



DIVISION OF CORRECTION BOARD REPORT

September 2024

Dexter Payne
Director



POPULATION REPORT

RESEARCH/PLANNING

August 2024 Admissions and Releases – Admissions for August 2024 totaled 492 (429-males and 63-females) while releases totaled 364 (308-males and 56 females) for a net increase in-house of 128 inmates.

Inmate Population Growth/Projection – At the end of August 2024, the jurisdictional population for the Division of Correction totaled 19,038, representing an increase of 535 inmates since the first of January 2024. At reporting time, calendar year 2024 has seen an average growth rate of 67 inmates per month, which is down from an average monthly increase of 71 inmates per month during calendar year 2023.

Average County Jail Backup – The backup in the county jails averaged 2,121 inmates per day during the month of August 2024, which was up from the per-day average of 2,099 inmates during the month of July 2024. Of the 2,121 average, short-term revocations accounted for 338 (296 males and 42 females) during the month.

INSTITUTIONS

INMATE INSTITUTIONAL GRIEVANCES

Inmate Formal/Informal Grievances: During August, a total of 1,510 formal grievances and 2,039 informal grievances were filed at various units.

Institutional Grievances Appeals: There was a total of 584 appeals of institutional grievances received in August. Of those, 395 were acknowledged and 189 were rejected for various reasons. Of the total, 333 appeals answered, 332 had no merit and one had merit.

FARM DIVISION

During August, harvest kicked off with EARU harvesting corn and Cummins harvesting corn and rice. Corn yields are within the state average and Rice yields are averaging over 200 bushels per acre in some fields. Field work is starting behind the combine getting ready for the next crop.

Vegetables are still being moved into the unit kitchens & Fall gardens are being planted.

Dairy's milk production is averaging higher than last year. Egg production is down due to current flock being older and needing to be replaced, but there is a waiting list over 6 months out to get new chicks with the company we normally use.

Breeding season for Beef Herd ended in August, due to us shorting our breeding season to 80 days. Next breeding season we hope to shorten to 70 days.

Pastures still have plenty of grass as we move into fall.

REGIONAL MAINTENANCE HOURS

Regional Maintenance Hours	August 2024
Benton Unit	5,498
Delta Regional Unit	3,464
East Arkansas Regional Unit	864
Grimes Unit	2,992
McPherson Unit	2,137
Mississippi County Work Release	1,000
North Central Unit	7,448
Ouachita River Correctional Unit	6,752
Randall L. Williams Unit	2,552
Texarkana Regional Corr. Ctr.	3,210
Tucker Unit	4,576
Varner Unit	5,910
Wrightsville Unit	3,986
TOTAL HOURS	50,389

WORK RELEASE RENT REPORT

Unit	August 2024
Benton Unit	\$174,460.00
Mississippi County Work Release	\$109,054.00
Northwest Arkansas Work Release	\$50,600.00
Tucker Work Release	\$39,366.00
Texarkana Regional Correctional Center	\$70,158.00
Wrightsville Hawkins Unit	\$45,210.00
TOTAL	\$488,848.00

REENTRY

PROGRAMS - August 2024

Program Name	Beginning Count	Admitted	Removed	Graduated	End Count	Volunteer Hours
Juvenile Program* (RLW)	11	1	1	0*	11	0
Release (Ester)	12	8	2	0	18	2
Veterans Program (Ester)	21	3	2	0	22	3
AFC - Pathway Home 4	18	14	6	10	22	0
TOTAL	62	26	5	10	73	5

*Juveniles are transferred from the program once they reach the age of 18.

WORKFORCE ALLIANCE FOR GROWTH IN THE ECONOMY (WAGE)

August 2024 Capacity: 120 Unit:	Participants	Status
Delta	8	Active
Ester	0	Not Active
Hawkins	5	Active
McPherson	0	Will start back mid September
North Central	0	Not Active
Ouachita River	13	Active
Tucker	16	Active
Wrightsville	3	Active
TOTAL	45	

WRIGHTSVILLE-HAWKINS PATHWAY TO FREEDOM PROGRAM

August 2024 Capacity: 200	Beginning Count	Enrolled During the Month	Removed	End Count*
Wrightsville-Hawkins PTF	200	21	22	199

ADVANCED PRINCIPLES AND APPLICATIONS FOR LIFE PROGRAM (APAL)

August 2024 Capacity: 86	Beginning Count	Admissions During Mo.	Removed*	End Count
Ester	58	3	3	58
Hawkins	12	2	0	14
TOTAL	70	5	3	71

Advanced PAL is an 18-month reentry program that combines a pre-release curriculum with the PAL program.

*The "Removed" column indicates the number of participants who paroled, completed the program, withdrew from the program, transferred, or were removed from the program for another reason.

THINK LEGACY

August 2024 Capacity: 324 Unit	Beginning Count	Admitted	Graduated	Removed*	End Count
Cummins	30	0	0	7	23
Delta Regional	24	0	0	0	24
East Arkansas Regional	13	0	0	2	11
McPherson	34	0	0	1	33
North Central	48	0	0	15	33
Ouachita River	24	0	0	6	18
Tucker	31	0	0	4	27
TOTAL	204	0	0	35	169

THINK LEGACY VOLUNTEER HOURS = 2

*The "Removed" column indicates the total number of participants who paroled, signed out, transferred, or were removed from the program for any other reason and are no longer in the barracks.

COLLEGE REPORT August 2024

COLLEGE PROGRAM LOCATIONS	Beginning Count	Admissions During Mo.	Removed During Mo.	End Count	Staff Enrolled
Arkansas State University					
Grimes Unit	0	23	0	23	0
McPherson Unit	0	41	0	41	0
Ashland University					
North Central Unit	7	0	2	5	0
Mid-America Seminary College					
Varner Unit	36	0	0	36	0
Philander Smith College					
East Arkansas Regional Unit	0	49	0	49	0
Tucker Unit	0	29	0	29	0
Southeast Arkansas College					
Cummins Unit	29	15	5	39	0
Delta Unit	11	13	0	24	0
Varner Unit	33	18	1	50	0
Shorter College					
Hawkins Unit	20	12	7	25	0
Ouachita River Unit	20	4	0	20	0
Pine Bluff Complex	39	22	6	55	0
Texarkana Regional	8	0	3	5	0
Wrightsville Unit	26	5	4	27	0
TOTAL	229	229	40	418	0

TRAINING

DIVISION OF CORRECTION

TRAINING - August 2024

BASIC TRAINING DIVISION –

BCOT Class 2024-L, led by instructor Reed, graduated on August 16 with a total of 33 cadets.

Willis H. Sargent Award -

Ja'Kari Henderson - Pine Bluff Unit

IN-SERVICE DIVISION –

There were 6 in-service classes held by the Training Academy during the month, with a total of 75.75 training hours.

eCADEMY –

During August, 418 ADC employees completed a total of 4,911.25 hours of eCADEMY training.

HEALTH/CORRECTIONAL PROGRAMS

CHAPLAINCY SERVICES AND COMMUNITY SPEAKING EVENTS

East Arkansas Regional Unit

The Institute for Basic Life Principles program came to EARU twice bringing seminars to 45 PAL program students. Basic Seminar 101 was held on Aug. 19-22 and Basic Seminar 102 was held on Aug. 26-29.

Pine Bluff Unit

Kairos Prison Ministry was at the PBU for the 54th Kairos walk on Aug. 22-25. The 4-day event saw 24 inmates participating alongside 23 volunteers. The volunteers logged 854.5 hours for this event.

Maximum Security Unit

The IBLP program came to Max Unit twice bringing seminars to the PAL program students. Basic Seminar 101 was held on Aug. 05-06 for 23 students and Basic Seminar 102 was held on Aug. 19-22 for 21 students. Forever Free Recovery Alive class provided by First Assembly North Little Rock held a graduation ceremony for the 17 inmates completing the program. Pastor Lane Mason from First Assembly NLR was the host of the ceremony.

Tucker Unit

The Christian Motorcycle Association held their motorcycle rally with 11 volunteers ministering to 165 inmates.

ACCREDITATION

ACA Internal Audits Completed:

08/06-08/07: EARU Audit
 08/06: Varner - Fire & Safety Independent Audits
 08/07: Ester - Fire & Safety Independent Audits
 08/13: Vaarner Final Pre-Audit
 08/14: Grimes & McPherson - Fire & Safety Independent Audits
 08/14-08/18: ACA Conference (panel hearings for McPherson, Grimes, Max, Training Academy, Cummins & ORCU)
 08/20: Varner File Audit
 08/20: Hawkins - Fire & Safety Independent Audits
 08/22: Benton WR - Fire & Safety Independent Audits
 08/27: Varner - Fire & Safety Independent Audits

VOLUNTEER SERVICES - August 2024

Program Name	Hours
Release (Ester)	8
Veteran (Ester)	3
Total	11

MENTAL HEALTH SERVICES

Reduction of Sexual Victimization Program (RSVP) and Sex Offender Treatment Programs (SOFT):

August 2024	Capacity	Beginning Count	Completed	Removed	Admissions	End Count
RSVP	238	236	76	4	80	236
SOFT	30	12	0	0	0	12
Total	268	248	76	4	80	248

There are 814 males on the waiting list for RSVP and zero females on the waiting list for SOFT who are within five years of their TE date. Of those, 12 inmates are mandated by the Post Prison Transfer Board.

The average time on the waiting list from request is between one and two months for those stipulated.

*The total on the waiting list, including those not currently within the identified timeframe, is 1,645 males and zero females. Of these, 787 are eligible and 858 are ineligible for the program. There is one PREA inmate in the program at this time.

*Ineligibility is due to being in restrictive housing, having class IV status, or receiving a major disciplinary within the last 60 days.

Substance User Rehabilitation Services (SURS):

August 2024 Unit	Capacity	Beginning Count	Completed	Removed	Admissions	End Count
Benton	20	20	0	1	1	20
Cummins	45	44	5	7	12	44
Grimes	50	50	7	2	8	49
Maximum Security	4	3	0	0	0	3
McPherson	150	147	22	5	26	116
Randall L. Williams	150	141	21	13	35	142
Tucker	62	59	5	1	4	57
Wrightsville	150	147	25	9	33	146
Total	631	611	85	38	119	607

For SURS, there are 2,822 males and 372 females on the waiting list who are within five years of their release date. Of those, 151 are mandated by the Post Prison Transfer Board. The average time on the waiting list from request is 15 days. *The total on the waiting list, including those not currently within the identified timeframe, is 1,401 males and 502 females. Of these, 3,345 are eligible and 1,258 are ineligible for the program. *Ineligibility is due to being in restrictive housing, having class IV status, or receiving a major disciplinary within the last 60 days.

Ouachita River Correctional Unit (ORCU) Residential Program Unit (RPU):

The RPU had one admissions and two discharges in August for an end-of-month count of 119.

McPherson Unit Mental Health Residential Program Unit (RPU):

There were three admissions and three discharges in August for an end-of-month count of 40.

Habilitation Program:

The Habilitation Program at the Ouachita River Correctional Unit provided treatment services to 45 inmates in August. There was three admissions and one discharges, which resulted in an end-of-month count of 44.

Suicide:

There were 148 suicidal threats in August. There were 14 attempts, one of which resulted in death.

Staffing:

The following Mental Health Services and Substance User Rehabilitation Services (SURS) positions were vacant in July and August 2024:

Positions	FTEs*	July	August
Mental Health Administrator	1	0	0
Psychologists	4	2	2
Psychological Examiners	1	0	0
Social Workers	9	7	7
Licensed Professional Counselors	3	3	3
Rehab Director	1	1	1
Rehab Facility Supervisors	3	3	3
Advisors	29	29	29
Substance Abuse Program Coord.	4	4	4
Substance Abuse Program Leaders	35	34	34
Administrative Specialist	7	7	7
Rehab Program Managers	8	8	8

*FTE refers to authorized Full Time Equivalent positions.

Self-Study Classes:

Classes	Number of Participants	Number Completed	Waiting List
Anger Management	144	116	548
Thinking Errors	147	147	495
Substance Abuse Education	102	101	500
Communication Skills	98	98	445
Domestic Violence	38	38	126
Victims of Domestic Violence	37	37	114
Stress Management	142	139	572
Parenting	76	76	197

Outpatient:

There were 2,376 inmates on the mental health medical log at the beginning of August. Mental Health staff conducted the following contacts during the month:

Case Management Contacts	1,832
Requests for Interviews	699
Testing	0
Intakes	468
Unit Requests	1,542
Pre-Lockup Reviews	423
Routine Restrictive Housing Reviews	1,058
Restrictive Housing Rounds	12,208
PREA Evaluations	70
Routine Follow-up	571
834 Requests	72

MENTAL HEALTH SERVICES, *continued*

County Mental Health Requests:

During August, there were 205 requests received of a mental health nature. Of those, 5 inmates were fast-tracked to ADC.

County Medical Health Requests:

During August, there were 758 requests received of a medical nature. A total of 11 inmates were fast-tracked to ADC.

Medical Contract Reimbursements:

Sanction reimbursements for ADC in May amounted to \$9,650.00.

Deaths:

There were 7 inmate deaths during the month of August. One was claimed, six were cremated and claimed. There were zero not claimed.

Wellpath:

See attachment for Wellpath's report regarding outside beds and emergency room visits.

Medical Grievances:

In August, there were 145 appeals of medical grievances received and 78 appeals were answered. Three were found to be with merit and one with merit but resolved.

SEX OFFENDER ASSESSMENT

Assessments Completed:

Risk Level	August	September 1999 through August 2024
Level 1	0	1,248
Level 2	0	9,717
Level 3	0	8,151
Level 4	0	758
Default 3	0	*
Total	0	19,874

*Default Level 3's are included in the total number of Level 3's to date.

ACIC Numbers:

The total number of sex offenders registered from September 1999 through August 2024:

Compliant	8,365
Delinquent	2,130
Confined	3,870
Out-of-State	4,478
Address Unknown	135
Deported	209
Incapacitated	140
Out of USA	85
Total	19,412

Consistent with current Arkansas law, deceased offenders no longer remain on the registry.

PAWS IN PRISON

August 2024 Unit	Enrolled	Graduated	Foster	Volunteer Hours
Hawkins Unit	6	4	1	0
Maximum Security Unit	6	3	0	0
McPherson Unit	0	6	3	0
North Central Unit	4	1	0	0
Ouachita River Correctional Unit	5	1	0	0
Randall L. Williams Unit	4	2	0	8
Tucker Unit	7	3	0	0
Total	32	20	4	8

Completed Paws in Prison Training:

August 2024 Program Graduates	20
YTD Program Graduates	145
Total Graduates Since Inception (Dec 2011)	2,490
Dogs Currently in Foster (Graduated, but Not Adopted)	4
August 2024 Volunteer Hours	8
YTD Volunteer Hours	82

AGENCY HIGHLIGHTS

AUGUST 2024

PROMOTIONS

Some of the security promotions during the month of August included:

Benton Unit

- Lt. Stephanie Jordan

Cummins Unit

- Lt. Gloria Bell
- Sgt. Jessica Allen
- Fredrick Coleman

East Arkansas Regional Unit

- Major Rodney Brown

Hawkins Unit

- Lt. Bob Warren

Tucker Reentry

- Sgt. David Westbrook

Maximum Security Unit

- Captain Jeremy Ridgle
- Lt. Brandon Bass
- Lt. Welsey Harris
- Sgt. Jeremy Stone
- Sgt. Kentrell Jorden

Randall L. Williams Unit

- Sgt. Demarqus Jermon

Transportation

- Sgt. Gerren Alexander

Tucker Unit

- Corporal Tomeka Caldwell

Wrightsville Unit

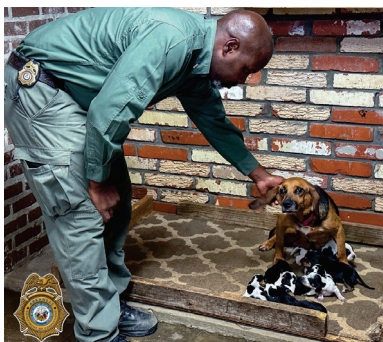
- Corporal Sharonda Hurst
- Sgt Anycia Hill
- Sgt. Charlena Green-cage
- Lt. Jonathan Beck

BCOT 2024-L (TRAINING ACADEMY)

Join the #ARDOCFamily in congratulating the recent graduates of the Basic Correctional Officer Training Academy Class 2024-L!



NEWEST K-9 MEMBERS AT TUCKER



Meet the nine newest members of the #ARDOCFamily! These nine puppies were born a few short weeks ago at the Tucker Unit - AR DOC and are being well looked after by their momma, Peanut, and the

Tucker K9 Team.



BCOT 2024-M (MCPHERSON)

BCOT Class 2024-M Defensive Tactics and PT



ACA 154TH CONGRESS OF CORRECTION

Recently, members of the DOC Management team were in Nashville, TN for the American Correctional Association (ACA) 154th Congress of Correction. During the conference, the following six ADC facilities received their ACA Reaccreditation certificates:

Cummins Unit, Maximum Security Unit, Ouachita River Correctional Unit, McPherson Unit, ADC Training Academy, and Grimes Unit



BCOT 2024-K (CUMMINS)

Join the #ARDOCFamily in congratulating the recent graduates of the Basic Correctional Officer Training Academy Class 2024-K! This was the first class to graduate from the ADC Satellite Academy held at the Cummins Unit.



REGIONAL MAINTENANCE PROJECT HIGHLIGHTS

AUGUST 2024

Cleaning up downtown Pine Bluff:

Pine Bluff Regional Maintenance



Arkansas School for the Deaf:

Wrightsville Complex Regional Maintenance



Lake DeGray State Park Golf Course:

Ouachita River Regional Maintenance



2024 INFORMAL GRIEVANCE REPORT

Month	BENTON	HAWK/M	HAWK/F	WRTS	EARU & MX	GRIMES	RLW	MCWR	MCPH	MSU	NCU	PBU	NWA	TU	TRCC	VSMX	VU	CU & CMU	ORCU	Ester	DRU	TOTAL
JAN	1	10	13	60	211	211	14	0	296	73	68	27	2	53	0	136	41	92	116	28	147	1,599
FEB	2	5	15	73	195	260	20	0	274	84	42	16	0	76	1	170	35	174	118	25	106	1,691
MAR	0	11	7	52	171	266	12	0	231	49	62	25	0	63	1	139	43	212	109	26	83	1,562
APR	2	11	24	61	211	218	15	0	155	39	71	22	0	68	0	170	36	172	89	31	75	1,470
MAY	0	9	25	94	222	202	22	0	238	47	98	34	0	76	0	160	36	183	105	37	102	1,690
JUN	0	7	11	66	439	204	24	1	229	129	69	13	2	43	1	154	49	154	85	20	73	1,773
JUL	0	5	22	84	789	205	24	2	184	125	63	26	1	43	0	154	38	151	102	17	82	2,117
AUG	1	4	23	103	597	251	16	1	180	43	93	54	0	97	0	170	43	163	63	34	103	2,039
SEPT																						0
OCT																						0
NOV																						0
DEC																						0
TOTAL	6	62	140	593	2,835	1,817	147	4	1,787	589	566	217	5	519	3	1,253	321	1,301	787	218	771	13,941

2024 FORMAL GRIEVANCE REPORT

Month	BENTON	HAWK/M	HAWK/F	WRTS	EARU & MX	GRIMES	RLW	MCWR	MCPH	MSU	NCU	PBU	NWA	TU	TRCC	VSMX	VU	CU & CMU	ORCU	Ester	DRU	TOTAL
JAN	0	4	3	26	302	115	10	0	135	79	56	24	0	20	0	100	22	65	89	14	75	1,139
FEB	0	0	8	32	278	126	14	2	136	118	37	15	0	41	0	130	22	109	81	6	50	1,205
MAR	2	4	3	41	288	157	10	0	108	85	56	11	0	28	1	100	22	155	67	8	56	1,202
APR	0	5	12	22	357	121	10	1	93	81	41	17	0	33	0	146	18	116	52	11	41	1,177
MAY	0	2	10	63	341	98	20	0	100	49	75	21	0	28	0	144	22	129	49	18	52	1,221
JUN	0	4	10	31	381	119	12	2	81	93	48	7	0	28	1	121	27	135	54	13	49	1,216
JUL	0	5	8	46	622	110	14	2	94	110	41	10	1	28	0	117	9	120	55	9	36	1,437
AUG	1	2	12	48	546	153	8	1	78	112	62	24	1	75	0	131	19	117	43	21	56	1,510
SEPT																						0
OCT																						0
NOV																						0
DEC																						0
TOTAL	3	26	66	309	3,115	999	98	8	825	727	416	129	2	281	2	989	161	946	490	100	415	10,107

Report includes Pine Bluff Reentry (PBR), Pine Bluff Unit (PBU) and Pine Bluff Work Release (PBW).

INMATE INSTITUTIONAL GRIEVANCE APPEAL REPORT – AUGUST 2024

	Acknowledged	Rejected	Processed W/O Merit	Processed W/ Merit
Benton Unit	0	0	0	0
Benton Work Release	0	0	0	0
Cummins Unit	22	23	15	0
Cummins Modular Unit	0	0	1	0
Delta Regional Unit	6	3	2	0
East Arkansas Regional Unit	15	3	15	0
East Arkansas Regional Max Unit	161	46	111	0
Ester Unit	2	2	2	0
Grimes Unit	32	28	23	0
Maximum Security Unit	31	19	55	1
Tucker Re-Entry	0	0	0	0
McPherson Unit	15	7	11	0
McPherson Mental Health Residential Program Unit	0	1	0	0
Mississippi County Work Release Center	0	0	0	0
Northwest Arkansas Work Release Center	0	0	0	0
North Central Unit	17	6	3	0
Ouachita River Correctional Unit	10	3	6	0
ORCU Hospital	0	1	0	0
ORCU New Commitment	1	0	0	0
ORCU Mental Health Residential Program Unit	1	0	1	0
Pine Bluff Unit	1	1	0	0
Pine Bluff Re-Entry	0	0	0	0
Randall L. Williams Correctional Facility	0	3	1	0
Texarkana Regional Correctional Center	0	0	0	0
Tucker Unit	25	12	26	0
Varner Super Max	42	20	46	0
Varner Unit	3	3	4	0
Wrightsville Unit	11	6	10	0
Hawkins Center	0	2	0	0
Hawkins for Males	0	0	0	0
Hawkins SPU	0	0	0	0
Total	395	189	332	1

ADMISSIONS AND RELEASES - August 2024

<u>Admissions</u>	<u>Male</u>	<u>Female</u>	<u>Total</u>
Asian	1	0	1
Black	141	11	152
Caucasian	269	52	321
Hispanic	12	0	12
Native American Indian	4	0	4
Native Hawaiian or Pacific Island	1	0	1
Other	0	0	0
Unknown	1	0	1
Total	429	63	492

<u>Releases</u>	<u>Male</u>	<u>Female</u>	<u>Total</u>
Asian	2	0	2
Black	104	12	116
Caucasian	189	42	231
Hispanic	12	2	14
Native American Indian	1	0	1
Native Hawaiian or Pacific Island	0	0	0
Other	0	0	0
Unknown	0	0	0
Total	308	56	364

ADC INMATE POPULATION GROWTH 2000-2029 - AUGUST 2024

Mo.	2000	2001	2002	2003	2004	2005	2006	2007	2008	2009	2010	2011	2012	2013	2014	2015	2016	2017	2018	2019	2020	2021	2022	2023	2024
Jan.	11,984	11,908	12,402	13,015	13,105	13,595	13,481	13,839	14,518	14,796	15,334	16,312	15,134	14,815	17,481	18,142	17,785	17,824	18,201	17,958	17,989	16,119	17,154	17,682	18,522
Feb.	12,169	12,022	12,529	13,054	13,166	13,783	13,633	14,012	14,603	14,883	15,374	16,209	14,990	15,008	17,438	18,082	17,625	17,608	17,998	17,846	18,181	16,120	17,077	17,814	18,612
March	12,006	12,033	12,299	13,108	13,088	13,418	13,534	13,772	14,580	14,843	15,290	16,095	14,964	14,665	17,395	18,233	17,573	17,666	18,089	17,898	17,860	16,085	16,992	18,075	18,820
April	12,069	12,167	12,465	13,213	13,323	13,469	13,554	13,851	14,769	14,937	15,570	16,172	15,124	14,850	17,604	18,703	17,815	17,798	18,227	17,977	17,331	16,250	17,059	18,206	18,889
May	12,109	12,384	12,558	13,463	13,556	13,528	13,711	14,146	14,880	15,146	15,694	16,062	15,132	15,074	17,593	18,693	17,769	17,652	17,945	17,817	16,694	16,476	17,229	18,267	18,863
June	12,005	12,108	12,439	13,418	13,389	13,251	13,430	13,915	14,700	15,025	15,564	15,554	14,832	14,825	17,340	18,813	17,973	17,963	17,972	17,942	16,552	16,560	17,129	18,213	18,957
July	12,030	12,190	12,622	13,509	13,528	13,286	13,560	14,082	14,868	15,195	15,807	15,519	14,879	15,379	17,522	18,870	18,130	18,180	18,005	18,002	16,511	16,638	17,109	18,397	18,955
August	12,087	12,371	12,815	13,565	13,632	13,419	13,646	14,224	15,100	15,385	15,829	15,240	14,675	16,103	17,549	18,806	17,919	18,051	17,751	18,090	16,367	16,655	17,274	18,375	19,038
September	11,983	12,289	12,774	13,341	13,516	13,237	13,652	14,217	14,850	15,285	16,025	15,172	14,724	16,412	17,605	18,549	18,026	18,179	17,865	17,856	16,215	16,698	17,432	18,380	
October	12,119	12,348	12,942	13,341	13,584	13,363	13,775	14,349	14,836	15,381	16,311	15,271	14,856	16,993	17,880	18,430	18,127	18,348	17,943	17,947	16,311	16,821	17,480	18,557	
November	12,094	12,408	13,162	13,408	13,706	13,587	13,913	14,437	15,025	15,340	16,460	15,205	14,625	17,168	17,848	17,981	17,573	17,973	17,666	18,060	16,165	16,982	17,521	18,500	
December	11,856	12,333	12,845	13,106	13,470	13,338	13,728	14,315	14,716	15,199	16,204	15,062	14,654	17,235	17,874	17,707	17,537	18,078	17,799	17,759	16,094	17,023	17,648	18,503	
Net Ann. Inc.	29	477	512	261	364	-132	390	587	401	483	1,005	-1,142	-408	2,581	639	-167	-170	541	-279	-40	-1,665	929	625	855	535
Avg. Mo. Inc.	2	40	43	22	30	-11	33	49	33	40	84	-95	-34	215	53	-14	-14	45	-23	-3	-139	77	52	71	67

Population is total jurisdictional count at end of each month. Population at end of month December 1999 was 11,827.

Average monthly population increased for past fifteen years 2009 - 2023 is 21

Average monthly population increased for past ten years Jan. 2014 - Dec 2023 is 11

Average monthly population decreased for past five years 2019 - 2023 is 12

Projected at Growth of 21 per Month

Mo.	2008	2009	2010	2011	2012	2013	2014	2015	2016	2017	2018	2019	2020	2021	2022	2023	2024	2025	2026	2027	2028	2029
	Actual	Actual	Actual	Actual	Actual	Actual	Actual	Actual	Actual	Actual	Actual	Actual	Actual	Actual	Actual	Actual	Actual/Proj	Proj.	Proj.	Proj.	Proj.	Proj.
January	14,518	14,796	15,334	16,312	15,134	14,815	17,481	18,142	17,785	17,824	18,201	17,958	17,989	16,119	17,154	17,682	18,522	19,143	19,395	19,647	19,899	20,151
February	14,603	14,883	15,374	16,209	14,990	15,008	17,438	18,082	17,625	17,608	17,998	17,846	18,181	16,120	17,077	17,814	18,612	19,164	19,416	19,668	19,920	20,172
March	14,580	14,843	15,290	16,095	14,964	14,665	17,395	18,233	17,573	17,666	18,089	17,898	17,860	16,085	16,992	18,075	18,820	19,185	19,437	19,689	19,941	20,193
April	14,769	14,937	15,570	16,172	15,124	14,850	17,604	18,703	17,815	17,798	18,227	17,977	17,331	16,250	17,059	18,206	18,889	19,206	19,458	19,710	19,962	20,214
May	14,880	15,146	15,694	16,062	15,132	15,074	17,593	18,693	17,769	17,652	17,945	17,817	16,694	16,476	17,229	18,267	18,863	19,227	19,479	19,731	19,983	20,235
June	14,700	15,025	15,564	15,554	14,832	14,825	17,340	18,813	17,973	17,963	17,972	17,942	16,552	16,560	17,129	18,213	18,957	19,248	19,500	19,752	20,004	20,256
July	14,868	15,195	15,807	15,519	14,879	15,379	17,522	18,870	18,130	18,180	18,005	18,002	16,511	16,638	17,109	18,397	18,955	19,269	19,521	19,773	20,025	20,277
August	15,100	15,385	15,829	15,240	14,675	16,103	17,549	18,806	17,919	18,051	17,751	18,090	16,367	16,655	17,274	18,375	19,038	19,290	19,542	19,794	20,046	20,298
September	14,850	15,285	16,025	15,172	14,724	16,412	17,605	18,549	18,026	18,179	17,865	17,856	16,215	16,698	17,432	18,380	19,059	19,311	19,563	19,815	20,067	20,319
October	14,836	15,381	16,311	15,271	14,856	16,993	17,880	18,430	18,127	18,348	17,943	17,947	16,311	16,821	17,480	18,557	19,080	19,332	19,584	19,836	20,088	20,340
November	15,025	15,340	16,460	15,205	14,625	17,168	17,848	17,981	17,573	17,973	17,666	18,060	16,165	16,982	17,521	18,500	19,101	19,353	19,605	19,857	20,109	20,361
December	14,716	15,199	16,204	15,062	14,654	17,235	17,874	17,707	17,537	18,078	17,799	17,759	16,094	17,023	17,648	18,503	19,122	19,374	19,626	19,878	20,130	20,382
Net Ann. Inc.	401	483	1,005	-1,142	-408	2,581	639	-167	-170	541	-279	-40	-1,665	929	625	855	619	252	252	252	252	252
Ave. Mo. Inc.	33	40	84	-95	-34	215	53	-14	-14	45	-23	-3	-139	77	52	71	52	21	21	21	21	21

FISCAL YEAR 2024 COUNTY JAIL BACKUP - AUGUST 2024

DAY		Jul-24		Aug-24
1		2,058		2,112
2		2,085		2,120
3		2,085	*	2,120
4		2,111	*	2,120
5		2,111		2,107
6	*	2,111		2,090
7	*	2,111		2,097
8		2,131		2,097
9		2,120		2,102
10		2,130	*	2,102
11		2,125	*	2,102
12		2,116		2,092
13	*	2,116		2,104
14	*	2,116		2,113
15		2,097		2,115
16		2,096		2,106
17		2,097	*	2,106
18		2,100	*	2,106
19		2,074		2,132
20	*	2,074		2,128
21	*	2,074		2,139
22		2,103		2,141
23		2,105		2,154
24		2,077	*	2,154
25		2,083	*	2,154
26		2,095		2,127
27	*	2,095		2,140
28	*	2,095		2,137
29		2,100		2,156
30		2,092		2,139
31		2,080	*	2,139
Avg Daily Backup		2,099		2,121

Notes: Total does not include 309 Contracts in County Jails (maximum of 336)

County Jail Back-up Average for August 2024 - 2,121

County Jail Back-up Fiscal Year Average as of August 31, 2024 - 2,110

Short Term Revocation Program Average for August 2024 - 338

Short Term Revocation Program Fiscal Year Average as of August 31, 2024 - 359

STTG UNIT COUNTS – AUGUST 2024

Unit	Beginning Total	Confirmed	Suspected	In	Out	Paroled	Removed	Ending Total	Total Unit Population	Unit % of STTG's
Benton	93	0	0	8	8	3	0	90	330	27.27%
Cummins	678	1	0	87	77	7	0	682	2,000	34.10%
Delta	210	0	0	11	9	0	0	212	622	34.08%
EARU	704	0	0	29	27	8	0	698	1,630	42.82%
Ester	111	0	0	84	8	7	0	180	704	25.57%
Grimes	410	2	0	21	20	11	0	400	1,094	36.56%
Hawkins	46	0	0	7	2	0	0	51	452	11.28%
Max	290	0	0	29	15	4	0	300	700	42.86%
McPherson	47	1	0	0	0	1	0	47	1,053	4.46%
MCWR	53	0	0	6	5	0	0	54	187	28.88%
NCU	286	0	0	15	11	9	0	281	937	29.99%
NWAWR	24	0	0	0	0	0	0	24	100	24.00%
ORCU	319	0	0	50	42	9	0	318	1,579	20.14%
ORCU Intake	103	115	0	0	107	0	0	111	348	31.90%
Pine Bluff	139	1	0	16	21	3	0	132	557	23.70%
RLW	213	0	0	31	18	1	0	225	548	41.06%
TWR	40	0	0	3	1	0	0	42	133	31.58%
Tucker	297	0	0	15	13	6	0	293	1,000	29.30%
Varner	753	0	0	73	58	8	0	760	1,702	44.65%
Wrightsville	220	0	0	7	4	3	0	220	862	25.52%
Total	5,036	120	0	492	446	80	0	5,120	16,538	30.96%

ORCU Intake brought in 115 new STTG members into ADC last month.

STTG DISCIPLINARY REPORT – AUGUST 2024

Unit	STTG Incidents	STTG Suspected Incidents	Total Unit Disciplinary	Disciplinary Involving STTG	Percentage
Benton	0	0	11	5	45.45%
Cummins	0	0	541	293	54.16%
Delta	0	0	116	63	54.31%
EARU	0	0	209	114	54.55%
Easter	0	0	34	10	29.41%
Grimes	1	0	177	85	48.02%
Hawkins	0	0	9	1	11.11%
Max	0	0	102	52	50.98%
McPherson	0	0	160	21	13.13%
MCWR	0	0	4	0	0.00%
NCU	2	0	191	98	51.31%
NWAWR	0	0	3	0	0.00%
ORCU	0	0	143	45	31.47%
ORCU Intake	0	0	9	2	22.22%
Pine Bluff	0	0	125	50	40.00%
RLW	0	0	109	61	55.96%
TWR	0	0	3	0	0.00%
Tucker	0	0	122	51	41.80%
Varner	0	0	451	256	56.76%
Wrightsville	0	0	166	64	38.55%
Total	3	0	2,685	1,271	47.34%

STTG COUNTS BY STTG SET – AUGUST 2024

STTG Set	Benton	Cummins	Delta	EARU	Ester	Grimes	Hawkins	Max	McPherso	MCWR	NCU	NWAWR	ORCU	Intake	PB	RLW	TWR	Tucker	Varner	Wrightsvil	Total	
Asian	2	0	0	1	2	0	0	0	0	0	0	0	0	0	0	0	0	1	1	1	0	8
Bloods	16	132	40	144	19	89	11	63	8	7	55	3	53	8	22	44	11	44	171	45	985	
Crips	9	77	33	86	17	47	2	44	3	7	25	2	35	6	12	29	5	27	103	31	600	
Folk	5	75	8	57	31	25	4	30	3	1	10	2	20	12	4	10	1	22	65	21	406	
GD	14	154	49	168	36	86	7	74	11	11	79	7	67	18	34	45	6	55	170	39	1,130	
Mexican	6	26	9	22	7	14	3	3	1	2	10	0	11	4	8	13	0	6	24	11	180	
Motorcycle	0	2	0	0	0	0	0	1	1	0	3	0	5	0	0	0	0	22	1	1	36	
Other	1	9	10	18	2	12	3	8	5	3	8	1	12	10	7	6	1	10	18	6	150	
People	5	36	11	35	5	25	0	23	1	1	10	0	15	2	8	10	1	14	31	10	243	
Unknown	0	13	2	9	2	1	2	1	0	4	2	2	0	0	4	3	1	6	9	3	64	
W/S	14	74	22	39	47	36	8	13	6	9	30	7	60	31	11	32	6	46	72	23	586	
AB	2	9	1	7	4	4	0	0	1	1	8	0	4	2	1	3	0	5	19	3	74	
AC	1	11	3	15	5	7	0	5	1	1	4	0	5	2	0	2	0	4	23	0	89	
NAE	4	35	12	44	2	20	2	13	3	3	19	0	16	9	7	14	4	9	27	11	254	
WAR	11	29	12	53	1	34	9	22	3	4	18	0	15	7	14	14	5	22	26	16	315	
Total	90	682	212	698	180	400	51	300	47	54	281	24	318	111	132	225	42	293	760	220	5,120	

Key:

GD = Gangster Disciples

W/S = White Supremacist

NAE = New Aryan Empire

WAR = White Aryan Resistance

AC = Aryan Circle

AB = Aryan Brotherhood

ADC INPATIENT AND EMERGENCY ROOM UTILIZATION

ARKANSAS DEPARTMENT OF CORRECTION INPATIENT AND EMERGENCY ROOM UTILIZATION

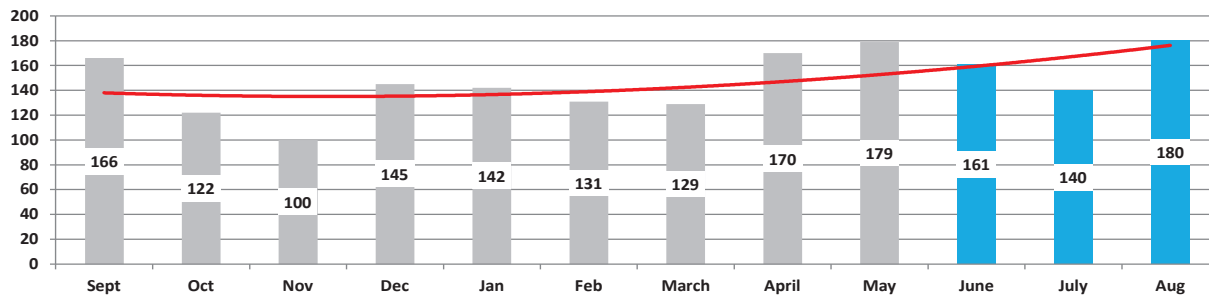
ADC Inpatient Statistics Past 12 Months

	2023	2023	2023	2023	2024	2024	2024	2024	2024	2024	2024	2024	2024	
	Sept	Oct	Nov	Dec	Jan	Feb	March	April	May	June	July	Aug	Average	
Admissions	72	65	51	58	70	54	54	61	74	75	62	85	65.1	
Hospital Days	404	273	218	221	292	230	208	231	373	322	335	406	292.8	
Average Length of Stay	5.61	4.20	4.27	3.81	4.17	4.26	3.85	3.79	5.04	4.29	5.40	4.78	4.50	

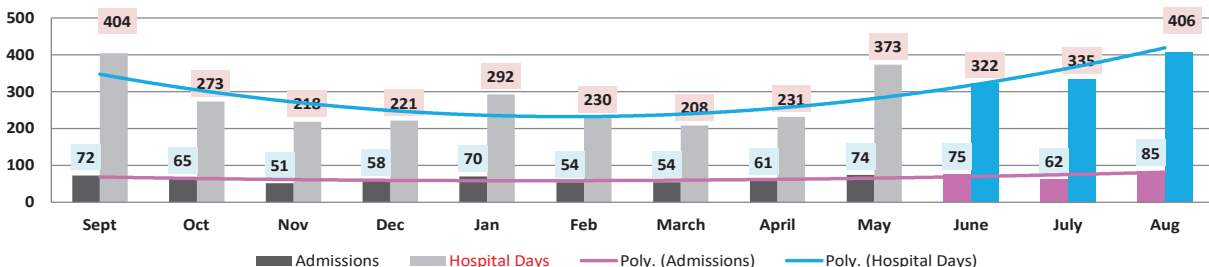
ADC ER Visits Past 12 Months

	2023	2023	2023	2023	2024	2024	2024	2024	2024	2024	2024	2024	2024	
	Sept	Oct	Nov	Dec	Jan	Feb	March	April	May	June	July	Aug	Average	
Emergency Room Visits	166	122	100	145	142	131	129	170	179	161	140	180	147.1	

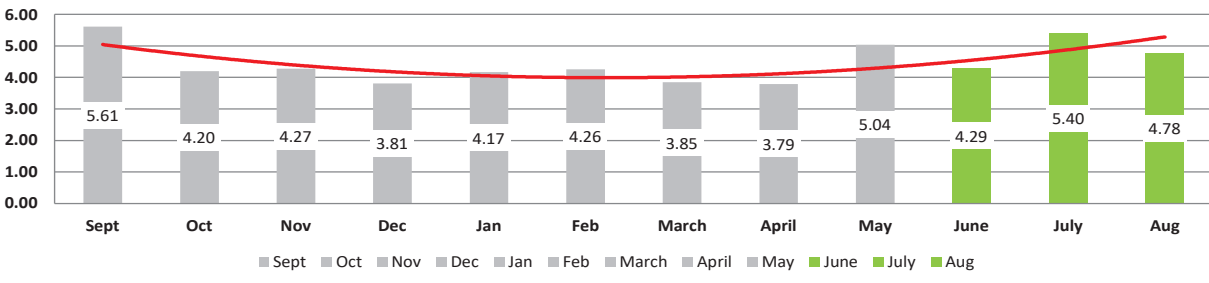
ADC Emergency Room Visits
Past 12 Months



ADC Inpatient Utilization
Past 12 Months



ADC Inpatient Average Length of Stay
Past 12 Months



MEDICAL GRIEVANCE BOARD REPORT – AUGUST 2024

Unit	<i>Acknowledged/Received</i>	<i>Rejected</i>	<i>Reviewed & Signed by Dep Director</i>	<i>With Merit</i>	<i>With Merit, but Resolved</i>	<i>% With Merit</i>	<i>Without Merit</i>
Benton	0	0	0	0	0	0.00%	0
CMU	2	1	0	0	0	0.00%	0
Cummins	17	7	11	1	0	9.09%	10
Delta	8	0	5	0	0	0.00%	5
EARU	13	5	3	1	0	33.33%	2
EARU Max	38	8	15	0	1	6.67%	14
Ester	0	0	0	0	0	0.00%	0
Grimes	7	6	10	0	0	0.00%	10
Hawkins	0	0	0	0	0	0.00%	0
McPherson	3	3	2	0	0	0.00%	2
MCWRC	0	0	0	0	0	0.00%	0
MSU	6	0	4	0	0	0.00%	4
North Central	9	2	11	1	0	9.09%	10
NWAWRC	0	0	0	0	0	0.00%	0
Ouachita	16	1	8	0	0	0.00%	8
Pine Bluff	1	0	2	0	0	0.00%	2
Randall L. Williams	0	0	0	0	0	0.00%	0
SNN	0	0	0	0	0	0.00%	0
TRCC	0	0	0	0	0	0.00%	0
Tucker	4	0	2	0	0	0.00%	2
Varner	6	2	3	0	0	0.00%	3
Varner Super Max	13	0	2	0	0	0.00%	2
WRU	2	0	0	0	0	0.00%	0
WHM	0	0	0	0	0	0.00%	0
WWR	0	0	0	0	0	0.00%	0
Total	145	35	78	3	1	5.13%	74

CHAPLAINCY

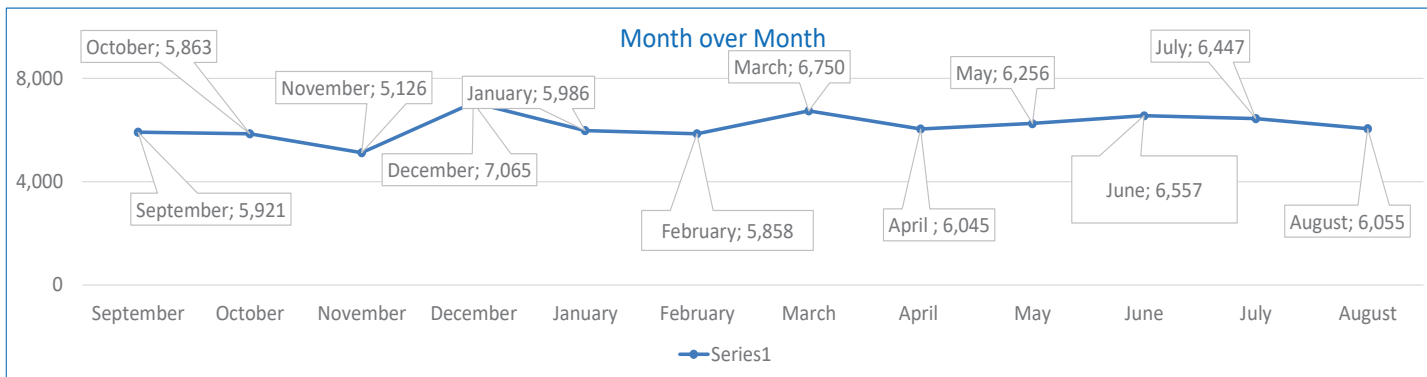
Month: August Year: 2024	CUMMINS	DELTA REGIONAL	EAST ARKANSAS	EAST ARKANSAS MAX	ESTER	GRIMES	HAWKINS	MAXIMUM	MCPHERSON	NORTH CENTRAL	OUACHITA RIVER	PINE BLUFF	RANDALL L. WILLIAMS	TUCKER	VARNER	VARNER MAX	WRIGHTSVILLE	TOTAL
Services Chaplains Oversaw																		
Christian																		
Population	10	8	6	0	4	3	3	4	8	19	4	5	4	5	11	0	1	95
Segregation	0	0	0	0	0	0	0	4	0	0	0	0	0	0	0	0	0	4
Muslim																		
Population	4	5	5	0	4	3	3	1	4	5	5	5	5	1	5	0	4	59
Segregation	0	0	0	0	0	0	0	1	0	0	0	0	0	0	0	0	0	1
159																		
Volunteers in Charge																		
Protestant	15	0	3	0	20	12	4	19	15	14	9	3	17	12	0	0	10	153
Catholic	2	0	0	0	0	4	4	0	4	4	4	0	1	0	4	0	12	39
Muslim	1	0	5	0	0	4	1	2	0	0	0	5	1	0	1	0	0	20
Other	4	0	0	0	0	0	4	0	0	0	5	0	0	0	12	0	0	25
Baptism	2	0	0	0	0	0	0	4	0	4	0	0	2	4	0	0	35	51
Marriages																		
	0	0	0	0	1	0	0	0	2	0	0	0	0	0	1	0	0	4
Distributed by Chaplains																		
Greeting Cards	4	18	0	0	30	9	120	95	0	18	55	21	7	135	30	348	0	890
Bibles, Quran, Torah, Etc.	25	15	21	15	68	6	10	4	1	28	250	27	9	4	21	34	30	568
Study Course	30	0	3	3	116	2	0	6	24	0	35	12	2	60	0	6	0	299
Writing Supplies	0	0	0	0	60	158	10	144	75	0	500	0	0	2	0	0	0	949
Literature	447	237	1,623	210	462	10	250	46	176	798	255	31	140	300	328	561	319	6,193
Chaplain's Visits																		
Barracks	35	16	9	110	12	37	20	13	143	49	200	8	77	218	75	15	28	1,065
Approximate Hours Spent in Barracks	6	13	5	55	6	21	26	12	89	12	40	1	15	54	31	8	22	416
Inmate Office visits	90	237	8	0	18	125	41	5	50	107	11	23	20	327	71	0	12	1,145
Other Office visits	15	15	0	0	6	3	8	4	53	0	12	119	35	44	73	0	3	390
Hospital	0	0	0	0	0	2	0	0	1	4	32	0	0	0	0	0	0	39
Infirmery/Sick Call	4	3	1	0	4	3	0	6	10	4	4	1	4	3	2	2	3	54
Restrictive/Punitive Housing	18	4	1	0	4	5	4	14	6	0	13	4	5	18	6	6	3	111
PC - DRU	4																	4
Visitation Days	0	0	0	0	0	0	0	2	0	0	0	0	0	0	0	0	0	2
Volunteer Visits																		
RCV	0	0	0	0	2	11	4	2	5	0	6	54	7	2	0	0	0	93
OCV	27	12	5	0	20	8	8	32	36	36	20	36	1	140	0	0	0	381
Spiritual Advisor	0	0	0	0	0	0	0	0	0	0	0	0	0	1	0	0	0	1
CRA	29	2	31	1	16	23	47	45	52	117	63	7	16	126	31	9	37	652
Religious Volunteer Hours																		
Volunteer Hours	73	21	91	5	140	146	59	256	355	552	283	836	32	515	111	21	74	3,570
Denominational/Volunteer Chaplain Hours	8	0	0	0	50	0	53	36	36	38	36	93	0	74	53	2	28	507
4,077																		
Other Activities of Chaplain																		
Counseled Employees	6	18	11	0	7	3	3	2	6	0	22	8	4	12	148	0	3	253
Orientation Sessions	8	0	0	0	0	0	0	0	0	0	0	0	0	0	0	0	0	8
Free World Devotions	0	0	7	0	0	0	0	0	5	0	0	0	0	2	20	0	0	34
Spoke in Churches	0	8	8	0	4	2	0	0	9	0	0	4	0	4	20	0	0	59
Crisis Intervention Sessions	6	10	6	0	0	0	9	1	0	0	13	5	3	9	3	4	5	74
Marriage Counseling	1	0	1	0	0	0	0	0	2	0	0	0	0	3	0	0	0	7
Denominational Meeting	0	0	1	0	1	0	0	0	2	0	0	0	0	0	0	0	0	4
Chaplain's Meeting	1	1	2	0	1	1	1	1	1	1	1	1	1	1	1	0	1	16
Volunteer Training Session	1	0	2	0	1	1	0	0	1	0	0	1	0	1	0	0	0	8
Chaplain Transfers																		
	1	0	0	0	0	0	0	0	0	0	0	0	0	0	0	0	0	1
Chaplain Promotions																		
	0	0	0	0	0	0	0	0	0	0	0	0	0	0	0	0	0	0
PAL PROGRAM																		
Enrolled at start of month	60	24	54	0	58	47	12	18	56	71	38	0	0	59	50	0	22	569
Enrolled during the month	9	0	8	0	3	9	2	3	14	9	7	0	0	8	7	0	3	82
Removed From PAL Program																		
# Paroled	1	0	1	0	3	0	0	0	5	2	1	0	0	2	1	0	0	16
# Completed	2	0	0	0	0	3	0	0	1	0	4	0	0	2	4	0	1	17
# Withdrew	2	0	0	0	0	2	0	1	1	4	0	0	0	0	1	0	0	11
# Removed	4	0	0	0	0	0	0	0	3	1	0	0	0	4	0	0	1	13
# Transferred	0	0	8	0	0	3	0	0	4	2	1	0	0	0	1	0	1	20
Total Removed from PAL Program	9	0	9	0	3	8	0	1	14	9	6	0	0	8	7	0	3	77
Total Enrolled at the End of the Month	60	24	53	0	58	48	14	20	56	71	39	0	0	59	50	0	22	574
Volunteers in PAL																		
	7	0	10	0	8	14	14	7	31	16	6	0	0	8	2	0	6	129
Special Events:																		
	0	0	2	0	0	0	0	3	0	0	0	1	0	1	0	0	0	7

SECURUS VIDEO VISITATION REPORT AUGUST 2024

AR-DOC SVV Activity Tracker

Total ADP **18,373**

Total Visits by Month	September	October	November	December	January	February	March	April	May	June	July	August
Total (Includes SuperMax)	5,921	5,863	5,126	7,065	5,986	5,858	6,750	6,045	6,256	6,557	6,447	6,055
Target Objective	15,587	15,587	15,587	15,587	15,587	15,587	15,587	15,587	15,587	15,587	15,587	15,587



Completed Visits

Site	Current Month	Previous Month
<i>Benton</i>	116	109
<i>Cummins</i>	372	385
<i>Delta Regional</i>	344	402
<i>East Arkansas Regional</i>	482	478
<i>Ester</i>	363	366
<i>Grimes</i>	595	548
<i>J Aaron Hawkins Sr.</i>	396	395
<i>Tucker Max</i>	220	193
<i>Mcperson</i>	406	428
<i>Mississippi County WRC</i>	58	13
<i>North Central</i>	535	439
<i>NW Arkansas WRC</i>	13	9
<i>Ouachita River</i>	675	624
<i>Pine Bluff Re-Entry</i>	60	25
<i>Pine Bluff Complex</i>	118	130
<i>Randall L Williams</i>	173	137
<i>State Police Barracks</i>	79	70
<i>Texarkana Regional</i>	14	21
<i>Tucker Unit</i>	425	433
<i>Varner</i>	759	661
<i>Wrightsville Unit</i>	244	189
<i>Tucker Re-entry</i>	0	0
Total:	6,447	6,055

Jul-24 24-Aug

Missed by Inmate

Site	Current Month	Previous Month
<i>Benton</i>	1	14
<i>Cummins</i>	33	12
<i>Delta Regional</i>	2	4
<i>East Arkansas Regional</i>	8	17
<i>Ester</i>	5	8
<i>Grimes</i>	17	12
<i>J Aaron Hawkins Sr.</i>	4	5
<i>Tucker Max</i>	7	5
<i>Mcperson</i>	11	12
<i>Mississippi County WRC</i>	0	12
<i>North Central</i>	15	25
<i>NW Arkansas WRC</i>	1	1
<i>Ouachita River</i>	12	16
<i>Pine Bluff Re-Entry</i>	2	0
<i>Pine Bluff Complex</i>	2	2
<i>Randall L Williams</i>	4	0
<i>State Police Barracks</i>	2	3
<i>Texarkana Regional</i>	2	2
<i>Tucker Unit</i>	7	20
<i>Varner</i>	23	32
<i>Wrightsville Unit</i>	3	0
<i>Tucker Re-entry</i>	0	0
Total:	161	202

Jul-24 Aug-24

SECURUS TABLET REPORT AUGUST 2024

Contract ID	Site ID	Agency Name	Personal Tablets (All)	0	5	Community / Inventory	Officer	Total
I-003320	9322	AR DOC - BENTON UNIT	325	80	245	221	8	554
I-003320	9323	AR DOC - CUMMINS UNIT	1,296	928	368	610	17	1,923
I-003320	9324	AR DOC - DELTA REGIONAL UNIT	457	274	183	129	20	606
I-003320	9325	AR DOC - EAST ARKANSAS REGIONAL UNIT	677	475	202	557	10	1,244
I-003320	7981	AR DOC - ESTER UNIT	578	380	198	246	20	844
I-003320	9326	AR DOC - GRIMES UNIT	764	474	290	679	14	1,457
I-003320	9340	AR DOC - J AARON HAWKINS SR CENTER FOR W	425	251	174	140	19	584
I-003320	9328	AR DOC - MCPHERSON UNIT	765	481	284	1,324	21	2,110
I-003320	9329	AR DOC - MISSISSIPPI COUNTY WORK RELEASE	188	44	144	143	9	340
I-003320	9330	AR DOC - NORTH CENTRAL UNIT	757	484	273	123	10	890
I-003320	9331	AR DOC - NW ARKANSAS WORK RELEASE CENTER	100	15	85	63	8	171
I-003320	9332	AR DOC - OUACHITA RIVER UNIT	1,280	795	485	834	14	2,128
I-003320	7715	AR DOC - PINE BLUFF RE-ENTRY CENTER	0	0	0	31	0	31
I-003320	9333	AR DOC - PINE BLUFF UNIT	388	277	111	152	9	549
I-003320	9334	AR DOC - RANDALL L WILLIAMS FACILITY	404	259	145	182	15	601
I-003320	9097	AR DOC - STATE POLICE BARRACKS	56	37	19	8	3	67
I-003320	9335	AR DOC - TEXARKANA REGION CORRECTION CEN	132	38	94	94	15	241
I-003320	9327	AR DOC - TUCKER MAXIMUM SECURITY UNIT	266	181	85	287	14	567
I-003320	7806	AR DOC - TUCKER RE-ENTRY CENTER	122	53	69	45	2	169
I-003320	9336	AR DOC - TUCKER UNIT	846	583	263	276	15	1,137
I-003320	9337	AR DOC - VARNER UNIT	872	629	243	427	21	1,320
I-003320	9338	AR DOC - WRIGHTSVILLE UNIT	758	548	210	455	9	1,222
			11,456	7286	4175	7,026	273	30,216

CONSTRUCTION BUDGET / STATUS REPORT - SEPTEMBER 5, 2024 — [Page 1 of 2]

Fund	Project Description	Approved Budget	Actual Budget Spent	Available Budget	\$ % Complete	Construction % Complete	Notes
700483A NDC0200	Tucker Max Pre-cast Rec Yard Pens	8,160,845	1,142,834 -	7,018,011	14%	13%	Final plans submitted to DBA for approval on pre-cast pens. The funds spent on this project is reflective of engineering fees and the material needed to construct the rec pen panels. Notice to proceed to WD&D was given on 3/4 as proposed. Awaiting approval letter from the Governor's office in order to proceed to bid at DBA. Project on hold.
700483A	Cummins Expanded Metal Rec Yard	368,617	72,760	295,857	20%	15%	We are constructing the panels on-site. Funds spent on this project is reflective of engineering fees spent against this portion of the overall project. This project is being finalized with the design team and will be submitted to DBA in the following the review and approval.
22V	Fire Suppression	941,252	668,105	273,147	71%	90%	Vendor has assessed all units and scheduling is being established. Parts have been ordered and on-hand. We are working with the vendor on scheduling their work with the remaining units.
7004820	Lethal Fence Control for Cummins, Varner SuperMax, Tucker Max, & EARU	1,490,000	1,244,352	245,648	84%	100%	Project is complete. Work completed on 4/17. Awaiting closeout documents.
7004810	Administrative East Roof Replacement	2,191,441	2,024,110	167,331	92%	100%	Project Scope has been completed. We are awaiting the manufacturer to have their site visit to issue the warranty. We are working with the WD&D and the contractor on liquidatable damages on exceeding days toward completion. Also, we are working with both parties to close out the insurance claims that were experienced during the project. Documents have been sent over for review and approval to DBA.
7004810	Central Warehouse Roof Replacement	385,816	243,877	141,940	63%	100%	
7004810	RLW Roof Replacement	2,722,743	2,377,140	345,602	87%	100%	
KBR4N98	Max Re-Entry Generator Project	135,000	16,635	118,365	12%	12%	Plans submitted to DBA. We have received our notice to proceed on this project. Funds spent are reflective of engineering fees and site work at location. Project on hold.
7004818	McPherson Renovation Project	1,800,000	489,228	1,310,772	27%	78%	Team is on-site and working on the demo plan. All of the documents have been submitted to DBA for review and approved. Project delayed on 2/26. Approval to resume project on 4/2. On schedule. Project is on schedule.
NDC0300	Mississippi County 50 Bed Expansion	2,300,000	105,713	2,194,287	5%	3%	The design firm has completed the final design for review. Documents are at DBA for the third time for review after comments satisfied by design firm. Fees are reflective of design fees allowed under the state contract. Worked with WD&D and work can be performed for \$1,900,000 of construction cost. Working evaluating 100 bed expansion options.
7004811	Tucker Riot Gates	700,000	40,424	659,576	6%	6%	Documents are at DBA under review. Fees are reflective of design fees allowed under the state contract. Notice to proceed to bid issued on 3/7. Bid opening on 4/17 for this project. Project came in at \$469,371. Documents signed and delivered to DBA. the vendor has 180 days to complete from 6/11/24. Vendor awaiting material in order to start the project.
7004812 School Funds	Tucker School Project	3,000,000	134,067 -	2,865,933	4%	0%	Design and development phase of this project has been completed. DBA has reviewed the design and answers have been given to complete review. DBA preparing bid documents to be sent out for advertising. ALC reviewed on 1/26. New project estimate is \$4,500,000. Delivered by WD&D.
KBSHW18 ARPA 7004829	Tucker Water Treatment	4,825,445	221,668 -	4,603,777	5%	4%	DBA issued our notice to proceed to bid on 1/22/2024. APRA has given authorization to advertise for bids. The funds spent on this project is reflective of engineering and design fees. Reviewed by ALC on 1/26. Documents sent over to DBA separating the project to bring the project within the allocated budget. Comments submitted to DBA for review and approval on 7/25/24. Bid opening for this project is 9/28.
509	Water Tower Repairs	475,000	14,589	460,411	3%	20%	Project documents have been reviewed by DBA. Working with contractors to procure services to make these repairs as soon as possible. Bid for the repairs for Cummins and EARU came back at \$25,000 that closed on 6/4/2024. Repairs on the first two tanks are currently underway. Bid opening on 8/20/24 for the Varner tank.



CONSTRUCTION BUDGET / STATUS REPORT - AUGUST 5, 2024 — [Page 2 of 2]

Fund	Project Description	Approved Budget	Actual Budget Spent	Available Budget	\$ % Complete	Construction % Complete	Notes
Telephone Projects							
Maintenance & Operations	AC All Units	100,000	10,596	89,404	11%	11%	repairing & replacing daily.
	ACA	100,000	2,043	97,957	2%	2%	Current and upcoming ACA's are Varner, PB Complex, NWAR, Industry & TRCC.
	ADA	10,000.00		10,000	0%	0%	on-going
	Boiler Fund	90,000	14,699	75,301	16%	15%	on-going
	Camera Equipment	400,000	99,895	300,105	25%	20%	cameras as requested/approved.
	Faststop	15,000		15,000	0%	0%	on-going
	Fire Alarm	41,000		41,000	0%	0%	on-going
	Gates and Fences	25,000		25,000	0%	0%	on-going
	Locks and Riot Gates	90,000	1,353	88,647	2%	2%	on-going
	Metal Ceilings	20,000	519	19,481	3%	3%	on-going
	Plumbing	100,000	6,197	93,803	6%	6%	on-going
	Stainless Steel	35,000		35,000	0%	0%	on-going
	Subtotal	\$ 1,026,000	\$ 135,302	\$ 890,698			
Capital Projects FY 24 Carry Forward	Emergency Generator - All Units	100,000	0	100,000	0%	0%	on-going
	Roof Repair-Benton	714,200		714,200	0%	0%	Need repairs at Delta, Varner, Tucker Max and Tucker, Wrightsville, Pine Bluff, Cummins, NWAR and McPherson.
	Roof Repair-Central Office						
	Roof Repair-Central Warehouse						
	Roof Repairs-Cummins						
	Construction/Maintenance						
	Roof Repairs-Delta						
	Roof Repairs-East Arkansas						
	Roof Repairs-Max						
	Roof Repair-Malvern						
	Roof Repair - McPherson						
	Roof Repair - PBU						
	Roof Repair - RLW						
	Roof Repairs-Tucker						
	Roof Repairs-Varner						
	Roof Repairs-Wrightsville						
Subtotal	\$ 814,200	\$ -	\$ 814,200				
New Capital Projects	Wrightsville Camera Project	3,800,000	-	3,800,000	0%	0%	
	Flooring Project	300,000	-	300,000	0%	0%	
	Subtotal	\$ 4,100,000	\$ -	\$ 4,100,000			
	Architect Fees 865C	30,000	6,465	23,535	22%		
	Total 865C	\$ 5,970,200	\$ 141,766	\$ 5,828,434			
	Architect Fees 865	30,000	29,313	688	98%		

Notes: Report has not been reconciled against Accountings Reconciled Reports. Tolerance/Deviation is with in 1% of Projected Spending.