



DIVISION OF CORRECTION BOARD REPORT

October 2024

Dexter Payne
Director



POPULATION REPORT

RESEARCH/PLANNING

September 2024 Admissions and Releases – Admissions for September 2024 totaled **514** (398-males and 116-females) while releases totaled 409 (330-males and 79 females) for a net increase in-house of 105 inmates.

Inmate Population Growth/Projection – At the end of September 2024, the jurisdictional population for the Division of Correction totaled **19,043**, representing an increase of **540** inmates since the first of January 2024. At reporting time, calendar year 2024 has seen an average growth rate of **60** inmates per month, which is down from an average monthly increase of **71** inmates per month during calendar year 2023.

Average County Jail Backup – The backup in the county jails averaged 2,064 inmates per day during the month of September 2024, which was up from the per-day average of **2,121** inmates during the month of July 2024. Of the **2,064** average, short-term revocations accounted for **429** (366 males and 63 females) during the month.

House Bill 1530/Restrictive Housing (RH)- July thru September 2024- There was a 1.6% increase in overall RH assignments the 3rd Quarter of 2024 compared to the 2nd Quarter of 2024. There was a 2.4% increase in the number of major disciplinaries this Quarter of those assigned to RH. There was a slight increase in the number of inmates assigned to RH who are fifty-five & older, twenty-one or younger and those with SMI diagnosis. There was one suicides & thirty-eight attempted suicides this Quarter of those assigned to RH. There was one death this Quarter of those who were housed in RH. There was no change in the number of inmates assigned to RH for Protective Custody

INSTITUTIONS

INMATE INSTITUTIONAL GRIEVANCES

Inmate Formal/Informal Grievances: During September, a total of 1,293 formal grievances and 1,810 informal grievances were filed at various units. **Institutional Grievances Appeals:** There was a total of 513 appeals of institutional grievances received in September. Of those, 379 were acknowledged and 134 were rejected for various reasons. Of the total, 286 appeals answered, 281 had no merit and 5 had merit.

FARM DIVISION

Harvest was in high gear during September. All 3 farms have made significant progress in the harvest and field prep for next year. Both EARU and Cummins will be planting winter wheat.

Some units are still taking vegetables into the kitchens, but the current drought is making it difficult on some units to get their fall gardens producing. Sweet potato harvest will be starting soon.

Dairy production remains above last year's production. Egg production is still down. All birds have been moved to one house to stay operational, since parts for the other houses have been on back-order for over 6 months.

Pastures will be planted in forage to help with dairy production over the winter months, and wheat for beef herds early spring grazing. Hay needs have been met for next years needs and still have a stockpile of grass that can be utilized this winter.

REGIONAL MAINTENANCE HOURS

Regional Maintenance Hours	September 2024
Benton Unit	6,335
Delta Regional Unit	4,478
East Arkansas Regional Unit	1,392
Grimes Unit	2,994
McPherson Unit	1,398
Mississippi County Work Release	840
North Central Unit	7,800
Ouachita River Correctional Unit	5,604
Randall L. Williams Unit	2,624
Texarkana Regional Corr. Ctr.	3,210
Tucker Unit	3,584
Varner Unit	5,022
Wrightsville Unit	3,006
TOTAL HOURS	48,287

WORK RELEASE RENT REPORT

Unit	September 2024
Benton Unit	\$139,062.00
Mississippi County Work Release	\$101,332.00
Northwest Arkansas Work Release	\$63,822.00
Tucker Work Release	\$25,388.00
Texarkana Regional Correctional Center	\$70,312.00
Wrightsville Hawkins Unit	\$43,296.00
TOTAL	\$443,212.00

REENTRY

PROGRAMS - September 2024

Program Name	Beginning Count	Admitted	Removed	Graduated	End Count	Volunteer Hours
Juvenile Program* (RLW)	11	1	0	0*	12	0
Release (Ester)	18	4	7	0	15	3
Veterans Program (Ester)	22	4	15	0	11	3
AFC - Pathway Home 4	22	10	7	10	25	0
TOTAL	73	19	29	0	63	6

*Juvenciles are transferred from the program once they reach the age of 18.

WORKFORCE ALLIANCE FOR GROWTH IN THE ECONOMY (WAGE)

September 2024 Capacity: 120 Unit:	Participants	Status
Delta	9	Active
Ester	0	Not Active
Hawkins	5	Active
McPherson	8	Active
North Central	0	Not Active
Ouachita River	11	Active
Tucker	16	Active
Wrightsville	3	Active
TOTAL	52	

WRIGHTSVILLE-HAWKINS PATHWAY TO FREEDOM PROGRAM

September 2024 Capacity: 200	Beginning Count	Enrolled During the Month	Removed	End Count*
Wrightsville-Hawkins PTF	199	7	6	200

ADVANCED PRINCIPLES AND APPLICATIONS FOR LIFE PROGRAM (APAL)

September 2024 Capacity: 86	Beginning Count	Admissions During Mo.	Removed*	End Count
Ester	58	3	3	58
Hawkins	12	2	0	14
TOTAL	70	5	3	71

Advanced PAL is an 18-month reentry program that combines a pre-release curriculum with the PAL program.

*The "Removed" column indicates the number of participants who paroled, completed the program, withdrew from the program, transferred, or were removed from the program for another reason.

THINK LEGACY

September 2024 Capacity: 324	Beginning Count	Admitted	Graduated	Removed*	End Count
Unit					
Cummins	23	0	23	0	0
Delta Regional	24	0	24	0	0
East Arkansas Regional	11	0	11	0	0
McPherson	33	0	33	0	0
North Central	33	0	33	0	0
Ouachita River	18	0	18	0	0
Tucker	27	0	27	0	0
TOTAL	169	0	169	0	0

THINK LEGACY VOLUNTEER HOURS = 6

*The "Removed" column indicates the total number of participants who paroled, signed out, transferred, or were removed from the program for any other reason and are no longer in the barracks.

**COLLEGE REPORT
September 2024**

COLLEGE PROGRAM LOCATIONS	Beginning Count	Admissions During Mo.	Removed During Mo.	End Count	Staff Enrolled
Arkansas State University					
Grimes Unit	23	0	0	23	0
McPherson Unit	41	0	0	41	0
Ashland University					
North Central Unit	5	0	0	5	0
Mid-America Seminary College					
Varner Unit	36	0	0	36	0
Philander Smith College					
East Arkansas Regional Unit	49	0	6	43	0
Tucker Unit	29	1	3	27	0
Southeast Arkansas College					
Cummins Unit	39	1	1	39	0
Delta Unit	24	1	2	23	0
Varner Unit	50	0	2	48	0
Shorter College					
Hawkins Unit	25	2	7	20	0
Ouachita River Unit	10	0	2	8	0
Pine Bluff Complex	55	0	11	44	0
Texarkana Regional	5	0	3	2	0
Wrightsville Unit	27	0	4	23	0
TOTAL	418	5	41	382	0

TRAINING

**DIVISION OF CORRECTION
TRAINING - September 2024**

BASIC TRAINING DIVISION –

BCOT Class 2024-Q, led by instructor Wiley, graduated on September 27 with a total of 37 cadets.

Willis H. Sargent Award -

Jonathan Williamson- Grimes Unit

IN-SERVICE DIVISION –

There were 9 in-service classes held by the Training Academy during the month, with a total of 124.5 training hours.

eCADEMY –

During September, 457 ADC employees completed a total of 4,911.25 hours of eCADEMY training.

HEALTH/CORRECTIONAL PROGRAMS

CHAPLAINCY SERVICES AND COMMUNITY SPEAKING EVENTS

Tucker Unit

9/9/2024 - - Spoke to North Little Rock Gideons as a testimony speaker and volunteers' recruitment.

9/13/2024-Spoke at Graduation at Graduation Ceremony for Basic Seminar at the • Pop County Jail.

9/26/2024-Guest speaker at Grimes Unit SURS recovery month celebration.

Barbara Ester Unit

9/5/2024 - - Ester Unit Chaplaincy handed out 400 soups and 100 packs of hot chocolate to our indigent inmates.

Ouachita River Correctional Unit

9/26/24 through 9/29/24 - - Kairos Weekend. 18 Inmate participants, 39 Inmate workers & 21 volunteers.

Cummins Unit

9/5, 9/5, 9/6/2024 - - Rock of Ages, 5 volunteers visited barracks and did nightly services-403 participants.

9/13, 9/14/2024 - - CMA, 10 Volunteers, 200 participants in services, 1000 participants on the Yard event.

9/26, 9/27/2024- Pottsville Assemble of God, 8 volunteers. Barracks visits and nightly services. 269 Inmates participated.

East Arkansas Regional Unit

9/25/2024 - - PAL Graduation, 58 Inmates, 19 staff attended.

ACCREDITATION

ACA Internal Audits Completed:

- 09/06/24: Admin East Follow Up Audit
- 09/12/24: McPherson Pre-Audit
- 09/14/24: Grimes Pre-Audit
- 09/15/24: Central Office Follow up Audit
- 09/20/24: Maximum Security Pre-Audit

VOLUNTEER SERVICES - September 2024

Program Name	Hours
Release (Ester)	3
Veteran (Ester)	3
NTI (NWARC)	8
Total	14

MENTAL HEALTH SERVICES

Reduction of Sexual Victimization Program (RSVP) and Sex Offender Treatment Programs (SOFT):

September 2024	Capacity	Beginning Count	Completed	Removed	Admissions	End Count
RSVP	238	236	0	10	9	235
SOFT	30	12	6	6	2	8
Total	268	248	6	16	11	243

There are 833 males on the waiting list for RSVP and zero females on the waiting list for SOFT who are within five years of their TE date. Of those, 11 inmates are mandated by the Post Prison Transfer Board.

The average time on the waiting list from request is between one and two months for those stipulated.

*The total on the waiting list, including those not currently within the identified timeframe, is 1,700 males and zero females. Of these, 833 are eligible and 867 are ineligible for the program. There are 0 PREA inmate in the program at this time.

***Ineligibility is due to being in restrictive housing, having class IV status, or receiving a major disciplinary within the last 60 days.**

Substance User Rehabilitation Services (SURS):

September 2024 Unit	Capacity	Beginning Count	Completed	Removed	Admissions	End Count
Benton	20	20	1	3	4	20
Cummins	45	44	9	6	10	39
Grimes	50	49	2	5	5	47
Maximum Security	4	3	0	0	1	4
McPherson	150	146	19	6	29	150
Randall L. Williams	150	142	16	22	34	138
Tucker	62	57	16	4	21	58
Wrightsville	150	146	28	9	35	114
Total	631	607	91	55	139	600

For SURS, there are 2,843 males and 403 females on the waiting list who are within five years of their release date. Of those, 150 are mandated by the Post Prison Transfer Board. The average time on the waiting list from request is 15 days. *The total on the waiting list, including those not currently within the identified timeframe, is 4,126 males and 528 females. Of these, 3,396 are eligible and 1,258 are ineligible for the program.

***Ineligibility is due to being in restrictive housing, having class IV status, or receiving a major disciplinary within the last 60 days.**

Ouachita River Correctional Unit (ORCU) Residential Program Unit (RPU):

The RPU had 2 admissions and 3 discharges in September for an end-of-month count of 118.

McPherson Unit Mental Health Residential Program Unit (RPU):

There were 2 admissions and 2 discharges in September for an end-of-month count of 40.

Habilitation Program:

The Habilitation Program at the Ouachita River Correctional Unit provided treatment services to 44 inmates in September. There were 0 admissions and 0 discharges, which resulted in an end-of-month count of 44.

Suicide:

There were 114 suicidal threats in September. There were 10 attempts, none of which resulted in death.

MENTAL HEALTH SERVICES, *continued*

Staffing:

The following Mental Health Services and Substance User Rehabilitation Services (SURS) positions were vacant in May and September 2024:

Positions	FTEs*	July	September
Mental Health Administrator	1	0	0
Psychologists	4	2	2
Psychological Examiners	0	0	0
Social Workers	9	7	7
Licensed Professional Counselors	3	3	3
Rehab Director	1	1	1
Rehab Facility Supervisors	3	3	3
Advisors	29	29	29
Substance Abuse Program Coord.	4	4	4
Substance Abuse Program Leaders	35	34	34
Administrative Specialist	7	7	7
Rehab Program Managers	8	8	8

*FTE refers to authorized Full Time Equivalent positions.

Self-Study Classes:

Classes	Number of Participants	Number Completed	Waiting List
Anger Management	103	103	714
Thinking Errors	86	86	589
Substance Abuse Education	108	107	475
Communication Skills	95	95	608
Domestic Violence	59	59	99
Victims of Domestic Violence	26	26	134
Stress Management	94	94	635
Parenting	79	74	136

Outpatient:

There were 2,236 inmates on the mental health medical log at the beginning of September. Mental Health staff conducted the following contacts during the month:

Case Management Contacts	1,439
Requests for Interviews	484
Testing	0
Intakes	533
Unit Requests	1,348
Pre-Lockup Reviews	357
Routine Restrictive Housing Reviews	596
Restrictive Housing Rounds	10,530
PREA Evaluations	71
Routine Follow-up	410
834 Requests	58

County Mental Health Requests:

During September, there were 332 requests received of a mental health nature. Of those, 3 inmates were fast-tracked to ADC.

County Medical Health Requests:

During September, there were 767 requests received of a medical nature. A total of 10 inmates were fast-tracked to ADC.

Medical Contract Reimbursements:

Sanction reimbursements for ADC in July amounted to \$19,350.00.

Deaths:

There were 6 inmate deaths during the month of September. 2 was claimed, 4 were cremated and claimed. There were zero not claimed.

Wellpath:

See attachment for Wellpath's report regarding outside beds and emergency room visits.

Medical Grievances:

In September, there were 158 appeals of medical grievances received and 227 appeals were answered. 5 were found to be with merit and 3 with merit but resolved.

SEX OFFENDER ASSESSMENT

Assessments Completed:

Risk Level	September	October 1999 through September 2024
Level 1	0	1,248
Level 2	0	9,717
Level 3	0	8,151
Level 4	0	758
Default 3	0	*
Total	0	19,874

*Default Level 3's are included in the total number of Level 3's to date.

ACIC Numbers:

The total number of sex offenders registered from October 1999 through September 2024:

Compliant	8,375
Delinquent	2,098
Confined	3,919
Out-of-State	4,491
Address Unknown	132
Deported	209
Incapacitated	140
Out of USA	84
Total	19,448

Consistent with current Arkansas law, deceased offenders no longer remain on the registry.

PAWS IN PRISON

September 2024 Unit	Enrolled	Graduated	Foster	Volunteer Hours
Hawkins Unit	5	2	1	0
Maximum Security Unit	6	3	0	2
McPherson Unit	0	0	0	0
North Central Unit	4	1	0	0
Ouachita River Correctional Unit	6	1	0	0
Randall L. Williams Unit	4	1	0	10
Tucker Unit	7	4	1	0
Total	32	12	2	12

Completed Paws in Prison Training:

September 2024 Program Graduates	12
YTD Program Graduates	157
Total Graduates Since Inception (Dec 2011)	2,502
Dogs Currently in Foster (Graduated, but Not Adopted)	2
September 2024 Volunteer Hours	12
YTD Volunteer Hours	94

**AGENCY HIGHLIGHTS
SEPTEMBER 2024**

PROMOTIONS

Some of the security promotions during the month of September included:

Benton Unit

- Food Prep Frankie Lewis
- Sgt. LLOYD Gaynor

Cummins Unit

- Lt. Cebria Williams
- Sgt. Porche Robinson
- Sgt. Tecolia West

East Arkansas Regional Unit

- Corporal Shereka Little

East Arkansas Regional Unit

- Sgt. Monicak Branscomb
- Sgt. April McKnight

Ester Unit

- Sgt. Robert Staron

HQ Transportation

- Sgt. Edward Moore Jr.

Maximum Security Unit

- Corporal LaPorishia Carthan
- Sgt. Jonathon Harris
- Sgt. Christina Caldwell

Tucker Reentry

- Corporal Tina Dean
- Sgt. Tamira Sibley

McPherson Unit

- Sgt. Kate Brown

North Central Unit

- Sgt. Jack Sohns

Ouachita River Unit

- Food Prep Larry Williams
- Lt. Michael Yates
- Corporal Donisha Samuels
- Sgt. Richard Curl
- Corporal Erica Tichell
- Corporal LaDonna Harris
- Sgt. Randy Underwood

Pine Bluff Unit

- Corporal Elizabeth Fults
- Sgt. Damika Fuller

Randall L Williams Unit

- Sgt. Samantha Carroll
- Sgt. Omar Reed
- Captin Natasha Odom

Tucker Unit

- Corporal Amanda Hickerson
- Warden Anthony Jackson

Varner Unit

- Sgt. Robert Brown

BCOT 2024-O (EARU)

Join the #ARDOCFamily in congratulating the recent graduates of the Basic Correctional Officer Training Academy Class



2024-O. This is the second class to graduate from the East Arkansas Regional Unit's satellite academy!

PRESS CONFERENCE HELD WITH NORTH CENTRAL K-9

The Arkansas Division of Correction's North Central Unit K9 Team and the Arkansas Division of Community Correction's



Special Response Team worked along side the U.S. Marshals Service Eastern Arkansas Fugitive Task Force during Operation North Star FY 2024.

NWAWR OFFENDERS GET BAPTIZED!

We would like shout out the Northwest Arkansas Work Release Center's Volunteer Chaplains, Ray Triplet and Jim Ingler. Thanks to these men, we recently had the honor to witness several offenders at the center get baptized!



LEADERSHIP II TRAINING (TRAINING ACADEMY)

#Congratulations to the 40 members of the #ARDOCFamily on completing the Leadership II Course held this week at the ADC Training Academy



BCOT 2024-N (TRAINING ACADEMY)

#Congratulations to the recent graduates of the ADC Basic Correctional Officer Training Academy Class 2024-N!



BCOT 2024-P (CUMMINS UNIT)

#Congratulations to the recent graduates of the ADC Basic Correctional Officer Cummins Unit Class



REGIONAL MAINTENANCE PROJECT HIGHLIGHTS

SEPTEMBER 2024

Clean up of Historic Love Rest Green Grove Cemetery Tucker Unit Regional Maintenance



Festival Set up in Sheridan for Timberfest: Pine Bluff Regional Maintenance



Clean up at Harbor Oaks & Regional Park: Pine Bluff Regional Maintenance



2024 INFORMAL GRIEVANCE REPORT

Month	BENTON	HAWK/M	HAWK/F	WRTS	EARU & MX	GRIMES	RLW	MCWR	MCPH	MSU	NCU	PBU	NWA	TU	TRCC	VSMX	VU	CU & CMU	ORCU	Ester	DRU	TOTAL
JAN	1	10	13	60	211	211	14	0	296	73	68	27	2	53	0	136	41	92	116	28	147	1,599
FEB	2	5	15	73	195	260	20	0	274	84	42	16	0	76	1	170	35	174	118	25	106	1,691
MAR	0	11	7	52	171	266	12	0	231	49	62	25	0	63	1	139	43	212	109	26	83	1,562
APR	2	11	24	61	211	218	15	0	155	39	71	22	0	68	0	170	36	172	89	31	75	1,470
MAY	0	9	25	94	222	202	22	0	238	47	98	34	0	76	0	160	36	183	105	37	102	1,690
JUN	0	7	11	66	439	204	24	1	229	129	69	13	2	43	1	154	49	154	85	20	73	1,773
JUL	0	5	22	84	789	205	24	2	184	125	63	26	1	43	0	154	38	151	102	17	82	2,117
AUG	1	4	23	103	597	251	16	1	180	43	93	54	0	97	0	170	43	163	63	34	103	2,039
SEPT	1	13	12	84	505	198	28	0	99	93	72	41	0	97	1	116	34	173	104	34	105	1,810
OCT																						0
NOV																						0
DEC																						0
TOTAL	7	75	152	677	3,340	2,015	175	4	1,886	682	638	258	5	616	4	1,369	355	1,474	891	252	876	15,751

2024 FORMAL GRIEVANCE REPORT

Month	BENTON	HAWK/M	HAWK/F	WRTS	EARU & MX	GRIMES	RLW	MCWR	MCPH	MSU	NCU	PBU	NWA	TU	TRCC	VSMX	VU	CU & CMU	ORCU	Ester	DRU	TOTAL
JAN	0	4	3	26	302	115	10	0	135	79	56	24	0	20	0	100	22	65	89	14	75	1,139
FEB	0	0	8	32	278	126	14	2	136	118	37	15	0	41	0	130	22	109	81	6	50	1,205
MAR	2	4	3	41	288	157	10	0	108	85	56	11	0	28	1	100	22	155	67	8	56	1,202
APR	0	5	12	22	357	121	10	1	93	81	41	17	0	33	0	146	18	116	52	11	41	1,177
MAY	0	2	10	63	341	98	20	0	100	49	75	21	0	28	0	144	22	129	49	18	52	1,221
JUN	0	4	10	31	381	119	12	2	81	93	48	7	0	28	1	121	27	135	54	13	49	1,216
JUL	0	5	8	46	622	110	14	2	94	110	41	10	1	28	0	117	9	120	55	9	36	1,437
AUG	1	2	12	48	546	153	8	1	78	112	62	24	1	75	0	131	19	117	43	21	56	1,510
SEPT	0	6	6	36	417	111	18	4	62	94	54	23	0	69	1	89	14	135	74	21	59	1,293
OCT																						0
NOV																						0
DEC																						0
TOTAL	3	32	72	345	3,532	1,110	116	12	887	821	470	152	2	350	3	1,078	175	1,081	564	121	474	11,400

Report includes Pine Bluff Reentry (PBR), Pine Bluff Unit (PBU) and Pine Bluff Work Release (PBW).

INMATE INSTITUTIONAL GRIEVANCE APPEAL REPORT – SEPTEMBER 2024

	Acknowledged	Rejected	Processed W/O Merit	Processed W/ Merit
Benton Unit	0	0	0	0
Benton Work Release	0	0	0	0
Cummins Unit	26	31	16	0
Cummins Modular Unit	1	0	0	0
Delta Regional Unit	5	2	1	0
East Arkansas Regional Unit	14	1	5	0
East Arkansas Regional Max Unit	134	29	146	2
Ester Unit	4	3	5	0
Grimes Unit	37	7	12	0
Maximum Security Unit	42	13	39	0
Tucker Re-Entry	0	0	0	0
McPherson Unit	16	12	5	0
McPherson Mental Health Residential Program Unit	0	0	0	0
Mississippi County Work Release Center	0	0	0	0
Northwest Arkansas Work Release Center	0	0	0	0
North Central Unit	18	3	31	2
Ouachita River Correctional Unit	4	3	7	0
ORCU Hospital	0	0	0	0
ORCU New Commitment	1	0	2	0
ORCU Mental Health Residential Program Unit	0	3	0	0
Pine Bluff Unit	3	0	0	0
Pine Bluff Re-Entry	0	0	0	0
Randall L. Williams Correctional Facility	2	1	0	0
Texarkana Regional Correctional Center	0	0	0	0
Tucker Unit	6	8	10	1
Varner Super Max	54	10	0	0
Varner Unit	7	2	1	0
Wrightsville Unit	4	6	1	0
Hawkins Center	1	0	0	0
Hawkins for Males	0	0	0	0
Hawkins SPU	0	0	0	0
Total	379	134	281	5

ADMISSIONS AND RELEASES - September 2024

<u>Admissions</u>	<u>Male</u>	<u>Female</u>	<u>Total</u>
Asian	0	1	1
Black	162	22	184
Caucasian	221	90	311
Hispanic	13	2	15
Native American Indian	0	0	0
Native Hawaiian or Pacific Island	1	0	1
Other	0	0	0
Unknown	1	1	2
Total	398	116	514

<u>Releases</u>	<u>Male</u>	<u>Female</u>	<u>Total</u>
Asian	2	0	2
Black	107	17	124
Caucasian	212	62	274
Hispanic	8	0	8
Native American Indian	0	0	0
Native Hawaiian or Pacific Island	1	0	1
Other	0	0	0
Unknown	0	0	0
Total	330	79	409

ADC INMATE POPULATION GROWTH 2000-2029 - SEPTEMBER 2024

Mo.	2000	2001	2002	2003	2004	2005	2006	2007	2008	2009	2010	2011	2012	2013	2014	2015	2016	2017	2018	2019	2020	2021	2022	2023	2024
Jan.	11,984	11,908	12,402	13,015	13,105	13,595	13,481	13,839	14,518	14,796	15,334	16,312	15,134	14,815	17,481	18,142	17,785	17,824	18,201	17,958	17,989	16,119	17,154	17,682	18,522
Feb.	12,169	12,022	12,529	13,054	13,166	13,783	13,633	14,012	14,603	14,883	15,374	16,209	14,990	15,008	17,438	18,082	17,625	17,608	17,998	17,846	18,181	16,120	17,077	17,814	18,612
March	12,006	12,033	12,299	13,108	13,088	13,418	13,534	13,772	14,580	14,843	15,290	16,095	14,964	14,665	17,395	18,233	17,573	17,666	18,089	17,898	17,860	16,085	16,992	18,075	18,820
April	12,069	12,167	12,465	13,213	13,323	13,469	13,554	13,851	14,769	14,937	15,570	16,172	15,124	14,850	17,604	18,703	17,815	17,798	18,227	17,977	17,331	16,250	17,059	18,206	18,889
May	12,109	12,384	12,558	13,463	13,556	13,528	13,711	14,146	14,880	15,146	15,694	16,062	15,132	15,074	17,593	18,693	17,769	17,652	17,945	17,817	16,694	16,476	17,229	18,267	18,863
June	12,005	12,108	12,439	13,418	13,389	13,251	13,430	13,915	14,700	15,025	15,564	15,554	14,832	14,825	17,340	18,813	17,973	17,963	17,972	17,942	16,552	16,560	17,129	18,213	18,957
July	12,030	12,190	12,622	13,509	13,528	13,286	13,560	14,082	14,868	15,195	15,807	15,519	14,879	15,379	17,522	18,870	18,130	18,180	18,005	18,002	16,511	16,638	17,109	18,397	18,955
August	12,087	12,371	12,815	13,565	13,632	13,419	13,646	14,224	15,100	15,385	15,829	15,240	14,675	16,103	17,549	18,806	17,919	18,051	17,751	18,090	16,367	16,655	17,274	18,375	19,038
September	11,983	12,289	12,774	13,341	13,516	13,237	13,652	14,217	14,850	15,285	16,025	15,172	14,724	16,412	17,605	18,549	18,026	18,179	17,865	17,856	16,215	16,698	17,432	18,380	19,043
October	12,119	12,348	12,942	13,341	13,584	13,363	13,775	14,349	14,836	15,381	16,311	15,271	14,856	16,993	17,880	18,430	18,127	18,348	17,943	17,947	16,311	16,821	17,480	18,557	
November	12,094	12,408	13,162	13,408	13,706	13,587	13,913	14,437	15,025	15,340	16,460	15,205	14,625	17,168	17,848	17,981	17,573	17,973	17,666	18,060	16,165	16,982	17,521	18,500	
December	11,856	12,333	12,845	13,106	13,470	13,338	13,728	14,315	14,716	15,199	16,204	15,062	14,654	17,235	17,874	17,707	17,537	18,078	17,799	17,759	16,094	17,023	17,648	18,503	
Net Ann. Inc.	29	477	512	261	364	-132	390	587	401	483	1,005	-1,142	-408	2,581	639	-167	-170	541	-279	-40	-1,665	929	625	855	540
Avg. Mo. Inc.	2	40	43	22	30	-11	33	49	33	40	84	-95	-34	215	53	-14	-14	45	-23	-3	-139	77	52	71	60

Population is total jurisdictional count at end of each month. Population at end of month December 1999 was 11,827.

Average monthly population increased for past fifteen years 2009 - 2023 is 21

Average monthly population increased for past ten years Jan. 2014 - Dec 2023 is 11

Average monthly population decreased for past five years 2019 - 2023 is 12

Projected at Growth of 21 per Month

Mo.	2008	2009	2010	2011	2012	2013	2014	2015	2016	2017	2018	2019	2020	2021	2022	2023	2024	2025	2026	2027	2028	2029
	Actual	Actual	Actual	Actual	Actual	Actual	Actual	Actual	Actual	Actual	Actual	Actual	Actual	Actual	Actual	Actual	Actual/Proj	Proj.	Proj.	Proj.	Proj.	Proj.
January	14,518	14,796	15,334	16,312	15,134	14,815	17,481	18,142	17,785	17,824	18,201	17,958	17,989	16,119	17,154	17,682	18,522	19,127	19,379	19,631	19,883	20,135
February	14,603	14,883	15,374	16,209	14,990	15,008	17,438	18,082	17,625	17,608	17,998	17,846	18,181	16,120	17,077	17,814	18,612	19,148	19,400	19,652	19,904	20,156
March	14,580	14,843	15,290	16,095	14,964	14,665	17,395	18,233	17,573	17,666	18,089	17,898	17,860	16,085	16,992	18,075	18,820	19,169	19,421	19,673	19,925	20,177
April	14,769	14,937	15,570	16,172	15,124	14,850	17,604	18,703	17,815	17,798	18,227	17,977	17,331	16,250	17,059	18,206	18,889	19,190	19,442	19,694	19,946	20,198
May	14,880	15,146	15,694	16,062	15,132	15,074	17,593	18,693	17,769	17,652	17,945	17,817	16,694	16,476	17,229	18,267	18,863	19,211	19,463	19,715	19,967	20,219
June	14,700	15,025	15,564	15,554	14,832	14,825	17,340	18,813	17,973	17,963	17,972	17,942	16,552	16,560	17,129	18,213	18,957	19,232	19,484	19,736	19,988	20,240
July	14,868	15,195	15,807	15,519	14,879	15,379	17,522	18,870	18,130	18,180	18,005	18,002	16,511	16,638	17,109	18,397	18,955	19,253	19,505	19,757	20,009	20,261
August	15,100	15,385	15,829	15,240	14,675	16,103	17,549	18,806	17,919	18,051	17,751	18,090	16,367	16,655	17,274	18,375	19,038	19,274	19,526	19,778	20,030	20,282
September	14,850	15,285	16,025	15,172	14,724	16,412	17,605	18,549	18,026	18,179	17,865	17,856	16,215	16,698	17,432	18,380	19,043	19,295	19,547	19,799	20,051	20,303
October	14,836	15,381	16,311	15,271	14,856	16,993	17,880	18,430	18,127	18,348	17,943	17,947	16,311	16,821	17,480	18,557	19,064	19,316	19,568	19,820	20,072	20,324
November	15,025	15,340	16,460	15,205	14,625	17,168	17,848	17,981	17,573	17,973	17,666	18,060	16,165	16,982	17,521	18,500	19,085	19,337	19,589	19,841	20,093	20,345
December	14,716	15,199	16,204	15,062	14,654	17,235	17,874	17,707	17,537	18,078	17,799	17,759	16,094	17,023	17,648	18,503	19,106	19,358	19,610	19,862	20,114	20,366
Net Ann. Inc.	401	483	1,005	-1,142	-408	2,581	639	-167	-170	541	-279	-40	-1,665	929	625	855	603	252	252	252	252	252
Ave. Mo. Inc.	33	40	84	-95	-34	215	53	-14	-14	45	-23	-3	-139	77	52	71	50	21	21	21	21	21

FISCAL YEAR 2024 COUNTY JAIL BACKUP - SEPTEMBER 2024

DAY		Jul-24		Aug-24		Sep-24
1		2,058		2,112	*	2,139
2		2,085		2,120		2,077
3		2,085	*	2,120		2,077
4		2,111	*	2,120		2,077
5		2,111		2,107		2,105
6	*	2,111		2,090		2,100
7	*	2,111		2,097	*	2,100
8		2,131		2,097	*	2,100
9		2,120		2,102		2,086
10		2,130	*	2,102		2,069
11		2,125	*	2,102		2,084
12		2,116		2,092		2,073
13	*	2,116		2,104		2,109
14	*	2,116		2,113	*	2,109
15		2,097		2,115	*	2,109
16		2,096		2,106		2,110
17		2,097	*	2,106		2,096
18		2,100	*	2,106		2,085
19		2,074		2,132		2,053
20	*	2,074		2,128		2,054
21	*	2,074		2,139	*	2,054
22		2,103		2,141	*	2,054
23		2,105		2,154		2,029
24		2,077	*	2,154		2,038
25		2,083	*	2,154		1,996
26		2,095		2,127		1,982
27	*	2,095		2,140		1,991
28	*	2,095		2,137	*	1,991
29		2,100		2,156	*	1,991
30		2,092		2,139		1,990
31		2,080	*	2,139		
Avg Daily Backup		2,099		2,121		2,064

Notes: Total does not include 309 Contracts in County Jails (maximum of 336)

County Jail Back-up Average for September 2024 - 2,064

County Jail Back-up Fiscal Year Average as of September 30, 2024 - 2,095

Short-Term Revocation Program Average for September 2024 - 429

Short-Term Revocation Fiscal Year Average as of September 30, 2024 - 420

STTG UNIT COUNTS – SEPTEMBER 2024

Unit	Beginning Total	Confirmed	Suspected	In	Out	Paroled	Removed	Ending Total	Total Unit Population	Unit % of STTG's
Benton	90	0	0	6	8	2	0	82	336	24.40%
Cummins	673	0	0	75	54	14	0	680	2,012	33.80%
Delta	210	0	0	9	12	0	0	207	626	33.07%
EARU	698	1	0	28	16	5	0	706	1,638	43.10%
Ester	180	0	0	23	30	7	0	166	706	23.51%
Grimes	400	1	0	39	34	11	0	393	1,091	36.02%
Hawkins	21	0	0	3	4	0	0	50	450	11.11%
Max	300	0	0	7	1	8	0	298	705	42.27%
McPherson	47	3	0	4	3	3	0	48	1,040	4.62%
MCWR	54	0	0	13	10	3	0	54	185	29.19%
NCU	281	0	0	22	14	7	0	282	942	29.94%
NWAWR	24	0	0	0	0	0	0	24	99	24.24%
ORCU	318	0	0	45	27	10	0	326	1,578	20.66%
ORCU Intake	103	135	0	0	132	0	0	106	348	30.46%
Pine Bluff	132	5	0	13	4	5	0	141	614	22.96%
RLW	225	5	0	16	12	14	0	220	552	39.86%
TWR	42	0	0	5	3	0	0	44	133	33.08%
Tucker	293	0	0	20	8	11	0	294	999	29.43%
Varner	760	0	0	73	58	13	0	762	1,706	44.67%
Wrightsville	220	0	0	13	12	3	0	218	865	25.20%
Total	5,071	150	0	414	442	116	0	5,101	16,625	30.68%

ORCU Intake brought in 135 new STTG members into ADC last month.

STTG DISCIPLINARY REPORT – SEPTEMBER 2024

Unit	STTG Incidents	STTG Suspected Incidents	Total Unit Disciplinary	Disciplinary Involving STTG	Percentage
Benton	0	0	11	7	63.64%
Cummins	0	0	503	296	58.85%
Delta	0	0	164	87	53.05%
EARU	0	0	174	100	57.47%
Easter	0	0	66	18	27.27%
Grimes	1	0	179	93	51.96%
Hawkins	0	0	14	0	0.00%
Max	0	0	89	55	61.80%
McPherson	0	0	138	6	4.35%
MCWR	0	0	4	2	50.00%
NCU	2	0	173	87	50.29%
NWAWR	0	0	3	1	33.33%
ORCU	0	0	129	38	29.46%
ORCU Intake	0	0	7	5	71.43%
Pine Bluff	0	0	47	16	34.04%
RLW	0	0	62	31	50.00%
TWR	0	0	10	3	30.00%
Tucker	0	0	77	23	29.87%
Varner	0	0	408	214	52.45%
Wrightsville	0	0	224	114	50.89%
Total	3	0	2,482	1,196	48.19%

STTG COUNTS BY STTG SET – SEPTEMBER 2024

STTG Set	Benton	Cummins	Delta	EARU	Ester	Grimes	Hawkins	Max	McPherso	MCWR	NCU	NWAWR	ORCU	Intake	PB	RLW	TWR	Tucker	Varner	Wrightsvil	Total	
Asian	2	0	0	1	0	1	0	0	0	0	0	0	0	0	0	0	0	1	1	1	0	7
Bloods	14	135	41	148	31	84	11	63	11	7	54	3	49	13	24	45	10	41	171	45	1,000	
Crips	9	77	33	87	16	44	3	45	4	9	25	2	28	12	13	29	7	27	108	30	608	
Folk	5	75	8	57	10	24	3	30	3	3	13	7	19	9	4	10	1	21	65	20	387	
GD	14	150	28	173	39	86	8	72	9	9	78	2	67	18	36	46	5	77	170	39	1,126	
Mexican	7	26	10	24	8	16	3	3	1	2	8	0	11	5	7	12	0	5	21	12	181	
Motorcycle	0	2	0	0	0	0	0	1	1	0	3	0	5	0	1	0	0	2	1	1	17	
Other	1	9	10	17	7	7	3	8	2	3	10	1	22	2	6	7	1	9	18	6	149	
People	4	36	11	33	5	26	0	23	1	1	10	0	10	4	8	11	1	14	31	10	239	
Unknown	0	13	2	7	3	1	2	1	0	4	2	2	0	0	4	3	1	7	9	3	64	
W/S	14	74	49	40	22	34	7	13	9	8	30	7	75	28	18	26	9	52	72	22	609	
AB	2	9	1	4	3	5	0	0	1	1	7	0	4	1	3	1	1	5	19	3	70	
AC	1	11	3	15	5	7	0	5	1	1	4	0	6	1	0	2	0	4	23	0	89	
NAE	3	35	0	47	8	22	2	11	3	2	17	0	14	6	8	13	3	8	27	11	240	
WAR	6	28	11	53	9	36	8	23	2	4	21	0	16	7	9	15	4	21	26	16	315	
Total	82	680	207	706	166	393	50	298	48	54	282	24	326	106	141	220	44	294	762	218	5,101	

Key:

GD = Gangster Disciples

W/S = White Supremacist

NAE = New Aryan Empire

WAR = White Aryan Resistance

AC = Aryan Circle

AB = Aryan Brotherhood

ADC INPATIENT AND EMERGENCY ROOM UTILIZATION

ARKANSAS DEPARTMENT OF CORRECTION INPATIENT AND EMERGENCY ROOM UTILIZATION

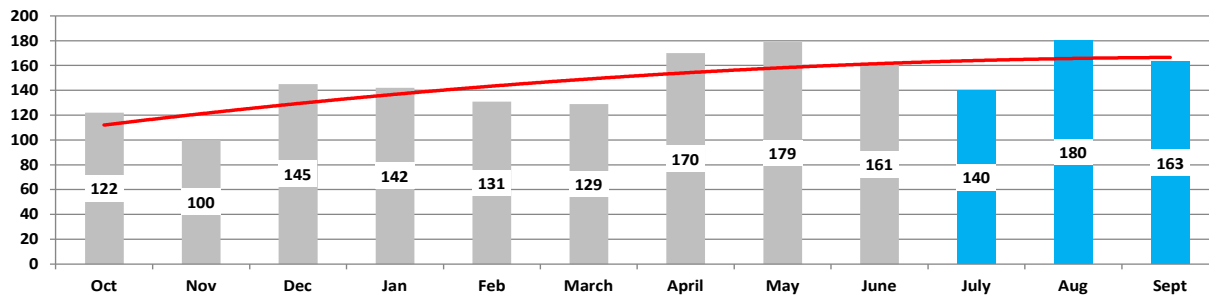
ADC Inpatient Statistics Past 12 Months

	2023	2023	2023	2024	2024	2024	2024	2024	2024	2024	2024	2024	2024	Average
	Oct	Nov	Dec	Jan	Feb	March	April	May	June	July	Aug	Sept		
Admissions	65	51	58	70	54	54	61	74	75	62	85	80	65.8	
Hospital Days	273	218	221	292	230	208	231	373	322	335	406	371	290.0	
Average Length of Stay	4.20	4.27	3.81	4.17	4.26	3.85	3.79	5.04	4.29	5.40	4.78	4.64	4.41	

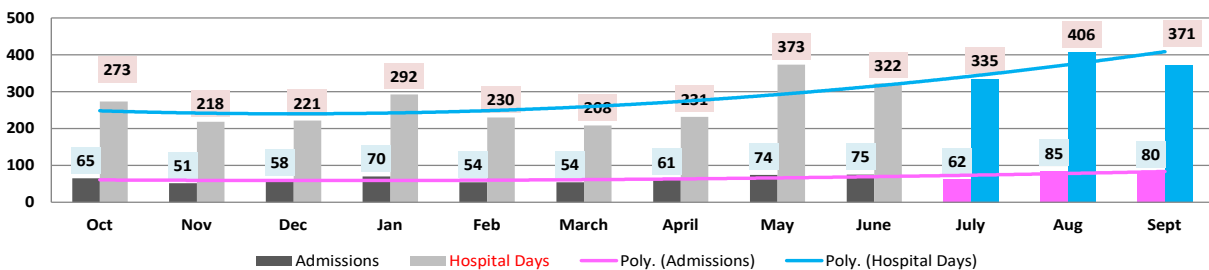
ADC ER Visits Past 12 Months

	2023	2023	2023	2024	2024	2024	2024	2024	2024	2024	2024	2024	2024	Average
	Oct	Nov	Dec	Jan	Feb	March	April	May	June	July	Aug	Sept		
Emergency Room Visits	122	100	145	142	131	129	170	179	161	140	180	163	146.8	

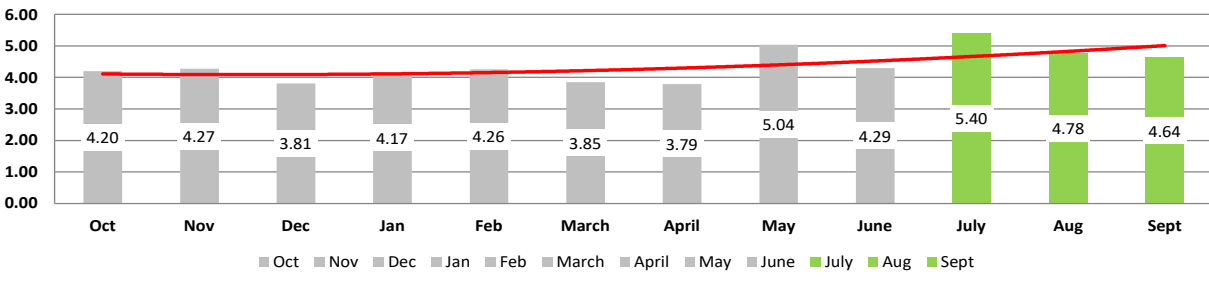
ADC Emergency Room Visits
Past 12 Months



ADC Inpatient Utilization
Past 12 Months



ADC Inpatient Average Length of Stay
Past 12 Months



MEDICAL GRIEVANCE BOARD REPORT – SEPTEMBER 2024

Unit	<i>Acknowledged/Received</i>	<i>Rejected</i>	<i>Reviewed & Signed by Dep Director</i>	<i>With Merit</i>	<i>With Merit, but Resolved</i>	<i>% With Merit</i>	<i>Without Merit</i>
Benton	0	0	0	0	0	0.00%	0
CMU	1	0	3	0	1	33.33%	2
Cummins	8	0	20	0	1	5.00%	19
Delta	9	0	9	0	0	0.00%	9
EARU	14	0	23	1	0	4.35%	22
EARU Max	45	0	65	1	0	1.54%	64
Ester	6	0	4	0	0	0.00%	4
Grimes	17	0	18	1	0	5.56%	17
Hawkins	2	1	2	0	0	0.00%	2
McPherson	3	0	5	0	1	20.00%	4
MCWRC	0	0	0	0	0	0.00%	0
MSU	13	0	15	0	0	0.00%	15
North Central	9	0	12	0	0	0.00%	12
NWAWRC	0	0	0	0	0	0.00%	0
Ouachita	9	0	15	0	0	0.00%	15
Pine Bluff	2	0	2	1	0	50.00%	1
Randall L. Williams	0	0	0	0	0	0.00%	0
SNN	0	0	0	0	0	0.00%	0
TRCC	0	0	0	0	0	0.00%	0
Tucker	5	0	5	0	0	0.00%	5
Varner	3	0	7	0	0	0.00%	7
Varner Super Max	6	0	14	1	0	7.14%	13
WRU	5	0	7	0	0	0.00%	7
WHM	1	0	1	0	0	0.00%	1
WWR	0	0	0	0	0	0.00%	0
Total	158	1	227	5	3	3.52%	219

CHAPLAINCY

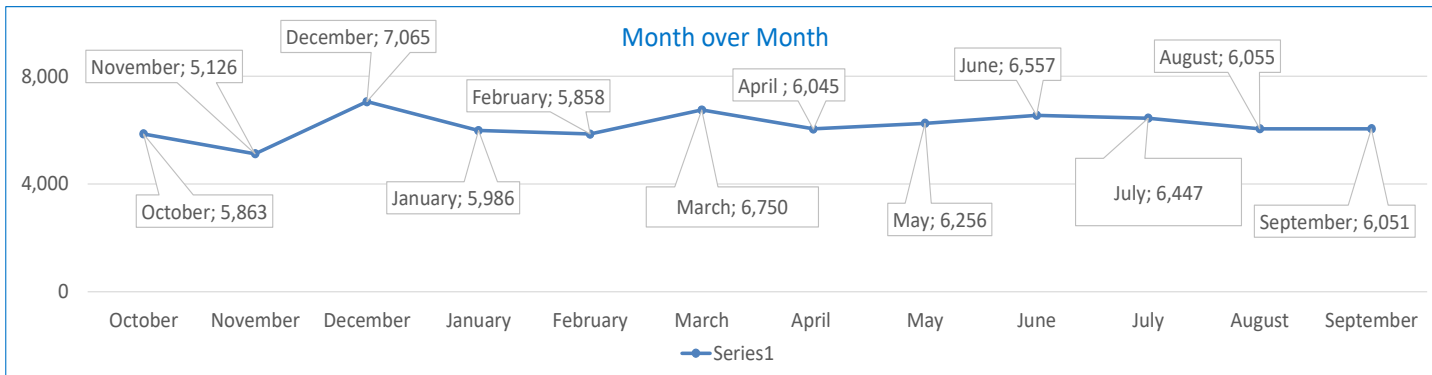
Month: September Year: 2024	CUMMINS	DELTA REGIONAL	EAST ARKANSAS	EAST ARKANSAS MAX	ESTER	GRIMES	HAWKINS	MAXIMUM	MCPHERSON	NORTH CENTRAL	OUACHITA RIVER	PINE BLUFF	RANDALL L. WILLIAMS	TUCKER	VARNER	VARNER MAX	WRIGHTSVILLE	TOTAL
Services Chaplains Oversaw																		
Christian																		
Population	6	8	10	0	4	8	3	4	10	5	1	6	2	3	11	0	2	83
Segregation	0	0	0	0	0	0	0	4	0	0	0	0	0	0	0	0	0	4
Muslim																		
Population	4	5	4	0	4	4	3	4	4	1	2	4	3	0	4	0	3	49
Segregation	0	0	0	0	0	0	0	4	0	0	0	0	0	0	0	0	0	4
	140																	
Volunteers in Charge																		
Protestant	15	0	4	0	23	10	5	16	15	14	9	5	17	13	0	0	12	158
Catholic	1	0	2	0	0	4	4	0	2	4	4	1	1	1	3	0	1	28
Muslim	1	0	4	0	0	0	1	1	0	4	0	4	0	0	0	0	0	15
Other	2	0	0	0	0	0	4	4	0	0	5	0	0	0	6	0	0	21
Baptism	0	0	0	0	0	0	0	3	0	6	0	0	0	4	0	0	0	13
Marriages																		
	0	0	0	0	0	0	2	0	2	0	0	0	0	1	0	0	1	6
Distributed by Chaplains																		
Greeting Cards	6	30	0	0	18	23	8	112	0	34	20	0	2	135	42	303	0	733
Bibles, Quran, Torah, Etc.	22	4	12	25	58	11	15	11	83	70	160	61	14	3	15	42	30	636
Study Course	29	0	3	1	200	2	0	12	7	0	22	10	6	36	2	20	0	350
Writing Supplies	0	0	0	0	57	42	10	180	36	0	500	0	0	8	0	0	0	833
Literature	626	189	804	230	432	18	250	71	317	621	325	332	113	250	831	508	300	6,217
Chaplain's Visits																		
Barracks	42	15	94	107	12	25	18	3	172	33	20	16	77	218	66	16	28	962
Approximate Hours Spent in Barracks	11	14	24	37	8	22	22	5	89	8	40	2	12	34	33	6	29	396
Inmate Office visits	72	250	29	12	7	154	31	6	42	87	28	10	20	280	37	0	24	1,089
Other Office visits	12	14	19	15	8	8	9	0	38	0	19	70	25	30	32	0	6	305
Hospital	0	0	0	0	0	3	0	0	1	0	16	0	0	0	0	0	0	20
Infirmery/Sick Call	1	4	5	0	4	8	0	4	5	3	4	1	4	5	5	1	3	57
Restrictive/Punitive Housing	14	4	0	30	4	8	3	10	4	3	5	4	5	5	3	3	3	108
PC - DRU		4																4
Visitation Days	0	0	0	0	0	0	0	0	0	0	0	0	0	0	0	0	0	0
Volunteer Visits																		
RCV	0	0	0	0	2	3	4	1	3	0	4	14	6	2	0	0	0	39
OCV	29	9	4	4	4	6	8	29	39	37	89	1	3	46	0	0	1	309
Spiritual Advisor	0	0	0	0	0	0	0	0	0	0	0	0	0	0	0	0	0	0
CRA	32	3	32	14	10	16	48	38	53	113	74	8	19	132	31	12	34	669
Religious Volunteer Hours																		
Volunteer Hours	266	27	59	38	136	98	60	225	188	570	992	54	47	488	104	20	68	3,440
Denominational/Volunteer Chaplain Hours	12	0	0	0	61	0	51	50	40	45	87	30	0	66	46	4	31	523
	3,963																	
Other Activities of Chaplain																		
Counseled Employees	4	20	7	2	6	4	7	0	1	0	19	10	11	12	113	0	1	217
Orientation Sessions	8	0	1	0	0	0	0	0	0	2	0	0	0	0	0	0	0	11
Free World Devotions	0	0	6	0	0	2	0	0	4	0	0	0	0	2	22	0	0	36
Spoke in Churches	0	8	6	0	4	6	2	0	1	0	0	5	2	6	22	0	0	62
Crisis Intervention Sessions	4	11	5	0	0	0	3	0	0	0	13	6	2	12	4	1	6	67
Marriage Counseling	0	0	2	0	0	0	0	0	0	0	0	0	0	6	0	0	0	8
Denominational Meeting	0	0	0	0	1	0	0	0	1	0	0	0	0	0	0	0	0	2
Chaplain's Meeting	1	1	8	0	1	1	1	1	1	1	1	1	2	1	1	0	1	23
Volunteer Training Session	1	0	10	0	1	0	0	0	2	1	0	1	0	0	0	0	0	16
Chaplain Transfers																		
	0	0	0	0	0	0	0	0	0	0	0	0	0	0	0	0	0	0
Chaplain Promotions																		
	0	0	0	0	0	0	0	0	0	0	0	0	0	0	0	0	0	0
PAL PROGRAM																		
Enrolled at start of month	60	24	53	0	58	48	10	20	56	71	39	0	0	59	50	0	22	570
Enrolled during the month	2	4	0	0	0	0	3	2	10	2	8	0	0	2	6	0	2	41
Removed From PAL Program																		
# Paroled	1	0	1	0	0	0	1	0	1	0	1	0	0	1	0	0	0	6
# Completed	1	0	0	0	0	0	0	0	3	0	4	0	0	2	3	0	1	14
# Withdraw	0	0	0	0	0	0	0	2	3	1	0	0	0	1	2	0	0	9
# Removed	0	0	0	0	0	1	0	1	2	0	5	0	0	0	2	0	1	12
# Transferred	0	0	0	0	0	0	0	0	12	2	2	0	0	0	1	0	1	18
Total Removed from PAL Program	0	0	0	0	0	1	1	3	1	0	5	0	0	1	8	0	3	59
Total Enrolled at the End of the Month	62	28	53	0	58	47	12	19	45	70	35	0	0	60	48	0	21	552
Volunteers In PAL																		
	10	1	8	0	8	15	14	7	31	16	6	0	0	6	2	0	6	130
Special Events:																		
	3	0	1	0	1	0	0	0	0	0	1	0	0	3	0	0	0	9

SECURUS VIDEO VISITATION REPORT SEPTEMBER 2024

AR-DOC SVV Activity Tracker

Total ADP **18,373**

Total Visits by Month	October	November	December	January	February	March	April	May	June	July	August	September
Total (Includes SuperMax)	5,863	5,126	7,065	5,986	5,858	6,750	6,045	6,256	6,557	6,447	6,055	6,051
Target Objective	15,587	15,587	15,587	15,587	15,587	15,587	15,587	15,587	15,587	15,587	15,587	15,587



Completed Visits

Site	Current Month	Previous Month
Benton	109	128
Cummins	385	371
Delta Regional	402	377
East Arkansas Regional	478	470
Ester	366	324
Grimes	548	540
J Aaron Hawkins Sr.	395	356
Tucker Max	193	173
Mcperson	428	436
Mississippi County WRC	13	32
North Central	439	525
NW Arkansas WRC	9	11
Ouachita River	624	688
Pine Bluff Re-Entry	25	0
Pine Bluff Complex	130	129
Randall L Williams	137	113
State Police Barracks	70	51
Texarkana Regional	21	21
Tucker Unit	433	537
Vарner	661	589
Wrightsville Unit	189	180
Tucker Re-entry	0	0
Total:	6,055	6,051

Aug-24 24-Sep

Missed by Inmate

Site	Current Month	Previous Month
Benton	14	1
Cummins	12	27
Delta Regional	4	9
East Arkansas Regional	17	23
Ester	8	6
Grimes	12	10
J Aaron Hawkins Sr.	5	5
Tucker Max	5	9
Mcperson	12	13
Mississippi County WRC	12	10
North Central	25	14
NW Arkansas WRC	1	5
Ouachita River	16	19
Pine Bluff Re-Entry	0	0
Pine Bluff Complex	2	4
Randall L Williams	0	9
State Police Barracks	3	1
Texarkana Regional	2	1
Tucker Unit	20	17
Vарner	32	43
Wrightsville Unit	0	7
Tucker Re-entry	0	0
Total:	202	233

Aug-24 24-Sep

SECURUS TABLET REPORT SEPTEMBER 2024

Contract ID	Site ID	Agency Name	Personal Tablets (All)	0	5	Community / Inventory	Officer	Total
I-003320	9322	AR DOC - BENTON UNIT	330	88	242	214	8	552
I-003320	9323	AR DOC - CUMMINS UNIT	1,379	989	390	1,422	17	2,818
I-003320	9324	AR DOC - DELTA REGIONAL UNIT	480	304	176	113	20	613
I-003320	9325	AR DOC - EAST ARKANSAS REGIONAL UNIT	722	516	206	1,431	10	2,163
I-003320	7981	AR DOC - ESTER UNIT	615	402	213	415	20	1,050
I-003320	9326	AR DOC - GRIMES UNIT	852	530	322	1,313	14	2,179
I-003320	9340	AR DOC - J AARON HAWKINS SR CENTER FOR W	434	282	152	132	19	585
I-003320	9328	AR DOC - MCPHERSON UNIT	806	506	300	1,747	21	2,574
I-003320	9329	AR DOC - MISSISSIPPI COUNTY WORK RELEASE	186	44	142	147	9	342
I-003320	9330	AR DOC - NORTH CENTRAL UNIT	773	526	247	490	10	1,273
I-003320	9331	AR DOC - NW ARKANSAS WORK RELEASE CENTER	98	11	87	60	8	166
I-003320	9332	AR DOC - OUACHITA RIVER UNIT	1,368	855	513	877	14	2,259
I-003320	7715	AR DOC - PINE BLUFF RE-ENTRY CENTER	0	0	0	23	0	23
I-003320	9333	AR DOC - PINE BLUFF UNIT	488	313	175	114	9	611
I-003320	9334	AR DOC - RANDALL L WILLIAMS FACILITY	424	265	159	176	15	615
I-003320	9097	AR DOC - STATE POLICE BARRACKS	52	36	16	9	3	64
I-003320	9335	AR DOC - TEXARKANA REGION CORRECTION CEN	131	38	93	92	15	238
I-003320	9327	AR DOC - TUCKER MAXIMUM SECURITY UNIT	508	335	173	338	14	860
I-003320	7806	AR DOC - TUCKER RE-ENTRY CENTER	115	52	63	60	2	177
I-003320	9336	AR DOC - TUCKER UNIT	849	585	264	568	15	1,432
I-003320	9337	AR DOC - VARNER UNIT	933	678	255	1,169	21	2,123
I-003320	7133	AR DOC - WRIGHTSVILLE SATELLITE UNIT	0	0	0	0	2	2
I-003320	9338	AR DOC - WRIGHTSVILLE UNIT	776	558	218	966	9	1,751
			12,319	7,913	4,406	11,876	275	24,470

CONSTRUCTION BUDGET / STATUS REPORT - OCTOBER 5, 2024 — [Page 1 of 2]

Fund	Project Description	Approved Budget	Actual Budget Spent	Available Budget	\$ % Complete	Construction % Complete	Notes
700483A NDC0200	Tucker Max Pre-cast Rec Yard Pens	8,160,845	1,142,834 -	7,018,011	14%	13%	Final plans submitted to DBA for approval on pre-cast pens. The funds spent on this project is reflective of engineering fees and the material needed to construct the rec pen panels. Notice to proceed to WD&D was given on 3/4 as proposed. Awaiting approval letter from the Governor's office in order to proceed to bid at DBA. Project on hold.
700483A	Cummins Expanded Metal Rec Yard	368,617	72,760	295,857	20%	15%	We are constructing the panels on-site. Funds spent on this project is reflective of engineering fees spent against this portion of the overall project. This project is being finalized with the design team and will be submitted to DBA in the following the review and approval.
22V	Fire Suppression	941,252	746,520	194,732	79%	98%	Vendor has assessed all units and scheduling is being established. Parts have been ordered and on-hand. We are working with the vendor on finishing their work on this project.
7004820	Lethal Fence Control for Cummins, Varner SuperMax, Tucker Max, & EARU	1,490,000	1,292,847	197,153	87%	100%	Project is complete. Work completed on 4/17. Closeout documents received and vendor paid. Just waiting on final payment to architect to close out project.
7004810	Administrative East Roof Replacement	2,191,441	2,126,831	64,610	97%	100%	Project Scope has been completed. Just waiting on final payment to architect to close out project.
7004810	Central Warehouse Roof Replacement	385,816	255,592	130,225	66%	100%	
7004810	RLW Roof Replacement	2,722,743	2,384,604	338,139	88%	100%	
KBR4N98	Max Re-Entry Generator Project	135,000	16,635	118,365	12%	12%	Plans submitted to DBA. We have received our notice to proceed on this project. Funds spent are reflective of engineering fees and site work at location. Project on hold.
7004818	McPherson Renovation Project	1,800,000	676,036	1,123,964	38%	97%	Team is on-site and working on the demo plan. All of the documents have been submitted to DBA for review and approved. Project delayed on 2/26. Approval to resume project on 4/2. Waiting on delayed fixtures. Projected ship date is Oct 1.
NDC0300	Mississippi County 50 Bed Expansion	2,300,000	111,620	2,188,380	5%	3%	The design firm has completed the final design for review. Documents are at DBA for the third time for review after comments satisfied by design firm. Fees are reflective of design fees. Working with WD&D and contractor on scope and pricing of 100 bed facility.
7004811	Tucker Riot Gates	700,000	40,424	659,576	6%	6%	Documents are at DBA under review. Fees are reflective of design fees allowed under the state contract. Notice to proceed to bid issued on 3/7. Bid opening on 4/17 for this project. Project came in at \$469,371. Documents signed and delivered to DBA. the vendor has 180 days to complete from 6/11/24. Vendor awaiting material in order to start the project.
7004812 School Funds	Tucker School Project	3,000,000	134,067 -	2,865,933	4%	0%	Design and development phase of this project has been completed. DBA has reviewed the design and answers have been given to complete review. DBA preparing bid documents to be sent out for advertising. ALC reviewed on 1/26. New project estimate is \$4,500,000. Delivered by WD&D. Project on hold until we receive
KBSHW18 ARPA 7004829	Tucker Water Treatment	4,825,445	221,910 -	4,603,535	5%	4%	DBA issued our notice to proceed to bid on 1/22/2024. APRA has given authorization to advertise for bids. The funds spent on this project is reflective of engineering and design fees. Reviewed by ALC on 1/26. First of two elements of the project came in within projected budget. Awaiting second part of open and then notice to proceed.
509	Water Tower Repairs	475,000	14,589	460,411	3%	45%	Project documents have been reviewed by DBA. Working with contractors to procure services to make these repairs as soon as possible. Bid for the repairs for Cummins and EARU came back at \$25,000 that closed on 6/4/2024. Repairs on the first two tanks are currently underway. Project came in under budget. First two tanks have been completed. All that remains is the Varner tank work.



CONSTRUCTION BUDGET / STATUS REPORT - SEPTEMBER 5, 2024 — [Page 2 of 2]

Fund	Project Description	Approved Budget	Actual Budget Spent	Available Budget	\$ % Complete	Construction % Complete	Notes
Telephone Projects							
Maintenance & Operations	AC All Units	100,000	46,150	53,850	46%	46%	repairing & replacing daily.
	ACA	100,000	16,495	83,505	16%	16%	Current and upcoming ACA's are Varner, PB Complex, NWAR, Industry & TRCC.
	ADA	10,000.00		10,000	0%	0%	on-going
	Boiler Fund	90,000	24,399	65,601	27%	27%	on-going
	Camera Equipment	400,000	118,884	281,116	30%	25%	cameras as requested/approved.
	Faststop	15,000		15,000	0%	0%	on-going
	Fire Alarm	41,000		41,000	0%	0%	on-going
	Gates and Fences	25,000		25,000	0%	0%	on-going
	Locks and Riot Gates	90,000	1,353	88,647	2%	2%	on-going
	Metal Ceilings	20,000	10,004	9,996	50%	50%	on-going
	Plumbing	100,000	15,091	84,909	15%	15%	on-going
	Stainless Steel	35,000		35,000	0%	0%	on-going
	Subtotal	\$ 1,026,000	\$ 232,378	\$ 793,622			
Capital Projects FY 24 Carry Forward	Emergency Generator - All Units	100,000	20,046	79,954	20%	20%	on-going
	Roof Repair-Benton						Need repairs at Delta, Varner, Tucker Max and Tucker, Wrightsville, Pine Bluff, Cummins, NAWAR and McPherson.
	Roof Repair-Central Office						
	Roof Repair-Central Warehouse						
	Roof Repairs-Cummins						
	Construction/Maintenance						
	Roof Repairs-Delta						
	Roof Repairs-East Arkansas						
	Roof Repairs-Max	714,200		659,443	8%	0%	
	Roof Repair-Malvern						
	Roof Repair - McPherson						
	Roof Repair - PBU		54,757				
	Roof Repair - RLW						
	Roof Repairs-Tucker						
	Roof Repairs-Varner						
Roof Repairs-Wrightsville							
Subtotal	\$ 814,200	\$ 74,803	\$ 739,397				
New Capital Projects	Wrightsville Camera Project	3,800,000	-	3,800,000	0%	0%	Working with Heather Bailey on a IFB (Invitation to Bid). All of the specifications have been delivered.
	Flooring Project	300,000	-	300,000	0%	0%	Working with several vendors that offer this flooring on scope and price.
Subtotal	\$ 4,100,000	\$ -	\$ 4,100,000				
Architect Fees 865C		30,000	6,465	23,535	22%		
Total 865C		\$ 5,970,200	\$ 313,645	\$ 5,656,555			
Architect Fees 865		30,000	29,313	688	98%		

Notes: Report has not been reconciled against Accountings Reconciled Reports. Tolerance/Deviation is with in 1% of Projected Spending.