



DIVISION OF CORRECTION BOARD REPORT

March 2025

Dexter Payne
Director



POPULATION REPORT

RESEARCH/PLANNING

February 2025 Admissions and Releases – Admissions for February 2025 totaled **359** (311-males and 48-females) while releases totaled 350 (308-males and 42 females) for a net increase in-house of 9 inmates.

Inmate Population Growth/Projection – At the end of February 2025, the jurisdictional population for the Division of Correction totaled **18,805**, representing an decrease of **39** inmates since the first of February 2025. At reporting time, calendar year 2025 has seen a decrease of **20** inmates per month, which is down from an average monthly increase of **28** inmates per month during calendar year 2024.

Average County Jail Backup – The backup in the county jails averaged 1,652 inmates per day during the month of February 2025, which was down from the per-day average of **1,730** inmates during the month of January 2025. Of the **1,652** average, short-term revocations accounted for **192** (141 males and 50 females) during the month.

INSTITUTIONS

INMATE INSTITUTIONAL GRIEVANCES

Inmate Formal/Informal Grievances: During February, a total of 1,052 formal grievances and 1,400 informal grievances were filed at various ADC Facilities.

Institutional Grievances Appeals: There was a total of 400 appeals of institutional grievances received in February. Of those, 281 were acknowledged and 119 were rejected for various reasons. Of the total, 318 appeals answered, 317 had no merit and 1 had merit.

Resident Formal/Informal Grievances: During February, a total of 20 formal grievances and 130 informal grievances were filed at various Residential Centers.

Institutional Grievances Appeals: There was 3 appeals of institutional grievances received in February. Of those, 12 was acknowledged and 2 was rejected for various reasons.

FARM DIVISION

All departments within the agriculture department made it through the extreme cold and ice that February brought with minimal issues.

All row crop areas are still working in the shop to ensure the equipment is ready to start the crop season. Soil samples were collected and sent in for testing; results were received, and each farm has put together a plan for fertilizing.

Beef Herd was due to start calving March 5th but started late February. Beef Herd sold the three groups of calves through Superior and were in the top 3% of the sale; all three groups had repeat buyers.

Hay inventory is looking good, we will have inventory left over to start us off next year.

The annual garden meeting was held on February 4th, and most units were represented. It was discussed to continue networking with the other units to ensure we keep products moving and reduce waste. Vegetable seeds have been ordered, and some are already planted in the greenhouses.

Pullets are set to be moved to the layer house March 3rd, we expect to see production start mid-March.

Dairy production continues to climb; we now have over 60 heads with another 17 expected to calve this month.

All farms are still short on staff and we will continue to try to recruit new staff.

REGIONAL MAINTENANCE HOURS

Regional Maintenance Hours	February 2025
Benton Unit	4,331
Delta Regional Unit	1,144
East Arkansas Regional Unit	272
Grimes Unit	1,936
McPherson Unit	1,136
Mississippi County Work Release	1,232
North Central Unit	3,168
Ouachita River Correctional Unit	3,608
Randall L. Williams Unit	1,920
Texarkana Regional Corr. Ctr.	1,696
Tucker Unit	1,448
Varner Unit	4,928
Wrightsville Unit	3,024
TOTAL HOURS	29,843

WORK RELEASE RENT REPORT

Unit	February 2025
Benton Unit	\$136,092.00
Mississippi County Work Release	\$95,050.00
Northwest Arkansas Work Release	\$50,514.00
Pine Bluff Work Release	\$32,934.00
Tucker Work Release	\$41,294.00
Texarkana Regional Correctional Center	\$71,236.00
TOTAL	\$427,120.00

REENTRY

PROGRAMS - February 2025

Program Name	Beginning Count	Admitted	Removed	Graduated	End Count	Volunteer Hours
Juvenile Program* (RLW)	11	0	3	0	8	0
Release (Ester)	6	23	5	0	24	2
Veterans Program (Ester)	17	5	0	0	23	0
AFC - Pathway Home 4	22	10	17	0	15	0
TOTAL	56	38	25	0	70	2

*Juveniles are transferred from the program once they reach the age of 18.

WORKFORCE ALLIANCE FOR GROWTH IN THE ECONOMY (WAGE)

February 2025 Capacity: 120 Unit:	Participants	Status
Delta	12	Active
Ester	0	Not Active
Hawkins	0	Not Active
McPherson	8	Active
North Central	0	Not Active
Ouachita River	8	Active
Tucker	24	Active
Wrightsville	5	Active
TOTAL	57	

WRIGHTSVILLE-HAWKINS PATHWAY TO FREEDOM PROGRAM

February 2025 Capacity: 200	Beginning Count	Enrolled During the Month	Removed	End Count*
Wrightsville-Hawkins PTF	197	19	17	199

ADVANCED PRINCIPLES AND APPLICATIONS FOR LIFE PROGRAM (APAL)

February 2025 Capacity: 86	Beginning Count	Admissions During Mo.	Removed*	End Count
Ester	27	0	0	27
McPherson	20	4	3	21
TOTAL	47	4	3	48

Advanced PAL is an 18-month reentry program that combines a pre-release curriculum with the PAL program.

*The "Removed" column indicates the number of participants who paroled, completed the program, withdrew from the program, transferred, or were removed from the program for another reason.

THINK LEGACY

February 2025 Capacity: 324	Beginning Count	Admitted	Graduated	Removed*	End Count
Unit					
Cummins	24	30	24	0	30
Delta Regional	9	24	9	0	24
East Arkansas Regional	0	0	0	0	0
McPherson	29	46	29	0	46
North Central	28	30	28	0	30
Ouachita River	30	13	30	0	13
Tucker	15	25	15	0	25
TOTAL	135	168	135	0	168

THINK LEGACY VOLUNTEER HOURS = 0

*The "Removed" column indicates the total number of participants who paroled, signed out, transferred, or were removed from the program for any other reason and are no longer in the barracks.

COLLEGE REPORT

February 2025

COLLEGE PROGRAM LOCATIONS	Beginning Count	Admissions During Mo.	Removed During Mo.	End Count	Staff Enrolled
Arkansas State University					
Grimes Unit	29	0	5	24	0
McPherson Unit	63	0	1	62	0
Ashland University					
North Central Unit	5	0	0	5	0
Mid-America Seminary College					
Varner Unit	36	0	0	36	0
Philander Smith College					
East Arkansas Regional Unit	35	0	5	30	0
Tucker Unit	22	0	0	22	0
Southeast Arkansas College					
Cummins Unit	47	0	3	44	0
Delta Unit	22	0	1	21	0
Varner Unit	60	0	3	57	0
Shorter College					
Hawkins Unit	0	0	0	0	0
Ouachita River Unit	7	11	0	18	0
Pine Bluff Complex	79	0	21	58	0
Texarkana Regional	6	0	0	6	0
Wrightsville Unit	32	0	5	27	0
TOTAL	443	11	44	410	0

TREATMENT:**PROGRAM SUMMARY**

A total of 1,025 residents have agreed to participate in Medication-Assisted Treatment (MAT) since the program started in July 2018 with a total of 210 discharged with follow up in the community in progress and a total of 180 have completed the program.

Partnerships are in effect with 90 community providers to continue MAT upon release from an ACC center.

In February, there were 25 active participants in the Telehealth program implemented in January 2023.

General Treatment Program Summary

(Non-Drug Court):	Number of Participants
Substance Use Disorder Treatment	3,943
Continuing Care	174
Domestic Violence Prevention	32
Anger Management	107
Tobacco Use Treatment	0

Ongoing Projects

Treatment supervisors reported combined 137 hours of direct clinical supervision with Treatment staff in 18 Community Correction locations.

TRAINING**DIVISION OF CORRECTION****TRAINING - February 2025****BASIC TRAINING DIVISION –**

BCOT Class 2025-A, led by Instructor Wiley, graduated on February 21st with a total of 29 cadets.

Willis H. Sargent Award –

Ralph Ivey - Ouachita River Correctional Unit

IN-SERVICE DIVISION –

There was zero in-service classes held by the Training Academy during the month, with a total of 0.0 training hours.

eCADEMY –

During February, 749 ADC employees completed a total of 10,622.20 hours of eCADEMY training.

ACCREDITATION**ACA Internal Audits Completed:**

01/09-01/13 - ACA Conference and Panel Hearing- Varner & Omega
 1/29- Pine Bluff Complex- Pre-Audit
 1/8- Batesville, Fire/Safety audit
 1/14-1/15 RLW Fire/Safety audit
 1/21-1/22- Ester Fire/Safety audit
 1/28- NCU Fire/Safety audit

HEALTH/CORRECTIONAL PROGRAMS

CHAPLAINCY SERVICES AND COMMUNITY SPEAKING

Larry B. Norris Unit

CRA Joshua Haviland, from the Institute for Basic Life Principles, IBLP, facilitated an Anger Resolution Seminar on February 24-25, 2025. This seminar was held for the PAL program with 16 students in attendance.

RLW Unit

Juvenile Church Services began on 02/12/2025 with 10 of in attendance. These services will repeat every Wednesday from 1pm – 2pm.

Tucker Unit

Tucker Unit Chaplain William Pearson spoke at the Gideons Bible International Pastoral Appreciation Dinner at their Russellville Camp on February 24, 2025. He spoke on volunteer recruitment to the 61 pastors and guesting present.

VOLUNTEER SERVICES - February 2025

Program Name	Hours
Release (Ester)	2
Veteran (Ester)	3
NTI (NWARC)	0
Yoga (Varner)	0
Total	5

MENTAL HEALTH SERVICES

Reduction of Sexual Victimization Program (RSVP) and Sex Offender Treatment Programs (SOFT):

February 2025	Capacity	Beginning Count	Completed	Removed	Admissions	End Count
RSVP	236	236	0	11	9	234
SOFT	36	9	0	0	0	9
Total	268	238	63	0	5	243

There are 845 males on the waiting list for RSVP and 15 females on the waiting list for SOFT who are within five years of their TE date. Of those, nine (9) inmates are mandated by the Post Prison Transfer Board.

The average time on the waiting list from request is between one and two months for those stipulated.

*The total on the waiting list, including those not currently within the identified timeframe, is 1,750 males and zero females. Of these, 845 are eligible and 905 are ineligible for the program. There is zero PREA inmate in the program at this time.

*Ineligibility is due to being in restrictive housing, having class IV status, or receiving a major disciplinary within the last 60 days.

Substance User Rehabilitation Services (SURS):

February 2025 Unit	Capacity	Beginning Count	Completed	Removed	Admissions	End Count
Benton	20	20	0	0	0	20
Cummins	45	44	4	2	7	45
Grimes	50	50	2	4	6	50
Larry B. Norris	4	0	0	0	0	0
McPherson	150	147	18	9	28	148
Randall L. Williams	150	137	9	13	23	138
Tucker	62	59	10	7	17	59
Wrightsville	150	144	19	10	19	134
Total	681	620	62	46	111	623

For SURS, there are 2,723 males and 357 females on the waiting list who are within five years of their release date. Of those, 155 are mandated by the Post Prison Transfer Board. The average time on the waiting list from request is 18 days.

*The total on the waiting list, including those not currently within the identified timeframe, is 4,039 males and 506 females. Of these, 3,235 are eligible and 1,310 are ineligible for the program.

*Ineligibility is due to being in restrictive housing, having class IV status, or receiving a major disciplinary within the last 60 days.

MENTAL HEALTH SERVICES, *continued***Ouachita River Correctional Unit (ORCU) Residential Program Unit (RPU):**

The RPU had zero (0) admission and six (6) discharges in February for an end-of-month count of 102.

McPherson Unit Mental Health Residential Program Unit (RPU):

There were three (3) admissions and three (3) discharges in February for an end-of-month count of 40.

Habilitation Program:

The Habilitation Program at the Ouachita River Correctional Unit provided treatment services to 43 inmates in February. There was zero (0) admission and zero (0) discharges, which resulted in an end-of-month count of 43.

Suicide:

There were 80 suicidal threats in February. There were two (2) attempts, one (1) of which resulted in death.

Staffing:

The following Mental Health Services positions were vacant in November and February 2025:

Positions	FTEs*	January	February
Psychologist	6	5	4
Mental Health Director	12	3	2
Mental Health Coordinator	3	0	0
Mental Health Technicians	30	0	0
Mental Health Professionals	43	20	19
Mental Health AA	9	1	2
Psychiatrist	4	1	1
Psychiatrist Nurse Practitioner	6	2	1

*FTE refers to authorized Full Time Equivalent positions.

Self-Study Classes:

Classes	Number of Participants	Number Completed	Waiting List
Anger Management	203	149	337
Thinking Errors	151	109	409
Substance Abuse Education	141	109	365
Communication Skills	160	123	392
Domestic Violence	27	25	94
Victims of Domestic Violence	70	48	146
Stress Management	196	159	403
Parenting	68	60	190

Outpatient:

There were 2,386 inmates on the mental health medical log at the beginning of February. Mental Health staff conducted the following contacts during the month:

Case Management Contacts	2,154
Requests for Interviews	643
Testing	0
Intakes	426
Unit Requests	1,425
Pre-Lockup Reviews	390
Routine Restrictive Housing Reviews	1,045
Restrictive Housing Rounds	13,891
PREA Evaluations	1,407
Routine Follow-up	232
834 Requests	64

County Mental Health Requests:

During February, there were 189 requests received of a mental health nature. Of those, one (1) inmates were fast-tracked to ADC.

County Medical Health Requests:

During February, there were 635 requests received of a medical nature. A total of six (6) inmates were fast-tracked to ADC.

Medical Contract Reimbursements:

Sanction reimbursements for ADC in February amounted to \$60,700.00.

Deaths:

There were ten (10) inmate deaths during the month of February. Two (2) were claimed, Seven (7) were cremated and claimed. There was zero (0) not claimed and one (1) pending.

Wellpath:

See attachment for Wellpath's report regarding outside beds and emergency room visits.

Medical Grievances:

In February, there were 57 appeals of medical grievances received and 67 appeals were answered. two (2) was found to be with merit and one (1) with merit but resolved.

PAWS IN PRISON

February 2025 Unit	Enrolled	Graduated	Foster	Volunteer Hours
Larry B. Norris Unit	6	3	1	0
North Central Unit	4	3	0	0
Ouachita River Correctional Unit	6	2	1	0
Randall L. Williams Unit	4	4	1	6
Tucker Unit	7	4	0	0
Total	27	16	3	6

Completed Paws in Prison Training:

February 2025 Program Graduates	16
YTD Program Graduates	22
Total Graduates Since Inception (Dec 2011)	2579
Dogs Currently in Foster (Graduated, but Not Adopted)	3
March 2025 Volunteer Hours	6
YTD Volunteer Hours	12

AGENCY HIGHLIGHT

FEBRUARY 2025 PROMOTIONS

Some of the security promotions during the month of February included:

East Arkansas Regional Unit

- Sgt. Nikita Woods

Grimes Unit

- Lt. Nicholas Wilson

Larry B. Norris Unit

- Sgt. Corey Baxter
- Captain Jonathon Martin
- Sgt. Cathron Scaife

McPherson Unit

- Sgt. Krysten Reeves

Mississippi County Work Release

- Sgt. Curtis Petty
- Captain Marcus Wilkerson

North Central Unit

- Food Prep. Steven Kaczmer

Northeast AR CCC

- Sgt. Donna Stokes

Northwest AR WRC

- Sgt. Jamie Zaula

Ouachita River Unit

- Sgt. Raymond Paquette
- Captain Joshua Crosby
- Sgt. Whitney Williams

Pine Bluff Unit

- Food Prep. Latonia Frazier
- Sgt. Marvin Roberts

Randall L. Williams Unit

- Sgt. Kristina McKnight

Tucker Unit

- Sgt. Nicholas Dismute

Varner Unit

- Lt. Janah Hymes
- Sgt. Darkeia Washington
- Lt. Christopher Pennington
- Corporal Danielle Knirht

PAL GRADUATION- EARU

During the recent Principles and Applications For Life (PAL) program graduation at the East Arkansas Regional Unit, staff and volunteers gathered to celebrate the program's graduates.

FIRST GED GRADUATES- WRCC

Join the #ARDOCFamily in congratulating the first GED graduates from the White River Correctional Center!

PINNACLE AWARDS

Recently, the Arkansas Division of Correction held their annual Pinnacle Awards honoring ADC employees that went above and beyond in 2024. Thank you again to the Arkansas Association of Correctional Employees Trust (AACET) for sponsoring the event!

BCOT 2024-Z- TRAINING ACADEMY

#Congratulations to the recent graduates of the Basic Correctional Officer Training Academy Class 2024-Z!



BCOT 2024-AB- TRAINING ACADEMY

Join the #ARDOCFamily in congratulating the recent graduates of the Basic Correctional Officer Training Academy Class 2024-AB!



NEWLY APPOINTED BOC MEMBER- G. HODGES

Join us in welcoming Grant Hodges to the #ARDOCFamily. Grant was appointed to the Arkansas Board of Corrections by Governor Sarah Huckabee Sanders in January 2025, and he participated in his first BOC meeting this week.

AG FEATURED IN NAIA 2025 NEWLETTER

We would like to thank the National Association of Institutional Agribusiness (NAIA) for featuring the DOC Agriculture Division in their Winter 2025 Newsletter.

Read the full story on our website at bit.ly/NAIA-Winter-2025-Story.

MEMORIAL FOR SGT CAUDELL- 3 YEARS

Today we honor and remember the life of Sgt. Joshua Caudell, who lost his life in the line of duty three years ago today. Sgt. Caudell served in the Tucker K-9 Unit and had been with the Department of Corrections since December 2012. In addition to his time at the Tucker Unit, he had worked at the Cummins, Larry B. Norris (formerly Maximum Security), Varner/Varner Supermax and Pine Bluff units.

ECACC PARTICIPATE IN "READERS TO LEADERS"

It was a great pleasure being invited to participate in "Readers to Leaders" at Faulk Elementary this morning! Corporal Austin Hill, Corporal Amber Morton, Administrative Specialist Miyah Meredith, and IPO Tiffany Pickens read to multiple classes and also received certificates of appreciation from Faulk Elementary. Thank you for having us!

HORSE AUCTION CATALOGS SENT OUT

We have some great news! The 2025 ADC Horse Auction catalogs are in the mail! If you can't wait to see the 24 horses in this year's auction, you can view or download the catalog online at doc.arkansas.gov/horse-auction-2025.

#ADCHorseAuction #GoodHomesForGoodHorses

ACA ELECTED LEADERSHIP- SEC. WALLACE

Join the #ARDOCFamily in congratulating DOC Secretary Lindsay Wallace. Sec. Wallace was recently elected to the American Correctional Association's Board of Governors (Institutions). She joins a host of other dedicated leaders across the country who are shaping the future of corrections.

FIRST FOAL OF 2025 NAMED

We would like to introduce you all to Diamond, the first foal born in 2025. After more than 200 name suggestions, Diamond won by a landslide!

COMMS FIST BUMP CHALLENGE WITH STAFF

The Communications Teams wanted to show some love to members of the #ARDOCFamily. Over the next few months, they will be traveling to various DOC facilities, so be on the lookout!

WINTER WEATHER AT NCU

Talk about walking in a winter wonderland. Thank you to the North Central Unit crew for sending in these pictures from around the unit.

REGIONAL MAINTENANCE PROJECT HIGHLIGHTS

FEBRUARY 2025

Clean up for Malvern School District at Morrison Park/Leopard Yard:
Ouachtia River Correctional Unit Regional Maintenance**Clean up at Pine Bluff National Little League Field (Ed Brown Field):**
Pine Bluff Unit Regional Maintenance**Moving furniture for the Department of Agriculture:**
Wrightsville Unit Regional Maintenance

RESIDENTIAL CENTERS STATISTICS AT A GLANCE - FEBRUARY 2025

Resident Admissions:

CAC: 15
 ECAC: 91
 NEAC: 31
 OMEGA: 30
 SWAC: 119

Resident Releases:

CAC: 914
 ECAC: 61
 NEAC: 39
 OMEGA: 40
 SWAC: 85

Affordable Healthcare**Enrollment:**

CAC: 14
 ECAC: 65
 NEAC: 33
 OMEGA: 41
 SWAC: 92

Wage Class Enrollment:

CAC: 18
 ECAC: 0
 OMEGA: 13
 SWAC: 11

Shorter College Enrollment:

CAC: 34
 ECAC: 52
 NEAC: 24
 SWAC: 37

Henderson State University**Enrollment:**

OMEGA: 36
 SWAC: 62

Successful Completions:

CAC: 12
 ECAC: 30
 NEAC: 17
 OMEGA: 40
 SWAC: 49

Exodus Enrollment:

CAC: 76
 ECAC: 20

Good Grid Enrollment

CAC: 13
 ECAC: 13
 NEAC: 27
 OMEGA: 45
 SWAC: 213

Photo IDs Issued:

CAC: 8
 ECAC: 9
 NEAC: 8
 OMEGA: 7
 SWAC: 19

Drivers Licenses Obtained:

CAC: 6
 ECAC: 0
 NEAC: 9
 OMEGA: 1
 SWAC: 11

Brith Certificates:

ECAC: 14
 NEAC: 2
 SWAC: 1

MAT Participants:

CAC: 12
 ECAC: 38
 SWAC: 2

MAT Discharged:

CAC: 0
 ECAC: 5
 SWAC: 0

Reformers Anonymous:

SWAC: 27

Life Recovery:

CAC: 23
 OMEGA: 5
 SWAC: 63

Victim Impact Panel:

CAC: 3
 NEAC: 14
 SWAC: 15

Accuplacer Testing:

NEAC: 18
 SWAC: 0

Number of Volunteers:

CAC: 56
 ECAC: 121
 NEAC: 26
 OMEGA: 25
 SWAC: 119

Number of Volunteer Hours:

CAC: 324.5
 ECAC: 337
 NEAC: 213
 OMEGA: 93
 SWAC: 714

GED Enrollment:

CAC: 39
 ECAC: 70
 NEAC: 32
 OMEGA: 9
 SWAC: 66

GED Completed:

CAC: 1
 ECAC: 1
 NEAC: 0
 OMEGA: 1
 SWAC: 0

AA/NA Attendance:

CAC: 70
 ECAC: 425
 NEAC: 40
 OMEGA: 51
 SWAC: 52

Celebrate Recovery**Attendance:**

CAC: 39
 NEAC: 50
 SWAC: 34

Social Security Cards:

CAC: 0
 ECAC: 14
 NEAC: 5
 SWAC: 205

ServSafe:

CAC: 0
 NEAC: 0

I.C.E.V.:

ECAC: 9
 SWAC: 9

2025 INFORMAL GRIEVANCE REPORT

Month	BENTON	CACCC	CU & CMU	DRU	EACCC	EARU & MX	Ester	GRIMES	HAWK/M	HAWK/F	LBNU	MCWR	MCPH	NEACCC	NCU	NWA	OMGEA	ORCU	PBU	RLW	SWACCC	TU	TRCC	VSMX	VU	WRCCC	WRTS	TOTAL
JAN	0	9	106	81	72	152	48	234	11	19	112	0	160	26	95	0	48	123	36	24	20	63	3	166	49	15	68	1,740
FEB	0	6	97	66	40	168	27	222	5	28	69	0	161	16	47	0	40	117	16	27	12	96	1	120	39	16	94	1,530
MAR																												0
APR																												0
MAY																												0
JUN																												0
JUL																												0
AUG																												0
SEPT																												0
OCT																												0
NOV																												0
DEC																												0
TOTAL	0	15	203	147	112	320	75	456	16	47	181	0	321	42	142	0	88	240	52	51	32	159	4	286	88	31	162	3,270

2025 FORMAL GRIEVANCE REPORT

Month	BENTON	CACCC	CU & CMU	DRU	EACCC	EARU & MX	Ester	GRIMES	HAWK/M	HAWK/F	LBNU	MCWR	MCPH	NEACCC	NCU	NWA	OMGEA	ORCU	PBU	RLW	SWACCC	TU	TRCC	VSMX	VU	WRCCC	WRTS	TOTAL
JAN	0	2	106	45	0	263	31	127	6	2	108	0	55	2	63	0	31	64	17	13	0	53	3	125	24	0	31	1,171
FEB																												0
MAR																												0
APR																												0
MAY																												0
JUN																												0
JUL																												0
AUG																												0
SEPT																												0
OCT																												0
NOV																												0
DEC																												0
TOTAL	0	2	106	45	0	263	31	127	6	2	108	0	55	2	63	0	31	64	17	13	0	53	3	125	24	0	31	1,171

Report includes Pine Bluff Reentry (PBR), Pine Bluff Unit (PBU) and Pine Bluff Work Release (PBW).

INMATE INSTITUTIONAL GRIEVANCE APPEAL REPORT – FEBRUARY 2025

	Acknowledged	Rejected	Processed W/O Merit	Processed W/ Merit
Benton Unit	0	0	0	0
Benton Work Release	0	0	0	0
CACCC	0	0	0	0
Cummins Unit	15	15	18	0
Cummins Modular Unit	2	1	1	0
Delta Regional Unit	14	7	7	0
EACCC	0	11	0	0
East Arkansas Regional Unit	8	2	14	0
East Arkansas Regional Max Unit	76	26	93	0
Ester Unit	4	6	6	0
Grimes Unit	32	12	31	0
Larry B. Norris Unit (MAX)	30	11	21	0
Tucker Work Release	0	0	0	0
McPherson Unit	11	5	13	0
McPherson Mental Health Residential Program Unit	0	0	0	0
Mississippi County Work Release Center	0	0	0	
NEACCC	3	1	2	1
Northwest Arkansas Work Release Center	0	0	0	0
North Central Unit	18	4	26	0
OMEGA	0	0	0	0
Ouachita River Correctional Unit	10	4	10	0
ORCU Hospital	0	0	0	0
ORCU New Commitment	0	0	0	0
ORCU Mental Health Residential Program Unit	0	0	0	0
Pine Bluff Unit	4	2	4	0
Pine Bluff Re-Entry	0	0	0	0
Randall L. Williams Correctional Facility	0	7	1	0
SWACCC	0	0	0	0
Texarkana Regional Correctional Center	0	0	0	0
Tucker Unit	12	1	14	0
Varner Super Max	32	9	37	0
Varner Unit	9	3	7	0
WRCCC	0	0	0	0
Wrightsville Unit	4	3	13	1
Hawkins Center	0	1	0	0
Hawkins for Males	0	0	1	0
Hawkins SPU	0	0	0	0
Total	287	218	341	2

ADMISSIONS AND RELEASES - February 2025

<u>Admissions</u>	<u>Male</u>	<u>Female</u>	<u>Total</u>
Asian	1	0	1
Black	91	9	100
Caucasian	209	38	247
Hispanic	6	1	7
Native American Indian	1	0	1
Native Hawaiian or Pacific Island	0	0	0
Other	2	0	2
Unknown	1	0	1
Total	311	48	359

<u>Releases</u>	<u>Male</u>	<u>Female</u>	<u>Total</u>
Asian	2	0	2
Black	119	10	129
Caucasian	178	30	208
Hispanic	9	2	11
Native American Indian	0	0	0
Native Hawaiian or Pacific Island	0	0	0
Other	0	0	0
Unknown	0	0	0
Total	308	42	350

ADC INMATE POPULATION GROWTH 2000-2029 - FEBRUARY 2025

Mo.	2000	2001	2002	2003	2004	2005	2006	2007	2008	2009	2010	2011	2012	2013	2014	2015	2016	2017	2018	2019	2020	2021	2022	2023	2024	2025
Jan.	11,984	11,908	12,402	13,015	13,105	13,595	13,481	13,839	14,518	14,796	15,334	16,312	15,134	14,815	17,481	18,142	17,785	17,824	18,201	17,958	17,989	16,119	17,154	17,682	18,522	18,673
Feb.	12,169	12,022	12,529	13,054	13,166	13,783	13,633	14,012	14,603	14,883	15,374	16,209	14,990	15,008	17,438	18,082	17,625	17,608	17,998	17,846	18,181	16,120	17,077	17,814	18,612	18,805
March	12,006	12,033	12,299	13,108	13,088	13,418	13,534	13,772	14,580	14,843	15,290	16,095	14,964	14,665	17,395	18,233	17,573	17,666	18,089	17,898	17,860	16,085	16,992	18,075	18,820	
April	12,069	12,167	12,465	13,213	13,323	13,469	13,554	13,851	14,769	14,937	15,570	16,172	15,124	14,850	17,604	18,703	17,815	17,798	18,227	17,977	17,331	16,250	17,059	18,206	18,889	
May	12,109	12,384	12,558	13,463	13,556	13,528	13,711	14,146	14,880	15,146	15,694	16,062	15,132	15,074	17,593	18,693	17,769	17,652	17,945	17,817	16,694	16,476	17,229	18,267	18,863	
June	12,005	12,108	12,439	13,418	13,389	13,251	13,430	13,915	14,700	15,025	15,564	15,554	14,832	14,825	17,340	18,813	17,973	17,963	17,972	17,942	16,552	16,560	17,129	18,213	18,957	
July	12,030	12,190	12,622	13,509	13,528	13,286	13,560	14,082	14,868	15,195	15,807	15,519	14,879	15,379	17,522	18,870	18,130	18,180	18,005	18,002	16,511	16,638	17,109	18,397	18,955	
August	12,087	12,371	12,815	13,565	13,632	13,419	13,646	14,224	15,100	15,385	15,829	15,240	14,675	16,103	17,549	18,806	17,919	18,051	17,751	18,090	16,367	16,655	17,274	18,375	19,038	
September	11,983	12,289	12,774	13,341	13,516	13,237	13,652	14,217	14,850	15,285	16,025	15,172	14,724	16,412	17,605	18,549	18,026	18,179	17,865	17,856	16,215	16,698	17,432	18,380	19,043	
October	12,119	12,348	12,942	13,341	13,584	13,363	13,775	14,349	14,836	15,381	16,311	15,271	14,856	16,993	17,880	18,430	18,127	18,348	17,943	17,947	16,311	16,821	17,480	18,557	19,100	
November	12,094	12,408	13,162	13,408	13,706	13,587	13,913	14,437	15,025	15,340	16,460	15,205	14,625	17,168	17,848	17,981	17,573	17,973	17,666	18,060	16,165	16,982	17,521	18,500	18,987	
December	11,856	12,333	12,845	13,106	13,470	13,338	13,728	14,315	14,716	15,199	16,204	15,062	14,654	17,235	17,874	17,707	17,537	18,078	17,799	17,759	16,094	17,023	17,648	18,503	18,844	
Net Ann. Inc.	29	477	512	261	364	-132	390	587	401	483	1,005	-1,142	-408	2,581	639	-167	-170	541	-279	-40	-1,665	929	625	855	341	-39
Avg. Mo. Inc.	2	40	43	22	30	-11	33	49	33	40	84	-95	-34	215	53	-14	-14	45	-23	-3	-139	77	52	71	28	-20

Population is total jurisdictional count at end of each month. Population at end of month December 1999 was 11,827.

Average monthly population increased for past fifteen years 2010 - 2024 is 20

Average monthly population increased for past ten years Jan. 2011 - Dec 2024 is 8

Average monthly population decreased for past five years 2020 - 2024 is 18

Projected at Growth of 20 per Month

Mo.	2008	2009	2010	2011	2012	2013	2014	2015	2016	2017	2018	2019	2020	2021	2022	2023	2024	2025	2026	2027	2028	2029
	Actual	Actual	Actual	Actual	Actual	Actual	Actual	Actual	Actual	Actual	Actual	Actual	Actual	Actual	Actual	Actual	Actual	Actual/Proj.	Proj.	Proj.	Proj.	Proj.
January	14,518	14,796	15,334	16,312	15,134	14,815	17,481	18,142	17,785	17,824	18,201	17,958	17,989	16,119	17,154	17,682	18,522	18,673	19,025	19,265	19,505	19,745
February	14,603	14,883	15,374	16,209	14,990	15,008	17,438	18,082	17,625	17,608	17,998	17,846	18,181	16,120	17,077	17,814	18,612	18,805	19,045	19,285	19,525	19,765
March	14,580	14,843	15,290	16,095	14,964	14,665	17,395	18,233	17,573	17,666	18,089	17,898	17,860	16,085	16,992	18,075	18,820	18,825	19,065	19,305	19,545	19,785
April	14,769	14,937	15,570	16,172	15,124	14,850	17,604	18,703	17,815	17,798	18,227	17,977	17,331	16,250	17,059	18,206	18,889	18,845	19,085	19,325	19,565	19,805
May	14,880	15,146	15,694	16,062	15,132	15,074	17,593	18,693	17,769	17,652	17,945	17,817	16,694	16,476	17,229	18,267	18,863	18,865	19,105	19,345	19,585	19,825
June	14,700	15,025	15,564	15,554	14,832	14,825	17,340	18,813	17,973	17,963	17,972	17,942	16,552	16,560	17,129	18,213	18,957	18,885	19,125	19,365	19,605	19,845
July	14,868	15,195	15,807	15,519	14,879	15,379	17,522	18,870	18,130	18,180	18,005	18,002	16,511	16,638	17,109	18,397	18,955	18,905	19,145	19,385	19,625	19,865
August	15,100	15,385	15,829	15,240	14,675	16,103	17,549	18,806	17,919	18,051	17,751	18,090	16,367	16,655	17,274	18,375	19,038	18,925	19,165	19,405	19,645	19,885
September	14,850	15,285	16,025	15,172	14,724	16,412	17,605	18,549	18,026	18,179	17,865	17,856	16,215	16,698	17,432	18,380	19,043	18,945	19,185	19,425	19,665	19,905
October	14,836	15,381	16,311	15,271	14,856	16,993	17,880	18,430	18,127	18,348	17,943	17,947	16,311	16,821	17,480	18,557	19,100	18,965	19,205	19,445	19,685	19,925
November	15,025	15,340	16,460	15,205	14,625	17,168	17,848	17,981	17,573	17,973	17,666	18,060	16,165	16,982	17,521	18,500	18,987	18,985	19,225	19,465	19,705	19,945
December	14,716	15,199	16,204	15,062	14,654	17,235	17,874	17,707	17,537	18,078	17,799	17,759	16,094	17,023	17,648	18,503	18,844	19,005	19,245	19,485	19,725	19,965
Net Ann. Inc.	401	483	1,005	-1,142	-408	2,581	639	-167	-170	541	-279	-40	-1,665	929	625	855	341	161	240	240	240	240
Ave. Mo. Inc.	33	40	84	-95	-34	215	53	-14	-14	45	-23	-3	-139	77	52	71	28	13	20	20	20	20

MONTHLY POPULATION AVERAGES - FEBRUARY 2025

Unit/Center	2/3	2/4	2/5	2/6	2/7	2/10	2/11	2/12	2/13	2/14	2/17	2/18	2/19	2/20	2/21	2/24	2/25	2/26	2/27	2/28	AVG
Benton	333	332	331	331	325	325	329	329	330	330	330	330	330	330	330	330	333	336	338	341	331
Cummins	2,013	2,000	1,999	1,997	1,997	1,995	1,995	2,005	2,002	2,001	2,002	2,002	2,000	2,000	2,000	1,999	1,998	1,996	1,992	1,992	1,999
Delta	624	619	619	625	622	624	623	624	622	622	623	623	623	623	623	623	623	628	624	619	623
E AR Reg	1,631	1,629	1,633	1,632	1,636	1,639	1,639	1,639	1,637	1,631	1,635	1,635	1,635	1,633	1,633	1,633	1,634	1,633	1,636	1,633	1,634
Ester	692	707	703	700	697	697	690	694	694	699	691	691	693	693	691	689	690	687	692	696	694
Grimes	1,095	1,095	1,097	1,095	1,096	1,095	1,100	1,100	1,101	1,096	1,094	1,094	1,099	1,099	1,099	1,103	1,103	1,099	1,101	1,103	1,098
Max Sec	585	585	584	584	586	587	585	585	586	586	586	587	586	585	585	587	588	588	588	587	586
McPherson	1,214	1,211	1,216	1,216	1,220	1,217	1,211	1,217	1,216	1,214	1,206	1,206	1,207	1,207	1,207	1,206	1,211	1,217	1,219	1,219	1,213
MCWRC	185	185	187	187	187	186	186	186	186	185	185	185	185	185	185	185	181	185	185	185	185
N Central	940	939	935	933	933	933	934	934	936	935	935	935	935	935	935	941	941	939	938	948	937
NWAWRC	99	100	100	100	100	99	99	99	100	99	100	100	99	99	99	99	100	100	100	100	100
Ouachita River	1,893	1,900	1,894	1,893	1,890	1,891	1,893	1,896	1,899	1,899	1,889	1,889	1,883	1,883	1,882	1,884	1,879	1,887	1,886	1,884	1,890
Randall L Williams	542	538	532	540	539	536	542	540	536	544	543	544	543	542	543	542	538	544	542	539	540
Pine Bluff	561	561	562	560	556	555	555	552	549	551	552	551	552	552	552	550	546	544	548	544	553
PB Work Release	56	56	56	55	56	56	56	56	55	55	55	55	55	55	55	56	56	56	56	55	56
TRCC	133	132	132	132	132	132	132	132	132	132	131	131	131	131	131	130	130	130	130	130	131
Tucker	1,010	1,009	1,013	1,010	1,008	1,006	1,005	1,001	1,003	1,003	999	999	1,010	1,010	1,009	1,006	1,005	1,010	1,009	1,005	1,007
Tucker Work Release	105	104	105	106	108	108	108	116	121	121	123	122	120	121	121	120	119	119	118	115	115
Vamer	1,705	1,704	1,700	1,705	1,703	1,701	1,706	1,700	1,703	1,703	1,702	1,702	1,706	1,706	1,705	1,702	1,698	1,704	1,703	1,704	1,703
Wrightsville	862	863	864	862	857	859	859	866	865	855	863	863	864	865	866	859	857	862	858	851	861
WR Hawkins-Females	6	6	6	6	6	6	6	5	5	5	5	5	5	5	5	5	5	5	5	5	5
WR Hawkins-Males	434	445	450	450	450	444	443	437	438	439	437	437	436	434	433	431	433	422	418	414	436
Total ADC	16,718	16,720	16,718	16,719	16,704	16,691	16,696	16,713	16,716	16,705	16,686	16,686	16,697	16,693	16,689	16,680	16,668	16,691	16,686	16,669	16,697
ALETA	13	13	13	13	13	13	13	13	13	13	13	13	13	13	13	13	13	13	13	13	13
Ar State Police	53	53	53	53	51	51	51	51	53	53	53	53	53	53	53	53	53	53	53	53	53
Co Jail / M	1,421	1,428	1,462	1,474	1,508	1,507	1,521	1,515	1,514	1,540	1,568	1,567	1,587	1,592	1,608	1,607	1,629	1,615	1,625	1,633	1,546
Co Jail / F	119	123	118	117	110	109	114	111	109	109	106	106	106	106	108	108	99	97	99	96	109
Total Co Jail BK	1,540	1,551	1,580	1,591	1,618	1,616	1,635	1,626	1,623	1,649	1,674	1,673	1,693	1,698	1,716	1,715	1,728	1,712	1,724	1,729	1,655
309/M	183	183	183	182	182	182	185	187	185	183	184	184	186	186	186	189	188	187	187	187	185
309/F	123	124	124	120	119	122	124	124	124	124	124	124	124	124	124	126	126	126	126	126	124
Total Act 309	306	307	307	302	301	304	309	311	309	307	308	308	310	310	310	315	314	313	313	313	309
Total Non ADC	1,912	1,924	1,953	1,959	1,983	1,984	2,008	2,001	1,998	2,022	2,048	2,047	2,069	2,074	2,092	2,096	2,108	2,091	2,103	2,108	2,030
Total	18,630	18,644	18,671	18,678	18,687	18,675	18,704	18,714	18,714	18,727	18,734	18,733	18,766	18,767	18,781	18,776	18,776	18,782	18,789	18,777	18,727
	1	1	1	1	1	1	1	1	1	1	1	1	1	1	1	1	1	1	1	1	20

16697

18726

0

CENTER POPULATIONS - FEBRUARY 2025

ARDOC

ARKANSAS DEPARTMENT OF CORRECTION

PAGE: 1 of 2

REPORT NO. IPTR500 - 18

ACC OPTION

PROCESSED: 02/28/2025 12:30 AM

STATEWIDE POPULATION REPORT

REQUESTOR: eOMIS

FOR: 02/28/2025

Location:	In Count	Out To:					Capacity	% Capacity
		ORCU Hosp	Other Hosp	Furlough	Court	Total		
Central AR CCC - Males/Males	150	0	0	0	0	150	150	
Central AR CCC - Males Total	150	0	0	0	0	150	150	100.0%
East Central AR CCC/Females	386	0	0	0	2	388	362	
East Central AR CCC-Females Drug Treatment/Females	9	0	0	0	0	9	0	
East Central AR CCC Supervision Sanction-Female/90 Day PV in CCC Females	12	0	0	0	0	12	0	
East Central AR CCC Supervision Sanction-Female/Females	46	0	0	0	3	49	88	
East Central AR CCC Total	453	0	0	0	5	458	450	101.8%
NE AR CCC - Drug Treatment/Males	15	0	0	0	0	15	25	
NE AR CCC/Males	227	0	0	0	0	227	215	
NE AR CCC Total	242	0	0	0	0	242	240	100.8%
Omega Supervision Sanction Center/ Sanction Males*	61	0	0	0	0	61	0	
Omega Supervision Sanction Center/90 Day PV in CCC Males	131	0	0	0	0	131	0	
Omega Supervision Sanction Center/Males	61	2	1	0	5	69	300	
Omega Supervision Sanction Center Total	253	2	1	0	5	261	300	87.0%
Phillips County Detention Center/90 Day PV in CCC Males	16	0	0	0	0	16	0	
Phillips County Detention Center/Males	0	0	0	0	0	0	80	
Phillips County Detention Center Total	16	0	0	0	0	16	80	20.0%
SW AR CCC/Males	412	0	0	0	0	412	440	
SW AR Supervision Sanction Center/Males	90	0	0	0	0	90	100	
SW AR CCC Total	502	0	0	0	0	502	540	93.0%
White River Correctional Center/90 Day PV in CCC Males	137	0	0	0	0	137	0	
White River Correctional Center/Males	0	0	0	0	4	4	173	
White River Correctional Center Total	137	0	0	0	4	141	173	81.5%
In Transit Count:	0							
TOTALS - UNIT COUNT	1,753	2	1	0	14	1,770		
					Male	1,312	1,483	88.5%
					Female	458	450	101.8%
					Total	1,770	1,933	91.6%
County Jail Backup SSP/Females Total	6	0	0	0	0	6		
County Jail Backup SSP/Males Total	30	0	0	0	0	30		
County Jail Backup/Females Total	75	0	0	0	0	75		
County Jail Backup/Males Total	64	0	0	0	0	64		
TOTAL - NONAGENCY	175	0	0	0	0	175		
					Male	94		
					Female	81		
					Total	175		
Re-Entry Act 146 Total	202	0	0	0	0	202	208	97.1%
GRAND TOTAL	2,130	2	1	0	14	2,147		

FISCAL YEAR 2025 COUNTY JAIL BACKUP - FEBRUARY 2025

DAY		Jul-24		Aug-24		Sep-24		Oct-24		Nov-24		Dec-24		Jan-25		Feb-25
1		2,058		2,112	*	2,139		2,000		2,083	*	2,046		1,872	*	1,602
2		2,085		2,120		2,077		2,016	*	2,083		2,046		1,872	*	1,602
3		2,085	*	2,120		2,077		2,027	*	2,083		2,022		1,838		1,540
4		2,111	*	2,120		2,077		2,031		2,103		2,038	*	1,838		1,551
5		2,111		2,107		2,105	*	2,031		2,110		1,969	*	1,838		1,580
6	*	2,111		2,090		2,100	*	2,031		2,083		1,936		1,814		1,591
7	*	2,111		2,097	*	2,100		2,026		2,094	*	1,936		1,827		1,618
8		2,131		2,097	*	2,100		2,009		2,097	*	1,936		1,818	*	1,618
9		2,120		2,102		2,086		2,027	*	2,097		1,912		1,780	*	1,618
10		2,130	*	2,102		2,069		2,050	*	2,097		1,902		1,769		1,616
11		2,125	*	2,102		2,084		2,075		2,099		1,874	*	1,769		1,635
12		2,116		2,092		2,073	*	2,075		2,099		1,862	*	1,769		1,626
13	*	2,116		2,104		2,109	*	2,075		2,116		1,869		1,760		1,623
14	*	2,116		2,113	*	2,109		2,068		2,113	*	1,869		1,791		1,649
15		2,097		2,115	*	2,109		2,061		2,099	*	1,869		1,749	*	1,649
16		2,096		2,106		2,110		2,071	*	2,099		1,855		1,732	*	1,649
17		2,097	*	2,106		2,096		2,074	*	2,099		1,880		1,698		1,674
18		2,100	*	2,106		2,085		2,067		2,086		1,906	*	1,698		1,673
19		2,074		2,132		2,053	*	2,067		2,084		1,903	*	1,698		1,693
20	*	2,074		2,128		2,054	*	2,067		2,101		1,908		1,674		1,698
21	*	2,074		2,139	*	2,054		2,042		2,117	*	1,908		1,674		1,716
22		2,103		2,141	*	2,054		2,051		2,151	*	1,908		1,637	*	1,716
23		2,105		2,154		2,029		2,056	*	2,151		1,902		1,619	*	1,716
24		2,077	*	2,154		2,038		2,042	*	2,151		1,904		1,640		1,715
25		2,083	*	2,154		1,996		2,048		2,146		1,904	*	1,640		1,728
26		2,095		2,127		1,982	*	2,048		2,111		1,904	*	1,640		1,712
27	*	2,095		2,140		1,991	*	2,048		2,108		1,885		1,629		1,724
28	*	2,095		2,137	*	1,991		2,050		2,047	*	1,885		1,650		1,729
29		2,100		2,156	*	1,991		2,056		2,046	*	1,885		1,645		
30		2,092		2,139		1,990		2,052	*	2,046		1,885		1,637		
31		2,080	*	2,139				2,063				1,870		1,602		
Avg Daily Backup		2,099		2,121		2,064		2,049		2,100		1,915		1,730		1,652

Notes: Total does not include 309 Contracts in County jails (maximum of 336)

County Jail Back-up average for January 2025 - 1,730

County Jaik Back-up average as January 31, 2025 - 2,011

Short-Term Revocation Program average for January 2025 - 139

Short-TermFiscal Year average as of January 31, 2025 - 347

STTG UNIT COUNTS – FEBRUARY 2025

Unit	Beginning Total	Confirmed	Suspected	In	Out	Paroled	Removed	Ending Total	Total Unit Population	Unit % of STTG's
Benton	93	1	0	4	1	4	0	93	341	27.27%
Cummins	678	0	0	76	66	7	0	681	2,003	34.00%
Delta	228	8	1	13	8	5	0	237	626	37.86%
EARU	707	0	0	34	17	11	0	713	1,634	43.64%
Ester	154	0	0	24	19	6	0	163	692	23.55%
Grimes	418	1	0	18	20	5	1	411	1,101	37.33%
Hawkins	101	0	0	13	10	11	0	93	422	22.04%
Norris	295	0	0	14	8	0	0	301	701	42.94%
McPherson	49	0	0	0	3	0	0	46	1,219	3.77%
MCWR	56	0	0	7	0	0	0	63	186	33.87%
NCU	274	3	0	10	7	8	0	272	948	28.69%
NWAWR	19	0	0	1	1	0	0	19	100	19.00%
ORCU	322	0	0	47	39	8	0	322	1,544	20.85%
ORCU Intake	76	88	0	0	87	0	0	77	348	22.13%
Pine Bluff	149	0	0	21	23	2	0	145	598	24.25%
RLW	211	0	0	23	21	6	0	213	538	39.59%
TWR	38	0	0	2	2	0	0	38	134	28.36%
Tucker	280	0	0	9	10	7	0	272	1,008	26.98%
Varner	775	0	0	64	63	1	0	775	1,703	45.51%
Wrightsville	234	0	0	16	15	5	0	230	850	27.06%
Total	5,157	101	1	396	420	86	1	5,164	16,696	30.93%

ORCU Intake brought in 88 new STTG members into ADC last month.

STTG DISCIPLINARY REPORT – FEBRUARY 2025

Unit	STTG Incidents	STTG Suspected Incidents	Total Unit Disciplinary	Disciplinary Involving STTG	Percentage
Benton	0	0	4	1	25.00%
Cummins	0	0	334	180	53.89%
Delta	0	0	84	32	38.10%
EARU	0	0	188	103	54.79%
Easter	0	0	92	42	45.65%
Grimes	0	0	153	65	42.48%
Hawkins	0	0	16	7	43.75%
Norris	0	0	67	35	52.24%
McPherson	0	0	146	11	7.53%
MCWR	0	0	7	3	42.86%
NCU	3	0	108	52	48.15%
NWAWR	0	0	4	2	50.00%
ORCU	0	0	80	24	30.00%
ORCU Intake	0	0	2	1	50.00%
Pine Bluff	0	0	83	40	48.19%
RLW	0	0	94	52	55.32%
TWR	0	0	6	4	66.67%
Tucker	0	0	89	48	53.93%
Varner	0	0	272	135	49.63%
Wrightsville	0	0	145	71	48.97%
Total	3	0	1,974	908	46.00%

STTG COUNTS BY STTG SET – FEBRUARY 2025

STTG Set	Benton	Cummins	Delta	EARU	Ester	Grimes	Hawkins	Norris	McPherso	MCWR	NCU	NWAWR	ORCU	Intake	PB	RLW	TWR	Tucker	Varner	Wrightswil	Total	
Asian	2	0	0	1	0	0	0	0	0	0	0	0	0	0	0	0	0	1	1	1	2	8
Bloods	13	133	40	151	32	85	17	59	8	12	54	0	45	14	26	45	7	43	169	44	997	
Crips	11	77	37	88	14	48	10	45	4	7	30	3	35	8	12	26	4	21	110	35	625	
Folk	5	73	15	56	10	26	6	30	4	4	15	6	14	9	8	7	2	20	67	31	408	
GD	17	143	52	179	35	92	18	82	9	13	76	2	72	18	35	43	4	71	179	39	1,179	
Mexican	6	26	12	23	14	14	2	3	2	2	8	0	13	3	4	5	0	7	22	11	177	
Motorcycle	0	6	0	0	3	0	0	1	1	1	2	0	4	0	1	0	0	1	1	1	22	
Other	1	9	12	20	4	9	6	8	3	2	8	1	23	0	4	3	2	9	18	4	146	
People	4	36	11	36	6	30	0	23	1	0	8	0	13	5	7	11	0	12	31	10	244	
Unknown	0	23	4	8	2	0	3	2	0	3	2	2	5	0	4	4	4	4	9	3	82	
W/S	14	74	25	37	23	30	16	3	6	13	28	5	55	7	21	34	7	46	70	21	535	
AB	2	9	1	5	3	7	3	0	1	0	5	0	3	1	3	17	3	4	19	3	89	
AC	1	10	5	18	3	9	0	5	1	1	4	0	5	1	0	15	0	3	23	0	104	
NAE	6	35	13	36	7	25	3	14	3	3	16	0	19	5	8	0	3	11	27	13	247	
WAR	11	27	10	55	7	36	9	26	3	2	16	0	16	6	12	3	1	19	29	13	301	
Total	93	681	237	713	163	411	93	301	46	63	272	19	322	77	145	213	38	272	775	230	5,164	

Key:

GD = Gangster Disciples

W/S = White Supremacist

NAE = New Aryan Empire

WAR = White Aryan Resistance

AC = Aryan Circle

AB = Aryan Brotherhood

MEDICATION-ASSISTED TREATMENT PROGRAM (MAT) REPORT - FEBRUARY 2025

Locations:	MAT Start Dates	Active Program Participants	New Clients in the Program this Month	Dropped Out	Total Active Participants
CACCC - Little Rock	Sep-19	9	6	0	9
EACCC - West Memphis	Jul-18	38	9	0	38
NEACCC - Osceola	Dec-21	0	0	0	0
SWACCC - Texarkana	Jul-18	1	0	0	1
Probation / Parole	2018	43	0	0	48
Medically Withdrawn	Closed Unsuccessful	Completed	Total Active		
92	208	177	48		
Total # of Participants Since Program Began					1010

Clinical Activities

Action	Jul-23	Aug-23	Sep-23	Oct-23	Nov-23	Dec-23
Assessments Completed in units	42	20	11	9	4	13
# of Clients Educated in units	352	515	403	426	427	400
# of Clients Released to Supervision	12	7	3	2	4	6
Pre-Release Interviews Completed	14	15	15	4	4	8

Clinical Activities

Action	Jan-24	Feb-24	Mar-24	Apr-24	May-24	Jun-24
# of Assessments Completed in units	13	3	12	11	11	9
# of Clients Educated in units	411	261	514	420	353	282
# of Clients Released to Supervision	4	7	10	7	11	10
Pre-Release Interviews Completed	11	6	14	14	7	14

Action	Jul-24	Aug-24	Sep-24	Oct-24	Nov-24	Dec-24
# of Assessments Completed in units	8	0	0	20		
# of Clients Educated in units	221	279	220	234		
# of Clients Released to Supervision	12	6	10	7		
Pre-Release Interviews Completed	7	7	4	11		

ADC INPATIENT AND EMERGENCY ROOM UTILIZATION

ARKANSAS DEPARTMENT OF CORRECTION
INPATIENT AND EMERGENCY ROOM UTILIZATION

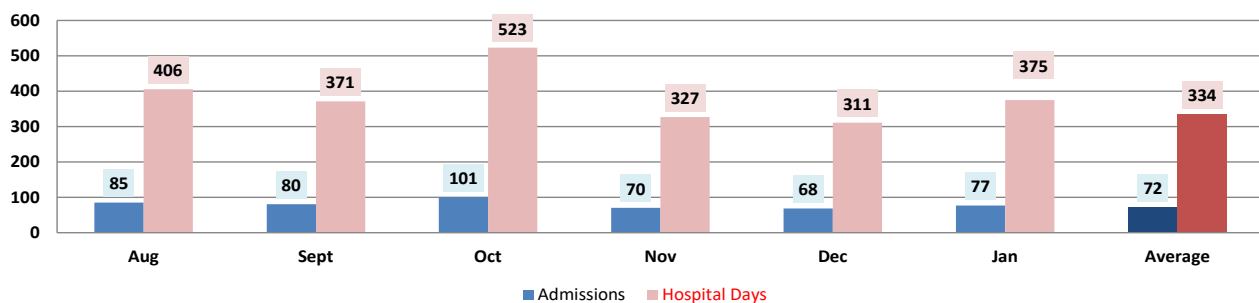
ADC Inpatient Statistics Past 12 Months

	2024	2024	2024	2024	2024	2024	2024	2024	2024	2024	2024	2025	
	Feb	March	April	May	June	July	Aug	Sept	Oct	Nov	Dec	Jan	Average
Admissions	54	54	61	74	75	62	85	80	101	70	68	77	72
Hospital Days	230	208	231	373	322	335	406	371	523	327	311	375	334
Average Length of Stay	4.26	3.85	3.79	5.04	4.29	5.40	4.78	4.64	5.18	4.67	4.57	4.87	4.66

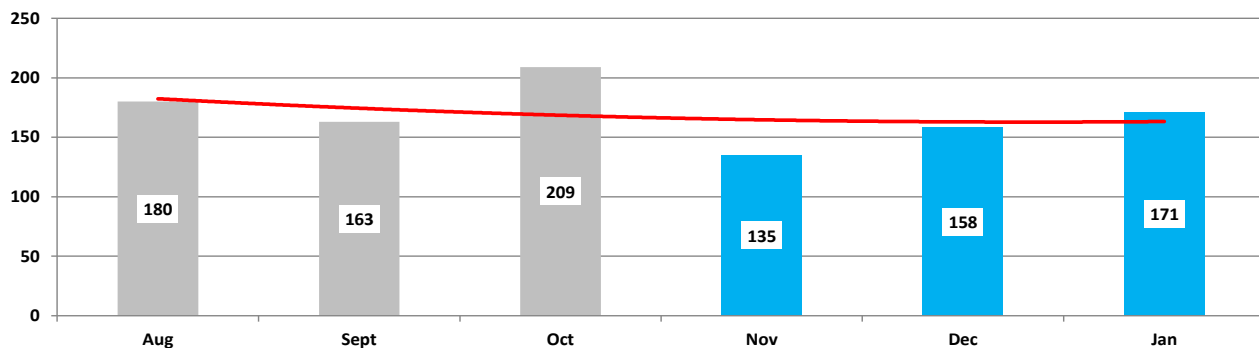
ADC ER Visits Past 12 Months

	2024	2024	2024	2024	2024	2024	2024	2024	2024	2024	2024	2025	
	Feb	March	April	May	June	July	Aug	Sept	Oct	Nov	Dec	Jan	Average
Emergency Room Visits	131	129	170	179	161	140	180	163	209	135	158	171	160.5

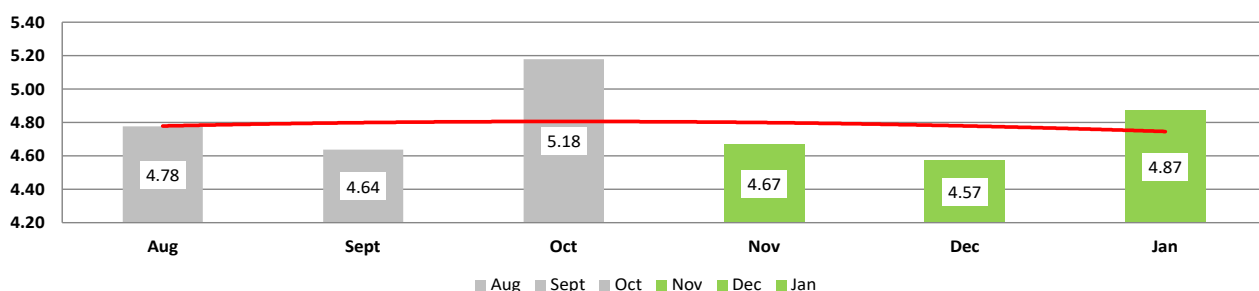
ADC Inpatient Utilization



ADC Emergency Room Visits



ADC Inpatient Average Length of Stay

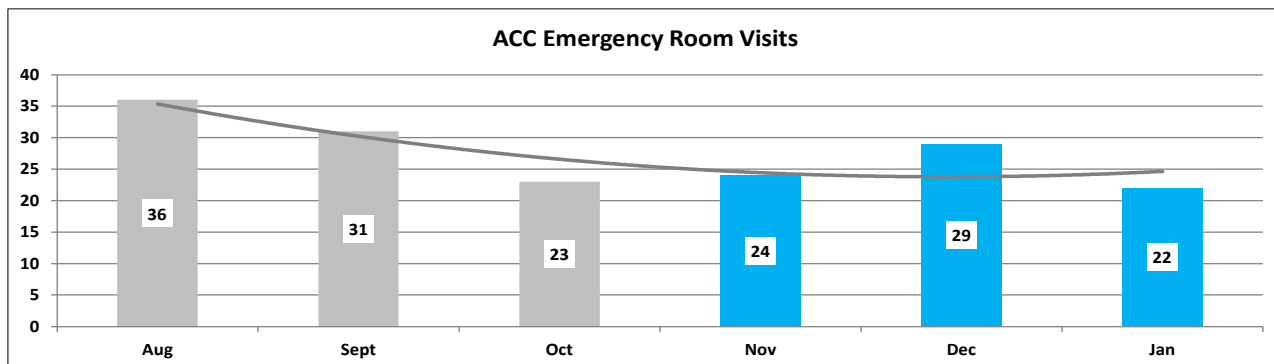
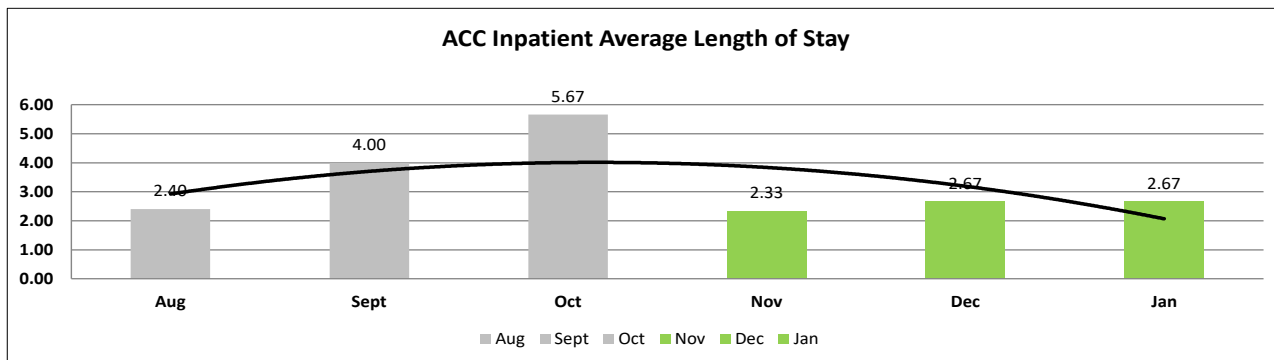
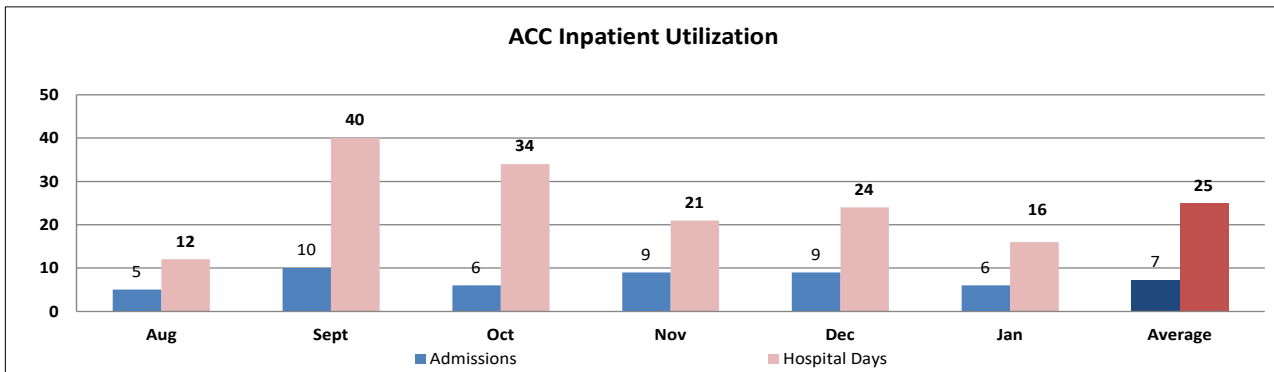


COMMUNITY CORRECTIONS INPATIENT AND EMERGENCY ROOM UTILIZATION

ARKANSAS COMMUNITY CORRECTION
INPATIENT AND EMERGENCY ROOM UTILIZATION

ACC Inpatient Statistics Past 12 Months													
	2024 Feb	2024 March	2024 April	2024 May	2024 June	2024 July	2024 Aug	2024 Sept	2024 Oct	2024 Nov	2024 Dec	2025 Jan	Average
Admissions	7	5	7	5	11	7	5	10	6	9	9	6	7
Hospital Days	28	16	25	13	39	31	12	40	34	21	24	16	25
Average Length of Stay	4.00	3.20	3.57	2.60	3.55	4.43	2.40	4.00	5.67	2.33	2.67	2.67	3.44

ACC ER Visits Past 12 Months													
	2024 Feb	2024 March	2024 April	2024 May	2024 June	2024 July	2024 Aug	2024 Sept	2024 Oct	2024 Nov	2024 Dec	2025 Jan	Average
Emergency Room Visits	11	22	34	23	37	39	36	31	23	24	29	22	27.6



MEDICAL GRIEVANCE BOARD REPORT – FEBRUARY 2025

Unit	<i>Acknowledged/Received</i>	<i>Rejected</i>	<i>Reviewed & Signed by Dep Director</i>	<i>With Merit</i>	<i>With Merit, but Resolved</i>	<i>% With Merit</i>	<i>Without Merit</i>
Benton	0	0	0	0	0	0%	0
CMU	0	0	0	0	0	0%	0
Cummins	4	6	11	0	0	0%	11
Delta	1	2	1	0	0	0%	1
EARU	6	1	9	0	0	0%	9
EARU Max	20	6	15	0	1	7%	14
Ester	2	1	2	0	0	0%	2
Grimes	2	5	7	0	0	0%	7
Hawkins	0	0	1	0	0	0%	1
McPherson	0	2	1	0	0	0%	1
MCWRC	0	0	0	0	0	0%	0
MSU	2	11	1	0	0	0%	1
NE AR CCC	2	0	2	0	0	0%	2
North Central	1	1	1	0	0	0%	1
NWAWRC	0	0	0	0	0	0%	0
Omega Supervision	0	0	0	0	0	0%	0
Ouachita	1	1	0	0	0	0%	0
Pine Bluff	2	0	3	1	0	33%	2
Randall L. Williams	0	2	0	0	0	0%	0
SNN	0	1	0	0	0	0%	0
TRCC	0	0	0	0	0	0%	0
Tucker	0	4	1	1	0	100%	0
Varner	3	1	2	0	0	0%	2
Varner Super Max	8	1	5	0	0	0%	5
White River	0	0	0	0	0	0%	0
WRU	0	0	1	0	0	0%	1
WHM	3	3	4	0	0	0%	4
WWR	0	0	0	0	0	0%	0
Total	57	48	67	2	1	4%	64

CHAPLAINCY

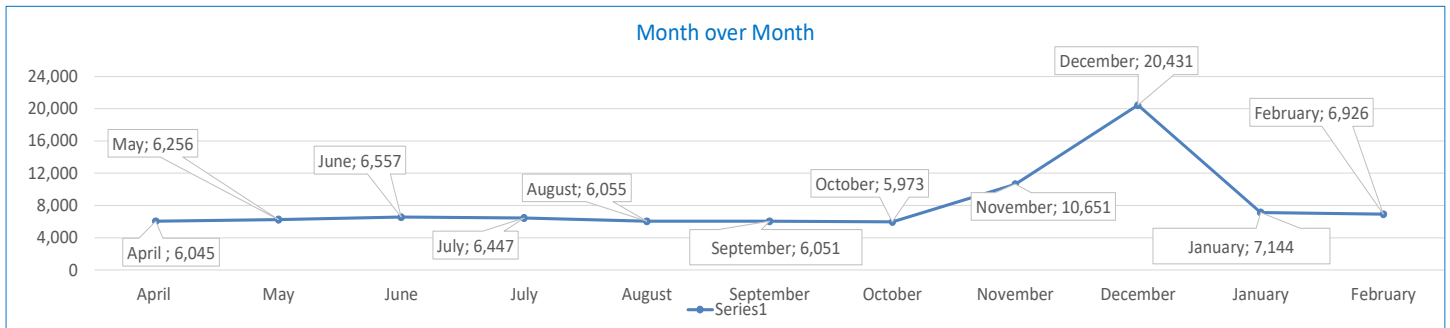
Month: February Year: 2025	CUMMINS	DELTA REGIONAL	EAST ARKANSAS	EAST ARKANSAS MAX	ESTER	GRIMES	HAWKINS	LB NORRIS	MCPHERSON	NORTH CENTRAL	OUACHITA RIVER	PINE BLUFF	RANDALL L. WILLIAMS	TUCKER	VARNER	VARNER MAX	WRIGHTSVILLE	TOTAL
Services Chaplains Oversaw																		
Christian																		
Population	0	5	24	0	2	14	1	4	5	2	2	7	2	3	11	0	1	83
Segregation	0	0	0	0	0	0	0	4	0	0	0	0	0	0	0	0	0	4
Muslim																		
Population	5	4	4	0	4	5	3	0	4	5	4	4	4	1	4	0	4	55
Segregation	0	0	0	0	0	0	0	0	0	0	0	0	0	0	0	0	0	0
																		142
Volunteers in Charge																		
Protestant	26	0	0	0	17	6	6	14	11	14	6	4	14	9	0	0	7	134
Catholic	1	0	3	0	1	3	4	0	2	4	3	0	1	1	3	0	3	29
Muslim	3	0	0	0	1	0	1	1	0	0	0	4	0	1	0	0	0	11
Other	0	0	0	0	0	0	0	4	4	0	5	0	0	1	9	0	0	23
Baptism	0	1	0	0	27	0	0	1	0	2	3	0	11	2	0	0	1	48
Marriages																		
	0	1	0	0	0	0	0	0	0	0	1	0	0	0	0	0	0	2
Distributed by Chaplains																		
Greeting Cards	15	19	0	0	42	43	0	121	0	11	32	6	46	48	45	225	0	653
Bibles, Quran, Torah, Etc.	20	13	5	39	32	26	3	18	19	78	194	36	19	10	8	35	5	560
Study Course	406	120	0	1	164	0	0	2	13	0	18	15	5	25	10	9	0	788
Writing Supplies	40	0	0	0	58	56	10	81	54	0	127	5	0	10	0	0	10	451
Literature	3,000	249	870	80	833	28	152	55	74	645	130	272	82	250	587	706	240	8,253
Chaplain's Visits																		
Barracks	12	7	34	35	42	128	16	15	108	47	163	24	70	91	247	26	19	1,084
Approximate Hours Spent in Barracks	2	14	9	9	11	198	1	11	112	14	22	4	9	23	61	7	9	516
Inmate Office visits	53	215	19	0	11	105	4	12	148	66	15	20	28	189	53	0	14	952
Other Office visits	12	15	9	0	7	6	6	6	0	0	20	44	40	40	41	0	6	252
Hospital	0	0	0	0	0	1	0	0	0	1	9	0	0	0	0	0	0	11
Infirmary/Sick Call	1	0	10	0	4	4	4	1	4	4	9	6	8	4	4	4	4	71
Restrictive/Punitive Housing	0	4	0	0	4	4	4	9	8	5	4	4	5	11	6	6	4	78
PC - DRU		4																4
Visitation Days	0	0	0	0	0	0	0	1	0	0	0	0	0	0	0	0	0	1
Volunteer Visits																		
RCV	0	0	0	0	3	4	0	1	38	4	0	19	4	2	0	0	0	75
OCV	10	3	8	0	3	5	9	18	15	8	15	0	0	26	0	0	9	129
Spiritual Advisor	0	0	0	0	0	0	0	0	0	0	0	0	0	0	0	0	0	0
CRA	30	2	20	0	38	18	6	41	40	103	76	5	15	92	28	9	37	560
Religious Volunteer Hours																		
Volunteer Hours	70	10	120	0	104	101	15	187	221	494	298	30	31	339	98	1	92	2,211
Denominational/Volunteer Chaplain Hours	23	0	0	0	40	0	50	151	0	15	16	31	0	56	70	13	56	521
																		2,732
Other Activities of Chaplain																		
Counseled Employees	6	10	9	0	7	3	2	1	0	0	19	39	6	20	27	0	3	152
Orientation Sessions	1	0	2	0	1	0	0	0	0	4	0	0	0	0	0	0	0	8
Free World Devotions	0	0	15	0	2	5	0	0	0	0	8	0	0	4	16	0	0	50
Spoke in Churches	0	0	8	0	2	3	0	1	0	0	10	2	1	4	16	0	0	47
Crisis Intervention Sessions	4	0	3	0	0	0	2	8	5	0	16	13	2	4	13	1	4	75
Marriage Counseling	0	2	0	0	0	0	0	0	0	2	1	0	0	0	0	0	0	5
Denominational Meeting	0	0	0	0	1	1	0	1	0	1	0	0	1	0	0	0	0	5
Chaplain's Meeting	2	2	8	0	1	1	3	0	2	1	2	1	1	1	1	0	3	29
Volunteer Training Session	0	0	0	0	1	0	0	0	0	0	0	0	2	1	0	0	0	4
Chaplain Transfers																		
	0	0	0	0	0	0	0	0	0	0	0	0	0	0	0	0	0	0
Chaplain Promotions																		
	0	0	0	0	0	0	0	0	0	0	0	0	0	0	0	0	0	0
PAL PROGRAM																		
Enrolled at start of month	60	24	54	0	58	49	0	16	56	71	33	0	0	59	48	0	26	554
Enrolled during the month	5	0	0	0	0	6	0	2	5	3	7	0	0	5	3	0	3	39
Removed From PAL Program																		
# Paroled	1	0	0	0	0	0	0	1	2	1	1	0	0	2	0	0	0	8
# Completed	1	0	0	0	0	1	0	0	0	0	1	0	0	4	2	0	0	9
# Withdrew	1	0	0	0	0	2	0	0	2	0	0	0	0	0	0	0	1	6
# Removed	1	0	0	0	0	1	0	0	0	0	1	0	0	0	1	0	2	6
# Transferred	2	0	1	0	0	1	0	0	1	2	1	0	0	0	0	0	0	8
Total Removed from PAL Program	6	0	1	0	0	5	0	1	5	3	4	0	0	6	3	0	3	37
Total Enrolled at the End of the Month	59	24	53	0	58	50	0	17	56	71	36	0	0	58	48	0	26	556
Volunteers in PAL																		
	8	0	8	0	8	13	0	6	48	16	7	0	0	7	2	0	7	130
Special Events:																		
	0	0	0	0	0	0	0	1	0	0	0	0	1	1	0	0	0	3

SECURUS VIDEO VISITATION REPORT FEBRUARY 2025

AR-DOC SVV Activity Tracker

Total ADP **18,373**

Total Visits by Month	March	April	May	June	July	August	September	October	November	December	January	February
Total (Includes SuperMax)	6,750	6,045	6,256	6,557	6,447	6,055	6,051	5,973	10,651	20,431	7,144	6,926
Target Objective	15,587	15,587	15,587	15,587	15,587	15,587	15,587	15,587	15,587	15,587	15,587	15,587



Completed Visits

Site	Current Month	Previous Month
Benton	88	134
Cummins	474	465
Delta Regional	433	395
East Arkansas Regional	501	557
Ester	362	359
Grimes	579	596
J Aaron Hawkins Sr.	253	241
Tucker Max	200	173
Mcpherson	564	607
Mississippi County WRC	40	55
North Central	568	594
NW Arkansas WRC	1	5
Ouachita River	634	703
Pine Bluff Re-Entry	87	62
Pine Bluff Complex	126	214
Randall L Williams	147	165
State Police Barracks	45	52
Texarkana Regional	58	64
Tucker Unit	563	557
Varner	833	740
Wrightsville Unit	370	406
Tucker Re-entry	0	0
Total:	6,926	7,144

25-Feb Jan-25

Missed by Inmate

Site	Current Month	Previous Month
Benton	3	17
Cummins	22	42
Delta Regional	8	19
East Arkansas Regional	38	61
Ester	12	15
Grimes	18	32
J Aaron Hawkins Sr.	3	14
Tucker Max	9	15
Mcpherson	19	41
Mississippi County WRC	2	14
North Central	19	15
NW Arkansas WRC	6	6
Ouachita River	34	39
Pine Bluff Re-Entry	3	5
Pine Bluff Complex	5	12
Randall L Williams	7	17
State Police Barracks	0	3
Texarkana Regional	6	10
Tucker Unit	25	40
Varner	61	104
Wrightsville Unit	3	16
Tucker Re-entry	0	0
Total:	303	537

25-Feb Jan-25

SECURUS TABLET REPORT FEBRUARY 2025

Contract ID	Site ID	Agency Name	Personal Tablets (All)	0	5	Community / Inventory	Officer	Total	New Subscriptions
I-003320	9322	AR DOC - BENTON UNIT	342	92	250	155	8	505	
I-003320	9323	AR DOC - CUMMINS UNIT	1,976	1,559	417	714	17	2,707	
I-003320	9324	AR DOC - DELTA REGIONAL UNIT	618	407	211	144	20	782	
I-003320	9325	AR DOC - EAST ARKANSAS REGIONAL UNIT	1,582	1,230	352	647	10	2,239	
I-003320	7981	AR DOC - ESTER UNIT	692	490	202	436	20	1,148	
I-003320	9326	AR DOC - GRIMES UNIT	1,085	761	324	655	14	1,754	
I-003320	9340	AR DOC - J AARON HAWKINS SR CENTER FOR W	422	310	112	161	19	602	
I-003320	9328	AR DOC - MCPHERSON UNIT	1,220	845	375	919	42	2,181	
I-003320	9329	AR DOC - MISSISSIPPI COUNTY WORK RELEASE	186	45	141	148	9	343	
I-003320	9330	AR DOC - NORTH CENTRAL UNIT	941	669	272	162	10	1,113	
I-003320	9331	AR DOC - NW ARKANSAS WORK RELEASE CENTER	100	12	88	49	8	157	
I-003320	9332	AR DOC - OUACHITA RIVER UNIT	1,681	1,162	519	1,025	40	2,746	
I-003320	7715	AR DOC - PINE BLUFF RE-ENTRY CENTER	55	8	47	24	0	79	
I-003320	9333	AR DOC - PINE BLUFF UNIT	546	432	114	140	9	695	
I-003320	9334	AR DOC - RANDALL L WILLIAMS FACILITY	536	380	156	171	15	722	
I-003320	9097	AR DOC - STATE POLICE BARRACKS	53	39	14	8	3	64	
I-003320	9335	AR DOC - TEXARKANA REGION CORRECTION CEN	130	28	102	83	15	228	
I-003320	9327	AR DOC - TUCKER MAXIMUM SECURITY UNIT	542	413	129	200	14	756	
I-003320	7806	AR DOC - TUCKER RE-ENTRY CENTER	116	50	66	55	2	173	
I-003320	9336	AR DOC - TUCKER UNIT	999	732	267	273	15	1,287	
I-003320	9337	AR DOC - VARNER UNIT	1,644	1,283	361	468	21	2,133	
I-003320	7133	AR DOC - WRIGHTSVILLE SATELLITE UNIT	0	0	0	0	2	2	
I-003320	9338	AR DOC - WRIGHTSVILLE UNIT	842	613	229	519	18	1,379	
			16,308	11,560	4,748	7,156	331	23,795	