



# DIVISION OF CORRECTION BOARD REPORT

January 2025

Dexter Payne  
Director



## POPULATION REPORT

### RESEARCH/PLANNING

**December 2024 Admissions and Releases** – Admissions for December 2024 totaled **413** (360-males and 53-females) while releases totaled 382 (318-males and 64 females) for a net decrease in-house of 31 inmates.

**Inmate Population Growth/Projection** – At the end of December 2024, the jurisdictional population for the Division of Correction totaled **18,844**, representing an increase of **341** inmates since the first of January 2024. At reporting time, calendar year 2024 has seen an average growth rate of **28** inmates per month, which is down from an average monthly increase of **71** inmates per month during calendar year 2023.

**Average County Jail Backup** – The backup in the county jails averaged 1,915 inmates per day during the month of December 2024, which was down from the per-day average of **2,100** inmates during the month of November 2024. Of the **1,915** average, short-term revocations accounted for **202** (162 males and 40 females) during the month.

**House Bill 1530/Restrictive Housing (RH)-October thru December 2024**- There was a **4.5%** increase in overall RH assignments the 4th Quarter of 2024 compared to the 3rd Quarter of 2024. There was a scant decrease in the number of major disciplinaries this Quarter compared to the 3rd Quarter of 2024. There was no change in the those assigned to RH who are fifty-five and older. There was a decrease this Quarter in the number of inmates assigned to RH for Protective Custody, who are twenty-one or younger, and those with SMI diagnosis. There was one (1) suicide, thirty-three (33) suicide attempts and five (5) deaths the 4th Quarter of 2024.

## INSTITUTIONS

### INMATE INSTITUTIONAL GRIEVANCES

**Inmate Formal/Informal Grievances:** During December, a total of 1,253 formal grievances and 1,534 informal grievances were filed at various ADC Facilities.

**Institutional Grievances Appeals:** There was a total of 524 appeals of institutional grievances received in December. Of those, 351 were acknowledged and 173 were rejected for various reasons. Of the total, 274 appeals answered, 271 had no merit and 3 had merit.

**Resident Formal/Informal Grievances:** During December, a total of 125 formal grievances and 253 informal grievances were filed at various Residential Centers.

**Institutional Grievances Appeals:** There was zero (0) appeals of institutional grievances received in December. Of those, zero (0) was acknowledged and zero (0) was rejected for various reasons.

### FARM DIVISION

December was a slow month, row crop worked in the shop repairing equipment, plans were made for next year's crops, and the wheat crops were certified. Beef Herd weighed 24 calves and separated them into three weight classes to be sold. The lighter group of 135 Lbs. will be sold on January 10, 2025. Dr. Looney with U of A has completed all the pregnancy checks and some were identified as having issues that would prevent them from breeding and those will be processed at cold storage for inmate consumption. Both Cummins and Wrightsville have had to feed little hay and have done an excellent job managing the pastures.

The preparations for the annual horse sale have begun. The sale is set at Saline County Fairgrounds on March 8, 2025. We are looking at 26 horses to be placed in the sale. New pullets are scheduled to be moved to the layer house in February.

Dairy purchased 10 new Holstein heifers from a dairy that went out of business in Prairie Grove. These heifers should begin calving in March.

**REGIONAL MAINTENANCE HOURS**

Regional Maintenance Hours	December 2024
Benton Unit	4,349
Delta Regional Unit	1,096
East Arkansas Regional Unit	416
Grimes Unit	2,184
McPherson Unit	2,303
Mississippi County Work Release	2,208
North Central Unit	5,400
Ouachita River Correctional Unit	5,728
Randall L. Williams Unit	2,656
Texarkana Regional Corr. Ctr.	2,130
Tucker Unit	2,160
Varner Unit	5,120
Wrightsville Unit	1,912
<b>TOTAL HOURS</b>	<b>37,662</b>

**WORK RELEASE RENT REPORT**

Unit	December 2024
Benton Unit	\$134,002.00
Mississippi County Work Release	\$105,622.00
Northwest Arkansas Work Release	\$63,294.00
Pine Bluff Work Release	<b>\$33,418.00</b>
Tucker Work Release	\$40,260.00
Texarkana Regional Correctional Center	\$68,420.00
<b>TOTAL</b>	<b>\$445,016.00</b>

**REENTRY**

**PROGRAMS - December 2024**

Program Name	Beginning Count	Admitted	Removed	Graduated	End Count	Volunteer Hours
Juvenile Program* (RLW)	10	2	1	0	11	0
Release (Ester)	23	5	11	0	17	2
Veterans Program (Ester)	27	1	0	0	28	0
AFC - Pathway Home 4	25	12	11	0	26	0
<b>TOTAL</b>	<b>85</b>	<b>20</b>	<b>23</b>	<b>0</b>	<b>82</b>	<b>2</b>

\*Juveniles are transferred from the program once they reach the age of 18.

**WORKFORCE ALLIANCE FOR GROWTH IN THE ECONOMY (WAGE)**

December 2024 Capacity: 120 Unit:	Participants	Status
Delta	7	Active
Ester	0	Not Active
Hawkins	5	Active
McPherson	5	Active
North Central	0	Not Active
Ouachita River	10	Active
Tucker	0	Active
Wrightsville	3	Active
<b>TOTAL</b>	<b>30</b>	

**WRIGHTSVILLE-HAWKINS PATHWAY TO FREEDOM PROGRAM**

December 2024 Capacity: 200	Beginning Count	Enrolled During the Month	Removed	End Count*
Wrightsville-Hawkins PTF	198	7	5	200

**ADVANCED PRINCIPLES AND APPLICATIONS FOR LIFE PROGRAM (APAL)**

December 2024 Capacity: 86	Beginning Count	Admissions During Mo.	Removed*	End Count
Ester	26	8	8	26
McPherson	0	0	0	0
<b>TOTAL</b>	<b>26</b>	<b>8</b>	<b>8</b>	<b>26</b>

Advanced PAL is an 18-month reentry program that combines a pre-release curriculum with the PAL program.

\*The "Removed" column indicates the number of participants who paroled, completed the program, withdrew from the program, transferred, or were removed from the program for another reason.

**THINK LEGACY**

December 2024 Capacity: 324					
Unit	Beginning Count	Admitted	Graduated	Removed*	End Count
Cummins	34	0	0	10	24
Delta Regional	23	1	0	5	19
East Arkansas Regional	0	0	0	0	0
McPherson	37	0	0	6	31
North Central	35	0	0	3	32
Ouachita River	35	0	0	3	32
Tucker	19	0	0	1	18
<b>TOTAL</b>	<b>183</b>	<b>1</b>	<b>0</b>	<b>28</b>	<b>156</b>

THINK LEGACY VOLUNTEER HOURS = 0

\*The "Removed" column indicates the total number of participants who paroled, signed out, transferred, or were removed from the program for any other reason and are no longer in the barracks.

**COLLEGE REPORT  
December 2024**

COLLEGE PROGRAM LOCATIONS	Beginning Count	Admissions During Mo.	Removed During Mo.	End Count	Staff Enrolled
<b>Arkansas State University</b>					
Grimes Unit	21	0	21	0	0
McPherson Unit	35	0	35	0	0
<b>Ashland University</b>					
North Central Unit	5	0	0	5	0
<b>Mid-America Seminary College</b>					
Varner Unit	36	0	0	36	0
<b>Philander Smith College</b>					
East Arkansas Regional Unit	35	0	35	0	0
Tucker Unit	20	0	20	0	0
<b>Southeast Arkansas College</b>					
Cummins Unit	37	0	3	34	0
Delta Unit	23	0	0	23	0
Varner Unit	45	0	2	43	0
<b>Shorter College</b>					
Hawkins Unit	0	0	0	0	0
Ouachita River Unit	7	0	0	7	0
Pine Bluff Complex	40	0	3	37	0
Texarkana Regional	3	3	0	6	0
Wrightsville Unit	19	0	2	17	0
<b>TOTAL</b>	<b>326</b>	<b>3</b>	<b>121</b>	<b>208</b>	<b>0</b>

**TREATMENT:  
PROGRAM SUMMARY**

A total of 1,021 residents have agreed to participate in Medication-Assisted Treatment (MAT) since the program started in July 2018 with a total of 209 discharged with follow up in the community in progress and a total of 178 have completed the program.

Partnerships are in effect with 90 community providers to continue MAT upon release from an ACC center.

In December, there were 36 active participants in the Telehealth program implemented in January 2023.

**General Treatment Program Summary**

(Non-Drug Court):	Number of Participants
Substance Use Disorder Treatment	3,964
Continuing Care	176
Domestic Violence Prevention	23
Anger Management	86
Tobacco Use Treatment	0

**Ongoing Projects**

Treatment supervisors reported combined 160 hours of direct clinical supervision with Treatment staff in 24 Community Correction locations.

**TRAINING**

**DIVISION OF CORRECTION**

**TRAINING - December 2024**

**BASIC TRAINING DIVISION –**

**BCOT Class 2024-X**, led by Instructor Wiley, graduated on December 20th with a total of 48 cadets.

**Willis H. Sargent Award -**

Krystal Person- McPherson Unit

**BASIC TRAINING DIVISION –**

**BCOT Class 2024-PC**, led by Instructor Caldwell, graduated on December 20th with a total of 12 cadets.

**IN-SERVICE DIVISION –**

There was one in-service classes held by the Training Academy during the month, with a total of 156 training hours.

**eCADEMY –**

During December, 417ADC employees completed a total of 6,037.13 hours of eCADEMY training.

**ACCREDITATION**

**ACA Internal Audits Completed:**

12/5- ACA quartley meeting & training

12/18- CACC internal audit

12/30- Wrightsville industry internal audit

## HEALTH/CORRECTIONAL PROGRAMS

### CHAPLAINCY SERVICES AND COMMUNITY SPEAKING E

#### Division Wide

ADC Annual Inmate Christmas Bag Program took place at each of the units. The unit chaplains gave a selection of various items from food, hygiene, writing materials, to clothes to each of the inmates.

#### East Arkansas Regional Unit Security Unit

The chaplains at EARU held a service for 17 ADC on December 17, 2024. There were 11 inmates in attendance.

#### Ester Unit

The Ester PAL and APAL graduation was held on December 19, 2024. The program saw 4 graduates from PAL and 8 graduates from APAL. Deputy Warden Steven Ricketts was the guest speaker.

### VOLUNTEER SERVICES - December 2024

Program Name	Hours
Release (Ester)	2
Veteran (Ester)	0
NTI (NWARC)	22
Yoga (Varner)	0
<b>Total</b>	<b>24</b>

## MENTAL HEALTH SERVICES

### Reduction of Sexual Victimization Program (RSVP) and Sex Offender Treatment Programs (SOFT):

December 2024	Capacity	Beginning Count	Completed	Removed	Admissions	End Count
RSVP	232	232	63	0	0	232
SOFT	36	6	0	0	5	11
<b>Total</b>	<b>268</b>	<b>238</b>	<b>63</b>	<b>0</b>	<b>5</b>	<b>243</b>

There are 814 males on the waiting list for RSVP and 18 females on the waiting list for SOFT who are within five years of their TE date. Of those, eight (8) inmates are mandated by the Post Prison Transfer Board.

The average time on the waiting list from request is between one and two months for those stipulated.

\*The total on the waiting list, including those not currently within the identified timeframe, is 1,693 males and zero females. Of these, 814 are eligible and 879 are ineligible for the program. There is one PREA inmate in the program at this time.

**\*Ineligibility is due to being in restrictive housing, having class IV status, or receiving a major disciplinary within the last 60 days.**

### Substance User Rehabilitation Services (SURS):

December 2024 Unit	Capacity	Beginning Count	Completed	Removed	Admissions	End Count
Benton	20	19	0	0	1	20
Cummins	45	44	7	2	9	44
Grimes	50	46	8	3	14	49
Larry B. Norris	4	1	1	0	0	0
McPherson	150	149	28	7	34	148
Randall L. Williams	150	142	32	15	33	128
Tucker	62	57	10	4	13	56
Wrightsville	150	139	20	14	40	145
<b>Total</b>	<b>631</b>	<b>597</b>	<b>106</b>	<b>45</b>	<b>144</b>	<b>590</b>

For SURS, there are 2,904 males and 400 females on the waiting list who are within five years of their release date. Of those, 143 are mandated by the Post Prison Transfer Board. The average time on the waiting list from request is 15 days.

\*The total on the waiting list, including those not currently within the identified timeframe, is 4,086 males and 509 females. Of these, 3,304 are eligible and 1,291 are ineligible for the program.

**\*Ineligibility is due to being in restrictive housing, having class IV status, or receiving a major disciplinary within the last 60 days.**

**MENTAL HEALTH SERVICES, *continued***

**Ouachita River Correctional Unit (ORCU) Residential Program Unit (RPU):**

The RPU had zero (0) admission and four (4) discharges in December for an end-of-month count of 112.

**McPherson Unit Mental Health Residential Program Unit (RPU):**

There were zero (0) admissions and zero (0) discharges in December for an end-of-month count of 40.

**Habilitation Program:**

The Habilitation Program at the Ouachita River Correctional Unit provided treatment services to 44 inmates in December. There was zero (0) admission and zero (0) discharges, which resulted in an end-of-month count of 44.

**Suicide:**

There were 107 suicidal threats in December. There were seven (7) attempts, one (1) of which resulted in death.

**Staffing:**

The following Mental Health Services positions were vacant in November and December 2024:

Positions	FTEs*	November	December
Psychologist	6	5	5
Mental Health Director	12	3	3
Mental Health Coordinator	3	0	0
Mental Health Technicians	30	1	0
Mental Health Professionals	43	17	30
Mental Health AA	9	1	1
Psychiatrist	4	1	1
Psychiatrist Nurse Practitioner	6	1	2

\*FTE refers to authorized Full Time Equivalent positions.

**Self-Study Classes:**

Classes	Number of Participants	Number Completed	Waiting List
Anger Management	155	155	742
Thinking Errors	116	116	778
Substance Abuse Education	108	108	608
Communication Skills	146	146	776
Domestic Violence	33	33	135
Victims of Domestic Violence	41	41	184
Stress Management	110	110	768
Parenting	69	69	284

**Outpatient:**

There were 2,404 inmates on the mental health medical log at the beginning of December. Mental Health staff conducted the following contacts during the month:

Case Management Contacts	1,834
Requests for Interviews	672
Testing	0
Intakes	858
Unit Requests	2,219
Pre-Lockup Reviews	236
Routine Restrictive Housing Reviews	905
Restrictive Housing Rounds	16,089
PREA Evaluations	84
Routine Follow-up	1,164
834 Requests	55

**County Mental Health Requests:**

During December, there were 206 requests received of a mental health nature. Of those, two (2) inmates were fast-tracked to ADC.

**County Medical Health Requests:**

During December, there were 783 requests received of a medical nature. A total of nine (9) inmates were fast-tracked to ADC.

**Medical Contract Reimbursements:**

Sanction reimbursements for ADC in December amounted to \$90,650.00.

**Deaths:**

There were nine (9) inmate deaths during the month of December. three (3) were claimed, five (5) were cremated and claimed. There was one (1) not claimed.

**Wellpath:**

See attachment for Wellpath's report regarding outside beds and emergency room visits.

**Medical Grievances:**

In December, there were 95 appeals of medical grievances received and 132 appeals were answered. Nine (9) was found to be with merit and zero (0) with merit but resolved

December 2024 Unit	Enrolled	Graduated	Foster	Volunteer Hours
Hawkins Unit	0	0	0	0
Maximum Security Unit	6	4	1	0
McPherson Unit	0	0	0	0
North Central Unit	4	4	2	0
Ouachita River Correctional Unit	6	5	1	0
Randall L. Williams Unit	4	4	1	8
Tucker Unit	7	4	0	0
<b>Total</b>	<b>27</b>	<b>21</b>	<b>5</b>	<b>8</b>

**Completed Paws in Prison Training:**

December 2024 Program Graduates	21
YTD Program Graduates	212
Total Graduates Since Inception (Dec 2011)	2557
Dogs Currently in Foster (Graduated, but Not Adopted)	5
January 2024 Volunteer Hours	8
YTD Volunteer Hours	112

**AGENCY HIGHLIGHT**

**DECEMBER 2024**

**PROMOTIONS**

Some of the security promotions during the month of December included:

**Cummins Unit**

- Sgt. Adelynn Henderson

**Delta Regional Unit**

- Sgt. Betty Cockran

**Grimes Unit**

- Sgt. Joseph Adkisson
- Sgt. Victor Teague

**Larry B. Norris Unit**

- Sgt. Ronald Rufer

**Northeast Arkansas CCC**

- Sgt. Jacqueline X Boyd

**Northwest Arkansas Work Release**

- Sgt. Casey Cloud

**Omega SSC**

- CO I Christian Greek

**Ouachita River Unit**

- Sgt. Jerred C Britt

**Phillips County**

- Lt. Adam Swopes
- Sgt. Rodney Stevenson
- Capt. Taylor Cothren

**Pine Bluff Unit**

- Major Jamesha Madden

**Training Academy**

- Instructor Carla Robinson

**Tucker Unit**

- Sgt. Tavian Ross
- Field Sgt. Danishia Buckley



**BOCT- 2024-V**

We would like to congratulate the recent graduates of the Newport Satellite Training Academy BCOT Class 2024-V!

**PROMOTION- DEPUTY WARDEN COBBS**

#Congratulations to Deputy Warden Mary Cobbs on her recent #promotion at the Wrightsville Complex!

**BOCT- 2024-W**

The #ARDOCFamily would like to congratulate the recent graduates of the Basic Correctional Officer Training Academy Class 2024-W!



**DELTA REGIONAL UNIT- MONTICELLO PARADE**

DRU had the wonderful opportunity to join in for the Monticello Christmas Parade on December 3, 2024. We had a blast.

**DELTA REGIONAL UNIT- MCGEHEE PARADE**

Delta Regional was proud to join in the McGehee City Christmas Parade that was held on December 10, 2024.

**Ouachita River Unit- MALVERN PARADE**

Last week, the Ouachita River Correctional Unit had the honor of participating in the Malvern Christmas Parade.

**DRU & CENTRAL TRANSPORTATION**

Thank you to the Delta Regional Unit, Central Transportation, and Capt. Dwana Johnson for your donations to the City of Dermott Nursing Home. The #ARDOCFamily was able to give gift bags filled with fruit, candy, and socks for all the residents. It was an AWESOME experience, one that staff will cherish for years to come. We are truly grateful to be among some AWESOME PEOPLE with BIG HEARTS!

**AG OFFICER OF THE YEAR AWARDS**

Three Division of Community Correction officers and one Division of Correction officer were honored Thursday, December 12, 2024 at the Attorney General's Officer of the Year Awards for exemplary service to the State.

**BCOT 2024-PCDC**

Before their graduation today, the cadets at the Phillips County Detention Center were challenged both physically and academically during Basic Correctional Officer Training Academy.

**MCPHERSON- ADOPT A LOCAL FAMILY**

The McPherson Unit staff came together to adopt a local family for Christmas this year. Thanks to everyone who had a hand in making this a success!

**PINE BLUFF COMPLEX- CHRISTMAS ADOPT**

Pine Bluff Complex - AR DOC is deeply committed to serving the community. It was truly gratifying for our corrections complex to bring joy to numerous families in Jefferson County during Christmas. We recognize the profound impact this had on many children and their families. As corrections professionals, our role extends beyond maintaining public safety to include serving our community through acts of service. We are grateful to the Boys & Girls Club of Jefferson County for the opportunity to make a positive difference. Merry Christmas

**PROMOTION- TY'JUNIA CLARK**

Join the #ARDOCFamily in congratulating Ty'Junia Clark on her recent #promotion to DOC Training Administrator!

**DRU- DERMOTT NURSING HOME PARADE**

Delta was honored to be present for the 1st Dermott Nursing Home parade for their residents. Wishing time all the best and happy holidays.

**BCOT 2024-PCDC**

Join the #ARDOCFamily in congratulating the Basic Correctional Officer Training Academy graduates that will be assigned to the Phillips County Detention Center. We would like to express our gratitude to Galilee Baptist Church in Helena for hosting the graduation!



## REGIONAL MAINTENANCE PROJECT HIGHLIGHTS DECEMBER 2024

**Christmas Lights Grant County Courthouse:**  
Pine Bluff Unit Regional Maintenance



**Moving furniture for Arkansas School for the Deaf:**  
Wrightsville Unit Regional Maintenance



**Set up for Martin Luther King Jr. Commission's Christmas toy and food drive:**  
Wrightsville Unit Regional Maintenance



## RESIDENTIAL CENTERS STATISTICS AT A GLANCE - DECEMBER 2024

**Resident Admissions:**

CAC: 22  
 ECAC: 51  
 NEAC: 29  
 OMEGA: 53  
 SWAC: 83

**Resident Releases:**

CAC: 24  
 ECAC: 102  
 NEAC: 43  
 OMEGA: 73  
 SWAC: 122

**Affordable Healthcare****Enrollment:**

CAC: 24  
 ECAC: 115  
 NEAC: 49  
 OMEGA: 60  
 SWAC: 125

**Wage Class Enrollment:**

CAC: 9  
 ECAC: 0  
 OMEGA: 4  
 SWAC: 5

**Shorter College Enrollment:**

CAC: 20  
 ECAC: 0  
 NEAC: 10  
 SWAC: 37

**Henderson State University****Enrollment:**

OMEGA: 19  
 SWAC: 66

**Successful Completions:**

CAC: 23  
 ECAC: 42  
 NEAC: 30  
 OMEGA: 72  
 SWAC: 68

**Exodus Enrollment:**

CAC: 41  
 ECAC: 0

**Good Grid Enrollment**

CAC: 65  
 ECAC: 14  
 NEAC: 54  
 OMEGA: 32  
 SWAC: 77

**Photo IDs Issued:**

CAC: 16  
 ECAC: 14  
 NEAC: 0  
 OMEGA: 34  
 SWAC: 43

**Drivers Licenses Obtained:**

CAC: 8  
 ECAC: 0  
 NEAC: 0  
 OMEGA: 6  
 SWAC: 8

**Brith Certificates:**

ECAC: 2  
 NEAC: 2  
 SWAC: 3

**MAT Participants:**

CAC: 4  
 ECAC: 38  
 SWAC: 3

**MAT Discharged:**

CAC: 0  
 ECAC: 9  
 SWAC: 2

**Reformers Anonymous:**

SWAC: 0

**Life Recovery:**

OMEGA: 33  
 SWAC: 124

**Victim Impact Panel:**

CAC: 2  
 NEAC: 13  
 SWAC: 23

**Accuplacer Testing:**

NEAC: 7  
 SWAC: 0

**Number of Volunteers:**

CAC: 107  
 ECAC: 89  
 NEAC: 24  
 OMEGA: 25  
 SWAC: 119

**Number of Volunteer Hours:**

CAC: 389  
 ECAC: 154  
 NEAC: 105  
 OMEGA: 112  
 SWAC: 584

**GED Enrollment:**

CAC: 35  
 ECAC: 0  
 NEAC: 3  
 OMEGA: 7  
 SWAC: 75

**GED Completed:**

CAC: 2  
 ECAC: 0  
 NEAC: 0  
 OMEGA: 1  
 SWAC: 4

**AA/NA Attendance:**

CAC: 147  
 ECAC: 406  
 NEAC: 42  
 OMEGA: 97  
 SWAC: 55

**Celebrate Recovery****Attendance:**

CAC: 51  
 NEAC: 44  
 SWAC: 51

**Social Security Cards:**

CAC: 8  
 ECAC: 9  
 NEAC: 2  
 SWAC: 74

**ServSafe:**

CAC: 0  
 NEAC: 0

**I.C.E.V.:**

ECAC: 0  
 SWAC: 21



2024 INFORMAL GRIEVANCE REPORT

Month	BENTON	CACCC	CU & CMU	DRU	EACCC	EARU & MX	Ester	GRIMES	HAWK/M	HAWK/F	LBNU	MCWR	MCPH	NEACCC	NCU	NWA	OMGEA	ORCU	PBU	RLW	SWACCC	TU	TRCC	VSMX	VU	WRCCC	WRTS	TOTAL
JAN	1		92	147		211	28	211	10	13	73	0	296	12	68	2		116	27	14		53	0	136	41		60	1,611
FEB	2		174	106		195	25	260	5	15	84	0	274	8	42	0		118	16	20		76	1	170	35		73	1,699
MAR	0		212	83		171	26	266	11	7	49	0	231	19	62	0		109	25	12		63	1	139	43		52	1,581
APR	2		172	75		211	31	218	11	24	39	0	155	6	71	0		89	22	15		68	0	170	36		61	1,476
MAY	0		183	102		222	37	202	9	25	47	0	238	26	98	0		105	34	22		76	0	160	36		94	1,716
JUN	0		154	73		439	20	204	7	11	129	1	229	8	69	2		85	13	24		43	1	154	49		66	1,781
JUL	0		151	82		789	17	205	5	22	125	2	184	6	63	1		102	26	24		43	0	154	38		84	2,123
AUG	1		163	103		597	34	251	4	23	43	1	180	9	93	0		63	54	16		97	0	170	43		103	2,048
SEPT	1		173	105		505	34	198	13	12	93	0	99	5	72	0		104	41	28		97	1	116	34		84	1,815
OCT	0	0	166	113	0	498	30	188	9	30	96	0	161	17	109	0	53	67	35	54	0	95	0	140	30	0	102	1,993
NOV	0	0	134	65	0	480	34	238	6	27	105	0	180	19	105	0	31	57	31	23	12	84	1	133	28	6	75	1,874
DEC	0	10	162	60	88	193	49	283	12	6	105	0	169	38	90	1	89	77	17	13	1	53	2	137	38	27	67	1,787
TOTAL	7	10	1,936	1,114	88	4,511	365	2,724	102	215	988	4	2,396	173	942	6	173	1,092	341	265	13	848	7	1,779	451	33	921	21,504

2024 FORMAL GRIEVANCE REPORT

Month	BENTON	CACCC	CU & CMU	DRU	EACCC	EARU & MX	Ester	GRIMES	HAWK/M	HAWK/F	LBNU	MCWR	MCPH	NEACCC	NCU	NWA	OMGEA	ORCU	PBU	RLW	SWACCC	TU	TRCC	VSMX	VU	WRCCC	WRTS	TOTAL
JAN	0		65	75		302	14	115	4	3	79	0	135	0	56	0		89	24	10		20	0	100	22		26	1,139
FEB	0		109	50		278	6	126	0	8	118	2	136	0	37	0		81	15	14		41	0	130	22		32	1,205
MAR	2		155	56		288	8	157	4	3	85	0	108	3	56	0		67	11	10		28	1	100	22		41	1,205
APR	0		116	41		357	11	121	5	12	81	1	93	3	41	0		52	17	10		33	0	146	18		22	1,180
MAY	0		129	52		341	18	98	2	10	49	0	100	0	75	0		49	21	20		28	0	144	22		63	1,221
JUN	0		135	49		381	13	119	4	10	93	2	81	1	48	0		54	7	12		28	1	121	27		31	1,217
JUL	0		120	36		622	9	110	5	8	110	2	94	0	41	1		55	10	14		28	0	117	9		46	1,437
AUG	1		117	56		546	21	153	2	12	112	1	78	0	62	1		43	24	8		75	0	131	19		48	1,510
SEPT	0		135	59		417	21	111	6	6	94	4	62	0	54	0		74	23	18		69	1	89	14		36	1,293
OCT	0	0	134	69	0	498	20	102	7	18	89	0	86	0	69	0	100	38	14	27	0	61	0	103	14	0	55	1,504
NOV	0	0	119	38	0	400	21	130	6	16	91	0	85	0	62	0	134	40	21	13	0	55	1	101	17	3	29	1,382
DEC	0	1	126	37	0	301	28	162	12	5	93	1	93	3	54	1	111	53	15	6	0	94	1	108	25	10	38	1,378
TOTAL	3	1	1,460	618	0	4,731	190	1,504	57	111	1,094	13	1,151	10	655	3	345	695	202	162	0	560	5	1,390	231	13	467	15,671

Report includes Pine Bluff Reentry (PBR), Pine Bluff Unit (PBU) and Pine Bluff Work Release (PBW).

## INMATE INSTITUTIONAL GRIEVANCE APPEAL REPORT – DECEMBER 2024

	Acknowledged	Rejected	Processed W/O Merit	Processed W/ Merit
Benton Unit	0	0	0	0
Benton Work Release	0	0	0	0
CACCC	0	0	0	0
Cummins Unit	19	23	8	0
Cummins Modular Unit	0	1	1	0
Delta Regional Unit	7	7	5	0
EACCC	0	0	0	0
East Arkansas Regional Unit	5	12	10	0
East Arkansas Regional Max Unit	132	35	99	0
Ester Unit	6	3	4	0
Grimes Unit	11	21	13	0
Larry B. Norris Unit (MAX)	36	9	14	1
Tucker Work Release	0	0	0	0
McPherson Unit	12	8	17	1
McPherson Mental Health Residential Program Unit	0	0	0	0
Mississippi County Work Release Center	0	0	0	0
NEACCC	2	1	1	0
Northwest Arkansas Work Release Center	0	0	0	0
North Central Unit	12	5	17	0
OMEGA	111	37	1	0
Ouachita River Correctional Unit	11	7	4	0
ORCU Hospital	0	0	0	0
ORCU New Commitment	0	0	0	0
ORCU Mental Health Residential Program Unit	1	0	1	0
Pine Bluff Unit	6	2	5	0
Pine Bluff Re-Entry	0	0	0	0
Randall L. Williams Correctional Facility	2	2	1	0
SWACCC	0	0	0	0
Texarkana Regional Correctional Center	1	1	0	0
Tucker Unit	31	4	23	0
Varner Super Max	39	21	28	0
Varner Unit	9	7	7	0
WRCCC	1	1	0	0
Wrightsville Unit	9	4	12	1
Hawkins Center	2	1	3	0
Hawkins for Males	0	0	0	0
Hawkins SPU	0	0	0	0
<b>Total</b>	<b>465</b>	<b>212</b>	<b>274</b>	<b>3</b>

## ADMISSIONS AND RELEASES - December 2024

<u>Admissions</u>	<u>Male</u>	<u>Female</u>	<u>Total</u>
Asian	3	0	3
Black	129	15	144
Caucasian	205	37	242
Hispanic	19	1	20
Native American Indian	1	0	1
Native Hawaiian or Pacific Island	2	0	2
Other	0	0	0
Unknown	1	0	1
<b>Total</b>	<b>360</b>	<b>53</b>	<b>413</b>

<u>Releases</u>	<u>Male</u>	<u>Female</u>	<u>Total</u>
Asian	0	0	0
Black	106	12	118
Caucasian	198	50	248
Hispanic	10	1	11
Native American Indian	2	1	3
Native Hawaiian or Pacific Island	1	0	1
Other	1	0	1
Unknown	0	0	0
<b>Total</b>	<b>318</b>	<b>64</b>	<b>382</b>

ADC INMATE POPULATION GROWTH 2000-2029 - DECEMBER 2024

Mo.	2000	2001	2002	2003	2004	2005	2006	2007	2008	2009	2010	2011	2012	2013	2014	2015	2016	2017	2018	2019	2020	2021	2022	2023	2024
Jan.	11,984	11,908	12,402	13,015	13,105	13,595	13,481	13,839	14,518	14,796	15,334	16,312	15,134	14,815	17,481	18,142	17,785	17,824	18,201	17,958	17,989	16,119	17,154	17,682	18,522
Feb.	12,169	12,022	12,529	13,054	13,166	13,783	13,633	14,012	14,603	14,883	15,374	16,209	14,990	15,008	17,438	18,082	17,625	17,608	17,998	17,846	18,181	16,120	17,077	17,814	18,612
March	12,006	12,033	12,299	13,108	13,088	13,418	13,534	13,772	14,580	14,843	15,290	16,095	14,964	14,665	17,395	18,233	17,573	17,666	18,089	17,898	17,860	16,085	16,992	18,075	18,820
April	12,069	12,167	12,465	13,213	13,323	13,469	13,554	13,851	14,769	14,937	15,570	16,172	15,124	14,850	17,604	18,703	17,815	17,798	18,227	17,977	17,331	16,250	17,059	18,206	18,889
May	12,109	12,384	12,558	13,463	13,556	13,528	13,711	14,146	14,880	15,146	15,694	16,062	15,132	15,074	17,593	18,693	17,769	17,652	17,945	17,817	16,694	16,476	17,229	18,267	18,863
June	12,005	12,108	12,439	13,418	13,389	13,251	13,430	13,915	14,700	15,025	15,564	15,554	14,832	14,825	17,340	18,813	17,973	17,963	17,972	17,942	16,552	16,560	17,129	18,213	18,957
July	12,030	12,190	12,622	13,509	13,528	13,286	13,560	14,082	14,868	15,195	15,807	15,519	14,879	15,379	17,522	18,870	18,130	18,180	18,005	18,002	16,511	16,638	17,109	18,397	18,955
August	12,087	12,371	12,815	13,565	13,632	13,419	13,646	14,224	15,100	15,385	15,829	15,240	14,675	16,103	17,549	18,806	17,919	18,051	17,751	18,090	16,367	16,655	17,274	18,375	19,038
September	11,983	12,289	12,774	13,341	13,516	13,237	13,652	14,217	14,850	15,285	16,025	15,172	14,724	16,412	17,605	18,549	18,026	18,179	17,865	17,856	16,215	16,698	17,432	18,380	19,043
October	12,119	12,348	12,942	13,341	13,584	13,363	13,775	14,349	14,836	15,381	16,311	15,271	14,856	16,993	17,880	18,430	18,127	18,348	17,943	17,947	16,311	16,821	17,480	18,557	19,100
November	12,094	12,408	13,162	13,408	13,706	13,587	13,913	14,437	15,025	15,340	16,460	15,205	14,625	17,168	17,848	17,981	17,573	17,973	17,666	18,060	16,165	16,982	17,521	18,500	18,987
December	11,856	12,333	12,845	13,106	13,470	13,338	13,728	14,315	14,716	15,199	16,204	15,062	14,654	17,235	17,874	17,707	17,537	18,078	17,799	17,759	16,094	17,023	17,648	18,503	18,844
Net Ann. Inc.	29	477	512	261	364	-132	390	587	401	483	1,005	-1,142	-408	2,581	639	-167	-170	541	-279	-40	-1,665	929	625	855	341
Avg. Mo. Inc.	2	40	43	22	30	-11	33	49	33	40	84	-95	-34	215	53	-14	-14	45	-23	-3	-139	77	52	71	28

Population is total jurisdictional count at end of each month. Population at end of month December 1999 was 11,827.

Average monthly population increased for past fifteen years 2009 - 2023 is 21

Average monthly population increased for past ten years Jan. 2014 - Dec 2023 is 11

Average monthly population decreased for past five years 2019 - 2023 is 12

Projected at Growth of 21 per Month

Mo.	2008	2009	2010	2011	2012	2013	2014	2015	2016	2017	2018	2019	2020	2021	2022	2023	2024	2025	2026	2027	2028	2029
	Actual	Actual	Actual	Actual	Actual	Actual	Actual	Actual	Actual	Actual	Actual	Actual	Actual	Actual	Actual	Actual	Actual	Proj.	Proj.	Proj.	Proj.	Proj.
January	14,518	14,796	15,334	16,312	15,134	14,815	17,481	18,142	17,785	17,824	18,201	17,958	17,989	16,119	17,154	17,682	18,522	18,865	19,117	19,369	19,621	19,873
February	14,603	14,883	15,374	16,209	14,990	15,008	17,438	18,082	17,625	17,608	17,998	17,846	18,181	16,120	17,077	17,814	18,612	18,886	19,138	19,390	19,642	19,894
March	14,580	14,843	15,290	16,095	14,964	14,665	17,395	18,233	17,573	17,666	18,089	17,898	17,860	16,085	16,992	18,075	18,820	18,907	19,159	19,411	19,663	19,915
April	14,769	14,937	15,570	16,172	15,124	14,850	17,604	18,703	17,815	17,798	18,227	17,977	17,331	16,250	17,059	18,206	18,889	18,928	19,180	19,432	19,684	19,936
May	14,880	15,146	15,694	16,062	15,132	15,074	17,593	18,693	17,769	17,652	17,945	17,817	16,694	16,476	17,229	18,267	18,863	18,949	19,201	19,453	19,705	19,957
June	14,700	15,025	15,564	15,554	14,832	14,825	17,340	18,813	17,973	17,963	17,972	17,942	16,552	16,560	17,129	18,213	18,957	18,970	19,222	19,474	19,726	19,978
July	14,868	15,195	15,807	15,519	14,879	15,379	17,522	18,870	18,130	18,180	18,005	18,002	16,511	16,638	17,109	18,397	18,955	18,991	19,243	19,495	19,747	19,999
August	15,100	15,385	15,829	15,240	14,675	16,103	17,549	18,806	17,919	18,051	17,751	18,090	16,367	16,655	17,274	18,375	19,038	19,012	19,264	19,516	19,768	20,020
September	14,850	15,285	16,025	15,172	14,724	16,412	17,605	18,549	18,026	18,179	17,865	17,856	16,215	16,698	17,432	18,380	19,043	19,033	19,285	19,537	19,789	20,041
October	14,836	15,381	16,311	15,271	14,856	16,993	17,880	18,430	18,127	18,348	17,943	17,947	16,311	16,821	17,480	18,557	19,100	19,054	19,306	19,558	19,810	20,062
November	15,025	15,340	16,460	15,205	14,625	17,168	17,848	17,981	17,573	17,973	17,666	18,060	16,165	16,982	17,521	18,500	18,987	19,075	19,327	19,579	19,831	20,083
December	14,716	15,199	16,204	15,062	14,654	17,235	17,874	17,707	17,537	18,078	17,799	17,759	16,094	17,023	17,648	18,503	18,844	19,096	19,348	19,600	19,852	20,104
Net Ann. Inc.	401	483	1,005	-1,142	-408	2,581	639	-167	-170	541	-279	-40	-1,665	929	625	855	341	252	252	252	252	252
Ave. Mo. Inc.	33	40	84	-95	-34	215	53	-14	-14	45	-23	-3	-139	77	52	71	28	21	21	21	21	21



CENTER POPULATIONS - DECEMBER 2024

ARDOC  
REPORT NO. IPTR500 - 18

ARKANSAS DEPARTMENT OF CORRECTION  
ACC OPTION  
STATEWIDE POPULATION REPORT

PAGE: 1 of 2  
PROCESSED: 01/01/2025 12:30 AM  
REQUESTOR: eOMIS

FOR: 01/01/2025

Location:	In Count	Out To:					Total	Capacity	% Capacity
		ORCU Hosp	Other Hosp	Furlough	Court				
Central AR CCC - Males/Males	154	0	0	0	0	154	150		
<b>Central AR CCC - Males Total</b>	<b>154</b>	<b>0</b>	<b>0</b>	<b>0</b>	<b>0</b>	<b>154</b>	<b>150</b>	<b>102.7%</b>	
East Central AR CCC/Females	361	0	0	0	0	361	362		
East Central AR CCC-Females Drug Treatment/Females	12	0	0	0	0	12	0		
East Central AR CCC Supervision Sanction-Female/90 Day PV in CCC Females	19	0	0	0	0	19	0		
East Central AR CCC Supervision Sanction-Female/Females	41	0	0	0	2	43	88		
<b>East Central AR CCC Total</b>	<b>433</b>	<b>0</b>	<b>0</b>	<b>0</b>	<b>2</b>	<b>435</b>	<b>450</b>	<b>96.7%</b>	
NE AR CCC - Drug Treatment/Males	12	0	0	0	0	12	25		
NE AR CCC/Males	227	0	0	0	0	227	215		
<b>NE AR CCC Total</b>	<b>239</b>	<b>0</b>	<b>0</b>	<b>0</b>	<b>0</b>	<b>239</b>	<b>240</b>	<b>99.6%</b>	
Omega Supervision Sanction Center/90 Day PV in CCC Males	249	0	0	0	0	249	0		
Omega Supervision Sanction Center/Males	99	0	0	0	0	99	300		
<b>Omega Supervision Sanction Center Total</b>	<b>348</b>	<b>0</b>	<b>0</b>	<b>0</b>	<b>0</b>	<b>348</b>	<b>300</b>	<b>116.0%</b>	
SW AR CCC/Males	387	0	0	0	2	389	440		
SW AR Supervision Sanction Center/Males	92	0	0	0	0	92	100		
<b>SW AR CCC Total</b>	<b>479</b>	<b>0</b>	<b>0</b>	<b>0</b>	<b>2</b>	<b>481</b>	<b>540</b>	<b>89.1%</b>	
White River Correctional Center/90 Day PV in CCC Males	160	0	0	0	0	160	0		
White River Correctional Center/Males	-160	0	0	0	0	-160	173		
<b>White River Correctional Center Total</b>	<b>0</b>	<b>0</b>	<b>0</b>	<b>0</b>	<b>0</b>	<b>0</b>	<b>173</b>	<b>0.0%</b>	
<b>In Transit Count:</b>	<b>0</b>								
<b>TOTALS - UNIT COUNT</b>	<b>1,653</b>	<b>0</b>	<b>0</b>	<b>0</b>	<b>4</b>	<b>1,657</b>			
					<b>Male</b>	<b>1,222</b>	<b>1,403</b>	<b>87.1%</b>	
					<b>Female</b>	<b>435</b>	<b>450</b>	<b>96.7%</b>	
					<b>Total</b>	<b>1,657</b>	<b>1,853</b>	<b>89.4%</b>	
<b>County Jail Backup SSP/Females Total</b>	<b>6</b>	<b>0</b>	<b>0</b>	<b>0</b>	<b>0</b>	<b>6</b>			
<b>County Jail Backup SSP/Males Total</b>	<b>18</b>	<b>0</b>	<b>0</b>	<b>0</b>	<b>0</b>	<b>18</b>			
<b>County Jail Backup/Females Total</b>	<b>43</b>	<b>0</b>	<b>0</b>	<b>0</b>	<b>0</b>	<b>43</b>			
<b>County Jail Backup/Males Total</b>	<b>65</b>	<b>0</b>	<b>0</b>	<b>0</b>	<b>0</b>	<b>65</b>			
<b>State Prison Unit/Males Total</b>	<b>1</b>	<b>0</b>	<b>0</b>	<b>0</b>	<b>0</b>	<b>1</b>			
<b>TOTAL - NONAGENCY</b>	<b>133</b>	<b>0</b>	<b>0</b>	<b>0</b>	<b>0</b>	<b>133</b>			
					<b>Male</b>	<b>84</b>			
					<b>Female</b>	<b>49</b>			
					<b>Total</b>	<b>133</b>			
<b>Re-Entry Act 146 Total</b>	<b>178</b>	<b>0</b>	<b>0</b>	<b>0</b>	<b>0</b>	<b>178</b>	<b>208</b>	<b>85.6%</b>	
<b>GRAND TOTAL</b>	<b>1,964</b>	<b>0</b>	<b>0</b>	<b>0</b>	<b>4</b>	<b>1,968</b>			

**FISCAL YEAR 2024 COUNTY JAIL BACKUP - DECEMBER 2024**

DAY	Jul-24	Aug-24	Sep-24	Oct-24	Nov-24	Dec-24
1	2,058	2,112 *	2,139	2,000	2,083 *	2,046
2	2,085	2,120	2,077	2,016 *	2,083	2,046
3	2,085 *	2,120	2,077	2,027 *	2,083	2,022
4	2,111 *	2,120	2,077	2,031	2,103	2,038
5	2,111	2,107	2,105 *	2,031	2,110	1,969
6	* 2,111	2,090	2,100 *	2,031	2,083	1,936
7	* 2,111	2,097 *	2,100	2,026	2,094 *	1,936
8	2,131	2,097 *	2,100	2,009	2,097 *	1,936
9	2,120	2,102	2,086	2,027 *	2,097	1,912
10	2,130 *	2,102	2,069	2,050 *	2,097	1,902
11	2,125 *	2,102	2,084	2,075	2,099	1,874
12	2,116	2,092	2,073 *	2,075	2,099	1,862
13	* 2,116	2,104	2,109 *	2,075	2,116	1,869
14	* 2,116	2,113 *	2,109	2,068	2,113 *	1,869
15	2,097	2,115 *	2,109	2,061	2,099 *	1,869
16	2,096	2,106	2,110	2,071 *	2,099	1,855
17	2,097 *	2,106	2,096	2,074 *	2,099	1,880
18	2,100 *	2,106	2,085	2,067	2,086	1,906
19	2,074	2,132	2,053 *	2,067	2,084	1,903
20	* 2,074	2,128	2,054 *	2,067	2,101	1,908
21	* 2,074	2,139 *	2,054	2,042	2,117 *	1,908
22	2,103	2,141 *	2,054	2,051	2,151 *	1,908
23	2,105	2,154	2,029	2,056 *	2,151	1,902
24	2,077 *	2,154	2,038	2,042 *	2,151	1,904
25	2,083 *	2,154	1,996	2,048	2,146	1,904
26	2,095	2,127	1,982 *	2,048	2,111	1,904
27	* 2,095	2,140	1,991 *	2,048	2,108	1,885
28	* 2,095	2,137 *	1,991	2,050	2,047 *	1,885
29	2,100	2,156 *	1,991	2,056	2,046 *	1,885
30	2,092	2,139	1,990	2,052 *	2,046	1,885
31	2,080 *	2,139		2,063		1,870
<b>Avg Daily Backup</b>	<b>2,099</b>	<b>2,121</b>	<b>2,064</b>	<b>2,049</b>	<b>2,100</b>	<b>1,915</b>

Notes: Total does not include 309 Contracts in County Jails (maximum of 336)

County Jail Back-up average for December 2024 - 1,915

County Jail Fiscal Year Average as of December 31, 2024 - 2,058

Short-Term Revocation Program Average for December 2024 - 202

Short- Term Fiscal Year Average as of December 31, 2024 - 382

## STTG UNIT COUNTS – DECEMBER 2024

Unit	Beginning Total	Confirmed	Suspected	In	Out	Paroled	Removed	Ending Total	Total Unit Population	Unit % of STTG's
Benton	84	2	0	10	4	4	0	88	325	27.08%
Cummins	686	1	0	56	48	3	0	692	2,020	34.26%
Delta	208	9	0	23	7	5	0	228	625	36.48%
EARU	719	0	0	10	14	7	0	708	1,634	43.33%
Ester	161	0	0	28	22	8	0	159	697	22.81%
Grimes	397	2	0	38	14	10	0	413	1,099	37.58%
Hawkins	55	0	0	1	6	0	0	56	260	21.54%
Norris	293	0	0	5	6	2	0	290	691	41.97%
McPherson	50	1	0	0	0	1	0	50	1,229	4.07%
MCWR	56	0	0	10	16	0	0	60	185	32.43%
NCU	282	0	0	8	11	7	0	272	938	29.00%
NWAWR	23	0	0	0	1	2	0	20	99	20.20%
ORCU	323	0	0	61	42	16	0	326	1,552	21.01%
ORCU Intake	69	125	0	0	97	0	0	97	345	28.12%
Pine Bluff	142	0	0	15	11	4	0	142	613	23.16%
RLW	211	0	0	27	22	4	0	212	552	38.41%
TWR	39	0	0	4	2	0	0	41	131	31.30%
Tucker	296	0	0	8	1	9	0	294	1,006	29.22%
Varner	760	0	0	46	35	5	0	766	1,693	45.25%
Wrightsville	215	0	0	26	11	4	0	226	852	26.53%
<b>Total</b>	<b>5,069</b>	<b>140</b>	<b>0</b>	<b>376</b>	<b>370</b>	<b>91</b>	<b>0</b>	<b>5,140</b>	<b>16,546</b>	<b>31.06%</b>

**ORCU Intake brought in 125 new STTG members into ADC last month.**



## STTG DISCIPLINARY REPORT – DECEMBER 2024

Unit	STTG Incidents	STTG Suspected Incidents	Total Unit Disciplinary	Disciplinary Involving STTG	Percentage
Benton	0	0	19	8	42.11%
Cummins	0	0	295	151	51.19%
Delta	0	0	84	49	58.33%
EARU	0	0	217	117	53.92%
Easter	0	0	71	36	50.70%
Grimes	4	0	142	68	47.89%
Hawkins	0	0	6	2	33.33%
Norris	0	0	85	46	54.12%
McPherson	0	0	130	12	9.23%
MCWR	0	0	4	3	75.00%
NCU	0	0	97	37	38.14%
NWAWR	0	0	0	0	#DIV/0!
ORCU	0	0	107	44	41.12%
ORCU Intake	0	0	6	1	16.67%
Pine Bluff	0	0	73	35	47.95%
RLW	0	0	128	57	44.53%
TWR	0	0	3	1	33.33%
Tucker	0	0	107	43	40.19%
Varner	0	0	171	98	57.31%
Wrightsville	0	0	203	87	42.86%
<b>Total</b>	<b>4</b>	<b>0</b>	<b>1,948</b>	<b>895</b>	<b>45.94%</b>

STTG COUNTS BY STTG SET – DECEMBER 2024

STTG Set	Benton	Cummins	Delta	EARU	Ester	Grimes	Hawkins	Norris	McPherso	MCWR	NCU	NWAWR	ORCU	Intake	PB	RLW	TWR	Tucker	Varner	Wrightsvil	Total	
Asian	2	0	0	1	0	0	0	0	0	0	0	0	0	0	0	0	0	1	1	1	2	8
Bloods	14	135	40	141	29	85	12	60	10	10	51	0	44	14	24	45	7	49	169	42	981	
Crips	9	77	33	89	16	46	3	46	4	8	27	3	30	15	12	24	7	20	108	33	610	
Folk	4	75	13	56	12	26	11	32	4	2	14	2	18	7	7	6	1	24	67	30	411	
GD	15	150	55	181	34	87	10	71	9	12	77	5	72	16	35	49	8	74	175	39	1,174	
Mexican	6	26	12	23	12	16	2	3	2	2	8	0	8	4	4	8	0	7	22	11	176	
Motorcycle	0	6	0	0	2	0	0	1	1	1	2	0	4	1	1	0	0	1	1	1	22	
Other	1	9	12	16	4	11	1	6	3	2	8	1	23	7	5	5	2	12	18	5	151	
People	6	36	11	34	5	27	0	21	1	1	5	0	10	5	8	12	0	14	31	10	237	
Unknown	0	23	4	9	3	0	0	1	0	6	2	1	18	0	3	4	3	4	9	3	93	
W/S	13	74	20	39	23	35	6	5	8	7	30	8	55	13	19	32	4	45	70	20	526	
AB	3	9	1	6	3	7	2	0	1	0	5	0	3	1	4	2	2	6	19	3	77	
AC	1	10	5	17	2	10	0	4	1	1	4	0	8	2	0	0	0	5	23	0	93	
NAE	4	35	13	40	7	23	2	16	3	4	19	0	20	5	9	13	3	11	27	13	267	
WAR	10	27	9	56	7	40	7	24	3	4	20	0	13	7	11	12	3	21	26	14	314	
<b>Total</b>	<b>88</b>	<b>692</b>	<b>228</b>	<b>708</b>	<b>159</b>	<b>413</b>	<b>56</b>	<b>290</b>	<b>50</b>	<b>60</b>	<b>272</b>	<b>20</b>	<b>326</b>	<b>97</b>	<b>142</b>	<b>212</b>	<b>41</b>	<b>294</b>	<b>766</b>	<b>226</b>	<b>5,140</b>	

Key:  
 GD = Gangster Disciples  
 W/S = White Supremacist  
 NAE = New Aryan Empire  
 WAR = White Aryan Resistance  
 AC = Aryan Circle  
 AB = Aryan Brotherhood

MEDICATION-ASSISTED TREATMENT PROGRAM (MAT) REPORT - DECEMBER 2024

Locations:		MAT Start Dates	Active Program Participants	New Clients in the Program this Month	Dropped Out	Total Active Participants
CACCC - Little Rock		Sep-19	4	0	0	4
EACCC - West Memphis		Jul-18	38	2	0	38
NEACCC - Osceola		Dec-21	0	0	0	0
SWACCC - Texarkana		Jul-18	3	0	0	3
Probation / Parole		2018	63	0	0	108
Medically Withdrawn	Closed Unsuccessful	Completed		Total Active		
92	209	180		108		
Total # of Participants Since Program Began						1021

Clinical Activities

Action	Jul-23	Aug-23	Sep-23	Oct-23	Nov-23	Dec-23
Assessments Completed in units	42	20	11	9	4	13
# of Clients Educated in units	352	515	403	426	427	400
# of Clients Released to Supervision	12	7	3	2	4	6
Pre-Release Interviews Completed	14	15	15	4	4	8

Clinical Activities

Action	Jan-24	Feb-24	Mar-24	Apr-24	May-24	Jun-24
# of Assessments Completed in units	13	3	12	11	11	9
# of Clients Educated in units	411	261	514	420	353	282
# of Clients Released to Supervision	4	7	10	7	11	10
Pre-Release Interviews Completed	11	6	14	14	7	14

Action	Jul-24	Aug-24	Sep-24	Oct-24	Nov-24	Dec-24
# of Assessments Completed in units	8	0	0	20	9	2
# of Clients Educated in units	221	279	220	234	189	110
# of Clients Released to Supervision	12	6	10	7	13	11
Pre-Release Interviews Completed	7	7	4	11	9	15

## ADC INPATIENT AND EMERGENCY ROOM UTILIZATION

### ARKANSAS DEPARTMENT OF CORRECTION INPATIENT AND EMERGENCY ROOM UTILIZATION

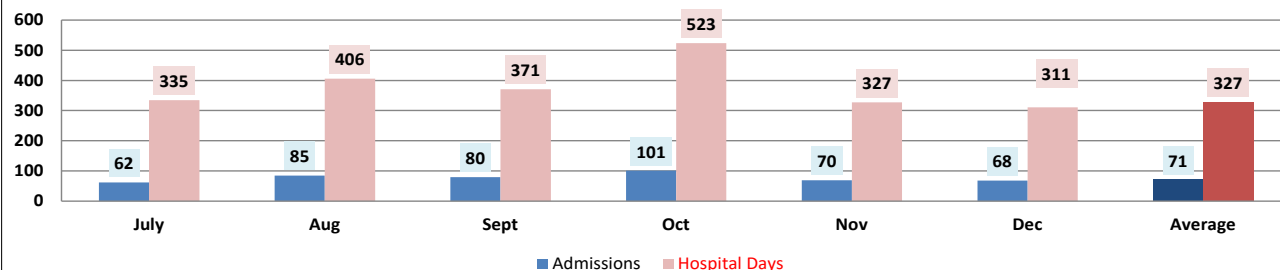
**ADC Inpatient Statistics Past 12 Months**

	2024	2024	2024	2024	2024	2024	2024	2024	2024	2024	2024	2024	Average
	Jan	Feb	March	April	May	June	July	Aug	Sept	Oct	Nov	Dec	
<b>Admissions</b>	70	54	54	61	74	75	62	85	80	101	70	68	<b>71</b>
<b>Hospital Days</b>	292	230	208	231	373	322	335	406	371	523	327	311	<b>327</b>
<b>Average Length of Stay</b>	4.17	4.26	3.85	3.79	5.04	4.29	5.40	4.78	4.64	5.18	4.67	4.57	<b>4.60</b>

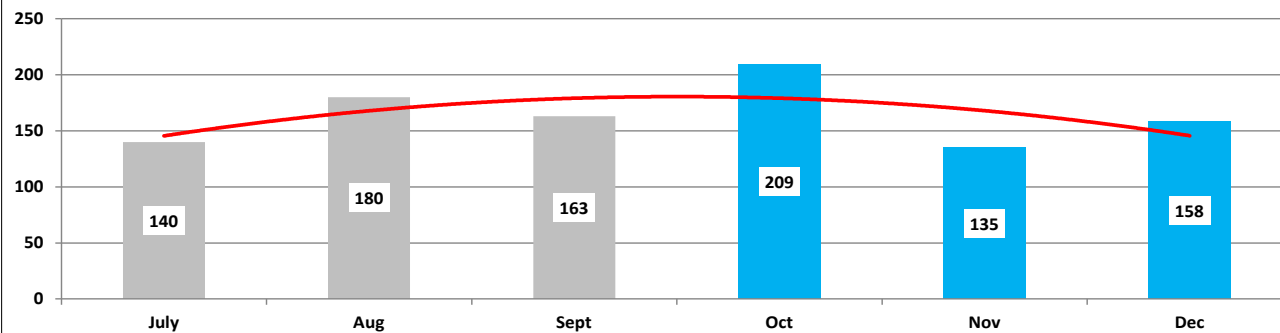
**ADC ER Visits Past 12 Months**

	2024	2024	2024	2024	2024	2024	2024	2024	2024	2024	2024	2024	Average
	Jan	Feb	March	April	May	June	July	Aug	Sept	Oct	Nov	Dec	
<b>Emergency Room Visits</b>	142	131	129	170	179	161	140	180	163	209	135	158	<b>158.1</b>

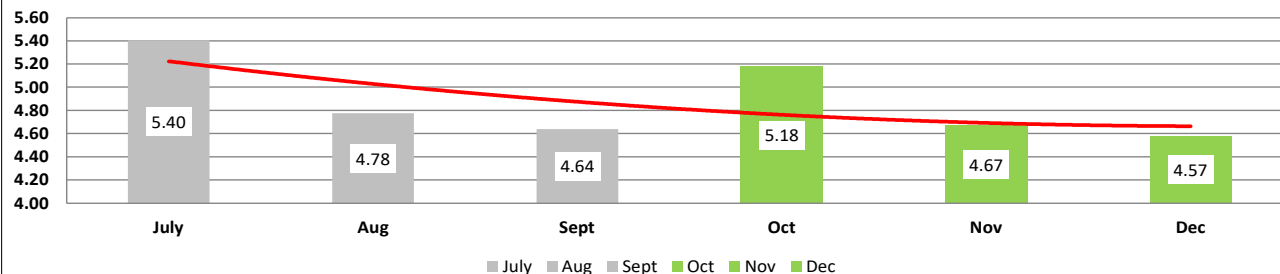
**ADC Inpatient Utilization**



**ADC Emergency Room Visits**



**ADC Inpatient Average Length of Stay**

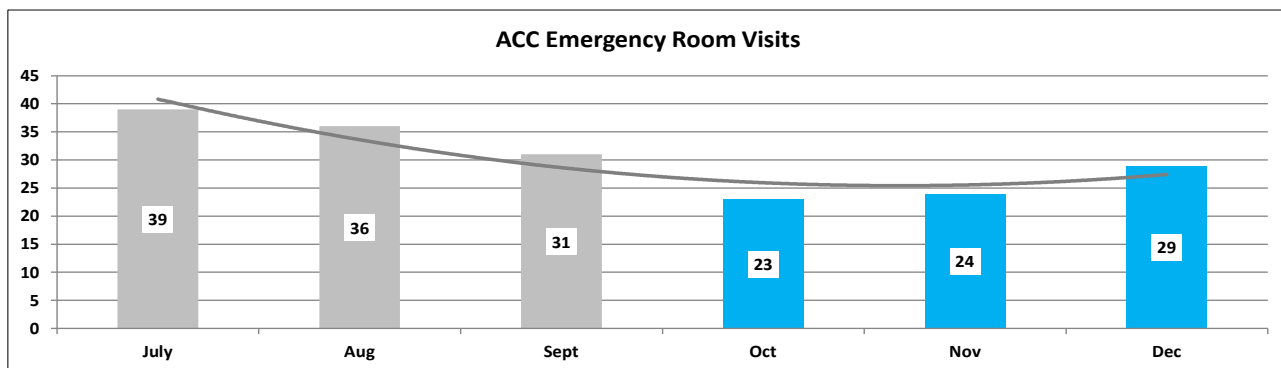
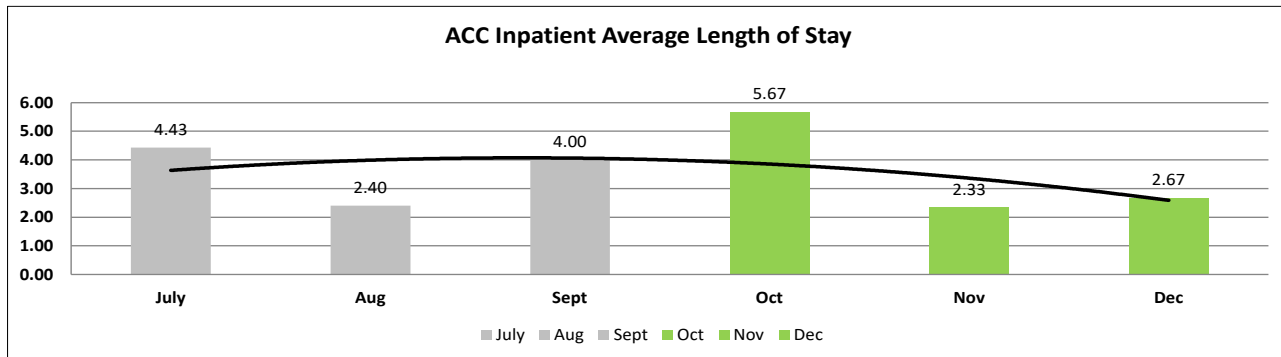
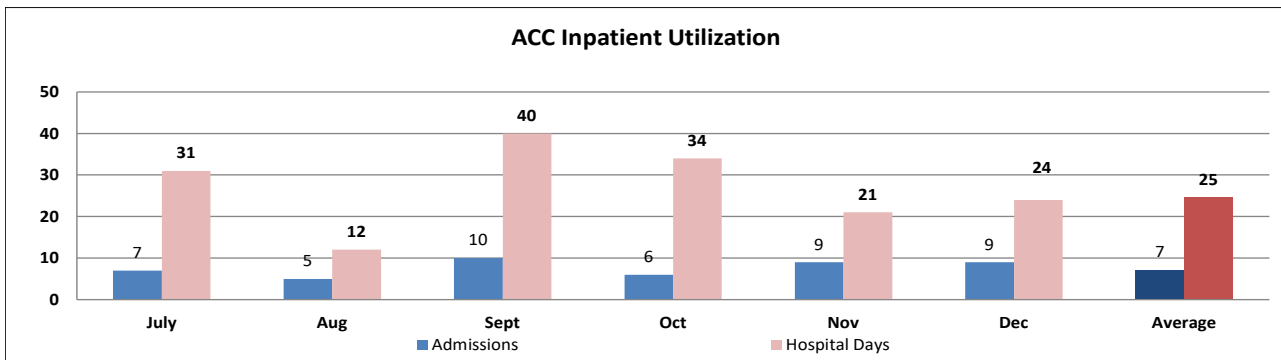


COMMUNITY CORRECTIONS INPATIENT AND EMERGENCY ROOM UTILIZATION

ARKANSAS COMMUNITY CORRECTION  
INPATIENT AND EMERGENCY ROOM UTILIZATION

ACC Inpatient Statistics Past 12 Months														
	2024	2024	2024	2024	2024	2024	2024	2024	2024	2024	2024	2024	2024	
	Jan	Feb	March	April	May	June	July	Aug	Sept	Oct	Nov	Dec	Average	
Admissions	5	7	5	7	5	11	7	5	10	6	9	9	7	
Hospital Days	12	28	16	25	13	39	31	12	40	34	21	24	25	
Average Length of Stay	2.40	4.00	3.20	3.57	2.60	3.55	4.43	2.40	4.00	5.67	2.33	2.67	3.43	

ACC ER Visits Past 12 Months														
	2024	2024	2024	2024	2024	2024	2024	2024	2024	2024	2024	2024	2024	
	Jan	Feb	March	April	May	June	July	Aug	Sept	Oct	Nov	Dec	Average	
Emergency Room Visits	15	11	22	34	23	37	39	36	31	23	24	29	27.0	



## MEDICAL GRIEVANCE BOARD REPORT - NOVEMBER 2024

UNIT	ACKNOWLEDGED/RECEIVED	REJECTED	REVIEWED & SIGNED BY DEPUTY DIRECTOR	WITH MERIT	WITH MERIT, BUT RESOLVED	WITH MERIT %	WITHOUT MERIT
Central Arkansas CCC	0	0	0	0	0	0%	0
Cummins Mod	0	0	0	0	0	0%	0
Cummins	10	6	15	1	0	6.67%	14
Delta	5	0	4	0	0	0%	4
East AR	5	2	7	0	0	0%	7
East AR Max	7	7	22	3	0	13.64%	19
Ester	2	0	2	0	0	0%	2
Grimes	13	4	23	0	0	0%	23
Hawkins	0	1	1	0	0	0%	1
McPherson	4	0	6	0	0	0%	6
McPherson RPU	0	0	0	0	0	0%	0
Max Security Unit	7	1	10	1	0	10.00%	9
New Commitments	0	0	0	0	0	0%	0
North Central	8	1	4	1	0	25.00%	3
ORCU	8	0	6	0	0	0%	6
Pine Bluff Unit	2	0	2	0	0	0%	2
RLW	0	0	0	0	0	0%	0
SNH	0	0	0	0	0	0%	0
SNU	1	0	1	0	0	0%	1
Tucker	7	0	10	0	0	0%	10
Varner	5	0	5	0	0	0%	5
Varner Super Max	7	0	10	2	0	20.00%	8
Wrightsville	1	0	1	1	0	100.00%	0
Wrightsville-Hawkins	3	0	3	0	0	0%	3
<b>Total</b>	<b>95</b>	<b>22</b>	<b>132</b>	<b>9</b>	<b>0</b>	<b>6.82%</b>	<b>123</b>

### CHAPLAINCY

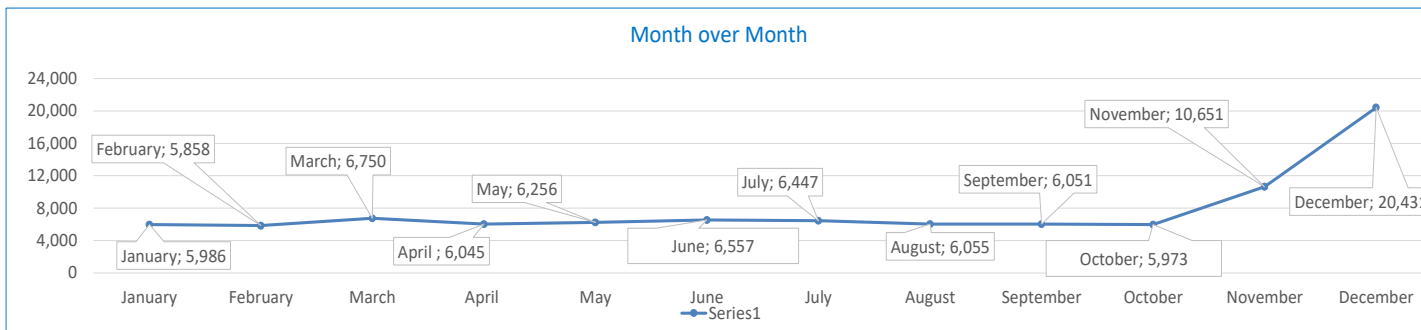
Month: November Year: 2024	CUMMINS	DELTA REGIONAL	EAST ARKANSAS	EAST ARKANSAS MAX	ESTER	GRIMES	HAWKINS	MCPHERSON	NORRIS	NORTH CENTRAL	OUACHITA RIVER	PINE BLUFF	RANDALL L. WILLIAMS	TUCKER	VARNER	VARNER MAX	WRIGHTSVILLE	TOTAL
<b>Services Chaplains Oversaw</b>																		
Christian																		
Population	3	5	17	0	4	8	1	8	4	3	2	10	3	3	12	0	2	85
Segregation	0	0	0	0	0	0	0	0	4	0	0	0	0	0	0	0	0	4
Muslim																		
Population	4	0	2	0	4	4	2	5	1	4	3	4	3	1	4	0	2	43
Segregation	0	0	0	0	0	0	0	0	1	0	0	0	0	0	0	0	0	1
<b>133</b>																		
<b>Volunteers in Charge</b>																		
Protestant	13	4	0	0	16	6	4	6	13	15	5	2	15	13	0	0	6	118
Catholic	2	0	0	0	1	6	3	2	0	4	3	1	1	0	5	0	5	33
Muslim	4	0	0	0	0	0	1	4	2	0	0	4	0	1	0	0	2	18
Other	0	0	0	0	4	0	0	0	3	0	5	0	0	0	10	0	0	22
Baptism	0	0	0	0	0	0	0	0	0	0	0	0	8	0	0	0	0	8
<b>Marriages</b>																		
	0	0	0	0	0	0	0	0	0	0	0	0	0	1	0	0	0	1
<b>Distributed by Chaplains</b>																		
Greeting Cards	5	8	2,600	12	20	52	14	0	2,930	3,879	8	723	62	167	3,366	1,725	10	15,581
Bibles, Quran, Torah, Etc.	30	3	5	21	25	2	3	13	11	84	160	16	11	10	9	11	14	428
Study Course	260	168	3	2	62	1	0	23	12	0	11	5	4	25	0	10	0	586
Writing Supplies	0	0	813	0	26	65	56	42	161	0	180	1,037	0	6	0	0	0	2,386
Literature	651	117	32	91	772	20	60	51	86	683	165	28	146	340	879	639	460	5,220
<b>Chaplain's Visits</b>																		
Barracks	15	50	8	29	36	124	2	172	18	45	334	5	88	223	126	14	10	1,299
Approximate Hours Spent in Barracks	2	46	20	7	14	62	2	121	2	16	63	20	13	55	32	4	14	493
Inmate Office visits	75	25	2	20	15	166	6	35	11	39	11	54	26	290	30	0	17	822
Other Office visits	18	10	0	2	7	6	4	29	0	5	40	0	40	45	36	0	3	245
Hospital	0	0	6	0	0	0	0	0	0	2	8	4	0	0	0	0	0	20
Infirmary/Sick Call	1	0	0	0	4	3	3	8	4	5	7	5	11	1	3	2	3	60
Restrictive/Punitive Housing	4	4	0	0	4	6	3	8	0	5	4	0	7	9	3	3	3	63
PC - DRU		4																4
Visitation Days	0	0	0	0	0	0	0	0	1	0	0	0	0	0	0	0	0	1
<b>Volunteer Visits</b>																		
RCV	0	0	0	0	6	2	0	4	2	1	0	4	8	0	0	0	0	27
OCV	20	6	19	0	8	5	4	52	26	14	20	0	0	48	0	0	6	228
Spiritual Advisor	0	0	0	0	0	0	0	0	0	0	0	0	0	0	0	0	0	0
CRA	23	1	38	0	33	19	8	98	39	97	74	4	19	227	31	12	15	738
<b>Religious Volunteer Hours</b>																		
Volunteer Hours	49	11	160	0	140	87	12	230	226	412	368	18	54	380	87	16	21	2,271
Denominational/Volunteer Chaplain Hours	10	0	0	0	54	0	61	176	150	13	34	21	0	31	37	4	35	626
<b>2,897</b>																		
<b>Other Activities of Chaplain</b>																		
Counseled Employees	10	10	9	0	7	3	2	2	7	0	22	50	2	10	198	0	4	336
Orientation Sessions	5	0	1	0	0	0	0	0	0	3	0	0	0	0	0	0	0	9
Free World Devotions	0	0	6	0	4	1	0	0	0	0	0	0	1	2	22	0	0	36
Spoke in Churches	0	0	7	0	2	1	0	8	0	0	0	4	1	3	22	0	0	48
Crisis Intervention Sessions	0	0	0	0	0	0	5	0	0	4	10	0	6	4	1	5	35	
Marriage Counseling	0	0	1	0	0	0	0	0	0	0	0	0	3	0	0	0	4	
Denominational Meeting	0	0	2	0	1	0	0	0	0	2	0	0	2	0	0	0	7	
Chaplain's Meeting	1	0	2	0	1	3	2	1	0	0	2	1	1	1	1	0	2	18
Volunteer Training Session	0	0	1	0	1	0	0	0	0	0	1	0	0	1	0	0	4	
<b>Chaplain Transfers</b>																		
	1	0	0	0	0	0	0	0	0	0	0	0	0	0	0	0	0	1
<b>Chaplain Promotions</b>																		
	0	0	0	0	0	0	0	0	0	0	0	0	0	0	0	0	0	0
<b>PAL PROGRAM</b>																		
Enrolled at start of month	60	24	54	0	52	48	0	56	22	71	35	0	0	58	48	0	22	550
Enrolled during the month	2	1	0	0	16	3	0	3	4	3	5	0	0	6	8	0	5	56
Removed From PAL Program																		
# Paroled	1	0	0	0	1	1	0	1	0	0	2	0	0	1	0	0	0	7
# Completed	1	0	0	0	12	0	0	0	1	2	0	0	0	5	4	0	2	27
# Withdrew	0	0	0	0	0	2	0	1	1	0	2	0	0	0	1	0	0	7
# Removed	0	1	0	0	0	1	0	1	2	1	1	0	0	2	0	0	0	9
# Transferred	0	0	0	0	0	2	0	0	0	0	0	0	0	1	2	0	1	6
Total Removed from PAL Program	2	1	0	0	13	6	0	3	4	3	5	0	0	9	7	0	3	56
<b>Total Enrolled at the End of the Month</b>	<b>60</b>	<b>24</b>	<b>54</b>	<b>0</b>	<b>55</b>	<b>45</b>	<b>0</b>	<b>56</b>	<b>22</b>	<b>71</b>	<b>35</b>	<b>0</b>	<b>0</b>	<b>55</b>	<b>49</b>	<b>0</b>	<b>24</b>	<b>550</b>
<b>Volunteers In PAL</b>																		
	4	0	6	0	7	0	0	34	6	16	6	0	0	7	2	0	6	94
<b>Special Events:</b>																		
	0	0	2	0	1	1	1	1	1	1	1	1	1	1	1	0	1	14

## SECURUS VIDEO VISITATION REPORT DECEMBER 2024

### AR-DOC SVV Activity Tracker

Total ADP **18,373**

Total Visits by Month	January	February	March	April	May	June	July	August	September	October	November	December
Total (Includes SuperMax)	5,986	5,858	6,750	6,045	6,256	6,557	6,447	6,055	6,051	5,973	10,651	20,431
Target Objective	15,587	15,587	15,587	15,587	15,587	15,587	15,587	15,587	15,587	15,587	15,587	15,587



#### Completed Visits

Site	Current Month	Previous Month
<b>Benton</b>	423	208
<b>Cummins</b>	1217	637
<b>Delta Regional</b>	1233	564
<b>East Arkansas Regional</b>	1635	876
<b>Ester</b>	885	463
<b>Grimes</b>	1857	957
<b>J Aaron Hawkins Sr.</b>	383	334
<b>Tucker Max</b>	724	336
<b>Mcperson</b>	1396	620
<b>Mississippi County WRC</b>	127	41
<b>North Central</b>	1565	986
<b>NW Arkansas WRC</b>	13	11
<b>Ouachita River</b>	1906	1076
<b>Pine Bluff Re-Entry</b>	118	101
<b>Pine Bluff Complex</b>	370	182
<b>Randall L Williams</b>	397	273
<b>State Police Barracks</b>	156	104
<b>Texarkana Regional</b>	247	143
<b>Tucker Unit</b>	1747	908
<b>Varner</b>	3003	1297
<b>Wrightsville Unit</b>	1029	534
<b>Tucker Re-entry</b>	0	0
<b>Total:</b>	<b>20,431</b>	<b>10,651</b>

Dec-24                      Nov-24

#### Missed by Inmate

Site	Current Month	Previous Month
<b>Benton</b>	42	10
<b>Cummins</b>	135	48
<b>Delta Regional</b>	70	24
<b>East Arkansas Regional</b>	319	90
<b>Ester</b>	77	37
<b>Grimes</b>	88	36
<b>J Aaron Hawkins Sr.</b>	29	10
<b>Tucker Max</b>	40	45
<b>Mcperson</b>	86	20
<b>Mississippi County WRC</b>	19	2
<b>North Central</b>	158	55
<b>NW Arkansas WRC</b>	14	1
<b>Ouachita River</b>	219	78
<b>Pine Bluff Re-Entry</b>	6	4
<b>Pine Bluff Complex</b>	48	9
<b>Randall L Williams</b>	64	14
<b>State Police Barracks</b>	10	3
<b>Texarkana Regional</b>	27	3
<b>Tucker Unit</b>	193	50
<b>Varner</b>	420	127
<b>Wrightsville Unit</b>	60	22
<b>Tucker Re-entry</b>	0	0
<b>Total:</b>	<b>2,124</b>	<b>688</b>

Dec-24                      Nov-24



**SECURUS TABLET REPORT  
DECEMBER 2024**

Contract ID	Site ID	Agency Name	Personal Tablets (All)	0	5	Community / Inventory	Officer	Total
I-003320	9322	AR DOC - BENTON UNIT	326	90	236	201	8	535
I-003320	9323	AR DOC - CUMMINS UNIT	1,986	1,482	504	831	17	2,834
I-003320	9324	AR DOC - DELTA REGIONAL UNIT	617	373	244	150	20	787
I-003320	9325	AR DOC - EAST ARKANSAS REGIONAL UNIT	1,538	1,091	447	781	10	2,329
I-003320	7981	AR DOC - ESTER UNIT	690	439	251	450	20	1,160
I-003320	9326	AR DOC - GRIMES UNIT	1,084	707	377	705	14	1,803
I-003320	9340	AR DOC - J AARON HAWKINS SR CENTER FOR W	261	137	124	159	19	439
I-003320	9328	AR DOC - MCPHERSON UNIT	1,224	757	467	1,654	46	2,924
I-003320	9329	AR DOC - MISSISSIPPI COUNTY WORK RELEASE	185	37	148	145	9	339
I-003320	9330	AR DOC - NORTH CENTRAL UNIT	931	603	328	191	10	1,132
I-003320	9331	AR DOC - NW ARKANSAS WORK RELEASE CENTER	100	13	87	56	8	164
I-003320	9332	AR DOC - OUACHITA RIVER UNIT	1,496	904	592	833	40	2,369
I-003320	7715	AR DOC - PINE BLUFF RE-ENTRY CENTER	56	6	50	27	0	83
I-003320	9333	AR DOC - PINE BLUFF UNIT	555	386	169	257	9	821
I-003320	9334	AR DOC - RANDALL L WILLIAMS FACILITY	543	360	183	200	15	758
I-003320	9097	AR DOC - STATE POLICE BARRACKS	54	32	22	9	3	66
I-003320	9335	AR DOC - TEXARKANA REGION CORRECTION CEN	129	28	101	88	15	232
I-003320	9327	AR DOC - TUCKER MAXIMUM SECURITY UNIT	523	359	164	210	14	747
I-003320	7806	AR DOC - TUCKER RE-ENTRY CENTER	112	39	73	56	2	170
I-003320	9336	AR DOC - TUCKER UNIT	1,006	668	338	322	15	1,343
I-003320	9337	AR DOC - VARNER UNIT	1,608	1,166	442	560	21	2,189
I-003320	7133	AR DOC - WRIGHTSVILLE SATELLITE UNIT	0	0	0	0	2	2
I-003320	9338	AR DOC - WRIGHTSVILLE UNIT	842	542	300	562	18	1,422
			<b>15,866</b>	<b>10,219</b>	<b>5,647</b>	<b>8,447</b>	<b>335</b>	<b>24,648</b>