



DIVISION OF CORRECTION BOARD REPORT

February 2025

Dexter Payne
Director



POPULATION REPORT

RESEARCH/PLANNING

January 2025 Admissions and Releases – Admissions for January 2025 totaled **599** (549-males and 50-females) while releases totaled 402 (335-males and 67 females) for a net increase in-house of 197 inmates.

Inmate Population Growth/Projection – At the end of January 2025, the jurisdictional population for the Division of Correction totaled **18,673**, representing an decrease of **171** inmates since the first of January 2025. At reporting time, calendar year 2025 has seen a decrease of **171** inmates per month, which is down from an average monthly increase of **28** inmates per month during calendar year 2024.

Average County Jail Backup – The backup in the county jails averaged 1,730 inmates per day during the month of January 2025, which was down from the per-day average of **1,915** inmates during the month of December 2024. Of the **1,730** average, short-term revocations accounted for **139** (85 males and 54 females) during the month.

INSTITUTIONS

INMATE INSTITUTIONAL GRIEVANCES

Inmate Formal/Informal Grievances: During January, a total of 1,136 formal grievances and 1,550 informal grievances were filed at various ADC Facilities.

Institutional Grievances Appeals: There was a total of 505 appeals of institutional grievances received in January. Of those, 287 were acknowledged and 218 were rejected for various reasons. Of the total, 346 appeals answered, 341 had no merit and 5 had merit.

Resident Formal/Informal Grievances: During January, a total of 35 formal grievances and 190 informal grievances were filed at various Residential Centers.

Institutional Grievances Appeals: There was 47 appeals of institutional grievances received in January. Of those, 38 was acknowledged and 9 was rejected for various reasons.

FARM DIVISION

The Ag Division spent the month working in the shops gets equipment ready for planting season. EARU Shop is overhauling power units and small tractors. Cummins is working on planters and drills getting them ready to plant. Tucker has been going through power units and implements.

The beef herd continued feeding hay through the month. The amount of hay that has been fed this winter is significantly less than what we have fed in the past. We were able to use stockpiled grass to reduce hay. We sold 135 head of 385# steers on January 10th. They sold for \$4.56/#. That is a record-breaking sale for us. Calving season should early March.

The dairy's production is ahead of last year. We have started a beef dairy cross on our calves. Those calves should bring more at the sale barn instead of straight Holsteins.

The hens have gone through another molt and egg production is way down. The pullets will be moving March 3rd. They should start producing about 2 weeks after moving.

All farms are still short on staff. We will be attending career days to try to recruit new staff.

REGIONAL MAINTENANCE HOURS

Regional Maintenance Hours	January 2025
Benton Unit	4,755
Delta Regional Unit	1,720
East Arkansas Regional Unit	312
Grimes Unit	1,704
McPherson Unit	1,976
Mississippi County Work Release	1,215
North Central Unit	1,736
Ouachita River Correctional Unit	5,504
Randall L. Williams Unit	1,848
Texarkana Regional Corr. Ctr.	1,330
Tucker Unit	976
Varner Unit	4,916
Wrightsville Unit	3,012
TOTAL HOURS	31,004

WORK RELEASE RENT REPORT

Unit	January 2025
Benton Unit	\$167,596.00
Mississippi County Work Release	\$106,788.00
Northwest Arkansas Work Release	\$51,128.00
Pine Bluff Work Release	\$34,254.00
Tucker Work Release	\$40,260.00
Texarkana Regional Correctional Center	\$86,482.00
TOTAL	\$445,016.00

REENTRY

PROGRAMS - January 2025

Program Name	Beginning Count	Admitted	Removed	Graduated	End Count	Volunteer Hours
Juvenile Program* (RLW)	11	0	0	0	11	0
Release (Ester)	17	6	10	0	6	2
Veterans Program (Ester)	28	0	11	0	17	3
AFC - Pathway Home 4	26	8	12	0	22	0
TOTAL	82	14	33	0	56	5

*Juveniles are transferred from the program once they reach the age of 18.

WORKFORCE ALLIANCE FOR GROWTH IN THE ECONOMY (WAGE)

January 2025 Capacity: 120 Unit:	Participants	Status
Delta	10	Active
Ester	0	Not Active
Hawkins	0	Not Active
McPherson	12	Active
North Central	0	Not Active
Ouachita River	8	Active
Tucker	24	Active
Wrightsville	3	Active
TOTAL	57	

WRIGHTSVILLE-HAWKINS

PATHWAY TO FREEDOM PROGRAM

January 2025 Capacity: 200	Beginning Count	Enrolled During the Month	Removed	End Count*
Wrightsville-Hawkins PTF	200	15	18	197

ADVANCED PRINCIPLES AND APPLICATIONS FOR LIFE PROGRAM (APAL)

January 2025 Capacity: 86	Beginning Count	Admissions During Mo.	Removed*	End Count
Ester	26	4	3	27
McPherson	0	36	0	36
TOTAL	26	40	3	63

Advanced PAL is an 18-month reentry program that combines a pre-release curriculum with the PAL program.

*The "Removed" column indicates the number of participants who paroled, completed the program, withdrew from the program, transferred, or were removed from the program for another reason.

THINK LEGACY

January 2025 Capacity: 324	Beginning Count	Admitted	Graduated	Removed*	End Count
Unit					
Cummins	34	0	0	10	24
Delta Regional	19	0	0	10	9
East Arkansas Regional	0	0	0	0	0
McPherson	31	0	0	2	29
North Central	32	0	0	4	28
Ouachita River	32	0	0	2	30
Tucker	18	0	0	3	15
TOTAL	166	0	0	31	135

THINK LEGACY VOLUNTEER HOURS = 6

*The "Removed" column indicates the total number of participants who paroled, signed out, transferred, or were removed from the program for any other reason and are no longer in the barracks.

COLLEGE REPORT

January 2025

COLLEGE PROGRAM LOCATIONS	Beginning Count	Admissions During Mo.	Removed During Mo.	End Count	Staff Enrolled
Arkansas State University					
Grimes Unit	0	29	0	29	0
McPherson Unit	0	63	0	63	0
Ashland University					
North Central Unit	5	0	0	5	0
Mid-America Seminary College					
Varner Unit	36	0	0	36	0
Philander Smith College					
East Arkansas Regional Unit	0	35	0	35	0
Tucker Unit	0	22	0	22	0
Southeast Arkansas College					
Cummins Unit	34	14	1	47	0
Delta Unit	23	0	1	22	0
Varner Unit	43	18	1	60	0
Shorter College					
Hawkins Unit	0	0	0	0	0
Ouachita River Unit	7	11	0	18	0
Pine Bluff Complex	37	49	7	79	0
Texarkana Regional	6	0	0	6	0
Wrightsville Unit	17	22	7	32	0
TOTAL	208	250	30	454	0

TREATMENT:**PROGRAM SUMMARY**

A total of 1,021 residents have agreed to participate in Medication-Assisted Treatment (MAT) since the program started in July 2018 with a total of 209 discharged with follow up in the community in progress and a total of 178 have completed the program.

Partnerships are in effect with 90 community providers to continue MAT upon release from an ACC center.

In January, there were 27 active participants in the Telehealth program implemented in January 2023.

General Treatment Program Summary

(Non-Drug Court):	Number of Participants
Substance Use Disorder Treatment	3,977
Continuing Care	174
Domestic Violence Prevention	25
Anger Management	97
Tobacco Use Treatment	0

Ongoing Projects

Treatment supervisors reported combined 142 hours of direct clinical supervision with Treatment staff in 24 Community Correction locations.

TRAINING**DIVISION OF CORRECTION****TRAINING - January 2025****BASIC TRAINING DIVISION –**

BCOT Class 2024-Z, led by Instructor Rufer, graduated on January 10th with a total of 25 cadets.

Willis H. Sargent Award –

Dena Simmons- McPherson Unit

BASIC TRAINING DIVISION –

BCOT Class 2024-AB, led by CaptianCaldwell, graduated on January 31th with a total of 41 cadets.

IN-SERVICE DIVISION –

There was four in-service classes held by the Training Academy during the month, with a total of 19.25 training hours.

eCADEMY –

During January, 742 ADC employees completed a total of 12,914.90 hours of eCADEMY training.

ACCREDITATION**ACA Internal Audits Completed:**

01/09-01/13 - ACA Conference and Panel Hearing- Varner & Omega
 1/29- Pine Bluff Complex- Pre-Audit
 1/8- Batesville, Fire/Safety audit
 1/14-1/15 RLW Fire/Safety audit
 1/21-1/22- Ester Fire/Safety audit
 1/28- NCU Fire/Safety audit

HEALTH/CORRECTIONAL PROGRAMS

CHAPLAINCY SERVICES AND COMMUNITY SPEAKING

EARU Unit

PAL Graduation took place at EARU on January 21, 2025, with 61 inmates and 28 CRAs / Staff in attendance.

Hawkins Center

St. Edwards Catholic and other Catholic Dioceses sponsored the yearly Epiphany Meal and the Hawkins / Pathways to Freedom unit January 6, 2025. The meal consisted of BBQ beef, beans, rice, soft tortillas shells, guacamole, Mexican snack cakes, and 2 canned sodas each. 53 Hawkins inmates, 200 PTF inmates, and 7 maternity ward inmates, along with security staff and non-security staff were served.

Larry B. Norris Unit

The Forever Free Addiction Recovery Ministry began a Recovery Alive class for the PAL program on January 30, 2025, with 16 inmates participating.

McPherson Unit

Ribbon Cutting Ceremony for the APALs program was on January 21, 2025, with approximately 75 inmates in attendance. Assistant Director of Programs, Ms. Syrna Bowers, was the guest speaker. ADC guests in attendance included Director Dexter Payne, Deputy Director Aundra Culclager, Superintendent Tiffanye Compton, and Administrator of Chaplaincy Services Jerry Wilson. The program began with 17 inmates and gained 5 more before the end of the month.

RLW Unit

Malachi Dads Graduation ceremony was held for 13 graduating inmates on January 15, 2025.

Tucker Unit

Anger Resolution Seminar with IBLP Ministries was held on January 6-8, 2025. There were 3 volunteers, and 47 inmates involved in the seminar. All the inmates were in population and not in the PAL Program.

Wrightsville Unit

St. Edwards Catholic and other Catholic Dioceses sponsored the yearly Epiphany Meal and the Hawkins / Pathways to Freedom unit January 6, 2025. The meal consisted of BBQ beef, beans, rice, soft tortillas shells, guacamole, Mexican snack cakes, and 2 canned sodas each. 870 Wrightsville Inmates along with security staff and non-security staff were served.

VOLUNTEER SERVICES - January 2025

Program Name	Hours
Release (Ester)	2
Veteran (Ester)	3
NTI (NWARC)	0
Yoga (Varner)	0
Total	5

MENTAL HEALTH SERVICES

Reduction of Sexual Victimization Program (RSVP) and Sex Offender Treatment Programs (SOFT):

January 2025	Capacity	Beginning Count	Completed	Removed	Admissions	End Count
RSVP	232	232	63	0	0	232
SOFT	36	11	0	4	2	9
Total	268	238	63	0	5	243

There are 814 males on the waiting list for RSVP and 13 females on the waiting list for SOFT who are within five years of their TE date. Of those, eight (8) inmates are mandated by the Post Prison Transfer Board.

The average time on the waiting list from request is between one and two months for those stipulated.

*The total on the waiting list, including those not currently within the identified timeframe, is 1,693 males and zero females. Of these, 814 are eligible and 879 are ineligible for the program. There is one PREA inmate in the program at this time.

*Ineligibility is due to being in restrictive housing, having class IV status, or receiving a major disciplinary within the last 60 days.

Substance User Rehabilitation Services (SURS):

January 2025 Unit	Capacity	Beginning Count	Completed	Removed	Admissions	End Count
Benton	20	20	0	0	0	20
Cummins	45	44	5	2	7	44
Grimes	50	49	8	3	12	50
Larry B. Norris	4	0	0	0	0	0
McPherson	150	148	23	11	33	147
Randall L. Williams	150	128	25	13	47	137
Tucker	62	56	6	6	15	59
Wrightsville	150	145	23	7	29	144
Total	631	590	90	42	143	601

For SURS, there are 2,732 males and 355 females on the waiting list who are within five years of their release date. Of those, 132 are mandated by the Post Prison Transfer Board. The average time on the waiting list from request is 15 days.

*The total on the waiting list, including those not currently within the identified timeframe, is 4,032 males and 490 females. Of these, 3,219 are eligible and 1,303 are ineligible for the program.

*Ineligibility is due to being in restrictive housing, having class IV status, or receiving a major disciplinary within the last 60 days.

MENTAL HEALTH SERVICES, *continued***Ouachita River Correctional Unit (ORCU) Residential Program Unit (RPU):**

The RPU had zero (0) admission and six (6) discharges in January for an end-of-month count of 108.

McPherson Unit Mental Health Residential Program Unit (RPU):

There were two (2) admissions and two (2) discharges in January for an end-of-month count of 40.

Habilitation Program:

The Habilitation Program at the Ouachita River Correctional Unit provided treatment services to 44 inmates in January. There was zero (0) admission and zero (0) discharges, which resulted in an end-of-month count of 44.

Suicide:

There were 114 suicidal threats in January. There were seven (7) attempts, one (1) of which resulted in death.

Staffing:

The following Mental Health Services positions were vacant in November and January 2025:

Positions	FTEs*	December	January
Psychologist	6	5	4
Mental Health Director	12	3	2
Mental Health Coordinator	3	0	0
Mental Health Technicians	30	0	0
Mental Health Professionals	43	20	19
Mental Health AA	9	1	2
Psychiatrist	4	1	1
Psychiatrist Nurse Practitioner	6	2	1

*FTE refers to authorized Full Time Equivalent positions.

Self-Study Classes:

Classes	Number of Participants	Number Completed	Waiting List
Anger Management	131	112	545
Thinking Errors	113	98	543
Substance Abuse Education	52	52	446
Communication Skills	117	106	525
Domestic Violence	21	21	99
Victims of Domestic Violence	14	14	152
Stress Management	56	56	494
Parenting	10	10	222

Outpatient:

There were 2,377 inmates on the mental health medical log at the beginning of January. Mental Health staff conducted the following contacts during the month:

Case Management Contacts	2,184
Requests for Interviews	750
Testing	0
Intakes	542
Unit Requests	2,105
Pre-Lockup Reviews	269
Routine Restrictive Housing Reviews	659
Restrictive Housing Rounds	14,696
PREA Evaluations	532
Routine Follow-up	153
834 Requests	86

County Mental Health Requests:

During January, there were 99 requests received of a mental health nature. Of those, zero (0) inmates were fast-tracked to ADC.

County Medical Health Requests:

During January, there were 790 requests received of a medical nature. A total of eleven (11) inmates were fast-tracked to ADC.

Medical Contract Reimbursements:

Sanction reimbursements for ADC in January amounted to \$36,650.00.

Deaths:

There were sixteen (16) inmate deaths during the month of January. Ten (10) were claimed, four (4) were cremated and claimed. There was two (2) not claimed.

Wellpath:

See attachment for Wellpath's report regarding outside beds and emergency room visits.

Medical Grievances:

In January, there were 89 appeals of medical grievances received and 106 appeals were answered. five (5) was found to be with merit and two (2) with merit but resolved.

PAWS IN PRISON

January 2025 Unit	Enrolled	Graduated	Foster	Volunteer Hours
Larry B. Norris Unit	6	2	1	0
North Central Unit	4	1	0	0
Ouachita River Correctional Unit	6	0	0	0
Randall L. Williams Unit	4	0	0	6
Tucker Unit	7	3	0	0
Total	27	6	1	6

Completed Paws in Prison Training:

January 2025 Program Graduates	6
YTD Program Graduates	6
Total Graduates Since Inception (Dec 2011)	2563
Dogs Currently in Foster (Graduated, but Not Adopted)	1
February 2025 Volunteer Hours	6
YTD Volunteer Hours	6

AGENCY HIGHLIGHT

JANUARY 2025 PROMOTIONS

Some of the security promotions during the month of January included:

East Arkansas Regional Unit

- Corporal Jeanette Crippen

Barbara Ester Unit

- Sgt. Jimmy Via
- Lt. Jensine Calloway

Grimes Unit

- Major Corey Evans

Larry B. Norris Unit

- Lt. LaSonya Scott

McPherson Unit

- Corporal Edward Eaton

North Central Unit

- Sgt. Casey Goggans

Omega SSC

- Sgt. Rebekah Peterson

Ouachita River Unit

- Sgt. Danny Riddell

Phillips County

- Corporal Tenesha Coney

- Sgt. Brittany Westbrook

Tucker Unit

- Lt. Qushawna Stinnett

Varner Unit

- Captain Edward O'Connor
- Corporal Beverly Cash

CAUGHT YA! AWARD- EARU

Caught Ya! Cpl. Nikita Woods of the East Arkansas Regional Unit was recently presented with a Caught Ya Award for going above and beyond when challenging an inmate who was in possession of drugs.

Keep up the great work Cpl. Woods!

VIOLA HIGH SCHOOL TOURS NORTH CENTRAL

Students from Viola High School recently had the opportunity to tour the North Central Unit. During the tour, they learned out the programs and offered at the unit, including Paws in Prison, they tested out the school's fork lift simulator, and a few volunteered to try the "loaf".

BCOT 2024-X- TRAINING ACADEMY

Join the #ARDOCFamily in congratulating the recent graduates of the Basic Correctional Officer Training Academy Class 2024-X!



2025 ACA CONFERENCE

Recently, members of the DOC Management team were in Orlando, FL for the American Correctional Association (ACA) #WinterinOrlando 2025 Conference. During the conference, the Omega Supervision Sanction Center and Varner/Varner Supermax received their ACA Rec accreditation certificates.

CAUGHT YA! AWARD- PINE BLUFF COMPLEX

Caught Ya!

Cpl. Carolyn Morehead of the Ester Unit (Pine Bluff Complex) received both a Caught Ya! Award and Superintendent's Award for her efforts and success in contraband detection and suppression at the unit! Keep up the amazing work Cpl.!

PINE BLUFF COMPLEX HOST OCSE

We would like to thank staff from the Office of Child Support Enforcement for visiting the Pine Bluff Complex to speak with inmates. Their staff answered a variety of questions in order to help those in attendance to create a child support plan. Resources such as OCSE are beyond helpful to inmates who will soon reenter the community.

BARBARA ESTER DEDICATION ANNIVERSARY

On January 20, 2012, Cpl. Barbara Ann Ester was fatally stabbed by an inmate while on duty at the East Arkansas Regional Unit. In August of 2016, the Arkansas Department of Corrections dedicated its first reentry facility, the Barbara Ester Unit, in her honor.

PROMOTION- MAJOR COREY EVANS

Join the #ARDOCFamily in congratulating Major Cory Evans on his recent #promotion!

BCOT 2024-AA- CUMMINS

Join us in congratulating the recent graduates of the Cummins Unit Regional BCOT Academy Class 2024-AA!



PINE BLUFF COMPLEX- DINNER FOR WHITE HALL HIGHSCHOOL BASKETBALL TEAMS

Recently, staff from the Pine Bluff Complex for the girls' and boys' basketball teams at White Hall High School. The PBC team is dedicated to be a positive change for youth in their communities.

WRIGHTSVILLE COMPLEX- INMATE GED

Staff at the Wrightsville Complex held a ceremony for recent graduates of the Arkansas Correctional School District's GED program.

MAXIMUM SECURITY RENAMING

A dedication ceremony was held on Wednesday, January 22, 2025, officially renaming the Maximum Security Unit in Tucker, Arkansas, to the Larry B. Norris Unit.

ADC CHALLENGE COIN- DELTA REGIONAL

ADC Director Dexter Payne visited the Delta Regional Unit to present Cpl. Delania Burchfield with an ADC Challenge Coin. Cpl. Burchfield received this award for her exceptional work in the unit's entrance building, stopping a visitor from bringing in narcotics to an inmate. Once apprehended, the visitor stated that she was paid \$500 to bring the drugs into the facility. The visitor was arrested by the Arkansas State Police. Keep up the great work Corporal!

REGIONAL MAINTENANCE PROJECT HIGHLIGHTS

JANUARY 2025

Clean up for the City of Malvern:
Ouachtia River Correctional Unit Regional Maintenance



Clean up at Jefferson Regional Park:
Pine Bluff Unit Regional Maintenance



Carpenter work at The Garfield Institute of Music in Jacksonville:
Wrightsville Unit Regional Maintenance



RESIDENTIAL CENTERS STATISTICS AT A GLANCE - JANUARY 2025

Resident Admissions:

CAC: 24
 ECAC: 102
 NEAC: 51
 OMEGA: 28
 SWAC: 116

Resident Releases:

CAC: 9
 ECAC: 109
 NEAC: 34
 OMEGA: 56
 SWAC: 116

Affordable Healthcare**Enrollment:**

CAC: 11
 ECAC: 63
 NEAC: 0
 OMEGA: 24
 SWAC: 86

Wage Class Enrollment:

CAC: 9
 ECAC: 0
 OMGEA: 8
 SWAC: 11

Shorter College Enrollment:

CAC: 35
 ECAC: 56
 NEAC: 24
 SWAC: 46

Henderson State University**Enrollment:**

OMEGA: 0
 SWAC: 119

Successful Completions:

CAC: 11
 ECAC: 25
 NEAC: 26
 OMEGA: 51
 SWAC: 53

Exodus Enrollment:

CAC: 84
 ECAC: 0

Good Grid Enrollment

CAC: 15
 ECAC: 13
 NEAC: 22
 OMEGA: 41
 SWAC: 169

Photo IDs Issued:

CAC: 8
 ECAC: 14
 NEAC: 7
 OMEGA: 19
 SWAC: 43

Drivers Licenses Obtained:

CAC: 3
 ECAC: 2
 NEAC: 3
 OMEGA: 1
 SWAC: 7

Brith Certificates:

ECAC: 2
 NEAC: 0
 SWAC: 1

MAT Participants:

CAC: 12
 ECAC: 38
 SWAC: 2

MAT Discharged:

CAC: 0
 ECAC: 7
 SWAC: 2

Reformers Anonymous:

SWAC: 42

Life Recovery:

OMEGA: 23
 SWAC: 110

Victim Impact Panel:

CAC: 2
 NEAC: 0
 SWAC: 24

Accuplacer Testing:

NEAC: 17
 SWAC: 0

Number of Volunteers:

CAC: 54
 ECAC: 117
 NEAC: 24
 OMEGA: 22
 SWAC: 119

Number of Volunteer Hours:

CAC: 352
 ECAC: 283
 NEAC: 93
 OMEGA: 57
 SWAC: 690

GED Enrollment:

CAC: 45
 ECAC: 70
 NEAC: 29
 OMEGA: 4
 SWAC: 40

GED Completed:

CAC: 3
 ECAC: 3
 NEAC: 1
 OMGEA: 0
 SWAC: 5

AA/NA Attendance:

CAC: 115
 ECAC: 398
 NEAC: 41
 OMEGA: 67
 SWAC: 20

Celebrate Recovery**Attendance:**

CAC: 40
 NEAC: 38
 SWAC: 114

Social Secruity Cards:

CAC: 14
 ECAC: 6
 NEAC: 23
 SWAC: 3

ServSafe:

CAC: 0
 NEAC: 0

I.C.E.V.:

ECAC: 06
 SWAC: 9

2025 INFORMAL GRIEVANCE REPORT

Month	BENTON	CACCC	CU & CMU	DRU	EACCC	EARU & MX	Ester	GRIMES	HAWK/M	HAWK/F	LBNU	MCWR	MCPH	NEACCC	NCU	NWA	OMGEA	ORCU	PBU	RLW	SWACCC	TU	TRCC	VSMX	VU	WRCCC	WRTS	TOTAL
JAN	0	9	106	81	72	152	48	234	11	19	112	0	160	26	95	0	48	123	36	24	20	63	3	166	49	15	68	1,740
FEB																												0
MAR																												0
APR																												0
MAY																												0
JUN																												0
JUL																												0
AUG																												0
SEPT																												0
OCT																												0
NOV																												0
DEC																												0
TOTAL	0	9	106	81	72	152	48	234	11	19	112	0	160	26	95	0	48	123	36	24	20	63	3	166	49	15	68	1,740

2025 FORMAL GRIEVANCE REPORT

Month	BENTON	CACCC	CU & CMU	DRU	EACCC	EARU & MX	Ester	GRIMES	HAWK/M	HAWK/F	LBNU	MCWR	MCPH	NEACCC	NCU	NWA	OMGEA	ORCU	PBU	RLW	SWACCC	TU	TRCC	VSMX	VU	WRCCC	WRTS	TOTAL
JAN	0	2	106	45	0	263	31	127	6	2	108	0	55	2	63	0	31	64	17	13	0	53	3	125	24	0	31	1,171
FEB																												0
MAR																												0
APR																												0
MAY																												0
JUN																												0
JUL																												0
AUG																												0
SEPT																												0
OCT																												0
NOV																												0
DEC																												0
TOTAL	0	2	106	45	0	263	31	127	6	2	108	0	55	2	63	0	31	64	17	13	0	53	3	125	24	0	31	1,171

Report includes Pine Bluff Reentry (PBR), Pine Bluff Unit (PBU) and Pine Bluff Work Release (PBW).

INMATE INSTITUTIONAL GRIEVANCE APPEAL REPORT – JANUARY 2025

	Acknowledged	Rejected	Processed W/O Merit	Processed W/ Merit
Benton Unit	0	0	0	0
Benton Work Release	0	0	0	0
CACCC	0	0	0	0
Cummins Unit	24	35	31	0
Cummins Modular Unit	1	0	0	0
Delta Regional Unit	6	9	4	0
EACCC	0	0	0	0
East Arkansas Regional Unit	15	3	4	0
East Arkansas Regional Max Unit	95	46	116	0
Ester Unit	5	8	4	0
Grimes Unit	30	30	30	0
Larry B. Norris Unit (MAX)	19	8	35	3
Tucker Work Release	0	0	0	0
McPherson Unit	11	16	15	0
McPherson Mental Health Residential Program Unit	0	1	0	0
Mississippi County Work Release Center	0	0	0	0
NEACCC	1	1	0	0
Northwest Arkansas Work Release Center	0	0	0	0
North Central Unit	17	6	16	0
OMEGA	38	9	0	0
Ouachita River Correctional Unit	4	7	6	0
ORCU Hospital	0	0	0	0
ORCU New Commitment	1	1	1	0
ORCU Mental Health Residential Program Unit	0	0	0	0
Pine Bluff Unit	3	4	6	0
Pine Bluff Re-Entry	0	0	0	0
Randall L. Williams Correctional Facility	0	6	0	0
SWACCC	0	0	0	0
Texarkana Regional Correctional Center	0	0	1	0
Tucker Unit	11	3	17	0
Varner Super Max	25	29	40	2
Varner Unit	6	2	8	0
WRCCC	0	0	0	0
Wrightsville Unit	11	4	7	0
Hawkins Center	1	0	0	0
Hawkins for Males	2	0	0	0
Hawkins SPU	0	0	0	0
Total	287	218	341	5

ADMISSIONS AND RELEASES - January 2025

<u>Admissions</u>	<u>Male</u>	<u>Female</u>	<u>Total</u>
Asian	4	0	4
Black	210	8	218
Caucasian	304	37	341
Hispanic	27	2	29
Native American Indian	1	2	3
Native Hawaiian or Pacific Island	2	1	3
Other	1	0	1
Unknown	0	0	0
Total	549	50	599

<u>Releases</u>	<u>Male</u>	<u>Female</u>	<u>Total</u>
Asian	0	1	1
Black	120	6	126
Caucasian	199	58	257
Hispanic	16	1	17
Native American Indian	0	1	1
Native Hawaiian or Pacific Island	0	0	0
Other	0	0	0
Unknown	0	0	0
Total	335	67	402

ADC INMATE POPULATION GROWTH 2000-2029 - JANUARY 2025

Mo.	2000	2001	2002	2003	2004	2005	2006	2007	2008	2009	2010	2011	2012	2013	2014	2015	2016	2017	2018	2019	2020	2021	2022	2023	2024	2025
Jan.	11,984	11,908	12,402	13,015	13,105	13,595	13,481	13,839	14,518	14,796	15,334	16,312	15,134	14,815	17,481	18,142	17,785	17,824	18,201	17,958	17,989	16,119	17,154	17,682	18,522	18,673
Feb.	12,169	12,022	12,529	13,054	13,166	13,783	13,633	14,012	14,603	14,883	15,374	16,209	14,990	15,008	17,438	18,082	17,625	17,608	17,998	17,846	18,181	16,120	17,077	17,814	18,612	
March	12,006	12,033	12,299	13,108	13,088	13,418	13,534	13,772	14,580	14,843	15,290	16,095	14,964	14,665	17,395	18,233	17,573	17,666	18,089	17,898	17,860	16,085	16,992	18,075	18,820	
April	12,069	12,167	12,465	13,213	13,323	13,469	13,554	13,851	14,769	14,937	15,570	16,172	15,124	14,850	17,604	18,703	17,815	17,798	18,227	17,977	17,331	16,250	17,059	18,206	18,889	
May	12,109	12,384	12,558	13,463	13,556	13,528	13,711	14,146	14,880	15,146	15,694	16,062	15,132	15,074	17,593	18,693	17,769	17,652	17,945	17,817	16,694	16,476	17,229	18,267	18,863	
June	12,005	12,108	12,439	13,418	13,389	13,251	13,430	13,915	14,700	15,025	15,564	15,554	14,832	14,825	17,340	18,813	17,973	17,963	17,972	17,942	16,552	16,560	17,129	18,213	18,957	
July	12,030	12,190	12,622	13,509	13,528	13,286	13,560	14,082	14,868	15,195	15,807	15,519	14,879	15,379	17,522	18,870	18,130	18,180	18,005	18,002	16,511	16,638	17,109	18,397	18,955	
August	12,087	12,371	12,815	13,565	13,632	13,419	13,646	14,224	15,100	15,385	15,829	15,240	14,675	16,103	17,549	18,806	17,919	18,051	17,751	18,090	16,367	16,655	17,274	18,375	19,038	
September	11,983	12,289	12,774	13,341	13,516	13,237	13,652	14,217	14,850	15,285	16,025	15,172	14,724	16,412	17,605	18,549	18,026	18,179	17,865	17,856	16,215	16,698	17,432	18,380	19,043	
October	12,119	12,348	12,942	13,341	13,584	13,363	13,775	14,349	14,836	15,381	16,311	15,271	14,856	16,993	17,880	18,430	18,127	18,348	17,943	17,947	16,311	16,821	17,480	18,557	19,100	
November	12,094	12,408	13,162	13,408	13,706	13,587	13,913	14,437	15,025	15,340	16,460	15,205	14,625	17,168	17,848	17,981	17,573	17,973	17,666	18,060	16,165	16,982	17,521	18,500	18,987	
December	11,856	12,333	12,845	13,106	13,470	13,338	13,728	14,315	14,716	15,199	16,204	15,062	14,654	17,235	17,874	17,707	17,537	18,078	17,799	17,759	16,094	17,023	17,648	18,503	18,844	
Net Ann. Inc.	29	477	512	261	364	-132	390	587	401	483	1,005	-1,142	-408	2,581	639	-167	-170	541	-279	-40	-1,665	929	625	855	341	-171
Avg. Mo. Inc.	2	40	43	22	30	-11	33	49	33	40	84	-95	-34	215	53	-14	-14	45	-23	-3	-139	77	52	71	28	-171

Population is total jurisdictional count at end of each month. Population at end of month December 1999 was 11,827.

Average monthly population increased for past fifteen years 2010 - 2024 is 20

Average monthly population increased for past ten years Jan. 201 - Dec 2024 is 8

Average monthly population decreased for past five years 2020 - 2024 is 18

Projected at Growth of 20 per Month

Mo.	2008	2009	2010	2011	2012	2013	2014	2015	2016	2017	2018	2019	2020	2021	2022	2023	2024	2025	2026	2027	2028	2029
	Actual	Actual	Actual	Actual	Actual	Actual	Actual	Actual	Actual	Actual	Actual	Actual	Actual	Actual	Actual	Actual	Actual	Actual/Proj.	Proj.	Proj.	Proj.	Proj.
January	14,518	14,796	15,334	16,312	15,134	14,815	17,481	18,142	17,785	17,824	18,201	17,958	17,989	16,119	17,154	17,682	18,522	18,673	18,913	19,153	19,393	19,633
February	14,603	14,883	15,374	16,209	14,990	15,008	17,438	18,082	17,625	17,608	17,998	17,846	18,181	16,120	17,077	17,814	18,612	18,693	18,933	19,173	19,413	19,653
March	14,580	14,843	15,290	16,095	14,964	14,665	17,395	18,233	17,573	17,666	18,089	17,898	17,860	16,085	16,992	18,075	18,820	18,713	18,953	19,193	19,433	19,673
April	14,769	14,937	15,570	16,172	15,124	14,850	17,604	18,703	17,815	17,798	18,227	17,977	17,331	16,250	17,059	18,206	18,889	18,733	18,973	19,213	19,453	19,693
May	14,880	15,146	15,694	16,062	15,132	15,074	17,593	18,693	17,769	17,652	17,945	17,817	16,694	16,476	17,229	18,267	18,863	18,753	18,993	19,233	19,473	19,713
June	14,700	15,025	15,564	15,554	14,832	14,825	17,340	18,813	17,973	17,963	17,972	17,942	16,552	16,560	17,129	18,213	18,957	18,773	19,013	19,253	19,493	19,733
July	14,868	15,195	15,807	15,519	14,879	15,379	17,522	18,870	18,130	18,180	18,005	18,002	16,511	16,638	17,109	18,397	18,955	18,793	19,033	19,273	19,513	19,753
August	15,100	15,385	15,829	15,240	14,675	16,103	17,549	18,806	17,919	18,051	17,751	18,090	16,367	16,655	17,274	18,375	19,038	18,813	19,053	19,293	19,533	19,773
September	14,850	15,285	16,025	15,172	14,724	16,412	17,605	18,549	18,026	18,179	17,865	17,856	16,215	16,698	17,432	18,380	19,043	18,833	19,073	19,313	19,553	19,793
October	14,836	15,381	16,311	15,271	14,856	16,993	17,880	18,430	18,127	18,348	17,943	17,947	16,311	16,821	17,480	18,557	19,100	18,853	19,093	19,333	19,573	19,813
November	15,025	15,340	16,460	15,205	14,625	17,168	17,848	17,981	17,573	17,973	17,666	18,060	16,165	16,982	17,521	18,500	18,987	18,873	19,113	19,353	19,593	19,833
December	14,716	15,199	16,204	15,062	14,654	17,235	17,874	17,707	17,537	18,078	17,799	17,759	16,094	17,023	17,648	18,503	18,844	18,893	19,133	19,373	19,613	19,853
Net Ann. Inc.	401	483	1,005	-1,142	-408	2,581	639	-167	-170	541	-279	-40	-1,665	929	625	855	341	49	240	240	240	240
Ave. Mo. Inc.	33	40	84	-95	-34	215	53	-14	-14	45	-23	-3	-139	77	52	71	28	4	20	20	20	20

MONTHLY POPULATION AVERAGES - JANUARY 2025

[illegible]

CENTER POPULATIONS - JANUARY 2025

ARDOC

ARKANSAS DEPARTMENT OF CORRECTION

PAGE: 1 of 2

REPORT NO. IPTR500 - 18

ACC OPTION
STATEWIDE POPULATION REPORT

PROCESSED: 01/31/2025 12:30 AM

REQUESTOR: eOMIS

FOR: 01/31/2025

Location:	In Count	Out To:					Capacity	% Capacity
		ORCU Hosp	Other Hosp	Furlough	Court	Total		
Central AR CCC - Males/Males	154	0	0	0	1	155	150	
Central AR CCC - Males Total	154	0	0	0	1	155	150	103.3%
East Central AR CCC/Females	373	0	0	0	0	373	362	
East Central AR CCC-Females Drug Treatment/Females	2	0	0	0	0	2	0	
East Central AR CCC Supervision Sanction-Female/90 Day PV in CCC Females	18	0	0	0	0	18	0	
East Central AR CCC Supervision Sanction-Female/Females	48	0	0	0	1	49	88	
East Central AR CCC Total	441	0	0	0	1	442	450	98.2%
NE AR CCC - Drug Treatment/Males	15	0	0	0	0	15	25	
NE AR CCC/Males	225	0	0	0	0	225	215	
NE AR CCC Total	240	0	0	0	0	240	240	100.0%
Omega Supervision Sanction Center/90 Day PV in CCC Males	260	0	0	0	0	260	0	
Omega Supervision Sanction Center/Males	70	0	0	0	11	81	300	
Omega Supervision Sanction Center Total	330	0	0	0	11	341	300	113.7%
SW AR CCC/Males	387	0	0	0	1	388	440	
SW AR Supervision Sanction Center/Males	82	0	0	0	0	82	100	
SW AR CCC Total	469	0	0	0	1	470	540	87.0%
White River Correctional Center/90 Day PV in CCC Males	154	0	0	0	0	154	0	
White River Correctional Center/Males	0	0	0	0	5	5	173	
White River Correctional Center Total	154	0	0	0	5	159	173	91.9%
In Transit Count:	0							
TOTALS - UNIT COUNT	1,788	0	0	0	19	1,807		
					Male	1,365	1,403	97.3%
					Female	442	450	98.2%
					Total	1,807	1,853	97.5%
County Jail Backup SSP/Females Total	7	0	0	0	0	7		
County Jail Backup SSP/Males Total	28	0	0	0	0	28		
County Jail Backup/Females Total	61	0	0	0	0	61		
County Jail Backup/Males Total	111	0	0	0	0	111		
State Prison Unit/Males Total	1	0	0	0	0	1		
TOTAL - NONAGENCY	208	0	0	0	0	208		
					Male	140		
					Female	68		
					Total	208		
Re-Entry Act 146 Total	196	0	0	0	0	196	208	94.2%
GRAND TOTAL	2,192	0	0	0	19	2,211		

FISCAL YEAR 2025 COUNTY JAIL BACKUP - JANUARY 2025

DAY		Jul-24		Aug-24		Sep-24		Oct-24		Nov-24		Dec-24		Jan-25
1		2,058		2,112	*	2,139		2,000		2,083	*	2,046		1,872
2		2,085		2,120		2,077		2,016	*	2,083		2,046		1,872
3		2,085	*	2,120		2,077		2,027	*	2,083		2,022		1,838
4		2,111	*	2,120		2,077		2,031		2,103		2,038	*	1,838
5		2,111		2,107		2,105	*	2,031		2,110		1,969	*	1,838
6	*	2,111		2,090		2,100	*	2,031		2,083		1,936		1,814
7	*	2,111		2,097	*	2,100		2,026		2,094	*	1,936		1,827
8		2,131		2,097	*	2,100		2,009		2,097	*	1,936		1,818
9		2,120		2,102		2,086		2,027	*	2,097		1,912		1,780
10		2,130	*	2,102		2,069		2,050	*	2,097		1,902		1,769
11		2,125	*	2,102		2,084		2,075		2,099		1,874	*	1,769
12		2,116		2,092		2,073	*	2,075		2,099		1,862	*	1,769
13	*	2,116		2,104		2,109	*	2,075		2,116		1,869		1,760
14	*	2,116		2,113	*	2,109		2,068		2,113	*	1,869		1,791
15		2,097		2,115	*	2,109		2,061		2,099	*	1,869		1,749
16		2,096		2,106		2,110		2,071	*	2,099		1,855		1,732
17		2,097	*	2,106		2,096		2,074	*	2,099		1,880		1,698
18		2,100	*	2,106		2,085		2,067		2,086		1,906	*	1,698
19		2,074		2,132		2,053	*	2,067		2,084		1,903	*	1,698
20	*	2,074		2,128		2,054	*	2,067		2,101		1,908		1,674
21	*	2,074		2,139	*	2,054		2,042		2,117	*	1,908		1,674
22		2,103		2,141	*	2,054		2,051		2,151	*	1,908		1,637
23		2,105		2,154		2,029		2,056	*	2,151		1,902		1,619
24		2,077	*	2,154		2,038		2,042	*	2,151		1,904		1,640
25		2,083	*	2,154		1,996		2,048		2,146		1,904	*	1,640
26		2,095		2,127		1,982	*	2,048		2,111		1,904	*	1,640
27	*	2,095		2,140		1,991	*	2,048		2,108		1,885		1,629
28	*	2,095		2,137	*	1,991		2,050		2,047	*	1,885		1,650
29		2,100		2,156	*	1,991		2,056		2,046	*	1,885		1,645
30		2,092		2,139		1,990		2,052	*	2,046		1,885		1,637
31		2,080	*	2,139				2,063				1,870		1,602
Avg Daily Backup		2,099		2,121		2,064		2,049		2,100		1,915		1,730

Notes: Total does not include 309 Contracts in County jails (maximum of 336)

County Jail Back-up average for January 2025 - 1,730

County Jaik Back-up average as January 31, 2025 - 2,011

Short-Term Revocation Program average for January 2025 - 139

Short-TermFiscal Year average as of January 31, 2025 - 347

STTG UNIT COUNTS – JANUARY 2025

Unit	Beginning Total	Confirmed	Suspected	In	Out	Paroled	Removed	Ending Total	Total Unit Population	Unit % of STTG's
Benton	88	1	0	10	5	1	0	93	333	27.93%
Cummins	688	0	0	63	54	6	0	681	2,013	33.83%
Delta	228	0	1	16	16	6	0	223	624	35.74%
EARU	708	1	0	23	16	9	0	707	1,632	43.32%
Ester	159	0	0	20	12	3	0	164	693	23.67%
Grimes	397	0	0	44	10	13	0	418	1,095	38.17%
Hawkins	56	0	0	45	0	0	0	101	440	22.95%
Norris	290	0	0	9	4	0	0	295	690	42.75%
McPherson	50	0	0	0	1	0	0	49	1,214	4.04%
MCWR	56	0	0	5	0	0	0	61	185	32.97%
NCU	272	0	0	15	10	3	0	274	940	29.15%
NWAWR	20	0	0	0	1	0	0	19	99	19.19%
ORCU	326	0	0	61	49	16	0	322	1,547	20.81%
ORCU Intake	97	80	0	0	101	0	0	76	346	21.97%
Pine Bluff	142	0	0	16	5	4	0	149	613	24.31%
RLW	211	0	0	26	23	4	0	210	545	38.53%
TWR	41	0	0	8	9	2	0	38	133	28.57%
Tucker	294	5	0	16	16	19	0	280	1,010	27.72%
Varner	766	0	3	77	71	0	0	775	1,705	45.45%
Wrightsville	226	0	0	28	18	2	0	234	862	27.15%
Total	5,115	87	4	482	421	88	0	5,169	16,719	30.92%

ORCU Intake brought in 80 new STTG members into ADC last month.

STTG DISCIPLINARY REPORT – JANUARY 2025

Unit	STTG Incidents	STTG Suspected Incidents	Total Unit Disciplinary	Disciplinary Involving STTG	Percentage
Benton	0	0	11	5	45.45%
Cummins	0	0	397	192	48.36%
Delta	0	0	69	35	50.72%
EARU	0	0	207	117	56.52%
Easter	0	0	151	68	45.03%
Grimes	0	0	138	58	42.03%
Hawkins	0	0	5	1	20.00%
Norris	0	0	100	55	55.00%
McPherson	0	0	202	14	6.93%
MCWR	0	0	4	1	25.00%
NCU	0	0	116	49	42.24%
NWAWR	0	0	2	1	50.00%
ORCU	0	0	107	40	37.38%
ORCU Intake	0	0	4	1	25.00%
Pine Bluff	0	0	92	43	46.74%
RLW	0	0	157	78	49.68%
TWR	0	0	10	5	50.00%
Tucker	1	1	59	28	47.46%
Varner	0	0	150	89	59.33%
Wrightsville	0	0	136	53	38.97%
Total	1	1	2,117	933	44.07%

STTG COUNTS BY STTG SET – JANUARY 2025

STTG Set	Benton	Cummins	Delta	EARU	Ester	Grimes	Hawkins	Norris	McPherso	MCWR	NCU	NWAWR	ORCU	Intake	PB	RLW	TWR	Tucker	Varner	Wrightsvil	Total	
Asian	2	0	0	1	0	0	0	0	0	0	0	0	0	0	0	0	0	1	1	1	2	8
Bloods	12	133	40	143	29	87	17	60	10	11	51	0	41	14	28	42	7	46	169	44	984	
Crips	13	77	33	89	16	49	12	47	4	8	31	3	37	8	10	26	5	20	110	35	633	
Folk	5	73	13	55	13	26	6	36	4	3	15	2	14	9	9	6	2	21	67	32	411	
GD	16	143	50	180	34	89	20	74	9	12	77	5	72	18	38	48	5	72	179	39	1,180	
Mexican	6	26	12	23	11	15	3	3	2	2	8	0	13	3	4	6	0	7	22	11	177	
Motorcycle	0	6	0	0	0	0	0	1	1	1	2	0	4	0	1	0	0	1	1	1	19	
Other	1	9	12	17	6	13	7	6	3	2	8	1	23	0	5	4	2	9	18	5	151	
People	4	36	11	36	5	28	0	21	1	1	5	0	13	5	8	11	0	13	31	10	239	
Unknown	0	23	4	7	4	0	4	1	0	5	2	2	5	0	4	4	3	4	9	3	84	
W/S	13	74	20	39	23	33	14	10	7	9	28	6	55	7	19	32	6	47	70	22	534	
AB	3	9	1	5	5	7	4	0	1	0	5	0	3	0	3	15	3	3	19	3	89	
AC	1	10	5	17	3	10	0	3	1	1	5	0	6	1	0	14	0	3	23	0	103	
NAE	6	35	13	40	8	25	4	9	3	4	19	0	20	5	8	0	3	12	27	13	254	
WAR	11	27	9	55	7	36	10	24	3	2	18	0	16	6	12	2	1	21	29	14	303	
Total	93	681	223	707	164	418	101	295	49	61	274	19	322	76	149	210	38	280	775	234	5,169	

Key:

GD = Gangster Disciples

W/S = White Supremacist

NAE = New Aryan Empire

WAR = White Aryan Resistance

AC = Aryan Circle

AB = Aryan Brotherhood

MEDICATION-ASSISTED TREATMENT PROGRAM (MAT) REPORT - JANUARY 2025

Locations:	MAT Start Dates	Active Program Participants	New Clients in the Program this Month	Dropped Out	Total Active Participants
CACCC - Little Rock	Sep-19	9	6	0	9
EACCC - West Memphis	Jul-18	38	9	0	38
NEACCC - Osceola	Dec-21	0	0	0	0
SWACCC - Texarkana	Jul-18	1	0	0	1
Probation / Parole	2018	43	0	0	48
Medically Withdrawn	Closed Unsuccessful	Completed	Total Active		
92	208	177	48		
Total # of Participants Since Program Began					1010

Clinical Activities

Action	Jul-23	Aug-23	Sep-23	Oct-23	Nov-23	Dec-23
Assessments Completed in units	42	20	11	9	4	13
# of Clients Educated in units	352	515	403	426	427	400
# of Clients Released to Supervision	12	7	3	2	4	6
Pre-Release Interviews Completed	14	15	15	4	4	8

Clinical Activities

Action	Jan-24	Feb-24	Mar-24	Apr-24	May-24	Jun-24
# of Assessments Completed in units	13	3	12	11	11	9
# of Clients Educated in units	411	261	514	420	353	282
# of Clients Released to Supervision	4	7	10	7	11	10
Pre-Release Interviews Completed	11	6	14	14	7	14

Action	Jul-24	Aug-24	Sep-24	Oct-24	Nov-24	Dec-24
# of Assessments Completed in units	8	0	0	20		
# of Clients Educated in units	221	279	220	234		
# of Clients Released to Supervision	12	6	10	7		
Pre-Release Interviews Completed	7	7	4	11		

ADC INPATIENT AND EMERGENCY ROOM UTILIZATION

ARKANSAS DEPARTMENT OF CORRECTION
INPATIENT AND EMERGENCY ROOM UTILIZATION

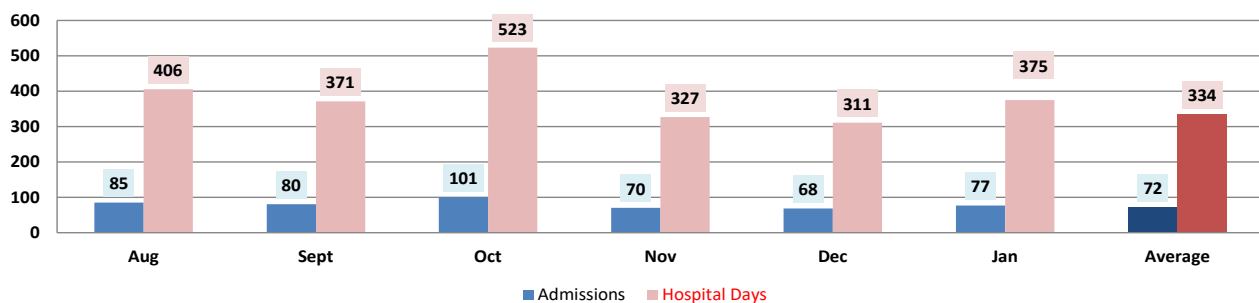
ADC Inpatient Statistics Past 12 Months

	2024	2024	2024	2024	2024	2024	2024	2024	2024	2024	2024	2025	
	Feb	March	April	May	June	July	Aug	Sept	Oct	Nov	Dec	Jan	Average
Admissions	54	54	61	74	75	62	85	80	101	70	68	77	72
Hospital Days	230	208	231	373	322	335	406	371	523	327	311	375	334
Average Length of Stay	4.26	3.85	3.79	5.04	4.29	5.40	4.78	4.64	5.18	4.67	4.57	4.87	4.66

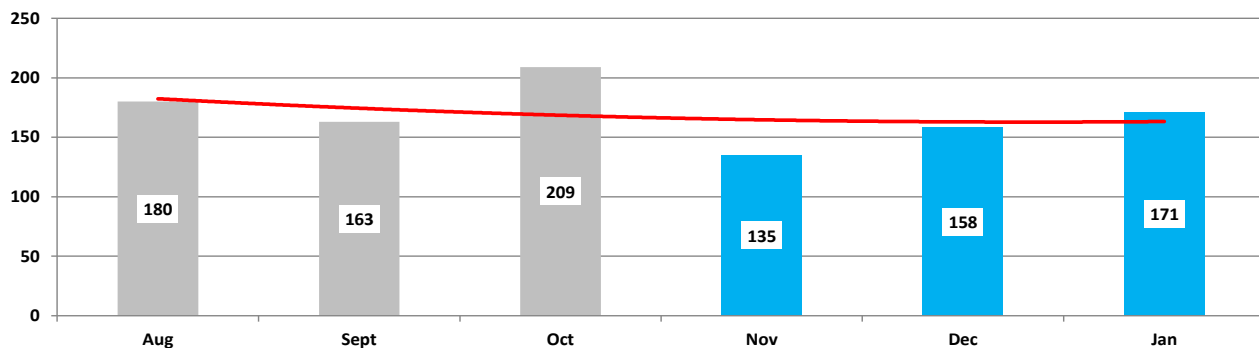
ADC ER Visits Past 12 Months

	2024	2024	2024	2024	2024	2024	2024	2024	2024	2024	2024	2025	
	Feb	March	April	May	June	July	Aug	Sept	Oct	Nov	Dec	Jan	Average
Emergency Room Visits	131	129	170	179	161	140	180	163	209	135	158	171	160.5

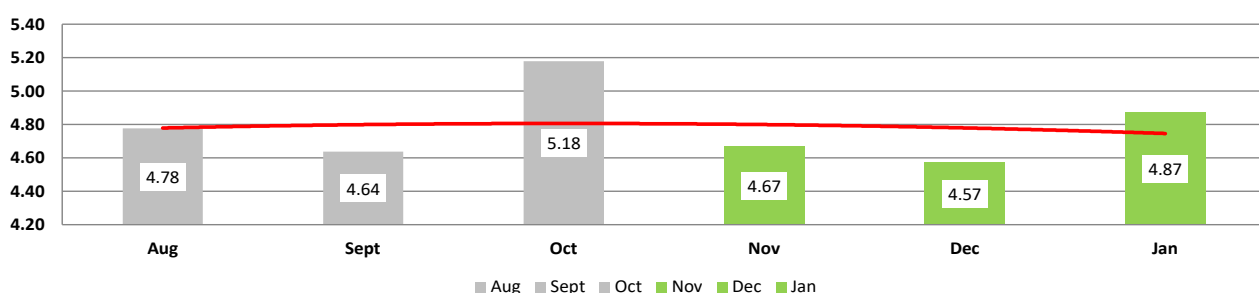
ADC Inpatient Utilization



ADC Emergency Room Visits



ADC Inpatient Average Length of Stay

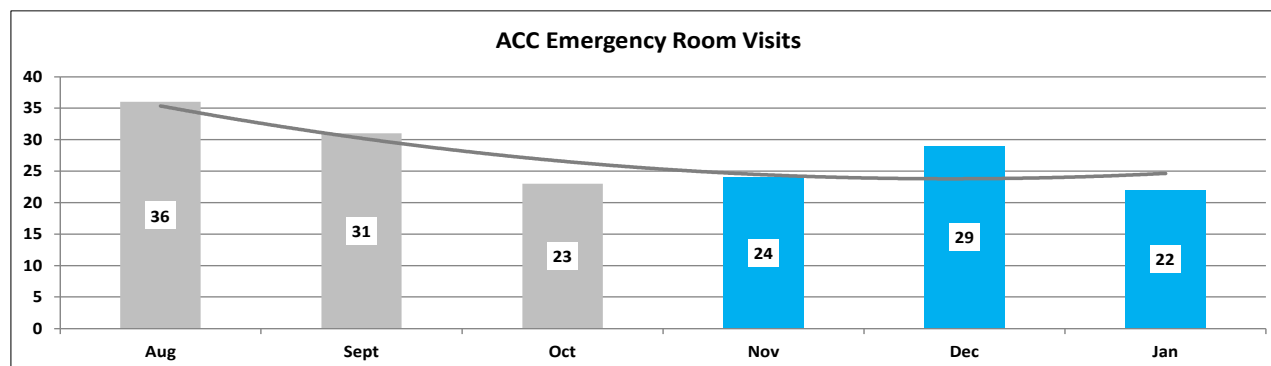
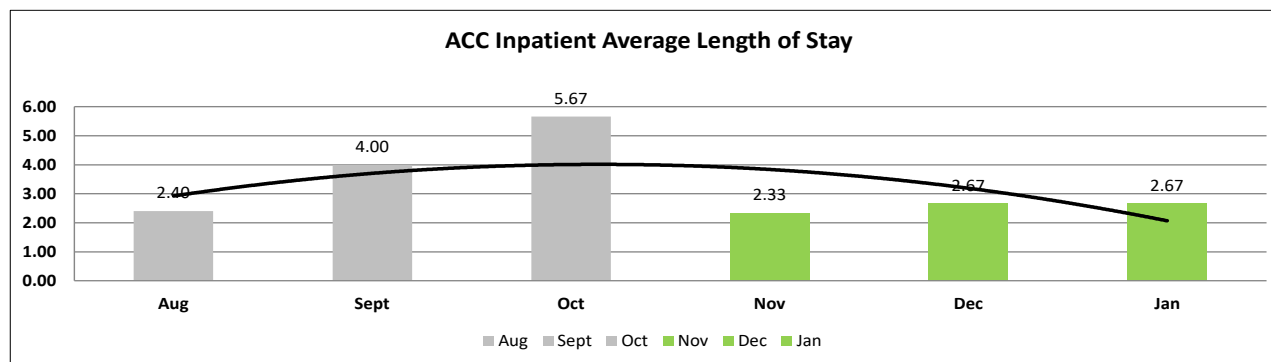
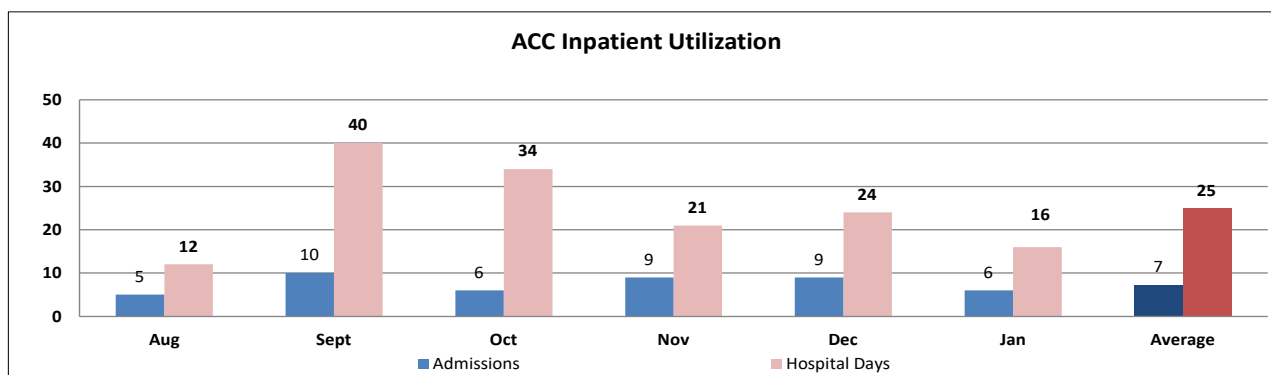


COMMUNITY CORRECTIONS INPATIENT AND EMERGENCY ROOM UTILIZATION

ARKANSAS COMMUNITY CORRECTION
INPATIENT AND EMERGENCY ROOM UTILIZATION

ACC Inpatient Statistics Past 12 Months													
	2024 Feb	2024 March	2024 April	2024 May	2024 June	2024 July	2024 Aug	2024 Sept	2024 Oct	2024 Nov	2024 Dec	2025 Jan	Average
Admissions	7	5	7	5	11	7	5	10	6	9	9	6	7
Hospital Days	28	16	25	13	39	31	12	40	34	21	24	16	25
Average Length of Stay	4.00	3.20	3.57	2.60	3.55	4.43	2.40	4.00	5.67	2.33	2.67	2.67	3.44

ACC ER Visits Past 12 Months													
	2024 Feb	2024 March	2024 April	2024 May	2024 June	2024 July	2024 Aug	2024 Sept	2024 Oct	2024 Nov	2024 Dec	2025 Jan	Average
Emergency Room Visits	11	22	34	23	37	39	36	31	23	24	29	22	27.6



MEDICAL GRIEVANCE BOARD REPORT – JANUARY 2025

Unit	<i>Acknowledged/Received</i>	<i>Rejected</i>	<i>Reviewed & Signed by Dep Director</i>	<i>With Merit</i>	<i>With Merit, but Resolved</i>	<i>% With Merit</i>	<i>Without Merit</i>
Benton	0	0	0	0	0	0.00%	0
CMU	1	6	3	0	0	0.00%	3
Cummins	10	15	11	0	0	0.00%	11
Delta	0	0	5	0	0	0.00%	5
EARU	10	2	6	0	0	0.00%	6
EARU Max	22	2	18	1	0	5.56%	17
Ester	1	1	1	0	0	0.00%	1
Grimes	11	14	13	2	0	15.38%	11
Hawkins	0	0	0	0	0	0.00%	0
McPherson	2	8	2	0	0	0.00%	2
MCWRC	0	0	0	0	0	0.00%	0
MSU	2	3	2	0	0	0.00%	2
North Central	2	0	11	1	0	9.09%	10
NWAWRC	0	0	0	0	0	0.00%	0
Omega Supervision	0	0	0	0	0	0.00%	0
Ouachita	6	0	6	0	0	0.00%	6
Pine Bluff	3	0	2	0	1	50.00%	1
Randall L. Williams	0	0	0	0	0	0.00%	0
SNU	0	0	3	0	0	0.00%	3
TRCC	0	0	0	0	0	0.00%	0
Tucker	4	6	4	0	0	0.00%	4
Varner	0	1	3	0	0	0.00%	3
Varner Super Max	3	3	5	0	1	20.00%	4
White River	2	0	3	0	0	0.00%	3
WRU	4	1	3	1	0	33.33%	2
WHM	6	2	5	0	0	0.00%	5
WWR	0	0	0	0	0	0.00%	0
Total	89	64	106	5	2	6.60%	99

CHAPLAINCY

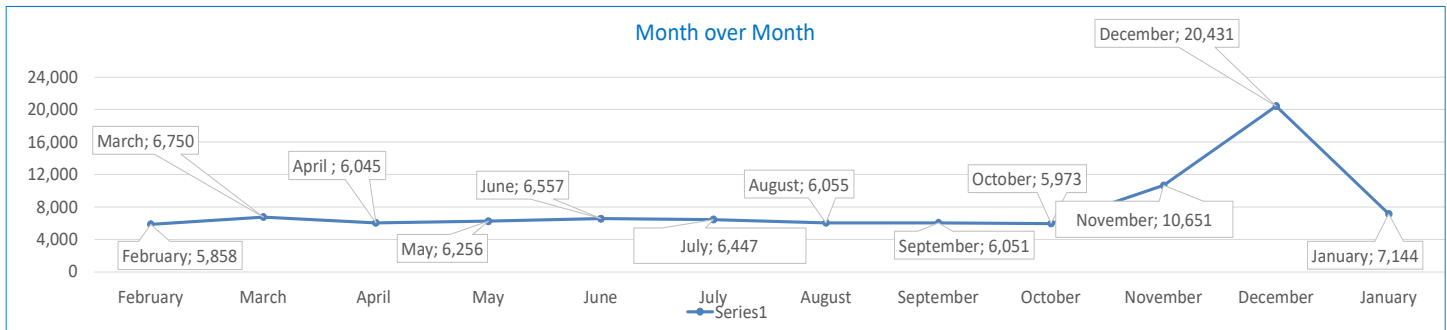
Month: January Year: 2025	CUMMINS	DELTA REGIONAL	EAST ARKANSAS	EAST ARKANSAS MAX	ESTER	GRIMES	HAWKINS	LB NORRIS	MCPHERSON	NORTH CENTRAL	OUACHITA RIVER	PINE BLUFF	RANDALL L. WILLIAMS	TUCKER	VARNER	VARNER MAX	WRIGHTSVILLE	TOTAL
Services Chaplains Oversaw																		
Christian																		
Population	1	1	25	0	2	11	2	1	8	2	1	9	1	3	11	0	1	79
Segregation	0	0	0	0	0	0	0	1	0	0	0	0	0	0	0	0	0	1
Muslim																		
Population	5	5	4	0	4	4	2	1	5	5	3	5	4	1	5	0	2	55
Segregation	0	0	0	0	0	0	0	1	0	0	0	0	0	0	0	0	0	1
																		136
Volunteers in Charge																		
Protestant	15	3	0	0	15	0	3	11	6	14	10	3	13	11	0	0	7	111
Catholic	1	0	2	0	1	0	4	0	2	4	4	1	1	0	2	0	4	26
Muslim	4	0	0	0	1	0	2	2	4	0	1	5	0	0	0	0	2	21
Other	0	0	0	0	0	0	0	3	0	0	5	0	0	0	9	0	0	17
Baptism	0	0	20	0	0	0	0	4	0	2	9	0	0	12	0	0	0	47
Marriages																		
	0	0	0	0	0	1	0	0	0	0	0	0	0	1	0	0	0	2
Distributed by Chaplains																		
Greeting Cards	40	18	0	0	15	58	0	91	0	11	17	9	31	25	102	219	0	636
Bibles, Quran, Torah, Etc.	25	12	6	31	40	23	5	22	13	78	180	43	13	10	24	37	20	582
Study Course	270	120	0	2	0	2	0	4	23	0	16	2	9	112	8	4	0	572
Writing Supplies	0	0	0	0	38	73	30	211	42	0	120	15	0	69	0	0	0	598
Literature	500	224	1,341	511	890	32	25	82	51	645	140	277	115	240	573	506	275	6,427
Chaplain's Visits																		
Barracks	5	2	45	13	36	162	12	25	172	47	111	18	77	114	51	16	11	917
Approximate Hours Spent in Barracks	2	1	11	3	8	286	1	2	121	14	16	30	11	28	26	4	8	572
Inmate Office visits	75	350	17	0	15	228	5	10	35	66	10	7	17	316	30	0	26	1,207
Other Office visits	15	17	20	0	8	7	9	4	29	0	15	49	42	44	57	0	6	322
Hospital	0	0	0	0	0	0	0	0	0	1	6	0	1	1	0	0	0	9
Infirmary/Sick Call	0	0	3	0	4	4	4	2	8	4	6	5	8	5	5	5	4	67
Restrictive/Punitive Housing	0	3	0	0	4	5	4	5	8	5	3	5	7	9	5	5	4	72
PC - DRU		1																1
Visitation Days	0	0	0	0	1	0	0	0	0	0	0	0	0	0	0	0	0	1
Volunteer Visits																		
RCV	0	0	0	0	3	3	0	2	4	4	0	9	2	10	0	0	0	37
OCV	5	0	11	0	3	6	27	8	52	8	20	2	0	29	2	0	25	198
Spiritual Advisor	0	0	0	0	0	0	0	0	0	0	0	0	0	0	0	0	0	0
CRA	25	3	14	0	17	19	4	32	98	103	71	7	17	94	25	9	13	551
Religious Volunteer Hours																		
Volunteer Hours	50	12	103	0	54	153	31	111	230	494	309	74	34	279	89	1	60	2,084
Denominational/Volunteer Chaplain Hours	10	16	0	0	45	0	64	81	176	15	36	24	0	54	41	13	46	621
																		2,705
Other Activities of Chaplain																		
Counseled Employees	12	75	10	0	8	5	4	2	2	0	15	44	2	8	85	0	2	274
Orientation Sessions	0	0	1	0	2	0	0	0	0	4	0	0	0	0	0	0	0	7
Free World Devotions	0	0	7	0	2	4	0	8	0	0	8	0	2	4	19	0	0	54
Spoke in Churches	0	0	8	0	2	4	1	4	8	0	4	3	3	3	19	0	0	59
Crisis Intervention Sessions	0	0	1	0	0	0	5	1	0	0	3	5	1	10	4	4	4	38
Marriage Counseling	0	3	0	0	0	1	0	0	0	2	0	0	0	2	0	0	0	8
Denominational Meeting	0	0	2	0	1	1	0	8	0	1	0	0	1	0	0	0	0	14
Chaplain's Meeting	1	1	4	0	1	2	2	0	1	1	1	1	1	1	1	0	2	20
Volunteer Training Session	0	0	0	0	1	0	0	0	0	0	0	0	0	0	0	0	0	1
Chaplain Transfers																		
	0	1	0	0	0	0	0	0	0	0	0	0	0	0	0	0	0	1
Chaplain Promotions																		
	0	0	0	0	0	0	0	0	0	0	0	0	0	0	0	0	0	0
PAL PROGRAM																		
Enrolled at start of month	60	24	54	0	55	45	0	22	56	71	35	0	0	55	49	0	24	550
Enrolled during the month	3	2	10	0	6	11	0	4	3	3	3	0	0	12	5	0	5	67
Removed from PAL Program																		
# Paroled	2	0	0	0	0	0	0	0	1	0	0	0	0	2	0	0	0	5
# Completed	0	0	3	0	0	4	0	1	0	2	1	0	0	4	5	0	1	21
# Withdrew	1	1	0	0	0	0	0	1	1	0	1	0	0	0	0	0	0	5
# Removed	0	0	7	0	3	2	0	2	1	1	2	0	0	0	1	0	2	21
# Transferred	0	1	0	0	0	1	0	0	0	0	1	0	0	2	0	0	0	5
Total Removed from PAL Program	3	2	10	0	3	7	0	4	3	3	5	0	0	8	6	0	3	57
Total Enrolled at the End of the Month	60	24	54	0	58	49	0	22	56	71	33	0	0	59	48	0	26	560
Volunteers in PAL																		
	8	0	10	0	7	13	1	6	34	16	7	0	0	7	2	0	6	117
Special Events:																		
	0	0	1	0	0	0	1	1	1	0	0	0	1	1	0	0	1	7

SECURUS VIDEO VISITATION REPORT JANUARY 2025

AR-DOC SVV Activity Tracker

Total ADP **18,373**

Total Visits by Month	February	March	April	May	June	July	August	September	October	November	December	January
Total (Includes SuperMax)	5,858	6,750	6,045	6,256	6,557	6,447	6,055	6,051	5,973	10,651	20,431	7,144
Target Objective	15,587	15,587	15,587	15,587	15,587	15,587	15,587	15,587	15,587	15,587	15,587	15,587



Completed Visits

Site	Current Month	Previous Month
Benton	134	423
Cummins	465	1217
Delta Regional	395	1233
East Arkansas Regional	557	1635
Ester	359	885
Grimes	596	1857
J Aaron Hawkins Sr.	241	383
Tucker Max	173	724
Mcpherson	607	1396
Mississippi County WRC	55	127
North Central	594	1565
NW Arkansas WRC	5	13
Ouachita River	703	1906
Pine Bluff Re-Entry	62	118
Pine Bluff Complex	214	370
Randall L Williams	165	397
State Police Barracks	52	156
Texarkana Regional	64	247
Tucker Unit	557	1747
Varner	740	3003
Wrightsville Unit	406	1029
Tucker Re-entry	0	0
Total:	7,144	20,431

Jan-25

Dec-24

Missed by Inmate

Site	Current Month	Previous Month
Benton	17	42
Cummins	42	135
Delta Regional	19	70
East Arkansas Regional	61	319
Ester	15	77
Grimes	32	88
J Aaron Hawkins Sr.	14	29
Tucker Max	15	40
Mcpherson	41	86
Mississippi County WRC	14	19
North Central	15	158
NW Arkansas WRC	6	14
Ouachita River	39	219
Pine Bluff Re-Entry	5	6
Pine Bluff Complex	12	48
Randall L Williams	17	64
State Police Barracks	3	10
Texarkana Regional	10	27
Tucker Unit	40	193
Varner	104	420
Wrightsville Unit	16	60
Tucker Re-entry	0	0
Total:	537	2,124

25-Jan

Dec-24

SECURUS TABLET REPORT JANUARY 2025

Contract ID	Site ID	Agency Name	Personal Tablets (All)	\$0	\$5	Community / Inventory	Officer	Total	New Subscriptions
I-003320	9322	AR DOC - BENTON UNIT	360	99	261	203	8	571	
I-003320	9323	AR DOC - CUMMINS UNIT	1,237	851	386	682	17	1,936	
I-003320	9324	AR DOC - DELTA REGIONAL UNIT	446	246	200	136	20	602	
I-003320	9325	AR DOC - EAST ARKANSAS REGIONAL UNIT	728	512	216	707	10	1,445	
I-003320	7981	AR DOC - ESTER UNIT	573	369	204	173	20	766	
I-003320	9326	AR DOC - GRIMES UNIT	695	413	282	714	14	1,423	
I-003320	9340	AR DOC - J AARON HAWKINS SR CENTER FOR W	425	236	189	177	19	621	
I-003320	9328	AR DOC - MCPHERSON UNIT	696	444	252	160	21	877	
I-003320	9329	AR DOC - MISSISSIPPI COUNTY WORK RELEASE	186	39	147	134	9	329	
I-003320	9330	AR DOC - NORTH CENTRAL UNIT	669	426	243	119	10	798	
I-003320	9331	AR DOC - NW ARKANSAS WORK RELEASE CENTER	100	22	78	85	8	193	
I-003320	9332	AR DOC - OUACHITA RIVER UNIT	1,138	737	401	449	14	1,601	
I-003320	7715	AR DOC - PINE BLUFF RE-ENTRY CENTER	53	14	39	27	0	80	
I-003320	9333	AR DOC - PINE BLUFF UNIT	384	246	138	196	9	589	
I-003320	9334	AR DOC - RANDALL L WILLIAMS FACILITY	362	206	156	210	15	587	
I-003320	9097	AR DOC - STATE POLICE BARRACKS	55	32	23	11	3	69	
I-003320	9335	AR DOC - TEXARKANA REGION CORRECTION CEN	133	40	93	100	14	247	
I-003320	9327	AR DOC - TUCKER MAXIMUM SECURITY UNIT	236	154	82	360	14	610	
I-003320	7806	AR DOC - TUCKER RE-ENTRY CENTER	0	0	0	45	2	47	
I-003320	9336	AR DOC - TUCKER UNIT	820	537	283	302	13	1,135	
I-003320	9337	AR DOC - VARNER UNIT	839	585	254	578	23	1,440	
I-003320	9338	AR DOC - WRIGHTSVILLE UNIT	629	380	249	571	9	1,209	
			10,764	6,588	4,176	6,139	272	17,175	