



# DIVISION OF CORRECTION BOARD REPORT

December 2023

Dexter Payne  
Director



## POPULATION REPORT

### RESEARCH/PLANNING

**November 2023 Admissions and Releases** – Admissions for November 2023 totaled **510** (438-males and 72-females) while releases totaled **402** (336-males and 66 females) for a net increase in-house of 108 inmates.

**Inmate Population Growth/Projection** – At the end of November 2023, the jurisdictional population for the Division of Correction totaled **18,500**, representing an increase of **852** inmates since the first of January 2023. At reporting time, calendar year 2023 has seen an average rate of 77 inmates per month, which is up from an average monthly increase of **52** inmates per month during calendar year 2022.

**Average County Jail Backup** – The backup in the county jails averaged **1,844** inmates per day during the month of November 2023, which was down from the per-day average of **2,004** inmates during the month of June 2023. Of the **1,844** average, short-term revocations accounted for **284** (247 males and 38 females) during the month.

## INSTITUTIONS

### INMATE INSTITUTIONAL GRIEVANCES

**Inmate Formal/Informal Grievances:** During November, a total of 981 formal grievances and 1,470 informal grievances were filed at various units.

**Institutional Grievances Appeals:** There was a total of 437 appeals of institutional grievances received in November. Of those, 286 were acknowledged and 151 were rejected for various reasons. Of the total, 307 appeals answered, 306 had no merit and one had merit.

### FARM DIVISION

November continued to give all farms the opportunity to do field work. Cummins was able to subsoil most row crop areas for the coming year. Cummins also did work on roads and ditches to improve the drainage. East AR and Tucker worked all of their fields and have them ready for next year's crop.

The farms planted 2500 acres of winter wheat for grain harvest in 2024. The wheat is off to a great start and has been fertilized to promote tillering and a strong root system going into winter.

The gardens brought in sweet potatoes in time for Thanksgiving. Turnips and greens are still being harvested for kitchen use.

The cattle operations planted almost 2,000 acres of wheat and other forages for grazing. This forage should provide a better rate of gain on the weaned calves and reduce hay use which turns to more economic benefit for us.

Milk production is trending up with the cooler weather. The dairy farm is adding more cattle to the tank weekly to try to increase the production.

Egg production remains steady. The houses have a flock of pullets that are 8 weeks old that will move to the production layer house around the first of February.

### WORK RELEASE RENT REPORT

Unit	November 2023
Benton Unit	\$142,098.00
Mississippi County Work Release	\$98,076.00
Northwest Arkansas Work Release	\$48,884.00
Pine Bluff Work Release	\$44,022.00
Texarkana Regional Corr. Ctr.	\$67,760.00
Wrightsville Hawkins Unit	\$38,588.00
<b>Total</b>	<b>\$439,428.00</b>

### REGIONAL MAINTENANCE HOURS

Regional Maintenance Hours	November 2023
Benton Unit	6,091
Delta Regional Unit	1,712
East Arkansas Regional Unit	1,320
Grimes Unit	1,644
McPherson Unit	1,335
Mississippi County Work Release	1,008
North Central Unit	4,712
Ouachita River Correctional Unit	5,536
Randall L. Williams Unit	3,376
Texarkana Regional Corr. Ctr.	3,380
Tucker Unit	1,296
Varner Unit	1,960
Wrightsville Unit	3,120
<b>Total Hours</b>	<b>36,490</b>

**REENTRY**

**PROGRAMS - November 2023**

Program Name	Beginning Count	Admitted	Removed	Graduated	End Count	Volunteer Hours
Juvenile Program* (RLW)	8	1	0	0*	6	0
Peer Recovery (Esters - DHS)	0	0	0	0	0	0
Release (Ester)	20	4	4	0	20	0
Veterans Program (Ester)	31	0	3	0	28	0
Veterans Program (EARU)	22	0	0	0	22	0
Lifer	0	0	0	0	0	0
<b>TOTAL</b>	<b>81</b>	<b>5</b>	<b>7</b>	<b>22</b>	<b>54</b>	<b>0</b>

\*Juvenciles are transferred from the program once they reach the age of 18.

**WORKFORCE ALLIANCE FOR GROWTH IN THE ECONOMY (WAGE)**

November 2023 Capacity: 120 Unit:	Participants	Status
Delta	0	Not Active
Ester	0	Not Active
Hawkins	0	Pending Next Class
McPherson	0	Pending Next Class
North Central	0	Pending Next Class
Ouachita River	15	Active
Tucker	16	Active
Wrightsville	2	Active
<b>TOTAL</b>		<b>33</b>

**WRIGHTSVILLE-HAWKINS PATHWAY TO FREEDOM PROGRAM**

November 2023 Capacity: 200	Beginning Count	Enrolled During the Month	Removed	End Count*
Wrightsville-Hawkins PTF	197	10	7	200

**ADVANCED PRINCIPLES AND APPLICATIONS FOR LIFE PROGRAM (APAL)**

November 2023 Capacity: 86	Beginning Count	Admissions During Mo.	Removed*	End Count
Ester	58	0	0	58
Hawkins	16	0	1	15
<b>TOTAL</b>	<b>74</b>	<b>0</b>	<b>1</b>	<b>73</b>

Advanced PAL is an 18-month reentry program that combines a pre-release curriculum with the PAL program.

\*The "Removed" column indicates the number of participants who paroled, completed the program, withdrew from the program, transferred, or were removed from the program for another reason.

**THINK LEGACY**

November 2023 Capacity: 635 Unit	Beginning Count	Admitted	Graduated	Removed*	End Count
Cummins	0	19	0	5	14
Delta Regional	0	24	0	0	24
East Arkansas Regional	0	33	0	0	33
McPherson	0	47	0	5	42
North Central	0	41	0	1	40
Ouachita River	0	30	0	3	27
Tucker	0	16	0	0	16
<b>Total</b>	<b>0</b>	<b>210</b>	<b>0</b>	<b>14</b>	<b>196</b>

THINK LEGACY VOLUNTEER HOURS = 4

\*The "Removed" column indicates the total number of participants who paroled, signed out, transferred, or were removed from the program for any other reason and are no longer in the barracks.

**COLLEGE REPORT November 2023**

COLLEGE PROGRAM LOCATIONS	Beginning Count	Admissions During Mo.	Removed During Mo.	End Count	Staff Enrolled
<b>Arkansas State University</b>					
Grimes Unit	23	0	1	22	0
McPherson Unit	43	0	2	41	0
<b>Ashland University</b>					
North Central Unit	12	0	0	12	0
<b>Mid-America Seminary College</b>					
Varner Unit	36	0	0	36	0
<b>Philander Smith College</b>					
East Arkansas Regional Unit	49	0	6	43	0
Tucker Unit	22	0	0	22	0
<b>Southeast Arkansas College</b>					
Cummins Unit	31	0	1	30	0
Delta Unit	19	0	0	19	0
Varner Unit	30	0	2	28	0
<b>Shorter College</b>					
Hawkins Unit	16	0	2	14	0
Ouachita River Unit	17	0	1	16	0
Pine Bluff Complex	48	0	3	45	0
Texarkana Regional	7	0	0	7	0
Wrightsville Unit	20	0	7	13	0
<b>TOTAL</b>	<b>373</b>	<b>0</b>	<b>25</b>	<b>348</b>	<b>0</b>

## TRAINING

### DIVISION OF CORRECTION TRAINING - November 2023

#### BASIC TRAINING DIVISION –

BCOT Class 2023-N, led by instructor Christina Caldwell, graduated on November 9 with a total of 28 cadets.

#### IN-SERVICE DIVISION –

Classes held by the Training Academy during the month included:

- Taser Certification/Recertification – 11/07 (8 hours); Instructor: Adam Nading – 30 participants

During the month of November 2023, the Training Academy held one class that totaled 240 hours with a total of 30 participants. In-service training hours for November 2023 total 240 hours.

#### eCADEMY –

During November, 484 ADC employees completed a total of 7,105 hours of eCADEMY training.

## HEALTH/CORRECTIONAL PROGRAMS

### CHAPLAINCY SERVICES AND COMMUNITY SPEAKING EVENTS

#### Cummins Unit –

Volunteers from the Institute of Basic Life Principles conducted their Basic Seminar on November 13 – 16. At a graduation ceremony following the conclusion of the seminar, all 60 participating inmates received certificates of completion.

#### Delta Regional Unit –

Twenty-four inmate students completed the Life Principles Basic Seminar 101 from November 28 - 30.

#### Maximum Security Unit –

Intercessory Prayer Class began on November 17 with 25 inmate participants. The class is facilitated by five volunteers. On November 28, 2,300 Christmas cards donated by Day Springs were distributed to 580 inmates.

## ACCREDITATION

#### ACA Internal Audits Completed:

11/06-11/08 Maximum Security File Review  
11/13-11/17 McPherson/Grimes File Review

#### Classes Taught:

11/08 BCOT

## VOLUNTEER SERVICES - November 2023

Program Name	Hours
Yoga (Varner)	4.25
NTI (NWAARC)	6
<b>Total</b>	<b>10.25</b>

## MENTAL HEALTH SERVICES

### Reduction of Sexual Victimization Program (RSVP) and Sex Offender Treatment Programs (SOFT):

November 2023	Capacity	Beginning Count	Completed	Removed	Admissions	End Count
RSVP	238	237	0	4	3	236
SOFT	30	6	0	0	0	6
<b>Total</b>	<b>268</b>	<b>243</b>	<b>0</b>	<b>4</b>	<b>3</b>	<b>242</b>

There are 873 males on the waiting list for RSVP and zero females on the waiting list for SOFT who are within five years of their TE date. Of those, eight inmates are mandated by the Parole Board.

The average time on the waiting list from request is between one and two months for those stipulated.

\*The total on the waiting list, including those not currently within the identified timeframe, is 1,628 males and zero females. Of these, 873 are eligible and 755 are ineligible for the program. There are zero PREA inmate in the program at this time.

\*Ineligibility is due to being in restrictive housing, having class IV status, or receiving a major disciplinary within the last 60 days.

### Therapeutic Community (TC):

November 2023 Unit	Capacity	Beginning Count	Completed	Removed	Admissions	End Count
Tucker	62	59	3	3	6	59
<b>Total</b>	<b>62</b>	<b>59</b>	<b>3</b>	<b>3</b>	<b>6</b>	<b>59</b>

### Substance Abuse Treatment Program (SATP):

November 2023 Unit	Capacity	Beginning Count	Completed	Removed	Admissions	End Count
Benton	20	20	1	0	1	20
Maximum Security	4	2	0	0	0	2
<b>Total</b>	<b>24</b>	<b>22</b>	<b>1</b>	<b>0</b>	<b>1</b>	<b>22</b>

**MENTAL HEALTH SERVICES, *continued***

**PILOT PROGRAM – Substance User Rehabilitation Services (SURS):**

November 2023 Unit	Capacity	Beginning Count	Completed	Removed	Admissions	End Count
Cummins	45	44	5	2	7	44
McPherson	150	149	18	5	24	150
Grimes	50	47	16	2	20	49
Randall L. Williams	150	148	27	10	32	143
Wrightsville	150	147	12	14	21	142
<b>Total</b>	<b>545</b>	<b>535</b>	<b>78</b>	<b>33</b>	<b>104</b>	<b>528</b>

For TC/SATP/SURS, there are 2,852 males and 391 females on the waiting list who are within five years of their release date. Of those, 52 are mandated by the Parole Board.

The average time on the waiting list from request is 13.5 days.

\*The total on the waiting list, including those not currently within the identified timeframe, is 3,913 males and 464 females. Of these, 3,243 are eligible and 1,134 are ineligible for the program.

**\*Ineligibility is due to being in restrictive housing, having class IV status, or receiving a major disciplinary within the last 60 days.**

**Ouachita River Correctional Unit (ORCU) Residential Program Unit (RPU):**

The RPU had zero admissions and one discharge in November for an end-of-month count of 116.

**McPherson Unit Mental Health Residential Program Unit (RPU):**

There were three admissions and three discharges in November for an end-of-month count of 40.

**Habilitation Program:**

The Habilitation Program at the Ouachita River Correctional Unit provided treatment services to 40 inmates in November. There were three admissions and zero discharges, which resulted in an end-of-month count of 43.

**Anger Management Treatment:**

The Anger Management Treatment Program at the Cummins Unit did not provide treatment services to any inmates in November. There were no admissions or discharges, for an end-of-month count of zero.

**Suicide:**

There were 103 suicidal threats in November. There were 14 attempts, none of which resulted in death.

**Staffing:**

The following Mental Health Services and Substance Abuse Treatment Program (SATP) positions were vacant in August and November 2023:

Positions	FTEs*	October	November
Psychologists	2	1	0
Psychological Examiners	2	0	0
Social Workers	26	5	7
Licensed Professional Counselors	2	0	0
Rehab Director	1	1	1
Rehab Facility Supervisors	3	1	1
Advisors	55	23	25
Substance Abuse Program Coord.	5	1	2
Substance Abuse Program Leaders	40	8	15
Administrative Specialist	10	5	4
Rehab Program Managers	7	7	7

\*FTE refers to authorized Full Time Equivalent positions.

**Self-Study Classes:**

Classes	Number of Participants	Number Completed	Waiting List
Anger Management	97	95	731
Thinking Errors	152	134	624
Substance Abuse Education	70	70	518
Communication Skills	88	88	686
Domestic Violence	33	33	177
Victims of Domestic Violence	15	15	59
Stress Management	84	84	656
Parenting	51	51	228

**Outpatient:**

There were 2,211 inmates on the mental health medical log at the beginning of November. Mental Health staff conducted the following contacts during the month:

Case Management Contacts	1,977
Requests for Interviews	347
Testing	0
Intakes	507
Unit Requests	1,470
Pre-Lockup Reviews	386
Routine Restrictive Housing Reviews	834
Restrictive Housing Rounds	10,997
PREA Evaluations	41
Routine Follow-up	648
834 Requests	34

**MENTAL HEALTH SERVICES, *continued***

**County Mental Health Requests:**

During November, there were 254 requests received of a mental health nature. Of those, three inmates was fast-tracked to ADC.

**County Medical Health Requests:**

During November, there were 765 requests received of a medical nature. A total of 10 inmates were fast-tracked to ADC.

**Medical Contract Reimbursements:**

Sanction reimbursements for ADC in October amounted to \$17,300.00.

**Deaths:**

There were 11 inmate deaths during the month of November. Two were claimed, six were cremated and claimed, three were not claimed.

**Wellpath:**

See attachment for Wellpath’s report regarding outside beds and emergency room visits.

**Medical Grievances:**

In November, there were 114 appeals of medical grievances received and 81 appeals were answered. Two were found to be with merit and two with merit but resolved.

**SEX OFFENDER ASSESSMENT**

**Assessments Completed:**

Risk Level	November	September 1999 through November 2023
Level 1	1	1,239
Level 2	33	9,531
Level 3	4	7,869
Level 4	0	754
Default 3	0	*
<b>Total</b>	<b>38</b>	<b>19,393</b>

\*Default Level 3’s are included in the total number of Level 3’s to date.

**ACIC Numbers:**

The total number of sex offenders registered from September 1999 through November 2023:

Compliant	8,923
Delinquent	1,438
Confined	3,732
Out-of-State	4,358
Address Unknown	150
Deported	207
Incapacitated	121
Out of USA	58
<b>Total</b>	<b>18,987</b>

Consistent with current Arkansas law, deceased offenders no longer remain on the registry.

**PAWS IN PRISON**

November 2023 Unit	Enrolled	Graduated	Foster	Volunteer Hours
Hawkins Unit	5	2	0	0
Maximum Security Unit	8	2	0	0
McPherson Unit	6	6	1	0
North Central Unit	4	2	0	0
Ouachita River Correctional Unit	7	3	1	0
Randall L. Williams Unit	4	4	0	0
Tucker Unit	7	2	0	0
<b>Total</b>	<b>41</b>	<b>21</b>	<b>2</b>	<b>0</b>

**Completed Paws in Prison Training:**

November 2023 Program Graduates	21
YTD Program Graduates	221
Total Graduates Since Inception (Dec 2011)	2,329
Dogs Currently in Foster (Graduated, but Not Adopted)	2
November 2023 Volunteer Hours	0
YTD Volunteer Hours	82

**AGENCY HIGHLIGHTS  
NOVEMBER 2023**

**PROMOTIONS**

Some of the security promotions during the month of November included:

**Grimes Unit**

- Sgt. Erin Zuber

**Varner Unit**

- Sgt. Keirice Sawyer
- Sgt. Thomas Walden

**McPherson Unit**

- Sgt. Mark Howard

**Wrightsville Unit**

- Sgt. Bob Warren

**North Central Unit**

- Lt. Robert Cross
- Sgt. Dustin Foster
- Lt. Alex Rush

**Ouachita River Unit**

- Sgt. Zachary Dillard
- Sgt. Esteeban Gomez
- Captain Dillan Jennings

**Transportation**

- Lt. Roshane Powell
- Sgt. Jared Womble

**VARNER UNIT BREAKS GROUND ON NEW SEMINARY SCHOOL**



The prison seminary program is growing and getting a new home! A ground breaking ceremony was held at the Varner Unit for a 5,000 sq. ft. building with a library, 4 classrooms, and enough space for 100 students. It will also provide much-needed space for GED classes and night courses being taught at the unit. The building is being paid for with private donations. Seminary students earn a bachelor of arts degree in Christian Studies from the College of Mid-America Baptist Theological Seminary, based in Memphis. Inmates of all faiths can apply. Graduates can become field ministers, peer mentors, or chaplains' assistants while still incarcerated. Once released, they can use their degrees to become pastors in the free world.

**TUCKER FARM ADDED TO THE CENTURY FARM PROGRAM**



The Tucker Farm was recognized as an Arkansas Century Farm along with 36 other farms. The Arkansas Century Farm Program is administered by the Arkansas Department of Agriculture and recognizes Arkansas's rich agricultural heritage and honors those who have owned and farmed the same land for at least 100 years.

**ARKANSAS CORRECTIONAL INDUSTRIES HOSTS ANNUAL SHOWCASE**

The annual showcase held at the Arkansas State Fairgrounds welcomed local vendors, customers and staff for a display of various products and services offered by ACI. Free lunch was sponsored by Razor Chemicals and door prizes were given away with the grand prize of an Apple Ipad!



## REGIONAL MAINTENANCE PROJECT HIGHLIGHTS

NOVEMBER 2023

**Camp Couchdale Clean up - November 7:**

*Ouachita River Unit Regional Maintenance*



**Dumas Street Clean up - November 17:**

*Varner Unit Regional Maintenance*



**Wrightsville Trash Clean up - November 13:**

*Wrightsville Complex Regional Maintenance*



**2023 INFORMAL GRIEVANCE REPORT**

Month	BENTON	HAWK/M	HAWK/F	WRTS	EARU & MX	GRIMES	RLW	MCWR	MCPH	MSU	NCU	PBU	NWA	TU	TRCC	VSMX	VU	CU & CMU	ORCU	Ester	DRU	TOTAL
JAN	1	8	14	40	138	211	26	2	248	74	43	44	0	57	6	296	38	115	94	23	113	1,591
FEB	4	2	14	62	123	238	22	1	256	52	56	38	0	60	1	250	37	150	74	35	77	1,552
MAR	5	4	8	42	153	324	28	0	224	99	64	75	0	84	0	173	44	164	137	47	111	1,786
APR	7	1	13	61	106	264	12	0	245	77	96	61	0	47	0	194	30	122	131	36	136	1,639
MAY	6	4	13	46	168	214	21	0	272	138	87	41	0	42	1	151	56	86	112	27	148	1,633
JUN	6	3	55	70	135	198	15	1	290	95	75	46	0	35	1	161	27	151	85	17	136	1,602
JUL	0	12	22	33	146	160	11	0	162	71	79	30	0	47	4	142	33	161	103	25	111	1,352
AUG	1	4	28	66	330	245	15	0	305	77	80	53	0	70	1	150	25	108	148	38	141	1,885
SEPT	3	10	29	80	156	245	13	0	157	51	97	28	1	61	0	149	32	91	96	19	143	1,461
OCT	1	16	11	82	134	212	10	0	201	97	109	32	0	79	1	114	35	76	140	24	162	1,536
NOV	0	15	5	13	251	205	6	0	286	48	75	25	0	76	1	111	36	129	94	19	75	1,470
DEC																						0
<b>TOTAL</b>	<b>34</b>	<b>79</b>	<b>212</b>	<b>595</b>	<b>1,840</b>	<b>2,516</b>	<b>179</b>	<b>4</b>	<b>2,646</b>	<b>879</b>	<b>861</b>	<b>473</b>	<b>1</b>	<b>658</b>	<b>16</b>	<b>1,891</b>	<b>393</b>	<b>1,353</b>	<b>1,214</b>	<b>310</b>	<b>1,353</b>	<b>17,507</b>

**2023 FORMAL GRIEVANCE REPORT**

Month	BENTON	HAWK/M	HAWK/F	WRTS	EARU & MX	GRIMES	RLW	MCWR	MCPH	MSU	NCU	PBU	NWA	TU	TRCC	VSMX	VU	CU & CMU	ORCU	Ester	DRU	TOTAL
JAN	1	5	4	39	247	127	8	0	86	79	34	29	0	44	0	38	23	84	77	11	63	999
FEB	2	6	3	51	212	163	13	0	83	77	37	22	0	38	0	119	19	100	72	15	41	1,073
MAR	2	4	4	37	246	196	14	0	93	104	48	42	0	58	1	139	32	104	115	21	69	1,329
APR	4	1	9	40	200	154	10	0	94	92	65	52	0	36	2	146	16	101	92	13	86	1,213
MAY	3	0	5	31	284	127	8	0	97	91	57	28	0	24	0	114	36	69	93	11	68	1,146
JUN	3	3	15	29	250	112	6	0	109	86	57	40	0	22	1	120	19	96	69	7	75	1,119
JUL	0	4	9	22	264	74	4	0	83	44	37	24	0	36	0	116	16	99	74	11	60	977
AUG	0	4	8	41	204	138	5	0	102	72	46	26	0	53	0	119	12	66	103	22	80	1,101
SEPT	0	2	7	41	218	138	9	0	79	50	53	11	0	46	1	125	21	55	69	6	96	1,027
OCT	0	6	6	50	257	139	4	0	124	91	69	16	0	40	0	102	21	66	84	14	68	1,157
NOV	0	6	1	8	290	103	4	0	124	52	48	10	0	48	0	89	23	59	72	9	35	981
DEC																						0
<b>TOTAL</b>	<b>15</b>	<b>41</b>	<b>71</b>	<b>389</b>	<b>2,672</b>	<b>1,471</b>	<b>85</b>	<b>0</b>	<b>1,074</b>	<b>838</b>	<b>551</b>	<b>300</b>	<b>0</b>	<b>445</b>	<b>5</b>	<b>1,227</b>	<b>238</b>	<b>899</b>	<b>920</b>	<b>140</b>	<b>741</b>	<b>12,122</b>

Report includes Pine Bluff Reentry (PBR), Pine Bluff Unit (PBU) and Pine Bluff Work Release (PBW).



## INMATE INSTITUTIONAL GRIEVANCE APPEAL REPORT – NOVEMBER 2023

	Acknowledged	Rejected	Processed W/O Merit	Processed W/ Merit
Benton Unit	0	0	0	0
Benton Work Release	0	0	0	0
Cummins Unit	13	12	5	0
Cummins Modular Unit	0	0	0	0
Delta Regional Unit	8	6	12	0
East Arkansas Regional Unit	7	2	8	0
East Arkansas Regional Max Unit	90	18	102	0
Ester Unit	2	2	3	0
Grimes Unit	22	24	29	0
Maximum Security Unit	24	12	31	0
Tucker Re-Entry	0	0	0	0
McPherson Unit	6	11	15	0
McPherson Mental Health Residential Program Unit	1	0	1	0
Mississippi County Work Release Center	0	0	0	0
Northwest Arkansas Work Release Center	0	0	0	0
North Central Unit	19	2	32	0
Ouachita River Correctional Unit	20	12	16	0
ORCU Hospital	0	0	0	0
ORCU New Commitment	0	0	0	0
ORCU Mental Health Residential Program Unit	4	1	2	0
Pine Bluff Unit	3	1	2	0
Pine Bluff Re-Entry	0	0	0	0
Randall L. Williams Correctional Facility	0	0	0	0
Texarkana Regional Correctional Center	0	0	0	0
Tucker Unit	16	5	14	0
Varner Super Max	36	30	20	1
Varner Unit	6	7	3	0
Wrightsville Unit	7	5	10	0
Hawkins Center	1	1	1	0
Hawkins for Males	1	0	0	0
Hawkins SPU	0	0	0	0
<b>Total</b>	<b>286</b>	<b>151</b>	<b>306</b>	<b>1</b>

## ADMISSIONS AND RELEASES – NOVEMBER 2023

<b>Admissions</b>	<b>Male</b>	<b>Female</b>	<b>Total</b>
Asian	1	0	1
Black	153	11	164
Caucasian	261	57	318
Hispanic	20	3	23
Native American Indian	1	1	2
Native Hawaiian or Pacific Island	2	0	2
Other	0	0	0
Unknown	0	0	0
<b>Total</b>	<b>438</b>	<b>72</b>	<b>510</b>

<b>Releases</b>	<b>Male</b>	<b>Female</b>	<b>Total</b>
Asian	1	0	1
Black	108	9	117
Caucasian	214	55	269
Hispanic	10	2	12
Native American Indian	1	0	1
Native Hawaiian or Pacific Island	0	0	0
Other	2	0	2
Unknown	0	0	0
<b>Total</b>	<b>336</b>	<b>66</b>	<b>402</b>

ADC INMATE POPULATION GROWTH 2000-2028 - NOVEMBER 2023

Mo.	2000	2001	2002	2003	2004	2005	2006	2007	2008	2009	2010	2011	2012	2013	2014	2015	2016	2017	2018	2019	2020	2021	2022	2023
Jan.	11,984	11,908	12,402	13,015	13,105	13,595	13,481	13,839	14,518	14,796	15,334	16,312	15,134	14,815	17,481	18,142	17,785	17,824	18,201	17,958	17,989	16,119	17,154	17,682
Feb.	12,169	12,022	12,529	13,054	13,166	13,783	13,633	14,012	14,603	14,883	15,374	16,209	14,990	15,008	17,438	18,082	17,625	17,608	17,998	17,846	18,181	16,120	17,077	17,814
March	12,006	12,033	12,299	13,108	13,088	13,418	13,534	13,772	14,580	14,843	15,290	16,095	14,964	14,665	17,395	18,233	17,573	17,666	18,089	17,898	17,860	16,085	16,992	18,075
April	12,069	12,167	12,465	13,213	13,323	13,469	13,554	13,851	14,769	14,937	15,570	16,172	15,124	14,850	17,604	18,703	17,815	17,798	18,227	17,977	17,331	16,250	17,059	18,206
May	12,109	12,384	12,558	13,463	13,556	13,528	13,711	14,146	14,880	15,146	15,694	16,062	15,132	15,074	17,593	18,693	17,769	17,652	17,945	17,817	16,694	16,476	17,229	18,267
June	12,005	12,108	12,439	13,418	13,389	13,251	13,430	13,915	14,700	15,025	15,564	15,554	14,832	14,825	17,340	18,813	17,973	17,963	17,972	17,942	16,552	16,560	17,129	18,213
July	12,030	12,190	12,622	13,509	13,528	13,286	13,560	14,082	14,868	15,195	15,807	15,519	14,879	15,379	17,522	18,870	18,130	18,180	18,005	18,002	16,511	16,638	17,109	18,397
August	12,087	12,371	12,815	13,565	13,632	13,419	13,646	14,224	15,100	15,385	15,829	15,240	14,675	16,103	17,549	18,806	17,919	18,051	17,751	18,090	16,367	16,655	17,274	18,375
September	11,983	12,289	12,774	13,341	13,516	13,237	13,652	14,217	14,850	15,285	16,025	15,172	14,724	16,412	17,605	18,549	18,026	18,179	17,865	17,856	16,215	16,698	17,432	18,380
October	12,119	12,348	12,942	13,341	13,584	13,363	13,775	14,349	14,836	15,381	16,311	15,271	14,856	16,993	17,880	18,430	18,127	18,348	17,943	17,947	16,311	16,821	17,480	18,557
November	12,094	12,408	13,162	13,408	13,706	13,587	13,913	14,437	15,025	15,340	16,460	15,205	14,625	17,168	17,848	17,981	17,573	17,973	17,666	18,060	16,165	16,982	17,521	18,500
December	11,856	12,333	12,845	13,106	13,470	13,338	13,728	14,315	14,716	15,199	16,204	15,062	14,654	17,235	17,874	17,707	17,537	18,078	17,799	17,759	16,094	17,023	17,648	
Net Ann. Inc.	29	477	512	261	364	-132	390	587	401	483	1,005	-1,142	-408	2,581	639	-167	-170	541	-279	-40	-1,665	929	625	852
Avg. Mo. Inc.	2	40	43	22	30	-11	33	49	33	40	84	-95	-34	215	53	-14	-14	45	-23	-3	-139	77	52	77

Population is total jurisdictional count at end of each month. Population at end of month December 1999 was 11,827.

Average monthly population increased for past fifteen years 2008 - 2022 is 18

Average monthly population increased for past ten years Jan. 2013 - Dec 2022 is 25

Average monthly population decreased for past five years 2018 - 2022 is -7

Projected at Growth of 18 per Month

Mo.	2008	2009	2010	2011	2012	2013	2014	2015	2016	2017	2018	2019	2020	2021	2022	2023	2024	2025	2026	2027	2028	2029	
	Actual	Actual	Actual	Actual	Actual	Actual	Actual	Actual	Actual	Actual	Actual	Actual	Actual	Actual	Actual	Actual/Proj	Proj.	Proj.	Proj.	Proj.	Proj.	Proj.	
January	14,518	14,796	15,334	16,312	15,134	14,815	17,481	18,142	17,785	17,824	18,201	17,958	17,989	16,119	17,154	17,682	18,536	18,752	18,968	19,184	19,400	19,616	
February	14,603	14,883	15,374	16,209	14,990	15,008	17,438	18,082	17,625	17,608	17,998	17,846	18,181	16,120	17,077	17,814	18,554	18,770	18,986	19,202	19,418	19,634	
March	14,580	14,843	15,290	16,095	14,964	14,665	17,395	18,233	17,573	17,666	18,089	17,898	17,860	16,085	16,992	18,075	18,572	18,788	19,004	19,220	19,436	19,652	
April	14,769	14,937	15,570	16,172	15,124	14,850	17,604	18,703	17,815	17,798	18,227	17,977	17,331	16,250	17,059	18,206	18,590	18,806	19,022	19,238	19,454	19,670	
May	14,880	15,146	15,694	16,062	15,132	15,074	17,593	18,693	17,769	17,652	17,945	17,817	16,694	16,476	17,229	18,267	18,608	18,824	19,040	19,256	19,472	19,688	
June	14,700	15,025	15,564	15,554	14,832	14,825	17,340	18,813	17,973	17,963	17,972	17,942	16,552	16,560	17,129	18,213	18,626	18,842	19,058	19,274	19,490	19,706	
July	14,868	15,195	15,807	15,519	14,879	15,379	17,522	18,870	18,130	18,180	18,005	18,002	16,511	16,638	17,109	18,397	18,644	18,860	19,076	19,292	19,508	19,724	
August	15,100	15,385	15,829	15,240	14,675	16,103	17,549	18,806	17,919	18,051	17,751	18,090	16,367	16,655	17,274	18,375	18,662	18,878	19,094	19,310	19,526	19,742	
September	14,850	15,285	16,025	15,172	14,724	16,412	17,605	18,549	18,026	18,179	17,865	17,856	16,215	16,698	17,432	18,380	18,680	18,896	19,112	19,328	19,544	19,760	
October	14,836	15,381	16,311	15,271	14,856	16,993	17,880	18,430	18,127	18,348	17,943	17,947	16,311	16,821	17,480	18,557	18,698	18,914	19,130	19,346	19,562	19,778	
November	15,025	15,340	16,460	15,205	14,625	17,168	17,848	17,981	17,573	17,973	17,666	18,060	16,165	16,982	17,521	18,500	18,716	18,932	19,148	19,364	19,580	19,796	
December	14,716	15,199	16,204	15,062	14,654	17,235	17,874	17,707	17,537	18,078	17,799	17,759	16,094	17,023	17,648	18,518	18,734	18,950	19,166	19,382	19,598	19,814	
Net Ann. Inc.	401	483	1,005	-1,142	-408	2,581	639	-167	-170	541	-279	-40	-1,665	929	625	870	216	216	216	216	216	216	216
Ave. Mo. Inc.	33	40	84	-95	-34	215	53	-14	-14	45	-23	-3	-139	77	52	73	18	18	18	18	18	18	18

MONTHLY POPULATION AVERAGES - NOVEMBER 2023

Unit/Center	11/1	11/2	11/3	11/6	11/7	11/8	11/9	11/10	11/13	11/14	11/15	11/16	11/17	11/20	11/21	11/22	11/23	11/24	11/27	11/28	11/29	11/30	AVG
Benton	353	348	342	337	337	337	347	354	354	353	352	356	354	352	352	358	355	355	355	354	355	352	351
Cummins	1,984	1,987	1,993	1,990	1,990	1,986	1,998	1,998	1,998	2,001	2,001	2,000	2,003	2,003	2,003	1,996	1,993	1,993	1,992	1,993	1,994	1,993	1,995
Delta	626	626	626	623	623	623	623	624	624	624	628	627	630	629	628	628	625	625	625	625	625	619	625
East AR Reg	1,651	1,650	1,658	1,659	1,660	1,656	1,654	1,651	1,651	1,649	1,651	1,650	1,653	1,652	1,648	1,653	1,658	1,658	1,658	1,658	1,658	1,658	1,654
Ester	612	612	612	609	605	609	609	602	602	600	611	605	609	611	608	614	613	613	613	612	611	609	609
Grimes	1,089	1,088	1,087	1,096	1,093	1,095	1,093	1,094	1,094	1,094	1,097	1,093	1,093	1,090	1,098	1,092	1,089	1,089	1,089	1,105	1,100	1,100	1,094
Max Sec	581	581	585	584	583	583	583	583	583	583	583	581	580	580	580	580	580	580	581	581	581	581	582
McPherson	1,053	1,052	1,049	1,048	1,047	1,044	1,048	1,046	1,046	1,053	1,046	1,047	1,049	1,050	1,052	1,050	1,052	1,052	1,052	1,042	1,053	1,049	1,049
MCWRC	178	178	185	185	185	183	183	185	185	185	184	184	185	185	183	185	185	185	185	185	181	181	184
N Central	870	869	866	866	876	868	874	869	869	868	860	859	858	855	868	880	877	877	877	876	875	900	871
NWAWRC	100	100	100	99	95	100	100	99	99	100	100	100	100	100	100	100	100	100	100	100	100	100	100
Ouachita River	1,938	1,936	1,917	1,934	1,935	1,934	1,933	1,930	1,930	1,925	1,924	1,926	1,925	1,928	1,922	1,915	1,913	1,913	1,912	1,913	1,916	1,917	1,924
Randall L Williams	542	543	547	549	551	547	546	546	546	543	541	540	541	540	544	533	539	539	539	537	540	545	543
Pine Bluff	539	539	537	536	535	541	538	533	533	541	541	540	536	537	542	542	538	538	538	536	535	529	537
PB Reentry	52	51	52	52	52	50	54	54	54	54	54	54	54	54	54	54	54	54	54	54	54	54	53
TRCC	127	127	127	127	127	127	130	130	130	130	130	130	131	131	131	131	130	130	130	129	127	127	129
Tucker	966	972	971	996	997	995	995	993	993	992	994	989	990	992	991	990	997	997	996	996	1,001	1,000	991
Varner	1,698	1,699	1,700	1,699	1,699	1,699	1,695	1,692	1,691	1,688	1,700	1,697	1,700	1,699	1,698	1,697	1,695	1,695	1,695	1,695	1,694	1,694	1,696
Wrightsville	856	860	857	851	847	848	846	844	844	844	848	851	846	845	866	866	867	867	867	867	866	871	856
WR Hawkins-Females	255	255	255	252	252	256	254	253	253	256	256	256	256	256	256	256	256	256	256	255	255	255	255
WR Hawkins-Males	197	197	198	198	198	200	200	199	199	199	198	198	199	199	199	200	200	200	200	200	200	200	199
<b>Total ADC</b>	<b>16,267</b>	<b>16,270</b>	<b>16,264</b>	<b>16,290</b>	<b>16,287</b>	<b>16,281</b>	<b>16,303</b>	<b>16,279</b>	<b>16,278</b>	<b>16,279</b>	<b>16,299</b>	<b>16,283</b>	<b>16,292</b>	<b>16,288</b>	<b>16,323</b>	<b>16,320</b>	<b>16,316</b>	<b>16,316</b>	<b>16,314</b>	<b>16,314</b>	<b>16,321</b>	<b>16,334</b>	<b>16,297</b>
ALETA	18	18	18	18	18	18	18	18	18	18	18	18	18	18	18	18	18	18	18	18	18	18	18
Ar State Police	63	63	63	62	62	61	61	60	60	60	60	59	59	59	59	58	58	58	58	58	58	58	60
Co Jail / M	1,731	1,749	1,721	1,689	1,698	1,698	1,689	1,695	1,695	1,716	1,680	1,715	1,731	1,701	1,649	1,648	1,619	1,619	1,619	1,615	1,619	1,592	1,677
Co Jail / F	159	162	165	168	169	164	159	160	160	158	167	166	164	166	167	170	164	164	164	166	159	163	164
Total Co Jail BK	1,890	1,911	1,886	1,857	1,867	1,862	1,848	1,855	1,855	1,874	1,847	1,881	1,895	1,867	1,816	1,818	1,783	1,783	1,783	1,781	1,778	1,755	1,841
309/M	174	174	174	176	175	178	178	176	176	175	175	175	176	178	178	178	181	181	181	181	181	181	177
309/F	111	111	111	111	116	119	119	118	118	118	118	118	118	118	119	119	117	117	117	124	124	125	118
Total Act 309	285	285	285	287	291	297	297	294	294	293	293	293	294	296	297	297	298	298	298	305	305	306	295
<b>Total Non ADC</b>	<b>2,256</b>	<b>2,277</b>	<b>2,252</b>	<b>2,224</b>	<b>2,238</b>	<b>2,238</b>	<b>2,224</b>	<b>2,227</b>	<b>2,227</b>	<b>2,245</b>	<b>2,218</b>	<b>2,251</b>	<b>2,266</b>	<b>2,240</b>	<b>2,190</b>	<b>2,191</b>	<b>2,157</b>	<b>2,157</b>	<b>2,157</b>	<b>2,162</b>	<b>2,159</b>	<b>2,137</b>	<b>2,214</b>
<b>Total</b>	<b>18,523</b>	<b>18,547</b>	<b>18,516</b>	<b>18,514</b>	<b>18,525</b>	<b>18,519</b>	<b>18,527</b>	<b>18,506</b>	<b>18,505</b>	<b>18,524</b>	<b>18,517</b>	<b>18,534</b>	<b>18,558</b>	<b>18,528</b>	<b>18,513</b>	<b>18,511</b>	<b>18,473</b>	<b>18,473</b>	<b>18,471</b>	<b>18,476</b>	<b>18,480</b>	<b>18,471</b>	<b>18,511</b>

## FISCAL YEAR 2023 COUNTY JAIL BACKUP - NOVEMBER 2023

DAY		Jul-23		Aug-23		Sep-23		Oct-23		Nov-23
1	*	2,053		2,207		2,062	*	2,009		1,890
2	*	2,053		2,206	*	2,062		2,016		1,911
3		2,073		2,202	*	2,062		2,004		1,886
4		2,077		2,218		2,052		2,013	*	1,886
5		2,077	*	2,218		2,052		2,022	*	1,886
6		2,085	*	2,218		2,054		2,015		1,857
7		2,120		2,163		2,028	*	2,015		1,867
8	*	2,120		2,156		2,044	*	2,015		1,862
9	*	2,120		2,137	*	2,044		2,051		1,848
10		2,139		2,132	*	2,044		2,010		1,855
11		2,103		2,127		2,030		2,033	*	1,855
12		2,087	*	2,127		2,021		2,050	*	1,855
13		2,103	*	2,127		1,989		2,030		1,855
14		2,111		2,119		2,019	*	2,030		1,874
15	*	2,111		2,116		2,046	*	2,030		1,847
16	*	2,111		2,120	*	2,046		2,008		1,881
17		2,106		2,122	*	2,046		2,023		1,895
18		2,114		2,147		2,030		2,027	*	1,895
19		2,144	*	2,147		2,000		2,044	*	1,895
20		2,146	*	2,147		1,999		2,041		1,867
21		2,153		2,104		2,046	*	2,041		1,816
22	*	2,153		2,101		2,057	*	2,041		1,818
23	*	2,153		2,111	*	2,057		2,058		1,783
24		2,146		2,118	*	2,057		1,956		1,783
25		2,150		2,152		2,035		1,962	*	1,783
26		2,182	*	2,152		2,026		1,935	*	1,783
27		2,212	*	2,152		1,992		1,934		1,783
28		2,225		2,155		1,981	*	1,934		1,781
29	*	2,225		2,154		2,009	*	1,934		1,778
30	*	2,225		2,118	*	2,009		1,938		1,755
31		2,187		2,099				1,913		
<b>Avg Daily Backup</b>		<b>2,131</b>		<b>2,147</b>		<b>2,033</b>		<b>2,004</b>		<b>1,844</b>

**Notes: Totals do not include 309 Contracts in County Jails (maximum of 336)**

**County Jail Back-up Average for November 2023 - 1,844**

**County Jail Back-up Fiscal Year Average as of November 30, 2023 - 2,032**

**Short-Term Revocation Program Average for November 2023 - 271**

**Short-Term Revocation Program Fiscal Year Average as of November 30, 2023 - 284**

## STTG UNIT COUNTS – NOVEMBER 2023

Unit	Beginning Total	Confirmed	Suspected	In	Out	Paroled	Removed	Ending Total	Total Unit Population	Unit % of STTG's
Benton	85	0	0	11	10	0	0	86	352	24.43%
Cummins	675	1	0	49	34	12	0	679	1,987	34.17%
Delta	223	0	0	6	9	0	0	220	619	35.54%
EARU	732	0	0	32	16	7	0	741	1,662	44.58%
Ester	111	0	0	63	3	6	0	165	607	27.18%
Grimes	402	0	0	19	10	10	0	401	1,097	36.55%
Hawkins	42	0	0	3	3	0	0	42	456	9.21%
Max	300	0	0	12	8	2	0	302	582	51.89%
Mcperson	48	0	0	1	2	2	0	45	1,039	4.33%
MCWR	47	0	0	0	0	0	0	47	186	25.27%
NCU	266	0	0	31	14	4	0	279	912	30.59%
NWAWR	22	0	0	2	1	0	0	23	100	23.00%
ORCU	337	0	0	37	17	8	0	349	1,574	22.17%
ORCU Intake	108	136	0	0	145	0	0	99	347	28.53%
Pine Bluff	161	0	0	6	9	2	0	156	591	26.40%
RLW	199	0	0	25	18	6	0	210	540	38.89%
TWR	38	0	0	2	4	0	0	36	130	27.69%
Tucker	264	0	0	18	6	7	0	269	997	26.98%
Varner	744	0	0	74	56	7	0	755	1,695	44.54%
Wrightsville	250	0	0	13	9	6	0	248	1,326	18.70%
<b>Total</b>	<b>5,054</b>	<b>137</b>	<b>0</b>	<b>404</b>	<b>374</b>	<b>79</b>	<b>0</b>	<b>5,152</b>	<b>16,799</b>	<b>30.67%</b>

**ORCU Intake brought in 136 new STTG members into ADC last month.**

## STTG DISCIPLINARY REPORT – NOVEMBER 2023

Unit	STTG Incidents	STTG Suspected Incidents	Total Unit Disciplinary	Disciplinary Involving STTG	Percentage
Benton	0	0	17	2	11.76%
Cummins	0	0	322	175	54.35%
Delta	0	0	158	88	55.70%
EARU	0	0	207	125	60.39%
Easter	0	0	23	7	30.43%
Grimes	0	5	211	118	55.92%
Hawkins	0	0	1	0	0.00%
Max	1	0	76	45	59.21%
McPherson	1	0	130	7	5.38%
MCWR	0	0	1	0	0.00%
NCU	5	0	87	52	59.77%
NWAWR	0	0	1	0	0.00%
ORCU	0	0	79	18	22.78%
ORCU Intake	0	0	3	1	33.33%
Pine Bluff	0	0	97	40	41.24%
RLW	0	0	39	22	56.41%
TWR	0	0	1	0	0.00%
Tucker	0	0	44	18	40.91%
Varner	0	0	377	204	54.11%
Wrightsville	0	0	169	74	43.79%
<b>Total</b>	<b>7</b>	<b>5</b>	<b>2,043</b>	<b>996</b>	<b>48.75%</b>

## STTG COUNTS BY STTG SET – NOVEMBER 2023

STTG Set	Benton	Cummins	Delta	EARU	Ester	Grimes	Hawkins	Max	McPherson	MCWR	NCU	NWAWR	ORCU	Intake	PB	RLW	TWR	Tucker	Vарner	Wrightsville	Total
Asian	2	1	0	0	2	0	0	0	0	0	0	0	0	0	0	1	0	1	1	0	8
Bloods	20	149	41	154	29	82	6	70	4	4	51	3	47	16	29	34	9	35	166	49	998
Crips	8	76	32	92	22	46	5	41	3	5	30	1	35	10	21	24	3	20	110	29	613
Folk	3	65	0	62	34	37	5	38	3	1	17	9	13	7	51	10	2	14	80	22	473
GD	22	155	19	187	9	85	5	66	11	12	76	0	74	18	38	44	6	66	150	50	1,093
Mexican	2	23	43	22	5	14	1	5	2	4	7	1	14	5	7	11	0	10	25	13	214
Motorcycle	0	5	0	1	0	0	0	2	1	0	2	0	2	0	0	0	0	2	1	1	17
Other	4	8	14	20	3	15	2	7	4	1	8	0	23	0	3	9	1	19	18	11	170
People	1	34	6	31	5	18	1	18	2	1	15	0	11	3	10	7	1	11	30	7	212
Unknown	0	10	6	6	3	1	2	1	0	0	1	0	16	12	0	0	1	4	12	6	81
W/S	12	67	9	42	48	38	7	9	5	11	26	8	70	13	35	36	13	40	78	32	599
AB	0	10	2	9	1	3	0	2	1	1	9	1	5	1	1	2	1	5	18	2	74
AC	0	8	6	16	3	9	0	6	2	1	3	0	4	1	0	5	0	6	17	1	88
NAE	6	37	7	40	1	25	3	19	6	4	12	0	13	6	6	15	3	19	28	10	260
WAR	6	31	35	59	0	28	5	18	1	2	22	0	22	7	10	2	4	17	21	15	305
<b>Total</b>	<b>86</b>	<b>679</b>	<b>220</b>	<b>741</b>	<b>165</b>	<b>401</b>	<b>42</b>	<b>302</b>	<b>45</b>	<b>47</b>	<b>279</b>	<b>23</b>	<b>349</b>	<b>99</b>	<b>156</b>	<b>210</b>	<b>36</b>	<b>269</b>	<b>755</b>	<b>248</b>	<b>5,152</b>

Key:

GD = Gangster Disciples

W/S = White Supremacist

NAE = New Aryan Empire

WAR = White Aryan Resistance

AC = Aryan Circle

AB = Aryan Brotherhood



## ADC INPATIENT AND EMERGENCY ROOM UTILIZATION

**ACC Inpatient Statistics Past 12 Months per 1,000 Inmates**

	2022	2023											Average
	Dec	Jan	Feb	March	April	May	June	July	Aug	Sept	Oct	Nov	
<b>Admissions</b>	3.7	4.9	2.5	1.9	3.6	7.0	4.6	1.7	1.7	2.8	4.3	3.3	<b>3</b>
<b>Hospital Days</b>	5.6	17.8	7.6	5.0	10.2	17.5	14.9	5.8	10.5	7.2	16.7	10.4	<b>11</b>
<b>Average Length of Stay</b>	1.50	3.63	3.00	2.67	2.83	2.50	3.25	3.33	6.33	2.60	3.88	3.17	<b>3</b>

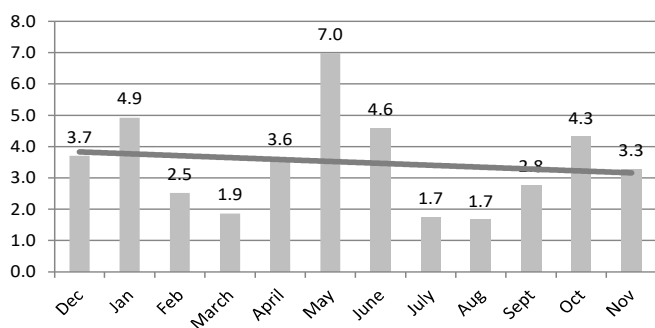
**ACC Emergency Room Visits Past 12 Months per 1,000 Inmates**

	2022	2023											Average
	Dec	Jan	Feb	March	April	May	June	July	Aug	Sept	Oct	Nov	
<b>Emergency Room Visits</b>	8.6	17.2	5.7	5.0	9.0	18.0	13.2	7.0	6.6	8.9	11.9	9.3	<b>10</b>

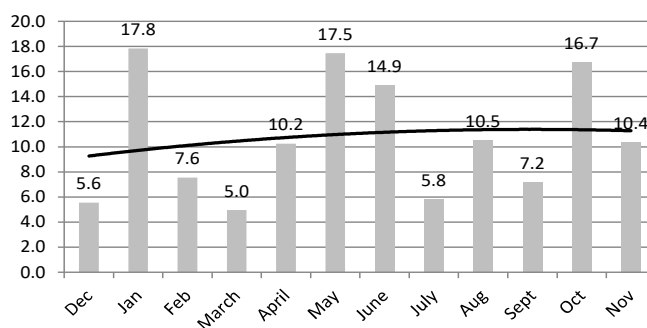
**ACC Population Past 12 Months**

	2022	2023											Average
	Dec	Jan	Feb	March	April	May	June	July	Aug	Sept	Oct	Nov	
<b>Population</b>	1621	1626	1588	1612	1660	1719	1748	1718	1807	1807	1856	1831	<b>1716</b>

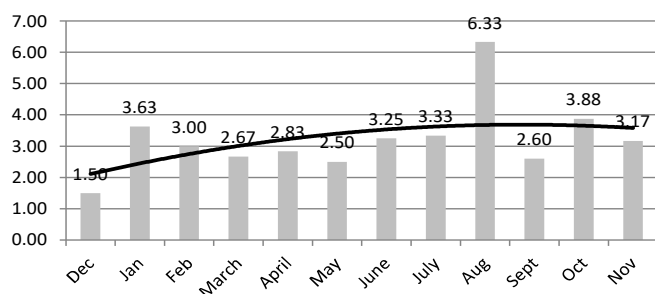
**ACC Admissions per 1,000 Inmates**



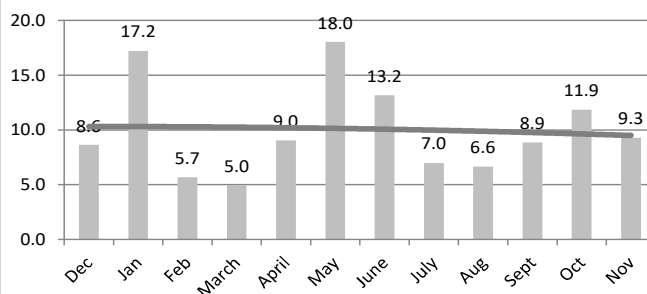
**ACC Hospital Days per 1,000 Inmates**



**ACC Hospital Average Length of Stay per 1,000 Inmates**



**ACC Emergency Room Visits per 1,000 Inmates**



## MEDICAL GRIEVANCE BOARD REPORT – NOVEMBER 2023

Unit	Acknowledged/Received	Rejected	Reviewed & Signed by Dep Director	With Merit	With Merit, but Resolved	% With Merit	Without Merit
Benton	0	0	0	0	0	0.00%	0
CMU	2	0	2	0	0	0.00%	2
Cummins	4	3	8	1	0	12.50%	7
Delta	1	0	3	0	0	0.00%	3
EARU	10	0	5	0	1	20.00%	4
EARU Max	15	3	7	0	0	0.00%	7
Ester	1	0	0	0	0	0.00%	0
Grimes	13	4	4	0	0	0.00%	4
Hawkins	1	0	0	0	0	0.00%	0
McPherson	10	1	6	0	0	0.00%	6
MCWRC	0	0	0	0	0	0.00%	0
MSU	10	0	7	0	0	0.00%	7
North Central	8	0	12	0	0	0.00%	12
NWAWRC	0	0	0	0	0	0.00%	0
Ouachita	12	0	11	0	1	9.09%	10
Pine Bluff	1	0	1	0	0	0.00%	1
Randall L. Williams	0	0	0	0	0	0.00%	0
SNN	0	0	1	0	0	0.00%	1
TRCC	0	0	0	0	0	0.00%	0
Tucker	9	0	6	1	0	16.67%	5
Varner	7	1	2	0	0	0.00%	2
Varner Super Max	8	0	6	0	0	0.00%	6
WRU	1	3	0	0	0	0.00%	0
WHM	1	0	0	0	0	0.00%	0
WWR	0	0	0	0	0	0.00%	0
<b>Total</b>	<b>114</b>	<b>15</b>	<b>81</b>	<b>2</b>	<b>2</b>	<b>4.94%</b>	<b>77</b>

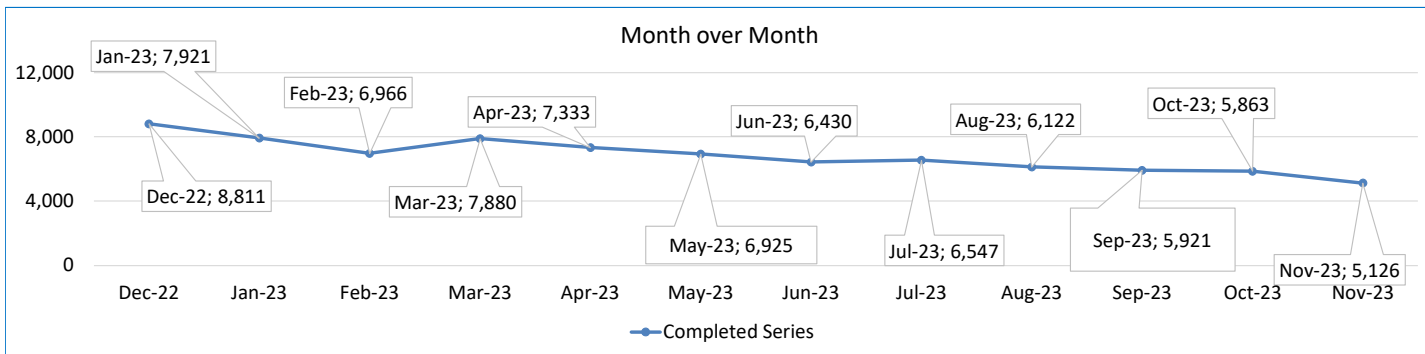


## SECURUS VIDEO VISITATION REPORT NOVEMBER 2023

### AR-DOC SVV Activity Tracker

Total ADP 16,459

Total Visits by Month	Dec-22	Jan-23	Feb-23	Mar-23	Apr-23	May-23	Jun-23	Jul-23	Aug-23	Sep-23	Oct-23	Nov-23
<b>Total (Includes SuperMax)</b>	8,811	7,921	6,966	7,880	7,333	6,925	6,430	6,547	6,122	5,921	5,863	5,126
<b>Target Objective</b>	15,587	15,587	15,587	15,587	15,587	15,587	15,587	15,587	15,587	15,587	15,587	15,587



#### Completed Visits

Site	Current Month	Previous Month
<i>Benton</i>	79	82
<i>Cummins</i>	434	531
<i>Delta Regional</i>	239	246
<i>East Arkansas Regional</i>	429	492
<i>Ester</i>	265	377
<i>Grimes</i>	403	528
<i>J Aaron Hawkins Sr.</i>	360	373
<i>Tucker Max</i>	256	319
<i>Mcperson</i>	264	325
<i>Mississippi County WRC</i>	63	73
<i>North Central</i>	414	442
<i>NW Arkansas WRC</i>	11	13
<i>Ouachita River</i>	462	561
<i>Pine Bluff Complex</i>	173	153
<i>Randall L Williams</i>	109	110
<i>State Police Barracks</i>	54	51
<i>Texarkana Regional</i>	16	19
<i>Tucker Unit</i>	222	240
<i>Varner</i>	648	699
<i>Wrightsville Unit</i>	184	201
<i>Pine Bluff Re-Entry</i>	41	28
<i>Tucker Re-entry</i>	0	0
<b>Total:</b>	<b>5,126</b>	<b>5,863</b>

#### Missed by Inmate

Site	Current Month	Previous Month
<i>Benton</i>	2	3
<i>Cummins</i>	21	23
<i>Delta Regional</i>	3	3
<i>East Arkansas Regional</i>	10	16
<i>Ester</i>	15	1
<i>Grimes</i>	3	20
<i>J Aaron Hawkins Sr.</i>	1	5
<i>Tucker Max</i>	7	8
<i>Mcperson</i>	1	7
<i>Mississippi County WRC</i>	9	2
<i>North Central</i>	3	6
<i>NW Arkansas WRC</i>	2	2
<i>Ouachita River</i>	49	18
<i>Pine Bluff Complex</i>	2	6
<i>Randall L Williams</i>	0	0
<i>State Police Barracks</i>	2	3
<i>Texarkana Regional</i>	2	1
<i>Tucker Unit</i>	9	3
<i>Varner</i>	18	35
<i>Wrightsville Unit</i>	3	10
<i>Pine Bluff Re-Entry</i>	1	1
<i>Tucker Re-entry</i>	0	0
<b>Total:</b>	<b>163</b>	<b>173</b>

**SECURUS TABLET REPORT  
NOVEMBER 2023**

Agency Name	Personal Tablets (All)	\$0	\$5	Community / Inventory	Officer	Total
AR DOC - BENTON UNIT	351	96	255	194	8	553
AR DOC - CUMMINS UNIT	1,277	899	378	676	14	1,967
AR DOC - DELTA REGIONAL UNIT	409	241	168	284	20	713
AR DOC - EAST ARKANSAS REGIONAL UNIT	840	567	273	707	10	1,557
AR DOC - ESTER UNIT	554	358	196	235	20	809
AR DOC - GRIMES UNIT	667	392	275	815	14	1,496
AR DOC - J AARON HAWKINS SR CENTER FOR W	425	239	186	180	19	624
AR DOC - MCPHERSON UNIT	726	467	259	195	21	942
AR DOC - MISSISSIPPI COUNTY WORK RELEASE	182	39	143	143	9	334
AR DOC - NORTH CENTRAL UNIT	642	410	232	146	10	798
AR DOC - NW ARKANSAS WORK RELEASE CENTER	100	28	72	164	8	272
AR DOC - OUACHITA RIVER UNIT	1,232	784	448	571	14	1,817
AR DOC - PINE BLUFF RE-ENTRY CENTER	54	11	43	20	0	74
AR DOC - PINE BLUFF UNIT	401	267	134	254	9	664
AR DOC - RANDALL L WILLIAMS FACILITY	389	229	160	253	15	657
AR DOC - STATE POLICE BARRACKS	57	36	21	16	3	76
AR DOC - TEXARKANA REGION CORRECTION CEN	127	35	92	103	10	240
AR DOC - TUCKER MAXIMUM SECURITY UNIT	242	163	79	316	14	572
AR DOC - TUCKER RE-ENTRY CENTER	0	0	0	45	2	47
AR DOC - TUCKER UNIT	838	566	272	377	11	1,226
AR DOC - VARNER UNIT	816	599	217	683	21	1,520
AR DOC - WRIGHTSVILLE UNIT	632	432	200	612	9	1,253
	<b>10,961</b>	<b>6,858</b>	<b>4,103</b>	<b>6,989</b>	<b>261</b>	<b>18,211</b>

CONSTRUCTION BUDGET / STATUS REPORT - DECEMBER 6, 2023 — [Page 1 of 2]

Fund	Project Description	Approved Budget	Actual Budget Spent	Available Budget	\$ % Complete	Construction % Complete	Notes
700483A	EARU Max Rec Expanded Metal Rec Yard	879,000	860,123	18,877	98%	98%	Construction of the Rec Pens at EARU began on 1/03/2022. We are making great progress with this project. The funds spent on this project is reflective of the engineering fees, material and construction of the panels. Panels are erected and final walk throughs performed. Waiting on locks from the vendor. Once received the project should deliver to the unit.
700483A NDC0200	Tucker Max Expanded Metal Rec Yard	8,160,845	1,142,834 -	7,018,011	14%	13%	Final plans submitted to DBA for approval on pre-cast pens. The funds spent on this project is reflective of engineering fees and the material needed to construct the rec pen panels.
700483A	Cummins Expanded Metal Rec Yard	368,617	72,760	295,857	20%	15%	We are constructing the panels on-site. Funds spent on this project is reflective of engineering fees spent against this portion of the overall project. This project is being finalized with the design team and will be submitted to DBA in the following weeks for review and approval.
HCA0100 NDC0200	Entegrity Energy Improvements NCU Water Conservation	2,490,173	924,851 1,163,469	401,854	84%	84%	All of the water project is complete inside the unit. The only remaining item left is the automatic bar screen. Waiting on the bar screen to arrive.
22V	Fire Suppression	941,252	-	941,252	0%	0%	Vendor has assessed all units and scheduling is being established
7004820	Lethal Fence Control for Cummins, Varner SuperMax, Tucker Max, & EARU	1,490,000	1,143,417	346,583	77%	96%	Material and part delays has driven the delay on project. Funds spent on this project is reflective of design fees and payment for equipment to vendor. The EARU lethal fence upgrade element is complete. Cummins, Max and Varner installation has been completed. Some control work to finish up and training.
7004810	Administrative East Roof Replacement	2,191,441	2,014,962	176,479	92%	100%	Project Scope has been completed. We are awaiting the manufacturer to have their site visit to issue the warranty. We are working with the WD&D and the contractor on liquidatable damages on exceeding days toward completion. Also, we are working with both parties to close out the insurance claims that were experienced during the project.
7004810	Central Warehouse Roof Replacement	385,816	240,200	145,616	62%	100%	
7004810	RLW Roof Replacement	2,722,743	2,364,315	358,427	87%	100%	
865C 7004820 KBR4Q95	NCU Perimeter Security	600,000	20,625 525,861 6,275	47,239	92%	99%	All equipment for NCU and cameras are operational. Walkthrough at NCU has been completed and vendor is working that punch list.
KBR4N98	Max Re-Entry Generator Project	135,000	16,635	118,365	12%	10%	Plans submitted to DBA. We have received our notice to proceed on this project. Funds spent are reflective of engineering fees and site work at location.
NDC0300	Mississippi County 50 Bed Expansion	2,300,000	98,971	2,201,029	4%	3%	The design firm has completed the final design for review. Documents are at DBA for final review. Fees are reflective of design fees allowed under the state contract. Being prepared to be put out to bid.
KBR4Q95	NCU Generator	202,000	177,350	24,650	88%	14%	DBA Approved. Generator has arrived. Funds spent on this project is on-call design fees, generator cost and material needed once we are ready for installation. This project is on hold.
7004811	Tucker Riot Gates	700,000	40,154	659,846	6%	0%	Documents are at DBA under review. Fees are reflective of design fees allowed under the state contract.
7004812 School Funds	Tucker School Project	3,000,000	15,250	2,984,750	1%	0%	Design and development phase of this project has been completed. DBA has reviewed the design and answers have been given to complete review. DBA preparing bid documents to be sent out for bidding.
KBSHW18 ARPA 7004829	Tucker Water Treatment	4,825,445	173,830	4,651,615	4%	12%	The original blueprints has been completed and approved. The detail drawings are complete. Submittals has been presented to DBA for final approval. APRA has given authorization to advertise for bids. The funds spent on this project is reflective of engineering and design fees.



CONSTRUCTION BUDGET / STATUS REPORT - DECEMBER 6, 2023 — [Page 2 of 2]

Fund	Project Description	Approved Budget	Actual Budget Spent	Available Budget	\$ % Complete	Construction % Complete	Notes
<u>Telephone Projects</u>							
Maintenance & Operations	AC All Units	70,000	33,466	36,534	48%	48%	repairing & replacing daily.
	ACA	100,000	48,406	51,594	48%	9%	Working with Central Office/AE, Max, TA, Grimes, McPherson, Cummins & ORCU
	ADA	10,000	0	10,000	0%	0%	on-going
	Additional Metal Fab	15,000	10,470	4,530	70%	15%	on-going
	Boiler Fund	60,500	0	60,500	0%	0%	on-going
	Camera Equipment	320,000	228,772	91,228	71%	28%	cameras as requested/approved.
	Fasttop	15,000	0	15,000	0%	0%	on-going
	Fire Alarm	41,000	23,201	17,799	57%	57%	on-going
	Gates and Fences	25,000	8,013	16,987	32%	32%	on-going
	Locks and Riot Gates	90,000	49,992	40,008	56%	55%	on-going
	Metal Ceilings	20,000	0	20,000	0%	0%	on-going
	ORCU Gravel Pit	15,000	3,931	11,069	26%	26%	on-going
	Stainless Steel	20,000	0	20,000	0%	0%	on-going
	<b>Subtotal</b>		<b>\$ 801,500</b>	<b>\$ 406,251</b>	<b>\$ 395,249</b>		

Capital Projects FY23 Carry Forward	Dog Kennel/Horse Stable Malvern	58,000	24,947	33,053	43%	99%	Dog Kennel is complete. Most all of the work on the horse barn has been performed. Project construction is complete. Awaiting Entergy to supply the power to the building.
	Emergency Generator - All Units	100,000	27,929	72,071	28%	28%	on-going
	Roof Repair-Benton	910,700	0	566,873	38%	30%	Need repairs at Delta, Varner, Tucker Max and Tucker, Wrightsville, Pine Bluff, Cummins, NAWAR and McPherson.
	Roof Repair-Central Office		0				
	Roof Repair-Central Warehouse		0				
	Roof Repairs-Cummins		0				
	Construction/Maintenance		0				
	Roof Repairs-Delta		3,993				
	Roof Repairs-East Arkansas		106,052				
	Roof Repairs-Max		103,794				
	Roof Repair-Malvern		0				
	Roof Repair - McPherson		0				
	Roof Repair - PBU		10,889				
	Roof Repair - RLW		0				
	Roof Repairs-Tucker		52,613				
	Roof Repairs-Varner		50,390				
	Roof Repairs-Wrightsville		16,096				
<b>Subtotal</b>		<b>\$ 1,068,700</b>	<b>\$ 396,703</b>	<b>\$ 671,997</b>			

Architect Fees	30,000	26,282	3,718	88%
<b>Total</b>	<b>\$ 1,900,200</b>	<b>\$ 829,237</b>	<b>\$ 1,070,963</b>	