



DIVISION OF COMMUNITY CORRECTION BOARD REPORT

August 2023

Jerry Bradshaw
Director



FROM THE DIRECTOR:

COMMUNITY EFFORTS

Many call him Community Supervision Agent Hicks. However, you can also call him a hero. The 15-month-old little girl he's holding was the subject of an endangered child alert today. Her mother had left her in the care of the child's grandmother, a parolee, who decided to take off with the little one. No one could find them, and an arrest warrant was issued for interfering with child custody.



Agent Hicks wouldn't give up in his efforts to locate the grandmother. Hours later, he managed to reach her and somehow persuade her to turn herself in at the Stone Co. Sheriff's Office. The grandmother was arrested. The child was recovered....all safe and sound. She's with her mom tonight. Her grandmother is in jail. And Agent Hicks is getting ready for another day of protecting Arkansas.

COMMUNITY SUPERVISION AREA HIGHLIGHTS:

AREA 2

On July 12, an agent who was assisted by agents from the 14th Judicial District Drug Task Force, conducted a home visit at the reported residence of probationer. As a result of the compliance check, two rifles, two shotguns, items of drug paraphernalia used to ingest methamphetamine, a substance suspected to be methamphetamine, and a large quantity of marijuana, including twelve growing plants,

were discovered by agents. The probationer was taken into custody by Baxter County Sheriff's deputies who also collected the evidence found at the residence.

AREA 4

On July 7th, Mississippi County Community Supervision Officers assisted with recovery of an escapee from the Northeast Arkansas Community Corrections Unit in Osceola, Arkansas. These efforts were also answered by numerous law enforcement and corrections units across the state.

AREA 6

On July 6, ISP Agents participated in the Faulkner County Roundup with other ISP agents, Conway PD, Faulkner County Sheriff's Department, DEA, and Arkansas State Police. Five arrests were made which included THC, drug paraphernalia, 70K in Surveying equipment recovered, Felony drug Warrants, Abscond Warrants, Federal Warrant, and Meth and Meth paraphernalia.

RESIDENTIAL SERVICES:

CENTRAL ARKANSAS COMMUNITY CORRECTION CENTER (CACCC)



Congratulations to Officer White on her most recent promotion to Corporal. Cpl. White is being pinned by Captain Johnathan Lanes

and Lt. Sammie Owens.

RESIDENTIAL SERVICES, continued:

**EAST CENTRAL ARKANSAS
COMMUNITY CORRECTION CENTER
(EACCC)**

East Central hosted games and activities for resident families on Family Reunification Day at the end of July. Activities were donated by First Pentecostal Volunteers including family photos and carnival games such as an egg race.



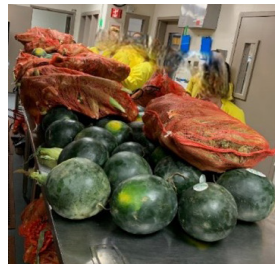
**NORTHEAST ARKANSAS COMMUNITY
CORRECTION CENTER (NEACCC)**



Congratulations to Madison Crawford on her most recent promotion to Corporal. Cpl. Crawford is being pinned by Captain Michael Matlock and Lt. Tomaka Smith.

**NORTHWEST ARKANSAS COMMUNITY
CORRECTION CENTER (NWACCC)**

Residents were delighted to accept a donation of watermelons and corn from the Central Arkansas Community Correction Center's garden.



**OMEGA SUPERVISION SANCTION CENTER
(OMEGA)**

Omega staff celebrated the 4th of July holiday with food and fellowship at the facility.



**SOUTHWEST ARKANSAS
COMMUNITY CORRECTION CENTER
(SWACCC)**

Congratulations to Officer Bayless on his most recent promotion to Lieutenant at the Southwest Arkansas Community Correction Center.



TREATMENT:

PROGRAM SUMMARY

1,635 probationers and parolees were served in the general Substance Use Disorder Treatment programs. Another 1,642 participants were served in the Drug Court Treatment programs, bringing the total served to 3,277 for the month.

A total of 809 residents have agreed to participate in Medication-Assisted Treatment (MAT) since the program started in August 2018. A total of 488 were discharged with follow up in the community in progress and 135 have completed the program.

Partnerships are in effect with 80 community providers to continue MAT upon release from an ACC center. Division of Behavioral Health approved request for reallocation of grant fund savings to purchase additional Vivitrol.

In July, there were 33 active participants in the Telehealth program implemented in January 2023.

General Treatment Program Summary

(Non-Drug Court):	Number of Participants
Substance Use Disorder Treatment	1,160
Case Management	104
Continuing Care	282
Domestic Violence Prevention	25
Life Skills	100
Tobacco Use Treatment	0

TREATMENT, continued:

AREA 3:

Monthly volunteer cooking classes are given at the Gethsemane Baptist Church in Walnut Ridge. Participants receive a free meal and three community service hours.

AREA 6:

Conway County Drug Court Advisor is networking with Arisa Health to bring STD/HIV testing and wellness exams for participants.

REENTRY PROGRAM:

REENTRY FACILITIES:

As of July 31, ACC had five licensed Reentry Facilities with 213 total residents in Phases I-IV of the Reentry program. Since the program began, a total of 2,922 individuals have successfully completed and graduated from the program. There was a total of 13 reentry graduates during the month.

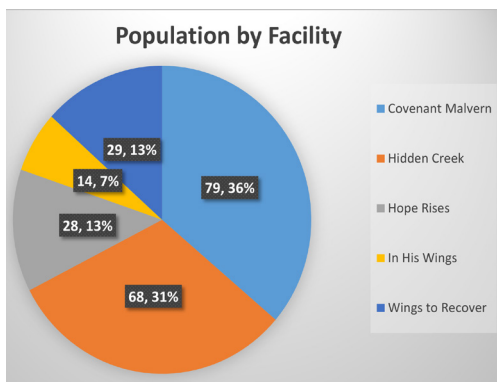
During the month, 22 new residents were transferred into the Reentry program, 22 residents started the Career Readiness Certificate program and 15 residents completed the program. A total of 26 Reentry Facility residents received their driver's license, 22 received an ID card, 31 received their Social Security card and 21 received birth certificates.

REENTRY OFFICERS:

In July, 148 Reentry residents were reported to be employed and 31 residents were reported to be ineligible for employment at this time. Reentry Officers reported one education referral, which resulted in enrollments.

Reentry Officers conducted 201 reentry facility office visits, 136 Phase IV office visits, 26 Phase IV home visits and 69 pre-parole plan verifications.

Reentry Officers made 26 community contacts within their assigned area during the month and conducted 30 office visits in their area.



Additionally, three job fairs were held resulting in 43 residents in attendance.

TRANSITIONAL HOUSING:

There are 20 licensed vendor facilities with 593 beds (524 ACC-funded) in the facilities.

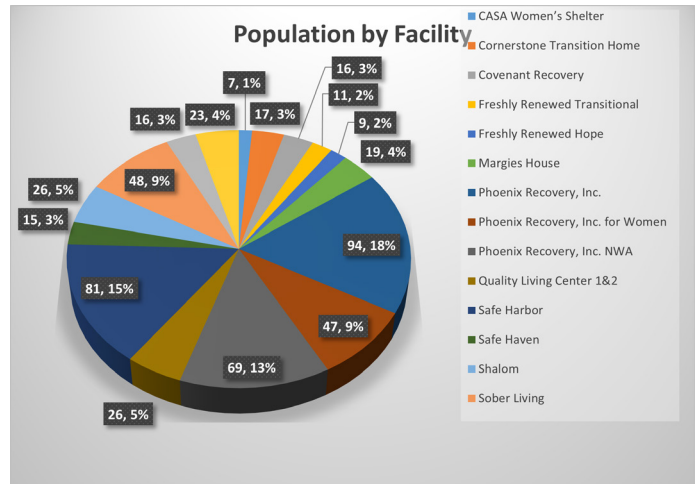
Within the transitional facilities, there are 281 residents who have obtained full-time employment.

In July, 328 residents who previously received their GED or high school diploma.

During the month, there were 46 registered sex offenders living in transitional facilities.

A total of 28 residents received their driver's license, 103 received an ID card, 110 received their Social Security card and 17 received birth certificates.

A total of 87 residents graduated from the Transitional Housing program, 38 absconded and 26 were dismissed.



SUPPLEMENTAL REPORTS

MEDICATION-ASSISTED TREATMENT PROGRAM (MAT) REPORT - JULY 2023

Locations:	MAT Start Dates	Active Program Participants	New Clients in the Program this Month	Dropped Out	Total Active Participants
CACCC - Little Rock	Sep-19	6	0	1	6
EACCC - West Memphis	Jul-18	21	6	0	21
NEACCC - Osceola	Dec-21	2	1	0	2
NWACCC - Fayetteville	Sep-19	2	0	0	2
OTVCCC - Malvern	Jul-18	**ended July 2021		0	0
SWACCC - Texarkana	Jul-18	11	4	0	11
Probation / Parole	2018	142	12	0	142
Medically Withdrawn	Closed Unsuccessful	Successful Completion		Total Active	
83	164	135		142	
Total # of Participants Since Program Began					809

Action	Aug-22	Sep-22	Oct-22	Nov-22	Dec-22	Jan-23
Assessments Completed in units	19	24	15	7	7	14
# of Clients Educated in units	377	639	592	526	444	418
# of Clients Released to Supervision	9	12	6	10	6	14
Pre-Release Interviews Completed	13	10	13	11	6	19

Action	Feb-23	Mar-23	Apr-23	May-23	Jun-23	Jul-23
# of Assessments Completed in units	14	8	6	10	3	42
# of Clients Educated in units	537	638	626	669	391	352
# of Clients Released to Supervision	17	14	11	10	8	12
Pre-Release Interviews Completed	19	9	15	12	10	14

COMMUNITY SUPERVISION FEE COLLECTIONS AND WAIVERS - JULY 2023 – [Page 1 of 2]

	Jul-22	Aug-22	Sep-22	Oct-22	Nov-22	Dec-22	Jan-23	Feb-23	Mar-23	Apr-23	May-23	Jun-23	Jul-23
Area 1 - Fayetteville													
Fees Possible	161,385	161,210	162,400	162,330	161,420	161,910	161,910	161,665	161,630	162,295	162,855	162,295	162,680
Fees Collected	143,051	159,516	147,952	150,795	143,292	146,378	158,297	153,759	179,446	143,289	145,384	163,293	149,942
% Collected	89%	99%	91%	93%	89%	90%	98%	95%	111%	88%	89%	101%	92%
% Paying Offenders	51%	56%	53%	55%	52%	53%	56%	55%	60%	52%	52%	56%	53%
% Employed	89%	89%	89%	90%	90%	89%	89%	88%	89%	89%	89%	88%	89%
Fees Converted	3,396	2,987	2,937	4,471	3,916	4,109	5,117	6,430	6,166	4,527	4,888	5,781	5,088
% Converted	2%	2%	2%	3%	2%	3%	3%	4%	4%	3%	3%	4%	3%
Fees Waived	2,905	3,080	3,325	3,990	3,815	3,780	3,920	3,920	3,745	4,305	3,990	3,885	3,955
% Waived	2%	2%	2%	2%	2%	2%	2%	2%	2%	3%	2%	2%	2%
Area 2 - Mountain Home													
Fees Possible	70,315	70,490	70,700	71,505	71,610	71,330	70,595	71,645	72,625	73,850	72,800	72,590	96,180
Fees Collected	64,500	71,664	63,232	77,167	69,465	70,240	70,606	71,303	82,208	65,462	68,280	72,555	93,865
% Collected	92%	102%	89%	108%	97%	98%	100%	100%	113%	89%	94%	100%	98%
% Paying Offenders	56%	60%	57%	62%	60%	61%	63%	60%	65%	57%	59%	62%	61%
% Employed	90%	89%	89%	90%	90%	89%	88%	89%	86%	87%	88%	88%	88%
Fees Converted	756	215	165	655	402	-	355	740	517	407	303	594	503
% Converted	1%	0%	0%	1%	1%	0%	1%	1%	1%	1%	0%	1%	1%
Fees Waived	665	560	420	490	560	525	560	560	595	420	420	420	1,155
% Waived	1%	1%	1%	1%	1%	1%	1%	1%	1%	1%	1%	1%	1%
Area 3 - Searcy													
Fees Possible	114,275	113,925	115,815	116,445	115,850	115,990	116,375	116,270	117,285	118,440	118,475	117,460	114,205
Fees Collected	106,257	112,820	108,919	109,884	105,664	106,786	114,056	116,417	120,008	105,505	106,137	111,162	103,221
% Collected	93%	99%	94%	94%	91%	92%	98%	100%	102%	89%	90%	95%	90%
% Paying Offenders	54%	57%	55%	56%	55%	55%	58%	58%	58%	53%	54%	56%	54%
% Employed	81%	80%	81%	82%	82%	81%	80%	81%	81%	82%	82%	82%	82%
Fees Converted	2,563	4,031	3,034	2,349	2,195	3,099	3,427	3,424	2,786	2,062	2,263	3,762	3,333
% Converted	2%	4%	3%	2%	2%	3%	3%	3%	2%	2%	2%	3%	3%
Fees Waived	3,045	2,905	3,045	3,220	3,115	2,975	3,045	2,940	3,430	3,290	3,220	3,185	3,045
% Waived	3%	3%	3%	3%	3%	3%	3%	3%	3%	3%	3%	3%	3%
Area 4 - Jonesboro													
Fees Possible	101,920	101,465	100,800	100,065	99,995	100,310	100,625	101,325	100,940	99,120	99,015	98,175	117,670
Fees Collected	80,584	90,824	89,496	93,105	79,770	84,590	89,445	96,762	99,013	79,836	85,339	89,901	100,992
% Collected	79%	90%	89%	93%	80%	84%	89%	95%	98%	81%	86%	92%	85%
% Paying Offenders	47%	51%	52%	53%	49%	51%	54%	55%	56%	50%	50%	54%	51%
% Employed	82%	82%	81%	81%	80%	79%	79%	80%	79%	79%	80%	82%	82%
Fees Converted	2,990	5,610	4,488	5,813	7,357	7,664	4,681	6,780	4,761	5,693	2,816	7,150	5,792
% Converted	3%	6%	4%	6%	7%	8%	5%	7%	5%	6%	3%	7%	5%
Fees Waived	6,020	5,565	6,055	6,195	6,020	6,230	6,125	6,125	6,195	6,545	6,090	6,020	6,125
% Waived	6%	5%	6%	6%	6%	6%	6%	6%	6%	7%	6%	6%	5%
Area 5 - Fort Smith													
Fees Possible	101,535	101,570	101,850	101,150	102,865	103,530	103,670	103,705	104,545	106,155	106,715	106,295	104,405
Fees Collected	84,363	97,906	89,636	87,938	93,525	89,813	102,668	100,568	112,709	89,684	85,425	100,919	99,272
% Collected	83%	96%	88%	87%	91%	87%	99%	97%	108%	84%	80%	95%	95%
% Paying Offenders	49%	55%	53%	52%	53%	52%	55%	54%	59%	50%	48%	55%	55%
% Employed	82%	83%	83%	83%	82%	83%	82%	83%	82%	82%	82%	83%	83%
Fees Converted	4,158	7,067	3,124	6,070	3,303	5,247	3,129	5,221	4,730	3,135	2,637	4,611	4,480
% Converted	4%	7%	3%	6%	3%	5%	3%	5%	5%	3%	2%	4%	4%
Area 6 - Conway													
Fees Possible	91,735	90,825	90,685	90,825	90,580	90,370	90,195	91,280	88,935	88,445	88,270	89,320	90,580
Fees Collected	77,790	88,593	83,824	87,869	85,177	85,094	89,295	86,146	102,762	80,818	81,070	82,430	82,056
% Collected	85%	98%	92%	97%	94%	94%	99%	94%	116%	91%	92%	92%	91%
% Paying Offenders	52%	57%	55%	57%	56%	58%	60%	56%	65%	57%	58%	58%	56%
% Employed	81%	82%	83%	83%	82%	82%	80%	81%	81%	81%	82%	80%	80%
Fees Converted	1,881	1,970	1,765	1,840	2,817	2,026	3,499	3,104	2,037	2,525	1,741	2,102	2,548
% Converted	2%	2%	2%	2%	3%	2%	4%	3%	2%	3%	2%	2%	3%
Fees Waived	1,645	1,750	1,785	1,680	1,505	1,470	1,575	1,575	1,820	2,030	2,065	1,925	2,100
% Waived	2%	2%	2%	2%	2%	2%	2%	2%	2%	2%	2%	2%	2%
Area 7 - LR Probation													
Fees Possible								90,755	91,175	90,825	91,210	91,735	94,115
Fees Collected								84,564	91,947	76,200	77,491	85,390	82,711
% Collected								93%	101%	84%	85%	92%	88%
% Paying Offenders								54%	56%	51%	51%	53%	51%
% Employed								83%	83%	83%	83%	81%	82%
Fees Converted								1,239	1,045	814	1,111	1,430	1,023
% Converted								1%	1%	1%	1%	2%	1%
Fees Waived								3,220	3,535	3,815	3,850	3,465	3,360
% Waived								4%	4%	4%	4%	4%	4%
Area 8 - LR Parole													
Fees Possible	169,610	170,135	169,820	170,275	169,015	166,180	163,835	73,675	73,045	72,765	73,535	72,380	72,835
Fees Collected	134,080	151,726	139,259	150,323	141,568	153,132	153,536	64,079	69,219	60,119	57,241	63,907	59,274
% Collected	79%	89%	82%	88%	84%	92%	93%	87%	95%	83%	78%	88%	81%
% Paying Offenders	45%	50%	48%	49%	48%	52%	53%	51%	53%	48%	46%	51%	48%
% Employed	83%	83%	83%	83%	82%	82%	81%	81%	80%	82%	81%	81%	82%
Fees Converted	814	4,466	3,696	3,696	5,247	1,771	5,584	2,387	3,487	3,279	2,629	3,014	4,444
% Converted	0%	3%	2%	2%	3%	1%	3%	3%	5%	5%	4%	4%	6%
Fees Waived	6,055	6,195	6,685	6,545	6,370	6,230	5,915	3,010	2,905	3,395	3,395	3,045	3,465
% Waived	4%	4%	4%	4%	4%	4%	4%	4%	4%	5%	5%	4%	5%



COMMUNITY SUPERVISION FEE COLLECTIONS AND WAIVERS - JULY 2023 – [Page 2 of 2]

	Jul-22	Aug-22	Sep-22	Oct-22	Nov-22	Dec-22	Jan-23	Feb-23	Mar-23	Apr-23	May-23	Jun-23	Jul-23
Area 9 - West Memphis													
Fees Possible	50,050	49,350	48,615	50,085	49,280	49,210	48,755	48,475	47,985	47,775	47,565	46,865	-
Fees Collected	41,076	44,847	43,564	41,220	39,642	38,469	44,648	42,867	49,780	37,616	42,191	43,888	-
% Collected	82%	91%	90%	82%	80%	78%	92%	88%	104%	79%	89%	94%	0%
% Paying Offenders	47%	52%	52%	49%	47%	46%	51%	49%	57%	48%	51%	53%	0%
% Employed	71%	71%	72%	71%	72%	70%	70%	70%	69%	72%	71%	71%	0%
Fees Converted	3,399	1,903	2,571	2,651	1,958	2,312	2,420	2,750	2,681	2,321	2,739	2,558	-
% Converted	7%	4%	5%	5%	4%	5%	5%	6%	6%	5%	6%	5%	0%
Fees Waived	1,225	1,190	1,190	945	980	840	1,225	1,155	1,085	1,120	1,155	1,085	-
% Waived	2%	2%	2%	2%	2%	2%	3%	2%	2%	2%	2%	2%	0%
Area 10 - Hot Springs													
Fees Possible	115,710	114,800	114,765	116,480	115,850	116,585	117,180	117,075	116,305	117,250	115,640	116,935	117,285
Fees Collected	101,062	103,964	100,109	108,223	100,860	102,562	105,927	107,217	119,383	96,962	98,745	108,584	103,919
% Collected	87%	91%	87%	93%	87%	88%	90%	92%	103%	83%	85%	93%	89%
% Paying Offenders	52%	54%	53%	55%	53%	53%	55%	53%	58%	50%	52%	55%	53%
% Employed	83%	81%	82%	82%	82%	82%	81%	81%	82%	81%	82%	81%	81%
Fees Converted	2,536	3,075	3,559	1,551	2,261	2,988	5,059	2,316	4,700	2,679	1,455	2,651	2,560
% Converted	2%	3%	3%	1%	2%	3%	4%	2%	4%	2%	1%	2%	2%
Fees Waived	7,140	6,965	7,350	7,875	7,420	7,910	7,840	7,140	7,105	7,665	7,455	7,560	7,910
% Waived	6%	6%	6%	7%	6%	7%	7%	6%	6%	7%	6%	6%	7%
Area 11 - Pine Bluff													
Fees Possible	92,505	92,085	92,435	92,715	92,890	91,875	91,490	91,070	91,000	92,085	93,205	92,995	102,655
Fees Collected	84,579	90,242	86,648	84,699	87,828	82,971	88,306	84,466	91,550	79,026	82,961	90,170	94,765
% Collected	91%	98%	94%	91%	95%	90%	97%	93%	101%	86%	89%	97%	92%
% Paying Offenders	56%	59%	58%	57%	58%	57%	60%	57%	60%	54%	56%	59%	57%
% Employed	75%	75%	75%	76%	76%	78%	77%	77%	76%	77%	77%	78%	78%
Fees Converted	4,318	6,303	3,993	3,972	3,787	4,411	4,722	5,060	5,737	3,846	4,803	4,587	6,729
% Converted	5%	7%	4%	4%	4%	5%	5%	6%	6%	4%	5%	5%	7%
Fees Waived	3,010	3,080	3,045	2,940	2,870	3,045	3,115	2,905	2,940	3,010	3,150	2,975	3,500
% Waived	3%	3%	3%	3%	3%	3%	3%	3%	3%	3%	3%	3%	3%
Area 12 - Texarkana													
Fees Possible	98,035	96,880	97,125	97,230	97,510	98,140	97,405	96,390	96,635	97,440	97,090	97,510	97,650
Fees Collected	87,248	91,483	91,724	91,814	81,976	83,470	92,266	90,775	99,591	77,505	79,458	84,291	88,083
% Collected	89%	94%	94%	94%	84%	85%	95%	94%	103%	79%	81%	86%	90%
% Paying Offenders	51%	55%	54%	54%	51%	51%	55%	53%	56%	47%	49%	50%	51%
% Employed	79%	80%	80%	80%	80%	79%	80%	81%	81%	80%	80%	79%	79%
Fees Converted	5,192	4,329	3,032	6,696	2,756	2,464	4,818	5,687	4,108	2,937	2,976	3,025	5,352
% Converted	5%	4%	3%	7%	3%	3%	5%	6%	4%	3%	3%	3%	5%
Fees Waived	2,835	2,625	2,835	2,870	2,800	3,010	2,765	2,660	2,555	2,765	3,325	3,290	3,815
% Waived	3%	3%	3%	3%	3%	3%	3%	3%	3%	3%	3%	3%	4%
Grand Total													
Fees Possible	1,167,075	1,162,735	1,165,010	1,169,105	1,166,865	1,165,430	1,162,035	1,163,330	1,162,105	1,166,445	1,166,375	1,164,555	1,170,260
Fees Collected	1,004,589	1,103,585	1,044,362	1,083,038	1,028,769	1,043,505	1,109,050	1,098,924	1,217,615	992,024	1,009,720	1,096,490	1,058,100
% Collected	86%	95%	90%	93%	88%	90%	95%	94%	105%	85%	87%	94%	90%
% Paying Offenders	51%	55%	53%	54%	53%	54%	56%	55%	59%	51%	52%	55%	54%
% Employed	82%	82%	82%	83%	82%	82%	82%	82%	82%	82%	82%	82%	82%
Fees Converted	32,002	41,954	32,364	39,763	35,998	36,090	42,809	45,136	42,753	34,224	30,359	41,264	41,852
% Converted	3%	4%	3%	3%	3%	3%	4%	4%	4%	3%	3%	4%	4%
Fees Waived	36,890	35,945	37,730	39,060	38,010	38,360	38,045	37,485	38,255	40,880	40,845	39,655	41,300
% Waived	3%	3%	3%	3%	3%	3%	3%	3%	3%	4%	4%	3%	4%

- Fees Possible:** The amount of supervision fees that can be collected per active/electronic monitoring supervision status of offenders for that month only. Does not include annual, pre-trial, and SIS.
- Fees Collected:** Actual amount of money collected that can be deposited in Special Revenue fund. Please keep in mind the amount collected could include an offender that pays three months in advance.
- Fees Converted:** Amount not included in Fees Collected. Represents the amount of money lost by conversions. If this money were collected instead of converted, it would be added to Fees Collected.
- Fees Waived:** Amount not included in Fees Collected. Represents the amount of money lost by waivers. If this money were collected instead of waived, it would be added to Fees Collected.

CENTER POPULATIONS - JULY 2023

ARDOC
REPORT NO. IPTR500 -
18

ARKANSAS DEPARTMENT OF CORRECTION
ACC OPTION
STATEWIDE POPULATION REPORT

PAGE: 1 of 1
PROCESSED: 07/31/2023 12:30
AM REQUESTOR: eOMIS

FOR: 07/31/2023

Location:	In Count	Out To:					Total	Capacity	% Capacity
		ORCU Hosp	Other Hosp	Furlough	Court				
Central AR CCC - Males/Males	149	0	0	0	1	150	150		
Central AR CCC - Males Total	149	0	0	0	1	150	150	100.0%	
East Central AR CCC/Females	328	0	0	0	2	330	362		
East Central AR CCC Supervision Sanction-Female/90 Day PV in CCC Females	12	0	0	0	0	12	0		
East Central AR CCC Supervision Sanction-Female/ 90 Day PV	94	0	0	0	0	94	88		
East Central AR CCC Total	434	0	0	0	2	436	450	96.9%	
NE AR CCC - Drug Treatment/Males	24	0	0	0	0	24	25		
NE AR CCC/Males	204	0	0	0	0	204	215		
NE AR CCC Total	228	0	0	0	0	228	240	95.0%	
NW AR CCC/Females	116	0	0	0	0	116	114		
NW AR CCC Total	116	0	0	0	0	116	114	101.8%	
Omega Supervision Sanction Center/90 Day PV in CCC Males	181	0	0	0	0	181	0		
Omega Supervision Sanction Center/Males	157	0	0	0	7	164	300		
Omega Supervision Sanction Center Total	338	0	0	0	7	345	300	115.0%	
SW AR CCC/Males	400	0	0	0	2	402	440		
SW AR Supervision Sanction Center/Males	79	0	0	0	0	79	100		
SW AR CCC Total	479	0	0	0	2	481	540	89.1%	
In Transit Count:	0								
TOTALS - UNIT COUNT	1,744	0	0	0	12	1,756			
					Male	1,204	1,230	97.9%	
					Female	552	564	97.9%	
					Total	1,756	1,794	97.9%	
County Jail Backup SSP/Females Total	21	0	0	0	0	21			
County Jail Backup SSP/Males Total	11	0	0	0	0	11			
County Jail Backup/Females Total	42	0	0	0	0	42			
County Jail Backup/Males Total	49	0	0	0	0	49			
TOTAL - NONAGENCY	123	0	0	0	0	123			
					Male	60			
					Female	63			
					Total	123			
Re-Entry Act 146 Total	223	0	0	0	0	223	219	101.8%	
GRAND TOTAL	2,090	0	0	0	12	2,102			

RESIDENTIAL CENTERS STATISTICS AT A GLANCE - JULY 2023

Resident Admissions:

CAC: 19
 ECAC: 97
 NEAC: 23
 NWAC: 24
 OMEGA: 86
 SWAC: 86

Resident Releases:

CAC: 14
 ECAC: 64
 NEAC: 41
 NWAC: 20
 OMEGA: 63
 SWAC: 85

Affordable Healthcare Enrollment:

CAC: 36
 ECAC: 50
 NEAC: 41
 NWAC: 45
 OMEGA: 48
 SWAC: 80

Wage Class Enrollment:

CAC: 14
 ECAC: 10
 NEAC: 0
 NWAC: 0
 OMEGA: 5
 SWAC: 10

Shorter College Enrollment:

CAC: 14
 ECAC: 0
 NEAC: 0
 NWAC: 0
 SWAC: 10
 OMEGA: 0

Henderson State University Enrollment:

OMEGA: 0
 SWAC: 26

Exodus Enrollment:

CAC: 39
 ECAC: 20

Good Grid Enrollment

CAC: 27
 ECAC: 33
 NEAC: 18
 NWAC: 23
 OMEGA: 20
 SWAC: 40

Photo IDs Issued:

CAC: 11
 ECAC: 10
 NEAC: 4
 NWAC: 10
 OMEGA: 32
 SWAC: 37

Drivers Licenses Obtained:

CAC: 2
 ECAC: 2
 NEAC: 4
 NWAC: 8
 OMEGA: 6
 SWAC: 4

MAT Participants:

CAC: 11
 ECAC: 21
 NEAC: 1
 NWAC: 3
 OMEGA: 0
 SWAC: 12

Reformers Anonymous:

OMEGA: 0
 SWAC: 82

W.O.R.K:

NEAC: 12

Victim Impact Panel:

SWAC: 16

VIP Class:

NEAC: 3

Number of Volunteers:

CAC: 52
 ECAC: 98
 NEAC: 58
 NWAC: 102
 OMEGA: 9
 SWAC: 46

Number of Volunteer Hours:

CAC: 320
 ECAC: 140.5
 NEAC: 107
 NWAC: 329.5
 OMEGA: 53.05
 SWAC: 463

GED Enrollment:

CAC: 0
 ECAC: 0
 NEAC: 0
 NWAC: 0
 OMEGA: 0
 SWAC: 97

GED Completed:

CAC: 0
 ECAC: 0
 NEAC: 0
 NWAC: 0
 OMEGA: 0
 SWAC: 0

AA/NA Attendance:

CAC: 143
 ECAC: 419
 NEAC: 27
 NWAC: 75
 OMEGA: 208
 SWAC: 21

Celebrate Recovery Attendance:

CAC: 30
 ECAC: 0
 NEAC: 26
 NWAC: 12
 OMEGA: 0
 SWAC: 20

COMMUNITY SUPERVISION POPULATION

Active:

Includes current status of Active, Abscond and Electronic Monitoring

Inactive:

Includes current status of Non Reporting, Unsupervised, SIS
(Suspended Imposition of Sentence), Incarcerated and Out to Other State

Area #	AREA	Active (including Abscond)	Inactive	TOTAL
Area 1	Fayetteville	7,162	3,019	10,181
Area 2	Mountain Home	2,508	621	3,129
Area 3	Searcy	4,664	1,414	6,078
Area 4	Jonesboro	3,816	1,942	5,758
Area 5	Fort Smith	3,986	4,138	8,124
Area 6	Conway	3,416	1,156	4,572
Area 7	Little Rock-Probation	3,135	986	4,121
Area 8	Little Rock-Parole	3,559	697	4,256
Area 9	West Memphis	1,938	497	2,435
Area 10	Hot Springs	5,065	1,014	6,079
Area 11	Pine Bluff	4,177	880	5,057
Area 12	Texarkana	4,035	1,467	5,502
ISC	C.O. Interstate Compact	2	1,788	1,790
	Statewide Totals by Status	47,463	19,619	67,082

COMMUNITY SUPERVISION POPULATION

Statewide Totals by Current Supervision Status as of 07/31/23

Area #	AREA	Active (including Abscond)	Electronic Monitoring (Direct)	Absconded	Inactive				Suspnd Imposition of Snt (SIS)	OVERALL TOTALS PER AREA
		Active (Direct Supv)			Incarcerated	Non-Reporting	Out to Other State	Unsupervised		
Area 1	Fayetteville	5,221	32	1,909	543	449	668	286	1,073	10,181
Area 2	Mountain Home	2,146	20	342	141	91	157	65	167	3,129
Area 3	Searcy	3,626	6	1,032	257	190	250	54	663	6,078
Area 4	Jonesboro	3,022	14	780	226	244	153	98	1,221	5,758
Area 5	Fort Smith	3,202	30	754	213	282	135	139	3,369	8,124
Area 6	Conway	2,677	13	726	254	147	110	41	604	4,572
Area 7	Little Rock-Probation	2,676	8	451	214	429	54	15	274	4,121
Area 8	Little Rock-Parole	2,298	96	1,165	138	231		160	168	4,256
Area 9	West Memphis	1,375	6	557	113	63	40	47	234	2,435
Area 10	Hot Springs	3,699	23	1,343	268	156	102	151	337	6,079
Area 11	Pine Bluff	2,951	23	1,203	233	113	60	132	342	5,057
Area 12	Texarkana	2,958	15	1,062	310	266	309	91	491	5,502
ISC	C.O. Interstate Compact			2	12	68	1,708			1,790
	Statewide Totals by Current Supervision Status	35,851	286	11,326	2,922	2,729	3,746	1,279	8,943	67,082

Total Active including Abscond
24,811

Explanation for “Current Supervision Status”

Active Supervision:

Offender is currently on Active/Direct Supervision Status.

Electronic Monitoring:

Offender is currently on an Electronic Monitor.

Incarcerated:

Offender is currently incarcerated including the following:

- Parole Holds (in state and out-of-state)
- ACT 570 Holds
- County Jail (including possible new charges—felony or misdemeanors—or serving commitments for traffic fines, court commitments, etc).

Non Reporting:

Drug Court offender currently in a Community Correction Center for sanction or court commitment, on detainer (federal or ICE hold), out-of-state, in CCC Residential Treatment, nursing home, hospital, or Arkansas State Hospital.

Out-To-Other-State:

Offender supervised out of Arkansas through Interstate Compact.

Unsupervised:

Parolee whose earned Good Time has met the requirements for unsupervised parole, probationers who received Unsupervised Sentence (e.g., five-year probation sentence specified as 3 years supervised and an additional 2 years unsupervised probation; or an unsupervised probation sentence which is common for misdemeanor offenses (e.g., 1 year unsupervised probation term).

Suspended Imposition of Sentence (SIS):

Offender received a suspended term of supervision.

REGULAR COMMUNITY SUPERVISION CASELOADS

Regular P&P Caseloads/Workloads By Area

8/1/23

AREA	Authorized Officers	Filled	Regular P&P Offenders				Total Active Offenders	Caseload Ratio (Authorized Positions)	Caseload Ratio (Filled Positions)	Work Units	Workload (Authorized Positions)	Workload (Filled Positions)	Total Indirect
			Maximum	Medium	Minimum	Pending							
AREA 01	51	49	223	2,006	2,395	161	4,785	94	98	7,322	144	149	4,536
AREA 02	19	19	132	778	948	22	1,880	99	99	2,934	154	154	733
AREA 03	34	34	169	1,524	1,336	82	3,111	92	92	5,023	148	148	1,896
AREA 04	32	32	131	1,005	1,492	71	2,699	84	84	4,000	125	125	2,430
AREA 05	29	28	219	1,028	1,351	70	2,668	92	95	4,173	144	149	4,312
AREA 06	29	29	140	1,011	1,262	48	2,461	85	85	3,778	130	130	1,246
AREA 07	31	29	117	1,109	1,389	88	2,703	87	93	4,091	132	141	1,211
AREA 08	32	29	268	1,215	539	90	2,102	66	72	3,922	123	135	894
AREA 09	18	18	134	473	667	31	1,305	73	73	2,064	115	115	748
AREA 10	38	37	223	1,342	1,649	65	3,279	86	89	5,103	134	138	1,662
AREA 11	31	29	161	1,124	1,029	58	2,372	77	82	3,854	124	133	1,342
AREA 12	32	30	227	1,108	1,405	72	2,812	88	94	4,415	138	147	1,838
Statewide	376	363	2,144	13,723	15,462	848	32,177	1,022	1,055	50,681	1,611	1,665	22,848
Area Average			179	1,144	1,289	71	2,681	85	88	4,223	134	140	

¹ Regular P&P Caseloads/Workloads include offenders with Active (Direct), Electronic Monitoring, and Incarcerated supervision statuses. Incarcerated here refers to temporary jail stays.
² Offenders on Annual or Indirect Supervision are excluded from caseload/workload counts and ratios.
³ Specialty Court Offender figures shown here are only those assigned to regular P&P officers. These offenders are not counted in caseload or workload ratios.
⁴ Indirect totals here are for offenders in Non-Active supervision statuses or those under Annual Supervision.

COMMUNITY SUPERVISION CASELOADS FOR SPECIALTY COURTS

Specialty Court Caseloads/Workloads By Area

AREA	Authorized Officers	Filled	Regular P&P Offenders				Total Regular P&P Offenders	Total Active Specialty Court Offenders	Total Indirect Including Regular & Specialty	Caseload Ratios (Based on Active/Direct offenders)			Workload		
			Maximum	Medium	Minimum	Unassigned				P&P	Specialty	Mixed	Work Units	Workload (Authorized Positions)	Workload (Filled Positions)
AREA 02	5	5	14	113	142	2	271	65	76	54	13	67	548	110	110
AREA 03	7	6	16	189	217	12	434	63	187	62	9	71	761	109	127
AREA 04	6	6	13	103	92	14	222	113	133	37	19	56	513	86	86
AREA 05	9	8	15	62	149	4	230	300	141	26	33	59	812	90	101
AREA 06	7	7	28	73	112	6	219	91	221	31	13	44	506	72	72
AREA 07	2	2	0	2	3	0	5	79	37	3	40	42	131	65	65
AREA 09	2	2	8	41	73	2	124	30	90	62	15	77	225	113	113
AREA 10	7	7	20	77	99	3	199	113	300	28	16	45	499	71	71
AREA 11	7	7	28	184	155	7	374	115	303	53	16	70	806	115	115
AREA 12	4	4	16	58	110	9	193	94	185	48	24	72	422	105	105
Statewide	65	62	158	919	1,156	59	2,292	1,469	1,834	35	23	58	6,052	1,028	1,069
Area Average			14	84	105	5	134			37	22	59	791	93	98

¹ Specialty Court Caseloads/Workloads include offenders who are assigned to officers in Specialty Court positions who have Active (Direct), Electronic Monitoring, or Incarcerated supervision statuses.
² Offenders on Indirect or Annual Supervision are not included in caseload counts or ratios. Annual supervision counts include both regular P&P and Specialty Court offenders assigned to Specialty Court officers.
³ Offenders in risk level columns above are regular P&P offenders who are supervised by officers in Specialty Court positions.

Specialized Caseloads

AREA	Authorized Officers	Totals	Ratios
		Offenders	Caseload
INTENSIVE SUPERVISION	13	374	25
INTERSTATE COMPACT	0	1,789	0
SPECIAL RESPONSE TEAM	18	4,235	233
Statewide	31	6,398	146

This page and the next contain statewide caseload information for ACC. Caseloads are presented separately for regular parole and probation, specialty court, and specialized caseloads. This version is specifically designed for quarterly legislative reporting and differs from the daily caseloads/workloads report.

Beyond the exclusion of workloads calculation, it is important to note that direct supervision in these tables includes regular parole and probation and specialty court (including regular parole and probation offenders carried by specialty court officers) offenders with active (direct), electronic monitoring, or incarceration supervision status, as well as absconders assigned to SRT officers. Offenders on annual supervision are counted as indirect.

COMMUNITY SUPERVISION CASELOADS

Caseloads By Area

8/1/23

AREA	Authorized Officers	Vacant	Filled	Total Active	Total Indirect	Totals:
AREA 01	60	3	57	5,212	4,697	9,909
AREA 02	24	0	24	2,216	809	3,025
AREA 03	41	1	40	3,608	2,085	5,693
AREA 04	38	0	38	3,034	2,563	5,597
AREA 05	38	2	36	3,198	4,453	7,651
AREA 06	36	0	36	2,771	1,467	4,238
AREA 07	33	2	31	2,787	1,248	4,035
AREA 08	32	3	29	2,102	894	2,996
AREA 09	20	0	20	1,459	838	2,297
AREA 10	45	1	44	3,591	1,962	5,553
AREA 11	38	2	36	2,861	1,645	4,506
AREA 12	36	2	34	3,099	2,023	5,122
TOTALS	441	16	425	35,938	24,684	60,622
INSTITUTIONAL PAROLE	28	0	28	0	0	0
INTENSIVE SUPERVISION	13	0	13	328	46	374
INTERSTATE COMPACT	0	0	0	12	1,777	1,789
RE-ENTRY	11	0	11	2	0	2
SEX OFFENDER ASSESSMENT	12	1	11	0	0	0
SPECIAL RESPONSE TEAM	18	0	18	7	4,228	4,235
TOTALS	82	1	81	349	6,051	6,400
Statewide TOTALS	523	17	506	36,287	30,735	67,022

Caseloads are presented in distinct officer groupings:

Regular: These are officers carrying normal Probation and Parole caseloads.

Specialty Court: These officers supervise offenders in specialty courts. Note that these officers August also carry regular P/P offenders, and these offenders are reflected in the specialty court caseload/workload figures; however, separate caseload/workload ratios are calculated for the regular and specialty court portions of a specialty court officer's caseload, in addition to a combined, or mixed, ratio.

Specialized: These officers supervise strategically specialized caseloads consisting of offenders requiring heightened supervision protocols (intensive supervision) and parolees who have absconded supervision (Special Response Team).

Indirect: These are offenders for whom their sentence, circumstance, or current status is associated with a reduced supervision obligation for the officers they are assigned to. Generally, these include offenders in non-reporting status, those on suspended sentences (SIS), and interstate compact offenders. Offenders on annual supervision are also included in this group.

COMMUNITY SUPERVISION RISK LEVELS

Statewide Risk Levels by Caseload Types as of July 31, 2023

CURRENT RISK LEVELS	Parole	Probation	Drug Court	Hope Court	Mental Health Court	Veterans Court	Swift Courts	Pre Trial/ Drug Court	Pre Trial/ Pre-Adjudicated	Pre Trial/ Regular	Pre Trial/ Veterans Court	Suspended	Ext Sex Offender Supv	Totals
Maximum	2,647	1,546	184	4		10				2		318		4,711
Medium	9,124	12,179	1,082	29	13	46	3	3	25	11	2	1,499	4	24,020
Minimum	5,891	15,742	536	16	13	55	3	10	53	6	3	1,417		23,745
Annual Reporting	2,199	1,173	2									167		3,541
Unassigned	2,886	2,325	58	1	2	3		12		11	1	5,766		11,065
Sum:	22,747	32,965	1,862	50	28	114	6	25	78	30	6	9,167	4	67,082

CURRENT RISK LEVELS ASSIGNED EXPLANATION:

- Maximum- last risk level score as "High"
- Medium- last risk level score as "Medium"
- Minimum- last risk level score as "Low"
- Annual- identifies offenders that are supervised Annual Reporting
- Unassigned- no ARORA has been completed or offender is currently supervised as "Unsupervised" where the risk level was changed to unassigned

Statewide Risk Levels by Caseload Supervision Status as of July 31, 2023

RISK LEVELS BY CURRENT SUPERVISION STATUS	Maximum	Medium	Minimum	Annual Reporting	Unassigned	Sum:
Active (Direct Supv)	2,124	14,017	16,593	2,775	342	35,851
Electronic Monitoring (Direct)	89	184	10	1	2	286
Absconded	1,335	5,206	2,933	73	1,779	11,326
Incarcerated	431	1,307	560	7	617	2,922
Non-Reporting	292	929	553	13	942	2,729
Out to Other State	123	802	1,358	44	1,419	3,746
Unsupervised	8	114	347	461	349	1,279
Suspnd Imposition of Snt (SIS)	309	1,461	1,391	167	5,615	8,943
Sum:	4,711	24,020	23,745	3,541	11,065	67,082

COMMUNITY SUPERVISION GAINS AND LOSSES - JULY 2023

Supervision Events		Parole	Probation	Pre-Trial	Suspended	Sum:
Total Gains	Intakes	625	728	22	136	1,511
	Sanction Release from SSP	135	13			148
	Total Gains					1,659
Total Losses	Revocations/or New ADC or CCC Sentence	318	223	1	42	584
	Sanction Incarceration SSP	144	6			150
	Terminations	203	439	8	143	793
	Total Losses					1,527

SRT TASK FORCE REPORT - JULY 2023

ARRESTS:	
Absconders	57
Active Supervision	40
Collateral Arrests	72
SRT Total:	69
Task Force Total:	100

SRT Plus Task Force Total:	69
Felony Charges	232
Misdemeanor Charges	106
Traffic Charges	42
Narcotics Arrests	61

CONFISCATIONS:	
Marijuana	3,313.5 grams
Meth	1,962.4 grams
Heroin	240 grams
Fentanyl	232.6 grams
Prescription Pills	169 pills
Handguns	15
Rifles	6
Recovered Vehicles	0
Drug Paraphernalia	52 items
Currency Seized	\$6,928.00

COMMUNITY SUPERVISION - COMMUNITY SERVICE - JULY 2023

Community Service Report

AREAS	CITIES WITHIN AREA	FY2023 TOTALS	2022						2023						JULY 2023		FY2024 TOTALS
			JULY	AUGUST	SEPTEMBER	OCTOBER	NOVEMBER	DECEMBER	JANUARY	FEBRUARY	MARCH	APRIL	MAY	JUNE	NUMBER OF PARTICIPANTS	NUMBER OF HOURS	
1	Bentonville, Fayetteville, Huntsville	12,985.56	1,090.00	1,127.00	1,404.00	1,059.25	1,594.25	907.25	1,082.00	1,006.00	820.56	507.50	876.50	887.75	65	795.50	795.50
2	Harrison, Mountain Home, Salem, Mountain View, Berryville	9,794.50	910.00	511.50	1,126.25	566.00	570.00	389.00	577.75	907.00	1,152.50	1,271.50	598.50	859.50	47	770.50	770.50
3	Searcy, Newport, Walnut Ridge, Ash Flat, Heber Springs, Batesville, Pocahontas, Lonoke	27,553.95	1,686.00	1,912.00	2,431.83	3,108.00	1,577.00	2,629.00	2,368.58	2,179.75	2,215.52	1,546.77	2,316.75	1,976.75	87	1,441.84	1,441.84
4	Jonesboro, Paragould, Osceola	6,416.50	264.00	481.00	476.00	707.00	618.00	607.00	405.50	578.25	357.00	486.50	329.00	433.25	69	546.50	546.50
5	Fort Smith, Booneville, Clarksville, Ozark, Mena	8,283.79	740.00	880.00	647.00	870.50	783.00	765.00	486.95	599.15	538.50	417.04	388.00	507.15	59	499.95	499.95
6	Conway, Russellville, Morrilton, Danville	7,043.22	556.00	846.00	541.00	952.00	454.00	663.00	489.93	429.04	496.66	454.11	297.46	340.58	39	381.48	381.48
7	Little Rock	6,830.18	-	-	-	-	-	-	-	898.33	2,208.85	745.00	1,308.00	1,670.00	45	756.00	756.00
8	Little Rock, North Little Rock	12,744.34	1,190.00	1,969.00	1,080.00	986.00	2,066.00	367.00	1,325.00	227.00	384.00	229.09	279.00	302.00	36	384.00	384.00
9	Forrest City, Helena, West Memphis	4,358.48	417.40	256.60	305.08	277.20	338.20	319.00	367.00	341.49	470.50	270.51	332.50	377.00	3	17.00	17.00
10	Malvern, Benton, Sheridan, Arkadelphia, Hot Springs, Benton, Camden, Fordyce	9,765.40	790.75	817.40	965.75	619.25	54.00	57.00	1,257.00	723.00	1,028.75	835.50	568.00	1,194.00	58	623.25	623.25
11	Pine Bluff, Stuttgart, Monticello, El Dorado, Crossett	11,066.75	684.50	769.00	688.00	588.25	1,017.00	647.50	1,079.25	852.00	1,043.75	979.00	1,160.75	698.75	58	990.25	990.25
12	Texarkana, Ashdown, Hope, Lewisville, Nashville, Magnolia	10,003.30	1,028.50	1,095.40	889.15	920.40	431.00	547.50	483.75	888.00	732.50	674.00	1,013.50	577.00	59	812.00	812.00
13	Area Dissolved																
TOTAL		126,845.97	9,357.15	10,664.90	10,554.06	10,653.85	9,502.45	7,898.25	9,922.71	9,629.01	11,449.09	8,416.52	9,467.96	9,823.73	625.00	8,018.27	8,018.27

Litter Crew Report

AREAS	CITIES WITHIN AREA	2023 TOTALS	2022						2023						JULY 2023		FY2024 TOTALS
			AUGUST	SEPTEMBER	OCTOBER	NOVEMBER	DECEMBER	JANUARY	FEBRUARY	MARCH	APRIL	MAY	JUNE	NUMBER OF PARTICIPANTS	NUMBER OF HOURS		
2	Harrison, Mountain Home, Salem, Mountain View, Berryville	852.0	106.0	174.0	106.0	216.0	53.0	110.0	20.0	179.5	373.5	0.0	0.0	12	280.0	280.0	
3	Searcy, Newport, Walnut Ridge, Ash Flat, Heber Springs, Batesville, Pocahontas, Lonoke	447.0	144.0	22.0	88.0	64.0	43.0	0.0	0.0	0.0	0.0	0.0	4.0	0	0.0	0.0	
4	Jonesboro, Paragould, Osceola	64.0	0.0	16.0	32.0	0.0	0.0	0.0	0.0	0.0	0.0	0.0	0.0	0	0.0	0.0	
5	Fort Smith, Booneville, Clarksville, Ozark, Mena	193.0	40.0	17.0	28.0	30.0	28.0	0.0	9.0	15.0	24.0	0.0	16.0	7	21.0	21.0	
6	Conway, Russellville, Morrilton, Danville	30.0	10.0	20.0	0.0	0.0	0.0	0.0	0.0	0.0	0.0	0.0	0.0	0	0.0	0.0	
8	North Little Rock	-	-	-	-	-	-	-	-	-	-	-	-	4	184.0	184.0	
9	Forrest City, Helena, West Memphis	88.0	22.0	18.0	20.0	0.0	4.0	0.0	0.0	0.0	0.0	0.0	0.0	0	0.0	0.0	
TOTAL		1,833.0	322.0	267.0	254.0	310.0	128.0	110.0	29.0	194.5	397.5	0.0	20.0	23	485.0	485.0	

County Work Project Report

AREAS	FY2023 TOTALS	2022						2023						JULY 2023			FY2024 TOTALS
		AUGUST	SEPTEMBER	OCTOBER	NOVEMBER	DECEMBER	JANUARY	FEBRUARY	MARCH	APRIL	MAY	JUNE	COUNTIES WHERE WORK COMPLETED	NUMBER OF PROBATIONERS AND PAROLEES	NUMBER OF HOURS		
1	157.0	4.0	57.0	0.0	8.0	0.0	0.0	0.0	0.0	0.0	0.0	0.0	0.0	Benton	0	0.0	0.0
10	346.0	10.0	220.0	0.0	20.0	0.0	96.0	0.0	0.0	0.0	0.0	0.0	0.0	Gariand, Hot Spring	0	0.0	0.0
11	275.0	0.0	273.0	2.0	0.0	0.0	0.0	0.0	0.0	0.0	0.0	0.0	0.0	Jefferson	0	0.0	0.0
TOTAL		690.0	14.0	550.0	2.0	28.0	0.0	96.0	0.0	0.0	0.0	0.0	0.0		0	0.0	0.0

COMMUNITY SUPERVISION REVOCATIONS

Revocation Events By Supervision Types and Area - July 2023

Area	Supervision Type	Revoked (Sent to ADC)	Revoked (Sent to CCC)	Revoked (Other)	New ADC/ CCC Sentence
Area 1-Fayetteville	Parole	30			1
Area 2-Mountain Home		9		1	2
Area 3-Searcy		29			4
Area 4-Jonesboro		23			6
Area 5-Fort Smith		35			14
Area 6-Conway		13			4
Area 8-Little Rock		40			9
Area 9-West Memphis		8			2
Area 10-Hot Springs		28			
Area 11-Pine Bluff		32			2
Area 12-Texarkana		21			5
Total by Supervision Type	Parole	268		1	49
Area 1-Fayetteville	Probation	17	4	15	2
Area 2-Mountain Home		5		4	1
Area 3-Searcy		15	12	6	2
Area 4-Jonesboro		10	1	8	7
Area 5-Fort Smith		1	1	1	9
Area 6-Conway		8	7		1
Area 7-Little Rock		2		28	1
Area 9-West Memphis		1			5
Area 10-Hot Springs			1	15	
Area 11-Pine Bluff		8	4	4	4
Area 12-Texarkana		12	1		
Total by Supervision Type	Probation	79	31	81	32
Area 12-Texarkana	Pre-Trial	1			
Total by Supervision Type	Pre-Trial	1			
Area 1-Fayetteville	Suspended	1		1	2
Area 2-Mountain Home		1			1
Area 3-Searcy		1			1
Area 4-Jonesboro		1			5
Area 5-Fort Smith					19
Area 10-Hot Springs					1
Area 11-Pine Bluff					2
Area 12-Texarkana		6			
Total by Supervision Type	Suspended	10		1	31
TOTAL BY SUPERVISION EVENT		358	31	83	112

REVOCATION HEARINGS

Parole Revocation Hearings and Outcomes - July 2023

Hearing Outcome	Laws and Technical	Laws Only	Technical Only	Total By Hearing Outcome
Administrative Revocation		54	1	55
Deferred	3	1		4
Reinstate	4	4		8
Revoked	29	6	2	37
Waived	180	26	12	218
Total By Violation Type	216	91	15	322

Note: Excludes SSP Sanction Hearings

ACT 1029 HEARINGS HELD	Total
Revoked	12
Waived	10
Total # ACT 1029 Hearings	22

Note: Included in totals for Hearing Outcomes

SUPERVISION SANCTIONS

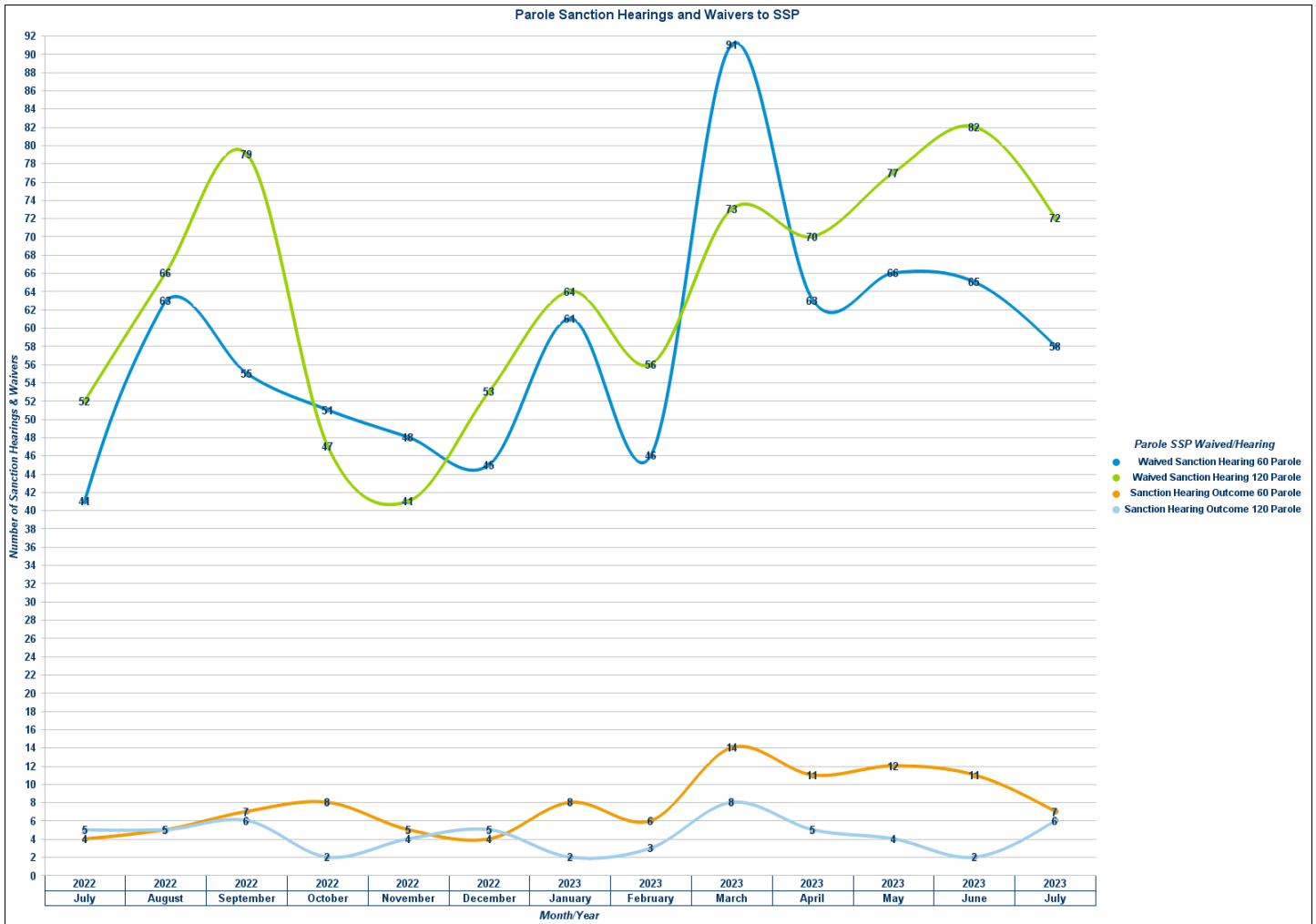
Supervision Sanction Hearings and Waivers

07/01/2023 - 07/31/2023

Sanction Hearing Outcome	Sanction Hearing Type	Parole	Probation	Sum:
Sanction Hearing Outcome 60 Parole	Sanction Hearing	7		7
Sanction Hearing Outcome 120 Parole		6		6
Totals:	Sanction Hearing	13		13
Waived Sanction Hearing 60 Parole	Waived Sanction Hearing	58		58
Waived Sanction Hearing 90 Probation			4	4
Waived Sanction Hearing 120 Parole		72		72
Waived Sanction Hearing 180 Probation			2	2
Totals:	Waived Sanction Hearing	130	6	136
	Overall Totals:	143	6	149

Note: SSP lengths for parolees only were changed in August 2021.

PAROLE SANCTION HEARINGS AND WAIVERS TO SSP



COMMUNITY SUPERVISION DRUG TESTING

**Regular Probation and Parole
Positive Tests During July 2023**

Offender Urine Tests Administered this Period: 7,089
Number of Offenders Testing Positive: 2,497

Drug Tested	Count
THC/Marijuana	1,568
Methamphetamines	1,449
Amphetamines	942
Cocaine	172
Benzodiazepines	140
Alcohol	62
Ethyl Glucuronide	62
Heroin/Opiates	54
Ecstasy	52
Oxycodone	51
Fentanyl	41
Methadone	26
Buprenorphine	25
Barbiturates	20
Hydrocodone	14
Propoxyphene	14
Morphine	12
Tramadol	10
K2 (SPICE)	4
PCP	3
Methadone Metabolite	2
Other Hallucinogens	2
Speed	2
Cotinine	1
Crack	1
Inhalants	1
Kratom	1
LSD	1
Prescription Abuse	1
Total	4,733

**Drug Courts
Positive Tests During July 2023**

Offender Urine Tests Administered this Period: 7,382
Number of Offenders Testing Positive: 336

Drug Tested	Count
Buprenorphine	484
THC/Marijuana	216
Amphetamines	212
Methamphetamines	210
Ethyl Glucuronide	92
Benzodiazepines	54
Morphine	38
Tramadol	38
Methadone	35
Ecstasy	34
Oxycodone	28
Cocaine	22
Fentanyl	20
Heroin/Opiates	17
Creatinine	12
Alcohol	10
Kratom	4
Barbiturates	2
Hydrocodone	2
K2 (SPICE)	1
Methaqualone	1
Nicotine	1
Other Hallucinogens	1
PCP	1
Total 1,535	1,535

**Specialty Courts
Positive Tests During July 2023**

Offender Urine Tests Administered this Period: 202
Number of Offenders Testing Positive: 15

Drug Tested	Count
THC/Marijuana	26
Benzodiazepines	9
Amphetamines	6
Methamphetamines	6
Buprenorphine	5
Barbiturates	2
Fentanyl	2
Ethyl Glucuronide	1
Methadone	1
Morphine	1
Total	59

