

Innovation in Information Sharing to Coordinate Crime Reduction

Arkansas Justice Reinvestment
Initiative (JRI)



1

Agenda



Introductions



Grant Overview



Current Context



Next Steps

Step 1: Gather Stakeholder Feedback

2


Introductions

- CNA
- Presenters: DOC and DIS
- Core Implementation Team

- Stakeholders
 - Arkansas government (on call today)
 - Community and faith-based organizations
 - Local government
 - Justice-involved individuals
 - Business community and workforce development
 - Research, policy development organizations



3



Justice Reinvestment Initiative (JRI)

- Data-driven process to increase public safety.
- More effective and efficient use of criminal justice resources to reduce recidivism and hold individuals accountable.

4

JRI Category 3: Cross-Agency Information Sharing

- Develop and build data-sharing tools such as arrest alert systems that assist in addressing expensive deficiencies in sites' criminal justice systems.
- Break down information sharing silos and challenge current practices that may impede a community's crime reduction strategies.

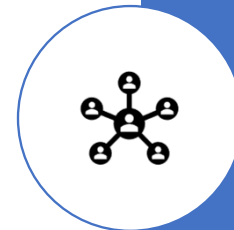


5

Project Summary

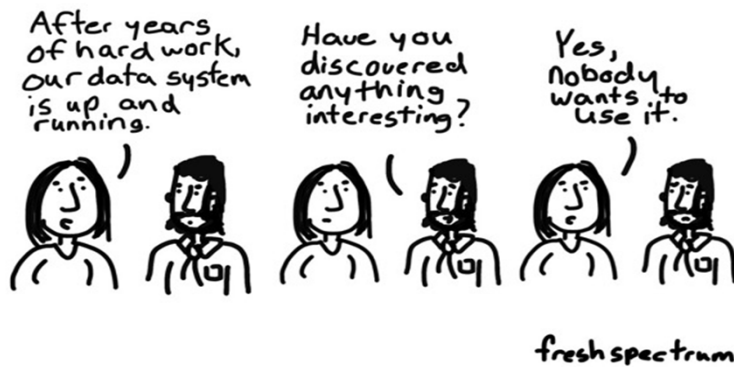
- Working with stakeholders to identify high impact data tools and products
 - Wide net of stakeholders
- Building on existing IT infrastructure to support interagency and cross-sector sharing
 - Arkansas Data Hub to support specific data needs

[Arkansas JRI Grant State Action Plan](#)



6

Goal is Useful Cross-Agency Data Products



7

Building on Previous Work

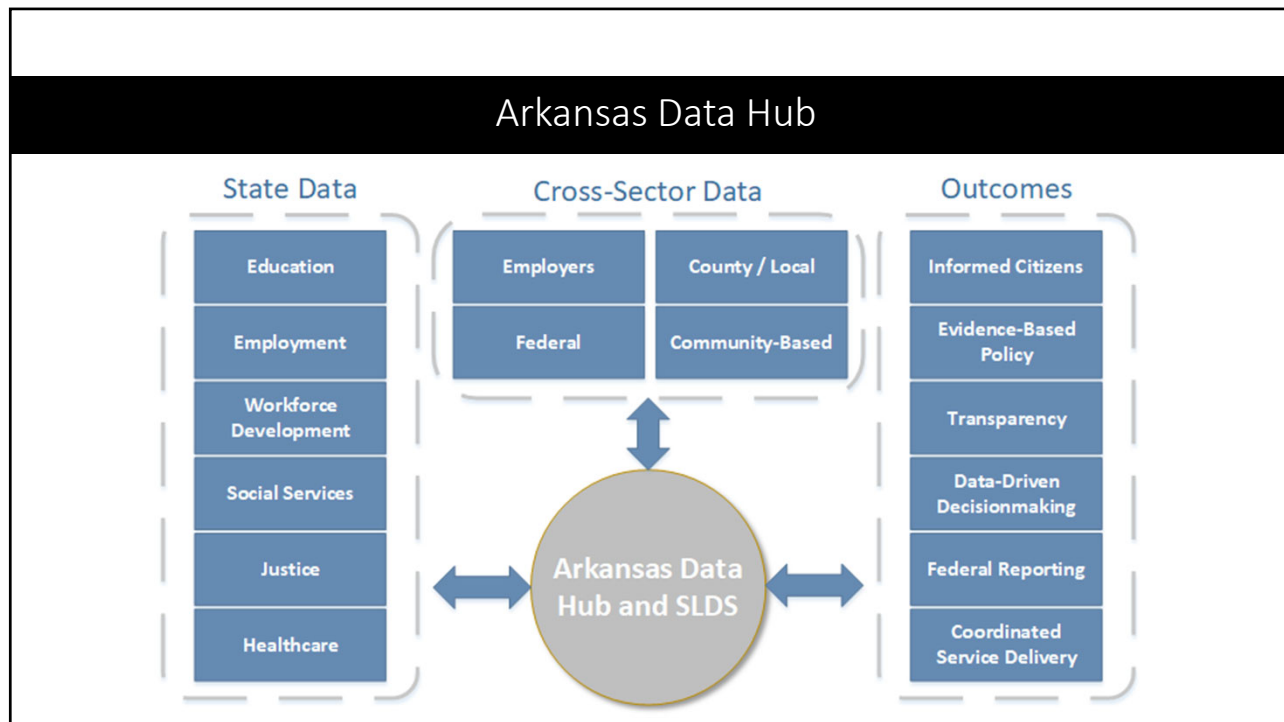


Previous Design Thinking

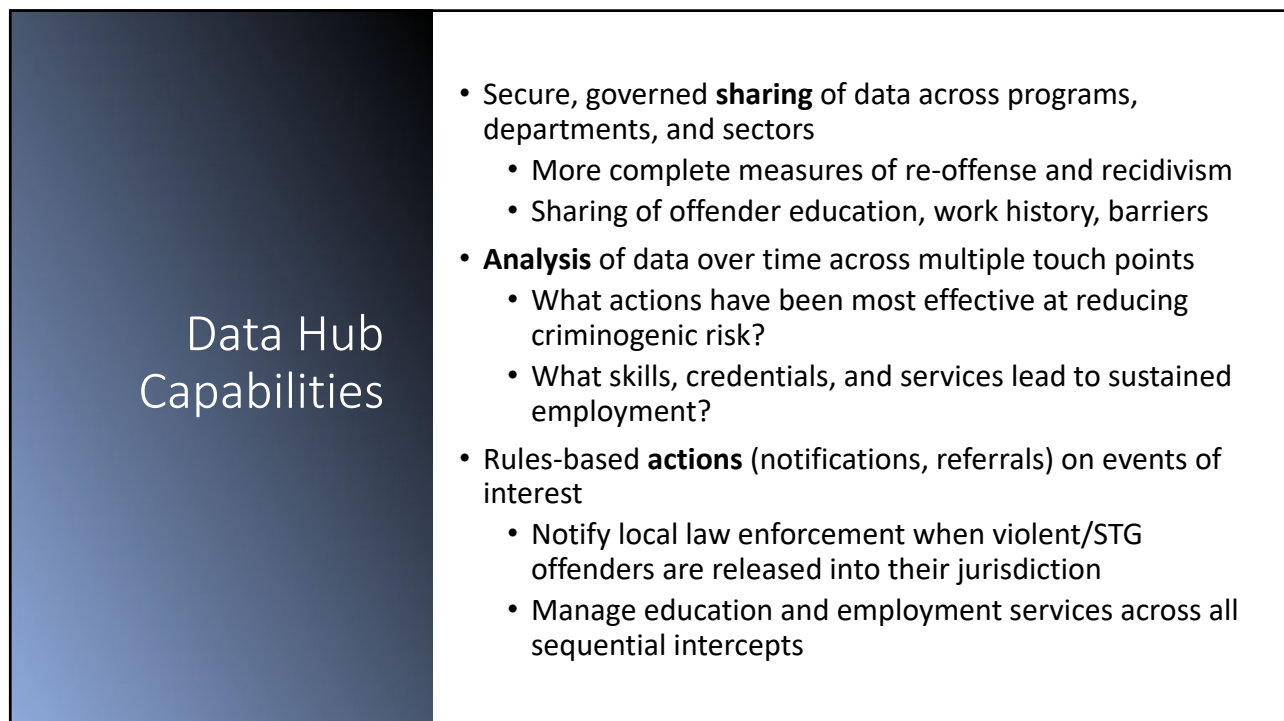


AR Data Hub

8




9



10

Moving forward

- Stakeholder feedback – identifying opportunities 
- Additional stakeholder time for more in depth one on one and small group conversations
- Core implementation team: idea grouping and quadrant analysis
- Data product development
- Evaluation of data usage pre and post project

11

Identifying Opportunities



- Individual level data for notifications, case management, etc.
- Population level data for evidence-based policy making
- Stakeholder Feedback Jamboard ([link in chat](#))

12

Stakeholder Feedback



[Interactive Jamboard](#) (link in chat)



Other Questions or Thoughts

13

Thank you



Contact information for scheduling follow-up conversations:

Martie.Roberts@arkansas.gov, 501-682-6387
Division of Information Systems

Presenters:

Robin.White@arkansas.gov, Department of Corrections

Carrie.Anderson@arkansas.gov, Division of Information Systems

Robert.McGough@arkansas.gov, Division of Information Systems

Heather.Saco@arkansas.gov, Division of Information Systems

14