



DIVISION OF CORRECTION BOARD REPORT

July 2022

Dexter Payne
Director



POPULATION REPORT

RESEARCH/PLANNING

June 2022 Admissions and Releases –

Admissions for June 2022 totaled 469 (414-males and 55-females) while releases totaled 528 (452-males and 76 females) for a net decrease in-house of 59 inmates.

Inmate Population Growth/Projection –

At the end of June 2022, the jurisdictional population for the Division of Correction totaled **17,129**, representing an increase of **106** inmates since the first of January 2022. At reporting time, calendar year 2022 has seen an average rate of **18** inmates per month, which is down from an average monthly increase of **77** inmates per month during calendar year 2021.

Average County Jail Backup –

The backup in the county jails averaged **1,494** inmates per day during the month of June 2022, which was the same per-day average as the month of May. Of the **1,494** average, short-term revocations accounted for **558** (475 males and 83 females) during the month. Also, the average county jail backup for fiscal year 2022 was 1,743, which is up by 5.9% from the fiscal year 2021 average of 1,646.

House Bill 1530/Restrictive Housing (RH) - April through June 2022 –

There was:

- A 4.1% increase in overall RH assignments during the second quarter of 2022 compared to the first quarter.
- A 24.2% increase in the number of major disciplinarys during this quarter – particularly for “Failure to Obey Order of Staff” (509 compared to 349 during the first quarter).
- Two suicides during this quarter but a scant decrease in the number of suicide attempts.
- A slight increase in the number of assignments for those held in RH who were age 21 or younger, compared to the first quarter.
- A small decrease in the number of inmates with an SMI diagnosis as well as those held in RH who were age 55 and older, compared to the first quarter.

INSTITUTIONS

INMATE INSTITUTIONAL GRIEVANCES

Inmate Formal/Informal Grievances:

During June, a total of 1,345 formal grievances and 1,932 informal grievances were filed at various units.

Institutional Grievances Appeals: There was a total of 486 appeals of institutional grievances received in June. Of those, 365 were acknowledged and 121 were rejected for various reasons. Of the total 262 appeals answered, 257 had no merit and five had merit.

FARMS

June was a busy month at all farms. The wheat harvest was the main focus for Tucker, Cummins and EARU, which yielded more than 300,000 bushels combined. Equaling six barge loads of grain, it was a good harvest. All farms were able to plant soybean crops behind the wheat. The heat came in early, which brought dry conditions as well. Irrigation has been going at all farms for most of the month.

Vegetable production hit high gear with more than 100,000 pounds moving into the kitchens during the month.

Hay production was a focus with Wrightsville and Cummins baling over 2,500 rolls. The crew from North Central handled production at Tucker and EARU and baled 384 rolls at those units.

With the dairy cows feeling the stress of the heat, fans and misters are being used to keep them as comfortable as possible. Milk production typically goes down and the somatic cell count rises with the summer heat.

New hens are being transferred to the layer house on July 2.

REGIONAL MAINTENANCE HOURS

Regional Maintenance Hours	June 2022
Benton Unit	8,289
Delta Regional Unit	3,362
East Arkansas Regional Unit	1,248
Grimes Unit	3,324
McPherson Unit	2,620
Mississippi County Work Release	1,563
North Central Unit	7,920
Ouachita River Correctional Unit	3,256
Randall L. Williams Unit	4,920
Texarkana Regional Correctional Center	3,992
Tucker Unit	1,064
Varner Unit	3,996
Wrightsville Unit	4,176
Total Hours	49,730

WORK RELEASE RENT REPORT

Unit	June 2022
Benton Unit	\$80,019.00
Mississippi County Work Release	\$62,781.00
Northwest Arkansas Work Release	\$37,859.00
Pine Bluff Work Release	\$33,422.00
Texarkana Regional Correctional Center	\$45,186.00
Wrightsville Hawkins Unit	\$27,404.00
Total	\$286,671.00

REENTRY

RANDALL L. WILLIAMS
JUVENILE EDUCATION PROGRAM

June 2022 Capacity: 20	Beginning Count	New Commitments	DCR/Punitive	Transferred/ Turned 18*	Paroled	End Count
Juveniles*	9	0	0	0	0	9

*Juveniles are transferred from the program once they reach the age of 18.

ESTER UNIT INSIDE OUT PROGRAM

June 2022 Capacity: 20	Beginning Count	Admitted	Graduated	Removed	End Count
Participants	0	16	0	1	15

This is a new program that began June 27, 2022, in a partnership with DHS.

WORKFORCE ALLIANCE FOR
GROWTH IN THE ECONOMY (WAGE)

June 2022 Capacity: 120 Unit:	Beginning Count	Admissions During Mo.	Completed	Removed*	End Count
Delta	0	0	0	0	0
Ester	0	0	0	0	0
Hawkins	22	0	7	1	14
McPherson	0	0	0	0	0
Ouachita River	13	13	10	3	13
Tucker	15	0	0	0	15
Wrightsville	5	0	2	0	3
TOTAL	55	13	19	4	45

*The "Removed" column indicates the number of participants who transferred, signed out, received a disciplinary, were removed because test scores were not returned/were too low to continue, or were released from prison.

ADVANCED PRINCIPLES
AND APPLICATIONS FOR
LIFE PROGRAM (APAL)

June 2022 Capacity: 86	Beginning Count	Admissions During Mo.	Removed*	End Count
Ester	56	0	6	50
Hawkins	15	2	0	17
TOTAL	71	2	6	67

Advanced PAL is an 18-month reentry program that combines a pre-release curriculum with the PAL program.

*The "Removed" column indicates the number of participants who paroled, completed the program, withdrew from the program, transferred, or were removed from the program for another reason.

WRIGHTSVILLE-HAWKINS
PATHWAY TO FREEDOM PROGRAM

June 2022 Capacity: 200	Beginning Count	Enrolled During the Month	Removed	End Count*
Wrightsville-Hawkins PTF	199	10	11	198

THINK LEGACY

June 2022 Capacity: 635 Unit	Beginning Count	Admitted	Graduated	Removed*	End Count
Cummins	26	0	0	5	21
Delta Regional	12	0	0	1	11
East Arkansas Regional	16	0	0	0	16
McPherson	28	0	0	7	21
North Central	27	0	0	4	23
Ouachita River	24	0	0	3	21
Tucker	29	0	0	5	24
Total	162	0	0	25	137

*The "Removed" column indicates the total number of participants who paroled, signed out, transferred, or were removed from the program for any other reason and are no longer in the barracks.

TRAINING

DIVISION OF CORRECTION
TRAINING - JUNE 2022

BASIC TRAINING DIVISION –

BCOT Class 2022-G, led by Major Joi Harris, graduated on June 23 with a total of 35 cadets. The Willis H. Sargent Award was presented to Luke Combs of the Ouachita River Correctional Unit.

Academic Awards were presented to the following:

- 1st – Luke Combs, Ouachita River Correctional Unit
- 2nd – Thomas Ruble III, Varner Unit
- 3rd – Samantha Bishop, Randall L. Williams Unit

Recipients of *Physical Fitness Awards* were:

- 1st – Willie Dukes III, Varner Unit
- 2nd – Caden Waldrop, Texarkana Regional Correctional Ctr.
- 3rd – Sherodrick Smith, Maximum Security Unit

eCADEMY –

During June, 342 ADC employees completed a total of 5,204.50 hours of eCADEMY training.

HEALTH/CORRECTIONAL
PROGRAMS

CHAPLAINCY SERVICES

Delta Regional Unit – Delta Chaplaincy worked with unit administration to conduct a talent show on June 9, in which seven inmates participated.

East Arkansas Regional Unit – On June 14, 50 inmates attended a seminar conducted by the regional manager of the Angel Tree program on how it can minister to their families.

ACCREDITATION

ACA Internal Audits Completed:

06/01–06/30 Wrightsville Complex File Prep

Fire/Safety and Sanitation Independent Audits Conducted by the Fire and Sanitation Coordinator:

06/06–06/07 Miss. Co. Work Release Independent Audit

06/10–06/14 East Arkansas Regional Unit Independent Audit

06/23–06/27 Delta Regional Unit Independent Audit

06/29–06/30 North Central Unit Independent Audit

Classes Taught:

06/15 Fire/Safety and Tool Control Training at Cummins Pavilion

VOLUNTEER SERVICES

A detailed Volunteer Services report that includes all ADC facilities can be viewed on Page 24.

MENTAL HEALTH SERVICES

Reduction of Sexual Victimization Program (RSVP) and Sex Offender Treatment Programs (SOFT):

June 2022	Capacity	Beginning Count	Completed	Removed	Admissions	End Count
RSVP	238	236	0	9	8	235
SOFT	30	7	1	2	0	4
Total	268	243	1	11	8	239

There are 1,196 males on the waiting list for RSVP and 9 females on the waiting list for SOFT who are within five years of their TE date. Of those, ten inmates are mandated by the Parole Board.

The average time on the waiting list from request is between one and two months for those stipulated.

*The total on the waiting list, including those not currently within the identified timeframe, is 1,578 males and 12 females. Of these, 1,205 are eligible and 385 are ineligible for the program. There is one PREA inmate in the program at this time.

*Ineligibility is due to being in restrictive housing, having class IV status, or receiving a major disciplinary within the last 60 days.

MENTAL HEALTH SERVICES, *continued***Therapeutic Community (TC):**

June 2022 Unit	Capacity	Beginning Count	Completed	Removed	Admissions	End Count
Tucker	62	57	0	5	3	55
Wrightsville	50	48	6	5	11	48
Total	112	105	6	10	14	103

There are 660 males and 210 females on the waiting list who are within ten years of their release date. Of those, 28 are mandated by the Parole Board.

The average time on the waiting list from request is 15 days.

*The total on the waiting list, including those not currently within the identified timeframe, is 889 males and 226 females. Of these, 898 are eligible and 217 are ineligible for the program.

***Ineligibility is due to being in restrictive housing, having class IV status, or receiving a major disciplinary within the last 60 days.**

Substance Abuse Treatment Program (SATP):

June 2022 Unit	Capacity	Beginning Count	Completed	Removed	Admissions	End Count
Benton	20	20	11	0	5	14
Cummins	45	45	3	1	4	45
Maximum Security	4	1	1	0	4	4
Randall L. Williams	150	146	32	16	37	135
Wrightsville	100	90	15	4	20	91
Total	319	302	62	21	70	289

There are 2,144 males and 187 females on the waiting list who are within five years of their release date. Of those, 40 are mandated by the Parole Board.

The average time on the waiting list from request is 13 days.

*The total on the waiting list, including those not currently within the identified timeframe, is 2,837 males and 221 females. Of these, 2,371 are eligible and 687 are ineligible for the program.

***Ineligibility is due to being in restrictive housing, having class IV status, or receiving a major disciplinary within the last 60 days.**

PILOT PROGRAM – Substance User Rehabilitation Services (SURS):

June 2022 Unit	Capacity	Beginning Count	Completed	Removed	Admissions	End Count
McPherson	150	118	34	8	32	108
Grimes	50	47	23	2	25	47
Total	200	165	57	10	57	155

Substance Use Intervention Program:

The Substance Use Intervention Program had five admissions and eight discharges for an end-of-month count of 25 in June. This program is housed at the Varner Unit and is for inmates found guilty of a disciplinary violation for drug use or drug possession.

Ouachita River Correctional Unit (ORCU) Residential Program Unit (RPU):

The RPU had four admissions and nine discharges in June for an end-of-month count of 118.

McPherson Unit Mental Health Residential Program Unit (RPU):

There were six admissions and five discharges in June for an end-of-month count of 40.

Habilitation Program:

The Habilitation Program at the Ouachita River Correctional Unit provided treatment services to 45 inmates in June. There were no admissions and one discharge, which resulted in an end-of-month count of 44.

Anger Management Treatment:

The Anger Management Treatment Program at the Cummins Unit did not provide treatment services to any inmates in June. There were no admissions or discharges, for an end-of-month count of zero.

Suicide:

There were 111 suicidal threats in June. There were 25 attempts, none of which resulted in death.

MENTAL HEALTH SERVICES, *continued***Staffing:**

The following Mental Health Services and Substance Abuse Treatment Program (SATP) positions were vacant in May and June 2022:

Positions	FTEs*	May 2022	June 2022
Psychologists	14	6	7
Psychological Examiners	2	2	2
Social Workers	31	14	15
Licensed Professional Counselors	2	1	2
Rehab Director	1	1	1
Rehab Facility Supervisors	3	1	1
Advisors	64	21	23
Substance Abuse Program Coord.	6	3	3
Substance Abuse Program Leaders	40	7	9
Administrative Specialists	17	2	2
Rehab Program Managers	9	0	1

*FTE refers to authorized Full Time Equivalent positions.

ADDITIONAL MENTAL HEALTH AND MEDICAL INFORMATION**Self-Study Classes:**

Classes	Number of Participants	Number Completed	Waiting List
Anger Management	316	296	932
Thinking Errors	278	252	829
Substance Abuse Education	274	264	602
Communication Skills	241	237	905
Domestic Violence	131	122	202
Victims of Domestic Violence	65	65	92
Stress Management	230	221	895
Parenting	207	189	358

Outpatient:

There were 2,209 inmates on the mental health medical log at the beginning of June. Mental Health staff conducted the following contacts during the month:

Case Management Contacts	1,959
Requests for Interviews	1,474
Testing	0
Intakes	562
Unit Requests	1,702
Pre-Lockup Reviews	405
Routine Restrictive Housing Reviews	800
Restrictive Housing Rounds	15,955
PREA Evaluations	52
Routine Follow-up	494
834 Requests	30

County Mental Health Requests:

During June, there were 262 requests received of a mental health nature. Of those, 107 inmates were fast-tracked to ADC. **Note: Most inmates were not transferred due to COVID-19.**

County Medical Health Requests:

During June, there were 597 requests received of a medical nature. A total of six inmates were fast-tracked to ADC.

Medical Contract Reimbursements:

Sanction reimbursements for ADC in May amounted to \$15,950.00.

Deaths:

There were four inmate deaths during the month of June, all of which were cremated.

Wellpath:

See attachment for Wellpath's report regarding outside beds and emergency room visits.

Medical Grievances:

In June, there were 111 appeals of medical grievances received and 132 appeals were answered. Four were found to be with merit.

SEX OFFENDER ASSESSMENT

Assessments Completed:

Risk Level	June	September 1999 through June 2022
Level 1	0	1,223
Level 2	34	8,930
Level 3	19	7,579
Level 4	0	735
Default 3	0	*
Total	53	18,467
*Default Level 3's are included in the total number of Level 3's to date.		

ACIC Numbers:

The total number of sex offenders registered from September 1999 through June 2022:

Compliant	8,607
Delinquent	1,427
Confined	3,496
Out-of-State	4,070
Address Unknown	154
Deported	210
Incapacitated	114
Out of USA	21
Total	18,099

Consistent with current Arkansas law, deceased offenders no longer remain on the registry.

PAWS IN PRISON

June 2022 Unit	Enrolled	Graduated	Foster	Volunteer Hours
Hawkins Unit	6	2	0	0
Maximum Security Unit	9	5	1	0
McPherson Unit	8	0	0	0
North Central Unit	3	3	0	0
Ouachita River Correctional Unit	6	1	0	0
Randall L. Williams Unit	4	2	2	10
Tucker Unit	8	5	0	0
Total	44	18	3	10

Completed Paws in Prison Training:

June 2022 Program Graduates	18
YTD 2022 Program Graduates	107
Total Graduates Since Inception (December 2011)	1,977
Dogs Currently in Foster (Graduated, but Not Adopted)	3
June 2022 Volunteer Hours	10
YTD Volunteer Hours	60

INFORMATION TECHNOLOGY

INMATE TABLETS – Within the Division of Correction, a total of 10,557 inmate tablets were utilized during June. Of those, 6,471 were base tablets at no cost. A total of 4,084 tablets were leased at \$5 per month and include premium content.

INMATE VIDEO VISITS – Inmates completed 8,935 video visits during the month and missed 484 within the Division of Correction.

CONSTRUCTION/MAINTENANCE

PROJECT UPDATES

SEE CONSTRUCTION BUDGET / STATUS REPORT IN ATTACHMENTS SECTION (PAGES 27-28).

AGENCY HIGHLIGHTS

JUNE 2022

DEPUTY DIRECTOR GRIFFIN RETIRES

ADC Deputy Director Rory Griffin retired from the Department on June 30 and was honored with a reception at Legends

Auditorium at Admin East that day. In the preceding week, Mr. Griffin attended his final meeting of the Board of Corrections (BOC). Chairman Benny Magness and other members of the Board took a moment to present Mr. Griffin with a lapel pin to show their appreciation for his years of dedicated service to the Department.



AGENCY HIGHLIGHTS, *continued***PROMOTIONS**

Some of the security promotions during the month of June included:

Grimes Unit

- Lt. Heath Dunagan

Hawkins Unit

- Lt. Rodney Welch

McPherson Unit

- Sgt. Jacqueline Matthews

Ouachita River**Correctional Unit**

- Sgt. Whitney Clark
- Sgt. Joseph Hunter

Randall L.**Williams Unit**

- Lt. Marque Martin

Transportation

- Sgt. Kenneth Carlock
- Lt. Gregory Green

Wrightsville Unit

- Sgt. Daryl Craig

STAFF**APPRECIATION**

Cpl. Yolanda Smith and Cpl. Blake Barnes of the Northwest Arkansas Work Release

Center were presented with the Shining Light Award for going above and beyond the call of duty.

The following were recently awarded Employee of Month honors:

- Lt. Dwyatt Felts, Wrightsville Unit
- Cpl. Todd Sage, Benton Unit
- Cpl. Cordell Smith, NAWARC
- Cpl. Tomasa Waters, Hawkins Unit



Lt. Heath Dunagan



Lt. Marque Martin



NWAWRC Shining Light Award



Lt. Felts



Cpl. Sage



Cpl. Smith



Cpl. Waters

BENTON PILOT PROGRAM LAUNCHED

Benton Work Release was given approval to launch a pilot program allowing new hires to report to work at the unit before going through the ADC Training Academy. One of the benefits is that the new employees can begin working more quickly so that they're less likely to be lost to other prospective employers.

**HEAVY EQUIPMENT SIMULATORS INSTALLED AT VARNER UNIT**

Board of Corrections Secretary Dr. William "Dubs" Byers, Arkansas Correctional School (ACS) Superintendent Dr. Bill Glover, CTE Manager Jeff Fowler and ACS Deputy Superintendent

Tracy Dowell received training on newly installed heavy equipment simulators at the Varner Unit. The simulators will be used to help further the career and technical education of offenders at the unit.

**GRADUATION HELD FOR BCOT 2022-G**

The BCOT Class 2022-G graduated from the ADC Training Academy on June 22. Superintendent DeAngelo Earl and ADC Director Dexter Payne offered words of encouragement to the class as they begin their careers with the AR DOC Family.



AGENCY HIGHLIGHTS, *continued***SCHOOL ART
TEACHER HELPING
PROMOTE PAWS IN
PRISON PROGRAM**

During the month, THV 11's Craig O'Neill featured Harrisburg Elementary School art teacher Blaze Cantrell as Arkansan of the Day. The feature highlighted a recent art project collaboration between the school and the Paws in Prison program at the McPherson Unit.

**CUBICLES INSTALLED BY NWAIRC INMATES
AT NEW FAYETTEVILLE
DHS OFFICE**

Northwest Arkansas Work Release inmates assisted Correctional Industries Supervisors Gary Reynolds and Barrett Thomas (*pictured right*) with the installation of 190 cubicles in the new Department of Human Services office in Fayetteville.

**PIE IN THE FACE
FUNDRAISER HELD
FOR ORCU EMPLOYEE
CORPORATION**

The staff at the Ouachita River Correctional Unit raised money to support the Employee Corporation with a "Pie in the Face" fundraiser. Staff donated money for a chance to throw a pie.

**EDUCATION AFTER RELEASE THE FOCUS
OF CUMMINS THINK LEGACY SEMINAR**

On June 22, Cummins Unit Program Specialist Lisa Bailey hosted guests who conducted a seminar with 21 Think Legacy Program students on continuing their education after release. The volunteers, who were from the Delta Education Opportunity Center in conjunction with the University of Arkansas at Little Rock, discussed topics such as the Free Application for Federal Student Aid (FAFSA), entering local colleges and Vo-Tech school opportunities.

**BCOT 2022-H CADETS GET HANDS-ON SELF
DEFENSE TRAINING
AT ACADEMY**

Cadets in the Basic Correctional Officer Training Class 2022-H participated in an in-depth self defense training class on pressure points control tactics.

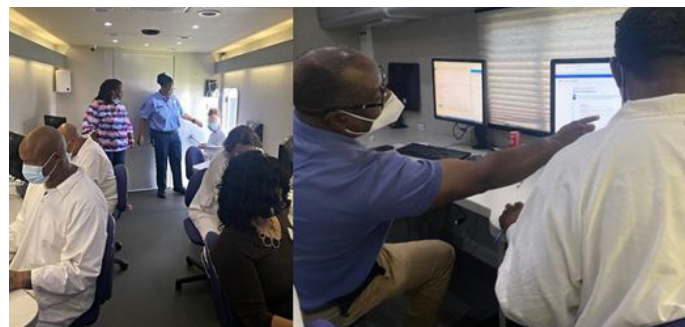
**PINE BLUFF COMPLEX EMPLOYEE
CORPORATION FUNDRAISER HELD**

To kick off summer, the Pine Bluff Complex held a raffle fundraiser benefiting their Employee Corporation. Lt. Darnell Johnson of the Randall L. Williams

Unit and Capt. Greg Moore of the Ester Unit each won a basket and cooler filled with goodies.

**EMPLOYMENT DAY HELD FOR ESTER INMATES**

In June, the Ester Unit held an Employment Day for inmates. Release Program Specialist Cozette Fuller coordinated with the Arkansas Division of Workforce Services to make this event possible. Nine participants from the Veterans Program and eight from the Release Program took part.

**VOLUNTEER GROUP
MAKES DONATION
TO PAWS IN PRISON
PROGRAM**

La Moderne, a volunteer group of ushers at Little Rock's Robinson Center, made a \$2,500 donation to the Arkansas Paws in Prison program. La Moderne member Peggy Cryer and her pup Mia, a PIP graduate, presented a check to program Coordinator Victoria Vander Schilden on June 15.



REGIONAL MAINTENANCE PROJECT HIGHLIGHTS

JUNE 2022

Clean Up of Boys/Girls Club Ball Fields (Malvern)*Ouachita River Regional Maintenance – June 6:***Cleanup of Ditches (Gould)***Varner Regional Maintenance 1 – June 7:***Cleanup of McClain Park (Mountain Home)***North Central Regional Maintenance – June 17:***City Cleanup and Limb Removal (Newport)***Grimes Regional Maintenance – June 22:***Cleanup at UAPB Fish Hatchery (Pine Bluff)***Pine Bluff Regional Maintenance – June 22:***Repair of Taylor Field Back Wall (Pine Bluff)***Pine Bluff Regional Maintenance – June 30:*

2022 INFORMAL GRIEVANCE REPORT

Month	BENTON	HAWK/M	HAWK/F	WRTS	EARU & MX	GRIMES	RLW	MCWR	MCPH	MSU	NCU	PBU	NWA	TU	TRCC	VSMX	VU	CU & CMU	ORCU	Ester	DRU	TOTAL
JAN	3	18	36	92	227	198	42	0	262	122	100	58	0	55	1	436	40	172	135	46	159	2,202
FEB	1	8	37	54	188	166	15	0	375	111	111	54	0	43	1	309	43	112	130	38	125	1,921
MAR	1	35	32	105	197	184	31	0	326	90	67	66	0	48	5	434	45	96	88	30	149	2,029
APR	0	15	25	72	207	176	18	0	285	95	86	46	0	68	0	487	33	143	139	25	98	2,018
MAY	0	7	17	40	209	187	39	0	283	75	91	34	0	41	1	343	31	87	138	34	83	1,740
JUN	0	10	24	65	244	246	46	0	300	54	87	76	0	49	0	317	35	129	94	40	116	1,932
JUL	0	0	0	0	0	0	0	0	0	0	0	0	0	0	0	0	0	0	0	0	0	0
AUG	0	0	0	0	0	0	0	0	0	0	0	0	0	0	0	0	0	0	0	0	0	0
SEPT	0	0	0	0	0	0	0	0	0	0	0	0	0	0	0	0	0	0	0	0	0	0
OCT	0	0	0	0	0	0	0	0	0	0	0	0	0	0	0	0	0	0	0	0	0	0
NOV	0	0	0	0	0	0	0	0	0	0	0	0	0	0	0	0	0	0	0	0	0	0
DEC	0	0	0	0	0	0	0	0	0	0	0	0	0	0	0	0	0	0	0	0	0	0
TOTAL	5	93	171	428	1,272	1,157	191	0	1,831	547	542	334	0	304	8	2,326	227	739	724	213	730	11,842

2022 FORMAL GRIEVANCE REPORT

[illegible]

INMATE INSTITUTIONAL GRIEVANCE APPEAL REPORT – JUNE 2022

	Acknowledged	Rejected	Processed W/O Merit	Processed W/ Merit
Benton Unit	0	0	0	0
Benton Work Release	0	0	0	0
Cummins Unit	11	4	8	0
Cummins Modular Unit	31	0	2	0
Delta Regional Unit	13	4	17	0
East Arkansas Regional Unit	15	3	6	0
East Arkansas Regional Max Unit	91	18	42	5
Ester Unit	6	3	1	0
Grimes Unit	33	14	13	0
Maximum Security Unit	24	8	16	0
Tucker Re-Entry	0	0	0	0
McPherson Unit	13	15	12	0
McPherson Mental Health Residential Program Unit	1	0	1	0
Mississippi County Work Release Center	0	0	0	0
Northwest Arkansas Work Release Center	0	0	0	0
North Central Unit	12	6	7	0
Ouachita River Correctional Unit	16	2	12	0
ORCU Hospital	0	0	0	0
ORCU New Commitment	0	0	1	0
ORCU Mental Health Residential Program Unit	1	0	0	0
Pine Bluff Unit	2	2	0	0
Pine Bluff Re-Entry	0	0	0	0
Randall L. Williams Correctional Facility	6	4	2	0
Texarkana Regional Correctional Center	0	0	0	0
Tucker Unit	0	2	4	0
Varner Super Max	75	21	99	0
Varner Unit	2	4	3	0
Wrightsville Unit	13	7	11	0
Hawkins Center	0	4	0	0
Hawkins for Males	0	0	0	0
Hawkins SPU	0	0	0	0
Total	365	121	257	5

ADMISSIONS AND RELEASES – JUNE 2022

<u>Admissions</u>	<u>Male</u>	<u>Female</u>	<u>Total</u>
Asian	3	0	3
Black	127	10	137
Hispanic	9	2	11
Native American Indian	2	0	2
Native Hawaiian or Pacific Isl.	0	0	0
White	273	43	316
Other	0	0	0
Unknown	0	0	0
Total	414	55	469

<u>Releases</u>	<u>Male</u>	<u>Female</u>	<u>Total</u>
Asian	3	0	3
Black	143	15	158
Hispanic	12	0	12
Native American Indian	3	2	5
Native Hawaiian or Pacific Isl.	2	0	2
White	286	59	345
Other	3	0	3
Unknown	0	0	0
Total	452	76	528

ADC INMATE POPULATION GROWTH 2000-2028 - JUNE 2022

Updated 06/30/2022

Mo.	2000	2001	2002	2003	2004	2005	2006	2007	2008	2009	2010	2011	2012	2013	2014	2015	2016	2017	2018	2019	2020	2021	2022
Jan.	11,984	11,908	12,402	13,015	13,105	13,595	13,481	13,839	14,518	14,796	15,334	16,312	15,134	14,815	17,481	18,142	17,785	17,824	18,201	17,958	17,989	16,119	17,154
Feb.	12,169	12,022	12,529	13,054	13,166	13,783	13,633	14,012	14,603	14,883	15,374	16,209	14,990	15,008	17,438	18,082	17,625	17,608	17,998	17,846	18,181	16,120	17,077
March	12,006	12,033	12,299	13,108	13,088	13,418	13,534	13,772	14,580	14,843	15,290	16,095	14,964	14,665	17,395	18,233	17,573	17,666	18,089	17,898	17,860	16,085	16,992
April	12,069	12,167	12,465	13,213	13,323	13,469	13,554	13,851	14,769	14,937	15,570	16,172	15,124	14,850	17,604	18,703	17,815	17,798	18,227	17,977	17,331	16,250	17,059
May	12,109	12,384	12,558	13,463	13,556	13,528	13,711	14,146	14,880	15,146	15,694	16,062	15,132	15,074	17,593	18,693	17,769	17,652	17,945	17,817	16,694	16,476	17,229
June	12,005	12,108	12,439	13,418	13,389	13,251	13,430	13,915	14,700	15,025	15,564	15,554	14,832	14,825	17,340	18,813	17,973	17,963	17,972	17,942	16,552	16,560	17,129
July	12,030	12,190	12,622	13,509	13,528	13,286	13,560	14,082	14,868	15,195	15,807	15,519	14,879	15,379	17,522	18,870	18,130	18,180	18,005	18,002	16,511	16,638	
August	12,087	12,371	12,815	13,565	13,632	13,419	13,646	14,224	15,100	15,385	15,829	15,240	14,675	16,103	17,549	18,806	17,919	18,051	17,751	18,090	16,367	16,655	
September	11,983	12,289	12,774	13,341	13,516	13,237	13,652	14,217	14,850	15,285	16,025	15,172	14,724	16,412	17,605	18,549	18,026	18,179	17,865	17,856	16,215	16,698	
October	12,119	12,348	12,942	13,341	13,584	13,363	13,775	14,349	14,836	15,381	16,311	15,271	14,856	16,993	17,880	18,430	18,127	18,348	17,943	17,947	16,311	16,821	
November	12,094	12,408	13,162	13,408	13,706	13,587	13,913	14,437	15,025	15,340	16,460	15,205	14,625	17,168	17,848	17,981	17,573	17,973	17,666	18,060	16,165	16,982	
December	11,856	12,333	12,845	13,106	13,470	13,338	13,728	14,315	14,716	15,199	16,204	15,062	14,654	17,235	17,874	17,707	17,537	18,078	17,799	17,759	16,094	17,023	
Net Ann. Inc.	29	477	512	261	364	-132	390	587	401	483	1,005	-1,142	-408	2,581	639	-167	-170	541	-279	-40	-1,665	929	106
Avg. Mo. Inc.	2	40	43	22	30	-11	33	49	33	40	84	-95	-34	215	53	-14	-14	45	-23	-3	-139	77	18

Population is total jurisdictional count at end of each month. Population at end of month December 1999 was 11,827.

Average monthly population increased for past fifteen years 2007 - 2021 is 18

Average monthly population increased for past ten years Jan. 2012 - Dec 2021 is 16

Average monthly population decreased for past five years 2017 - 2021 is -9

Projected at Growth of 18 per Month

Mo.	2008	2009	2010	2011	2012	2013	2014	2015	2016	2017	2018	2019	2020	2021	2022	2023	2024	2025	2026	2027	2028
	Actual	Actual	Actual	Actual	Actual	Actual	Actual	Actual	Actual	Actual	Actual	Actual	Actual	Actual	Actual/Proj	Proj.	Proj.	Proj.	Proj.	Proj.	Proj.
January	14,518	14,796	15,334	16,312	15,134	14,815	17,481	18,142	17,785	17,824	18,201	17,958	17,989	16,119	17,154	17,255	17,471	17,687	17,903	18,119	18,335
February	14,603	14,883	15,374	16,209	14,990	15,008	17,438	18,082	17,625	17,608	17,998	17,846	18,181	16,120	17,077	17,273	17,489	17,705	17,921	18,137	18,353
March	14,580	14,843	15,290	16,095	14,964	14,665	17,395	18,233	17,573	17,666	18,089	17,898	17,860	16,085	16,992	17,291	17,507	17,723	17,939	18,155	18,371
April	14,769	14,937	15,570	16,172	15,124	14,850	17,604	18,703	17,815	17,798	18,227	17,977	17,331	16,250	17,059	17,309	17,525	17,741	17,957	18,173	18,389
May	14,880	15,146	15,694	16,062	15,132	15,074	17,593	18,693	17,769	17,652	17,945	17,817	16,694	16,476	17,229	17,327	17,543	17,759	17,975	18,191	18,407
June	14,700	15,025	15,564	15,554	14,832	14,825	17,340	18,813	17,973	17,963	17,972	17,942	16,552	16,560	17,129	17,345	17,561	17,777	17,993	18,209	18,425
July	14,868	15,195	15,807	15,519	14,879	15,379	17,522	18,870	18,130	18,180	18,005	18,002	16,511	16,638	17,147	17,363	17,579	17,795	18,011	18,227	18,443
August	15,100	15,385	15,829	15,240	14,675	16,103	17,549	18,806	17,919	18,051	17,751	18,090	16,367	16,655	17,165	17,381	17,597	17,813	18,029	18,245	18,461
September	14,850	15,285	16,025	15,172	14,724	16,412	17,605	18,549	18,026	18,179	17,865	17,856	16,215	16,698	17,183	17,399	17,615	17,831	18,047	18,263	18,479
October	14,836	15,381	16,311	15,271	14,856	16,993	17,880	18,430	18,127	18,348	17,943	17,947	16,311	16,821	17,201	17,417	17,633	17,849	18,065	18,281	18,497
November	15,025	15,340	16,460	15,205	14,625	17,168	17,848	17,981	17,573	17,973	17,666	18,060	16,165	16,982	17,219	17,435	17,651	17,867	18,083	18,299	18,515
December	14,716	15,199	16,204	15,062	14,654	17,235	17,874	17,707	17,537	18,078	17,799	17,759	16,094	17,023	17,237	17,453	17,669	17,885	18,101	18,317	18,533
Net Ann. Inc.	401	483	1,005	-1,142	-408	2,581	639	-167	-170	541	-279	-40	-1,665	929	214	216	216	216	216	216	216
Ave. Mo. Inc.	33	40	84	-95	-34	215	53	-14	-14	45	-23	-3	-139	77	18	18	18	18	18	18	18

MONTHLY POPULATION AVERAGES - JUNE 2022

Unit/Center	6/1	6/2	6/3	6/6	6/7	6/8	6/9	6/10	6/13	6/14	6/15	6/16	6/17	6/20	6/21	6/22	6/23	6/24	6/27	6/28	6/29	6/30	AVG
Benton	325	325	316	314	318	325	325	329	329	330	330	325	325	320	324	326	326	324	323	322	321	311	323
Cummins	1,973	1,973	1,974	1,976	1,973	1,967	1,965	1,971	1,966	1,965	1,962	1,969	1,967	1,966	1,959	1,954	1,953	1,954	1,952	1,952	1,949	1,949	1,963
Delta	598	594	593	603	613	612	612	614	609	608	606	603	598	606	606	604	605	613	610	609	607	611	606
East AR Reg	1,561	1,553	1,567	1,575	1,571	1,563	1,560	1,569	1,573	1,571	1,567	1,568	1,568	1,573	1,571	1,570	1,568	1,569	1,568	1,578	1,579	1,574	1,569
Ester	575	573	575	574	574	570	567	568	573	574	575	574	573	574	575	573	571	569	569	569	572	568	572
Grimes	1,070	1,070	1,070	1,067	1,067	1,066	1,057	1,056	1,062	1,063	1,065	1,059	1,059	1,064	1,064	1,065	1,054	1,051	1,051	1,070	1,070	1,065	1,063
Max Sec	565	565	565	565	566	566	565	564	565	564	563	563	564	563	563	563	563	563	562	562	562	562	564
McPherson	966	968	967	965	973	980	973	970	965	956	956	964	962	959	961	962	961	954	951	950	947	945	962
MCWRC	148	150	150	150	150	149	148	148	148	148	148	152	152	155	155	155	155	155	155	155	152	150	151
N Central	824	824	831	826	838	838	834	834	833	835	845	845	843	840	835	833	831	826	827	827	823	814	832
NWAWRC	100	100	99	100	100	100	100	100	100	100	99	100	100	98	98	100	100	100	100	101	98	101	100
Ouachita River	1,798	1,778	1,780	1,789	1,798	1,779	1,778	1,788	1,763	1,770	1,772	1,793	1,792	1,789	1,798	1,775	1,775	1,806	1,804	1,772	1,780	1,797	1,785
Randall L Williams	543	547	549	542	542	545	545	542	544	546	547	540	533	536	533	534	534	532	535	534	531	526	539
Pine Bluff	535	533	531	530	530	536	532	532	529	539	540	546	546	540	540	538	536	538	533	535	530	535	536
PB Reentry	54	54	54	54	53	52	54	54	54	54	53	53	53	51	51	51	52	49	51	51	51	51	52
TRCC	124	124	124	122	122	121	124	124	124	125	125	124	124	124	128	127	127	127	127	128	120	120	124
Tucker	611	609	608	603	602	601	602	605	606	606	611	610	609	609	611	615	615	615	617	617	615	613	610
Varner	1,616	1,615	1,618	1,618	1,616	1,629	1,629	1,628	1,626	1,638	1,636	1,635	1,633	1,637	1,637	1,637	1,637	1,637	1,636	1,636	1,634	1,631	1,630
Wrightsville	833	845	843	850	844	843	845	844	833	832	846	846	845	845	841	848	845	845	847	846	846	847	844
WR Hawkins-Females	255	255	254	254	254	253	253	253	253	251	250	251	251	251	251	251	251	252	251	250	248	248	252
WR Hawkins-Males	199	199	198	197	197	196	198	196	196	196	195	195	195	194	194	194	194	193	193	193	195	198	196
Total ADC	15,273	15,254	15,266	15,274	15,301	15,291	15,266	15,289	15,251	15,271	15,291	15,315	15,292	15,294	15,295	15,275	15,253	15,272	15,262	15,257	15,230	15,216	15,273
ALETA	17	17	17	17	17	17	17	17	17	17	17	17	17	17	17	17	17	17	17	17	17	17	17
Ar State Police	53	53	53	53	53	53	53	53	53	53	53	53	53	53	52	52	52	51	50	51	51	51	52
Co Jail / M	1,449	1,456	1,432	1,406	1,391	1,390	1,419	1,389	1,404	1,380	1,359	1,343	1,378	1,344	1,357	1,373	1,384	1,350	1,371	1,405	1,426	1,421	1,392
Co Jail / F	112	104	103	104	98	90	96	102	106	105	111	101	102	102	100	102	108	109	113	108	100	100	103
Total Co Jail BK	1,561	1,560	1,535	1,510	1,489	1,480	1,515	1,491	1,510	1,485	1,470	1,444	1,480	1,446	1,457	1,475	1,492	1,459	1,484	1,513	1,526	1,521	1,495
309/M	216	216	217	213	213	213	211	213	214	213	214	214	213	213	213	213	214	213	212	211	211	207	213
309/F	90	88	88	88	88	88	88	91	90	90	90	90	90	90	90	90	90	90	92	92	93	92	90
Total Act 309	306	304	305	301	301	301	299	304	304	303	304	304	303	303	303	303	304	303	304	303	304	299	303
Total Non ADC	1,937	1,934	1,910	1,881	1,860	1,851	1,884	1,865	1,884	1,858	1,844	1,818	1,853	1,819	1,829	1,847	1,865	1,830	1,855	1,884	1,898	1,888	1,867
Total	17,210	17,188	17,176	17,155	17,161	17,142	17,150	17,154	17,135	17,129	17,135	17,133	17,145	17,113	17,124	17,122	17,118	17,102	17,117	17,141	17,128	17,104	17,140

RESTRICTIVE HOUSING QUARTERLY REPORT

APRIL 1, 2022 TO JUNE 30, 2022

Restrictive Housing Disciplinary Counts

12-3 : Failure to Obey Order of Staff	509
12-4 : Refusing a Direct Verbal Order	260
05-3 : Assault - Verbal or Written Threat	259
04-8 : Battery - Use of Force on an Inmate	250
11-1 : Insolence to a Staff Member	237
02-16 : Refusal to Submit to Testing	217
03-5 : Out of Place of Assignment	176
09-3 : Possession/Introduction Drugs	129
09-15 : Possession/Introduction/Use of Cell Phone	103
02-17 : Creating Unnecessary Noise	91
01-1 : Banding Together/Demonstration	81
10-3 : Indecent Exposure	77
05-5 : Provoking or Agitating a Fight	76
09-1 : Possession/Intro of Fireworks	73
07-1 : Unauthorized Use of State Prop	72
02-5 : Unauthorized Use of Mail/Phone	70
09-5 : Possession/Introduction of Clothing	65
13-2 : Lying to a Staff Member	63
02-13 : Breaking Into or Disrupt Line	55
02-2 : Use of Drugs, Alcohol, Chemical	55

Disciplinary Categories

Violence to Self	0
Violence to Others	353
Possession of Drug-Related Contraband	184
Masturbation/Indecent Exposure	87
Sex with Another Person	27
Other Violations	2,881

Inmates Placed in RH	1,950
----------------------	-------

Population Demographics

RACE	GENDER		TOTAL
	M	F	
Asian	2	1	3
Black	1,895	72	1,967
Caucasian	1,265	79	1,344
Hispanic	91	5	96
NA Indian	8	0	8
Native Hawaiian or Pacific Isl	2	0	2
Other	7	0	7
TOTAL	3,270	157	3,427

Protective Custody	3
Twenty-one or Younger	67
Fifty-five or Older	223
SMI	46

Suicides/Deaths in Restrictive Housing

Suicides	2
Suicide Attempts	27
Deaths	2

FISCAL YEAR 2022 COUNTY JAIL BACKUP

DAY	Jul-21	Aug-21	Sep-21	Oct-21	Nov-21	Dec-21	Jan-22	Feb-22	Mar-22	Apr-22	May-22	Jun-22
1	1,059 *	1,294	1,583	1,777	2,050	2,125 *	2,117	2,350	1,889	1,498 *	1,430	1,561
2	1,090	1,309	1,612 *	1,777	2,023	2,108 *	2,117	2,375	1,853 *	1,498	1,467	1,560
3	1,090	1,342	1,624 *	1,777	2,045	2,092	2,114	2,333	1,808 *	1,498	1,441	1,535
4	1,090	1,356 *	1,624	1,792	2,076 *	2,092	2,100	2,341	1,769	1,517	1,437 *	1,535
5	1,096	1,370 *	1,624	1,773	2,111 *	2,092	2,117 *	2,341 *	1,769	1,490	1,439 *	1,535
6	1,096	1,396	1,645	1,773 *	2,111	2,099	2,102 *	2,341 *	1,769	1,480	1,429 *	1,510
7	1,114 *	1,396	1,645	1,789 *	2,111	2,133	2,134	2,361	1,756	1,467 *	1,429	1,489
8	1,089 *	1,396	1,603	1,816	2,103	2,103 *	2,134	2,310	1,705	1,458 *	1,429	1,480
9	1,090	1,408	1,620 *	1,816	2,118	2,099 *	2,134	2,277	1,662 *	1,458	1,456	1,515
10	1,090	1,405	1,649 *	1,816	2,135	2,080	2,141	2,252	1,622 *	1,458	1,482	1,491
11	1,090	1,404 *	1,649	1,856	2,099 *	2,080	2,144	2,230	1,617	1,433	1,468 *	1,491
12	1,121	1,416 *	1,649	1,875	2,098 *	2,080	2,174 *	2,230 *	1,617	1,456	1,463 *	1,491
13	1,125	1,436	1,638	1,841 *	2,098	2,093	2,196 *	2,230 *	1,617	1,472	1,506	1,510
14	1,146 *	1,436	1,606	1,868 *	2,098	2,098	2,227	2,206	1,581	1,494 *	1,506	1,485
15	1,131 *	1,436	1,628	1,913	2,123	2,101 *	2,227	2,177	1,549	1,470 *	1,506	1,470
16	1,155	1,435	1,657 *	1,913	2,105	2,134 *	2,227	2,154	1,525 *	1,470	1,469	1,444
17	1,189	1,460	1,693 *	1,913	2,135	2,158	2,251	2,127	1,533 *	1,470	1,501	1,480
18	1,189 *	1,485	1,693 *	1,926	2,150 *	2,158	2,251	2,090	1,528	1,510	1,489 *	1,480
19	1,189 *	1,499	1,693 *	1,935	2,180 *	2,158	2,282 *	2,090 *	1,528	1,504	1,517 *	1,480
20	1,208	1,499	1,711	1,953 *	2,180	2,212	2,311 *	2,090 *	1,528	1,485	1,507	1,446
21	1,228 *	1,499	1,721	1,956 *	2,180	2,228	2,335	2,040	1,505	1,470 *	1,507	1,457
22	1,237 *	1,499	1,752	1,956	2,144	2,196	2,336	2,040	1,509	1,447 *	1,507	1,475
23	1,259	1,514	1,722 *	1,956	2,151	2,172 *	2,336	2,022	1,538 *	1,447	1,560	1,492
24	1,259 *	1,527	1,719 *	1,956	2,165	2,172 *	2,336	1,964	1,511 *	1,447	1,597	1,459
25	1,259 *	1,511 *	1,719	1,975	2,192 *	2,172	2,301	1,950	1,493	1,420	1,545 *	1,459
26	1,248	1,523 *	1,719	2,003	2,191 *	2,172	2,313 *	1,950 *	1,493	1,393	1,510 *	1,459
27	1,233	1,540	1,727	1,987 *	2,191	2,172	2,323 *	1,950 *	1,493	1,395	1,542	1,484
28	1,248 *	1,540	1,757	2,013 *	2,191	2,184	2,322	1,911	1,510	1,410 *	1,542	1,513
29	1,266 *	1,540	1,780	2,026	2,190	2,175 *	2,322		1,494	1,430 *	1,542	1,526
30	1,294	1,526	1,804 *	2,026	2,153	2,158 *	2,322		1,500 *	1,430	1,542	1,521
31	1,294 *	1,562		2,026		2,117	2,345		1,481		1,542	
Avg Daily Backup	1,170	1,450	1,676	1,896	2,130	2,136	2,229	2,169	1,605	1,463	1,494	1,494

Notes: Totals do not include 309 Contracts in County Jails (maximum of 336)

County Jail Back-up for June 2022 - 1,494

County Jail Back-up Fiscal Year Average 2022 - 1,743

Short-Term Revocation Program Average for June 2022 - 558

Short-Term Revocation Program Fiscal Year Average 2022 - 606

County Jail Backup Averages for Fiscal Year 2021 Included on Next Page for Reference

FISCAL YEAR 2021 COUNTY JAIL BACKUP

DAY	Jul-20	Aug-20	Sep-20	Oct-20	Nov-20	Dec-20	Jan-21	Feb-21	Mar-21	Apr-21	May-21	Jun-21
1	800 *	1,284	1,625	1,827 *	2,090	1,879	1,891	2,226	1,984	1,599 *	1,357	1,234
2	829 *	1,284	1,642	1,833	2,124	1,896 *	1,891	2,224	1,982	1,599 *	1,357	1,208
3	850	1,309	1,672 *	1,833	2,076	1,894 *	1,891	2,250	1,923 *	1,599	1,345	1,191
4	* 850	1,308	1,696 *	1,833	2,087	1,917	1,891	2,259	1,936 *	1,599	1,329	1,198
5	* 850	1,299 *	1,696	1,842	2,109 *	1,917	1,897	2,221	1,900	1,576	1,314 *	1,198
6	850	1,304 *	1,696	1,862	2,140 *	1,917	1,914 *	2,221 *	1,900	1,549	1,294 *	1,198
7	863	1,334	1,718	1,884 *	2,140	1,882	1,932 *	2,221 *	1,900	1,535	1,303	1,173
8	874 *	1,334	1,718	1,902 *	2,140	1,840	1,959	2,173	1,859	1,535 *	1,303	1,175
9	898 *	1,334	1,679	1,897	2,137	1,815 *	1,959	2,131	1,870	1,578 *	1,303	1,157
10	932	1,331	1,689 *	1,897	2,080	1,797 *	1,959	2,107	1,813 *	1,578	1,290	1,150
11	* 932	1,350	1,672 *	1,897	2,028	1,827	1,969	2,086	1,793 *	1,578	1,260	1,141
12	* 932	1,351 *	1,672	1,918	2,028 *	1,827	1,971	2,085	1,782	1,577	1,267 *	1,141
13	961	1,361 *	1,672	1,925	2,026 *	1,827	2,005 *	2,085 *	1,782	1,538	1,225 *	1,141
14	975	1,380	1,676	1,947 *	2,026	1,843	2,016 *	2,085 *	1,782	1,509	1,275	1,119
15	1,003 *	1,380	1,702	1,917 *	2,026	1,852	2,057	2,035	1,798	1,491 *	1,275	1,082
16	1,032 *	1,380	1,705	1,955	1,989	1,835 *	2,057	2,035	1,759	1,469 *	1,275	1,075
17	1,059	1,388	1,731 *	1,955	1,961	1,854 *	2,057	2,032	1,733 *	1,469	1,268	1,060
18	* 1,059	1,403	1,769 *	1,955	1,918	1,897	2,065	2,025	1,741 *	1,469	1,244	1,071
19	* 1,059	1,426 *	1,769	1,944	1,907 *	1,897	2,065	2,017	1,717	1,471	1,267 *	1,071
20	1,081	1,457 *	1,769	1,958	1,890 *	1,897	2,068 *	2,017 *	1,717	1,434	1,266 *	1,071
21	1,099	1,481	1,772	1,974 *	1,890	1,863	2,071 *	2,017 *	1,717	1,453	1,268	1,081
22	1,124 *	1,481	1,786	1,969 *	1,890	1,893	2,095	2,004	1,739	1,423 *	1,268	1,053
23	1,168 *	1,481	1,811	1,998	1,837	1,856 *	2,095	1,993	1,710	1,414 *	1,268	1,088
24	1,181	1,496	1,801 *	1,998	1,846	1,796 *	2,095	2,009	1,684 *	1,414	1,251	1,076
25	* 1,181	1,518	1,835 *	1,998	1,866	1,796	2,106	2,001	1,676 *	1,414	1,256	1,091
26	* 1,181	1,539 *	1,835	2,023	1,866 *	1,796	2,103	2,006	1,657	1,400	1,251 *	1,091
27	1,203	1,566 *	1,835	2,033	1,866 *	1,796	2,106 *	2,006 *	1,657	1,356	1,236 *	1,091
28	1,216	1,589	1,810	2,019 *	1,866	1,795	2,120 *	2,006 *	1,657	1,384	1,260	1,087
29	1,242 *	1,589	1,791	2,056 *	1,866	1,820	2,200		1,627	1,365 *	1,260	1,084
30	1,263 *	1,589	1,815	2,090	1,866	1,850 *	2,200		1,606	1,357 *	1,260	1,062
31	1,284	1,607		2,090		1,866 *	2,200		1,629		1,234	
Avg Daily Backup	1,027	1,417	1,735	1,943	1,986	1,853	2,029	2,092	1,775	1,491	1,278	1,122

Note: Totals do not include 309 Contracts in County Jails (maximum of 336)

STTG UNIT COUNTS – JUNE 2022

Unit	Beginning Total	Confirmed	Suspected	In	Out	Paroled	Removed	Ending Total	Total Unit Population	Unit % of STTG's
Benton	92	1	0	12	4	6	0	95	315	30.16%
Cummins	658	0	0	34	24	7	0	661	1,953	33.85%
Delta	212	0	0	26	6	0	0	232	610	38.03%
EARU	626	0	0	24	11	10	0	629	1,562	40.27%
Ester	134	1	0	11	12	9	0	125	563	22.20%
Grimes	382	0	0	11	8	10	0	373	1,056	35.32%
Hawkins	50	0	0	2	0	0	0	52	443	11.74%
Max	282	0	0	3	3	1	0	281	561	50.09%
Mcpherson	45	1	0	0	1	0	0	45	945	4.76%
MCWR	48	0	0	7	1	2	0	52	149	34.90%
NCU	276	0	0	20	24	15	0	263	825	31.88%
NWAWR	25	0	0	5	2	1	0	27	100	27.00%
ORCU	402	0	0	110	124	13	0	375	1,523	24.62%
ORCU Intake	95	135	0	0	149	0	0	81	220	36.82%
Pine Bluff	190	0	0	26	23	2	0	191	582	32.82%
RLW	208	0	0	19	14	6	0	207	535	38.69%
TWR	52	0	0	15	18	2	2	45	119	37.82%
Tucker	211	0	0	7	6	5	0	207	606	34.16%
Varner	669	0	0	71	61	8	0	671	1,620	41.42%
Wrightsville	283	0	2	35	5	13	0	302	839	36.00%
Total	4,940	138	2	438	496	110	2	4,914	15,126	32.49%

ORCU Intake brought in 135 new STTG members into ADC last month.

STTG DISCIPLINARY REPORT – JUNE 2022

Unit	STTG Incidents	STTG Suspected Incidents	Total Unit Disciplinary	Disciplinary Involving STTG	Percentage
Benton	0	0	4	0	0.00%
Cummins	0	0	458	225	49.13%
Delta	0	0	177	110	62.15%
EARU	0	0	199	110	55.28%
Easter	0	0	30	14	46.67%
Grimes	1	0	289	159	55.02%
Hawkins	0	0	1	0	0.00%
Max	0	0	70	45	64.29%
Mcperson	0	0	120	3	2.50%
MCWR	0	0	1	0	0.00%
NCU	0	0	137	79	57.66%
NWAWR	0	0	2	0	0.00%
ORCU	0	0	83	38	45.78%
ORCU Intake	0	0	7	5	71.43%
Pine Bluff	0	0	59	35	59.32%
RLW	0	0	114	59	51.75%
TWR	0	0	4	3	75.00%
Tucker	0	0	132	71	53.79%
Varner	0	0	248	138	55.65%
Wrightsville	0	0	81	37	45.68%
Total	1	0	2,216	1,131	51.04%

STTG COUNTS BY STTG SET – JUNE 2022

STTG Set	Benton	Cummins	Delta	EARU	Ester	Grimes	Hawkins	Max	Mcpherson	MCWR	NCU	NWAWR	ORCU	Intake	PB	RLW	TWR	Tucker	Varner	Wrightsville	Total
Asian	1	1	1	2	0	0	0	0	0	1	0	0	1	0	0	0	0	1	1	0	9
Bloods	19	151	34	120	21	70	8	62	3	6	48	9	62	8	33	29	10	33	151	56	933
Crips	7	73	22	72	12	34	6	34	7	8	22	4	43	6	18	18	2	19	93	42	542
Folk	3	65	0	39	4	32	11	29	6	2	15	7	14	9	10	11	3	14	59	20	353
GD	15	146	38	172	30	83	2	73	0	16	48	0	99	6	46	44	9	60	152	54	1,093
Mexican	6	18	9	14	5	13	3	3	5	3	6	0	4	6	5	11	0	4	22	14	151
Motorcycle	0	2	1	3	0	0	0	1	1	0	2	0	3	0	1	1	0	0	1	3	19
Other	4	18	9	21	11	11	3	7	3	1	16	0	17	4	8	14	2	7	25	5	186
People	1	24	9	22	1	23	2	19	3	0	11	1	11	0	12	7	1	10	23	14	194
Unknown	1	12	14	16	0	1	0	4	0	0	3	1	0	0	1	1	3	4	3	7	71
W/S	20	66	61	53	20	51	17	8	17	7	45	5	99	28	30	40	7	24	53	39	690
AB	0	8	0	5	2	3	0	1	0	1	0	0	2	1	1	2	0	3	10	5	44
AC	0	8	8	13	1	7	0	5	0	0	7	0	1	2	1	3	3	2	15	4	80
NAE	6	37	9	38	7	17	0	15	0	2	15	0	7	6	12	11	2	9	31	16	240
WAR	12	32	17	39	11	28	0	20	0	5	25	0	12	5	13	15	3	17	32	23	309
Total	95	661	232	629	125	373	52	281	45	52	263	27	375	81	191	207	45	207	671	839	4,914

Key:

GD = Gangster Disciples

W/S = White Supremacist

NAE = New Aryan Empire

WAR = White Aryan Resistance

AC = Aryan Circle

AB = Aryan Brotherhood

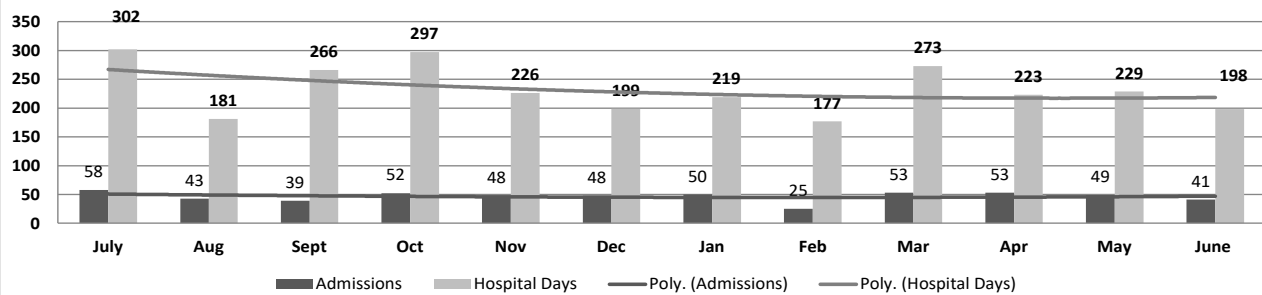
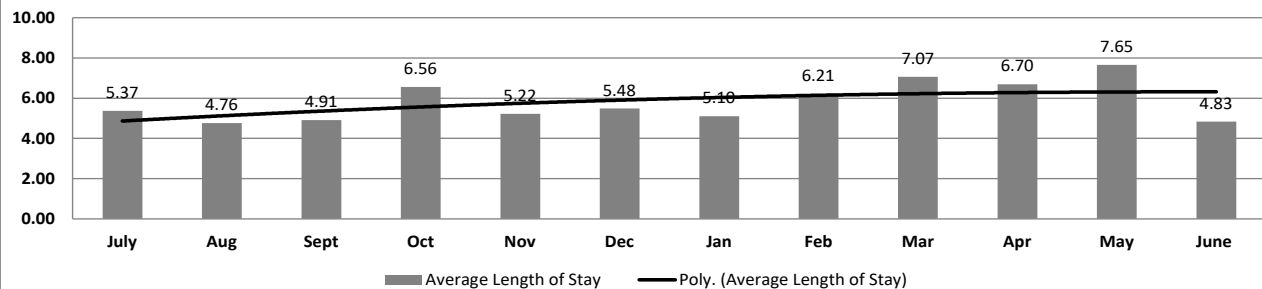
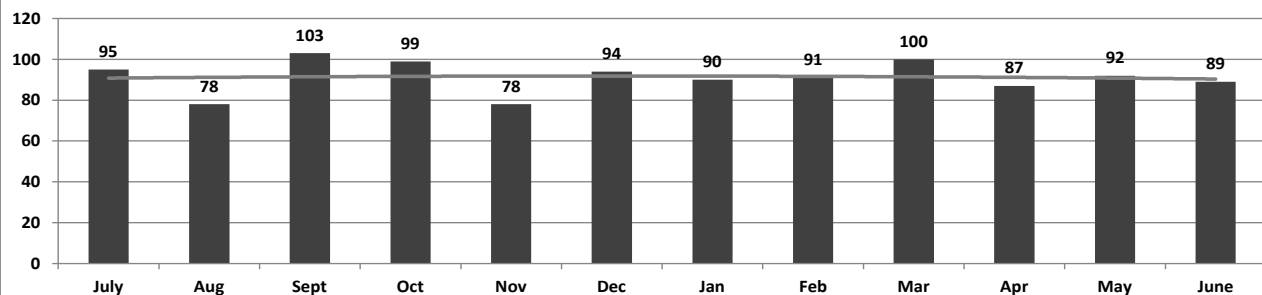
ADC INPATIENT AND EMERGENCY ROOM UTILIZATION

ADC Inpatient Statistics Past 12 Months

	2021						2022						Average
	July	Aug	Sept	Oct	Nov	Dec	Jan	Feb	Mar	Apr	May	June	
Admissions	58	43	39	52	48	48	50	25	53	53	49	41	46.6
Hospital Days	302	181	266	297	226	199	219	177	273	223	229	198	232.5
Average Length of Stay	5.37	4.76	4.91	6.56	5.22	5.48	5.10	6.21	7.07	6.70	7.65	4.83	4.99

ADC ER Visits Past 12 Months

	2021						2022						Average
	July	Aug	Sept	Oct	Nov	Dec	Jan	Feb	Mar	Apr	May	June	
Emergency Room Visits	95	78	103	99	78	94	90	91	100	87	92	89	91.3

ADC Inpatient Utilization
Past 12 MonthsADC Inpatient Average Length of Stay
Past 12 MonthsADC Emergency Room Visits
Past 12 Months

MEDICAL GRIEVANCE BOARD REPORT – JUNE 2022

Unit	<i>Acknowledged/ Received</i>	<i>Rejected</i>	<i>Reviewed & Signed by Dep Director</i>	<i>With Merit</i>	<i>With Merit, but Resolved</i>	<i>% With Merit</i>	<i>Without Merit</i>
Benton	0	0	0	0	0	0%	0
CMU	0	1	1	0	0	0%	1
Cummins	8	3	14	0	0	0%	14
Delta	3	0	2	0	0	0%	2
EARU	16	1	21	0	0	0%	21
EARU Max	24	0	26	1	0	4%	25
Ester	1	0	0	0	0	0%	0
Grimes	8	0	3	0	0	0%	3
Hawkins	0	0	0	0	0	0%	0
McPherson	4	0	10	2	0	20%	8
MCWRC	0	0	0	0	0	0%	0
MSU	8	2	7	0	0	0%	7
North Central	3	0	11	0	0	0%	11
NWAWRC	0	0	0	0	0	0%	0
Ouachita	9	1	7	0	0	0%	7
Pine Bluff	1	0	0	0	0	0%	0
Randall L. Williams	3	1	2	0	0	0%	2
SNN	0	0	0	0	0	0%	0
TRCC	0	0	0	0	0	0%	0
Tucker	12	0	9	0	0	0%	9
Varner	3	0	3	0	0	0%	3
Varner Super Max	7	2	12	1	0	8%	11
WRU	1	0	4	0	0	0%	4
WHM	0	0	0	0	0	0%	0
WWR	0	0	0	0	0	0%	0
Total	111	11	132	4	0	3%	128

CHAPLAINCY

Month: June Year: 2022		CUMMINS	DELTA REGIONAL	EAST ARKANSAS	EAST ARKANSAS MAX	ESTER	GRIMES	HAWKINS	MAXIMUM	MCPHERSON	NORTH CENTRAL	OUACHITA RIVER	PINE BLUFF	RANDALL L. WILLIAMS	TUCKER	VARNER	VARNER MAX	WRIGHTSVILLE	TOTAL
Services Chaplains Oversaw																			
Christian																			
Population	5	3	1	0	4	2	0	2	4	12	19	2	8	2	13	0	8	85	
Segregation	0	0	0	0	0	0	0	2	0	0	0	0	0	0	0	0	0	2	
Muslim																			
Population	4	3	4	0	1	4	0	4	4	1	4	5	4	0	4	0	3	45	
Segregation	0	0	0	0	0	0	0	4	0	0	0	0	0	0	0	0	0	4	
136																			
Volunteers in Charge																			
Protestant	11	6	12	0	8	2	13	12	0	0	0	7	15	8	0	0	6	100	
Catholic	0	0	0	0	0	0	0	0	0	4	4	1	1	0	0	0	0	10	
Muslim	0	0	0	0	0	0	0	0	0	0	0	0	0	1	0	0	1	2	
Other	0	0	4	0	0	0	0	0	0	0	5	0	0	0	0	0	0	9	
Baptism	0	0	6	0	0	0	0	0	0	8	0	0	0	0	0	0	0	14	
Marriages																			
	0	0	0	0	0	0	0	0	0	0	0	0	0	0	0	0	0	0	
Distributed by Chaplains																			
Greeting Cards	50	10	0	0	110	32	0	46	474	91	65	54	23	322	98	1,954	75	3,404	
Bibles,Quran,Torrah, Etc.	43	18	12	24	25	17	30	7	34	25	250	11	10	283	15	14	10	828	
Study Course	0	0	16	17	20	5	10	23	20	0	34	9	0	65	0	1	0	220	
Writing Supplies	0	0	0	0	55	128	200	7	61	0	400	0	0	136	0	0	0	987	
Literature	1,578	0	609	418	105	193	200	7	71	840	325	173	43	874	592	345	325	6,698	
Chaplain's Visits																			
Barracks	56	23	33		14	47	12	13	0	92	44	138	37	94	55	40	20	718	
Approximate Hours Spent in Barracks	60	5	8	0	6	45	1	5	15	23	22	25	26	23	14	16	5	299	
Inmate Office visits	34	177	53	0	7	82	42	7	105	22	36	17	17	184	87	0	17	887	
Other Office visits	7	14	6	2	10	21	6	10	8	12	41	73	4	40	33	8	6	301	
Hospital	0	0	0	0	0	0	0	0	0	0	16	0	0	0	0	0	0	16	
Infirmary/Sick Call	4	1	2	0	4	4	3	10	4	5	5	3	2	2	8	1	3	61	
Restrictive/Punitive Housing	4	3	0	12	2	4	5	7	9	4	25	3	3	24	9	9	3	126	
PC - DRU		3																3	
Visitation Days	0	0	0	0	1	0	0	0	0	0	0	0	0	0	0	0	0	1	
Volunteer Visits																			
RCV	0	0	0	0	0	0	0	0	4	0	0	0	0	0	0	0	0	4	
OCV	0	4	2	0	0	0	0	11	9	0	0	0	9	22	0	0	0	57	
Spiritual Advisor	1	0	0	0	0	0	0	0	0	0	0	0	0	0	0	0	0	1	
CRA	34	5	32	12	8	55	41	35	44	13	44	9	14	77	9	1	18	451	
Religious Volunteer Hours																			
Volunteer Hours	49	24	89	16	0	232	41	84	277	264	247	34	33	232	35	2	38	1,697	
Denominational/Volunteer Chaplain Hours	65	16	8	0	71	20	110	29	5	267	17	11	0	16	0	0	20	655	
2,352																			
Other Activities of Chaplain																			
Counseled Employees	5	3	6	0	10	4	5	13	5	0	26	5	2	6	139	0	0	229	
Orientation Sessions	3	0	0	0	0	0	0	0	0	0	0	0	0	0	0	0	0	3	
Free World Devotions	0	0	3	0	2	5	0	0	2	0	0	0	0	4	24	0	0	40	
Spoke in Churches	10	0	4	0	2	1	0	0	0	0	15	0	0	4	24	0	0	60	
Crisis Intervention Sessions	23	12	4	0	0	0	2	1	30	0	16	7	8	7	15	0	12	137	
Marriage Counseling	0	0	1	0	0	0	0	0	0	0	0	0	0	0	0	0	0	1	
Denominational Meeting	2	1	1	0	1	1	0	0	0	0	0	0	0	0	0	0	0	6	
Chaplain's Meeting	0	0	1	0	1	1	1	1	1	0	1	3	1	1	3	0	0	15	
Volunteer Training Session	0	0	0	0	0	0	0	1	0	0	0	0	0	0	0	0	0	1	
Chaplain Transfers																			
	0	0	0	0	0	0	0	0	0	0	0	0	0	0	0	0	0	0	
Chaplain Promotions																			
	0	0	0	0	0	0	0	0	0	0	0	0	0	0	0	0	0	0	
PAL PROGRAM																			
Enrolled at start of month	45	14	50	0	56	47	15	23	56	60	30	0	0	50	50	0	30	526	
Enrolled during the month	5	3	0	0	0	10	2	1	10	5	0	0	0	10	4	0	3	53	
Removed From PAL Program																			
# Paroled	1	0	0	0	5	2	0	1	1	0	0	0	0	2	2	0	3	17	
# Completed	2	0	0	0	0	0	0	1	1	1	0	0	0	1	1	0	0	7	
# Withdrew	0	1	1	0	1	2	0	2	3	1	0	0	0	2	1	0	1	15	
# Removed	2	0	0	0	0	4	0	2	4	3	0	0	0	2	2	0	1	20	
# Transferred	0	0	0	0	0	0	0	0	1	0	2	0	0	0	0	0	0	3	
Total Removed from PAL Program	5	1	1	0	6	8	0	6	10	5	2	0	0	7	6	0	5	62	
Total Enrolled at the End of the Month	45	16	49	0	50	49	17	18	56	60	28	0	0	53	48	0	28	517	
Volunteers In PAL																			
	0	0	6	0	6	0	44	5	27	8	0	0	0	0	0	0	5	101	
Special Events:																			
	0	1	1	0	0	0	0	0	0	0	0	0	0	0	0	0	0	2	

VOLUNTEER SERVICES

Month: June Year: 2022		BENTON UNIT	CUMMINS	DELTA REGIONAL	EAST ARKANSAS	EAST ARK. MAX	ESTER	GRIMES	HAWKINS	MCPHERSON	MCWR	NWAWRC	NORTH CENTRAL	OUACHITA	PINE BLUFF	RLW	TRCC	TUCKER	TUCKER MAX	VARNER	VARNER MAX	WRIGHTSVILLE	TOTAL
CHAPLAINCY HOURS																							
VOLUNTEERS IN CHARGE		7	11	6	22	0	8	2	13	0	1	1	12	9	8	16	2	9	12	0	0	7	139
VOLUNTEER VISITS		31	35	9	34	12	8	55	41	57	4	4	13	44	9	23	1	99	46	9	1	18	522
RELIGIOUS VOLUNTEER HOURS		93	114	40	97	16	71	252	151	282	4	8	531	264	45	33	16	248	113	35	2	58	2,473
SPECIAL EVENTS		0	0	1	1	0	0	0	0	0	0	0	0	0	0	0	0	0	0	0	0	0	2
																						TOTAL	3,136
PALS PROGRAM																							
Volunteer Hours		0	0	0	6	0	6	0	44	27	0	0	8	0	0	0	0	0	0	0	0	5	96
THINK LEGACY																							
Volunteer Hours		0	2	0	0	0	0	0	0	3	0	0	1	0	0	0	0	11	0	0	0	0	17
WAGE																							
Volunteer Hours		0	0	0	0	0	0	0	94.5	0	0	0	0	96	0	0	0	95	0	0	0	96.5	382
OTHER																							
Program Name	Total # of Hours Volunteered																						
Paws in Prison	10																						
Inside Out Program	12																						
Veterans Program	6																						
Release Program	6.5																						
Yoga	18.25																						
TOTAL	52.75																						

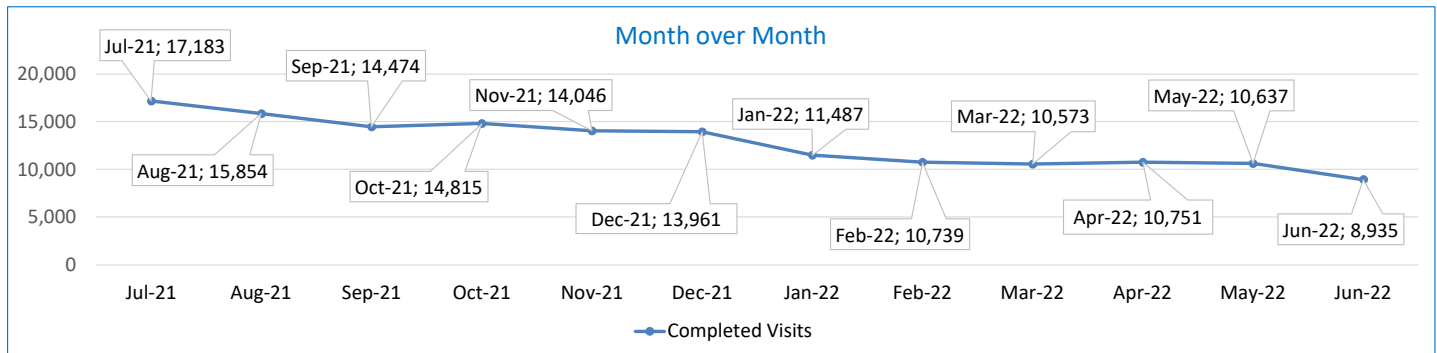
SECURUS VIDEO VISITATION REPORT JUNE 2022

AR-DOC SVV Activity Tracker

Total ADP 15,264

Total Visits by Month	Jul-21	Aug-21	Sep-21	Oct-21	Nov-21	Dec-21	Jan-22	Feb-22	Mar-22	Apr-22	May-22	Jun-22
Total (Includes SuperMax)	17,183	15,854	14,474	14,815	14,046	13,961	11,487	10,739	10,573	10,751	10,637	8,935
Target Objective	15,587	15,587	15,587	15,587	15,587	15,587	15,587	15,587	15,587	15,587	15,587	15,587

Anywhere Visitation Performance:



Completed Visits

Site	Current Month	Previous Month
Benton	161	196
Cummins	706	980
Delta Regional	300	379
East Arkansas Regional	1,068	1,284
Ester	368	409
Grimes	728	817
J Aaron Hawkins Sr.	508	632
Tucker Max	436	489
Mcperson	481	564
Mississippi County WRC	95	127
North Central	897	1,176
NW Arkansas WRC	37	26
Ouachita River	784	930
Pine Bluff Complex	337	389
Randall L Williams	167	184
State Police Barracks	60	109
Texarkana Regional	51	67
Tucker Unit	137	183
Varner	946	964
Wrightsville Unit	642	701
Pine Bluff Re-Entry	26	31
Tucker Re-entry	0	0
Total:	8,935	10,637

Missed by Inmate

Site	Current Month	Previous Month
Benton	9	9
Cummins	34	41
Delta Regional	20	16
East Arkansas Regional	56	35
Ester	18	4
Grimes	22	10
J Aaron Hawkins Sr.	23	16
Tucker Max	29	13
Mcperson	21	13
Mississippi County WRC	10	10
North Central	27	12
NW Arkansas WRC	2	5
Ouachita River	60	25
Pine Bluff Complex	30	17
Randall L Williams	1	4
State Police Barracks	24	5
Texarkana Regional	7	5
Tucker Unit	9	11
Varner	54	101
Wrightsville Unit	26	13
Pine Bluff Re-Entry	2	1
Tucker Re-entry	0	0
Total:	484	366

SECURUS TABLET REPORT JUNE 2022

Facility Name	Personal Tablets (All)	\$0	\$5	Community / Inventory	Officer	Total	New Subscriptions
Benton Unit	305	115	190	95	8	408	0
Cummins Unit	1,336	905	430	807	14	2,157	36
Delta Regional Unit	427	252	175	204	16	647	63
East Arkansas Regional Unit	886	577	309	659	10	1,555	85
Ester Unit	528	352	176	212	20	760	17
Grimes Unit	722	463	259	331	14	1,067	67
J. Aaron Hawkins Sr. Center For Women	421	245	176	141	19	581	8
McPherson Unit	733	430	303	433	18	1,184	133
Mississippi County Work Release Center	150	58	92	57	9	216	1
North Central Unit	609	367	242	159	10	778	54
Northwest Arkansas Work Release Center	101	41	60	16	8	125	0
Ouachita River Correctional Unit	931	580	351	1,159	14	2,104	106
Pine Bluff Reentry Center	51	11	40	25	0	76	1
Pine Bluff Unit	432	269	163	172	9	613	31
Randall L. Williams Facility	390	223	167	127	15	532	50
State Police Barracks	51	36	15	10	3	64	0
Texarkana Regional Correctional Center	118	32	86	41	10	169	1
Tucker Maximum Security Unit	262	158	103	353	15	630	20
Tucker Reentry Center	0	0	0	45	2	47	0
Tucker Unit	473	304	169	265	10	748	28
Varner Unit	943	628	315	730	21	1,694	91
Wrightsville Unit	688	425	263	306	9	1,003	68
TOTAL	10,557	6,471	4,084	6,347	254	17,158	860

CONSTRUCTION BUDGET / STATUS REPORT - JULY 5, 2022 — [Page 1 of 2]

Fund	Project Description	Approved Budget	Actual Budget Spent	Available Budget	\$ % Complete	Construction % Complete	Notes
700483A	EARU Max Rec Expanded Metal Rec Yard	879,000	822,456	56,544	94%	69%	Construction of the Rec Pens at EARU began on 1/03/2022. We are making great progress with this project. The funds spent on this project is reflective of the engineering fees, material and construction of the panels. 24 pens are complete.
700483A	Tucker Max Expanded Metal Rec Yard	1,800,000	1,139,825	660,175	63%	25%	DBA Approved to proceed. We are constructing the panels on-site. Material list has been ordered and delivered. The funds spent on this project is reflective of engineering fees and the material needed to construct the rec pen panels.
700483A	Cummins Expanded Metal Rec Yard	368,617	50,012	318,605	14%	10%	Plans on hold, will modify for exp. Metal. Funds spent on this project is reflective of engineering fees spent against this portion of the overall project.
KBR4Q95	Bullpens	851,999	388,676	463,323	46%	45%	Varner & EARU complete. Installation underway at Max. Locks delivered. Working on bullpens now.
KBR4Q95	13 & 15 Barracks Door Revisions	174,000	136,711	37,289	79%	68%	All doors and locks installed in 13 Barracks. 15 barracks has been remeasured for quality assurance and we are fabricating the revisions at this time at Central Maintenance.
7004828	Entegrity Energy Improvements Phase 2 at Tucker and Max	18,603,150	11,331,064	7,272,086	61%	39%	Lighting is complete at the Max and Tucker Unit. HVAC has began at the Max and Tucker Unit and is expected to for the next several months, depending on weather. Plumbing has also began at the MAX and Tucker Unit.
KBSHW18	Tucker Water Treatment	1,093,848	116,411	977,437	11%	0%	The original blueprints has been completed and approved. The detail drawings are complete. Submittals has been presented to DBA for final approval. Awaiting notice to proceed. The funds spent on this project is reflective of engineering and design fees.
KBSFW18	Max Armory	100,000	67,089	32,911	67%	20%	We have our notice to proceed from DBA. Site work complete. Project construction began on June 20, 2022.
KBR4Q95			-				
7004810	Administrative East Roof Replacement	1,802,000	291,313	1,510,687	16%	3%	The funds spent is reflective of engineering fees. Pre-con meeting was held on May 3rd to discuss start of project. All material on-site for RLW modified bitumen roof. Work has began at RLW on the modified bitumen roof and the TPO roof located at Administration East as of June 27, 2022.
7004810	Central Warehouse Roof Replacement	424,000	27,372	396,628	6%	0%	
7004810	RLW Roof Replacement	3,074,000	233,712	2,840,288	8%	5%	
865C	NCU Perimeter Security	600,000	20,625	542,766	10%	0%	We have received the notice to proceed from DBA. The pre-con meeting was made on June 22nd to assess mobilization and start date for the project. In the pre-con meeting it was discussed that the vendors last site visits would happen within the next two weeks and a schedule of construction would be set after those visits were made. The funds spent is reflective of on-call design fees.
7004820			30,334				
KBR4Q95			6,275				
N98	Max Re-Entry Generator Project	135,000	16,635	118,365	12%	0%	Plans submitted to DBA. We have received our notice to proceed on this project. Funds spent are reflective of engineering fees.
KBR4Q95	Wrightsville Standby Generator Project	202,000	20,081	181,919	10%	10%	DBA Approved. Generator is purchased. ETA has been pushed to August 18, 2022. Funds spent on this project is on-call design fees and material needed once generator is received.
7004820	Tucker 10 Barracks Sidewalk	70,259	17,629	52,630	25%	80%	Sidewalk is complete. We have installed post and wrapping with fence. Conduit and wire for lighting and cameras are ran. This project has several additional elements added that will better secure movement through the compound. The difference in funds spent and construction complete is due to use of on-site material identified after the budget was approved.
7004820	Lethal Fence Control for Cummins, Varner SuperMax, Tucker Max, & EARU	1,090,000	64,207	1,025,793	6%	0%	Project has cleared DBA. The project has been awarded to Tri-State. Working with the vendor on start date of this project. Notice to proceed has been issued and the pre-con meeting was held on June 15, 2022 with vendor and design professional. Funds spent on this project is reflective of on-call design fees.



CONSTRUCTION BUDGET / STATUS REPORT - JULY 5, 2022 — [Page 2 of 2]

Fund	Project Description	Approved Budget	Actual Budget Spent	Available Budget	\$ % Complete	Construction % Complete	Notes
<u>Telephone Projects</u>							
Maintenance & Operations	Fire Alarm Upgrades (All Units)	41,000		41,000	0%	0%	on-going
	Stainless Steel - Kitchen/Shower/Restrooms - All Units	20,000		20,000	0%	0%	continual need
	Gates and Fences all units	25,000		25,000	0%	0%	to improve security
	ACA Maintenance	100,000		100,000	0%	0%	Working with Wrightsville, Benton and Tucker with FY23 ACA.
	ADA Projects - All Units	10,000		10,000	0%	0%	Working with Varner for the sports field sidewalk.
	Fast Top Floor Systems (kitchen/laundry/showers all units)	25,000		25,000	0%	0%	Benton complete. MCWRC flooring has been delivered. Ouachita kitchen material has been ordered and awaiting arrival.
	Camera Equipment - All Units	320,000		320,000	0%	0%	cameras as requested/approved.
	Lock/Riot Gates - All Units	90,500		90,500	0%	0%	on-going.
	AC Units-All Units	70,000		70,000	0%	0%	repairing & replacing dally.
	Subtotal	\$ 701,500	\$ -	\$ 701,500			
Capital Projects FY22 Carry Forward	Metal Ceilings	25,000		25,000	0%	0%	Wrightsville showers are underway.
	ORCU Gravel Pit Operations	35,000		35,000	0%	0%	on-going.
	Dog Kennel/Horse Stable Malvern	58,000	13,945	44,055	24%	0%	The funds spent is reflective of on-call design fees.
	Emergency Generator - All Units	130,000		130,000	0%	0%	Cummins 300kW generator complete. Hawkins Unit Gen is installed and operational. Max Gen mat'l rec'd, Generator rec'd. Cummins East Bldg. we have approval awaiting Max generator install.
	Delta Perimeter Video Surveillance	622,000	30,812	591,188	5%	0%	We have received the notice to proceed from DBA. The pre-con meeting was made on June 22nd to assess mobilization and start date for the project. In the pre-con meeting it was discussed that the vendors last site visits would happen within the next two weeks and a schedule of construction would be set after those visits were made. The funds spent is reflective of on-call design fees.
	Roof Repairs-Cummins	130,700		130,700	0%	0%	Prepared large order for multiple Units. Need repairs at ORCU, Wrightsville, Cummins & others. Varner & ORCU working on repairs, received TPO. We have also assessed Mississippi County Work Release and identified need for repair. Office of State Procurement secured a State contract to purchase roofing materials.
	Roof Repairs-Cummins Laundry						
	Construction/Maintenance						
	Roof Repairs-Delta						
	Roof Repairs-East Arkansas						
	Roof Repairs-Max						
	Roof Repair-McPherson						
	Roof Repair - NCU						
	Roof Repair - RLW						
	Roof Repairs-Tucker						
	Roof Repairs-Varner						
	Roof Repairs-Wrightsville						
	Subtotal	\$ 1,000,700	\$ 44,757	\$ 955,943			
New Projects	Additional Metal Fab	10,000	-	10,000	0%	0%	The fuel island portion of this project is expected to be complete by June 30, 2022.
	PB Warehouse Drive Replacement	158,000	739	157,261	0%	50%	
	Subtotal	\$ 168,000	\$ 739	167,261			
	Architect Fees	30,000	0	30,000	0%		
	Total	\$ 1,900,200	\$ 45,496	\$ 1,854,704			

Notes Report has not been reconciled against Accountings Reconciled Reports.
Tolerance/Deviation is with in 1% of Projected Spending.