



**DIVISION OF
COMMUNITY
CORRECTION**

Director's Report

June 2022

Jerry Bradshaw, Director

From the Director

JARROD SELF PROMOTION

Jarrold Self was promoted to the Area Manager over the Reentry Program for the Division of Community Correction in May. ACC Director Jerry Bradshaw stated, "Jarrod was the clear choice for this job. He has been and will continue to be a valued member of the ACC/DOC family." Jarrod Self began his career with the DOC at the Tucker Unit in 2005 as a CO and then worked his way through the ranks of Cpl., Field Sgt., Field Lt. and Field Major. In 2016, he transferred to ACC to work with the Reentry Team as the Asst. Area Manager. Jarrod has seen the reentry barriers offenders face after release and has made efforts within our communities to bridge the gaps. He has assisted in the implementation of and continues as the review authority for the FindGood release process, which ensures timely response from housing vendors and discourages discrimination.



AGENT PROMOTIONS

Three Parole/Probation Officers were recently promoted to Agent — Aaron Hall from Area 1, Nakita Hollis from Area 9 and Rebecca Melear from Area 1.



Agent Hall



Agent Hollis



Agent Melear

ACA REACCREDITATION AWARDED TO ACC CENTER

On May 13, Warden Kevin Miners and the excellent staff at the Southwest Arkansas Community Correction Center were recredited by the American Correctional Association (ACA) with perfect scores



Auditor William Gallaher, Director Bradshaw, Warden Miners and Auditor Renee Watkins

of 100% for both Mandatory and Non-Mandatory Standards/Best Practices. Thanks go to the staff at SWACCC, Deputy Director Jimmy Banks and ACA Coordinator Debbie Ruff for a job well done.

Parole/Probation Area Highlights

AREA 1

On May 13, Area Manager Mike Parker attended the Benton County Drug Court graduation. The guest speaker was U.S. Senator John Boozman.



Assistant Director of Parole/Probation Jim Cheek, DOC Chief of Staff Lindsay Wallace, Senator John Boozman, Area 1 Manager Mike Parker and Assistant Director of Treatment Ben Udochi



AREA 2

On May 16, the Izard County Drug Court staff attended the signing of a proclamation for National Drug Court Month.

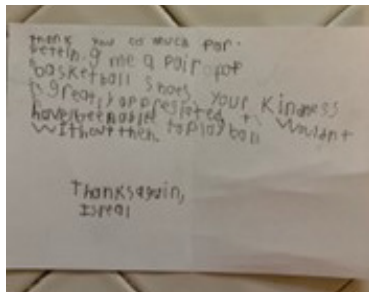
AREA 2, *CONTINUED*



Thomas Kendrick, defense attorney, Brad Sipe, prosecuting attorney, Julie Sanders, administrative assistant, Judge Chaney Taylor, Annette Dixon, drug court advisor and Angelia Roberts, COAP project coordinator for Izard County. Also in attendance but not pictured was Agent Josh Morehead.

On May 19, Assistant Area Manager Eva Frame and Administrative Assistant Deborah Teague attended the monthly meeting of the Mountain Home Chamber of Commerce Drug Action Team. Several representatives from law enforcement, mental health, schools, and clergy were in attendance. The purpose of the meeting was to establish coalition members and discuss the requirements for grant application.

The Harrison Parole/ Probation Office came together to purchase a pair of athletic shoes for a 6th grade child whose family could not afford them. This allowed the boy to be able to play basketball on the newly refinished gym floor at the Jasper gym. To show his appreciation, the boy sent a thank you note to the staff that helped him.



AREA 4

Betty McGill, Area 4 Administrative Assistant III at the Osceola Office, has retired. She worked for the Department for the last 28 years. She began her employment as an Economic Sanctions Officer and then 5 years later she became an Intake Officer. Betty will be greatly missed by



Agent Heather Godair and Betty McGill

everyone. She has been a blessing to all. Betty plans on spending more time with her family and especially her four grandchildren.

During the week before Memorial Day, several Paragould Office employees volunteered to help with placing flags on veterans' graves. Area 4 Parole/ Probation staff were assigned to Croft Cemetery, which has 15 veterans and Liberty Cemetery, which has 19. Overall, approximately 1,900 flags were placed throughout 32 Greene County cemeteries.

The employees participating included Agent Andrew Spillman, Agent Heather Steele, Agent Jody Barker, Officer Ethan McGinnis, Officer Sarah Hughes, Agent Kenny Milligan and Administrative Assistant Danna Simpson.



Agent Andrew Spillman shows his respect by placing a flag on the grave of his grandfather.

AREA 5

On May 16, CPPS Pauletta Martin arranged for the Arkansas Blood Institute to come to the Fort Smith Office for a blood drive. A total of 11 staff members donated blood at the drive, which has the potential of helping 33 individuals in need.



Dr. Debbie Faubus from the Crawford County Adult Education Center was the guest speaker at the Fort Smith Office's May staff meeting. She came to discuss the services they offer, which include: GED, National Career Readiness Certificates, WAGE certificates, English as a Second Language and others.



Dr. Faubus

AREA 6

On May 9, The Arkansas Peace Officers' Memorial was held on the Capitol Grounds in Little Rock. Agent Corey Charles and Officer Evan Thomas attended.



On May 14, a team from Area 6 represented the Danville Drug Court at Yell Fest in Dardanelle with an information booth where they provided educational literature about the drug court program, recovery programs and substance use disorders and treatment.



Also during the month, Yell County Drug Court participants decorated the office door for National Drug Court Month.



On May 25-26, Area 6 Parole/Probation Officers participated in Defensive Tactics in Conway and Russellville, instructed by Agent Emily Rhea and Agent WJ Tobias.



AREA 8

Treatment Advisor Heather Freeman was selected by her peers as Employee of the Month for May.

Some of the reasons given by her coworkers were, "Heather goes above and beyond with the officers by helping with assessments and making sure they have the resources needed in the community," and "Heather is a team player and her people skills are tremendous with a bright smile and a positive attitude."

AREA 10

On May 10, the Annual Arkansas State Police Memorial was held. Agent Kerri McBroome and Agent Brittney Cathie attended the memorial.



AREA 11

On May 14, offenders helped with neighborhood outreach, sponsored by the City of Pine Bluff along with local churches. Area 11 offenders worked a total of 631.5 community service hours during May.



Parole/Probation Home Visits

On May 6, **Area 2** Agent Hunter Boles, with the assistance of the Izard County Sheriff's Department, conducted a home visit at the residence of a parolee. A small plastic baggie containing a white crystalline substance suspected to be methamphetamine was found. The offender was taken into custody with felony charges pending.

On May 9, The Mississippi County Sheriff's Department Street Crimes Unit, the Sheriff's Drug Task Force along with **Area 4** Parole/Probation and the Gosnell Police Department conducted a search of an offender's residence. During the search, officers located one Girsan MC28 SA-T 9mm handgun, one FN 509 9mm handgun, one EAA 38 special revolver, 95 ecstasy pills, 83 oxycodone pills containing suspected fentanyl, 5 alprazolam pills, 22 clonazepam pills, 21 diazepam pills, 4 ounces of marijuana, various drug paraphernalia and \$1,707 in cash. The offender was transported to the Mississippi County Detention Center, where he was charged with multiple offenses.



Area 4 Parole/Probation Officer Tiffany Razer is pictured with Sgt. Jeremy Sharp, Sgt. Elonzo Cummings, Sheriff Dale Cook, Cpl. Austin Griffin, Maj. Robb Rounsavall and Gosnell Assistant Police Chief Andrew Wyles.

On May 25, **Area 8** Intensive Supervision Program (ISP) agents received information that a parole absconder was at a Little Rock motel and possibly had a firearm.

Agents made contact with the absconder, along with a female, as they were exiting the building. He was arrested on his abscond warrant and a search of the room was conducted where plastic baggies, a scale, and other paraphernalia were found, as well as a



box of .25 caliber ammunition. The female was placed under arrest due to the paraphernalia found in the room they shared. A search of her purse was conducted subsequent to arrest, and a 9mm handgun, loaded with a round in the chamber, a loaded .25 caliber handgun, a spare 9mm magazine, a small amount of suspected methamphetamine, a small amount of marijuana and a scale were found. The absconder made the admission that all items in the purse were his and that he had asked her to carry them for him. All evidence was turned over to Little Rock Police Department (LRPD) narcotics officers and the absconder was transported to the LRPD, where he faced multiple charges.

On May 10, **Area 10** Assistant Area Manager Angela Tjelmeland, Agent Richard Perry, and Parole/Probation Officer Blake Tolleson conducted a home visit on an offender who was released from the jail without authorization. The offender barricaded himself under his trailer between insulation and floor joists. The Saline County Sheriff's Office was called to assist, and the offender eventually surrendered and was booked into jail.

Residential Services

CENTRAL ARKANSAS COMMUNITY CORRECTION CENTER (CACCC)

Treatment Coordinator Karen Mattin presented Warden Mark Warner with a token of appreciation from the Treatment Department.



CACCC, *CONTINUED*

Corp. Matthew Gieber was presented with the May Employee of the Month award for CACCC by Capt. Rodney Petty and Lt. Mark Baker.



EAST CENTRAL ARKANSAS COMMUNITY CORRECTION CENTER (ECACCC)

In May, ECACCC Lt. Juliet Jackson helped welcome Shatara Jordan and Nekia Skinner to the team.



Several staff members from ECACCC visited Arkansas Workforce Services for a Career Expo.



ECACCC team members took time to pose for a photo while working with Project Pat, a program that uses music to support offender success in the community.



A prayer breakfast was one of several special events held in celebration of Correctional Officers and Employees Week at the Center. Sgt. Kevin Jordan of the West Memphis Police Department was the guest speaker.



NORTHEAST ARKANSAS COMMUNITY CORRECTION CENTER (NEACCC)

Training on the use of Naloxone (Narcan), which is an opioid overdose treatment, was conducted by Medication-Assisted Treatment (MAT) Program Coordinators Aaron Bond-Martin and Chandler Hickman at the Osceola Unit in May.



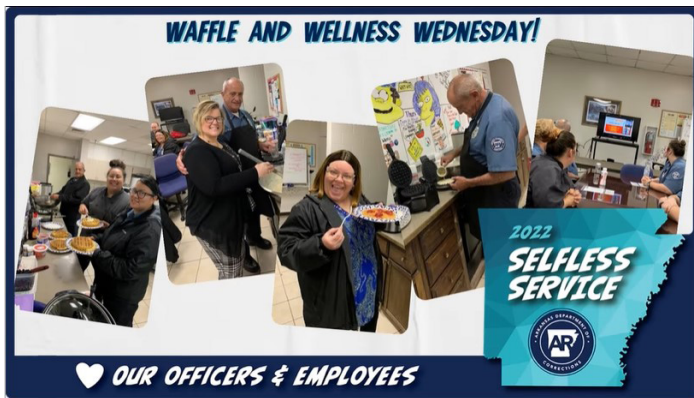
NEACCC, *CONTINUED*

NEACCC Capt. Andre Harris, who has worked for Arkansas Community Corrections for more than 17 years, served as featured speaker at the residents graduation in May.



NORTHWEST ARKANSAS COMMUNITY CORRECTION CENTER (NWACCC)

NWACCC celebrated their incredible staff for their "Selfless Service" throughout National Correctional Officers and Employees Week, Teacher Appreciation Week and National Nurses Week.



OMEGA SUPERVISION SANCTION CENTER

The Treatment team from the Omega Center enjoyed lunch at El Parian, sponsored by AACET, for winning the Gold Key Impact Award in March.

Pictured here are Stephen Morphew, Caroline Canady, Jackie Lee, Emilee Craver, Christopher Laginja, Amanda Patrick, Shawn Wehunt, Doug Dixon, Macy Bishop and Kelsie Works.



SOUTHWEST ARKANSAS COMMUNITY CORRECTION CENTER (SWACCC)

In May, the Treatment staff honored MAT Advisor Nicole Collins, Substance Abuse Program Leader (SAPL) Byron Woods and Kristan Brown for their dedicated service to Arkansas Community Corrections.



Nicole Collins

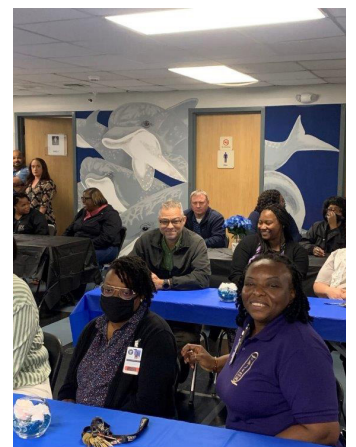


Byron Woods



Kristan Brown

In celebration of Correctional Officers and Employees Week, a luncheon was held for all of the wonderful staff of SWACCC.



Treatment

PROGRAM SUMMARY

1,692 probationers and parolees were served in the general Substance Use Disorder Treatment programs. Additionally, 1,441 participants were served in the Drug Court Treatment programs, bringing the total served to 3,133.

A total of 644 residents have agreed to participate in Medication-Assisted Treatment (MAT) since the program started in July 2018. As of May, a total of 326 were discharged with follow up in progress in the community and 91 have completed the program.

With one partner added this month, partnerships are now in effect with 75 community providers to continue MAT upon release from an ACC center. The program has been extended through September 2022 and provides for Transitional Housing Services and Peer Recovery Specialists. Division of Aging Adult and Behavioral Health Services approved carryover funds for the purchase of additional Vivitrol.

Telehealth services, which began in July 2019, were active in 15 locations. New admissions were discontinued when a grant ended in September 2021. All active clients in 5 of the 15 locations are in the continuing care phase as the program comes to a conclusion.

An Intensive Case Management pilot program in the North Little Rock Parole/Probation Office (Area 8) began in September 2021 and currently has two active participants. A total of four referrals for services are in progress. This month, one was assisted with housing and one with mental health services.

General Treatment Program Summary

(Non-Drug Court):	Number of Participants
Substance Use Disorder Treatment	1,157
Case Management	119
Continuing Care	348
Domestic Violence Prevention	11
Life Skills	72
Tobacco Use Treatment	8

Reentry Program

REENTRY FACILITIES

As of May 31, ACC had six licensed Reentry Facilities with 187 total residents in Phases I-IV of the Reentry

Facility program. Since the program began, there have been a total of 2,594 individuals who have successfully completed and graduated from the program. There was a total of 20 reentry graduates this month.

During the month, 41 new residents were transferred into the Reentry program, five residents started WAGE classes, 11 residents completed WAGE, and no residents started GED classes. A total of 15 residents started the Career Readiness Certificate program and 11 residents completed the program. A total of 16 Reentry Facility residents received their driver's license, 20 received an ID card, 12 received their Social Security card and seven received birth certificates.

REENTRY OFFICERS

In May, 131 residents were reported to be employed and 33 residents were reported to be ineligible for employment at this time. Reentry Officers reported nine education referrals which resulted in education enrollment.

Reentry Officers conducted 137 Reentry Facility office visits, 91 Phase IV office visits, 13 Phase IV home visits, and 37 pre-parole plan verifications. Reentry Officers made 29 community contacts within their assigned area during the month and conducted 83 office visits in their area.

TRANSITIONAL HOUSING

There are 18 licensed vendor facilities with 418 ACC-funded beds within the facilities.

Within the transitional facilities, there are 299 residents who have obtained full-time employment.

One resident reported enrollment in GED classes this month and there are 294 Transitional Housing facility residents who reported having previously received their GED or high school diploma.

During the month, there were 45 registered sex offenders living in a transitional facility.

A total of 21 residents received their driver's license, 88 received an ID card, 81 received their Social Security card and 15 received birth certificates.

A total of 72 residents graduated from the Transitional Housing program, 53 absconded and 21 were dismissed.

Medication-Assisted Treatment Program (MAT) Report - May 2022

MAT Participants

Locations:	MAT Start Dates	Active Program Participants	New Clients in the Program this Month	Dropped Out	Total Active Participants
CACCC - Little Rock	Sep-19	14	1	0	15
EACCC - West Memphis	Jul-18	35	6	1	26
NEACCC - Osceola	Dec-21	15	0	0	15
NWACCC - Fayetteville	Sep-19	5	1	0	6
OTVCCC - Malvern	Jul-18	**ended July 2021		0	0
SWACCC - Texarkana	Jul-18	21	1	0	11
Probation / Parole	2018	86	15	0	97
Medically Withdrawn	Closed Unsuccessful	Successful Completion	Total Active		
55	122	91	170		
		Total # of Participants Since Program Began			644

Clinical Activities

Action	Jan-22	Feb-22	Mar-22	Apr-22	May-22	Jun-22
Assessments Completed in units	3	5	25	22	9	
# of Clients Educated in units	298	292	518	463	425	
# of Clients Released to Supervision	6	6	9	6	15	
Pre-Release Interviews Completed	6	6	9	9	21	

Clinical Activities

Action	Jul-22	Aug-22	Sep-22	Oct-22	Nov-22	Dec-22
# of Assessments Completed in units						
# of Clients Educated in units						
# of Clients Released to Supervision						
Pre-Release Interviews Completed						

Parole/Probation Fee Collections and Waivers

	May-21	Jun-21	Jul-21	Aug-21	Sep-21	Oct-21	Nov-21	Dec-21	Jan-22	Feb-22	Mar-22	Apr-22	May-22
Area 1 - Fayetteville													
Fees Possible	150,430	149,485	149,380	152,775	154,070	152,775	153,650	155,365	154,980	156,415	158,865	160,580	162,645
Fees Collected	139,080	138,642	138,245	135,376	138,815	138,069	143,046	145,917	141,751	147,678	174,308	150,044	121,160
% Collected	92%	93%	93%	89%	90%	90%	93%	94%	91%	94%	110%	93%	74%
% Paying Offenders	55%	57%	57%	54%	55%	56%	57%	57%	57%	56%	60%	56%	43%
% Employed	88%	88%	89%	88%	89%	89%	88%	89%	89%	89%	89%	89%	88%
Fees Converted	2,208	1,883	2,797	2,090	1,517	1,394	2,198	1,725	2,952	1,961	4,919	3,880	2,939
% Converted	1%	1%	2%	1%	1%	1%	1%	1%	2%	1%	3%	2%	2%
Fees Waived	2,275	1,995	2,380	2,450	2,485	2,520	2,870	2,485	2,660	2,695	3,010	2,870	2,730
% Waived	2%	1%	2%	2%	2%	2%	2%	2%	2%	2%	2%	2%	2%
Area 2 - Mountain Home													
Fees Possible	69,895	69,650	70,560	69,720	70,700	69,965	70,525	70,245	69,720	68,565	69,475	70,000	70,770
Fees Collected	62,321	65,752	68,877	63,666	70,033	70,258	66,693	63,599	65,721	69,550	76,699	67,924	59,826
% Collected	89%	94%	98%	91%	99%	100%	95%	91%	94%	101%	110%	97%	85%
% Paying Offenders	58%	60%	60%	59%	60%	62%	61%	59%	61%	62%	65%	61%	52%
% Employed	85%	87%	87%	87%	86%	87%	88%	88%	88%	88%	88%	89%	89%
Fees Converted	-	132	-	-	143	528	-	72	105	362	355	242	336
% Converted	0%	0%	0%	0%	0%	1%	0%	0%	0%	1%	1%	0%	0%
Fees Waived	490	420	420	420	455	455	315	385	315	455	700	455	595
% Waived	1%	1%	1%	1%	1%	1%	0%	1%	0%	1%	1%	1%	1%
Area 3 - Searcy													
Fees Possible	115,570	114,520	113,855	114,450	115,150	114,275	116,130	115,360	115,185	114,870	112,770	113,540	114,870
Fees Collected	103,755	99,533	102,560	101,506	100,668	106,446	106,091	108,718	107,212	107,555	125,895	103,473	86,954
% Collected	90%	87%	90%	89%	87%	93%	91%	94%	93%	94%	112%	91%	76%
% Paying Offenders	57%	56%	57%	56%	55%	58%	56%	57%	58%	56%	61%	55%	46%
% Employed	80%	80%	80%	81%	81%	81%	81%	81%	80%	81%	81%	81%	81%
Fees Converted	1,293	1,415	1,161	792	1,857	2,148	1,505	1,396	1,234	1,551	1,425	1,585	1,870
% Converted	1%	1%	1%	1%	2%	2%	1%	1%	1%	1%	1%	1%	2%
Fees Waived	3,640	3,920	3,745	3,745	3,430	3,430	3,185	3,290	3,570	3,780	3,185	3,150	2,905
% Waived	3%	3%	3%	3%	3%	3%	3%	3%	3%	3%	3%	3%	3%
Area 4 - Jonesboro													
Fees Possible	102,375	100,450	101,990	101,255	100,625	101,115	102,445	102,830	101,395	99,960	99,050	99,960	102,200
Fees Collected	86,855	90,685	86,231	87,470	93,408	88,200	84,125	89,568	86,875	91,183	106,199	83,072	77,588
% Collected	85%	90%	85%	86%	93%	87%	82%	87%	86%	91%	107%	83%	76%
% Paying Offenders	50%	54%	51%	51%	55%	52%	51%	51%	53%	53%	58%	50%	44%
% Employed	79%	80%	79%	80%	80%	80%	81%	80%	80%	80%	80%	80%	81%
Fees Converted	1,188	2,442	1,698	3,729	2,732	3,630	3,193	2,937	3,091	2,030	4,263	3,122	3,328
% Converted	1%	2%	2%	4%	3%	4%	3%	3%	3%	2%	4%	3%	3%
Fees Waived	5,670	5,530	5,600	5,740	5,985	6,475	6,125	6,160	5,915	5,460	5,600	5,180	5,880
% Waived	6%	6%	5%	6%	6%	6%	6%	6%	6%	5%	6%	5%	6%
Area 5 - Fort Smith													
Fees Possible	105,420	105,945	102,830	105,280	106,015	104,475	104,405	104,370	103,320	103,670	103,530	104,335	104,125
Fees Collected	84,165	83,487	88,667	85,685	81,189	91,615	94,634	90,669	89,547	99,171	118,377	95,968	77,880
% Collected	80%	79%	86%	81%	77%	88%	91%	87%	87%	96%	114%	92%	75%
% Paying Offenders	51%	50%	54%	50%	49%	53%	53%	52%	53%	53%	61%	53%	45%
% Employed	78%	78%	79%	79%	80%	80%	80%	80%	81%	81%	81%	82%	82%
Fees Converted	3,732	4,791	5,095	3,358	4,628	6,518	4,685	8,100	8,712	5,983	7,609	6,518	4,208
% Converted	4%	5%	5%	3%	4%	6%	4%	8%	8%	6%	7%	6%	4%
Fees Waived	2,380	2,030	1,540	1,750	1,785	1,995	2,170	2,135	2,100	1,925	1,855	2,415	2,625
% Waived	2%	2%	1%	2%	2%	2%	2%	2%	2%	2%	2%	2%	3%

	May-21	Jun-21	Jul-21	Aug-21	Sep-21	Oct-21	Nov-21	Dec-21	Jan-22	Feb-22	Mar-22	Apr-22	May-22
Area 6 - Conway													
Fees Possible	99,925	99,890	97,090	97,195	96,040	95,760	94,325	93,835	93,100	93,905	92,960	92,995	92,855
Fees Collected	93,058	85,772	83,891	77,272	89,768	92,133	89,105	90,168	87,534	86,936	101,933	85,781	82,503
% Collected	93%	86%	86%	80%	93%	96%	94%	96%	94%	93%	110%	92%	89%
% Paying Offenders	58%	55%	54%	51%	56%	57%	58%	60%	58%	56%	62%	56%	51%
% Employed	76%	76%	78%	77%	79%	80%	81%	80%	81%	81%	81%	81%	81%
Fees Converted	1,478	1,562	1,661	1,491	2,030	2,120	1,715	959	932	868	1,205	601	1,239
% Converted	1%	2%	2%	2%	2%	2%	2%	1%	1%	1%	1%	1%	1%
Fees Waived	1,540	1,470	1,435	1,470	1,610	1,610	1,470	1,505	1,785	1,890	1,715	1,855	1,575
% Waived	2%	1%	1%	2%	2%	2%	2%	2%	2%	2%	2%	2%	2%
Area 8 - Little Rock													
Fees Possible	177,030	176,610	173,460	175,105	173,040	171,535	171,150	169,575	167,055	166,775	167,195	168,105	169,260
Fees Collected	156,068	160,449	142,881	149,693	148,423	147,452	149,709	142,796	151,469	155,469	166,874	153,074	124,203
% Collected	88%	91%	82%	85%	86%	86%	87%	84%	91%	93%	100%	91%	73%
% Paying Offenders	50%	52%	49%	50%	50%	50%	51%	49%	51%	51%	54%	51%	42%
% Employed	79%	80%	81%	79%	82%	83%	83%	82%	82%	81%	82%	83%	83%
Fees Converted	2,469	2,277	2,420	418	1,067	88	1,742	715	3,588	1,771	2,596	2,599	2,519
% Converted	1%	1%	1%	0%	1%	0%	1%	0%	2%	1%	2%	2%	1%
Fees Waived	6,475	6,405	6,650	6,860	6,650	6,335	6,335	6,125	6,055	5,880	5,950	5,845	6,055
% Waived	4%	4%	4%	4%	4%	4%	4%	4%	4%	4%	4%	3%	4%
Area 9 - West Memphis													
Fees Possible	52,955	53,270	52,255	52,570	51,905	51,870	51,835	51,415	50,050	50,260	50,050	50,225	49,455
Fees Collected	41,622	46,826	42,813	45,127	44,940	42,202	44,844	45,406	47,396	43,062	58,849	43,207	39,813
% Collected	79%	88%	82%	86%	87%	81%	87%	88%	95%	86%	118%	86%	81%
% Paying Offenders	50%	54%	51%	51%	54%	51%	51%	53%	54%	51%	62%	56%	46%
% Employed	67%	68%	69%	68%	70%	70%	71%	70%	70%	70%	71%	70%	70%
Fees Converted	1,320	1,246	737	1,397	537	814	974	1,051	1,408	2,376	2,222	2,115	3,300
% Converted	2%	2%	1%	3%	1%	2%	2%	2%	3%	5%	4%	4%	7%
Fees Waived	1,715	1,400	1,575	1,785	1,715	1,505	1,260	1,295	1,435	1,470	1,330	1,365	1,190
% Waived	3%	3%	3%	3%	3%	3%	2%	3%	3%	3%	3%	3%	2%
Area 10 - Hot Springs													
Fees Possible	101,430	99,645	98,770	97,160	96,600	98,000	97,720	116,095	116,375	115,640	114,205	115,675	115,290
Fees Collected	90,285	90,892	90,730	87,247	85,714	88,766	86,697	105,250	102,976	108,003	125,566	102,106	87,913
% Collected	89%	91%	92%	90%	89%	91%	89%	91%	88%	93%	110%	88%	76%
% Paying Offenders	57%	58%	56%	56%	56%	57%	55%	56%	55%	56%	62%	55%	47%
% Employed	81%	82%	82%	82%	83%	83%	84%	82%	82%	82%	82%	83%	83%
Fees Converted	429	1,682	1,441	1,342	1,997	1,848	2,558	2,255	2,409	429	2,423	2,057	1,254
% Converted	0%	2%	1%	1%	2%	2%	3%	2%	2%	0%	2%	2%	1%
Fees Waived	5,880	5,915	5,740	5,985	5,985	6,370	5,985	6,790	7,035	6,965	7,035	6,895	6,930
% Waived	6%	6%	6%	6%	6%	7%	6%	6%	6%	6%	6%	6%	6%
Area 11 - Pine Bluff													
Fees Possible	77,595	76,860	76,475	76,160	76,020	75,530	75,460	93,485	92,960	92,505	91,770	93,625	93,765
Fees Collected	65,771	68,345	69,166	66,129	72,541	71,992	71,369	85,609	85,572	92,612	108,431	78,421	73,760
% Collected	85%	89%	90%	87%	95%	95%	95%	92%	92%	100%	118%	84%	79%
% Paying Offenders	58%	58%	59%	56%	61%	60%	60%	58%	58%	59%	67%	55%	50%
% Employed	73%	74%	74%	75%	75%	76%	77%	76%	74%	74%	75%	76%	76%
Fees Converted	2,813	2,681	1,919	3,256	2,655	2,351	3,264	4,689	3,249	3,773	3,886	3,299	2,904
% Converted	4%	3%	3%	4%	3%	3%	4%	5%	3%	3%	4%	4%	3%
Fees Waived	1,015	910	945	980	1,015	945	1,015	2,800	2,835	2,905	3,045	3,220	3,115
% Waived	1%	1%	1%	1%	1%	1%	1%	3%	3%	3%	3%	3%	3%

	May-21	Jun-21	Jul-21	Aug-21	Sep-21	Oct-21	Nov-21	Dec-21	Jan-22	Feb-22	Mar-22	Apr-22	May-22
Area 12 - Texarkana													
Fees Possible	84,700	85,050	86,590	86,310	86,765	88,060	89,145	99,785	98,630	99,470	99,715	99,225	99,295
Fees Collected	71,743	74,949	74,724	75,432	70,603	78,704	72,040	88,616	89,321	98,834	111,689	88,228	78,355
% Collected	85%	88%	86%	87%	81%	89%	81%	88%	90%	99%	111%	88%	79%
% Paying Offenders	52%	54%	53%	53%	51%	54%	51%	54%	55%	57%	60%	53%	47%
% Employed	77%	77%	78%	77%	77%	77%	77%	76%	77%	76%	77%	78%	78%
Fees Converted	2,105	4,475	5,022	4,832	3,821	3,050	3,191	5,535	4,170	2,718	2,442	3,636	3,119
% Converted	2%	5%	6%	6%	4%	3%	4%	6%	4%	3%	2%	4%	3%
Fees Waived	2,345	2,170	2,240	2,135	2,170	1,995	1,820	3,150	2,800	2,800	2,975	2,835	2,555
% Waived	3%	3%	3%	2%	3%	2%	2%	3%	3%	3%	3%	3%	3%
Area 13 - El Dorado													
Fees Possible	51,590	50,505	50,750	50,750	50,365	50,085	49,280	-	-	-	-	-	-
Fees Collected	44,223	44,070	44,284	45,424	45,466	45,054	44,820	-	-	-	-	-	-
% Collected	85%	86%	86%	88%	90%	89%	90%	0%	0%	0%	0%	0%	0%
% Paying Offenders	53%	56%	55%	54%	54%	57%	56%	0%	0%	0%	0%	0%	0%
% Employed	69%	70%	70%	70%	70%	71%	72%	0%	0%	0%	0%	0%	0%
Fees Converted	154	781	264	528	985	989	451	-	-	-	-	-	-
% Converted	0%	2%	1%	1%	2%	2%	1%	0%	0%	0%	0%	0%	0%
Fees Waived	3,675	3,290	3,220	3,395	3,675	3,955	3,745	-	-	-	-	-	-
% Waived	7%	7%	6%	7%	7%	8%	8%	0%	0%	0%	0%	0%	0%
Grand Total													
Fees Possible	1,188,915	1,181,880	1,174,005	1,178,730	1,177,295	1,173,445	1,176,070	1,172,360	1,162,770	1,162,035	1,159,585	1,168,265	1,174,530
Fees Collected	1,038,946	1,049,403	1,033,070	1,020,027	1,041,569	1,060,889	1,053,172	1,056,316	1,055,375	1,100,052	1,274,819	1,051,297	909,954
% Collected	87%	89%	88%	87%	88%	90%	90%	90%	91%	95%	110%	90%	77%
% Paying Offenders	54%	55%	54%	53%	54%	55%	55%	55%	55%	55%	61%	54%	46%
% Employed	79%	80%	80%	80%	81%	81%	82%	81%	81%	81%	81%	82%	82%
Fees Converted	19,188	25,366	24,214	23,232	23,969	25,479	25,475	29,431	31,849	23,820	33,343	29,651	27,014
% Converted	2%	2%	2%	2%	2%	2%	2%	3%	3%	2%	3%	3%	2%
Fees Waived	37,100	35,455	35,490	36,715	36,960	37,590	36,295	36,120	36,505	36,225	36,400	36,085	36,155
% Waived	3%	3%	3%	3%	3%	3%	3%	3%	3%	3%	3%	3%	3%

Fees Possible: The amount of supervision fees that can be collected per active/electronic monitoring supervision status of offenders for that month only.

Does not include annual, pre-trial, and SIS.

Fees Collected: Actual amount of money collected that can be deposited in Special Revenue fund. Please keep in mind the amount collected could include an offender that pays three months in advance.

Fees Converted: Amount not included in Fees Collected. Represents the amount of money lost by conversions. If this money were collected instead of converted, it would be added to Fees Collected.

Fees Waived: Amount not included in Fees Collected. Represents the amount of money lost by waivers. If this money were collected instead of waived, it would be added to Fees Collected.

* Area 13 - El Dorado was dissolved in December 2021 and the counties in that area were divided between Areas 10, 11 and 12. Area 13 will continue to show on this listing until the January 2023 report when it will drop off naturally as having no collections.

Center Populations

ARDOC
REPORT NO. IPTR500 - 18

ARKANSAS DEPARTMENT OF CORRECTION
ACC OPTION
STATEWIDE POPULATION REPORT

PAGE: 1 of 1
PROCESSED: 05/31/2022 12:32 AM
REQUESTOR: eOMIS

FOR: 05/31/2022

Location:	In Count	Out To:					Capacity	% Capacity
		ORCU Hosp	Other Hosp	Furlough	Court	Total		
Central AR CCC - Males/Males	147	0	0	0	0	147	120	
Central AR CCC - Short Term Drug Court Treatment/Males	7	0	0	0	0	7	30	
Central AR CCC - Males Total	154	0	0	0	0	154	150	102.7%
East Central AR CCC/Females	178	0	0	0	0	178	212	
East Central AR CCC-Females Drug Treatment/Females	22	0	0	0	0	22	50	
East Central AR CCC Supervision Sanction-Female/Females	78	0	0	0	0	78	88	
East Central AR CCC Total	278	0	0	0	0	278	350	79.4%
NE AR CCC - Drug Treatment/Males	17	0	0	0	0	17	25	
NE AR CCC/Males	212	0	0	0	1	213	215	
NE AR CCC Total	229	0	0	0	1	230	240	95.8%
NW AR CCC/Females	113	0	0	0	1	114	114	
NW AR CCC Total	113	0	0	0	1	114	114	100.0%
Omega Supervision Sanction Center/90 Day PV in CCC Males	144	0	0	0	0	144	0	
Omega Supervision Sanction Center/Males	130	0	0	0	1	131	300	
Omega Supervision Sanction Center Total	274	0	0	0	1	275	300	91.7%
SW AR CCC/ Sanction Males*	1	0	0	0	0	1	0	
SW AR CCC/Males	339	0	0	0	0	339	375	
SW AR Supervision Sanction Center/Males	117	0	0	0	0	117	100	
SW AR CCC Total	457	0	0	0	0	457	475	96.2%
In Transit Count:	0							
TOTALS - UNIT COUNT	1,505	0	0	0	3	1,508		
					Male	1,116	1,165	95.8%
					Female	392	464	84.5%
					Total	1,508	1,629	92.6%
County Jail Backup SSP/Females Total	7	0	0	0	0	7		
County Jail Backup SSP/Males Total	40	0	0	0	0	40		
County Jail Backup/Females Total	10	0	0	0	0	10		
County Jail Backup/Males Total	24	0	0	0	0	24		
TOTAL - NONAGENCY	81	0	0	0	0	81		
					Male	64		
					Female	17		
					Total	81		
Re-Entry Act 146 Total	185	0	0	0	0	185	244	75.8%
GRAND TOTAL	1,771	0	0	0	3	1,774		

Residential Centers Statistics Report At A Glance - May 2022

Resident Admissions:

CAC: 19
ECAC: 64
NEAC: 22
NWAC: 6
OMEGA: 82
SWAC: 82

Resident Releases:

CAC: 25
ECAC: 68
NEAC: 14
NWAC: 6
OMEGA: 89
SWAC: 80

Affordable Healthcare Enrollment:

CAC: 26
ECAC: 80
NEAC: 14
NWAC: 1
OMEGA: 94
SWAC: 89

Wage Class Enrollment:

CAC: 22
ECAC: 0
NEAC: 0
NWAC: 0
OMEGA: 10
SWAC: 12

Shorter College Enrollment:

CAC: 41
ECAC: 49
NEAC: 23
NWAC: 10
SWAC: 64
OMEGA: 0

Henderson State University Enrollment:

OMEGA:
Met with 45 residents

Exodus Enrollment:

CAC: 132
ECAC: 0

Good Grid Enrollment

CAC: 140
ECAC: 71
NEAC: 22
NWAC: 6
OMEGA: 0
SWAC: 0

Photo IDs Issued:

CAC: 16
ECAC: 10
NEAC: 5
NWAC: 3
OMEGA: 18
SWAC: 8

Drivers Licenses Obtained:

CAC: 9
ECAC: 5
NEAC: 3
NWAC: 2
OMEGA: 4
SWAC: 3

MAT Participants:

CAC: 13
ECAC: 26
NEAC: 19
NWAC: 6
OMEGA: 0
SWAC: 12

Reformers Anonymous Attendance:

OMEGA: 74

Number of Volunteers:

CAC: 41
ECAC: 14
NEAC: 40
NWAC: 83
OMEGA: 20
SWAC: 37

Number of Volunteer Hours:

CAC: 187
ECAC: 74
NEAC: 89
NWAC: 243.25
OMEGA: 54.07
SWAC: 487

GED Enrollment:

CAC: 20
ECAC: 28
NEAC: 25
NWAC: 19
OMEGA: 10
SWAC: 48

GED Completed:

CAC: 2
ECAC: 1
NEAC: 8
NWAC: 6
OMEGA: 0
SWAC: 1

AA/NA Attendance:

CAC: 144
ECAC: 275
NEAC: 73
NWAC: 38/35
OMEGA: 85
SWAC: 194

Celebrate Recovery Attendance:

CAC: 37
ECAC: 20
NEAC: 54
NWAC: 13
OMEGA: 0
SWAC: 0

Parole/Probation Population

Active:

Includes current status of Active, Abscond and Electronic Monitoring

Inactive:

Includes current status of Non Reporting, Unsupervised, SIS
(Suspended Imposition of Sentence), Incarcerated and Out to Other State

Statewide Totals by Current Supervision Status (Active and Inactive) as of June 12, 2022

Area	Active	Inactive	TOTAL
Area 1-Fayetteville	7,148	2,909	10,057
Area 2-Mountain Home	2,489	643	3,132
Area 3-Searcy	4,684	1,369	6,053
Area 4-Jonesboro	3,986	1,773	5,759
Area 5-Fort Smith	3,943	3,882	7,825
Area 6-Conway	3,631	1,123	4,754
Area 8-Little Rock	7,476	1,282	8,758
Area 9-West Memphis	1,993	423	2,416
Area 10-Hot Springs	5,163	1,011	6,174
Area 11-Pine Bluff	4,294	941	5,235
Area 12-Texarkana	4,163	1,428	5,591
ISC	12	1,752	1,764
Statewide Totals by Status	48,982	18,536	67,518

Parole/Probation Population

Statewide Totals by Current Supervision Status as of June 12, 2022

Area	Active			Inactive					OVERALL TOTALS PER AREA
	Active (Direct Supv)	Electronic Monitoring (Direct)	Absconded	Incarcerated	Non-Reporting	Out to Other State	Unsupervised	Suspnd Imposition of Snt (SIS)	
Area 1-Fayetteville	5,213	38	1,897	589	427	572	264	1,057	10,057
Area 2-Mountain Home	2,089	21	379	177	120	135	73	138	3,132
Area 3-Searcy	3,586	4	1,094	258	182	227	45	657	6,053
Area 4-Jonesboro	3,159	15	812	227	209	153	86	1,098	5,759
Area 5-Fort Smith	3,172	19	752	243	329	148	125	3,037	7,825
Area 6-Conway	2,816	1	814	263	131	113	48	568	4,754
Area 8-Little Rock	5,165	92	2,219	337	360	53	204	328	8,758
Area 9-West Memphis	1,440	3	550	133	54	55	16	165	2,416
Area 10-Hot Springs	3,665	33	1,465	269	168	95	166	313	6,174
Area 11-Pine Bluff	3,015	18	1,261	241	100	71	159	370	5,235
Area 12-Texarkana	2,984	14	1,165	317	236	282	113	480	5,591
ISC	11		1	16	70	1,666			1,764
Statewide Totals by Current Supervision Status	36,315	258	12,409	3,070	2,386	3,570	1,299	8,211	67,518

<i>Offender Count Active Excluding Absconders</i>
36,573

Explanation for “Current Supervision Status”

Active Supervision:

Offender is currently on Active/Direct Supervision Status.

Electronic Monitoring:

Offender is currently on an Electronic Monitor.

Incarcerated:

Offender is currently incarcerated including the following:

- Parole Holds (in state and out-of-state)
- ACT 570 Holds
- County Jail (including possible new charges—felony or misdemeanors—or serving commitments for traffic fines, court commitments, etc).

Non Reporting:

Drug Court offender currently in a Community Correction Center for sanction or court commitment, on detainer (federal or ICE hold), out-of-state, in CCC Residential Treatment, nursing home, hospital, or Arkansas State Hospital.

Out-To-Other-State:

Offender supervised out of Arkansas through Interstate Compact.

Unsupervised:

Parolee whose earned Good Time has met the requirements for unsupervised parole, probationers who received Unsupervised Sentence (e.g., five-year probation sentence specified as 3 years supervised and an additional 2 years unsupervised probation; or an unsupervised probation sentence which is common for misdemeanor offenses (e.g., 1 year unsupervised probation term).

Suspended Imposition of Sentence (SIS):

Offender received a suspended term of supervision.

Regular Parole/Probation Caseloads

Regular P&P Caseloads/Workloads By Area

6/14/2022

AREA	Authorized Officers	Filled	Regular P&P Offenders				Total Active Offenders	Caseload Ratio (Authorized Positions)		Caseload Ratio (Filled Positions)	Work Units	Workload (Authorized Positions)	Workload (Filled Positions)	Total Indirect
			Maximum	Medium	Minimum	Pending								
AREA 01	52	50	220	2,018	2,381	151	4,770	92	95	95	7,308	141	146	4,358
AREA 02	19	18	138	696	932	35	1,801	95	100	100	2,792	147	155	679
AREA 03	38	36	211	1,536	1,407	60	3,214	85	89	89	5,209	137	145	1,944
AREA 04	33	32	156	1,125	1,507	77	2,865	87	90	90	4,342	132	136	2,272
AREA 05	29	26	252	1,032	1,297	81	2,662	92	102	102	4,246	146	163	3,800
AREA 06	29	29	181	1,044	1,304	62	2,591	89	89	89	4,031	139	139	1,195
AREA 07/08	64	60	405	2,285	2,139	193	5,022	78	84	84	8,241	129	137	2,327
AREA 09	18	18	132	499	664	27	1,322	73	73	73	2,101	117	117	576
AREA 10	40	37	248	1,388	1,659	83	3,378	84	91	91	5,309	133	143	1,686
AREA 11	35	32	219	1,222	1,076	58	2,575	74	80	80	4,273	122	134	1,492
AREA 12	34	27	246	1,135	1,345	75	2,801	82	104	104	4,473	132	166	1,779
Statewide	391	365	2,408	13,980	15,711	902	33,001	931	999	999	52,326	1,473	1,581	22,108
Area Average			219	1,271	1,428	82	3,000	85	91	91	4,757	134	143	

¹ Regular P&P Caseloads/Workloads include offenders with Active (Direct), Electronic Monitoring, and Incarcerated supervision statuses. Incarcerated here refers to temporary jail stays.

² Offenders on Annual or Indirect Supervision are excluded from caseload/workload counts and ratios.

³ Specialty Court Offender figures shown here are only those assigned to regular P&P officers. These offenders are not counted in caseload or workload ratios.

⁴ Indirect totals here are for offenders in Non-Active supervision statuses or those under Annual Supervision.

This page and the following two pages contain statewide caseload information for ACC. Caseloads are presented separately for regular parole and probation, specialty court, and specialized caseloads. This version is specifically designed for quarterly legislative reporting and differs from the daily caseloads/workloads report.

Beyond the exclusion of workloads calculation, it is important to note that direct supervision in these tables includes regular parole and probation and specialty court (including regular parole and probation offenders carried by specialty court officers) offenders with active (direct), electronic monitoring, or incarceration supervision status, as well as absconders assigned to SRT officers. Offenders on annual supervision are counted as indirect.

Parole/Probation Caseloads for Specialty Courts

Specialty Court Caseloads/Workloads By Area

AREA	Authorized Officers		Filled	Regular P&P Offenders				Total Regular P&P Offenders	Total Active Specialty Court Offenders	Total Indirect Including Regular & Specialty	Caseload Ratios (Based on Active/Direct offenders)				Workload	
				Maximum	Medium	Minimum	Unassigned				P&P	Specialty	Mixed	Work Units		
AREA 01	10	9	0	10	8	1	19	430	171	2	43	45	858	86	95	
AREA 02	5	5	33	156	179	4	372	22	102	74	4	79	636	127	127	
AREA 03	6	6	9	84	125	7	225	113	164	38	19	56	508	85	85	
AREA 04	5	5	9	70	120	5	204	85	121	41	17	58	424	85	85	
AREA 05	9	9	6	69	224	8	307	275	322	34	31	65	840	93	93	
AREA 06	6	6	35	85	112	5	237	104	295	40	17	57	564	94	94	
AREA 07/08	1	0	0	0	0	0	0	0	0	0	0	0	0	0	0	
AREA 09	3	3	27	62	105	7	201	31	129	67	10	77	357	119	119	
AREA 10	7	5	11	45	56	5	117	104	305	17	15	32	362	52	72	
AREA 11	7	7	26	124	100	6	256	112	306	37	16	53	611	87	87	
AREA 12	6	6	24	114	110	3	251	114	228	42	19	61	584	97	97	
Statewide	65	61	180	819	1,139	51	2,189	1,390	2,143	34	21	55			955	
Area Average			16	74	104	5	126			35	17	53				

¹ Specialty Court Caseloads/Workloads include offenders who are assigned to officers in Specialty Court positions who have Active (Direct), Electronic Monitoring, or Incarcerated supervision statuses.

² Offenders on Indirect or Annual Supervision are not included in caseload counts or ratios. Annual supervision counts include both regular P&P and Specialty Court offenders assigned to Specialty Court officers.

³ Offenders in risk-level columns above are regular P&P offenders who are supervised by officers in Specialty Court positions.

Specialized Caseloads

AREA	Authorized Officers	Totals		Ratios	
		Offenders	Caseload	Caseload	
INTENSIVE SUPERVISION	18	66	4	4	
INTERSTATE COMPACT	0	1,756	0	0	
SPECIAL RESPONSE TEAM	18	4,580	252	252	
Statewide	36	6,402	129	129	

Parole/Probation Caseloads

Caseloads By Area

6/14/2022

AREA	Cases	Authorized Officers	Vacant	Filled	Total Active	Total Indirect	Totals:
AREA 01	AREA CASES	62	3	59	5,219	4,529	9,748
AREA 02		24	1	23	2,195	781	2,976
AREA 03		44	2	42	3,552	2,120	5,672
AREA 04		38	1	37	3,154	2,393	5,547
AREA 05		38	3	35	3,244	4,122	7,366
AREA 06		35	0	35	2,932	1,493	4,425
AREA 07/08		65	5	60	5,068	2,337	7,405
AREA 09		21	0	21	1,554	705	2,259
AREA 10		47	5	42	3,599	1,991	5,590
AREA 11		42	3	39	2,943	1,798	4,741
AREA 12		40	7	33	3,166	2,007	5,173
TOTALS	AREA CASES	456	30	426	36,626	24,276	60,902
INSTITUTIONAL PAROLE	SPECIALIZED CASES	28	0	28	0	0	0
INTENSIVE SUPERVISION		18	15	3	66	0	66
INTERSTATE COMPACT		0	0	0	28	1,728	1,756
RE-ENTRY		11	1	10	0	0	0
SEX OFFENDER ASSESSMENT		12	1	11	19	0	19
SPECIAL RESPONSE TEAM		18	0	18	18	4,562	4,580
TOTALS	SPECIALIZED CASES	87	17	70	131	6,290	6,421
Statewide TOTALS		543	47	496	36,757	30,566	67,323

Caseloads are presented in distinct officer groupings:

Regular: These are officers carrying normal Probation and Parole caseloads.

Specialty Court: These officers supervise offenders in specialty courts. Note that these officers may also carry regular P&P offenders, and these offenders are reflected in the specialty court caseload/workload figures; however, separate caseload/workload ratios are calculated for the regular and specialty court portions of a specialty court officer's caseload, in addition to a combined, or mixed, ratio.

Specialized: These officers supervise strategically specialized caseloads consisting of offenders requiring heightened supervision protocols (intensive supervision) and parolees who have absconded supervision (Special Response Team).

Indirect: These are offenders for whom their sentence, circumstance, or current status is associated with a reduced supervision obligation for the officers they are assigned to. Generally, these include offenders in non-reporting status, those on suspended sentences (SIS), and interstate compact offenders. Offenders on annual supervision are also included in this group.

Parole/Probation Risk Levels

Statewide Risk Levels by Caseload Types as of June 4, 2022

CURRENT RISK LEVELS	Parole	Probation	Drug Court	Hope Court	Mental Health Court	Veterans Court	Swift Courts	Pre Adjudicated	Pre Trial/ Drug Court	Pre Trial/ Pre-Adjudicated	Pre Trial/ Regular	Pre Trial/ Veterans Court	Suspended	Ext Sex Offender Supv	Totals
Maximum	2,823	1,528	177	4		2	5		1		2		302	1	4,845
Medium	9,485	12,020	977	37	12	42	30		6	28	13		1,506	3	24,159
Minimum	6,159	16,106	532	20	7	50	35	2	9	53	4	2	1,373		24,352
Annual Reporting	2,320	1,191	1				11						162		3,685
Unassigned	2,950	2,325	60	1		4	1		17	2	12		5,052		10,424
Sum:	23,737	33,170	1,747	62	19	98	82	2	33	83	31	2	8,395	4	67,465

CURRENT RISK LEVELS ASSIGNED EXPLANATION:

- Maximum- last risk level score as “High”
- Medium- last risk level score as “Medium”
- Minimum- last risk level score as “Low”
- Annual- identifies offenders that are supervised Annual Reporting
- Unassigned- no ARORA has been completed or offender is currently supervised as “Unsupervised” where the risk level was changed to unassigned

Statewide Risk Levels by Caseload Supervision Status as of June 4, 2022

RISK LEVELS BY CURRENT SUPERVISION STATUS	Maximum	Medium	Minimum	Annual Reporting	Unassigned	Sum:
Active (Direct Supv)	2,131	14,029	16,808	2,878	435	36,281
Electronic Monitoring (Direct)	90	137	13	2		242
Absconded	1,453	5,599	3,412	78	1,849	12,391
Incarcerated	482	1,349	575	13	659	3,078
Non-Reporting	262	739	464	13	930	2,408
Out to Other State	123	714	1,295	42	1,404	3,578
Unsupervised	14	108	439	497	248	1,306
Suspnd Imposition of Snt (SIS)	290	1,484	1,346	162	4,899	8,181
Sum:	4,845	24,159	24,352	3,685	10,424	67,465

Parole/Probation Population

Probation and Parole Gains and Losses in May 2022

Gains and Losses	Probation	Parole	Pre-Trial	Suspended	Sum:
Intakes	830	691	17	132	1,670
Sanction Release from SSP	9	193			202
Total Gains	839	884	17	132	1,872
Revocations/or New ADC or CCC Sentence	253	419	3	43	718
Sanction Incarceration SSP	8	133			141
Terminations	484	245	21	135	885
Total Losses	745	797	24	178	1,744

ACC SRT and IPS Teams

May SRT – Task Force Report	
Arrests:	
Absconders	98
Active Supervision	57
Collateral Arrest	80
SRT Total:	80
Task Force Total:	197
SRT Plus Task Force Total:	277

May SRT – Task Force Report	
Felony charges	513
Misdemeanor charges	178
Traffic charges	84
Narcotics arrests	138
Confiscations:	
Marijuana	39,316.2 grams
Meth	4,732.9 grams
Cocaine	1,388.0 grams
Heroin	14 grams
Fentanyl	128.2 grams
Prescription pills	6,228 pills
Handguns	34
Rifles	17
Recovered vehicles	3
Drug paraphernalia	276 items
Currency seized	\$624,875.00

INTENSIVE PAROLE SUPERVISION		MAY 2022																		
Type of Charges																				
Firearm		1																		
Narcotics		0																		
Firearm/Narcotics		1																		
Active (Felony) Warrant		8																		
Total Charges Filed		10																		
<table><tr><th colspan="3">NUMBER OF ARRESTS</th></tr><tr><td></td><th>Parole</th><th>Probation</th></tr><tr><td>Active Supervision</td><td>1</td><td>0</td></tr><tr><td>Absconders</td><td>7</td><td>0</td></tr><tr><td>Collateral</td><td colspan="2">2</td></tr><tr><td>Total Arrests:</td><td colspan="2">10</td></tr></table>			NUMBER OF ARRESTS				Parole	Probation	Active Supervision	1	0	Absconders	7	0	Collateral	2		Total Arrests:	10	
NUMBER OF ARRESTS																				
	Parole	Probation																		
Active Supervision	1	0																		
Absconders	7	0																		
Collateral	2																			
Total Arrests:	10																			
CONFISCATIONS																				
Marijuana		0.4 pounds																		
Methamphetamine		3.0 grams																		
Mushrooms		453																		
Handguns		3																		
Rifles		2																		
Courtesy/Assisted/Requested Home Visits Conducted IPS Agents:		65																		

Parole/Probation Community Service - May 2022

Community Service

			2021 TOTALS	2022												MAY		2022 TOTALS
																NUMBER OF PARTICIPANTS	NUMBER OF HOURS	
AREAS	CITIES WITHIN AREA			JUNE	JULY	AUGUST	SEPTEMBER	OCTOBER	NOVEMBER	DECEMBER	JANUARY	FEBRUARY	MARCH	APRIL				
1	Bentonville, Fayetteville, Huntsville			1,321.25	1,614.50	1,109.75	1,183.85	1,508.0	1,283.50	829.0	1,238.0	1,104.0	656.0	800.0	110	1,223.50	5,021.5	
2	Harrison, Mountain Home, Salem, Mountain View, Berryville			498.0	291.0	600.50	326.0	216.0	216.0	503.50	244.0	349.50	364.50	490.50	32	721.0	2,169.5	
3	Searcy, Newport, Walnut Ridge, Ash Flat, Heber Springs, Batesville, Pocahontas, Lonoke			1,200.0	897.0	965.0	941.0	1,813.0	1,397.0	1,004.0	1,645.0	1,036.0	1,835.0	1,558.0	62	1,835.0	7,909.0	
4	Jonesboro, Paragould, Osceola			198.0	140.0	274.0	307.0	381.0	330.0	206.0	264.0	183.50	440.50	385.50	30	256.50	1,530.0	
5	Fort Smith, Booneville, Clarksville, Ozark, Mena			803.0	963.50	784.0	677.0	797.0	1,050.0	1,091.0	1,052.0	1,104.0	773.0	784.0	86	837.0	4,550.0	
6	Conway, Russellville, Morrilton, Danville			547.15	551.0	389.60	512.41	671.57	419.35	168.0	192.0	294.52	161.65	226.20	38	718.71	1,593.03	
8	Little Rock, North Little Rock			1,643.0	1,462.0	227.0	357.0	119.0	793.0	939.0	1,061.0	1,212.0	1,377.0	2,098.50	106	2,284.50	8,033.0	
9	Forrest City, Helena, West Memphis			200.50	264.2	212.20	191.0	274.10	143.20	168.50	141.80	206.0	265.6	306.91	29	313.60	1,233.91	
10	Malvern, Benton, Sheridan, Arkadelphia, Hot Springs, Benton, Camden, Fordyce			366.50	301.70	289.50	346.0	536.0	629.50	345.0	412.50	371.50	612.50	968.0	48	812.50	3,177.00	
11	Pine Bluff, Stuttgart, Monticello, El Dorado, Crossett			592.50	377.0	453.50	663.70	599.50	418.50	670.20	529.50	400.30	578.75	559.25	61	631.50	2,699.30	
12	Texarkana, Ashdown, Hope, Lewisville, Nashville, Magnolia			316.80	153.60	731.0	660.50	359.0	344.20	870.80	1,034.0	761.0	1,107.3	1,100.50	47	769.50	4,772.25	
13	This area was dissolved			322.0	351.50	132.0	174.89	306.0	192.0									
TOTAL				8,008.70	7,367.00	6,168.05	6,340.35	7,580.17	7,216.25	6,795.0	7,813.75	7,022.32	8,171.75	9,277.36	649	10,403.31	42,688.49	

Litter Crew Report

AREAS	CITIES WITHIN AREA	NUMBER OF PARTICIPANTS	NUMBER OF HOURS
2	Harrison, Mountain Home, Salem, Mountain View, Berryville	6	78.5
3	Searcy, Newport, Walnut Ridge, Ash Flat, Heber Springs, Batesville, Pocahontas, Lonoke	13	99.0
5	Fort Smith, Booneville, Clarksville, Ozark, Mena	5	15.0
9	Forrest City, Helena, West Memphis	2	25.0
TOTAL		26	217.5

County Work Project Report

AREA	COUNTY	NUMBER OF PROBATIONERS AND PAROLEES	NUMBER OF HOURS
1	Benton	3	35.0
TOTAL		3	35.0

Parole/Probation Revocations

Revocation Events By Supervision Types and Area - May 2022

Area	Supervision Type	Revoked (Sent to ADC)	Revoked (Sent to CCC)	Revoked (Other)	New ADC/ CCC Sentence
Area 1-Fayetteville	Probation	8	1	15	4
Area 2-Mountain Home		8	2	2	5
Area 3-Searcy		19	6	7	
Area 4-Jonesboro		6	3	6	12
Area 5-Fort Smith		4	1	2	7
Area 6-Conway		13	9		2
Area 8-Little Rock		7	1	36	3
Area 9-West Memphis		1			3
Area 10-Hot Springs		8	4	9	4
Area 11-Pine Bluff		7	1	7	
Area 12-Texarkana		17		3	
Total by Supervision Type	Probation	98	28	87	40
Area 1-Fayetteville	Parole	41		1	1
Area 2-Mountain Home		11			2
Area 3-Searcy		42		2	7
Area 4-Jonesboro		28			2
Area 5-Fort Smith		35			18
Area 6-Conway		40			5
Area 8-Little Rock		66			8
Area 9-West Memphis		11			
Area 10-Hot Springs		26	1	1	3
Area 11-Pine Bluff		33			8
Area 12-Texarkana		19			8
Total by Supervision Type	Parole	352	1	4	62
Area 5-Fort Smith	Pre-Trial				1
Area 10-Hot Springs				1	
Area 11-Pine Bluff				1	
Total by Supervision Type	Pre-Trial			2	1
Area 1-Fayetteville	Suspended			2	
Area 2-Mountain Home		1			
Area 3-Searcy		3		2	
Area 4-Jonesboro					1
Area 5-Fort Smith					25
Area 6-Conway			1		1
Area 8-Little Rock					3
Area 9-West Memphis				1	1
Area 11-Pine Bluff		1			
Area 12-Texarkana				1	
Total by Supervision Type	Suspended	5	1	6	31
TOTAL BY SUPERVISION EVENT		455	30	99	134

Revocation Hearings

Parole Revocation Hearings and Outcomes May 2022

Hearing Outcome	Laws and Technical	Laws Only	Technical Only	Total By Hearing Outcome
Administrative Revocation		86		86
Deferred	2	1		3
Reinstate	2	2	2	6
Revoked	37	5	1	43
Waived	260	23	15	298
Total By Violation Type	301	117	18	436

Note: Excludes SSP Sanction Hearings

ACT 1029 HEARINGS HELD	Total
Revoked	14
Waived	4
Total # ACT 1029 Hearings	18

Note: Included in totals for Hearing Outcomes

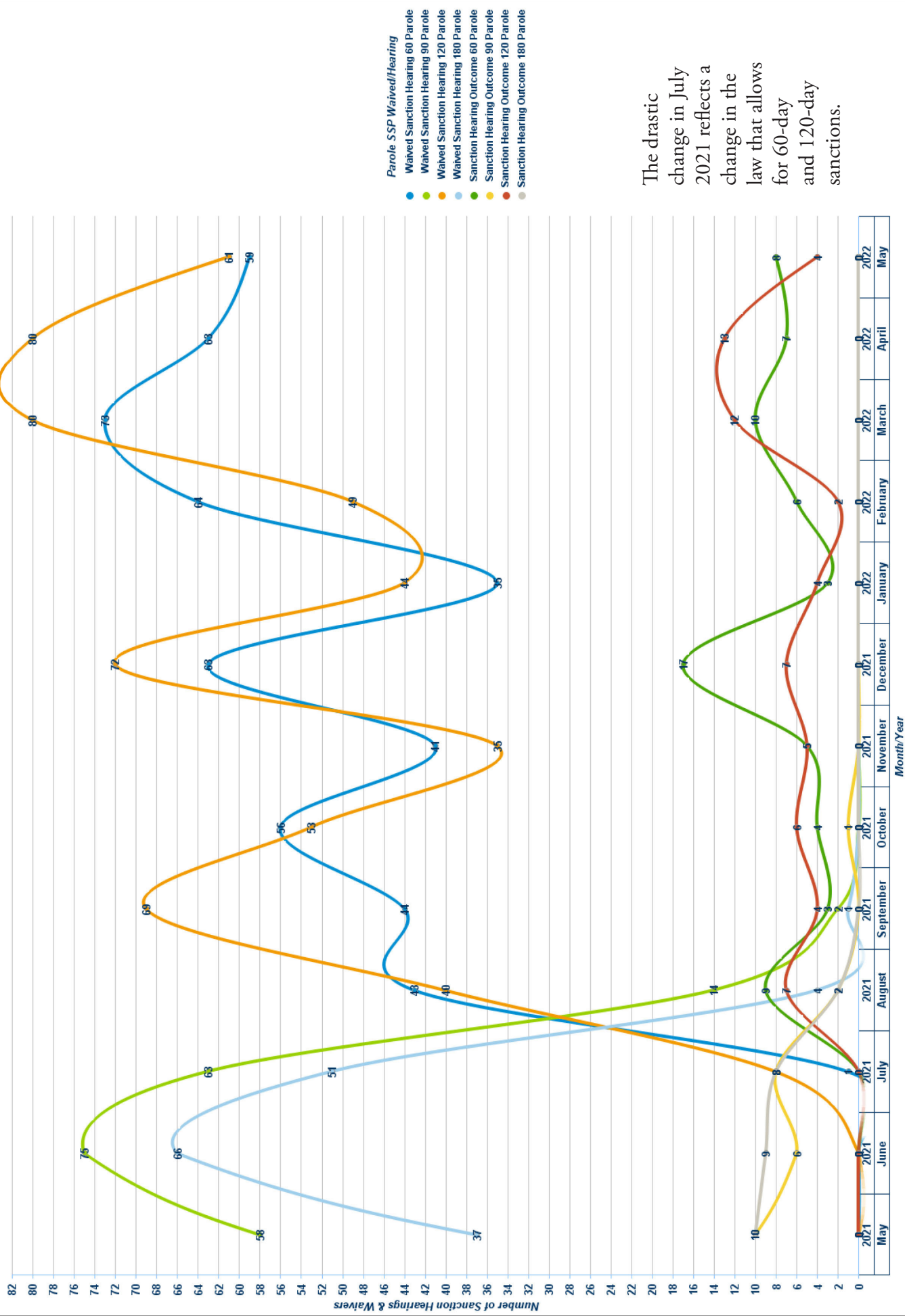
Supervision Sanctions

Supervision Sanction Hearings and Waivers 5/1/2022 - 5/31/2022

Sanction Hearing Outcome	Sanction Hearing Type	Parole	Probation	Sum:
Sanction Hearing Outcome 60 Parole	Sanction Hearing	72		72
Sanction Hearing Outcome 90 Parole		27		27
Sanction Hearing Outcome 90 Probation			3	3
Sanction Hearing Outcome 120 Parole		64		64
Sanction Hearing Outcome 180 Parole		29		29
Sanction Hearing Outcome 180 Probation			4	4
Totals:	Sanction Hearing	192	7	199
Waived Sanction Hearing 60 Parole	Waived Sanction Hearing	541	1	542
Waived Sanction Hearing 90 Parole		212		212
Waived Sanction Hearing 90 Probation		1	65	66
Waived Sanction Hearing 120 Parole		592		592
Waived Sanction Hearing 180 Parole		159		159
Waived Sanction Hearing 180 Probation			17	17
Totals:	Waived Sanction Hearing	1,505	83	1,588
	Overall Totals:	1,697	90	1,787

Parole Sanction Hearings and Waivers to SSP

Parole Sanction Hearings and Waivers to SSP



The drastic change in July 2021 reflects a change in the law that allows for 60-day and 120-day sanctions.

Parole/Probation Drug Testing

Regular Probation and Parole Positive Tests During May 2022

Offender Urine Tests Administered this Period: 8,838
Number of Offenders Testing Positive: 3,364

Drug Tested	Count
Methamphetamines	2,037
THC/Marijuana	2,021
Amphetamines	1,387
Benzodiazepines	230
Cocaine	196
Heroin/Opiates	81
Alcohol	73
Ecstasy	70
Oxycodone	68
Ethyl Glucuronide	61
Fentanyl	37
Buprenorphine	28
Hydrocodone	25
Tramadol	20
Methadone	19
Morphine	17
Barbiturates	16
Propoxyphene	12
Methadone Metabolite	7
Prescription Abuse	7
Creatinine	4
PCP	4
Heroin Metabolite	3
pH	3
Crack	2
LSD	2
Other Hallucinogens	2
Cotinine	1
Inhalants	1
K2 (SPICE)	1
Methaqualone	1
Nicotine	1
Speed	1
Total	6,438

Drug Courts Positive Tests During May 2022

Offender Urine Tests Administered this Period: 8,486
Number of Offenders Testing Positive: 250

Drug Tested	Count
Buprenorphine	335
Methamphetamines	238
THC/Marijuana	211
Amphetamines	198
Fentanyl	49
Ethyl Glucuronide	46
Benzodiazepines	39
Ecstasy	39
Morphine	39
Cocaine	27
Methadone	26
Oxycodone	19
Tramadol	16
Alcohol	14
Barbiturates	10
Heroin/Opiates	6
K2 (SPICE)	5
Creatinine	4
Hydrocodone	3
Methadone Metabolite	2
PCP	2
Kratom	1
Methaqualone	1
Total	1,330

Specialty Courts Positive Tests During May 2022

Offender Urine Tests Administered this Period: 217
Number of Offenders Testing Positive: 19

Drug Tested	Count
THC/Marijuana	22
Amphetamines	11
Methamphetamines	11
Ethyl Glucuronide	4
Heroin/Opiates	3
Benzodiazepines	1
Buprenorphine	1
Cocaine	1
Hydrocodone	1
Oxycodone	1
Total	56