



DIVISION OF  
CORRECTION

# BOARD REPORT

March 2022



@ARDeptofCorrections



@adcpio



@arcorrections



Dexter Payne,  
Director

## POPULATION REPORT

### RESEARCH/PLANNING

#### February 2022 Admissions and Releases –

Admissions for February 2022 totaled **872** (713-males and 159-females) while releases totaled **440** (364-males and 76 females) for a net increase in-house of **432** inmates.

#### Inmate Population Growth/Projection –

At the end of February 2022, the jurisdictional population for the Division of Correction totaled **17,077**, representing an increase of **54** inmates since the first of January 2022. At reporting time, calendar year 2022 has seen an average increase of **27** inmates per month, which is down from an average monthly increase of **77** inmates per month during calendar year 2021.

#### Average County Jail Back-up –

The backup in the county jails averaged **2,169** inmates per day during the month of February 2022, which was down from the per-day average of **2,229** inmates during the month of January 2022. Of the **2,169** average, short-term revocations accounted for **521** (442 males and 79 females) during the month.

### INMATE INSTITUTIONAL GRIEVANCES

**Inmate Formal/Informal Grievances:** During February, a total of 1,252 formal grievances and 1,921 informal grievances were filed at various units.

**Institutional Grievances Appeals:** There was a total of 521 appeals of institutional grievances received in February. Of those, 391 were acknowledged and 130 were rejected for various reasons. Of the total 331 appeals answered, 329 had no merit and two had merit.

## INSTITUTIONS

### FARM

The month of February stayed cold and wet and brought some ice. Farms continued working in the shops preparing equipment for the planting season.

The planting of potatoes and onions was started in the gardens in some locations.

The wheat crop continues to look very good, along with the prices. The application of fertilizer was started at all three locations.

The first foal of the year was born at Calico Rock with ice on the ground. A total of 85% of the mares are confirmed to have bred this year.

Egg production has been on the rise and work with the kitchens to take and use more eggs is underway.

### REGIONAL MAINTENANCE HOURS

Regional Maintenance Hours	February 2022
Benton Unit	5,675
Delta Regional Unit	1,304
East Arkansas Regional Unit	0
Grimes Unit	696
McPherson Unit	796
Mississippi County Work Release	321
North Central Unit	232
Ouachita River Correctional Unit	2,184
Randall L. Williams Unit	1,616
Texarkana Regional Correctional Center	153
Tucker Unit	528
Varner Unit	1,624
Wrightsville Unit	2,751
<b>Total Hours</b>	<b>17,880</b>

### WORK RELEASE RENT REPORT

Unit	February 2022
Benton Unit	\$88,451.00
Mississippi County Work Release	\$51,068.00
Northwest Arkansas Work Release	\$37,349.00
Pine Bluff Work Release	\$31,756.00
Texarkana Regional Correctional Center	\$33,218.00
Wrightsville Hawkins Unit	\$17,340.00
<b>Total</b>	<b>\$259,182.00</b>

**REENTRY****RANDALL L. WILLIAMS****JUVENILE EDUCATION PROGRAM**

February 2022 Capacity: 20	Beginning Count	New Commitments	DCR/Punitive	Transferred/ Turned 18*	Paroled	End Count
Juveniles*	5	1	0	1	0	5

\*Juveniles are transferred from the program once they reach the age of 18.

**WORKFORCE ALLIANCE FOR  
GROWTH IN THE ECONOMY (WAGE)**

February 2022 Capacity: 120 Unit:	Beginning Count	Admissions During Mo.	Removed*	Completed	End Count
Delta	0	0	0	0	0
Ester	0	0	0	0	0
Hawkins	22	0	0	0	22
McPherson	0	0	0	0	0
Ouachita River	0	0	0	0	0
Tucker	0	0	0	0	0
Wrightsville	6	0	0	0	6
<b>TOTAL</b>	<b>28</b>	<b>0</b>	<b>0</b>	<b>0</b>	<b>28</b>

\*The "Removed" column indicates the number of participants who transferred, signed out, received a disciplinary, were removed because test scores were not returned/were too low to continue, or were released from prison.

**ADVANCED PRINCIPLES  
AND APPLICATIONS FOR  
LIFE PROGRAM (APAL)**

February 2022 Capacity: 86	Beginning Count	Admissions During Mo.	Removed*	End Count
Ester	53	0	0	53
Hawkins	25	2	3	24
<b>TOTAL</b>	<b>78</b>	<b>2</b>	<b>3</b>	<b>77</b>

Advanced PAL is an 18-month reentry program that combines a pre-release curriculum with the PAL program.

\*The "Removed" column indicates the number of participants who paroled, completed the program, withdrew from the program, transferred, or were removed from the program for another reason.

**WRIGHTSVILLE-HAWKINS  
PATHWAY TO FREEDOM PROGRAM**

February 2022 Capacity: 200	Beginning Count	Enrolled During the Month	Removed	End Count*
Wrightsville-Hawkins PTF	192	15	13	194

**THINK LEGACY**

February 2022 Capacity: 635 Unit	Beginning Count	Admitted	Graduated	Removed*	End Count
Cummins	39	11	0	2	48
Delta Regional	22	2	0	0	24
East Arkansas Regional	38	3	0	0	41
McPherson	23	18	0	2	39
North Central	48	3	0	3	48
Ouachita River	32	0	0	0	32
Tucker	27	10	0	2	35
<b>Total</b>	<b>229</b>	<b>47</b>	<b>0</b>	<b>9</b>	<b>267</b>

\*The "Removed" column indicates the total number of participants who paroled, signed out, transferred, or were removed from the program for any other reason and are no longer in the barracks.

**TRAINING****DIVISION OF CORRECTION  
TRAINING - FEBRUARY 2022****BASIC TRAINING DIVISION –**

Under the direction of Instructor Michael Lennox, **BCOT Class 2022-A** graduated on February 18, 2022, with a total of 36 cadets.

The *Willis H. Sargent Award* recipient was Tearrial Bankers of the Delta Regional Unit.

*Academic Awards* were presented to the following:

- 1st – Hubert Fleming, Delta Regional Unit
- 2nd – Caleb George, Wrightsville Unit
- 3rd – Gage Cash, Delta Regional Unit

Recipients of *Physical Fitness Awards* were:

- 1st – James Hoskins, North Central Unit
- 2nd – Angel Flores, Tucker Unit
- 3rd – James Nowden, Delta Regional Unit

**ADC TRAINING, continued****IN-SERVICE DIVISION –**

Classes held by the Training Academy during the month included a virtual *Grievance Procedure Training* with 99 participants across the state taking part. An *Internal Affairs Report Writing* class was also presented virtually to 12 students.

**eCADEMY –**

During February, 552 ADC employees completed a total of 9,401 hours of eCADEMY training.

**HEALTH/CORRECTIONAL PROGRAMS****CHAPLAINCY SERVICES**

**Cummins Unit** – The *Principles for Application* seminar was held in the PAL program on February 22-25 with four volunteers teaching from 9 a.m. to 2 p.m. each day.

**Delta Regional Unit** – On February 14, six inmates participated in the final *Bible QUIZlympics* competition. A total of 28 inmates completed the study, *33 The Series: A Man and His Traps*, on 02/18.

**ACCREDITATION****ACA Internal Audits Completed:**

02/08 Pine Bluff Complex Final Pre-Audit

02/14–02/25 Pine Bluff Complex File Review

**Fire/Safety and Sanitation Independent Audits Conducted by the Fire and Sanitation Coordinator:**

02/01–02/04 Pine Bluff Complex Audit Prep

02/16 Wrightsville Industry Independent Audit

02/17 Pine Bluff Complex Fire Safety File Review

**VOLUNTEER SERVICES****Total Number of Volunteer Hours for February 2022:**

Unit/Program	Hours
Delta Unit	0
East Arkansas Regional Unit	0
McPherson Unit	0
Mississippi County Work Release Center	0
Northwest Arkansas Work Release Center	10
Ouachita River Correctional Unit	0
Pine Bluff Complex	0
Texarkana Regional Correctional Center	0
Varner	0
PAWS	4
Think Legacy	0
Religious Services/Chaplaincy	451
<b>Total Hours</b>	<b>465</b>

**MENTAL HEALTH SERVICES****Reduction of Sexual Victimization Program (RSVP) and Sex Offender Treatment Programs (SOFT):**

February 2022	Capacity	Beginning Count	Completed	Removed	Admissions	End Count
RSVP	238	141	0	0	93	234
SOFT	30	6	0	1	0	5
<b>Total</b>	<b>268</b>	<b>147</b>	<b>0</b>	<b>1</b>	<b>93</b>	<b>239</b>

There are 1,129 males on the waiting list for RSVP and seven females on the waiting list for SOFT who are within five years of their TE date. Of those, 16 inmates are mandated by the Parole Board.

The average time on the waiting list from request is between one and two months for those stipulated.

\*The total on the waiting list, including those not currently within the identified timeframe, is 1,475 males and nine females. Of these, 1,133 are eligible and 351 are ineligible for the program. There is one PREA inmate in the program at this time.

\*Ineligibility is due to being in restrictive housing, having class IV status, or receiving a major disciplinary within the last 60 days.

**Therapeutic Community (TC):**

February 2022 Unit	Capacity	Beginning Count	Completed	Removed	Admissions	End Count
Tucker	62	33	1	1	24	55
Wrightsville	50	33	6	3	21	45
<b>Total</b>	<b>112</b>	<b>66</b>	<b>7</b>	<b>4</b>	<b>45</b>	<b>100</b>

There are 577 males and 169 females on the waiting list who are within ten years of their release date. Of those, 25 are mandated by the Parole Board.

The average time on the waiting list from request is 36 days.

\*The total on the waiting list, including those not currently within the identified timeframe, is 781 males and 185 females. Of these, 771 are eligible and 195 are ineligible for the program.

\*Ineligibility is due to being in restrictive housing, having class IV status, or receiving a major disciplinary within the last 60 days.

**MENTAL HEALTH SERVICES, continued****Substance Abuse Treatment Program (SATP):**

February 2022 Unit	Capacity	Beginning Count	Completed	Removed	Admissions	End Count
Benton	20	18	7	3	12	20
Cummins	45	38	1	3	12	46
Maximum Security	4	4	0	0	0	4
Randall L. Williams	150	131	11	15	30	135
Wrightsville	100	91	4	8	23	102
<b>Total</b>	<b>319</b>	<b>282</b>	<b>23</b>	<b>29</b>	<b>77</b>	<b>307</b>

There are 1,923 males and 154 females on the waiting list who are within five years of their release date. Of those, 55 are mandated by the Parole Board.

The average time on the waiting list from request is 29 days.

\*The total on the waiting list, including those not currently within the identified timeframe, is 2,554 males and 184 females. Of these, 2,132 are eligible and 606 are ineligible for the program.

\*Ineligibility is due to being in restrictive housing, having class IV status, or receiving a major disciplinary within the last 60 days.

**PILOT PROGRAM – Substance User Rehabilitation Services (SURS):**

February 2022 Unit	Capacity	Beginning Count	Completed	Removed	Admissions	End Count
McPherson	150	83	12	17	63	117
Grimes	50	47	17	2	24	52
<b>Total</b>	<b>200</b>	<b>130</b>	<b>29</b>	<b>19</b>	<b>87</b>	<b>169</b>

**Substance Use Intervention Program:**

The Substance Use Intervention Program had 22 admissions and ten discharges for an end-of-month count of 24 in February. This program is housed at the Varner Unit and is for inmates found guilty of a disciplinary violation for drug use or drug possession.

**Ouachita River Correctional Unit (ORCU) Residential Program Unit (RPU):**

The RPU had two admissions and one discharge in February for an end-of-month count of 119.

**McPherson Unit Mental Health Residential Program Unit (RPU):**

There were four admissions and five discharges in February for an end-of-month count of 39.

**Habilitation Program:**

The Habilitation Program at the Ouachita River Correctional Unit provided treatment services to 44 inmates in February. There was one admission and two discharges, which resulted in an end-of-month count of 42.

**Anger Management Treatment:**

The Anger Management Treatment Program at the Cummins Unit did not provide treatment services to any inmates in February. There were no admissions or discharges, for an end-of-month count of zero.

**Suicide:**

There were 84 suicidal threats in February. There were seven attempts, one of which resulted in death.

**Staffing:**

The following Mental Health Services and Substance Abuse Treatment Program (SATP) positions were vacant in January and February 2022:

Positions	FTE's*	January 2022	February 2022
Psychologists	14	5	5
Psychological Examiners	2	2	2
Social Workers	31	18	16
Licensed Professional Counselors	2	1	1
Rehab Director	1	1	1
Rehab Facility Supervisors	3	1	1
Advisors	64	24	20
Substance Abuse Program Coord.	6	1	2
Substance Abuse Program Leaders	40	8	9
Administrative Specialists	17	3	2

\*FTE refers to authorized Full Time Equivalent positions.

## ADDITIONAL MENTAL HEALTH AND MEDICAL INFORMATION

### Self-Study Classes:

Classes	Number of Participants	Number Completed	Waiting List
Anger Management	28	25	888
Thinking Errors	104	103	804
Substance Abuse Education	117	115	634
Communication Skills	154	141	712
Domestic Violence	19	19	164
Victims of Domestic Violence	4	4	83
Stress Management	105	87	767
Parenting	41	40	280

### Outpatient:

There were 2,050 inmates on the mental health medical log at the beginning of February. Mental Health staff conducted the following contacts during the month:

Case Management Contacts	1,606
Requests for Interviews	920
Testing	1
Intakes	520
Unit Requests	1,721
Pre-Lockup Reviews	4,856
Routine Restrictive Housing Reviews	610
Restrictive Housing Rounds	10,762
PREA Evaluations	41
Routine Follow-up	288
834 Requests	27

### County Mental Health Requests:

During February, there were 378 requests received of a mental health nature. Of those, 205 inmates were fast-tracked to ADC. *Note: Most inmates were not transferred due to COVID-19.*

### County Medical Health Requests:

During February, there were 689 requests received of a medical nature. A total of five inmates were fast-tracked to ADC.

### Medical Contract Reimbursements:

Sanction reimbursements for ADC in January amounted to \$16,100.00.

### Deaths:

There were four inmate deaths during the month of February. Two were claimed and two were cremated.

### Wellpath:

See attachment for Wellpath's report regarding outside beds and emergency room visits.

### Medical Grievances:

In February, there were 128 appeals of medical grievances received and 96 appeals were answered. Four were found to be with merit and one with merit but resolved.

## SEX OFFENDER ASSESSMENT

### Assessments Completed:

Risk Level	February	September 1999 through February 2022
Level 1	0	1,221
Level 2	22	8,719
Level 3	9	7,499
Level 4	5	735
Default 3	0	*
<b>Total</b>	<b>36</b>	<b>18,174</b>
*Default Level 3's are included in the total number of Level 3's to date.		

### ACIC Numbers:

The total number of sex offenders registered from September 1999 through February 2022:

Compliant	8,594
Delinquent	1,431
Confined	3,373
Out-of-State	3,993
Address Unknown	150
Deported	210
Incapacitated	150
Out of USA	19
<b>Total</b>	<b>17,875</b>

Consistent with current Arkansas law, deceased offenders no longer remain on the registry.



**PAWS IN PRISON**

February 2022 Unit	Enrolled	Graduated	Foster	Volunteer Hours
Hawkins Unit	4	3	0	0
Maximum Security Unit	7	7	0	0
McPherson Unit	6	2	0	0
North Central Unit	3	2	0	0
Ouachita River Correctional Unit	1	0	0	0
Randall L. Williams Unit	3	1	0	4
Tucker Unit	7	4	0	0
<b>Total</b>	<b>31</b>	<b>19</b>	<b>0</b>	<b>4</b>

**Completed Paws in Prison Training:**

February 2022 Program Graduates	19
YTD 2022 Program Graduates	32
Total Graduates Since Inception (December 2011)	1,902
Dogs Currently in Foster (Graduated, but Not Adopted)	0
February 2022 Volunteer Hours	4
YTD Volunteer Hours	4

**INFORMATION TECHNOLOGY**

**INMATE TABLETS** – Within the Division of Correction, a total of 1,786 inmate tablets were leased during February.

**INMATE VIDEO VISITS** – Inmates completed 10,739 video visits during the month and missed 353 within the Division of Correction.

**CONSTRUCTION/MAINTENANCE****PROJECT UPDATES**

**SEE CONSTRUCTION BUDGET / STATUS REPORT IN ATTACHMENTS SECTION (PAGES 23-24).**

**AGENCY HIGHLIGHTS****FEBRUARY 2022****PROMOTIONS**

Some of the security promotions highlighted during the month of February included:

**Cummins Unit**

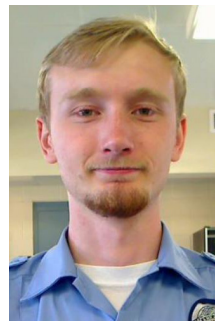
- Sgt. Joshua Jones (*right*)

**Texarkana Regional Correctional Center**

- Deputy Warden Lillie Phillips
- Captain Clinton Whitworth

**Wrightsville Unit**

- Lt. Tamarcus Howard (*right*)
- Sgt. LaTierra Slater



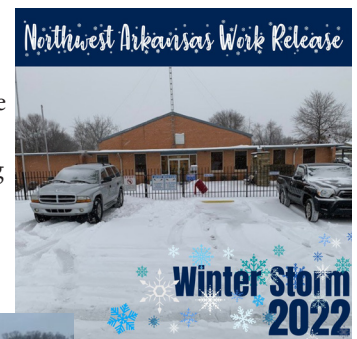
Cpl. Castle

**OUACHITA RIVER CORPORAL RECOGNIZED**

Cpl. Cody Castle was recognized for receiving the “Caught Ya!” Award for going above and beyond in the line of duty at the Ouachita River Correctional Unit.

**WINTRY WEATHER HITS STATE**

Wintry weather moved into the state in early February, leaving facilities across the state waking up to snow-and-ice-covered parking lots and pathways needing to be cleared.

**GOVERNOR ANNOUNCES PRISON EXPANSION**

During a press briefing in early February, Governor Asa Hutchinson announced his commitment of surplus funds for the expansion of the North Central Unit by 498 beds.

Secretary Graves thanked the governor for his continued commitment to giving the Department of Corrections the resources and support needed to meet the DOC's goal of preserving public safety.





## FAITH-BASED REENTRY PROGRAM AT NORTH CENTRAL HIGHLIGHTED

The Prison Fellowship Academy, a faith-based reentry program at the North Central Unit, is sponsored by Prison Fellowship and was highlighted on our social media platforms. Over the past year, the program has implemented more than 100 class hours of instruction, and the program at NCU is the first and only one in the state.



## K-9 UNIT ASSISTS IN CAPTURE OF FUGITIVE

On Feb. 11, an ADC K-9 unit assisted several law enforcement entities in a manhunt in Redfield, which led to the ultimate apprehension of a fugitive wanted for a homicide that occurred on Feb. 9 in Little Rock.

## PUBLIC ASSISTS IN THE NAMING OF THE FIRST FOAL BORN IN 2022

The first foal of the year was born at North Central Unit on Valentine's Day. A naming contest was held via the DOC Facebook page, with "Cupid" being declared the winning name.



## DIRECTOR VISITS TRAINING ACADEMY

ADC Director Dexter Payne visited with the cadets of the BCOT Class 2022-B during their first week of training.



## K-9 OFFICER KILLED IN THE LINE OF DUTY

In the early morning hours of Feb. 28, Sgt. Joshua Caudell, with the Tucker K-9 unit, was killed in the line of duty while assisting the Pulaski County Sheriff's Office. Sgt. Caudell had served with the ADC since December 2021, working at several different units. Sgt. Caudell is survived by a wife and three children.





## REGIONAL MAINTENANCE PROJECT HIGHLIGHTS MARCH 2022

**Animal Shelter Storage Shed Cleanup (Malvern)**  
*Ouachita River Regional Maintenance – Feb. 1:*



**Henderson State Univ. Creek Cleanup (Arkadelphia)**  
*Ouachita River Regional Maintenance – Feb. 7:*



**Oakland Cemetary Grounds Cleanup (Little Rock)**  
*Wrightsville Regional Maintenance – Feb. 9:*



**Ed Brown Little League Grounds Cleanup (Pine Bluff)**  
*Pine Bluff Regional Maintenance – Feb. 9:*



**Teardown of Old Southside School Gym (Batesville)**  
*Grimes Regional Maintenance – Feb. 18:*



**Cleanup of Varner Unit Drainage Ditches**  
*Varner Regional Maintenance – Feb 22:*





## 2022 INFORMAL GRIEVANCE REPORT

Month	BENTON	HAWK/M	HAWK/F	WRTS	EARU & MX	GRIMES	RLW	MCWR	MCPH	MSU	NCU	PBU	NWA	TU	TRCC	VSMX	VU	CU & CMU	ORCU	Ester	DRU	TOTAL
JAN	3	18	36	92	227	198	42	0	262	122	100	58	0	55	1	436	40	172	135	46	159	2,202
FEB	1	8	37	54	188	166	15	0	375	111	111	54	0	43	1	309	43	112	130	38	125	1,921
MAR	0	0	0	0	0	0	0	0	0	0	0	0	0	0	0	0	0	0	0	0	0	0
APR	0	0	0	0	0	0	0	0	0	0	0	0	0	0	0	0	0	0	0	0	0	0
MAY	0	0	0	0	0	0	0	0	0	0	0	0	0	0	0	0	0	0	0	0	0	0
JUN	0	0	0	0	0	0	0	0	0	0	0	0	0	0	0	0	0	0	0	0	0	0
JUL	0	0	0	0	0	0	0	0	0	0	0	0	0	0	0	0	0	0	0	0	0	0
AUG	0	0	0	0	0	0	0	0	0	0	0	0	0	0	0	0	0	0	0	0	0	0
SEPT	0	0	0	0	0	0	0	0	0	0	0	0	0	0	0	0	0	0	0	0	0	0
OCT	0	0	0	0	0	0	0	0	0	0	0	0	0	0	0	0	0	0	0	0	0	0
NOV	0	0	0	0	0	0	0	0	0	0	0	0	0	0	0	0	0	0	0	0	0	0
DEC	0	0	0	0	0	0	0	0	0	0	0	0	0	0	0	0	0	0	0	0	0	0
TOTAL	4	26	73	146	415	364	57	0	637	233	211	112	0	98	2	745	83	284	265	84	284	4,123

## 2022 FORMAL GRIEVANCE REPORT

Month	BENTON	HAWK/M	HAWK/F	WRTS	EARU & MX	GRIMES	RLW	MCWR	MCPH	MSU	NCU	PBU	NWA	TU	TRCC	VSMX	VU	CU & CMU	ORCU	Ester	DRU	TOTAL
JAN	2	4	14	42	310	103	33	0	115	136	61	29	0	49	0	193	12	134	83	23	87	1,430
FEB	0	1	13	32	244	98	11	0	126	132	58	54	0	27	1	177	25	90	66	22	75	1,252
MAR	0	0	0	0	0	0	0	0	0	0	0	0	0	0	0	0	0	0	0	0	0	0
APR	0	0	0	0	0	0	0	0	0	0	0	0	0	0	0	0	0	0	0	0	0	0
MAY	0	0	0	0	0	0	0	0	0	0	0	0	0	0	0	0	0	0	0	0	0	0
JUN	0	0	0	0	0	0	0	0	0	0	0	0	0	0	0	0	0	0	0	0	0	0
JUL	0	0	0	0	0	0	0	0	0	0	0	0	0	0	0	0	0	0	0	0	0	0
AUG	0	0	0	0	0	0	0	0	0	0	0	0	0	0	0	0	0	0	0	0	0	0
SEPT	0	0	0	0	0	0	0	0	0	0	0	0	0	0	0	0	0	0	0	0	0	0
OCT	0	0	0	0	0	0	0	0	0	0	0	0	0	0	0	0	0	0	0	0	0	0
NOV	0	0	0	0	0	0	0	0	0	0	0	0	0	0	0	0	0	0	0	0	0	0
DEC	0	0	0	0	0	0	0	0	0	0	0	0	0	0	0	0	0	0	0	0	0	0
TOTAL	2	5	27	74	554	201	44	0	241	268	119	83	0	76	1	370	37	224	149	45	162	2,682

## INMATE INSTITUTIONAL GRIEVANCE APPEAL REPORT – FEBRUARY 2022

	Acknowledged	Rejected	Processed W/O Merit	Processed W/ Merit
Benton Unit	0	1	0	0
Benton Work Release	0	0	0	0
Cummins Unit	24	17	30	0
Cummins Modular Unit	0	1	0	0
Delta Regional Unit	14	6	8	0
East Arkansas Regional Unit	14	0	0	1
East Arkansas Regional Max Unit	93	12	89	0
Ester Unit	5	2	0	0
Grimes Unit	22	9	10	0
Maximum Security Unit	50	11	34	0
Tucker Re-Entry	0	0	0	0
McPherson Unit	25	14	12	1
McPherson Mental Health Residential Program Unit	0	0	0	0
Mississippi County Work Release Center	0	0	0	0
Northwest Arkansas Work Release Center	0	0	0	0
North Central Unit	16	3	12	0
Ouachita River Correctional Unit	15	7	12	0
ORCU Hospital	0	0	0	0
ORCU New Commitment	0	0	0	0
ORCU Mental Health Residential Program Unit	0	0	0	0
Pine Bluff Unit	5	7	2	0
Pine Bluff Re-Entry	0	0	0	0
Randall L. Williams Correctional Facility	9	4	1	0
Texarkana Regional Correctional Center	0	0	0	0
Tucker Unit	5	4	5	0
Varner Super Max	80	21	97	0
Varner Unit	3	7	7	0
Wrightsville Unit	9	3	9	0
Hawkins Center	2	1	1	0
Hawkins for Males	0	0	0	0
Hawkins SPU	0	0	0	0
<b>Total</b>	<b>391</b>	<b>130</b>	<b>329</b>	<b>2</b>



## ADMISSIONS AND RELEASES – FEBRUARY 2022

<b><u>Admissions</u></b>	<b><u>Male</u></b>	<b><u>Female</u></b>	<b><u>Total</u></b>
Asian	1	1	2
Black	284	18	302
Hispanic	27	3	30
Native American Indian	1	0	1
Native Hawaiian or Pacific Isl.	1	0	1
White	398	137	535
Other	1	0	1
Unknown	0	0	0
<b>Total</b>	<b>713</b>	<b>159</b>	<b>872</b>

<b><u>Releases</u></b>	<b><u>Male</u></b>	<b><u>Female</u></b>	<b><u>Total</u></b>
Asian	1	2	3
Black	133	13	146
Hispanic	9	0	9
Native American Indian	3	0	3
Native Hawaiian or Pacific Isl.	1	0	1
White	216	61	277
Other	1	0	1
Unknown	0	0	0
<b>Total</b>	<b>364</b>	<b>76</b>	<b>440</b>

## ADC INMATE POPULATION GROWTH 2000-2028 - FEBRUARY 2022

Updated 02/28/2022

Mo.	2000	2001	2002	2003	2004	2005	2006	2007	2008	2009	2010	2011	2012	2013	2014	2015	2016	2017	2018	2019	2020	2021	2022
Jan.	11,984	11,908	12,402	13,015	13,105	13,595	13,481	13,839	14,518	14,796	15,334	16,312	15,134	14,815	17,481	18,142	17,785	17,824	18,201	17,958	17,989	16,119	17,154
Feb.	12,169	12,022	12,529	13,054	13,166	13,783	13,633	14,012	14,603	14,883	15,374	16,209	14,990	15,008	17,438	18,082	17,625	17,608	17,998	17,846	18,181	16,120	17,077
March	12,006	12,033	12,299	13,108	13,088	13,418	13,534	13,772	14,580	14,843	15,290	16,095	14,964	14,665	17,395	18,233	17,573	17,666	18,089	17,898	17,860	16,085	
April	12,069	12,167	12,465	13,213	13,323	13,469	13,554	13,851	14,769	14,937	15,570	16,172	15,124	14,850	17,604	18,703	17,815	17,798	18,227	17,977	17,331	16,250	
May	12,109	12,384	12,558	13,463	13,556	13,528	13,711	14,146	14,880	15,146	15,694	16,062	15,132	15,074	17,593	18,693	17,769	17,652	17,945	17,817	16,694	16,476	
June	12,005	12,108	12,439	13,418	13,389	13,251	13,430	13,915	14,700	15,025	15,564	15,554	14,832	14,825	17,340	18,813	17,973	17,963	17,972	17,942	16,552	16,560	
July	12,030	12,190	12,622	13,509	13,528	13,286	13,560	14,082	14,868	15,195	15,807	15,519	14,879	15,379	17,522	18,870	18,130	18,180	18,005	18,002	16,511	16,638	
August	12,087	12,371	12,815	13,565	13,632	13,419	13,646	14,224	15,100	15,385	15,829	15,240	14,675	16,103	17,549	18,806	17,919	18,051	17,751	18,090	16,367	16,655	
September	11,983	12,289	12,774	13,341	13,516	13,237	13,652	14,217	14,850	15,285	16,025	15,172	14,724	16,412	17,605	18,549	18,026	18,179	17,865	17,856	16,215	16,698	
October	12,119	12,348	12,942	13,341	13,584	13,363	13,775	14,349	14,836	15,381	16,311	15,271	14,856	16,993	17,880	18,430	18,127	18,348	17,943	17,947	16,311	16,821	
November	12,094	12,408	13,162	13,408	13,706	13,587	13,913	14,437	15,025	15,340	16,460	15,205	14,625	17,168	17,848	17,981	17,573	17,973	17,666	18,060	16,165	16,982	
December	11,856	12,333	12,845	13,106	13,470	13,338	13,728	14,315	14,716	15,199	16,204	15,062	14,654	17,235	17,874	17,707	17,537	18,078	17,799	17,759	16,094	17,023	
Net Ann. Inc.	29	477	512	261	364	-132	390	587	401	483	1,005	-1,142	-408	2,581	639	-167	-170	541	-279	-40	-1,665	929	54
Avg. Mo. Inc.	2	40	43	22	30	-11	33	49	33	40	84	-95	-34	215	53	-14	-14	45	-23	-3	-139	77	27

Population is total jurisdictional count at end of each month. Population at end of month December 1999 was 11,827.

Average monthly population increased for past fifteen years 2007 - 2021 is 18

Average monthly population increased for past ten years Jan. 2012 - Dec 2021 is 16

Average monthly population decreased for past five years 2017 - 2021 is -9

Projected at Growth of 18 per Month

Mo.	2008	2009	2010	2011	2012	2013	2014	2015	2016	2017	2018	2019	2020	2021	2022	2023	2024	2025	2026	2027	2028
	Actual	Actual	Actual	Actual	Actual	Actual	Actual	Actual	Actual	Actual	Actual	Actual	Actual	Actual	Actual/ Proj	Proj.	Proj.	Proj.	Proj.	Proj.	Proj.
January	14,518	14,796	15,334	16,312	15,134	14,815	17,481	18,142	17,785	17,824	18,201	17,958	17,989	16,119	17,154	17,275	17,491	17,707	17,923	18,139	18,355
February	14,603	14,883	15,374	16,209	14,990	15,008	17,438	18,082	17,625	17,608	17,998	17,846	18,181	16,120	17,077	17,293	17,509	17,725	17,941	18,157	18,373
March	14,580	14,843	15,290	16,095	14,964	14,665	17,395	18,233	17,573	17,666	18,089	17,898	17,860	16,085	17,095	17,311	17,527	17,743	17,959	18,175	18,391
April	14,769	14,937	15,570	16,172	15,124	14,850	17,604	18,703	17,815	17,798	18,227	17,977	17,331	16,250	17,113	17,329	17,545	17,761	17,977	18,193	18,409
May	14,880	15,146	15,694	16,062	15,132	15,074	17,593	18,693	17,769	17,652	17,945	17,817	16,694	16,476	17,131	17,347	17,563	17,779	17,995	18,211	18,427
June	14,700	15,025	15,564	15,554	14,832	14,825	17,340	18,813	17,973	17,963	17,972	17,942	16,552	16,560	17,149	17,365	17,581	17,797	18,013	18,229	18,445
July	14,868	15,195	15,807	15,519	14,879	15,379	17,522	18,870	18,130	18,180	18,005	18,002	16,511	16,638	17,167	17,383	17,599	17,815	18,031	18,247	18,463
August	15,100	15,385	15,829	15,240	14,675	16,103	17,549	18,806	17,919	18,051	17,751	18,090	16,367	16,655	17,185	17,401	17,617	17,833	18,049	18,265	18,481
September	14,850	15,285	16,025	15,172	14,724	16,412	17,605	18,549	18,026	18,179	17,865	17,856	16,215	16,698	17,203	17,419	17,635	17,851	18,067	18,283	18,499
October	14,836	15,381	16,311	15,271	14,856	16,993	17,880	18,430	18,127	18,348	17,943	17,947	16,311	16,821	17,221	17,437	17,653	17,869	18,085	18,301	18,517
November	15,025	15,340	16,460	15,205	14,625	17,168	17,848	17,981	17,573	17,973	17,666	18,060	16,165	16,982	17,239	17,455	17,671	17,887	18,103	18,319	18,535
December	14,716	15,199	16,204	15,062	14,654	17,235	17,874	17,707	17,537	18,078	17,799	17,759	16,094	17,023	17,257	17,473	17,689	17,905	18,121	18,337	18,553
Net Ann. Inc.	401	483	1,005	-1,142	-408	2,581	639	-167	-170	541	-279	-40	-1,665	929	234	216	216	216	216	216	216
Ave. Mo. Inc.	33	40	84	-95	-34	215	53	-14	-14	45	-23	-3	-139	77	20	18	18	18	18	18	18



## MONTHLY POPULATION AVERAGES - FEBRUARY 2022

Unit/Center	2/1	2/2	2/3	2/4	2/7	2/8	2/9	2/10	2/11	2/14	2/15	2/16	2/17	2/18	2/21	2/22	2/23	2/24	2/25	2/28	AVG
Benton	322	326	320	320	320	326	322	321	320	319	317	322	320	313	311	311	312	306	303	302	317
Cummins	1,877	1,864	1,912	1,912	1,912	1,942	1,942	1,931	1,931	1,930	1,928	1,926	1,917	1,920	1,915	1,915	1,947	1,942	1,932	1,935	1,922
Delta	581	581	581	580	580	609	609	609	608	606	606	604	605	602	602	602	601	620	614	611	601
East AR Reg	1,476	1,472	1,472	1,472	1,472	1,471	1,466	1,467	1,468	1,463	1,462	1,484	1,471	1,472	1,492	1,492	1,538	1,537	1,533	1,532	1,486
Ester	521	521	504	504	504	541	535	534	529	529	525	525	539	535	539	539	539	545	541	539	529
Grimes	1,045	1,075	1,072	1,072	1,070	1,068	1,068	1,066	1,065	1,060	1,060	1,062	1,065	1,058	1,042	1,042	1,042	1,053	1,053	1,051	1,059
Max Sec	550	549	548	548	549	550	550	550	552	553	553	552	552	552	552	552	551	549	549	549	551
McPherson	901	901	914	914	913	930	942	940	936	936	935	930	923	937	959	959	966	972	972	957	937
MCWRC	128	131	131	131	131	131	135	132	132	132	131	132	136	136	136	136	134	134	134	134	133
N Central	717	716	716	715	715	714	714	711	711	712	711	736	739	741	736	736	766	761	761	760	729
NWAWRC	98	98	98	98	98	98	98	98	98	98	100	100	100	100	100	100	100	100	100	100	99
Ouachita River	1,713	1,676	1,636	1,636	1,637	1,496	1,539	1,583	1,591	1,638	1,685	1,654	1,671	1,673	1,667	1,667	1,542	1,541	1,573	1,614	1,622
Randall L Williams	501	497	495	497	493	489	489	489	489	486	485	490	485	491	491	491	491	494	498	496	492
Pine Bluff	484	479	493	492	492	520	522	518	519	512	514	508	504	502	498	499	516	516	511	509	505
PB Reentry	51	51	49	49	49	49	49	49	49	50	50	50	49	49	49	48	50	50	50	50	50
TRCC	100	99	101	101	101	99	99	105	105	107	107	107	112	118	118	118	118	118	122	122	109
Tucker	608	607	606	606	606	601	598	598	597	597	596	596	595	604	606	606	604	606	619	617	604
Varner	1,551	1,546	1,545	1,545	1,545	1,594	1,591	1,591	1,596	1,590	1,589	1,585	1,582	1,577	1,591	1,591	1,605	1,615	1,615	1,615	1,583
Wrightsville	745	742	777	777	779	778	775	766	781	780	773	793	791	800	808	808	828	827	828	826	789
WR Hawkins-Females	222	229	229	229	229	229	228	228	228	224	224	224	224	212	211	211	216	215	215	238	223
WR Hawkins-Males	192	192	191	191	191	189	189	189	189	189	188	188	188	188	197	197	195	195	194	195	191
Total ADC	14,383	14,352	14,390	14,389	14,386	14,424	14,460	14,475	14,494	14,511	14,539	14,568	14,568	14,580	14,620	14,620	14,661	14,696	14,717	14,752	14,531
ALETA	18	18	18	18	18	18	18	18	18	18	18	18	18	18	18	18	18	17	17	17	18
Ar State Police	50	50	52	52	49	53	53	52	52	52	51	51	53	53	51	51	54	54	54	53	52
Co Jail / M	2,154	2,172	2,151	2,157	2,173	2,139	2,116	2,093	2,069	2,045	2,017	1,990	1,960	1,926	1,894	1,894	1,881	1,836	1,821	1,790	2,014
Co Jail / F	196	203	182	184	188	171	161	159	161	161	160	164	167	164	146	146	141	128	129	121	162
Total Co Jail BK	2,350	2,375	2,333	2,341	2,361	2,310	2,277	2,252	2,230	2,206	2,177	2,154	2,127	2,090	2,040	2,040	2,022	1,964	1,950	1,911	2,176
309/M	232	233	231	231	232	232	233	233	233	234	235	234	235	233	233	233	233	230	230	230	233
309/F	95	95	94	94	94	94	92	92	91	92	92	92	92	92	91	91	91	91	91	91	92
Total Act 309	327	328	325	325	326	326	325	325	324	326	327	326	327	325	324	324	324	321	321	321	325
Total Non ADC	2,745	2,771	2,728	2,736	2,754	2,707	2,673	2,647	2,624	2,602	2,573	2,549	2,525	2,486	2,433	2,433	2,418	2,356	2,342	2,302	2,571
Total	17,128	17,123	17,118	17,125	17,140	17,131	17,133	17,122	17,118	17,113	17,112	17,117	17,093	17,066	17,053	17,053	17,079	17,052	17,059	17,054	17,102

## FISCAL YEAR 2022 COUNTY JAIL BACKUP - FEBRUARY 2022

DAY	Jul-21	Aug-21	Sep-21	Oct-21	Nov-21	Dec-21	Jan-22	Feb-22
1	1,059	* 1,294	1,583	1,777	2,050	2,125	* 2,117	2,350
2	1,090	1,309	1,612	* 1,777	2,023	2,108	* 2,117	2,375
3	* 1,090	1,342	1,624	* 1,777	2,045	2,092	2,114	2,333
4	* 1,090	1,356	* 1,624	1,792	2,076	* 2,092	2,100	2,341
5	1,096	1,370	* 1,624	1,773	2,111	* 2,092	2,117	* 2,341
6	1,096	1,396	1,645	1,773	* 2,111	2,099	2,102	* 2,341
7	1,114	* 1,396	1,645	1,789	* 2,111	2,133	2,134	2,361
8	1,089	* 1,396	1,603	1,816	2,103	2,103	* 2,134	2,310
9	1,090	1,408	1,620	* 1,816	2,118	2,099	* 2,134	2,277
10	* 1,090	1,405	1,649	* 1,816	2,135	2,080	2,141	2,252
11	* 1,090	1,404	* 1,649	1,856	2,099	* 2,080	2,144	2,230
12	1,121	1,416	* 1,649	1,875	2,098	* 2,080	2,174	* 2,230
13	1,125	1,436	1,638	1,841	* 2,098	2,093	2,196	* 2,230
14	1,146	* 1,436	1,606	1,868	* 2,098	2,098	2,227	2,206
15	1,131	* 1,436	1,628	1,913	2,123	2,101	* 2,227	2,177
16	1,155	1,435	1,657	* 1,913	2,105	2,134	* 2,227	2,154
17	1,189	1,460	1,693	* 1,913	2,135	2,158	2,251	2,127
18	* 1,189	1,485	* 1,693	1,926	2,150	* 2,158	2,251	2,090
19	* 1,189	1,499	* 1,693	1,935	2,180	* 2,158	2,282	* 2,090
20	1,208	1,499	1,711	1,953	* 2,180	2,212	2,311	* 2,090
21	1,228	* 1,499	1,721	1,956	* 2,180	2,228	2,335	2,040
22	1,237	* 1,499	1,752	1,956	2,144	2,196	2,336	2,040
23	1,259	1,514	1,722	* 1,956	2,151	2,172	* 2,336	2,022
24	* 1,259	1,527	1,719	* 1,956	2,165	2,172	* 2,336	1,964
25	* 1,259	1,511	* 1,719	1,975	2,192	* 2,172	2,301	1,950
26	1,248	1,523	* 1,719	2,003	2,191	* 2,172	2,313	* 1,950
27	1,233	1,540	1,727	1,987	* 2,191	2,172	2,323	* 1,950
28	1,248	* 1,540	1,757	2,013	* 2,191	2,184	2,322	1,911
29	1,266	* 1,540	1,780	2,026	2,190	2,175	* 2,322	
30	1,294	1,526	1,804	* 2,026	2,153	2,158	* 2,322	
31	* 1,294	1,562		* 2,026		2,117	2,345	
Avg Daily Backup	1,170	1,450	1,676	1,896	2,130	2,136	2,229	2,169

Notes: Totals do not include 309 Contracts in County Jails (maximum of 336)

County Jail Back-up for February 2022 - 2,169

County Jail Back-up Fiscal Year Average as of February 28, 2022 - 1,857

Short-Term Revocation Program Average for February 2022 - 521

Short-Term Revocation Program Fiscal Year Average as of February 28, 2022 - 641



## STTG UNIT COUNTS – FEBRUARY 2022

Unit	Beginning Total	Confirmed	Suspected	In	Out	Paroled	Removed	Ending Total	Total Unit Population	Unit % of STTG's
Benton	86	0	0	3	1	5	0	83	305	27.21%
Cummins	631	0	0	63	39	8	0	644	1,931	33.35%
Delta	182	0	0	32	9	0	0	205	610	33.61%
EARU	581	0	0	70	18	12	0	621	1,531	40.56%
Ester	100	0	0	34	14	7	0	113	539	20.96%
Grimes	364	7	0	25	10	10	2	374	1,049	35.65%
Hawkins	47	0	0	2	2	0	0	47	432	10.88%
Max	261	0	0	10	3	2	0	266	551	48.28%
Mcperson	37	0	0	0	0	0	0	37	960	3.85%
MCWR	36	0	0	6	1	3	0	38	133	28.57%
NCU	244	0	0	51	11	4	0	280	807	34.70%
NWAWR	31	0	0	1	2	0	0	30	100	30.00%
ORCU	391	0	0	161	199	19	0	334	1,364	24.49%
ORCU Intake	89	303	0	0	300	0	0	92	245	37.55%
Pine Bluff	171	0	0	27	22	5	0	171	559	30.59%
RLW	205	0	0	19	15	10	0	199	488	40.78%
TWR	41	0	0	10	0	0	0	51	122	41.80%
Tucker	211	0	0	14	5	6	0	214	619	34.57%
Varner	622	0	0	63	28	0	0	657	1,616	40.66%
Wrightsville	273	7	5	15	2	18	0	280	825	33.94%
<b>Total</b>	<b>4,603</b>	<b>317</b>	<b>5</b>	<b>606</b>	<b>681</b>	<b>109</b>	<b>2</b>	<b>4,736</b>	<b>14,786</b>	<b>32.03%</b>

ORCU Intake brought in 303 new STTG members into ADC last month.

## STTG DISCIPLINARY REPORT – FEBRUARY 2022

Unit	STTG Incidents	STTG Suspected Incidents	Total Unit Disciplinary	Disciplinary Involving STTG	Percentage
Benton	0	0	5	1	20.00%
Cummins	0	0	111	70	63.06%
Delta	0	0	154	93	60.39%
EARU	0	0	160	84	52.50%
Easter	0	0	8	1	12.50%
Grimes	2	0	144	74	51.39%
Hawkins	0	0	1	0	0.00%
Max	0	0	52	32	61.54%
Mcpherson	0	0	117	8	6.84%
MCWR	0	0	1	1	100.00%
NCU	1	0	74	50	67.57%
NWAWR	0	0	7	1	14.29%
ORCU	0	0	83	37	44.58%
ORCU Intake	0	0	17	11	64.71%
Pine Bluff	0	0	64	26	40.63%
RLW	0	0	64	30	46.88%
TWR	0	0	1	0	0.00%
Tucker	0	0	34	19	55.88%
Varner	0	0	169	103	60.95%
Wrightsville	0	0	70	11	15.71%
<b>Total</b>	<b>3</b>	<b>0</b>	<b>1,336</b>	<b>652</b>	<b>48.80%</b>

## STTG COUNTS BY STTG SET – FEBRUARY 2022

STTG Set	Benton	Cummins	Delta	EARU	Ester	Grimes	Hawkins	Max	Mcperson	MCWR	NCU	NWAWR	ORCU	Intake	PB	RLW	TWR	Tucker	Varner	Wrightsville	Total
Asian	1	2	0	0	0	0	0	0	0	1	1	0	1	0	0	0	0	1	0	0	7
Bloods	14	148	39	119	17	72	5	59	3	10	49	11	50	18	26	41	9	36	147	60	933
Crips	6	76	20	76	9	36	5	34	8	2	29	2	27	3	18	14	5	15	93	35	513
Folk	4	58	9	61	5	34	11	28	7	0	15	5	78	18	5	8	2	19	61	14	442
GD	18	146	61	147	23	76	0	65	0	13	55	0	24	9	39	45	14	56	147	54	992
Mexican	1	20	5	12	6	12	1	3	3	2	4	1	5	1	5	10	0	3	25	12	131
Motorcycle	0	2	0	2	0	0	1	1	1	0	3	0	2	4	1	1	0	0	1	2	21
Other	3	16	10	20	13	11	1	7	3	0	13	1	23	2	6	11	2	9	24	9	184
People	1	27	8	24	2	25	2	19	2	0	12	1	14	5	7	4	0	10	18	8	189
Unknown	1	11	3	16	0	1	0	4	0	0	3	0	10	5	0	1	2	6	8	7	78
W/S	20	44	23	57	18	46	12	7	10	5	49	9	74	18	43	31	9	25	51	27	578
AB	0	6	0	4	2	4	1	1	0	1	2	0	3	0	0	2	0	2	11	3	42
AC	0	9	3	12	3	8	1	5	0	0	7	0	1	2	2	3	3	3	12	5	79
NAE	7	43	9	30	5	18	2	15	0	3	11	0	9	3	9	11	1	8	24	21	229
WAR	7	36	15	41	10	31	5	18	0	1	27	0	13	4	10	17	4	21	35	23	318
<b>Total</b>	<b>83</b>	<b>644</b>	<b>205</b>	<b>621</b>	<b>113</b>	<b>374</b>	<b>47</b>	<b>266</b>	<b>37</b>	<b>38</b>	<b>280</b>	<b>30</b>	<b>334</b>	<b>12</b>	<b>171</b>	<b>199</b>	<b>51</b>	<b>214</b>	<b>657</b>	<b>280</b>	<b>4,736</b>

Key:

GD = Gangster Disciples

W/S = White Supremacist

NAE = New Aryan Empire

WAR = White Aryan Resistance

AC = Aryan Circle

AB = Aryan Brotherhood

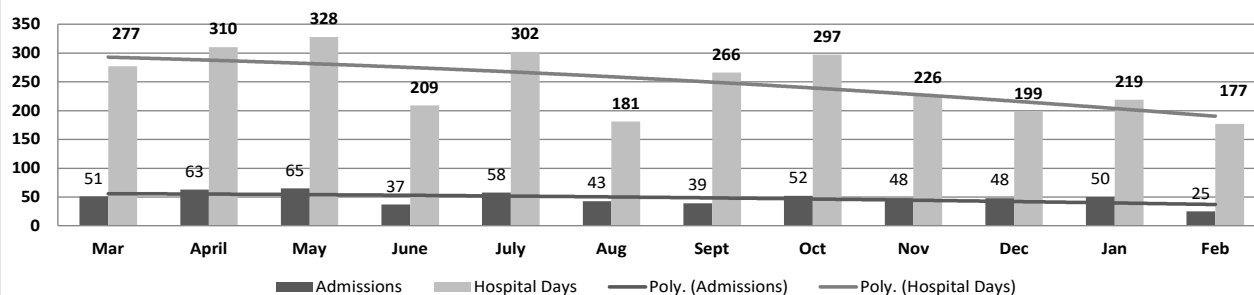
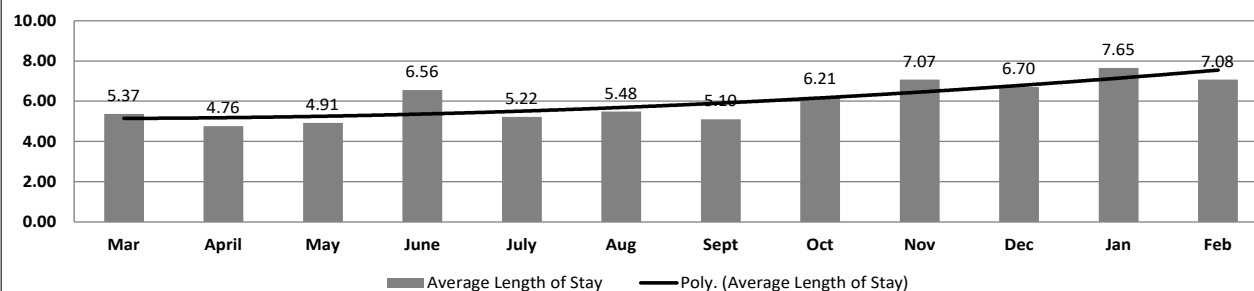
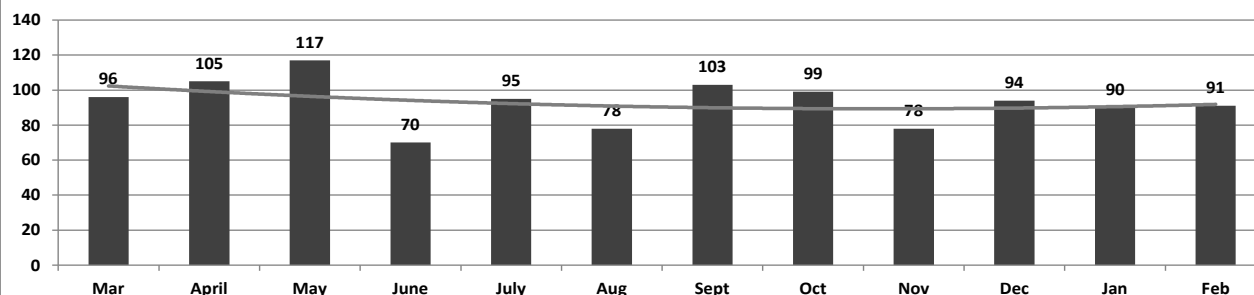
## ADC INPATIENT AND EMERGENCY ROOM UTILIZATION

ADC Inpatient Statistics Past 12 Months

	2021										2022		
	Mar	April	May	June	July	Aug	Sept	Oct	Nov	Dec	Jan	Feb	Average
Admissions	51	63	65	37	58	43	39	52	48	48	50	25	48.3
Hospital Days	277	310	328	209	302	181	266	297	226	199	219	177	249.3
Average Length of Stay	5.37	4.76	4.91	6.56	5.22	5.48	5.10	6.21	7.07	6.70	7.65	7.08	5.17

ADC ER Visits Past 12 Months

	2021										2022		
	Mar	April	May	June	July	Aug	Sept	Oct	Nov	Dec	Jan	Feb	Average
Emergency Room Visits	96	105	117	70	95	78	103	99	78	94	90	91	93.0

ADC Inpatient Utilization  
Past 12 MonthsADC Inpatient Average Length of Stay  
Past 12 MonthsADC Emergency Room Visits  
Past 12 Months



## MEDICAL GRIEVANCE BOARD REPORT – FEBRUARY 2022

Unit	<i>Acknowledged/ Received</i>	<i>Rejected</i>	<i>Reviewed &amp; Signed by Dep Director</i>	<i>With Merit</i>	<i>With Merit, but Resolved</i>	<i>% With Merit</i>	<i>Without Merit</i>
Benton	0	0	0	0	0	0%	0
CMU	0	0	0	0	0	0%	0
Cummins	12	2	9	1	0	11%	8
Delta	3	0	2	1	0	50%	1
EARU	17	0	4	0	0	0%	4
EARU Max	25	0	15	0	1	7%	14
Ester	0	0	1	0	0	0%	1
Grimes	3	3	6	0	0	0%	6
Hawkins	0	0	0	0	0	0%	0
McPherson	9	0	1	0	0	0%	1
MCWRC	0	0	0	0	0	0%	0
MSU	20	0	9	0	0	0%	9
North Central	6	2	19	0	0	0%	19
NWAWRC	0	0	0	0	0	0%	0
Ouachita	8	1	8	1	0	13%	7
Pine Bluff	0	0	1	0	0	0%	1
Randall L. Williams	1	0	1	0	0	0%	1
SNN	0	0	0	0	0	0%	0
TRCC	0	0	0	0	0	0%	0
Tucker	0	0	8	0	0	0%	8
Varner	6	1	4	1	0	25%	3
Varner Super Max	12	0	4	0	0	0%	4
WRU	6	0	4	0	0	0%	4
WHM	0	0	0	0	0	0%	0
WWR	0	0	0	0	0	0%	0
<b>Total</b>	<b>128</b>	<b>9</b>	<b>96</b>	<b>4</b>	<b>1</b>	<b>5%</b>	<b>91</b>

VU with merit is MH

## CHAPLAINCY

Month: February      Year: 2022		CUMMINS	DELTA REGIONAL	EAST ARKANSAS	EAST ARKANSAS MAX	ESTER	GRIMES	HAWKINS	MAXIMUM	MCPHERSON	NORTH CENTRAL	OJACHITA RIVER	PINE BLUFF	RANDALL L. WILLIAMS	TUCKER	VARNER	VARNER MAX	WRIGHTSVILLE	TOTAL
Services Chaplains Oversaw																			
Christian																			
Population	0	0	0	0	3	0	0	0	4	10	10	4	0	0	7	0	0	38	
Segregation	0	0	0	0	3	0	0	0	0	0	0	0	0	0	0	0	0	3	
Muslim																			
Population	0	0	0	0	2	0	0	3	4	4	4	4	0	0	4	0	0	25	
Segregation	0	0	0	0	2	0	0	3	0	0	0	0	0	0	0	0	0	5	
71																			
Volunteers in Charge																			
Protestant	0	0	0	0	0	0	0	0	0	0	2	0	0	0	0	0	0	2	
Catholic	0	0	0	0	0	0	0	0	0	0	0	0	0	0	0	0	0	0	
Muslim	0	0	0	0	0	0	0	0	0	0	0	0	0	0	1	0	0	1	
Other	0	0	0	0	0	0	0	0	0	0	0	0	0	0	0	0	0	0	
Baptism	0	0	0	0	0	0	0	0	0	0	0	0	0	0	0	0	0	0	
Marriages																			
	0	0	0	0	0	0	0	0	0	0	0	0	0	0	0	0	0	0	
Distributed by Chaplains																			
Greeting Cards	17	1	0	0	252	45	0	562	668	21	175	26	9	72	21	276	75	2,220	
Bibles,Quran,Torrah, Etc.	28	43	10	41	15	42	10	9	106	8	185	7	18	5	2	17	10	556	
Study Course	0	2	4	10	95	7	0	0	22	0	45	34	3	48	11	7	5	293	
Writing Supplies	0	0	0	0	53	96	72	12	58	0	500	0	0	62	0	0	100	953	
Literature	1,569	0	316	376	471	89	19	155	280	350	102	0	5	908	327	290	5,517		
Chaplain's Visits																			
Barracks	61	37	55		24	64	4	53	20	60	34	9	36	42	257	44	15	815	
Approximate Hours Spent in Barracks	54	7	9	0	10	11	4	9	10	15	11	1	22	10	93	23	4	293	
Inmate Office visits	32	118	36	0	30	48	25	1	28	0	19	2	26	98	45	0	13	521	
Other Office visits	15	15	5	0	27	18	10	0	30	0	43	28	8	40	27	24	7	297	
Hospital	4	0	0	0	0	0	0	0	0	0	13	0	0	0	0	0	0	17	
Infirmary/Sick Call	7	2	2	0	4	1	2	6	0	3	13	0	2	1	3	3	3	52	
Restrictive/Punitive Housing	0	2	0	32	3	6	4	19	8	3	16	1	6	5	0	9	3	117	
PC - DRU		3																3	
Visitation Days	0	0	0	0	0	0	0	0	0	0	0	0	0	0	0	0	0	0	
Volunteer Visits																			
RCV	0	0	0	0	0	0	0	0	0	0	0	0	0	0	0	0	0	0	
OCV	2	0	0	0	0	0	0	0	0	0	0	0	0	0	0	0	0	2	
Spiritual Advisor	0	0	0	0	0	0	0	0	0		0	0	0	0	0	0	0	0	
CRA	42	0	3	0	0	13	15	1	0	3	5	1	3	23	0	0	3	112	
Religious Volunteer Hours																			
Volunteer Hours	0	0	12	0	0	61	15	2	0	13	0	8	13	68	0	0	6	198	
Denominational/Volunteer Chaplain Hours	14	18	0	0	37	0	23	3	0	122	26	0	0	4	0	0	6	253	
																			451
Other Activities of Chaplain																			
Counseled Employees	5	3	4	0	10	4	5	0	9	6	23	0	0	3	67	0	5	144	
Orientation Sessions	3	0	1	0	0	0	0	0	0	0	0	0	0	0	0	0	0	4	
Free World Devotions	0	0	1	0	4	7	0	0	2	0	2	0	0	3	24	0	0	43	
Spoke in Churches	8	0	4	0	4	3	0	0	1	0	1	10	0	4	24	0	0	59	
Crisis Intervention Sessions	17	16	4	0	0	0	5	0	10	6	18	3	0	10	7	0	7	103	
Marriage Counseling	0	0	0	0	0	0	0	0	0	0	0	0	0	0	0	0	0	0	
Denominational Meeting	0	0	1	0	1	0	0	0	0	0	0	1	0	0	0	0	0	3	
Chaplain's Meeting	1	1	1	0	1	0	1	0	1	1	1	1	0	1	9	1	1	21	
Volunteer Training Session	0	0	0	0	0	0	0	0	0	0	0	0	0	0	0	0	0	0	
Chaplain Transfers																			
	0	0	0	0	0	1	0	0	0	0	0	0	0	0	0	0	0	1	
Chaplain Promotions																			
	0	0	0	0	0	0	0	0	0	0	0	0	0	0	0	0	0	0	
PAL PROGRAM																			
Enrolled at start of month	47	22	44	0	53	46	25	19	53	50	28	0	0	48	47	0	26	508	
Enrolled during the month	3	2	2	0	0	7	2	1	11	15	2	0	0	4	5	0	6	60	
Removed From PAL Program																			
# Paroled	1	0	2	0	0	0	2	0	4	0	1	0	0	3	0	0	1	14	
# Completed	1	0	0	0	0	1	0	0	0	0	2	0	0	0	0	0	0	4	
# Withdrew	0	0	0	0	0	1	0	0	1	2	0	0	0	0	2	0	2	8	
# Removed	1	2	0	0	0	2	0	3	0	1	0	0	0	1	2	0	3	15	
# Transferred	0	0	1	0	0	1	1	0	5	2	0	0	0	1	0	0	1	12	
Total Removed from PAL Program	3	2	3	0	0	5	3	3	10	5	3	0	0	5	4	0	7	53	
Total Enrolled at the End of the Month	47	22	43	0	53	48	24	17	54	60	27	0	0	47	48	0	25	515	
Volunteers In PAL																			
	9	1	0	0	2	0	7	0	0	6	0	0	0	0	0	0	3	28	
Special Events:																			
	1	2	0	0	0	0	0	2	0	0	0	0	0	0	0	0	0	5	

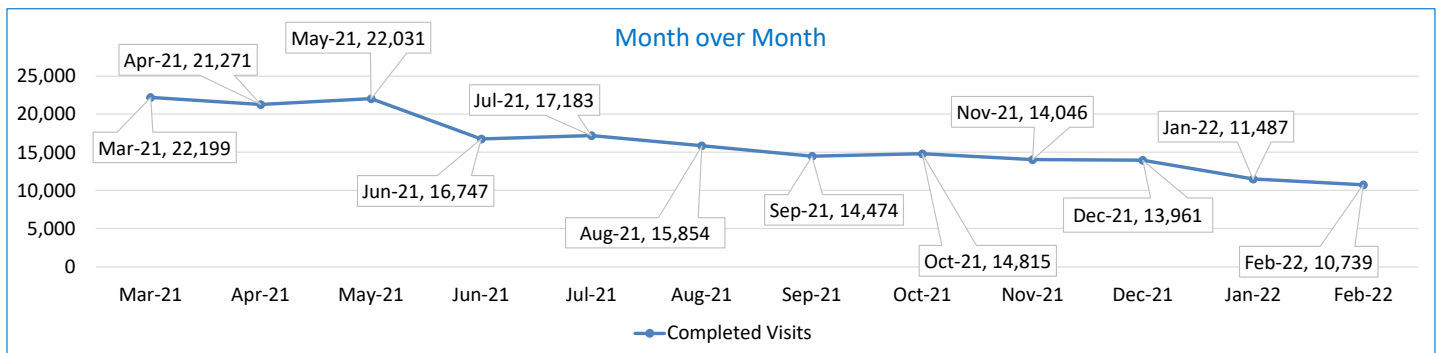
## SECURUS VIDEO VISITATION REPORT FEBRUARY 2022

### AR-DOC SVV Activity Tracker

Total ADP 14,927

Total Visits by Month	Mar-21	Apr-21	May-21	Jun-21	Jul-21	Aug-21	Sep-21	Oct-21	Nov-21	Dec-21	Jan-22	Feb-22
Total (Includes SuperMax)	22,199	21,271	22,031	16,747	17,183	15,854	14,474	14,815	14,046	13,961	11,487	10,739
Target Objective	15,587	15,587	15,587	15,587	15,587	15,587	15,587	15,587	15,587	15,587	15,587	15,587

#### Anywhere Visitation Performance:



#### Completed Visits

Site	Current Month	Previous Month
Benton	265	304
Cummins	927	1,089
Delta Regional	462	553
East Arkansas Regional	1,345	1,392
Ester	451	532
Grimes	836	881
J Aaron Hawkins Sr.	471	638
Tucker Max	555	492
Mcperson	471	541
Mississippi County WRC	145	108
North Central	976	1,129
NW Arkansas WRC	46	37
Ouachita River	1,071	1,187
Pine Bluff Complex	292	297
Randall L Williams	316	289
State Police Barracks	47	64
Texarkana Regional	79	55
Tucker Unit	208	216
Varner	1,043	890
Wrightsville Unit	713	743
Pine Bluff Re-Entry	20	50
Tucker Re-entry	0	0
<b>Total:</b>	<b>10,739</b>	<b>11,487</b>

#### Missed by Inmate

Site	Current Month	Previous Month
Benton	17	17
Cummins	30	66
Delta Regional	11	20
East Arkansas Regional	33	28
Ester	3	7
Grimes	9	13
J Aaron Hawkins Sr.	43	6
Tucker Max	18	18
Mcperson	22	16
Mississippi County WRC	14	28
North Central	16	18
NW Arkansas WRC	2	17
Ouachita River	18	40
Pine Bluff Complex	9	26
Randall L Williams	10	21
State Police Barracks	1	1
Texarkana Regional	11	8
Tucker Unit	21	5
Varner	35	195
Wrightsville Unit	30	12
Pine Bluff Re-Entry	0	3
Tucker Re-entry	0	0
<b>Total:</b>	<b>353</b>	<b>565</b>

### SECURUS TABLET REPORT FEBRUARY 2022

Facility Name	Subscription	Facility	Officer	Total	New Subscriptions
Benton Unit	69	336	8	413	0
Cummins Unit	237	2,237	14	2,488	1
Delta Regional Unit	65	723	16	804	0
East Arkansas Regional Unit	137	108	10	255	1
Ester Unit	83	740	20	843	1
Grimes Unit	91	47	14	152	0
J. Aaron Hawkins Sr. Center For Women	98	543	19	660	0
McPherson Unit	106	1,132	15	1,253	2
Mississippi County Work Release Center	36	137	9	182	0
North Central Unit	130	895	10	1,035	4
Northwest Arkansas Work Release Center	31	109	8	148	0
Ouachita River Correctional Unit	180	104	14	298	2
Pine Bluff Reentry Center	13	63	0	76	0
Pine Bluff Unit	58	559	8	625	0
Randall L. Williams Facility	32	607	14	653	0
State Police Barracks	20	1	3	24	0
Texarkana Regional Correctional Center	23	102	10	135	0
Tucker Maximum Security Unit	66	44	15	125	0
Tucker Reentry Center	0	45	3	48	0
Tucker Unit	74	749	10	833	0
Varner Unit	139	61	21	221	0
Wrightsville Unit	98	888	6	992	0
<b>TOTAL</b>	<b>1,786</b>	<b>10,230</b>	<b>247</b>	<b>12,263</b>	<b>11</b>



## CONSTRUCTION BUDGET / STATUS REPORT - MARCH 7, 2022 — [Page 1 of 2]

Fund	Project Description	Total Projected Spent	Budget	Available Funds	\$ % Complete	Construction % Complete	Notes
700483A	EARU Max Rec Expanded Metal Rec Yard	825,469	879,000	53,531	94%	64%	Construction of the Rec Pens at EARU began on 1/03/2022.
700483A	Tucker Max Expanded Metal Rec Yard	1,139,825	1,800,000	660,175	63%	0%	DBA Approved to proceed. We are constructing the panels on-site. Material list has been ordered and delivered.
700483A	Cummins Expanded Metal Rec Yard	50,012	368,617	318,605	14%	0%	Plans on hold, will modify for exp. metal
KBR4Q95	Bullpens	388,676	851,999	463,323	46%	55%	Varner & EARU complete. Installation underway at Max. Locks delivered. Working on bullpens now.
KBR4Q95	13 & 15 Barracks Door Revisions	119,111	174,000	54,889	68%	68%	All doors and locks installed in 13 Barracks. We are fabricating the revisions at this time at Central Maintenance.
700485A	Entegrity Energy Improvements at EARU & Delta	16,961,127	17,010,204	49,077	100%	100%	lights (100%), plumbing 100%, water (100%), compost (100%), & solar (100%), HVAC (100%). Training was removed from project.
7004828	Entegrity Energy Improvements Phase 2 at Tucker and Max	4,896,516	18,603,150	13,706,634	26%	35%	Lighting is complete at the Max. HVAC has began at Tucker. Plumbing has began at the MAX. Lighting has moved over to Tucker.
KBSHW18	Tucker Water Treatment	70,495	1,093,848	1,023,353	6%	0%	The original blueprints has been completed and approved. The detail drawings for design is almost complete. Projection is 1/24/2022 for submittal to DBA for final approval. Awaiting notice to proceed.
KBSFW18 KBR4Q95	Max Armory	67,089 -	100,000	32,911	67%	0%	We have our notice to proceed from DBA. Project projected to begin on-site 2/1/2022.
7004810	Administrative East Roof Replacement	63,848	1,802,000	1,738,153	3.5%	0%	Preconstruction meeting with contractor on 2/28/2022. Contractor has put his order in for material awaiting at ETD on material.
7004810	Central Warehouse Roof Replacement	21,179	424,000	402,822	5.0%	0%	
7004810	RLW Roof Replacement	126,590	3,074,000	2,947,410	4.1%	0%	
2ZV	NWARWRC Laundry and Commissary	246,029	250,000	3,971	98%	99%	Only punch list item is to install cameras. Set for 3/7/2022.
865C 7004820 KBR4Q95	NCU Perimeter Security	20,625 137 6,275	600,000	572,963	5%	0%	Project is under review at DBA for the change order to a visual surveillance alternate to the microwave fence system. Awaiting notice to proceed.
N98	Max Re-Entry Generator Project	16,635	135,000	118,365	12%	0%	Plans submitted to DBA. We have received our notice to proceed on this project.
KBR4Q95	NCU Replacement Generator Project	182,463	202,000	19,537	90%	10%	DBA Approved. Generator is purchased. ETA is March 15, 2022.
7004820	Tucker Asbestos Abatement	382,229	448,000	65,771	85%	100%	Performance of this contract is Complete. Final completion with DBA on 3/1/2022.
7004820	Tucker 10 Barracks Sidewalk	14,853	70,259	55,406	21%	90%	Sidewalk is complete. We have installed post and wrapping with fence. Running conduit and pulling wire for lighting and cameras.



## CONSTRUCTION BUDGET / STATUS REPORT - MARCH 7, 2022 — [Page 2 of 2]

Fund	Project Description	Total Projected Spent	Budget	Available Funds	\$ % Complete	Construction % Complete	Notes
7004820	Lethal Fence Control for Cummins, Varner SuperMax, Tucker Max, & EARU	59,049	875,000	815,951	7%	0%	Project was bid through DBA on 12/21/2021 and low bid came in at \$1,080,000. Bid was rejected.

Telephone Projects

Maintenance & Operations	Fire Alarm Upgrades (All Units)	34,046	41,000	6,954	83%	40%	on-going
	Stainless Steel - Kitchen/Shower/Restrooms - All Units	18,738	20,000	1,262	94%	25%	continual need
	Gates and Fences all units	23,647	25,000	1,353	95%	50%	to improve security
	ACA Maintenance	98,987	100,000	1,013	99%	98%	Working with NWAAR, Wrightsville, Pine Bluff Complex, Texarkana, Benton and Tucker with 2022 ACA.
	ADA Projects - All Units	5,611	10,000	4,389	56%	0%	Working with Varner for the sports field sidewalk.
	Fast Top Floor Systems (kitchen/laundry/showers all units)	15,920	25,000	9,080	64%	60%	Benton complete. Ouachita kitchen material has been ordered and awaiting arrival.
	Camera Equipment - All Units	170,294	250,000	79,706	68%	55%	cameras as requested/approved.
	Lock/Riot Gates - All Units	35,862	90,500	54,638	40%	15%	on-going.
	AC Units-All Units	68,143	70,000	1,857	97%	96%	repairing & replacing daily.
	<b>Subtotal</b>	<b>\$ 471,249</b>	<b>\$ 631,500</b>	<b>\$ 160,251</b>			

Capital Projects FY21 Carry Forward	Metal Ceilings	0	25,000	25,000	0%	0%	Wrightsville showers are underway.
	ORCU Gravel Pit Operations	13,974	35,000	21,026	40%	35%	on-going.
	Dog Kennel/Horse Stable Malvern	39,990	48,000	8,010	83%	80%	Pad poured, walls erected and roof being installed.
	Emergency Generator - All Units	75,284	250,000	174,716	30%	5%	Cummins 300kW generator complete. Hawkins Unit Gen is installed and operational. Max Gen mat'l rec'd, Generator rec'd. Cummins East Bldg. we have approval awaiting Max generator install.
	Tucker 4 new filters & one aeration tank	8,943	10,000	1,057	89%	100%	Project is complete.
	Roof Repairs-Cummins	0	130,700	126,099	4%	4%	Prepared large order for multiple Units. Need repairs at ORCU, Wrightsville, Cummins & others. Varner & ORCU working on repairs, received TPO. Office of State Procurement secured a State contract to purchase roofing materials.
	Roof Repairs-Cummins Laundry	0					
	Construction/Maintenance	0					
	Roof Repairs-Delta	3,758					
	Roof Repairs-East Arkansas	0					
	Roof Repairs-Max	0					
	Roof Repair - NCU	842					
	Roof Repair - RLW	0					
	Roof Repairs-Tucker	0					
	Roof Repairs-Varner	0					
	Roof Repairs-Wrightsville	0					
	<b>Subtotal</b>	<b>\$ 142,791</b>	<b>\$ 498,700</b>	<b>\$ 355,909</b>			

New Projects	Delta Perimeter	0	622,000	622,000	0%	0%	Project is under review at DBA for the change order to a visual surveillance alternate to the microwave fence system. Should have approval the week of 1/14/2022.
	Wrightsville Perimeter	0	-	0	0%	0%	
	PB Warehouse Drive Replacement	0	118,000	118,000	0%	0%	Project suspended.
	<b>Subtotal</b>	<b>\$ -</b>	<b>\$ 740,000</b>	<b>\$ 740,000</b>			
	Architect Fees	16,217	30,000	13,783	54%		
	<b>Total</b>	<b>\$ 630,258</b>	<b>\$ 1,900,200</b>	<b>\$ 1,269,942</b>			