



DIVISION OF
CORRECTION

BOARD REPORT

April 2022



@ARDeptofCorrections



@adcpio



@arcorrections



Dexter Payne,
Director

POPULATION REPORT

RESEARCH/PLANNING

March 2022 Admissions and Releases –

Admissions for March 2022 totaled **856** (734-males and 122-females) while releases totaled **541** (475-males and 66 females) for a net increase in-house of **315** inmates.

Inmate Population Growth/Projection –

At the end of March 2022, the jurisdictional population for the Division of Correction totaled **16,992**, representing a decrease of **31** inmates since the first of January 2022. At reporting time, calendar year 2022 has seen a decrease of **10** inmates per month, which is down from an average monthly increase of **77** inmates per month during calendar year 2021.

Average County Jail Back-up –

The backup in the county jails averaged **1,605** inmates per day during the month of March 2022, which was down from the per-day average of **2,169** inmates during the month of February 2022. Of the **1,605** average, short-term revocations accounted for **485** (402 males and 83 females) during the month.

House Bill 1530/Restrictive Housing (RH) - January through March 2022 –

- There was a slight decrease in overall RH assignments during the first quarter of 2022 compared to the fourth quarter of 2021.
- There was a slight decrease in the number of major disciplinarys.
- There was one suicide this quarter, but an increase in the number of suicide attempts.
- There was a decrease in the number of inmates assigned to RH for protective custody.
- There was a small decrease in RH assignments for those aged 21 and younger
- There was an increase for those aged 55 and older.
- There was no significant change for those with an SMI diagnosis.

Institutional Grievances Appeals: There was a total of 544 appeals of institutional grievances received in March. Of those, 403 were acknowledged and 141 were rejected for various reasons. Of the total 439 appeals answered, 434 had no merit and five had merit.

FARM

March was a good month for the Agricultural Division. Calving season is in full swing at the Wrightsville and Cummins units. When the grass starts greening up, this will slow down on the need for feeding hay.

The 11th Annual ADC Horse Auction was held on March 12, and it was another record year for the sale. A total of 25 horses were sold for \$111,000. That averages out to \$4,440 per horse, which beats last year's record by \$1,300. There were many return customers this year, in addition to new buyers.

The wheat crops continue to look very good at all farms. Two applications of fertilizer have been applied, with the final one scheduled for early April.

Prices for all commodities have been setting highs during the month. Taking advantage of the markets, prices have been set on about 20% of the anticipated production for soybeans and corn. Delivery of corn and soybean seed has been made, so all farms are ready for planting.

All units have been working on their gardens. A lot of potatoes have been planted and other crops are going in as weather permits.

Egg production is doing well, with daily amounts hovering around 50,000, which covers the needs for ADC and ACC. Milk production has shown a steady increase in response to coming out of winter season.

Timber cutting resumed at Cummins during the month. This project is on schedule for completion and will hopefully be cleaned up enough to make winter pastures in the fall.

Four new employees joined the staff during the month, which is helpful, but we are losing one who is returning to security.

The 2022 crop year is on target to be an interesting one. Fertilizer prices have tripled, fuel prices have doubled, and the availability of equipment parts is in question. This will be a year when every trip across the field counts.

INSTITUTIONS

INMATE INSTITUTIONAL GRIEVANCES

Inmate Formal/Informal Grievances: During March, a total of 1,255 formal grievances and 2,029 informal grievances were filed at various units.

REGIONAL MAINTENANCE HOURS

| Regional Maintenance Hours | March 2022 |
|--|---------------|
| Benton Unit | 6,162 |
| Delta Regional Unit | 1,608 |
| East Arkansas Regional Unit | 712 |
| Grimes Unit | 2,400 |
| McPherson Unit | 1,900 |
| Mississippi County Work Release | 610 |
| North Central Unit | 4,772 |
| Ouachita River Correctional Unit | 3,232 |
| Randall L. Williams Unit | 3,408 |
| Texarkana Regional Correctional Center | 240 |
| Tucker Unit | 800 |
| Varner Unit | 2,400 |
| Wrightsville Unit | 4,264 |
| Total Hours | 32,508 |

WORK RELEASE RENT REPORT

| Unit | March 2022 |
|--|---------------------|
| Benton Unit | \$84,864.00 |
| Mississippi County Work Release | \$58,480.00 |
| Northwest Arkansas Work Release | \$37,723.00 |
| Pine Bluff Work Release | \$40,647.00 |
| Texarkana Regional Correctional Center | \$37,825.00 |
| Wrightsville Hawkins Unit | \$26,146.00 |
| Total | \$285,685.00 |

REENTRY**RANDALL L. WILLIAMS
JUVENILE EDUCATION PROGRAM**

| March 2022 Capacity: 20 | Beginning Count | New Commitments | DCR/Punitive | Transferred/ Turned 18* | Paroled | End Count |
|----------------------------------|--------------------|--------------------|--------------|----------------------------|---------|-----------|
| Juveniles* | 5 | 3 | 0 | 0 | 0 | 8 |

*Juveniles are transferred from the program once they reach the age of 18.

**WORKFORCE ALLIANCE FOR
GROWTH IN THE ECONOMY (WAGE)**

| March 2022 Capacity: 120 Unit: | Beginning Count | Admissions During Mo. | Removed* | Completed | End Count |
|--------------------------------------|--------------------|--------------------------|----------|-----------|-----------|
| Delta | 0 | 0 | 0 | 0 | 0 |
| Ester | 0 | 0 | 0 | 0 | 0 |
| Hawkins | 22 | 0 | 0 | 3 | 19 |
| McPherson | 0 | 0 | 0 | 0 | 0 |
| Ouachita River | 0 | 0 | 0 | 0 | 0 |
| Tucker | 0 | 0 | 0 | 0 | 0 |
| Wrightsville | 6 | 0 | 0 | 0 | 6 |
| TOTAL | 28 | 0 | 0 | 3 | 25 |

*The "Removed" column indicates the number of participants who transferred, signed out, received a disciplinary, were removed because test scores were not returned/were too low to continue, or were released from prison.

**ADVANCED PRINCIPLES
AND APPLICATIONS FOR
LIFE PROGRAM (APAL)**

| March 2022 Capacity: 86 | Beginning Count | Admissions During Mo. | Removed* | End Count |
|----------------------------------|--------------------|--------------------------|----------|-----------|
| Ester | 53 | 0 | 3 | 50 |
| Hawkins | 24 | 5 | 6 | 23 |
| TOTAL | 77 | 5 | 9 | 73 |

Advanced PAL is an 18-month reentry program that combines a pre-release curriculum with the PAL program.

*The "Removed" column indicates the number of participants who paroled, completed the program, withdrew from the program, transferred, or were removed from the program for another reason.

**WRIGHTSVILLE-HAWKINS
PATHWAY TO FREEDOM PROGRAM**

| March 2022 Capacity: 200 | Beginning Count | Enrolled During the Month | Removed | End Count* |
|-----------------------------------|--------------------|---------------------------------|---------|------------|
| Wrightsville-Hawkins PTF | 194 | 33 | 29 | 198 |

THINK LEGACY

| March 2022 Capacity: 635 Unit | Beginning Count | Admitted | Graduated | Removed* | End Count |
|-------------------------------------|--------------------|----------|-----------|-----------|------------|
| Cummins | 48 | 0 | 0 | 11 | 37 |
| Delta Regional | 24 | 0 | 0 | 9 | 15 |
| East Arkansas Regional | 41 | 0 | 0 | 24 | 17 |
| McPherson | 39 | 0 | 0 | 3 | 40 |
| North Central | 43 | 0 | 0 | 3 | 40 |
| Ouachita River | 33 | 0 | 0 | 5 | 28 |
| Tucker | 35 | 0 | 0 | 1 | 34 |
| Total | 263 | 0 | 0 | 56 | 211 |

*The "Removed" column indicates the total number of participants who paroled, signed out, transferred, or were removed from the program for any other reason and are no longer in the barracks.

TRAINING**DIVISION OF CORRECTION
TRAINING - MARCH 2022****BASIC TRAINING DIVISION –**

Instructor David Farrier's **BCOT Class 2022-B** graduated on March 11, 2022, with a total of 62 cadets.

Academic Awards were presented to the following:

- 1st – Lenetra Parker, Cummins Unit
- 2nd – Dreifus Smith, Cummins Unit
- 3rd – Jermonda Patton, East Arkansas Regional Unit

Recipients of *Physical Fitness Awards* were:

- 1st – Marquisia Johnson, Ester Unit
- 2nd – Keundra Fouts, Randall L. Williams Unit
- 3rd – Ianna Brown, Ester Unit

IN-SERVICE DIVISION –

Classes held by the Training Academy during the month included:

- March 2 – *Annual Training Day* (5 students A.M. session/1 student P.M. session)
- March 3 – *Leadership 101*, Instructor Perry Robinson (2 students in person/5 virtually); and *Security Auditor Training*, Instructor Randy Shores (13 students)
- March 3-4 – *Security for Non-Security for Religious Volunteers*, Instructor Joshua Mayfield
- March 9 – *OC Instructor Training*, Instructor Randy Shores (26 students)
- March 10-11 – *Employee Grievances*, Instructor Tammy Baker (2 students)
- March 16-18 – *Management Level I* (41 students in person/33 virtually)

- March 23-24 – *Blue Courage*, Instructor Robert Potter (1 student in person/3 virtually)

eCADEMY –

During March, 551 ADC employees completed a total of 8,771 hours of eCADEMY training.

**HEALTH/CORRECTIONAL
PROGRAMS****CHAPLAINCY SERVICES**

All Facilities – On March 14-16, chaplains from all areas participated in training at Camp Paron, located in Paron. The Arkansas Baptist State Convention sponsored the training, which focused on planning for support of a successful inmate field ministry program following the May 2023 graduation of students from Mid-America College at Varner.

In-person worship gatherings are restarting at units statewide as COVID-19 precautionary measures are changing and as staffing allows.

Delta Regional Unit – During the month of March, a total of 28 inmates completed the spiritual training course, *33 The Series: Volume IV*.

East Arkansas Regional Unit – Christmas Behind Bars partnered with EARU Chaplaincy to distribute 1,391 gift sacks to inmates on March 18. IBLP representatives conducted "The Basic Life Principal Seminar" on March 28 with 38 PAL inmates participating.

North Central Unit – The IBLP Basic Seminar 1 was led by volunteers at the unit March 15-18, with 60 inmates and two volunteers participating. Basic Seminar 2 was facilitated on March 21-24, with 30 inmates and three volunteers taking part.

Tucker Unit – On March 22, Tucker Unit Chaplaincy, with the assistance of security staff, distributed 600 gift sacks donated by Christmas Behind Bars.

ACCREDITATION**ACA Internal Audits Completed:**

- 03/01–03/03 Pine Bluff Complex Reaccreditation
- 03/07–03/10 NAWARC File Review
- 03/14–03/15 TRCC File Review
- 03/16–03/17 Industry File Review
- 03/21–03/25 Wrightsville File Review
- 03/29 NAWARC Unit Visit

Classes Taught:

- 03/31 Basic Correctional Officer Training

Fire/Safety and Sanitation Independent Audits Conducted by the Fire and Sanitation Coordinator:

- 03/29 NAWARC Independent Audit
- 03/30 Industry Warehouse Independent Audit
- 03/31 TRCC Independent Audit

VOLUNTEER SERVICES**Total Number of Volunteer Hours for March 2022:**

| Unit/Program | Hours |
|--|--------------|
| Delta Unit | 0 |
| East Arkansas Regional Unit | 0 |
| McPherson Unit | 0 |
| Mississippi County Work Release Center | 0 |
| Northwest Arkansas Work Release Center | 15 |
| Ouachita River Correctional Unit | 0 |
| Pine Bluff Complex | 0 |
| Texarkana Regional Correctional Center | 0 |
| Varner | 0 |
| PAWS | 24 |
| Think Legacy | 0 |
| WAGE | 120 |
| Religious Services/Chaplaincy | 1,746 |
| Total Hours | 1,905 |

MENTAL HEALTH SERVICES**Reduction of Sexual Victimization Program (RSVP) and Sex Offender Treatment Programs (SOFT):**

| March 2022 | Capacity | Beginning Count | Completed | Removed | Admissions | End Count |
|--------------|------------|-----------------|-----------|----------|------------|------------|
| RSVP | 238 | 234 | 0 | 9 | 10 | 235 |
| SOFT | 30 | 5 | 0 | 0 | 1 | 6 |
| Total | 268 | 239 | 0 | 9 | 11 | 241 |

There are 1,204 males on the waiting list for RSVP and seven females on the waiting list for SOFT who are within five years of their TE date. Of those, 14 inmates are mandated by the Parole Board.

The average time on the waiting list from request is between one and two months for those stipulated.

*The total on the waiting list, including those not currently within the identified timeframe, is 1,548 males and nine females. Of these, 1,210 are eligible and 347 are ineligible for the program. There is one PREA inmate in the program at this time.

***Ineligibility is due to being in restrictive housing, having class IV status, or receiving a major disciplinary within the last 60 days.**

Therapeutic Community (TC):

| March 2022 Unit | Capacity | Beginning Count | Completed | Removed | Admissions | End Count |
|-----------------|------------|-----------------|-----------|----------|------------|------------|
| Tucker | 62 | 55 | 1 | 0 | 4 | 58 |
| Wrightsville | 50 | 45 | 1 | 2 | 6 | 48 |
| Total | 112 | 100 | 2 | 2 | 10 | 106 |

There are 602 males and 192 females on the waiting list who are within ten years of their release date. Of those, 26 are mandated by the Parole Board.

The average time on the waiting list from request is 39 days.

*The total on the waiting list, including those not currently within the identified timeframe, is 816 males and 207 females. Of these, 820 are eligible and 203 are ineligible for the program.

***Ineligibility is due to being in restrictive housing, having class IV status, or receiving a major disciplinary within the last 60 days.**

Substance Abuse Treatment Program (SATP):

| March 2022 Unit | Capacity | Beginning Count | Completed | Removed | Admissions | End Count |
|---------------------|------------|-----------------|-----------|-----------|------------|------------|
| Benton | 20 | 20 | 2 | 1 | 1 | 18 |
| Cummins | 45 | 46 | 8 | 4 | 11 | 45 |
| Maximum Security | 4 | 4 | 0 | 0 | 0 | 4 |
| Randall L. Williams | 150 | 135 | 22 | 9 | 39 | 143 |
| Wrightsville | 100 | 102 | 1 | 6 | 7 | 102 |
| Total | 319 | 307 | 33 | 20 | 58 | 312 |

There are 2,129 males and 169 females on the waiting list who are within five years of their release date. Of those, 53 are mandated by the Parole Board.

The average time on the waiting list from request is 21 days.

*The total on the waiting list, including those not currently within the identified timeframe, is 2,782 males and 200 females. Of these, 2,351 are eligible and 631 are ineligible for the program.

***Ineligibility is due to being in restrictive housing, having class IV status, or receiving a major disciplinary within the last 60 days.**

PILOT PROGRAM – Substance User Rehabilitation Services (SURS):

| March 2022 Unit | Capacity | Beginning Count | Completed | Removed | Admissions | End Count |
|-----------------|------------|-----------------|-----------|-----------|------------|------------|
| McPherson | 150 | 117 | 26 | 18 | 53 | 126 |
| Grimes | 50 | 52 | 16 | 3 | 11 | 44 |
| Total | 200 | 169 | 42 | 21 | 64 | 170 |

Substance Use Intervention Program:

The Substance Use Intervention Program had 12 admissions and five discharges for an end-of-month count of 31 in March. This program is housed at the Varner Unit and is for inmates found guilty of a disciplinary violation for drug use or drug possession.

Ouachita River Correctional Unit (ORCU) Residential Program Unit (RPU):

The RPU had nine admissions and eight discharges in March for an end-of-month count of 120.

McPherson Unit Mental Health Residential Program Unit (RPU):

There were seven admissions and six discharges in March for an end-of-month count of 40.

Habilitation Program:

The Habilitation Program at the Ouachita River Correctional Unit provided treatment services to 44 inmates in March. There were two admissions and no discharges, which resulted in an end-of-month count of 44.

Anger Management Treatment:

The Anger Management Treatment Program at the Cummins Unit did not provide treatment services to any inmates in March. There were no admissions or discharges, for an end-of-month count of zero.

Suicide:

There were 110 suicidal threats in March. There were nine attempts, none of which resulted in death.

Staffing:

The following Mental Health Services and Substance Abuse Treatment Program (SATP) positions were vacant in February and March 2022:

| Positions | FTE's* | February 2022 | March 2022 |
|----------------------------------|--------|---------------|------------|
| Psychologists | 14 | 5 | 6 |
| Psychological Examiners | 2 | 2 | 2 |
| Social Workers | 31 | 16 | 16 |
| Licensed Professional Counselors | 2 | 1 | 1 |
| Rehab Director | 1 | 1 | 1 |
| Rehab Facility Supervisors | 3 | 1 | 1 |
| Advisors | 64 | 20 | 21 |
| Substance Abuse Program Coord. | 6 | 2 | 2 |
| Substance Abuse Program Leaders | 40 | 9 | 9 |
| Administrative Specialists | 17 | 2 | 2 |

*FTE refers to authorized Full Time Equivalent positions.

ADDITIONAL MENTAL HEALTH AND MEDICAL INFORMATION**Self-Study Classes:**

| Classes | Number of Participants | Number Completed | Waiting List |
|------------------------------|------------------------|------------------|--------------|
| Anger Management | 373 | 331 | 782 |
| Thinking Errors | 291 | 291 | 794 |
| Substance Abuse Education | 295 | 292 | 637 |
| Communication Skills | 259 | 238 | 736 |
| Domestic Violence | 85 | 84 | 156 |
| Victims of Domestic Violence | 61 | 61 | 77 |
| Stress Management | 233 | 216 | 808 |
| Parenting | 127 | 127 | 309 |

ADDITIONAL MENTAL HEALTH AND MEDICAL INFORMATION, *continued*

Outpatient:

There were 2,170 inmates on the mental health medical log at the beginning of March. Mental Health staff conducted the following contacts during the month:

| | |
|-------------------------------------|--------|
| Case Management Contacts | 1,848 |
| Requests for Interviews | 834 |
| Testing | 5 |
| Intakes | 1,120 |
| Unit Requests | 1,496 |
| Pre-Lockup Reviews | 311 |
| Routine Restrictive Housing Reviews | 1,262 |
| Restrictive Housing Rounds | 16,983 |
| PREA Evaluations | 82 |
| Routine Follow-up | 377 |
| 834 Requests | 43 |

County Mental Health Requests:

During March, there were 318 requests received of a mental health nature. Of those, 148 inmates were fast-tracked to ADC. **Note: Most inmates were not transferred due to COVID-19.**

County Medical Health Requests:

During March, there were 529 requests received of a medical nature. A total of eight inmates were fast-tracked to ADC.

Medical Contract Reimbursements:

Sanction reimbursements for ADC in February amounted to \$10,700.00.

Deaths:

There were four inmate deaths during the month of March. One was claimed and three were cremated.

Wellpath:

See attachment for Wellpath's report regarding outside beds and emergency room visits.

Medical Grievances:

In March, there were 157 appeals of medical grievances received and 170 appeals were answered. Two were found to be with merit.

SEX OFFENDER ASSESSMENT

Assessments Completed:

| Risk Level | March | September 1999 through March 2022 |
|---|-----------|-----------------------------------|
| Level 1 | 1 | 1,221 |
| Level 2 | 46 | 8,765 |
| Level 3 | 20 | 7,529 |
| Level 4 | 0 | 735 |
| Default 3 | 10 | * |
| Total | 77 | 18,251 |
| *Default Level 3's are included in the total number of Level 3's to date. | | |

ACIC Numbers:

The total number of sex offenders registered from September 1999 through March 2022:

| | |
|-----------------|---------------|
| Compliant | 8,561 |
| Delinquent | 1,435 |
| Confined | 3,444 |
| Out-of-State | 4,007 |
| Address Unknown | 150 |
| Deported | 210 |
| Incapacitated | 109 |
| Out of USA | 20 |
| Total | 17,937 |

Consistent with current Arkansas law, deceased offenders no longer remain on the registry.

PAWS IN PRISON

| March 2022 Unit | Enrolled | Graduated | Foster | Volunteer Hours |
|----------------------------------|-----------|-----------|----------|-----------------|
| Hawkins Unit | 5 | 3 | 0 | 0 |
| Maximum Security Unit | 10 | 5 | 0 | 8 |
| McPherson Unit | 8 | 6 | 0 | 0 |
| North Central Unit | 3 | 0 | 0 | 0 |
| Ouachita River Correctional Unit | 8 | 0 | 0 | 0 |
| Randall L. Williams Unit | 4 | 3 | 0 | 8 |
| Tucker Unit | 11 | 2 | 0 | 8 |
| Total | 49 | 19 | 0 | 24 |

PAWS IN PRISON, *continued***Completed Paws in Prison Training:**

| | |
|---|-------|
| March 2022 Program Graduates | 19 |
| YTD 2022 Program Graduates | 51 |
| Total Graduates Since Inception (December 2011) | 1,921 |
| Dogs Currently in Foster (Graduated, but Not Adopted) | 0 |
| March 2022 Volunteer Hours | 24 |
| YTD Volunteer Hours | 28 |

INFORMATION TECHNOLOGY

INMATE TABLETS – Within the Division of Correction, a total of 1,747 inmate tablets were leased during March.

INMATE VIDEO VISITS – Inmates completed 10,573 video visits during the month and missed 465 within the Division of Correction.

CONSTRUCTION/MAINTENANCE**PROJECT UPDATES**

SEE CONSTRUCTION BUDGET / STATUS REPORT IN ATTACHMENTS SECTION (PAGES 25-26).

AGENCY HIGHLIGHTS**MARCH 2022****2021 Pinnacle Awards Ceremony Held**

The Division of Correction held its annual Pinnacle Awards ceremony on March 31. Held at the Pleasant Valley Country Club in Little Rock, a number of staff members were recognized for receiving the highest awards given by the ADC. John Felts, who is Arkansas Parole Board Chairman and a member of the Arkansas Board of Corrections, was the event's guest speaker. Those receiving 2021 awards were:

- **Board of Corrections Meritorious Service Award** – **Dale Reed**, ADC Chief Deputy Director
- **Employee of the Year** – **Mary Allen**, Unit Accreditation Specialist, Cummins Unit and **Sgt. Felicia Gordon**, Program Specialist, Varner Unit
- **Correctional Officer of the Year** – **Cpl. Latrice Jackson**, Cummins Unit and **Sgt. Lanata Ridgle**, Wrightsville Unit



- **Supervisor/Administrator of the Year** – **Vicki Bice**, Fiscal Support Supervisor, Administrative Annex East and **Michael Smith**, Human Resources Coordinator, North Central Unit
- **Correctional Supervisor of the Year** – **Lt. Linda Arnold**, Pine Bluff Unit; **Lt. Malcolm Crompton**, Varner Unit; and **Lt. Merlin Fitzpatrick**, Cummins Unit
- **Deputy Warden of the Year** – **Linda Louis**, Hawkins Unit and **Robert Pierce**, Cummins Unit
- **Warden of the Year** – **Christopher Budnik**, Tucker Unit
- **Superintendent of the Year** – **Aundrea Culclager**, Central Office
- **Treatment Staff of the Year** – **Lue Bailey**, Advisor, Delta Regional Unit; **Kevin Neisler**, Social Worker, McPherson Unit; and **Bob Parker**, Mental Health Administrator, Central Office
- **Director's Citation of Excellence Award** – **Connie Dean**, Central Warehouse Supervisor and **Sgt. Dorsey Lee**, East Arkansas Regional Unit
- **Director's Outstanding Service Award** – **Cpl. Verna Farmer-Barnes**, Maximum Security Unit; **Roni Gean**, Administrative Specialist III, Central Office; and **Mikel Hickerson**, Head Farm Manager II, Farm Division
- **Hero Award** – **Cpl. Russell Reckart**, McPherson Unit
- **Secretary's Award of Merit** – **Stefanie Glasscock**, Personnel Manager, Central Office
- **AACET Award** – **Richard Cooper**, Assistant Director, Construction Division

PROMOTIONS

Some of the security promotions highlighted during the month of March included:

Cummins Unit

- Sgt. Ieisha Henry
- Field Sgt. Jeremiah O'Dell
- Sgt. Janiqua Smith

Maximum Security Unit

- Capt. Shaqueta Johnson
- Sgt. Akia Vincer

McPherson Unit

- Maj. Johnnie Swift

Varner Unit

- Sgt. Felicia Gordon
- Capt. Corey Thomas

**Maj. Swift****Capt. Thomas**

AGENCY HIGHLIGHTS, continued**STAFF APPRECIATION**

Food Production Supervisor Kendrick Kelly was awarded Employee of the Month honors at Mississippi County Work Release Center.



Kendrick Kelly

During the month, Pine Bluff Complex Deputy Warden Adam Clark and Lt. Ronald Weast spent two days cooking and feeding every shift at the Complex.

**ACA REACCREDITATION AWARDED TO MCPHERSON UNIT**

On March 3, Superintendent Joe Page and the dedicated staff at the Pine Bluff Complex were granted reaccreditation by the American Correctional Association with stellar results: 100% on Mandatory Standards/Best Practices and 99.5% on Non-Mandatory Standards/Best Practices.

The auditors bragged on the cleanliness, professionalism, and hospitality displayed by staff. They were also amazed by the teamwork that goes on among the three units that comprise the Complex.

**CHALLENGE COINS AWARDED**

Following the recent ACA closeout at the Pine Bluff Complex, four ADC staff members were presented with a Challenge Coin by Director Dexter Payne in recognition of their valuable contributions towards the success of the audit.

- Jessica Parent, RLW
- Virginia Robins, McPherson
- Latoris Willis, MSU
- Pamela Burke, Delta Unit

**SGT. MAYWEATHER'S MEMORY HONORED AT GOULD CITY HALL**

In January, Sgt. Jalyn Mayweather of the Ouachita River Correctional Unit died from injuries sustained in a car accident. In addition to being an ADC officer, he was also a part-time police officer at Gould. On March 25, the City of Gould held a remembrance ceremony for him at City Hall where a permanent sign was erected in his memory. Pictured with the sign are some of his family members who were in attendance.

**11TH ANNUAL HORSE AUCTION**

The weather was very cold, but that didn't stop buyers from coming from all around to attend the 11th Annual ADC Horse Auction. The ADC Agricultural Division did a great job organizing the sale, held on Saturday, March 12, at the Saline County Fairgrounds in Benton.

A patriotic salute to veterans kicked off the event. And the memory of Sgt. Joshua Caudell, who died in the line of duty the week before, was honored in a poignant way when Lt. S. Hadley of the Tucker Unit led a horse with an empty saddle into the ring.

After that, Auctioneer Mark McElroy got the ball rolling on selling the 25 horses in the line up. An all-time sales record was set with the horses bringing in a whopping \$111,000, which will go back into the program.



REGIONAL MAINTENANCE PROJECT HIGHLIGHTS MARCH 2022

Old Southside School Gym Teardown (Batesville)

Grimes Regional Maintenance – March 2:



Hwy. 9 Trash Cleanup for ARDOT (Malvern)

Ouachita River Regional Maintenance – March 2/4/7:



Baseball Field Windscreen Installation (White Hall)

Pine Bluff Regional Maintenance – March 3:



County Road Storm Debris Cleanup (Izard Co.)

North Central Regional Maintenance – March 6:



Softball Field Cleanup (Star City)

Varner Regional Maintenance 1 – March 14:



Western Hills Grounds Cleanup (Little Rock)

Wrightsville Regional Maintenance – March 17:



2022 INFORMAL GRIEVANCE REPORT

| Month | BENTON | HAWK/M | HAWK/F | WRTS | EARU & MX | GRIMES | RLW | MCWR | MCPH | MSU | NCU | PBU | NWA | TU | TRCC | VSMX | VU | CU & CMU | ORCU | Ester | DRU | TOTAL |
|-------|--------|--------|--------|------|-----------|--------|-----|------|------|-----|-----|-----|-----|-----|------|-------|-----|----------|------|-------|-----|-------|
| JAN | 3 | 18 | 36 | 92 | 227 | 198 | 42 | 0 | 262 | 122 | 100 | 58 | 0 | 55 | 1 | 436 | 40 | 172 | 135 | 46 | 159 | 2,202 |
| FEB | 1 | 8 | 37 | 54 | 188 | 166 | 15 | 0 | 375 | 111 | 111 | 54 | 0 | 43 | 1 | 309 | 43 | 112 | 130 | 38 | 125 | 1,921 |
| MAR | 1 | 35 | 32 | 105 | 197 | 184 | 31 | 0 | 326 | 90 | 67 | 66 | 0 | 48 | 5 | 434 | 45 | 96 | 88 | 30 | 149 | 2,029 |
| APR | 0 | 0 | 0 | 0 | 0 | 0 | 0 | 0 | 0 | 0 | 0 | 0 | 0 | 0 | 0 | 0 | 0 | 0 | 0 | 0 | 0 | 0 |
| MAY | 0 | 0 | 0 | 0 | 0 | 0 | 0 | 0 | 0 | 0 | 0 | 0 | 0 | 0 | 0 | 0 | 0 | 0 | 0 | 0 | 0 | 0 |
| JUN | 0 | 0 | 0 | 0 | 0 | 0 | 0 | 0 | 0 | 0 | 0 | 0 | 0 | 0 | 0 | 0 | 0 | 0 | 0 | 0 | 0 | 0 |
| JUL | 0 | 0 | 0 | 0 | 0 | 0 | 0 | 0 | 0 | 0 | 0 | 0 | 0 | 0 | 0 | 0 | 0 | 0 | 0 | 0 | 0 | 0 |
| AUG | 0 | 0 | 0 | 0 | 0 | 0 | 0 | 0 | 0 | 0 | 0 | 0 | 0 | 0 | 0 | 0 | 0 | 0 | 0 | 0 | 0 | 0 |
| SEPT | 0 | 0 | 0 | 0 | 0 | 0 | 0 | 0 | 0 | 0 | 0 | 0 | 0 | 0 | 0 | 0 | 0 | 0 | 0 | 0 | 0 | 0 |
| OCT | 0 | 0 | 0 | 0 | 0 | 0 | 0 | 0 | 0 | 0 | 0 | 0 | 0 | 0 | 0 | 0 | 0 | 0 | 0 | 0 | 0 | 0 |
| NOV | 0 | 0 | 0 | 0 | 0 | 0 | 0 | 0 | 0 | 0 | 0 | 0 | 0 | 0 | 0 | 0 | 0 | 0 | 0 | 0 | 0 | 0 |
| DEC | 0 | 0 | 0 | 0 | 0 | 0 | 0 | 0 | 0 | 0 | 0 | 0 | 0 | 0 | 0 | 0 | 0 | 0 | 0 | 0 | 0 | 0 |
| TOTAL | 5 | 61 | 105 | 251 | 612 | 548 | 88 | 0 | 963 | 323 | 278 | 178 | 0 | 146 | 7 | 1,179 | 128 | 380 | 353 | 114 | 433 | 6,152 |

2022 FORMAL GRIEVANCE REPORT

| Month | BENTON | HAWK/M | HAWK/F | WRTS | EARU & MX | GRIMES | RLW | MCWR | MCPH | MSU | NCU | PBU | NWA | TU | TRCC | VSMX | VU | CU & CMU | ORCU | Ester | DRU | TOTAL |
|-------|--------|--------|--------|------|-----------|--------|-----|------|------|-----|-----|-----|-----|-----|------|------|----|----------|------|-------|-----|-------|
| JAN | 2 | 4 | 14 | 42 | 310 | 103 | 33 | 0 | 115 | 136 | 61 | 29 | 0 | 49 | 0 | 193 | 12 | 134 | 83 | 23 | 87 | 1,430 |
| FEB | 0 | 1 | 13 | 32 | 244 | 98 | 11 | 0 | 126 | 132 | 58 | 54 | 0 | 27 | 1 | 177 | 25 | 90 | 66 | 22 | 75 | 1,252 |
| MAR | 0 | 11 | 10 | 35 | 208 | 122 | 31 | 0 | 139 | 135 | 40 | 33 | 0 | 46 | 1 | 204 | 19 | 66 | 75 | 12 | 68 | 1,255 |
| APR | 0 | 0 | 0 | 0 | 0 | 0 | 0 | 0 | 0 | 0 | 0 | 0 | 0 | 0 | 0 | 0 | 0 | 0 | 0 | 0 | 0 | 0 |
| MAY | 0 | 0 | 0 | 0 | 0 | 0 | 0 | 0 | 0 | 0 | 0 | 0 | 0 | 0 | 0 | 0 | 0 | 0 | 0 | 0 | 0 | 0 |
| JUN | 0 | 0 | 0 | 0 | 0 | 0 | 0 | 0 | 0 | 0 | 0 | 0 | 0 | 0 | 0 | 0 | 0 | 0 | 0 | 0 | 0 | 0 |
| JUL | 0 | 0 | 0 | 0 | 0 | 0 | 0 | 0 | 0 | 0 | 0 | 0 | 0 | 0 | 0 | 0 | 0 | 0 | 0 | 0 | 0 | 0 |
| AUG | 0 | 0 | 0 | 0 | 0 | 0 | 0 | 0 | 0 | 0 | 0 | 0 | 0 | 0 | 0 | 0 | 0 | 0 | 0 | 0 | 0 | 0 |
| SEPT | 0 | 0 | 0 | 0 | 0 | 0 | 0 | 0 | 0 | 0 | 0 | 0 | 0 | 0 | 0 | 0 | 0 | 0 | 0 | 0 | 0 | 0 |
| OCT | 0 | 0 | 0 | 0 | 0 | 0 | 0 | 0 | 0 | 0 | 0 | 0 | 0 | 0 | 0 | 0 | 0 | 0 | 0 | 0 | 0 | 0 |
| NOV | 0 | 0 | 0 | 0 | 0 | 0 | 0 | 0 | 0 | 0 | 0 | 0 | 0 | 0 | 0 | 0 | 0 | 0 | 0 | 0 | 0 | 0 |
| DEC | 0 | 0 | 0 | 0 | 0 | 0 | 0 | 0 | 0 | 0 | 0 | 0 | 0 | 0 | 0 | 0 | 0 | 0 | 0 | 0 | 0 | 0 |
| TOTAL | 2 | 16 | 37 | 109 | 762 | 323 | 75 | 0 | 380 | 403 | 159 | 116 | 0 | 122 | 2 | 574 | 56 | 290 | 224 | 57 | 230 | 3,937 |

INMATE INSTITUTIONAL GRIEVANCE APPEAL REPORT – MARCH 2022

| | Acknowledged | Rejected | Processed W/O Merit | Processed W/ Merit |
|--|--------------|------------|---------------------|--------------------|
| Benton Unit | 0 | 0 | 0 | 0 |
| Benton Work Release | 0 | 0 | 0 | 0 |
| Cummins Unit | 11 | 11 | 0 | 0 |
| Cummins Modular Unit | 0 | 2 | 11 | 0 |
| Delta Regional Unit | 10 | 4 | 15 | 0 |
| East Arkansas Regional Unit | 23 | 6 | 16 | 0 |
| East Arkansas Regional Max Unit | 73 | 23 | 101 | 2 |
| Ester Unit | 4 | 0 | 3 | 0 |
| Grimes Unit | 21 | 6 | 23 | 0 |
| Maximum Security Unit | 32 | 3 | 48 | 1 |
| Tucker Re-Entry | 0 | 0 | 0 | 0 |
| McPherson Unit | 19 | 5 | 25 | 1 |
| McPherson Mental Health Residential Program Unit | 0 | 0 | 0 | 0 |
| Mississippi County Work Release Center | 0 | 0 | 0 | 0 |
| Northwest Arkansas Work Release Center | 0 | 0 | 0 | 0 |
| North Central Unit | 22 | 6 | 21 | 1 |
| Ouachita River Correctional Unit | 25 | 10 | 22 | 0 |
| ORCU Hospital | 0 | 0 | 0 | 0 |
| ORCU New Commitment | 3 | 0 | 3 | 0 |
| ORCU Mental Health Residential Program Unit | 0 | 0 | 0 | 0 |
| Pine Bluff Unit | 8 | 8 | 5 | 0 |
| Pine Bluff Re-Entry | 0 | 0 | 0 | 0 |
| Randall L. Williams Correctional Facility | 5 | 5 | 6 | 0 |
| Texarkana Regional Correctional Center | 0 | 0 | 0 | 0 |
| Tucker Unit | 10 | 6 | 12 | 0 |
| Varner Super Max | 102 | 38 | 87 | 0 |
| Varner Unit | 11 | 4 | 16 | 0 |
| Wrightsville Unit | 14 | 2 | 12 | 0 |
| Hawkins Center | 10 | 2 | 8 | 0 |
| Hawkins for Males | 0 | 0 | 0 | 0 |
| Hawkins SPU | 0 | 0 | 0 | 0 |
| Total | 403 | 141 | 434 | 5 |

ADMISSIONS AND RELEASES – MARCH 2022

| <u>Admissions</u> | <u>Male</u> | <u>Female</u> | <u>Total</u> |
|---------------------------------|-------------|---------------|--------------|
| Asian | 2 | 0 | 2 |
| Black | 232 | 26 | 258 |
| Hispanic | 22 | 3 | 25 |
| Native American Indian | 4 | 1 | 5 |
| Native Hawaiian or Pacific Isl. | 3 | 0 | 3 |
| White | 468 | 92 | 560 |
| Other | 3 | 0 | 3 |
| Unknown | 0 | 0 | 0 |
| Total | 734 | 122 | 856 |

| <u>Releases</u> | <u>Male</u> | <u>Female</u> | <u>Total</u> |
|---------------------------------|-------------|---------------|--------------|
| Asian | 2 | 0 | 2 |
| Black | 151 | 9 | 160 |
| Hispanic | 13 | 1 | 14 |
| Native American Indian | 2 | 1 | 3 |
| Native Hawaiian or Pacific Isl. | 1 | 0 | 1 |
| White | 305 | 55 | 360 |
| Other | 1 | 0 | 1 |
| Unknown | 0 | 0 | 0 |
| Total | 475 | 66 | 541 |

ADC INMATE POPULATION GROWTH 2000-2028 - MARCH 2022

Updated 03/31/2022

| Mo. | 2000 | 2001 | 2002 | 2003 | 2004 | 2005 | 2006 | 2007 | 2008 | 2009 | 2010 | 2011 | 2012 | 2013 | 2014 | 2015 | 2016 | 2017 | 2018 | 2019 | 2020 | 2021 | 2022 |
|---------------|--------|--------|--------|--------|--------|--------|--------|--------|--------|--------|--------|--------|--------|--------|--------|--------|--------|--------|--------|--------|--------|--------|--------|
| Jan. | 11,984 | 11,908 | 12,402 | 13,015 | 13,105 | 13,595 | 13,481 | 13,839 | 14,518 | 14,796 | 15,334 | 16,312 | 15,134 | 14,815 | 17,481 | 18,142 | 17,785 | 17,824 | 18,201 | 17,958 | 17,989 | 16,119 | 17,154 |
| Feb. | 12,169 | 12,022 | 12,529 | 13,054 | 13,166 | 13,783 | 13,633 | 14,012 | 14,603 | 14,883 | 15,374 | 16,209 | 14,990 | 15,008 | 17,438 | 18,082 | 17,625 | 17,608 | 17,998 | 17,846 | 18,181 | 16,120 | 17,077 |
| March | 12,006 | 12,033 | 12,299 | 13,108 | 13,088 | 13,418 | 13,534 | 13,772 | 14,580 | 14,843 | 15,290 | 16,095 | 14,964 | 14,665 | 17,395 | 18,233 | 17,573 | 17,666 | 18,089 | 17,898 | 17,860 | 16,085 | 16,992 |
| April | 12,069 | 12,167 | 12,465 | 13,213 | 13,323 | 13,469 | 13,554 | 13,851 | 14,769 | 14,937 | 15,570 | 16,172 | 15,124 | 14,850 | 17,604 | 18,703 | 17,815 | 17,798 | 18,227 | 17,977 | 17,331 | 16,250 | |
| May | 12,109 | 12,384 | 12,558 | 13,463 | 13,556 | 13,528 | 13,711 | 14,146 | 14,880 | 15,146 | 15,694 | 16,062 | 15,132 | 15,074 | 17,593 | 18,693 | 17,769 | 17,652 | 17,945 | 17,817 | 16,694 | 16,476 | |
| June | 12,005 | 12,108 | 12,439 | 13,418 | 13,389 | 13,251 | 13,430 | 13,915 | 14,700 | 15,025 | 15,564 | 15,554 | 14,832 | 14,825 | 17,340 | 18,813 | 17,973 | 17,963 | 17,972 | 17,942 | 16,552 | 16,560 | |
| July | 12,030 | 12,190 | 12,622 | 13,509 | 13,528 | 13,286 | 13,560 | 14,082 | 14,868 | 15,195 | 15,807 | 15,519 | 14,879 | 15,379 | 17,522 | 18,870 | 18,130 | 18,180 | 18,005 | 18,002 | 16,511 | 16,638 | |
| August | 12,087 | 12,371 | 12,815 | 13,565 | 13,632 | 13,419 | 13,646 | 14,224 | 15,100 | 15,385 | 15,829 | 15,240 | 14,675 | 16,103 | 17,549 | 18,806 | 17,919 | 18,051 | 17,751 | 18,090 | 16,367 | 16,655 | |
| September | 11,983 | 12,289 | 12,774 | 13,341 | 13,516 | 13,237 | 13,652 | 14,217 | 14,850 | 15,285 | 16,025 | 15,172 | 14,724 | 16,412 | 17,605 | 18,549 | 18,026 | 18,179 | 17,865 | 17,856 | 16,215 | 16,698 | |
| October | 12,119 | 12,348 | 12,942 | 13,341 | 13,584 | 13,363 | 13,775 | 14,349 | 14,836 | 15,381 | 16,311 | 15,271 | 14,856 | 16,993 | 17,880 | 18,430 | 18,127 | 18,348 | 17,943 | 17,947 | 16,311 | 16,821 | |
| November | 12,094 | 12,408 | 13,162 | 13,408 | 13,706 | 13,587 | 13,913 | 14,437 | 15,025 | 15,340 | 16,460 | 15,205 | 14,625 | 17,168 | 17,848 | 17,981 | 17,573 | 17,973 | 17,666 | 18,060 | 16,165 | 16,982 | |
| December | 11,856 | 12,333 | 12,845 | 13,106 | 13,470 | 13,338 | 13,728 | 14,315 | 14,716 | 15,199 | 16,204 | 15,062 | 14,654 | 17,235 | 17,874 | 17,707 | 17,537 | 18,078 | 17,799 | 17,759 | 16,094 | 17,023 | |
| Net Ann. Inc. | 29 | 477 | 512 | 261 | 364 | -132 | 390 | 587 | 401 | 483 | 1,005 | -1,142 | -408 | 2,581 | 639 | -167 | -170 | 541 | -279 | -40 | -1,665 | 929 | -31 |
| Avg. Mo. Inc. | 2 | 40 | 43 | 22 | 30 | -11 | 33 | 49 | 33 | 40 | 84 | -95 | -34 | 215 | 53 | -14 | -14 | 45 | -23 | -3 | -139 | 77 | -10 |

Population is total jurisdictional count at end of each month. Population at end of month December 1999 was 11,827.

Average monthly population increased for past fifteen years 2007 - 2021 is 18

Average monthly population increased for past ten years Jan. 2012 - Dec 2021 is 16

Average monthly population decreased for past five years 2017 - 2021 is -9

Projected at Growth of 18 per Month

| Mo. | 2008 | 2009 | 2010 | 2011 | 2012 | 2013 | 2014 | 2015 | 2016 | 2017 | 2018 | 2019 | 2020 | 2021 | 2022 | 2023 | 2024 | 2025 | 2026 | 2027 | 2028 |
|---------------|--------|--------|--------|--------|--------|--------|--------|--------|--------|--------|--------|--------|--------|--------|-----------------|--------|--------|--------|--------|--------|--------|
| | Actual | Actual | Actual | Actual | Actual | Actual | Actual | Actual | Actual | Actual | Actual | Actual | Actual | Actual | Actual/ Proj | Proj. | Proj. | Proj. | Proj. | Proj. | Proj. |
| January | 14,518 | 14,796 | 15,334 | 16,312 | 15,134 | 14,815 | 17,481 | 18,142 | 17,785 | 17,824 | 18,201 | 17,958 | 17,989 | 16,119 | 17,154 | 17,172 | 17,388 | 17,604 | 17,820 | 18,036 | 18,252 |
| February | 14,603 | 14,883 | 15,374 | 16,209 | 14,990 | 15,008 | 17,438 | 18,082 | 17,625 | 17,608 | 17,998 | 17,846 | 18,181 | 16,120 | 17,077 | 17,190 | 17,406 | 17,622 | 17,838 | 18,054 | 18,270 |
| March | 14,580 | 14,843 | 15,290 | 16,095 | 14,964 | 14,665 | 17,395 | 18,233 | 17,573 | 17,666 | 18,089 | 17,898 | 17,860 | 16,085 | 16,992 | 17,208 | 17,424 | 17,640 | 17,856 | 18,072 | 18,288 |
| April | 14,769 | 14,937 | 15,570 | 16,172 | 15,124 | 14,850 | 17,604 | 18,703 | 17,815 | 17,798 | 18,227 | 17,977 | 17,331 | 16,250 | 17,010 | 17,226 | 17,442 | 17,658 | 17,874 | 18,090 | 18,306 |
| May | 14,880 | 15,146 | 15,694 | 16,062 | 15,132 | 15,074 | 17,593 | 18,693 | 17,769 | 17,652 | 17,945 | 17,817 | 16,694 | 16,476 | 17,028 | 17,244 | 17,460 | 17,676 | 17,892 | 18,108 | 18,324 |
| June | 14,700 | 15,025 | 15,564 | 15,554 | 14,832 | 14,825 | 17,340 | 18,813 | 17,973 | 17,963 | 17,972 | 17,942 | 16,552 | 16,560 | 17,046 | 17,262 | 17,478 | 17,694 | 17,910 | 18,126 | 18,342 |
| July | 14,868 | 15,195 | 15,807 | 15,519 | 14,879 | 15,379 | 17,522 | 18,870 | 18,130 | 18,180 | 18,005 | 18,002 | 16,511 | 16,638 | 17,064 | 17,280 | 17,496 | 17,712 | 17,928 | 18,144 | 18,360 |
| August | 15,100 | 15,385 | 15,829 | 15,240 | 14,675 | 16,103 | 17,549 | 18,806 | 17,919 | 18,051 | 17,751 | 18,090 | 16,367 | 16,655 | 17,082 | 17,298 | 17,514 | 17,730 | 17,946 | 18,162 | 18,378 |
| September | 14,850 | 15,285 | 16,025 | 15,172 | 14,724 | 16,412 | 17,605 | 18,549 | 18,026 | 18,179 | 17,865 | 17,856 | 16,215 | 16,698 | 17,100 | 17,316 | 17,532 | 17,748 | 17,964 | 18,180 | 18,396 |
| October | 14,836 | 15,381 | 16,311 | 15,271 | 14,856 | 16,993 | 17,880 | 18,430 | 18,127 | 18,348 | 17,943 | 17,947 | 16,311 | 16,821 | 17,118 | 17,334 | 17,550 | 17,766 | 17,982 | 18,198 | 18,414 |
| November | 15,025 | 15,340 | 16,460 | 15,205 | 14,625 | 17,168 | 17,848 | 17,981 | 17,573 | 17,973 | 17,666 | 18,060 | 16,165 | 16,982 | 17,136 | 17,352 | 17,568 | 17,784 | 18,000 | 18,216 | 18,432 |
| December | 14,716 | 15,199 | 16,204 | 15,062 | 14,654 | 17,235 | 17,874 | 17,707 | 17,537 | 18,078 | 17,799 | 17,759 | 16,094 | 17,023 | 17,154 | 17,370 | 17,586 | 17,802 | 18,018 | 18,234 | 18,450 |
| Net Ann. Inc. | 401 | 483 | 1,005 | -1,142 | -408 | 2,581 | 639 | -167 | -170 | 541 | -279 | -40 | -1,665 | 929 | 131 | 216 | 216 | 216 | 216 | 216 | 216 |
| Ave. Mo. Inc. | 33 | 40 | 84 | -95 | -34 | 215 | 53 | -14 | -14 | 45 | -23 | -3 | -139 | 77 | 11 | 18 | 18 | 18 | 18 | 18 | 18 |

MONTHLY POPULATION AVERAGES - MARCH 2022

| Unit/Center | 3/1 | 3/2 | 3/3 | 3/4 | 3/7 | 3/8 | 3/9 | 3/10 | 3/11 | 3/14 | 3/15 | 3/16 | 3/17 | 3/18 | 3/21 | 3/22 | 3/23 | 3/24 | 3/25 | 3/28 | 3/29 | 3/30 | 3/31 | AVG |
|--------------------|--------|--------|--------|--------|--------|--------|--------|--------|--------|--------|--------|--------|--------|--------|--------|--------|--------|--------|--------|--------|--------|--------|--------|--------|
| Benton | 305 | 311 | 315 | 315 | 307 | 307 | 304 | 306 | 307 | 304 | 303 | 306 | 306 | 304 | 304 | 303 | 303 | 304 | 291 | 287 | 287 | 287 | 288 | 302 |
| Cummins | 1,931 | 1,938 | 1,954 | 1,952 | 1,944 | 1,947 | 1,945 | 1,939 | 1,925 | 1,919 | 1,919 | 1,938 | 1,938 | 1,937 | 1,936 | 1,940 | 1,934 | 1,967 | 1,961 | 1,951 | 1,958 | 1,952 | 1,967 | 1,943 |
| Delta | 610 | 606 | 619 | 617 | 609 | 596 | 595 | 592 | 607 | 606 | 615 | 610 | 608 | 608 | 605 | 616 | 618 | 617 | 614 | 613 | 611 | 614 | 614 | 610 |
| East AR Reg | 1,531 | 1,567 | 1,566 | 1,565 | 1,565 | 1,566 | 1,560 | 1,558 | 1,556 | 1,564 | 1,557 | 1,556 | 1,557 | 1,557 | 1,555 | 1,547 | 1,547 | 1,563 | 1,560 | 1,559 | 1,566 | 1,565 | 1,563 | 1,559 |
| Ester | 539 | 539 | 539 | 540 | 537 | 527 | 530 | 547 | 549 | 547 | 544 | 545 | 540 | 539 | 538 | 535 | 532 | 538 | 538 | 536 | 543 | 544 | 538 | 539 |
| Grimes | 1,049 | 1,049 | 1,062 | 1,075 | 1,071 | 1,071 | 1,069 | 1,070 | 1,070 | 1,068 | 1,069 | 1,069 | 1,068 | 1,068 | 1,067 | 1,063 | 1,063 | 1,063 | 1,061 | 1,060 | 1,060 | 1,062 | 1,058 | 1,065 |
| Max Sec | 551 | 553 | 553 | 553 | 556 | 556 | 557 | 557 | 558 | 558 | 558 | 558 | 558 | 558 | 558 | 559 | 558 | 558 | 558 | 557 | 557 | 556 | 559 | 557 |
| McPherson | 960 | 967 | 987 | 999 | 985 | 983 | 977 | 979 | 978 | 977 | 979 | 974 | 978 | 982 | 980 | 985 | 991 | 989 | 987 | 990 | 986 | 992 | 985 | 982 |
| MCWRC | 133 | 134 | 134 | 134 | 134 | 134 | 134 | 138 | 138 | 139 | 139 | 139 | 138 | 138 | 135 | 135 | 133 | 132 | 132 | 137 | 137 | 137 | 136 | 136 |
| N Central | 807 | 804 | 810 | 809 | 810 | 804 | 815 | 815 | 812 | 827 | 832 | 829 | 828 | 826 | 825 | 834 | 831 | 831 | 817 | 819 | 832 | 832 | 832 | 821 |
| NWAWRC | 100 | 100 | 100 | 100 | 100 | 100 | 99 | 97 | 97 | 97 | 100 | 100 | 100 | 100 | 99 | 99 | 99 | 99 | 97 | 100 | 100 | 100 | 99 | 99 |
| Ouachita River | 1,609 | 1,601 | 1,582 | 1,614 | 1,654 | 1,681 | 1,685 | 1,712 | 1,697 | 1,705 | 1,713 | 1,718 | 1,718 | 1,751 | 1,772 | 1,759 | 1,760 | 1,743 | 1,765 | 1,762 | 1,740 | 1,746 | 1,743 | 1,706 |
| Randall L Williams | 488 | 487 | 484 | 483 | 485 | 496 | 502 | 499 | 515 | 520 | 525 | 526 | 528 | 527 | 533 | 535 | 537 | 518 | 530 | 526 | 535 | 535 | 538 | 515 |
| Pine Bluff | 509 | 508 | 508 | 507 | 507 | 509 | 507 | 506 | 506 | 512 | 510 | 521 | 521 | 521 | 518 | 510 | 503 | 510 | 505 | 510 | 510 | 514 | 517 | 511 |
| PB Reentry | 50 | 50 | 50 | 50 | 50 | 50 | 50 | 50 | 50 | 50 | 50 | 49 | 49 | 49 | 48 | 54 | 53 | 53 | 53 | 53 | 53 | 53 | 53 | 51 |
| TRCC | 122 | 121 | 121 | 121 | 121 | 121 | 124 | 124 | 124 | 124 | 124 | 124 | 124 | 122 | 122 | 122 | 122 | 118 | 120 | 120 | 120 | 119 | 119 | 122 |
| Tucker | 619 | 611 | 611 | 611 | 605 | 602 | 602 | 601 | 602 | 601 | 600 | 598 | 597 | 595 | 595 | 604 | 602 | 601 | 601 | 601 | 605 | 605 | 604 | 603 |
| Varner | 1,616 | 1,616 | 1,616 | 1,615 | 1,610 | 1,603 | 1,605 | 1,605 | 1,625 | 1,620 | 1,628 | 1,623 | 1,618 | 1,616 | 1,613 | 1,612 | 1,604 | 1,604 | 1,604 | 1,598 | 1,596 | 1,592 | 1,588 | 1,610 |
| Wrightsville | 825 | 824 | 824 | 822 | 827 | 840 | 849 | 851 | 849 | 846 | 839 | 843 | 843 | 840 | 840 | 855 | 848 | 847 | 845 | 846 | 853 | 846 | 855 | 842 |
| WR Hawkins-Females | 238 | 236 | 235 | 235 | 243 | 244 | 254 | 254 | 258 | 257 | 257 | 264 | 261 | 257 | 257 | 257 | 260 | 260 | 259 | 259 | 259 | 259 | 259 | 253 |
| WR Hawkins-Males | 194 | 191 | 192 | 192 | 192 | 192 | 190 | 188 | 199 | 199 | 198 | 195 | 195 | 194 | 194 | 196 | 195 | 195 | 195 | 194 | 194 | 195 | 190 | 194 |
| | | | | | | | | | | | | | | | | | | | | | | | | |
| Total ADC | 14,786 | 14,813 | 14,862 | 14,909 | 14,912 | 14,929 | 14,953 | 14,988 | 15,022 | 15,040 | 15,059 | 15,085 | 15,073 | 15,089 | 15,094 | 15,120 | 15,093 | 15,110 | 15,093 | 15,078 | 15,102 | 15,105 | 15,105 | 15,020 |
| | | | | | | | | | | | | | | | | | | | | | | | | |
| ALETA | 17 | 17 | 17 | 17 | 17 | 17 | 17 | 17 | 17 | 17 | 17 | 17 | 17 | 17 | 15 | 15 | 15 | 15 | 15 | 15 | 15 | 15 | 15 | 16 |
| Ar State Police | 52 | 51 | 51 | 53 | 53 | 52 | 51 | 49 | 49 | 49 | 54 | 54 | 54 | 56 | 54 | 54 | 54 | 54 | 54 | 54 | 54 | 54 | 53 | 53 |
| Co Jail / M | 1,768 | 1,737 | 1,715 | 1,685 | 1,669 | 1,611 | 1,574 | 1,533 | 1,526 | 1,479 | 1,450 | 1,429 | 1,438 | 1,430 | 1,409 | 1,413 | 1,448 | 1,421 | 1,398 | 1,410 | 1,396 | 1,405 | 1,383 | 1,510 |
| Co Jail / F | 121 | 116 | 93 | 84 | 87 | 94 | 88 | 89 | 91 | 102 | 99 | 96 | 95 | 98 | 96 | 96 | 90 | 90 | 95 | 100 | 98 | 95 | 98 | 96 |
| Total Co Jail BK | 1,889 | 1,853 | 1,808 | 1,769 | 1,756 | 1,705 | 1,662 | 1,622 | 1,617 | 1,581 | 1,549 | 1,525 | 1,533 | 1,528 | 1,505 | 1,509 | 1,538 | 1,511 | 1,493 | 1,510 | 1,494 | 1,500 | 1,481 | 1,606 |
| 309/M | 231 | 231 | 233 | 232 | 234 | 234 | 234 | 233 | 231 | 230 | 231 | 233 | 232 | 233 | 232 | 232 | 231 | 231 | 228 | 227 | 226 | 225 | 224 | 231 |
| 309/F | 91 | 91 | 91 | 92 | 92 | 91 | 91 | 91 | 89 | 89 | 90 | 90 | 92 | 92 | 91 | 91 | 92 | 92 | 92 | 92 | 91 | 91 | 91 | 91 |
| Total Act 309 | 322 | 322 | 324 | 324 | 326 | 325 | 325 | 324 | 320 | 319 | 321 | 323 | 324 | 325 | 323 | 323 | 323 | 323 | 320 | 319 | 317 | 316 | 315 | 322 |
| | | | | | | | | | | | | | | | | | | | | | | | | |
| Total Non ADC | 2,280 | 2,243 | 2,200 | 2,163 | 2,152 | 2,099 | 2,055 | 2,012 | 2,003 | 1,966 | 1,941 | 1,919 | 1,928 | 1,926 | 1,897 | 1,901 | 1,930 | 1,903 | 1,882 | 1,898 | 1,880 | 1,885 | 1,864 | 1,997 |
| | | | | | | | | | | | | | | | | | | | | | | | | |
| Total | 17,066 | 17,056 | 17,062 | 17,072 | 17,064 | 17,028 | 17,008 | 17,000 | 17,025 | 17,006 | 17,000 | 17,004 | 17,001 | 17,015 | 16,991 | 17,021 | 17,023 | 17,013 | 16,975 | 16,976 | 16,982 | 16,990 | 16,969 | 17,017 |

RESTRICTIVE HOUSING QUARTERLY REPORT JANUARY 1, 2022 TO MARCH 31, 2022

Restrictive Housing Disciplinary Counts

| | |
|---|-----|
| 12-3 : Failure to Obey Order of Staff | 349 |
| 04-8 : Battery - Use of Force on an Inmate | 276 |
| 12-4 : Refusing a Direct Verbal Order | 226 |
| 05-3 : Assault - Verbal or Written Threat | 200 |
| 11-1 : Insolence to a Staff Member | 171 |
| 02-16 : Refusal To Submit to Testing | 152 |
| 03-5 : Out of Place of Assignment | 147 |
| 09-3 : Possession/Introduce Drugs | 103 |
| 02-17 : Creating Unnecessary Noise | 96 |
| 01-1 : Banding Together/Demonstration | 87 |
| 09-1 : Possession/Intro Of Fireworks | 78 |
| 10-3 : Indecent Exposure | 72 |
| 02-5 : Unauthorized Use Of Mail/Phone | 66 |
| 02-12 : Keep Person/Quarters W Regulat | 64 |
| 09-15 : Possession/Introduction/Use of Cell Phone | 64 |
| 07-1 : Unauthorized Use Of State Property | 56 |
| 05-5 : Provoking Or Agitating A Fight | 54 |
| 13-2 : Lying To A Staff Member | 52 |
| 09-5 : Possession/Introduction Of Clothing | 47 |
| 15-2 : Asking/Offering Inducement | 42 |

Disciplinary Categories

| | |
|---------------------------------------|-------|
| Violence to Self | 0 |
| Violence to Others | 364 |
| Possession of Drug-Related Contraband | 141 |
| Masturbation/Indecent Exposure | 74 |
| Sex with Another Person | 27 |
| Other Violations | 2,237 |

| | |
|----------------------|-------|
| Inmates Placed in RH | 1,874 |
|----------------------|-------|

Population Demographics

| RACE | GENDER | | Total |
|--------------------------------|--------------|------------|--------------|
| | M | F | |
| Asian | 4 | 1 | 5 |
| Black | 1,794 | 75 | 1,869 |
| Caucasian | 1,336 | 105 | 1,441 |
| Hispanic | 86 | 7 | 93 |
| NA Indian | 6 | 0 | 6 |
| Native Hawaiian or Pacific Isl | 3 | 0 | 3 |
| Other | 5 | 0 | 5 |
| Total | 3,234 | 188 | 3,422 |

| | |
|--------------------|-----|
| Protective Custody | 3 |
| Age 21 or Younger | 55 |
| Age 55 or Older | 238 |
| SMI | 52 |

Suicides/Deaths in Restrictive Housing

| | |
|------------------|----|
| Suicides | 1 |
| Suicide Attempts | 30 |
| Deaths | 2 |

FISCAL YEAR 2022 COUNTY JAIL BACKUP - MARCH 2022

| DAY | | Jul-21 | | Aug-21 | | Sep-21 | | Oct-21 | | Nov-21 | | Dec-21 | | Jan-22 | | Feb-22 | | Mar-22 |
|------------------|---|--------|---|--------|---|--------|---|--------|---|--------|---|--------|---|--------|---|--------|---|--------|
| 1 | | 1,059 | * | 1,294 | | 1,583 | | 1,777 | | 2,050 | | 2,125 | * | 2,117 | | 2,350 | | 1,889 |
| 2 | | 1,090 | | 1,309 | | 1,612 | * | 1,777 | | 2,023 | | 2,108 | * | 2,117 | | 2,375 | | 1,853 |
| 3 | * | 1,090 | | 1,342 | | 1,624 | * | 1,777 | | 2,045 | | 2,092 | | 2,114 | | 2,333 | | 1,808 |
| 4 | * | 1,090 | | 1,356 | * | 1,624 | | 1,792 | | 2,076 | * | 2,092 | | 2,100 | | 2,341 | | 1,769 |
| 5 | | 1,096 | | 1,370 | * | 1,624 | | 1,773 | | 2,111 | * | 2,092 | | 2,117 | * | 2,341 | * | 1,769 |
| 6 | | 1,096 | | 1,396 | | 1,645 | | 1,773 | * | 2,111 | | 2,099 | | 2,102 | * | 2,341 | * | 1,769 |
| 7 | | 1,114 | * | 1,396 | | 1,645 | | 1,789 | * | 2,111 | | 2,133 | | 2,134 | | 2,361 | | 1,756 |
| 8 | | 1,089 | * | 1,396 | | 1,603 | | 1,816 | | 2,103 | | 2,103 | * | 2,134 | | 2,310 | | 1,705 |
| 9 | | 1,090 | | 1,408 | | 1,620 | * | 1,816 | | 2,118 | | 2,099 | * | 2,134 | | 2,277 | | 1,662 |
| 10 | * | 1,090 | | 1,405 | | 1,649 | * | 1,816 | | 2,135 | | 2,080 | | 2,141 | | 2,252 | | 1,622 |
| 11 | * | 1,090 | | 1,404 | * | 1,649 | | 1,856 | | 2,099 | * | 2,080 | | 2,144 | | 2,230 | | 1,617 |
| 12 | | 1,121 | | 1,416 | * | 1,649 | | 1,875 | | 2,098 | * | 2,080 | | 2,174 | * | 2,230 | * | 1,617 |
| 13 | | 1,125 | | 1,436 | | 1,638 | | 1,841 | * | 2,098 | | 2,093 | | 2,196 | * | 2,230 | * | 1,617 |
| 14 | | 1,146 | * | 1,436 | | 1,606 | | 1,868 | * | 2,098 | | 2,098 | | 2,227 | | 2,206 | | 1,581 |
| 15 | | 1,131 | * | 1,436 | | 1,628 | | 1,913 | | 2,123 | | 2,101 | * | 2,227 | | 2,177 | | 1,549 |
| 16 | | 1,155 | | 1,435 | | 1,657 | * | 1,913 | | 2,105 | | 2,134 | * | 2,227 | | 2,154 | | 1,525 |
| 17 | | 1,189 | | 1,460 | | 1,693 | * | 1,913 | | 2,135 | | 2,158 | | 2,251 | | 2,127 | | 1,533 |
| 18 | * | 1,189 | | 1,485 | * | 1,693 | | 1,926 | | 2,150 | * | 2,158 | | 2,251 | | 2,090 | | 1,528 |
| 19 | * | 1,189 | | 1,499 | * | 1,693 | | 1,935 | | 2,180 | * | 2,158 | | 2,282 | * | 2,090 | * | 1,528 |
| 20 | | 1,208 | | 1,499 | | 1,711 | | 1,953 | * | 2,180 | | 2,212 | | 2,311 | * | 2,090 | * | 1,528 |
| 21 | | 1,228 | * | 1,499 | | 1,721 | | 1,956 | * | 2,180 | | 2,228 | | 2,335 | | 2,040 | | 1,505 |
| 22 | | 1,237 | * | 1,499 | | 1,752 | | 1,956 | | 2,144 | | 2,196 | | 2,336 | | 2,040 | | 1,509 |
| 23 | | 1,259 | | 1,514 | | 1,722 | * | 1,956 | | 2,151 | | 2,172 | * | 2,336 | | 2,022 | | 1,538 |
| 24 | * | 1,259 | | 1,527 | | 1,719 | * | 1,956 | | 2,165 | | 2,172 | * | 2,336 | | 1,964 | | 1,511 |
| 25 | * | 1,259 | | 1,511 | * | 1,719 | | 1,975 | | 2,192 | * | 2,172 | | 2,301 | | 1,950 | | 1,493 |
| 26 | | 1,248 | | 1,523 | * | 1,719 | | 2,003 | | 2,191 | * | 2,172 | | 2,313 | * | 1,950 | * | 1,493 |
| 27 | | 1,233 | | 1,540 | | 1,727 | | 1,987 | * | 2,191 | | 2,172 | | 2,323 | * | 1,950 | * | 1,493 |
| 28 | | 1,248 | * | 1,540 | | 1,757 | | 2,013 | * | 2,191 | | 2,184 | | 2,322 | | 1,911 | | 1,510 |
| 29 | | 1,266 | * | 1,540 | | 1,780 | | 2,026 | | 2,190 | | 2,175 | * | 2,322 | | | | 1,494 |
| 30 | | 1,294 | | 1,526 | | 1,804 | * | 2,026 | | 2,153 | | 2,158 | * | 2,322 | | | | 1,500 |
| 31 | * | 1,294 | | 1,562 | | | * | 2,026 | | | | 2,117 | | 2,345 | | | | 1,481 |
| Avg Daily Backup | | 1,170 | | 1,450 | | 1,676 | | 1,896 | | 2,130 | | 2,136 | | 2,229 | | 2,169 | | 1,605 |

Notes: Totals do not include 309 Contracts in County Jails (maximum of 336)

County Jail Back-up for March 2022 - 1,605

County Jail Back-up Fiscal Year Average as of March 31, 2022 - 1,829

Short-Term Revocation Program Average for March 2022 - 485

Short-Term Revocation Program Fiscal Year Average as of March 31, 2022 - 623

STTG UNIT COUNTS – MARCH 2022

| Unit | Beginning Total | Confirmed | Suspected | In | Out | Paroled | Removed | Ending Total | Total Unit Population | Unit % of STTG's |
|--------------|-----------------|------------|-----------|------------|------------|------------|----------|--------------|-----------------------|------------------|
| Benton | 83 | 1 | 0 | 6 | 7 | 12 | 0 | 71 | 288 | 24.65% |
| Cummins | 644 | 0 | 0 | 60 | 42 | 10 | 0 | 652 | 1,965 | 33.18% |
| Delta | 201 | 0 | 0 | 40 | 21 | 0 | 0 | 220 | 607 | 36.24% |
| EARU | 621 | 0 | 0 | 20 | 13 | 15 | 0 | 613 | 1,558 | 39.35% |
| Ester | 113 | 0 | 0 | 13 | 2 | 5 | 0 | 119 | 539 | 22.08% |
| Grimes | 374 | 0 | 0 | 15 | 6 | 3 | 1 | 379 | 1,057 | 35.86% |
| Hawkins | 47 | 1 | 1 | 2 | 3 | 0 | 0 | 49 | 457 | 10.72% |
| Max | 266 | 0 | 0 | 17 | 5 | 2 | 0 | 276 | 558 | 49.46% |
| Mcperson | 37 | 0 | 0 | 0 | 0 | 0 | 0 | 37 | 986 | 3.75% |
| MCWR | 38 | 0 | 0 | 5 | 1 | 1 | 0 | 41 | 135 | 30.37% |
| NCU | 280 | 0 | 0 | 34 | 21 | 9 | 0 | 284 | 826 | 34.38% |
| NWAWR | 30 | 0 | 0 | 2 | 3 | 0 | 0 | 29 | 99 | 29.29% |
| ORCU | 334 | 0 | 0 | 290 | 142 | 12 | 0 | 470 | 1,516 | 31.00% |
| ORCU Intake | 92 | 202 | 0 | 0 | 221 | 0 | 0 | 73 | 228 | 32.02% |
| Pine Bluff | 171 | 6 | 0 | 38 | 19 | 12 | 0 | 184 | 568 | 32.39% |
| RLW | 199 | 14 | 0 | 67 | 64 | 16 | 0 | 200 | 540 | 37.04% |
| TWR | 51 | 0 | 0 | 32 | 31 | 1 | 0 | 51 | 115 | 44.35% |
| Tucker | 214 | 0 | 0 | 9 | 13 | 8 | 0 | 202 | 603 | 33.50% |
| Varner | 657 | 20 | 0 | 58 | 47 | 19 | 0 | 669 | 1,585 | 42.21% |
| Wrightsville | 280 | 0 | 0 | 22 | 6 | 11 | 0 | 297 | 853 | 34.82% |
| Total | 4,732 | 244 | 1 | 730 | 667 | 136 | 1 | 4,916 | 15,083 | 32.59% |

ORCU Intake brought in 202 new STTG members into ADC last month.

STTG DISCIPLINARY REPORT – MARCH 2022

| Unit | STTG Incidents | STTG Suspected Incidents | Total Unit Disciplinary | Disciplinary Involving STTG | Percentage |
|--------------|----------------|--------------------------|-------------------------|-----------------------------|---------------|
| Benton | 0 | 0 | 13 | 6 | 46.15% |
| Cummins | 0 | 0 | 311 | 154 | 49.52% |
| Delta | 0 | 0 | 106 | 55 | 51.89% |
| EARU | 0 | 0 | 220 | 112 | 50.91% |
| Easter | 0 | 0 | 26 | 9 | 34.62% |
| Grimes | 0 | 0 | 224 | 105 | 46.88% |
| Hawkins | 0 | 0 | 1 | 0 | 0.00% |
| Max | 0 | 0 | 88 | 57 | 64.77% |
| Mcperson | 0 | 0 | 111 | 5 | 4.50% |
| MCWR | 0 | 0 | 4 | 1 | 25.00% |
| NCU | 1 | 0 | 69 | 32 | 46.38% |
| NWAWR | 0 | 0 | 1 | 0 | 0.00% |
| ORCU | 0 | 0 | 131 | 50 | 38.17% |
| ORCU Intake | 0 | 0 | 6 | 1 | 16.67% |
| Pine Bluff | 0 | 0 | 43 | 19 | 44.19% |
| RLW | 0 | 0 | 133 | 94 | 70.68% |
| TWR | 0 | 0 | 2 | 1 | 50.00% |
| Tucker | 0 | 0 | 43 | 23 | 53.49% |
| Varner | 0 | 0 | 156 | 98 | 62.82% |
| Wrightsville | 0 | 0 | 50 | 29 | 58.00% |
| Total | 1 | 0 | 1,738 | 851 | 48.96% |

STTG COUNTS BY STTG SET – MARCH 2022

| STTG Set | Benton | Cummins | Delta | EARU | Ester | Grimes | Hawkins | Max | Mcperson | MCWR | NCU | NWAWR | ORCU | Intake | PB | RLW | TWR | Tucker | Varner | Wrightsville | Total |
|--------------|-----------|------------|------------|------------|------------|------------|-----------|------------|-----------|-----------|------------|-----------|------------|-----------|------------|------------|-----------|------------|------------|--------------|--------------|
| Asian | 1 | 2 | 0 | 0 | 0 | 0 | 0 | 0 | 0 | 1 | 1 | 0 | 1 | 1 | 0 | 0 | 0 | 1 | 0 | 0 | 8 |
| Bloods | 10 | 147 | 39 | 120 | 18 | 72 | 7 | 63 | 3 | 9 | 50 | 12 | 70 | 8 | 21 | 39 | 10 | 33 | 151 | 58 | 940 |
| Crips | 4 | 72 | 21 | 74 | 11 | 36 | 8 | 34 | 8 | 4 | 29 | 2 | 40 | 4 | 21 | 13 | 4 | 12 | 93 | 42 | 532 |
| Folk | 4 | 60 | 0 | 48 | 6 | 34 | 10 | 28 | 7 | 1 | 16 | 5 | 118 | 3 | 5 | 8 | 2 | 16 | 64 | 17 | 452 |
| GD | 15 | 146 | 49 | 160 | 24 | 76 | 1 | 68 | 0 | 13 | 53 | 0 | 24 | 2 | 51 | 42 | 13 | 56 | 151 | 59 | 1,003 |
| Mexican | 1 | 16 | 5 | 16 | 7 | 12 | 3 | 3 | 3 | 2 | 6 | 1 | 13 | 3 | 7 | 9 | 0 | 5 | 26 | 12 | 150 |
| Motorcycle | 0 | 2 | 1 | 1 | 0 | 0 | 1 | 1 | 1 | 0 | 3 | 0 | 2 | 0 | 1 | 2 | 0 | 0 | 1 | 2 | 18 |
| Other | 4 | 18 | 9 | 18 | 13 | 11 | 4 | 8 | 3 | 0 | 14 | 1 | 21 | 4 | 7 | 11 | 2 | 8 | 23 | 10 | 189 |
| People | 1 | 24 | 9 | 23 | 2 | 25 | 3 | 19 | 2 | 0 | 13 | 1 | 14 | 3 | 9 | 6 | 0 | 8 | 19 | 8 | 189 |
| Unknown | 1 | 17 | 2 | 17 | 0 | 1 | 1 | 4 | 0 | 0 | 3 | 0 | 23 | 6 | 0 | 1 | 2 | 7 | 3 | 9 | 97 |
| W/S | 17 | 61 | 51 | 49 | 18 | 51 | 2 | 8 | 10 | 6 | 48 | 7 | 118 | 22 | 38 | 31 | 10 | 23 | 56 | 33 | 659 |
| AB | 0 | 8 | 0 | 4 | 2 | 4 | 1 | 1 | 0 | 1 | 2 | 0 | 3 | 3 | 11 | 1 | 0 | 3 | 10 | 3 | 57 |
| AC | 0 | 8 | 8 | 13 | 4 | 8 | 0 | 5 | 0 | 0 | 8 | 0 | 1 | 1 | 11 | 2 | 3 | 3 | 13 | 5 | 93 |
| NAE | 6 | 38 | 9 | 31 | 4 | 18 | 2 | 15 | 0 | 3 | 12 | 0 | 9 | 6 | 2 | 14 | 1 | 7 | 26 | 17 | 220 |
| WAR | 7 | 33 | 17 | 39 | 10 | 31 | 6 | 19 | 0 | 1 | 26 | 0 | 13 | 7 | 0 | 21 | 4 | 20 | 33 | 22 | 309 |
| Total | 71 | 652 | 220 | 613 | 119 | 379 | 49 | 276 | 37 | 41 | 284 | 29 | 470 | 73 | 184 | 200 | 51 | 202 | 669 | 297 | 4,916 |

Key:

GD = Gangster Disciples

W/S = White Supremacist

NAE = New Aryan Empire

WAR = White Aryan Resistance

AC = Aryan Circle

AB = Aryan Brotherhood

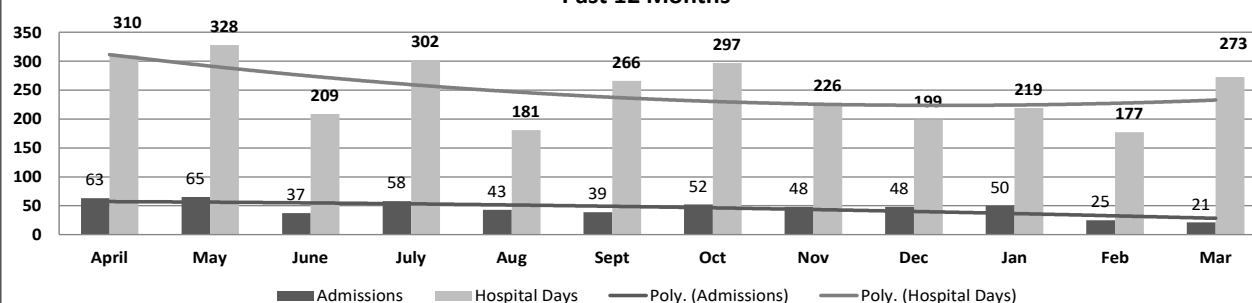
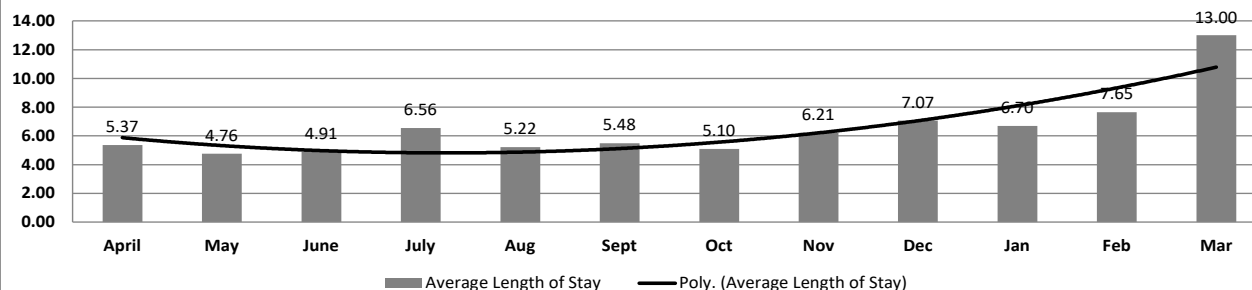
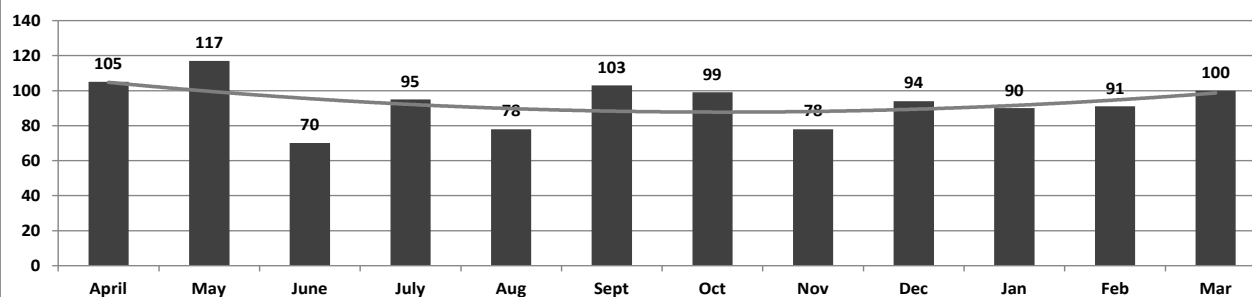
ADC INPATIENT AND EMERGENCY ROOM UTILIZATION

ADC Inpatient Statistics Past 12 Months

| | 2021 | | | | | | | | | 2022 | | | |
|------------------------|-------|------|------|------|------|------|------|------|------|------|------|-------|---------|
| | April | May | June | July | Aug | Sept | Oct | Nov | Dec | Jan | Feb | Mar | Average |
| Admissions | 63 | 65 | 37 | 58 | 43 | 39 | 52 | 48 | 48 | 50 | 25 | 21 | 45.8 |
| Hospital Days | 310 | 328 | 209 | 302 | 181 | 266 | 297 | 226 | 199 | 219 | 177 | 273 | 248.9 |
| Average Length of Stay | 5.37 | 4.76 | 4.91 | 6.56 | 5.22 | 5.48 | 5.10 | 6.21 | 7.07 | 6.70 | 7.65 | 13.00 | 5.44 |

ADC ER Visits Past 12 Months

| | 2021 | | | | | | | | | 2022 | | | |
|-----------------------|-------|-----|------|------|-----|------|-----|-----|-----|------|-----|-----|---------|
| | April | May | June | July | Aug | Sept | Oct | Nov | Dec | Jan | Feb | Mar | Average |
| Emergency Room Visits | 105 | 117 | 70 | 95 | 78 | 103 | 99 | 78 | 94 | 90 | 91 | 100 | 93.3 |

ADC Inpatient Utilization
Past 12 MonthsADC Inpatient Average Length of Stay
Past 12 MonthsADC Emergency Room Visits
Past 12 Months

MEDICAL GRIEVANCE BOARD REPORT – MARCH 2022

| Unit | <i>Acknowledged/ Received</i> | <i>Rejected</i> | <i>Reviewed & Signed by Dep Director</i> | <i>With Merit</i> | <i>With Merit, but Resolved</i> | <i>% With Merit</i> | <i>Without Merit</i> |
|---------------------|-----------------------------------|-----------------|--|-------------------|-------------------------------------|---------------------|----------------------|
| Benton | 0 | 0 | 0 | 0 | 0 | 0% | 0 |
| CMU | 0 | 0 | 0 | 0 | 0 | 0% | 0 |
| Cummins | 28 | 2 | 15 | 0 | 0 | 0% | 15 |
| Delta | 5 | 0 | 5 | 0 | 0 | 0% | 5 |
| EARU | 7 | 0 | 20 | 0 | 0 | 0% | 20 |
| EARU Max | 16 | 1 | 45 | 0 | 0 | 0% | 45 |
| Ester | 7 | 0 | 1 | 0 | 0 | 0% | 1 |
| Grimes | 7 | 3 | 6 | 1 | 0 | 17% | 5 |
| Hawkins | 0 | 0 | 0 | 0 | 0 | 0% | 0 |
| McPherson | 10 | 3 | 11 | 0 | 0 | 0% | 11 |
| MCWRC | 0 | 0 | 0 | 0 | 0 | 0% | 0 |
| MSU | 9 | 0 | 23 | 0 | 0 | 0% | 23 |
| North Central | 9 | 3 | 7 | 1 | 0 | 14% | 6 |
| NWAWRC | 0 | 0 | 0 | 0 | 0 | 0% | 0 |
| Ouachita | 9 | 2 | 11 | 0 | 0 | 0% | 11 |
| Pine Bluff | 5 | 0 | 1 | 0 | 0 | 0% | 1 |
| Randall L. Williams | 1 | 0 | 2 | 0 | 0 | 0% | 2 |
| SNN | 0 | 0 | 0 | 0 | 0 | 0% | 0 |
| TRCC | 0 | 0 | 0 | 0 | 0 | 0% | 0 |
| Tucker | 18 | 3 | 0 | 0 | 0 | 0% | 0 |
| Varner | 3 | 1 | 7 | 0 | 0 | 0% | 7 |
| Varner Super Max | 23 | 1 | 11 | 0 | 0 | 0% | 11 |
| WRU | 0 | 2 | 5 | 0 | 0 | 0% | 5 |
| WHM | 0 | 0 | 0 | 0 | 0 | 0% | 0 |
| WWR | 0 | 0 | 0 | 0 | 0 | 0% | 0 |
| Total | 157 | 21 | 170 | 2 | 0 | 1% | 168 |

CHAPLAINCY

| Month: March Year: 2022 | | CUMMINS | DELTA REGIONAL | EAST ARKANSAS | EAST ARKANSAS MAX | ESTER | GRIMES | HAWKINS | MAXIMUM | MCPHERSON | NORTH CENTRAL | OUACHITA RIVER | PINE BLUFF | RANDALL L. WILLIAMS | TUCKER | VARNER | VARNER MAX | WRIGHTSVILLE | TOTAL |
|---|-------|---------|----------------|---------------|-------------------|-------|--------|---------|---------|-----------|---------------|----------------|------------|---------------------|--------|--------|------------|--------------|-------|
| Services Chaplains Oversaw | | | | | | | | | | | | | | | | | | | |
| Christian | | | | | | | | | | | | | | | | | | | |
| Population | 0 | 0 | 0 | 0 | 4 | 0 | 0 | 0 | 5 | 8 | 14 | 4 | 0 | 2 | 14 | 0 | 0 | 51 | |
| Segregation | 0 | 0 | 0 | 0 | 3 | 0 | 0 | 0 | 0 | 0 | 0 | 0 | 0 | 0 | 0 | 0 | 0 | 3 | |
| Muslim | | | | | | | | | | | | | | | | | | | |
| Population | 0 | 0 | 0 | 0 | 2 | 0 | 0 | 4 | 5 | 4 | 4 | 4 | 0 | 0 | 4 | 0 | 0 | 27 | |
| Segregation | 0 | 0 | 0 | 0 | 2 | 0 | 0 | 4 | 0 | 0 | 0 | 0 | 0 | 0 | 0 | 0 | 0 | 6 | |
| 87 | | | | | | | | | | | | | | | | | | | |
| Volunteers in Charge | | | | | | | | | | | | | | | | | | | |
| Protestant | 0 | 9 | 0 | 0 | 0 | 0 | 0 | 0 | 0 | 0 | 0 | 0 | 0 | 7 | 0 | 0 | 0 | 16 | |
| Catholic | 0 | 0 | 0 | 0 | 0 | 0 | 0 | 0 | 0 | 0 | 5 | 0 | 0 | 0 | 0 | 0 | 0 | 5 | |
| Muslim | 0 | 0 | 0 | 0 | 0 | 0 | 0 | 0 | 0 | 0 | 0 | 0 | 0 | 1 | 0 | 0 | 0 | 1 | |
| Other | 0 | 0 | 0 | 0 | 0 | 0 | 0 | 0 | 0 | 0 | 8 | 0 | 0 | 0 | 0 | 0 | 0 | 8 | |
| Baptism | 0 | 0 | 0 | 0 | 0 | 0 | 0 | 0 | 0 | 0 | 0 | 0 | 0 | 6 | 0 | 0 | 0 | 6 | |
| Marriages | | | | | | | | | | | | | | | | | | | |
| | 0 | 0 | 0 | 0 | 0 | 0 | 0 | 0 | 0 | 0 | 0 | 0 | 0 | 0 | 0 | 0 | 0 | 0 | |
| Distributed by Chaplains | | | | | | | | | | | | | | | | | | | |
| Greeting Cards | 55 | 0 | 0 | 0 | 241 | 73 | 0 | 36 | 251 | 41 | 150 | 26 | 29 | 217 | 22 | 171 | 90 | 1,402 | |
| Bibles,Quran,Torrah, Etc. | 38 | 35 | 18 | 29 | 23 | 35 | 13 | 14 | 65 | 18 | 215 | 7 | 45 | 45 | 7 | 18 | 40 | 665 | |
| Study Course | 0 | 10 | 15 | 16 | 91 | 5 | 0 | 6 | 30 | 0 | 40 | 34 | 8 | 107 | 0 | 3 | 0 | 365 | |
| Writing Supplies | 0 | 0 | 0 | 0 | 57 | 97 | 70 | 11 | 70 | 0 | 500 | 0 | 0 | 83 | 0 | 0 | 500 | 1,388 | |
| Literature | 1,678 | 625 | 412 | 382 | 0 | 139 | 200 | 142 | 910 | 252 | 325 | 102 | 52 | 857 | 779 | 263 | 300 | 7,418 | |
| Chaplain's Visits | | | | | | | | | | | | | | | | | | | |
| Barracks | 55 | 26 | 35 | | 24 | 17 | 4 | 29 | 25 | 98 | 32 | 23 | 84 | 115 | 432 | 21 | 10 | 1,030 | |
| Approximate Hours Spent in Barracks | 71 | 6 | 2 | 0 | 6 | 10 | 1 | 24 | 10 | 25 | 10 | 5 | 38 | 28 | 170 | 12 | 3 | 421 | |
| Inmate Office visits | 42 | 145 | 62 | 0 | 33 | 21 | 46 | 1 | 43 | 10 | 23 | 8 | 41 | 131 | 98 | 0 | 25 | 729 | |
| Other Office visits | 11 | 10 | 17 | 2 | 27 | 0 | 12 | 5 | 30 | 0 | 41 | 19 | 5 | 45 | 69 | 22 | 8 | 323 | |
| Hospital | 0 | 0 | 0 | 0 | 0 | 0 | 0 | 0 | 0 | 0 | 20 | 0 | 0 | 0 | 82 | 0 | 0 | 102 | |
| Infirmary/Sick Call | 4 | 5 | 2 | 0 | 3 | 0 | 0 | 5 | 0 | 4 | 24 | 0 | 2 | 4 | 16 | 5 | 2 | 76 | |
| Restrictive/Punitive Housing | 4 | 4 | 0 | 25 | 3 | 5 | 5 | 11 | 10 | 7 | 22 | 0 | 6 | 23 | 0 | 11 | 3 | 139 | |
| PC - DRU | | 4 | | | | | | | | | | | | | | | | 4 | |
| Visitation Days | 0 | 0 | 0 | 0 | 0 | 0 | 0 | 0 | 0 | 0 | 0 | 0 | 0 | 0 | 0 | 0 | 0 | 0 | |
| Volunteer Visits | | | | | | | | | | | | | | | | | | | |
| RCV | 0 | 0 | 0 | 0 | 0 | 0 | 0 | 0 | 3 | 0 | 0 | 0 | 0 | 0 | 0 | 0 | 0 | 3 | |
| OCV | 0 | 0 | 0 | 0 | 0 | 0 | 0 | 1 | 0 | 0 | 0 | 0 | 0 | 25 | 0 | 0 | 0 | 26 | |
| Spiritual Advisor | 0 | 0 | 0 | 0 | 0 | 0 | 0 | 0 | 0 | 0 | 1 | 0 | 0 | 1 | 0 | 0 | 0 | 2 | |
| CRA | 12 | 16 | 20 | 1 | 3 | 64 | 47 | 5 | 30 | 23 | 28 | 3 | 37 | 107 | 0 | 0 | 15 | 411 | |
| Religious Volunteer Hours | | | | | | | | | | | | | | | | | | | |
| Volunteer Hours | 24 | 16 | 89 | 2 | 22 | 289 | 70 | 11 | 144 | 116 | 128 | 24 | 37 | 178 | 0 | 0 | 30 | 1,180 | |
| Denominational/Volunteer Chaplain Hours | 12 | 19 | 0 | 0 | 131 | 34 | 68 | 18 | 5 | 221 | 10 | 0 | 0 | 8 | 0 | 0 | 40 | 566 | |
| 1,746 | | | | | | | | | | | | | | | | | | | |
| Other Activities of Chaplain | | | | | | | | | | | | | | | | | | | |
| Counseled Employees | 14 | 6 | 5 | 0 | 9 | 3 | 5 | 1 | 14 | 4 | 21 | 0 | 4 | 8 | 173 | 0 | 8 | 275 | |
| Orientation Sessions | 5 | 0 | 0 | 0 | 0 | 0 | 0 | 0 | 0 | 0 | 0 | 0 | 0 | 0 | 0 | 0 | 0 | 5 | |
| Free World Devotions | 0 | 0 | 0 | 0 | 3 | 7 | 0 | 0 | 1 | 0 | 2 | 0 | 0 | 3 | 27 | 0 | 0 | 43 | |
| Spoke in Churches | 10 | 0 | 7 | 0 | 2 | 0 | 1 | 0 | 1 | 1 | 1 | 2 | 0 | 2 | 27 | 0 | 0 | 54 | |
| Crisis Intervention Sessions | 0 | 14 | 2 | 0 | 0 | 0 | 2 | 0 | 12 | 6 | 16 | 3 | 9 | 8 | 5 | 5 | 12 | 94 | |
| Marriage Counseling | 0 | 0 | 0 | 0 | 2 | 0 | 0 | 0 | 1 | 0 | 0 | 0 | 0 | 0 | 0 | 0 | 0 | 3 | |
| Denominational Meeting | 0 | 0 | 0 | 0 | 3 | 0 | 0 | 1 | 0 | 0 | 0 | 0 | 0 | 0 | 0 | 0 | 0 | 4 | |
| Chaplain's Meeting | 2 | 1 | 1 | 0 | 0 | 2 | 2 | 0 | 2 | 1 | 1 | 0 | 1 | 2 | 6 | 0 | 0 | 21 | |
| Volunteer Training Session | 0 | 1 | 1 | 0 | 0 | 1 | 0 | 1 | 0 | 1 | 0 | 0 | 0 | 1 | 0 | 0 | 0 | 6 | |
| Chaplain Transfers | | | | | | | | | | | | | | | | | | | |
| | 0 | 0 | 0 | 0 | 0 | 1 | 0 | 0 | 0 | 0 | 0 | 0 | 0 | 0 | 0 | 0 | 0 | 1 | |
| Chaplain Promotions | | | | | | | | | | | | | | | | | | | |
| | 0 | 0 | 0 | 0 | 0 | 0 | 0 | 0 | 0 | 0 | 0 | 0 | 0 | 0 | 0 | 0 | 0 | 0 | |
| PAL PROGRAM | | | | | | | | | | | | | | | | | | | |
| Enrolled at start of month | 47 | 22 | 43 | 0 | 53 | 48 | 24 | 17 | 54 | 60 | 27 | 0 | 0 | 47 | 48 | 0 | 25 | 515 | |
| Enrolled during the month | 3 | 3 | 14 | 0 | 0 | 1 | 5 | 2 | 19 | 7 | 4 | 0 | 0 | 4 | 6 | 0 | 11 | 79 | |
| Removed From PAL Program | | | | | | | | | | | | | | | | | | | |
| # Paroled | 1 | 0 | 0 | 0 | 0 | 0 | 2 | 0 | 5 | 2 | 0 | 0 | 0 | 1 | 2 | 0 | 2 | 15 | |
| # Completed | 1 | 3 | 5 | 0 | 0 | 0 | 0 | 0 | 1 | 3 | 1 | 0 | 0 | 0 | 0 | 0 | 0 | 14 | |
| # Withdrew | 0 | 0 | 0 | 0 | 0 | 0 | 0 | 0 | 2 | 1 | 1 | 0 | 0 | 0 | 0 | 0 | 0 | 4 | |
| # Removed | 2 | 0 | 3 | 0 | 1 | 1 | 0 | 1 | 1 | 1 | 0 | 0 | 0 | 0 | 2 | 0 | 3 | 15 | |
| # Transferred | 1 | 0 | 2 | 0 | 2 | 0 | 4 | 0 | 8 | 0 | 0 | 0 | 0 | 1 | 0 | 0 | 1 | 19 | |
| Total Removed from PAL Program | 5 | 3 | 10 | 0 | 3 | 1 | 6 | 1 | 17 | 7 | 2 | 0 | 0 | 2 | 4 | 0 | 6 | 67 | |
| Total Enrolled at the End of the Month | 45 | 22 | 47 | 0 | 50 | 48 | 23 | 18 | 56 | 60 | 29 | 0 | 0 | 49 | 50 | 0 | 30 | 527 | |
| Volunteers In PAL | | | | | | | | | | | | | | | | | | | |
| | 2 | 1 | 4 | 0 | 5 | 0 | 11 | 0 | 0 | 6 | 0 | 0 | 0 | 0 | 0 | 0 | 5 | 34 | |
| Special Events: | | | | | | | | | | | | | | | | | | | |
| | 1 | 2 | 2 | 2 | 1 | 1 | 1 | 1 | 1 | 3 | 1 | 1 | 1 | 2 | 1 | 1 | 1 | 23 | |

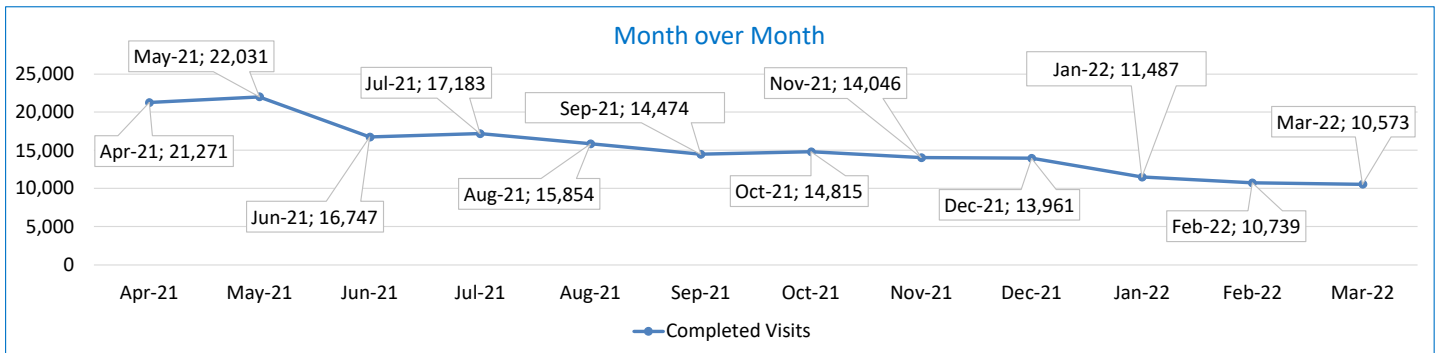
SECURUS VIDEO VISITATION REPORT MARCH 2022

AR-DOC SVV Activity Tracker

Total ADP 15,145

| Total Visits by Month | Apr-21 | May-21 | Jun-21 | Jul-21 | Aug-21 | Sep-21 | Oct-21 | Nov-21 | Dec-21 | Jan-22 | Feb-22 | Mar-22 |
|---------------------------|--------|--------|--------|--------|--------|--------|--------|--------|--------|--------|--------|--------|
| Total (Includes SuperMax) | 21,271 | 22,031 | 16,747 | 17,183 | 15,854 | 14,474 | 14,815 | 14,046 | 13,961 | 11,487 | 10,739 | 10,573 |
| Target Objective | 15,587 | 15,587 | 15,587 | 15,587 | 15,587 | 15,587 | 15,587 | 15,587 | 15,587 | 15,587 | 15,587 | 15,587 |

Anywhere Visitation Performance:



Completed Visits

| Site | Current Month | Previous Month |
|------------------------|---------------|----------------|
| Benton | 229 | 265 |
| Cummins | 782 | 927 |
| Delta Regional | 322 | 462 |
| East Arkansas Regional | 1,233 | 1,345 |
| Ester | 469 | 451 |
| Grimes | 923 | 836 |
| J Aaron Hawkins Sr. | 536 | 471 |
| Tucker Max | 615 | 555 |
| Mcperson | 465 | 471 |
| Mississippi County WRC | 127 | 145 |
| North Central | 1,031 | 976 |
| NW Arkansas WRC | 39 | 46 |
| Ouachita River | 990 | 1,071 |
| Pine Bluff Complex | 291 | 292 |
| Randall L Williams | 259 | 316 |
| State Police Barracks | 77 | 47 |
| Texarkana Regional | 85 | 79 |
| Tucker Unit | 208 | 208 |
| Varner | 1,108 | 1,043 |
| Wrightsville Unit | 766 | 713 |
| Pine Bluff Re-Entry | 18 | 20 |
| Tucker Re-entry | 0 | 0 |
| Total: | 10,573 | 10,739 |

Missed by Inmate

| Site | Current Month | Previous Month |
|------------------------|---------------|----------------|
| Benton | 8 | 17 |
| Cummins | 65 | 30 |
| Delta Regional | 27 | 11 |
| East Arkansas Regional | 44 | 33 |
| Ester | 18 | 3 |
| Grimes | 22 | 9 |
| J Aaron Hawkins Sr. | 20 | 43 |
| Tucker Max | 38 | 18 |
| Mcperson | 52 | 22 |
| Mississippi County WRC | 15 | 14 |
| North Central | 18 | 16 |
| NW Arkansas WRC | 8 | 2 |
| Ouachita River | 34 | 18 |
| Pine Bluff Complex | 6 | 9 |
| Randall L Williams | 15 | 10 |
| State Police Barracks | 1 | 1 |
| Texarkana Regional | 5 | 11 |
| Tucker Unit | 8 | 21 |
| Varner | 46 | 35 |
| Wrightsville Unit | 14 | 30 |
| Pine Bluff Re-Entry | 1 | 0 |
| Tucker Re-entry | 0 | 0 |
| Total: | 465 | 353 |

SECURUS TABLET REPORT MARCH 2022

| Facility Name | Subscription | Facility | Officer | Total | New Subscriptions |
|--|--------------|---------------|------------|---------------|-------------------|
| Benton Unit | 65 | 338 | 8 | 411 | 179 |
| Cummins Unit | 237 | 2,239 | 14 | 2,490 | 313 |
| Delta Regional Unit | 62 | 723 | 16 | 801 | 156 |
| East Arkansas Regional Unit | 131 | 1,712 | 10 | 1,853 | 237 |
| Ester Unit | 82 | 743 | 20 | 845 | 161 |
| Grimes Unit | 90 | 1,218 | 14 | 1,322 | 146 |
| J. Aaron Hawkins Sr. Center For Women | 90 | 546 | 19 | 655 | 127 |
| McPherson Unit | 102 | 1,130 | 15 | 1,247 | 344 |
| Mississippi County Work Release Center | 36 | 138 | 9 | 183 | 5 |
| North Central Unit | 127 | 898 | 10 | 1,035 | 176 |
| Northwest Arkansas Work Release Center | 30 | 109 | 8 | 147 | 51 |
| Ouachita River Correctional Unit | 173 | 1,944 | 14 | 2,131 | 324 |
| Pine Bluff Reentry Center | 13 | 63 | 0 | 76 | 1 |
| Pine Bluff Unit | 57 | 560 | 8 | 625 | 116 |
| Randall L. Williams Facility | 30 | 607 | 14 | 651 | 136 |
| State Police Barracks | 18 | 66 | 3 | 87 | 5 |
| Texarkana Regional Correctional Center | 21 | 104 | 10 | 135 | 80 |
| Tucker Maximum Security Unit | 66 | 651 | 15 | 732 | 82 |
| Tucker Re-Entry Center | 0 | 45 | 2 | 47 | 0 |
| Tucker Unit | 73 | 750 | 10 | 833 | 180 |
| Varner Unit | 140 | 1,793 | 21 | 1,954 | 242 |
| Wrightsville Unit | 104 | 891 | 6 | 1,001 | 262 |
| TOTAL | 1,747 | 17,268 | 246 | 19,261 | 3,323 |

CONSTRUCTION BUDGET / STATUS REPORT - APRIL 5, 2022 — [Page 1 of 2]

| Fund | Project Description | Approved Budget | Actual Budget Spent | Available Budget | \$ % Complete | Construction % Complete | Notes |
|---------|---|-----------------|---------------------|------------------|---------------|-------------------------|---|
| 700483A | EARU Max Rec Expanded Metal Rec Yard | 879,000 | 812,699 | 66,301 | 92% | 64% | Construction of the Rec Pens at EARU began on 1/03/2022. Currently working on demolition of old rec pens. The funds spent on this project is reflective of the engineering fees, material and construction of the panels. The remaining balance of construction completion will be actual construction of the rec pens. |
| 700483A | Tucker Max Expanded Metal Rec Yard | 1,800,000 | 1,139,825 | 660,175 | 63% | 25% | DBA Approved to proceed. We are constructing the panels on-site. Material list has been ordered and delivered. The funds spent on this project is reflective of engineering fees and the material needed to construct the rec pen panels. |
| 700483A | Cummins Expanded Metal Rec Yard | 368,617 | 50,012 | 318,605 | 14% | 0% | Plans on hold, will modify for exp. Metal. Funds spent on this project is reflective of engineering fees spent against this portion of the overall project. |
| KBR4Q95 | Bullpens | 851,999 | 388,676 | 463,323 | 46% | 45% | Varner & EARU complete. Installation underway at Max. Locks delivered. Working on bullpens now. |
| KBR4Q95 | 13 & 15 Barracks Door Revisions | 174,000 | 119,111 | 54,889 | 68% | 68% | All doors and locks installed in 13 Barracks. 15 barracks has been remeasured for quality assurance and we are fabricating the revisions at this time at Central Maintenance. |
| 7004828 | Integrity Energy Improvements Phase 2 at Tucker and Max | 18,603,150 | 5,881,173 | 12,721,977 | 32% | 30% | Lighting is complete at the Max and Tucker Unit. HVAC has began at the Max and Tucker Unit. Plumbing has also began at the MAX and Tucker Unit. |
| KBSHW18 | Tucker Water Treatment | 1,093,848 | 88,838 | 1,005,010 | 8% | 0% | The original blueprints has been completed and approved. The detail drawings are complete. Submittals has been presented to DBA for final approval. Awaiting notice to proceed. |
| KBSFW18 | Max Armory | 100,000 | 67,089 | 32,911 | 67% | 0% | We have our notice to proceed from DBA. Project was put on HOLD because reduction in staff and covering maintenance on several units. Dedicated staff to be on-site by 4/15 to begin preparation of site for construction. Project projected to begin on-site 4/15/2022. |
| KBR4Q95 | | | - | | | | |
| 7004810 | Administrative East Roof Replacement | 1,802,000 | 63,848 | 1,738,153 | 4% | 0% | Preconstruction meeting with contractor on 2/28/2022. Contractor has put his order in for material awaiting at ETD on material. Updated schedule was sent out on 3/25/2022. The funds spent is reflective of engineering fees. |
| 7004810 | Central Warehouse Roof Replacement | 424,000 | 21,179 | 402,822 | 5% | 0% | |
| 7004810 | RLW Roof Replacement | 3,074,000 | 126,590 | 2,947,410 | 4% | 0% | |
| 22V | NWARWRC Laundry and Commissary | 250,000 | 246,734 | 3,266 | 99% | 100% | Project is complete. |
| 865C | NCU Perimeter Security | 600,000 | 20,625 | 547,799 | 9% | 0% | We have received the notice to bid from DBA. That notice has been processed back to DBA and we are awaiting notice to proceed. Once notice to proceed is received the project will go out to our vendor to mobilize and set the start date for project. The funds spent is reflective of on-call design fees. |
| 7004820 | | | 25,301 | | | | |
| KBR4Q95 | | | 6,275 | | | | |
| N98 | Max Re-Entry Generator Project | 135,000 | 16,635 | 118,365 | 12% | 0% | Plans submitted to DBA. We have received our notice to proceed on this project. Funds spent are reflective of engineering fees. |
| KBR4Q95 | NCU Replacement Generator Project | 202,000 | 20,081 | 181,919 | 10% | 10% | DBA Approved. Generator is purchased. ETA is June 6, 2022. Funds spent on this project is on-call design fees and material needed once generator is received. |
| 7004820 | Tucker Asbestos Abatement | 448,000 | 368,845 | 79,155 | 82% | 100% | Performance of this contract is Complete. |
| 7004820 | Tucker 10 Barracks Sidewalk | 70,259 | 14,863 | 55,395 | 21% | 80% | Sidewalk is complete. We have installed post and wrapping with fence. Conduit and wire for lighting and cameras are ran. The difference in funds spent and construction complete is due to use of on-site material identified after the budget was approved. |



CONSTRUCTION BUDGET / STATUS REPORT - APRIL 5, 2022 — [Page 2 of 2]

| Fund | Project Description | Approved Budget | Actual Budget Spent | Available Budget | \$ % Complete | Construction % Complete | Notes |
|-------------------------------------|---|---------------------|---------------------|---------------------|---------------|-------------------------|--|
| 7004820 | Lethal Fence Control for Cummins, Varner SuperMax, Tucker Max, & EARU | 1,090,000 | 59,049 | 1,030,951 | 5% | 0% | Project has cleared DBA. The project will have a pre-bid walkthrough meeting on April 6, 2022. Once the walkthrough is completed it will be put out for bid. Funds spent on this project is reflective of on-call design fees. |
| Telephone Projects | | | | | | | |
| Maintenance & Operations | Fire Alarm Upgrades (All Units) | 41,000 | 21,230 | 19,770 | 52% | 50% | on-going |
| | Stainless Steel - Kitchen/Shower/Restrooms - All Units | 20,000 | 18,368 | 1,632 | 92% | 90% | continual need |
| | Gates and Fences all units | 25,000 | 13,609 | 11,391 | 54% | 50% | to improve security |
| | ACA Maintenance | 100,000 | 93,427 | 6,573 | 93% | 90% | Working with Wrightsville, Texarkana, Benton and Tucker with 2022 ACA. |
| | ADA Projects - All Units | 10,000 | 2,798 | 7,202 | 28% | 28% | Working with Varner for the sports field sidewalk. |
| | Fast Top Floor Systems (kitchen/laundry/showers all units) | 25,000 | 15,920 | 9,080 | 64% | 64% | Benton complete. MCWRC flooring has been delivered. Ouachita kitchen material has been ordered and awaiting arrival. |
| | Camera Equipment - All Units | 320,000 | 169,990 | 150,010 | 53% | 53% | cameras as requested/approved. |
| | Lock/Riot Gates - All Units | 90,500 | 31,926 | 58,574 | 35% | 30% | on-going. |
| | AC Units-All Units | 70,000 | 68,143 | 1,857 | 97% | 96% | repairing & replacing daily. |
| | Subtotal | \$ 701,500 | \$ 435,412 | \$ 266,088 | | | |
| Capital Projects FY21 Carry Forward | Metal Ceilings | 25,000 | - | 25,000 | 0% | 0% | Wrightsville showers are underway. |
| | ORCU Gravel Pit Operations | 35,000 | 13,585 | 21,415 | 39% | 39% | on-going. |
| | Dog Kennel/Horse Stable Malvern | 48,000 | 38,148 | 9,852 | 79% | 75% | Pad poured, walls erected roof installed. Finishing up metal work for the interior design. |
| | Emergency Generator - All Units | 130,000 | 49,266 | 80,734 | 38% | 38% | Cummins 300kW generator complete. Hawkins Unit Gen is installed and operational. Max Gen mat'l rec'd, Generator rec'd. Cummins East Bldg. we have approval awaiting Max generator install. |
| | Tucker 4 new filters & one aeration tank | 10,000 | 8,943 | 1,057 | 89% | 100% | Project is complete. |
| | Roof Repairs-Cummins | 130,700 | - | 126,099 | 4% | 4% | Prepared large order for multiple Units. Need repairs at ORCU, Wrightsville, Cummins & others. Varner & ORCU working on repairs, received TPO. Office of State Procurement secured a State contract to purchase roofing materials. |
| | Roof Repairs-Cummins Laundry | | - | | | | |
| | Construction/Maintenance | | - | | | | |
| | Roof Repairs-Delta | | 3,758 | | | | |
| | Roof Repairs-East Arkansas | | - | | | | |
| | Roof Repairs-Max | | - | | | | |
| | Roof Repair - NCU | | 842 | | | | |
| | Roof Repair - RLW | | - | | | | |
| | Roof Repairs-Tucker | | - | | | | |
| | Roof Repairs-Varner | | - | | | | |
| | Roof Repairs-Wrightsville | | - | | | | |
| | Subtotal | \$ 378,700 | \$ 114,543 | \$ 264,157 | | | |
| New Projects | Delta Perimeter | 622,000 | 25,677 | 596,323 | 4% | 0% | Project is under review at DBA for the change order to a visual surveillance alternate to the microwave fence system. Should have approval the week of 5/1/2022. Funds spent on this project is reflective of on-call design fees. |
| | Wrightsville Perimeter | | - | 0 | 0% | 0% | |
| | PB Warehouse Drive Replacement | 118,000 | - | 118,000 | 0% | 0% | Project suspended. |
| | Subtotal | \$ 740,000 | \$ 25,677 | \$ 714,323 | | | |
| | Architect Fees | 80,000 | 20,257 | 59,743 | 25% | | |
| | Total | \$ 1,900,200 | \$ 595,889 | \$ 1,304,311 | | | |

Notes Report has not been reconciled against Accountings Reconciled Reports.
Tolerance/Deviation is with in 1% of Projected Spending.