



DIVISION OF
CORRECTION

BOARD REPORT

December 2021



@ARDeptofCorrections



@adcpio



@arcorrections



Dexter Payne,
Director

POPULATION REPORT

RESEARCH/PLANNING

November 2021 Admissions and Releases –

Admissions for November 2021 totaled **414** (287-males and 127-females) while releases totaled **288** (226-males and 62 females) for a net increase in-house of **126** inmates.

Inmate Population Growth/Projection –

At the end of November 2021, the jurisdictional population for the Division of Correction totaled **16,982**, representing an increase of **888** inmates since the first of January 2021. At reporting time, calendar year 2021 has seen an average increase of **81** inmates per month, which is up from an average monthly decrease of **139** inmates per month during calendar year 2020.

Average County Jail Back-up –

The backup in the county jails averaged **2,130** inmates per day during the month of November 2021, which was up from the per-day average of **1,896** inmates during the month of October 2021. Of the **2,130** average, short-term revocations accounted for **628** (557 males and 71 females) during the month.

INSTITUTIONS

INMATE INSTITUTIONAL GRIEVANCES

Inmate Formal/Informal Grievances: During November 2021, a total of 1,257 formal grievances and 1,608 informal grievances were filed at various units.

Institutional Grievances Appeals: There was a total of 425 appeals of institutional grievances received in November 2021. Of those, 318 were acknowledged and 107 were rejected for various reasons. Of the total 272 appeals answered, 269 had no merit and three had merit.

FARM

The month of November remained dry, so field work continued at all farms. The wheat crops looked very good statewide due to warm weather, which allowed for good growth and tillering as the winter season approached. Rice, corn and soybean seeds for 2022 crops were purchased together during the month. By lumping all farms together for volume and prepaying in December, more than \$400,000 was saved on the price of the seed.

The weaning of beef herd calves took place during the month and steer calves were scheduled to be sold through Superior Auctions, Inc.

Crews from North Central Unit and the Newport Complex were able to put up a lot of extra hay for us this summer. The two crews put up 1,075 rolls of hay on ground that is normally only mowed at Grimes, EARU and Tucker/Tucker Max. This translates into a \$30,000 benefit for the farm. The hay will be used at units for horses and the Wrightsville beef herd.

Vegetables, including greens, sweet potatoes and kale, were gathered and moved into the kitchens.

The Farm Division lost a valued employee during the month. James Reeves, who worked in farm maintenance for several years, lost his battle with cancer and will be greatly missed.

REGIONAL MAINTENANCE HOURS

Regional Maintenance Hours	November 2021
Benton Unit	4,737
Delta Regional Unit	1,432
East Arkansas Regional Unit	104
Grimes Unit	1,844
McPherson Unit	1,384
Mississippi County Work Release	736
North Central Unit	5,152
Ouachita River Correctional Unit	3,368
Randall L. Williams Unit	2,272
Texarkana Regional Correctional Center	90
Tucker Unit	1,024
Varner Unit	2,192
Wrightsville Unit	1,096
Total Hours	25,431

WORK RELEASE RENT REPORT

Unit	November 2021
Benton Unit	\$101,966.00
Mississippi County Work Release	\$49,521.00
Northwest Arkansas Work Release	\$39,525.00
Pine Bluff Work Release	\$32,810.00
Texarkana Regional Correctional Center	\$31,909.00
Wrightsville Hawkins Unit	\$16,218.00
Total	\$271,949.00

REENTRY**RANDALL L. WILLIAMS****JUVENILE EDUCATION PROGRAM**

November 2021 Capacity: 20	Beginning Count	New Commitments	DCR/Punitive	Transferred/ Turned 18*	Paroled	End Count
Juveniles*	5	0	0	0	0	5

*Juveniles are transferred from the program once they reach the age of 18.

**WORKFORCE ALLIANCE FOR
GROWTH IN THE ECONOMY (WAGE)**

November 2021 Capacity: 120 Unit:	Beginning Count	Admissions During Mo.	Removed*	Completed	End Count
Delta	16	0	0	16	0
Hawkins	0	0	0	0	0
McPherson	0	0	0	0	0
Ouachita River	0	0	0	0	0
Tucker	0	0	0	0	0
TOTAL	16	0	0	16	0

*The "Removed" column indicates the number of participants who transferred, signed out, received a disciplinary, were removed because test scores were not returned/were too low to continue, or were released from prison.

**ADVANCED PRINCIPLES
AND APPLICATIONS FOR
LIFE PROGRAM (APAL)**

November 2021 Capacity: 86	Beginning Count	Admissions During Mo.	Removed*	End Count
Ester	56	2	3	55
Hawkins	31	2	6	27
TOTAL	87	4	9	82

Advanced PAL is an 18-month reentry program that combines a pre-release curriculum with the PAL program.

*The "Removed" column indicates the number of participants who paroled, completed the program, withdrew from the program, transferred, or were removed from the program for another reason.

**WRIGHTSVILLE-HAWKINS
PATHWAY TO FREEDOM PROGRAM**

November 2021 Capacity: 200	Beginning Count	Enrolled During the Month	Removed	End Count*
Wrightsville-Hawkins PTF	195	9	9	195

*The "End Count" column includes nine graduates who remain in the Pathway to Freedom barracks.

THINK LEGACY

November 2021 Capacity: 635 Unit	Beginning Count	Admitted	Graduated	Removed*	End Count
Cummins	0	0	0	0	0
Delta Regional	10	0	0	0	10
East Arkansas Regional	38	0	0	0	38
McPherson	0	0	0	0	0
North Central	27	0	0	0	27
Ouachita River	0	0	0	0	0
Tucker	18	0	0	1	17
Total	93	0	0	1	92

*The "Removed" column indicates the total number of participants who paroled, signed out, transferred, or were removed from the program for any other reason and are no longer in the barracks.

TRAINING**DIVISION OF CORRECTION
TRAINING - NOVEMBER 2021****BASIC TRAINING DIVISION –**

Under the direction of Instructor David Farrier, **BCOT Class 2021-M** graduated on November 5, 2021, with a total of 14 cadets.

The *Willis H. Sargent Award* recipient was Jerlisa Flowers of the Delta Regional Unit.

Academic Awards were presented to the following:

- 1st – Celita Buchanan, Texarkana Regional Maintenance;
- 2nd – Demauri Givens, Ester Unit
- 3rd – Jerlisa Flowers, Delta Regional Unit

Recipients of *Physical Fitness Awards* were:

- 1st – Demauri Givens, Ester Unit
- 2nd – Shaneka Lightsey, Ester Unit
- 3rd – Milton Moore, Cummins Unit

ADC TRAINING, continued

Instructor Nicholas Reed's **BCOT Class 2021-N** graduated on November 26, 2021, with a total of 14 cadets.

The *Willis H. Sargent Award* recipient was Ka'Cetrya Peacock of the East Arkansas Regional Unit.

Academic Awards were presented to the following:

- 1st – Deshawn Eans, Cummins Unit
- 2nd – Makheem Cobbs, Ester Unit
- 3rd – Morufu Oyekanmi, Varner Unit

Recipients of *Physical Fitness Awards* were:

- 1st – Makheem Cobbs, Ester Unit
- 2nd – Morufu Oyekanmi, Varner Unit
- 3rd – Javarus Curtis, Wrightsville Unit

IN-SERVICE DIVISION –

During the month, the Training Academy held a *Management Level I* class attended by 35 participants. Additionally, the following course was presented both live and virtually: *Regain, Refrain, Retain: Supervisor's Refresher*, which highlights the hot topics of supervision basics and techniques.

eCADEMY –

During November, 334 ADC employees completed a total of 4,566 hours of eCADEMY training. About 7% of ADC employees completed at least one course during that timeframe, averaging 13.6 hours per staff member.

HEALTH/CORRECTIONAL PROGRAMS**CHAPLAINCY SERVICES**

Delta Regional Unit – The Storybook Project returned on November 11 with two inmates having the opportunity to make a recording of themselves reading a book that will be sent to their children.

North Central Unit – Thanksgiving cards were distributed on November 5. A total of 2,520 cards were given to all of the inmates at the facility.

Randall L. Williams Unit – All inmates at the unit were gifted with Christmas cards, date books, and address books on November 26.

ACCREDITATION**ACA Internal Audits Completed:**

- 11/08–11/09 Delta Regional Unit
- 11/15–11/19 Wrightsville Complex File Review
- 11/22–11/24 Wrightsville Complex File Review

Classes Taught:

- 11/18 Basic Correctional Officer Training

Fire/Safety and Sanitation Independent Audits Conducted by the Fire and Sanitation Coordinator:

- 11/08–11/10 Delta Regional Unit

VOLUNTEER SERVICES**Total Number of Volunteer Hours for November 2021:**

Unit/Program	Hours
Delta Unit	0
East Arkansas Regional Unit	0
McPherson Unit	0
Mississippi County Work Release Center	0
Northwest Arkansas Work Release Center	18
Ouachita River Correctional Unit	0
Pine Bluff Complex	0
Texarkana Regional Correctional Center	0
Varner	0
PAWS	8
Think Legacy	0
Religious Services/Chaplaincy	1,379
Total Hours	1,405

MENTAL HEALTH SERVICES**Reduction of Sexual Victimization Program (RSVP) and Sex Offender Treatment Programs (SOFT):**

November 2021	Capacity	Beginning Count	Completed	Removed	Admissions	End Count
RSVP	238	145	0	2	0	143
SOFT	30	8	0	2	0	6
Total	268	153	0	4	0	149

There are 1,159 males on the waiting list for RSVP and five females on the waiting list for SOFT who are within five years of their TE date. Of those, 18 inmates are mandated by the Parole Board.

The average time on the waiting list from request is between one and two months for those stipulated.

*The total on the waiting list, including those not currently within the identified timeframe, is 1,500 males and five females. Of these, 1,178 are eligible and 327 are ineligible for the program. There is one PREA inmate in the program at this time.

*Ineligibility is due to being in restrictive housing, having class IV status, or receiving a major disciplinary within the last 60 days.

MENTAL HEALTH SERVICES, continued**Therapeutic Community (TC):**

November 2021 Unit	Capacity	Beginning Count	Completed	Removed	Admissions	End Count
Tucker	62	49	11	0	9	47
Wrightsville	50	48	4	2	3	45
Total	112	97	15	2	12	92

There are 578 males and 171 females on the waiting list who are within ten years of their release date. Of those, 19 are mandated by the Parole Board.

The average time on the waiting list from request is 20 days.

*The total on the waiting list, including those not currently within the identified timeframe, is 770 males and 182 females. Of these, 768 are eligible and 184 are ineligible for the program.

*Ineligibility is due to being in restrictive housing, having class IV status, or receiving a major disciplinary within the last 60 days.

Substance Abuse Treatment Program (SATP):

November 2021 Unit	Capacity	Beginning Count	Completed	Removed	Admissions	End Count
Benton	20	19	5	0	05	19
Cummins	45	38	7	2	13	42
Maximum Security	4	3	0	0	0	3
Randall L. Williams	150	120	32	9	24	103
Wrightsville	100	51	10	3	39	77
Total	469	231	54	14	81	244

There are 1,937 males and 148 females on the waiting list who are within five years of their release date. Of those, 37 are mandated by the Parole Board.

The average time on the waiting list from request is 13 days.

*The total on the waiting list, including those not currently within the identified timeframe, is 2,549 males and 171 females. Of these, 2,122 are eligible and 598 are ineligible for the program.

*Ineligibility is due to being in restrictive housing, having class IV status, or receiving a major disciplinary within the last 60 days.

PILOT PROGRAM – Substance User Rehabilitation Services (SURS):

November 2021 Unit	Capacity	Beginning Count	Completed	Removed	Admissions	End Count
McPherson	150	109	20	13	57	133
Grimes	50	43	4	3	14	50
Total	200	152	24	16	71	183

Substance Use Intervention Program: The Substance Use Intervention Program had 11 admissions and 3 discharges for an end-of-month count of 37 in November. This program is housed at the Varner Unit and is for inmates found guilty of a disciplinary violation for drug use or drug possession.

Ouachita River Correctional Unit (ORCU) Residential Program Unit (RPU): The RPU had three admissions and two discharges in November for an end-of-month count of 120.

McPherson Unit Mental Health Residential Program Unit (RPU): There were two admissions and two discharges in November for an end-of-month count of 38.

Habilitation Program: The Habilitation Program at the Ouachita River Correctional Unit provided treatment services to 45 inmates in November. There was one admission and two discharges, which resulted in an end-of-month count of 43.

Anger Management Treatment: The Anger Management Treatment Program at the Cummins Unit did not provide treatment services to any inmates in November. There were no admissions or discharges, for an end-of-month count of zero.

Staffing: The following Mental Health Services and Substance Abuse Treatment Program (SATP) positions were vacant in October and November 2021:

Positions	FTE's*	October 2021	November 2021
Psychologists	14	6	6
Psychological Examiners	2	1	2
Social Workers	31	17	17
Licensed Professional Counselors	2	1	1
Rehab Director	1	1	1
Rehab Facility Supervisors	3	1	1
Advisors	64	26	23
Substance Abuse Program Coord.	6	0	1
Substance Abuse Program Leaders	40	9	8
Administrative Specialists	17	3	3

*FTE refers to authorized Full Time Equivalent positions.

ADDITIONAL MENTAL HEALTH AND MEDICAL INFORMATION

Self-Study Classes:

Classes	Number of Participants	Number Completed	Waiting List
Anger Management	213	200	829
Thinking Errors	217	194	850
Substance Abuse Education	237	231	612
Communication Skills	114	114	800
Domestic Violence	81	79	203
Victims of Domestic Violence	20	20	29
Stress Management	113	112	875
Parenting	77	77	344

Suicide: There were 92 suicidal threats in November. There were seven attempts, none of which resulted in death.

Outpatient: There were 2,007 inmates on the mental health medical log at the beginning of November. Mental Health staff conducted the following contacts during the month:

Case Management Contacts	2,055
Requests for Interviews	1,192
Testing	0
Intakes	285
Unit Requests	1,175
Pre-Lockup Reviews	350
Routine Restrictive Housing Reviews	1,638
Restrictive Housing Rounds	17,007
PREA Evaluations	92
Routine Follow-up	692
834 Requests	36

County Mental Health Requests: During November, there were 327 requests received of a mental health nature. Of those, 177 inmates were fast-tracked to ADC. ***Note: Most inmates were not transferred due to COVID-19.***

County Medical Health Requests: During November, there were 814 requests received of a medical nature. A total of 12 inmates were fast-tracked to ADC.

Medical Contract Reimbursements: Sanction reimbursements for ADC in October amounted to \$8,700.00.

Deaths: There were six inmate deaths during the month of November. One was claimed and five were cremated.

Wellpath: See attachment for Wellpath's report regarding outside beds and emergency room visits.

Medical Grievances: In November, there were 129 appeals of medical grievances received and 156 appeals were answered. Four were found to be with merit and two with merit but resolved.

SEX OFFENDER ASSESSMENT

Assessments Completed:

Risk Level	November	September 1999 through November 2021
Level 1	3	1,217
Level 2	46	8,617
Level 3	28	7,438
Level 4	0	725
Default 3	1	*
Total	78	17,997
*Default Level 3's are included in the total number of Level 3's to date.		

ACIC Numbers:

The total number of sex offenders registered from September 1999 through November 2021:

Compliant	8,587
Delinquent	1,387
Confined	3,356
Out-of-State	3,952
Address Unknown	149
Deported	208
Incapacitated	99
Out of USA	17
Total	17,755

Consistent with current Arkansas law, deceased offenders no longer remain on the registry.

PAWS IN PRISON

November 2021 Unit	Enrolled	Graduated	Foster	Volunteer Hours
Hawkins Unit	6	4	0	0
Maximum Security Unit	10	7	0	0
McPherson Unit	8	0	0	0
North Central Unit	4	2	0	0
Ouachita River Correctional Unit	6	3	0	0
Randall L. Williams Unit	4	2	0	8
Tucker Unit	9	4	0	0
Total	47	22	0	8

Completed Paws in Prison Training:

November 2021 Program Graduates	22
YTD 2021 Program Graduates	181
Total Graduates Since Inception (December 2011)	1,844
Dogs Currently in Foster (Graduated, but Not Adopted)	0
November 2021 Volunteer Hours	8
YTD Volunteer Hours	70

INFORMATION TECHNOLOGY

INMATE TABLETS – Within the Division of Correction, a total of 1,974 inmate tablets were leased during November.

INMATE VIDEO VISITS – Inmates completed 14,046 video visits during the month and missed 340 within the Division of Correction.

CONSTRUCTION/MAINTENANCE**PROJECT UPDATES**

SEE CONSTRUCTION BUDGET / STATUS REPORT IN ATTACHMENTS SECTION (PAGES 23-24).

AGENCY HIGHLIGHTS**NOVEMBER 2021:****PROMOTIONS**

Some of the promotions that occurred during the month of November included:

East Arkansas Regional Unit

- Field Sgt. Briana Clemons
- Lt. Leavy Watson
- Lt. Jay Wilborn

Maximum Security Unit

- Sgt. David James

Ouachita River Correctional Unit

- Sgt. Christian Tillman (*top*)

Randall L. Williams Unit

- Lt. Cagney Pickett
- Sgt. Candice Tyson (*bottom*)

**UNIT AWARDS**

The following are the remaining 2021 ADC unit award winners not previously recognized. They will all be in the running for the Division's annual Pinnacle Awards.

**Admin East**

- Employee of the Year – Donna Heflin
- Supervisor of the Year – Vicki Bice

Central Office

- Employee of the Year – Roni Gean
- Supervisor of the Year – Bob Parker

Delta Unit

- Employee of the Year – Angela King
- Supervisor of the Year – Pamela Burke
- Correctional Officer of the Year – Sgt. Courtney Thrower
- Correctional Supervisor of the Year – Capt. Kimberly Lum

Ester Unit

- Employee of the Year – Cozette Fuller
- Supervisor of the Year – Sharone Ware
- Correctional Officer of the Year – Cpl. Canessa King
- Correctional Supervisor of the Year – Sgt. Teresa Meadows
- Warden's Outstanding Service Award – Major Michael Lowe

Grimes Unit

- Employee of the Year – Robert Potter
- Supervisor of the Year – Deputy Warden Kenneth Davis
- Correctional Officer of the Year – Cpl. Willie Harris
- Correctional Supervisor of the Year – Lt. Devin Thorne

Mississippi County Work Release Center

- Employee of the Year – Cynthia Brown
- Supervisor of the Year – Capt. Nicholas Naracon
- Correctional Officer of the Year – Cpl. Lauren Stanley
- Correctional Supervisor of the Year – Sgt. Robert Mcadams
- Warden's Outstanding Service Award – Capt. Nicholas Naracon

Northwest Arkansas Work Release Center

- Employee of the Year – Blake Barnes

North Central Unit

- Employee of the Year – LaJetta McMahan
- Supervisor of the Year – Michael Smith
- Correctional Officer of the Year – Cpl. David Phillips
- Correctional Supervisor of the Year – Capt. Christopher Brandon

AGENCY HIGHLIGHTS, *continued*

Pine Bluff Unit

- Employee of the Year – Jessica Jernigan
- Supervisor of the Year – Deputy Warden Emmer Branch
- Correctional Officer of the Year – Cpl. Vivian Johnson
- Correctional Supervisor of the Year – Lt. Linda Arnold
- Warden's Outstanding Service Award – Mary Reynolds

Randall L. Williams Unit

- Employee of the Year – Katrina Rowland
- Supervisor of the Year – Kenyada Ireland
- Correctional Officer of the Year – Cpl. Shead Charles
- Correctional Supervisor of the Year – Sgt. Melissa Smith
- Warden's Outstanding Service Award – Major (now Deputy Warden) Randy Straughn

Texarkana Regional Correctional Center

- Employee of the Year – Catherine Siders
- Supervisor of the Year – Lt. Eric Keener
- Correctional Officer of the Year – Cpl. Kamisha Fedrick
- Warden's Outstanding Service Award – Lynda McGhee

Varner Unit

- Employee of the Year – Felicia Gordon
- Supervisor of the Year – Dexter McDonnell
- Correctional Officer of the Year – Cpl. Larry Giles
- Correctional Supervisor of the Year – Lt. Malcolm Crompton
- Warden's Outstanding Service Award – Major Brandon Carroll and Barbara Smallwood

Wrightsville Complex

- Correctional Officer of the Year – Sgt. Sylvester White (Hawkins)

PATHWAY TO FREEDOM MEETING HELD WITH WRIGHTSVILLE COMPLEX STAFF

Leaders from the Wrightsville/Hawkins Unit and Pathway to Freedom, Inc. met in November to discuss building on the program's success.

Pathway to Freedom is a Christian service program that provides educational, values-based, pre-release services to inmates while preparing them for reentry into the community.



PROGRAM RECEIVES DOG TREAT DONATION

During the month, our four-legged friends in the Paws in Prison program at the Hawkins Unit were gifted with a big assortment of dog bone treats created and donated by Claudia's Canine Bakery.

CHARLIE BRENKE HONORED WITH WELLPATH AWARD

During the month, Charlie Brenke, CQI Coordinator for our healthcare provider Wellpath, was honored as the 2021 Employee of the Year at the Annual Wellpath Leadership Conference in Nashville.



MCPHERSON STAFF COMPETES IN COOKING COMPETITION

On Nov. 8, staff at the McPherson Unit staff competed in its inaugural "Golden Utensil Challenge." A total of 18 dishes



were entered to compete in either a chili cook off to win the Golden Spoon or a bake off to win the Golden Spatula.

The Golden Spoon was won by Monica Williams for her

southwest chili and second place was awarded to Kelly Whaley for venison chili.

The Golden Spatula winner was Ciara Dauck who won for both her pumpkin spice cake and citrus pecan pie. LeeAnn Elliott's chocolate pie placed second.

Trophies were handmade by Warden Nurxuhul Faust.

THINK LEGACY PILOT PROGRAM AT TUCKER UNIT HOST GUEST SPEAKERS

On Nov. 10, Jeremy McKenzie, Director of Covenant Recovery, and Carrie Williams, with the Division of Community Correction's reentry program, stopped by the Tucker Unit to speak to the participants in the Think Legacy Pilot Program led by Program Specialist Severron Miller. Discussion focused on the barriers to reentry and how they can be overcome.



SPONSORED LIGHT DISPLAY DONATED TO ADC

The Pine Bluff Regional Park Festival of Lights Association donated a sponsored light display for ADC as part of their annual Enchanted Land of Lights and Legends at Jefferson Regional Park.



REGIONAL MAINTENANCE PROJECT HIGHLIGHTS NOVEMBER 2021

Army National Guard 1st Battalion HQ - Malvern

ORCU Regional Maintenance – Nov. 1:



Grounds Clean Up at Church in Portland

Delta Regional Maintenance – Nov. 8-15:



Fence Row Clean Up at Cummins

Varner Regional Maintenance 1 – Nov. 10:



Christmas Display Setup at PB Regional Park

Pine Bluff Regional Maintenance – Nov. 12:



Litter Clean Up on Highway 384

Grimes Regional Maintenance – Nov. 17:



Park Installation of Christmas Lights (White Hall)

Pine Bluff Regional Maintenance – Nov. 30:



2021 INFORMAL GRIEVANCE REPORT

Month	BENTON	HAWK/M	HAWK/F	WRTS	EARU & MX	GRIMES	RLW	MCWR	MCPH	MSU	NCU	PBU	NWA	TU	TRCC	VSMX	VU	CU & CMU	ORCU	Ester	DRU	TOTAL
JAN	1	30	1	56	269	243	41	0	301	147	106	43	0	62	0	152	26	124	174	41	99	1,916
FEB	1	15	22	78	185	177	25	0	465	149	67	26	0	91	3	163	37	363	112	27	63	2,069
MAR	1	15	22	87	279	207	11	0	376	149	66	38	0	120	4	188	29	196	164	52	96	2,100
APR	3	15	24	70	297	173	18	0	210	108	142	38	0	86	5	362	77	178	163	16	128	2,113
MAY	2	15	14	37	254	188	19	0	320	103	104	22	0	49	4	220	46	254	128	12	158	1,949
JUN	1	30	29	37	253	259	29	0	461	123	133	46	0	53	4	452	133	241	166	32	148	2,630
JUL	2	31	42	227	245	187	23	1	138	128	91	32	0	59	3	373	109	166	166	41	134	2,198
AUG	2	31	40	96	248	188	29	0	426	136	114	30	0	71	1	367	48	172	158	42	149	2,348
SEPT	1	10	42	164	248	161	34	0	193	148	101	35	0	74	0	347	40	113	182	28	111	2,032
OCT	1	13	7	90	172	139	16	0	429	123	97	29	0	53	1	202	14	131	193	26	113	1,849
NOV	2	27	24	54	175	159	19	0	202	124	126	52	0	52	0	178	20	156	139	25	74	1,608
DEC	0	0	0	0	0	0	0	0	0	0	0	0	0	0	0	0	0	0	0	0	0	0
TOTAL	17	232	267	996	2,625	2,081	264	1	3,521	1,438	1,147	391	0	770	25	3,004	579	2,094	1,745	342	1,273	22,812

2021 FORMAL GRIEVANCE REPORT

Month	BENTON	HAWK/M	HAWK/F	WRTS	EARU & MX	GRIMES	RLW	MCWR	MCPH	MSU	NCU	PBU	NWA	TU	TRCC	VSMX	VU	CU & CMU	ORCU	Ester	DRU	TOTAL
JAN	1	15	1	30	293	176	17	0	173	197	71	24	0	55	2	152	26	150	125	22	44	1,574
FEB	2	7	8	40	272	115	21	0	158	186	51	8	0	79	0	163	37	126	89	16	35	1,413
MAR	3	7	8	53	375	98	7	0	188	264	47	8	0	92	0	188	29	149	147	27	96	1,786
APR	2	1	3	46	374	82	11	0	125	128	97	13	0	46	1	227	53	132	92	10	62	1,505
MAY	1	7	1	29	305	109	15	1	154	95	80	10	0	62	1	206	36	206	98	7	58	1,481
JUN	0	7	9	43	345	134	17	0	154	145	82	22	0	47	0	251	63	227	112	19	87	1,764
JUL	2	18	16	62	336	108	11	1	91	136	61	14	0	45	0	183	40	169	69	15	75	1,452
AUG	1	12	24	53	338	109	25	1	123	132	81	11	0	40	0	170	26	178	74	21	105	1,524
SEPT	4	5	14	72	292	86	19	0	102	163	57	13	0	64	1	161	20	130	96	12	61	1,372
OCT	1	2	3	35	245	84	16	0	137	132	67	14	0	32	1	169	16	135	116	13	48	1,266
NOV	0	8	11	43	276	105	9	0	134	130	59	13	0	45	0	178	20	104	69	12	41	1,257
DEC	0	0	0	0	0	0	0	0	0	0	0	0	0	0	0	0	0	0	0	0	0	0
TOTAL	17	89	98	506	3,451	1,206	168	3	1,539	1,708	753	150	0	607	6	2,048	366	1,706	1,087	174	712	16,394

INMATE INSTITUTIONAL GRIEVANCE APPEAL REPORT – NOVEMBER 2021

	Acknowledged	Rejected	Processed W/O Merit	Processed W/ Merit
Benton Unit	0	0	0	0
Benton Work Release	0	0	0	0
Bowie County Texas Correctional Facility	0	0	0	0
Cummins Unit	33	7	18	0
Cummins Modular Unit	0	1	1	0
Delta Regional Unit	12	3	6	0
East Arkansas Regional Unit	36	5	35	0
East Arkansas Regional Max Unit	36	9	28	0
Ester Unit	0	1	0	0
Grimes Unit	21	7	14	1
Maximum Security Unit	36	21	31	1
Tucker Re-Entry	0	0	0	0
McPherson Unit	5	8	16	0
McPherson Mental Health Residential Program Unit	0	0	0	0
Mississippi County Work Release Center	0	0	0	0
Northwest Arkansas Work Release Center	0	0	0	0
North Central Unit	21	2	13	0
Ouachita River Correctional Unit	5	2	7	0
ORCU Hospital	0	0	0	0
ORCU New Commitment	1	2	6	0
ORCU Mental Health Residential Program Unit	0	0	1	0
Pine Bluff Unit	3	1	3	1
Pine Bluff Re-Entry	0	0	0	0
Randall L. Williams Correctional Facility	1	1	10	0
Texarkana Regional Correctional Center	0	0	0	0
Tucker Unit	12	4	8	0
Varner Super Max	75	26	51	0
Varner Unit	4	0	8	0
Wrightsville Unit	11	6	10	0
Hawkins Center	3	0	2	0
Hawkins for Males	3	1	1	0
Hawkins SPU	0	0	0	0
Total	318	107	269	3

ADMISSIONS AND RELEASES – NOVEMBER 2021

<u>Admissions</u>	<u>Male</u>	<u>Female</u>	<u>Total</u>
Asian	4	0	4
Black	103	18	121
Hispanic	12	3	15
Native American Indian	1	1	2
Native Hawaiian or Pacific Isl.	0	0	0
White	165	105	270
Other	1	0	1
Unknown	1	0	1
Total	287	127	414

<u>Releases</u>	<u>Male</u>	<u>Female</u>	<u>Total</u>
Asian	2	0	2
Black	73	5	78
Hispanic	5	1	6
Native American Indian	3	0	3
Native Hawaiian or Pacific Isl.	1	0	1
White	141	56	197
Other	1	0	1
Unknown	0	0	0
Total	226	62	288

ADC INMATE POPULATION GROWTH 2000-2027 - NOVEMBER 2021

Updated 11/30/2021

Mo.	2000	2001	2002	2003	2004	2005	2006	2007	2008	2009	2010	2011	2012	2013	2014	2015	2016	2017	2018	2019	2020	2021
Jan.	11,984	11,908	12,402	13,015	13,105	13,595	13,481	13,839	14,518	14,796	15,334	16,312	15,134	14,815	17,481	18,142	17,785	17,824	18,201	17,958	17,989	16,119
Feb.	12,169	12,022	12,529	13,054	13,166	13,783	13,633	14,012	14,603	14,883	15,374	16,209	14,990	15,008	17,438	18,082	17,625	17,608	17,998	17,846	18,181	16,120
March	12,006	12,033	12,299	13,108	13,088	13,418	13,534	13,772	14,580	14,843	15,290	16,095	14,964	14,665	17,395	18,233	17,573	17,666	18,089	17,898	17,860	16,085
April	12,069	12,167	12,465	13,213	13,323	13,469	13,554	13,851	14,769	14,937	15,570	16,172	15,124	14,850	17,604	18,703	17,815	17,798	18,227	17,977	17,331	16,250
May	12,109	12,384	12,558	13,463	13,556	13,528	13,711	14,146	14,880	15,146	15,694	16,062	15,132	15,074	17,593	18,693	17,769	17,652	17,945	17,817	16,694	16,476
June	12,005	12,108	12,439	13,418	13,389	13,251	13,430	13,915	14,700	15,025	15,564	15,554	14,832	14,825	17,340	18,813	17,973	17,963	17,972	17,942	16,552	16,560
July	12,030	12,190	12,622	13,509	13,528	13,286	13,560	14,082	14,868	15,195	15,807	15,519	14,879	15,379	17,522	18,870	18,130	18,180	18,005	18,002	16,511	16,638
August	12,087	12,371	12,815	13,565	13,632	13,419	13,646	14,224	15,100	15,385	15,829	15,240	14,675	16,103	17,549	18,806	17,919	18,051	17,751	18,090	16,367	16,655
September	11,983	12,289	12,774	13,341	13,516	13,237	13,652	14,217	14,850	15,285	16,025	15,172	14,724	16,412	17,605	18,549	18,026	18,179	17,865	17,856	16,215	16,698
October	12,119	12,348	12,942	13,341	13,584	13,363	13,775	14,349	14,836	15,381	16,311	15,271	14,856	16,993	17,880	18,430	18,127	18,348	17,943	17,947	16,311	16,821
November	12,094	12,408	13,162	13,408	13,706	13,587	13,913	14,437	15,025	15,340	16,460	15,205	14,625	17,168	17,848	17,981	17,573	17,973	17,666	18,060	16,165	16,982
December	11,856	12,333	12,845	13,106	13,470	13,338	13,728	14,315	14,716	15,199	16,204	15,062	14,654	17,235	17,874	17,707	17,537	18,078	17,799	17,759	16,094	
Net Ann. Inc.	29	477	512	261	364	-132	390	587	401	483	1,005	-1,142	-408	2,581	639	-167	-170	541	-279	-40	-1,665	888
Avg. Mo. Inc.	2	40	43	22	30	-11	33	49	33	40	84	-95	-34	215	53	-14	-14	45	-23	-3	-139	81

Population is total jurisdictional count at end of each month. Population at end of month December 1999 was 11,827.

Average monthly population increase for past fifteen years 2006 - 2020 is 15

Average monthly population increase for past ten years Jan. 2011 - Dec 2020 is -1

Average monthly population increase for past five years 2016 - 2020 is -27

Projected at Growth of 15 per Month

Mo.	2008	2009	2010	2011	2012	2013	2014	2015	2016	2017	2018	2019	2020	2021	2022	2023	2024	2025	2026	2027
	Actual	Actual	Actual	Actual	Actual	Actual	Actual	Actual	Actual	Actual	Actual	Actual	Actual	Actual	Proj.	Proj.	Proj.	Proj.	Proj.	Proj.
January	14,518	14,796	15,334	16,312	15,134	14,815	17,481	18,142	17,785	17,824	18,201	17,958	17,989	16,119	17,012	17,192	17,372	17,552	17,732	17,912
February	14,603	14,883	15,374	16,209	14,990	15,008	17,438	18,082	17,625	17,608	17,998	17,846	18,181	16,120	17,027	17,207	17,387	17,567	17,747	17,927
March	14,580	14,843	15,290	16,095	14,964	14,665	17,395	18,233	17,573	17,666	18,089	17,898	17,860	16,085	17,042	17,222	17,402	17,582	17,762	17,942
April	14,769	14,937	15,570	16,172	15,124	14,850	17,604	18,703	17,815	17,798	18,227	17,977	17,331	16,250	17,057	17,237	17,417	17,597	17,777	17,957
May	14,880	15,146	15,694	16,062	15,132	15,074	17,593	18,693	17,769	17,652	17,945	17,817	16,694	16,476	17,072	17,252	17,432	17,612	17,792	17,972
June	14,700	15,025	15,564	15,554	14,832	14,825	17,340	18,813	17,973	17,963	17,972	17,942	16,552	16,560	17,087	17,267	17,447	17,627	17,807	17,987
July	14,868	15,195	15,807	15,519	14,879	15,379	17,522	18,870	18,130	18,180	18,005	18,002	16,511	16,638	17,102	17,282	17,462	17,642	17,822	18,002
August	15,100	15,385	15,829	15,240	14,675	16,103	17,549	18,806	17,919	18,051	17,751	18,090	16,367	16,655	17,117	17,297	17,477	17,657	17,837	18,017
September	14,850	15,285	16,025	15,172	14,724	16,412	17,605	18,549	18,026	18,179	17,865	17,856	16,215	16,698	17,132	17,312	17,492	17,672	17,852	18,032
October	14,836	15,381	16,311	15,271	14,856	16,993	17,880	18,430	18,127	18,348	17,943	17,947	16,311	16,821	17,147	17,327	17,507	17,687	17,867	18,047
November	15,025	15,340	16,460	15,205	14,625	17,168	17,848	17,981	17,573	17,973	17,666	18,060	16,165	16,982	17,162	17,342	17,522	17,702	17,882	18,062
December	14,716	15,199	16,204	15,062	14,654	17,235	17,874	17,707	17,537	18,078	17,799	17,759	16,094	16,997	17,177	17,357	17,537	17,717	17,897	18,077
Net Ann. Inc.	401	483	1,005	-1,142	-408	2,581	639	-167	-170	541	-279	-40	-1,665	903	180	180	180	180	180	180
Ave. Mo. Inc.	33	40	84	-95	-34	215	53	-14	-14	45	-23	-3	-139	75	15	15	15	15	15	15

MONTHLY POPULATION AVERAGES - NOVEMBER 2021

Unit/Center	11/1	11/2	11/3	11/4	11/5	11/8	11/9	11/10	11/11	11/12	11/15	11/16	11/17	11/18	11/19	11/22	11/23	11/24	11/25	11/26	11/29	11/30	AVG
Benton	298	298	296	296	300	299	300	303	303	303	303	303	305	306	304	302	302	298	298	298	298	298	301
Cummins	1,904	1,927	1,924	1,922	1,917	1,916	1,915	1,912	1,912	1,912	1,921	1,921	1,921	1,919	1,918	1,923	1,923	1,918	1,918	1,918	1,918	1,918	1,918
Delta	604	603	603	592	583	603	604	604	603	603	607	607	606	604	606	615	615	604	602	602	602	602	603
East AR Reg	1,462	1,462	1,457	1,457	1,457	1,455	1,453	1,453	1,452	1,452	1,451	1,451	1,450	1,449	1,449	1,449	1,448	1,447	1,444	1,444	1,444	1,443	1,451
Ester	553	555	556	555	555	557	557	556	552	552	548	550	548	557	557	550	542	541	533	533	533	532	549
Grimes	1,045	1,056	1,056	1,055	1,052	1,047	1,046	1,049	1,045	1,045	1,040	1,038	1,038	1,037	1,036	1,038	1,038	1,036	1,032	1,032	1,032	1,031	1,042
Max Sec	556	556	557	558	558	558	558	558	558	558	558	558	558	558	558	556	556	556	555	555	555	555	557
McPherson	875	876	877	868	869	882	877	889	904	904	913	907	901	906	913	906	903	909	907	907	907	945	898
MCWRC	116	116	116	116	115	114	114	111	111	111	122	122	122	122	122	122	122	122	122	122	122	122	118
N Central	790	790	790	789	788	784	784	784	784	784	783	783	783	783	781	781	777	774	774	774	774	774	782
NWAWRC	100	100	99	100	100	100	100	100	100	100	100	100	100	98	100	100	100	100	100	100	100	99	100
Ouachita River	1,636	1,615	1,629	1,631	1,629	1,615	1,613	1,616	1,664	1,665	1,620	1,671	1,669	1,668	1,668	1,655	1,673	1,648	1,647	1,647	1,649	1,650	1,644
Randall L Williams	480	481	487	487	483	481	480	478	474	474	474	473	472	465	459	478	486	473	473	473	473	472	476
Pine Bluff	453	454	444	443	443	439	439	439	443	443	442	441	440	434	431	430	429	454	456	456	456	456	444
PB Reentry	54	54	54	54	54	54	54	54	54	54	54	54	54	53	54	54	54	54	54	54	54	54	54
TRCC	88	88	88	88	88	88	88	88	88	88	88	88	88	88	88	91	91	91	91	91	91	91	89
Tucker	648	648	646	643	643	642	640	643	642	642	641	641	641	639	637	630	627	627	625	625	625	625	637
Vanner	1,536	1,538	1,537	1,537	1,537	1,538	1,537	1,530	1,525	1,525	1,532	1,532	1,528	1,527	1,528	1,529	1,528	1,528	1,527	1,527	1,527	1,527	1,531
Wrightsville	733	751	747	748	757	758	756	752	752	752	762	762	761	758	758	779	781	791	786	786	786	787	764
WR Hawkins-Females	245	245	244	243	243	243	242	246	245	245	244	244	241	241	240	240	240	240	240	240	240	238	242
WR Hawkins-Males	195	194	194	196	195	195	195	195	195	195	198	198	200	200	200	196	195	195	195	195	195	195	196
Total ADC	14,371	14,407	14,401	14,378	14,366	14,368	14,352	14,360	14,406	14,407	14,401	14,444	14,426	14,412	14,407	14,424	14,430	14,406	14,379	14,379	14,381	14,414	14,396
ALETA	18	18	18	18	18	18	18	18	18	18	18	18	18	18	18	18	18	18	18	18	18	18	18
Ar State Police	54	54	54	54	54	54	54	54	54	54	53	53	53	54	54	54	54	54	59	59	59	59	55
Co Jail / M	1,826	1,801	1,821	1,844	1,877	1,884	1,891	1,916	1,896	1,895	1,920	1,895	1,927	1,951	1,985	1,949	1,956	1,974	1,987	1,986	1,985	1,984	1,916
Co Jail / F	224	222	224	232	234	219	227	219	203	203	203	210	208	199	195	195	195	191	205	205	205	169	209
Total Co Jail BK	2,050	2,023	2,045	2,076	2,111	2,103	2,118	2,135	2,099	2,098	2,123	2,105	2,135	2,150	2,180	2,144	2,151	2,165	2,192	2,191	2,190	2,153	2,125
309/M	214	212	212	213	216	215	218	219	220	220	221	221	220	220	220	220	222	223	223	223	223	224	219
309/F	91	92	92	92	91	90	91	91	92	92	90	90	90	90	90	90	90	90	90	90	90	90	91
Total Act 309	305	304	304	305	307	305	309	310	312	312	311	311	310	310	310	310	312	313	313	313	313	314	310
Total Non ADC	2,427	2,399	2,421	2,453	2,490	2,480	2,499	2,517	2,483	2,482	2,505	2,487	2,516	2,532	2,562	2,526	2,535	2,550	2,582	2,581	2,580	2,544	2,508
Total	16,798	16,806	16,822	16,831	16,856	16,848	16,851	16,877	16,889	16,889	16,906	16,931	16,942	16,944	16,969	16,950	16,965	16,956	16,961	16,960	16,961	16,958	16,904

FISCAL YEAR 2022 COUNTY JAIL BACKUP - NOVEMBER 2021

DAY		Jul-21		Aug-21		Sep-21		Oct-21		Nov-21
1		1,059	*	1,294		1,583		1,777		2,050
2		1,090		1,309		1,612	*	1,777		2,023
3	*	1,090		1,342		1,624	*	1,777		2,045
4	*	1,090		1,356	*	1,624		1,792		2,076
5		1,096		1,370	*	1,624		1,773		2,111
6		1,096		1,396		1,645		1,773	*	2,111
7		1,114	*	1,396		1,645		1,789	*	2,111
8		1,089	*	1,396		1,603		1,816		2,103
9		1,090		1,408		1,620	*	1,816		2,118
10	*	1,090		1,405		1,649	*	1,816		2,135
11	*	1,090		1,404	*	1,649		1,856		2,099
12		1,121		1,416	*	1,649		1,875		2,098
13		1,125		1,436		1,638		1,841	*	2,098
14		1,146	*	1,436		1,606		1,868	*	2,098
15		1,131	*	1,436		1,628		1,913		2,123
16		1,155		1,435		1,657	*	1,913		2,105
17		1,189		1,460		1,693	*	1,913		2,135
18	*	1,189		1,485	*	1,693		1,926		2,150
19	*	1,189		1,499	*	1,693		1,935		2,180
20		1,208		1,499		1,711		1,953	*	2,180
21		1,228	*	1,499		1,721		1,956	*	2,180
22		1,237	*	1,499		1,752		1,956		2,144
23		1,259		1,514		1,722	*	1,956		2,151
24	*	1,259		1,527		1,719	*	1,956		2,165
25	*	1,259		1,511	*	1,719		1,975		2,192
26		1,248		1,523	*	1,719		2,003		2,191
27		1,233		1,540		1,727		1,987	*	2,191
28		1,248	*	1,540		1,757		2,013	*	2,191
29		1,266	*	1,540		1,780		2,026		2,190
30		1,294		1,526		1,804	*	2,026		2,153
31	*	1,294		1,562			*	2,026		
Avg Daily Backup		1,170		1,450		1,676		1,896		2,130

Notes: Totals do not include 309 Contracts in County Jails (maximum of 336)

County Jail Back-up average for November 2021 - 2,130

County Jail Back-up Fiscal Year Average as of November 30, 2021 - 1,664

Short-Term Revocation Program Average for November 2021 - 628

Short-Term Revocation Program Fiscal Year Average as of November 30, 2021 - 693

STTG UNIT COUNTS – NOVEMBER 2021

Unit	Beginning Total	Confirmed	Suspected	In	Out	Paroled	Removed	Ending Total	Total Unit Population	Unit % of STTG's
Benton	87	3	0	0	5	0	0	85	292	29.11%
Cummins	666	0	0	49	28	22	0	665	1,927	34.51%
Delta	185	0	0	20	22	0	0	183	598	30.60%
EARU	572	0	0	0	0	6	3	563	1,442	39.04%
Ester	104	0	0	18	16	8	0	98	521	18.81%
Grimes	376	0	0	7	7	6	0	370	1,028	35.99%
Hawkins	49	0	0	2	3	0	0	50	461	10.85%
Max	265	0	0	2	1	1	0	265	532	49.81%
Mcpherson	38	0	0	1	0	0	0	39	938	4.16%
MCWR	34	0	0	6	2	0	0	38	122	31.15%
NCU	267	2	0	6	7	2	0	266	771	34.50%
NWAWR	27	0	0	2	0	0	0	29	100	29.00%
ORCU	407	0	0	40	26	10	0	411	221	185.97%
ORCU Intake	71	135	0	0	128	0	0	78	1,471	5.30%
Pine Bluff	142	0	0	31	15	8	0	150	516	29.07%
RLW	189	0	0	24	8	7	0	198	498	39.76%
TWR	34	0	0	1	0	0	0	35	89	39.33%
Tucker	228	0	0	1	8	7	0	214	619	34.57%
Varner	620	0	0	41	26	8	0	627	1,548	40.50%
Wrightsville	230	0	0	41	1	7	0	263	789	33.33%
Total	4,591	140	0	292	303	92	3	4,627	14,483	31.95%

ORCU Intake brought in 135 new STTG members into ADC last month.

STTG DISCIPLINARY REPORT – NOVEMBER 2021

Unit	STTG Incidents	STTG Suspected Incidents	Total Unit Disciplinary	Disciplinary Involving STTG	Percentage
Benton	0	0	8	5	62.50%
Cummins	0	0	172	74	43.02%
Delta	0	0	197	106	53.81%
EARU	0	0	130	73	56.15%
Easter	0	0	8	3	37.50%
Grimes	0	1	135	64	47.41%
Hawkins	0	0	1	0	0.00%
Max	0	0	74	34	45.95%
Mcperson	0	0	139	13	9.35%
MCWR	0	0	1	1	100.00%
NCU	1	0	62	31	50.00%
NWAWR	0	0	3	0	0.00%
ORCU	0	0	72	38	52.78%
ORCU Intake	0	0	7	3	42.86%
Pine Bluff	0	0	57	27	47.37%
RLW	0	0	49	16	32.65%
TWR	0	0	1	0	0.00%
Tucker	0	0	56	30	53.57%
Varner	0	0	161	96	59.63%
Wrightsville	0	0	59	28	47.46%
Total	1	1	1,392	642	46.12%

STTG COUNTS BY STTG SET – NOVEMBER 2021

STTG Set	Benton	Cummins	Delta	EARU	Ester	Grimes	Hawkins	Max	Mcperson	MCWR	NCU	NWAWR	ORCU	Intake	PB	RLW	TWR	Tucker	Varner	Wrightsville	Total
Asian	1	2	0	0	0	0	0	0	0	1	1	1	2	0	0	0	0	1	0	0	9
Bloods	16	147	39	102	19	72	5	57	3	11	40	10	64	9	23	39	6	37	139	49	887
Crips	6	84	11	79	9	38	5	34	8	1	27	3	41	4	16	14	3	15	92	36	526
Folk	3	57	0	139	2	30	12	28	7	0	14	6	72	8	4	9	2	21	65	6	485
GD	20	151	28	57	16	80	0	67	0	10	46	0	42	7	35	45	10	57	139	51	861
Mexican	1	23	6	11	6	11	1	3	3	2	5	1	11	1	6	12	0	5	24	11	143
Motorcycle	0	1	1	3	0	0	1	1	1	1	3	0	2	1	1	0	1	0	0	2	19
Other	3	23	6	12	13	12	1	8	3	0	12	2	23	3	9	9	0	8	20	9	176
People	1	24	8	19	2	23	2	19	2	0	10	0	25	2	8	7	0	9	19	11	191
Unknown	1	10	8	14	0	1	4	4	0	1	5	0	10	9	0	1	1	7	6	11	93
W/S	18	53	45	47	17	50	10	7	12	5	51	6	70	15	34	30	6	21	40	23	560
AB	0	7	0	4	0	4	1	1	0	2	1	0	3	2	0	2	0	4	12	5	48
AC	0	8	3	13	3	7	1	5	0	0	8	0	1	2	1	2	4	3	14	5	80
NAE	9	38	11	29	3	17	2	13	0	3	15	0	15	7	7	9	0	8	25	23	234
WAR	6	37	17	34	8	25	5	18	0	1	28	0	30	8	6	19	2	18	32	21	315
Total	85	665	183	563	98	370	50	265	39	38	266	29	411	78	150	198	35	214	627	263	4,627

Key:

GD = Gangster Disciples

W/S = White Supremacist

NAE = New Aryan Empire

WAR = White Aryan Resistance

AC = Aryan Circle

AB = Aryan Brotherhood

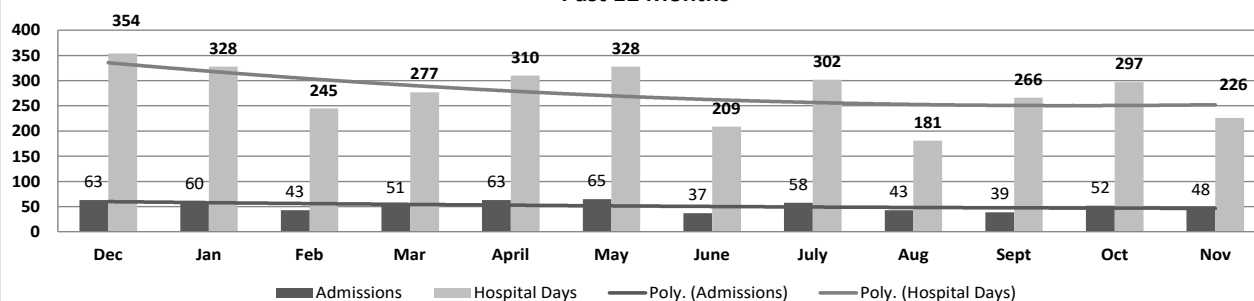
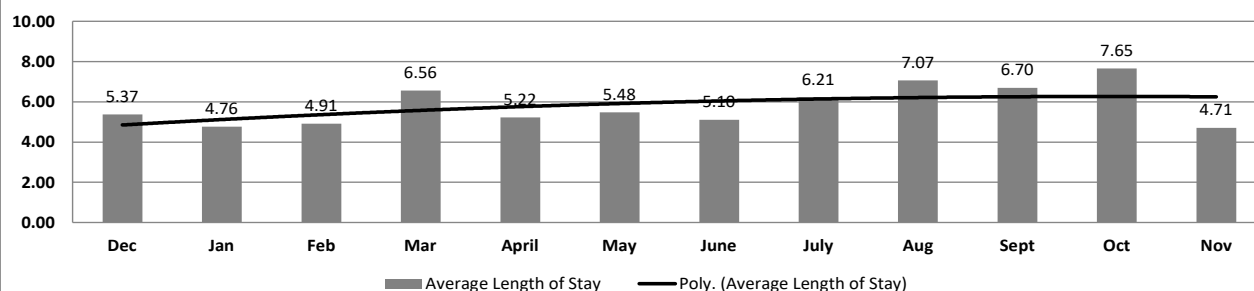
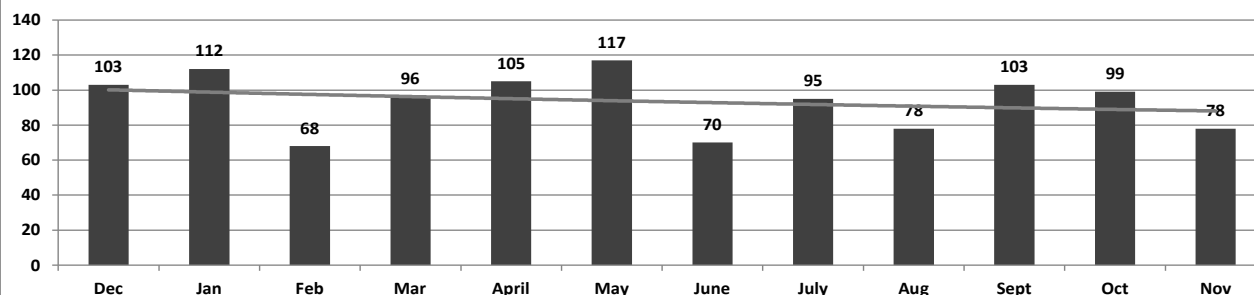
ADC INPATIENT AND EMERGENCY ROOM UTILIZATION

ADC Inpatient Statistics Past 12 Months

	2020	2021											Average
	Dec	Jan	Feb	Mar	April	May	June	July	Aug	Sept	Oct	Nov	
Admissions	63	60	43	51	63	65	37	58	43	39	52	48	51.8
Hospital Days	354	328	245	277	310	328	209	302	181	266	297	226	276.9
Average Length of Stay	5.37	4.76	4.91	6.56	5.22	5.48	5.10	6.21	7.07	6.70	7.65	4.71	5.34

ADC ER Visits Past 12 Months

	2020	2021											Average
	Dec	Jan	Feb	Mar	April	May	June	July	Aug	Sept	Oct	Nov	
Emergency Room Visits	103	112	68	96	105	117	70	95	78	103	99	78	93.7

ADC Inpatient Utilization
Past 12 MonthsADC Inpatient Average Length of Stay
Past 12 MonthsADC Emergency Room Visits
Past 12 Months

MEDICAL GRIEVANCE BOARD REPORT – NOVEMBER 2021

Unit	<i>Acknowledged/ Received</i>	<i>Rejected</i>	<i>Reviewed & Signed by Dep Director</i>	<i>With Merit</i>	<i>With Merit, but Resolved</i>	<i>% With Merit</i>	<i>Without Merit</i>
Benton	0	0	0	0	0	0%	0
CMU	1	0	1	0	0	0%	1
Cummins	18	5	22	0	0	0%	22
Delta	2	0	2	0	0	0%	2
EARU	19	1	23	1	0	4%	22
EARU Max	17	2	27	2	1	11%	24
Ester	1	0	1	0	0	0%	1
Grimes	12	2	6	0	0	0%	6
Hawkins	0	0	0	0	0	0%	0
McPherson	4	1	7	0	0	0%	7
MCWRC	0	0	0	0	0	0%	0
MSU	15	4	19	0	0	0%	19
North Central	4	1	9	1	0	11%	8
NWAWRC	0	0	0	0	0	0%	0
Ouachita	15	2	14	0	0	0%	14
Pine Bluff	2	0	1	0	1	100%	0
Randall L. Williams	0	1	0	0	0	0%	0
SNN	1	0	0	0	0	0%	0
TRCC	0	0	0	0	0	0%	0
Tucker	7	1	14	0	0	0%	14
Varner	6	0	6	0	0	0%	6
Varner Super Max	4	1	4	0	0	0%	4
WRU	1	0	0	0	0	0%	0
WHM	0	0	0	0	0	0%	0
WWR	0	0	0	0	0	0%	0
Total	129	21	156	4	2	4%	150

CHAPLAINCY

Month: November Year: 2021	CUMMINS	DELTA REGIONAL	EAST ARKANSAS	EAST ARKANSAS MAX	ESTER	GRIMES	HAWKINS	MAXIMUM	MCPHERSON	NORTH CENTRAL	OUACHITA RIVER	PINE BLUFF	RANDALL L. WILLIAMS	TUCKER	VARNER	VARNER MAX	WRIGHTSVILLE	TOTAL
Services Chaplains Oversaw																		
Christian																		
Population	0	4	0	0	3	0	0	0	4	10	9	4	0	0	11	0	0	45
Segregation	0	0	0	0	3	0	0	0	0	0	0	0	0	0	0	0	0	3
Muslim																		
Population	0	0	0	0	2	0	0	3	4	4	4	4	0	0	4	0	0	25
Segregation	0	0	0	0	2	0	0	3	0	0	0	0	0	0	0	0	0	5
																		78
Volunteers in Charge																		
Protestant	0	5	0	0	0	0	0	0	0	0	4	0	0	10	0	0	0	19
Catholic	0	0	0	0	0	0	0	0	0	5	4	0	0	0	0	0	0	9
Muslim	0	0	0	0	0	0	0	0	0	0	0	0	0	1	0	0	0	1
Other	0	0	0	0	0	0	0	0	0	0	0	0	0	0	0	0	0	0
Baptism	0	0	0	0	0	0	0	0	0	0	0	0	0	5	0	0	0	5
Marriages																		
	0	0	0	0	0	0	0	0	0	0	0	0	0	0	0	0	0	0
Distributed by Chaplains																		
Greeting Cards	27	226	8	12	200	2,208	11	32	500	2,558	200	33	1,532	671	12	351	150	8,731
Bibles, Quran, Torah, Etc.	39	6	7	14	12	11	15	16	26	10	150	5	46	284	17	22	20	700
Study Course	0	5	9	16	103	15	100	0	19	10	50	3	3	6	14	2	0	355
Writing Supplies	0	0	0	0	27	12	370	15	30	0	500	90	0	625	0	0	50	1,719
Literature	3,095	575	472	431	155	1,163	160	78	69	425	350	0	1,965	600	522	364	275	10,699
Chaplain's Visits																		
Barracks	71	65	30	0	12	18	7	8	20	127	26	93	32	96	404	49	10	1,068
Approximate Hours Spent in Barracks	81	12	7	0	7	10	1	5	20	32	6	8	49	24	150	17	3	432
Inmate Office visits	43	97	27	0	43	53	12	3	65	10	48	10	26	123	81	0	24	665
Other Office visits	23	5	0	0	13	13	14	5	12	0	31	33	5	40	32	28	5	259
Hospital	0	0	0	0	0	0	0	0	0	0	10	0	0	0	0	0	0	10
Infirmary/Sick Call	11	3	1	0	2	1	0	8	0	0	10	0	3	5	6	9	3	62
Restrictive/Punitive Housing	11	4	0	13	1	2	4	4	8	0	13	3	5	12	0	16	1	97
PC - DRU		3																3
Visitation Days	0	0	0	0	0	0	0	0	0	0	0	0	0	0	0	0	0	0
Volunteer Visits																		
RCV	0	0	0	0	0	0	0	0	0	0	0	0	0	0	0	0	0	0
OCV	0	0	0	0	0	0	0	0	0	0	0	0	0	43	0	0	0	43
Spiritual Advisor	0	0	0	0	0	0	0	0	0	0	0	28	0	74	0	0	0	102
CRA	6	5	0	0	1	32	15	5	30	27	30	0	14	0	0	0	4	169
Religious Volunteer Hours																		
Volunteer Hours	23	23	0	0	7	153	35	11	110	95	166	2	14	170	0	0	21	830
Denominational/Volunteer Chaplain Hours	21	12	0	0	181	9	40	0	18	249	4	0	0	5	0	0	10	549
																		1,379
Other Activities of Chaplain																		
Counseled Employees	11	7	3	0	5	3	3	1	0	8	21	0	5	8	120	0	10	205
Orientation Sessions	0	0	0	0	0	0	3	0	0	0	0	12	0	0	0	0	2	17
Free World Devotions	0	0	0	0	2	7	0	0	0	0	2	4	0	2	23	0	0	40
Spoke in Churches	5	0	5	0	4	1	1	0	0	0	2	0	0	4	23	0	0	45
Crisis Intervention Sessions	27	11	2	0	0	0	11	0	0	8	16	0	12	11	7	4	6	115
Marriage Counseling	0	0	1	0	0	0	0	0	0	0	0	0	0	0	0	0	0	1
Denominational Meeting	0	0	0	0	1	0	0	1	1	0	0	0	0	0	0	0	0	3
Chaplain's Meeting	0	1	1	0	1	1	1	0	1	0	1	0	1	2	11	0	1	22
Volunteer Training Session	0	0	0	0	0	0	0	1	0	1	0	0	0	0	0	0	0	2
Chaplain Transfers																		
	0	0	0	0	0	1	0	0	0	0	0	0	0	0	1	0	1	3
Chaplain Promotions																		
	0	0	0	0	0	0	0	0	0	0	0	0	0	0	0	0	0	0
PAL PROGRAM																		
Enrolled at start of month	46	21	46	0	56	44	31	25	56	60	34	0	0	52	49	0	20	540
Enrolled during the month	4	2	0	0	2	8	2	0	3	4	3	0	0	0	2	0	0	30
Removed From PAL Program																		
# Paroled	0	0	0	0	1	0	1	0	6	0	1	0	0	0	0	0	0	9
# Completed	3	0	0	0	1	0	1	0	0	0	2	0	0	0	0	0	0	6
# Withdrew	0	1	0	0	0	2	1	0	1	2	1	0	0	0	2	0	0	10
# Removed	0	0	0	0	1	4	1	0	2	4	1	0	0	1	0	0	0	14
# Transferred	0	0	0	0	1	0	3	0	0	0	1	0	0	0	0	0	0	5
Total Removed from PAL Program	3	1	0	0	3	7	6	0	9	6	6	0	0	1	2	0	0	44
Total Enrolled at the End of the Month	47	22	46	0	55	45	27	25	50	58	31	0	0	51	49	0	20	526
Volunteers in PAL																		
	14	1	0	0	0	14	15	5	0	6	2	0	0	0	0	0	0	57
Special Events:																		
	0	1	0	0	0	0	0	0	0	1	0	0	1	0	0	0	0	3

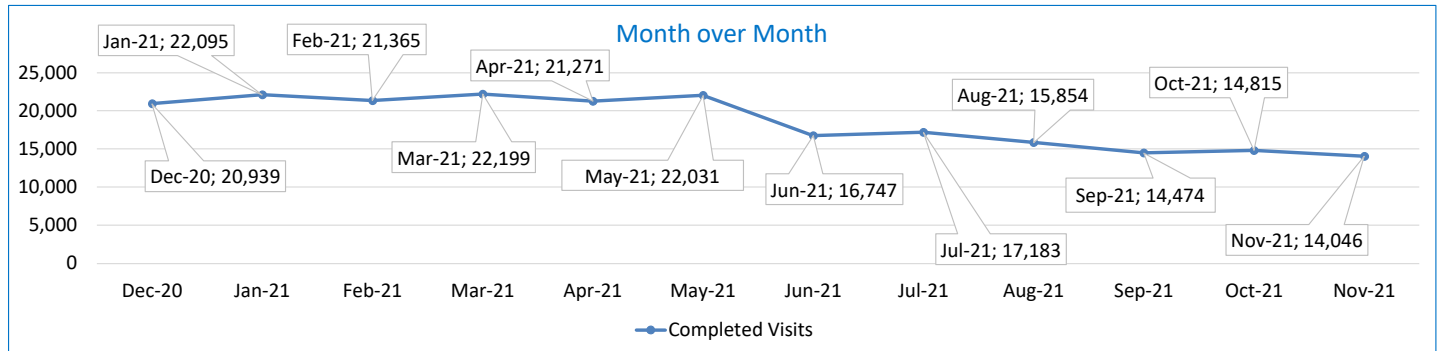
SECURUS VIDEO VISITATION REPORT NOVEMBER 2021

AR-DOC SVV Activity Tracker

Total ADP 14,952

Total Visits by Month	Dec-20	Jan-21	Feb-21	Mar-21	Apr-21	May-21	Jun-21	Jul-21	Aug-21	Sep-21	Oct-21	Nov-21
Total (Includes SuperMax)	20,939	22,095	21,365	22,199	21,271	22,031	16,747	17,183	15,854	14,474	14,815	14,046
Target Objective	15,587	15,587	15,587	15,587	15,587	15,587	15,587	15,587	15,587	15,587	15,587	15,587

Anywhere Visitation Performance:



Completed Visits

Site	Current Month	Previous Month
Benton	358	462
Cummins	1,248	1,295
Delta Regional	643	722
East Arkansas Regional	1,735	1,877
Ester	677	689
Grimes	920	967
J Aaron Hawkins Sr.	619	706
Tucker Max	667	754
Mcpherson	600	617
Mississippi County WRC	153	103
North Central	1,347	1,424
NW Arkansas WRC	36	40
Ouachita River	1,423	1,438
Pine Bluff Complex	302	294
Randall L Williams	485	482
State Police Barracks	140	126
Texarkana Regional	83	46
Tucker Unit	298	342
Varner	1,362	1,420
Wrightsville Unit	892	969
Pine Bluff Re-Entry	58	42
Tucker Re-entry	0	0
Total:	14,046	14,815

Missed by Inmate

Site	Current Month	Previous Month
Benton	11	5
Cummins	32	75
Delta Regional	16	17
East Arkansas Regional	26	50
Ester	8	6
Grimes	17	16
J Aaron Hawkins Sr.	27	20
Tucker Max	32	34
Mcpherson	14	36
Mississippi County WRC	11	28
North Central	19	14
NW Arkansas WRC	3	12
Ouachita River	52	39
Pine Bluff Complex	5	11
Randall L Williams	5	13
State Police Barracks	1	0
Texarkana Regional	4	8
Tucker Unit	26	24
Varner	27	64
Wrightsville Unit	4	14
Pine Bluff Re-Entry	0	3
Tucker Re-entry	0	0
Total:	340	489

SECURUS TABLET REPORT NOVEMBER 2021

Facility Name	Subscription	Facility	Officer	Total	New Subscriptions
Benton Unit	85	16	8	109	1
Cummins Unit	256	109	14	379	16
Delta Regional Unit	74	38	16	128	3
East Arkansas Regional Unit	158	107	10	275	3
Ester Unit	93	143	20	256	2
Grimes Unit	96	49	14	159	7
J. Aaron Hawkins Sr Center For Women	119	74	19	212	4
McPherson Unit	110	91	15	216	14
Mississippi County Work Release Center	40	4	9	53	0
North Central Unit	139	89	10	238	8
Northwest Arkansas Work Release Center	38	2	8	48	1
Ouachita River Correctional Unit	206	104	14	324	10
Pine Bluff Reentry Center	16	4	0	20	1
Pine Bluff Unit	60	7	8	75	2
Randall L. Williams Facility	35	29	14	78	3
State Police Barracks	21	0	3	24	1
Texarkana Regional Correctional Center	22	2	10	34	0
Tucker Maximum Security Unit	69	60	15	144	3
Tucker Reentry Center	0	51	3	54	0
Tucker Unit	82	65	10	157	4
Varner Unit	160	58	20	238	9
Wrightsville Unit	95	49	6	150	3
TOTAL	1,974	1,151	246	3,371	95

CONSTRUCTION BUDGET / STATUS REPORT - DECEMBER 6, 2021 — [Page 1 of 2]

Fund	Project Description	Total Projected Spent	Budget	Available Funds	\$ % Complete	Construction % Complete	Notes
700483A	EARU Max Rec Expanded Metal Rec Yard	845,215	879,000	33,785	96%	64%	We have delivered panels to EARU. Should have notice to proceed within 30 days.
700483A	Tucker Max Expanded Metal Rec Yard	1,103,522	1,800,000	696,478	61%	0%	DBA Approved to proceed. We are constructing the panels on-site. Material list has been ordered and delivered.
700483A	Cummins Expanded Metal Rec Yard	50,012	368,617	318,605	14%	0%	Plans on hold, will modify for exp. metal
KBR4Q95	Bullpens	388,676	851,999	463,323	46%	98%	Varner & EARU complete. Installation underway at Max. Locks delivered. Working on bullpens now.
KBR4Q95	13 & 15 Barracks Door Revisions	119,111	174,000	54,889	68%	68%	All doors and locks installed in 13 Barracks. We are fabricating the revisions at this time on the hill.
700485A	Entegrity Energy Improvements at EARU & Delta	16,961,127	17,010,204	49,077	100%	99%	lights (100%), plumbing 100%, water (100%), compost (100%), & solar (100%), HVAC (100%). Only Training is incomplete.
7004828	Entegrity Energy Improvements Phase 2 at Tucker and Max	2,546,931	18,603,150	16,056,219	14%	30%	Lighting is complete at the Max. HVAC has began at Tucker. Plumbing has began at the MAX. Lighting has moved over to Tucker.
KBSHW18	Tucker Water Treatment	52,151	1,093,848	1,041,697	5%	0%	The original blueprints has been completed and approved. The detail drawing will be submitted by 11/1/21 for DBA review.
KBSFW18 KBR4Q95	Max Armory	55,072 -	100,000	44,928	55%	0%	DBA has the project to review. Should have our notice to proceed within the next 30 days.
7004810	Administrative East Roof Replacement	60,494	1,802,000	1,741,507	3.4%	0%	All roofs have been designed. DBA has the project and is under review. Should have our notice to proceed within the next 45 days.
7004810	Central Warehouse Roof Replacement	20,061	424,000	403,940	4.7%	0%	
7004810	RLW Roof Replacement	119,882	3,074,000	2,954,118	3.9%	0%	
22V	NWARWRC Laundry and Commissary	241,538	250,000	8,462	97%	90%	All Building and material are onsite. We are pulling wiring this week. The building is erected and is set to deliver the week of 12/15/21.
865C 7004820 KBR4Q95	NCU Perimeter Security	20,625 137 6,275	600,000	572,963	5%	0%	The project has been sent over for review. We are working with OSP on purchasing agreement with Motorola.
N98	Max Re-Entry Generator Project	16,635	135,000	118,365	12%	0%	Plans submitted to DBA. We have received our notice to proceed on this project.
KBR4Q95	NCU Replacement Generator Project	182,463	202,000	19,537	90%	35%	DBA Approved. Generator is purchased. Waiting on ETA on delivery.
7004820	Tucker Asbestos Abatement	357,075	448,000	90,925	80%	80%	Contract Complete. Work underway. Started 8/31/2021. Completion scheduled for December 18, 2021.
7004820	Tucker 10 Barracks Sidewalk	12,087	70,259	58,171	17%	75%	Sidewalk is complete. We are mobilizing to install post for roof. We have the fence material to wrap the project once the post is installed.



CONSTRUCTION BUDGET / STATUS REPORT - DECEMBER 6, 2021 — [Page 2 of 2]

Fund	Project Description	Total Projected Spent	Budget	Available Funds	\$ % Complete	Construction % Complete	Notes
7004820	Lethal Fence Control for Cummins, Varner SuperMax, Tucker Max, & EARU	55,903	875,000	819,097	6%	0%	Plans to be submitted to DBA on 9/10/2021.

Telephone Projects

Maintenance & Operations	Fire Alarm Upgrades (All Units)	29,226	41,000	11,774	71%	15%	on-going
	Stainless Steel - Kitchen/Shower/Restrooms - All Units	4,331	20,000	15,669	22%	0%	continual need
	Gates and Fences all units	14,166	25,000	10,834	57%	45%	to improve security
	ACA Maintenance	74,962	100,000	25,038	75%	40%	Walkthrough done at Varner. Dedicating resources to Varner for ACA.
	ADA Projects - All Units	0	10,000	10,000	0%	0%	Working with Varner for the sports field sidewalk.
	Fast Top Floor Systems (kitchen/laundry/showers all units)	15,920	25,000	9,080	64%	55%	Benton complete. Ouachita kitchen material has been ordered and awaiting arrival.
	Camera Equipment - All Units	142,353	250,000	107,647	57%	25%	cameras as requested/approved.
	Lock/Riot Gates - All Units	14,691	90,500	75,809	16%	15%	on-going.
	AC Units-All Units	69,268	70,000	732	99%	90%	repairing & replacing daily.
	Subtotal	\$ 364,917	\$ 631,500	\$ 266,583			

Capital Projects FY21 Carry Forward	Metal Ceilings	0	25,000	25,000	0%	0%	Wrightsville showers are underway.
	ORCU Gravel Pit Operations	8,655	35,000	26,345	25%	15%	on-going.
	Dog Kennel/Horse Stable Malvern	22,777	48,000	25,223	47%	55%	Material for this project in on-site. Slab and walls are complete. Project delayed, COVID.
	Emergency Generator - All Units	50,518	250,000	199,482	20%	25%	Cummins 300kW generator complete. Hawkins Unit Gen is installed and operational. Max Gen mat'l rec'd, Generator rec'd. Cummins East Bldg. we have approval awaiting Max generator install.
	Tucker 4 new filters & one aeration tank	8,943	10,000	1,057	89%	100%	Project is complete.
	Roof Repairs-Cummins	0	130,700	126,101	4%	0%	Prepared large order for multiple Units. Max is complete. Need repairs at ORCU, Delta, Cummins & others. Varner & ORCU working on repairs, received TPO Office of State Procurement secured a State contract to purchase roofing materials.
	Roof Repairs-Cummins Laundry	0				0%	
	Construction/Maintenance	0				0%	
	Roof Repairs-Delta	3,757				0%	
	Roof Repairs-East Arkansas	0				0%	
	Roof Repairs-Max	0				0%	
	Roof Repair - NCU	842				0%	
	Roof Repair - RLW	0				0%	
	Roof Repairs-Tucker	0				0%	
	Roof Repairs-Varner	0				0%	
	Roof Repairs-Wrightsville	0				0%	
	Subtotal	\$ 95,491	\$ 498,700	\$ 403,209			

New Projects	Delta Perimeter	0	622,000	622,000	0%	0%	purchasing materials
	Wrightsville Perimeter	0	-	0	0%	0%	
	PB Warehouse Drive Replacement	0	118,000	118,000	0%	0%	Project suspended.
	Subtotal	\$ -	\$ 740,000	\$ 740,000			
	Architect Fees	16,217	30,000	13,783	54%		
	Total	\$ 476,626	\$ 1,900,200	\$ 1,423,574			

Notes Report has not been reconciled against Accountings Reconciled Reports.
Tolerance/Deviation is with in 1% of Projected Spending.