



DIVISION OF  
CORRECTION

# BOARD REPORT

October 2021



@ARDeptofCorrections



@adcpio



@arcorrections



Dexter Payne,  
Director

## POPULATION REPORT

### RESEARCH/PLANNING

#### **September 2021 Admissions and Releases –**

Admissions for September 2021 totaled **275** (241-males and 34-females) while releases totaled **423** (379-males and 44 females) for a net decrease in-house of **148** inmates.

#### **Inmate Population Growth/Projection –**

At the end of September 2021, the jurisdictional population for the Division of Correction totaled **16,698**, representing an increase of **604** inmates since the first of January 2021. At reporting time, calendar year 2021 has seen an average increase of **67** inmates per month, which is up from an average monthly decrease of **139** inmates per month during calendar year 2020.

#### **Average County Jail Back-up –**

The backup in the county jails averaged **1,676** inmates per day during the month of September 2021, which was up from the per-day average of **1,450** inmates during the month of August 2021. Of the **1,676** average, short-term revocations accounted for **654** (580 males and 75 females) during the month.

#### **House Bill 1530/Restrictive Housing (RH)**

##### **July 2021 through September 2021 –**

A total of **3,656** (3,445 males and 211 females) inmates were assigned to Restrictive Housing during the third quarter of the year.

- There was a **2.6%** increase in overall RH assignments in the third quarter of 2021 compared to the second quarter.
- There was a **2.6%** increase in the number of major disciplinarys.
- There was a **9.4%** increase in the number of inmates 55 or older held in RH compared to the second quarter of 2021.
- There were no suicides during the third quarter of 2021, but an increase of **10** suicide attempts.
- There were no significant changes in the number of inmates assigned to RH for Protective Custody. Additionally, there were no significant changes in RH assignments for those age 21 years or younger, or with an SMI diagnosis.

*Refer to Page 14 of this report for further details.*

## INSTITUTIONS

### INMATE INSTITUTIONAL GRIEVANCES

**Inmate Formal/Informal Grievances:** During September 2021, a total of 1,372 formal grievances and 2,032 informal grievances were filed at various units.

**Institutional Grievances Appeals:** There was a total of 515 appeals of institutional grievances received in September 2021. Of those, 428 were acknowledged and 87 were rejected for various reasons. Of the total 393 appeals answered, 392 had no merit and one had merit.

### FARM

The month of September ushered in good harvesting weather. The Cummins Unit completed their harvest of rice and corn. Rice yields were better than last year, but corn production was off, which has prompted efforts to determine the reason why. The thought is that heavy rain in June caused the leaching of nitrogen, which stressed the plants during a critical growth time. The East Arkansas Regional Unit (EARU) completed their corn harvest along with cutting some early soybeans. EARU's corn yields were about the same as Cummins. The Tucker Unit harvested rice and some early soybeans.

The land improvement project at Cummins has completed the dirt-moving phase. The improved area will be planted with wheat this winter. McClelland Consulting Engineers, Inc. is preparing well designs so that the next phase of the project can move forward.

Pregnancy checks were conducted on the beef herd at Wrightsville and the replacement heifers at Cummins. It was noted that this year's conception rate is lower compared with past years. A meeting has been scheduled with Dr. Charles Looney with the University of Arkansas Animal Science Division to see what changes need to be made to the program. A fall calving herd is anticipated to avoid carrying open cows all year before trying to breed them again.

During the month, crews worked on finishing up cutting hay at all locations, with an estimated yield of close to 7,000 rolls upon completion.

Cummins planted some wheat for the purpose of early growth for fall cattle grazing. Our wheat acres will increase again this year. Wheat prices are more than \$7 per bushel and still moving up, which could provide about \$1.5 million in revenue by June of next year.

**REGIONAL MAINTENANCE HOURS**

Regional Maintenance Hours	September 2021
Benton Unit	6,994.75
Delta Regional Unit	3,400
East Arkansas Regional Unit	1,504
Grimes Unit	3,772
McPherson Unit	1,760
Mississippi County Work Release	720
North Central Unit	7,872
Ouachita River Correctional Unit	2,008
Randall L. Williams Unit	3,284
Texarkana Regional Correctional Center	506
Tucker Unit	2,064
Varner Unit	3,224
Wrightsville Unit	616
<b>Total Hours</b>	<b>37,724.75</b>

**WORK RELEASE RENT REPORT**

Unit	September 2021
Benton Unit	\$101,643.00
Mississippi County Work Release	\$44,183.00
Northwest Arkansas Work Release	\$36,975.00
Pine Bluff Work Release	\$31,875.00
Texarkana Regional Correctional Center	\$18,258.00
Wrightsville Hawkins Unit	\$18,702.00
<b>Total</b>	<b>\$251,636.00</b>

**REENTRY****RANDALL L. WILLIAMS  
JUVENILE EDUCATION PROGRAM**

September 2021 Capacity: 20	Beginning Count	New Commitments	DCR/Punitive	Transferred/ Turned 18*	Paroled	End Count
Juveniles*	4	1	0	0	0	5

\*Juveniles are transferred from the program once they reach the age of 18.

**WORKFORCE ALLIANCE FOR  
GROWTH IN THE ECONOMY (WAGE)**

September 2021 Capacity: 120 Unit:	Beginning Count	Admissions During Mo.	Removed*	Completed	End Count
Delta	0	23	0	0	23
Hawkins	0	0	0	0	0
McPherson	0	0	0	0	0
Ouachita River	0	0	0	0	0
Tucker	0	0	0	0	0
<b>TOTAL</b>	<b>0</b>	<b>23</b>	<b>0</b>	<b>0</b>	<b>23</b>

\*The "Removed" column indicates the number of participants who transferred, signed out, received a disciplinary, were removed because test scores were not returned/were too low to continue, or were released from prison.

**ADVANCED PRINCIPLES  
AND APPLICATIONS FOR  
LIFE PROGRAM (APAL)**

September 2021 Capacity: 86	Beginning Count	Admissions During Mo.	Removed*	End Count
Ester	53	23	20	56
Hawkins	31	3	10	24
<b>TOTAL</b>	<b>84</b>	<b>26</b>	<b>30</b>	<b>80</b>

Advanced PAL is an 18-month reentry program that combines a pre-release curriculum with the PAL program.

\*The "Removed" column indicates the number of participants who paroled, completed the program, withdrew from the program, transferred, or were removed from the program for another reason.

**WRIGHTSVILLE-HAWKINS  
PATHWAY TO FREEDOM PROGRAM**

September 2021 Capacity: 200	Beginning Count	Enrolled During the Month	Removed	End Count*
Wrightsville-Hawkins PTF	197	9	11	195

THINK LEGACY

September 2021 Capacity: 635 Unit	Beginning Count	Admitted	Graduated	Removed*	End Count
Cummins	0	0	0	0	0
Delta Regional	10	0	0	0	10
East Arkansas Regional	39	7	0	0	46
McPherson	0	0	0	0	0
North Central	48	0	0	0	48
Ouachita River	0	0	0	0	0
Tucker	19	0	0	0	19
<b>Total</b>	<b>116</b>	<b>7</b>	<b>0</b>	<b>0</b>	<b>123</b>

\*The "Removed" column indicates the total number of participants who paroled, signed out, transferred, or were removed from the program for any other reason and are no longer in the barracks.

**TRAINING****DIVISION OF CORRECTION  
TRAINING - SEPTEMBER 2021****BASIC TRAINING DIVISION –**

Instructor Ramone Woodall's **BCOT Class 2021-J** graduated on September 3, 2021, with a total of 32 cadets.

The *Willis H. Sargent Award* recipient was Derrick Bailey of the East Arkansas Regional Unit.

*Academic Awards* were presented to the following:

- 1st – Kevin Coulter, Grimes Unit
- 2nd – Chauncey Clayton, Benton Unit
- 3rd – Tiamia Turner, Varner Unit

Recipients of *Physical Fitness Awards* were:

- 1st – Brandon Hatley, Randall L. Williams Unit
- 2nd – Kent Brown, Delta Unit
- 3rd – Keyviontae Brooks, Randall L. Williams Unit

Under the direction of Instructor Nicholas Reed, **BCOT Class 2020-K** graduated on September 27 with a total of 20 cadets.

The *Willis H. Sargent Award* recipient was Jeffery Hughes of the Ouachita River Correctional Unit.

*Academic Awards* were presented to the following:

- 1st – Emily Pokorny, North Central Unit
- 2nd – Joe Beltran, Grimes Unit
- 3rd – Casey Cloud, Benton Unit

Recipients of *Physical Fitness Awards* were:

- 1st – Joe Beltran, Grimes Unit
- 2nd – Jeffery Hughes, Ouachita River Correctional Unit
- 3rd – Emily Pokorny, North Central Unit

**IN-SERVICE DIVISION –**

During the month, the Training Academy held a *Defensive Driving* class attended by two participants, a *CPR* class attended by 16 participants, and a *Field Training Officer* class with three participants.

The Training Academy also offered a *ServSafe* class attended by seven participants and a *HFRG Defensive Tactics Instructor Certification/Re-Certification* class attended by 36 participants.

Additionally, a *Management Level I* class was presented to 19 participants both live and virtually.

**eCADEMY –**

During September, 297 ADC employees completed a total of 3,759 hours of eCADEMY training. About 7% of ADC employees completed at least one course during that timeframe, averaging 1.00 hours per staff member.

**HEALTH/CORRECTIONAL  
PROGRAMS****CHAPLAINCY SERVICES**

**Delta Unit** – Delta Unit QUIZlympics began in September. While all barracks were invited to participate, a total of 25 participants from five barracks decided to take part.

**Ester Unit** – Graduation for the APAL and PAL programs took place on September 17. Seven participants graduated from the APAL program, and nine from the PAL program.

**North Central Unit** – Prison Fellowship Academy graduation was held on September 7 for seven participants. Among those graduating, four decided to continue by taking part in the PAL program.

**ACCREDITATION****ACA Internal Audits Completed:**

09/06–09/10 Pine Bluff Complex File Review  
 09/14 Varner Unit Final Pre-Audit  
 09/15–09/17 Varner Unit File Review  
 09/21 ACA Quarterly Meeting  
 09/27–09/30 Varner Unit File Review

**Classes Taught:**

09/10 Basic Correctional Officer Training

**Fire/Safety and Sanitation Independent Audits Conducted by the Fire and Sanitation Coordinator:**

09/01–09/03 Wrightsville Independent Annual Audit  
 09/20–09/29 Varner Unit Audit Prep

## VOLUNTEER SERVICES

### Total Number of Volunteer Hours for September 2021:

Unit/Program	Hours
Delta Unit	0
East Arkansas Regional Unit	0
McPherson Unit	0
Mississippi County Work Release Center	0
Northwest Arkansas Work Release Center	1
Ouachita River Correctional Unit	0
Pine Bluff Complex	0
Texarkana Regional Correctional Center	0
Varner	0
PAWS	18
Think Legacy	0
Religious Services/Chaplaincy	1,581
<b>Total Hours</b>	<b>1,600</b>

## MENTAL HEALTH SERVICES

### Reduction of Sexual Victimization Program (RSVP) and Sex Offender Treatment Programs (SOFT):

September 2021	Capacity	Beginning Count	Completed	Removed	Admissions	End Count
RSVP	238	228	0	11	5	222
SOFT	30	7	0	0	0	7
<b>Total</b>	<b>268</b>	<b>235</b>	<b>0</b>	<b>11</b>	<b>5</b>	<b>229</b>

There are 1,077 males on the waiting list for RSVP and six females on the waiting list for SOFT who are within five years of their TE date. Of those, 15 inmates are mandated by the Parole Board.

The average time on the waiting list from request is between one and two months for those stipulated.

\*The total on the waiting list, including those not currently within the identified timeframe, is 1,451 males and seven females. Of these, 1,097 are eligible and 361 are ineligible for the program. There is one PREA inmate in the program at this time.

\*Ineligibility is due to being in restrictive housing, having class IV status, or receiving a major disciplinary within the last 60 days.

### Therapeutic Community (TC):

September 2021	Capacity	Beginning Count	Completed	Removed	Admissions	End Count
McPherson	50	47	1	4	5	47
Tucker	68	65	0	2	0	63
Wrightsville	50	37	0	0	9	46
<b>Total</b>	<b>168</b>	<b>149</b>	<b>1</b>	<b>6</b>	<b>14</b>	<b>156</b>

There are 570 males and 194 females on the waiting list who are within ten years of their release date. Of those, 29 are mandated by the Parole Board.

The average time on the waiting list from request is 19 days.

\*The total on the waiting list, including those not currently within the identified timeframe, is 764 males and 211 females. Of these, 793 are eligible and 182 are ineligible for the program.

\*Ineligibility is due to being in restrictive housing, having class IV status, or receiving a major disciplinary within the last 60 days.

### Substance Abuse Treatment Program (SATP):

September 2021	Capacity	Beginning Count	Completed	Removed	Admissions	End Count
Benton	20	20	3	4	0	13
Cummins	45	36	5	5	10	36
Grimes	50	52	11	11	11	41
Maximum Security	4	2	1	0	0	1
McPherson	100	82	21	11	23	73
Randall L. Williams	150	136	9	23	22	126
Wrightsville	100	101	23	7	3	74
<b>Total</b>	<b>469</b>	<b>429</b>	<b>73</b>	<b>61</b>	<b>69</b>	<b>364</b>

There are 2,032 males and 165 females on the waiting list who are within five years of their release date. Of those, 45 are mandated by the Parole Board.

The average time on the waiting list from request is 11 days.

\*The total on the waiting list, including those not currently within the identified timeframe, is 2,667 males and 192 females. Of these, 2,242 are eligible and 617 are ineligible for the program.

\*Ineligibility is due to being in restrictive housing, having class IV status, or receiving a major disciplinary within the last 60 days.

**Substance Use Intervention Program:** The Substance Use Intervention Program had four admissions and 25 discharges for an end-of-month count of 18 for September. This program is housed at the Varner Unit and is for inmates found guilty of a disciplinary violation for drug use or drug possession.

**Ouachita River Correctional Unit (ORCU) Residential Program Unit (RPU):** The RPU had four admissions and six discharges in September for an end-of-month count of 122.

**McPherson Unit Mental Health Residential Program Unit (RPU):** There were four admissions and five discharges in September for an end-of-month count of 39.

**MENTAL HEALTH SERVICES, continued**

**Habilitation Program:** The Habilitation Program at the Ouachita River Correctional Unit provided treatment services to 45 inmates during September. There were no admissions or discharges, which resulted in an end-of-month count of 45.

**Anger Management Treatment:** The Anger Management Treatment Program at the Cummins Unit did not provide treatment services to any inmates during September. There were no admissions or discharges, for an end-of-month count of zero.

**Staffing:** The following Mental Health Services and Substance Abuse Treatment Program (SATP) positions were vacant in August and September 2021:

Positions	FTE's*	August 2021	September 2021
Psychologists	14	6	6
Psychological Examiners	2	0	1
Social Workers	31	14	16
Licensed Professional Counselors	2	1	1
Rehab Director	1	1	1
Rehab Facility Supervisors	3	1	1
Advisors	64	22	23
Substance Abuse Program Leaders	40	5	6
Administrative Specialists	17	3	3

\*FTE refers to authorized Full Time Equivalent positions.

**ADDITIONAL MENTAL HEALTH AND MEDICAL INFORMATION****Self-Study Classes:**

Classes	Number of Participants	Number Completed	Waiting List
Anger Management	137	120	1,049
Thinking Errors	119	112	977
Substance Abuse Education	175	169	670
Communication Skills	164	155	825
Domestic Violence	61	54	190
Victims of Domestic Violence	52	47	53
Stress Management	195	186	896
Parenting	160	141	356

**Suicide:** There were 107 suicidal threats during September. There were six attempts, none of which resulted in death.

**Outpatient:** There were 2,089 inmates on the mental health medical log at the beginning of September. Mental Health staff conducted the following contacts during the month:

Case Management Contacts	2,055
Requests for Interviews	1,150
Testing	1
Intakes	234
Unit Requests	1,731
Pre-Lockup Reviews	346
Routine Restrictive Housing Reviews	667
Restrictive Housing Rounds	18,688
PREA Evaluations	73
Routine Follow-up	436
834 Requests	22

**County Mental Health Requests:** During September, there were 285 requests received of a mental health nature. Of those, 230 inmates were fast-tracked to ADC. **Note: Most inmates were not transferred due to COVID-19.**

**County Medical Health Requests:** During September, there were 671 requests received of a medical nature. A total of six inmates were fast-tracked to ADC.

**Medical Contract Reimbursements:** Sanction reimbursements for ADC in August amounted to \$12,800.00.

**Deaths:** There were ten inmate deaths during the month of September. Two were claimed and eight were cremated.

**Wellpath:** See attachment for Wellpath's report regarding outside beds and emergency room visits.

**Medical Grievances:** In September, there were 150 appeals of medical grievances received and 89 appeals were answered. Three were found to be with merit and two with merit but resolved.

**SEX OFFENDER ASSESSMENT****Assessments Completed:**

Risk Level	September	September 1999 through September 2021
Level 1	0	1,213
Level 2	30	8,512
Level 3	29	7,391
Level 4	3	723
Default 3	1	*
<b>Total</b>	<b>63</b>	<b>17,839</b>

\*Default Level 3's are included in the total number of Level 3's to date.



## ADDITIONAL MENTAL HEALTH AND MEDICAL INFORMATION, *continued*

### ACIC Numbers:

The total number of sex offenders registered from September 1999 through September 2021:

Compliant	8,537
Delinquent	1,394
Confined	3,351
Out-of-State	3,939
Address Unknown	149
Deported	209
Incapacitated	95
Out of USA	14
<b>Total</b>	<b>17,688</b>

Consistent with current Arkansas law, deceased offenders no longer remain on the registry.

### PAWS IN PRISON

September 2021 Unit	Enrolled	Graduated	Foster	Volunteer Hours
Hawkins Unit	5	1	0	0
Maximum Security Unit	10	4	0	4
McPherson Unit	8	0	0	0
North Central Unit	4	1	0	0
Ouachita River Correctional Unit	7	2	0	0
Randall L. Williams Unit	4	0	0	10
Tucker Unit	10	4	0	4
<b>Total</b>	<b>48</b>	<b>12</b>	<b>0</b>	<b>18</b>

### Completed Paws in Prison Training:

September 2021 Program Graduates	12
YTD 2021 Program Graduates	134
Total Graduates Since Inception (December 2011)	1,797
Dogs Currently in Foster (Graduated, but Not Adopted)	0
September 2021 Volunteer Hours	8
YTD Volunteer Hours	48

## INFORMATION TECHNOLOGY

**INMATE TABLETS** – Within the Division of Correction, a total of 2,215 inmate tablets were leased during September.

**INMATE VIDEO VISITS** – Inmates completed 14,474 video visits during the month and missed 517 within the Division of Correction.

## CONSTRUCTION/MAINTENANCE

### PROJECT UPDATES

SEE CONSTRUCTION BUDGET / STATUS REPORT IN ATTACHMENTS SECTION (PAGES 24-25).

## AGENCY HIGHLIGHTS

### SEPTEMBER 2021:

#### *Awards Presented to East Arkansas Regional Unit Officers*

Major Tyrone Allison presented Cpl. Nakiyah Obraint and Lt. Douglas



Lt. Swiney (left)



Sgt. Dorsey (right)



Lt. Swiney (right)

Swiney of the East Arkansas Regional Unit with “Caught Ya” awards for going above and beyond the call of duty by helping to prevent contraband from entering the unit.



Cpl. Obraint (right)

Later in the month, Major Allison presented Lt. Swiney with another “Caught Ya” award along with Sgt. Dorsey Lee, in recognition of their above and beyond actions demonstrated while on duty.

#### *Mom Pins Daughter at Varner Graduation*

Keeping it in the family, Jhayla McFarley had the honor of being pinned as a Correctional Officer II by her mother, Sgt. Laquista Swopes, at the Varner Unit’s Basic Correctional Officer Training graduation held on September 3.



**AGENCY HIGHLIGHTS, continued*****McPherson Unit Officer Promoted to Field Sergeant***

Kari Ring was promoted from Corporal to Field Sergeant at the McPherson Unit. Field Sgt. Ring (center) is pictured with Field Sgt. Terra Polston and Field Lt. Vennie Clark.

***Parks Named Employee of the Quarter at Benton Unit***

Cpl. William Parks was presented with Employee of the Quarter honors at the Benton Unit. The award announcement read, "Cpl. Parks is always professional with a positive attitude and high morale. He runs the building and/or post efficiently, and always conducts the proper building checks. When

Cpl. Parks is assigned Field Training Officer, he always observes instructing and teaching the correct way per policy."

***Two New Lieutenants Named at Tucker Unit***

Lt. Shyrome Hadley (left) and Lt. Adam Ryan were announced as the two newest lieutenants at the Tucker Unit. A long-time employee at the Cummins Unit, Lt. Hadley most recently served as a sergeant there. Lt. Ryan made a return to the Tucker Unit following a season working as a Training Academy instructor.

***Superintendent Earl Serves as Guest Speaker at Annual Youth Summit***

DeAngelo Earl, Superintendent of the Wrightsville Complex, was invited to be a guest speaker representing the Division of Correction at the annual Back to School Non-Violence Youth Summit hosted by the Arkansas Martin Luther King, Jr. Commission.

***Jones Promoted to Captain at Delta Regional Unit***

Derrick Jones was announced as the newly-promoted captain at the Delta Regional Unit. Captain Jones (center) is pictured with Warden Thomas Hurst and Deputy Warden Linda Dykes.

***Paws in Prison Graduate Providing Emotional Support for Elementary Students***

"Zoey," a graduate of the Paws in Prison program, was featured on a KARK Channel 4 news segment highlighting how she helps students each day as an



emotional support dog at a Hot Springs elementary school. The segment can be viewed here: <https://www.kark.com/news/health/coronavirus/emotional-support-dog-zoey-helps-hot-springs-students-cope-with-school-during-pandemic/>.

**REGIONAL MAINTENANCE  
PROJECT HIGHLIGHTS  
SEPTEMBER 2021****Clean Up at Gould High School*****Varner Regional Maintenance – September 3:***



## REGIONAL MAINTENANCE PROJECT HIGHLIGHTS SEPTEMBER 2021

### Trash Clean Up in Grady

*Varner Regional Maintenance – September 7:*



### Limb Removal in Grady

*Varner Regional Maintenance – September 8:*



### Clean Up on James Rd. (Lincoln Co.)

*Varner Regional Maintenance 1 and 2 – September 10:*



### Adding Sawdust to Lincoln Co. Fairgrounds Arena

*Varner Regional Maintenance 1 and 2 – September 16:*



### Leaf Clean Up at Cane Creek State Park

*Varner Regional Maintenance 1 and 2 – September 24:*



### Ditch Clean Up in Dumas

*Varner Regional Maintenance 1 – September 30:*





## 2021 INFORMAL GRIEVANCE REPORT

Month	BENTON	HAWK/M	HAWK/F	WRTS	EARU & MX	GRIMES	RLW	MCWR	MCPH	MSU	NCU	PBU	NWA	TU	TRCC	VSMX	VU	CU & CMU	ORCU	Ester	DRU	TOTAL
JAN	1	30	1	56	269	243	41	0	301	147	106	43	0	62	0	152	26	124	174	41	99	1,916
FEB	1	15	22	78	185	177	25	0	465	149	67	26	0	91	3	163	37	363	112	27	63	2,069
MAR	1	15	22	87	279	207	11	0	376	149	66	38	0	120	4	188	29	196	164	52	96	2,100
APR	3	15	24	70	297	173	18	0	210	108	142	38	0	86	5	362	77	178	163	16	128	2,113
MAY	2	15	14	37	254	188	19	0	320	103	104	22	0	49	4	220	46	254	128	12	158	1,949
JUN	1	30	29	37	253	259	29	0	461	123	133	46	0	53	4	452	133	241	166	32	148	2,630
JUL	2	31	42	227	245	187	23	1	138	128	91	32	0	59	3	373	109	166	166	41	134	2,198
AUG	2	31	40	96	248	188	29	0	426	136	114	30	0	71	1	367	48	172	158	42	149	2,348
SEPT	1	10	42	164	248	161	34	0	193	148	101	35	0	74	0	347	40	113	182	28	111	2,032
OCT	0	0	0	0	0	0	0	0	0	0	0	0	0	0	0	0	0	0	0	0	0	0
NOV	0	0	0	0	0	0	0	0	0	0	0	0	0	0	0	0	0	0	0	0	0	0
DEC	0	0	0	0	0	0	0	0	0	0	0	0	0	0	0	0	0	0	0	0	0	0
TOTAL	14	192	236	852	2,278	1,783	229	1	2,890	1,191	924	310	0	665	24	2,624	545	1,807	1,413	291	1,086	19,355

## 2021 FORMAL GRIEVANCE REPORT

Month	BENTON	HAWK/M	HAWK/F	WRTS	EARU & MX	GRIMES	RLW	MCWR	MCPH	MSU	NCU	PBU	NWA	TU	TRCC	VSMX	VU	CU & CMU	ORCU	Ester	DRU	TOTAL
JAN	1	15	1	30	293	176	17	0	173	197	71	24	0	55	2	152	26	150	125	22	44	1,574
FEB	2	7	8	40	272	115	21	0	158	186	51	8	0	79	0	163	37	126	89	16	35	1,413
MAR	3	7	8	53	375	98	7	0	188	264	47	8	0	92	0	188	29	149	147	27	96	1,786
APR	2	1	3	46	374	82	11	0	125	128	97	13	0	46	1	227	53	132	92	10	62	1,505
MAY	1	7	1	29	305	109	15	1	154	95	80	10	0	62	1	206	36	206	98	7	58	1,481
JUN	0	7	9	43	345	134	17	0	154	145	82	22	0	47	0	251	63	227	112	19	87	1,764
JUL	2	18	16	62	336	108	11	1	91	136	61	14	0	45	0	183	40	169	69	15	75	1,452
AUG	1	12	24	53	338	109	25	1	123	132	81	11	0	40	0	170	26	178	74	21	105	1,524
SEPT	4	5	14	72	292	86	19	0	102	163	57	13	0	64	1	161	20	130	96	12	61	1,372
OCT	0	0	0	0	0	0	0	0	0	0	0	0	0	0	0	0	0	0	0	0	0	0
NOV	0	0	0	0	0	0	0	0	0	0	0	0	0	0	0	0	0	0	0	0	0	0
DEC	0	0	0	0	0	0	0	0	0	0	0	0	0	0	0	0	0	0	0	0	0	0
TOTAL	16	79	84	428	2,930	1,017	143	3	1,268	1,446	627	123	0	530	5	1,701	330	1,467	902	149	623	13,871

## INMATE INSTITUTIONAL GRIEVANCE APPEAL REPORT – SEPTEMBER 2021

	Acknowledged	Rejected	Processed W/O Merit	Processed W/ Merit
Benton Unit	0	0	1	0
Benton Work Release	0	0	0	0
Bowie County Texas Correctional Facility	0	0	0	0
Cummins Unit	52	8	49	0
Cummins Modular Unit	1	0	2	0
Delta Regional Unit	14	1	18	0
East Arkansas Regional Unit	20	3	53	0
East Arkansas Regional Max Unit	39	8	65	0
Ester Unit	2	2	3	0
Grimes Unit	49	11	19	0
Maximum Security Unit	59	7	31	1
Tucker Re-Entry	0	0	0	0
McPherson Unit	25	3	16	0
McPherson Mental Health Residential Program Unit	0	0	0	0
Mississippi County Work Release Center	0	0	1	0
Northwest Arkansas Work Release Center	0	0	0	0
North Central Unit	22	6	20	0
Ouachita River Correctional Unit	23	5	5	0
ORCU Hospital	0	0	0	0
ORCU New Commitment	5	1	1	0
ORCU Mental Health Residential Program Unit	3	0	0	0
Pine Bluff Unit	1	0	0	0
Pine Bluff Re-Entry	0	0	0	0
Randall L. Williams Correctional Facility	6	4	5	0
Texarkana Regional Correctional Center	0	0	0	0
Tucker Unit	21	2	14	0
Varner Super Max	61	17	58	0
Varner Unit	7	2	16	0
Wrightsville Unit	13	4	9	0
Hawkins Center	3	3	2	0
Hawkins for Males	2	0	4	0
Hawkins SPU	0	0	0	0
<b>Total</b>	<b>428</b>	<b>87</b>	<b>392</b>	<b>1</b>

## ADMISSIONS AND RELEASES – SEPTEMBER 2021

<b><u>Admissions</u></b>	<b><u>Male</u></b>	<b><u>Female</u></b>	<b><u>Total</u></b>
Asian	2	0	2
Black	74	9	83
Hispanic	6	1	7
Native American Indian	0	3	3
Native Hawaiian or Pacific Isl.	0	0	0
White	159	21	180
Other	0	0	0
Unknown			0
<b>Total</b>	<b>241</b>	<b>34</b>	<b>275</b>

<b><u>Releases</u></b>	<b><u>Male</u></b>	<b><u>Female</u></b>	<b><u>Total</u></b>
Asian	0	0	0
Black	112	9	121
Hispanic	18	1	19
Native American Indian	3	1	4
Native Hawaiian or Pacific Isl.	0	0	0
White	246	33	279
Other	0	0	0
Unknown	0	0	0
<b>Total</b>	<b>379</b>	<b>44</b>	<b>423</b>



## ADC INMATE POPULATION GROWTH 2000-2027 - SEPTEMBER 2021

Updated 09/30/2021

Mo.	2000	2001	2002	2003	2004	2005	2006	2007	2008	2009	2010	2011	2012	2013	2014	2015	2016	2017	2018	2019	2020	2021
Jan.	11,984	11,908	12,402	13,015	13,105	13,595	13,481	13,839	14,518	14,796	15,334	16,312	15,134	14,815	17,481	18,142	17,785	17,824	18,201	17,958	17,989	16,119
Feb.	12,169	12,022	12,529	13,054	13,166	13,783	13,633	14,012	14,603	14,883	15,374	16,209	14,990	15,008	17,438	18,082	17,625	17,608	17,998	17,846	18,181	16,120
March	12,006	12,033	12,299	13,108	13,088	13,418	13,534	13,772	14,580	14,843	15,290	16,095	14,964	14,665	17,395	18,233	17,573	17,666	18,089	17,898	17,860	16,085
April	12,069	12,167	12,465	13,213	13,323	13,469	13,554	13,851	14,769	14,937	15,570	16,172	15,124	14,850	17,604	18,703	17,815	17,798	18,227	17,977	17,331	16,250
May	12,109	12,384	12,558	13,463	13,556	13,528	13,711	14,146	14,880	15,146	15,694	16,062	15,132	15,074	17,593	18,693	17,769	17,652	17,945	17,817	16,694	16,476
June	12,005	12,108	12,439	13,418	13,389	13,251	13,430	13,915	14,700	15,025	15,564	15,554	14,832	14,825	17,340	18,813	17,973	17,963	17,972	17,942	16,552	16,560
July	12,030	12,190	12,622	13,509	13,528	13,286	13,560	14,082	14,868	15,195	15,807	15,519	14,879	15,379	17,522	18,870	18,130	18,180	18,005	18,002	16,511	16,638
August	12,087	12,371	12,815	13,565	13,632	13,419	13,646	14,224	15,100	15,385	15,829	15,240	14,675	16,103	17,549	18,806	17,919	18,051	17,751	18,090	16,367	16,655
September	11,983	12,289	12,774	13,341	13,516	13,237	13,652	14,217	14,850	15,285	16,025	15,172	14,724	16,412	17,605	18,549	18,026	18,179	17,865	17,856	16,215	16,698
October	12,119	12,348	12,942	13,341	13,584	13,363	13,775	14,349	14,836	15,381	16,311	15,271	14,856	16,993	17,880	18,430	18,127	18,348	17,943	17,947	16,311	
November	12,094	12,408	13,162	13,408	13,706	13,587	13,913	14,437	15,025	15,340	16,460	15,205	14,625	17,168	17,848	17,981	17,573	17,973	17,666	18,060	16,165	
December	11,856	12,333	12,845	13,106	13,470	13,338	13,728	14,315	14,716	15,199	16,204	15,062	14,654	17,235	17,874	17,707	17,537	18,078	17,799	17,759	16,094	
Net Ann. Inc.	29	477	512	261	364	-132	390	587	401	483	1,005	-1,142	-408	2,581	639	-167	-170	541	-279	-40	-1,665	604
Avg. Mo. Inc.	2	40	43	22	30	-11	33	49	33	40	84	-95	-34	215	53	-14	-14	45	-23	-3	-139	67

Population is total jurisdictional count at end of each month. Population at end of month December 1999 was 11,827.

Average monthly population increase for past fifteen years 2006 - 2020 is 15

Average monthly population increase for past ten years Jan. 2011 - Dec 2020 is -1

Average monthly population increase for past five years 2016 - 2020 is -27

Projected at Growth of 15 per Month

Mo.	2008	2009	2010	2011	2012	2013	2014	2015	2016	2017	2018	2019	2020	2021	2022	2023	2024	2025	2026	2027
	Actual	Actual	Actual	Actual	Actual	Actual	Actual	Actual	Actual	Actual	Actual	Actual	Actual	Actual	Proj.	Proj.	Proj.	Proj.	Proj.	Proj.
January	14,518	14,796	15,334	16,312	15,134	14,815	17,481	18,142	17,785	17,824	18,201	17,958	17,989	16,119	16,758	16,938	17,118	17,298	17,478	17,658
February	14,603	14,883	15,374	16,209	14,990	15,008	17,438	18,082	17,625	17,608	17,998	17,846	18,181	16,120	16,773	16,953	17,133	17,313	17,493	17,673
March	14,580	14,843	15,290	16,095	14,964	14,665	17,395	18,233	17,573	17,666	18,089	17,898	17,860	16,085	16,788	16,968	17,148	17,328	17,508	17,688
April	14,769	14,937	15,570	16,172	15,124	14,850	17,604	18,703	17,815	17,798	18,227	17,977	17,331	16,250	16,803	16,983	17,163	17,343	17,523	17,703
May	14,880	15,146	15,694	16,062	15,132	15,074	17,593	18,693	17,769	17,652	17,945	17,817	16,694	16,476	16,818	16,998	17,178	17,358	17,538	17,718
June	14,700	15,025	15,564	15,554	14,832	14,825	17,340	18,813	17,973	17,963	17,972	17,942	16,552	16,560	16,833	17,013	17,193	17,373	17,553	17,733
July	14,868	15,195	15,807	15,519	14,879	15,379	17,522	18,870	18,130	18,180	18,005	18,002	16,511	16,638	16,848	17,028	17,208	17,388	17,568	17,748
August	15,100	15,385	15,829	15,240	14,675	16,103	17,549	18,806	17,919	18,051	17,751	18,090	16,367	16,655	16,863	17,043	17,223	17,403	17,583	17,763
September	14,850	15,285	16,025	15,172	14,724	16,412	17,605	18,549	18,026	18,179	17,865	17,856	16,215	16,698	16,878	17,058	17,238	17,418	17,598	17,778
October	14,836	15,381	16,311	15,271	14,856	16,993	17,880	18,430	18,127	18,348	17,943	17,947	16,311	16,713	16,893	17,073	17,253	17,433	17,613	17,793
November	15,025	15,340	16,460	15,205	14,625	17,168	17,848	17,981	17,573	17,973	17,666	18,060	16,165	16,728	16,908	17,088	17,268	17,448	17,628	17,808
December	14,716	15,199	16,204	15,062	14,654	17,235	17,874	17,707	17,537	18,078	17,799	17,759	16,094	16,743	16,923	17,103	17,283	17,463	17,643	17,823
Net Ann. Inc.	401	483	1,005	-1,142	-408	2,581	639	-167	-170	541	-279	-40	-1,665	649	180	180	180	180	180	180
Ave. Mo. Inc.	33	40	84	-95	-34	215	53	-14	-14	45	-23	-3	-139	54	15	15	15	15	15	15

## MONTHLY POPULATION AVERAGES - SEPTEMBER 2021

Unit/Center	9/1	9/2	9/3	9/6	9/7	9/8	9/9	9/10	9/13	9/14	9/15	9/16	9/17	9/20	9/21	9/22	9/23	9/24	9/27	9/28	9/29	9/30	AVG
Benton	321	319	319	314	314	312	312	316	316	315	315	317	319	318	317	319	320	320	320	319	319	320	317
Cummins	1,909	1,910	1,908	1,902	1,902	1,902	1,902	1,898	1,899	1,897	1,899	1,897	1,893	1,893	1,892	1,897	1,897	1,894	1,890	1,889	1,887	1,889	1,898
Delta	594	594	591	589	589	585	584	585	584	584	585	585	585	586	589	607	607	605	605	616	616	615	595
East AR Reg	1,519	1,517	1,518	1,517	1,517	1,516	1,516	1,515	1,513	1,511	1,511	1,509	1,508	1,503	1,502	1,502	1,502	1,498	1,498	1,496	1,493	1,493	1,508
Ester	559	563	553	554	554	553	556	556	559	559	557	557	558	554	556	564	565	563	559	557	561	560	558
Grimes	1,060	1,047	1,046	1,046	1,046	1,049	1,046	1,051	1,049	1,049	1,044	1,038	1,036	1,046	1,041	1,050	1,058	1,057	1,055	1,049	1,049	1,049	1,048
Max Sec	553	554	553	552	552	552	552	552	552	552	553	552	553	553	555	556	557	558	559	559	559	559	554
McPherson	876	876	876	865	865	863	863	859	864	864	867	864	864	863	867	866	860	858	860	860	855	849	864
MCWRC	119	119	119	119	119	119	120	120	120	119	119	119	122	122	122	122	122	122	121	117	117	117	120
N Central	796	781	777	775	775	773	768	767	767	767	768	769	768	769	768	779	778	773	770	768	768	759	772
NWAWRC	100	99	99	99	99	100	98	98	98	98	96	96	96	100	100	99	100	99	99	101	101	101	99
Ouachita River	1,630	1,628	1,629	1,632	1,632	1,659	1,659	1,650	1,687	1,709	1,707	1,704	1,693	1,686	1,685	1,636	1,664	1,686	1,686	1,677	1,669	1,672	1,667
Randall L Williams	516	513	514	515	515	523	509	507	511	506	504	501	499	499	499	501	494	496	499	501	501	499	506
Pine Bluff	464	462	462	460	460	461	474	472	466	466	466	467	465	460	460	450	451	450	451	450	449	446	460
PB Reentry	53	53	53	53	53	53	53	54	54	54	53	54	54	54	52	52	52	52	52	52	52	54	53
TRCC	102	100	99	99	99	99	98	98	99	99	99	99	97	97	97	97	97	97	97	97	97	96	98
Tucker	715	708	708	707	707	706	703	703	702	701	701	701	699	695	695	691	691	691	687	684	681	680	698
Varner	1,547	1,545	1,541	1,537	1,537	1,541	1,541	1,541	1,539	1,537	1,533	1,532	1,531	1,530	1,531	1,531	1,531	1,531	1,529	1,527	1,526	1,522	1,535
Wrightsville	803	799	794	790	790	789	789	786	789	789	791	789	790	789	787	787	781	777	776	777	776	776	787
WR Hawkins-Females	242	242	242	241	241	241	241	241	241	241	239	239	239	238	236	236	236	236	236	234	242	241	239
WR Hawkins-Males	197	199	199	198	198	198	198	199	198	198	198	196	196	196	194	194	193	193	192	192	191	194	196
Total ADC	14,675	14,628	14,600	14,564	14,564	14,594	14,582	14,568	14,607	14,615	14,605	14,585	14,565	14,551	14,545	14,536	14,556	14,556	14,541	14,522	14,509	14,491	14,572
ALETA	18	18	18	18	18	18	18	18	18	18	18	18	18	18	18	18	18	18	18	18	18	18	18
Ar State Police	47	47	52	52	52	52	53	53	51	51	50	50	49	49	49	49	49	49	49	48	48	48	50
Co Jail / M	1,387	1,415	1,420	1,437	1,437	1,395	1,411	1,434	1,429	1,403	1,427	1,447	1,474	1,488	1,500	1,529	1,495	1,492	1,505	1,535	1,557	1,576	1,463
Co Jail / F	196	197	204	208	208	208	209	215	209	203	201	210	219	223	221	223	227	227	222	222	223	228	214
Total Co Jail BK	1,583	1,612	1,624	1,645	1,645	1,603	1,620	1,649	1,638	1,606	1,628	1,657	1,693	1,711	1,721	1,752	1,722	1,719	1,727	1,757	1,780	1,804	1,677
309/M	233	233	233	232	232	232	233	233	232	231	230	229	228	227	227	227	227	224	219	219	219	217	228
309/F	86	86	86	87	87	87	88	89	88	92	92	92	92	93	93	93	93	94	94	96	96	96	91
Total Act 309	319	319	319	319	319	319	321	322	320	323	322	321	320	320	320	320	320	318	313	315	315	313	319
Total Non ADC	1,967	1,996	2,013	2,034	2,034	1,992	2,012	2,042	2,027	1,998	2,018	2,046	2,080	2,098	2,108	2,139	2,109	2,104	2,107	2,138	2,161	2,183	2,064
Total	16,642	16,624	16,613	16,598	16,598	16,586	16,594	16,610	16,634	16,613	16,623	16,631	16,645	16,649	16,653	16,675	16,665	16,660	16,648	16,660	16,670	16,674	16,636

## RESTRICTIVE HOUSING QUARTERLY REPORT JULY 1, 2021 TO SEPTEMBER 30, 2021

### Restrictive Housing Disciplinary Counts

12-3 : Failure to Obey Order of Staff	471
04-8 : Battery - Use of Force on an Inmate	339
12-4 : Refusing a Direct Verbal Order	300
05-3 : Assault - Verbal or Written Threat	267
11-1 : Insolence to a Staff Member	194
03-5 : Out of Place of Assignment	193
02-16 : Refusal to Submit to Testing	151
09-3 : Possession/Introduce Drugs	129
02-17 : Creating Unnecessary Noise	121
05-5 : Provoking or Agitating a Fight	90
02-12 : Keep Person/Quarters W Regulat	77
10-3 : Indecent Exposure	77
01-1 : Banding Together/Demonstration	67
09-15 : Possession/Introduction/Use of Cell Phone	64
07-1 : Unauthorized Use of State Property	62
15-3 : Purchase of Unauthorized Articles	62
09-1 : Possession/Intro of Fireworks	59
09-5 : Possession/Introduction of Clothing	55
02-2 : Use of Drugs, Alcohol, Chemical	51
13-2 : Lying to a Staff Member	48

### Disciplinary Categories

Violence to Others	431
Possession of Drug-Related Contraband	180
Masturbation/Indecent Exposure	82
Sex with Another Person	39
Other Violations	2,705

Inmates Placed in RH	2,221
----------------------	-------

### Population Demographics

RACE	GENDER		Total
	M	F	
Asian	3	0	3
Black	1,914	91	2,005
Caucasian	1,428	114	1,542
Hispanic	90	5	95
NA Indian	5	1	6
Native Hawaiian or Pacific Isl	2	0	2
Other	3	0	3
<b>Total</b>	<b>3,445</b>	<b>211</b>	<b>3,656</b>

Protective Custody	8
Age 21 or Younger	76
Age 55 or Older	232
SMI	57

### Suicides/Deaths in Restrictive Housing

Suicides	0
Suicide Attempts	23
Deaths	2

\*Correction: In July 2021 report, there was a reported increase of 26.1% in major disciplinarys. The correct change was 2.6%.



## FISCAL YEAR 2022 COUNTY JAIL BACKUP - SEPTEMBER 2021

DAY		Jul-21		Aug-21		Sep-21
1		1,059	*	1,294		1,583
2		1,090		1,309		1,612
3	*	1,090		1,342		1,624
4	*	1,090		1,356	*	1,624
5		1,096		1,370	*	1,624
6		1,096		1,396		1,645
7		1,114	*	1,396		1,645
8		1,089	*	1,396		1,603
9		1,090		1,408		1,620
10	*	1,090		1,405		1,649
11	*	1,090		1,404	*	1,649
12		1,121		1,416	*	1,649
13		1,125		1,436		1,638
14		1,146	*	1,436		1,606
15		1,131	*	1,436		1,628
16		1,155		1,435		1,657
17		1,189		1,460		1,693
18	*	1,189		1,485	*	1,693
19	*	1,189		1,499	*	1,693
20		1,208		1,499		1,711
21		1,228	*	1,499		1,721
22		1,237	*	1,499		1,752
23		1,259		1,514		1,722
24	*	1,259		1,527		1,719
25	*	1,259		1,511	*	1,719
26		1,248		1,523	*	1,719
27		1,233		1,540		1,727
28		1,248	*	1,540		1,757
29		1,266	*	1,540		1,780
30		1,294		1,526		1,804
31	*	1,294		1,562		
Avg Daily Backup		1,170		1,450		1,676

Notes: Totals do not include 309 Contracts in County Jails (maximum of 336)

County Jail Back-up Average for September 2021 - 1,432

Short-Term Revocation Program Average for September 2021 - 654

## STTG UNIT COUNTS – SEPTEMBER 2021

Unit	Beginning Total	Confirmed	Suspected	In	Out	Paroled	Removed	Ending Total	Total Unit Population	Unit % of STTG's
Benton	92	0	0	10	4	6	0	92	302	30.46%
Cummins	657	0	0	27	21	9	0	654	1,892	34.57%
Delta	181	0	0	11	7	4	0	181	608	29.77%
EARU	593	0	0	8	6	9	0	586	1,491	39.30%
Ester	94	0	0	20	11	2	0	101	557	18.13%
Grimes	381	0	0	22	13	10	0	380	1,054	36.05%
Hawkins	49	0	0	3	3	0	0	49	434	11.29%
Max	267	0	0	9	5	1	0	270	557	48.47%
Mcpherson	36	0	0	0	0	0	0	36	853	4.22%
MCWR	33	0	0	2	2	1	0	32	116	27.59%
NCU	267	2	0	24	15	12	0	266	785	33.89%
NWAWR	35	0	0	1	5	1	0	30	99	30.30%
ORCU	406	0	0	57	24	14	0	425	1,530	27.78%
ORCU Intake	121	89	0	0	68	0	0	142	229	62.01%
Pine Bluff	147	0	0	13	15	5	0	140	514	27.24%
RLW	191	0	0	10	4	9	0	188	500	37.60%
TWR	37	0	0	0	1	3	0	33	92	35.87%
Tucker	244	0	0	1	6	5	0	234	671	34.87%
Varner	627	0	0	37	34	13	0	617	1,517	40.67%
Wrightsville	270	0	0	0	21	10	0	239	759	31.49%
<b>Total</b>	<b>4,728</b>	<b>91</b>	<b>0</b>	<b>255</b>	<b>265</b>	<b>114</b>	<b>0</b>	<b>4,695</b>	<b>14,560</b>	<b>32.25%</b>

ORCU Intake brought in 89 new STTG members into ADC last month.

## STTG DISCIPLINARY REPORT – SEPTEMBER 2021

Unit	STTG Incidents	STTG Suspected Incidents	Total Unit Disciplinary	Disciplinary Involving STTG	Percentage
Benton	0	0	8	4	50.00%
Cummins	0	0	417	210	50.36%
Delta	0	0	115	67	58.26%
EARU	0	0	139	76	54.68%
Easter	0	0	26	5	19.23%
Grimes	0	1	96	55	57.29%
Hawkins	0	0	1	0	0.00%
Max	0	0	93	52	55.91%
Mcpherson	0	0	95	12	12.63%
MCWR	0	0	2	1	50.00%
NCU	3	0	104	34	32.69%
NWAWR	0	0	9	4	44.44%
ORCU	0	0	93	45	48.39%
ORCU Intake	0	0	8	1	12.50%
Pine Bluff	0	0	40	21	52.50%
RLW	0	0	84	37	44.05%
TWR	0	0	1	0	0.00%
Tucker	0	0	57	23	40.35%
Varner	1	0	250	150	60.00%
Wrightsville	0	0	122	50	40.98%
<b>Total</b>	<b>4</b>	<b>1</b>	<b>1,760</b>	<b>847</b>	<b>48.13%</b>



## STTG COUNTS BY STTG SET – SEPTEMBER 2021

STTG Set	Benton	Cummins	Delta	EARU	Ester	Grimes	Hawkins	Max	Mcpherson	MCWR	NCU	NWAWR	ORCU	Intake	PB	RLW	TWR	Tucker	Varner	Wrightsville	Total
Asian	0	2	0	0	0	0	0	0	0	1	1	1	2	0	0	0	0	1	0	0	8
Bloods	20	143	38	103	19	74	5	59	4	10	36	9	64	16	21	39	6	43	134	43	886
Crips	6	90	12	82	13	37	5	34	7	1	28	3	41	10	18	15	3	17	95	33	550
Folk	3	55	0	118	1	30	11	32	7	2	16	5	70	25	5	9	2	22	64	10	487
GD	20	148	32	89	20	81	0	65	0	8	43	0	50	20	34	43	11	62	145	48	919
Mexican	1	25	6	11	7	12	1	4	2	2	5	1	13	2	6	10	0	5	23	10	146
Motorcycle	0	1	1	3	1	0	1	1	1	1	3	0	2	0	1	0	1	0	0	2	19
Other	3	22	6	11	13	13	1	8	3	0	12	2	22	2	6	7	0	8	17	7	163
People	1	23	8	19	1	24	2	19	2	0	11	1	25	1	9	10	0	11	17	10	194
Unknown	1	7	8	13	0	14	0	4	0	0	5	0	10	4	0	2	1	8	9	6	92
W/S	19	45	44	52	14	43	14	7	10	3	55	8	76	38	27	23	5	25	33	20	561
AB	1	6	0	4	0	5	1	1	0	2	3	0	3	2	1	3	0	4	12	4	52
AC	3	8	1	14	3	8	1	4	0	0	8	0	2	2	0	2	2	3	13	5	79
NAE	8	42	8	32	4	14	2	13	0	2	15	0	15	5	5	8	1	8	23	25	230
WAR	6	37	17	35	5	25	5	19	0	0	25	0	30	15	7	17	1	17	32	16	309
<b>Total</b>	<b>92</b>	<b>654</b>	<b>181</b>	<b>586</b>	<b>101</b>	<b>380</b>	<b>49</b>	<b>270</b>	<b>36</b>	<b>32</b>	<b>266</b>	<b>30</b>	<b>425</b>	<b>142</b>	<b>140</b>	<b>188</b>	<b>33</b>	<b>234</b>	<b>614</b>	<b>239</b>	<b>4,695</b>

Key:

GD = Gangster Disciples

W/S = White Supremacist

NAE = New Aryan Empire

WAR = White Aryan Resistance

AC = Aryan Circle

AB = Aryan Brotherhood

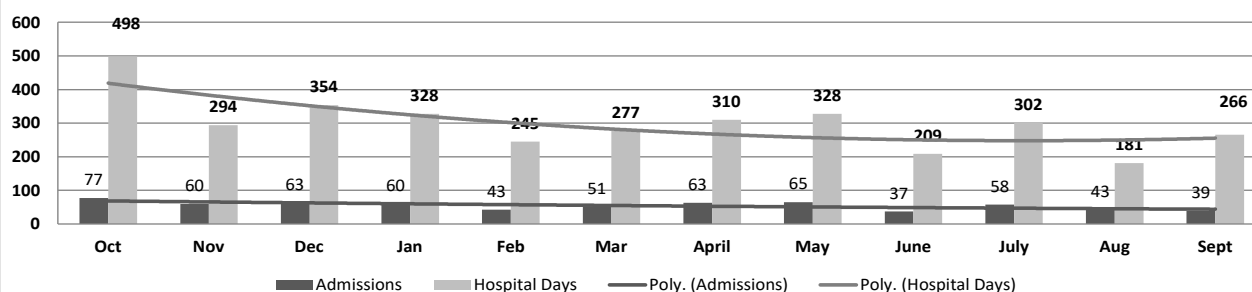
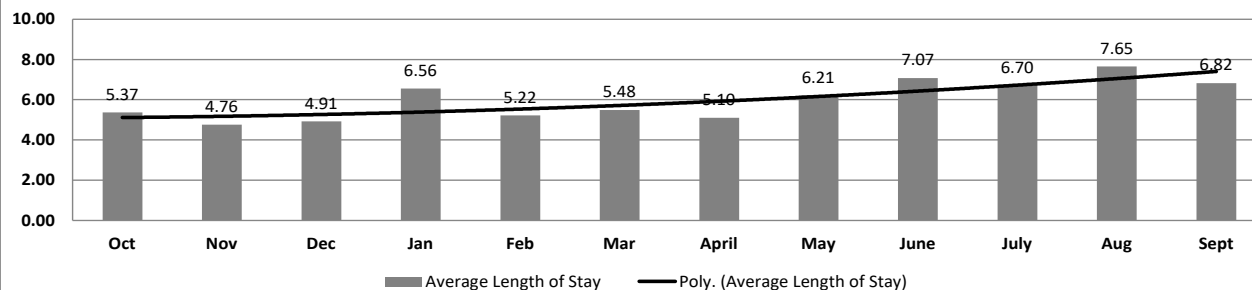
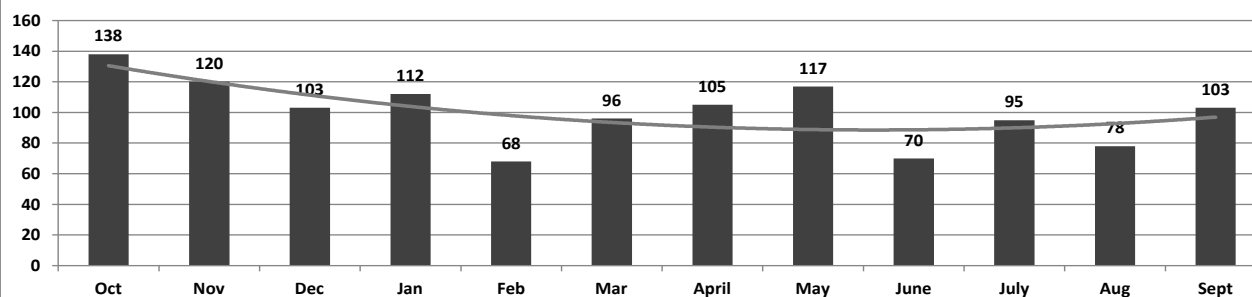
## ADC INPATIENT AND EMERGENCY ROOM UTILIZATION

ADC Inpatient Statistics Past 12 Months

	2020			2021									Average
	Oct	Nov	Dec	Jan	Feb	Mar	April	May	June	July	Aug	Sept	
Admissions	77	60	63	60	43	51	63	65	37	58	43	39	54.9
Hospital Days	498	294	354	328	245	277	310	328	209	302	181	266	299.3
Average Length of Stay	5.37	4.76	4.91	6.56	5.22	5.48	5.10	6.21	7.07	6.70	7.65	6.82	5.45

ADC ER Visits Past 12 Months

	2020			2021									Average
	Oct	Nov	Dec	Jan	Feb	Mar	April	May	June	July	Aug	Sept	
Emergency Room Visits	138	120	103	112	68	96	105	117	70	95	78	103	100.4

ADC Inpatient Utilization  
Past 12 MonthsADC Inpatient Average Length of Stay  
Past 12 MonthsADC Emergency Room Visits  
Past 12 Months

## MEDICAL GRIEVANCE BOARD REPORT – SEPTEMBER 2021

Unit	<i>Acknowledged/ Received</i>	<i>Rejected</i>	<i>Reviewed &amp; Signed by Dep Director</i>	<i>With Merit</i>	<i>With Merit, but Resolved</i>	<i>% With Merit</i>	<i>Without Merit</i>
Benton	0	0	0	0	0	0%	0
CMU	0	0	0	0	0	0%	0
Cummins	27	2	20	0	0	0%	20
Delta	1	4	6	0	1	17%	5
EARU	24	2	6	0	1	17%	5
EARU Max	30	0	6	0	0	0%	6
Ester	0	0	2	0	0	0%	2
Grimes	5	6	8	2	0	25%	6
Hawkins	0	0	0	0	0	0%	0
McPherson	13	6	2	0	0	0%	2
MCWRC	0	0	0	0	0	0%	0
MSU	9	1	8	0	0	0%	8
North Central	19	0	7	1	0	14%	6
NWAWRC	0	0	0	0	0	0%	0
Ouachita	8	2	9	0	0	0%	9
Pine Bluff	0	0	0	0	0	0%	0
Randall L. Williams	1	0	0	0	0	0%	0
SNN	0	0	0	0	0	0%	0
TRCC	0	0	0	0	0	0%	0
Tucker	7	3	2	0	0	0%	2
Varner	4	0	2	0	0	0%	2
Varner Super Max	2	1	9	0	0	0%	9
WRU	0	1	0	0	0	0%	0
WHM	0	0	2	0	0	0%	2
WWR	0	0	0	0	0	0%	0
<b>Total</b>	<b>150</b>	<b>28</b>	<b>89</b>	<b>3</b>	<b>2</b>	<b>6%</b>	<b>84</b>

## CHAPLAINCY

Month: September Year: 2021	CUMMINS	DELTA REGIONAL	EAST ARKANSAS	EAST ARKANSAS MAX	ESTER	GRIMES	HAWKINS	MAXIMUM	MCPHERSON	NORTH CENTRAL	OUACHITA RIVER	PINE BLUFF	RANDALL L. WILLIAMS	TUCKER	VARNER	VARNER MAX	WRIGHTSVILLE	TOTAL
<b>Services Chaplains Oversaw</b>																		
Christian																		
Population	0	0	0	0	3	0	0	0	4	17	9	4	0	1	16	0	0	54
Segregation	0	0	0	0	3	0	0	0	0	0	0	0	0	0	0	0	0	3
Muslim																		
Population	0	0	0	0	2	0	0	2	4	4	4	4	0	0	4	0	0	24
Segregation	0	0	0	0	2	0	0	2	0	0	0	0	0	0	0	0	0	4
																		85
<b>Volunteers in Charge</b>																		
Protestant	0	0	0	0	0	0	0	0	0	0	4	0	0	15	0	0	0	19
Catholic	0	0	0	0	0	0	0	0	0	0	5	0	0	0	0	0	0	5
Muslim	0	0	0	0	0	0	1	0	0	0	0	0	0	2	0	0	0	3
Other	0	0	0	0	0	0	0	0	0	0	0	0	0	0	0	0	0	0
Baptism	0	0	0	0	0	0	0	0	0	0	0	0	0	6	0	0	0	6
<b>Marriages</b>																		
	0	0	0	0	0	0	0	0	0	0	0	0	0	0	0	0	0	0
<b>Distributed by Chaplains</b>																		
Greeting Cards	30	4	0	0	51	32	77	20	508	30	175	68	30	171	45	342	40	1,623
Bibles, Quran, Torah, Etc.	37	6	16	20	17	18	5	5	34	20	125	3	58	114	23	22	23	546
Study Course	0	4	4	13	93	2	120	0	18	0	42	11	122	108	56	1	0	594
Writing Supplies	0	0	0	0	20	0	625	10	111	0	500	0	0	212	0	374	75	1,927
Literature	3,013	550	482	327	102	52	450	52	149	350	350	30	728	863	542	32	395	8,467
<b>Chaplain's Visits</b>																		
Barracks	73	29	30		12	24	8	32	26	119	24	0	22	79	507	32	11	1,028
Approximate Hours Spent in Barracks	85	7	14	0	6	5	2	34	32	30	3	0	56	20	185	21	5	505
Inmate Office visits	41	69	35	0	26	67	20	5	23	20	51	13	26	131	95	0	27	649
Other Office visits	21	5	17	3	9	21	11	0	18	0	32	31	17	22	36	15	0	258
Hospital	2	0	0	0	0	0	0	0	0	0	6	0	0	0	0	0	0	8
Infirmary/Sick Call	3	3	3	0	0	1	4	15	0	4	7	0	1	0	6	6	2	55
Restrictive/Punitive Housing	6	4	0	23		2	7	6	8	5	13	2	4	9	0	22	2	113
PC - DRU		3																3
Visitation Days	0	0	0	0	0	0	0	0	0	0	0	0	0	0	0	0	0	0
<b>Volunteer Visits</b>																		
RCV	0	0	0	0	0	0	12	0	0	0	0	0	0	0	0	0	0	12
OCV	0	0	0	0	0	0	28	0	0	0	0	0	0	19	0	0	0	47
Spiritual Advisor	0	0	0	0	0	0	0	0	0	0	0	0	0	0	0	0	0	0
CRA	8	0	19	4	5	48	12	2	30	24	30	6	0	60	0	0	1	249
<b>Religious Volunteer Hours</b>																		
Volunteer Hours	29	0	67	8	5	228	30	4	130	89	166	42	0	228	0	0	25	1,051
Denominational/Volunteer Chaplain Hours	21	2	5	0	180	6	34	0	10	199	4	8	0	11	0	0	50	530
																		1,581
<b>Other Activities of Chaplain</b>																		
Counseled Employees	7	8	9	0	5	2	9	2	0	12	21	0	12	12	119	0	0	218
Orientation Sessions	0	0	0	0	0	0	6	0	0	0	0	0	0	0	0	0	0	6
Free World Devotions	0	0	0	0	1	9	0	0	9	0	2	0	1	2	24	0	0	48
Spoke in Churches	4	0	4	0	2	1	0	0	1	0	2	9	0	2	24	0	0	49
Crisis Intervention Sessions	35	9	6	0	0	0	3	1	0	6	16	9	24	11	3	0	10	133
Marriage Counseling	0	0	1	0	0	0	0	0	0	0	0	0	0	0	0	0	0	1
Denominational Meeting	0	0	0	0	1	1	0	1	1	0	0	0	0	0	0	0	0	4
Chaplain's Meeting	1	0	1	1	1	1	1	0	1	1	1	0	1	1	16	0	0	27
Volunteer Training Session	0	0	0	0	0	0	0	0	0	0	0	0	0	0	0	0	0	0
<b>Chaplain Transfers</b>																		
	0	0	0	0	0	0	0	0	1	0	0	0	1	0	0	0	0	2
<b>Chaplain Promotions</b>																		
	0	0	0	0	0	0	0	0	0	0	0	0	0	0	0	0	0	0
<b>PAL PROGRAM</b>																		
Enrolled at start of month	46	19	48	0	53	48	31	20	55	60	33	0	0	53	49	0	22	537
Enrolled during the month	4	3	0	0	23	4	3	2	11	13	0	0	0	2	4	0	0	69
Removed From PAL Program																		
# Paroled	1	0	1	0	0	0	1	0	1	3	0	0	0	2	1	0	0	10
# Completed	1	0	0	0	16	0	3	0	2	3	0	0	0	0	0	0	0	25
# Withdrew	1	0	0	0	3	1	2	0	1	2	0	0	0	1	2	0	2	15
# Removed	0	0	0	0	1	3	2	1	3	3	0	0	0	0	0	0	0	13
# Transferred	0	0	0	0	0	1	2	0	4	2	0	0	0	0	0	0	0	9
Total Removed from PAL Program	3	0	1	0	20	5	10	1	11	13	0	0	0	3	3	0	2	72
Total Enrolled at the End of the Month	47	22	47	0	56	47	24	21	55	60	33	0	0	52	50	0	20	534
<b>Volunteers in PAL</b>																		
	2	1	7	0	0	13	12	7	30	6	1	0	0	0	0	0	4	83
<b>Special Events:</b>																		
	0	1	0	0	1	0	0	0	0	1	0	0	0	0	0	0	0	3



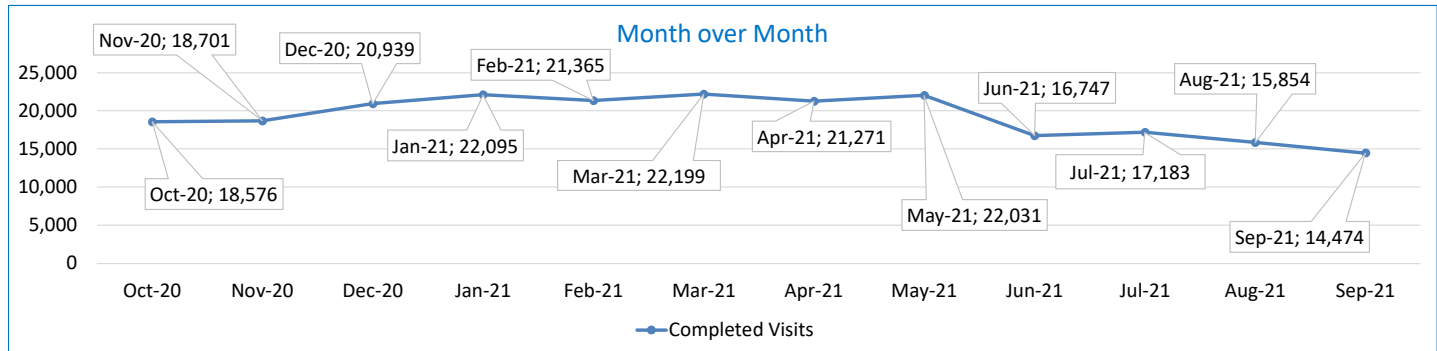
## SECURUS VIDEO VISITATION REPORT SEPTEMBER 2021

### AR-DOC SVV Activity Tracker

Total ADP 14,557

Total Visits by Month	Oct-20	Nov-20	Dec-20	Jan-21	Feb-21	Mar-21	Apr-21	May-21	Jun-21	Jul-21	Aug-21	Sep-21
Total (Includes SuperMax)	18,576	18,701	20,939	22,095	21,365	22,199	21,271	22,031	16,747	17,183	15,854	14,474
Target Objective	15,587	15,587	15,587	15,587	15,587	15,587	15,587	15,587	15,587	15,587	15,587	15,587

#### Anywhere Visitation Performance:



#### Completed Visits

Site	Current Month	Previous Month
Benton	490	437
Cummins	1,058	1,427
Delta Regional	732	835
East Arkansas Regional	1,819	1,943
Ester	592	603
Grimes	964	875
J Aaron Hawkins Sr.	690	800
Tucker Max	770	870
Mcperson	609	635
Mississippi County WRC	122	145
North Central	1,323	1,452
NW Arkansas WRC	58	93
Ouachita River	1,421	1,592
Pine Bluff Complex	255	314
Randall L Williams	482	531
State Police Barracks	122	88
Texarkana Regional	69	98
Tucker Unit	477	535
Varner	1,475	1,573
Wrightsville Unit	921	979
Pine Bluff Re-Entry	25	29
Tucker Re-entry	0	0
<b>Total:</b>	<b>14,474</b>	<b>15,854</b>

#### Missed by Inmate

Site	Current Month	Previous Month
Benton	10	17
Cummins	97	51
Delta Regional	46	10
East Arkansas Regional	47	66
Ester	13	9
Grimes	12	12
J Aaron Hawkins Sr.	10	18
Tucker Max	15	7
Mcperson	25	32
Mississippi County WRC	24	10
North Central	11	48
NW Arkansas WRC	7	5
Ouachita River	39	53
Pine Bluff Complex	8	15
Randall L Williams	25	29
State Police Barracks	4	4
Texarkana Regional	18	14
Tucker Unit	12	11
Varner	81	59
Wrightsville Unit	10	38
Pine Bluff Re-Entry	3	0
Tucker Re-entry	0	0
<b>Total:</b>	<b>517</b>	<b>508</b>

### SECURUS TABLET REPORT SEPTEMBER 2021

Facility Name	Subscription	Facility	Officer	Total	New Subscriptions
Benton Unit	111	15	8	134	0
Cummins Unit	286	117	14	417	0
Delta Regional Unit	88	39	16	143	0
East Arkansas Regional Unit	169	103	10	282	0
Ester Unit	104	142	20	266	0
Grimes Unit	137	48	14	199	0
J. Aaron Hawkins Sr. Center For Women	130	103	19	252	0
McPherson Unit	138	95	15	248	0
Mississippi County Work Release Center	43	4	9	56	0
North Central Unit	114	124	10	248	0
Northwest Arkansas Work Release Center	44	5	8	57	0
Ouachita River Correctional Unit	208	117	14	339	0
Pine Bluff Reentry Center	16	4	0	20	0
Pine Bluff Unit	67	7	8	82	0
Randall L. Williams Facility	45	28	14	87	0
State Police Barracks	21	0	3	24	0
Texarkana Regional Correctional Center	32	3	10	45	0
Tucker Maximum Security Unit	85	64	15	164	0
Tucker Reentry Center	0	51	3	54	0
Tucker Unit	100	64	10	174	0
Varner Unit	153	75	20	248	0
Wrightsville Unit	124	46	6	176	0
<b>TOTAL</b>	<b>2,215</b>	<b>1,254</b>	<b>246</b>	<b>3,715</b>	<b>0</b>

## CONSTRUCTION BUDGET / STATUS REPORT - OCTOBER 4, 2021 — [Page 1 of 2]

Fund	Project Description	Total Projected Spent	Budget	Available Funds	\$ % Complete	Construction % Complete	Notes
700483A	EARU Max Rec Expanded Metal Rec Yard	836,866	879,000	42,134	95%	64%	We have delivered panels to EARU. We have started demolition and construction of new Rec pens.
700483A	Tucker Max Expanded Metal Rec Yard	1,103,522	1,800,000	696,478	61%	0%	DBA Approved to proceed. We are constructing the panels on-site. Material list has been ordered and delivered.
700483A	Cummins Expanded Metal Rec Yard	50,012	368,617	318,605	14%	0%	Plans on hold, will modify for exp. metal
KBR4Q95	Bullpens	388,676	851,999	463,323	46%	98%	Varner & EARU complete. Installation underway at Max. Locks delivered. Working on bullpens now.
KBR4Q95	13 & 15 Barracks Door Revisions	119,111	174,000	54,889	68%	68%	All doors and locks installed in 13 Barracks. We are fabricating the revisions at this time on the hill.
700485A	Integrity Energy Improvements at EARU & Delta	16,961,127	17,010,204	49,077	100%	99%	lights (100%), plumbing 100%, water (100%), compost (100%), & solar (100%), HVAC (100%). Only Training is incomplete.
7004828	Integrity Energy Improvements Phase 2 at Tucker and Max	1,920,263	18,603,150	16,682,887	10%	10%	Lighting has started at the Max. HVAC has began at Tucker. Plumbing will begin at the Max on Nov. 1, 2021.
KBSHW18	Tucker Water Treatment	31,346	1,093,848	1,062,502	3%	0%	The original blueprints has been completed and approved. The detail drawing will be submitted by 11/1/21 for DBA review.
KBSFW18	Max Armory	43,105	70,000	26,895	61.6%	0%	DBA had to review the plans with our on-call because previous approved drawings were stamped by Gail. Under review by DBA.
7004810	Administrative East Roof Replacement	60,494	1,544,880	1,484,387	3.9%	0%	All roofs have been designed. We are working with DBA to satisfy the required comments to finalize their review.
7004810	Central Warehouse Roof Replacement	20,061	357,132	337,071	5.6%	0%	
7004810	RLW Roof Replacement	119,882	2,897,988	2,778,106	4.14%	0%	
2ZV	NWARWRC Laundry and Commissary	230,357	250,000	19,643	92%	60%	All Building and material are onsite. We are pulling wiring this week. The building is erected and is set to deliver the week of 11/5/21.
865C KBR4Q95	NCU Perimeter Security	20,625 6,275	270,000	243,100	10%	0%	DBA Approved plans. DBA has the project in review.
N98	Max Re-Entry Generator Project	16,634	135,000	118,366	12%	0%	Plans submitted to DBA. We have received our notice to proceed on this project.
KBR4Q95	NCU Replacement Generator Project	182,463	202,000	19,537	90%	0%	DBA Approved. Bids are being requested.
7004820	Tucker Asbestos Abatement	319,516	448,000	128,484	71%	15%	Contract Complete. Work underway. Started 8/31/2021. Completion scheduled for December 18, 2021.
7004820	Tucker 10 Barracks Sidewalk	10,728	70,259	59,530	15%	15%	DBA approved to proceed. We have regraded the area. Working to prepare walkway for concrete.
7004820	Lethal Fence Control for Cummins, Varner SuperMax, Tucker Max, & EARU	46,250	875,000	828,750	5%	0%	Plans to be submitted to DBA on 9/10/2021.



## CONSTRUCTION BUDGET / STATUS REPORT - OCTOBER 4, 2021 — [Page 2 of 2]

Fund	Project Description	Total Projected Spent	Budget	Available Funds	\$ % Complete	Construction % Complete	Notes
<u>Telephone Projects</u>							
Maintenance & Operations	Fire Alarm Upgrades (All Units)	6,068	41,000	34,932	15%	15%	on-going
	Stainless Steel - Kitchen/Shower/Restrooms - All Units	0	20,000	20,000	0%	0%	continual need
	Gates and Fences all units	12,508	25,000	12,492	50%	45%	to improve security
	ACA Maintenance	51,851	100,000	48,149	52%	40%	Walkthrough done at Varner. Dedication resources to Varner for ACA.
	ADA Projects - All Units	0	10,000	10,000	0%	0%	Working with Varner for the sports field sidewalk.
	Fast Top Floor Systems (kitchen/laundry/showers all units)	18,079	25,000	6,921	72%	55%	Benton complete. Ouachita kitchen material has been ordered and awaiting arrival.
	Camera Equipment - All Units	117,174	250,000	132,827	47%	25%	cameras as requested/approved.
	Lock/Riot Gates - All Units	13,623	90,500	76,877	15%	15%	on-going.
	AC Units-All Units	69,278	70,000	722	99%	90%	repairing & replacing daily.
	<b>Subtotal</b>	<b>\$ 288,580</b>	<b>\$ 631,500</b>	<b>\$ 342,920</b>			
Capital Projects FY21 Carry Forward	Metal Ceilings	0	25,000	25,000	0%	0%	Wrightsville showers are underway.
	ORCU Gravel Pit Operations	6,472	35,000	28,528	18%	15%	on-going.
	Dog Kennel/Horse Stable Malvern	13,584	48,000	34,416	28%	55%	Material for this project ordered. Dedicated project supervisor on-site. Slab prepwork is underway.
	Emergency Generator - All Units	48,220	250,000	201,780	19%	25%	Cummins 300kW generator complete. Hawkins Unit Gen is installed and operational. Max Gen mat'l rec'd, Generator rec'd. Cummins East Bldg. we have approval awaiting Max generator install.
	Tucker 4 new filters & one aeration tank	9,122	10,000	878	91%	100%	Project is complete.
	Roof Repairs-Cummins	0	130,700	127,336	3%	0%	Prepared large order for multiple Units. Max is complete. Need repairs at ORCU, Delta, Cummins & others. Varner & ORCU working on repairs, received TPO Office of State Procurement secured a State contract to purchase roofing materials.
	Roof Repairs-Cummins Laundry	0				0%	
	Construction/Maintenance	0				0%	
	Roof Repairs-Delta	3,364				0%	
	Roof Repairs-East Arkansas	0				0%	
	Roof Repairs-Max	0				0%	
	Roof Repair - NCU	0				0%	
	Roof Repair - RLW	0				0%	
	Roof Repairs-Tucker	0				0%	
	Roof Repairs-Varner	0				0%	
	Roof Repairs-Wrightsville	0				0%	
	<b>Subtotal</b>	<b>\$ 80,762</b>	<b>\$ 498,700</b>	<b>\$ 417,938</b>			
New Projects	Delta Perimeter	0	261,000	261,000	0%	0%	purchasing materials
	Wrightsville Perimeter	0	361,000	361,000	0%	0%	
	PB Warehouse Drive Replacement	0	118,000	118,000	0%	0%	Project suspended.
	<b>Subtotal</b>	<b>\$ -</b>	<b>\$ 740,000</b>	<b>\$ 740,000</b>			
	Architect Fees	6,431	30,000	23,569	21%		
	<b>Total</b>	<b>\$ 375,773</b>	<b>\$ 1,900,200</b>	<b>\$ 1,524,427</b>			

Notes Report has not been reconciled against Accountings Reconciled Reports.  
Tolerance/Deviation is with in 1% of Projected Spending.