



DIVISION OF
CORRECTION

BOARD REPORT

November 2021



@ARDeptofCorrections



@adcpio



@arcorrections



Dexter Payne,
Director

POPULATION REPORT

RESEARCH/PLANNING

October 2021 Admissions and Releases –

Admissions for October 2021 totaled **271** (180-males and 91-females) while releases totaled **371** (312-males and 59 females) for a net decrease in-house of **100** inmates.

Inmate Population Growth/Projection –

At the end of October 2021, the jurisdictional population for the Division of Correction totaled **16,821**, representing an increase of **727** inmates since the first of January 2021. At reporting time, calendar year 2021 has seen an average increase of **73** inmates per month, which is up from an average monthly decrease of **139** inmates per month during calendar year 2020.

Average County Jail Back-up –

The backup in the county jails averaged **1,896** inmates per day during the month of October 2021, which was up from the per-day average of **1,676** inmates during the month of September 2021. Of the **1,896** average, short-term revocations accounted for **626** (558 males and 69 females) during the month.

maintenance crews. Arrangements are being made for steer calves to be sold through Superior Livestock Auctions in either late December or early January. Heifers are being held until March in order to better evaluate for replacements.

The newest pullets are growing well and will be moved to the layer house in mid-December. Currently, an average of 42,000 eggs are being produced daily.

The dairy's milk production is increasing with the transition to cooler weather. With the addition of new cows along with the availability of better silage, the upward trend in milk production should continue.

The vegetable harvest has been rather slow this fall, which is prompting a move towards incorporating more mechanical harvesting for the spring crops.

With the extended good weather during October and prices continuing to rise, about 5,200 acres of wheat was planted. A 40-bushel average in increments from \$7.15 to \$7.44 has been booked. With the market currently at \$7.85, the plan is to price some more when it increases to \$8.00.

The seed bid for all corn, rice and soybeans went out during the month. The goal is to have this approved and paid for in November in order to yield the best discounts.

INSTITUTIONS

INMATE INSTITUTIONAL GRIEVANCES

Inmate Formal/Informal Grievances: During October 2021, a total of 1,266 formal grievances and 1,849 informal grievances were filed at various units.

Institutional Grievances Appeals: There was a total of 411 appeals of institutional grievances received in October 2021. Of those, 317 were acknowledged and 94 were rejected for various reasons. Of the total 402 appeals answered, 399 had no merit and three had merit.

FARM

Nice weather during the month of October brought about an end to the 2021 harvest at all farms. The weather also contributed towards being able to plant wheat, put out most of next year's fertilizer, and work most of the land at least once in preparation for the 2022 crops.

Calf weaning began during the month, which always proves challenging due to fence disrepair. There's a plan to work on the fences during the winter with the help of regional

REGIONAL MAINTENANCE HOURS

Regional Maintenance Hours	October 2021
Benton Unit	6,197
Delta Regional Unit	2,064
East Arkansas Regional Unit	568
Grimes Unit	3,088
McPherson Unit	1,316
Mississippi County Work Release	570
North Central Unit	3,456
Ouachita River Correctional Unit	1,976
Randall L. Williams Unit	2,824
Texarkana Regional Correctional Center	331
Tucker Unit	1,776
Varner Unit	3,224
Wrightsville Unit	448
Total Hours	27,838

WORK RELEASE RENT REPORT

Unit	October 2021
Benton Unit	\$103,277.00
Mississippi County Work Release	\$44,812.00
Northwest Arkansas Work Release	\$36,975.00
Pine Bluff Work Release	\$33,728.00
Texarkana Regional Correctional Center	\$39,525.00
Wrightsville Hawkins Unit	\$18,360.00
Total	\$276,677.00

REENTRY**RANDALL L. WILLIAMS
JUVENILE EDUCATION PROGRAM**

October 2021 Capacity: 20	Beginning Count	New Commitments	DCR/Punitive	Transferred/ Turned 18*	Paroled	End Count
Juveniles*	5	0	0	0	0	5

*Juveniles are transferred from the program once they reach the age of 18.

**WORKFORCE ALLIANCE FOR
GROWTH IN THE ECONOMY (WAGE)**

October 2021 Capacity: 120 Unit:	Beginning Count	Admissions During Mo.	Removed*	Completed	End Count
Delta	20	0	4	0	16
Hawkins	0	0	0	0	0
McPherson	0	0	0	0	0
Ouachita River	0	0	0	0	0
Tucker	0	0	0	0	0
TOTAL	20	0	4	0	16

*The "Removed" column indicates the number of participants who transferred, signed out, received a disciplinary, were removed because test scores were not returned/were too low to continue, or were released from prison.

**ADVANCED PRINCIPLES
AND APPLICATIONS FOR
LIFE PROGRAM (APAL)**

October 2021 Capacity: 86	Beginning Count	Admissions During Mo.	Removed*	End Count
Ester	56	0	0	56
Hawkins	24	9	2	31
TOTAL	80	9	2	87

Advanced PAL is an 18-month reentry program that combines a pre-release curriculum with the PAL program.

*The "Removed" column indicates the number of participants who paroled, completed the program, withdrew from the program, transferred, or were removed from the program for another reason.

**WRIGHTSVILLE-HAWKINS
PATHWAY TO FREEDOM PROGRAM**

October 2021 Capacity: 200	Beginning Count	Enrolled During the Month	Removed	End Count*
Wrightsville-Hawkins PTF	195	4	4	195

*The "End Count" column includes nine graduates who remain in the Pathway to Freedom barracks.

THINK LEGACY

October 2021 Capacity: 635 Unit	Beginning Count	Admitted	Graduated	Removed*	End Count
Cummins	0	0	0	0	0
Delta Regional	21	0	0	0	21
East Arkansas Regional	46	7	0	5	48
McPherson	0	0	0	0	0
North Central	35	0	0	0	35
Ouachita River	0	0	0	0	0
Tucker	18	0	0	0	18
Total	120	7	0	5	122

*The "Removed" column indicates the total number of participants who paroled, signed out, transferred, or were removed from the program for any other reason and are no longer in the barracks.

TRAINING

DIVISION OF CORRECTION TRAINING - OCTOBER 2021

BASIC TRAINING DIVISION –

Under the direction of Instructor Ramone Woodall, **BCOT Class 2021-L** graduated on October 12, 2021, with a total of 23 cadets.

The *Willis H. Sargent Award* recipient was Connie Turner of the East Arkansas Regional Unit.

Academic Awards were presented to the following:

- 1st – Deedjra Lawrence, McPherson Unit
- 2nd – Misty Morgan, North Central Unit
- 3rd – Ryan Dempsey, Grimes Unit

Recipients of *Physical Fitness Awards* were:

- 1st – Ryan Dempsey, Grimes Unit
- 2nd – Isaakil Orday, East Arkansas Unit
- 3rd – Jeremy Teague, Construction

IN-SERVICE DIVISION –

During the month, the Training Academy held a *Defensive Driving* class attended by one participant, a *Firearms Instructor Certification* class attended by 8 participants, and two *eOMIS Training–Basic* and *eOMIS Incident Report* classes with a total of 30 participants each. The Training Academy also offered a *Firearms Training* class attended by two participants and a *Self Defense and Staff Survival* class attended by one participant.

Additionally, the following classes were presented both live and virtually: *Management Level I*, presented to 21 participants and two sessions of *Regain, Refrain, Retain: The Supervisor's Annual Refresher*, to 109 participants.

eCADEMY –

During October, 397 ADC employees completed a total of 6,305 hours of eCADEMY training. About 9% of ADC employees completed at least one course during that timeframe, averaging 1.40 hours per staff member.

HEALTH/CORRECTIONAL PROGRAMS

CHAPLAINCY SERVICES

Maximum Security Unit – On October 21, the unit's annual career service and employee awards program was hosted at the unit chapel.

ACCREDITATION

ACA Internal Audits Completed:

10/05–10/07 Varner Unit Reaccreditation (100% on Mandatory Standards/Best Practices and 99.3% on Non-Mandatory Standards/Best Practices)

10/11–10/15 Central Office and Wrightsville Complex File Review
10/25–10/30 East Arkansas Regional Unit and Tucker Unit File Review

Classes Taught:

10/21 Basic Correctional Officer Training

Fire/Safety and Sanitation Independent Audits Conducted by the Fire and Sanitation Coordinator:

10/20 Omega Supervision Sanction Center

Classes Taught:

10/21–10/22 Fire Safety at Cummins Pavilion

VOLUNTEER SERVICES

Total Number of Volunteer Hours for October 2021:

Unit/Program	Hours
Delta Unit	0
East Arkansas Regional Unit	0
McPherson Unit	0
Mississippi County Work Release Center	0
Northwest Arkansas Work Release Center	10
Ouachita River Correctional Unit	0
Pine Bluff Complex	0
Texarkana Regional Correctional Center	0
Varner	0
PAWS	14
Think Legacy	0
Religious Services/Chaplaincy	1,783
Total Hours	1,807

MENTAL HEALTH SERVICES

Reduction of Sexual Victimization Program (RSVP) and Sex Offender Treatment Programs (SOFT):

October 2021	Capacity	Beginning Count	Completed	Removed	Admissions	End Count
RSVP	238	222	78	3	4	145
SOFT	30	7	1	1	3	8
Total	268	229	79	4	7	153

There are 1,116 males on the waiting list for RSVP and four females on the waiting list for SOFT who are within five years of their TE date. Of those, 17 inmates are mandated by the Parole Board.

The average time on the waiting list from request is between one and two months for those stipulated.

*The total on the waiting list, including those not currently within the identified timeframe, is 1,452 males and four females. Of these, 1,118 are eligible and 338 are ineligible for the program. There is one PREA inmate in the program at this time.

*Ineligibility is due to being in restrictive housing, having class IV status, or receiving a major disciplinary within the last 60 days.

MENTAL HEALTH SERVICES, continued**Therapeutic Community (TC):**

October 2021 Unit	Capacity	Beginning Count	Completed	Removed	Admissions	End Count
Tucker	62	63	10	4	0	49
Wrightsville	50	46	0	2	4	48
Total	112	149	10	6	4	97

There are 576 males and 199 females on the waiting list who are within ten years of their release date. Of those, 21 are mandated by the Parole Board.

The average time on the waiting list from request is 23 days.

*The total on the waiting list, including those not currently within the identified timeframe, is 769 males and 210 females. Of these, 796 are eligible and 183 are ineligible for the program.

*Ineligibility is due to being in restrictive housing, having class IV status, or receiving a major disciplinary within the last 60 days.

Substance Abuse Treatment Program (SATP):

October 2021 Unit	Capacity	Beginning Count	Completed	Removed	Admissions	End Count
Benton	20	20	3	4	0	13
Cummins	45	36	5	5	10	36
Maximum Security	4	2	1	0	0	1
Randall L. Williams	150	136	9	23	22	126
Wrightsville	100	101	23	7	3	74
Total	469	429	73	61	69	364

There are 1,985 males and 152 females on the waiting list who are within five years of their release date. Of those, 32 are mandated by the Parole Board.

The average time on the waiting list from request is 13 days.

*The total on the waiting list, including those not currently within the identified timeframe, is 2,605 males and 175 females. Of these, 2,169 are eligible and 611 are ineligible for the program.

*Ineligibility is due to being in restrictive housing, having class IV status, or receiving a major disciplinary within the last 60 days.

PILOT PROGRAM – Substance User Rehabilitation Services (SURS):

October 2021 Unit	Capacity	Beginning Count	Completed	Removed	Admissions	End Count
McPherson	150	120	29	11	29	109
Grimes	50	41	9	0	11	43
Total	200	161	38	11	40	152

Substance Use Intervention Program: The Substance Use Intervention Program had 24 admissions and 13 discharges for an end-of-month count of 29 in October. This program is housed at the Varner Unit and is for inmates found guilty of a disciplinary violation for drug use or drug possession.

Ouachita River Correctional Unit (ORCU) Residential Program Unit (RPU): The RPU had one admission and four discharges in October for an end-of-month count of 119.

McPherson Unit Mental Health Residential Program Unit (RPU): There was one admission and two discharges in October for an end-of-month count of 38.

Habilitation Program: The Habilitation Program at the Ouachita River Correctional Unit provided treatment services to 45 inmates in October. There were no admissions or discharges, which resulted in an end-of-month count of 45.

Anger Management Treatment: The Anger Management Treatment Program at the Cummins Unit did not provide treatment services to any inmates in October. There were no admissions or discharges, for an end-of-month count of zero.

Staffing: The following Mental Health Services and Substance Abuse Treatment Program (SATP) positions were vacant in September and October 2021:

Positions	FTE's*	September 2021	October 2021
Psychologists	14	6	6
Psychological Examiners	2	1	1
Social Workers	31	16	17
Licensed Professional Counselors	2	1	1
Rehab Director	1	1	1
Rehab Facility Supervisors	3	1	1
Advisors	64	23	26
Substance Abuse Program Leaders	40	6	9
Administrative Specialists	17	3	3

*FTE refers to authorized Full Time Equivalent positions.

ADDITIONAL MENTAL HEALTH AND MEDICAL INFORMATION

Self-Study Classes:

Classes	Number of Participants	Number Completed	Waiting List
Anger Management	265	246	799
Thinking Errors	80	80	926
Substance Abuse Education	59	58	675
Communication Skills	82	82	761
Domestic Violence	23	23	193
Victims of Domestic Violence	14	14	36
Stress Management	69	69	854
Parenting	96	89	313

Suicide: There were 95 suicidal threats in October. There were eight attempts, none of which resulted in death.

Outpatient: There were 2,019 inmates on the mental health medical log at the beginning of October. Mental Health staff conducted the following contacts during the month:

Case Management Contacts	1,723
Requests for Interviews	1,414
Testing	2
Intakes	262
Unit Requests	961
Pre-Lockup Reviews	296
Routine Restrictive Housing Reviews	677
Restrictive Housing Rounds	17,198
PREA Evaluations	80
Routine Follow-up	356
834 Requests	25

County Mental Health Requests: During October, there were 311 requests received of a mental health nature. Of those, 182 inmates were fast-tracked to ADC. ***Note: Most inmates were not transferred due to COVID-19.***

County Medical Health Requests: During October, there were 659 requests received of a medical nature. A total of ten inmates were fast-tracked to ADC.

Medical Contract Reimbursements: Sanction reimbursements for ADC in September amounted to \$9,600.00.

Deaths: There were three inmate deaths during the month of October. All three were cremated.

Wellpath: See attachment for Wellpath's report regarding outside beds and emergency room visits.

Medical Grievances: In October, there were 132 appeals of medical grievances received and 125 appeals were answered. Four were found to be with merit and five with merit but resolved.

SEX OFFENDER ASSESSMENT

Assessments Completed:

Risk Level	October	September 1999 through October 2021
Level 1	1	1,214
Level 2	59	8,571
Level 3	18	7,409
Level 4	2	725
Default 3	0	*
Total	80	17,919
*Default Level 3's are included in the total number of Level 3's to date.		

ACIC Numbers:

The total number of sex offenders registered from September 1999 through October 2021:

Compliant	8,573
Delinquent	1,373
Confined	3,350
Out-of-State	3,953
Address Unknown	148
Deported	209
Incapacitated	100
Out of USA	17
Total	17,723

Consistent with current Arkansas law, deceased offenders no longer remain on the registry.

PAWS IN PRISON

October 2021 Unit	Enrolled	Graduated	Foster	Volunteer Hours
Hawkins Unit	6	1	0	0
Maximum Security Unit	9	6	0	4
McPherson Unit	8	8	1	0
North Central Unit	4	2	0	0
Ouachita River Correctional Unit	6	3	1	0
Randall L. Williams Unit	3	2	0	6
Tucker Unit	8	3	1	4
Total	44	25	3	14

Completed Paws in Prison Training:

October 2021 Program Graduates	25
YTD 2021 Program Graduates	159
Total Graduates Since Inception (December 2011)	1,822
Dogs Currently in Foster (Graduated, but Not Adopted)	3
October 2021 Volunteer Hours	14
YTD Volunteer Hours	62

INFORMATION TECHNOLOGY

INMATE TABLETS – Within the Division of Correction, a total of 611 inmate tablets were leased during October.

INMATE VIDEO VISITS – Inmates completed 14,815 video visits during the month and missed 489 within the Division of Correction.

CONSTRUCTION/MAINTENANCE**PROJECT UPDATES**

SEE CONSTRUCTION BUDGET / STATUS REPORT IN ATTACHMENTS SECTION (PAGES 24-25).

AGENCY HIGHLIGHTS**OCTOBER 2021:****PROMOTIONS**

Some of the promotions that occurred during the month of October included:

Cummins Unit

- Sergeant Tanya Johnson

**Delta Regional Unit**

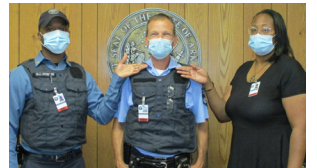
- Field Sergeant Vivian Hope (*top photo*)

Maximum Security Unit

- Sgt. Joshua Breazzeal
- Sgt. Ahmari Caffey
- Sgt. Jaerica Culclager
- Sgt. Aminnica Gardner
- Sgt. Marquette Gill
- Sgt. Christopher Grant
- Sgt. Michael Hughes (*center photo*)
- Field Sgt. Marquise McCraney

Wrightsville Unit

- Lt. Ivory McDaniel
- Lt. Reiman Pearson (*bottom photo*)

**CHALLENGE COINS**

During the month, the following were presented with ADC Challenge Coins in recognition of their dedication to their work:

Cummins Unit

- Sgt. Felicia Brooks

Varner Unit

- Sgt. Shirley Hudson



Sgt. Brooks



Sgt. Hudson

ACA REACCREDITATION AWARDED TO VARNER UNIT

On October 7, Superintendent James (Hoot) Gibson and the dedicated staff at the Varner Unit achieved reaccreditation by the American Correctional Association with outstanding scores: 100% on Mandatory Standards/ Best Practices and 99.3% on Non-Mandatory Standards/ Best Practices. We commend them for their hard work in preparing for the audit.

**UNIT AWARDS**

Fall is a time when ADC staff members are honored for their years of service and exemplary work with the agency. Here's a list of the 2021 winners that have been announced thus far who will all be considered for ADC Pinnacle Awards.

Benton Unit

- Employee of the Year – Vanessa Turner
- Supervisor of the Year – Janet Lewis
- Correctional Officer of the Year – Cpl. William Parks
- Correctional Supervisor of the Year – Capt. Josh Crosby

AGENCY HIGHLIGHTS, continued**Cummins Unit**

- Employee of the Year – Mary Allen
- Supervisor of the Year – Tammy Allen
- Correctional Officer of the Year – Latrice Jackson
- Correctional Supervisor of the Year – Lt. Merlin Fitzpatrick
- Warden's Outstanding Service Award – Sgt. Felicia Brooks and Erika Crompton

East Arkansas Regional Unit

- Employee of the Year – Essie Clay
- Supervisor of the Year – Debra Mills
- Correctional Officer of the Year – Cpl. Ronnie Hoskins
- Correctional Supervisor of the Year – Capt. Stephen Lane

Maximum Security Unit

- Employee of the Year, William Manning
- Correctional Officer of the Year – Sgt. Karma Thorns
- Correctional Supervisor of the Year – Capt. Lakenya Jackson
- Warden's Outstanding Employee of the Year – Sgt. Jeremy Ridgle and Dock King

McPherson Unit

- Employee of the Year – Jeannie Long and Christopher Riley
- Supervisor of the Year Award – Warden Nurzuhal Faust
- Correctional Officer of the Year Award – Cpl. Monica Williams
- Correctional Supervisor of the Year – Lt. Chad Baker
- Warden's Outstanding Service Award – Ciara Dauck, Cpl. Alphonso Dean, Cpl. Edward Eaton, Jalesia Hearyman and Codie Odom

Northwest Arkansas Work Release Center

- Supervisor of the Year – Charlotte Johnson
- Correctional Supervisor of the Year – Sgt. John Springston
- Volunteer Service Award – Jim Engler and Ray Tripplett

Ouachita River Correctional Unit

- Employee of the Year – Barbara Holliman
- Supervisor of the Year – Crystal McCoy
- Correctional Officer of the Year – Sgt. Cole McAnally
- Correctional Supervisor of the Year – Capt. Sheila Johnson
- Warden's Outstanding Service Award – Rachel McLelland and Major Jimmy Coleman

Tucker Unit

- Employee of the Year – Michael Kindall
- Supervisor of the Year – Ronald Chism
- Treatment Staff of the Year – Joe Alexander
- Correctional Officer of the Year – Cpl. J'Quayla McMillion
- Correctional Supervisor of the Year – Capt. Audrey Wilkins
- Warden's Outstanding Service Award – Sgt. Latonya Sellers

Wrightsville Complex

- Employee of the Year – Michelle Moon (Hawkins) and Heather Johnson (Wrightsville)

- Supervisor of the Year – Deputy Warden Linda Louis (Hawkins) and Superintendent DeAngelo Earl (Wrightsville)
- Correctional Officer of the Year – Sgt. Lanata Ridgle (Wrightsville)
- Correctional Supervisor of the Year – Capt. Tondra Spencer (Hawkins) and Capt. Carl Lewis (Wrightsville)
- Superintendent's Outstanding Service Award – Sgt. Johnnie Harris (Wrightsville)

PATHWAY TO FREEDOM, INC. HOSTS 10TH ANNIVERSARY CELEBRATION AT GOVERNOR'S MANSION

Department of Corrections leaders, along with the Arkansas Board of Corrections, took part in a fundraiser event celebrating Pathway to Freedom, Inc.'s 10th anniversary with a dinner at the Governor's Mansion on September 30.



Pathway to Freedom, Inc. seeks to address the transformation of prisoners' lives through an 18-month pre-release residential program through a contractual agreement with the Arkansas Department of Correction. The program continues for an additional 12 months of mentoring and support once the inmate has returned to the community.

AR DOC PARTNERS WITH STATE PARKS OF ARKANSAS TO CLEAN UP NATIONAL LANDMARK

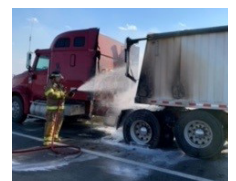
On October 11 and 12, a regional maintenance crew from the Tucker Unit completed a critical project to remove overgrown vegetation from Mound A at Toltec Mounds Archeological State Park. This partnership of the Arkansas Department of Corrections and the State Parks of Arkansas will help preserve what has been a designated a National Historic Landmark since 1978.

Corrections Secretary Solomon Graves said, "The use of our regional maintenance crews saves tax dollars and builds goodwill in communities across Arkansas."

The 100-acre archeological complex is home to some of the most significant remnants of Native American life in Arkansas.

**QUICK FIRE RESPONSE**

On October 21, the Cummins Fire Department quickly responded to a call for an 18-wheeler that caught fire on Highway 65. According to the truck driver, the crew's response time was less than ten minutes.



AGENCY HIGHLIGHTS, continued**HALLOWEEN FUN FOR UNITS**

Several staff members at the Maximum Security Unit, pitched in to make Halloween goody bags to distribute among staff as a morale booster. Warden James Shipman stated, "Correctional staff have to work, no matter the day. They miss most of the holidays with their families just to provide public safety. We love our employees here at the Max Unit."



On October 23, the McPherson Unit's Employee Corporation hosted a Trunk-or-Treat event for employees of both McPherson and Grimes Units and their families.

The staff at the Ouachita River Correctional Unit really got into the Halloween spirit of this year. The Employee Corporation donated lots of candy to pass out to the kids in the community at the Trunk or Treat event in Malvern. Additionally, unit staff were treated to pizza and Ms. Johns, Deputy Warden Ball's Administrative Assistant, posed as the Wicked Witch of the West to pass out candy to staff as well.

**PAWS IN PRISON RECEIVES GENEROUS DONATION FROM RICELAND**

Arkansas Paws in Prison pups hit the jackpot in October with an incredible donation from Riceland Foods. The Arkansas-based company donated 18 pallets, weighing 6,000 pounds, of rice-based dog treats to the program.

**"PINK OUT" DAYS OBSERVED AT ADC FACILITIES FOR BREAST CANCER AWARENESS**

October is Breast Cancer Awareness Month, and several facilities observed it by designating a "pink out" day. The



Administrative East office in Pine Bluff and Maximum Security Unit participated, along with Varner Unit Shift B (shown here).

MAXIMUM SECURITY UNIT STAFF SHOW SUPPORT OF RED RIBBON WEEK

In support of the nation's oldest drug awareness campaign, staff at the Maximum Security Unit wore red on a designated day during the October observance of Red Ribbon Week.

RED RIBBON SCHOLARSHIP "PIE FLY" FUNDRAISER HELD

A fundraiser in support of the ADC Red Ribbon Scholarship was held on October 29 on the steps of the DOC Headquarters in North Little Rock. Called the

Pie Fly Fundraiser, several staff members volunteered for the chance to be pied in the face for a good cause. Corrections Secretary Graves and ADC Director Payne (top photo) were automatic "winners," and \$1 votes determined the remaining five candidates to be pied along with them. The top vote getters included: Superintendent Aundrea Culclager (pied by Chaplaincy Services Administrator Joshua Mayfield), Superintendent DeAngelo Earl Superintendent James "Hoot" Gibson (pied by his daughter, April Gibson), Warden James Shipman, and ADC Deputy Director William Straughn (who was out of state and had to put off his pieing until the following month).



People interested in throwing the pies could donate money to have their names put into a drawing for random selection. The event was livestreamed via Facebook and everyone was a good sport despite the stickiness. In the end, more than \$2,700.00 in scholarship funds was raised.

REGIONAL MAINTENANCE PROJECT HIGHLIGHTS OCTOBER 2021

Clean Up in Melbourne

NCU Regional Maintenance 1 – October 4:



Grounds Maintenance at Varner Compound

Varner Regional Maintenance 1 and 2 – October 4:



Mound A Clean Up at Toltec State Park (Scott)

Tucker Regional Maintenance – October 11:



Ditch Clean Up on Washington St. (England)

Tucker Regional Maintenance – October 14:



Ditch Clean Up on Washington St. (England)

Tucker Regional Maintenance – October 15:



Clean Up of City Lots in Gould

Varner Regional Maintenance 1 – October 22:



2021 INFORMAL GRIEVANCE REPORT

Month	BENTON	HAWK/M	HAWK/F	WRTS	EARU & MX	GRIMES	RLW	MCWR	MCPH	MSU	NCU	PBU	NWA	TU	TRCC	VSMX	VU	CU & CMU	ORCU	Ester	DRU	TOTAL
JAN	1	30	1	56	269	243	41	0	301	147	106	43	0	62	0	152	26	124	174	41	99	1,916
FEB	1	15	22	78	185	177	25	0	465	149	67	26	0	91	3	163	37	363	112	27	63	2,069
MAR	1	15	22	87	279	207	11	0	376	149	66	38	0	120	4	188	29	196	164	52	96	2,100
APR	3	15	24	70	297	173	18	0	210	108	142	38	0	86	5	362	77	178	163	16	128	2,113
MAY	2	15	14	37	254	188	19	0	320	103	104	22	0	49	4	220	46	254	128	12	158	1,949
JUN	1	30	29	37	253	259	29	0	461	123	133	46	0	53	4	452	133	241	166	32	148	2,630
JUL	2	31	42	227	245	187	23	1	138	128	91	32	0	59	3	373	109	166	166	41	134	2,198
AUG	2	31	40	96	248	188	29	0	426	136	114	30	0	71	1	367	48	172	158	42	149	2,348
SEPT	1	10	42	164	248	161	34	0	193	148	101	35	0	74	0	347	40	113	182	28	111	2,032
OCT	1	13	7	90	172	139	16	0	429	123	97	29	0	53	1	202	14	131	193	26	113	1,849
NOV	0	0	0	0	0	0	0	0	0	0	0	0	0	0	0	0	0	0	0	0	0	0
DEC	0	0	0	0	0	0	0	0	0	0	0	0	0	0	0	0	0	0	0	0	0	0
TOTAL	15	205	243	942	2,450	1,922	245	1	3,319	1,314	1,021	339	0	718	25	2,826	559	1,938	1,606	317	1,199	21,204

2021 FORMAL GRIEVANCE REPORT

Month	BENTON	HAWK/M	HAWK/F	WRTS	EARU & MX	GRIMES	RLW	MCWR	MCPH	MSU	NCU	PBU	NWA	TU	TRCC	VSMX	VU	CU & CMU	ORCU	Ester	DRU	TOTAL
JAN	1	15	1	30	293	176	17	0	173	197	71	24	0	55	2	152	26	150	125	22	44	1,574
FEB	2	7	8	40	272	115	21	0	158	186	51	8	0	79	0	163	37	126	89	16	35	1,413
MAR	3	7	8	53	375	98	7	0	188	264	47	8	0	92	0	188	29	149	147	27	96	1,786
APR	2	1	3	46	374	82	11	0	125	128	97	13	0	46	1	227	53	132	92	10	62	1,505
MAY	1	7	1	29	305	109	15	1	154	95	80	10	0	62	1	206	36	206	98	7	58	1,481
JUN	0	7	9	43	345	134	17	0	154	145	82	22	0	47	0	251	63	227	112	19	87	1,764
JUL	2	18	16	62	336	108	11	1	91	136	61	14	0	45	0	183	40	169	69	15	75	1,452
AUG	1	12	24	53	338	109	25	1	123	132	81	11	0	40	0	170	26	178	74	21	105	1,524
SEPT	4	5	14	72	292	86	19	0	102	163	57	13	0	64	1	161	20	130	96	12	61	1,372
OCT	1	2	3	35	245	84	16	0	137	132	67	14	0	32	1	169	16	135	116	13	48	1,266
NOV	0	0	0	0	0	0	0	0	0	0	0	0	0	0	0	0	0	0	0	0	0	0
DEC	0	0	0	0	0	0	0	0	0	0	0	0	0	0	0	0	0	0	0	0	0	0
TOTAL	17	81	87	463	3,175	1,101	159	3	1,405	1,578	694	137	0	562	6	1,870	346	1,602	1,018	162	671	15,137

INMATE INSTITUTIONAL GRIEVANCE APPEAL REPORT – OCTOBER 2021

	Acknowledged	Rejected	Processed W/O Merit	Processed W/ Merit
Benton Unit	0	0	0	0
Benton Work Release	0	0	0	0
Cummins Unit	19	10	57	0
Cummins Modular Unit	1	0	1	0
Delta Regional Unit	16	2	19	1
East Arkansas Regional Unit	33	1	23	1
East Arkansas Regional Max Unit	49	8	40	1
Ester Unit	3	1	6	0
Grimes Unit	23	8	21	0
Maximum Security Unit	40	27	52	0
Tucker Re-Entry	0	0	0	0
McPherson Unit	15	4	4	0
McPherson Mental Health Residential Program Unit	0	0	0	0
Mississippi County Work Release Center	0	0	0	0
Northwest Arkansas Work Release Center	0	0	0	0
North Central Unit	20	2	27	0
Ouachita River Correctional Unit	9	3	25	0
ORCU Hospital	0	0	0	0
ORCU New Commitment	6	2	5	0
ORCU Mental Health Residential Program Unit	1	0	3	0
Pine Bluff Unit	3	3	0	0
Pine Bluff Re-Entry	0	0	0	0
Randall L. Williams Correctional Facility	8	1	9	0
Texarkana Regional Correctional Center	0	0	0	0
Tucker Unit	6	1	13	0
Varner Super Max	37	17	64	0
Varner Unit	7	3	8	0
Wrightsville Unit	18	0	17	0
Hawkins Center	2	1	3	0
Hawkins for Males	1	0	2	0
Hawkins SPU	0	0	0	0
Total	317	94	399	3

ADMISSIONS AND RELEASES – OCTOBER 2021

<u>Admissions</u>	<u>Male</u>	<u>Female</u>	<u>Total</u>
Asian	1	0	1
Black	55	10	65
Hispanic	5	0	5
Native American Indian	0	1	1
Native Hawaiian or Pacific Isl.	0	0	0
White	119	80	199
Other	0	0	0
Unknown	0	0	0
Total	180	91	271

<u>Releases</u>	<u>Male</u>	<u>Female</u>	<u>Total</u>
Asian	1	0	1
Black	111	6	117
Hispanic	6	1	7
Native American Indian	1	0	1
Native Hawaiian or Pacific Isl.	0	0	0
White	193	52	245
Other	0	0	0
Unknown	0	0	0
Total	312	59	371

ADC INMATE POPULATION GROWTH 2000-2027 - OCTOBER 2021

Updated 10/31/2021

Mo.	2000	2001	2002	2003	2004	2005	2006	2007	2008	2009	2010	2011	2012	2013	2014	2015	2016	2017	2018	2019	2020	2021
Jan.	11,984	11,908	12,402	13,015	13,105	13,595	13,481	13,839	14,518	14,796	15,334	16,312	15,134	14,815	17,481	18,142	17,785	17,824	18,201	17,958	17,989	16,119
Feb.	12,169	12,022	12,529	13,054	13,166	13,783	13,633	14,012	14,603	14,883	15,374	16,209	14,990	15,008	17,438	18,082	17,625	17,608	17,998	17,846	18,181	16,120
March	12,006	12,033	12,299	13,108	13,088	13,418	13,534	13,772	14,580	14,843	15,290	16,095	14,964	14,665	17,395	18,233	17,573	17,666	18,089	17,898	17,860	16,085
April	12,069	12,167	12,465	13,213	13,323	13,469	13,554	13,851	14,769	14,937	15,570	16,172	15,124	14,850	17,604	18,703	17,815	17,798	18,227	17,977	17,331	16,250
May	12,109	12,384	12,558	13,463	13,556	13,528	13,711	14,146	14,880	15,146	15,694	16,062	15,132	15,074	17,593	18,693	17,769	17,652	17,945	17,817	16,694	16,476
June	12,005	12,108	12,439	13,418	13,389	13,251	13,430	13,915	14,700	15,025	15,564	15,554	14,832	14,825	17,340	18,813	17,973	17,963	17,972	17,942	16,552	16,560
July	12,030	12,190	12,622	13,509	13,528	13,286	13,560	14,082	14,868	15,195	15,807	15,519	14,879	15,379	17,522	18,870	18,130	18,180	18,005	18,002	16,511	16,638
August	12,087	12,371	12,815	13,565	13,632	13,419	13,646	14,224	15,100	15,385	15,829	15,240	14,675	16,103	17,549	18,806	17,919	18,051	17,751	18,090	16,367	16,655
September	11,983	12,289	12,774	13,341	13,516	13,237	13,652	14,217	14,850	15,285	16,025	15,172	14,724	16,412	17,605	18,549	18,026	18,179	17,865	17,856	16,215	16,698
October	12,119	12,348	12,942	13,341	13,584	13,363	13,775	14,349	14,836	15,381	16,311	15,271	14,856	16,993	17,880	18,430	18,127	18,348	17,943	17,947	16,311	16,821
November	12,094	12,408	13,162	13,408	13,706	13,587	13,913	14,437	15,025	15,340	16,460	15,205	14,625	17,168	17,848	17,981	17,573	17,973	17,666	18,060	16,165	
December	11,856	12,333	12,845	13,106	13,470	13,338	13,728	14,315	14,716	15,199	16,204	15,062	14,654	17,235	17,874	17,707	17,537	18,078	17,799	17,759	16,094	
Net Ann. Inc.	29	477	512	261	364	-132	390	587	401	483	1,005	-1,142	-408	2,581	639	-167	-170	541	-279	-40	-1,665	727
Avg. Mo. Inc.	2	40	43	22	30	-11	33	49	33	40	84	-95	-34	215	53	-14	-14	45	-23	-3	-139	73

Population is total jurisdictional count at end of each month. Population at end of month December 1999 was 11,827.

Average monthly population increase for past fifteen years 2006 - 2020 is 15

Average monthly population increase for past ten years Jan. 2011 - Dec 2020 is -1

Average monthly population increase for past five years 2016 - 2020 is -27

Projected at Growth of 15 per Month

Mo.	2008	2009	2010	2011	2012	2013	2014	2015	2016	2017	2018	2019	2020	2021	2022	2023	2024	2025	2026	2027
	Actual	Actual	Actual	Actual	Actual	Actual	Actual	Actual	Actual	Actual	Actual	Actual	Actual	Actual	Proj.	Proj.	Proj.	Proj.	Proj.	Proj.
January	14,518	14,796	15,334	16,312	15,134	14,815	17,481	18,142	17,785	17,824	18,201	17,958	17,989	16,119	16,866	17,046	17,226	17,406	17,586	17,766
February	14,603	14,883	15,374	16,209	14,990	15,008	17,438	18,082	17,625	17,608	17,998	17,846	18,181	16,120	16,881	17,061	17,241	17,421	17,601	17,781
March	14,580	14,843	15,290	16,095	14,964	14,665	17,395	18,233	17,573	17,666	18,089	17,898	17,860	16,085	16,896	17,076	17,256	17,436	17,616	17,796
April	14,769	14,937	15,570	16,172	15,124	14,850	17,604	18,703	17,815	17,798	18,227	17,977	17,331	16,250	16,911	17,091	17,271	17,451	17,631	17,811
May	14,880	15,146	15,694	16,062	15,132	15,074	17,593	18,693	17,769	17,652	17,945	17,817	16,694	16,476	16,926	17,106	17,286	17,466	17,646	17,826
June	14,700	15,025	15,564	15,554	14,832	14,825	17,340	18,813	17,973	17,963	17,972	17,942	16,552	16,560	16,941	17,121	17,301	17,481	17,661	17,841
July	14,868	15,195	15,807	15,519	14,879	15,379	17,522	18,870	18,130	18,180	18,005	18,002	16,511	16,638	16,956	17,136	17,316	17,496	17,676	17,856
August	15,100	15,385	15,829	15,240	14,675	16,103	17,549	18,806	17,919	18,051	17,751	18,090	16,367	16,655	16,971	17,151	17,331	17,511	17,691	17,871
September	14,850	15,285	16,025	15,172	14,724	16,412	17,605	18,549	18,026	18,179	17,865	17,856	16,215	16,698	16,986	17,166	17,346	17,526	17,706	17,886
October	14,836	15,381	16,311	15,271	14,856	16,993	17,880	18,430	18,127	18,348	17,943	17,947	16,311	16,821	17,001	17,181	17,361	17,541	17,721	17,901
November	15,025	15,340	16,460	15,205	14,625	17,168	17,848	17,981	17,573	17,973	17,666	18,060	16,165	16,836	17,016	17,196	17,376	17,556	17,736	17,916
December	14,716	15,199	16,204	15,062	14,654	17,235	17,874	17,707	17,537	18,078	17,799	17,759	16,094	16,851	17,031	17,211	17,391	17,571	17,751	17,931
Net Ann. Inc.	401	483	1,005	-1,142	-408	2,581	639	-167	-170	541	-279	-40	-1,665	757	180	180	180	180	180	180
Ave. Mo. Inc.	33	40	84	-95	-34	215	53	-14	-14	45	-23	-3	-139	63	15	15	15	15	15	15

MONTHLY POPULATION AVERAGES - OCTOBER 2021

Unit/Center	10/1	10/4	10/5	10/6	10/7	10/8	10/11	10/12	10/13	10/14	10/15	10/18	10/19	10/20	10/21	10/22	10/25	10/26	10/27	10/28	10/29	AVG
Benton	303	302	302	305	304	303	303	303	302	304	305	304	303	303	303	299	298	298	298	303	299	302
Cummins	1,888	1,892	1,890	1,892	1,897	1,903	1,893	1,893	1,893	1,892	1,891	1,887	1,883	1,879	1,878	1,877	1,880	1,884	1,907	1,913	1,911	1,892
Delta	611	608	608	607	607	607	606	606	607	607	609	611	613	611	611	612	610	608	609	605	604	608
E AR Reg	1,493	1,491	1,486	1,486	1,485	1,481	1,481	1,480	1,480	1,478	1,471	1,471	1,471	1,471	1,471	1,470	1,469	1,469	1,469	1,469	1,465	1,477
Ester	557	557	556	561	559	552	554	555	556	552	551	543	544	544	544	546	546	548	551	552	552	551
Grimes	1,045	1,054	1,054	1,051	1,048	1,048	1,062	1,062	1,061	1,062	1,050	1,049	1,054	1,054	1,053	1,052	1,052	1,049	1,049	1,046	1,045	1,052
Max Sec	559	557	557	558	558	558	558	557	557	557	557	558	558	558	558	558	558	558	563	558	556	558
McPherson	853	853	860	855	837	836	834	833	841	837	835	833	843	841	862	889	887	887	882	874	876	855
MCWRC	117	116	116	115	115	115	115	111	111	111	111	116	116	116	117	117	115	116	116	116	116	115
N Central	773	785	782	781	780	781	782	781	781	782	779	790	790	790	787	785	781	782	790	790	791	784
NWAWRC	99	99	101	101	101	99	99	100	100	100	99	100	101	101	101	100	100	101	101	101	100	100
Ouachita River	1,694	1,659	1,677	1,708	1,703	1,688	1,681	1,681	1,677	1,676	1,670	1,654	1,653	1,658	1,656	1,655	1,658	1,660	1,638	1,638	1,639	1,668
Randall L Williams	513	500	499	495	494	496	497	496	503	503	501	490	491	490	490	496	487	486	502	504	494	497
Pine Bluff	446	460	462	466	467	467	464	463	461	457	456	462	460	461	460	450	450	451	450	444	440	457
PB Reentry	54	54	54	54	54	54	54	54	54	54	54	54	54	54	54	52	52	52	52	52	54	54
TRCC	92	92	92	90	90	90	93	93	93	93	93	93	91	91	91	91	91	91	91	91	88	91
Tucker	676	671	671	668	666	664	665	665	665	663	662	659	655	653	652	651	650	650	650	650	651	660
Varner	1,521	1,517	1,516	1,515	1,515	1,511	1,509	1,506	1,545	1,545	1,542	1,540	1,539	1,540	1,540	1,538	1,538	1,536	1,542	1,540	1,536	1,530
Wrightsville	769	759	758	759	759	766	762	753	750	750	752	749	746	745	744	746	744	742	740	733	732	750
WR Hawkins-Females	240	239	240	238	248	249	246	246	245	245	244	244	244	244	243	241	241	241	240	245	245	243
WR Hawkins-Males	195	195	195	195	195	198	199	199	199	199	198	198	198	197	197	197	197	197	196	195	195	197
Total ADC	14,498	14,460	14,476	14,500	14,482	14,466	14,457	14,437	14,481	14,469	14,437	14,405	14,407	14,401	14,412	14,422	14,404	14,406	14,436	14,419	14,389	14,441
ALETA	18	18	18	18	18	18	18	18	18	18	18	18	18	18	18	17	17	17	17	17	18	18
Ar State Police	51	51	51	50	50	50	50	49	51	51	51	51	52	52	52	52	54	54	54	54	54	52
Co Jail / M	1,548	1,559	1,547	1,545	1,565	1,589	1,623	1,640	1,617	1,644	1,672	1,681	1,696	1,703	1,725	1,745	1,761	1,786	1,765	1,789	1,808	1,667
Co Jail / F	229	233	226	228	224	227	233	235	224	224	241	245	239	250	231	211	214	217	222	224	218	228
Total Co Jail BK	1,777	1,792	1,773	1,773	1,789	1,816	1,856	1,875	1,841	1,868	1,913	1,926	1,935	1,953	1,956	1,956	1,975	2,003	1,987	2,013	2,026	1,895
309/M	217	217	215	215	215	215	216	216	217	217	219	219	220	222	224	224	219	216	216	216	214	218
309/F	96	97	92	93	93	94	94	95	95	94	94	94	94	94	95	95	94	94	94	93	91	94
Total Act 309	313	314	307	308	308	309	310	311	312	311	313	313	314	316	319	319	313	310	310	309	305	312
Total Non ADC	2,159	2,175	2,149	2,149	2,165	2,193	2,234	2,253	2,222	2,248	2,295	2,308	2,319	2,339	2,345	2,344	2,359	2,384	2,368	2,393	2,403	2,276
Total	16,657	16,635	16,625	16,649	16,647	16,659	16,691	16,690	16,703	16,717	16,732	16,713	16,726	16,740	16,757	16,766	16,763	16,790	16,804	16,812	16,792	16,717

FISCAL YEAR 2022 COUNTY JAIL BACKUP - OCTOBER 2021

DAY		Jul-21		Aug-21		Sep-21		Oct-21
1		1,059	*	1,294		1,583		1,777
2		1,090		1,309		1,612	*	1,777
3	*	1,090		1,342		1,624	*	1,777
4	*	1,090		1,356	*	1,624		1,792
5		1,096		1,370	*	1,624		1,773
6		1,096		1,396		1,645		1,773
7		1,114	*	1,396		1,645		1,789
8		1,089	*	1,396		1,603		1,816
9		1,090		1,408		1,620	*	1,816
10	*	1,090		1,405		1,649	*	1,816
11	*	1,090		1,404	*	1,649		1,856
12		1,121		1,416	*	1,649		1,875
13		1,125		1,436		1,638		1,841
14		1,146	*	1,436		1,606		1,868
15		1,131	*	1,436		1,628		1,913
16		1,155		1,435		1,657	*	1,913
17		1,189		1,460		1,693	*	1,913
18	*	1,189		1,485	*	1,693		1,926
19	*	1,189		1,499	*	1,693		1,935
20		1,208		1,499		1,711		1,953
21		1,228	*	1,499		1,721		1,956
22		1,237	*	1,499		1,752		1,956
23		1,259		1,514		1,722	*	1,956
24	*	1,259		1,527		1,719	*	1,956
25	*	1,259		1,511	*	1,719		1,975
26		1,248		1,523	*	1,719		2,003
27		1,233		1,540		1,727		1,987
28		1,248	*	1,540		1,757		2,013
29		1,266	*	1,540		1,780		2,026
30		1,294		1,526		1,804	*	2,026
31	*	1,294		1,562			*	2,026
Avg Daily Backup		1,170		1,450		1,676		1,896

Notes: Totals do not include 309 Contracts in County Jails (maximum of 336)

County Jail Back-up Average for October 2021 - 1,896

County Jail Back-up Fiscal Year Average as of October 31, 2021 - 1,548

Short-Term Revocation Program Average for October 2021 - 626

Short-Term Revocation Program Fiscal Year Average as of October 31, 2021 - 709

STTG UNIT COUNTS – OCTOBER 2021

Unit	Beginning Total	Confirmed	Suspected	In	Out	Paroled	Removed	Ending Total	Total Unit Population	Unit % of STTG's
Benton	92	0	0	6	9	2	0	87	298	29.19%
Cummins	654	0	0	79	51	16	0	666	1,904	34.98%
Delta	181	0	0	6	0	0	0	187	604	30.96%
EARU	586	0	0	0	3	11	0	572	1,462	39.12%
Ester	101	1	0	23	15	6	0	104	553	18.81%
Grimes	380	0	0	29	10	9	14	376	1,045	35.98%
Hawkins	49	0	0	2	3	0	0	49	440	11.14%
Max	270	0	0	6	8	3	0	265	556	47.66%
Mcperson	36	0	2	2	0	2	0	38	875	4.34%
MCWR	32	0	0	4	2	0	0	34	116	29.31%
NCU	266	2	0	23	15	9	0	267	790	33.80%
NWAWR	30	0	0	0	3	0	0	27	100	27.00%
ORCU	425	0	0	21	23	16	0	407	1,462	27.84%
ORCU Intake	69	72	0	0	70	0	0	71	174	40.80%
Pine Bluff	140	0	0	25	15	8	0	142	507	28.01%
RLW	188	0	0	23	17	5	0	189	480	39.38%
TWR	33	0	0	5	4	0	0	34	88	38.64%
Tucker	234	0	0	2	5	3	0	228	648	35.19%
Varner	624	0	0	61	44	11	0	630	1,536	41.02%
Wrightsville	229	0	0	14	4	9	0	230	733	31.38%
Total	4,619	75	2	331	301	110	14	4,603	14,371	32.03%

ORCU Intake brought in 70 new STTG members into ADC last month.

STTG DISCIPLINARY REPORT – OCTOBER 2021

Unit	STTG Incidents	STTG Suspected Incidents	Total Unit Disciplinary	Disciplinary Involving STTG	Percentage
Benton	0	0	13	5	38.46%
Cummins	0	0	308	157	50.97%
Delta	0	0	156	80	51.28%
EARU	0	0	661	400	60.51%
Easter	0	0	15	7	46.67%
Grimes	0	1	187	76	40.64%
Hawkins	0	0	1	0	0.00%
Max	0	0	89	37	41.57%
Mcpherson	0	0	131	14	10.69%
MCWR	0	0	5	1	20.00%
NCU	0	0	106	49	46.23%
NWAWR	0	0	6	3	50.00%
ORCU	0	0	69	23	33.33%
ORCU Intake	0	0	5	2	40.00%
Pine Bluff	0	0	48	28	58.33%
RLW	0	0	58	33	56.90%
TWR	0	0	1	0	0.00%
Tucker	0	0	62	33	53.23%
Varner	0	0	182	110	60.44%
Wrightsville	0	0	99	42	42.42%
Total	0	1	2,202	1,100	49.95%

STTG COUNTS BY STTG SET – OCTOBER 2021

STTG Set	Benton	Cummins	Delta	EARU	Ester	Grimes	Hawkins	Max	Mcpherson	MCWR	NCU	NWAWR	ORCU	Intake	PB	RLW	TWR	Tucker	Varner	Wrightsville	Total
Asian	1	2	0	0	0	0	0	0	0	1	1	1	2	0	0	0	0	1	0	0	9
Bloods	19	148	39	102	21	74	5	58	4	10	39	8	64	8	22	36	6	40	136	44	883
Crips	5	88	11	82	8	39	6	34	7	1	27	3	41	5	15	15	3	16	94	33	533
Folk	3	55	0	113	2	31	12	28	8	1	15	0	70	3	4	9	2	22	66	5	449
GD	20	151	32	86	20	79	1	66	0	10	46	6	42	13	36	44	10	59	145	46	912
Mexican	1	23	6	12	8	12	1	3	1	2	5	1	11	2	5	10	0	8	23	9	143
Motorcycle	0	1	1	3	1	0	1	1	1	1	3	0	2	0	1	0	1	0	0	2	19
Other	3	23	6	12	13	13	1	8	3	0	12	2	23	4	5	9	0	8	19	6	170
People	1	24	8	19	2	24	2	19	3	0	10	0	25	2	9	8	0	11	18	9	194
Unknown	1	7	8	12	0	14	0	4	0	0	5	0	10	5	0	2	1	7	9	8	93
W/S	18	49	45	49	16	34	13	7	11	5	54	6	70	20	29	22	5	23	35	23	534
AB	0	7	0	4	4	5	1	1	0	2	1	0	3	0	1	2	0	4	13	4	52
AC	0	8	3	13	6	7	0	5	0	0	7	0	2	0	1	2	4	3	14	4	79
NAE	9	41	11	31	3	17	2	13	0	1	17	0	12	5	6	11	0	8	24	22	233
WAR	6	39	17	34	0	27	4	18	0	0	25	0	30	4	8	19	2	18	34	15	300
Total	87	666	187	572	104	379	49	265	38	34	267	27	407	71	142	189	34	228	630	230	4,603

Key:

GD = Gangster Disciples

W/S = White Supremacist

NAE = New Aryan Empire

WAR = White Aryan Resistance

AC = Aryan Circle

AB = Aryan Brotherhood

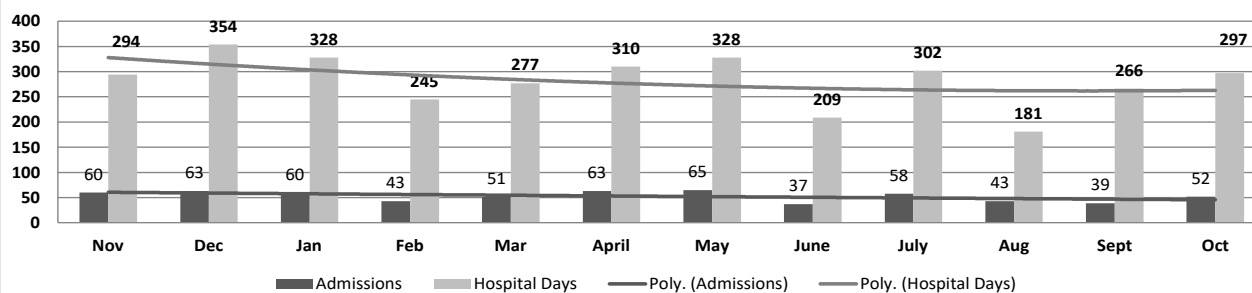
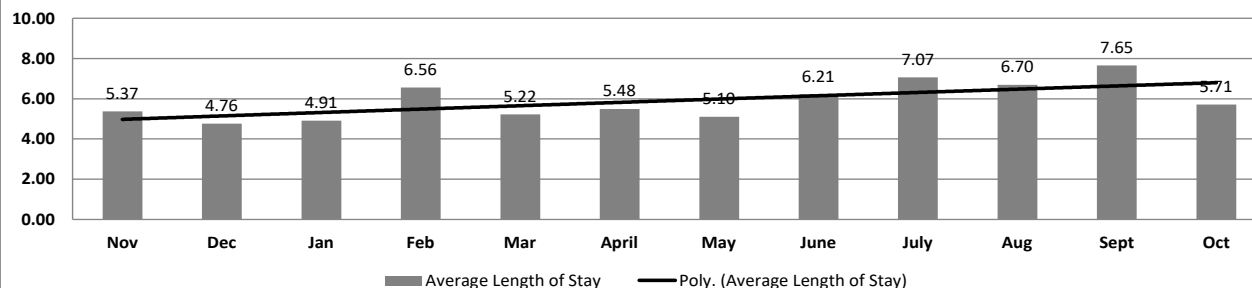
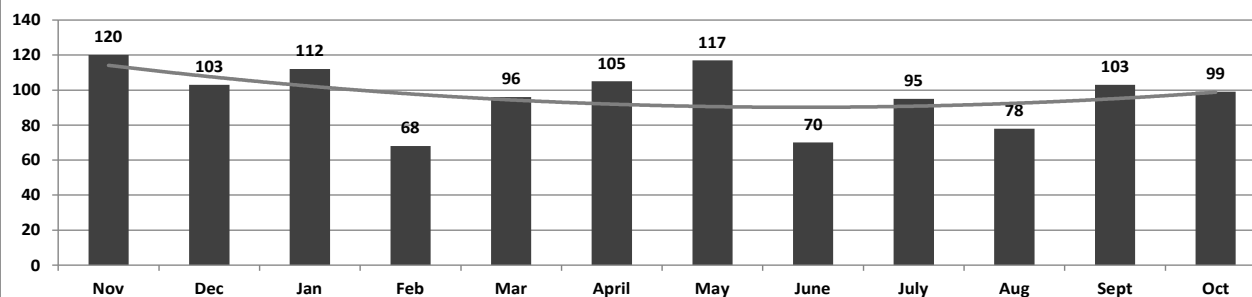
ADC INPATIENT AND EMERGENCY ROOM UTILIZATION

ADC Inpatient Statistics Past 12 Months

	2020		2021										Average
	Nov	Dec	Jan	Feb	Mar	April	May	June	July	Aug	Sept	Oct	
Admissions	60	63	60	43	51	63	65	37	58	43	39	52	52.8
Hospital Days	294	354	328	245	277	310	328	209	302	181	266	297	282.6
Average Length of Stay	5.37	4.76	4.91	6.56	5.22	5.48	5.10	6.21	7.07	6.70	7.65	5.71	5.35

ADC ER Visits Past 12 Months

	2020		2021										Average
	Nov	Dec	Jan	Feb	Mar	April	May	June	July	Aug	Sept	Oct	
Emergency Room Visits	120	103	112	68	96	105	117	70	95	78	103	99	97.2

ADC Inpatient Utilization
Past 12 MonthsADC Inpatient Average Length of Stay
Past 12 MonthsADC Emergency Room Visits
Past 12 Months

MEDICAL GRIEVANCE BOARD REPORT – OCTOBER 2021

Unit	<i>Acknowledged/ Received</i>	<i>Rejected</i>	<i>Reviewed & Signed by Dep Director</i>	<i>With Merit</i>	<i>With Merit, but Resolved</i>	<i>% With Merit</i>	<i>Without Merit</i>
Benton	0	0	0	0	0	0%	0
CMU	1	1	5	0	1	20%	4
Cummins	14	7	20	0	1	5%	19
Delta	1	3	0	0	0	0%	0
EARU	18	1	23	1	0	4%	22
EARU Max	24	2	25	1	2	12%	22
Ester	1	2	1	0	0	0%	1
Grimes	4	0	6	0	1	17%	5
Hawkins	0	0	0	0	0	0%	0
McPherson	6	8	9	0	0	0%	9
MCWRC	0	0	0	0	0	0%	0
MSU	19	2	6	1	0	17%	5
North Central	5	1	15	1	0	7%	14
NWAWRC	0	0	0	0	0	0%	0
Ouachita	14	2	5	0	0	0%	5
Pine Bluff	1	1	0	0	0	0%	0
Randall L. Williams	1	0	1	0	0	0%	1
SNN	1	0	0	0	0	0%	0
TRCC	0	0	0	0	0	0%	0
Tucker	11	1	3	0	0	0%	3
Varner	3	1	0	0	0	0%	0
Varner Super Max	8	0	5	0	0	0%	5
WRU	0	0	1	0	0	0%	1
WHM	0	0	0	0	0	0%	0
WWR	0	0	0	0	0	0%	0
Total	132	32	125	4	5	7%	116

CHAPLAINCY

Month: October Year: 2021	CUMMINS	DELTA REGIONAL	EAST ARKANSAS	EAST ARKANSAS MAX	ESTER	GRIMES	HAWKINS	MAXIMUM	MCPHERSON	NORTH CENTRAL	OUACHITA RIVER	PINE BLUFF	RANDALL L. WILLIAMS	TUCKER	VARNER	VARNER MAX	WRIGHTSVILLE	TOTAL
Services Chaplains Oversaw																		
Christian																		
Population	0	4	0	0	3	0	0	0	4	15	9	5	0	1	13	0	0	54
Segregation	0	0	0	0	3	0	0	0	0	0	0	0	0	0	0	0	0	3
Muslim																		
Population	0	0	0	0	2	0	0	4	4	5	5	5	0	0	5	0	0	30
Segregation	0	0	0	0	2	0	0	4	0	0	0	0	0	0	0	0	0	6
93																		
Volunteers in Charge																		
Protestant	0	2	0	0	0	0	0	0	0	0	4	0	0	3	0	0	0	9
Catholic	0	0	0	0	0	0	0	0	0	0	4	0	0	0	0	0	0	4
Muslim	0	0	0	0	0	0	0	0	0	0	0	0	0	2	0	0	0	2
Other	0	0	0	0	0	0	0	0	0	0	0	0	0	0	0	0	0	0
Baptism	0	0	0	0	0	0	0	0	0	0	0	0	0	9	0	0	0	9
Marriages																		
	0	0	0	0	0	0	0	0	0	0	0	0	0	0	0	0	0	0
Distributed by Chaplains																		
Greeting Cards	25	0	0	0	81	28	15	23	626	52	165	33	32	415	15	360	100	1,970
Bibles,Quran,Torrah, Etc.	43	12	11	17	17	11	20	7	40	18	135	8	56	125	11	11	15	557
Study Course	0	9	6	14	93	6	100	0	89	43	39	3	2	26	20	3	0	453
Writing Supplies	0	0	0	0	20	50	300	8	110	0	500	0	0	98	0	0	50	1,136
Literature	3,033	625	531	384	153	60	50	14	114	405	325	49	636	820	496	239	310	8,244
Chaplain's Visits																		
Barracks	75	33	28	0	10	15	8	7	30	115	26	0	36	62	466	20	0	931
Approximate Hours Spent in Barracks	85	8	6	0	5	3	1	15	30	29	6	0	19	13	160	15	0	395
Inmate Office visits	39	165	45	0	26	32	15	0	96	12	48	56	17	133	79	0	27	790
Other Office visits	23	8	13	6	17	6	9	5	18	0	31	37	9	45	33	17	0	277
Hospital	0	0	0	0	0	0	0	0	0	0	10	0	0	0	0	0	0	10
Infirmary/Sick Call	7	4	2	0	2	2	0	0	2	6	10	1	0	1	7	2	6	52
Restrictive/Punitive Housing	9	5	0	17	0	1	6	0	8	3	13	2	12	10	0	21	4	111
PC - DRU		3																3
Visitation Days	0	0	0	0	0	0	0	0	0	0	0	0	0	0	0	0	0	0
Volunteer Visits																		
RCV	0	0	0	0	0	0	0	0	0	0	0	0	0	1	0	0	0	1
OCV	0	0	0	0	0	0	24	0	0	0	0	3	0	20	0	0	0	47
Spiritual Advisor	0	0	0	0	0	0	0	0	0	0	0	0	0	0	0	0	0	0
CRA	8	3	21	3	5	53	15	4	31	21	31	16	3	43	0	0	7	264
Religious Volunteer Hours																		
Volunteer Hours	29	10	79	9	5	195	35	13	154	69	184	19	14	229	0	0	40	1,084
Denominational/Volunteer Chaplain Hours	21	10	7	0	181	10	66	0	26	241	31	0	0	8	0	0	98	699
																		1,783
Other Activities of Chaplain																		
Counseled Employees	9	10	5	0	9	6	4	0	15	6	19	1	6	4	88	0	6	188
Orientation Sessions	0	0	0	0	0	0	0	0	0	0	0	0	0	0	0	0	0	0
Free World Devotions	0	1	1	0	2	8	0	0	10	0	1	0	0	3	27	0	0	53
Spoke in Churches	3	0	5	0	2	0	0	0	1	0	2	9	0	5	27	0	0	54
Crisis Intervention Sessions	31	16	2	0	0	0	9	0	2	6	18	4	13	18	7	3	10	139
Marriage Counseling	0	0	0	0	0	0	0	0	0	0	0	0	0	0	0	0	0	0
Denominational Meeting	0	0	0	0	1	1	0	0	1	1	0	0	0	0	0	0	0	4
Chaplain's Meeting	0	1	1	0	1	1	1	0	1	1	1	1	1	1	13	0	0	24
Volunteer Training Session	0	0	0	0	0	0	0	0	0	0	0	0	0	0	0	0	0	0
Chaplain Transfers																		
	0	0	0	0	0	1	0	0	1	0	0	0	0	0	0	0	0	2
Chaplain Promotions																		
	0	0	0	0	0	0	0	0	0	0	0	0	0	0	0	0	0	0
PAL PROGRAM																		
Enrolled at start of month	47	22	47	0	56	47	24	21	55	60	33	0	0	52	50	0	20	534
Enrolled during the month	2	0	0	0	0	4	9	6	21	3	7	0	0	3	3	0	0	58
Removed From PAL Program																		
# Paroled	0	0	0	0	0	0	0	1	2	0	1	0	0	0	0	0	0	4
# Completed	0	0	0	0	0	2	0	0	2	0	4	0	0	1	0	0	0	9
# Withdrew	1	0	1	0	0	2	2	0	4	0	0	0	0	2	1	0	0	13
# Removed	2	1	0	0	0	0	0	0	5	2	0	0	0	0	1	0	0	11
# Transferred	0	0	0	0	0	3	0	1	7	1	1	0	0	0	2	0	0	15
Total Removed from PAL Program	3	1	1	0	0	7	2	2	20	3	6	0	0	3	4	0	0	52
Total Enrolled at the End of the Month	46	21	46	0	56	44	31	25	56	60	34	0	0	52	49	0	20	540
Volunteers In PAL																		
	7	1	7	0	0	16	15	0	29	6	2	0	0	0	0	0	0	83
Special Events:																		
	0	0	0	0	0	0	0	1	0	0	0	0	0	0	0	0	0	1

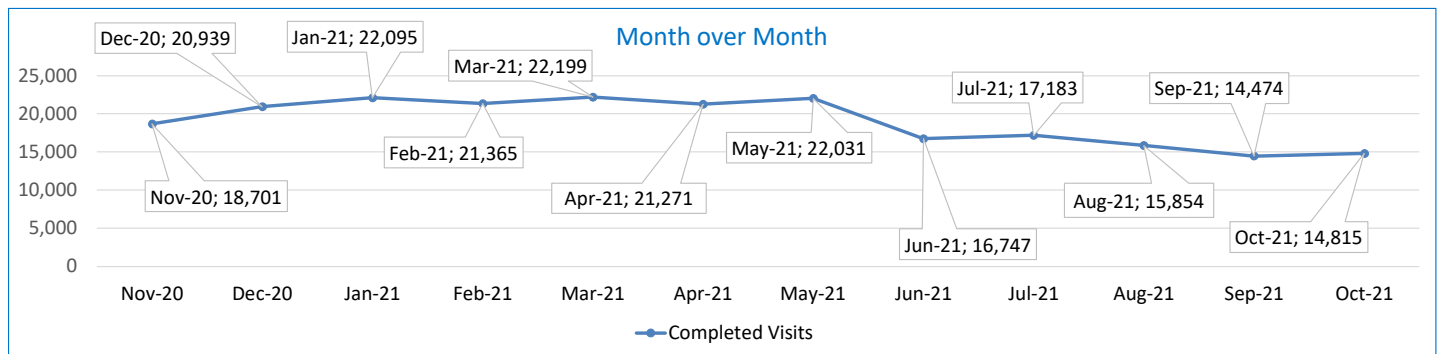
SECURUS VIDEO VISITATION REPORT OCTOBER 2021

AR-DOC SVV Activity Tracker

Total ADP 15,595

Total Visits by Month	Nov-20	Dec-20	Jan-21	Feb-21	Mar-21	Apr-21	May-21	Jun-21	Jul-21	Aug-21	Sep-21	Oct-21
Total (Includes SuperMax)	18,701	20,939	22,095	21,365	22,199	21,271	22,031	16,747	17,183	15,854	14,474	14,815
Target Objective	15,587	15,587	15,587	15,587	15,587	15,587	15,587	15,587	15,587	15,587	15,587	15,587

Anywhere Visitation Performance:



Completed Visits

Site	Current Month	Previous Month
Benton	462	490
Cummins	1,295	1,058
Delta Regional	722	732
East Arkansas Regional	1,877	1,819
Ester	689	592
Grimes	967	964
J Aaron Hawkins Sr.	706	690
Tucker Max	754	770
Mcpherson	617	609
Mississippi County WRC	103	122
North Central	1,424	1,323
NW Arkansas WRC	40	58
Ouachita River	1,438	1,421
Pine Bluff Complex	294	255
Randall L Williams	482	482
State Police Barracks	126	122
Texarkana Regional	46	69
Tucker Unit	342	477
Varner	1,420	1,475
Wrightsville Unit	969	921
Pine Bluff Re-Entry	42	25
Tucker Re-entry	0	0
Total:	14,815	14,474

Missed by Inmate

Site	Current Month	Previous Month
Benton	5	10
Cummins	75	97
Delta Regional	17	46
East Arkansas Regional	50	47
Ester	6	13
Grimes	16	12
J Aaron Hawkins Sr.	20	10
Tucker Max	34	15
Mcpherson	36	25
Mississippi County WRC	28	24
North Central	14	11
NW Arkansas WRC	12	7
Ouachita River	39	39
Pine Bluff Complex	11	8
Randall L Williams	13	25
State Police Barracks	0	4
Texarkana Regional	8	18
Tucker Unit	24	12
Varner	64	81
Wrightsville Unit	14	10
Pine Bluff Re-Entry	3	3
Tucker Re-entry	0	0
Total:	489	517

SECURUS TABLET REPORT OCTOBER 2021

Facility Name	Subscription	Facility	Officer	Total	New Subscriptions
Benton Unit	33	16	8	57	3
Cummins Unit	79	116	14	209	11
Delta Regional Unit	21	38	16	75	4
East Arkansas Regional Unit	38	105	10	153	6
Ester Unit	23	142	20	185	2
Grimes Unit	29	51	14	94	14
J. Aaron Hawkins Sr. Center For Women	39	103	19	161	2
McPherson Unit	29	95	15	139	9
Mississippi County Work Release Center	10	4	9	23	3
North Central Unit	35	99	10	144	9
Northwest Arkansas Work Release Center	13	4	8	25	1
Ouachita River Correctional Unit	65	106	14	185	18
Pine Bluff Reentry Center	0	4	0	4	0
Pine Bluff Unit	20	7	8	35	4
Randall L. Williams Facility	11	29	14	54	5
State Police Barracks	7	0	3	10	1
Texarkana Regional Correctional Center	7	3	10	20	1
Tucker Maximum Security Unit	28	62	15	105	5
Tucker Reentry Center	0	51	3	54	0
Tucker Unit	28	65	10	103	8
Varner Unit	66	56	20	142	14
Wrightsville Unit	30	49	6	85	3
TOTAL	611	1,205	246	2,062	123

CONSTRUCTION BUDGET / STATUS REPORT - NOVEMBER 8, 2021 — [Page 1 of 2]

Fund	Project Description	Total Projected Spent	Budget	Available Funds	\$ % Complete	Construction % Complete	Notes
700483A	EARU Max Rec Expanded Metal Rec Yard	836,866	879,000	42,134	95%	64%	We have delivered panels to EARU. Should have notice to proceed within 30 days.
700483A	Tucker Max Expanded Metal Rec Yard	1,103,522	1,800,000	696,478	61%	0%	DBA Approved to proceed. We are constructing the panels on-site. Material list has been ordered and delivered.
700483A	Cummins Expanded Metal Rec Yard	50,012	368,617	318,605	14%	0%	Plans on hold, will modify for exp. metal
KBR4Q95	Bullpens	388,676	851,999	463,323	46%	98%	Varner & EARU complete. Installation underway at Max. Locks delivered. Working on bullpens now.
KBR4Q95	13 & 15 Barracks Door Revisions	119,111	174,000	54,889	68%	68%	All doors and locks installed in 13 Barracks. We are fabricating the revisions at this time on the hill.
700485A	Entegrity Energy Improvements at EARU & Delta	16,961,127	17,010,204	49,077	100%	99%	lights (100%), plumbing 100%, water (100%), compost (100%), & solar (100%), HVAC (100%). Only Training is incomplete.
7004828	Entegrity Energy Improvements Phase 2 at Tucker and Max	2,063,263	18,603,150	16,539,887	11%	30%	Lighting is complete at the Max. HVAC has began at Tucker. Plumbing has began at the MAX. Lighting has moved over to Tucker.
KBSHW18	Tucker Water Treatment	38,846	1,093,848	1,055,002	4%	0%	The original blueprints has been completed and approved. The detail drawing will be submitted by 11/1/21 for DBA review.
KBSFW18 KBR4Q95	Max Armory	55,072 -	100,000	44,928	55%	0%	DBA has the project to review. Should have our notice to proceed within the next 30 days.
7004810	Administrative East Roof Replacement	60,494	1,544,880	1,484,387	3.9%	0%	All roofs have been designed. DBA has the project and is under review. Should have our notice to proceed within the next 45 days.
7004810	Central Warehouse Roof Replacement	20,061	357,132	337,071	5.6%	0%	
7004810	RLW Roof Replacement	119,882	2,897,988	2,778,106	4.14%	0%	
22V	NWARWRC Laundry and Commissary	236,621	250,000	13,379	95%	85%	All Building and material are onsite. We are pulling wiring this week. The building is erected and is set to deliver the week of 11/5/21.
865C 7004820 KBR4Q95	NCU Perimeter Security	20,625 137 6,275	600,000	572,963	5%	0%	The project has been sent over for review. We are working with OSP on purchasing agreement with Motorola.
N98	Max Re-Entry Generator Project	16,635	135,000	118,365	12%	0%	Plans submitted to DBA. We have received our notice to proceed on this project.
KBR4Q95	NCU Replacement Generator Project	182,463	202,000	19,537	90%	35%	DBA Approved. Generator is purchased. Waiting on ETA on delivery.
7004820	Tucker Asbestos Abatement	339,906	448,000	108,094	76%	60%	Contract Complete. Work underway. Started 8/31/2021. Completion scheduled for December 18, 2021.
7004820	Tucker 10 Barracks Sidewalk	11,187	70,259	59,072	16%	50%	Sidewalk is complete. We are mobilizing to install post for roof. We have the fence material to wrap the project once the post is installed.



CONSTRUCTION BUDGET / STATUS REPORT - NOVEMBER 8, 2021 — [Page 2 of 2]

Fund	Project Description	Total Projected Spent	Budget	Available Funds	\$ % Complete	Construction % Complete	Notes
7004820	Lethal Fence Control for Cummins, Varner SuperMax, Tucker Max, & EARU	46,250	875,000	828,750	5%	0%	Plans to be submitted to DBA on 9/10/2021.

Telephone Projects

Maintenance & Operations	Fire Alarm Upgrades (All Units)	11,703	41,000	29,297	29%	15%	on-going
	Stainless Steel - Kitchen/Shower/Restrooms - All Units	4,383	20,000	15,617	22%	0%	continual need
	Gates and Fences all units	12,489	25,000	12,511	50%	45%	to improve security
	ACA Maintenance	74,469	100,000	25,531	74%	40%	Walkthrough done at Varner. Dedicating resources to Varner for ACA.
	ADA Projects - All Units	0	10,000	10,000	0%	0%	Working with Varner for the sports field sidewalk.
	Fast Top Floor Systems (kitchen/laundry/showers all units)	18,006	25,000	6,994	72%	55%	Benton complete. Ouachita kitchen material has been ordered and awaiting arrival.
	Camera Equipment - All Units	133,406	250,000	116,594	53%	25%	cameras as requested/approved.
	Lock/Riot Gates - All Units	13,715	90,500	76,785	15%	15%	on-going.
	AC Units-All Units	69,268	70,000	732	99%	90%	repairing & replacing daily.
	Subtotal	\$ 337,437	\$ 631,500	\$ 294,063			

Capital Projects FY21 Carry Forward	Metal Ceilings	0	25,000	25,000	0%	0%	Wrightsville showers are underway.
	ORCU Gravel Pit Operations	7,359	35,000	27,641	21%	15%	on-going.
	Dog Kennel/Horse Stable Malvern	22,531	48,000	25,469	47%	55%	Material for this project in on-site. Slab and walls are complete. Project delayed, COVID.
	Emergency Generator - All Units	50,518	250,000	199,482	20%	25%	Cummins 300kW generator complete. Hawkins Unit Gen is installed and operational. Max Gen mat'l rec'd, Generator rec'd. Cummins East Bldg. we have approval awaiting Max generator install.
	Tucker 4 new filters & one aeration tank	8,943	10,000	1,057	89%	100%	Project is complete.
	Roof Repairs-Cummins	0	130,700	126,101	4%	0%	Prepared large order for multiple Units. Max is complete. Need repairs at ORCU, Delta, Cummins & others. Varner & ORCU working on repairs, received TPO Office of State Procurement secured a State contract to purchase roofing materials.
	Roof Repairs-Cummins Laundry	0				0%	
	Construction/Maintenance	0				0%	
	Roof Repairs-Delta	3,757				0%	
	Roof Repairs-East Arkansas	0				0%	
	Roof Repairs-Max	0				0%	
	Roof Repair - NCU	842				0%	
	Roof Repair - RLW	0				0%	
	Roof Repairs-Tucker	0				0%	
	Roof Repairs-Varner	0				0%	
	Roof Repairs-Wrightsville	0				0%	
	Subtotal	\$ 93,949	\$ 498,700	\$ 404,751			

New Projects	Delta Perimeter	0	622,000	622,000	0%	0%	purchasing materials
	Wrightsville Perimeter	0	-	0	0%	0%	
	PB Warehouse Drive Replacement	0	118,000	118,000	0%	0%	Project suspended.
	Subtotal	\$ -	\$ 740,000	\$ 740,000			
	Architect Fees	13,771	30,000	16,229	46%		
	Total	\$ 445,157	\$ 1,900,200	\$ 1,455,043			

Notes Report has not been reconciled against Accountings Reconciled Reports.
Tolerance/Deviation is with in 1% of Projected Spending.