



**DIVISION OF  
COMMUNITY  
CORRECTION**

# **Director's Report**

**October 2021**

**Jerry Bradshaw, Director**

# From the Director

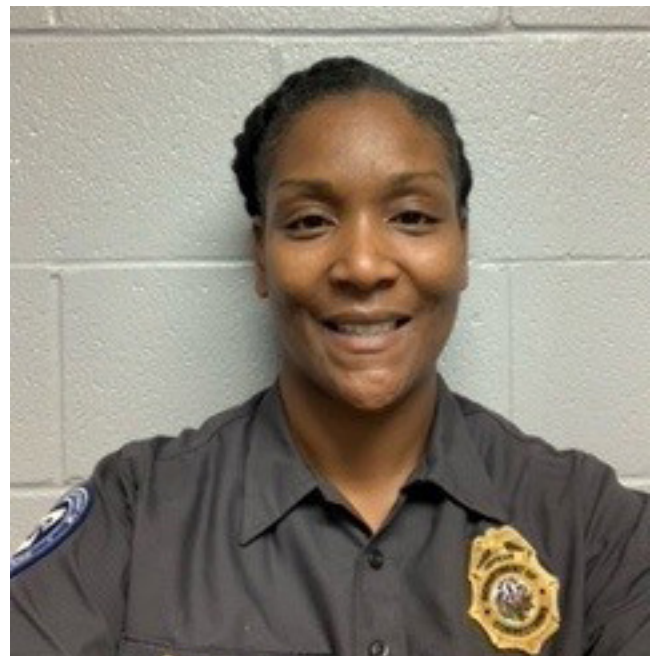


**Area 11** staff banded together during August and September and collected donations for foster children at the Centers for Youth and Family in memory of Arzo Johnson, an ACC Special Response Team member who died unexpectedly in August. Johnson was passionate about helping people. He and his wife fostered many children from the center and had adopted several. The center specifically requested backpacks, duffle bags, and plastic storage bins with lids. These items help children when they are being moved, as they often must move their belongings in trash bags. "Arzo was a great man who has left big shoes to fill. Together we believe we can make a difference for these children," said Area 11 staffers. In addition to the items in the photograph above, Area 11 donated Walmart gift cards totaling more than \$200 and cash. Arzo Johnson, Jr., 59, of Little Rock, passed away Thursday, August 5, 2021. He is greatly missed by the ACC family.

**Area 2** Assistant Area Manager Eva Frame attended a board meeting of the CCI Community Connections for Youth & Families, which provides programs for community youth, including the children of adults on parole or probation. Programming includes family dynamics, coping with character, active parenting, life skills, teen substance abuse awareness and adult anger management. Also discussed was the good working relationship that the program has had with Care Center Ministries.

Congratulations to Sidra Porchia on her well deserved

promotion to Assistant Area Manager for **Area 10**. She will be over Dallas, Ouachita and Calhoun counties. AAM Porchia began her employment with ACC in 2014 and has served as a Drug Court Probation Officer, Alternative Sentencing Officer and Field Training Officer for the Ouachita County Parole/ Probation Office. Many of these positions she held at the same time. During the beginning of her career with ACC, AAM Porchia worked with only the assistance of her supervising manager, and assisted in training all incoming staff.



Outside of the Division, AAM Porchia is a former board member of Ouachita County Boys and Girls Club, and is currently a member of the Arkansas

Officials Association and the Ouachita County Emergence Preparedness Association. AAM Porchia is a proud member of the Mt. Olive Baptist Church, where she serves as a Sunday school teacher. She is also a member of the Delta Sigma Theta Sorority and a graduate of Arkansas Baptist College. She loves serving God, family and community and is a tremendous asset to **Area 10**.

Officers from **Area 4** parole/probation participated in a Stop the Bleed training, which was hosted at the Emerson Ambulance base. During this course, officers learned the proper way to put a tourniquet on, use combat gauze, and apply chest seals. All of these are lifesaving methods used to stop the number one cause of preventable death in frontline first responders, hemorrhaging. During the 8-hour training officers engaged in practical application of the techniques learned and participated in scenario-based exercises to apply what was learned. At the end of the training, officers were all given a kit containing supplies to stop a person from hemorrhaging.



In recognition of National Recovery Month, the Paragould Drug Court (**Area 4**) held a drive during September to collect personal hygiene products that were given to the Agape House.

**Area 2** Agent Jana Pinkston from the Mountain View office instructed a self defense class at the Church of God in Mountain View, which focused on women's self defense. Topics included in the course were situational awareness, community information, public information on registered sex offenders, components of self defense, escape from various situations, attacks, striking, and survival. The 3-hour class had 15 participants. Mountain View Police Department assisted and allowed use of their equipment.

Rashidat Wright-Hill, MAT Counselor in **Area 8**, was selected by her peers as Employee of the Month for September.



Some of the reasons given by her coworkers are below: "Rashidat goes above and beyond the normal day to day." "Rashidat is very helpful to everyone and super sweet and a hard worker." "Rashidat has a positive attitude that is contagious." "Rashidat cares about her job and coworkers."

## The Work of Parole/Probation Officers and Agents

**Area 11** agents found marijuana, drug paraphernalia and instruments of crime during a home visit in Pine Bluff. The offender was ticketed for committing the offense of misdemeanor possession of marijuana and misdemeanor possession of instruments of crime.







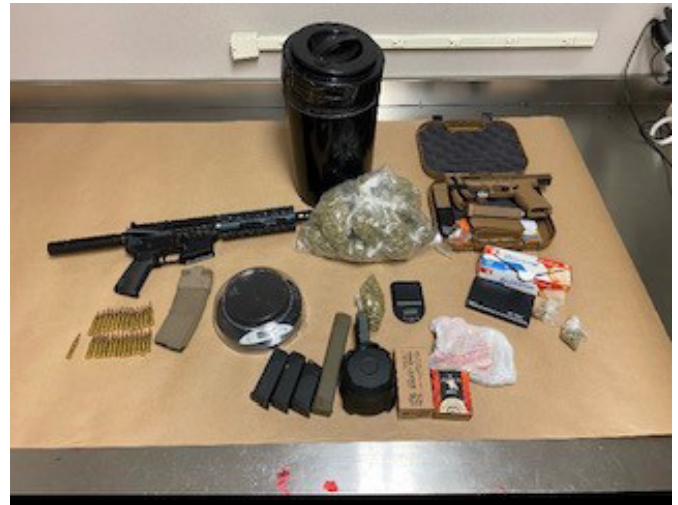
Two were arrested and transported to the Booneville Police Department after a Logan County Task Force (consisting of Logan County Sheriff's Office, the area Drug Task Force, Booneville Police Department, and ACC's Parole and Probation officers in **Area 5**) conducted a search at the Capri Motel, located at 630 W. Main, Booneville. Four different rooms that serve as homes for five offenders were searched and officers found glass smoking devices with white powder residue, digital scales with a white residue and numerous packing bags, numerous syringes filled with methamphetamine and/or blood and a multi-colored pipe used to smoke marijuana and drug paraphernalia.

Nearly 14 grams of methamphetamine were found during a check of a room at a Little Rock motel after **Area 8** officers received information that an absconder was in that room at the motel. Officers also found drug paraphernalia. Two offenders in abscond status were taken into custody.



An offender who reported for an office visit where marijuana was found in his vehicle led officers to search his home. An AR-15 style rifle, drug paraphernalia and a Glock pistol were found during

the home visit by **Area 8** officers. The offender was taken into custody.



**Area 8** agents searched a recreational vehicle that was home to two offenders and discovered approximately 3 ounces of suspected methamphetamine.



#### **Treatment Program Summary:**

General Substance Use Disorder Treatment programs served 1,526 probationers and parolees and Drug Court Treatment programs served 1,264 participants, bringing the total served to 2,790 during September.

A total of 548 residents have agreed to participate in Medication Assisted Treatment (MAT) since the program started in July 2018; 267 are discharged with follow up in progress in the community; and 74 have completed the program. A partnership is in effect

with 69 Community Providers to continue MAT upon release from an ACC Center, and the program has been extended through September 2022 with Peer Recovery Specialist and Transitional Housing services added.

**General Treatment Program Summary (Non-Drug Court):**

Substance Use Disorder Treatment - 995 participants

Case Management - 139 participants

Continuing Care - 336 participants

Domestic Violence Prevention - 10 participants

Life Skills - 72 participants

Tobacco Use Treatment - 6 participants

Case Management Pilot Program in North Little Rock - 9 participants

**Reentry Facilities:**

ACC has 7 licensed reentry facilities with 240 total residents currently in Phases I-IV of the Reentry Facility Program. There were 14 reentry graduates during September.

During the month, 38 new residents were transferred into the reentry program, two residents started WAGE classes and two residents completed WAGE. Ten residents started GED classes and three completed GED, 14 residents started the Career Readiness Certificate program and 11 residents completed CRC. A total of 27 reentry facility residents received their driver's license, 30 received an ID card, 24 received their Social Security card and 20 received birth certificates.

**Reentry Officers:**

In September, 154 facility residents were reported to be employed and 32 residents were reported to be ineligible for employment. Reentry officers reported 18 education referrals, which resulted in education enrollment. Reentry officers conducted 202 reentry facility office visits, 179 Phase IV office visits, 32 Phase IV home visits, and 43 parole plan verifications. Reentry officers made 31 community contacts within their assigned area during the month.

**Transitional Housing:**

There were 21 licensed facilities with 430 ACC funded beds during September.

Within the transitional facilities there are a total of 255

residents who have obtained full time employment. This month, 3 residents reported to have enrolled in GED Classes.

There is a total of 52 registered sex offenders living in transitional facilities.

A total of 57 graduated from the transitional housing program. Sixty-three absconded and 20 were dismissed

Assistant Director Carrie Williams and Volunteer/Mentor Coordinator Kerri Kocourek attended a peer conference and banquet where several peer specialists and peer supervisors were honored and recognized for their commitment to changing lives in Arkansas and walking alongside individuals in recovery from addiction. Arkansas currently has 300 trained peer counselors. Williams, Kocourek and Corliss Johnson of the reentry team participated in a Mississippi County Coalition meeting at Arkansas Northeastern College. It was the group's first meeting in the community.







At left, **Northwest Arkansas Center** Advisor Abby Clark paints her cares away during a retreat for professionals who work in the field of addiction.

The photograph below shows the treatment staff of the Northwest Community Correction Center in Fayetteville. The treatment team attended a retreat to honor staff for National Addiction Professionals Day. Shown below is Brianna Kimble, Nicole Hill, Kenitra Edwards, Abby Clark, Tracy Kimble, Mary Anne Tarver and Crystal Albarran.

THANK YOU FOR VISITING

# NWA Community Corrections Treatment Team!



Heal One Woman, Heal a Community

# National Recovery Month

National Recovery Month is a national observance held every September to educate Americans that substance use treatment and mental health services can enable those with a mental and/or substance use disorder, to live healthy and rewarding lives.

Recovery Month celebrates the gains made by those in recovery, just as we celebrate health improvements made by those who are managing other health conditions such as hypertension, diabetes, asthma, and heart disease. This observance reinforces the positive message that behavioral health is essential to overall health, prevention works, treatment is effective, and people can and do recover.



Osceola Mayor Sally Wilson opened Recovery Month observances at the **Northeast Arkansas Center** by declaring "National Recovery Month" in Osceola.

Recovery Month guest speakers in **Area 4** included Assistant Director Cindy Richardson, Assistant Area Manager Tracy Crews (below), Northeast Arkansas Center Supervisor Phillip Glover and Parole/Probation Agent Jason Letner. Richardson spoke to drug court participants about how people who go into the fields of treatment, law enforcement, and corrections likely have a testimony that caused this field to choose them. She felt it would be great to hear from different personnel within our agency (who are willing to tell their story) about what brought them to their position. She told her story of her traumatic childhood, how it affected her throughout her life and even today. She encouraged each participant to dig to the root of their issues and start working from the root to the top for a successful outcome. She explained that counseling services are not something to be ashamed of and are not a

punishment, but a gift to yourself; and about how no one, at all, no matter their position, can judge a book by its cover and she is the example.

Crews shown below, spoke to Phase 1 in the Craighead County Drug Court about growing up with parents who were addicted. She described a childhood of them forgetting to pick her up from school, missing ballgames, and just lacking in presence. She explained what it was like to be in law enforcement and her father getting arrested multiple times and how she had to realize she had become an enabler for him. But with his last arrest in Crittenden County, he feared he would die but he was fortunate enough to go to drug court. She explained to the drug court participants that her father graduated drug court with honors and has been clean for more than 10 years. And her mother began attending church and getting involved in positive groups and was able to also begin living a sober lifestyle that she maintains to this day.

She provided encouragement to them, saying that they

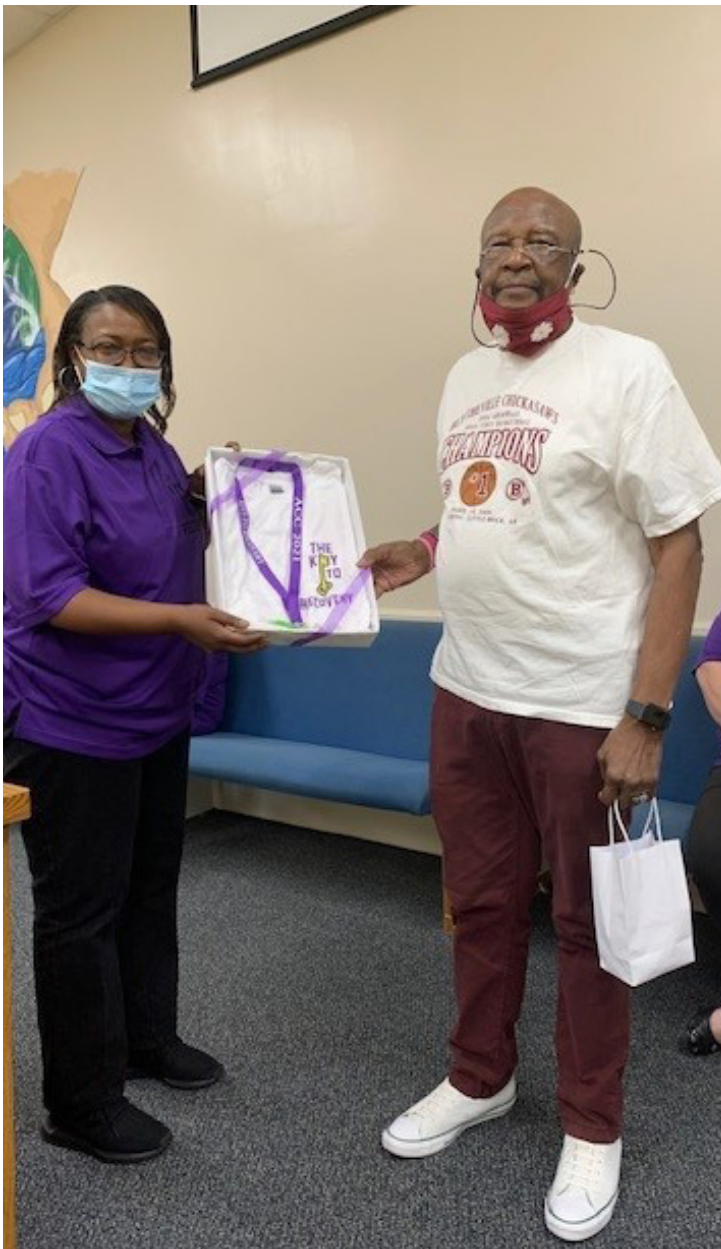


can change their lives, they can rebuild relationships that their addiction destroyed, and they can be successful in their sobriety. Glover spoke to Drug Court Phases 1 and 2 about the right path, addressing underlying issues rather than just symptoms of



addiction, providing his testimony, and determining how you want to be remembered in your life. The Drug Court participants really spoke highly of the information they took from Glover. One volunteered to go to treatment saying “I am ready to get my time in treatment done because I do not want to be the type of mother his mother was.” To finish recognizing Recovery Month, Agent Letner, from the Poinsett County Parole office, spoke to Phases 1 and 2. He gave a very touching and emotional

testimony of his life, growing up with parents who were addicts, then having sisters who were addicts, and his mother and sister losing their battle to addiction. He also discussed his own addiction. He encouraged counseling, journaling, and working on your demons rather than coping with drugs and alcohol. Agent Letner told the groups “Even if you only have one day clean, pat yourself on the back because that is an accomplishment.”



Treatment Coordinator Martha Washington, shown at left, presented Mr. Freeman-Harris, with a recovery T-shirt after he served as a guest speaker at the **Northeast Arkansas Center** in Osceola's Recovery Month observances. Mr. Freeman-Harris has 25 years of sobriety. Mr. D. Brown, shown at right, was presented with a similar T-shirt by Treatment Supervisor Flossie Lane after speaking to residents at the center. Mr. Brown served 2 years in prison. He has 16 years of sobriety, and he now works as the Director of a Shelby County reentry program.





Darlene Owens, Arkansas Rehabilitation Services, shown above, spoke about eligibility requirements for rehabilitation services during the **Central Arkansas Center's** National Recovery Month celebration. And shown below is Jennifer Harrington, who spoke to the residents at the **Omega** Unit about mental health after-care when they are released from the unit.



Residents got the opportunity to dunk **East Central Arkansas Center** staff during Floor Olympics. Pictured in the dunking booth is Corporal Nikima Chatters.



Assistant Director of Reentry Carrie Williams was honored to be one of the speakers during a Recovery event at the **Northeast Arkansas Center**. She was presented with a recovery T-shirt. Judge Catherine Dean was a guest speaker at the unit addressing new laws and changes to the expungement process.





Success Stories Dana Certain, Jessie Lanning, Tina Hipp returned to the **East Central Arkansas Center** to share words of encouragement and details of their success after release from the unit. Ashley Booker (not formerly incarcerated) also shared her story of recovery from drugs and toxic relationships.



Chaplin Billy Davis helped to kick off National Recovery Month with The Keys to Recovery at the **Northeast Center** in Osceola.



J.G. Regnier, Board of Examiners for Licensed Alcohol and Drug Counselors, was the keynote speaker for the Addiction Professional's luncheon at the **Central Arkansas Center** in Little Rock. He spoke of counselor appreciation and self care.



# Comprehensive Opioid Abuse Program (COAP) Clinical Report- September 2021

	Status		Assessments	Groups	Individuals	MAT	Total Assesments
<b>Locations:</b>							
Area 2- Melbourne, Izard County	Active 12/19		0	8	1	1	4
Area 2- Berryville, Carroll County	Active 9/19		0	8	48	2	42
Area 2- Mtn. View, Stone County	Active 7/19		0	8	8	0	39
Area 3- Newport, Jackson County	Active 11/19		0	8	11	1	37
Area 3- Walnut Ridge, Lawrence County	Active 10/19		0	8	12	2	11
Area 3- Pocahontas, Randolph County	Active 7/19		0	8	4	1	9
Area 4- Paragould, Green County	Active 8/19		0	8	22	2	36
Area 4- Hardy, Sharp County	Active 10/19		0	8	14	1	21
Area 5- Clarksville, Johnson County	Active 7/19		0	8	4	1	10
Area 5- Ozark, Franklin County	Active 1/20		0	8	0	1	4
Area 6- Danville, Yell County	Active 7/19		0	8	5	3	18
Area 6- Morrilton, Conway County	Active 8/19		0	0	0	0	14
Area 10- Arkadelphia, Clark County	Active 8/19		0	8	3	0	31
Area 10- Sheridan, Grant County	Active 7/19		0	0	0	0	20
Area 12- Lewisville, Lafayette County	Active 8/2020		0	8	5	0	4
<b>Total</b>	<b>15</b>		<b>0</b>	<b>104</b>	<b>137</b>	<b>15</b>	<b>300</b>
<b>Advisor Program Data:</b>	<b>Admissions</b>	<b>Active</b>	<b>D/S</b>	<b>GRAD</b>	<b>U/S</b>	<b>REF</b>	<b>Aftercare</b>
Melbourne, Berryville, Mtn. View, Walnut Ridge, Pocahontas, Paragould, Clarksville and Ozark	0	37	2	2	0	0	8
Vacant	0	0	0	0	0	0	0
Vacant	0	0	0	0	0	0	0
<b>Total for Month</b>	<b>0</b>	<b>37</b>	<b>2</b>	<b>2</b>	<b>0</b>	<b>0</b>	<b>8</b>

Key: U/S Unsuccessful D/S Discharges REF Referrals

1-Transfer Out of State

**COVID19 Precautions in P/P Offices**

**Aftercare Implemented due to COVID19**

# Parole/Probation Fee Collections and Waivers

	Sep-20	Oct-20	Nov-20	Dec-20	Jan-21	Feb-21	Mar-21	Apr-21	May-21	Jun-21	Jul-21	Aug-21	Sep-21
<b>Area 1 - Fayetteville</b>													
Fees Possible	156,345	154,455	153,965	150,920	149,205	150,570	150,430	150,990	150,430	149,485	149,380	152,775	154,070
Fees Collected	147,777	140,640	130,474	135,800	165,590	133,284	203,089	149,681	139,080	138,642	138,245	135,376	138,815
% Collected	95%	91%	85%	90%	111%	89%	135%	99%	92%	93%	93%	89%	90%
% Paying Offenders	55%	56%	53%	55%	62%	54%	67%	57%	55%	57%	57%	54%	55%
% Employed	85%	86%	86%	86%	87%	86%	87%	87%	88%	88%	89%	88%	89%
Fees Converted	1,285	2,834	1,835	2,325	2,895	2,399	1,787	1,529	2,208	1,883	2,797	2,090	1,517
% Converted	1%	2%	1%	2%	2%	2%	1%	1%	1%	1%	2%	1%	1%
Fees Waived	3,395	3,360	3,500	2,485	2,625	2,730	2,800	2,380	2,275	1,995	2,380	2,450	2,485
% Waived	2%	2%	2%	2%	2%	2%	2%	2%	2%	1%	2%	2%	2%
<b>Area 2 - Mountain Home</b>													
Fees Possible	71,225	70,630	70,455	69,825	70,105	70,000	69,825	68,565	69,895	69,650	70,560	69,720	70,700
Fees Collected	66,116	72,686	63,387	66,965	76,653	66,813	88,189	77,509	62,321	65,752	68,877	63,666	70,033
% Collected	93%	103%	90%	96%	109%	95%	126%	113%	89%	94%	98%	91%	99%
% Paying Offenders	60%	65%	60%	63%	67%	60%	69%	65%	58%	60%	60%	59%	60%
% Employed	85%	84%	84%	84%	82%	83%	84%	84%	85%	87%	87%	87%	86%
Fees Converted	308	45	250	118	110	342	262	39	-	132	-	-	143
% Converted	0%	0%	0%	0%	0%	0%	0%	0%	0%	0%	0%	0%	0%
Fees Waived	595	490	560	385	490	525	525	385	490	420	420	420	455
% Waived	1%	1%	1%	1%	1%	1%	1%	1%	1%	1%	1%	1%	1%
<b>Area 3 - Searcy</b>													
Fees Possible	126,350	124,250	124,285	122,640	120,435	119,000	116,795	116,200	115,570	114,520	113,855	114,450	115,150
Fees Collected	114,663	114,692	104,536	110,401	124,294	106,011	162,838	116,378	103,755	99,533	102,560	101,506	100,668
% Collected	91%	92%	84%	90%	103%	89%	139%	100%	90%	87%	90%	89%	87%
% Paying Offenders	57%	57%	55%	57%	61%	55%	70%	59%	57%	56%	57%	56%	55%
% Employed	79%	80%	79%	78%	78%	78%	78%	79%	80%	80%	80%	81%	81%
Fees Converted	1,190	708	1,138	2,051	645	638	1,785	1,122	1,293	1,415	1,161	792	1,857
% Converted	1%	1%	1%	2%	1%	1%	2%	1%	1%	1%	1%	1%	2%
Fees Waived	5,180	4,690	4,760	4,550	4,935	4,165	4,200	3,990	3,640	3,920	3,745	3,745	3,430
% Waived	4%	4%	4%	4%	4%	4%	4%	3%	3%	3%	3%	3%	3%
<b>Area 4 - Jonesboro</b>													
Fees Possible	104,685	102,795	102,235	102,515	101,465	101,255	100,415	100,485	102,375	100,450	101,990	101,255	100,625
Fees Collected	93,378	94,548	78,615	89,874	100,214	87,129	133,552	97,035	86,855	90,685	86,231	87,470	93,408
% Collected	89%	92%	77%	88%	99%	86%	133%	97%	85%	90%	85%	86%	93%
% Paying Offenders	54%	56%	50%	53%	56%	51%	66%	55%	50%	54%	51%	51%	55%
% Employed	77%	78%	77%	76%	76%	76%	77%	78%	79%	80%	79%	80%	80%
Fees Converted	1,695	2,295	1,755	3,085	3,781	1,275	2,437	1,332	1,188	2,442	1,698	3,729	2,732
% Converted	2%	2%	2%	3%	4%	1%	2%	1%	1%	2%	2%	4%	3%
Fees Waived	5,075	5,215	5,425	5,670	5,495	5,460	5,810	5,635	5,670	5,530	5,600	5,740	5,985
% Waived	5%	5%	5%	6%	5%	5%	6%	6%	6%	6%	5%	6%	6%
<b>Area 5 - Fort Smith</b>													
Fees Possible	108,360	108,150	108,185	107,205	108,010	107,485	107,905	106,820	105,420	105,945	102,830	105,280	106,015
Fees Collected	91,887	95,890	82,848	89,136	112,654	89,293	132,590	114,007	84,165	83,487	88,667	85,685	81,189
% Collected	85%	89%	77%	83%	104%	83%	123%	107%	80%	79%	86%	81%	77%
% Paying Offenders	52%	54%	50%	52%	59%	52%	64%	58%	51%	50%	54%	50%	49%
% Employed	76%	78%	78%	75%	76%	76%	76%	77%	78%	78%	79%	79%	80%
Fees Converted	6,606	5,347	2,603	5,821	6,170	4,372	4,942	5,195	3,732	4,791	5,095	3,358	4,628
% Converted	6%	5%	2%	5%	6%	4%	5%	5%	4%	5%	5%	3%	4%
Fees Waived	3,675	3,115	2,590	2,800	2,520	2,800	3,115	2,905	2,380	2,030	1,540	1,750	1,785
% Waived	3%	3%	2%	3%	2%	3%	3%	3%	2%	2%	1%	2%	2%



## Fee Collections / Waivers / Conversions

	Sep-20	Oct-20	Nov-20	Dec-20	Jan-21	Feb-21	Mar-21	Apr-21	May-21	Jun-21	Jul-21	Aug-21	Sep-21
<b>Area 6 - Conway</b>													
Fees Possible	104,580	103,705	102,620	101,605	99,680	99,995	100,135	100,765	99,925	99,890	97,090	97,195	96,040
Fees Collected	88,746	98,834	84,946	90,860	110,011	82,647	133,616	99,502	93,058	85,772	83,891	77,272	89,768
% Collected	85%	95%	83%	89%	110%	83%	133%	99%	93%	86%	86%	80%	93%
% Paying Offenders	54%	60%	53%	56%	64%	53%	69%	59%	58%	55%	54%	51%	56%
% Employed	75%	75%	75%	75%	76%	76%	76%	76%	76%	76%	78%	77%	79%
Fees Converted	803	887	1,124	2,242	1,180	1,147	2,449	1,216	1,478	1,562	1,661	1,491	2,030
% Converted	1%	1%	1%	2%	1%	1%	2%	1%	1%	2%	2%	2%	2%
Fees Waived	1,400	1,120	1,085	1,190	1,470	1,470	1,680	1,645	1,540	1,470	1,435	1,470	1,610
% Waived	1%	1%	1%	1%	1%	1%	2%	2%	2%	1%	1%	2%	2%
<b>Area 8 - Little Rock</b>													
Fees Possible	190,750	188,020	185,500	187,285	182,735	180,880	180,285	179,235	177,030	176,610	173,460	175,105	173,040
Fees Collected	171,878	167,234	152,886	157,779	184,030	144,724	221,352	176,977	156,068	160,449	142,881	149,693	148,423
% Collected	90%	89%	82%	84%	101%	80%	123%	99%	88%	91%	82%	85%	86%
% Paying Offenders	51%	52%	50%	50%	57%	48%	61%	54%	50%	52%	49%	50%	50%
% Employed	75%	77%	77%	77%	75%	75%	77%	77%	79%	80%	81%	81%	82%
Fees Converted	314	1,710	426	510	300	1,461	3,924	2,397	2,469	2,277	2,420	418	1,067
% Converted	0%	1%	0%	0%	0%	1%	2%	1%	1%	1%	1%	0%	1%
Fees Waived	6,580	6,685	7,140	6,755	7,420	6,930	7,140	6,510	6,475	6,405	6,650	6,860	6,650
% Waived	3%	4%	4%	4%	4%	4%	4%	4%	4%	4%	4%	4%	4%
<b>Area 9 - West Memphis</b>													
Fees Possible	52,920	52,430	50,645	51,625	52,010	51,765	52,255	52,500	52,955	53,270	52,255	52,570	51,905
Fees Collected	46,999	48,530	41,437	37,398	52,033	38,961	64,688	57,021	41,622	46,826	42,813	45,127	44,940
% Collected	89%	93%	82%	72%	100%	75%	124%	109%	79%	88%	82%	86%	87%
% Paying Offenders	52%	56%	51%	47%	54%	45%	62%	58%	50%	54%	51%	51%	54%
% Employed	66%	67%	69%	68%	69%	67%	65%	66%	67%	68%	69%	68%	70%
Fees Converted	2,569	3,025	2,329	1,026	3,680	2,940	3,623	1,460	1,320	1,246	737	1,397	537
% Converted	5%	6%	5%	2%	7%	6%	7%	3%	2%	2%	1%	3%	1%
Fees Waived	1,855	1,785	1,925	1,890	2,100	2,240	2,100	2,030	1,715	1,400	1,575	1,785	1,715
% Waived	4%	3%	4%	4%	4%	4%	4%	4%	3%	3%	3%	3%	3%
<b>Area 10 - Hot Springs</b>													
Fees Possible	108,255	107,275	107,415	107,135	103,320	103,285	101,920	101,150	101,430	99,645	98,770	97,160	96,600
Fees Collected	102,963	100,789	92,669	89,778	104,726	91,192	124,924	97,714	90,285	90,892	90,730	87,247	85,714
% Collected	95%	94%	86%	84%	101%	88%	123%	97%	89%	91%	92%	90%	89%
% Paying Offenders	58%	59%	56%	55%	62%	55%	66%	59%	57%	58%	56%	56%	56%
% Employed	77%	78%	77%	77%	78%	78%	79%	80%	81%	82%	82%	82%	83%
Fees Converted	1,350	1,450	700	1,850	1,026	873	1,417	1,214	429	1,682	1,441	1,342	1,997
% Converted	1%	1%	1%	2%	1%	1%	1%	1%	0%	2%	1%	1%	2%
Fees Waived	5,565	5,670	5,845	5,775	6,055	5,530	5,880	5,775	5,880	5,915	5,740	5,985	5,985
% Waived	5%	5%	5%	5%	6%	5%	6%	6%	6%	6%	6%	6%	6%
<b>Area 11 - Pine Bluff</b>													
Fees Possible	84,035	82,355	82,635	82,565	81,235	79,695	79,870	78,890	77,595	76,860	76,475	76,160	76,020
Fees Collected	75,530	75,598	68,143	75,456	84,005	72,741	100,893	79,929	65,771	68,345	69,166	66,129	72,541
% Collected	90%	92%	82%	91%	103%	91%	126%	101%	85%	89%	90%	87%	95%
% Paying Offenders	57%	59%	56%	59%	64%	58%	71%	62%	58%	58%	59%	56%	61%
% Employed	71%	72%	73%	72%	70%	70%	71%	71%	73%	74%	74%	75%	75%
Fees Converted	2,414	2,395	3,135	2,820	3,462	2,222	3,056	1,551	2,813	2,681	1,919	3,256	2,655
% Converted	3%	3%	4%	3%	4%	3%	4%	2%	4%	3%	3%	4%	3%
Fees Waived	1,225	1,190	1,330	1,120	1,225	1,155	1,015	980	1,015	910	945	980	1,015
% Waived	1%	1%	2%	1%	2%	1%	1%	1%	1%	1%	1%	1%	1%

### Fee Collections / Waivers / Conversions

	Sep-20	Oct-20	Nov-20	Dec-20	Jan-21	Feb-21	Mar-21	Apr-21	May-21	Jun-21	Jul-21	Aug-21	Sep-21
<b>Area 12 - Texarkana</b>													
Fees Possible	91,455	88,830	90,405	88,270	87,535	87,955	87,990	85,785	84,700	85,050	86,590	86,310	86,765
Fees Collected	78,604	80,041	72,199	80,825	89,390	75,492	115,324	89,459	71,743	74,949	74,724	75,432	70,603
% Collected	86%	90%	80%	92%	102%	86%	131%	104%	85%	88%	86%	87%	81%
% Paying Offenders	52%	54%	51%	56%	58%	51%	65%	57%	52%	54%	53%	53%	51%
% Employed	74%	75%	75%	75%	76%	75%	76%	77%	77%	77%	78%	77%	77%
Fees Converted	2,546	2,878	2,280	4,223	2,930	1,462	2,336	2,060	2,105	4,475	5,022	4,832	3,821
% Converted	3%	3%	3%	5%	3%	2%	3%	2%	2%	5%	6%	6%	4%
Fees Waived	2,345	2,380	2,310	2,135	2,135	2,520	2,275	2,065	2,345	2,170	2,240	2,135	2,170
% Waived	3%	3%	3%	2%	2%	3%	3%	2%	3%	3%	3%	2%	3%
<b>Area 13 - El Dorado</b>													
Fees Possible	54,075	54,460	54,110	53,270	52,955	52,570	51,695	52,185	51,590	50,505	50,750	50,750	50,365
Fees Collected	44,780	51,592	41,946	45,746	54,502	44,634	65,251	53,433	44,223	44,070	44,284	45,424	45,466
% Collected	83%	95%	78%	85%	102%	85%	125%	102%	85%	86%	86%	88%	90%
% Paying Offenders	52%	57%	51%	54%	59%	52%	66%	59%	53%	56%	55%	54%	54%
% Employed	66%	67%	68%	68%	67%	68%	68%	69%	69%	70%	70%	70%	70%
Fees Converted	945	510	610	315	341	704	2,536	220	154	781	264	528	985
% Converted	2%	1%	1%	1%	1%	1%	5%	0%	0%	2%	1%	1%	2%
Fees Waived	3,815	3,605	4,130	4,165	4,130	4,060	4,095	3,675	3,675	3,290	3,220	3,395	3,675
% Waived	7%	7%	8%	8%	8%	8%	8%	7%	7%	7%	6%	7%	7%
<b>Grand Total</b>													
Fees Possible	1,253,035	1,237,355	1,232,455	1,224,860	1,208,690	1,204,455	1,199,520	1,193,570	1,188,915	1,181,880	1,174,005	1,178,730	1,177,295
Fees Collected	1,123,320	1,141,073	1,014,086	1,070,017	1,258,102	1,032,922	1,546,305	1,208,646	1,038,946	1,049,403	1,033,070	1,020,027	1,041,569
% Collected	90%	92%	82%	87%	104%	86%	129%	101%	87%	89%	88%	87%	88%
% Paying Offenders	55%	57%	53%	55%	60%	53%	66%	58%	54%	55%	54%	53%	54%
% Employed	77%	77%	78%	77%	77%	77%	77%	78%	79%	80%	80%	80%	81%
Fees Converted	22,022	24,084	18,183	26,385	26,520	19,834	30,553	19,334	19,188	25,366	24,214	23,232	23,969
% Converted	2%	2%	1%	2%	2%	2%	3%	2%	2%	2%	2%	2%	2%
Fees Waived	40,705	39,305	40,600	38,920	40,600	39,585	40,635	37,975	37,100	35,455	35,490	36,715	36,960
% Waived	3%	3%	3%	3%	3%	3%	3%	3%	3%	3%	3%	3%	3%

**Fees Possible:** The amount of supervision fees that can be collected per active/electronic monitoring supervision status of offenders for that month only. Does not include annual, pre-trial, and SIS.

**Fees Collected:** Actual amount of money collected that can be deposited in Special Revenue fund. Please keep in mind the amount collected could include an offender that pays three months in advance.

**Fees Converted:** Amount not included in Fees Collected. Represents the amount of money lost by conversions. If this money were collected instead of converted, it would be added to Fees Collected.

**Fees Waived:** Amount not included in Fees Collected. Represents the amount of money lost by waivers. If this money were collected instead of waived, it would be added to Fees Collected.



# Center Populations

ARDOC  
REPORT NO. IPTR500 - 18

ARKANSAS DEPARTMENT OF CORRECTION  
ACC OPTION  
STATEWIDE POPULATION REPORT

PAGE: 1 of 1  
PROCESSED: 09/30/2021 12:32 AM  
REQUESTOR: eOMIS

FOR: 09/30/2021

Location:	In Count	Out To:					Capacity	% Capacity
		ORCU Hosp	Other Hosp	Furlough	Court	Total		
Central AR CCC - Males/Males	120	0	0	0	0	120	120	
Central AR CCC - Short Term Drug Court Treatment/Males	6	0	0	0	0	6	30	
<b>Central AR CCC - Males Total</b>	<b>126</b>	<b>0</b>	<b>0</b>	<b>0</b>	<b>0</b>	<b>126</b>	<b>150</b>	<b>84.0%</b>
East Central AR CCC/Females	199	0	0	0	0	199	212	
East Central AR CCC-Females Drug Treatment/Females	21	0	0	0	0	21	50	
East Central AR CCC Supervision Sanction-Female/Females	50	0	0	0	0	50	88	
<b>East Central AR CCC Total</b>	<b>270</b>	<b>0</b>	<b>0</b>	<b>0</b>	<b>0</b>	<b>270</b>	<b>350</b>	<b>77.1%</b>
NE AR CCC - Drug Treatment/Males	22	0	0	0	0	22	25	
NE AR CCC/Males	158	0	0	0	0	158	215	
<b>NE AR CCC Total</b>	<b>180</b>	<b>0</b>	<b>0</b>	<b>0</b>	<b>0</b>	<b>180</b>	<b>240</b>	<b>75.0%</b>
NW AR CCC/Females	85	0	0	0	1	86	114	
<b>NW AR CCC Total</b>	<b>85</b>	<b>0</b>	<b>0</b>	<b>0</b>	<b>1</b>	<b>86</b>	<b>114</b>	<b>75.4%</b>
Omega Supervision Sanction Center/Males	197	0	0	0	0	197	300	
<b>Omega Supervision Sanction Center Total</b>	<b>197</b>	<b>0</b>	<b>0</b>	<b>0</b>	<b>0</b>	<b>197</b>	<b>300</b>	<b>65.7%</b>
SW AR CCC/Males	172	0	0	0	2	174	375	
SW AR Supervision Sanction Center/Males	70	0	0	0	0	70	100	
<b>SW AR CCC Total</b>	<b>242</b>	<b>0</b>	<b>0</b>	<b>0</b>	<b>2</b>	<b>244</b>	<b>475</b>	<b>51.4%</b>
<b>In Transit Count:</b>	<b>0</b>							
<b>TOTALS - UNIT COUNT</b>	<b>1,100</b>	<b>0</b>	<b>0</b>	<b>0</b>	<b>3</b>	<b>1,103</b>		
					<b>Male</b>	<b>747</b>	<b>1,165</b>	<b>64.1%</b>
					<b>Female</b>	<b>356</b>	<b>464</b>	<b>76.7%</b>
					<b>Total</b>	<b>1,103</b>	<b>1,629</b>	<b>67.7%</b>
<b>County Jail Backup SSP/Females Total</b>	<b>13</b>	<b>0</b>	<b>0</b>	<b>0</b>	<b>0</b>	<b>13</b>		
<b>County Jail Backup SSP/Males Total</b>	<b>29</b>	<b>0</b>	<b>0</b>	<b>0</b>	<b>0</b>	<b>29</b>		
<b>County Jail Backup/Females Total</b>	<b>24</b>	<b>0</b>	<b>0</b>	<b>0</b>	<b>0</b>	<b>24</b>		
<b>County Jail Backup/Males Total</b>	<b>54</b>	<b>0</b>	<b>0</b>	<b>0</b>	<b>0</b>	<b>54</b>		
<b>TOTAL - NONAGENCY</b>	<b>120</b>	<b>0</b>	<b>0</b>	<b>0</b>	<b>0</b>	<b>120</b>		
					<b>Male</b>	<b>83</b>		
					<b>Female</b>	<b>37</b>		
					<b>Total</b>	<b>120</b>		
<b>Re-Entry Act 146 Total</b>	<b>227</b>	<b>0</b>	<b>0</b>	<b>0</b>	<b>0</b>	<b>227</b>	<b>240</b>	<b>94.6%</b>
<b>GRAND TOTAL</b>	<b>1,447</b>	<b>0</b>	<b>0</b>	<b>0</b>	<b>3</b>	<b>1,450</b>		

# Residential Centers September Statistics Report At A Glance

## **Resident admissions:**

CAC: 36  
ECAC: 51  
NEAC: 42  
NWAC: 12  
OMEGA: 93  
SWAC: 0

## **Resident Releases:**

CAC: 19  
ECAC: 50  
NEAC: 31  
NWAC: 10  
OMEGA: 61  
SWAC: 67

## **Affordable Healthcare Enrollment:**

CAC: 21  
ECAC: 51  
NEAC: 31  
NWAC: 12  
OMEGA: 46  
SWAC: 47

## **Wage Class Enrollment:**

CAC: 15  
ECAC: 0  
NEAC: 0  
NWAC: 0  
OMEGA: 0  
SWAC: 0

## **Shorter College Enrollment:**

CAC: 17  
ECAC: 57  
NEAC: 15  
NWAC: 8  
SWAC: 50  
OMEGA: 0

## **Henderson State University Enrollment:**

OMEGA: 0

## **Exodus Enrollment:**

CAC: 0  
ECAC: 0

## **Good Grid Enrollment**

CAC: 13  
ECAC: 258  
NEAC: 8  
NWAC: 11  
OMEGA: 25  
SWAC: 0

## **Photo IDs issued:**

CAC: 4  
ECAC: 3  
NEAC: 4  
NWAC: 0  
OMEGA: 0  
SWAC: 0

## **Drivers Licenses Obtained:**

CAC: 1  
ECAC: 1  
NEAC: 0  
NWAC: 0  
OMEGA: 0  
SWAC: 0

## **MAT Participants:**

CAC: 11  
ECAC: 21  
NEAC: 0  
NWAC: 0  
OMEGA: 0  
SWAC: 4

## **Number of Volunteers:**

CAC: 46  
ECAC: 39  
NEAC: 32  
NWAC: 90  
OMEGA: 2  
SWAC: 15

## **Number of Volunteer hours:**

CAC: 232  
ECAC: 297  
NEAC: 132  
NWAC: 117  
OMEGA: 7  
SWAC: 410

## **GED Enrollment:**

CAC: 30  
ECAC: 21  
NEAC: 18  
NWAC: 14  
OMEGA: 7  
SWAC: 45

## **GED Completed:**

CAC: 0  
ECAC: 2  
NEAC: 5  
NWAC: 3  
OMEGA: 0  
SWAC: 0

## **AA/NA Attendance:**

CAC: 2,283  
ECAC: 0  
NEAC: 26  
NWAC: 12  
OMEGA: 0  
SWAC: 95

## **Celebrate Recovery Attendance:**

CAC: 0  
ECAC: 0  
NEAC: 24  
NWAC: 10  
OMEGA: 0  
SWAC: 0



# Parole/Probation Population

**Active:**

includes current status of Active, Abscond and Electronic Monitoring

**Inactive:**

includes current status of Non Reporting, Unsupervised, SIS  
(Suspended Imposition of Sentence), Incarcerated and Out to Other State

## Statewide Totals by Current Supervision Status (Active and Inactive) as of October 4, 2021

Area	Active	Inactive	TOTAL
Area 1-Fayetteville	7,023	2,876	9,899
Area 2-Mountain Home	2,495	573	3,068
Area 3-Searcy	4,776	1,276	6,052
Area 4-Jonesboro	4,075	1,740	5,815
Area 5-Fort Smith	4,003	3,504	7,507
Area 6-Conway	3,684	1,045	4,729
Area 8-Little Rock	7,544	1,267	8,811
Area 9-West Memphis	2,063	383	2,446
Area 10-Hot Springs	4,251	834	5,085
Area 11-Pine Bluff	3,433	611	4,044
Area 12-Texarkana	3,642	1,237	4,879
Area 13-El Dorado	2,364	552	2,916
ISC	30	1,804	1,834
Statewide Totals by Status	49,383	17,702	67,085

# Parole/Probation Population

Statewide Totals by Current Supervision Status as of **October 4, 2021**

Area	Active			Inactive					OVERALL TOTALS PER AREA
	Active (Direct Supv)	Electronic Monitoring (Direct)	Absconded	Incarcerated	Non- Reporting	Out to Other State	Unsupervised	Suspnd Imposition of Snt (SIS)	
Area 1-Fayetteville	5,039	43	1,941	545	444	512	319	1,056	9,899
Area 2-Mountain Home	2,098	9	388	145	107	133	83	105	3,068
Area 3-Searcy	3,633	3	1,140	229	157	212	55	623	6,052
Area 4-Jonesboro	3,137	14	924	254	196	161	67	1,062	5,815
Area 5-Fort Smith	3,247	15	741	246	286	146	130	2,696	7,507
Area 6-Conway	2,894	3	787	202	124	110	72	537	4,729
Area 8-Little Rock	5,342	49	2,153	331	356	43	222	315	8,811
Area 9-West Memphis	1,513	3	547	117	47	53	12	154	2,446
Area 10-Hot Springs	3,059	30	1,162	231	175	77	149	202	5,085
Area 11-Pine Bluff	2,425	10	998	156	61	64	127	203	4,044
Area 12-Texarkana	2,632	8	1,002	249	211	271	123	383	4,879
Area 13-El Dorado	1,616	2	746	149	60	24	75	244	2,916
ISC	22		7	22	74	1,708			1,833
	1								1
<b>Statewide Totals by Current Supervision Status</b>	<b>36,658</b>	<b>189</b>	<b>12,536</b>	<b>2,876</b>	<b>2,298</b>	<b>3,514</b>	<b>1,434</b>	<b>7,580</b>	<b>67,085</b>

**Offender Count Active Excluding Absconders**

**36,847**

## Explanation for “Current Supervision Status”

### Active Supervision:

Offender is currently on Active/Direct Supervision Status.

### Electronic Monitoring:

Offender is currently on an Electronic Monitor.

### Incarcerated:

Offender is currently incarcerated including the following:

- Parole Holds (in state and out-of-state)
- ACT 570 Holds
- County Jail (including possible new charges—felony or misdemeanors—or serving commitments for traffic fines, court commitments, etc).

### Non Reporting:

Drug Court offender currently in a Community Correction Center for sanction or court commitment, on detainer (federal or ICE hold), out-of-state, in CCC Residential Treatment, nursing home, hospital, or Arkansas State Hospital.

### Out-To-Other-State:

Offender supervised out of Arkansas through Interstate Compact.

### Unsupervised:

Parolee whose earned Good Time has met the requirements for unsupervised parole, probationers who received Unsupervised Sentence (e.g., five-year probation sentence specified as 3 years supervised and an additional 2 years unsupervised probation; or an unsupervised probation sentence which is common for misdemeanor offenses (e.g., 1 year unsupervised probation term).

### Suspended Imposition of Sentence (SIS):

Offender received a suspended term of supervision.

# Regular Parole/Probation Caseloads

Regular P&P Caseloads/Workloads By Area

10/15/2021

AREA	Authorized Officers	Filled	Regular P&P Offenders				Total Active Offenders	Caseload Ratio (Authorized Positions)	Caseload Ratio (Filled Positions)	Work Units	Workload (Authorized Positions)	Workload (Filled Positions)	Total Indirect
			Maximum	Medium	Minimum	Pending							
AREA 01	52	47	239	1978	2201	212	4630	89	99	7,204	139	153	4430
AREA 02	19	19	141	680	924	29	1774	93	93	2,752	145	145	629
AREA 03	38	36	192	1499	1403	61	3155	83	88	5,075	134	141	1935
AREA 04	33	32	189	1089	1512	82	2872	87	90	4,382	133	137	2368
AREA 05	31	26	260	1012	1202	77	2551	88	98	4,131	142	159	3461
AREA 06	29	27	197	1022	1305	63	2587	89	96	4,038	139	150	1207
AREA 07/08	64	53	383	2301	2236	183	5103	80	96	8,284	129	156	2266
AREA 09	19	18	146	568	729	28	1471	77	82	2,348	124	130	623
AREA 10	33	31	230	1112	1416	56	2814	85	91	4,418	134	143	1316
AREA 11	27	26	171	966	831	45	2013	75	77	3,351	124	129	1089
AREA 12	30	26	250	985	1252	68	2555	85	98	4,081	136	157	1680
AREA 13	19	17	100	694	609	44	1447	76	85	2,369	125	139	863
Statewide	394	358	2498	13906	15620	948	32972	1,008	1,093	52,432	1,603	1,739	21,867
Area Average			208	1,159	1,302	79	2,748	84	91	4,369	134	146	
<sup>1</sup> Regular P&P Caseloads/Workloads include offenders with Active (Direct), Electronic Monitoring, and Incarcerated supervision statuses. Incarcerated here refers to temporary jail stays. <sup>2</sup> Offenders on Annual or Indirect Supervision are excluded from caseload/workload counts and ratios. <sup>3</sup> Specialty Court Offender figures shown here are only those assigned to regular P&P officers. These offenders are not counted in caseload or workload ratios. <sup>4</sup> Indirect totals here are for offenders in Non-Active supervision statuses or those under Annual Supervision.													

This page and the following two pages contain statewide caseload information for ACC. Caseloads are presented separately for regular parole and probation, specialty court, and specialized caseloads. This version is specifically designed for quarterly legislative reporting and differs from the daily caseloads/workloads report.

Beyond the exclusion of workloads calculation, it is important to note that direct supervision in these tables includes regular parole and probation and specialty court (including regular parole and probation offenders carried by specialty court officers) offenders with active (direct), electronic monitoring, or incarceration supervision status, as well as absconders assigned to SRT officers. Offenders on annual supervision are counted as indirect.



# Parole/Probation Caseloads for Specialty Courts

## Specialty Court Caseloads/Workloads By Area

AREA	Authorized Officers	Filled	Regular P&P Offenders				Total Regular P&P Offenders	Total Active Specialty Court Offenders	Total Indirect Including Regular & Specialty	Caseload Ratios (Based on Active/Direct offenders)			Workload		
			Maximum	Medium	Minimum	Unassigned				P&P	Specialty	Mixed	Work Units	Workload (Authorized Positions)	Workload (Filled Positions)
AREA 01	9	7	0	1	0	0	1	268	120	0	30	30	464	52	66
AREA 02	5	5	39	158	152	2	351	25	117	70	5	75	631	126	126
AREA 03	6	5	6	123	162	1	292	101	154	49	17	66	582	97	116
AREA 04	5	5	11	74	122	8	215	72	93	43	14	57	425	85	85
AREA 05	9	9	4	91	321	6	422	293	311	47	33	79	986	110	110
AREA 06	6	5	32	87	141	11	271	88	268	45	15	60	591	99	118
AREA 07/08	1	0	0	0	0	0	0	0	0	0	0	0	0	0	0
AREA 09	2	2	9	40	64	2	115	13	69	58	7	64	191	95	95
AREA 10	6	6	3	20	46	1	70	115	246	12	19	31	284	47	47
AREA 11	4	4	27	141	105	7	280	25	258	70	6	76	523	131	131
AREA 12	3	3	12	47	52	0	111	63	128	37	21	58	271	90	90
AREA 13	7	5	5	22	9	1	37	152	101	5	22	27	300	43	60
Statewide	63	56	148	804	1174	39	2165	1215	1865	34	19	54			1,046
Area Average			12	67	98	3		101		36	16	52			
<div>1 Specialty Court Caseloads/Workloads include offenders who are assigned to officers in Specialty Court positions who have Active (Direct), Electronic Monitoring, or Incarcerated supervision statuses. 2 Offenders on Indirect or Annual Supervision are not included in caseload counts or ratios. Annual supervision counts include both regular P&amp;P and Specialty Court offenders assigned to Specialty Court officers. 3 Offenders in risk-level columns above are regular P&amp;P offenders who are supervised by officers in Specialty Court positions.</div>															

3

## Specialized Caseloads

AREA	Authorized Officers	Totals	Ratios
		Offenders	Caseload
INTENSIVE SUPERVISION	4	184	42
INTERSTATE COMPACT	0	1832	0
SPECIAL RESPONSE TEAM	18	4716	260
Statewide	22	6,732	222

# Parole/Probation Caseloads

Caseloads By Area

10/15/2021

AREA	Cases	Authorized Officers	Vacant	Filled	Total Active	Total Indirect	Totals:
AREA 01	AREA CASES	62	7	55	4954	4587	9541
AREA 02		24	0	24	2150	747	2897
AREA 03		44	3	41	3548	2091	5639
AREA 04		38	1	37	3159	2461	5620
AREA 05		38	3	35	3266	3772	7038
AREA 06		35	3	32	2946	1476	4422
AREA 07/08		65	12	53	5103	2266	7369
AREA 09		21	1	20	1599	692	2291
AREA 10		39	2	37	2999	1562	4561
AREA 11		31	1	30	2318	1347	3665
AREA 12		33	4	29	2729	1808	4537
AREA 13		26	4	22	1636	964	2600
<b>TOTALS</b>	<b>AREA CASES</b>	<b>456</b>	<b>41</b>	<b>415</b>	<b>36407</b>	<b>23773</b>	<b>60180</b>
INSTITUTIONAL PAROLE	SPECIALIZED CASES	28	1	27	0	0	0
INTENSIVE SUPERVISION		4	0	4	166	18	184
INTERSTATE COMPACT		0	0	0	39	1793	1832
RE-ENTRY		11	2	9	0	0	0
SEX OFFENDER ASSESSMENT		12	1	11	0	0	0
SPECIAL RESPONSE TEAM		18	1	17	15	4701	4716
<b>TOTALS</b>	<b>SPECIALIZED CASES</b>	<b>73</b>	<b>5</b>	<b>68</b>	<b>220</b>	<b>6512</b>	<b>6732</b>
<b>Statewide TOTALS</b>		<b>529</b>	<b>46</b>	<b>483</b>	<b>36627</b>	<b>30,285</b>	<b>66912</b>

Caseloads are presented in distinct officer groupings:

**Regular:** These are officers carrying normal Probation and Parole caseloads.

**Specialty Court:** These officers supervise offenders in specialty courts. Note that these officers may also carry regular P&P offenders, and these offenders are reflected in the specialty court caseload/workload figures; however, separate caseload/workload ratios are calculated for the regular and specialty court portions of a specialty court officer's caseload, in addition to a combined, or mixed, ratio.

**Specialized:** These officers supervise strategically specialized caseloads consisting of offenders requiring heightened supervision protocols (intensive supervision) and parolees who have absconded supervision (Special Response Team).

**Indirect:** These are offenders for whom their sentence, circumstance, or current status is associated with a reduced supervision obligation for the officers they are assigned to. Generally, these include offenders in non-reporting status, those on suspended sentences (SIS), and interstate compact offenders. Offenders on annual supervision are also included in this group.

# Parole/Probation Risk Levels

## Statewide Risk Levels by Caseload Types as of October 4, 2021

CURRENT RISK LEVELS	Parole	Probation	Drug Court	Hope Court	Mental Health Court	Veterans Court	Swift Courts	Pre Adjudicated	Pre Trial/ Drug Court	Pre Trial/ Pre-Adjudicated	Pre Trial/ Regular	Pre Trial/ Veterans Court	Suspended	Ext Sex Offender Supv	Totals
Maximum	3,056	1,466	154	4	2	1	4			1			303		4,991
Medium	9,836	11,702	869	37	16	43	27		10	38	5		1,400	3	23,986
Minimum	6,354	15,777	552	27	9	43	37	2	14	43	6	2	1,370		24,236
Annual Reporting	2,459	1,337					13						138		3,947
Unassigned	3,024	2,247	53	3		2	2		13	2	12		4,567		9,925
Sum:	24,729	32,529	1,628	71	27	89	83	2	37	84	23	2	7,778	3	67,085

### CURRENT RISK LEVELS ASSIGNED EXPLANATION:

- Maximum- last risk level score as “High”
- Medium- last risk level score as “Medium”
- Minimum- last risk level score as “Low”
- Annual- identifies offenders that are supervised Annual Reporting
- Unassigned- no ARORA has been completed or offender is currently supervised as “Unsupervised” where the risk level was changed to unassigned

## Statewide Risk Levels by Caseload Supervision Status as of October 4, 2021

RISK LEVELS BY CURRENT SUPERVISION STATUS	Maximum	Medium	Minimum	Annual Reporting	Unassigned	Sum:
Active (Direct Supv)	2,289	14,110	16,735	3,127	397	36,658
Electronic Monitoring (Direct)	75	97	16		1	189
Absconded	1,538	5,623	3,514	73	1,788	12,536
Incarcerated	442	1,241	504	19	670	2,876
Non-Reporting	229	692	440	13	924	2,298
Out to Other State	113	719	1,210	46	1,426	3,514
Unsupervised	14	141	473	531	275	1,434
Suspnd Imposition of Snt (SIS)	291	1,363	1,344	138	4,444	7,580
Sum:	4,991	23,986	24,236	3,947	9,925	67,085



# Parole/Probation Population

## Probation and Parole Gains and Losses in September 2021

Gains and Losses	Probation	Parole	Pre-Trial	Suspended	Sum:
Intakes	812	764	23	145	1,744
Sanction Release from SSP	9	131			140
<b>Total Gains</b>	<b>821</b>	<b>895</b>	<b>23</b>	<b>145</b>	<b>1,884</b>
Revocations/or New ADC or CCC Sentence	238	424	2	17	681
Sanction Incarceration SSP	2	118			120
Terminations	489	236	11	111	847
<b>Total Losses</b>	<b>729</b>	<b>778</b>	<b>13</b>	<b>128</b>	<b>1,648</b>

## ACC Specialty Teams

September SRT-Task Force Report	
<b>Arrests:</b>	
<b>Absconders</b>	46
<b>Active Supervision</b>	28
<b>Collateral Arrest</b>	90
<b>SRT Total:</b>	34
<b>Task Force Total:</b>	130
<b>SRT Plus Task Force Total:</b>	164

September SRT-Task Force Report	
<b>Felony charges</b>	229
<b>Misdemeanor charges</b>	84
<b>Traffic charges</b>	17
<b>Narcotics arrests</b>	60
<b>Confiscations:</b>	
<b>Marijuana</b>	1,660.5 grams
<b>Meth</b>	3,625.2 grams
<b>Cocaine</b>	58.2 grams
<b>Fentanyl</b>	123 grams
<b>Fentanyl pills</b>	220 pills
<b>Prescription pills</b>	125 pills
<b>Handguns</b>	32
<b>Rifles</b>	16
<b>Recovered vehicles</b>	1
<b>Drug paraphernalia</b>	63 items
<b>Currency seized</b>	\$15,247

# ACC Specialty Teams

## Intensive Parole Supervision Team 2021

				Totals
<i><b>Arrests</b></i>	July	August	September	
<b>Active Supervision</b>				
Parole	3	1		4
Probation	3	1	1	5
<b>Absconders</b>				
Parole			3	3
Probation		1	2	3
Collateral				0
<b>Total Arrest</b>	<b>6</b>	<b>3</b>	<b>6</b>	<b>15</b>
<i><b>Charges</b></i>				
Firearm				0
Narcotics	3	1	5	9
Firearm/Naracotics	1	1	1	3
Warrant/Other	1	1		2
<i><b>Narcotics (Listed in Grams)</b></i>				
Marijuana / g	544.0	76,564.0	454.0	77,562.0
Meth / g	20.5	14.2	316.0	350.7
Cocaine / g	20.0	21.7		0.0
Crack Cocaine/g				0.0
Prescription Pills				0.0
Xanax Bars		309.0		309.0
Ecstasy/MDMA				0.0
Heroin / g				0.0
Fentanyl / g	85			85
LSD Stamps				0
<i><b>Weapons</b></i>				
Handguns	1	2	1	4
Rifles		1	1	2
Shotguns				0
<b>Total Firearms</b>				<b>6</b>
Currency		\$80,000		<b>\$80,000</b>



# Parole/Probation Community Service

## Community Service

					2020 Totals									September		2021 Totals
Area	Cities Within Area	October	November	December		January	February	March	April	May	June	July	August	Number of Participants	Number of Hours	
1	Bentonville, Fayetteville, Huntsville	729.9	650.4	706.0	6,725	883.5	843.0	767.5	777.2	1,263.8	1,321.3	1,614.5	1,109.8	178	1,183.9	9,764.3
2	Harrison, Mountain Home, Salem, Mountain View, Berryville	599.0	663.0	1,540.0	8,671	662.0	206.0	1,208.0	582.0	662.0	498.0	291.0	600.5	12	326.0	5,035.5
3	Searcy, Newport, Walnut Ridge, Ash Flat, Heber Springs, Batesville, Pocahontas, Lonoke	1,607.0	1,468.0	1,607.0	12,965	1,060.0	529.0	1,313.0	1,258.0	849.0	1,200.0	897.0	965.0	46	941.0	9,012.0
4	Jonesboro, Paragould, Osceola	275.0	144.5	285.5	2,321	340.0	340.0	191.6	95.1	87.5	198.0	140.0	274.0	37	307.0	1,973.2
5	Fort Smith, Booneville, Clarksville, Ozark, Mena	960.0	828.0	860.5	9,472	467.0	720.5	879.0	968.0	799.5	803.0	963.5	784.0	86	677.0	7,061.5
6	Conway, Russellville, Morrilton, Danville	388.8	376.7	602.4	4,759	676.2	154.0	428.0	739.8	965.8	547.2	551.0	389.6	39	512.4	4,963.8
8	Little Rock, North Little Rock	196.0	133.0	51.0	3,929	45.0	1,145.0	2,322.0	1,772.0	1,367.0	1,643.0	1,462.0	227.0	33	357.0	10,340.0
9	Forrest City, Helena, West Memphis	424.5	320.0	270.5	2,291	394.6	233.0	357.0	152.0	183.0	200.5	264.2	212.2	15	191.0	2,187.5
10	Malvern, Benton, Sheridan, Arkadelphia, Hot Springs, Benton	768.5	275.0	778.0	5,181	403.0	161.5	371.0	558.4	227.5	366.5	301.7	289.5	30	346.0	3,025.1
11	Pine Bluff, Stuttgart, Monticello, Crossett	356.0	535.3	360.5	4,302	394.2	222.3	302.8	679.3	644.3	592.5	377.0	453.5	65	663.7	4,329.6
12	Texarkana, Ashdown, Hope, Lewisville, Nashville	210.0	238.3	442.0	3,365	358.0	127.4	236.4	331.8	129.0	316.8	153.6	731.0	43	660.5	3,044.5
13	Magnolia, El Dorado, Camden, Fordyce	350.0	775.5	252.5	3,849	320.5	193.0	433.8	162.5	360.5	322.0	351.5	132.0	15	174.9	2,450.6
TOTAL		6,864.6	6,407.6	7,755.9	67,828	6,004.0	4,874.7	8,810.1	8,076.1	7,538.8	8,008.7	7,367.0	6,168.1	599	6,340.4	63,187.7

## September 2021 Litter Crew Report

Area	Cities Within Area	Number of Participants	Number of Hours
Area 2	Harrison, Mountain Home, Salem, Mountain View, Berryville	7	141.0
Area 3	Searcy, Newport, Walnut Ridge, Ash Flat, Heber Springs, Batesville, Pocahontas, Lonoke	9	137.0
Area 4	Jonesboro, Paragould, Osceola	4	32.0
Area 5	Fort Smith, Booneville, Clarksville, Ozark, Mena	5	20.0
Area 9	Forrest City, Helena, West Memphis	1	15.0
TOTAL		26	345.0

## County Work Project Report September 2021

Area	County	Number of PROBATIONERS and PAROLEES	Number of HOURS
1	Benton	1	8.00
5	Franklin	14	44.00
5	Johnson	7	82.50
TOTAL		22	134.50

# Parole/Probation Revocations

## Revocation Events By Supervision Types and Area September 2021

Area	Supervision Type	Revoked (Sent to ADC)	Revoked (Sent to CCC)	Revoked (Other)	New ADC/ CCC Sentence
Area 1-Fayetteville	Probation	9		18	2
Area 2-Mountain Home		7			2
Area 3-Searcy		18	5	4	5
Area 4-Jonesboro		3	6	14	8
Area 5-Fort Smith		6		1	1
Area 6-Conway		12	5		1
Area 8-Little Rock		3		26	3
Area 9-West Memphis			1	1	1
Area 10-Hot Springs		9	3	8	7
Area 11-Pine Bluff		10	1	1	2
Area 12-Texarkana		21		1	
Area 13-El Dorado		4	2	7	
Total by Supervision Type	Probation	102	23	81	32
Area 1-Fayetteville	Parole	39		1	2
Area 2-Mountain Home		17			3
Area 3-Searcy		31	1	2	5
Area 4-Jonesboro		34			6
Area 5-Fort Smith		32			3
Area 6-Conway		30			8
Area 8-Little Rock		74			9
Area 9-West Memphis		8			2
Area 10-Hot Springs		32			7
Area 11-Pine Bluff		33			5
Area 12-Texarkana		18			9
Area 13-El Dorado		12			1
Total by Supervision Type	Parole	360	1	3	60
Area 13-El Dorado	Pre-Trial		1	1	
Total by Supervision Type	Pre-Trial		1	1	
Area 3-Searcy	Suspended		1	1	1
Area 4-Jonesboro				1	6
Area 5-Fort Smith					1
Area 6-Conway					1
Area 10-Hot Springs					1
Area 12-Texarkana		3			
Area 13-El Dorado			1		
Total by Supervision Type	Suspended	3	2	2	10
	TOTAL BY SUPERVISION EVENT	465	27	87	102

# Revocation Hearings

## Parole Revocation Hearings and Outcomes September 2021

Hearing Outcome	Laws and Technical	Laws Only	Technical Only	Total By Hearing Outcome
Deferred	13	2		15
Reinstate	8	1		9
Revoked	45	84	4	133
Waived	257	31	12	300
<b>Total By Violation Type</b>	<b>323</b>	<b>118</b>	<b>16</b>	<b>457</b>

Note: Excludes SSP Sanction Hearings

ACT 1029 HEARINGS HELD	Total
Deferred	2
Revoked	12
Waived	13
<b>Total # ACT 1029 Hearings</b>	<b>27</b>

Note: Included in totals for Hearing Outcomes

# Supervision Sanctions

## Supervision Sanction Hearings and Waivers

10/1/2017- 9/30/21

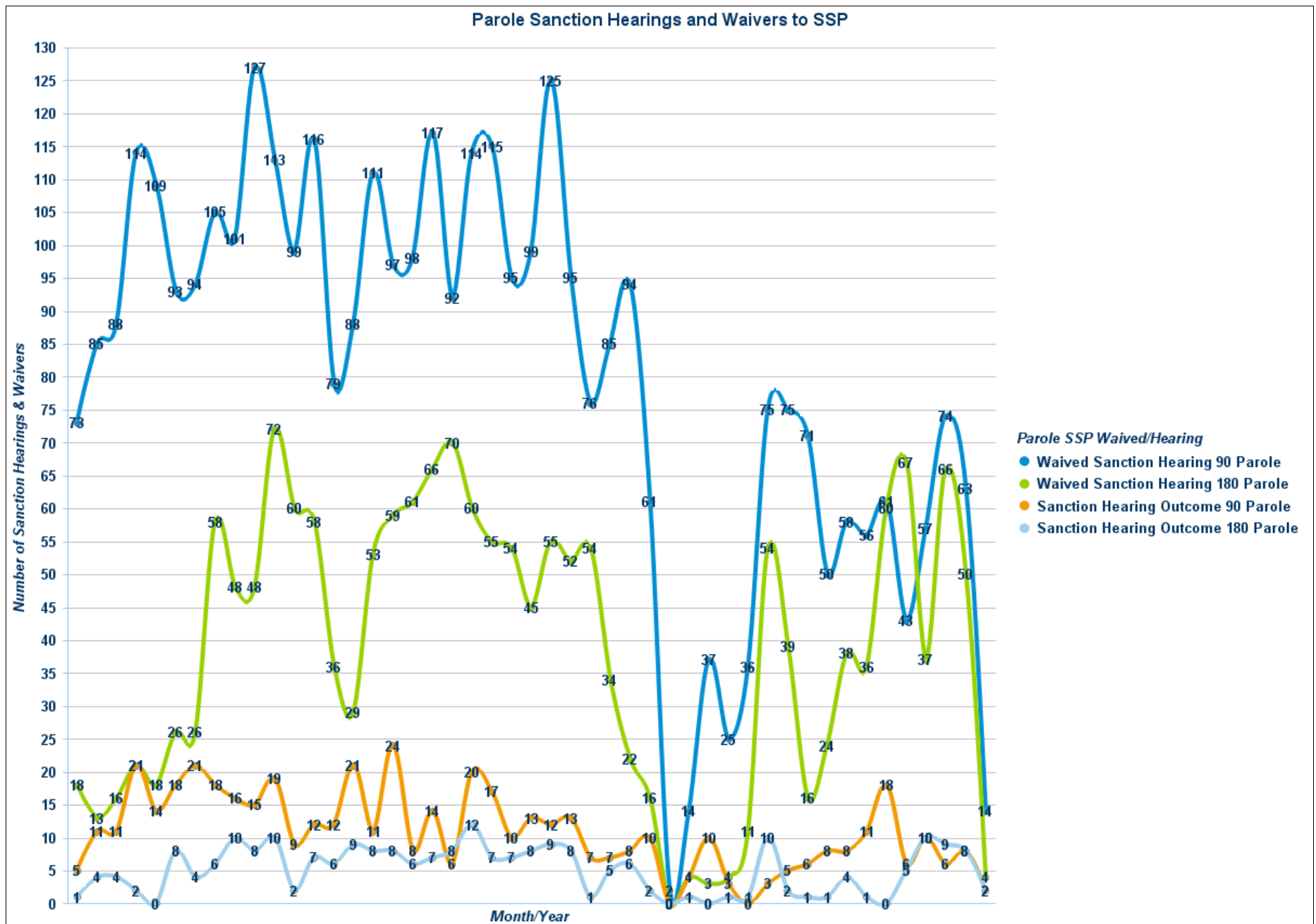
Sanction Hearing Outcome	Sanction Hearing Type	Parole	Probation	Sum:
Sanction Hearing Outcome 90 Parole	Sanction Hearing	511		511
Sanction Hearing Outcome 90 Probation		1	17	18
Sanction Hearing Outcome 180 Parole		239		239
Sanction Hearing Outcome 180 Probation			11	11
Sanction Hearing Outcome 60 Parole		13		13
Sanction Hearing Outcome 120 Parole		9		9
<b>Totals:</b>	<b>Sanction Hearing</b>	<b>773</b>	<b>28</b>	<b>801</b>

Waived Sanction Hearing 90 Parole	Waived Sanction Hearing	3,771	1	3,772
Waived Sanction Hearing 90 Probation			340	340
Waived Sanction Hearing 180 Parole		1,818		1,818
Waived Sanction Hearing 180 Probation			63	63
Waived Sanction Hearing 120 Parole		117		117
Waived Sanction Hearing 60 Parole		85		85
<b>Totals:</b>	<b>Waived Sanction Hearing</b>	<b>5,791</b>	<b>404</b>	<b>6,195</b>

	<b>Overall Totals:</b>	<b>6,564</b>	<b>432</b>	<b>6,996</b>
--	------------------------	--------------	------------	--------------



# Parole Sanction Hearings and Waivers to SSP



# Parole/Probation Drug Testing

## Regular Probation and Parole

### Positive Tests during September 2021

Offender Urine Tests this Period: 6,740

Number of Offenders Testing Positive: 2,641

Drug Tested	Count
Methamphetamines	1,655
THC/Marijuana	1,556
Amphetamines	1,052
Benzodiazepines	187
Cocaine	166
Heroin/Opiates	83
Alcohol	62
Ecstasy	59
Ethyl Glucuronide	47
Buprenorphine	37
Oxycodone	34
Morphine	23
Barbiturates	19
Methadone	19
Fentanyl	17
Hydrocodone	14
Tramadol	13
Other Hallucinogens	7
Propoxyphene	7
PCP	6
Prescription Abuse	6
Methadone Metabolite	5
K2 (SPICE)	4
Crack	2
Cotinine	1
Creatinine	1
Heroin Metabolite	1
Methaqualone	1
Total	5,084

## Drug Courts

### Positive Tests during September 2021

Offender Urine Tests this Period: 6,210

Number of Offenders Testing Positive: 214

Drug Tested	Count
Buprenorphine	161
Methamphetamines	159
Amphetamines	135
THC/Marijuana	135
Morphine	37
Benzodiazepines	26
Ethyl Glucuronide	25
Tramadol	20
Fentanyl	19
Ecstasy	18
Methadone	15
Alcohol	13
Oxycodone	13
Heroin/Opiates	12
Cocaine	10
Barbiturates	2
Creatinine	2
Hydrocodone	2
K2 (SPICE)	2
Methadone Metabolite	1
Methaqualone	1
PCP	1
Total	809

## Specialty Courts

### Positive Tests during September 2021

Offender Urine Tests this Period: 303

Number of Offenders Testing Positive: 13

Drug Tested	Count
THC/Marijuana	11
Methamphetamines	6
Amphetamines	5
Benzodiazepines	2
Buprenorphine	1
Hydrocodone	1
Tramadol	1
Total	27