



**DIVISION OF  
COMMUNITY  
CORRECTION**

# **Director's Report**

**November 2021**

**Jerry Bradshaw, Director**

# From the Director

Congratulations to the **Omega Supervision Sanction Center** in Malvern for passing their American Correctional Association (ACA) audit. The unit scored 100% on both mandatory and non-mandatory standards. Both ACA auditors spoke highly of the preparation done by the Omega Center for the audit and the audit chairman noted that this was one of the best audits he has ever done, and he has been an ACA auditor for 15 years. ACC Director Jerry Bradshaw gave special thanks to the Division of Community Correction ACA Coordinator Debbie Ruff and Deputy Director of Residential Services Jimmy Banks for their outstanding oversight in preparing for the audit. Bradshaw also thanked Superintendent Jared Byers with the Division of Correction for his much-appreciated assistance as Omega prepared for the audit and for being a great neighbor. This was Warden Andrew Ruh's first audit as Warden, and he knocked it out of the park, Bradshaw noted.

Secretary Solomon Graves visited the Fort Smith Parole and Probation office in October, taking a tour of the facility, introducing himself to staff and spending an afternoon performing home visits with Assistant Area Manager Michael Irby and Agent Taylor Pippin.



Johnathan Lanes, DOC Headquarters Building Security and Central Transportation Lieutenant, was given the opportunity, along with several Lee High School (Marianna) alumni, to speak with seniors at a career event discussing educational and career experiences, giving the students encouraging words for life after high school. Lanes is shown below.



Cody Muldrew was promoted to Assistant Area Manager for **Area 1** Parole and Probation in Fayetteville. Muldrew graduated from Southern Arkansas University in 2012 with a Bachelor of Science degree in Criminal Justice with a minor in Juvenile Justice. He began his career working for Youth Bridge in Fayetteville and from there went on to become in-school suspension instructor for Hope public schools. Muldrew began his career with ACC in October 2012, and was promoted to Agent in 2015.

The Dr. David Powell Memorial Award, given by the Arkansas Association of Alcohol and Drug Abuse Counselors, was presented to ACC's Assistant Treatment Program Manager Margaret Linker. She has been a dedicated substance abuse counselor, mentor to counselors in training, and a fine role model for those

who suffered with addiction for well over 10 years. There were many nominations for Margaret, which speaks volumes. She works tirelessly and humbly both for the well-being of her clients and the people she works with. Linker, below, works out of **Area 8** Parole and Probation office (North Little Rock).



Washington County (**Area 1**) Parole and Probation staff are pictured below, ready to hit the streets to ensure compliance with regulations that prevent sex offenders from general participation in Halloween events.



Officers also visited Halloween events frequented by children and families. **Area 1** Assistant Area Manager Mark Bernthal is shown below at a trunk or treat event



**Area 1** Manager Mike Parker is shown below at a costumed event.



**Area 11** Parole and Probation staff took part in a late October Drug Take Back event in Jefferson County.

**Area 6** Parole and Probation Officers Evan Thomas and Heike McKinney participated in a blood drive at the Faulkner County Sheriff's Office.



Berryville Drug Court (**Area 2**) participants assisted in the operation of the Pioneer and Heritage Days in Carroll County. The participants were a great help in setting up, keeping the trash emptied, and tearing down after the event was over. Several of the Drug Court participants took part in making butter and assisting the elderly who were present for the festival. Although the Drug Court participants all worked very hard, they found some time to enjoy themselves at the event as well.

Members of the Kagome USA, Human Resources Department held a hiring event at the Osceola Parole and Probation office. Career Placement Specialist Tammy Zagala, **Area 4**, Jonesboro and Agent Stephanie Wofford, **Area 4**, Osceola worked with Kagome to hold the event and applicants were eligible candidates from officer caseloads in Mississippi County. Kagome held interviews and set several qualified candidates for a date to tour the plant and complete new hire paperwork. This is the third successful hiring event that has been held at the Osceola Parole and Probation office.



In late October, Parole and Probation officers from Mountain Home, Mountain View and Melbourne assisted local sheriff's departments with the National Prescription Drug Take Back event. Both locations saw a large amount of unwanted, unused, or out-of-date prescriptions dropped off for proper disposal. Agent Nick Mayfield, who participates in the Baxter County event twice a year, stated, "I saw a lot more prescription opiates turned in at this event than I ever remember in the past." In Izard County, members of the Comprehensive Opioid Abuse Program, Tobacco Prevention Program, and Parole and Probation Agent Joshua Morehead, representing the Division of Community Correction, were available to answer questions.



Agents Jodi Tarver and Matthew Epps, and Officers Jana Runge and Michael Wilson of the Fayetteville Parole/Probation Office (**Area 1**) volunteered their time to assist with the Northwest Arkansas Drug Take Back event. Officers joined the Fayetteville, Springdale, Huntsville, and Prairie Grove Police Departments and Project Right Choice by interacting with their local community, educating them on medication safety and accepting and disposing of approximately seven 50-gallon barrels of unwanted, unused, and unneeded medications



Drills were held nationwide as part of Earthquake Awareness Month during October and Parole and Probation offices throughout the state participated.

In Mountain Home (**Area 2**), Agent Bobby Hicks, who is also the safety officer for the Mountain Home office, spearheaded the drill and presented several facts about earthquakes and how to be safe in the event an earthquake occurs in our area. Agent Josh Morehead conducted a similar training at the Melbourne office.

In **Area 10**, the Hot Springs, Arkadelphia and Camden parole/probation offices participated.

In **Area 11**, staff took refuge under conference tables.



And in **Area 3**, below.



In **Area 12**, below.



Community service workers from the Camden Parole and Probation office (**Area 10**) are shown below collecting trash.



Franklin County community service workers (**Area 5**) assisted Franklin County Emergency Management Services in late October by digging a small trench for the line between a propane tank and a generator. The county was very grateful for the assistance.



Congratulations to Agent Tashara White who was named Employee of the Month for **Area 8** Parole and Probation office. Some of the reasons given by her coworkers for her selection were:

- “helpful and knowledgeable.”
- “dedicated to her work duties.”
- “cares about her job and coworkers.”
- “is a team player, pleasant and has a positive attitude.”



## The Work of Parole/Probation Officers and Agents

Agents Dustin Parker and Brooke Williams conducted a home visit in White Hall (**Area 11**) and retrieved

a .50 Wolf rifle with a scope. A violation report was submitted to the Cleveland County Prosecutor's office.



**Area 2** Agent Steve Simers developed information regarding the whereabouts of an offender who had been in abscond status for nearly a year, with assistance from 16th Judicial District Drug Task Force Special Agent Byler, Special Agent Byler, Fulton County Sheriff's deputies, and Salem Police, he found the offender in Salem. As officers were surrounding the building, a male subject ran from the back of the building toward a wooded area. Officers were able to apprehend the subject, who was identified as the absconder. A search of the building resulted in the discovery of a substantial amount of methamphetamine, marijuana, and numerous items of drug paraphernalia. The offender was transported to the Fulton County Detention Center and is being charged with several felony offenses.



**Area 10** Assistant Area Manager Sidra Porchia worked with the Camden Police Department during a home visit that netted the discovery of a gun.

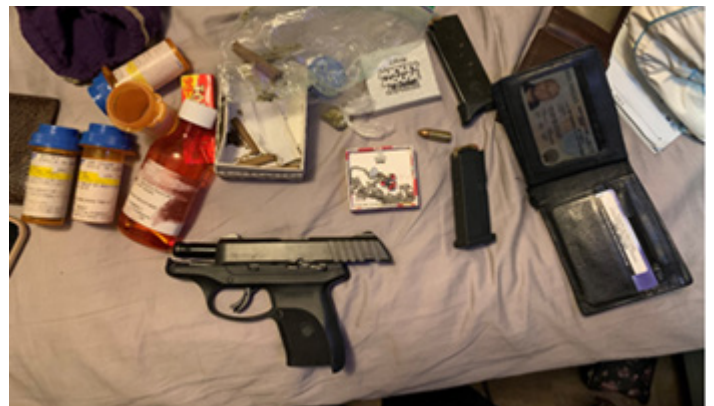


**Area 2** agents and officers conducted home visits on all sex offenders under supervision on Halloween. In addition to agents and officers performing home visits, managers assisted and attended community and church-hosted Halloween activities in the area on the Saturday before and on Halloween night.

**Area 10** Agent Kenya Collins and Parole and Probation Officers Blake Tolleson and Cameron Rhinehart assisted the Benton Police Department with a home visit, which resulted in the arrest of two parolees on charges of Possession of a Controlled Substance and Possession of Drug Paraphernalia.

**Area 5** Parole/Probation Officer Jacky Young and Agent James Mize provided naloxone to a woman found wandering in a wooded area. The officers were working with the Logan County Sheriff's Office in locating a woman who was diagnosed with bipolar disorder and had walked into the woods from a local human development center. It was believed that she had taken excessive medication. When the woman was found, she was awake but had shallow breathing and was unable to respond or speak or move. She was carried out of the woods and taken to the road for medical transport to the hospital. While waiting for medical personnel, the female was administered two naloxone doses that PPO Young had on his person. Paramedics arrived on scene and took the woman to the hospital in Booneville. Logan County Sheriff Jason Massey thanked Mize and Young for their assistance.

In mid-October, **Area 4** Parole and Probation Agent Stephanie Wofford and Officer Amanda Cutler assisted the Osceola Police Department and Drug Task Force with parole and probation home visits in the City of Osceola. One home visit resulted in several articles of drug paraphernalia being found and the arrest of an active parolee.



The second and final search resulted in a firearms arrest and the charging of two parolees on supervision in Mississippi County.

**Area 8** Intensive Parole Supervision Agents (IPS) along with the Pulaski County Sheriff's Office conducted a home visit and located approximately 3 grams of methamphetamines and 4 grams of suspected fentanyl. All evidence was retained by the Pulaski County Sheriff's Office.



**Area 8** IPS Agents received information that an offender was involved in narcotic activity and a home visit yielded a 9mm pistol, marijuana edibles, 1 ounce of fentanyl, and an ounce of cocaine. The offender was transported to the Little Rock Police Department Southwest Substation and all evidence was collected by LRPD narcotics. A petition to revoke was filed.



A multi-agency home visit was conducted in **Area 8** that found an offender running through the woods beside the residence. Officers searched the woods for about an hour before Jacksonville police arrived with a K-9 unit. Shortly after the K-9 entered the woods, the offender exited and yelled he was coming out. Commanded to lie on the ground with his hands and legs apart, officers cuffed and then arrested the offender who was transported to the North Little Rock Parole and Probation Office.



A second multi-agency home visit in **Area 8** revealed a semi-automatic pistol, a digital scale, approximately a half pound of marijuana and arrested a parole absconder.



A multi-agency home visit in **Area 8** revealed a semi-automatic handgun tucked between the couch cushions.



## Treatment Program Summary

1,458 parolees and probationers were served in the general Substance Use Disorder Treatment Programs and 1,307 participants were served in the Drug Court Treatment Programs, bringing the total served to 2,765.

A total of 556 residents agreed to participate in Medication Assisted Treatment (MAT) since the program started in July 2018. 273 are discharged with follow up in progress in the community and 75 have completed the program. Partnership is in effect with 71 community providers to continue MAT upon release from an ACC Center and the program has been extended through September 2022 with peer recovery specialist and transitional housing services added.

### General Treatment Program Summary (Non-Drug Court):

Substance Use Disorder Treatment - 943 participants

Case Management - 120 participants

Continuing Care - 319 participants

Domestic Violence Prevention - 11 participants

Life Skills - 86 participants

Tobacco Use Treatment Groups - 6 participants

Case Management Pilot Program - 11 participants

## Reentry

At the end of October, ACC had 7 licensed reentry facilities with 240 total residents currently in phases I-IV of the Reentry Facility Program with 25 reentry graduates this month.

During the month, 35 new residents were transferred into the reentry program, 20 residents completed

WAGE, 12 residents started GED classes, 13 residents started the Career Readiness Certificate program and three completed the program. A total of 23 reentry facility residents received their driver's license, 16 received an ID card, 28 received their Social Security card and 14 received birth certificates.

Reentry officers reported 14 education referrals which resulted in education enrollment. Reentry officers conducted 188 reentry facility office visits, 124 Phase IV office visits, 31 Phase IV home visits, and 56 parole plan verifications. Reentry officers made 44 community contacts within their assigned area during the month. Reentry officers conducted 70 office visits in their area.

### Transitional Housing:

There are 21 licensed transitional living facilities with 407 ACC funded beds housing 255 residents who have obtained full time employment.

During October, 6 residents reported to have enrolled in GED Classes.

There is a total of 42 registered sex offenders living in the transitional facilities.

A total of 55 graduated the transitional housing program with 64 absconding and 16 dismissals.

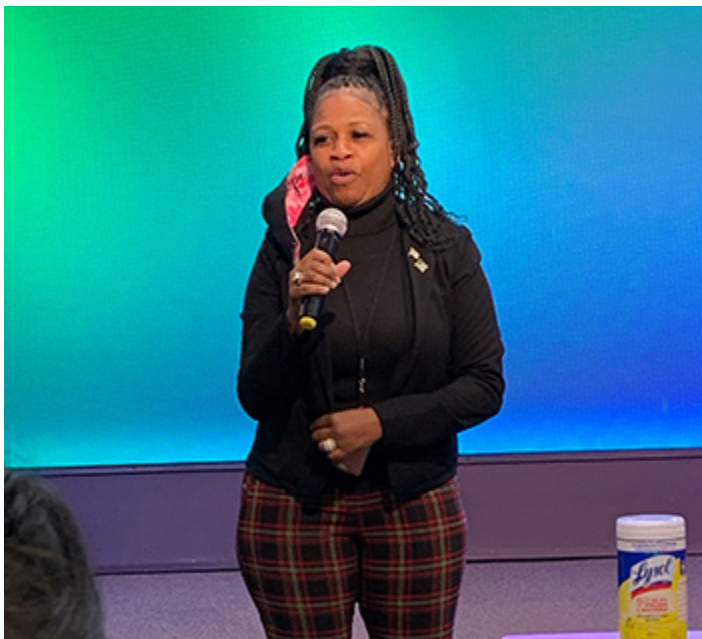
### Arkansas Works

During the month, there were 658 individuals screened for the Arkansas Works program. There were a total 656 applications received and 420 who enrolled in a qualified health plan as reported by the Eaton Agency.

## Reentry on the Road

Pastor Sharon Nesbitt of Dominion Church, East Central Arkansas Center staff and reentry staff, Carrie Williams and Corliss Johnson hosted the 2nd Reentry on the Road event at the Dominion Church in Marion on October 21.

Mayor Marco McClendon of West Memphis spoke to a group 53 attendees about the need for a reentry coalition in Crittenden County and the city of West Memphis. ECAC Chaplain Bruce Evans opened the event with a prayer and ECAC Deputy Warden Tomeka Coleman provided the welcome. Other speakers included Shorter College Human Resources Specialist Benny McDowell, Mary Thomas with Arkansas Northeastern College, Peer Recovery Specialist Ashley Costa, Veteran's Specialist Misty Evans and Career and Work Ready Specialist Daniel Shaull. Photographs on the following page.



# Comprehensive Opioid Abuse Program (COAP) Clinical Report- October 2021

|                                       | Status            | Advisor       | Assessments | Groups      | Individuals | MAT        | Total Assesments |
|---------------------------------------|-------------------|---------------|-------------|-------------|-------------|------------|------------------|
| <b>Locations:</b>                     |                   |               |             |             |             |            |                  |
| Area 2- Melbourne, Izard County       | Active 12/19      | Aaron         | 0           | 8           | 1           | 1          | 4                |
| Area 2- Berryville, Carroll County    | Active 9/19       | Aaron         | 0           | 8           | 40          | 2          | 42               |
| Area 2- Mtn. View, Stone County       | Active 7/19       | Aaron         | 0           | 8           | 5           | 0          | 39               |
| Area 3- Newport, Jackson County       | Active 11/19      | *             | 0           | 8           | 6           | 1          | 37               |
| Area 3- Walnut Ridge, Lawrence County | Active 10/19      | Aaron         | 0           | 8           | 7           | 2          | 11               |
| Area 3- Pocahontas, Randolph County   | Active 7/19       | Aaron         | 0           | 8           | 4           | 1          | 9                |
| Area 4- Paragould, Green County       | Active 8/19       | Aaron         | 0           | 8           | 11          | 2          | 36               |
| Area 4- Hardy, Sharp County           | Active 10/19      | *             | 0           | 8           | 13          | 1          | 21               |
| Area 5- Clarksville, Johnson County   | Active 7/19       | Aaron         | 0           | 8           | 1           | 1          | 10               |
| Area 5- Ozark, Franklin County        | Active 1/20       | Aaron         | 0           | 8           | 1           | 1          | 4                |
| Area 6- Danville, Yell County         | Active 7/19       | *             | 0           | 8           | 5           | 3          | 18               |
| Area 6- Morrilton, Conway County      | Active 8/19       | *             | 0           | 0           | 0           | 0          | 14               |
| Area 10- Arkadelphia, Clark County    | Active 8/19       | *             | 0           | 8           | 1           | 0          | 31               |
| Area 10- Sheridan, Grant County       | Active 7/19       | *             | 0           | 0           | 0           | 0          | 20               |
| Area 12- Lewisville, Lafayette County | Active 8/2020     | *             | 0           | 8           | 4           | 0          | 4                |
| <b>Total</b>                          | 15                | N/A           | 0           | 8           | 99          | 15         | 300              |
| <b>Advisor Program Data:</b>          | <b>Admissions</b> | <b>Active</b> | <b>D/S</b>  | <b>GRAD</b> | <b>U/S</b>  | <b>REF</b> | <b>Aftercare</b> |
| Aaron Bond-Martin                     | 0                 | 29            | 8           | 4           | 4           | 0          | 10               |
| Vacant                                | 0                 | 0             | 0           | 0           | 0           | 0          | 0                |
| Vacant                                | 0                 | 0             | 0           | 0           | 0           | 0          | 0                |
| <b>Total for Month</b>                | 0                 | 29            | 8           | 4           | 4           | 0          | 10               |

Key: U/S Unsuccessful D/S Discharges REF Referrals

1-Transfer Out of State

COVID19 Precautions in P/P Offices

Aftercare Implemented due to COVID19

# Parole/Probation Fee Collections and Waivers

|                               | Oct-20  | Nov-20  | Dec-20  | Jan-21  | Feb-21  | Mar-21  | Apr-21  | May-21  | Jun-21  | Jul-21  | Aug-21  | Sep-21  | Oct-21  |
|-------------------------------|---------|---------|---------|---------|---------|---------|---------|---------|---------|---------|---------|---------|---------|
| <b>Area 1 - Fayetteville</b>  |         |         |         |         |         |         |         |         |         |         |         |         |         |
| Fees Possible                 | 154,455 | 153,965 | 150,920 | 149,205 | 150,570 | 150,430 | 150,990 | 150,430 | 149,485 | 149,380 | 152,775 | 154,070 | 152,775 |
| Fees Collected                | 140,640 | 130,474 | 135,800 | 165,590 | 133,284 | 203,089 | 149,681 | 139,080 | 138,642 | 138,245 | 135,376 | 138,815 | 138,069 |
| % Collected                   | 91%     | 85%     | 90%     | 111%    | 89%     | 135%    | 99%     | 92%     | 93%     | 93%     | 89%     | 90%     | 90%     |
| % Paying Offenders            | 56%     | 53%     | 55%     | 62%     | 54%     | 67%     | 57%     | 55%     | 57%     | 57%     | 54%     | 55%     | 56%     |
| % Employed                    | 86%     | 86%     | 86%     | 87%     | 86%     | 87%     | 87%     | 88%     | 88%     | 89%     | 88%     | 89%     | 89%     |
| Fees Converted                | 2,834   | 1,835   | 2,325   | 2,895   | 2,399   | 1,787   | 1,529   | 2,208   | 1,883   | 2,797   | 2,090   | 1,517   | 1,394   |
| % Converted                   | 2%      | 1%      | 2%      | 2%      | 2%      | 1%      | 1%      | 1%      | 1%      | 2%      | 1%      | 1%      | 1%      |
| Fees Waived                   | 3,360   | 3,500   | 2,485   | 2,625   | 2,730   | 2,800   | 2,380   | 2,275   | 1,995   | 2,380   | 2,450   | 2,485   | 2,520   |
| % Waived                      | 2%      | 2%      | 2%      | 2%      | 2%      | 2%      | 2%      | 2%      | 1%      | 2%      | 2%      | 2%      | 2%      |
| <b>Area 2 - Mountain Home</b> |         |         |         |         |         |         |         |         |         |         |         |         |         |
| Fees Possible                 | 70,630  | 70,455  | 69,825  | 70,105  | 70,000  | 69,825  | 68,565  | 69,895  | 69,650  | 70,560  | 69,720  | 70,700  | 69,965  |
| Fees Collected                | 72,686  | 63,387  | 66,965  | 76,653  | 66,813  | 88,189  | 77,509  | 62,321  | 65,752  | 68,877  | 63,666  | 70,033  | 70,258  |
| % Collected                   | 103%    | 90%     | 96%     | 109%    | 95%     | 126%    | 113%    | 89%     | 94%     | 98%     | 91%     | 99%     | 100%    |
| % Paying Offenders            | 65%     | 60%     | 63%     | 67%     | 60%     | 69%     | 65%     | 58%     | 60%     | 60%     | 59%     | 60%     | 62%     |
| % Employed                    | 84%     | 84%     | 84%     | 82%     | 83%     | 84%     | 84%     | 85%     | 87%     | 87%     | 87%     | 86%     | 87%     |
| Fees Converted                | 45      | 250     | 118     | 110     | 342     | 262     | 39      | -       | 132     | -       | -       | 143     | 528     |
| % Converted                   | 0%      | 0%      | 0%      | 0%      | 0%      | 0%      | 0%      | 0%      | 0%      | 0%      | 0%      | 0%      | 1%      |
| Fees Waived                   | 490     | 560     | 385     | 490     | 525     | 525     | 385     | 490     | 420     | 420     | 420     | 455     | 455     |
| % Waived                      | 1%      | 1%      | 1%      | 1%      | 1%      | 1%      | 1%      | 1%      | 1%      | 1%      | 1%      | 1%      | 1%      |
| <b>Area 3 - Searcy</b>        |         |         |         |         |         |         |         |         |         |         |         |         |         |
| Fees Possible                 | 124,250 | 124,285 | 122,640 | 120,435 | 119,000 | 116,795 | 116,200 | 115,570 | 114,520 | 113,855 | 114,450 | 115,150 | 114,275 |
| Fees Collected                | 114,692 | 104,536 | 110,401 | 124,294 | 106,011 | 162,838 | 116,378 | 103,755 | 99,533  | 102,560 | 101,506 | 100,668 | 106,446 |
| % Collected                   | 92%     | 84%     | 90%     | 103%    | 89%     | 139%    | 100%    | 90%     | 87%     | 90%     | 89%     | 87%     | 93%     |
| % Paying Offenders            | 57%     | 55%     | 57%     | 61%     | 55%     | 70%     | 59%     | 57%     | 56%     | 57%     | 56%     | 55%     | 58%     |
| % Employed                    | 80%     | 79%     | 78%     | 78%     | 78%     | 78%     | 79%     | 80%     | 80%     | 80%     | 81%     | 81%     | 81%     |
| Fees Converted                | 708     | 1,138   | 2,051   | 645     | 638     | 1,785   | 1,122   | 1,293   | 1,415   | 1,161   | 792     | 1,857   | 2,148   |
| % Converted                   | 1%      | 1%      | 2%      | 1%      | 1%      | 2%      | 1%      | 1%      | 1%      | 1%      | 1%      | 2%      | 2%      |
| Fees Waived                   | 4,690   | 4,760   | 4,550   | 4,935   | 4,165   | 4,200   | 3,990   | 3,640   | 3,920   | 3,745   | 3,745   | 3,430   | 3,430   |
| % Waived                      | 4%      | 4%      | 4%      | 4%      | 4%      | 4%      | 3%      | 3%      | 3%      | 3%      | 3%      | 3%      | 3%      |
| <b>Area 4 - Jonesboro</b>     |         |         |         |         |         |         |         |         |         |         |         |         |         |
| Fees Possible                 | 102,795 | 102,235 | 102,515 | 101,465 | 101,255 | 100,415 | 100,485 | 102,375 | 100,450 | 101,990 | 101,255 | 100,625 | 101,115 |
| Fees Collected                | 94,548  | 78,615  | 89,874  | 100,214 | 87,129  | 133,552 | 97,035  | 86,855  | 90,685  | 86,231  | 87,470  | 93,408  | 88,200  |
| % Collected                   | 92%     | 77%     | 88%     | 99%     | 86%     | 133%    | 97%     | 85%     | 90%     | 85%     | 86%     | 93%     | 87%     |
| % Paying Offenders            | 56%     | 50%     | 53%     | 56%     | 51%     | 66%     | 55%     | 50%     | 54%     | 51%     | 51%     | 55%     | 52%     |
| % Employed                    | 78%     | 77%     | 76%     | 76%     | 76%     | 77%     | 78%     | 79%     | 80%     | 79%     | 80%     | 80%     | 80%     |
| Fees Converted                | 2,295   | 1,755   | 3,085   | 3,781   | 1,275   | 2,437   | 1,332   | 1,188   | 2,442   | 1,698   | 3,729   | 2,732   | 3,630   |
| % Converted                   | 2%      | 2%      | 3%      | 4%      | 1%      | 2%      | 1%      | 1%      | 2%      | 2%      | 4%      | 3%      | 4%      |
| Fees Waived                   | 5,215   | 5,425   | 5,670   | 5,495   | 5,460   | 5,810   | 5,635   | 5,670   | 5,530   | 5,600   | 5,740   | 5,985   | 6,475   |
| % Waived                      | 5%      | 5%      | 6%      | 5%      | 5%      | 6%      | 6%      | 6%      | 6%      | 5%      | 6%      | 6%      | 6%      |
| <b>Area 5 - Fort Smith</b>    |         |         |         |         |         |         |         |         |         |         |         |         |         |
| Fees Possible                 | 108,150 | 108,185 | 107,205 | 108,010 | 107,485 | 107,905 | 106,820 | 105,420 | 105,945 | 102,830 | 105,280 | 106,015 | 104,475 |
| Fees Collected                | 95,890  | 82,848  | 89,136  | 112,654 | 89,293  | 132,590 | 114,007 | 84,165  | 83,487  | 88,667  | 85,685  | 81,189  | 91,615  |
| % Collected                   | 89%     | 77%     | 83%     | 104%    | 83%     | 123%    | 107%    | 80%     | 79%     | 86%     | 81%     | 77%     | 88%     |
| % Paying Offenders            | 54%     | 50%     | 52%     | 59%     | 52%     | 64%     | 58%     | 51%     | 50%     | 54%     | 50%     | 49%     | 53%     |
| % Employed                    | 78%     | 78%     | 75%     | 76%     | 76%     | 76%     | 77%     | 78%     | 78%     | 79%     | 79%     | 80%     | 80%     |
| Fees Converted                | 5,347   | 2,603   | 5,821   | 6,170   | 4,372   | 4,942   | 5,195   | 3,732   | 4,791   | 5,095   | 3,358   | 4,628   | 6,518   |
| % Converted                   | 5%      | 2%      | 5%      | 6%      | 4%      | 5%      | 5%      | 4%      | 5%      | 5%      | 3%      | 4%      | 6%      |
| Fees Waived                   | 3,115   | 2,590   | 2,800   | 2,520   | 2,800   | 3,115   | 2,905   | 2,380   | 2,030   | 1,540   | 1,750   | 1,785   | 1,995   |
| % Waived                      | 3%      | 2%      | 3%      | 2%      | 3%      | 3%      | 3%      | 2%      | 2%      | 1%      | 2%      | 2%      | 2%      |

|                       | Oct-20  | Nov-20  | Dec-20  | Jan-21  | Feb-21  | Mar-21  | Apr-21  | May-21  | Jun-21  | Jul-21  | Aug-21  | Sep-21  | Oct-21  |
|-----------------------|---------|---------|---------|---------|---------|---------|---------|---------|---------|---------|---------|---------|---------|
| Area 6 - Conway       |         |         |         |         |         |         |         |         |         |         |         |         |         |
| Fees Possible         | 103,705 | 102,620 | 101,605 | 99,680  | 99,995  | 100,135 | 100,765 | 99,925  | 99,890  | 97,090  | 97,195  | 96,040  | 95,760  |
| Fees Collected        | 98,834  | 84,946  | 90,860  | 110,011 | 82,647  | 133,616 | 99,502  | 93,058  | 85,772  | 83,891  | 77,272  | 89,768  | 92,133  |
| % Collected           | 95%     | 83%     | 89%     | 110%    | 83%     | 133%    | 99%     | 93%     | 86%     | 86%     | 80%     | 93%     | 96%     |
| % Paying Offenders    | 60%     | 53%     | 56%     | 64%     | 53%     | 69%     | 59%     | 58%     | 55%     | 54%     | 51%     | 56%     | 57%     |
| % Employed            | 75%     | 75%     | 75%     | 76%     | 76%     | 76%     | 76%     | 76%     | 76%     | 78%     | 77%     | 79%     | 80%     |
| Fees Converted        | 887     | 1,124   | 2,242   | 1,180   | 1,147   | 2,449   | 1,216   | 1,478   | 1,562   | 1,661   | 1,491   | 2,030   | 2,120   |
| % Converted           | 1%      | 1%      | 2%      | 1%      | 1%      | 2%      | 1%      | 1%      | 2%      | 2%      | 2%      | 2%      | 2%      |
| Fees Waived           | 1,120   | 1,085   | 1,190   | 1,470   | 1,470   | 1,680   | 1,645   | 1,540   | 1,470   | 1,435   | 1,470   | 1,610   | 1,610   |
| % Waived              | 1%      | 1%      | 1%      | 1%      | 1%      | 2%      | 2%      | 2%      | 1%      | 1%      | 2%      | 2%      | 2%      |
| Area 8 - Little Rock  |         |         |         |         |         |         |         |         |         |         |         |         |         |
| Fees Possible         | 188,020 | 185,500 | 187,285 | 182,735 | 180,880 | 180,285 | 179,235 | 177,030 | 176,610 | 173,460 | 175,105 | 173,040 | 171,535 |
| Fees Collected        | 167,234 | 152,886 | 157,779 | 184,030 | 144,724 | 221,352 | 176,977 | 156,068 | 160,449 | 142,881 | 149,693 | 148,423 | 147,452 |
| % Collected           | 89%     | 82%     | 84%     | 101%    | 80%     | 123%    | 99%     | 88%     | 91%     | 82%     | 85%     | 86%     | 86%     |
| % Paying Offenders    | 52%     | 50%     | 50%     | 57%     | 48%     | 61%     | 54%     | 50%     | 52%     | 49%     | 50%     | 50%     | 50%     |
| % Employed            | 77%     | 77%     | 77%     | 75%     | 75%     | 77%     | 77%     | 79%     | 80%     | 81%     | 81%     | 82%     | 83%     |
| Fees Converted        | 1,710   | 426     | 510     | 300     | 1,461   | 3,924   | 2,397   | 2,469   | 2,277   | 2,420   | 418     | 1,067   | 88      |
| % Converted           | 1%      | 0%      | 0%      | 0%      | 1%      | 2%      | 1%      | 1%      | 1%      | 1%      | 0%      | 1%      | 0%      |
| Fees Waived           | 6,685   | 7,140   | 6,755   | 7,420   | 6,930   | 7,140   | 6,510   | 6,475   | 6,405   | 6,650   | 6,860   | 6,650   | 6,335   |
| % Waived              | 4%      | 4%      | 4%      | 4%      | 4%      | 4%      | 4%      | 4%      | 4%      | 4%      | 4%      | 4%      | 4%      |
| Area 9 - West Memphis |         |         |         |         |         |         |         |         |         |         |         |         |         |
| Fees Possible         | 52,430  | 50,645  | 51,625  | 52,010  | 51,765  | 52,255  | 52,500  | 52,955  | 53,270  | 52,255  | 52,570  | 51,905  | 51,870  |
| Fees Collected        | 48,530  | 41,437  | 37,398  | 52,033  | 38,961  | 64,688  | 57,021  | 41,622  | 46,826  | 42,813  | 45,127  | 44,940  | 42,202  |
| % Collected           | 93%     | 82%     | 72%     | 100%    | 75%     | 124%    | 109%    | 79%     | 88%     | 82%     | 86%     | 87%     | 81%     |
| % Paying Offenders    | 56%     | 51%     | 47%     | 54%     | 45%     | 62%     | 58%     | 50%     | 54%     | 51%     | 51%     | 54%     | 51%     |
| % Employed            | 67%     | 69%     | 68%     | 69%     | 67%     | 65%     | 66%     | 67%     | 68%     | 69%     | 68%     | 70%     | 70%     |
| Fees Converted        | 3,025   | 2,329   | 1,026   | 3,680   | 2,940   | 3,623   | 1,460   | 1,320   | 1,246   | 737     | 1,397   | 537     | 814     |
| % Converted           | 6%      | 5%      | 2%      | 7%      | 6%      | 7%      | 3%      | 2%      | 2%      | 1%      | 3%      | 1%      | 2%      |
| Fees Waived           | 1,785   | 1,925   | 1,890   | 2,100   | 2,240   | 2,100   | 2,030   | 1,715   | 1,400   | 1,575   | 1,785   | 1,715   | 1,505   |
| % Waived              | 3%      | 4%      | 4%      | 4%      | 4%      | 4%      | 4%      | 3%      | 3%      | 3%      | 3%      | 3%      | 3%      |
| Area 10 - Hot Springs |         |         |         |         |         |         |         |         |         |         |         |         |         |
| Fees Possible         | 107,275 | 107,415 | 107,135 | 103,320 | 103,285 | 101,920 | 101,150 | 101,430 | 99,645  | 98,770  | 97,160  | 96,600  | 98,000  |
| Fees Collected        | 100,789 | 92,669  | 89,778  | 104,726 | 91,192  | 124,924 | 97,714  | 90,285  | 90,892  | 90,730  | 87,247  | 85,714  | 88,766  |
| % Collected           | 94%     | 86%     | 84%     | 101%    | 88%     | 123%    | 97%     | 89%     | 91%     | 92%     | 90%     | 89%     | 91%     |
| % Paying Offenders    | 59%     | 56%     | 55%     | 62%     | 55%     | 66%     | 59%     | 57%     | 58%     | 56%     | 56%     | 56%     | 57%     |
| % Employed            | 78%     | 77%     | 77%     | 78%     | 78%     | 79%     | 80%     | 81%     | 82%     | 82%     | 82%     | 83%     | 83%     |
| Fees Converted        | 1,450   | 700     | 1,850   | 1,026   | 873     | 1,417   | 1,214   | 429     | 1,682   | 1,441   | 1,342   | 1,997   | 1,848   |
| % Converted           | 1%      | 1%      | 2%      | 1%      | 1%      | 1%      | 1%      | 0%      | 2%      | 1%      | 1%      | 2%      | 2%      |
| Fees Waived           | 5,670   | 5,845   | 5,775   | 6,055   | 5,530   | 5,880   | 5,775   | 5,880   | 5,915   | 5,740   | 5,985   | 5,985   | 6,370   |
| % Waived              | 5%      | 5%      | 5%      | 6%      | 5%      | 6%      | 6%      | 6%      | 6%      | 6%      | 6%      | 6%      | 7%      |
| Area 11 - Pine Bluff  |         |         |         |         |         |         |         |         |         |         |         |         |         |
| Fees Possible         | 82,355  | 82,635  | 82,565  | 81,235  | 79,695  | 79,870  | 78,890  | 77,595  | 76,860  | 76,475  | 76,160  | 76,020  | 75,530  |
| Fees Collected        | 75,598  | 68,143  | 75,456  | 84,005  | 72,741  | 100,893 | 79,929  | 65,771  | 68,345  | 69,166  | 66,129  | 72,541  | 71,992  |
| % Collected           | 92%     | 82%     | 91%     | 103%    | 91%     | 126%    | 101%    | 85%     | 89%     | 90%     | 87%     | 95%     | 95%     |
| % Paying Offenders    | 59%     | 56%     | 59%     | 64%     | 58%     | 71%     | 62%     | 58%     | 58%     | 59%     | 56%     | 61%     | 60%     |
| % Employed            | 72%     | 73%     | 72%     | 70%     | 70%     | 71%     | 71%     | 73%     | 74%     | 74%     | 75%     | 75%     | 76%     |
| Fees Converted        | 2,395   | 3,135   | 2,820   | 3,462   | 2,222   | 3,056   | 1,551   | 2,813   | 2,681   | 1,919   | 3,256   | 2,655   | 2,351   |
| % Converted           | 3%      | 4%      | 3%      | 4%      | 3%      | 4%      | 2%      | 4%      | 3%      | 3%      | 4%      | 3%      | 3%      |
| Fees Waived           | 1,190   | 1,330   | 1,120   | 1,225   | 1,155   | 1,015   | 980     | 1,015   | 910     | 945     | 980     | 1,015   | 945     |
| % Waived              | 1%      | 2%      | 1%      | 2%      | 1%      | 1%      | 1%      | 1%      | 1%      | 1%      | 1%      | 1%      | 1%      |

|                            | Oct-20    | Nov-20    | Dec-20    | Jan-21    | Feb-21    | Mar-21    | Apr-21    | May-21    | Jun-21    | Jul-21    | Aug-21    | Sep-21    | Oct-21    |
|----------------------------|-----------|-----------|-----------|-----------|-----------|-----------|-----------|-----------|-----------|-----------|-----------|-----------|-----------|
| <b>Area 12 - Texarkana</b> |           |           |           |           |           |           |           |           |           |           |           |           |           |
| Fees Possible              | 88,830    | 90,405    | 88,270    | 87,535    | 87,955    | 87,990    | 85,785    | 84,700    | 85,050    | 86,590    | 86,310    | 86,765    | 88,060    |
| Fees Collected             | 80,041    | 72,199    | 80,825    | 89,390    | 75,492    | 115,324   | 89,459    | 71,743    | 74,949    | 74,724    | 75,432    | 70,603    | 78,704    |
| % Collected                | 90%       | 80%       | 92%       | 102%      | 86%       | 131%      | 104%      | 85%       | 88%       | 86%       | 87%       | 81%       | 89%       |
| % Paying Offenders         | 54%       | 51%       | 56%       | 58%       | 51%       | 65%       | 57%       | 52%       | 54%       | 53%       | 53%       | 51%       | 54%       |
| % Employed                 | 75%       | 75%       | 75%       | 76%       | 75%       | 76%       | 77%       | 77%       | 77%       | 78%       | 77%       | 77%       | 77%       |
| Fees Converted             | 2,878     | 2,280     | 4,223     | 2,930     | 1,462     | 2,336     | 2,060     | 2,105     | 4,475     | 5,022     | 4,832     | 3,821     | 3,050     |
| % Converted                | 3%        | 3%        | 5%        | 3%        | 2%        | 3%        | 2%        | 2%        | 5%        | 6%        | 6%        | 4%        | 3%        |
| Fees Waived                | 2,380     | 2,310     | 2,135     | 2,135     | 2,520     | 2,275     | 2,065     | 2,345     | 2,170     | 2,240     | 2,135     | 2,170     | 1,995     |
| % Waived                   | 3%        | 3%        | 2%        | 2%        | 3%        | 3%        | 2%        | 3%        | 3%        | 3%        | 2%        | 3%        | 2%        |
| <b>Area 13 - El Dorado</b> |           |           |           |           |           |           |           |           |           |           |           |           |           |
| Fees Possible              | 54,460    | 54,110    | 53,270    | 52,955    | 52,570    | 51,695    | 52,185    | 51,590    | 50,505    | 50,750    | 50,750    | 50,365    | 50,085    |
| Fees Collected             | 51,592    | 41,946    | 45,746    | 54,502    | 44,634    | 65,251    | 53,433    | 44,223    | 44,070    | 44,284    | 45,424    | 45,466    | 45,054    |
| % Collected                | 95%       | 78%       | 85%       | 102%      | 85%       | 125%      | 102%      | 85%       | 86%       | 86%       | 88%       | 90%       | 89%       |
| % Paying Offenders         | 57%       | 51%       | 54%       | 59%       | 52%       | 66%       | 59%       | 53%       | 56%       | 55%       | 54%       | 54%       | 57%       |
| % Employed                 | 67%       | 68%       | 68%       | 67%       | 68%       | 68%       | 69%       | 69%       | 70%       | 70%       | 70%       | 70%       | 71%       |
| Fees Converted             | 510       | 610       | 315       | 341       | 704       | 2,536     | 220       | 154       | 781       | 264       | 528       | 985       | 989       |
| % Converted                | 1%        | 1%        | 1%        | 1%        | 1%        | 5%        | 0%        | 0%        | 2%        | 1%        | 1%        | 2%        | 2%        |
| Fees Waived                | 3,605     | 4,130     | 4,165     | 4,130     | 4,060     | 4,095     | 3,675     | 3,675     | 3,290     | 3,220     | 3,395     | 3,675     | 3,955     |
| % Waived                   | 7%        | 8%        | 8%        | 8%        | 8%        | 8%        | 7%        | 7%        | 7%        | 6%        | 7%        | 7%        | 8%        |
| <b>Grand Total</b>         |           |           |           |           |           |           |           |           |           |           |           |           |           |
| Fees Possible              | 1,237,355 | 1,232,455 | 1,224,860 | 1,208,690 | 1,204,455 | 1,199,520 | 1,193,570 | 1,188,915 | 1,181,880 | 1,174,005 | 1,178,730 | 1,177,295 | 1,173,445 |
| Fees Collected             | 1,141,073 | 1,014,086 | 1,070,017 | 1,258,102 | 1,032,922 | 1,546,305 | 1,208,646 | 1,038,946 | 1,049,403 | 1,033,070 | 1,020,027 | 1,041,569 | 1,060,889 |
| % Collected                | 92%       | 82%       | 87%       | 104%      | 86%       | 129%      | 101%      | 87%       | 89%       | 88%       | 87%       | 88%       | 90%       |
| % Paying Offenders         | 57%       | 53%       | 55%       | 60%       | 53%       | 66%       | 58%       | 54%       | 55%       | 54%       | 53%       | 54%       | 55%       |
| % Employed                 | 77%       | 78%       | 77%       | 77%       | 77%       | 77%       | 78%       | 79%       | 80%       | 80%       | 80%       | 81%       | 81%       |
| Fees Converted             | 24,084    | 18,183    | 26,385    | 26,520    | 19,834    | 30,553    | 19,334    | 19,188    | 25,366    | 24,214    | 23,232    | 23,969    | 25,479    |
| % Converted                | 2%        | 1%        | 2%        | 2%        | 2%        | 3%        | 2%        | 2%        | 2%        | 2%        | 2%        | 2%        | 2%        |
| Fees Waived                | 39,305    | 40,600    | 38,920    | 40,600    | 39,585    | 40,635    | 37,975    | 37,100    | 35,455    | 35,490    | 36,715    | 36,960    | 37,590    |
| % Waived                   | 3%        | 3%        | 3%        | 3%        | 3%        | 3%        | 3%        | 3%        | 3%        | 3%        | 3%        | 3%        | 3%        |

**Fees Possible:** The amount of supervision fees that can be collected per active/electronic monitoring supervision status of offenders for that month only. Does not include annual, pre-trial, and SIS.

**Fees Collected:** Actual amount of money collected that can be deposited in Special Revenue fund. Please keep in mind the amount collected could include an offender that pays three months in advance.

**Fees Converted:** Amount not included in Fees Collected. Represents the amount of money lost by conversions. If this money were collected instead of converted, it would be added to Fees Collected.

**Fees Waived:** Amount not included in Fees Collected. Represents the amount of money lost by waivers. If this money were collected instead of waived, it would be added to Fees Collected.

# Center Populations

ARDOC  
REPORT NO. IPTR500 - 18

ARKANSAS DEPARTMENT OF CORRECTION  
ACC OPTION  
STATEWIDE POPULATION REPORT

PAGE: 1 of 1  
PROCESSED: 10/29/2021 12:33 AM  
REQUESTOR: eOMIS

FOR: 10/29/2021

| Location:   | In Count     | Out To:   |            |          |               |              | Capacity     | % Capacity   |
|---|--------------|-----------|------------|----------|---------------|--------------|--------------|--------------|
|   |              | ORCU Hosp | Other Hosp | Furlough | Court         | Total        |              |              |
| Central AR CCC - Males/Males                            | 115          | 0         | 0          | 0        | 0             | 115          | 120          |              |
| Central AR CCC - Short Term Drug Court Treatment/Males  | 6            | 0         | 0          | 0        | 0             | 6            | 30           |              |
| <b>Central AR CCC - Males Total</b>                     | <b>121</b>   | <b>0</b>  | <b>0</b>   | <b>0</b> | <b>0</b>      | <b>121</b>   | <b>150</b>   | <b>80.7%</b> |
| East Central AR CCC/Females                             | 199          | 0         | 0          | 0        | 1             | 200          | 212          |              |
| East Central AR CCC-Females Drug Treatment/Females      | 20           | 0         | 0          | 0        | 0             | 20           | 50           |              |
| East Central AR CCC Supervision Sanction-Female/Females | 54           | 0         | 0          | 0        | 0             | 54           | 88           |              |
| <b>East Central AR CCC Total</b>                        | <b>273</b>   | <b>0</b>  | <b>0</b>   | <b>0</b> | <b>1</b>      | <b>274</b>   | <b>350</b>   | <b>78.3%</b> |
| NE AR CCC - Drug Treatment/Males                        | 11           | 0         | 0          | 0        | 0             | 11           | 25           |              |
| NE AR CCC/Males   | 146          | 0         | 0          | 0        | 1             | 147          | 215          |              |
| <b>NE AR CCC Total</b>                                  | <b>157</b>   | <b>0</b>  | <b>0</b>   | <b>0</b> | <b>1</b>      | <b>158</b>   | <b>240</b>   | <b>65.8%</b> |
| NW AR CCC/Females                                       | 90           | 0         | 0          | 0        | 0             | 90           | 114          |              |
| <b>NW AR CCC Total</b>                                  | <b>90</b>    | <b>0</b>  | <b>0</b>   | <b>0</b> | <b>0</b>      | <b>90</b>    | <b>114</b>   | <b>78.9%</b> |
| Omega Supervision Sanction Center/Males                 | 214          | 0         | 0          | 0        | 0             | 214          | 300          |              |
| <b>Omega Supervision Sanction Center Total</b>          | <b>214</b>   | <b>0</b>  | <b>0</b>   | <b>0</b> | <b>0</b>      | <b>214</b>   | <b>300</b>   | <b>71.3%</b> |
| SW AR CCC/Males   | 216          | 0         | 1          | 0        | 0             | 217          | 375          |              |
| SW AR Supervision Sanction Center/Males                 | 28           | 0         | 0          | 0        | 0             | 28           | 100          |              |
| <b>SW AR CCC Total</b>                                  | <b>244</b>   | <b>0</b>  | <b>1</b>   | <b>0</b> | <b>0</b>      | <b>245</b>   | <b>475</b>   | <b>51.6%</b> |
| <b>In Transit Count:</b>                                | <b>0</b>     |           |            |          |               |              |              |              |
| <b>TOTALS - UNIT COUNT</b>                              | <b>1,099</b> | <b>0</b>  | <b>1</b>   | <b>0</b> | <b>2</b>      | <b>1,102</b> |              |              |
|   |              |           |            |          | <b>Male</b>   | <b>738</b>   | <b>1,165</b> | <b>63.3%</b> |
|   |              |           |            |          | <b>Female</b> | <b>364</b>   | <b>464</b>   | <b>78.4%</b> |
|   |              |           |            |          | <b>Total</b>  | <b>1,102</b> | <b>1,629</b> | <b>67.6%</b> |
| <b>County Jail Backup SSP/Females Total</b>             | <b>8</b>     | <b>0</b>  | <b>0</b>   | <b>0</b> | <b>0</b>      | <b>8</b>     |              |              |
| <b>County Jail Backup SSP/Males Total</b>               | <b>47</b>    | <b>0</b>  | <b>0</b>   | <b>0</b> | <b>0</b>      | <b>47</b>    |              |              |
| <b>County Jail Backup/Females Total</b>                 | <b>22</b>    | <b>0</b>  | <b>0</b>   | <b>0</b> | <b>0</b>      | <b>22</b>    |              |              |
| <b>County Jail Backup/Males Total</b>                   | <b>52</b>    | <b>0</b>  | <b>0</b>   | <b>0</b> | <b>0</b>      | <b>52</b>    |              |              |
| <b>TOTAL - NONAGENCY</b>                                | <b>129</b>   | <b>0</b>  | <b>0</b>   | <b>0</b> | <b>0</b>      | <b>129</b>   |              |              |
|   |              |           |            |          | <b>Male</b>   | <b>99</b>    |              |              |
|   |              |           |            |          | <b>Female</b> | <b>30</b>    |              |              |
|   |              |           |            |          | <b>Total</b>  | <b>129</b>   |              |              |
| <b>Re-Entry Act 146 Total</b>                           | <b>239</b>   | <b>0</b>  | <b>0</b>   | <b>0</b> | <b>0</b>      | <b>239</b>   | <b>240</b>   | <b>99.6%</b> |
| <b>GRAND TOTAL</b>                                      | <b>1,467</b> | <b>0</b>  | <b>1</b>   | <b>0</b> | <b>2</b>      | <b>1,470</b> |              |              |

# Residential Centers October Statistics Report At A Glance

## **Resident admissions:**

CAC: 1  
ECAC: 44  
NEAC: 0  
NWAC: 12  
OMEGA: 75  
SWAC: 63

## **Resident Releases:**

CAC: 22  
ECAC: 40  
NEAC: 22  
NWAC: 12  
OMEGA: 63  
SWAC: 61

## **Affordable Healthcare Enrollment:**

CAC: 22  
ECAC: 58  
NEAC: 22  
NWAC: 7  
OMEGA: 48  
SWAC: 51

## **Wage Class Enrollment:**

CAC: 10  
ECAC: 0  
NEAC: 0  
NWAC: 12  
OMEGA: 0  
SWAC: 0

## **Shorter College Enrollment:**

CAC: 19  
ECAC: 54  
NEAC: 23  
NWAC: 9  
SWAC: 42  
OMEGA: 0

## **Henderson State University Enrollment:**

OMEGA: 130

## **Exodus Enrollment:**

CAC: 10  
ECAC: 0

## **Good Grid Enrollment**

CAC: 15  
ECAC: 19  
NEAC: 2  
NWAC: 20  
OMEGA: 20  
SWAC: 0

## **Photo IDs issued:**

CAC: 1  
ECAC: 2  
NEAC: 0  
NWAC: 0  
OMEGA: 0  
SWAC: 2

## **Drivers Licenses Obtained:**

CAC: 1  
ECAC: 3  
NEAC: 0  
NWAC: 0  
OMEGA: 0  
SWAC: 3

## **MAT Participants:**

CAC: 10  
ECAC: 22  
NEAC: 0  
NWAC: 3  
OMEGA: 0  
SWAC: 2

## **Number of Volunteers:**

CAC: 17  
ECAC: 12  
NEAC: 0  
NWAC: 72  
OMEGA: 2  
SWAC: 29

## **Number of Volunteer hours:**

CAC: 109  
ECAC: 166.5  
NEAC: 0  
NWAC: 194.75  
OMEGA: 14  
SWAC: 297

## **GED Enrollment:**

CAC: 27  
ECAC: 23  
NEAC: 0  
NWAC: 17  
OMEGA: 10  
SWAC: 42

## **GED Completed:**

CAC: 3  
ECAC: 5  
NEAC: 0  
NWAC: 2  
OMEGA: 0  
SWAC: 0

## **AA/NA Attendance:**

CAC: 11  
ECAC: 12  
NEAC: 0  
NWAC: 19  
OMEGA: 48  
SWAC: 96

## **Celebrate Recovery Attendance:**

CAC: 2  
ECAC: 0  
NEAC: 14  
NWAC: 14  
OMEGA: 0  
SWAC: 0

# Parole/Probation Population

**Active:**

includes current status of Active, Abscond and Electronic Monitoring

**Inactive:**

includes current status of Non Reporting, Unsupervised, SIS  
(Suspended Imposition of Sentence), Incarcerated and Out to Other State

## Statewide Totals by Current Supervision Status (Active and Inactive) as of November 4, 2021

| Area                       | Active | Inactive | TOTAL  |
|----------------------------|--------|----------|--------|
| Area 1-Fayetteville        | 7,073  | 2,818    | 9,891  |
| Area 2-Mountain Home       | 2,472  | 587      | 3,059  |
| Area 3-Searcy              | 4,753  | 1,287    | 6,040  |
| Area 4-Jonesboro           | 4,084  | 1,738    | 5,822  |
| Area 5-Fort Smith          | 3,986  | 3,599    | 7,585  |
| Area 6-Conway              | 3,719  | 1,054    | 4,773  |
| Area 8-Little Rock         | 7,496  | 1,274    | 8,770  |
| Area 9-West Memphis        | 2,061  | 389      | 2,450  |
| Area 10-Hot Springs        | 4,274  | 831      | 5,105  |
| Area 11-Pine Bluff         | 3,423  | 625      | 4,048  |
| Area 12-Texarkana          | 3,704  | 1,207    | 4,911  |
| Area 13-El Dorado          | 2,370  | 562      | 2,932  |
| ISC                        | 31     | 1,794    | 1,825  |
| Statewide Totals by Status | 49,446 | 17,765   | 67,211 |

# Parole/Probation Population

Statewide Totals by Current Supervision Status as of **November 4, 2021**

| Area   | Active                     |                                      |           | Inactive     |                   |                          |              |   | OVERALL<br>TOTALS<br>PER<br>AREA |
|--|----------------------------|--------------------------------------|-----------|--------------|-------------------|--------------------------|--------------|---|----------------------------------|
|  | Active<br>(Direct<br>Supv) | Electronic<br>Monitoring<br>(Direct) | Absconded | Incarcerated | Non-<br>Reporting | Out to<br>Other<br>State | Unsupervised | Suspnd<br>Imposition<br>of Snt<br>(SIS) |                                  |
| Area 1-Fayetteville                                  | 5,006                      | 50                                   | 2,017     | 566          | 429               | 515                      | 301          | 1,007                                   | 9,891                            |
| Area 2-Mountain Home                                 | 2,086                      | 5                                    | 381       | 155          | 112               | 131                      | 81           | 108                                     | 3,059                            |
| Area 3-Searcy  | 3,600                      | 5                                    | 1,148     | 237          | 171               | 203                      | 52           | 624                                     | 6,040                            |
| Area 4-Jonesboro                                     | 3,157                      | 7                                    | 920       | 247          | 204               | 152                      | 68           | 1,067                                   | 5,822                            |
| Area 5-Fort Smith                                    | 3,202                      | 21                                   | 763       | 225          | 324               | 146                      | 134          | 2,770                                   | 7,585                            |
| Area 6-Conway  | 2,911                      | 2                                    | 806       | 213          | 121               | 111                      | 67           | 542                                     | 4,773                            |
| Area 8-Little Rock                                   | 5,289                      | 40                                   | 2,167     | 337          | 348               | 46                       | 222          | 321                                     | 8,770                            |
| Area 9-West Memphis                                  | 1,510                      | 4                                    | 547       | 114          | 54                | 51                       | 12           | 158                                     | 2,450                            |
| Area 10-Hot Springs                                  | 3,109                      | 22                                   | 1,143     | 225          | 174               | 79                       | 142          | 211                                     | 5,105                            |
| Area 11-Pine Bluff                                   | 2,414                      | 12                                   | 997       | 156          | 66                | 67                       | 128          | 208                                     | 4,048                            |
| Area 12-Texarkana                                    | 2,677                      | 7                                    | 1,020     | 221          | 208               | 272                      | 121          | 385                                     | 4,911                            |
| Area 13-El Dorado                                    | 1,602                      | 3                                    | 765       | 139          | 55                | 25                       | 89           | 254                                     | 2,932                            |
| ISC  | 25                         |                                      | 6         | 24           | 75                | 1,695                    |              |   | 1,825                            |
| Statewide Totals by<br>Current Supervision<br>Status | 36,588                     | 178                                  | 12,680    | 2,859        | 2,341             | 3,493                    | 1,417        | 7,655                                   | 67,211                           |

**Offender Count Active Excluding Absconders**

**36,766**

## Explanation for “Current Supervision Status”

### Active Supervision:

Offender is currently on Active/Direct Supervision Status.

### Electronic Monitoring:

Offender is currently on an Electronic Monitor.

### Incarcerated:

Offender is currently incarcerated including the following:

- Parole Holds (in state and out-of-state)
- ACT 570 Holds
- County Jail (including possible new charges—felony or misdemeanors—or serving commitments for traffic fines, court commitments, etc).

### Non Reporting:

Drug Court offender currently in a Community Correction Center for sanction or court commitment, on detainer (federal or ICE hold), out-of-state, in CCC Residential Treatment, nursing home, hospital, or Arkansas State Hospital.

### Out-To-Other-State:

Offender supervised out of Arkansas through Interstate Compact.

### Unsupervised:

Parolee whose earned Good Time has met the requirements for unsupervised parole, probationers who received Unsupervised Sentence (e.g., five-year probation sentence specified as 3 years supervised and an additional 2 years unsupervised probation; or an unsupervised probation sentence which is common for misdemeanor offenses (e.g., 1 year unsupervised probation term).

### Suspended Imposition of Sentence (SIS):

Offender received a suspended term of supervision.

# Regular Parole/Probation Caseloads

## Regular P&P Caseloads/Workloads By Area

11/1/21

| AREA         | Authorized Officers | Filled | Regular P&P Offenders |        |         |         | Total Active Offenders | Caseload Ratio (Authorized Positions) | Caseload Ratio (Filled Positions) | Work Units | Workload (Authorized Positions) | Workload (Filled Positions) | Total Indirect |
|--------------|---------------------|--------|-----------------------|--------|---------|---------|------------------------|---------------------------------------|-----------------------------------|------------|---------------------------------|-----------------------------|----------------|
|              |                     |        | Maximum               | Medium | Minimum | Pending |                        |                                       |                                   |            |                                 |                             |                |
| AREA 01      | 52                  | 48     | 244                   | 1,951  | 2,212   | 187     | 4,594                  | 88                                    | 96                                | 7,136      | 137                             | 149                         | 4,422          |
| AREA 02      | 19                  | 19     | 143                   | 681    | 916     | 28      | 1,768                  | 93                                    | 93                                | 2,751      | 145                             | 145                         | 625            |
| AREA 03      | 38                  | 37     | 189                   | 1,514  | 1,434   | 60      | 3,197                  | 84                                    | 86                                | 5,125      | 135                             | 139                         | 2,019          |
| AREA 04      | 33                  | 33     | 180                   | 1,068  | 1,524   | 68      | 2,840                  | 86                                    | 86                                | 4,303      | 130                             | 130                         | 2,376          |
| AREA 05      | 31                  | 27     | 254                   | 976    | 1,197   | 80      | 2,507                  | 86                                    | 93                                | 4,040      | 139                             | 150                         | 3,528          |
| AREA 06      | 29                  | 27     | 193                   | 1,007  | 1,281   | 95      | 2,576                  | 89                                    | 95                                | 4,022      | 139                             | 149                         | 1,212          |
| AREA 07/08   | 64                  | 52     | 377                   | 2,292  | 2,238   | 193     | 5,100                  | 80                                    | 98                                | 8,266      | 129                             | 159                         | 2,288          |
| AREA 09      | 19                  | 18     | 145                   | 545    | 704     | 30      | 1,424                  | 75                                    | 79                                | 2,277      | 120                             | 126                         | 625            |
| AREA 10      | 33                  | 30     | 220                   | 1,117  | 1,439   | 54      | 2,830                  | 86                                    | 94                                | 4,417      | 134                             | 147                         | 957            |
| AREA 11      | 27                  | 26     | 172                   | 962    | 828     | 44      | 2,006                  | 74                                    | 77                                | 3,341      | 124                             | 129                         | 1,102          |
| AREA 12      | 30                  | 26     | 249                   | 968    | 1,268   | 68      | 2,553                  | 85                                    | 98                                | 4,059      | 135                             | 156                         | 1,694          |
| AREA 13      | 19                  | 17     | 96                    | 695    | 597     | 38      | 1,426                  | 75                                    | 84                                | 2,337      | 123                             | 137                         | 860            |
| Statewide    | 394                 | 360    | 2,462                 | 13,776 | 15,638  | 945     | 32,821                 | 1,002                                 | 1,080                             | 52,075     | 1,590                           | 1,716                       | 21,708         |
| Area Average |                     |        | 205                   | 1,148  | 1,303   | 79      | 2,735                  | 83                                    | 90                                | 4,340      | 133                             | 145                         |                |

<sup>1</sup> Regular P&P Caseloads/Workloads include offenders with Active (Direct), Electronic Monitoring, and Incarcerated supervision statuses. Incarcerated here refers to temporary jail stays.

<sup>2</sup> Offenders on Annual or Indirect Supervision are excluded from caseload/workload counts and ratios.

<sup>3</sup> Specialty Court Offender figures shown here are only those assigned to regular P&P officers. These offenders are not counted in caseload or workload ratios.

<sup>4</sup> Indirect totals here are for offenders in Non-Active supervision statuses or those under Annual Supervision.

This page and the following two pages contain statewide caseload information for ACC. Caseloads are presented separately for regular parole and probation, specialty court, and specialized caseloads. This version is specifically designed for quarterly legislative reporting and differs from the daily caseloads/workloads report.

Beyond the exclusion of workloads calculation, it is important to note that direct supervision in these tables includes regular parole and probation and specialty court (including regular parole and probation offenders carried by specialty court officers) offenders with active (direct), electronic monitoring, or incarceration supervision status, as well as absconders assigned to SRT officers. Offenders on annual supervision are counted as indirect.

# Parole/Probation Caseloads for Specialty Courts

## Specialty Court Caseloads/Workloads By Area

| AREA   | Authorized Officers | Filled | Regular P&P Offenders |        |         |            | Total Regular P&P Offenders | Total Active Specialty Court Offenders | Total Indirect Including Regular & Specialty | Caseload Ratios (Based on Active/Direct offenders) |           |       | Workload   |                                 |                             |
|--|---------------------|--------|-----------------------|--------|---------|------------|-----------------------------|--|--|--|-----------|-------|------------|---------------------------------|-----------------------------|
|  |                     |        | Maximum               | Medium | Minimum | Unassigned |                             |  |  | P&P  | Specialty | Mixed | Work Units | Workload (Authorized Positions) | Workload (Filled Positions) |
|  |                     |        |                       |        |         |            |                             |  |  |  |           |       |            |                                 |                             |
| AREA 01  | 9                   | 7      | 0                     | 1      | 0       | 0          | 1                           | 279                                    | 120  | 0  | 31        | 31    | 483        | 54                              | 69                          |
| AREA 02  | 5                   | 5      | 36                    | 153    | 151     | 2          | 342                         | 26                                     | 117  | 68   | 5         | 74    | 613        | 123                             | 123                         |
| AREA 03  | 6                   | 6      | 5                     | 85     | 106     | 1          | 197                         | 118                                    | 76   | 33   | 20        | 53    | 478        | 80                              | 80                          |
| AREA 04  | 5                   | 5      | 11                    | 77     | 125     | 7          | 220                         | 72                                     | 94   | 44   | 14        | 58    | 433        | 87                              | 87                          |
| AREA 05  | 9                   | 9      | 7                     | 93     | 323     | 8          | 431                         | 291                                    | 324  | 48   | 32        | 80    | 1,008      | 112                             | 112                         |
| AREA 06  | 6                   | 5      | 35                    | 95     | 156     | 9          | 295                         | 90                                     | 268  | 49   | 15        | 64    | 634        | 106                             | 127                         |
| AREA 07/08   | 1                   | 1      | 0                     | 0      | 0       | 0          | 0                           | 29                                     | 6  | 0  | 29        | 29    | 48         | 48                              | 48                          |
| AREA 09  | 2                   | 2      | 13                    | 54     | 81      | 1          | 149                         | 13                                     | 76   | 75   | 7         | 81    | 247        | 123                             | 123                         |
| AREA 10  | 6                   | 6      | 4                     | 18     | 44      | 1          | 67                          | 119                                    | 244  | 11   | 20        | 31    | 288        | 48                              | 48                          |
| AREA 11  | 4                   | 4      | 29                    | 136    | 109     | 8          | 282                         | 24                                     | 259  | 71   | 6         | 77    | 523        | 131                             | 131                         |
| AREA 12  | 3                   | 3      | 14                    | 46     | 53      | 1          | 114                         | 61                                     | 130  | 38   | 20        | 58    | 276        | 92                              | 92                          |
| AREA 13  | 7                   | 6      | 4                     | 23     | 11      | 1          | 39                          | 153                                    | 102  | 6  | 22        | 27    | 302        | 43                              | 50                          |
| Statewide  | 63                  | 59     | 158                   | 781    | 1,159   | 39         | 2,137                       | 1,275                                  | 1,816  | 34   | 20        | 54    | 5,333      | 1,045                           | 1,089                       |
| Area Average   |                     |        | 13                    | 65     | 97      | 3          |                             | 106                                    |  | 37   | 18        | 55    | 643        | 85                              | 90                          |
| 1Specialty Court Caseloads/Workloads include offenders who are assigned to officers in Specialty Court positions who have Active (Direct), Electronic Monitoring, or Incarcerated supervision statuses.<br>2Offenders on Indirect or Annual Supervision are not included in caseload counts or ratios. Annual supervision counts include both regular P&P and Specialty Court offenders assigned to Specialty Court officers.<br>3Offenders in risk-level columns above are regular P&P offenders who are supervised by officers in Specialty Court positions. |                     |        |                       |        |         |            |                             |  |  |  |           |       |            |                                 |                             |

## Specialized Caseloads

| AREA                  | Authorized Officers | Totals    | Ratios   |
|-----------------------|---------------------|-----------|----------|
|                       |                     | Offenders | Caseload |
| INTENSIVE SUPERVISION | 4                   | 99        | 25       |
| INTERSTATE COMPACT    | 0                   | 1,830     | 0        |
| SPECIAL RESPONSE TEAM | 18                  | 4,760     | 262      |
| Statewide             | 22                  | 6,689     | 221      |

# Parole/Probation Caseloads

## Caseloads By Area

11/1/21

| AREA                    | Cases                    | Authorized Officers | Vacant    | Filled     | Total Active  | Total Indirect | Totals:       |
|-------------------------|--------------------------|---------------------|-----------|------------|---------------|----------------|---------------|
| AREA 01                 | AREA CASES               | 62                  | 6         | 56         | 4,924         | 4,580          | 9,504         |
| AREA 02                 |                          | 24                  | 0         | 24         | 2,136         | 743            | 2,879         |
| AREA 03                 |                          | 44                  | 1         | 43         | 3,512         | 2,097          | 5,609         |
| AREA 04                 |                          | 38                  | 0         | 38         | 3,132         | 2,470          | 5,602         |
| AREA 05                 |                          | 40                  | 2         | 38         | 3,229         | 3,852          | 7,081         |
| AREA 06                 |                          | 35                  | 3         | 32         | 2,961         | 1,481          | 4,442         |
| AREA 07/08              |                          | 65                  | 12        | 53         | 5,129         | 2,294          | 7,423         |
| AREA 09                 |                          | 21                  | 1         | 20         | 1,586         | 701            | 2,287         |
| AREA 10                 |                          | 39                  | 3         | 36         | 3,016         | 1,201          | 4,217         |
| AREA 11                 |                          | 31                  | 1         | 30         | 2,312         | 1,361          | 3,673         |
| AREA 12                 |                          | 33                  | 4         | 29         | 2,728         | 1,824          | 4,552         |
| AREA 13                 |                          | 26                  | 3         | 23         | 1,618         | 962            | 2,580         |
| <b>TOTALS</b>           | <b>AREA CASES</b>        | <b>458</b>          | <b>36</b> | <b>420</b> | <b>36,283</b> | <b>23,566</b>  | <b>59,849</b> |
| INSTITUTIONAL PAROLE    | SPECIALIZED CASES        | 28                  | 1         | 27         | 0             | 0              | 0             |
| INTENSIVE SUPERVISION   |                          | 4                   | 0         | 4          | 99            | 0              | 99            |
| INTERSTATE COMPACT      |                          | 0                   | 0         | 0          | 46            | 1,784          | 1,830         |
| RE-ENTRY                |                          | 11                  | 1         | 10         | 0             | 0              | 0             |
| SEX OFFENDER ASSESSMENT |                          | 12                  | 1         | 11         | 0             | 0              | 0             |
| SPECIAL RESPONSE TEAM   |                          | 18                  | 0         | 18         | 24            | 4,736          | 4,760         |
| <b>TOTALS</b>           | <b>SPECIALIZED CASES</b> | <b>73</b>           | <b>3</b>  | <b>70</b>  | <b>169</b>    | <b>6,520</b>   | <b>6,689</b>  |
| <b>Statewide TOTALS</b> |                          | <b>531</b>          | <b>39</b> | <b>490</b> | <b>36,452</b> | <b>30,086</b>  | <b>66,538</b> |

Caseloads are presented in distinct officer groupings:

**Regular:** These are officers carrying normal Probation and Parole caseloads.

**Specialty Court:** These officers supervise offenders in specialty courts. Note that these officers may also carry regular P&P offenders, and these offenders are reflected in the specialty court caseload/workload figures; however, separate caseload/workload ratios are calculated for the regular and specialty court portions of a specialty court officer's caseload, in addition to a combined, or mixed, ratio.

**Specialized:** These officers supervise strategically specialized caseloads consisting of offenders requiring heightened supervision protocols (intensive supervision) and parolees who have absconded supervision (Special Response Team).

**Indirect:** These are offenders for whom their sentence, circumstance, or current status is associated with a reduced supervision obligation for the officers they are assigned to. Generally, these include offenders in non-reporting status, those on suspended sentences (SIS), and interstate compact offenders. Offenders on annual supervision are also included in this group.

# Parole/Probation Risk Levels

## Statewide Risk Levels by Caseload Types as of November 4, 2021

| CURRENT RISK LEVELS | Parole | Probation | Drug Court | Hope Court | Mental Health Court | Veterans Court | Swift Courts | Pre Adjudicated | Pre Trial/ Drug Court | Pre Trial/ Pre-Adjudicated | Pre Trial/ Regular | Pre Trial/ Veterans Court | Suspended | Ext Sex Offender Supv | Totals |
|---------------------|--------|-----------|------------|------------|---------------------|----------------|--------------|-----------------|-----------------------|----------------------------|--------------------|---------------------------|-----------|-----------------------|--------|
| Maximum             | 3,041  | 1,468     | 164        | 4          | 2                   | 2              | 4            |                 |                       | 1                          |                    |                           | 301       |                       | 4,987  |
| Medium              | 9,751  | 11,799    | 902        | 36         | 15                  | 42             | 29           |                 | 14                    | 39                         | 5                  |                           | 1,402     | 3                     | 24,037 |
| Minimum             | 6,319  | 15,876    | 546        | 25         | 8                   | 42             | 35           | 2               | 16                    | 44                         | 5                  | 2                         | 1,383     |                       | 24,303 |
| Annual Reporting    | 2,450  | 1,325     |            |            |                     |                | 13           |                 |                       |                            |                    |                           | 146       |                       | 3,934  |
| Unassigned          | 2,922  | 2,322     | 52         | 4          |                     | 2              | 2            |                 | 16                    | 5                          | 10                 |                           | 4,615     |                       | 9,950  |
| Sum:                | 24,483 | 32,790    | 1,664      | 69         | 25                  | 88             | 83           | 2               | 46                    | 89                         | 20                 | 2                         | 7,847     | 3                     | 67,211 |

### CURRENT RISK LEVELS ASSIGNED EXPLANATION:

- Maximum- last risk level score as “High”
- Medium- last risk level score as “Medium”
- Minimum- last risk level score as “Low”
- Annual- identifies offenders that are supervised Annual Reporting
- Unassigned- no ARORA has been completed or offender is currently supervised as “Unsupervised” where the risk level was changed to unassigned

## Statewide Risk Levels by Caseload Supervision Status as of November 4, 2021

| RISK LEVELS BY CURRENT SUPERVISION STATUS | Maximum | Medium | Minimum | Annual Reporting | Unassigned | Sum:   |
|---|---------|--------|---------|------------------|------------|--------|
| Active (Direct Supv)                      | 2,246   | 14,026 | 16,794  | 3,116            | 406        | 36,588 |
| Electronic Monitoring (Direct)            | 68      | 95     | 13      |                  | 2          | 178    |
| Absconded                                 | 1,569   | 5,736  | 3,491   | 76               | 1,808      | 12,680 |
| Incarcerated                              | 435     | 1,243  | 513     | 15               | 653        | 2,859  |
| Non-Reporting                             | 246     | 720    | 452     | 13               | 910        | 2,341  |
| Out to Other State                        | 117     | 715    | 1,216   | 45               | 1,400      | 3,493  |
| Unsupervised                              | 16      | 134    | 465     | 523              | 279        | 1,417  |
| Suspnd Imposition of Snt (SIS)            | 290     | 1,368  | 1,359   | 146              | 4,492      | 7,655  |
| Sum:                                      | 4,987   | 24,037 | 24,303  | 3,934            | 9,950      | 67,211 |

# Parole/Probation Population

## Probation and Parole Gains and Losses in October 2021

| Gains and Losses                       | Probation  | Parole     | Pre-Trial | Suspended  | Sum:         |
|--|------------|------------|-----------|------------|--------------|
| Intakes                                | 862        | 623        | 31        | 131        | 1,647        |
| Sanction Release from SSP              | 7          | 128        |           |            | 135          |
| <b>Total Gains</b>                     | <b>869</b> | <b>751</b> | <b>31</b> | <b>131</b> | <b>1,782</b> |
|  |            |            |           |            |              |
| Revocations/or New ADC or CCC Sentence | 209        | 377        | 2         | 31         | 619          |
| Sanction Incarceration SSP             | 5          | 119        |           |            | 124          |
| Terminations                           | 509        | 226        | 8         | 121        | 864          |
| <b>Total Losses</b>                    | <b>723</b> | <b>722</b> | <b>10</b> | <b>152</b> | <b>1,607</b> |

## ACC Special Response Team

| October SRT-Task Force Report     |     |
|-----------------------------------|-----|
| <b>Arrests:</b>                   |     |
| <b>Absconders</b>                 | 56  |
| <b>Active Supervision</b>         | 33  |
| <b>Collateral Arrest</b>          | 91  |
| <b>SRT Total:</b>                 | 44  |
|                                   |     |
| <b>Task Force Total:</b>          | 184 |
|                                   |     |
| <b>SRT Plus Task Force Total:</b> | 228 |

| October SRT-Task Force Report |                |
|-------------------------------|----------------|
| <b>Felony charges</b>         | 288            |
| <b>Misdemeanor charges</b>    | 106            |
| <b>Traffic charges</b>        | 52             |
| <b>Narcotics arrests</b>      | 123            |
| <b>Confiscations:</b>         |                |
| <b>Marijuana</b>              | 41,381.4 grams |
| <b>Meth</b>                   | 22,374.4 grams |
| <b>Cocaine</b>                | 789.4 grams    |
| <b>Fentanyl</b>               | 533 grams      |
| <b>Fentanyl pills</b>         | 220 pills      |
| <b>Prescription pills</b>     | 164 pills      |
| <b>Handguns</b>               | 47             |
| <b>Rifles</b>                 | 7              |
| <b>Recovered vehicles</b>     | 2              |
| <b>Drug paraphernalia</b>     | 146 items      |
| <b>Currency seized</b>        | \$381,370      |

# Area 8 Intensive Parole Supervision

| <i>Arrests</i>                                     | July  | August   | September | October | Totals   |
|--|-------|----------|-----------|---------|----------|
| Active Supervision                                 |       |          |           |         |          |
| Parole   | 3     | 1        |           | 2       | 6        |
| Probation  | 3     | 1        | 1         | 3       | 8        |
|  |       |          |           |         |          |
| Absconders   |       |          |           |         |          |
| Parole   |       |          | 3         | 2       | 5        |
| Probation  |       | 1        | 2         | 2       | 5        |
|  |       |          |           |         |          |
| Collateral   |       |          |           |         | 0        |
|  |       |          |           |         |          |
| Total Arrest                                       | 6     | 3        | 6         | 9       | 24       |
|  |       |          |           |         |          |
| <i>Charges</i>                                     |       |          |           |         |          |
| Firearm  |       |          |           | 2       | 2        |
| Narcotics  | 3     | 1        | 5         | 3       | 12       |
| Firearm/Narcotics                                  | 1     | 1        | 1         | 2       | 5        |
| Warrant/Other                                      | 2     | 1        |           | 2       | 5        |
|  |       |          |           |         |          |
| Total Charges Filed                                |       |          |           |         | 24       |
|  |       |          |           |         |          |
| <i>Narcotics (Listed in Grams)</i>                 |       |          |           |         |          |
| Marijuana / g                                      | 544.0 | 76,564.0 | 454.0     | 228.0   | 77,790.0 |
| Meth / g   | 20.5  | 14.2     | 316.0     | 6.0     | 356.7    |
| Cocaine / g  | 20.0  | 21.7     |           | 28.0    | 69.7     |
| Xanax Bars   |       | 309.0    |           |         | 309.0    |
| Fentanyl / g                                       | 85    |          |           | 28      | 113      |
|  |       |          |           |         |          |
| <i>Weapons</i>                                     |       |          |           |         |          |
| Handguns   | 1     | 2        | 1         | 4       | 8        |
| Rifles   |       | 1        | 1         |         | 2        |
| Total Firearms                                     |       |          |           |         | 10       |
|  |       |          |           |         |          |
| Currency   |       | \$80,000 |           | \$5,900 | \$85,900 |
|  |       |          |           |         |          |
| Courtesy/Assisted Home Visits Conducted IPS Agents |       |          |           | 5       | 5        |

# Parole/Probation Community Service

## Community Service

|       |  |          |          | 2020 Totals |         |          |         |         |         |         |         |         |           | October                |                 | 2021 Totals |
|-------|--|----------|----------|-------------|---------|----------|---------|---------|---------|---------|---------|---------|-----------|------------------------|-----------------|-------------|
| Area  | Cities Within Area   | November | December |             | January | February | March   | April   | May     | June    | July    | August  | September | Number of Participants | Number of Hours |             |
| 1     | Bentonville, Fayetteville, Huntsville  | 650.4    | 706.0    | 6,725       | 883.5   | 843.0    | 767.5   | 777.2   | 1,263.8 | 1,321.3 | 1,614.5 | 1,109.8 | 1,183.9   | 181                    | 1,508.0         | 11,272.3    |
| 2     | Harrison, Mountain Home, Salem, Mountain View, Berryville                              | 663.0    | 1,540.0  | 8,671       | 662.0   | 206.0    | 1,208.0 | 582.0   | 662.0   | 498.0   | 291.0   | 600.5   | 326.0     | 13                     | 216.0           | 5,251.5     |
| 3     | Searcy, Newport, Walnut Ridge, Ash Flat, Heber Springs, Batesville, Pocahontas, Lonoke | 1,468.0  | 1,607.0  | 12,965      | 1,060.0 | 529.0    | 1,313.0 | 1,258.0 | 849.0   | 1,200.0 | 897.0   | 965.0   | 941.0     | 65                     | 1,813.0         | 10,825.0    |
| 4     | Jonesboro, Paragould, Osceola  | 144.5    | 285.5    | 2,321       | 340.0   | 340.0    | 191.6   | 95.1    | 87.5    | 198.0   | 140.0   | 274.0   | 307.0     | 42                     | 381.0           | 2,354.2     |
| 5     | Fort Smith, Booneville, Clarksville, Ozark, Mena                                       | 828.0    | 860.5    | 9,472       | 467.0   | 720.5    | 879.0   | 968.0   | 799.5   | 803.0   | 963.5   | 784.0   | 677.0     | 137                    | 797.0           | 7,858.5     |
| 6     | Conway, Russellville, Morrilton, Danville  | 376.7    | 602.4    | 4,759       | 676.2   | 154.0    | 428.0   | 739.8   | 965.8   | 547.2   | 551.0   | 389.6   | 512.4     | 48                     | 671.6           | 5,635.4     |
| 8     | Little Rock, North Little Rock   | 133.0    | 51.0     | 3,929       | 45.0    | 1,145.0  | 2,322.0 | 1,772.0 | 1,367.0 | 1,643.0 | 1,462.0 | 227.0   | 357.0     | 19                     | 119.0           | 10,459.0    |
| 9     | Forrest City, Helena, West Memphis   | 320.0    | 270.5    | 2,291       | 394.6   | 233.0    | 357.0   | 152.0   | 183.0   | 200.5   | 264.2   | 212.2   | 191.0     | 19                     | 274.1           | 2,461.6     |
| 10    | Malvern, Benton, Sheridan, Arkadelphia, Hot Springs, Benton                            | 275.0    | 778.0    | 5,181       | 403.0   | 161.5    | 371.0   | 558.4   | 227.5   | 366.5   | 301.7   | 289.5   | 346.0     | 42                     | 536.0           | 3,561.1     |
| 11    | Pine Bluff, Stuttgart, Monticello, Crossett  | 535.3    | 360.5    | 4,302       | 394.2   | 222.3    | 302.8   | 679.3   | 644.3   | 592.5   | 377.0   | 453.5   | 663.7     | 49                     | 599.5           | 4,929.1     |
| 12    | Texarkana, Ashdown, Hope, Lewisville, Nashville  | 238.3    | 442.0    | 3,365       | 358.0   | 127.4    | 236.4   | 331.8   | 129.0   | 316.8   | 153.6   | 731.0   | 660.5     | 30                     | 359.0           | 3,403.5     |
| 13    | Magnolia, El Dorado, Camden, Fordyce   | 775.5    | 252.5    | 3,849       | 320.5   | 193.0    | 433.8   | 162.5   | 360.5   | 322.0   | 351.5   | 132.0   | 174.9     | 17                     | 306.0           | 2,756.6     |
| TOTAL |  | 6,407.6  | 7,755.9  | 67,828      | 6,004.0 | 4,874.7  | 8,810.1 | 8,076.1 | 7,538.8 | 8,008.7 | 7,367.0 | 6,168.1 | 6,340.4   | 662                    | 7,580.2         | 70,767.8    |

## October 2021 Litter Crew Report

| Area   | Cities Within Area   | Number of Participants | Number of Hours |
|--------|--|------------------------|-----------------|
| Area 2 | Harrison, Mountain Home, Salem, Mountain View, Berryville                              | 5                      | 151.3           |
| Area 3 | Searcy, Newport, Walnut Ridge, Ash Flat, Heber Springs, Batesville, Pocahontas, Lonoke | 10                     | 106.0           |
| Area 5 | Fort Smith, Booneville, Clarksville, Ozark, Mena                                       | 12                     | 62.0            |
| Area 9 | Forrest City, Helena, West Memphis   | 1                      | 10.0            |
| TOTAL  |  | 28                     | 329.3           |

## County Work Project Report October 2021

| Area  | County | Number of PROBATIONERS and PAROLEES | Number of HOURS |
|-------|--------|-------------------------------------|-----------------|
| 1     | Benton | 3                                   | 70.00           |
| TOTAL |        | 3                                   | 70.00           |

# Parole/Probation Revocations

## Revocation Events By Supervision Types and Area October 2021

| Area                       | Supervision Type | Revoked (Sent to ADC) | Revoked (Sent to CCC) | Revoked (Other) | New ADC/ CCC Sentence |
|----------------------------|------------------|-----------------------|-----------------------|-----------------|-----------------------|
| Area 1-Fayetteville        | Probation        | 8                     | 1                     | 11              | 3                     |
| Area 2-Mountain Home       |                  | 9                     |                       |                 |                       |
| Area 3-Searcy              |                  | 12                    | 3                     | 5               | 2                     |
| Area 4-Jonesboro           |                  | 10                    | 2                     | 2               | 7                     |
| Area 5-Fort Smith          |                  | 3                     | 4                     | 1               | 7                     |
| Area 6-Conway              |                  | 13                    | 5                     |                 | 3                     |
| Area 8-Little Rock         |                  | 3                     |                       | 37              |                       |
| Area 9-West Memphis        |                  | 1                     | 1                     | 3               | 1                     |
| Area 10-Hot Springs        |                  | 6                     | 2                     | 9               | 1                     |
| Area 11-Pine Bluff         |                  | 5                     | 5                     | 3               |                       |
| Area 12-Texarkana          |                  | 8                     | 1                     | 1               | 1                     |
| Area 13-El Dorado          |                  | 4                     | 1                     | 4               | 1                     |
| Total by Supervision Type  | Probation        | 82                    | 25                    | 76              | 26                    |
| Area 1-Fayetteville        | Parole           | 35                    |                       | 3               |                       |
| Area 2-Mountain Home       |                  | 13                    |                       |                 |                       |
| Area 3-Searcy              |                  | 29                    |                       |                 |                       |
| Area 4-Jonesboro           |                  | 29                    |                       |                 |                       |
| Area 5-Fort Smith          |                  | 38                    | 1                     |                 | 4                     |
| Area 6-Conway              |                  | 17                    |                       |                 | 5                     |
| Area 8-Little Rock         |                  | 73                    |                       |                 | 10                    |
| Area 9-West Memphis        |                  | 9                     |                       |                 |                       |
| Area 10-Hot Springs        |                  | 31                    |                       |                 | 4                     |
| Area 11-Pine Bluff         |                  | 23                    |                       |                 | 3                     |
| Area 12-Texarkana          |                  | 19                    |                       |                 | 10                    |
| Area 13-El Dorado          |                  | 21                    |                       |                 |                       |
| Total by Supervision Type  | Parole           | 337                   | 1                     | 3               | 36                    |
| Area 3-Searcy              | Pre-Trial        | 1                     |                       |                 |                       |
| Area 13-El Dorado          |                  |                       |                       | 1               |                       |
| Total by Supervision Type  | Pre-Trial        | 1                     |                       | 1               |                       |
| Area 1-Fayetteville        | Suspended        |                       |                       |                 | 5                     |
| Area 4-Jonesboro           |                  |                       |                       |                 | 4                     |
| Area 5-Fort Smith          |                  |                       |                       |                 | 3                     |
| Area 6-Conway              |                  | 3                     |                       |                 | 2                     |
| Area 8-Little Rock         |                  |                       |                       | 1               |                       |
| Area 9-West Memphis        |                  |                       |                       |                 | 1                     |
| Area 10-Hot Springs        |                  |                       |                       |                 | 3                     |
| Area 11-Pine Bluff         |                  | 1                     |                       |                 |                       |
| Area 12-Texarkana          |                  | 3                     |                       |                 | 1                     |
| Area 13-El Dorado          |                  | 1                     |                       | 1               | 2                     |
| Total by Supervision Type  | Suspended        | 8                     |                       | 2               | 21                    |
| TOTAL BY SUPERVISION EVENT |                  | 428                   | 26                    | 82              | 83                    |

# Revocation Hearings

## Parole Revocation Hearings and Outcomes October 2021

| Hearing Outcome                        | Laws and Technical | Laws Only | Technical Only | Total By Hearing Outcome |
|--|--------------------|-----------|----------------|--------------------------|
| <b>Deferred</b>                        | 6                  |           |                | <b>6</b>                 |
| <b>Reinstate</b>                       | 5                  | 3         | 1              | <b>9</b>                 |
| <b>Revoked</b>                         | 40                 | 64        | 2              | <b>106</b>               |
| <b>Revoke Supervision Sanction Pgm</b> |                    | 1         |                | <b>1</b>                 |
| <b>Waived</b>                          | 258                | 19        | 8              | <b>285</b>               |
| <b>Total By Violation Type</b>         | <b>309</b>         | <b>87</b> | <b>11</b>      | <b>407</b>               |

Note: Excludes SSP Sanction Hearings

| ACT 1029 HEARINGS HELD           | Total     |
|----------------------------------|-----------|
| Deferred                         | 1         |
| Reinstate                        | 1         |
| Revoked                          | 18        |
| Waived                           | 20        |
| <b>Total # ACT 1029 Hearings</b> | <b>40</b> |

Note: Included in totals for Hearing Outcomes

# Supervision Sanctions

## Supervision Sanction Hearings and Waivers

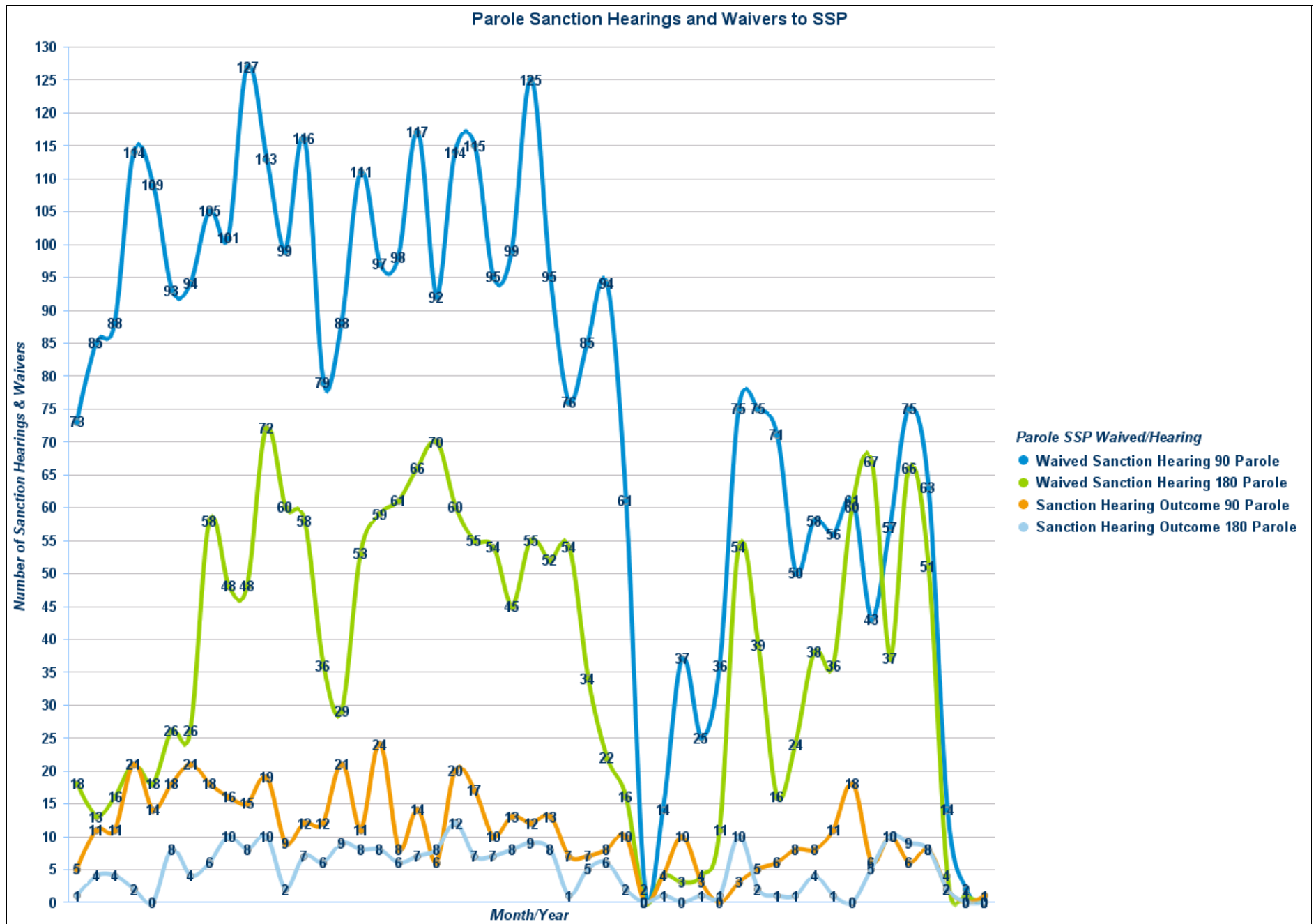
10/1/2017- 10/31/21

| Sanction Hearing Outcome               | Sanction Hearing Type   | Parole     | Probation | Sum:       |
|--|-------------------------|------------|-----------|------------|
| Sanction Hearing Outcome 90 Parole     | Sanction Hearing        | 512        |           | <b>512</b> |
| Sanction Hearing Outcome 90 Probation  |                         | 1          | 18        | <b>19</b>  |
| Sanction Hearing Outcome 180 Parole    |                         | 239        |           | <b>239</b> |
| Sanction Hearing Outcome 180 Probation |                         |            | 11        | <b>11</b>  |
| Sanction Hearing Outcome 60 Parole     |                         | 16         |           | <b>16</b>  |
| Sanction Hearing Outcome 120 Parole    |                         | 16         |           | <b>16</b>  |
| <b>Totals:</b>                         | <b>Sanction Hearing</b> | <b>784</b> | <b>29</b> | <b>813</b> |

|                                       |                                |              |            |              |
|---------------------------------------|--------------------------------|--------------|------------|--------------|
| Waived Sanction Hearing 90 Parole     | Waived Sanction Hearing        | 3,771        | 1          | <b>3,772</b> |
| Waived Sanction Hearing 90 Probation  |                                |              | 341        | <b>341</b>   |
| Waived Sanction Hearing 180 Parole    |                                | 1,818        |            | <b>1,818</b> |
| Waived Sanction Hearing 180 Probation |                                |              | 66         | <b>66</b>    |
| Waived Sanction Hearing 120 Parole    |                                | 169          |            | <b>169</b>   |
| Waived Sanction Hearing 60 Parole     |                                | 141          |            | <b>141</b>   |
| <b>Totals:</b>                        | <b>Waived Sanction Hearing</b> | <b>5,899</b> | <b>408</b> | <b>6,307</b> |

|  |                        |              |            |              |
|--|------------------------|--------------|------------|--------------|
|  | <b>Overall Totals:</b> | <b>6,683</b> | <b>437</b> | <b>7,120</b> |
|--|------------------------|--------------|------------|--------------|

# Parole Sanction Hearings and Waivers to SSP



# Parole/Probation Drug Testing

## Regular Probation and Parole Positive Tests during October

Offender Urine Tests this Period: 7,145  
Number of Offenders Testing Positive: 2,771

| Drug Tested          | Count |
|----------------------|-------|
| Methamphetamines     | 1,782 |
| THC/Marijuana        | 1,609 |
| Amphetamines         | 1,083 |
| Benzodiazepines      | 177   |
| Cocaine              | 173   |
| Heroin/Opiates       | 94    |
| Alcohol              | 76    |
| Ecstasy              | 50    |
| Oxycodone            | 47    |
| Ethyl Glucuronide    | 38    |
| Buprenorphine        | 36    |
| Morphine             | 29    |
| Fentanyl             | 20    |
| Tramadol             | 14    |
| Barbiturates         | 11    |
| Methadone            | 11    |
| Hydrocodone          | 9     |
| Propoxyphene         | 6     |
| K2 (SPICE)           | 3     |
| Methadone Metabolite | 3     |
| Other Hallucinogens  | 3     |
| PCP                  | 3     |
| Cotinine             | 2     |
| Creatinine           | 2     |
| Methaqualone         | 2     |
| Speed                | 2     |
| Crack                | 1     |
| LSD                  | 1     |
| Prescription Abuse   | 1     |
| Total                | 5,288 |

## Drug Courts

### Positive Tests during October

Offender Urine Tests this Period: 7,156  
Number of Offenders Testing Positive: 236

| Drug Tested          | Count |
|----------------------|-------|
| Methamphetamines     | 217   |
| THC/Marijuana        | 205   |
| Buprenorphine        | 181   |
| Amphetamines         | 178   |
| Benzodiazepines      | 48    |
| Morphine             | 40    |
| Ethyl Glucuronide    | 29    |
| Fentanyl             | 25    |
| Oxycodone            | 23    |
| Methadone            | 21    |
| Tramadol             | 19    |
| Ecstasy              | 15    |
| Cocaine              | 11    |
| Alcohol              | 8     |
| Heroin/Opiates       | 8     |
| Creatinine           | 4     |
| Barbiturates         | 1     |
| Methadone Metabolite | 1     |
| Total                | 1,034 |

## Specialty Courts

### Positive Tests during October

Offender Urine Tests this Period: 289  
Number of Offenders Testing Positive: 19

| Drug Tested       | Count |
|-------------------|-------|
| THC/Marijuana     | 11    |
| Methamphetamines  | 10    |
| Amphetamines      | 7     |
| Alcohol           | 1     |
| Benzodiazepines   | 1     |
| Buprenorphine     | 1     |
| Cocaine           | 1     |
| Ethyl Glucuronide | 1     |
| Total             | 33    |