



DIVISION OF
CORRECTION

BOARD REPORT

August 2021



@ARDeptofCorrections



@adcpio



@arcorrections



Dexter Payne,
Director

POPULATION REPORT

RESEARCH/PLANNING

July 2021 Admissions and Releases – Admissions for July 2021 totaled **255** (183-males and 72-females) while releases totaled **421** (350-males and 71 females) for a net decrease in-house of **166** inmates.

Inmate Population Growth/Projection – At the end of July 2021, the jurisdictional population for the Division of Correction totaled **16,638**, representing an increase of **544** inmates since the first of January 2021. At reporting time, calendar year 2021 has seen an average increase of **78** inmates per month, which is up from an average monthly decrease of **139** inmates per month during calendar year 2020.

Average County Jail Back-up – The backup in the county jails averaged **1,170** inmates per day during the month of July 2021, which was up from the per-day average of **1,122** inmates during the month of June 2021. Of the **1,170** average, short-term revocations accounted for **834** (737 males and 98 females) during the month.

INSTITUTIONS

INMATE INSTITUTIONAL GRIEVANCES

Inmate Formal/Informal Grievances: During July 2021, a total of 1,452 formal grievances and 2,198 informal grievances were filed at various units.

Institutional Grievances Appeals: There was a total of 630 appeals of institutional grievances received in July 2021. Of those, 474 were acknowledged and 156 were rejected for various reasons. Of the total 348 appeals answered, 347 had no merit and one was found with merit.

FARM

During the month of July, row crop operations began irrigating after receiving record rains the previous month. The crop that went underwater from the flooding rains in June is recovering and looking better.

Hay production went into high gear during the month, with almost 4,000 bales of hay produced.

Egg production started rising during the month when the newest flock began producing.

Most gardens had ceased production by the time the summer heatwave moved into the state. The corn harvest

was good, and peas are currently being harvested at the Cummins Unit with a combine.

A total of 82 head of heifers that did not meet our guidelines for replacements, were sold through Superior Livestock Auctions during the month. The heifers topped the sale at \$1.57/pound and went to Iowa.

The process of purchasing additional dairy cows is underway. They're anticipated to arrive this month.

REGIONAL MAINTENANCE HOURS

Regional Maintenance Hours	July 2021
Benton Unit	7,732
Delta Regional Unit	3,312
East Arkansas Regional Unit	4,210
Grimes Unit	1,964
McPherson Unit	1,900
Mississippi County Work Release	608
North Central Unit	6,928
Ouachita River Correctional Unit	2,408
Randall L. Williams Unit	2,864
Texarkana Regional Correctional Center	239
Tucker Unit	736
Varner Unit	2,491
Wrightsville Unit	2,016
Total Hours	37,408.0

WORK RELEASE RENT REPORT

Unit	July 2021
Benton Unit	\$83,730.00
Mississippi County Work Release	\$43,469.00
Northwest Arkansas Work Release	\$31,348.00
Pine Bluff Work Release	\$27,013.00
Texarkana Regional Correctional Center	\$37,298.00
Wrightsville Hawkins Unit	\$15,453.00
Total	\$238,311.00

REENTRY**RANDALL L. WILLIAMS**
JUVENILE EDUCATION PROGRAM

July 2021 Capacity: 20	Beginning Count	New Commitments	DCR/Punitive	Transferred/ Turned 18*	Paroled	End Count
Juveniles*	3	2	0	1	0	4

*Juveniles are transferred from the program once they reach the age of 18.

WORKFORCE ALLIANCE FOR
GROWTH IN THE ECONOMY (WAGE)

July 2021 Capacity: 120 Unit:	Beginning Count	Admissions During Mo.	Removed*	Completed	End Count
Delta	0	0	0	0	0
Hawkins	0	0	0	0	0
McPherson	0	0	0	0	0
Ouachita River	20	0	0	0	20
Tucker	0	0	0	0	0
TOTAL	20	0	0	0	20

*The "Removed" column indicates the number of participants who transferred, signed out, received a disciplinary, were removed because test scores were not returned/were too low to continue, or were released from prison.

ADVANCED PRINCIPLES
AND APPLICATIONS FOR
LIFE PROGRAM (APAL)

July 2021 Capacity: 86	Beginning Count	Admissions During Mo.	Removed*	End Count
Ester	18	37	1	54
Hawkins	43	2	9	36
TOTAL	61	39	10	90

Advanced PAL is an 18-month reentry program that combines a pre-release curriculum with the PAL program.

*The "Removed" column indicates the number of participants who paroled, completed the program, withdrew from the program, transferred, or were removed from the program for another reason.

WRIGHTSVILLE-HAWKINS
PATHWAY TO FREEDOM PROGRAM

July 2021 Capacity: 200	Beginning Count	Enrolled During the Month	Removed	End Count*
Wrightsville-Hawkins PTF	187	19	9	197

*The "End Count" column includes 20 graduates who remain in the Pathway to Freedom barracks.

THINK LEGACY

July 2021 Capacity: 635 Unit	Beginning Count	Admitted	Graduated	Removed**	End Count	Graduated But Remain *
Cummins	40	0	1	14	25	0
Delta Regional	18	0	0	4	24	11
East Arkansas Regional	0	0	0	0	0	0
McPherson	61	8	4	35	31	1
North Central	0	0	0	0	0	0
Ouachita River	25	0	2	1	22	0
Tucker	0	0	0	0	0	0
Total	144	8	7	54	102	12

*The "Graduated But Remain" column indicates the number of participants who have successfully completed the program but remain in the barracks. *These numbers are included in the End Count.*

**The "Removed" column indicates the total number of participants who paroled, signed out, transferred, or were removed from the program for any other reason and are no longer in the barracks.

ADMINISTRATIVE SERVICES**DIVISION OF CORRECTION**
TRAINING - JULY 2021**BASIC TRAINING DIVISION –**

Instructor David Farrier's **BCOT Class 2021-G** graduated on July 2, 2021, with a total of 27 cadets.

Academic Awards were presented to the following:

- 1st – Brady Smith, Grimes Unit
- 2nd – Tovita Walton, Wrightsville Unit
- 3rd – Keoshiana Taylor, Ouachita River Correctional Unit

Recipients of *Physical Fitness Awards* were:

- 1st – Brady Smith, Grimes Unit
- 2nd – Jacqueline Matthews, McPherson Unit
- 3rd – Melvin Miller, Ester Unit

ADC TRAINING, continued

Under the direction of Instructor Adam Ryan, **BCOT Class 2021-H** graduated on July 24 with a total of 11 cadets.

The *Willis H. Sargent Award* recipient was Sean Lane of the Ouachita River Correctional Unit.

Academic Awards were presented to the following:

- 1st – Vernon Short, North Central Unit
- 2nd – James Ikerd, Delta Regional Unit
- 3rd – Jason Croop, Wrightsville Unit

Recipients of *Physical Fitness Awards* were:

- 1st – Christopher Parent, Varner Unit
- 2nd – Joshua Brunson, Varner Unit
- 3rd – Kristopher Johnson, Varner Unit

IN-SERVICE DIVISION –

During the month, the Training Academy held a *Defensive Driving* class attended by six participants, two *OMIS Training Basic* classes attended by 39 total participants, two *eOMIS Incident Report* classes attended by 39 total participants, a *Taser Training* class with 23 participants, two *Field Training Officer* classes attended by a total of 11 participants, and an *Oleoresin Capsicum End User Certification/Recertification* course with two participants. The Training Academy also offered two classes in live and virtual formats: *Where's My Coffee* and *Skills to Pay the Bills*, each with six participants.

eCADEMY –

During July, 318 ADC employees completed a total of 4,395 hours of eCADEMY training. About 7% of ADC employees completed at least one course during that timeframe, averaging 1.00 hours per staff member.

HEALTH/CORRECTIONAL PROGRAMS

CHAPLAINCY SERVICES

All Facilities – The Chaplaincy Division honored the ADC Wardens at the annual Warden's Prayer Breakfast on July 14, at Cabot's First Baptist Church.

The Eid-al-Adha feast was celebrated at all units during the week of July 19–24. More than 700 inmates in the Islamic community commemorated the ending of Ramadan and their month of fasting.

Delta Unit – Using institutional television, a new DVD study, "Malachi Dads," began on July 24, with 39 inmates enrolled.

ACCREDITATION

ACA Internal Audits Completed:

07/06–07/15 Varner Unit Audit Prep

Classes Taught:

07/09 Basic Correctional Officer Training

Fire/Safety and Sanitation Independent Audits Conducted by the Fire and Sanitation Coordinator:

07/19–07/29 Pine Bluff Complex Walk-Through Inspection

VOLUNTEER SERVICES

Total Number of Volunteer Hours for July 2021:

Unit/Program	Hours
Delta Unit	0
East Arkansas Regional Unit	0
McPherson Unit	0
Mississippi County Work Release Center	0
Northwest Arkansas Work Release Center	3
Ouachita River Correctional Unit	0
Pine Bluff Complex	0
Texarkana Regional Correctional Center	0
Varner	0
PAWS	12
Think Legacy	0
Religious Services/Chaplaincy	1,399
Total Hours	1,414

MENTAL HEALTH SERVICES

Reduction of Sexual Victimization Program (RSVP) and Sex Offender Treatment Programs (SOFT):

July 2021	Capacity	Beginning Count	Completed	Removed	Admissions	End Count
RSVP	238	200	11	6	1	184
SOFT	30	4	0	1	5	8
Total	268	204	11	7	6	192

There are 1,115 males on the waiting list for RSVP and seven females on the waiting list for SOFT who are within five years of their TE date. Of those, 16 inmates are mandated by the Parole Board.

The average time on the waiting list from request is between one and two months for those stipulated.

*The total on the waiting list, including those not currently within the identified timeframe, is 1,447 males and eight females. Of these, 1,119 are eligible and 336 are ineligible for the program. There is one PREA inmate in the program at this time.

*Ineligibility is due to being in restrictive housing, having class IV status, or receiving a major disciplinary within the last 60 days.

MENTAL HEALTH SERVICES, *continued***Therapeutic Community (TC):**

July 2021 Unit	Capacity	Beginning Count	Completed	Removed	Admissions	End Count
McPherson	50	50	0	1	0	49
Tucker	68	74	0	1	0	73
Wrightsville	50	40	2	2	0	36
Total	168	164	2	4	0	158

There are 587 males and 210 females on the waiting list who are within ten years of their release date. Of those, 23 are mandated by the Parole Board.

The average time on the waiting list from request is 13 days.

*The total on the waiting list, including those not currently within the identified timeframe, is 783 males and 221 females. Of these, 820 are eligible and 184 are ineligible for the program.

*Ineligibility is due to being in restrictive housing, having class IV status, or receiving a major disciplinary within the last 60 days.

Substance Abuse Treatment Program (SATP):

July 2021 Unit	Capacity	Beginning Count	Completed	Removed	Admissions	End Count
Benton	20	20	6	1	5	18
Cummins	45	44	0	8	3	39
Grimes	50	51	0	3	5	53
Maximum Security	4	4	0	0	0	4
McPherson	100	96	20	4	14	86
Randall L. Williams	150	139	0	23	13	129
Wrightsville	100	114	24	6	0	84
Total	469	468	50	45	40	413

There are 2,213 males and 185 females on the waiting list who are within five years of their release date. Of those, 41 are mandated by the Parole Board.

The average time on the waiting list from request is 34 days.

*The total on the waiting list, including those not currently within the identified timeframe, is 2,856 males and 213 females. Of these, 2,439 are eligible and 630 are ineligible for the program.

*Ineligibility is due to being in restrictive housing, having class IV status, or receiving a major disciplinary within the last 60 days.

Substance Use Intervention Program: The Substance Use Intervention Program had five admissions and four discharges for an end-of-month count of 44 for July. This program is housed at the Varner Unit and is for inmates found guilty of a disciplinary violation for drug use or drug possession.

Ouachita River Correctional Unit (ORCU) Residential Program Unit (RPU): The RPU had three admissions and four discharges in July for an end-of-month count of 120.

McPherson Unit Mental Health Residential Program Unit (RPU): There were six admissions and five discharges in July for an end-of-month count of 40.

Habilitation Program: The Habilitation Program at the Ouachita River Correctional Unit provided treatment services to 46 inmates during July. There were two admissions and one discharge, resulting in an end-of-month count of 45.

Anger Management Treatment: The Anger Management Treatment Program at the Cummins Unit did not provide treatment services to any inmates during July. There were no admissions or discharges, for an end-of-month count of zero.

Staffing: The following Mental Health Services and Substance Abuse Treatment Program (SATP) positions were vacant in June and July 2021:

Positions	FTE's*	June 2021	July 2021
Psychologists	14	5	6
Social Workers	31	13	13
Licensed Professional Counselors	2	1	1
Rehab Program Managers	9	0	1
Advisors	64	19	22
Substance Abuse Program Leaders	40	8	5
Administrative Specialists	17	6	5

*FTE refers to authorized Full Time Equivalent positions.

ADDITIONAL MENTAL HEALTH AND MEDICAL INFORMATION**Self-Study Classes:**

Classes	Number of Participants	Number Completed	Waiting List
Anger Management	151	149	1,031
Thinking Errors	197	170	994
Substance Abuse Education	129	111	696
Communication Skills	179	150	948
Domestic Violence	18	18	196
Victims of Domestic Violence	16	10	79
Stress Management	354	324	847
Parenting	86	82	426

Suicide: There were 128 suicidal threats during July. There were 21 attempts resulting in one death.

Outpatient: There were 2,186 inmates on the mental health medical log at the beginning of July. Mental Health staff conducted the following contacts during the month:

Case Management Contacts	2,142
Requests for Interviews	1,158
Testing	1
Intakes	281
Unit Requests	1,340
Pre-Lockup Reviews	525
Routine Restrictive Housing Reviews	1,105
Restrictive Housing Rounds	18,485
PREA Evaluations	96
Routine Follow-up	4,584
834 Requests	39

County Mental Health Requests: During July, there were 112 requests received of a mental health nature. Of those, 96 inmates were fast-tracked to ADC. *Note: Most inmates were not transferred due to COVID-19.*

County Medical Health Requests: During July, there were 383 requests received of a medical nature. A total of two inmates were fast-tracked to ADC.

Medical Contract Reimbursements: Sanction reimbursements for June amounted to \$14,100.00.

Deaths: There were seven inmate deaths during the month of July. Three were claimed and four were cremated.

Wellpath: See attachment for Wellpath's report regarding outside beds and emergency room visits.

Medical Grievances: In July, there were 109 appeals of medical grievances received and 127 appeals were answered. Eleven were found to be with merit and one with merit but resolved.

SEX OFFENDER ASSESSMENT

Assessments Completed:

Risk Level	July	September 1999 through July 2021
Level 1	0	1,211
Level 2	48	8,428
Level 3	18	7,340
Level 4	0	713
Default 3	2	*
Total	68	17,692
*Default Level 3's are included in the total number of Level 3's to date.		

ACIC Numbers:

The total number of sex offenders registered from September 1999 through July 2021:

Compliant	8,555
Delinquent	1,349
Confined	3,354
Out-of-State	3,891
Address Unknown	144
Deported	208
Incapacitated	96
Out of USA	14
Total	17,611

Consistent with current Arkansas law, deceased offenders no longer remain on the registry.

PAWS IN PRISON

July 2021 Unit	Enrolled	Graduated	Foster	Volunteer Hours
Hawkins Unit	5	3	0	0
Maximum Security Unit	10	7	0	2
McPherson Unit	8	0	0	0
North Central Unit	4	2	0	0
Ouachita River Correctional Unit	6	1	1	0
Randall L. Williams Unit	4	1	0	8
Tucker Unit	6	5	0	2
Total	43	19	1	12

Completed Paws in Prison Training:

July 2021 Program Graduates	19
YTD 2021 Program Graduates	104
Total Graduates Since Inception (December 2011)	1,767
Dogs Currently in Foster (Graduated, but Not Adopted)	1
July 2021 Volunteer Hours	12
YTD Volunteer Hours	22

INFORMATION TECHNOLOGY

INMATE TABLETS – Within the Division of Correction, a total of 2,376 inmate tablets were leased during July.

INMATE VIDEO VISITS – Inmates completed 17,183 video visits during the month and missed 550 within the Division of Correction.

CONSTRUCTION/MAINTENANCE

PROJECT UPDATES

SEE CONSTRUCTION BUDGET / STATUS REPORT
IN ATTACHMENTS SECTION (PAGES 22-23).

AGENCY HIGHLIGHTS

JULY 2021:



2020 Pinnacle Awards Ceremony Held

After a delay of several months prompted by restrictions on gatherings due to COVID-19, the Division of Correction held its annual Pinnacle Awards ceremony on July 9. Held at the Pleasant Valley Country Club in Little Rock, 14 staff members were recognized for receiving the highest awards given by the ADC. Arkansas State Police Colonel William "Bill" Bryant served as the guest speaker for the event. Those receiving 2020 awards were:

- **Board of Corrections Meritorious Service Award** – *Dr. Charles Allen*, Chief Administrative Officer-Arkansas Corrections School System
- **Employee of the Year** – *Roxie Brockman*, Fiscal Support Specialist-Administrative Annex East and *Derrick Bailey*, Human Resources Specialist-East Arkansas Regional Unit
- **Correctional Officer of the Year** – *Sergeant John Colbert*, North Central Unit and *Corporal Heather Forsman*, McPherson Unit
- **Supervisor/Administrator of the Year** – *Ronald Martin*, Project Supervisor-Construction
- **Correctional Supervisor of the Year** – *Lieutenant Hector Cendejas*-Varner Unit and *Captain Brandon Davis*-Maximum Security Unit
- **Deputy Warden of the Year** – *Todd Ball*-Ouachita River Correctional Unit
- **Warden/Superintendent of the Year** – *Superintendent Aundrea Culclager*-Cummins Unit

- **Director's Citation of Excellence Award** – *Deputy Director William Straughn*-Central Office
- **Director's Outstanding Service Award** – *Debra Glover*, Industry Program Manager-Arkansas Correctional Industries/Cummins Unit and *Wellpath Staff*
- **Hero Award** – *Corporal Roy Starks*-Barbara Ester Unit

Weeklong Career Fair Held in Pine Bluff

During the month, the Arkansas Workforce Center and the Division of Correction partnered in hosting a weeklong career fair for the local facilities in Pine Bluff.



Wrightsville Unit Hosts Food Truck

On July 8, the Wrightsville Unit hosted the Down Home Blues BBQ food truck that was enjoyed by current and prospective employees who were on hand for a career fair.



Annual Warden's Prayer Breakfast Held in Cabot

On July 14, wardens from the Division of Correction gathered to take part in the annual prayer breakfast



breakfast hosted by the Chaplaincy Division. The event was held at the First Baptist Church of Cabot.

Tucker Unit Staff Recipients of Appreciation Lunch



During the month, Arkansas Association of Correctional Employees Trust (AACET) provided an appreciation lunch from Dorey's Catering to the dedicated staff at the Tucker Unit.

REGIONAL MAINTENANCE PROJECT HIGHLIGHTS JULY 2021

Harvesting 125 Bags of Corn at Cummins Unit
Varner Regional Maintenance 1 and 2 – July 9:



Overgrowth Removal at Star City Softball Field
Varner Regional Maintenance – July 13:



Clean Up on Star City School District Property
Varner Regional Maintenance – July 15:



Trash Clean Up on Alabama Rd. (Lincoln Co.)
Varner Regional Maintenance 1 and 2 – July 20:



Street Curb Clean Up – Gould, AR
Varner Regional Maintenance 1 and 2 – July 26:



Curb and Ditch Clean Up – Gould, AR
Varner Regional Maintenance 1 – July 29:



2021 INFORMAL GRIEVANCE REPORT

Month	BENTON	HAWK/M	HAWK/F	WRTS	EARU & MX	GRIMES	RLW	MCWR	MCPH	MSU	NCU	PBU	NWA	TU	TRCC	VSMX	VU	CU & CMU	ORCU	Ester	DRU	TOTAL
JAN	1	30	1	56	269	243	41	0	301	147	106	43	0	62	0	152	26	124	174	41	99	1,916
FEB	1	15	22	78	185	177	25	0	465	149	67	26	0	91	3	163	37	363	112	27	63	2,069
MAR	1	15	22	87	279	207	11	0	376	149	66	38	0	120	4	188	29	196	164	52	96	2,100
APR	3	15	24	70	297	173	18	0	210	108	142	38	0	86	5	362	77	178	163	16	128	2,113
MAY	2	15	14	37	254	188	19	0	320	103	104	22	0	49	4	220	46	254	128	12	158	1,949
JUN	1	30	29	37	253	259	29	0	461	123	133	46	0	53	4	452	133	241	166	32	148	2,630
JUL	2	31	42	227	245	187	23	1	138	128	91	32	0	59	3	373	109	166	166	41	134	2,198
AUG	0	0	0	0	0	0	0	0	0	0	0	0	0	0	0	0	0	0	0	0	0	0
SEPT	0	0	0	0	0	0	0	0	0	0	0	0	0	0	0	0	0	0	0	0	0	0
OCT	0	0	0	0	0	0	0	0	0	0	0	0	0	0	0	0	0	0	0	0	0	0
NOV	0	0	0	0	0	0	0	0	0	0	0	0	0	0	0	0	0	0	0	0	0	0
DEC	0	0	0	0	0	0	0	0	0	0	0	0	0	0	0	0	0	0	0	0	0	0
TOTAL	11	151	154	592	1,782	1,434	166	1	2,271	907	709	245	0	520	23	1,910	457	1,522	1,073	221	826	14,975

2021 FORMAL GRIEVANCE REPORT

Month	BENTON	HAWK/M	HAWK/F	WRTS	EARU & MX	GRIMES	RLW	MCWR	MCPH	MSU	NCU	PBU	NWA	TU	TRCC	VSMX	VU	CU & CMU	ORCU	Ester	DRU	TOTAL
JAN	1	15	1	30	293	176	17	0	173	197	71	24	0	55	2	152	26	150	125	22	44	1,574
FEB	2	7	8	40	272	115	21	0	158	186	51	8	0	79	0	163	37	126	89	16	35	1,413
MAR	3	7	8	53	375	98	7	0	188	264	47	8	0	92	0	188	29	149	147	27	96	1,786
APR	2	1	3	46	374	82	11	0	125	128	97	13	0	46	1	227	53	132	92	10	62	1,505
MAY	1	7	1	29	305	109	15	1	154	95	80	10	0	62	1	206	36	206	98	7	58	1,481
JUN	0	7	9	43	345	134	17	0	154	145	82	22	0	47	0	251	63	227	112	19	87	1,764
JUL	2	18	16	62	336	108	11	1	91	136	61	14	0	45	0	183	40	169	69	15	75	1,452
AUG	0	0	0	0	0	0	0	0	0	0	0	0	0	0	0	0	0	0	0	0	0	0
SEPT	0	0	0	0	0	0	0	0	0	0	0	0	0	0	0	0	0	0	0	0	0	0
OCT	0	0	0	0	0	0	0	0	0	0	0	0	0	0	0	0	0	0	0	0	0	0
NOV	0	0	0	0	0	0	0	0	0	0	0	0	0	0	0	0	0	0	0	0	0	0
DEC	0	0	0	0	0	0	0	0	0	0	0	0	0	0	0	0	0	0	0	0	0	0
TOTAL	11	62	46	303	2,300	822	99	2	1,043	1,151	489	99	0	426	4	1,370	284	1,159	732	116	457	10,975

INMATE INSTITUTIONAL GRIEVANCE APPEAL REPORT – JULY 2021

	Acknowledged	Rejected	Processed W/O Merit	Processed W/ Merit
Benton Unit	0	1	0	0
Benton Work Release	0	0	0	0
Bowie County Texas Correctional Facility	0	0	0	0
Cummins Unit	66	12	32	0
Cummins Modular Unit	7	0	0	0
Delta Regional Unit	24	6	4	0
East Arkansas Regional Unit	42	8	14	0
East Arkansas Regional Max Unit	91	18	59	0
Ester Unit	4	3	7	0
Grimes Unit	20	18	18	0
Maximum Security Unit	35	13	33	1
Tucker Re-Entry	0	0	0	0
McPherson Unit	24	10	22	0
McPherson Mental Health Residential Program Unit	0	0	0	0
Mississippi County Work Release Center	0	0	0	0
Northwest Arkansas Work Release Center	0	0	0	0
North Central Unit	22	13	26	0
Ouachita River Correctional Unit	16	5	4	0
ORCU Hospital	0	0	0	0
ORCU New Commitment	1	0	0	0
ORCU Mental Health Residential Program Unit	0	0	1	0
Pine Bluff Unit	2	1	4	0
Pine Bluff Re-Entry	0	0	0	0
Randall L. Williams Correctional Facility	5	0	4	0
Texarkana Regional Correctional Center	0	0	0	0
Tucker Unit	20	7	10	0
Varner Super Max	69	27	80	0
Varner Unit	12	2	21	0
Wrightsville Unit	11	11	3	0
Hawkins Center	0	0	2	0
Hawkins for Males	3	1	3	0
Hawkins SPU	0	0	0	0
Total	474	156	347	1

ADMISSIONS AND RELEASES – JULY 2021

<u>Admissions</u>	<u>Male</u>	<u>Female</u>	<u>Total</u>
Asian	0	0	0
Black	48	12	60
Hispanic	7	2	9
Native American Indian	0	0	0
Native Hawaiian or Pacific Isl.	0	0	0
White	126	58	184
Other	2	0	2
Unknown	0	0	0
Total	183	72	255

<u>Releases</u>	<u>Male</u>	<u>Female</u>	<u>Total</u>
Asian	2	0	2
Black	123	6	129
Hispanic	12	1	13
Native American Indian	1	2	3
Native Hawaiian or Pacific Isl.	0	0	0
White	212	62	274
Other	0	0	0
Unknown	0	0	0
Total	350	71	421

ADC INMATE POPULATION GROWTH 2000-2027 - JULY 2021

Updated 07/31/2021

Mo.	2000	2001	2002	2003	2004	2005	2006	2007	2008	2009	2010	2011	2012	2013	2014	2015	2016	2017	2018	2019	2020	2021
Jan.	11,984	11,908	12,402	13,015	13,105	13,595	13,481	13,839	14,518	14,796	15,334	16,312	15,134	14,815	17,481	18,142	17,785	17,824	18,201	17,958	17,989	16,119
Feb.	12,169	12,022	12,529	13,054	13,166	13,783	13,633	14,012	14,603	14,883	15,374	16,209	14,990	15,008	17,438	18,082	17,625	17,608	17,998	17,846	18,181	16,120
March	12,006	12,033	12,299	13,108	13,088	13,418	13,534	13,772	14,580	14,843	15,290	16,095	14,964	14,665	17,395	18,233	17,573	17,666	18,089	17,898	17,860	16,085
April	12,069	12,167	12,465	13,213	13,323	13,469	13,554	13,851	14,769	14,937	15,570	16,172	15,124	14,850	17,604	18,703	17,815	17,798	18,227	17,977	17,331	16,250
May	12,109	12,384	12,558	13,463	13,556	13,528	13,711	14,146	14,880	15,146	15,694	16,062	15,132	15,074	17,593	18,693	17,769	17,652	17,945	17,817	16,694	16,476
June	12,005	12,108	12,439	13,418	13,389	13,251	13,430	13,915	14,700	15,025	15,564	15,554	14,832	14,825	17,340	18,813	17,973	17,963	17,972	17,942	16,552	16,560
July	12,030	12,190	12,622	13,509	13,528	13,286	13,560	14,082	14,868	15,195	15,807	15,519	14,879	15,379	17,522	18,870	18,130	18,180	18,005	18,002	16,511	16,638
August	12,087	12,371	12,815	13,565	13,632	13,419	13,646	14,224	15,100	15,385	15,829	15,240	14,675	16,103	17,549	18,806	17,919	18,051	17,751	18,090	16,367	
September	11,983	12,289	12,774	13,341	13,516	13,237	13,652	14,217	14,850	15,285	16,025	15,172	14,724	16,412	17,605	18,549	18,026	18,179	17,865	17,856	16,215	
October	12,119	12,348	12,942	13,341	13,584	13,363	13,775	14,349	14,836	15,381	16,311	15,271	14,856	16,993	17,880	18,430	18,127	18,348	17,943	17,947	16,311	
November	12,094	12,408	13,162	13,408	13,706	13,587	13,913	14,437	15,025	15,340	16,460	15,205	14,625	17,168	17,848	17,981	17,573	17,973	17,666	18,060	16,165	
December	11,856	12,333	12,845	13,106	13,470	13,338	13,728	14,315	14,716	15,199	16,204	15,062	14,654	17,235	17,874	17,707	17,537	18,078	17,799	17,759	16,094	
Net Ann. Inc.	29	477	512	261	364	-132	390	587	401	483	1,005	-1,142	-408	2,581	639	-167	-170	541	-279	-40	-1,665	544
Avg. Mo. Inc.	2	40	43	22	30	-11	33	49	33	40	84	-95	-34	215	53	-14	-14	45	-23	-3	-139	78

Population is total jurisdictional count at end of each month. Population at end of month December 1999 was 11,827.

Average monthly population increase for past fifteen years 2006 - 2020 is 15

Average monthly population increase for past ten years Jan. 2011 - Dec 2020 is -1

Average monthly population increase for past five years 2016 - 2020 is -27

Projected at Growth of 15 per Month

Mo.	2008	2009	2010	2011	2012	2013	2014	2015	2016	2017	2018	2019	2020	2021	2022	2023	2024	2025	2026	2027
	Actual	Actual	Actual	Actual	Actual	Actual	Actual	Actual	Actual	Actual	Actual	Actual	Actual	Actual	Proj.	Proj.	Proj.	Proj.	Proj.	Proj.
January	14,518	14,796	15,334	16,312	15,134	14,815	17,481	18,142	17,785	17,824	18,201	17,958	17,989	16,119	16,728	16,908	17,088	17,268	17,448	17,628
February	14,603	14,883	15,374	16,209	14,990	15,008	17,438	18,082	17,625	17,608	17,998	17,846	18,181	16,120	16,743	16,923	17,103	17,283	17,463	17,643
March	14,580	14,843	15,290	16,095	14,964	14,665	17,395	18,233	17,573	17,666	18,089	17,898	17,860	16,085	16,758	16,938	17,118	17,298	17,478	17,658
April	14,769	14,937	15,570	16,172	15,124	14,850	17,604	18,703	17,815	17,798	18,227	17,977	17,331	16,250	16,773	16,953	17,133	17,313	17,493	17,673
May	14,880	15,146	15,694	16,062	15,132	15,074	17,593	18,693	17,769	17,652	17,945	17,817	16,694	16,476	16,788	16,968	17,148	17,328	17,508	17,688
June	14,700	15,025	15,564	15,554	14,832	14,825	17,340	18,813	17,973	17,963	17,972	17,942	16,552	16,560	16,803	16,983	17,163	17,343	17,523	17,703
July	14,868	15,195	15,807	15,519	14,879	15,379	17,522	18,870	18,130	18,180	18,005	18,002	16,511	16,638	16,818	16,998	17,178	17,358	17,538	17,718
August	15,100	15,385	15,829	15,240	14,675	16,103	17,549	18,806	17,919	18,051	17,751	18,090	16,367	16,653	16,833	17,013	17,193	17,373	17,553	17,733
September	14,850	15,285	16,025	15,172	14,724	16,412	17,605	18,549	18,026	18,179	17,865	17,856	16,215	16,668	16,848	17,028	17,208	17,388	17,568	17,748
October	14,836	15,381	16,311	15,271	14,856	16,993	17,880	18,430	18,127	18,348	17,943	17,947	16,311	16,683	16,863	17,043	17,223	17,403	17,583	17,763
November	15,025	15,340	16,460	15,205	14,625	17,168	17,848	17,981	17,573	17,973	17,666	18,060	16,165	16,698	16,878	17,058	17,238	17,418	17,598	17,778
December	14,716	15,199	16,204	15,062	14,654	17,235	17,874	17,707	17,537	18,078	17,799	17,759	16,094	16,713	16,893	17,073	17,253	17,433	17,613	17,793
Net Ann. Inc.	401	483	1,005	-1,142	-408	2,581	639	-167	-170	541	-279	-40	-1,665	619	180	180	180	180	180	180
Ave. Mo. Inc.	33	40	84	-95	-34	215	53	-14	-14	45	-23	-3	-139	52	15	15	15	15	15	15

MONTHLY POPULATION AVERAGES - JULY 2021

Unit/Center	7/1	7/2	7/5	7/6	7/7	7/8	7/9	7/12	7/13	7/14	7/15	7/16	7/19	7/20	7/21	7/22	7/23	7/26	7/27	7/28	7/29	7/30	AVG
Benton	300	301	300	300	299	294	298	298	297	299	300	299	299	298	301	301	304	305	305	307	309	309	301
Cummins	1,920	1,912	1,911	1,911	1,908	1,905	1,903	1,901	1,901	1,906	1,905	1,904	1,902	1,903	1,901	1,902	1,897	1,910	1,912	1,915	1,912	1,909	1,907
Delta	611	609	609	609	609	609	609	609	607	608	607	608	609	610	610	608	608	605	603	601	600	600	607
East AR Reg	1,544	1,538	1,536	1,536	1,537	1,536	1,534	1,534	1,527	1,526	1,523	1,518	1,511	1,511	1,506	1,514	1,512	1,537	1,534	1,529	1,545	1,540	1,529
Ester	551	560	556	556	556	557	557	571	570	572	567	563	564	563	564	562	561	563	565	566	568	566	563
Grimes	1,071	1,074	1,074	1,074	1,072	1,082	1,071	1,071	1,070	1,079	1,068	1,068	1,076	1,076	1,073	1,073	1,069	1,066	1,067	1,068	1,074	1,069	1,072
Max Sec	556	556	557	557	557	556	556	555	555	557	557	557	557	557	557	557	557	557	559	559	560	560	557
McPherson	920	914	911	911	913	917	925	923	931	918	913	912	907	912	912	907	907	906	905	908	911	914	914
MCWRC	118	118	118	118	118	118	118	118	116	116	115	115	121	121	123	123	123	123	122	122	122	122	119
N Central	837	829	826	826	825	838	836	835	835	841	838	838	839	839	838	837	833	832	832	833	826	823	833
NWAWRC	100	99	99	99	100	99	99	100	100	100	100	100	100	100	100	100	99	99	99	99	98	98	99
Ouachita River	1,742	1,733	1,743	1,743	1,725	1,743	1,735	1,735	1,735	1,725	1,756	1,757	1,739	1,739	1,732	1,721	1,722	1,684	1,721	1,719	1,694	1,693	1,729
Randall L Williams	522	510	510	510	510	511	504	487	487	487	487	488	490	490	488	486	481	508	507	507	506	508	499
Pine Bluff	520	521	518	518	519	516	516	512	512	517	517	516	510	508	508	510	507	504	503	502	503	502	512
PB Reentry	53	53	53	53	52	54	54	54	54	54	54	54	53	53	53	53	53	53	53	53	53	53	53
TRCC	97	98	101	101	101	101	101	101	101	100	98	98	97	97	99	99	99	99	99	99	99	99	99
Tucker	761	758	756	756	751	751	746	745	745	745	744	744	742	742	741	741	742	747	745	744	738	735	746
Varner	1,616	1,612	1,611	1,610	1,610	1,609	1,606	1,596	1,594	1,590	1,589	1,588	1,580	1,578	1,574	1,573	1,567	1,568	1,566	1,565	1,565	1,562	1,588
Wrightsville	824	826	825	825	842	840	847	836	844	840	840	838	840	836	835	831	825	825	825	824	823	822	832
WR Hawkins-Females	239	233	233	233	233	233	233	234	234	250	250	250	246	246	251	251	248	248	248	248	248	248	243
WR Hawkins-Males	187	189	193	193	194	194	193	194	193	193	195	195	195	195	196	197	197	196	196	195	198	198	194
Total ADC	15,089	15,043	15,040	15,039	15,031	15,063	15,041	15,009	15,008	15,023	15,023	15,010	14,977	14,974	14,962	14,946	14,911	14,935	14,966	14,963	14,952	14,930	14,996
ALETA	15	16	16	16	16	16	16	16	16	16	16	16	16	16	16	16	16	16	16	16	18	18	16
Ar State Police	52	51	52	52	52	52	52	52	52	52	52	52	50	50	50	50	50	50	50	50	50	50	51
Co Jail / M	931	958	967	967	991	972	977	1,002	1,014	1,026	1,015	1,033	1,058	1,075	1,096	1,106	1,119	1,107	1,089	1,103	1,124	1,144	1,040
Co Jail / F	128	132	129	129	123	117	113	119	111	120	116	122	131	133	132	131	140	141	144	145	142	150	129
Total Co Jail BK	1,059	1,090	1,096	1,096	1,114	1,089	1,090	1,121	1,125	1,146	1,131	1,155	1,189	1,208	1,228	1,237	1,259	1,248	1,233	1,248	1,266	1,294	1,169
309/M	235	232	233	233	234	235	234	234	234	233	234	235	234	234	234	235	235	235	235	234	234	234	234
309/F	90	90	88	88	88	88	88	88	88	89	89	89	88	89	89	89	89	89	89	89	88	88	89
Total Act 309	325	322	321	321	322	323	322	322	322	322	323	324	322	323	323	324	324	324	324	323	322	322	323
Total Non ADC	1,451	1,479	1,485	1,485	1,504	1,480	1,480	1,511	1,515	1,536	1,522	1,547	1,577	1,597	1,617	1,627	1,649	1,638	1,623	1,637	1,656	1,684	1,559
Total	16,540	16,522	16,525	16,524	16,535	16,543	16,521	16,520	16,523	16,559	16,545	16,557	16,554	16,571	16,579	16,573	16,560	16,573	16,589	16,600	16,608	16,614	16,555

FISCAL YEAR 2022 COUNTY JAIL BACKUP - JULY 2021

DAY		Jul-21	
1		1,059	
2		1,090	
3	*	1,090	
4	*	1,090	
5		1,096	
6		1,096	
7		1,114	
8		1,089	
9		1,090	
10	*	1,090	
11	*	1,090	
12		1,121	
13		1,125	
14		1,146	
15		1,131	
16		1,155	
17		1,189	
18	*	1,189	
19	*	1,189	
20		1,208	
21		1,228	
22		1,237	
23		1,259	
24	*	1,259	
25	*	1,259	
26		1,248	
27		1,233	
28		1,248	
29		1,266	
30		1,294	
31	*	1,294	
Avg Daily Backup		1,170	

Note: Totals do not include 309 Contracts in County Jails (maximum of 336)

County Jail Back-up Average for July 2021 - 1,170

Short-Term Revocation Program Average for July 2021 - 834

STTG UNIT COUNTS – JULY 2021

Unit	Beginning Total	Confirmed	Suspected	In	Out	Paroled	Removed	Ending Total	Total Unit Population	Unit % of STTG's
Benton	74	2	0	18	1	1	0	92	310	29.68%
Cummins	653	0	0	44	36	2	0	659	1,905	34.59%
Delta	174	0	0	11	7	1	0	177	596	29.70%
EARU	588	0	0	159	148	7	0	592	1,538	38.49%
Ester	96	2	0	24	16	12	0	94	561	16.76%
Grimes	376	0	0	33	22	1	0	386	1,070	36.07%
Hawkins	46	0	0	1	0	0	0	47	445	10.56%
Max	271	0	0	6	2	1	0	275	559	49.19%
Mcpherson	38	0	0	1	0	2	0	37	911	4.06%
MCWR	29	0	0	3	1	0	0	31	120	25.83%
NCU	281	2	0	16	19	4	0	276	821	33.62%
NWAWR	34	0	0	2	1	3	0	32	98	32.65%
ORCU	445	0	0	71	67	16	0	433	1,538	28.15%
ORCU Intake	138	52	0	0	81	0	0	109	140	77.86%
Pine Bluff	147	0	0	52	35	5	0	159	553	28.75%
RLW	185	0	0	28	13	4	0	196	519	37.76%
TWR	35	0	0	3	2	1	0	35	99	35.35%
Tucker	260	0	0	16	14	6	0	256	739	34.64%
Varner	661	0	0	49	53	19	2	638	1,564	40.79%
Wrightsville	261	0	0	11	6	5	0	261	821	31.79%
Total	4,792	58	0	548	524	90	2	4,785	14,907	32.10%

ORCU Intake brought in 52 new STTG members into ADC last month.

STTG DISCIPLINARY REPORT – JULY 2021

Unit	STTG Incidents	STTG Suspected Incidents	Total Unit Disciplinary	Disciplinary Involving STTG	Percentage
Benton	0	0	15	5	33.33%
Cummins	0	0	246	125	50.81%
Delta	0	0	120	36	30.00%
EARU	0	0	132	70	53.03%
Easter	0	0	21	9	42.86%
Grimes	0	0	148	81	54.73%
Hawkins	0	0	1	0	0.00%
Max	0	0	94	50	53.19%
Mcpherson	0	0	108	14	12.96%
MCWR	0	0	1	0	0.00%
NCU	0	0	98	49	50.00%
NWAWR	0	0	5	3	60.00%
ORCU	0	0	97	37	38.14%
ORCU Intake	0	0	12	7	58.33%
Pine Bluff	1	0	41	36	87.80%
RLW	0	0	165	94	56.97%
TWR	0	0	1	0	0.00%
Tucker	0	0	62	41	66.13%
Varner	0	0	335	164	48.96%
Wrightsville	0	0	98	40	40.82%
Total	1	0	1,800	861	47.83%

STTG COUNTS BY STTG SET – JULY 2021

STTG Set	Benton	Cummins	Delta	EARU	Ester	Grimes	Hawkins	Max	Mcperson	MCWR	NCU	NWAWR	ORCU	Intake	PB	RLW	TWR	Tucker	Varner	Wrightsville	Total
Asian	0	2	0	0	0	0	0	0	0	1	1	1	2	0	0	0	0	1	0	0	8
Bloods	17	147	37	107	18	78	4	57	4	9	40	11	48	10	23	43	4	46	138	45	886
Crips	6	94	13	81	6	36	3	36	7	2	29	2	33	9	22	17	4	19	98	36	553
Folk	5	54	0	50	3	31	9	34	7	2	18	7	90	17	4	8	2	23	63	10	437
GD	20	150	39	156	17	87	0	65	0	7	44	0	60	13	42	47	13	66	146	51	1,023
Mexican	1	23	7	12	5	10	1	5	3	2	7	0	9	2	7	8	0	5	24	11	142
Motorcycle	0	1	1	3	0	0	1	2	1	1	2	0	3	0	1	0	1	0	0	2	19
Other	4	21	6	16	14	15	1	9	3	1	14	2	18	1	4	6	0	8	17	8	168
People	1	22	7	18	2	22	2	17	2	0	14	0	20	1	11	10	0	11	18	10	188
Unknown	0	8	4	11	0	8	4	4	0	0	5	0	10	4	0	2	1	12	11	9	93
W/S	25	43	42	44	11	45	14	9	10	2	52	9	76	35	29	27	6	26	34	36	575
AB	1	4	2	4	1	5	0	1	0	2	1	0	5	2	0	3	0	4	13	5	53
AC	0	7	2	15	3	8	1	2	0	0	8	0	1	0	1	2	2	6	15	6	79
NAE	9	45	5	37	5	15	2	14	0	0	16	0	23	5	8	9	1	9	26	18	247
WAR	3	38	12	38	9	26	5	20	0	2	25	0	35	10	7	14	1	20	35	14	314
Total	92	659	177	592	94	386	47	275	37	31	276	32	433	109	159	196	35	256	638	261	4,785

Key:

GD = Gangster Disciples

W/S = White Supremacist

NAE = New Aryan Empire

WAR = White Aryan Resistance

AC = Aryan Circle

AB = Aryan Brotherhood

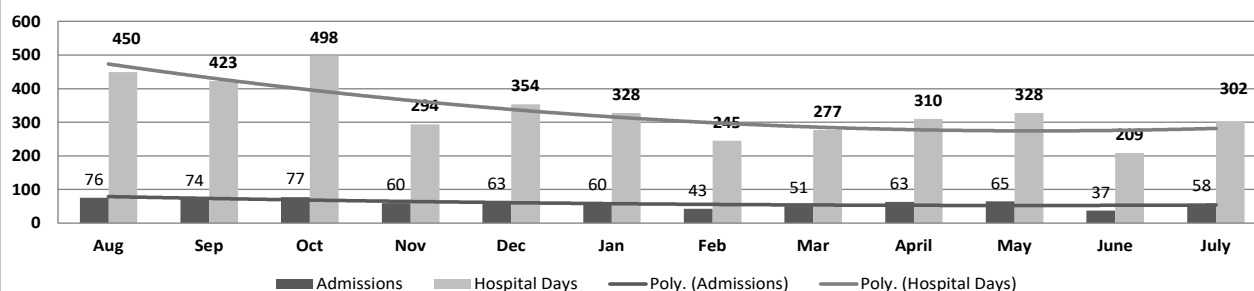
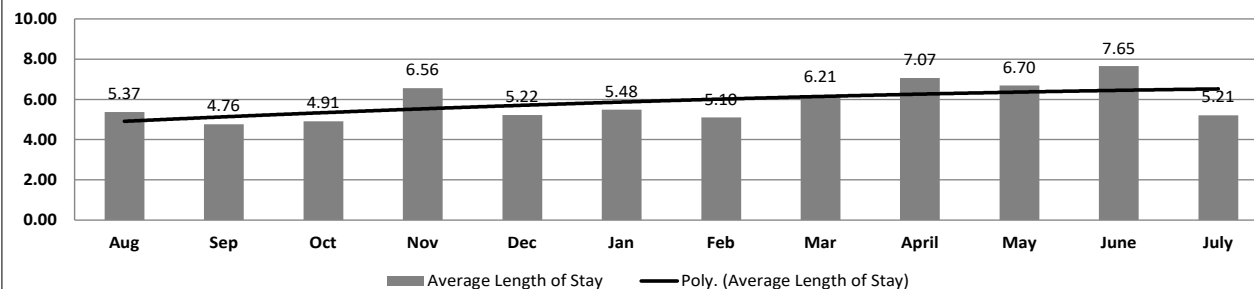
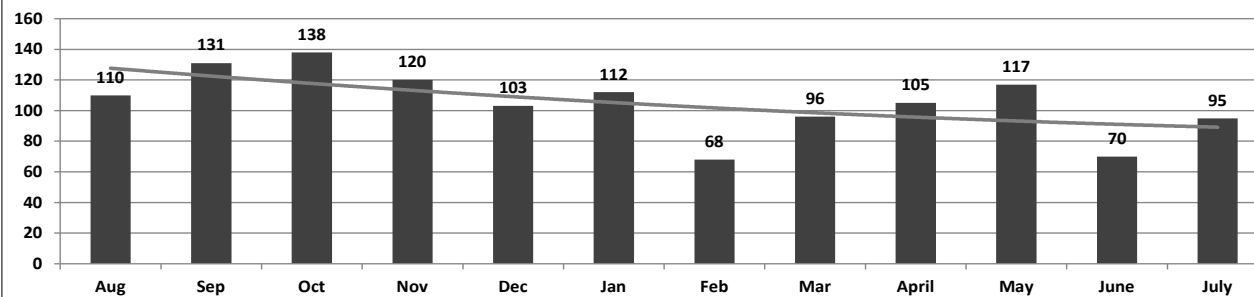
ADC INPATIENT AND EMERGENCY ROOM UTILIZATION

ADC Inpatient Statistics Past 12 Months

	ABC Inpatient Statistics - Last 12 Months												
	2020					2021							
	Aug	Sep	Oct	Nov	Dec	Jan	Feb	Mar	April	May	June	July	Average
Admissions	76	74	77	60	63	60	43	51	63	65	37	58	60.6
Hospital Days	450	423	498	294	354	328	245	277	310	328	209	302	334.8
Average Length of Stay	5.37	4.76	4.91	6.56	5.22	5.48	5.10	6.21	7.07	6.70	7.65	5.21	5.53

ADC ER Visits Past 12 Months

ADDER VISITS Past 12 Months													
	2020					2021							
	Aug	Sep	Oct	Nov	Dec	Jan	Feb	Mar	April	May	June	July	Average
Emergency Room Visits	110	131	138	120	103	112	68	96	105	117	70	95	105.4

ADC Inpatient Utilization
Past 12 MonthsADC Inpatient Average Length of Stay
Past 12 MonthsADC Emergency Room Visits
Past 12 Months

MEDICAL GRIEVANCE BOARD REPORT – JULY 2021

Unit	<i>Acknowledged/ Received</i>	<i>Rejected</i>	<i>Reviewed & Signed by Dep Director</i>	<i>With Merit</i>	<i>With Merit, but Resolved</i>	<i>% With Merit</i>	<i>Without Merit</i>
Benton	0	0	0	0	0	0%	0
Bowie County	0	0	0	0	0	0%	0
CMU	2	0	0	0	0	0%	0
Cummins	20	1	14	2	0	14%	12
Delta	2	2	6	1	0	17%	5
EARU	6	2	14	1	0	7%	13
EARU Max	11	2	35	0	0	0%	35
Ester	0	1	0	0	0	0%	0
Grimes	10	2	10	2	0	20%	8
Hawkins	0	0	0	0	0	0%	0
McPherson	10	2	2	2	0	100%	0
MCWRC	0	0	0	0	0	0%	0
MSU	15	5	6	0	0	0%	6
North Central	15	1	11	0	0	0%	11
NWAWRC	0	0	0	0	0	0%	0
Ouachita	6	0	13	1	1	15%	11
Pine Bluff	0	3	0	0	0	0%	0
Randall L. Williams	0	0	1	0	0	0%	1
SNN	0	0	0	0	0	0%	0
TRCC	0	0	0	0	0	0%	0
Tucker	3	3	2	0	0	0%	2
Varner	1	0	2	1	0	50%	1
Varner Super Max	5	1	8	0	0	0%	8
WRU	2	0	2	1	0	50%	1
WHM	1	0	1	0	0	0%	1
WWR	0	0	0	0	0	0%	0
Total	109	25	127	11	1	9%	115

CHAPLAINCY

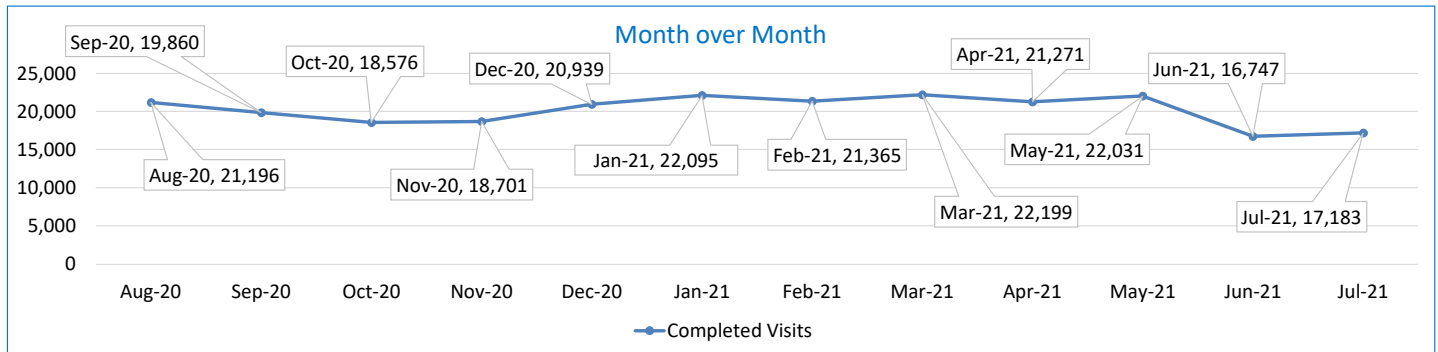
Month: July Year: 2021	CUMMINS	DELTA REGIONAL	EAST ARKANSAS	EAST ARKANSAS MAX	ESTER	GRIMES	HAWKINS	MAXIMUM	MCPHERSON	NORTH CENTRAL	OUACHITA RIVER	PINE BLUFF	RANDALL L. WILLIAMS	TUCKER	VARNER	VARNER MAX	WRIGHTSVILLE	TOTAL
Services Chaplains Oversaw																		
Christian																		
Population	0	2	0	0	5	0	0	0	4	8	8	4	4	1	4	0	0	40
Segregation	0	0	0	0	5	0	0	0	0	0	0	0	0	0	0	0	0	5
Muslim																		
Population	0	0	0	0	2	0	0	6	4	5	5	5	5	0	5	0	0	37
Segregation	0	0	0	0	2	0	0	6	0	0	0	0	0	0	0	0	0	8
90																		
Volunteers in Charge																		
Protestant	0	4	0	0	0	0	0	0	0	0	5	0	0	7	0	0	0	16
Catholic	0	0	0	0	0	0	0	0	0	0	4	0	0	0	0	0	0	4
Muslim	0	0	0	0	0	0	0	0	0	0	0	0	0	2	0	0	0	2
Other	0	0	0	0	0	0	0	0	0	0	0	0	0	0	0	0	0	0
Baptism	0	0	0	0	0	0	0	0	0	0	0	0	0	5	0	0	0	5
Marriages																		
	0	0	0	0	0	0	0	0	0	0	0	0	0	0	0	0	0	0
Distributed by Chaplains																		
Greeting Cards	45	3	0	0	107	48	70	32	633	41	165	10	0	426	33	323	50	1,986
Bibles,Quran,Torrah, Etc.	38	15	12	18	30	15	28	8	59	25	120	14	0	114	29	16	20	561
Study Course	0	10	14	12	28	3	0	4	59	0	31	17	0	63	31	1	1	274
Writing Supplies	0	0	0	0	22	101	525	20	110	0	500	1	0	92	0	0	40	1,411
Literature	2,700	600	489	353	96	3	240	24	182	1,200	370	90	0	741	660	342	0	8,090
Chaplain's Visits																		
Barracks	53	26	30	0	10	91	16	32	40	66	29	42	5	117	324	37	10	928
Approximate Hours Spent in Barracks	61	6	13	0	7	37	4	16	25	20	3	20	0	29	132	23	0	396
Inmate Office visits	39	75	32	0	37	88	6	4	52	6	52	10	25	180	95	0	55	756
Other Office visits	13	20	33	1	9	34	10	0	16	10	34	53	14	40	21	12	12	332
Hospital	2	0	0	0	0	0	0	0	0	0	1	10	0	0	0	0	0	13
Infirmary/Sick Call	4	3	0	0	4	2	2	0	2	6	10	0	0	4	6	2	0	45
Restrictive/Punitive Housing	4	3	0	21	1	1	4	14	2	5	20	4	1	9	0	17	0	106
PC - DRU		3	0		0				0									3
Visitation Days	0	0	0	0	1	0	0	0	0	0	0	0	0	0	0	0	0	1
Volunteer Visits																		
RCV	0	0	0	0	0	0	12	0	0	0	0	0	0	0	0	0	0	12
OCV	0	4	0	0	0	0	28	0	0	0	0	0	0	24	0	0	0	56
Spiritual Advisor	0	0	0	0	0	0	0	0	0	0	0	0	0	1	0	0	0	1
CRA	20	3	11	1	0	46	28	1	16	13	19	3	0	53	0	0	16	230
Religious Volunteer Hours																		
Volunteer Hours	50	21	40	2	0	202	68	5	77	46	152	18	0	172	0	0	36	889
Denominational/Volunteer Chaplain Hours	30	3	5	0	134	12	42	0	22	186	18	0	0	25	0	0	33	510
																		1,399
Other Activities of Chaplain																		
Counseled Employees	3	9	6	0	8	1	12	1	1	12	21	0	2	11	79	0	15	181
Orientation Sessions	3	0	0	0	0	0	0	0	0	0	0	0	0	0	0	0	0	3
Free World Devotions	0	0	0	0	1	9	0	0	0	0	1	12	0	3	24	0	0	50
Spoke in Churches	11	1	1	0	1	6	0	0	0	0	0	8	0	3	24	0	0	55
Crisis Intervention Sessions	19	23	3	0	0	0	4	2	0	4	0	0	6	15	4	1	10	91
Marriage Counseling	0	0	0	0	0	0	0	0	0	0	0	0	0	0	0	0	0	0
Denominational Meeting	0	0	0	0	1	0	0	0	0	1	0	0	0	0	0	0	0	2
Chaplain's Meeting	1	1	1	0	1	1	1	0	1	1	0	1	1	1	6	0	1	18
Volunteer Training Session	0	0	0	0	0	0	0	0	0	2	0	0	0	0	0	0	0	2
Chaplain Transfers																		
	0	0	0	0	0	0	0	0	0	0	0	0	0	0	0	0	1	1
Chaplain Promotions																		
	0	0	0	0	0	1	0	0	0	0	0	0	0	0	0	0	0	1
PAL PROGRAM																		
Enrolled at start of month	44	21	49	0	18	46	43	22	54	60	38	0	27	54	48	0	2	526
Enrolled during the month	3	0	2	0	37	9	2	6	23	2	2	0	0	8	4	0	15	113
Removed From PAL Program																		
# Paroled	0	0	0	0	0	1	1	0	6	0	0	0	0	0	0	0	2	10
# Completed	0	0	1	0	0	1	7	0	3	0	6	0	0	1	0	0	0	19
# Withdrew	0	0	0	0	1	1	0	2	3	1	0	0	0	3	2	0	0	13
# Removed	0	0	1	0	0	1	1	4	4	1	0	0	0	4	0	0	0	16
# Transferred	0	0	0	0	0	1	0	0	6	0	5	0	27	0	1	0	2	42
Total Removed from PAL Program	0	0	2	0	1	5	9	6	22	2	11	0	27	8	3	0	4	100
Total Enrolled at the End of the Month	47	21	49	0	54	50	36	22	55	60	29	0	0	54	49	0	13	539
Volunteers in PAL																		
	0	0	6	0	0	0	8	0	16	8	2	0	0	0	0	0	5	45
Special Events:																		
	1	2	1	1	1	1	1	1	1	1	1	1	1	1	1	1	1	18

SECURUS VIDEO VISITATION REPORT JULY 2021

AR-DOC SVV Activity Tracker

Total ADP 15,000

Total Visits by Month	Aug-20	Sep-20	Oct-20	Nov-20	Dec-20	Jan-21	Feb-21	Mar-21	Apr-21	May-21	Jun-21	Jul-21
Total (Includes SuperMax)	21,196	19,860	18,576	18,701	20,939	22,095	21,365	22,199	21,271	22,031	16,747	17,183
Target Objective	15,587	15,587	15,587	15,587	15,587	15,587	15,587	15,587	15,587	15,587	15,587	15,587



Completed Visits

Site	Current Month	Previous Month
Benton	531	327
Cummins	1,518	1,379
Delta Regional	965	1,039
East Arkansas Regional	1,967	1,959
Ester	670	703
Grimes	919	881
J Aaron Hawkins Sr.	896	836
Tucker Max	1,130	1,189
Mcperson	610	649
Mississippi County WRC	119	130
North Central	1,595	1,458
NW Arkansas WRC	91	108
Ouachita River	1,421	1,419
Pine Bluff Complex	297	330
Randall L Williams	702	662
State Police Barracks	89	76
Texarkana Regional	101	101
Tucker Unit	555	438
Varner	1,828	1,972
Wrightsville Unit	1,140	1,051
Pine Bluff Re-Entry	39	40
Tucker Re-entry	0	0
Total:	17,183	16,747

Missed by Inmate

Site	Current Month	Previous Month
Benton	5	11
Cummins	79	257
Delta Regional	12	15
East Arkansas Regional	75	83
Ester	7	8
Grimes	16	11
J Aaron Hawkins Sr.	10	26
Tucker Max	19	108
Mcperson	25	26
Mississippi County WRC	30	10
North Central	51	58
NW Arkansas WRC	11	8
Ouachita River	48	54
Pine Bluff Complex	11	7
Randall L Williams	17	13
State Police Barracks	4	1
Texarkana Regional	28	8
Tucker Unit	17	24
Varner	59	49
Wrightsville Unit	26	58
Pine Bluff Re-Entry	0	0
Tucker Re-entry	0	0
Total:	550	835

SECURUS TABLET REPORT JULY 2021

Facility Name	Subscription	Facility	Officer	Total	New Subscriptions
Benton Unit	114	15	8	137	0
Cummins Unit	306	100	14	420	0
Delta Regional Unit	95	39	16	150	0
East Arkansas Regional Unit	181	103	10	294	0
Ester Unit	111	142	20	273	0
Grimes Unit	150	76	14	240	0
J. Aaron Hawkins Sr Center For Women	145	72	19	236	0
McPherson Unit	145	103	15	263	0
Mississippi County Work Release Center	47	3	9	59	0
North Central Unit	124	113	10	247	0
Northwest Arkansas Work Release Center	48	5	8	61	0
Ouachita River Correctional Unit	223	113	14	350	0
Pine Bluff Reentry Center	19	3	0	22	0
Pine Bluff Unit	68	7	8	83	0
Randall L. Williams Facility	51	27	14	92	0
State Police Barracks	21	0	3	24	0
Texarkana Regional Correctional Center	36	3	10	49	0
Tucker Maximum Security Unit	95	64	15	174	0
Tucker Reentry Center	0	51	3	54	0
Tucker Unit	108	64	10	182	0
Varner Unit	163	71	20	254	0
Wrightsville Unit	126	47	6	179	0
TOTAL	2,376	1,221	246	3,843	0

CONSTRUCTION BUDGET / STATUS REPORT - AUGUST 5, 2021 — [Page 1 of 2]

Fund	Project Description	Total Projected Spent	Budget	Available Funds	\$ % Complete	Construction % Complete	Notes
KBR4Q95	ESTER - Phase 3 - General Improvement Fund	3,000,943	3,001,781	838	100%	100%	Gravel Parking lot completed. Project Complete.
700483A	EARU Max Rec Expanded Metal Rec Yard	824,431	879,000	54,569	94%	64%	We have delivered panels to EARU. We have started demolition and construction of new Rec pens.
700483A	Tucker Max Expanded Metal Rec Yard	1,060,637	1,800,000	739,363	59%	0%	DBA Approved to proceed. We are constructing the panels on-site. Material list has been ordered and delivered.
700483A	Cummins Expanded Metal Rec Yard	50,012	368,617	318,605	14%	0%	Plans on hold, will modify for exp. metal
KBR4Q95	Bullpens	388,676	851,999	463,323	46%	98%	Varner & EARU complete. Installation underway at Max. Locks delivered. Working on bullpens now.
KBR4Q95	13 & 15 Barracks Door Revisions	119,111	174,000	54,889	68%	68%	All doors and locks installed in 13 Barracks. We are looking at modifications for 15 barracks.
KBR4Q95	Camera's (New)	1,240,280	1,248,000	7,720	99%	100%	Delta, Varner, EARU, Cummins, RLW, Tucker, PBU, & the Max are complete. Project Complete
700485A	Integrity Energy Improvements at EARU & Delta	16,961,127	17,010,204	49,077	100%	99%	lights (100%), plumbing 100%, water (100%), compost (100%), & solar (100%), HVAC (100%). Only Training is incomplete.
7004828	Integrity Energy Improvements Phase 2 at Tucker and Max	1,842,263	18,603,150	16,760,887	10%	0%	We are working with Integrity on the capital equipment list that will be installed in phase II. Lighting and water conservation is set to begin in April.
KBSCW18	McPherson Administration	395,305	395,439	134	100%	100%	Substantial Completion done 6/29/2021. Building Delivered 6/30/2021. Project Complete.
KBSCW18	McPherson Visitation	311,737	312,430	693	100%	100%	
KBR4Q95	McPherson Administration and Visitation	8,338	100,000	91,662	8%	100%	
KBSHW18	Tucker Water Treatment	-	1,093,848	1,093,848	0%	0%	Engineering firm selected. Contract complete. Awaiting paperwork form DBA to proceed.
KBSFW18	Max Armory	60,198	70,000	9,802	86.0%	0%	DBA approved Plans 8/21/20. Land work is underway. Material is being delivered to location to begin construction.
7004810	Administrative East Roof Replacement	60,494	1,407,242	1,346,749	4.3%	0%	All roofs have been designed and they are working with DBA for approval. The specified material needing to be bid out is set to submit to OSP on 4/6/2021.
7004810	Central Warehouse Roof Replacement	20,061	322,722	302,662	6.2%	0%	
7004810	RLW Roof Replacement	119,882	2,639,917	2,520,035	4.54%	0%	
22V	NWARWRC Laundry and Commissary	177,441	250,000	72,559	71%	25%	Foundation and slab prep work done. Lift station installed and operational. Building and material are onsite construction of the project has started.
865C KBR4Q95	NCU Perimeter Security	20,625 5,980	270,000	243,395	10%	0%	DBA Approved plans. DBA has the project in review.
N98	Max Re-Entry Generator Project	16,014	135,000	118,986	12%	0%	Plans submitted to DBA. We have received our notice to proceed on this project.
KBR4Q95	NCU Replacement Generator Project	20,081	202,000	181,919	10%	0%	DBA Approved. Bids are being requested.
7004820	Tucker Asbestos Abatement	23,273	448,000	424,727	5%	0%	Contract Complete. Site visit scheduled for 8/10.



CONSTRUCTION BUDGET / STATUS REPORT - AUGUST 5, 2021 — [Page 2 of 2]

Fund	Project Description	Total Projected Spent	Budget	Available Funds	\$ % Complete	Construction % Complete	Notes
7004820	Tucker 10 Barracks Sidewalk	-	70,259	70,259	0%	0%	DBA approved to proceed. We have regraded the area. Projected start date of 7/15/21.
7004820	Lethal Fence Control for Cummins, Varner SuperMax, Tucker Max, & EARU	37,000	875,000	838,000	4%	0%	

Telephone Projects

Maintenance & Operations	Fire Alarm Upgrades (All Units)	5,328	41,000	35,672	13%	0%	on-going
	Stainless Steel - Kitchen/Shower/Restrooms - All Units	0	20,000	20,000	0%	0%	continual need
	Gates and Fences all units	6,427	25,000	18,573	26%	0%	to improve security
	ACA Maintenance	13,248	100,000	86,752	13%	0%	Walkthrough done at Varner. Dedicating resources to Varner for ACA.
	ADA Projects - All Units	0	10,000	10,000	0%	0%	Working with Varner for the sports field sidewalk.
	Fast Top Floor Systems (kitchen/laundry/showers all units)	0	25,000	25,000	0%	0%	Benton complete. Ouachita kitchen material has been ordered and awaiting arrival.
	Camera Equipment - All Units	99,408	250,000	150,592	40%	0%	cameras as requested/approved.
	Lock/Riot Gates - All Units	12,256	90,500	78,244	14%	0%	on-going.
	AC Units-All Units	33,798	70,000	36,202	48%	0%	repairing & replacing daily.
	Subtotal	\$ 170,465	\$ 631,500	\$ 461,035			

Capital Projects FY21 Carry Forward	Metal Ceilings	0	25,000	25,000	0%	0%	Wrightsville showers are underway.
	ORCU Gravel Pit Operations	6,317	35,000	28,683	18%	0%	on-going.
	Dog Kennel/Horse Stable Malvern	3,976	48,000	44,024	8%	25%	Material for this project ordered. Dedicated project supervisor on-site. Slab prepwork is underway.
	Emergency Generator - All Units	40,876	250,000	209,124	16%	15%	Cummins 300kW generator complete. Hawkins Unit Gen is installed and operational. Max Gen mat'l rec'd, Generator rec'd. Cummins East Bldg. we have approval awaiting Max generator install.
	Tucker 4 new filters & one aeration tank	465	10,000	9,535	5%	100%	Project is complete.
	Roof Repairs-Cummins	0	130,700	127,313	3%	0%	Prepared large order for multiple Units. Max is complete. Need repairs at ORCU, Delta, Cummins & others. Varner & ORCU working on repairs, received TPO. Office of State Procurement secured a State contract to purchase roofing materials.
	Roof Repairs-Cummins Laundry	0				0%	
	Construction/Maintenance	0				0%	
	Roof Repairs-Delta	3,387				0%	
	Roof Repairs-East Arkansas	0				0%	
	Roof Repairs-Max	0				0%	
	Roof Repair - NCU	0				0%	
	Roof Repair - RLW	0				0%	
	Roof Repairs-Tucker	0				0%	
	Roof Repairs-Varner	0				0%	
	Roof Repairs-Wrightsville	0				0%	
	Subtotal	\$ 55,021	\$ 498,700	\$ 443,679			

New Projects	Delta Perimeter	0	261,000	261,000	0%	0%	purchasing materials
	Wrightsville Perimeter	0	361,000	361,000			
	PB Warehouse Drive Replacement	0	118,000	118,000	0%	0%	Project suspended.
	Subtotal	\$ -	\$ 740,000	\$ 740,000			
	Architect Fees	425	30,000	29,575	1%		
	Total	\$ 225,911	\$ 1,900,200	\$ 1,674,289			

Notes Report has not been reconciled against Accountings Reconciled Reports.
Tolerance/Deviation is with in 1% of Projected Spending.