



DIVISION OF  
CORRECTION

# BOARD REPORT

June 2021



@ARDeptofCorrections



@adcpio



@arcorrections



Dexter Payne,  
Director

## POPULATION REPORT

### RESEARCH/PLANNING

**May 2021 Admissions and Releases** – Admissions for May 2021 totaled **679** (593-males and 86-females) while releases totaled **328** (280-males and 48 females).

**Inmate Population Growth/Projection** – At the end of May 2021, the jurisdictional population for the Division of Correction totaled **16,476**, representing an increase of **382** inmates since the first of January 2021. Calendar year 2021 has seen an average increase of **76** inmates per month, which is up from an average monthly decrease of **139** inmates per month during calendar year 2020.

**Average County Jail Back-up** – The backup in the county jails averaged **1,278** inmates per day during the month of May 2021, which was down from the per-day average of **1,491** inmates during the month of April 2021. Of the **1,278** average, short-term revocations accounted for **846** (753 males and 93 females) during the month.

## INSTITUTIONS

### INMATE INSTITUTIONAL GRIEVANCES

**Inmate Formal/Informal Grievances:** During May 2021, a total of 1,481 formal grievances and 1,949 informal grievances were filed at various units.

**Institutional Grievances Appeals:** There was a total of 450 appeals of institutional grievances received in May 2021. Of those, 389 were acknowledged and 61 were rejected for various reasons. Of the total 423 appeals answered, 413 had no merit and ten were found with merit.

### FARM

Even with wet weather throughout the month of May, all farms continued planting when possible. All of the rice and corn was planted, and almost 85% of full-season soybeans were planted. The wheat crop continued to look good, with plans for harvesting made for the first full week of June.

All gardens were planted, but the cooler temperatures slowed down the initial growth. It is estimated that fresh vegetables will be coming into the kitchens around mid-June.

The beef herd artificial insemination protocol was started for the upcoming breeding season. A study is underway with the University of Arkansas on selecting replacement heifers at the

Cummins Unit. Dr. Looney is helping identify replacements and will follow the study all the way through to see what the offspring looks like.

The newest pullets grew at such a rapid rate that they became overcrowded in the cages. This prompted an early move to the layer house of about half of the group. The remaining half should be moved within four weeks. Egg production in the group is anticipated to begin by the end of the month.

Even though the land improvement project at Cummins was slowed by wet weather, progress has been made. About half of the land that has been leveled should be planted with soybeans before June 15. All paperwork needed by DBA to send out bids for new wells has been submitted.

### REGIONAL MAINTENANCE HOURS

Regional Maintenance Hours	May 2021
Benton Unit	7,177
Delta Regional Unit	2,113
East Arkansas Regional Unit	1,168
Grimes Unit	3,468
McPherson Unit	1,548
Mississippi County Work Release	948
North Central Unit	6,168
Ouachita River Correctional Unit	2,960
Randall L. Williams Unit	2,200
Texarkana Regional Correctional Center	0
Tucker Unit	1,136
Varner Unit	2,552
Wrightsville Unit	2,174
<b>Total Hours</b>	<b>33,612.0</b>

### WORK RELEASE RENT REPORT

Unit	May 2021
Benton Unit	\$73,695.00
Mississippi County Work Release	\$43,605.00
Northwest Arkansas Work Release	\$31,637.00
Pine Bluff Work Release	\$25,211.00
Texarkana Regional Correctional Center	\$9,843.00
Wrightsville Hawkins Unit	\$11,815.00
<b>Total</b>	<b>\$195,806.00</b>

**REENTRY****RANDALL L. WILLIAMS**  
**JUVENILE EDUCATION PROGRAM**

May 2021 Capacity: 20	Beginning Count	New Commitments	DCR/Punitive	Transferred/ Turned 18*	Paroled	End Count
Juveniles*	2	1	0	0	0	3

\*Juveniles are transferred from the program once they reach the age of 18.

**WORKFORCE ALLIANCE FOR**  
**GROWTH IN THE ECONOMY (WAGE)**

May 2021 Capacity: 120 Unit:	Beginning Count	Admissions During Mo.	Removed*	Completed	End Count
Delta	0	3	0	0	3
Hawkins**	0	0	0	0	0
McPherson**	0	0	0	0	0
Ouachita River	20	0	0	0	20
Tucker**	0	0	0	0	0
<b>TOTAL</b>	<b>20</b>	<b>3</b>	<b>0</b>	<b>0</b>	<b>23</b>

\*The "Removed" column indicates the number of participants who transferred, signed out, received a disciplinary, were removed because test scores were not returned/were too low to continue, or were released from prison.

\*\*WAGE Program inactive during the month due to COVID-19.

**ADVANCED PRINCIPLES**  
**AND APPLICATIONS FOR**  
**LIFE PROGRAM (APAL)**

May 2021 Capacity: 86	Beginning Count	Admissions During Mo.	Removed*	End Count
Ester	19	0	1	18
Hawkins	42	1	1	42
<b>TOTAL</b>	<b>61</b>	<b>1</b>	<b>2</b>	<b>60</b>

Advanced PAL is an 18-month reentry program that combines a pre-release curriculum with the PAL program.

\*The "Removed" column indicates the number of participants who paroled, completed the program, withdrew from the program, transferred, or were removed from the program for another reason.

**WRIGHTSVILLE-HAWKINS**  
**PATHWAY TO FREEDOM PROGRAM**

May 2021 Capacity: 200	Beginning Count	Enrolled During the Month	Removed	End Count*
Wrightsville-Hawkins PTF	193	7	8	192

**THINK LEGACY**

May 2021 Capacity: 635 Unit	Beginning Count	Admitted	Graduated	Removed**	End Count	Graduated But Remain*
Cummins	49	0	2	5	50	8
Delta Regional	23	0	0	1	22	0
East Arkansas Regional	38	5	0	0	43	0
Hawkins (Female)	0	0	0	0	0	0
McPherson	58	18	10	8	58	0
North Central	0	0	0	0	0	0
Ouachita River	28	7	7	1	27	0
Tucker	0	0	0	0	0	0
<b>Total</b>	<b>196</b>	<b>30</b>	<b>19</b>	<b>15</b>	<b>200</b>	<b>8</b>

\*The "Graduated But Remain" column indicates the number of participants who have successfully completed the program but remain in the barracks. *These numbers are included in the End Count.*

\*\*The "Removed" column indicates the total number of participants who paroled, signed out, transferred, or were removed from the program for any other reason and are no longer in the barracks.

**ADMINISTRATIVE SERVICES****DIVISION OF CORRECTION**  
**TRAINING - MAY 2021****BASIC TRAINING DIVISION –**

Instructor Sarah Apel's **BCOT Class 2021-D** graduated on April 30, 2021, with a total of 17 cadets.

*Academic Awards* were presented to the following:

- 1st – Mario Stubblefield, Maximum Security Unit
- 2nd – Kenneth Anderson, Grimes Unit
- 3rd – Zachary Fisher, Ouachita River Correctional Unit

Recipients of *Physical Fitness Awards* were:

- 1st – Kenneth Anderson, Grimes Unit
- 2nd – Mario Stubblefield, Maximum Security Unit
- 3rd – Nicholas Wommack, North Central Unit

## DIVISION OF CORRECTION

### TRAINING, continued

Instructor David Farrier's **BCOT Class 2021-E** graduated on May 21, 2021, with 15 cadets.

*Academic Awards* were presented to the following:

- 1st – Justin Peterman, North Central Unit
- 2nd – Michael Hatcher, Cummins Unit
- 3rd – Marie Castellon, Grimes Unit

Recipients of *Physical Fitness Awards* were:

- 1st – Lawrence John-Williams, Varner Unit
- 2nd – Michael Hatcher, Cummins Unit
- 3rd – Hannah Anderson, McPherson Unit

### **IN-SERVICE DIVISION –**

During the month, the Training Academy held a *ServSafe* class attended by four participants, a *Mail Handling* class attended by ten participants, and an *Oleoresin Capsicum Instructor Certification* course attended by nine participants. All other in-person training has remained suspended until further notice due to COVID-19.

### **eCADEMY –**

During May, 508 ADC employees completed a total of 8,704 hours of eCADEMY training. About 11% of ADC employees completed at least one course during that timeframe, averaging 2.00 hours per staff member.

## **HEALTH/CORRECTIONAL PROGRAMS**

### CHAPLAINCY SERVICES

**All Facilities** – The Chaplaincy Division at all facilities has continued to provide religious services virtually over the video systems, including Jumu'ah Prayer. The conclusion of Ramadan was observed on May 13. All facilities provided the Eid Al-Fitr feast within four days of the conclusion of Ramadan. Volunteer access remained discontinued through the end of May.

**Ester Unit** – APAL class completed the "Grace for Addictions" study by Vic Porter on May 28. A total of 25 students successfully completed the program. The class voted on having a fellowship day of celebration and enjoyed cheeseburgers and fries.

**Maximum Security Unit** – The chapel broadcast and livestream system was launched throughout the unit on May 10. The chapel now has Independent Chapel Broadcast on channel 5 and can broadcast services and programs on TV as well as livestream events on channel 50.

**McPherson Unit** – Chaplaincy Services conducted a Mother's Day celebration on May 8. Chicken dinners, strawberry pies and lemonade were served to both inmates and staff.

## ACCREDITATION

### **ACA Internal Audits Completed:**

- 05/03–05/06 Cummins Unit Reaccreditation (100% on Mandatory Standards/Best Practices and 98.7% on Non-Mandatory Standards/Best Practices)
- 05/10 North Central Unit Pre-Audit
- 05/11–05/14 Ouachita River Correctional Unit Audit Prep – (Working at Unit)
- 05/17–05/21 Ouachita River Correctional Unit Audit Prep – (Working at Unit)
- 05/25–05/27 Ouachita River Correctional Unit Reaccreditation (100% on Mandatory Standards/Best Practices and 99.79% on Non-Mandatory Standards/Best Practices)

### **Fire/Safety and Sanitation Independent Audits Conducted by the Fire and Sanitation Coordinator:**

- 05/10–05/21 Ouachita River Correctional Unit Audit Prep

## VOLUNTEER SERVICES

### **Total Number of Volunteer Hours for May 2021:**

Unit/Program	Hours
Delta Unit	0
East Arkansas Regional Unit	0
McPherson Unit	0
Mississippi County Work Release Center	0
Northwest Arkansas Work Release Center	6.5
Ouachita River Correctional Unit	0
Pine Bluff Complex	0
Texarkana Regional Correctional Center	0
Varner	0
PAWS	0
Think Legacy	0
Religious Services/Chaplaincy	0
<b>Total Hours</b>	<b>6.5</b>

## MENTAL HEALTH SERVICES

### **Reduction of Sexual Victimization Program (RSVP) and Sex Offender Treatment Programs (SOFT):**

May 2021	Capacity	Beginning Count	Completed	Removed	Admissions	End Count
RSVP	238	158	0	1	0	157
SOFT	30	4	0	0	1	5
<b>Total</b>	<b>268</b>	<b>162</b>	<b>0</b>	<b>1</b>	<b>1</b>	<b>162</b>

**MENTAL HEALTH SERVICES, *continued***

There are 1,152 males on the waiting list for RSVP and eight females on the waiting list for SOFT who are within five years of their TE date. Of those, 16 inmates are mandated by the Parole Board.

The average time on the waiting list from request is between one and two months for those stipulated.

\*The total on the waiting list, including those not currently within the identified timeframe, is 1,505 males and nine females. Of these, 1,158 are eligible and 356 are ineligible for the program. There are no PREA inmates in the program at this time.

**\*Ineligibility is due to being in restrictive housing, having class IV status, or receiving a major disciplinary within the last 60 days.**

**Therapeutic Community (TC):**

May 2021 Unit	Capacity	Beginning Count	Completed	Removed	Admissions	End Count
McPherson	50	52	0	7	4	49
Tucker	120	113	0	21	0	92
Wrightsville	50	42	1	0	9	50
<b>Total</b>	<b>220</b>	<b>207</b>	<b>1</b>	<b>28</b>	<b>13</b>	<b>191</b>

There are 548 males and 168 females on the waiting list who are within ten years of their release date. Of those, 12 are mandated by the Parole Board.

The average time on the waiting list from request is ten days.

\*The total on the waiting list, including those not currently within the identified timeframe, is 734 males and 178 females. Of these, 728 are eligible and 184 are ineligible for the program.

**\*Ineligibility is due to being in restrictive housing, having class IV status, or receiving a major disciplinary within the last 60 days.**

**Substance Abuse Treatment Program (SATP):**

May 2021 Unit	Capacity	Beginning Count	Completed	Removed	Admissions	End Count
Benton	20	18	1	0	3	20
Cummins	45	30	4	3	13	36
Grimes	50	47	8	8	16	47
Maximum Security	4	4	0	0	0	4
McPherson	100	97	5	9	18	101
Randall L. Williams	200	95	0	9	52	138
Wrightsville	150	133	4	11	15	133
<b>Total</b>	<b>569</b>	<b>424</b>	<b>22</b>	<b>40</b>	<b>117</b>	<b>479</b>

There are 2,093 males and 170 females on the waiting list who are within five years of their release date. Of those, 33 are mandated by the Parole Board.

The average time on the waiting list from request is 15 days.

\*The total on the waiting list, including those not currently within the identified timeframe, is 2,724 males and 196 females. Of these, 2,296 are eligible and 624 are ineligible for the program.

**\*Ineligibility is due to being in restrictive housing, having class IV status, or receiving a major disciplinary within the last 60 days.**

**Substance Use Intervention Program:** The Substance Use Intervention Program had 41 admissions and three discharges for an end-of-month count of 38 for May. This program is housed at the Varner Unit and is for inmates found guilty of a disciplinary violation for drug use or drug possession.

**Ouachita River Correctional Unit (ORCU) Residential Program Unit (RPU):** The RPU had six admissions and three discharges in May for an end-of-month count of 121.

**McPherson Unit Mental Health Residential Program Unit (RPU):** There were three admissions and three discharges in May for an end-of-month count of 40.

**Habilitation Program:** The Habilitation Program at the Ouachita River Correctional Unit provided treatment services to 45 inmates during May. There were no admissions and one discharge, resulting in an end-of-month count of 44.

**Anger Management Treatment:** The Anger Management Treatment Program at the Cummins Unit provided no treatment services to inmates during May. There were no admissions or discharges, for an end-of-month count of zero.

**Staffing:** The following Mental Health Services and Substance Abuse Treatment Program (SATP) positions were vacant in April and May 2021:

Positions	FTE's*	April 2021	May 2021
Psychologists	14	5	5
Social Workers	31	13	13
Licensed Professional Counselors	2	1	1
Rehab Program Managers	9	1	0
Advisors	64	19	21
Substance Abuse Program Leaders	40	8	8
Administrative Specialists	17	4	4

\*FTE refers to authorized Full Time Equivalent positions.



## ADDITIONAL MENTAL HEALTH AND MEDICAL INFORMATION

### Self-Study Classes:

Classes	Number of Participants	Number Completed	Waiting List
Anger Management	295	276	809
Thinking Errors	279	249	753
Substance Abuse Education	158	134	728
Communication Skills	192	164	824
Domestic Violence	29	29	163
Victims of Domestic Violence	26	25	25
Stress Management	211	176	884
Parenting	106	86	328

**Suicide:** There were 78 suicidal threats during May. There were seven attempts and no deaths.

**Outpatient:** There were 2,121 inmates on the mental health medical log at the beginning of May. Mental Health staff conducted the following contacts during May:

Case Management Contacts	2,020
Requests for Interviews	1,128
Testing	5
Intakes	679
Unit Requests	1,438
Pre-Lockup Reviews	518
Routine Restrictive Housing Reviews	676
Restrictive Housing Rounds	18,673
PREA Evaluations	98
Routine Follow-up	323
834 Requests	32

**County Mental Health Requests:** During May, there were 168 requests received of a mental health nature. Of those, 128 inmates were fast-tracked to ADC. **Note: Most inmates were not transferred due to COVID-19.**

**County Medical Health Requests:** During May, there were 499 requests received of a medical nature. A total of ten inmates were fast-tracked to ADC.

**Medical Contract Reimbursements:** Sanction reimbursements for April amounted to \$8,500.00.

**Deaths:** There were two inmate deaths during the month of May. Both were cremated.

**Wellpath:** See attachment for Wellpath's report regarding outside beds and emergency room visits.

**Medical Grievances:** In May, there were 154 appeals received of medical grievances and 75 appeals were answered. Three of those were found to be with merit and one with merit but resolved.

## SEX OFFENDER ASSESSMENT

### Assessments Completed:

Risk Level	May	September 1999 through May 2021
Level 1	0	1,211
Level 2	50	8,351
Level 3	19	7,299
Level 4	2	713
Default 3	1	*
<b>Total</b>	<b>72</b>	<b>17,574</b>
*Default Level 3's are included in the total number of Level 3's to date.		

### ACIC Numbers:

The total number of sex offenders registered from September 1999 through May 2021:

Compliant	8,445
Delinquent	1,402
Confined	3,311
Out-of-State	3,874
Address Unknown	144
Deported	208
Incapacitated	93
Out of USA	14
<b>Total</b>	<b>17,491</b>

Consistent with current Arkansas law, deceased offenders no longer remain on the registry.

## PAWS IN PRISON

May 2021 Unit	Enrolled	Graduated	Foster	Volunteer Hours
Hawkins Unit	6	2	0	0
Maximum Security Unit	9	3	0	0
North Central Unit	4	0	0	0
Ouachita River Correctional Unit	5	4	0	0
Randall L. Williams Unit	5	0	0	0
Tucker Unit	6	4	0	0
<b>Total</b>	<b>35</b>	<b>13</b>	<b>0</b>	<b>0</b>

### Completed Paws in Prison Training:

May 2021 Program Graduates	13
YTD 2021 Program Graduates	68
Total Graduates Since Inception (December 2011)	1,731
Dogs Currently in Foster (Graduated, but Not Adopted)	0
May 2021 Volunteer Hours	0
YTD Volunteer Hours	0

## INFORMATION TECHNOLOGY

**INMATE TABLETS** – Within the Division of Correction, a total of 2,672 inmate tablets were leased during May.

**INMATE VIDEO VISITS** – Inmates completed 22,031 video visits during the month and missed 845 within the Division of Correction.

## CONSTRUCTION/MAINTENANCE

### PROJECT UPDATES

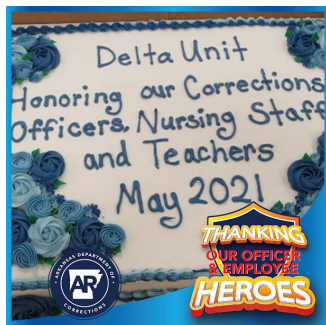
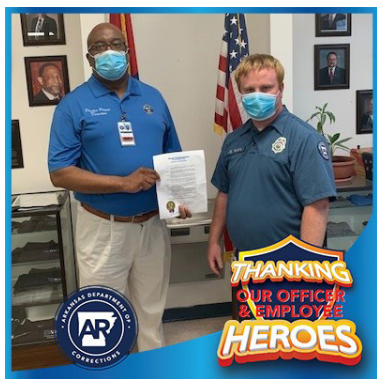
SEE CONSTRUCTION BUDGET / STATUS REPORT IN ATTACHMENTS SECTION (PAGES 22-23).

## AGENCY HIGHLIGHTS

**MAY 2021:**

### *Correctional Officers/ Employees, Nurses and Teachers Week Observed*

Gov. Asa Hutchinson proclaimed May 2 through May 8, 2021, as Correctional Officers and Employees Week. Teacher Appreciation Week and National Nurses Week were also observed simultaneously. In addition to individual unit celebrations attended by members of the management team, our social media platforms were flooded with posts recognizing all of our dedicated employees.



### *Foal Born on Star Wars Day*

On May 4, which is informally recognized as "Star Wars Day," a foal was born in a pasture far, far away at the North Central Unit and appropriately named, "Skywalker." Within the next week, three more foals were born into the horse program.

### *ACA Reaccreditation Awarded to ADC Units*

During May, two ADC facilities obtained reaccreditation from the American Correctional Association (ACA). The Cummins Unit scored 100% on mandatory standards/best practices and 98.7% on non-mandatory standards/best practices. The Ouachita River Correctional Unit scored 100% on mandatory standards/best practices and 99.79% on non-mandatory standards/best practices.



Cummins Unit ACA Audit



Ouachita River Unit ACA Audit

Congratulations to Superintendent Aundrea Culclager, Superintendent Randy Watson, and the outstanding staff at both facilities for the hard work and dedication that went into audit preparations.

### *McPherson Inmates Treated to Mother's Day Lunch*



McPherson Unit Chaplaincy sponsored a catered lunch on Sat., May 8, for the women house at the unit in celebration of Mother's Day. Chaplaincy volunteers boxed up lunches outside the facility, and unit staff

volunteered to serve the ladies inside the unit. Funding for the luncheon was raised by a host of volunteers and community members.

### *Ouachita River Correctional Unit Officer Recognized for Recruitment Efforts*

Division of Correction Director Dexter Payne stopped by the Ouachita River Correctional Unit during the month to personally thank Officer Donald Bullis for his efforts in recruiting four people to work at the unit since November 2020.





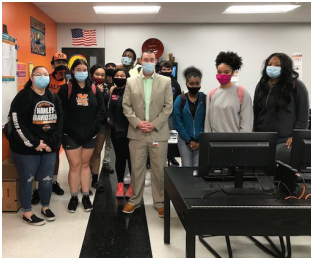
## **AGENCY HIGHLIGHTS, continued**

### ***Grimes Sergeant Receives Posthumous Award***

In January 2021, Grimes Unit tenured officer Sgt. Roger Tim passed away. During Correctional Officers and Employee Week, Sgt. Tim's shift nominated him for the Humanitarian Award. His widow was later presented with a certificate and Halo Award.



### ***Deputy Warden Visits Area High School***



During the month of May, Ouachita River Correctional Unit Deputy Warden Todd Ball visited students at Malvern High School to share about the numerous career opportunities available at the Arkansas Department of Corrections.

### ***Secretary Graves Visits McPherson Unit***

Corrections Secretary Solomon Graves paid a visit to the McPherson Unit during the month to express thanks to staff for their daily efforts.



### ***Graduation Held at Tucker Unit***

The Tucker Unit hosted a graduation ceremony for its Arkansas Correctional School class of 2021 graduates during the month of May.



### ***Modified In-Person Visitation Announced for Remaining ADC Units***

On May 27, an announcement was made that as of June 12, expansion of modified in-person visitation would include all remaining DOC facilities.



## **REGIONAL MAINTENANCE PROJECT HIGHLIGHTS - MAY 2021**

### **Trash Clean Up in Grady, Arkansas**

*Varner Regional Maintenance 1 and 2 – May 3:*



Before



After

### **Lot Clean Up in Gould, Arkansas**

*Varner Regional Maintenance 1 and 2 – May 25:*



Before



After

### **Clean Up on Dumas Museum Grounds**

*Varner Regional Maintenance 1 – May 26:*



Before



After

## 2021 INFORMAL GRIEVANCE REPORT

Month	BENTON	HAWK/M	HAWK/F	WRTS	EARU & MX	GRIMES	RLW	MCWR	MCPH	MSU	NCU	PBU	NWA	TU	TRCC	VSMX	VU	CU & CMU	ORCU	Ester	DRU	Bowie Cty	TOTAL
JAN	1	30	1	56	269	243	41	0	301	147	106	43	0	62	0	152	26	124	174	41	99	0	1,916
FEB	1	15	22	78	185	177	25	0	465	149	67	26	0	91	3	163	37	363	112	27	63	0	2,069
MAR	1	15	22	87	279	207	11	0	376	149	66	38	0	120	4	188	29	196	164	52	96	0	2,100
APR	3	15	24	70	297	173	18	0	210	108	142	38	0	86	5	362	77	178	163	16	128	0	2,113
MAY	2	15	14	37	254	188	19	0	320	103	104	22	0	49	4	220	46	254	128	12	158	0	1,949
JUN	0	0	0	0	0	0	0	0	0	0	0	0	0	0	0	0	0	0	0	0	0	0	0
JUL	0	0	0	0	0	0	0	0	0	0	0	0	0	0	0	0	0	0	0	0	0	0	0
AUG	0	0	0	0	0	0	0	0	0	0	0	0	0	0	0	0	0	0	0	0	0	0	0
SEPT	0	0	0	0	0	0	0	0	0	0	0	0	0	0	0	0	0	0	0	0	0	0	0
OCT	0	0	0	0	0	0	0	0	0	0	0	0	0	0	0	0	0	0	0	0	0	0	0
NOV	0	0	0	0	0	0	0	0	0	0	0	0	0	0	0	0	0	0	0	0	0	0	0
DEC	0	0	0	0	0	0	0	0	0	0	0	0	0	0	0	0	0	0	0	0	0	0	0
TOTAL	8	90	83	328	1,284	988	114	0	1,672	656	485	167	0	408	16	1,085	215	1,115	741	148	544	0	10,147

## 2021 FORMAL GRIEVANCE REPORT

Month	BENTON	HAWK/M	HAWK/F	WRTS	EARU & MX	GRIMES	RLW	MCWR	MCPH	MSU	NCU	PBU	NWA	TU	TRCC	VSMX	VU	CU & CMU	ORCU	Ester	DRU	Bowie Cty	TOTAL
JAN	1	15	1	30	293	176	17	0	173	197	71	24	0	55	2	152	26	150	125	22	44	0	1,574
FEB	2	7	8	40	272	115	21	0	158	186	51	8	0	79	0	163	37	126	89	16	35	0	1,413
MAR	3	7	8	53	375	98	7	0	188	264	47	8	0	92	0	188	29	149	147	27	96	0	1,786
APR	2	1	3	46	374	82	11	0	125	128	97	13	0	46	1	227	53	132	92	10	62	0	1,505
MAY	1	7	1	29	305	109	15	1	154	95	80	10	0	62	1	206	36	206	98	7	58	0	1,481
JUN	0	0	0	0	0	0	0	0	0	0	0	0	0	0	0	0	0	0	0	0	0	0	0
JUL	0	0	0	0	0	0	0	0	0	0	0	0	0	0	0	0	0	0	0	0	0	0	0
AUG	0	0	0	0	0	0	0	0	0	0	0	0	0	0	0	0	0	0	0	0	0	0	0
SEPT	0	0	0	0	0	0	0	0	0	0	0	0	0	0	0	0	0	0	0	0	0	0	0
OCT	0	0	0	0	0	0	0	0	0	0	0	0	0	0	0	0	0	0	0	0	0	0	0
NOV	0	0	0	0	0	0	0	0	0	0	0	0	0	0	0	0	0	0	0	0	0	0	0
DEC	0	0	0	0	0	0	0	0	0	0	0	0	0	0	0	0	0	0	0	0	0	0	0
TOTAL	9	37	21	198	1,619	580	71	1	798	870	346	63	0	334	4	936	181	763	551	82	295	0	7,759



## INMATE INSTITUTIONAL GRIEVANCE APPEAL REPORT – MAY 2021

	Acknowledged	Rejected	Processed W/O Merit	Processed W/ Merit
Benton Unit	0	1	0	0
Benton Work Release	0	0	0	0
Bowie County Texas Correctional Facility	0	0	0	0
Cummins Unit	25	7	20	2
Cummins Modular Unit	1	0	1	0
Delta Regional Unit	16	0	12	0
East Arkansas Regional Unit	17	4	19	0
East Arkansas Regional Max Unit	88	9	83	3
Ester Unit	1	1	1	0
Grimes Unit	13	6	11	0
Maximum Security Unit	46	5	46	0
Tucker Re-Entry	0	0	0	0
McPherson Unit	32	3	32	0
McPherson Mental Health Residential Program Unit	0	0	0	0
Mississippi County Work Release Center	1	0	1	0
Northwest Arkansas Work Release Center	0	0	0	0
North Central Unit	23	0	20	1
Ouachita River Correctional Unit	16	5	27	0
ORCU Hospital	0	0	0	0
ORCU New Commitment	5	1	15	2
ORCU Mental Health Residential Program Unit	1	0	0	0
Pine Bluff Unit	5	2	3	0
Pine Bluff Re-Entry	0	0	0	0
Randall L. Williams Correctional Facility	2	5	1	0
Texarkana Regional Correctional Center	0	0	0	0
Tucker Unit	18	2	22	1
Varner Super Max	68	5	83	1
Varner Unit	4	3	5	0
Wrightsville Unit	7	1	10	0
Hawkins Center	0	1	1	0
Hawkins for Males	0	0	0	0
Hawkins SPU	0	0	0	0
<b>Total</b>	<b>389</b>	<b>61</b>	<b>413</b>	<b>10</b>

## ADMISSIONS AND RELEASES – MAY 2021

<u>Admissions</u>	<u>Male</u>	<u>Female</u>	<u>Total</u>
Asian	2	0	2
Black	147	14	161
Hispanic	20	1	21
Native American Indian	0	1	1
Native Hawaiian or Pacific Isl.	2	0	2
White	421	70	491
Other	1	0	1
Unknown	0	0	0
<b>Total</b>	<b>593</b>	<b>86</b>	<b>679</b>
<u>Releases</u>	<u>Male</u>	<u>Female</u>	<u>Total</u>
Asian	0	0	0
Black	82	11	93
Hispanic	9	1	10
Native American Indian	1	1	2
Native Hawaiian or Pacific Isl.	0	0	0
White	188	35	223
Other	0	0	0
Unknown	0	0	0
<b>Total</b>	<b>280</b>	<b>48</b>	<b>328</b>

## ADC INMATE POPULATION GROWTH 2000-2027 - MAY 2021

Updated 05/31/2021

Mo.	2000	2001	2002	2003	2004	2005	2006	2007	2008	2009	2010	2011	2012	2013	2014	2015	2016	2017	2018	2019	2020	2021
Jan.	11,984	11,908	12,402	13,015	13,105	13,595	13,481	13,839	14,518	14,796	15,334	16,312	15,134	14,815	17,481	18,142	17,785	17,824	18,201	17,958	17,989	16,119
Feb.	12,169	12,022	12,529	13,054	13,166	13,783	13,633	14,012	14,603	14,883	15,374	16,209	14,990	15,008	17,438	18,082	17,625	17,608	17,998	17,846	18,181	16,120
March	12,006	12,033	12,299	13,108	13,088	13,418	13,534	13,772	14,580	14,843	15,290	16,095	14,964	14,665	17,395	18,233	17,573	17,666	18,089	17,898	17,860	16,085
April	12,069	12,167	12,465	13,213	13,323	13,469	13,554	13,851	14,769	14,937	15,570	16,172	15,124	14,850	17,604	18,703	17,815	17,798	18,227	17,977	17,331	16,250
May	12,109	12,384	12,558	13,463	13,556	13,528	13,711	14,146	14,880	15,146	15,694	16,062	15,132	15,074	17,593	18,693	17,769	17,652	17,945	17,817	16,694	16,476
June	12,005	12,108	12,439	13,418	13,389	13,251	13,430	13,915	14,700	15,025	15,564	15,554	14,832	14,825	17,340	18,813	17,973	17,963	17,972	17,942	16,552	
July	12,030	12,190	12,622	13,509	13,528	13,286	13,560	14,082	14,868	15,195	15,807	15,519	14,879	15,379	17,522	18,870	18,130	18,180	18,005	18,002	16,511	
August	12,087	12,371	12,815	13,565	13,632	13,419	13,646	14,224	15,100	15,385	15,829	15,240	14,675	16,103	17,549	18,806	17,919	18,051	17,751	18,090	16,367	
September	11,983	12,289	12,774	13,341	13,516	13,237	13,652	14,217	14,850	15,285	16,025	15,172	14,724	16,412	17,605	18,549	18,026	18,179	17,865	17,856	16,215	
October	12,119	12,348	12,942	13,341	13,584	13,363	13,775	14,349	14,836	15,381	16,311	15,271	14,856	16,993	17,880	18,430	18,127	18,348	17,943	17,947	16,311	
November	12,094	12,408	13,162	13,408	13,706	13,587	13,913	14,437	15,025	15,340	16,460	15,205	14,625	17,168	17,848	17,981	17,573	17,973	17,666	18,060	16,165	
December	11,856	12,333	12,845	13,106	13,470	13,338	13,728	14,315	14,716	15,199	16,204	15,062	14,654	17,235	17,874	17,707	17,537	18,078	17,799	17,759	16,094	
Net Ann. Inc.	29	477	512	261	364	-132	390	587	401	483	1,005	-1,142	-408	2,581	639	-167	-170	541	-279	-40	-1,665	382
Avg. Mo. Inc.	2	40	43	22	30	-11	33	49	33	40	84	-95	-34	215	53	-14	-14	45	-23	-3	-139	76

Population is total jurisdictional count at end of each month. Population at end of month December 1999 was 11,827.

Average monthly population increase for past fifteen years 2006 - 2020 is 15

Average monthly population increase for past ten years Jan. 2011 - Dec 2020 is -1

Average monthly population increase for past five years 2016 - 2020 is -27

Projected at Growth of 15 per Month

Mo.	2008	2009	2010	2011	2012	2013	2014	2015	2016	2017	2018	2019	2020	2021	2022	2023	2024	2025	2026	2027
	Actual	Actual	Actual	Actual	Actual	Actual	Actual	Actual	Actual	Actual	Actual	Actual	Actual	Actual	Proj.	Proj.	Proj.	Proj.	Proj.	Proj.
January	14,518	14,796	15,334	16,312	15,134	14,815	17,481	18,142	17,785	17,824	18,201	17,958	17,989	16,119	16,596	16,776	16,956	17,136	17,316	17,496
February	14,603	14,883	15,374	16,209	14,990	15,008	17,438	18,082	17,625	17,608	17,998	17,846	18,181	16,120	16,611	16,791	16,971	17,151	17,331	17,511
March	14,580	14,843	15,290	16,095	14,964	14,665	17,395	18,233	17,573	17,666	18,089	17,898	17,860	16,085	16,626	16,806	16,986	17,166	17,346	17,526
April	14,769	14,937	15,570	16,172	15,124	14,850	17,604	18,703	17,815	17,798	18,227	17,977	17,331	16,250	16,641	16,821	17,001	17,181	17,361	17,541
May	14,880	15,146	15,694	16,062	15,132	15,074	17,593	18,693	17,769	17,652	17,945	17,817	16,694	16,476	16,656	16,836	17,016	17,196	17,376	17,556
June	14,700	15,025	15,564	15,554	14,832	14,825	17,340	18,813	17,973	17,963	17,972	17,942	16,552	16,491	16,671	16,851	17,031	17,211	17,391	17,571
July	14,868	15,195	15,807	15,519	14,879	15,379	17,522	18,870	18,130	18,180	18,005	18,002	16,511	16,506	16,686	16,866	17,046	17,226	17,406	17,586
August	15,100	15,385	15,829	15,240	14,675	16,103	17,549	18,806	17,919	18,051	17,751	18,090	16,367	16,521	16,701	16,881	17,061	17,241	17,421	17,601
September	14,850	15,285	16,025	15,172	14,724	16,412	17,605	18,549	18,026	18,179	17,865	17,856	16,215	16,536	16,716	16,896	17,076	17,256	17,436	17,616
October	14,836	15,381	16,311	15,271	14,856	16,993	17,880	18,430	18,127	18,348	17,943	17,947	16,311	16,551	16,731	16,911	17,091	17,271	17,451	17,631
November	15,025	15,340	16,460	15,205	14,625	17,168	17,848	17,981	17,573	17,973	17,666	18,060	16,165	16,566	16,746	16,926	17,106	17,286	17,466	17,646
December	14,716	15,199	16,204	15,062	14,654	17,235	17,874	17,707	17,537	18,078	17,799	17,759	16,094	16,581	16,761	16,941	17,121	17,301	17,481	17,661
Net Ann. Inc.	401	483	1,005	-1,142	-408	2,581	639	-167	-170	541	-279	-40	-1,665	487	180	180	180	180	180	180
Ave. Mo. Inc.	33	40	84	-95	-34	215	53	-14	-14	45	-23	-3	-139	41	15	15	15	15	15	15



## MONTHLY POPULATION AVERAGES - MAY 2021

Unit/Center	5/3	5/4	5/5	5/6	5/7	5/10	5/11	5/12	5/13	5/14	5/17	5/18	5/19	5/20	5/21	5/24	5/25	5/26	5/27	5/28	5/31	AVG
Benton	260	260	252	264	270	270	266	266	273	272	272	272	272	271	272	271	271	269	269	267	267	268
Cummins	1,913	1,909	1,905	1,900	1,892	1,895	1,905	1,907	1,906	1,906	1,907	1,907	1,914	1,914	1,919	1,917	1,914	1,911	1,908	1,906	1,906	1,908
Delta	608	605	603	603	604	602	600	600	600	601	599	597	584	586	585	603	603	603	608	602	602	600
E AR Reg	1,515	1,512	1,509	1,523	1,522	1,521	1,517	1,517	1,517	1,515	1,515	1,514	1,514	1,515	1,513	1,509	1,531	1,532	1,529	1,527	1,525	1,519
Ester	429	429	430	430	429	428	426	458	456	456	459	459	496	485	482	480	479	477	482	482	484	459
Grimes	1,050	1,050	1,050	1,046	1,039	1,047	1,058	1,058	1,043	1,052	1,052	1,061	1,061	1,047	1,041	1,052	1,056	1,055	1,064	1,060	1,056	1,052
Max Sec	558	557	557	557	557	557	558	558	560	560	560	560	560	560	560	559	558	558	558	558	558	558
McPherson	907	915	914	915	914	906	909	912	908	912	914	920	911	910	916	910	917	920	924	924	919	914
MCWRC	109	109	108	108	115	114	114	114	114	114	114	114	114	113	113	113	113	114	114	114	112	113
N Central	818	817	817	810	806	812	810	806	814	815	815	813	812	808	816	827	832	832	828	828	836	818
NWAWRC	89	89	88	88	86	86	92	93	100	98	98	99	98	100	100	100	100	100	100	100	100	95
Ouachita River	1,688	1,724	1,758	1,719	1,700	1,697	1,710	1,716	1,695	1,685	1,721	1,733	1,733	1,712	1,664	1,652	1,614	1,643	1,655	1,653	1,655	1,692
Randall L Williams	465	471	446	505	503	503	501	468	483	485	481	480	448	525	525	524	524	524	523	521	526	497
Pine Bluff	499	500	524	520	519	519	518	518	516	514	514	513	512	504	499	500	500	497	495	494	490	508
PB Reentry	53	53	53	53	53	53	53	53	53	53	53	53	54	54	54	53	53	53	53	53	53	53
TRCC	97	97	97	97	95	99	99	97	97	97	97	97	97	97	97	97	97	97	97	100	100	97
Tucker	736	735	736	735	733	729	726	721	735	734	725	723	720	720	745	746	771	771	783	778	778	742
Vamer	1,543	1,539	1,551	1,550	1,589	1,586	1,585	1,584	1,582	1,582	1,582	1,584	1,579	1,578	1,628	1,624	1,622	1,622	1,622	1,621	1,645	1,590
Wrightsville	746	747	746	747	754	765	765	765	776	771	780	782	780	777	778	784	786	798	791	789	784	772
WR Hawkins-Females	227	226	234	234	234	234	234	234	234	234	234	234	245	244	244	244	244	243	240	240	244	237
WR Hawkins-Males	193	193	193	194	194	194	193	193	192	192	192	193	193	193	194	197	197	192	192	192	192	193
Total ADC	14,503	14,537	14,571	14,598	14,608	14,617	14,639	14,638	14,654	14,648	14,684	14,708	14,697	14,713	14,745	14,762	14,782	14,811	14,835	14,809	14,832	14,685
ALETA	14	14	14	14	14	14	14	14	14	14	14	14	14	14	14	14	14	14	14	14	14	14
Ar State Police	51	51	51	50	50	50	50	50	50	50	50	50	50	50	50	50	50	50	50	50	52	50
Co Jail / M	1,207	1,195	1,186	1,168	1,171	1,155	1,126	1,140	1,102	1,147	1,136	1,121	1,149	1,142	1,144	1,123	1,129	1,124	1,113	1,134	1,107	1,144
Co Jail / F	138	134	128	126	132	135	134	127	123	128	132	123	118	124	124	128	127	127	123	126	127	128
Total Co Jail BK	1,345	1,329	1,314	1,294	1,303	1,290	1,260	1,267	1,225	1,275	1,268	1,244	1,267	1,266	1,268	1,251	1,256	1,251	1,236	1,260	1,234	1,272
309/M	237	236	235	235	234	234	234	234	234	229	232	232	231	232	232	233	234	235	235	233	233	234
309/F	86	86	86	86	86	86	86	86	85	84	84	84	84	87	87	87	87	88	88	88	87	86
Total Act 309	323	322	321	321	320	320	320	320	319	313	316	316	315	319	319	320	321	323	323	321	320	320
Total Non ADC	1,733	1,716	1,700	1,679	1,687	1,674	1,644	1,651	1,608	1,652	1,648	1,624	1,646	1,649	1,651	1,635	1,641	1,638	1,623	1,645	1,620	1,656
Total	16,236	16,253	16,271	16,277	16,295	16,291	16,283	16,289	16,262	16,300	16,332	16,332	16,343	16,362	16,396	16,397	16,423	16,449	16,458	16,454	16,452	16,341

## FISCAL YEAR 2021 COUNTY JAIL BACKUP - MAY 2021

DAY		Jul-20		Aug-20		Sep-20		Oct-20		Nov-20		Dec-20		Jan-21		Feb-21		Mar-21		Apr-21		May-21
1		800	*	1,284		1,625		1,827	*	2,090		1,879		1,891		2,226		1,984		1,599	*	1,357
2		829	*	1,284		1,642		1,833		2,124		1,896	*	1,891		2,224		1,982		1,599	*	1,357
3		850		1,309		1,672	*	1,833		2,076		1,894	*	1,891		2,250		1,923	*	1,599		1,345
4	*	850		1,308		1,696	*	1,833		2,087		1,917		1,891		2,259		1,936	*	1,599		1,329
5	*	850		1,299	*	1,696		1,842		2,109	*	1,917		1,897		2,221		1,900		1,576		1,314
6		850		1,304	*	1,696		1,862		2,140	*	1,917		1,914	*	2,221	*	1,900		1,549		1,294
7		863		1,334		1,718		1,884	*	2,140		1,882		1,932	*	2,221	*	1,900		1,535		1,303
8		874	*	1,334		1,718		1,902	*	2,140		1,840		1,959		2,173		1,859		1,535	*	1,303
9		898	*	1,334		1,679		1,897		2,137		1,815	*	1,959		2,131		1,870		1,578	*	1,303
10		932		1,331		1,689	*	1,897		2,080		1,797	*	1,959		2,107		1,813	*	1,578		1,290
11	*	932		1,350		1,672	*	1,897		2,028		1,827		1,969		2,086		1,793	*	1,578		1,260
12	*	932		1,351	*	1,672		1,918		2,028	*	1,827		1,971		2,085		1,782		1,577		1,267
13		961		1,361	*	1,672		1,925		2,026	*	1,827		2,005	*	2,085	*	1,782		1,538		1,225
14		975		1,380		1,676		1,947	*	2,026		1,843		2,016	*	2,085	*	1,782		1,509		1,275
15		1,003	*	1,380		1,702		1,917	*	2,026		1,852		2,057		2,035		1,798		1,491	*	1,275
16		1,032	*	1,380		1,705		1,955		1,989		1,835	*	2,057		2,035		1,759		1,469	*	1,275
17		1,059		1,388		1,731	*	1,955		1,961		1,854	*	2,057		2,032		1,733	*	1,469		1,268
18	*	1,059		1,403		1,769	*	1,955		1,918		1,897		2,065		2,025		1,741	*	1,469		1,244
19	*	1,059		1,426	*	1,769		1,944		1,907	*	1,897		2,065		2,017		1,717		1,471		1,267
20		1,081		1,457	*	1,769		1,958		1,890	*	1,897		2,068	*	2,017	*	1,717		1,434		1,266
21		1,099		1,481		1,772		1,974	*	1,890		1,863		2,071	*	2,017	*	1,717		1,453		1,268
22		1,124	*	1,481		1,786		1,969	*	1,890		1,893		2,095		2,004		1,739		1,423	*	1,268
23		1,168	*	1,481		1,811		1,998		1,837		1,856	*	2,095		1,993		1,710		1,414	*	1,268
24		1,181		1,496		1,801	*	1,998		1,846		1,796	*	2,095		2,009		1,684	*	1,414		1,251
25	*	1,181		1,518		1,835	*	1,998		1,866		1,796		2,106		2,001		1,676	*	1,414		1,256
26	*	1,181		1,539	*	1,835		2,023		1,866	*	1,796		2,103		2,006		1,657		1,400		1,251
27		1,203		1,566	*	1,835		2,033		1,866	*	1,796		2,106	*	2,006	*	1,657		1,356		1,236
28		1,216		1,589		1,810		2,019	*	1,866		1,795		2,120	*	2,006	*	1,657		1,384		1,260
29		1,242	*	1,589		1,791		2,056	*	1,866		1,820		2,200				1,627		1,365	*	1,260
30		1,263	*	1,589		1,815		2,090		1,866		1,850	*	2,200				1,606		1,357	*	1,260
31		1,284		1,607			*	2,090				1,866	*	2,200				1,629				1,234
Avg Daily Backup		1,027		1,417		1,735		1,943		1,986		1,853		2,029		2,020		1,775		1,491		1,278

Notes: Totals do not include 309 Contracts in County Jails (maximum of 336)

County Jail Back-up for May 2021 - 1,278

County Jail Back-up Fiscal Year Average as of May 31, 2021 - 1

Short-Term Revocation Program for May 2021 - 846

Short-Term Revocation Program Fiscal Year Average as of May 31, 2021 - 719

## STTG UNIT COUNTS – MAY 2021

Unit	Beginning Total	Confirmed	Suspected	In	Out	Paroled	Removed	Ending Total	Total Unit Population	Unit % of STTG's
Benton	56	0	0	10		1	0	65	260	25.00%
Cummins	656	0	0	37	26	14	0	653	1,909	34.21%
Delta	174	0	0	12	9	0	0	177	605	29.26%
EARU	560	0	3	30	5	9	0	579	1,512	38.29%
Ester	57	0	0	24	4	2	0	75	429	17.48%
Grimes	378	0	0	30	21	11	0	376	1,050	35.81%
Hawkins	43	0	0	2	0	0	0	45	419	10.74%
Max	270	0	0	2	2	1	0	269	557	48.29%
Mcpherson	38	0	0	2	0	1	0	39	915	4.26%
MCWR	27	0	0	2	0	0	0	29	109	26.61%
NCU	260	0	0	36	29	0	0	267	817	32.68%
NWAWR	25	0	0	7	0	1	0	30	89	33.71%
ORCU	456	0	0	220	214	6	0	456	1,523	29.94%
ORCU Intake	136	230	0	0	230	0	0	136	219	62.10%
Pine Bluff	119	0	0	58	23	0	0	154	553	27.85%
RLW	178	0	0	32	9	0	0	169	417	40.53%
TWR	33	0	0	2	0	0	0	36	97	37.11%
Tucker	251	0	0	10	1	0	0	260	735	35.37%
Varner	590	1	0	85	40	4	0	632	1,539	41.07%
Wrightsville	228	0	0	11	6	5	0	247	747	33.07%
<b>Total</b>	<b>4,535</b>	<b>231</b>	<b>3</b>	<b>612</b>	<b>619</b>	<b>55</b>	<b>0</b>	<b>4,694</b>	<b>14,501</b>	<b>32.37%</b>

ORCU Intake brought in 230 new STTG members into ADC last month.



## STTG DISCIPLINARY REPORT – MAY 2021

Unit	STTG Incidents	STTG Suspected Incidents	Total Unit Disciplinary	Disciplinary Involving STTG	Percentage
Benton	0	0	7	1	14.29%
Cummins	0	0	147	72	48.98%
Delta	0	0	137	63	45.99%
EARU	0	0	458	300	65.50%
Easter	0	0	9	2	22.22%
Grimes	0	0	150	62	41.33%
Hawkins	0	0	1	0	0.00%
Max	1	0	73	32	43.84%
Mcperson	0	0	126	8	6.35%
MCWR	0	0	1	0	0.00%
NCU	0	0	80	32	40.00%
NWAWR	0	0	7	5	71.43%
ORCU	0	0	93	37	39.78%
ORCU Intake	0	0	6	5	83.33%
Pine Bluff	0	0	73	27	36.99%
RLW	1	0	119	66	55.46%
TWR	0	0	1	0	0.00%
Tucker	0	0	104	59	56.73%
Varner	0	0	333	181	54.35%
Wrightsville	0	0	42	17	40.48%
<b>Total</b>	<b>2</b>	<b>0</b>	<b>1,967</b>	<b>969</b>	<b>49.26%</b>

## STTG COUNTS BY STTG SET – MAY 2021

STTG Set	Benton	Cummins	Delta	EARU	Ester	Grimes	Hawkins	Max	Mcperson	MCWR	NCU	NWAWR	ORCU	Intake	PB	RLW	TWR	Tucker	Varner	Wrightsville	Total
Asian	0	1	0	0	0	0	0	0	0	1	1	1	2	0	0	1	0	1	0	0	8
Bloods	13	155	39	106	12	72	3	59	4	6	45	9	55	15	23	36	1	41	137	43	874
Crips	6	89	12	79	11	33	3	36	7	2	26	3	33	11	20	20	4	19	99	30	543
Folk	5	54	0	88	2	31	9	34	8	2	16	5	93	25	4	7	1	20	61	6	471
GD	12	147	34	115	14	80	0	64	0	9	49	0	64	24	44	33	16	73	134	60	972
Mexican	1	18	8	13	2	7	1	5	4	1	6	0	9	0	6	10	0	6	24	9	130
Motorcycle	0	1	1	2	0	0	1	2	1	1	1	0	3	0	1	0	1	0	0	2	17
Other	2	23	6	13	8	16	1	6	3	1	12	1	18	1	5	5	0	9	18	11	159
People	1	21	7	19	2	25	1	17	2	0	15	1	20	1	10	7	0	14	19	12	194
Unknown	0	10	6	14	0	8	0	3	0	0	5	0	10	4	4	3	1	9	11	10	98
W/S	18	45	41	48	10	48	14	8	10	2	53	10	80	36	22	23	8	23	36	5	540
AB	0	4	1	4	5	5	4	1	0	2	0	0	5	2	1	3	1	7	14	4	63
AC	0	6	1	15	5	7	1	2	0	0	7	0	1	2	1	2	0	7	15	7	79
NAE	3	44	7	34	3	16	2	12	0	0	11	0	23	5	5	7	1	10	26	23	232
WAR	4	35	14	29	1	28	5	20	0	2	21	0	40	10	8	12	1	21	38	25	314
<b>Total</b>	<b>65</b>	<b>653</b>	<b>177</b>	<b>579</b>	<b>75</b>	<b>376</b>	<b>45</b>	<b>269</b>	<b>39</b>	<b>29</b>	<b>267</b>	<b>30</b>	<b>456</b>	<b>136</b>	<b>154</b>	<b>169</b>	<b>35</b>	<b>260</b>	<b>632</b>	<b>247</b>	<b>4,694</b>

Key:

GD = Gangster Disciples

W/S = White Supremacist

NAE = New Aryan Empire

WAR = White Aryan Resistance

AC = Aryan Circle

AB = Aryan Brotherhood

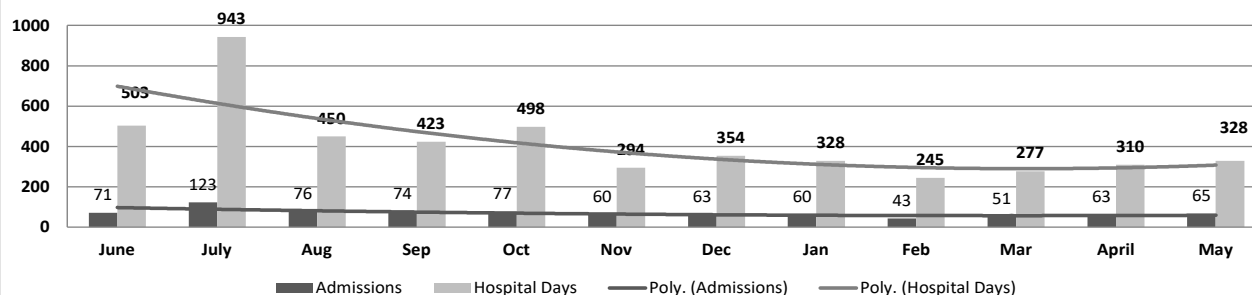
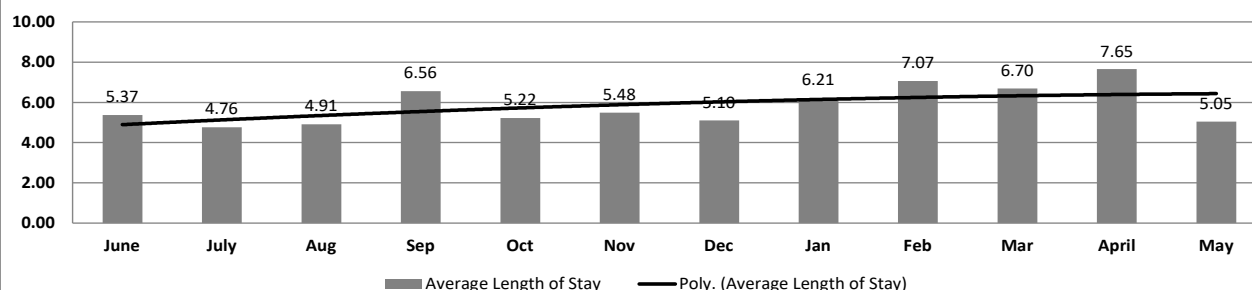
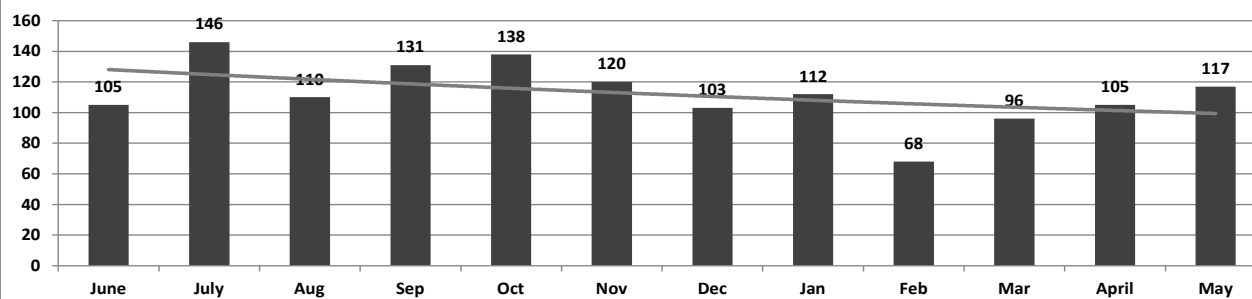
## ADC INPATIENT AND EMERGENCY ROOM UTILIZATION

ADC Inpatient Statistics Past 12 Months

	2020							2021					
	June	July	Aug	Sep	Oct	Nov	Dec	Jan	Feb	Mar	April	May	Average
Admissions	71	123	76	74	77	60	63	60	43	51	63	65	68.8
Hospital Days	503	943	450	423	498	294	354	328	245	277	310	328	412.8
Average Length of Stay	5.37	4.76	4.91	6.56	5.22	5.48	5.10	6.21	7.07	6.70	7.65	5.05	6.00

ADC ER Visits Past 12 Months

	2020							2021					
	June	July	Aug	Sep	Oct	Nov	Dec	Jan	Feb	Mar	April	May	Average
Emergency Room Visits	105	146	110	131	138	120	103	112	68	96	105	117	112.6

ADC Inpatient Utilization  
Past 12 MonthsADC Inpatient Average Length of Stay  
Past 12 MonthsADC Emergency Room Visits  
Past 12 Months



## MEDICAL GRIEVANCE BOARD REPORT – MAY 2021

Unit	<i>Acknowledged/ Received</i>	<i>Rejected</i>	<i>Reviewed &amp; Signed by Dep Director</i>	<i>With Merit</i>	<i>With Merit, but Resolved</i>	<i>% With Merit</i>	<i>Without Merit</i>
Benton	0	0	0	0	0	0%	0
Bowie County	0	0	0	0	0	0%	0
CMU	2	1	0	0	0	0%	0
Cummins	5	14	4	1	0	25%	3
Delta	5	1	0	0	0	0%	0
EARU	13	3	7	0	0	0%	7
EARU Max	26	3	9	0	0	0%	9
Ester	0	0	2	0	0	0%	2
Grimes	11	4	4	1	0	25%	3
Hawkins	0	0	0	0	0	0%	0
McPherson	7	2	0	0	0	0%	0
MCWRC	0	0	0	0	0	0%	0
MSU	8	2	5	0	0	0%	5
North Central	24	3	8	0	0	0%	8
NWAWRC	0	0	0	0	0	0%	0
Ouachita	16	1	6	0	1	17%	5
Pine Bluff	0	0	0	0	0	0%	0
Randall L. Williams	0	0	0	0	0	0%	0
SNN	1	1	4	0	0	0%	4
TRCC	0	0	0	0	0	0%	0
Tucker	10	2	2	0	0	0%	2
Varner	7	1	9	1	0	11%	8
Varner Super Max	16	2	14	0	0	0%	14
WRU	3	0	1	0	0	0%	1
WHM	0	0	0	0	0	0%	0
WWR	0	0	0	0	0	0%	0
<b>Total</b>	<b>154</b>	<b>40</b>	<b>75</b>	<b>3</b>	<b>1</b>	<b>5%</b>	<b>71</b>

## CHAPLAINCY

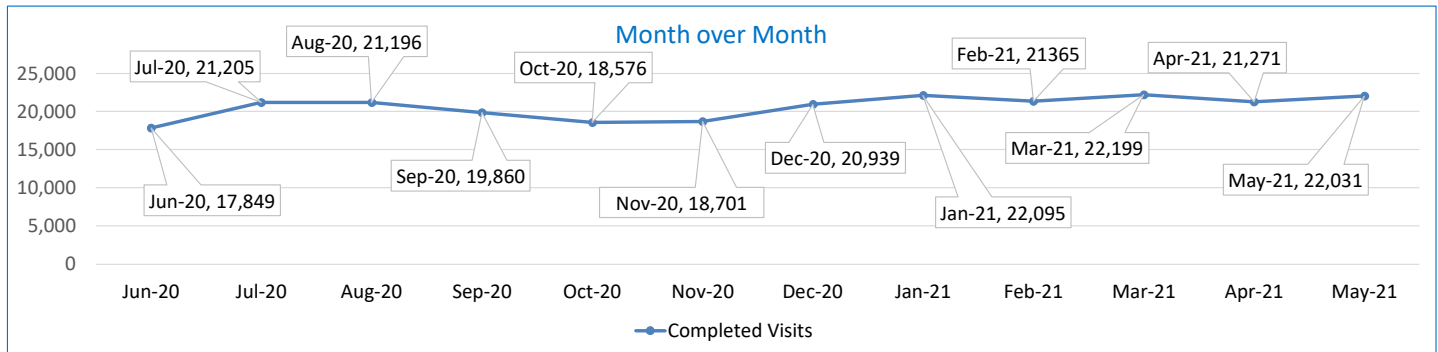
Month: May Year: 2021			CUMMINS	DELTA REGIONAL	EAST ARKANSAS	EAST ARKANSAS MAX	ESTER	GRIMES	HAWKINS	MAXIMUM	MCPHERSON	NORTH CENTRAL	OUACHITA RIVER	PINE BLUFF	RANDALL L. WILLIAMS	TUCKER	VARNER	VARNER MAX	WRIGHTSVILLE	TOTAL
Services Chaplains Oversaw																				
Christian																				
Population	0	0	0	0	5	0	0	0	0	4	13	5	5	0	5	0	0	37		
Segregation	0	0	0	0	5	0	0	0	0	0	0	0	0	0	0	0	0	5		
Muslim																				
Population	0	0	0	0	2	0	0	3	0	4	5	4	4	0	4	0	0	26		
Segregation	0	0	0	0	2	0	0	3	0	0	0	0	0	0	0	0	0	5		
73																				
Volunteers in Charge																				
Protestant	0	0	0	0	0	0	0	0	0	0	0	0	0	0	0	0	0	0		
Catholic	0	0	0	0	0	0	0	0	0	0	0	0	0	0	0	0	0	0		
Muslim	0	0	0	0	0	0	0	0	0	0	0	0	0	0	0	0	0	0		
Other	0	0	0	0	0	0	0	0	0	0	0	0	0	0	0	0	0	0		
Baptism	0	0	0	0	0	0	0	0	0	0	0	0	0	0	0	0	0	0		
Marriages																				
	0	0	0	0	0	0	0	0	0	0	0	0	0	0	0	0	0	0		
Distributed by Chaplains																				
Greeting Cards	300	5	0	0	31	42	715	44	301	0	175	21	38	1,360	78	308	18	3,436		
Bibles,Quran,Torrah, Etc.	23	20	14	21	23	26	65	5	88	0	145	25	15	264	23	16	22	795		
Study Course	0	0	23	34	7	0	0	0	54	0	29	6	24	104	0	0	0	281		
Writing Supplies	0	0	0	0	31	44	750	17	70	0	500	1	150	315	0	0	75	1,953		
Literature	1,892	525	498	347	44	18	700	574	182	0	250	504	2,532	836	336	328	312	9,878		
Chaplain's Visits																				
Barracks	53	22	42		1	83	36	16	12	42	33	69	4	32	360	28	10	843		
Approximate Hours Spent in Barracks	64	8	9	0	1	31	8	19	6	21	4	30	0	8	200	18	5	432		
Inmate Office visits	32	71	60	0	27	163	55	7	92	6	60	8	174	107	47	0	17	926		
Other Office visits	49	12	47	0	11	29	40	0	0	4	42	58	10	44	16	4	18	384		
Hospital	1	0	0	0	0	0	0	0	0	0	25	0	0	0	0	0	0	26		
Infirmary/Sick Call	6	3	6	0	7	6	0	0	0	3	22	2	0	3	8	2	4	72		
Restrictive/Punitive Housing	5	3	0	15	3	5	8	4	0	5	17	4	3	2	0	11	4	89		
PC - DRU		3							0					0				3		
Visitation Days	0	0	0	0	0	0	0	0	0	0	0	0	0	0	0	0	0	0		
Volunteer Visits																				
RCV	0	0	0	0	0	0	0	0	0	0	0	0	0	0	0	0	0	0		
OCV	0	0	0	0	0	0	0	0	0	0	0	0	0	0	0	0	0	0		
Spiritual Advisor	0	0	0	0	0	0	0	0	0	0	0	0	0	0	0	0	0	0		
CRA	0	0	0	0	0	0	0	0	0	0	1	0	0	3	0	0	0	4		
Religious Volunteer Hours																				
Volunteer Hours	0	0	0	0	100	0	0	0	38	0	7	0	0	18	0	0	0	163		
Denominational/Volunteer Chaplain Hours	0	0	0	0	100	0	0	13	38	0	0	0	0	15	0	0	0	166		
																				329
Other Activities of Chaplain																				
Counseled Employees	3	7	4	0	0	5	25	2	3	3	19	0	2	6	65	0	12	156		
Orientation Sessions	2	0	0	0	0	0	0	0	0	0	0	0	0	0	0	0	0	2		
Free World Devotions	0	0	2	0	1	9	0	1	0	0	0	0	3	4	27	0	0	47		
Spoke in Churches	12	1	6	0	1	1	0	2	0	0	7	0	3	4	27	0	0	64		
Crisis Intervention Sessions	16	9	2	0	0	18	55	0	0	0	2	4	7	11	7	0	15	146		
Marriage Counseling	0	0	0	0	0	0	0	0	0	0	0	0	0	0	0	0	0	0		
Denominational Meeting	0	0	0	0	1	1	0	1	0	0	0	0	1	0	0	0	0	4		
Chaplain's Meeting	1	1	1	0	1	1	1	0	1	1	1	0	0	1	13	0	1	24		
Volunteer Training Session	0	0	1	0	0	1	1	0	0	0	0	0	0	0	0	0	0	3		
Chaplain Transfers																				
	0	0	0	0	0	0	0	0	0	0	0	0	0	0	0	0	0	0		
Chaplain Promotions																				
	0	0	0	0	0	0	0	0	0	0	0	0	0	0	0	0	0	0		
PAL PROGRAM																				
Enrolled at start of month	47	22	45	0	19	48	42	22	54	60	38	0	32	54	0	0	19	502		
Enrolled during the month	3	0	1	0	0	0	1	0	16	4	0	0	0	4	50	0	0	79		
Removed From PAL Program																				
# Paroled	0	0	1	0	1	1	0	0	2	1	0	0	0	15	0	0	0	21		
# Completed	2	0	0	0	0	1	0	0	1	0	0	0	0	0	0	0	0	4		
# Withdrew	0	0	0	0	0	1	0	0	5	0	0	0	0	0	0	0	0	6		
# Removed	3	0	1	0	0	1	0	1	4	1	0	0	2	0	1	0	0	14		
# Transferred	0	0	0	0	0	0	1	0	4	2	1	0	0	0	0	0	0	8		
Total Removed from PAL Program	5	0	2	0	1	4	1	1	16	4	1	0	2	15	1	0	0	53		
Total Enrolled at the End of the Month	45	22	44	0	18	44	42	21	54	60	37	0	30	43	49	0	19	528		
Volunteers in PAL																				
	0	0	0	0	0	0	0	6	0	6	0	0	0	0	0	0	0	12		
Special Events:																				
	1	1	1	1	2	1	1	2	2	1	1	1	1	1	1	1	1	20		

## SECURUS VIDEO VISITATION REPORT MAY 2021

### AR-DOC SVV Activity Tracker

Total ADP 14,945

Total Visits by Month	Jun-20	Jul-20	Aug-20	Sep-20	Oct-20	Nov-20	Dec-20	Jan-21	Feb-21	Mar-21	Apr-21	May-21
Total (Includes SuperMax)	17,849	21,205	21,196	19,860	18,576	18,701	20,939	22,095	21,365	22,199	21,271	22,031
Target Objective	15,587	15,587	15,587	15,587	15,587	15,587	15,587	15,587	15,587	15,587	15,587	15,587



#### Completed Visits

Site	Current Month	Previous Month
Benton	311	333
Cummins	1,970	2,032
Delta Regional	1,613	1,707
East Arkansas Regional	2,580	2,362
Ester	842	1,025
Grimes	1,207	1,138
J Aaron Hawkins Sr.	1,077	983
Tucker Max	1,546	1,555
Mcperson	862	833
Mississippi County WRC	170	173
North Central	1,877	1,926
NW Arkansas WRC	153	80
Ouachita River	2,097	2,039
Pine Bluff Complex	402	462
Randall L Williams	715	626
State Police Barracks	87	85
Texarkana Regional	200	100
Tucker Unit	586	535
Varner	2,370	2,153
Wrightsville Unit	1,293	1,056
Pine Bluff Re-Entry	73	68
Tucker Re-entry	0	0
<b>Total:</b>	<b>22,031</b>	<b>21,271</b>

#### Missed by Inmate

Site	Current Month	Previous Month
Benton	18	23
Cummins	231	73
Delta Regional	19	21
East Arkansas Regional	51	30
Ester	12	17
Grimes	20	24
J Aaron Hawkins Sr.	17	22
Tucker Max	20	28
Mcperson	26	22
Mississippi County WRC	9	19
North Central	56	55
NW Arkansas WRC	14	10
Ouachita River	73	45
Pine Bluff Complex	11	20
Randall L Williams	14	17
State Police Barracks	1	0
Texarkana Regional	6	17
Tucker Unit	12	12
Varner	57	55
Wrightsville Unit	177	85
Pine Bluff Re-Entry	1	1
Tucker Re-entry	0	0
<b>Total:</b>	<b>845</b>	<b>596</b>

**SECURUS TABLET REPORT  
MAY 2021**

Facility Name	Subscription	Facility	Officer	Total	New Subscriptions
Benton Unit	125	10	8	143	0
Cummins Unit	340	88	14	442	0
Delta Regional Unit	107	38	16	161	0
East Arkansas Regional Unit	205	97	10	312	0
Ester Unit	119	139	20	278	0
Grimes Unit	170	73	14	257	0
J. Aaron Hawkins Sr Center For Women	154	70	19	243	0
McPherson Unit	172	100	15	287	0
Mississippi County Work Release Center	52	3	9	64	0
North Central Unit	147	111	10	268	0
Northwest Arkansas Work Release Center	57	3	8	68	0
Ouachita River Correctional Unit	242	108	14	364	0
Pine Bluff Reentry Center	28	2	0	30	0
Pine Bluff Unit	84	5	8	97	0
Randall L. Williams Facility	62	26	15	103	0
State Police Barracks	23	0	3	26	0
Texarkana Regional Correctional Center	35	2	10	47	0
Tucker Maximum Security Unit	106	60	15	181	0
Tucker Reentry Center	0	51	3	54	0
Tucker Unit	119	62	10	191	0
Varner Unit	179	64	20	263	0
Wrightsville Unit	146	40	6	192	0
<b>TOTAL</b>	<b>2,672</b>	<b>1,152</b>	<b>247</b>	<b>4,071</b>	<b>0</b>

## CONSTRUCTION BUDGET / STATUS REPORT - JUNE 8, 2021 — [Page 1 of 2]

Fund	Project Description	Total Projected Spent	Budget	Available Funds	\$ % Complete	Construction % Complete	Notes
KBR4Q95	ESTER - Phase 3 - General Improvement Fund	2,977,000	3,001,781	24,782	99%	98%	Gravel for parking lot ordered.
700483A	EARU Max Rec Expanded Metal Rec Yard	824,433	879,000	54,567	94%	0%	All panels constructed at Central Maintenance. We are delivering panels. We have started demolition and construction of new Rec pens.
700483A	Tucker Max Expanded Metal Rec Yard	1,060,637	1,800,000	739,363	59%	0%	DBA Approved to proceed. We are constructing the panels on-site. Material list has been ordered and delivered.
700483A	Cummins Expanded Metal Rec Yard	50,012	368,617	318,605	14%	0%	Plans on hold, will modify for exp. metal
KBR4Q95	Bullpens	388,676	851,999	463,323	46%	98%	Varner & EARU complete. Installation underway at Max. Locks delivered. Working on bullpens now.
KBR4Q95	13 & 15 Barracks Door Revisions	119,111	174,000	54,889	68%	68%	All doors and locks installed in 13 Barracks. We are looking at modifications for 15 barracks.
KBR4Q95	Camera's (New)	1,240,280	1,248,000	7,720	99%	86%	Delta, Varner, EARU, Cummins, RLW, PBU, & the Max are complete, working at Tucker, 90% complete.
700485A	Integrity Energy Improvements at EARU & Delta	16,961,127	17,010,204	49,077	100%	97%	lights (100%), plumbing 100%, water (100%), compost (100%), & solar (100%), HVAC (100%). Only Training is incomplete.
7004828	Integrity Energy Improvements Phase 2 at Tucker and Max	1,842,263	18,603,150	16,760,887	10%	0%	We are working with Integrity on the capital equipment list that will be installed in phase II. Lighting and water conservation is set to begin in April.
KBSCW18	McPherson Administration	395,312	395,439	127	100%	85%	Finishing up all of the detail work. ETA is June 16th.
KBSCW18	McPherson Visitation	307,437	312,430	4,993	98%	85%	
KBR4Q95	McPherson Administration and Visitation	2,122	100,000	97,878	2%	0%	
KBSHW18	Tucker Water Treatment	-	1,093,848	1,093,848	0%	0%	Engineering firm selected. Contract being prepared.
KBSFW18	Max Armory	62,052	70,000	7,948	88.6%	0%	DBA approved Plans 8/21/20. Land work is underway. Material is being delivered to location to begin construction.
7004810	Administrative East Roof Replacement	960	1,407,242	1,406,282	0.1%	0%	All roofs have been designed and they are working with DBA for approval. The specified material needing to be bid out is set to submit to OSP on 4/6/2021.
7004810	Central Warehouse Roof Replacement	216	322,722	322,506	0.1%	0%	
7004810	RLW Roof Replacement	815	2,639,917	2,639,102	0.03%	0%	
22V	NWARWRC Laundry and Commissary	166,978	250,000	83,022	67%	0%	Foundation and slab prep work done. Lift station installed and operational. Building and material are onsite construction of the project has started.
865C KBR4Q95	NCU Perimeter Security	20,625 5,834	270,000	243,541	10%	0%	DBA Approved plans. DBA has the project in review.
N98	Max Re-Entry Generator Project	3,193	135,000	131,807	2%	0%	Plans submitted to DBA. We have received our notice to proceed on this project.
KBR4Q95	NCU Replacement Generator Project	20,081	202,000	181,919	10%	0%	DBA Approved. Bids are being requested.





## CONSTRUCTION BUDGET / STATUS REPORT - JUNE 8, 2021 — [Page 2 of 2]

Fund	Project Description	Total Projected Spent	Budget	Available Funds	\$ % Complete	Construction % Complete	Notes
7004820	Tucker Asbestos Abatement	18,969	448,000	429,031	4%	0%	Notified that paperwork is in final review at DBA.
7004820	Tucker 10 Barracks Sidewalk	-	70,259	70,259	0%	0%	DBA approved to proceed. We have regraded the area. Projected start date of 5/25/21.

Telephone Projects

Maintenance & Operations	Fire Alarm Upgrades (All Units)	40,967	41,000	33	100%	50%	on-going
	Stainless Steel - Kitchen/Shower/Restrooms - All Units	19,598	20,000	402	98%	15%	continual need
	Gates and Fences all units	24,204	25,000	796	97%	0%	to improve security
	ACA Maintenance	99,835	100,000	165	100%	0%	Construction personell and additional maintenace teams at ORCU. Headed to NCU and Varner next.
	ADA Projects - All Units	9,695	10,000	305	97%	0%	Working with Varner for the sports field sidewalk.
	Fast Top Floor Systems (kitchen/laundry/showers all units)	17,593	17,775	182	99%	0%	Benton complete. Ouachita kitchen material has been ordered and awaiting arrival.
	Camera Equipment - All Units	246,601	250,000	3,399	99%	15%	cameras as requested/approved.
	Lock/Riot Gates - All Units	89,018	90,500	1,482	98%	12%	on-going.
	AC Units-All Units	69,718	70,000	282	100%	25%	repairing & replacing daily.
	<b>Subtotal</b>	<b>\$ 617,230</b>	<b>\$ 624,275</b>	<b>\$ 7,045</b>			

Capital Projects FY20 Carry Forward	Metal Ceilings	24,369	25,000	631	97%	0%	NCU complete, Delta is next.
	ORCU Gravel Pit Operations	32,646	35,000	2,354	93%	18%	on-going.
	Dog Kennel/Horse Stable Malvern	0	48,000	48,000	0%	0%	DBA approved the Plans, released for construction. Material for this project ordered. Dedicated project supervisor on-site.
	Emergency Generator - All Units	130,154	250,000	119,846	52%	20%	Cummins 300kW generator complete. All material purchased for Hawkins. Generator is currently being installed. Max Gen mat'l rec'd, Generator rec'd. Will start as soon as Hawkins Unit Gen is installed. Cummins East Bldg. we have approval awaiting Max generator install.
	Tucker 4 new filters & one aeration tank	486,636	488,434	1,798	100%	70%	Project is ready for final. We are awaiting the correct power swith to install and should be ready to go
	Roof Repairs-Cummins	24,800	145,000	1,385	99%	0%	Prepared large order for multiple Units. Max is complete. Need repairs at ORCU, Delta, Cummins & others. Varner & ORCU working on repairs, received TPO
	Construction/Maintenace	18,037				0%	
	Roof Repairs-Delta	3,387				0%	
	Roof Repairs-East Arkansas	59,629				0%	
	Roof Repairs-Max	0				0%	
	Roof Repair - NCU	7,278				0%	
	Roof Repair - RLW	5,786				0%	
	Roof Repairs-Tucker	0				0%	
	Roof Repairs-Varner	20,044				0%	
	Roof Repairs-Wrightsville	4,654				0%	
	Boiler Repair	99,582	100,000	418	100%	18%	continually needing repair
	<b>Subtotal</b>	<b>\$ 917,003</b>	<b>\$ 1,091,434</b>	<b>\$ 174,431</b>			

New Projects	Additional Metal Fab shop	20,346	29,266	8,920	70%	0%	purchasing materials
	PB Warehouse Drive replacement	0	-	0	0%	0%	Project suspended for this fiscal year.
	<b>Subtotal</b>	<b>\$ 20,345.89</b>	<b>\$ 29,266</b>	<b>\$ 8,920</b>			
	Architect Fees	111,489	155,225	43,736	72%		
	<b>Total</b>	<b>\$ 1,666,067</b>	<b>\$ 1,900,200</b>	<b>\$ 234,133</b>			

**Notes** Report has not been reconciled against Accountings Reconciled Reports.  
Tolerance/Deviation is with in 1% of Projected Spending.