



DIVISION OF  
CORRECTION

# BOARD REPORT

April 2021



@ARDeptofCorrections



@adcpiio



@arcorrections



Dexter Payne,  
Director

## POPULATION REPORT

### RESEARCH/PLANNING

**March 2021 Admissions and Releases** – Admissions for March 2021 totaled **883** (716-males and 167-females) while releases totaled **503** (429-males and 74 females).

**Inmate Population Growth/Projection** – At the end of March 2021, the jurisdictional population for the Division of Correction totaled **16,085**, representing a decrease of **9** inmates since the first of January 2021. Calendar year 2021 has seen an average decrease of **3** inmates per month, which is down from an average monthly decrease of **139** inmates per month during calendar year 2020.

**Average County Jail Back-up** – The backup in the county jails averaged **1,775** inmates per day during the month of March 2021, which was down from the per-day average of **2,020** inmates during the month of February 2021. Of the **1,775** average, short-term revocations accounted for **709** (623 males and 86 females) during the month.

**House Bill 1530/Restrictive Housing (RH) - January 2021 through March 2021** – A total of **3,434** (3,262 males and 172 females) inmates were assigned to Restrictive Housing during the first quarter of the year.

- There was a **3.5%** increase in overall RH assignments in the first quarter of 2021 compared to the previous quarter.
- There was a **9.4%** decrease in the number of individuals 55 or older held in RH compared to the fourth quarter of 2020.
- Disciplinary increased in most categories for the first quarter of 2021.
- Attempted suicides went up by **8** in the first quarter of 2021.

*Refer to Page 13 of this report for further details.*

## INSTITUTIONS

### INMATE INSTITUTIONAL GRIEVANCES

**Inmate Formal/Informal Grievances:** During March 2021, a total of 1,786 formal grievances and 2,100 informal grievances were filed at various units.

**Institutional Grievances Appeals:** There was a total of 708 appeals of institutional grievances received in March 2021. Of those, 564 were acknowledged and 144 were rejected for various reasons. Of the total 521 appeals answered, 517 had no merit and four were found with merit.

### FARM

During March, field work was limited due to wet grounds. Some gardens were able to get plants started in the fields.

Calving season has been in full swing at both the Wrightsville and Cummins units. So far, there have been no problems with calving, which has been the goal with the artificial insemination program. Cummins has been experiencing a problem with coyotes attacking newborn calves.

The 10th Annual ADC Horse Auction, held on March 13, was a big success. There was a steady flow of riders on the sale preview day, as well as several repeat buyers in attendance. The price of the horses this year averaged more than \$2,700 each, with a new record high price set for a single horse. Ben, a 21-year-old gelding from the Varner Unit, sold for \$6,100. He will enjoy retirement in Dardanelle.

Equipment that was either inoperable or too costly to fix was consigned to BigIron Auctions for their March sale. Proceeds from the sale are being used to purchase new equipment for farm operations.

Work to get farm improvement projects underway at the Cummins, Tucker and East Arkansas Regional units is in motion. A dirt moving contractor is in place and there are bids for power units, wells and making conversions from diesel to electric.

### REGIONAL MAINTENANCE HOURS

Regional Maintenance Hours	March 2021
Benton Unit	6,866
Delta Regional Unit	2,363
East Arkansas Regional Unit	1,744
Grimes Unit	2,240
McPherson Unit	2,256
Mississippi County Work Release	63
North Central Unit	4,584
Ouachita River Correctional Unit	904
Randall L. Williams Unit	3,760
Texarkana Regional Correctional Center	0
Tucker Unit	536
Varner Unit	2,504
Wrightsville Unit	288
<b>Total Hours</b>	<b>28,108</b>

**WORK RELEASE RENT REPORT**

Unit	March 2021
Benton Unit	\$76,670.00
Mississippi County Work Release	\$44,387.00
Northwest Arkansas Work Release	\$24,939.00
Pine Bluff Work Release	\$25,143.00
Texarkana Regional Correctional Center	\$32,725.00
Wrightsville Hawkins Unit	\$8,823.00
<b>Total</b>	<b>\$212,687.00</b>

**REENTRY****RANDALL L. WILLIAMS****JUVENILE EDUCATION PROGRAM**

March 2021 Capacity: 20	Beginning Count	New Commitments	DCR/Punitive	Transferred/ Turned 18*	Paroled	End Count
Juveniles*	2	1	0	1	0	2

\*Juveniles are transferred from the program once they reach the age of 18.

**WORKFORCE ALLIANCE FOR  
GROWTH IN THE ECONOMY (WAGE)**

March 2021 Capacity: 120 Unit:	Beginning Count	Admissions During Mo.	Removed*	Completed	End Count
Delta***	0	0	0	0	0
Ester**	0	0	0	0	0
Hawkins***	0	0	0	0	0
McPherson***	0	0	0	0	0
Ouachita River	20	0	0	0	20
Tucker***	0	0	0	0	0
Tucker Reentry***	0	0	0	0	0
Wrightsville***	0	0	0	0	0
<b>TOTAL</b>	<b>20</b>	<b>0</b>	<b>0</b>	<b>0</b>	<b>20</b>

\*The "Removed" column indicates the number of participants who transferred, signed out, received a disciplinary, were removed because test scores were not returned/were too low to continue, or were released from prison.

\*\*The Ester Unit WAGE Program is experiencing a change in software resulting in no classes being taught at this time.

\*\*\*WAGE Program inactive during the month due to COVID-19.

**ADVANCED PRINCIPLES  
AND APPLICATIONS FOR  
LIFE PROGRAM (APAL)**

March 2021 Capacity: 86	Beginning Count	Admissions During Mo.	Removed*	End Count
Ester	32	0	13	19
Hawkins	46	1	6	41
<b>TOTAL</b>	<b>78</b>	<b>1</b>	<b>19</b>	<b>60</b>

Advanced PAL is an 18-month reentry program that combines a pre-release curriculum with the PAL program.

\*The "Removed" column indicates the number of participants who paroled, completed the program, withdrew from the program, transferred, or were removed from the program for another reason.

**WRIGHTSVILLE-HAWKINS  
PATHWAY TO FREEDOM PROGRAM**

March 2021 Capacity: 200	Beginning Count	Enrolled During the Month	Removed	End Count*
Wrightsville-Hawkins PTF	148	64	21	191

**THINK LEGACY**

March 2021 Capacity: 635 Unit	Beginning Count	Admitted	Graduated	Removed**	End Count	Graduated But Remain*
Cummins	56	17	0	26	47	0
Delta Regional	22	4	0	4	22	0
East Arkansas Regional	35	0	0	0	35	0
Ester	0	0	0	0	0	0
Grimes	0	0	0	0	0	0
Hawkins (Female)	7	0	0	0	7	0
McPherson	40	22	3	15	47	3
North Central	0	0	0	0	0	0
Ouachita River	30	9	0	9	30	0
Tucker	0	0	0	0	0	0
Tucker Women's Reentry	0	0	0	0	0	0
Varner	0	0	0	0	0	0
Wrightsville	0	0	0	0	0	0
<b>Total</b>	<b>190</b>	<b>52</b>	<b>3</b>	<b>54</b>	<b>188</b>	<b>3</b>

\*The "Graduated But Remain" column indicates the number of participants who have successfully completed the program but remain in the barracks. *These numbers are included in the End Count.*

\*\*The "Removed" column indicates the total number of participants who paroled, signed out, transferred, or were removed from the program for any other reason and are no longer in the barracks.

## ADMINISTRATIVE SERVICES

### DIVISION OF CORRECTION TRAINING - MARCH 2021

#### BASIC TRAINING DIVISION –

Instructor Ramone Woodall's **BCOT Class 2021-B** graduated on March 26, 2021, with a total of 33 cadets.

The *Willis H. Sargent Award* recipient for the class was Daniel McQuinn of the Texarkana Regional Unit.

*Academic Awards* were presented to the following:

- 1st – Andrew McEwen, Maximum Unit
- 2nd – Keashawn Robinson, Grimes Unit and Rebecca Reed, North Central Unit
- 3rd – Christopher Sneed, Texarkana Regional Unit

Recipients of *Physical Fitness Awards* were:

- 1st – Rakeem Rice, Pine Bluff Unit
- 2nd – Jonathan Young, Varner Unit
- 3rd – Chandler Irby, Varner Unit

#### IN-SERVICE DIVISION –

During the month, the Training Academy held a Self Defense and Staff Survival class attended by three participants. All other in-person training has remained suspended until further notice due to COVID-19.

#### eCADEMY –

During March, 924 ADC employees completed a total of 18,377 hours of eCADEMY training. About 21% of ADC employees completed at least one course during that timeframe, averaging 4.00 hours per staff member.

## HEALTH/CORRECTIONAL PROGRAMS

### CHAPLAINCY SERVICES

**All Facilities** – The Chaplaincy Division at all facilities has continued to provide religious services virtually over the video systems, including Jumu'ah Prayer.

**Delta Regional Unit** – A video study series, "Financial Freedom 102," was shown at 7:30 a.m. on Saturday mornings throughout the facility during the month of March.

**Ester Unit** – An APAL graduation was held on March 15, with 12 students successfully completing the 18-month program and 20 students completing phase one of the program.

**Grimes Unit** – Chaplaincy Services sponsored a March Madness scripture memory contest. Inmates in the program selected teams and competed in a tournament to see which team could memorize the most verses. More than 2,500 combined Bible verses were memorized in four weeks by the participants.

**Randall L. Williams Unit** – During March, inmates continued a 16-week Bible study on the book of Romans and began the "Financial Freedom 101" program. Chaplain Caracciolo distributed candy to staff on several occasions throughout the month.

## ACCREDITATION

#### ACA Internal Audits Completed:

03/08–03/10 Maximum Security Unit Reaccreditation (100% on Mandatory Standards/Best Practices and 98.9% on Non-Mandatory Standards/Best Practices)

03/11–03/12 Willis H. Sargent Training Academy Reaccreditation (100% on Mandatory Standards/Best Practices and 100% on Non-Mandatory Standards/Best Practices)

03/16 Cummins Unit Pre-Audit

03/17 McPherson Unit Audit Prep – Visit

03/18 Grimes Unit Audit Prep – Visit

03/25 Ouachita River Correctional Unit Pre-Audit

03/26–03/31 Ouachita River Correctional Unit File Review

#### Fire/Safety and Sanitation Independent Audits Conducted by the Fire and Sanitation Coordinator:

03/16–03/31 Newport Complex Audit Prep

## VOLUNTEER SERVICES

#### Total Number of Volunteer Hours for March 2021:

Unit/Program	Hours
Delta Unit	0
East Arkansas Regional Unit	0
McPherson Unit	0
Mississippi County Work Release Center	0
Northwest Arkansas Work Release Center	9.50
Ouachita River Correctional Unit	0
Pine Bluff Complex	0
Texarkana Regional Correctional Center	0
Varner	0
PAWS	0
Think Legacy	0
Religious Services/Chaplaincy	0
<b>Total Hours</b>	<b>9.50</b>

**MENTAL HEALTH SERVICES****Reduction of Sexual Victimization Program (RSVP) and Sex Offender Treatment Programs (SOFT):**

March 2021	Capacity	Beginning Count	Completed	Removed	Admissions	End Count
RSVP	278	52	0	0	107	159
SOFT	30	1	0	0	3	4
<b>Total</b>	<b>308</b>	<b>53</b>	<b>0</b>	<b>0</b>	<b>110</b>	<b>163</b>

There are 639 males on the waiting list for RSVP and six females on the waiting list for SOFT who are within five years of their TE date. Of those, 26 inmates are mandated by the Parole Board.

The average time on the waiting list from request is between one and two months for those stipulated.

\*The total on the waiting list, including those not currently within the identified timeframe, is 1,415 males and seven females. Of these, 1,092 are eligible and 330 are ineligible for the program. There are no PREA inmates in the program at this time.

**\*Ineligibility is due to being in restrictive housing, having class IV status, or receiving a major disciplinary within the last 60 days.**

**Therapeutic Community (TC):**

March 2021 Unit	Capacity	Beginning Count	Completed	Removed	Admissions	End Count
McPherson	53	46	0	10	15	51
Tucker	136	78	6	26	70	116
Wrightsville	50	24	2	4	30	48
<b>Total</b>	<b>239</b>	<b>148</b>	<b>8</b>	<b>40</b>	<b>115</b>	<b>215</b>

There are 495 males and 138 females on the waiting list who are within ten years of their release date. Of those, five are mandated by the Parole Board.

The average time on the waiting list from request is 17 days.

\*The total on the waiting list, including those not currently within the identified timeframe, is 669 males and 146 females. Of these, 633 are eligible and 182 are ineligible for the program.

**\*Ineligibility is due to being in restrictive housing, having class IV status, or receiving a major disciplinary within the last 60 days.**

**Substance Abuse Treatment Program (SATP):**

March 2021 Unit	Capacity	Beginning Count	Completed	Removed	Admissions	End Count
Benton	20	17	0	6	7	18
Cummins	47	36	6	7	14	37
Grimes	56	40	0	7	21	54
Maximum Security	4	3	0	0	1	4
McPherson	106	56	3	13	36	76
Randall L. Williams	200	37	7	15	42	57
Wrightsville	150	68	12	7	43	92
<b>Total</b>	<b>583</b>	<b>257</b>	<b>28</b>	<b>55</b>	<b>164</b>	<b>338</b>

There are 1,896 males and 150 females on the waiting list who are within five years of their release date. Of those, 26 are mandated by the Parole Board.

The average time on the waiting list from request is 17 days.

\*The total on the waiting list, including those not currently within the identified timeframe, is 2,491 males and 165 females. Of these, 2,046 are eligible and 610 are ineligible for the program.

**\*Ineligibility is due to being in restrictive housing, having class IV status, or receiving a major disciplinary within the last 60 days.**

**Substance Use Intervention Program:** The Substance Use Intervention Program had no admissions or discharges for an end-of-month count of zero for March. This program is housed at the Varner Unit and is for inmates found guilty of a disciplinary violation for drug use or drug possession.

**Ouachita River Correctional Unit (ORCU) Residential Program Unit (RPU):** The RPU had seven admissions and nine discharges in March for an end-of-month count of 117.

**McPherson Unit Mental Health Residential Program Unit (RPU):** There were six admissions and four discharges in March for an end-of-month count of 38.

**Habilitation Program:** The Habilitation Program at the Ouachita River Correctional Unit provided treatment services to 45 inmates during March. There were no admissions or discharges, resulting in an end-of-month count of 45.

**Anger Management Treatment:** The Anger Management Treatment Program at the Cummins Unit provided no treatment services to inmates during March. There were no admissions or discharges, for an end-of-month count of zero.

**MENTAL HEALTH SERVICES, continued**

**Staffing:** The following Mental Health Services and Substance Abuse Treatment Program (SATP) positions were vacant in February and March 2021:

Positions	FTE's*	February 2021	March 2021
Psychologists	14	5	5
Social Workers	31	12	12
Licensed Professional Counselors	2	1	1
Rehab Program Managers	9	1	1
Advisors	64	14	15
Substance Abuse Program Leaders	40	9	7
Administrative Specialists	17	5	4

\*FTE refers to authorized Full Time Equivalent positions.

**ADDITIONAL MENTAL HEALTH AND MEDICAL INFORMATION****Self-Study Classes:**

Classes	Number of Participants	Number Completed	Waiting List
Anger Management	210	177	748
Thinking Errors	139	123	649
Substance Abuse Education	88	74	608
Communication Skills	152	119	750
Domestic Violence	25	24	145
Victims of Domestic Violence	6	6	33
Stress Management	85	68	800
Parenting	51	44	276

**Suicide:** There were 90 suicidal threats during March. There were seven attempts, none of which resulted in death.

**Outpatient:** There were 1,933 inmates on the mental health medical log at the beginning of March. Mental Health staff conducted the following contacts during March:

Case Management Contacts	1,773
Requests for Interviews	1,277
Testing	4
Intakes	816
Unit Requests	1,491
Pre-Lockup Reviews	557
Routine Restrictive Housing Reviews	1,075
Restrictive Housing Rounds	21,517
PREA Evaluations	101
Routine Follow-up	368
834 Requests	44

**County Mental Health Requests:** During March, there were 262 requests received of a mental health nature. Of those, 136 inmates were fast-tracked to ADC. **Note: Most inmates were not transferred due to COVID-19.**

**County Medical Health Requests:** During March, there were 766 requests received of a medical nature. A total of six inmates were fast-tracked to ADC.

**Medical Contract Reimbursements:** Sanction reimbursements for February amounted to \$12,600.00.

**Deaths:** There were three inmate deaths during the month of March. One was claimed and two were cremated.

**Wellpath:** See attachment for Wellpath's report regarding outside beds and emergency room visits.

**Medical Grievances:** In March, there were 142 appeals received of medical grievances and 146 appeals were answered. Nine of those were found to be with merit and eight with merit but resolved.

**SEX OFFENDER ASSESSMENT****Assessments Completed:**

Risk Level	March	September 1999 through March 2021
Level 1	1	1,210
Level 2	60	8,250
Level 3	33	7,239
Level 4	5	709
Default 3	2	*
<b>Total</b>	<b>101</b>	<b>17,408</b>
<b>*Default Level 3's are included in the total number of Level 3's to date.</b>		

**ACIC Numbers:**

The total number of sex offenders registered from September 1999 through March 2021:

Compliant	8,428
Delinquent	1,436
Confined	3,225
Out-of-State	3,863
Address Unknown	137
Deported	208
Incapacitated	96
Out of USA	13
<b>Total</b>	<b>17,406</b>

Consistent with current Arkansas law, deceased offenders no longer remain on the registry.



**PAWS IN PRISON**

March 2021 Unit	Enrolled	Graduated	Foster	Volunteer Hours
Hawkins Unit	6	4	1	0
Maximum Security Unit	9	4	0	0
North Central Unit	4	0	0	0
Ouachita River Correctional Unit	8	0	0	0
Randall L. Williams Unit	4	0	0	0
Tucker Unit	4	5	0	0
<b>Total</b>	<b>35</b>	<b>13</b>	<b>1</b>	<b>0</b>

**Completed Paws in Prison Training:**

March 2021 Program Graduates	13
YTD 2021 Program Graduates	35
Total Graduates Since Inception (December 2011)	1,698
Dogs Currently in Foster (Graduated, but Not Adopted)	1
March 2021 Volunteer Hours	0
YTD Volunteer Hours	0

**INFORMATION TECHNOLOGY**

**INMATE TABLETS** – Within the Division of Correction, a total of 2,981 inmate tablets were leased during March.

**INMATE VIDEO VISITS** – Inmates completed 22,199 video visits during the month and missed 1,154 within the Division of Correction.

**CONSTRUCTION/MAINTENANCE****PROJECT UPDATES**

**SEE CONSTRUCTION BUDGET / STATUS REPORT IN ATTACHMENTS SECTION (PAGES 23-24).**

**AGENCY HIGHLIGHTS****MARCH 2021:*****ACA Reaccreditation Awarded to ADC Units***

Two ADC facilities obtained reaccreditation from the American Correctional Association (ACA) during the week of March 8–12. The Maximum Security Unit scored 100% on mandatory standards/best practices and 98.9% on non-mandatory standards/best practices. The Willis H. Sargent Training Academy scored 100% on both mandatory and non-mandatory standards/best practices.

**Maximum Security Unit ACA Audit**

Congratulations to Maximum Security Unit Warden Jared Byers, Training Academy Director Randy Callas, and the hard-working and dedicated staff at both facilities for achieving reaccreditation.

***Fallen Officer Honored by Arkansas State Senate***

State Senator Keith Ingram and Representatives Reginald Murdock and David Tollett sponsored a special Senate Concurrent Memorial Resolution to remember and honor Sgt. Travis Wallace. Sgt. Wallace was a 5-year veteran of the Division of Correction (East Arkansas Regional Unit), who heroically died in the line of duty on Nov. 12, 2020, while on duty serving as an officer with the Helena – West Helena Police Department. Members of Sgt. Wallace's family, including his son and mother, were on hand for the March 11 senate session where the resolution honoring his service and commitment was read.

***10th Annual Horse Auction***

The 10th Annual ADC Horse Auction, held on Saturday, March 13 at Benton's Saline County Fairgrounds, was a great success. The Agricultural staff did a wonderful job organizing the event. A total of 26 horses were sold, including a gelding from the Varner Unit that brought in a record-setting \$6,100.

***Pine Bluff Complex Staff Honored***

During March, Pine Bluff Complex administrative staff presented gift bags to several personnel members. The gesture was to demonstrate appreciation for them using their own vehicles to transport fellow staff members to and from work during February's winter storm, which went above and beyond the call of duty.

**Randall L. Williams Unit****Pine Bluff Unit****Ester Unit*****Field Riders Participate in Parade***

Several ADC field riders were featured in the March 24 edition of the Pine Bluff Commercial as part of their coverage of a parade held on Tuesday, March 23, honoring slain Pine Bluff Detective Kevin Collins.





## REGIONAL MAINTENANCE PROJECT HIGHLIGHTS MARCH 2021

### Repair Work on Old Corral at Cummins

*Varner Regional Maintenance 1 and 2 – March 12:*



Before



After

### Repair Work on Old Corral at Cummins

*Varner Regional Maintenance 1 and 2 – March 22:*



Before



After

### Gate Repair/Fence Row Cleaning at Cummins

*Varner Regional Maintenance 1 and 2 – March 26:*



Before



After

### Trash Clean Up at Varner

*Varner Regional Maintenance – March 18:*



Before



After

### Gate Replacement at Old Corral at Cummins

*Varner Regional Maintenance 1 and 2 – March 24:*



Before



After

### Fence Row Weeding at Cummins Beef Herd

*Varner Regional Maintenance 1 and 2 – March 29:*



Before



After

## 2021 INFORMAL GRIEVANCE REPORT

Month	BENTON	HAWK/M	HAWK/F	WRTS	EARU & MX	GRIMES	RLW	MCWR	MCPH	MSU	NCU	PBU	NWA	TU	TRCC	VSMX	VU	CU & CMU	ORCU	Ester	DRU	Bowie Cty	TOTAL
JAN	1	30	1	56	269	243	41	0	301	147	106	43	0	62	0	152	26	124	174	41	99	0	1,916
FEB	1	15	22	78	185	177	25	0	465	149	67	26	0	91	3	163	37	363	112	27	63	0	2,069
MAR	1	15	22	87	279	207	11	0	376	149	66	38	0	120	4	188	29	196	164	52	96	0	2,100
APR	0	0	0	0	0	0	0	0	0	0	0	0	0	0	0	0	0	0	0	0	0	0	0
MAY	0	0	0	0	0	0	0	0	0	0	0	0	0	0	0	0	0	0	0	0	0	0	0
JUN	0	0	0	0	0	0	0	0	0	0	0	0	0	0	0	0	0	0	0	0	0	0	0
JUL	0	0	0	0	0	0	0	0	0	0	0	0	0	0	0	0	0	0	0	0	0	0	0
AUG	0	0	0	0	0	0	0	0	0	0	0	0	0	0	0	0	0	0	0	0	0	0	0
SEPT	0	0	0	0	0	0	0	0	0	0	0	0	0	0	0	0	0	0	0	0	0	0	0
OCT	0	0	0	0	0	0	0	0	0	0	0	0	0	0	0	0	0	0	0	0	0	0	0
NOV	0	0	0	0	0	0	0	0	0	0	0	0	0	0	0	0	0	0	0	0	0	0	0
DEC	0	0	0	0	0	0	0	0	0	0	0	0	0	0	0	0	0	0	0	0	0	0	0
TOTAL	3	60	45	221	733	627	77	0	1,142	445	239	107	0	273	7	503	92	683	450	120	258	0	6,085

## 2021 FORMAL GRIEVANCE REPORT

Month	BENTON	HAWK/M	HAWK/F	WRTS	EARU & MX	GRIMES	RLW	MCWR	MCPH	MSU	NCU	PBU	NWA	TU	TRCC	VSMX	VU	CU & CMU	ORCU	Ester	DRU	Bowie Cty	TOTAL
JAN	1	15	1	30	293	176	17	0	173	197	71	24	0	55	2	152	26	150	125	22	44	0	1,574
FEB	2	7	8	40	272	115	21	0	158	186	51	8	0	79	0	163	37	126	89	16	35	0	1,413
MAR	3	7	8	53	375	98	7	0	188	264	47	8	0	92	0	188	29	149	147	27	96	0	1,786
APR	0	0	0	0	0	0	0	0	0	0	0	0	0	0	0	0	0	0	0	0	0	0	0
MAY	0	0	0	0	0	0	0	0	0	0	0	0	0	0	0	0	0	0	0	0	0	0	0
JUN	0	0	0	0	0	0	0	0	0	0	0	0	0	0	0	0	0	0	0	0	0	0	0
JUL	0	0	0	0	0	0	0	0	0	0	0	0	0	0	0	0	0	0	0	0	0	0	0
AUG	0	0	0	0	0	0	0	0	0	0	0	0	0	0	0	0	0	0	0	0	0	0	0
SEPT	0	0	0	0	0	0	0	0	0	0	0	0	0	0	0	0	0	0	0	0	0	0	0
OCT	0	0	0	0	0	0	0	0	0	0	0	0	0	0	0	0	0	0	0	0	0	0	0
NOV	0	0	0	0	0	0	0	0	0	0	0	0	0	0	0	0	0	0	0	0	0	0	0
DEC	0	0	0	0	0	0	0	0	0	0	0	0	0	0	0	0	0	0	0	0	0	0	0
TOTAL	6	29	17	123	940	389	45	0	519	647	169	40	0	226	2	503	92	425	361	65	175	0	4,773



## INMATE INSTITUTIONAL GRIEVANCE APPEAL REPORT – MARCH 2021

	Acknowledged	Rejected	Processed W/O Merit	Processed W/ Merit
Benton Unit	2	3	1	0
Benton Work Release	0	0	0	0
Bowie County Texas Correctional Facility	0	0	0	0
Cummins Unit	39	16	32	0
Cummins Modular Unit	1	0	0	0
Delta Regional Unit	21	2	19	0
East Arkansas Regional Unit	32	16	28	0
East Arkansas Regional Max Unit	66	6	51	1
Ester Unit	12	4	5	0
Grimes Unit	48	6	50	0
Maximum Security Unit	60	15	89	0
Tucker Re-Entry	0	0	0	0
McPherson Unit	32	9	28	0
McPherson Mental Health Residential Program Unit	11	0	3	0
Mississippi County Work Release Center	0	0	0	0
Northwest Arkansas Work Release Center	0	0	0	0
North Central Unit	26	5	27	0
Ouachita River Correctional Unit	19	4	23	0
ORCU Hospital	0	1	1	0
ORCU New Commitment	10	2	5	0
ORCU Mental Health Residential Program Unit	2	0	2	0
Pine Bluff Unit	1	0	4	0
Pine Bluff Re-Entry	0	0	0	0
Randall L. Williams Correctional Facility	7	2	8	0
Texarkana Regional Correctional Center	0	0	0	0
Tucker Unit	29	13	24	0
Varner Super Max	112	21	105	3
Varner Unit	13	8	2	0
Wrightsville Unit	19	7	6	0
Hawkins Center	1	2	0	0
Hawkins for Males	1	2	4	0
Hawkins SPU	0	0	0	0
<b>Total</b>	<b>564</b>	<b>144</b>	<b>517</b>	<b>4</b>

## ADMISSIONS AND RELEASES – MARCH 2021

<u>Admissions</u>	<u>Male</u>	<u>Female</u>	<u>Total</u>
Asian	0	0	0
Black	213	18	231
Hispanic	33	2	35
Native American Indian	2	4	6
Native Hawaiian or Pacific Isl.	0	0	0
White	467	143	610
Other	1	0	1
Unknown	0	0	0
<b>Total</b>	<b>716</b>	<b>167</b>	<b>883</b>

<u>Releases</u>	<u>Male</u>	<u>Female</u>	<u>Total</u>
Asian	2	0	2
Black	166	10	176
Hispanic	11	2	13
Native American Indian	0	0	0
Native Hawaiian or Pacific Isl.	1	0	1
White	249	62	311
Other	0	0	0
Unknown	0	0	0
<b>Total</b>	<b>429</b>	<b>74</b>	<b>503</b>

## ADC INMATE POPULATION GROWTH 2000-2027 - MARCH 2021

Updated 03/31/2021

Mo.	2000	2001	2002	2003	2004	2005	2006	2007	2008	2009	2010	2011	2012	2013	2014	2015	2016	2017	2018	2019	2020	2021
Jan.	11,984	11,908	12,402	13,015	13,105	13,595	13,481	13,839	14,518	14,796	15,334	16,312	15,134	14,815	17,481	18,142	17,785	17,824	18,201	17,958	17,989	16,119
Feb.	12,169	12,022	12,529	13,054	13,166	13,783	13,633	14,012	14,603	14,883	15,374	16,209	14,990	15,008	17,438	18,082	17,625	17,608	17,998	17,846	18,181	16,120
March	12,006	12,033	12,299	13,108	13,088	13,418	13,534	13,772	14,580	14,843	15,290	16,095	14,964	14,665	17,395	18,233	17,573	17,666	18,089	17,898	17,860	16,085
April	12,069	12,167	12,465	13,213	13,323	13,469	13,554	13,851	14,769	14,937	15,570	16,172	15,124	14,850	17,604	18,703	17,815	17,798	18,227	17,977	17,331	
May	12,109	12,384	12,558	13,463	13,556	13,528	13,711	14,146	14,880	15,146	15,694	16,062	15,132	15,074	17,593	18,693	17,769	17,652	17,945	17,817	16,694	
June	12,005	12,108	12,439	13,418	13,389	13,251	13,430	13,915	14,700	15,025	15,564	15,554	14,832	14,825	17,340	18,813	17,973	17,963	17,972	17,942	16,552	
July	12,030	12,190	12,622	13,509	13,528	13,286	13,560	14,082	14,868	15,195	15,807	15,519	14,879	15,379	17,522	18,870	18,130	18,180	18,005	18,002	16,511	
August	12,087	12,371	12,815	13,565	13,632	13,419	13,646	14,224	15,100	15,385	15,829	15,240	14,675	16,103	17,549	18,806	17,919	18,051	17,751	18,090	16,367	
September	11,983	12,289	12,774	13,341	13,516	13,237	13,652	14,217	14,850	15,285	16,025	15,172	14,724	16,412	17,605	18,549	18,026	18,179	17,865	17,856	16,215	
October	12,119	12,348	12,942	13,341	13,584	13,363	13,775	14,349	14,836	15,381	16,311	15,271	14,856	16,993	17,880	18,430	18,127	18,348	17,943	17,947	16,311	
November	12,094	12,408	13,162	13,408	13,706	13,587	13,913	14,437	15,025	15,340	16,460	15,205	14,625	17,168	17,848	17,981	17,573	17,973	17,666	18,060	16,165	
December	11,856	12,333	12,845	13,106	13,470	13,338	13,728	14,315	14,716	15,199	16,204	15,062	14,654	17,235	17,874	17,707	17,537	18,078	17,799	17,759	16,094	
Net Ann. Inc.	29	477	512	261	364	-132	390	587	401	483	1,005	-1,142	-408	2,581	639	-167	-170	541	-279	-40	-1,665	-9
Avg. Mo. Inc.	2	40	43	22	30	-11	33	49	33	40	84	-95	-34	215	53	-14	-14	45	-23	-3	-139	-3

Population is total jurisdictional count at end of each month. Population at end of month December 1999 was 11,827.

Average monthly population increase for past fifteen years 2006 - 2020 is 15

Average monthly population increase for past ten years Jan. 2011 - Dec 2020 is -1

Average monthly population increase for past five years 2016 - 2020 is -27

Projected at Growth of 15 per Month

Mo.	2008	2009	2010	2011	2012	2013	2014	2015	2016	2017	2018	2019	2020	2021	2022	2023	2024	2025	2026	2027
	Actual	Actual	Actual	Actual	Actual	Actual	Actual	Actual	Actual	Actual	Actual	Actual	Actual	Actual	Proj.	Proj.	Proj.	Proj.	Proj.	Proj.
January	14,518	14,796	15,334	16,312	15,134	14,815	17,481	18,142	17,785	17,824	18,201	17,958	17,989	16,119	16,235	16,415	16,595	16,775	16,955	17,135
February	14,603	14,883	15,374	16,209	14,990	15,008	17,438	18,082	17,625	17,608	17,998	17,846	18,181	16,120	16,250	16,430	16,610	16,790	16,970	17,150
March	14,580	14,843	15,290	16,095	14,964	14,665	17,395	18,233	17,573	17,666	18,089	17,898	17,860	16,085	16,265	16,445	16,625	16,805	16,985	17,165
April	14,769	14,937	15,570	16,172	15,124	14,850	17,604	18,703	17,815	17,798	18,227	17,977	17,331	16,100	16,280	16,460	16,640	16,820	17,000	17,180
May	14,880	15,146	15,694	16,062	15,132	15,074	17,593	18,693	17,769	17,652	17,945	17,817	16,694	16,115	16,295	16,475	16,655	16,835	17,015	17,195
June	14,700	15,025	15,564	15,554	14,832	14,825	17,340	18,813	17,973	17,963	17,972	17,942	16,552	16,130	16,310	16,490	16,670	16,850	17,030	17,210
July	14,868	15,195	15,807	15,519	14,879	15,379	17,522	18,870	18,130	18,180	18,005	18,002	16,511	16,145	16,325	16,505	16,685	16,865	17,045	17,225
August	15,100	15,385	15,829	15,240	14,675	16,103	17,549	18,806	17,919	18,051	17,751	18,090	16,367	16,160	16,340	16,520	16,700	16,880	17,060	17,240
September	14,850	15,285	16,025	15,172	14,724	16,412	17,605	18,549	18,026	18,179	17,865	17,856	16,215	16,175	16,355	16,535	16,715	16,895	17,075	17,255
October	14,836	15,381	16,311	15,271	14,856	16,993	17,880	18,430	18,127	18,348	17,943	17,947	16,311	16,190	16,370	16,550	16,730	16,910	17,090	17,270
November	15,025	15,340	16,460	15,205	14,625	17,168	17,848	17,981	17,573	17,973	17,666	18,060	16,165	16,205	16,385	16,565	16,745	16,925	17,105	17,285
December	14,716	15,199	16,204	15,062	14,654	17,235	17,874	17,707	17,537	18,078	17,799	17,759	16,094	16,220	16,400	16,580	16,760	16,940	17,120	17,300
Net Ann. Inc.	401	483	1,005	-1,142	-408	2,581	639	-167	-170	541	-279	-40	-1,665	126	180	180	180	180	180	180
Ave. Mo. Inc.	33	40	84	-95	-34	215	53	-14	-14	45	-23	-3	-139	11	15	15	15	15	15	15



## MONTHLY POPULATION AVERAGES - MARCH 2021

Unit/Center	3/1	3/2	3/3	3/4	3/5	3/8	3/9	3/10	3/11	3/12	3/15	3/16	3/17	3/18	3/19	3/22	3/23	3/24	3/25	3/26	3/29	3/30	3/31	AVG
Benton	276	275	275	274	274	271	271	271	270	270	269	264	264	286	292	289	289	286	283	267	266	266	266	275
Cummins	1,901	1,938	1,928	1,918	1,912	1,908	1,904	1,895	1,895	1,893	1,892	1,891	1,880	1,878	1,876	1,879	1,875	1,869	1,857	1,861	1,861	1,869	1,866	1,889
Delta	519	519	517	512	543	543	543	541	542	542	544	544	544	544	545	606	602	600	600	600	607	606	604	559
East AR Reg	1,463	1,463	1,461	1,458	1,518	1,516	1,514	1,508	1,505	1,504	1,505	1,502	1,497	1,494	1,489	1,465	1,462	1,466	1,462	1,466	1,467	1,478	1,477	1,484
Ester	448	448	446	446	436	429	421	453	458	462	461	459	461	458	456	461	461	460	454	435	435	429	426	448
Grimes	944	980	977	978	1,016	1,013	1,003	1,004	1,003	998	993	993	994	992	1,019	1,018	1,018	1,026	1,011	1,011	1,021	1,021	1,018	1,002
Max Sec	549	550	552	552	552	552	552	551	551	551	551	551	551	550	550	550	550	551	550	552	552	551	552	551
McPherson	793	806	818	828	836	830	835	843	842	850	850	864	870	877	880	882	892	896	892	898	888	891	899	859
MCWRC	116	116	127	127	127	127	127	127	127	127	127	127	127	127	127	125	125	118	112	110	110	109	109	122
N Central	746	745	733	726	721	720	720	718	716	714	712	759	759	758	758	755	755	750	737	736	732	734	734	736
NWAWRC	65	66	66	66	66	66	66	66	66	66	66	70	70	70	70	86	86	86	86	86	79	79	79	73
Ouachita River	1,607	1,522	1,586	1,593	1,520	1,539	1,541	1,558	1,607	1,651	1,651	1,657	1,703	1,703	1,705	1,587	1,642	1,629	1,625	1,643	1,604	1,623	1,624	1,614
Randall L Williams	471	470	469	469	469	463	479	474	472	467	466	428	425	419	417	407	404	435	434	440	456	455	455	450
Pine Bluff	466	467	466	466	466	459	448	445	445	449	447	486	484	481	480	479	480	480	480	473	496	498	496	471
PB Reentry	54	54	53	53	53	53	53	53	53	53	53	53	53	53	53	53	53	52	52	52	52	52	47	53
TRCC	95	95	95	102	102	102	102	102	102	102	101	101	100	100	100	100	100	100	100	100	99	93	93	99
Tucker	704	709	706	703	703	741	737	728	729	729	726	724	720	715	715	712	709	710	769	766	782	780	778	730
Vanner	1,488	1,486	1,483	1,481	1,480	1,478	1,472	1,468	1,466	1,465	1,464	1,464	1,463	1,460	1,460	1,461	1,460	1,454	1,454	1,455	1,441	1,440	1,437	1,464
Wrightsville	657	656	655	648	649	639	633	658	653	655	650	650	649	645	643	689	687	682	691	705	705	706	703	666
WR Hawkins-Females	190	190	190	190	188	188	188	185	184	184	184	183	183	184	183	182	182	179	179	176	175	175	175	183
WR Hawkins-Males	148	147	147	145	151	153	171	171	170	169	169	169	168	168	176	183	186	189	190	189	190	190	191	171
Total ADC	13,700	13,702	13,750	13,735	13,782	13,790	13,780	13,819	13,856	13,901	13,881	13,939	13,965	13,962	13,994	13,969	14,018	14,018	14,018	14,021	14,018	14,045	14,029	13,899
ALETA	14	16	16	16	16	16	16	16	16	16	16	17	17	17	17	17	17	17	16	16	16	15	15	16
Ar State Police	53	53	53	53	51	51	53	51	54	54	56	57	57	57	57	57	57	56	55	55	56	56	56	55
Co Jail / M	1,715	1,726	1,681	1,702	1,672	1,629	1,642	1,593	1,572	1,566	1,582	1,556	1,538	1,555	1,532	1,551	1,529	1,505	1,494	1,480	1,445	1,425	1,452	1,571
Co Jail / F	269	256	242	234	228	230	228	220	221	216	216	203	195	186	185	188	181	179	182	177	182	181	177	208
Total Co Jail BK	1,984	1,982	1,923	1,936	1,900	1,859	1,870	1,813	1,793	1,782	1,798	1,759	1,733	1,741	1,717	1,739	1,710	1,684	1,676	1,657	1,627	1,606	1,629	1,779
309/M	237	239	241	243	244	244	243	242	241	240	240	239	241	242	244	244	244	245	245	245	245	244	245	242
309/F	87	87	84	85	85	87	87	86	87	87	87	87	87	87	87	87	87	87	87	87	87	87	87	87
Total Act 309	324	326	325	328	329	331	330	328	328	327	327	326	328	329	331	331	331	332	332	332	332	331	332	329
Total Non ADC	2,375	2,377	2,317	2,333	2,296	2,257	2,269	2,208	2,191	2,179	2,197	2,159	2,135	2,144	2,122	2,144	2,115	2,089	2,079	2,060	2,031	2,008	2,032	2,179
Total	16,075	16,079	16,067	16,068	16,078	16,047	16,049	16,027	16,047	16,080	16,078	16,098	16,100	16,106	16,116	16,113	16,133	16,107	16,097	16,081	16,049	16,053	16,061	16,078

## RESTRICTIVE HOUSING QUARTERLY REPORT JANUARY 1, 2021 TO MARCH 31, 2021

### Restrictive Housing Disciplinary Counts

12-3 : Failure To Obey Order Of Staff	442
04-8 : Battery - Use of Force On An Inmate	301
12-4 : Refusing A Direct Verbal Order	287
05-3 : Assault - Verbal Or Written Threat	267
11-1 : Insolence To A Staff Member	199
03-5 : Out Of Place Of Assignment	169
02-17 : Creating Unnecessary Noise	133
09-3 : Possession/Introduce Drugs	116
02-16 : Refusal To Submit To Testing	111
10-3 : Indecent Exposure	87
05-5 : Provoking Or Agitating A Fight	76
09-15 : Possession/Introduction/Use of Cell Phone	72
02-2 : Use Of Drugs, Alcohol, Chemical	70
02-12 : Keep Person/Quarters W Regulat	69
01-1 : Banding Together/Demonstration	68
09-1 : Possession/Intro Of Fireworks	64
02-5 : Unauthorized Use Of Mail/Phone	63
09-5 : Possession/Introduction Of Clothing	59
15-3 : Purchase Of Unauthor Articles	47
07-1 : Unauthorized Use Of State Prop	42

### Disciplinary Categories

Violence to Others	382
Possession of Drug-Related Contraband	186
Masturbation/Indecent Exposure	102
Sex with Another Person	15
Other Violations	2,574

Inmates Placed in RH	2,034
----------------------	-------

### Population Demographics

RACE	GENDER		Total
	M	F	
Asian	3	0	3
Black	1,899	78	1,977
Caucasian	1,257	82	1,339
Hispanic	92	11	103
NA Indian	7	1	8
Native Hawaiian or Pacific Isl	3	0	3
Other	1	0	1
<b>Total</b>	<b>3,262</b>	<b>172</b>	<b>3,434</b>

Protective Custody	7
Twenty-one or Younger	96
Fifty-five or Older	211
SMI	54

### Suicides/Deaths in Restrictive Housing

Suicides	1
Suicide Attempts	11
Deaths	5

## FISCAL YEAR 2021 COUNTY JAIL BACKUP - MARCH 2021

DAY	Jul-20	Aug-20	Sep-20	Oct-20	Nov-20	Dec-20	Jan-21	Feb-21	Mar-21
1	800	* 1,284	1,625	1,827	* 2,090	1,879	1,891	2,226	1,984
2	829	* 1,284	1,642	1,833	2,124	1,896	* 1,891	2,224	1,982
3	850	1,309	1,672	* 1,833	2,076	1,894	* 1,891	2,250	1,923
4	* 850	1,308	1,696	* 1,833	2,087	1,917	1,891	2,259	1,936
5	* 850	1,299	* 1,696	1,842	2,109	* 1,917	1,897	2,221	1,900
6	850	1,304	* 1,696	1,862	2,140	* 1,917	1,914	* 2,221	* 1,900
7	863	1,334	1,718	1,884	* 2,140	1,882	1,932	* 2,221	* 1,900
8	874	* 1,334	1,718	1,902	* 2,140	1,840	1,959	2,173	1,859
9	898	* 1,334	1,679	1,897	2,137	1,815	* 1,959	2,131	1,870
10	932	1,331	1,689	* 1,897	2,080	1,797	* 1,959	2,107	1,813
11	* 932	1,350	1,672	* 1,897	2,028	1,827	1,969	2,086	1,793
12	* 932	1,351	* 1,672	1,918	2,028	* 1,827	1,971	2,085	1,782
13	961	1,361	* 1,672	1,925	2,026	* 1,827	2,005	* 2,085	* 1,782
14	975	1,380	1,676	1,947	* 2,026	1,843	2,016	* 2,085	* 1,782
15	1,003	* 1,380	1,702	1,917	* 2,026	1,852	2,057	2,035	1,798
16	1,032	* 1,380	1,705	1,955	1,989	1,835	* 2,057	2,035	1,759
17	1,059	1,388	1,731	* 1,955	1,961	1,854	* 2,057	2,032	1,733
18	* 1,059	1,403	1,769	* 1,955	1,918	1,897	2,065	2,025	1,741
19	* 1,059	1,426	* 1,769	1,944	1,907	* 1,897	2,065	2,017	1,717
20	1,081	1,457	* 1,769	1,958	1,890	* 1,897	2,068	* 2,017	* 1,717
21	1,099	1,481	1,772	1,974	* 1,890	1,863	2,071	* 2,017	* 1,717
22	1,124	* 1,481	1,786	1,969	* 1,890	1,893	2,095	2,004	1,739
23	1,168	* 1,481	1,811	1,998	1,837	1,856	* 2,095	1,993	1,710
24	1,181	1,496	1,801	* 1,998	1,846	1,796	* 2,095	2,009	1,684
25	* 1,181	1,518	1,835	* 1,998	1,866	1,796	2,106	2,001	1,676
26	* 1,181	1,539	* 1,835	2,023	1,866	* 1,796	2,103	2,006	1,657
27	1,203	1,566	* 1,835	2,033	1,866	* 1,796	2,106	* 2,006	* 1,657
28	1,216	1,589	1,810	2,019	* 1,866	1,795	2,120	* 2,006	* 1,657
29	1,242	* 1,589	1,791	2,056	* 1,866	1,820	2,200		1,627
30	1,263	* 1,589	1,815	2,090	1,866	1,850	* 2,200		1,606
31	1,284	1,607		* 2,090		1,866	* 2,200		1,629
Avg Daily Backup	1,027	1,417	1,735	1,943	1,986	1,853	2,029	2,020	1,775

Notes: Totals do not include 309 Contracts in County Jails (maximum of 336)

County Jail Back-up for March 2021 ~ 1,775

County Jail Back-up Fiscal Year Averages as of March 31, 2021 ~ 1,754

Short-Term Revocation Program for March 2021 ~ 709

Short-Term Revocation Program Fiscal Year Average as of March 31, 2021 ~ 699



## STTG UNIT COUNTS – MARCH 2021

Unit	Beginning Total	Confirmed	Suspected	In	Out	Paroled	Removed	Ending Total	Total Unit Population	Unit % of STTG's
Benton	55	1	0	18	10	4	0	60	265	22.64%
Cummins	664	0	0	53	37	24	0	656	1,919	34.18%
Delta	155	0	0	34	12	3	0	174	604	28.81%
EARU	569	0	0	48	26	16	0	575	1,459	39.41%
Ester	60	2	0	13	14	4	1	56	433	12.93%
Grimes	342	1	0	61	12	14	0	378	1,019	37.10%
Hawkins	32	0	0	17	5	0	0	44	361	12.19%
Max	264	0	0	14	7	2	0	269	557	48.29%
Mcperson	38	2	1	2	0	3	0	40	901	4.44%
MCWR	32	0	0	0	2	4	0	26	109	23.85%
NCU	229	0	0	46	28	0	0	247	768	32.16%
NWAWR	15	0	0	8	0	4	0	19	78	24.36%
ORCU	449	0	0	163	187	15	0	410	1,381	29.69%
ORCU Intake	146	264	0	0	283	0	0	127	193	65.80%
Pine Bluff	112	0	0	30	18	5	0	119	501	23.75%
RLW	186	0	0	46	41	13	0	178	451	39.47%
TWR	28	0	0	4	1	1	0	30	91	32.97%
Tucker	234	0	0	65	17	7	0	275	778	35.35%
Varner	593	0	0	96	96	6	0	587	1,445	40.62%
Wrightsville	240	0	0	34	5	4	0	228	740	30.81%
<b>Total</b>	<b>4,443</b>	<b>270</b>	<b>1</b>	<b>752</b>	<b>801</b>	<b>129</b>	<b>1</b>	<b>4,498</b>	<b>14,053</b>	<b>32.01%</b>

ORCU Intake brought 264 new STTG members into ADC last month.

## STTG DISCIPLINARY REPORT – MARCH 2021

Unit	STTG Incidents	STTG Suspected Incidents	Total Unit Disciplinary	Disciplinary Involving STTG	Percentage
Benton	0	0	12	4	33.33%
Cummins	0	0	159	82	51.57%
Delta	0	0	137	63	45.99%
EARU	0	0	262	175	66.79%
Easter	0	0	11	4	36.36%
Grimes	1	0	213	101	47.42%
Hawkins	0	0	1	0	0.00%
Max	0	0	122	60	49.18%
Mcperson	0	0	146	13	8.90%
MCWR	0	0	1	0	0.00%
NCU	1	0	78	33	42.31%
NWAWR	0	0	2	2	100.00%
ORCU	0	0	129	45	34.88%
ORCU Intake	0	0	12	6	50.00%
Pine Bluff	0	0	109	39	35.78%
RLW	0	0	78	27	34.62%
TWR	0	0	1	1	100.00%
Tucker	0	0	116	60	51.72%
Varner	0	0	401	228	56.86%
Wrightsville	0	0	105	59	56.19%
<b>Total</b>	<b>2</b>	<b>0</b>	<b>2,095</b>	<b>1,002</b>	<b>47.83%</b>

## STTG COUNTS BY STTG SET – MARCH 2021

STTG Set	Benton	Cummins	Delta	EARU	Ester	Grimes	Hawkins	Max	Mcperson	MCWR	NCU	NWAWR	ORCU	Intake	PB	RLW	TWR	Tucker	Varner	Wrightsville	Total
Asian	0	1	0	1	0	0	0	0	0	1	1	0	2	0	0	1	0	1	0	0	8
Bloods	14	153	36	111	8	72	4	63	4	4	41	5	48	18	16	45	1	44	129	44	860
Crips	5	91	14	78	8	35	5	35	6	1	24	3	33	11	12	24	3	20	95	24	527
Folk	5	56	0	89	3	0	10	34	7	2	14	4	87	20	5	9	1	24	60	8	438
GD	10	146	42	118	12	113	0	64	0	10	40	0	70	21	39	33	14	73	126	54	985
Mexican	1	19	10	12	1	8	1	5	3	1	9	0	9	0	6	6	0	6	21	8	126
Motorcycle	0	1	1	4	0	1	1	2	1	1	1	0	1	0	1	0	1	0	0	0	16
Other	1	23	6	18	4	15	1	6	2	1	13	1	14	1	6	4	0	10	21	7	154
People	1	22	7	16	1	25	1	17	2	0	10	1	20	1	8	7	0	15	19	12	185
Unknown	0	14	4	13	0	6	0	4	0	0	5	0	5	4	2	3	1	0	3	7	71
W/S	16	42	31	36	9	48	10	6	15	1	54	5	68	32	12	27	9	35	29	25	510
AB	2	5	1	6	1	5	4	1	0	2	0	0	5	2	1	2	0	2	10	4	53
AC	0	6	1	15	3	6	1	2	0	0	8	0	1	2	1	2	0	4	15	7	74
NAE	3	44	7	28	2	16	2	10	0	2	8	0	19	5	4	7	0	13	24	17	211
WAR	2	33	14	30	4	28	4	20	0	0	19	0	28	10	6	8	0	28	35	11	280
<b>Total</b>	<b>60</b>	<b>656</b>	<b>174</b>	<b>575</b>	<b>56</b>	<b>378</b>	<b>44</b>	<b>269</b>	<b>40</b>	<b>26</b>	<b>247</b>	<b>19</b>	<b>410</b>	<b>127</b>	<b>119</b>	<b>178</b>	<b>30</b>	<b>275</b>	<b>587</b>	<b>228</b>	<b>4,498</b>

Key:

GD = Gangster Disciples

W/S = White Supremacist

NAE = New Aryan Empire

WAR = White Aryan Resistance

AC = Aryan Circle

AB = Aryan Brotherhood



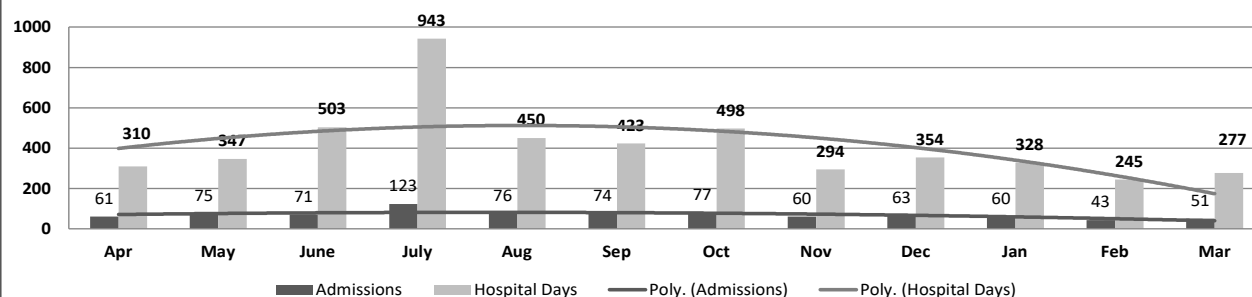
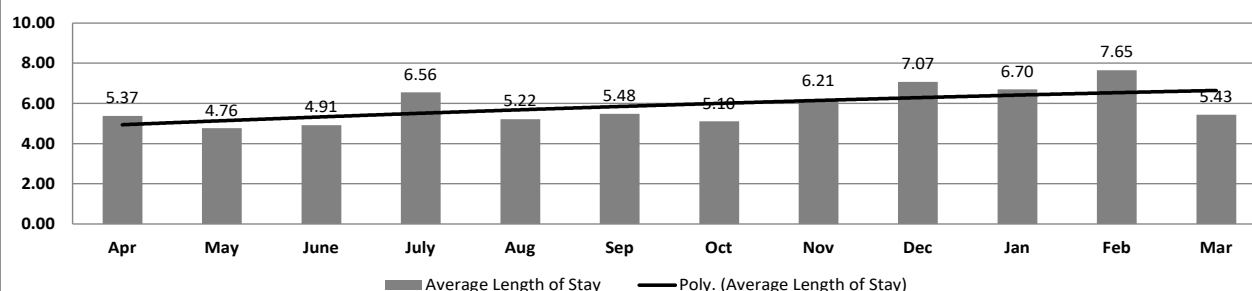
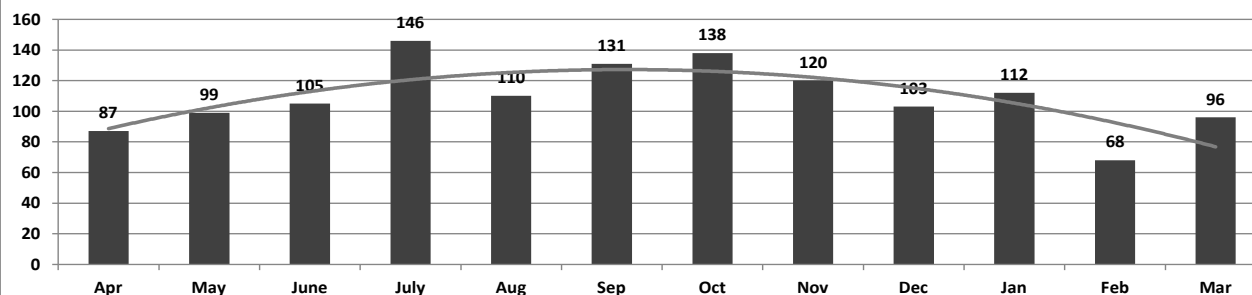
## ADC INPATIENT AND EMERGENCY ROOM UTILIZATION

ADC Inpatient Statistics Past 12 Months

	2020									2021			
	Apr	May	June	July	Aug	Sep	Oct	Nov	Dec	Jan	Feb	Mar	Average
Admissions	61	75	71	123	76	74	77	60	63	60	43	51	69.5
Hospital Days	310	347	503	943	450	423	498	294	354	328	245	277	414.3
Average Length of Stay	5.37	4.76	4.91	6.56	5.22	5.48	5.10	6.21	7.07	6.70	7.65	5.43	5.96

ADC ER Visits Past 12 Months

	2020									2021			
	Apr	May	June	July	Aug	Sep	Oct	Nov	Dec	Jan	Feb	Mar	Average
Emergency Room Visits	87	99	105	146	110	131	138	120	103	112	68	96	109.6

ADC Inpatient Utilization  
Past 12 MonthsADC Inpatient Average Length of Stay  
Past 12 MonthsADC Emergency Room Visits  
Past 12 Months

## MEDICAL GRIEVANCE BOARD REPORT – MARCH 2021

Unit	<i>Acknowledged/ Received</i>	<i>Rejected</i>	<i>Reviewed &amp; Signed by Dep Director</i>	<i>With Merit</i>	<i>With Merit, but Resolved</i>	<i>% With Merit</i>	<i>Without Merit</i>
Benton	0	0	0	0	0	0%	0
Bowie County	0	0	0	0	0	0%	0
CMU	0	2	1	0	0	0%	1
Cummins	0	2	7	2	1	43%	4
Delta	2	0	1	0	0	0%	1
EARU	16	0	18	1	2	17%	15
EARU Max	14	4	23	2	1	13%	20
Ester	4	1	7	0	0	0%	7
Grimes	20	3	17	1	3	24%	13
Hawkins	0	0	0	0	0	0%	0
McPherson	8	21	7	0	0	0%	7
MCWRC	0	0	0	0	0	0%	0
MSU	15	3	3	0	0	0%	3
North Central	12	0	19	0	0	0%	19
NWAWRC	0	0	0	0	0	0%	0
Ouachita	7	6	11	1	0	9%	10
Pine Bluff	0	5	0	0	0	0%	0
Randall L. Williams	3	1	1	0	0	0%	1
SNN	1	1	5	1	0	20%	4
TRCC	0	0	0	0	0	0%	0
Tucker	12	4	3	0	0	0%	3
Varner	11	0	3	0	0	0%	3
Varner Super Max	16	0	16	1	0	6%	15
WRU	0	0	2	0	0	0%	2
WHM	1	0	2	0	1	50%	1
WWR	0	0	0	0	0	0%	0
<b>Total</b>	<b>142</b>	<b>53</b>	<b>146</b>	<b>9</b>	<b>8</b>	<b>12%</b>	<b>129</b>

## CHAPLAINCY

Month: March Year: 2021	CUMMINS	DELTA REGIONAL	EAST ARKANSAS	EAST ARKANSAS MAX	ESTER	GRIMES	HAWKINS	MAXIMUM	MCPHERSON	NORTH CENTRAL	OUACHITA RIVER	PINE BLUFF	RANDALL L. WILLIAMS	TUCKER	VARNER	VARNER MAX	WRIGHTSVILLE	TOTAL
<b>Services Chaplains Oversaw</b>																		
Christian																		
Population	0	0	0	0	5	0	0	0	4	4	13	4	4	0	4	0	0	38
Segregation	0	0	0	0	5	0	0	0	0	0	0	0	0	0	0	0	0	5
Muslim																		
Population	0	0	0	0	2	0	0	5	4	4	4	4	4	0	4	0	0	31
Segregation	0	0	0	0	2	0	0	5	0	0	0	0	0	0	0	0	0	7
																		81
<b>Volunteers in Charge</b>																		
Protestant	0	0	0	0	0	0	0	0	0	0	0	0	0	0	0	0	0	0
Catholic	0	0	0	0	0	0	0	0	0	0	0	0	0	0	0	0	0	0
Muslim	0	0	0	0	0	0	0	0	0	0	0	0	0	0	0	0	0	0
Other	0	0	0	0	0	0	0	0	0	0	0	0	0	0	0	0	0	0
Baptism	0	0	0	0	0	0	0	0	0	0	0	0	0	4	0	0	0	4
Marriages	0	0	0	0	0	0	0	0	0	0	0	0	0	0	0	0	0	0
<b>Distributed by Chaplains</b>																		
Greeting Cards	33	6	7	16	50	34	298	44	330	35	200	20	8	860	12	249	9	2,211
Bibles, Quran, Torah, Etc.	29	20	13	17	22	21	15	8	60	15	120	15	5	284	10	28	30	712
Study Course	3	5	24	28	11	3	0	40	23	0	32	0	70	64	2	14	5	324
Writing Supplies	0	0	0	0	36	32	350	16	84	5	500	10	330	211	0	0	100	1,674
Literature	1,765	575	437	286	78	41	400	24	206	830	275	152	2,233	846	444	482	673	9,747
<b>Chaplain's Visits</b>																		
Barracks	45	53	62		12	113	28	17	15	48	32	73	2	44	541	14	32	1,131
Approximate Hours Spent in Barracks	32	9	12	0	6	89	8	20	20	15	3	36	0	11	160	10	12	443
Inmate Office visits	38	75	32	0	32	144	85	8	68	10	22	10	82	127	46	0	25	804
Other Office visits	12	15	9	0	8	25	35	0	33	6	41	42	6	50	63	7	10	362
Hospital	0	0	0	0	0	0	0	0	0	0	24	0	0	0	0	0	0	24
Infirmery/Sick Call	4	3	1	0	6	17	0	16	8	3	20	2	0	6	0	3	5	94
Restrictive/Punitive Housing	4	4	0	24	3	19	8	0	8	5	16	3	2	6	0	11	5	118
PC - DRU		4							0									4
Visitation Days	0	0	0	0	0	0	0	0	0	0	0	0	0	0	0	0	0	0
<b>Volunteer Visits</b>																		
RCV	0	0	0	0	0	0	0	0	0	0	0	0	0	0	0	0	0	0
OCV	0	0	0	0	0	0	0	0	0	0	0	0	0	0	0	0	0	0
Spiritual Advisor	0	0	0	0	0	0	0	0	0	0	0	0	0	0	0	0	0	0
CRA	0	0	0	0	0	0	0	0	0	0	1	0	0	0	0	0	0	1
<b>Religious Volunteer Hours</b>																		
Volunteer Hours	0	0	0	0	0	0	0	0	70	0	8	0	0	0	0	0	0	78
Denominational/Volunteer Chaplain Hours	0	0	0	0	105	0	0	13	70	0	0	0	0	3	0	0	0	191
																		269
<b>Other Activities of Chaplain</b>																		
Counseled Employees	2	10	6	0	0	6	15	4	27	6	17	0	2	6	153	0	17	271
Orientation Sessions	2	0	0	0	0	0	0	0	0	0	0	0	0	0	0	0	4	6
Free World Devotions	0	0	0	0	0	8	0	0	0	0	1	0	4	4	27	0	0	44
Spoke in Churches	12	0	1	0	1	4	0	0	1	0	4	13	0	3	27	0	0	66
Crisis Intervention Sessions	17	10	3	0	0	0	44	1	16	8	3	4	20	12	6	4	9	157
Marriage Counseling	0	0	0	0	0	0	0	0	0	0	2	0	0	0	0	0	0	2
Denominational Meeting	0	0	0	0	1	3	0	1	0	0	0	1	0	0	0	0	0	6
Chaplain's Meeting	0	1	1	0	1	2	1	0	1	0	1	1	1	1	3	0	1	15
Volunteer Training Session	0	0	0	0	0	0	0	0	0	0	0	0	0	0	0	0	0	0
Chaplain Transfers	0	0	0	0	0	0	0	0	1	0	0	0	0	0	0	0	0	1
Chaplain Promotions	0	0	0	0	0	0	0	0	0	0	0	0	0	0	0	0	0	0
PAL PROGRAM																		
Enrolled at start of month	45	18	47	0	32	44	46	16	53	60	27	0	26	47	0	0	19	480
Enrolled during the month	5	6	12	0	0	8	1	4	17	7	12	0	8	5	0	0	0	85
Removed From PAL Program																		
# Paroled	0	0	0	0	0	0	2	1	8	0	1	0	0	0	0	0	0	12
# Completed	0	0	3	0	12	3	0	1	7	0	0	0	3	0	0	0	0	29
# Withdrew	2	2	5	0	0	0	0	0	2	2	0	0	0	0	0	0	0	13
# Removed	0	0	3	0	1	2	1	1	1	1	0	0	0	2	0	0	0	12
# Transferred	1	0	3	0	0	1	3	0	0	4	0	0	0	2	0	0	0	14
Total Removed from PAL Program	3	2	14	0	13	6	6	3	18	7	1	0	0	7	0	0	0	80
Total Enrolled at the End of the Month	47	22	45	0	19	46	41	17	52	60	38	0	34	45	0	0	19	485
Volunteers in PAL	0	0	0	0	0	0	0	7	1	6	0	0	0	0	0	0	0	14
Special Events:	0	1	0	0	1	1	0	0	0	0	0	0	2	0	0	0	0	5

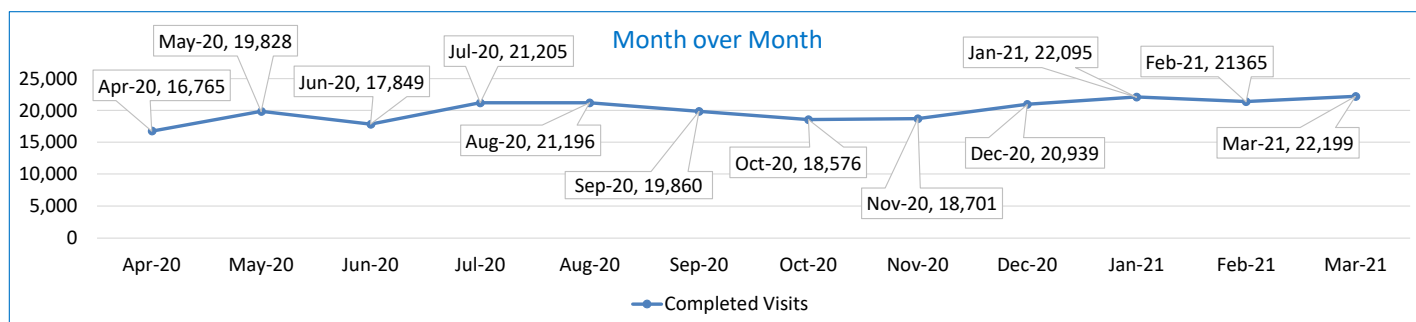


## SECURUS VIDEO VISITATION REPORT MARCH 2021

### AR-DOC SVV Activity Tracker

Total ADP 14,147

Total Visits by Month	Apr-20	May-20	Jun-20	Jul-20	Aug-20	Sep-20	Oct-20	Nov-20	Dec-20	Jan-21	Feb-21	Mar-21
Total (Includes SuperMax)	16,765	19,828	17,849	21,205	21,196	19,860	18,576	18,701	20,939	22,095	21,365	22,199
Target Objective	15,587	15,587	15,587	15,587	15,587	15,587	15,587	15,587	15,587	15,587	15,587	15,587



#### Completed Visits

Site	Current Month	Previous Month
Benton	392	342
Cummins	2,083	2,208
Delta Regional	1,769	1,471
East Arkansas Regional	2,461	2,395
Ester	1,103	976
Grimes	1,159	1,102
J Aaron Hawkins Sr.	816	856
Tucker Max	1,613	1,693
Mcperson	752	684
Mississippi County WRC	246	260
North Central	1,997	1,631
NW Arkansas WRC	83	76
Ouachita River	2,200	2,162
Pine Bluff Complex	653	651
Randall L Williams	829	780
State Police Barracks	109	102
Texarkana Regional	212	259
Tucker Unit	639	536
Varner	2,212	2,058
Wrightsville Unit	809	1,068
Pine Bluff Re-Entry	62	55
Tucker Re-entry	0	0
Total:	22,199	21,365

#### Missed by Inmate

Site	Current Month	Previous Month
Benton	20	12
Cummins	164	164
Delta Regional	43	33
East Arkansas Regional	105	74
Ester	15	22
Grimes	23	21
J Aaron Hawkins Sr.	127	15
Tucker Max	145	46
Mcperson	28	25
Mississippi County WRC	21	14
North Central	27	18
NW Arkansas WRC	2	12
Ouachita River	47	56
Pine Bluff Complex	34	13
Randall L Williams	19	7
State Police Barracks	1	2
Texarkana Regional	18	7
Tucker Unit	26	32
Varner	68	65
Wrightsville Unit	221	20
Pine Bluff Re-Entry	0	0
Tucker Re-entry	0	0
Total:	1,154	658

### SECURUS TABLET REPORT MARCH 2021

Facility Name	Subscription	Facility	Officer	Total	New Subscriptions
Benton Unit	132	3	8	143	1
Cummins Unit	371	89	14	474	11
Delta Regional Unit	130	38	16	184	5
East Arkansas Regional Unit	248	97	10	355	9
Ester Unit	130	139	20	289	3
Grimes Unit	198	70	14	282	13
J. Aaron Hawkins Sr Center For Women	168	69	19	256	1
McPherson Unit	213	100	15	328	17
Mississippi County Work Release Center	58	2	9	69	1
North Central Unit	167	116	10	293	10
Northwest Arkansas Work Release Center	51	2	8	61	0
Ouachita River Correctional Unit	242	108	14	364	14
Pine Bluff Reentry Center	24	2	0	26	0
Pine Bluff Unit	107	5	8	120	2
Randall L. Williams Facility	81	24	15	120	4
State Police Barracks	24	0	3	27	0
Texarkana Regional Correctional Center	35	2	10	47	1
Tucker Maximum Security Unit	111	55	15	181	1
Tucker Reentry Center	0	52	3	55	0
Tucker Unit	140	61	10	211	6
Varner Unit	196	71	20	287	6
Wrightsville Unit	155	42	6	203	9
<b>TOTAL</b>	<b>2,981</b>	<b>1,147</b>	<b>247</b>	<b>4,375</b>	<b>114</b>

## CONSTRUCTION BUDGET / STATUS REPORT - APRIL 7, 2021 — [Page 1 of 2]

Fund	Project Description	Total Projected Spent	Budget	Available Funds	\$ % Complete	Construction % Complete	Notes
KBR4Q95	ESTER - Phase 3 - General Improvement Fund	2,977,000	3,001,781	24,782	99%	98%	Gravel for parking lot ordered.
700483A	EARU Max Rec Expanded Metal Rec Yard	820,646	879,000	58,354	93%	0%	All panels constructed at Central Maintenance. We are packaging material and arranging to deliver panels to begin demolition and construction of new Rec pens.
700483A	Tucker Max Expanded Metal Rec Yard	68,963	1,800,000	1,731,037	4%	0%	DBA Approved to proceed on 9/5/2020. Material list and requisitions processed.
700483A	Cummins Expanded Metal Rec Yard	50,012	368,617	318,605	14%	0%	Plans on hold, will modify for exp. metal
KBR4Q95	Bullpens	388,676	851,999	463,323	46%	98%	Varner & EARU complete. Installation underway at Max. Locks delivered. Working on bullpens now.
KBR4Q95	13 & 15 Barracks Door Revisions	119,111	174,000	54,889	68%	68%	All doors and locks installed in 13 Barracks. Job on hold to assess long term plan.
KBR4Q95	Camera's (New)	1,245,657	1,248,000	2,343	100%	86%	Delta, Varner, EARU, Cummins, RLW, PBU, & the Max are complete, working at Tucker, 90% complete.
700485A	Integrity Energy Improvements at EARU & Delta	16,961,127	17,010,204	49,077	100%	97%	lights (100%), plumbing 100%, water (100%), compost (100%), & solar (100%), HVAC (100%). Only Training is incomplete.
7004828	Integrity Energy Improvements Phase 2 at Tucker and Max	1,842,263	18,603,150	16,760,887	10%	0%	We are working with Integrity on the capital equipment list that will be installed in phase II. Lighting and water conservation is set to begin in April.
KBSCW18	McPherson Administration	391,580	395,439	3,859	99%	85%	Completing the wiring. Installing flooring. ETA is April 30, 2021.
KBSCW18	McPherson Visitation	305,211	312,430	7,219	98%	85%	
KBR4Q95	McPherson Administration and Visitation	-	100,000	100,000	0%	0%	
KBSHW18	Tucker Water Treatment	-	1,093,848	1,093,848	0%	0%	Engineering firm selected. Negotiating contract amount.
KBSFW18	Max Armory	26,928	70,000	43,072	38.5%	0%	DBA approved Plans 8/21/20. Land work is underway. Material is being delivered to location to begin construction.
7004810	Administrative East Roof Replacement	960	1,407,242	1,406,282	0.1%	0%	All roofs have been designed and they are working with DBA for approval. The specified material needing to be bid out is set to submit to OSP on 4/6/2021.
7004810	Central Warehouse Roof Replacement	216	322,722	322,506	0.1%	0%	
7004810	RLW Roof Replacement	815	2,639,917	2,639,102	0.03%	0%	
22V	NWARWRC Laundry and Commissary	162,227	250,000	87,773	65%	0%	Foundation and slab prep work done. Lift station installed and operational. Building and material are onsite and construction is set to start 4/15/2021.
865C KBR4Q95	NCU Perimeter Security	20,625 5,834	270,000	243,541	10%	0%	DBA Approved plans. DBA has the project in review.
N98	Max Re-Entry Generator Project	3,193	135,000	131,807	2%	0%	Plans submitted to DBA for approval December 2, 2020. Still in review at DBA.
KBR4Q95	NCU Replacement Generator Project	20,081	202,000	181,919	10%	0%	Project is at DBA for review and approval.



## CONSTRUCTION BUDGET / STATUS REPORT - APRIL 7, 2021 — [Page 2 of 2]

Fund	Project Description	Total Projected Spent	Budget	Available Funds	\$ % Complete	Construction % Complete	Notes
7004820	Tucker 10 Barracks Sidewalk	-	70,259	70,259	0%	0%	DBA approved to proceed. Mobilizing to begin project. Projected start date of 5/15/21.

Telephone Projects

Maintenance & Operations	Fire Alarm Upgrades (All Units)	35,402	41,000	5,598	86%	50%	on-going
	Stainless Steel - Kitchen/Shower/Restrooms - All Units	13,361	20,000	6,639	67%	15%	continual need
	Gates and Fences all units	10,688	25,000	14,312	43%	0%	to improve security
	ACA Maintenance	61,011	100,000	38,989	61%	0%	Construction teams at Tucker Max, EARU, Training Academy, Cummins & Varner.
	ADA Projects - All Units	376	10,000	9,624	4%	0%	Working with Varner for the sports field sidewalk.
	Fast Top Floor Systems (kitchen/laundry/showers all	17,091	17,775	684	96%	0%	Benton restrooms underway. Ouachita kitchen next.
	Camera Equipment - All Units	207,300	250,000	42,700	83%	15%	cameras as requested/approved.
	Lock/Riot Gates - All Units	65,024	90,500	25,476	72%	12%	on-going.
	AC Units-All Units	66,033	70,000	3,967	94%	25%	repairing & replacing daily.
	<b>Subtotal</b>	<b>\$ 476,287</b>	<b>\$ 624,275</b>	<b>\$ 147,988</b>			

Capital Projects FY20 Carry Forward	Metal Ceilings	21,084	25,000	3,916	84%	0%	NCU complete, Delta is next.
	ORCU Gravel Pit Operations	22,852	35,000	12,148	65%	18%	on-going.
	Dog Kennel/Horse Stable Malvern	0	48,000	48,000	0%	0%	DBA approved the Plans, released for construction. Material for this project ordered.
	Emergency Generator - All Units	130,154	250,000	119,846	52%	20%	Cummins 300kW generator complete. All material purchased for Hawkins. Generator is currently being installed. Max Gen mat'l rec'd, Generator rec'd. Will start as soon as Hawkins Unit Gen is installed. Cummins East Bldg. we have approval awaiting Max generator install.
	Tucker 4 new filters & one aeration tank	483,247	488,434	5,187	99%	70%	Filters are set and ready to be installed. North and South wall complete, laying the block for East
	Roof Repairs-Cummins	24,800	145,000	29,353	80%	0%	Prepared large order for multiple Units. Max is complete. Need repairs at ORCU, Delta, Cummins & others. Varner & ORCU working on repairs, received TPO
	Roof Repairs-Cummins Laundry	0				0%	
	Roof Repairs-East Arkansas	53,107				0%	
	Roof Repairs-Max	0				0%	
	Roof Repair - NCU	6,016				0%	
	Roof Repair - RLW	5,786				0%	
	Roof Repairs-Tucker	0				0%	
	Roof Repairs-Varner	21,285				0%	
	Roof Repairs-Wrightsville	4,654				0%	
	Boiler Repair	91,365	100,000	8,635	91%	18%	continually needing repair
	<b>Subtotal</b>	<b>\$ 864,349</b>	<b>\$ 1,091,434</b>	<b>\$ 227,085</b>			

New Projects	Additional Metal Fab shop	0	29,266	29,266	0%	0%	purchasing materials
	PB Warehouse Drive replacement	0	-	0	0%	0%	Project suspended for this fiscal year.
	<b>Subtotal</b>	<b>\$ -</b>	<b>\$ 29,266</b>	<b>\$ 29,266</b>			
	Architect Fees	85,589	155,225	69,636	55%		
	<b>Total</b>	<b>\$ 1,426,224</b>	<b>\$ 1,900,200</b>	<b>\$ 473,976</b>			

Notes Report has not been reconciled against Accountings Reconciled Reports.  
Tolerance/Deviation is with in 1% of Projected Spending.