



DIVISION OF  
CORRECTION

# BOARD REPORT

February 2021



@ARDeptofCorrections



@adcpio



@arcorrections



Dexter Payne,  
Director

## POPULATION REPORT

### RESEARCH/PLANNING

**January 2021 Admissions and Releases** – Admissions for January 2021 totaled **19** (17-males and 2-females) while releases totaled **303** (260-males and 43 females) for a net decrease in-house of **284** inmates.

**Inmate Population Growth/Projection** – At the end of January 2021, the jurisdictional population for the Division of Correction totaled **16,119**, representing an increase of **25** inmates since the first of January 2021. Calendar year 2021 has seen an average increase of **25** inmates per month, which is up from an average monthly decrease of **139** inmates per month during calendar year 2020.

**Average County Jail Back-up** – The backup in the county jails averaged **2,029** inmates per day during the month of January 2021, which was up from the per-day average of **1,853** inmates during the month of December 2020. Of the **2,029** average, short-term revocations accounted for **690** (608 males and 82 females) during the month.

## INSTITUTIONS

### INMATE INSTITUTIONAL GRIEVANCES

**Inmate Formal/Informal Grievances:** During January 2021, a total of 1,574 formal grievances and 1,916 informal grievances were filed at various units.

**Institutional Grievances Appeals:** There was a total of 723 appeals of institutional grievances received in January 2021. Of those, 578 were acknowledged and 145 were rejected for various reasons. Of the total 546 appeals answered, none had merit.

### FARM

A garden supervisors meeting was held at Cummins during the month of January, where plans for the 2021 gardens were discussed. Plans were based on the usage of each unit. The hot topic of discussion pertained to the ability to get squads out to do the work in the gardens with the ongoing pandemic. Deputy Director Billy Straughn addressed the group and gave support to turn out as many inmate crews as possible to ensure the gardens are planted and harvested. The Tucker Unit will be growing spices for all kitchens in their greenhouse.

The row crop supervisors spent time working in the shops getting equipment ready for the coming year. They also worked on their training hours, which has been difficult this year due to the pandemic. The University of Arkansas Extension Service

has made all of their production meetings virtual. Staff members will have to meet as a group and watch the videos to make sure everyone gets credit for the training. Winter wheat was planted at all farms this year, and most acres have already been treated with one round of fertilizer.

All beef cattle have been tested for pregnancy, and the results showed an average conception rate. Some cows were identified as needing to be culled from the herd due to physical problems that would prevent them from raising calves. Those cows will be taken through the plant to provide meat for inmate consumption.

Egg numbers remained low but steady. A new flock of chicks are due to arrive the first week in February.

Milk production has been climbing slowly due to the new cows. Crews were expected to arrive during the month to complete repairs to the roofs of barns used for hay storage and loafing sheds for the cows.

### REGIONAL MAINTENANCE HOURS

Regional Maintenance Hours	January 2021
Benton Unit	7,547
Delta Regional Unit	2,360
East Arkansas Regional Unit	0
Grimes Unit	796
McPherson Unit	936
Mississippi County Work Release	406
North Central Unit	4,288
Ouachita River Correctional Unit	0
Randall L. Williams Unit	1,376
Texarkana Regional Correctional Center	0
Tucker Unit	88
Varner Unit	1,936
Wrightsville Unit	200
<b>Total Hours</b>	<b>19,933</b>

### WORK RELEASE RENT REPORT

Unit	January 2021
Benton Unit	\$65,637.00
Mississippi County Work Release	\$45,662.00
Northwest Arkansas Work Release	\$7,701.00
Pine Bluff Work Release	\$22,117.00
Texarkana Regional Correctional Center	\$25,098.00
Wrightsville Hawkins Unit	\$6,851.00
<b>Total</b>	<b>\$173,066.00</b>

**REENTRY****RANDALL L. WILLIAMS**  
**JUVENILE EDUCATION PROGRAM**

January 2021 Capacity: 20	Beginning Count	New Commitments	DCR/Punitive	Transferred/ Turned 18*	Paroled	End Count
Juveniles*	1	1	0	0	0	2

\*Juveniles are transferred from the program once they reach the age of 18.

**WORKFORCE ALLIANCE FOR**  
**GROWTH IN THE ECONOMY (WAGE)**

January 2021 Capacity: 120 Unit:	Beginning Count	Admissions During Mo.	Removed*	Completed	End Count
Delta	21	0	1	0	20
Ester**	0	0	0	0	0
Hawkins***	0	0	0	0	0
McPherson***	0	0	0	0	0
Ouachita River	20	0	0	0	20
Tucker***	0	0	0	0	0
Tucker Reentry***	0	0	0	0	0
Wrightsville***	0	0	0	0	0
<b>TOTAL</b>	<b>41</b>	<b>0</b>	<b>1</b>	<b>0</b>	<b>40</b>

\*The "Removed" column indicates the number of participants who transferred, signed out, received a disciplinary, were removed because test scores were not returned/were too low to continue, or were released from prison.

\*\*The Ester Unit WAGE Program is experiencing a change in software resulting in no classes being taught at this time.

\*\*\*WAGE Program inactive during the month due to COVID-19.

**ADVANCED PRINCIPLES**  
**AND APPLICATIONS FOR**  
**LIFE PROGRAM (APAL)**

January 2021 Capacity: 86	Beginning Count	Admissions During Mo.	Removed*	End Count
Ester	33	0	0	33
Hawkins	50	0	3	47
<b>TOTAL</b>	<b>83</b>	<b>0</b>	<b>3</b>	<b>80</b>

Advanced PAL is an 18-month reentry program that combines a pre-release curriculum with the PAL program.

\*The "Removed" column indicates the number of participants who paroled, completed the program, withdrew from the program, transferred, or were removed from the program for another reason.

**WRIGHTSVILLE-HAWKINS**  
**PATHWAY TO FREEDOM PROGRAM**

January 2021 Capacity: 200	Beginning Count	Enrolled During the Month	Removed	End Count*
Wrightsville-Hawkins PTF	157	1	1	157

\*The "End Count" column includes 20 graduates who remain in the Pathway to Freedom barracks.

**THINK LEGACY**

January 2021 Capacity: 635 Unit	Beginning Count	Admitted	Graduated	Removed**	End Count
Cummins	56	6	5	8	49
Delta Regional	23	0	0	1	22
East Arkansas Regional	39	0	0	4	35
Ester	1	0	0	0	1
Grimes	38	0	0	0	38
Hawkins (Female)	7	0	0	0	7
McPherson	38	5	1	5	37
North Central	12	0	0	0	12
Ouachita River	23	6	0	2	27
Tucker	0	0	0	0	0
Tucker Women's Reentry	0	0	0	0	0
Varner	0	0	0	0	0
Wrightsville	0	0	0	0	0
<b>Total</b>	<b>237</b>	<b>17</b>	<b>6</b>	<b>20</b>	<b>228</b>

\*\*The "Removed" column indicates the total number of participants who paroled, signed out, transferred, or were removed from the program for any other reason and are no longer in the barracks.

\*The "Graduated But Remain" column indicates the number of participants who have successfully completed the program but remain in the barracks. *These numbers are included in the End Count.*

**ADMINISTRATIVE SERVICES****DIVISION OF CORRECTION**  
**TRAINING - JANUARY 2021****BASIC TRAINING DIVISION –**

Instructor Sarah Apel's **BCOT Class 2020-Q** graduated on January 19, 2021, with a total of 42 cadets.

The *Willis H. Sargent Award* recipient for the class was April Gatson of the Cummins Unit.

Lincoln Fowler of the North Central Unit received the *Dean's List Award*.

*Academic Awards* were presented to the following:

- 1st – Lincoln Fowler, North Central Unit
- 2nd – Alyson Slaughter, Grimes Unit
- 3rd – Ricky Cantrell III, Varner Unit

## DIVISION OF CORRECTION

### TRAINING, continued

Recipients of *Physical Fitness Awards* were:

- 1st – William Thompson, Cummins Unit
- 2nd – Ricky Cantrell III, Varner Unit
- 3rd – Sidney Willard, Grimes Unit

### **IN-SERVICE DIVISION –**

No in-service training was held by the Training Academy during the month. All in-person training remains suspended until further notice due to COVID-19.

### **eCADEMY –**

During January, 845 ADC employees completed a total of 17,817 hours of eCADEMY training. About 29% of ADC employees completed at least one course during that timeframe, averaging 4.00 hours per staff member.

## **HEALTH/CORRECTIONAL PROGRAMS**

### CHAPLAINCY SERVICES

**All Facilities** – During the month of January, the Chaplaincy Division at all facilities continued to provide religious services virtually over the video systems. This included Jumu'ah Prayer. While general volunteer access remained discontinued throughout January due to COVID-19, special clearance was given for volunteer chaplains to provide emergency coverage.

**Delta Regional Unit** – A video series, “33 The Series – The Manhood Story,” was shown over the span of two Saturday mornings in January. A total of 68 inmates signed up to participate in the video training, with 54 earning the completion certificate.

**Randall L. Williams Unit** – Unit Chaplaincy provided snacks to all officers on shift during Martin Luther King Jr. Day.

### ACCREDITATION

#### **ACA Internal Audits Completed:**

- 01/07–01/08 McPherson Unit File Review
- 01/11–01/12 Training Academy File Review
- 01/13 East Arkansas Regional Unit
- 01/21–01/22 Grimes Unit File Review
- 01/26 ACA Panel Hearing for Central Office
- 01/27 Maximum Security Unit

#### **Classes Taught:**

- 01/04 BCOT

#### **Fire/Safety and Sanitation Independent Audits Conducted by the Fire and Sanitation Coordinator:**

- 01/21–01/22 East Arkansas Regional Unit Audit Prep
- 01/25–01/29 East Arkansas Regional Unit Audit Prep

#### **Classes Taught:**

- 01/05–01/06 Certified Fire/Safety Officer at Mississippi County Work Release

## VOLUNTEER SERVICES

### **Total Number of Volunteer Hours for January 2021:**

Unit/Program	Hours
Delta Unit	0
East Arkansas Regional Unit	0
McPherson Unit	0
Mississippi County Work Release Center	0
Northwest Arkansas Work Release Center	4
Ouachita River Correctional Unit	0
Pine Bluff Complex	0
Texarkana Regional Correctional Center	0
Varner	0
PAWS	0
Think Legacy	0
Religious Services/Chaplaincy	0
<b>Total Hours</b>	<b>4</b>

### MENTAL HEALTH SERVICES

#### **Reduction of Sexual Victimization Program (RSVP) and Sex Offender Treatment Programs (SOFT):**

January 2021	Capacity	Beginning Count	Completed	Removed	Admissions	End Count
RSVP	278	89	0	5	6	90
SOFT	30	3	0	0	0	3
<b>Total</b>	<b>308</b>	<b>92</b>	<b>0</b>	<b>5</b>	<b>6</b>	<b>93</b>

There are 812 males on the waiting list for RSVP and five females on the waiting list for SOFT who are within five years of their TE date. Of those, 35 inmates are mandated by the Parole Board.

The average time on the waiting list from request is between one and two months for those stipulated.

\*The total on the waiting list, including those not currently within the identified timeframe, is 1,433 males and five females. Of these, 1,135 are eligible and 303 are ineligible for the program. There are no PREA inmates in the program at this time.

\*Ineligibility is due to being in restrictive housing, having class IV status, or receiving a major disciplinary within the last 60 days.

**MENTAL HEALTH SERVICES, continued****Therapeutic Community (TC):**

January 2021 Unit	Capacity	Beginning Count	Completed	Removed	Admissions	End Count
McPherson	53	22	0	4	34	52
Tucker	136	50	0	0	0	50
Wrightsville	50	15	0	1	0	14
<b>Total</b>	<b>239</b>	<b>87</b>	<b>0</b>	<b>5</b>	<b>34</b>	<b>116</b>

There are 497 males and 120 females on the waiting list who are within ten years of their release date. Of those, 11 are mandated by the Parole Board.

The average time on the waiting list from request is seven days.

\*The total on the waiting list, including those not currently within the identified timeframe, is 730 males and 159 females. Of these, 628 are eligible and 231 are ineligible for the program.

\*Ineligibility is due to being in restrictive housing, having class IV status, or receiving a major disciplinary within the last 60 days.

**Substance Abuse Treatment Program (SATP):**

January 2021 Unit	Capacity	Beginning Count	Completed	Removed	Admissions	End Count
Benton	20	12	0	2	0	10
Cummins	47	25	2	2	2	23
Grimes	56	31	1	6	1	25
Maximum Security	4	3	2	0	0	1
McPherson	106	25	3	3	44	63
Randall L. Williams	200	56	6	6	0	44
Wrightsville	150	47	10	5	40	72
<b>Total</b>	<b>583</b>	<b>199</b>	<b>24</b>	<b>24</b>	<b>87</b>	<b>238</b>

There are 1,660 males and 151 females on the waiting list who are within five years of their release date. Of those, 33 are mandated by the Parole Board.

The average time on the waiting list from request is 11 days.

\*The total on the waiting list, including those not currently within the identified timeframe, is 2,320 males and 182 females. Of these, 1,844 are eligible and 658 are ineligible for the program.

\*Ineligibility is due to being in restrictive housing, having class IV status, or receiving a major disciplinary within the last 60 days.

**Substance Use Intervention Program:** The Substance Use Intervention Program had no admissions or discharges for an end-of-month count of zero for January. This program is housed at the Varner Unit and is for inmates found guilty of a disciplinary violation for drug use or drug possession.

**Ouachita River Correctional Unit (ORCU) Residential**

**Program Unit (RPU):** The RPU had five admissions and three discharges in January for an end-of-month count of 120.

**McPherson Unit Mental Health Residential Program Unit**

**(RPU):** There were three admissions and six discharges in January for an end-of-month count of 37.

**Habilitation Program:** The Habilitation Program at the Ouachita River Correctional Unit provided treatment services to 45 inmates during January. There was one admission and no discharges, resulting in an end-of-month count of 45.

**Anger Management Treatment:** The Anger Management Treatment Program at the Cummins Unit provided treatment services to three inmates during January. There were no admissions and three discharges, for an end-of-month count of zero.

**Staffing:** The following Mental Health Services and Substance Abuse Treatment Program (SATP) positions were vacant in December 2020 and January 2021:

Positions	FTE's*	December 2020	January 2021
Psychologists	14	5	5
Social Workers	31	13	13
Rehab Program Manager	9	1	1
Advisors	64	11	11
Substance Abuse Program Leaders	40	5	7
Administrative Specialists	17	5	4

\*FTE refers to authorized Full Time Equivalent positions.

**ADDITIONAL MENTAL HEALTH AND MEDICAL INFORMATION****Self-Study Classes:**

Classes	Number of Participants	Number Completed	Waiting List
Anger Management	172	159	740
Thinking Errors	249	243	628
Substance Abuse Education	130	126	593
Communication Skills	144	139	723
Domestic Violence	48	38	142
Victims of Domestic Violence	2	2	33
Stress Management	103	100	727
Parenting	103	90	223



## ADDITIONAL MENTAL HEALTH AND MEDICAL INFORMATION, *continued*

**Suicide:** There were 94 suicidal threats during January. There were three attempts resulting in three deaths.

**Outpatient:** There were 1,897 inmates on the mental health medical log at the beginning of December. Mental Health staff conducted the following contacts during December:

Case Management Contacts	1,924
Requests for Interviews	1,140
Testing	6
Intakes	68
Unit Requests	944
Pre-Lockup Reviews	465
Routine Restrictive Housing Reviews	910
Restrictive Housing Rounds	22,206
PREA Evaluations	103
Routine Follow-up	444
834 Requests	27

**County Mental Health Requests:** During January, there were 319 requests received of a mental health nature. Of those, no inmates were fast-tracked to ADC. *Note: Most inmates were not transferred due to COVID-19.*

**County Medical Health Requests:** During January, there were 872 requests received of a medical nature. A total of eight inmates were fast-tracked to ADC.

**Medical Contract Reimbursements:** Sanction reimbursements for December amounted to \$13,300.00.

**Deaths:** There were nine inmate deaths during the month of January. Five were claimed and four cremated.

**Wellpath:** See attachment for Wellpath's report regarding outside beds and emergency room visits.

**Medical Grievances:** In January, there were 143 appeals received of medical grievances and 110 appeals were answered. Seven of those were found to be with merit.

## SEX OFFENDER ASSESSMENT

### **Assessments Completed:**

Risk Level	January	September 1999 through January 2021
Level 1	0	1,209
Level 2	46	8,156
Level 3	18	7,190
Level 4	0	704
Default 3	0	*
<b>Total</b>	<b>64</b>	<b>17,259</b>
*Default Level 3's are included in the total number of Level 3's to date.		

### **ACIC Numbers:**

The total number of sex offenders registered from September 1999 through January 2021:

Compliant	8,457
Delinquent	1,411
Confined	3,198
Out-of-State	3,806
Address Unknown	142
Deported	208
Incapacitated	96
Out of USA	13
<b>Total</b>	<b>17,331</b>

Consistent with current Arkansas law, deceased offenders no longer remain on the registry.

## PAWS IN PRISON

January 2021 Unit	Enrolled	Graduated	Foster	Volunteer Hours
Hawkins Unit	6	1	0	0
Maximum Security Unit	7	5	0	0
North Central Unit	4	0	0	0
Ouachita River Correctional Unit	1	4	0	0
Randall L. Williams Unit	3	0	0	0
Tucker Unit	5	1	0	0
<b>Total</b>	<b>26</b>	<b>11</b>	<b>0</b>	<b>0</b>

### **Completed Paws in Prison Training:**

January 2021 Program Graduates	11
YTD 2021 Program Graduates	11
Total Graduates Since Inception (December 2011)	1,674
Dogs Currently in Foster (Graduated, but Not Adopted)	0
January 2021 Volunteer Hours	0
YTD Volunteer Hours	0

## **INFORMATION TECHNOLOGY**

**INMATE TABLETS** – Within the Division of Correction, a total of 3,350 inmate tablets were leased during January.

**INMATE VIDEO VISITS** – Inmates completed 22,095 video visits during the month and missed 512 within the Division of Correction.

## CONSTRUCTION/MAINTENANCE

### PROJECT UPDATES

SEE CONSTRUCTION BUDGET / STATUS REPORT IN ATTACHMENTS SECTION (PAGES 22-23).

## AGENCY HIGHLIGHTS

### JANUARY 2021:

#### *Media Event Held to Kick Off the Start of COVID-19 Vaccinations for the DOC*

The Arkansas Department of Corrections began conducting its first round of COVID-19 vaccinations the first week of January. Recognizing that the vaccine is our best shot to get back to normal, a media event was held on January 5. Two DOC employees volunteered to publicly receive their



vaccinations – Captain Dwana Johnson, supervisor over Central Transportation at the Pine Bluff Unit and Cherity Godwin, Wellpath LPN serving in the Special Needs Unit of the Ouachita River Correctional facility.

#### *Staff Vaccination Photos Promoted on Social Media*

Beginning on January 6 and running throughout the month, the DOC Comms Team began the “Best Shot” photo campaign featuring staff receiving their COVID-19 vaccinations across all social media platforms. The photos were branded with a treatment stating, “I took my best shot for getting back to normal.” Pictured here is East Arkansas Regional Unit’s Deputy Warden Anthony Jackson receiving an injection.



#### *Awards Presented to Tucker Unit Correctional Staff*

During the month of January, Tucker Unit Deputy Warden Emmer Branch and Major Adam Clark presented awards to Sgt. Shelia Brazell, Correctional Supervisor of the Year, and Cpl. Lawanda Wofford, Correctional Officer of the Year.



Brazell



Wofford

#### *Cpl. Ester Remembered at EARU*

January 20 marked nine years since Cpl. Barbara Ester was killed at the hands of an inmate while on duty at East Arkansas Regional Unit. Each year, the staff at the unit honors the legacy of Cpl. Ester, a 12-year veteran of the ADC, with a special memorial table.



#### *New Officers Welcomed to ORCU*

During the month, the Ouachita River Correctional Unit welcomed three graduates of Basic Correctional Officer Training class 2020-Q to the family. The new officers include Estela Estrada, Tahj Carter, and Lynnlee Jordan.



#### *Drones Addressed with Legislators*

Division of Correction Director Dexter Payne, along with Division of Community Correction Director Jerry Bradshaw and Corrections Secretary Solomon Graves, had an opportunity in January to show Arkansas legislators a drone that was secured last summer at the Varner Unit. Since drones can be used to drop contraband items into correctional facilities, the three leaders strongly support Senate Bill 173. This legislation would protect certain food-processing and manufacturing plants as well as prisons from interference from drones.





**AGENCY HIGHLIGHTS, continued*****ADC Staff Receive County Officer of the Year Honors***

On January 29, three Division of Correction staff members were honored at a luncheon in Benton by Arkansas Attorney General Leslie Rutledge for receiving 2020 County Officer of the Year awards. Two Division of Community Correction employees were also honored. CONGRATULATIONS to the following:

- Capt. Andre Harris, Northeast Arkansas Community Correction Center, Mississippi County Officer of the Year
- Sgt. Tamisha Ivory, Ouachita River Correctional Unit, Hot Spring County Officer of the Year
- Sgt. Kyle Moody, North Central Unit, Izard County Officer of the Year

- Capt. Lillie Phillips, Texarkana Regional Correctional Center, Miller County Officer of the Year
- Sgt. Stephanie Soimis, East Central Community Correction Center, Crittenden County Officer of the Year



## REGIONAL MAINTENANCE PROJECT HIGHLIGHTS JANUARY 2021

### Grass Chopping/Fence Wire Repair at Cummins *Varner Regional Maintenance 1 and 2 – January 6:*



### Fence Row Cleaning/Wire Repair at Cummins *Varner Regional Maintenance – January 14:*



### 171 Bag Harvest of Cabbage at Cummins *Varner Regional Maintenance – January 20:*



### 55 Bag Harvest of Turnips at Cummins *Varner Regional Maintenance – January 22:*



## 2020 INFORMAL GRIEVANCE REPORT

Month	BENTON	HAWK/M	HAWK/F	WRTS	EARU & MX	GRIMES	RLW	MCWR	MCPH	MSU	NCU	PBU	NWA	TU	TRCC	VSMX	VU	CU & CMU	ORCU	Ester	DRU	Bowie Cty	TOTAL
JAN	1	30	1	56	269	243	41	0	301	147	106	43	0	62	0	152	26	124	174	41	99	n/a	1,916
FEB	0	0	0	0	0	0	0	0	0	0	0	0	0	0	0	0	0	0	0	0	0	0	0
MAR	0	0	0	0	0	0	0	0	0	0	0	0	0	0	0	0	0	0	0	0	0	0	0
APR	0	0	0	0	0	0	0	0	0	0	0	0	0	0	0	0	0	0	0	0	0	0	0
MAY	0	0	0	0	0	0	0	0	0	0	0	0	0	0	0	0	0	0	0	0	0	0	0
JUN	0	0	0	0	0	0	0	0	0	0	0	0	0	0	0	0	0	0	0	0	0	0	0
JUL	0	0	0	0	0	0	0	0	0	0	0	0	0	0	0	0	0	0	0	0	0	0	0
AUG	0	0	0	0	0	0	0	0	0	0	0	0	0	0	0	0	0	0	0	0	0	0	0
SEPT	0	0	0	0	0	0	0	0	0	0	0	0	0	0	0	0	0	0	0	0	0	0	0
OCT	0	0	0	0	0	0	0	0	0	0	0	0	0	0	0	0	0	0	0	0	0	0	0
NOV	0	0	0	0	0	0	0	0	0	0	0	0	0	0	0	0	0	0	0	0	0	0	0
DEC	0	0	0	0	0	0	0	0	0	0	0	0	0	0	0	0	0	0	0	0	0	0	0
TOTAL	1	30	1	56	269	243	41	0	301	147	106	43	0	62	0	152	26	124	174	41	99	0	1,916

## 2020 FORMAL GRIEVANCE REPORT

Month	BENTON	HAWK/M	HAWK/F	WRTS	EARU & MX	GRIMES	RLW	MCWR	MCPH	MSU	NCU	PBU	NWA	TU	TRCC	VSMX	VU	CU & CMU	ORCU	Ester	DRU	Bowie Cty	TOTAL
JAN	1	15	1	30	293	176	17	0	173	197	71	24	0	55	2	152	26	150	125	22	44	n/a	1,574
FEB	0	0	0	0	0	0	0	0	0	0	0	0	0	0	0	0	0	0	0	0	0	0	0
MAR	0	0	0	0	0	0	0	0	0	0	0	0	0	0	0	0	0	0	0	0	0	0	0
APR	0	0	0	0	0	0	0	0	0	0	0	0	0	0	0	0	0	0	0	0	0	0	0
MAY	0	0	0	0	0	0	0	0	0	0	0	0	0	0	0	0	0	0	0	0	0	0	0
JUN	0	0	0	0	0	0	0	0	0	0	0	0	0	0	0	0	0	0	0	0	0	0	0
JUL	0	0	0	0	0	0	0	0	0	0	0	0	0	0	0	0	0	0	0	0	0	0	0
AUG	0	0	0	0	0	0	0	0	0	0	0	0	0	0	0	0	0	0	0	0	0	0	0
SEPT	0	0	0	0	0	0	0	0	0	0	0	0	0	0	0	0	0	0	0	0	0	0	0
OCT	0	0	0	0	0	0	0	0	0	0	0	0	0	0	0	0	0	0	0	0	0	0	0
NOV	0	0	0	0	0	0	0	0	0	0	0	0	0	0	0	0	0	0	0	0	0	0	0
DEC	0	0	0	0	0	0	0	0	0	0	0	0	0	0	0	0	0	0	0	0	0	0	0
TOTAL	1	15	1	30	293	176	17	0	173	197	71	24	0	55	2	152	26	150	125	22	44	0	1,574



## INMATE INSTITUTIONAL GRIEVANCE APPEAL REPORT – JANUARY 2021

	Acknowledged	Rejected	Processed W/O Merit	Processed W/ Merit
Benton Unit	1	1	1	0
Benton Work Release	0	0	0	0
Bowie County Texas Correctional Facility	0	0	0	0
Cummins Unit	36	9	35	0
Cummins Modular Unit	1	0	1	0
Delta Regional Unit	13	3	13	0
East Arkansas Regional Unit	30	2	34	0
East Arkansas Regional Max Unit	82	13	62	0
Ester Unit	12	0	20	0
Grimes Unit	73	23	55	0
Maximum Security Unit	62	22	60	0
Tucker Re-Entry	0	0	0	0
McPherson Unit	36	14	35	0
McPherson Mental Health Residential Program Unit	2	3	2	0
Mississippi County Work Release Center	0	0	0	0
Northwest Arkansas Work Release Center	0	0	0	0
North Central Unit	50	8	27	0
Ouachita River Correctional Unit	29	12	12	0
ORCU Hospital	1	0	0	0
ORCU New Commitment	17	2	13	0
ORCU Mental Health Residential Program Unit	2	3	1	0
Pine Bluff Unit	1	5	0	0
Pine Bluff Re-Entry	0	0	0	0
Randall L. Williams Correctional Facility	5	5	3	0
Texarkana Regional Correctional Center	0	0	0	0
Tucker Unit	20	2	8	0
Varner Super Max	72	14	131	0
Varner Unit	12	1	11	0
Wrightsville Unit	16	3	20	0
Hawkins Center	0	0	0	0
Hawkins for Males	5	0	2	0
Hawkins SPU	0	0	0	0
<b>Total</b>	<b>578</b>	<b>145</b>	<b>546</b>	<b>0</b>

## ADMISSIONS AND RELEASES – JANUARY 2021

<u>Admissions</u>	<u>Male</u>	<u>Female</u>	<u>Total</u>
Asian	0	0	0
Black	6	0	6
Hispanic	0	0	0
Native American Indian	0	0	0
Native Hawaiian or Pacific Isl.	0	0	0
White	11	2	13
Other	0	0	0
Unknown	0	0	0
<b>Total</b>	<b>17</b>	<b>2</b>	<b>19</b>

<u>Releases</u>	<u>Male</u>	<u>Female</u>	<u>Total</u>
Asian	1	0	1
Black	97	5	102
Hispanic	12	0	12
Native American Indian	0	1	1
Native Hawaiian or Pacific Isl.	0	0	0
White	150	37	187
Other	0	0	0
Unknown	0	0	0
<b>Total</b>	<b>260</b>	<b>43</b>	<b>303</b>

## ADC INMATE POPULATION GROWTH 2000-2027 - JANUARY 2021

Updated 01/29/2021

Mo.	2000	2001	2002	2003	2004	2005	2006	2007	2008	2009	2010	2011	2012	2013	2014	2015	2016	2017	2018	2019	2020	2021
Jan.	11,984	11,908	12,402	13,015	13,105	13,595	13,481	13,839	14,518	14,796	15,334	16,312	15,134	14,815	17,481	18,142	17,785	17,824	18,201	17,958	17,989	16,119
Feb.	12,169	12,022	12,529	13,054	13,166	13,783	13,633	14,012	14,603	14,883	15,374	16,209	14,990	15,008	17,438	18,082	17,625	17,608	17,998	17,846	18,181	
March	12,006	12,033	12,299	13,108	13,088	13,418	13,534	13,772	14,580	14,843	15,290	16,095	14,964	14,665	17,395	18,233	17,573	17,666	18,089	17,898	17,860	
April	12,069	12,167	12,465	13,213	13,323	13,469	13,554	13,851	14,769	14,937	15,570	16,172	15,124	14,850	17,604	18,703	17,815	17,798	18,227	17,977	17,331	
May	12,109	12,384	12,558	13,463	13,556	13,528	13,711	14,146	14,880	15,146	15,694	16,062	15,132	15,074	17,593	18,693	17,769	17,652	17,945	17,817	16,694	
June	12,005	12,108	12,439	13,418	13,389	13,251	13,430	13,915	14,700	15,025	15,564	15,554	14,832	14,825	17,340	18,813	17,973	17,963	17,972	17,942	16,552	
July	12,030	12,190	12,622	13,509	13,528	13,286	13,560	14,082	14,868	15,195	15,807	15,519	14,879	15,379	17,522	18,870	18,130	18,180	18,005	18,002	16,511	
August	12,087	12,371	12,815	13,565	13,632	13,419	13,646	14,224	15,100	15,385	15,829	15,240	14,675	16,103	17,549	18,806	17,919	18,051	17,751	18,090	16,367	
September	11,983	12,289	12,774	13,341	13,516	13,237	13,652	14,217	14,850	15,285	16,025	15,172	14,724	16,412	17,605	18,549	18,026	18,179	17,865	17,856	16,215	
October	12,119	12,348	12,942	13,341	13,584	13,363	13,775	14,349	14,836	15,381	16,311	15,271	14,856	16,993	17,880	18,430	18,127	18,348	17,943	17,947	16,311	
November	12,094	12,408	13,162	13,408	13,706	13,587	13,913	14,437	15,025	15,340	16,460	15,205	14,625	17,168	17,848	17,981	17,573	17,973	17,666	18,060	16,165	
December	11,856	12,333	12,845	13,106	13,470	13,338	13,728	14,315	14,716	15,199	16,204	15,062	14,654	17,235	17,874	17,707	17,537	18,078	17,799	17,759	16,094	
Net Ann. Inc.	29	477	512	261	364	-132	390	587	401	483	1,005	-1,142	-408	2,581	639	-167	-170	541	-279	-40	-1,665	25
Avg. Mo. Inc.	2	40	43	22	30	-11	33	49	33	40	84	-95	-34	215	53	-14	-14	45	-23	-3	-139	25

Population is total jurisdictional count at end of each month. Population at end of month December 1999 was 11,827.

Average monthly population increase for past fifteen years 2006 - 2020 is 15

Average monthly population increase for past ten years Jan. 2011 - Dec 2020 is -1

Average monthly population increase for past five years 2016 - 2020 is -27

Projected at Growth of 15 per Month

Mo.	2008	2009	2010	2011	2012	2013	2014	2015	2016	2017	2018	2019	2020	2021	2022	2023	2024	2025	2026	2027
	Actual	Actual	Actual	Actual	Actual	Actual	Actual	Actual	Actual	Actual	Actual	Actual	Actual	Actual	Proj.	Proj.	Proj.	Proj.	Proj.	Proj.
January	14,518	14,796	15,334	16,312	15,134	14,815	17,481	18,142	17,785	17,824	18,201	17,958	17,989	16,119	16,299	16,479	16,659	16,839	17,019	17,199
February	14,603	14,883	15,374	16,209	14,990	15,008	17,438	18,082	17,625	17,608	17,998	17,846	18,181	16,134	16,314	16,494	16,674	16,854	17,034	17,214
March	14,580	14,843	15,290	16,095	14,964	14,665	17,395	18,233	17,573	17,666	18,089	17,898	17,860	16,149	16,329	16,509	16,689	16,869	17,049	17,229
April	14,769	14,937	15,570	16,172	15,124	14,850	17,604	18,703	17,815	17,798	18,227	17,977	17,331	16,164	16,344	16,524	16,704	16,884	17,064	17,244
May	14,880	15,146	15,694	16,062	15,132	15,074	17,593	18,693	17,769	17,652	17,945	17,817	16,694	16,179	16,359	16,539	16,719	16,899	17,079	17,259
June	14,700	15,025	15,564	15,554	14,832	14,825	17,340	18,813	17,973	17,963	17,972	17,942	16,552	16,194	16,374	16,554	16,734	16,914	17,094	17,274
July	14,868	15,195	15,807	15,519	14,879	15,379	17,522	18,870	18,130	18,180	18,005	18,002	16,511	16,209	16,389	16,569	16,749	16,929	17,109	17,289
August	15,100	15,385	15,829	15,240	14,675	16,103	17,549	18,806	17,919	18,051	17,751	18,090	16,367	16,224	16,404	16,584	16,764	16,944	17,124	17,304
September	14,850	15,285	16,025	15,172	14,724	16,412	17,605	18,549	18,026	18,179	17,865	17,856	16,215	16,239	16,419	16,599	16,779	16,959	17,139	17,319
October	14,836	15,381	16,311	15,271	14,856	16,993	17,880	18,430	18,127	18,348	17,943	17,947	16,311	16,254	16,434	16,614	16,794	16,974	17,154	17,334
November	15,025	15,340	16,460	15,205	14,625	17,168	17,848	17,981	17,573	17,973	17,666	18,060	16,165	16,269	16,449	16,629	16,809	16,989	17,169	17,349
December	14,716	15,199	16,204	15,062	14,654	17,235	17,874	17,707	17,537	18,078	17,799	17,759	16,094	16,284	16,464	16,644	16,824	17,004	17,184	17,364
Net Ann. Inc.	401	483	1,005	-1,142	-408	2,581	639	-167	-170	541	-279	-40	-1,665	190	180	180	180	180	180	180
Ave. Mo. Inc.	33	40	84	-95	-34	215	53	-14	-14	45	-23	-3	-139	16	15	15	15	15	15	15



## MONTHLY POPULATION AVERAGES - JANUARY 2021

Unit/Center	1/1	1/4	1/5	1/6	1/7	1/8	1/11	1/12	1/13	1/14	1/15	1/18	1/19	1/20	1/21	1/22	1/25	1/26	1/27	1/28	1/29	AVG
Benton	262	262	262	262	262	260	258	258	258	258	257	255	255	255	252	252	252	252	250	250	247	256
Cummins	1,906	1,906	1,901	1,901	1,903	1,901	1,901	1,901	1,900	1,893	1,893	1,895	1,895	1,891	1,891	1,888	1,887	1,887	1,885	1,884	1,943	1,898
Delta	532	532	532	532	533	532	531	531	522	521	521	520	520	521	521	519	519	519	516	516	515	524
E AR Reg	1,514	1,514	1,514	1,513	1,514	1,512	1,506	1,507	1,506	1,504	1,503	1,507	1,507	1,507	1,507	1,507	1,505	1,504	1,504	1,503	1,498	1,507
Ester	468	468	468	468	467	467	467	464	464	464	460	460	460	459	459	459	457	455	455	454	453	462
Grimes	909	909	909	906	906	902	902	900	899	898	898	896	896	896	894	894	892	892	892	890	890	899
Max Sec	550	550	550	550	550	551	551	551	550	551	551	553	553	552	552	551	550	550	550	550	549	551
McPherson	806	806	803	802	798	799	796	794	794	789	789	784	784	781	780	774	770	770	771	772	772	787
MCWRC	125	125	125	125	124	124	124	123	122	122	122	122	122	122	121	121	121	121	121	121	121	123
N Central	712	712	710	709	705	706	706	703	703	703	703	703	703	703	699	699	699	698	698	698	698	703
NWAWRC	68	68	68	68	68	68	68	68	68	68	68	68	68	68	68	68	68	68	68	68	68	68
Ouachita River	1,517	1,517	1,516	1,513	1,505	1,503	1,502	1,498	1,496	1,498	1,500	1,503	1,505	1,505	1,508	1,501	1,499	1,501	1,505	1,508	1,399	1,500
Randall L Williams	468	468	468	468	466	465	464	465	464	463	463	462	462	462	462	460	460	460	458	457	505	465
Pine Bluff	496	496	496	490	490	490	489	489	488	487	487	486	486	486	486	484	483	483	481	481	481	487
PB Reentry	43	43	43	49	49	49	49	49	49	49	49	49	49	49	49	49	49	49	49	49	49	48
TRCC	102	102	102	102	102	101	101	101	101	101	101	98	98	98	98	98	98	98	98	98	98	100
Tucker	718	718	718	717	717	717	709	707	701	700	699	699	699	699	699	699	694	692	692	691	691	704
Varner	1,496	1,496	1,496	1,495	1,495	1,491	1,490	1,487	1,484	1,482	1,482	1,480	1,480	1,480	1,479	1,473	1,473	1,473	1,471	1,468	1,468	1,483
Wrightsville	754	767	768	768	768	773	775	775	774	775	788	771	746	746	745	742	729	725	723	722	708	754
WR Hawkins-Females	200	200	200	200	200	200	199	199	199	199	197	196	196	196	196	197	197	197	196	196	196	198
WR Hawkins-Males	157	156	156	156	156	156	156	156	156	156	156	156	156	156	157	157	157	157	157	157	157	156
Total ADC	13,803	13,815	13,805	13,794	13,778	13,767	13,744	13,726	13,698	13,681	13,687	13,663	13,640	13,632	13,623	13,592	13,559	13,551	13,540	13,533	13,506	13,673
ALETA	14	14	14	14	14	14	14	14	14	14	14	14	14	14	14	14	14	14	14	14	14	14
Ar State Police	37	25	24	24	22	17	15	15	15	14	0	0	25	25	25	25	34	34	34	35	49	24
Co Jail / M	1,670	1,670	1,676	1,691	1,704	1,727	1,734	1,737	1,764	1,770	1,805	1,809	1,809	1,813	1,816	1,839	1,848	1,843	1,846	1,855	1,928	1,779
Co Jail / F	221	221	221	223	228	232	235	234	241	246	252	256	256	255	255	256	258	260	260	265	272	245
Total Co Jail BK	1,891	1,891	1,897	1,914	1,932	1,959	1,969	1,971	2,005	2,016	2,057	2,065	2,065	2,068	2,071	2,095	2,106	2,103	2,106	2,120	2,200	2,024
309/M	247	247	247	247	245	244	244	244	244	244	243	243	243	243	243	243	243	243	243	243	243	244
309/F	88	88	88	88	86	85	85	85	84	84	83	83	83	83	83	83	83	83	83	83	83	84
Total Act 309	335	335	335	335	331	329	329	329	328	328	326	326	326	326	326	326	326	326	326	326	326	328
Total Non ADC	2,277	2,265	2,270	2,287	2,299	2,319	2,327	2,329	2,362	2,372	2,397	2,405	2,430	2,433	2,436	2,460	2,480	2,477	2,480	2,495	2,589	2,390
Total	16,080	16,080	16,075	16,081	16,077	16,086	16,071	16,055	16,060	16,053	16,084	16,068	16,070	16,065	16,059	16,052	16,039	16,028	16,020	16,028	16,095	16,063

## FISCAL YEAR 2021 COUNTY JAIL BACKUP - JANUARY 2021

DAY		Jul-20		Aug-20		Sep-20		Oct-20		Nov-20		Dec-20		Jan-21
1		800	*	1,284		1,625		1,827	*	2,090		1,879		1,891
2		829	*	1,284		1,642		1,833		2,124		1,896	*	1,891
3		850		1,309		1,672	*	1,833		2,076		1,894	*	1,891
4	*	850		1,308		1,696	*	1,833		2,087		1,917		1,891
5	*	850		1,299	*	1,696		1,842		2,109	*	1,917		1,897
6		850		1,304	*	1,696		1,862		2,140	*	1,917		1,914
7		863		1,334		1,718		1,884	*	2,140		1,882		1,932
8		874	*	1,334		1,718		1,902	*	2,140		1,840		1,959
9		898	*	1,334		1,679		1,897		2,137		1,815	*	1,959
10		932		1,331		1,689	*	1,897		2,080		1,797	*	1,959
11	*	932		1,350		1,672	*	1,897		2,028		1,827		1,969
12	*	932		1,351	*	1,672		1,918		2,028	*	1,827		1,971
13		961		1,361	*	1,672		1,925		2,026	*	1,827		2,005
14		975		1,380		1,676		1,947	*	2,026		1,843		2,016
15		1,003	*	1,380		1,702		1,917	*	2,026		1,852		2,057
16		1,032	*	1,380		1,705		1,955		1,989		1,835	*	2,057
17		1,059		1,388		1,731	*	1,955		1,961		1,854	*	2,057
18	*	1,059		1,403		1,769	*	1,955		1,918		1,897		2,065
19	*	1,059		1,426	*	1,769		1,944		1,907	*	1,897		2,065
20		1,081		1,457	*	1,769		1,958		1,890	*	1,897		2,068
21		1,099		1,481		1,772		1,974	*	1,890		1,863		2,071
22		1,124	*	1,481		1,786		1,969	*	1,890		1,893		2,095
23		1,168	*	1,481		1,811		1,998		1,837		1,856	*	2,095
24		1,181		1,496		1,801	*	1,998		1,846		1,796	*	2,095
25	*	1,181		1,518		1,835	*	1,998		1,866		1,796		2,106
26	*	1,181		1,539	*	1,835		2,023		1,866	*	1,796		2,103
27		1,203		1,566	*	1,835		2,033		1,866	*	1,796		2,106
28		1,216		1,589		1,810		2,019	*	1,866		1,795		2,120
29		1,242	*	1,589		1,791		2,056	*	1,866		1,820		2,200
30		1,263	*	1,589		1,815		2,090		1,866		1,850	*	2,200
31		1,284		1,607			*	2,090				1,866	*	2,200
Avg Daily Backup		1,027		1,417		1,735		1,943		1,986		1,853		2,029

Notes: Totals do not include 309 Contracts in County Jails (maximum of 336)

County Jail Back-up for January 2021 ~ 2,029

County Jail Back-up Fiscal Year Average as of January 31, 2021 ~ 1,713

Short-Term Revocation Program Average for January 2021 ~ 690

Short-Term Revocation Program Fiscal Year Average as of January 31, 2021 ~ 697

## STTG UNIT COUNTS – JANUARY 2021

Unit	Beginning Total	Confirmed	Suspected	In	Out	Paroled	Removed	Ending Total	Total Unit Population	Unit % of STTG's
Benton	55	0	0	0	1	0	0	54	240	22.50%
Cummins	668	0	0	15	1	12	0	670	1,942	34.50%
Delta	155	0	0	0	0	8	0	147	516	28.49%
EARU	595	0	0	3	0	10	0	588	1,498	39.25%
Easter	65	0	0	0	0	6	0	59	453	13.02%
Grimes	325	0	0	0	1	9	0	315	889	35.43%
Hawkins	34	0	0	4	3	0	0	35	353	9.92%
Max	265	0	0	3	2	3	0	265	549	48.27%
Mcperson	38	0	0	0	0	0	0	38	772	4.92%
MCWR	35	0	0	0	2	1	0	32	121	26.45%
NCU	210	0	0	1	8	0	0	203	697	29.12%
NWAWR	17	0	0	1	0	1	0	17	68	25.00%
ORCU	441	0	0	31	42	11	0	419	1,310	31.98%
ORCU Intake	97	7	0	0	40	0	0	64	71	90.14%
Pine Bluff	112	0	0	6	2	0	0	116	538	21.56%
RLW	198	0	0	2	9	3	0	188	469	40.09%
TWR	30	0	0	0	1	0	0	29	98	29.59%
Tucker	242	0	0	2	5	0	0	239	691	34.59%
Varner	595	0	0	69	56	10	0	598	1,505	39.73%
Wrightsville	240	0	0	0	9	10	0	221	709	31.17%
<b>Total</b>	<b>4,417</b>	<b>7</b>	<b>0</b>	<b>137</b>	<b>182</b>	<b>84</b>	<b>0</b>	<b>4,297</b>	<b>13,489</b>	<b>31.86%</b>

ORCU Intake brought in 7 new STTG members into ADC last month.



## STTG DISCIPLINARY REPORT – JANUARY 2021

Unit	STTG Incidents	STTG Suspected Incidents	Total Unit Disciplinary	Disciplinary Involving STTG	Percentage
Benton	0	0	9	0	0.00%
Cummins	0	0	189	109	57.67%
Delta	0	0	74	70	94.59%
EARU	0	0	129	80	62.02%
Easter	0	0	10	4	40.00%
Grimes	0	0	179	80	44.69%
Hawkins	0	0	21	4	19.05%
Max	0	2	101	50	49.50%
Mcperson	0	0	204	9	4.41%
MCWR	0	0	2	2	100.00%
NCU	0	0	84	44	52.38%
NWAWR	0	0	2	0	0.00%
ORCU	0	0	116	37	31.90%
ORCU Intake	0	0	4	2	50.00%
Pine Bluff	0	0	65	20	30.77%
RLW	0	0	57	27	47.37%
TWR	0	0	1	1	100.00%
Tucker	0	0	115	56	48.70%
Varner	1	0	229	139	60.70%
Wrightsville	0	0	160	81	50.63%
<b>Total</b>	<b>1</b>	<b>2</b>	<b>1,751</b>	<b>815</b>	<b>46.54%</b>

## STTG COUNTS BY STTG SET – JANUARY 2021

STTG Set	Benton	Cummins	Delta	EARU	Easter	Grimes	Hawkins	Max	Mcpherson	MCWR	NCU	NWAWR	ORCU	Intake	PB	RLW	TWR	Tucker	Varner	Wrightsville	Total
Asian	0	1	0	0	0	0	0	0	0	1	0	0	1	0	0	1	0	0	0	0	4
Bloods	9	154	29	112	11	65	2	63	6	4	33	4	63	18	15	42	0	35	134	39	838
Crips	4	94	16	79	6	31	3	35	6	1	17	1	43	11	14	24	2	20	98	21	526
Folk	5	57	0	108	2	0	5	31	8	2	13	4	6	3	6	10	14	22	60	12	368
GD	14	153	34	102	14	89	5	64	1	12	36	0	72	10	32	42	0	69	125	54	928
Mexican	2	19	9	15	2	6	1	5	2	1	8	1	9	0	5	6	0	2	21	10	124
Motorcycle	0	1	1	2	0	1	1	2	1	1	1	0	1	0	1	0	1	0	0	0	14
Other	0	24	5	14	4	15	2	6	0	1	9	1	19	1	6	4	0	8	19	4	142
People	0	25	7	21	1	20	1	18	2	0	8	1	16	0	8	10	1	18	18	10	185
Unknown	0	13	2	11	0	7	0	3	0	1	5	0	10	3	3	3	1	0	6	6	74
W/S	11	43	23	25	9	33	6	8	12	2	43	5	109	9	13	32	8	20	29	32	472
AB	2	6	0	5	1	4	0	1	0	2	1	0	5	0	1	1	1	7	11	5	53
AC	0	6	1	10	4	6	1	4	0	0	6	0	1	0	1	1	0	7	14	6	68
NAE	5	39	5	38	3	15	2	9	0	3	5	0	29	5	6	4	1	10	27	13	219
WAR	2	35	15	46	2	23	6	16	0	1	18	0	35	4	5	8	0	21	36	9	282
<b>Total</b>	<b>54</b>	<b>670</b>	<b>147</b>	<b>588</b>	<b>59</b>	<b>315</b>	<b>35</b>	<b>265</b>	<b>38</b>	<b>32</b>	<b>203</b>	<b>17</b>	<b>419</b>	<b>64</b>	<b>116</b>	<b>188</b>	<b>29</b>	<b>239</b>	<b>598</b>	<b>221</b>	<b>4,297</b>

Key:

GD = Gangster Disciples

W/S = White Supremacist

NAE = New Aryan Empire

WAR = White Aryan Resistance

AC = Aryan Circle

AB = Aryan Brotherhood

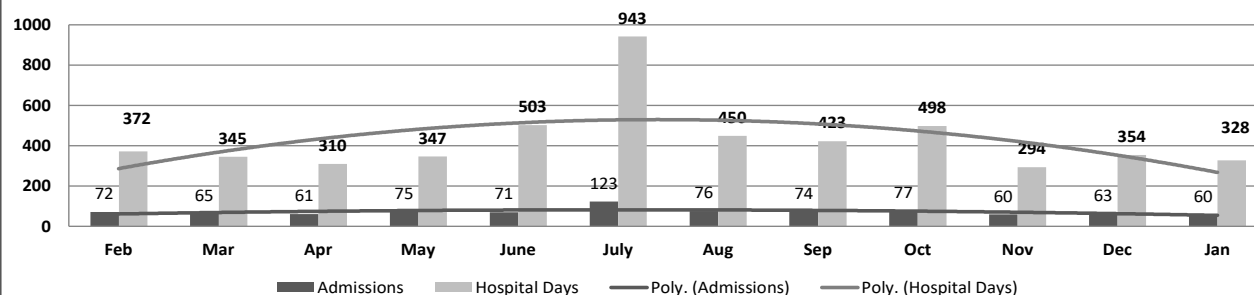
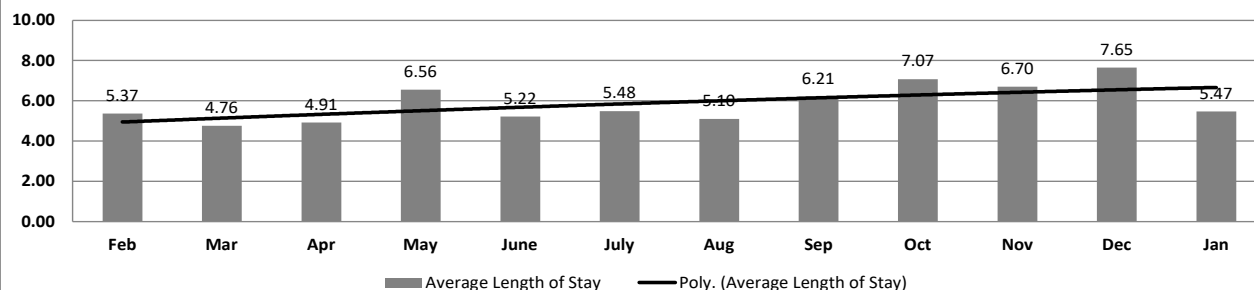
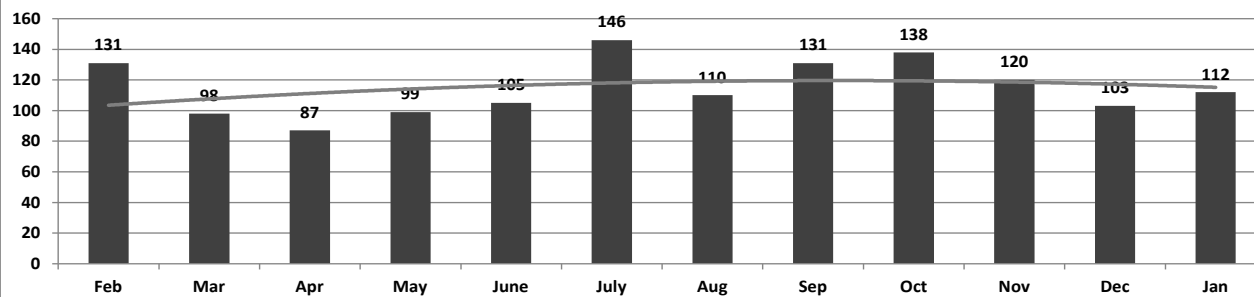
## ADC INPATIENT AND EMERGENCY ROOM UTILIZATION

ADC Inpatient Statistics Past 12 Months

	ABC Inpatient Statistics - Past 12 Months												2021	
	2020													
	Feb	Mar	Apr	May	June	July	Aug	Sep	Oct	Nov	Dec	Jan		
Admissions	72	65	61	75	71	123	76	74	77	60	63	60	73.1	
Hospital Days	372	345	310	347	503	943	450	423	498	294	354	328	430.6	
Average Length of Stay	5.37	4.76	4.91	6.56	5.22	5.48	5.10	6.21	7.07	6.70	7.65	5.47	5.89	

ADC ER Visits Past 12 Months

	ADLER VISITS Past 12 Months												Average
	2020											2021	
	Feb	Mar	Apr	May	June	July	Aug	Sep	Oct	Nov	Dec	Jan	
Emergency Room Visits	131	98	87	99	105	146	110	131	138	120	103	112	115.0

ADC Inpatient Utilization  
Past 12 MonthsADC Inpatient Average Length of Stay  
Past 12 MonthsADC Emergency Room Visits  
Past 12 Months



## MEDICAL GRIEVANCE BOARD REPORT – JANUARY 2021

Unit	Acknowledged/ Received	Rejected	Reviewed & Signed by Dep Director	With Merit	With Merit, but Resolved	% With Merit	Without Merit
Benton	0	0	0	0	0	0%	0
Bowie County	0	0	0	0	0	0%	0
CMU	0	2	0	0	0	0%	0
Cummins	3	4	5	1	0	20%	4
Delta	4	2	2	0	0	0%	2
EARU	20	2	20	2	0	10%	18
EARU Max	28	2	16	0	0	0%	16
Ester	4	0	3	0	0	0%	3
Grimes	16	4	2	1	0	50%	1
Hawkins	0	0	0	0	0	0%	0
McPherson	2	6	4	0	0	0%	4
MCWRC	0	0	0	0	0	0%	0
MSU	5	2	5	0	0	0%	5
North Central	18	1	15	1	0	7%	14
NWAWRC	0	0	0	0	0	0%	0
Ouachita	8	0	6	0	0	0%	6
Pine Bluff	0	0	2	0	1	50%	1
Randall L. Williams	1	0	2	1	0	50%	1
SNN	0	0	2	0	0	0%	2
TRCC	0	0	0	0	0	0%	0
Tucker	6	0	2	0	0	0%	2
Varner	6	0	7	0	0	0%	7
Varner Super Max	16	3	13	1	1	15%	11
WRU	5	1	4	0	0	0%	4
WHM	1	1	0	0	0	0%	0
WWR	0	0	0	0	0	0%	0
<b>Total</b>	<b>143</b>	<b>30</b>	<b>110</b>	<b>7</b>	<b>2</b>	<b>8%</b>	<b>101</b>

## CHAPLAINCY

Month: January Year: 2021	CUMMINS	DELTA REGIONAL	EAST ARKANSAS	EAST ARKANSAS MAX	ESTER	GRIMES	HAWKINS	MAXIMUM	MCPHERSON	NORTH CENTRAL	OUACHITA RIVER	PINE BLUFF	RANDALL L. WILLIAMS	TUCKER	VARNER	VARNER MAX	WRIGHTSVILLE	TOTAL
<b>Services Chaplains Oversaw</b>																		
Christian																		
Population	0	0	0	0	8	0	0	0	4	4	13	5	5	0	5	0	0	44
Segregation	0	0	0	0	0	0	0	0	0	0	0	0	0	0	0	0	0	0
Muslim																		
Population	0	0	0	0	8	0	0	5	4	4	5	5	5	0	5	0	0	41
Segregation	0	0	0	0	0	0	0	5	0	0	0	0	0	0	0	0	0	5
																		90
<b>Volunteers in Charge</b>																		
Protestant	0	0	0	0	0	0	0	0	0	0	0	0	5	0	0	0	0	5
Catholic	0	0	0	0	0	0	0	0	0	0	0	0	0	0	0	0	0	0
Muslim	0	0	0	0	0	0	0	0	0	0	0	0	5	0	0	0	0	5
Other	0	0	0	0	0	0	0	0	0	0	0	0	0	0	0	0	0	0
Baptism	0	0	0	0	0	0	0	0	0	0	0	0	0	5	0	0	0	5
Marriages	0	0	0	0	0	0	0	0	0	0	0	0	0	0	0	0	0	0
<b>Distributed by Chaplains</b>																		
Greeting Cards	15	0	10	9	57	8	105	44	602	36	250	15	19	150	27	209	0	1,556
Bibles, Quran, Torah, Etc.	30	10	6	11	15	24	15	8	62	10	125	11	7	100	5	16	25	480
Study Course	3	0	18	15	5	0	0	40	28	0	28	0	0	0	4	4	6	151
Writing Supplies	0	0	0	0	36	0	200	16	116	0	500	0	0	100	0	0	100	1,068
Literature	3,500	425	421	371	78	887	150	24	172	850	350	28	1,905	720	394	434	325	11,034
<b>Chaplain's Visits</b>																		
Barracks	22	35	58		2	65	20	17	12	40	38	0	2	27	373	19	13	743
Approximate Hours Spent in Barracks	18	6	9	0	1	45	4	20	20	20	5	0	0	7	142	15	7	319
Inmate Office visits	20	56	34	0	11	34	35	8	33	6	21	3	85	101	32	0	14	493
Other Office visits	11	10	28	0	8	65	25	0	32	7	41	2	10	40	63	13	10	365
Hospital	0	0	0	0	0	0	0	0	0	0	38	0	0	0	0	0	0	38
Infirmary/Sick Call	3	1	5	0	8	7	16	16	8	4	26	0	0	1	3	2	3	103
Restrictive/Punitive Housing	10	2	0	20	2	9	0	0	16	4	20	0	2	4	0	6	2	97
PC - DRU		3																3
Visitation Days	0	0	0	0	0	0	0	0	0	0	0	0	0	0	0	0	0	0
<b>Volunteer Visits</b>																		
RCV	0	0	0	0	0	0	0	0	0	0	0	0	0	0	0	0	0	0
OCV	0	0	0	0	0	0	0	0	0	0	0	0	0	0	0	0	0	0
Spiritual Advisor	0	0	0	0	0	0	0	0	0	0	0	0	0	0	0	0	0	0
CRA	0	0	0	0	0	0	0	0	0	0	2	0	0	0	0	0	0	2
<b>Religious Volunteer Hours</b>																		
Volunteer Hours	0	0	0	0	0	0	0	0	0	0	9	0	0	0	0	0	0	9
Denominational/Volunteer Chaplain Hours	0	0	0	0	22	0	0	13	102	0	0	0	0	17	0	0	0	154
																		163
<b>Other Activities of Chaplain</b>																		
Counseled Employees	7	4	1	0	8	13	26	4	36	5	18	0	2	9	125	0	6	264
Orientation Sessions	0	0	0	0	0	0	0	0	0	0	0	0	0	0	0	0	0	0
Free World Devotions	0	0	1	0	6	6	0	0	1	0	0	0	0	4	27	0	0	45
Spoke in Churches	13	0	4	0	0	3	0	0	1	0	4	16	0	4	27	0	0	72
Crisis Intervention Sessions	20	15	3	0	0	0	41	1	125	5	3	3	10	15	10	0	13	264
Marriage Counseling	0	0	0	0	0	0	0	0	0	0	2	0	0	0	0	0	0	2
Denominational Meeting	0	0	0	0	0	0	0	0	1	0	0	0	0	0	0	0	0	1
Chaplain's Meeting	0	1	0	0	2	2	1	0	1	0	1	1	1	1	17	0	0	28
Volunteer Training Session	0	0	0	0	0	0	0	0	0	0	0	0	0	0	0	0	0	0
<b>Chaplain Transfers</b>																		
	0	0	0	0	0	0	0	0	0	0	0	0	0	0	0	0	0	0
<b>Chaplain Promotions</b>																		
	0	0	0	0	0	0	0	0	0	0	0	0	0	0	0	0	0	0
<b>PAL PROGRAM</b>																		
Enrolled at start of month	46	19	47	0	33	43	50	17	38	14	34	0	17	39	0	0	19	416
Enrolled during the month	1	2	0	0	0	1	0	8	26	46	0	0	6	21	0	0	0	111
Removed From PAL Program																		
# Paroled	0	0	0	0	0	2	0	0	0	0	2	0	0	0	0	0	0	4
# Completed	0	2	2	0	0	0	1	0	8	0	0	0	0	5	0	0	0	18
# Withdrew	0	0	0	0	0	0	0	0	3	0	3	0	0	0	0	0	0	6
# Removed	2	0	0	0	0	2	1	0	5	0	3	0	0	1	0	0	0	14
# Transferred	0	0	0	0	0	0	1	0	2	0	0	0	0	0	0	0	0	3
Total Removed from PAL Program	2	2	2	0	0	4	3	0	18	0	8	0	0	6	0	0	0	45
Total Enrolled at the End of the Month	45	19	47*	0	33	40	47	25	46	60	26	0	23	54	0	0	19	437
<b>Volunteers in PAL</b>																		
	2	0	0	0	6	0	0	7	2	6	0	0	0	0	0	0	0	23
<b>Special Events:</b>																		
	0	1	0	0	0	0	0	0	0	0	0	0	1	0	0	0	0	2

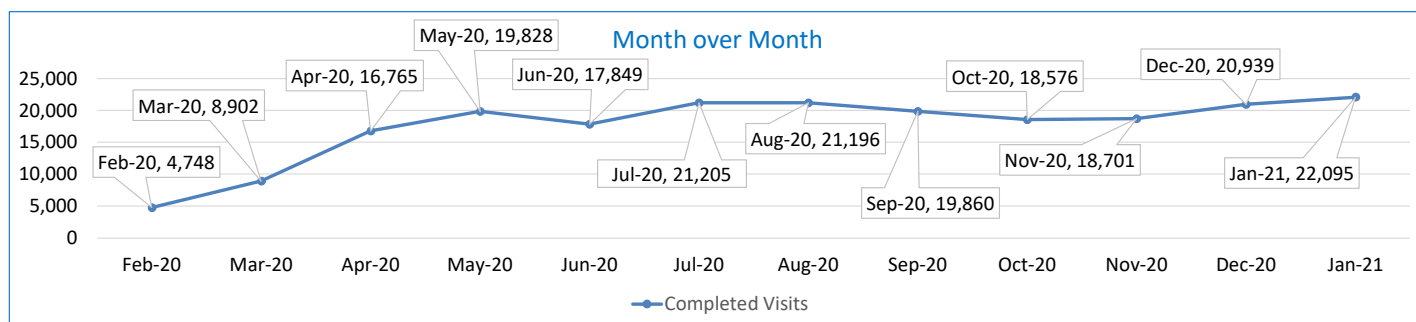
\*Two inmates at the East Arkansas Regional Unit completed the program, but due to movement restrictions, were still in the PAL housing area at the end of the month. That is why the total number does not reflect the two completions as departures from the program.

## SECURUS VIDEO VISITATION REPORT JANUARY 2021

### AR-DOC SVV Activity Tracker

Total ADP 13,583

Total Visits by Month	Feb-20	Mar-20	Apr-20	May-20	Jun-20	Jul-20	Aug-20	Sep-20	Oct-20	Nov-20	Dec-20	Jan-21
Total (Includes SuperMax)	4,748	8,902	16,765	19,828	17,849	21,205	21,196	19,860	18,576	18,701	20,939	22,095
Target Objective	15,587	15,587	15,587	15,587	15,587	15,587	15,587	15,587	15,587	15,587	15,587	15,587



#### Completed Visits

Site	Current Month	Previous Month
Benton	485	376
Cummins	2,215	1,932
Delta Regional	1,575	1,436
East Arkansas Regional	2,313	2,256
Ester	1,088	969
Grimes	1,232	1,389
J Aaron Hawkins Sr.	855	829
Tucker Max	1,541	1,335
Mcperson	712	812
Mississippi County WRC	273	241
North Central	1,559	1,498
NW Arkansas WRC	82	49
Ouachita River	2,323	2,464
Pine Bluff Complex	698	628
Randall L Williams	779	677
State Police Barracks	51	96
Texarkana Regional	268	252
Tucker Unit	513	575
Varner	2,361	2,072
Wrightsville Unit	1,129	987
Pine Bluff Re-Entry	43	66
Tucker Re-entry	0	0
<b>Total:</b>	<b>22,095</b>	<b>20,939</b>

#### Missed by Inmate

Site	Current Month	Previous Month
Benton	30	26
Cummins	39	56
Delta Regional	28	23
East Arkansas Regional	52	64
Ester	21	24
Grimes	22	82
J Aaron Hawkins Sr.	12	55
Tucker Max	47	61
Mcperson	16	44
Mississippi County WRC	10	18
North Central	21	55
NW Arkansas WRC	4	15
Ouachita River	37	55
Pine Bluff Complex	16	34
Randall L Williams	15	18
State Police Barracks	0	0
Texarkana Regional	3	8
Tucker Unit	21	20
Varner	82	90
Wrightsville Unit	36	71
Pine Bluff Re-Entry	0	1
Tucker Re-entry	0	0
<b>Total:</b>	<b>512</b>	<b>820</b>

### SECURUS TABLET REPORT JANUARY 2021

Facility Name	Subscription	Facility	Officer	Total	New Subscriptions
Benton Unit	141	3	8	152	0
Cummins Unit	418	88	14	520	54
Delta Regional Unit	135	37	16	188	14
East Arkansas Regional Unit	292	97	10	399	22
Ester Unit	162	139	20	321	10
Grimes Unit	249	72	14	335	13
J. Aaron Hawkins Sr Center For Women	159	68	19	246	12
McPherson Unit	247	102	15	364	32
Mississippi County Work Release Center	71	2	9	82	3
North Central Unit	189	113	10	312	20
Northwest Arkansas Work Release Center	42	2	8	52	1
Ouachita River Correctional Unit	272	108	14	394	32
Pine Bluff Reentry Center	27	2	0	29	0
Pine Bluff Unit	120	5	8	133	14
Randall L. Williams Facility	103	24	15	142	28
State Police Barracks	19	0	3	22	1
Texarkana Regional Correctional Center	41	2	10	53	4
Tucker Maximum Security Unit	123	29	15	167	14
Tucker Reentry Center	0	51	3	54	0
Tucker Unit	143	61	10	214	13
Varner Unit	232	74	20	326	26
Wrightsville Unit	165	53	6	224	16
<b>TOTAL</b>	<b>3,350</b>	<b>1,132</b>	<b>247</b>	<b>4,729</b>	<b>329</b>



## CONSTRUCTION BUDGET / STATUS REPORT - FEBRUARY 2, 2021 — [Page 1 of 2]

Fund	Project Description	Total Projected Spent	Budget	Available Funds	\$ % Complete	Construction % Complete	Notes
KBR4Q95	ESTER - Phase 3 - General Improvement Fund	2,977,000	3,911,781	934,782	76%	98%	McClelland Engrs redesigning Parking Lot. At DBA & FEMA for approval.
700483A	EARU Max Rec Expanded Metal Rec Yard	819,150	879,000	59,850	93%	0%	Started construction of the panels as of 11/20/2020. 75% of material in house. Building panels in shop. Construction set to begin 3/15/21.
700483A	Tucker Max Expanded Metal Rec Yard	60,183	1,800,000	1,739,817	3%	0%	DBA Approved to proceed on 9/5/2020. Working on material list for procurement.
700483A	Cummins Expanded Metal Rec Yard	50,012	368,617	318,605	14%	0%	Plans on hold, will modify for exp. metal
KBR4Q95	Bullpens	388,676	851,999	463,323	46%	98%	Varner & EARU complete. Installation underway at Max. Locks delivered. Project on hold due to COVID-19.
KBR4Q95	13 & 15 Barracks Door Revisions	119,111	174,000	54,889	68%	68%	All doors and locks installed in 13 Barracks. Job on hold to assess long term plan.
KBR4Q95	Camera's (New)	1,073,900	1,248,000	174,100	86%	86%	Delta, Varner, EARU, Cummins, RLW, PBU, & the Max are complete, working at Tucker, 90% complete.
700485A	Entegrity Energy Improvements at EARU & Delta	16,961,127	17,010,204	49,077	100%	97%	lights (100%), plumbing 100%, water (100%), compost (100%), & solar (100%), HVAC (100%). Only Training is incomplete.
7004828	Entegrity Energy Improvements Phase 2 at Tucker and Max	1,842,263	18,603,150	16,760,887	10%	0%	We are working with Entegrity on the capital equipment list that will be installed in phase II. Lighting and water conservation is set to begin in February.
700486A	Pine Bluff Unit Barracks 9 Renovation	369,616	437,000	67,384	85%	100%	Project Completed
KBSCW18	McPherson Administration	375,777	395,439	19,662	95%	85%	Ceiling grid and sprinkler system installed. Sheet rock hung and finished, ready to paint. Floors delivered and preparing to install. ETA completion 1 month.
KBSCW18	McPherson Visitation	305,024	312,430	7,406	98%	85%	
KBR4Q95	McPherson Administration and Visitation	-	100,000	100,000	0%	0%	
KBSHW18	Tucker Water Treatment	-	1,093,848	1,093,848	0%	0%	Preparing RFQ for designer.
KBFSW18	Max Armory	248	70,000	69,752	0.4%	0%	DBA approved Plans 8/21/20. Tentative start date 3/01/2021.
7004810	Administrative East Roof Replacement	960	309,375	308,415	0.3%	0%	ADFA funding. Core samples taken on 11/17/2020 for assessment. All roofs have been designed and they are working with DBA for approval.
7004810	Central Warehouse Roof Replacement	216	135,020	134,804	0.2%	0%	
7004810	RLW Roof Replacement	815	1,888,776	1,887,961	0.04%	0%	
22V	NWARWRC Laundry and Commissary	147,334	250,000	102,666	59%	0%	Foundation and slab prep work done. Ready to be poured. Lift station installed and operational.
865C KBR4Q95	NCU Perimeter Security	20,625 5,834	270,000	243,541	10%	0%	DBA Approved plans. We have notice to proceed.
N98	Max Re-Entry Generator Project	3,193	135,000	131,807	2%	0%	Plans submitted to DBA for approval December 2, 2020. Still in review at DBA.
KBR4Q95	NCU Replacement Generator Project	4,016	202,000	197,984	2%	0%	Project is at DBA for review and approval. Reviewing questions from DBA with on-call and getting answered



## CONSTRUCTION BUDGET / STATUS REPORT - FEBRUARY 2, 2021 — [Page 2 of 2]

Fund	Project Description	Total Projected Spent	Budget	Available Funds	\$ % Complete	Construction % Complete	Notes
7004820	Tucker 10 Barracks Sidewalk	-	70,259	70,259	0%	0%	DBA approved to proceed. Mobilizing to begin project. Projected start date of 3/15/21.

Telephone Projects

Maintenance & Operations	Fire Alarm Upgrades (All Units)	38,282	41,000	2,718	93%	50%	on-going
	Stainless Steel - Kitchen/Shower/Restrooms - All Units	3,834	20,000	16,166	19%	15%	continual need
	Gates and Fences all units	6,729	25,000	18,271	27%	0%	to improve security
	ACA Maintenance	36,159	100,000	63,841	36%	0%	Construction teams at Tucker Max, EARU, Training Academy, Cummins & MCWRC.
	ADA Projects - All Units	376	10,000	9,624	4%	0%	Working with Varner for the sports field sidewalk.
	Fast Top Floor Systems (kitchen/laundry/showers all	0	25,000	25,000	0%	0%	Benton restrooms underway. Ouachita kitchen next.
	Camera Equipment - All Units	166,665	250,000	83,335	67%	15%	cameras as requested/approved.
	Lock/Riot Gates - All Units	49,053	90,500	41,447	54%	12%	on-going.
	AC Units-All Units	64,008	70,000	5,992	91%	25%	repairing & replacing daily.
	<b>Subtotal</b>	<b>\$ 365,107</b>	<b>\$ 631,500</b>	<b>\$ 266,393</b>			

Capital Projects FY20 Carry Forward	Metal Ceilings	9,293	25,000	15,707	37%	0%	NCU complete, Delta is next.
	ORCU Gravel Pit Operations	17,345	35,000	17,655	50%	18%	on-going.
	Dog Kennel/Horse Stable Malvern	0	48,000	48,000	0%	0%	DBA approved the Plans, released for construction. Dedicated resources this week to begin laying the project out and starting the prep work.
	Emergency Generator - All Units	130,240	250,000	119,760	52%	20%	Cummins 300kW generator complete. All material purchased for Hawkins. Generator is currently being installed. Max Gen mat'l rec'd, Generator rec'd. Will start as soon as Hawkins Unit Gen is installed. Cummins East Bldg. we have approval awaiting Max generator install.
	Tucker 4 new filters & one aeration tank	464,606	488,434	23,828	95%	70%	Filters are set and ready to be installed. North and South wall complete, laying the block for East
	Roof Repairs-Cummins	24,800	145,000	29,633	80%	0%	Prepared large order for multiple Units. Max is complete. Need repairs at ORCU, Delta, Cummins & others. Varner & ORCU working on repairs, received TPO
	Roof Repairs-Cummins Laundry	0				0%	
	Roof Repairs-East Arkansas	53,107				0%	
	Roof Repairs-Max	0				0%	
	Roof Repair - NCU	5,735				0%	
	Roof Repair - RLW	5,786				0%	
	Roof Repairs-Tucker	0				0%	
	Roof Repairs-Varner	21,285				0%	
	Roof Repairs-Wrightsville	4,654				0%	
	Boiler Repair	91,640	100,000	8,360	92%	18%	continually needing repair
	<b>Subtotal</b>	<b>\$ 828,490</b>	<b>\$ 1,091,434</b>	<b>\$ 262,944</b>			

New Projects	Additional Metal Fab shop	0	29,266	29,266	0%	0%	purchasing materials
	PB Warehouse Drive replacement	0	118,000	118,000	0%	0%	asphalt drive pot holed. Preparing Plans.
	<b>Subtotal</b>	<b>\$ -</b>	<b>\$ 147,266</b>	<b>\$ 147,266</b>			
	Architect Fees	30,569	30,000	-569	102%		
	<b>Total</b>	<b>\$ 1,224,166</b>	<b>\$ 1,900,200</b>	<b>\$ 676,034</b>			

Notes Report has not been reconciled against Accountings Reconciled Reports.  
Tolerance/Deviation is with in 1% of Projected Spending.