



DIVISION OF
CORRECTION

BOARD REPORT

October 2020



@ARDeptofCorrections



@adcpio

Dexter Payne,
Director



POPULATION REPORT

RESEARCH/PLANNING

September 2020 Admissions and Releases – Admissions for September 2020 totaled **219** (178-males and 41-females) while releases totaled **520** (424-males and 96 females) for a decrease in-house of **301** inmates.

Inmate Population Growth/Projection – At the end of September 2020, the jurisdictional population for the Division of Correction totaled **16,215**, representing a decrease of **1,544** inmates since the first of January 2020. Calendar year 2020 average has seen an average decrease of **172** inmates per month, which is up from an average monthly decrease of **three** inmates per month during calendar year 2019.

Average County Jail Back-up – The backup in the county jails averaged **1,735** inmates per day during the month of September 2020, which was up from the per-day average of **1,417** inmates during the month of August 2020. Of the **1,735** average, short-term revocations accounted for **747** (648-males and 99-females) during the month.

House Bill 1530/Restrictive Housing (RH) - July 2020 through September 2020 – A total of **3,474** (3,339-males & 135-females) inmates were assigned to Restrictive Housing during the third quarter of the year.

- There was a **5%** decrease in overall RH assignments in the third quarter.
- There was a **15%** decrease in the number of individuals 21 or younger held in RH compared to the second quarter.
- There was a **14%** increase in the number of individuals 55 or older held in RH compared to the second quarter.
- During the third quarter, the number of SMI inmates assigned to RH remained the same as the second quarter.
- **Important Note** - In the July 2020 RH report, there were 20 reported male inmates with a race listed as "Other." This count should have been two.

Refer to Page 12 of this report for further details.

PREA Hotline Data - September 2020:

Number of Calls Received	372
Total Calls Referred for Reported PREA Issue	39
Total Calls Referred for Non-PREA Issue	157
Calls Referred Due to Technical Failure	3
Repeat Calls	90
Test Calls	0
No Message	83

INMATE INSTITUTIONAL GRIEVANCES

Inmate Formal/Informal Grievances: During September 2020, a total of 1,700 formal grievances and 2,431 informal grievances were filed at various units.

Institutional Grievances Appeals: There was a total of 694 appeals of institutional grievances received in September 2020. Of those, 573 were acknowledged and 121 were rejected for various reasons. Of the total 520 appeals answered, 517 had no merit and three were found with merit.

FARM

Harvesting was the focus for all farms during the month of September. The rice harvest at the Cummins Unit was completed, averaging 214.6 bushels/acre across 1,038 acres. This is almost 60 bushels/acre better than last year's crop. Early yields on soybeans at Cummins appear to be ahead of last year as well. Tucker Unit completed their corn harvest and averaged 206 bushels/acre. The first field at the East Arkansas Regional Unit averaged 211 bushels/acre. Overall, it appears that yields across all farms will be improved compared to last year's production.

Due to most field squads being on lockdown due to COVID-19, fall gardens are likely to be impacted. Efforts are underway to secure the needed supplies to complete green houses to be used for winter production.

Drawings and specifications for feed mill repairs were received from the engineer. Bids for the repairs are scheduled to open in early October.

Calves in the beef herd will soon be weaned. The Vac 45 program is being utilized to help market the calves. This means calves will be vaccinated and weaned for at least 45 days before selling, which will add value to their price.

The dairy continues to meet the Department's needs for milk. The mini pouch bagging machine is out of service and efforts are underway to get it repaired. Milk is currently being collected in five-gallon bags.

PRISON RAPE ELIMINATION ACT (PREA)

The PREA Coordinator provided **PREA Distance Learning Topic 1: Reporting** in September. The half-hour class was completed by 400 staff members.

FARM, continued

Egg production is returning to normal very slowly following last month's molt. A veterinarian conducted testing, which indicated no presence of diseases. In an effort to boost egg production, an adjustment was made to the feed ration.

Cold storage is processing meat again and there is a supply in the cooler ready for shipping. Vegetable processing freezers are filled close to capacity with produce that is ready to go to the kitchens.

REGIONAL MAINTENANCE HOURS

Regional Maintenance Hours	September 2020
Benton Unit	3,274.5
Delta Regional Unit	2,720
East Arkansas Regional Unit	228
Grimes Unit	1,384
McPherson Unit	848
Mississippi County Work Release	1,280
North Central Unit	3,520
Ouachita River Correctional Unit	1,622
Randall L. Williams Unit	232
Texarkana Regional Correctional Center	927
Tucker Unit	820
Varner Unit	464
Wrightsville Unit	619
Total Hours	17,938.5

WORK RELEASE RENT REPORT

Unit	September 2020
Benton Unit	\$41,293.00
Mississippi County Work Release	\$9,911.00
Northwest Arkansas Work Release	\$6,426.00
Pine Bluff Work Release	\$23,868.00
Texarkana Regional Correctional Center	\$37,221.00
Tucker Reentry Work Release	\$11,706.00
Total	\$130,425.00

REENTRY**RANDALL L. WILLIAMS
JUVENILE EDUCATION PROGRAM**

September 2020 Capacity: 20	Beginning Count	New Commitments	DCR/Punitive	Transferred/ Turned 18*	Paroled	End Count
Juveniles*	2	0	0	0	0	2

*Juveniles are transferred from the program once they reach the age of 18.

**WORKFORCE ALLIANCE FOR
GROWTH IN THE ECONOMY (WAGE)**

September 2020 Capacity: 120 Unit:	Beginning Count	Admissions During Mo.	Removed*	Completed	End Count
Delta	8	0	0	0	8
Ester**	0	0	0	0	0
Hawkins***	0	0	0	0	0
McPherson***	0	0	0	0	0
Ouachita River	20	0	0	0	20
Tucker	18	0	0	0	18
Tucker Reentry	1	0	0	0	1
Wrightsville***	0	0	0	0	0
TOTAL	47	0	0	0	47

*The "Removed" column indicates the number of participants who transferred, signed out, received a disciplinary, were removed because test scores were not returned/were too low to continue, or were released from prison.

**The Ester Unit WAGE Program is experiencing a change in software resulting in no classes being taught at this time.

***WAGE Program inactive during the month due to COVID-19.

**ADVANCED PRINCIPLES
AND APPLICATIONS FOR
LIFE PROGRAM (APAL)**

September 2020 Capacity: 86	Beginning Count	Admissions During Mo.	Removed*	End Count
Ester	34	0	1	33
Hawkins	45	5	9	41
TOTAL	79	5	10	74

Advanced PAL is an 18-month reentry program that combines a pre-release curriculum with the PAL program.

*The "Removed" column indicates the number of participants who paroled, completed the program, withdrew from the program, transferred, or were removed from the program for another reason.

**WRIGHTSVILLE-HAWKINS
PATHWAY TO FREEDOM PROGRAM**

September 2020 Capacity: 200	Beginning Count	Enrolled During the Month	Removed	End Count*
Wrightsville-Hawkins PTF	181	1	3	179

THINK LEGACY

September 2020 Capacity: 635 Unit	Beginning Count	Admitted	Graduated	Graduated But Remain*	Removed**	End Count
Cummins	41	12	0	0	1	52
Delta Regional	17	0	0	0	1	16
East Arkansas Regional	32	6	0	0	0	38
Ester	34	0	17	0	2	15
Grimes	49	0	11	11*	0	49
Hawkins (Female)	11	0	0	0	3	8
McPherson	50	32	14	0	13	55
North Central	38	12	7	6*	7	42
Ouachita River	9	7	4	3*	2	13
Tucker	31	0	0	0	0	31
Tucker Women's Reentry	7	0	0	0	3	4
Varner	38	0	0	2*	0	38
Wrightsville	36	0	2	2*	10	26
Total	393	69	55	24*	42	387

*The "Graduated But Remain" column indicates the number of participants who have successfully completed the program but remain in the barracks.

**The "Removed" column indicates the total number of participants who paroled, signed out, transferred, or were removed from the program for any other reason and are no longer in the barracks.

There are 43 females and 89 males on the Think Legacy waiting list, for a total of 132. All Think Legacy applicants are within six to 18 months of their TE or discharge date. The average wait time is approximately 120 days.

ADMINISTRATIVE SERVICES**DIVISION OF CORRECTION
TRAINING - SEPTEMBER 2020****BASIC TRAINING DIVISION –**

Instructor Sarah Apel's **BCOT Class 2020-K** began their Correctional Officer training at the Training Academy on August 3 with 31 cadets and finished with 25 graduates. An awards ceremony could not be held due to a power outage at the Academy. Class awards were sent to each unit for presentation on graduation day, held on September 11.

The recipient of the *Willis H. Sargent Award* for BCOT Class 2020-K was Gary Ladner of the McPherson Unit.

Recipients of *Physical Fitness Awards* were:

- 1st - Dylon Harrington, McPherson Unit
- 2nd - Kylea Ross, Wrightsville Unit
- 3rd - Joseph Womack, East Arkansas Regional Unit

Academic Awards were presented to the following:

- 1st - Krystan Reeves, McPherson Unit
- 2nd - Jesse Horton, Ouachita River Unit
- 3rd - Kylea Ross, Wrightsville Unit

IN-SERVICE DIVISION –

In-service training for the month consisted of a **Correctional Security for Non-Security: Full-Time Staff-40** class, which was attended by seven participants. **Defensive Driving Class** was presented twice during the month with a total of 11 participants in attendance. It was offered at the Training Academy by outside staff and offered to multiple state agencies. All other in-person training has been suspended until further notice due to COVID-19.

eCADEMY –

During September, 428 ADC employees completed a total of 4,481 hours of eCADEMY training. About 10% of ADC employees completed at least one course during that timeframe, averaging 1.00 hour per staff member.

**HEALTH/CORRECTIONAL
PROGRAMS****CHAPLAINCY SERVICES**

All Facilities – During the month of September, the Chaplaincy Division at all facilities continued to provide religious services virtually over the video systems. This included Jumu'ah Prayer. While some facilities have the capability of delivering services in real time from onsite, many require pre-recorded services to be played at a time when unit schedules permit.

Although volunteer access remained discontinued throughout the month due to COVID-19, chaplains at all facilities continued to provide necessary services.

Delta Regional Unit – A Financial Freedom 101 seminar was presented September 2-18 via DVD over the institutional channel. Of the 44 inmates who signed up for course, 39 earned completion certificates.

Maximum Security Unit – On September 2, the chapel received and distributed literature from the Prison Alliance prison ministry. A Discovery Series devotional called, "Clinging to Hope in the Storm," was distributed to all staff on 9/21.

Randall L. Williams Unit – During the month of September, Bible study course completion certificates were distributed to an average of 20 inmates each week. Snacks were also given out to officers working all shifts.

ACCREDITATION

ACA Internal Audits Completed:

- 9/01–9/04 Central Office and Admin East Audit Prep
- 9/07–9/11 Central Office and Admin East Audit Prep and Welcome Book
- 9/14–9/18 Maximum Security Unit and McPherson Unit Audit Prep
- 9/21–9/25 Central Office and Admin East Audit Prep and Independent Walk-Through

Classes Taught:

- 9/21 BCOT

Fire/Safety and Sanitation Independent Audits Conducted by the Fire and Sanitation Coordinator:

- 9/14–9/17 Cummins Independent Annual Audit

VOLUNTEER SERVICES

Total Number of Volunteer Hours for September 2020:

Unit/Program	Hours
Delta Unit	0
East Arkansas Regional Unit	0
McPherson Unit	0
Mississippi County Work Release Center	0
Northwest Arkansas Work Release Center	0
Ouachita River Correctional Unit	0
Pine Bluff Complex	0
Texarkana Regional Correctional Center	5.5
Varner	0
PAWS	0
Think Legacy	0
Religious Services/Chaplaincy	0
Total Hours	5.5

MENTAL HEALTH SERVICES

Reduction of Sexual Victimization Program (RSVP) and Sex Offender Treatment Programs (SOFT):

September 2020	Capacity	Beginning Count	Completed	Removed	Admissions	End Count
RSVP	278	130	0	0	0	130
SOFT	30	4	1	0	1	4
Total	308	134	1	0	1	134

There are 815 males on the waiting list for RSVP and two females on the waiting list for SOFT who are within five years of their TE date. Of those, 37 inmates are mandated by the Parole Board.

The average time on the waiting list from request is between one and two months for those stipulated.

*The total on the waiting list, including those not currently within the identified timeframe, is 1,444 males and two females. Of these, 815 are eligible and 635 are ineligible for the program. There are no PREA inmates in the program at this time.

*Ineligibility is due to being in restrictive housing, having class IV status, or receiving a major disciplinary within the last 60 days.

Therapeutic Community (TC):

September 2020 Unit	Capacity	Beginning Count	Completed	Removed	Admissions	End Count
McPherson	53	30	3	8	17	36
Tucker	136	34	5	7	0	22
Wrightsville	50	26	0	4	0	22
Total	239	90	8	19	17	80

There are 707 males and 124 females on the waiting list who are within ten years of their release date. Of those, 15 are mandated by the Parole Board.

The average time on the waiting list from request is seven days.

*The total on the waiting list, including those not currently within the identified timeframe, is 936 males and 135 females. Of these, 846 are eligible and 225 are ineligible for the program.

*Ineligibility is due to being in restrictive housing, having class IV status, or receiving a major disciplinary within the last 60 days.

Substance Abuse Treatment Program (SATP):

Unit	Capacity	Beginning Count	Completed	Removed	Admissions	End Count
Benton	20	17	0	3	0	14
Cummins	47	31	0	0	0	31
Grimes	56	23	5	0	26	44
Maximum Security	4	4	0	0	0	4
McPherson	106	43	9	4	15	46
Randall L. Williams	200	104	0	16	0	88
Wrightsville	150	75	0	8	0	67
Total	583	297	14	31	41	294

There are 1,797 males and 158 females on the waiting list who are within five years of their release date. Of those, 24 are mandated by the Parole Board.

MENTAL HEALTH SERVICES, continued

The average time on the waiting list from request is 70 days.

*The total on the waiting list, including those not currently within the identified timeframe, is 2,393 males and 188 females. Of these, 1,979 are eligible and 602 are ineligible for the program.

***Ineligibility is due to being in restrictive housing, having class IV status, or receiving a major disciplinary within the last 60 days.**

Substance Use Intervention Program: The Substance Use Intervention Program had no admissions and nine discharges for an end-of-month count of zero for September. This program is housed at the Varner Unit and is for inmates found guilty of a disciplinary violation for drug use or drug possession.

Ouachita River Correctional Unit (ORCU) Residential Program Unit (RPU): The RPU had one admission and one discharge in September for an end-of-month count of 116.

McPherson Unit Mental Health Residential Program Unit (RPU): There were three admissions and four discharges in September for an end-of-month count of 54.

Habilitation Program: The Habilitation Program at the Ouachita River Correctional Unit provided treatment services to 44 inmates during September. There were no admissions or discharges, resulting in an end-of-month count of 44.

Anger Management Treatment: The Anger Management Treatment Program at the Cummins Unit provided treatment services to 12 inmates during September. There were no admissions or discharges, for an end-of-month count of 12.

Staffing: The following Mental Health Services and Substance Abuse Treatment Program (SATP) positions were vacant in August and September 2020:

Positions	FTE's*	August 2020	September 2020
Psychologists	14	5	5
Social Workers	31	12	12
Rehab Program Manager	0	0	1
Advisors	64	13	11
Substance Abuse Program Leaders	35	7	7
Administrative Specialists	17	6	8

*FTE refers to authorized Full Time Equivalent positions.

ADDITIONAL MENTAL HEALTH AND MEDICAL INFORMATION**Self-Study Classes:**

Classes	Number of Participants	Number Completed	Waiting List
Anger Management	107	106	720
Thinking Errors	194	159	722
Substance Abuse Education	91	90	548
Communication Skills	105	92	743
Domestic Violence	58	43	207
Victims of Domestic Violence	14	14	29
Stress Management	155	144	662
Parenting	76	62	209

Suicide: There were 78 suicidal threats during September. There were three attempts resulting in no deaths.

Outpatient: There were 1,878 inmates on the mental health medical log at the beginning of September. Mental Health staff conducted the following contacts during September:

Case Management Contacts	1,766
Requests for Interviews	1,310
Testing	0
Intakes	179
Unit Requests	898
Pre-Lockup Reviews	484
Routine Restrictive Housing Reviews	1,049
Restrictive Housing Rounds	20,395
PREA Evaluations	127
Routine Follow-up	386
834 Requests	31

County Mental Health Requests: During September, there were 308 requests received of a mental health nature. Of those, 152 inmates were fast-tracked to ADC. **Note: Most inmates were not transferred due to COVID-19.**

County Medical Health Requests: During September, there were 722 requests received of a medical nature. A total of six inmates were fast-tracked to ADC.

Medical Contract Reimbursements: Sanction reimbursements for August were \$8,800.00.

Deaths: There were seven inmate deaths during the month of September. Two were claimed and five were cremated.

Wellpath: See attachment for Wellpath's report regarding outside beds and emergency room visits.

Medical Grievances: In September, there were 204 appeals received of medical grievances and 199 appeals were answered; six of those were found to be with merit and three with merit but resolved.

SEX OFFENDER ASSESSMENT

Assessments Completed:

Risk Level	September	September 1999 through September 2020
Level 1	0	1,204
Level 2	22	8,042
Level 3	9	7,129
Level 4	0	700
Default 3	2	*
Total	33	17,075
*Default Level 3's are included in the total number of Level 3's to date.		

ACIC Numbers:

The total number of sex offenders registered from September 1999 through September 2020:

Compliant	8,359
Delinquent	1,389
Confined	3,232
Out-of-State	3,747
Address Unknown	141
Deported	207
Incapacitated	98
Out of USA	11
Total	17,184

Consistent with current Arkansas law, deceased offenders no longer remain on the registry.

PAWS IN PRISON

September 2020 Unit	Enrolled	Graduated	Foster	Volunteer Hours
Hawkins Unit	3	0	0	0
Maximum Security Unit	0	11	3	0
North Central Unit	4	4	0	0
Ouachita River Correctional Unit	4	0	0	0
Randall L. Williams Unit	5	0	0	0
Tucker Unit	7	1	0	0
Total	23	16	3	0

Completed Paws in Prison Training:

September 2020 Program Graduates	16
YTD 2020 Program Graduates	177
Total Graduates Since Inception (December 2011)	1,629
Dogs Currently in Foster (Graduated, but Not Adopted)	3
September 2020 Volunteer Hours	0
YTD Volunteer Hours	56

INFORMATION TECHNOLOGY

INMATE TABLETS – Within the Division of Correction, a total of 3,437 inmate tablets were leased during September.

INMATE VIDEO VISITS – Inmates completed 19,860 video visits during the month and missed 789 within the Division of Correction.

CONSTRUCTION/MAINTENANCE

PROJECT UPDATES

SEE CONSTRUCTION BUDGET / STATUS REPORT IN ATTACHMENTS SECTION (PAGES 23-24).

AGENCY HIGHLIGHTS

AGENCY-WIDE:

Chaplaincy Services Takes Part in Virtual Prison Ministry Preview Session

In anticipation of the eventual reopening of our state's prisons to volunteers, the Division of Correction's Chaplaincy Services partnered with the Arkansas Baptist Convention to conduct a prison ministry preview session via Zoom on September 14. Led by ADC Chaplaincy Services administrator Joshua Mayfield, the online event provided information about opportunities for religious services volunteers, answered common questions, and shared information on how to get started.

Plans Being Made for Limited In-Person Visitation

Director Payne announced on September 29 that although visitation will not resume on October 1, the Arkansas Department of Corrections is working with the Arkansas Department of Health on a plan to have in-person visitation at a limited capacity at some facilities prior to November 1, 2020.

McPHERSON UNIT:

Employees Take Part in Great Arkansas Cleanup

Employees from the McPherson Unit made up two teams who participated in the Great Arkansas Cleanup and the Trashiest Team Cleanup Contest in Newport on September 19. The winning team in this year's contest was McPherson's "Garbage Gurus." Their team was made up of Lisa Lindsey, Virginia Spence, Randy Williams and Chaplain Nicole Lang. They picked up 33 bags of trash to earn the victory. Also competing on behalf of the unit was the "Dumpster Divas" team who contributed to the overall collection of 135 bags of trash (plus other large debris) that was gathered from ten miles of roadways and parks in Jackson County.



2020 INFORMAL GRIEVANCE REPORT

Month	BENTON	HAWK/M	HAWK/F	WRTS	EARU & MX	GRIMES	RLW	MCWR	MCPH	MSU	NCU	PBU	NWA	TU	TRCC	VSMX	VU	CU & CMU	ORCU	Ester	DRU	Bowie Cty	TOTAL
JAN	0	34	27	84	449	213	19	0	342	199	150	41	0	123	2	486	89	220	296	39	84	33	2,930
FEB	2	34	27	52	209	164	19	0	288	245	107	35	0	138	2	464	95	178	232	25	63	43	2,422
MAR	1	29	19	64	384	150	12	0	301	264	148	35	0	101	2	486	65	238	260	31	104	29	2,723
APR	2	50	27	121	434	180	32	0	254	268	168	45	0	148	7	521	121	268	292	38	146	22	3,144
MAY	2	20	34	106	259	154	64	0	238	316	129	67	0	92	1	491	101	465	269	29	126	26	2,989
JUN	0	15	7	113	371	199	35	0	234	192	154	64	0	118	0	422	80	303	134	35	116	16	2,608
JUL	1	42	19	116	392	160	40	0	261	144	104	48	0	127	2	386	72	276	228	43	143	21	2,625
AUG	7	52	25	86	333	205	42	0	271	153	137	74	0	120	0	442	82	149	260	61	166	18	2,683
SEPT	0	28	26	84	298	161	36	0	236	104	174	93	0	90	1	402	102	202	264	35	77	18	2,431
OCT	0	0	0	0	0	0	0	0	0	0	0	0	0	0	0	0	0	0	0	0	0	0	0
NOV	0	0	0	0	0	0	0	0	0	0	0	0	0	0	0	0	0	0	0	0	0	0	0
DEC	0	0	0	0	0	0	0	0	0	0	0	0	0	0	0	0	0	0	0	0	0	0	0
TOTAL	15	304	211	826	3,129	1,586	299	0	2,425	1,885	1,271	502	0	1,057	17	4,100	807	2,299	2,235	336	1,025	226	24,555

2020 FORMAL GRIEVANCE REPORT

Month	BENTON	HAWK/M	HAWK/F	WRTS	EARU & MX	GRIMES	RLW	MCWR	MCPH	MSU	NCU	PBU	NWA	TU	TRCC	VSMX	VU	CU & CMU	ORCU	Ester	DRU	Bowie Cty	TOTAL
JAN	0	13	10	35	404	105	5	0	130	174	90	11	0	92	4	260	65	125	153	15	43	7	1,741
FEB	0	13	10	31	365	59	15	1	120	130	61	22	0	75	0	242	66	104	126	17	32	16	1,505
MAR	1	27	8	30	426	63	12	1	122	221	93	5	0	99	0	273	65	129	153	16	50	5	1,799
APR	2	27	8	32	450	87	15	0	84	178	99	12	0	97	0	298	91	181	163	14	73	1	1,912
MAY	2	12	2	48	367	70	49	0	93	316	88	19	0	78	1	301	80	315	156	11	60	5	2,073
JUN	1	4	1	53	392	93	20	0	98	192	104	27	0	76	0	310	59	210	221	12	66	3	1,942
JUL	0	14	3	43	473	75	21	0	99	173	59	23	0	77	0	245	57	177	212	18	60	6	1,835
AUG	4	20	7	45	383	97	17	0	115	102	65	17	0	81	0	273	54	134	212	45	81	6	1,758
SEPT	0	16	12	43	364	75	33	0	111	153	91	23	0	76	0	257	80	135	166	20	42	3	1,700
OCT	0	0	0	0	0	0	0	0	0	0	0	0	0	0	0	0	0	0	0	0	0	0	0
NOV	0	0	0	0	0	0	0	0	0	0	0	0	0	0	0	0	0	0	0	0	0	0	0
DEC	0	0	0	0	0	0	0	0	0	0	0	0	0	0	0	0	0	0	0	0	0	0	0
TOTAL	10	146	61	360	3,624	724	187	2	972	1,639	750	159	0	751	5	2,459	617	1,510	1,562	168	507	52	16,265

INMATE INSTITUTIONAL GRIEVANCE APPEAL REPORT – SEPTEMBER 2020

	Acknowledged	Rejected	Processed W/O Merit	Processed W/ Merit
Benton Unit	0	0	0	0
Benton Work Release	0	0	0	0
Bowie County Texas Correctional Facility	5	0	7	0
Cummins Unit	42	7	26	0
Cummins Modular Unit	0	0	16	0
Delta Regional Unit	6	7	9	0
East Arkansas Regional Unit	32	5	43	1
East Arkansas Regional Max Unit	102	11	95	1
Ester Unit	8	1	13	0
Grimes Unit	16	6	18	0
Maximum Security Unit	46	7	41	0
Tucker Re-Entry	0	0	0	0
McPherson Unit	23	16	17	0
McPherson Mental Health Residential Program Unit	0	2	0	0
Mississippi County Work Release Center	0	0	0	0
Northwest Arkansas Work Release Center	0	0	0	0
North Central Unit	5	3	18	0
Ouachita River Correctional Unit	46	11	49	0
ORCU Hospital	0	0	0	0
ORCU New Commitment	3	0	10	0
ORCU Mental Health Residential Program Unit	0	4	0	0
Pine Bluff Unit	4	3	2	1
Pine Bluff Re-Entry	0	0	0	0
Randall L. Williams Correctional Facility	6	6	4	0
Texarkana Regional Correctional Center	1	0	1	0
Tucker Unit	15	8	13	0
Varner Super Max	164	14	99	0
Varner Unit	30	9	20	0
Wrightsville Unit	12	1	16	0
Hawkins Center	0	0	0	0
Hawkins for Males	7	0	0	0
Hawkins SPU	0	0	0	0
Total	573	121	517	3

ADMISSIONS AND RELEASES – SEPTEMBER 2020

<u>Admissions</u>	<u>Male</u>	<u>Female</u>	<u>Total</u>
Asian	0	0	0
Black	85	14	99
Hispanic	4	0	4
Native American Indian	1	1	2
Native Hawaiian or Pacific Isl.	1	0	1
White	86	26	112
Other	1	0	1
Unknown	0	0	0
Total	178	41	219

<u>Releases</u>	<u>Male</u>	<u>Female</u>	<u>Total</u>
Asian	1	1	2
Black	133	9	142
Hispanic	12	0	12
Native American Indian	2	1	3
Native Hawaiian or Pacific Isl.	0	0	0
White	275	85	360
Other	1	0	1
Unknown	0	0	0
Total	424	96	520

ADC INMATE POPULATION GROWTH 2000-2026 - SEPTEMBER 2020

Updated 9/30/2020

Mo.	2000	2001	2002	2003	2004	2005	2006	2007	2008	2009	2010	2011	2012	2013	2014	2015	2016	2017	2018	2019	2020
Jan.	11,984	11,908	12,402	13,015	13,105	13,595	13,481	13,839	14,518	14,796	15,334	16,312	15,134	14,815	17,481	18,142	17,785	17,824	18,201	17,958	17,989
Feb.	12,169	12,022	12,529	13,054	13,166	13,783	13,633	14,012	14,603	14,883	15,374	16,209	14,990	15,008	17,438	18,082	17,625	17,608	17,998	17,846	18,181
March	12,006	12,033	12,299	13,108	13,088	13,418	13,534	13,772	14,580	14,843	15,290	16,095	14,964	14,665	17,395	18,233	17,573	17,666	18,089	17,898	17,860
April	12,069	12,167	12,465	13,213	13,323	13,469	13,554	13,851	14,769	14,937	15,570	16,172	15,124	14,850	17,604	18,703	17,815	17,798	18,227	17,977	17,331
May	12,109	12,384	12,558	13,463	13,556	13,528	13,711	14,146	14,880	15,146	15,694	16,062	15,132	15,074	17,593	18,693	17,769	17,652	17,945	17,817	16,694
June	12,005	12,108	12,439	13,418	13,389	13,251	13,430	13,915	14,700	15,025	15,564	15,554	14,832	14,825	17,340	18,813	17,973	17,963	17,972	17,942	16,552
July	12,030	12,190	12,622	13,509	13,528	13,286	13,560	14,082	14,868	15,195	15,807	15,519	14,879	15,379	17,522	18,870	18,130	18,180	18,005	18,002	16,511
August	12,087	12,371	12,815	13,565	13,632	13,419	13,646	14,224	15,100	15,385	15,829	15,240	14,675	16,103	17,549	18,806	17,919	18,051	17,751	18,090	16,367
September	11,983	12,289	12,774	13,341	13,516	13,237	13,652	14,217	14,850	15,285	16,025	15,172	14,724	16,412	17,605	18,549	18,026	18,179	17,865	17,856	16,215
October	12,119	12,348	12,942	13,341	13,584	13,363	13,775	14,349	14,836	15,381	16,311	15,271	14,856	16,993	17,880	18,430	18,127	18,348	17,943	17,947	
November	12,094	12,408	13,162	13,408	13,706	13,587	13,913	14,437	15,025	15,340	16,460	15,205	14,625	17,168	17,848	17,981	17,573	17,973	17,666	18,060	
December	11,856	12,333	12,845	13,106	13,470	13,338	13,728	14,315	14,716	15,199	16,204	15,062	14,654	17,235	17,874	17,707	17,537	18,078	17,799	17,759	
Net Ann. Inc.	29	477	512	261	364	-132	390	587	401	483	1,005	-1,142	-408	2,581	639	-167	-170	541	-279	-40	-1,544
Avg. Mo. Inc.	2	40	43	22	30	-11	33	49	33	40	84	-95	-34	215	53	-14	-14	45	-23	-3	-172

Population is total jurisdictional count at end of each month. Population at end of month December 1999 was 11,827.

Average monthly population increase for past fifteen years 2005 - 2019 is 24

Average monthly population increase for past ten years Jan. 2010 - Dec 2019 is 21

Average monthly population increase for past five years 2015 - 2019 is -2

Projected at Growth of 24 per Month

Mo.	2008	2009	2010	2011	2012	2013	2014	2015	2016	2017	2018	2019	2020	2021	2022	2023	2024	2025	2026
	Actual	Actual	Actual	Actual	Actual	Actual	Actual	Actual	Actual	Actual	Actual	Actual	Actual Proj.	Proj.	Proj.	Proj.	Proj.	Proj.	Proj.
January	14,518	14,796	15,334	16,312	15,134	14,815	17,481	18,142	17,785	17,824	18,201	17,958	17,989	16,311	16,599	16,887	17,175	17,463	17,751
February	14,603	14,883	15,374	16,209	14,990	15,008	17,438	18,082	17,625	17,608	17,998	17,846	18,181	16,335	16,623	16,911	17,199	17,487	17,775
March	14,580	14,843	15,290	16,095	14,964	14,665	17,395	18,233	17,573	17,666	18,089	17,898	17,860	16,359	16,647	16,935	17,223	17,511	17,799
April	14,769	14,937	15,570	16,172	15,124	14,850	17,604	18,703	17,815	17,798	18,227	17,977	17,331	16,383	16,671	16,959	17,247	17,535	17,823
May	14,880	15,146	15,694	16,062	15,132	15,074	17,593	18,693	17,769	17,652	17,945	17,817	16,694	16,407	16,695	16,983	17,271	17,559	17,847
June	14,700	15,025	15,564	15,554	14,832	14,825	17,340	18,813	17,973	17,963	17,972	17,942	16,552	16,431	16,719	17,007	17,295	17,583	17,871
July	14,868	15,195	15,807	15,519	14,879	15,379	17,522	18,870	18,130	18,180	18,005	18,002	16,511	16,455	16,743	17,031	17,319	17,607	17,895
August	15,100	15,385	15,829	15,240	14,675	16,103	17,549	18,806	17,919	18,051	17,751	18,090	16,367	16,479	16,767	17,055	17,343	17,631	17,919
September	14,850	15,285	16,025	15,172	14,724	16,412	17,605	18,549	18,026	18,179	17,865	17,856	16,215	16,503	16,791	17,079	17,367	17,655	17,943
October	14,836	15,381	16,311	15,271	14,856	16,993	17,880	18,430	18,127	18,348	17,943	17,947	16,239	16,527	16,815	17,103	17,391	17,679	17,967
November	15,025	15,340	16,460	15,205	14,625	17,168	17,848	17,981	17,573	17,973	17,666	18,060	16,263	16,551	16,839	17,127	17,415	17,703	17,991
December	14,716	15,199	16,204	15,062	14,654	17,235	17,874	17,707	17,537	18,078	17,799	17,759	16,287	16,575	16,863	17,151	17,439	17,727	18,015
Net Ann. Inc.	401	483	1,005	-1,142	-408	2,581	639	-167	-170	541	-279	-40	-1,472	288	288	288	288	288	288
Ave. Mo. Inc.	33	40	84	-95	-34	215	53	-14	-14	45	-23	-3	-123	24	24	24	24	24	24

MONTHLY POPULATION AVERAGES - SEPTEMBER 2020

Unit/Center	9/1	9/2	9/3	9/4	9/7	9/8	9/9	9/10	9/11	9/14	9/15	9/16	9/17	9/18	9/21	9/22	9/23	9/24	9/25	9/28	9/29	9/30	AVG
Benton	305	305	305	292	292	292	290	290	290	279	278	278	278	278	278	277	276	275	275	273	273	272	284
Cummins	1,772	1,772	1,771	1,771	1,765	1,765	1,764	1,762	1,760	1,759	1,755	1,752	1,752	1,751	1,747	1,747	1,746	1,745	1,744	1,743	1,743	1,736	1,756
Delta	554	554	547	547	546	546	546	545	544	542	541	540	539	539	540	541	539	538	538	538	538	537	543
East AR Reg	1,467	1,460	1,460	1,463	1,461	1,461	1,461	1,461	1,460	1,459	1,459	1,456	1,455	1,448	1,461	1,461	1,458	1,458	1,451	1,450	1,450	1,450	1,458
Ester	523	518	518	518	518	518	512	511	500	500	500	501	498	498	494	494	492	492	491	490	491	490	503
Grimes	984	982	962	956	955	955	949	949	943	944	944	943	941	942	942	942	941	929	928	924	924	921	945
Max Sec	564	560	560	560	560	560	560	559	559	559	559	559	560	559	558	558	558	559	558	558	558	558	559
McPherson	824	824	820	820	806	806	806	796	796	796	796	782	772	772	776	782	793	804	799	797	793	787	798
MCWRC	130	125	125	125	125	125	125	125	125	123	123	123	123	123	123	123	122	122	122	122	122	121	124
N Central	706	703	702	696	692	692	689	689	681	682	682	681	681	680	680	680	680	680	680	677	677	677	686
NWAWRC	82	82	81	81	81	81	81	81	76	70	69	69	69	68	68	68	68	68	68	68	68	68	73
Ouachita River	1,625	1,622	1,618	1,615	1,617	1,618	1,668	1,669	1,715	1,715	1,716	1,725	1,722	1,720	1,716	1,715	1,717	1,715	1,713	1,761	1,763	1,762	1,692
Randall L Williams	395	394	389	389	387	387	387	387	388	388	388	386	384	382	379	378	378	376	371	370	370	361	382
Pine Bluff	466	466	466	463	466	466	466	466	465	465	465	466	466	466	463	461	458	457	456	455	454	453	463
PB Reentry	52	51	51	51	51	51	51	51	51	51	51	50	50	49	53	53	53	53	53	53	53	53	52
TRCC	95	95	95	94	94	94	94	92	92	92	92	90	90	90	90	90	89	88	100	100	100	100	93
Tucker	843	843	830	828	827	827	826	822	821	816	816	812	812	812	808	809	805	805	805	805	805	804	817
Tucker Re-Entry	65	65	62	62	61	61	61	61	61	60	60	59	59	58	57	62	62	61	61	60	60	60	61
Varner	1,455	1,454	1,453	1,453	1,453	1,453	1,453	1,452	1,452	1,449	1,449	1,445	1,443	1,443	1,443	1,442	1,441	1,440	1,439	1,437	1,436	1,435	1,446
Wrightsville	758	757	752	752	751	751	751	751	737	736	736	735	728	728	718	716	716	712	712	711	711	709	733
WR Hawkins-Females	189	189	189	189	189	189	189	189	189	189	189	189	189	181	182	183	178	178	178	176	176	172	184
WR Hawkins-Males	181	181	181	180	180	180	180	180	180	180	180	180	181	181	180	180	180	180	180	179	179	179	180
Total ADC	14,035	14,002	13,937	13,905	13,877	13,878	13,909	13,888	13,885	13,854	13,848	13,821	13,784	13,769	13,757	13,757	13,750	13,735	13,722	13,747	13,744	13,705	13,832
Bowie CO., TX	289	288	287	287	286	286	286	286	286	286	286	286	286	286	285	284	284	284	282	282	282	282	285
ALETA	15	15	15	15	15	15	15	15	15	15	15	15	15	15	15	15	15	15	15	15	15	15	15
Ar State Police	56	56	56	56	56	56	56	56	56	57	57	57	57	57	57	57	57	57	57	57	57	57	57
Co Jail / M	1,441	1,460	1,485	1,508	1,523	1,523	1,485	1,492	1,474	1,481	1,498	1,502	1,528	1,561	1,567	1,584	1,616	1,622	1,658	1,632	1,614	1,640	1,541
Co Jail / F	184	182	187	188	195	195	194	197	198	195	204	203	203	208	205	202	195	179	177	178	177	175	192
Total Co Jail BK	1,625	1,642	1,672	1,696	1,718	1,718	1,679	1,689	1,672	1,676	1,702	1,705	1,731	1,769	1,772	1,786	1,811	1,801	1,835	1,810	1,791	1,815	1,733
309/M	231	231	230	230	229	229	229	229	229	229	229	231	231	238	236	234	235	235	233	233	233	233	232
309/F	81	81	84	84	84	84	84	84	84	84	84	85	85	84	85	85	84	84	84	86	86	86	84
Total Act 309	312	312	314	314	313	313	313	313	313	313	313	316	316	322	321	319	319	319	317	319	319	319	316
Total Non ADC	2,297	2,313	2,344	2,368	2,388	2,388	2,349	2,359	2,342	2,347	2,373	2,379	2,405	2,449	2,450	2,461	2,486	2,476	2,506	2,483	2,464	2,488	2,406
Total	16,332	16,315	16,281	16,273	16,265	16,266	16,258	16,247	16,227	16,201	16,221	16,200	16,189	16,218	16,207	16,218	16,236	16,211	16,228	16,230	16,208	16,193	16,238

RESTRICTIVE HOUSING QUARTERLY REPORT JULY 1, 2020 TO SEPTEMBER 30, 2020

Restrictive Housing Disciplinary Counts

12-3 : Failure To Obey Order Of Staff	451
04-8 : Battery - Use of Force on an Inmate	251
12-4 : Refusing A Direct Verbal Order	221
05-3 : Assault - Verbal or Written Threat	211
11-1 : Insolence To A Staff Member	181
03-5 : Out Of Place Of Assignment	139
02-17 : Creating Unnecessary Noise	117
09-15 : Possession/Introduction/Use of Cell Phone	104
09-3 : Possession/Introduce Drugs	92
02-12 : Keep Person/Quarters W Regulat	81
02-16 : Refusal To Submit To Testing	81
10-3 : Indecent Exposure	73
07-1 : Unauthorized Use Of State Prop	64
05-5 : Provoking Or Agitating A Fight	63
09-1 : Possession/Intro Of Fireworks	52
09-5 : Possession/Introduction Of Clothing	52
01-1 : Banding Together/Demonstration	51
13-2 : Lying To A Staff Member	45
15-3 : Purchase Of Unauthor Articles	43
08-4 : Destruction Of Property	40

Disciplinary Categories

Violence to others	318
Possession of Drug-Related Contraband	209
Masturbation/Indecent Exposure	79
Sex with Another Person	14
Other Violations	2,218

Inmates Placed in RH	1,966
----------------------	-------

Population Demographics

<u>RACE</u>	<u>GENDER</u>		<u>Total</u>
	<u>M</u>	<u>F</u>	
Asian	6	1	7
Black	1,884	60	1,944
Caucasian	1,358	65	1,423
Hispanic	84	7	91
NA Indian	4	2	6
Native Hawaiian or Pacific Isl	2	0	2
Other	1	0	1
Total	3,339	135	3,474

Protective Custody	7
21 or Younger	95
55 or Older	246
SMI	57

Suicides/Deaths in Restrictive Housing

Suicides	0
Suicide Attempts	10
Deaths	4

Note: In the July 2020 report, there were 20 reported male inmates with a race listed as "Other." This count should have been two (2).

FISCAL YEAR 2021 COUNTY JAIL BACKUP - SEPTEMBER 2020

DAY		Jul-20		Aug-20		Sep-20
1		800	*	1,284		1,625
2		829	*	1,284		1,642
3		850		1,309		1,672
4	*	850		1,308		1,696
5	*	850		1,299	*	1,696
6		850		1,304	*	1,696
7		863		1,334		1,718
8		874	*	1,334		1,718
9		898	*	1,334		1,679
10		932		1,331		1,689
11	*	932		1,350		1,672
12	*	932		1,351	*	1,672
13		961		1,361	*	1,672
14		975		1,380		1,676
15		1,003	*	1,380		1,702
16		1,032	*	1,380		1,705
17		1,059		1,388		1,731
18	*	1,059		1,403		1,769
19	*	1,059		1,426	*	1,769
20		1,081		1,457	*	1,769
21		1,099		1,481		1,772
22		1,124	*	1,481		1,786
23		1,168	*	1,481		1,811
24		1,181		1,496		1,801
25	*	1,181		1,518		1,835
26	*	1,181		1,539	*	1,835
27		1,203		1,566	*	1,835
28		1,216		1,589		1,810
29		1,242	*	1,589		1,791
30		1,263	*	1,589		1,815
31		1,284		1,607		
Avg Daily Backup		1,027		1,417		1,735

Notes: Totals do not include 309 Contracts in County Jails (maximum of 336)

County Jail Back-up Average for September 2020 - 1,393

Short-Term Revocation Program Average for September 2020 - 747

STTG UNIT COUNTS – SEPTEMBER 2020

Unit	Beginning Total	Confirmed	Suspected	In	Out	Paroled	Removed	Ending Total	Total Unit Population	Unit % of STTG's
Benton	52	1	0	0	0	3	0	50	268	18.66%
Cummins	632	0	0	5	8	12	0	617	1,731	35.64%
Delta	196	0	0	1	2	8	0	187	534	35.02%
EARU	564	0	0	1	10	4	0	551	1,434	38.42%
Grimes	340	7	2	3	0	19	0	333	919	36.24%
Hawkins	46	0	0	1	1	2	0	41	356	11.52%
Max	279	0	0	1	2	1	0	277	616	44.97%
Mcperson	39	0	0	0	0	2	0	37	784	4.72%
MCWR	29	0	0	0	3	0	0	26	121	21.49%
NCU	205	0	0	0	10	0	0	195	672	29.02%
NWAWR	18	0	0	0	0	1	0	17	68	25.00%
ORCU	340	38	0	55	1	13	0	419	1,621	25.85%
ORCU Intake	31	51	0	0	17	0	0	65	141	46.10%
PB/Ester	89	1	0	1	2	12	1	76	1,337	5.68%
RLW	162	0	0	0	3	9	0	150	354	42.37%
TWR	25	0	0	4	0	1	0	28	99	28.28%
Tucker	288	0	0	0	2	6	0	280	802	34.91%
Varner	600	0	0	21	18	5	0	598	1,431	41.79%
Wrightsville	263	0	0	1	8	13	0	243	699	34.76%
Total	4,198	98	2	94	87	111	1	4,190	13,987	29.96%

ORCU Intake brought in 51 new STTG members into ADC last month.

STTG DISCIPLINARY REPORT – SEPTEMBER 2020

Unit	STTG Incidents	STTG Suspected Incidents	Total Unit Disciplinary	Disciplinary Involving STTG	Percentage
Benton	0	0	5	0	0.00%
Cummins	0	0	209	100	47.85%
Delta	0	0	64	39	60.94%
EARU	0	0	112	69	61.61%
Grimes	1	0	146	71	48.63%
Hawkins	0	0	146	71	48.63%
Max	0	1	4	0	0.00%
Mcpherson	0	0	201	17	8.46%
MCWR	0	0	1	1	100.00%
NCU	0	0	55	13	23.64%
NWAWR	0	0	5	1	20.00%
ORCU	0	0	93	42	45.16%
ORCU Intake	0	0	7	1	14.29%
PB/Ester	0	0	17	8	47.06%
RLW	0	0	63	28	44.44%
TWR	0	0	6	0	0.00%
Tucker	0	0	254	113	44.49%
Varner	0	0	157	85	54.14%
Wrightsville	0	0	170	93	54.71%
Total	1	1	1,715	752	43.85%

STTG COUNTS BY STTG SET – SEPTEMBER 2020

STTG Set	Benton	Cummins	Delta	EARU	Grimes	Hawkins	Max	Mcperson	MCWR	NCU	NWAWR	ORCU	Intake	PB	RLW	TWR	Tucker	Varner	Wrightsville	Total
Asian	0	1	0	0	0	0	0	0	1	0	0	2	0	0	3	0	0	0	0	7
Bloods	5	143	36	96	58	4	64	5	3	29	4	80	17	15	34	0	46	128	36	803
Crips	3	88	16	75	30	4	35	5	1	15	0	44	7	10	21	3	24	95	23	499
Folk	3	53	13	114	0	5	34	8	1	14	5	2	0	3	8	0	21	63	20	367
GD	12	136	48	89	99	7	60	0	10	34	0	89	15	16	28	10	84	130	64	931
Mexican	1	16	11	16	7	1	6	2	1	9	1	8	1	2	3	0	5	17	11	118
Motorcycle	0	1	1	1	1	1	4	1	2	1	0	0	0	1	1	0	3	0	0	18
Other	0	18	8	9	15	2	4	0	0	8	1	17	1	3	7	6	9	15	7	130
People	1	24	8	16	17	1	19	2	1	7	1	17	4	0	9	1	9	18	9	164
Unknown	0	8	8	9	8	0	3	1	0	5	0	0	3	0	4	0	7	5	5	66
W/S	15	38	13	35	40	6	7	13	5	41	5	100	10	12	19	6	28	30	26	449
AB	2	6	0	4	4	0	0	0	1	2	0	7	0	2	1	1	1	11	5	47
AC	1	7	1	12	10	1	5	0	0	5	0	4	0	3	1	0	3	16	10	79
NAE	5	40	8	33	17	3	12	0	0	4	0	29	2	2	4	1	14	35	15	224
WAR	2	38	16	42	27	6	24	0	0	21	0	20	5	7	7	0	26	35	12	288
Total	50	617	187	551	333	41	277	37	26	195	17	419	65	76	150	28	280	598	243	4,190

Key:

GD = Gangster Disciples

W/S = White Supremacist

NAE = New Aryan Empire

WAR = White Aryan Resistance

AC = Aryan Circle

AB = Aryan Brotherhood

INTERNAL AFFAIRS BOARD REPORT - SEPTEMBER 2020

Opened Investigation, Reviews/ASP September 2020	Open Investigation	Open Review	ASP Referral
Arson	0	0	0
Assault on Inmate	0	0	0
Assault on Staff	0	0	0
Attempted Escape	0	0	0
Banding Together to Interfere with Unit	0	0	0
Battery on Inmate	0	0	2
Battery on Inmate without Serious Injury	0	0	0
Battery on Inmate with Serious Injury	0	0	0
Battery on Inmate with Use of Unknown Substance	0	0	0
Battery on Other Person with Serious Injury	0	0	0
Battery on Other Person with Use of Unknown Substance	0	0	0
Battery on Staff	0	0	1
Battery on Staff and Inmate	0	0	1
Battery on Staff without Serious Injury	0	0	0
Battery on Staff with Serious Injury	0	0	0
Battery on Staff with Bodily Fluids	0	0	1
Battery on Staff with Use of Unknown Substance	0	0	0
Child Pornography	0	0	1
Criminal Activity	0	0	0
Death	0	0	6
Disobey Direct Order	0	0	0
Employee Misconduct	7	2	1
Excessive Force	1	0	0
Escape from Unit	0	0	0
Escape from Work Release	0	0	0
Escape Plan	0	0	0
Farm Incident	1	0	0
Forcible Rape	0	0	0
Inappropriate Relationship	0	0	0
Indecent Exposure	0	0	0
Inmate on Inmate Abusive Sexual Contact	0	1	0
Inmate on Inmate Sexual Assault	0	0	0
Inmate on Inmate Sexual Contact	2	6	0
Inmate on Inmate Sexual Harassment	0	31	0
Inmate on Inmate Sexual Misconduct	1	11	0
Inmate on Inmate Nonconsensual Sexual Contact	0	0	1
Introduction of Cell Phone	0	0	0
Introduction of Contraband	1	0	5
Introduction of Drugs	0	0	2
Introduction of Money	0	1	0
Introduction of Tobacco	0	0	0
Introduction of Weapon	0	0	0
Major Breach of Security	0	0	0
Misconduct	0	0	0
Missing Narcotics	0	0	0
Other Incident	0	0	0
Other Rule Violation	0	0	0
Possession of Cell Phone	0	0	9
Possession of Drugs	0	0	1
Possession of Money	0	0	0
Possession of a Weapon	0	0	0
Property Damage	0	0	0
Racial Slurs	0	0	0
Retaliation	0	0	0
Sexual Assault	0	0	0
STTG	0	1	0
Suspected Criminal Activity	0	0	0
Rape	0	0	0
Riot	0	0	0
Sexual Misconduct	0	0	0
Staff on Inmate Sexual Harassment	0	24	0
Staff on Inmate Sexual Misconduct	1	9	0
Staff on Staff Sexual Harassment	0	0	0
Staff on Staff Sexual Misconduct	0	0	0
Suicide Attempt	0	1	0
Suspected Criminal Activity	0	0	0
Theft	0	0	0
Trafficking	0	0	1
Threat on Staff	0	0	0
Use of Force	0	44	0
Verbal Abuse	0	0	0
Verbal/Written Threat on Staff	0	0	0
Work Release Misconduct	0	0	0
Total	14	131	32

ADC INPATIENT AND EMERGENCY ROOM UTILIZATION

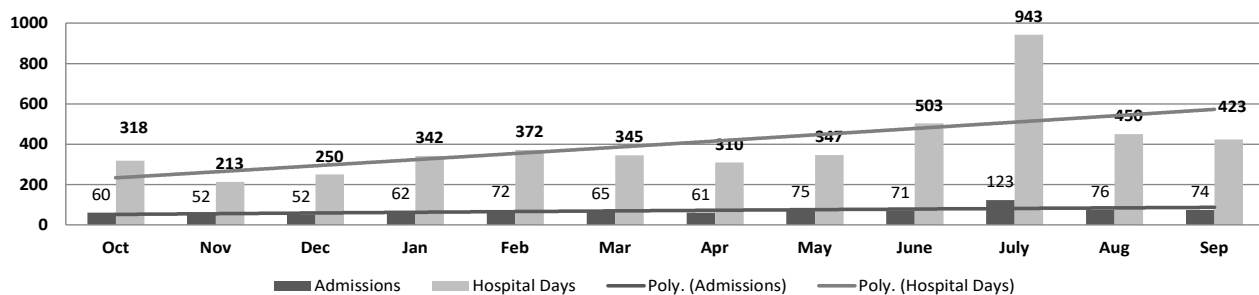
ADC Inpatient Statistics Past 12 Months

	2019			2020									Average
	Oct	Nov	Dec	Jan	Feb	Mar	Apr	May	June	July	Aug	Sep	
Admissions	60	52	52	62	72	65	61	75	71	123	76	74	70.3
Hospital Days	318	213	250	342	372	345	310	347	503	943	450	423	401.3
Average Length of Stay	5.37	4.76	4.91	6.56	5.22	5.48	5.10	6.21	7.07	6.70	7.65	5.72	5.71

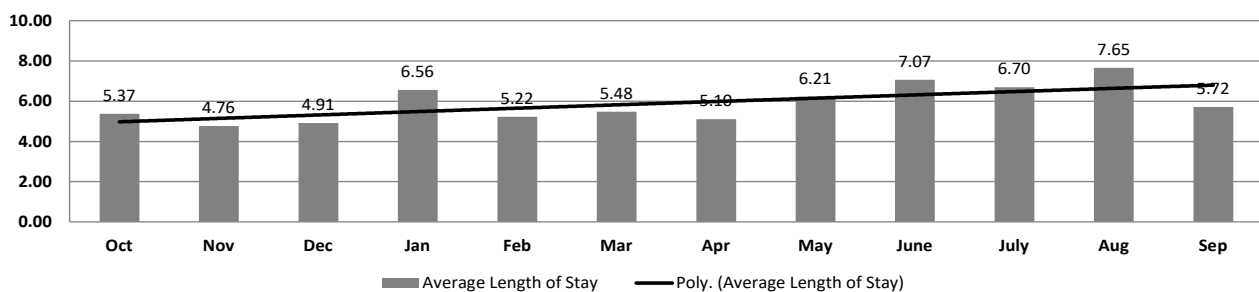
ADC ER Visits Past 12 Months

	2019			2020									Average
	Oct	Nov	Dec	Jan	Feb	Mar	Apr	May	June	July	Aug	Sep	
Emergency Room Visits	115	100	79	92	131	98	87	99	105	146	110	131	107.8

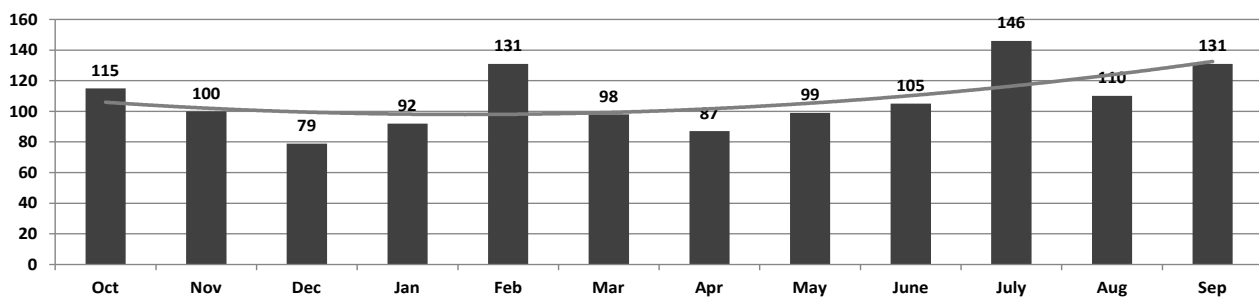
ADC Inpatient Utilization Past 12 Months



ADC Inpatient Average Length of Stay Past 12 Months



ADC Emergency Room Visits Past 12 Months



MEDICAL GRIEVANCE BOARD REPORT – SEPTEMBER 2020

Unit	<i>Acknowledged/ Received</i>	<i>Rejected</i>	<i>Reviewed & Signed by Dep Director</i>	<i>With Merit</i>	<i>With Merit, but Resolved</i>	<i>% With Merit</i>	<i>Without Merit</i>
Benton	0	0	0	0	0	0%	0
Bowie County	0	1	0	0	0	0%	0
CMU	0	1	1	0	0	0%	1
Cummins	5	3	7	0	0	0%	7
Delta	4	0	0	0	0	0%	0
EARU	19	2	34	1	1	6%	32
EARU Max	40	0	36	2	0	6%	34
Ester	7	0	3	0	0	0%	3
Grimes	8	1	11	0	0	0%	11
Hawkins	0	0	0	0	0	0%	0
McPherson	1	0	10	0	1	10%	9
MCWRC	0	0	0	0	0	0%	0
MSU	8	1	8	0	0	0%	8
North Central	17	2	17	1	1	12%	15
NWAWRC	0	0	0	0	0	0%	0
Ouachita	29	2	28	1	0	4%	27
Pine Bluff	1	0	2	0	0	0%	2
Randall L. Williams	3	1	0	0	0	0%	0
SNN	2	0	3	0	0	0%	3
TRCC	0	0	0	0	0	0%	0
Tucker	9	1	16	0	0	0%	16
Varner	11	0	3	0	0	0%	3
Varner Super Max	36	3	18	1	0	6%	17
WRU	3	1	0	0	0	0%	0
WHM	1	0	2	0	0	0%	2
WWR	0	0	0	0	0	0%	0
Total	204	19	199	6	3	5%	190

CHAPLAINCY

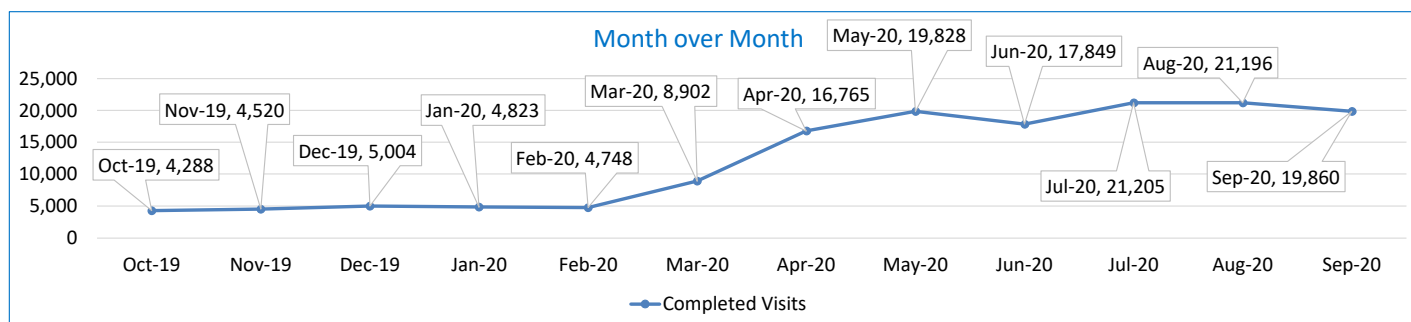
Month: September Year: 2020	CUMMINS	DELTA REGIONAL	EAST ARKANSAS	EAST ARKANSAS MAX	ESTER	GRIMES	HAWKINS	MAXIMUM	MCPHERSON	NORTH CENTRAL	OUACHITA RIVER	PINE BLUFF	RANDALL L. WILLIAMS	TUCKER	VARNER	VARNER MAX	WRIGHTSVILLE	TOTAL
Services Chaplains Oversaw																		
Christian																		
Population	0	0	0	0	8	0	0	0	4	4	13	8	4	0	4	0	0	45
Segregation	0	0	0	0	0	0	0	4	0	0	0	0	0	0	0	0	0	4
Muslim																		
Population	0	0	0	0	8	0	0	4	4	0	4	4	4	0	4	0	0	32
Segregation	0	0	0	0	0	0	0	4	0	0	0	0	0	0	0	0	0	4
																		85
Volunteers in Charge																		
Protestant	0	0	0	0	0	0	0	0	0	0	0	0	0	0	0	0	0	0
Catholic	0	0	0	0	0	0	0	0	0	0	0	0	0	0	0	0	0	0
Muslim	0	0	0	0	0	0	0	0	0	0	0	0	0	0	0	0	0	0
Other	0	0	0	0	0	0	0	0	0	0	0	0	0	0	0	0	0	0
Baptism	0	0	0	0	0	0	0	0	0	0	0	0	0	0	0	0	0	0
Marriages																		
	0	0	0	0	0	0	0	0	0	0	0	0	0	0	0	0	0	0
Distributed by Chaplains																		
Greeting Cards	50	0	0	0	25	15	325	50	570	234	350	0	12	218	47	133	5	2,034
Bibles, Quran, Torah, Etc.	67	15	13	16	10	18	45	20	23	5	325	0	10	59	5	14	40	685
Study Course	0	0	8	9	15	9	0	10	37	0	75	0	0	61	3	0	50	277
Writing Supplies	0	0	0	0	35	34	400	30	70	0	500	0	0	98	0	0	10	1,177
Literature	4,398	600	972	346	0	22	450	225	172	741	500	0	3,676	514	179	276	250	13,321
Chaplain's Visits																		
Barracks	170	58	27		24	47	25	56	7	42	85	0	5	39	303		11	899
Approximate Hours Spent in Barracks	65	11	6	0	22	24	10	30	20	11	17	0	0	10	76	13	10	325
Inmate Office visits	21	77	11	0	15	95	25	13	45	10	29	4	54	110	5	0	7	521
Other Office visits	40	20	13	0	10	9	20	15	29	21	78	0	10	40	10	4	11	330
Hospital	0	0	0	0	0	0	0	0	0	0	30	0	0	0	0	0	0	30
Infirmary/Sick Call	6	1	2	0	1	1	8	30	8	2	27	0	0	2	2	0	5	95
Restrictive/Punitive Housing	14	3	0	13		4	4	10	16	4	79	0	4	4	0	0	2	157
PC - DRU		0																0
Visitation Days	0	0	0	0	0	0	0	0	0	0	0	0	0	0	0	0	0	0
Volunteer Visits																		
RCV	0	0	0	0	0	0	0	0	0	0	0	0	0	0	0	0	0	0
OCV	0	0	0	0	0	0	0	0	0	0	0	0	0	0	0	0	0	0
Spiritual Advisor	0	0	0	0	0	0	0	0	0	0	0	0	0	0	0	0	0	0
CRA	0	0	0	0	0	0	0	0	0	0	0	0	0	0	0	0	0	0
Religious Volunteer Hours																		
Volunteer Hours	0	0	0	0	0	0	0	0	0	0	0	0	0	0	0	0	0	0
Denominational/Volunteer Chaplain Hours	0	0	0	0	0	0	0	0	0	0	0	0	0	0	0	0	0	0
																		0
Other Activities of Chaplain																		
Counseled Employees	13	12	7	0	10	1	24	4	35	2	45	0	3	14	25	5	10	210
Orientation Sessions	0	0	0	0	0	2	0	0	0	0	0	0	0	0	0	0	0	2
Free World Devotions	0	0	3	0	4	7	0	0	1	0	5	0	0	2	24	0	0	46
Spoke in Churches	22	0	2	0	1	1	0	0	1	0	0	0	0	4	24	0	0	55
Crisis Intervention Sessions	8	15	4	0	0	0	40	3	210	10	45	2	0	15	3	4	5	364
Marriage Counseling	0	0	0	0	0	0	0	0	0	0	4	0	0	0	0	0	0	4
Denominational Meeting	0	0	0	0	0	0	0	0	0	0	0	0	0	0	0	0	0	0
Chaplain's Meeting	0	1	1	0	1	1	1	0	1	1	1	1	1	1	21	0	1	33
Volunteer Training Session	0	0	0	0	0	0	0	0	0	0	0	0	0	0	0	0	0	0
Chaplain Transfers																		
	0	0	0	0	0	0	0	0	0	0	0	0	0	0	0	0	0	0
Chaplain Promotions																		
	0	0	0	0	0	0	0	0	0	0	0	0	0	0	0	0	0	0
PAL PROGRAM																		
Enrolled at start of month	38	20	48	0	34	48	45	21	29	19	25	0	25	55	0	0	19	426
Enrolled during the month	8	0	0	0	0	0	5	1	26	0	5	0	0	14	0	0	0	59
Removed From PAL Program																		
# Paroled	2	0	0	0	0	0	0	0	5	3	0	0	2	1	0	0	0	13
# Completed	2	0	0	0	0	0	3	1	9	0	2	0	0	9	0	0	0	26
# Withdrew	2	0	0	0	0	0	5	0	1	1	0	0	0	0	0	0	0	9
# Removed	0	3	1	0	1	1	1	0	1	0	2	0	0	10	0	0	0	20
# Transferred	0	0	0	0	0	0	0	0	2	0	3	0	0	0	0	0	0	5
Total Removed from PAL Program	6	3	1	0	1	1	9	1	18	4	7	0	2	20	0	0	0	73
Total Enrolled at the End of the Month	40	17	47	0	33	47	41	21	37	15	23	0	23	49	0	0	19	412
Volunteers in PAL																		
	0	0	0	0	0	0	0	0	0	0	0	0	0	0	0	0	0	0
Special Events:																		
	0	1	0	0	0	0	0	2	0	0	0	0	2	0	0	0	0	5

SECURUS VIDEO VISITATION REPORT SEPTEMBER 2020

AR-DOC SVV Activity Tracker

Total ADP 14,875

Total Visits by Month	Oct-19	Nov-19	Dec-19	Jan-20	Feb-20	Mar-20	Apr-20	May-20	Jun-20	Jul-20	Aug-20	Sep-20
Total (Includes SuperMax)	4,288	4,520	5,004	4,823	4,748	8,902	16,765	19,828	17,849	21,205	21,196	19,860
Target Objective	15,587	15,587	15,587	15,587	15,587	15,587	15,587	15,587	15,587	15,587	15,587	15,587



Completed Visits

Site	Current Month	Previous Month
Benton	181	78
Cummins	1,765	2,072
Delta Regional	1,196	1,299
East Arkansas Regional	2,385	2,203
Ester	1,087	1,259
Grimes	1,190	1,391
J Aaron Hawkins Sr.	635	766
Tucker Max	844	876
Mcperson	616	749
Mississippi County WRC	213	163
North Central	1,280	1,396
NW Arkansas WRC	15	69
Ouachita River	2,516	2,272
Pine Bluff Complex	736	697
Randall L Williams	844	968
State Police Barracks	65	63
Texarkana Regional	191	258
Tucker Unit	853	1,273
Varner	2,026	1,939
Wrightsville Unit	1,158	1,331
Pine Bluff Re-Entry	64	74
Tucker Re-entry	0	0
Total:	19,860	21,196

Missed by Inmate

Site	Current Month	Previous Month
Benton	67	105
Cummins	67	104
Delta Regional	30	29
East Arkansas Regional	65	88
Ester	26	22
Grimes	15	45
J Aaron Hawkins Sr.	64	52
Tucker Max	70	41
Mcperson	22	25
Mississippi County WRC	7	12
North Central	26	30
NW Arkansas WRC	4	8
Ouachita River	55	25
Pine Bluff Complex	35	48
Randall L Williams	19	13
State Police Barracks	4	0
Texarkana Regional	6	10
Tucker Unit	38	43
Varner	67	110
Wrightsville Unit	101	76
Pine Bluff Re-Entry	1	2
Tucker Re-entry	0	0
Total:	789	888

**SECURUS TABLET REPORT
SEPTEMBER 2020**

Facility Name	Subscription	Facility	Officer	Total	New Subscriptions
Benton Unit	153	3	8	164	22
Cummins Unit	381	86	14	481	28
Delta Regional Unit	145	28	16	189	8
East Arkansas Regional Unit	284	97	15	396	32
Ester Unit	171	135	20	326	18
Grimes Unit	280	71	14	365	28
J. Aaron Hawkins Sr Center For Women	149	69	15	233	3
McPherson Unit	261	102	15	378	30
Mississippi County Work Release Center	72	2	9	83	3
North Central Unit	163	98	10	271	16
Northwest Arkansas Work Release Center	51	2	8	61	3
Ouachita River Correctional Unit	312	108	14	434	63
Pine Bluff Reentry Center	26	2	0	28	2
Pine Bluff Unit	112	5	8	125	14
Randall L. Williams Facility	86	24	15	125	9
State Police Barracks	21	1	3	25	2
Texarkana Regional Correctional Center	34	2	10	46	2
Tucker Maximum Security Unit	122	31	12	165	11
Tucker Reentry Center	45	54	6	105	1
Tucker Unit	158	55	10	223	15
Varner Unit	224	82	20	326	17
Wrightsville Unit	187	54	6	247	16
TOTAL	3,437	1,111	248	4,796	343

CONSTRUCTION BUDGET / STATUS REPORT - OCTOBER 5, 2020 — [Page 1 of 2]

Fund	Project Description	Total Projected Spent	Budget	Available Funds	\$ % Complete	Construction % Complete	Notes
KBR4Q95	ESTER - Phase 3 - General Improvement Fund	2,977,000	3,911,781	934,782	76%	98%	McClelland Engrs designing Parking Lot. Survey done. Cameras and lights to be installed around perimeter after paving.
700483A	EARU Max Rec Expanded Metal Rec Yard	77,004	879,000	801,996	9%	0%	DBA approved plans for expanded metal rec pens. Materials being purchased.
700483A	Tucker Max Expanded Metal Rec Yard	60,183	1,800,000	1,739,817	3%	0%	DBA Approved to proceed on 9/5/2020. Working on material list for procurement.
700483A	Cummins Expanded Metal Rec Yard	50,012	368,617	318,605	14%	0%	Plans on hold, will modify for exp. Metal
KBR4Q95	Bullpens	388,676	851,999	463,323	46%	98%	Varner & EARU complete. Installation underway at Max. Locks delivered. Held up by 2 supervisors quitting and COVID-19.
KBR4Q95	13 & 15 Barracks Door Revisions	119,111	174,000	54,889	68%	68%	All doors and locks installed in 13 Barracks. Job on hold to assess long term plan
KBR4Q95	Camera's (New)	1,073,900	1,248,000	174,100	86%	86%	Delta, Varner, EARU, Cummins, RLW, PBU, & the Max are complete, working at Tucker.
700485A	Entegrity Energy Improvements at EARU & Delta	16,961,127	17,010,204	49,077	100%	97%	lights (100%), plumbing 100%, water (100%), compost (100%), & solar (100%), HVAC (100%). Only Training is incomplete.
700486A	Pine Bluff Unit Barracks 9 Renovation	369,616	437,000	67,384	85%	98%	9A, B C & D water controls arrived 2/5, Icon training delayed, installation near complete.
KBSCW18	McPherson Administration	361,702	395,439	33,737	91%	85%	Walls, slabs, brick complete. Roof slab poured. Roofer on site,
KBSCW18	McPherson Visitation	303,530	312,430	8,900	97%	85%	insulating duct, running electrical & installing doors. Inmate labor back at work last week. ETA completion 2 months
KBR4Q95	McPherson Administration and Visitation	-	100,000	100,000	0%	0%	
KBSHW18	Tucker Water Treatment	-	1,093,848	1,093,848	0%	0%	Preparing RFQ for designer.
KBSFW18	Max Armory	-	70,000	70,000	0%	0%	DBA approved Plans 8/21/20. Tentative start date 11/01/2020.
KBSFW18	Varner Armory	64,621	68,399	3,778	94%	85%	Slab & ceiling poured, ext & int walls up, roof & brick complete. Working on finish work inside. Completion delayed, expected completion 11/01/2020. No supervisor nor inmates due to COVID positive test.
7004810	Administrative East Roof Replacement	-	309,375	309,375	0%	0%	ADFA funding. Had meeting and site visit with seleted design firm to establish plan and material specs.
7004810	Central Warehouse Roof Replacement	-	135,020	135,020	0%	0%	
7004810	RLW Roof Replacement	-	1,888,776	1,888,776	0%	0%	
22V	NWARWRC Laundry and Commissary	15,144	250,000	234,856	6%	0%	DBA approved Plans, Springdale Water Dept comments rec'd & answered. All approvals received. Tentative start date 10/12/2020
Q95	NCU Perimeter Security	20,625	270,000	249,375	8%	0%	Plans for new microwave system at DBA for approval.
N98	Max Re-Entry Generator Project	-	135,000	135,000	0%	0%	Plans sent to our On-Call on 8/06/2020. Plans submitted to DBA for approval.
Q95	NCU Replacement Generator Project	-	202,000	202,000	0%	0%	Plans sent to our On-Call on 8/06/2020.



CONSTRUCTION BUDGET / STATUS REPORT - OCTOBER 5, 2020 — [Page 2 of 2]

Fund	Project Description	Total Projected Spent	Budget	Available Funds	\$ % Complete	Construction % Complete	Notes
7004820	Tucker 10 Barracks Sidewalk	-	70,259	70,259	0%	0%	DBA approved to proceed. Mobilizing to begin project. Projected start date of December 14, 2020.

Telephone Projects

Maintenance & Operations	Fire Alarm Upgrades (All Units)	34,499	41,000	6,501	84%	50%	on-going
	Stainless Steel - Kitchen/Shower/Restrooms -	3,864	20,000	16,136	19%	15%	continual need
	Gates and Fences all units	3,460	25,000	21,540	14%	0%	to improve security
	ACA Maintenance	1,563	100,000	98,437	2%	0%	Upcoming are NCU, EARU & MCWRC.
	ADA Projects - All Units	376	10,000	9,624	4%	0%	Working with Varner for the sports field sidewalk.
	Fast Top Floor Systems (kitchen/laundry/showers all	0	25,000	25,000	0%	0%	Benton restrooms underway. Ouachita kitchen next.
	Camera Equipment - All Units	47,230	250,000	202,770	19%	15%	cameras as requested/approved.
	Lock/Riot Gates - All Units	13,033	90,500	77,467	14%	12%	on-going.
	AC Units-All Units	49,633	70,000	20,367	71%	25%	repairing & replacing daily.
	Subtotal	\$ 153,659	\$ 631,500	\$ 477,841			

Capital Projects FY20 Carry Forward	Metal Ceilings	9,331	25,000	15,669	37%	0%	NCU complete, Delta is next.
	ORCU Gravel Pit Operations	15,077	35,000	19,923	43%	18%	on-going. Crusher operating.
	Dog Kennel/Horse Stable Malvern	0	48,000	48,000	0%	0%	DBA approved the Plans, released for construction. Site surveyed and selected. Both Construction Supervisors at ORCU working in the maintenance dept. Project on hold.
	Emergency Generator - All Units	123,862	250,000	126,138	50%	20%	Cummins 300kW generator complete. Max Gen mat'l rec'd, gen delivery delayed to mid October (10/15). All material purchased for Hawkins is purchased waiting on del. Date. Hawkins Kitchen & Cummins East Bldg.
	Tucker 4 new filters & one aeration tank	458,386	488,434	30,048	94%	70%	Filters to arrive November 15, 2020.
	Roof Repairs-Cummins	12,378	145,000	96,271	34%	0%	Prepared large order for multiple Units. Max is complete. Need repairs at ORCU, Delta, Cummins & others. Varner & ORCU working on repairs, received TPO
	Roof Repairs-Cummins Laundry	0				0%	
	Roof Repairs-East Arkansas	5,908				0%	
	Roof Repairs-Max	0				0%	
	Roof Repair - NCU	5,834				0%	
	Roof Repair - RLW	0				0%	
	Roof Repairs-Tucker	0				0%	
	Roof Repairs-Varner	19,955				0%	
	Roof Repairs-Wrightsville	4,654				0%	
	Boiler Repair	22,988	100,000	77,012	23%	18%	continually needing repair
	Subtotal	\$ 678,373	\$ 1,091,434	\$ 413,061			

New Projects	Additional Metal Fab shop	0	29,266	29,266	0%	0%	purchasing materials
	PB Warehouse Drive replacement	0	118,000	118,000	0%	0%	asphalt drive pot holed. Preparing Plans.
	Subtotal	\$ -	\$ 147,266	\$ 147,266			
	Architect Fees	2,116	30,000	27,884	7%		
	Total	\$ 834,147	\$ 1,900,200	\$ 1,066,053			

Notes Report has not been reconciled against Accountings Reconciled Reports.
Tolerance/Deviation is with in 1% of Projected Spending.