



DIVISION OF  
CORRECTION

# BOARD REPORT

November 2020



@ARDeptofCorrections



@adcpio

Dexter Payne,  
Director



## POPULATION REPORT

### RESEARCH/PLANNING

**October 2020 Admissions and Releases** – Admissions for October 2020 totaled **265** (253-males and 12-females) while releases totaled **414** (386-males and 28 females) for a net decrease in-house of **149** inmates.

**Inmate Population Growth/Projection** – At the end of October 2020, the jurisdictional population for the Division of Correction totaled **16,311**, representing a decrease of **1,448** inmates since the first of January 2020. Calendar year 2020 average has seen an average decrease of **145** inmates per month, which is up from an average monthly decrease of **three** inmates per month during calendar year 2019.

**Average County Jail Back-up** – The backup in the county jails averaged **1,943** inmates per day during the month of October 2020, which was up from the per-day average of **1,735** inmates during the month of September 2020. Of the **1,943** average, short-term revocations accounted for **746** (660 males and 86 females) during the month.

## INSTITUTIONS

### PRISON RAPE ELIMINATION ACT (PREA)

No PREA training was conducted during the month of October due to COVID-19.

#### PREA Hotline Data - October 2020:

Number of Calls Received	398*
Total Calls Referred for Reported PREA Issue	33
Total Calls Referred for Non-PREA Issue	178
Calls Referred Due to Technical Failure	0
Repeat Calls	90
Test Calls	0
No Message	79

\*A total of 18 of the calls received were from residents of the Division of Community Correction (DCC) and forwarded to their Warden/Center Supervisor.

### INMATE INSTITUTIONAL GRIEVANCES

**Inmate Formal/Informal Grievances:** During October 2020, a total of 1,618 formal grievances and 2,051 informal grievances were filed at various units.

**Institutional Grievances Appeals:** There was a total of 490 appeals of institutional grievances received in October 2020. Of those, 402 were acknowledged and 88 were rejected for various reasons. Of the total 590 appeals answered, 589 had no merit and one was found with merit.

### FARM

During the month of October, row crop harvest was conducted at all farms. Additionally, due to record high market prices, a combined total of 2,500 acres of wheat was planted across all farms. Wheat harvest will take place in June 2021.

With a reduced number of squads available due to COVID-19, gardens have been harvested when and where possible. Efforts have been made to send as much fresh produce as feasible to the kitchens due to the limited numbers of inmates available to handle processing.

Egg production has been up to around 30,000 in daily totals.

Cold storage has been processing meat and covering requests from the warehouse.

### REGIONAL MAINTENANCE HOURS

Regional Maintenance Hours	October 2020
Benton Unit	5,450
Delta Regional Unit	4,140
East Arkansas Regional Unit	88
Grimes Unit	1,672
McPherson Unit	3,412
Mississippi County Work Release	1,392
North Central Unit	2,336
Ouachita River Correctional Unit	2,296
Randall L. Williams Unit	1,102
Texarkana Regional Correctional Center	24
Tucker Unit	384
Varner Unit	560
Wrightsville Unit	1,248
<b>Total Hours</b>	<b>24,104</b>

### WORK RELEASE RENT REPORT

Unit	October 2020
Benton Unit	\$92,752.00
Mississippi County Work Release	\$40,545.00
Northwest Arkansas Work Release	\$25,228.00
Pine Bluff Work Release	\$30,515.00
Texarkana Regional Correctional Center	\$6,324.00
Tucker Reentry Work Release	\$10,209.00
<b>Total</b>	<b>\$205,573.00</b>

**REENTRY****RANDALL L. WILLIAMS**  
**JUVENILE EDUCATION PROGRAM**

October 2020 Capacity: 20	Beginning Count	New Commitments	DCR/Punitive	Transferred/ Turned 18*	Paroled	End Count
Juveniles*	2	0	0	1	0	1

\*Juveniles are transferred from the program once they reach the age of 18.

**WORKFORCE ALLIANCE FOR**  
**GROWTH IN THE ECONOMY (WAGE)**

October 2020 Capacity: 120 Unit:	Beginning Count	Admissions During Mo.	Removed*	Completed	End Count
Delta	8	0	0	8	0
Ester**	0	0	0	0	0
Hawkins***	0	0	0	0	0
McPherson***	0	0	0	0	0
Ouachita River	20	0	0	0	20
Tucker***	0	0	0	0	0
Tucker Reentry***	0	0	0	0	0
Wrightsville***	0	0	0	0	0
<b>TOTAL</b>	<b>28</b>	<b>0</b>	<b>0</b>	<b>8</b>	<b>20</b>

\*The "Removed" column indicates the number of participants who transferred, signed out, received a disciplinary, were removed because test scores were not returned/were too low to continue, or were released from prison.

\*\*The Ester Unit WAGE Program is experiencing a change in software resulting in no classes being taught at this time.

\*\*\*WAGE Program inactive during the month due to COVID-19.

**ADVANCED PRINCIPLES**  
**AND APPLICATIONS FOR**  
**LIFE PROGRAM (APAL)**

October 2020 Capacity: 86	Beginning Count	Admissions During Mo.	Removed*	End Count
Ester	33	0	0	33
Hawkins	41	1	2	40
<b>TOTAL</b>	<b>74</b>	<b>1</b>	<b>2</b>	<b>73</b>

Advanced PAL is an 18-month reentry program that combines a pre-release curriculum with the PAL program.

\*The "Removed" column indicates the number of participants who paroled, completed the program, withdrew from the program, transferred, or were removed from the program for another reason.

**WRIGHTSVILLE-HAWKINS**  
**PATHWAY TO FREEDOM PROGRAM**

October 2020 Capacity: 200	Beginning Count	Enrolled During the Month	Removed	End Count*
Wrightsville-Hawkins PTF	179	1	8	172

**THINK LEGACY**

October 2020 Capacity: 635 Unit	Beginning Count	Admitted	Graduated	Removed**	End Count	Graduated But Remain*	Waiting List
Cummins	54	9	1	11	51	7	12
Delta Regional	16	0	0	2	14	5	35
East Arkansas Regional	0	0	0	0	0	0	7
Ester	15	0	0	11	4	0	0
Grimes	37	0	6	1	30	6	23
Hawkins (Female)	8	0	1	1	6	1	11
McPherson	55	0	0	2	53	1	72
North Central	44	0	0	0	44	0	50
Ouachita River	9	16	0	0	25	3	0
Tucker	0	0	0	0	0	0	0
Tucker Women's Reentry	0	0	0	0	0	0	0
Varner	0	0	0	0	0	0	0
Wrightsville	25	0	4	0	21	0	89
<b>Total</b>	<b>263</b>	<b>25</b>	<b>12</b>	<b>28</b>	<b>248</b>	<b>23</b>	<b>299</b>

\*\*The "Removed" column indicates the total number of participants who paroled, signed out, transferred, or were removed from the program for any other reason and are no longer in the barracks.

\*The "Graduated But Remain" column indicates the number of participants who have successfully completed the program but remain in the barracks. *These numbers are included in the End Count.*

## ADMINISTRATIVE SERVICES

### DIVISION OF CORRECTION TRAINING - OCTOBER 2020

#### BASIC TRAINING DIVISION –

Instructor Jason Price's **BCOT Class 2020-L** officially graduated on Friday, October 9, 2020, with a total of 39 cadets. An awards luncheon was held for the graduates on September 22.

The *Willis H. Sargent Award* recipient for the class was Dwight Merrill Jr. of the Pine Bluff Unit.

Due to COVID-19, the remaining awards were sent to individual units to be presented at a later date because of a few cadets being quarantined during the four-week training course.

Recipients of *Physical Fitness Awards* were:

- 1st - Randolph Vanderveer, Benton Work Release
- 2nd - Nalleli Resendiz, Grimes Unit
- 3rd - Jamaricus Richard, Pine Bluff Unit

*Academic Awards* were presented to the following:

- 1st - Tezra Collins, Ester Unit
- 2nd - Madelyn Byrd, Ouachita River Unit
- 3rd - Nalleli Resendiz, Grimes Unit
- Rocky O'Malley, Tucker Unit

Under the direction of Instructor David Farrier, **BCOT Class 2020-M** graduated on October 23 with a total of 34 cadets.

An awards ceremony could not be held due to a power outage at the Academy. Class awards were sent to each unit for presentation on graduation day.

The *Willis H. Sargent Award* recipient was Jimmy Via Jr. of the Wrightsville Unit.

Recipients of *Physical Fitness Awards* were:

- 1st - Shanell Young, Ouachita River Unit
- 2nd - Hunter Like, East Arkansas Regional Unit
- 3rd - Keenyn McKenzie, Ouachita River Unit

*Academic Awards* were presented to the following:

- 1st - Tamisha Patton, East Arkansas Regional Unit
- 2nd - Zachary Lawrence, Grimes Unit
- 3rd - Adam Dalton, McPherson Unit

#### IN-SERVICE DIVISION –

In-service training for the month consisted of a **Taser Instructor Certification** class, which was attended by two participants. The course was hosted at the Training Academy and presented by AXON staff. All other in-person training has been suspended until further notice due to COVID-19.

#### eCADEMY –

During October, 546 ADC employees completed a total of 5,495 hours of eCADEMY training. About 12% of ADC employees completed at least one course during that timeframe, averaging 1.22 hour per staff member.

## HEALTH/CORRECTIONAL PROGRAMS

### CHAPLAINCY SERVICES

**All Facilities** – During the month of October, the Chaplaincy Division at all facilities continued to provide religious services virtually over the video systems. This included Jumu'ah Prayer.

Volunteer access remained discontinued throughout the month due to COVID-19.

Chaplains from the following facilities participated in a chaplaincy training event at Camp Paron near Paron, Arkansas on October 26-28:

- Cummins Unit
- East Arkansas Regional Unit
- Maximum Security Unit
- Ouachita River Correctional
- Tucker Unit
- Delta Regional Unit
- Grimes Unit
- McPherson Unit
- Randall L. Williams Unit
- Wrightsville Unit

### ACCREDITATION

#### ACA Internal Audits Completed:

10/05–10/08 Central Office and Admin East ACA Audit:  
Mandatory Standards – 100%  
Non-Mandatory Standards – 99.26%

10/19–10/23 Maximum Security Unit and McPherson Unit Audit Prep

10/26–10/30 Maximum Security Unit and Training Academy Audit Prep

#### Classes Taught:

10/28 BCOT

#### Fire/Safety and Sanitation Independent Audits Conducted by the Fire and Sanitation Coordinator:

10/12–10/14 Cummins Unit Independent Audit

10/26–10/29 Maximum Security Unit Independent Audit

### VOLUNTEER SERVICES

#### Total Number of Volunteer Hours for October 2020:

Unit/Program	Hours
Delta Unit	0
East Arkansas Regional Unit	0
McPherson Unit	0
Mississippi County Work Release Center	0
Northwest Arkansas Work Release Center	2.5
Ouachita River Correctional Unit	0
Pine Bluff Complex	0
Texarkana Regional Correctional Center	0
Varner	0
PAWS	0
Think Legacy	0
Religious Services/Chaplaincy	0
<b>Total Hours</b>	<b>2.5</b>

**MENTAL HEALTH SERVICES****Reduction of Sexual Victimization Program (RSVP) and Sex Offender Treatment Programs (SOFT):**

October 2020	Capacity	Beginning Count	Completed	Removed	Admissions	End Count
RSVP	278	130	0	0	64	194
SOFT	30	4	0	0	0	4
<b>Total</b>	<b>308</b>	<b>134</b>	<b>0</b>	<b>0</b>	<b>64</b>	<b>198</b>

There are 794 males on the waiting list for RSVP and two females on the waiting list for SOFT who are within five years of their TE date. Of those, 32 inmates are mandated by the Parole Board.

The average time on the waiting list from request is between one and two months for those stipulated.

\*The total on the waiting list, including those not currently within the identified timeframe, is 1,389 males and two females. Of these, 794 are eligible and 595 are ineligible for the program. There are no PREA inmates in the program at this time.

\*Ineligibility is due to being in restrictive housing, having class IV status, or receiving a major disciplinary within the last 60 days.

**Therapeutic Community (TC):**

October 2020 Unit	Capacity	Beginning Count	Completed	Removed	Admissions	End Count
McPherson	53	36	0	1	0	35
Tucker	136	22	6	2	0	14
Wrightsville	50	22	0	1	0	21
<b>Total</b>	<b>239</b>	<b>80</b>	<b>6</b>	<b>4</b>	<b>0</b>	<b>70</b>

There are 627 males and 126 females on the waiting list who are within ten years of their release date. Of those, 15 are mandated by the Parole Board.

The average time on the waiting list from request is seven days.

\*The total on the waiting list, including those not currently within the identified timeframe, is 840 males and 137 females. Of these, 753 are eligible and 224 are ineligible for the program.

\*Ineligibility is due to being in restrictive housing, having class IV status, or receiving a major disciplinary within the last 60 days.

**Substance Abuse Treatment Program (SATP):**

October 2020 Unit	Capacity	Beginning Count	Completed	Removed	Admissions	End Count
Benton	20	14	4	0	0	10
Cummins	47	31	0	14	18	35
Grimes	56	44	7	4	17	50
Maximum Security	4	4	1	0	0	3
McPherson	106	46	5	4	0	37
Randall L. Williams	200	88	0	10	0	78
Wrightsville	150	67	0	7	0	60
<b>Total</b>	<b>583</b>	<b>294</b>	<b>17</b>	<b>39</b>	<b>35</b>	<b>273</b>

There are 1,787 males and 170 females on the waiting list who are within five years of their release date. Of those, 26 are mandated by the Parole Board.

The average time on the waiting list from request is 32 days.

\*The total on the waiting list, including those not currently within the identified timeframe, is 2,395 males and 200 females. Of these, 1,959 are eligible and 602 are ineligible for the program.

\*Ineligibility is due to being in restrictive housing, having class IV status, or receiving a major disciplinary within the last 60 days.

**Substance Use Intervention Program:** The Substance Use Intervention Program had no admissions or discharges for an end-of-month count of zero for October. This program is housed at the Varner Unit and is for inmates found guilty of a disciplinary violation for drug use or drug possession.

**Ouachita River Correctional Unit (ORCU) Residential Program Unit (RPU):** The RPU had five admissions and two discharges in October for an end-of-month count of 119.

**McPherson Unit Mental Health Residential Program Unit (RPU):** There were two admissions and 20 discharges in October for an end-of-month count of 36.

**Habilitation Program:** The Habilitation Program at the Ouachita River Correctional Unit provided treatment services to 45 inmates during October. There was one admission and no discharges, resulting in an end-of-month count of 45.

**Anger Management Treatment:** The Anger Management Treatment Program at the Cummins Unit provided treatment services to 12 inmates during October. There were no admissions and eight discharges, for an end-of-month count of four.

**MENTAL HEALTH SERVICES, continued**

**Staffing:** The following Mental Health Services and Substance Abuse Treatment Program (SATP) positions were vacant in September and October 2020:

Positions	FTE's*	September 2020	October 2020
Psychologists	14	5	5
Social Workers	31	12	12
Rehab Program Manager	0	1	1
Advisors	64	11	12
Substance Abuse Program Leaders	35	7	3
Administrative Specialists	17	8	8

\*FTE refers to authorized Full Time Equivalent positions.

**ADDITIONAL MENTAL HEALTH AND MEDICAL INFORMATION****Self-Study Classes:**

Classes	Number of Participants	Number Completed	Waiting List
Anger Management	176	124	671
Thinking Errors	69	68	695
Substance Abuse Education	147	145	455
Communication Skills	99	99	677
Domestic Violence	69	64	187
Victims of Domestic Violence	12	12	20
Stress Management	89	89	644
Parenting	68	67	180

**Suicide:** There were 77 suicidal threats during October. There were ten attempts resulting in three deaths.

**Outpatient:** There were 1,873 inmates on the mental health medical log at the beginning of October. Mental Health staff conducted the following contacts during October:

Case Management Contacts	1,764
Requests for Interviews	1,206
Testing	3
Intakes	287
Unit Requests	784
Pre-Lockup Reviews	504
Routine Restrictive Housing Reviews	816
Restrictive Housing Rounds	20,557
PREA Evaluations	93
Routine Follow-up	352
834 Requests	42

**County Mental Health Requests:** During October, there were 323 requests received of a mental health nature. Of those, 184 inmates were fast-tracked to ADC. **Note: Most inmates were not transferred due to COVID-19.**

**County Medical Health Requests:** During October, there were 845 requests received of a medical nature. A total of eight inmates were fast-tracked to ADC.

**Medical Contract Reimbursements:** Sanction reimbursements for September were \$18,350.00.

**Deaths:** There were 15 inmate deaths during the month of October. Three were claimed and 12 were cremated.

**Wellpath:** See attachment for Wellpath's report regarding outside beds and emergency room visits.

**Medical Grievances:** In October, there were 179 appeals received of medical grievances and 173 appeals were answered; eight of those were found to be with merit and one with merit but resolved.

**SEX OFFENDER ASSESSMENT****Assessments Completed:**

Risk Level	October	September 1999 through October 2020
Level 1	2	1,206
Level 2	24	8,066
Level 3	18	7,153
Level 4	0	700
Default 3	6	*
<b>Total</b>	<b>50</b>	<b>17,125</b>

\*Default Level 3's are included in the total number of Level 3's to date.

**ACIC Numbers:**

The total number of sex offenders registered from September 1999 through October 2020:

Compliant	8,359
Delinquent	1,371
Confined	3,237
Out-of-State	3,766
Address Unknown	141
Deported	208
Incapacitated	95
Out of USA	11
<b>Total</b>	<b>17,225</b>

Consistent with current Arkansas law, deceased offenders no longer remain on the registry.



**PAWS IN PRISON**

October 2020 Unit	Enrolled	Graduated	Foster	Volunteer Hours
Hawkins Unit	4	0	0	0
Maximum Security Unit	0	0	0	0
North Central Unit	4	0	0	0
Ouachita River Correctional Unit	6	1	0	0
Randall L. Williams Unit	6	5	0	0
Tucker Unit	5	1	0	0
<b>Total</b>	<b>25</b>	<b>7</b>	<b>0</b>	<b>0</b>

**Completed Paws in Prison Training:**

October 2020 Program Graduates	7
YTD 2020 Program Graduates	184
Total Graduates Since Inception (December 2011)	1,636
Dogs Currently in Foster (Graduated, but Not Adopted)	0
October 2020 Volunteer Hours	0
YTD Volunteer Hours	56

**INFORMATION TECHNOLOGY**

INMATE TABLETS – Within the Division of Correction, a total of 3,211 inmate tablets were leased during October.

INMATE VIDEO VISITS – Inmates completed 18,576 video visits during the month and missed 778 within the Division of Correction.

**CONSTRUCTION/MAINTENANCE****PROJECT UPDATES**

SEE CONSTRUCTION BUDGET / STATUS REPORT IN ATTACHMENTS SECTION (PAGES 22-23).

**AGENCY HIGHLIGHTS****AGENCY-WIDE:*****ADC Staff Featured in Department Social Media Campaign Leading Up to New Website Launch***

In early October, the Communications Team launched a month-long “AR DOC Family” social media campaign with the theme, “Tell Our Story.”

ADC employees, along with others throughout the Department, were featured with a photo and a statement about what it means to be a part of the AR DOC Family.

The campaign, which was positively received, was used to build momentum for the October 29 launch of the new DOC website, built by the Information Network of Arkansas. The fresh redesign of the website has improved features in the Inmate Search and Inmate Deposit Service tools, and should serve as a valuable resource for ADC constituents.

**Take Some Time to Visit the AR DOC Family!**



Check out our brand new website with updated features at:  
<https://doc.arkansas.gov/>

## AR DOC *Family*

**Justin Whipps**

Correctional Sergeant –  
ADC Cummins Unit

*“I enjoy coming to work because I feel like I can make a change with the staff and inmates. I have a continuous drive to learn something new every day I step foot into the Cummins Unit.”*



## 2020 INFORMAL GRIEVANCE REPORT

Month	BENTON	HAWK/M	HAWK/F	WRTS	EARU & MX	GRIMES	RLW	MCWR	MCPH	MSU	NCU	PBU	NWA	TU	TRCC	VSMX	VU	CU & CMU	ORCU	Ester	DRU	Bowie Cty	TOTAL
JAN	0	34	27	84	449	213	19	0	342	199	150	41	0	123	2	486	89	220	296	39	84	33	2,930
FEB	2	34	27	52	209	164	19	0	288	245	107	35	0	138	2	464	95	178	232	25	63	43	2,422
MAR	1	29	19	64	384	150	12	0	301	264	148	35	0	101	2	486	65	238	260	31	104	29	2,723
APR	2	50	27	121	434	180	32	0	254	268	168	45	0	148	7	521	121	268	292	38	146	22	3,144
MAY	2	20	34	106	259	154	64	0	238	316	129	67	0	92	1	491	101	465	269	29	126	26	2,989
JUN	0	15	7	113	371	199	35	0	234	192	154	64	0	118	0	422	80	303	134	35	116	16	2,608
JUL	1	42	19	116	392	160	40	0	261	144	104	48	0	127	2	386	72	276	228	43	143	21	2,625
AUG	7	52	25	86	333	205	42	0	271	153	137	74	0	120	0	442	82	149	260	61	166	18	2,683
SEPT	0	28	26	84	298	161	36	0	236	104	174	93	0	90	1	402	102	202	264	35	77	18	2,431
OCT	1	40	22	64	267	142	21	0	286	124	158	32	0	99	1	230	19	159	261	21	88	16	2,051
NOV	0	0	0	0	0	0	0	0	0	0	0	0	0	0	0	0	0	0	0	0	0	0	0
DEC	0	0	0	0	0	0	0	0	0	0	0	0	0	0	0	0	0	0	0	0	0	0	0
TOTAL	16	344	233	890	3,396	1,728	320	0	2,711	2,009	1,429	534	0	1,156	18	4,330	826	2,458	2,496	357	1,113	242	26,606

## 2020 FORMAL GRIEVANCE REPORT

Month	BENTON	HAWK/M	HAWK/F	WRTS	EARU & MX	GRIMES	RLW	MCWR	MCPH	MSU	NCU	PBU	NWA	TU	TRCC	VSMX	VU	CU & CMU	ORCU	Ester	DRU	Bowie Cty	TOTAL
JAN	0	13	10	35	404	105	5	0	130	174	90	11	0	92	4	260	65	125	153	15	43	7	1,741
FEB	0	13	10	31	365	59	15	1	120	130	61	22	0	75	0	242	66	104	126	17	32	16	1,505
MAR	1	27	8	30	426	63	12	1	122	221	93	5	0	99	0	273	65	129	153	16	50	5	1,799
APR	2	27	8	32	450	87	15	0	84	178	99	12	0	97	0	298	91	181	163	14	73	1	1,912
MAY	2	12	2	48	367	70	49	0	93	316	88	19	0	78	1	301	80	315	156	11	60	5	2,073
JUN	1	4	1	53	392	93	20	0	98	192	104	27	0	76	0	310	59	210	221	12	66	3	1,942
JUL	0	14	3	43	473	75	21	0	99	173	59	23	0	77	0	245	57	177	212	18	60	6	1,835
AUG	4	20	7	45	383	97	17	0	115	102	65	17	0	81	0	273	54	134	212	45	81	6	1,758
SEPT	0	16	12	43	364	75	33	0	111	153	91	23	0	76	0	257	80	135	166	20	42	3	1,700
OCT	0	18	2	38	342	55	11	0	118	280	93	14	0	62	0	230	19	119	158	9	44	6	1,618
NOV	0	0	0	0	0	0	0	0	0	0	0	0	0	0	0	0	0	0	0	0	0	0	0
DEC	0	0	0	0	0	0	0	0	0	0	0	0	0	0	0	0	0	0	0	0	0	0	0
TOTAL	10	164	63	398	3,966	779	198	2	1,090	1,919	843	173	0	813	5	2,689	636	1,629	1,720	177	551	58	17,883

## INMATE INSTITUTIONAL GRIEVANCE APPEAL REPORT – OCTOBER 2020

	Acknowledged	Rejected	Processed W/O Merit	Processed W/ Merit
Benton Unit	0	0	0	0
Benton Work Release	0	0	0	0
Bowie County Texas Correctional Facility	1	0	3	0
Cummins Unit	14	10	39	0
Cummins Modular Unit	2	2	1	0
Delta Regional Unit	9	2	8	0
East Arkansas Regional Unit	38	5	45	0
East Arkansas Regional Max Unit	86	6	128	0
Ester Unit	4	0	8	0
Grimes Unit	14	6	16	0
Maximum Security Unit	27	3	36	0
Tucker Re-Entry	0	0	0	0
McPherson Unit	25	8	24	0
McPherson Mental Health Residential Program Unit	0	0	0	0
Mississippi County Work Release Center	0	0	0	0
Northwest Arkansas Work Release Center	0	0	0	0
North Central Unit	13	8	16	0
Ouachita River Correctional Unit	21	8	59	1
ORCU Hospital	1	0	0	0
ORCU New Commitment	15	0	6	0
ORCU Mental Health Residential Program Unit	6	0	0	0
Pine Bluff Unit	1	3	2	0
Pine Bluff Re-Entry	0	0	0	0
Randall L. Williams Correctional Facility	4	2	8	0
Texarkana Regional Correctional Center	0	0	0	0
Tucker Unit	8	5	14	0
Varner Super Max	92	13	133	0
Varner Unit	14	5	25	0
Wrightsville Unit	4	0	14	0
Hawkins Center	0	0	0	0
Hawkins for Males	3	2	4	0
Hawkins SPU	0	0	0	0
<b>Total</b>	<b>402</b>	<b>88</b>	<b>589</b>	<b>1</b>



## ADMISSIONS AND RELEASES – OCTOBER 2020

<u>Admissions</u>	<u>Male</u>	<u>Female</u>	<u>Total</u>
Asian	0	0	0
Black	129	1	130
Hispanic	8	1	9
Native American Indian	0	0	0
Native Hawaiian or Pacific Isl.	0	0	0
White	114	10	124
Other	1	0	1
Unknown	1	0	1
<b>Total</b>	<b>253</b>	<b>12</b>	<b>265</b>

<u>Releases</u>	<u>Male</u>	<u>Female</u>	<u>Total</u>
Asian	0	0	0
Black	133	6	139
Hispanic	12	0	12
Native American Indian	2	0	2
Native Hawaiian or Pacific Isl.	0	0	0
White	239	22	261
Other	0	0	0
Unknown	0	0	0
<b>Total</b>	<b>386</b>	<b>28</b>	<b>414</b>

## ADC INMATE POPULATION GROWTH 2000-2026 - OCTOBER 2020

Updated 10/31/2020

Mo.	2000	2001	2002	2003	2004	2005	2006	2007	2008	2009	2010	2011	2012	2013	2014	2015	2016	2017	2018	2019	2020
Jan.	11,984	11,908	12,402	13,015	13,105	13,595	13,481	13,839	14,518	14,796	15,334	16,312	15,134	14,815	17,481	18,142	17,785	17,824	18,201	17,958	17,989
Feb.	12,169	12,022	12,529	13,054	13,166	13,783	13,633	14,012	14,603	14,883	15,374	16,209	14,990	15,008	17,438	18,082	17,625	17,608	17,998	17,846	18,181
March	12,006	12,033	12,299	13,108	13,088	13,418	13,534	13,772	14,580	14,843	15,290	16,095	14,964	14,665	17,395	18,233	17,573	17,666	18,089	17,898	17,860
April	12,069	12,167	12,465	13,213	13,323	13,469	13,554	13,851	14,769	14,937	15,570	16,172	15,124	14,850	17,604	18,703	17,815	17,798	18,227	17,977	17,331
May	12,109	12,384	12,558	13,463	13,556	13,528	13,711	14,146	14,880	15,146	15,694	16,062	15,132	15,074	17,593	18,693	17,769	17,652	17,945	17,817	16,694
June	12,005	12,108	12,439	13,418	13,389	13,251	13,430	13,915	14,700	15,025	15,564	15,554	14,832	14,825	17,340	18,813	17,973	17,963	17,972	17,942	16,552
July	12,030	12,190	12,622	13,509	13,528	13,286	13,560	14,082	14,868	15,195	15,807	15,519	14,879	15,379	17,522	18,870	18,130	18,180	18,005	18,002	16,511
August	12,087	12,371	12,815	13,565	13,632	13,419	13,646	14,224	15,100	15,385	15,829	15,240	14,675	16,103	17,549	18,806	17,919	18,051	17,751	18,090	16,367
September	11,983	12,289	12,774	13,341	13,516	13,237	13,652	14,217	14,850	15,285	16,025	15,172	14,724	16,412	17,605	18,549	18,026	18,179	17,865	17,856	16,215
October	12,119	12,348	12,942	13,341	13,584	13,363	13,775	14,349	14,836	15,381	16,311	15,271	14,856	16,993	17,880	18,430	18,127	18,348	17,943	17,947	16,311
November	12,094	12,408	13,162	13,408	13,706	13,587	13,913	14,437	15,025	15,340	16,460	15,205	14,625	17,168	17,848	17,981	17,573	17,973	17,666	18,060	
December	11,856	12,333	12,845	13,106	13,470	13,338	13,728	14,315	14,716	15,199	16,204	15,062	14,654	17,235	17,874	17,707	17,537	18,078	17,799	17,759	
Net Ann. Inc.	29	477	512	261	364	-132	390	587	401	483	1,005	-1,142	-408	2,581	639	-167	-170	541	-279	-40	-1,448
Avg. Mo. Inc.	2	40	43	22	30	-11	33	49	33	40	84	-95	-34	215	53	-14	-14	45	-23	-3	-145

Population is total jurisdictional count at end of each month. Population at end of month December 1999 was 11,827.

Average monthly population increase for past fifteen years 2005 - 2019 is 24

Average monthly population increase for past ten years Jan. 2010 - Dec 2019 is 21

Average monthly population increase for past five years 2015 - 2019 is -2

Projected at Growth of 24 per Month

Mo.	2008	2009	2010	2011	2012	2013	2014	2015	2016	2017	2018	2019	2020	2021	2022	2023	2024	2025	2026
	Actual	Actual	Actual	Actual	Actual	Actual	Actual	Actual	Actual	Actual	Actual	Actual	Actual Proj.	Proj.	Proj.	Proj.	Proj.	Proj.	Proj.
January	14,518	14,796	15,334	16,312	15,134	14,815	17,481	18,142	17,785	17,824	18,201	17,958	17,989	16,383	16,671	16,959	17,247	17,535	17,823
February	14,603	14,883	15,374	16,209	14,990	15,008	17,438	18,082	17,625	17,608	17,998	17,846	18,181	16,407	16,695	16,983	17,271	17,559	17,847
March	14,580	14,843	15,290	16,095	14,964	14,665	17,395	18,233	17,573	17,666	18,089	17,898	17,860	16,431	16,719	17,007	17,295	17,583	17,871
April	14,769	14,937	15,570	16,172	15,124	14,850	17,604	18,703	17,815	17,798	18,227	17,977	17,331	16,455	16,743	17,031	17,319	17,607	17,895
May	14,880	15,146	15,694	16,062	15,132	15,074	17,593	18,693	17,769	17,652	17,945	17,817	16,694	16,479	16,767	17,055	17,343	17,631	17,919
June	14,700	15,025	15,564	15,554	14,832	14,825	17,340	18,813	17,973	17,963	17,972	17,942	16,552	16,503	16,791	17,079	17,367	17,655	17,943
July	14,868	15,195	15,807	15,519	14,879	15,379	17,522	18,870	18,130	18,180	18,005	18,002	16,511	16,527	16,815	17,103	17,391	17,679	17,967
August	15,100	15,385	15,829	15,240	14,675	16,103	17,549	18,806	17,919	18,051	17,751	18,090	16,367	16,551	16,839	17,127	17,415	17,703	17,991
September	14,850	15,285	16,025	15,172	14,724	16,412	17,605	18,549	18,026	18,179	17,865	17,856	16,215	16,575	16,863	17,151	17,439	17,727	18,015
October	14,836	15,381	16,311	15,271	14,856	16,993	17,880	18,430	18,127	18,348	17,943	17,947	16,311	16,599	16,887	17,175	17,463	17,751	18,039
November	15,025	15,340	16,460	15,205	14,625	17,168	17,848	17,981	17,573	17,973	17,666	18,060	16,335	16,623	16,911	17,199	17,487	17,775	18,063
December	14,716	15,199	16,204	15,062	14,654	17,235	17,874	17,707	17,537	18,078	17,799	17,759	16,359	16,647	16,935	17,223	17,511	17,799	18,087
Net Ann. Inc.	401	483	1,005	-1,142	-408	2,581	639	-167	-170	541	-279	-40	-1,400	288	288	288	288	288	288
Ave. Mo. Inc.	33	40	84	-95	-34	215	53	-14	-14	45	-23	-3	-117	24	24	24	24	24	24

## MONTHLY POPULATION AVERAGES - OCTOBER 2020

Unit/Center	10/1	10/2	10/3	10/6	10/7	10/8	10/9	10/12	10/13	10/14	10/15	10/16	10/19	10/20	10/21	10/22	10/23	10/26	10/27	10/28	10/29	10/30	AVG
Benton	271	268	268	268	268	268	266	266	266	266	266	266	265	265	263	262	262	262	262	262	261	257	265
Cummins	1,734	1,732	1,731	1,728	1,723	1,723	1,723	1,723	1,723	1,723	1,765	1,764	1,760	1,760	1,766	1,808	1,808	1,808	1,806	1,803	1,801	1,799	1,760
Delta	533	533	534	534	535	532	530	529	529	527	524	524	523	521	519	518	519	518	517	517	511	511	524
East AR Reg	1,450	1,448	1,434	1,484	1,481	1,477	1,471	1,470	1,466	1,465	1,465	1,465	1,464	1,460	1,466	1,465	1,463	1,458	1,457	1,456	1,455	1,500	1,465
Ester	490	490	487	487	486	475	474	472	472	468	468	467	467	467	464	464	463	463	463	462	459	459	471
Grimes	921	919	919	912	912	910	946	941	941	934	936	936	928	928	928	925	923	924	923	916	916	916	925
Max Sec	558	556	556	556	556	555	554	554	554	553	553	553	554	555	555	553	552	552	552	550	548	548	554
McPherson	779	777	784	784	784	781	781	781	780	780	780	780	779	779	779	775	775	774	774	774	773	769	778
MCWRC	121	121	121	121	121	132	136	135	135	134	133	133	133	133	133	133	131	131	131	131	131	131	130
N Central	676	672	672	672	671	670	671	670	669	669	669	666	666	666	665	665	663	655	655	655	655	653	666
NWAWRC	68	68	68	68	68	68	68	68	68	68	68	68	68	68	68	71	71	71	71	71	71	71	69
Ouachita River	1,763	1,762	1,762	1,714	1,707	1,704	1,714	1,711	1,709	1,704	1,698	1,700	1,740	1,730	1,721	1,725	1,722	1,714	1,714	1,714	1,732	1,736	1,723
Randall L Williams	361	355	354	353	353	350	350	349	349	346	345	345	344	343	341	341	338	337	337	336	333	333	345
Pine Bluff	453	453	453	451	451	449	449	450	450	452	452	450	450	450	450	449	449	447	447	446	442	442	449
PB Reentry	53	53	52	53	52	52	52	52	52	52	52	52	52	52	52	52	52	52	52	52	52	52	52
TRCC	100	100	99	99	99	99	99	99	99	99	99	99	99	98	98	98	98	98	98	98	98	98	99
Tucker	804	804	802	799	799	797	790	790	789	789	788	785	785	784	782	784	784	784	775	771	771	771	788
Tucker Re-Entry	60	60	60	59	59	59	59	58	58	58	57	57	57	57	58	58	58	58	58	58	57	57	58
Varner	1,435	1,435	1,431	1,431	1,431	1,431	1,430	1,430	1,429	1,427	1,424	1,419	1,417	1,417	1,416	1,414	1,414	1,414	1,413	1,454	1,449	1,449	1,428
Wrightsville	702	702	699	699	701	701	698	693	692	690	690	687	686	686	685	685	684	683	683	683	679	676	690
WR Hawkins-Females	173	172	170	170	170	170	170	171	171	171	172	171	171	171	170	170	170	170	170	170	171	169	171
WR Hawkins-Males	179	179	175	175	173	173	173	173	173	172	172	172	173	173	173	173	173	173	173	173	173	173	174
Total ADC	13,684	13,659	13,631	13,617	13,600	13,576	13,604	13,585	13,574	13,547	13,576	13,559	13,581	13,563	13,552	13,588	13,572	13,546	13,531	13,552	13,538	13,570	13,584
Bowie CO., TX	281	280	280	280	280	280	280	280	280	280	280	280	279	278	277	277	277	277	276	276	275	225	276
ALETA	15	15	15	15	15	15	15	15	15	15	15	15	15	15	15	15	15	15	15	15	15	15	15
Ar State Police	57	57	57	56	56	56	56	56	56	56	56	56	56	56	56	56	56	56	56	56	56	56	56
Co Jail / M	1,649	1,647	1,660	1,676	1,697	1,714	1,706	1,724	1,731	1,750	1,719	1,754	1,737	1,748	1,764	1,756	1,781	1,806	1,815	1,795	1,825	1,854	1,741
Co Jail / F	178	186	182	186	187	188	191	194	194	197	198	201	207	210	210	213	217	220	218	224	231	236	203
Total Co Jail BK	1,827	1,833	1,842	1,862	1,884	1,902	1,897	1,918	1,925	1,947	1,917	1,955	1,944	1,958	1,974	1,969	1,998	2,026	2,033	2,019	2,056	2,090	1,944
309/M	233	233	246	246	245	243	243	243	243	243	243	242	242	247	247	247	245	245	244	244	244	243	243
309/F	86	88	88	88	88	88	88	88	88	88	88	88	88	88	88	88	88	88	88	88	88	88	88
Total Act 309	319	321	334	334	333	331	331	331	331	331	331	330	330	335	335	335	333	333	332	332	332	331	331
Total Non ADC	2,499	2,506	2,528	2,547	2,568	2,584	2,579	2,600	2,607	2,629	2,599	2,636	2,624	2,642	2,657	2,652	2,679	2,707	2,712	2,698	2,734	2,717	2,622
Total	16,183	16,165	16,159	16,164	16,168	16,160	16,183	16,185	16,181	16,176	16,175	16,195	16,205	16,205	16,209	16,240	16,251	16,253	16,243	16,250	16,272	16,287	16,206

## FISCAL YEAR 2021 COUNTY JAIL BACKUP - OCTOBER 2020

DAY		Jul-20		Aug-20		Sep-20		Oct-20
1		800	*	1,284		1,625		1,827
2		829	*	1,284		1,642		1,833
3		850		1,309		1,672	*	1,833
4	*	850		1,308		1,696	*	1,833
5	*	850		1,299	*	1,696		1,842
6		850		1,304	*	1,696		1,862
7		863		1,334		1,718		1,884
8		874	*	1,334		1,718		1,902
9		898	*	1,334		1,679		1,897
10		932		1,331		1,689	*	1,897
11	*	932		1,350		1,672	*	1,897
12	*	932		1,351	*	1,672		1,918
13		961		1,361	*	1,672		1,925
14		975		1,380		1,676		1,947
15		1,003	*	1,380		1,702		1,917
16		1,032	*	1,380		1,705		1,955
17		1,059		1,388		1,731	*	1,955
18	*	1,059		1,403		1,769	*	1,955
19	*	1,059		1,426	*	1,769		1,944
20		1,081		1,457	*	1,769		1,958
21		1,099		1,481		1,772		1,974
22		1,124	*	1,481		1,786		1,969
23		1,168	*	1,481		1,811		1,998
24		1,181		1,496		1,801	*	1,998
25	*	1,181		1,518		1,835	*	1,998
26	*	1,181		1,539	*	1,835		2,023
27		1,203		1,566	*	1,835		2,033
28		1,216		1,589		1,810		2,019
29		1,242	*	1,589		1,791		2,056
30		1,263	*	1,589		1,815		2,090
31		1,284		1,607			*	2,090
Avg Daily Backup		1,027		1,417		1,735		1,943

Note: Totals Do Not Include 309 Contracts in County Jails (Maximum of 336)

County Jail Back-up Fiscal Year Average as of October 31, 2020 ~ 1,531

Short-Term Revocation Program Average for October 2020 ~ 745

Short-Term Revocation Program Fiscal Year Average as of October 31, 2020 ~ 705

## STTG UNIT COUNTS – OCTOBER 2020

Unit	Beginning Total	Confirmed	Suspected	In	Out	Paroled	Removed	Ending Total	Total Unit Population	Unit % of STTG's
Benton	50	0	0	0	0	5	0	45	256	17.58%
Cummins	617	0	0	61	33	7	0	638	1,799	35.46%
Delta	200	0	0	0	26	0	0	174	506	34.39%
EARU	551	0	0	38	6	16	0	567	1,489	38.08%
Grimes	333	0	1	28	8	19	0	335	956	35.04%
Hawkins	41	0	0	1	0	0	0	42	340	12.35%
Max	273	0	0	4	4	1	0	272	605	44.96%
Mcperson	37	0	0	1	1	0	0	37	805	4.60%
MCWR	26	0	0	10	1	0	0	35	131	26.72%
NCU	195	0	0	0	8	0	0	187	650	28.77%
NWAWR	18	0	0	0	0	1	0	17	78	21.79%
ORCU	419	45	0	56	5	18	0	497	164	303.05%
ORCU Intake	31	51	0	0	17	0	0	65	120	54.17%
PB/Ester	178	0	0	4	6	4	0	172	947	18.16%
RLW	150	0	0	0	3	6	0	141	330	42.73%
TWR	28	0	0	41	42	0	0	27	98	27.55%
Tucker	274	0	0	3	5	0	0	272	781	34.83%
Varner	590	0	0	34	21	6	0	597	1,450	41.17%
Wrightsville	243	0	0	3	4	10	0	232	672	34.52%
<b>Total</b>	<b>4,254</b>	<b>96</b>	<b>1</b>	<b>284</b>	<b>190</b>	<b>93</b>	<b>0</b>	<b>4,352</b>	<b>12,177</b>	<b>35.74%</b>

**ORCU Intake brought in 51 new STTG members into ADC last month.**



## STTG DISCIPLINARY REPORT – OCTOBER 2020

Unit	STTG Incidents	STTG Suspected Incidents	Total Unit Disciplinary	Disciplinary Involving STTG	Percentage
Benton	0	0	2	0	0.00%
Cummins	0	0	211	110	52.13%
Delta	0	0	148	38	25.68%
EARU	0	0	299	199	66.56%
Grimes	3	0	266	147	55.26%
Hawkins	0	0	22	4	18.18%
Max	0	0	68	34	50.00%
Mcpherson	0	0	170	15	8.82%
MCWR	0	0	1	0	0.00%
NCU	0	0	60	20	33.33%
NWAWR	0	0	4	1	25.00%
ORCU	0	0	102	33	32.35%
ORCU Intake	0	0	5	3	60.00%
PB/Ester	0	0	52	14	26.92%
RLW	0	0	47	28	59.57%
TWR	0	0	1	1	100.00%
Tucker	0	0	114	53	46.49%
Varner	0	0	182	122	67.03%
Wrightsville	0	0	201	115	57.21%
<b>Total</b>	<b>3</b>	<b>0</b>	<b>1,955</b>	<b>937</b>	<b>47.93%</b>

## STTG COUNTS BY STTG SET – OCTOBER 2020

STTG Set	Benton	Cummins	Delta	EARU	Grimes	Hawkins	Max	Mcperson	MCWR	NCU	NWAWR	ORCU	Intake	PB	RLW	TWR	Tucker	Varner	Wrightsville	Total
Asian	0	1	0	0	0	0	0	0	1	0	0	2	0	0	3	0	0	0	0	7
Bloods	5	152	36	105	64	4	62	5	3	29	4	100	17	29	33	0	44	130	36	858
Crips	3	94	17	71	32	4	35	5	2	14	0	50	7	22	19	3	24	95	23	520
Folk	3	56	0	61	0	6	30	8	0	14	5	2	0	11	7	0	22	62	19	306
GD	11	141	37	147	99	7	65	0	15	33	0	99	15	41	29	13	86	131	61	1,030
Mexican	1	18	11	13	7	1	5	2	1	9	1	11	1	6	2	0	5	18	11	123
Motorcycle	0	1	1	1	1	1	4	1	2	1	0	0	0	2	0	0	2	0	0	17
Other	0	19	5	12	14	2	4	0	1	7	1	17	1	9	3	0	6	15	7	123
People	1	23	6	19	21	1	18	2	0	7	1	17	4	9	9	1	10	18	9	176
Unknown	0	8	6	12	8	0	3	1	0	5	0	9	3	0	4	1	0	7	4	71
W/S	12	40	33	36	38	6	7	13	8	41	5	130	10	21	18	7	24	31	25	505
AB	2	6	0	4	3	0	1	0	1	2	0	7	0	2	1	1	8	12	5	55
AC	0	6	1	9	7	1	5	0	0	5	0	4	0	4	1	0	8	14	8	73
NAE	5	38	5	33	16	3	12	0	1	4	0	29	2	7	5	1	10	29	13	213
WAR	2	35	16	44	25	6	21	0	0	16	0	20	5	9	7	0	23	35	11	275
<b>Total</b>	<b>45</b>	<b>638</b>	<b>174</b>	<b>567</b>	<b>335</b>	<b>42</b>	<b>272</b>	<b>37</b>	<b>35</b>	<b>187</b>	<b>17</b>	<b>497</b>	<b>65</b>	<b>172</b>	<b>141</b>	<b>27</b>	<b>272</b>	<b>597</b>	<b>232</b>	<b>4,352</b>

Key:

GD = Gangster Disciples

W/S = White Supremacist

NAE = New Aryan Empire

WAR = White Aryan Resistance

AC = Aryan Circle

AB = Aryan Brotherhood

## INTERNAL AFFAIRS BOARD REPORT - OCTOBER 2020

Opened Investigation, Reviews/ASP October 2020	Open Investigation	Open Review	ASP Referral
Arson	0	0	0
Assault on Inmate	0	0	0
Assault on Staff	0	0	0
Attempted Escape	0	0	0
Banding Together	0	0	1
Banding Together to Interfere with Unit	0	0	0
Battery on Inmate	0	0	1
Battery on Inmate without Serious Injury	0	0	0
Battery on Inmate with Serious Injury	0	1	0
Battery on Inmate with Use of Unknown Substance	0	0	0
Battery on Other Person with Serious Injury	0	0	0
Battery on Other Person with Use of Unknown Substance	0	0	0
Battery on Staff	0	0	2
Battery on Staff and Inmate	0	0	0
Battery on Staff without Serious Injury	0	0	0
Battery on Staff with Serious Injury	0	0	0
Battery on Staff with Bodily Fluids	0	0	3
Battery on Staff with Use of Unknown Substance	0	0	0
Child Pornography	0	0	0
Criminal Activity	0	0	1
Death	0	0	9
Disobey Direct Order	0	0	0
Employee Misconduct	5	0	0
Excessive Force	0	0	0
Escape from Unit	0	0	0
Escape from Work Release	0	0	0
Escape Plan	0	0	0
Farm Incident	0	0	0
Forcible Rape	0	0	0
Inappropriate Relationship	0	0	0
Indecent Exposure	0	0	0
Inmate on Inmate Abusive Sexual Contact	0	5	0
Inmate on Inmate Sexual Assault	0	0	0
Inmate on Inmate Sexual Contact	0	0	0
Inmate on Inmate Sexual Harassment	0	22	0
Inmate on Inmate Sexual Misconduct	0	11	0
Inmate on Inmate Nonconsensual Sexual Contact	0	6	0
Introduction of Cell Phone	0	0	0
Introduction of Contraband	0	0	2
Introduction of Drugs	0	0	3
Introduction of Money	0	0	0
Introduction of Tobacco	0	0	0
Introduction of Weapon	0	0	0
Major Breach of Security	1	0	0
Misconduct	0	0	0
Missing Narcotics	0	0	0
Other Felony	0	0	1
Other Incident	0	0	0
Other Rule Violation	1	0	0
Possession of Cell Phone	1	0	5
Possession of Drugs	0	0	2
Possession of Money	0	0	0
Possession of a Weapon	1	0	0
Property Damage	0	0	0
Racial Slurs	1	0	0
Retaliation	0	0	0
Sexual Assault	0	1	0
Sexual Misconduct	0	1	0
STTG	0	0	0
Suspected Criminal Activity	0	0	0
Rape	0	0	0
Riot	0	0	0
Sexual Misconduct	0	0	0
Staff on Inmate Sexual Harassment	0	36	0
Staff on Inmate Sexual Misconduct	0	10	0
Staff on Staff Sexual Harassment	0	0	0
Staff on Staff Sexual Misconduct	0	0	0
Suicide Attempt	0	0	0
Suspected Criminal Activity	0	0	0
Theft	0	0	0
Trafficking	1	0	0
Threat on Staff	0	0	0
Use of Force	1	45	0
Verbal Abuse	0	0	0
Verbal/Written Threat on Staff	0	0	0
Work Release Misconduct	0	0	0
<b>Total</b>	<b>12</b>	<b>138</b>	<b>30</b>

## ADC INPATIENT AND EMERGENCY ROOM UTILIZATION

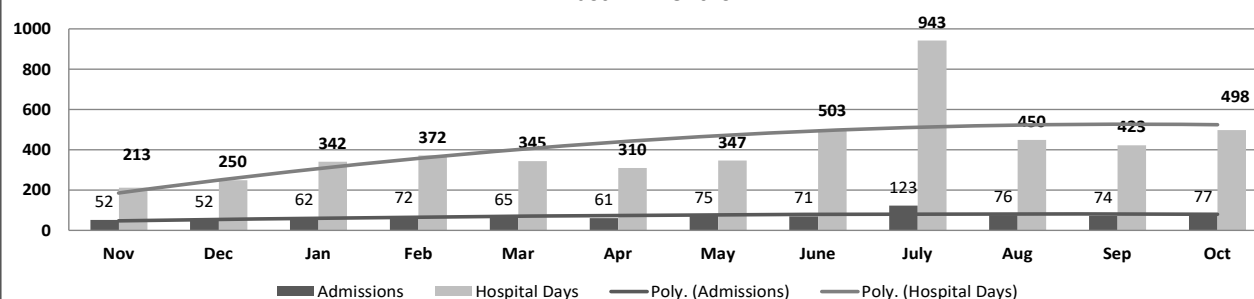
### ADC Inpatient Statistics Past 12 Months

	2019		2020										Average
	Nov	Dec	Jan	Feb	Mar	Apr	May	June	July	Aug	Sep	Oct	
Admissions	52	52	62	72	65	61	75	71	123	76	74	77	71.7
Hospital Days	213	250	342	372	345	310	347	503	943	450	423	498	416.3
Average Length of Stay	5.37	4.76	4.91	6.56	5.22	5.48	5.10	6.21	7.07	6.70	7.65	6.47	5.81

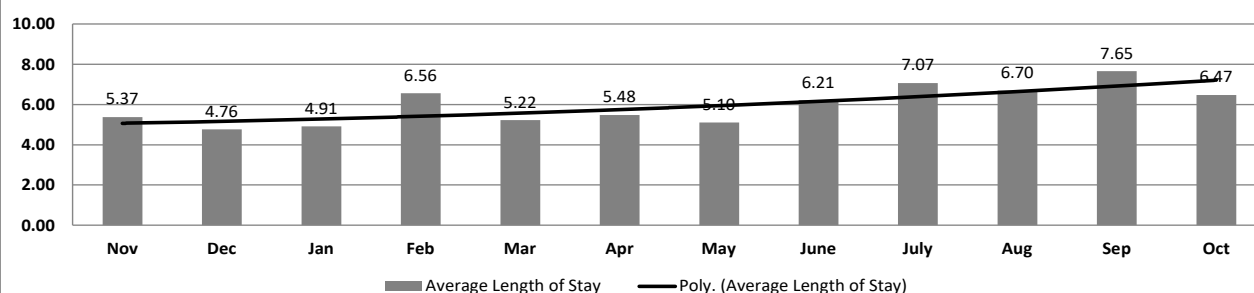
### ADC ER Visits Past 12 Months

	2019		2020										Average
	Nov	Dec	Jan	Feb	Mar	Apr	May	June	July	Aug	Sep	Oct	
Emergency Room Visits	100	79	92	131	98	87	99	105	146	110	131	138	109.7

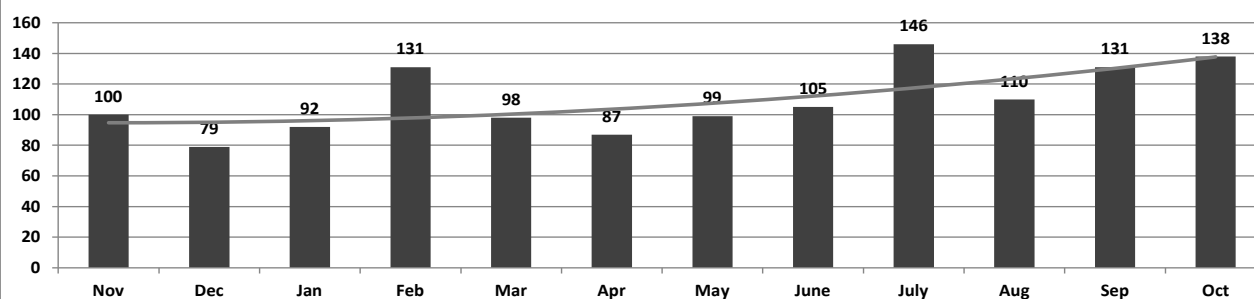
### ADC Inpatient Utilization Past 12 Months



### ADC Inpatient Average Length of Stay Past 12 Months



### ADC Emergency Room Visits Past 12 Months



## MEDICAL GRIEVANCE BOARD REPORT – OCTOBER 2020

Unit	<i>Acknowledged/ Received</i>	<i>Rejected</i>	<i>Reviewed &amp; Signed by Dep Director</i>	<i>With Merit</i>	<i>With Merit, but Resolved</i>	<i>% With Merit</i>	<i>Without Merit</i>
Benton	0	0	0	0	0	0%	0
Bowie County	0	0	0	0	0	0%	0
CMU	2	0	0	0	0	0%	0
Cummins	4	1	6	0	0	0%	6
Delta	1	0	4	0	0	0%	4
EARU	18	0	18	1	0	6%	17
EARU Max	23	2	35	3	0	9%	32
Ester	8	2	5	0	0	0%	5
Grimes	9	2	7	0	0	0%	7
Hawkins	2	0	0	0	0	0%	0
McPherson	1	11	0	0	0	0%	0
MCWRC	0	0	0	0	0	0%	0
MSU	11	2	8	0	1	13%	7
North Central	19	4	16	1	0	6%	15
NWAWRC	0	0	0	0	0	0%	0
Ouachita	25	0	20	0	0	0%	20
Pine Bluff	0	0	2	0	0	0%	2
Randall L. Williams	6	0	0	0	0	0%	0
SNN	6	0	2	0	0	0%	2
TRCC	0	0	0	0	0	0%	0
Tucker	0	6	8	1	0	13%	7
Varner	13	0	12	0	0	0%	12
Varner Super Max	24	0	27	2	0	7%	25
WRU	6	5	2	0	0	0%	2
WHM	1	0	1	0	0	0%	1
WWR	0	0	0	0	0	0%	0
<b>Total</b>	<b>179</b>	<b>35</b>	<b>173</b>	<b>8</b>	<b>1</b>	<b>5%</b>	<b>164</b>



## CHAPLAINCY

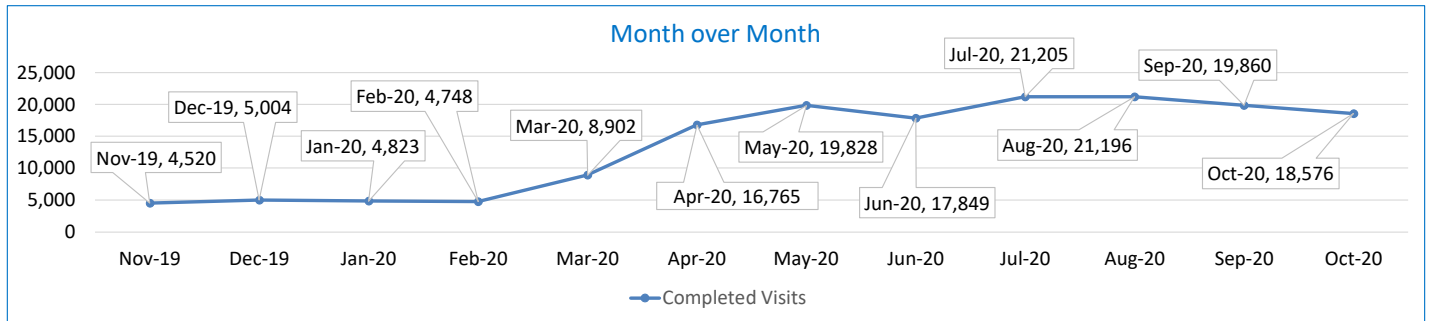
Month: October Year: 2020		CUMMINS	DELTA REGIONAL	EAST ARKANSAS	EAST ARKANSAS MAX	ESTER	GRIMES	HAWKINS	MAXIMUM	MCPHERSON	NORTH CENTRAL	OUACHITA RIVER	PINE BLUFF	RANDALL L. WILLIAMS	TUCKER	VARNER	VARNER MAX	WRIGHTSVILLE	TOTAL
Services Chaplains Oversaw																			
Christian																			
Population	0	0	0	0	8	0	0	0	4	4	13	9	4	0	4	0	0	46	
Segregation	0	0	0	0	0	0	0	0	0	0	0	0	0	0	0	0	0	0	
Muslim																			
Population	0	0	0	0	8	0	0	4	4	0	5	5	5	0	5	0	0	36	
Segregation	0	0	0	0	0	0	0	4	0	0	0	0	0	0	0	0	0	4	
86																			
Volunteers in Charge																			
Protestant	0	0	0	0	0	0	0	0	0	0	0	0	4	0	0	0	0	4	
Catholic	0	0	0	0	0	0	0	0	0	0	0	0	0	0	0	0	0	0	
Muslim	0	0	0	0	0	0	0	0	0	0	0	0	5	0	0	0	0	5	
Other	0	0	0	0	0	0	0	0	0	0	0	0	0	0	0	0	0	0	
Baptism	0	0	0	0	0	0	0	0	0	0	0	0	0	0	0	0	0	0	
Marriages																			
	0	0	0	0	0	0	0	0	0	0	0	0	0	0	0	0	0	0	
Distributed by Chaplains																			
Greeting Cards	72	25	0	0	10	24	98	72	374	150	300	10	0	86	21	43	13	1,273	
Bibles,Quran,Torrah, Etc.	20	25	16	14	5	13	25	8	42	10	350	2	4	115	3	7	35	694	
Study Course	0	5	27	17	12	5	100	0	14	0	65	3	0	212	1	0	45	506	
Writing Supplies	0	0	0	0	32	84	200	20	22	0	500	0	0	412	0	0	30	1,300	
Literature	2,345	575	687	276	0	27	250	80	99	450	500	92	2,036	186	324	265	300	8,492	
Chaplain's Visits																			
Barracks	120	36	36		24	44	16	35	9	27	82	12	4	46	424		10	925	
Approximate Hours Spent in Barracks	33	5	8	0	12	19	20	28	25	4	16	1	0	12	150	15	6	354	
Inmate Office visits	31	50	24	0	15	68	25	5	30	0	31	0	42	76	23	0	13	433	
Other Office visits	27	12	7	2	8	21	16	10	45	16	76	6	6	44	25	6	12	339	
Hospital	0	0	0	0	0	0	0	0	0	0	27	0	0	0	0	0	0	27	
Infirmary/Sick Call	4	1	3	0	2	3	4	20	8	4	24	0	0	2	7	4	4	90	
Restrictive/Punitive Housing	3	2	0	13		2	12	15	8	5	65	0	4	4	0	10	4	147	
PC - DRU		2																2	
Visitation Days	0	0	0	0	0	0	0	0	0	0	0	0	0	0	0	0	0	0	
Volunteer Visits																			
RCV	0	0	0	0	0	0	0	0	0	0	0	0	0	0	0	0	0	0	
OCV	0	0	0	0	0	0	0	0	0	0	0	0	0	0	0	0	0	0	
Spiritual Advisor	0	0	0	0	0	0	0	0	0	0	0	0	0	0	0	0	0	0	
CRA	0	0	0	0	0	0	0	0	0	0	0	0	0	0	0	0	0	0	
Religious Volunteer Hours																			
Volunteer Hours	0	0	0	0	0	0	0	0	0	0	0	0	0	0	0	0	0	0	
Denominational/Volunteer Chaplain Hours	0	0	0	0	0	0	0	0	0	0	0	0	0	0	0	0	0	0	
0																			
Other Activities of Chaplain																			
Counseled Employees	16	10	9	0	8	3	30	6	44	10	43	0	3	10	51	0	10	253	
Orientation Sessions	0	0	1	0	0	0	0	0	0	0	0	0	0	0	0	0	0	1	
Free World Devotions	0	0	3	0	1	8	0	0	1	0	5	3	0	3	24	0	0	48	
Spoke in Churches	14	0	2	0	3	0	0	0	1	0	0	0	1	3	24	0	0	48	
Crisis Intervention Sessions	14	15	2	0	0	0	40	5	205	3	41	4	0	25	10	4	13	381	
Marriage Counseling	0	0	1	0	0	0	0	1	0	0	3	0	0	0	0	0	0	5	
Denominational Meeting	0	0	0	0	0	0	0	0	0	0	0	0	0	0	0	0	0	0	
Chaplain's Meeting	0	1	1	0	1	1	1	1	1	1	1	1	2	2	3	0	2	19	
Volunteer Training Session	0	0	0	0	0	0	0	0	0	0	0	0	0	0	0	0	0	0	
Chaplain Transfers																			
	0	0	0	0	0	1	0	0	0	0	0	0	0	0	0	0	0	1	
Chaplain Promotions																			
	0	0	0	0	0	0	0	0	0	0	0	0	0	0	0	0	0	0	
PAL PROGRAM																			
Enrolled at start of month	40	17	47	0	33	47	41	21	36	15	23	0	23	50	0	0	19	412	
Enrolled during the month	7	0	1	0	0	14	1	0	7	0	16	0	0	1	0	0	0	47	
Removed From PAL Program																			
# Paroled	1	0	0	0	0	1	0	0	0	0	2	0	2	1	0	0	0	7	
# Completed	0	0	0	0	0	10	1	2	0	0	1	0	0	1	0	0	0	15	
# Withdrew	0	0	0	0	0	0	1	0	0	0	0	0	0	0	0	0	0	1	
# Removed	0	2	3	0	0	5	0	0	3	0	2	0	2	6	0	0	0	23	
# Transferred	1	0	0	0	0	1	0	0	0	0	0	0	0	0	0	0	0	2	
Total Removed from PAL Program	2	2	3	0	0	17	2	2	3	0	5	0	4	8	0	0	0	48	
Total Enrolled at the End of the Month	45	15	45	0	33	44	40	19	40	15	34	0	19	43	0	0	19	411	
Volunteers in PAL																			
	0	0	0	0	0	0	0	0	0	0	0	0	0	0	0	0	0	0	
Special Events:																			
	0	0	0	0	0	0	0	0	0	0	0	0	0	0	0	0	0	0	

## SECURUS VIDEO VISITATION REPORT OCTOBER 2020

### AR-DOC SVV Activity Tracker

Total ADP 14,838

Total Visits by Month	Nov-19	Dec-19	Jan-20	Feb-20	Mar-20	Apr-20	May-20	Jun-20	Jul-20	Aug-20	Sep-20	Oct-20
Total (Includes SuperMax)	4,520	5,004	4,823	4,748	8,902	16,765	19,828	17,849	21,205	21,196	19,860	18,576
Target Objective	15,587	15,587	15,587	15,587	15,587	15,587	15,587	15,587	15,587	15,587	15,587	15,587



#### Completed Visits

Site	Current Month	Previous Month
Benton	208	181
Cummins	1,739	1,765
Delta Regional	1,015	1,196
East Arkansas Regional	1,935	2,385
Ester	977	1,087
Grimes	1,107	1,190
J Aaron Hawkins Sr.	620	635
Tucker Max	749	844
Mcperson	634	616
Mississippi County WRC	161	213
North Central	1,382	1,280
NW Arkansas WRC	39	15
Ouachita River	2,422	2,516
Pine Bluff Complex	706	736
Randall L Williams	786	844
State Police Barracks	68	65
Texarkana Regional	221	191
Tucker Unit	803	853
Varner	1,774	2,026
Wrightsville Unit	1,147	1,158
Pine Bluff Re-Entry	83	64
Tucker Re-entry	0	0
<b>Total:</b>	<b>18,576</b>	<b>19,860</b>

#### Missed by Inmate

Site	Current Month	Previous Month
Benton	38	67
Cummins	95	67
Delta Regional	20	30
East Arkansas Regional	68	65
Ester	20	26
Grimes	16	15
J Aaron Hawkins Sr.	13	64
Tucker Max	118	70
Mcperson	31	22
Mississippi County WRC	17	7
North Central	33	26
NW Arkansas WRC	0	4
Ouachita River	53	55
Pine Bluff Complex	30	35
Randall L Williams	20	19
State Police Barracks	1	4
Texarkana Regional	21	6
Tucker Unit	65	38
Varner	97	67
Wrightsville Unit	21	101
Pine Bluff Re-Entry	1	1
Tucker Re-entry	0	0
<b>Total:</b>	<b>778</b>	<b>789</b>

### SECURUS TABLET REPORT OCTOBER 2020

Facility Name	Subscription	Facility	Officer	Total	New Subscriptions
Benton Unit	135	3	8	146	149
Cummins Unit	347	86	14	447	356
Delta Regional Unit	143	28	16	187	142
East Arkansas Regional Unit	269	97	15	381	278
Ester Unit	163	135	20	318	166
Grimes Unit	257	71	14	342	268
J. Aaron Hawkins Sr Center For Women	134	69	15	218	132
McPherson Unit	227	102	15	344	246
Mississippi County Work Release Center	69	2	9	80	77
North Central Unit	161	98	10	269	181
Northwest Arkansas Work Release Center	42	2	8	52	46
Ouachita River Correctional Unit	321	108	14	443	369
Pine Bluff Reentry Center	27	2	0	29	26
Pine Bluff Unit	104	5	8	117	125
Randall L. Williams Facility	78	24	15	117	81
State Police Barracks	22	1	3	26	22
Texarkana Regional Correctional Center	39	2	10	51	42
Tucker Maximum Security Unit	118	31	12	161	125
Tucker Reentry Center	41	54	6	101	45
Tucker Unit	139	55	10	204	144
Varnier Unit	211	82	20	313	244
Wrightsville Unit	164	54	6	224	176
<b>TOTAL</b>	<b>3,211</b>	<b>1,111</b>	<b>248</b>	<b>4,570</b>	<b>3,440</b>

## CONSTRUCTION BUDGET / STATUS REPORT - NOVEMBER 3, 2020 — [Page 1 of 2]

Fund	Project Description	Total Projected Spent	Budget	Available Funds	\$ % Complete	Construction % Complete	Notes
KBR4Q95	ESTER - Phase 3 - General Improvement Fund	2,977,000	3,911,781	934,782	76%	98%	McClelland Engrs designing Parking Lot. At DBA for approval.
700483A	EARU Max Rec Expanded Metal Rec Yard	813,652	879,000	65,348	93%	0%	DBA approved plans for expanded metal rec pens. Materials being purchased.
700483A	Tucker Max Expanded Metal Rec Yard	60,183	1,800,000	1,739,817	3%	0%	DBA Approved to proceed on 9/5/2020. Working on material list for procurement.
700483A	Cummins Expanded Metal Rec Yard	50,012	368,617	318,605	14%	0%	Plans on hold, will modify for exp. metal
KBR4Q95	Bullpens	388,676	851,999	463,323	46%	98%	Varner & EARU complete. Installation underway at Max. Locks delivered. Project on hold due to COVID-19.
KBR4Q95	13 & 15 Barracks Door Revisions	119,111	174,000	54,889	68%	68%	All doors and locks installed in 13 Barracks. Job on hold to assess long term plan
KBR4Q95	Camera's (New)	1,073,900	1,248,000	174,100	86%	86%	Delta, Varner, EARU, Cummins, RLW, PBU, & the Max are complete, working at Tucker.
700485A	Integrity Energy Improvements at EARU & Delta	16,961,127	17,010,204	49,077	100%	97%	lights (100%), plumbing 100%, water (100%), compost (100%), & solar (100%), HVAC (100%). Only Training is incomplete.
700486A	Pine Bluff Unit Barracks 9 Renovation	369,616	437,000	67,384	85%	98%	9A, B C & D water controls arrived 2/5, Icon training delayed, installation near complete.
KBSCW18	McPherson Administration	366,767	395,439	28,672	93%	85%	Walls, slabs, brick complete. Roof slab poured. Roofer on site,
KBSCW18	McPherson Visitation	304,462	312,430	7,968	97%	85%	insulating duct, running electrical & installing doors. Inmate labor back at work last week. ETA completion 1 month.
KBR4Q95	McPherson Administration and Visitation	-	100,000	100,000	0%	0%	
KBSHW18	Tucker Water Treatment	-	1,093,848	1,093,848	0%	0%	Preparing RFQ for designer.
KBSFW18	Max Armory	-	70,000	70,000	0%	0%	DBA approved Plans 8/21/20. Tentative start date 11/16/2020.
KBSFW18	Varner Armory	66,150	68,399	2,249	97%	85%	Slab & ceiling poured, ext & int walls up, roof & brick complete. Working on finish work inside. Completion delayed, expected completion 11/06/2020.
7004810	Administrative East Roof Replacement	-	309,375	309,375	0%	0%	ADFA funding. Had meeting and site visit with selected design firm to establish plan and material specs.
7004810	Central Warehouse Roof Replacement	-	135,020	135,020	0%	0%	
7004810	RLW Roof Replacement	-	1,888,776	1,888,776	0%	0%	
2ZV	NWARWRC Laundry and Commissary	124,286	250,000	125,714	50%	0%	DBA approved Plans, Springdale Water Dept comments rec'd & answered. All approvals received. Started project 10/13/2020.
865C	NCU Perimeter Security	20,625	270,000	249,375	8%	0%	DBA Approved plans. We have notice to proceed.
KBR4Q95		-					
N98	Max Re-Entry Generator Project	-	135,000	135,000	0%	0%	Plans sent to our On-Call on 8/06/2020. Plans submitted to DBA for approval.
KBR4Q95	NCU Replacement Generator Project	-	202,000	202,000	0%	0%	Plans sent to our On-Call on 8/06/2020. Will be sent for approval to DBA by 11/06/2020.



## CONSTRUCTION BUDGET / STATUS REPORT - NOVEMBER 3, 2020 — [Page 2 of 2]

Fund	Project Description	Total Projected Spent	Budget	Available Funds	\$ % Complete	Construction % Complete	Notes
7004820	Tucker 10 Barracks Sidewalk	-	70,259	70,259	0%	0%	DBA approved to proceed. Mobilizing to begin project. Projected start date of December 14, 2020.

Telephone Projects

Maintenance & Operations	Fire Alarm Upgrades (All Units)	34,499	41,000	6,501	84%	50%	on-going
	Stainless Steel Kitchen/Shower/Restrooms - All Units	3,834	20,000	16,166	19%	15%	continual need
	Gates and Fences all units	15,767	25,000	9,233	63%	0%	to improve security
	ACA Maintenance	8,396	100,000	91,604	8%	0%	Upcoming are NCU, EARU & MCWRC.
	ADA Projects - All Units	376	10,000	9,624	4%	0%	Working with Varner for the sports field sidewalk.
	Fast Top Floor Systems (kitchen/laundry/showers all units)	0	25,000	25,000	0%	0%	Benton restrooms underway. Ouachita kitchen next.
	Camera Equipment - All Units	98,448	250,000	151,552	39%	15%	cameras as requested/approved.
	Lock/Riot Gates - All Units	25,242	90,500	65,258	28%	12%	on-going.
	AC Units-All Units	53,631	70,000	16,369	77%	25%	repairing & replacing daily.
	<b>Subtotal</b>	<b>\$ 240,193</b>	<b>\$ 631,500</b>	<b>\$ 391,307</b>			

Capital Projects FY20 Carry Forward	Metal Ceilings	9,293	25,000	15,707	37%	0%	NCU complete, Delta is next.
	ORCU Gravel Pit Operations	15,149	35,000	19,851	43%	18%	on-going. Crusher operating.
	Dog Kennel/Horse Stable Malvern	0	48,000	48,000	0%	0%	DBA approved the Plans, released for construction. Site surveyed and selected. Both Construction Supervisors at ORCU working in the maintenance dept. Project on hold.
	Emergency Generator - All Units	130,038	250,000	119,962	52%	20%	Cummins 300kW generator complete. Max Gen mat'l rec'd, gen delivery delayed to mid October (10/15). All material purchased for Hawkins is purchased waiting on del. Date. Hawkins Kitchen (Ship date 11/18/2020) & Cummins East Bldg.
	Tucker 4 new filters & one aeration tank	461,635	488,434	26,799	95%	70%	Filters are being installed at this time.
	Roof Repairs-Cummins	12,200	145,000	48,153	67%	0%	Prepared large order for multiple Units. Max is complete. Need repairs at ORCU, Delta, Cummins & others. Varner & ORCU working on repairs, received TPO Office of State Procurement secured a State contract to purchase roofing materials.
	Roof Repairs-Cummins Laundry	0				0%	
	Roof Repairs-East Arkansas	48,823				0%	
	Roof Repairs-Max	0				0%	
	Roof Repair - NCU	5,735				0%	
	Roof Repair - RLW	5,786				0%	
	Roof Repairs-Tucker	0				0%	
	Roof Repairs-Varner	19,648				0%	
	Roof Repairs-Wrightsville	4,654				0%	
	Boiler Repair	31,789	100,000	68,211	32%	18%	continually needing repair
	<b>Subtotal</b>	<b>\$ 744,751</b>	<b>\$ 1,091,434</b>	<b>\$ 346,683</b>			

New Projects	Additional Metal Fab shop	0	29,266	29,266	0%	0%	purchasing materials
	PB Warehouse Drive replacement	0	118,000	118,000	0%	0%	asphalt drive pot holed. Preparing Plans.
	<b>Subtotal</b>	<b>\$ -</b>	<b>\$ 147,266</b>	<b>\$ 147,266</b>			
	Architect Fees	2,116	30,000	27,884	7%		
	<b>Total</b>	<b>\$ 987,059</b>	<b>\$ 1,900,200</b>	<b>\$ 913,141</b>			

Notes Report has not been reconciled against Accountings Reconciled Reports.  
Tolerance/Deviation is with in 1% of Projected Spending.