



DIVISION OF
CORRECTION

BOARD REPORT

January 2021



@ARDeptofCorrections



@adcpio



@arcorrections



Dexter Payne,
Director

POPULATION REPORT

RESEARCH/PLANNING

December 2020 Admissions and Releases – Admissions for December 2020 totaled **468** (402-males and 66-females) while releases totaled **522** (449-males and 73 females) for a net decrease in-house of **54** inmates.

Inmate Population Growth/Projection – At the end of December 2020, the jurisdictional population for the Division of Correction totaled **16,094**, representing a decrease of **1,665** inmates since the first of January 2020. Calendar year 2020 has seen an average decrease of **139** inmates per month, which is up from an average monthly decrease of **three** inmates per month during calendar year 2019.

Average County Jail Back-up – The backup in the county jails averaged **1,853** inmates per day during the month of December 2020, which was down from the per-day average of **1,986** inmates during the month of November 2020. Of the **1,853** average, short-term revocations accounted for **683** (612 males and 71 females) during the month.

House Bill 1530/Restrictive Housing (RH) - October 2020 through December 2020 – A total of **3,506** (3,304 males and 202 females) inmates were assigned to Restrictive Housing during the fourth quarter of the year.

- There was a slight decrease in overall RH assignments in the fourth quarter.
- There was a **3.2%** decrease in the number of individuals 21 or younger held in RH compared to the third quarter.
- There was a **5.3%** decrease in the number of individuals 55 or older held in RH compared to the third quarter.
- There was a **8.8%** decrease in the number of SMI inmates assigned to RH compared to the third quarter.

Refer to Page 12 of this report for further details.

INSTITUTIONS

INMATE INSTITUTIONAL GRIEVANCES

Inmate Formal/Informal Grievances: During December 2020, a total of 1,749 formal grievances and 2,259 informal grievances were filed at various units.

Institutional Grievances Appeals: There was a total of 442 appeals of institutional grievances received in December 2020. Of those, 363 were acknowledged and 79 were rejected for various reasons. Of the total 410 appeals answered, 406 had no merit and four were found with merit.

FARM

During the month of December, steers from both farms were sold through Superior Livestock at a good price and were shipped out prior to Christmas. All heifers are being held as possible replacements for the coming year.

Greenhouses are being finished out at units across the state in preparation of being operational by spring.

Thirty head of dairy cattle were purchased from an Arkansas dairy. A total of 15 are fresh milking and the remaining half are springing heifers. This purchase has already increased the milk production for Farm Operations.

In anticipation of planting the 2021 crops, row crop crews worked in the shops preparing equipment.

REGIONAL MAINTENANCE HOURS

Regional Maintenance Hours	December 2020
Benton Unit	4,987
Delta Regional Unit	2,784
East Arkansas Regional Unit	0
Grimes Unit	80
McPherson Unit	404
Mississippi County Work Release	1,120
North Central Unit	4,768
Ouachita River Correctional Unit	1,960
Randall L. Williams Unit	1,968
Texarkana Regional Correctional Center	0
Tucker Unit	0
Varner Unit	2,312
Wrightsville Unit	64
Total Hours	20,447

WORK RELEASE RENT REPORT

Unit	December 2020
Benton Unit	\$61,642.00
Mississippi County Work Release	\$43,928.00
Northwest Arkansas Work Release	\$24,990.00
Pine Bluff Work Release	\$16,048.00
Texarkana Regional Correctional Center	\$27,999.00
Tucker Reentry Work Release	\$6,851.00
Total	\$181,458.00

REENTRY**RANDALL L. WILLIAMS**
JUVENILE EDUCATION PROGRAM

December 2020 Capacity: 20	Beginning Count	New Commitments	DCR/Punitive	Transferred/ Turned 18*	Paroled	End Count
Juveniles*	1	0	0	0	0	1

*Juveniles are transferred from the program once they reach the age of 18.

WORKFORCE ALLIANCE FOR
GROWTH IN THE ECONOMY (WAGE)

December 2020 Capacity: 120 Unit:	Beginning Count	Admissions During Mo.	Removed*	Completed	End Count
Delta	0	21	0	0	21
Ester**	0	0	0	0	0
Hawkins***	0	0	0	0	0
McPherson***	0	0	0	0	0
Ouachita River	20	0	0	0	20
Tucker***	0	0	0	0	0
Tucker Reentry***	0	0	0	0	0
Wrightsville***	0	0	0	0	0
TOTAL	20	21	0	0	41

*The "Removed" column indicates the number of participants who transferred, signed out, received a disciplinary, were removed because test scores were not returned/were too low to continue, or were released from prison.

**The Ester Unit WAGE Program is experiencing a change in software resulting in no classes being taught at this time.

***WAGE Program inactive during the month due to COVID-19.

ADVANCED PRINCIPLES
AND APPLICATIONS FOR
LIFE PROGRAM (APAL)

December 2020 Capacity: 86	Beginning Count	Admissions During Mo.	Removed*	End Count
Ester	33	0	0	33
Hawkins	45	7	2	50
TOTAL	78	7	2	83

Advanced PAL is an 18-month reentry program that combines a pre-release curriculum with the PAL program.

*The "Removed" column indicates the number of participants who paroled, completed the program, withdrew from the program, transferred, or were removed from the program for another reason.

WRIGHTSVILLE-HAWKINS
PATHWAY TO FREEDOM PROGRAM

December 2020 Capacity: 200	Beginning Count	Enrolled During the Month	Removed	End Count*
Wrightsville-Hawkins PTF	157	9	9	157

THINK LEGACY

December 2020 Capacity: 635 Unit	Beginning Count	Admitted	Graduated	Removed**	End Count	Graduated But Remain*
Cummins	47	0	3	3	41	0
Delta Regional	22	0	0	0	22	0
East Arkansas Regional	42	0	0	3	39	0
Ester	2	1	2	0	1	0
Grimes	38	0	0	0	38	0
Hawkins (Female)	0	0	0	0	0	0
McPherson	0	0	0	0	0	0
North Central	13	0	0	0	13	0
Ouachita River	25	1	2	4	20	2
Tucker	0	0	0	0	0	0
Tucker Women's Reentry	0	0	0	0	0	0
Varner	0	0	0	0	0	0
Wrightsville	0	0	0	0	0	0
Total	189	2	7	10	174	2

**The "Removed" column indicates the total number of participants who paroled, signed out, transferred, or were removed from the program for any other reason and are no longer in the barracks.

*The "Graduated But Remain" column indicates the number of participants who have successfully completed the program but remain in the barracks. *These numbers are included in the End Count.*

ADMINISTRATIVE SERVICES**DIVISION OF CORRECTION**
TRAINING - DECEMBER 2020**BASIC TRAINING DIVISION –**

Instructor David Farrier's **BCOT Class 2020-O** graduated on December 4, 2020, with a total of 38 cadets.

The *Willis H. Sargent Award* recipient for the class was James Young Jr. of the McPherson Unit.

Academic Awards were presented to the following:

- 1st - Mikeala Farmer, Cummins Unit
- 2nd - James Wright, Benton Work Release
- 3rd - Christian Derouen, North Central Unit

Recipients of *Physical Fitness Awards* were:

- 1st - James Wright, Benton Work Release
- 2nd - Tina Hart, East Arkansas Regional Unit
- 3rd - Shelia Janes, Maximum Security Unit

DIVISION OF CORRECTION TRAINING, continued

Under the direction of Instructor Randy Callas, **BCOT Class 2020-P** graduated on December 23 with a total of 24 cadets.

The *Willis H. Sargent Award* recipient was Lisa Jones of the Tucker Unit.

Academic Awards were presented to the following:

- 1st - Claude McCaskill III, Maximum Security Unit
- 2nd - Cameron McCaskill, Maximum Security Unit
- 3rd - Blake Pepper, North Central Unit

Recipients of *Physical Fitness Awards* were:

- 1st - Blake Pepper, North Central Unit
- 2nd - Kahari Jackson, Pine Bluff Unit
- 3rd - Stephen Young, Tucker Unit

Instructor Robert Potter's **BCOT Class 2020-P2** graduated on December 28, with 11 cadets.

Academic Awards were presented to the following:

- 1st - Ann Reynolds, McPherson Unit
- 2nd - Joshua McGough, Grimes Unit
- 3rd - Nicholas Ladd, Grimes Unit

Recipients of *Physical Fitness Awards* were:

- 1st - Joshua McGough, Grimes Unit
- 2nd - Ronald Krause, McPherson Unit
- 3rd - Bridget Means, McPherson Unit

IN-SERVICE DIVISION –

In-service training for the month consisted of a **Defensive Driving** class, which was attended by seven participants. All other in-person training has been suspended until further notice due to COVID-19.

eCADEMY –

During December, 1,014 ADC employees completed a total of 12,683 hours of eCADEMY training. About 22% of ADC employees completed at least one course during that timeframe, averaging 2.80 hours per staff member.

HEALTH/CORRECTIONAL PROGRAMS

CHAPLAINCY SERVICES

All Facilities – During the month of December, the Chaplaincy Division at all facilities continued to provide religious services virtually over the video systems. This included Jumu'ah Prayer. General volunteer access remained discontinued throughout December due to COVID-19 although special clearance was given for volunteer chaplains to provide emergency coverage during the holiday season.

Delta Regional Unit – “Visitation 2.0” and “Timothy’s Gift” Christmas concert recordings were played on Christmas Eve and Christmas day, respectively.

East Arkansas Regional Unit – Christmas/holiday sacks were distributed to all unit residents on December 8.

Ester Unit – On December 22, Chaplains Jerry Tolbert and David Shockey delivered Christmas packages to 480 inmates.

Hawkins Unit – The Christmas bag distribution for all inmates took place on December 17.

Maximum Security Unit – The Christmas bag distribution for Restrictive Housing took place on December 17. General Population received Christmas bags on December 19. The total number of bags distributed was 532.

On December 27, a Christmas concert program donated by “Timothy’s Gift” of Nashville, Tennessee aired over the unit chapel channel.

North Central Unit – The Chapel distributed Christmas gift sacks to 750 inmates and 220 staff members on December 18.

Ouachita River Correctional Unit – The Chapel completed its Christmas sack distribution to all unit residents on December 16. On the following day, 12 participants graduated from the “Man Up” program that is offered by Unit Chaplaincy.

Pine Bluff Unit – A total of 15 inmates completed the Financial Freedom video series on December 8.

On December 15, each inmate at Pine Bluff Unit received a Christmas gift sack from unit Chaplaincy.

Randall L. Williams Unit – Unit Chaplaincy completed its giveaway of Christmas goody bags to all inmates and officers on December 17.

On December 24 and 25, Chaplaincy provided breakfast snacks to all working staff, as well as served coffee and hot chocolate to all four shifts.

On Christmas Day, popcorn and sodas were provided to all inmates and working staff.

Tucker Unit – On December 18, Tucker Unit Chaplaincy completed its Christmas sack distribution. A sack was provided to every inmate in the facility thanks to the generous donations of local churches and volunteers. Although unable to utilize Tucker Unit volunteers for the distribution because of COVID-19 restrictions, the unit graciously provided five officers to assist.

Wrightsville Unit – Christmas bags were distributed to inmates on December 17.

On the same day, Unit Chaplaincy provided a special holiday meal for Wrightsville staff and security, with 128 in attendance.

ACCREDITATION

ACA Internal Audits Completed:

12/07–12/10 Maximum Security Unit Audit Prep

12/14–12/17 Central Office Files

Classes Taught:

12/07 BCOT

Fire/Safety and Sanitation Independent Audits Conducted by the Fire and Sanitation Coordinator:

12/01–12/02 Grimes Unit Independent Audit

12/07–12/18 East Arkansas Regional Unit Follow Up Independent Audit

VOLUNTEER SERVICES

Total Number of Volunteer Hours for December 2020:

Unit/Program	Hours
Delta Unit	0
East Arkansas Regional Unit	0
McPherson Unit	0
Mississippi County Work Release Center	0
Northwest Arkansas Work Release Center	12.5
Ouachita River Correctional Unit	0
Pine Bluff Complex	0
Texarkana Regional Correctional Center	0
Varner	0
PAWS	0
Think Legacy	0
Religious Services/Chaplaincy	0
Total Hours	12.5

MENTAL HEALTH SERVICES

Reduction of Sexual Victimization Program (RSVP) and Sex Offender Treatment Programs (SOFT):

December 2020	Capacity	Beginning Count	Completed	Removed	Admissions	End Count
RSVP	278	194	0	4	0	190
SOFT	30	4	1	0	0	3
Total	308	198	1	4	0	193

There are 812 males on the waiting list for RSVP and three females on the waiting list for SOFT who are within five years of their TE date. Of those, 34 inmates are mandated by the Parole Board.

The average time on the waiting list from request is between one and two months for those stipulated.

*The total on the waiting list, including those not currently within the identified timeframe, is 1,454 males and three females. Of these, 1,146 are eligible and 311 are ineligible for the program. There are no PREA inmates in the program at this time.

*Ineligibility is due to being in restrictive housing, having class IV status, or receiving a major disciplinary within the last 60 days.

Therapeutic Community (TC):

December 2020	Capacity	Beginning Count	Completed	Removed	Admissions	End Count
McPherson	53	31	0	9	0	22
Tucker	136	50	0	0	0	50
Wrightsville	50	18	0	3	0	15
Total	239	99	0	12	0	87

There are 567 males and 150 females on the waiting list who are within ten years of their release date. Of those, ten are mandated by the Parole Board.

The average time on the waiting list from request is seven days.

*The total on the waiting list, including those not currently within the identified timeframe, is 780 males and 159 females. Of these, 717 are eligible and 222 are ineligible for the program.

*Ineligibility is due to being in restrictive housing, having class IV status, or receiving a major disciplinary within the last 60 days.

Substance Abuse Treatment Program (SATP):

December 2020	Capacity	Beginning Count	Completed	Removed	Admissions	End Count
Benton	20	18	4	2	0	12
Cummins	47	33	5	4	1	25
Grimes	56	42	4	7	0	31
Maximum Security	4	3	0	0	0	3
McPherson	106	31	0	6	0	25
Randall L. Williams	200	64	15	13	20	56
Wrightsville	150	55	5	10	7	47
Total	583	246	33	42	28	199

There are 1,843 males and 199 females on the waiting list who are within five years of their release date. Of those, 30 are mandated by the Parole Board.

The average time on the waiting list from request is 14 days.

*The total on the waiting list, including those not currently within the identified timeframe, is 2,424 males and 229 females. Of these, 2,042 are eligible and 611 are ineligible for the program.

*Ineligibility is due to being in restrictive housing, having class IV status, or receiving a major disciplinary within the last 60 days.

Substance Use Intervention Program: The Substance Use Intervention Program had no admissions or discharges for an end-of-month count of zero for December. This program is housed at the Varner Unit and is for inmates found guilty of a disciplinary violation for drug use or drug possession.

Ouachita River Correctional Unit (ORCU) Residential

Program Unit (RPU): The RPU had five admissions and seven discharges in December for an end-of-month count of 118.

McPherson Unit Mental Health Residential Program Unit (RPU): There were four admissions and three discharges in December for an end-of-month count of 40.

MENTAL HEALTH SERVICES, *continued*

Habilitation Program: The Habilitation Program at the Ouachita River Correctional Unit provided treatment services to 45 inmates during December. There were no admissions and one discharge, resulting in an end-of-month count of 44.

Anger Management Treatment: The Anger Management Treatment Program at the Cummins Unit provided treatment services to three inmates during December. There were no admissions or discharges, for an end-of-month count of three.

Staffing: The following Mental Health Services and Substance Abuse Treatment Program (SATP) positions were vacant in November and December 2020:

Positions	FTE's*	November 2020	December 2020
Psychologists	14	5	5
Social Workers	31	12	13
Rehab Program Manager	0	1	1
Advisors	64	11	11
Substance Abuse Program Leaders	35	5	5
Administrative Specialists	17	5	5

*FTE refers to authorized Full Time Equivalent positions.

ADDITIONAL MENTAL HEALTH AND MEDICAL INFORMATION**Self-Study Classes:**

Classes	Number of Participants	Number Completed	Waiting List
Anger Management	112	110	772
Thinking Errors	106	92	664
Substance Abuse Education	82	74	511
Communication Skills	144	144	721
Domestic Violence	88	81	145
Victims of Domestic Violence	5	5	38
Stress Management	116	114	700
Parenting	73	71	255

Suicide: There were 115 suicidal threats during December. There were three attempts resulting in one death.

Outpatient: There were 1,897 inmates on the mental health medical log at the beginning of December. Mental Health staff conducted the following contacts during December:

Case Management Contacts	1,960
Requests for Interviews	1,167
Testing	0
Intakes	415
Unit Requests	856
Pre-Lockup Reviews	410
Routine Restrictive Housing Reviews	799
Restrictive Housing Rounds	19,324
PREA Evaluations	89
Routine Follow-up	428
834 Requests	36

County Mental Health Requests: During December, there were 125 requests received of a mental health nature. Of those, two inmates were fast-tracked to ADC. **Note: Most inmates were not transferred due to COVID-19.**

County Medical Health Requests: During December, there were 688 requests received of a medical nature. A total of five inmates were fast-tracked to ADC.

Medical Contract Reimbursements: Sanction reimbursements for November were \$13,450.00.

Deaths: There were nine inmate deaths during the month of December. One was claimed and eight were cremated.

Wellpath: See attachment for Wellpath's report regarding outside beds and emergency room visits.

Medical Grievances: In December, there were 135 appeals received of medical grievances and 149 appeals were answered. Six of those were found to be with merit.

SEX OFFENDER ASSESSMENT**Assessments Completed:**

Risk Level	December	September 1999 through December 2020
Level 1	3	1,209
Level 2	44	8,110
Level 3	18	7,172
Level 4	4	704
Default 3	1	*
Total	70	17,195
*Default Level 3's are included in the total number of Level 3's to date.		

ACIC Numbers:

The total number of sex offenders registered from September 1999 through December 2020:

Compliant	8,413
Delinquent	1,418
Confined	3,227
Out-of-State	3,782
Address Unknown	139
Deported	208
Incapacitated	95
Out of USA	11
Total	17,293

Consistent with current Arkansas law, deceased offenders no longer remain on the registry.

PAWS IN PRISON

December 2020 Unit	Enrolled	Graduated	Foster	Volunteer Hours
Hawkins Unit	2	1	0	0
Maximum Security Unit	9	3	0	0
North Central Unit	4	3	0	0
Ouachita River Correctional Unit	6	3	0	0
Randall L. Williams Unit	2	6	0	0
Tucker Unit	1	4	0	0
Total	24	20	0	0

Completed Paws in Prison Training:

December 2020 Program Graduates	20
YTD 2020 Program Graduates	211
Total Graduates Since Inception (December 2011)	1,663
Dogs Currently in Foster (Graduated, but Not Adopted)	0
December 2020 Volunteer Hours	0
YTD Volunteer Hours	56

INFORMATION TECHNOLOGY

INMATE TABLETS – Within the Division of Correction, a total of 508 inmate tablets were leased during December.

INMATE VIDEO VISITS – Inmates completed 20,939 video visits during the month and missed 820 within the Division of Correction.

CONSTRUCTION/MAINTENANCE**PROJECT UPDATES**

SEE CONSTRUCTION BUDGET / STATUS REPORT IN ATTACHMENTS SECTION (PAGES 23-24).

AGENCY HIGHLIGHTS**AGENCY-WIDE:*****Modified In-Person Visitation Piloted***

A pilot for modified in-person visitation began at two units, Benton Work Release and Delta Regional Unit, on December 12. In-person rules and procedures had to be significantly altered due to COVID-19 precautions. The pilot utilized a new web-based scheduling system that worked well prior to December 30 when AR DOC announced the suspension of all non-essential unit operations due to an increase in COVID cases among staff.

Modified In-Person Visitation Scheduled to Begin Dec. 12 at These Pilot Facilities:

- Benton Work Release
- Delta Regional Unit
- Northeast Arkansas Community Correction Center
- Northwest Arkansas Community Correction Center

***COVID-19 Vaccine Delivered to DOC***

On December 30, Wellpath Regional Vice President Dona Gordon and Arkansas Corrections Secretary Solomon Graves accepted the Department of Corrections' first

COVID-19 vaccine delivery. Consistent with Arkansas Department of Health directions to initially allocate

frontline healthcare workers and medical support staff, the vaccine was first made available to our Wellpath partners, as well as officers permanently assigned to medical security and transportation roles.

**REGIONAL MAINTENANCE PROJECT HIGHLIGHTS
DECEMBER 2020****Varner Unit – Cleanup at Cummins Unit Dairy
*Regional Maintenance 1 and 2 – December 7:*****Before****After*****Regional Maintenance 1 and 2 – December 9:*****Before****After**

2020 INFORMAL GRIEVANCE REPORT

Month	BENTON	HAWK/M	HAWK/F	WRTS	EARU & MX	GRIMES	RLW	MCWR	MCPH	MSU	NCU	PBU	NWA	TU	TRCC	VSMX	VU	CU & CMU	ORCU	Ester	DRU	Bowie Cty	TOTAL
JAN	0	34	27	84	449	213	19	0	342	199	150	41	0	123	2	486	89	220	296	39	84	33	2,930
FEB	2	34	27	52	209	164	19	0	288	245	107	35	0	138	2	464	95	178	232	25	63	43	2,422
MAR	1	29	19	64	384	150	12	0	301	264	148	35	0	101	2	486	65	238	260	31	104	29	2,723
APR	2	50	27	121	434	180	32	0	254	268	168	45	0	148	7	521	121	268	292	38	146	22	3,144
MAY	2	20	34	106	259	154	64	0	238	316	129	67	0	92	1	491	101	465	269	29	126	26	2,989
JUN	0	15	7	113	371	199	35	0	234	192	154	64	0	118	0	422	80	303	134	35	116	16	2,608
JUL	1	42	19	116	392	160	40	0	261	144	104	48	0	127	2	386	72	276	228	43	143	21	2,625
AUG	7	52	25	86	333	205	42	0	271	153	137	74	0	120	0	442	82	149	260	61	166	18	2,683
SEPT	0	28	26	84	298	161	36	0	236	104	174	93	0	90	1	402	102	202	264	35	77	18	2,431
OCT	1	40	22	64	267	142	21	0	286	124	158	32	0	99	1	230	19	159	261	21	88	16	2,051
NOV	1	19	20	60	266	175	38	0	385	85	118	33	0	66	2	170	21	217	157	39	96	4	1,972
DEC	6	30	18	64	238	494	13	0	429	108	112	30	0	66	0	217	30	126	170	27	81	0	2,259
TOTAL	23	393	271	1,014	3,900	2,397	371	0	3,525	2,202	1,659	597	0	1,288	20	4,717	877	2,801	2,823	423	1,290	246	30,837

2020 FORMAL GRIEVANCE REPORT

Month	BENTON	HAWK/M	HAWK/F	WRTS	EARU & MX	GRIMES	RLW	MCWR	MCPH	MSU	NCU	PBU	NWA	TU	TRCC	VSMX	VU	CU & CMU	ORCU	Ester	DRU	Bowie Cty	TOTAL
JAN	0	13	10	35	404	105	5	0	130	174	90	11	0	92	4	260	65	125	153	15	43	7	1,741
FEB	0	13	10	31	365	59	15	1	120	130	61	22	0	75	0	242	66	104	126	17	32	16	1,505
MAR	1	27	8	30	426	63	12	1	122	221	93	5	0	99	0	273	65	129	153	16	50	5	1,799
APR	2	27	8	32	450	87	15	0	84	178	99	12	0	97	0	298	91	181	163	14	73	1	1,912
MAY	2	12	2	48	367	70	49	0	93	316	88	19	0	78	1	301	80	315	156	11	60	5	2,073
JUN	1	4	1	53	392	93	20	0	98	192	104	27	0	76	0	310	59	210	221	12	66	3	1,942
JUL	0	14	3	43	473	75	21	0	99	173	59	23	0	77	0	245	57	177	212	18	60	6	1,835
AUG	4	20	7	45	383	97	17	0	115	102	65	17	0	81	0	273	54	134	212	45	81	6	1,758
SEPT	0	16	12	43	364	75	33	0	111	153	91	23	0	76	0	257	80	135	166	20	42	3	1,700
OCT	0	18	2	38	342	55	11	0	118	280	93	14	0	62	0	230	19	119	158	9	44	6	1,618
NOV	1	4	5	47	321	82	26	0	153	151	72	11	0	50	2	170	21	101	104	36	36	0	1,393
DEC	7	7	2	45	302	234	10	0	178	185	110	22	0	41	0	217	30	114	148	16	81	0	1,749
TOTAL	18	175	70	490	4,589	1,095	234	2	1,421	2,255	1,025	206	0	904	7	3,076	687	1,844	1,972	229	668	58	21,025

INMATE INSTITUTIONAL GRIEVANCE APPEAL REPORT – DECEMBER 2020

	Acknowledged	Rejected	Processed W/O Merit	Processed W/ Merit
Benton Unit	2	0	0	0
Benton Work Release	0	0	0	0
Bowie County Texas Correctional Facility	0	0	2	0
Cummins Unit	9	1	32	0
Cummins Modular Unit	1	1	0	0
Delta Regional Unit	7	3	5	0
East Arkansas Regional Unit	19	4	33	0
East Arkansas Regional Max Unit	54	5	84	0
Ester Unit	4	0	1	0
Grimes Unit	15	10	16	1
Maximum Security Unit	50	13	53	0
Tucker Re-Entry	0	0	0	0
McPherson Unit	21	4	25	0
McPherson Mental Health Residential Program Unit	0	0	0	0
Mississippi County Work Release Center	0	0	0	0
Northwest Arkansas Work Release Center	0	0	0	0
North Central Unit	16	9	11	0
Ouachita River Correctional Unit	14	19	22	0
ORCU Hospital	0	0	1	0
ORCU New Commitment	11	0	9	0
ORCU Mental Health Residential Program Unit	1	0	5	0
Pine Bluff Unit	0	1	1	0
Pine Bluff Re-Entry	0	0	0	0
Randall L. Williams Correctional Facility	0	3	3	0
Texarkana Regional Correctional Center	0	0	1	0
Tucker Unit	11	2	14	0
Varner Super Max	111	1	62	2
Varner Unit	9	2	9	1
Wrightsville Unit	7	1	13	0
Hawkins Center	0	0	0	0
Hawkins for Males	1	0	4	0
Hawkins SPU	0	0	0	0
Total	363	79	406	4

ADMISSIONS AND RELEASES – DECEMBER 2020

<u>Admissions</u>	<u>Male</u>	<u>Female</u>	<u>Total</u>
Asian	0	0	0
Black	91	9	100
Hispanic	10	0	10
Native American Indian	0	0	0
Native Hawaiian or Pacific Isl.	0	0	0
White	300	57	357
Other	1	0	1
Unknown	0	0	0
Total	402	66	468

<u>Releases</u>	<u>Male</u>	<u>Female</u>	<u>Total</u>
Asian	2	0	2
Black	162	11	173
Hispanic	7	1	8
Native American Indian	3	1	4
Native Hawaiian or Pacific Isl.	0	0	0
White	273	60	333
Other	2	0	2
Unknown	0	0	0
Total	449	73	522

ADC INMATE POPULATION GROWTH 2000-2026 - DECEMBER 2020

Updated 12/31/2020

Mo.	2000	2001	2002	2003	2004	2005	2006	2007	2008	2009	2010	2011	2012	2013	2014	2015	2016	2017	2018	2019	2020
Jan.	11,984	11,908	12,402	13,015	13,105	13,595	13,481	13,839	14,518	14,796	15,334	16,312	15,134	14,815	17,481	18,142	17,785	17,824	18,201	17,958	17,989
Feb.	12,169	12,022	12,529	13,054	13,166	13,783	13,633	14,012	14,603	14,883	15,374	16,209	14,990	15,008	17,438	18,082	17,625	17,608	17,998	17,846	18,181
March	12,006	12,033	12,299	13,108	13,088	13,418	13,534	13,772	14,580	14,843	15,290	16,095	14,964	14,665	17,395	18,233	17,573	17,666	18,089	17,898	17,860
April	12,069	12,167	12,465	13,213	13,323	13,469	13,554	13,851	14,769	14,937	15,570	16,172	15,124	14,850	17,604	18,703	17,815	17,798	18,227	17,977	17,331
May	12,109	12,384	12,558	13,463	13,556	13,528	13,711	14,146	14,880	15,146	15,694	16,062	15,132	15,074	17,593	18,693	17,769	17,652	17,945	17,817	16,694
June	12,005	12,108	12,439	13,418	13,389	13,251	13,430	13,915	14,700	15,025	15,564	15,554	14,832	14,825	17,340	18,813	17,973	17,963	17,972	17,942	16,552
July	12,030	12,190	12,622	13,509	13,528	13,286	13,560	14,082	14,868	15,195	15,807	15,519	14,879	15,379	17,522	18,870	18,130	18,180	18,005	18,002	16,511
August	12,087	12,371	12,815	13,565	13,632	13,419	13,646	14,224	15,100	15,385	15,829	15,240	14,675	16,103	17,549	18,806	17,919	18,051	17,751	18,090	16,367
September	11,983	12,289	12,774	13,341	13,516	13,237	13,652	14,217	14,850	15,285	16,025	15,172	14,724	16,412	17,605	18,549	18,026	18,179	17,865	17,856	16,215
October	12,119	12,348	12,942	13,341	13,584	13,363	13,775	14,349	14,836	15,381	16,311	15,271	14,856	16,993	17,880	18,430	18,127	18,348	17,943	17,947	16,311
November	12,094	12,408	13,162	13,408	13,706	13,587	13,913	14,437	15,025	15,340	16,460	15,205	14,625	17,168	17,848	17,981	17,573	17,973	17,666	18,060	16,165
December	11,856	12,333	12,845	13,106	13,470	13,338	13,728	14,315	14,716	15,199	16,204	15,062	14,654	17,235	17,874	17,707	17,537	18,078	17,799	17,759	16,094
Net Ann. Inc.	29	477	512	261	364	-132	390	587	401	483	1,005	-1,142	-408	2,581	639	-167	-170	541	-279	-40	-1,665
Avg. Mo. Inc.	2	40	43	22	30	-11	33	49	33	40	84	-95	-34	215	53	-14	-14	45	-23	-3	-139

Population is total jurisdictional count at end of each month. Population at end of month December 1999 was 11,827.

Average monthly population increase for past fifteen years 2005 - 2019 is 24

Average monthly population increase for past ten years Jan. 2010 - Dec 2019 is 21

Average monthly population increase for past five years 2015 - 2019 is -2

Projected at Growth of 24 per Month

Mo.	2008	2009	2010	2011	2012	2013	2014	2015	2016	2017	2018	2019	2020	2021	2022	2023	2024	2025	2026
Mo.	Actual	Actual	Actual	Actual	Actual	Actual	Actual	Actual	Actual	Actual	Actual	Actual	Actual	Proj.	Proj.	Proj.	Proj.	Proj.	Proj.
January	14,518	14,796	15,334	16,312	15,134	14,815	17,481	18,142	17,785	17,824	18,201	17,958	17,989	16,118	16,406	16,694	16,982	17,270	17,558
February	14,603	14,883	15,374	16,209	14,990	15,008	17,438	18,082	17,625	17,608	17,998	17,846	18,181	16,142	16,430	16,718	17,006	17,294	17,582
March	14,580	14,843	15,290	16,095	14,964	14,665	17,395	18,233	17,573	17,666	18,089	17,898	17,860	16,166	16,454	16,742	17,030	17,318	17,606
April	14,769	14,937	15,570	16,172	15,124	14,850	17,604	18,703	17,815	17,798	18,227	17,977	17,331	16,190	16,478	16,766	17,054	17,342	17,630
May	14,880	15,146	15,694	16,062	15,132	15,074	17,593	18,693	17,769	17,652	17,945	17,817	16,694	16,214	16,502	16,790	17,078	17,366	17,654
June	14,700	15,025	15,564	15,554	14,832	14,825	17,340	18,813	17,973	17,963	17,972	17,942	16,552	16,238	16,526	16,814	17,102	17,390	17,678
July	14,868	15,195	15,807	15,519	14,879	15,379	17,522	18,870	18,130	18,180	18,005	18,002	16,511	16,262	16,550	16,838	17,126	17,414	17,702
August	15,100	15,385	15,829	15,240	14,675	16,103	17,549	18,806	17,919	18,051	17,751	18,090	16,367	16,286	16,574	16,862	17,150	17,438	17,726
September	14,850	15,285	16,025	15,172	14,724	16,412	17,605	18,549	18,026	18,179	17,865	17,856	16,215	16,310	16,598	16,886	17,174	17,462	17,750
October	14,836	15,381	16,311	15,271	14,856	16,993	17,880	18,430	18,127	18,348	17,943	17,947	16,311	16,334	16,622	16,910	17,198	17,486	17,774
November	15,025	15,340	16,460	15,205	14,625	17,168	17,848	17,981	17,573	17,973	17,666	18,060	16,165	16,358	16,646	16,934	17,222	17,510	17,798
December	14,716	15,199	16,204	15,062	14,654	17,235	17,874	17,707	17,537	18,078	17,799	17,759	16,094	16,382	16,670	16,958	17,246	17,534	17,822
Net Ann. Inc.	401	483	1,005	-1,142	-408	2,581	639	-167	-170	541	-279	-40	-1,665	288	288	288	288	288	288
Ave. Mo. Inc.	33	40	84	-95	-34	215	53	-14	-14	45	-23	-3	-139	24	24	24	24	24	24

MONTHLY POPULATION AVERAGES - DECEMBER 2020

Unit/Center	12/1	12/2	12/3	12/4	12/7	12/8	12/9	12/10	12/11	12/14	12/15	12/16	12/17	12/18	12/21	12/22	12/23	12/24	12/25	12/28	12/29	12/30	12/31	AVG
Benton	285	285	282	266	259	252	252	247	247	245	245	247	249	262	262	262	262	262	262	262	262	262	262	260
Cummins	1,852	1,853	1,858	1,858	1,847	1,849	1,838	1,837	1,837	1,831	1,831	1,825	1,824	1,824	1,862	1,907	1,905	1,908	1,908	1,908	1,908	1,907	1,906	1,864
Delta	495	497	492	521	538	538	537	536	535	534	534	530	526	525	524	524	524	523	523	523	523	533	533	525
East AR Reg	1,549	1,551	1,552	1,553	1,553	1,553	1,550	1,537	1,541	1,547	1,546	1,547	1,539	1,536	1,534	1,537	1,529	1,530	1,530	1,526	1,520	1,517	1,515	1,539
Ester	492	490	489	489	487	485	483	483	481	479	480	473	473	473	472	472	469	469	469	469	469	469	469	478
Grimes	966	966	966	965	964	962	952	947	948	941	940	939	934	936	931	931	931	931	931	931	927	916	916	942
Max Sec	552	551	551	551	548	548	547	547	546	546	546	546	546	547	547	550	550	550	550	550	550	550	550	549
McPherson	807	807	799	803	805	808	812	805	813	815	820	817	810	808	812	813	812	812	812	812	811	809	809	810
MCWRC	126	126	126	126	126	126	135	132	131	128	128	128	128	128	128	128	128	126	126	126	126	125	125	127
N Central	659	654	660	657	656	654	652	650	675	699	699	697	696	683	683	683	681	679	679	679	686	685	713	676
NWAWRC	78	72	72	72	72	71	69	71	71	71	71	70	68	68	68	68	68	68	68	68	68	68	68	70
Ouachita River	1,657	1,656	1,659	1,570	1,547	1,547	1,591	1,641	1,613	1,584	1,582	1,629	1,632	1,631	1,590	1,542	1,586	1,593	1,593	1,594	1,588	1,578	1,515	1,596
Randall L Williams	380	380	379	387	442	492	492	490	444	443	442	439	438	438	476	476	472	470	470	470	469	440	468	448
Pine Bluff	433	429	422	419	419	420	419	416	455	453	449	448	448	447	450	450	451	471	471	471	470	497	497	448
PB Reentry	47	44	44	44	44	43	43	43	42	42	42	42	42	42	42	42	42	42	42	42	42	42	42	43
TRCC	93	93	93	90	90	90	90	89	89	89	90	100	100	100	100	100	100	100	100	100	100	102	102	96
Tucker	772	755	745	744	737	736	736	736	735	735	731	729	725	725	725	724	723	723	723	723	721	721	719	732
Tucker Re-Entry	52	52	52	52	0	0	0	0	0	0	0	0	0	0	0	0	0	0	0	0	0	0	0	9
Varner	1,464	1,472	1,470	1,519	1,518	1,516	1,516	1,512	1,511	1,511	1,505	1,505	1,504	1,497	1,496	1,500	1,499	1,504	1,504	1,504	1,503	1,500	1,498	1,501
Wrightsville	795	792	784	779	779	779	776	774	773	766	767	766	759	752	745	735	740	740	740	741	741	742	748	761
WR Hawkins-Females	161	161	161	161	213	213	213	207	206	206	206	206	205	205	207	207	205	205	205	205	205	200	200	198
WR Hawkins-Males	157	157	157	157	157	157	157	156	156	158	158	158	162	162	162	162	161	161	161	161	160	159	159	159
Total ADC	13,872	13,843	13,813	13,783	13,801	13,839	13,860	13,856	13,849	13,823	13,812	13,841	13,808	13,789	13,816	13,813	13,838	13,867	13,867	13,865	13,849	13,822	13,814	13,831
ALETA	14	14	14	14	14	14	14	14	14	14	14	14	14	14	14	14	14	14	14	14	14	14	14	14
Ar State Police	52	52	52	52	52	52	52	53	53	52	51	51	50	50	50	50	50	50	50	49	48	47	41	50
Co Jail / M	1,685	1,699	1,698	1,722	1,694	1,652	1,630	1,609	1,641	1,654	1,667	1,644	1,662	1,702	1,668	1,693	1,655	1,596	1,596	1,595	1,614	1,635	1,651	1,655
Co Jail / F	194	197	196	195	188	188	185	188	186	189	185	191	192	195	195	200	201	200	200	200	206	215	215	196
Total Co Jail BK	1,879	1,896	1,894	1,917	1,882	1,840	1,815	1,797	1,827	1,843	1,852	1,835	1,854	1,897	1,863	1,893	1,856	1,796	1,796	1,795	1,820	1,850	1,866	1,851
309/M	248	248	245	241	239	239	238	248	247	247	246	243	243	242	242	242	242	242	242	242	249	247	247	244
309/F	88	88	88	88	88	88	88	88	88	88	88	88	88	88	88	88	88	88	88	88	88	88	88	88
Total Act 309	336	336	333	329	327	327	326	336	335	335	334	331	331	330	330	330	330	330	330	330	337	335	335	332
Total Non ADC	2,281	2,298	2,293	2,312	2,275	2,233	2,207	2,200	2,229	2,244	2,251	2,231	2,249	2,291	2,257	2,287	2,250	2,190	2,190	2,188	2,219	2,246	2,256	2,247
Total	16,153	16,141	16,106	16,095	16,076	16,072	16,067	16,056	16,078	16,067	16,063	16,072	16,057	16,080	16,073	16,100	16,088	16,057	16,057	16,053	16,068	16,068	16,070	16,078

RESTRICTIVE HOUSING QUARTERLY REPORT OCTOBER 1, 2020 TO DECEMBER 31, 2020

Restrictive Housing Disciplinary Counts

12-3 : Failure To Obey Order Of Staff	426
04-8 : Battery - Use of Force on an Inmate	304
05-3 : Assault - Verbal or Written Threat	233
12-4 : Refusing A Direct Verbal Order	200
11-1 : Insolence To A Staff Member	191
03-5 : Out Of Place Of Assignment	159
02-17 : Creating Unnecessary Noise	115
09-3 : Possession/Introduce Drugs	108
05-5 : Provoking Or Agitating A Fight	92
10-3 : Indecent Exposure	92
02-12 : Keep Person/Quarters W Regulat	88
02-16 : Refusal To Submit To Testing	87
07-1 : Unauthorized Use Of State Property	83
09-15 : Possession/Introduction/Use of Cell Phone	81
02-2 : Use Of Drugs,Alcohol,Chemical	74
09-1 : Possession/Intro Of Fireworks	65
01-1 : Banding Together/Demonstration	58
09-5 : Possession/Introduction Of Clothing	56
02-5 : Unauthorized Use Of Mail/Phone	48
15-3 : Purchase Of Unauthor Articles	48

Disciplinary Categories

Violence to Others	380
Possession of Drug-Related Contraband	182
Masturbation/Indecent Exposure	99
Sex with Another Person	18
Other Violations	2,368

Inmates Placed in RH	1,965
----------------------	-------

Population Demographics

RACE	GENDER		Total
	M	F	
Asian	8	0	8
Black	1,892	84	1,976
Caucasian	1,316	105	1,421
Hispanic	80	12	92
NA Indian	6	1	7
Native Hawaiian or Pacific Isl	2	0	2
Other	0	0	0
Total	3,304	202	3,506

Protective Custody	6
21 or Younger	92
55 or Older	233
SMI	52

Suicides/Deaths in Restrictive Housing

Suicides	1
Suicide Attempts	3
Deaths	4

FISCAL YEAR 2021 COUNTY JAIL BACKUP - DECEMBER 2020

DAY		Jul-20		Aug-20		Sep-20		Oct-20		Nov-20		Dec-20
1		800	*	1,284		1,625		1,827	*	2,090		1,879
2		829	*	1,284		1,642		1,833		2,124		1,896
3		850		1,309		1,672	*	1,833		2,076		1,894
4	*	850		1,308		1,696	*	1,833		2,087		1,917
5	*	850		1,299	*	1,696		1,842		2,109	*	1,917
6		850		1,304	*	1,696		1,862		2,140	*	1,917
7		863		1,334		1,718		1,884	*	2,140		1,882
8		874	*	1,334		1,718		1,902	*	2,140		1,840
9		898	*	1,334		1,679		1,897		2,137		1,815
10		932		1,331		1,689	*	1,897		2,080		1,797
11	*	932		1,350		1,672	*	1,897		2,028		1,827
12	*	932		1,351	*	1,672		1,918		2,028	*	1,827
13		961		1,361	*	1,672		1,925		2,026	*	1,827
14		975		1,380		1,676		1,947	*	2,026		1,843
15		1,003	*	1,380		1,702		1,917	*	2,026		1,852
16		1,032	*	1,380		1,705		1,955		1,989		1,835
17		1,059		1,388		1,731	*	1,955		1,961		1,854
18	*	1,059		1,403		1,769	*	1,955		1,918		1,897
19	*	1,059		1,426	*	1,769		1,944		1,907	*	1,897
20		1,081		1,457	*	1,769		1,958		1,890	*	1,897
21		1,099		1,481		1,772		1,974	*	1,890		1,863
22		1,124	*	1,481		1,786		1,969	*	1,890		1,893
23		1,168	*	1,481		1,811		1,998		1,837		1,856
24		1,181		1,496		1,801	*	1,998		1,846		1,796
25	*	1,181		1,518		1,835	*	1,998		1,866		1,796
26	*	1,181		1,539	*	1,835		2,023		1,866	*	1,796
27		1,203		1,566	*	1,835		2,033		1,866	*	1,796
28		1,216		1,589		1,810		2,019	*	1,866		1,795
29		1,242	*	1,589		1,791		2,056	*	1,866		1,820
30		1,263	*	1,589		1,815		2,090		1,866		1,850
31		1,284		1,607			*	2,090				1,866
Avg Daily Backup		1,027		1,417		1,735		1,943		1,986		1,853

Note: Totals do not include 309 Contract in County Jails (maximum of 336)

County Jail Back-up for December 2020 ~ 1,853

County Jail Back-up Fiscal Year Average as of December 31, 2020 ~ 1,660

Short-Term Revocation Program Average for December 2020 ~ 683

Short-Term Revocation Program Fiscal Year Average as of December 31, 2020 ~ 698

STTG UNIT COUNTS – DECEMBER 2020

Unit	Beginning Total	Confirmed	Suspected	In	Out	Paroled	Removed	Ending Total	Total Unit Population	Unit % of STTG's
Benton	57	1	0	6	3	6	0	55	262	20.99%
Cummins	653	0	0	70	44	15	0	664	1,906	34.84%
Delta	169	0	0	12	23	3	0	155	532	29.14%
EARU	601	0	0	13	5	14	0	595	1,514	39.30%
Easter	69	0	0	1	3	2	0	65	468	13.89%
Grimes	344	0	0	2	2	19	0	325	909	35.75%
Hawkins	35	0	0	1	2	0	0	34	357	9.52%
Max	269	0	0	1	1	4	0	265	550	48.18%
Mcpherson	36	2	1	0	2	2	0	35	806	4.34%
MCWR	38	0	0	2	3	2	0	35	125	28.00%
NCU	187	0	0	36	13	0	0	210	712	29.49%
NWAWR	17	0	0	1	0	1	0	17	68	25.00%
ORCU	434	0	0	135	111	17	0	441	1,359	32.45%
ORCU Intake	123	132	0	0	158	0	0	97	158	61.39%
Pine Bluff	95	0	0	17	0	0	0	112	539	20.78%
RLW	174	0	0	61	15	5	0	215	468	45.94%
TWR	26	0	0	0	0	0	0	26	102	25.49%
Tucker	269	0	0	1	16	8	0	246	718	34.26%
Varner	587	0	0	71	45	13	0	600	1,496	40.11%
Wrightsville	261	0	0	0	11	10	0	240	754	31.83%
Total	4,444	135	1	430	457	121	0	4,432	13,803	32.11%

ORCU Intake brought in 132 new STTG members into ADC last month.

STTG DISCIPLINARY REPORT – DECEMBER 2020

Unit	STTG Incidents	STTG Suspected Incidents	Total Unit Disciplinary	Disciplinary Involving STTG	Percentage
Benton	0	0	8	1	12.50%
Cummins	0	0	155	81	52.26%
Delta	0	0	118	58	49.15%
EARU	0	16	104	80	76.92%
Easter	0	0	18	7	38.89%
Grimes	0	0	145	66	45.52%
Hawkins	0	0	1	0	0.00%
Max	0	1	60	19	31.67%
Mcpherson	0	0	129	11	8.53%
MCWR	0	0	5	1	20.00%
NCU	1	0	61	25	40.98%
NWAWR	0	0	5	1	20.00%
ORCU	0	0	123	36	29.27%
ORCU Intake	0	0	3	1	33.33%
Pine Bluff	0	0	79	24	30.38%
RLW	0	0	57	34	59.65%
TWR	0	0	1	0	0.00%
Tucker	0	0	54	25	46.30%
Varner	1	0	139	79	56.83%
Wrightsville	0	0	153	77	50.33%
Total	2	17	1,418	626	44.15%

STTG COUNTS BY STTG SET – DECEMBER 2020

STTG Set	Benton	Cummins	Delta	EARU	Easter	Grimes	Hawkins	Max	Mcperson	MCWR	NCU	NWAWR	ORCU	Intake	PB	RLW	TWR	Tucker	Varner	Wrightsville	Total
Asian	0	1	0	0	0	0	0	0	0	1	0	0	1	0	0	3	0	0	0	0	6
Bloods	9	155	30	112	12	68	3	62	5	4	33	4	69	18	16	53	0	36	134	42	865
Crips	4	93	16	77	7	31	3	35	5	2	18	1	45	12	13	24	3	23	98	25	535
Folk	5	56	0	118	2	0	9	31	8	2	13	4	6	0	6	9	0	22	61	12	364
GD	14	150	28	99	15	94	0	64	1	12	37	0	80	25	30	43	12	79	131	63	977
Mexican	2	18	11	15	2	6	1	5	2	1	10	1	8	0	5	5	0	3	22	12	129
Motorcycle	0	1	1	2	1	1	1	3	1	1	1	0	1	0	1	0	0	1	0	0	16
Other	0	25	5	14	4	14	1	2	0	1	10	1	18	2	5	10	0	7	19	6	144
People	0	27	6	21	1	21	1	18	2	0	9	1	17	1	8	12	1	10	17	9	182
Unknown	0	9	4	12	0	7	0	3	0	1	5	0	13	9	3	4	1	0	7	9	87
W/S	12	44	33	37	9	35	6	8	11	4	44	5	114	17	14	32	7	20	26	10	488
AB	2	6	0	5	2	4	0	1	0	3	1	0	5	0	1	1	1	7	11	5	55
AC	0	6	1	8	5	6	1	4	0	1	6	0	3	2	1	3	0	7	13	9	76
NAE	5	38	5	31	3	15	2	9	0	0	5	0	29	5	6	5	1	10	27	21	217
WAR	2	35	15	44	2	23	6	20	0	2	18	0	32	6	3	11	0	21	34	17	291
Total	55	664	155	595	65	325	34	265	35	35	210	17	441	97	112	215	26	246	600	240	4,432

Key:

GD = Gangster Disciples

W/S = White Supremacist

NAE = New Aryan Empire

WAR = White Aryan Resistance

AC = Aryan Circle

AB = Aryan Brotherhood

INTERNAL AFFAIRS BOARD REPORT - DECEMBER 2020

Opened Investigation, Reviews/ASP December 2020	Open Investigation	Open Review	ASP Referral
Arson	0	0	0
Assault on Inmate	0	1	0
Assault on Staff	0	0	0
Attempted Escape	0	0	0
Banding Together	0	0	0
Banding Together to Interfere with Unit	0	0	0
Battery on Inmate	1	0	2
Battery on Inmate without Serious Injury	0	0	0
Battery on Inmate with Serious Injury	0	0	0
Battery on Inmate with Use of Unknown Substance	0	0	0
Battery on Other Person with Serious Injury	0	0	0
Battery on Other Person with Use of Unknown Substance	0	0	0
Battery on Staff	0	0	1
Battery on Staff and Inmate	0	0	0
Battery on Staff without Serious Injury	0	0	0
Battery on Staff with Serious Injury	0	0	0
Battery on Staff with Bodily Fluids	0	0	1
Battery on Staff with Use of Unknown Substance	0	0	0
Child Pornography	0	0	0
Criminal Activity	0	0	0
Death	0	0	8
Disobey Direct Order	0	0	0
Employee Misconduct	5	3	0
Excessive Force	1	0	0
Escape from Unit	0	0	0
Escape from Work Release	0	0	0
Escape Plan	0	0	0
Farm Incident	0	0	0
Forcible Rape	0	0	0
Inappropriate Relationship	0	0	0
Indecent Exposure	0	0	0
Inmate on Inmate Abusive Sexual Contact	0	1	0
Inmate on Inmate Sexual Assault	0	0	0
Inmate on Inmate Sexual Contact	0	1	0
Inmate on Inmate Sexual Harassment	0	28	0
Inmate on Inmate Sexual Misconduct	0	16	0
Inmate on Inmate Nonconsensual Sexual Contact	0	1	0
Introduction of Cell Phone	0	0	1
Introduction of Contraband	0	0	3
Introduction of Drugs	0	0	3
Introduction of Money	0	0	0
Introduction of Tobacco	0	0	0
Introduction of Weapon	0	0	0
Major Breach of Security	0	0	0
Misconduct	0	0	0
Missing Narcotics	0	0	0
Other Felony	0	0	0
Other Incident	0	0	0
Other Rule Violation	0	0	0
Possession of Cell Phone	0	0	14
Possession of Drugs	1	0	7
Possession of Money	0	0	0
Possession of a Weapon	0	0	0
Property Damage	0	0	0
Racial Slurs	0	0	0
Retaliation	0	0	0
Sexual Assault	0	0	0
Sexual Misconduct	0	0	0
STTG	0	0	0
Suspected Criminal Activity	0	0	0
Rape	0	0	0
Riot	0	0	0
Sexual Misconduct	0	0	0
Staff on Inmate Sexual Harassment	0	18	0
Staff on Inmate Sexual Misconduct	0	1	0
Staff on Staff Sexual Harassment	2	0	0
Staff on Staff Sexual Misconduct	0	0	0
Suicide Attempt	0	0	0
Suspected Criminal Activity	0	0	0
Theft	0	0	0
Trafficking	0	0	0
Threat on Staff	0	0	0
Use of Force	0	43	0
Verbal Abuse	0	0	0
Verbal/Written Threat on Staff	0	0	0
Work Release Misconduct	0	0	0
Total	10	113	40

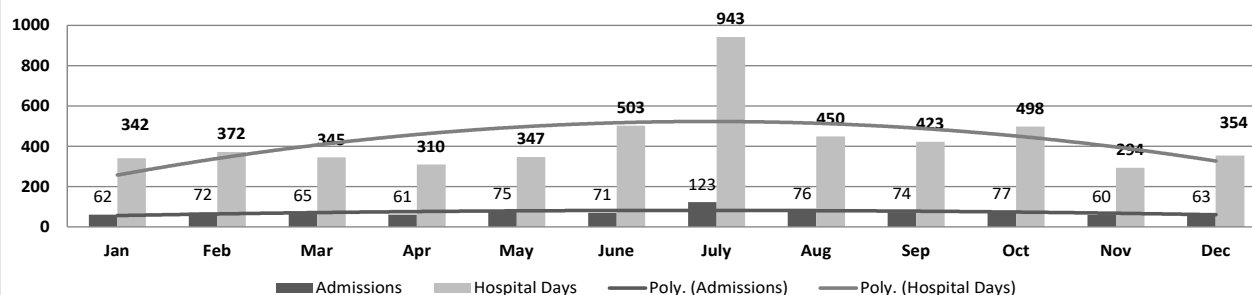
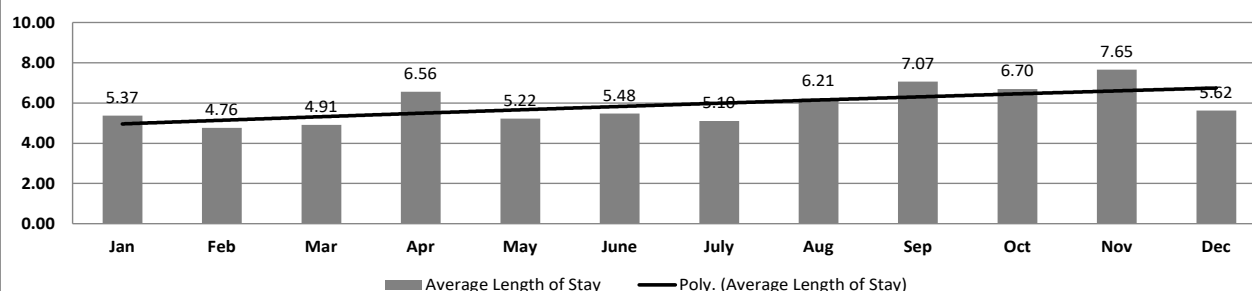
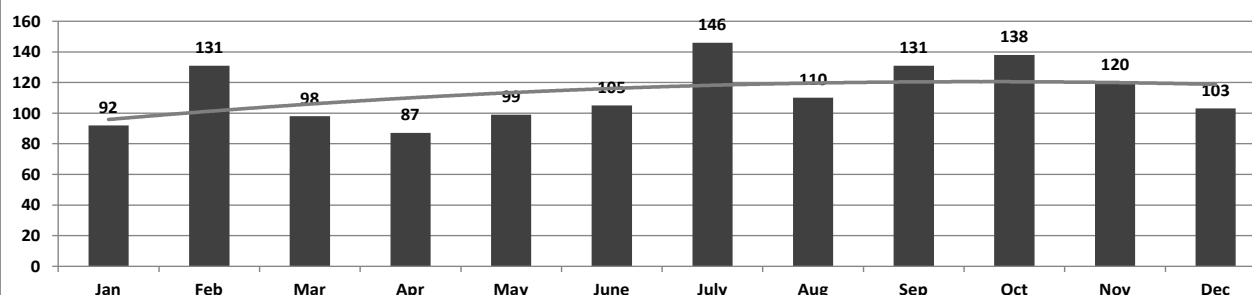
ADC INPATIENT AND EMERGENCY ROOM UTILIZATION

ADC Inpatient Statistics Past 12 Months

	2020												Average
	Jan	Feb	Mar	Apr	May	June	July	Aug	Sep	Oct	Nov	Dec	
Admissions	62	72	65	61	75	71	123	76	74	77	60	63	73.3
Hospital Days	342	372	345	310	347	503	943	450	423	498	294	354	431.8
Average Length of Stay	5.37	4.76	4.91	6.56	5.22	5.48	5.10	6.21	7.07	6.70	7.65	5.62	5.89

ADC ER Visits Past 12 Months

	2020												Average
	Jan	Feb	Mar	Apr	May	June	July	Aug	Sep	Oct	Nov	Dec	
Emergency Room Visits	92	131	98	87	99	105	146	110	131	138	120	103	113.3

ADC Inpatient Utilization
Past 12 MonthsADC Inpatient Average Length of Stay
Past 12 MonthsADC Emergency Room Visits
Past 12 Months

MEDICAL GRIEVANCE BOARD REPORT – DECEMBER 2020

Unit	<i>Acknowledged /Received</i>	<i>Rejected</i>	<i>Reviewed & Signed by Dep Director</i>	<i>With Merit</i>	<i>With Merit, but Resolved</i>	<i>% With Merit</i>	<i>Without Merit</i>
Benton	0	0	0	0	0	0%	0
Bowie County	0	0	0	0	0	0%	0
CMU	0	0	0	0	0	0%	0
Cummins	1	3	6	1	0	17%	5
Delta	2	0	2	1	0	50%	1
EARU	12	4	14	0	1	7%	13
EARU Max	12	3	9	0	1	11%	8
Ester	6	0	2	0	0	0%	2
Grimes	12	0	6	0	0	0%	6
Hawkins	1	0	0	0	0	0%	0
McPherson	5	3	1	0	0	0%	1
MCWRC	0	0	0	0	0	0%	0
MSU	5	0	20	0	0	0%	20
North Central	15	1	20	0	0	0%	20
NWAWRC	0	0	0	0	0	0%	0
Ouachita	15	3	14	1	0	7%	13
Pine Bluff	1	0	0	0	0	0%	0
Randall L. Williams	3	1	3	0	0	0%	3
SNN	3	1	3	0	0	0%	3
TRCC	0	0	0	0	0	0%	0
Tucker	3	3	2	0	1	50%	1
Varner	8	0	11	1	0	9%	10
Varner Super Max	24	1	24	2	0	8%	22
WRU	5	0	7	0	0	0%	7
WHM	2	0	5	0	0	0%	5
WWR	0	0	0	0	0	0%	0
Total	135	23	149	6	3	6%	140

CHAPLAINCY

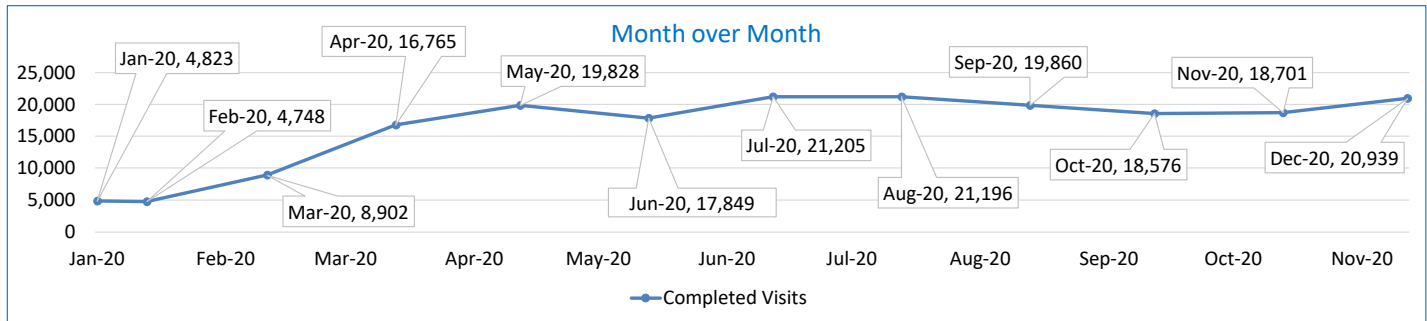
Month: December Year: 2020	CUMMINS	DELTA REGIONAL	EAST ARKANSAS	EAST ARKANSAS MAX	ESTER	GRIMES	HAWKINS	MAXIMUM	MCPHERSON	NORTH CENTRAL	OUACHITA RIVER	PINE BLUFF	RANDALL L. WILLIAMS	TUCKER	VARNER	VARNER MAX	WRIGHTSVILLE	TOTAL
Services Chaplains Oversaw																		
Christian																		
Population	0	0	0	0	8	0	0	0	4	4	14	6	4	0	4	0	0	44
Segregation	0	0	0	0	0	0	0	0	0	0	0	0	0	0	0	0	0	0
Muslim																		
Population	0	0	0	0	8	0	0	3	4	4	4	4	4	0	4	0	0	35
Segregation	0	0	0	0	0	0	0	3	0	0	0	0	0	0	0	0	0	3
																		82
Volunteers in Charge																		
Protestant	0	0	0	0	0	0	0	0	0	0	0	0	4	0	0	0	0	4
Catholic	0	0	0	0	0	0	0	0	0	0	0	0	0	0	0	0	0	0
Muslim	0	0	0	0	0	0	0	0	0	0	0	0	4	0	0	0	0	4
Other	0	0	0	0	0	0	0	0	0	0	0	0	0	0	0	0	0	0
Baptism	0	0	0	0	0	0	0	0	0	0	0	0	0	1	0	0	0	1
Marriages																		
	0	0	0	0	0	0	0	0	0	0	0	0	0	0	0	0	0	0
Distributed by Chaplains																		
Greeting Cards	2,000	302	23	32	150	8	98	2,128	2,104	1,800	275	1,600	52	760	23	196	6	11,557
Bibles, Quran, Torah, Etc.	20	15	13	8	15	24	0	543	66	30	135	8	14	84	4	10	41	1,030
Study Course	5	0	53	17	12	0	0	28	35	0	31	15	0	175	4	2	3	380
Writing Supplies	0	0	0	0	32	0	789	556	33	0	500	0	0	190	0	0	200	2,300
Literature	2,000	650	737	416	0	887	150	613	193	500	425	0	3,047	1,300	1,307	811	1,175	14,211
Chaplain's Visits																		
Barracks	60	62	21		15	65	5	33	3	55	39	39	4	32	484	27	11	955
Approximate Hours Spent in Barracks	24	12	3	0	10	45	6	10	20	14	5	13	0	16	165	20	6	369
Inmate Office visits	15	67	17	0	30	34	25	7	15	12	31	13	52	124	59	0	6	507
Other Office visits	15	8	6	2	10	65	21	10	40	15	42	30	10	25	25	14	5	343
Hospital	0	0	0	0	0	0	0	0	0	0	27	0	0	0	0	0	0	27
Infirmary/Sick Call	4	1	1	0	1	7	4	7	8	4	26	2	0	2	9	7	1	84
Restrictive/Punitive Housing	6	3	0	20		9	14	9	16	3	13	2	2	3	0	5	3	108
PC - DRU		5																5
Visitation Days	0	0	0	0	0	0	0	0	0	0	0	0	0	0	0	0	0	0
Volunteer Visits																		
RCV	0	0	0	0	0	0	0	0	0	0	0	0	0	0	0	0	0	0
OCV	0	0	0	0	0	0	0	0	0	0	0	0	0	0	0	0	0	0
Spiritual Advisor	0	0	0	0	0	0	0	0	0	0	0	0	0	0	0	0	0	0
CRA	2	0	0	0	0	0	0	0	0	0	2	0	0	0	0	0	3	7
Religious Volunteer Hours																		
Volunteer Hours	56	0	0	0	0	0	0	0	0	0	15	0	0	0	0	0	20	91
Denominational/Volunteer Chaplain Hours	32	0	0	0	0	0	28	0	60	0	0	0	0	18	0	0	28	166
																		257
Other Activities of Chaplain																		
Counseled Employees	10	3	1	0	12	13	26	2	25	20	16	28	3	14	174	0	10	357
Orientation Sessions	1	0	0	0	0	0	0	0	0	0	0	0	0	0	0	0	0	1
Free World Devotions	0	0	0	0	1	6	0	0	1	0	0	0	0	6	27	0	0	41
Spoke in Churches	9	0	3	0	3	3	0	0	1	0	0	10	0	4	27	0	0	60
Crisis Intervention Sessions	15	10	3	0	0	0	38	1	109	6	19	5	9	14	6	0	6	241
Marriage Counseling	0	0	0	0	0	0	0	0	0	0	3	0	0	0	0	0	0	3
Denominational Meeting	0	0	0	0	0	0	0	0	0	0	0	0	0	0	0	0	0	0
Chaplain's Meeting	0	1	1	0	1	2	1	0	1	1	1	1	1	1	19	0	1	32
Volunteer Training Session	0	0	0	0	1	0	0	0	0	0	0	0	0	0	0	0	0	1
Chaplain Transfers																		
	0	0	0	0	0	0	0	0	0	0	0	0	0	0	0	0	0	0
Chaplain Promotions																		
	0	0	0	0	0	0	0	0	0	0	0	0	0	0	0	0	0	0
PAL PROGRAM																		
Enrolled at start of month	44	15	48	0	33	43	45	15	35	14	33	0	19	44	0	0	19	407
Enrolled during the month	3	12	0	0	0	1	7	2	8	0	2	0	0	0	0	0	0	35
Removed From PAL Program																		
# Paroled	0	0	0	0	0	2	2	0	3	0	0	0	1	2	0	0	0	10
# Completed	0	8	0	0	0	0	0	0	0	0	0	0	0	0	0	0	0	8
# Withdraw	0	0	0	0	0	0	0	0	0	0	0	0	1	0	0	0	0	1
# Removed	1	0	0	0	0	2	0	0	1	0	1	0	0	3	0	0	0	8
# Transferred	0	0	1	0	0	0	0	0	1	0	0	0	0	0	0	0	0	2
Total Removed from PAL Program	1	8	1	0	0	4	2	0	5	0	1	0	2	5	0	0	0	29
Total Enrolled at the End of the Month	46	19	47	0	33	40	50	17	38	14	34	0	17	39	0	0	19	413
Volunteers in PAL																		
	2	0	0	0	0	0	0	7	2	6	0	0	0	0	0	0	0	17
Special Events:																		
	0	1	1	1	1	0	1	2	0	1	2	2	3	1	0	0	2	18

SECURUS VIDEO VISITATION REPORT DECEMBER 2020

AR-DOC SVV Activity Tracker

Total ADP 13,889

Total Visits by Month	Jan-20	Feb-20	Mar-20	Apr-20	May-20	Jun-20	Jul-20	Aug-20	Sep-20	Oct-20	Nov-20	Dec-20
Total (Includes SuperMax)	4,823	4,748	8,902	16,765	19,828	17,849	21,205	21,196	19,860	18,576	18,701	20,939
Target Objective	15,587	15,587	15,587	15,587	15,587	15,587	15,587	15,587	15,587	15,587	15,587	15,587



Completed Visits

Site	Current Month	Previous Month
Benton	376	459
Cummins	1,932	1,817
Delta Regional	1,436	1,053
East Arkansas Regional	2,256	1,919
Ester	969	877
Grimes	1,389	1,106
J Aaron Hawkins Sr.	829	414
Tucker Max	1,335	1,053
Mcperson	812	657
Mississippi County WRC	241	206
North Central	1,498	1,491
NW Arkansas WRC	49	78
Ouachita River	2,464	2,374
Pine Bluff Complex	628	612
Randall L Williams	677	691
State Police Barracks	96	86
Texarkana Regional	252	333
Tucker Unit	575	755
Varner	2,072	1,664
Wrightsville Unit	987	991
Pine Bluff Re-Entry	66	65
Tucker Re-entry	0	0
Total:	20,939	18,701

Missed by Inmate

Site	Current Month	Previous Month
Benton	26	28
Cummins	56	71
Delta Regional	23	24
East Arkansas Regional	64	48
Ester	24	29
Grimes	82	40
J Aaron Hawkins Sr.	55	34
Tucker Max	61	99
Mcperson	44	42
Mississippi County WRC	18	18
North Central	55	34
NW Arkansas WRC	15	2
Ouachita River	55	65
Pine Bluff Complex	34	42
Randall L Williams	18	11
State Police Barracks	0	3
Texarkana Regional	8	13
Tucker Unit	20	67
Varner	90	95
Wrightsville Unit	71	54
Pine Bluff Re-Entry	1	0
Tucker Re-entry	0	0
Total:	820	819

**SECURUS TABLET REPORT
DECEMBER 2020**

Facility Name	Subscription	Facility	Officer	Total	New Subscriptions
Benton Unit	14	3	8	25	10
Cummins Unit	82	87	14	183	54
Delta Regional Unit	31	36	16	83	19
East Arkansas Regional Unit	61	97	15	173	35
Ester Unit	6	140	20	166	14
Grimes Unit	43	72	14	129	25
J. Aaron Hawkins Sr Center For Women	11	69	15	95	5
McPherson Unit	61	103	15	179	26
Mississippi County Work Release Center	2	2	9	13	1
North Central Unit	23	98	10	131	22
Northwest Arkansas Work Release Center	1	2	8	11	1
Ouachita River Correctional Unit	37	110	14	161	30
Pine Bluff Reentry Center	4	2	0	6	1
Pine Bluff Unit	5	5	8	18	18
Randall L. Williams Facility	11	24	15	50	21
State Police Barracks	1	1	3	5	0
Texarkana Regional Correctional Center	2	2	10	14	0
Tucker Maximum Security Unit	19	31	12	62	10
Tucker Reentry Center	2	54	6	62	0
Tucker Unit	24	61	10	95	10
Varner Unit	23	75	20	118	37
Wrightsville Unit	45	54	6	105	26
TOTAL	508	1,128	248	1,884	365

CONSTRUCTION BUDGET / STATUS REPORT - JANUARY 8, 2021 — [Page 1 of 2]

Fund	Project Description	Total Projected Spent	Budget	Available Funds	\$ % Complete	Construction % Complete	Notes
KBR4Q95	ESTER - Phase 3 - General Improvement Fund	2,977,000	3,911,781	934,782	76%	98%	McClelland Engrs redesigning Parking Lot. At DBA & FEMA for approval.
700483A	EARU Max Rec Expanded Metal Rec Yard	819,150	879,000	59,850	93%	0%	Started construction of the panels as of 11/20/2020. 75% of material in house. Building panels in shop. Construction set to begin 3/15/21.
700483A	Tucker Max Expanded Metal Rec Yard	60,183	1,800,000	1,739,817	3%	0%	DBA Approved to proceed on 9/5/2020. Working on material list for procurement.
700483A	Cummins Expanded Metal Rec Yard	50,012	368,617	318,605	14%	0%	Plans on hold, will modify for exp. metal
KBR4Q95	Bullpens	388,676	851,999	463,323	46%	98%	Varner & EARU complete. Installation underway at Max. Locks delivered. Project on hold due to COVID-19.
KBR4Q95	13 & 15 Barracks Door Revisions	119,111	174,000	54,889	68%	68%	All doors and locks installed in 13 Barracks. Job on hold to assess long term plan.
KBR4Q95	Camera's (New)	1,073,900	1,248,000	174,100	86%	86%	Delta, Varner, EARU, Cummins, RLW, PBU, & the Max are complete, working at Tucker, 90% complete.
700485A	Entegrity Energy Improvements at EARU & Delta	16,961,127	17,010,204	49,077	100%	97%	lights (100%), plumbing 100%, water (100%), compost (100%), & solar (100%), HVAC (100%). Only Training is incomplete.
7004828	Entegrity Energy Improvements Phase 2 at Tucker and Max	-	18,603,150	18,603,150	0%	0%	We are working with Entegrity on the capital equipment list that will be installed in phase II. Lighting and water conservation is set to begin in February.
700486A	Pine Bluff Unit Barracks 9 Renovation	369,616	437,000	67,384	85%	98%	9A, B C & D water controls arrived 2/5, Icon training delayed, installation near complete.
KBSCW18	McPherson Administration	374,372	395,439	21,067	95%	85%	Walls, slabs, brick complete. Roof slab poured. Roofer on site, insulating duct, running electrical & installing doors. Inmate labor back at work last week. ETA completion 1 month.
KBSCW18	McPherson Visitation	304,836	312,430	7,594	98%	85%	
KBR4Q95	McPherson Administration and Visitation	-	100,000	100,000	0%	0%	
KBSHW18	Tucker Water Treatment	-	1,093,848	1,093,848	0%	0%	Preparing RFQ for designer.
KBFSW18	Max Armory	251	70,000	69,749	0.4%	0%	DBA approved Plans 8/21/20. Tentative start date 3/01/2021.
7004810	Administrative East Roof Replacement	960.00	309,375	308,415	0.3%	0%	ADFA funding. Core samples taken on 11/17/2020 for assessment. All roofs have been designed and they are working with DBA for approval.
7004810	Central Warehouse Roof Replacement	216.00	135,020	134,804	0.2%	0%	
7004810	RLW Roof Replacement	815.00	1,888,776	1,887,961	0.04%	0%	
22V	NWARWRC Laundry and Commissary	147,825	250,000	102,175	59%	0%	DBA approved Plans, Springdale Water Dept comments rec'd & answered. All approvals received. Started project 10/13/2020. Installing lift station.
865C KBR4Q95	NCU Perimeter Security	20,625 5,009	270,000	244,366	9%	0%	DBA Approved plans. We have notice to proceed.
N98	Max Re-Entry Generator Project	3,193	135,000	131,807	2%	0%	Plans submitted to DBA for approval December 2, 2020. Still in review at DBA.
KBR4Q95	NCU Replacement Generator Project	4,016	202,000	197,984	2%	0%	Project is at DBA for review and approval. Is set to be sent back to on-call the week of 1/15/2021.



CONSTRUCTION BUDGET / STATUS REPORT - JANUARY 8, 2021 — [Page 2 of 2]

Fund	Project Description	Total Projected Spent	Budget	Available Funds	\$ % Complete	Construction % Complete	Notes
7004820	Tucker 10 Barracks Sidewalk	-	70,259	70,259	0%	0%	DBA approved to proceed. Mobilizing to begin project. Projected start date of 3/15/21.

Telephone Projects

Maintenance & Operations	Fire Alarm Upgrades (All Units)	34,070	41,000	6,930	83%	50%	on-going
	Stainless Steel - Kitchen/Shower/Restrooms - All Units	3,834	20,000	16,166	19%	15%	continual need
	Gates and Fences all units	5,463	25,000	19,537	22%	0%	to improve security
	ACA Maintenance	24,775	100,000	75,225	25%	0%	Construction teams at Tucker Max, EARU, Training Academy, Cummins & MCWRC.
	ADA Projects - All Units	376	10,000	9,624	4%	0%	Working with Varner for the sports field sidewalk.
	Fast Top Floor Systems (kitchen/laundry/showers all	0	25,000	25,000	0%	0%	Benton restrooms underway. Ouachita kitchen next.
	Camera Equipment - All Units	166,814	250,000	83,186	67%	15%	cameras as requested/approved.
	Lock/Riot Gates - All Units	48,583	90,500	41,917	54%	12%	on-going.
	AC Units-All Units	64,008	70,000	5,992	91%	25%	repairing & replacing daily.
	Subtotal	\$ 347,923	\$ 631,500	\$ 283,577			

Capital Projects FY20 Carry Forward	Metal Ceilings	9,293	25,000	15,707	37%	0%	NCU complete, Delta is next.
	ORCU Gravel Pit Operations	15,334	35,000	19,666	44%	18%	on-going.
	Dog Kennel/Horse Stable Malvern	0	48,000	48,000	0%	0%	DBA approved the Plans, released for construction. Site surveyed and selected. Both Construction Supervisors at ORCU working in the maintenance dept. Project on hold.
	Emergency Generator - All Units	131,145	250,000	118,855	52%	20%	Cummins 300kW generator complete. All material purchased for Hawkins. Generator is currently being installed. Max Gen mat'l rec'd, Generator rec'd. Will start as soon as Hawkins Unit Gen is installed. Cummins East Bldg. we have approval awaiting Max generator install.
	Tucker 4 new filters & one aeration tank	461,718	488,434	26,716	95%	70%	Filters are being installed at this time.
	Roof Repairs-Cummins	24,986	145,000	31,253	78%	0%	Prepared large order for multiple Units. Max is complete. Need repairs at ORCU, Delta, Cummins & others. Varner & ORCU working on repairs, received TPO
	Roof Repairs-Cummins Laundry	0				0%	
	Roof Repairs-East Arkansas	52,938				0%	
	Roof Repairs-Max	0				0%	
	Roof Repair - NCU	5,735				0%	
	Roof Repair - RLW	5,786				0%	
	Roof Repairs-Tucker	0				0%	
	Roof Repairs-Varner	19,648				0%	
	Roof Repairs-Wrightsville	4,654				0%	
	Boiler Repair	78,673	100,000	21,327	79%	18%	continually needing repair
	Subtotal	\$ 809,909	\$ 1,091,434	\$ 281,525			

New Projects	Additional Metal Fab shop	0	29,266	29,266	0%	0%	purchasing materials
	PB Warehouse Drive replacement	0	118,000	118,000	0%	0%	asphalt drive pot holed. Preparing Plans.
	Subtotal	\$ -	\$ 147,266	\$ 147,266			
	Architect Fees	30,569	30,000	-569	102%		
	Total	\$ 1,188,402	\$ 1,900,200	\$ 711,798			

Notes Report has not been reconciled against Accountings Reconciled Reports.
Tolerance/Deviation is with in 1% of Projected Spending.