



DIVISION OF
CORRECTION

BOARD REPORT

December 2020



@ARDeptofCorrections



@adcpio

Dexter Payne,
Director



POPULATION REPORT

RESEARCH/PLANNING

November 2020 Admissions and Releases – Admissions for November 2020 totaled **469** (398-males and 71-females) while releases totaled **349** (307-males and 42 females) for a net increase in-house of **120** inmates.

Inmate Population Growth/Projection – At the end of November 2020, the jurisdictional population for the Division of Correction totaled **16,165**, representing a decrease of **1,594** inmates since the first of January 2020. Calendar year 2020 has seen an average decrease of **145** inmates per month, which is up from an average monthly decrease of **three** inmates per month during calendar year 2019.

Average County Jail Back-up – The backup in the county jails averaged **1,986** inmates per day during the month of November 2020, which was up from the per-day average of **1,943** inmates during the month of October 2020. Of the **1,986** average, short-term revocations accounted for **688** (615 males and 73 females) during the month.

INSTITUTIONS

PRISON RAPE ELIMINATION ACT (PREA)

The PREA Coordinator provided **PREA Annual Refresher** on November 19. The 1.5-hour class was completed by 27 Riverside Vo-Tech instructors.

PREA Hotline Data - November 2020:

Number of Calls Received	480
Number of Calls from ADC Inmates	369
Number of Calls from DCC Residents	11
Total Calls Referred for Reported PREA Issue	24
Total Calls Referred for Non-PREA Issue (FYI)	149
Calls Referred Due to Technical Failure	0
Repeat Calls	56
Test Calls	0
No Message	251
Incidents that Originated with Hotline Calls Referred to IAD	25

INMATE INSTITUTIONAL GRIEVANCES

Inmate Formal/Informal Grievances: During November 2020, a total of 1,393 formal grievances and 1,972 informal grievances were filed at various units.

Institutional Grievances Appeals: There was a total of 461 appeals of institutional grievances received in November 2020. Of those, 378 were acknowledged and 83 were rejected for various reasons. Of the total 378 appeals answered, 372 had no merit and six were found with merit.

FARM

In early November, the row crop harvest was completed at all farms. The season ended with good yields on soybeans and rice. All wheat crops are up, and herbicide was applied in preparation for the winter months.

The beef herd weaned calves, which then began a preconditioning program that adds value to their price when put up for sale. Additionally, Farm Operations has a goal of retaining 300 replacement heifers for both farms to increase the size of their herds.

Hay production was completed at units across the state. A special thanks goes to the crews from the North Central and Grimes units for helping to bale almost 1,000 extra bales at the Grimes, East Arkansas Regional, and Tucker units.

Even though fall gardens were down due to the reduced number of squads available to pick because of COVID-19, a lot of squash, cabbage and sweet potatoes were still harvested.

REGIONAL MAINTENANCE HOURS

Regional Maintenance Hours	November 2020
Benton Unit	4,115
Delta Regional Unit	3,504
East Arkansas Regional Unit	88
Grimes Unit	936
McPherson Unit	204
Mississippi County Work Release	2,304
North Central Unit	4,976
Ouachita River Correctional Unit	2,048
Randall L. Williams Unit	1,792
Texarkana Regional Correctional Center	0
Tucker Unit	0
Varner Unit	2,012
Wrightsville Unit	1,248
Total Hours	23,227

WORK RELEASE RENT REPORT

Unit	November 2020
Benton Unit	\$68,680.00
Mississippi County Work Release	\$42,075.00
Northwest Arkansas Work Release	\$26,180.00
Pine Bluff Work Release	\$23,987.00
Texarkana Regional Correctional Center	\$0.00
Tucker Reentry Work Release	\$6,902.00
Total	\$167,824.00

REENTRYRANDALL L. WILLIAMS
JUVENILE EDUCATION PROGRAM

November 2020 Capacity: 20	Beginning Count	New Commitments	DCR/Punitive	Transferred/ Turned 18*	Paroled	End Count
Juveniles*	1	0	0	0	0	1

*Juveniles are transferred from the program once they reach the age of 18.

WORKFORCE ALLIANCE FOR
GROWTH IN THE ECONOMY (WAGE)

November 2020 Capacity: 120 Unit:	Beginning Count	Admissions During Mo.	Removed*	Completed	End Count
Delta***	0	0	0	0	0
Ester**	0	0	0	0	0
Hawkins***	0	0	0	0	0
McPherson***	0	0	0	0	0
Ouachita River	20	0	0	0	20
Tucker***	0	0	0	0	0
Tucker Reentry***	0	0	0	0	0
Wrightsville***	0	0	0	0	0
TOTAL	20	0	0	0	20

*The "Removed" column indicates the number of participants who transferred, signed out, received a disciplinary, were removed because test scores were not returned/were too low to continue, or were released from prison.

**The Ester Unit WAGE Program is experiencing a change in software resulting in no classes being taught at this time.

***WAGE Program inactive during the month due to COVID-19.

ADVANCED PRINCIPLES
AND APPLICATIONS FOR
LIFE PROGRAM (APAL)

November 2020 Capacity: 86	Beginning Count	Admissions During Mo.	Removed*	End Count
Ester	33	0	0	33
Hawkins	40	6	1	45
TOTAL	73	6	1	78

Advanced PAL is an 18-month reentry program that combines a pre-release curriculum with the PAL program.

*The "Removed" column indicates the number of participants who paroled, completed the program, withdrew from the program, transferred, or were removed from the program for another reason.

WRIGHTSVILLE-HAWKINS
PATHWAY TO FREEDOM PROGRAM

November 2020 Capacity: 200	Beginning Count	Enrolled During the Month	Removed	End Count*
Wrightsville-Hawkins PTF	172	0	15	157

THINK LEGACY

November 2020 Capacity: 635 Unit	Beginning Count	Admitted	Graduated	Removed**	End Count	Graduated But Remain*
Cummins	31	2	4	12	17	0
Delta Regional	12	0	7	2	3	0
East Arkansas Regional	42	0	0	0	42	0
Ester	3	0	1	0	2	0
Grimes	38	12	5	0	45	0
Hawkins (Female)	6	0	3	2	1	0
McPherson	53	0	1	0	52	0
North Central	20	0	8	1	11	0
Ouachita River	25	8	2	8	25	2
Tucker	18	0	0	0	18	0
Tucker Women's Reentry	0	0	0	0	0	0
Varner	0	0	0	0	0	0
Wrightsville	10	0	10	0	0	0
Total	258	22	41	25	216	2

**The "Removed" column indicates the total number of participants who paroled, signed out, transferred, or were removed from the program for any other reason and are no longer in the barracks.

*The "Graduated But Remain" column indicates the number of participants who have successfully completed the program but remain in the barracks. *These numbers are included in the End Count.*

ADMINISTRATIVE SERVICES

DIVISION OF CORRECTION TRAINING - NOVEMBER 2020

BASIC TRAINING DIVISION –

Instructor Ramone Woodall's **BCOT Class 2020-N** graduated on November 19, 2020, with a total of 34 cadets. An awards ceremony was held on November 5.

The *Willis H. Sargent Award* recipient for the class was Lawanda Harris of the Grimes Unit.

Recipients of *Physical Fitness Awards* were:

- 1st - Chad Dooley, Randall L. Williams Unit
- 2nd - Kendarious Woods, Delta Regional Unit
- 3rd - Zykia Cage, Cummins Unit

Academic Awards were presented to the following:

- 1st - Jaime Cole, Delta Regional Unit
- 2nd - Skyler Roark, Maximum Security Unit
- 3rd - Colten Foster, North Central Unit
- Kyla Jackson, Ester Unit

IN-SERVICE DIVISION –

In-service training for the month consisted of a **Defensive Driving** class, which was attended by four participants. **Self Defense and Staff Survival** class was also offered with seven participants in attendance. All other in-person training has been suspended until further notice due to COVID-19.

eCADEMY –

During November, 445 ADC employees completed a total of 3,720 hours of eCADEMY training. About 8% of ADC employees completed at least one course during that timeframe, averaging 0.09 hours per staff member.

HEALTH/CORRECTIONAL PROGRAMS

CHAPLAINCY SERVICES

All Facilities – During the month of November, the Chaplaincy Division at all facilities continued to provide religious services virtually over the video systems. This included Jumu'ah Prayer. Volunteer access remained discontinued throughout the month due to COVID-19.

Ouachita River Correctional Unit – “Christmas Behind Bars” delivered gift sacks to the unit that were distributed to each inmate on November 30.

Pine Bluff Unit – Chaplain Michael Ault transferred to the unit from Cummins on November 1. A total of 28 inmates completed the Financial Freedom Seminar, provided at the facility via video, from Nov. 9 - 25.

Randall L. Williams Unit – In a gesture of appreciation, the chapel provided gift bags to unit officers for Veterans Day and Thanksgiving.

ACCREDITATION

ACA Internal Audits Completed:

11/02–11/06 Grimes Unit Audit Prep
11/09–11/12 Ouachita River Correctional Unit Audit Prep
11/16–11/19 Cummins Unit Audit Prep
11/23–11/25 Wrightsville Unit Audit Prep

Classes Taught:

11/05 BCOT
11/19 BCOT

Fire/Safety and Sanitation Independent Audits Conducted by the Fire and Sanitation Coordinator:

11/09–11/10 McPherson Unit Independent Audit

VOLUNTEER SERVICES

Total Number of Volunteer Hours for November 2020:

Unit/Program	Hours
Delta Unit	0
East Arkansas Regional Unit	0
McPherson Unit	0
Mississippi County Work Release Center	0
Northwest Arkansas Work Release Center	10
Ouachita River Correctional Unit	0
Pine Bluff Complex	0
Texarkana Regional Correctional Center	0
Varner	0
PAWS	0
Think Legacy	0
Religious Services/Chaplaincy	0
Total Hours	10

MENTAL HEALTH SERVICES

Reduction of Sexual Victimization Program (RSVP) and Sex Offender Treatment Programs (SOFT):

November 2020	Capacity	Beginning Count	Completed	Removed	Admissions	End Count
RSVP	278	194	0	4	0	190
SOFT	30	4	1	0	0	3
Total	308	198	1	4	0	193

There are 805 males on the waiting list for RSVP and three females on the waiting list for SOFT who are within five years of their TE date. Of those, 33 inmates are mandated by the Parole Board.

The average time on the waiting list from request is between one and two months for those stipulated.

*The total on the waiting list, including those not currently within the identified timeframe, is 1,436 males and three females. Of these, 805 are eligible and 631 are ineligible for the program. There are no PREA inmates in the program at this time.

*Ineligibility is due to being in restrictive housing, having class IV status, or receiving a major disciplinary within the last 60 days.

Therapeutic Community (TC):

November 2020 Unit	Capacity	Beginning Count	Completed	Removed	Admissions	End Count
McPherson	53	35	0	4	0	31
Tucker	136	14	3	1	40	50
Wrightsville	50	21	0	3	0	18
Total	239	70	3	8	40	99

There are 583 males and 138 females on the waiting list who are within ten years of their release date. Of those, 17 are mandated by the Parole Board.

The average time on the waiting list from request is seven days.

*The total on the waiting list, including those not currently within the identified timeframe, is 794 males and 149 females. Of these, 721 are eligible and 222 are ineligible for the program.

*Ineligibility is due to being in restrictive housing, having class IV status, or receiving a major disciplinary within the last 60 days.

Substance Abuse Treatment Program (SATP):

November 2020 Unit	Capacity	Beginning Count	Completed	Removed	Admissions	End Count
Benton	20	10	1	2	11	18
Cummins	47	35	1	1	0	33
Grimes	56	50	5	4	1	42
Maximum Security	4	3	0	0	0	3
McPherson	106	37	0	6	0	31
Randall L. Williams	200	78	3	11	0	64
Wrightsville	150	60	0	5	0	55
Total	583	273	10	29	12	246

There are 1,797 males and 158 females on the waiting list who are within five years of their release date. Of those, 24 are mandated by the Parole Board.

The average time on the waiting list from request is 70 days.

*The total on the waiting list, including those not currently within the identified timeframe, is 2,393 males and 188 females. Of these, 1,979 are eligible and 602 are ineligible for the program.

*Ineligibility is due to being in restrictive housing, having class IV status, or receiving a major disciplinary within the last 60 days.

Substance Use Intervention Program: The Substance Use Intervention Program had no admissions or discharges for an end-of-month count of zero for November. This program is housed at the Varner Unit and is for inmates found guilty of a disciplinary violation for drug use or drug possession.

Ouachita River Correctional Unit (ORCU) Residential

Program Unit (RPU): The RPU had three admissions and two discharges in November for an end-of-month count of 120.

McPherson Unit Mental Health Residential Program Unit

(RPU): There were three admissions and no discharges in November for an end-of-month count of 39.

Habilitation Program: The Habilitation Program at the Ouachita River Correctional Unit provided treatment services to 45 inmates during November. There were no admissions or discharges, resulting in an end-of-month count of 45.

Anger Management Treatment: The Anger Management Treatment Program at the Cummins Unit provided treatment services to four inmates during November. There were no admissions and one discharge, for an end-of-month count of three.

Staffing: The following Mental Health Services and Substance Abuse Treatment Program (SATP) positions were vacant in October and November 2020:

Positions	FTE's*	October 2020	November 2020
Psychologists	14	5	5
Social Workers	31	12	12
Rehab Program Manager	0	1	1
Advisors	64	12	11
Substance Abuse Program Leaders	35	3	5
Administrative Specialists	17	8	5

*FTE refers to authorized Full Time Equivalent positions.

ADDITIONAL MENTAL HEALTH AND MEDICAL INFORMATION

Self-Study Classes:

Classes	Number of Participants	Number Completed	Waiting List
Anger Management	123	117	685
Thinking Errors	308	265	561
Substance Abuse Education	70	63	516
Communication Skills	72	72	708
Domestic Violence	34	31	186
Victims of Domestic Violence	7	7	26
Stress Management	113	113	623
Parenting	41	41	199

Suicide: There were 76 suicidal threats during November. There were nine attempts resulting in one death.

Outpatient: There were 1,841 inmates on the mental health medical log at the beginning of November. Mental Health staff conducted the following contacts during November:

Case Management Contacts	1,756
Requests for Interviews	1,092
Testing	2
Intakes	449
Unit Requests	889
Pre-Lockup Reviews	443
Routine Restrictive Housing Reviews	779
Restrictive Housing Rounds	18,672
PREA Evaluations	97
Routine Follow-up	345
834 Requests	29

County Mental Health Requests: During November, there were 288 requests received of a mental health nature. Of those, 143 inmates were fast-tracked to ADC. *Note: Most inmates were not transferred due to COVID-19.*

County Medical Health Requests: During November, there were 763 requests received of a medical nature. A total of five inmates were fast-tracked to ADC.

Medical Contract Reimbursements: Sanction reimbursements for October were \$11,650.00.

Deaths: There were six inmate deaths during the month of November. Three were claimed and three were cremated.

Wellpath: See attachment for Wellpath's report regarding outside beds and emergency room visits.

Medical Grievances: In November, there were 112 appeals received of medical grievances and 154 appeals were answered. Seven of those were found to be with merit.

SEX OFFENDER ASSESSMENT

Assessments Completed:

Risk Level	November	September 1999 through November 2020
Level 1	1	1,207
Level 2	14	8,080
Level 3	4	7,162
Level 4	1	701
Default 3	5	*
Total	25	17,150
*Default Level 3's are included in the total number of Level 3's to date.		

ACIC Numbers:

The total number of sex offenders registered from September 1999 through November 2020:

Compliant	8,363
Delinquent	1,410
Confined	3,249
Out-of-State	3,770
Address Unknown	142
Deported	208
Incapacitated	95
Out of USA	11
Total	17,248

Consistent with current Arkansas law, deceased offenders no longer remain on the registry.

PAWS IN PRISON

November 2020 Unit	Enrolled	Graduated	Foster	Volunteer Hours
Hawkins Unit	4	0	0	0
Maximum Security Unit	7	0	0	0
North Central Unit	3	1	0	0
Ouachita River Correctional Unit	6	2	0	0
Randall L. Williams Unit	6	0	0	0
Tucker Unit	5	4	0	0
Total	31	7	0	0

Completed Paws in Prison Training:

November 2020 Program Graduates	7
YTD 2020 Program Graduates	191
Total Graduates Since Inception (December 2011)	1,643
Dogs Currently in Foster (Graduated, but Not Adopted)	0
November 2020 Volunteer Hours	0
YTD Volunteer Hours	56

INFORMATION TECHNOLOGY

INMATE TABLETS – Within the Division of Correction, a total of 165* inmate tablets were leased during November.

*The low number of subscription tablets for the month correlates to the implementation of the “Make Mine” program, which provides educational and self-help opportunities for offenders. As part of the implementation, tablet subscriptions requiring the reinstatement of the subscription were canceled. Impacted subscription holders were provided free subscriptions for the month, and tablets with free basic content were placed in the facilities allowing offenders to review. The program gives offenders the opportunity to own one through a lease of \$5.00 per month.

INMATE VIDEO VISITS – Inmates completed 18,701 video visits during the month and missed 819 within the Division of Correction.

CONSTRUCTION/MAINTENANCE

PROJECT UPDATES

SEE CONSTRUCTION BUDGET / STATUS REPORT IN ATTACHMENTS SECTION (PAGES 22-23).

AGENCY HIGHLIGHTS

AGENCY-WIDE:

COVID-19

The ADC continued taking measures addressing COVID-19 that included ongoing suspension of visitation at the state’s correctional facilities through November 13. Securus, the ADC’s communication partner, continued providing phone and video visitation at lower rates during this time.

EAST ARKANSAS REGIONAL UNIT (EARU):

Staff Remember Fallen Officer

On November 20, staff at EARU gathered together in a socially-distant way to say goodbye to their colleague and friend, Sergeant Travis Wallace, with a balloon release. Sgt. Wallace, who also served as a police officer for the city of

Helena-West Helena, was killed November 12 as he attempted to arrest a subject wanted for a shooting that occurred the previous week.



REGIONAL MAINTENANCE PROJECT HIGHLIGHTS NOVEMBER 2020

Varner Unit – Cleanup at Local Wastewater Treatment Plant

Regional Maintenance 1 – November 5:



Before



After

Regional Maintenance 1 and 2 – November 9:



Before



After

Regional Maintenance 1 and 2 – November 17:



Before



After

2020 INFORMAL GRIEVANCE REPORT

<i>Month</i>	BENTON	HAWK/M	HAWK/F	WRTS	EARU & MX	GRIMES	RLW	MCWR	MCPH	MSU	NCU	PBU	NWA	TU	TRCC	VSMX	VU	CU & CMU	ORCU	Ester	DRU	Bowie Cty	TOTAL
JAN	0	34	27	84	449	213	19	0	342	199	150	41	0	123	2	486	89	220	296	39	84	33	2,930
FEB	2	34	27	52	209	164	19	0	288	245	107	35	0	138	2	464	95	178	232	25	63	43	2,422
MAR	1	29	19	64	384	150	12	0	301	264	148	35	0	101	2	486	65	238	260	31	104	29	2,723
APR	2	50	27	121	434	180	32	0	254	268	168	45	0	148	7	521	121	268	292	38	146	22	3,144
MAY	2	20	34	106	259	154	64	0	238	316	129	67	0	92	1	491	101	465	269	29	126	26	2,989
JUN	0	15	7	113	371	199	35	0	234	192	154	64	0	118	0	422	80	303	134	35	116	16	2,608
JUL	1	42	19	116	392	160	40	0	261	144	104	48	0	127	2	386	72	276	228	43	143	21	2,625
AUG	7	52	25	86	333	205	42	0	271	153	137	74	0	120	0	442	82	149	260	61	166	18	2,683
SEPT	0	28	26	84	298	161	36	0	236	104	174	93	0	90	1	402	102	202	264	35	77	18	2,431
OCT	1	40	22	64	267	142	21	0	286	124	158	32	0	99	1	230	19	159	261	21	88	16	2,051
NOV	1	19	20	60	266	175	38	0	385	85	118	33	0	66	2	170	21	217	157	39	96	4	1,972
DEC	0	0	0	0	0	0	0	0	0	0	0	0	0	0	0	0	0	0	0	0	0	0	0
TOTAL	17	363	253	950	3,662	1,903	358	0	3,096	2,094	1,547	567	0	1,222	20	4,500	847	2,675	2,653	396	1,209	246	28,578

2020 FORMAL GRIEVANCE REPORT

<i>Month</i>	BENTON	HAWK/M	HAWK/F	WRTS	EARU & MX	GRIMES	RLW	MCWR	MCPH	MSU	NCU	PBU	NWA	TU	TRCC	VSMX	VU	CU & CMU	ORCU	Ester	DRU	Bowie Cty	TOTAL
JAN	0	13	10	35	404	105	5	0	130	174	90	11	0	92	4	260	65	125	153	15	43	7	1,741
FEB	0	13	10	31	365	59	15	1	120	130	61	22	0	75	0	242	66	104	126	17	32	16	1,505
MAR	1	27	8	30	426	63	12	1	122	221	93	5	0	99	0	273	65	129	153	16	50	5	1,799
APR	2	27	8	32	450	87	15	0	84	178	99	12	0	97	0	298	91	181	163	14	73	1	1,912
MAY	2	12	2	48	367	70	49	0	93	316	88	19	0	78	1	301	80	315	156	11	60	5	2,073
JUN	1	4	1	53	392	93	20	0	98	192	104	27	0	76	0	310	59	210	221	12	66	3	1,942
JUL	0	14	3	43	473	75	21	0	99	173	59	23	0	77	0	245	57	177	212	18	60	6	1,835
AUG	4	20	7	45	383	97	17	0	115	102	65	17	0	81	0	273	54	134	212	45	81	6	1,758
SEPT	0	16	12	43	364	75	33	0	111	153	91	23	0	76	0	257	80	135	166	20	42	3	1,700
OCT	0	18	2	38	342	55	11	0	118	280	93	14	0	62	0	230	19	119	158	9	44	6	1,618
NOV	1	4	5	47	321	82	26	0	153	151	72	11	0	50	2	170	21	101	104	36	36	0	1,393
DEC	0	0	0	0	0	0	0	0	0	0	0	0	0	0	0	0	0	0	0	0	0	0	0
TOTAL	11	168	68	445	4,287	861	224	2	1,243	2,070	915	184	0	863	7	2,859	657	1,730	1,824	213	587	58	19,276

INMATE INSTITUTIONAL GRIEVANCE APPEAL REPORT – NOVEMBER 2020

	Acknowledged	Rejected	Processed W/O Merit	Processed W/ Merit
Benton Unit	0	0	0	0
Benton Work Release	0	0	0	0
Bowie County Texas Correctional Facility	1	0	0	0
Cummins Unit	27	6	22	0
Cummins Modular Unit	0	0	0	0
Delta Regional Unit	4	0	4	0
East Arkansas Regional Unit	28	0	21	1
East Arkansas Regional Max Unit	54	8	97	1
Ester Unit	12	0	1	0
Grimes Unit	9	6	10	0
Maximum Security Unit	43	14	39	0
Tucker Re-Entry	0	0	0	0
McPherson Unit	15	7	24	0
McPherson Mental Health Residential Program Unit	0	0	0	0
Mississippi County Work Release Center	0	0	0	0
Northwest Arkansas Work Release Center	0	0	0	0
North Central Unit	18	1	19	0
Ouachita River Correctional Unit	9	2	23	2
ORCU Hospital	0	0	0	0
ORCU New Commitment	7	2	8	1
ORCU Mental Health Residential Program Unit	1	1	2	0
Pine Bluff Unit	1	1	3	0
Pine Bluff Re-Entry	0	0	0	0
Randall L. Williams Correctional Facility	2	4	3	0
Texarkana Regional Correctional Center	2	0	0	0
Tucker Unit	9	4	6	0
Varner Super Max	109	15	82	1
Varner Unit	10	2	1	0
Wrightsville Unit	15	5	5	0
Hawkins Center	0	2	0	0
Hawkins for Males	2	3	2	0
Hawkins SPU	0	0	0	0
Total	378	83	372	6

ADMISSIONS AND RELEASES – NOVEMBER 2020

<u>Admissions</u>	<u>Male</u>	<u>Female</u>	<u>Total</u>
Asian	1	0	1
Black	117	9	126
Hispanic	10	1	11
Native American Indian	0	1	1
Native Hawaiian or Pacific Isl.	1	0	1
White	269	60	329
Other	0	0	0
Unknown	0	0	0
Total	398	71	469

<u>Releases</u>	<u>Male</u>	<u>Female</u>	<u>Total</u>
Asian	1	0	1
Black	114	5	119
Hispanic	5	0	5
Native American Indian	1	1	2
Native Hawaiian or Pacific Isl.	1	0	1
White	185	36	221
Other	0	0	0
Unknown	0	0	0
Total	307	42	349

ADC INMATE POPULATION GROWTH 2000-2026 - NOVEMBER 2020

Updated 11/30/2020

Mo.	2000	2001	2002	2003	2004	2005	2006	2007	2008	2009	2010	2011	2012	2013	2014	2015	2016	2017	2018	2019	2020
Jan.	11,984	11,908	12,402	13,015	13,105	13,595	13,481	13,839	14,518	14,796	15,334	16,312	15,134	14,815	17,481	18,142	17,785	17,824	18,201	17,958	17,989
Feb.	12,169	12,022	12,529	13,054	13,166	13,783	13,633	14,012	14,603	14,883	15,374	16,209	14,990	15,008	17,438	18,082	17,625	17,608	17,998	17,846	18,181
March	12,006	12,033	12,299	13,108	13,088	13,418	13,534	13,772	14,580	14,843	15,290	16,095	14,964	14,665	17,395	18,233	17,573	17,666	18,089	17,898	17,860
April	12,069	12,167	12,465	13,213	13,323	13,469	13,554	13,851	14,769	14,937	15,570	16,172	15,124	14,850	17,604	18,703	17,815	17,798	18,227	17,977	17,331
May	12,109	12,384	12,558	13,463	13,556	13,528	13,711	14,146	14,880	15,146	15,694	16,062	15,132	15,074	17,593	18,693	17,769	17,652	17,945	17,817	16,694
June	12,005	12,108	12,439	13,418	13,389	13,251	13,430	13,915	14,700	15,025	15,564	15,554	14,832	14,825	17,340	18,813	17,973	17,963	17,972	17,942	16,552
July	12,030	12,190	12,622	13,509	13,528	13,286	13,560	14,082	14,868	15,195	15,807	15,519	14,879	15,379	17,522	18,870	18,130	18,180	18,005	18,002	16,511
August	12,087	12,371	12,815	13,565	13,632	13,419	13,646	14,224	15,100	15,385	15,829	15,240	14,675	16,103	17,549	18,806	17,919	18,051	17,751	18,090	16,367
September	11,983	12,289	12,774	13,341	13,516	13,237	13,652	14,217	14,850	15,285	16,025	15,172	14,724	16,412	17,605	18,549	18,026	18,179	17,865	17,856	16,215
October	12,119	12,348	12,942	13,341	13,584	13,363	13,775	14,349	14,836	15,381	16,311	15,271	14,856	16,993	17,880	18,430	18,127	18,348	17,943	17,947	16,311
November	12,094	12,408	13,162	13,408	13,706	13,587	13,913	14,437	15,025	15,340	16,460	15,205	14,625	17,168	17,848	17,981	17,573	17,973	17,666	18,060	16,165
December	11,856	12,333	12,845	13,106	13,470	13,338	13,728	14,315	14,716	15,199	16,204	15,062	14,654	17,235	17,874	17,707	17,537	18,078	17,799	17,759	
Net Ann. Inc.	29	477	512	261	364	-132	390	587	401	483	1,005	-1,142	-408	2,581	639	-167	-170	541	-279	-40	-1,594
Avg. Mo. Inc.	2	40	43	22	30	-11	33	49	33	40	84	-95	-34	215	53	-14	-14	45	-23	-3	-145

Population is total jurisdictional count at end of each month. Population at end of month December 1999 was 11,827.

Average monthly population increase for past fifteen years 2005 - 2019 is 24

Average monthly population increase for past ten years Jan. 2010 - Dec 2019 is 21

Average monthly population increase for past five years 2015 - 2019 is -2

Projected at Growth of 24 per Month

Mo.	2008	2009	2010	2011	2012	2013	2014	2015	2016	2017	2018	2019	2020	2021	2022	2023	2024	2025	2026
	Actual	Actual	Actual	Actual	Actual	Actual	Actual	Actual	Actual	Actual	Actual	Actual	Actual Proj.	Proj.	Proj.	Proj.	Proj.	Proj.	Proj.
January	14,518	14,796	15,334	16,312	15,134	14,815	17,481	18,142	17,785	17,824	18,201	17,958	17,989	16,213	16,501	16,789	17,077	17,365	17,653
February	14,603	14,883	15,374	16,209	14,990	15,008	17,438	18,082	17,625	17,608	17,998	17,846	18,181	16,237	16,525	16,813	17,101	17,389	17,677
March	14,580	14,843	15,290	16,095	14,964	14,665	17,395	18,233	17,573	17,666	18,089	17,898	17,860	16,261	16,549	16,837	17,125	17,413	17,701
April	14,769	14,937	15,570	16,172	15,124	14,850	17,604	18,703	17,815	17,798	18,227	17,977	17,331	16,285	16,573	16,861	17,149	17,437	17,725
May	14,880	15,146	15,694	16,062	15,132	15,074	17,593	18,693	17,769	17,652	17,945	17,817	16,694	16,309	16,597	16,885	17,173	17,461	17,749
June	14,700	15,025	15,564	15,554	14,832	14,825	17,340	18,813	17,973	17,963	17,972	17,942	16,552	16,333	16,621	16,909	17,197	17,485	17,773
July	14,868	15,195	15,807	15,519	14,879	15,379	17,522	18,870	18,130	18,180	18,005	18,002	16,511	16,357	16,645	16,933	17,221	17,509	17,797
August	15,100	15,385	15,829	15,240	14,675	16,103	17,549	18,806	17,919	18,051	17,751	18,090	16,367	16,381	16,669	16,957	17,245	17,533	17,821
September	14,850	15,285	16,025	15,172	14,724	16,412	17,605	18,549	18,026	18,179	17,865	17,856	16,215	16,405	16,693	16,981	17,269	17,557	17,845
October	14,836	15,381	16,311	15,271	14,856	16,993	17,880	18,430	18,127	18,348	17,943	17,947	16,311	16,429	16,717	17,005	17,293	17,581	17,869
November	15,025	15,340	16,460	15,205	14,625	17,168	17,848	17,981	17,573	17,973	17,666	18,060	16,165	16,453	16,741	17,029	17,317	17,605	17,893
December	14,716	15,199	16,204	15,062	14,654	17,235	17,874	17,707	17,537	18,078	17,799	17,759	16,189	16,477	16,765	17,053	17,341	17,629	17,917
Net Ann. Inc.	401	483	1,005	-1,142	-408	2,581	639	-167	-170	541	-279	-40	-1,570	288	288	288	288	288	288
Ave. Mo. Inc.	33	40	84	-95	-34	215	53	-14	-14	45	-23	-3	-131	24	24	24	24	24	24

MONTHLY POPULATION AVERAGES - NOVEMBER 2020

Unit/Center	11/2	11/3	11/4	11/5	11/6	11/9	11/10	11/11	11/12	11/13	11/16	11/17	11/18	11/19	11/20	11/23	11/24	11/25	11/26	11/27	11/30	AVG
Benton	257	256	256	256	267	267	267	266	266	264	264	264	262	262	260	260	275	288	285	285	285	267
Cummins	1,802	1,804	1,799	1,797	1,795	1,791	1,785	1,835	1,835	1,835	1,878	1,877	1,876	1,876	1,874	1,867	1,855	1,854	1,852	1,852	1,852	1,838
Delta	512	513	506	506	506	509	508	508	508	507	504	504	506	505	503	499	498	497	495	495	495	504
E AR Reg	1,499	1,499	1,489	1,478	1,476	1,479	1,481	1,524	1,524	1,523	1,518	1,518	1,519	1,559	1,558	1,558	1,553	1,558	1,548	1,548	1,548	1,522
Ester	461	461	457	457	505	506	504	501	501	502	502	502	502	501	501	497	497	495	493	493	493	492
Grimes	916	959	956	944	930	930	979	981	981	981	974	974	973	972	972	972	972	968	967	967	967	964
Max Sec	550	550	550	551	552	551	550	550	550	550	549	550	550	550	550	551	551	550	550	550	550	550
McPherson	769	805	805	800	800	800	803	804	804	804	802	802	808	808	809	802	806	806	801	801	801	802
MCWRC	131	131	131	131	131	139	139	133	133	133	133	133	133	133	131	129	129	127	127	127	127	131
N Central	651	651	650	647	646	645	695	695	695	697	697	696	694	689	682	677	675	668	660	660	660	673
NWAWRC	71	71	78	78	78	78	78	79	79	79	79	79	79	79	79	78	78	78	78	78	78	78
Ouachita River	1,779	1,774	1,769	1,766	1,656	1,728	1,682	1,634	1,635	1,631	1,588	1,595	1,646	1,653	1,686	1,684	1,682	1,659	1,658	1,658	1,658	1,677
Randall L Williams	332	335	330	329	393	391	391	391	391	391	391	391	392	391	391	391	388	385	379	380	380	378
Pine Bluff	440	439	438	440	440	440	440	440	440	441	439	439	439	437	437	436	435	435	434	433	433	438
PB Reentry	52	52	52	52	52	51	51	51	51	51	51	51	51	53	52	52	52	52	47	47	47	51
TRCC	98	98	98	98	98	98	98	98	98	98	98	98	98	98	98	98	98	94	93	93	93	97
Tucker	764	763	781	802	802	799	799	799	799	796	790	790	787	787	784	782	782	778	773	773	773	786
Tucker Re-Entry	57	57	55	55	55	55	55	55	55	55	55	55	55	55	55	55	55	52	52	52	52	55
Varner	1,448	1,451	1,450	1,450	1,450	1,445	1,441	1,440	1,440	1,438	1,484	1,484	1,481	1,480	1,476	1,471	1,470	1,469	1,467	1,467	1,467	1,460
Wrightsville	674	674	672	672	717	723	722	722	722	721	716	754	754	756	757	802	798	796	794	794	794	740
WR Hawkins-Females	168	168	168	168	167	167	167	167	167	167	166	166	166	166	164	164	164	164	161	161	161	166
WR Hawkins-Males	172	172	172	172	172	165	162	162	162	159	159	159	159	158	158	158	157	157	157	157	157	162
Total ADC	13,603	13,683	13,662	13,649	13,688	13,757	13,797	13,835	13,836	13,823	13,837	13,881	13,930	13,968	13,977	13,983	13,970	13,930	13,871	13,871	13,871	13,831
Bowie CO., TX	175	125	125	125	77	0	0	0	0	0	0	0	0	0	0	0	0	0	0	0	0	30
ALETA	15	15	15	15	15	15	15	15	15	15	15	15	15	15	15	15	15	15	15	15	15	15
Ar State Police	56	56	56	56	56	51	51	51	51	51	54	54	54	53	53	53	53	53	53	53	53	53
Co Jail / M	1,885	1,880	1,889	1,910	1,941	1,935	1,879	1,836	1,836	1,833	1,799	1,767	1,730	1,711	1,688	1,638	1,648	1,666	1,668	1,668	1,668	1,785
Co Jail / F	239	196	198	199	199	202	201	192	192	193	190	194	188	196	202	199	198	200	198	198	198	199
Total Co Jail BK	2,124	2,076	2,087	2,109	2,140	2,137	2,080	2,028	2,028	2,026	1,989	1,961	1,918	1,907	1,890	1,837	1,846	1,866	1,866	1,866	1,866	1,984
309/M	241	241	248	248	248	248	248	248	248	246	245	245	245	245	244	244	249	248	248	248	248	246
309/F	88	88	88	88	88	88	88	88	88	88	88	88	88	88	87	87	87	86	88	88	88	88
Total Act 309	329	329	336	336	336	336	336	336	336	334	333	333	333	333	331	331	336	334	336	336	336	334
Total Non ADC	2,699	2,601	2,619	2,641	2,624	2,539	2,482	2,430	2,430	2,426	2,391	2,363	2,320	2,308	2,289	2,236	2,250	2,268	2,270	2,270	2,270	2,416
Total	16,302	16,284	16,281	16,290	16,312	16,296	16,279	16,265	16,266	16,249	16,228	16,244	16,250	16,276	16,266	16,219	16,220	16,198	16,141	16,141	16,141	16,247

FISCAL YEAR 2021 COUNTY JAIL BACKUP - NOVEMBER 2020

DAY		Jul-20		Aug-20		Sep-20		Oct-20		Nov-20
1		800	*	1,284		1,625		1,827	*	2,090
2		829	*	1,284		1,642		1,833		2,124
3		850		1,309		1,672	*	1,833		2,076
4	*	850		1,308		1,696	*	1,833		2,087
5	*	850		1,299	*	1,696		1,842		2,109
6		850		1,304	*	1,696		1,862		2,140
7		863		1,334		1,718		1,884	*	2,140
8		874	*	1,334		1,718		1,902	*	2,140
9		898	*	1,334		1,679		1,897		2,137
10		932		1,331		1,689	*	1,897		2,080
11	*	932		1,350		1,672	*	1,897		2,028
12	*	932		1,351	*	1,672		1,918		2,028
13		961		1,361	*	1,672		1,925		2,026
14		975		1,380		1,676		1,947	*	2,026
15		1,003	*	1,380		1,702		1,917	*	2,026
16		1,032	*	1,380		1,705		1,955		1,989
17		1,059		1,388		1,731	*	1,955		1,961
18	*	1,059		1,403		1,769	*	1,955		1,918
19	*	1,059		1,426	*	1,769		1,944		1,907
20		1,081		1,457	*	1,769		1,958		1,890
21		1,099		1,481		1,772		1,974	*	1,890
22		1,124	*	1,481		1,786		1,969	*	1,890
23		1,168	*	1,481		1,811		1,998		1,837
24		1,181		1,496		1,801	*	1,998		1,846
25	*	1,181		1,518		1,835	*	1,998		1,866
26	*	1,181		1,539	*	1,835		2,023		1,866
27		1,203		1,566	*	1,835		2,033		1,866
28		1,216		1,589		1,810		2,019	*	1,866
29		1,242	*	1,589		1,791		2,056	*	1,866
30		1,263	*	1,589		1,815		2,090		1,866
31		1,284		1,607			*	2,090		
Avg Daily Backup		1,027		1,417		1,735		1,943		1,986

Note: Totals do not include 309 Contract in County Jails (maximum of 309)

County Jail Back-up for November 2020 ~ 1,986

County Jail Back-up Fiscal Year Average as of November 30, 2020 ~ 1,627

Short-Term Revocation Program Average for November 2020 ~ 686

Short-Term Revocation Program Fiscal Year Average as of November 30, 2020 ~ 704

STTG UNIT COUNTS – NOVEMBER 2020

Unit	Beginning Total	Confirmed	Suspected	In	Out	Paroled	Removed	Ending Total	Total Unit Population	Unit % of STTG's
Benton	45	1	1	10	0	0	0	57	282	20.21%
Cummins	638	0	0	55	38	2	0	653	1,858	35.15%
Delta	169	0	0	0	4	6	0	159	492	32.32%
EARU	567	0	0	52	9	9	0	601	1,552	38.72%
Easter	68	0	0	3	2	0	0	69	489	14.11%
Grimes	335	0	0	37	7	15	1	349	966	36.13%
Hawkins	42	0	0	0	3	1	0	38	318	11.95%
Max	269	0	0	6	2	5	0	272	603	45.11%
Mcperson	37	1	0	0	2	0	0	36	799	4.51%
MCWR	35	0	0	5	2	0	0	38	126	30.16%
NCU	187	0	0	28	7	0	0	208	660	31.52%
NWAWR	17	0	0	0	0	0	0	17	72	23.61%
ORCU	497	0	0	76	118	21	0	434	1,450	29.93%
ORCU Intake	94	81	0	0	52	0	0	123	209	58.85%
Pine Bluff	96	0	0	0	1	0	0	95	466	20.39%
RLW	166	0	0	9	1	4	0	170	379	44.85%
TWR	27	0	0	1	1	1	0	26	93	27.96%
Tucker	262	0	0	18	5	1	0	274	745	36.78%
Varner	598	0	0	30	25	9	0	594	1,470	40.41%
Wrightsville	232	4	0	49	24	0	0	261	784	33.29%
Total	4,381	87	1	379	303	74	1	4,474	13,813	32.39%

ORCU Intake brought in 81 new STTG members into ADC last month.

STTG DISCIPLINARY REPORT – NOVEMBER 2020

Unit	STTG Incidents	STTG Suspected Incidents	Total Unit Disciplinary	Disciplinary Involving STTG	Percentage
Benton	0	0	9	1	11.11%
Cummins	0	0	134	72	53.73%
Delta	0	0	75	45	60.00%
EARU	0	1	105	86	81.90%
Easter	0	0	11	5	45.45%
Grimes	0	0	162	69	42.59%
Hawkins	0	0	16	3	18.75%
Max	0	1	59	37	62.71%
Mcpherson	0	0	122	13	10.66%
MCWR	0	0	6	2	33.33%
NCU	0	0	69	37	53.62%
NWAWR	0	0	6	1	16.67%
ORCU	0	0	100	39	39.00%
ORCU Intake	0	0	3	2	66.67%
Pine Bluff	0	0	72	24	33.33%
RLW	0	0	57	34	59.65%
TWR	0	0	1	0	0.00%
Tucker	0	0	44	19	43.18%
Varner	0	0	153	89	58.17%
Wrightsville	0	0	222	129	58.11%
Total	0	2	1,426	707	49.58%

STTG COUNTS BY STTG SET – NOVEMBER 2020

STTG Set	Benton	Cummins	Delta	EARU	Easter	Grimes	Hawkins	Max	Mcpherson	MCWR	NCU	NWAWR	ORCU	Intake	PB	RLW	TWR	Tucker	Varner	Wrightsville	Total
Asian	0	1	0	0	0	0	0	0	0	1	0	0	2	0	0	3	0	0	0	0	7
Bloods	11	154	31	110	12	70	3	64	5	4	38	4	70	23	16	40	0	42	129	44	870
Crips	3	94	16	79	8	33	3	34	5	2	17	0	48	9	12	22	3	24	96	26	534
Folk	5	55	0	119	3	31	6	31	8	2	14	5	3	0	7	8	0	22	60	20	399
GD	13	149	34	100	15	70	6	64	0	14	34	0	83	35	24	31	12	84	132	64	964
Mexican	2	18	11	16	2	7	1	5	2	1	10	1	7	1	4	4	0	4	22	12	130
Motorcycle	0	1	1	2	1	1	1	3	1	2	1	0	0	1	1	0	0	2	0	0	18
Other	0	23	5	12	5	15	2	4	0	1	7	1	22	3	4	10	0	14	17	8	153
People	1	23	6	21	1	22	1	18	2	0	8	1	17	2	7	11	1	10	17	12	181
Unknown	0	10	4	16	0	8	0	3	0	1	5	0	8	7	0	4	1	0	7	7	81
W/S	13	40	33	36	11	38	4	8	13	5	41	5	105	26	10	20	7	23	26	28	492
AB	2	6	0	4	1	3	0	1	0	1	4	0	6	0	1	1	1	8	12	6	57
AC	0	6	1	9	3	8	1	7	0	0	7	0	1	3	1	2	0	8	14	9	80
NAE	5	36	5	33	2	18	3	9	0	3	5	0	29	5	5	5	1	10	28	14	216
WAR	2	37	12	44	5	25	7	21	0	1	17	0	33	8	3	9	0	23	34	11	292
Total	57	653	159	601	69	349	38	272	36	38	208	17	434	123	95	170	26	274	594	261	4,474

Key:

GD = Gangster Disciples

W/S = White Supremacist

NAE = New Aryan Empire

WAR = White Aryan Resistance

AC = Aryan Circle

AB = Aryan Brotherhood

INTERNAL AFFAIRS BOARD REPORT - NOVEMBER 2020

Opened Investigation, Reviews/ASP November 2020	Open Investigation	Open Review	ASP Referral
Arson	0	0	0
Assault on Inmate	0	0	0
Assault on Staff	0	0	0
Attempted Escape	0	0	0
Banding Together	0	0	0
Banding Together to Interfere with Unit	0	0	0
Battery on Inmate	0	0	2
Battery on Inmate without Serious Injury	0	0	0
Battery on Inmate with Serious Injury	0	0	0
Battery on Inmate with Use of Unknown Substance	0	0	0
Battery on Other Person with Serious Injury	0	0	0
Battery on Other Person with Use of Unknown Substance	0	0	0
Battery on Staff	0	0	2
Battery on Staff and Inmate	0	0	0
Battery on Staff without Serious Injury	0	0	0
Battery on Staff with Serious Injury	0	0	0
Battery on Staff with Bodily Fluids	0	0	2
Battery on Staff with Use of Unknown Substance	0	0	0
Child Pornography	0	0	0
Criminal Activity	0	0	0
Death	0	0	6
Disobey Direct Order	0	0	0
Employee Misconduct	8	0	0
Excessive Force	0	0	0
Escape from Unit	0	0	0
Escape from Work Release	0	0	0
Escape Plan	0	0	0
Farm Incident	0	0	0
Forcible Rape	0	0	0
Inappropriate Relationship	0	0	0
Indecent Exposure	0	0	0
Inmate on Inmate Abusive Sexual Contact	0	0	0
Inmate on Inmate Sexual Assault	0	0	0
Inmate on Inmate Sexual Contact	0	2	0
Inmate on Inmate Sexual Harassment	0	22	0
Inmate on Inmate Sexual Misconduct	0	15	0
Inmate on Inmate Nonconsensual Sexual Contact	0	0	0
Introduction of Cell Phone	0	0	0
Introduction of Contraband	2	0	0
Introduction of Drugs	1	0	4
Introduction of Money	0	0	0
Introduction of Tobacco	0	0	0
Introduction of Weapon	0	0	0
Major Breach of Security	0	0	0
Misconduct	0	0	0
Missing Narcotics	0	0	0
Other Felony	0	0	0
Other Incident	1	0	0
Other Rule Violation	0	0	0
Possession of Cell Phone	0	0	14
Possession of Drugs	0	0	13
Possession of Money	0	0	0
Possession of a Weapon	0	0	0
Property Damage	0	0	0
Racial Slurs	0	0	0
Retaliation	0	0	0
Sexual Assault	0	0	0
Sexual Misconduct	0	0	0
STTG	0	0	0
Suspected Criminal Activity	1	0	0
Rape	0	0	0
Riot	0	0	0
Sexual Misconduct	0	0	0
Staff on Inmate Sexual Harassment	1	27	0
Staff on Inmate Sexual Misconduct	1	5	0
Staff on Staff Sexual Harassment	1	1	0
Staff on Staff Sexual Misconduct	0	0	0
Suicide Attempt	0	0	0
Suspected Criminal Activity	0	0	0
Theft	0	0	0
Trafficking	0	0	0
Threat on Staff	0	0	0
Use of Force	0	40	0
Verbal Abuse	0	0	0
Verbal/Written Threat on Staff	0	0	0
Work Release Misconduct	0	0	0
Total	16	112	43

ADC INPATIENT AND EMERGENCY ROOM UTILIZATION

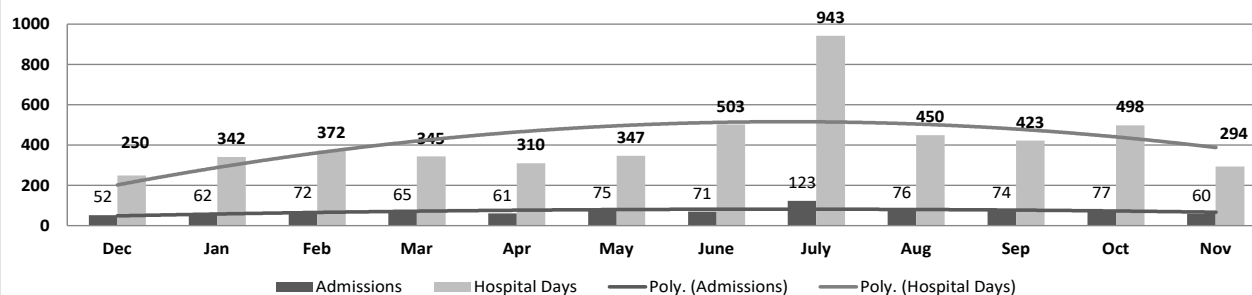
ADC Inpatient Statistics Past 12 Months

	2019	2020											
	Dec	Jan	Feb	Mar	Apr	May	June	July	Aug	Sep	Oct	Nov	Average
Admissions	52	62	72	65	61	75	71	123	76	74	77	60	72.3
Hospital Days	250	342	372	345	310	347	503	943	450	423	498	294	423.1
Average Length of Stay	5.37	4.76	4.91	6.56	5.22	5.48	5.10	6.21	7.07	6.70	7.65	4.90	5.85

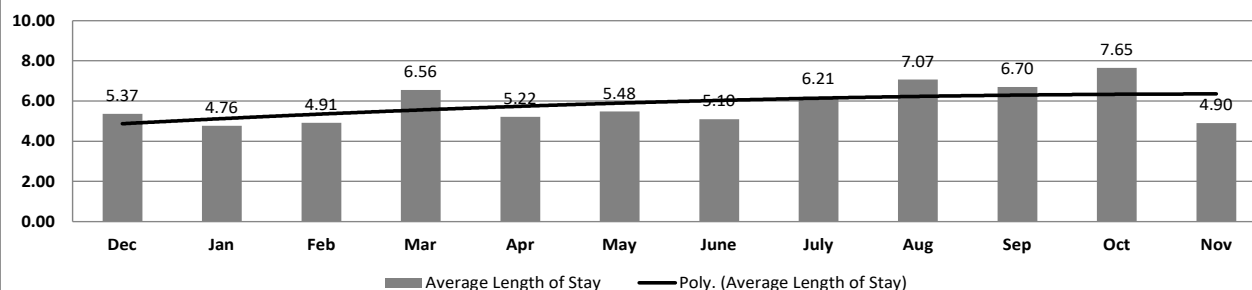
ADC ER Visits Past 12 Months

	2019	2020											
	Dec	Jan	Feb	Mar	Apr	May	June	July	Aug	Sep	Oct	Nov	Average
Emergency Room Visits	79	92	131	98	87	99	105	146	110	131	138	120	111.3

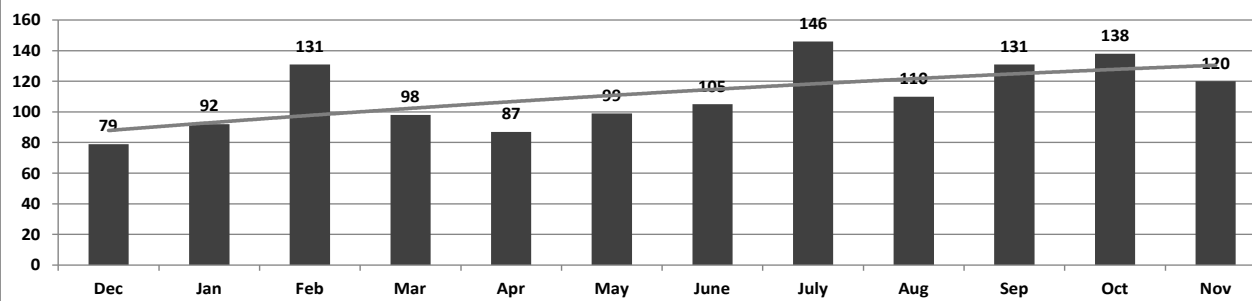
ADC Inpatient Utilization Past 12 Months



ADC Inpatient Average Length of Stay Past 12 Months



ADC Emergency Room Visits Past 12 Months



MEDICAL GRIEVANCE BOARD REPORT – NOVEMBER 2020

Unit	Acknowledged/ Received	Rejected	Reviewed & Signed by Dep Director	With Merit	With Merit, but Resolved	% With Merit	Without Merit
Benton	0	0	0	0	0	0%	0
Bowie County	0	0	0	0	0	0%	0
CMU	0	1	0	0	0	0%	0
Cummins	7	6	2	0	0	0%	2
Delta	1	0	1	0	0	0%	1
EARU	23	3	19	1	0	5%	18
EARU Max	14	3	32	4	0	13%	28
Ester	0	0	8	0	0	0%	8
Grimes	2	2	7	0	0	0%	7
Hawkins	0	0	2	0	0	0%	2
McPherson	2	5	1	1	0	100%	0
MCWRC	0	0	0	0	0	0%	0
MSU	12	0	1	0	0	0%	1
North Central	9	1	14	0	0	0%	14
NWAWRC	0	0	0	0	0	0%	0
Ouachita	7	2	21	0	0	0%	21
Pine Bluff	1	1	0	0	0	0%	0
Randall L. Williams	2	0	6	0	0	0%	6
SNN	2	1	3	0	0	0%	3
TRCC	0	0	0	0	0	0%	0
Tucker	2	4	2	0	0	0%	2
Varner	4	3	5	0	0	0%	5
Varner Super Max	16	1	27	1	0	4%	26
WRU	4	1	3	0	0	0%	3
WHM	4	1	0	0	0	0%	0
WWR	0	0	0	0	0	0%	0
Total	112	35	154	7	0	5%	147

CHAPLAINCY

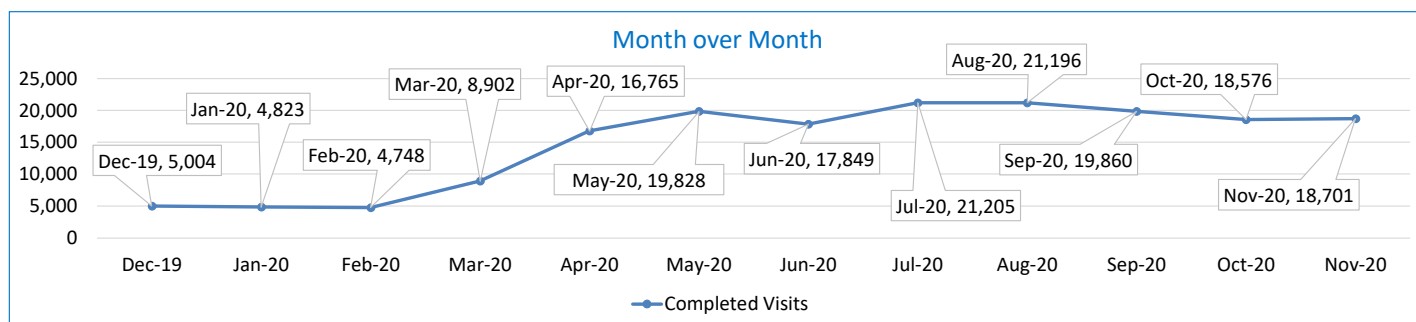
Month: November Year: 2020	CUMMINS	DELTA REGIONAL	EAST ARKANSAS	EAST ARKANSAS MAX	ESTER	GRIMES	HAWKINS	MAXIMUM	MCPHERSON	NORTH CENTRAL	OUACHITA RIVER	PINE BLUFF	RANDALL L. WILLIAMS	TUCKER	VARNER	VARNER MAX	WRIGHTSVILLE	TOTAL
Services Chaplains Oversaw																		
Christian																		
Population	0	0	0	0	8	0	0	0	4	4	13	8	5	0	5	0	0	47
Segregation	0	0	0	0	0	0	0	0	0	0	0	0	0	0	0	0	0	0
Muslim																		
Population	0	0	0	0	8	0	0	4	4	0	4	4	4	0	4	0	0	32
Segregation	0	0	0	0	0	0	0	4	0	0	0	0	0	0	0	0	0	4
																		83
Volunteers in Charge																		
Protestant	0	0	0	0	0	0	0	0	0	0	0	0	5	0	0	0	0	5
Catholic	0	0	0	0	0	0	0	0	0	0	0	0	0	0	0	0	0	0
Muslim	0	0	0	0	0	0	0	0	0	0	0	0	4	0	0	0	0	4
Other	0	0	0	0	0	0	0	0	0	0	0	0	0	0	0	0	0	0
Baptism	0	0	0	0	0	0	0	0	0	0	0	0	0	1	0	0	0	1
Marriages																		
	0	0	0	0	0	0	0	0	0	0	0	0	0	0	0	0	0	0
Distributed by Chaplains																		
Greeting Cards	180	0	0	0	25	1,968	98	89	374	200	250	10	0	614	2,739	1,862	8	8,417
Bibles, Quran, Torah, Etc.	35	10	15	10	10	24	35	8	42	8	150	6	8	100	20	22	35	538
Study Course	0	2	23	25	8	0	100	0	14	0	33	33	0	150	0	2	4	394
Writing Supplies	0	0	0	0	32	27	250	30	22	0	500	0	0	720	0	0	500	2,081
Literature	2,000	450	594	249	0	198	400	126	99	400	450	95	2,177	760	263	410	400	9,071
Chaplain's Visits																		
Barracks	85	32	28		20	91	16	30	9	25	42	27	4	27	357		7	800
Approximate Hours Spent in Barracks	24	9	4	3	10	46	18	17	25	6	4	14	0	7	137	10	4	338
Inmate Office visits	22	37	19	0	25	65	23	6	30	2	32	1	0	80	48	0	8	398
Other Office visits	22	8	10	4	8	16	20	14	45	5	40	31	4	45	31	8	10	321
Hospital	0	0	0	0	0	0	0	0	0	0	27	0	1	0	0	0	0	28
Infirmary/Sick Call	4	1	4	0	1	10	4	12	8	4	26	1	0	5	6	5	2	93
Restrictive/Punitive Housing	3	1	0	4		4	16	18	8	6	13	2	2	3	0	7	4	91
PC - DRU		1																1
Visitation Days	0	0	0	0	0	0	0	0	0	0	0	0	0	0	0	0	0	0
Volunteer Visits																		
RCV	0	0	0	0	0	0	0	0	0	0	0	0	0	0	0	0	0	0
OCV	0	0	0	0	0	0	0	0	0	0	0	0	0	0	0	0	0	0
Spiritual Advisor	0	0	0	0	0	0	0	0	0	0	0	0	0	0	0	0	0	0
CRA	0	0	0	0	0	0	0	0	0	0	0	0	0	0	0	0	0	0
Religious Volunteer Hours																		
Volunteer Hours	0	0	0	0	0	0	0	0	0	0	0	0	0	0	0	0	0	0
Denominational/Volunteer Chaplain Hours	0	0	0	0	0	0	0	0	0	0	0	0	0	0	0	0	0	0
																		0
Other Activities of Chaplain																		
Counseled Employees	13	2	11	0	10	6	28	6	44	3	19	30	2	12	91	0	6	283
Orientation Sessions	0	0	0	0	0	0	0	0	0	0	0	0	0	0	0	0	0	0
Free World Devotions	0	0	1	0	1	8	0	0	1	0	0	0	0	6	27	0	0	44
Spoke in Churches	9	0	3	0	2	1	0	0	1	0	0	14	2	4	27	0	0	63
Crisis Intervention Sessions	19	6	2	0	0	0	35	11	205	4	21	4	0	14	4	7	8	340
Marriage Counseling	0	0	0	0	0	0	0	0	0	0	2	0	0	0	0	0	0	2
Denominational Meeting	0	0	0	0	0	0	0	0	0	0	0	0	0	0	0	0	0	0
Chaplain's Meeting	0	1	1	0	1	2	1	1	1	0	1	1	2	1	12	0	1	26
Volunteer Training Session	0	0	0	0	0	0	0	0	0	0	0	0	0	0	0	0	0	0
Chaplain Transfers																		
	0	0	0	0	0	0	0	0	0	0	0	1	0	0	0	0	0	1
Chaplain Promotions																		
	0	0	0	0	0	0	0	0	0	0	0	0	0	0	0	0	0	0
PAL PROGRAM																		
Enrolled at start of month	45	15	45	0	33	44	40	19	40	15	34	0	19	43	0	0	19	411
Enrolled during the month	5	0	8	0	0	0	6	0	0	0	4	0	1	5	0	0	0	29
Removed From PAL Program																		
# Paroled	2	0	0	0	0	1	1	0	2	0	1	0	0	1	0	0	0	8
# Completed	0	0	2	0	0	0	0	2	1	0	0	0	0	1	0	0	0	6
# Withdrew	0	0	2	0	0	0	0	0	0	0	0	0	0	0	0	0	0	2
# Removed	2	0	3	0	0	0	0	2	2	1	1	0	1	2	0	0	0	14
# Transferred	2	0	0	0	0	0	0	0	0	0	3	0	0	0	0	0	0	5
Total Removed from PAL Program	6	0	7	0	0	1	1	4	5	1	5	0	1	4	0	0	0	35
Total Enrolled at the End of the Month	44	15	46	0	33	43	45	15	35	14	33	0	19	44	0	0	19	405
Volunteers In PAL																		
	0	0	0	0	0	0	0	0	0	0	0	0	0	0	0	0	0	0
Special Events:																		
	0	0	0	0	0	0	0	0	0	0	1	1	2	0	0	0	0	4

SECURUS VIDEO VISITATION REPORT NOVEMBER 2020

AR-DOC SVV Activity Tracker

Total ADP 13,976

Total Visits by Month	Dec-19	Jan-20	Feb-20	Mar-20	Apr-20	May-20	Jun-20	Jul-20	Aug-20	Sep-20	Oct-20	Nov-20
Total (Includes SuperMax)	5,004	4,823	4,748	8,902	16,765	19,828	17,849	21,205	21,196	19,860	18,576	18,701
Target Objective	15,587	15,587	15,587	15,587	15,587	15,587	15,587	15,587	15,587	15,587	15,587	15,587



Completed Visits

Site	Current Month	Previous Month
Benton	459	208
Cummins	1,817	1,739
Delta Regional	1,053	1,015
East Arkansas Regional	1,919	1,935
Ester	877	977
Grimes	1,106	1,107
J Aaron Hawkins Sr.	414	620
Tucker Max	1,053	749
Mcperson	657	634
Mississippi County WRC	206	161
North Central	1,491	1,382
NW Arkansas WRC	78	39
Ouachita River	2,374	2,422
Pine Bluff Complex	612	706
Randall L Williams	691	786
State Police Barracks	86	68
Texarkana Regional	333	221
Tucker Unit	755	803
Varner	1,664	1,774
Wrightsville Unit	991	1,147
Pine Bluff Re-Entry	65	83
Tucker Re-entry	0	0
Total:	18,701	18,576

Missed by Inmate

Site	Current Month	Previous Month
Benton	28	38
Cummins	71	95
Delta Regional	24	20
East Arkansas Regional	48	68
Ester	29	20
Grimes	40	16
J Aaron Hawkins Sr.	34	13
Tucker Max	99	118
Mcperson	42	31
Mississippi County WRC	18	17
North Central	34	33
NW Arkansas WRC	2	0
Ouachita River	65	53
Pine Bluff Complex	42	30
Randall L Williams	11	20
State Police Barracks	3	1
Texarkana Regional	13	21
Tucker Unit	67	65
Varner	95	97
Wrightsville Unit	54	21
Pine Bluff Re-Entry	0	1
Tucker Re-entry	0	0
Total:	819	778

SECURUS TABLET REPORT NOVEMBER 2020

Facility Name	Subscription	Facility	Officer	Total	New Subscriptions
Benton Unit	6	3	8	17	3
Cummins Unit	28	85	14	127	34
Delta Regional Unit	9	27	16	52	9
East Arkansas Regional Unit	19	97	15	131	39
Ester Unit	0	135	20	155	2
Grimes Unit	15	70	14	99	16
J. Aaron Hawkins Sr Center For Women	2	69	15	86	1
McPherson Unit	27	99	15	141	32
Mississippi County Work Release Center	1	2	9	12	1
North Central Unit	3	98	10	111	14
Northwest Arkansas Work Release Center	0	2	8	10	1
Ouachita River Correctional Unit	14	107	14	135	41
Pine Bluff Reentry Center	0	2	0	2	1
Pine Bluff Unit	4	5	8	17	7
Randall L. Williams Facility	0	24	15	39	7
State Police Barracks	0	1	3	4	0
Texarkana Regional Correctional Center	3	2	10	15	2
Tucker Maximum Security Unit	8	30	12	50	8
Tucker Reentry Center	2	50	6	58	1
Tucker Unit	6	55	10	71	7
Varner Unit	2	79	20	101	22
Wrightsville Unit	16	54	6	76	24
TOTAL	165	1,096	248	1,509	272

CONSTRUCTION BUDGET / STATUS REPORT - DECEMBER 1, 2020 — [Page 1 of 2]

Fund	Project Description	Total Projected Spent	Budget	Available Funds	\$ % Complete	Construction % Complete	Notes
KBR4Q95	ESTER - Phase 3 - General Improvement Fund	2,977,000	3,911,781	934,782	76%	98%	McClelland Engrs designing Parking Lot. At DBA for approval.
700483A	EARU Max Rec Expanded Metal Rec Yard	819,150	879,000	59,850	93%	0%	Started construction of the panels as of 11/20/2020. Other materials ordered awaiting arrival.
700483A	Tucker Max Expanded Metal Rec Yard	60,183	1,800,000	1,739,817	3%	0%	DBA Approved to proceed on 9/5/2020. Working on material list for procurement.
700483A	Cummins Expanded Metal Rec Yard	50,012	368,617	318,605	14%	0%	Plans on hold, will modify for exp. metal
KBR4Q95	Bullpens	388,676	851,999	463,323	46%	98%	Varner & EARU complete. Installation underway at Max. Locks delivered. Project on hold due to COVID-19.
KBR4Q95	13 & 15 Barracks Door Revisions	119,111	174,000	54,889	68%	68%	All doors and locks installed in 13 Barracks. Job on hold to assess long term plan
KBR4Q95	Camera's (New)	1,073,900	1,248,000	174,100	86%	86%	Delta, Varner, EARU, Cummins, RLW, PBU, & the Max are complete, working at Tucker.
700485A	Integrity Energy Improvements at EARU & Delta	16,961,127	17,010,204	49,077	100%	97%	lights (100%), plumbing 100%, water (100%), compost (100%), & solar (100%), HVAC (100%). Only Training is incomplete.
700486A	Pine Bluff Unit Barracks 9 Renovation	369,616	437,000	67,384	85%	98%	9A, B C & D water controls arrived 2/5, Icon training delayed, installation near complete.
KBSCW18	McPherson Administration	366,039	395,439	29,400	93%	85%	Walls, slabs, brick complete. Roof slab poured. Roofer on site,
KBSCW18	McPherson Visitation	304,462	312,430	7,968	97%	85%	insulating duct, running electrical & installing doors. Inmate labor back at work last week. ETA completion 1 month.
KBR4Q95	McPherson Administration and Visitation	-	100,000	100,000	0%	0%	
KBSHW18	Tucker Water Treatment	-	1,093,848	1,093,848	0%	0%	Preparing RFQ for designer.
KBSFW18	Max Armory	-	70,000	70,000	0%	0%	DBA approved Plans 8/21/20. Tentative start date 12/01/2020.
KBSFW18	Varner Armory	66,247	68,399	2,152	97%	85%	Complete and delivered to unit.
7004810	Administrative East Roof Replacement	960.00	309,375	308,415	0%	0%	ADFA funding. Core samples taken on 11/17/2020 for assesment.
7004810	Central Warehouse Roof Replacement	216.00	135,020	134,804	0%	0%	
7004810	RLW Roof Replacement	815.00	1,888,776	1,887,961	0%	0%	
2ZV	NWARWRC Laundry and Commissary	135,165	250,000	114,835	54%	0%	DBA approved Plans, Springdale Water Dept comments rec'd & answered. All approvals received. Started project 10/13/2020 on schedule.
865C	NCU Perimeter Security	20,625	270,000	244,366	9%	0%	DBA Approved plans. We have notice to proceed.
KBR4Q95		5,009					
N98	Max Re-Entry Generator Project	-	135,000	135,000	0%	0%	Plans submitted to DBA for approval December 2, 2020.
KBR4Q95	NCU Replacement Generator Project	-	202,000	202,000	0%	0%	Will be sent for approval to DBA by 11/25/2020.
7004820	Tucker 10 Barracks Sidewalk	-	70,259	70,259	0%	0%	DBA approved to proceed. Mobilizing to begin project. Projected start date of December 14, 2020.



CONSTRUCTION BUDGET / STATUS REPORT - DECEMBER 1, 2020 — [Page 2 of 2]

Fund	Project Description	Total Projected Spent	Budget	Available Funds	\$ % Complete	Construction % Complete	Notes
Telephone Projects							
Maintenance & Operations	Fire Alarm Upgrades (All Units)	35,854	41,000	5,146	87%	50%	on-going
	Stainless Steel - Kitchen/Shower/Restrooms - All Units	3,834	20,000	16,166	19%	15%	continual need
	Gates and Fences all units	5,463	25,000	19,537	22%	0%	to improve security
	ACA Maintenance	8,383	100,000	91,617	8%	0%	Upcoming are NCU, EARU & MCWRC.
	ADA Projects - All Units	376	10,000	9,624	4%	0%	Working with Varner for the sports field sidewalk.
	Fast Top Floor Systems (kitchen/laundry/showers all units)	0	25,000	25,000	0%	0%	Benton restrooms underway. Ouachita kitchen next.
	Camera Equipment - All Units	115,250	250,000	134,750	46%	15%	cameras as requested/approved.
	Lock/Riot Gates - All Units	34,798	90,500	55,702	38%	12%	on-going.
	AC Units-All Units	64,271	70,000	5,729	92%	25%	repairing & replacing daily.
	Subtotal	\$ 268,230	\$ 631,500	\$ 363,270			
Capital Projects FY20 Carry Forward	Metal Ceilings	9,293	25,000	15,707	37%	0%	NCU complete, Delta is next.
	ORCU Gravel Pit Operations	15,149	35,000	19,851	43%	18%	on-going. Crusher operating.
	Dog Kennel/Horse Stable Malvern	0	48,000	48,000	0%	0%	DBA approved the Plans, released for construction. Site surveyed and selected. Both Construction Supervisors at ORCU working in the maintenance dept. Project on hold.
	Emergency Generator - All Units	131,835	250,000	118,165	53%	20%	Cummins 300kW generator complete. Max Gen mat'l rec'd, gen delivery delayed to mid October (10/15). All material purchased for Hawkins is purchased waiting on del. Date. Hawkins Kitchen (Ship date 11/18/2020) & Cummins East Bldg.
	Tucker 4 new filters & one aeration tank	466,434	488,434	22,000	95%	70%	Filters are being installed at this time.
	Roof Repairs-Cummins	24,986	145,000	31,760	78%	0%	Prepared large order for multiple Units. Max is complete. Need repairs at ORCU, Delta, Cummins & others. Varner & ORCU working on repairs, received TPO Office of State Procurement secured a State contract to purchase roofing materials.
	Roof Repairs-Cummins Laundry	0				0%	
	Roof Repairs-East Arkansas	52,430				0%	
	Roof Repairs-Max	0				0%	
	Roof Repair - NCU	5,735					
	Roof Repair - RLW	5,786					
	Roof Repairs-Tucker	0				0%	
	Roof Repairs-Varner	19,648				0%	
	Roof Repairs-Wrightsville	4,654				0%	
	Boiler Repair	51,694	100,000	48,306	52%	18%	continually needing repair
	Subtotal	\$ 787,645	\$ 1,091,434	\$ 303,789			
New Projects	Additional Metal Fab shop	0	29,266	29,266	0%	0%	purchasing materials
	PB Warehouse Drive replacement	0	118,000	118,000	0%	0%	asphalt drive pot holed. Preparing Plans.
	Subtotal	\$ -	\$ 147,266	\$ 147,266			
	Architect Fees	13,030	30,000	16,970	43%		
	Total	\$ 1,068,905	\$ 1,900,200	\$ 831,295			

Notes Report has not been reconciled against Accountings Reconciled Reports.
Tolerance/Deviation is with in 1% of Projected Spending.