

Division of Correction Facilities*

Facility	Type	Custody		Personnel	
		Capacity	Avg. Pop.	Security	Non Security
Benton	Min	325	334	59	19
Cummins	Med/Max	1,876	1,804	406	53
Delta Regional	Min/Med	614	617	159	24
East Arkansas	Med/Max	1,531	1,612	312	54
Ester	Med	579	582	140	16
Grimes	Med/Max	1,012	1,077	214	30
Maximum Security	Max	532	564	197	28
McPherson	Med/Max	964	983	198	35
Mississippi Co.	Min	133	131	32	7
North Central	Min/Med	800	824	174	23
Northwest	Min	100	98	26	4
Ouachita	Min/Med	1,837	1,816	409	57
Pine Bluff	Min/Med	540	531	148	21
Pine Bluff Re-Entry	Min	54	53	13	1
R. L. Williams	Min/Med	562	541	127	19
Texarkana	Min	128	121	27	3
Tucker	Med/Max	1,002	993	166	31
Tucker Re-Entry	Min	124	113	30	2
Varner/VSM	Med/Max	1,598	1,624	302	56
Wrightsville	Min/Med	850	882	185	25
J. A. Hawkins Center	Min	456	419	62	10

*This table does not include non-agency beds (e.g., ALETA, ASP, Bowie Co., Act 309)

The Mission of the Arkansas Division of Correction is to provide public safety by carrying out the mandates of the courts; provide a safe humane environment for staff and inmates; strengthen the work ethic through teaching of good habits; and provide opportunities for staff and inmates to improve spiritually, mentally and physically.

The Vision of the Arkansas Division of Correction is to be an honorable and professional organization through ethical and innovative leadership at all levels, providing cost efficient, superior correctional services that return productive people to the community.

For more information go to www.adc.arkansas.gov

Industry Programs

- Bus Barn
- Athletic/Recreation Equipment
- Custom Powder Coating
- Inmate Boots
- Mattresses
- Metal Fabrication
- Seating/Dorm Furniture
- Upholstery/Re-Upholstery
- Vehicle Refurbishing
- Coffee/Tea
- Eco-Products
- Toilet Paper
- Furniture
- Garment
- Embroidery
- Graphic Arts
- Engraving
- Picture Frames
- Printing/Duplicating
- Janitorial
- Prison Industry Enhancement (PIE)
- Wire-Harnesses
- Vinyl Products
- Signs
- Silk-Screening

Avg. Assigned ~ 429

Riverside Vocational-Technical Programs

- Building Maintenance
- Building Trades Technology
- Computer Applications Technology
- Computerized Accounting
- Cosmetology
- Culinary Arts
- Horticulture
- HVAC
- Landscape & Design
- NCCER
- Plumbing
- Residential Carpentry
- Residential Electricity
- ServSafe Food Handler Certificate
- Welding

Courses are individually paced but usually take about thirteen months to complete.

Inmates Enrolled at Vo-Tech ~ 266
Inmates Completed Vo-Tech ~ 130

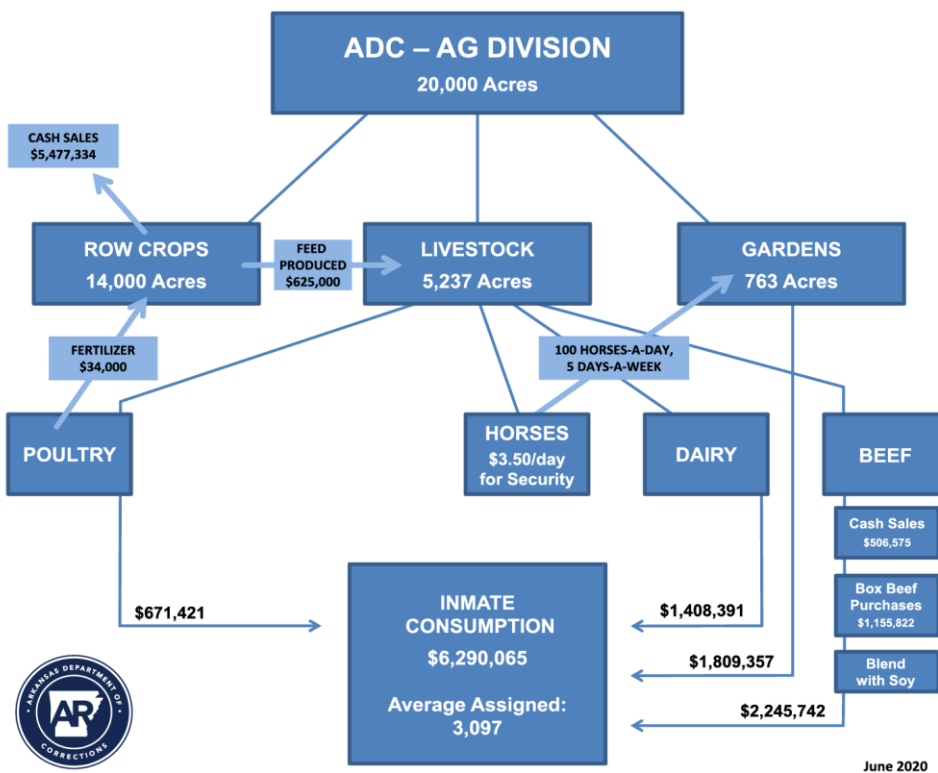
Educational Scores & Data

Test of Adult Basic Education: Reading 5.68 Math 5.16
Pre-Test Avg. Post-Test Avg. N/A due to COVID-19

Avg. Instr. Months: 8
Total Tested: 780

2019~2020 GED Recipients: 550

College Enrollment: 445
Arkansas Prison Initiative College at Mid-America (CAMA) ~ 25
Arkansas State University Newport (ASUN) ~ 111
Central Arkansas Baptist Institute (CABBI) ~ 34
Likewise College ~ 22
Shorter College ~ 253



DIVISION OF CORRECTION

Statistical Information & Trends

Dexter Payne ~ Director

Solomon Graves ~ Secretary

Lindsay Wallace ~ Chief of Staff

Cindy Murphy ~ Communications Director

Published by:

The Research & Planning Division

Tiffanye Compton ~ Administrator

Darell McHenry ~ Project Analyst

Bryan Rodgers ~ Software Support Analyst

Revenues

General Revenue:	\$360,991,738
Agriculture:	\$ 5,423,525
Industry:	\$ 7,206,612
Work Release:	\$ 3,375,590

Average Inmate Cost
Annual ~ \$23,490
Daily ~ \$64.18

Fees

Work Release: \$17.00 per day-per inmate

Human Resource Information

Positions:	
Security:	3,530
Non-Security:	980
Ratio: Budgeted CO's to Inmate:	1:4.5
Beginning Salary for CO-I:	\$29,045.95 - \$32,404.94
Percentage Turnover Rate:	
Security:	43.9%
Non-Security:	7.3%
Percentage of Overall Employed Staff:	
Males:	29.7%
Females:	70.3%

Average County Jail Backup

MO.	YEAR									
	'11	'12	'13	'14	'15	'16	'17	'18	'19	'20
JUL	1,397	943	350	525	2,284 ⁶	2,598 ¹³	1,328	1,450 ²⁰	1,576	1,514
AUG	1,604	911	445	991	2,214 ⁷	2,572	1,469	1,510	1,666	1,570
SEP	1,652	699	408	1,512	2,200	2,109 ¹⁴	1,234	1,495	1,536	1,478
OCT	1,746	574 ²	309	1,993	2,252 ⁸	1,881 ¹⁵	1,435 ¹⁷	1,667	1,577	1,455
NOV	1,942	622 ³	415	2,517	2,428 ⁹	1,798	1,331 ¹⁸	1,735	1,631	1,536 ²³
DEC	1,819	568	243	2,642	2,323	1,324	994	1,540	1,494	1,317 ²⁴
JAN	1,662	631	254	2,650	2,261 ¹⁰	1,087 ¹⁶	1,039	1,480	1,458	1,244
FEB	1,731	730	446	2,782 ⁴	2,572	1,178	1,278	1,579	1,621	1,417
MAR	1,563	477	407	2,767	2,440 ¹¹	943	1,122 ¹⁹	1,639	1,525	1,345
APR	1,496 ¹	452	358	2,487 ⁵	2,357 ¹²	989	1,212	1,762 ²¹	1,530 ²²	972
MAY	1,493	580	573	2,584	2,734	1,220	1,321	1,818	1,542	581
JUN	1,246	468	487	2,515	2,688	1,123	1,308	1,579	1,469	647
AVG	1,613	638	391	2,164	2,396	1,569	1,256	1,604	1,552	1,256

16 beds @Tucker ¹	2 beds @Aleta/ASP ⁷	196 beds @Ester ¹⁶
17 beds @Aleta/ASP ²	124 beds @Bootcamp ⁸	32 beds @ORCU ¹⁷
20 beds @RLW ³	16 beds @ORCU	16 beds @ORCU ¹⁸
422 beds @ORCU	18 beds @VSM/Varner ⁹	7 beds @ORCU ¹⁹
98 beds @Tucker ⁴	38 beds @Tucker ¹⁰	199 beds @Ester
200 beds @NCU ⁵	60 beds @Varner	64 beds @Pine Bluff ²⁰
29 beds @Delta	288 beds @Bowie Co. ¹¹	-300 beds @Cummins ²¹
5 beds @Aleta/ASP	12 beds @Grimes ¹²	-124 beds @TU Re-Entry
50 beds @NCU ⁶	54 beds @PBWR	-88 beds @Varner ²²
10 beds @Delta	48 beds @Bowie Co.	46 beds @Pine Bluff
58 beds @NWARWR	12 beds @MCWR ¹⁴	124 beds @TU Re-Entry
164 beds @McPherson	56 beds @Hawkins	-56 beds @Hawkins Fem.
76 beds @ORCU	33 beds @McPherson	300 beds @Cummins ²³
175 beds @WR Satellite	11 beds @Delta ¹⁵	-128 beds @EARU ²⁴
		56 beds @Hawkins Fem.

Denotes Lowest
Denotes Highest

BED ADJUSTMENTS BY YEAR

Inmate Population

Gender:	Male 91.9%	Female 8.1%
Race:	White 53.8%	Hispanic 3.3%
	Black 42.1%	Other 0.8%

Average Age of Population: Male = 39 Female = 37
Average Age at Admission: Male = 35 Female = 35

Classification of Inmates

Class I-A	4.9%	Class I-P	<0.1%
Class I-B	5.2%	Class II	9.1%
Class I-C	58.4%	Class III	4.4%
Class I-D	0.4%	Class IV	17.5%

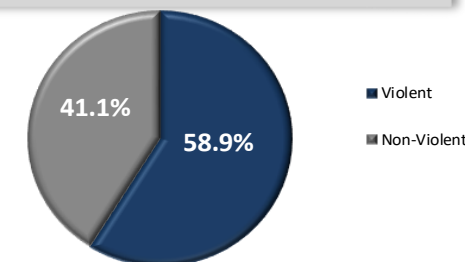
Custody Level

Minimum: 48.2% Medium: 34.6%
Maximum: 17.1% Unclassified: < 0.1%

Inmate Sentencing Data

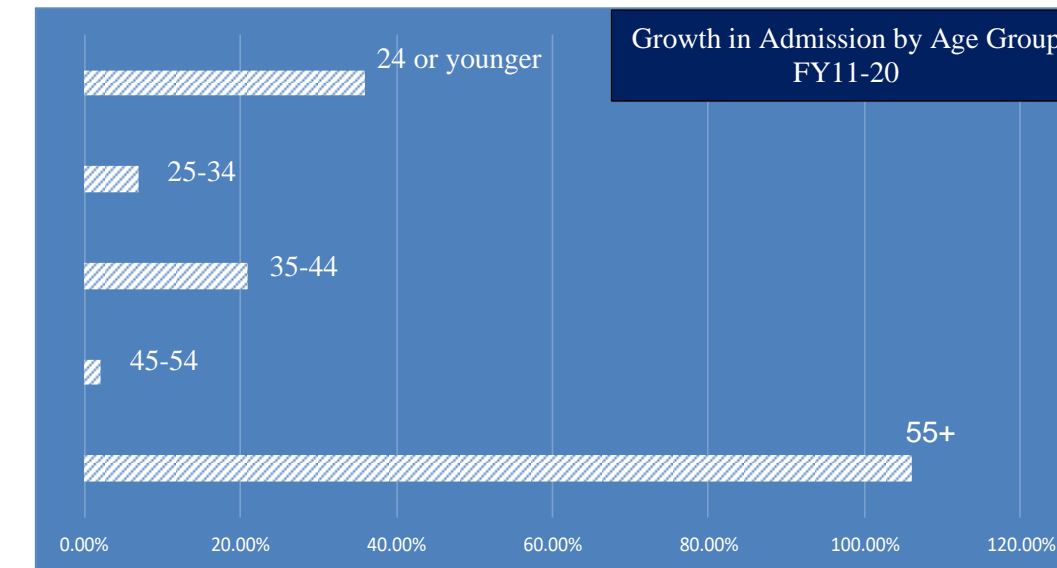
Total Inmates Admitted:	7,239
Total Inmates Released:	7,436
Total Inmates Serving Life:	1,250
Total Inmates Serving Death:	29
Avg. Juvenile Population:	7
Avg. Length of Sentence for Population:	20y 9m 0d
Avg. Length of Sentence for Admission:	8y 2m 1d
Avg. Length of Time Served:	4y 3m 18d

Offense Type (%)



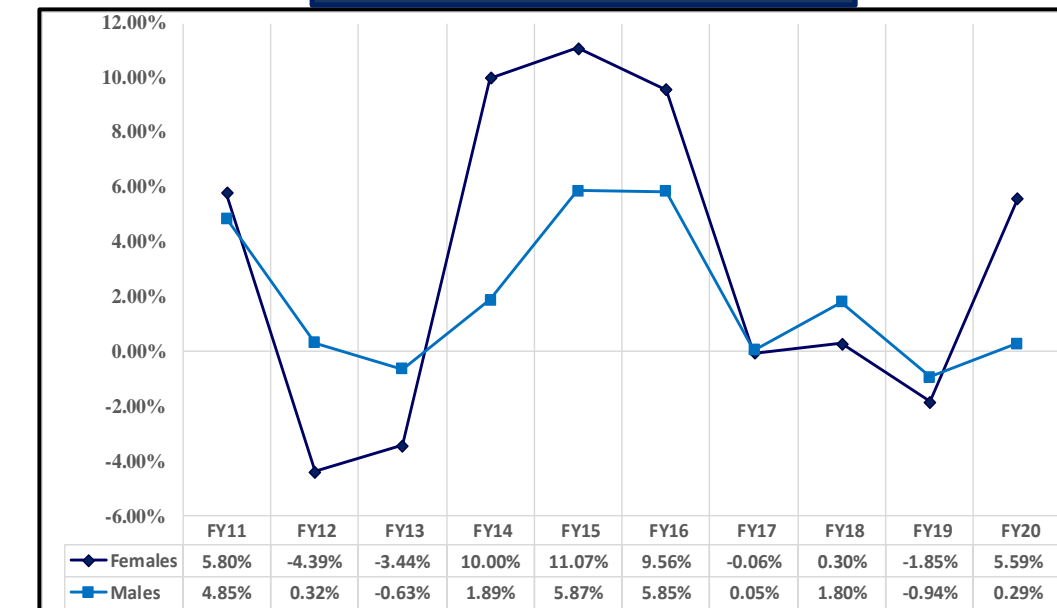
*As defined by A.C.A. 5-4-501(d)(2)

Comparative Look



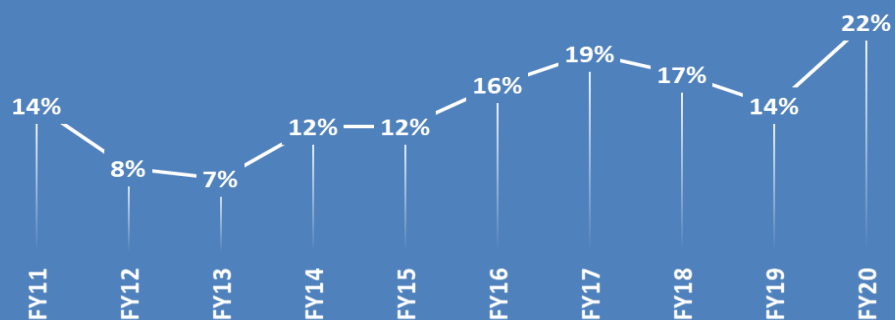
Statistically, the risk of recidivism decreases significantly with age, yet the number of elderly prisoners (age 55+) continues to be the fastest growing age group. They represent 13.40% of the ADC Population and have had a growth rate of 106% over the last 10 years.

Average Growth Rate by Gender



Over the last decade, the ADC females have an average growth rate of 3.26% compared to the males growth rate of 1.93%.

CORRECTIONAL OFFICER VACANCY RATE TREND



AVERAGE COUNTY JAIL BACKUP HISTORICAL TREND

