



ADC

ARKANSAS DEPARTMENT OF CORRECTION

FY

2016

ANNUAL REPORT

Wendy Kelley
Director

Director's Message:

As Director of the Arkansas Department of Correction (ADC), I am pleased to submit the ADC Fiscal Year 2016 (*July 1, 2015-June 30, 2016*) Annual Report, as required by Ark. Code Ann. 12-27-107. During the fiscal year, the Arkansas Department of Correction continued to experience growth in the inmate population. For the first time, we saw our jurisdictional count surpass 19,000 inmates. Our Correctional Officer uniform badge has the phrase "Honor and Integrity in Public Service" as a part of its design. From the newest hire to the most seasoned veteran, our staff live that phrase daily. I continue to be proud of the professionalism by which our staff approach their duties in the midst of continued population growth and other challenges.



During the fiscal year, we opened our first reentry facility, the Barbara Ester Unit. The Barbara Ester Unit's programs include Preparing for Success which incorporates the National Institute of Corrections' evidence-based Thinking for a Change curriculum as well as Advanced PAL. Our Agricultural Division provided over \$1.9 million in savings to the taxpayer through inmate consumption of farm produced goods. These farm-produced goods provide a healthy meal option for our inmates, while limiting the food costs on the state's budget.

As Director, I am proud of ADC's employees and their achievements made during the past fiscal year. We remain committed to our mission of advancing the public's safety by carrying out the mandate of the courts, providing a safe humane environment for staff and inmates, strengthening the work ethic of inmates through the teaching of good habits, and providing opportunities for staff and inmates to improve spiritually, mentally, and physically. We look forward to new opportunities in service to this great state.

On behalf of this agency, I extend a collective thank you for the support the Arkansas Department of Correction continues to receive from our partners in law enforcement, the Governor, the General Assembly and the Board of Corrections.



Asa Hutchinson
Governor

Respectfully Submitted,

Wendy Kelley

Wendy Kelley
Director
Arkansas Department of Correction

ADC Mission Statement

- Provide public safety by carrying out the mandates of the courts;
- Provide a safe, humane environment for staff and inmates;
- Provide programs to strengthen the work ethic;
- Provide opportunities for spiritual, mental, and physical growth.

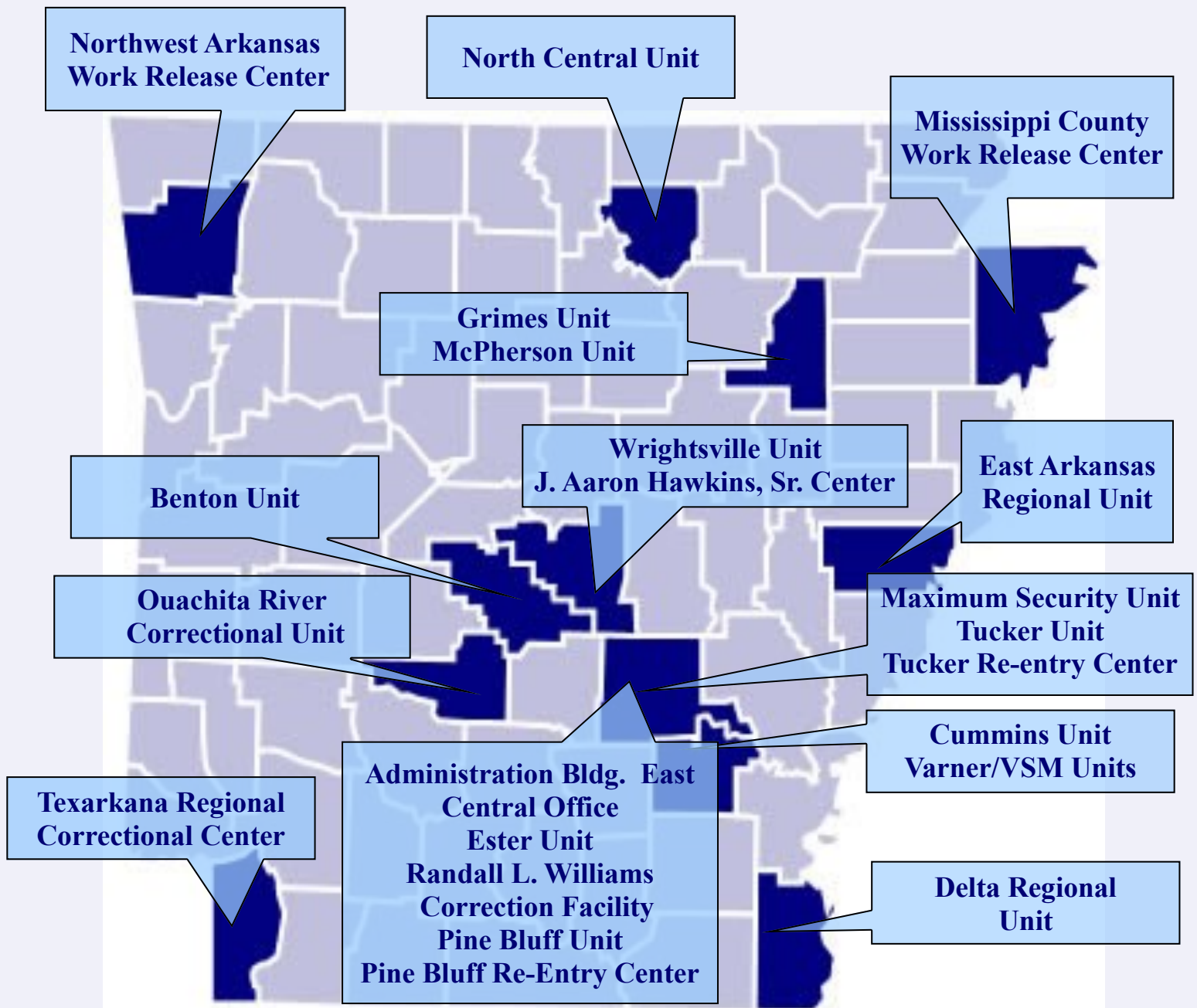
Annual Report

ADC Vision Statement

To be an honorable and professional organization through ethical and innovative leadership at all levels, providing cost efficient, superior correctional services that return productive people to the community.

Arkansas Department Correction Facilities

The Arkansas Department of Correction (ADC) is an agency of the state of Arkansas that operates adult correctional facilities. Our headquarters is in Pine Bluff. The ADC is charged with carrying out the mandates of the courts and we are just one piece of the criminal justice system in Arkansas.



Highlights fy 16

ORCU Chapel Held Ground Breaking Ceremony



The Ouachita River Correctional Unit hosted a chapel ground breaking ceremony for the planned 6,800 square-foot chapel.

Governor Supports PIP



The Paws in Prison (PIP) program turned four years old during FY16. To celebrate its fourth birthday, the very first "Ruff" Rock N Roll fundraiser was held at the Scott Plantation in Scott,

Arkansas. Arkansas Governor Asa Hutchinson visited with Paws in Prison ambassador-dog Chloe. The Governor's office has applauded the efforts of Paws in Prison (PIP).

Comedian Jeff Foxworthy

Comedian Jeff Foxworthy took time while in Little Rock for a performance to discuss the importance of growing partnerships between the state and faith groups to address homelessness, the need for more foster/adoptive parents and offender reentry.



Those in attendance were challenged to think outside of the box and to ANSWER THE CALL!

Healthy Relationships



A class entitled Health Relationships was given by John Brown University to 23 inmates at the Northwest Arkansas Work Release Center. Founded in 1998, the University's mission is to equip people for developing healthy relationships through consulting, education, enrichment, resources, research and assessment.

Scott Grimes Remembered



The Grimes Unit in Newport held a commemoration ceremony to mark the 20-year anniversary of the death of Sergeant Scott A. Grimes for whom the Unit was named.



11-29-1995
End of Watch

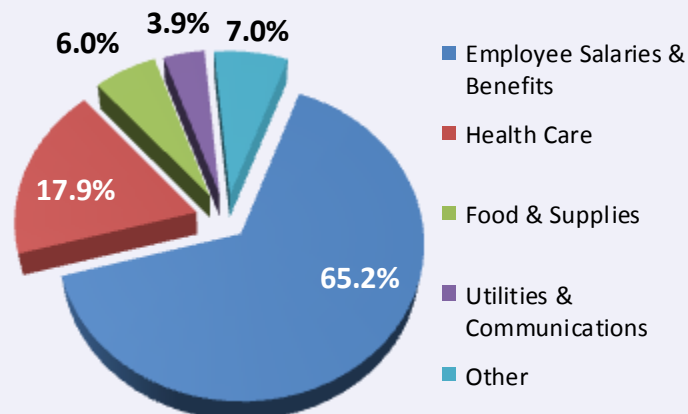
Fiscal Summary fy 16

The ADC operational budget for FY 2016 was \$338,440,793, excluding Correctional Industries, Farm & Work Release that operate under a separate revolving fund. The single largest expenditure continues to be employee salaries and benefits, accounting for 65.2% of the fiscal year. The Department's personnel cost decreased by \$5,444,688 during FY16, primarily from an increase in vacancies. Also during FY16, ADC paid off arrearages for leave liability for security staff. In addition to personnel costs, other significant expenditures during FY 2016 included inmate health care costs (accounting for 17.9% or \$60,604,598), utilities and communications (accounting for 3.9% or \$13,313,544), and food and supplies for inmates (accounting for 6.0% or \$20,602,431).

Average Inmate Costs

Year	Per Day	Per Year	Care & Custody
2004	47.32	17,271.80	209,542,704
2005	48.24	17,607.60	215,042,365
2006	52.12	19,023.80	243,207,957
2007	54.82	20,009.30	253,342,707
2008	57.13	20,852.45	272,844,471
2009	60.19	21,969.35	280,135,153
2010	60.03	21,910.95	288,888,121
2011	59.7	21,790.50	303,606,007
2012	61.83	22,567.95	320,877,549
2013	62.93	22,969.45	320,227,065
2014	63.26	23,089.00	324,189,396
2015	62.90	22,959.00	336,640,020
2016	60.51	22,086.00	338,440,793

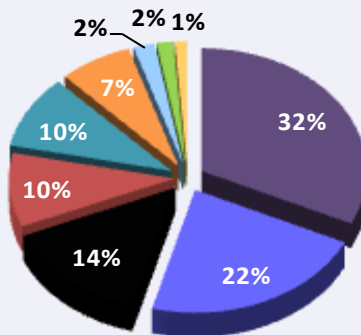
Operating Expenditures



Construction Expenditures

Project	Expenditures	
	FY16	Total To-Date
Cummins Poultry Houses	\$602,898	\$5,481,607
Ester	\$3,287,178	\$7,392,711
Tucker Well	\$0	\$388,972

Industry Revenue



Bus Barn	\$2,625,346.84
Clothing	\$1,816,987.88
Janitorial	\$1,181,112.62
Eco Products	\$797,489.28
Furniture	\$789,155.45
Duplicating	\$587,839.47
Beverages	\$170,477.56
PIE Program	\$133,118.34
Vinyl	\$94,907.58

Total

\$8,196,435.02

Agency Revenue

General Revenue	\$338,119,579
Agriculture	\$8,335,107
Industry	\$7,665,786
Work Release	\$3,402,762
Total	\$357,523,234

Federal Grants Received

Block Grants for Prev. & Treat. of Substance Abuse (16SABG)	\$64,882
Residential Substance Abuse (R14-190)	\$41,429
Residential Substance Abuse (R14MG-190)	\$14,997
Residential Substance Abuse (R15-190)	\$71
State Criminal Alien Assistance Program (SCAAP 2015)	\$261,109
Total Received	\$382,488

Admissions fy 16

Inmate Sentencing Summary

Total Inmates Admitted (Males =9,391; Females =1,456):	10,847
Total Inmates Released (Males =8,689; Females =1,366):	10,055
Average Length of Sentence (Population):	19y 3m 9d
Average Length of Sentence (Admissions):	8y 7m 19d
Average Length of Stay:	4y 7m 5d

Top 10 Admission Offenses

Offense	% of Admission	Avg. Sentence
Residential Burglary	9.9%	9y 1m 4d
Manu/Delv/Poss Control Subs.	9.2%	10y 1m 20d
Robbery	5.2%	11y 5m 24d
Poss. Cont. Sub. Sched. I,II Meth Cocaine <2G	4.1%	4y 2m 15d
Commercial Burglary	3.3%	7y 7m 11d
Theft of Property	3.0%	8y 6m 4d
Sexual Assault	2.9%	11y 8m 2d
Forgery	2.7%	5y 7m 1d
Failure To Appear	2.5%	6y 2m 10d
Poss. Firearm Certain Person	2.3%	7y 0m 5d

Top 10 Admission Offenses By Gender

Males

Offense	% of Admissions	Avg. Sentence
Residential Burglary	10.4%	9y 3m 16d
Manu/Delv/Poss Control Subs.	9.4%	10y 5m 5d
Robbery	5.4%	11y 9m 9d
Poss. Cont. Sub. Sched I,II Meth Cocaine <2G	3.7%	4y 2m 17d
Commercial Burglary	3.5%	7y 8m 19d
Sexual Assault	3.3%	11y 8m 24d
Theft of Property	3.0%	8y 8m 7d
Poss. Firearm Certain Person	2.6%	7y 0m 24d
Failure To Appear	2.4%	6y 6m 5d
Breaking and Entering	2.1%	4y 5m 19d

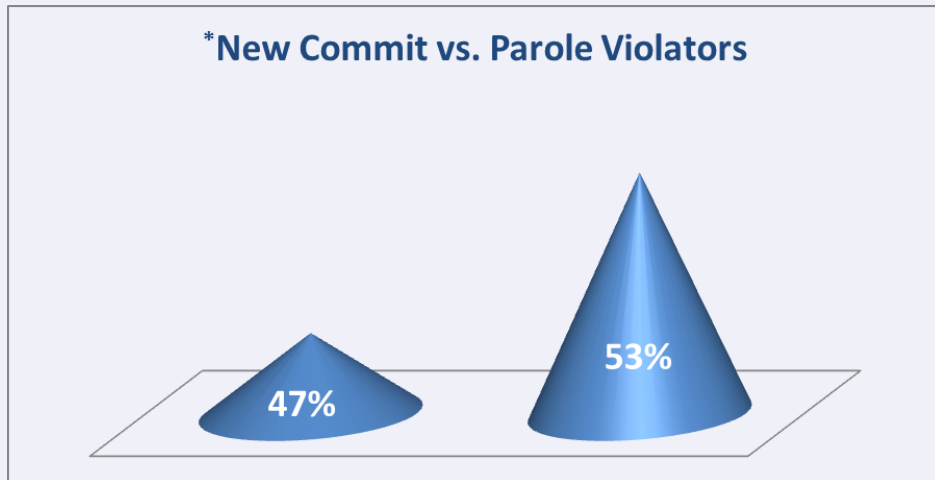
Females

Offense	% of Admissions	Avg. Sentence
Manu/Delv/Poss Control Subs.	7.8%	7y 10m 12d
Forgery	7.8%	5y 0m 3d
Residential Burglary	6.5%	7y 0m 2d
Poss. Cont. Sub. Sched I,II Meth Cocaine <2G	6.3%	4y 2m 5d
Poss. Drug Paraphernalia Meth Cocaine	4.3%	3y 8m 13d
Poss. Drug Paraphernalia Man. Meth Cocaine	3.7%	5y 8m 24d
Robbery	3.5%	8y 6m 21d
Deliver Meth Cocaine <2G	3.5%	6y 2m 3d
Failure To Appear	3.4%	4y 9m 5d
Theft of Property	3.3%	7y 5m 23d

Admissions by Commitment Type fy 16

Parole Violators accounted for 53% of all admissions to the Arkansas Department of Correction in FY16.

***New Commit vs. Parole Violators**



*Admission occurred in FY16, however the initial commitment or parole violation may have occurred prior to FY16.

What Happened During FY16

- + More convictions leading to prison sentences
- + Longer sentences/time served for convictions
- + Females were the fastest growing segment of the prison population
- + The ADC jurisdictional count reach a record high number of 19,063
- + The County Jail Back-up reached a high of 2,705
- = More parolees returned to prison

Admissions by County^{fy 16}

County	Males						Females						County Total	% of Overall
	A	B	C	H	O	Total	A	B	C	H	O	Total		
Arkansas	1	52	32	0	0	85	0	3	10	0	0	13	98	0.90%
Ashley	0	54	49	0	0	103	0	5	11	0	0	16	119	1.10%
Baxter	0	3	112	0	0	115	0	0	25	0	0	25	140	1.29%
^{*4} Benton	4	20	373	56	4	457	0	0	58	5	0	63	520	4.79%
Boone	0	2	84	1	0	87	0	0	6	0	0	6	93	0.86%
Bradley	0	17	10	2	0	29	0	4	2	0	0	6	35	0.32%
Calhoun	0	8	8	0	0	16	0	1	0	0	0	1	17	0.16%
Carroll	0	1	42	3	0	46	0	0	3	0		3	49	0.45%
Chicot	0	40	9	0	0	49	0	2	3	0	0	5	54	0.50%
Clark	0	51	38	1	0	90	0	3	7	0	0	10	100	0.92%
Clay	0	2	34	0	0	36	0	0	9	0	0	9	45	0.41%
Cleburne	0	2	73	1	0	76	0	0	11	0	0	11	87	0.80%
Cleveland	0	12	25	1	0	38	0	0	1	0	0	1	39	0.36%
Columbia	0	55	11	0	0	66	0	5	0	0	0	5	71	0.65%
Conway	0	18	59	0	0	77	0	1	6	0	0	7	84	0.77%
^{*10} Craighead	1	113	137	5	0	256	0	7	20	1	0	28	284	2.62%
Crawford	3	16	184	5	2	210	1	1	25	0	0	27	237	2.18%
Crittenden	0	211	54	3	0	268	0	8	7	0	0	15	283	2.61%
Cross	0	10	18	0	0	28	0	0	1	0	0	1	29	0.27%
Dallas	0	15	8	0	0	23	0	2	0	0	0	2	25	0.23%
Desha	0	37	16	1	0	54	0	0	3	0	0	3	57	0.53%
Drew	0	39	30	0	0	69	0	1	7	0	0	8	77	0.71%
^{*9} Faulkner	0	115	125	2	1	243	0	6	42	0	0	48	291	2.68%
Franklin	0	1	60	1	0	62	0	0	11	0	0	11	73	0.67%
Fulton	0	0	29	0	0	29	0	0	4	0	0	4	33	0.30%
^{*7} Garland	1	91	174	7	1	274	0	6	40	0	0	46	320	2.95%
Grant	1	10	63	2	0	76	0	0	12	0	0	12	88	0.81%
Greene	0	17	148	2	0	167	0	0	64	0	1	65	232	2.14%
Hempstead	0	44	35	1	0	80	0	0	1	0	0	1	81	0.75%
Hot Spring	0	39	92	2	0	133	0	2	14	0	0	16	149	1.37%
Howard	0	46	39	1	0	86	0	6	10	0	0	16	102	0.94%
Independence	1	13	116	5	0	135	0	1	33	0	0	34	169	1.56%
Izard	0	1	25	0	0	26	0	0	6	0	0	6	32	0.30%
Jackson	0	29	83	1	0	113	0	6	29	0	0	35	148	1.36%
^{*5} Jefferson	0	286	72	3	0	361	0	13	12	0	0	25	386	3.56%
Johnson	1	14	108	9	0	132	0	2	10	0	0	12	144	1.33%
Lafayette	0	17	18	0	0	35	0	1	5	0	0	6	41	0.38%
Lawrence	0	2	78	0	0	80	0	0	10	0	0	10	90	0.83%
Lee	0	10	1	0	0	11	0	0	0	0	0	0	11	0.10%
Lincoln	0	2	5	0	0	7	0	0	1	0	0	1	8	0.07%
Little River	0	32	75	1	0	108	0	3	19	0	0	22	130	1.20%
Logan	0	2	32	0	0	34	0	0	11	0	0	11	45	0.41%
^{*8} Lonoke	1	57	195	9	2	264	0	1	38	2	0	41	305	2.81%
Madison	0	1	34	1	0	36	0	0	2	0	0	2	38	0.35%
Marion	0	0	25	0	0	25	0	0	1	1	0	2	27	0.25%
^{*6} Miller	0	144	133	2	2	281	1	12	30	1	0	44	325	3.00%
Mississippi	0	103	60	1	0	164	0	2	6	0	0	8	172	1.59%
Monroe	0	36	18	1	0	55	0	2	2	0	0	4	59	0.54%
Montgomery	0	0	14	0	0	14	0	0	3	0	0	3	17	0.16%
Nevada	0	6	10	0	0	16	0	0	0	0	0	0	16	0.15%
Newton	0	0	8	0	0	8	0	0	0	0	0	0	8	0.07%
Ouachita	0	78	34	0	0	112	0	3	0	0	0	3	115	1.06%
Perry	0	1	9	1	1	12	0	1	1	0	0	2	14	0.13%
Phillips	0	31	6	0	0	37	0	0	0	0	0	0	37	0.34%
Pike	0	3	48	1	0	52	0	2	15	0	0	17	69	0.64%
Poinsett	0	21	70	1	0	92	0	0	10	0	0	10	102	0.94%
Polk	0	1	67	1	0	69	0	0	10	0	0	10	79	0.73%
Pope	1	34	148	12	1	196	0	3	56	4	0	63	259	2.39%
Prairie	0	8	16	0	0	24	0	0	0	0	0	0	24	0.22%
^{*1} Pulaski	2	867	333	18	1	1221	0	94	85	1	0	180	1401	12.92%
Randolph	0	3	43	0	0	46	0	0	2	0	0	2	48	0.44%
St. Francis	0	29	6	0	0	35	0	1	1	0	0	2	37	0.34%
Saline	0	44	198	4	0	246	0	2	18	0	0	20	266	2.45%
Scott	0	1	19	1	0	21	0	1	2	0	0	3	24	0.22%
Searcy	0	0	4	0	0	4	0	0	1	0	0	1	5	0.05%
^{*2} Sebastian	10	138	443	29	5	625	1	19	156	1	1	178	803	7.40%
Sevier	0	14	55	7	3	79	0	2	22	0	1	25	104	0.96%
Sharp	0	1	40	0	0	41	0	0	7	0	0	7	48	0.44%
Stone	0	0	31	2	1	34	0	0	11	0	0	11	45	0.41%
Union	0	143	68	1	0	212	0	9	11	0	0	20	232	2.14%
Van Buren	0	0	26	0	2	28	0	0	9	0	0	9	37	0.34%
^{*3} Washington	7	106	396	66	12	587	0	9	81	2	1	93	680	6.27%
White	0	39	177	0	1	217	0	5	34	0	0	39	256	2.36%
Woodruff	0	12	9	0	0	21	0	0	0	0	0	0	21	0.19%
Yell	0	10	32	1	0	43	0	1	10	0	0	11	54	0.50%
Unknown/NA	0	3	0	0	1	4	0	0	0	0	0	0	4	0.04%
Grand Totals	34	3483	3517	275	40	9391	3	258	1173	18	4	1456	10847	100.00%

Releases fy 16

FY16 Releases				Average Sentence Data		
Race	Males	Females	Total	Male	Female	Total
Asian	30	1	31	Sentenced	8y 4m 14d	4y 0m 0d
				Stayed	2y 11m 22d	0y 8m 1d
Black	3,231	251	3,482	Sentenced	9y 6m 12d	6y 11m 0d
				Stayed	5y 7m 4d	3y 3m 27d
Caucasian	5,165	1,084	6,249	Sentenced	7y 11m 21d	6y 1m 17d
				Stayed	4y 5m 19d	2y 9m 1d
Hispanic	226	21	247	Sentenced	8y 11m 8d	8y 8m 16d
				Stayed	3y 10m 16d	2y 8m 12d
Mexican	3	0	3	Sentenced	26y 8m 0d	0
				Stayed	15y 1m 15d	0
NA Indian	22	9	31	Sentenced	6y 11m 0d	8y 9m 13d
				Stayed	3y 7m 2d	3y 5m 0d
NA Hawaiian or Pacific Islander	8	0	8	Sentenced	14y 10m 14d	0
				Stayed	4y 1m 4d	0
Other	4	0	4	Sentenced	8y 10m 15d	0
				Stayed	4y 11m 0d	0
Total	8,689	1,366	10,055	Sentenced	8y 7m 3d	6y 4m 0d
				Stayed	4y 10m 13d	2y 10m 10d

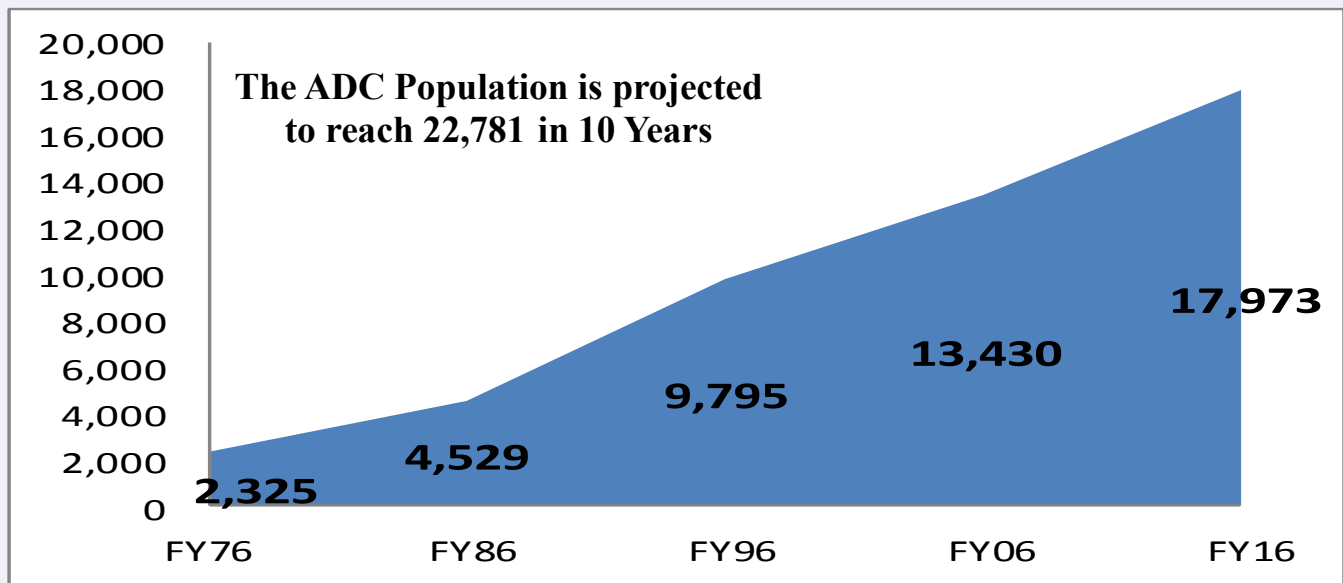
ADC Population Growth

Sentence Length vs. Time Served

Year	Avg. Sentence Length Admissions	Avg. Time Served Releases
FY 07	8y 10m 16d	2y 9m
FY 08	9y 0m 25	2y 9m
FY 09	8y 11m 17d	2y 10m
FY 10	9y 2m 17d	3y 7m
FY 11	9y 3m 0d	3y 10m
FY12	9y 3m 20d	3y 11m
FY13	9y 1m 2d	3y 11m 18d
FY14	9y 0m 18d	4y 4m 25d
FY15	8y 8m 25d	4y 6m 1d
FY16	8y 7m 19d	4y 7m 5d

While the average sentence length at admissions has remained stable, the average length of time served has doubled during the past decade, contributing to an overall growth in the ADC population.

ADC Population Growth



Research during the fiscal year included the Council of State Government (CSG) working with the state's correctional agencies, analyzing the significant growth in the prison population. Below are the policy options that CSG provided in an effort to reduce the corrections population, contain spending and reinvest in strategies that can reduce recidivism and increase public safety....

- ♦ Focus supervision resources on people who are most likely to re-offend.
- ♦ Increase the availability of effective community-based substance use treatment and services.
- ♦ Reconfigure aspects of ACC's residential facilities to ensure the effectiveness and efficiency of services that are intended to reduce recidivism.
- ♦ Limit the amount of time people who have violated the conditions of their supervision may spend in prison so that prison space is reserved for people who commit serious and violent offenses.
- ♦ Improve the quality and consistency of the parole decision-making process, preparation for release and information sharing between Arkansas's correctional agencies as it relates to parole.
- ♦ Revise the Arkansas Sentencing Guidelines to ensure that sentences to prison are reserved for people convicted of the most serious offenses or who have extensive criminal histories.
- ♦ Improve the collection of information related to restitution and access to compensation for victims of crime.
- ♦ Develop and fund strategies to reduce pressures on county jails, including specialized law enforcement training, screening and assessment and diversion for people with mental illnesses.

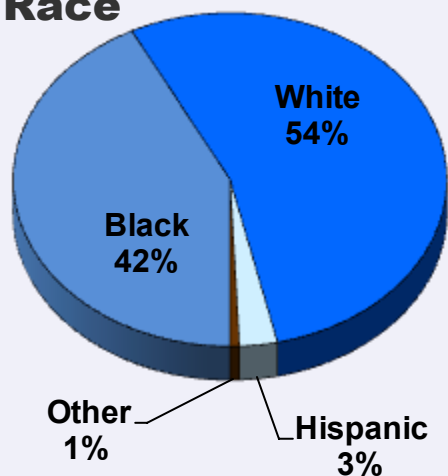
Population Snapshot fy16

Population - 6/30/2016

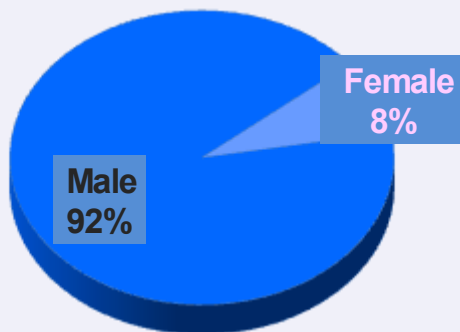
Custody - 16,050
Jurisdiction - 17,973
Average Daily - 18,117
Avg. County Jail Backup—1,569
Avg. County Jail 309 Contract—287
Avg. Age of Pop. Male = 39 Female = 37
Avg. Age at Adm. Male = 33 Female = 33
Avg. Age at Release Male = 36 Female = 35

Demographic Characteristics

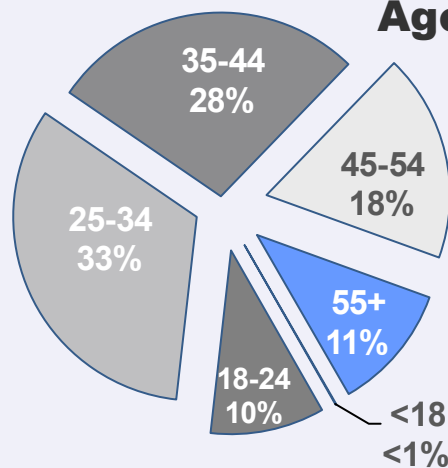
Race



Gender

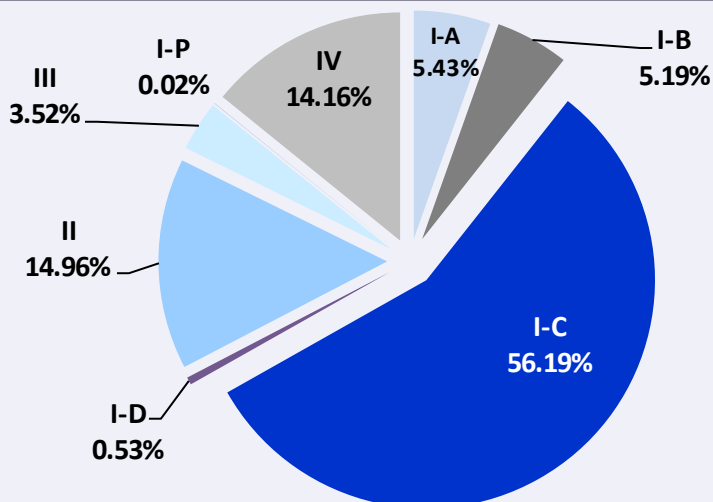


Age



Classification Characteristics

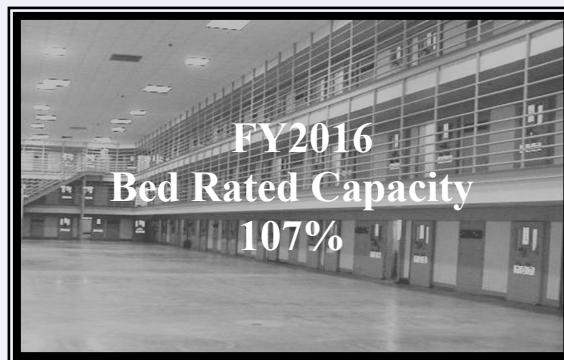
Good Time Class



Population Snapshot fy 16

Top 10 Current Population Offenses

Offense	% of Population	Avg. Sentence
Rape	8.9%	32y 6m 4d
Aggravated Robbery	7.6%	27y 3m 12d
Murder-1st Degree	7.5%	42y 2m 1d
Residential Burglary	6.9%	13y 9m 2d
Manu/Delv/Poss Control Subs.	6.5%	19y 8m 23d
Sexual Assault	6.2%	16y 11m 23d
Robbery	5.8%	17y 6m 22d
Battery	3.4%	19y 5m 10d
Capital Murder	3.3%	Not Available
Murder-2nd Degree	2.5%	31y 4m 0d



Top 10 Current Population Offenses By Gender

Males

Offense	% of Population	Avg. Sentence
Rape	9.6%	32y 6m 24d
Aggravated Robbery	8.0%	27y 5m 0d
Murder-1st Degree	7.5%	42y 8m 12d
Residential Burglary	7.0%	13y 11m 24d
Sexual Assault	6.6%	17y 0m 20d
Manu/Delv/Poss Control Subs.	6.5%	20y 5m 7d
Robbery	5.8%	18y 0m 0d
Battery-1st Degree	3.5%	19y 7m 9d
Capital Murder	3.4%	Not Available
Criminal Attempt	2.5%	29y 0m 0d

Females

Offense	% of Population	Av. Sentence
Manu/Delv/Poss Control Subs.	7.2%	12y 9m 4d
Murder-1st Degree	7.2%	35y 6m 9d
Residential Burglary	5.7%	10y 8m 2d
Robbery	5.5%	12y 7m 1d
Forgery	4.4%	6y 4m 10d
Poss. Cont. Sub. Sched L,LL Meth Cocaine <2G	3.7%	5y 0m 0d
Aggravated Robbery	3.3%	23y 8m 20d
Murder-2nd Degree	3.1%	31y 1m 8d
Theft of Property	3.0%	9y 10m 17d
Battery-1st Degree	2.5%	16y 10m 18d

Population Snapshot fy16

Classification Characteristics

ADC Custody Levels

Minimum:

Benton Unit
Mississippi County Work Release
Northwest Arkansas Work Release
Pine Bluff Work Release
Pine Bluff Re-Entry
Texarkana Work Release
Tucker Re-entry Center
Wrightsville Satellite Unit

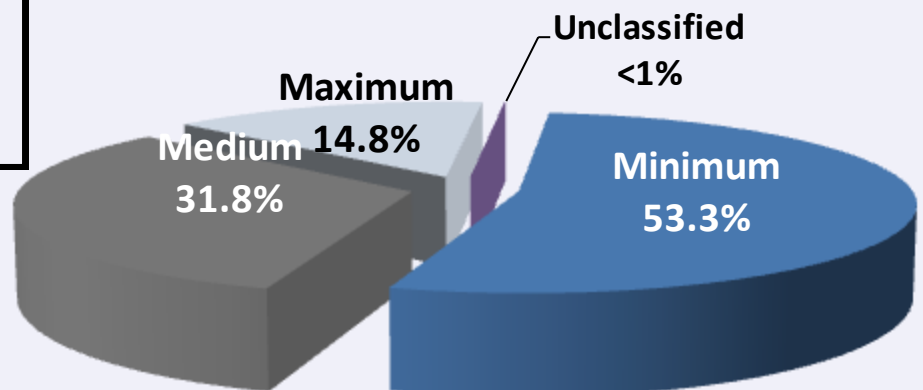
Maximum-Medium:

Cummins Unit
East Arkansas Regional Unit
Grimes Unit
Maximum Security Unit
McPherson Unit
Varner Unit
Varner Supermax

Medium-Minimum

Delta Regional Unit
Ester Unit
J. Aaron Hawkins Center
Randall L. Williams Co. Facility
North Central Unit
Ouachita River Correctional Unit
Pine Bluff Unit
Tucker Unit
Wrightsville Unit

Custody Level %



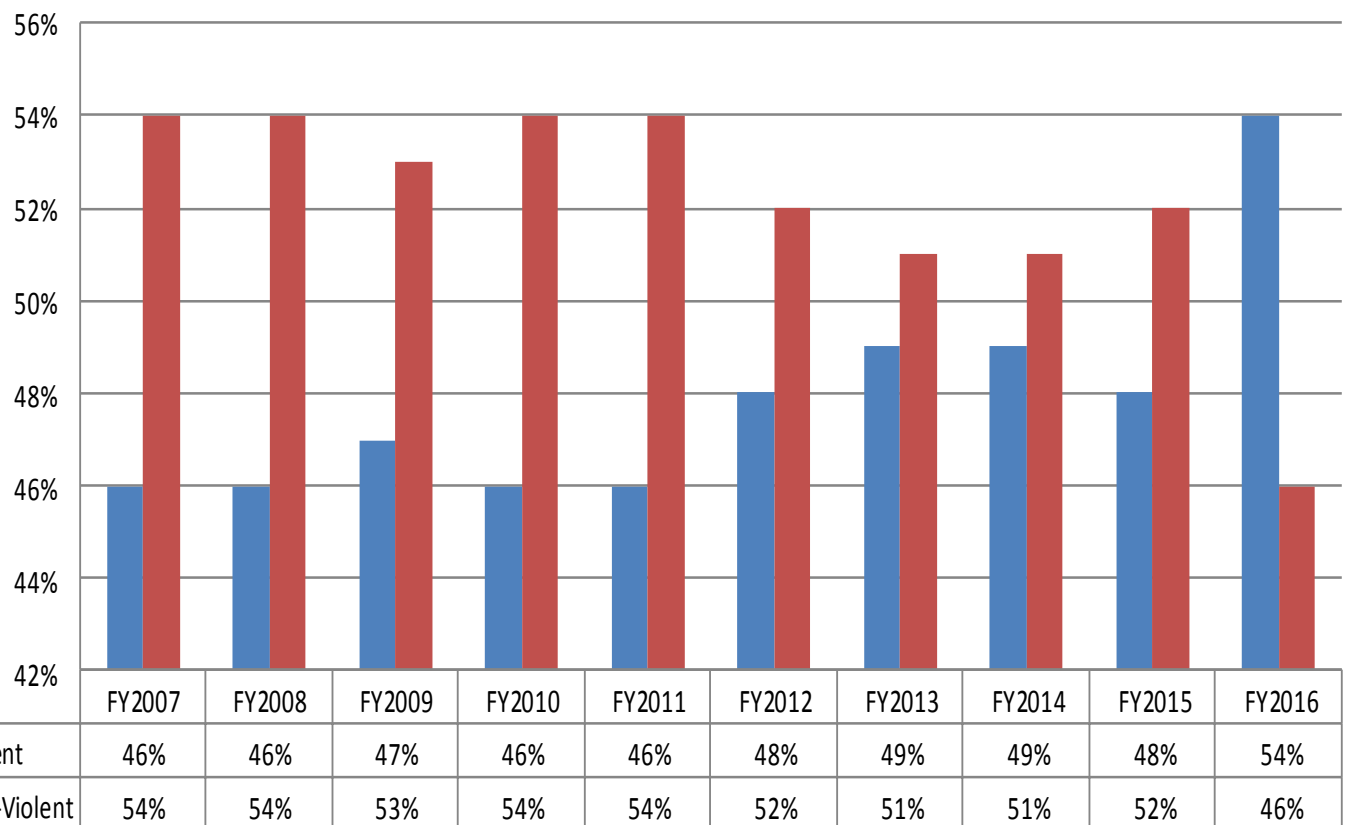
Inmate Characteristics fy16

Violent vs. Non-Violent

The spike in the FY16 violent vs. non-violent offenses is due in part to the 90th General Assembly in the 2015 Regular Session, amending Act 895 Arkansas Code §5-4-501(d)(2) which moved Residential Burglary from a non-violent offense to a violent offense. 6.9% of the ADC current population are serving a sentence for Residential Burglary.

Essentially, FY16 reflects that 54% of the Arkansas Department of Correction Inmates are serving time for violent offenses while 46% are serving time for non-violent offenses.

ADC Trend of *Violent vs. Non-Violent Inmates



**As defined by A.C.A. 5-4-501(d)(2)*

Inmate Characteristics fy16

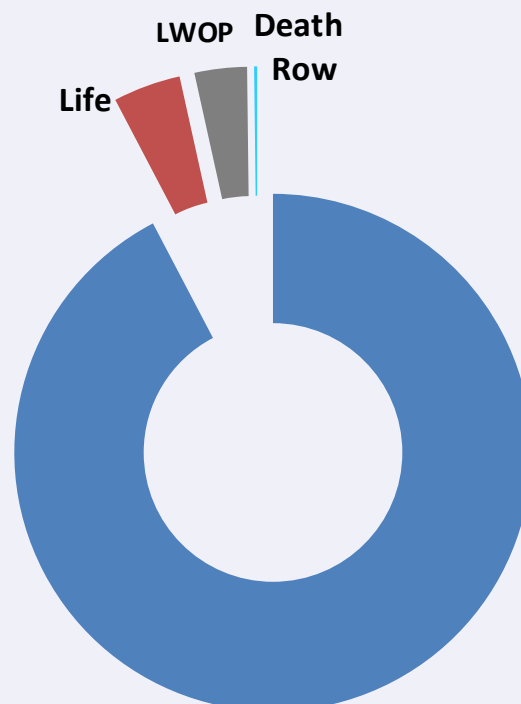
Lifers & Death Row

Lifers

- ♦ At the end of FY16 there were 1,357 Inmates who had life sentences or 8.5% of the Inmate Population (3.7% are life without parole & 4.8% are life with parole).
- ♦ Age range 19-86.
- ♦ Average Age 50.
- ♦ 53.4% are Black, 44.7% are White, 1.5% are Hispanic & 0.4% Other.
- ♦ 95.1% of the Lifers are Males & 4.9% are females.
- ♦ Top offenses include Capital Murder, Murder-1st Degree & Rape
- ♦ 13 Inmates were sentenced to Life with Parole & 10 Life without parole in FY16.

Death Row

- ♦ At the end of FY16 there were 34 Inmates on Death Row or 0.2% of the Inmate Population.
- ♦ Age range 31-66.
- ♦ Average age of ADC Inmates who are on Death Row is 47.
- ♦ Of the 34 Inmates that are on Death Row, 18 are Black (53%) and 16 are White (47%).
- ♦ All were sentenced to death for Capital Murder.
- ♦ All Death Row Inmates are males; no females.
- ♦ No Inmates were sentenced to Death during FY16.
- ♦ The longest serving Death Row Inmate had served 26 years in that status at the end of FY16.
- ♦ Average Length of Stay on Death Row is 13 years.



Inmate Characteristics fy16

Parole Eligibility

70%

- ♦ At the end of FY16 there were 3,440 Inmates that must serve at least 70% of their sentence or 21.4% of the Inmate Population.
- ♦ Age range 17-83.
- ♦ Average Age 39.
- ♦ 53% are Black, 44% are White, 3% are Hispanic & >1% Other.
- ♦ 96% are Males & 4% are females.
- ♦ Top offenses include Aggravated Robbery, Rape & Murder-1st.
- ♦ 245 Inmates were sentenced to serve 70% of their sentence in FY16.

50+ Years

- ♦ At the end of FY16 there were 1,033 Inmates that were serving a 50+ Sentence or 6.4% of the Inmate Population.
- ♦ Age range 19-81.
- ♦ Average age of ADC Inmates who have been sentenced to 50+ years is 43.
- ♦ Of the 1,033 Inmates that have been sentenced to 50+ years, 587 are Black (57%) and 414 are White (40%) & 32 are Other (3%).
- ♦ 97% are Males & 3% are Females.
- ♦ Top offenses include Rape, Murder-1st Degree & Aggravated Robbery.
- ♦ 39 Inmates were sentenced to serve 50+ years during FY16.

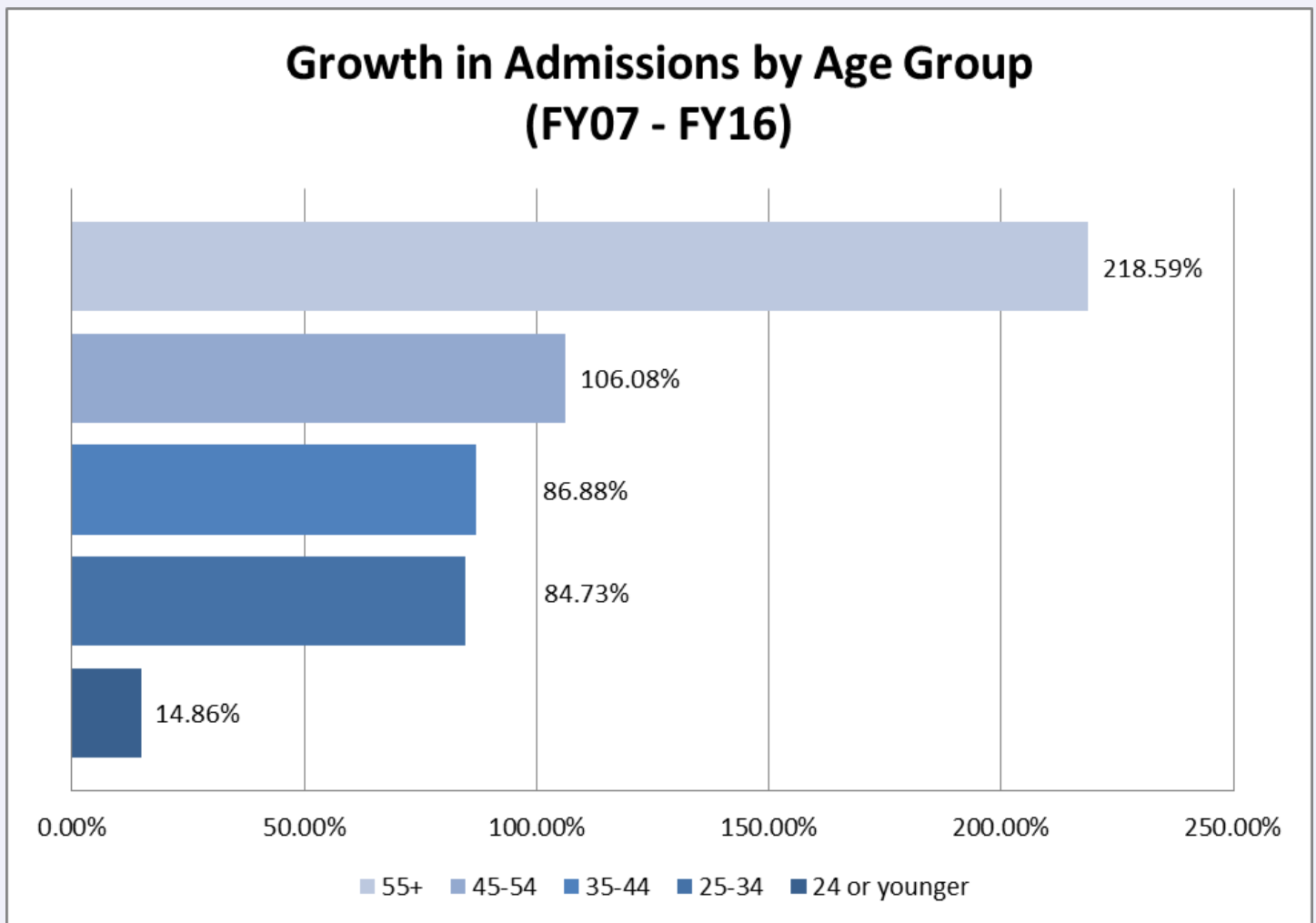
100+ Years

- ♦ At the end of FY16 there were 148 Inmates that were serving a 100+ Sentence or 1% of the Inmate Population.
- ♦ Age range 24-81
- ♦ Average age of ADC Inmates who have been sentenced to 100+ years is 48.
- ♦ Of the 148 Inmates that have been sentenced to 100+ years, 95 are Black (64%) and 47 are White (32%) & 6 are Other (4%).
- ♦ 98% are Males & 2% are Females.
- ♦ Top offenses include Rape, Aggravated Robbery & Manu/Del/Poss Control Sub.
- ♦ 5 Inmates were sentenced to serve 100+ years during FY16.

The overall statistics are based on total sentence length and may be the result of cumulative sentences. Please note that Inmates sentenced to 100 or more years are a subset of inmates sentenced to 50 or more years. For the FY16 numbers, 70%ers are those that received a 70% sentence during the fiscal year, while the 50+ and 100+ inmates are those that began a term of incarceration of 50 or 100 or more years prior to the fiscal year.

Aging Inmate Population

- ♦ According to a Special Report from the Bureau of Justice Statistics (*May 2016*), elderly prisoners (age 55 or older) have been the fastest growing age group. Longer sentences, more time served, and increased admissions among older inmates led to the aging of the state prison population.
- ♦ The top five offenses that elderly ADC inmates are serving time for are Rape (13.14%), Aggravated Robbery (10.41%), Advertising Drug Paraphernalia (9.69%), Murder-1st Degree (8.71%) & Sexual Assault (6.13%).
- ♦ Age range 55-91 for elderly inmates.
- ♦ Average age of elderly ADC Inmates is 61.
- ♦ Elderly ADC Inmates represent 11.0% of the total inmate population.
- ♦ 95.5% of elderly Inmates in the ADC are male; 4.5% are female.
- ♦ Elderly Inmates represent 4.6% of all inmates admitted during FY16.
- ♦ The number of Inmates age 55 or older admitted to the Arkansas Department of Correction (ADC) has more than tripled within the last decade (between 2007-2016, see chart below).



ADC Agriculture

The Arkansas Department of Correction Agriculture Division is designed to be a self-supporting program. The Division's primary goals are to provide useful and meaningful work for inmates, cost-effectively produce sufficient food for inmate consumption and maximize revenues from production and sales of marketable field crops and livestock.

Row Crops	Garden Vegetables	Vegetable Processing	Cattle Operations	Equine Operations
Poultry Operations	Slaughter House	Common Fare Kitchen	Milk Processing	Feed Mill (for livestock and Poultry Consumption)

Major agricultural programs are housed at Cummins, Tucker, East Arkansas, Ouachita, Wrightsville, & North Central.

Total Acres Owned = 25,294
(includes farm, prison facilities, and infrastructure)

Total Agricultural Acres Owned = 20,344



- ♦ 14,226 Acres Row Crop
- ♦ 5,238 Acres Pasture
- ♦ 650 Acres Garden
- ♦ 200 Acres Misc. Agriculture
- ♦ 30 Acres Orchard



Hens 140,797 ♦
Hogs 2,541 ♦
Cattle (Beef /Dairy Cows) 2,390 ♦
Horses 363 ♦



ADC Industry

The ADC Industry Program offers on-the-job training for inmates in manufacturing settings and produces goods for public agencies and nonprofit organizations. Operations include digital imaging, janitorial products, garment manufacturing, vinyl products, graphic arts and duplicating, mattress manufacturing, vehicle refurbishing, school furniture repair, furniture manufacturing and athletic/recreational equipment production. The ADC Industry Program provides inmates with training and transferable work habits to aid with their successful reentry and securing employment.

A photograph showing several inmates working in a garment manufacturing facility. They are seated at long tables with sewing machines, working on white fabric pieces. The room is well-lit with overhead fluorescent lights.

Garment Manufacturing

A photograph showing two large trucks parked in an outdoor industrial area. One is a red semi-truck and the other is a white box truck. In the background, there is a chain-link fence and some industrial buildings.

Vehicle Refurbishing

Bus Barn

- Athletic/Recreation Equipment
- Custom Powder Coating
- Inmate Boots
- Mattresses
- Metal Fabrication
- Seating/Dorm Furniture
- Upholstery/Re-Upholstery
- Vehicle Refurbishing

Coffee/Tea

Eco-Products

- Toilet Paper

Furniture

Garment

- Embroidery

Graphic Arts

- Engraving
- Picture Frames
- Printing/Duplicating

Janitorial

Prison Industry Enhancement (PIE)

- Wire-harnesses

Vinyl Products

- Signs
- Silk-Screening

A photograph showing a large industrial workshop with many workstations. In the foreground, there are several workbenches with tools and equipment. In the background, there are more workstations and a large overhead crane. The room is well-lit with overhead fluorescent lights.

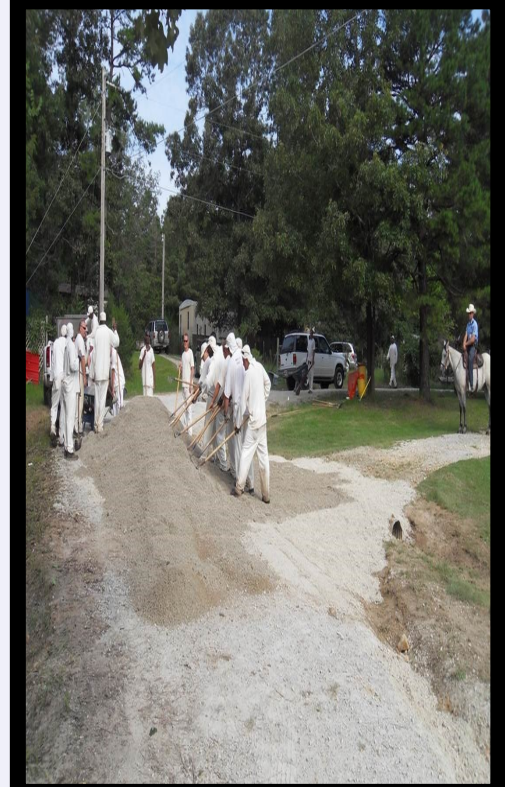
Wire-Harnesses

Programs

Regional Maintenance Program

The work of the Regional Maintenance Program is in line with the Department of Correction Mission Statement, "To strengthen the work ethic through teaching of good habits". Our Inmate Work crews provided services, such as inmate labor, maintenance, construction and cleanup to communities, schools and organizations. The following table shows the number of hours per facility worked during the fiscal year.

Unit	Hours
Benton Work Release Unit	78,115
Delta Regional Unit	55,639
East Arkansas Regional Unit	41,853
Grimes Unit	38,643
McPherson Unit	32,908
Mississippi Co. Work Release	21,275
North Central Unit	110,224
Ouachita River Unit	66,121
Randall L. Williams	44,772
Texarkana Work Release Unit	30,464
Tucker Unit	37,988
Vарner Unit	44,612
Wrightsville Unit	29,814
Wrightsville Satellite Unit	28,223
Total Hours Worked	660,651



ADC Health & Correctional Programs

The ADC Health & Correctional Programs offer ADC Inmates a wide range of programs and services which are in place to assist inmates while they are incarcerated as well as provide them with the necessary education and tools to improve their lives. The specific treatment and specialized programs provide ADC Inmates with meaningful opportunities for positive behavioral change, skill development and motivation to become self-sufficient, productive members of society upon release.



Advanced Principles & Application for Life (APAL) Habilitation

Health Care

Pathway to Freedom

Paws in Prison

Reduction of Sexual Victimization Program
(RSVP)

Sex Offender Treatment (SOFT)

Substance Abuse Treatment Program
(SATP)

Therapeutic Community (TC)

(Group Services-Anger Management, Substance Abuse Education, Stress Management, Parenting Skills, Communications Skills, Thinking Errors, Domestic Violence, Victims of Domestic Violence)

Program Completions

S.A.T.P.

Jul-15	89
Aug-15	70
Sep-15	89
Oct-15	86
Nov-15	100
Dec-15	95
Jan-16	83
Feb-16	77
Mar-16	92
Apr-16	94
May-16	96
Jun-16	97

T.C.

Jul-15	23
Aug-15	9
Sep-15	15
Oct-15	24
Nov-15	21
Dec-15	30
Jan-16	18
Feb-16	12
Mar-16	22
Apr-16	19
May-16	20
Jun-16	17

Grand Total

1068

Grand Total

230



Programs

Education

Education for inmates is provided through the Arkansas Correctional School system. The district which is accredited provides non-graded programs that enable students to progress individually. Academic testing during intake orientation determines placement. Students are retested at three month intervals and may be promoted to higher levels, with the potential of earning a high school equivalency (GED) diploma. Inmates have also earned associates and bachelor degrees with several schools and universities offering on-site classes. The Board of Corrections has made education mandatory for all inmates who lack their GED or High School Diploma and are able to participate.

Fiscal Year 2016

2015-2016 Enrolled Student:

3,000 Avg.

Avg. Days of Instruction:

138

Total Tested:

2,200

2015-2016 GED Recipients:

323



Programs

Riverside Vo-Tech

Vocational Education is provided by the Riverside Vocational Technical School. Its mission is to equip inmates with marketable skills to aid their re-entry into society. Courses are individually paced and take 9 to 12 months to complete.



Bld./Grounds Maint.
Boiler Tech**
Combination Welding
Computer Applications
Computer Accounting
Cosmetology
Culinary Arts
Facilities Maintenance
Finish Carpentry/Cabinets
Food Service Technology
Furniture
Graphic Arts*
Horticulture
HVAC & Refrigeration
Landscape Const./Design
NCCER Industry Craft Skills**
Office Technology
Plumbing
Re-Entry & Employability**
Residential Carpentry
Residential Electricity
ServSafe Food Handler Certificate**
ServSafe Mgr. Certificate**
Small Engine Mechanic
Upholstery
Welding Assembly*
Warehouse Logistics*

*Industry Co-op
** Short Courses



Fiscal Year 2016

**Inmates Enrolled at Vo-Tech
970**

**Inmates Completed Vo-Tech
230**

Programs

ADC Construction

Construction and Maintenance builds and maintain facilities required for departmental operations. Many construction projects are completed using inmate labor, which provides work and training for inmates and reduces departmental overall construction costs.

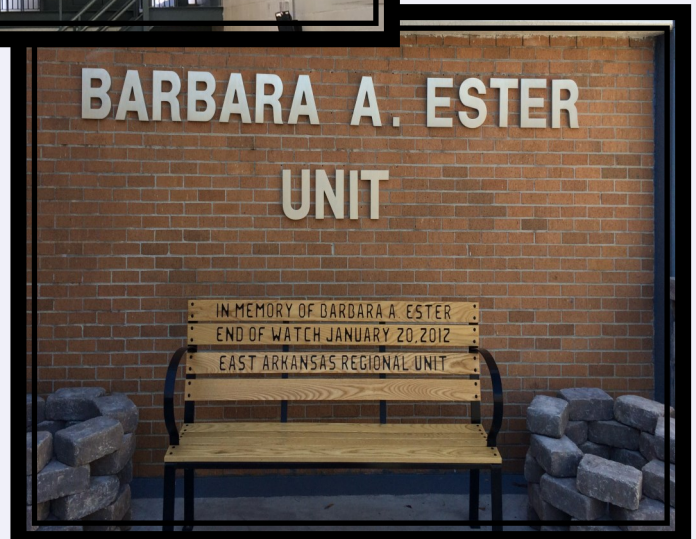
Barbara A. Ester Unit



- ♦ In-House Construction Crews
- ♦ Built with ADC Inmate Labor
- ♦ Job Training



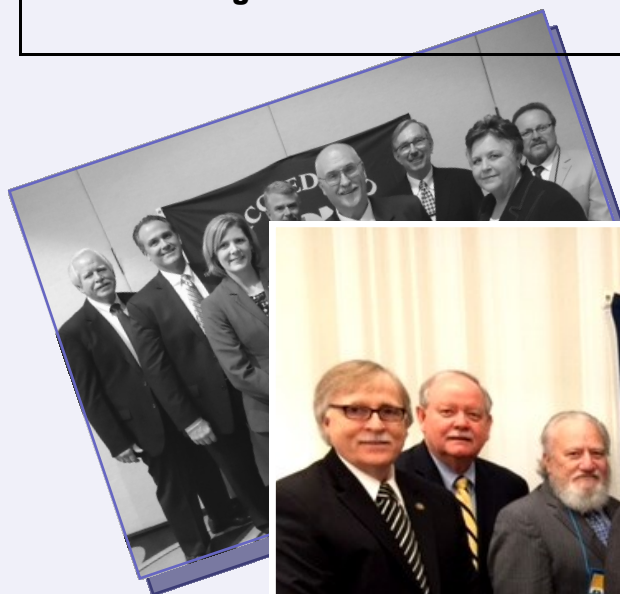
- ♦ 380 Beds with Phase I & II
- ♦ 200 Beds Planned for Phase III



Accomplishments fy 16

Accreditation is intended to improve facility operations through adherence to clear standards relevant to all areas/operations of the facility, including safety, security, order, inmate care, programs, justice, and administration. In fiscal year 2016, five correctional institutions and Correctional Industries, successfully achieved their American Correctional Association (ACA) re-accreditation. The following tables shows the compliance level results for each facility from their FY16 ACA audit.

Facility	Mandatory	Non-Mandatory
Varner Unit:	100%	99.5%
Correctional Industries:	100%	100%
Northwest Arkansas Work Release Center:	100%	100%
Pine Bluff Complex:	100%	100%
Texarkana Regional Work Release Center:	100%	100%



Job/Work Programs

The Vision of the Arkansas Department of Correction is to be an honorable and professional organization through ethical and innovative leadership at all levels, providing cost efficient, superior correctional services that return productive people to the community. The Unit Classification Committee makes all work assignments. All inmates who are medically able are expected to work and disciplinarys will be written if an inmate refuses a work assignment. ADC does not pay wages to inmates.

Various Jobs/Programs	# Assigned
Act 309	287
Agri/Garden/Hoe Squads	4,502
ALETA	19
Ark. State Police	60
Barber/Beautician	110
Boot Camp	90
Building Utility/Maintenance	1,162
Commissary	65
Construction	103
Dog Kennel	22
Industry	445
Kitchen/Food Services	1,338
Laundry	547
Painters	24
Porters	1,723
Re-Entry (Preparing for Success, Pathway to Freedom, APAL, PAL)	528
Regional Maintenance	501
School	798
Treatment Programs (SATP/TC/RSVP/Habilitation)	1,236
Unassigned (medical or restricted housing)	3,420
Vo-Tech	262
Wastewater/Sanitation	91
Work Release	548

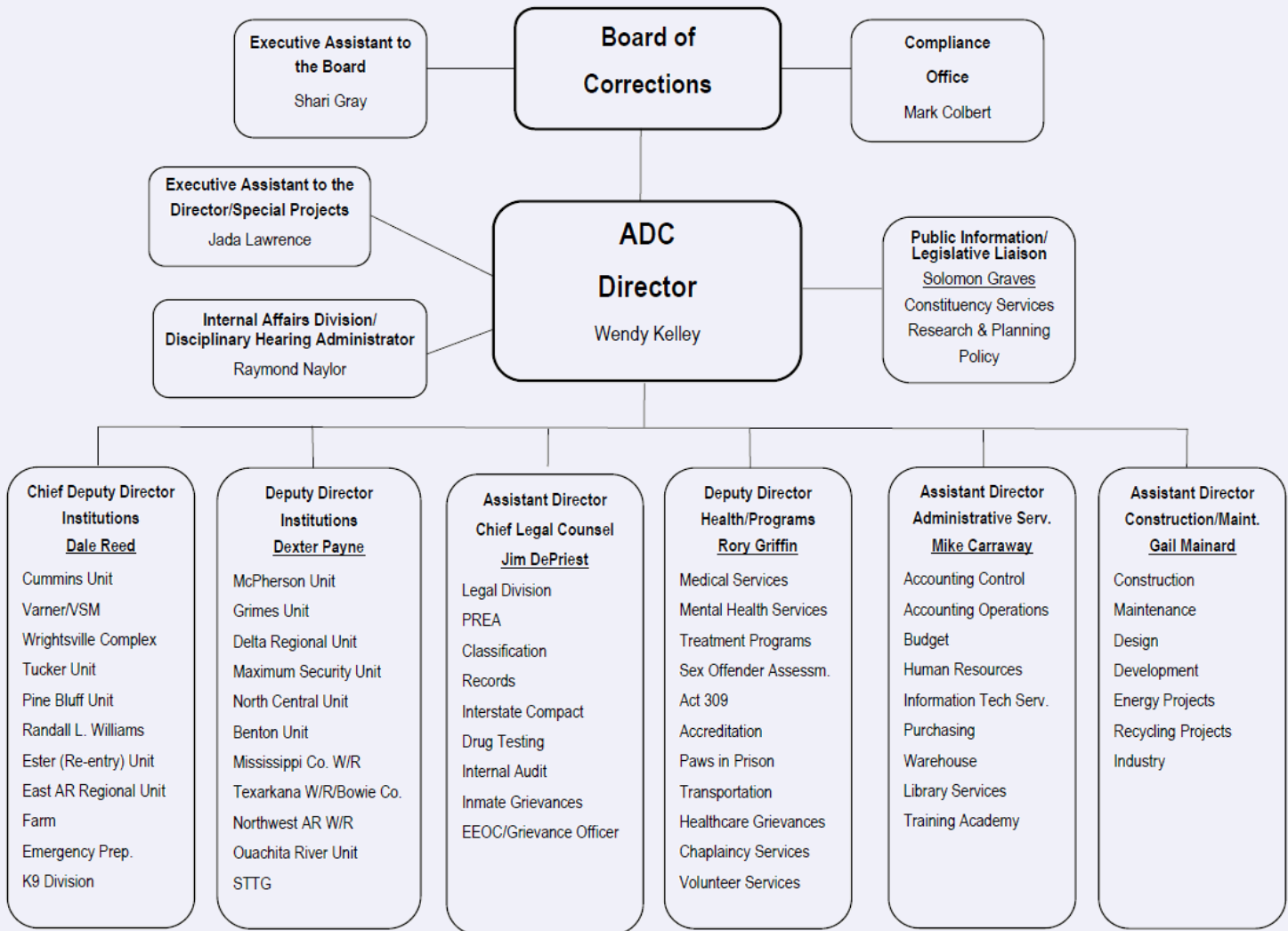
*Some Inmates may have two assignments due to half day program or school and half day job assignment



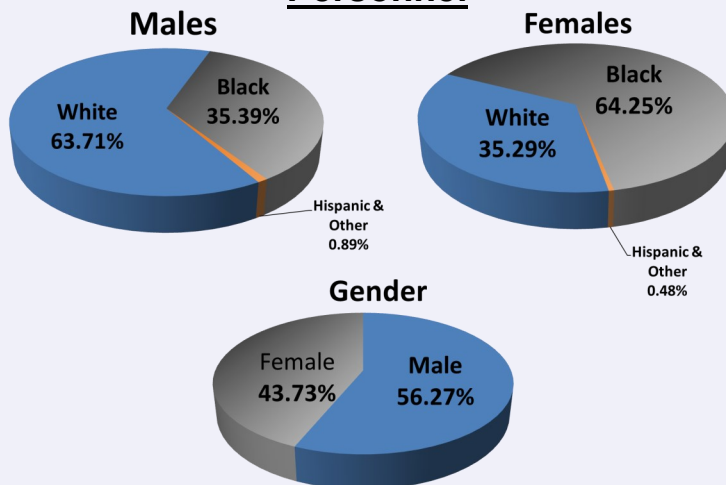
Personnel fy 16

Arkansas Department of Correction / Organizational Chart

03/10/2016



Personnel



Arkansas Board of Corrections
P.O. Box 20550
Pine Bluff, AR 71612
(870) 267- 6754

Benny Magness, Chair
Dr. Mary Parker-Reed, Vice-Chair
Senator Bobby Glover, Secretary
John Felts, Member
Rev. Tyrone Broomfield, Member
Buddy Chadick, Member
Dr. Dubs Byers, Member
Mark Colbert, Compliance Attorney
Shari Gray, Administrative Assistant

Administration Building/Central Office (870) 267-6999
 6814 Princeton Pike, Pine Bluff, AR 71602

Administrative Annex East Building (870) 850-8510
 2403 East Harding, Pine Bluff, AR 71601

Prepared By:
The Research & Planning Division
Tiffanye Compton, M.S.
Research & Planning Administrator
Jacob M. Laan, M.S., Research & Statistics Supervisor