



**Wendy Kelley**  
**Director**

**Board Report**  
**October 2016**



## **PUBLIC RELATIONS**

### **RESEARCH/PLANNING**

**September, 2016 Admissions and Releases** – Admissions for September 2016 totaled **839** (757-males & 82-females), while Releases totaled **678** (618-males & 60-females) for a net increase in-house of 161 inmates.

**Inmate Population Growth/Projection** – At the end of September 2016 the Arkansas Department of Correction Population totaled **18,026** representing an increase of **319** inmates since the first of January 2016. Calendar Year 2016 has seen an average increase of **35** inmates per month, up from an average decrease of **14** inmates per month during Calendar Year 2015.

**Average County Jail Back-up** – The backup in the County Jails averaged **1,234** inmates per day during the month of September, 2016 – down from an average of **1,469** inmates per day during the month of August, 2016.

## **LEGAL SERVICES**

### **PREA**

#### **PREA Data:**

Number of calls received	203
Total Number of Repeat Calls	54
Total Number of Calls with no message	65
Total Reported PREA Issue Calls	31
Total Reported non-PREA Calls	53
Total Calls due to Technical Failure	0
Totals Calls Referred to Internal Affairs Div	21

### **INMATE GRIEVANCE**

**Inmate Formal/Informal Grievances:** In September, there were a total of 2,173 formal grievances filed and 3,990 informal grievances filed at various units.

**Institutional Grievances:** There were a total of 632 appeals of institutional grievances received in September. One Hundred and forty five (145) were rejected for various reasons. We answered 424 in September. Four were found with merit.

## **OPERATIONS/INSTITUTIONS**

### **STTG**

The STTG Coordinator attended the third quarter meeting on Arkansas gangs at the U.S. Attorney General's Office in Little Rock. A STTG quarterly meeting was held at the Administrative East building in Pine Bluff for all ADC STTG Coordinators. An increase in White Supremacist activity at the North Central Unit was investigated. A meeting was held with the Director of Safety and Security for Pulaski County Special School District to help increase their knowledge on gangs in Central Arkansas.

### **FARM**

Harvesting was top priority during the month of September. Cummins completed rice, corn and about 30% of the soybean harvest. Tucker completed the rice harvest and 50% of their soybeans. EARU completed the milo harvest.

Yields are above average on soybeans. Corn was off this year and rice was a little below average. Milo yields are about average.

The fall gardens are planted but are in need of rain. We depopulated a layer house in September. The birds were past their productive life span. We will be moving pullets over and getting new chicks in October. Cummins started their calving season and it should last for approximately three months.

**Regional Maintenance Hours**

Regional Maintenance Hours	September
Benton Unit	6,637
Delta Regional Unit	4,033
East Arkansas Unit	5,352
Grimes Unit	3,176
McPherson Unit	2,648
Mississippi Co Work Release	3,800
North Central Unit	9,688
Ouachita River	5,720
Randall Williams Unit	4,224
Texarkana Regional Unit	3,579
Varner Unit	3,488
*Tucker Unit	2,482
Wrightsville Satellite Unit	5,880
Wrightsville Unit	4,600
Total Hours	65,307

\*Max Boot Camp is included with the Tucker Unit for the month and will be known as Tucker Unit Regional Maintenance moving forward.

**Work Release Rent Report**

Work Release Rent Report	September
Benton Unit	\$121,431.00
Pine Bluff Re-entry Center	\$27,115.00
Northwest AR Work Release Center	\$38,352.00
Mississippi Co Work Release Center	\$48,263.00
Pine Bluff Unit	\$31,671.00
Texarkana Regional Unit	\$39,388.00
<b>TOTAL</b>	<b>\$306,220.00</b>

**RE-ENTRY****Preparing for Success**

	Slots	Completed	Discharged	End Count
McPherson	15	2	0	14
Ester-4 BKS	50	8	10	45
Ester-5 BKS	50	3	5	49
Wrightsville Satellite	25	24	4	0
<b>Total</b>	<b>140</b>	<b>37</b>	<b>19</b>	<b>108</b>

There are 659 males and 73 females on the waiting list within 42 months of their release date and of those, five (5) males and zero (0) females are mandated by the Parole. The average time on the

waiting list is about three (3) months. The total number of inmates on the waiting list, including those not currently within the identified time frame, is 736 males and 108 females.

**WAGE ( Workforce Alliance for Growth in the Economy)**

	Slots	Completed	Discharged	End Count
Wrightsville Satellite	30	5	17	37
Ouachita	15	0	1	10
<b>Total</b>	<b>30</b>	<b>5</b>	<b>17</b>	<b>37</b>

**Thinking for a Change**

	Slots	Completed	Discharged	End Count
Wrightsville Satellite	30	5	17	37
<b>Total</b>	<b>30</b>	<b>5</b>	<b>17</b>	<b>37</b>

**ADMINISTRATIVE SERVICES****BUDGET SECTION UPDATE****Procurement Section Update:****Awarded Contracts**

HVAC Pine Bluff Unit School Building

**Contract Renewals**

Deodorant Soap

**Procurement/Contracts Report (required by policy) –**

For September 2016, Purchase Orders and Contracts in excess of \$10,000 amounted to \$3,457,152.55. Of this amount, \$977,418.11 was for Inmate Care and Custody related items (food, shoes, clothing, etc.). Bulk fuel costs for the month of September were \$34,868.67 – average cost of E-10 was \$1.62/gallon; average cost for bulk diesel was \$1.58/gallon.

**HUMAN RESOURCES UPDATE**

**Workplace Safety** – During the month of September, the modified version of the Health and Safety Plan was presented to one (1) Basic Training class with a total of 64 cadets in attendance.

Sixty-one (61) incidents were reported to the company nurse in September, bringing our total to 552 incidents in 2016.

**Benefits** – One hundred thirty-three (133) MIPS payments were made in September. One hundred one (101) FMLA requests were processed with 97 approved and 4 denied. A total of 11 CAT leave requests were processed with 4 approved, 5 denied, and 2 pending. Of the 4 shared leave applications that were received, 2 were approved for a total of

440 hours of donated time; 2 were denied.

**Physical Assessments** –A total of 159 applicants and incumbent personnel were assessed in the month of September. Sixty-nine (69) incumbent personnel successfully passed their physical assessments while one (1) did not and is waiting to be released by a Physician. Eighty-nine (89) applicants passed their physical assessments.

**Employment** – Facebook results for the month showed a total of 3,300 likes of our page. Through Discover Corrections, there were 7,880 people from across the U.S. who viewed ADC's page. This site does not allow one to review comments made unless the viewer applies for a position through the site and is hired. During the month of September, no applications were submitted for ADC through the Discover Corrections website. Job Fairs were held on September 27<sup>th</sup> at the Eastern Arkansas Regional Career/Job Expo and on September 29<sup>th</sup> at the Fall Employment Expo in Jonesboro. Sixty-two (62) contacts for potential applicants were made at those two (2) events.

The reporting features that INS (Information Network Systems) has developed for the ARStateJobs website (all agencies) have been implemented. We have requested agency specific features but have not received notification that those changes have been made. To prevent the duplication of information, we are only tracking CO I applications through the ARStateJobs website. This site does not have the capabilities to give us a breakdown. INS has not developed any agency specific request for reporting purposes.

A total of 2,004 applications were received during September. Thirty-three Non-Correctional applications and 93 CO I applications were processed. Fifty-nine Correctional Officers were hired, and 8 Correctional Officers were rehired.

**Vacancies, Hires, and Terminations** - In September 2016, a total of 587 vacancies, 68 new hires, and 96 terminations were at the various ADC locations.

**Administrative Services Division Monthly Reports (attached) include:**

**Gifts, Grants, and Donations/Inmate Welfare Fund Balance (required by policy)** – During the month of September reports are as follows:

**Inmate Welfare Fund** balance on September 30, was \$5,348,064.48.

**The PAWS in Prison Fund** total on September 30, was \$52,403.95: ADC account (7004822/Donations) \$19,159.55 and ADC account (NDC0500/Recycling) \$33,244.420. This does not include the Foundation account managed by the PIP Foundation Board.

## INFORMATION TECHNOLOGY

**In September, the IT department:**

- Network security has been enhanced by configuring the servers (Group Policy) to force password changes every 90 days and requiring complex passwords. In addition, a user's network accounts are locked for a period of 15 minutes if the user exceeds three invalid attempts to logon to the network. After locking, the account will require IT intervention to be reset, or the user will have to wait 15 minutes before repeating an attempt to logon to the ADC network.
- ADC IT staff is working with Kroll, a DIS vendor that is conducting a phased project for Cyber Security Risk Assessment on the State Network. Phase One is Investigation and Evaluation which includes:

1. Meeting
2. Distribution of a CRSA Questionnaire
3. Network and Web penetration testing
4. Advanced threat analysis & monitoring Carbon Black Deployment (in progress).

Kroll has requested an onsite assessment interview with ADC's IT department during the month of October as a part of Phase One.

- Phase Two is Remediation Guidance.
- Phase Three is Underwriting
- Phase Four is Response.

**Conference calls and meetings that were attended by EOMIS staff include:**

- Records Supervisors met to discuss detainee records maintained in EOMIS. Items of discussion included what each record contains and how they are documented.
- DHS Beneficiary Relations Manager, Justin Mizell discussed how the EOMIS extract file is sent daily, what information is sent, and where the file is delivered.
- A discussion was held on Victim Information and Notifications and APPRISS on Parole Board events.
- Call with Marquis to review status of current application issues and development projects, also an update with Contexte and ACC (More information will be available on the status during October).
- A meeting was held to discuss a request received from CSG for additional data to be used to provide recidivism projections.

- In an introductory meeting, we visited with Microsoft's new representatives and discussed ADC's technology needs. A follow-up meeting will focus on our existing licensing contract and licensing offerings.
- SQL reports are being created internally and processed to allow audit staff access to areas such as Grievance, Classification, Records, Intake, and Incident Report View. The code is being written in a way that allows for other areas to be targeted easier in the future. We

plan to ask department supervisors to review and report needed changes that would allow staff members the access they need to complete their jobs and restrict those not requiring access. This side project spawned from the Security Profile Review discussed at Management Team.

### TRAINING ACADEMY

**Basic Training Division** - Captain David Farrier's BCOT Class 2016-K graduated on September 9, 2016 with 40 cadets. Gretta Mobley from the Ouachita River Unit won the Willis H. Sargent Award. ADC Weapons Manager, Robert Hutcheson served as the special speaker.

Class 2016-L, Captain Lance Hall's class, graduated on September 30<sup>th</sup> with 49 cadets. Deputy Warden Michelle Williams-Gray served as the special speaker. Jawaun Lee from the Benton Unit won the Willis H. Sargent Award.

**In-Service Division** -September's highlight was the 40 hour Firearms Instructor Certification course. This course brings students in and gives them the skills to teach others how to shoot. Students learn teaching and coaching presentation skills. Students are eventually trained on how to run a firing range. Once certified, they become Range Masters at their units. As Range Masters, they will qualify cadets and incumbent staff with weapons used at their units.

**eCADEMY**—During the month of September, 317 ADC employees completed a total of 4,468.5 hours of eCADEMY training. Approximately 7% of ADC employees completed at least one course during that time frame, for an average of 1.05 % hours per staff member.

## **HEALTH/CORRECTIONAL PROGRAMS**

### CHAPLAINCY SERVICES

#### All Facilities

Eid Ul Fitr, the final Islamic feast of the year was held at all facilities. Inmates who observed Ramadan participated.

#### Benton Work Release

The movie "Courageous" was shown to the inmates on September 10. Seven inmates attended.

#### Cummins Unit

On September 23- 24, Christian Motorcyclist Association conducted barracks visitation, held a worship service in the chapel, and led an event on the prison yard. Twenty-eight volunteers and 816 inmates participated.

#### Delta Regional Unit

A basic literacy program began on September 12th in conjunction with the Arkansas Literacy Council. Twelve inmates participated in the program.

#### Maximum Security Unit

A PAL graduation ceremony was held on September 22nd; 12 inmates graduated. A volunteer meeting was held with 28 volunteers attending on September 25.

#### McPherson Unit

Ninety-five inmates participated in the Storybook Project event sponsored by Unit Chaplaincy on September 21. Seven volunteers assisted.

#### Ouachita River Correctional Unit

Bikers IV Jesus held a Rodeo Revival and Bike Games event on the yard in addition to leading worship services on September 16, 17, and 18. Two hundred ninety inmates participated in the worship services.

A KAIROS Walk was conducted from September 22 through September 25. Thirty volunteers helped in the event and thirty inmates participated.

#### Varner Unit

Christmas Behind Bars came to the facility on September 9<sup>th</sup> and 10<sup>th</sup> visiting with and providing gifts for the entire inmate population.

## ACCREDITATION

Reaccreditation audits were held at the Wrightsville Complex on September 26-28 and Benton Unit on September 29 -30. Wrightsville Complex scored 100% on Mandatory and 99.8% on Non-Mandatory. Benton Unit scored 100% on Mandatory and 100% on Non-Mandatory.

#### ACA Internal Audits Completed:

September 1-2	Wrightsville Unit file prep
September 9	Benton Unit file prep
September 12	Cummins Unit, trained ACA Specialist
September 13	Tucker Unit 2 <sup>nd</sup> pre-audit
September 14	Tucker Unit file prep
September 19	Tucker Unit file prep
September 20	Wrightsville Unit prep
September 21	Benton Unit file prep
September 26-28	Wrightsville Complex Reaccreditation
September 29-30	Benton Unit Reaccreditation

#### Classes Taught:

September 6 Training Academy

#### Fire/Safety and Sanitation independent audits conducted by the Fire and Sanitation Coordinator:

9/19 – 9/23	Tucker Unit audit prep
9/26 – 9/27	Wrightsville Complex Reaccreditation
9/28	Tucker Unit audit prep
9/29	Benton Unit Reaccreditation
9/30	Tucker Unit audit prep



**VOLUNTEER SERVICES**

The total number of volunteer hours for September

Unit	Hours
Cummins	2
Delta Regional	3
East Arkansas Regional	24.75
Hawkins	20
Maximum Security	51
Mississippi Co Work Release	12
Northwest Arkansas Work Release	12
Ouachita River	18
Randall Williams	33
Pine Bluff Complex	360
Wrightsville	24
Tucker	24.5
Varner	128
Religious All Units	6,892
Total	7,604.25

**PROGRAM INFORMATION****Sex Offender Treatment**

	SLOTS	COMPLETED	REMOVED	CLIENTS
RSVP	238	0	4	238
SOFT	30	0	0	13
Total	268	0	4	251

There are 781 males on the waiting list for RSVP and 19 females on the waiting list for SOFT within five years of their TE date. And of those, 84 are mandated by the Parole Board. The average time on the waiting list from request is about 3 to 6 months for stipulated. The total on the waiting list, including those not currently within the identified time frame, is 1,389 males and 25 females. We have one PREA inmate in the program at this time.

**Therapeutic Community:**

	Slots	Completed	Removed	Clients
Tucker	129*	10	3	137
Wrightsville	45*	4	4	47
McPherson	50*	6	3	49
Total	224	20	10	233

There are 243 males and 13 females on the waiting list within 18 months of their release date. And of those, 13 are mandated by the Parole Board. The average time on the waiting list from request is 29 days. The total on the waiting list, including those not currently within the identified time frame, is 525 males and 54 females.

\*Denotes transitional beds available at this treatment program. Tucker TC has 129 client slots and seven peer counselor slots.

**S.A.T.P.:**

	Slots	Completed	Removed	Clients
Grimes	50*	6	3	49
McPherson	100*	10	7	99
MSU	3	0	0	3
RLW/CF	188*	27	13	186
Tucker	43*	9	1	43
Varner	44	6	5	47
Wrightsville	135*	8	13	136
Total	563	66	42	563

There are 2,122 males and 372 females on the waiting list within 18 months of their release date. And of those, 26 are mandated by the Parole Board. The average time on the waiting list from request is 20 days. The total on the waiting list including those not currently within the identified time frame is 2,961 males and 480 females.

\*Denotes transitional beds available at this treatment program.

**ORCU R.P.U.:**

The Residential Program Unit at Ouachita had one admission and 9 discharges in September for an end-of-month count of 102.

**McPherson Mental Health Residential Program:**

There were 2 admissions and 2 discharges in September for an end-of-month count of 40.

**Habilitation Program:**

The Habilitation Program at the Ouachita River Correctional Unit provided treatment services to 39 inmates during September. There was one admission and two discharges for an end-of-month count of 37.

**Staffing:**

The following Mental Health Services and SATP positions were vacant in August and September.

	August	September
Psychologists	6	6
Social Workers	7	7
Advisors	3	4
Substance Abuse Program Leaders	2	2
Admin Specialist/Analyst	2	1

**ADDITIONAL PROGRAM INFORMATION****Self-study Classes:**

	# of Participants	# Completed	Waiting List
Anger Management	262	222	1,540
Thinking Errors	415	314	2,120
Substance Abuse Education	119	96	376
Communication Skills	194	155	1,109
Domestic Violence	64	58	661
Victims of Domestic Violence	2	2	50
Stress Management	309	156	1,280
Parenting	274	250	1,166

**Suicide:**

There were 106 suicidal threats, gestures or low/moderate risk attempts during September.

**Outpatient:**

There were 2,267 inmates on the Mental Health Medical Log at the beginning of September. Mental Health conducted the following contacts during September:

Case management contacts	2,329
Requests for interviews	6,425
Testing	2
Intakes	988
Unit requests	1,362
Counseling (with treatment plans)	32
Pre-lock up reviews	609
Routine segregation reviews	310
Segregation rounds	11,414
PREA evaluations	89
Routine follow-up	175
834 requests	32

**Monetary Sanctions:**

Sanction reimbursements for September were \$55,400.00.

**County Mental Health Requests:**

During September, there were 80 requests of a mental health nature received. Nine (9) inmates were fast tracked to ADC.

**County Medical Health Requests:**

During September, there were 288 requests of a medical nature received and 12 were fast tracked.

**Deaths:**

There were 8 inmate deaths during the month of September; 5

were claimed, and 3 cremated.

**CCS:**

See attachment for CCS's report regarding outside beds and emergency room visits.

**Medical Grievances:**

In September, there were a total of 277 appeals of medical grievances received and 227 appeals were answered. Twenty-three of those were found to be with merit and 7 with merit but resolved.

**SEX OFFENDER ASSESSMENT****Assessments Completed:**

Risk Level	September	Sept. 1999 thru August 31, 2016
Level 1	0	1,152
Level 2	26	6,375
Level 3	28	6,114
Level 4	2	575
Default 3	1	*
<b>Total</b>	<b>57</b>	<b>14,226</b>
*Default Level 3's are included in the total number of Level 3's to date.		

**ACIC Numbers:**

The total number of sex offenders registered from Sept. 1, 1999 to September 30, 2016:

In Compliance	7,417
Delinquent (Did not return address on time)	908
Confined	2,979
Out of State	3,002
Address Unknown (absconded)	178
Deceased	1,044
Deported	170
Incapacitated	70
Out of USA	5
<b>Total</b>	<b>15,773</b>

**PAWS IN PRISON****Currently Enrolled in Training:**

Max Unit	8
Tucker Unit	10
Hawkins Unit	5
Randall Williams Unit	4
Ouachita River Unit	8
North Central Unit	9
<b>Total</b>	<b>44</b>

**Completed Training:**

September 2016	13
YTD 2016	167
Since Inception Dec. 2011	831
Dogs Currently in foster: (Graduated but not adopted)	5

**CONSTRUCTION****PROJECT UPDATES****Barbara Ester Unit:**

Barracks are being renovated in the old hospital and medical areas. Re-roofing is near completion and HVAC units are being installed. Skylight bars are being received and will be installed. We are installing new metal ceilings, working on plumbing, air conditioning and electrical. We received specifications and plans for a new generator. Plans are being finalized for the new Infirmary.

**Cummins Unit:**

Work is being rendered on roof repairs and interior repairs to 2 Free-line residences and the Guest House. Roadwork to the wastewater plant continues.

**Cummins Poultry:**

The generator is tested weekly. JBP architects are working on additional cooler Plans and Specifications. Cooler plans and specifications have been sent to DBA for their review/approval.

**Delta Unit:**

Work is still being executed on storm damage. The roof repair bid closed and is under review. Lockeby Architects is working on Gym repair plans. AIG Insurance has visited the site and will make final recommendations.

**East Arkansas Regional Unit:**

Work is in progress on building a new firing range. Porches and under pinning on State trailers finished. Material has been received for farm building to be moved. Received purchasing approval for plumbing to install stainless steel in barracks.

**HDRS Building:**

Work is being performed on extending the parking lot. Razor wire is being installed around the top of the existing fence surrounding the building.

**Pine Bluff:**

Plans for new Barracks in the former Central Records building are at DBA for review.

**Pine Bluff Unit — New School:**

The metal at the New School has been erected and work has been started on interior walls.

**Ouachita River Correctional Unit:**

Gravel operations are still in progress. The Chapel metal building has arrived. Structural steel is being placed on the building.

Sidewalks to the Chapel are being built. Working on main electrical service and tap for water.

**Maximum Security Unit:**

The boiler is being repaired. The metal ceilings on the walkways in the barracks are being worked on. Work is in progress on floor repairs to Officer BOQ trailers. The restrooms at the former Boot Camp facility are being remodeled in anticipation of the Women's Work Release relocation.

**Tucker Unit:**

Layne Well Drilling has drilled new well. ADC has laid 1000' of 8' waterline as a part of this project. Additional cross fencing is being worked on.

**Varner Unit:**

Work is in progress on re-roofing Unit buildings.

**Wrightsville Unit:**

Work is being rendered on kitchen roof repairs. The Hobbycraft roof has been replaced. Multiple water line leaks have been repaired.

**PERSONNEL UPDATES**

The following positions were vacant in September:

Four (4) Maintenance Technicians  
Director of Maintenance (re-posted)  
Project Supervisor (re-posted)

[illegible][illegible]



Inmate Institutional Grievance Appeal Report September 2016				
	Received	Rejected	Processed W/O Merit	Processed W/ Merit
Benton Unit	0	0	0	0
Benton Work Release	0	0	0	0
Bowie County Texas Correctional Facility	11	1	13	0
Cummins Unit	24	15	8	0
Cummins Modular Unit	4	1	3	0
Delta Regional Unit	13	4	5	0
Ester Unit	2	0	0	0
East Arkansas Regional Unit	28	7	16	0
East Arkansas Regional Maximum Unit	86	23	54	2
Grimes Unit	24	12	37	0
Maximum Security Unit	57	13	56	1
McPherson Unit	47	9	60	1
McPherson Mental Health Residential Program Unit	1	3	6	0
Mississippi County Work Release Center	0	0	0	0
Northwest Arkansas Work Release Center	0	0	0	0
North Central Unit	11	3	10	0
Ouachita River Correctional Unit	23	7	9	0
ORCU Hospital	0	0	1	0
ORCU New Commitment	1	0	0	0
ORCU Mental Health Residential Program Unit	1	0	0	0
Pine Bluff Unit	8	3	3	0
Pine Bluff Re-Entry	0	0	0	0
Randall L. Williams Correctional Facility	1	3	5	0
Texarkana Regional Correctional Center	0	0	0	0
Tucker Unit	15	6	2	0
Varner Super Max	111	25	109	0
Varner Unit	16	6	19	0
Wrightsville Unit	2	2	3	0
Wrightsville Satellite Unit	0	0	0	0
Hawkins Center	1	2	0	0
Hawkins for Males	0	0	1	0
Hawkins SPU	0	0	0	0
<b>Total</b>	<b>487</b>	<b>145</b>	<b>420</b>	<b>4</b>

<b>Admissions and Releases</b>			
<b>September 2016</b>			
<b><u>Admissions</u></b>	<b><u>Male</u></b>	<b><u>Female</u></b>	<b><u>Total</u></b>
Asian	5	0	5
Black	298	12	310
Hispanic	21	1	22
Nat. Amer.	4	0	4
Hawaiian/Pacific Isl	0	0	0
White	429	69	498
Other	0	0	0
Unknown	0	0	0
<b>Total</b>	<b>757</b>	<b>82</b>	<b>839</b>
<b><u>Releases</u></b>	<b><u>Male</u></b>	<b><u>Female</u></b>	<b><u>Total</u></b>
Asian	1	1	2
Black	221	8	229
Hispanic	21	0	21
Nat. Amer.	2	1	3
Hawaiian/Pacific Isl	1	0	1
White	372	50	422
Other	0	0	0
Unknown	0	0	0
<b>Total</b>	<b>618</b>	<b>60</b>	<b>678</b>

**ARKANSAS DEPARTMENT OF CORRECTION  
INMATE POPULATION GROWTH 2000-2023**

Mo.	2000	2001	2002	2003	2004	2005	2006	2007	2008	2009	2010	2011	2012	2013	2014	2015	2016
Jan.	11,984	11,908	12,402	13,015	13,105	13,595	13,481	13,839	14,518	14,796	15,334	16,312	15,134	14,815	17,481	18,142	17,785
Feb.	12,169	12,022	12,529	13,054	13,166	13,783	13,633	14,012	14,603	14,883	15,374	16,209	14,990	15,008	17,438	18,082	17,625
March	12,006	12,033	12,299	13,108	13,088	13,418	13,534	13,772	14,580	14,843	15,290	16,095	14,964	14,665	17,395	18,233	17,573
April	12,069	12,167	12,465	13,213	13,323	13,469	13,554	13,851	14,769	14,937	15,570	16,172	15,124	14,850	17,604	18,703	17,815
May	12,109	12,384	12,558	13,463	13,556	13,528	13,711	14,146	14,880	15,146	15,694	16,062	15,132	15,074	17,593	18,693	17,769
June	12,005	12,108	12,439	13,418	13,389	13,251	13,430	13,915	14,700	15,025	15,564	15,554	14,832	14,825	17,340	18,813	17,973
July	12,030	12,190	12,622	13,509	13,528	13,286	13,560	14,082	14,868	15,195	15,807	15,519	14,879	15,379	17,522	18,870	18,130
August	12,087	12,371	12,815	13,565	13,632	13,419	13,646	14,224	15,100	15,385	15,829	15,240	14,675	16,103	17,549	18,806	17,919
September	11,983	12,289	12,774	13,341	13,516	13,237	13,652	14,217	14,850	15,285	16,025	15,172	14,724	16,412	17,605	18,549	18,026
October	12,119	12,348	12,942	13,341	13,584	13,363	13,775	14,349	14,836	15,381	16,311	15,271	14,856	16,993	17,880	18,430	
November	12,094	12,408	13,162	13,408	13,706	13,587	13,913	14,437	15,025	15,340	16,460	15,205	14,625	17,168	17,848	17,981	
December	11,856	12,333	12,845	13,106	13,470	13,338	13,728	14,315	14,716	15,199	16,204	15,062	14,654	17,235	17,874	17,707	
Net Ann. Inc.	29	477	512	261	364	-132	390	587	401	483	1,005	-1,142	-408	2,581	639	-167	319
Avg. Mo. Inc.	2	40	43	22	30	-11	33	49	33	40	84	-95	-34	215	53	-14	35

Updated 09/30/2016

Population is total jurisdictional count at end of each month. Population at end of month December 1999 was 11,827.

Average monthly population increase for past fifteen years 2001 - 2015 is 33

Average monthly population increase for past ten years Jan 2006 - Dec 2015 is 36

Average monthly population increase for past five years 2011 - 2015 is 25

Mo.	2008	2009	2010	2011	2012	2013	2014	2015	2016	2017	2018	2019	2020	2021	2022	2023
January	Actual 14,518	Actual 14,796	Actual 15,334	Actual 16,312	Actual 15,134	Actual 14,815	Actual 17,481	Actual 18,142	Actual/ Proj. 17,785	Proj. 18,158	Proj. 18,554	Proj. 18,950	Proj. 19,346	Proj. 19,742	Proj. 20,138	Proj. 20,534
February	Actual 14,603	Actual 14,883	Actual 15,374	Actual 16,209	Actual 14,990	Actual 15,008	Actual 17,438	Actual 18,082	Actual 17,625	Proj. 18,191	Proj. 18,587	Proj. 18,983	Proj. 19,379	Proj. 19,775	Proj. 20,171	Proj. 20,567
March	Actual 14,580	Actual 14,843	Actual 15,290	Actual 16,095	Actual 14,964	Actual 14,665	Actual 17,395	Actual 18,233	Actual 17,573	Proj. 18,224	Proj. 18,620	Proj. 19,016	Proj. 19,412	Proj. 19,808	Proj. 20,204	Proj. 20,600
April	Actual 14,769	Actual 14,937	Actual 15,570	Actual 16,172	Actual 15,124	Actual 14,850	Actual 17,604	Actual 18,703	Actual 17,815	Proj. 18,257	Proj. 18,653	Proj. 19,049	Proj. 19,445	Proj. 19,841	Proj. 20,237	Proj. 20,633
May	Actual 14,880	Actual 15,146	Actual 15,694	Actual 16,062	Actual 15,132	Actual 15,074	Actual 17,593	Actual 18,693	Actual 17,769	Proj. 18,290	Proj. 18,686	Proj. 19,082	Proj. 19,478	Proj. 19,874	Proj. 20,270	Proj. 20,666
June	Actual 14,700	Actual 15,025	Actual 15,564	Actual 15,554	Actual 14,832	Actual 14,825	Actual 17,340	Actual 18,813	Actual 17,973	Proj. 18,323	Proj. 18,719	Proj. 19,115	Proj. 19,511	Proj. 19,907	Proj. 20,303	Proj. 20,699
July	Actual 14,868	Actual 15,195	Actual 15,807	Actual 15,519	Actual 14,879	Actual 15,379	Actual 17,522	Actual 18,870	Actual 18,130	Proj. 18,356	Proj. 18,752	Proj. 19,148	Proj. 19,544	Proj. 19,940	Proj. 20,336	Proj. 20,732
August	Actual 15,100	Actual 15,385	Actual 15,829	Actual 15,240	Actual 14,675	Actual 16,103	Actual 17,549	Actual 18,806	Actual 17,919	Proj. 18,389	Proj. 18,785	Proj. 19,181	Proj. 19,577	Proj. 19,973	Proj. 20,369	Proj. 20,765
September	Actual 14,850	Actual 15,285	Actual 16,025	Actual 15,172	Actual 14,724	Actual 16,412	Actual 17,605	Actual 18,549	Actual 18,026	Proj. 18,422	Proj. 18,818	Proj. 19,214	Proj. 19,610	Proj. 20,006	Proj. 20,402	Proj. 20,798
October	Actual 14,836	Actual 15,381	Actual 16,311	Actual 15,271	Actual 14,856	Actual 16,993	Actual 17,880	Actual 18,430	Actual 18,059	Proj. 18,455	Proj. 18,851	Proj. 19,247	Proj. 19,643	Proj. 20,039	Proj. 20,435	Proj. 20,831
November	Actual 15,025	Actual 15,340	Actual 16,460	Actual 15,205	Actual 14,625	Actual 17,168	Actual 17,848	Actual 17,981	Actual 18,092	Proj. 18,488	Proj. 18,884	Proj. 19,280	Proj. 19,676	Proj. 20,072	Proj. 20,468	Proj. 20,864
December	Actual 14,716	Actual 15,199	Actual 16,204	Actual 15,062	Actual 14,654	Actual 17,235	Actual 17,874	Actual 17,707	Actual 18,125	Proj. 18,521	Proj. 18,917	Proj. 19,313	Proj. 19,709	Proj. 20,105	Proj. 20,501	Proj. 20,897
Net Ann. Inc.	401	483	1,005	-1,142	-408	2,581	639	-167	418	396	396	396	396	396	396	396
Ave. Mo. Inc.	33	40	84	-95	-34	215	53	-14	35	33	33	33	33	33	33	33

Projected at Growth of 33 per Month

## Monthly Population Averages - September 2016

	9/1	9/2	9/5	9/6	9/7	9/8	9/9	9/12	9/13	9/14	9/15	9/16	9/19	9/20	9/21	9/22	9/23	9/26	9/27	9/28	9/29	9/30		
Unit/Center																							AVG	
Benton	328	327	325	325	324	325	323	324	324	326	327	325	323	323	327	328	331	333	332	331	333	333	327	
Cummins	1,915	1,930	1,925	1,925	1,921	1,922	1,916	1,920	1,920	1,927	1,923	1,929	1,928	1,933	1,935	1,935	1,935	1,935	1,932	1,937	1,934	1,944	1,928	
Delta	610	605	631	631	630	619	629	622	622	614	629	629	623	627	625	623	620	620	620	617	611	629	622	
E AR Reg	1,677	1,685	1,683	1,683	1,684	1,689	1,682	1,688	1,688	1,683	1,685	1,680	1,689	1,691	1,685	1,678	1,691	1,693	1,691	1,693	1,691	1,686	1,686	
Ester	373	377	377	376	378	377	376	370	368	371	364	369	366	367	364	374	373	372	372	369	372	369	371	
Grimes	1,083	1,083	1,082	1,082	1,081	1,076	1,077	1,082	1,081	1,082	1,083	1,083	1,078	1,076	1,079	1,077	1,077	1,081	1,081	1,079	1,075	1,075	1,080	
Max Sec	632	633	634	634	634	633	632	625	625	625	623	623	605	607	607	606	605	604	604	605	606	604	618	
McPherson	1,022	1,007	1,014	1,014	1,018	1,017	1,017	1,019	1,022	1,023	1,023	1,025	1,024	1,024	1,025	1,025	1,022	1,024	1,023	1,023	1,023	1,023	1,021	
MCWRC	143	144	143	143	143	143	144	143	143	143	144	144	144	144	144	144	144	144	144	144	144	144	144	
N Central	830	824	836	836	838	840	839	839	839	842	842	841	838	838	838	835	831	826	833	834	835	838	836	
NWAWRC	99	100	100	100	100	100	100	99	99	100	100	100	100	100	100	98	98	100	100	100	99	100	100	
Ouachita River	1,824	1,778	1,783	1,783	1,829	1,854	1,850	1,869	1,874	1,874	1,868	1,866	1,864	1,876	1,873	1,881	1,879	1,875	1,876	1,874	1,862	1,864	1,853	
Randall L Williams	552	548	547	547	547	548	551	548	541	537	537	539	551	555	556	556	552	553	554	556	554	552	549	
Pine Bluff	409	431	428	429	428	423	420	431	427	422	418	419	430	429	430	429	427	424	423	429	427	434	426	
PB Reentry	53	54	54	54	54	54	54	54	54	54	54	54	54	54	54	54	54	54	53	53	53	54	54	
TRCC	128	128	128	128	128	128	128	128	128	128	128	128	127	127	127	128	128	128	128	128	128	128	128	
Tucker	1,008	1,011	1,010	1,010	1,017	1,025	1,024	1,019	1,025	1,018	1,021	1,022	1,019	1,018	1,013	1,012	1,012	1,019	1,014	1,010	1,014	1,012	1,016	
Vanner	1,745	1,744	1,740	1,740	1,739	1,735	1,737	1,736	1,736	1,745	1,744	1,735	1,743	1,743	1,746	1,741	1,739	1,734	1,735	1,742	1,741	1,740	1,740	
Wagnisville	1,470	1,483	1,484	1,484	1,481	1,484	1,501	1,500	1,499	1,493	1,491	1,495	1,491	1,486	1,491	1,497	1,497	1,494	1,494	1,493	1,494	1,493	1,491	
Total ADC	15,901	15,892	15,924	15,924	15,974	15,992	16,000	16,016	16,015	16,007	16,004	16,006	15,997	16,018	16,019	16,021	16,015	16,013	16,009	16,017	15,996	16,010	15,990	15,990
ALETA	19	19	19	19	19	19	19	19	19	19	20	20	20	20	20	20	20	20	20	20	19	19	19	
Ar State Police	64	64	64	64	64	64	63	63	62	62	61	61	61	62	61	61	62	62	62	63	64	63	63	
Co Jail / M	1,314	1,280	1,251	1,251	1,215	1,184	1,171	1,179	1,186	1,161	1,157	1,146	1,136	1,135	1,168	1,182	1,202	1,206	1,220	1,217	1,244	1,254	1,203	
Co Jail / F	21	22	9	9	7	11	14	15	20	17	25	26	29	37	38	46	51	54	64	68	74	81	34	
Total Co Jail BK	1,335	1,302	1,260	1,260	1,222	1,195	1,185	1,194	1,206	1,178	1,182	1,172	1,165	1,172	1,206	1,228	1,253	1,260	1,284	1,285	1,318	1,335	1,236	
Bowie Co., TX	331	330	330	330	329	329	333	333	335	335	333	333	333	333	336	336	336	335	335	336	336	336	333	
309/M	210	208	208	208	208	208	208	208	207	207	206	206	209	209	209	210	210	210	210	210	209	207	208	
309/F	32	32	32	32	32	32	32	32	32	32	32	32	34	34	34	34	34	34	34	34	34	34	33	
Total Act 309	242	240	240	240	240	240	240	240	239	239	238	238	243	243	243	244	244	244	244	244	243	241	241	
Total Non ADC	1,991	1,955	1,913	1,913	1,874	1,847	1,840	1,849	1,861	1,833	1,834	1,824	1,822	1,830	1,866	1,889	1,915	1,921	1,945	1,947	1,980	1,994	1,893	
Total	17,892	17,847	17,837	17,837	17,848	17,839	17,840	17,865	17,876	17,840	17,838	17,830	17,819	17,848	17,885	17,910	17,930	17,934	17,954	17,964	17,976	18,004	17,882	



## FY '16 County Jail Back-up

DAY		Jul-16		Aug-16		Sep-16
1		1,238		1,361		1,335
2	*	1,238		1,357		1,302
3	*	1,238		1,385	*	1,302
4		1,252		1,391	*	1,302
5		1,252		1,428		1,260
6		1,282	*	1,428		1,260
7		1,324	*	1,428		1,222
8		1,324		1,424		1,195
9	*	1,324		1,429		1,185
10	*	1,324		1,437	*	1,185
11		1,274		1,469	*	1,185
12		1,280		1,478		1,194
13		1,323	*	1,478		1,206
14		1,331	*	1,478		1,178
15		1,353		1,494		1,182
16	*	1,353		1,508		1,172
17	*	1,353		1,515	*	1,172
18		1,343		1,523	*	1,172
19		1,368		1,531		1,165
20		1,384	*	1,531		1,172
21		1,382	*	1,531		1,206
22		1,353		1,525		1,228
23	*	1,353		1,522		1,253
24	*	1,353		1,553	*	1,253
25		1,336		1,542	*	1,253
26		1,350		1,512		1,260
27		1,379	*	1,512		1,284
28		1,364	*	1,512		1,285
29		1,380		1,466		1,318
30	*	1,380		1,424		1,335
31	*	1,380		1,377		
Average		1,328		1,469		1,234

Notes: Totals do not include 309 Contracts in County Jails (maximum of 336)





## September STTG Unit Counts

Unit	Confirmed	Suspected	In	Out	Paroled	Removed	Ending Total
Benton	5	2	8	6	0	0	70
Cummins	0	0	30	12	16	0	450
Delta	4	0	19	18	3	0	126
EARU	0	1	22	35	3	0	535
Grimes	0	0	29	7	12	0	292
Hawkins	0	0	8	2	0	0	52
Mcpherson	0	0	1	3	0	0	66
Max	0	0	6	5	0	0	247
MCWR	0	0	9	5	3	0	40
NCU	0	0	24	14	19	0	191
NWAWR	0	0	2	1	1	0	17
ORCU	1	0	32	38	15	0	322
ORCU Intake	144	0	0	144	0	0	60
PB/Ester	0	0	46	17	13	0	182
RLW	0	0	23	11	9	0	127
TWR	0	0	1	2	0	0	28
Tucker	4	0	24	19	9	0	277
Varner	0	0	56	45	0	0	692
Wrightsville	0	0	38	28	8	0	263
<b>Total</b>	<b>158</b>	<b>3</b>	<b>378</b>	<b>412</b>	<b>111</b>	<b>0</b>	<b>4037</b>

**ORCU Intake brought in 144 new STTG members into ADC this Month.**

## STTG Incidents

STTG	Incidents	Total
STTG Incidents		13
STTG Suspected Incidents		13
Unit Total Disciplinary		1784
Disciplinary Involving STTG		438
<b>Percent</b>		<b>24.55%</b>



## September STTG Counts by STTG Set

STTG Set	Benton	Cummins	Delta	EARU	Grimes	Hawkins	Mcperson	Max	MCWR	NCU	NWAWR	ORCU	Intake	PB	RLW	TWR	Tucker	Varner	Wrightsville	Total
Asian	2	0	0	3	1	0	0	0	0	1	1	1	1	2	0	0	0	2	0	15
Bloods	9	86	24	93	53	6	10	63	1	23	2	57	15	23	21	8	56	131	50	731
Crips	5	66	21	60	31	6	11	31	4	16	3	39	5	26	18	3	34	105	53	537
Folk	17	137	33	185	89	18	11	84	9	37	5	93	18	65	31	12	87	225	72	1228
Mexican	2	13	10	13	12	2	3	4	2	11	1	15	2	5	4	0	1	19	8	127
Motorcycle	1	3	0	5	1	1	1	0	0	2	0	0	1	0	0	0	1	3	0	19
Other	2	9	3	9	10	0	0	2	5	7	1	4	1	2	1	0	3	11	15	85
People	2	25	1	23	15	2	3	9	1	11	0	18	0	12	2	0	13	27	16	180
Unknown	0	1	2	7	7	1	3	1	0	5	0	6	6	4	4	4	0	3	7	61
W/S	18	35	19	137	20	8	13	16	4	38	2	39	4	17	22	1	33	166	19	611
NAE	3	17	4	0	16	0	8	9	2	8	1	18	2	5	6	0	12	0	2	113
WAR	6	42	3	0	26	4	2	14	8	16	1	21	2	12	9	0	24	0	18	208
AC	1	7	1	0	9	4	1	12	1	7	0	6	2	4	6	0	7	0	0	68
AB	2	9	5	0	2	0	0	2	3	9	0	5	0	7	3	0	4	0	3	54
<b>Total</b>	<b>70</b>	<b>450</b>	<b>126</b>	<b>535</b>	<b>292</b>	<b>52</b>	<b>66</b>	<b>247</b>	<b>40</b>	<b>191</b>	<b>17</b>	<b>322</b>	<b>60</b>	<b>182</b>	<b>127</b>	<b>28</b>	<b>277</b>	<b>692</b>	<b>263</b>	<b>4037</b>

Key:

W/S = White Supremacist  
 NAE = New Aryan Empire  
 WAR = White Aryan Resistance  
 AC = Aryan Circle  
 AB = Aryan Brotherhood

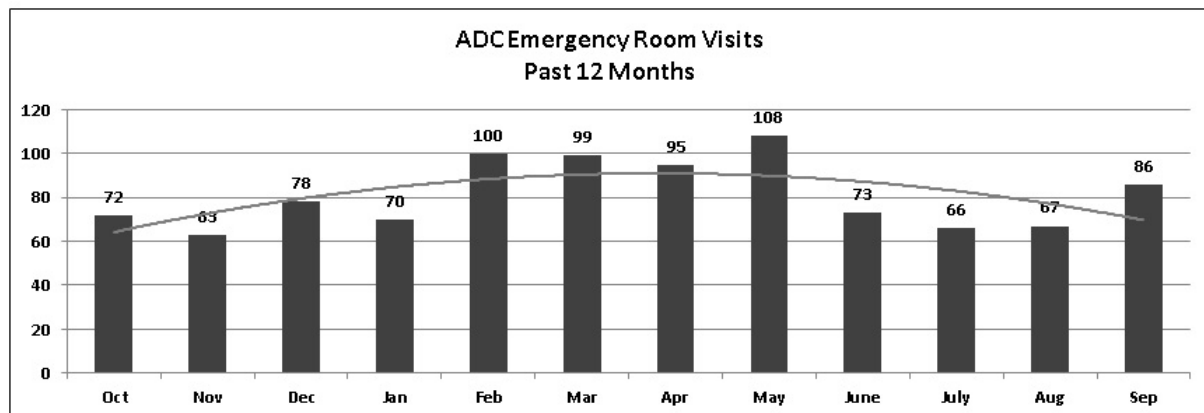
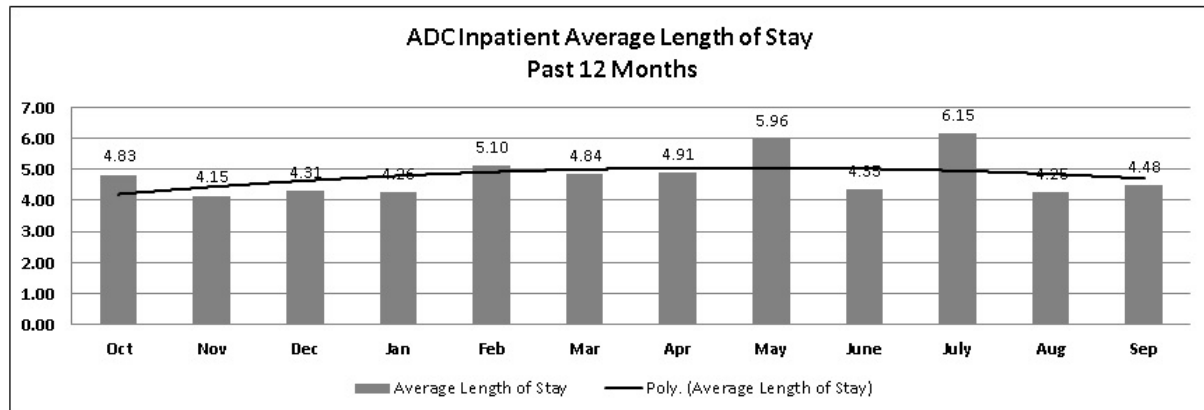
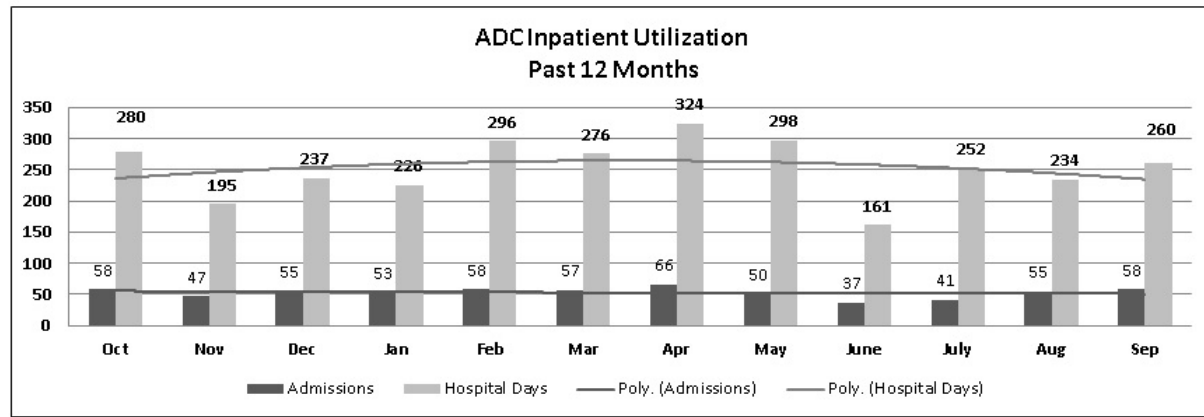
## ARKANSAS DEPARTMENT OF CORRECTION INPATIENT AND EMERGENCY ROOM UTILIZATION

### ADC Inpatient Statistics Past 12 Months

	2015			2016										
	Oct	Nov	Dec	Jan	Feb	Mar	Apr	May	June	July	Aug	Sep	Average	
Admissions	58	47	55	53	58	57	66	50	37	41	55	58	52.9	
Hospital Days	280	195	237	226	296	276	324	298	161	252	234	260	253.3	
Average Length of Stay	4.83	4.15	4.31	4.26	5.10	4.84	4.91	5.96	4.35	6.15	4.25	4.48	4.79	

### ADC ER Visits Past 12 Months

	2015			2016										
	Oct	Nov	Dec	Jan	Feb	Mar	Apr	May	June	July	Aug	Sep	Average	
Emergency Room Visits	72	63	78	70	100	99	95	108	73	66	67	86	81.4	



## Medical Grievance Report September 2016

Unit	<i>Acknowledged/ Received</i>	<i>Rejected</i>	<i>Reviewed &amp; Signed Dep Director</i>	<i>With Merit</i>	<i>With Merit, but Not Resolved</i>	<i>% With Merit</i>	<i>Without Merit</i>
Benton	0	0	0	0	0	0%	0
Boot Camp	0	0	0	0	0	0%	0
Bowie Co.	11	1	1	0	0	0%	1
CMU	1	0	0	0	0	0%	0
Cummins	9	1	6	2	0	33%	4
Delta	7	0	1	0	0	0%	1
EARU	23	1	17	1	0	6%	16
EARU Max	37	6	17	1	0	6%	16
Ester	1	0	2	0	0	0%	2
Grimes	24	9	5	1	0	20%	4
Hawkins	0	0	0	0	0	0%	0
McPherson	5	1	7	1	1	29%	5
MCWRC	0	0	0	0	0	0%	0
MSU	43	6	23	5	0	22%	18
North Central	10	1	11	1	0	9%	10
NWAWRC	0	0	0	0	0	0%	0
Ouachita	30	5	17	0	0	0%	17
Pine Bluff	0	1	0	0	0	0%	0
Randall Williams	5	0	2	0	0	0%	2
SNN	0	0	3	0	0	0%	3
TRCC	0	0	0	0	0	0%	0
Tucker	3	1	14	2	1	21%	11
Varner	30	1	23	2	0	9%	21
Varner S Max	34	6	76	7	5	16%	64
WRU	3	1	2	0	0	0%	2
WHM	1	0	0	0	0	0%	0
WWR	0	0	0	0	0	0%	0
<b>TOTAL</b>	<b>277</b>	<b>41</b>	<b>227</b>	<b>23</b>	<b>7</b>	<b>13%</b>	<b>197</b>



# CHAPLAINCY

Monthly Report for: September 2016

	BENTON	CUMMINS	DELTA REGIONAL	EAST ARKANSAS	EAST ARKANSAS MAX	ESTER	GRIMES	HAWKINS	MAXIMUM SECURITY	MCPHERSON	NORTH CENTRAL	OUACHITA RIVER	PINE BLUFF	RANDALL L. WILLIAM	TUCKER	VARNER	VARNER MAX	WRIGHTSVILLE	PTF	TOTAL
<b>Services Chaplains Oversaw</b>																				
Christian																				
Population	4	9	7	5	0	14	21	4	10	10	3	8	1	14	19	2	0	12	0	143
Segregation	0	0	0	0	0	0	0	0	0	0	0	0	0	0	0	0	0	0	0	0
Muslim																				
Population	0	4	4	5	0	4	6	3	0	6	0	6	1	6	0	4	0	0	0	49
Segregation	0	0	0	0	0	0	0	0	0	0	0	0	0	0	0	0	0	0	0	0
<b>Total Services</b>																				<b>192</b>
<b>Volunteers in Charge</b>																				
Protestant	20	18	1	32	0	10	29	5	22	40	23	75	12	1	31	18	2	26	0	365
Catholic	0	1	0	0	0	0	4	2	0	3	2	1	0	2	0	3	4	4	0	26
Muslim	0	0	0	5	0	0	4	0	1	0	0	6	0	1	0	3	0	2	0	22
Other	5	0	0	0	0	0	0	1	0	4	0	0	0	0	0	0	0	0	0	10
Baptism	0	0	4	8	0	0	0	0	0	0	3	0	0	0	4	0	0	0	0	19
Marriages	1	0	0	0	0	0	0	0	0	0	0	1	0	1	0	1	0	1	0	5
<b>Distributed by Chaplains</b>																				
Greeting Cards	30	28	31	0	0	2	119	0	500	903	39	0	180	18	134	169	98	0	0	2251
Bibles, Quran, Torah, Etc	25	23	10	8	20	20	96	0	20	88	14	275	5	12	13	74	15	15	0	733
Study Course	10	45	0	2	0	3	24	0	150	6	0	16	5	7	0	90	2	0	0	360
Writing Supplies	15	114	0	0	0	0	14	572	1100	119	0	0	0	10	0	0	0	0	0	1944
Literature	225	500	128	313	62	150	78	240	1125	130	327	600	200	17	5	2113	316	300	250	7079
<b>Chaplain's Visits</b>																				
Barracks	54	53	45	24	0	24	108	31	271	288	31	75	75	68	101	25	5	53	10	1341
Approximate Hours Spent in Barracks	37	49	8	16	0	98	45	59	68	52	62	20	30	30	25	6	4	25	5	639
Inmate Office visits	124	69	16	94	0	75	93	67	51	74	36	445	68	126	169	46	0	38	4	1595
Other Office visits	67	11	12	122	0	30	22	0	39	10	3	0	6	10	30	11	0	30	0	403
Hospital	0	1	1	0	0	0	6	4	0	1	5	30	0	9	0	1	0	1	0	59
Infirmary/Sick Call	0	1	0	9	0	8	23	0	10	1	6	8	4	10	3	1	0	6	0	90
Admin Seg	0	4	0	0	24	0	7	0	60	10	0	25	0	0	0	0	4	0	0	134
Segregation	0	0	1	0	24	0	71	5	0	10	0	24	4	10	0	0	4	4	0	157
Punitive	0	3	3	0	12	0	0	0	18	10	1	11	4	10	3	0	4	4	0	83
PC	0	0	3	0	0	0	0	0	0	10	0	0	0	0	0	0	4	4	0	21
Visitation Days	1	0	0	0	0	0	0	0	0	10	3	5	0	0	0	0	0	1	0	20
<b>Volunteer Visits</b>																				
RCV	3	0	0	0	0	0	7	2	30	13	9	0	0	16	12	0	0	1	0	93
OCV	11	0	0	0	0	7	0	0	59	43	20	241	18	14	21	33	1	30	50	548
Spiritual Advisor	0	1	0	0	0	0	1	0	0	1	0	4	1	3	1	0	0	2	1	15
CRA	31	84	7	102	5	10	23	0	152	72	84	153	9	25	64	29	19	15	0	884
<b>Religious Volunteer Hours</b>																				
Volunteer Hours	121	220	15	310	18	32	308	23	839	326	308	1,288	58	121	372	323	35	52	70	4839
DENOMINATIONAL/VOLUNTEER CHAPLAIN HOURS	92	245	0	31	0	80	57	171	108	165	79	566	15	85	122	22	0	200	15	2053
<b>Total Volunteer Hours</b>																				<b>6892</b>
<b>Other Activities of Chaplain</b>																				
Counselled Employees	7	2	2	5	0	15	6	0	32	2	3	61	11	11	7	8	2	10	4	188
Orientation Sessions	1	4	0	2	0	0	0	0	0	4	1	0	0	0	0	0	0	0	0	12
Free Word Devotions	0	1	0	8	0	8	0	0	15	0	0	23	12	12	0	0	0	0	0	79
Spoke in Churches	6	7	0	39	0	8	19	0	3	3	0	17	12	12	4	0	0	12	0	142
Crisis Intervention Sessions	3	14	0	0	0	10	2	0	0	12	6	4	12	7	12	9	5	8	0	104
Marriage Counseling	1	0	0	1	0	1	2	1	2	0	0	2	0	0	1	1	0	2	0	14
Denominational Meeting	0	2	0	7	0	4	0	0	4	1	0	5	0	1	0	0	0	0	0	24
Chaplain's Meeting	1	2	1	1	0	1	1	3	1	1	1	1	1	1	1	11	11	2	0	41
Volunteer Training Session	1	0	0	0	0	8	0	1	1	0	2	4	0	0	0	6	0	0	0	23
Choir Trip	0	0	0	0	0	0	0	0	0	0	0	0	0	0	0	0	0	0	0	0
Chaplain Transfers	0	0	0	0	0	0	0	0	0	0	0	0	0	0	0	0	0	0	0	0
Chaplain Promotions	0	0	0	0	0	0	0	0	0	0	0	0	0	0	0	0	0	0	0	0
<b>PAL PROGRAM</b>																				
Enrolled at start of month	0	46	4	50	0	0	47	46	23	36	34	41	0	27	62	46	0	29	0	491
Enrolled during the month	0	2	8	7	0	0	7	9	4	19	11	12	0	1	27	6	0	6	0	119
<b>Removed From PAL Program</b>																				
# Paroled	0	0	0	0	0	0	1	1	0	7	0	1	0	0	4	1	0	1	0	16
# Completed	0	0	0	4	0	0	0	3	1	0	2	6	0	1	6	3	0	0	0	26
# Withdraw	0	1	0	1	0	0	0	0	2	0	2	0	0	1	8	0	0	1	0	16
# Removed	0	1	0	3	0	0	4	1	4	2	0	0	0	0	12	1	0	3	0	31
# Transferred	0	0	1	2	0	0	2	2	0	2	1	2	0	0	3	0	0	1	0	16
Total Removed from PAL Program	0	2	1	10	0	0	7	7	7	11	5	9	0	2	33	5	0	6	0	105
Total Enrolled at the End of the Month	0	46	11	47	0	0	47	48	20	44	40	44	0	26	56	47	0	29	0	505
Volunteers In PAL	0	31	1	10	0	0	21	14	15	20	5	9	0	7	7	14	0	4	0	158
Special Events:	1	1	1	2	1	1	0	0	2	1	0	2	1	1	0	2	2	1	0	19



SEPTEMBER 2016					
PURCHASE ORDERS OVER \$10,000.00					
VENDOR	DESCRIPTION	LOCATION	PO#		FUND
Progressive Tractor & Implement	Tractors Lease Overage	Cummins/Farm	4501655718	\$10,776.00	Operational Farm Budget
Robbins Sales Company INC	Food Purchases	Central Warehouse	4501655970	58,395.68	Operational Budget
American Paper & Twine	Paper Towels	Central Warehouse	4501655976	11,368.34	Operational Budget
Miller-Bowie Supply Co	Pullet Premix	Cummins/Farm	4501656349	21,780.00	Operational Farm Budget
Miller-Bowie Supply Co	Feed	Cummins/Farm	4501656343	34,299.20	Operational Farm Budget
Barnes Paper Co	Egg Cartons	Cummins/Farm	4501656353	13,603.05	Operational Farm Budget
Arkansas Correctional Industries	Bulk Order Forms	Admin East/Purchasing	4501655904	31,442.20	Operational Budget
Southwest Fence Company	Fencing	Construction/Construction	4501657541	10,085.79	Operational Budget
Green & Chapman LLC	Fuel	Cummins/Farm	4501654233	36,721.03	Operational Farm Budget
Beyrl Bitley & Sons Trucking LLC	Hauling Services	Cummins/Farm	4501655199	21,936.24	Operational Farm Budget
Pellerin Laundry Machinery	Washer & Dryer	Miss. Co.	4501656780	12,644.00	Operational Budget
Jag Textile Company	Fabric	Wrightsville/Industry	4501657087	66,500.00	Operational Industry Budget
Green Point AG LLC	Insecticide	Cummins/Chemical Shed	4501657596	13,745.00	Operational Farm Budget
Southland Transport of Stuttgart LLC	Hauling Services	Tucker/Farm	4501657782	27,000.00	Operational Farm Budget
Tommy's Flying Service INC	Aerial Service	Tucker/Farm	4501657260	10,500.00	Operational Farm Budget
Simpson Door & Hardware LLC	Building Supplies	Construction/Construction	4501658278	25,371.20	Operational Budget
Arkansas Correctional Industries	Laundry Supplies	Central Warehouse	4501658573	13,065.74	Operational Budget
Triple J Flying Service Inc	Aerial Service	Cummins/Farm	4501649803	23,371.40	Operational Farm Budget
Beyrl Bitley & Sons Trucking LLC	Hauling Services	Cummins/Farm	4501656909	14,305.23	Operational Farm Budget
Untangle INC	Software	Information Services	4501658825	24,678.00	Operational Budget
William R Hill & Co Inc	Food Purchases	Central Warehouse	4501658562	156,535.40	Operational Budget
Sysco Food Services of Arkansas	Food Purchases	Central Warehouse	4501658566	17,773.50	Operational Budget
Atlantic Beverage Company	Food Purchases	Central Warehouse	4501658581	16,518.80	Operational Budget
National Food Group	Soy Protein	Cummins/Cold Storage	4501657733	23,156.00	Operational Farm Budget
Bob Barker Company INC	Clothing Items	Grimes Unit	4501659128	10,247.43	Operational Budget
Redwood Biotech	Drug Testing Fee	Drug Testing	4501658874	13,005.38	Operational Budget
Premier Biotech INC	Drug Testing Fee	Drug Testing	4501658878	16,243.00	Operational Budget
Mid South Sales INC	Fuel Purchase	Ouachita	4501658336	10,239.02	Operational Budget
Servicewear Apparel	Uniforms	Training Academy	4501659434	13,669.99	Operational Budget
McIntire Enterprises INC	Food Mixer	Wrightsville/Maintenance	4501659689	10,447.22	Operational Budget
Galls LLC	Clothing Items	Training Academy	4501659607	35,987.60	Operational Budget
William A Harrison Inc	HVAC Equipment	Grimes Unit/Construction	4501659580	17,633.40	Operational Budget
Greenway Equipment INC	Leased Tractors	Cummins/Farm	4501659818	59,569.80	Operational Budget
Green & Chapman LLC	Unleaded Fuel	Cummins/Commissary	4501658707	13,380.86	Operational Budget
Turner Holdings LLC (Hiland Dairy)	Food Purchases	Central Warehouse	4501660589	17,200.72	Operational Budget
Turner Holdings LLC (Hiland Dairy)	Food Purchases	Central Warehouse	4501660584	17,200.72	Operational Budget
Bob Barker Company INC	Clothing Items	Grimes Unit	4501660977	11,141.00	Operational Budget
Pellerin Laundry Machinery	Commercial Washing Machine	Cummins/Maintenance	4501660498	22,037.50	Operational Budget
William R Hill & Co Inc	Food Purchases	Central Warehouse	4501661064	357,297.50	Operational Budget
US Food Service	Food Purchases	Central Warehouse	4501661065	97,260.20	Operational Budget
Robbins Sales Company INC	Food Purchases	Central Warehouse	4501661071	84,385.28	Operational Budget
National Food Group	Food Purchases	Central Warehouse	4501661076	109,027.80	Operational Budget
Stuart C Irby Co	Electrical Parts	Construction/Construction	4501661391	10,775.97	Operational Budget
Falk Plumbing Supply	Plumbing Equipment	Construction/Construction	4501661585	14,234.43	Operational Budget
Krueger International INC	KDAK	Tucker/Industry	4501659825	10,790.00	Operational Budget
Terry Simpson	Hauling Services	EARU/Farm	4501660674	10,500.00	Operational Farm Budget
Dreamline MFG INC	Mattress Foam	Tucker/Industry	4501659841	42,000.00	Operational Industry Budget
Southern Aluminum MFG INC	Alumilite Tables	Tucker/Industry	4501659824	10,550.00	Operational Industry Budget
Dulaney Seed INC	Seeds	EARU/Farm	4501660244	35,615.00	Operational Farm Budget
Delta Grow Seed CO INC	Seeds	Tucker/Farm	4501661478	10,050.00	Operational Farm Budget
Greenway Equipment INC	Tractor	Tucker/Farm	4501661464	11,913.96	Operational Farm Budget
Dulaney Seed INC	Seeds	Cummins/Chemical Shed	4501661474	43,995.00	Operational Farm Budget
AC Furniture Co Inc	Chair Kits	Tucker/Industry	4501659843	50,608.13	Operational Industry Budget
Mid South Sales INC	Diesel Fuel	Tucker/Farm	4501655413	11,248.79	Operational Farm Budget
Graybar Electric CO INC	Building Supplies	Construction/Construction	4501661662	10,709.86	Operational Budget
Krebs Brothers Supply CO INC	Food Mixer	Wrightsville/Maintenance	4501661976	10,447.22	Operational Budget
Fastenal	Camera Monitors	Construction/Construction	4501661277	31,117.29	Operational Budget
WW Grainger INC	Metal Detectors	Cummins/Commissary	4501660678	14,716.32	Operational Budget
Purvis Industries	Gear Box	Cummins/Maintenance	4501661011	10,665.27	Operational Budget
McKennon Implement CO	Tractor Equipment	Cummins/Farm	4501655196	18,059.55	Operational Farm Budget
Shamrock Meats INC	Ground Beef	Cummins/Cold Storage	4501662185	479,700.00	Operational Farm Budget
D&H Poultry Service INC	Veterinary Supplies	Cummins/Farm	4501662449	19,428.00	Operational Farm Budget
Helena Chemical Company	Herbicide	Cummins/Chemical Shed	4501661590	11,702.40	Operational Farm Budget
Tri Co Farmers Assn	Herbicide	EARU/Farm	4501661613	10,584.00	Operational Farm Budget
Barnes Paper Co	Egg Cartons	Cummins/Farm	4501661654	14,912.40	Operational Farm Budget
Pyramid Interiors Distributors	Metal Ceiling Material	Construction/Construction	4501662634	37,916.87	Operational Budget
JWC Environmental	Buna N Elastomers	EARU/Maintenance	4501662703	11,691.70	Operational Budget
Shamrock Meats INC	Ground Beef	Cummins/Cold Storage	4501662848	479,700.00	Operational Farm Budget
Miller-Bowie Supply Co	Feed	Cummins/Farm	4501662902	179,040.00	Operational Farm Budget
Dulaney Seed INC	Seeds	Cummins/Chemical Shed	4501662918	12,966.00	Operational Farm Budget
Printing Papers INC	Paper	Wrightsville/Industry	4501662949	13,060.00	Operational Industry Budget
Mid South Sales INC	Toilet Paper	Hawkins/Industry	4501662603	52,531.20	Operational Industry Budget
		Total for Purchases over \$10,000		\$3,292,775.58	
FIRM CONTRACTS OVER \$25,000.00					
VENDOR	DESCRIPTION	UNIT	Contract # P.O#	PURCHASE AMOUNT	FUND
Comfort Systems USA AR INC	HVAC Equipment	Construction/Construction Division	4501658453	\$164,376.97	DOC Existing Facilities
		Total for Contracts		\$164,376.97	
EMERGENCY PURCHASE ORDERS OVER \$25,000.00					
		Total EM Purchases		\$0.00	
Total Purchases				\$3,457,152.55	

**Arkansas Department of Correction  
Vacancies, Hires and Terminations  
September 2016**

<b>UNIT</b>	<b>VACANCIES</b>	<b>HIRES</b>	<b>TERMINATIONS</b>
BENTON (CR05)	2	2	1
CENTRAL OFFICE (CR01, CR02, CR08 & CR22)	20	2	2
CHAPLAINCY	1	0	0
CONSTRUCTION (CR04)	10	0	2
CUMMINS (CR09)	87	2	10
DELTA (CR10)	8	7	5
EAST ARKANSAS (CR12)	71	5	13
ESTER (CR11)	11	0	0
FARM (CR29)	12	0	3
GRIMES (CR27)	9	3	4
INDUSTRY (CR07)	12	0	1
MAXIMUM SECURITY (CR14)	43	8	8
MCPHERSON (CR28)	35	3	14
MENTAL HEALTH	20	0	0
MISS COUNTY (CR15)	3	1	1
NORTH CENTRAL (CR16)	5	4	4
NORTHWEST ARK (CR17)	1	1	0
OUACHITA RIVER (CR30)	47	10	5
PINE BLUFF (CR20)	1	3	0
RANDAL L. WILLIAMS (CR13)	13	2	1
TEXARKANA (CR21)	0	0	0
TRANSPORTATION (CR32)	9	1	2
TUCKER BOOTCAMP (CR33)	1	0	0
TUCKER (CR23)	33	1	8
VARNER (CR24)	52	7	4
VARNER SUPER MAX (CR31)	41	1	3
WRIGHTSVILLE (CR25)/HAWKINS(CR06)	40	5	5
<b>TOTAL</b>	<b>587</b>	<b>68</b>	<b>96</b>



## ARKANSAS DEPARTMENT OF CORRECTION

### Construction Budget / Status Report

Report Date - October 7, 2016

Data as of 10/03/16

Fund	Project Desc	Total Projected Spend	Budget	Available Funds	\$ % Complete	Construction % Complete	Notes
7004810	Cummins Poultry Houses	\$5,481,607	\$6,100,000	\$618,393	90%	90%	Cooler-designed at DBA for approval
7004819	ESTER - Phase 1	\$3,886,593	\$4,000,000	\$113,407	97%	97%	184 beds opened 7/1/15. Kitchen complete. 190 beds opened January 2016. Phase 3 roof and interior underway.
700481A	ESTER - Phase 2 1A	\$1,522,445	\$5,100,000	\$3,577,555	30%	80%	
7004820	ESTER - Phase 2 - Kitchen	\$373,623	\$1,700,000	\$0	22%	100%	
KBR4Q95	ESTER - Phase 3 - General Improvement Fu	\$2,348,897	\$7,400,000	\$5,051,103	32%	45%	
VDC0100	Wrightsville Generator	\$193,267	\$200,000	\$6,733	97%	100%	1st phase complete, 2nd phase prioritized and in design.
70004820	Tucker 2016 New Well	\$362,336	\$550,000	\$187,664	66%	98%	Contractor on site, lacks final tap & Health Dept. approval.
7004815	ORCU- Chapel	\$105,991	\$200,000	\$94,009	53%	40%	Slab Complete - Building being erected
	Pine Bluff Unit Barracks Renovation		\$784,000				Plans to DBA
<b>Telephone Projects</b>							
Maintenance & Operations	Camera Equipment - All Units	\$41,281	\$250,000	\$208,719	17%	17%	on going
	Fire Alarm Upgrades (All Units)	\$42,616	\$53,000	\$10,384	80%	84%	All identified are complete.
	Locks/Riot Gates - All Units	\$39,135	\$75,000	\$35,865	52%	60%	EARU underway.
	Gates and Fences all units	\$48,045	\$50,000	\$1,955	96%	96%	Multiple Underway
	Gas Stations - Canopy (C/O)	\$0	\$5,000	\$5,000	0%	85%	Canopy built in shop to do foundation
	Stainless Steel - Kitchen/Shower/Restrooms - A	\$23,009	\$50,000	\$26,991	46%	46%	On Going, sinks, showers, ceiling.
	ACA Maintenance	\$32,796	\$175,000	\$142,204	19%	100%	All identified are complete.
	ADA Projects - All Units	\$1,974	\$5,000	\$3,026	39%	100%	All identified are complete.
	Fast Top Floor Systems - (kitchen/laundry/show	\$5,657	\$50,000	\$44,343	11%	100%	100% of identified projects
	AC Units - All Units	\$141,441	\$150,000	\$8,559	94%	100%	All identified are complete.
	Lawn Equipment - All Units	\$0	\$0	\$0	0%	0%	Moved 1/20/16
	Parking Lot - Gravel and Paving - EARU	\$0					Plans underway.
	Parking Lot - Gravel and Paving - Tucker	\$0	\$250,000	\$250,000	0%		Tucker Completed 2015
	Parking Lot - Gravel and Paving - Other Units	\$0					
FY16 Carryforward	ORCU Gravel Pit Operations	\$26,053	\$45,000	\$18,947	58%	58%	continual
	PB Kitchen HVAC	\$0	\$12,000	\$12,000	0%	0%	make up air unit - on hold
	Dog Kennel/Horse Stable Malvern	\$0	\$48,000	\$48,000	0%	0%	
	Tucker Pole Barn (Reg. Maint.) Firing Range	\$0	\$12,200	\$12,200	0%	100%	
	Metal Ceilings	\$78,067	\$75,000	(\$3,067)	104%	85%	Max Barracks #1 complete, #3 underway
FY17 New Projects	Emergency Generator - All Units	\$0	\$220,000	\$220,000	0%	0%	Plans in Design
	Tucker Wastewater Containers	\$0	\$31,000	\$31,000	0%	0%	
	Boiler Repairs	\$63,223	\$90,000	\$26,777	70%	100%	100% of identified projects
	Roof Repairs-Tucker	\$0				30%	Underway
	Roof Repairs-Vanner	\$49,014				50%	Underway
	Roof Repairs-East Arkansas	\$0	\$250,000	\$186,475	20%	20%	Underway
	Roof Repairs-East Arkansas	\$14,511					
	Roof Repairs-Cummins Laundry	\$0				25%	Underway

#### Notes

- \* Report has not been reconciled against Accountings Reconciled Reports.
- \* Tolerance/Deviation is with in 1% of Projected Spending.
- \* FY2015 Carry forward to FY2016 Project Budget = (FY2015 Actual Spending + FY2016 Approved Budget Amount.)