

Wendy Kelley
Director

Board Report
October 2017



PUBLIC RELATIONS

RESEARCH/PLANNING

September 2017 Admissions and Releases – Admissions for September totaled **629** (527-males & 102-females) while Releases totaled **572** (493-males & 79 females) for a net increase in-house of 57 Inmates.

Inmate Population Growth/Projection – At the end of September 2017, the Arkansas Department of Correction Population totaled **18,179** representing a growth of **642** Inmates since the beginning of 2017. Calendar Year 2017 average growth is **71** Inmates per month, up from an average decrease of **14** Inmates per month during Calendar Year 2016.

Average County Jail Back-up – The backup in the County Jails averaged **1,495** Inmates per day during the month of September 2017 – down from an average of **1,510** inmates per day during the month of August, 2017.

LEGAL SERVICES

PREA

PREA Data:

Number of calls received	353
Total Number of Repeat Calls	93
Total Number of Calls with no message	93
Total Reported PREA Issue Calls	8
Total Reported non-PREA Calls	159
Total Calls due to Technical Failure	0
Totals Calls Referred to Internal Affairs Division	11

INMATE GRIEVANCE

Inmate Formal/Informal Grievances: In September, there were a total of 1,901 formal grievances filed and 3,272 informal grievances filed at various units.

Institutional Grievances: There were a total of 615 appeals of institutional grievances received in September. Five hundred eighteen (518) were acknowledged and 97 were rejected for various reasons. A total of 517 appeals were answered, 511 had no merit and 6 were found with merit.

INSTITUTIONS

STTG

The STTG Coordinator assisted the FBI in an ongoing investigation on September 6th. Assistance was provided to the Attorney General's office with STTG information on September 11th. The third STTG quarterly meeting was held at Administration East on the 20th with all STTG Coordinators in attendance. On September 26th, the STTG Coordinator spoke at the Homeland Security Liaison Officer training seminar at the Conference Center in El Dorado, Arkansas.

FARM

Rice harvest was completed at Cummins and Tucker farms with very good yields. Hurricane Harvey caused damage to the corn crops at East Arkansas and Cummins Unit. EARU had the most damage with an estimated loss of 25%. Soybean harvest started at all farms on beans planted earlier on non-irrigated fields. The double crop soybeans are being sprayed due to the outbreak of the red banded stink bug. Fall gardens are planted but struggling due to the lack of rain. Harvest should start back on fresh produce in October. New chicks were brought into the pullet house. Pork production increased in September. We took 300 pigs through the processing plant. The Wrightsville beef herd will be weaning calves next month. The Cummins beef herd started calving. At the end of the September, 148 calves were born and tagged.

Regional Maintenance Hours

Regional Maintenance Hours	September
Benton Unit	6,744
Delta Regional Unit	1,832
East Arkansas Unit	2,720
Grimes Unit	2,376
McPherson Unit	1,156
Mississippi Co Work Release	1,176
North Central Unit	10,184
Ouachita River Unit	3,968
Randall Williams Unit	3,435
Texarkana Regional Unit	540
Tucker Unit	1,780
Varner Unit	1,192
Wrightsville Unit	3,652
Total Hours	41,755

Work Release Rent Report

Unit	September
Benton Unit	\$96,747.00
Mississippi County Work Release	\$56,439.00
Northwest AR Work Release Center	\$39,168.00
Pine Bluff Unit	\$29,563.00
Texarkana Regional Unit	\$42,874.00
Tucker Re-Entry Center	\$25,330.00
Total	\$290,121.00

Preparing for Success

Unit	Slots	Completed	Discharged	End Count
Ester Barracks 9-12	127	34	20	106
Tucker Re-Entry	20	8	2	20
Total	147	42	22	126

There are 621 males and 133 females on the waiting list within 42 months of their release date, and of those, 3 males are mandated by the Parole Board. The average time on the waiting list is approximately 3 months. The total number of inmates on the waiting list, including those not currently within the identified time frame, is 678 males and 167 females.

WAGE**(Workforce Alliance for Growth in the Economy)**

	Slots	Completed	Discharged	End Count
Ouachita	10	0	0	10
Ester	10	0	0	5
Hawkins	34	8	7	28
Total	54	8	7	43

Randall L. Williams Juvenile Education Program*

	Slots	Enrolled	Discharged	End Count
Juveniles	20	16	1	16
Total	20	16	1	16

*The Juvenile count changes based on new commitments. They are transferred from the program once they reach the age of 18.

ADMINISTRATIVE SERVICES**BUDGET SECTION UPDATE****Procurement Section Update:****Procurement/Contracts Report (required by policy) –**

For September 2017, Purchase Orders and Contracts in excess of \$10,000 amounted to \$3,873,259.93. Of this amount, \$2,328,947.24 was for Inmate Care and Custody related items (e.g. food, shoes, clothing, etc.). Bulk fuel costs for the month of September were \$91,323.60 – average cost for E-10 was \$1.95/gallon; average cost for bulk diesel was \$2.02/gallon.

HUMAN RESOURCES UPDATE

Workplace Safety – During the month of September, the modified version of the Health and Safety Plan was presented to one Basic Training class to a total of 50 cadets.

Sixty-seven (67) incidents were reported to the company nurse in September, bringing our total to 635 in 2017.

Benefits – There were 92 FMLA requests processed, with 89 approved and 3 denied. A total of 13 CAT leave requests were received, 2 were approved, and 11 are pending.

Physical Assessments –A total of 260 applicants and incumbent personnel were assessed in the month of September. Ninety five (95) incumbent personnel successfully passed their physical assessment. One hundred ten (110) applicants passed their physical assessments and one (1) applicant did not and has not rescheduled).

Employment – The East Arkansas Regional Unit Human Resources personnel attended a Job Fair at the Forrest City Workforce Center on September 25th.

A total of 2,289 applications were received in September. Fifty three (53) Non-Security applications and one hundred two (102) CO I applications were processed. Forty-five (45) Correctional Officers were hired and eleven (11) Correctional Officers were rehired.

Vacancies, Hires, and Terminations - In September 2017, a total of 547 vacancies, 68 new hires, and 115 terminations occurred at the various ADC locations.

Administrative Services Division Monthly Reports (attached) include:

Gifts, Grants, and Donations– \$5,000 was donated in the month of September (watermelons).

Inmate Welfare Fund–balance on September 30, 2017 was \$5,865,439.96.

The PAWS in Prison Fund total on September 30, 2017 was \$183,954.30: ADC account (7004822/Donations) \$19,159.55 ADC account (NDC0500/Recycling) \$107,473.88, and ADC Paws in Prison Non-Profit account \$57,320.87.

INFORMATION TECHNOLOGY

Unit ACA managers were trained on how to upload, delete, and modify files/folders in Spotlight to manage their units' policies on Spotlight.

Met with ACC and the State's Chief Data Officer, Dr. Wang, to discuss the Interagency Data Exchange Agreement (IDEA) that aims to bring together the thoughts and concerns of all of the stakeholders of shared data by the agencies. The key components are the confidentiality and access of the data as well as the responsibilities of the parties involved to protect the data. Data Loss Prevention (DLP) is the main concern of ADC IT Security. We also discussed options for limiting the email functions of current reporting systems to contain all such reports within the state email system. We desire a future solution of encrypting each file or email attachment, but this process will require development by DIS for all state email and development by Marquis for all EOMIS reports.

Discussed an EOMIS interface with SECURUS to provide gang data for IPRO (Investigator Pro). Labeling gang data with IPRO will flag all inmates affiliated with a gang label. Once inmates are labeled with their affiliations, the flag will appear anytime their name appears linking inmates to each other. In the background, one can also see if an inmate takes part in and ICER (inmate-to-inmate communications). IPRO labeled data can identify when gangs talk to each other, allowing better intelligence for staff members.

Discussed the next step of requirements for implementing Elo Tablets which will record inmate badge swipes as attendance records for the Correctional School District. The tablets will be

configured in Kiosk mode and be mounted to a wall. Network cabling and power to the tablets will also be required.

Discussed by conference call the ACT 423 changes being implemented by ACC on 10/1/17 that could impact ADC records and classification. The call addressed the changes being implemented to the admission summary and job/programs screens that could impact current ADC functions. After review, ADC staff requested inmate numbers that are being used for testing purposes by ACC, so we can review and ascertain that there will not be an adverse effect on ADC processes.

Attended a Business Objects Web Intelligence class with Research and Planning, presented by DIS. We are currently reviewing the offerings of this new software for EOMIS Intelligence data.

Discussed the automation project of county jail invoices for LLE (Local Law Enforcement). EOMIS includes programming that will allow LLE to view, update, and approve monthly invoices for inmates who are housed in county jail and are listed on the county jail waiting list for ADC. ADC approved the Baxter County Sheriff's department as the first pilot location for the new electronic processing of invoices. The pilot testing will begin with the October invoices.

SECURUS Video Visitation Project: In Process

- The East Arkansas Regional Unit Dog Kennel installation is in process.
- The Tucker Unit Dog Kennel installation will begin after EARU's is completed.
- The Cummins Unit Dog Kennel is pending a revised agreement with Entergy on the usage of their poles for aerial fiber.
- SECURUS began installation at Wrightsville on August 28th. The contractor is set to begin work on October 4th. The expected completion of Wrightsville and the scheduled training date is November 8th. "Go Live" will be scheduled following completion.

A total of 3,398 video visits occurred this month. Visits will remain at the \$5.00/30 minutes promotional price until December 31, 2017.

Training Academy – September 2017

Basic Training Division

Captain Mark Norris BCOT Class 2017 Cummins B graduated on September 15, 2017, with 22 cadets. Jacquilline Walker from the Varner Unit won the Willis H. Sargent Award. Warden William Straughn from the Cummins Unit served as the Graduation Speaker.

Captain David Farrier's BCOT Class 2017-L graduated on September 22, 2017 with 55 cadets. Rose Wright from the Transportation Division received the Willis H. Sargent Award. Deputy Warden Anthony Jackson served as the Graduation Speaker.

In-Service Division:

Management Level II class was held September 12th – 14th. The LEAP Seminar was held on September 15th, this class consists of 6 classes given in the course of one day designed for all employees.

The Department also partnered with Arkansas Community Correction for their 1st Annual Phenomenal Woman Seminar on September 15th.

PREA for Supervisors: A train the trainer class was held on Sept 19—21 with 22 staff members in attendance; this course is specifically designed for supervisory staff and their subordinates at the units.

The Field Training Officer (FTO) class was held on the 21st. The Annual Training Day was held on September 22nd which offered all mandatory classes in one day, alternating PREA and Emergency Preparedness every other month.

The 40 Hour Firearms Instructor Certification course was taught the 25th – 29th. This course brings students in and gives them the skills to teach others how to shoot. Students learn presentation skills on teaching and coaching and eventually receive the training to run a firing range. Once certified, students become Range Masters at their unit and can qualify cadets and incumbent staff.

eCADEMY

During the month of September 2017, 287 ADC employees completed a total of 2,748 hours of eCADEMY training. Approximately 6% of ADC employees completed at least one course during that time frame, averaging 1.68 hours per staff member.

Tablet Implementation Schedule			
Install Priority Phase 1	ADC Facility	Install % Completed	Go Live Date
1	EARU	96%	04-Oct-17
1	MCWRC	94%	04-Oct-17
2	GRIMES	93%	04-Oct-17
2	HAWKINS	94%	04-Oct-17
2	MCPHERSON	93%	04-Oct-17
3	PINE BLUFF	93%	04-Oct-17
3	PINE BLUFF RE-ENTRY	94%	04-Oct-17
3	ESTER	94%	04-Oct-17
3	RANDALL L WILLIAMS	93%	04-Oct-17
4	MAXIMUM SECURITY	93%	04-Oct-17
4	TUCKER	93%	04-Oct-17
4	TUCKER RE-ENTRY	94%	04-Oct-17
Install Priority Phase 2	ADC Facility	Install % Completed	Go Live Date
5	DELTA	74%	26-Jan-2018
5	WRIGHTSVILLE	27%	26-Jan-2018
5	CUMMINS	27%	26-Jan-2018
5	VARNER	20%	26-Jan-2018
5	NORTH CENTRAL	59%	26-Jan-2018
5	NWAWRC	77%	26-Jan-2018
5	TEXARKANA	60%	26-Jan-2018
5	OUACHITA	69%	26-Jan-2018
5	BENTON	32%	26-Jan-2018
5	STATE POLICE	49%	26-Jan-2018

HEALTH/CORRECTIONAL PROGRAMS**CHAPLAINCY SERVICES****Benton Work Release**

St. Mark Missionary Baptist Church of North Little Rock conducted a special worship service for the facility on September 9th with 42 inmates. On September 16, House of Refuge Ministries from Jacksonville held a worship gathering with 36 inmates.

Delta Regional Unit

On September 22nd, twenty-four (24) inmates graduated from the Institute of Self Worth Seminar. Program Founder, Vic Porter attended as a special guest.

East Arkansas Regional Unit

On September 1st, Christmas Behind Bars gave gift bags to all inmates, followed by a worship service. Forty-nine (49) inmates graduated from the PAL program on September 27th.

Hawkins Unit

On September 1st, two (2) inmates observed the yearly Eid Ul Adha Feast.

North Central Unit

Eleven (11) inmates observed Eid Ul Adha on September 5th. Revival services were held September 27—29. Ninety (90) inmates participated. Fifteen (15) volunteers from Gideon's International visited each housing area in the facility on September 30th, and gave Bibles to inmates who wished to receive one.

Ouachita River Correctional Unit

KAIROS #21 was held September 21—24. Thirty (30) volunteers participated in all four days of the event. Thirty (30) inmate participants completed the KAIROS event.

Tucker Unit

A volunteer training session was held on September 30th with 7 volunteers.

Varner Unit

Christmas Behind Bars visited Varner from September 14—16. They provided gift bags for all inmates and offered worship service opportunities for those who wished to participate.

Wrightsville Unit

Eid Ul Adha was observed by 42 inmates (10 from PTF) on September 1st.

ACCREDITATION

ACA Internal Audits Completed:

Sept 5-6 Grimes File Review
 Sept 11-13 Grimes File Review
 Sept 18-22 Grimes File Review
 Sept 25-29 Grimes File Review

Classes Taught:

Sept. 26 Accreditation/Training Academy

Fire/Safety and Sanitation independent audits conducted by the Fire and Sanitation Coordinator:

Sept. 8 Construction and Centralized Maintenance Inspection

Sept. 11 Max Unit

Sept. 16 Fire Marshal inspected Central Office and Admin East

VOLUNTEER SERVICES

The total number of volunteer hours for the month.:

Unit	Hours
Cummins	1
East Arkansas Regional	39
Maximum Security	5
MCWRC	12
North Central	4
NWARWRC	6
Pine Bluff Unit	14
Randall Williams	55
Varner	136
Wrightsville Complex	9
PAWS	11.5
Think Legacy	248.5
Religious Services/Chaplaincy	5,469
Total	6,010

PROGRAM SERVICES**Sex Offender Treatment Programs:**

	Slots	Completed	Removed	Clients
RSVP	238	0	3	240
SOFT	30	0	0	11
Total	268	0	3	251

There are 834 males on the waiting list for RSVP and 15 females on the waiting list for SOFT within five years of their TE date and of those 65 are mandated by the Parole Board. The average time on the waiting list from request is about three to six months for stipulated. The total on the waiting list, including those not currently within the identified time frame, is 1,496 males and 20 females. We have one (1) PREA inmate in the program at this time.

*The waiting list numbers include inmates that are ineligible due to class or housing status.

Therapeutic Community:

	Slots	Completed	Removed	Clients
Tucker	129*	11	8	136
Wrightsville	45*	4	3	50
McPherson	50*	7	1	53
Total	224	22	12	239

There are 321 males and 16 females on the waiting list within 18 months of their release date, and of those, 11 are mandated by the Parole Board. The average time on the waiting list from request is 16 days. The total on the waiting list, including those not currently within the identified time frame, is 573 males and 50 females.

*Denotes transitional beds available at this treatment program. Tucker TC has 129 client slots and 7 peer counselor slots.

Substance Abuse Treatment Program

	Slots	Completed	Removed	Clients
Grimes	50*	12	0	46
McPherson	100*	8	0	103
MSU	3	0	0	3
RLW	188*	26	16	188
Tucker	43*	6	3	44
Vanner	44	5	0	46
Wrightsville	135*	22	19	130
Total	563	79	38	560

There are 2,038 males and 302 females on the waiting list within 18 months of their release date, and of those, 50 are mandated by the Parole Board. The average time on the waiting list from request is 16 days. The total on the waiting list, including those not currently within the identified time frame, is 2,861 males and 424 females.

*Denotes transitional beds available at this treatment program.

ORCU Residential Program Unit:

The Residential Program Unit at Ouachita had 5 admissions and 6 discharges in September for an end-of-month count of 121.

McPherson Residential Program Unit:

There were zero admissions and 4 discharges in September for an end-of-month count of 38.

Habilitation Program:

The Habilitation Program at the Ouachita River Correctional Unit provided treatment services to 47 inmates during September. There were 3 admissions and 2 discharges for an end-of-month count of 45.

Restrictive Housing (RH) Anger Management Treatment:

The RH Anger Management Treatment Program at Cummins provided treatment services to 24 inmates during September. There were 4 admissions and zero discharges for an end-of-month count of 24.

Staffing:

The following Mental Health Services and SATP positions were vacant in August and September.

Positions	August	September
Psychologists	8	9
Social Workers	15	14
Advisors	6	8
Substance Abuse Program Leaders	5	3
Admin Specialist/Analyst	1	1
Psychological Examiner	1	1
Rehab Manager	2	2

ADDITIONAL PROGRAM INFORMATION

Self Study Classes	# of Participants	# Completed	Waiting List
Anger Management	282	250	1,202
Thinking Errors	261	202	1,442
Substance Abuse Education	230	148	263
Communication Skills	224	118	1,048
Domestic Violence	170	135	375
Victims of Domestic Violence	0	0	48
Stress Management	280	208	1,136
Parenting	218	151	813

Suicide:

There were 127 suicidal threats, gestures or low/moderate risk attempts during September. There were 9 serious attempts, none resulted in death.

Outpatient:

There were 2,264 inmates on the mental health medical log at the beginning of September. Mental Health conducted the following contacts during September:

Case management contacts	2,153
Requests for interviews	1,132
Testing	2
Intakes	644
Unit requests	1,253
Counseling (with treatment plans)	0
Pre-lock up reviews	427
Routine segregation reviews	691
Segregation rounds	19,825
PREA evaluations	61
Routine follow-up	185
834 requests	37

County Mental Health Requests:

During September, there were 77 requests of a mental health nature received. 38 inmates were fast tracked to ADC.

County Medical Health Requests:

During September, there were 288 requests of a medical nature received. Four inmates were fast tracked to ADC.

Monetary Sanctions:

Sanction reimbursements for September were \$18,900.

Deaths:

There were nine (9) inmate deaths during the month of September; five (5) were claimed and four (4) were cremated.

CCS:

See attachment for CCS's report regarding outside beds and emergency room visits.

Medical Grievances:

In September, there were 147 appeals of medical grievances received and 129 appeals were answered; 14 of those were found to be with merit and two with merit but resolved.

SEX OFFENDER ASSESSMENT**Assessments Completed:**

Risk Level	September	Sept. 1999 thru September 2017
Level 1	0	1,164
Level 2	45	6,941
Level 3	29	6,446
Level 4	2	612
Default 3	3	*
Total	79	15,163
*Default Level 3's are included in the total number of Level 3's to date..		

ACIC Numbers:

The total number of sex offenders registered from Sept. 1999 thru September 2017:

In Compliant	7,736
Delinquent (Did not return address on time)	983
Confined	3,090
Out of State	3,216
Address Unknown (absconded)	187
Deported	173
Incapacitated	80
Out of USA	8
Total	15,473

Due to a change in AR Law, deceased offenders no longer remain on the registry. Thus far, 1,142 deceased offenders have been removed from the registry.

THINK LEGACY

Unit	Slots	Graduates	Removed	Signed-Out	Assigned
Cummins Unit	55	5	7	4	54
Delta Regional Unit	24	0	2	0	23
East Arkansas Unit	50	0	3	0	44
Ester Unit	48	10	2	1	44
Grimes Unit	56	5	2	0	50
Hawkins Unit	40	4	5	0	40
McPherson Unit	68	5	17	5	68
North Central Unit	59	7	2	1	53
Ouachita River Unit	46	0	4	1	27
Tucker Re-Entry(♀)	24	0	0	0	18
Tucker Unit	55	3	6	2	56
Varner Unit	49	8	0	0	47
Wrightsville Unit	49	11	5	0	50
Total	623	58	55	14	574

There are 47 males, and 41 Females on the waiting list. All Think Legacy applicants are within 18 months of their TE, or discharge date. The average wait time is approximately 45 days. Workforce Development, Arkansas Securities, Arkansas Voices, and The Brandon Burlsworth Foundation are speaking at each Unit.

PAWS IN PRISON**Currently Enrolled in Training:**

Maximum Security Unit	8
Tucker Unit	7
Hawkins Unit	6
Randall Williams Unit	4
Ouachita River Unit	8
North Central Unit	6
Total	39

Completed Training:

September 2017	5
YTD 2017	117
Since Inception Dec. 2011	978
Dogs Currently in foster: (Graduated but not adopted)	3

Construction/Maintenance**Project Updates****Ester Unit:**

Repairs made to the existing electrical for the emergency generator on 10/3. Installing cameras.

Cummins Unit:

On-call architect submitted plans and specs to DBA for new generator.

Architect working on Plans for the new School to be located where the existing Hobbycraft building is located. Maintenance is re-roofing barracks and replacing windows that were broken during recent disturbance.

Cummins Poultry:

Continuing to test Generators weekly. The new Cooler walls are complete. Refrigeration and electrical work continues.

Delta Unit:

Working on storm damage. Contractor continues to tear off the old roof and put on the new one. The gym has been repaired. Interior HVAC and electrical work continues. Repairs to the Horse Barn roof continue. Entegrity continues to work on the design of the energy saving projects. Entegrity, architects and Unit staff met to determine where the compost operation will be located. The broken barracks windows in the main corridor were replaced

East Arkansas Regional Unit:

Entegrity continuing to work on plans for energy upgrades. There was a meeting to determine the location of the composting operation. The Highway Department has graded and laid all the asphalt for the parking lot. The Unit has striped the parking spaces. We are working with Entergy and DBA to change exterior perimeter lighting to LED. This will reduce emergency generator loads and downsize the proposed emergency generators.

Hawkins:

Architects have completed plans for an additional generator for the kitchen and lighting. The plans were submitted to DBA for approval.

Maximum Security Unit:

Working on repairs to the boiler. Contractor replacing tubes in the hot water exchange tank. Plans for the 4 barracks utility chase were approved by DBA for construction. Ordering ceiling material. Crews completed repairs to East Isolation. Preventative repairs are being made to West isolation.

Newport:

The contractor is nearing completion on repairing the gym roof. We have repaired the barn roof and wall, beginning work on the dog kennel barn.

Ouachita River Correctional Unit:

Gravel operations continue. More than half of skylights have been installed, with the remainder on order. Delivery has been delayed due to the hurricane in Florida. Working on interior of Chapel building. All single doors, vents, duct, dampers, returns and transitions have been delivered to the job.

Pine Bluff:

Working with Entergy to upgrade all perimeter lighting. Determining energy savings and costs for using LED lights. The architect is working on the plans for the 9 barracks renovation.

Tucker Unit:

Continue to monitor waste water plant & make repairs & adjustments to keep in compliance. Working on changing out the water filter media and adding more filters.

Wrightsville:

Architects submitted plans and specs to DBA for approval on new generator. Additional projects include the new Isolation recreation yard and repairs to the farm house.

Construction/Maintenance Personnel Update

3 Maintenance Technicians
1 Construction Project Specialist
1 Assistant Maintenance Supervisor
1 Project Specialist
1 Corporal

2017 INFORMAL GRIEVANCE REPORT

Month	BENTON	HAWK/M	HAWK/F	WRTS SPU	WRTS	WRTS/SAT	EARU & MX	GRIMES	RLW	MCWR	MCPH	MSU	NCU	PBU Re-entry	PBU	NWA	TU	TRCC	VSMX	VU	CU	ORCU	Ester	DRU	Bowie Cty	TOTAL
JAN	2	15	34	0	75	13	416	301	59	0	309	225	138	1	25	0	109	1	235	85	297	388	22	150	106	3006
FEB	2	15	34	0	83	6	313	280	40	0	247	211	181	0	18	0	68	2	533	100	301	229	23	193	91	2970
MAR	1	7	21	0	63	0	480	283	36	2	381	214	205	0	30	1	162	3	694	88	470	298	48	218	115	3820
APR	4	28	23	0	83	0	341	234	52	0	366	173	198	0	25	0	125	6	657	97	287	214	46	123	96	3178
MAY	4	28	35	0	110	0	821	315	53	0	326	181	217	0	19	0	159	1	611	90	312	306	49	146	98	3881
JUN	2	17	30	0	78	0	1218	278	78	0	367	148	181	0	41	0	169	2	757	85	314	314	44	162	87	4372
JUL	1	37	28	0	82	0	370	283	61	0	411	155	197	0	46	0	155	0	564	94	228	310	53	172	82	3329
AUG	1	37	60	0	71	0	425	296	59	0	283	137	226	0	68	2	160	1	616	84	275	408	71	235	90	3605
SEPT	1	22	49	0	121	0	460	246	44	0	313	122	199	0	63	0	162	0	612	92	198	272	39	185	72	3272
OCT																										0
NOV																										0
DEC																										0
TOTAL	18	206	314	0	766	19	4844	2516	482	2	3003	1566	1742	1	335	3	1269	16	5279	815	2682	2739	395	1584	837	31433

2017 FORMAL GRIEVANCE REPORT

Month	BENTON	HAWK/M	HAWK/F	WRTS SPU	WRTS	WRTS/SAT	EARU & MX	GRIMES	RLW	MCWR	MCPH	MSU	NCU	PBU Re-entry	PBU	NWA	TU	TRCC	VSMX	VU	CU	ORCU	Ester	DRU	Bowie Cty	TOTAL
JAN	1	5	16	0	27	6	350	113	31	1	148	239	59	1	6	0	87	2	314	67	151	165	12	67	24	1892
FEB	2	7	12	0	45	1	388	117	17	0	112	208	87	0	6	0	68	0	360	91	165	169	8	81	16	1960
MAR	0	15	20	0	24	0	389	98	17	0	125	222	95	0	3	1	110	0	421	76	173	166	13	97	30	2095
APR	2	39	46	0	34	0	322	113	22	1	148	201	79	0	6	0	65	2	423	86	141	182	16	56	14	1998
MAY	2	28	35	0	47	0	445	142	27	0	186	227	93	0	3	0	93	0	361	77	145	271	28	78	25	2313
JUN	0	9	8	0	34	0	408	114	31	0	167	170	69	0	7	0	99	3	425	83	160	240	21	79	22	2149
JUL	0	10	7	0	45	0	438	136	37	0	129	178	94	0	20	0	98	0	345	77	132	218	24	77	15	2080
AUG	0	9	15	0	25	0	429	128	23	0	139	162	11	0	19	2	122	0	358	74	154	216	35	131	29	2081
SEPT	0	10	29	0	48	0	352	123	30	1	152	115	89	0	32	0	113	0	322	73	126	157	20	92	17	1901
OCT																										0
NOV																										0
DEC																										0
TOTAL	7	132	188	0	329	7	3521	1084	235	3	1306	1722	676	1	102	3	855	7	3329	704	1347	1784	177	758	192	18469

Inmate Institutional Grievance Appeal Report September 2017

	Acknowledged	Rejected	Processed W/O Merit	Processed W/ Merit
Benton Unit	0	0	0	0
Benton Work Release	0	2	0	0
Bowie County Texas Correctional Facility	2	0	7	0
Cummins Unit	21	9	27	0
Cummins Modular Unit	6	1	5	0
Delta Regional Unit	24	2	16	0
East Arkansas Regional Unit	47	9	33	1
East Arkansas Regional Max Unit	92	3	70	1
Ester Unit	7	0	5	0
Grimes Unit	24	14	35	0
Maximum Security Unit	24	8	51	1
Tucker Re-Entry	0	0	0	0
McPherson Unit	35	5	31	0
McPherson Mental Health Residential Program Unit	5	0	3	0
Mississippi County Work Release Center	0	0	0	0
Northwest Arkansas Work Release Center	0	0	0	0
North Central Unit	24	0	12	0
Ouachita River Correctional Unit	26	7	31	0
ORCU Hospital	0	0	0	0
ORCU New Commitment	1	0	2	0
ORCU Mental Health Residential Program Unit	1	1	0	0
Pine Bluff Unit	0	3	1	0
Pine Bluff Re-Entry	0	0	0	0
Randall L. Williams Correctional Facility	1	2	2	0
Texarkana Regional Correctional Center	0	0	0	0
Tucker Unit	22	4	23	0
Varner Super Max	115	18	119	2
Varner Unit	22	5	28	0
Wrightsville Unit	12	2	4	1
Hawkins Center	3	2	3	0
Hawkins for Males	4	0	3	0
Hawkins SPU	0	0	0	0
Total	518	97	511	6

Admissions and Releases			
Sep-17			
<u>Admissions</u>	<u>Male</u>	<u>Female</u>	<u>Total</u>
Asian	2	0	2
Black	218	12	230
Hispanic	16	0	16
Native American Indian	1	1	2
White	290	89	379
Total	527	102	629
<u>Releases</u>	<u>Male</u>	<u>Female</u>	<u>Total</u>
Asian	3	0	3
Black	174	14	188
Hispanic	16	2	18
White	300	63	363
Total	493	79	572

ARKANSAS DEPARTMENT OF CORRECTION
INMATE POPULATION GROWTH 2000-2024

Updated 09/30/2017

Mo.	2000	2001	2002	2003	2004	2005	2006	2007	2008	2009	2010	2011	2012	2013	2014	2015	2016	2017
Jan.	11,984	11,908	12,402	13,015	13,105	13,595	13,481	13,839	14,518	14,796	15,334	16,312	15,134	14,815	17,481	18,142	17,785	17,824
Feb.	12,169	12,022	12,529	13,054	13,166	13,783	13,633	14,012	14,603	14,883	15,374	16,209	14,990	15,008	17,438	18,082	17,625	17,608
March	12,006	12,033	12,299	13,108	13,088	13,418	13,534	13,772	14,580	14,843	15,290	16,095	14,964	14,665	17,395	18,233	17,573	17,666
April	12,069	12,167	12,465	13,213	13,323	13,469	13,554	13,851	14,769	14,937	15,570	16,172	15,124	14,850	17,604	18,703	17,815	17,798
May	12,109	12,384	12,558	13,463	13,556	13,528	13,711	14,146	14,880	15,146	15,694	16,062	15,132	15,074	17,593	18,693	17,769	17,652
June	12,005	12,108	12,439	13,418	13,389	13,251	13,430	13,915	14,700	15,025	15,564	15,554	14,832	14,825	17,340	18,813	17,973	17,963
July	12,030	12,190	12,622	13,509	13,528	13,286	13,560	14,082	14,868	15,195	15,807	15,519	14,879	15,379	17,522	18,870	18,130	18,180
August	12,087	12,371	12,815	13,565	13,632	13,419	13,646	14,224	15,100	15,385	15,829	15,240	14,675	16,103	17,549	18,806	17,919	18,051
September	11,983	12,289	12,774	13,341	13,516	13,237	13,652	14,217	14,850	15,285	16,025	15,172	14,724	16,412	17,605	18,549	18,026	18,179
October	12,119	12,348	12,942	13,341	13,584	13,363	13,775	14,349	14,836	15,381	16,311	15,271	14,856	16,993	17,880	18,430	18,127	
November	12,094	12,408	13,162	13,408	13,706	13,587	13,913	14,437	15,025	15,340	16,460	15,205	14,625	17,168	17,848	17,981	17,573	
December	11,856	12,333	12,845	13,106	13,470	13,338	13,728	14,315	14,716	15,199	16,204	15,062	14,654	17,235	17,874	17,707	17,537	
Net Ann. Inc.	29	477	512	261	364	-132	390	587	401	483	1,005	-1,142	-408	2,581	639	-167	-170	642
Avg. Mo. Inc.	2	40	43	22	30	-11	33	49	33	40	84	-95	-34	215	53	-14	-14	71

Population is total jurisdictional count at end of each month. Population at end of month December 1999 was 11,827.

Average monthly population increase for past fifteen years 2002 - 2016 is 29

Average monthly population increase for past ten years Jan.2007 - Dec 2016 is 32

Average monthly population increase for past five years 2012 - 2016 is 41

Projected at Growth of 29 per Month

	2008	2009	2010	2011	2012	2013	2014	2015	2016	2017	2018	2019	2020	2021	2022	2023	2024
Mo.	Actual	Actual	Actual	Actual	Actual	Actual	Actual	Actual	Actual	Actual/ Proj.	Proj.	Proj.	Proj.	Proj.	Proj.	Proj.	Proj.
January	14,518	14,796	15,334	16,312	15,134	14,815	17,481	18,142	17,785	17,824	18,295	18,643	18,991	19,339	19,687	20,035	20,383
February	14,603	14,883	15,374	16,209	14,990	15,008	17,438	18,082	17,625	17,608	18,324	18,672	19,020	19,368	19,716	20,064	20,412
March	14,580	14,843	15,290	16,095	14,964	14,665	17,395	18,233	17,573	17,666	18,353	18,701	19,049	19,397	19,745	20,093	20,441
April	14,769	14,937	15,570	16,172	15,124	14,850	17,604	18,703	17,815	17,798	18,382	18,730	19,078	19,426	19,774	20,122	20,470
May	14,880	15,146	15,694	16,062	15,132	15,074	17,593	18,693	17,769	17,652	18,411	18,759	19,107	19,455	19,803	20,151	20,499
June	14,700	15,025	15,564	15,554	14,832	14,825	17,340	18,813	17,973	17,963	18,440	18,788	19,136	19,484	19,832	20,180	20,528
July	14,868	15,195	15,807	15,519	14,879	15,379	17,522	18,870	18,130	18,180	18,469	18,817	19,165	19,513	19,861	20,209	20,557
August	15,100	15,385	15,829	15,240	14,675	16,103	17,549	18,806	17,919	18,051	18,498	18,846	19,194	19,542	19,890	20,238	20,586
September	14,850	15,285	16,025	15,172	14,724	16,412	17,605	18,549	18,026	18,179	18,527	18,875	19,223	19,571	19,919	20,267	20,615
October	14,836	15,381	16,311	15,271	14,856	16,993	17,880	18,430	18,127	18,208	18,556	18,904	19,252	19,600	19,948	20,296	20,644
November	15,025	15,340	16,460	15,205	14,625	17,168	17,848	17,981	17,573	18,237	18,585	18,933	19,281	19,629	19,977	20,325	20,673
December	14,716	15,199	16,204	15,062	14,654	17,235	17,874	17,707	17,537	18,266	18,614	18,962	19,310	19,658	20,006	20,354	20,702
Net Ann. Inc.	401	483	1,005	-1,142	-408	2,581	639	-167	-170	729	348	348	348	348	348	348	348
Ave. Mo. Inc.	33	40	84	-95	-34	215	53	-14	-14	61	29	29	29	29	29	29	29

Monthly Population Averages

Unit/Center	9/1	9/4	9/5	9/6	9/7	9/8	9/11	9/12	9/13	9/14	9/15	9/18	9/19	9/20	9/21	9/22	9/25	9/26	9/27	9/28	9/30	Average
Benton	324	320	320	323	323	323	326	326	326	324	324	325	322	323	327	325	326	329	328	325	328	325
Cummins	1,919	1,921	1,921	1,919	1,919	1,919	1,918	1,916	1,921	1,921	1,919	1,924	1,924	1,922	1,921	1,920	1,917	1,918	1,918	1,914	1,939	1,920
Delta	612	609	609	622	623	619	619	621	619	617	615	616	625	625	619	615	613	613	605	605	592	615
EARU	1,673	1,676	1,676	1,676	1,670	1,658	1,669	1,668	1,670	1,666	1,671	1,661	1,665	1,665	1,665	1,663	1,663	1,662	1,662	1,662	1,662	1,667
Ester	563	556	556	557	564	579	571	567	557	563	554	570	574	579	578	579	579	585	582	581	586	570
Grimes	1,079	1,075	1,075	1,078	1,077	1,076	1,081	1,080	1,080	1,070	1,072	1,073	1,079	1,079	1,077	1,081	1,070	1,076	1,082	1,068	1,067	1,076
Max Sec	639	637	637	639	640	640	639	639	639	636	638	638	638	637	637	637	638	637	637	643	639	638
McPherson	951	947	947	950	949	956	953	955	953	951	959	961	961	966	960	966	973	981	976	965	966	959
MCWRC	137	137	137	137	137	139	138	138	138	138	136	134	134	133	133	134	134	134	134	134	134	136
N Central	818	807	807	811	819	827	827	826	825	821	821	819	821	821	819	826	816	816	812	819	831	819
NWAWRC	100	100	100	100	100	100	100	100	100	100	99	100	100	100	99	100	98	98	99	100	100	100
Ouachita River	1,851	1,852	1,852	1,822	1,838	1,817	1,840	1,840	1,840	1,841	1,832	1,819	1,834	1,838	1,848	1,840	1,838	1,831	1,836	1,842	1,836	1,837
Randall L Williams	548	546	546	559	561	564	556	555	552	558	558	557	555	554	554	552	551	553	553	554	554	554
Pine Bluff	470	485	485	486	483	484	490	490	489	487	484	479	480	479	476	472	479	475	476	478	485	482
PB Reentry	53	53	53	53	54	54	54	54	54	52	54	54	54	54	54	54	54	54	54	54	54	54
TRCC	128	128	128	128	128	128	128	128	128	128	128	128	128	128	128	128	128	129	129	128	127	128
Tucker	1,002	1,002	1,002	1,004	997	1,002	1,007	1,002	1,001	998	998	1,003	1,001	1,005	1,006	997	998	1,012	1,006	1,006	991	1,002
Vamer	1,732	1,735	1,735	1,734	1,734	1,729	1,725	1,721	1,722	1,718	1,719	1,725	1,720	1,721	1,731	1,731	1,727	1,717	1,717	1,717	1,712	1,725
Wrightsville	1,311	1,301	1,301	1,311	1,310	1,314	1,308	1,308	1,312	1,311	1,314	1,312	1,303	1,309	1,308	1,305	1,303	1,309	1,312	1,316	1,312	1,309
Total ADC	15,910	15,887	15,887	15,909	15,926	15,928	15,949	15,934	15,926	15,900	15,895	15,898	15,918	15,938	15,940	15,925	15,905	15,929	15,918	15,911	15,915	15,917
Ar State Police Co Jail / M Co Jail / F Total Co Jail BK Bowie Co., TX 309/M 309/F Total Act 309																						
	20	20	20	20	20	20	20	20	20	20	20	20	20	20	20	20	20	20	20	20	20	20
	57	57	57	57	60	60	60	60	60	60	60	61	61	61	61	60	59	59	58	57	54	59
	1,397	1,398	1,398	1,374	1,366	1,399	1,383	1,389	1,388	1,415	1,426	1,427	1,407	1,409	1,428	1,466	1,484	1,513	1,541	1,534	1,511	1,431
	63	64	64	63	60	57	56	56	62	64	63	63	64	63	63	71	68	65	66	62	66	63
	1,460	1,462	1,462	1,437	1,426	1,456	1,439	1,445	1,450	1,479	1,489	1,490	1,471	1,472	1,491	1,537	1,552	1,578	1,607	1,596	1,577	1,494
	333	333	333	333	333	333	332	330	330	332	332	332	332	336	336	336	336	336	336	336	335	334
	207	207	207	206	206	206	207	208	208	209	207	206	205	204	202	204	208	208	208	208	208	207
	44	44	44	44	44	44	44	44	44	44	44	44	44	44	44	44	44	44	44	44	44	44
Total Act 309	251	251	251	250	250	250	251	252	252	253	251	250	249	248	246	248	252	252	252	252	252	251
Total Non ADC	2,121	2,123	2,123	2,097	2,089	2,119	2,102	2,107	2,112	2,144	2,152	2,153	2,133	2,137	2,154	2,201	2,219	2,245	2,273	2,261	2,238	2,157
Total	18,031	18,010	18,010	18,006	18,015	18,047	18,051	18,041	18,038	18,044	18,047	18,051	18,051	18,075	18,094	18,126	18,124	18,174	18,191	18,172	18,153	18,074
	1	1	1	1	1	1	1	1	1	1	1	1	1	1	1	1	1	1	1	1	1	21

Fiscal Year 2017 County Jail Backup

DAY		Jul-17		Aug-17		Sep-17
1	*	1,384		1,490		1,460
2	*	1,384		1,478	*	1,460
3		1,392		1,471	*	1,460
4		1,419		1,467		1,462
5		1,419	*	1,467		1,462
6		1,424	*	1,467		1,437
7		1,428		1,475		1,426
8	*	1,428		1,493		1,456
9	*	1,428		1,472	*	1,456
10		1,437		1,485	*	1,456
11		1,473		1,505		1,439
12		1,442	*	1,505		1,445
13		1,474	*	1,505		1,450
14		1,468		1,525		1,479
15	*	1,468		1,524		1,489
16	*	1,468		1,529	*	1,489
17		1,491		1,518	*	1,489
18		1,482		1,546		1,490
19		1,441	*	1,546		1,471
20		1,435	*	1,546		1,472
21		1,464		1,592		1,491
22	*	1,464		1,592		1,537
23	*	1,464		1,577	*	1,537
24		1,453		1,543	*	1,537
25		1,455		1,516		1,552
26		1,452	*	1,516		1,578
27		1,481	*	1,516		1,607
28		1,483		1,490		1,596
29	*	1,483		1,490		1,577
30	*	1,483		1,480	*	1,577
31		1,484		1,476		
Avg Daily Backup		1,450		1,510		1,495

Note: Totals do not include 309 Contracts in County Jails (maximum of 336)

Fiscal Year Average 1,484.78



September STTG Unit Counts

Unit	Beginning Total	Confirmed	Suspected	In	Out	Paroled	Removed	Ending Total	Total Unit Population	Unit % of STTG's
Benton	69	1		3	7	3		63	325	19.38%
Cummins	495			22	10	10		497	1942	25.59%
Delta	161	2		15	10	1		167	606	27.56%
EARU	555	3	1	40	18	9		572	1660	34.46%
Grimes	334			29	22	16		325	1083	30.01%
Hawkins	36			3	1			38	448	8.48%
Max	236			5	6	2		233	647	36.01%
Mcpherson	59	1		60		1		59	972	6.07%
MCWR	39	2		5	5	1		40	134	29.85%
NCU	192			29	8	12		201	829	24.25%
NWAWR	16			1				17	100	17.00%
ORCU	321			40	34	16		311	1610	19.32%
ORCU Intake	80	135			125			90	224	40.18%
PB/Ester	276			72	47	22		279	1125	24.80%
RLW	143			26	23	5		141	550	25.64%
TWR	21			1	1			21	124	16.94%
Tucker	267			28	20	9		266	998	26.65%
Varner	680	2		91	44	16		713	1700	41.94%
Wrightsville	182			19	19	6		176	861	20.44%
Total	4162	146	1	489	400	129	0	4209	15938	26.41%

ORCU Intake brought in 135 new STTG members into ADC last Month.



September STTG Disciplinary Report

Unit	STTG Incidents	STTG Suspected Incidents	Total Unit Disciplinary	Disciplinary Involving STTG	Percentage
Benton			26	8	30.77%
Cummins			606	208	34.32%
Delta			123	51	41.46%
EARU			270	126	46.67%
Grimes			174	63	36.21%
Hawkins			12	0	0.00%
Max			63	41	65.08%
Mcpherson			121	20	16.53%
MCWR			59	20	33.90%
NCU	2		123	40	32.52%
NWAWR			0	0	#DIV/0!
ORCU	17		340	130	38.24%
ORCU Intake			12	1	8.33%
PB/Ester	1		88	29	32.95%
RLW	2	2	85	25	29.41%
TWR			3	0	0.00%
Tucker			123	54	43.90%
Varner		1	440	269	61.14%
Wrightsville			119	39	32.77%
Total	22	3	2787	1124	40.33%



September STTG Counts by STTG Set

STTG Set	Benton	Cummins	Delta	EARU	Grimes	Hawkins	Max	Mcperson	MCWR	NCU	NWAWR	ORCU	Intake	PB	RLW	TWR	Tucker	Varner	Wrightsville	Total
Asian	1	1	1		3					1	1			3			2			13
Bloods	6	101	36	94	56	9	60	7	3	21	3	52	9	42	15	6	56	136	33	745
Crips	6	70	17	59	32	3	27	8	4	25	3	47	7	32	17	1	30	118	29	535
Folk	1	22	9	62	30	6	24	9		7	2	21	14	21		6	25	69	14	342
GD	14	138	32	126	65	9	45	3	7	37	2	71	25	58	48		57	153	35	925
Mexican	4	14	4	17	12	2	2	3		8	3	11	1	5	9		7	28	4	134
Motorcycle		1		3	3		1	1		1			1		5			4		20
Other	2	9	4	11	13		2			5		9	3	11	1		6	17	2	95
People	3	19	4	14	13		12	3	2	9	1	13	5	18	1	1	9	23	7	157
Unknown		4		9	10		1		1	4		5	2	2	3	1	2	5	5	54
W/S	12	38	28	53	34	5	12	18	9	35		33	18	42	21	6	30	79	18	491
NAE	3	23	15	33	15	1	11	3	4	10		22	3	9	8		13	16	8	197
WAR	5	47	10	63	24	2	26	3	7	24		17	2	19	8		21	33	15	326
AC	2	7	6	13	13	1	7		2	7	1	7		8	4		5	21	3	107
AB	1	3	1	15	2		3	1	1	7	1	3		12	1		3	11	3	68
Total	63	495	167	572	325	38	233	59	40	201	17	311	90	282	141	21	266	713	176	4209

Key:

GD = Gangster Disciples

W/S = White Supremacist

NAE = New Aryan Empire

WAR = White Aryan Resistance

AC = Aryan Circle

AB = Aryan Brotherhood

ARKANSAS DEPARTMENT OF CORRECTION INPATIENT AND EMERGENCY ROOM UTILIZATION

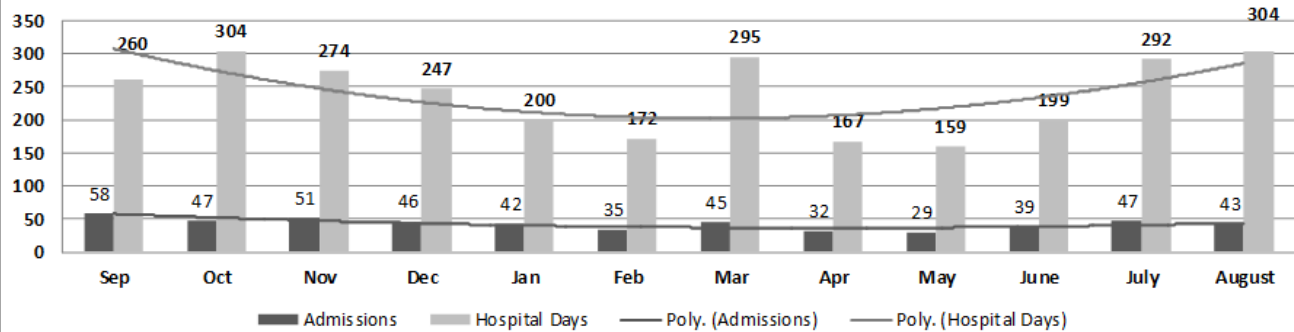
ADC Inpatient Statistics Past 12 Months

	2016				2017								Average
	Sep	Oct	Nov	Dec	Jan	Feb	Mar	Apr	May	June	July	August	
Admissions	58	47	51	46	42	35	45	32	29	39	47	43	42.8
Hospital Days	260	304	274	247	200	172	295	167	159	199	292	304	239.4
Average Length of Stay	4.48	6.47	5.37	5.37	4.76	4.91	6.56	5.22	5.48	5.10	6.21	7.07	5.59

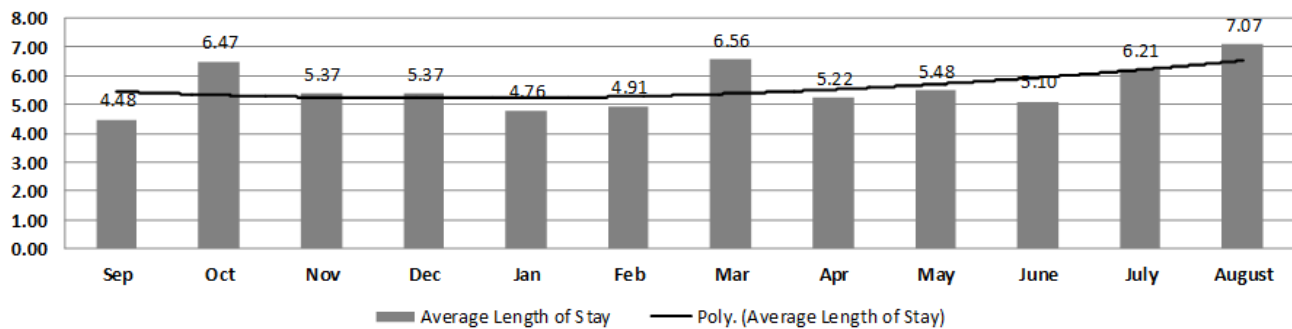
ADC ER Visits Past 12 Months

	2016				2017								Average
	Sep	Oct	Nov	Dec	Jan	Feb	Mar	Apr	May	June	July	August	
Emergency Room Visits	86	101	103	102	92	85	129	114	92	85	92	133	101.2

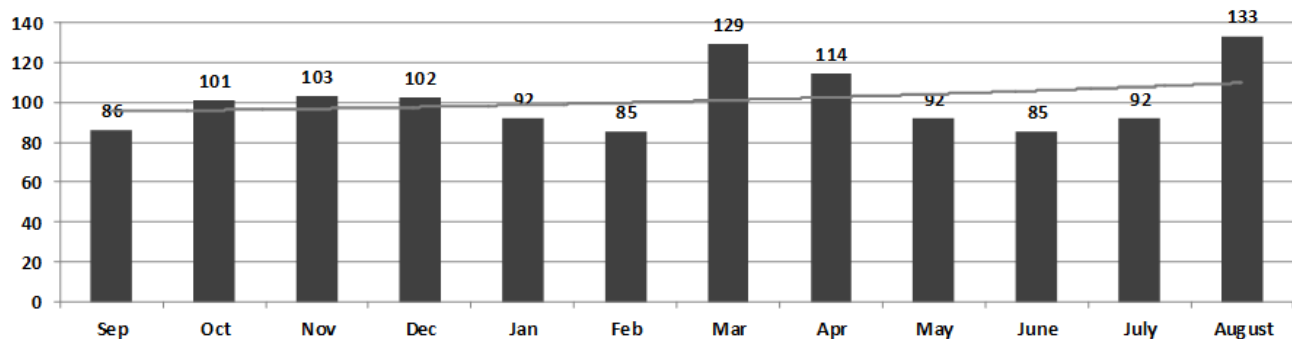
ADC Inpatient Utilization Past 12 Months



ADC Inpatient Average Length of Stay Past 12 Months



ADC Emergency Room Visits Past 12 Months



**August 2017
Medical Grievance
Board Report**

Unit	Acknowledg ed/ Received	Rejected	Reviewed & Signed by Dep Director	With Merit	With Merit, but Resolved	% With Merit	Without Merit
Benton	0	0	0	0	0	0%	0
Bowie Co.	3	0	4	0	0	0%	4
CMU	1	0	1	0	0	0%	1
Cummins	21	2	24	2	0	8%	22
Delta	7	1	8	0	1	13%	7
EARU	25	3	34	7	2	26%	25
EARU Max	33	1	39	7	2	23%	30
Ester	1	0	3	0	0	0%	3
Grimes	4	4	15	0	0	0%	15
Hawkins	0	1	0	0	0	0%	0
McPherson	5	0	17	0	0	0%	17
MCWRC	0	0	0	0	0	0%	0
MSU	6	1	7	0	0	0%	7
North Central	3	0	8	1	0	13%	7
NWAWRC	0	0	0	0	0	0%	0
Ouachita	52	9	32	4	0	13%	28
Pine Bluff	0	0	1	0	0	0%	1
Randall Williams	3	0	6	0	1	17%	5
SNN	0	0	0	0	0	0%	0
TRCC	0	0	0	0	0	0%	0
Tucker	1	0	12	1	1	17%	10
Varner	14	1	14	1	0	7%	13
Varner S Max	21	8	40	6	0	15%	34
WRU	5	1	7	0	0	0%	7
WHM	1	1	0	0	0	0%	0
WWR	0	0	0	0	0	0%	0
TOTAL	206	33	272	29	7	13%	236

September 2017

PURCHASE ORDERS OVER \$10,000.00

PURCHASE ORDERS OVER \$10,000.00						
VENDOR	DESCRIPTION	LOCATION	PO#	PURCHASE AMOUNT	FUND	
WWV Grainger	Replacement Skylights	ORU/Maintenance	4501743609	\$50,941.86	Operational Budget	
Green & Chapman LLC	Fuel	Wrightsville	4501741645	\$15,119.62	Operational Budget	
Crop Production Services Inc	Herbicide	Cummins/Farm	4501743807	\$27,540.00	Operational Farm Budget	
Bob Barker Company	Clothing Purchases	Varner	4501744812	\$28,960.11	Operational Budget	
William R Hill & Co., Doug Waldmann	Food Purchases	Central Warehouse	4501744674	\$254,551.36	Operational Budget	
Arkansas Correctional Industries	Boots	Varner	4501744846	\$29,827.23	Operational Budget	
US Foods Inc	Food Purchases	Central Warehouse	4501744678	\$61,458.10	Operational Budget	
Sysco Food Services of Arkansas	Food Purchases	Central Warehouse	4501744684	\$32,521.00	Operational Budget	
Kerr Paper & Supply	Paper Bags & Food Wrap	Central Warehouse	4501744718	\$10,516.25	Operational Budget	
Robbins Sales Company Inc	Food Purchases	Central Warehouse	4501744712	\$40,155.36	Operational Budget	
Arkansas Correctional Industries	Food Purchases	Central Warehouse	4501744720	\$11,277.00	Operational Budget	
Arkansas Correctional Industries	Janitorial Supplies	Central Warehouse	4501744723	\$14,250.88	Operational Budget	
American Paper & Twine Co	Janitorial Supplies	Central Warehouse	4501744729	\$36,354.73	Operational Budget	
Mid States Services Inc	Toilet Paper	Hawkins/Industry	4501745462	\$21,964.80	Operational Industry Budget	
Natural State Crop Consultant LLC	Crop Consulting	Cummins/Farm	4501745391	\$10,500.00	Operational Farm Budget	
Krueger International Inc	Chair Kits	Tucker/Industry	4501745726	\$40,464.00	Operational Industry Budget	
McKesson Medical Surgical Minnesota	Employee TB Screening	Medical Services	4501745544	\$26,208.30	Operational Budget	
Triple J Flying Services Inc	Aerial Chemicals for Soybeans	Cummins/Farm	4501745919	\$19,075.00	Operational Farm Budget	
Galls LLC	Uniform Shirts	Training Academy	4501745982	\$23,405.20	Operational Budget	
WWV Grainger	X-Ray Scanning Equipment	Cummins/Emergency Prep	4501745820	\$23,406.19	Operational Budget	
Arkansas Correctional Industries	Bulk Form Order for Units	Purchasing/Each unit cost center	4501746147	\$51,716.69	Operational Budget	
Arkansas Correctional Industries	Stainless Steel Benches	North Central	4501746271	\$14,978.63	Inmate Welfare Fund	
Tommys Flying Service Inc	Aerial Spray over Soybeans	Tucker/Farm	4501746336	\$16,800.00	Operational Farm Budget	
Miller Bowie Supply .Com	Fencing	Cummins/Farm	4501746262	\$10,815.04	Operational Farm Budget	
Arkansas Correctional Industries	Toilet Paper	Central Warehouse	4501746164	\$300,576.25	Operational Budget	
Arkansas Correctional Industries	Janitorial Supplies	Central Warehouse	4501746158	\$35,585.78	Operational Budget	
Green Point AG LLC	Insecticide	Tucker/Farm	4501746367	\$15,000.00	Operational Farm Budget	
JMS Russel Metals Corp	Iron & Metal	Tucker/Industry	4501746076	\$17,041.50	Operational Industry Budget	
Bob Barker Company	Clothing Purchases	Wrightsville	4501746181	\$12,855.93	Operational Budget	
Green Point AG LLC	Insecticide	Cummins/Chemical Shed	4501746428	\$15,273.00	Operational Farm Budget	
Greenway Equipment Inc	Combine Rental	Tucker/Farm	4501745981	\$17,570.31	Operational Farm Budget	
Arkansas Correctional Industries	Field Jackets	Wrightsville	4501746070	\$19,100.72	Operational Budget	
National Food Group	Food Purchases	Central Warehouse	4501746440	\$102,723.80	Operational Budget	
Robbins Sales Company Inc	Food Purchases	Central Warehouse	4501746439	\$167,114.08	Operational Budget	
US Foods Inc	Food Purchases	Central Warehouse	4501746437	\$39,039.50	Operational Budget	
William R Hill & Co., Doug Waldmann	Food Purchases	Central Warehouse	4501746429	\$270,899.94	Operational Budget	
MJ Kellner	Food Purchases	Central Warehouse	4501746447	\$186,048.00	Operational Budget	
Dreamline Mfg Inc	Mattress	Tucker/Industry	4501746103	\$36,750.00	Operational Industry Budget	
Bob Barker Company	Clothing Purchases	Grimes	4501746458	\$20,841.90	Operational Budget	
Mid South Sales Inc	Fuel	Central Warehouse	4501744805	\$10,523.96	Operational Budget	
The Presidio Corporation	Cisco Phones for EARU	Admin East/Information Systems	4501746697	\$23,036.75	Operational Budget	
Shoe Corporation of Birmingham	Boots	Tucker/Industry	4501746692	\$12,808.40	Operational Industry Budget	
Accessibility Lifts of Arkansas LLC	Wheelchair Lift	Delta/Maintenance	4501746351	\$20,624.83	Medical Sanction Fund	
R & E Supply Co	Condenser Unit & Refrigerant	Cummins Cold Storage Facility	4501746646	\$15,942.04	Operational Farm Budget	
Mid States Services Inc	Toilet Paper	Hawkins/Industry	4501747227	\$24,268.80	Operational Industry Budget	
Miller Bowie Supply .Com	Swine Feed	Cummins/Farm	4501747324	\$15,008.40	Operational Farm Budget	
Miller Bowie Supply .Com	Chicken Feed	Cummins/Farm	4501747304	\$19,360.00	Operational Farm Budget	
Gary R Powell AG H20	Machinery Parts	Cummins/Farm	4501745578	\$38,935.06	Operational Farm Budget	
Classic Brands LLC	Mattress	Wrightsville/Industry	4501746097	\$29,260.00	Operational Industry Budget	
Comfort Systems USA AR Inc	Boiler Heating Coil	Construction/Construction	4501746967	\$17,849.74	Telephone - Const	
Terry Simpson	Hauling Soybeans	EARU/Farm	4501747645	\$14,500.00	Operational Farm Budget	
Arkansas Correctional Industries	Clothing and Linens	Grimes	4501747583	\$11,822.17	Operational Budget	
Southern Pipe & Supply Inc	Boiler	McPherson	4501747637	\$10,852.29	Telephone - Const	
Green & Chapman LLC	Fuel	Cummins/Commissary	4501742019	\$14,245.17	Operational Budget	
SSB Manufacturing Company	Mattress	Wrightsville/Industry	4501746092	\$182,000.00	Operational Industry Budget	
Newberry Tanks & Equipment Inc	Farm Diesel Tank	EARU/Farm	4501746348	\$21,358.11	Operational Farm Budget	
Beyrl Bitely & Sons Trucking Inc	Hauling Corn	Cummins/Farm	4501747508	\$12,600.00	Operational Farm Budget	
Beyrl Bitely & Sons Trucking Inc	Hauling Soybeans	Cummins/Farm	4501747510	\$27,000.00	Operational Farm Budget	
Southern Aluminum Mfg Inc	Bench & Table	Tucker/Industry	4501747624	\$11,859.00	Operational Industry Budget	
Palarm Automation Inc	Box Filler Machine	Cummins Creamery/Farm	4501747682	\$26,337.50	Operational Farm Budget	
Arkansas Correctional Industries	Field Jackets	Grimes	4501747854	\$27,468.89	Operational Budget	
APAC Tennessee Inc	Asphalt	EARU/Construction	4501747810	\$119,970.00	Telephone - Const	
Cruse Uniforms and Equipment Inc	Chemical Weapons	Departmental Armor	4501748094	\$15,578.69	Telephone - Emerg Prep	
The Presidio Corporation	Network Service Equipment	Admin East/Information Systems	4501748087	\$11,219.20	Operational Budget	
Trane US Inc Trane Company Mid South	Cooling/Heating Unit	Grimes/Maintenance	4501748501	\$10,161.74	Telephone - Const	
The Sherwin-Williams Co	Paint	Construction/Construction	4501748651	\$12,293.54	Telephone - Const	
SHI International Corp	Software	Admin East/Information Systems	4501748699	\$53,058.64	Operational Budget	
The Presidio Corporation	Network Service Equipment	Admin East/Information Systems	4501748873	\$46,566.92	Operational Budget	
Pine Bluff Glass & Overhead Door	Replacement Windows	Construction/Maintenance	4501748996	\$11,721.30	Operational Budget	
Mid South Sales Inc	Fuel	ORU	4501747094	\$10,561.20	Operational Budget	
Untangle Inc	PC Software	Admin East/Information Systems	4501748776	\$25,758.00	Operational Budget	
Riggs Rental Exchange LLC	Equipment Rental-Genie Scissor Lift	Cummins/Commissary	4501749088	\$16,877.50	Operational Budget	
The Manhattan Group LLC	Bus Engine Rebuild	Central Transportation	4501749058	\$15,757.58	Operational Budget	
Redwood Toxicology Laboratory Inc	Drug Test T-Cup	Admin Building/Chief Deputy Institution	4501749341	\$34,571.25	Operational Budget	
Fisher Transportation Services LLC	Hauling Soybeans	Tucker/Farm	4501749758	\$43,800.00	Operational Farm Budget	
John W. Gasparini Inc	Heat Exchanger Repair Parts	Varner/Maintenance	4501749558	\$12,890.15	Operational Budget	
Datamax Inc	Lexmark Printers	Admin East/Information Systems	4501749852	\$16,923.46	Operational Budget	
Green Point AG LLC	Fuel	Cummins/Farm	4501749291	\$30,271.72	Operational Farm Budget	
Boyd Metals of Little Rock Inc	Angle Iron, Tubing, Sheet Metal	Tucker/Industry	4501750132	\$20,017.70	Operational Industry Budget	
Mid States Services Inc	Toilet Paper	Hawkins/Industry	4501750182	\$21,964.80	Operational Industry Budget	
Atlantic Beverage Company	Food Purchases	Central Warehouse	4501750460	\$19,465.30	Operational Budget	
Abram Goldszer, Goldszer Enterprises	Disposable Razor	Central Warehouse	4501750398	\$16,100.33	Operational Budget	
Phoenix Trading Inc, Americare Products	Deodorant Soap	Central Warehouse	4501750407	\$17,384.40	Operational Budget	
Arkansas Correctional Industries	Tea and Coffee	Central Warehouse	4501750392	\$11,080.00	Operational Budget	
Sysco Food Services of Arkansas	Food Purchases	Central Warehouse	4501750434	\$102,384.10	Operational Budget	
Arkansas Correctional Industries	Janitorial Supplies	Central Warehouse	4501750395	\$34,249.66	Operational Budget	
Arkansas Correctional Industries	Clothing and Linens	Delta	4501750477	\$38,758.43	Operational Budget	
Bob Barker Company	Clothing Purchases	Delta	4501750365	\$21,099.98	Operational Budget	
William R Hill & Co., Doug Waldmann	Food Purchases	Central Warehouse	4501750430	\$249,870.56	Operational Budget	
Robbins Sales Company Inc	Food Purchases	Central Warehouse	4501750440	\$33,034.40	Operational Budget	
National Food Group	Food Purchases	Central Warehouse	4501750450	\$30,640.00	Operational Budget	
Layne Christensen Company	Well Pump Repair	EARU/Maintenance	4501739012	\$24,212.38	Operational Budget	
Arkansas Correctional Industries	Clothing	Grimes	4501750940	\$17,525.90	Operational Budget	
Mid South Sales Inc	Fuel	Central Warehouse	4501750279	\$10,601.93	Operational Budget	
Total for Purchases over \$10,000				\$3,873,259.93		
FIRM CONTRACTS OVER \$25,000.00						
VENDOR	DESCRIPTION	UNIT	Contract # P.O.#	PURCHASE AMOUNT	FUND	
Total for Contracts				\$0.00		
EMERGENCY PURCHASE ORDERS OVER \$25,000.00						

**Arkansas Department of Correction
Vacancies, Hires and Terminations
September 2017**

<u>UNIT</u>	VACANCIES	HIRES	TERMINATIONS
BENTON (CR05)	6	1	1
CENTRAL OFFICE (CR01, CR02, CR08 & CR22)	13	2	3
CHAPLAINCY	0	0	0
CONSTRUCTION (CR04)	7	3	5
CUMMINS (CR09)	59	2	14
DELTA (CR10)	16	3	1
EAST ARKANSAS (CR12)	37	9	14
ESTER (CR11)	15	2	6
FARM (CR29)	8	0	1
GRIMES (CR27)	24	3	7
INDUSTRY (CR07)	15	0	1
MAXIMUM SECURITY (CR14)	44	4	3
MCPHERSON (CR28)	25	3	9
MENTAL HEALTH	34	2	1
MISS COUNTY (CR15)	4	1	1
NORTH CENTRAL (CR16)	6	7	3
NORTHWEST ARK (CR17)	1	1	0
OUACHITA RIVER (CR30)	33	10	10
PINE BLUFF (CR20)	6	0	2
RANDAL L. WILLIAMS (CR13)	13	0	3
TEXARKANA (CR21)	4	0	3
TRANSPORTATION (CR32)	10	0	0
TUCKER (CR23)	39	4	7
TUCKER RENTRY (CR33)	0	1	2
VARNER (CR24)	99	5	6
WRIGHTSVILLE (CR25)/HAWKINS(CR06)	29	5	12
TOTAL	547	68	115

Chaplaincy

Monthly Report for: August 2017	BENTON	CUMMINS	DELTA REGIONAL	EAST ARKANSAS	EAST ARKANSAS MAX	ESTER	GRIMES	HAWKINS	MAXIMUM SECURITY	MCPHERSON	NORTH CENTRAL	OUACHITA RIVER	PINE BLUFF	RANDALL L WILLIAMS	TUCKER	VARNER	VARNER MAX	WRIGHTSVILLE	PTF	TOTAL
Services Chaplains Oversaw																				
Christian																				
Population	5	11	11	6	0	1	6	2	13	4	7	5	3	13	10	3	0	3	0	103
Segregation	0	0	2	0	0	0	0	0	0	1	0	2	0	0	0	0	0	0	0	5
Muslim																				
Population	0	4	4	7	0	0	4	0	0	4	0	2	1	4	0	5	0	1	0	36
Segregation	0	0	0	0	0	0	0	0	0	0	0	0	0	0	0	0	0	0	0	0
Total Services																				144
Volunteers in Charge																				
Protestant	22	25	3	16	0	14	19	8	56	27	22	7	11	14	15	23	4	15	0	301
Catholic	0	0	0	2	0	0	2	5	1	2	1	2	0	0	0	3	4	4	0	26
Muslim	0	1	0	0	0	4	4	0	0	5	0	4	0	0	0	0	0	0	0	18
Other	4	2	0	1	0	0	0	0	9	2	0	14	0	0	0	0	0	0	0	32
Baptism	0	0	0	19	0	0	12	21	0	0	1	0	0	1	2	25	3	5	0	89
Marriages																				
	0	0	0	0	0	0	0	0	2	0	1	1	0	0	0	0	0	1	0	5
Distributed by Chaplains																				
Greeting Cards	20	56	6	0	0	22	33	0	139	933	18	112	215	10	92	89	199	0	300	2244
Bibles, Quran, Torah, Etc.	50	33	50	8	27	85	24	48	65	52	50	800	7	8	33	74	27	22	0	1463
Study Course	325	0	2	4	7	20	18	0	155	38	0	96	0	3	1	230	71	0	0	970
Writing Supplies	35	1400	0	0	0	150	62	0	190	2	0	100	0	0	0	0	0	0	800	2739
Literature	200	1578	735	407	73	375	17	125	450	230	209	800	158	10	1	3429	910	300	225	10232
Chaplain's Visits																				
Barracks	81	74	64	9	0	24	115	6	49	125	81	142	35	6	231	111	37	28	0	1218
Approximate Hours Spent in Barracks	44	45	12	5	0	98	253	6	23	60	42	97	6	1	58	16	11	14	0	791
Inmate Office visits	58	63	96	72	0	75	190	87	51	69	71	190	32	118	219	280	0	25	0	1696
Other Office visits	83	22	10	26	0	20	35	5	22	48	20	98	9	6	45	16	0	30	0	495
Hospital	0	0	1	0	0	0	6	0	0	3	1	33	0	5	0	1	0	0	0	50
Infirmary/Sick Call	0	4	2	6	0	4	42	0	5	4	3	37	4	10	5	7	0	5	0	138
Restrictive Housing	0	3	3	0	14	0	18	0	46	9	5	25	4	10	1	0	25	4	0	167
Punitive Isolation	0	4	3	0	3	0	0	0	4	9	0	28	4	10	0	0	12	0	0	77
PC - DRU	0	0	4	0	0	0	0	0	0	0	0	0	0	0	0	0	0	0	0	4
Visitation Days	0	0	2	0	0	0	0	0	0	2	3	4	0	0	0	0	0	0	0	11
Volunteer Visits																				
RCV	5	0	0	0	0	0	5	0	29	17	11	90	0	0	15	0	0	0	0	172
OCV	11	0	0	0	0	14	0	0	53	12	23	0	20	18	91	9	0	20	20	291
Spiritual Advisor	0	2	0	0	0	0	0	0	0	0	0	11	1	1	4	0	1	1	0	21
CRA	24	42	16	96	8	0	250	44	102	34	79	117	15	4	139	45	11	11	0	1037
Religious Volunteer Hours																				
Volunteer Hours	97	175	28	254	14	14	265	84	444	139	310	527	72	67	783	255	24	80	0	3632
DENOMINATIONAL/VOLUNTEER CHAPLAIN HOUR	89	48	12	26	0	254	46	159	108	160	157	62	14	86	129	20	0	225	0	1595
Total Volunteer Hours																				5227
Other Activities of Chaplain																				
Counseled Employees	124	7	3	8	0	4	8	0	20	23	5	39	6	4	6	14	13	4	0	288
Orientation Sessions	0	4	0	1	0	0	0	0	1	0	4	4	0	0	0	0	0	0	0	14
Free World Devotions	0	2	0	4	0	9	5	0	8	2	0	8	12	5	4	0	0	0	0	59
Spoke in Churches	4	12	1	14	0	4	22	0	6	1	0	19	12	4	7	0	0	0	0	106
Crisis Intervention Sessions	3	25	0	0	0	4	0	8	4	20	4	83	6	6	6	7	3	16	0	195
Marriage Counseling	4	0	1	3	0	0	2	0	0	15	1	3	0	3	0	0	0	3	0	35
Denominational Meeting	0	1	0	0	0	1	0	0	2	0	0	4	0	4	0	0	0	0	0	12
Chaplain's Meeting	0	4	1	1	0	1	2	1	1	1	1	2	1	1	1	3	0	2	0	23
Volunteer Training Session	0	0	1	1	0	1	0	0	0	0	1	2	1	0	1	0	0	3	0	11
Choir Trip	0	0	0	0	0	0	0	0	0	0	0	0	0	0	0	0	0	0	0	0
Chaplain Transfers																				
	0	0	0	0	0	0	0	0	0	0	0	0	0	0	0	0	0	0	0	0
Chaplain Promotions																				
	0	0	0	0	0	0	0	0	0	0	0	0	0	0	0	0	0	0	0	0
PAL PROGRAM																				
Enrolled at start of month	0	46	21	50	0	45	44	45	16	56	23	41	0	33	52	46	0	28	0	546
Enrolled during the month	0	11	8	0	0	5	8	9	3	19	7	8	0	3	16	6	0	4	0	107
Removed From PAL Program																				
# Paroled	0	0	0	0	0	0	1	6	0	9	0	2	0	2	3	2	0	1	0	26
# Completed	0	0	0	1	0	0	4	0	0	1	3	1	0	0	2	2	0	0	0	14
# Withdrew	0	6	0	0	0	5	0	2	0	0	0	3	0	0	0	3	0	2	0	21
# Removed	0	3	7	0	0	0	0	3	0	4	0	8	0	2	9	0	0	2	0	38
# Transferred	0	2	2	0	0	0	1	2	0	5	1	1	0	0	1	0	0	0	0	15
Total Removed from PAL Program	0	11	9	1	0	5	6	13	0	19	4	15	0	4	15	7	0	5	0	114
Total Enrolled at the End of the Month	0	46	20	49	0	45	46	41	19	56	26	34	0	32	53	45	0	27	0	539
Volunteers In PAL																				
	0	17	2	10	0	8	15	14	19	20	5	10	0	4	7	5	0	24	0	160
Special Events:																				
	3	1	1	2	2	1	0	1	1	1	0	2	0	2	2	0	0	0	0	19

AR-DOC Securus Video Visitation Activity Tracker

Total ADP: 15,586

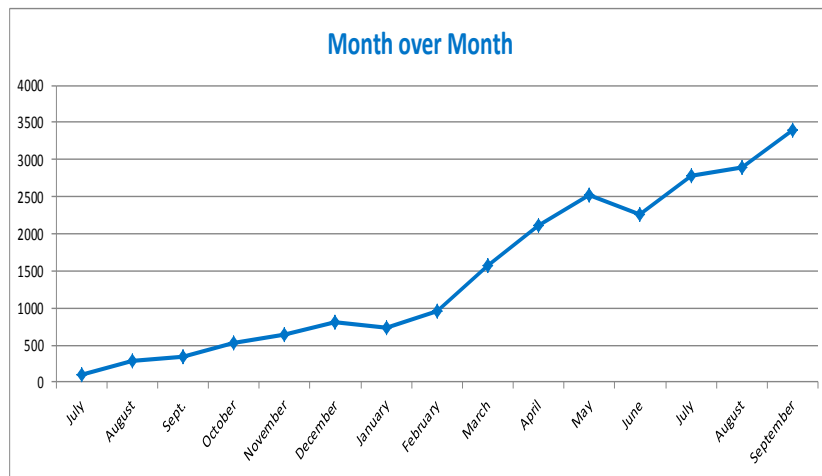
July 6, 2016 Go Live: Cummins & Pine Bluff Re-Entry
August 17, 2016 Go Live: Benton, State Police Barracks & Wrightsville Unit
Sept. 14, 2016 Go Live: NW Arkansas Work Release
Sept. 28, 2016 Go Live: Varner Unit & Texarkana Regional Correction Center
Nov. 2, 2016 Go Live: Mississippi County Work Release Center
Jan. 18, 2017 Go Live: Randall L Williams Facility & Pine Bluff Complex
Feb. 22, 2017 Go Live: Mcpherson Unit, J Aaron Hawkins Sr. Center Facility & Ester Unit
March 29, 2017 Go Live: East Arkansas Regional Unit & Tucker Re-entry
April 11, 2017 Go Live: North Central Unit
April 12, 2017 Go Live: Grimes Unit
June 3, 2017 Go Live: Tucker Unit
July 19, 2017 Go Live: Delta Regional Unit
August 23, 2017 Go Live: Tucker Maximum Security Unit
August 28, 2017 Go Live: Ouachita River Unit

Promotional Pricing

Until 12/31/17: \$5/30 minutes - Promotional price point to encourage remote visitation

Total Visits by Month	July	August	Sept.	October	November	December	January	February	March	April	May	June	July	August	September
Total	97	288	348	528	631	806	736	958	1,578	2,117	2,524	2,252	2,780	2,898	3,398
Target Objective	2,002	2,552	4,468	4,468	4,590	4,590	5,589	7,097	8,876	10,722	10,722	11,710	11,710	14,659	14,659

Anywhere Visitation Performance:



Completed Visits

Site	September	August
Cummins	300	249
Pine Bluff Re-Entry	0	0
Benton	79	94
State Police Barracks	39	33
Wrightsville Satellite	0	0
NW Arkansas WRC	0	1
Varner Unit	148	149
Texarkana Regional	5	3
Mississippi County WRC	48	74
Randall L Williams	225	235
Pine Bluff Complex	149	153
Mcpherson	137	146
J Aaron Hawkins Sr.	222	227
Ester	330	394
East Arkansas Regional	255	290
Tucker Re-entry	0	1
North Central	221	215
Grimes	330	256
Tucker Unit	276	328
Delta Regional	142	25
Tucker Max	83	7
Ouachita River	409	18
Total:	3398	2898

Missed by Inmate

Site	September	August
Cummins	14	9
Pine Bluff Re-Entry	0	1
Benton	3	7
State Police Barracks	6	0
Wrightsville Satellite	0	0
NW Arkansas WRC	0	0
Varner Unit	7	22
Texarkana Regional	1	5
Mississippi County WRC	9	5
Randall L Williams	17	9
Pine Bluff Complex	3	8
Mcpherson	5	3
J Aaron Hawkins Sr.	6	4
Ester	13	6
East Arkansas Regional	14	8
Tucker Re-entry	0	0
North Central	0	2
Grimes	6	6
Tucker Unit	43	4
Delta Regional	1	0
Tucker Max	1	0
Ouachita River	14	0
Total:	163	99