



**Wendy Kelley**  
**Director**

**Board Report**  
**November 2017**



## **PUBLIC RELATIONS**

### **RESEARCH/PLANNING**

**October 2017 Admissions and Releases** – Admissions for October totaled **587** (486-males & 101-females) while Releases totaled **541** (461-males & 80 females) for a net increase in-house of 46 Inmates.

**Inmate Population Growth/Projection** – At the end of October 2017, the Arkansas Department of Correction Population totaled **18,348** representing an increase of **811** Inmates since the beginning of 2017. Calendar year 2017 average growth is **81** Inmates per month, up from an average decrease of **14** Inmates per month during calendar year 2016.

**Average County Jail Back-up** – The backup in the County Jails averaged **1,667** Inmates per day during the month of October 2017 – up from an average decrease of **1,495** inmates per day during the month of September 2017. Average County Jail Back-up for first four months of **FY18** is **1,530** Inmates per day.

## **LEGAL SERVICES**

### **PREA**

#### **PREA data:**

Number of Calls Received	284
Total PREA Issue Calls	9
Total Non-PREA Calls	127
Total Calls Referred to Internal Affairs Division	8
Total Repeat Calls	67
Total Calls with no message	81
Total Technical Failure Calls	0

### **INMATE GRIEVANCE**

**Inmate Formal/Informal Grievances:** In October, there were a total of 2,159 formal grievances filed and 3,194 informal grievances filed at various units.

**Institutional Grievances:** There were a total of 607 appeals of institutional grievances received in October. Four hundred seventy-eight (478) were acknowledged and 129 were rejected for various reasons. A total of 502 appeals were answered, 494 had no merit and 8 were found with merit.

## **INSTITUTIONS**

### **STTG**

The STTG Coordinator conducted an STTG sweep of the Tucker Unit on October 11<sup>th</sup> and the Maximum Security Unit on the 24<sup>th</sup>. Assistance was also provided to four (4) BCOT classes on October 2<sup>nd</sup>, 6<sup>th</sup>, 16<sup>th</sup> and 20<sup>th</sup>. The STTG Coordinator also attended the Board of Correction meeting in West Memphis on October 30<sup>th</sup> and gave a briefing on STTG's operating in ADC.

### **FARM**

Fall weather was dry which was perfect for harvest. Tucker and East Arkansas farms finished harvesting all their crops on October 26<sup>th</sup>. Cummins farm needed two (2) additional days to finish the soybean harvest. EARU has all of their land prepared for next year. Cummins has been fertilizing, putting out litter and bedding their land for next year. Tucker has started their land preparation. The fall gardens were doing well until the freeze hit three (3) weeks early. The normal frost/freeze date is November 18<sup>th</sup>. We had frost on October 24<sup>th</sup> followed by a freeze on both October 27<sup>th</sup> & 28<sup>th</sup>, which wiped out a lot of the crops. The garden and surrounding pasture at Newport were lost due to a Sept 19<sup>th</sup> incident. An ag-plane spraying a soybean field destroyed our garden crop and hay, and what was not killed could not be salvaged. Gathering documents for a claim. Cooler temps are helping the dairy milk production. We are still meeting ADC needs. The livestock operation finished hay season. We have more hay in inventory this year than we have had in 8 years going into winter. Winter pastures have been planted. Cummins is winding down calving season. The Wrightsville beef herd is weaning this year's calves. The calves will be sold during the months of December and January.

**Regional Maintenance Hours**

Regional Maintenance Hours	October
Benton Unit	6,820
Delta Regional Unit	2,436
East Arkansas Unit	5,080
Grimes Unit	2,048
McPherson Unit	1,124
Mississippi Co Work Release	1,560
North Central Unit	9,488
Ouachita River Unit	2,712
Randall Williams Unit	4,040
Texarkana Regional Unit	668
Tucker Unit	1,565
Varner Unit	2,554
Wrightsville Unit	2,347
<b>Total Hours</b>	<b>42,442</b>

**Work Release Rent Report**

Unit	October
Benton Unit	\$98,498.00
Mississippi County Work Release	\$57,137.00
Northwest AR Work Release Center	\$48,841.00
Pine Bluff Unit	\$35,904.00
Texarkana Regional Unit	\$41,752.00
Tucker Re-Entry Center	\$25,738.00
<b>Total</b>	<b>\$307,870.00</b>

**Preparing for Success**

Unit	Slots	Completed	Discharged	End Count
Ester Barracks 9-12	125	2	18	116
Tucker Re-Entry	20	7	1	18
<b>Total</b>	<b>145</b>	<b>9</b>	<b>19</b>	<b>134</b>

There are 586 males and 134 females on the waiting list within 42 months of their release date, and of those, 10 males are mandated by the Parole Board. The average time on the waiting list is approximately 3 months. The total number of inmates on the waiting list, including those not currently within the identified time frame, is 659 males and 167 females.

**WAGE****(Workforce Alliance for Growth in the Economy)**

Unit	Slots	Completed	Discharged	End Count
Delta	20	10	10	10
Ester	10	0	0	3
Hawkins	36	16	6	31
Ouachita River	10	1	0	9
Tucker	10	3	0	9
Tucker Re-Entry	10	0	1	5
Wrightsville	36	4	2	8
<b>Total</b>	<b>132</b>	<b>34</b>	<b>19</b>	<b>75</b>

**Randall L. Williams Juvenile Education Program**

	Slots	Enrolled	Discharged	End Count
Juveniles	20	19	0	19
<b>Total</b>	<b>20</b>	<b>19</b>	<b>0</b>	<b>19</b>

**ADMINISTRATIVE SERVICES****BUDGET SECTION UPDATE****Procurement Section Update:****Current Bids:**

- Metal/Isolation Recreation Yard-EARU
- Personal Care Items

**Contracts Recently Awarded/Renewed:**

- Waste Management-EARU
- Liquid Bleach
- Janitorial Supplies

**Procurement/Contracts Report (required by policy) –**

For October 2017, Purchase Orders and Contracts in excess of \$10,000 amounted to \$3,177,178.55. Of this amount, \$1,488,407.17 was for Inmate Care and Custody related items (food, shoes, clothing, etc.). Bulk fuel costs for the month of October were \$74,826.83 – average cost of E-10 was \$2.07/gallon; average cost for bulk diesel was \$1.96/gallon.

**HUMAN RESOURCES UPDATE**

**Workplace Safety** – During the month of October, the modified version of the Health and Safety Plan was presented to one (1) Basic Training class to a total of 70 cadets.

Seventy-two (72) incidents were reported to the company nurse in October, bringing our total to 708 in 2017.

**Benefits** – There were 113 FMLA requests processed, with 91 approved, 4 denied and 18 pending. A total of 14 CAT leave requests were received, 6 were approved and 8 are pending.

**Physical Assessments** –A total of 205 applicants and incumbent personnel were assessed in the month of October. One hundred nineteen (119) incumbent personnel successfully passed their physical assessment. Eighty-three (83) applicants passed their physical assessments and 3 did not (and none have rescheduled).

**Employment** – ADC Human Resources personnel attended 4 Job Fairs in the month of October:

Date	Unit	Location
10/3	Max	State House Convention Center
10/20	EARU	Eugene Woods Civic Center/ Memphis
10/21	Grimes	Swifton Fall Festival
10/26	Cummins, Delta & Varner	University of Arkansas Technical College/McGehee

A total of 2,003 applications were received in October. Sixty-nine (69) Non-Security applications and one hundred five (105) CO I applications were processed. One hundred eleven (111) Correctional Officers were hired, and twenty-four (24) Correctional Officers were rehired.

**Vacancies, Hires, and Terminations** - In October 2017, a total of 561 vacancies, 120 new hires, and 113 terminations were at the various ADC locations.

**Administrative Services Division Monthly Reports (attached) include:**

**Gifts, Grants, and Donations**– \$19,410 was donated in the month of October (various hardware items & 942 library books).

**Inmate Welfare Fund**-balance on October 31, 2017 was \$5,822,607.92.

**The PAWS in Prison Fund** total on October 31, 2017 was \$180,933.48: ADC account (7004822/Donations) \$19,159.55 and ADC account (NDC0500/Recycling) \$101,553.06 and ADC Paws in Prison Non-Profit account balance was \$60,220.87.

## **INFORMATION TECHNOLOGY**

We began the pilot program of the automated county jail process with the Baxter County Jail on October 5<sup>th</sup>. The jail is having some difficulties in receiving its invoices. The application-generated emails do not have the invoices attached, nor is there a link to access the invoices when logged into EOMIS. We are working with Sergeant Neal to resolve these issues.

### **SECURUS Video Visitation (SVV) Project: In Process**

- The East Arkansas Regional Unit Dog Kennel network is complete. One (1) SVV Kiosk with Inmate Telephone service included was installed. The network also supports leased tablets.
- The Tucker Unit Dog Kennel installation has been approved by SECURUS to move forward.
- No work has occurred on the Cummins Unit Dog Kennel installation due to a revised agreement with Securus and Entergy on the usage of their poles for aerial fiber.
- Wrightsville – SECURUS began installation on August 28<sup>th</sup>. The contractors were onsite on October 4<sup>th</sup>. “Go Live” is tentatively scheduled for the first week of December.

A total of 3,572 video visits occurred this month. Visits will remain at the \$5.00/30 minutes promotional price to encourage remote visitation until December 31, 2017.

**SECURUS Tablet Project:**

We are one month into the deployment of Phase I. Edovo is live at East Arkansas. The Edovo servers have been installed at all Phase I facilities, and teams are working to deploy the application on the tablets. To date, around 477 tablets have been leased. Phase II of the tablet implementation date is scheduled to “Go Live” on January 26, 2018. Several facilities could possibly go live at an earlier date pending facility approval as installations are completed.

**Tablet Implementation Schedule**

<b>Install Priority Phase 1</b>	<b>ADC Facility</b>	<b>Installation % Completed</b>
1	EAST ARKANSAS REGIONAL	100%
1	MISSISSIPPI COUNTY WORK RELEASE	98%
2	GRIMES	97%
2	HAWKINS	98%
2	MCPHERSON	97%
3	PINE BLUFF	97%
3	PINE BLUFF RE-ENTRY	98%
3	ESTER	98%
3	RANDALL WILLIAMS	97%
4	MAXIMUM SECURITY	97%
4	TUCKER	97%
4	TUCKER RE-ENTRY	98%
5	DELTA	74%
<b>Install Priority Phase 2</b>	<b>ADC Facility</b>	<b>Installation % Complete</b>
5	WRIGHTSVILLE	31%
5	CUMMINS	31%
5	VARNER	25%
5	NORTH CENTRAL	59%
5	NWAWRC	77%
5	TEXARKANA	60%
5	OUACHITA	69%
5	BENTON	32%
5	STATE POLICE	49%

**Training Academy – October 2017****Basic Training Division**

Lt. Lance Hall’s BCOT Class 2017-M graduated on October 6, 2017, with 50 cadets. James Capdeville from the North Central Unit won the Willis H. Sargent Award. Major Kennie Bolden from the Ouachita River Correctional Unit served as the Graduation Speaker.

Lt. David Ferrier’s BCOT Class 2017-N graduated on October 27, 2017 with 54 cadets. Jonathan Petty from the Grimes Unit received the Willis H. Sargent Award. Center Supervisor Misty White from the Mississippi County Work Release Center served as the Graduation Speaker.

**In-Service Division**

On October 3rd and 4th, a Security for Non Security class was offered for full-time staff. Management Level 1 class was held October 9<sup>th</sup> – October 12<sup>th</sup>. Security for Non-Security for Contract Staff was held October 30<sup>th</sup> – October 31<sup>st</sup>.

Deputy Warden Judy Taylor presented Sexual Assault Investigation Training (SAIT) to PREA Compliance Managers, Lieutenants, Captains, Majors, Deputy Wardens, and Wardens. Attendees learned key information on the PREA process. This class was held on October 9<sup>th</sup> – 11<sup>th</sup> and again on October 30<sup>th</sup> – November 1<sup>st</sup>. PREA “Train the Trainer” class was given on October 24–29.

The Certified Police Officer (CPO) Range Qualifications was offered October 16<sup>th</sup> – 18<sup>th</sup> to ensure that our CPO staff members are proficient in their shooting abilities.

The Annual Training Day was held on October 20th which offered all mandatory classes in one day.

**eCADEMY**

During the month of October 2017, 424 ADC employees completed a total of 4,176.50 hours of eCADEMY training. Approximately 9% of ADC employees completed at least one course during that time frame, averaging 0.9 hours per staff member.

**HEALTH/CORRECTIONAL PROGRAMS****CHAPLAINCY SERVICES****Benton Work Release**

Christian Motorcycle Association visited the facility on October 13th and 14th and led three (3) services in the chapel with 75 inmates. CRA James Brown facilitated a showing of the movie “Courageous” on October 21st with 56 inmates. Twelve (12) inmates earned certificates for Stepping Up, a Family Life Men’s Leadership course.

**Cummins Unit**

Volunteers from First Assembly of God of Star City, held revival services from October 26th through 29th with a total of 414 inmates.

**Delta Regional Unit**

On October 19th, six (6) volunteers from Center Fork Missionary Baptist Church near Hot Springs served as judges for Delta Unit's first Bible Quizlympics Competition. Two (2) teams of 9 inmates competed in answering 325 questions from the book of Acts.

**East Arkansas Regional Unit**

Volunteers from First Pentecostal Church of Little Rock led revival services on October 26th and 27th with a total of 89 inmates.

**Grimes Unit**

On October 20th, the Storybook Project assisted 28 inmates in recording themselves reading stories. The recording will be sent to the inmate's children.

**McPherson Unit**

The Storybook Project assisted 91 inmates in recording themselves reading stories on October 25th. These recordings will be sent to the participating inmate's children.

**North Central Unit**

On October 20th, the Storybook Project assisted 32 inmates in recording themselves reading stories. The recordings will be sent to the inmate's children.

**Ouachita River Correctional Unit**

Christmas Behind Bars Prison Ministry distributed gift packages on October 7th to all inmates.

**Texarkana**

Chaplain Ashworth and CRA Dall Wilson assisted Center Supervisor Dexter Holmes on October 21st in conducting a graduation ceremony for inmates who completed the Stepping Up program. Chaplain Ashworth and CRA Wilson also conducted a worship service that same evening.

**Tucker Unit**

KAIROS Walk #40 was held from October 5<sup>th</sup> — 8<sup>th</sup>. Twenty-two (22) volunteers worked inside the facility all four days to assist 24 inmate participants in completing the event.

**Varner Unit**

Christmas Behind Bars visited Varner from October 14th through the 16th. They provided gift bags for all inmates and offered worship service opportunities for those who wished to participate.

**Wrightsville-Hawkins (Pathway To Freedom)**

John Brown University representatives came and conducted a seminar for the PTF participants on October 27.

**Accreditation**

ACA Internal Audits Completed:

October 2-4 Central Office/Admin East Reaccreditation,  
100% Mandatory, 98.5% Non-Mandatory  
October 10-13 Grimes File Review  
October 16-19 Maximum Security File Review  
October 23-26 Cummins Unit File Review  
October 30-31 Cummins Unit File Review

Fire/Safety and Sanitation independent audits conducted by the Fire and Sanitation Coordinator:

October 2-4 Central Office/Admin East Reaccreditation  
100% Mandatory, 98.5% Non-Mandatory  
October 9-12 Maximum Security Audit  
October 16-19 Ouachita River Unit Independent Audit  
October 24-26 Grimes Independent Audit  
October 31 McPherson Independent Audit

**VOLUNTEER SERVICES**

The total number of volunteer hours for the month.

Unit	Hours
Cummins	2
East Arkansas Regional	100
Ester	4
Maximum Security	8
North Central	4
Ouachita River	16
PAWS	22
Pine Bluff	11
Religious Services/Chaplaincy	4,977
Randall Williams	26
Think Legacy	232.5
Varner	109.5
Wrightsville Complex	15
<b>Total</b>	<b>5,527</b>



**PROGRAM SERVICES****Sex Offender Treatment Programs:**

	SLOTS	COMPLETED	REMOVED	CLIENTS
RSVP	238	0	5	240
SOFT	30	0	1	10
Total	268	0	6	250

There are 853 males on the waiting list for RSVP and 7 females on the waiting list for SOFT within 5 years of their TE date. Of those, 78 inmates are mandated by the Parole Board. The average time on the waiting list from request is approximately 3 to 6 months for those stipulated. The total on the waiting list, including those not currently within the identified time frame, is 1,522 males and 11 females. We have one PREA inmate in the program at this time.

\*The waiting list numbers include inmates that are ineligible due to class or housing status.

**Therapeutic Community:**

Unit	Slots	Completed	Removed	Clients
Tucker	129*	10	11	132
Wrightsville	45*	2	4	48
McPherson	50*	2	6	52
<b>Total</b>	<b>224</b>	<b>14</b>	<b>21</b>	<b>232</b>

There are 224 males and 19 females on the waiting list within 18 months of their release date. Of those, 13 are stipulated by the Parole Board. The average time on the waiting list from request is 17 days. The total on the waiting list, including those not currently within the identified time frame, is 619 males and 53 females.

\*Denotes transitional beds available at this treatment program. The Tucker Therapeutic Community also has 129 client slots and seven (7) peer counselor slots.

**Substance Abuse Treatment Program**

Unit	Slots	Completed	Removed	Clients
Grimes	50*	4	1	50
McPherson	100*	22	7	102
MSU	3	0	0	3
RLW/CF	188*	38	21	190
Tucker	43*	4	7	42
Varner	44	5	5	45
Wrightsville	135*	22	36	140
Total	<b>563</b>	<b>95</b>	<b>77</b>	<b>572</b>

There are 2,278 males and 305 females on the waiting list within 18 months of their release date. And of those, 55 are stipulated by the Parole Board. The average time on the waiting list from request is 15 days. The total on the waiting list including those not currently within the identified time frame is 3,226 males and 429 females.

\*Denotes transitional beds available at this treatment program.

**Outpatient:**

There were 2,253 inmates on the mental health medication log at the beginning of October. Mental Health staff conducted the following contacts during October.

Case management contacts	2,125
Requests for interviews	1,178
Testing	1
Intakes	581
Unit requests	1,204
Pre-lock up reviews	570
Routine segregation reviews	685
Segregation rounds	19,837
PREA evaluations	57
Routine follow-up	192
834 requests	38

**ORCU Residential Program Unit:**

The RPU at Ouachita had 7 admissions and 5 discharges in October for an end-of-month count of 123.

**McPherson Mental Health Residential Program:**

There were no admissions or discharges in October. The end-of-month count was 38.

**Habilitation Program:**

The Habilitation Program at the Ouachita River Correctional Unit provided treatment services to 46 inmates during October. There was 1 admission and 2 discharges for an end-of-month count of 44.

**Restrictive Housing (RH) Anger Management Treatment:**

The RH Anger Management Treatment Program at the Cummins Unit provided treatment services to 27 inmates during October. There were 3 admissions and 3 discharges for an end-of-month count of 24.

**Staffing:**

The following Mental Health Services and SATP positions were vacant in September and October.

Positions	September	October
Psychologists	9	10
Social Workers	14	15
Advisors	8	8
Substance Abuse Program Leaders	3	0
Admin Specialist/Analyst	1	0
Rehab Program Manager	2	2
Psychological Examiner	1	1

**ADDITIONAL PROGRAM INFORMATION**

Self-Study Classes	# of Participants	# Completed	Waiting List
Anger Management	295	282	1,156
Thinking Errors	426	357	1,342
Substance Abuse Education	122	50	253
Communication Skills	223	145	1,091
Domestic Violence	34	18	370
Victims of Domestic Violence	0	0	62
Stress Management	255	200	1,181
Parenting	220	167	765

**Suicide:**

There were 109 suicidal threats, gestures or low/moderate risk attempts during October. There were 5 serious attempts, none resulted in death.

**County Mental Health Requests:**

During October, there were 65 requests of a mental health nature received. Thirty (30) inmates were fast tracked to ADC.

**County Medical Health Requests:**

During October, there were 328 requests of a medical nature received. Six (6) inmates were fast tracked to ADC.

**Monetary Sanctions:**

Sanction reimbursements for October were \$12,500.

**Deaths:**

There were three (3) inmate deaths during the month of October; one (1) was claimed and two (2) were cremated.

**CCS:**

See attachment for CCS's report regarding outside beds and emergency room visits.

**Medical Grievances:**

In October, there were 189 appeals of medical grievances received, 216 appeals were answered; 21 of those were found to be with merit and 5 with merit but resolved.

**SEX OFFENDER ASSESSMENTS****Assessments Completed:**

Risk Level	October	Sept. 1999 thru October 31, 2017
Level 1	0	1,164
Level 2	27	6,968
Level 3	19	6,467
Level 4	2	614
Default 3	2	*
<b>Total</b>	<b>50</b>	<b>15,213</b>
*Default Level 3's are included in the total number of Level 3's to date.		

**ACIC Numbers:**

The total number of sex offenders registered from Sept. 1999 thru October 2017:

In Compliance	7,756
Delinquent (Did not return address on time)	1,014
Confined	3,083
Out of State	3,234
Address Unknown (absconded)	183
Deported	174
Incapacitated	80
Out of USA	7
<b>Total</b>	<b>15,531</b>

**Think Legacy**

Unit	Slots	Graduates	Removed	Signed-out	Assigned
Cummins	55	0	1	0	46
Delta	24	0	0	0	24
EARU	50	0	5	0	49
Ester	48	1	6	0	39
Grimes	56	3	0	0	50
Hawkins	40	1	3	0	35
McPherson	68	8	4	2	68
North Central	59	4	3	2	49
Ouachita River	46	0	0	0	46
Tucker Re-Entry	24	0	0	0	14
Tucker	55	2	4	0	57
Varner	49	6	2	0	49
Wrightsville	49	6	4	1	50
<b>Total</b>	<b>623</b>	<b>31</b>	<b>32</b>	<b>5</b>	<b>576</b>

There are 111 males and 38 females on the waiting list. All Think Legacy applicants are within 18 months of their TE, or discharge date. The average time on the waiting list is approximately 45 days. The Burlsworth Foundation spoke at the McPherson Unit on October 16th. Tucker Unit hosted a WAGE Graduation Ceremony on October 19th and was covered by THV 11 News. The McPherson Unit hosted a Resource and Re-unification Fair on October 30th.

**PAWS IN PRISON****Currently Enrolled in Training:**

Maximum Security Unit	8
Tucker Unit	7
Hawkins Unit	5
Randall Williams Unit	4
Ouachita River Unit	8
North Central Unit	7
<b>Total</b>	<b>39</b>

**Completed Training:**

October 2017	11
Year to date- 2017	128
Since Inception Dec. 2011	989
Dogs Currently in foster: (Graduated but not adopted)	8

**Construction/Maintenance****Project Updates****Cummins Unit:**

On-call architect submitted plans and specs to DBA for new generator. Architect is also working on plans for the new School to be located where the existing Hobbycraft building is. Continue replacing windows that were broken during recent disturbance.

**Cummins Poultry:**

Continuing to test Generators weekly. Refrigeration and electrical work for the new cooler is ongoing. Also repaired original Poultry cooler.

**Delta Unit:**

Contractor finished tearing off and replacing the roof covering, and is now working on penetrations and parapet. The Horse Barn repairs are complete. The gym repairs are lacking only the HVAC repairs. Entegrity is continuing to work on the design of the energy saving project. Plans have been sent to DBA for Phases I and 2. Replacing barracks windows in the main corridor with polycarbonate (Lexan).

**East Arkansas Regional Unit:**

Entegrity is continuing to work on plans for energy savings projects. Plans have been sent to DBA for Phases I and 2. The Highway Department has graded and laid all the asphalt for the parking lot. Unit staff has striped the parking spaces. Plans for the emergency generators for the perimeter lighting were sent to DBA for review and approval.

**Maximum Security Unit:**

Working on repairs to boiler. Purchasing replacement tubes for the hot water exchange tank. Ordering new high service pumps and valves. Barracks 4 utility chase: Plans approved by DBA for construction. Ordered ceiling material. Crews completed repairs to East Isolation areas. Finished Recreation Yard upgrades.

**Newport:**

Grimes Gym roof repair has been completed. Crews are now working inside the building to repair water damages. We have repaired the barn roof and wall, began work on the dog kennel barn.

**Ouachita River Correctional Unit:**

Gravel operations continue. More than half of the broken skylights have been replaced, with the remainder on order. Chapel: Working on interior of building and ordering remainder of material as funds become available.

**Pine Bluff:**

Architects submitted Plans to DBA for review to change former Industry area in 9 barracks to inmate housing.

**Tucker Unit:**

Continue to monitor waste water plant & make repairs & adjustments to keep in compliance. Working on changing out the water filter media and adding more filters.

**Wrightsville:**

Architects submitted plans to DBA for approval of new generator at both Units. Working on the construction of the new Isolation recreation yard. Finished repairs to the farm house at Wrightsville.

**CONSTRUCTION / MAINTENANCE PERSONNEL UPDATE:**

1 Project Supervisor  
3 Maintenance Technicians  
1 Administrative Spec  
1 Assistant Maintenance Supervisor  
1 Corporal



## 2017 INFORMAL GRIEVANCE REPORT

Month	BENTON	HAWK/M	HAWK/F	WRTS SPU	WRTS	WRTS/SAT	EARU & MX	GRIMES	RLW	MCWR	MCPH	MSU	NCU	PBU Re-entry	PBU	NWA	TU	TRCC	VSMX	VU	CU	ORCU	Ester	DRU	Bowie Cty	TOTAL
JAN	2	15	34	0	75	13	416	301	59	0	309	225	138	1	25	0	109	1	235	85	297	388	22	150	106	3006
FEB	2	15	34	0	83	6	313	280	40	0	247	211	181	0	18	0	68	2	533	100	301	229	23	193	91	2970
MAR	1	7	21	0	63	0	480	283	36	2	381	214	205	0	30	1	162	3	694	88	470	298	48	218	115	3820
APR	4	28	23	0	83	0	341	234	52	0	366	173	198	0	25	0	125	6	657	97	287	214	46	123	96	3178
MAY	4	28	35	0	110	0	821	315	53	0	326	181	217	0	19	0	159	1	611	90	312	306	49	146	98	3881
JUN	2	17	30	0	78	0	1218	278	78	0	367	148	181	0	41	0	169	2	757	85	314	314	44	162	87	4372
JUL	1	37	28	0	82	0	370	283	61	0	411	155	197	0	46	0	155	0	564	94	228	310	53	172	82	3329
AUG	1	37	60	0	71	0	425	296	59	0	283	137	226	0	68	2	160	1	616	84	275	408	71	235	90	3605
SEPT	1	22	49	0	121	0	460	246	44	0	313	122	199	0	63	0	162	0	612	92	198	272	39	185	72	3272
OCT	0	23	20	0	90	0	528	266	41	0	353	129	99	0	70	1	167	0	558	98	205	257	33	188	68	3194
NOV																										0
DEC																										0
TOTAL	18	229	334	0	856	19	5372	2782	523	2	3356	1695	1841	1	405	4	1436	16	5837	913	2887	2996	428	1772	905	34627

## 2017 FORMAL GRIEVANCE REPORT

Month	BENTON	HAWK/M	HAWK/F	WRTS SPU	WRTS	WRTS/SAT	EARU & MX	GRIMES	RLW	MCWR	MCPH	MSU	NCU	PBU Re-entry	PBU	NWA	TU	TRCC	VSMX	VU	CU	ORCU	Ester	DRU	Bowie Cty	TOTAL
JAN	1	5	16	0	27	6	350	113	31	1	148	239	59	1	6	0	87	2	314	67	151	165	12	67	24	1892
FEB	2	7	12	0	45	1	388	117	17	0	112	208	87	0	6	0	68	0	360	91	165	169	8	81	16	1960
MAR	0	15	20	0	24	0	389	98	17	0	125	222	95	0	3	1	110	0	421	76	173	166	13	97	30	2095
APR	2	39	46	0	34	0	322	113	22	1	148	201	79	0	6	0	65	2	423	86	141	182	16	56	14	1998
MAY	2	28	35	0	47	0	445	142	27	0	186	227	93	0	3	0	93	0	361	77	145	271	28	78	25	2313
JUN	0	9	8	0	34	0	408	114	31	0	167	170	69	0	7	0	99	3	425	83	160	240	21	79	22	2149
JUL	0	10	7	0	45	0	438	136	37	0	129	178	94	0	20	0	98	0	345	77	132	218	24	77	15	2080
AUG	0	9	15	0	25	0	429	128	23	0	139	162	11	0	19	2	122	0	358	74	154	216	35	131	29	2081
SEPT	0	10	29	0	48	0	352	123	30	1	152	115	89	0	32	0	113	0	322	73	126	157	20	92	17	1901
OCT	0	9	10	0	30	0	569	120	18	0	184	179	51	0	21	1	101	0	339	83	147	157	16	108	16	2159
NOV																										0
DEC																										0
TOTAL	7	141	198	0	359	7	4090	1204	253	3	1490	1901	727	1	123	4	956	7	3668	787	1494	1941	193	866	208	20628

Inmate Institutional Grievance Appeal Report October 2017				
	Acknowledged	Rejected	Processed W/O Merit	Processed W/ Merit
Benton Unit	0	0	0	0
Benton Work Release	0	0	0	0
Bowie County Texas Correctional Facility	11	3	9	0
Cummins Unit	33	10	18	0
Cummins Modular Unit	0	2	1	0
Delta Regional Unit	33	5	27	
East Arkansas Regional Unit	28	11	29	1
East Arkansas Regional Max Unit	88	12	78	4
Ester Unit	2	0	7	0
Grimes Unit	17	11	15	0
Maximum Security Unit	29	8	50	0
Tucker Re-Entry	0	0	0	0
McPherson Unit	21	4	33	0
McPherson Mental Health Residential Program Unit	0	4	1	0
Mississippi County Work Release Center	0	0	0	0
Northwest Arkansas Work Release Center	0	0	0	0
North Central Unit	19	5	15	0
Ouachita River Correctional Unit	35	10	32	0
ORCU Hospital	0	0	0	0
ORCU New Commitment	1	1	1	0
ORCU Mental Health Residential Program Unit	1	0	1	0
Pine Bluff Unit	6	1	1	0
Pine Bluff Re-Entry	0	0	0	0
Randall L. Williams Correctional Facility	3	2	1	0
Texarkana Regional Correctional Center	0	0	0	0
Tucker Unit	19	7	16	1
Varner Super Max	101	20	123	1
Varner Unit	26	7	22	0
Wrightsville Unit	4	3	11	1
Hawkins Center	0	2	1	0
Hawkins for Males	1	1	2	0
Hawkins SPU	0	0	0	0
<b>Total</b>	<b>478</b>	<b>129</b>	<b>494</b>	<b>8</b>

<b>Admissions and Releases</b>			
<b>Oct-17</b>			
<b><u>Admissions</u></b>	<b><u>Male</u></b>	<b><u>Female</u></b>	<b><u>Total</u></b>
Asian	4	0	4
Black	163	18	181
Hispanic	10	1	11
Native American Indian	3	0	3
Nat. Hawaiian or Pacific Isl	2	0	2
White	<b>304</b>	<b>82</b>	<b>386</b>
<b>Total</b>	<b>486</b>	<b>101</b>	<b>587</b>
<b><u>Releases</u></b>	<b><u>Male</u></b>	<b><u>Female</u></b>	<b><u>Total</u></b>
Asian	2	0	2
Black	187	13	200
Hispanic	11	0	11
White	261	67	328
<b>Total</b>	<b>461</b>	<b>80</b>	<b>541</b>

**ARKANSAS DEPARTMENT OF CORRECTION**  
**INMATE POPULATION GROWTH 2000-2024**

Updated 10/31/2017

Mo.	2000	2001	2002	2003	2004	2005	2006	2007	2008	2009	2010	2011	2012	2013	2014	2015	2016	2017
Jan.	11,984	11,908	12,402	13,015	13,105	13,595	13,481	13,839	14,518	14,796	15,334	16,312	15,134	14,815	17,481	18,142	17,785	17,824
Feb.	12,169	12,022	12,529	13,054	13,166	13,783	13,633	14,012	14,603	14,883	15,374	16,209	14,990	15,008	17,438	18,082	17,625	17,608
March	12,006	12,033	12,299	13,108	13,088	13,418	13,534	13,772	14,580	14,843	15,290	16,095	14,964	14,665	17,395	18,233	17,573	17,666
April	12,069	12,167	12,465	13,213	13,323	13,469	13,554	13,851	14,769	14,937	15,570	16,172	15,124	14,850	17,604	18,703	17,815	17,798
May	12,109	12,384	12,558	13,463	13,556	13,528	13,711	14,146	14,880	15,146	15,694	16,062	15,132	15,074	17,593	18,693	17,769	17,652
June	12,005	12,108	12,439	13,418	13,389	13,251	13,430	13,915	14,700	15,025	15,564	15,554	14,832	14,825	17,340	18,813	17,973	17,963
July	12,030	12,190	12,622	13,509	13,528	13,286	13,560	14,082	14,868	15,195	15,807	15,519	14,879	15,379	17,522	18,870	18,130	18,180
August	12,087	12,371	12,815	13,565	13,632	13,419	13,646	14,224	15,100	15,385	15,829	15,240	14,675	16,103	17,549	18,806	17,919	18,051
September	11,983	12,289	12,774	13,341	13,516	13,237	13,652	14,217	14,850	15,285	16,025	15,172	14,724	16,412	17,605	18,549	18,026	18,179
October	12,119	12,348	12,942	13,341	13,584	13,363	13,775	14,349	14,836	15,381	16,311	15,271	14,856	16,993	17,880	18,430	18,127	18,348
November	12,094	12,408	13,162	13,408	13,706	13,587	13,913	14,437	15,025	15,340	16,460	15,205	14,625	17,168	17,848	17,981	17,573	
December	11,856	12,333	12,845	13,106	13,470	13,338	13,728	14,315	14,716	15,199	16,204	15,062	14,654	17,235	17,874	17,707	17,537	
Net Ann. Inc.	29	477	512	261	364	-132	390	587	401	483	1,005	-1,142	-408	2,581	639	-167	-170	811
Avg. Mo. Inc.	2	40	43	22	30	-11	33	49	33	40	84	-95	-34	215	53	-14	-14	81

Population is total jurisdictional count at end of each month. Population at end of month December 1999 was 11,827.

Average monthly population increase for past fifteen years 2002 - 2016 is 29

Average monthly population increase for past ten years Jan.2007 - Dec 2016 is 32

Average monthly population increase for past five years 2012 - 2016 is 41

Projected at Growth of 29 per Month

	2008	2009	2010	2011	2012	2013	2014	2015	2016	2017	2018	2019	2020	2021	2022	2023	2024
Mo.	Actual	Actual	Actual	Actual	Actual	Actual	Actual	Actual	Actual	Actual/ Proj.	Proj.	Proj.	Proj.	Proj.	Proj.	Proj.	Proj.
January	14,518	14,796	15,334	16,312	15,134	14,815	17,481	18,142	17,785	17,824	18,435	18,783	19,131	19,479	19,827	20,175	20,523
February	14,603	14,883	15,374	16,209	14,990	15,008	17,438	18,082	17,625	17,608	18,464	18,812	19,160	19,508	19,856	20,204	20,552
March	14,580	14,843	15,290	16,095	14,964	14,665	17,395	18,233	17,573	17,666	18,493	18,841	19,189	19,537	19,885	20,233	20,581
April	14,769	14,937	15,570	16,172	15,124	14,850	17,604	18,703	17,815	17,798	18,522	18,870	19,218	19,566	19,914	20,262	20,610
May	14,880	15,146	15,694	16,062	15,132	15,074	17,593	18,693	17,769	17,652	18,551	18,899	19,247	19,595	19,943	20,291	20,639
June	14,700	15,025	15,564	15,554	14,832	14,825	17,340	18,813	17,973	17,963	18,580	18,928	19,276	19,624	19,972	20,320	20,668
July	14,868	15,195	15,807	15,519	14,879	15,379	17,522	18,870	18,130	18,180	18,609	18,957	19,305	19,653	20,001	20,349	20,697
August	15,100	15,385	15,829	15,240	14,675	16,103	17,549	18,806	17,919	18,051	18,638	18,986	19,334	19,682	20,030	20,378	20,726
September	14,850	15,285	16,025	15,172	14,724	16,412	17,605	18,549	18,026	18,179	18,667	19,015	19,363	19,711	20,059	20,407	20,755
October	14,836	15,381	16,311	15,271	14,856	16,993	17,880	18,430	18,127	18,348	18,696	19,044	19,392	19,740	20,088	20,436	20,784
November	15,025	15,340	16,460	15,205	14,625	17,168	17,848	17,981	17,573	18,377	18,725	19,073	19,421	19,769	20,117	20,465	20,813
December	14,716	15,199	16,204	15,062	14,654	17,235	17,874	17,707	17,537	18,406	18,754	19,102	19,450	19,798	20,146	20,494	20,842
Net Ann. Inc.	401	483	1,005	-1,142	-408	2,581	639	-167	-170	869	348	348	348	348	348	348	348
Ave. Mo. Inc.	33	40	84	-95	-34	215	53	-14	-14	72	29	29	29	29	29	29	29

### Monthly Population Averages

	10/2	10/3	10/4	10/5	10/6	10/9	10/10	10/11	10/12	10/13	10/16	10/17	10/18	10/19	10/20	10/23	10/24	10/25	10/26	10/27	10/30	10/31	
Unit/Center																							Average
Benton	325	325	323	321	326	325	322	323	322	326	328	328	327	326	326	324	324	320	321	325	325	328	325
Cummins	1,942	1,940	1,934	1,933	1,932	1,929	1,916	1,924	1,921	1,917	1,909	1,906	1,915	1,915	1,935	1,932	1,936	1,935	1,934	1,932	1,930	1,925	1,927
Delta	606	608	625	619	618	616	602	597	614	614	612	609	610	609	629	626	625	622	621	621	620	628	616
EARU	1,660	1,660	1,655	1,655	1,653	1,650	1,650	1,646	1,645	1,644	1,635	1,655	1,665	1,671	1,663	1,657	1,657	1,666	1,668	1,662	1,666	1,671	1,657
Ester	584	584	582	577	581	578	584	576	576	582	575	568	567	568	577	580	583	581	576	573	574	573	577
Grimes	1,083	1,083	1,081	1,076	1,074	1,078	1,078	1,082	1,077	1,075	1,082	1,083	1,081	1,076	1,079	1,080	1,080	1,079	1,079	1,080	1,079	1,077	1,079
Max Sec	647	647	645	643	643	643	648	648	643	643	643	643	643	643	643	644	644	644	644	639	638	637	643
McPherson	972	974	971	973	973	976	977	975	962	963	969	973	971	972	974	973	974	978	978	989	994	994	975
MCWRC	134	133	133	132	135	135	135	135	134	136	136	135	135	135	135	135	135	137	137	137	137	137	135
North Central	829	823	818	808	815	809	822	833	839	838	829	829	830	828	824	822	821	834	844	842	842	840	828
NWAWRC	100	100	100	100	100	100	100	100	100	100	100	100	99	100	100	100	99	99	100	99	99	98	100
Ouachita River	1,834	1,829	1,812	1,832	1,822	1,825	1,817	1,820	1,814	1,831	1,813	1,804	1,799	1,792	1,755	1,773	1,767	1,733	1,731	1,708	1,735	1,757	1,791
Randall L Williams	550	547	552	554	548	554	557	557	564	561	568	567	567	566	564	561	556	555	554	551	553	558	557
Pine Bluff	487	487	487	487	487	483	485	485	494	495	490	494	497	489	490	489	495	493	491	491	494	497	490
PB Reentry	54	54	54	54	54	54	54	54	54	54	54	54	54	54	54	54	54	54	54	54	54	54	54
TRCC	124	124	124	127	127	126	126	127	127	127	127	127	127	127	128	127	127	127	128	128	128	128	127
Tucker	998	1,007	1,001	996	1,001	998	996	994	987	990	993	995	1,000	1,000	1,000	1,004	1,007	1,004	999	999	996	992	998
Varner	1,700	1,699	1,706	1,702	1,708	1,705	1,710	1,712	1,706	1,699	1,702	1,713	1,709	1,708	1,704	1,690	1,704	1,714	1,712	1,724	1,724	1,725	1,708
Wrightsville	1,309	1,315	1,323	1,324	1,311	1,318	1,321	1,319	1,309	1,306	1,316	1,315	1,318	1,318	1,317	1,324	1,323	1,312	1,305	1,305	1,304	1,299	1,314
<b>Total ADC</b>	<b>15,938</b>	<b>15,939</b>	<b>15,926</b>	<b>15,913</b>	<b>15,908</b>	<b>15,902</b>	<b>15,900</b>	<b>15,907</b>	<b>15,888</b>	<b>15,901</b>	<b>15,881</b>	<b>15,898</b>	<b>15,914</b>	<b>15,897</b>	<b>15,897</b>	<b>15,895</b>	<b>15,911</b>	<b>15,887</b>	<b>15,876</b>	<b>15,859</b>	<b>15,892</b>	<b>15,918</b>	<b>15,902</b>
ALETA	20	20	20	20	20	20	20	20	20	20	20	20	20	20	20	20	19	19	19	19	19	19	20
Ar State Police	54	54	54	54	54	50	50	51	57	56	56	56	56	56	56	56	57	57	58	58	58	58	55
Co Jail / M	1,519	1,540	1,553	1,568	1,550	1,551	1,582	1,574	1,577	1,590	1,598	1,586	1,597	1,597	1,599	1,589	1,600	1,642	1,664	1,693	1,684	1,673	1,597
Co Jail / F	71	77	78	77	81	76	71	65	62	69	64	63	63	64	65	67	69	75	78	70	70	72	70
Total Co Jail BK	1,590	1,617	1,631	1,645	1,631	1,627	1,653	1,639	1,639	1,659	1,662	1,649	1,660	1,661	1,664	1,656	1,669	1,717	1,742	1,763	1,754	1,745	1,667
Bowie Co., TX	336	336	336	333	336	336	320	335	335	336	336	336	336	336	336	336	336	336	334	334	334	334	335
309/M	208	208	207	207	206	206	206	208	208	209	210	207	208	207	205	204	204	204	204	203	203	203	206
309/F	43	43	43	43	42	42	41	42	45	45	45	45	44	44	43	44	45	45	45	45	45	45	44
Total Act 309	251	251	250	250	248	248	247	250	253	254	255	252	252	251	248	248	249	249	249	248	248	248	250
<b>Total Non ADC</b>	<b>2,251</b>	<b>2,278</b>	<b>2,291</b>	<b>2,302</b>	<b>2,289</b>	<b>2,281</b>	<b>2,290</b>	<b>2,295</b>	<b>2,304</b>	<b>2,325</b>	<b>2,329</b>	<b>2,313</b>	<b>2,324</b>	<b>2,324</b>	<b>2,324</b>	<b>2,316</b>	<b>2,330</b>	<b>2,378</b>	<b>2,402</b>	<b>2,422</b>	<b>2,413</b>	<b>2,404</b>	<b>2,327</b>
<b>Total</b>	<b>18,189</b>	<b>18,217</b>	<b>18,217</b>	<b>18,215</b>	<b>18,197</b>	<b>18,183</b>	<b>18,190</b>	<b>18,202</b>	<b>18,192</b>	<b>18,226</b>	<b>18,210</b>	<b>18,211</b>	<b>18,238</b>	<b>18,221</b>	<b>18,221</b>	<b>18,211</b>	<b>18,241</b>	<b>18,265</b>	<b>18,278</b>	<b>18,281</b>	<b>18,305</b>	<b>18,322</b>	<b>18,229</b>



**Fiscal Year 2017 County Jail Backup**

DAY		Jul-17	Aug-17	Sep-17		Oct-17
1	*	1,384	1,490	1,460	*	1,577
2	*	1,384	1,478	1,460	*	1,590
3		1,392	1,471	1,460		1,617
4		1,419	1,467	1,462		1,631
5		1,419	1,467	1,462		1,645
6		1,424	1,467	1,437		1,631
7		1,428	1,475	1,426	*	1,631
8	*	1,428	1,493	1,456	*	1,631
9	*	1,428	1,472	1,456		1,627
10		1,437	1,485	1,456		1,653
11		1,473	1,505	1,439		1,639
12		1,442	1,505	1,445		1,639
13		1,474	1,505	1,450		1,659
14		1,468	1,525	1,479	*	1,659
15	*	1,468	1,524	1,489	*	1,659
16	*	1,468	1,529	1,489		1,662
17		1,491	1,518	1,489		1,649
18		1,482	1,546	1,490		1,660
19		1,441	1,546	1,471		1,661
20		1,435	1,546	1,472		1,664
21		1,464	1,592	1,491	*	1,664
22	*	1,464	1,592	1,537	*	1,664
23	*	1,464	1,577	1,537		1,656
24		1,453	1,543	1,537		1,669
25		1,455	1,516	1,552		1,717
26		1,452	1,516	1,578		1,742
27		1,481	1,516	1,607		1,763
28		1,483	1,490	1,596	*	1,763
29	*	1,483	1,490	1,577	*	1,763
30	*	1,483	1,480	1,577		1,754
31		1,484	1,476			1,745
Avg Daily Backup		1,450	1,510	1,495		1,667

Note: Totals do not include 309 Contracts in County Jails (maximum of 336)

Fiscal Year Average 1,530



## October STTG Unit Counts

Unit	Beginning Total	Confirmed	Suspected	In	Out	Paroled	Removed	Ending Total	Total Unit Population	Unit % of STTG's
Benton	63		0	6	7	1		61	325	18.77%
Cummins	497	3		27	6	14		507	1926	26.32%
Delta	167	2		34	34	3		166	622	26.69%
EARU	572	3	3	157	136	11		588	1674	35.13%
Grimes	325	1		14	9	6		325	1077	30.18%
Hawkins	38			6	4	1		39	449	8.69%
Max	236	14		6	5			251	635	39.53%
Mcpherson	62	2		1	1	1	4	59	995	5.93%
MCWR	40			2	2	2		38	137	27.74%
NCU	201			25	9	9		208	839	24.79%
NWAWR	16				1			15	90	16.67%
ORCU	311	1		86	25	7		366	1589	23.03%
ORCU Intake	90	116			132			74	184	40.22%
PB/Ester	282			63	42	12		291	1121	25.96%
RLW	143	3		30	18	5		153	560	27.32%
TWR	21			4				25	128	19.53%
Tucker	266	14		23	23	2		278	994	27.97%
Varner	666			85	83	9		659	1721	38.29%
Wrightsville	163			12	9	5		161	854	18.85%
<b>Total</b>	<b>4159</b>	<b>159</b>	<b>3</b>	<b>581</b>	<b>546</b>	<b>88</b>	<b>4</b>	<b>4264</b>	<b>15920</b>	<b>26.78%</b>

**ORCU Intake brought in 116 new STTG members into ADC last Month.**



## Arkansas Department of Correction

# October STTG Disciplinary Report

Unit	STTG Incidents	STTG Suspected Incidents	Total Unit Disciplinary	Disciplinary Involving STTG	Percentage
Benton			22	6	27.27%
Cummins			479	155	32.36%
Delta			216	99	45.83%
EARU	6		275	100	36.36%
Grimes	4	4	276	115	41.67%
Hawkins			36	1	2.78%
Max			92	45	48.91%
Mcperson			118	11	9.32%
MCWR			9	4	44.44%
NCU	2		132	55	41.67%
NWAWR			3	3	100.00%
ORCU			253	67	26.48%
ORCU Intake			8	2	25.00%
PB/Ester	1		74	23	31.08%
RLW	1		61	10	16.39%
TWR			0	0	0.00%
Tucker	4		119	51	42.86%
Varner			477	291	61.01%
Wrightsville	1		90	18	20.00%
<b>Total</b>	<b>19</b>	<b>4</b>	<b>2740</b>	<b>1056</b>	<b>38.54%</b>



## October STTG Counts by STTG Set

STTG Set	Benton	Cummins	Delta	EARU	Grimes	Hawkins	Max	Mcperson	MCWR	NCU	NWAWR	ORCU	Intake	PB	RLW	TWR	Tucker	Varner	Wrightsville	Total
Asian	1	2	1	1	2					1	1		1	3			2	1		16
Bloods	8	103	35	90	57	8	70	7	3	19	2	63	12	43	15	6	61	123	30	755
Crips	4	72	19	55	31	3	26	7	4	28	2	59	4	36	20	2	30	110	24	536
Folk	1	143	10	60	29	5	29	6		10	1	25	10	21		6	29	72	7	464
GD	14	18	34	132	67	8	50	5	7	40	3	94	16	64	44		62	129	33	820
Mexican	7	15	3	18	13	3	2	5		8	3	11	4	8	9		7	26	5	147
Motorcycle		1		4	4		1	1				1	1	1	3			3		20
Other	2	8	4	13	12		2	2		6		6	2	12	3		6	17	3	98
People	2	17	3	18	12		12	5	2	11	1	10	1	18	1	1	9	23	9	155
Unknown		2		12	9		1		1	8		5	3	1	4	1	3	1	3	54
W/S	12	37	28	54	35	7	14	16	8	26		40	13	41	23	9	30	77	20	490
NAE	2	28	13	34	15	2	9	2	3	15		23	3	10	11		11	15	5	201
WAR	5	46	8	68	24	2	25	2	6	21		19	3	19	13		21	30	16	328
AC	2	12	7	13	13	1	6	1	2	9	1	7	1	6	4		4	21	3	113
AB	1	3	1	16	2		4		2	6	1	3		8	3		3	11	3	67
<b>Total</b>	<b>61</b>	<b>507</b>	<b>166</b>	<b>588</b>	<b>325</b>	<b>39</b>	<b>251</b>	<b>59</b>	<b>38</b>	<b>208</b>	<b>15</b>	<b>366</b>	<b>74</b>	<b>291</b>	<b>153</b>	<b>25</b>	<b>278</b>	<b>659</b>	<b>161</b>	<b>4264</b>

Key:

GD = Gangster Disciples

W/S = White Supremacist

NAE = New Aryan Empire

WAR = White Aryan Resistance

AC = Aryan Circle

AB = Aryan Brotherhood

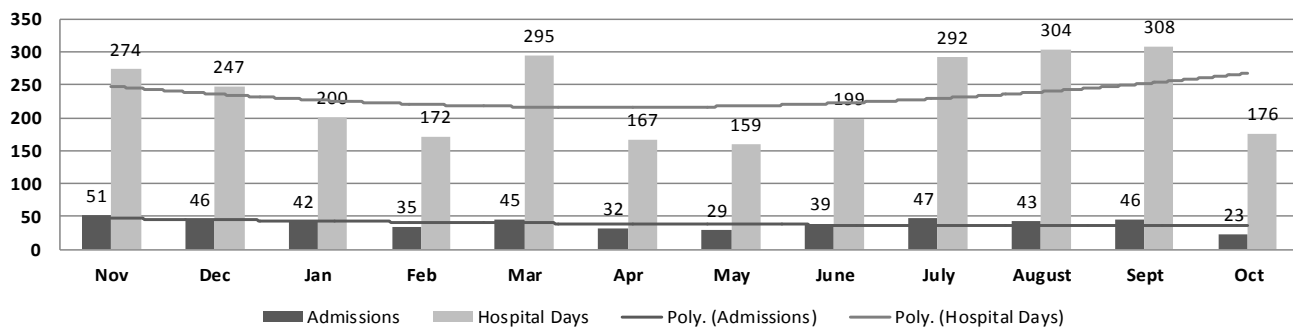
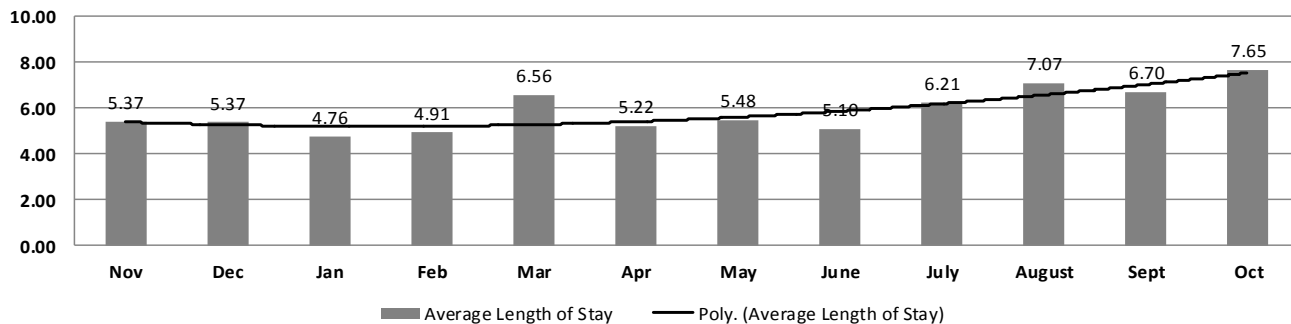
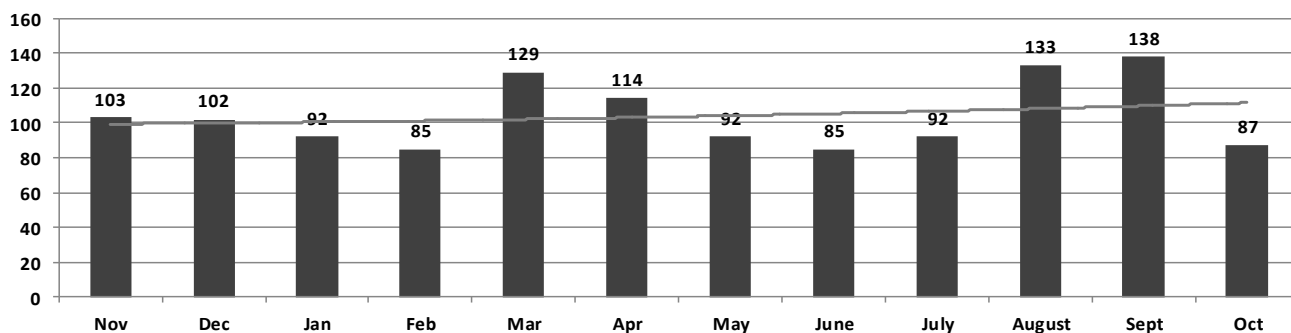
## ARKANSAS DEPARTMENT OF CORRECTION INPATIENT AND EMERGENCY ROOM UTILIZATION

ADC Inpatient Statistics Past 12 Months

	ABC Inpatient Statistics Past 12 Months												
	2016		2017										
	Nov	Dec	Jan	Feb	Mar	Apr	May	June	July	August	Sept	Oct	Average
Admissions	51	46	42	35	45	32	29	39	47	43	46	23	39.8
Hospital Days	274	247	200	172	295	167	159	199	292	304	308	176	232.8
Average Length of Stay	5.37	5.37	4.76	4.91	6.56	5.22	5.48	5.10	6.21	7.07	6.70	7.65	5.84

ADC ER Visits Past 12 Months

	2016		2017										
	Nov	Dec	Jan	Feb	Mar	Apr	May	June	July	August	Sept	Oct	Average
Emergency Room Visits	103	102	92	85	129	114	92	85	92	133	138	87	104.3

ADC Inpatient Utilization  
Past 12 MonthsADC Inpatient Average Length of Stay  
Past 12 MonthsADC Emergency Room Visits  
Past 12 Months



**October 2017  
Medical Grievance  
Board Report**

<b>Unit</b>	<b>Acknowledged/ Received</b>	<b>Rejected</b>	<b>Reviewed &amp; Signed by Dep Director</b>	<b>With Merit</b>	<b>With Merit, but Resolved</b>	<b>% With Merit</b>	<b>Without Merit</b>
<b>Benton</b>	0	0	0	0	0	<b>0%</b>	0
<b>Bowie Co.</b>	7	0	8	1	1	<b>25%</b>	6
<b>CMU</b>	0	1	0	0	0	<b>0%</b>	0
<b>Cummins</b>	12	2	17	2	0	<b>12%</b>	15
<b>Delta</b>	7	0	8	0	0	<b>0%</b>	8
<b>EARU</b>	24	7	16	2	1	<b>19%</b>	13
<b>EARU Max</b>	29	5	31	1	2	<b>10%</b>	28
<b>Ester</b>	5	0	4	0	0	<b>0%</b>	4
<b>Grimes</b>	6	1	6	0	0	<b>0%</b>	6
<b>Hawkins</b>	0	0	1	1	0	<b>100%</b>	0
<b>McPherson</b>	5	1	12	0	0	<b>0%</b>	12
<b>MCWRC</b>	0	0	0	0	0	<b>0%</b>	0
<b>MSU</b>	11	1	13	1	0	<b>8%</b>	12
<b>North Central</b>	10	1	12	0	0	<b>0%</b>	12
<b>NWAWRC</b>	0	0	0	0	0	<b>0%</b>	0
<b>Ouachita</b>	39	8	24	4	0	<b>17%</b>	20
<b>Pine Bluff</b>	0	0	0	0	0	<b>0%</b>	0
<b>Randall Williams</b>	1	0	1	0	0	<b>0%</b>	1
<b>SNN</b>	0	0	0	0	0	<b>0%</b>	0
<b>TRCC</b>	0	0	0	0	0	<b>0%</b>	0
<b>Tucker</b>	4	2	4	0	0	<b>0%</b>	4
<b>Varner</b>	4	0	16	4	0	<b>25%</b>	12
<b>Varner S Max</b>	22	2	35	4	1	<b>14%</b>	30
<b>WRU</b>	2	0	8	1	0	<b>13%</b>	7
<b>WHM</b>	1	1	0	0	0	<b>0%</b>	0
<b>WWR</b>	0	0	0	0	0	<b>0%</b>	0
<b>TOTAL</b>	<b>189</b>	<b>32</b>	<b>216</b>	<b>21</b>	<b>5</b>	<b>12%</b>	<b>190</b>

October 2017

<b>PURCHASE ORDERS OVER \$10,000.00</b>					
<b>VENDOR</b>	<b>DESCRIPTION</b>	<b>LOCATION</b>	<b>PO#</b>	<b>PURCHASE AMOUNT</b>	<b>FUND</b>
Littlefield Oil Co	Fuel	Grimes	4501743569	\$14,580.75	Operational Budget
Green & Chapman LLC	Fuel	Cummins/Commissary	4501749556	\$15,999.01	Operational Budget
Miller Bowie Supply	Chicken Feed	Cummins/Farm	4501751534	\$39,312.00	Operational Farm Budget
Green Point AG LLC	Soybean Fertilizer	Cummins/Chemical Shed	4501751535	\$47,700.00	Operational Farm Budget
Miller Bowie Supply	Dairy Cow Feed and Mineral	Cummins/Farm	4501751550	\$16,425.60	Operational Farm Budget
Dreamline Mfg Inc	Mattress	Tucker/Industry	4501752374	\$26,250.00	Operational Industry Budget
Shamrock Meats Inc	Ground Beef	Cummins Cold Storage	4501752410	\$319,800.00	Operational Farm Budget
Barnes Paper Co	Egg Cartons	Cummins/Farm	4501752448	\$10,961.71	Operational Farm Budget
Cedar Creek LLC	Plywood	Wrightsville/ACI Warehouse	4501752509	\$10,956.00	Operational Industry Budget
Dulaney Seed Inc	Oat Crop Seed	Cummins/Chemical Shed	4501752843	\$12,919.68	Operational Farm Budget
Mid States Services	Toilet Paper	Hawkins/ACI Imaging	4501752914	\$21,964.80	Operational Industry Budget
Cruse Uniforms	Body Armor	Training Academy	4501753104	\$100,068.80	Operational Budget
William Hill & Co Inc	Food Purchases	Central Warehouse	4501753045	\$104,942.84	Operational Budget
Robbins Sales Company Inc	Food Purchases	Central Warehouse	4501753123	\$83,509.44	Operational Budget
Arkansas Correctional Industries	Laundry and Janitorial Supplies	Central Warehouse	4501753038	\$18,858.49	Operational Budget
American Paper & Twine Co	Paper Towels	Central Warehouse	4501753043	\$11,887.65	Operational Budget
US Foods Inc	Food Purchases	Central Warehouse	4501753047	\$15,964.88	Operational Budget
A C Sales Co	Drink Mix	Central Warehouse	4501753169	\$11,512.00	Operational Budget
Tommy Huntley, Huntley Metal Sales	Yard Pens Project Supplies	Construction/Central Maintenance	4501753478	\$13,758.80	Work Release
Tommy Huntley, Huntley Metal Sales	Ceiling Materials	Construction	4501753706	\$32,619.12	Telephone Funds
Fastenal Co	Security and Auto Supplies	Construction	4501753750	\$46,380.44	Telephone Funds
Arkansas Correctional Industries	Clothing, Linens, Boots	McPherson	4501753841	\$33,285.40	Operational Budget
Green & Chapman LLC	Fuel	Tucker/Farm	4501752317	\$14,743.21	Operational Farm Budget
John W Gasparini Inc, Marks Plumbing	Construction, Plumbing Supplies	Max/Maintenance	4501754088	\$17,712.98	Operational Budget
Arkansas Correctional Industries	Boots	Cummins/Commissary	4501754054	\$14,086.80	Operational Budget
William Hill & Co Inc	Food Purchases	Central Warehouse	4501754339	\$36,696.36	Operational Budget
Printing Papers Inc	Paper	Central Warehouse	4501754351	\$27,276.75	Operational Budget
US Foods Inc	Food Purchases	Central Warehouse	4501754346	\$36,594.46	Operational Budget
WW Grainger	Skylights	Ouachita/Construction	4501754206	\$42,201.27	Operational Budget
Mid South Sales Inc	Fuel	EARU/Farm	4501753278	\$14,069.76	Operational Farm Budget
Arkansas Correctional Industries	Clothing	Ouachita	4501754320	\$43,301.34	ORU Operating Expense
Bob Barker	Clothing	Tucker	4501754500	\$19,833.60	Tucker Operating Expense
Sysco Food Services of Arkansas	Food Purchases	Central Warehouse	4501754584	\$349,200.00	Operational Budget
Mid States Services	Toilet Paper	Hawkins/ACI Imaging	4501755009	\$21,964.80	Operational Industry Budget
Arkansas Correctional Industries	Boots	Grimes	4501755332	\$11,557.73	Operational Budget
Green Point AG LLC	Soybean Fertilizer	Cummins/Chemical Shed	4501755433	\$47,700.00	Operational Farm Budget
Riceland Foods Inc	Soybean Meal	Cummins/Farm	4501755450	\$170,100.00	Operational Farm Budget
Green Point AG LLC	Rice & Soybean Fertilizer	Tucker/Farm	4501755431	\$85,650.00	Operational Farm Budget
Razor Chemical Inc	Janitorial Supplies	Delta/Janitorial	4501755677	\$24,102.80	Operational Industry Budget
Tabb Textiles Co Inc	Sheeting Fabric	Wrightsville/ACI Warehouse	4501755679	\$48,600.00	Operational Industry Budget
Barnes Paper Co	Egg Cartons	Cummins/Farm	4501755446	\$13,364.40	Operational Farm Budget
Greenway Equipment Inc	Combine Rental	Cummins/Farm	4501754657	\$23,000.00	Operational Farm Budget
Galls LLC	Uniform Shirts	Training Academy	4501755076	\$13,005.92	Operational Budget
GE Government Supply LLC	Powdered Milk	Cummins/Farm	4501756322	\$86,800.00	Operational Farm Budget
Insulation Refractories SVC INC	Reline Boiler Room Tank	Tucker/Construction	4501756209	\$14,650.94	Telephone Funds
National Food Group	Soy Protein	Cummins Cold Storage	4501756312	\$20,388.00	Operational Farm Budget
Mid States Services	Toilet Paper	Hawkins/ACI Imaging	4501756587	\$24,268.80	Operational Industry Budget
Fisher Transportation Services	Hauling Soybeans	Tucker/Farm	4501756697	\$18,250.00	Operational Farm Budget
Arkansas Correctional Industries	Clothing	Cummins/Commissary	4501756650	\$20,779.77	Operational Budget
Delta Manufacturing	Gooseneck Trailer	Varner	4501756698	\$10,639.28	Work Release
John W Gasparini Inc, Marks Plumbing	Plumbing Supplies	Varner/Maintenance	4501756829	\$10,340.56	Operational Budget
Terco Investments Co Inc	Lighting Contactors	Construction	4501756852	\$13,515.42	Existing Fac Maint
Helena Chemical Company	Fertilizer	EARU/Farm	4501756967	\$18,570.40	Operational Farm Budget
Lowes Home Ctr Inc	Building Supplies	Cummins/Maintenance	4501756796	\$14,410.51	Operational Budget
Shoe Corporation of Birmingham	Boots	Tucker/Industry	4501756820	\$14,169.60	Operational Industry Budget
Carlton Bates Co	Electric Fence Repair	Cummins/Maintenance	4501756849	\$14,007.25	Operational Budget
American Quilting Co Inc	Quilted Fabric	Wrightsville/ACI Warehouse	4501757203	\$28,900.00	Operational Industry Budget
Fastenal Co	Milk Crates	Cummins Creamery/Farm	4501757120	\$10,150.15	Operational Farm Budget
Terco Investments Co Inc	Electrical Parts	Construction/Central Maintenance	4501757504	\$10,449.64	Operational Budget
William Hill & Co Inc	Food Purchases	Central Warehouse	4501757751	\$196,690.40	Operational Budget
Atlantic Beverage Company	Food Purchases	Central Warehouse	4501757867	\$15,145.00	Operational Budget
Arkansas Correctional Industries	Janitorial Supplies	Central Warehouse	4501757846	\$28,589.42	Operational Budget
Sysco Food Services of Arkansas	Food Purchases	Central Warehouse	4501757858	\$30,812.90	Operational Budget
US Foods Inc	Food Purchases	Central Warehouse	4501757807	\$95,681.10	Operational Budget
Robbins Sales Company Inc	Food Purchases	Central Warehouse	4501757864	\$39,279.52	Operational Budget
Fastenal Co	Panasonic Monitors	Construction	4501757895	\$16,727.44	Telephone Funds
Dell Marketing LP	Computers	Admin East/Information Systems	4501758326	\$81,187.44	Operational Budget
National Food Group	Food Purchases	Central Warehouse	4501758237	\$62,251.40	Operational Budget
US Foods Inc	Food Purchases	Central Warehouse	4501758232	\$57,552.30	Operational Budget
William Hill & Co Inc	Food Purchases	Central Warehouse	4501758229	\$100,539.12	Operational Budget
Mid South Sales Inc	Fuel	Cummins/Commissary	4501757085	\$15,434.10	Operational Budget
Sysco Food Services of Arkansas	Food Purchases	Central Warehouse	4501758234	\$22,578.50	Operational Budget
<b>Total for Purchases over \$10,000</b>				<b>\$3,177,178.55</b>	
<b>FIRM CONTRACTS OVER \$25,000.00</b>					
<b>VENDOR</b>	<b>DESCRIPTION</b>	<b>UNIT</b>	<b>Contract # P.O#</b>	<b>PURCHASE AMOUNT</b>	<b>FUND</b>
<b>Total for Contracts</b>				<b>\$0.00</b>	
<b>EMERGENCY PURCHASE ORDERS OVER \$25,000.00</b>					
<b>Total EM Purchases</b>				<b>\$0.00</b>	
<b>Total Purchases</b>				<b>\$3,177,178.55</b>	

**Arkansas Department of Correction  
Vacancies, Hires and Terminations  
October 2017**

<b>UNIT</b>	<b>VACANCIES</b>	<b>HIRES</b>	<b>TERMINATIONS</b>
BENTON (CR05)	4	2	1
CENTRAL OFFICE (CR01, CR02, CR08 & CR22)	20	2	5
CHAPLAINCY	0	0	0
CONSTRUCTION (CR04)	8	2	1
CUMMINS (CR09)	61	6	7
DELTA (CR10)	13	4	1
EAST ARKANSAS (CR12)	43	20	25
ESTER (CR11)	17	1	3
FARM (CR29)	8	0	0
GRIMES (CR27)	21	11	7
INDUSTRY (CR07)	15	1	0
MAXIMUM SECURITY (CR14)	49	3	10
MCPHERSON (CR28)	36	4	10
MENTAL HEALTH	35	1	3
MISS COUNTY (CR15)	1	2	1
NORTH CENTRAL (CR16)	6	7	5
NORTHWEST ARK (CR17)	0	1	0
OUACHITA RIVER (CR30)	27	14	9
PINE BLUFF (CR20)	7	4	0
RANDAL L. WILLIAMS (CR13)	15	3	3
TEXARKANA (CR21)	3	2	0
TRANSPORTATION (CR32)	11	1	1
TUCKER (CR23)	34	13	10
TUCKER RENTRY (CR33)	3	0	1
VARNER (CR24)	99	9	8
WRIGHTSVILLE (CR25)/HAWKINS(CR06)	25	7	2
TOTAL	561	120	113

## Chaplaincy

Monthly Report for: October 2017	BENTON	CUMMINS	DELTA REGIONAL	EAST ARKANSAS	EAST ARKANSAS MAX	ESTER	GRIMES	HAWKINS	MAXIMUM SECURITY	MCPHERSON	NORTH CENTRAL	OUACHITA RIVER	PINE BLUFF	RANDALL L. WILLIAMS	TUCKER	VARNER	VARNER MAX	WRIGHTSVILLE	PTF	TOTAL
<b>Services Chaplains Oversaw</b>																				
Christian																				
Population	3	10	10	4	0	1	7	3	8	5	7	6	3	10	9	1	0	5	1	93
Segregation	0	0	1	0	0	0	0	0	0	0	0	3	0	0	0	0	0	0	0	4
Muslim																				
Population	0	4	4	4	0	1	4	0	1	4	1	2	1	4	0	5	0	0	1	36
Segregation	0	0	0	0	0	0	0	0	0	0	0	0	0	0	0	0	0	0	0	0
<b>Total Services</b>																				<b>133</b>
<b>Volunteers in Charge</b>																				
Protestant	27	30	4	14	0	14	24	26	52	27	7	10	10	8	15	27	5	25	4	329
Catholic	0	0	0	3	0	0	3	5	1	2	1	1	0	1	0	3	4	5	5	34
Muslim	0	0	0	4	0	4	0	0	0	4	0	7	0	0	0	0	0	1	0	20
Other	3	2	0	3	0	0	0	2	0	2	0	17	0	0	0	0	0	2	0	31
Baptism	0	4	0	7	0	8	9	0	0	0	0	0	0	0	3	0	3	0	0	34
<b>Marriages</b>																				
	0	0	1	0	0	0	0	0	0	1	0	0	0	0	1	1	0	0	0	4
<b>Distributed by Chaplains</b>																				
Greeting Cards	25	17	4	0	0	45	28	0	111	881	60	0	189	12	43	80	164	0	250	1909
Bibles, Quran, Torah, Etc.	30	7	25	515	19	100	19	5	20	60	42	740	8	8	13	54	31	20	3	1719
Study Course	300	0	0	6	7	0	5	0	134	36	0	40	0	3	0	290	41	0	0	862
Writing Supplies	25	0	0	0	0	0	49	0	190	1	0	40	0	0	1	0	0	0	800	1106
Literature	250	912	805	475	137	570	67	17	520	229	268	740	200	14	1	1281	775	360	225	7846
<b>Chaplain's Visits</b>																				
Barracks	78	31	41	4	0	22	338	48	39	66	67	162	68	3	103	116	35	32	12	1265
Approximate Hours Spent in Barracks	46	24	5	1	0	94	71	24	27	40	34	85	8	1	26	18	11	16	6	537
Inmate Office visits	89	45	118	64	0	65	108	44	18	50	70	197	42	115	335	87	0	37	20	1504
Other Office visits	64	6	10	22	0	20	28	12	30	45	20	104	8	8	35	51	0	35	12	510
Hospital	0	2	0	0	0	0	6	0	1	0	0	30	0	5	1	2	0	0	0	47
Infirmary/Sick Call	0	2	1	3	0	6	24	6	3	3	3	42	4	10	5	4	0	4	0	120
Restrictive Housing	0	3	3	0	18	0	342	10	51	6	6	32	4	10	4	0	24	4	0	517
Punitive Isolation	0	3	3	0	1	0	0	10	20	6	0	24	4	10	0	11	4	0	0	96
PC - DRU	0	0	3	0	0	0	0	0	0	0	0	0	0	0	0	0	0	0	0	3
Visitation Days	0	0	2	0	0	0	0	3	0	2	0	2	0	0	0	0	0	1	0	10
<b>Volunteer Visits</b>																				
RCV	4	0	0	0	0	0	12	3	44	23	8	66	0	8	18	0	0	0	4	190
OCV	24	0	0	0	0	14	0	82	29	14	15	0	15	0	85	4	0	44	20	346
Spiritual Advisor	0	2	0	0	0	0	1	1	1	0	0	10	2	1	1	0	0	2	1	22
CRA	33	42	9	120	17	12	236	8	96	38	76	110	16	13	101	48	7	62	0	1044
<b>Religious Volunteer Hours</b>																				
Volunteer Hours	101	134	32	229	29	14	249	85	27	179	284	447	69	54	1141	199	21	106	0	3400
DENOMINATIONAL/VOLUNTEER CHAPLAIN HOUR	106	31	3	32	0	254	64	96	111	76	160	96	18	67	164	9	0	290	0	1577
<b>Total Volunteer Hours</b>																				<b>4977</b>
<b>Other Activities of Chaplain</b>																				
Counseled Employees	18	2	2	9	0	6	9	13	3	18	10	32	8	6	7	24	10	7	5	189
Orientation Sessions	0	4	0	0	0	0	0	0	1	0	1	4	0	0	0	0	0	0	0	10
Free World Devotions	0	0	0	8	0	10	14	0	2	2	0	9	12	7	8	1	0	0	0	73
Spoke in Churches	4	6	0	16	0	11	16	1	1	2	0	4	12	8	4	1	0	0	1	87
Crisis Intervention Sessions	7	13	0	0	0	10	0	18	3	17	4	112	9	4	8	7	2	15	5	234
Marriage Counseling	3	0	0	5	0	0	3	0	1	3	0	3	0	1	1	0	0	2	2	24
Denominational Meeting	0	1	0	0	0	0	0	0	1	0	0	4	1	4	1	0	0	0	0	12
Chaplain's Meeting	0	2	1	1	0	1	2	1	0	1	1	1	1	1	1	1	0	1	1	17
Volunteer Training Session	1	0	0	0	0	0	0	9	1	0	4	0	0	1	0	0	0	16	1	33
Choir Trip	0	0	0	0	0	0	0	0	0	0	0	0	0	0	0	0	0	0	0	0
<b>Chaplain Transfers</b>																				
	0	0	0	0	0	0	0	0	0	0	0	0	0	0	0	0	0	0	0	0
<b>Chaplain Promotions</b>																				
	0	0	0	0	0	0	0	0	0	0	0	0	0	0	0	0	0	0	0	0
<b>PAL PROGRAM</b>																				
Enrolled at start of month	0	47	23	49	0	45	49	49	19	56	27	36	0	33	52	43	0	29	0	557
Enrolled during the month	0	5	4	3	0	0	4	5	2	18	2	15	0	0	15	8	0	4	0	85
Removed From PAL Program																				
# Paroled	0	0	0	0	0	0	0	2	0	6	2	3	0	1	0	1	0	1	0	16
# Completed	0	0	0	3	0	0	1	0	9	0	2	5	0	1	2	2	0	1	0	26
# Withdrew	0	1	1	0	0	0	0	1	0	3	1	2	0	1	3	1	0	1	0	15
# Removed	0	1	2	0	0	0	0	1	0	2	1	5	0	2	1	0	0	2	0	17
# Transferred	0	3	1	1	0	0	2	1	0	7	1	1	0	2	2	1	0	0	0	22
Total Removed from PAL Program	0	5	4	4	0	0	3	5	9	18	7	16	0	7	8	5	0	5	0	96
Total Enrolled at the End of the Month	0	47	23	48	0	45	50	49	12	56	22	35	0	26	59	46	0	28	0	546
<b>Volunteers In PAL</b>																				
	0	21	2	10	0	8	15	40	20	20	5	10	0	4	12	6	0	30	0	203
<b>Special Events:</b>																				
	3	1	1	1	0	0	1	0	0	1	1	1	0	0	1	0	0	0	1	12

## AR-DOC Securus Video Visitation Activity Tracker

Total ADP: 15,586

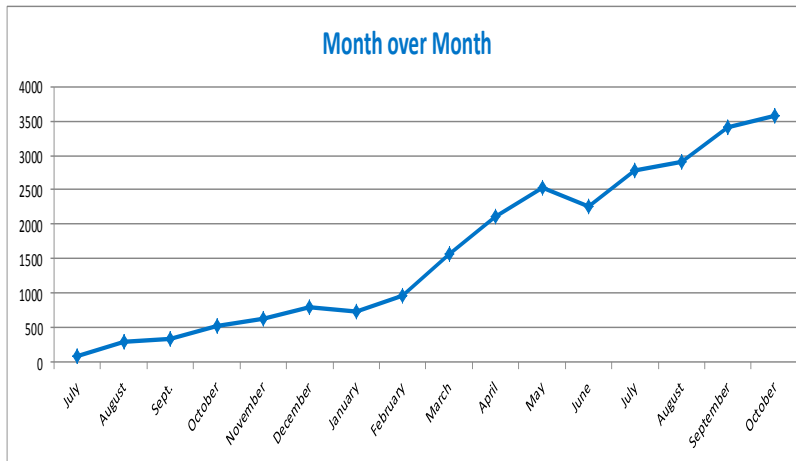
**July 6, 2016 Go Live:** Cummins & Pine Bluff Re-Entry  
**August 17, 2016 Go Live:** Benton, State Police Barracks & Wrightsville Unit  
**Sept. 14, 2016 Go Live:** NW Arkansas Work Release  
**Sept. 28, 2016 Go Live:** Varner Unit & Texarkana Regional Correction Center  
**Nov. 2, 2016 Go Live:** Mississippi County Work Release Center  
**Jan. 18, 2017 Go Live:** Randall L Williams Facility & Pine Bluff Complex  
**Feb. 22, 2017 Go Live:** Mcpherson Unit, J Aaron Hawkins Sr. Center Facility & Ester Unit  
**March 29, 2017 Go Live:** East Arkansas Regional Unit & Tucker Re-entry  
**April 11, 2017 Go Live:** North Central Unit  
**April 12, 2017 Go Live:** Grimes Unit  
**June 3, 2017 Go Live:** Tucker Unit  
**July 19, 2017 Go Live:** Delta Regional Unit

## Promotional Pricing

Until 12/31/17: \$5/30 minutes - Promotional price point to encourage remote visitation

Total Visits by Month	July	August	Sept.	October	November	December	January	February	March	April	May	June	July	August	September	October
Total (Includes SuperMax)	97	288	348	528	631	806	736	958	1,578	2,117	2,524	2,252	2,780	2,898	3,398	3,572
Target Objective	2,002	2,552	4,468	4,468	4,590	4,590	5,589	7,097	8,876	10,722	10,722	11,710	11,710	14,659	14,659	14,659

## Anywhere Visitation Performance:



## Completed Visits

Site	October	September
Cummins	330	300
Pine Bluff Re-Entry	0	0
Benton	89	79
State Police Barracks	29	39
Wrightsville Satellite	0	0
NW Arkansas WRC	11	0
Varner Unit	177	148
Texarkana Regional	17	5
Mississippi County WRC	38	48
Randall L Williams	316	225
Pine Bluff Complex	155	149
Mcpherson	144	137
J Aaron Hawkins Sr.	211	222
Ester	319	330
East Arkansas Regional	319	255
Tucker Re-entry	9	0
North Central	260	221
Grimes	345	330
Tucker Unit	274	276
Delta Regional	187	142
Tucker Max	141	83
Ouachita River	201	409
<b>Total:</b>	<b>3572</b>	<b>3398</b>

## Missed by Inmate

Site	October	September
Cummins	20	14
Pine Bluff Re-Entry	0	0
Benton	5	3
State Police Barracks	1	6
Wrightsville Satellite	0	0
NW Arkansas WRC	0	0
Varner Unit	18	7
Texarkana Regional	2	1
Mississippi County WRC	2	9
Randall L Williams	12	17
Pine Bluff Complex	3	3
Mcpherson	5	5
J Aaron Hawkins Sr.	3	6
Ester	7	13
East Arkansas Regional	4	14
Tucker Re-entry	0	0
North Central	9	0
Grimes	9	6
Tucker Unit	39	43
Delta Regional	11	1
Tucker Max	3	1
Ouachita River	20	14
<b>Total:</b>	<b>173</b>	<b>163</b>