

**Wendy Kelley**  
**Director**

**Board Report**  
**May 2017**



## **PUBLIC RELATIONS**

### **RESEARCH/PLANNING**

**April 2017 Admissions and Releases** – Admissions for April totaled **650** (570-males & 80-females) while Releases totaled **569** (498-males & 71 females) for a net increase in-house of 81 Inmates.

**Inmate Population Growth/Projection** – At the end of April 2017, the Arkansas Department of Correction Population totaled **17,798** representing a growth of **261** Inmates since the beginning of 2017. Calendar year 2017 average growth is **65** Inmates per month, up from an average decrease of **14** Inmates per month during calendar year 2016.

**Average County Jail Back-up** – The backup in the County Jails averaged **1,212** Inmates per day during the month of April 2017 – up from an average of **1,122** inmates per day during the month of March 2017.

## **LEGAL SERVICES**

### **PREA**

#### **PREA Data:**

Number of calls received	239
Total Number of Repeat Calls	62
Total Number of Calls with no message	66
Total Reported PREA Issue Calls	45
Total Reported non-PREA Calls	66
Total Calls due to Technical Failure	0
Totals Calls Referred to Internal Affairs Division	26

The PREA Coordinator and PREA Compliance Managers attended Neurobiology of Trauma Training sponsored by Arkansas Coalition Against Sexual Assault, in Little Rock on April 13th.

### **INMATE GRIEVANCE**

**Inmate Formal/Informal Grievances:** In April, there were a total of 1,998 formal grievances filed and 3,178 informal grievances filed at various units.

**Institutional Grievances:** There were a total of 524 appeals of institutional grievances received with 83 being rejected. 398 appeals were answered in April. Five (5) were found with merit.

## **OPERATIONS/INSTITUTIONS**

### **STTG**

The STTG Coordinator assisted two outside agencies with information and consulted on intelligence issues relating to ADC STTG inmates. The Coordinator also assisted the Tennessee Department of Correction with information linked to an ADC STTG inmate attempting to communicate with inmates in their system.

### **FARM**

The row crop operations moved forward and all crops were planted. EARU planted all of their corn and soybeans (except what will be double cropped behind the wheat). Tucker planted all of their rice. Cummins planted 600 acres of soybeans and all of their corn and rice. All of the gardens are in good shape and the majority of the crops were planted on time this year. We are expecting the first harvest to come off mid-May. The confined livestock areas are in good order and producing well. Milk supply is still down while we continue to battle somatic cell count, however ADC needs are covered. Beef operations are coming out of the winter in good shape. There is an adequate supply of grass at both locations and a carryover of hay for the first time in five years. The horse program at NCU welcomed the first foal of the year on April 17<sup>th</sup>. The apple orchard at NCU survived the late snow and freezing temperatures and has a very good fruit set going into the growing season.

**Regional Maintenance Hour**

<b>Regional Maintenance Hours</b>	<b>April</b>
Benton Unit	6,322
Delta Regional Unit	2,408
East Arkansas Unit	4,384
Grimes Unit	2,456
McPherson Unit	1,040
Mississippi Co Work Release	2,004
North Central Unit	5,984
Ouachita River Unit	4,336
Randall Williams Unit	4,608
Texarkana Regional Unit	1,350
Tucker Unit	1,248
Varner Unit	1,968
Wrightsville Unit	2,803
<b>Total Hours</b>	<b>40,911</b>

**Work Release Rent Report**

<b>Work Release Rent Report</b>	<b>April</b>
Benton Unit	\$100,997.00
Mississippi County Work Release	\$48,518.00
Northwest AR Work Release Center	\$39,049.00
Pine Bluff Unit	\$40,630.00
Texarkana Regional Unit	\$36,924.00
Tucker Re-Entry Center	\$27,166.00
<b>Total</b>	<b>\$293,284.00</b>

**RE-ENTRY****Preparing for Success**

<b>Unit</b>	<b>Slots</b>	<b>Completed</b>	<b>Discharged</b>	<b>End Count</b>
Ester Barracks 9-12	100	8	9	116
Tucker Re-Entry	20	3	2	18
<b>Total</b>	<b>120</b>	<b>11</b>	<b>11</b>	<b>134</b>

There are 609 males and 187 females on the waiting list within 42 months of their release date, and of those, 8 males are mandated by the Parole Board. The average time on the waiting list is approximately 3 months. The total number of inmates on the waiting list, including those not currently within the identified time frame, is 682 males and 220 females.

\*The waiting list numbers include inmates that are ineligible due to class or housing status.

**WAGE****(Workforce Alliance for Growth in the Economy)**

	<b>Slots</b>	<b>Completed</b>	<b>Discharged</b>	<b>End Count</b>
<b>Ouachita</b>	12	2	0	10
<b>Delta</b>	15	1	0	15
<b>Ester</b>	27	0	1	27
<b>Hawkins</b>	30	0	0	18
<b>Total</b>	<b>84</b>	<b>3</b>	<b>1</b>	<b>70</b>

**Randall L. Williams Juvenile Education Program**

	<b>Slots</b>	<b>Enrolled</b>	<b>Discharged</b>	<b>End Count</b>
<b>*Juveniles</b>	14	13	1	14
<b>Total</b>	<b>14</b>	<b>13</b>	<b>1</b>	<b>14</b>

\*The Juvenile count changes based on new commitments. They are transferred from the program once they reach the age of 18.

**ADMINISTRATIVE SERVICES****BUDGET SECTION UPDATE**

Act 715— The Honorable Judge Mary S. McGowan ordered \$1,040.46 reimbursement to the state to help pay for the care and custody of Inmate Ronnie Bowen, ADC #075045. The Act 715 case was held on April 20, 2017, in the Pulaski County Court house against Inmate Bowen.

**Procurement Section Update:****Current Bid through Office of State Procurement**

Egg Cooler– Cummins Poultry Operation

**Current Bids through Division of Building Authority**

Steel & Building Material – Delta Unit

**Contracts Recently Awarded through Division of Building Authority**

Generator

**Contracts Recently Renewed**

Thermal

**Procurement/Contracts Report (required by policy) –**

For April 2017, Purchase Orders and Contracts in excess of \$10,000 amounted to \$4,936,435.22. Of this amount, \$2,906,276.67 was for Inmate Care and Custody related items (e.g. food, shoes, clothing, etc.). Bulk fuel costs for the month of April were \$77,855.73 – average cost for E-10 was \$1.93/gallon; average cost for diesel was \$1.73/gallon.

**HUMAN RESOURCES UPDATE**

**Workplace Safety** – During the month of April, the modified version of the Health and Safety Plan was presented to one Basic Training class with a total of 33 cadets in attendance. Ninety incidents were reported to the company nurse in April, bringing our total to 294 incidents in 2017.

**Benefits** – Eighty-six (86) MIPS payments were made in April. Seventy-eight (78) FMLA requests were processed with 75 approved and (3) denied. A total of 6 CAT leave requests were processed with 1 approved and 5 pending. Shared leave has been repealed by OPM.

**Physical Assessments** –A total of 130 applicants and incumbent personnel were assessed in the month of April. Eighty (80) incumbent personnel successfully passed their physical assessment. Forty-nine (49) applicants passed their physical assessments.

**Employment** – ADC Human Resources personnel attended several Job Fairs in the month of April:

A total of 1,639 applications were received during April. Sixty-

DATE	UNIT	LOCATION
4/5/17	Cummins	White Hall High School
4/12/17	Ouachita	College of the Ozarks
4/13/17	Varner	Pine Bluff Workforce Center
4/14/17	Cummins	Win Job Center, Greenville
4/18/17	Varner	UAPB
4/19/17	Varner	SEARK
4/19/17	Cummins	SEARK
4/20/17	McPherson	Truman Sports Complex
4/25/17	EARU	Forrest City Workforce Center
4/27/17	Varner	Star City High School
4/28/17	Cummins	Pine Bluff Workforce Center

one (61) Non-Security applications and sixty-seven (67) CO I applications were processed. Twenty-seven (27) Correctional Officers were hired, and 8 Correctional Officers were rehired.

**Vacancies, Hires, and Terminations** - In April 2017, a total of 634 vacancies, 44 new hires, and 78 terminations were at the various ADC locations.

**Administrative Services Division Monthly Reports (attached) include:**

**Gifts, Grants, and Donations**– \$422 was donated in the month of April (library books).

**Inmate Welfare Fund**-balance on April 30, 2017 was \$6,055,387.06.

**The PAWS in Prison Fund** total on April 30, 2017 was: \$125,069.31 including ADC account (7004822/Donations) \$19,159.55 and ADC account (NDC0500/Recycling)

\$105,909.76. This does not include the Foundation account managed by the PIP Foundation Board.

**INFORMATION TECHNOLOGY**

SECURUS Video Visitation implementation schedule:

Cummins – Dog Kennel Kiosk: This is considered a new project and is pending installation.

VSM – Four metal enclosures were built for Kiosk housing to secure for video sessions. Two metal enclosure fabrications are in progress with completion expected by mid-May. Kiosk installation for the four completed enclosures is scheduled for the week of May 8<sup>th</sup>. The remaining two Kiosks will be installed once the enclosures are received.

McPherson – SECURUS teams are back on site to trouble-shoot connectivity issues with the mobile Kiosk.

Ester Unit –The final Kiosk installation is pending infirmary construction completion.

East Arkansas Regional - Dog Kennel Kiosk: This is considered a new project and is pending installation.

Grimes – Securus teams are back on-site to trouble-shoot connectivity issues with the Mobile Kiosk.

Maximum Security – Installation is in process and at 85% completion.

Tucker – Installation process is at 10% completion. The dog kennel Kiosk is being treated as a separate project and is pending approval by SECURUS.

Delta – Installation will start after the Maximum Security “Go Live” Implementation.

Ouachita River – The site survey is complete. Installation will now begin.

Wrightsville – Pending Contractor Selection  
SECURUS will complete a site survey with Contractor (date to be determined).

<u>Completed Sites</u>	<u>Go Live Dates</u>
Cummins	July 6, 2016
Pine Bluff Re-Entry	July 6, 2016
Benton	August 17, 2016
Wrightsville ASP	August 17, 2016
Northwest Arkansas	Sept. 14, 2016
Varner	Sept. 28, 2016
Texarkana Regional	Sept. 28, 2016
Mississippi County	Nov. 2, 2016
Randall L. Williams	Jan. 18, 2017
Pine Bluff Unit	Jan. 18, 2017
McPherson Unit	Feb 22, 2017
J. Aaron Hawkins	Feb. 22, 2017
Ester Unit	Feb. 22, 2017
East Arkansas Regional	March 29, 2017
Tucker Re-Entry	March 29, 2017
North Central Unit	April 11, 2017

2,198 video visits occurred this in the month of April. Visits remain at the \$5.00/30 minutes promotional price to encourage remote visitation until December 31, 2017.

### Tablet Project Implementation

Install Priority	Unit	Transport Circuit Status	Install % Completed
1	EARU	Ready for Use	24%
2	Hawkins	4/30/2014	21%
3	NWAWRC	Ready for Use	11%
4	TRCC	Ready for Use	11%
5	MCWRC	Ready for Use	11%
6	Grimes	Ready for Use	39%
7	ORCU	Ready for Use	11%
8	McPherson	Will Use Grimes' Circuit	16%
9	Tucker Re-Entry	Ready for Use	28%
10	PBU	Ready for Use	12%
11	Benton Unit	Ready for Use	11%
12	State Police Barracks	Ready for Use	11%
13	PBU Re-Entry	Ready for Use	14%
14	RLW	Ready for Use	12%
15	Max Unit	05/25/2017	19%
16	Tucker Unit	05/25/2017	6%
17	Delta Unit	Ready for Use	11%
18	W/V Unit	04/30/2017	1%
19	Cummins Unit	05/25/2017	6%
20	Varner Unit	05/25/2017	28%
21	NCU	Ready for Use	28%
22	Ester Unit	Ready for Use	18%

SECURUS representatives Luke Keiser and Jamie Wade will meet with Rhonda Patterson at the East Arkansas Regional Unit for a site tablet implementation meeting on May 9<sup>th</sup>.

Courts Contexte interface development project is progressing with Marquis updating demographics for PB Warrants and developing displaying/uploading Contexte data into the eOMIS screen layout. AOC (Administrative Office of the Courts) is completing the sentencing mapping for the new sentencing form and working on additional design changes.

IT members attended a meeting on sentencing of those under 18 years of age. ACT 539 has a retroactive impact and contains an emergency clause that puts it into effect immediately (March 20, 2017). The discussion included how to handle the first list of inmates considered for parole in July. The process will initially be manual. EOMIS staff provided a list of proposed changes that will be needed for ACT 539.

An ARORA pilot program discussion was held and included training dates. Jacob Laan will work with Dr. Austin on logistics for the pilot. Jacob will also develop training materials and test cases for Dr. Austin to review and use for training staff and piloting the ARORA risk/needs instrument. Dr. Austin requested Jacob have the training material completed and to him by May 9th to allow time for review.

Cummins Farm has been upgraded to new wireless equipment which provides for a more stable network connection.

Fiber Optic network cabling was installed and connected to the network in the new Pine Bluff Unit School building.

A Jail Arraignment Kiosk that was provided as a pilot project by the Association of Arkansas Counties was installed at the Varner and Ouachita River Units. Installation is pending for Cummins, East Arkansas, North Central, McPherson, and Maximum Security.

The Think Legacy and Wage computer/network project continues. WAGE computers are networked; Think Legacy computers are non-networked. This requires two separate room locations for installation. Wardens are working to identify locations to install the computers. Metal cages have been requested to secure the computers.

The IT Business Manager is working to locate PC equipment transfer forms not inventoried by the units during the annual inventory in an attempt to locate the equipment.

**Training Academy – April 2017****Basic Training Division**

Captain David Farrier's BCOT Class 2017-D graduated on April 14, 2017, with 45 cadets. Heather Imboden from the North Central Unit won the Willis H. Sargent Award. Deputy Warden Judy Taylor served as the Special Speaker.

**In-Service Division**

The Academy held Security for Non-Security classes the 17<sup>th</sup> – 18<sup>th</sup> for Contract Staff. Management Level 1 class was held the 24<sup>th</sup> - 27<sup>th</sup>. We also had guest instructors from OPM's Training Division who presented two classes.

Three of our own Safariland Certified Instructors conducted training on April 18<sup>th</sup> – 19<sup>th</sup> to certify students as O.C. Instructors.

A Management Level 2 class was held the 4th - 6th. This is the second level course of supervisory training and is intended for Lieutenants and non-security supervisory staff. Focal points on this course include learning the supervisor's role in Correct Care Solutions, PREA for Supervisors, and the important issue of Rethinking Retention.

Agency Inmate Grievance Coordinator, Barbara Williams Taught the Problem Solvers Grievance Course on April 5th to Unit Problem Solvers and to Medical Contract Staff on April 26th. The monthly Annual Training Day held on the 28th made another successful run with 7 students.

**eCADEMY**

During the month of April, 494 ADC employees completed a total of 6,188 hours of eCADEMY training. Approximately 11% of ADC employees completed at least one course during that time frame, averaging .76 hours per staff member.

**HEALTH/CORRECTIONAL PROGRAMS****CHAPLAINCY SERVICES****Benton Work Release**

Financial Peace University classes were held on April 4th, 11th, 18th, and 25th with a total of 69 inmates. Six (6) volunteers from St. Mark's Missionary Baptist Church of North Little Rock held a service on April 9th with 24 inmates. On April 22nd, Clemmie Jones Outreach Ministries led a service with 25 inmates in attendance. Unit Chaplaincy hosted Movie Night on April 29th with 23 inmates.

**Delta Regional Unit**

Unit Chaplaincy initiated a bi-monthly worship service for Protective Custody inmates on April 9th. Three (3) inmates participated in the first service. A six week study entitled "Why On Earth Am I Here" began on April 24th. There are a total of 30 inmates enrolled in the study.

**East Arkansas Regional Unit**

A seminar entitled "The Man of God" launched on April 1st. The Seminar will run for 13 weeks and is open to all inmates.

**Hawkins Center**

On April 26th-27th, the Christian Motorcyclist Association held services with a total of 153 inmates.

**Maximum Security Unit**

On April 9th, 25 inmates participated in a service to teach and celebrate the traditional Feast of Unleavened Bread. Evangelist Grady Watson preached a special service for inmates on April 12th.

**North Central Unit**

Singing Men of Arkansas (a group of 36 volunteers), performed for the inmates on April 1st. One hundred fourteen (114) inmates attended the event. Mattingly Family Singers held a singing service on April 6th with 112 inmates. Six (6) volunteers facilitated the Storybook Project for 20 inmates on April 18th.

**Randall L. Williams Unit**

On April 27th-April 30th, KAIROS Prison Ministry conducted the 9<sup>th</sup> KAIROS weekend. Fifteen (15) volunteers logged 600 service hours over four days. Twenty-four (24) inmates participated in the event. Thirty-six (36) who had previously participated in a KAIROS event, assisted in the operation of this event.

**Wrightsville Unit**

Along with PTF participants, approximately 300 Wrightsville inmates attended events conducted by Christian Motorcyclist Association from April 27th-April 29th.

**ACCREDITATION**

ACA Internal Audits Completed:

April 3-4	Reaccreditation Audit, North Central Unit 100 Mandatory, 99.5% Non- Mandatory
Apr. 10	Audit prep EARU
Apr. 11	EARU 2 <sup>nd</sup> pre-audit
Apr. 17-21	Audit Prep EARU
Apr. 24-28	Audit Prep MCWRC & EARU

Fire/Safety and Sanitation independent audits conducted by the Fire and Sanitation Coordinator:

Apr. 3-4	Reaccreditation Audit, North Central Unit 100% Mandatory, 99.5% Non- Mandatory
Apr. 10-14	Audit prep EARU
Apr. 17-21	Audit Prep EARU
Apr. 24-28	Audit Prep EARU



**VOLUNTEER SERVICES**

The total number of volunteer hours for the month.

Unit	Hours
Benton Work Release	10
Cummins	2
East Arkansas Regional	100
Maximum Security	3
Mississippi County Work Release	12
Ouachita River	14
Randall L. Williams	18
Pine Bluff Complex	2
Paw in Prison	52
Wrightsville	16
Varner	81.5
Religious All Unit	6,354
Total	6664.5

**PROGRAM INFORMATION****Sex Offender Treatment Programs:**

	SLOTS	COMPLETED	REMOVED	CLIENTS
RSVP	238	0	10	238
SOFT	30	0	0	5
Total	268	0	10	243

There are 826 males on the waiting list for RSVP and 29 females on the waiting list for SOFT within 5 years of their TE date. Of those, 49 inmates are mandated by the Parole Board. The average time on the waiting list from request is about 3 to 6 months for those stipulated. The total on the waiting list, including those not currently within the identified time frame, is 1,487 males and 34 females. We have one PREA inmate in the program at this time. This program is being revised to allow for more turn over of the beds effective July 2017.

\*The waiting list numbers include inmates that are ineligible due to class or housing status.

**Therapeutic Community:**

	Slots	Completed	Removed	Clients
Tucker	129*	10	8	132
Wrightsville	45*	4	3	45
McPherson	50*	2	4	50
Total	224	16	15	227

There are 270 males and 14 females on the waiting list within 18 months of their release date. Of those, 22 are stipulated by the Parole Board. The average time on the waiting list from request is 19 days. The total on the waiting list, including those not currently within the identified time frame, is 613 males and 42 females.

\*Denotes transitional beds available at this treatment program. The Tucker Therapeutic Community also has 129 client slots and seven (7) peer counselor slots.

\*The waiting list numbers include inmates that are ineligible due to class or housing status.

**S.A.T.P.:**

Unit	Slots	Completed	Removed	Clients
Grimes	50*	5	3	51
McPherson	100*	10	9	107
MSU	3	0	0	3
RLW/CF	188*	28	19	190
Tucker	43*	2	4	44
Varner	44	6	8	44
Wrightsville	135*	15	16	146
Total	563	66	59	585

There are 2,033 males and 345 females on the waiting list within 18 months of their release date. And of those, 40 are stipulated by the Parole Board. The average time on the waiting list from request is 18 days. The total on the waiting list including those not currently within the identified time frame is 2,845 males and 464 females.

\*Denotes transitional beds available at this treatment program.

\*The waiting list numbers include inmates that are ineligible due to class or housing status.

**ORCU R.P.U.:**

The Residential Program Unit at Ouachita had 12 admissions and 15 discharges in April for an end-of-month count of 118.

**McPherson Mental Health Residential Program:**

There was 1 admission and 1 discharge in April for an end-of-month count of 40.

**Habilitation Program:**

The Habilitation Program at the Ouachita River Unit provided treatment services to 46 inmates during April. There was 1 admission and 1 discharge for an end-of-month count of 45.

**Staffing:**

The following Mental Health Services and SATP positions were vacant in March and April.

Positions	March	April
Psychologists	7	7
Social Workers	4	5
Advisors	6	7
Substance Abuse Program Leaders	2	1
Admin Specialist/Analyst	1	0

**ADDITIONAL PROGRAM INFORMATION**

Self-Study Classes	# of Participants	# Completed	Waiting List
Anger Management	391	337	1,473
Thinking Errors	435	354	1,781
Substance Abuse Education	74	56	315
Communication Skills	234	197	1,202
Domestic Violence	143	133	472
Victims of Domestic Violence	0	0	31
Stress Management	273	174	1,212
Parenting	187	152	1,001

**Suicide:**

There were 82 suicidal threats, gestures or low/moderate risk attempts during April. There were no serious attempts.

**Outpatient:**

There were 2,256 inmates on the mental health medical log at the beginning of April. Mental Health conducted the following contacts during April:

Case management contacts	2,468
Requests for interviews	1,118
Testing	3
Intakes	675
Unit requests	1,117
Counseling (with treatment plans)	0
Pre-lock up reviews	509
Routine segregation reviews	874
Segregation rounds	18,078
PREA evaluations	111
Routine follow-up	188
834 requests	24

**Monetary Sanctions:**

Sanction reimbursements for April were \$18,100.

**County Mental Health Requests:**

During April, there were 40 requests of a mental health nature received. No inmates were fast tracked to ADC.

**County Medical Health Requests:**

During April, there were 231 requests of a medical nature received. No inmates were fast tracked to ADC.

**Deaths:**

There were 10 inmate deaths during the month of April; 7 were claimed, and 3 were cremated.

**CCS:**

See attachment for CCS's report regarding outside beds and emergency room visits.

**Medical Grievances:**

In April, there were a total of 226 appeals of medical grievances received and 146 appeals were answered; 13 of those were found to be with merit and 1 with merit but resolved.

**SEX OFFENDER ASSESSMENTS****Assessments Completed:**

Risk Level	April	Sept. 1999 thru April 30, 2017
Level 1	0	1,160
Level 2	56	6,694
Level 3	33	6,291
Level 4	0	585
Default 3	3	*
<b>Total</b>	<b>92</b>	<b>14,730</b>
*Default Level 3's are included in the total number of Level 3's to date.		

**ACIC Numbers:**

The total number of sex offenders registered from Sept. 1, 1999 to April 30, 2017:

In Compliance	7,718
Delinquent (Did not return address on time)	876
Confined	3,059
Out of State	3,115
Address Unknown (absconded)	183
Deceased	1,101
Deported	173
Incapacitated	73
Out of USA	7
<b>Total</b>	<b>16,305</b>

**PAWS IN PRISON****Currently Enrolled in Training:**

Maximum Security Unit	7
Tucker Unit	6
Hawkins Unit	6
Randall Williams Unit	4
Ouachita River Unit	7
North Central Unit	8
<b>Total</b>	<b>38</b>

**Completed Training:**

April 2017	12
YTD 2017	61
Since Inception Dec. 2011	922
Dogs Currently in foster: (Graduated but not adopted)	5

## **Construction/Maintenance**

### **Project Updates**

#### **Barbara Ester Unit:**

We are continuing to purchase material. A pre-construction meeting was held on April 13 and a work scheduled has been prepared. We are working on the infirmary and dental area floors and interior finish. Work on the parking lot is scheduled next.

#### **Cummins Unit:**

Roadwork to the wastewater plant continues.

#### **Cummins Poultry:**

The generator was tested weekly. A contract has been awarded for the new egg cooler at the chicken house.

#### **Delta Unit:**

Work is still being pursued on storm damage. DBA is revising the roofing contract. We are working on quotes for material. Entegriy's plans were approved by the Board of Correction.

#### **East Arkansas Regional Unit:**

Work continues on building a new firing range. The renovation to the inmate barracks with fast top floors & stainless steel on shower walls has been completed. Crews are repairing cell doors & testing all doors in Max Unit. Repairs to the Warden's residence are complete. New gravel for the repairs to the parking lot is being delivered. We are working with Entergy to change exterior perimeter lighting to LED, this will reduce emergency generator loads by two thirds.

#### **Hawkins Unit:**

The architects are working on plans for an additional generator for lighting and the kitchen.

#### **Maximum Security Unit:**

The boiler is being repaired. Work is being rendered on the walkways and metal ceiling in barracks.

#### **Newport:**

Plans are being prepared to repair the roof damage from the storm that occurred on March 1st.

#### **NWAWRC:**

The equipment submittals for the sewage lift station have been approved and ordered. The force main from the lift station to the city manhole has been installed across neighboring property.

#### **Ouachita River Correctional Unit:**

Gravel operations are still in progress. Approximately half of skylights have been installed, with more ordered. Freeline residences have damage to the roofs that need to be repaired. We are working on the interior in the Chapel. Door frames and hardware have been ordered. The Dog Kennel has damage from the storm that needs to be repaired.

#### **Pine Bluff Unit:**

Comments about the completion of the kitchen project from the Architect's Final Inspection have been received and are being addressed. We are still buying material for the new barracks in former Central Records. The Duct and sprinkler have been installed. Substantial work has been achieved in the new school building and the project has been turned over to the school. We are working with Entergy to upgrade all perimeter lighting.

#### **Training Academy:**

We are working on an estimate for air conditioning in the gym.

#### **Tucker Unit:**

The waste water plant is continuously monitored, repaired and adjustments are made when needed to remain in compliance. The new well is operating satisfactorily.

#### **CONSTRUCTION/MAINTENANCE PERSONNEL VACANCIES:**

4 Maintenance Technicians

1 Project Specialist

2 Administrative Specialists I



## 2017 INFORMAL GRIEVANCE REPORT

<i>Month</i>	BENTON	HAWK/M	HAWK/F	WRTS SPU	WRTS	WRTS/SAT	EARU & MX	GRIMES	RLW	MCWR	MCPH	MSU	NCU	PBU Re-entry	PBU	NWA	TU	TRCC	VSMX	VU	CU	ORCU	Ester	DRU	Bowie Cty	TOTAL
JAN	2	15	34	0	75	13	416	301	59	0	309	225	138	1	25	0	109	1	235	85	297	388	22	150	106	3006
FEB	2	15	34	0	83	6	313	280	40	0	247	211	181	0	18	0	68	2	533	100	301	229	23	193	91	2970
MAR	1	7	21	0	63	0	480	283	36	2	381	214	205	0	30	1	162	3	694	88	470	298	48	218	115	3820
APR	4	28	23	0	83	0	341	234	52	0	366	173	198	0	25	0	125	6	657	97	287	214	46	123	96	3178
MAY																										0
JUN																										0
JUL																										0
AUG																										0
SEPT																										0
OCT																										0
NOV																										0
DEC																										0
TOTAL	9	65	112	0	304	19	1550	1098	187	2	1303	823	722	1	98	1	464	12	2119	370	1355	1129	139	684	408	12974

## 2017 FORMAL GRIEVANCE REPORT

<i>Month</i>	BENTON	HAWK/M	HAWK/F	WRTS SPU	WRTS	WRTS/SAT	EARU & MX	GRIMES	RLW	MCWR	MCPH	MSU	NCU	PBU Re-entry	PBU	NWA	TU	TRCC	VSMX	VU	CU	ORCU	Ester	DRU	Bowie Cty	TOTAL
JAN	1	5	16	0	27	6	350	113	31	1	148	239	59	1	6	0	87	2	314	67	151	165	12	67	24	1892
FEB	2	7	12	0	45	1	388	117	17	0	112	208	87	0	6	0	68	0	360	91	165	169	8	81	16	1960
MAR	0	15	20	0	24	0	389	98	17	0	125	222	95	0	3	1	110	0	421	76	173	166	13	97	30	2095
APR	2	39	46	0	34	0	322	113	22	1	148	201	79	0	6	0	65	2	423	86	141	182	16	56	14	1998
MAY																										0
JUN																										0
JUL																										0
AUG																										0
SEPT																										0
OCT																										0
NOV																										0
DEC																										0
TOTAL	5	66	94	0	130	7	1449	441	87	2	533	870	320	1	21	1	330	4	1518	320	630	682	49	301	84	7945

## Inmate Institutional Grievance Appeal Report

### April 2017

Unit	Acknowledged	Rejected	Processed W/O Merit	Processed W/ Merit
Benton Unit	0	0	0	0
Benton Work Release	0	0	0	0
Bowie County Texas Facility	10	1	8	0
Cummins Unit	25	6	11	1
Cummins Modular Unit	3	0	2	0
Delta Regional Unit	15	4	13	1
East Arkansas Regional Unit	20	1	17	0
EARU Max	46	8	101	3
Ester Unit	1	0	0	0
Grimes Unit	17	3	16	0
Maximum Security Unit	63	13	79	0
McPherson Unit	19	8	16	0
McPherson RPU	0	0	0	0
MCWRC	1	0	0	0
NWARWRC	0	0	0	0
North Central Unit	10	2	0	0
Ouachita River Unit	26	4	10	0
ORCU Hospital	0	0	0	0
ORCU New Commitment	0	0	0	0
ORCU RPU	1	2	0	0
Pine Bluff Unit	0	1	0	0
Pine Bluff Re-Entry	0	0	0	0
Randall Williams Unit	0	0	0	0
Correctional Center	0	0	0	0
Tucker Unit	22	2	14	0
Varner Super Max	127	22	74	0
Varner Unit	22	2	18	0
Wrightsville Unit	8	1	11	0
Wrightsville Satellite Unit	0	0	0	0
Hawkins Center	1	2	2	0
Hawkins for Males	4	1	1	0
Hawkins SPU	0	0	0	0
<b>Total</b>	<b>441</b>	<b>83</b>	<b>393</b>	<b>5</b>

<b>Admissions and Releases</b>			
<b>April, 2017</b>			
<b><u>Admissions</u></b>	<b><u>Male</u></b>	<b><u>Female</u></b>	<b><u>Total</u></b>
Asian	6	0	6
Black	193	8	201
Hispanic	17	1	18
Nat. Amer.	0	2	2
Hawaiian/Pacific Isl	0	0	0
Other	0	0	0
White	354	69	423
<b>Total</b>	<b>570</b>	<b>80</b>	<b>650</b>
<b><u>Releases</u></b>	<b><u>Male</u></b>	<b><u>Female</u></b>	<b><u>Total</u></b>
Asian	2	0	2
Black	177	8	185
Hispanic	18	0	18
Nat. Amer.	0	1	1
Hawaiian/Pacific Isl	1	0	1
Other	0	0	0
White	300	62	362
<b>Total</b>	<b>498</b>	<b>71</b>	<b>569</b>

**ARKANSAS DEPARTMENT OF CORRECTION**  
**INMATE POPULATION GROWTH 2000-2024**

Updated 04/30/2017

Mo.	2000	2001	2002	2003	2004	2005	2006	2007	2008	2009	2010	2011	2012	2013	2014	2015	2016	2017
Jan.	11,984	11,908	12,402	13,015	13,105	13,595	13,481	13,839	14,518	14,796	15,334	16,312	15,134	14,815	17,481	18,142	17,785	17,824
Feb.	12,169	12,022	12,529	13,054	13,166	13,783	13,633	14,012	14,603	14,883	15,374	16,209	14,990	15,008	17,438	18,082	17,625	17,608
March	12,006	12,033	12,299	13,108	13,088	13,418	13,534	13,772	14,580	14,843	15,290	16,095	14,964	14,665	17,395	18,233	17,573	17,666
April	12,069	12,167	12,465	13,213	13,323	13,469	13,554	13,851	14,769	14,937	15,570	16,172	15,124	14,850	17,604	18,703	17,815	17,798
May	12,109	12,384	12,558	13,463	13,556	13,528	13,711	14,146	14,880	15,146	15,694	16,062	15,132	15,074	17,593	18,693	17,769	
June	12,005	12,108	12,439	13,418	13,389	13,251	13,430	13,915	14,700	15,025	15,564	15,554	14,832	14,825	17,340	18,813	17,973	
July	12,030	12,190	12,622	13,509	13,528	13,286	13,560	14,082	14,868	15,195	15,807	15,519	14,879	15,379	17,522	18,870	18,130	
August	12,087	12,371	12,815	13,565	13,632	13,419	13,646	14,224	15,100	15,385	15,829	15,240	14,675	16,103	17,549	18,806	17,919	
September	11,983	12,289	12,774	13,341	13,516	13,237	13,652	14,217	14,850	15,285	16,025	15,172	14,724	16,412	17,605	18,549	18,026	
October	12,119	12,348	12,942	13,341	13,584	13,363	13,775	14,349	14,836	15,381	16,311	15,271	14,856	16,993	17,880	18,430	18,127	
November	12,094	12,408	13,162	13,408	13,706	13,587	13,913	14,437	15,025	15,340	16,460	15,205	14,625	17,168	17,848	17,981	17,573	
December	11,856	12,333	12,845	13,106	13,470	13,338	13,728	14,315	14,716	15,199	16,204	15,062	14,654	17,235	17,874	17,707	17,537	
Net Ann. Inc.	29	477	512	261	364	-132	390	587	401	483	1,005	-1,142	-408	2,581	639	-167	-170	261
Avg. Mo. Inc.	2	40	43	22	30	-11	33	49	33	40	84	-95	-34	215	53	-14	-14	65

Population is total jurisdictional count at end of each month. Population at end of month December 1999 was 11,827.

Average monthly population increase for past fifteen years 2002 - 2016 is 29

Average monthly population increase for past ten years Jan.2007 - Dec 2016 is 32

Average monthly population increase for past five years 2012 - 2016 is 41

## Projected at Growth of 29 per Month

	2008	2009	2010	2011	2012	2013	2014	2015	2016	2017	2018	2019	2020	2021	2022	2023	2024
Mo.	Actual	Actual	Actual	Actual	Actual	Actual	Actual	Actual	Actual	Actual/ Proj.	Proj.	Proj.	Proj.	Proj.	Proj.	Proj.	Proj.
January	14,518	14,796	15,334	16,312	15,134	14,815	17,481	18,142	17,785	17,824	18,059	18,407	18,755	19,103	19,451	19,799	20,147
February	14,603	14,883	15,374	16,209	14,990	15,008	17,438	18,082	17,625	17,608	18,088	18,436	18,784	19,132	19,480	19,828	20,176
March	14,580	14,843	15,290	16,095	14,964	14,665	17,395	18,233	17,573	17,666	18,117	18,465	18,813	19,161	19,509	19,857	20,205
April	14,769	14,937	15,570	16,172	15,124	14,850	17,604	18,703	17,815	17,798	18,146	18,494	18,842	19,190	19,538	19,886	20,234
May	14,880	15,146	15,694	16,062	15,132	15,074	17,593	18,693	17,769	17,827	18,175	18,523	18,871	19,219	19,567	19,915	20,263
June	14,700	15,025	15,564	15,554	14,832	14,825	17,340	18,813	17,973	17,856	18,204	18,552	18,900	19,248	19,596	19,944	20,292
July	14,868	15,195	15,807	15,519	14,879	15,379	17,522	18,870	18,130	17,885	18,233	18,581	18,929	19,277	19,625	19,973	20,321
August	15,100	15,385	15,829	15,240	14,675	16,103	17,549	18,806	17,919	17,914	18,262	18,610	18,958	19,306	19,654	20,002	20,350
September	14,850	15,285	16,025	15,172	14,724	16,412	17,605	18,549	18,026	17,943	18,291	18,639	18,987	19,335	19,683	20,031	20,379
October	14,836	15,381	16,311	15,271	14,856	16,993	17,880	18,430	18,127	17,972	18,320	18,668	19,016	19,364	19,712	20,060	20,408
November	15,025	15,340	16,460	15,205	14,625	17,168	17,848	17,981	17,573	18,001	18,349	18,697	19,045	19,393	19,741	20,089	20,437
December	14,716	15,199	16,204	15,062	14,654	17,235	17,874	17,707	17,537	18,030	18,378	18,726	19,074	19,422	19,770	20,118	20,466
Net Ann. Inc.	401	483	1,005	-1,142	-408	2,581	639	-167	-170	493	348	348	348	348	348	348	348
Ave. Mo. Inc.	33	40	84	-95	-34	215	53	-14	-14	41.08	29	29	29	29	29	29	29

## Monthly Population Averages

	4/3	4/4	4/5	4/6	4/7	4/10	4/11	4/12	4/13	4/14	4/17	4/18	4/19	4/20	4/21	4/24	4/25	4/26	4/27	4/28	
Unit/Center																					AVG
Benton	327	329	327	328	326	326	327	323	323	324	320	325	330	325	322	329	332	330	329	328	327
Cummins	1,906	1,919	1,921	1,920	1,915	1,913	1,910	1,909	1,903	1,898	1,895	1,885	1,885	1,884	1,883	1,881	1,878	1,875	1,873	1,871	1,896
Delta	622	620	620	612	606	598	596	625	625	625	628	628	625	628	628	615	631	618	616	629	620
EARU Reg	1,656	1,654	1,659	1,659	1,670	1,676	1,676	1,677	1,666	1,670	1,676	1,676	1,670	1,655	1,646	1,641	1,656	1,654	1,652	1,651	1,662
Ester	569	567	561	559	560	572	571	569	566	556	569	562	559	556	552	555	554	572	568	566	563
Grimes	1,068	1,070	1,075	1,075	1,070	1,075	1,082	1,076	1,084	1,074	1,080	1,073	1,072	1,072	1,079	1,078	1,078	1,078	1,077	1,074	1,076
Max Sec	657	657	657	656	656	656	655	652	650	650	650	650	647	654	656	655	656	656	657	657	654
McPherson	985	986	982	980	976	983	987	979	973	975	977	978	980	977	976	989	988	990	994	987	982
MCWRC	144	144	144	144	144	144	144	144	144	144	144	144	144	141	143	143	143	143	144	142	144
N Central	816	812	807	816	823	821	833	833	832	822	829	828	826	824	819	809	818	818	829	825	822
NWAWRC	100	100	100	100	100	99	99	98	99	99	100	100	99	98	98	98	98	99	99	99	99
Ouachita River	1,840	1,844	1,839	1,832	1,832	1,822	1,827	1,833	1,840	1,843	1,839	1,836	1,833	1,836	1,818	1,826	1,820	1,837	1,836	1,840	1,834
Randall L. Williams	555	553	557	560	554	553	550	552	568	566	563	569	567	558	559	563	565	561	561	565	560
Pine Bluff	421	425	423	423	423	423	425	421	427	426	429	430	430	425	427	426	427	430	427	427	426
PB Reentry	54	54	54	54	54	54	54	54	54	54	54	54	54	54	54	54	54	54	54	54	54
TRCC	128	128	127	127	128	128	128	127	127	128	128	128	128	128	127	127	126	126	126	126	127
Tucker	1,008	1,015	1,010	997	1,002	1,001	1,004	1,014	1,010	1,010	1,008	1,005	1,015	1,010	1,009	1,008	1,008	1,015	1,018	1,016	1,009
Varner	1,689	1,690	1,691	1,693	1,691	1,691	1,685	1,687	1,677	1,681	1,675	1,680	1,677	1,700	1,702	1,696	1,697	1,691	1,701	1,700	1,690
Wrightsville	1,303	1,304	1,309	1,301	1,307	1,302	1,309	1,308	1,305	1,301	1,306	1,309	1,307	1,307	1,314	1,313	1,313	1,314	1,312	1,307	1,308
<b>Total ADC</b>	<b>15,848</b>	<b>15,871</b>	<b>15,863</b>	<b>15,836</b>	<b>15,837</b>	<b>15,837</b>	<b>15,862</b>	<b>15,881</b>	<b>15,873</b>	<b>15,846</b>	<b>15,870</b>	<b>15,860</b>	<b>15,848</b>	<b>15,832</b>	<b>15,812</b>	<b>15,806</b>	<b>15,842</b>	<b>15,861</b>	<b>15,873</b>	<b>15,864</b>	<b>15,851</b>
ALETA	20	20	20	20	20	20	20	20	20	20	20	20	20	20	20	20	20	20	20	20	20
Ar State Police	60	60	60	59	59	60	60	60	60	61	61	61	60	60	60	60	60	60	60	60	60
Co Jail / M	1,157	1,164	1,181	1,198	1,193	1,175	1,174	1,134	1,152	1,177	1,148	1,189	1,196	1,189	1,215	1,226	1,213	1,198	1,206	1,240	1,186
Co Jail / F	17	22	22	23	23	19	19	21	26	26	23	23	25	26	27	17	18	15	18	23	22
Total Co Jail BK	1,174	1,186	1,203	1,221	1,216	1,194	1,193	1,155	1,178	1,203	1,171	1,212	1,221	1,215	1,242	1,243	1,231	1,213	1,224	1,263	1,208
Bowie Co., TX	330	334	334	335	335	335	336	336	336	336	336	335	335	335	335	335	335	336	336	336	335
309/M	194	194	193	193	193	197	197	197	198	197	197	197	196	195	193	193	193	193	192	191	195
309/F	39	39	39	39	39	39	39	39	39	39	39	38	38	38	38	38	38	38	38	38	39
Total Act 309	233	233	232	232	232	236	236	236	237	236	236	235	234	233	231	231	231	231	230	229	233
<b>Total Non ADC</b>	<b>1,817</b>	<b>1,833</b>	<b>1,849</b>	<b>1,867</b>	<b>1,862</b>	<b>1,845</b>	<b>1,845</b>	<b>1,807</b>	<b>1,831</b>	<b>1,856</b>	<b>1,824</b>	<b>1,863</b>	<b>1,870</b>	<b>1,863</b>	<b>1,888</b>	<b>1,889</b>	<b>1,877</b>	<b>1,860</b>	<b>1,870</b>	<b>1,908</b>	<b>1,856</b>
<b>Total</b>	<b>17,665</b>	<b>17,704</b>	<b>17,712</b>	<b>17,703</b>	<b>17,699</b>	<b>17,682</b>	<b>17,707</b>	<b>17,688</b>	<b>17,704</b>	<b>17,702</b>	<b>17,694</b>	<b>17,723</b>	<b>17,718</b>	<b>17,695</b>	<b>17,700</b>	<b>17,695</b>	<b>17,719</b>	<b>17,721</b>	<b>17,743</b>	<b>17,772</b>	<b>17,707</b>



## Fiscal Year 2017 County Jail Backup

DAY	Jul-16	Aug-16	Sep-16	Oct-16	Nov-16	Dec-16	Jan-17	Feb-17	Mar-17	Apr-17
1	1,238	1,361	1,335 *	1,335	1,447	1,128 *	1,013	1,223	1,223 *	1,180
2	* 1,238	1,357	1,302 *	1,335	1,428	1,098 *	1,013	1,235	1,203 *	1,180
3	* 1,238	1,385 *	1,302	1,336	1,408 *	1,098	1,018	1,211	1,191	1,174
4	1,252	1,391 *	1,302	1,360	1,405 *	1,098	995 *	1,211 *	1,191	1,186
5	1,252	1,428	1,260	1,381 *	1,405	1,059	1,000 *	1,211 *	1,191	1,203
6	1,282 *	1,428	1,260	1,409 *	1,405	1,035	992	1,228	1,161	1,221
7	1,324 *	1,428	1,222	1,415	1,370	1,016 *	992	1,236	1,160	1,216
8	1,324	1,424	1,195 *	1,415	1,364	987 *	992	1,262	1,139 *	1,216
9	* 1,324	1,429	1,185 *	1,415	1,386	966	958	1,239	1,116 *	1,216
10	* 1,324	1,437 *	1,185	1,408	1,401 *	966	985	1,298	1,099	1,194
11	1,274	1,469 *	1,185	1,418	1,387 *	966	990 *	1,298 *	1,099	1,193
12	1,280	1,478	1,194	1,421 *	1,387	922	988 *	1,298 *	1,099	1,155
13	1,323 *	1,478	1,206	1,414 *	1,387	917	1,000	1,283	1,073	1,178
14	1,331 *	1,478	1,178	1,431	1,386	920 *	1,000	1,297	1,069	1,203
15	1,353	1,494	1,182 *	1,431	1,355	943 *	1,000	1,324	1,076 *	1,203
16	* 1,353	1,508	1,172 *	1,431	1,367	966	1,003	1,309	1,050 *	1,203
17	* 1,353	1,515 *	1,172	1,440	1,351 *	966	1,003	1,340	1,045	1,171
18	1,343	1,523 *	1,172	1,478	1,349 *	966	1,003 *	1,340 *	1,045	1,212
19	1,368	1,531	1,165	1,490 *	1,349	946	1,028 *	1,340 *	1,045	1,221
20	1,384 *	1,531	1,172	1,492 *	1,349	937	1,038	1,325	1,044	1,215
21	1,382 *	1,531	1,206	1,480	1,332	953 *	1,030	1,325	1,089	1,242
22	1,353	1,525	1,228 *	1,480	1,301	985 *	1,038	1,316	1,103 *	1,242
23	* 1,353	1,522	1,253 *	1,480	1,255 *	985	1,063	1,301	1,128 *	1,242
24	* 1,353	1,553 *	1,253	1,480	1,208 *	985	1,080	1,283	1,114	1,243
25	1,336	1,542 *	1,253	1,470	1,208 *	985	1,091 *	1,283 *	1,114	1,231
26	1,350	1,512	1,260	1,471 *	1,208 *	985	1,124 *	1,283 *	1,114	1,213
27	1,379 *	1,512	1,284	1,479 *	1,208	1,007	1,133	1,250	1,119	1,224
28	1,364 *	1,512	1,285	1,471	1,208	995 *	1,133	1,241	1,155	1,263
29	1,380	1,466	1,318 *	1,471	1,185	998 *	1,133		1,164 *	1,263
30	* 1,380	1,424	1,335 *	1,471	1,141	1,013	1,159		1,172 *	1,263
31	* 1,380	1,377		1,482		* 1,013	1,202		1,180	
Average	1,328	1,469	1,234	1,435	1,331	994	1,039	1,278	1,122	1,212

Fiscal Year Average 1,244



## April STTG Counts by STTG Set

STTG Set	Benton	Cummins	Delta	EARU	Grimes	Hawkins	Max	Mcpherson	MCWR	NCU	NWAWR	ORCU	Intake	PB	RLW	TWR	Tucker	Varner	Wrightsville	Total
Asian	1				1					1	1			2			2	2		10
Bloods	7	94	26	88	52	8	67	10	2	22	3	54	8	38	20	7	52	124	31	713
Crips	3	67	15	48	27	3	34	5	4	20	5	29	7	25	21	4	35	97	31	480
Folk	2	40	10	51	36	7	28	10		45	1	23	4	21		6	29	93	29	435
GD	13	103	34	129	70	8	50	3	7		6	66	14	42	39		40	132	28	784
Mexican	6	12	4	18	11	3	2	3		7	3	11	1	13	5	2	4	22	5	132
Motorcycle	1	1		5		1	1	1		3				1	6			3		23
Other	3	7	4	14	8	1	2	2	3	4		3		8	4		6	15	10	94
People	1	17	4	17	11		11	3	1	12	2	14	2	13	4		14	24	18	168
Unknown	0	4		10	2		1		1	2		8	4	1	5	2	4	2	5	51
W/S	13	36	18	58	35	6	12	13	4	33	1	40	10	18	29	7	37	28	6	404
NAE	4	24	10	30	12	1	5	2	5	6		17	4	13	5		11	20	8	177
WAR	8	43	4	58	29	2	14	1	8	20	1	21	1	13	13		20	46	8	310
AC	2	9	3	13	12	1	6		2	6		8	1	6	3		8	40	3	123
AB	2	3	2	14	3		2		3	7	1	8	2	4	6		2	10	5	74
<b>Total</b>	<b>66</b>	<b>460</b>	<b>134</b>	<b>553</b>	<b>309</b>	<b>41</b>	<b>235</b>	<b>53</b>	<b>40</b>	<b>188</b>	<b>24</b>	<b>302</b>	<b>58</b>	<b>218</b>	<b>160</b>	<b>28</b>	<b>246</b>	<b>658</b>	<b>187</b>	<b>3978</b>

Key:

GD = Gangster Disciples

W/S = White Supremacist

NAE = New Aryan Empire

WAR = White Aryan Resistance

AC = Aryan Circle

AB = Aryan Brotherhood



## April STTG Unit Counts

Unit	Beginning Total	Confirmed	Suspected	In	Out	Paroled	Removed	Ending Total	Total Unit Population	Unit % of STTG's
Benton	69	5		3	8	3		66	330	20.00%
Cummins	460			16	11	5		460	1889	24.35%
Delta	126			27	12	7		134	626	21.41%
EARU	546	2	2	54	42	9		553	1675	33.01%
Grimes	302			24	9	8		309	1072	28.82%
Hawkins	42	1		5	6	1		41	452	9.07%
Max	241			5	8	2		235	655	35.88%
Mcpherson	55	1			1	2		53	986	5.38%
MCWR	41			2	2	1		40	141	28.37%
NCU	193	6		30	29	12		188	830	22.65%
NWAWR	21			3				24	100	24.00%
ORCU	297			35	19	11		302	1595	18.93%
ORCU Intake	98	137			147			58	229	25.33%
PB/Ester	221	7		44	42	11	1	218	1040	20.96%
RLW	152			36	20	8		160	560	28.57%
TWR	27			3	1	1		28	128	21.88%
Tucker	259			23	17	1		264	1007	26.22%
Varner	664			94	90	10		658	1701	38.68%
Wrightsville	186			24	14	9		187	861	21.72%
<b>Total</b>	<b>4000</b>	<b>159</b>	<b>2</b>	<b>428</b>	<b>478</b>	<b>101</b>	<b>1</b>	<b>3978</b>	<b>15877</b>	<b>25.06%</b>

ORCU Intake brought in 137 new STTG members into ADC last Month.





## April STTG Disciplinary Report

Unit	STTG Incidents	STTG Suspected Incidents	Total Unit Disciplinary	Disciplinary Involving STTG	Percentage
Benton			26	6	23.08%
Cummins	1		455	116	25.49%
Delta			137	43	31.39%
EARU	1	10	259	137	52.90%
Grimes	3	1	134	39	29.10%
Hawkins			29	2	6.90%
Max			64	36	56.25%
Mcpherson			216	27	12.50%
MCWR			12	3	25.00%
NCU	1		120	34	28.33%
NWAWR			4		0.00%
ORCU			354	97	27.40%
ORCU Intake			17	7	41.18%
PB/Ester			47	10	21.28%
RLW		1	96	40	41.67%
TWR			2		0.00%
Tucker			191	92	48.17%
Varner			465	279	60.00%
Wrightsville			75	26	34.67%
<b>Total</b>	<b>6</b>	<b>12</b>	<b>2703</b>	<b>994</b>	<b>36.77%</b>

## ARKANSAS DEPARTMENT OF CORRECTION INPATIENT AND EMERGENCY ROOM UTILIZATION

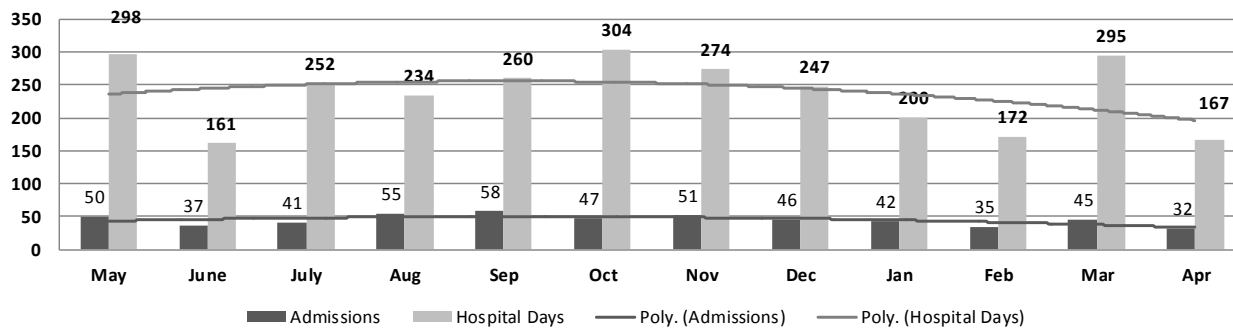
### ADC Inpatient Statistics Past 12 Months

	2016						2017						
	May	June	July	Aug	Sep	Oct	Nov	Dec	Jan	Feb	Mar	Apr	Average
Admissions	50	37	41	55	58	47	51	46	42	35	45	32	44.9
Hospital Days	298	161	252	234	260	304	274	247	200	172	295	167	238.7
Average Length of Stay	5.96	4.35	6.15	4.25	4.48	6.47	5.37	5.37	4.76	4.91	6.56	5.22	5.31

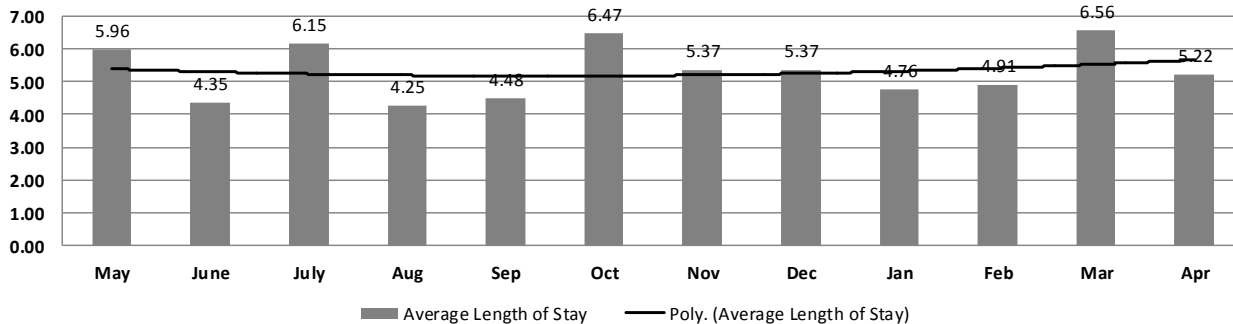
### ADC ER Visits Past 12 Months

	2016						2017						
	May	June	July	Aug	Sep	Oct	Nov	Dec	Jan	Feb	Mar	Apr	Average
Emergency Room Visits	108	73	66	67	86	101	103	102	92	80	126	111	92.9

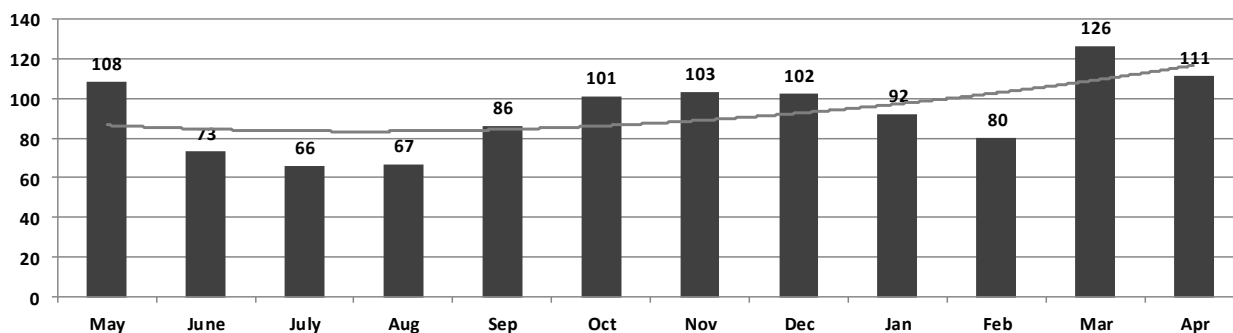
#### ADC Inpatient Utilization Past 12 Months



#### ADC Inpatient Average Length of Stay Past 12 Months



#### ADC Emergency Room Visits Past 12 Months





April 2017  
Medical Grievance  
Board Report

Unit	Acknowledged/ Received	Rejected	Reviewed & Signed by Dep Director	With Merit	With Merit, but Resolved	% With Merit	Without Merit
Benton	0	0	0	0	0	0%	0
Bowie County	1	0	3	0	0	0%	3
CMU	1	0	0	0	0	0%	0
Cummins	15	1	15	1	0	7%	14
Delta	1	0	2	0	0	0%	2
EARU	19	5	13	4	0	31%	9
EARU Max	28	6	28	4	0	14%	24
Ester	0	0	1	0	0	0%	1
Grimes	19	0	7	0	1	14%	6
Hawkins	0	2	0	0	0	0%	0
McPherson	1	3	5	1	0	20%	4
MCWRC	0	0	0	0	0	0%	0
MSU	16	2	7	1	0	14%	6
North Central	19	0	7	0	0	0%	7
NWAWRC	0	0	0	0	0	0%	0
Ouachita	32	4	22	1	0	5%	21
Pine Bluff	0	0	0	0	0	0%	0
Randall L. Williams	1	0	0	0	0	0%	0
SNN	0	0	0	0	0	0%	0
TRCC	0	0	0	0	0	0%	0
Tucker	7	0	5	1	0	20%	4
Varner	22	4	10	0	0	0%	10
Varner Super Max	38	1	18	0	0	0%	18
WRU	4	0	2	0	0	0%	2
WHM	2	0	1	0	0	0%	1
WWR	0	0	0	0	0	0%	0
<b>TOTAL</b>	<b>226</b>	<b>28</b>	<b>146</b>	<b>13</b>	<b>1</b>	<b>10%</b>	132

April 2017 Purchase Orders Over \$10,000.00

VENDOR	DESCRIPTION	LOCATION	PO#	PURCHASE AMOUNT	FUND
Wholesale Electric Supply Co Inc	Building Supplies	Construction/Construction	4501703889	\$25,491.09	PB Records Renovation
Jones Hydro Services	Well Repair	Maximum Security/Maintenance	4501662041	\$49,942.94	Operational Budget
American Paper & Twine	Paper Towels	Central Warehouse	4501704260	\$11,368.34	Operational Budget
US Foods Inc	Food Purchases	Central Warehouse	4501704266	\$25,754.40	Operational Budget
Mid States Services Inc	Toilet Paper	Hawkins/ACI/Imaging	4501704380	\$24,268.80	Operational Industry Budget
Woodbury Beach Co	Tube Bundle for Storage Tank	Maximum Security/Maintenance	4501704535	\$15,896.54	Operational Budget
Datamax Inc	Lexmark Printer	Admin East/Information Systems	4501704501	\$14,761.38	Operational Budget
Arkansas Correctional Industries	Laundry Supplies	Central Warehouse	4501704517	\$36,576.52	Operational Budget
Tabb Textiles Co Inc	Fabric Sheetting	Cummins/Industry	4501704522	\$46,800.00	Operational Industry Budget
Mid States Services Inc	Toilet Paper	Hawkins/ACI/Imaging	4501704531	\$24,268.80	Operational Industry Budget
Searcy Co Equip Co	Repair Parts	Wrightsville	4501705284	\$10,225.64	Operational Budget
Helena Chemical Company	Herbicide	Tucker/Farm	4501704792	\$14,781.80	Operational Farm Budget
Tri-County Farmers Association	Fertilizer	EARU/Farm	4501704606	\$24,790.00	Operational Farm Budget
Crop Production Services Inc	Herbicide	EARU/Farm	4501704629	\$13,891.50	Operational Farm Budget
Cumberland Materials Inc	Building Supplies	Ouachita/Construction	4501705105	\$12,123.00	Malvern Construction
WW Grainger Inc	Lawn Mowers	Central Warehouse	4501703647	\$105,360.00	Operational Budget
Green Point AG LLC	Herbicide	Tucker/Farm	4501704228	\$41,409.48	Operational Farm Budget
McKesson Medical Surgical	Medical Supplies	Admin Services/Health & Corr Prog	4501705458	\$24,680.59	Medical Risk Assessment
Vans Harvesting Inc	Bean Picker Rental	Cummins/Farm	4501653185	\$23,037.25	Operational Farm Budget
Crop Production Services Inc	Herbicide	Cummins/Chemical Shed	4501704602	\$40,059.00	Operational Farm Budget
Cruse Uniforms and Equipment	Police Equipment	Varner	4501705121	\$10,088.88	Operational Budget
Barnes Paper Co	Poultry House Supplies	Cummins/Farm	4501706050	\$24,066.24	Operational Farm Budget
Green Point AG LLC	Diesel Fuel	Cummins/Farm	4501704142	\$38,919.81	Operational Farm Budget
MJ Kellner	Food Purchases	Central Warehouse	4501706372	\$61,421.00	Operational Budget
William R Hill & Co	Food Purchases	Central Warehouse	4501706423	\$1,128,913.53	Operational Budget
WW Grainger Inc	Skylight	Ouachita/Maintenance	4501706012	\$12,074.48	Operational Budget
Razor Chemical Inc	Janitorial Supplies	Delta/Janitorial	4501706444	\$16,306.40	Operational Industry Budget
Empire Paper	Bleach	Central Warehouse	4501706495	\$13,135.24	Operational Budget
Phoenix Trading Americare Products	Sanitary Napkins	Central Warehouse	4501706517	\$11,308.64	Operational Budget
American Paper & Twine	Paper Towels	Central Warehouse	4501706477	\$52,369.20	Operational Budget
Green & Chapman LLC	Fuel	Wrightsville	4501697039	\$12,145.75	Operational Budget
United Fence & Construction Co Inc	Construction Supplies	Wrightsville	4501701315	\$13,661.93	Inmate Welfare Funds
John R Hestir	Consulting Fees	Tucker/Farm	4501704284	\$12,337.00	Operational Farm Budget
Robbins Sales Company Inc	Food Purchases	Central Warehouse	4501706870	\$312,541.60	Operational Budget
National Food Group	Food Purchases	Central Warehouse	4501706948	\$48,409.20	Operational Budget
Bayer Corp	Shampoo	Central Warehouse	4501706982	\$10,859.98	Operational Budget
A C Sales Co	Food Purchases	Central Warehouse	4501706978	\$18,018.40	Operational Budget
WW Grainger Inc	Skylight	Ouachita/Maintenance	4501706954	\$13,477.63	Operational Budget
Phoenix Trading Americare Products	Deodorant Soap	Central Warehouse	4501706745	\$24,627.90	Operational Budget
Jones-Zylon Co	Water Tumbler	Central Warehouse	4501706666	\$10,107.21	Operational Budget
Green Point AG LLC	Herbicide	Cummins/Chemical Shed	4501706650	\$26,644.40	Operational Farm Budget
Green Point AG LLC	Fertilizer	Cummins/Chemical Shed	4501706655	\$68,750.00	Operational Farm Budget
Arkansas Correctional Industries	Clothing and Linens	Delta	4501707002	\$40,458.93	Operational Budget
Arkansas Correctional Industries	Toilet Paper	Central Warehouse	4501707073	\$161,848.75	Operational Budget
Printing Papers Inc	Paper	Central Warehouse	4501707071	\$27,122.30	Operational Budget
Arkansas Correctional Industries	Janitorial Supplies	Central Warehouse	4501707069	\$215,042.09	Operational Budget
Arkansas Correctional Industries	Tea and Coffee	Central Warehouse	4501707068	\$43,926.00	Operational Budget
Sysco Food Services of Arkansas	Food Purchases	Central Warehouse	4501707092	\$173,099.15	Operational Budget
White River Petroleum Co Inc	Fuel	Grimes	4501706377	\$10,650.57	Operational Budget
Mid Sout Sales Inc	Fuel	Cummins/Commissary	4501707159	\$16,139.60	Operational Budget
Shamrock Meats Inc	Ground Beef	Cummins Cold Storage Facility	4501707419	\$145,938.00	Operational Farm Budget
Helena Chemical Company	Herbicide	EARU/Farm	4501707424	\$30,340.00	Operational Farm Budget
MFA Incorporated	Herbicide	Tucker/Farm	4501704794	\$36,400.00	Operational Farm Budget
William A Harrison, Harrison Energy	HVAC Equipment	Benton	4501708149	\$59,750.76	Work Release
Bale Chevrolet	Passenger Vans	Admin East/Purchasing	4501707950	\$348,634.00	Work Release
McLarty NLR LLC	Trucks	Admin East/Purchasing	4501708216	\$68,440.00	Work Release
Superior Automotive Group	Dually Trucks	Admin East/Purchasing	4501708268	\$55,200.00	Work Release
Little Rock Winnelson	Plumbing Supplies	McPherson/Maintenance	4501707658	\$14,279.09	Operational Budget
Ouachita Gravel Company	Gravel	Ouachita/Horse Barn	4501708643	\$10,729.69	Operational Budget
Supreme Fixture Co	Kettle	Ouachita	4501708647	\$22,255.78	Work Release
Arkansas Correctional Industries	Clothing	Grimes	4501708117	\$18,930.48	Operational Budget
Charm Tex Inc	Clothing	McPherson	4501708352	\$10,469.12	Operational Budget
Green Point AG LLC	Fertilizer	Cummins/Chemical Shed	4501708163	\$12,225.00	Operational Farm Budget
Arkansas Correctional Industries	Clothing	McPherson	4501709351	\$24,714.38	Operational Budget
Agvise Crop Consulting LLC	Crop Consulting-Soybeans	Cummins/Farm	4501708123	\$10,575.00	Operational Farm Budget
Mid States Services Inc	Toilet Paper	Hawkins/ACI/Imaging	4501708915	\$24,268.80	Operational Industry Budget
Helena Chemical Company	Herbicide	Cummins/Chemical Shed	4501709968	\$41,710.00	Operational Farm Budget
Green Point AG LLC	Fertilizer	Cummins/Chemical Shed	4501709885	\$32,895.00	Operational Farm Budget
GE Government Supply Inc	Powdered Milk	Cummins Creamery/Farm	4501709877	\$86,800.00	Operational Farm Budget
Cruse Uniforms and Equipment	Armory Supplies	ADC/Departmental Armor	4501710012	\$16,686.17	Work Release
US Foods Inc	Food Purchases	Central Warehouse	4501707084	\$124,388.72	Operational Budget
Atlantic Beverage Company	Food Purchases	Central Warehouse	4501706964	\$37,944.25	Operational Budget
WW Grainger Inc	Roof Vents	Delta/Construction	4501709652	\$32,560.76	Operational Budget
Arkansas Correctional Industries	Clothing and Linens	Pine Bluff	4501710088	\$25,068.90	Operational Budget
Arkansas Correctional Industries	Boots	Tucker	4501710355	\$12,144.60	Operational Budget
Tommy's Flying Service Inc	Fertilizer	Tucker/Farm	4501710386	\$14,100.00	Operational Farm Budget
Green Point AG LLC	Fertilizer	Tucker/Farm	4501710389	\$28,217.00	Operational Farm Budget
US Foods Inc	Food Purchases	Central Warehouse	4501710520	\$54,939.00	Operational Budget
National Food Group	Food Purchases	Central Warehouse	4501710524	\$156,067.00	Operational Budget
Arkansas Correctional Industries	Boots and Mattresses	McPherson	4501710514	\$14,701.84	Operational Budget

Total for Purchases over \$10,000

\$4,785,332.22

**FIRM CONTRACTS OVER \$25,000.00**

VENDOR	DESCRIPTION	UNIT	Contract # P.O.#	PURCHASE AMOUNT	FUND
Generated Energy Solutions LLC	Generator	Ester/Construction	4501706622	\$151,103.00	Ester II ADFA Funds

Total for Contracts

\$151,103.00

**EMERGENCY PURCHASE ORDERS OVER \$25,000.00**

Total EM Purchases

\$0.00

**Total Purchases**

\$4,936,435.22

## Arkansas Department of Correction April 2017 Vacancies, Hires and Terminations

UNIT	VACANCIES	HIRES	TERMINATIONS
BENTON (CR05)	3	1	0
CENTRAL OFFICE (CR01, CR02, CR08 & CR22)	20	2	2
CHAPLAINCY	0	1	0
CONSTRUCTION (CR04)	10	2	1
CUMMINS (CR09)	85	1	10
DELTA (CR10)	9	0	4
EAST ARKANSAS (CR12)	75	8	9
ESTER (CR11)	4	2	2
FARM (CR29)	10	0	0
GRIMES (CR27)	14	3	5
INDUSTRY (CR07)	14	0	1
MAXIMUM SECURITY (CR14)	54	5	4
MCPHERSON (CR28)	32	0	6
MENTAL HEALTH	20	1	1
MISS COUNTY (CR15)	3	3	4
NORTH CENTRAL (CR16)	5	3	1
NORTHWEST ARK (CR17)	2	0	0
OUACHITA RIVER (CR30)	69	4	17
PINE BLUFF (CR20)	8	0	0
RANDALL WILLIAMS (CR13)	6	0	3
TEXARKANA (CR21)	1	0	0
TRANSPORTATION (CR32)	11	0	0
TUCKER (CR23)	29	0	1
TUCKER RENTRY (CR33)	1	0	0
VARNER (CR24)	69	5	1
VARNER SUPER MAX (CR31)	51	1	3
WRIGHTSVILLE (CR25)/HAWKINS(CR06)	29	2	3
TOTAL	634	44	78

# CHAPLAINCY

Apr-17	BENTON	CUMMINS	DELTA REGIONAL	EAST ARKANSAS	EAST ARKANSAS MAX	ESTER	GRIMES	HAWKINS	MAXIMUM SECURITY	MCPHERSON	NORTH CENTRAL	OUACHITA RIVER	PINE BLUFF	RANDALL L. WILLIAMS	TUCKER	VARNER	VARNER MAX	WRIGHTSVILLE	PTF	TOTAL
<b>Services Chaplains Oversaw</b>																				
Christian																				
Population	7	8	9	8	0	9	7	8	6	5	9	7	3	13	7	3	0	5	0	114
Segregation	0	0	0	0	0	1	0	0	0	1	0	3	0	0	0	0	1	0	0	6
Muslim																				
Population	0	4	3	2	0	4	5	0	0	5	0	2	1	0	1	4	0	0	0	31
Segregation	0	0	0	0	0	1	0	0	0	0	0	0	0	0	0	0	0	0	0	1
<b>Total Services</b>																				<b>152</b>
<b>Volunteers in Charge</b>																				
Protestant	20	38	2	27	0	1	25	13	41	42	23	19	11	9	18	16	5	13	0	323
Catholic	0	0	0	2	0	0	2	0	1	2	2	1	0	0	0	3	3	4	0	20
Muslim	0	0	0	4	0	0	5	0	1	5	0	4	0	1	2	0	0	0	0	22
Other	4	4	0	4	0	0	0	0	2	1	0	7	0	0	0	0	0	0	0	22
Baptism	0	0	0	3	0	0	3	0	0	0	0	0	0	0	3	0	0	0	0	9
<b>Marriages</b>																				
	0	0	1	1	0	0	0	0	0	0	0	0	0	1	0	0	1	0	0	4
<b>Distributed by Chaplains</b>																				
Greeting Cards	40	27	180	0	0	0	176	0	104	794	36	2800	135	22	169	722	481	0	400	6086
Bibles, Quran, Torah, Etc.	35	10	12	4	6	34	82	10	9	72	12	625	2	14	28	35	21	17	0	1028
Study Course	400	6	0	8	2	2	18	2	97	50	0	75	0	9	1	75	40	0	0	785
Writing Supplies	50	47	0	0	0	1050	56	55	190	0	0	0	0	8	0	0	0	0	1000	2456
Literature	175	978	725	186	47	475	121	300	0	308	485	500	61	10	13	1103	1870	275	200	7832
<b>Chaplain's Visits</b>																				
Barracks	81	41	56	13	0	24	478	15	75	140	31	100	23	15	126	92	51	49	8	1418
Approximate Hours Spent in Barracks	44	25	16	8	0	98	62	8	35	60	24	85	3	5	32	11	0	24	0	540
Inmate Office visits	58	27	61	97	0	70	136	71	28	60	72	150	23	154	216	173	0	40	20	1456
Other Office visits	83	12	10	32	0	36	12	0	40	25	20	50	21	12	41	0	0	45	0	439
Hospital	0	0	1	0	0	0	0	0	0	2	0	28	0	0	0	1	0	0	0	32
Infirmity/Sick Call	0	4	0	2	0	3	36	8	5	4	3	21	4	10	4	1	0	7	0	112
Restrictive Housing	0	4	4	0	8	0	38	10	28	10	1	24	4	10	13	0	38	4	0	196
Punitive Isolation	0	11	4	0	4	1	0	0	34	10	0	6	4	10	0	0	13	4	0	101
PC - DRU	0	0	4	0	0	0	0	0	0	0	0	0	0	0	0	0	0	0	0	4
Visitation Days	0	1	3	0	0	0	2	0	0	5	2	6	0	2	0	0	0	1	0	22
<b>Volunteer Visits</b>																				
RCV	7	0	0	0	0	0	4	1	64	16	19	96	0	2	12	0	0	0	0	221
OCV	17	0	0	0	0	14	0	24	124	20	45	0	14	75	67	15	0	45	25	485
Spiritual Advisor	2	5	0	0	0	0	0	0	0	1	0	5	1	1	3	0	0	1	0	19
CRA	25	43	15	89	7	12	68	26	0	18	65	119	23	12	100	64	21	32	0	739
<b>Religious Volunteer Hours</b>																				
Volunteer Hours	123	133	15	258	19	14	248	50	590	207	233	522	90	654	615	203	102	64	0	4140
Denominational/Volunteer Hours	101	140	0	33	0	254	48	121	642	128	125	45	26	134	165	12	0	240	0	2214
<b>Total Volunteer Hours</b>																				<b>6354</b>
<b>Other Activities of Chaplain</b>																				
Counseled Employees	113	7	3	10	0	10	9	8	2	15	6	47	10	4	12	11	10	12	2	291
Orientation Sessions	0	4	0	0	0	0	0	0	0	0	0	4	0	3	0	0	0	0	0	11
Free World Devotions	0	0	0	10	0	10	0	0	4	3	0	19	12	12	4	1	0	0	0	75
Spoke in Churches	9	8	0	14	0	10	32	0	5	2	0	20	12	12	4	0	0	12	0	140
Crisis Intervention Sessions	13	36	0	0	0	5	0	15	1	40	5	19	19	10	7	6	7	25	4	212
Marriage Counseling	6	0	0	1	0	0	3	0	3	4	1	2	0	2	1	0	1	0	0	24
Denominational Meeting	0	1	0	4	0	0	0	0	1	0	0	6	1	0	1	0	0	0	0	14
Chaplain's Meeting	0	6	1	1	0	3	2	0	0	0	1	1	1	1	1	6	0	1	1	26
Volunteer Training Session	2	0	0	1	0	0	0	0	5	0	0	1	0	1	0	0	0	0	0	10
Choir Trip	0	0	0	0	0	0	0	0	0	0	0	0	0	0	0	0	0	0	0	0
<b>Chaplain Transfers</b>																				
	0	0	0	1	0	0	0	0	0	0	0	0	0	0	0	0	0	0	0	1
<b>Chaplain Promotions</b>																				
	0	0	0	0	0	0	0	0	0	0	0	0	0	0	0	0	0	0	0	0
<b>PAL PROGRAM</b>																				
Enrolled at start of month	0	47	12	49	0	53	50	42	20	56	28	42	0	31	57	48	0	23	0	558
Enrolled during the month	0	8	3	1	0	1	5	17	20	20	6	7	0	1	10	6	0	4	0	109
<b>Removed From PAL Program</b>																				
# Paroled	0	0	0	0	0	0	2	1	0	8	0	3	0	0	1	1	0	0	0	16
# Completed	0	0	0	1	0	0	2	0	0	2	3	1	0	1	2	0	0	0	0	12
# Withdrew	0	4	2	0	0	0	0	4	1	0	3	1	0	0	1	5	0	1	0	22
# Removed	0	3	0	0	0	0	2	2	1	6	0	1	0	1	2	1	0	0	0	19
# Transferred	0	1	0	0	0	0	0	1	0	6	1	2	0	0	1	1	0	0	0	13
Total Removed from PAL Program	0	8	2	1	0	0	6	8	2	22	7	8	0	2	7	8	0	1	0	82
Total Enrolled at the End of the Month	0	47	13	49	0	54	49	51	38	54	27	41	0	30	60	46	0	26	0	585
<b>Volunteers in PAL</b>																				
	0	23	2	10	0	7	13	5	15	21	5	9	0	4	11	4	0	40	0	169
<b>Special Events:</b>																				
	7	0	2	1	0	0	0	1	2	0	3	0	0	1	0	0	0	1	1	19

### THINK LEGACY SPECIAL EVENTS

Monthly Report for: April 2017	CUMMINS	DELTA REGIONAL	EAST ARKANSAS	ESTER	GRIMES	HAWKINS	MCPHERSON	NORTH CENTRAL	OUACHITA RIVER	RLW JUVENILE	TUCKER WOMEN'S	TUCKER	VARNER	WRIGHTSVILLE	Total
<b>Classification / Total Counts</b>															
How many eligible participant's are on the waiting list	0	20	6	0	9	0	42	0	5	0	4	13	46	6	151
How many Participants were seen by Classification	9	8	12	5	5	29	16	0	3	0	4	20	7	6	124
How many were approved	9	8	8	5	14	1	16	0	3	0	4	20	7	6	101
How many were denied	0	0	4	0	18	9	0	0	0	0	0	0	0	0	31
Total number of beds in the barracks	60	24	50	48	56	64	68	53	46	0	N/A	55	50	49	623
Think Legacy Participants' assigned to the barracks	53	24	50	41	51	29	65	53	40	0	16	50	47	49	568
<b>Graduation</b>															
Graduates for the month	0	1	0	0	0	0	2	0	1	0	0	0	1	0	5
How many made parole	4	2	5	0	4	0	7	0	1	0	4	4	2	2	35
How many transferred to another unit	1	4	1	0	3	4	0	0	2	0	0	1	0	0	16
<b>Re-entry Participant Removal</b>															
How many Participants' signed out?	1	2	0	2	0	0	1	6	1	0	0	0	2	3	18
How many Participants were removed by staff?	6	2		0	0	0	0	0	1	0	0	9	0	3	21
How many received Disciplinary Action for the month	1	2	5	0	4	2	4	0	0	0	0	0	2	0	20
<b>Recidivism</b>															
How many Graduates' absconded (eOMIS)	N/A	N/A	N/A	N/A	N/A	0	1	N/A	N/A	0	N/A	N/A	N/A	N/A	1
How many Graduates are incarcerated currently (eOMIS)	N/A	N/A	N/A	N/A	N/A	0	17	4	N/A	0	0	N/A	N/A	N/A	21
(Information provided through Justice Exchange)															
<b>Volunteers</b>															
Volunteers / Guest Speaker Hours	7	10	29	15	10	8	18	27	6	0	2	1	1	11	145
Staff Hours Teaching	1	5	38	77	70	38	7	4	3	0	80	0	28	68	419
<b>Other Activities</b>															
Orientation Sessions	4	1	1	0	10	0	5	0	3	0	2	2	3	4	35
# that couldn't attend Guest Speaker's via work assign.	0	0	0	0	0	0	0	0	0	0	0	0	0	0	0
<b>Special Events:</b>															
Events:	10	0	0	5	1	0	5	0	0		0	0	0		21



## AR-DOC SW Activity Tracker

Total ADP: 15,586

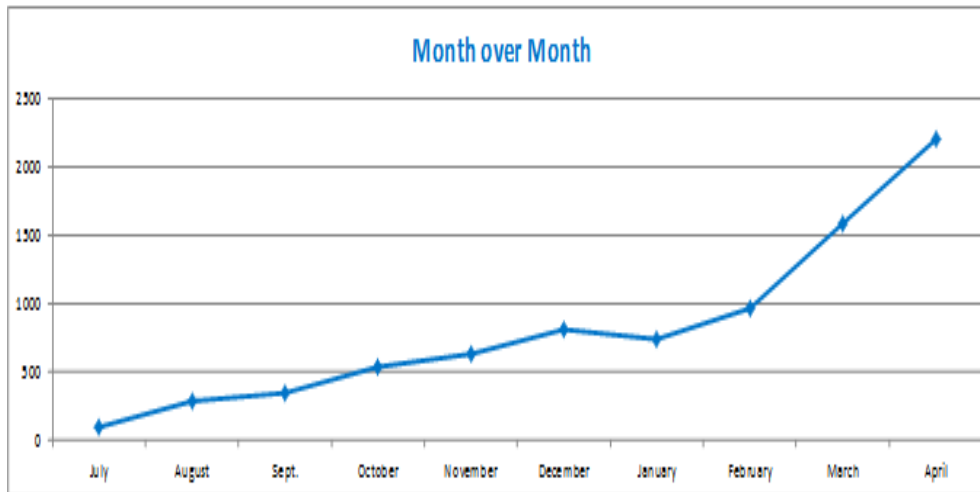
**July 6, 2016 Go Live:** Cummins & Pine Bluff Re-Entry  
**August 17, 2016 Go Live:** Benton, State Police Barracks & Wrightsville Unit  
**Sept. 14, 2016 Go Live:** NW Arkansas Work Release  
**Sept. 28, 2016 Go Live:** Varner Unit & Texarkana Regional Correction Center  
**Nov. 2, 2016 Go Live:** Mississippi County Work Release Center  
**Jan. 18, 2017 Go Live:** Randall L. Williams Facility & Pine Bluff Complex  
**Feb. 22, 2017 Go Live:** McPherson Unit, J. Aaron Hawkins Sr. Center Facility & Ester Unit  
**March 29, 2017 Go Live:** East Arkansas Regional Unit & Tucker Re-entry  
**April 11, 2017 Go Live:** North Central Unit

## Promotional Pricing

Until 12/31/17: \$5/30 minutes - Promotional price point to encourage remote visitation

Total Visits by Month	July	August	Sept.	October	November	December	January	February	March	April
Total	97	288	348	528	631	806	736	958	1,578	2,198
Target Objective	2,002	2,552	4,468	4,468	4,590	4,590	5,589	7,097	8,876	10,722

## Anywhere Visitation Performance:



## Completed Visits

Site	Current Month	Previous Month
Cummins	305	264
Pine Bluff Re-Entry	3	0
Benton	91	92
State Police Barracks	41	26
Wrightsville Satellite	0	9
NW Arkansas WRC	0	0
Varner Unit	251	162
Texarkana Regional	20	6
Mississippi County WRC	38	45
Randall L. Williams	175	171
Pine Bluff Complex	209	138
McPherson	205	5
J. Aaron Hawkins Sr.	45	0
Ester	105	0
East Arkansas Regional	2	0
Tucker Re-entry	0	0
North Central	103	0
Grimes	65	0
<b>Total:</b>	<b>1658</b>	<b>654</b>

## Missed by Inmate

Site	Current Month	Previous Month
Cummins	11	5
Pine Bluff Re-Entry	0	0
Benton	2	6
State Police Barracks	1	1
Wrightsville Satellite	0	0
NW Arkansas WRC	0	0
Varner Unit	10	16
Texarkana Regional	5	0
Mississippi County WRC	7	6
Randall L. Williams	4	4
Pine Bluff Complex	1	2
McPherson	4	0
J. Aaron Hawkins Sr.	28	0
Ester	15	0
East Arkansas Regional	0	0
Tucker Re-entry	0	0
North Central	7	0
Grimes	0	0
<b>Total:</b>	<b>84</b>	<b>35</b>

