

**Wendy Kelley
Director**

**March
2016**



OPERATIONS/INSTITUTIONS

RESEARCH/PLANNING

February Admissions and Releases – Admissions for February totaled **1,028** (900-males and 128-females), while releases totaled **1,021** (882-males and 139-females), for a net increase in-house of seven.

Inmate Population Growth/Projection – At the end of February, the Arkansas Department of Correction population totaled 17,625 representing a decrease of 82 inmates since the first of January. Calendar Year 2016 averaged growth is -41 inmates per month, down from an average monthly growth of -14 inmates per months during Calendar Year 2015.

Average County Jail Backup- The backup in the County Jails averaged **1,178** Inmates per day during the month of February, 2016, up from an average of **1,087** Inmates per day for the month of January, 2016.

PREA/STTG

PREA Hotline Data:

A PREA Compliance Manager's meeting was held during the month of February. The PREA Demonstration eOMIS Project Teleconference was held on February 22 with ADC, BJS, IJIS and Marquis participating. PREA Hotline calls and incident reports are continuing to be entered by staff into eOMIS incident reporting. PREA e-mail alerts have continued to generate to key staff who can immediately address PREA related issues. Automated data collection with enumeration of incident characteristics and outcomes for annual SSV reporting is monitored by the PREA coordinator.

Number of calls received	131
Total Number of Repeat Calls	37
Total Number of Calls With No Message	52
Total Reported PREA Issue Calls	24
Total Reported non-PREA Calls	18
Total Calls Due to Technical Failure	0
Total Calls Referred to IAD	13

STTG

STTG participated in two forum questions put out by state DOC coordinators on gang intelligence gathering policies and radicalization prevalence in state DOC's. We also offered assistance to the Tennessee DOC with information linked to the ADC STTG inmate concerning an inmate currently in our custody attempting to communicate with inmates in their system.

FARM

The ADC AG division used the month of February to get equipment ready for the upcoming year. We took advantage of the dry weather during the month to do some field work on the row crops and gardens. Fertilizer and chicken litter were applied where needed.

The Wrightsville cattle were shipped February 10-11. Cattle went to north Arkansas and to Texarkana. The horses were gathered for the horse auction to be held March 12. Coggins testing and the sale book were put together. The gardeners began working on their transplants in the greenhouses. Onions were planted at Cummins.

INMATE GRIEVANCE

Inmate Formal / Informal Grievances: In February, there were a total of 1,981 formal grievances filed and 3,887 informal grievances filed at various Units.

Institutional Grievances: There were a total of 585 appeals of institutional grievances received and 395 appeals were answered in February. Eleven were found with merit.

CHAPLAINCY SERVICES

Benton Work Release

On February 6, the movie "War Room" was shown. Thirty-six inmates attended.

On February 2, 9, 16, and 23, Financial Peace University classes were held with 68 inmates participating.

On February 6, 13, 20, and 27, Courageous Bible Study, "Honor Begins at Home," was held with 63 inmates attending.

On February 15, the movie "God Is Not Dead" was shown with 21 inmates in attendance.

On February 27, Clemmie Jones Outreach Ministries came to the facility and 30 inmates attended the service that they led.

Cummins Unit

On February 20 and 21, the COPS Ministry led services in the chapel. Seventy-four inmates attended the first service and 81

came to the second.

Hawkins Unit

On February 14, a communion service was led by a volunteer and a chaplain with 81 inmates in attendance.

On February 20, Fellowship of Christian Athletes brought seven volunteers and held a service with 36 inmates.

Maximum Security Unit

On February 21, the COPS Ministry from California came to our facility. Five volunteers led a service with 40 inmates attending in the chapel.

On February 26, the Nation of Islam inmates celebrated Saviors Day at the chapel. Three volunteers facilitated the event for 43 inmates.

On February 27, our quarterly CRA training took place in the chapel with 29 volunteers participating.

Wrightsville Unit

We held two special events in February. On February 20, the Fellowship of Christian Athletes brought a group of Razorback athletes into the unit. Thirteen volunteers came with the group and 95 inmates attended.

COPS Ministry, a team of law enforcement officers from California, came to the facility on the February 22. Five volunteers led a service with 60 inmates participating.

ORCU

In February, an open meeting was held for inmates interested in participating in a Celebrate Recovery group. Twenty- three inmates attended.

Grimes

A quarterly volunteer meeting was held and two new volunteers were recruited to work in the reentry barracks.

Preparing for Success: February 2016

	Slots	Completed	Dis-charged	End Count
McPherson	15	0	0	11
Ester-3 BKS	50	9	12	54
Ester-4 BKS	50	11	7	52
Total	115	20	19	117

There are 619 males and 70 females on the waiting list within 42 months of their release date and of those, 11 males and one female are mandated by the Board of Parole. The average time on the waiting list is about three months. The total on the waiting list, including those not currently within the identified time frame, is 691 males and 94 females.

Volunteer Services

The total number of volunteer hours for the month of February

Unit	Hours
Intern hours	48
MCWRC	18
ORCU	30
RLW	35
Pine Bluff	12
Tucker	23
WSU	320
PAWS	2
TOTAL	488

ADMINISTRATIVE SERVICES

Procurement Section Update:

Contracts/Bids Status:

Contract Renewals

Uniform Jackets
Waste Disposal – Wrightsville
Rubber Boots
Thermals
Holiday Packages
Uniform Rental
Canvas Shoes

Contracts/Bids (in process by OSP)

Ester Unit Phase III

Structural Steel

Roofing

HVAC

Metal Building

Fire Suppression

Awarded Contract (ABA)

Ester Unit

Asbestos Removal: Nabholz

Minority Spending 2nd Quarter FY16

October - December \$188,563.41 (1.39%)

Total to date FY16 - \$344,509.07 (2.51%)

Human Resource Update:

Workplace Safety – During the month of February, the modified version of the Health and Safety Plan was presented to one Basic Training class with a total of 58 cadets in attendance.

There were 62 incidents reported to the company nurse in February, which brings our total to 104 incidents in 2016. The safety topic, “Slips and Falls,” was presented to 48 employees located at the Administration Annex East Facility.

Benefits – There were 25 MIPS promotions and 104 MIPS payments. Seventy-four FMLA requests were processed with 72 approved and two denied. A total of five CAT leave requests were processed, with three approved and two denied. Six hundred thirty-four hours were donated to the CAT leave bank. There were five applications received for shared leave, with three approved and two denied, for a total of 584 hours of donated time.

Physical Assessments – There was a total of 174 applicants and incumbent personnel that were assessed in the month of February. Eighty-three incumbent personnel successfully completed their physical assessments and five incumbent personnel did not. Of those five, three rescheduled and passed, and the other two are pending rescheduled dates. There were 86 applicants tested, and all passed their physical assessments.

Employment – Facebook results for the month showed a total of 2,976 “likes” of our page. Through Discover Corrections, there were 3,987 people from across the U.S. who viewed ADC’s page. There were no job fairs for the month of February.

Because of duplicating information, we are now only tracking CO I applications through the ARStateJobs website. This site does not have the capabilities to give us a breakdown.

There were a total of 2,222 applications received during February through ARStateJobs website. A total of 70 non-correctional applications were processed in February. Seventy-nine CO I applications were processed with the following results: 54 correctional officers were hired and 25 correctional officers were rehired.

Gifts, Grants, and Donations/Inmate Welfare Fund Balance (required by policy) – During the month of February are reported as follows:

Donated to ADC:

Gifts, Grants and Donations:

Donations for the month of February were \$957.25.

Inmate Welfare Fund balance on February 29 was \$4,342,091.25.

PAWS in Prison Fund balances total on February 29, were \$81,157.31 in ADC. Account (7004822/Donations) \$19,109.05 and ADC account (NDC0500/Recycling) \$62,048.26. This does not include the foundation account managed by PIP Foundation Board.

Procurement/Contracts Report (required by policy) –

For February 2016, purchase orders and contracts in excess of \$10,000 amounted to \$2,825,852.18. Of this amount, \$1,769,982.93 was for inmate care and custody related items (food, shoes, clothing, etc.). Bulk fuel costs for the month of February were \$10,906.44 - average cost of E-10

was \$1.62/gallon; average cost of bulk diesel was \$1.89/gallon for the month of February.

Vacancies, Hires, and Terminations - On February 29, 2016 there was a total of 560 vacancies, 67 new hires, and 84 terminations at the various ADC locations.

Information Technology

The network team worked on the following:

- Completed North Central Unit horse barn fiber survey and provided a list of distances and specifications to maintenance. Maintenance will provide a material list for IT to order for the project.
- Ran fiber at McPherson for the parole and intake office connections.
- Grimes Unit maintenance has submitted a materials list for a fiber run to SATP following a fiber survey. A requisition for the materials is being processed to complete the project.
- A fiber survey was completed and materials ordered for a connection of the Delta Regional Unit School.
- A new fiber run from East Arkansas records department to the chapel is in progress. A materials list is being generated.

Asset inventory identification and AASIS updating has been primary during the month.

eOMIS discussion, project development, and conference calls included the following:

Interface with Office of Driver Services for inmate driver’s licensing. ODS rejected some license requests sent via interface due to invalid formatting or missing sentencing orders. ODS can only receive PDF sentencing orders. eOMIS currently contains a mixture of image and PDF documents.

Integrated Justice Project with Contexte automated courts system. This project is moving forward. Marquis and AOC are currently working on the schema.

Modifications are in progress for VINE notifications to correctly address when inmates are moved in or out of re-entry centers.

Adding a module for ADC School District. ADC and Marquis have discussed the requirements for creating the module using information provided by School District. Marquis is currently putting together a rough draft document for discussion. Once received, the draft will be reviewed and amended as necessary.

Segregation Tracking and Reporting. A discussion with key participants was held on the current process of tracking inmates in segregation and how to improve the process.

Marquis Software Development provided a demonstration on inmate services project for the inmate KIOSK. Canteen ordering, funds transfer to phone, and sick call request were among

the items reviewed.

IT participated in a demonstration on inmate and agency provided tablets. IT attended a demonstration on data sharing titled Operation Lockdown.

Training Academy

Basic Training Division - BCOT 2016-A class graduated on February 12, with 63 cadets. The Willis H. Sargent Award winner was Marcia Rogers of the Ouachita River Unit. Dr. Ed Engstrom, Maximum Security Unit, served as the special speaker.

- **In-Service Division** - February started with a Management Level I class held February 1-4. This four day session is for new supervisors and includes training as mandated through the office of the Governor. Guest instructors from OPM's (Office of Personnel Management) Training Division presented two of those classes, Arkansas Government Basics and HRkansas. Other topics taught by ADC staff include: Performance Evaluation, Grievance Prevention and Handling, and the Fair Labor Standards Act. Over 30 students completed this course.

The focal point for this month is the new and improved FTO-Field Training Officer Class. This course is designed for staff that will work side by side with cadets and train them on how to accomplish their jobs. The FTO program module that is used means using our best staff to model for our new staff. Components of the training focus on teaching and the *retention of the employee*. Two classes were held.

Training Academy Law Enforcement Training Instructor, Amanda Bacus was able to begin her training debut with two classes on February 10. In the morning, she presented Image Matters. This highlights topics that promote the positive image of the agency and how a bad image can cause damage. The second class of the day was Attitude Virus. The focus of this presentation was to show students how to get rid of the sickness that glooms and dooms a team. Students learn how to be "healthy" for the benefit of the team.

During the last two weeks of the month three of the four Security for Non-Security classes for the Department were held. Security for Non-Security is an important course to prepare non-security staff for the career they face dealing with the prison environment. February 17, was the eight-hour class for volunteers. February 23-24, was the 16-hour version for religious volunteers. And, finally, the 40-hour class for full time staff was also conducted February 23-24. Presentations for this segment of training highlight sexual harassment, sexual misconduct, ADC history, con games.

eCADEMY - During the month of February, 424 ADC employees completed a total of 5,465.75 hours of eCADEMY training.

HEALTH/CORRECTIONAL PROGRAMS

Sex Offender Treatment Programs:

	SLOTS	COM- PLETED	RE- MOVED	CLI- ENTS
RSVP	238	0	10	237
SOFT	30	0	0	10
Total	268	0	10	247

There are 719 males on the waiting list for RSVP and 29 females on the waiting list for SOFT that are within five years of their TE date and of those, 51 are mandated by the Board of Parole. The average time on the waiting list from request is three to six months for stipulated. The total on the waiting list, including those not currently within the identified time frame, is 1,570 males and 35 females. We have one **PREA** inmate in the program at this time.

Therapeutic Community:

	Slots	Completed	Removed	Clients
Tucker	129*	8	9	128
Wrtsville	45*	4	1	47
McPherson	50*	0	4	53
Total	224	12	14	228

There are 119 males and 46 females on the waiting list that are within 18 months of their release date and of those, 19 are mandated by the Board of Parole. The average time on the waiting list from request is 21 days. The total on the waiting list, including those not currently within the identified time frame, is 470 males and 46 females.

*Denotes transitional beds available at this treatment program. Tucker TC has 129 client slots and seven peer counselor slots.

S.A.T.P.:

	Slots	Com- pleted	Re- moved	Clients
Grimes	50*	5	3	51
McPherson	100*	8	5	103
MSU	3	0	0	3
RLW/CF	188*	35	12	176
Tucker	43*	6	2	44
Varner	44	10	3	45
Wrightsville	135*	13	12	144
Total	563	77	37	566

There are 2,050 males and 471 females on the waiting list that are within 18 months of their release date and of those, 35 are mandated

by the Board of Parole. The average time on the waiting list from request is 23 days. The total on the waiting list, including those not currently within the identified time frame, is 2,998 males and 533 females.

*Denotes transitional beds available at this treatment program.

R.P.U.:

The Residential Program Unit at Ouachita had one admission and four discharges in February for an end-of-month count of 64.

McPherson Mental Health Residential Program:

There were three admissions and one was discharged in February for an end-of-month count of 42.

Habilitation Program:

The Habilitation Program at the Ouachita River Correctional Unit provided treatment services to 38 inmates during February. There were no admissions and no discharges for an end-of-month count of 38.

Staffing:

The following Mental Health Services and SATP positions were vacant in January and February.

	January	February
Psychologists	8	7
Social Workers	7	8
Advisors	3	2
Substance Abuse Prog Leaders	4	5
Admin Specialist/Analyst	2	3

ADDITIONAL PROGRAM INFORMATION

Self-study Classes:

	# Participants	# Completed	Waiting List
Anger Mgmt	491	417	1,509
Thinking Errors	303	213	2,641
SAE	145	31	679
Comm Skills	230	211	1,470
DV	64	17	1,073
Stress Mgmt	355	180	1,637
Parenting	182	130	1,413

SAE=Substance Abuse Education DV=Domestic Violence

Suicide:

There were 94 suicidal threats, gestures or low/moderate risk attempts during February. There were two serious attempts with one resulting in death.

Outpatient:

There were 2,183 inmates on the mental health medical log at the

beginning of February. Mental Health conducted the following contacts during February:

Case management contacts	2,238
Requests for interviews	5,095
Testing	1
Intakes	966
Unit requests	1,194
Counseling (with treatment plans)	127
Pre-lock up reviews	557
Routine seg reviews	202
Seg rounds	8,655
PREA evaluations	8
Routine follow-up	201
834 requests	42

County Mental Health Requests:

During February there were 82 requests of a mental health nature received. Fourteen inmates were fast tracked to ADC.

Monetary Sanctions:

Sanction reimbursements for January were \$32,800.

County Medical Health Requests:

During February, there were 462 requests of a medical nature received and 11 were fast tracked to ADC.

Deaths:

There were seven inmate deaths during the month of February; four bodies were claimed, three were cremated.

CCS:

See attachment for CCS's report regarding outside beds and emergency room visits.

Medical Grievances:

In February, there were a total of 238 appeals of medical grievances received and 245 appeals were answered. Twenty-five of those were found to be with merit and eight were with merit but resolved.

SEX OFFENDER ASSESSMENT

Assessments Completed:

Risk Level	February	Sept. 1999 thru Jan. 31, 2016
Level 1	0	1,147
Level 2	37	6,050
Level 3	17	5,965
Level 4	0	555
Default 3	1	**
Total	55	13,717

*Default Level 3's are included in the total number of Level 3 to date.

ACIC Numbers:

The total number of sex offenders registered from Sept. 1, 1999 to December 31, 2016:

In Compliance	7,303
Delinquent (Did not return address on time)	867
Confined	2,825
Out of State	2,873
Address Unknown (absconded)	183
Deceased	963
Deported	160
Incapacitated	62
Out of USA	3
Total	15,239

PAWS IN PRISON

Currently Enrolled in Training:

Max	8
Tucker	10
Hawkins	5
RLW	5
ORCU	10
NCU	8
Total	46

Completed Training:

February 2016	14
YTD 2016	42
Since Inception Dec. 2011	701
Dogs Currently in foster*	4

* graduated but not adopted

CONSTRUCTION PROJECT UPDATES

Barbara Ester Unit (Diagnostic)

The renovation of the barracks and re-roofing the unit is continuing; along with purchasing material, installing new metal ceilings, working on plumbing, and working on electrical. We have received approved plans from DBA for Phase III and the new classrooms. We are finishing up renovations to Phase I and II. The asbestos abatement is to start for Phase III. Demolition is also continuing for Phase III. Dirt work has begun for classrooms at PBU.

Cummins Unit

Work is continuing on roof repairs, and repairs to the free line residences. Gravel has been hauled from Malvern pit to the road at the wastewater plant as the weather permits.

Cummins Poultry

The new generator arrived, and is being installed.

East Arkansas Regional Unit

Work is continuing on the new firing range, and gravel road work will continue as it dries out. Metal roofs are being installed on State trailers as well as under pinning. Fiber optic wire and conduit have been run for the building.

HR Building

The sex offender area (SOCNA) has had new floor tile installed.

Ouachita River Correctional Unit

Gravel operations are continuing. The fuel system on the track hoe has been repaired by installing a water separator and filters on the fuel tank. We have been reconciling budget versus cost to build on the chapel project, and are pricing out material.

Newport/Grimes

The sallyport building is complete.

Pine Bluff Unit

Remodeling of the free line residences continues. We are making repairs and getting Unit ready for ACA.

RLW Unit:

We are getting the Unit ready for ACA.

Springdale:

We have installed smoke detectors and conduits for the inmate barracks area.

Training Academy:

The pad has been poured for the generator and gravel is being put down for parking lot.

Tucker Maximum Security Unit:

A metal ceiling is being put down on fir in front of the cells in barracks 5.

CONSTRUCTION PERSONNEL UPDATE:

15 vacancies

2—Project Supervisors-approved

1—Admin Spec-pending,

2—COI,

1—Sgt-approved,

1—Project Specialist,

1—Construction Coordinator,

1—Engineer-advertised 3 times now,

5—Maintenance Technicians (2 at EARU reposted, 1 at WR reposted),

1—Assistant Maintenance Supervisor at EARU.

REGIONAL MAINTENANCE

Regional Maintenance Hours 2016			
		<u>Jan '16</u>	<u>Feb'16</u>
Benton Unit		5,756	6,455
Delta Regional Unit		4,862	3,973
EARU		*360	3,848
Grimes		2,760	2,865
McPherson		2,540	2,980
Randall L. Williams Corr. Facility		2,712	4,384
MSCOWRC		1,954	2,164
North Central Unit		6,264	11,632
Ouachita River		4,240	5,416
TRCC		1,910	1,671
Max Boot Camp		2,722	3,272
Varner Unit		2,496	3,344
Wrightsville Unit		972	2,053
Wrightsville Satellite Unit		592	4,063
Total Hours		39,780	54,057

* Due to weather and EARU field officers were in training for 2 weeks--80 hours

Work Release Rent Report

Rent Report		
		<u>Feb'16</u>
Benton Unit		\$85,476.00
Pine Bluff ReEntry Unit		\$24,460.00
NWARWRC		\$47,668.00
MSCOWRC		\$45,407.00
Pine Bluff Unit		\$41,752.00
TRCC		\$30,974.00
Total Rent Paid		\$275,737.00

[illegible][illegible]

INMATE INSTITUTIONAL GRIEVANCE APPEAL REPORT

	Received	Rejected	Processed W/O Merit	Processed W/ Merit
Benton Unit	1	0	0	0
Benton Work Release	0	0	0	0
Bowie County Texas Correctional Facility	15	12	13	0
Cummins Unit	10	4	10	0
Cummins Modular Unit	3	0	0	0
Delta Regional Unit	14	4	3	0
Ester Unit	5	1	0	0
East Arkansas Regional Unit	26	2	21	0
East Arkansas Regional Maximum Unit	60	11	68	7
Grimes Unit	19	15	16	0
Maximum Security Unit	74	11	57	0
McPherson Unit	10	4	13	0
McPherson Mental Health Residential Program Unit	0	6	0	0
Mississippi County Work Release Center	0	0	0	0
Northwest Arkansas Work Release Center	0	0	0	0
North Central Unit	23	6	5	0
Ouachita River Correctional Unit	29	8	4	0
ORCU Hospital	3	0	0	0
ORCU New Commitment	0	1	0	0
ORCU Mental Health Residential Program Unit	1	0	0	0
Pine Bluff Unit	2	0	1	0
Pine Bluff Re-Entry	0	0	1	0
Randall L. Williams Correctional Facility	2	1	2	0
Texarkana Regional Correctional Center	0	0	0	0
Tucker Unit	17	6	14	4
Varner Super Max	118	21	119	0
Varner Unit	34	4	34	0
Wrightsville Unit	0	0	1	0
Wrightsville Satellite Unit	0	0	0	0
Hawkins Center	2	0	1	0
Hawkins for Males	0	0	1	0
Hawkins SPU	0	0	0	0
Total	468	117	384	11

ADMISSIONS AND RELEASES

<u>Admissions</u>	<u>Male</u>	<u>Female</u>	<u>Total</u>
Asian	3	0	3
Black	324	24	348
Hispanic	19	2	21
Nat. Amer.	1	0	1
Hawaiian/Pacific Isl	0	0	0
White	552	102	654
Other	1	0	1
Unknown	0	0	0
Total	900	128	1028
<u>Releases</u>	<u>Male</u>	<u>Female</u>	<u>Total</u>
Asian	2	0	2
Black	326	24	350
Hispanic	27	2	29
Nat. Amer.	3	2	5
Hawaiian/Pacific Isl	0	0	0
White	524	111	635
Other	0	0	0
Total	882	139	1021

ARKANSAS DEPARTMENT OF CORRECTION

INMATE POPULATION GROWTH 2000-2022

Updated 02/23/2016

Mo.	2000	2001	2002	2003	2004	2005	2006	2007	2008	2009	2010	2011	2012	2013	2014	2015	2016
Jan.	11,984	11,908	12,402	13,015	13,105	13,595	13,481	13,839	14,518	14,796	15,334	16,312	15,134	14,815	17,481	18,142	17,785
Feb.	12,169	12,022	12,529	13,054	13,166	13,783	13,633	14,012	14,603	14,883	15,374	16,209	14,990	15,008	17,438	18,082	17,625
March	12,006	12,033	12,299	13,108	13,088	13,418	13,534	13,772	14,580	14,843	15,290	16,095	14,964	14,665	17,395	18,233	
April	12,069	12,167	12,465	13,213	13,323	13,469	13,554	13,851	14,769	14,937	15,570	16,172	15,124	14,850	17,604	18,703	
May	12,109	12,384	12,558	13,463	13,556	13,528	13,711	14,146	14,880	15,146	15,694	16,062	15,132	15,074	17,593	18,693	
June	12,005	12,108	12,439	13,418	13,389	13,251	13,430	13,915	14,700	15,025	15,564	15,554	14,832	14,825	17,340	18,813	
July	12,030	12,190	12,622	13,509	13,528	13,286	13,560	14,082	14,868	15,195	15,807	15,519	14,879	15,379	17,522	18,870	
August	12,087	12,371	12,815	13,565	13,632	13,419	13,646	14,224	15,100	15,385	15,829	15,240	14,675	16,103	17,549	18,806	
September	11,983	12,289	12,774	13,341	13,516	13,237	13,652	14,217	14,850	15,285	16,025	15,172	14,724	16,412	17,605	18,549	
October	12,119	12,348	12,942	13,341	13,584	13,363	13,775	14,349	14,836	15,381	16,311	15,271	14,856	16,993	17,880	18,430	
November	12,094	12,408	13,162	13,408	13,706	13,587	13,913	14,437	15,025	15,340	16,460	15,205	14,625	17,168	17,848	17,981	
December	11,856	12,333	12,845	13,106	13,470	13,338	13,728	14,315	14,716	15,199	16,204	15,062	14,654	17,235	17,874	17,707	
Net Ann. Inc.	29	477	512	261	364	-132	390	587	401	483	1,005	-1,142	-408	2,581	639	-167	-82
Avg. Mo. Inc.	2	40	43	22	30	-11	33	49	33	40	84	-95	-34	215	53	-14	-41

Population is total jurisdictional count at end of each month. Population at end of month December 1999 was 11,827.
 Average monthly population increase for past fifteen years 2001 - 2015 is 33
 Average monthly population increase for past ten years Jan.2006 - Dec 2015 is 36
 Average monthly population increase for past five years 2011 - 2015 is 25

Projected at Growth of 33 per Month

	2008	2009	2010	2011	2012	2013	2014	2015	2016	2017	2018	2019	2020	2021	2022	2023
Mo.	Actual	Actual	Actual	Actual	Actual	Actual	Actual	Actual	Actual/ Proj.	Proj.	Proj.	Proj.	Proj.	Proj.	Proj.	Proj.
January	14,518	14,796	15,334	16,312	15,134	14,815	17,481	18,142	17,785	17,988	18,384	18,780	19,176	19,572	19,968	20,364
February	14,603	14,883	15,374	16,209	14,990	15,008	17,438	18,082	17,625	18,021	18,417	18,813	19,209	19,605	20,001	20,397
March	14,580	14,843	15,290	16,095	14,964	14,665	17,395	18,233	17,658	18,054	18,450	18,846	19,242	19,638	20,034	20,430
April	14,769	14,937	15,570	16,172	15,124	14,850	17,604	18,703	17,691	18,087	18,483	18,879	19,275	19,671	20,067	20,463
May	14,880	15,146	15,694	16,062	15,132	15,074	17,593	18,693	17,724	18,120	18,516	18,912	19,308	19,704	20,100	20,496
June	14,700	15,025	15,564	15,554	14,832	14,825	17,340	18,813	17,757	18,153	18,549	18,945	19,341	19,737	20,133	20,529
July	14,868	15,195	15,807	15,519	14,879	15,379	17,522	18,870	17,790	18,186	18,582	18,978	19,374	19,770	20,166	20,562
August	15,100	15,385	15,829	15,240	14,675	16,103	17,549	18,806	17,823	18,219	18,615	19,011	19,407	19,803	20,199	20,595
September	14,850	15,285	16,025	15,172	14,724	16,412	17,605	18,549	17,856	18,252	18,648	19,044	19,440	19,836	20,232	20,628
October	14,836	15,381	16,311	15,271	14,856	16,993	17,880	18,430	17,889	18,285	18,681	19,077	19,473	19,869	20,265	20,661
November	15,025	15,340	16,460	15,205	14,625	17,168	17,848	17,981	17,922	18,318	18,714	19,110	19,506	19,902	20,298	20,694
December	14,716	15,199	16,204	15,062	14,654	17,235	17,874	17,707	17,955	18,351	18,747	19,143	19,539	19,935	20,331	20,727
Net Ann. Inc.	401	483	1,005	-1,142	-408	2,581	639	-167	248	396	396	396	396	396	396	396
Ave. Mo. Inc.	33	40	84	-95	-34	215	53	-14	21	33	33	33	33	33	33	33

Monthly Population Averages

Unit/Center	2/1	2/2	2/3	2/4	2/5	2/8	2/9	2/10	2/11	2/12	2/15	2/16	2/17	2/18	2/19	2/22	2/23	2/24	2/25	2/26	2/29	AVG	
Benton	329	327	328	331	328	327	329	339	340	335	333	333	333	336	332	333	339	341	340	339	340	334	
Cummins	1,936	1,929	1,925	1,925	1,920	1,913	1,921	1,918	1,918	1,927	1,923	1,923	1,922	1,919	1,948	1,953	1,950	1,946	1,941	1,939	1,934	1,930	
Delta	622	620	617	614	621	616	615	618	620	616	619	619	618	613	621	617	600	584	616	610	624	615	
E AR Reg	1,664	1,665	1,675	1,674	1,680	1,699	1,697	1,698	1,694	1,691	1,690	1,690	1,688	1,687	1,689	1,686	1,688	1,671	1,675	1,672	1,677	1,683	
Ester	341	341	342	342	341	341	342	342	346	345	344	344	348	347	345	355	353	340	342	332	347	344	
Grimes	1,077	1,077	1,073	1,073	1,065	1,069	1,081	1,077	1,074	1,074	1,067	1,067	1,079	1,074	1,059	1,066	1,059	1,057	1,066	1,062	1,074	1,070	
Max Sec	665	648	648	654	655	655	655	661	664	666	674	674	680	682	683	682	668	673	670	670	667	666	
McPherson	1,017	1,017	1,029	1,032	1,041	1,042	1,043	1,041	1,038	1,038	1,037	1,037	1,036	1,032	1,031	1,036	1,020	1,013	1,012	1,010	1,009	1,029	
MCWRC	141	141	142	142	140	140	140	142	142	142	142	142	142	143	141	141	134	134	139	143	143	141	
N Central	838	839	840	837	840	840	840	840	833	833	833	833	836	834	831	836	833	829	834	813	822	834	
NWAWRC	100	100	99	100	100	100	99	99	100	100	99	99	99	99	100	100	96	96	100	100	99	99	
Ouachita River	1,787	1,806	1,804	1,810	1,805	1,796	1,789	1,790	1,803	1,801	1,792	1,792	1,788	1,796	1,805	1,791	1,791	1,791	1,783	1,790	1,782	1,795	
Randall L William	568	568	572	570	570	570	567	570	569	567	569	569	571	571	565	560	550	543	563	550	562	565	
Pine Bluff	441	442	439	433	439	437	438	440	440	438	442	442	439	438	439	432	438	437	434	436	437	438	
PB Reentry	54	54	54	54	54	54	54	54	54	54	54	54	54	54	54	54	54	54	54	54	54	54	
TRCC	128	128	128	128	128	128	128	128	128	128	128	128	128	128	128	128	128	118	118	124	128	127	
Tucker	993	994	997	1,006	1,007	1,017	1,020	1,014	1,009	1,018	1,020	1,020	1,020	1,024	1,023	1,017	1,018	1,014	1,013	1,018	1,021	1,013	
Varner	1,739	1,738	1,737	1,738	1,741	1,743	1,743	1,737	1,731	1,734	1,731	1,731	1,731	1,732	1,735	1,731	1,731	1,738	1,728	1,743	1,738	1,736	
Wrightsville	1,501	1,496	1,503	1,500	1,496	1,497	1,497	1,493	1,491	1,492	1,495	1,495	1,496	1,489	1,485	1,493	1,482	1,491	1,477	1,480	1,491	1,492	
Total ADC	15,941	15,930	15,952	15,963	15,971	15,984	15,998	16,001	15,994	15,999	15,992	15,992	16,008	15,998	16,014	16,011	15,932	15,870	15,905	15,885	15,949	15,966	15966
ALETA	20	20	20	20	20	20	20	20	20	20	20	20	20	20	20	20	20	20	20	20	20	20	
Ar State Police	58	57	57	58	58	58	58	58	57	57	59	59	59	59	59	59	60	60	59	59	59	58	
Co Jail / M	1,115	1,136	1,168	1,187	1,207	1,180	1,178	1,203	1,211	1,207	1,215	1,215	1,199	1,231	1,227	1,234	1,180	1,147	1,077	1,035	952	1,167	
Co Jail / F	17	19	12	14	6	7	7	13	15	12	14	14	8	8	14	9	8	13	8	7	11		
Total Co Jail BK	1,132	1,155	1,180	1,201	1,213	1,187	1,185	1,216	1,226	1,219	1,229	1,229	1,207	1,239	1,241	1,243	1,189	1,155	1,090	1,043	959	1,178	
Bowie Co., TX	336	336	336	336	334	335	335	336	336	336	336	336	336	336	336	336	336	336	332	336	335	336	
309/M	259	259	259	257	255	254	254	253	253	253	253	253	253	253	253	253	257	256	250	249	245	254	
309/F	40	40	40	40	40	38	38	38	38	38	38	38	38	38	38	37	37	37	37	36	38		
Total Act 309	299	299	299	297	295	292	292	291	291	291	291	291	291	291	291	291	294	293	287	286	281	292	
Total Non ADC	1,845	1,867	1,892	1,912	1,920	1,892	1,890	1,921	1,930	1,923	1,935	1,935	1,913	1,945	1,947	1,949	1,899	1,864	1,788	1,744	1,654	1,884	
Total	17,786	17,797	17,844	17,875	17,891	17,876	17,888	17,922	17,924	17,922	17,927	17,927	17,921	17,943	17,961	17,960	17,831	17,734	17,693	17,629	17,603	17,850	17850
	1	1	1	1	1	1	1	1	1	1	1	1	1	1	1	1	1	1	1	1	1	21	

ADC County Jail Backup FY2016

DAY	Jul-15	Aug-15	Sep-15	Oct-15	Nov-15	Dec-15	Jan-16	Feb-16
1	2,674	2,556	2,276	1,973	1,801	1,591	1,189	1,132
2	2,615	2,556	2,274	1,979	1,829	1,570	1,189	1,155
3	2,618	2,558	2,267	1,979	1,851	1,530	1,189	1,180
4	2,618	2,572	2,236	1,979	1,862	1,487	1,189	1,201
5	2,618	2,592	2,236	1,938	1,869	1,487	1,155	1,213
6	2,618	2,598	2,236	1,899	1,887	1,487	1,142	1,213
7	2,638	2,615	2,180	1,900	1,887	1,421	1,132	1,213
8	2,669	2,615	2,180	1,895	1,887	1,390	1,100	1,187
9	2,686	2,615	2,174	1,895	1,848	1,378	1,100	1,185
10	2,677	2,621	2,181	1,895	1,839	1,370	1,100	1,216
11	2,677	2,625	2,147	1,895	1,854	1,341	1,042	1,226
12	2,677	2,597	2,147	1,895	1,854	1,341	1,031	1,219
13	2,660	2,606	2,147	1,879	1,826	1,341	1,010	1,219
14	2,635	2,607	2,116	1,897	1,826	1,323	1,005	1,219
15	2,614	2,607	2,100	1,914	1,826	1,262	992	1,229
16	2,587	2,607	2,074	1,886	1,819	1,276	992	1,229
17	2,576	2,614	2,067	1,886	1,826	1,279	992	1,207
18	2,576	2,651	2,034	1,886	1,826	1,234	1,007	1,239
19	2,576	2,666	2,034	1,862	1,817	1,234	1,007	1,241
20	2,541	2,705	2,034	1,872	1,805	1,234	1,027	1,241
21	2,550	2,687	2,031	1,856	1,805	1,207	1,044	1,241
22	2,546	2,687	2,023	1,853	1,805	1,201	1,072	1,243
23	2,542	2,687	2,019	1,843	1,820	1,208	1,072	1,189
24	2,550	2,685	2,034	1,843	1,780	1,241	1,072	1,155
25	2,550	2,605	2,023	1,843	1,728	1,241	1,091	1,090
26	2,550	2,553	2,023	1,821	1,634	1,241	1,088	1,043
27	2,533	2,453	2,023	1,814	1,634	1,241	1,110	1,043
28	2,535	2,309	2,027	1,815	1,634	1,241	1,139	1,043
29	2,525	2,309	1,975	1,815	1,634	1,244	1,138	959
30	2,549	2,309	1,958	1,801	1,634	1,212	1,138	
31	2,556	2,272		1,801		1,200	1,138	
Average	2,598	2,572	2,109	1,881	1,798	1,324	1,087	1,178

Notes: Totals do not include 309 Contracts in County Jails (maximum of 336)

CHAPLAINCY

Monthly Report for: Feb 2016		BENTON	CUMMINS	DELTA REGIONAL	EAST ARKANSAS	EAST ARKANSAS MAX	GRIMES	HAWKINS	MAXIMUM SECURITY	MCPHERSON	NORTH CENTRAL	OUACHITA RIVER	PINE BLUFF	RANDALL L. WILLIAMS	TUCKER	VARNER	VARNER MAX	WRIGHTSVILLE	PTF	TOTAL
Chaplain in Charge		13	14	16	5	0	26	4	8	13	5	13	3	10	8	6	6	6	2	158
Christian																				
Population		13	13	12	3	0	25	4	7	12	5	13	2	10	6	2	2	6	2	137
Segregation		0	0	0	0	0	0	0	0	0	0	0	0	0	0	2	2	0	0	4
Muslim																				
Population		0	1	4	2	0	1	0	1	1	0	0	1	0	2	1	1	2	0	17
Segregation		0	0	0	0	0	0	0	0	0	0	0	0	0	0	1	1	0	0	2
Volunteers in Charge																				
Protestant		17	35	14	36	0	26	6	24	40	71	69	10	7	10	3	8	33	8	417
Catholic		0	0	0	3	0	4	2	1	3	2	1	0	0	2	1	1	8	8	36
Muslim		0	2	1	2	0	0	0	1	0	0	3	0	0	1	0	0	0	0	10
Other		4	0	0	10	0	0	0	1	4	0	4	0	0	0	0	0	0	0	23
Baptism		0	4	0	0	0	0	0	0	0	1	0	0	0	0	0	0	0	0	5
Marriages		2	0	0	0	0	0	0	1	0	0	0	0	0	0	0	0	0	0	3
Distributed by Chaplains																				
Greeting Cards		20	107	0	0	0	42	0	400	466	33	10	235	30	20	252	246	0	215	2076
Bibles,Quran,Torrah, Etc.		30	54	6	8	5	18	7	12	37	20	165	15	10	5	69	21	16	0	498
Study Course		150	47	0	4	2	0	0	126	0	0	12	12	10	0	20	1	0	0	384
Writing Supplies		25	84	0	0	0	12	539	500	0	0	240	0	50	8	0	0	0	1100	2558
Literature		120	600	160	262	17	412	520	800	88	650	450	215	30	30	1371	91	450	200	6466
Chaplain's Visits																				
Barracks - How Many Visits		69	125	8	24	20	259	22	178	100	51	39	62	32	61	7	25	42	15	1139
Approximate Hours Spent in Barracks		41	73	4	50	15	17	68	45	51	26	5	30	86	65	7	17	15	7	622
Office (How many Inmates)		138	117	175	50	0	149	90	29	50	46	90	68	100	320	71	0	50	20	1563
How Many Visits Chaplain Made																				
Hospital		0	2	0	0	0	0	0	0	1	0	22	0	0	0	1	0	0	0	26
Infirmary/Sick Call		0	5	4	7	0	52	3	8	4	4	2	4	4	18	2	0	5	0	122
Office		0	15	0	0	0	18	0	30	8	0	0	14	8	50	7	0	32	6	188
Admin Seg		0	8	0	46	20	0	0	52	8	0	15	0	0	0	0	30	4	0	183
Segregation		0	0	0	13	0	12	0	0	8	0	15	4	8	0	0	0	30	4	94
Punitive		0	7	4	10	10	0	0	24	8	5	18	4	8	17	0	6	4	0	125
PC		0	0	0	12	0	0	0	0	8	0	0	0	0	0	0	0	0	0	20
Visitation Days		1	0	0	0	0	0	0	0	4	3	4	0	0	0	0	0	0	0	12
How Many Visits Volunteers Made																				
RCV		5	0	0	36	0	5	2	23	32	0	69	0	18	5	0	0	0	0	195
OCV		6	0	12	0	0	0	43	66	25	26	19	32	23	2	17	0	41	50	362
Spiritual Advisor		0	0	0	0	0	1	0	0	2	0	2	1	1	2	1	0	0	0	10
CRA		27	53	10	93	10	78	11	110	62	104	127	15	10	9	117	53	15	0	904
Total Volunteer Hours		87	97	44	268	4	247	232	506	321	420	618	112	78	115	403	0	52	50	3654
DENOMINATIONAL /VOLUNTEER CHAPLAIN HOURS		110	137	0	0	0	44	152	74	99	91	145	75	138	136	23	0	223	100	1547
Other Activities of Chaplain																				
Counseled Employees		7	6	5	3	0	18	2	11	1	4	43	17	8	10	3	0	5	0	143
Orientation Sessions		0	4	0	1	0	6	0	0	4	1	0	0	0	4	0	0	0	0	20
Free World Devotions		0	12	0	0	0	0	0	0	0	0	5	12	12	0	0	0	0	0	41
Spoke in Churches		4	15	8	16	0	20	0	3	1	0	5	12	12	2	0	0	15	12	125
Crisis Intervention Sessions		13	21	12	0	0	3	0	6	5	4	35	12	9	11	11	0	35	7	184
Marriage Counseling		2	5	0	3	0	2	0	2	0	0	0	0	0	2	0	0	0	0	16
Denominational Meeting		0	1	0	1	0	0	0	0	1	0	1	0	0	1	0	0	0	0	5
Chaplain's Meeting		1	1	1	3	0	1	1	1	1	1	2	1	1	2	2	0	1	0	20
Volunteer Training Session		1	1	1	1	0	4	0	1	0	0	0	0	0	0	1	0	4	0	14
Choir Trip		0	0	0	0	0	0	0	0	0	0	0	0	0	0	0	0	0	0	0
Staff Movement (Chaplain)																				
		0	0	0	1	0	1	0	0	1	0	0	0	0	0	1	0	0	0	4
Promotions (Chaplain)																				
		0	0	0	0	0	0	0	0	0	0	0	0	0	0	0	0	0	0	0
Interns																				
PAL PROGRAM																				
# Enrolled at start of month		0	44	14	50	0	52	56	20	39	32	45	0	27	61	41	0	30	0	511
# Enrolled during the month		0	11	0	5	0	4	4	3	7	3	10	0	3	11	8	0	2	0	71
Removed from the program																				
# Paroled		0	0	0	0	0	4	3	0	5	2	1	0	4	4	2	0	1	0	26
# Completed		0	0	0	3	0	1	0	3	2	3	1	0	0	1	1	0	0	0	15
# Withdrew		0	2	0	1	0	2	2	0	0	1	2	0	0	1	0	0	2	0	13
# Removed		0	4	0	2	0	2	1	0	6	2	0	0	1	1	4	0	1	0	24
# Transferred		0	2	0	0	0	0	3	0	0	0	5	0	0	3	0	0	0	0	13
Total removed from program		0	8	0	6	0	9	9	3	13	8	9	0	5	10	7	0	4	0	91
# Enrolled at the end of the month		0	47	14	49	0	47	51	20	33	27	46	0	25	62	42	0	28	0	491
# Of volunteers		0	16	3	53	0	28	14	11	20	5	12	0	5	4	2	0	8	0	181
Special Events:																				

Report Date - March 4, 2016						* % Complete	Notes	
Data as of 03/02/16								
Fund	Project Desc	Total Projected Spend	Budget	Available Funds	* % Complete			
7004810	Cummins Poultry Houses	\$5,436,893	\$6,100,000	\$663,107	89%	Generator arrived March 1. Start up March 9.		
7004811	ORCU Maintenance Shop	\$318,706	\$383,000	\$64,294	83%	Building Complete. Finishing Security Tower		
7004811	ORCU - VoTech	\$570,545	\$817,000	\$246,455	70%	Complete		
7004812	NCU Phase II	\$3,086,966	\$3,200,000	\$113,034	96%	Complete - Held open for Professional Fees.		
7004819	ESTER - Phase 1	\$3,787,978	\$4,000,000	\$212,022	95%	184 Beds opened 7/1/15. Kitchen complete. Beds opened January 2016. Asbestos Abatement Complete		
700481A	ESTER - Phase 2 1A	\$1,584,705	\$5,100,000	\$3,515,295	31%			
7004820	ESTER - Phase 2 - Kitchen	\$373,623	\$1,700,000	\$1,326,377	22%			
KBR4Q95	ESTER - Phase 3 - General Improvement Fund	\$959,444	\$7,400,000	\$6,440,556	13%			
7004820	Tucker Boot Camp	\$655,340	\$764,088	\$108,748	86%	Complete		
NDC0100	Wrightsville Generator	\$182,261	\$200,000	\$17,739	91%	1st phase complete, 2nd phase prioritized.		
NDC0100	Tucker Parking Lot	\$159,070	\$300,000	\$140,930	53%	Parking Lot complete		
NDC0300	HDRS Renovation - Phase II	\$172,258	\$175,000	\$2,742	98%	Complete		
70004820	Tucker 2016 New Well	\$0	\$550,000	\$550,000	0%	Contract Signed - 3/3/16		
Telephone Projects								
Maintenance & Operations	Camera Equipment - All Units	\$380,052	\$400,000	\$19,948	95%			
	Fire Alarm Upgrades (All Units)	\$36,083	\$75,000	\$38,917	48%			
	Locks/Riot Gates - All Units	\$27,202	\$75,000	\$47,798	36%			
	Gates and Fences all units	\$25,856	\$50,000	\$24,144	52%			
	Gas Stations - Canopy (C/O)	\$5,862	\$12,000	\$6,138	49%			
	Stainless Steel - Kitchen/Shower/Restrooms - All Units	\$39,430	\$150,000	\$110,570	26%			
	ACA Maintenance	\$103,976	\$200,000	\$96,024	52%			
	ADA Projects - All Units	\$1,628	\$25,000	\$23,372	7%			
	Fast Top Floor Systems - (kitchen/laundry/showers all)	\$24,903	\$50,000	\$25,097	50%			
	Lawn Equipment - All Units	\$0	\$0	\$0		Moved 1/20/16		
	Parking Lot - Gravel and Paving - EARU	\$0						
	Parking Lot - Gravel and Paving - Tucker	\$0	\$344,106	\$344,106	0%			
	Parking Lot - Gravel and Paving - Other Units	\$0						
Subtotal		\$644,993	\$1,381,106	\$736,113				
FY15 Carryforward	ORCU Gravel Pit Operations	\$76,068	\$87,762	\$11,694	87%	continual		
	Cummins Non-Contact Visitation	\$0	\$0	\$0	0%	on hold		
	Tucker Pole Barn (Reg. Maint.)	\$15,672	\$17,932	\$2,260	87%			
	Metal Ceilings	\$141,985	\$200,000	\$58,015	71%			
	TWWPP Containers 4	\$17,103	\$22,103	\$5,000	77%			
	Tucker New Well	\$0	\$2	\$2	0%	Moved to WBS C.0480.T915		
	Subtotal	\$250,828	\$327,799	\$76,971				
FY16 New Projects	Dog Kennel/Horse Stable Malvern	\$0	\$48,000	\$48,000	0%			
	Wrightsville Kitchen Roofing Repairs	\$0	\$15,000	\$15,000	0%			
	Wrightsville Emergency Generator continuation	\$0	\$300,000	\$300,000	0%			
	Boiler Repairs - Varner	\$72,049	\$100,000	\$27,951	72%			
	Grimes Sallyport	\$8,666	\$10,000	\$1,334	87%	Complete		
	PB Kitchen HVAC	\$27,986	\$40,000	\$12,014	70%	Added: 2/4/16		
	EARU Firing Range	\$12,740	\$20,000	\$7,260	64%</			

Medical Grievance

Unit	Acknowledged/ Received	Rejected	Reviewed & Signed by Dep Director	With Merit	With Merit, but Resolved	% With Merit	Without Merit
Benton	0	0	0	0	0	0%	0
Boot Camp	0	0	0	0	0	0%	0
Bowie Co.	1	1	4	1	0	0%	3
CMU	0	0	0	0	0	0%	0
Cummins	9	2	11	3	0	27%	8
Delta	3	1	2	0	0	0%	2
EARU	24	3	25	3	0	12%	22
EARU Max	19	1	34	2	0	6%	32
Esther	0	0	0	0	0	0%	0
Grimes	10	3	11	0	2	18%	9
Hawkins	2	1	1	0	0	0%	1
McPherson	16	4	1	0	0	0%	1
MCWRC	0	0	0	0	0	0%	0
MSU	27	2	38	3	1	11%	34
North Central	15	3	5	0	1	20%	4
NWAWRC	0	0	0	0	0	0%	0
Ouachita	11	3	5	0	0	0%	5
Pine Bluff	0	0	0	0	0	0%	0
Randall Williams	2	0	5	0	0	0%	5
SNN	1	0	0	0	0	0%	0
TRCC	0	0	0	0	0	0%	0
Tucker	21	2	5	0	0	0%	5
Varner	29	6	45	3	3	0%	39
Varner S Max	42	4	49	9	1	20%	39
WRU	6	2	4	1	0	0%	3
WHM	0	1	0	0	0	0%	0
WWR	0	0	0	0	0	0%	0
TOTAL	238	39	245	25	8	13%	212

ADC INPATIENT AND EMERGENCY ROOM UTILIZATION

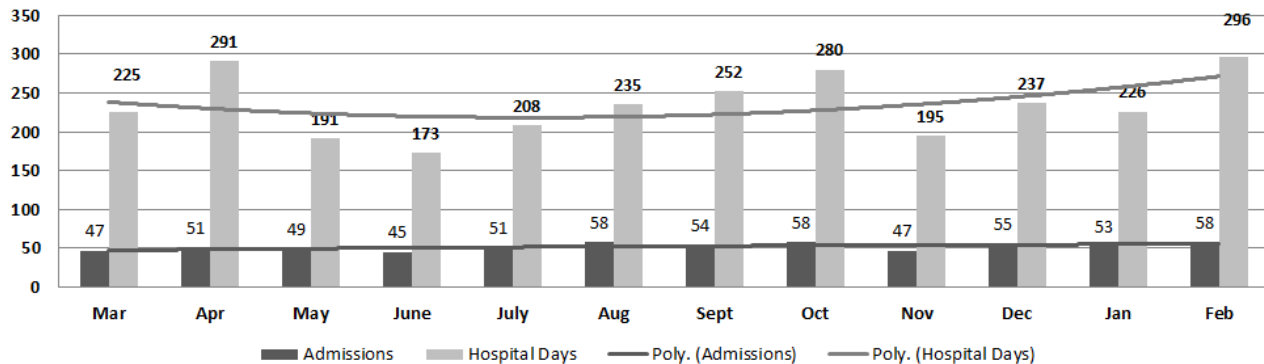
ADC Inpatient Statistics Past 12 Months

	2015										2016		Average
	Mar	Apr	May	June	July	Aug	Sept	Oct	Nov	Dec	Jan	Feb	
Admissions	47	51	49	45	51	58	54	58	47	55	53	58	52.2
Hospital Days	225	291	191	173	208	235	252	280	195	237	226	296	234.1
Average Length of Stay	4.79	5.71	3.90	3.84	4.08	4.05	4.67	4.83	4.15	4.31	4.26	5.10	4.49

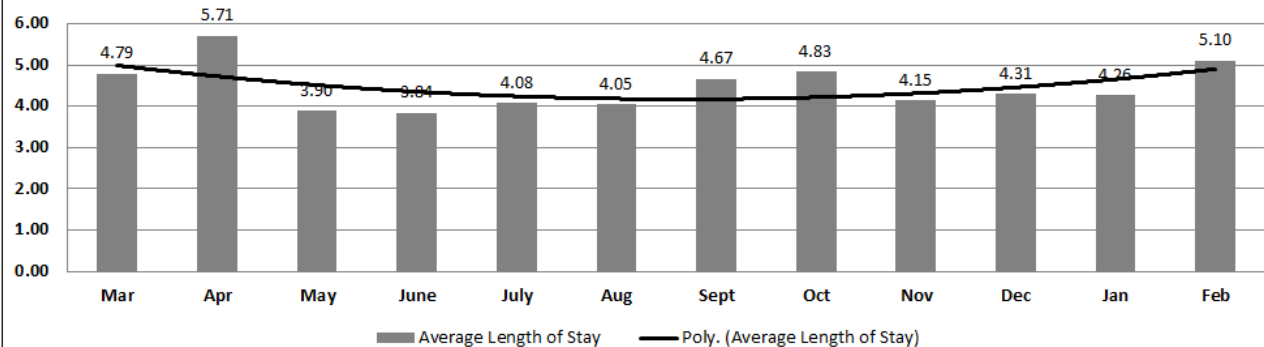
ADC ER Visits Past 12 Months

	2015										2016		Average
	Mar	Apr	May	June	July	Aug	Sept	Oct	Nov	Dec	Jan	Feb	
Emergency Room Visits	79	83	86	77	99	74	76	72	63	78	70	100	79.8

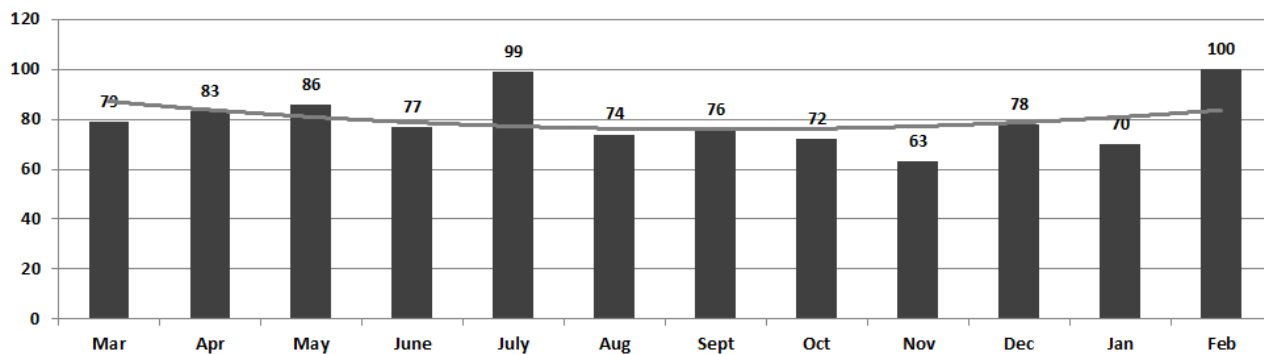
ADC Inpatient Utilization Past 12 Months



ADC Inpatient Average Length of Stay Past 12 Months



ADC Emergency Room Visits Past 12 Months



Monthly Purchasing Report/ Purchase Orders Over \$10,000

<u>VENDOR</u>	<u>DESCRIPTION</u>	<u>LOCATION</u>	<u>PO#</u>	<u>AMOUNT</u>	<u>FUND</u>
U S Foods Inc	Food Purchases	Central Warehouse	4501599081	\$21,484.80	Operational Budget
AR Dept of Cor Industry	Janitorial Supplies	Central Warehouse	4501599102	\$70,971.02	Operational Budget
U S Foods Inc	Food Purchases	Central Warehouse	4501599203	\$93,000.00	Operational Budget
Uniforms 4 All Inc	Uniforms	Training Academy	4501599258	\$10,499.53	Operational Budget
Galls Inc	Uniforms	Training Academy	4501599876	\$16,726.14	Operational Budget
W W Grainger Inc	Radios	Emergency Preparedness	4501600078	\$11,977.46	Operational Budget
U S Foods Inc	Food Purchases	Central Warehouse	4501600212	\$70,707.50	Operational Budget
Sysco Food Services of AR Inc	Food Purchases	Central Warehouse	4501600215	\$65,866.30	Operational Budget
Robbins Sales Co Inc	Food Purchases	Central Warehouse	4501600219	\$199,656.00	Operational Budget
National Food Group	Food Purchases	Central Warehouse	4501600232	\$99,883.40	Operational Budget
Atlantic Beverage Company	Food Purchases	Central Warehouse	4501600244	\$19,657.40	Operational Budget
Tabb Textiles Co Inc	Fabric	Wrightsville ACI Warehouse	4501598625	\$42,600.00	Operational Industry Budget
Acadian Hardwoods & Cypress	Oak, Planed	Wrightsville ACI Warehouse	4501599515	\$20,500.00	Operational Industry Budget
Cedar Creek LLC	Lumber, Plywood	Wrightsville ACI Warehouse	4501599520	\$20,391.00	Operational Industry Budget
Ponderosa Packaging	Corrugated Boxes & Lids	Varner Vegetable Processing	4501599134	\$47,568.75	Operational Farm Budget
Shoe Corporation of Birmingham	Brogans	Tucker Unit/Industry	4501599790	\$25,350.00	Operational Industry Budget
William R Hill & Co Inc	Food Purchases	Central Warehouse	4501600366	\$209,280.85	Operational Budget
BlueLine Rental LLC	Rental Equipment	Ester Unit	4501600241	\$10,755.50	Ester Phase III Q95 Funds
Sysco Food Services of AR Inc	Food Purchases	Central Warehouse	4501600635	\$10,605.50	Operational Budget
Robbins Sales Co Inc	Food Purchases	Central Warehouse	4501600639	\$92,648.64	Operational Budget
Kerr Paper & Supply	Paper Products	Central Warehouse	4501600644	\$14,116.05	Operational Budget
Phoenix Trading	Soap	Central Warehouse	4501600654	\$23,179.20	Operational Budget
United Fence & Construction Co Inc	Fencing	Ester Unit	4501600940	\$16,814.46	Ester Phase III Q95 Funds
Terry Simpson	Gravel	EARU Unit	4501600698	\$25,602.20	Operational Budget
Barnes Paper Co	Egg Cartons	Cummins Unit/Farm	4501601034	\$27,358.75	Operational Farm Budget
Dept of Emergency Management	Dozer	North Central Unit/Farm	4501600202	\$13,625.00	Operational Farm Budget
Breit Industries LLC	Meat Processing Equipment	Cummins Unit/Farm	4501599857	\$10,811.42	Operational Farm Budget
Triple D Consulting Inc	Crop Consulting	EARU/Farm	4501600846	\$13,115.43	Operational Farm Budget
JMS Russel Metals Corp	Welding Equipment	Tucker Unit/Industry	4501600297	\$33,827.20	Operational Industry Budget
Hampton Pugh Co LLC	Chemical Herbicide	Cummins Chemical Shed	4501600716	\$70,678.25	Operational Farm Budget
Robbins Sales Co Inc	Food Purchases	Central Warehouse	4501601867	\$38,422.72	Operational Budget
Sysco Food Services of AR Inc	Food Purchases	Central Warehouse	4501601863	\$28,993.40	Operational Budget
U S Foods Inc	Food Purchases	Central Warehouse	4501601861	\$24,160.00	Operational Budget
William R Hill & Co Inc	Food Purchases	Central Warehouse	4501601855	\$158,026.00	Operational Budget
Mississippi AG Company	Farm Equipment Parts	Cummins Unit/Farm	4501592931	\$25,927.39	Operational Farm Budget
NES LLC	Asbestos Removal	Ester Unit	4501602104	\$54,314.18	Ester Phase III Q95 Funds
Huntley Metal Sales	Stainless Steel	Wrightsville, Tucker, & R/LW	4501602502	\$13,816.98	Telephone Funds - Const
Green & Chapman Inc	Ethanol & Low Sulfur Diesel	Wrightsville Unit	4501602245	\$10,906.44	Operational Budget
AR Dept of Cor Industry	Inmate Clothing & Linen	Delta Regional Unit	4501603410	\$32,428.03	Operational Budget
AR Dept of Cor Industry	Inmate Clothing	Ouachita Unit	4501602951	\$76,836.28	Operational Budget
National Food Group	Food Purchases	Central Warehouse	4501603608	\$61,449.40	Operational Budget
Pine Bluff Heating & Air Cond Inc	HVAC Equipment	Pine Bluff Unit	4501603700	\$27,986.25	Telephone Funds - Const
AR Dept of Cor Industry	Inmate Linen	EARU Unit	4501604639	\$20,423.93	Operational Budget
AR Dept of Cor Industry	Inmate Clothing & Linen	Ouachita Unit	4501604957	\$20,436.41	Operational Budget
W W Grainger Inc	Safety Supplies	Emergency Preparedness	4501604016	\$27,196.05	Telephone Funds - Emerg Prep
William R Hill & Co Inc	Food Purchases	Central Warehouse	4501605032	\$157,175.12	Operational Budget
AR Dept of Cor Industry	Food Purchases	Central Warehouse	4501605092	\$11,080.00	Operational Budget
AR Dept of Cor Industry	Janitorial Supplies	Central Warehouse	4501605087	\$47,723.83	Operational Budget
Printing Papers Inc	Xerox Paper	Central Warehouse	4501605084	\$26,200.40	Operational Budget
Atlantic Beverage Company	Food Purchases	Central Warehouse	4501605080	\$10,165.60	Operational Budget
Robbins Sales Co Inc	Food Purchases	Central Warehouse	4501605067	\$17,516.80	Operational Budget
Mid States Services Inc	Toilet Tissue	Wrightsville Unit ACI Imaging	4501605106	\$64,819.20	Operational Industry Budget
Seedway LLC	Garden Seed	Cummins Unit/Farm	4501605134	\$71,163.10	Operational Farm Budget
Razor Chemical Inc	Janitorial Supplies	Delta Regional Janitorial Factory	4501603951	\$18,031.20	Operational Industry Budget
Fastenal Co	Containers	Varner Vegetable Processing	4501603452	\$23,757.50	Operational Farm Budget
Cedar Creek LLC	Plywood	Wrightsville ACI Warehouse	4501602383	\$10,715.80	Operational Industry Budget
Miller Bowie Supply	Feed	Cummins Unit/Farm	4501600720	\$15,680.00	Operational Farm Budget
Miller Bowie Supply	Feed	Cummins Unit/Farm	4501600722	\$14,047.20	Operational Farm Budget
AR Dept of Cor Industry	Inmate Clothing & Linen	Tucker Unit	4501605246	\$47,888.35	Operational Budget
Terry Ace Hardware	Fiber Optic Equipment	Pine Bluff Unit	4501605464	\$13,635.30	Operational Budget
American Correctional Association	Re-Accreditation Fee	Admin Building Accreditation	4501602722	\$16,200.00	Industry/Work Release Funds
GE Government Supply LLC	Powdered Milk	Cummins Creamery/Farm	4501605492	\$86,800.00	Operational Farm Budget
Razor Chemical Inc	Chemicals	Delta Regional Janitorial Factory	4501605441	\$11,507.60	Operational Industry Budget
Helena Chemical Company	Crop Seed	Tucker Unit/Farm	4501604003	\$99,900.00	Operational Farm Budget
Green Point AG LLC	Chemical Herbicide	Cummins Chemical Shed	4501603923	\$16,956.22	Operational Farm Budget
Drew Farm Supply	Garden Seed	EARU/Farm	4501603637	\$14,307.75	Operational Farm Budget
Total for Purchases over \$10,000				\$2,825,852.18	
FIRM CONTRACTS OVER \$25,000.00					
<u>VENDOR</u>	<u>DESCRIPTION</u>	<u>UNIT</u>	<u>Contract #</u> <u>P.O#</u>	<u>PURCHASE</u> <u>AMOUNT</u>	<u>FUND</u>
Total for Contracts				\$0.00	
EMERGENCY PURCHASE ORDERS OVER \$25,000.00					
Total EM Purchases				\$0.00	
Total Purchases				\$2,825,852.18	

Vacancies, Hires and Terminations

UNIT	VACANCIES	HIRES	TERMINATIONS
BENTON (CR05)	5	0	4
CENTRAL OFFICE (CR01, CR02, CR08 & CR22)	32	2	4
CHAPLAINCY	2	1	1
CONSTRUCTION (CR04)	16	1	1
CUMMINS (CR09)	68	12	12
DELTA (CR10)	7	4	3
EAST ARKANSAS (CR12)	50	5	14
ESTER (CR11)	21	1	1
FARM (CR29)	9	0	0
GRIMES (CR27)	12	4	2
INDUSTRY (CR07)	12	1	0
MAXIMUM SECURITY (CR14)	39	3	8
MCPHERSON (CR28)	24	2	3
MENTAL HEALTH	24	1	0
MISS COUNTY (CR15)	2	1	0
NORTH CENTRAL (CR16)	7	2	2
NORTHWEST ARK (CR17)	1	0	0
OUACHITA RIVER (CR30)	47	10	8
PINE BLUFF (CR20)	7	0	2
RANDAL L. WILLIAMS (CR13)	15	2	2
TEXARKANA (CR21)	0	2	0
TRANSPORTATION (CR32)	0	0	0
TUCKER BOOTCAMP (CR33)	2	1	0
TUCKER (CR23)	33	6	4
VARNER (CR24)	52	3	5
VARNER SUPER MAX (CR31)	37	0	2
WRIGHTSVILLE (CR25)/HAWKINS(CR06)	36	3	6
TOTAL	560	67	84