



Wendy Kelley
Director

Board Report
July 2017



PUBLIC RELATIONS

RESEARCH/PLANNING

June 2017 Admissions and Releases – Admissions for June totaled **812** (691-males & 121-females) while Releases totaled **569** (494-males & 75 females) for a net increase in-house of 243 Inmates.

Inmate Population Growth/Projection – At the end of June 2017, the Arkansas Department of Correction Population totaled **17,963** representing a growth of **426** Inmates since the beginning of 2017. Calendar year 2017 average growth is **71** Inmates per month, up from an average decrease of **14** Inmates per month during calendar year 2016.

Average County Jail Back-up – The backup in the County Jails averaged **1,308** Inmates per day during the month of June 2017 – down from an average of **1,321** inmates per day during the month of May 2017. Average County Jail Back-up for **FY17** is **1,256** down from **FY16** average of **1,569** (see attached spreadsheet for breakdown).

LEGAL SERVICES

PREA

PREA Data:

Number of calls received	344
Total Number of Repeat Calls	135
Total Number of Calls with no message	67
Total Reported PREA Issue Calls	44
Total Reported non-PREA Calls	98
Total Calls due to Technical Failure	0
Totals Calls Referred to Internal Affairs Division	55

Department of Justice Representatives came to the McPherson Unit June 12-15, 2017 and provided PREA technical assistance. They also followed up on progress made since their visit in 2015. The Annual PREA Report was made available on the ADC Website for public viewing on June 9th. This report can be found under Publications. PREA standards require that the Department prepare an annual report of its findings and make all aggregated sexual abuse data from facilities under its direct control available to the public. Graphs provided in the report depicts such data from 2009 through **2015**. The Annual PREA report will be updated yearly or more often if needed.

INMATE GRIEVANCE

Inmate Formal/Informal Grievances: In June, there were a total of 2,149 formal grievances filed and 4,372 informal grievances filed at various units.

Institutional Grievances: There were a total of 758 appeals of institutional grievances received in June. Five hundred ninety-five (595) were acknowledged and 163 were rejected for various reasons. A total of 483 appeals were answered, 474 had no merit and 9 were found with merit.

OPERATIONS/INSTITUTIONS

STTG

The second STTG quarterly meeting of the year was held on June 15th at the Ouachita River Unit with all Unit STTG coordinators. Afterwards, a STTG Sweep was conducted by the STTG coordinators, with the help from the K9 Unit. The STTG Coordinator attended a meeting with the FBI Joint Terrorism Task Force in Little Rock on June 14th.

FARM

The wheat harvest was completed at all farms during the month of June. The wheat quality and yields were both affected by the wet weather during spring and early summer. Soybeans have been planted at all farms. Overall, the crop is in average to above average condition. The calf crop at Cummins has been weaned and the steers will be placed on Superior to sell in July. The wet conditions are hampering hay production at this time. Vegetable harvest was a big focus in June. All gardens did a great job maximizing the harvest. Plans are starting for the fall gardens now. Egg production was consistent for the month. We will be depopulating one house in July. Milk production has been consistent and we continue to supply inmate needs. The equipment lease for all farms was awarded in June to New Holland.

Regional Maintenance Hour

Regional Maintenance Hours	June
Benton Unit	7,688
Delta Regional Unit	2,848
East Arkansas Unit	6,328
Grimes Unit	1,972
McPherson Unit	928
Mississippi Co Work Release	2,009
North Central Unit	9,702
Ouachita River Unit	5,888
Randall Williams Unit	4,776
Texarkana Regional Unit	1,882
Tucker Unit	1,520
Varner Unit	2,544
Wrightsville Unit	3,184
Total Hours	51,269

Work Release Rent Report

Unit	June
Benton Unit	\$97,087.00
Mississippi County Work Release	\$38,437.00
Northwest AR Work Release Center	\$38,114.00
Pine Bluff Unit	\$32,589.00
Texarkana Regional Unit	\$35,071.00
Tucker Re-Entry Center	\$24,888.00
Total	\$266,186.00

Preparing for Success

Unit	Slots	Completed	Discharged	End Count
Ester Barracks 9-12	100	35	14	108
Tucker Re-Entry	20	3	4	18
Total	120	38	18	126

There are 607 males and 165 females on the waiting list within 42 months of their release date, and of those, 6 males are mandated by the Parole Board. The average time on the waiting list is approximately 3 months. The total number of inmates on the waiting list, including those not currently within the identified time frame, is 683 males and 199 females.

WAGE**(Workforce Alliance for Growth in the Economy)**

	Slots	Completed	Discharged	End Count
Ouachita	14	2	2	10
Ester	10	0	0	5
Hawkins	36	16	11	21
Total	60	18	13	36

Randall L. Williams Juvenile Education Program*

	Slots	Enrolled	Discharged	End Count
Juveniles	19	19	0	19
Total	19	19	0	19

*The Juvenile count changes based on new commitments. They are transferred from the program once they reach the age of 18.

ADMINISTRATIVE SERVICES**BUDGET SECTION UPDATE**

Act 715— The Honorable Judge Mary S. McGowan ordered \$500.00 reimbursement to the state to help pay for the care and custody of Inmate Gary D. Ward, ADC #98083. The Act 715 case against Inmate Ward was held on June 19, 2017, in the Pulaski County Courthouse. The court authorized and ordered a payment of \$18,565.68 to the plaintiff for deposit into the defendant's inmate account for payment to his 84 year old mother's assisted living care and also long distance calls to his mother.

Procurement Section Update:**Current Bids:**

There are no active bids this time period.

Contracts Recently Awarded/Renewed:

There is nothing to report in this category for this time period.

Procurement/Contracts Report (required by policy) –

For June 2017, Purchase Orders and Contracts in excess of \$10,000 amounted to \$1,814,831.37. Of this amount, \$334,679.85 was for Inmate Care and Custody related items (e.g. food, shoes, clothing, etc.). Bulk fuel costs for the month of June were \$36,974.63 – average cost for E-10 was \$1.74/gallon; average cost for diesel was \$1.71/gallon.

HUMAN RESOURCES UPDATE

Workplace Safety – During the month of June, the modified version of the Health and Safety Plan was presented to two Basic Training classes to a total of 78 cadets.

Seventy-one (71) incidents were reported to the company nurse in June, bringing our total to 444 incidents in 2017.

Benefits – One hundred-seventy four (174) MIPS payments were made in June. Ninety-seven (97) FMLA requests were processed with 94 approved and 3 denied. A total of 8 CAT leave requests were received and all are pending.

Physical Assessments –A total of 231 applicants and incumbent personnel were assessed in the month of June. One hundred eleven (111) incumbent personnel successfully passed their physical assessment and one did not (and has not rescheduled). One hundred-eighteen (118) applicants passed their physical assessments and one did not (and has not rescheduled).

Employment – ADC Human Resources personnel attended 3 Job Fairs in the month of June:

DATE	UNIT	LOCATION
6/6/17	Grimes	Jackson County Workforce
6/15/17	Cummins/ Varner	Pine Bluff Convention Center
6/22/17	EARU	Time Square-Marianna

A total of 1,978 applications were received in June. Fifty-eight (58) Non-Security applications and one hundred-eighteen (118) CO I applications were processed. Seventy (70) Correctional Officers were hired, and 18 Correctional Officers were rehired.

Vacancies, Hires, and Terminations - In June 2017, a total of 627 vacancies, 86 new hires, and 109 terminations were at the various ADC locations.

Administrative Services Division Monthly Reports (attached) include:

Gifts, Grants, and Donations– \$1,855 was donated in the month of June (hay bales and library books).

Inmate Welfare Fund-balance on June 30, 2017 was \$5,335,187.96.

The PAWS in Prison Fund total on June 30, 2017 was \$119,630.88: ADC account (7004822/Donations) \$19,159.55 and ADC account (NDC0500/Recycling) \$100,471.33. This does not include the Foundation account managed by the PIP Foundation Board

INFORMATION TECHNOLOGY

Jail Arraignment Project – Installed systems at Varner, Cummins, EARU, NCU, Max, ORCU, and McPherson. All equipment is now installed and operational for court arraignments, eliminating the requirement of transporting inmates for arraignment in certain counties. This project was funded by the Arkansas Association of Counties.

Act 539 EOMIS development project was placed on hold based on a ruling from Judge Griffen, stating that the Act is unconstitutional. Act 539 concerns the sentencing of a person under eighteen years old.

Discussed with ACIC, Appriss, and Marquis the suppressing of escape alerts and VINE notifications on escaped inmates who have been confirmed as deceased. A coordinated agency effort is required to enter inmates' external movements (returned and deceased) in EOMIS to prevent alert notifications from sending alerts to Alert Express registered users. The notifications were suppressed to accommodate the entering of transactions for deceased inmates on the same date an inmate escaped from the Delta Regional Unit, thereby preventing the alerts of the escaped inmate from generating. ADC has since spoken with Marquis to identify a way to update deceased escapees' records without having to place the escape notifications on hold as there is no way of knowing when an actual escape may happen that requires alert notices to generate.

SECURUS Video Visitation Implementation schedule:

Complete

- VSM – Completed installation and activated Kiosk July 6th.
- McPherson – Site completed. Mobile Kiosk activated on June 20th.
- Maximum Security – Installation complete. Coordinating a “Go Live” date with the Warden who requested activation of all Kiosks at the same time.

In Process

- Cummins Dog Kennel Kiosk – pending infrastructure installation.
- Ester Unit – Pending receipt of construction infirmary equipment.
- East Arkansas Regional - Dog Kennel Kiosk - pending installation and “Go Live” date.
- Tucker – Dog Kennel Kiosk – pending infrastructure installation. Mobile Kiosk went “Live” on July 2nd.
- Delta – Installation is at 60% completion. The next steps are coordinating staff training and a “Go Live” date with the warden.
- Ouachita River – SECURUS installation team is at 25% completion. Tablet infrastructure is being installed simultaneously. A “Go Live” date is pending.
- Wrightsville – Contractor will be used. Installation and “Go Live” date is pending.
- Pine Bluff Unit – Barrack 10 has been added to the list. Installation and “Go Live” date is pending.

Two thousand two hundred fifty-two (2,252) video visits occurred this month. Visits will remain at the \$5.00/30 minutes promotional price until December 31, 2017.

Tablet Project Implementation

Install Priority	ADC Facility	Installation % Completed
1	EARU	29%
2	MCWRC	21%
3	GRIMES	44%
4	HAWKINS	26%
5	MCPHERSON	33%
6	PINE BLUFF	33%
7	PINE BLUFF RE-ENTRY	33%
8	ESTER	28%
9	RANDALL WILLIAMS	17%
10	MAXIMUM SECURITY	24%
11	TUCKER	31%
12	TUCKER RE-ENTRY	33%
13	DELTA	29%
14	WRIGHTSVILLE	6%
15	CUMMINS	11%
16	VARNER	11%
17	NORTH CENTRAL	28%
18	NWAWRC	17%
19	TEXARKANA	32%
20	OUACHITA	17%
21	BENTON	17%
22	STATE POLICE	17%

Training Academy – June 2017**Basic Training Division**

Captain Lance Hall's BCOT Class 2017-G graduated on June 16, 2017, with 53 cadets. Valarie Guyton from the Ouachita River Unit won the Willis H. Sargent Award. Mr. Tommy Rochelle served as the Graduation Speaker.

In-Service Division

Management Level 1 class was held June 12th – June 15th. Guest instructors from OPM's (Office of Personnel Management) Training Division presented two classes, Arkansas Government Basics and HRkansas.

Other classes held this month included the Security for Non-Security for staff and occasional volunteers, ServSafe Manager Course for Food Safety, and the monthly Annual Training Day that was held on the 16th.

eCADEMY

During the month of June, 517 ADC employees completed a total of 6,590.25 hours of eCADEMY training. Approximately 11% of ADC employees completed at least one course during that time frame, averaging 1.40 hours per staff member.

HEALTH/CORRECTIONAL PROGRAMS**CHAPLAINCY SERVICES****All Facilities**

Observance of the month of Ramadan concluded for Islamic inmates on Sunday, June 25th. Chaplains at all facilities arranged the Eid Ul Fitr feast, which follows the conclusion of Ramadan.

Delta Regional Unit

Bikers IV Jesus held worship services June 2-4. They conducted a motorcycle rodeo on the yard on the afternoon of June 3rd with over 300 inmates. On June 28th, Father Theo Okapara took confessions and conducted mass for 39 inmates.

East Arkansas Regional Unit

On June 22nd and 23rd, basic literacy tutor training was offered by Heather Powell from Arkansas Literacy Council.

Maximum Security Unit

On June 17th, Christmas Behind Bars distributed 1,200 gifts to inmates and staff at Maximum Security Unit and Tucker Reentry Center. They conducted a worship service after the distribution with 97 inmates. Life Principles #2 class held a graduation on June 27th, 32 inmates graduated the course.

McPherson Unit

The Storybook Project took place on June 7th with 86 inmates.

Tucker Unit

A volunteer training session was conducted at Tucker Unit Chapel on June 24th, 16 volunteers attended.

Wrightsville Unit

Gideon's International visited Wrightsville and Hawkins during the month of June to visit with inmates and distribute Bibles to those who wanted one.

Accreditation

ACA Internal Audits Completed:

June 1-2	Central Office File Review
June 5-7	Max File Review
June 8	ACA Managers Quarterly Meeting
June 12-15	Cummins Unit, worked with new ACA Manager
June 19-23	Cummins File Review
June 26-30	Cummins/Grimes File Review

Fire/Safety and Sanitation independent audits conducted by the Fire and Sanitation Coordinator:

June 1 Max Unit Independent Audit.

VOLUNTEER SERVICES

The total number of volunteer hours for the month.

Unit	Hours
Benton Work Release	26
Cummins	8
East Arkansas Regional	43
Ester	10
Maximum Security	28
McPherson	49
Mississippi County Work Release	12
Northwest Arkansas Work Release	4
Ouachita River	18
PAWS	12
Randall Williams	32
Religious Services/Chaplaincy	5629
Varner	16
Wrightsville	41
Total	5928

PROGRAM INFORMATION**Sex Offender Treatment Programs:**

	SLOTS	COMPLETED	REMOVED	CLIENTS
RSVP	238	56	60	178
SOFT	30	4	4	40
Total	268	60	64	218

There are 690 males on the waiting list for RSVP and 7 females on the waiting list for SOFT within 5 years of their TE date. Of those, 75 inmates are mandated by the Parole Board. The average time on the waiting list from request is approximately 3 to 6 months for those stipulated. The total on the waiting list, including those not currently within the identified time frame, is 1,554 males and 12 females. We have one PREA inmate in the program at this time.

*The waiting list numbers include inmates that are ineligible due to class or housing status.

Therapeutic Community:

	Slots	Completed	Removed	Clients
Tucker	129*	10	4	137
Wrightsville	45*	4	7	47
McPherson	50*	4	4	51
Total	224	18	15	235

There are 255 males and 18 females on the waiting list within 18 months of their release date. Of those, 20 are stipulated by the Parole Board. The average time on the waiting list from request is 18 days. The total on the waiting list, including those not currently within the identified time frame, is 630 males and 51 females.

*Denotes transitional beds available at this treatment program. The Tucker Therapeutic Community also has 129 client slots and seven (7) peer counselor slots.

*The waiting list numbers include inmates that are ineligible due to class or housing status.

S.A.T.P.:

Unit	Slots	Completed	Removed	Clients
Grimes	50*	8	3	52
McPherson	100*	14	10	98
MSU	3	0	0	3
RLW/CF	188*	26	20	191
Tucker	43*	5	4	43
Varner	44	6	7	44
Wrightsville	135*	15	12	143
Total	563	74	56	574

There are 1,958 males and 310 females on the waiting list within 18 months of their release date. And of those, 69 are stipulated by the Parole Board. The average time on the waiting list from request is 17 days. The total on the waiting list including those not currently within the identified time frame is 2,755 males and

449 females.

*Denotes transitional beds available at this treatment program.

*The waiting list numbers include inmates that are ineligible due to class or housing status.

ORCU R.P.U.:

The Residential Program Unit at Ouachita had 7 admissions and 2 discharges in June for an end-of-month count of 124.

McPherson Mental Health Residential Program:

There were 3 admissions and 3 discharges in June for an end-of-month count of 40.

Habilitation Program:

The Habilitation Program at the Ouachita River Unit provided treatment services to 45 inmates during June. There was 1 admission and no discharges for an end-of-month count of 45.

Staffing:

The following Mental Health Services and SATP positions were vacant in May and June.

Positions	May	June
Psychologists	7	7
Social Workers	5	7
Advisors	7	8
Substance Abuse Program Leaders	0	2
Admin Specialist/Analyst	1	2
Rehab Program Manager	0	2

ADDITIONAL PROGRAM INFORMATION

Self-Study Classes	# of Participants	# Completed	Waiting List
Anger Management	439	301	1,232
Thinking Errors	610	513	1,426
Substance Abuse Education	242	147	304
Communication Skills	192	83	1,103
Domestic Violence	89	64	413
Victims of Domestic Violence	0	0	35
Stress Management	149	54	1,200
Parenting	250	241	880

Suicide:

There were 141 suicidal threats, gestures or low/moderate risk attempts during June. There were 2 serious attempts, with 1 resulting in death.

Outpatient:

There were 2,221 inmates on the mental health medication log at the beginning of June. Mental Health staff conducted the following contacts during June:

Case management contacts	2,510
Requests for interviews	1,219
Testing	2
Intakes	914
Unit requests	1,166
Counseling (with treatment plans)	0
Pre-lock up reviews	632
Routine segregation reviews	752
Segregation rounds	17,855
PREA evaluations	141
Routine follow-up	177
834 requests	32

Think Legacy

Unit	Slots	Completed	Removed	Assigned
Cummins Unit	60	0	4	53
Delta Regional Unit	24	0	6	18
EARU	50	0	3	50
ESTER Unit	48	0	3	44
Grimes Unit	56	0	0	44
Hawkins Unit	40	2	0	42
McPherson Unit	68	10	15	66
North Central Unit	59	0	3	57
Ouachita River Unit	46	4	2	44
Tucker Re-Entry (♀)	21	0	0	21
Tucker Unit	55	0	11	35
Varner Unit	49	6	1	49
Wrightsville Unit	48	0	3	48
Total	624	22	51	571

There are 103 males, and 23 females on the waiting list, within 18 months of their TE, or discharge date. The average time on the waiting list is approximately 45 days. The Tucker Unit, and Tucker Re-Entry Center hosted a Resource and Reunification Fair in June.

Monetary Sanctions:

Sanction reimbursements for June were \$18,400.

County Mental Health Requests:

During June, there were 75 requests of a mental health nature

received. Two (2) inmates were fast tracked to ADC.

County Medical Health Requests:

During June, there were 236 requests of a medical nature received. Eighteen (18) inmates were fast tracked to ADC.

Deaths:

There were 9 inmate deaths during the month of June; 5 were claimed, and 4 were cremated.

CCS:

See attachment for CCS's report regarding outside beds and emergency room visits.

Medical Grievances:

In June, there were a total of 255 appeals of medical grievances received and 247 appeals were answered; 16 of those were found to be with merit and 4 with merit but resolved.

SEX OFFENDER ASSESSMENTS**Assessments Completed:**

Risk Level	June	Sept. 1999 thru June 30, 2017
Level 1	2	1,162
Level 2	52	6,798
Level 3	21	6,347
Level 4	2	593
Default 3	10	*
Total	87	14,900
*Default Level 3's are included in the total number of Level 3's to date.		

ACIC Numbers:

The total number of sex offenders registered from Sept. 1, 1999 to June 30, 2017:

In Compliance	7,694
Delinquent (Did not return address on time)	931
Confined	3,055
Out of State	3,171
Address Unknown (absconded)	181
Deceased	1,127
Deported	174
Incapacitated	76
Out of USA	6
Total	16,415

PAWS IN PRISON**Currently Enrolled in Training:**

Maximum Security Unit	7
Tucker Unit	7
Hawkins Unit	4
Randall Williams Unit	4
Ouachita River Unit	8
North Central Unit	8
Total	38

Completed Training:

June 2017	12
YTD 2017	84
Since Inception Dec. 2011	945
Dogs Currently in foster: (Graduated but not adopted)	3

Construction/Maintenance**Project Updates****Ester Unit:**

Cleaning up the jobsite.

Contractor working on generator and new transfer switch, will be hooking up the rest of the Ester Unit.

Completing Infirmary.

Cummins Unit:

Worked with the Entergy Business Office on LED update to perimeter lighting unit wide.

Cummins Poultry:

Continuing to test Generators weekly.

Pre-construction meeting with Supreme Fixtures to inspect site and plans for construction of new egg cooler.

Delta Unit:

Working on storm damage. Contractor started roof demo and repair on June 6, 2017. Materials purchased for gym and other building repairs.

Entegrity working on design of the energy saving project. Construction crew to start on repairs to gym and outlying buildings that were storm damaged.

East Arkansas Regional Unit:

Entegrity working on Plans for energy upgrade.

400+ tons of gravel for the repairs to the parking lot have been delivered. Will work on parking lot when gravel is on site.

We are working with Entergy to change exterior perimeter lighting to LED, this will reduce emergency generator loads and downsize the proposed emergency generators. Moved farm trailer and finished the trailer underpinning. Working on relocating the Farm shop/warehouse.

Newport:

Grimes Gym roof repair bids opened June 6th. The low bid was approved and a contract being awarded. New A/C equipment arriving to replace storm damaged equipment. Camera crew continues to install new cameras at McPherson.

Ouachita River Correctional Unit:

Gravel operations continue.

Approximately half of skylights installed, with more ordered.

Damage to Freeline residence roofs to be repaired.

Chapel: Working on interior of building. Will use doors salvaged from demolition projects.

Pine Bluff:

PBU Kitchen Air Conditioner: Crews are making corrections to the Return Air Handlers per the Engineer's punch list.

New Barracks in the former Central Records building: Construction is complete. Working with Entergy to upgrade all perimeter lighting. Determining energy savings for using LED lights.

Springdale NWAARC:

Sewage Lift Station is online and operating, Substantial Completion issued.

Maximum Security Unit:

Working on repairs to boiler, replacing tubes in the hot water exchange tank. Metal ceiling in Barracks 3 complete. Plans for Barracks 4 sent to DBA for review & approval.

Tucker Unit:

Ongoing: Continue to monitor waste water plant & make repairs & adjustments to keep in compliance. The replacement of water filter continues.

Hawkins:

Architects completed plans for additional generator for lighting & kitchen, preparing bid package.

CONSTRUCTION / MAINTENANCE PERSONNEL UPDATE:

3 Maintenance Technicians

2 Project Specialists

4 Administrative Spec I

1 Director of Maintenance

2017 INFORMAL GRIEVANCE REPORT

Month	BENTON	HAWK/M	HAWK/F	WRTS/SPU	WRTS	WRTS/SAT	EARU & MX	GRIMES	RLW	MCWR	MCPH	MSU	NCU	PBU Re-entry	PBU	NWA	TU	TRCC	VSMX	VU	CU	ORCU	Ester	DRU	Bowie Cty	TOTAL
JAN	2	15	34	0	75	13	416	301	59	0	309	225	138	1	25	0	109	1	235	85	297	388	22	150	106	3006
FEB	2	15	34	0	83	6	313	280	40	0	247	211	181	0	18	0	68	2	533	100	301	229	23	193	91	2970
MAR	1	7	21	0	63	0	480	283	36	2	381	214	205	0	30	1	162	3	694	88	470	298	48	218	115	3820
APR	4	28	23	0	83	0	341	234	52	0	366	173	198	0	25	0	125	6	657	97	287	214	46	123	96	3178
MAY	4	28	35	0	110	0	821	315	53	0	326	181	217	0	19	0	159	1	611	90	312	306	49	146	98	3881
JUN	2	17	30	0	78	0	1218	278	78	0	367	148	181	0	41	0	169	2	757	85	314	314	44	162	87	4372
JUL																										0
AUG																										0
SEPT																										0
OCT																										0
NOV																										0
DEC																										0
TOTAL	15	110	177	0	492	19	3589	1691	318	2	1996	1152	1120	1	158	1	792	15	3487	545	1981	1749	232	992	593	21227

2017 FORMAL GRIEVANCE REPORT

Month	BENTON	HAWK/M	HAWK/F	WRTS/SPU	WRTS	WRTS/SAT	EARU & MX	GRIMES	RLW	MCWR	MCPH	MSU	NCU	PBU Re-entry	PBU	NWA	TU	TRCC	VSMX	VU	CU	ORCU	Ester	DRU	Bowie Cty	TOTAL
JAN	1	5	16	0	27	6	350	113	31	1	148	239	59	1	6	0	87	2	314	67	151	165	12	67	24	1892
FEB	2	7	12	0	45	1	388	117	17	0	112	208	87	0	6	0	68	0	360	91	165	169	8	81	16	1960
MAR	0	15	20	0	24	0	389	98	17	0	125	222	95	0	3	1	110	0	421	76	173	166	13	97	30	2095
APR	2	39	46	0	34	0	322	113	22	1	148	201	79	0	6	0	65	2	423	86	141	182	16	56	14	1998
MAY	2	28	35	0	47	0	445	142	27	0	186	227	93	0	3	0	93	0	361	77	145	271	28	78	25	2313
JUN	0	9	8	0	34	0	408	114	31	0	167	170	69	0	7	0	99	3	425	83	160	240	21	79	22	2149
JUL																										0
AUG																										0
SEPT																										0
OCT																										0
NOV																										0
DEC																										0
TOTAL	7	103	137	0	211	7	2302	697	145	2	886	1267	482	1	31	1	522	7	2304	480	935	1193	98	458	131	12407

Inmate Institutional Grievance Appeal Report June 2017

	Acknowledged	Rejected	Processed W/O Merit	Processed W/ Merit
Benton Unit	0	0	1	0
Benton Work Release	0	0	0	0
Bowie County Texas Correctional Facility	4	2	7	0
Cummins Unit	39	10	41	0
Cummins Modular Unit	1	0	0	0
Delta Regional Unit	26	5	15	1
East Arkansas Regional Unit	50	16	37	1
East Arkansas Regional Max Unit	84	19	44	2
Ester Unit	2	1	1	0
Grimes Unit	22	6	17	0
Maximum Security Unit	53	18	50	0
McPherson Unit	33	8	29	0
McPherson Mental Health Residential Program Unit	1	0	0	
Mississippi County Work Release Center	0	0	0	0
Northwest Arkansas Work Release Center	0	0	0	0
North Central Unit	21	11	15	0
Ouachita River Correctional Unit	34	17	33	1
ORCU Hospital	3	0	1	0
ORCU New Commitment	0	0	0	0
ORCU Mental Health Residential Program Unit	6	1	4	0
Pine Bluff Unit	2	0	2	0
Pine Bluff Re-Entry	0	0	0	0
Randall L. Williams Correctional Facility	0	1	1	0
Texarkana Regional Correctional Center	0	0	1	0
Tucker Unit	23	8	20	0
Vamer Super Max	155	27	125	4
Vamer Unit	23	6	24	0
Wrightsville Unit	9	7	4	0
Wrightsville Satellite Unit	0	0	0	0
Hawkins Center	3	0	1	0
Hawkins for Males	1	0	1	0
Hawkins SPU	0	0	0	0
Total	595	163	474	9

Admissions and Releases			
June, 2017			
<u>Admissions</u>	<u>Male</u>	<u>Female</u>	<u>Total</u>
Asian	4	0	4
Black	243	21	264
Hawaiian/Pacific Isl	0	0	0
Hispanic	20	2	22
Nat. Amer.	0	1	1
Other	1	0	1
Unknown	1	0	1
White	422	97	519
Total	691	121	812
<u>Releases</u>	<u>Male</u>	<u>Female</u>	<u>Total</u>
Asian	1	0	1
Black	165	10	175
Hispanic	15	0	15
Nat. Amer.	2	0	2
Hawaiian/Pacific Isl	0	0	0
Other	2	0	2
White	309	65	374
Total	494	75	569

ARKANSAS DEPARTMENT OF CORRECTION
INMATE POPULATION GROWTH 2000-2024

Updated 06/30/2017

Month	2000	2001	2002	2003	2004	2005	2006	2007	2008	2009	2010	2011	2012	2013	2014	2015	2016	2017
Jan.	11,984	11,908	12,402	13,015	13,105	13,595	13,481	13,839	14,518	14,796	15,334	16,312	15,134	14,815	17,481	18,142	17,785	17,824
Feb.	12,169	12,022	12,529	13,054	13,166	13,783	13,633	14,012	14,603	14,883	15,374	16,209	14,990	15,008	17,438	18,082	17,625	17,608
March	12,006	12,033	12,299	13,108	13,088	13,418	13,534	13,772	14,580	14,843	15,290	16,095	14,964	14,665	17,395	18,233	17,573	17,666
April	12,069	12,167	12,465	13,213	13,323	13,469	13,554	13,851	14,769	14,937	15,570	16,172	15,124	14,850	17,604	18,703	17,815	17,798
May	12,109	12,384	12,558	13,463	13,556	13,528	13,711	14,146	14,880	15,146	15,694	16,062	15,132	15,074	17,593	18,693	17,769	17,652
June	12,005	12,108	12,439	13,418	13,389	13,251	13,430	13,915	14,700	15,025	15,564	15,554	14,832	14,825	17,340	18,813	17,973	17,963
July	12,030	12,190	12,622	13,509	13,528	13,286	13,560	14,082	14,868	15,195	15,807	15,519	14,879	15,379	17,522	18,870	18,130	
August	12,087	12,371	12,815	13,565	13,632	13,419	13,646	14,224	15,100	15,385	15,829	15,240	14,675	16,103	17,549	18,806	17,919	
September	11,983	12,289	12,774	13,341	13,516	13,237	13,652	14,217	14,850	15,285	16,025	15,172	14,724	16,412	17,605	18,549	18,026	
October	12,119	12,348	12,942	13,341	13,584	13,363	13,775	14,349	14,836	15,381	16,311	15,271	14,856	16,993	17,880	18,430	18,127	
November	12,094	12,408	13,162	13,408	13,706	13,587	13,913	14,437	15,025	15,340	16,460	15,205	14,625	17,168	17,848	17,981	17,573	
December	11,856	12,333	12,845	13,106	13,470	13,338	13,728	14,315	14,716	15,199	16,204	15,062	14,654	17,235	17,874	17,707	17,537	
Net Ann. Inc.	29	477	512	261	364	-132	390	587	401	483	1,005	-1,142	-408	2,581	639	-167	-170	426
Avg. Mo. Inc.	2	40	43	22	30	-11	33	49	33	40	84	-95	-34	215	53	-14	-14	71

Population is total jurisdictional count at end of each month. Population at end of month December 1999 was 11,827.

Average monthly population increase for past fifteen years 2002 - 2016 is 29

Average monthly population increase for past ten years Jan.2007 - Dec 2016 is 32

Average monthly population increase for past five years 2012 - 2016 is 41

Projected at Growth of 29 per Month

	2008	2009	2010	2011	2012	2013	2014	2015	2016	2017	2018	2019	2020	2021	2022	2023	2024
Month	Actual	Actual	Actual	Actual	Actual	Actual	Actual	Actual	Actual	Actual/ Proj.	Proj.	Proj.	Proj.	Proj.	Proj.	Proj.	Proj.
January	14,518	14,796	15,334	16,312	15,134	14,815	17,481	18,142	17,785	17,824	18,166	18,514	18,862	19,210	19,558	19,906	20,254
February	14,603	14,883	15,374	16,209	14,990	15,008	17,438	18,082	17,625	17,608	18,195	18,543	18,891	19,239	19,587	19,935	20,283
March	14,580	14,843	15,290	16,095	14,964	14,665	17,395	18,233	17,573	17,666	18,224	18,572	18,920	19,268	19,616	19,964	20,312
April	14,769	14,937	15,570	16,172	15,124	14,850	17,604	18,703	17,815	17,798	18,253	18,601	18,949	19,297	19,645	19,993	20,341
May	14,880	15,146	15,694	16,062	15,132	15,074	17,593	18,693	17,769	17,652	18,282	18,630	18,978	19,326	19,674	20,022	20,370
June	14,700	15,025	15,564	15,554	14,832	14,825	17,340	18,813	17,973	17,963	18,311	18,659	19,007	19,355	19,703	20,051	20,399
July	14,868	15,195	15,807	15,519	14,879	15,379	17,522	18,870	18,130	17,992	18,340	18,688	19,036	19,384	19,732	20,080	20,428
August	15,100	15,385	15,829	15,240	14,675	16,103	17,549	18,806	17,919	18,021	18,369	18,717	19,065	19,413	19,761	20,109	20,457
September	14,850	15,285	16,025	15,172	14,724	16,412	17,605	18,549	18,026	18,050	18,398	18,746	19,094	19,442	19,790	20,138	20,486
October	14,836	15,381	16,311	15,271	14,856	16,993	17,880	18,430	18,127	18,079	18,427	18,775	19,123	19,471	19,819	20,167	20,515
November	15,025	15,340	16,460	15,205	14,625	17,168	17,848	17,981	17,573	18,108	18,456	18,804	19,152	19,500	19,848	20,196	20,544
December	14,716	15,199	16,204	15,062	14,654	17,235	17,874	17,707	17,537	18,137	18,485	18,833	19,181	19,529	19,877	20,225	20,573
Net Ann. Inc.	401	483	1,005	-1,142	-408	2,581	639	-167	-170	600	348	348	348	348	348	348	348
Ave. Mo. Inc.	33	40	84	-95	-34	215	53	-14	-14	50	29	29	29	29	29	29	29

Monthly Population Averages

	6/1	6/2	6/5	6/6	6/7	6/8	6/9	6/12	6/13	6/14	6/15	6/16	6/19	6/20	6/21	6/22	6/23	6/26	6/27	6/28	6/29	6/30	AVG
Unit/Center																							
Benton	330	335	333	329	329	330	329	329	333	329	328	329	328	328	328	327	330	336	339	339	338	335	331
Cummins	1,875	1,868	1,878	1,877	1,883	1,881	1,884	1,878	1,882	1,879	1,887	1,887	1,886	1,887	1,882	1,881	1,879	1,872	1,870	1,870	1,877	1,884	1,879
Delta	618	619	617	617	625	627	609	607	606	618	608	607	621	621	621	621	615	610	620	617	612	623	618
EARU Reg	1,673	1,671	1,670	1,669	1,671	1,669	1,667	1,679	1,683	1,677	1,670	1,667	1,653	1,652	1,663	1,649	1,651	1,653	1,669	1,673	1,671	1,676	1,667
Exter	532	529	526	530	524	521	522	523	519	544	557	561	569	563	569	567	562	572	574	569	564	564	548
Grimes	1,057	1,057	1,075	1,073	1,082	1,075	1,074	1,078	1,074	1,074	1,076	1,074	1,080	1,077	1,074	1,074	1,074	1,084	1,086	1,086	1,081	1,081	1,078
MaxSec	652	652	652	654	652	649	651	651	650	645	644	643	647	647	645	644	643	645	644	643	643	642	647
McPherson	947	952	955	957	953	952	955	953	958	954	958	958	957	966	955	953	957	962	964	958	953	969	957
MCWRC	144	142	142	142	142	141	142	143	142	142	142	141	141	139	139	141	141	141	141	141	144	144	142
N Central	821	819	825	839	832	828	839	838	835	832	832	831	834	830	830	831	822	824	821	838	830	830	830
NWAWRC	98	97	98	98	99	99	96	96	100	100	100	100	100	100	100	99	100	100	95	95	94	94	98
Ozark River	1,807	1,811	1,786	1,807	1,803	1,838	1,846	1,840	1,838	1,837	1,835	1,827	1,835	1,846	1,834	1,841	1,834	1,810	1,823	1,833	1,851	1,838	1,828
Randall L. Williams	556	558	554	558	552	551	550	543	545	553	552	553	554	555	552	565	559	565	564	566	567	564	558
Fine Bluff	424	415	420	425	424	419	431	427	429	425	427	420	420	420	420	412	425	435	435	433	433	430	425
PB Re-Entry	54	54	54	54	54	54	54	54	54	54	54	54	54	54	54	54	54	53	53	54	54	54	54
TRCC	122	125	125	125	125	128	128	128	128	128	128	128	128	128	128	127	126	126	126	125	128	128	127
Tucker	992	981	981	992	987	991	996	1,002	1,006	993	994	1,004	1,007	1,004	1,010	1,007	1,008	1,006	1,009	1,008	1,006	1,003	999
Varner	1,705	1,705	1,709	1,701	1,711	1,709	1,706	1,707	1,717	1,708	1,709	1,718	1,718	1,718	1,716	1,712	1,707	1,706	1,709	1,712	1,718	1,718	1,711
Wrightsville	1,306	1,302	1,309	1,308	1,307	1,311	1,297	1,304	1,303	1,312	1,313	1,311	1,308	1,307	1,309	1,313	1,308	1,314	1,319	1,315	1,314	1,308	1,309
Total ADC	15,713	15,692	15,709	15,755	15,755	15,773	15,776	15,780	15,802	15,804	15,814	15,813	15,840	15,842	15,829	15,818	15,795	15,814	15,861	15,875	15,878	15,885	15,801
ALETA	20	20	20	20	20	20	20	20	20	20	20	20	20	20	20	20	20	20	20	20	20	20	20
Ar State Police	60	59	59	59	64	64	64	63	63	63	63	63	64	63	63	63	63	63	63	63	63	63	63
Co Jail /M	1,234	1,271	1,253	1,229	1,220	1,234	1,232	1,237	1,240	1,256	1,256	1,247	1,227	1,259	1,293	1,321	1,359	1,353	1,332	1,317	1,323	1,349	1,275
Co Jail /F	27	28	29	30	27	32	35	34	30	34	35	32	25	25	32	32	37	31	33	38	47	35	32
Total Co Jail BK	1,261	1,299	1,282	1,259	1,247	1,266	1,267	1,271	1,270	1,290	1,291	1,279	1,252	1,284	1,325	1,353	1,396	1,384	1,365	1,355	1,370	1,384	1,307
Bowie Co., TX	332	332	332	331	331	331	332	332	334	334	334	334	334	334	335	335	335	335	335	335	335	335	334
309/M	196	196	197	197	205	208	206	206	204	205	202	201	201	204	204	203	205	208	208	208	205	206	203
309/F	39	39	39	39	41	43	43	43	43	43	43	43	43	43	43	43	43	43	44	44	44	44	42
Total Act 309	235	235	236	236	246	251	249	249	247	248	245	244	244	247	247	246	248	251	252	252	249	250	246
Total Non ADC	1,908	1,945	1,929	1,905	1,908	1,932	1,932	1,935	1,934	1,955	1,953	1,940	1,914	1,948	1,990	2,017	2,062	2,053	2,035	2,025	2,037	2,052	1,969
Total	17,621	17,637	17,638	17,660	17,663	17,705	17,708	17,715	17,736	17,759	17,767	17,753	17,754	17,790	17,819	17,835	17,857	17,867	17,896	17,900	17,915	17,937	17,770

Fiscal Year 2017 County Jail Backup

DAY	Jul-16	Aug-16	Sep-16	Oct-16	Nov-16	Dec-16	Jan-17	Feb-17	Mar-17	Apr-17	May-17	Jun-17
1	1,238	1,361	1,335 *	1,335	1,447	1,128 *	1,013	1,223	1,223 *	1,180	1,257	1,261
2	* 1,238	1,357	1,302 *	1,335	1,428	1,098 *	1,013	1,235	1,203 *	1,180	1,244	1,299
3	* 1,238	1,385 *	1,302	1,336	1,408 *	1,098	1,018	1,211	1,191	1,174	1,254 *	1,299
4	1,252	1,391 *	1,302	1,360	1,405 *	1,098	995 *	1,211 *	1,191	1,186	1,263 *	1,299
5	1,252	1,428	1,260	1,381 *	1,405	1,059	1,000 *	1,211 *	1,191	1,203	1,280	1,282
6	1,282 *	1,428	1,260	1,409 *	1,405	1,035	992	1,228	1,161	1,221 *	1,280	1,259
7	1,324 *	1,428	1,222	1,415	1,370	1,016 *	992	1,236	1,160	1,216 *	1,280	1,247
8	1,324	1,424	1,195 *	1,415	1,364	987 *	992	1,262	1,139 *	1,216	1,283	1,266
9	* 1,324	1,429	1,185 *	1,415	1,386	966	958	1,239	1,116 *	1,216	1,270	1,267
10	* 1,324	1,437 *	1,185	1,408	1,401 *	966	985	1,298	1,099	1,194	1,285 *	1,267
11	1,274	1,469 *	1,185	1,418	1,387 *	966	990 *	1,298 *	1,099	1,193	1,308 *	1,267
12	1,280	1,478	1,194	1,421 *	1,387	922	988 *	1,298 *	1,099	1,155	1,307	1,271
13	1,323 *	1,478	1,206	1,414 *	1,387	917	1,000	1,283	1,073	1,178 *	1,307	1,270
14	1,331 *	1,478	1,178	1,431	1,386	920 *	1,000	1,297	1,069	1,203 *	1,307	1,290
15	1,353	1,494	1,182 *	1,431	1,355	943 *	1,000	1,324	1,076 *	1,203	1,327	1,291
16	* 1,353	1,508	1,172 *	1,431	1,367	966	1,003	1,309	1,050 *	1,203	1,320	1,279
17	* 1,353	1,515 *	1,172	1,440	1,351 *	966	1,003	1,340	1,045	1,171	1,331 *	1,279
18	1,343	1,523 *	1,172	1,478	1,349 *	966	1,003 *	1,340 *	1,045	1,212	1,346 *	1,279
19	1,368	1,531	1,165	1,490 *	1,349	946	1,028 *	1,340 *	1,045	1,221	1,375	1,252
20	1,384 *	1,531	1,172	1,492 *	1,349	937	1,038	1,325	1,044	1,215 *	1,375	1,284
21	1,382 *	1,531	1,206	1,480	1,332	953 *	1,030	1,325	1,089	1,242 *	1,375	1,325
22	1,353	1,525	1,228 *	1,480	1,301	985 *	1,038	1,316	1,103 *	1,242	1,396	1,353
23	* 1,353	1,522	1,253 *	1,480	1,255 *	985	1,063	1,301	1,128 *	1,242	1,381	1,396
24	* 1,353	1,553 *	1,253	1,480	1,208 *	985	1,080	1,283	1,114	1,243	1,410 *	1,396
25	1,336	1,542 *	1,253	1,470	1,208 *	985	1,091 *	1,283 *	1,114	1,231	1,370 *	1,396
26	1,350	1,512	1,260	1,471 *	1,208 *	985	1,124 *	1,283 *	1,114	1,213	1,353	1,384
27	1,379 *	1,512	1,284	1,479 *	1,208	1,007	1,133	1,250	1,119	1,224 *	1,353	1,365
28	1,364 *	1,512	1,285	1,471	1,208	995 *	1,133	1,241	1,155	1,263 *	1,353	1,355
29	1,380	1,466	1,318 *	1,471	1,185	998 *	1,133		1,164 *	1,263	1,330	1,370
30	* 1,380	1,424	1,335 *	1,471	1,141	1,013	1,159		1,172 *	1,263	1,330	1,384
31	* 1,380	1,377		1,482		1,013	1,202		1,180		1,306	
Average	1,328	1,469	1,234	1,435	1,331	994	1,039	1,278	1,122	1,212	1,321	1,308

Note: Totals do not include 309 Contracts in County Jails (maximum of 336)

Fiscal Year Average 1,256



Arkansas Department of Correction

June STTG Unit Counts

Unit	Beginning Total	Confirmed	Suspected	In	Out	Paroled	Removed	Ending Total	Total Unit Population	Unit % of STTG's
Benton	57	3	1	21	3			79	332	23.80%
Cummins	471			34	10	8		487	1882	25.88%
Delta	138	3		25	11	2		150	621	24.15%
EARU	540	3	3	71	69	8		540	1678	32.18%
Grimes	326	1		29	9	14		334	1080	30.93%
Hawkins	37				1			36	451	7.98%
Max	232			10	12	2		228	643	35.46%
Mcpherson	48	7		1	3	1		52	971	5.36%
MCWR	40	1		4	2			43	144	29.86%
NCU	198	5		25	19	7		202	827	24.43%
NWAWR	21			2	4			19	97	19.59%
ORCU	313	43		33	32	5		352	1612	21.84%
ORCU Intake	55	166			161			60	239	25.10%
PB/Ester	216			101	56	21	1	239	1047	22.83%
RLW	156	1		32	25	5		159	564	28.19%
TWR	23			1				24	128	18.75%
Tucker	274			20	23	3		269	1001	26.87%
Varner	665			26	17	6		668	1718	38.88%
Wrightsville	185			31	20	1		195	854	22.83%
Total	3995	233	4	466	477	83	1	4136	15889	26.03%

ORCU Intake brought in 166 new STTG members into ADC last Month.



Arkansas Department of Correction

June STTG Disciplinary Report

Unit	STTG Incidents	STTG Suspected Incidents	Total Unit Disciplinary	Disciplinary Involving STTG	Percentage
Benton			7	2	28.57%
Cummins			458	179	39.08%
Delta			150	37	24.67%
EARU		2	295	143	48.47%
Grimes	1	1	148	59	39.86%
Hawkins			26	0	0.00%
Max			94	44	46.81%
Mcperson			195	17	8.72%
MCWR			1	1	100.00%
NCU	3		133	41	30.83%
NWAWR			4	2	50.00%
ORCU	6		272	104	38.24%
ORCU Intake			16	5	31.25%
PB/Ester	1		63	20	31.75%
RLW	3		63	28	44.44%
TWR			0	0	0.00%
Tucker	2		162	81	50.00%
Varner			306	162	52.94%
Wrightsville	1		105	39	37.14%
Total	17	3	2498	964	38.59%



June STTG Counts by STTG Set

STTG Set	Benton	Cummins	Delta	EARU	Grimes	Hawkins	Max	McPherson	MCWR	NCU	NWAWR	ORCU	Intake	PBU	RLW	TWR	Tucker	Varner	Wrightsville	Total
Asian	1		1		1					1	1		2	2			3	3		15
Bloods	8	94	33	91	59	8	63	7	3	19	5	55	8	38	20	6	52	127	35	731
Crips	7	70	19	56	32	3	35	6	4	20	3	42	3	24	21	2	32	102	34	515
Folk	2	23	8	49	31	7	26	9		8	2	30	2	18		6	23	93	33	370
GD	12	135	33	132	73	9	48	3	8	47	3	84	11	53	39		52	124	32	898
Mexican	7	13	5	14	12	2	1	4		9	3	13	3	6	5	2	4	24	4	131
Motorcycle		1		3	2	1	1	1		1			2	2	6			3		23
Other	4	9	4	10	13		2			3		7	1	11	4		5	12	10	95
People	3	19	4	13	11		11	3	1	9	1	13	2	13	4		11	24	9	151
Unknown		3		6	6		1		1	1		6		3	5	2	5	3	4	46
W/S	17	38	18	51	34	3	11	16	9	33		43	15	33	19	6	30	34	8	418
NAE	5	26	12	29	15	1	7	2	6	16		20	8	9	8		11	21	9	205
WAR	9	43	6	59	28	1	15	1	8	22		22	1	14	20		28	44	7	328
AC	2	11	4	12	13	1	5		2	8		13	2	6	3		9	44	4	139
AB	2	2	3	15	4		2		1	5	1	4		7	5		4	10	6	71
Total	79	487	150	540	334	36	228	52	43	202	19	352	60	239	159	24	239	668	195	4136

Key:

GD = Gangster Disciples

W/S = White Supremacist

NAE = New Aryan Empire

WAR = White Aryan Resistance

AC = Aryan Circle

AB = Aryan Brotherhood

ARKANSAS DEPARTMENT OF CORRECTION INPATIENT AND EMERGENCY ROOM UTILIZATION

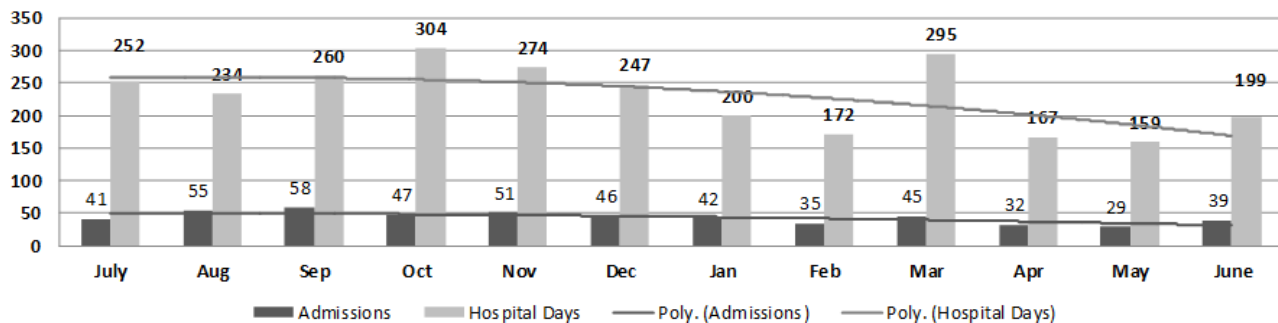
ADC Inpatient Statistics Past 12 Months

	2016						2017						
	July	Aug	Sep	Oct	Nov	Dec	Jan	Feb	Mar	Apr	May	June	Average
Admissions	41	55	58	47	51	46	42	35	45	32	29	39	43.3
Hospital Days	252	234	260	304	274	247	200	172	295	167	159	199	230.3
Average Length of Stay	6.15	4.25	4.48	6.47	5.37	5.37	4.76	4.91	6.56	5.22	5.48	5.10	5.31

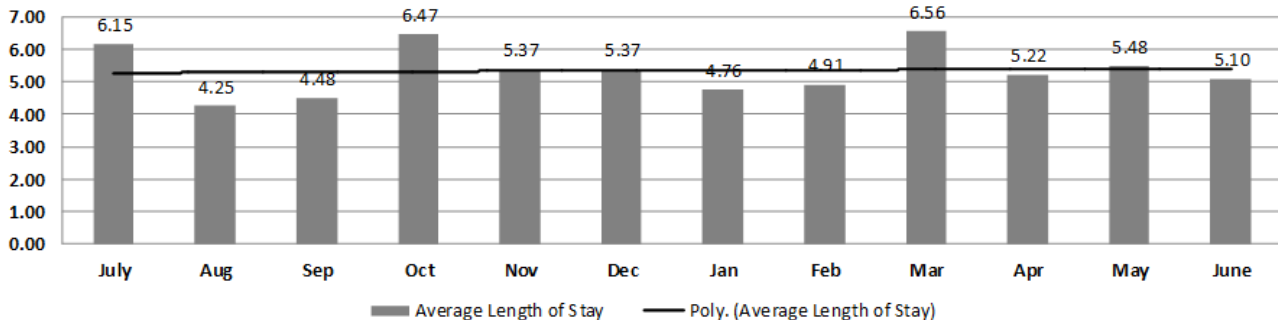
ADC ER Visits Past 12 Months

	2016						2017						
	July	Aug	Sep	Oct	Nov	Dec	Jan	Feb	Mar	Apr	May	June	Average
Emergency Room Visits	66	67	86	101	103	102	92	80	126	111	89	84	92.3

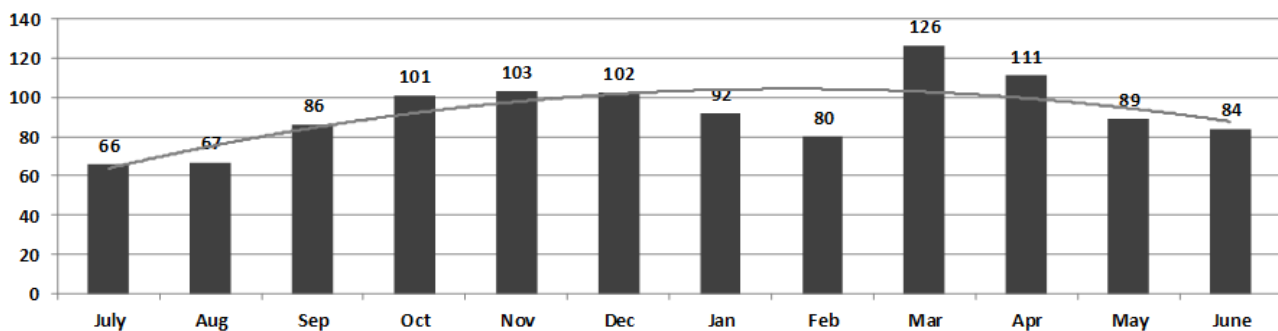
ADC Inpatient Utilization Past 12 Months



ADC Inpatient Average Length of Stay Past 12 Months



ADC Emergency Room Visits Past 12 Months



**June 2017
Medical Grievance
Board Report**

Unit	Acknowledged/ Received	Rejected	Reviewed & Signed by Dep Director	With Merit	With Merit, but Resolved	% With Merit	Without Merit
Benton	0	0	0	0	0	0%	0
Bowie Co.	1	0	2	0	0	0%	2
CMU	0	0	1	0	0	0%	1
Cummins	16	2	10	0	1	10%	9
Delta	13	0	1	0	0	0%	1
EARU	27	6	6	2	0	33%	4
EARU Max	31	3	21	4	1	24%	16
Ester	1	1	0	0	0	0%	0
Grimes	16	1	22	1	1	9%	20
Hawkins	0	0	0	0	0	0%	0
McPherson	27	1	6	0	0	0%	6
MCWRC	0	0	0	0	0	0%	0
MSU	21	3	25	1	0	4%	24
North Central	9	0	15	0	1	7%	14
NWAWRC	0	0	0	0	0	0%	0
Ouachita	32	11	65	3	0	5%	62
Pine Bluff	0	0	0	0	0	0%	0
Randall Williams	2	1	2	1	0	50%	1
SNN	0	0	0	0	0	0%	0
TRCC	0	0	0	0	0	0%	0
Tucker	10	4	3	0	0	0%	3
Varner	15	3	20	1	0	5%	19
Varner S Max	30	5	44	2	0	5%	42
WRU	4	0	3	1	0	33%	2
WHM	0	1	1	0	0	0%	1
WWR	0	0	0	0	0	0%	0
TOTAL	255	42	247	16	4	8%	227

June 2017 Purchase Orders Over \$10,000.00

<u>VENDOR</u>	<u>DESCRIPTION</u>	<u>LOCATION</u>	<u>PO#</u>	<u>PURCHASE AMOUNT</u>	<u>FUND</u>
Wholesale Electric Supply Co Inc	Building Supplies	Construction/Construction	4501703889	\$25,491.09	PB Records Renovation
Jones Hydro Services	Well Repair	Maximum Security/Maintenance	4501662041	\$49,942.94	Operational Budget
American Paper & Twine	Paper Towels	Central Warehouse	4501704260	\$11,368.34	Operational Budget
US Foods Inc	Food Purchases	Central Warehouse	4501704266	\$25,754.40	Operational Budget
Mid States Services Inc	Toilet Paper	Hawkins/ACI/Imaging	4501704380	\$24,268.80	Operational Industry Budget
Woodbury Beach Co	Tube Bundle for Storage Tank	Maximum Security/Maintenance	4501704535	\$15,896.54	Operational Budget
Datamax Inc	Lexmark Printer	Admin East/Information Systems	4501704501	\$14,761.38	Operational Budget
Arkansas Correctional Industries	Laundry Supplies	Central Warehouse	4501704517	\$36,576.52	Operational Budget
Tabb Textiles Co Inc	Fabric Sheeting	Cummins/Industry	4501704522	\$46,800.00	Operational Industry Budget
Mid States Services Inc	Toilet Paper	Hawkins/ACI/Imaging	4501704531	\$24,268.80	Operational Industry Budget
Searcy Co Equip Co	Repair Parts	Wrightsville	4501705284	\$10,225.64	Operational Budget
Helena Chemical Company	Herbicide	Tucker/Farm	4501704792	\$14,781.80	Operational Farm Budget
Tri-County Farmers Association	Fertilizer	EARU/Farm	4501704606	\$24,790.00	Operational Farm Budget
Crop Production Services Inc	Herbicide	EARU/Farm	4501704629	\$13,891.50	Operational Farm Budget
Cumberland Materials Inc	Building Supplies	Ouachita/Construction	4501705105	\$12,123.00	Malvern Construction
WW Grainger Inc	Lawn Mowers	Central Warehouse	4501703647	\$105,360.00	Operational Budget
Green Point AG LLC	Herbicide	Tucker/Farm	4501704228	\$41,409.48	Operational Farm Budget
McKesson Medical Surgical	Medical Supplies	Admin Services/Health & Corr Prog	4501705458	\$24,680.59	Medical Risk Assessment
Vans Harvesting Inc	Bean Picker Rental	Cummins/Farm	4501653185	\$23,037.25	Operational Farm Budget
Crop Production Services Inc	Herbicide	Cummins/Chemical Shed	4501704602	\$40,059.00	Operational Farm Budget
Cruse Uniforms and Equipment	Police Equipment	Varner	4501705121	\$10,088.88	Operational Budget
Barnes Paper Co	Poultry House Supplies	Cummins/Farm	4501706050	\$24,066.24	Operational Farm Budget
Green Point AG LLC	Diesel Fuel	Cummins/Farm	4501704142	\$38,919.81	Operational Farm Budget
MJ Kellner	Food Purchases	Central Warehouse	4501706372	\$61,421.00	Operational Budget
William R Hill & Co	Food Purchases	Central Warehouse	4501706423	\$1,128,913.53	Operational Budget
WW Grainger Inc	Skylight	Ouachita/Maintenance	4501706012	\$12,074.48	Operational Budget
Razor Chemical Inc	Janitorial Supplies	Delta/Janitorial	4501706444	\$16,306.40	Operational Industry Budget
Empire Paper	Bleach	Central Warehouse	4501706495	\$13,135.24	Operational Budget
Phoenix Trading Amercare Products	Sanitary Napkins	Central Warehouse	4501706517	\$11,308.64	Operational Budget
American Paper & Twine	Paper Towels	Central Warehouse	4501706477	\$52,369.20	Operational Budget
Green & Chapman LLC	Fuel	Wrightsville	4501697039	\$12,145.75	Operational Budget
United Fence & Construction Co Inc	Construction Supplies	Wrightsville	4501701315	\$13,661.93	Inmate Welfare Funds
John R Hestir	Consulting Fees	Tucker/Farm	4501704284	\$12,337.00	Operational Farm Budget
Robbins Sales Company Inc	Food Purchases	Central Warehouse	4501706870	\$312,541.60	Operational Budget
National Food Group	Food Purchases	Central Warehouse	4501706948	\$48,409.20	Operational Budget
Bayer Corp	Shampoo	Central Warehouse	4501706982	\$10,859.98	Operational Budget
A C Sales Co	Food Purchases	Central Warehouse	4501706978	\$18,018.40	Operational Budget
WW Grainger Inc	Skylight	Ouachita/Maintenance	4501706954	\$13,477.63	Operational Budget
Phoenix Trading Amercare Products	Deodorant Soap	Central Warehouse	4501706745	\$24,627.90	Operational Budget
Jones-Zylon Co	Water Tumbler	Central Warehouse	4501706666	\$10,107.21	Operational Budget
Green Point AG LLC	Herbicide	Cummins/Chemical Shed	4501706650	\$26,644.40	Operational Farm Budget
Green Point AG LLC	Fertilizer	Cummins/Chemical Shed	4501706655	\$68,750.00	Operational Farm Budget
Arkansas Correctional Industries	Clothing and Linens	Delta	4501707002	\$40,458.93	Operational Budget
Arkansas Correctional Industries	Toilet Paper	Central Warehouse	4501707073	\$161,848.75	Operational Budget
Printing Papers Inc	Paper	Central Warehouse	4501707071	\$27,122.30	Operational Budget
Arkansas Correctional Industries	Janitorial Supplies	Central Warehouse	4501707069	\$215,042.09	Operational Budget
Arkansas Correctional Industries	Tea and Coffee	Central Warehouse	4501707068	\$43,926.00	Operational Budget
Sysco Food Services of Arkansas	Food Purchases	Central Warehouse	4501707092	\$173,099.15	Operational Budget
White River Petroleum Co Inc	Fuel	Grimes	4501706377	\$10,650.57	Operational Budget
Mid Sout Sales Inc	Fuel	Cummins/Commissary	4501707159	\$16,139.60	Operational Budget
Shamrock Meats Inc	Ground Beef	Cummins Cold Storage Facility	4501707419	\$145,938.00	Operational Farm Budget
Helena Chemical Company	Herbicide	EARU/Farm	4501707424	\$30,340.00	Operational Farm Budget
MFA Incorporated	Herbicide	Tucker/Farm	4501704794	\$36,400.00	Operational Farm Budget
William A Harrison, Harrison Energy	HVAC Equipment	Benton	4501708149	\$59,750.76	Work Release
Bale Chevrolet	Passenger Vans	Admin East/Purchasing	4501707950	\$348,634.00	Work Release
McLarty NLRFF LLC	Trucks	Admin East/Purchasing	4501708216	\$68,440.00	Work Release
Superior Automotive Group	Dually Trucks	Admin East/Purchasing	4501708268	\$55,200.00	Work Release
Little Rock Winnelson	Plumbing Supplies	McPherson/Maintenance	4501707658	\$14,279.09	Operational Budget
Ouachita Gravel Company	Gravel	Ouachita/Horse Barn	4501708643	\$10,729.69	Operational Budget
Supreme Fixture Co	Kettle	Ouachita	4501708647	\$22,255.78	Work Release
Arkansas Correctional Industries	Clothing	Grimes	4501708117	\$18,930.48	Operational Budget
Charm Tex Inc	Clothing	Mcpherson	4501708352	\$10,469.12	Operational Budget
Green Point AG LLC	Fertilizer	Cummins/Chemical Shed	4501708163	\$12,225.00	Operational Farm Budget
Arkansas Correctional Industries	Clothing	McPherson	4501709351	\$24,714.38	Operational Budget
Agvico Crop Consulting LLC	Crop Consulting-Soybeans	Cummins/Farm	4501708123	\$10,575.00	Operational Farm Budget
Mid States Services Inc	Toilet Paper	Hawkins/ACI/Imaging	4501708915	\$24,268.80	Operational Industry Budget
Helena Chemical Company	Herbicide	Cummins/Chemical Shed	4501709968	\$41,710.00	Operational Farm Budget
Green Point AG LLC	Fertilizer	Cummins/Chemical Shed	4501709885	\$32,895.00	Operational Farm Budget
GE Government Supply Inc	Powdered Milk	Cummins Creamery/Farm	4501709877	\$86,800.00	Operational Farm Budget
Cruse Uniforms and Equipment	Armory Supplies	ADC/Departmental Armor	4501710012	\$16,686.17	Work Release
US Foods Inc	Food Purchases	Central Warehouse	4501707084	\$124,388.72	Operational Budget
Atlantic Beverage Company	Food Purchases	Central Warehouse	4501706964	\$37,944.25	Operational Budget
WW Grainger Inc	Roof Vents	Delta/Construction	4501709652	\$32,560.76	Operational Budget
Arkansas Correctional Industries	Clothing and Linens	Pine Bluff	4501710088	\$25,068.90	Operational Budget
Arkansas Correctional Industries	Boots	Tucker	4501710355	\$12,144.60	Operational Budget
Tommy's Flying Service Inc	Fertilizer	Tucker/Farm	4501710386	\$14,100.00	Operational Farm Budget
Green Point AG LLC	Fertilizer	Tucker/Farm	4501710389	\$28,217.00	Operational Farm Budget
US Foods Inc	Food Purchases	Central Warehouse	4501710520	\$54,939.00	Operational Budget
National Food Group	Food Purchases	Central Warehouse	4501710524	\$156,067.00	Operational Budget
Arkansas Correctional Industries	Boots and Mattresses	McPherson	4501710514	\$14,701.84	Operational Budget

Total for Purchases over \$10,000

\$4,785,332.22

FIRM CONTRACTS OVER \$25,000.00

<u>VENDOR</u>	<u>DESCRIPTION</u>	<u>UNIT</u>	<u>Contract #</u>	<u>PURCHASE P.O.# AMOUNT</u>	<u>FUND</u>
Generated Energy Solutions LLC	Generator	Ester/Construction	4501706622	\$151,103.00	Ester II ADFA Funds

Total for Contracts

\$151,103.00

EMERGENCY PURCHASE ORDERS OVER \$25,000.00

Total EM Purchases

\$0.00

Total Purchases

\$4,936,435.22

Arkansas Department of Correction June 2017 Vacancies, Hires and Terminations

<u>UNIT</u>	VACANCIES	HIRES	TERMINATIONS
BENTON (CR05)	7	1	4
CENTRAL OFFICE (CR01, CR02, CR08 & CR22)	13	2	5
CHAPLAINCY	0	0	0
CONSTRUCTION (CR04)	9	2	2
CUMMINS (CR09)	80	8	5
DELTA (CR10)	13	4	5
EAST ARKANSAS (CR12)	58	14	13
ESTER (CR11)	15	0	4
FARM (CR29)	11	0	1
GRIMES (CR27)	19	6	6
INDUSTRY (CR07)	14	1	0
MAXIMUM SECURITY (CR14)	57	3	9
MCPHERSON (CR28)	25	3	7
MENTAL HEALTH	36	0	2
MISS COUNTY (CR15)	6	1	3
NORTH CENTRAL (CR16)	4	5	2
NORTHWEST ARK (CR17)	3	0	2
OUACHITA RIVER (CR30)	50	14	7
PINE BLUFF (CR20)	6	4	2
RANDAL L. WILLIAMS (CR13)	12	0	3
TEXARKANA (CR21)	2	0	1
TRANSPORTATION (CR32)	10	0	5
TUCKER (CR23)	33	4	0
TUCKER RENTRY (CR33)	2	2	1
VARNER (CR24)	72	8	5
VARNER SUPER MAX (CR31)	39	1	9
WRIGHTSMILLE (CR25)/HAWKINS(CR06)	31	3	6
TOTAL	627	86	109

Chaplaincy

Monthly Report for: June 2017	BENTON	CUMMINS	DELTA REGIONAL	EAST ARKANSAS	EAST ARKANSAS MAX	ESTER	GRIMES	HAWKINS	MAXIMUM SECURITY	MCPHERSON	NORTH CENTRAL	OUACHITA RIVER	PINE BLUFF	RANDALL L. WILLIAMS	TUCKER	VARNER	VARNER MAX	WRIGHTSVILLE	PTF	TOTAL	
Services Chaplains Oversaw																					
Christian																					
Population	4	11	9	6	0	1	9	4	13	4	5	6	3	10	10	3	0	3	0	101	
Segregation	0	0	1	0	0	0	0	0	0	1	0	3	0	0	0	0	0	0	0	5	
Muslim																					
Population	0	5	4	12	0	1	7	0	1	6	0	2	1	0	0	5	0	0	0	44	
Segregation	0	0	0	0	0	0	0	0	0	0	0	0	0	0	0	0	0	0	0	0	
Total Services																				150	
Volunteers in Charge																					
Protestant	24	36	3	18	0	11	27	8	44	28	19	23	13	10	15	28	2	20	0	329	
Catholic	0	0	0	0	0	0	2	3	1	3	1	1	0	0	0	2	0	1	0	14	
Muslim	0	0	0	8	0	5	6	0	2	6	0	5	0	1	2	0	0	0	0	35	
Other	3	2	0	0	0	0	0	0	5	2	0	4	0	0	0	0	0	1	0	17	
Baptism	0	2	0	17	0	0	11	0	3	0	0	2	0	1	0	4	0	26	0	66	
Marriages																					
	1	0	0	0	0	1	0	0	0	0	0	0	0	0	0	0	0	1	0	3	
Distributed by Chaplains																					
Greeting Cards	100	24	10	0	0	50	47	0	145	723	38	500	115	21	95	419	313	0	900	3500	
Bibles,Quran,Torrah, Etc.	25	30	10	165	8	37	31	10	20	69	15	610	8	9	66	103	18	18	0	1252	
Study Course	375	11	10	0	0	0	20	0	137	45	0	43	0	12	0	19	6	0	0	678	
Writing Supplies	25	10	0	0	0	300	2	0	190	0	0	50	0	5	0	0	0	0	800	1382	
Literature	175	1126	500	587	178	250	6	90	450	374	256	625	200	7	5	2165	921	350	225	8490	
Chaplain's Visits																					
Barracks	76	63	56	8	0	24	45	19	271	154	63	81	23	13	129	132	37	24	8	1226	
Approximate Hours Spent in Barracks	37	28	10	4	0	98	67	4	29	60	31	72	3	3	32	12	20	12	8	530	
Inmate Office visits	60	95	94	64	0	70	150	98	51	70	48	94	30	139	235	193	0	12	25	1528	
Other Office visits	94	27	6	17	0	20	35	4	30	40	20	76	9	6	30	19	0	30	0	463	
Hospital	0	2	0	0	0	0	4	0	0	0	3	29	0	8	0	1	0	0	0	47	
Infirmary/Sick Call	0	3	1	3	0	0	24	6	5	2	8	21	4	10	5	0	0	4	0	96	
Restrictive Housing	0	4	3	0	4	0	20	0	32	8	4	19	4	10	4	0	19	4	0	135	
Punitive Isolation	0	8	3	0	6	0	0	1	14	8	0	23	4	10	0	0	18	4	0	99	
PC - DRU			5																		5
Visitation Days	0	0	2	0	0	0	1	0	0	2	0	3	0	0	0	0	0	1	0	9	
Volunteer Visits																					
RCV	7	0	0	0	0	0	4	0	29	24	6	0	0	2	18	0	0	0	0	90	
OCV	30	0	0	0	0	14	0	52	68	21	19	152	17	18	33	10	0	21	25	480	
Spiritual Advisor	0	1	0	0	0	0	1	0	0	0	0	9	1	1	1	1	0	1	0	16	
CRA	26	39	16	103	7	12	75	30	160	35	78	114	11	11	108	60	6	14	0	905	
Religious Volunteer Hours																					
Volunteer Hours	142	133	162	298	16	14	357	60	963	228	255	817	60	60	421	218	27	42	0	4273	
DENOM/VOLUNTEER CHAPLAIN HOURS	103	16	34	36	0	254	49	130	91	160	49	40	9	79	81	19	0	206	0	1356	
Total Volunteer Hours																				5629	
Other Activities of Chaplain																					
Counseled Employees	16	6	2	8	0	4	6	7	18	30	4	37	5	4	12	12	20	12	3	206	
Orientation Sessions	0	4	0	0	0	0	1	0	0	0	0	4	0	0	0	0	0	0	0	9	
Free World Devotions	0	2	1	6	0	10	5	0	16	4	0	14	12	12	7	1	0	0	0	90	
Spoke in Churches	5	8	0	13	0	4	16	0	5	4	0	17	12	12	7	0	0	2	1	106	
Crisis Intervention Sessions	4	29	0	0	0	3	0	18	0	25	4	78	6	5	7	4	4	12	20	219	
Marriage Counseling	3	0	0	2	0	2	0	0	3	12	1	2	0	3	0	0	0	1	5	34	
Denominational Meeting	0	3	1	1	0	0	0	0	3	0	0	7	1	0	0	0	0	0	0	16	
Chaplain's Meeting	0	3	1	1	0	1	1	2	0	1	1	3	1	1	1	3	0	2	6	28	
Volunteer Training Session	0	1	0	1	0	0	1	0	0	1	0	1	0	1	1	1	0	0	0	8	
Choir Trip	0	0	0	0	0	0	0	0	0	0	0	0	0	0	0	0	0	0	0	0	
Chaplain Transfers																					
	0	0	0	0	0	0	0	0	0	0	0	0	0	0	0	0	0	0	0	0	
Chaplain Promotions																					
	0	0	0	0	0	0	0	0	0	0	0	0	0	0	0	0	0	0	0	0	

AR-DOC Securus Video Visitation Activity Tracker

Total ADP: 15,586

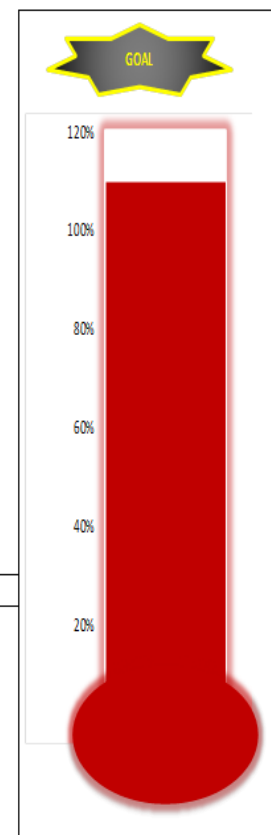
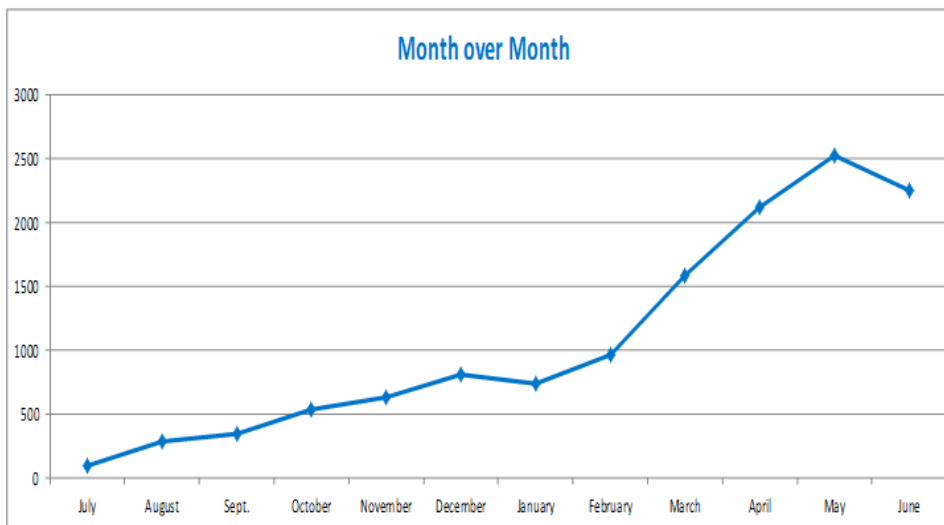
July 6, 2016 Go Live: Cummins & Pine Bluff Re-Entry
 August 17, 2016 Go Live: Benton, State Police Barracks & Wrightsville Unit
 Sept. 14, 2016 Go Live: NW Arkansas Work Release
 Sept. 28, 2016 Go Live: Varner Unit & Texarkana Regional Correction Center
 Nov. 2, 2016 Go Live: Mississippi County Work Release Center
 Jan. 18, 2017 Go Live: Randall L Williams Facility & Pine Bluff Complex
 Feb. 22, 2017 Go Live: Mcpherson Unit, J Aaron Hawkins Sr. Center Facility & Ester Unit
 March 29, 2017 Go Live: East Arkansas Regional Unit & Tucker Re-entry
 April 11, 2017 Go Live: North Central Unit
 April 12, 2017 Go Live: Grimes Unit
 June 3, 2017 Go Live: Tucker Unit

Promotional Pricing

Until 12/31/17: \$5/30 minutes-Promotional price point to encourage remote visitation

Total Visits by Month	July	August	Sept.	October	November	December	January	February	March	April	May	June
Total	97	288	348	528	631	806	736	958	1,578	2,117	2,524	2,252
Target Objective	2,002	2,552	4,468	4,468	4,590	4,590	5,589	7,097	8,876	10,722	10,722	11,710

Anywhere Visitation Performance:



Complete d Visits

Site	Current Month	Previous Month
Cummins	299	310
Pine Bluff Re-Entry	1	4
Benton	79	95
State Police Barracks	21	14
Wrightsville Satellite	0	0
NW Arkansas WRC	0	1
Varner Unit	174	221
Texarkana Regional	4	9
Mississippi County WRC	69	60
Randall L Williams	180	197
Pine Bluff Complex	120	133
Mcpherson	158	199
J Aaron Hawkins Sr.	184	173
Ester	277	385
East Arkansas Regional	232	284
Tucker Re-entry	0	0
North Central	179	253
Grimes	158	186
Tucker Unit	117	0
Total:	2252	2524

Missed by Inmate

Site	Current Month	Previous Month
Cummins	14	19
Pine Bluff Re-Entry	0	0
Benton	5	9
State Police Barracks	0	0
Wrightsville Satellite	0	0
NW Arkansas WRC	0	0
Varner Unit	17	6
Texarkana Regional	0	0
Mississippi County WRC	6	2
Randall L Williams	8	19
Pine Bluff Complex	10	5
Mcpherson	11	4
J Aaron Hawkins Sr.	4	17
Ester	7	5
East Arkansas Regional	19	13
Tucker Re-entry	0	0
North Central	11	4
Grimes	5	4
Tucker Unit	15	0
Total:	132	107