

**Wendy Kelley**  
**Director**

**Board Report**  
**January 2017**



## **PUBLIC RELATIONS**

### **RESEARCH/PLANNING**

**December, 2016 Admissions and Releases** – Admissions for December totaled **858** (741-males & 117-females) while Releases totaled **732** (611-males & 121 females) for a net increase in-house of 126 Inmates).

**Inmate Population Growth/Projection** – At the end of December 2016, the Arkansas Department of Correction Population totaled **17,537** representing a decrease of **170** Inmates since the first of January, 2016. Calendar year 2016 has seen an average decrease of **14** Inmates per month, which is the same decrease of **14** Inmates per month during calendar year 2015.

**Average County Jail Back-up** – The backup in the County Jails averaged **994** Inmates per day during the month of December, 2016 – down from an average of **1,331** inmates per day during the month of November, 2016.

## **LEGAL SERVICES**

### **PREA**

The Occasional Service Volunteer Training class was held on December 16th in Batesville for community based Rape Crisis Counselors who will be able to respond to inmates at the McPherson Unit, Hawkins Unit, and the Tucker Re-Entry Center

#### **PREA Data:**

Number of calls received	270
Total Number of Repeat Calls	94
Total Number of Calls with no message	51
Total Reported PREA Issue Calls	50
Total Reported non-PREA Calls	75
Total Calls due to Technical Failure	0
Totals Calls Referred to Internal Affairs Division	41

### **INMATE GRIEVANCE**

**Inmate Formal/Informal Grievances:** In December, there were a total of 1,841 formal grievances filed and 3,413 informal grievances filed at various units.

**Institutional Grievances:** There were a total of 458 appeals of institutional grievances received with 91 being rejected. 468 appeals were answered in December. Five (5) were found with merit.

## **OPERATIONS/INSTITUTIONS**

### **STTG**

The last STTG quarterly meeting of the year was held at the Admin East building for all STTG Coordinators on December 1st. Topics of discussion included current STTG activity at each unit, gang patterns & trends, and management of STTG files at each unit. On December 6th, the STTG Coordinator held the forth STTG sweep at the Grimes Unit with the help of Unit STTG Coordinators as well as several K9 officers. We identified 50 new STTG inmates and updated 68 STTG inmate files.

### **FARM**

The Agriculture Division had a quiet month during December. The winter rain hit and field work ceased. The Cummins beef herd finished calving and bulls were put back with the herd. The Wrightsville beef herd calves have been weaned will be put up for sale in February. The gardens have greens and turnips still in the fields. The winter wheat crop is growing at all farms and we will be fertilizing as needed during the upcoming months.

**Regional Maintenance Hours**

<b>Regional Maintenance Hours</b>	<b>December</b>
Benton Unit	5,902
Delta Regional Unit	2,512
East Arkansas Unit	2,624
Grimes Unit	2,184
McPherson Unit	1,488
Mississippi Co Work Release	2,201
North Central Unit	6,632
Ouachita River Unit	5,096
Randall Williams Unit	3,504
Texarkana Regional Unit	1,334
Tucker Unit	1,505
Varner Unit	400
Wrightsville Unit	1,792
Wrightsville Satellite Unit	1,528
<b>Total Hours</b>	<b>38,702</b>

**Work Release Rent Report**

<b>Work Release Rent Report</b>	<b>December</b>
Benton Unit	\$98,549.00
Mississippi County Work Release	\$45,441.00
Northwest AR Work Release Center	\$37,502.00
Pine Bluff Unit	\$30,753.00
Texarkana Regional Unit	\$43,044.00
Tucker Re-Entry Center	\$24,922.00
<b>Total</b>	<b>\$280,211.00</b>

**RE-ENTRY****Preparing for Success**

	<b>Slots</b>	<b>Completed</b>	<b>Discharged</b>	<b>End Count</b>
McPherson	0	3	0	0
Ester-4 BKS	50	6	9	44
Ester-5 BKS	50	2	3	49
Tucker Re-Entry	12	1	4	12
<b>Total</b>	<b>112</b>	<b>12</b>	<b>16</b>	<b>105</b>

There are 684 males and 111 females on the waiting list within 42 months of their release date, and of those, 4 males and no females are mandated by the Parole Board. The average time on the waiting list is approximately 3 months. The total number of inmates on the waiting list, including those not currently within the identified time frame, is 743 males and 139 females.

**WAGE****(Workforce Alliance for Growth in the Economy)**

	<b>Slots</b>	<b>Completed</b>	<b>Discharged</b>	<b>End Count</b>
Wrightsville Satellite	30	4	10	16
Ouachita	13	8	0	5
Delta	15	0	2	15
<b>Total</b>	<b>58</b>	<b>12</b>	<b>12</b>	<b>36</b>

**Thinking for a Change**

	<b>Slots</b>	<b>Completed</b>	<b>Discharged</b>	<b>End Count</b>
Wrightsville Satellite	25	23	2	0
RLW (Juveniles)	15	0	0	15
<b>Total</b>	<b>40</b>	<b>23</b>	<b>2</b>	<b>15</b>

**Think Legacy:**

Think Legacy is a department wide Reentry program initiated in 2016 and formally launched at the beginning of 2017. Inmates within 12 to 18 months of their projected release may be housed in a Think Legacy barracks. They are required to take twenty (20) or more hours per week of instruction tailored to aid inmates in making a successful transition back into free society are offered. Think Legacy utilizes ADC staff as well as volunteers who provide instruction and make resources available to inmate participants.

**ADMINISTRATIVE SERVICES****BUDGET SECTION UPDATE**

- Budget has no Act 715 cases to report.

**Procurement Section Update:****Current Bid through Office of State Procurement**

Pine Bluff Barracks Renovation Project:

1. Plumbing Equipment
2. Ceiling Material
3. HVAC

**Current Bids through Division of Building Authority**

Generator – Ester Unit

Steel & Building Material – Delta Unit

**Contract Renewals**

Waste Disposal – Newport Complex

Personal Care Products

**Procurement/Contracts Report (required by policy) –**

For December 2016, Purchase Orders and Contracts in excess of \$10,000 amounted to \$1,827,083.04. Of this amount, \$1,192,259.09 was for Inmate Care and Custody related items (food, shoes, clothing, etc.). Bulk fuel costs for the month of December were \$11,113.29 – average cost for E-10 was \$1.54/gallon; no bulk diesel was purchased during the reporting period.

## HUMAN RESOURCES UPDATE

**Workplace Safety** – During the month of December, the modified version of the Health and Safety Plan was presented to one Basic Training class with a total of 40 cadets in attendance.

Fifty-two incidents were reported to the company nurse in December, bringing our total to 747 incidents in 2016.

**Benefits** – One hundred-sixteen (116) MIPS payments were made in December. Eighty-Six (86) FMLA requests were processed with 82 approved and 4 denied. A total of 10 CAT leave requests were processed with 3 approved, 6 denied and 1 pending. A total of 2,814 hours was donated to the Cat Leave Bank during December. One shared leave application was received and denied.

**Physical Assessments** –A total of 189 applicants and incumbent personnel were assessed in the month of December. Seventy One (71) incumbent personnel successfully passed their physical assessment, and 2 did not. Both rescheduled and passed. One hundred-sixteen (116) applicants passed their physical assessments.

**Employment** – Cummins staff attended a Job Fair at the Lake Village Workforce Center on December 9<sup>th</sup>.

A total of 1,928 applications were received during December. Thirty-six (36) Non-Security applications and seventy-five (75) CO I applications were processed. Thirty-two (32) Correctional Officers were hired, and eleven (11) Correctional Officers were rehired.

**Vacancies, Hires, and Terminations** - In December 2016, a total of 628 vacancies, 51 new hires, and 76 terminations were at the various ADC locations.

**Administrative Services Division Monthly Reports (attached) include:**

**Gifts, Grants, and Donations-** No donations were reported in the month of December.

**Inmate Welfare Fund-**balance on December 31, 2016 was \$5,468,528.95.

**The PAWS in Prison Fund** total on December 31, 2016 was: \$42,415.45 including ADC account (7004822/Donations) \$19,159.55 and ADC account (NDC0500/Recycling) \$23,255.90. This does not include the Foundation account managed by the Paws Prison Foundation Board.

## INFORMATION TECHNOLOGY

**In December, the IT department:**

- Windows Update Server (WSUS) planning and implementation was conducted. The Administration East building and the ORCU facility were the first two sites targeted. This project is necessary to update the Microsoft computer system software which prevents system breaches and attacks. Prior to the WSUS deployment, system updates required hands-on manual updating. ADMIN East was selected as

the initial test site with only IT staff systems identified in the test. Success with the IT tests led to the rollout.

- We continue to build our Disaster Recovery Site at ORCU.
- Progress continues on the EOMIS/Contexte interface development with the testing of three web services. AOC is revising the Contexte application to contain a form that includes all sentencing data.

## TRAINING ACADEMY

### **Basic Training Division**

Captain Latisha Davis' BCOT Class 2016-O graduated on December 2, 2016 with 28 cadets. Michael Terry from Construction won the Willis H. Sargent Award. Deputy Warden Deangelo Earl of the Grimes Unit served as the Commencement Speaker.

Captain Lance Hall's BCOT Class 2016-P graduated on December 22, 2016 with 54 cadets. Jerry Rickman from the Ouachita River Unit received the Willis H. Sargent Award. Deputy Warden James Shipman of the Wrightsville Complex served as the Special Speaker.

### **In-Service Division**

Management Level I class was held December 5-8. This four day session is for new supervisors and includes training as mandated by the Governor's office. Guest instructors from OPM's training division presented two classes: Arkansas Government Basics and HRkansas.

A Motivational Interviewing Train the Trainer course was presented as a part of the implementation of the new Restrictive Housing policies. Motivational Interviewing training will be given to all staff assigned to Restrictive Housing. The course was held at Admin East from December 5-7 and was taught by SATP Coordinator, John Dean.

**eCADEMY**—During the month of December 2016, A total of 346 ADC employees completed a total of 4556.25 hours of eCADEMY training. Approximately 7% of ADC employees completed at least one course during that time frame, for an average of 1.03 hours per staff member.

## **HEALTH/CORRECTIONAL PROGRAMS**

### CHAPLAINCY SERVICES

#### **Benton Work Release**

Benton Work Release Christmas Sack distribution was held on December 17th. Sacks were distributed to 340 inmates and 92 staff members.

**Cummins Unit**

Timothy's Gift performed a music ministry program on December 2-3. A total of 259 inmates participated in the two events. On December 21, Cummins Unit chaplains and 7 volunteers distributed Christmas bags to approximately 1,600 inmates.

**Delta Regional Unit**

On December 19th, in cooperation with Inmate Council, DRU chaplaincy provided Christmas sacks to 602 inmates.

**East Arkansas Regional Unit**

Pastor Steven Gaines, of Bellevue Baptist Church in Memphis, preached a Christmas service on December 12th.

On December 13th, Chaplaincy staff and volunteers distributed Christmas sacks to the entire inmate population.

Central Arkansas Baptist Bible Institute concluded its fall term on December 19th. Certificates were issued to students who passed their courses for the semester.

**Ester Unit**

On December 1st, Timothy's Gift led a service in the unit chapel with approximately 150 inmates in attendance.

Christmas sacks were passed out to all inmates on December 15.

**Grimes Unit**

Forty-eight (48) inmates participated in the Storybook Project in the month of December. The unit chaplains provided a Christmas gift sack to each inmate.

**Hawkins Center**

The unit enjoyed the Covenant Presbyterian Choir and a unit Christmas party.

**Maximum Security Unit**

Christmas sacks were distributed to all inmates. On Christmas Day, Certified Religious Assistant Renie Rule gave homemade cookies to all inmates.

**McPherson Unit**

On December 16th, thirty (30) volunteers assisted in distributing Christmas bags to the inmate population. The inmate choir delivered a Christmas Cantata on Dec 22 & 23. Approximately 360 inmates attended the Cantata.

**North Central Unit**

On December 5th, the Chaplaincy distributed 3,125 Christmas cards to the inmate population for them to send to family and friends. New Life Fellowship presented a concert at the facility on December 9th with 186 inmates in attendance.

On December 10th, eleven (11) volunteers from First Baptist Church of Calico Rock performed a Christmas concert with 190 inmates in attendance.

From December 15th –17th, three (3) volunteers led revival services in the unit, 134 inmates attended. Twenty-one (21) volunteers distributed Christmas sacks to all inmates on December 22nd.

**Ouachita River Correctional Unit**

Thirteen (13) volunteers from First Baptist Church & Handbell Choir had a service on December 14th with 40 inmates in attendance. Christmas gift bags were distributed to the entire inmate population.

**Pine Bluff Unit**

Pine Bluff Unit Chaplaincy handed out Christmas packages on December 15th to each inmate at the facility.

**Randall L. Williams Unit**

Randall L. Williams Unit chaplaincy distributed Christmas bags to the entire inmate population on December 21.

**Tucker Unit**

First Baptist Church of Jacksonville presented their Christmas Cantata in the unit chapel on December 9th. Twenty-five (25) volunteers led the service with 133 inmates in attendance. On December 13th, five (5) volunteers and the Inmate Counsel assisted in distributing Christmas bags to all inmates.

Seven (7) volunteers from Family Church conducted a Christmas service for the inmates on December 16th, with 129 inmates in attendance.

**Varner Unit**

Christmas sacks were disbursed to all inmates on December 19th. On December 23<sup>rd</sup>, a Christmas program was conducted in the chapel.

**Wrightsville Unit**

On December 19th, Chaplaincy distributed Christmas sacks to all inmates in the Wrightsville Complex (including Satellite, and State Police).

**ACCREDITATION**

Fire/Safety and Sanitation independent audits conducted by the Fire and Sanitation Coordinator:

December 6th      North Central Independent Audit

**VOLUNTEER SERVICES**

The total number of volunteer hours for the month.

Unit	Hours
Delta Regional	4
East Arkansas Regional	21.5
Maximum Security	12
Mississippi County Work Release	12
North Central	50
Ouachita River	16
Pine Bluff Complex	236
Religious All Units	5,069
Randall Williams	18
Varner	75.5
Wrightsville	8
Total	5,522

**PROGRAM INFORMATION****Sex Offender Treatment**

	SLOTS	COMPLETED	REMOVED	CLIENTS
RSVP	238	56	5	237
SOFT	30	0	0	9
Total	268	56	5	246

There are 797 males on the waiting list for RSVP and 24 females on the waiting list for SOFT within five (5) years of their TE date. Of those, 60 inmates are mandated by the Parole Board. The average time on the waiting list from request is about 3 to 6 months for those stipulated. The total on the waiting list, including those not currently within the identified time frame, is 1,432 males and 30 females. We have one PREA inmate in the program at this time.

**Therapeutic Community:**

	Slots	Completed	Removed	Clients
Tucker	129*	9	10	131
Wrightsville	45*	9	4	48
McPherson	50*	5	0	48
Total	224	23	14	227

There are 242 males and 15 females on the waiting list within 18 months of their release date. Of those, 12 are stipulated by the Parole Board. The average time on the waiting list from request is 35 days. The total on the waiting list, including those not currently within the identified time frame, is 522 males and 50 females.

\*Denotes transitional beds available at this treatment program. The Tucker Therapeutic Community has 129 client slots and seven (7) peer counselor slots.

**S.A.T.P.:**

Unit	Slots	Completed	Removed	Clients
Grimes	50*	6	3	51
McPherson	100*	6	6	99
MSU	3	0	0	1
RLW/CF	188*	23	24	188
Tucker	43*	8	5	43
Varner	44	7	8	46
Wrightsville	135*	17	15	141
Total	563	67	61	569

There are 2,091 males and 345 females on the waiting list within 18 months of their release date and of those, 27 are stipulated by the Parole Board. The average time on the waiting list from request is 19 days. The total on the waiting list including those not currently within the identified time frame is 2,896 males and 460 females.

\*Denotes transitional beds available at this treatment program.

**ORCU R.P.U.:**

The Residential Program Unit at Ouachita had 9 admissions and 9 discharges in December for an end-of-month count of 120.

**McPherson Mental Health Residential Program:**

There was 1 admission and 3 discharges in December for an end-of-month count of 36.

**Habilitation Program:**

The Habilitation Program at the Ouachita River Correctional Unit provided treatment services to 38 inmates during December. There were no admissions or discharges for an end-of-month count of 38.

**Staffing:**

The following Mental Health Services and SATP positions were vacant in November and December.

Positions	November	December
Psychologists	6	6
Social Workers	6	7
Advisors	4	4
Substance Abuse Program Leaders	2	2
Admin Specialist/Analyst	1	2



**ADDITIONAL PROGRAM INFORMATION**

Self-Study Classes	# of Participants	# Completed	Waiting List
Anger Management	177	115	1,455
Thinking Errors	396	251	1,896
Substance Abuse Education	52	33	291
Communication Skills	107	88	1,126
Domestic Violence	94	50	625
Victims of Domestic Violence	3	0	63
Stress Management	150	105	1,281
Parenting	180	147	1,011

**Suicide:**

There were 129 suicidal threats, gestures or low/moderate risk attempts during December. There were two serious attempts with one resulting in death.

**Outpatient:**

There were 2,255 inmates on the mental health medical log at the beginning of December. Mental Health conducted the following contacts during December:

Case management contacts	2,565
Requests for interviews	804
Testing	2
Intakes	904
Unit requests	1,206
Counseling (with treatment plans)	0
Pre-lock up reviews	600
Routine segregation reviews	162
Segregation rounds	17,542
PREA evaluations	68
Routine follow-up	164
834 requests	38

**Monetary Sanctions:**

Sanction reimbursements for December were \$30,450.00.

**County Mental Health Requests:**

During December, there were 112 requests of a mental health nature received and 11 inmates were fast tracked to ADC.

**County Medical Health Requests:**

During December, there were 262 requests of a medical nature received and 32 inmates were fast tracked to ADC.

**Deaths:**

There were 8 inmate deaths during the month of December; 3 were claimed, 4 cremated, and 1 buried.

**CCS:**

See attachment for CCS's report regarding outside beds and emergency room visits.

**Medical Grievances:**

In December, there were a total of 196 appeals of medical griev-

ances received and 168 appeals were answered; 19 of those were found to be with merit and 2 with merit but resolved.

**SEX OFFENDER ASSESSMENTS****Assessments Completed:**

Risk Level	December	Sept. 1999 thru December 31, 2016
Level 1	1	1,155
Level 2	43	6,480
Level 3	12	6,181
Level 4	3	579
Default 3	2	*
<b>Total</b>	<b>61</b>	<b>14,395</b>
*Default Level 3's are included in the total number of Level 3's to date.		

**ACIC Numbers:**

The total number of sex offenders registered from Sept. 1, 1999 to December 31, 2016:

In Compliance	7,496
Delinquent (Did not return address on time)	937
Confined	2,997
Out of State	3,039
Address Unknown (absconded)	179
Deceased	1,071
Deported	173
Incapacitated	69
Out of USA	8
<b>Total</b>	<b>15,969</b>

**PAWS IN PRISON****Currently Enrolled in Training:**

Max Unit	8
Tucker Unit	8
Hawkins Unit	4
Randall Williams Unit	3
Ouachita River Unit	8
North Central Unit	9
<b>Total</b>	<b>40</b>

**Completed Training:**

December 2016	6
YTD 2016	197
Since Inception Dec. 2011	861
Dogs Currently in foster: (Graduated but not adopted)	5

**CONSTRUCTION****PROJECT UPDATES****Barbara Ester Unit:**

Barracks are still being renovated in the old hospital/medical areas. HVAC units being installed. Structural steel installation is complete. Skylight bars are being received and will be installed. We are continuing to purchase material. Work is still in progress on plumbing, air conditioning, electrical and the installation of new metal ceilings. The Ester bid package for the generator is prepared. We are waiting for DBA approval to advertise. We have ordered material to begin work on the Infirmary and Dental area.

**Cummins Unit:**

We are still working on interior and exterior repairs to two Free-line residences and the Guest House. Roadwork to the wastewater plant continues.

**Cummins Poultry:**

The generator is tested weekly. JBP Architects completed the additional Cooler Plans and Specifications and we have sent them to DBA for review and approval.

**Delta Unit:**

Work is still being executed on storm damage. The roof repair bid is closed and under review. AIG Insurance visited the site and will make final recommendations on the damage settlement. We received plans and specifications to make repairs on damage to the gym, horse barn and pole barn. Integrity is continuing their energy audit. Plans to repair the Delta gym have been approved by DBA.

**East Arkansas Regional Unit:**

Work continues on building a new firing range. Integrity is continuing their energy audit. The showers in inmate barracks are being renovated. The Warden's residence is being re-roofed.

**Hawkins Unit:**

The perimeter lighting has been replaced and updated. Architects are working on plans for an additional generator for lighting and the kitchen.

**Maximum Security Unit:**

The boiler is being repaired. The metal ceilings on the walkways in the barracks are being worked on. Work is being rendered on floor repairs to Officer BOQ trailers.

**Ouachita River Correctional Unit:**

Gravel operations are still in progress. The Department received an insurance settlement for storm damage and was given approval to buy and replace skylights. We have started on metal studs in the Chapel. We are also removing short block wall partitions in the barracks.

**Pine Bluff Unit:**

The PBU Kitchen Air Conditioner is in place and operational. Make-up air units being installed. The plans for new barracks in the former Central Records building have been approved. Material is being purchased, demolition is underway, once demolition is complete, we will start construction. We are working on interior and HVAC units in the new school metal building.

**Tucker Unit:**

Layne Well Drilling has completed new well. A closeout meeting was conducted. The new water line has been pressurized and sterilized. Samples have been taken and sent off to the Health Department. We are waiting on approval of the samples. We are working on additional cross fencing & fencing around new water well & the generator.

**Wrightsville:**

A purchase request has been prepared for the kitchen roof repairs. Staff repaired multiple water line leaks. The plans for the Isolation Recreation Yard are being finalized.

**CONSTRUCTION/MAINTENANCE PERSONNEL VACANCIES:**

- 2 Project Supervisors
- 3 Maintenance Technicians
- 2 Administrative Specialists
- 1 Corporal position
- 1 Procurement Coordinator

## 2016 INFORMAL GRIEVANCE REPORT

Month	BENTON	HAWK/M	HAWK/F	WRTS SPU	WRTS	WRTS/SAT	EARU & M	GRIMES	RLW	MCWR	MCPH	MSU	NCU	PBU Re-eg	PBU	NWA	TU	TRCC	VSMX	VU	CU	ORCU	Ester	DRU	Bowie Cty	TOTAL
JAN	2	19	91	0	136	2	436	307	41	2	375	317	180	0	25	0	178	1	673	128	272	351	15	127	69	3747
FEB	3	22	97	0	137	17	420	347	64	1	390	243	177	1	18	0	190	0	585	184	249	423	29	118	172	3887
MAR	3	12	100	0	182	13	638	353	58	0	438	298	242	0	25	0	210	2	628	142	376	336	43	131	144	4374
APR	1	18	59	0	121	16	420	348	101	2	415	270	253	0	11	0	141	0	658	141	364	323	33	131	133	3959
MAY	1	23	46	0	98	0	443	364	84	0	348	216	221	5	5	0	146	3	682	167	280	400	25	119	90	3766
JUN	3	18	74	0	119	7	440	318	122	0	422	256	312	0	32	0	200	2	727	118	299	417	40	153	121	4200
JUL	1	35	40	0	114	5	505	344	67	2	379	215	211	2	45	0	120	1	673	108	326	399	34	160	158	3944
AUG	2	20	37	0	119	11	488	420	67	0	443	264	258	1	42	0	193	4	629	116	354	456	25	186	149	4284
SEPT	1	19	55	0	166	25	565	372	39	0	486	216	158	0	48	0	175	4	537	99	304	426	33	162	100	3990
OCT	1	16	44	0	138	18	484	342	59	3	404	238	154	0	11	0	146	4	532	94	285	405	23	165	171	3737
NOV	3	8	34	0	133	8	483	327	34	0	409	202	142	0	21	0	172	1	575	98	192	401	20	177	118	3558
DEC	3	18	37	0	92	31	416	328	45	2	376	161	156	0	26	0	112	2	535	69	269	388	35	191	121	3413
TOTAL	24	228	714	0	1,555	153	5738	4170	781	12	4885	2896	2464	9	309	0	1983	24	7434	1464	3570	4725	355	1820	1546	46859

## 2016 FORMAL GRIEVANCE REPORT

Month	BENTON	HAWK/M	HAWK/F	WRTS SPU	WRTS	WRTS/SAT	EARU & M	GRIMES	RLW	MCWR	MCPH	MSU	NCU	PBU Re-eg	PBU	NWA	TU	TRCC	VSMX	VU	CU	ORCU	Ester	DRU	Bowie Cty	TOTAL
JAN	1	4	31	0	12	0	351	154	25	0	120	203	71	0	12	0	112	3	358	103	117	119	8	48	20	1872
FEB	3	9	36	0	26	1	347	137	23	4	113	187	92	1	4	0	113	0	336	139	134	154	22	57	43	1981
MAR	3	5	38	0	43	1	417	162	31	0	141	203	127	0	11	0	120	2	336	109	163	181	20	52	95	2260
APR	0	3	24	0	29	2	441	154	48	0	180	260	116	0	7	1	92	0	374	132	160	176	22	53	37	2311
MAY	1	17	18	0	35	0	379	145	31	2	154	240	106	3	2	1	99	2	389	142	131	203	8	45	21	2174
JUN	3	5	14	0	27	0	460	171	60	0	165	259	131	0	9	0	110	2	364	113	137	184	13	58	33	2318
JUL	1	9	18	0	23	0	373	142	28	0	218	199	89	0	16	0	72	2	387	90	133	183	16	63	35	2097
AUG	2	12	17	0	22	0	440	168	30	0	205	249	121	1	28	0	99	0	362	101	149	198	18	68	48	2338
SEPT	0	2	23	0	26	3	426	171	22	1	224	195	66	0	23	0	88	5	328	83	148	226	14	68	31	2173
OCT	0	6	26	0	27	0	362	114	35	1	217	191	82	0	4	0	78	4	311	82	146	194	8	58	48	1994
NOV	0	2	10	0	25	0	473	132	15	0	212	204	66	0	4	0	95	2	375	91	105	158	9	66	29	2073
DEC	2	9	17	0	19	0	350	135	16	0	164	176	72	0	16	0	74	4	280	63	147	172	7	82	36	1841
TOTAL	16	83	272	0	314	7	4819	1785	364	8	2113	2566	1139	5	136	2	1152	26	4200	1248	1670	2148	165	718	476	25432



### Inmate Institutional Grievance Appeal Report December 2016

	Received	Rejected	Processed W/O Merit	Processed W/ Merit
Benton Unit	0	0	0	0
Benton Work Release	0	0	0	0
Bowie County Texas Correctional Facility	17	0	17	0
Cummins Unit	19	4	26	0
Cummins Modular Unit	1	0	1	0
Delta Regional Unit	6	7	9	1
East Arkansas Regional Unit	27	3	15	1
East Arkansas Regional Maximum Unit	37	7	87	0
Ester Unit	2	1	1	0
Grimes Unit	26	13	15	0
Maximum Security Unit	43	13	29	0
McPherson Unit	24	3	18	0
McPherson Mental Health Residential Program Unit	9	2	9	0
Mississippi County Work Release Center	0	0	0	0
Northwest Arkansas Work Release Center	0	0	0	0
North Central Unit	12	5	17	0
Ouachita River Correctional Unit	19	7	29	0
ORCU Hospital	0	0	0	0
ORCU New Commitment	0	0	6	0
ORCU Mental Health Residential Program Unit	1	1	0	0
Pine Bluff Unit	2	1	3	0
Pine Bluff Re-Entry	0	0	0	0
Randall L. Williams Correctional Facility	3	1	8	0
Texarkana Regional Correctional Center	2	1	0	0
Tucker Unit	15	5	4	1
Varner Super Max	91	10	139	0
Varner Unit	9	1	17	2
Wrightsville Unit	0	4	4	0
Wrightsville Satellite Unit	0	0	0	0
Hawkins Center	0	2	8	0
Hawkins for Males	2	0	1	0
Hawkins SPU	0	0	0	0
<b>Total</b>	<b>367</b>	<b>91</b>	<b>463</b>	<b>5</b>

### Admissions and Releases December 2016

<u>Admissions</u>	<u>Male</u>	<u>Female</u>	<u>Total</u>
Asian	6	0	6
Black	265	23	288
Hispanic	27	0	27
Nat. Amer.	1	2	3
Hawaiian/Pacific Isl	1	0	1
White	441	92	533
Other	0	0	0
Unknown	0	0	0
<b>Total</b>	<b>741</b>	<b>117</b>	<b>858</b>

<u>Releases</u>	<u>Male</u>	<u>Female</u>	<u>Total</u>
Asian	3	1	4
Black	225	28	253
Hispanic	15	1	16
Nat. Amer.	1	1	2
Hawaiian/Pacific Isl	0	0	0
White	367	90	457
Other	0	0	0
Unknown	0	0	0
<b>Total</b>	<b>611</b>	<b>121</b>	<b>732</b>

**ARKANSAS DEPARTMENT OF CORRECTION  
INMATE POPULATION GROWTH 2000-2023**

Mo.	2000	2001	2002	2003	2004	2005	2006	2007	2008	2009	2010	2011	2012	2013	2014	2015	2016
Jan.	11,984	11,908	12,402	13,015	13,105	13,595	13,481	13,839	14,518	14,796	15,334	16,312	15,134	14,815	17,481	18,142	17,785
Feb.	12,169	12,022	12,529	13,054	13,166	13,783	13,633	14,012	14,603	14,883	15,374	16,209	14,990	15,008	17,438	18,082	17,625
March	12,006	12,033	12,299	13,108	13,088	13,418	13,534	13,772	14,580	14,843	15,290	16,095	14,964	14,665	17,395	18,233	17,573
April	12,069	12,167	12,465	13,213	13,323	13,469	13,554	13,851	14,769	14,937	15,570	16,172	15,124	14,850	17,604	18,703	17,815
May	12,109	12,384	12,558	13,463	13,556	13,528	13,711	14,146	14,880	15,146	15,694	16,062	15,132	15,074	17,593	18,693	17,769
June	12,005	12,108	12,439	13,418	13,389	13,251	13,430	13,915	14,700	15,025	15,564	15,554	14,832	14,825	17,340	18,813	17,973
July	12,030	12,190	12,622	13,509	13,528	13,286	13,560	14,082	14,868	15,195	15,807	15,519	14,879	15,379	17,522	18,870	18,130
August	12,087	12,371	12,815	13,565	13,632	13,419	13,646	14,224	15,100	15,385	15,829	15,240	14,675	16,103	17,549	18,806	17,919
September	11,983	12,289	12,774	13,341	13,516	13,237	13,652	14,217	14,850	15,285	16,025	15,172	14,724	16,412	17,605	18,549	18,026
October	12,119	12,348	12,942	13,341	13,584	13,363	13,775	14,349	14,836	15,381	16,311	15,271	14,856	16,993	17,880	18,430	18,127
November	12,094	12,408	13,162	13,408	13,706	13,587	13,913	14,437	15,025	15,340	16,460	15,205	14,625	17,168	17,848	17,981	17,573
December	11,856	12,333	12,845	13,106	13,470	13,338	13,728	14,315	14,716	15,199	16,204	15,062	14,654	17,235	17,874	17,707	17,537
Net Ann. Inc.	29	477	512	261	364	-132	390	587	401	483	1,005	-1,142	-408	2,581	639	-167	-170
Avg. Mo. Inc.	2	40	43	22	30	-11	33	49	33	40	84	-95	-34	215	53	-14	-14

Population is total jurisdictional count at end of each month. Population at end of month December 1999 was 11,827.

Average monthly population increase for past fifteen years 2001 - 2015 is 33

Average monthly population increase for past ten years Jan.2006 - Dec 2015 is 36

Average monthly population increase for past five years 2011 - 2015 is 25

Mo.	2008	2009	2010	2011	2012	2013	2014	2015	2016	2017	2018	2019	2020	2021	2022	2023
January	Actual 14,518	Actual 14,796	Actual 15,334	Actual 16,312	Actual 15,134	Actual 14,815	Actual 17,481	Actual 18,142	Actual 17,785	Proj. 17,570	Proj. 17,966	Proj. 18,362	Proj. 18,758	Proj. 19,154	Proj. 19,550	Proj. 19,946
February	Actual 14,603	Actual 14,883	Actual 15,374	Actual 16,209	Actual 14,990	Actual 15,008	Actual 17,438	Actual 18,082	Actual 17,625	Proj. 17,603	Proj. 17,999	Proj. 18,395	Proj. 18,791	Proj. 19,187	Proj. 19,583	Proj. 19,979
March	Actual 14,580	Actual 14,843	Actual 15,290	Actual 16,095	Actual 14,964	Actual 14,665	Actual 17,395	Actual 18,233	Actual 17,573	Proj. 17,636	Proj. 18,032	Proj. 18,428	Proj. 18,824	Proj. 19,220	Proj. 19,616	Proj. 20,012
April	Actual 14,769	Actual 14,937	Actual 15,570	Actual 16,172	Actual 15,124	Actual 14,850	Actual 17,604	Actual 18,703	Actual 17,815	Proj. 17,669	Proj. 18,065	Proj. 18,461	Proj. 18,857	Proj. 19,253	Proj. 19,649	Proj. 20,045
May	Actual 14,880	Actual 15,146	Actual 15,694	Actual 16,062	Actual 15,132	Actual 15,074	Actual 17,593	Actual 18,693	Actual 17,769	Proj. 17,702	Proj. 18,098	Proj. 18,494	Proj. 18,890	Proj. 19,286	Proj. 19,682	Proj. 20,078
June	Actual 14,700	Actual 15,025	Actual 15,564	Actual 15,554	Actual 14,832	Actual 14,825	Actual 17,340	Actual 18,813	Actual 17,973	Proj. 17,735	Proj. 18,131	Proj. 18,527	Proj. 18,923	Proj. 19,319	Proj. 19,715	Proj. 20,111
July	Actual 14,868	Actual 15,195	Actual 15,807	Actual 15,519	Actual 14,879	Actual 15,379	Actual 17,522	Actual 18,870	Actual 18,130	Proj. 17,768	Proj. 18,164	Proj. 18,560	Proj. 18,956	Proj. 19,352	Proj. 19,748	Proj. 20,144
August	Actual 15,100	Actual 15,385	Actual 15,829	Actual 15,240	Actual 14,675	Actual 16,103	Actual 17,549	Actual 18,806	Actual 17,919	Proj. 17,801	Proj. 18,197	Proj. 18,593	Proj. 18,989	Proj. 19,385	Proj. 19,781	Proj. 20,177
September	Actual 14,850	Actual 15,285	Actual 16,025	Actual 15,172	Actual 14,724	Actual 16,412	Actual 17,605	Actual 18,549	Actual 18,026	Proj. 17,834	Proj. 18,230	Proj. 18,626	Proj. 19,022	Proj. 19,418	Proj. 19,814	Proj. 20,210
October	Actual 14,836	Actual 15,381	Actual 16,311	Actual 15,271	Actual 14,856	Actual 16,993	Actual 17,880	Actual 18,430	Actual 18,127	Proj. 17,867	Proj. 18,263	Proj. 18,659	Proj. 19,055	Proj. 19,451	Proj. 19,847	Proj. 20,243
November	Actual 15,025	Actual 15,340	Actual 16,460	Actual 15,205	Actual 14,625	Actual 17,168	Actual 17,848	Actual 17,981	Actual 17,573	Proj. 17,900	Proj. 18,296	Proj. 18,692	Proj. 19,088	Proj. 19,484	Proj. 19,880	Proj. 20,276
December	Actual 14,716	Actual 15,199	Actual 16,204	Actual 15,062	Actual 14,654	Actual 17,235	Actual 17,874	Actual 17,707	Actual 17,537	Proj. 17,933	Proj. 18,329	Proj. 18,725	Proj. 19,121	Proj. 19,517	Proj. 19,913	Proj. 20,309
Net Ann. Inc.	401	483	1,005	-1,142	-408	2,581	639	-167	-170	396	396	396	396	396	396	396
Ave. Mo. Inc.	33	40	84	-95	-34	215	53	-14	-14	33	33	33	33	33	33	33

## Monthly Population - December 2016

Unit/Center	12/1	12/2	12/5	12/6	12/7	12/8	12/9	12/12	12/13	12/14	12/15	12/16	12/19	12/20	12/21	12/22	12/27	12/28	12/29	12/30	AVG
Benton	331	332	331	332	327	328	327	327	325	331	328	328	327	327	325	325	325	323	324	320	327
Cummins	1,900	1,904	1,908	1,900	1,906	1,906	1,906	1,916	1,913	1,913	1,910	1,910	1,907	1,901	1,896	1,895	1,890	1,897	1,898	1,895	1,904
Delta	615	610	624	624	619	617	630	628	627	624	623	622	622	621	618	617	614	614	620	620	620
E AR Reg	1,683	1,690	1,689	1,691	1,687	1,680	1,677	1,678	1,687	1,690	1,687	1,687	1,692	1,690	1,682	1,684	1,679	1,686	1,671	1,685	1,685
Ester	351	350	350	349	344	369	370	365	364	363	361	360	351	360	360	355	352	352	352	357	357
Grimes	1,071	1,075	1,075	1,080	1,082	1,082	1,081	1,078	1,078	1,078	1,073	1,075	1,077	1,074	1,071	1,070	1,071	1,078	1,074	1,071	1,076
Max Sec	649	649	647	655	655	655	655	657	658	657	658	657	668	668	667	665	668	667	667	665	659
McPherson	996	1,000	997	994	995	1,000	1,000	978	974	967	972	972	963	972	967	973	957	960	963	958	978
MCWRC	144	144	144	143	143	143	143	143	143	142	142	144	144	144	144	144	144	144	144	144	144
N Central	826	817	829	840	841	848	842	837	836	833	833	831	823	826	837	832	819	832	832	828	832
NWAWRC	100	98	98	100	98	98	98	99	98	99	99	100	100	99	99	99	99	99	100	100	99
Ouachita River	1,737	1,734	1,754	1,768	1,791	1,793	1,794	1,819	1,824	1,833	1,844	1,827	1,840	1,847	1,846	1,842	1,841	1,838	1,850	1,835	1,813
Randall L William	556	560	558	554	550	546	558	560	559	563	563	561	560	560	549	561	556	559	564	562	558
Pine Bluff	427	425	426	419	424	422	430	433	434	433	430	426	428	428	427	426	429	431	427	429	428
PB Reentry	54	54	54	54	54	54	54	54	54	53	54	54	54	54	54	54	54	54	54	54	54
TRCC	126	124	124	122	122	122	122	124	124	124	124	126	127	128	128	128	128	128	128	128	125
Tucker	988	999	994	1,001	1,000	999	1,002	1,001	999	1,004	996	998	994	1,003	1,002	999	991	988	996	996	998
Varner	1,734	1,731	1,727	1,737	1,738	1,731	1,724	1,715	1,711	1,706	1,708	1,713	1,716	1,717	1,717	1,708	1,719	1,719	1,716	1,711	1,720
Wrightsville	1,481	1,476	1,482	1,475	1,480	1,474	1,474	1,469	1,477	1,486	1,485	1,483	1,485	1,479	1,490	1,485	1,479	1,471	1,471	1,475	1,479
Total ADC	15,769	15,772	15,811	15,838	15,856	15,867	15,887	15,881	15,885	15,899	15,890	15,874	15,878	15,898	15,879	15,862	15,815	15,840	15,851	15,833	15,854
ALETA	18	18	18	18	18	18	18	18	18	18	18	18	18	18	18	18	20	19	19	19	18
Ar State Police	64	64	64	64	64	64	64	64	63	63	62	62	62	62	61	60	60	63	63	62	63
Co Jail / M	1,112	1,090	1,049	1,022	1,003	972	956	916	903	908	935	952	931	927	945	975	999	993	991	1,005	979
Co Jail / F	16	8	10	13	13	15	10	6	14	12	8	14	15	10	8	10	8	2	7	8	10
Total Co Jail BK	1,128	1,098	1,059	1,035	1,016	987	966	922	917	920	943	966	946	937	953	985	1,007	995	998	1,013	990
Bowie Co., TX	331	331	331	331	328	336	336	336	336	336	335	332	332	332	332	332	332	332	331	335	333
309/M	213	213	213	212	211	209	209	209	208	208	212	212	211	210	210	215	216	217	216	216	212
309/F	34	34	34	33	33	33	33	33	33	33	35	35	35	35	35	36	37	37	37	37	36
Total Act 309	247	247	247	245	244	242	242	242	241	241	247	247	246	245	245	251	253	254	253	253	247
Total Non ADC	1,788	1,758	1,719	1,693	1,670	1,647	1,626	1,581	1,575	1,578	1,605	1,625	1,604	1,594	1,609	1,646	1,672	1,663	1,664	1,682	1,650
Total	17,557	17,530	17,530	17,531	17,526	17,514	17,513	17,462	17,460	17,477	17,495	17,499	17,482	17,492	17,488	17,508	17,487	17,503	17,515	17,515	17,504

## Fiscal Year 2017 County Jail Backup

DAY		Jul-16		Aug-16		Sep-16		Oct-16		Nov-16		Dec-16
1		1,238		1,361		1,335	*	1,335		1,447		1,128
2	*	1,238		1,357		1,302	*	1,335		1,428		1,098
3	*	1,238		1,385	*	1,302		1,336		1,408	*	1,098
4		1,252		1,391	*	1,302		1,360		1,405	*	1,098
5		1,252		1,428		1,260		1,381	*	1,405		1,059
6		1,282	*	1,428		1,260		1,409	*	1,405		1,035
7		1,324	*	1,428		1,222		1,415		1,370		1,016
8		1,324		1,424		1,195	*	1,415		1,364		987
9	*	1,324		1,429		1,185	*	1,415		1,386		966
10	*	1,324		1,437	*	1,185		1,408		1,401	*	966
11		1,274		1,469	*	1,185		1,418		1,387	*	966
12		1,280		1,478		1,194		1,421	*	1,387		922
13		1,323	*	1,478		1,206		1,414	*	1,387		917
14		1,331	*	1,478		1,178		1,431		1,386		920
15		1,353		1,494		1,182	*	1,431		1,355		943
16	*	1,353		1,508		1,172	*	1,431		1,367		966
17	*	1,353		1,515	*	1,172		1,440		1,351	*	966
18		1,343		1,523	*	1,172		1,478		1,349	*	966
19		1,368		1,531		1,165		1,490	*	1,349		946
20		1,384	*	1,531		1,172		1,492	*	1,349		937
21		1,382	*	1,531		1,206		1,480		1,332		953
22		1,353		1,525		1,228	*	1,480		1,301		985
23	*	1,353		1,522		1,253	*	1,480		1,255	*	985
24	*	1,353		1,553	*	1,253		1,480		1,208	*	985
25		1,336		1,542	*	1,253		1,470		1,208	*	985
26		1,350		1,512		1,260		1,471	*	1,208	*	985
27		1,379	*	1,512		1,284		1,479	*	1,208		1,007
28		1,364	*	1,512		1,285		1,471		1,208		995
29		1,380		1,466		1,318	*	1,471		1,185		998
30	*	1,380		1,424		1,335	*	1,471		1,141		1,013
31	*	1,380		1,377				1,482			*	1,013
Average		1,328		1,469		1,234		1,435		1,331		994

Fiscal Year Average 1,299

Notes: Totals do not include 309 Contracts in County Jails (maximum of 336)





## December STTG Unit Counts

Unit	Beginning Total	Confirmed	Suspected	In	Out	Paroled	Removed	Ending Total	Total Unit Population	Unit % of STTG's
Benton	69	3	-	-	4	-	-	68	325	20.92%
Cummins	431	-	-	31	11	15	-	436	1,874	23.27%
Delta	118	4	-	17	9	6	-	124	616	20.13%
EARU	509	-	2	39	19	16	-	515	1,670	30.84%
Grimes	294	47	-	15	25	7	-	324	1,063	30.48%
Hawkins	44	-	-	10	4	-	-	50	448	11.16%
Mcpherson	57	-	-	2	1	6	-	52	951	5.47%
Max	249	-	-	6	4	-	-	251	659	38.09%
MCWR	37	-	-	6	3	1	-	39	144	27.08%
NCU	195	-	-	26	12	14	-	195	816	23.90%
NWAWR	21	-	-	1	-	-	-	22	100	22.00%
ORCU	335	-	-	35	27	12	-	331	1,583	20.91%
ORCU Intake	39	126	-	-	127	-	-	38	226	16.81%
PB/Ester	168	3	-	26	24	14	-	159	837	19.00%
RLW	129	1	-	23	12	6	-	135	565	23.89%
TWR	25	-	-	1	2	-	-	24	128	18.75%
Tucker	265	-	-	30	18	-	-	277	1,002	27.64%
Varnar	635	-	-	90	29	12	-	684	1,699	40.26%
Wrightsville	226	-	-	24	20	4	-	226	1,026	22.03%
<b>Total</b>	<b>3,846</b>	<b>184</b>	<b>2</b>	<b>382</b>	<b>351</b>	<b>113</b>	<b>-</b>	<b>3,950</b>	<b>15,732</b>	<b>25.11%</b>

ORCU Intake brought in 126 new STTG members into ADC last Month.



### December STTG Counts by STTG Set

STTG Set	Benton	Cummins	Delta	EARU	Grimes	Hawkins	Mcpherson	Max	MCWR	NCU	NWAWR	ORCU	Intake	PB	RLW	TWR	Tucker	Varner	Wrightsville	Total
Asian	2	0	1	2	1	0	0	0	0	2	1	0	1	1	0	0	1	1	0	13
Bloods	10	89	26	81	57	8	10	66	2	25	3	57	6	22	18	8	63	129	32	712
Crips	4	64	17	57	36	7	6	33	4	18	4	34	3	20	16	4	36	104	36	503
Folk	5	45	8	53	23	16	8	30	0	6	3	32	1	20	0	0	23	87	36	396
GD	13	89	24	126	80	0	3	53	10	33	4	66	8	33	34	7	57	132	39	811
Mexican	2	13	9	21	10	2	3	3	1	9	1	14	0	5	3	1	3	21	7	128
Motorcycle	1	2	0	7	0	1	1	0	0	2	0	0	0	0	0	0	0	2	0	16
Other	2	9	3	12	11	0	0	2	0	5	1	4	0	3	2	0	12	10	12	88
People	1	18	4	18	15	0	2	11	0	13	0	15	1	10	2	0	14	28	24	176
Unknown	0	2	0	9	0	0	3	1	0	8	0	7	1	4	6	3	1	6	6	57
W/S	15	32	14	42	34	16	12	16	5	34	3	43	6	16	24	1	23	29	13	378
NAE	1	18	6	20	17	0	2	9	3	12	1	19	3	7	10	0	10	27	3	168
WAR	8	40	7	44	29	0	1	15	10	16	1	27	6	11	13	0	22	49	11	310
AC	1	8	1	10	9	0	1	11	1	6	0	7	2	3	4	0	10	48	2	124
AB	3	7	4	13	2	0	0	1	3	6	0	6	0	4	3	0	2	11	5	70
<b>Total</b>	<b>68</b>	<b>436</b>	<b>124</b>	<b>515</b>	<b>324</b>	<b>50</b>	<b>52</b>	<b>251</b>	<b>39</b>	<b>195</b>	<b>39</b>	<b>331</b>	<b>38</b>	<b>159</b>	<b>135</b>	<b>24</b>	<b>277</b>	<b>684</b>	<b>226</b>	<b>3950</b>

Key:

GD = Gangster Disciples

W/S = White Supremacist

NAE = New Aryan Empire

WAR = White Aryan Resistance

AC = Aryan Circle

AB = Aryan Brotherhood



## December STTG Disciplinary Report

Unit	STTG Incidents	STTG Suspected Incidents	Total Unit Disciplinary	Disciplinary Involving STTG	Percentage
Benton	0	0	16	4	25.00%
Cummins	4	0	312	79	25.32%
Delta	1	0	64	17	26.56%
EARU	0	0	230	69	30.00%
Grimes	1	0	105	35	33.33%
Hawkins	0	0	19	0	0.00%
Mcpherson	0	0	75	1	1.33%
Max	0	0	89	36	40.45%
MCWR	0	0	7	2	28.57%
NCU	0	0	72	19	26.39%
NWAWR	0	0	4	0	0.00%
ORCU	3	0	164	49	29.88%
ORCU Intake	0	0	14	4	28.57%
PB/Ester	0	0	17	1	5.88%
RLW	0	0	53	15	28.30%
TWR	0	0	2	1	50.00%
Tucker	0	0	69	28	40.58%
Varner	0	0	255	134	52.55%
Wrightsville	0	0	54	13	24.07%
<b>Total</b>	<b>9</b>	<b>0</b>	<b>1621</b>	<b>507</b>	<b>31.28%</b>

## ARKANSAS DEPARTMENT OF CORRECTION INPATIENT AND EMERGENCY ROOM UTILIZATION

### ADC Inpatient Statistics Past 12 Months

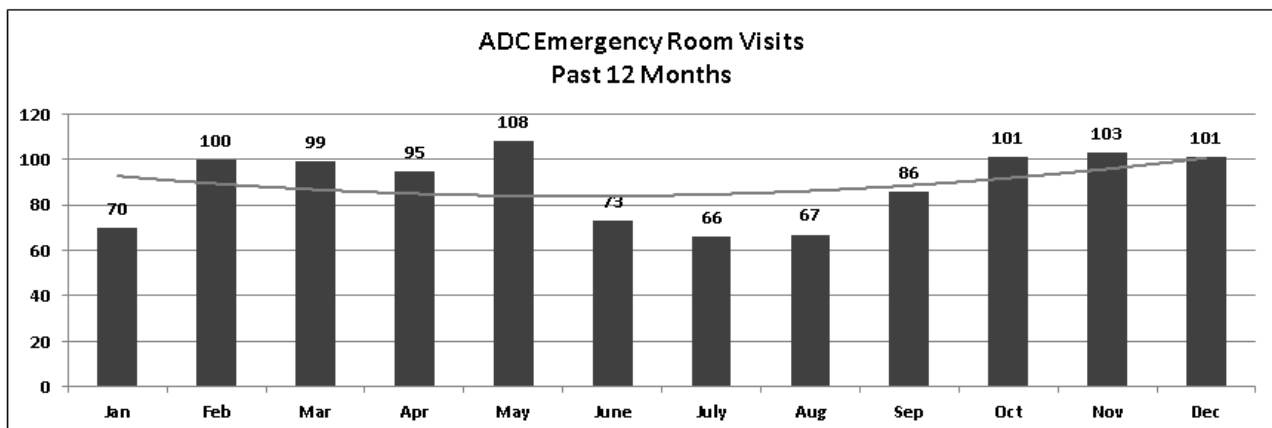
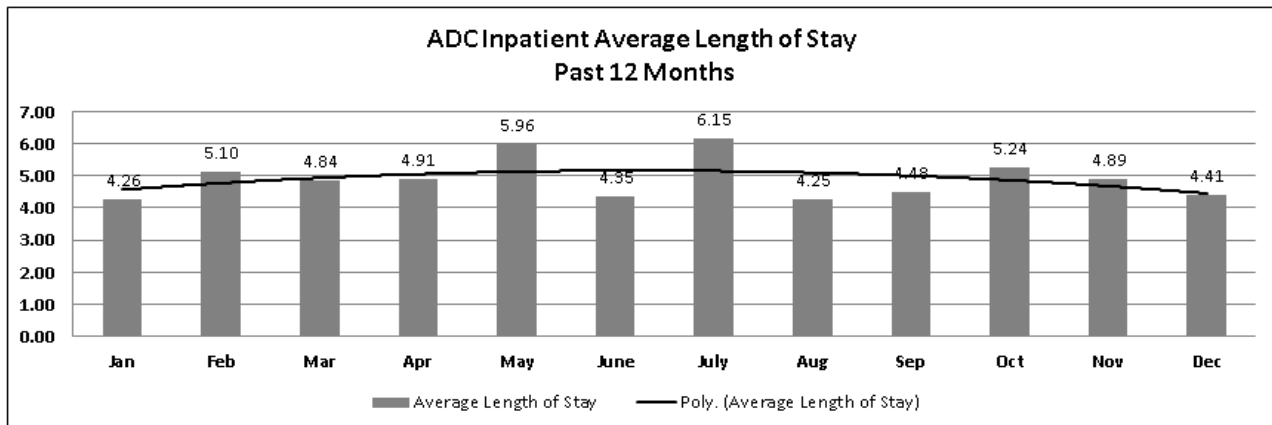
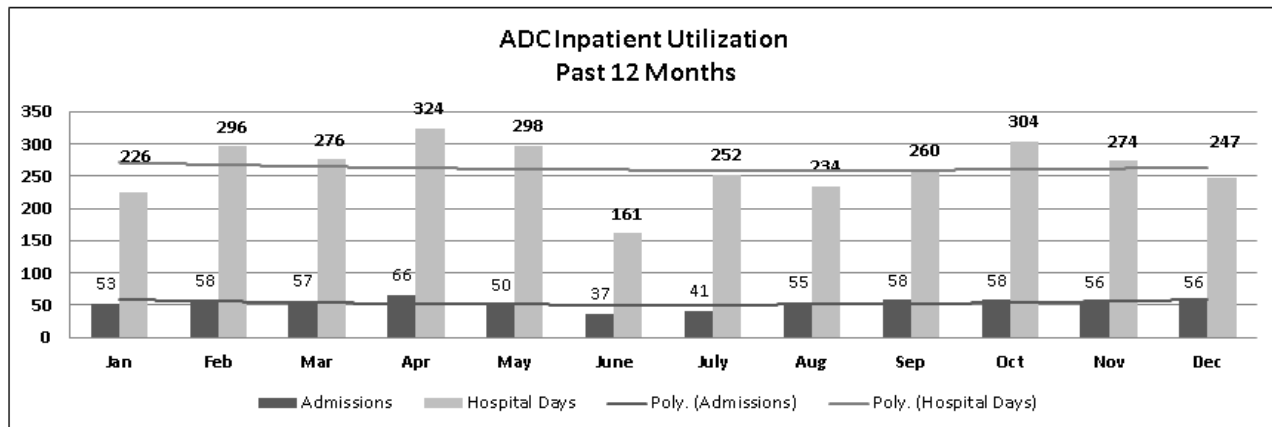
2016

	Jan	Feb	Mar	Apr	May	June	July	Aug	Sep	Oct	Nov	Dec	Average
<b>Admissions</b>	53	58	57	66	50	37	41	55	58	58	56	56	<b>53.8</b>
<b>Hospital Days</b>	226	296	276	324	298	161	252	234	260	304	274	247	<b>262.7</b>
<b>Average Length of Stay</b>	4.26	5.10	4.84	4.91	5.96	4.35	6.15	4.25	4.48	5.24	4.89	4.41	<b>4.89</b>

### ADC ER Visits Past 12 Months

2016

	Jan	Feb	Mar	Apr	May	June	July	Aug	Sep	Oct	Nov	Dec	Average
<b>Emergency Room Visits</b>	70	100	99	95	108	73	66	67	86	101	103	101	<b>89.1</b>



**Medical Grievance Report - December 2016**

Unit	Acknowledged/ Received	Rejected	Reviewed & Signed by Deputy Director	With Merit	With Merit, but Resolved	% With Merit	Without Merit
Benton	0	0	0	0	0	0%	0
Boot Camp	0	0	0	0	0	0%	0
Bowie Co.	0	0	1	0	0	0%	1
CMU	0	0	0	0	0	0%	0
Cummins	15	1	8	0	0	0%	8
Delta	3	1	0	0	0	0%	0
EARU	13	4	14	2	0	14%	12
EARU Max	26	8	14	1	1	14%	12
Ester	0	0	0	0	0	0%	0
Grimes	12	4	14	0	1	7%	13
Hawkins	0	1	0	0	0	0%	0
McPherson	15	7	6	1	0	17%	5
MCWRC	0	0	0	0	0	0%	0
MSU	39	3	30	6	0	20%	24
North Central	12	0	14	2	0	14%	12
NWAWRC	0	0	0	0	0	0%	0
Ouachita	17	5	13	3	0	23%	10
Pine Bluff	1	0	1	0	0	0%	1
Randall Williams	0	0	1	0	0	0%	1
SNN	8	3	3	0	0	0%	3
TRCC	0	0	0	0	0	0%	0
Tucker	17	1	5	0	0	0%	5
Varner	2	0	17	2	0	12%	15
Varner S Max	13	1	26	2	0	8%	24
WRU	2	1	1	0	0	0%	1
WHM	1	0	0	0	0	0%	0
WWR	0	0	0	0	0	0%	0
TOTAL	196	40	168	19	2	13%	147



# CHAPLAINCY

Monthly Report for: December 2016	BENTON	CUMMINS	DELTA REGIONAL	EAST ARKANSAS	EAST ARKANSAS MAX	ESTER	GRIMES	HAWKINS	MAXIMUM SECURITY	MCPHERSON	NORTH CENTRAL	OUACHITA RIVER	PINE BLUFF	RANDALL L. WILLIAMS	TUCKER	VARNER	VARNER MAX	WRIGHTSVILLE	PTF	TOTAL
<b>Services Chaplains Oversaw</b>																				
Christian																				
Population	4	11	6	4	0	10	22	0	17	10	8	16	1	13	5	4	0	12	3	146
Segregation	0	0	0	0	0	0	0	0	0	0	0	0	0	0	0	0	0	0	0	0
Muslim																				
Population	0	4	2	4	0	4	2	4	0	6	0	4	0	6	0	5	0	0	0	41
Segregation	0	0	0	0	0	0	0	0	0	0	0	0	0	0	0	0	0	0	0	0
<b>Total Services</b>																				<b>187</b>
<b>Volunteers in Charge</b>																				
Protestant	12	8	0	13	0	10	20	16	24	40	3	20	7	1	19	31	2	26	0	252
Catholic	0	0	0	0	0	0	2	2	0	3	2	1	0	2	0	2	3	4	0	21
Muslim	0	0	0	4	0	2	0	1	3	5	0	6	0	0	0	0	0	1	0	22
Other	4	0	0	4	0	0	0	0	1	1	0	0	0	0	0	0	0	0	0	10
Baptism	0	5	0	5	0	6	14	0	3	1	12	0	0	0	3	5	1	4	0	59
<b>Marriages</b>																				
	1	0	0	1	0	0	0	0	1	0	0	0	0	0	0	0	0	0	0	3
<b>Distributed by Chaplains</b>																				
Greeting Cards	1000	6000	250	0	0	560	3800	270	2226	690	3270	3600	2000	1695	569	407	391	0	0	26728
Bibles, Quran, Torah, Etc.	360	64	25	4	13	28	32	5	301	106	12	425	8	9	40	46	16	30	0	1524
Study Course	0	7	0	4	0	8	0	0	4	0	0	54	10	12	0	111	0	0	0	214
Writing Supplies	340	47	0	0	0	500	10	560	3363	0	0	25	0	16	0	0	0	2	0	4863
Literature	150	750	455	388	79	480	28	251	4775	241	840	810	500	10	379	2077	447	400	250	13310
<b>Chaplain's Visits</b>																				
Barracks	68	78	60	8	0	24	45	15	93	185	59	70	68	89	118	83	0	45	10	1118
Approximate Hours Spent in Barracks	41	39	8	4	0	98	106	26	531	60	30	43	30	36	30	18	0	22	5	1127
Inmate Office visits	131	71	32	103	0	75	143	60	0	74	71	209	72	124	256	72	0	34	12	1539
Other Office visits	76	26	6	53	0	36	32	0	45	12	25	60	10	15	31	12	0	40	0	479
Hospital	0	1	1	1	0	0	4	0	0	0	0	24	0	11	0	1	1	0	0	44
Infirmary/Sick Call	0	8	0	3	0	2	10	0	2	2	8	7	4	10	1	3	0	5	0	65
Restrictive Housing	0	4	4	0	18	0	30	5	38	20	0	63	8	10	0	0	24	5	0	229
Punitive Isolation	0	5	5	0	10	0	0	0	8	10	2	19	4	10	2	0	12	5	0	92
PC - DRU	0	0	0	0	0	0	0	0	0	0	0	0	0	0	0	0	0	0	0	0
Visitation Days	0	1	1	0	0	0	0	0	0	2	0	4	0	0	0	0	0	1	0	9
<b>Volunteer Visits</b>																				
RCV	3	0	0	0	0	0	6	4	24	25	12	77	0	16	6	0	0	0	0	173
OCV	8	0	0	0	0	7	0	0	48	43	35	0	8	12	40	12	0	42	50	305
Spiritual Advisor	0	1	1	0	0	0	0	0	1	1	0	0	0	2	13	0	0	0	1	20
CRA	31	26	26	83	1	10	67	91	55	260	72	105	20	6	58	56	2	15	0	984
<b>Religious Volunteer Hours</b>																				
Volunteer Hours	121	75	75	218	2	92	237	230	522	346	313	508	62	87	306	229	5	45	50	3523
DENOMINATIONAL/VOLUNTEER CHAPLAIN HOURS	98	94	94	24	0	96	53	135	100	155	164	124	10	62	107	18	0	200	12	1546
<b>Total Volunteer Hours</b>																				<b>5069</b>
<b>Other Activities of Chaplain</b>																				
Counseled Employees	21	3	3	3	0	15	18	0	5	6	25	101	7	10	6	8	7	8	4	250
Orientation Sessions	0	3	3	2	0	0	0	0	0	1	0	4	0	0	0	0	0	0	0	13
Free World Devotions	0	4	4	4	0	8	15	0	12	4	0	7	12	12	0	0	0	0	0	82
Spoke in Churches	4	12	12	19	0	8	18	0	8	2	0	4	12	12	4	0	0	12	0	127
Crisis Intervention Sessions	3	21	21	0	0	10	2	0	4	16	4	2	8	5	5	6	0	23	0	130
Marriage Counseling	1	0	1	2	0	1	2	0	7	0	0	3	0	0	1	0	0	0	0	18
Denominational Meeting	0	0	0	1	0	4	0	0	0	1	0	1	1	1	0	0	0	0	0	9
Chaplain's Meeting	0	2	2	1	0	1	0	0	0	1	1	2	1	1	0	30	0	2	0	44
Volunteer Training Session	1	0	0	0	0	0	0	0	0	0	0	1	0	0	0	1	0	0	0	3
Choir Trip	0	0	0	0	0	0	0	0	0	0	0	0	0	0	0	0	0	0	0	0
<b>Chaplain Transfers</b>																				
	0	0	0	0	0	0	0	0	0	0	0	0	0	0	0	0	0	0	0	0
<b>Chaplain Promotions</b>																				
	0	0	0	0	0	0	0	0	0	0	0	0	0	0	0	0	0	0	0	0
<b>PAL PROGRAM</b>																				
Enrolled at start of month	0	46	46	49	0	47	48	44	23	35	34	35	0	30	62	47	0	25	0	571
Enrolled during the month	0	2	2	1	0	1	2	5	0	10	12	14	0	1	10	7	0	2	0	69
Removed From PAL Program																				
# Paroled	0	0	0	0	0	0	0	2	0	6	1	4	0	1	5	3	0	2	0	24
# Completed	0	0	0	0	0	0	0	3	1	2	3	0	0	0	1	1	0	1	0	12
# Withdrew	0	0	0	0	0	0	0	0	1	2	1	3	0	0	2	1	0	0	0	10
# Removed	0	1	1	1	0	0	0	0	0	1	1	4	0	0	5	2	0	0	0	16
# Transferred	0	1	1	0	0	0	1	3	0	0	3	0	0	0	3	0	0	1	0	13
Total Removed from PAL Program	0	2	2	1	0	0	1	8	2	11	9	11	0	1	16	7	0	4	0	75
<b>Total Enrolled at the End of the Month</b>	0	46	46	49	0	48	49	41	21	34	37	38	0	30	56	47	0	23	0	565
<b>Volunteers in PAL</b>																				
	0	13	13	10	0	5	0	15	15	18	5	7	0	7	5	2	0	0	0	115
<b>Special Events:</b>																				
	1	0	0	3	0	0	2	2	3	3	0	1	0	0	0	2	0	0	0	17

**PURCHASE ORDERS OVER \$10,000.00 - December 2016**

<u>VENDOR</u>	<u>DESCRIPTION</u>	<u>LOCATION</u>	<u>PO#</u>	<u>PURCHASE AMOUNT</u>	<u>FUND</u>
Ponderosa Packaging	Lids and Boxes	Varner/Farm	4501677067	\$47,568.75	Operational Farm Budget
Quality Fence Co Inc	Building Supplies	Construction/Construction	4501677150	\$13,736.11	Operational Budget
American Correctional Association	Re-Accreditation	Admin. Accreditation	4501668760	\$17,250.00	Operational Budget
Graybar Electric	Construction Supplies	Construction/Construction	4501677161	\$11,891.54	Operational Budget
SHI International Corp	Software/Licenses	Information Systems	4501678987	\$87,765.21	Operational Budget
Dell Marketing LP	Computer Components	Information Systems	4501678670	\$95,067.65	Operational Budget
Mid South Sales INC	Fuel	Cummins/Commissary	4501672144	\$11,113.29	Operational Budget
Grainger	Shop Supplies	Construction/Construction	4501677877	\$29,591.90	Operational Budget
William R Hill & CO INC	Food Purchases	Central Warehouse	4501678474	\$134,219.59	Operational Budget
US Food Service	Food Purchases	Central Warehouse	4501678475	\$21,484.80	Operational Budget
Sysco Food Services of Arkansas	Food Purchases	Central Warehouse	4501678479	\$33,450.90	Operational Budget
National Food Group	Food Purchases	Central Warehouse	4501678482	\$30,640.00	Operational Budget
American Paper & Twine CO	Paper Towels	Central Warehouse	4501678522	\$34,738.51	Operational Budget
William R Hill & CO INC	Food Purchases	Central Warehouse	4501677687	\$55,112.96	Operational Budget
US Food Service	Food Purchases	Central Warehouse	4501677703	\$70,797.00	Operational Budget
Sysco Food Services of Arkansas	Food Purchases	Central Warehouse	4501677710	\$18,708.50	Operational Budget
Mid State Services INC	Toilet Paper	Hawkins/Imaging	4501678692	\$24,268.80	Operational Industry Budget
Mid State Services INC	Toilet Paper	Hawkins/Imaging	4501677399	\$24,268.80	Operational Industry Budget
Fastenal	Hard Drives	Construction/Construction	4501679295	\$12,042.87	Operational Budget
Bob Barker Co Inc	Clothing Items	Tucker Unit	4501678887	\$12,436.54	Operational Budget
Simpson Door and Hardware LLC	Building Supplies	Construction/Construction	4501679847	\$10,752.25	Operational Budget
Arkansas Correctional Industries	Clothing Items	Wrightsville Unit	4501679854	\$18,747.89	Operational Budget
Razor Chemical INC	Cleaning Supplies	Delta/Janitorial Factory	4501679654	\$17,390.40	Operational Industry Budget
Dale W Sansom	Angus Bull	Wrightsville/Farm	4501680263	\$28,000.00	Operational Farm Budget
Mid-States Service INC	Toilet Paper	Hawkins/Imaging	4501680302	\$20,275.20	Operational Industry Budget
Associated Packaging INC	Milk Processing Equipment	Cummins/Farm	4501680152	\$26,092.40	Operational Farm Budget
Mid-States Service INC	Toilet Paper	Hawkins/Imaging	4501680300	\$24,268.80	Operational Industry Budget
William R Hill & CO INC	Food Purchases	Central Warehouse	4501680939	\$321,044.61	Operational Budget
Arkansas Correctional Industries	Food Purchases	Central Warehouse	4501680898	\$11,080.00	Operational Budget
Arkansas Correctional Industries	Janitorial Supplies	Central Warehouse	4501680902	\$70,379.02	Operational Budget
US Food Service	Food Purchases	Central Warehouse	4501680944	\$63,361.20	Operational Budget
Sysco Food Services of Arkansas	Food Purchases	Central Warehouse	4501680947	\$27,797.40	Operational Budget
Robbins Sales Company INC	Food Purchases	Central Warehouse	4501680951	\$65,630.88	Operational Budget
National Food Group	Food Purchases	Central Warehouse	4501680956	\$62,251.40	Operational Budget
B Sharp Blades LTD	Disposable Razors	Central Warehouse	4501680879	\$16,100.33	Operational Budget
Green Point AG LLC	Seeds	Tucker/Farm	4501681366	\$11,690.00	Operational Farm Budget
Turner Holdings LLC	Milk	Central Warehouse	4501682003	\$19,501.24	Operational Budget
Turner Holdings LLC	Milk	Central Warehouse	4501681999	\$13,349.60	Operational Budget
Turner Holdings LLC	Milk	Central Warehouse	4501681995	\$19,537.32	Operational Budget
Turner Holdings LLC	Milk	Central Warehouse	4501681991	\$19,501.24	Operational Budget
Turner Holdings LLC	Milk	Central Warehouse	4501681989	\$13,349.60	Operational Budget
Turner Holdings LLC	Milk	Central Warehouse	4501681988	\$19,537.32	Operational Budget
Turner Holdings LLC	Milk	Central Warehouse	4501682083	\$19,501.24	Operational Budget
Huntley Metal Sales	Building Supplies	Construction/Construction	4501681870	\$20,463.36	Operational Budget
Mid-States Service INC	Toilet Paper	Wrightsville/Industry	4501682275	\$20,275.20	Operational Industry Budget
Arkansas Automatic Sprinklers INC	Fire Protection Equipment	Construction/Construction	4501680340	\$49,208.61	PB Records Bldg Reno
Pellerin Laundry Machinery	Washer/Dryer	Tucker/Maintenance	4501682526	\$31,842.81	Operational Budget

Total for Purchases over \$10,000

\$1,827,083.04

**FIRM CONTRACTS OVER \$25,000.00**

<u>VENDOR</u>	<u>DESCRIPTION</u>	<u>UNIT</u>	<u>Contract # P.O#</u>	<u>PURCHASE AMOUNT</u>	<u>FUND</u>
Total for Contracts				\$0.00	

**EMERGENCY PURCHASE ORDERS OVER \$25,000.00**

<u>VENDOR</u>	<u>DESCRIPTION</u>	<u>UNIT</u>	<u>Contract # P.O#</u>	<u>PURCHASE AMOUNT</u>	<u>FUND</u>
Total EM Purchases				\$0.00	

**Total Purchases****\$ 1,827,083.04**

**Arkansas Department of Correction  
Vacancies, Hires and Terminations  
December 2016**

<b>UNIT</b>	<b>VACANCIES</b>	<b>HIRES</b>	<b>TERMINATIONS</b>
BENTON (CR05)	7	1	2
CENTRAL OFFICE (CR01, CR02, CR08 & CR22)	20	1	1
CHAPLAINCY	0	0	0
CONSTRUCTION (CR04)	9	2	0
CUMMINS (CR09)	102	2	6
DELTA (CR10)	6	2	1
EAST ARKANSAS (CR12)	70	6	9
ESTER (CR11)	10	1	1
FARM (CR29)	11	0	0
GRIMES (CR27)	12	1	5
INDUSTRY (CR07)	13	1	1
MAXIMUM SECURITY (CR14)	54	3	8
MCPHERSON (CR28)	34	6	0
MENTAL HEALTH	21	1	2
MISS COUNTY (CR15)	1	3	0
NORTH CENTRAL (CR16)	3	0	3
NORTHWEST ARK (CR17)	3	0	3
OUACHITA RIVER (CR30)	58	1	8
PINE BLUFF (CR20)	6	0	4
RANDAL L. WILLIAMS (CR13)	6	1	3
TEXARKANA (CR21)	1	0	0
TRANSPORTATION (CR32)	10	0	1
TUCKER (CR23)	24	8	2
TUCKER RENTRY (CR33)	3	0	1
VARNER (CR24)	61	7	5
VARNER SUPER MAX (CR31)	42	0	5
WRIGHTSVILLE (CR25)/HAWKINS(CR06)	41	4	5
<b>TOTAL</b>	<b>628</b>	<b>51</b>	<b>76</b>

## ARKANSAS DEPARTMENT OF CORRECTION

### Construction Budget / Status Report

Report Date - January 5, 2017

Data as of 1/03/17

Fund	Project Desc	Total Projected Spend	Budget	Available Funds	\$ % Complete	Construction % Complete	Notes
7004810	Cummins Poultry Houses	\$5,481,607	\$6,100,000	\$618,393	90%	90%	Cooler-design at DBA for approval, Fire Marshal approval received.
7004819	ESTER - Phase 1	\$3,886,610	\$4,000,000	\$113,390	97%	97%	184 beds opened 7/1/15. Kitchen complete. 190 beds opened January 2016. Phase 3 roof and interior underway. Expect to open beds March 1st.
700481A	ESTER - Phase 2 1A	\$1,524,025	\$5,100,000	\$3,575,975	30%	84%	
7004820	ESTER - Phase 2 - Kitchen	\$373,623	\$1,700,000	\$0	22%	100%	
KBR4Q95	ESTER - Phase 3 - General Improvement Fu	\$2,562,521	\$7,400,000	\$4,837,479	35%	75%	
NDC0100	Wrightsville Generator	\$193,267	\$200,000	\$6,733	97%	100%	2nd phase prioritized and in design. Working with Entergy & on-call Engr.
70004820	Tucker 2016 New Well	\$389,772	\$550,000	\$160,228	71%	99%	ADC testing pipeline for ADH.
	Pine Bluff Unit Barracks Renovation	\$455,205	\$784,000	\$328,795	0%	0%	DBA approval rec'd 11/2/16, demo underway, ordering materials.
7004815	ORCU- Chapel	\$122,928	\$200,000	\$77,072	61%	50%	Building exterior complete, working on interior.
<b>Telephone Projects</b>							
Maintenance & Operations	Camera Equipment - All Units	\$128,246	\$250,000	\$121,754	51%	50%	on going
	Fire Alarm Upgrades (All Units)	\$46,759	\$53,000	\$6,241	88%	88%	All identified are complete.
	Locks/Riot Gates - All Units	\$54,624	\$75,000	\$20,376	73%	73%	EARU underway.
	Gates and Fences all units	\$49,354	\$50,000	\$646	99%	99%	Multiple Underway
	Gas Stations - Canopy (C/O)	\$0	\$5,000	\$5,000	0%	85%	Canopy built in shop, to do foundation
	Stainless Steel - Kitchen/Shower/Restrooms - A	\$62,419	\$70,000	\$7,581	89%	90%	On Going, sinks, showers, ceiling.
	ACA Maintenance	\$48,220	\$175,000	\$126,780	28%	28%	All identified are complete.
	ADA Projects - All Units	\$3,330	\$5,000	\$1,670	67%	67%	working on Varner project.
	Fast Top Floor Systems - (kitchen/laundry/show	\$5,657	\$50,000	\$44,343	11%	11%	100% of identified projects
	AC Units - All Units	\$140,521	\$150,000	\$9,480	94%	100%	All identified are complete.
	Lawn Equipment - All Units	\$0	\$0	\$0	0%	0%	Moved 1/20/16
	Parking Lot - Gravel and Paving - EARU	\$0					Plans at DBA for approval
	Parking Lot - Gravel and Paving - Tucker	\$0	\$250,000	\$250,000	0%		Tucker Completed 2015
	Parking Lot - Gravel and Paving - Other Units	\$0					
FY16 Carryforward	ORCU Gravel Pit Operations	\$19,848	\$45,000	\$25,152	44%	44%	continual
	PB Kitchen HVAC	\$486	\$12,000	\$11,514	0%	50%	scheduling shutdown to install
	Dog Kennel/Horse Stable Malvern	\$0	\$48,000	\$48,000	0%	0%	dog kennel plans underway
	Tucker Pole Barn (Reg. Maint.) Firing Range	\$0	\$12,200	\$12,200	0%	100%	
	Metal Ceilings	\$39,217	\$75,000	\$35,783	52%	90%	Max Barracks #3 underway
FY17 New Projects	Emergency Generator - All Units	\$439	\$220,000	\$219,561	0%	0%	2nd phase prioritized and in design. Working with Entergy & on-call Engr.
	Tucker Wastewater Containers	\$0	\$31,000	\$31,000	0%	0%	2 dumpsters and all materials on hand
	Tucker Well #1	\$0	\$47,000	\$47,000	0%	80%	repairs near completion
	EARU Firing Range	\$5,439	\$7,200	\$1,761	76%	97%	
	Boiler Repairs	\$83,817	\$90,000	\$6,183	93%	100%	100% of identified projects
	Roof Repairs-Tucker	\$0	\$250,000	\$184,002	21%	30%	Underway
	Roof Repairs-Varner	\$51,689				50%	Underway
	Roof Repairs-East Arkansas	\$0				20%	Underway
	Roof Repairs-East Arkansas	\$14,309					
	Roof Repairs-Cummins Laundry	\$0				25%	Underway

#### Notes

- \* Report has not been reconciled against Accountings Reconciled Reports.
- \* Tolerance/Deviation is with in 1% of Projected Spending.