



**Wendy Kelley**  
**Director**

**June**  
**2016**



## **PUBLIC RELATIONS**

### **RESEARCH/PLANNING**

**May, 2016 Admissions and Releases** – Admissions for May totaled **784** (672-males, 112-females), while releases totaled **961** (831-males, 130-females), for a net decrease in-house of 177.

**Inmate Population Growth/Projection** – At the end of May 2016, the Arkansas Department of Correction population totaled **17, 769** representing a decrease of **62** inmates since the first of January. Calendar year 2016 has seen an average decrease of 12 inmates per month, down from an average decrease of 14 inmates per month during calendar year 2015. (Admissions for May 2016 totaled 784 while Releases totaled 961 for a net decrease in-house of 177 inmates.

**Average County Jail Back-up** – The backup in the county jails averaged **1,220** inmates per day during the month of May – up from an average of **989** inmates per day during the month of April.

## **LEGAL SERVICES**

### **PREA**

#### **PREA Hotline Data:**

There were no reported issues with the PREA Hotline. Internal Affairs is handling all PREA investigations.

|  |     |
|--|-----|
| Number of calls received                     | 271 |
| Total calls referred for reported PREA issue | 55  |
| Total calls referred for non-PREA issue      | 47  |
| Calls referred due to technical failure      | 0   |
| Calls referred to IAD                        | 33  |
| Repeat Calls                                 | 78  |
| No Referral (Test Calls)                     | 2   |
| No Message                                   | 89  |

### **INMATE GRIEVANCE**

**Inmate Formal / Informal Grievances:** In May, there were a total of 2,174 formal grievances filed and 3,766 informal grievances filed at various units.

**Institutional Grievances:** There were a total of 644 appeals of institutional grievances received. One hundred-twenty were rejected and 384 appeals were answered in May. There were 526 appeals answered in May. Three (3) were found with merit.

## **OPERATIONS/INSTITUTIONS**

### **STTG**

The STTG Coordinator's Office assisted the Texas Department of Criminal Justice with an investigative inquiry on an individual that served time in the Arkansas Department of Correction. The Department provided information to validate STTG membership of an offender who is now in custody of the TDCJ.

### **FARM**

During the month of May, plenty of work was done on all farms. The row crop farmers spent the month planting. The crop acres were adjusted at Tucker due to a delay in planting. East Arkansas farm has 378 acres of corn, 334 acres of rice, 510 acres of milo and 707 acres of soybeans which are all planted. Cummins farm has 2,150 acres of corn, 1,000 acres of rice and 4,100 acres of soybeans planted. They are still lacking about 1,400 acres of soybeans to plant. Cummins should be looking at harvesting oats during the first two weeks of June.

The gardens have started some early harvesting this year. Newport garden has done very well this year. The Farm Administrator traveled to the farms this month and was amazed at how all of the satellite gardens were better than he had ever seen them. The people who are heading up those gardens deserve a lot of credit.

We are back to full capacity in the layer operation. We moved the pullets into the layer house. The birds started laying eggs quickly once they got moved. We are back to having excess eggs to sell on the open market. We received a new batch of chicks on the 25th which restored the chicken houses to full capacity.

Cummins beef herd weaned the calf crop and started the preconditioning program on the calves. They should be ready to sell sometime mid to late June.

The heavy rain has delayed the start of the hay season at all farms. We are in good shape for grazing cattle currently.

Milk production is steady going into the summer months. The dairy manager has it scheduled for enough cows to calf in that even with less production per cow during the heat we will still meet the needs of the kitchens.

### REGIONAL MAINTENANCE HOURS

| <b>Regional Maintenance Hours 2016</b> | <b>May 2016</b> |
|--|-----------------|
| <b>UNIT</b>                            |                 |
| BENTON UNIT                            | 7,485           |
| DELTA REGIONAL UNIT                    | 5,812           |
| EAST ARKANSAS REGIONAL UNIT            | 5,616           |
| GRIMES UNIT                            | 3,592           |
| MCPHERSON UNIT                         | 2,408           |
| MAX BOOT CAMP                          | 3,024           |
| MCWRC                                  | 1,821           |
| NORTH CENTRAL UNIT                     | 10,553          |
| OUACHITA RIVER UNIT                    | 5,472           |
| RANDALL L WILLIAMS UNIT                | 4,984           |
| TRCC                                   | 3,175           |
| VARNER UNIT                            | 4,386           |
| WRIGHTSVILLE UNIT                      | 2,912           |
| WRIGHTSVILLE SATELLITE UNIT            | 3,352           |
| <b>TOTAL</b>                           | <b>64,599</b>   |

### Work Release Rent Report

| <b>Rent Report, 2016</b>     | <b>May 2016</b>     |
|------------------------------|---------------------|
| <b>UNIT</b>                  |                     |
| BENTON                       | \$90,576.00         |
| PINE BLUFF REENTRY WORK REL. | \$27,999.00         |
| NWARWRC                      | \$39,253.00         |
| MSCOWRC                      | \$55,573.00         |
| PINE BLUFF UNIT              | \$42,840.00         |
| TRCC                         | \$31,872.00         |
| <b>TOTAL</b>                 | <b>\$288,113.00</b> |

### Preparing for Success: May 2016

|              |              |                  |                   | <b>End</b>   |
|--------------|--------------|------------------|-------------------|--------------|
|              | <b>Slots</b> | <b>Completed</b> | <b>Discharged</b> | <b>Count</b> |
| McPherson    | 15           | 4                | 1                 | 10           |
| Ester-4 BKS  | 50           | 16               | 3                 | 52           |
| Ester-5 BKS  | 50           | 9                | 5                 | 52           |
| <b>Total</b> | <b>115</b>   | <b>29</b>        | <b>9</b>          | <b>114</b>   |

There are 664 males and 64 females on the waiting list within 42

months of their release date and of those, three males and zero female are mandated by the Parole Board. The average time on the waiting list is about three months. The total on the waiting list, including those not currently within the identified time frame, is 730 males and 93 females.

### **ADMINISTRATIVE SERVICES**

#### BUDGET SECTION UPDATE

#### **Procurement Section Update:**

##### **Contract Renewals**

Thermals

##### **Current Bids (OSP)**

##### **Ester Unit Phase III**

Ceiling Material

Plumbing Components

Flour

##### **Metal Building (ORCU Chapel)**

##### **Awarded Contracts**

Ester Unit-Metal Classroom Building

Ester Unit-HVAC

Watermelons

##### **Minority Spending 3<sup>rd</sup> Quarter FY16**

Jan. – Mar. \$213,668.58 (1.58%)

Total to Date FY16 - \$558,177.65 (4.09%)

##### **Procurement/Contracts Report (required by policy) –**

For May purchase orders and contracts in excess of \$10,000 amounted to \$4,661,098.52. Of this amount, \$1,058,862.01 was for inmate care and custody related items (food, shoes, clothing, etc.). Bulk fuel costs for the month of May were \$49,426.68 – average cost of E-10 was \$1.78/gallon for the month of May.

#### HUMAN RESOURCES UPDATE:

**Workplace Safety** – In May, the modified version of the Health and Safety Plan was presented to two Basic Training classes with a total of 114 cadets in attendance. The safety topic, Office Ergonomics, was presented to 68 employees located at the Administration Annex East Facility. Sixty-nine incidents were reported to the company nurse in May, which brings our total to 324 incidents in 2016.

**Benefits** – Forty-five MIPS promotions and 162 MIPS payments were made. Eighty-three FMLA requests were processed with 82 approved and 1 denied. A total of 8 CAT leave requests were processed with 6 approved and 2 denied. Three applications were received for shared leave; one was approved, totaling 56 hours of donated time, and two were denied.

**Physical Assessments** – A total of 197 applicants and incumbent personnel were assessed in the month of May. Eighty-six incumbent personnel successfully passed their physical assessments. One hundred six applicants passed their physical assessments; five did not and one is pending a physician's release. Two applicants have not rescheduled.

**Employment** – Facebook results for the month showed a total of

3,139 “likes” of our page. Through Discover Corrections, there were 4,498 people from across the U.S. who viewed ADC’s page. This site does not allow one to review comments made unless the viewer applies for a position through their site and is hired. During the month of May, no applications were submitted for ADC through the Discover Corrections website.

The report through AR State Jobs provides the following:

- A. Advertised positions
- B. Positions hired
- C. Applications received
- D. How many met minimum qualifications
- E. How many did not meet qualifications and a reason why- (experience; 2-licences or certifications; 3-other)
- F. How many need further review
- G. How many were not processed
- H. Gender
- I. Race
- J. Veteran status

A total of 2,013 applications were received during May. Fifty non-correctional applications and eighty-two CO I applications were processed. Ninety-two Correctional Officers were hired, and 17 Correctional Officers were rehired.

**Vacancies, Hires, and Terminations** - In May 2016, a total of 518 vacancies, 111 new hires, and 66 terminations were at the various ADC locations.

#### **Administrative Services Division Monthly Reports (attached) include:**

**Gifts, Grants, and Donations/Inmate Welfare Fund Balance (required by policy)** – During the month of May, 2016 are reported as follows:

##### **Gifts, Grants and Donations:**

Three-hundred and twenty dollars was donated in the month of May.

**Inmate Welfare Fund** balance on May 31, 2016 was \$4,855,464.95.

**PAWS in Prison Fund** balances total on May 31, 2016 were \$70,042.92 in ADC. Account (7004822/Donations) \$19,159.05 and ADC account (NDC0500/Recycling) \$50,845.87. This does not include the Foundation account managed by PIP Foundation Board.

### **INFORMATION TECHNOLOGY**

#### **In May, the IT department:**

- Placed an order (3 month pilot project) for 80 Edovo tablets for inmate use at EARU. The tablets will be used in MAX 1 and Re-Entry in Barracks 20. The tablets have GED, ESL, Employment, Personal Finance, College Courses, Health and Wellness and a variety of other courses for educational benefits.
- Is installing 10 computer-KIOSKS at the Ester facility for inmate access to the Good Grid Re-Entry website. Construction is building a large workstation for the equipment. We have four computers currently at the Wrightsville Satel-

lite facility that we are also configuring for the Good Grid website.

- Worked with DIS to setup additional Polycom accounts for Real Presence Video Hearings.
- Visited Cummins to assist in preparation for Video Court hearings.
- Is working to complete the FY 18-19 IT plan.

#### **The network team is working on or has completed the following projects:**

- Fiber connectivity from AT&T to the East Arkansas Regional Facility is expected to be completed by June 10th. Once completed, the facility will be equipped with a 20 Meg circuit.
- Fiber connectivity from Centurylink to the North Central Facility is expected to be completed by mid-June. The facility has been struggling with two wireless routers for full unit connectivity due to failed vendor infrastructure and no vendor cabling available to upgrade.
- Securus Technologies is completing infrastructure requirements for SVV Kiosk at the Cummins facility. Expected “Go Live” for SVV at Cummins is July 6th. Pine Bluff Re-Entry unit has one SVV Kiosk installed and will be turned on the same date as Cummins.
- Installed new Kronos time clocks in Admin East, Central Office, Pine Bluff, and the Maximum Security Unit.
- Migration from Public o Private internet protocol (IP) addresses has been completed at Admin East, North West Arkansas, Cummins, Varner, Maximum Security, and Ouachita River units. Central Office is next in the series of migration.

#### **Eomis staff completed the following during the month:**

- Attended a conference call with Marquis and ACC staff to discuss modifications for re-entry codes to track and document offenders released to ACC for re-entry program.
- Visited Ester, Cummins, and Delta Regional Units to assist records departments with onsite training on the ID/DL processing and to make recommendations on placement of the equipment in order to obtain good quality photos. The remaining facilities will be visited in succession.
- Joy Taylor attended 2016 Corrections Technology Summit at Scottsdale, Arizona representing ADC. Joy is a member of the CTA board, filling the role of secretary.
- A new MOU between the ADC, ACC, and APB was completed to define the partnership between the participating agencies for EOMIS development and support. The MOU identifies the hosting support per agency and is necessary for legislative audit. The DIS Service Request for EOMIS hosting services was also updated for the same purpose.

### **TRAINING ACADEMY**

**Basic Training Division** - Capt. Latisha Davis’ BCOT Class 2016-E graduated on May 6, 2016 with 53 cadets. The Willis H. Sargent Award winner was Edward Young from the

Ouachita River Unit. Major Randy Shores, Emergency Preparedness Coordinator, served as the special speaker.

Class 2016-F, Capt. Lance Hall's class, graduated on May 27, 2016 with 59 cadets. ADC Weapons Manager, Robert Hutcheson, served as the special speaker. Linda Sue Souther from the Max unit received the Willis H. Sargent Award.

**In-Service Division** - May kicked off with the 40 hour Firearms Instructor Certification course. This course brings students in and gives them skills to teach others how to shoot. Students learn presentation skills on teaching and coaching and eventually have hands on training running a firing range. Once certified, they will become Range Masters at their units and qualify cadets and incumbent staff with the weapons they will use at their unit. On May 25<sup>th</sup>, the Managing a Multi-generational Workforce class, taught by Linda Hill, was a highlight for the month. Anyone who manages or supervises employees needs to take this training session. The Arkansas Department of Correction currently has four distinct age groups among our employees. With differing backgrounds, life experiences, goals and values, it is a challenge to fuse successfully these groups into a unified workforce. This training session points out the strengths and weaknesses of each group and how to supervise them all. It will be offered again soon.

### **eCADEMY**

During the month of May, a total of 525 ADC employees completed a total of 7,059 hours of eCADEMY training.

Approximately 11% of ADC employees completed at least one course during that time frame, averaging 1.51% hours per staff member.

## **HEALTH/CORRECTIONAL PROGRAMS**

### **CHAPLAINCY SERVICES**

#### **Benton Work Release**

Stepping Up classes were held on May 5th & 21th and twenty-seven inmates attended each class.

#### **Cummins Unit**

Heather Powell, with Arkansas Literacy Council, led joint training on May 23rd and 24th for inmates who were trained as basic literacy tutors at Cummins and Varner Units.

#### **East Arkansas Regional Unit**

The first CABBI (Central Arkansas Baptist Bible Institute) class at EARU held a graduation ceremony

#### **Grimes Unit**

"The Storybook Project began at Grimes Unit on May 17th. As of month's end, 48 inmates have participated.

#### **McPherson Unit**

On Saturday, May 7, the Unit Chaplaincy hosted a Mother's Day picnic on the rec yard. There were 796 inmates in attendance. A band played, a meal and ice cream were served, and a guest speaker preached.

The Arkansas Master's Singers held a concert at the unit with 242 inmates in attendance on May 12.

Storybook Project was launched at the facility on Tuesday, May 17, with 77 inmates participating so far.

### **North Central Unit**

On May 26 and 27, Heather Powell with Arkansas Literacy Council trained seven inmates to be basic literacy tutors in the facility

### **ORCU**

The ORCU Chaplaincy collaborated with the Recreation Department to host a Home Run Derby. Approximately 250 inmates attended. It's Almost Midnight Ministries from California conducted a workshop which was attended by 34 inmates. Seventeen inmates attended a Celebrate Recovery open meeting.

### **Randall L. Williams**

KAIROS Prison Ministry held RLW Weekend #7 from Thursday, May 19th through Sunday, May 22nd. There were 24 inmates who went through the activity as their introductory KAIROS event and 22 more who served as helpers for the event. Fifteen volunteers served a total of 360 hours over the course of the four days.

### **Varner Unit**

Heather Powell, with Arkansas Literacy Council, led joint training from May 23-24th for inmates who were trained as basic literacy tutors at Cummins and Varner Units.

Christian Motorcycle Association held an event at Varner on May 13 and 14. In addition to visiting with the population, CMA representatives also were permitted to visit inmates in the Super-max area.

The Behavioral Addiction class held a graduation ceremony on May 19th.

### **Wrightsville - Hawkins Complex**

On Thursday, May 5th, as part of the National Day of Prayer two volunteers from New Life Church in Conway led a special time of prayer with 28 inmates

## **ACCREDITATION**

ACA Audits have been completed for the first half of the year. Audits for the Wrightsville Complex and Benton Unit are scheduled for the month of September, and Tucker Unit in October.

ACA Internal Audits Completed:

May 2-6 Tucker Unit File prep

May 9-10 Tucker Unit file prep

May 17 & 19 Tucker Unit file prep  
 May 24 Interviews for ACA manager at NCU  
 May 31 Benton Unit file prep

#### Classes Taught:

May 25 Training Academy (BCOT)

Fire/Safety and Sanitation independent audits conducted by the Fire and Sanitation Coordinator:

5/2/16 – Ester Unit Inspection  
 5/3/16 – Hawkins Unit  
 5/4/16 – Tucker Unit ACA Files  
 5/5/16 – Cummins and Varner Maintenance Inspections  
 5/10/16-Delta Unit Independent Audit  
 5/24/16-EARU Training Fire/Safety

### VOLUNTEER SERVICES

The total number of volunteer hours for May 2016:

| Unit                          | Hours        |
|-------------------------------|--------------|
| Intern hours                  | 16           |
| McPherson                     | 17           |
| MCWRC                         | 1            |
| NCU                           | 52           |
| ORCU                          | 28           |
| RLW                           | 28           |
| Pine Bluff                    | 19           |
| WSU                           | 328          |
| PAWS                          | 6            |
| Religious Volunteer-all Units | 5,414        |
| <b>TOTAL</b>                  | <b>5,909</b> |

### PROGRAM INFORMATION

#### Sex Offender Treatment Programs:

|       | SLOTS | COMPLETED | REMOVED | CLIENTS |
|-------|-------|-----------|---------|---------|
| RSVP  | 238   | 0         | 4       | 238     |
| SOFT  | 30    | 9         | 10      | 0       |
| Total | 268   | 9         | 14      | 248     |

There are 765 males on the waiting list for RSVP and 22 females on the waiting list for SOFT within five years of their TE date and of those 64 are stipulated by the Parole Board. The average time on the waiting list from request is about three to six months

for inmates. The total on the waiting list, including those not currently within the identified time frame, is 1,609 males and 30 females. We have one **PREA** inmate in the program at this time.

#### Therapeutic Community:

|              | Slots | Completed | Removed | Clients |
|--------------|-------|-----------|---------|---------|
| Tucker       | 129*  | 13        | 4       | 132     |
| Wrightsville | 45*   | 6         | 1       | 47      |
| McPherson    | 50*   | 1         | 3       | 56      |
| Total        | 224   | 20        | 8       | 235     |

There are 263 males and 13 females on the waiting list within 18 months of their release date and of those 15 are mandated by the Parole Board. The average time on the waiting list from request is 22 days. The total on the waiting list, including those not currently within the identified time frame, is 611 males and 53 females.

\*Denotes transitional beds available at this treatment program. Tucker TC has 129 client slots and seven peer counselor slots.

#### S.A.T.P.:

|              | Slots      | Completed | Removed   | Clients    |
|--------------|------------|-----------|-----------|------------|
| Grimes       | 50*        | 3         | 3         | 52         |
| McPherson    | 100*       | 22        | 7         | 102        |
| MSU          | 3          | 1         | 0         | 3          |
| RLW/CF       | 188*       | 35        | 28        | 179        |
| Tucker       | 43*        | 1         | 0         | 44         |
| Varner       | 44         | 6         | 2         | 45         |
| Wrightsville | 135*       | 28        | 9         | 141        |
| Total        | <b>563</b> | <b>96</b> | <b>49</b> | <b>566</b> |

There are 1,921 males and 345 females on the waiting list within 18 months of their release date and of those 27 are mandated by the Parole Board. The average time on the waiting list from request is 18 days. The total on the waiting list including those not currently within the identified time frame is 2,789 males and 461 females.

\*Denotes transitional beds available at this treatment program.

#### R.P.U.:

The Residential Program Unit at Ouachita had five admissions and four discharges in May for an end-of-month count of 66.

#### McPherson Mental Health Residential Program:

There were 3 admissions and 5 were discharged in May for an end-of-month count of 37.

#### Habilitation Program:

The Habilitation Program at the Ouachita River Correctional Unit provided treatment services to 41 inmates during May. There were 2 admissions and 3 discharges for an end-of-month count of 38.

**Staffing:**

The following Mental Health Services and SATP positions were vacant in April and May.

|                                 | March | April |
|---------------------------------|-------|-------|
| Psychologists                   | 7     | 7     |
| Social Workers                  | 10    | 11    |
| Advisors                        | 3     | 3     |
| Substance Abuse Program Leaders | 3     | 2     |
| Admin Specialist/Analyst        | 2     | 1     |
| Substance Abuse Program Coord   | 1     | 1     |
| Psychological Examiner          | 1     | 0     |

**ADDITIONAL PROGRAM INFORMATION****Self-study Classes:**

|                 | # of Participants | # Completed | Waiting List |
|-----------------|-------------------|-------------|--------------|
| Anger Mgmt      | 600               | 445         | 1,499        |
| Thinking Errors | 462               | 286         | 2,457        |
| SAE             | 144               | 110         | 568          |
| Comm Skills     | 298               | 109         | 1,329        |
| DV              | 95                | 57          | 753          |
| Victims of DV   | 9                 | 0           | 81           |
| Stress Mgmt     | 362               | 151         | 1,432        |
| Parenting       | 151               | 48          | 1,174        |

SAE=Substance Abuse Education DV=Domestic Violence  
Victims of DV=Victims of Domestic Violence

**Suicide:**

There were **92** suicidal threats, gestures or low/moderate risk attempts during May. There was **1** serious attempt resulting in death.

**Outpatient:**

There were 2,275 inmates on the mental health medical log at the beginning of May. Mental Health conducted the following contacts during May:

Case management contacts: **2, 234**  
Requests for Interviews: **5,618**  
Testing: **5**  
Intakes: **604**  
Unit Requests: **950**  
Counseling (with treatment plans): **51**  
Pre-lock up reviews: **400**  
Routine Seg reviews: **146**  
Seg rounds: **10, 564**  
PREA evaluations: **56**  
Routine follow-up: **173**  
834 requests: **25**

**County Mental Health Requests:**

During May, there were 24 requests of a mental health nature received. Nineteen inmates were fast tracked to ADC.

**Monetary Sanctions:**

Sanction reimbursements for May were \$22,250.00.

**County Medical Health Requests:**

During May, there were 409 requests of a medical nature received and 14 were fast tracked to ADC.

**Deaths:**

There were 7 inmate deaths during the month of May; there were 6 claimed and 1 buried.

**CCS:**

See attachment for CCS's report regarding outside beds and emergency room visits.

**Medical Grievances:**

In May, there were a total of 363 appeals of medical grievances received and 324 appeals were answered. Twenty-seven of those were found to be with merit and 4 with merit but resolved.

**SEX OFFENDER ASSESSMENT****Assessments Completed:**

| Risk Level  | May       | Sept. 1999 thru May 31, 2016 |
|---|-----------|------------------------------|
| Level 1   | 1         | 1,150                        |
| Level 2   | 60        | 6,214                        |
| Level 3   | 23        | 6,034                        |
| Level 4   | 3         | 568                          |
| Default 3   | 2         | *                            |
| <b>Total</b>  | <b>89</b> | <b>13,966</b>                |
| *Default Level 3's are included in the total number of Level 3's to date. |           |                              |

**ACIC Numbers:**

The total number of sex offenders registered from Sept. 1, 1999 to May 31, 2016:

|   |               |
|---|---------------|
| In Compliance                               | 7,318         |
| Delinquent (Did not return address on time) | 871           |
| Confined                                    | 2,933         |
| Out of State                                | 2,953         |
| Address Unknown (absconded)                 | 181           |
| Deceased                                    | 1,009         |
| Deported                                    | 166           |
| Incapacitated                               | 67            |
| Out of USA                                  | 4             |
| <b>Total</b>                                | <b>15,502</b> |

**PAWS IN PRISON****Currently Enrolled in Training:**

|         |    |
|---------|----|
| Max     | 6  |
| Tucker  | 11 |
| Hawkins | 3  |
| RLW     | 4  |
| ORCU    | 11 |
| NCU     | 8  |
| Total   | 43 |

**Completed Training:**

|  |     |
|--|-----|
| May 2016   | 10  |
| YTD 2016   | 100 |
| Since Inception Dec. 2011                                | 759 |
| Dogs Currently in foster:<br>(Graduated but not adopted) | 5   |

**CONSTRUCTION****PROJECT UPDATES****Barbara Ester Unit (Diagnostic):**

The renovation of the barracks and re-roofing the unit is continuing along with purchasing material, installing new metal ceilings, and working on plumbing and electrical. The renovations to Phase 1 and 2 are being completed. The asbestos abatement for phase 3 is complete. Demolition is also continuing for phase 3. We are working on dirt work for classrooms at PBU. Bids on the new school opened April 27 and the bid came in at \$141,586 lower than estimated.

**Cummins Unit:**

Work is continuing on roof repairs and repairs to free line residences. Gravel is being hauled from Malvern pit to the road at the wastewater plant as the weather permits. Work is continuing on the remodeling of the farm residence with the construction crew from Pine Bluff.

**Cummins Poultry:**

The new generator has been installed. It is being tested weekly.

**Delta Unit:**

Work is continuing on the storm damage. The roof repairs have been turned in to DBA for review, and comments have been received.

**East Arkansas Regional Unit:**

Work continues on the new firing range, with the concrete work finished, and the gravel road work will continue as it dries out. Metal roofs are being installed on State trailers as well as underpinning. Fiber optic wire and conduit have been run for the building.

**HDRS Building:**

Industry offices moved to the Pine Bluff complex from Admin East.

**Ouachita River Correctional Unit:**

Gravel operations are continuing. A request has been submitted to build the Chapel. We have started the dirt work and are pricing materials. Bids for a metal building were put out and were due back May 17. The purchase orders for materials have been issued.

**Mississippi County:**

Replacement of the rusted doors and windows has been finished. Canopies have been added above the windows to cut down on water leaks.

**Springdale:**

The unit has passed the ACA audit.

**Tucker Maximum Security Unit:**

Repairs to the boiler room equipment are being made, and the parts have been ordered.

**CONSTRUCTION PERSONNEL UPDATE:**

- 1-Project Supervisor-approved
- 3-Admin Spec (EARU, NCU, Cummins)
- 1-COI, 1 pending
- 1-Sgt-pending transfer
- 1-Project Specialist-reposted at Ester
- 1-Engineer-reposted
- 3-Maintenance Technicians (2 at EARU reposted, 1 at WR reposted)
- 1-Assistant Maintenance Supervisor at EARU-reposted
- 1-Director of Maintenance-Varner

| 2016 INFORMAL GRIEVANCE REPORT |        |        |        |          |      |          |           |        |     |      |       |       |       |              |     |     |     |      |       |     |       |       |       |     |           |        |
|--------------------------------|--------|--------|--------|----------|------|----------|-----------|--------|-----|------|-------|-------|-------|--------------|-----|-----|-----|------|-------|-----|-------|-------|-------|-----|-----------|--------|
| Month                          | BENTON | HAWK/M | HAWK/F | WRTS SPU | WRTS | WRTS/SAT | EARU & MX | GRIMES | RLW | MCWR | MCPH  | MSU   | NCU   | PBU Re-entry | PBU | NWA | TU  | TRCC | VSMX  | VU  | CU    | ORCU  | Ester | DRU | Bowie Cty | TOTAL  |
| JAN                            | 2      | 19     | 91     | 0        | 136  | 2        | 436       | 307    | 41  | 2    | 375   | 317   | 180   | 0            | 25  | 0   | 178 | 1    | 673   | 128 | 272   | 351   | 15    | 127 | 69        | 3747   |
| FEB                            | 3      | 22     | 97     | 0        | 137  | 17       | 420       | 347    | 64  | 1    | 390   | 243   | 177   | 1            | 18  | 0   | 190 | 0    | 585   | 184 | 249   | 423   | 29    | 118 | 172       | 3887   |
| MAR                            | 3      | 12     | 100    | 0        | 182  | 13       | 638       | 353    | 58  | 0    | 438   | 298   | 242   | 0            | 25  | 0   | 210 | 2    | 628   | 142 | 376   | 336   | 43    | 131 | 144       | 4374   |
| APR                            | 1      | 18     | 59     | 0        | 121  | 16       | 420       | 348    | 101 | 2    | 415   | 270   | 253   | 0            | 11  | 0   | 141 | 0    | 658   | 141 | 364   | 323   | 33    | 131 | 133       | 3959   |
| MAY                            | 1      | 23     | 46     | 0        | 98   | 0        | 443       | 364    | 84  | 0    | 348   | 216   | 221   | 5            | 5   | 0   | 146 | 3    | 682   | 167 | 280   | 400   | 25    | 119 | 90        | 3766   |
| JUN                            |        |        |        |          |      |          |           |        |     |      |       |       |       |              |     |     |     |      |       |     |       |       |       |     |           |        |
| JUL                            |        |        |        |          |      |          |           |        |     |      |       |       |       |              |     |     |     |      |       |     |       |       |       |     |           |        |
| AUG                            |        |        |        |          |      |          |           |        |     |      |       |       |       |              |     |     |     |      |       |     |       |       |       |     |           |        |
| SEPT                           |        |        |        |          |      |          |           |        |     |      |       |       |       |              |     |     |     |      |       |     |       |       |       |     |           |        |
| OCT                            |        |        |        |          |      |          |           |        |     |      |       |       |       |              |     |     |     |      |       |     |       |       |       |     |           |        |
| NOV                            |        |        |        |          |      |          |           |        |     |      |       |       |       |              |     |     |     |      |       |     |       |       |       |     |           |        |
| DEC                            |        |        |        |          |      |          |           |        |     |      |       |       |       |              |     |     |     |      |       |     |       |       |       |     |           |        |
| TOTAL                          | 10     | 94     | 393    | -        | 674  | 48       | 2,357     | 1,719  | 348 | 5    | 1,966 | 1,344 | 1,073 | 6            | 84  | -   | 865 | 6    | 3,226 | 762 | 1,541 | 1,833 | 145   | 626 | 608       | 19,733 |

| 2016 FORMAL GRIEVANCE REPORT |        |        |        |          |      |          |            |        |     |      |      |       |     |              |     |     |     |      |       |     |     |      |       |     |           |        |  |
|------------------------------|--------|--------|--------|----------|------|----------|------------|--------|-----|------|------|-------|-----|--------------|-----|-----|-----|------|-------|-----|-----|------|-------|-----|-----------|--------|--|
| <i>Month</i>                 | BENTON | HAWK/M | HAWK/F | WRTS SPU | WRTS | WRTS/SAT | EARU & M X | GRIMES | RLW | MCWR | MCPH | MSU   | NCU | PBU Re-entry | PBU | NWA | TU  | TRCC | VSMX  | VU  | CU  | ORCU | Ester | DRU | Bowie Cty | TOTAL  |  |
| JAN                          | 1      | 4      | 31     | 0        | 12   | 0        | 351        | 154    | 25  | 0    | 120  | 203   | 71  | 0            | 12  | 0   | 112 | 3    | 358   | 103 | 117 | 119  | 8     | 48  | 20        | 1872   |  |
| FEB                          | 3      | 9      | 36     | 0        | 26   | 1        | 347        | 137    | 23  | 4    | 113  | 187   | 92  | 1            | 4   | 0   | 113 | 0    | 336   | 139 | 134 | 154  | 22    | 57  | 43        | 1981   |  |
| MAR                          | 3      | 5      | 38     | 0        | 43   | 1        | 417        | 162    | 31  | 0    | 141  | 203   | 127 | 0            | 11  | 0   | 120 | 2    | 336   | 109 | 163 | 181  | 20    | 52  | 95        | 2260   |  |
| APR                          | 0      | 3      | 24     | 0        | 29   | 2        | 441        | 154    | 48  | 0    | 180  | 260   | 116 | 0            | 7   | 1   | 92  | 0    | 374   | 132 | 160 | 176  | 22    | 53  | 37        | 2311   |  |
| MAY                          | 1      | 17     | 18     | 0        | 35   | 0        | 379        | 145    | 31  | 2    | 154  | 240   | 106 | 3            | 2   | 1   | 99  | 2    | 389   | 142 | 131 | 203  | 8     | 45  | 21        | 2174   |  |
| JUN                          |        |        |        |          |      |          |            |        |     |      |      |       |     |              |     |     |     |      |       |     |     |      |       |     |           |        |  |
| JUL                          |        |        |        |          |      |          |            |        |     |      |      |       |     |              |     |     |     |      |       |     |     |      |       |     |           |        |  |
| AUG                          |        |        |        |          |      |          |            |        |     |      |      |       |     |              |     |     |     |      |       |     |     |      |       |     |           |        |  |
| SEPT                         |        |        |        |          |      |          |            |        |     |      |      |       |     |              |     |     |     |      |       |     |     |      |       |     |           |        |  |
| OCT                          |        |        |        |          |      |          |            |        |     |      |      |       |     |              |     |     |     |      |       |     |     |      |       |     |           |        |  |
| NOV                          |        |        |        |          |      |          |            |        |     |      |      |       |     |              |     |     |     |      |       |     |     |      |       |     |           |        |  |
| DEC                          |        |        |        |          |      |          |            |        |     |      |      |       |     |              |     |     |     |      |       |     |     |      |       |     |           |        |  |
| TOTAL                        | 8      | 38     | 147    | -        | 145  | 4        | 1,935      | 752    | 158 | 6    | 708  | 1,093 | 512 | 4            | 36  | 2   | 536 | 7    | 1,793 | 625 | 705 | 833  | 80    | 255 | 216       | 10,598 |  |

**Inmate Institutional Grievance Appeal Report  
May 2016**

|   | Received   | Rejected   | Processed<br>W/O Merit | Processed<br>W/ Merit |
|---|------------|------------|------------------------|-----------------------|
| Benton Unit   | 0          | 0          | 0                      | 0                     |
| Benton Work Release                                 | 0          | 0          | 0                      | 0                     |
| Bowie County Texas<br>Correctional Facility         | 22         | 4          | 14                     | 0                     |
| Cummins Unit  | 31         | 12         | 16                     | 0                     |
| Cummins Modular Unit                                | 2          | 1          | 4                      | 0                     |
| Delta Regional Unit                                 | 10         | 3          | 9                      | 0                     |
| Ester Unit  | 1          | 0          | 8                      | 0                     |
| East Arkansas Regional Unit                         | 39         | 1          | 29                     | 0                     |
| East Arkansas Regional<br>Maximum Unit              | 74         | 10         | 33                     | 0                     |
| Grimes Unit   | 40         | 8          | 20                     | 0                     |
| Maximum Security Unit                               | 98         | 11         | 83                     | 1                     |
| McPherson Unit                                      | 13         | 6          | 16                     | 0                     |
| McPherson Mental Health<br>Residential Program Unit | 0          | 4          | 0                      | 0                     |
| Mississippi County Work Release<br>Center           | 0          | 0          | 0                      | 0                     |
| Northwest Arkansas Work<br>Release Center           | 0          | 0          | 0                      | 0                     |
| North Central Unit                                  | 12         | 11         | 15                     | 0                     |
| Ouachita River Correctional Unit                    | 17         | 11         | 18                     | 0                     |
| ORCU Hospital                                       | 0          | 0          | 0                      | 0                     |
| ORCU New Commitment                                 | 1          | 1          | 1                      | 0                     |
| ORCU Mental Health Residential<br>Program Unit      | 1          | 0          | 0                      | 0                     |
| Pine Bluff Unit                                     | 0          | 0          | 0                      | 0                     |
| Pine Bluff Re-Entry                                 | 0          | 0          | 0                      | 0                     |
| Randall L. Williams Correctional<br>Facility        | 5          | 1          | 1                      | 0                     |
| Texarkana Regional Correctional<br>Center           | 0          | 0          | 0                      | 0                     |
| Tucker Unit   | 12         | 5          | 27                     | 2                     |
| Varner Super Max                                    | 115        | 15         | 68                     | 0                     |
| Varner Unit   | 20         | 6          | 7                      | 0                     |
| Wrightsville Unit                                   | 8          | 7          | 3                      | 0                     |
| Wrightsville Satellite Unit                         | 0          | 0          | 0                      | 0                     |
| Hawkins Center                                      | 3          | 3          | 9                      | 0                     |
| Hawkins for Males                                   | 0          | 0          | 0                      | 0                     |
| Hawkins SPU   | 0          | 0          | 0                      | 0                     |
| <b>Total</b>  | <b>524</b> | <b>120</b> | <b>381</b>             | <b>3</b>              |

| <b>Admissions and Releases</b> |                    |                      |                     |
|--------------------------------|--------------------|----------------------|---------------------|
| <b>May 2016</b>                |                    |                      |                     |
| <b><u>Admissions</u></b>       | <b><u>Male</u></b> | <b><u>Female</u></b> | <b><u>Total</u></b> |
| Asian                          | 2                  | 1                    | 3                   |
| Black                          | 223                | 22                   | 245                 |
| Hispanic                       | 22                 | 1                    | 23                  |
| Nat. Amer.                     | 2                  | 0                    | 2                   |
| Hawaiian/Pacific Isl           | 0                  | 0                    | 0                   |
| White                          | 423                | 88                   | 511                 |
| Other                          | 0                  | 0                    | 0                   |
| Unknown                        | 0                  | 0                    | 0                   |
|                                |                    |                      |                     |
| <b>Total</b>                   | <b>672</b>         | <b>112</b>           | <b>784</b>          |
| <b><u>Releases</u></b>         | <b><u>Male</u></b> | <b><u>Female</u></b> | <b><u>Total</u></b> |
| Asian                          | 5                  | 0                    | 5                   |
| Black                          | 313                | 25                   | 338                 |
| Hispanic                       | 21                 | 3                    | 24                  |
| Nat. Amer.                     | 1                  | 0                    | 1                   |
| Hawaiian/Pacific Isl           | 0                  | 0                    | 0                   |
| White                          | 491                | 102                  | 593                 |
| Other                          | 0                  | 0                    | 0                   |
|                                |                    |                      |                     |
| <b>Total</b>                   | <b>831</b>         | <b>130</b>           | <b>961</b>          |

**ARKANSAS DEPARTMENT OF CORRECTION**  
**INMATE POPULATION GROWTH 2000-2023**

Updated 05/31/2016

| Month         | 2000   | 2001   | 2002   | 2003   | 2004   | 2005   | 2006   | 2007   | 2008   | 2009   | 2010   | 2011   | 2012   | 2013   | 2014   | 2015   | 2016   |
|---------------|--------|--------|--------|--------|--------|--------|--------|--------|--------|--------|--------|--------|--------|--------|--------|--------|--------|
| Jan.          | 11,984 | 11,908 | 12,402 | 13,015 | 13,105 | 13,595 | 13,481 | 13,839 | 14,518 | 14,796 | 15,334 | 16,312 | 15,134 | 14,815 | 17,481 | 18,142 | 17,785 |
| Feb.          | 12,169 | 12,022 | 12,529 | 13,054 | 13,166 | 13,783 | 13,633 | 14,012 | 14,603 | 14,883 | 15,374 | 16,209 | 14,990 | 15,008 | 17,438 | 18,082 | 17,625 |
| March         | 12,006 | 12,033 | 12,299 | 13,108 | 13,088 | 13,418 | 13,534 | 13,772 | 14,580 | 14,843 | 15,290 | 16,095 | 14,964 | 14,665 | 17,395 | 18,233 | 17,573 |
| April         | 12,069 | 12,167 | 12,465 | 13,213 | 13,323 | 13,469 | 13,554 | 13,851 | 14,769 | 14,937 | 15,570 | 16,172 | 15,124 | 14,850 | 17,604 | 18,703 | 17,815 |
| May           | 12,109 | 12,384 | 12,558 | 13,463 | 13,556 | 13,528 | 13,711 | 14,146 | 14,880 | 15,146 | 15,694 | 16,062 | 15,132 | 15,074 | 17,593 | 18,693 | 17,769 |
| June          | 12,005 | 12,108 | 12,439 | 13,418 | 13,389 | 13,251 | 13,430 | 13,915 | 14,700 | 15,025 | 15,564 | 15,554 | 14,832 | 14,825 | 17,340 | 18,813 |        |
| July          | 12,030 | 12,190 | 12,622 | 13,509 | 13,528 | 13,286 | 13,560 | 14,082 | 14,868 | 15,195 | 15,807 | 15,519 | 14,879 | 15,379 | 17,522 | 18,870 |        |
| August        | 12,087 | 12,371 | 12,815 | 13,565 | 13,632 | 13,419 | 13,646 | 14,224 | 15,100 | 15,385 | 15,829 | 15,240 | 14,675 | 16,103 | 17,549 | 18,806 |        |
| September     | 11,983 | 12,289 | 12,774 | 13,341 | 13,516 | 13,237 | 13,652 | 14,217 | 14,850 | 15,285 | 16,025 | 15,172 | 14,724 | 16,412 | 17,605 | 18,549 |        |
| October       | 12,119 | 12,348 | 12,942 | 13,341 | 13,584 | 13,363 | 13,775 | 14,349 | 14,836 | 15,381 | 16,311 | 15,271 | 14,856 | 16,993 | 17,880 | 18,430 |        |
| November      | 12,094 | 12,408 | 13,162 | 13,408 | 13,706 | 13,587 | 13,913 | 14,437 | 15,025 | 15,340 | 16,460 | 15,205 | 14,625 | 17,168 | 17,848 | 17,981 |        |
| December      | 11,856 | 12,333 | 12,845 | 13,106 | 13,470 | 13,338 | 13,728 | 14,315 | 14,716 | 15,199 | 16,204 | 15,062 | 14,654 | 17,235 | 17,874 | 17,707 |        |
| Net Ann. Inc. | 29     | 477    | 512    | 261    | 364    | -132   | 390    | 587    | 401    | 483    | 1,005  | -1,142 | -408   | 2,581  | 639    | -167   | 62     |
| Avg. Mo. Inc. | 2      | 40     | 43     | 22     | 30     | -11    | 33     | 49     | 33     | 40     | 84     | -95    | -34    | 215    | 53     | -14    | 12     |

Population is total jurisdictional count at end of each month. Population at end of month December 1999 was 11,827.

Average monthly population increase for past fifteen years 2001 - 2015 is 33

Average monthly population increase for past ten years Jan.2006 - Dec 2015 is 36

Average monthly population increase for past five years 2011 - 2015 is 25

**Projected at Growth of 33 per Month**

|               | 2008   | 2009   | 2010   | 2011   | 2012   | 2013   | 2014   | 2015   | 2016             | 2017   | 2018   | 2019   | 2020   | 2021   | 2022   | 2023   |
|---------------|--------|--------|--------|--------|--------|--------|--------|--------|------------------|--------|--------|--------|--------|--------|--------|--------|
| Month         | Actual | Actual | Actual | Actual | Actual | Actual | Actual | Actual | Actual/<br>Proj. | Proj.  | Proj.  | Proj.  | Proj.  | Proj.  | Proj.  | Proj.  |
| January       | 14,518 | 14,796 | 15,334 | 16,312 | 15,134 | 14,815 | 17,481 | 18,142 | 17,785           | 18,033 | 18,429 | 18,825 | 19,221 | 19,617 | 20,013 | 20,409 |
| February      | 14,603 | 14,883 | 15,374 | 16,209 | 14,990 | 15,008 | 17,438 | 18,082 | 17,625           | 18,066 | 18,462 | 18,858 | 19,254 | 19,650 | 20,046 | 20,442 |
| March         | 14,580 | 14,843 | 15,290 | 16,095 | 14,964 | 14,665 | 17,395 | 18,233 | 17,573           | 18,099 | 18,495 | 18,891 | 19,287 | 19,683 | 20,079 | 20,475 |
| April         | 14,769 | 14,937 | 15,570 | 16,172 | 15,124 | 14,850 | 17,604 | 18,703 | 17,815           | 18,132 | 18,528 | 18,924 | 19,320 | 19,716 | 20,112 | 20,508 |
| May           | 14,880 | 15,146 | 15,694 | 16,062 | 15,132 | 15,074 | 17,593 | 18,693 | 17,769           | 18,165 | 18,561 | 18,957 | 19,353 | 19,749 | 20,145 | 20,541 |
| June          | 14,700 | 15,025 | 15,564 | 15,554 | 14,832 | 14,825 | 17,340 | 18,813 | 17,802           | 18,198 | 18,594 | 18,990 | 19,386 | 19,782 | 20,178 | 20,574 |
| July          | 14,868 | 15,195 | 15,807 | 15,519 | 14,879 | 15,379 | 17,522 | 18,870 | 17,835           | 18,231 | 18,627 | 19,023 | 19,419 | 19,815 | 20,211 | 20,607 |
| August        | 15,100 | 15,385 | 15,829 | 15,240 | 14,675 | 16,103 | 17,549 | 18,806 | 17,868           | 18,264 | 18,660 | 19,056 | 19,452 | 19,848 | 20,244 | 20,640 |
| September     | 14,850 | 15,285 | 16,025 | 15,172 | 14,724 | 16,412 | 17,605 | 18,549 | 17,901           | 18,297 | 18,693 | 19,089 | 19,485 | 19,881 | 20,277 | 20,673 |
| October       | 14,836 | 15,381 | 16,311 | 15,271 | 14,856 | 16,993 | 17,880 | 18,430 | 17,934           | 18,330 | 18,726 | 19,122 | 19,518 | 19,914 | 20,310 | 20,706 |
| November      | 15,025 | 15,340 | 16,460 | 15,205 | 14,625 | 17,168 | 17,848 | 17,981 | 17,967           | 18,363 | 18,759 | 19,155 | 19,551 | 19,947 | 20,343 | 20,739 |
| December      | 14,716 | 15,199 | 16,204 | 15,062 | 14,654 | 17,235 | 17,874 | 17,707 | 18,000           | 18,396 | 18,792 | 19,188 | 19,584 | 19,980 | 20,376 | 20,772 |
| Net Ann. Inc. | 401    | 483    | 1,005  | -1,142 | -408   | 2,581  | 639    | -167   | 293              | 396    | 396    | 396    | 396    | 396    | 396    | 396    |
| Ave. Mo. Inc. | 33     | 40     | 84     | -95    | -34    | 215    | 53     | -14    | 24               | 33     | 33     | 33     | 33     | 33     | 33     | 33     |

## Monthly Population Averages

|                    | 5/2    | 5/3    | 5/4    | 5/5    | 5/6    | 5/9    | 5/10   | 5/11   | 5/12   | 5/13   | 5/16   | 5/17   | 5/18   | 5/19   | 5/20   | 5/23   | 5/24   | 5/25   | 5/26   | 5/27   | 5/30   | 5/31   |        |       |  |
|--------------------|--------|--------|--------|--------|--------|--------|--------|--------|--------|--------|--------|--------|--------|--------|--------|--------|--------|--------|--------|--------|--------|--------|--------|-------|--|
| Unit/Center        |        |        |        |        |        |        |        |        |        |        |        |        |        |        |        |        |        |        |        |        |        |        | AVG    |       |  |
| Benton             | 337    | 338    | 336    | 336    | 334    | 335    | 331    | 329    | 329    | 327    | 328    | 328    | 328    | 336    | 333    | 331    | 335    | 338    | 338    | 315    | 314    | 314    | 330    |       |  |
| Cummins            | 1,936  | 1,936  | 1,931  | 1,931  | 1,937  | 1,930  | 1,925  | 1,921  | 1,921  | 1,917  | 1,935  | 1,954  | 1,960  | 1,956  | 1,961  | 1,960  | 1,965  | 1,962  | 1,960  | 1,935  | 1,923  | 1,923  | 1,940  |       |  |
| Delta              | 618    | 627    | 621    | 620    | 618    | 618    | 627    | 622    | 620    | 626    | 625    | 625    | 622    | 622    | 619    | 619    | 619    | 627    | 625    | 619    | 619    | 619    | 622    |       |  |
| E AR Reg           | 1,689  | 1,690  | 1,691  | 1,686  | 1,686  | 1,693  | 1,693  | 1,688  | 1,687  | 1,685  | 1,687  | 1,685  | 1,689  | 1,687  | 1,696  | 1,691  | 1,692  | 1,690  | 1,689  | 1,678  | 1,671  | 1,671  | 1,687  |       |  |
| Ester              | 367    | 371    | 374    | 372    | 375    | 375    | 377    | 377    | 377    | 374    | 379    | 379    | 378    | 377    | 379    | 373    | 377    | 377    | 377    | 344    | 361    | 361    | 373    |       |  |
| Grimes             | 1,083  | 1,077  | 1,072  | 1,080  | 1,079  | 1,081  | 1,081  | 1,080  | 1,075  | 1,072  | 1,079  | 1,078  | 1,076  | 1,078  | 1,080  | 1,073  | 1,073  | 1,079  | 1,079  | 1,063  | 1,062  | 1,062  | 1,076  |       |  |
| Max Sec            | 673    | 674    | 673    | 672    | 681    | 681    | 681    | 682    | 683    | 677    | 678    | 660    | 659    | 661    | 660    | 662    | 661    | 666    | 669    | 668    | 666    | 666    | 671    |       |  |
| McPherson          | 1,019  | 1,020  | 1,021  | 1,030  | 1,032  | 1,032  | 1,031  | 1,033  | 1,034  | 1,035  | 1,034  | 1,032  | 1,032  | 1,031  | 1,028  | 1,028  | 1,028  | 1,026  | 1,025  | 1,017  | 1,001  | 1,001  | 1,026  |       |  |
| MCWRC              | 143    | 143    | 143    | 142    | 141    | 144    | 144    | 144    | 142    | 142    | 142    | 142    | 141    | 141    | 141    | 142    | 142    | 142    | 142    | 133    | 140    | 140    | 142    |       |  |
| N Central          | 839    | 836    | 843    | 839    | 839    | 835    | 841    | 839    | 834    | 831    | 840    | 840    | 839    | 836    | 840    | 840    | 837    | 833    | 833    | 822    | 834    | 834    | 837    |       |  |
| NWAWRC             | 100    | 100    | 100    | 100    | 100    | 100    | 99     | 100    | 100    | 100    | 99     | 100    | 100    | 100    | 100    | 100    | 100    | 100    | 100    | 94     | 98     | 98     | 99     |       |  |
| Ouachita River     | 1,795  | 1,789  | 1,792  | 1,805  | 1,809  | 1,796  | 1,807  | 1,799  | 1,809  | 1,798  | 1,794  | 1,804  | 1,809  | 1,797  | 1,800  | 1,846  | 1,841  | 1,853  | 1,841  | 1,822  | 1,826  | 1,826  | 1,812  |       |  |
| Randall L Williams | 555    | 559    | 559    | 561    | 559    | 555    | 560    | 560    | 563    | 561    | 558    | 557    | 559    | 556    | 558    | 556    | 555    | 553    | 555    | 536    | 550    | 550    | 556    |       |  |
| Pine Bluff         | 430    | 427    | 431    | 432    | 428    | 427    | 430    | 428    | 428    | 430    | 429    | 430    | 429    | 430    | 430    | 433    | 431    | 429    | 431    | 416    | 434    | 434    | 429    |       |  |
| PB Reentry         | 53     | 52     | 53     | 53     | 54     | 54     | 54     | 54     | 54     | 54     | 54     | 54     | 54     | 54     | 54     | 53     | 53     | 54     | 54     | 52     | 54     | 54     | 54     |       |  |
| TRCC               | 128    | 128    | 128    | 128    | 128    | 128    | 128    | 127    | 127    | 128    | 128    | 128    | 128    | 128    | 128    | 128    | 127    | 127    | 128    | 128    | 121    | 123    | 123    | 127   |  |
| Tucker             | 1,012  | 1,011  | 1,012  | 1,008  | 1,006  | 1,004  | 1,012  | 1,004  | 1,001  | 1,007  | 1,008  | 1,006  | 1,011  | 1,014  | 1,012  | 1,012  | 1,012  | 1,011  | 1,014  | 993    | 987    | 987    | 1,007  |       |  |
| Vamer              | 1,740  | 1,739  | 1,738  | 1,741  | 1,743  | 1,741  | 1,739  | 1,744  | 1,743  | 1,746  | 1,741  | 1,738  | 1,741  | 1,744  | 1,741  | 1,738  | 1,743  | 1,741  | 1,740  | 1,732  | 1,729  | 1,729  | 1,740  |       |  |
| Wrightsville       | 1,497  | 1,495  | 1,493  | 1,501  | 1,497  | 1,501  | 1,501  | 1,496  | 1,489  | 1,490  | 1,499  | 1,498  | 1,491  | 1,490  | 1,491  | 1,497  | 1,499  | 1,488  | 1,488  | 1,460  | 1,489  | 1,489  | 1,493  |       |  |
| Total ADC          | 16,014 | 16,012 | 16,011 | 16,037 | 16,046 | 16,030 | 16,061 | 16,027 | 16,016 | 16,000 | 16,037 | 16,038 | 16,046 | 16,038 | 16,051 | 16,081 | 16,090 | 16,097 | 16,088 | 15,820 | 15,881 | 15,881 | 16,018 | 16018 |  |
|                    |        |        |        |        |        |        |        |        |        |        |        |        |        |        |        |        |        |        |        |        |        |        |        |       |  |
| ALETA              | 20     | 20     | 20     | 20     | 19     | 20     | 20     | 20     | 20     | 20     | 20     | 20     | 20     | 20     | 20     | 20     | 20     | 20     | 20     | 19     | 19     | 20     |        |       |  |
| Ar State Police    | 65     | 65     | 65     | 64     | 62     | 62     | 62     | 62     | 62     | 62     | 62     | 62     | 62     | 63     | 63     | 63     | 63     | 64     | 63     | 63     | 63     | 63     | 63     |       |  |
| Co Jail / M        | 1,081  | 1,088  | 1,109  | 1,117  | 1,128  | 1,144  | 1,139  | 1,161  | 1,195  | 1,210  | 1,194  | 1,189  | 1,222  | 1,233  | 1,255  | 1,237  | 1,242  | 1,239  | 1,277  | 1,318  | 1,165  | 1,165  | 1,187  |       |  |
| Co Jail / F        | 4      | 17     | 16     | 10     | 13     | 9      | 16     | 19     | 26     | 27     | 32     | 36     | 39     | 46     | 50     | 40     | 39     | 37     | 44     | 27     | 9      | 9      | 26     |       |  |
| Total Co Jail BK   | 1,085  | 1,105  | 1,125  | 1,127  | 1,141  | 1,153  | 1,155  | 1,180  | 1,221  | 1,237  | 1,226  | 1,225  | 1,261  | 1,279  | 1,305  | 1,277  | 1,281  | 1,276  | 1,321  | 1,345  | 1,174  | 1,174  | 1,212  |       |  |
| Bowie Co., TX      | 334    | 335    | 336    | 336    | 333    | 333    | 334    | 334    | 334    | 336    | 336    | 335    | 335    | 335    | 335    | 335    | 335    | 335    | 335    | 335    | 335    | 335    | 335    |       |  |
| 309/M              | 237    | 236    | 235    | 233    | 233    | 233    | 233    | 248    | 249    | 249    | 250    | 250    | 247    | 247    | 246    | 244    | 244    | 245    | 245    | 245    | 242    | 242    | 242    |       |  |
| 309/F              | 34     | 34     | 34     | 34     | 32     | 32     | 31     | 31     | 32     | 32     | 32     | 32     | 33     | 33     | 33     | 33     | 33     | 33     | 33     | 33     | 33     | 33     | 33     |       |  |
| Total Act 309      | 271    | 270    | 269    | 267    | 265    | 265    | 264    | 279    | 281    | 281    | 282    | 282    | 280    | 280    | 279    | 277    | 277    | 278    | 278    | 278    | 275    | 275    | 275    |       |  |
| Total Non ADC      | 1,775  | 1,795  | 1,815  | 1,814  | 1,820  | 1,833  | 1,835  | 1,875  | 1,918  | 1,936  | 1,926  | 1,924  | 1,958  | 1,977  | 2,002  | 1,972  | 1,976  | 1,973  | 2,017  | 2,041  | 1,866  | 1,866  | 1,905  |       |  |
|                    |        |        |        |        |        |        |        |        |        |        |        |        |        |        |        |        |        |        |        |        |        |        |        |       |  |
| Total              | 17,789 | 17,807 | 17,826 | 17,851 | 17,866 | 17,863 | 17,896 | 17,902 | 17,934 | 17,936 | 17,963 | 17,962 | 18,004 | 18,015 | 18,053 | 18,053 | 18,066 | 18,070 | 18,105 | 17,861 | 17,747 | 17,747 | 17,923 | 17923 |  |

## ADC County Jail Backup FY2016

| DAY     | Jul-15  | Aug-15  | Sep-15  | Oct-15  | Nov-15  | Dec-15  | Jan-16  | Feb-16  | Mar-16 | Apr-16  | May-16 |
|---------|---------|---------|---------|---------|---------|---------|---------|---------|--------|---------|--------|
| 1       | 2,674 * | 2,556   | 2,276   | 1,973 * | 1,801   | 1,591   | 1,189   | 1,132   | 960    | 914 *   | 1,100  |
| 2       | 2,615 * | 2,556   | 2,274   | 1,979   | 1,829   | 1,570 * | 1,189   | 1,155   | 936 *  | 914     | 1,085  |
| 3       | 2,618   | 2,558   | 2,267 * | 1,979   | 1,851   | 1,530 * | 1,189   | 1,180   | 946 *  | 914     | 1,105  |
| 4       | * 2,618 | 2,572   | 2,236 * | 1,979   | 1,862   | 1,487   | 1,189   | 1,201   | 947    | 909     | 1,125  |
| 5       | * 2,618 | 2,592 * | 2,236   | 1,938   | 1,869 * | 1,487   | 1,155   | 1,213 * | 947    | 916     | 1,127  |
| 6       | 2,618   | 2,598 * | 2,236   | 1,899   | 1,887 * | 1,487   | 1142 *  | 1,213 * | 947    | 912     | 1,141  |
| 7       | 2,638   | 2,615   | 2,180   | 1,900 * | 1,887   | 1,421   | 1,132 * | 1,213   | 940    | 922 *   | 1,141  |
| 8       | 2,669 * | 2,615   | 2,180   | 1,895 * | 1,887   | 1,390   | 1,100   | 1,187   | 971    | 929 *   | 1,141  |
| 9       | 2,686 * | 2,615   | 2,174   | 1,895   | 1,848   | 1,378 * | 1,100   | 1,185   | 981 *  | 929     | 1,153  |
| 10      | 2,677   | 2,621   | 2,181 * | 1,895   | 1,839   | 1,370 * | 1,100   | 1,216   | 1000 * | 929     | 1,155  |
| 11      | * 2,677 | 2,625   | 2,147 * | 1,895   | 1,854   | 1,341   | 1,042   | 1,226   | 1032   | 912     | 1,180  |
| 12      | * 2,677 | 2,597 * | 2,147   | 1,895   | 1,854 * | 1,341   | 1,031   | 1,219 * | 1032   | 939     | 1,221  |
| 13      | 2,660   | 2,606 * | 2,147   | 1,879   | 1,826 * | 1,341   | 1,010 * | 1,219 * | 1032   | 975     | 1,237  |
| 14      | 2,635   | 2,607   | 2,116   | 1,897 * | 1,826   | 1,323   | 1,005 * | 1,219   | 999    | 1,001 * | 1,237  |
| 15      | 2,614 * | 2,607   | 2,100   | 1,914 * | 1,826   | 1,262   | 992     | 1,229   | 960    | 1,010 * | 1,237  |
| 16      | 2,587 * | 2,607   | 2,074   | 1,886   | 1,819   | 1,276 * | 992     | 1,229   | 974 *  | 1,010   | 1,226  |
| 17      | 2,576   | 2,614   | 2,067 * | 1,886   | 1,826   | 1,279 * | 992     | 1,207   | 962 *  | 1,010   | 1,225  |
| 18      | * 2,576 | 2,651   | 2,034 * | 1,886   | 1,826   | 1,234   | 1,007   | 1,239   | 917    | 1,028   | 1,261  |
| 19      | * 2,576 | 2,666 * | 2,034   | 1,862   | 1,817 * | 1,234   | 1,007   | 1,241 * | 917    | 1,012   | 1,279  |
| 20      | 2,541   | 2,705 * | 2,034   | 1,872   | 1,805 * | 1,234   | 1,027 * | 1,241 * | 917    | 1,006   | 1,305  |
| 21      | 2,550   | 2,687   | 2,031   | 1,856 * | 1,805   | 1,207   | 1,044 * | 1,241   | 908    | 1,025 * | 1,305  |
| 22      | 2,546 * | 2,687   | 2,023   | 1,853 * | 1,805   | 1,201   | 1,072   | 1,243   | 908    | 1,038 * | 1,305  |
| 23      | 2,542 * | 2,687   | 2,019   | 1,843   | 1,820   | 1,208 * | 1,072   | 1,189   | 918 *  | 1,038   | 1,277  |
| 24      | 2,550   | 2,685   | 2,034 * | 1,843   | 1,780   | 1,241 * | 1,072   | 1,155   | 888 *  | 1,038   | 1,281  |
| 25      | * 2,550 | 2,605   | 2,023 * | 1,843   | 1,728   | 1,241   | 1,091   | 1,090   | 903    | 1,038   | 1,276  |
| 26      | * 2,550 | 2,553 * | 2,023   | 1,821   | 1,634 * | 1,241   | 1,088   | 1,043 * | 903    | 1,066   | 1,321  |
| 27      | 2,533   | 2,453 * | 2,023   | 1,814   | 1,634 * | 1,241   | 1,110 * | 1,043 * | 903    | 1,063   | 1,345  |
| 28      | 2,535   | 2,309   | 2,027   | 1,815 * | 1,634   | 1,241   | 1,139 * | 1,043   | 879    | 1,075 * | 1,345  |
| 29      | 2,525 * | 2,309   | 1,975   | 1,815 * | 1,634   | 1,244   | 1,138   | 959     | 893    | 1,100 * | 1,345  |
| 30      | 2,549 * | 2,309   | 1,958   | 1,801   | 1,634   | 1,212 * | 1,138   |         | 892 *  | 1,100   | 1,174  |
| 31      | 2,556   | 2,272   |         | * 1,801 |         | 1,200 * | 1,138   |         | 924    |         | 1,174  |
| Average | 2,598   | 2,572   | 2,109   | 1,881   | 1,798   | 1,324   | 1,087   | 1,178   | 943    | 989     | 1,220  |

Notes: Totals do not include 309 Contracts in County Jails (maximum of 336)

# CHAPLAINCY

| Monthly Report for: <u>May 2016</u>     | BENTON | CUMMINS | DELTA REGIONAL | EAST ARKANSAS | EAST ARKANSAS MAX | ESTER | GRIMES | HAWKINS | MAXIMUM SECURITY | MCPHERSON | NORTH CENTRAL | OUACHITA RIVER | PINE BLUFF | RANDALL L. WILLIAMS | TUCKER | VARNER | VARNER MAX | WRIGHTSVILLE | PTF | TOTAL       |
|---|--------|---------|----------------|---------------|-------------------|-------|--------|---------|------------------|-----------|---------------|----------------|------------|---------------------|--------|--------|------------|--------------|-----|-------------|
| <b>Services Chaplains Oversaw</b>       |        |         |                |               |                   |       |        |         |                  |           |               |                |            |                     |        |        |            |              |     |             |
| <b>Christian</b>                        |        |         |                |               |                   |       |        |         |                  |           |               |                |            |                     |        |        |            |              |     |             |
| Population                              | 7      | 15      | 0              | 2             | 0                 | 15    | 22     | 4       | 10               | 11        | 5             | 50             | 2          | 13                  | 9      | 2      | 2          | 13           | 0   | 182         |
| Segregation                             | 0      | 0       | 0              | 2             | 0                 | 0     | 0      | 4       | 0                | 0         | 0             | 0              | 0          | 0                   | 0      | 2      | 2          | 0            | 0   | 10          |
| <b>Muslim</b>                           |        |         |                |               |                   |       |        |         |                  |           |               |                |            |                     |        |        |            |              |     |             |
| Population                              | 0      | 4       | 0              | 2             | 0                 | 4     | 5      | 0       | 0                | 2         | 0             | 0              | 1          | 5                   | 0      | 1      | 1          | 0            | 0   | 25          |
| Segregation                             | 0      | 0       | 0              | 2             | 0                 | 0     | 0      | 0       | 0                | 0         | 0             | 0              | 0          | 0                   | 0      | 1      | 1          | 0            | 0   | 4           |
| <b>Total Services</b>                   |        |         |                |               |                   |       |        |         |                  |           |               |                |            |                     |        |        |            |              |     | <b>221</b>  |
| <b>Volunteers in Charge</b>             |        |         |                |               |                   |       |        |         |                  |           |               |                |            |                     |        |        |            |              |     |             |
| Protestant                              | 18     | 0       | 4              | 31            | 0                 | 7     | 25     | 9       | 28               | 42        | 76            | 65             | 11         | 8                   | 27     | 3      | 8          | 19           | 4   | 385         |
| Catholic                                | 0      | 0       | 0              | 4             | 0                 | 0     | 3      | 1       | 1                | 3         | 2             | 1              | 1          | 1                   | 1      | 1      | 1          | 4            | 4   | 28          |
| Muslim                                  | 0      | 0       | 0              | 4             | 0                 | 0     | 0      | 0       | 0                | 0         | 0             | 6              | 0          | 1                   | 0      | 0      | 0          | 0            | 0   | 11          |
| Other                                   | 4      | 0       | 0              | 8             | 0                 | 0     | 0      | 0       | 1                | 4         | 0             | 1              | 0          | 0                   | 0      | 0      | 0          | 0            | 0   | 18          |
| Baptism                                 | 0      | 4       | 0              | 16            | 0                 | 0     | 0      | 0       | 1                | 0         | 4             | 0              | 0          | 3                   | 5      | 0      | 0          | 20           | 0   | 53          |
| <b>Marriages</b>                        |        |         |                |               |                   |       |        |         |                  |           |               |                |            |                     |        |        |            |              |     |             |
|   | 1      | 0       | 0              | 0             | 0                 | 3     | 1      | 0       | 2                | 0         | 0             | 1              | 0          | 1                   | 1      | 0      | 0          | 0            | 0   | 10          |
| <b>Distributed by Chaplains</b>         |        |         |                |               |                   |       |        |         |                  |           |               |                |            |                     |        |        |            |              |     |             |
| Greeting Cards                          | 1000   | 1500    | 0              | 0             | 0                 | 50    | 236    | 0       | 300              | 788       | 78            | 77             | 280        | 35                  | 314    | 423    | 235        | 0            | 150 | 5466        |
| Bibles, Quran, Torah, Etc.              | 20     | 70      | 15             | 79            | 3                 | 11    | 16     | 20      | 0                | 94        | 42            | 87             | 10         | 18                  | 10     | 193    | 14         | 14           | 0   | 716         |
| Study Course                            | 75     | 92      | 0              | 0             | 0                 | 0     | 12     | 1       | 163              | 0         | 0             | 15             | 10         | 15                  | 780    | 141    | 2          | 0            | 0   | 1306        |
| Writing Supplies                        | 25     | 200     | 0              | 0             | 0                 | 0     | 16     | 538     | 700              | 0         | 0             | 50             | 0          | 10                  | 0      | 0      | 0          | 0            | 280 | 1819        |
| Literature                              | 100    | 1345    | 122            | 385           | 21                | 0     | 462    | 4       | 1100             | 191       | 650           | 112            | 300        | 14                  | 310    | 1245   | 75         | 450          | 175 | 7061        |
| <b>Chaplain's Visits</b>                |        |         |                |               |                   |       |        |         |                  |           |               |                |            |                     |        |        |            |              |     |             |
| Barracks                                | 74     | 134     | 16             | 36            | 15                | 96    | 158    | 24      | 185              | 102       | 80            | 118            | 81         | 25                  | 165    | 7      | 4          | 30           | 0   | 1350        |
| Approximate Hours Spent in Barracks     | 39     | 62      | 4              | 30            | 9                 | 49    | 18     | 42      | 46               | 50        | 40            | 17.7           | 37         | 20                  | 41.3   | 6      | 7          | 30           | 0   | 548         |
| Inmate Office visits                    | 76     | 72      | 38             | 54            | 20                | 116   | 342    | 45      | 7                | 80        | 37            | 92             | 102        | 135                 | 168    | 58     | 0          | 42           | 3   | 1487        |
| Other Office visits                     | 0      | 24      | 2              | 0             | 0                 | 6     | 46     | 0       | 10               | 4         | 0             | 30             | 10         | 10                  | 30     | 63     | 0          | 30           | 0   | 265         |
| Hospital                                | 0      | 8       | 0              | 0             | 0                 | 0     | 2      | 0       | 0                | 0         | 0             | 22             | 0          | 9                   | 0      | 3      | 0          | 0            | 0   | 44          |
| Infirmary/Sick Call                     | 0      | 4       | 2              | 2             | 0                 | 4     | 16     | 2       | 4                | 4         | 2             | 5              | 4          | 10                  | 2      | 0      | 0          | 8            | 0   | 69          |
| Admin Seg                               | 4      | 12      | 0              | 0             | 20                | 0     | 0      | 0       | 41               | 8         | 0             | 7              | 0          | 0                   | 0      | 0      | 0          | 5            | 0   | 97          |
| Segregation                             | 0      | 0       | 0              | 13            | 0                 | 0     | 39     | 3       | 0                | 8         | 0             | 14             | 4          | 10                  | 0      | 0      | 20         | 5            | 0   | 116         |
| Punitive                                | 0      | 13      | 2              | 5             | 0                 | 0     | 0      | 0       | 21               | 8         | 3             | 14             | 4          | 10                  | 2      | 0      | 0          | 5            | 0   | 87          |
| PC                                      | 0      | 0       | 1              | 0             | 0                 | 0     | 0      | 0       | 0                | 8         | 0             | 0              | 0          | 0                   | 0      | 0      | 0          | 5            | 0   | 14          |
| Visitation Days                         | 1      | 0       | 0              | 0             | 0                 | 0     | 0      | 0       | 0                | 0         | 2             | 3              | 0          | 0                   | 0      | 0      | 0          | 0            | 0   | 6           |
| <b>Volunteer Visits</b>                 |        |         |                |               |                   |       |        |         |                  |           |               |                |            |                     |        |        |            |              |     |             |
| RCV                                     | 4      | 4       | 0              | 0             | 0                 | 0     | 5      | 4       | 29               | 21        | 0             | 123            | 0          | 18                  | 13     | 0      | 0          | 0            | 0   | 221         |
| OCV                                     | 15     | 0       | 5              | 0             | 0                 | 6     | 0      | 46      | 48               | 94        | 21            | 12             | 42         | 53                  | 61     | 17     | 0          | 40           | 50  | 510         |
| Spiritual Advisor                       | 1      | 1       | 0              | 0             | 0                 | 0     | 1      | 0       | 0                | 2         | 0             | 4              | 1          | 3                   | 28     | 1      | 0          | 1            | 0   | 43          |
| CRA                                     | 26     | 42      | 8              | 80            | 0                 | 10    | 76     | 12      | 110              | 74        | 88            | 137            | 22         | 8                   | 62     | 53     | 20         | 28           | 0   | 856         |
| <b>Religious Volunteer Hours</b>        |        |         |                |               |                   |       |        |         |                  |           |               |                |            |                     |        |        |            |              |     |             |
| Volunteer Hours                         | 81     | 82      | 28             | 217           | 0                 | 32    | 280    | 50      | 464              | 393       | 368           | 901            | 148        | 421                 | 445    | 538    | 20         | 69           | 50  | 4587        |
| DENOMINATIONAL/VOLUNTEER CHAPLAIN HOURS | 101    | 188     | 0              | 0             | 0                 | 96    | 55     | 132     | 92               | 165       | 190           | 229            | 50         | 152                 | 146    | 56     | 0          | 220          | 0   | 1872        |
| <b>Total Volunteer Hours</b>            |        |         |                |               |                   |       |        |         |                  |           |               |                |            |                     |        |        |            |              |     | <b>6459</b> |
| <b>Other Activities of Chaplain</b>     |        |         |                |               |                   |       |        |         |                  |           |               |                |            |                     |        |        |            |              |     |             |
| Counseled Employees                     | 3      | 23      | 0              | 2             | 0                 | 15    | 25     | 3       | 2                | 2         | 2             | 96             | 10         | 18                  | 2      | 2      | 0          | 5            | 0   | 210         |
| Orientation Sessions                    | 0      | 4       | 0              | 1             | 0                 | 0     | 0      | 1       | 0                | 4         | 1             | 0              | 0          | 0                   | 0      | 0      | 0          | 0            | 0   | 11          |
| Free World Devotions                    | 0      | 8       | 0              | 4             | 0                 | 4     | 0      | 0       | 0                | 2         | 0             | 5              | 12         | 12                  | 0      | 2      | 0          | 0            | 0   | 49          |
| Spoke in Churches                       | 3      | 18      | 0              | 20            | 0                 | 8     | 18     | 2       | 0                | 2         | 1             | 7              | 12         | 12                  | 4      | 0      | 0          | 16           | 0   | 123         |
| Crisis Intervention Sessions            | 7      | 39      | 3              | 0             | 0                 | 7     | 16     | 0       | 5                | 6         | 6             | 12             | 12         | 7                   | 23     | 8      | 3          | 23           | 0   | 177         |
| Marriage Counseling                     | 1      | 7       | 0              | 2             | 0                 | 3     | 1      | 0       | 0                | 0         | 0             | 1              | 0          | 0                   | 0      | 0      | 0          | 0            | 0   | 15          |
| Denominational Meeting                  | 0      | 4       | 0              | 0             | 0                 | 0     | 0      | 0       | 0                | 0         | 2             | 0              | 0          | 0                   | 0      | 0      | 0          | 0            | 0   | 6           |
| Chaplain's Meeting                      | 0      | 0       | 0              | 2             | 0                 | 1     | 0      | 2       | 0                | 1         | 1             | 3              | 1          | 1                   | 1      | 13     | 0          | 3            | 0   | 29          |
| Volunteer Training Session              | 1      | 0       | 0              | 1             | 0                 | 9     | 0      | 0       | 0                | 0         | 0             | 8              | 0          | 0                   | 1      | 1      | 0          | 0            | 0   | 21          |
| Choir Trip                              | 0      | 0       | 0              | 0             | 0                 | 0     | 0      | 0       | 0                | 0         | 0             | 0              | 0          | 0                   | 0      | 0      | 0          | 0            | 0   | 0           |
| Chaplain Transfers                      | 0      | 0       | 0              | 0             | 0                 | 0     | 0      | 0       | 1                | 0         | 0             | 0              | 0          | 0                   | 0      | 0      | 0          | 0            | 0   | 1           |
| <b>Chaplain Promotions</b>              |        |         |                |               |                   |       |        |         |                  |           |               |                |            |                     |        |        |            |              |     |             |
|   | 0      | 0       | 0              | 1             | 0                 | 0     | 0      | 0       | 0                | 0         | 0             | 0              | 0          | 0                   | 0      | 0      | 0          | 0            | 0   | 1           |
| <b>PAL PROGRAM</b>                      |        |         |                |               |                   |       |        |         |                  |           |               |                |            |                     |        |        |            |              |     |             |
| Enrolled at start of month              | 0      | 47      | 14             | 50            | 0                 | 0     | 51     | 53      | 22               | 32        | 31            | 42             | 0          | 28                  | 62     | 41     | 0          | 26           | 0   | 499         |
| Enrolled during the month               | 0      | 5       | 0              | 3             | 0                 | 0     | 1      | 2       | 3                | 6         | 3             | 3              | 0          | 4                   | 9      | 7      | 0          | 7            | 0   | 53          |
| Removed From PAL Program                |        |         |                |               |                   |       |        |         |                  |           |               |                |            |                     |        |        |            |              |     |             |
| # Paroled                               | 0      | 0       | 0              | 2             | 0                 | 0     | 1      | 2       | 0                | 4         | 3             | 0              | 0          | 0                   | 3      | 0      | 0          | 3            | 0   | 18          |
| # Completed                             | 0      | 1       | 0              | 2             | 0                 | 0     | 0      | 1       | 0                | 1         | 2             | 1              | 0          | 1                   | 2      | 2      | 0          | 1            | 0   | 14          |
| # Withdrew                              | 0      | 1       | 0              | 0             | 0                 | 0     | 0      | 4       | 0                | 1         | 3             | 0              | 0          | 0                   | 2      | 4      | 0          | 0            | 0   | 15          |
| # Removed                               | 0      | 3       | 0              | 0             | 0                 | 0     | 1      | 2       | 1                | 3         | 1             | 0              | 0          | 3                   | 2      | 2      | 0          | 0            | 0   | 18          |
| # Transferred                           | 0      | 0       | 0              | 1             | 0                 | 0     | 0      | 1       | 1                | 1         | 0             | 1              | 0          | 0                   | 0      | 0      | 0          | 0            | 0   | 5           |
| Total Removed from PAL Program          | 0      | 5       | 0              | 5             | 0                 | 0     | 0      | 11      | 2                | 10        | 9             | 2              | 0          | 4                   | 9      | 8      | 0          | 4            | 0   | 70          |
| Total Enrolled at the End of the Month  | 0      | 47      | 14             | 48            | 0                 | 0     | 50     | 44      | 23               | 28        | 25            | 43             | 0          | 28                  | 62     | 40     | 0          | 29           | 0   | 481         |
| Volunteers In PAL                       | 0      | 28      | 2              | 10            | 0                 | 0     | 19     | 14      | 10               | 32        | 6             | 0              | 0          | 6                   | 7      | 2      | 0          | 4            | 0   | 140         |
| <b>Special Events:</b>                  |        |         |                |               |                   |       |        |         |                  |           |               |                |            |                     |        |        |            |              |     |             |
|   | 5      | 1       | 0              | 0             | 0                 | 0     | 1      | 1       | 0                | 3         | 1             | 0              | 0          | 1                   | 0      | 3      | 1          | 1            | 0   | 18          |

## Medical Grievances

| <b>Unit</b>      | <b><i>Acknowledged/<br/>Received</i></b> | <b><i>Rejected</i></b> | <b><i>Reviewed &amp;<br/>Signed by Dep<br/>Director</i></b> | <b><i>With Merit</i></b> | <b><i>With Merit, but<br/>Resolved</i></b> | <b><i>% With Merit</i></b> | <b><i>Without Merit</i></b> |
|------------------|--|------------------------|---|--------------------------|--|----------------------------|-----------------------------|
| Benton           | 0  | 0                      | 0   | 0                        | 0  | 0%                         | 0                           |
| Boot Camp        | 0  | 0                      | 0   | 0                        | 0  | 0%                         | 0                           |
| Bowie Co.        | 3  | 0                      | 3   | 0                        | 0  | 0%                         | 3                           |
| CMU              | 0  | 0                      | 0   | 0                        | 0  | 0%                         | 0                           |
| Cummins          | 27                                       | 6                      | 21  | 3                        | 0  | 14%                        | 18                          |
| Delta            | 9  | 1                      | 8   | 2                        | 0  | 25%                        | 6                           |
| EARU             | 15                                       | 4                      | 11  | 0                        | 0  | 0%                         | 11                          |
| EARU Max         | 45                                       | 6                      | 39  | 5                        | 0  | 13%                        | 34                          |
| Ester            | 2  | 0                      | 2   | 1                        | 0  | 0%                         | 1                           |
| Grimes           | 20                                       | 3                      | 17  | 0                        | 1  | 6%                         | 16                          |
| Hawkins          | 2  | 0                      | 2   | 0                        | 0  | 0%                         | 2                           |
| McPherson        | 13                                       | 3                      | 10  | 1                        | 1  | 20%                        | 8                           |
| MCWRC            | 0  | 0                      | 0   | 0                        | 0  | 0%                         | 0                           |
| MSU              | 42                                       | 2                      | 40  | 5                        | 0  | 13%                        | 35                          |
| North Central    | 16                                       | 1                      | 15  | 2                        | 0  | 13%                        | 13                          |
| NWAWRC           | 0  | 0                      | 0   | 0                        | 0  | 0%                         | 0                           |
| Ouachita         | 15                                       | 4                      | 11  | 0                        | 0  | 0%                         | 11                          |
| Pine Bluff       | 3  | 2                      | 1   | 0                        | 0  | 0%                         | 1                           |
| Randall Williams | 7  | 0                      | 7   | 0                        | 1  | 0%                         | 6                           |
| SNN              | 0  | 0                      | 0   | 0                        | 0  | 0%                         | 0                           |
| TRCC             | 0  | 0                      | 0   | 0                        | 0  | 0%                         | 0                           |
| Tucker           | 15                                       | 1                      | 14  | 0                        | 1  | 0%                         | 13                          |
| Varner           | 40                                       | 1                      | 39  | 1                        | 0  | 0%                         | 38                          |
| Varner S Max     | 78                                       | 5                      | 73  | 6                        | 0  | 8%                         | 67                          |
| WRU              | 9  | 0                      | 9   | 1                        | 0  | 0%                         | 8                           |
| WHM              | 2  | 0                      | 2   | 0                        | 0  | 0%                         | 2                           |
| WWR              | 0  | 0                      | 0   | 0                        | 0  | 0%                         | 0                           |
| <b>TOTAL</b>     | <b>363</b>                               | <b>39</b>              | <b>324</b>  | <b>27</b>                | <b>4</b>                                   | <b>10%</b>                 | <b>293</b>                  |

## ADC INPATIENT AND EMERGENCY ROOM UTILIZATION

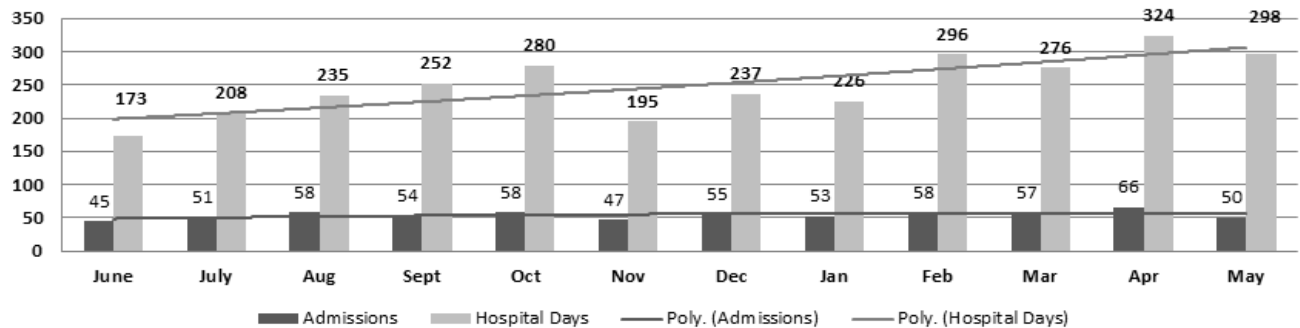
### ADC Inpatient Statistics Past 12 Months

|                        | 2015 |      |      |      |      |      |      | 2016 |      |      |      |      | Average |
|------------------------|------|------|------|------|------|------|------|------|------|------|------|------|---------|
|                        | June | July | Aug  | Sept | Oct  | Nov  | Dec  | Jan  | Feb  | Mar  | Apr  | May  |         |
| Admissions             | 45   | 51   | 58   | 54   | 58   | 47   | 55   | 53   | 58   | 57   | 66   | 50   | 54.3    |
| Hospital Days          | 173  | 208  | 235  | 252  | 280  | 195  | 237  | 226  | 296  | 276  | 324  | 298  | 250.0   |
| Average Length of Stay | 3.84 | 4.08 | 4.05 | 4.67 | 4.83 | 4.15 | 4.31 | 4.26 | 5.10 | 4.84 | 4.91 | 5.96 | 4.60    |

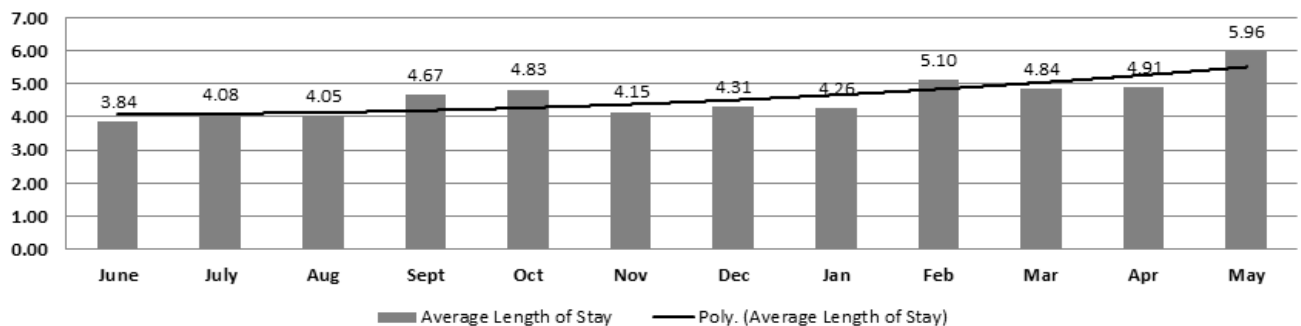
### ADC ER Visits Past 12 Months

|                       | 2015 |      |     |      |     |     |     | 2016 |     |     |     |     | Average |
|-----------------------|------|------|-----|------|-----|-----|-----|------|-----|-----|-----|-----|---------|
|                       | June | July | Aug | Sept | Oct | Nov | Dec | Jan  | Feb | Mar | Apr | May |         |
| Emergency Room Visits | 77   | 99   | 74  | 76   | 72  | 63  | 78  | 70   | 100 | 99  | 95  | 108 | 84.3    |

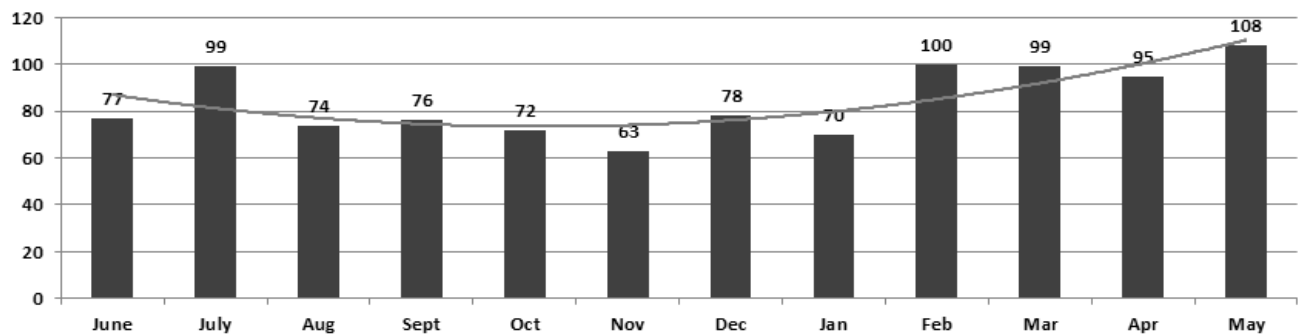
### ADC Inpatient Utilization Past 12 Months



### ADC Inpatient Average Length of Stay Past 12 Months



### ADC Emergency Room Visits Past 12 Months



## Monthly Purchase Orders Over \$10,000

|                                   | DESCRIPTION                | LOCATION                          | PO#        | PURCHASE AMOUNT | FUND                        |
|-----------------------------------|----------------------------|-----------------------------------|------------|-----------------|-----------------------------|
| W W Grainger Inc                  | Shop & Industrial Supplies | Cummins Unit                      | 4501621088 | \$12,747.01     | Operational Budget          |
| AR Dept of Correction Industries  | Inmate Clothing            | Ouachita Unit                     | 4501621279 | \$47,295.10     | Operational Budget          |
| AR Dept of Correction Industries  | Inmate Clothing            | Grimes Unit                       | 4501621426 | \$20,853.13     | Operational Budget          |
| AR Dept of Correction Industries  | Mattresses                 | Ester Unit                        | 4501621808 | \$34,571.25     | Ester Unit                  |
| Sysco Food Services of AR Inc     | Food Purchases             | Central Warehouse                 | 4501621988 | \$13,890.60     | Operational Budget          |
| Robbins Sales Company Inc         | Food Purchases             | Central Warehouse                 | 4501622006 | \$78,294.88     | Operational Budget          |
| National Food Group               | Food Purchases             | Central Warehouse                 | 4501622011 | \$40,066.80     | Operational Budget          |
| AR Dept of Correction Industries  | Food Purchases             | Central Warehouse                 | 4501622014 | \$22,160.00     | Operational Budget          |
| Atlantic Beverage Company         | Food Purchases             | Central Warehouse                 | 4501622024 | \$28,713.20     | Operational Budget          |
| A C Sales Co                      | Food Purchases             | Central Warehouse                 | 4501622037 | \$11,512.00     | Operational Budget          |
| JMS Russel Metals Corp            | Sheet Metal                | Tucker Unit/Industry              | 4501621593 | \$33,291.00     | Operational Industry Budget |
| Razor Chemical Inc                | Chemicals                  | Delta Regional Janitorial Factory | 4501621852 | \$17,771.10     | Operational Industry Budget |
| Dreamline Mfg Inc                 | Mattress Foam              | Tucker Unit/Industry              | 4501621610 | \$31,500.00     | Operational Industry Budget |
| Shamrock Meat Inc                 | Ground Beef                | Cummins Cold Storage Facility     | 4501621614 | \$180,400.00    | Operational Farm Budget     |
| Green Point AG LLC                | Herbicide                  | Cummins Chemical Shed             | 4501621606 | \$13,945.00     | Operational Farm Budget     |
| Acadian Hardwoods & Cypress       | Plywood                    | Wrightsville ACI Warehouse        | 4501621015 | \$10,908.00     | Operational Industry Budget |
| American Paper & Twine Co         | Paper Towels               | Central Warehouse                 | 4501622444 | \$11,039.62     | Operational Budget          |
| William R Hill & Co Inc           | Food Purchases             | Central Warehouse                 | 4501622453 | \$248,988.98    | Operational Budget          |
| Chapel Hardware & Garden Center   | Lawn Equipment             | Ester Unit                        | 4501622622 | \$10,679.23     | Ester Unit                  |
| Terry Ace Hardware                | Camera Equipment           | McPherson Unit                    | 4501622665 | \$14,851.75     | Telephone Funds             |
| Layne Christensen Company         | Water Well Drilling        | Tucker Unit                       | 4501622846 | \$387,779.50    | Prison housing              |
| Central Restaurant Products Inc   | Tilt Skillet               | Hawkins Unit                      | 4501622825 | \$16,098.13     | Operational Budget          |
| Fastenal Co                       | Camera Equipment           | McPherson Unit                    | 4501623103 | \$115,689.38    | Operational Budget          |
| Fastenal Co                       | Camera Equipment           | McPherson Unit                    | 4501623200 | \$123,516.16    | Operational Budget          |
| Fastenal Co                       | Camera Equipment           | McPherson Unit                    | 4501622843 | \$455,292.24    | Operational Budget          |
| AR Dept of Correction Industries  | Janitorial Supplies        | Central Warehouse                 | 4501623464 | \$70,132.09     | Operational Budget          |
| U S Foods                         | Food Purchases             | Central Warehouse                 | 4501623452 | \$98,488.96     | Operational Budget          |
| William R Hill & Co Inc           | Food Purchases             | Central Warehouse                 | 4501623443 | \$268,176.23    | Operational Budget          |
| Cruse Uniforms and Equipment Inc  | Body Armor                 | Training Academy                  | 4501622952 | \$97,129.50     | Operational Budget          |
| Jail Education Solutions Inc      | Network Equipment          | Information Services              | 4501623098 | \$15,145.50     | Operational Budget          |
| Green Point AG LLC                | Herbicide                  | Tucker Unit/Farm                  | 4501623238 | \$13,603.00     | Operational Farm Budget     |
| AR Dept of Correction Industries  | Tissue Paper               | Central Warehouse                 | 4501623694 | \$23,121.25     | Operational Budget          |
| Capital Fire Extinguisher Co Inc  | Fire Suppression System    | Wrightsville Industry             | 4501622218 | \$10,716.58     | Operational Industry Budget |
| Snyder Environmental & Const Co   | Tech Serice, Labor         | Cummins Unit                      | 4501621411 | \$35,848.03     | Operational Budget          |
| W W Grainger Inc                  | Security Supplies          | Ester Unit                        | 4501623222 | \$41,329.74     | Ester Unit                  |
| McClendon Mann & Felton Gin Co    | Cottonseed, Feed           | Cummins Unit/Farm                 | 4501623473 | \$19,091.20     | Operational Farm Budget     |
| Green Point AG LLC                | Herbicide                  | Cummins Chemical Shed             | 4501623461 | \$17,540.41     | Operational Farm Budget     |
| Charm Tex Inc                     | Mattresses                 | Benton Unit                       | 4501624778 | \$11,484.24     | Work Release                |
| AR Dept of Correction Industries  | Bulk Form Order            | Purchasing                        | 4501625603 | \$32,570.99     | Operational Budget          |
| Riceland Foods Inc                | Livestock Feed             | Cummins Feed Mill                 | 4501623311 | \$88,938.00     | Operational Farm Budget     |
| Tabb Textiles Co Inc              | Fabric                     | Wrightsville ACI Warehouse        | 4501624823 | \$39,000.00     | Operational Industry Budget |
| Razor Chemical Inc                | Chemicals                  | Delta Regional Janitorial Factory | 4501624844 | \$29,962.16     | Operational Industry Budget |
| W W Grainger Inc                  | Locks & Keys               | Ester Unit                        | 4501625592 | \$22,443.88     | Ester Unit                  |
| Cedar Creek LLC                   | Lumber                     | Wrightsville ACI Warehouse        | 4501625275 | \$16,515.00     | Operational Industry Budget |
| Helena Chemical Company           | Soybean Seed               | Tucker Unit/Farm                  | 4501625618 | \$22,200.00     | Operational Farm Budget     |
| Mid States Services Inc           | Tissue Paper               | Hawkins Unit ACI Imaging          | 4501624826 | \$40,550.40     | Operational Industry Budget |
| Miller Bowie Supply Com           | Feed                       | Cummins Feed Mill                 | 4501625570 | \$181,440.00    | Operational Farm Budget     |
| Goddess Products Inc              | Office Supplies            | Ester Unit                        | 4501626106 | \$10,763.53     | Ester Unit                  |
| W W Grainger Inc                  | Shop Supplies              | Ester Unit                        | 4501626702 | \$11,088.11     | Ester Unit                  |
| Western Detention Products Inc    | Keys                       | Ester Unit                        | 4501626230 | \$12,344.46     | Ester Unit                  |
| Long Lake Irrigation              | Pipe                       | Cummins Unit/Farm                 | 4501626980 | \$18,382.50     | Operational Farm Budget     |
| Helena Chemical Company           | Fertilizer                 | Tucker Unit/Farm                  | 4501626623 | \$45,206.40     | Operational Farm Budget     |
| Mid South Sales Inc               | Low Sulfur Red Diesel      | Tucker Unit/Farm                  | 4501625717 | \$12,055.64     | Operational Farm Budget     |
| Barnes Paper Co                   | Egg Cartons                | Cummins Unit/Farm                 | 4501626610 | \$47,775.15     | Operational Farm Budget     |
| Green Point AG LLC                | Fertilizer                 | Cummins Chemical Shed             | 4501626674 | \$31,020.00     | Operational Farm Budget     |
| Green Point AG LLC                | Fertilizer                 | Cummins Chemical Shed             | 4501626346 | \$95,810.00     | Operational Farm Budget     |
| Green Point AG LLC                | Herbicide                  | Cummins Chemical Shed             | 4501626339 | \$43,973.50     | Operational Farm Budget     |
| Green Point AG LLC                | Herbicide                  | Tucker Unit/Farm                  | 4501626281 | \$21,259.35     | Operational Farm Budget     |
| Triple J Flying Service Inc       | Aerial Application         | Cummins Unit/Farm                 | 4501621621 | \$13,327.60     | Operational Farm Budget     |
| Huntley Metal Sales               | Stainless Steel            | East AR Unit                      | 4501627353 | \$42,984.51     | Telephone Funds             |
| Pioneer Distributing Co           | Kitchen Equipment          | Grimes Unit                       | 4501626696 | \$20,545.10     | Operational Budget          |
| Mid States Services Inc           | Tissue Paper               | Hawkins Unit ACI Imaging          | 4501626995 | \$64,819.20     | Operational Industry Budget |
| Southern Pipe & Supply Co Inc     | Boiler & Accessories       | Grimes Unit                       | 4501628232 | \$20,881.34     | Operational Budget          |
| Green & Chapman LLC               | Unleaded Gasoline          | Cummins Unit                      | 4501625586 | \$14,714.43     | Operational Budget          |
| Simpson Door & Hardware LLC       | Building Supplies          | Ester Unit                        | 4501628088 | \$41,177.61     | DOC Existing Facilities     |
| Robbins Sales Company Inc         | Food Purchases             | Central Warehouse                 | 4501628637 | \$30,073.68     | Operational Budget          |
| Terry Ace Hardware                | Padlocks & Master Keys     | Ester Unit                        | 4501628224 | \$10,722.58     | Ester Unit                  |
| Mid South Sales Inc               | Low Sulfur Clear Diesel    | Cummins Unit/Farm                 | 4501623646 | \$22,656.61     | Operational Farm Budget     |
| Razor Chemical Inc                | Chemicals                  | Delta Regional Janitorial Factory | 4501627813 | \$15,203.90     | Operational Industry Budget |
| MFA Inc                           | Chemicals                  | Cummins Unit/Farm                 | 4501627445 | \$15,681.75     | Operational Farm Budget     |
| Total for Purchases over \$10,000 |                            |                                   |            | \$3,839,748.17  |                             |

## FIRM CONTRACTS OVER \$25,000.00

| VENDOR                             | DESCRIPTION                   | UNIT       | Contract #<br>P.O.# | PURCHASE AMOUNT | FUND                    |
|------------------------------------|-------------------------------|------------|---------------------|-----------------|-------------------------|
| D & J Steel Inc                    | Metal Building                | Ester Unit | 4501622354          | \$155,390.64    | ADFA Ester II           |
| B R McGinty Mechanical Contractors | HVAC Equipment & Installation | Ester Unit | 4501627101          | \$665,959.71    | DOC Existing Facilities |
| Total for Contracts                |                               |            |                     | \$821,350.35    |                         |

## EMERGENCY PURCHASE ORDERS OVER \$25,000.00

|                    |  |  |  |                |  |
|--------------------|--|--|--|----------------|--|
|                    |  |  |  | \$0.00         |  |
| Total EM Purchases |  |  |  | \$0.00         |  |
| Total Purchases    |  |  |  | \$4,661,098.52 |  |

**Arkansas Department of Correction  
Vacancies, Hires and Terminations  
May 2016**

| <b>UNIT</b>                              | <b>VACANCIES</b> | <b>HIRES</b> | <b>TERMINATIONS</b> |
|--|------------------|--------------|---------------------|
| BENTON (CR05)                            | 7                | 3            | 4                   |
| CENTRAL OFFICE (CR01, CR02, CR08 & CR22) | 22               | 2            | 4                   |
| CHAPLAINCY                               | 4                | 0            | 1                   |
| CONSTRUCTION (CR04)                      | 12               | 2            | 2                   |
| CUMMINS (CR09)                           | 86               | 6            | 7                   |
| DELTA (CR10)                             | 7                | 6            | 1                   |
| EAST ARKANSAS (CR12)                     | 46               | 17           | 10                  |
| ESTER (CR11)                             | 18               | 0            | 2                   |
| FARM (CR29)                              | 8                | 0            | 0                   |
| GRIMES (CR27)                            | 9                | 12           | 5                   |
| INDUSTRY (CR07)                          | 13               | 1            | 0                   |
| MAXIMUM SECURITY (CR14)                  | 32               | 11           | 2                   |
| MCPHERSON (CR28)                         | 19               | 7            | 2                   |
| MENTAL HEALTH                            | 24               | 0            | 0                   |
| MISS COUNTY (CR15)                       | 2                | 0            | 1                   |
| NORTH CENTRAL (CR16)                     | 3                | 1            | 0                   |
| NORTHWEST ARK (CR17)                     | 2                | 0            | 1                   |
| OUACHITA RIVER (CR30)                    | 49               | 11           | 6                   |
| PINE BLUFF (CR20)                        | 3                | 0            | 1                   |
| RANDAL L. WILLIAMS (CR13)                | 4                | 0            | 2                   |
| TEXARKANA (CR21)                         | 0                | 0            | 0                   |
| TRANSPORTATION (CR32)                    | 1                | 1            | 0                   |
| TUCKER BOOTCAMP (CR33)                   | 5                | 2            | 2                   |
| TUCKER (CR23)                            | 33               | 4            | 6                   |
| VARNER (CR24)                            | 43               | 11           | 3                   |
| VARNER SUPER MAX (CR31)                  | 46               | 1            | 3                   |
| WRIGHTSVILLE (CR25)/HAWKINS(CR06)        | 20               | 13           | 1                   |
| <b>TOTAL</b>                             | <b>518</b>       | <b>111</b>   | <b>66</b>           |

**ARKANSAS DEPARTMENT OF CORRECTION**  
**Construction Budget / Status Report**  
**Report Date - June 16, 2016**  
**Data as of 06/01/16**

| Fund                     | Project Desc   | Total Projected<br>Spend | Budget      | Available<br>Funds | \$ %<br>Complete | Construction<br>% Complete | Notes   |
|--------------------------|--|--------------------------|-------------|--------------------|------------------|----------------------------|---|
| 7004810                  | Cummins Poultry Houses                                 | \$5,503,101              | \$6,100,000 | \$596,899          | 90%              | 90%                        | Generator arrived March 1. Start up March 9. Cooler in design.  |
| 7004819                  | ESTER - Phase 1  | \$3,893,523              | \$4,000,000 | \$106,477          | 97%              | 97%                        | 184 beds opened 7/1/15. Kitchen complete. 190 beds opened January 2016. Phase 3 roof and interior underway. |
| 700481A                  | ESTER - Phase 2 1A                                     | \$1,469,981              | \$5,100,000 | \$3,630,019        | 29%              | 80%                        |   |
| 7004820                  | ESTER - Phase 2 - Kitchen                              | \$373,623                | \$1,700,000 | \$1,326,377        | 22%              | 100%                       |   |
| KBR4Q95                  | ESTER - Phase 3 - General Improvement Fund             | \$1,563,675              | \$7,400,000 | \$5,836,325        | 21%              | 20%                        |   |
| NDC0100                  | Wrightsville Generator                                 | \$182,261                | \$200,000   | \$17,739           | 91%              | 100%                       | 1st phase complete, 2nd phase prioritized.  |
| 70004820                 | Tucker 2016 New Well                                   | \$388,344                | \$550,000   | \$161,656          | 71%              | 0%                         | Contractor on site, setting up, 120 days to complete  |
| 7004815                  | ORCU- Chapel   | \$98,047                 | \$200,000   | \$101,953          | 49%              | 6%                         | Prelim Design Started   |
|                          | Pine Bluff Unit Barracks Renovation                    |                          | \$784,000   |                    |                  |                            |   |
| Telephone Projects       |  |                          |             |                    |                  |                            |   |
| Maintenance & Operations | Camera Equipment - All Units                           | \$396,297                | \$400,000   |                    |                  |                            |   |
|                          | Camera Equipment - 509 FC                              | \$0                      | \$100,000   | \$103,703          | 79%              | 1%                         |   |
|                          | Fire Alarm Upgrades (All Units)                        | \$51,318                 | \$75,000    | \$23,682           | 68%              | 71%                        | All identified are complete.  |
|                          | Locks/Riot Gates - All Units                           | \$51,011                 | \$75,000    | \$23,989           | 68%              | 60%                        | EARU underway.  |
|                          | Gates and Fences all units                             | \$43,362                 | \$50,000    | \$6,638            | 87%              | 81%                        | RLW Underway  |
|                          | Gas Stations - Canopy (C/O)                            | \$6,754                  | \$12,000    | \$5,246            | 56%              | 85%                        | Canopy built in shop to do foundation   |
|                          | Stainless Steel - Kitchen/Shower/Restrooms - All Units | \$90,973                 | \$150,000   | \$59,027           | 61%              | 80%                        | On Going, sinks, showers, ceiling.  |
|                          | ACA Maintenance  | \$151,345                | \$200,000   | \$48,655           | 76%              | 100%                       |   |
|                          | ADA Projects - All Units                               | \$3,626                  | \$25,000    | \$21,374           | 15%              | 100%                       |   |
|                          | Fast Top Floor Systems - (kitchen/laundry/showers all) | \$27,689                 | \$50,000    | \$22,311           | 55%              | 55%                        | 100% of identified projects   |
|                          | Lawn Equipment - All Units                             | \$0                      | \$0         | \$0                |                  |                            | Moved 1/20/16   |
|                          | Parking Lot - Gravel and Paving - EARU                 | \$0                      |             |                    |                  |                            | Plans underway.   |
|                          | Parking Lot - Gravel and Paving - Tucker               | \$0                      | \$344,106   | \$344,106          | 0%               |                            |   |
|                          | Parking Lot - Gravel and Paving - Other Units          | \$0                      |             |                    |                  |                            |   |
|                          | Subtotal   | \$822,374                | \$2,128,027 | \$658,732          |                  |                            |   |
| FY15 Carryforward        | ORCU Gravel Pit Operations                             | \$81,896                 | \$87,762    | \$5,866            | 93%              | 91%                        | continual   |
|                          | Cummins Non-Contact Visitation                         | \$0                      | \$0         | \$0                | 0%               | 0%                         | on hold   |
|                          | Tucker Pole Barn (Reg. Maint.) Firing Range            | \$15,672                 | \$17,932    | \$2,260            | 87%              | 100%                       |   |
|                          | Metal Ceilings   | \$162,184                | \$200,000   | \$37,816           | 81%              | 81%                        | Max Barracks 1 in process.  |
|                          | TWWPP Containers 4                                     | \$17,103                 | \$22,103    | \$5,000            | 77%              | 35%                        | 1 of 3 built  |
|                          | Subtotal   | \$276,855                | \$327,799   | \$50,944           |                  |                            |   |
| FY16 New Projects        | Dog Kennel/Horse Stable Malvern                        | \$0                      | \$48,000    | \$48,000           | 0%               | 0%                         |   |
|                          | Wrightsville Kitchen Roofing Repairs                   | \$17,894                 | \$15,000    | (\$2,894)          | 119%             | 0%                         | Material on site  |
|                          | Wrightsville Emergency Generator continuation          | \$0                      | \$300,000   | \$300,000          | 0%               |                            |   |
|                          | Boiler Repairs - Varner                                | \$100,779                | \$100,000   | (\$779)            | 101%             | 100%                       | 100% of identified projects   |
|                          | Grimes Sallyport                                       | \$8,606                  | \$10,000    | \$1,394            | 86%              | 100%                       | Complete  |
|                          | PB Kitchen HVAC  | \$27,239                 | \$40,000    | \$12,761           | 68%              | 60%                        | Added: 2/4/16, Equipment on Site  |
|                          | EARU Firing Range                                      | \$12,740                 | \$20,000    | \$7,260            | 64%              | 95%                        | lack awning & skirting  |
|                          | Roof Repairs-Tucker                                    | \$2,047                  | \$285,894   | \$261,586          | 9%               | 30%                        | Underway  |
|                          | Roof Repairs-Varner                                    | \$16,081                 |             |                    |                  | 50%                        | Underway  |
|                          | Roof Repairs-East Arkansas                             | \$6,181                  |             |                    |                  | 20%                        | Underway  |
|                          | Roof Repairs-Cummins Laundry                           | \$4,312                  |             |                    |                  | 25%                        | Underway  |
|                          | Subtotal   | \$195,878                |             |                    |                  | \$848,894                  | \$657,328   |
| Subtotal                 |  | \$1,295,106              | \$3,304,720 | \$1,367,005        | 39%              |                            |   |

**Notes**

- \* Report has not been reconciled against Accountings Reconciled Reports.
- \* Tolerance/Deviation is with in 1% of Projected Spending.
- \* FY2015 Carry forward to FY2016 Project Budget = (FY2015 Actual Spending + FY2016 Approved Budget Amount.)