

Wendy Kelley
Director

February
2016



OPERATIONS/INSTITUTIONS

RESEARCH/PLANNING

January Admissions and Releases – Admissions for January totaled **767** (690-males & 77-females), while releases totaled **583** (504-males and 79-females), for a net increase in-house of **184**.

Inmate Population Growth/Projection – At the end of January the Arkansas Department of Correction population totaled **17,785** representing a growth of 78 inmates since the first of January. The Calendar Year 2016 average growth is 78 Inmates per month, up from an average monthly growth during calendar year 2015 of -14 Inmates per month.

Average County Jail Backup – The backup in the County Jails averaged **1,087** inmates per day during the month of January – down from an average of **1,324** inmates per day for the month of December, 2015.

ACCREDITATION

Accreditation:

The accreditation manager attended the 2016 ACA Winter Conference in New Orleans, Louisiana, January 22-27, to receive the Accreditation Award for the Varner Unit; scores were 100% Mandatory and 99.5% Non-Mandatory.

ACA Internal Audits Completed:

Jan. 14 Pine Bluff Complex second pre-audit

Classes Taught:

Jan. 12 Training Academy

Fire/Safety and Sanitation independent audits conducted by the Fire and Sanitation Coordinator:

Jan. 14 McPherson/Grimes Industry Audit
Jan. 15 Central Maintenance Audit
Jan. 19 – 27 Pine Bluff Complex Audit prep
Jan. 29 Pine Bluff Complex Audit prep

PREA

PREA Hotline Data:

There were no reported issues with the PREA Hotline. Internal Affairs is handling all PREA investigations. Gender Responsiveness Training was provided for the Pine Bluff Complex and the Wrightsville Complex. PREA Demonstration Project phase is

transitioning from testing to production for Mental Health electronic PREA screenings; hotline calls, which are now entered in Incident Reporting; PREA e-mail alerts are now generated for suspected PREA incidents to key staff, and we now have the ability to automate data collection with enumeration of incident characteristics and outcomes for annual SSV reporting.

Number of calls received	37
Total calls referred for reported PREA issue	10
Total calls referred for non-PREA issue	15
Calls referred due to technical failure	0
Calls referred to IAD	5

FARM

The ADC agriculture division sold cattle through Superior Live-stock for the first time this month. Superior is an auction company that accepts bids in person, by phone and internet. They have over 7,000 registered bidders. Our cattle sold on January 15th and we did receive good prices. This auction is comparable to the Oklahoma City stockyards. When comparing the prices we received 30 cents per pound more than the auctions in Arkansas for those days.

The row crop farms used the month to repair equipment for the field as soon as the ground dries. The row crop supervisors attended several meetings during the month to see the latest farming chemicals and techniques.

The gardens harvested greens during the month. We did extensive planning for the upcoming year for vegetable production. We have plans in place for the Units with gardens to be successful this year.

The Horse Sale Committee met and made the final plans for the upcoming horse auction March 11-12.

We held our farm managers meeting at Cummins on January 21st. All farm managers were present and discussed the upcoming crops. We discussed security needs, equipment needs and marketing crops. The next manager meeting will be in April at Wrightsville.

INMATE GRIEVANCE

Inmate Formal / Informal Grievances: In January, there was a total of 1,872 formal grievances filed and 3,747 informal grievances filed at various units.

Institutional Grievances: There was a total of 475 appeals of institutional grievances received and 346 appeals were answered in January. Eight were found with merit.

RE-ENTRY

CHAPLAINCY SERVICES

Benton Work Release

On January 9, the movie "Courageous" was shown. Fifty-eight inmates attended and one indicated that he was saved at the event.

On January 12, 19, and 26, Financial Peace University classes were held with 62 inmates participating.

On January 16 and January 30 Courageous Bible Study, "Honor Begins at Home," was held with 44 inmates attending.

Hawkins Unit

On January 17, the APAL Program led a worship service for the compound under the oversight of a chaplain with 98 inmates attending.

McPherson

On January 28 and January 29, the chaplaincy presented a compound showing of War Room on the big screen in the PAL Barracks. Inmates were also given popcorn and lemonade that was provided by the Inmate Council and the Chaplaincy. The event was attended by 528 inmates. The event was staffed by four CRAs, 22 OCVs, and one chaplain.

Tucker Unit

On January 6 and January 20, Compassionate Communication class was held in the chapel. Eight inmates attended each session.

Wrightsville Unit

We held our regularly scheduled Quarterly CRA Meeting at First Pentecostal Church in North Little Rock. Chaplain Chamberlain facilitated the program. Chaplains Gillespie, Treasure, and D'Arezzo were all present. We had approximately 13 CRAs present and gave out about 10 CRA applications.

ORCU

In the month of January, a KAIROS reunion day was held at Ouachita River Unit with 35 inmates participating. Also, an open meeting for the Celebrate Recovery program was held with 25 inmates attending.

EARU

Chaplaincy Services assisted in the January 12 opening of the East Arkansas Regional Unit Reentry barracks. Fifty-five inmates were initially housed in the barracks.

Grimes

Throughout the course of the month of January, the Grimes Unit Chaplaincy has worked with unit administration to create plans and set target dates for two programs that we hope will greatly impact the inmate population: KAIROS and the unit reentry programming.

NCU

Reverend Joseph Blake came to North Central Unit and led revival services from January 6-10. An average of 123 inmates attended each service.

Preparing for Success: January 2016

	Slots	Completed	Discharged	End Count
McPherson	15	2	0	9
Ester-3 BKS	50	12	7	53
Ester-4 BKS	50	6	6	53
Total	115	20	13	115

There are 589 males and 65 females on the waiting list within 42 months of their release date and of those, ten males are mandated by the Board of Parole. The average time on the waiting list is about three months. The total on the waiting list, including those not currently within the identified time frame, is 659 males and 92 females.

Volunteer Services

The total number of volunteer hours for the month of January 2016:

Unit	Hours
RLW	40
North Central	2
Ouachita River	26
Pine Bluff	12
PAWS	2
WSU	292
Pine Bluff Unit – Pre-Release	6
Religious Volunteer-all Units	4455
TOTAL	4835

ADMINISTRATIVE SERVICES

ADMINISTRATIVE SERVICES

Procurement Section Update:

- Contracts/Bids Status:**

- Contract Renewals**

- Waste Disposal- Newport Complex
- Personal Care Items-Central Warehouse

- Current Bids (OSP)**

- (Ester Unit Phase III)
- Structural Steel

Roofing
Hot Water Storage Lining/Tubing
Metal Building
Fire Suppression

Minority Spending, 2nd Quarter FY16
October-December \$188,563.41 (1.39%)
Total to Date FY16-\$344,509.07

Human Resource Update:

Workplace Safety – During the month of January the modified version of the Health and Safety Plan was presented to two Basic Training classes with a total of 151 cadets in attendance.

There were 42 incidents reported to the company nurse in January, which is our total to date for the beginning of 2016. The safety topic, “Safe Lifting,” was presented to 55 employees located at the Administration Annex East Facility.

Benefits - There were 34 MIPS promotions and 119 MIPS payments. Seventy-one FMLA requests were processed with all approved. A total of 11 CAT leave requests were processed with six approved and five denied. Nine-hundred-fourteen hours were donated to the CAT Leave bank. There were six applications received for shared leave with five approved for a total of 593 hours of donated time, and one denied.

Physical Assessments – There was a total of 188 applicants and incumbent personnel who were assessed in the month of January. Ninety-seven incumbent personnel successfully completed their physical assessments and four incumbent personnel did not. Of those four, two rescheduled and passed; and the other two are pending rescheduled dates. Eighty-five applicants passed their physical assessments and two did not. One applicant rescheduled and passed, the other has not rescheduled.

Employment – Facebook results for the month showed a total of 2,891 “likes” of our page. Through Discover Corrections, there were 3,949 people from across the U.S. who viewed ADC’s page. This site does not allow you to review comments made unless the viewer applies for a position through their site and is hired. During the month of January there were no applications submitted for ADC through the Discover Corrections website.

The reporting features that INS (Information Network Systems) has developed for the ARStateJobs website (all agencies) have been implemented. We have requested agency specific features, but have not received notification that those changes have been made. Because of duplicating information, we are now only tracking COI applications through the ARStateJobs website. This site does not have the capabilities to give us a breakdown.

There were a total of 2,550 applications received from AR-StateJobs during January. There were 66 non-correctional

applications and 86 COI applications processed. One hundred twenty-three correctional officers were hired and 27 correctional officers were rehired.

Administrative Services Division Monthly Reports (attached) include:

Gifts, Grants, and Donations/Inmate Welfare Fund Balance (required by policy) – During the month of January, are reported as follows:

Inmate Welfare Fund balance on January 1-31 was \$4,102,901.01.

PAWS in Prison Fund balances total on January 1- 31, were \$83,255.12 in ADC. Account (7004822/Donations) \$19,109.05 and ADC account (NDC0500/Recycling) \$64,146.07. This does not include the Foundation account managed by PIP Foundation Board.

Procurement/Contracts Report (required by policy) – For January 2016, purchase orders and contracts in excess of \$10,000 amounted to \$3,179,862.32. Of this amount, \$1,687,486.90 was for inmate care and custody related items (food, shoes, clothing, etc.). Bulk fuel costs for the month of December were \$23,059.72 - average cost of E-10 was \$1.54/gallon; there were no bulk diesel purchases for the month of January.

Vacancies, Hires, and Terminations - On January 31 there were a total of 555 vacancies, 97 new hires, and 76 terminations at the various ADC locations.

Information Technology:

In January, the IT department continued to work with SECURUS on the deployment of Securus Video Visitation (SVV) KIOSK in facilities. SVV deployment for the Cummins Unit is tentatively scheduled for mid-February. As sites are deployed, a short announcement of the new service will be played during phone calls to friends and families for a 30-day time frame.

Technicians have been busy at the Ester Unit with installation of computers, printers, phones and the moving of Re-Entry staff to the unit.

Additional purchase of Laserfiche licensing has been procured to expand scanning of staffing documents in Unit Human Resources. When completed, Central HR and Unit HR will all have access to a central HR repository utilizing electronic records. This process will improve performance since all documents will be available in one location. The elimination of many filing cabinets for paper documents has also been achieved.

The network team has finished the fiber pairs at McPherson Unit and worked with Grimes on a partial site survey for fiber infrastructure planning and material requirements.

Progress for Wrightsville fiber infrastructure is pending infor-

mation concerning prior conduit installation.

We continue to address video court hearings as scheduled; testing, repairing and replacing equipment as needed. This includes staff training and laptop installations for increased volume and backup systems.

eOMIS discussion and conference calls included the following:

SIS sentence data entry work flow was changed to resolve an issue with how SIS sentences are connected to an incarceration sentence and the flags selected. The change prevents data entry from adding the sentence to the TE/PE calculations and to display the correct date for the supervision calculations upon release from ADC.

Integrated Justice Project with Contexte automated courts system. Marquis requested the required IP address for accessing Contexte database to continue mapping sentence data components. Contexte worked with Marquis to provide system firewall access.

A project with ACIC Criminal History system migration from mainframe to a browser based system. ACIC's system is integrated with eOMIS which will require system changes.

A meeting was held with DIS to discuss the state Microsoft Enterprise Licensing announcement and other agency items. DIS is working to eliminate the state's 14 Microsoft Enterprise Licenses to consolidate into one state agreement.

An annual reduction in costs of \$145,320 and an increase in bandwidth were made available with no construction cost via DIS by AT&T. The sites included were Grimes, McPherson, Wrightsville, Compliance, Industry Warehouse, Mississippi County, and Delta Regional Unit. Bandwidth was increased from 6 meg to either a 10 or 20 meg circuit, depending on size.

Training Academy Update – Updates for the Training Academy include:

Basic Training Division

The BCOT 2015-Q class graduated on January 15th with 56 cadets. The Willis H. Sargent Award winner was Ronald Clifton of the Mississippi County Work Release. Warden James "Hoot" Gibson, of the Wrightsville complex served as the special speaker.

In-Service Division

The first class of the year was *Security for Non-Security 16*. This is the entry level class for contract staff, such as Correct Care Solution employees. They learn the basics of the correctional system, starting with an overview of the history of the department. From there, they gain information concerning policies and procedures to assist them. Topics such as sexual harassment, sexual misconduct, PREA, and con games helped round out the syllabus.

Two instructor certification courses were also conducted this month: *Red Cross First Aid/CPR/AED* and *Oleoresin Capsicum* or *O.C. Instructor Certification*. This gives the Department the ability to have certified instructors train the large amount of end users.

One thing we are testing is regional training. This means we are making trips to units to help with their training. A need arose this month and we traveled to the Wrightsville Unit to teach the *Sexual Harassment* class to about 20 field staff and supervisors.

eCADEMY

During the month of January, 225 ADC employees completed a total of 2635.00 hours of eCADEMY training, and 0.05% of ADC employees completed at least one course during that time frame for an average of 0.56 hours per staff member.

HEALTH/CORRECTIONAL PROGRAMS

Sex Offender Treatment Programs:

	SLOTS	COMPLETED	RE-MOVED	CLIENTS
RSVP	238	0	7	238
SOFT	30	0	0	10
Total	268	0	7	248

There are 719 males on the waiting list for RSVP and 30 females on the waiting list for SOFT within five years of their TE date, and of those, 51 are mandated by the Board of Parole. The average time on the waiting list from the request is three to six months for stipulated. The total on the waiting list, including those not currently within the identified time frame, is 1,556 males and 36 females. We have one PREA inmate in the program at this time.

Therapeutic Community:

	Slots	Completed	Re-moved	Clients
Tucker	129*	6	14	121
Wrtsvlle	45*	3	3	46
McPhrsn	50*	9	2	46
Total	224	18	19	213

There are 120 males and 31 females on the waiting list within 18 months of their release date and of those 17 are mandated by the Board of Parole. The average time on the waiting list from the request is 22 days. The total on the waiting list, including those not currently within the identified time frame, is 495 males and 51 females.

*Denotes transitional beds available at this treatment program. Tucker TC has 129 client slots and seven peer counselor slots.

S.A.T.P.:

	Slots	Completed	Re-moved	Clients
Grimes	50*	8	0	53
McPh	100*	32	7	101
MSU	3	0	0	3
RLW/CF	188*	26	4	181
Tucker	43*	5	2	43
Varner	44	5	6	46
Wrightsville	135*	7	8	141
Total	563	83	27	568

There are 2,019 males and 441 females on the waiting list within 18 months of their release date, and of those, 32 are mandated by the Board of Parole. The average time on the waiting list from the request is 13 days. The total on the waiting list, including those not currently within the identified time frame, is 2,949 males and 544 females.

*Denotes transitional beds available at this treatment program.

R.P.U.:

The Residential Program Unit at Ouachita had four admissions and six discharges in January for an end-of-month count of 67.

McPherson Mental Health Residential Program:

There were three admissions and two discharges in January for an end-of-month count of 40.

Habilitation Program:

The Habilitation Program at the Ouachita River Correctional Unit provided treatment services to 39 inmates during January. There was one admission and one discharge for an end-of-month count of 38.

Staffing:

The following Mental Health Services and SATP positions were vacant in December and January.

	December	January
Psychologists	8	8
Social Workers	5	7
Advisors	4	3
Substance Abuse Prog Leaders	5	4
Admin Specialist/Analyst	1	2

ADDITIONAL PROGRAM INFORMATION**Self-study classes:**

	Participants	Completed	Waiting List
Anger Management	343	224	1,288
Thinking Errors	364	277	2,423
SAE	66	27	596
Communication Skills	311	188	1,429
DV	67	45	1,070
Victims of DV	3	3	104
Stress Management	234	148	1,697
Parenting	207	164	1,261

SAE=Substance Abuse Education

DV=Domestic Violence

Suicide:

There were 42 suicidal threats, gestures or low/moderate risk attempts during January. There was one serious attempt that did not result in death.

Outpatient:

There were 2,145 inmates on the mental health medical log at the beginning of January. Mental Health conducted the following contacts during January:

Case management contacts	2,194
Requests for interviews	4,387
Testing	2
Intakes	864
Unit requests	1,182
Counseling (with treatment plans)	165
Pre-lock up reviews	507
Routine seg reviews	457
Seg rounds	9,588
PREA evaluations	12
Routine follow-up	196
834 requests	31

County Mental Health Requests:

During January, there were 36 requests of a mental health nature received. Six inmates were fast tracked to ADC.

County Medical Health Requests:

During January, there were 374 requests of a medical nature received and 15 were fast tracked to ADC.

Monetary Sanctions:

Sanction reimbursements for December were \$28,850.

Deaths:

There were four inmate deaths during the month of January with one body claimed, and three cremated.

CCS:

See attachment for CCS's report regarding outside beds and emergency room visits.

Medical Grievances:

In January, there were a total of 228 appeals of medical grievances received and 368 appeals were answered. Thirty-seven of those were found to be with merit and four were with merit but resolved.

SEX OFFENDER ASSESSMENT**Assessments Completed:**

Risk Level	January	Sept. 1999 thru Jan. 31, 2016
Level 1	0	1,147
Level 2	27	6,013
Level 3	19	5,947
Level 4	1	555
Default 3	6	**
Total	53	13,662

*Default Level 3's are included in the total number of Level 3's to date.

ACIC Numbers:

The total number of sex offenders registered from Sept. 1, 1999 to December 31, 2015:

In Compliance	7,266
Delinquent (Did not return address on time)	869
Confined	2,792
Out of State	2,871
Address Unknown (absconded)	183
Deceased	960
Deported	159
Incapacitated	61
Out of USA	3
Total	15,164

PAWS IN PRISON**Currently Enrolled in Training:**

Max	5
Tucker	8
Hawkins	4
RLW	4
ORCU	9
NCU	8
Total	38

Completed Training:

January 2016	28
YTD 2016	28
Since Inception Dec. 2011	687
Dogs Currently in foster: (Graduated but not adopted)	4

CONSTRUCTION**PROJECT UPDATES:****Barbara Ester Unit (Diagnostic):**

We are renovating barracks, re-roofing the unit and continuing to purchase material. We are installing new metal ceilings, and working on plumbing and electrical. We received approved plans from DBA for Phase 3 and new classrooms and are finishing up renovations to Phase 1 and Phase 2. The asbestos abatement is scheduled to start for Phase 3. Demolition also continues for Phase 3.

Cummins Unit:

Work continues on roof repairs and repairs to free line residences. We are hauling gravel from the Malvern pit to the road at the wastewater plant as weather permits.

Cummins Poultry:

The contract has been awarded for the new generator, which was scheduled to arrive January 25. The generator is now expected by March 2 due to a strike at Kohler.

East Arkansas Regional Unit:

Work is continuing on the new firing range, and road work will continue when it dries out. We have started putting metal roofs and under pinning on State trailers. We have also run fiber optic wire and conduit for building.

Ouachita River Correctional Unit:

Gravel operations are continuing. We have repaired the fuel system on the track hoe, and have installed a water separator and filters on the fuel tank. We have also received new chapel plans and specs, and are reconciling budget versus cost to build the chapel.

Newport/Grimes:

Construction on the new sallyport building continues and is nearing completion.

Pine Bluff Unit:

Remodeling of the free line residences continues.

Training Academy:

The pad has been poured for a generator and gravel is being put down for a parking lot.

Tucker Maximum Security Unit:

We are putting a metal ceiling on fir down in front of the cells in Barracks 5.

Varner:

Work continues on roof repairs, but we are waiting on material so that the job can be completed.

CONSTRUCTION PERSONNEL UPDATE:**14 vacancies:**

7 - Maintenance technicians

1 - Engineer

2 - Project supervisors

1 - Project specialist

1 - Administration specialist I

2 - CO/both pending approval; have been interviewed and paperwork sent to HR for approval.

Regional Maintenance Hours

January, 2016

Benton Unit	5,756
Delta Regional Unit	4,862
EARU	360*
Grimes	2,760
McPherson	2,540
Randall L. Williams	2,712
MSCOWRC	1,954
North Central Unit	6,264
Ouachita River	4,240
TRCC	1,910
Max Boot Camp	2,722
Varner Unit	2,496
Wrightsville Unit and Satellite	1,576
Total Hours	40,152

* This was due to bad weather and EARU field officers being in training for two weeks (80 hours).

Work Release Rent Report

January 2016

	Jan '16
Benton Unit	\$88,791.00
Pine Bluff ReEntry Unit	\$27,100.00
NWARWRC	\$39,321.00
MSCOWRC	\$39,882.00
Pine Bluff Unit	\$32,538.00
TRCC	\$37,468.00
Total Rent Paid	\$265,100.00

[illegible][illegible]

INMATE INSTITUTIONAL GRIEVANCE APPEAL REPORT

January 2016				
	Received	Rejected	Processed W/O Merit	Processed W/ Merit
Benton Unit	0	0	2	0
Benton Work Release	0	0	0	0
Bowie County Texas Correctional Facility	9	3	17	0
Cummins Unit	16	10	8	0
Cummins Modular Unit	2	1	0	0
Delta Regional Unit	7	4	6	1
Ester Unit	2	0	0	0
East Arkansas Regional Unit	17	3	2	0
East Arkansas Regional Maximum Unit	85	11	68	3
Grimes Unit	13	10	17	0
Maximum Security Unit	53	12	38	0
McPherson Unit	15	8	14	0
McPherson Mental Health Residential Program Unit	0	1	0	0
Mississippi County Work Release Center	0	0	0	0
Northwest Arkansas Work Release Center	0	0	0	0
North Central Unit	10	5	7	0
Ouachita River Correctional Unit	12	4	28	2
ORCU New Commitment	0	0	0	0
ORCU Mental Health Residential Program Unit	0	0	0	0
Pine Bluff Unit	1	2	0	0
Pine Bluff Re-Entry	2	1	2	0
Randall L. Williams Correctional Facility	4	2	4	0
Texarkana Regional Correctional Center	0	0	0	0
Tucker Unit	31	7	12	2
Varner Super Max	76	8	95	0
Varner Unit	12	4	15	0
Wrightsville Unit	4	3	2	0
Wrightsville Satellite Unit	0	0	0	0
Hawkins Center	2	2	1	0
Hawkins for Males	1	0	0	0
Hawkins SPU	0	0	0	0
Total	374	101	338	8

ADMISSIONS AND RELEASES

<u>Admissions</u>	<u>Male</u>	<u>Female</u>	<u>Total</u>
Asian	3	0	3
Black	282	16	298
Hispanic	23	1	24
Nat. Amer.	3	0	3
Hawaiian/Pacific Isl	0	0	0
White	378	60	438
Other	0	0	0
Unknown	1	0	1
Total	690	77	767
<u>Releases</u>	<u>Male</u>	<u>Female</u>	<u>Total</u>
Asian	0	0	0
Black	176	16	192
Hispanic	14	2	16
Nat. Amer.	0	1	1
Hawaiian/Pacific Isl	1	0	1
White	312	60	372
Other	1	0	1
Total	504	79	583

ARKANSAS DEPARTMENT OF CORRECTION

INMATE POPULATION GROWTH 2000-2022

Updated 01/31/2016

Mo.	2000	2001	2002	2003	2004	2005	2006	2007	2008	2009	2010	2011	2012	2013	2014	2015	2016
Jan.	11,984	11,908	12,402	13,015	13,105	13,595	13,481	13,839	14,518	14,796	15,334	16,312	15,134	14,815	17,481	18,142	17,785
Feb.	12,169	12,022	12,529	13,054	13,166	13,783	13,633	14,012	14,603	14,883	15,374	16,209	14,990	15,008	17,438	18,082	
March	12,006	12,033	12,299	13,108	13,088	13,418	13,534	13,772	14,580	14,843	15,290	16,095	14,964	14,665	17,395	18,233	
April	12,069	12,167	12,465	13,213	13,323	13,469	13,554	13,851	14,769	14,937	15,570	16,172	15,124	14,850	17,604	18,703	
May	12,109	12,384	12,558	13,463	13,556	13,528	13,711	14,146	14,880	15,146	15,694	16,062	15,132	15,074	17,593	18,693	
June	12,005	12,108	12,439	13,418	13,389	13,251	13,430	13,915	14,700	15,025	15,564	15,554	14,832	14,825	17,340	18,813	
July	12,030	12,190	12,622	13,509	13,528	13,286	13,560	14,082	14,868	15,195	15,807	15,519	14,879	15,379	17,522	18,870	
August	12,087	12,371	12,815	13,565	13,632	13,419	13,646	14,224	15,100	15,385	15,829	15,240	14,675	16,103	17,549	18,806	
September	11,983	12,289	12,774	13,341	13,516	13,237	13,652	14,217	14,850	15,285	16,025	15,172	14,724	16,412	17,605	18,549	
October	12,119	12,348	12,942	13,341	13,584	13,363	13,775	14,349	14,836	15,381	16,311	15,271	14,856	16,993	17,880	18,430	
November	12,094	12,408	13,162	13,408	13,706	13,587	13,913	14,437	15,025	15,340	16,460	15,205	14,625	17,168	17,848	17,981	
December	11,856	12,333	12,845	13,106	13,470	13,338	13,728	14,315	14,716	15,199	16,204	15,062	14,654	17,235	17,874	17,707	
Net Ann. Inc.	29	477	512	261	364	-132	390	587	401	483	1,005	-1,142	-408	2,581	639	-167	78
Avg. Mo. Inc.	2	40	43	22	30	-11	33	49	33	40	84	-95	-34	215	53	-14	78

Population is total jurisdictional count at end of each month. Population at end of month December 1999 was 11,827.
 Average monthly population increase for past fifteen years 2001 - 2015 is 33
 Average monthly population increase for past ten years Jan.2006 - Dec 2015 is 36
 Average monthly population increase for past five years 2011 - 2015 is 25

Projected at Growth of 33 per Month

	2008	2009	2010	2011	2012	2013	2014	2015	2016	2017	2018	2019	2020	2021	2022	2023
Mo.	Actual	Actual	Actual	Actual	Actual	Actual	Actual	Actual	Actual/Proj.	Proj.	Proj.	Proj.	Proj.	Proj.	Proj.	Proj.
January	14,518	14,796	15,334	16,312	15,134	14,815	17,481	18,142	17,785	18,181	18,577	18,973	19,369	19,765	20,161	20,557
February	14,603	14,883	15,374	16,209	14,990	15,008	17,438	18,082	17,818	18,214	18,610	19,006	19,402	19,798	20,194	20,590
March	14,580	14,843	15,290	16,095	14,964	14,665	17,395	18,233	17,851	18,247	18,643	19,039	19,435	19,831	20,227	20,623
April	14,769	14,937	15,570	16,172	15,124	14,850	17,604	18,703	17,884	18,280	18,676	19,072	19,468	19,864	20,260	20,656
May	14,880	15,146	15,694	16,062	15,132	15,074	17,593	18,693	17,917	18,313	18,709	19,105	19,501	19,897	20,293	20,689
June	14,700	15,025	15,564	15,554	14,832	14,825	17,340	18,813	17,950	18,346	18,742	19,138	19,534	19,930	20,326	20,722
July	14,868	15,195	15,807	15,519	14,879	15,379	17,522	18,870	17,983	18,379	18,775	19,171	19,567	19,963	20,359	20,755
August	15,100	15,385	15,829	15,240	14,675	16,103	17,549	18,806	18,016	18,412	18,808	19,204	19,600	19,996	20,392	20,788
September	14,850	15,285	16,025	15,172	14,724	16,412	17,605	18,549	18,049	18,445	18,841	19,237	19,633	20,029	20,425	20,821
October	14,836	15,381	16,311	15,271	14,856	16,993	17,880	18,430	18,082	18,478	18,874	19,270	19,666	20,062	20,458	20,854
November	15,025	15,340	16,460	15,205	14,625	17,168	17,848	17,981	18,115	18,511	18,907	19,303	19,699	20,095	20,491	20,887
December	14,716	15,199	16,204	15,062	14,654	17,235	17,874	17,707	18,148	18,544	18,940	19,336	19,732	20,128	20,524	20,920
Net Ann. Inc	401	483	1,005	-1,142	-408	2,581	639	-167	441	396	396	396	396	396	396	396
Ave. Mo. Inc	33	40	84	-95	-34	215	53	-14	37	33	33	33	33	33	33	33

Monthly Population Averages

	1/4	1/5	1/6	1/7	1/8	1/11	1/12	1/13	1/14	1/15	1/18	1/19	1/20	1/21	1/22	1/25	1/26	1/27	1/28	1/29	AVG	
Unit/Center																						
Benton	329	328	333	330	331	328	328	328	324	330	335	335	335	332	332	330	331	330	329	327	330	
Cummins	1,917	1,917	1,911	1,898	1,905	1,906	1,903	1,900	1,906	1,937	1,933	1,933	1,940	1,937	1,929	1,929	1,937	1,931	1,925	1,930	1,921	
Delta	619	615	616	606	612	603	615	611	607	609	616	616	615	616	611	611	611	621	619	617	613	
E AR Reg	1,631	1,641	1,638	1,634	1,635	1,638	1,635	1,641	1,648	1,639	1,646	1,646	1,657	1,657	1,665	1,664	1,657	1,654	1,660	1,665	1,648	
Ester	182	225	262	271	270	332	333	333	338	339	340	340	340	340	340	338	341	342	342	342	315	
Grimes	1,066	1,071	1,069	1,075	1,073	1,039	1,052	1,058	1,067	1,073	1,067	1,067	1,067	1,063	1,063	1,063	1,073	1,070	1,063	1,067	1,065	
Max Sec	554	554	553	555	555	660	639	643	643	648	648	648	648	648	650	650	649	650	662	665	626	
McPherson	1,026	1,023	1,026	1,029	1,026	1,029	1,029	1,027	1,026	1,020	1,023	1,023	1,029	1,021	1,025	1,024	1,018	1,017	1,017	1,014	1,024	
MCWRC	138	139	139	139	143	143	142	141	141	141	141	141	140	140	138	138	138	142	141	141	140	
N Central	818	818	813	815	820	827	829	837	834	835	832	832	832	832	832	831	838	836	834	828	829	
NWAWRC	99	99	99	99	100	100	98	98	98	98	97	97	99	98	98	98	98	97	100	100	99	
Ouachita River	1,845	1,840	1,847	1,851	1,851	1,840	1,846	1,847	1,849	1,842	1,832	1,832	1,822	1,814	1,805	1,803	1,804	1,807	1,792	1,791	1,828	
Randall L Williams	574	573	571	570	567	565	568	572	571	570	568	568	569	571	571	571	569	564	572	571	570	
Pine Bluff	441	436	444	443	442	443	442	442	437	439	442	442	435	436	432	434	433	435	440	437	439	
PB Reentry	54	54	54	54	54	54	54	54	54	52	52	52	54	54	54	54	54	54	54	54	54	
TRCC	127	127	125	128	128	128	128	127	126	126	127	127	127	127	127	127	127	128	128	128	127	
Tucker	1,110	1,107	1,102	1,101	1,103	1,010	1,009	1,006	1,005	1,010	1,015	1,015	1,013	1,016	1,015	1,013	1,013	1,009	1,004	995	1,034	
Varner	1,733	1,736	1,731	1,726	1,724	1,723	1,740	1,737	1,738	1,734	1,733	1,733	1,734	1,738	1,733	1,733	1,737	1,733	1,736	1,741	1,734	
Wrightsville	1,491	1,487	1,494	1,493	1,489	1,493	1,490	1,493	1,496	1,497	1,497	1,497	1,489	1,494	1,498	1,498	1,496	1,498	1,494	1,498	1,494	
Total ADC	15,754	15,790	15,827	15,817	15,828	15,861	15,880	15,895	15,908	15,939	15,944	15,944	15,945	15,934	15,918	15,909	15,924	15,918	15,912	15,911	15,888	15888
ALETA	19	19	19	19	19	19	19	19	19	19	19	19	19	19	19	19	19	20	20	20	19	
Ar State Police	58	58	58	59	59	58	59	59	59	59	59	59	60	60	60	60	60	60	59	58	59	
Co Jail / M	1,186	1,144	1,134	1,120	1,086	1,033	1,026	1,005	997	981	996	996	1,017	1,032	1,060	1,077	1,076	1,099	1,131	1,125	1,066	
Co Jail / F	3	11	8	12	14	9	5	5	8	11	11	11	10	12	12	14	12	11	8	13	10	
Total Co Jail BK	1,189	1,155	1,142	1,132	1,100	1,042	1,031	1,010	1,005	992	1,007	1,007	1,027	1,044	1,072	1,091	1,088	1,110	1,139	1,138	1,076	
Bowie Co., TX	336	336	335	336	336	336	336	336	336	336	335	335	335	335	335	335	335	336	336	336	336	
309/M	247	246	246	248	253	259	259	259	261	261	261	261	261	261	261	261	259	259	259	259	257	
309/F	40	39	39	39	40	40	41	40	41	41	41	41	41	41	41	41	41	41	40	40	40	
Total Act 309	287	285	285	287	293	299	300	299	302	302	302	302	302	302	302	302	300	300	299	299	297	
Total Non ADC	1,889	1,853	1,839	1,833	1,807	1,754	1,745	1,723	1,721	1,708	1,722	1,722	1,743	1,760	1,788	1,807	1,802	1,826	1,853	1,851	1,787	
Total	17,643	17,643	17,666	17,650	17,635	17,615	17,625	17,618	17,629	17,647	17,666	17,666	17,688	17,694	17,706	17,716	17,726	17,744	17,765	17,762	17,675	17675
	1	1	1	1	1	1	1	1	1	1	1	1	1	1	1	1	1	1	1	1	20	

ADC County Jail Backup FY2016

DAY	Jul-15	Aug-15	Sep-15	Oct-15	Nov-15	Dec-15	Jan-16
1	2,674 *	2,556	2,276	1,973 *	1,801	1,591	1,189
2	2,615 *	2,556	2,274	1,979	1,829	1,570 *	1,189
3	2,618	2,558	2,267 *	1,979	1,851	1,530 *	1,189
4	* 2,618	2,572	2,236 *	1,979	1,862	1,487	1,189
5	* 2,618	2,592 *	2,236	1,938	1,869 *	1,487	1,155
6	2,618	2,598 *	2,236	1,899	1,887 *	1,487	1142
7	2,638	2,615	2,180	1,900 *	1,887	1,421	1,132
8	2,669 *	2,615	2,180	1,895 *	1,887	1,390	1,100
9	2,686 *	2,615	2,174	1,895	1,848	1,378 *	1,100
10	2,677	2,621	2,181 *	1,895	1,839	1,370 *	1,100
11	* 2,677	2,625	2,147 *	1,895	1,854	1,341	1,042
12	* 2,677	2,597 *	2,147	1,895	1,854 *	1,341	1,031
13	2,660	2,606 *	2,147	1,879	1,826 *	1,341	1,010
14	2,635	2,607	2,116	1,897 *	1,826	1,323	1,005
15	2,614 *	2,607	2,100	1,914 *	1,826	1,262	992
16	2,587 *	2,607	2,074	1,886	1,819	1,276 *	992
17	2,576	2,614	2,067 *	1,886	1,826	1,279 *	992
18	* 2,576	2,651	2,034 *	1,886	1,826	1,234	1,007
19	* 2,576	2,666 *	2,034	1,862	1,817 *	1,234	1,007
20	2,541	2,705 *	2,034	1,872	1,805 *	1,234	1,027
21	2,550	2,687	2,031	1,856 *	1,805	1,207	1,044
22	2,546 *	2,687	2,023	1,853 *	1,805	1,201	1,072
23	2,542 *	2,687	2,019	1,843	1,820	1,208 *	1,072
24	2,550	2,685	2,034 *	1,843	1,780	1,241 *	1,072
25	* 2,550	2,605	2,023 *	1,843	1,728	1,241	1,091
26	* 2,550	2,553 *	2,023	1,821	1,634 *	1,241	1,088
27	2,533	2,453 *	2,023	1,814	1,634 *	1,241	1,110
28	2,535	2,309	2,027	1,815 *	1,634	1,241	1,139
29	2,525 *	2,309	1,975	1,815 *	1,634	1,244	1,138
30	2,549 *	2,309	1,958	1,801	1,634	1,212 *	1,138
31	2,556	2,272	*	1,801		1,200 *	1,138
Average	2,598	2,572	2,109	1,881	1,798	1,324	1,087

1909.95

Notes: Totals do not include 309 Contracts in County Jails (maximum of 336)

CHAPLAINCY

Monthly Report for: Jan 2016		BENTON	CUMMINS	DELTA REGIONAL	EAST ARKANSAS	EAST ARKANSAS MAX	GRIMES	HAWKINS	MAXIMUM SECURITY	MCPHERSON	NORTH CENTRAL	OUACHITA RIVER	PINE BLUFF	RANDALL L. WILLIAMS	TUCKER	VARNER	VARNER MAX	WRIGHTSVILLE	PTF	TOTAL
Chaplain in Charge		11	12	13	3	0	15	5	13	12	9	18	3	10	7	3	0	5	2	141
Christian																				
Population		11	11	13	3	0	14	5	13	10	9	17	2	10	7	2	0	4	2	133
Segregation		0	0	0	0	0	0	0	0	0	0	0	0	0	0	0	0	0	0	0
Muslim																				
Population		0	1	0	0	0	1	0	0	2	0	1	1	0	0	1	0	1	0	8
Segregation		0	0	0	0	0	0	0	0	0	0	0	0	0	0	0	0	0	0	0
Volunteers in Charge																				
Protestant		15	33	13	52	8	28	6	28	40	69	26	11	4	12	4	1	29	8	387
Catholic		0	0	0	4	2	16	2	1	3	1	1	0	0	1	1	1	8	8	49
Muslim		0	1	1	3	3	0	0	0	0	0	0	0	0	0	0	0	0	0	8
Other		4	0	0	0	0	0	0	1	4	0	5	0	0	0	0	0	0	0	14
Baptism		0	0	4	7	0	0	0	1	0	9	0	0	0	0	0	0	0	0	21
Marriages		1	2	0	0	1	1	0	0	0	0	0	0	0	0	0	0	0	0	5
Distributed by Chaplains																0				
Greeting Cards		25	27	0	0	0	48	0	250	356	54	35	160	50	287	114	139	0	200	1745
Bibles, Quran, Torah, Etc.		10	30	7	5	0	16	12	13	42	18	100	10	30	130	93	9	20	0	545
Study Course		125	94	0	6	0	0	18	161	0	0	15	16	15	0	43	1	0	0	494
Writing Supplies		15	94	0	0	0	8	475	750	0	0	200	0	150	0	0	0	0	1000	2692
Literature		100	30	150	99	6	324	0	600	989	450	320	200	34	178	1158	74	300	200	5212
Chaplain's Visits																				
Barracks - How Many Visits		61	81	8	22	12	112	13	214	95	35	95	45	49	79	3	30	30	15	999
Approximate Hours Spent in Barracks		37	46	4	35	14	16	26	54	40	70	14	20	92	65	2	15	15	7	572
Office (How many Inmates)		142	130	200	65	9	156	70	26	60	56	82	48	95	210	39	0	51	20	1459
How Many Visits Chaplain Made																				
Hospital		0	2	0	1	0	0	0	0	1	0	21	0	0	0	0	0	0	0	25
Infirmary/Sick Call		0	5	4	12	0	46	4	6	5	4	2	4	4	18	0	0	5	0	119
Office		0	11	0	8	2	0	0	30	10	0	12	11	4	20	0	37	6	163	
Admin Seg		0	6	0	13	13	0	0	43	10	0	14	0	0	0	0	30	4	0	133
Segregation		0	0	0	13	13	13	0	0	10	0	16	4	6	0	0	30	4	0	109
Punitive		0	4	4	12	12	0	0	21	10	5	14	4	6	28	0	6	4	0	130
PC		0	0	0	12	12	0	0	0	10	0	0	0	0	0	0	0	0	0	34
Visitation Days		1	0	0	0	0	0	0	0	10	2	5	0	0	0	0	0	0	0	18
How Many Visits Volunteers Made																				
RCV		3	0	0	53	5	24	6	69	13	0	65	0	15	5	0	0	0	0	258
OCV		1	0	12	0	0	34	41	46	43	29	6	16	16	2	20	0	27	50	343
Spiritual Advisor		0	1	0	0	0	0	0	0	0	0	6	1	1	1	0	0	0	0	10
CRA		21	50	3	42	6	67	15	112	64	97	116	15	8	37	40	0	12	0	705
Total Volunteer Hours		109	83	30	108	22	184	163	458	333	367	516	64	80	115	206	0	39	50	2927
DENOMINATIONAL VOLUNTEER CHAPLAIN HOURS		123	121	0	0	0	44	101	69	140	95	142	72	145	136	25	0	215	100	1528
Other Activities of Chaplain																				
Counseled Employees		6	4	3	8	2	12	4	7	2	6	17	15	9	10	3	0	7	0	115
Orientation Sessions		0	5	0	0	0	8	0	0	4	1	0	0	0	3	0	0	0	0	21
Free World Devotions		0	13	0	12	0	0	0	0	1	0	10	12	12	0	0	0	0	0	60
Spoke in Churches		4	16	9	12	0	13	0	4	5	0	12	12	12	0	0	0	15	12	126
Crisis Intervention Sessions		22	27	20	0	0	6	2	4	12	5	25	12	7	10	11	0	20	7	190
Marriage Counseling		4	5	0	0	1	4	1	0	0	0	1	0	0	2	0	0	0	0	18
Denominational Meeting		0	3	0	1	0	0	0	0	1	0	2	0	0	0	1	0	0	0	8
Chaplain's Meeting		0	2	1	1	0	1	0	1	1	1	1	1	1	1	2	0	1	2	17
Volunteer Training Session		1	0	0	1	0	4	1	0	0	0	0	0	0	0	0	0	4	0	11
Choir Trip		0	0	0	0	0	0	0	0	0	0	0	0	0	0	0	0	0	0	0
Staff Movement (Chaplain)		0	0	0	0	0	1	0	0	0	0	0	0	0	0	0	0	0	0	1
Promotions (Chaplain)		0	0	0	0	0	0	0	0	0	0	0	0	0	0	0	0	0	0	0
Interns		0	0	0	0	0	0	0	0	0	0	0	0	0	0	0	0	0	0	0
PAL PROGRAM																				
# Enrolled at start of month		0	46	11	50	0	52	58	20	35	30	46	0	27	61	39	0	28	0	503
# Enrolled during the month		0	11	3	0	0	5	9	5	8	6	8	0	3	7	4	0	3	0	72
Total for this month added to Program		0	57	14	50	0	57	67	25	43	36	54	0	30	68	43	0	31	0	
(# Removed from the program)																				
# Paroled		0	1	0	0	0	2	2	0	2	1	0	0	2	3	1	0	1	0	15
# Completed			4	0	0	0	2	0	4	0	0	4	0	1	1	1	0	1	0	
# Withdrew		0	4	0	0	0	1	5	1	0	1	0	0	0	1	1	0	0	0	13
# Removed		0	2	0	0	0	2	1	0	2	2	1	0	0	2	0	0	0	0	12
# Transferred		0	0	0	0	0	0	3	0	0	2	4	0	0	2	0	0	0	0	11
Total for this month subtract from program		0	11	0	0	0	7	11	5	4	6	9	0	3	8	3	0	2	0	
# At the end of the month		0	46	14	50	0	50	56	20	39	30	45	0	27	60	40	0	29	0	506
# Of volunteers		0	13	3	18	0	28	14	11	20	5	12	0	5	7	4	0	8	0	148
Special Events:																				

Construction Budget / Status Report

Report Date - February 5, 2016 Data as of 02/03/16						* Percentage of Completion is the actual construction completion and does not reflect the cost in
Fund	Project Desc	Total Projected Spend	Budget	Available Funds	* % Complete	Notes
7004810	Cummins Poultry Houses	\$5,320,507	\$6,100,000	\$779,493	99%	Generator to arrive March 4. Start install for pad and switch February 9
7004811	ORCU Maintenance Shop	\$317,848	\$383,000	\$65,152	99%	Building Complete. Finishing Security Tower
7004811	ORCU - VoTech	\$569,770	\$817,000	\$247,230	99%	Complete
7004812	NCU Phase II	\$3,086,966	\$3,200,000	\$113,034	100%	Complete - Held open for Professional Fees.
7004819	ESTER - Phase 1	\$3,788,265	\$4,000,000	\$211,735	95%	184 Beds opened 7/1/15. Kitchen complete. Beds opened January 2016.
700481A	ESTER - Phase 2 1A	\$1,672,789	\$5,100,000	\$3,427,211	33%	
7004820	ESTER - Phase 2 - Kitchen	\$373,623	\$1,700,000	\$1,326,377	22%	
KBR4Q95	ESTER - Phase 3 - General Improvement Fund	\$164,877	\$7,400,000	\$7,235,123	2%	
7004820	Tucker Boot Camp	\$655,340	\$764,088	\$108,748	100%	Complete
NDC0100	Wrightsville Generator	\$182,261	\$200,000	\$17,739	44%	1st phase complete, 2nd phase being prioritized.
NDC0100	Tucker Parking Lot	\$149,697	\$300,000	\$150,303	100%	Parking Lot complete
NDC0300	HDRS Renovation - Phase II	\$172,258	\$175,000	\$2,742	100%	Complete
7004820	Tucker 2016 New Well	\$0	\$550,000	\$550,000	100%	Moved from T908_NDC0100, bids in
Telephone Projects						
Maintenance & Operations	Camera Equipment - All Units	\$250,237	\$400,000	\$149,763	63%	
	Fire Alarm Upgrades (All Units)	\$20,439	\$75,000	\$54,561	27%	
	Looks/Riot Gates - All Units	\$27,843	\$75,000	\$47,157	37%	
	Gates and Fences all units	\$8,208	\$50,000	\$41,792	16%	
	Gas Stations - Canopy (C/O)	\$4,768	\$12,000	\$7,232	40%	
	Stainless Steel - Kitchen/Shower/Restrooms - All Units	\$25,612	\$150,000	\$124,388	17%	
	ACA Maintenance	\$93,464	\$200,000	\$106,536	47%	
	ADA Projects - All Units	\$1,633	\$25,000	\$23,367	7%	
	Fast Top Floor Systems - (kitchen/laundry/showers all)	\$24,903	\$50,000	\$25,097	50%	
	Lawn Equipment - All Units	\$0	\$0	\$0		Moved 1/20/16
	Parking Lot - Gravel and Paving - EARU	\$0				
	Parking Lot - Gravel and Paving - Tucker	\$0	\$344,106	\$344,106	0%	
	Parking Lot - Gravel and Paving - Other Units	\$0				
	Subtotal	\$457,108	\$1,381,106	\$923,998		
FY15 Carry forward	ORCU Gravel Pit Operations	\$71,597	\$87,762	\$16,165	82%	continual
	Cummins Non-Contact Visitation	\$0	\$0	\$0	0%	on hold
	Tucker Pole Barn (Reg. Maint.)	\$15,672	\$17,932	\$2,260	87%	
	Metal Ceilings	\$142,123	\$200,000	\$57,877	71%	
	TWWPP Containers 4	\$17,103	\$22,103	\$5,000	77%	
	Tucker New Well	\$0	\$2	\$2	0%	Moved to WBS C.0480.T915
	Subtotal	\$246,495	\$327,799	\$81,304		
FY16 New Projects	Dog Kennel/Horse Stable Malvern	\$0	\$48,000	\$48,000	0%	
	Wrightsville Kitchen Roofing Repairs	\$0	\$15,000	\$15,000	0%	
	Wrightsville Emergency Generator continuation	\$0	\$300,000	\$300,000	0%	
	Boiler Repairs - Varner	\$61,388	\$100,000	\$38,612	61%	
	Grimes Sallyport	\$8,653	\$10,000	\$1,347	60%	underway
	PB Kitchen HVAC		\$40,000	\$40,000	60%	Added: 2/4/16
	Central Office Generator		\$15,000	\$15,000	60%	
	EARU Firing Range	\$12,740	\$20,000	\$7,260	80%	
	Roof Repairs	\$0				
	Roof Repairs-Tucker	\$2,047	\$285,894	\$261,553	91%	underway
	Roof Repairs-Varner	\$16,081				underway
	Roof Repairs-East Arkansas	\$6,214				underway
	Subtotal	\$61,388	\$548,000	\$401,612	11%	
Subtotal		\$810,724	\$2,542,799	\$1,732,075	32%	
Notes * Report has not been reconciled against Accountings Reconciled Reports. * FY2015 Carry forward to FY2016 Project Budget = (FY2015 Actual Spending + FY2016 Approved Budget Amount)						

Medical Grievance Appeals

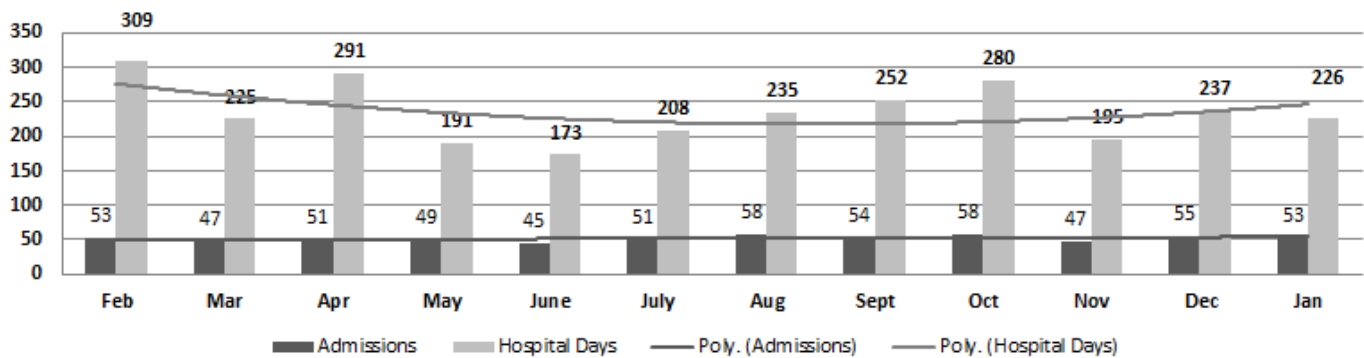
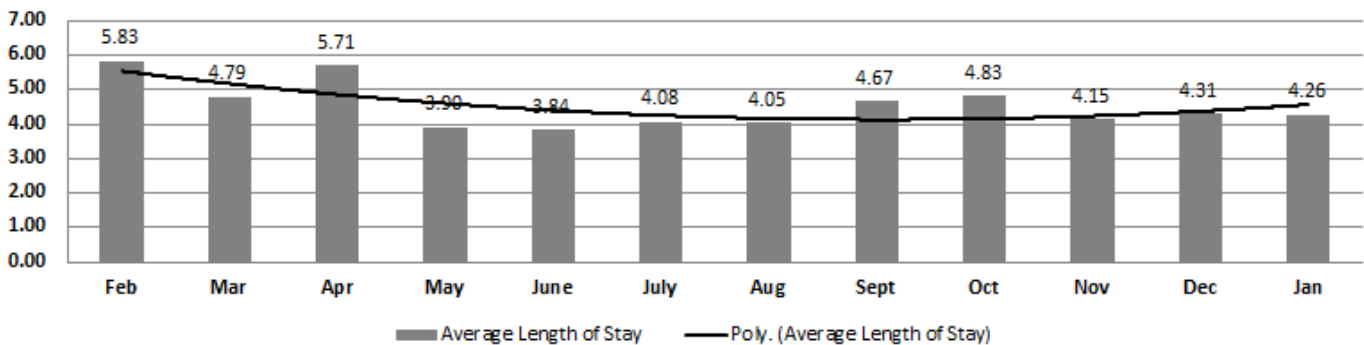
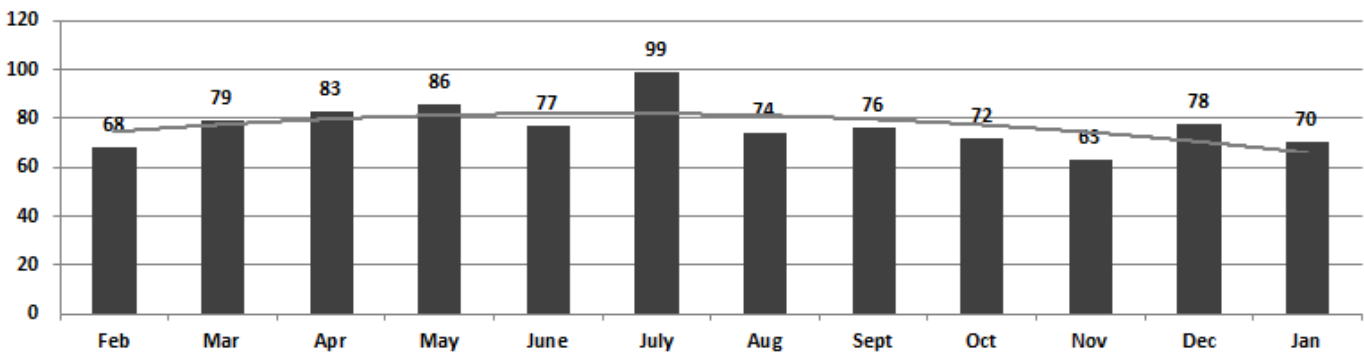
Unit	Acknowledged/ Received	Rejected	Reviewed & Signed by Dep Director	With Merit	With Merit, but Resolved	% With Merit	Without Merit
Benton	0	0	0	0	0	0%	0
Boot Camp	0	0	0	0	0	0%	0
Bowie Co.	4	0	1	0	0	0%	1
CMU	0	0	0	0	0	0%	0
Cummins	11	2	21	2	1	14%	18
Delta	1	0	3	0	0	0%	3
EARU	32	1	35	4	0	11%	31
EARU Max	31	2	70	7	0	10%	63
Esther	0	0	0	0	0	0%	0
Grimes	13	2	54	6	0	11%	48
Hawkins	1	0	2	0	0	0%	2
McPherson	0	9	6	1	1	33%	4
MCWRC	0	0	0	0	0	0%	0
MSU	35	12	25	2	1	12%	22
North Central	5	2	3	0	0	0%	3
NWAWRC	0	0	0	0	0	0%	0
Ouachita	13	0	6	1	0	17%	5
Pine Bluff	0	0	0	0	0	0%	0
Randall Williams	5	1	12	2	0	17%	10
SNN	0	0	3	0	0	0%	3
TRCC	0	0	0	0	0	0%	0
Tucker	5	0	7	0	0	0%	7
Varner	31	5	36	2	0	0%	34
Varner S Max	38	1	80	10	1	14%	69
WRU	3	1	2	0	0	0%	2
WHM	0	0	2	0	0	0%	2
WWR	0	0	0	0	0	0%	0
TOTAL	228	38	368	37	4	11%	327

ADC Inpatient Statistics Past 12 Months

	2015												2016	Average
	Feb	Mar	Apr	May	June	July	Aug	Sept	Oct	Nov	Dec	Jan		
Admissions	53	47	51	49	45	51	58	54	58	47	55	53	51.8	
Hospital Days	309	225	291	191	173	208	235	252	280	195	237	226	235.2	
Average Length of Stay	5.83	4.79	5.71	3.90	3.84	4.08	4.05	4.67	4.83	4.15	4.31	4.26	4.54	

ADC ER Visits Past 12 Months

	2015											2016	Average
	Feb	Mar	Apr	May	June	July	Aug	Sept	Oct	Nov	Dec	Jan	
Emergency Room Visits	68	79	83	86	77	99	74	76	72	63	78	70	77.1

ADC Inpatient Utilization
Past 12 MonthsADC Inpatient Average Length of Stay
Past 12 MonthsADC Emergency Room Visits
Past 12 Months

Monthly Purchasing Report/ Purchase Orders Over \$10,000

VENDOR	DESCRIPTION	LOCATION	PO#	AMOUNT	FUND
Southwest Microwave Inc	Fence Repair Items	Randall L Williams Unit	4501593655	\$10,375.78	Telephone Funds - Const
AR Dept of Correction Industry	Inmate Clothing	Ouachita Unit	4501593965	\$39,654.20	Operational Budget
Goaltext Corp	Inmate Shoes	Ouachita Unit	4501593976	\$22,945.98	Operational Budget
Green & Chapman Inc	Low Sulfur Red Diesel	Cummins Unit/Farm	4501591135	\$18,411.58	Operational Farm Budget
Pine Bluff Sand & Gravel Co	Masonry Sand & Pea Gravel	Ester Unit	4501593440	\$10,418.02	Construction ADFA Ester Unit II
Mid South Sales Inc	Ethanol Gasoline	Cummins Unit	4501592096	\$12,224.53	Operational Budget
Bob Barker Company Inc	Inmate Clothing	Tucker Unit	4501593345	\$10,124.40	Operational Budget
Gilbert AG Service Inc	Soybean Seed	Cummins Chemical Shed	4501591162	\$269,932.00	Operational Farm Budget
Mid States Services Inc	Tissue Paper	Hawkins ACI Imaging	4501592650	\$68,812.80	Operational Industry Budget
Razor Chemical Inc	Chemicals	Delta Regional Janitorial Factory	4501592100	\$11,719.40	Operational Industry Budget
Kronos Inc	Software/Licenses	Admin East/Information Services	4501593607	\$51,380.28	Operational Budget
Robbins Sales Company Inc	Food Purchases	Central Warehouse	4501593848	\$273,719.04	Operational Budget
William R Hill & Co Inc	Food Purchases	Central Warehouse	4501593855	\$61,526.57	Operational Budget
AR Dept of Correction Industry	Janitorial Supplies	Central Warehouse	4501593878	\$92,042.50	Operational Budget
Atlantic Beverage Company	Food Purchases	Central Warehouse	4501593873	\$20,078.70	Operational Budget
US Foods Inc	Food Purchases	Central Warehouse	4501593856	\$24,707.60	Operational Budget
Comfort Systems USA AR Inc	Provide & Install HVAC System	Ester Unit	4501593413	\$42,770.67	Construction ADFA Ester Unit II
AR Dept of Correction Industry	Inmate Clothing	Benton Unit	4501594855	\$18,659.93	Work Release Funds
William R Hill & Co Inc	Food Purchases	Central Warehouse	4501594983	\$185,124.74	Operational Budget
Sysco Food Services of AR Inc	Food Purchases	Central Warehouse	4501594990	\$331,094.20	Operational Budget
National Food Group	Food Purchases	Central Warehouse	4501595020	\$85,379.80	Operational Budget
AR Dept of Correction Industry	Inmate Clothing	Cummins Unit	450595490	\$31,499.25	Operational Budget
AR Dept of Correction Industry	Brogans	Cummins Unit	4501595484	\$10,565.10	Operational Budget
AR Dept of Correction Industry	Inmate Clothing & Linen	Varner Unit	4501595670	\$104,934.61	Operational Budget
Wheeler Metals Inc	Fencing	Wrightsville Unit	4501594560	\$10,578.00	Operational Farm Budget
Green Point AG LLC	Fertilizer	Cummins Chemical Shed	4501594664	\$10,725.00	Operational Farm Budget
W W Grainger Inc	Radio's	Ester Unit	4501594820	\$11,977.46	Operational Budget
William R Hill & Co Inc	Food Purchases	Central Warehouse	4501597301	\$195,470.36	Operational Budget
Robbins Sales Company Inc	Food Purchases	Central Warehouse	4501597312	\$92,953.28	Operational Budget
Pine Bluff Sand & Gravel Co	Concrete	Ester Unit	4501595993	\$34,571.25	Construction ADFA Ester Unit II
Citrix Systems Inc	Software Maintenance	Admin East/Information Services	4501596646	\$12,220.66	Operational Budget
Software House International Inc	Software Maintenance	Admin East/Information Services	4501596122	\$19,534.40	Operational Budget
Cruse Uniforms & Equipment Inc	Public Safety Supplies	Training Academy	4501595636	\$17,483.31	Operational Budget
US Foods Inc	Food Purchases	Central Warehouse	4501595949	\$95,419.60	Operational Budget
B Sharp Blades LTD	Disposable Razors	Central Warehouse	4501595961	\$16,100.33	Operational Budget
Printing Papers Inc	Office Supplies	Central Warehouse	4501595957	\$26,200.40	Operational Budget
Premier Biotech Inc	Drug Testing	Health Programs	4501597805	\$12,182.25	Operational Budget
American Paper & Twine Co	Paper Towels	Central Warehouse	4501597327	\$33,742.07	Operational Budget
AR Dept of Correction Industry	Inmate Clothing & Linen	Wrightsville Unit	4501598193	\$10,092.50	Operational Budget
AR Dept of Correction Industry	Inmate Clothing & Linen	Pine Bluff Unit	4501598172	\$22,962.02	Operational Budget
AR Dept of Correction Industry	Brogans	Pine Bluff Unit	4501598190	\$17,497.70	Operational Budget
Natural State Crop Consultant LLC	Garden Consulting	Cummins Unit/Farm	4501596158	\$36,281.25	Operational Farm Budget
Barnes Paper Co	Egg Cartons	Cummins Unit/Farm	4501596853	\$15,505.80	Operational Farm Budget
Drew Farm Supply	Onion Sets	Cummins Unit/Farm	4501596975	\$15,076.50	Operational Farm Budget
Matthews Ridgeview Farms	Sweet Potato Plants	Cummins Unit/Farm	4501596973	\$13,000.00	Operational Farm Budget
Seedway LLC	Garden Seeds	Cummins Unit/Farm	4501596972	\$88,761.75	Operational Farm Budget
Fastenal Co	Bags	Cummins Creamery	4501596922	\$27,681.25	Operational Farm Budget
Razor Chemical Inc	Chemicals	Delta Janitorial Factory	4501596386	\$34,338.80	Operational Industry Budget
Mid States Services Inc	Tissue Paper	Hawkins ACI Imaging	4501597489	\$72,806.40	Operational Industry Budget
Dreamline MFG Inc	Mattresses	Tucker Unit/Industry	4501596409	\$31,710.00	Operational Industry Budget
Miller Bowie Supply	Laver Feed	Cummins Unit/Farm	4501597486	\$181,440.00	Operational Farm Budget
Fords Well Drilling Service Inc	Irrigation Supplies	EARU/Farm	4501597328	\$18,812.50	Operational Farm Budget
MFA Incorporated	Chemical Herbicides	Wrightsville Unit/Farm	4501597514	\$11,766.00	Operational Farm Budget
Mid States Services Inc	Tissue Paper	Wrightsville ACI Imaging	4501592650	\$68,812.80	Operational Industry Budget
Total for Purchases over \$10,000				\$3,063,805.32	
FIRM CONTRACTS OVER \$25,000.00					
VENDOR	DESCRIPTION	UNIT	Contract # P.O.#	PURCHASE AMOUNT	FUND
RP Power LLC	Power Generator Equipment	Cummins Unit/Farm	4501582410	\$116,057.00	ADFA Loan
Total for Contracts				\$116,057.00	
EMERGENCY PURCHASE ORDERS OVER \$25,000.00					
Total EM Purchases				\$0.00	
Total Purchases				\$3,179,862.32	