



DIVISION OF  
CORRECTION

# BOARD REPORT

November 2019



@ARDeptofCorrections



@adcpio

Dexter Payne,  
Director



## POPULATION REPORT

### RESEARCH/PLANNING

**October 2019 Admissions and Releases** – Admissions for October 2019 totaled **596** (517-males & 79-females) while releases totaled **540** (455-males & 85 females) for a net increase in-house of **56** inmates.

**Inmate Population Growth/Projection** – At the end of October 2019, the jurisdictional population totaled **17,947**, representing a growth of **148** inmates since the first of January 2019. Average monthly growth for calendar year 2019 at the end of October is **15** inmates, up from an average monthly decrease of **23** inmates per month during calendar year 2018.

**Average County Jail Back-up** – The backup in the County Jails averaged **1,455** inmates per day during the month of October 2019 – down from an average of **1,478** inmates per day during the month of September 2019. Of the **1,455** average, short-term revocations accounted for **684** (615-males & 69-females) during the month.

## INSTITUTIONS

### PRISON RAPE ELIMINATION ACT (PREA)

#### PREA Hotline Data:

Number of Calls Received	395
Total PREA Issue Calls	44
Total Non-PREA Calls	129
Total Repeat Calls	85
Total Calls with No Message	137
Total Technical Failure Calls	0
Test Calls	0

The PREA Coordinator provided the following training during the month of October:

- **PREA Train the Trainer** - October 1 (attended by seven staff members)
- **Training provided by National PREA Resource Center** - Admin East – October 2 (attended by 46 staff members)
- **Training provided by National PREA Resource Center** - Ozark, AR – October 3 (attended by four staff members)
- **PREA Train the Trainer** - October 9 (attended by seven staff members)
- **PREA Train the Trainer** - October 17 (attended by eight staff members)

### INMATE INSTITUTIONAL GRIEVANCES

**Inmate Formal/Informal Grievances:** During October 2019, a total of 1,845 formal grievances and 2,974 informal grievances were filed at various units.

**Institutional Grievances Appeals:** There was a total of 469 appeals of institutional grievances received in October 2019. Of those, 382 were acknowledged and 87 were rejected for various reasons. A total of 409 appeals were answered; 405 had no merit and four were found with merit.

### SECURITY TERRORISTIC THREAT GROUP (STTG)

The STTG Coordinator taught the BCOT class at the Training Academy on October 2 and 23 and assisted the Little Rock FBI office with intel regarding Gangster Disciples operating in Arkansas during the month.

Additionally, the STTG Coordinator, along with K-9, assisted in BCOT special assignments conducted on 10/14-15.

### FARM

Great harvesting weather continued during the month of October. Cummins was able to finish harvesting during the month, as well as plant 740 acres of wheat. Tucker began harvesting soybeans and EARU started ground prep work for the 2020 crops.

Units harvested all that they could from their gardens during the month.

Egg and milk production were steady during October. Cows are expected to calve during November.

### REGIONAL MAINTENANCE HOURS

Regional Maintenance Hours	October 2019
Benton Unit	7,264
Delta Regional Unit	3,172
East Arkansas Regional Unit	2,976
Grimes Unit	3,344
McPherson Unit	1,640
Mississippi County Work Release	832
North Central Unit	9,120
Ouachita River Unit	1,505
Randall L. Williams Unit	4,064
Texarkana Regional Correctional Center	1,424.5
Tucker Unit	2,552
Varner Unit	3,848
Wrightsville Unit	2,936
<b>Total Hours</b>	<b>44,677.5</b>

**WORK RELEASE RENT REPORT**

Unit	October 2019
Benton Unit	\$126,004.00
Mississippi County Work Release	\$43,775.00
Northwest Arkansas Work Release	\$39,253.00
Pine Bluff Work Release	\$32,113.00
Texarkana Regional Correctional Center	\$49,810.00
Tucker Reentry Work Release	\$24,310.00
<b>Total</b>	<b>\$315,265.00</b>

**RANDALL L. WILLIAMS  
JUVENILE EDUCATION PROGRAM**

October 2019 Capacity: 20	Beginning Count	New Commitments	Removed	End Count
Juveniles*	9	3	0	12

\*Juveniles are transferred from the program once they reach the age of 18. The Juvenile count also changes based on new commitments. During the month of October, no inmates were on punitive status. None paroled or transferred from the program due to turning 18.

**REENTRY****WORKFORCE ALLIANCE FOR  
GROWTH IN THE ECONOMY (WAGE)**

October 2019 Capacity: 120 Unit:	Beginning Count	Admissions During Mo.	Removed*	Completed	End Count
Delta	13	9	1	12	9
Ester**	0	0	0	0	0
Hawkins	17	9	1	13	12
McPherson	8	0	0	4	4
Ouachita River	20	14	5	9	20
Tucker	15	8	3	3	17
Tucker Reentry	0	0	0	0	0
Wrightsville	22	10	1	13	18
<b>TOTAL</b>	<b>95</b>	<b>50</b>	<b>11</b>	<b>54</b>	<b>80</b>

\*The "Removed" column indicates the number of participants who transferred, signed out, received a disciplinary, or were released from prison.

\*\*The Ester Unit WAGE Program is going through a programming transition with no classes being taught at this time.

**ADVANCED PRINCIPLES  
AND APPLICATIONS FOR  
LIFE PROGRAM (APAL)**

October 2019 Capacity: 86	Beginning Count	Admissions During Mo.	Removed*	End Count
Ester	36	5	5	36
Hawkins	28	5	3	30
<b>TOTAL</b>	<b>64</b>	<b>10</b>	<b>8</b>	<b>66</b>

Advanced PAL is an 18-month reentry program that combines a pre-release curriculum with the PAL program.

\*The "Removed" column indicates the number of participants who transferred, signed out, received a disciplinary, or were released from prison.

**WRIGHTSVILLE-HAWKINS  
PATHWAY TO FREEDOM PROGRAM**

October 2019 Capacity: 200	Beginning Count	Enrolled During the Month	Removed	End Count*
Wrightsville-Hawkins PTF	196	17	15	198

\*The "End Count" column includes four graduates who remain in the Pathway to Freedom barracks.

**THINK LEGACY**

October 2019 Capacity: 635 Unit	Beginning Count	Admitted	Graduated	Removed	End Count
Cummins	54	12	7	8	51
Delta Regional	24	0	3	1	20
East Arkansas Regional	49	5	1	21	32
Ester	75	21	8	21	67
Grimes	53	9	9	6	47
Hawkins (Female)	32	14	5	7	34
McPherson	64	6	0	6	64
North Central	55	4	5	4	50
Ouachita River	33	13	8	13	25
Tucker	54	16	5	20	45
Tucker Women's Reentry	16	0	0	0	16
Varner	46	15	3	11	47
Wrightsville	44	15	2	11	46
<b>Total</b>	<b>599</b>	<b>130</b>	<b>56</b>	<b>129</b>	<b>544</b>

**THINK LEGACY, continued**

There are 115 females and 154 males on the Think Legacy waiting list, for a total of 269. All Think Legacy applicants are within six to 18 months of their TE or discharge date. The average wait time is approximately 120 days. A total of 614 participant slots are filled out of the available 635.

**October 2019 Think Legacy Activities included:**

Goodwill Industries of Arkansas hosted an employability class at the Grimes Unit on October 2. OSHA classes were instructed by Red Rocks Community College from 10/16-10/18 at the Cummins, Varner, and East Arkansas Units. The Hawkins Unit hosted a graduation ceremony on 10/16.

**ADMINISTRATIVE SERVICES****TRAINING ACADEMY - OCTOBER 2019****BASIC TRAINING DIVISION –**

Under the direction of instructor Ramone Woodall, **BCOT Class 2019-L** graduated on October 4 with a total of 61 cadets. Jesse Gibson of the Grimes Unit was the recipient of the Willis H. Sargent Award. Warden Aundrea Culclager of the Cummins Unit served as the guest speaker.

Seventy cadets graduated from instructor David Farrier's **BCOT Class 2019-M** on October 25. Zachary Shockey of the Mississippi County Work Release Center received the Willis H. Sargent Award. Deputy Warden Shelli Maroney of the Ouachita River Correctional Unit served as the guest speaker.

**IN-SERVICE DIVISION –**

Training Academy staff offered the *Blue Courage* class twice during the month of October. A total of 56 employees attended the classes.

The following classes were also offered to ADC staff through the Training Academy during the month:

- *Advanced Training for ADC Religious Volunteers*
- *Correctional Security for Non-Security (Full-time Staff 40)*
- *Correctional Security for Non-Security (Volunteers 8)*
- *CPR Instructor Certification Course*
- *Defensive Driving*
- *Firearms Instructor Course*
- *Management Level I*
- *Storm Spotter*
- *Unit Trainer Workshop*

**eCADEMY –**

During October, 377 ADC employees completed a total of 3,740 hours of eCADEMY training. About 8% of ADC employees completed at least one course during that timeframe, averaging 0.81 hours per staff member. The Computer Lab is open on a daily basis for employees who wish to complete online training through eCademy.

**HEALTH/CORRECTIONAL PROGRAMS****CHAPLAINCY SERVICES**

**Cummins Unit** – On October 24-26, First Assembly of God Church of Star City held a three-day revival service at the unit with an average of 100 inmates and five volunteers attending each night. Sixty inmates and one volunteer participated in the observance of Islamic Saviors Day at the unit on 10/10.

**Delta Regional Unit** – On October 2, a “Storybook Project” event was held with volunteers assisting ten inmates in recording books to be sent to their loved ones. On 10/4, a quarterly graduation ceremony was held for two students who completed the PAL and Think Legacy programs.

**East Arkansas Regional Unit** – Revival services were held at the unit on October 10-13 with an average of 125 inmates in attendance.

**Ester Unit** – A volunteer group from Texarkana called “The Truth Infusion” led revival services in the chapel on October 11-13 that was attended by an average of 83 inmates.

**Hawkins Unit** – Fifty-six inmates attended a “Soldiers of God” concert held at the unit on October 6. A Little Rock Catholic Church presented a musical on 10/13 that was attended by 59 inmates.

**Maximum Security Unit** – The Nation of Islam commemorated the Million Man March on October 17 with 18 inmates participating. The Chapel hosted the unit's career service awards ceremony on 10/22 with 18 inmates in attendance. On 10/24, Olivia Farrell visited the unit and spoke to 19 inmates in the reentry program's “Mindful Money” class.

**McPherson Unit** – Thirty-four inmates were baptized in a service facilitated by six volunteers on October 24.

**North Central Unit** – On October 1, seven volunteers with the “Storybook Project” visited the unit and assisted 24 inmates in recording books to be sent to their loved ones. On 10/4-5, five “Prison Fellowship” volunteers led a two-day Hope Event that was attended by 85 inmates on the first day and 46 on the second. A pilot program of Prison Fellowship Academy was launched at the unit on 10/28 with 15 volunteers and 25 inmates in attendance.

**Pine Bluff & Randall L. Williams Units (collaborative events)** – On October 11-13, 12 volunteers with the “Truth Infusion” ministry group held revival services attended by an average of 70 inmates each day. The chapel at the Pine Bluff Unit hosted Kairos Walk #13 for 18 participants from the Randall L. Williams Unit on 10/24-27.

**Tucker Unit** – Twenty-five volunteers and 18 inmates took part in a Kairos Walk event that was held at the unit on October 17-20.

**CHAPLAINCY SERVICES, *continued***

**Wrightsville Unit** – On October 3, eight volunteers from “Prison Fellowship” visited Wrightsville to conduct a worship service and concert event that was attended by 106 inmates. Arkansas State Police held a fish fry at the unit on 10/11 attended by 19 volunteers and 60 inmates.

**ACCREDITATION****Tucker Unit Reaccreditation Audit (10/8-10/10)-**

100% Mandatory Standards/Best Practices,  
99.8% Non-Mandatory Standards/Best Practices

**Fire/Safety and Sanitation independent audits conducted by the Fire and Sanitation Coordinator:**

10/14–10/18 North Central Unit Independent Audit  
10/24–10/25 Mississippi County Work Release Center Independent Audit

**VOLUNTEER SERVICES****Total Number of Volunteer Hours for October 2019:**

Unit/Program	Hours
Cummins Unit	14.5
Delta Unit	10
East Arkansas Regional Unit	22
Hawkins Unit	4
McPherson Unit	17
Mississippi County Work Release Center	16
North Central Unit	2
Northwest Arkansas Work Release Center	15.75
Ouachita River Correctional Unit	32
Pine Bluff Complex	13
Varner	26
PAWS	23
Think Legacy	164.25
Religious Services/Chaplaincy	6,661
<b>Total Hours</b>	<b>7020.50</b>

**MENTAL HEALTH SERVICES****Reduction of Sexual Victimization Program (RSVP) and Sex Offender Treatment Programs (SOFT):**

October 2019	Capacity	Beginning Count	Completed	Removed	Admissions	End Count
RSVP	278	274	70	5	89	288
SOFT	30	5	0	0	2	7
<b>Total</b>	<b>308</b>	<b>279</b>	<b>70</b>	<b>5</b>	<b>91</b>	<b>295</b>

There are 725 males on the waiting list for RSVP and 16 females on the waiting list for SOFT within five years of their TE date. Of those, 20 inmates are mandated by the Parole Board.

The average time on the waiting list from request is between one and two months for those stipulated.

The total on the waiting list, including those not currently within the identified timeframe, is 1,399 males – 1,101 of whom are low risk on the ARORA, and 18 females – nine of whom are low risk on the ARORA. There is one PREA inmate in the program at this time.

**\*The waiting list numbers include inmates that are ineligible due to class or housing status.**

**Therapeutic Community (TC):**

October 2019 Unit	Capacity	Beginning Count	Completed	Removed	Admissions	End Count
Tucker	136*	124	18	13	42	135
Wrightsville	50*	49	7	0	6	48
McPherson	53*	52	1	5	7	53
<b>Total</b>	<b>239</b>	<b>225</b>	<b>26</b>	<b>18</b>	<b>55</b>	<b>236</b>

There are 630 males and 98 females on the waiting list within 18 months of their release date. Of those, 13 are mandated by the Parole Board.

The average time on the waiting list from request is 16 days.

The total on the waiting list, including those not currently within the identified timeframe, is 1,109 males and 140 females; of these, 335 are low risk on the ARORA.

**\*Denotes transitional beds available at this treatment program. The Tucker Therapeutic Community has 129 client slots and seven peer counselor slots.**



**MENTAL HEALTH SERVICES, continued****Substance Abuse Treatment Program (SATP):**

Unit	Capacity	Beginning Count	Completed	Removed	Admissions	End Count
Cummins	47*	43	0	4	6	45
Grimes	56*	45	8	0	14	51
McPherson	106*	102	8	11	21	104
Maximum Security	3	3	0	0	0	3
Randall L. Williams	200*	185	28	21	34	170
Benton	36*	18	5	2	9	20
Wrightsville	150*	150	22	13	24	139
<b>Total</b>	<b>582</b>	<b>546</b>	<b>71</b>	<b>51</b>	<b>108</b>	<b>532</b>

There are 1,788 males and 206 females on the waiting list within 18 months of their release date. Of those, 45 are mandated by the Parole Board.

The average time on the waiting list from request is 17 days.

The total on the waiting list, including those not currently within the identified timeframe or ineligible due to class or housing status, is 2,786 males and 286 females; of these, 626 are low risk on the ARORA.

\*Denotes transitional beds available at this treatment program.

**Substance Use Intervention Program:** The Substance Use Intervention Program had 19 admissions and five discharges for an end-of-month count of 34 for October. This program is housed at the Varner Unit and is for inmates found guilty of a disciplinary violation for drug use or drug possession.

**ORCU Residential Program Unit (RPU):** The RPU had 11 admissions and 11 discharges in October for an end-of-month count of 124.

**McPherson Mental Health Residential Program Unit (RPU):** There were nine admissions and ten discharges in October for an end-of-month count of 39.

**Habilitation Program:** The Habilitation Program at the Ouachita River Correctional Unit provided treatment services to 45 inmates during October. There were no admissions or discharges resulting in an end-of-month count of 45.

**Anger Management Treatment:** The Anger Management Treatment Program at the Cummins Unit provided treatment services to 34 inmates during October. There were two admissions and two discharges for an end-of-month count of 32.

**Staffing:** The following Mental Health Services and Substance Abuse Treatment Program (SATP) positions were vacant in September and October 2019:

Positions	FTE's*	September	October
Psychologists	14	5	5
Social Workers	31	11	12
Advisors	64	9	13
Substance Abuse Program Leaders	35	4	4
Rehab Program Director	1	1	1
Administrative Specialists	17	2	2

\*FTE refers to authorized Full Time Equivalent positions.

**ADDITIONAL MENTAL HEALTH AND MEDICAL INFORMATION****Self-Study Classes:**

Classes	# of Participants	# Completed	Waiting List
Anger Management	212	205	1,251
Thinking Errors	235	230	1,147
Substance Abuse Education	215	214	732
Communication Skills	299	295	985
Domestic Violence	83	75	320
Victims of Domestic Violence	41	41	79
Stress Management	239	214	1,099
Parenting	175	173	514

**Suicide:** There were 83 suicidal threats during October. There were 11 attempts, none of which resulted in death.

## **ADDITIONAL MENTAL HEALTH AND MEDICAL INFORMATION, *continued***

**Outpatient:** There were 2,114 inmates on the mental health medical log at the beginning of October. Mental Health staff conducted the following contacts during October:

Case Management Contacts	2,032
Requests for Interviews	1,386
Testing	3
Intakes	607
Unit Requests	1,788
Counseling (with Treatment Plans)	0
Pre-Lockup Reviews	668
Routine Restrictive Housing Reviews	1,539
Restrictive Housing Rounds	22,580
PREA Evaluations	131
Routine Follow-up	288
834 Requests	42

**County Mental Health Requests:** During October, there were 183 requests of a mental health nature received. Seventy-nine inmates were fast-tracked to ADC.

**County Medical Health Requests:** During October, there were 679 requests of a medical nature received. Twenty-three inmates were fast-tracked to ADC.

**Medical Contract Reimbursements:** Sanction reimbursements for September were \$14,200.00.

**Deaths:** There were six inmate deaths during the month of October, all of which were cremated.

**Wellpath:** See attachment for Wellpath's report regarding outside beds and emergency room visits.

**Medical Grievances:** In October, there were 202 appeals of medical grievances received and 214 appeals were answered; 15 of those were found to be with merit and four with merit but resolved.

## **SEX OFFENDER ASSESSMENT**

### **Assessments Completed:**

Risk Level	October	September 1999 through October 2019
Level 1	0	1,201
Level 2	68	7,712
Level 3	30	6,953
Level 4	1	671
Default 3	5	*
<b>Total</b>	<b>104</b>	<b>16,537</b>
*Default Level 3's are included in the total number of Level 3's to date.		

### **ACIC Numbers:**

The total number of sex offenders registered from September 1999 through October 2019:

Compliant	8,527
Delinquent	980
Confined	3,275
Out-of-State	3,597
Address Unknown	123
Deported	205
Incapacitated	87
Out of USA	10
<b>Total</b>	<b>16,804</b>

Consistent with current Arkansas law, deceased offenders no longer remain on the registry.

## **PAWS IN PRISON**

### **Currently Enrolled in Training:**

Hawkins Unit	7
Maximum Security Unit	9
North Central Unit	9
Ouachita River Unit	7
Randall L. Williams Unit	5
Tucker Unit	6
<b>Total</b>	<b>43</b>

### **Completed Training:**

October 2019	11
YTD 2019	388
Since Inception (December 2011)	1,401
Dogs Currently in Foster (Graduated, but Not Adopted)	0
Volunteer Hours	23
Volunteer Hours (Year-to-Date)	396

## **CONSTRUCTION/MAINTENANCE**

## **PROJECT UPDATES**

SEE CONSTRUCTION BUDGET / STATUS REPORT  
IN ATTACHMENTS SECTION (PAGES 21-22).

## AGENCY HIGHLIGHTS

### AGENCY-WIDE:

#### ***PREA Workshop Offered in Pine Bluff***

Two representatives from the National PREA Resource Center (PRC) in Washington, DC led a workshop on the Prison Rape Elimination Act at the Administrative East building in Pine Bluff on October 2. In this first-of-its-kind training, PRC Associate Director Scott Catey, Ph.D., J.D., and Senior Program Associate Phebia Moreland, addressed a packed house filled with state and local corrections professionals on topics pertaining to sexual safety in confinement. This was the first PREA training that those who work at local facilities have received since federal law was passed in 2003. This much-needed training was coordinated by the DOC Secretary's Office, the Jail Standards Office and the Division of Community Correction.



#### ***Showcase Hosted by Correctional Industries***

Arkansas Correctional Industries (ACI) held its annual showcase at the State Fairgrounds on October 30. The event provided an opportunity for the public to see firsthand the many quality products and services that ACI has to offer – everything from janitorial supplies to furniture to signage.



### ***Correction Division Transfer and Promotion***

A couple of moves within the Division of Correction were announced during the month of October. First, Superintendent Gaylon Lay transferred from the Pine Bluff Complex to the East Arkansas Regional Unit. Superintendent Lay has been with the division more than 40 years and currently holds the distinction of being ADC's longest-serving warden/superintendent. He also served as the Superintendent of the Cummins Unit.



*Lay*

To fill the vacancy left by Lay, Darryl Golden was promoted to Superintendent of the Pine Bluff Complex. Superintendent Golden has been with the Correction Division for 28 years. He became a Deputy Warden in 2006 and was named Warden of McPherson in 2015. Most recently, he served as warden of the Delta Unit.



*Golden*

We extend congratulations to both men and know that their knowledge and experience will have a positive impact on the facilities.

### **GRIMES AND MCPHERSON UNITS:**

#### ***ASU Newport to Begin Offering Vocational Classes for Inmates in January***

An announcement was made on October 23 regarding a partnership between Arkansas State University (ASU) Newport and the Grimes and McPherson Units. Beginning in January, the units will begin offering two new vocational classes for inmates and their tuition will be covered by the Second Chance Pell Grant program. McPherson inmates will be able to take a certification course in welding and a certification course in diesel mechanics will be offered to inmates at Grimes. There will also be the opportunity for inmates to take college courses towards earning an associate degree. Classes will be held in the evening at the ASU Newport campus and inmates will be transported to the school by officers. Both courses have proven to be popular with other students and offer the potential for the inmates to have well-paying career options following their release from prison.



## 2019 INFORMAL GRIEVANCE REPORT

Month	BENTON	HAWK/M	HAWK/F	WRTS	EARU & MX	GRIMES	RLW	MCWR	MCPH	MSU	NCU	PBU	NWA	TU	TRCC	VsMX	VU	CU	ORCU	Ester	DRU	Bowie Cty	TOTAL
JAN	1	25	25	85	362	310	28	0	448	175	118	33	0	139	1	470	72	151	228	24	132	57	2,884
FEB	0	15	27	80	341	284	17	0	267	147	148	30	0	107	0	450	54	149	406	20	96	39	2,677
MAR	3	15	30	96	305	254	26	0	309	155	171	52	0	125	0	517	72	201	339	27	80	44	2,821
APR	0	34	14	100	305	243	21	0	454	267	141	42	0	97	0	607	145	167	255	29	97	53	3,071
MAY	3	21	12	88	354	299	10	0	278	406	106	40	1	119	1	448	90	180	396	32	114	35	3,033
JUN	1	20	17	81	290	221	21	0	307	192	131	37	1	130	0	478	67	157	203	21	110	46	2,531
JUL	1	30	20	109	318	294	19	4	383	242	143	38	0	113	1	489	88	183	426	27	101	60	3,089
AUG	3	29	19	122	316	272	17	2	390	146	139	17	0	135	4	445	84	136	494	27	90	45	2,932
SEPT	1	45	20	73	449	258	27	0	307	220	117	48	0	135	0	511	86	222	494	20	115	69	3,217
OCT	1	36	42	93	309	197	33	0	359	241	125	52	0	100	0	565	77	254	346	21	66	57	2,974
NOV	0	0	0	0	0	0	0	0	0	0	0	0	0	0	0	0	0	0	0	0	0	0	0
DEC	0	0	0	0	0	0	0	0	0	0	0	0	0	0	0	0	0	0	0	0	0	0	0
TOTAL	14	270	226	927	3,349	2,632	219	6	3,502	2,191	1,339	389	2	1,200	7	4,980	835	1,800	3,587	248	1,001	505	29,229

## 2019 FORMAL GRIEVANCE REPORT

Month	BENTON	HAWK/M	HAWK/F	WRTS	EARU & MX	GRIMES	RLW	MCWR	MCPH	MSU	NCU	PBU	NWA	TU	TRCC	VsMX	VU	CU	ORCU	Ester	DRU	Bowie Cty	TOTAL
JAN	0	14	8	37	335	152	16	0	171	128	70	13	0	117	0	289	55	106	155	12	73	21	1,772
FEB	0	4	5	56	334	134	9	0	104	185	78	15	0	81	0	255	46	115	161	8	57	8	1,655
MAR	3	9	4	40	332	121	12	0	115	111	102	15	0	125	0	310	5	144	113	25	37	14	1,637
APR	0	14	4	52	274	128	19	0	153	289	81	21	0	67	0	334	130	119	150	14	42	21	1,912
MAY	1	10	4	39	337	137	37	0	109	270	49	20	1	93	0	277	77	126	151	13	45	5	1,801
JUN	0	7	4	44	265	92	8	0	115	192	77	12	1	89	0	264	56	95	130	0	57	17	1,525
JUL	1	9	2	36	397	142	13	1	144	232	78	7	0	88	1	294	73	113	165	12	53	22	1,883
AUG	1	14	4	59	370	142	10	1	140	162	65	6	0	120	1	240	59	146	494	9	38	13	2,094
SEPT	0	19	10	34	400	110	11	0	105	236	62	11	0	102	0	302	75	133	173	15	58	19	1,875
OCT	1	17	9	43	394	81	14	0	105	227	58	11	0	76	0	320	63	173	195	9	33	16	1,845
NOV	0	0	0	0	0	0	0	0	0	0	0	0	0	0	0	0	0	0	0	0	0	0	0
DEC	0	0	0	0	0	0	0	0	0	0	0	0	0	0	0	0	0	0	0	0	0	0	0
TOTAL	7	117	54	440	3,438	1,239	149	2	1,261	2,032	720	131	2	958	2	2,885	639	1,270	1,887	117	493	156	17,999



## INMATE INSTITUTIONAL GRIEVANCE APPEAL REPORT – OCTOBER 2019

	Acknowledged	Rejected	Processed W/O Merit	Processed W/ Merit
Benton Unit	0	0	0	0
Benton Work Release	0	0	0	0
Bowie County Texas Correctional Facility	2	0	7	0
Cummins Unit	42	11	49	0
Cummins Modular Unit	0	0	0	0
Delta Regional Unit	3	1	4	0
East Arkansas Regional Unit	16	3	13	0
East Arkansas Regional Max Unit	69	8	80	2
Ester Unit	1	0	0	0
Grimes Unit	14	1	14	0
Maximum Security Unit	49	12	35	0
Tucker Re-Entry	0	0	0	0
McPherson Unit	14	6	14	0
McPherson Mental Health Residential Program Unit	0	0	0	0
Mississippi County Work Release Center	0	0	0	0
Northwest Arkansas Work Release Center	0	0	0	0
North Central Unit	10	2	8	0
Ouachita River Correctional Unit	24	6	47	0
ORCU Hospital	0	0	0	0
ORCU New Commitment	15	4	5	0
ORCU Mental Health Residential Program Unit	0	2	0	0
Pine Bluff Unit	4	2	1	0
Pine Bluff Re-Entry	0	0	0	0
Randall L. Williams Correctional Facility	0	0	1	0
Texarkana Regional Correctional Center	0	0	0	0
Tucker Unit	15	3	25	2
Varner Super Max	80	20	81	0
Varner Unit	13	2	14	0
Wrightsville Unit	7	4	5	0
Hawkins Center	3	0	2	0
Hawkins for Males	1	0	0	0
Hawkins SPU	0	0	0	0
<b>Total</b>	<b>382</b>	<b>87</b>	<b>405</b>	<b>4</b>

## ADMISSIONS AND RELEASES – OCTOBER 2019

<b><u>Admissions</u></b>	<b><u>Male</u></b>	<b><u>Female</u></b>	<b><u>Total</u></b>
Asian	2	0	2
Black	167	11	178
Hispanic	11	0	11
Native American Indian	1	0	1
Native Hawaiian or Pacific Isl.	2	0	2
White	333	68	401
Other	1	0	1
<b>Total</b>	<b>517</b>	<b>79</b>	<b>596</b>

<b><u>Releases</u></b>	<b><u>Male</u></b>	<b><u>Female</u></b>	<b><u>Total</u></b>
Asian	3	1	4
Black	146	13	159
Hispanic	18	1	19
Native American Indian	2	1	3
Native Hawaiian or Pacific Isl.	0	0	0
White	285	69	354
Other	1	0	1
<b>Total</b>	<b>455</b>	<b>85</b>	<b>540</b>

## ADC INMATE POPULATION GROWTH 2000-2026 - OCTOBER 2019

Updated 10/31/2019

Mo.	2000	2001	2002	2003	2004	2005	2006	2007	2008	2009	2010	2011	2012	2013	2014	2015	2016	2017	2018	2019
Jan.	11,984	11,908	12,402	13,015	13,105	13,595	13,481	13,839	14,518	14,796	15,334	16,312	15,134	14,815	17,481	18,142	17,785	17,824	18,201	17,958
Feb.	12,169	12,022	12,529	13,054	13,166	13,783	13,633	14,012	14,603	14,883	15,374	16,209	14,990	15,008	17,438	18,082	17,625	17,608	17,998	17,846
March	12,006	12,033	12,299	13,108	13,088	13,418	13,534	13,772	14,580	14,843	15,290	16,095	14,964	14,665	17,395	18,233	17,573	17,666	18,089	17,898
April	12,069	12,167	12,465	13,213	13,323	13,469	13,554	13,851	14,769	14,937	15,570	16,172	15,124	14,850	17,604	18,703	17,815	17,798	18,227	17,977
May	12,109	12,384	12,558	13,463	13,556	13,528	13,711	14,146	14,880	15,146	15,694	16,062	15,132	15,074	17,593	18,693	17,769	17,652	17,945	17,817
June	12,005	12,108	12,439	13,418	13,389	13,251	13,430	13,915	14,700	15,025	15,564	15,554	14,832	14,825	17,340	18,813	17,973	17,963	17,972	17,942
July	12,030	12,190	12,622	13,509	13,528	13,286	13,560	14,082	14,868	15,195	15,807	15,519	14,879	15,379	17,522	18,870	18,130	18,180	18,005	18,002
August	12,087	12,371	12,815	13,565	13,632	13,419	13,646	14,224	15,100	15,385	15,829	15,240	14,675	16,103	17,549	18,806	17,919	18,051	17,751	18,090
September	11,983	12,289	12,774	13,341	13,516	13,237	13,652	14,217	14,850	15,285	16,025	15,172	14,724	16,412	17,605	18,549	18,026	18,179	17,865	17,856
October	12,119	12,348	12,942	13,341	13,584	13,363	13,775	14,349	14,836	15,381	16,311	15,271	14,856	16,993	17,880	18,430	18,127	18,348	17,943	17,947
November	12,094	12,408	13,162	13,408	13,706	13,587	13,913	14,437	15,025	15,340	16,460	15,205	14,625	17,168	17,848	17,981	17,573	17,973	17,666	
December	11,856	12,333	12,845	13,106	13,470	13,338	13,728	14,315	14,716	15,199	16,204	15,062	14,654	17,235	17,874	17,707	17,537	18,078	17,799	
Net Ann. Inc.	29	477	512	261	364	-132	390	587	401	483	1,005	-1,142	-408	2,581	639	-167	-170	541	-279	148
Avg. Mo. Inc.	2	40	43	22	30	-11	33	49	33	40	84	-95	-34	215	53	-14	-14	45	-23	15

Population is total jurisdictional count at end of each month. Population at end of month December 1999 was 11,827.

Average monthly population increase for past fifteen years 2004 - 2018 is 26

Average monthly population increase for past ten years Jan. 2009 - Dec 2018 is 26

Average monthly population increase for past five years 2014 - 2018 is 9

Projected at Growth of 26 per Month

	2008	2009	2010	2011	2012	2013	2014	2015	2016	2017	2018	2019	2020	2021	2022	2023	2024	2025	2026
Mo.	Actual	Actual	Actual	Actual	Actual	Actual	Actual	Actual	Actual	Actual	Actual	Actual/ Proj.	Proj.	Proj.	Proj.	Proj.	Proj.	Proj.	Proj.
January	14,518	14,796	15,334	16,312	15,134	14,815	17,481	18,142	17,785	17,824	18,201	17,958	18,025	18,337	18,649	18,961	19,273	19,585	19,897
February	14,603	14,883	15,374	16,209	14,990	15,008	17,438	18,082	17,625	17,608	17,998	17,846	18,051	18,363	18,675	18,987	19,299	19,611	19,923
March	14,580	14,843	15,290	16,095	14,964	14,665	17,395	18,233	17,573	17,666	18,089	17,898	18,077	18,389	18,701	19,013	19,325	19,637	19,949
April	14,769	14,937	15,570	16,172	15,124	14,850	17,604	18,703	17,815	17,798	18,227	17,977	18,103	18,415	18,727	19,039	19,351	19,663	19,975
May	14,880	15,146	15,694	16,062	15,132	15,074	17,593	18,693	17,769	17,652	17,945	17,817	18,129	18,441	18,753	19,065	19,377	19,689	20,001
June	14,700	15,025	15,564	15,554	14,832	14,825	17,340	18,813	17,973	17,963	17,972	17,942	18,155	18,467	18,779	19,091	19,403	19,715	20,027
July	14,868	15,195	15,807	15,519	14,879	15,379	17,522	18,870	18,130	18,180	18,005	18,002	18,181	18,493	18,805	19,117	19,429	19,741	20,053
August	15,100	15,385	15,829	15,240	14,675	16,103	17,549	18,806	17,919	18,051	17,751	18,090	18,207	18,519	18,831	19,143	19,455	19,767	20,079
September	14,850	15,285	16,025	15,172	14,724	16,412	17,605	18,549	18,026	18,179	17,865	17,856	18,233	18,545	18,857	19,169	19,481	19,793	20,105
October	14,836	15,381	16,311	15,271	14,856	16,993	17,880	18,430	18,127	18,348	17,943	17,947	18,259	18,571	18,883	19,195	19,507	19,819	20,131
November	15,025	15,340	16,460	15,205	14,625	17,168	17,848	17,981	17,573	17,973	17,666	17,973	18,285	18,597	18,909	19,221	19,533	19,845	20,157
December	14,716	15,199	16,204	15,062	14,654	17,235	17,874	17,707	17,537	18,078	17,799	17,999	18,311	18,623	18,935	19,247	19,559	19,871	20,183
Net Ann. Inc.	401	483	1,005	-1,142	-408	2,581	639	-167	-170	541	-279	200	312	312	312	312	312	312	312
Ave. Mo. Inc.	33	40	84	-95	-34	215	53	-14	-14	45	-23	17	26	26	26	26	26	26	26

## MONTHLY POPULATION AVERAGES - OCTOBER 2019

Unit/Center	10/1	10/2	10/3	10/4	10/7	10/8	10/9	10/10	10/11	10/14	10/15	10/16	10/17	10/18	10/21	10/22	10/23	10/24	10/25	10/28	10/29	10/30	10/31	AVG
Benton	330	338	341	336	335	332	332	333	333	332	332	334	337	336	336	334	333	333	335	335	335	335	328	334
Cummins	1,646	1,645	1,644	1,645	1,651	1,651	1,659	1,657	1,654	1,651	1,654	1,656	1,656	1,654	1,653	1,654	1,654	1,653	1,653	1,652	1,656	1,656	1,648	1,652
Delta	624	624	618	625	622	623	623	622	622	621	629	627	624	625	621	619	628	627	624	626	625	630	616	624
E AR Reg	1,683	1,682	1,682	1,677	1,676	1,679	1,689	1,684	1,680	1,698	1,699	1,693	1,694	1,695	1,687	1,685	1,690	1,685	1,695	1,694	1,694	1,695	1,699	1,688
Ester	587	590	580	586	582	587	585	591	589	585	585	584	581	580	590	590	586	582	579	585	587	584	584	585
Grimes	1,070	1,068	1,068	1,069	1,084	1,080	1,079	1,079	1,075	1,076	1,073	1,077	1,077	1,071	1,071	1,070	1,070	1,088	1,084	1,084	1,084	1,076	1,072	1,076
Max Sec	675	677	673	672	673	673	670	671	670	670	671	670	669	668	676	677	674	684	686	692	691	688	691	677
McPherson	993	987	991	994	993	993	991	991	989	988	987	987	985	986	977	988	987	982	985	977	980	982	979	987
MCWRC	141	141	141	141	139	139	139	138	138	138	138	140	140	138	136	136	135	134	134	134	132	129	133	137
N Central	831	827	826	836	838	836	836	831	828	833	835	845	845	845	844	841	835	833	838	838	851	848	843	838
NWAWRC	98	100	99	100	100	100	100	100	101	100	100	100	99	100	100	100	100	100	100	100	99	99	98	100
Ouachita River	1,838	1,838	1,853	1,834	1,841	1,833	1,827	1,834	1,831	1,822	1,822	1,832	1,840	1,825	1,822	1,829	1,831	1,833	1,827	1,840	1,842	1,848	1,858	1,835
Randall L Williams	544	544	545	546	556	557	555	553	556	563	563	553	550	551	548	544	545	545	544	540	540	542	548	549
Pine Bluff	542	540	540	540	539	539	542	543	541	538	537	540	539	538	537	540	535	536	535	532	541	539	532	538
PB Reentry	54	54	53	53	53	54	53	53	53	54	54	54	54	54	54	54	54	54	54	54	54	54	54	54
TRCC	124	124	124	124	122	121	121	120	120	120	120	120	120	120	124	124	124	124	124	123	123	123	124	122
Tucker	1,011	1,010	1,007	1,012	1,005	1,008	1,006	1,006	1,005	999	1,001	997	1,003	1,014	1,016	1,011	1,015	1,010	1,006	1,007	1,014	1,015	1,014	1,008
Varner	1,645	1,645	1,632	1,630	1,637	1,645	1,647	1,648	1,646	1,645	1,642	1,642	1,636	1,633	1,632	1,629	1,627	1,611	1,614	1,617	1,622	1,629	1,627	1,634
Wrightsville	1,247	1,250	1,243	1,237	1,234	1,244	1,243	1,238	1,243	1,240	1,240	1,242	1,245	1,240	1,243	1,256	1,254	1,252	1,251	1,253	1,253	1,250	1,244	1,245
Total ADC	15,683	15,684	15,660	15,657	15,680	15,694	15,697	15,692	15,674	15,673	15,682	15,693	15,694	15,673	15,667	15,681	15,677	15,666	15,668	15,683	15,723	15,722	15,692	15,683
Bowie CO., TX	330	331	331	333	333	333	333	329	329	332	332	332	332	332	332	331	332	335	335	335	335	335	335	332
ALETA	18	18	18	18	18	18	18	18	18	18	18	18	18	18	18	18	18	18	18	18	18	18	18	18
Ar State Police	57	57	57	57	56	56	56	57	59	59	59	59	59	61	61	61	61	61	61	59	59	59	57	59
Co Jail / M	1,285	1,268	1,297	1,317	1,294	1,290	1,286	1,284	1,286	1,283	1,287	1,259	1,265	1,280	1,261	1,274	1,280	1,290	1,311	1,305	1,277	1,289	1,307	1,286
Co Jail / F	149	149	146	150	149	153	158	157	160	161	167	171	168	173	171	168	172	174	178	188	187	183	193	166
Total Co Jail BK	1,434	1,417	1,443	1,467	1,443	1,443	1,444	1,441	1,446	1,444	1,454	1,430	1,433	1,453	1,432	1,442	1,452	1,464	1,489	1,493	1,464	1,472	1,500	1,452
309/M	249	248	246	246	248	249	249	249	249	249	251	251	251	251	251	249	249	250	250	249	249	250	251	249
309/F	76	76	76	75	75	75	75	75	75	74	74	74	74	74	74	74	74	74	73	73	73	73	71	74
Total Act 309	325	324	322	321	323	324	324	324	324	323	325	325	325	325	325	323	323	324	323	322	322	323	322	323
Total Non ADC	2,164	2,147	2,171	2,196	2,173	2,174	2,175	2,169	2,176	2,176	2,188	2,164	2,167	2,189	2,168	2,175	2,186	2,202	2,226	2,227	2,198	2,207	2,232	2,184
Total	17,847	17,831	17,831	17,853	17,853	17,868	17,872	17,861	17,850	17,849	17,870	17,857	17,861	17,862	17,835	17,856	17,863	17,868	17,894	17,910	17,921	17,929	17,924	17,867



## FISCAL YEAR 2020 COUNTY JAIL BACKUP - OCTOBER 2019

DAY		Jul-19		Aug-19		Sep-19		Oct-19
1		1,502		1,507	*	1,639		1,434
2		1,500		1,518		1,620		1,417
3		1,506	*	1,518		1,620		1,443
4		1,495	*	1,518		1,586		1,467
5		1,495		1,536		1,558	*	1,467
6	*	1,495		1,506		1,531	*	1,467
7	*	1,495		1,511	*	1,531		1,443
8		1,507		1,492	*	1,531		1,443
9		1,510		1,491		1,505		1,444
10		1,520	*	1,491		1,504		1,441
11		1,544	*	1,491		1,487		1,446
12		1,550		1,503		1,446	*	1,446
13	*	1,550		1,523		1,429	*	1,446
14	*	1,550		1,538	*	1,429		1,444
15		1,527		1,562	*	1,429		1,454
16		1,523		1,584		1,437		1,430
17		1,507	*	1,584		1,439		1,433
18		1,491	*	1,584		1,435		1,453
19		1,518		1,596		1,452	*	1,453
20	*	1,518		1,609		1,443	*	1,453
21	*	1,518		1,609	*	1,443		1,432
22		1,503		1,625	*	1,443		1,442
23		1,511		1,660		1,443		1,452
24		1,488	*	1,660		1,429		1,464
25		1,497	*	1,660		1,416		1,489
26		1,526		1,622		1,396	*	1,489
27	*	1,526		1,614		1,428	*	1,489
28	*	1,526		1,636	*	1,428		1,493
29		1,515		1,651	*	1,428		1,464
30		1,522		1,639		1,423		1,472
31		1,514	*	1,639				1,500
Avg Daily Backup		1,514		1,570		1,478		1,455

Note: Totals do not include 309 Contracts in County Jails (maximum of 336)

County Jail Back-up Fiscal Year Average as of October 31, 2019 ~ 1,504

Short-Term Revocation Program Average for October 2019 ~ 684

Short -Term Revocation Program Fiscal Year Average as of October 31, 2019 ~ 716

## STTG UNIT COUNTS – OCTOBER 2019

Unit	Beginning Total	Confirmed	Suspected	In	Out	Paroled	Removed	Ending Total	Total Unit Population	Unit % of STTG's
Benton	75	1	0	4	3	4	0	73	334	21.86%
Cummins	535	0	0	14	12	7	0	530	1,651	32.10%
Delta	189	3	0	16	10	9	0	189	624	30.29%
EARU	621	0	0	56	25	6	0	646	1,690	38.22%
Grimes	343	0	0	38	18	1	0	362	1,082	33.46%
Hawkins	47	0	0	6	7	0	0	46	399	11.53%
Max	259	1	0	12	0	1	0	270	697	38.74%
Mcperson	46	1	0	0	0	3	0	44	964	4.56%
MCWR	44	0	0	4	6	1	0	42	132	31.82%
NCU	219	0	0	41	27	0	0	233	847	27.51%
NWAWR	13	0	0	0	0	1	0	12	100	12.00%
ORCU	339	0	0	42	28	19	0	334	1,600	20.88%
ORCU Intake	86	193	0	0	169	0	0	110	238	46.22%
PB/Ester	253	0	0	52	47	11	0	247	1,175	21.02%
RLW	154	0	0	61	54	0	0	161	547	29.43%
TWR	32	0	0	7	3	2	0	34	125	27.20%
Tucker	326	0	0	46	32	14	0	326	1,010	32.28%
Varner	682	0	0	81	81	8	0	674	1,638	41.15%
Wrightsville	256	0	0	27	16	7	0	260	837	31.06%
<b>Total</b>	<b>4,519</b>	<b>199</b>	<b>0</b>	<b>507</b>	<b>538</b>	<b>94</b>	<b>0</b>	<b>4,593</b>	<b>15,690</b>	<b>29.27%</b>

**ORCU Intake brought in 193 new STTG members into ADC last month.**

## STTG DISCIPLINARY REPORT – OCTOBER 2019

Unit	STTG Incidents	STTG Suspected Incidents	Total Unit Disciplinary	Disciplinary Involving STTG	Percentage
Benton	0	0	15	3	20.00%
Cummins	1	1	543	232	42.73%
Delta	0	0	260	55	21.15%
EARU	0	0	711	418	58.79%
Grimes	1	2	185	67	36.22%
Hawkins	0	0	19	1	5.26%
Max	0	0	109	60	55.05%
Mcpherson	0	0	158	19	12.03%
MCWR	0	0	7	2	28.57%
NCU	0	0	126	47	37.30%
NWAWR	0	0	16	0	0.00%
ORCU	0	0	117	32	27.35%
ORCU Intake	0	0	7	6	85.71%
PB/Ester	0	0	70	19	27.14%
RLW	0	0	76	33	43.42%
TWR	0	0	11	5	45.45%
Tucker	0	0	176	77	43.75%
Varner	0	0	833	398	47.78%
Wrightsville	0	0	225	85	37.78%
<b>Total</b>	<b>2</b>	<b>3</b>	<b>3,664</b>	<b>1,559</b>	<b>42.55%</b>

## STTG COUNTS BY STTG SET – OCTOBER 2019

STTG Set	Benton	Cummins	Delta	EARU	Grimes	Hawkins	Max	Mcperson	MCWR	NCU	NWAWR	ORCU	Intake	PB	RLW	TWR	Tucker	Varner	Wrightsville	Total
Asian	1	0	0	0	1	0	0	0	0	2	0	0	0	3	1	0	2	0	0	10
Bloods	8	116	39	114	69	5	62	6	6	42	3	73	15	52	24	5	52	144	39	874
Crips	6	78	21	71	36	4	39	4	3	15	2	40	10	34	22	2	31	101	27	546
Folk	4	47	0	136	15	5	14	10	0	13	3	19	0	11	13	0	23	73	14	400
GD	18	120	43	98	97	6	75	0	15	35	0	62	19	51	34	10	82	141	65	971
Mexican	1	13	11	17	10	1	3	2	2	8	1	8	2	10	6	1	5	21	7	129
Motorcycle	0	1	1	1	1	1	3	1	2	1	0	2	1	2	0	0	3	1	0	21
Other	2	12	9	15	14	1	2	0	1	11	0	11	8	7	6	7	9	12	5	132
People	3	15	6	13	15	1	17	3	0	13	1	15	3	9	10	0	8	24	12	168
Unknown	0	10	5	14	11	0	4	0	0	5	0	12	5	1	10	2	11	5	10	105
W/S	20	24	34	41	41	6	4	17	6	46	2	45	33	25	18	0	44	30	30	466
AB	1	7	1	11	4	5	1	0	1	7	0	2	0	5	1	2	7	12	5	72
AC	0	8	3	14	10	5	11	0	0	3	0	7	2	9	0	4	3	18	5	102
NAE	2	36	6	44	11	5	14	1	2	9	0	18	7	17	4	1	18	39	22	256
WAR	7	43	10	57	27	1	21	0	4	23	0	20	5	11	12	0	28	53	19	341
<b>Total</b>	<b>73</b>	<b>530</b>	<b>189</b>	<b>646</b>	<b>362</b>	<b>46</b>	<b>270</b>	<b>44</b>	<b>42</b>	<b>233</b>	<b>12</b>	<b>334</b>	<b>110</b>	<b>247</b>	<b>161</b>	<b>34</b>	<b>326</b>	<b>674</b>	<b>260</b>	<b>4,593</b>

Key:

GD = Gangster Disciples

W/S = White Supremacist

NAE = New Aryan Empire

WAR = White Aryan Resistance

AC = Aryan Circle

AB = Aryan Brotherhood



## INTERNAL AFFAIRS BOARD REPORT - OCTOBER 2019

Opened Investigation, Reviews/ASP October 2019	Open Investigation	Open Review	ASP Referral
Arson	0	0	0
Assault on Inmate	0	0	0
Assault on Staff	0	0	0
Attempted Escape from Unit	0	0	0
Banding Together to Interfere with Unit	0	0	0
Battery on Inmate without Serious Injury	0	0	1
Battery on Inmate with Serious Injury	0	0	0
Battery on Inmate with Use of Unknown Substance	0	0	0
Battery on Other Person with Serious Injury	0	0	0
Battery on Staff without Serious Injury	0	1	0
Battery on Staff with Serious Injury	0	0	0
Battery on Staff with Bodily Fluids	0	0	2
Battery on Staff with Use of Unknown Substance	0	0	0
Death	0	0	3
Disobey Direct Order	0	0	0
Employee Misconduct	2	0	0
Excessive Force	0	0	0
Escape from Unit	0	0	0
Escape from Work Release	0	0	0
Forcible Rape	0	0	0
Inappropriate Relationship	0	0	0
Indecent Exposure	0	2	0
Inmate on Inmate Abusive Sexual Contact	0	1	0
Inmate on Inmate Sexual Assault	0	0	0
Inmate on Inmate Sexual Contact	0	2	0
Inmate on Inmate Sexual Harassment	0	26	0
Inmate on Inmate Sexual Misconduct	1	32	0
Inmate on Inmate Nonconsensual Sexual Contact	0	2	0
Introduction of Cell Phone	1	0	0
Introduction of Contraband	1	0	3
Introduction of Drugs	0	0	1
Introduction of Tobacco	0	0	0
Other Incident	0	2	0
Other Rule Violation	0	0	0
Possession of Cell Phone	1	0	0
Possession of Drugs	0	0	1
Possession of a Weapon	0	0	2
Retaliation	0	0	0
Sexual Assault	1	0	0
Sexual Misconduct	0	0	0
Staff on Inmate Sexual Harassment	0	41	0
Staff on Inmate Sexual Misconduct	0	10	0
Staff on Staff Sexual Harassment	2	1	0
Staff on Staff Sexual Misconduct	0	0	0
Suicide Attempt	0	0	0
Suspected Criminal Activity	0	0	0
Trafficking	0	0	0
Use of Force	0	70	0
Verbal/Written threat on Staff	0	0	0
<b>Total</b>	<b>9</b>	<b>190</b>	<b>13</b>

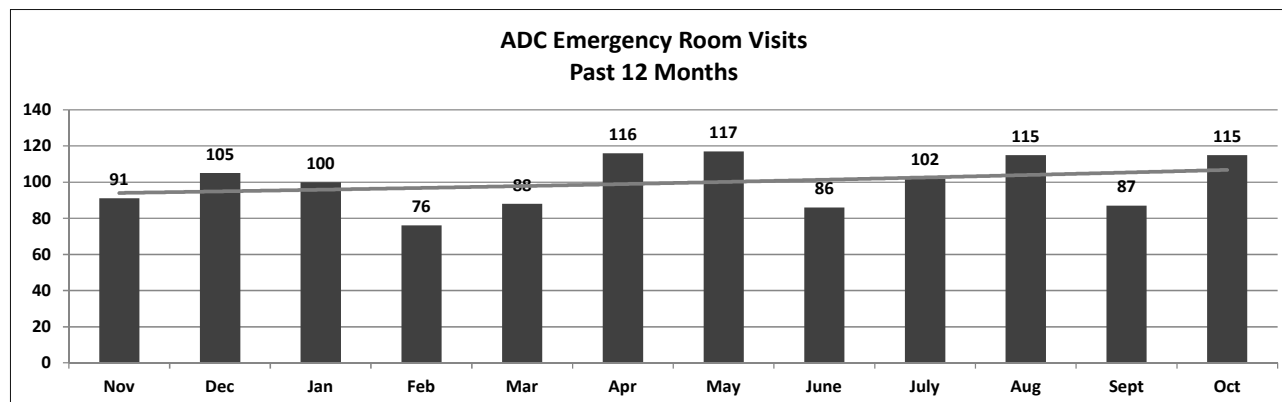
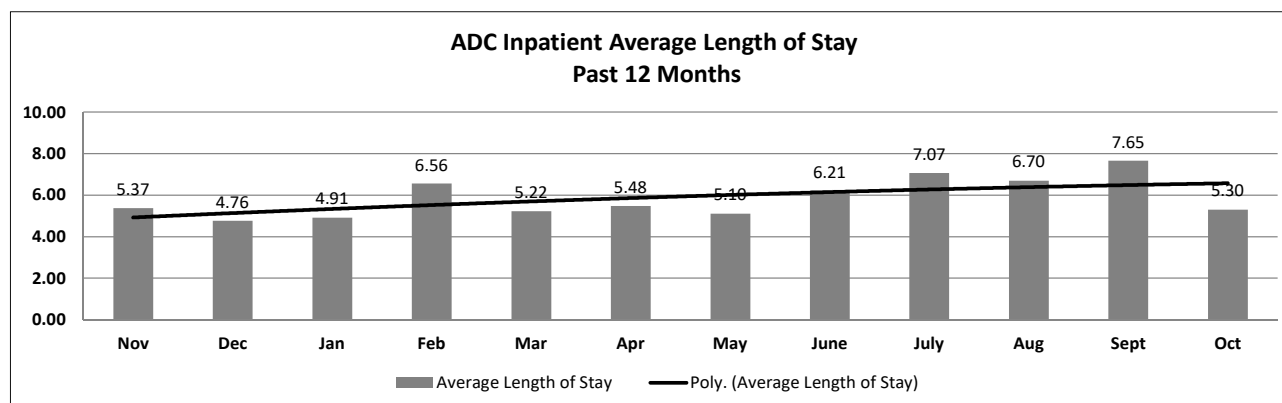
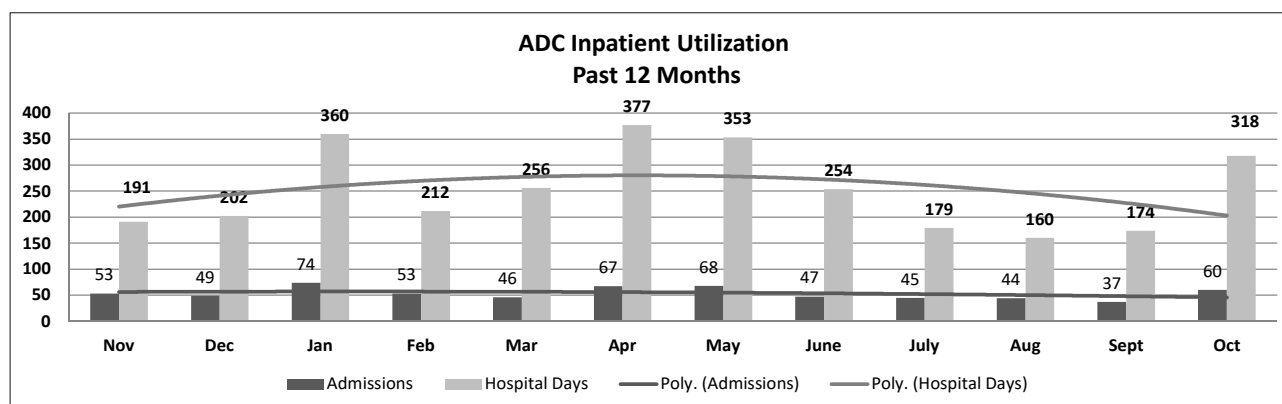
## ADC INPATIENT AND EMERGENCY ROOM UTILIZATION

### ADC Inpatient Statistics Past 12 Months

	2018		2019										Average
	Nov	Dec	Jan	Feb	Mar	Apr	May	June	July	Aug	Sept	Oct	
Admissions	53	49	74	53	46	67	68	47	45	44	37	60	53.6
Hospital Days	191	202	360	212	256	377	353	254	179	160	174	318	253.0
Average Length of Stay	5.37	4.76	4.91	6.56	5.22	5.48	5.10	6.21	7.07	6.70	7.65	5.30	4.72

### ADC ER Visits Past 12 Months

	2018		2019										Average
	Nov	Dec	Jan	Feb	Mar	Apr	May	June	July	Aug	Sept	Oct	
Emergency Room Visits	91	105	100	76	88	116	117	86	102	115	87	115	99.8



## MEDICAL GRIEVANCE BOARD REPORT – OCTOBER 2019

<b>Unit</b>	<b>Acknowledged/ Received</b>	<b>Rejected</b>	<b>Reviewed &amp; Signed by Dep Director</b>	<b>With Merit</b>	<b>With Merit, but Resolved</b>	<b>% With Merit</b>	<b>Without Merit</b>
<b>Benton</b>	0	0	0	0	0	<b>0%</b>	0
<b>Bowie Co.</b>	0	0	0	0	0	<b>0%</b>	0
<b>CMU</b>	0	0	0	0	0	<b>0%</b>	0
<b>Cummins</b>	6	6	5	0	0	<b>0%</b>	5
<b>Delta</b>	7	1	0	0	0	<b>0%</b>	0
<b>EARU</b>	29	17	19	1	0	<b>5%</b>	18
<b>EARU Max</b>	44	7	44	3	1	<b>9%</b>	40
<b>Ester</b>	0	3	1	0	1	<b>100%</b>	0
<b>Grimes</b>	6	2	17	0	0	<b>0%</b>	17
<b>Hawkins</b>	0	1	1	1	0	<b>100%</b>	0
<b>McPherson</b>	11	3	24	3	1	<b>17%</b>	20
<b>MCWRC</b>	0	0	0	0	0	<b>0%</b>	0
<b>MSU</b>	7	1	16	1	0	<b>6%</b>	15
<b>North Central</b>	6	2	7	0	0	<b>0%</b>	7
<b>NWAWRC</b>	0	0	0	0	0	<b>0%</b>	0
<b>Ouachita</b>	17	0	21	2	0	<b>10%</b>	19
<b>Pine Bluff</b>	0	0	0	0	0	<b>0%</b>	0
<b>Randall Williams</b>	0	0	1	0	0	<b>0%</b>	1
<b>SNN</b>	2	0	5	0	0	<b>0%</b>	5
<b>TRCC</b>	0	0	0	0	0	<b>0%</b>	0
<b>Tucker</b>	7	6	16	0	1	<b>6%</b>	15
<b>Varner</b>	18	2	13	0	0	<b>0%</b>	13
<b>Varner S Max</b>	34	1	12	1	0	<b>8%</b>	11
<b>WRU</b>	5	1	4	0	0	<b>0%</b>	4
<b>WHM</b>	3	1	8	3	0	<b>38%</b>	5
<b>WWR</b>	0	0	0	0	0	<b>0%</b>	0
<b>TOTAL</b>	<b>202</b>	<b>54</b>	<b>214</b>	<b>15</b>	<b>4</b>	<b>9%</b>	<b>195</b>

## CHAPLAINCY

Month: October Year: 2019	CUMMINS	DELTA REGIONAL	EAST ARKANSAS	EAST ARKANSAS MAX	ESTER	GRIMES	HAWKINS	MAXIMUM	MCPHERSON	NORTH CENTRAL	OUACHITA RIVER	PINE BLUFF	RANDALL L. WILLIAMS	TUCKER	VARNER	VARNER MAX	WRIGHTSVILLE	TOTAL
<b>Services Chaplains Oversaw</b>																		
Christian																		
Population	9	33	3	0	2	2	1	4	3	13	5	3	7	10	14	0	5	114
Segregation	0	0	0	0	0	0	0	0	0	0	0	0	0	0	0	0	0	0
Muslim																		
Population	5	5	1	0	1	4	0	7	4	0	0	4	5	1	5	0	1	43
Segregation	0	0	0	0	0	0	0	0	0	0	0	0	0	0	0	0	0	0
																		157
<b>Volunteers in Charge</b>																		
Protestant	25	12	28	0	17	17	25	22	38	7	9	11	0	24	13	4	27	279
Catholic	2	0	4	0	1	4	11	0	3	4	2	1	1	0	1	4	4	42
Muslim	1	2	3	0	1	0	0	7	0	0	8	2	1	2	1	0	2	30
Other	0	0	8	0	0	0	2	16	4	0	17	6	1	0	5	0	2	61
Baptism	2	0	20	0	5	3	0	1	0	3	0	0	0	2	5	0	0	41
Marriages	0	0	1	0	2	3	1	1	0	0	0	0	0	0	0	0	0	8
<b>Distributed by Chaplains</b>																		
Greeting Cards	152	4	0	0	16	25	200	80	714	60	40	177	96	86	31	100	0	1,781
Bibles, Quran, Torah, Etc.	10	25	14	12	32	17	5	5	32	20	300	11	19	142	24	48	10	726
Study Course	87	4	23	17	10	0	0	90	20	0	60	0	20	228	10	4	0	573
Writing Supplies	0	0	0	0	0	1	150	50	135	0	750	0	0	138	0	0	0	1,224
Literature	0	600	582	374	0	10	250	150	134	350	500	208	190	502	859	84	400	5,193
<b>Chaplain's Visits</b>																		
Barracks	52	26	4	0	22	38	20	41	10	50	110	27	4	166	375	0	22	967
Approximate Hours Spent in Barracks	15	7	2	0	110	23	20	10	8	25	14	7	4	41	100	15	11	412
Inmate Office visits	45	190	98	0	60	87	25	10	92	38	42	146	184	214	115	0	18	1,364
Other Office visits	10	20	22	17	22	23	8	15	25	10	55	21	2	33	15	0	7	305
Hospital	3	0	0	0	2	5	0	2	2	1	47	0	0	0	0	0	0	62
Infirmary/Sick Call	2	3	3	0	10	15	0	10	10	4	11	4	0	2	4	0	3	81
Restrictive/Punitive Housing	12	3	0	13	0	10	4	15	20	3	13	8	0	3	0	6	3	113
PC - DRU	0	3	0	0	0	0	0	0	0	0	0	0	0	0	0	0	0	3
Visitation Days	0	3	0	0	0	0	0	0	0	4	1	0	0	0	0	0	0	8
<b>Volunteer Visits</b>																		
RCV	0	3	9	0	0	0	6	0	28	0	0	24	0	6	3	0	0	79
OCV	0	18	42	0	24	0	74	79	8	30	75	80	124	62	11	0	27	654
Spiritual Advisor	2	0	0	0	0	0	0	2	2	0	4	0	0	2	0	0	1	13
CRA	53	9	89	5	22	70	63	194	47	108	131	27	55	98	31	8	33	1,043
<b>Religious Volunteer Hours</b>																		
Volunteer Hours	165	63	346	15	186	186	123	369	158	562	551	812	1,171	678	169	22	120	5,696
Denominational/Volunteer Chaplain Hours	50	18	14	0	160	15	90	75	128	141	29	16	9	164	26	0	30	965
																		6,661
<b>Other Activities of Chaplain</b>																		
Counseled Employees	2	10	9	0	12	5	10	4	35	3	22	2	0	2	10	0	20	146
Orientation Sessions	4	1	0	0	1	0	0	0	2	5	0	0	0	0	0	0	4	17
Free World Devotions	0	1	3	0	7	19	0	0	2	0	1	0	0	4	20	0	0	57
Spoke in Churches	26	1	6	0	8	5	2	0	3	1	5	3	2	3	20	0	0	85
Crisis Intervention Sessions	3	15	4	0	18	0	8	1	19	3	8	6	4	3	7	3	10	112
Marriage Counseling	0	0	2	0	0	3	1	2	1	0	1	0	2	1	0	0	0	13
Denominational Meeting	2	0	0	0	1	0	0	0	0	1	2	1	0	0	0	0	1	8
Chaplain's Meeting	1	1	1	0	0	2	0	0	0	1	1	1	1	0	6	0	1	16
Volunteer Training Session	0	2	0	0	0	2	1	0	0	5	0	0	0	0	0	0	0	10
<b>Chaplain Transfers</b>																		
	0	0	0	0	0	0	0	0	0	0	0	0	0	0	0	0	0	0
<b>Chaplain Promotions</b>																		
	0	0	0	0	0	1	0	0	0	0	0	0	0	0	0	0	0	1
<b>PAL PROGRAM</b>																		
Enrolled at start of month	45	24	50	0	36	47	28	19	56	21	24	0	24	61	49	0	24	508
Enrolled during the month	6	1	1	0	5	9	5	3	6	0	8	0	15	12	5	0	5	81
Removed From PAL Program																		
# Paroled	1	0	0	0	0	2	0	0	0	0	1	0	4	3	2	0	0	13
# Completed	0	1	0	0	0	1	0	2	3	0	0	0	0	1	0	0	2	10
# Withdrew	0	0	0	0	2	2	1	0	1	1	0	0	1	0	1	0	0	9
# Removed	2	0	0	0	2	3	0	1	1	2	0	0	1	4	1	0	1	18
# Transferred	1	0	1	0	1	0	2	0	1	0	1	0	2	4	2	0	0	15
Total Removed from PAL Program	4	1	1	0	5	0	3	3	6	3	2	0	8	12	6	0	3	65
Total Enrolled at the End of the Month	47	24	50	0	36	48	30	19	56	18	30	0	31	61	48	0	28	524
<b>Volunteers in PAL</b>																		
	21	2	11	0	6	34	19	6	32	6	7	0	2	5	8	0	4	163
<b>Special Events:</b>																		
	2	2	1	0	1	0	2	3	1	3	0	2	2	1	0	0	2	22



## CONSTRUCTION BUDGET / STATUS REPORT - NOVEMBER 8, 2019 — [Page 1 of 2]

Fund	Project Description	Total Projected	Budget	Available Funds	\$ % Complete	Construction % Complete	Notes
:BR4Q95	ESTER - Phase 3 - General Improvement Fund	2,951,933	4,383,781	1,431,849	67%	98%	Parking Lot in design. Cameras will be installed around perimeter after paving. ADFA bonds turned back on Phases 1 & 2 1A
'00483A	EARU ISO Rec Yard	265,735	271,430	5,695	98%	100%	Complete
'00483A	Varner ISO Rec Yard	179,734	180,953	1,219	99%	100%	Complete
'00483A	EARU Max Rec Precast Rec Yard	73,904	659,553	585,649	11%	6%	DBA APPROVED to bid, single bid received 10/17.
'00483A	Tucker Max Precast Rec Yard	60,028	1,210,000	1,149,972	5%	0%	Plans being submitted to DBA
'00483A	Cummins Precast Rec Yard	49,857	927,500	877,643	5%	0%	Plans being submitted to DBA
:BR4Q95	Bullpens	360,427	851,999	491,572	42%	98%	Varner & EARU complete. Materials for Max being ordered.
:BR4Q95	13 & 15 Barracks Door Revisions	119,737	174,000	54,263	69%	68%	All doors and locks installed in 13 Barracks.
:BR4Q95	Camera's (New)	1,075,318	1,248,000	172,682	86%	75%	Installations underway. Delta & Varner complete, working at EARU, Tucker, Cummins, and the Max.
'00485A	Entegrity Energy Improvements at EARU & Delta	16,524,885	17,010,204	485,319	97%	97%	lights (100%), plumbing 99%, water (100%), compost (100%), & solar (100%), HVAC (99%).
'00486A	Pine Bluff Unit Barracks 9 Renovation	409,406	437,000	27,594	94%	96%	9A, B C & D construction complete, 4/5/19. Plans for water controls sent to DBA.
:BSCW18	McPherson Administration	243,840.17	395,439	151,599	62%	16%	ordering material, all the footings poured, walls going up, 1 slab poured, precast contract approved.
:BSCW18	McPherson Visitation	263,794.76	312,430	48,635	84%	16%	
:BR4Q95	McPherson Administration and Visitation	0	100,000	100,000	0%	0%	
:BSHW18	Tucker Water Treatment	0	1,093,848	1,093,848	0%	0%	preparing RFQ for designer
:BSFW18	Max Armory	0	70,000	70,000	0%	0%	to replace existing inadequate Armory. Plans complete, submitting documents to DBA
:BSFW18	Varner Armory	0	68,399	68,399	0%	0%	DBA Approved for construction
:BR4Q43	Tucker Stainless Steel Showers	90,456	250,000	159,544	36%	34%	10 Barracks complete, working in the Pod restrooms
'004820	Central Office Roof Replacement	416,625.35	500,000	83,375	83%	100%	Started 12/3, Substantially complete 4/1/19
'004820	Pine Bluff Infirmary Roof Replacement	62,480.70	132,800	70,319	47%	100%	Pre-Const Mtg held 6-3-19, 120 days to complete, 100% compl.
'004810	Administrative East Roof Replacement	0	309,375	309,375	0%	0%	ADFA has funded, preparing RFQ for Plans design.
'004810	Central Warehouse Roof Replacement	0	135,020	135,020	0%	0%	
'004810	RLW Roof Roof Replacement	0	1,888,776	1,888,776	0%	0%	
:ZV	Springdale WRC Laundry and Commissary	0	0	0	0%	0%	Plans sent to DBA for review.

## Telephone Projects

Maintenance & Operations	Fire Alarm Upgrades (All Units)	4,761	41,000	36,239	12%	10%	on-going
	Stainless Steel - Kitchen/Shower/Restrooms - All Units	10,889	20,000	9,111	54%	40%	continual need
	Parking Lot - Gravel and Paving - EARU	2,864	68,000	65,136	4%	0%	Lee County gave us the Road. DBA approved the Plans. ArDOT agreed to construct.
	Gates and Fences all units	174	25,000	24,826	1%	1%	to improve security
	ACA Maintenance	45,038	100,000	54,962	45%	45%	Wrightsville, Benton, & Tucker passed their ACA audits.



## CONSTRUCTION BUDGET / STATUS REPORT - NOVEMBER 8, 2019 — [Page 2 of 2]

Fund	Project Description	Total Projected	Budget	Available Funds	\$ % Complete	Construction % Complete	Notes
Maintenance & Operations	ADA Projects - All Units	0	10,000	10,000	0%	0%	as needed. Have Plans for Varner sports field sidewalk
	Fast Top Floor Systems (kitchen/laundry/showers all units)	6,524	25,000	18,476	26%	15%	Tucker Pods underway, Benton restrooms next.
	Camera Equipment - All Units	148,943	250,000	101,057	60%	47%	cameras as requested/approved.
	Lock/Riot Gates - All Units	16,107	90,500	74,393	18%	5%	on-going.
	AC Units-All Units	52,816	70,000	17,184	75%	72%	repairing & replacing daily.
	<b>Subtotal</b>	<b>\$ 288,115</b>	<b>\$ 699,500</b>	<b>\$ 411,385</b>			
Capital Projects FY20 Carry Forward	Metal Ceilings	0	25,000	25,000	0%	0%	NCU next.
	ORCU Gravel Pit Operations	3,556	35,000	31,444	10%	9%	on-going. Crusher operating.
	Dog Kennel/Horse Stable Malvern	0	48,000	48,000	0%	0%	DBA comments received, responses underway.
	Emergency Generator - All Units	148,917	250,000	101,083	60%	60%	Wrightsville generator complete. Bids for Cummins underway.
	Tucker 4 new filters & one aeration tank	37,451	488,434	476,868	8%	6%	Plans approved. Building slab complete. Filters bid due 11/19.
	Roof Repairs-Cummins	0	145,000	136,207	6%	0%	Prepared large order for multiple Units. Currently at the Max. Need repairs at ORCU. Office of State Procurement secured a State contract to purchase roofing materials.
	Roof Repairs-Cummins Laundry	0				0%	
	Roof Repairs-East Arkansas	0				0%	
	Roof Repairs-Max	8,793				6%	
	Roof Repairs-Tucker	0				0%	
	Roof Repairs-Varner	0				0%	
	Roof Repairs-Wrightsville	0				0%	
	Boiler Repair	82,391	100,000	17,609	82%	46%	continually needing repair
	<b>Subtotal</b>	<b>\$ 281,108</b>	<b>\$ 1,091,434</b>	<b>\$ 810,326</b>			
New Projects	Max manhole	0	0	0	0%	0%	to provide access to a blockage point in sewer
	Tucker Barracks 10 covered walkway	0	0	0	0%	0%	Plans submitted to & comments received from DBA
	RLW Sewer relocation 400' + 2 MH	0	0	0	0%	0%	frequent stoppages, defect in pipe line.
	Max Boiler Tank Replacement	0	0	0	0%	0%	
	Additional Metal Fab shop	0	29,266	29,266	0%	0%	room to do more metal work
	PB Warehouse Drive replacement	0	50,000	50,000	0%	0%	asphalt drive pot holed
	Fuel Cards/Pumps for Cummins	0	0	0	0%	0%	
	<b>Subtotal</b>	<b>\$ -</b>	<b>\$ 79,266</b>	<b>\$ 79,266</b>			
	Architect Fees	10,415	30,000	19,585	35%		
	<b>Total</b>	<b>\$ 579,638</b>	<b>\$ 1,900,200</b>	<b>\$ 1,320,562</b>			

Notes Report has not been reconciled against Accountings Reconciled Reports.  
Tolerance/Deviation is with in 1% of Projected Spending.