



DIVISION OF
CORRECTION

BOARD REPORT

July 2020



@ARDeptofCorrections



@adcpiio

Dexter Payne,
Director



POPULATION REPORT

RESEARCH/PLANNING

June 2020 Admissions and Releases – Admissions for June 2020 totaled **271** (217-males & 54-females) while releases totaled **585** (494-males & 91 females) for a decrease in-house of **314** inmates.

Inmate Population Growth/Projection – At the end of June 2020, the jurisdictional population for the Division of Correction totaled **16,552**, representing a decrease of **1,207** inmates since the first of January 2020. Calendar year 2020 average has seen an average decrease of **201** inmates per month, which is up from an average monthly decrease of **three** inmates per month during calendar year 2019.

Average County Jail Back-up – The backup in the County Jails averaged **647** inmates per day during the month of June 2020, which was up slightly from the per-day average of **581** inmates during the month of May 2020. Of the **647** average, short-term revocations accounted for **505** (455-males & 50-females) during the month. The FY20 short-term revocation average was **644** (578-males & 66-females) and the average county jail backup for FY20 was **1,256**, which is down from the FY19 average of **1,552**.

House Bill 1530/Restrictive Housing (RH) -

April 2020 through June 2020 – A total of **3,539** (3,409-males & 130-females) inmates were assigned to Restrictive Housing during the second quarter of the year.

- There was a **16.1%** increase in overall RH assignments in the 2nd Quarter compared to the 1st Quarter.
- Disciplinary decreased across most categories for the 2nd Quarter.
- There was a **16.3%** increase in SMI individuals held in RH compared to the 1st Quarter.
- There was a slight increase in the number of individuals 21 or younger held in RH compared to the 1st Quarter.
- There was an **18.7%** increase in the number of individuals 55 or older held in RH compared to the 1st Quarter.
- There were no suicides during the 2nd Quarter.

Refer to Page 14 of this report for further details.

PRISON RAPE ELIMINATION ACT (PREA)

PREA training for June was suspended due to COVID-19.

PREA Hotline Data - June 2020:

Number of Calls Received	472
Total Calls Referred for Reported PREA Issue	28
Total Calls Referred for Non-PREA Issue	156
Calls Referred Due to Technical Failure	1
Repeat Calls	69
Test Calls	7
No Message	211

Two of the calls received were from residents of the Division of Community Corrections and referred to their PREA Coordinator and the Unit PCM.

INMATE INSTITUTIONAL GRIEVANCES

Inmate Formal/Informal Grievances: During June 2020, a total of 1,942 formal grievances and 2,608 informal grievances were filed at various units.

Institutional Grievances Appeals: There was a total of 701 appeals of institutional grievances received in June 2020. Of those, 587 were acknowledged and 114 were rejected for various reasons. Of the total 614 appeals answered, 610 had no merit and four were found with merit.

FARM

The month of June presented some challenges in our farm operations. With inmates being on lockdown, supervisors had to be moved from area to area to assist with completing jobs. Everyone pitched in to help as needed.

Cummins harvested wheat and oats during the first week of the month. The wheat yields were good with a 58-bushel-per-acre yield across all acres. The state average last year was 52 bushels per acre. Several areas yielded more than 80 bushels per acre, but the lower ends drowned out due to the wet spring weather. An insurance claim was filed due to the oats crop being hit by several storms and suffering damage from hail and high winds. The insurance adjusters estimated a minimum of a 30% loss, but another storm hit before harvesting was completed and even more of the crop was lost. The oats harvest finished with a 60-bushel-per-acre average, which is enough to meet feed needs for the unit and for planting next year.

FARM, continued

All row crops are looking good currently. We have had good rains at most farms, so the crops are above average. EARU has had to irrigate more than the other farms.

The gardens began turning a lot of produce into the kitchens this month. We have had very good cooperation on moving the vegetables to where they are needed. A special thanks goes to the Delta Unit Regional Maintenance for assisting Cummins with picking vegetables.

The confined livestock areas have been hit hard by the lack of inmates unable to work due to lockdown. Farm supervisors from every area have been involved in milking cows and packing eggs. Poultry House #6 has been depopulated to get ready for new hens to be moved from the pullet house in early July.

The beef operation has worked all of their calf crop, which signals that it's time to begin making hay. EARU and the Newport Complex have done a great job in producing almost 500 rolls of hay early.

REGIONAL MAINTENANCE HOURS

Regional Maintenance Hours	June 2020
Benton Unit	8,060
Delta Regional Unit	4,000
East Arkansas Regional Unit	1,288
Grimes Unit	4,288
McPherson Unit	1,240
Mississippi County Work Release	3,064
North Central Unit	6,104
Ouachita River Correctional Unit	2,752
Randall L. Williams Unit	3,448
Texarkana Regional Correctional Center	1,116.5
Tucker Unit	2,392
Varner Unit	3,880
Wrightsville Unit	2,504
Total Hours	44,136.5

WORK RELEASE RENT REPORT

Unit	June 2020
Benton Unit	\$88,638.00
Mississippi County Work Release	\$28,917.00
Northwest Arkansas Work Release	\$19,737.00
Pine Bluff Work Release	\$23,936.00
Texarkana Regional Correctional Center	\$37,366.00
Tucker Reentry Work Release	\$14,841.00
Total	\$213,435.00

View before/after highlights of June Regional Maintenance projects on Pages 7 and 8.

REENTRY**RANDALL L. WILLIAMS
JUVENILE EDUCATION PROGRAM**

June 2020 Capacity: 20	Beginning Count	New Commitments	DCR/Punitive	Transferred/ Turned 18*	Paroled	End Count
Juveniles*	5	0	0	1	0	4

*Juveniles are transferred from the program once they reach the age of 18.

**WORKFORCE ALLIANCE FOR
GROWTH IN THE ECONOMY (WAGE)**

June 2020 Capacity: 120 Unit:	Beginning Count	Admissions During Mo.	Removed*	Completed	End Count
Delta	0	0	0	0	0
Ester**	0	0	0	0	0
Hawkins	14	0	0	0	14
McPherson	0	0	0	0	0
Ouachita River	20	0	0	0	20
Tucker	18	0	1	0	17
Tucker Reentry	2	0	0	0	2
Wrightsville	24	0	0	0	24
TOTAL	78	0	1	0	77

*The "Removed" column indicates the number of participants who transferred, signed out, received a disciplinary, were removed because test scores were not returned/were too low to continue, or were released from prison.

**The Ester Unit WAGE Program is experiencing a change in software resulting in no classes being taught at this time.

**ADVANCED PRINCIPLES
AND APPLICATIONS FOR
LIFE PROGRAM (APAL)**

June 2020 Capacity: 86	Beginning Count	Admissions During Mo.	Removed*	End Count
Ester	34	0	0	34
Hawkins	53	1	4	44
TOTAL	90	1	4	87

Advanced PAL is an 18-month reentry program that combines a pre-release curriculum with the PAL program.

*The "Removed" column indicates the number of participants who paroled, completed the program, withdrew from the program, transferred, or were removed from the program for another reason.

WRIGHTSVILLE-HAWKINS PATHWAY TO FREEDOM PROGRAM

June 2020 Capacity: 200	Beginning Count	Enrolled During the Month	Removed	End Count*
Wrightsville-Hawkins PTF	191	0	1	190

THINK LEGACY

June 2020 Capacity: 635 Unit	Beginning Count	Admitted	Graduated	Graduated But Remain*	Removed**	End Count
Cummins	59	0	0	0	0	59
Delta Regional	22	0	0	0	2	20
East Arkansas Regional	49	1	0	0	0	50
Ester	65	6	15	0	2	54
Grimes	50	6	2	2	3	53
Hawkins (Female)	34	0	5	0	5	24
McPherson	54	4	6	6	9	49
North Central	52	0	3	2	5	46
Ouachita River	23	0	4	0	1	18
Tucker	53	0	3	0	5	45
Tucker Women's Reentry	15	0	1	0	2	12
Varner	49	3	1	1	2	50
Wrightsville	46	2	1	1	2	46
Total	571	22	41	12	38	526

*The "Graduated But Remain" column indicates the number of participants who have successfully completed the program but remain in the barracks.

**The "Removed" column indicates the total number of participants who paroled, signed out, transferred, or were removed from the program for any other reason and are no longer in the barracks.

There are 125 females and 445 males on the Think Legacy waiting list, for a total of 570. All Think Legacy applicants are within six to 18 months of their TE or discharge date. The average wait time is approximately 120 days.

June 2020 Think Legacy Activities:

Program graduations took place at Tucker Women's Reentry on June 3 and the North Central Unit on June 24.

ADMINISTRATIVE SERVICES

DIVISION OF CORRECTION

TRAINING - JUNE 2020

BASIC TRAINING DIVISION –

Under the direction of instructor Jason Price, 41 members of **BCOT Class 2020-G** were honored with an awards ceremony on June 5 at the Willis H. Sargent Training Academy. Texarkana Regional Correctional Center's Donnie Culberson was the recipient of the Willis H. Sargent Award. The cadets completed two weeks of on-the-job training (OJT) and graduated at their assigned units on June 19.

An awards ceremony was held for Instructor Sarah Apel's **BCOT Class 2020-H** on June 26 at the Willis H. Sargent Training Academy. Dylan Reed of the North Central Unit received the Willis H. Sargent Award. Due to COVID-19, accommodations were made for the 43 members of the class to complete their training with two weeks of OJT at their assigned units beginning on July 13, before officially graduating as correctional officers on July 24.

IN-SERVICE DIVISION –

In-service training for the month consisted of a **CPR Instructor Course** on June 17 with 16 participants in attendance. All other in-person training has been suspended until further notice due to COVID-19.

eCADEMY –

During June, 619 ADC employees completed a total of 9,238 hours of eCADEMY training. About 14% of ADC employees completed at least one course during that timeframe, averaging 2.05 hours per staff member.

HEALTH/CORRECTIONAL PROGRAMS

CHAPLAINCY SERVICES

All Facilities – During the month of June, chaplains at all facilities continued to provide necessary services while volunteer access remained suspended due to COVID-19.

The Chaplaincy Division at all facilities continued to provide religious services virtually over the video systems. This included Jumu'ah Prayer. While some facilities have the capability of delivering services in real time from onsite, many require pre-recorded services to be played at a time when unit schedules permit.

Taking COVID-19 restrictions into consideration, the Islamic Eid al-Fitr celebrations that follow Ramadan were observed at various units at times agreed upon by unit administration, chaplains, and the Islamic inmate communities.

ACCREDITATION**ACA Internal Audits Completed:**

6/01–6/05 Central Office Audit Prep Review
 6/08–6/12 MAX and MCWR Audit Prep Review
 6/15–6/19 MAX Audit Prep Review
 6/22–6/26 MAX Audit Prep Review
 6/29–6/30 Central Office Medical/Mental Health
 Audit Review

Classes Taught:

6/04 BCOT

Fire/Safety and Sanitation Independent Audits Conducted by the Fire and Sanitation Coordinator:

6/01–6/05 ORCU Audit Prep
 6/08–6/12 North Central Unit Independent Audit Prep
 6/15–6/19 MCWR Independent Audit Prep
 6/22–6/26 OFF

VOLUNTEER SERVICES**Total Number of Volunteer Hours for June 2020:**

Unit/Program	Hours
Delta Unit	0
East Arkansas Regional Unit	0
McPherson Unit	0
Mississippi County Work Release Center	0
Northwest Arkansas Work Release Center	0
Ouachita River Correctional Unit	0
Pine Bluff Complex	0
Texarkana Regional Correctional Center	0
Varner	0
PAWS	0
Think Legacy	0
Religious Services/Chaplaincy	0
Total Hours	0

MENTAL HEALTH SERVICES**Reduction of Sexual Victimization Program (RSVP) and Sex Offender Treatment Programs (SOFT):**

June 2020	Capacity	Beginning Count	Completed	Removed	Admissions	End Count
RSVP	278	226	0	5	0	221
SOFT	30	11	2	0	0	9
Total	308	237	2	5	0	230

There are 805 males on the waiting list for RSVP and three females on the waiting list for SOFT who are eligible. Of those, 28 inmates are mandated by the Parole Board.

The average time on the waiting list from request is between one and two months for those stipulated.

The total on the waiting list, including those not currently within the identified timeframe, is 1,432 males – 1,075 of whom are low risk on the ARORA, and five females – three of whom are low risk on the ARORA. There is one PREA inmate in the program at this time.

***The waiting list numbers include inmates that are ineligible due to class or housing status.**

Therapeutic Community (TC):

June 2020 Unit	Capacity	Beginning Count	Completed	Removed	Admissions	End Count
McPherson	53	43	2	6	8	43
Tucker	136	114	12	8	1	95
Wrightsville	50	49	19	3	2	43
Total	239	206	33	17	11	181

There are 570 males and 107 females on the waiting list who are eligible. Of those, 23 are mandated by the Parole Board.

The average time on the waiting list from request is 11 days.

The total on the waiting list, including those not currently within the identified timeframe, is 1,028 males and 179 females; of these, 372 are low risk on the ARORA.

MENTAL HEALTH SERVICES, continued**Substance Abuse Treatment Program (SATP):**

Unit	Capacity	Beginning Count	Completed	Removed	Admissions	End Count
Benton	20*	19	6	2	8	19
Cummins	47*	43	0	11	0	32
Grimes	56*	42	8	1	4	37
Maximum Security	4*	4	2	0	2	4
McPherson	106*	66	12	11	13	56
Randall L. Williams	200*	167	0	25	1	143
Wrightsville	150*	125	19	5	7	108
Total	583	466	47	55	35	399

There are 1,753 males and 169 females on the waiting list who are eligible. Of those, 31 are mandated by the Parole Board.

The average time on the waiting list from request is 21 days.

The total on the waiting list, including those not currently within the identified timeframe or ineligible due to class or housing status, is 2,734 males and 244 females; of these, 932 are low risk on the ARORA.

Substance Use Intervention Program: The Substance Use Intervention Program had ten admissions and eight discharges for an end-of-month count of 20 for June. This program is housed at the Varner Unit and is for inmates found guilty of a disciplinary violation for drug use or drug possession.

Ouachita River Correctional Unit (ORCU) Residential Program Unit (RPU): The RPU had no admissions and three discharges in June for an end-of-month count of 120.

McPherson Unit Mental Health Residential Program Unit (RPU): There were five admissions and four discharges in June for an end-of-month count of 59.

Habilitation Program: The Habilitation Program at the Ouachita River Correctional Unit provided treatment services to 45 inmates during June. There were no admissions or discharges, which resulted in an end-of-month count of 45.

Anger Management Treatment: The Anger Management Treatment Program at the Cummins Unit provided treatment services to 20 inmates during June. There were no admissions and six discharges for an end-of-month count of 14.

Staffing: The following Mental Health Services and Substance Abuse Treatment Program (SATP) positions were vacant in May and June 2020:

Positions	FTE's*	May 2020	June 2020
Psychologists	14	5	5
Social Workers	31	14	13
Advisors	64	13	12
Substance Abuse Program Leaders	35	8	3
Administrative Specialists	17	0	0

*FTE refers to authorized Full Time Equivalent positions.

ADDITIONAL MENTAL HEALTH AND MEDICAL INFORMATION**Self-Study Classes:**

Classes	Number of Participants	Number Completed	Waiting List
Anger Management	161	141	894
Thinking Errors	219	198	1,005
Substance Abuse Education	219	199	654
Communication Skills	246	241	895
Domestic Violence	99	83	216
Victims of Domestic Violence	18	18	60
Stress Management	298	298	854
Parenting	81	81	315

Suicide: There were 99 suicidal threats during June. There were eight attempts resulting in no deaths.

Outpatient: There were 2,037 inmates on the mental health medical log at the beginning of June. Mental Health staff conducted the following contacts during June:

Case Management Contacts	1,839
Requests for Interviews	1,384
Testing	2
Intakes	261
Unit Requests	1,139
Counseling (with Treatment Plans)	0
Pre-Lockup Reviews	521
Routine Restrictive Housing Reviews	836
Restrictive Housing Rounds	23,333
PREA Evaluations	101
Routine Follow-up	338
834 Requests	29

County Mental Health Requests: During June, there were 73 requests received of a mental health nature. Of those, 36 inmates were fast-tracked to ADC.

County Medical Health Requests: During June, there were 290 requests received of a medical nature. A total of two inmates were fast-tracked to ADC.

Medical Contract Reimbursements: Sanction reimbursements for May were \$8,750.00.

Deaths: There were seven inmate deaths during the month of June. All seven were cremated.

Wellpath: See attachment for Wellpath's report regarding outside beds and emergency room visits.

Medical Grievances: In June, there were 172 appeals received of medical grievances and 252 appeals were answered; 16 of those were found to be with merit and three with merit but resolved.

SEX OFFENDER ASSESSMENT

Assessments Completed:

Risk Level	June	September 1999 through June 2020
Level 1	0	1,204
Level 2	30	7,926
Level 3	13	7,076
Level 4	2	695
Default 3	3	*
Total	148	16,901
*Default Level 3's are included in the total number of Level 3's to date.		

ACIC Numbers:

The total number of sex offenders registered from September 1999 through June 2020:

Compliant	8,136
Delinquent	1,510
Confined	3,320
Out-of-State	3,694
Address Unknown	136
Deported	206
Incapacitated	99
Out of USA	10
Total	17,111

Consistent with current Arkansas law, deceased offenders no longer remain on the registry.

PAWS IN PRISON

June 2020 Unit	Enrolled	Graduated	Foster	Volunteer Hours
Hawkins Unit	8	1	0	0
Maximum Security Unit	10	3	0	0
North Central Unit	0	0	0	0
Ouachita River Correctional Unit	0	6	3	0
Randall L. Williams Unit	2	2	0	0
Tucker Unit	6	7	0	0
Total	26	19	3	0

Completed Paws in Prison Training:

June 2020 Program Graduates	19
YTD 2020 Program Graduates	121
Total Graduates Since Inception (December 2011)	1,573
Dogs Currently in Foster (Graduated, but Not Adopted)	3
June 2020 Volunteer Hours	0
YTD Volunteer Hours	56

INFORMATION TECHNOLOGY

INMATE TABLETS – Within the **Division of Correction**, a total of 3,429 inmate tablets were leased during June.

INMATE VIDEO VISITS – Inmates completed 17,849 video visits during the month and missed 584 within the **Division of Correction**.

CONSTRUCTION/MAINTENANCE

PROJECT UPDATES

SEE CONSTRUCTION BUDGET / STATUS REPORT IN ATTACHMENTS SECTION (PAGES 26-27).

AGENCY HIGHLIGHTS

AGENCY-WIDE:

COVID-19

The ADC continued taking measures addressing COVID-19 including:

- An announcement was made on June 24 that the suspension of inmate visitation at the state's prisons and community correction centers will continue until August 1. Lower phone and video visitation rates remain in place through the duration of visitation suspension.

AGENCY HIGHLIGHTS, continued***Paws in Prison Program
Receives Grant***

The Arkansas Paws in Prison Program was awarded a \$25,000 grant on June 28 by the Arkansas Animal Rescue Foundation. The purpose of the grant is to help support the program's operations.

**CUMMINS UNIT:*****Three Officers Awarded
Challenge Coins***

Cummins Unit D-Shift Officers Calondra Austin, Lametrea James, and LaShaun Morgan were presented with Challenge Coins by Director Dexter Payne. The officers were recognized for

their alertness and rising to the challenge in preventing illegal contraband from entering the unit!

VARNER UNIT:***Challenge Coin Presented to Cpl. Davenport***

On behalf of Secretary Wendy Kelley, Corporal Tyler Davenport of the Varner Unit was awarded a Challenge Coin by Superintendent James Gibson. Cpl. Davenport was recognized for the assistance he provided in April, which led to the apprehension of two subjects who fled the scene of a car crash near the unit the night before. One of the subjects was wanted in at least four states for various crimes, including a homicide. Cpl. Davenport's quick actions prevented the couple from committing any crimes in Arkansas.

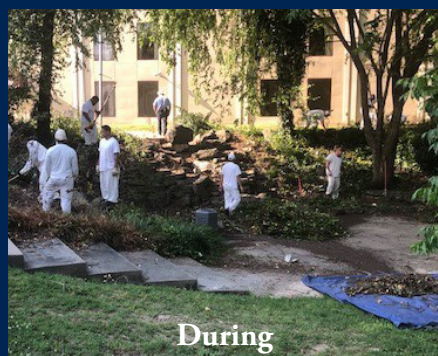
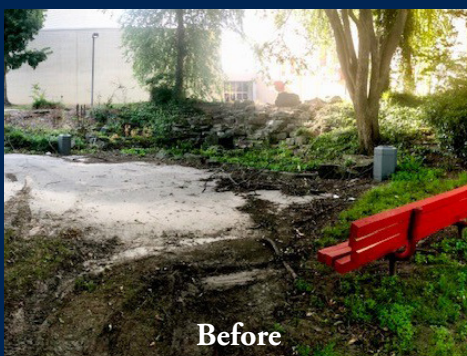


REGIONAL MAINTENANCE PROJECT HIGHLIGHTS JUNE 2020

Mississippi County Work Release Center – Alley Cleanup (Blytheville, Arkansas)



Randall L. Williams Unit – Benny Scallion Park Cleanup (Pine Bluff, Arkansas)

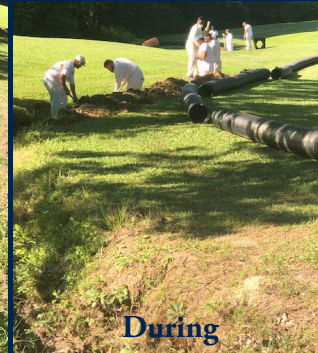
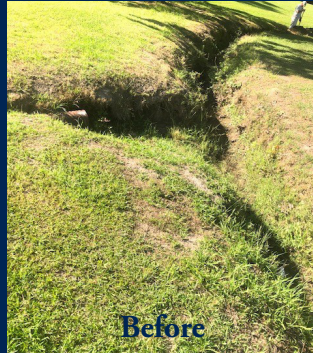


REGIONAL MAINTENANCE PROJECT HIGHLIGHTS, *CONTINUED* JUNE 2020

**Randall L. Williams Unit –
SEARK College
Building Cleanup**



Randall L. Williams Unit – MLK Park Drainage Culvert Construction



Varner Unit – Squash Picking at Cummins Unit



Varner Unit – Trash and Limb Cleanup



Varner Unit – Grounds Cleanup



2020 INFORMAL GRIEVANCE REPORT

Month	BENTON	HAWK/M	HAWK/F	WRTS	EARU & MX	GRIMES	RLW	MCWR	MCPH	MSU	NCU	PBU	NWA	TU	TRCC	VSMX	VU	CU & CMU	ORCU	Ester	DRU	Bowie Cty	TOTAL
JAN	0	34	27	84	449	213	19	0	342	199	150	41	0	123	2	486	89	220	296	39	84	33	2,930
FEB	2	34	27	52	209	164	19	0	288	245	107	35	0	138	2	464	95	178	232	25	63	43	2,422
MAR	1	29	19	64	384	150	12	0	301	264	148	35	0	101	2	486	65	238	260	31	104	29	2,723
APR	2	50	27	121	434	180	32	0	254	268	168	45	0	148	7	521	121	268	292	38	146	22	3,144
MAY	2	20	34	106	259	154	64	0	238	316	129	67	0	92	1	491	101	465	269	29	126	26	2,989
JUN	0	15	7	113	371	199	35	0	234	192	154	64	0	118	0	422	80	303	134	35	116	16	2,608
JUL	0	0	0	0	0	0	0	0	0	0	0	0	0	0	0	0	0	0	0	0	0	0	0
AUG	0	0	0	0	0	0	0	0	0	0	0	0	0	0	0	0	0	0	0	0	0	0	0
SEPT	0	0	0	0	0	0	0	0	0	0	0	0	0	0	0	0	0	0	0	0	0	0	0
OCT	0	0	0	0	0	0	0	0	0	0	0	0	0	0	0	0	0	0	0	0	0	0	0
NOV	0	0	0	0	0	0	0	0	0	0	0	0	0	0	0	0	0	0	0	0	0	0	0
DEC	0	0	0	0	0	0	0	0	0	0	0	0	0	0	0	0	0	0	0	0	0	0	0
TOTAL	7	182	141	540	2,106	1,060	181	0	1,657	1,484	856	287	0	720	14	2,870	551	1,672	1,483	197	639	169	16,816

2020 FORMAL GRIEVANCE REPORT

Month	BENTON	HAWK/M	HAWK/F	WRTS	EARU & MX	GRIMES	RLW	MCWR	MCPH	MSU	NCU	PBU	NWA	TU	TRCC	VSMX	VU	CU & CMU	ORCU	Ester	DRU	Bowie Cty	TOTAL
JAN	0	13	10	35	404	105	5	0	130	174	90	11	0	92	4	260	65	125	153	15	43	7	1,741
FEB	0	13	10	31	365	59	15	1	120	130	61	22	0	75	0	242	66	104	126	17	32	16	1,505
MAR	1	27	8	30	426	63	12	1	122	221	93	5	0	99	0	273	65	129	153	16	50	5	1,799
APR	2	27	8	32	450	87	15	0	84	178	99	12	0	97	0	298	91	181	163	14	73	1	1,912
MAY	2	12	2	48	367	70	49	0	93	316	88	19	0	78	1	301	80	315	156	11	60	5	2,073
JUN	1	4	1	53	392	93	20	0	98	192	104	27	0	76	0	310	59	210	221	12	66	3	1,942
JUL	0	0	0	0	0	0	0	0	0	0	0	0	0	0	0	0	0	0	0	0	0	0	0
AUG	0	0	0	0	0	0	0	0	0	0	0	0	0	0	0	0	0	0	0	0	0	0	0
SEPT	0	0	0	0	0	0	0	0	0	0	0	0	0	0	0	0	0	0	0	0	0	0	0
OCT	0	0	0	0	0	0	0	0	0	0	0	0	0	0	0	0	0	0	0	0	0	0	0
NOV	0	0	0	0	0	0	0	0	0	0	0	0	0	0	0	0	0	0	0	0	0	0	0
DEC	0	0	0	0	0	0	0	0	0	0	0	0	0	0	0	0	0	0	0	0	0	0	0
TOTAL	6	96	39	229	2,404	477	116	2	647	1,211	535	96	0	517	5	1,684	426	1,064	972	85	324	37	10,972

INMATE INSTITUTIONAL GRIEVANCE APPEAL REPORT – JUNE 2020

	Acknowledged	Rejected	Processed W/O Merit	Processed W/ Merit
Benton Unit	1	0	1	0
Benton Work Release	0	0	0	0
Bowie County Texas Correctional Facility	0	1	0	0
Cummins Unit	92	10	66	0
Cummins Modular Unit	24	2	13	0
Delta Regional Unit	11	2	21	3
East Arkansas Regional Unit	36	8	59	0
East Arkansas Regional Max Unit	80	8	88	1
Ester Unit	2	0	1	0
Grimes Unit	11	9	12	0
Maximum Security Unit	88	21	70	0
Tucker Re-Entry	0	0	0	0
McPherson Unit	15	4	24	0
McPherson Mental Health Residential Program Unit	0	0	0	0
Mississippi County Work Release Center	0	0	0	0
Northwest Arkansas Work Release Center	0	0	0	0
North Central Unit	24	10	36	0
Ouachita River Correctional Unit	24	10	45	0
ORCU Hospital	0	0	0	0
ORCU New Commitment	8	4	3	0
ORCU Mental Health Residential Program Unit	1	0	5	0
Pine Bluff Unit	3	5	0	0
Pine Bluff Re-Entry	0	0	0	0
Randall L. Williams Correctional Facility	16	1	5	0
Texarkana Regional Correctional Center	1	0	0	0
Tucker Unit	18	4	16	0
Varner Super Max	91	11	109	0
Varner Unit	32	3	28	0
Wrightsville Unit	9	0	8	0
Hawkins Center	0	0	0	0
Hawkins for Males	0	1	0	0
Hawkins SPU	0	0	0	0
Total	587	114	610	4

ADMISSIONS AND RELEASES – JUNE 2020

<u>Admissions</u>	<u>Male</u>	<u>Female</u>	<u>Total</u>
Asian	1	1	2
Black	53	8	61
Hispanic	6	0	6
Native American Indian	0	0	0
Native Hawaiian or Pacific Isl.	0	0	0
White	157	45	202
Other	0	0	0
Unknown	0	0	0
Total	217	54	271

<u>Releases</u>	<u>Male</u>	<u>Female</u>	<u>Total</u>
Asian	1	0	1
Black	168	13	181
Hispanic	16	2	18
Native American Indian	1	0	1
Native Hawaiian or Pacific Isl.	1	0	1
White	305	76	381
Other	2	0	2
Unknown	0	0	0
Total	494	91	585

ADC INMATE POPULATION GROWTH 2000-2026 - JUNE 2020

Updated 6/30/2020

Mo.	2000	2001	2002	2003	2004	2005	2006	2007	2008	2009	2010	2011	2012	2013	2014	2015	2016	2017	2018	2019	2020
Jan.	11,984	11,908	12,402	13,015	13,105	13,595	13,481	13,839	14,518	14,796	15,334	16,312	15,134	14,815	17,481	18,142	17,785	17,824	18,201	17,958	17,989
Feb.	12,169	12,022	12,529	13,054	13,166	13,783	13,633	14,012	14,603	14,883	15,374	16,209	14,990	15,008	17,438	18,082	17,625	17,608	17,998	17,846	18,181
March	12,006	12,033	12,299	13,108	13,088	13,418	13,534	13,772	14,580	14,843	15,290	16,095	14,964	14,665	17,395	18,233	17,573	17,666	18,089	17,898	17,860
April	12,069	12,167	12,465	13,213	13,323	13,469	13,554	13,851	14,769	14,937	15,570	16,172	15,124	14,850	17,604	18,703	17,815	17,798	18,227	17,977	17,331
May	12,109	12,384	12,558	13,463	13,556	13,528	13,711	14,146	14,880	15,146	15,694	16,062	15,132	15,074	17,593	18,693	17,769	17,652	17,945	17,817	16,694
June	12,005	12,108	12,439	13,418	13,389	13,251	13,430	13,915	14,700	15,025	15,564	15,554	14,832	14,825	17,340	18,813	17,973	17,963	17,972	17,942	16,552
July	12,030	12,190	12,622	13,509	13,528	13,286	13,560	14,082	14,868	15,195	15,807	15,519	14,879	15,379	17,522	18,870	18,130	18,180	18,005	18,002	
August	12,087	12,371	12,815	13,565	13,632	13,419	13,646	14,224	15,100	15,385	15,829	15,240	14,675	16,103	17,549	18,806	17,919	18,051	17,751	18,090	
September	11,983	12,289	12,774	13,341	13,516	13,237	13,652	14,217	14,850	15,285	16,025	15,172	14,724	16,412	17,605	18,549	18,026	18,179	17,865	17,856	
October	12,119	12,348	12,942	13,341	13,584	13,363	13,775	14,349	14,836	15,381	16,311	15,271	14,856	16,993	17,880	18,430	18,127	18,348	17,943	17,947	
November	12,094	12,408	13,162	13,408	13,706	13,587	13,913	14,437	15,025	15,340	16,460	15,205	14,625	17,168	17,848	17,981	17,573	17,973	17,666	18,060	
December	11,856	12,333	12,845	13,106	13,470	13,338	13,728	14,315	14,716	15,199	16,204	15,062	14,654	17,235	17,874	17,707	17,537	18,078	17,799	17,759	
Net Ann. Inc.	29	477	512	261	364	-132	390	587	401	483	1,005	-1,142	-408	2,581	639	-167	-170	541	-279	-40	-1,207
Avg. Mo. Inc.	2	40	43	22	30	-11	33	49	33	40	84	-95	-34	215	53	-14	-14	45	-23	-3	-201

Population is total jurisdictional count at end of each month. Population at end of month December 1999 was 11,827.

Average monthly population increase for past fifteen years 2005 - 2019 is 24

Average monthly population increase for past ten years Jan. 2010 - Dec 2019 is 21

Average monthly population increase for past five years 2015 - 2019 is -2

Projected at Growth of 24 per Month

	2008	2009	2010	2011	2012	2013	2014	2015	2016	2017	2018	2019	2020	2021	2022	2023	2024	2025	2026
Mo.	Actual	Actual	Actual	Actual	Actual	Actual	Actual	Actual	Actual	Actual	Actual	Actual	Actual Proj.	Proj.	Proj.	Proj.	Proj.	Proj.	Proj.
January	14,518	14,796	15,334	16,312	15,134	14,815	17,481	18,142	17,785	17,824	18,201	17,958	17,989	16,720	17,008	17,296	17,584	17,872	18,160
February	14,603	14,883	15,374	16,209	14,990	15,008	17,438	18,082	17,625	17,608	17,998	17,846	18,181	16,744	17,032	17,320	17,608	17,896	18,184
March	14,580	14,843	15,290	16,095	14,964	14,665	17,395	18,233	17,573	17,666	18,089	17,898	17,860	16,768	17,056	17,344	17,632	17,920	18,208
April	14,769	14,937	15,570	16,172	15,124	14,850	17,604	18,703	17,815	17,798	18,227	17,977	17,331	16,792	17,080	17,368	17,656	17,944	18,232
May	14,880	15,146	15,694	16,062	15,132	15,074	17,593	18,693	17,769	17,652	17,945	17,817	16,694	16,816	17,104	17,392	17,680	17,968	18,256
June	14,700	15,025	15,564	15,554	14,832	14,825	17,340	18,813	17,973	17,963	17,972	17,942	16,552	16,840	17,128	17,416	17,704	17,992	18,280
July	14,868	15,195	15,807	15,519	14,879	15,379	17,522	18,870	18,130	18,180	18,005	18,002	16,576	16,864	17,152	17,440	17,728	18,016	18,304
August	15,100	15,385	15,829	15,240	14,675	16,103	17,549	18,806	17,919	18,051	17,751	18,090	16,600	16,888	17,176	17,464	17,752	18,040	18,328
September	14,850	15,285	16,025	15,172	14,724	16,412	17,605	18,549	18,026	18,179	17,865	17,856	16,624	16,912	17,200	17,488	17,776	18,064	18,352
October	14,836	15,381	16,311	15,271	14,856	16,993	17,880	18,430	18,127	18,348	17,943	17,947	16,648	16,936	17,224	17,512	17,800	18,088	18,376
November	15,025	15,340	16,460	15,205	14,625	17,168	17,848	17,981	17,573	17,973	17,666	18,060	16,672	16,960	17,248	17,536	17,824	18,112	18,400
December	14,716	15,199	16,204	15,062	14,654	17,235	17,874	17,707	17,537	18,078	17,799	17,759	16,696	16,984	17,272	17,560	17,848	18,136	18,424
Net Ann. Inc.	401	483	1,005	-1,142	-408	2,581	639	-167	-170	541	-279	-40	-1,063	288	288	288	288	288	288
Ave. Mo. Inc.	33	40	84	-95	-34	215	53	-14	-14	45	-23	-3	-89	24	24	24	24	24	24

MONTHLY POPULATION AVERAGES - JUNE 2020

Unit/Center	6/1	6/2	6/3	6/4	6/5	6/8	6/9	6/10	6/11	6/12	6/15	6/16	6/17	6/18	6/19	6/22	6/23	6/24	6/25	6/26	6/29	6/30	AVG
Benton	347	335	331	331	330	327	325	324	313	313	313	312	329	335	333	328	328	328	328	327	327	327	327
Cummins	1,925	1,925	1,921	1,911	1,910	1,908	1,907	1,907	1,904	1,904	1,904	1,903	1,898	1,897	1,897	1,890	1,889	1,884	1,884	1,884	1,884	1,884	1,901
Delta	619	615	616	614	612	611	611	611	611	607	605	605	594	595	594	594	592	592	591	587	589	589	602
East AR Reg	1,569	1,563	1,563	1,573	1,571	1,570	1,570	1,565	1,563	1,562	1,561	1,561	1,561	1,561	1,561	1,560	1,560	1,556	1,555	1,555	1,554	1,554	1,562
Ester	575	576	574	582	581	581	580	580	580	577	575	575	575	580	580	580	580	579	572	573	573	573	577
Grimes	1,074	1,077	1,086	1,081	1,076	1,076	1,076	1,071	1,071	1,070	1,065	1,065	1,065	1,064	1,064	1,053	1,053	1,053	1,053	1,049	1,047	1,047	1,065
Max Sec	568	568	564	564	564	564	563	563	563	563	563	563	563	563	562	560	560	560	560	560	560	560	563
McPherson	901	908	913	898	895	893	891	896	896	894	889	893	890	889	891	891	892	892	882	880	877	878	892
MCWRC	132	128	127	127	127	127	127	127	127	136	136	136	136	135	135	135	135	135	135	135	135	135	132
N Central	804	811	808	799	797	797	798	794	794	794	794	794	787	786	786	782	782	780	780	777	776	774	791
NWAWRC	85	84	83	83	83	83	82	82	93	93	93	93	92	92	92	92	92	92	92	92	92	92	89
Ouachita River	1,644	1,641	1,615	1,614	1,637	1,642	1,670	1,670	1,661	1,702	1,701	1,679	1,718	1,697	1,696	1,733	1,734	1,734	1,734	1,734	1,733	1,732	1,687
Randall L Williams	506	502	499	497	495	494	494	493	482	481	479	479	477	476	473	473	473	470	468	468	466	466	482
Pine Bluff	516	525	525	523	521	514	514	513	509	501	502	510	508	513	509	508	508	508	508	506	505	504	511
PB Reentry	54	53	53	53	54	52	52	52	54	54	54	54	54	54	54	54	54	54	54	54	54	54	54
TRCC	115	115	115	115	108	108	108	108	112	112	112	112	112	110	110	110	110	110	110	110	110	110	111
Tucker	992	990	990	986	981	981	979	978	976	976	974	972	970	968	964	964	961	961	961	958	956	955	972
Tucker Re-Entry	104	102	102	101	99	99	99	99	99	99	99	98	98	98	98	96	95	95	95	95	92	92	98
Varner	1,594	1,576	1,582	1,560	1,546	1,546	1,544	1,544	1,540	1,535	1,534	1,533	1,531	1,530	1,530	1,527	1,527	1,524	1,524	1,522	1,521	1,520	1,540
Wrightsville	852	845	844	836	840	835	835	832	828	820	820	830	829	835	835	835	835	835	835	835	833	833	834
WR Hawkins-Females	234	231	230	231	228	227	228	226	222	222	222	212	214	214	214	214	214	211	211	210	210	210	220
WR Hawkins-Males	191	191	191	191	191	191	191	191	191	190	190	190	190	190	190	190	190	190	190	190	190	190	190
Total ADC	15,401	15,361	15,332	15,270	15,246	15,226	15,244	15,226	15,189	15,205	15,185	15,169	15,191	15,182	15,168	15,169	15,164	15,143	15,122	15,101	15,084	15,079	15,200
Bowie CO., TX	308	308	305	305	304	303	303	303	302	302	302	302	302	302	301	301	301	301	301	301	301	301	303
ALETA	15	15	15	15	15	15	15	15	15	15	15	15	15	15	15	15	15	16	16	16	16	16	15
Ar State Police	60	60	59	59	59	59	59	59	59	59	59	59	59	59	59	59	59	59	59	58	58	58	59
Co Jail / M	509	491	513	546	535	560	536	563	591	543	575	582	553	583	590	585	594	618	653	660	683	704	580
Co Jail / F	70	62	63	63	63	67	64	60	58	59	66	60	69	64	63	68	70	72	79	78	78	74	67
Total Co Jail BK	579	553	576	609	598	627	600	623	649	602	641	642	622	647	653	653	664	690	732	738	761	778	647
309/M	216	216	214	219	219	219	222	219	219	219	219	219	219	216	215	215	215	215	215	215	216	216	217
309/F	64	64	64	72	73	73	72	72	72	72	72	81	81	81	81	81	81	82	82	82	81	81	76
Total Act 309	280	280	278	291	292	292	294	291	291	291	291	300	300	297	296	296	296	297	297	297	297	297	293
Total Non ADC	1,242	1,216	1,233	1,279	1,268	1,296	1,271	1,291	1,316	1,269	1,308	1,318	1,298	1,320	1,324	1,324	1,335	1,363	1,405	1,410	1,433	1,450	1,317
Total	16,643	16,577	16,565	16,549	16,514	16,522	16,515	16,517	16,505	16,474	16,493	16,487	16,489	16,502	16,492	16,493	16,499	16,506	16,527	16,511	16,517	16,529	16,517

RESTRICTIVE HOUSING QUARTERLY REPORT APRIL 1, 2020 TO JUNE 30, 2020

<u>Restrictive Housing Disciplinary Counts</u>	
12-3 : Failure to Obey Order of Staff	417
04-8 : Battery - Use of Force on an Inmate	252
05-3 : Assault - Verbal or Written Threat	224
11-1 : Insolence To A Staff Member	216
12-4 : Refusing A Direct Verbal Order	141
02-17 : Creating Unnecessary Noise	125
03-5 : Out of Place of Assignment	101
01-1 : Banding Together/Demonstration	97
09-15 : Possession/Introduction/Use of Cell Phone	87
05-5 : Provoking or Agitating A Fight	86
02-12 : Keep Person/Quarters W Regulat	77
07-1 : Unauthorized Use of State Prop	77
10-3 : Indecent Exposure	64
09-5 : Possession/Introduction of Clothing	60
08-4 : Destruction of Property	58
09-3 : Possession/Introduce Drugs	58
13-2 : Lying To A Staff Member	55
02-16 : Refusal to Submit to Testing	52
09-1 : Possession/Intro of Fireworks	44
02-2 : Use Of Drugs, Alcohol, Chemical	42

<u>Disciplinary Categories</u>	
Violence to Others	319
Possession of Drug-Related Contraband	100
Masturbation/Indecent Exposure	64
Sex with Another Person	30
Other Violations	2,250

Inmates Placed in RH	2,071
----------------------	-------

Population Demographics

<u>RACE</u>	<u>GENDER</u>		Total
	M	F	
Asian	5	0	5
Black	1,913	56	1,969
Caucasian	1,403	71	1,474
Hispanic	79	3	82
NA Indian	5	0	5
Native Hawaiian	2	0	2
Other	20	0	2
Total	3,409	130	3,539

Protective Custody	7
Twenty-one or Younger	112
Fifty-five or Older	216
SMI	57

<u>Suicides/Deaths in Restrictive Housing</u>	
Suicides	0
Suicide Attempts	12
Deaths	4

Note: The Disciplinary Category "Violence to Self" in previous reports has been removed due to a prior change in disciplinary definitions.

FISCAL YEAR 2020 COUNTY JAIL BACKUP - JUNE 2020

DAY	Jul-19	Aug-19	Sep-19	Oct-19	Nov-19	Dec-19	Jan-20	Feb-20	Mar-20	Apr-20	May-20	Jun-20
1	1,502	1,507 *	1,639	1,434	1,521 *	1,584	1,278 *	1,319 *	1,527	1,158	768	579
2	1,500	1,518	1,620	1,417 *	1,521	1,584	1,278 *	1,319	1,531	1,163 *	768	553
3	1,506 *	1,518	1,620	1,443 *	1,521	1,508	1,279	1,331	1,518	1,170 *	768	576
4	1,495 *	1,518	1,586	1,467	1,502	1,432 *	1,279	1,316	1,460 *	1,170	722	609
5	1,495	1,536	1,558 *	1,467	1,505	1,412 *	1,279	1,334	1,430 *	1,170	646	598
6	* 1,495	1,506	1,531 *	1,467	1,513	1,397	1,281	1,354	1,457	1,169	616 *	598
7	* 1,495	1,511 *	1,531	1,443	1,538 *	1,397	1,271	1,402 *	1,457	1,089	598 *	598
8	1,507	1,492 *	1,531	1,443	1,547 *	1,397	1,274 *	1,402 *	1,457	1,070	609	627
9	1,510	1,491	1,505	1,444 *	1,547	1,345	1,300 *	1,402	1,398	1,070 *	609	600
10	1,520 *	1,491	1,504	1,441 *	1,547	1,332	1,300	1,384	1,353	983 *	609	623
11	1,544 *	1,491	1,487	1,446	1,545	1,296 *	1,300	1,393	1,357 *	983	565	649
12	1,550	1,503	1,446 *	1,446	1,545	1,280 *	1,300	1,396	1,350 *	983	588	602
13	* 1,550	1,523	1,429 *	1,446	1,528	1,293	1,259	1,400	1,356	985	550 *	602
14	* 1,550	1,538 *	1,429	1,444	1,517 *	1,293	1,263	1,430 *	1,356	922	556 *	602
15	1,527	1,562 *	1,429	1,454	1,556 *	1,293	1,253 *	1,430 *	1,356	930	530	641
16	1,523	1,584	1,437	1,430 *	1,556	1,286	1,197 *	1,430	1,355	928 *	530	642
17	1,507 *	1,584	1,439	1,433 *	1,556	1,261	1,194	1,434	1,340	880 *	530	622
18	1,491 *	1,584	1,435	1,453	1,498	1,229 *	1,194	1,434	1,300 *	880	535	647
19	1,518	1,596	1,452 *	1,453	1,475	1,236 *	1,194	1,441	1,337 *	880	510	653
20	* 1,518	1,609	1,443 *	1,453	1,509	1,249	1,181	1,436	1,262	877	532 *	653
21	* 1,518	1,609 *	1,443	1,432	1,525 *	1,249	1,181	1,434 *	1,262	872	525 *	653
22	1,503	1,625 *	1,443	1,442	1,513 *	1,249	1,165 *	1,434 *	1,262	883	519	653
23	1,511	1,660	1,443	1,452 *	1,513	1,273	1,180 *	1,434	1,295	911 *	519	664
24	1,488 *	1,660	1,429	1,464 *	1,513	1,239	1,188	1,454	1,246	921 *	519	690
25	1,497 *	1,660	1,416	1,489	1,556	1,239 *	1,188	1,481	1,222 *	921	504	732
26	1,526	1,622	1,396 *	1,489	1,571	1,239 *	1,188	1,487	1,436 *	921	504	738
27	* 1,526	1,614	1,428 *	1,489	1,581	1,241	1,210	1,518	1,202	865	525 *	738
28	* 1,526	1,636 *	1,428	1,493	1,584 *	1,241	1,225	1,527 *	1,202	807	544 *	738
29	1,515	1,651 *	1,428	1,464	1,584 *	1,241	1,270 *	1,527 *	1,202	816	566	761
30	1,522	1,639	1,423	1,472 *	1,584	1,246	1,286		1,195	791 *	566	778
31	1,514 *	1,639		1,500		1,263	1,319		1,203		566	
Avg Daily Backup	1,514	1,570	1,478	1,455	1,536	1,317	1,244	1,417	1,345	972	581	647

Notes: Totals do not include 309 Contracts in County Jails (maximum of 336)

County Jail Back-up Average for June 2020 ~ 647

County Jail Back-up Fiscal Year Average ~ 1,256

Short Term Revocation Program Average for June 2020 ~ 647

Short Term Revocation Program Fiscal Year Average ~ 644

County Jail Backup Averages for Fiscal Year 2019 Included on Next Page for Reference

FISCAL YEAR 2019 COUNTY JAIL BACKUP

DAY		Jul-18		Aug-18		Sep-18		Oct-18		Nov-18		Dec-18		Jan-19		Feb-19		Mar-19		Apr-19		May-19		Jun-19
1	*	1,575		1,618	*	1,646		1,531		1,634	*	1,578		1,461		1,545		1,568		1,531		1,452	*	1,497
2		1,578		1,624	*	1,646		1,531		1,659	*	1,578		1,461	*	1,545	*	1,568		1,552		1,453	*	1,497
3		1,594		1,631		1,613		1,520	*	1,659		1,538		1,452	*	1,545	*	1,568		1,540		1,483		1,491
4		1,577	*	1,631		1,613		1,537	*	1,659		1,532		1,430		1,555		1,472		1,536	*	1,483		1,506
5		1,577	*	1,631		1,583		1,535		1,646		1,521	*	1,430		1,563		1,517		1,523	*	1,483		1,481
6		1,548		1,649		1,567	*	1,535		1,654		1,519	*	1,430		1,574		1,526	*	1,523		1,507		1,476
7	*	1,548		1,654		1,552	*	1,535		1,644		1,532		1,431		1,564		1,518	*	1,523		1,527		1,466
8	*	1,548		1,652	*	1,552		1,535		1,633	*	1,532		1,427		1,598		1,548		1,517		1,532	*	1,466
9		1,547		1,642	*	1,552		1,527		1,602	*	1,532		1,419	*	1,598	*	1,548		1,490		1,518	*	1,466
10		1,532		1,665		1,517		1,524	*	1,602		1,509		1,400	*	1,598	*	1,548		1,534		1,528		1,459
11		1,571	*	1,665		1,508		1,557	*	1,602		1,505		1,401		1,591		1,557		1,557	*	1,528		1,448
12		1,584	*	1,665		1,501		1,578		1,600		1,513	*	1,401		1,595		1,511		1,557	*	1,528		1,458
13		1,609		1,670		1,503	*	1,578		1,600		1,496	*	1,401		1,608		1,485	*	1,557		1,543		1,464
14	*	1,609		1,671		1,514	*	1,578		1,618		1,493		1,402		1,627		1,511	*	1,557		1,524		1,463
15	*	1,609		1,660	*	1,514		1,574		1,626	*	1,493		1,404		1,641		1,516		1,524		1,537	*	1,463
16		1,598		1,676	*	1,514		1,571		1,633	*	1,493		1,425	*	1,641	*	1,516		1,529		1,544	*	1,463
17		1,589		1,681		1,505		1,573	*	1,633		1,472		1,434	*	1,641	*	1,516		1,529		1,589		1,471
18		1,569	*	1,681		1,496		1,583	*	1,633		1,458		1,459		1,645		1,525		1,521	*	1,589		1,448
19		1,563	*	1,681		1,498		1,606		1,633		1,484	*	1,459		1,645		1,538		1,502	*	1,589		1,446
20		1,559		1,690		1,511	*	1,606		1,620		1,477	*	1,459		1,647		1,535	*	1,502		1,557		1,452
21	*	1,559		1,683		1,494	*	1,606		1,624		1,463		1,476		1,658		1,527	*	1,502		1,576		1,482
22	*	1,559		1,677	*	1,494		1,606		1,657	*	1,463		1,476		1,675		1,528		1,504		1,597	*	1,482
23		1,553		1,685	*	1,494		1,599		1,657	*	1,463		1,479	*	1,675	*	1,528		1,505		1,601	*	1,482
24		1,560		1,701		1,506		1,619	*	1,657		1,452		1,509	*	1,675	*	1,528		1,516		1,595		1,476
25		1,552	*	1,701		1,524		1,612	*	1,657		1,452		1,513		1,706		1,525		1,524	*	1,595		1,447
26		1,553	*	1,701		1,542		1,634		1,656		1,452	*	1,513		1,728		1,523		1,558	*	1,595		1,464
27		1,597		1,700		1,527	*	1,634		1,650		1,449	*	1,513		1,674		1,519	*	1,558		1,582		1,448
28	*	1,597		1,679		1,532	*	1,634		1,609		1,464		1,528		1,625		1,501	*	1,558		1,582		1,474
29	*	1,597		1,669	*	1,532		1,602		1,591	*	1,464		1,515				1,504		1,552		1,563	*	1,474
30		1,623		1,657	*	1,532		1,595		1,578	*	1,464		1,535			*	1,504		1,523		1,528	*	1,474
31		1,629		1,646				1,621				1,473		1,540			*	1,504				1,497		
Avg Daily Backup		1,576		1,666		1,536		1,577		1,631		1,494		1,458		1,621		1,525		1,530		1,542		1,469

Notes: Totals do not include 309 Contracts in County Jails (maximum of 336)

Fiscal Year '19 Average ~ 1,552

Short-Term Revocation Program Fiscal Year '19 Average ~ 643

STTG UNIT COUNTS – JUNE 2020

Unit	Beginning Total	Confirmed	Suspected	In	Out	Paroled	Removed	Ending Total	Total Unit Population	Unit % of STTG's
Benton	68	4	0	0	3	3	0	66	322	20.50%
Cummins	689	0	0	5	5	6	0	683	1,875	36.43%
Delta	200	0	0	4	6	8	0	203	587	34.58%
EARU	598	0	0	1	0	7	0	592	1,554	38.10%
Grimes	374	2	2	12	0	14	0	376	1,044	36.02%
Hawkins	53	0	0	0	1	4	0	48	388	12.37%
Max	280	0	0	1	0	2	0	279	649	42.99%
Mcpherson	40	0	0	1	0	0	0	41	879	4.66%
MCWR	32	0	0	1	4	0	0	29	135	21.48%
NCU	228	0	0	4	11	0	0	221	763	28.96%
NWAWR	17	0	0	5	0	1	0	21	92	22.83%
ORCU	304	0	0	32	0	14	0	322	1,585	20.32%
ORCU Intake	40	74	0	0	48	0	0	66	146	45.21%
PB/Ester	110	0	0	8	4	8	0	106	1,129	9.39%
RLW	199	0	0	0	0	5	0	194	463	41.90%
TWR	31	0	0	2	1	2	0	30	116	25.86%
Tucker	338	0	0	5	4	1	0	338	948	35.65%
Varner	654	0	0	39	58	10	0	625	1,513	41.31%
Wrightsville	289	0	0	8	4	7	0	286	824	34.71%
Total	4,544	80	2	128	149	92	0	4,526	15,012	30.15%

ORCU Intake brought in 74 new STTG members into ADC last month.

STTG DISCIPLINARY REPORT – JUNE 2020

Unit	STTG Incidents	STTG Suspected Incidents	Total Unit Disciplinary	Disciplinary Involving STTG	Percentage
Benton	0	0	9	3	33.33%
Cummins	0	0	9	4	44.44%
Delta	0	0	95	34	35.79%
EARU	0	0	111	57	51.35%
Grimes	0	1	239	54	22.59%
Hawkins	0	0	12	0	0.00%
Max	0	1	83	35	42.17%
Mcpherson	0	0	224	20	8.93%
MCWR	0	0	1	0	0.00%
NCU	0	0	46	20	43.48%
NWAWR	0	0	4	1	25.00%
ORCU	0	0	115	44	38.26%
ORCU Intake	0	0	4	2	50.00%
PB/Ester	0	0	18	3	16.67%
RLW	0	0	17	6	35.29%
TWR	0	0	5	1	20.00%
Tucker	0	0	118	42	35.59%
Varner	0	0	284	149	52.46%
Wrightsville	0	0	119	67	56.30%
Total	0	2	1,513	542	35.82%

STTG COUNTS BY STTG SET – JUNE 2020

STTG Set	Benton	Cummins	Delta	EARU	Grimes	Hawkins	Max	Mcperson	MCWR	NCU	NWAWR	ORCU	Intake	PB	RLW	TWR	Tucker	Varner	Wrightsville	Total
Asian	0	1	0	0	1	0	0	0	0	0	0	2	1	0	2	0	0	0	0	7
Bloods	8	157	40	106	64	6	64	5	4	35	4	76	11	20	44	0	53	131	40	868
Crips	6	97	16	75	33	5	36	5	2	17	2	40	3	13	23	3	27	95	27	525
Folk	4	56	0	118	0	6	34	5	1	14	7	2	0	5	10	1	22	68	21	374
GD	20	146	44	91	108	6	58	3	11	40	0	57	17	22	41	14	100	134	74	986
Mexican	1	17	11	13	8	1	6	2	1	9	1	14	0	3	4	0	6	18	14	129
Motorcycle	0	1	1	1	1	1	5	1	2	1	0	0	0	1	1	0	3	0	1	20
Other	0	25	8	11	16	2	4	0	0	9	1	18	2	4	16	6	17	16	8	163
People	1	25	7	18	19	1	18	2	0	9	1	17	0	4	8	1	12	20	10	173
Unknown	0	12	11	12	10	0	3	3	0	5	0	11	4	0	0	0	3	6	7	87
W/S	17	47	46	43	48	2	10	10	6	45	5	23	8	16	23	2	31	33	32	447
AB	2	8	0	5	5	2	0	2	1	3	0	4	1	2	3	1	8	11	5	63
AC	1	8	3	13	14	5	5	1	0	7	0	5	0	4	2	1	7	17	12	105
NAE	3	42	4	37	21	5	12	2	1	5	0	25	10	3	7	1	15	35	20	248
WAR	3	41	12	49	28	6	24	0	0	22	0	28	9	9	10	0	34	41	15	331
Total	66	683	203	592	376	48	279	41	29	221	21	322	66	106	194	30	338	625	286	4,526

Key:

GD = Gangster Disciples

W/S = White Supremacist

NAE = New Aryan Empire

WAR = White Aryan Resistance

AC = Aryan Circle

AB = Aryan Brotherhood

INTERNAL AFFAIRS BOARD REPORT - JUNE 2020

Opened Investigation, Reviews/ASP June 2020	Open Investigation	Open Review	ASP Referral
Arson	0	0	0
Assault on Inmate	0	0	0
Assault on Staff	0	0	0
Attempted Escape	0	0	0
Banding Together to Interfere with Unit	0	0	0
Battery on Inmate	0	0	0
Battery on Inmate without Serious Injury	0	0	0
Battery on Inmate with Serious Injury	0	0	2
Battery on Inmate with Use of Unknown Substance	0	0	0
Battery on Other Person with Serious Injury	0	0	0
Battery on Other Person with Use of Unknown Substance	0	0	1
Battery on Staff	0	0	0
Battery on Staff without Serious Injury	0	0	0
Battery on Staff with Serious Injury	0	0	0
Battery on Staff with Bodily Fluids	0	0	7
Battery on Staff with Ue of Unknown Substance	0	0	0
Death	0	0	8
Disobey Direct Order	0	0	0
Employee Misconduct	5	1	0
Excessive Force	0	0	0
Escape from Unit	0	0	0
Escape from Work Release	0	0	0
Escape Plan	0	0	0
Forcible Rape	0	0	0
Inappropriate Relationship	0	0	0
Indecent Exposure	0	0	0
Inmate on Inmate Abusive Sexual Contact	0	1	0
Inmate on Inmate Sexual Assault	0	0	0
Inmate on Inmate Sexual Contact	2	2	0
Inmate on Inmate Sexual Harassment	1	36	0
Inmate on Inmate Sexual Misconduct	0	15	0
Inmate on Inmate Nonconsensual Sexual Contact	0	1	0
Introduction of Cell Phone	0	0	0
Introduction of Contraband	2	0	3
Introduction of Drugs	0	0	0
Introduction of Tobacco	0	0	0
Major Breach of Security	0	0	0
Misconduct	0	0	0
Missing Narcotics	0	0	0
Other Incident	0	0	0
Other Rule Violation	0	0	0
Possession of Cell Phone	1	0	22
Possession of Drugs	0	0	0
Possession of a Weapon	0	0	0
Property Damage	1	0	0
Racial Slurs	1	0	0
Retaliation	1	0	0
Sexual Assault	0	0	0
Rape	0	0	0
Riot	0	0	0
Sexual Misconduct	0	0	0
Staff on Inmate Sexual Harassment	0	25	0
Staff on Inmate Sexual Misconduct	2	6	0
Staff on Staff Sexual Harassment	1	0	0
Staff on Staff Sexual Misconduct	0	0	0
Suicide Attempt	0	0	0
Suspected Criminal Activity	0	0	0
Theft	0	0	1
Trafficking	0	0	0
Use of Force	0	62	0
Verbal Abuse	0	0	0
Verbal/Written Threat on Staff	0	0	0
Work Release Misconduct	0	0	0
Total	17	149	44

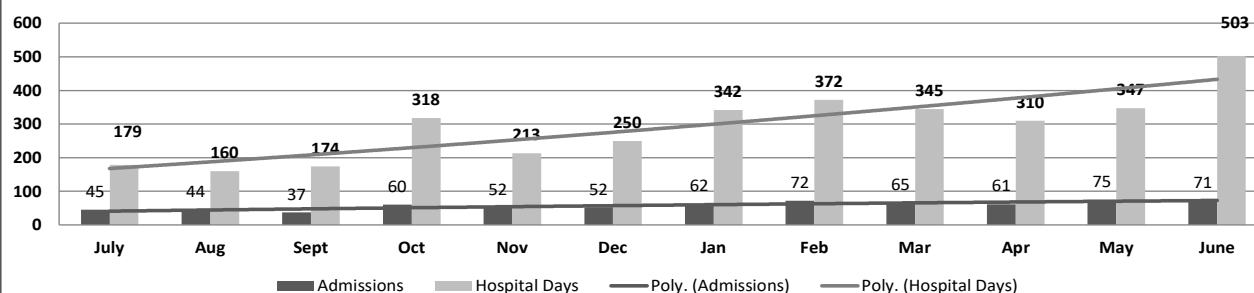
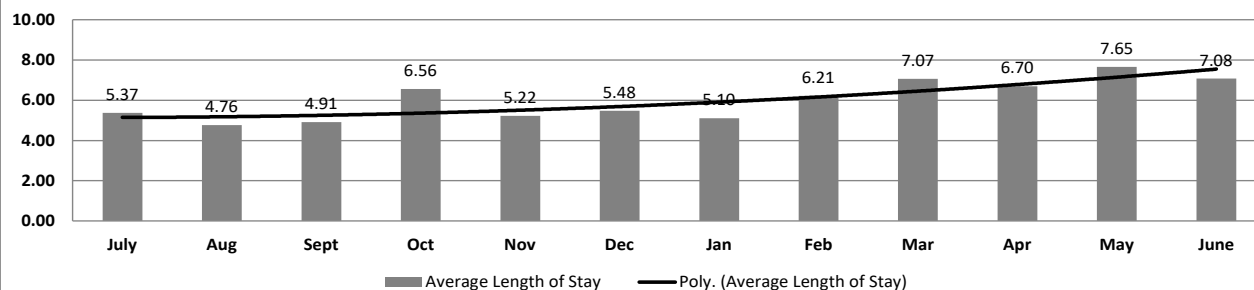
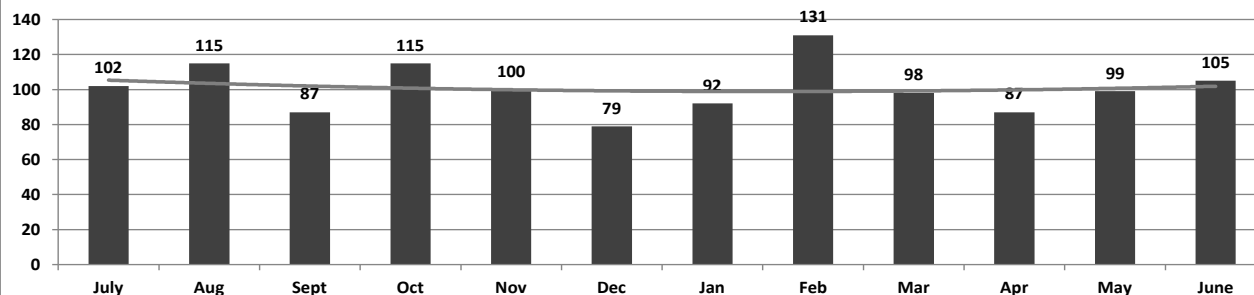
ADC INPATIENT AND EMERGENCY ROOM UTILIZATION

ADC Inpatient Statistics Past 12 Months

	2019						2020						Average
	July	Aug	Sept	Oct	Nov	Dec	Jan	Feb	Mar	Apr	May	June	
Admissions	45	44	37	60	52	52	62	72	65	61	75	71	58.0
Hospital Days	179	160	174	318	213	250	342	372	345	310	347	503	292.8
Average Length of Stay	5.37	4.76	4.91	6.56	5.22	5.48	5.10	6.21	7.07	6.70	7.65	7.08	5.05

ADC ER Visits Past 12 Months

	2019						2020						Average
	July	Aug	Sept	Oct	Nov	Dec	Jan	Feb	Mar	Apr	May	June	
Emergency Room Visits	102	115	87	115	100	79	92	131	98	87	99	105	100.8

ADC Inpatient Utilization
Past 12 MonthsADC Inpatient Average Length of Stay
Past 12 MonthsADC Emergency Room Visits
Past 12 Months

MEDICAL GRIEVANCE BOARD REPORT – JUNE 2020

Unit	<i>Acknowledged/ Received</i>	<i>Rejected</i>	<i>Reviewed & Signed by Dep Director</i>	<i>With Merit</i>	<i>With Merit, but Resolved</i>	<i>% With Merit</i>	<i>Without Merit</i>
Benton	0	0	0	0	0	0%	0
Bowie County	0	0	3	1	0	33%	2
CMU	1	2	0	0	0	0%	0
Cummins	16	6	2	0	0	0%	2
Delta	0	0	7	0	0	0%	7
EARU	22	4	66	5	1	9%	60
EARU Max	20	3	37	3	1	11%	33
Ester	1	0	7	0	0	0%	7
Grimes	4	1	4	1	0	25%	3
Hawkins	0	0	0	0	0	0%	0
McPherson	9	0	4	0	0	0%	4
MCWRC	0	0	0	0	0	0%	0
MSU	16	1	6	3	0	50%	3
North Central	9	3	8	1	1	25%	6
NWAWRC	0	0	0	0	0	0%	0
Ouachita	16	2	26	0	0	0%	26
Pine Bluff	0	0	0	0	0	0%	0
Randall L. Williams	3	0	1	0	0	0%	1
SNN	3	1	10	2	0	20%	8
TRCC	0	0	0	0	0	0%	0
Tucker	11	3	13	0	0	0%	13
Varner	9	2	6	0	0	0%	6
Varner Super Max	27	5	42	0	0	0%	42
WRU	4	0	1	0	0	0%	1
WHM	1	1	9	0	0	0%	9
WWR	0	0	0	0	0	0%	0
Total	172	34	252	16	3	8%	233

CHAPLAINCY

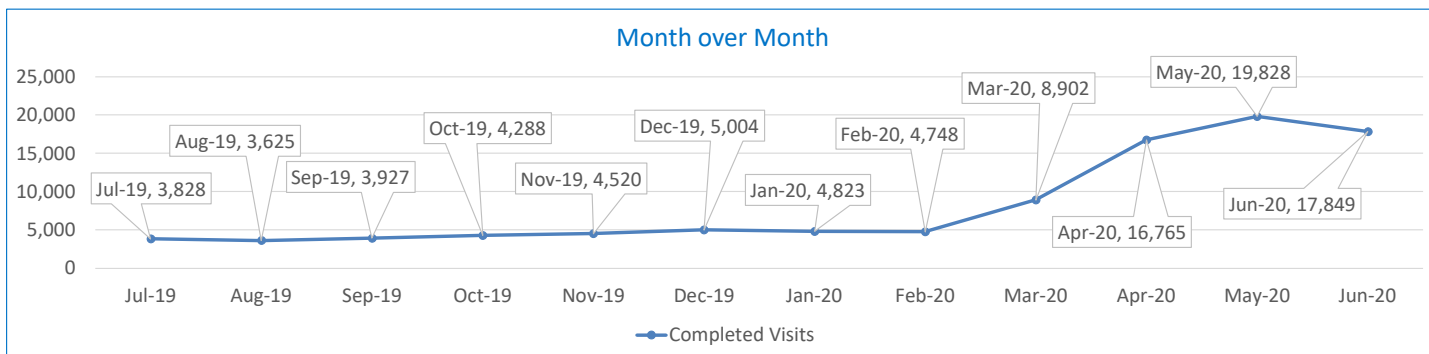
[illegible]

SECURUS VIDEO VISITATION REPORT JUNE 2020

AR-DOC SVV Activity Tracker

Total ADP 15,112

Total Visits by Month	Jul-19	Aug-19	Sep-19	Oct-19	Nov-19	Dec-19	Jan-20	Feb-20	Mar-20	Apr-20	May-20	Jun-20
Total (Includes SuperMax)	3,828	3,625	3,927	4,288	4,520	5,004	4,823	4,748	8,902	16,765	19,828	17,849
Target Objective	15,587	15,587	15,587	15,587	15,587	15,587	15,587	15,587	15,587	15,587	15,587	15,587



Completed Visits

Site	Current Month	Previous Month
<i>Benton</i>	425	459
<i>Cummins</i>	1,754	1,922
<i>Delta Regional</i>	790	895
<i>East Arkansas Regional</i>	1,598	1,680
<i>Ester</i>	1,010	965
<i>Grimes</i>	1,341	1,546
<i>J Aaron Hawkins Sr.</i>	677	866
<i>Tucker Max</i>	638	789
<i>Mcpherson</i>	695	883
<i>Mississippi County WRC</i>	88	213
<i>North Central</i>	1,143	1,124
<i>NW Arkansas WRC</i>	68	74
<i>Ouachita River</i>	1,414	1,484
<i>Pine Bluff Complex</i>	765	757
<i>Randall L Williams</i>	971	1,150
<i>State Police Barracks</i>	59	62
<i>Texarkana Regional</i>	250	184
<i>Tucker Unit</i>	1,267	1,388
<i>Varner</i>	1,694	1,983
<i>Wrightsville Unit</i>	1,178	1,395
<i>Pine Bluff Re-Entry</i>	24	9
<i>Tucker Re-entry</i>	0	0
Total:	17,849	19,828

Missed by Inmate

Site	Current Month	Previous Month
<i>Benton</i>	19	14
<i>Cummins</i>	68	149
<i>Delta Regional</i>	9	19
<i>East Arkansas Regional</i>	43	51
<i>Ester</i>	21	25
<i>Grimes</i>	34	46
<i>J Aaron Hawkins Sr.</i>	37	36
<i>Tucker Max</i>	17	34
<i>Mcpherson</i>	24	22
<i>Mississippi County WRC</i>	8	8
<i>North Central</i>	38	33
<i>NW Arkansas WRC</i>	7	2
<i>Ouachita River</i>	29	34
<i>Pine Bluff Complex</i>	35	23
<i>Randall L Williams</i>	18	20
<i>State Police Barracks</i>	3	1
<i>Texarkana Regional</i>	8	39
<i>Tucker Unit</i>	34	39
<i>Varner</i>	65	31
<i>Wrightsville Unit</i>	67	21
<i>Pine Bluff Re-Entry</i>	0	0
<i>Tucker Re-entry</i>	0	0
Total:	584	647

SECURUS TABLET REPORT JUNE 2020

Facility Name	Subscription	Facility	Officer	Total	New Subscriptions
Benton Unit	127	3	8	138	12
Cummins Unit	394	87	15	496	45
Delta Regional Unit	151	36	16	203	26
East Arkansas Regional Unit	254	97	15	366	39
Ester Unit	157	139	20	316	33
Grimes Unit	283	72	14	369	31
J Aaron Hawkins Sr Center For Women	157	69	15	241	12
McPherson Unit	248	103	15	366	30
Mississippi County Work Release Center	63	2	9	74	9
North Central Unit	163	98	10	271	22
Northwest Arkansas Work Release Center	53	2	8	63	6
Ouachita River Correctional Unit	286	110	14	410	39
Pine Bluff Reentry Center	23	2	0	25	1
Pine Bluff Unit	116	5	8	129	20
Randall L. Williams Facility	106	24	15	145	13
State Police Barracks	23	1	3	27	2
Texarkana Region Correction Center	42	2	10	54	4
Tucker Maximum Security Unit	116	31	12	159	13
Tucker Reentry Center	60	54	6	120	7
Tucker Unit	180	61	10	251	18
Varner Unit	229	82	20	331	28
Wrightsville Unit	198	54	6	258	30
TOTAL	3,429	1,134	249	4,812	440

CONSTRUCTION BUDGET / STATUS REPORT - JULY 8, 2020 — [Page 1 of 2]

Fund	Project Description	Total Projected	Budget	Available Funds	\$ % Complete	Construction % Complete	Notes
KBR4Q95	ESTER - Phase 3 - General Improvement Fund	2,951,933	4,383,781	1,431,849	67%	98%	Parking Lot in design with WD&D. Cameras and lights to be installed around perimeter after paving. ADFA bonds turned back on Phases 1 & 2, 1A.
700483A	EARU Max Rec Precast Rec Yard	77,004	659,553	582,549	12%	0%	Prepared plans for expanded metal rec pens. DBA comments received, being answered.
700483A	Tucker Max Precast Rec Yard	60,183	1,210,000	1,149,817	5%	0%	Plans being prepared for expanded metal rec pens.
700483A	Cummins Precast Rec Yard	50,012	927,500	877,488	5%	0%	Plans on hold, will modify for exp. Metal
KBR4Q95	Bullpens	387,733	851,999	464,266	46%	98%	Varner & EARU complete. Installation underway at Max. Locks delivered. Held up by virus
KBR4Q95	13 & 15 Barracks Door Revisions	119,111	174,000	54,889	68%	68%	All doors and locks installed in 13 Barracks.
KBR4Q95	Camera's (New)	1,073,900	1,248,000	174,100	86%	85%	Delta & Varner complete, working at EARU, Tucker, Cummins, RLW, PBU, and the Max.
700485A	Entegrity Energy Improvements at EARU & Delta	16,961,127	17,010,204	49,077	100%	97%	lights (100%), plumbing 100%, water (100%), compost (100%), & solar (100%), HVAC (100%). Only Training is incomplete.
700486A	Pine Bluff Unit Barracks 9 Renovation	369,616	437,000	67,384	85%	98%	9A, B C & D water controls arrived 2/5, training delayed, installation near complete.
KBSCW18	McPherson Administration	325,099	395,439	70,340	82%	80%	Walls are up, slabs poured, brick laid. Precast arrived 2/17, installed 2/19/20. Roof slab poured. Selected roofer. Expect to complete late July.
KBSCW18	McPherson Visitation	298,382	312,430	14,048	96%	80%	
KBR4Q95	McPherson Administration and Visitation	-	100,000	100,000	0%	0%	preparing RFQ for designer
KBSHW18	Tucker Water Treatment	-	1,093,848	1,093,848	0%	0%	
KBSFW18	Max Armory	-	70,000	70,000	0%	0%	to replace existing inadequate Armory. Plans sent to DBA 5/11/20, comments being answered.
KBSFW18	Varner Armory	59,912	68,399	8,487	88%	45%	Slab poured 5/18/20. Ext walls up, interior walls going up.
KBR4Q95	Tucker Isolation Bed Project	15,558	24,503	8,945	63%	30%	bed prototyped, modifications requested.
KBR4Q43	Tucker Stainless Steel Showers	152,964	250,000	97,036	61%	100%	All complete 6/23/20
7004820	Central Office Roof Replacement	416,625	500,000	83,375	83%	100%	Started 12/3, complete 4/30/19
7004820	Pine Bluff Infirmary Roof Replacement	63,681	132,800	69,119	48%	100%	Pre-Const Mtg held 6-3-19, 120 days to complete, 100% compl.
7004810	Administrative East Roof Replacement	-	309,375	309,375	0%	0%	ADFA has funded. RFQ ad ran 4/19 and 4/26. Design firm RFQ packets reviewed. Oral interviews to follow July 27th
7004810	Central Warehouse Roof Replacement	-	135,020	135,020	0%	0%	
7004810	RLW Roof Replacement	-	1,888,776	1,888,776	0%	0%	
22V	NWARWRC Laundry and Commissary	12,072	250,000	237,928	5%	0%	DBA approved Plans, Springdale Water Dept comments rec'd & answered. All approvals received.
865C	NCU Perimeter Security	18,563	270,000	251,438	7%	0%	Plans for new microwave system submitted to DBA for approval.



CONSTRUCTION BUDGET / STATUS REPORT - JULY 8, 2020 — [Page 2 of 2]

Fund	Project Description	Total Projected	Budget	Available Funds	\$ % Complete	Construction % Complete	Notes
Telephone Projects							
Maintenance & Operations	Fire Alarm Upgrades (All Units)	38,791	41,000	2,209	95%	95%	on-going
	Stainless Steel - Kitchen/Shower/Restrooms - All Units	19,902	20,000	98	100%	100%	continual need
	Parking Lot - Gravel and Paving - EARU	67,843	68,000	157	100%	100%	ArDOT completed the road paving 3/31/20. Purchased gravel for the shoulders with remaining funds.
	Gates and Fences all units	24,783	25,000	217	99%	99%	to improve security
	ACA Maintenance	99,686	100,000	314	100%	100%	Wrightsville, Benton, & Tucker passed. Upcoming are Delta, NCU, EARU & MCWRC.
	ADA Projects - All Units	9,930	10,000	70	99%	100%	as needed. Have plans for Varner sports field sidewalk
	Fast Top Floor Systems (kitchen/laundry/showers all units)	24,794	25,000	206	99%	100%	Tucker Pods complete, Benton restrooms underway. Ouachita kitchen next.
	Camera Equipment - All Units	249,443	250,000	557	100%	95%	cameras as requested/approved.
	Lock/Riot Gates - All Units	88,088	90,500	2,412	97%	95%	on-going.
	AC Units-All Units	69,614	70,000	386	99%	100%	repairing & replacing daily.
	Subtotal	\$ 692,873	\$ 699,500	\$ 6,627			
Capital Projects FY20 Carry Forward	Metal Ceilings	24,760	25,000	240	99%	0%	NCU next, material on order, then to Delta.
	ORCU Gravel Pit Operations	34,907	35,000	93	100%	100%	on-going. Crusher operating.
	Dog Kennel/Horse Stable Malvern	0	48,000	48,000	0%	0%	DA approved the Plans, released for construction. Laying out site.
	Emergency Generator - All Units	248,387	250,000	1,613	99%	100%	Cummins 300kW generator startup 7/9. PO issued for the Max. Starting Cummins East Bldg.
	Tucker 4 new filters & one aeration tank	449,611	488,434	38,823	92%	70%	Filters to arrive late August.
	Roof Repairs-Cummins	0	145,000	74,912		0%	Prepared large order for multiple Units. Currently at the Max. Need repairs at ORCU, Delta & others. Varner working on repairs, ordering TPO
	Roof Repairs-Cummins Laundry	0				0%	
	Roof Repairs-East Arkansas	0				0%	
	Roof Repairs-Max	8,784			52%	7%	
	Roof Repairs-Tucker	1,402				0%	Office of State Procurement secured a State contract to purchase roofing materials.
	Roof Repairs-Varner	59,903				48%	
	Roof Repairs-Wrightsville	0				0%	
	Boiler Repair	99,890	100,000	110	100%	100%	continually needing repair
	Subtotal	\$ 927,643	\$ 1,091,434	\$ 163,791			
New Projects	Max manhole	0	0	0	0%	0%	to provide access to a blockage point in sewer
	Tucker Barracks 10 covered walkway	0	0	0	0%	0%	Plans submitted to DBA, replying to Comments.
	RLW Sewer relocation 400' + 2 MH	0	0	0	0%	0%	frequent stoppages, defect in pipe line.
	Max Boiler Tank Replacement	0	0	0	0%	0%	
	Additional Metal Fab shop	23,525	29,266	5,741	80%	0%	purchasing materials
	PB Warehouse Drive replacement	0	50,000	50,000	0%	0%	asphalt drive pot holed
	Fuel Cards/Pumps for Cummins	0	0	0	0%	0%	
	Subtotal	\$ 23,525.13	\$ 79,266	\$ 55,741			
	Architect Fees	3,000	30,000	27,000	10%		
	Total	\$ 1,647,042	\$ 1,900,200	\$ 253,158			

Notes Report has not been reconciled against Accountings Reconciled Reports.
Tolerance/Deviation is with in 1% of Projected Spending.