



DIVISION OF
CORRECTION

BOARD REPORT

February 2020



@ARDeptofCorrections



@adcpio

Dexter Payne,
Director



POPULATION REPORT

RESEARCH/PLANNING

January 2020 Admissions and Releases – Admissions for January 2020 totaled **695** (615-males & 80-females) while releases totaled **461** (384-males & 77 females) for a net increase in-house of **234** inmates.

Inmate Population Growth/Projection – At the end of January 2020, the jurisdictional population for the Division of Correction totaled **17,989**, representing a growth of **230** inmates since the first of January 2020. Calendar year 2020 had an average growth of **230** inmates per month, which is up from an average monthly decrease of **3** inmates per month during calendar year 2019.

Average County Jail Back-up – The backup in the County Jails averaged **1,244** inmates per day during the month of January 2020 – down from an average of **1,317** inmates per day during the month of December 2019. Of the **1,244** average, short-term revocations accounted for **657** (598-males & 59-females) during the month.

INSTITUTIONS

PRISON RAPE ELIMINATION ACT (PREA)

PREA Hotline Data - January 2020:

Number of Calls Received	513
Total Calls Referred for Reported PREA Issue	33
Total Calls Referred for Non-PREA Issue	127
Calls Referred Due to Technical Failure	0
Repeat Calls	108
Test Calls	5
No Message	240

INMATE INSTITUTIONAL GRIEVANCES

Inmate Formal/Informal Grievances: During January 2020, a total of 1,741 formal grievances and 2,930 informal grievances were filed at various units.

Institutional Grievances Appeals: There was a total of 671 appeals of institutional grievances received in January 2020. Of those, 539 were acknowledged and 132 were rejected for various reasons. Of the total 528 appeals answered, 522 had no merit and six were found with merit.

SECURITY TERRORISTIC THREAT GROUP (STTG)

The STTG Coordinator, along with K-9, taught BCOT classes at the Training Academy on January 2 and 22.

BCOT special assignments were conducted by the STTG Coordinator and K-9 staff on 1/13–14.

An STTG sweep was conducted at the Tucker Unit on 1/17 and the Maximum Security Unit on 1/29.

FARM

The month of January was spent performing maintenance and repairs to equipment (tractors, planters, drills, etc.) for use during the coming year at all row crop farms. Work was also done on power units and irrigation systems.

Preparation of the garden greenhouses for seeding transplants got underway during the month.

Beef operations have had to contend with extremely wet and muddy conditions for cattle feeding.

Confined livestock operations have continued to meet ADC's needs.

REGIONAL MAINTENANCE HOURS

Regional Maintenance Hours	January 2020
Benton Unit	7,088
Delta Regional Unit	2,086
East Arkansas Regional Unit	1,280
Grimes Unit	1,588
McPherson Unit	1,328
Mississippi County Work Release	352
North Central Unit	7,872
Ouachita River Unit	888
Randall L. Williams Unit	4,136
Texarkana Regional Correctional Center	1,470
Tucker Unit	1,752
Varner Unit	3,336
Wrightsville Unit	449
Total Hours	33,625

WORK RELEASE RENT REPORT

Unit	January 2020
Benton Unit	\$105,366.00
Mississippi County Work Release	\$37,315.00
Northwest Arkansas Work Release	\$39,542.00
Pine Bluff Work Release	\$114,937.00
Texarkana Regional Correctional Center	\$51,510.00
Tucker Reentry Work Release	\$23,732.00
Total	\$372,402.00

REENTRY**RANDALL L. WILLIAMS
JUVENILE EDUCATION PROGRAM**

January 2020 Capacity: 20	Beginning Count	New Commitments	DCR/Punitive	Transferred/ Turned 18	Paroled	End Count
Juveniles*	8	0	2	1	0	7

*Juveniles are transferred from the program once they reach the age of 18.

**WORKFORCE ALLIANCE FOR
GROWTH IN THE ECONOMY (WAGE)**

January 2020 Capacity: 142 Unit:	Beginning Count	Admissions During Mo.	Removed*	Completed	End Count
Delta	0	8	0	0	8
Ester**	0	0	0	0	0
Hawkins	12	12	0	7	17
McPherson	5	8	0	4	9
Ouachita River	20	15	14	1	20
Tucker	19	2	4	2	15
Tucker Reentry	6	0	3	0	3
Wrightsville	22	9	2	9	20
TOTAL	84	54	23	23	92

*The "Removed" column indicates the number of participants who transferred, signed out, received a disciplinary, were removed because test scores were not returned/were too low to continue, or were released from prison.

**The Ester Unit WAGE Program is experiencing a change in software resulting in no classes being taught at this time.

**ADVANCED PRINCIPLES
AND APPLICATIONS FOR
LIFE PROGRAM (APAL)**

January 2020 Capacity: 86	Beginning Count	Admissions During Mo.	Removed*	End Count
Ester	36	1	1	36
Hawkins	46	6	2	50
TOTAL	82	7	3	86

Advanced PAL is an 18-month reentry program that combines a pre-release curriculum with the PAL program.

*The "Removed" column indicates the number of participants who paroled, completed the program, withdrew from the program, transferred, or were removed from the program for another reason.

**WRIGHTSVILLE-HAWKINS
PATHWAY TO FREEDOM PROGRAM**

January 2020 Capacity: 200	Beginning Count	Enrolled During the Month	Removed	End Count*
Wrightsville-Hawkins PTF	197	10	10	197

*The "End Count" column includes eight graduates who remain in the Pathway to Freedom barracks.

THINK LEGACY

January 2020 Capacity: 635 Unit	Beginning Count	Admitted	Graduated	Removed	End Count
Cummins	57	7	5	3	56
Delta Regional	21	2	1	0	22
East Arkansas Regional	46	8	3	4	47
Ester	74	18	15	2	75
Grimes	55	8	2	5	56
Hawkins (Female)	40	14	2	5	47
McPherson	64	17	5	11	65
North Central	53	8	3	6	52
Ouachita River	34	10	2	6	36
Tucker	60	13	0	14	59
Tucker Women's Reentry	22	0	0	1	21
Varner	50	19	6	17	46
Wrightsville	48	16	9	6	49
Total	624	140	53	80	631

THINK LEGACY, continued

There are 152 females and 384 males on the Think Legacy waiting list, for a total of 536. All Think Legacy applicants are within six to 18 months of their TE or discharge date. The average wait time is approximately 120 days.

January 2020 Think Legacy Activities included:

Delta Unit – A Think Legacy graduation ceremony was held on January 24, with guest speaker Chaplain Pearson and soloist Bertha Freeman in attendance.

Ester Unit – Deputy Warden Moses Jackson was the guest speaker at a graduation ceremony held on 1/31.

Grimes Unit – A graduation ceremony was held on 1/17.

North Central Unit – David George from Arkansas Securities visited on 1/24, and a graduation ceremony was held on 1/27.

McPherson Unit – Many guests visited the unit in January including: David Shockey on 1/2, Jimmy and Chelsea McGill on 1/7, Jennifer Smith on 1/8, Marilee House from the Rape Prevention Center on 1/9, David George from Arkansas Securities on 1/15, Mary Blair on 1/23, and Dana Ward from Harbor Home on 1/29.

Tucker Unit – Guest speaker Twona Frazier visited on 1/28.

Varner Unit – Twona Frazier spoke to program participants on 1/30.

ADMINISTRATIVE SERVICES

DIVISION OF CORRECTION TRAINING - JANUARY 2020

BASIC TRAINING DIVISION –

Under the direction of instructor David Farrier, **BCOT Class 2019-Q** graduated on January 24 with a total of 58 cadets. Michael Sawyers of the Ouachita River Correctional Unit was the recipient of the Willis H. Sargent Award. Warden Christopher Budnik of the Delta Regional Unit served as the guest speaker.

IN-SERVICE DIVISION –

The Training Academy offered one session of **Blue Courage** in January, which was attended by 42 participants. Additionally, a **Blue Courage Instructor Certification** class was also presented during the month to 17 participants.

The following classes were also offered to Division of Correction staff through the Training Academy during the month:

- **Correctional Security for Non-Security (Contract Staff 16)** [27 participants]
- **Correctional Security for Non-Security (Full-Time Staff 40)** [20 participants]
- **Correctional Security for Non-Security (Volunteers 8)** [18 participants]
- **Defensive Driving** [Six participants]

eCADEMY –

During January, 583 ADC employees completed a total of 10,024 hours of eCADEMY training. About 12% of ADC employees completed at least one course during that timeframe, averaging 2.13 hours per staff member. The Computer Lab is open on a daily basis for employees who wish to complete online training through eCademy.

HEALTH/CORRECTIONAL PROGRAMS

CHAPLAINCY SERVICES

Cummins Unit – On January 23, 15 inmates graduated from the PAL Program.

East Arkansas Regional Unit – Four inmates graduated from the PAL Program on January 16.

Hawkins Unit – On January 6, all inmates at the unit were served dinner sponsored by St. Edward's Catholic Church of Little Rock. Twenty inmates were baptized in a service held at the unit on 1/23. Deputy Warden Inman was the guest speaker.

North Central Unit – On January 25, 38 volunteers attended a CRA quarterly training event at Calico Rock Methodist Church. A Rejoice in Recovery graduation was held on 1/31 with 28 inmates and three volunteers in attendance.

Pine Bluff Unit – On January 31, Cops Out Preaching Salvation (COPS) held a service at the unit with 45 inmates and four volunteers in attendance.

Wrightsville Unit – All inmates at the unit were served dinner sponsored by Little Rock's St. Edward's Catholic Church on January 6. On 1/27, one volunteer attended a service where 27 inmates were baptized.

ACCREDITATION

ACA internal audits completed:

- | | |
|-----------|---|
| 1/6–1/8 | East Arkansas Regional Unit File Review |
| 1/9–1/14 | ADC's Internal Auditor/Accreditation Manager, along with several other staff members, attended ACA Commission Hearings in San Diego, California, to receive reaccreditation certificates for the following: |
| | Wrightsville/Hawkins Unit – 100% Mandatory Standards/Best Practices; 99.3% Non-Mandatory Standards/Best Practices |
| | Benton Unit – 100% on Mandatory Standards/Best Practices; 100% Non-Mandatory Standards/Best Practices |
| | Tucker Unit – 100% Mandatory Standards/Best Practices; 99.8% Non-Mandatory Standards/Best Practices |
| 1/15–1/17 | Began Modification of New 5th Edition Standards Manual |

ACCREDITATION, continued

1/20–1/24 Completed Modification of New 5th Edition Standards Manual

1/27–1/30 North Central Unit File Review

Fire/Safety and Sanitation independent audits conducted by the Fire and Sanitation Coordinator:

1/6–1/9 East Arkansas Regional Unit Audit Prep
 1/13–1/14 East Arkansas Regional Unit Audit Prep
 1/14–1/15 Delta Unit Audit Prep
 1/16 North Central Unit Audit Prep
 1/21 East Arkansas Regional Unit Audit Prep
 1/23 Delta Unit Audit Prep
 1/27 North Central Unit Audit Prep
 1/28 Delta Unit Audit Prep

VOLUNTEER SERVICES**Total Number of Volunteer Hours for January 2020:**

Unit/Program	Hours
Delta Unit	15
East Arkansas Regional Unit	4
Hawkins Unit	6
McPherson Unit	12
Mississippi County Work Release Center	4
Northwest Arkansas Work Release Center	34
Ouachita River Correctional Unit	15
Pine Bluff Complex	4
Varner	29
PAWS	24
Think Legacy	185
Religious Services/Chaplaincy	4,213
Total Hours	4,545

MENTAL HEALTH SERVICES**Reduction of Sexual Victimization Program (RSVP) and Sex Offender Treatment Programs (SOFT):**

January 2020	Capacity	Beginning Count	Completed	Removed	Admissions	End Count
RSVP	278	286	0	5	1	282
SOFT	30	8	0	1	0	7
Total	308	294	0	6	1	289

There are 785 males on the waiting list for RSVP and 12 females on the waiting list for SOFT within five years of their TE date. Of those, 21 inmates are mandated by the Parole Board.

The average time on the waiting list from request is between one and two months for those stipulated.

The total on the waiting list, including those not currently within the identified timeframe, is 1,434 males – 1,122 of whom are low risk on the ARORA, and 13 females – six of whom are low risk on the ARORA. There is one PREA inmate in the program at this time.

***The waiting list numbers include inmates that are ineligible due to class or housing status.**

Therapeutic Community (TC):

January 2020 Unit	Capacity	Beginning Count	Completed	Removed	Admissions	End Count
McPherson	53	53	3	5	7	52
Tucker	136	130	8	15	25	132
Wrightsville	50	48	6	1	11	52
Total	239	231	17	21	43	236

There are 613 males and 106 females on the waiting list within 18 months of their release date. Of those, 12 are mandated by the Parole Board.

The average time on the waiting list from request is 25 days.

The total on the waiting list, including those not currently within the identified timeframe, is 1,085 males and 162 females; of these, 343 are low risk on the ARORA.

Substance Abuse Treatment Program (SATP):

Unit	Capacity	Beginning Count	Completed	Removed	Admissions	End Count
Cummins	47	45	1	10	11	45
Grimes	56	45	2	2	9	50
McPherson	106	95	17	9	29	98
Maximum Security	4	3	0	2	1	4
Randall L. Williams	200	170	34	12	47	171
Benton	20	20	7	1	7	19
Wrightsville	150	144	19	21	42	146
Total	583	522	80	57	146	533

There are 1,859 males and 220 females on the waiting list within 18 months of their release date. Of those, 48 are mandated by the Parole Board.

SATP INFORMATION, *continued*

The average time on the waiting list from request is 40 days.

The total on the waiting list, including those not currently within the identified timeframe or ineligible due to class or housing status, is 2,896 males and 304 females; of these, 920 are low risk on the ARORA.

Substance Use Intervention Program: The Substance Use Intervention Program had 13 admissions and 16 discharges for an end-of-month count of 24 for January. This program is housed at the Varner Unit and is for inmates found guilty of a disciplinary violation for drug use or drug possession.

Ouachita River Correctional Unit (ORCU) Residential Program Unit (RPU): The RPU had four admissions and four discharges in January for an end-of-month count of 124.

McPherson Unit Mental Health Residential Program Unit (RPU): There were six admissions and seven discharges in January for an end-of-month count of 39.

Habilitation Program: The Habilitation Program at the Ouachita River Correctional Unit provided treatment services to 46 inmates during January. There was one admission and one discharge resulting in an end-of-month count of 45.

Anger Management Treatment: The Anger Management Treatment Program at the Cummins Unit provided treatment services to 32 inmates during January. There were 17 admissions and no discharges for an end-of-month count of 32.

Staffing: The following Mental Health Services and Substance Abuse Treatment Program (SATP) positions were vacant in December 2019 and January 2020:

Positions	FTEs*	Dec. 2019	Jan. 2020
Psychologists	14	5	5
Social Workers	31	14	16
Advisors	64	12	10
Substance Abuse Program Leaders	35	2	3
Administrative Specialists	17	1	2

*FTE refers to authorized Full Time Equivalent positions.

ADDITIONAL MENTAL HEALTH AND MEDICAL INFORMATION**Self-Study Classes:**

Classes	# of Participants	# Completed	Waiting List
Anger Management	268	263	1,221
Thinking Errors	345	325	1,345
Substance Abuse Education	271	269	885
Communication Skills	260	259	1,202
Domestic Violence	136	117	373
Victims of Domestic Violence	79	79	67
Stress Management	274	270	1,276
Parenting	249	248	518

Suicide: There were 93 suicidal threats during January. There were eight attempts resulting in one death.

Outpatient: There were 2,172 inmates on the mental health medical log at the beginning of January. Mental Health staff conducted the following contacts during January:

Case Management Contacts	2,078
Requests for Interviews	1,224
Testing	1
Intakes	528
Unit Requests	1,487
Counseling (with Treatment Plans)	0
Pre-Lockup Reviews	592
Routine Restrictive Housing Reviews	866
Restrictive Housing Rounds	21,151
PREA Evaluations	145
Routine Follow-up	325
834 Requests	42

County Mental Health Requests: During January, there were 165 requests of a mental health nature received. Of those, 73 inmates were fast-tracked to ADC.

County Medical Health Requests: During January, there were 557 requests of a medical nature received. A total of 21 inmates were fast-tracked to ADC.

Medical Contract Reimbursements: Sanction reimbursements for December were \$16,100.00.

Deaths: There were eight inmate deaths during the month of January. Five were claimed and three were cremated.

Wellpath: See attachment for Wellpath's report regarding outside beds and emergency room visits.

ADDITIONAL MENTAL HEALTH AND MEDICAL INFORMATION, *continued*

Medical Grievances: In January, there were 221 appeals of medical grievances received and 211 appeals were answered; 11 of those were found to be with merit and four with merit but resolved.

SEX OFFENDER ASSESSMENT

Assessments Completed:

Risk Level	January	September 1999 through January 2020
Level 1	3	1,204
Level 2	34	7,801
Level 3	19	7,013
Level 4	1	684
Default 3	6	*
Total	63	16,702
*Default Level 3's are included in the total number of Level 3's to date.		

ACIC Numbers:

The total number of sex offenders registered from September 1999 through January 2020:

Compliant	8,451
Delinquent	1,134
Confined	3,351
Out-of-State	3,632
Address Unknown	123
Deported	206
Incapacitated	91
Out of USA	10
Total	16,998

Consistent with current Arkansas law, deceased offenders no longer remain on the registry.

PAWS IN PRISON

Currently Enrolled in Training:

Hawkins Unit	6
Maximum Security Unit	8
North Central Unit	9
Ouachita River Correctional Unit	5
Randall L. Williams Unit	5
Tucker Unit	8
Total	41

Completed Paws in Prison Training:

January 2020 Program Graduates	21
YTD 2020 Program Graduates	21
Total Graduates Since Inception (December 2011)	1,473
Dogs Currently in Foster (Graduated, but Not Adopted)	4
January 2020 Volunteer Hours	24
YTD Volunteer Hours	24

CONSTRUCTION/MAINTENANCE

PROJECT UPDATES

SEE CONSTRUCTION BUDGET / STATUS REPORT IN ATTACHMENTS SECTION (PAGES 22-23).

AGENCY HIGHLIGHTS

AGENCY-WIDE:

Reaccreditation Officially Awarded to Three Units

The American Correctional Association's Winter Conference was held January 9-14, in San Diego, California. Members of leadership representing three ADC facilities – Wrightsville Complex, Tucker Unit, and Benton Unit – were awarded reaccreditation certificates for having met hundreds of national standards. During the hearings, many compliments were made about unit programing, most notably Pathway to Freedom, Paws in Prison, and Work Release.



AGENCY HIGHLIGHTS, *continued*

Three Facilities Damaged During Storms

Severe storms erupted over Arkansas on January 10-11 and left their mark on three ADC facilities. At the Mississippi County Work Release Center, a corner of the roof was peeled back. The East Arkansas Regional Unit suffered roof damage to two of its towers. The tower debris then caused damage to one of the perimeter fences. Fortunately, the electric fence between the perimeter fences remained intact. About half of the roof of an EARU hay barn was also lost due to the storm winds. At the Pine Bluff Complex, an electrical transformer blew out which caused two towers and a section of the perimeter fence at the Ester Unit to lose power. As is always the case, repair work was underway in no time.



2019 Pinnacle Awards Ceremony Held

Several staff members were honored for their outstanding work during the 2019 Pinnacle Awards Ceremony, held on January 24, 2020 at the Pleasant Valley Country Club in Little Rock. Dr. William "Dubs" Byers, member of the Board of Corrections, served as the event's guest speaker. Those who were recognized with awards were:

- **Board of Corrections Meritorious Service Award** – *George Wilson*, Health Services Administrator-Central Office
- **Employee of the Year** – *Jalesia Hearyman*, HR Assistant-McPherson Unit
- **Correctional Officer of the Year** – *Sergeant Charlotte Sanders*-Maximum Security Unit
- **Supervisor/Administrator of the Year** – *Lynette James*, Records Supervisor-Wrightsville Unit
- **Correctional Supervisor of the Year** – *Captain Jimmy Coleman*-Cummins Unit

- **Warden/Administrator's Outstanding Service Award** – *Richard Meeks*, Construction and Maintenance Coordinator-Construction
- **Deputy Warden of the Year** – *John Craig*-Benton Unit and *James Shipman*-Varner Unit
- **Warden/Superintendent of the Year** – *James "Hoot" Gibson*-Varner Unit and *Gaylon Lay*-East Arkansas Regional Unit
- **Director's Citation of Excellence Award** – *Lieutenant Antonio Johnson*-Varner Unit
- **Director's Outstanding Service Award** – *Sandra Kennedy*, Internal Auditor-Central Office and *Tiffanye Compton*, Policy and Research Coordinator-Central Office
- **Hero Award** – *Corporal Christopher Bennett*-Pine Bluff Unit.

Employees Take Part in Annual Polar Plunge

Thanks to the efforts of the ADC Volunteer Services Coordinator, Lauren Holstead, Division of Correction employees representing the Cummins Unit, Maximum Security Unit, Ouachita River



Correctional Unit, Pine Bluff Complex, and Varner Unit took part in the annual Polar Plunge for Special Olympics Arkansas on January 25. The purpose of the annual fundraiser is to raise awareness of and money for the local chapter of Special Olympics that ADC proudly supports each year. Held in past years at Lake Saracen, this year's event was moved to the Pine Bluff Aquatic Center and raised \$1,575 benefiting Special Olympics.

EAST ARKANSAS REGIONAL UNIT:

Corporal Ester Remembered

Each year during the week of January 20, the East Arkansas Regional Unit commemorates the life of a fallen officer by setting up a tribute table. The display honors the memory of Corporal Barbara Ester, who was stabbed to death by an inmate on January 20, 2012. Although the state's first reentry facility was named in her honor, the table at the unit where she once served allows her peers a tangible way to pause, reflect and remember the life of Corporal Ester and ensure that her legacy lives on.



AGENCY HIGHLIGHTS, continued

GRIMES UNIT:

Quick-Acting Staff Save Life

During the first weekend of 2020, Grimes Unit staff members were alerted that an inmate had collapsed and was unresponsive in the barracks. Upon discovery that the inmate was without a pulse, the responding staff immediately began life-saving procedures while transporting him to the unit infirmary. Thanks to the staffs' training and concern for the inmate, they were able to regain a



pulse and send the inmate to a local hospital to receive further medical treatment. A big thank you goes to the following security and medical staff who worked together to save a life: Sergeant Joseph Dauck, Corporal Adam Fields, Nurse Jodi Martz Boggs, and Nurse Rhonda Stanford.

MCPHERSON UNIT:

Warden and Program Specialist Receive Award

On January 23, McPherson Unit Warden Toni Bradley and Program Specialist Kerri Kocourek were each presented with an Excellence Award by Director Dexter Payne for demonstrating personal excellence and going the extra mile to authenticate the Think Legacy Reentry Program. The women were nominated by Reentry Coordinator Nicole Smart who stated, "Warden Bradley has the courage to try something new. Change does not come easy, but she is making it happen and it is extremely noticeable." She nominated Kerri for her "positive attitude and compassionate disposition in helping others."



VARNER UNIT:

January Award Winners Announced

Sergeant Malcolm Crompton was presented with the Security Employee of the Month Award for January. He has been with ADC since 2003 and currently serves in the SuperMax. The Non-Security Employee of the Month Award was presented to Lisa Witherspoon. She began working at the Varner Unit in 2006 where she currently serves as a medical records clerk. We congratulate both on receiving the awards and for their years of service to the ADC.



WRIGHTSVILLE UNIT:

Think Legacy Vision Board Event Held

The Think Legacy Reentry Program at the Wrightsville Unit hosted a "vision board" event on January 16 for its participants. A vision board is a collage of words and pictures representing goals and dreams...or whatever it is that a person wants to be, do, or have in life. The boards help people keep their focus on what truly matters to them. Putting the board in a place where it can be seen every day helps to reinforce priorities and inspire ways to reach goals and it also encourages turning positive thoughts into actions.



2020 INFORMAL GRIEVANCE REPORT

Month	BENTON	HAWK/M	HAWK/F	WRTS	EARU & MX	GRIMES	RLW	MCWR	MCPH	MSU	NCU	PBU	NWA	TU	TRCC	VSMX	VU	CU	ORCU	Ester	DRU	Bowie Cty	TOTAL
JAN	0	34	27	84	449	213	19	0	342	199	150	41	0	123	2	486	89	220	296	39	84	33	2,930
FEB	0	0	0	0	0	0	0	0	0	0	0	0	0	0	0	0	0	0	0	0	0	0	0
MAR	0	0	0	0	0	0	0	0	0	0	0	0	0	0	0	0	0	0	0	0	0	0	0
APR	0	0	0	0	0	0	0	0	0	0	0	0	0	0	0	0	0	0	0	0	0	0	0
MAY	0	0	0	0	0	0	0	0	0	0	0	0	0	0	0	0	0	0	0	0	0	0	0
JUN	0	0	0	0	0	0	0	0	0	0	0	0	0	0	0	0	0	0	0	0	0	0	0
JUL	0	0	0	0	0	0	0	0	0	0	0	0	0	0	0	0	0	0	0	0	0	0	0
AUG	0	0	0	0	0	0	0	0	0	0	0	0	0	0	0	0	0	0	0	0	0	0	0
SEPT	0	0	0	0	0	0	0	0	0	0	0	0	0	0	0	0	0	0	0	0	0	0	0
OCT	0	0	0	0	0	0	0	0	0	0	0	0	0	0	0	0	0	0	0	0	0	0	0
NOV	0	0	0	0	0	0	0	0	0	0	0	0	0	0	0	0	0	0	0	0	0	0	0
DEC	0	0	0	0	0	0	0	0	0	0	0	0	0	0	0	0	0	0	0	0	0	0	0
TOTAL	0	34	27	84	449	213	19	0	342	199	150	41	0	123	2	486	89	220	296	39	84	33	2,930

2020 FORMAL GRIEVANCE REPORT

Month	BENTON	HAWK/M	HAWK/F	WRTS	EARU & MX	GRIMES	RLW	MCWR	MCPH	MSU	NCU	PBU	NWA	TU	TRCC	VSMX	VU	CU	ORCU	Ester	DRU	Bowie Cty	TOTAL
JAN	0	13	10	35	404	105	5	0	130	174	90	11	0	92	4	260	65	125	153	15	43	7	1,741
FEB	0	0	0	0	0	0	0	0	0	0	0	0	0	0	0	0	0	0	0	0	0	0	0
MAR	0	0	0	0	0	0	0	0	0	0	0	0	0	0	0	0	0	0	0	0	0	0	0
APR	0	0	0	0	0	0	0	0	0	0	0	0	0	0	0	0	0	0	0	0	0	0	0
MAY	0	0	0	0	0	0	0	0	0	0	0	0	0	0	0	0	0	0	0	0	0	0	0
JUN	0	0	0	0	0	0	0	0	0	0	0	0	0	0	0	0	0	0	0	0	0	0	0
JUL	0	0	0	0	0	0	0	0	0	0	0	0	0	0	0	0	0	0	0	0	0	0	0
AUG	0	0	0	0	0	0	0	0	0	0	0	0	0	0	0	0	0	0	0	0	0	0	0
SEPT	0	0	0	0	0	0	0	0	0	0	0	0	0	0	0	0	0	0	0	0	0	0	0
OCT	0	0	0	0	0	0	0	0	0	0	0	0	0	0	0	0	0	0	0	0	0	0	0
NOV	0	0	0	0	0	0	0	0	0	0	0	0	0	0	0	0	0	0	0	0	0	0	0
DEC	0	0	0	0	0	0	0	0	0	0	0	0	0	0	0	0	0	0	0	0	0	0	0
TOTAL	0	13	10	35	404	105	5	0	130	174	90	11	0	92	4	260	65	125	153	15	43	7	1,741

INMATE INSTITUTIONAL GRIEVANCE APPEAL REPORT – JANUARY 2020

	Acknowledged	Rejected	Processed W/O Merit	Processed W/ Merit
Benton Unit	0	0	0	0
Benton Work Release	0	0	1	0
Bowie County Texas Correctional Facility	0	1	0	0
Cummins Unit	51	16	46	0
Cummins Modular Unit	0	0	1	0
Delta Regional Unit	14	4	4	0
East Arkansas Regional Unit	27	3	19	0
East Arkansas Regional Max Unit	128	18	63	2
Ester Unit	0	0	0	0
Grimes Unit	19	11	20	0
Maximum Security Unit	75	15	85	0
Tucker Re-Entry	0	0	0	0
McPherson Unit	16	12	14	0
McPherson Mental Health Residential Program Unit	1	0	0	0
Mississippi County Work Release Center	0	0	0	0
Northwest Arkansas Work Release Center	0	0	0	0
North Central Unit	7	3	16	0
Ouachita River Correctional Unit	34	10	34	1
ORCU Hospital	1	0	0	0
ORCU New Commitment	11	2	25	0
ORCU Mental Health Residential Program Unit	1	2	1	0
Pine Bluff Unit	1	4	1	0
Pine Bluff Re-Entry	0	0	0	0
Randall L. Williams Correctional Facility	1	2	1	0
Texarkana Regional Correctional Center	4	2	3	0
Tucker Unit	9	4	6	0
Varner Super Max	108	15	153	3
Varner Unit	16	6	17	0
Wrightsville Unit	12	0	11	0
Hawkins Center	2	0	0	0
Hawkins for Males	1	2	1	0
Hawkins SPU	0	0	0	0
Total	539	132	522	6

ADMISSIONS AND RELEASES – JANUARY 2020

<u>Admissions</u>	<u>Male</u>	<u>Female</u>	<u>Total</u>
Asian	2	0	2
Black	192	11	203
Hispanic	23	1	24
Native American Indian	1	0	1
Native Hawaiian or Pacific Isl.	0	0	0
White	396	68	464
Other	1	0	1
Total	615	80	695

<u>Releases</u>	<u>Male</u>	<u>Female</u>	<u>Total</u>
Asian	2	1	3
Black	110	10	120
Hispanic	12	1	13
Native American Indian	0	1	1
Native Hawaiian or Pacific Isl.	0	0	0
White	260	64	324
Other	0	0	0
Total	384	77	461

FISCAL YEAR 2020 COUNTY JAIL BACKUP - JANUARY 2020

DAY	Jul-19	Aug-19	Sep-19	Oct-19	Nov-19	Dec-19	Jan-20
1	1,502	1,507 *	1,639	1,434	1,521 *	1,584	1,278
2	1,500	1,518	1,620	1,417 *	1,521	1,584	1,278
3	1,506 *	1,518	1,620	1,443 *	1,521	1,508	1,279
4	1,495 *	1,518	1,586	1,467	1,502	1,432 *	1,279
5	1,495	1,536	1,558 *	1,467	1,505	1,412 *	1,279
6	* 1,495	1,506	1,531 *	1,467	1,513	1,397	1,281
7	* 1,495	1,511 *	1,531	1,443	1,538 *	1,397	1,271
8	1,507	1,492 *	1,531	1,443	1,547 *	1,397	1,274
9	1,510	1,491	1,505	1,444 *	1,547	1,345	1,300
10	1,520 *	1,491	1,504	1,441 *	1,547	1,332	1,300
11	1,544 *	1,491	1,487	1,446	1,545	1,296 *	1,300
12	1,550	1,503	1,446 *	1,446	1,545	1,280 *	1,300
13	* 1,550	1,523	1,429 *	1,446	1,528	1,293	1,259
14	* 1,550	1,538 *	1,429	1,444	1,517 *	1,293	1,263
15	1,527	1,562 *	1,429	1,454	1,556 *	1,293	1,253
16	1,523	1,584	1,437	1,430 *	1,556	1,286	1,197
17	1,507 *	1,584	1,439	1,433 *	1,556	1,261	1,194
18	1,491 *	1,584	1,435	1,453	1,498	1,229 *	1,194
19	1,518	1,596	1,452 *	1,453	1,475	1,236 *	1,194
20	* 1,518	1,609	1,443 *	1,453	1,509	1,249	1,181
21	* 1,518	1,609 *	1,443	1,432	1,525 *	1,249	1,181
22	1,503	1,625 *	1,443	1,442	1,513 *	1,249	1,165
23	1,511	1,660	1,443	1,452 *	1,513	1,273	1,180
24	1,488 *	1,660	1,429	1,464 *	1,513	1,239	1,188
25	1,497 *	1,660	1,416	1,489	1,556	1,239 *	1,188
26	1,526	1,622	1,396 *	1,489	1,571	1,239 *	1,188
27	* 1,526	1,614	1,428 *	1,489	1,581	1,241	1,210
28	* 1,526	1,636 *	1,428	1,493	1,584 *	1,241	1,225
29	1,515	1,651 *	1,428	1,464	1,584 *	1,241	1,270
30	1,522	1,639	1,423	1,472 *	1,584	1,246	1,286
31	1,514 *	1,639		1,500		1,263	1,319
Avg Daily Backup	1,514	1,570	1,478	1,455	1,536	1,317	1,244

Notes: Totals do not include 309 Contracts in County Jails (maximum of 336)

County Jail Back-up Average for January 2020 - 1,244

County Jail Back-up Fiscal Year Average as of January 31, 2020 - 1,445

Short-Term Revocation Program Average for January 2020 - 657

Short-Term Revocation Program Fiscal Year Average as of January 31, 2020 - 679

STTG UNIT COUNTS – JANUARY 2020

Unit	Beginning Total	Confirmed	Suspected	In	Out	Paroled	Removed	Ending Total	Total Unit Population	Unit % of STTG's
Benton	65	1	0	17	2	5	0	76	346	21.97%
Cummins	612	2	0	170	93	7	0	684	1,959	34.92%
Delta	202	0	0	30	16	11	0	205	624	32.85%
EARU	604	0	0	21	9	13	0	603	1,567	38.48%
Grimes	346	1	19	36	18	0	0	384	1,078	35.62%
Hawkins	47	0	0	9	2	0	0	55	449	12.25%
Max	268	15	0	15	14	3	0	283	674	41.99%
Mcperson	42	0	2	0	1	1	0	42	1,007	4.17%
MCWR	40	0	0	4	6	0	0	38	133	28.57%
NCU	232	0	0	33	22	0	0	243	813	29.89%
NWAWR	13	0	0	2	2	0	0	13	100	13.00%
ORCU	312	0	0	43	23	16	0	316	1,604	19.70%
ORCU Intake	101	202	0	0	218	0	0	85	239	35.56%
PB/Ester	109	0	0	27	29	7	1	99	1,168	8.48%
RLW	185	0	0	65	51	0	0	199	552	36.05%
TWR	34	0	0	0	1	0	0	33	126	26.19%
Tucker	324	12	0	21	18	0	0	336	994	33.80%
Varner	669	0	0	81	66	7	0	677	1,626	41.64%
Wrightsville	282	0	0	2	0	0	0	284	861	32.98%
Total	4,487	233	21	576	591	70	1	4,655	15,920	29.24%

ORCU Intake brought in 202 new STTG members into ADC last month.

STTG DISCIPLINARY REPORT – JANUARY 2020

Unit	STTG Incidents	STTG Suspected Incidents	Total Unit Disciplinary	Disciplinary Involving STTG	Percentage
Benton	0	0	9	3	33.33%
Cummins	1	4	223	108	48.43%
Delta	0	0	108	55	50.93%
EARU	0	0	362	183	50.55%
Grimes	0	3	124	58	46.77%
Hawkins	0	0	1	0	0.00%
Max	0	1	100	47	47.00%
Mcpherson	0	0	167	13	7.78%
MCWR	0	0	2	1	50.00%
NCU	0	0	92	35	38.04%
NWAWR	0	0	3	1	33.33%
ORCU	0	0	108	37	34.26%
ORCU Intake	0	0	9	1	11.11%
PB/Ester	0	0	11	6	54.55%
RLW	0	0	45	24	53.33%
TWR	0	0	4	1	25.00%
Tucker	0	0	170	89	52.35%
Varner	2	0	304	163	53.62%
Wrightsville	0	0	127	61	48.03%
Total	3	8	1,969	886	45.00%

STTG COUNTS BY STTG SET – JANUARY 2020

STTG Set	Benton	Cummins	Delta	EARU	Grimes	Hawkins	Max	Mcperson	MCWR	NCU	NWAWR	ORCU	Intake	PB	RLW	TWR	Tucker	Varner	Wrightsville	Total
Asian	0	1	0	0	0	0	0	0	0	1	0	0	0	2	2	0	0	0	0	6
Bloods	13	150	40	106	66	6	66	5	8	39	3	79	18	17	32	4	61	144	48	905
Crips	6	90	22	79	38	3	34	5	2	19	2	42	12	13	22	2	27	107	31	556
Folk	4	49	14	45	0	6	36	8	1	16	4	15	0	5	14	0	22	75	20	334
GD	19	152	44	110	122	8	53	0	13	40	0	61	13	24	49	10	102	141	58	1,019
Mexican	1	21	10	16	11	1	6	2	1	8	1	10	1	7	5	1	5	19	10	136
Motorcycle	0	2	2	1	2	1	4	1	2	1	0	1	0	2	1	0	3	0	0	23
Other	1	20	9	11	15	1	3	0	1	12	0	17	4	2	6	7	15	12	9	145
People	2	24	6	19	14	1	17	3	0	13	0	23	3	7	11	0	10	22	15	190
Unknown	0	13	7	13	10	1	2	0	0	5	0	9	6	0	8	2	0	4	7	87
W/S	18	55	31	68	49	10	12	18	3	51	3	13	13	10	22	0	33	40	32	481
AB	1	11	0	9	4	2	0	0	1	4	0	3	2	1	3	2	8	13	4	68
AC	1	7	2	20	12	5	10	0	0	5	0	7	1	5	1	4	7	18	10	115
NAE	2	42	5	48	15	5	13	0	3	8	0	20	5	2	10	1	15	35	21	250
WAR	8	47	13	58	26	5	27	0	3	21	0	16	7	2	13	0	28	47	19	340
Total	76	684	205	603	384	55	283	42	38	243	13	313	85	99	199	33	336	677	284	4,655

Key:

GD = Gangster Disciples

W/S = White Supremacist

NAE = New Aryan Empire

WAR = White Aryan Resistance

AC = Aryan Circle

AB = Aryan Brotherhood

INTERNAL AFFAIRS BOARD REPORT - JANUARY 2020

Opened Investigation, Reviews/ASP January 2020	Open Investigation	Open Review	ASP Referral
Arson	0	0	0
Assault on Inmate	0	0	0
Assault on Staff	0	0	0
Attempted Escape from Unit	0	0	0
Banding Together to Interfere with Unit	0	0	0
Battery on Inmate without Serious Injury	0	0	1
Battery on Inmate with Serious Injury	0	0	1
Battery on Inmate with Use of Unknown Substance	0	0	0
Battery on Other Person with Serious Injury	0	0	0
Battery on Staff without Serious Injury	0	0	1
Battery on Staff with Serious Injury	0	0	0
Battery on Staff with Bodily Fluids	0	0	1
Battery on Staff with Use of Unknown Substance	0	0	0
Death	0	0	9
Disobey Direct Order	0	0	0
Employee Misconduct	1	1	0
Excessive Force	0	0	0
Escape from Unit	0	0	0
Escape from Work Release	0	0	0
Forcible Rape	0	0	1
Inappropriate Relationship	0	0	0
Indecent Exposure	0	0	0
Inmate on Inmate Abusive Sexual Contact	1	0	0
Inmate on Inmate Sexual Assault	0	0	0
Inmate on Inmate Sexual Contact	0	3	0
Inmate on Inmate Sexual Harassment	0	30	0
Inmate on Inmate Sexual Misconduct	0	32	0
Inmate on Inmate Nonconsensual Sexual Contact	1	0	0
Introduction of Cell Phone	0	0	1
Introduction of Contraband	4	0	0
Introduction of Drugs	1	0	2
Introduction of Tobacco	0	0	0
Major Breach of Security	1	0	0
Missing Narcotics	0	0	1
Other Incident	2	0	0
Other Rule Violation	1	0	0
Possession of Cell Phone	1	0	11
Possession of Drugs	0	0	7
Possession of a Weapon	0	0	0
Retaliation	0	0	0
Sexual Assault	0	0	0
Sexual Misconduct	1	0	0
Staff on Inmate Sexual Harassment	2	27	0
Staff on Inmate Sexual Misconduct	5	10	2
Staff on Staff Sexual Harassment	5	0	0
Staff on Staff Sexual Misconduct	1	0	0
Suicide Attempt	0	0	0
Suspected Criminal Activity	1	0	0
Trafficking	1	0	0
Use of Force	0	58	0
Verbal/Written threat on Staff	0	0	0
Work Release Misconduct	0	1	0
Total	29	162	38

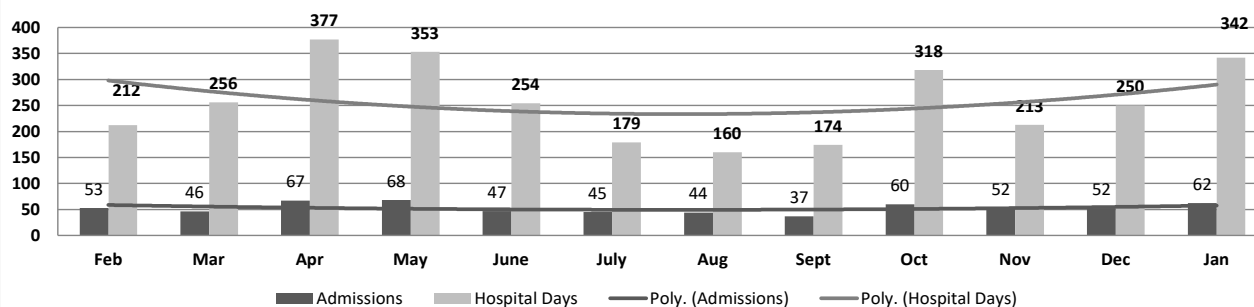
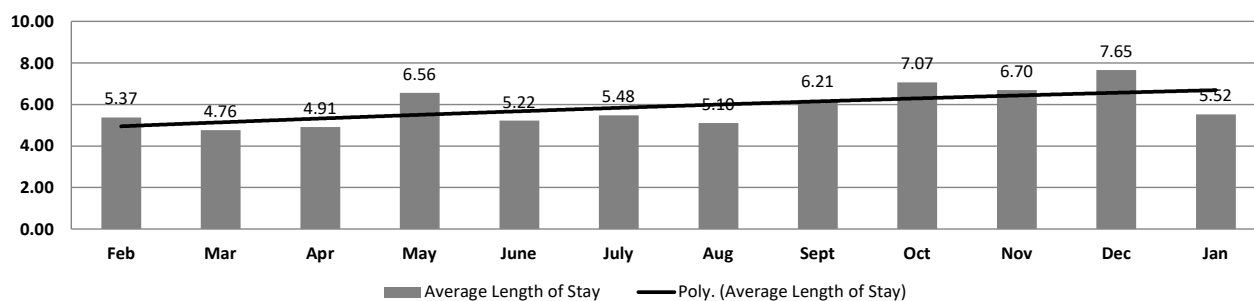
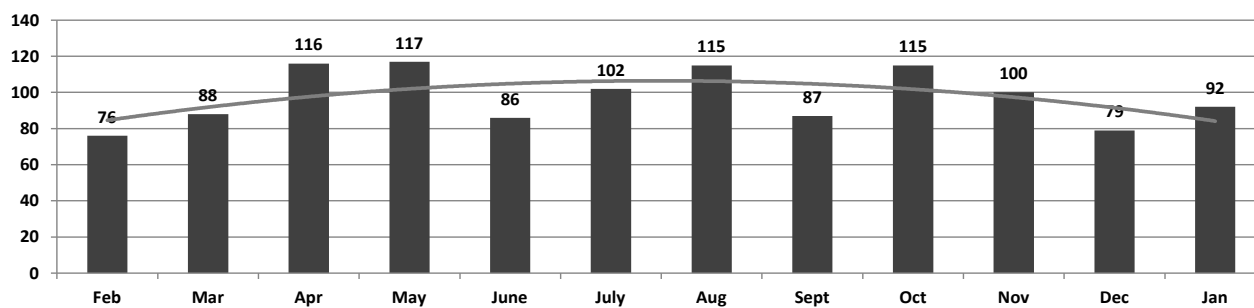
ADC INPATIENT AND EMERGENCY ROOM UTILIZATION

ADC Inpatient Statistics Past 12 Months

	ABC Inpatient Statistics - Past 12 Months												
	2019											2020	
	Feb	Mar	Apr	May	June	July	Aug	Sept	Oct	Nov	Dec	Jan	Average
Admissions	53	46	67	68	47	45	44	37	60	52	52	62	52.8
Hospital Days	212	256	377	353	254	179	160	174	318	213	250	342	257.3
Average Length of Stay	5.37	4.76	4.91	6.56	5.22	5.48	5.10	6.21	7.07	6.70	7.65	5.52	4.88

ADC ER Visits Past 12 Months

	2019													2020	
	Feb	Mar	Apr	May	June	July	Aug	Sept	Oct	Nov	Dec	Jan	Average		
Emergency Room Visits	76	88	116	117	86	102	115	87	115	100	79	92	97.8		

ADC Inpatient Utilization
Past 12 MonthsADC Inpatient Average Length of Stay
Past 12 MonthsADC Emergency Room Visits
Past 12 Months

MEDICAL GRIEVANCE BOARD REPORT – JANUARY 2020

Unit	<i>Acknowledged/ Received</i>	<i>Rejected</i>	<i>Reviewed & Signed by Dep Director</i>	<i>With Merit</i>	<i>With Merit, but Resolved</i>	<i>% With Merit</i>	<i>Without Merit</i>
Benton	0	0	0	0	0	0%	0
Bowie County	0	0	4	3	1	100%	0
CMU	0	0	0	0	0	0%	0
Cummins	24	3	9	1	0	11%	8
Delta	5	0	1	0	0	0%	1
EARU	23	10	7	0	0	0%	7
EARU Max	48	11	17	2	0	12%	15
Ester	3	1	2	0	0	0%	2
Grimes	9	0	5	0	0	0%	5
Hawkins	0	1	1	0	0	0%	1
McPherson	26	0	12	0	1	8%	11
MCWRC	0	0	0	0	0	0%	0
MSU	17	2	15	3	1	27%	11
North Central	2	1	5	0	0	0%	5
NWAWRC	0	0	0	0	0	0%	0
Ouachita	13	3	23	1	1	9%	21
Pine Bluff	1	1	0	0	0	0%	0
Randall L. Williams	0	0	1	0	0	0%	1
SNN	3	0	7	0	0	0%	7
TRCC	2	1	0	0	0	0%	0
Tucker	6	4	12	0	0	0%	12
Varner	13	2	29	1	0	3%	28
Varner Super Max	21	3	53	0	0	0%	53
WRU	2	0	3	0	0	0%	3
WHM	3	0	5	0	0	0%	5
WWR	0	0	0	0	0	0%	0
Total	221	43	211	11	4	7%	196

CONSTRUCTION BUDGET / STATUS REPORT - FEBRUARY 7, 2020 — [Page 1 of 2]

Fund	Project Description	Total Projected	Budget	Available Funds	\$ % Complete	Construction % Complete	Notes
KBR4Q95	ESTER - Phase 3 - General Improvement Fund	2,951,933	4,383,781	1,431,849	67%	98%	Parking Lot in design. Cameras will be installed around perimeter after paving. ADFA bonds turned back on Phases 1 & 2 1A
700483A	EARU ISO Rec Yard	265,735	271,430	5,695	98%	100%	Complete
700483A	Varner ISO Rec Yard	179,734	180,953	1,219	99%	100%	Complete
700483A	EARU Max Rec Precast Rec Yard	77,004	659,553	582,549	12%	0%	Looking at alternates. Preparing plans for expanded metal rec pens.
700483A	Tucker Max Precast Rec Yard	60,028	1,210,000	1,149,972	5%	0%	Plans on hold.
700483A	Cummins Precast Rec Yard	49,857	927,500	877,643	5%	0%	Plans on hold.
KBR4Q95	Bullpens	377,470	851,999	474,529	44%	98%	Varner & EARU complete, ready to install at Max when locks rec'd in 3 weeks.
KBR4Q95	13 & 15 Barracks Door Revisions	119,737	174,000	54,263		68%	All doors and locks installed in 13 Barracks.
KBR4Q95	Camera's (New)	1,075,743	1,248,000	172,257	86%	80%	Installations underway. Delta & Varner complete, working at EARU, Tucker, Cummins, and the Max.
700485A	Entegrity Energy Improvements at EARU & Delta	16,961,127	17,010,204	49,077	100%	97%	lights (100%), plumbing 99%, water (100%), compost (100%), & solar (100%), HVAC (99%).
700486A	Pine Bluff Unit Barracks 9 Renovation	368,491	437,000	68,509	84%	96%	9A, B C & D construction complete, 4/5/19. Water controls arrived 2/5.
KBSCW18	McPherson Administration	243,853	395,439	151,586	62%	25%	Walls are up, slabs poured, brick being laid on exterior walls. Precast to arrive 3/17/20.
KBSCW18	McPherson Visitation	270,643	312,430	41,787	87%	25%	
KBR4Q95	McPherson Administration and Visitation	-	100,000	100,000	0%	25%	
KBSHW18	Tucker Water Treatment	-	1,093,848	1,093,848	0%	0%	preparing RFQ for designer
KBSFW18	Max Armory	-	70,000	70,000	0%	0%	to replace existing inadequate Armory. Plans complete, submitting documents to DBA
KBSFW18	Varner Armory	-	68,399	68,399	0%	0%	Const. Supervisor ordering material
KBR4Q43	Tucker Stainless Steel Showers	140,310	250,000	109,690	56%	55%	10 Barracks, Pods 5 thru 8, A & B complete, working in the Pod restrooms and replacing windows
7004820	Central Office Roof Replacement	416,625	500,000	83,375	83%	100%	Started 12/3, complete 4/30/19
7004820	Pine Bluff Infirmary Roof Replacement	62,481	132,800	70,319	47%	100%	Pre-Const Mtg held 6-3-19, 120 days to complete, 100% compl.
7004810	Administrative East Roof Replacement	-	309,375	309,375	0%	0%	ADFA has funded, preparing RFQ for Plans design. Should have advertise by BOC meeting.
7004810	Central Warehouse Roof Replacement	-	135,020	135,020	0%	0%	
7004810	RLW Roof Replacement	-	1,888,776	1,888,776	0%	0%	
22V	NWARWRC Laundry and Commissary	-	250,000	250,000	0%	0%	DBA approved Plans, Springdale Water Dept comments rec'd & answered.

Telephone Projects

Maintenance & Operations	Fire Alarm Upgrades (All Units)	5,028	41,000	35,972	12%	10%	on-going
	Stainless Steel - Kitchen/Shower/Restrooms - All Units	15,587	20,000	4,413	78%	65%	continual need
	Parking Lot - Gravel and Paving - EARU	66,209	68,000	1,792	97%	97%	ArDOT agreed to construct road. Asphalt purchase approved. ArDOT holding off until Spring.
	Gates and Fences all units	17,512	25,000	7,488	70%	60%	to improve security



CONSTRUCTION BUDGET / STATUS REPORT - FEBRUARY 7, 2020 — [Page 2 of 2]

Fund	Project Description	Total Projected	Budget	Available Funds	\$ % Complete	Construction % Complete	Notes
Maintenance & Operations	ACA Maintenance	59,314	100,000	40,686	59%	45%	Wrightsville, Benton, & Tucker passed. Upcoming are Delta, NCU, EARU & MCWRC.
	ADA Projects - All Units	0	10,000	10,000	0%	0%	as needed. Have plans for Varner sports field sidewalk
	Fast Top Floor Systems (kitchen/laundry/showers all units)	6,442	25,000	18,558	26%	0%	Tucker Pods underway, Benton restrooms next.
	Camera Equipment - All Units	156,947	250,000	93,053	63%	54%	cameras as requested/approved.
	Lock/Riot Gates - All Units	23,667	90,500	66,833	26%	20%	on-going.
	AC Units-All Units	52,816	70,000	17,184	75%	72%	repairing & replacing daily.
	Subtotal	\$ 403,522	\$ 699,500	\$ 295,978			
Capital Projects FY20 Carry Forward	Metal Ceilings	0	25,000	25,000	0%	0%	NCU next.
	ORCU Gravel Pit Operations	5,891	35,000	29,110	17%	17%	on-going. Crusher operating.
	Dog Kennel/Horse Stable Malvern	0	48,000	48,000	0%	0%	DBA comments received, responses underway.
	Emergency Generator - All Units	154,959	250,000	95,041	62%	60%	Cummins 300kW generator ordered. 4/19 arrival.
	Tucker 4 new filters & one aeration tank	449,274	488,434	476,868	92%	8%	Building slab complete. Filter bid awarded to low bidder.
	Roof Repairs-Cummins	0	145,000	134,799	7%	0%	Prepared large order for multiple Units. Currently at the Max. Need repairs at ORCU, Delta & others. Varner & ORCU beginning repairs. Office of State Procurement secured a State contract to purchase roofing materials.
	Roof Repairs-Cummins Laundry	0				0%	
	Roof Repairs-East Arkansas	0				0%	
	Roof Repairs-Max	8,784				6%	
	Roof Repairs-Tucker	1,418				0%	
	Roof Repairs-Varner	0				0%	
	Roof Repairs-Wrightsville	0				0%	
	Boiler Repair	90,858	100,000	9,142	91%	80%	continually needing repair
	Subtotal	\$ 711,182	\$ 1,091,434	\$ 380,252			
New Projects	Max manhole	0	0	0	0%	0%	to provide access to a blockage point in sewer
	Tucker Barracks 10 covered walkway	0	0	0	0%	0%	Plans submitted to DBA
	RLW Sewer relocation 400' + 2 MH	0	0	0	0%	0%	frequent stoppages, defect in pipe line.
	Max Boiler Tank Replacement	0	0	0	0%	0%	
	Additional Metal Fab shop	0	29,266	29,266	0%	0%	room to do more metal work
	PB Warehouse Drive replacement	0	50,000	50,000	0%	0%	asphalt drive pot holed
	Fuel Cards/Pumps for Cummins	0	0	0	0%	0%	
	Subtotal	\$ -	\$ 79,266	\$ 79,266			
	Architect Fees	12,932	30,000	17,068	43%		
	Total	\$ 1,127,637	\$ 1,900,200	\$ 772,563			

Notes Report has not been reconciled against Accountings Reconciled Reports.
Tolerance/Deviation is with in 1% of Projected Spending.