



Wendy Kelley
Director

Board Report
December 2016



PUBLIC RELATIONS

RESEARCH/PLANNING

November, 2016 Admissions and Releases – Admissions for November totaled **1,065** (906-males & 159-females) while Releases totaled **1,262** (1,086-males & 176 females) for a net decrease in-house of 197 Inmates).

Inmate Population Growth/Projection – At the end of November 2016, the Arkansas Department of Correction Population totaled **17, 573** representing a decrease of **134** Inmates since the first of January, 2016. Calendar year 2016 has seen an average decrease of **12** Inmates per month, down from an average decrease of **14** Inmates per month during calendar year 2015.

Average County Jail Back-up – The backup in the County Jails averaged **1,331** Inmates per day during the month of November, 2016 – down from an average of **1,435** inmates per day during the month of October, 2016.

LEGAL SERVICES

PREA

PREA Data:

Number of calls received	292
Total Number of Repeat Calls	86
Total Number of Calls with no message	73
Total Reported PREA Issue Calls	52
Total Reported non-PREA Calls	81
Total Calls due to Technical Failure	0
Totals Calls Referred to Internal Affairs Division	48

INMATE GRIEVANCE

Inmate Formal/Informal Grievances: In November, there were a total of 2,073 formal grievances filed and 3,558 informal grievances filed at various units.

Institutional Grievances: There were a total of 580 appeals of institutional grievances received with 123 being rejected. Four hundred sixty-one (461) appeals were answered in November. Five (5) were found with merit.

OPERATIONS/INSTITUTIONS

STTG

The STTG Coordinator assisted the DEA with intelligence concerning White Supremacist inmates incarcerated in ADC. Several targeted searches of STTG leaders yielded valuable intelligence along with contraband that was being used by STTG leaders.

FARM

The month of November remained dry which allowed the row crop operations to get a lot of land preparation done for the 2017 crop year. Winter wheat and oats were planted at all locations. The fall gardens had a successful harvest. We are still harvesting vegetables at most locations. Egg production is still below our desired goal due to a number of aged birds in house #6. We had to hold them longer to get our schedule back in sequence after the generator issues. We are raising pullets at this time to go into that house which will be moved in late January. Dairy production should continue to rise over the next few months. The process of cleaning and repairing machinery started at all farms. We have some open positions in the Agriculture Division that we will be trying to fill during the winter to be fully staffed by spring.

Regional Maintenance Hours

Regional Maintenance Hours	November
Benton Unit	5,596
Delta Regional Unit	2,690
East Arkansas Unit	4,136
Grimes Unit	2,720
McPherson Unit	2,588
Mississippi Co Work Release	1,944
North Central Unit	6,352
Ouachita River Unit	4,664
Randall Williams Unit	3,868
Texarkana Regional Unit	2,696
Tucker Unit	2,220
Varner Unit	2,408
Wrightsville Unit	3,720
Wrightsville Satellite Unit	3,912
Total Hours	49,514

Work Release Rent Report

Work Release Rent Report	November
Benton Unit	\$99,637.00
Mississippi County Work Release	\$49,351.00
Northwest AR Work Release Center	\$38,420.00
Pine Bluff Unit	\$32,130.00
Texarkana Regional Unit	\$27,319.00
Tucker Re-Entry Center	\$19,159.00
Total	\$266,016.00

RE-ENTRY**Preparing for Success**

	Slots	Completed	Discharged	End Count
McPherson	15	0	9	3
Ester-4 BKS	50	17	14	36
Ester-5 BKS	50	21	30	29
Tucker Re-Entry	12	0	2	10
Total	127	38	55	78

There are 625 males and 92 females on the waiting list within 42 months of their release date, and of those, 7 males and 0 females are mandated by the Parole Board. The average time on the waiting list is about 3 months. The total number of inmates on the waiting list, including those not currently within the identified time frame, is 719 males and 124 females

WAGE**(Workforce Alliance for Growth in the Economy)**

	Slots	Completed	Discharged	End Count
Wrightsville Satellite	30	4	7	25
Ouachita	13	0	0	13
Delta	15	0	2	15
Total	58	4	9	53

Thinking for a Change

	Slots	Completed	Discharged	End Count
Wrightsville Satellite	25	0	8	22
RLW (Juveniles)	15	0	1	15
Total	40	0	9	37

ADMINISTRATIVE SERVICES**BUDGET SECTION UPDATE**

- Budget has no Act 715 cases to report.

Procurement Section Update:**Current Bids through Division of Building Authority**

Generator – Ester Unit

Steel & Building Material – Delta Unit

Contract Renewals

Waste Disposal – North Central Unit

Procurement/Contracts Report (required by policy) –

For November 2016, Purchase Orders and Contracts in excess of \$10,000 amounted to \$3,110,790.10. Of this amount, \$1,906,744.97 was for Inmate Care and Custody related items (food, shoes, clothing, etc.). Bulk fuel costs for the month of November were \$35,885.07 – no bulk E-10 was purchased during the reporting period; average cost for bulk diesel was \$1.62 per gallon.

HUMAN RESOURCES UPDATE

Workplace Safety – During the month of November, the modified version of the Health and Safety Plan was presented to one Basic Training class with a total of 57 cadets in attendance.

Fifty-six incidents were reported to the company nurse in November, bringing our total to 679 incidents in 2016.

Benefits – One hundred forty-eight (148) MIPS payments were made in November. Sixty-nine (69) FMLA requests were processed with 67 approved and 2 denied. A total of 7 CAT

leave requests were processed with 4 approved and 3 pending. Of the 5 shared leave applications that were received, 3 were denied and 2 are pending.

Physical Assessments –A total of 194 applicants and incumbent personnel were assessed in the month of November. One hundred thirteen (113) incumbent personnel successfully passed their physical assessment, and 2 did not. One re-scheduled and passed, and the other is pending physician approval. Seventy-nine (79) applicants passed their physical assessments.

Employment – Cummins, Tucker, Maximum Security, and Wrightsville Human Resources personnel attended the Career Expo 2016 on November 3rd at the Verizon Arena Convention Center in Little Rock. The North Central Unit Human Resources personnel visited Melbourne High School on November 30th.

A total of 1,652 applications were received during November. Sixty (60) Non-Correctional applications and seventy (70) CO I applications were processed. Fifty-three (53) Correctional Officers were hired, and 10 Correctional Officers were rehired.

Vacancies, Hires, and Terminations - In November 2016, a total of 601 vacancies, 128 new hires, and 60 terminations were at the various ADC locations.

Administrative Services Division Monthly Reports (attached) include:

Gifts, Grants, and Donations- \$238 was donated in November 2016.

Inmate Welfare Fund-balance on November 30, 2016 was \$5,557,044.48.

The PAWS in Prison Fund total on November 30, 2016 was: \$47,963.28 including ADC account (7004822/Donations) \$19,159.55 and ADC account (NDC0500/Recycling) \$28,803.73. This does not include the Foundation account managed by the Paws Prison Foundation Board.

INFORMATION TECHNOLOGY

In November, the IT department:

- IT will continue with McAfee software for antivirus protection for the agency network. Cylance was reviewed, but due to cost and footprint, McAfee was determined to be the best at this time. A three year contract with McAfee is being processed.
- Several IT staff members attended the 2016 Arkansas Digital Government Summit in Little Rock. This year's event included workshops on Cyber-security, Open Data, Master Data Management, Cloud Technology, and Threats.
- A conference call was held with Marquis, ACC, and ACIC staff to discuss current Openfox interface use of ACIC's ORI number for all queries (includes ACC and ADC staff queries). Marquis will work with ACIC to reprogram the interface to associate ACC's primary

ORI with ACC staff queries and ADC's primary ORI with ADC staff queries.

TRAINING ACADEMY

Basic Training Division

Captain Martha Lacy's BCOT Class 2016-N graduated on November 11, 2016 with 44 cadets. Brian Ray from the Ouachita River Unit won the Willis H. Sargent Award. Center Supervisor Dexter Holmes of the Texarkana Regional Correctional Center served as the Special Speaker.

In-Service Division

The Security for Non-Security class was held November 2-3. This class is designed for contract staff and volunteers. Students who attended were from Correct Care Solutions and the Correctional School System. Students get the basics of history, Security and Control, PREA, Inmate Con Games, Understanding the Criminal Mind, etc.

eCADEMY—During the month of November, 299 ADC employees completed a total of 3,925.50 hours of eCADEMY training. Approximately 6% of ADC employees completed at least one course during that time frame, for an average of 1.20 hours per staff member.

HEALTH/CORRECTIONAL PROGRAMS

CHAPLAINCY SERVICES

Benton Work Release

Greater Macedonia Missionary Baptist Church of Little Rock conducted an evening worship service on November 12 with 21 inmates in attendance.

On November 19, House of Refuge Prison Ministry of Jacksonville led a service with 13 inmates in attendance.

Delta Regional Unit

On November 14th and 15th, Heather Powell with Arkansas Literacy Council conducted literacy tutor training for 7 inmates.

East Arkansas Regional Unit

Timothy's Gift performed a musical show on November 27.

Hawkins Center

Timothy's Gift held a musical service during the final week of the month with 93 inmates in attendance.

Maximum Security Unit

Timothy's Gift performed on November 29 at the recently opened Tucker Reentry Facility. Thirty (30) inmates were able to attend along with 6 staff members.

McPherson Unit

Chaplaincy hosted Movie Night for the inmate population on November 3rd and 4th. Popcorn and refreshments were served. Between the two nights, 607 inmates participated.

Thirty (30) inmates participated in a KAIROS Weekend Walk from November 11-13.

A concert by "Love Without End" was held in the visitation area on November 18th with 176 inmates in attendance.

North Central Unit

On November 7th, the Chaplain and assisting volunteers distributed 1,800 greeting cards to the inmate population so they could send them to family and friends.

Randall L. Williams Unit

A KAIROS Weekend Walk was conducted November 3-6. Total participants between inmates and helpers was 38. Eighteen (18) volunteers assisted.

Ouachita River Correctional Unit

"A.G. and Kate," a musical duo from Holland performed a country/gospel show on November 1-2 with 164 inmates in attendance. Quarterly volunteer training was conducted in the Chapel on November 9th with 18 volunteers in attendance.

Tucker Unit

Timothy's Gift performed a Christmas program in the Chapel on November 29th with 228 inmates in attendance.

Wrightsville Unit

St. Luke's Choir from Little Rock held a service on November 17 with 14 volunteers and 138 inmates in attendance. On November 28th, Timothy's Gift performed with 219 inmates in attendance.

Varner Unit

Heather Powell from the Arkansas Literacy Council provided training for 5 inmates from Varner Unit to work as basic literacy tutors. This training was held November 21-22.

ACCREDITATION

Reaccreditation audits at Tucker Unit with scores of 100% Mandatory and 100% Non-Mandatory. ACA Audit completed at Wrightsville Unit with 100% on the mandatory standards.

ACA Internal Audits Completed:

Nov. 3 EARU file prep
 Nov. 4 TRCC
 Nov. 8-10 Delta File prep
 Nov. 15-18 Delta and NCU File Prep.
 Nov. 21-22 NCU File Prep
 Nov. 28 Delta 1st pre-audit

Classes Taught:

Nov. 7 Training Academy
 Nov. 29 Training Academy

Fire/Safety and Sanitation independent audits conducted by the Fire and Sanitation Coordinator:

Nov. 1-2 EARU Independent Audit
 Nov. 16-17 Delta Unit ACA Review
 Nov. 22 ORCU Fire/Safety Documentation Review
 Nov. 28 Delta Unit 1st Pre-Audit

Classes Taught:

Nov. 29-30 Instructed Fire/Safety Officer Certification Training

VOLUNTEER SERVICES

The total number of volunteer hours for the month.

Unit	Hours
Cummins	16.5
Delta Regional	3
East Arkansas Regional	44
Hawkins	20
Maximum Security	35
Mississippi County Work Release	12
North Central	50
Ouachita River	18
PAWS	31
Pine Bluff Complex*	336
Religious Services	5708
Randall Williams	30
Tucker Unit	12
Varner	60.25
Wrightsville	18
Total	6393.75

*Includes wage instructor hours.

PROGRAM INFORMATION**Sex Offender Treatment**

	SLOTS	COMPLETED	REMOVED	CLIENTS
RSVP	238	1	7	238
SOFT	30	0	2	9
Total	268	1	9	247

There are 882 males on the waiting list for RSVP and 21 females on the waiting list for SOFT within five years of their TE date. Of those, 66 are mandated by the Parole Board. The average time on the waiting list from request is about 3 to 6 months for stipulated. The total on the waiting list, including those not currently within the identified time frame, is 1,449 males and 27 females. We have one **PREA** inmate in the program at this time.

Therapeutic Community:

	Slots	Completed	Removed	Clients
Tucker	129*	14	19	120
Wrightsville	45*	4	2	47
McPherson	50*	8	5	49
Total	224	26	26	216

There are 194 males and 11 females on the waiting list within 18 months of their release date. Of those, 15 are mandated by the Parole Board. The average time on the waiting list from request is 38 days. The total on the waiting list, including those not currently within the identified time frame, is 528 males and 45 females.

*Denotes transitional beds available at this treatment program. Tucker TC has 129 client slots and seven (7) peer counselor slots.

S.A.T.P.:

Unit	Slots	Completed	Removed	Clients
Grimes	50*	9	8	49
McPherson	100*	13	6	104
MSU	3	1	0	1
RLW/CF	188*	31	15	189
Tucker	43*	5	7	41
Varner	44	4	2	44
Wrightsville	135*	21	14	121
Total	563	84	52	569

There are 1,912 males and 333 females on the waiting list within 18 months of their release date and of those, 31 are mandated by the Parole Board. The average time on the waiting list from request is 21 days. The total on the waiting list including those not currently within the identified time frame is 2,867 males and 438 females.

*Denotes transitional beds available at this treatment program.

ORCU R.P.U.:

The Residential Program Unit at Ouachita had 17 admissions and 4 discharges in November for an end-of-month count of 120.

McPherson Mental Health Residential Program:

There was 1 admission and 3 discharges in November for an end-of-month count of 38.

Habilitation Program:

The Habilitation Program at the Ouachita River Correctional Unit provided treatment services to 39 inmates during November. There was 1 admission and 1 discharge for an end-of-month count of 38.

Staffing:

The following Mental Health Services and SATP positions were vacant in October and November.

Positions	October	November
Psychologists	6	6
Social Workers	6	6
Advisors	4	4
Substance Abuse Program Leaders	2	2
Admin Specialist/Analyst	1	1

ADDITIONAL PROGRAM INFORMATION

Self-Study Classes	# of Participants	# Completed	Waiting List
Anger Management	345	334	1,628
Thinking Errors	298	285	2,100
Substance Abuse Education	51	40	393
Communication Skills	352	289	1,045
Domestic Violence	219	110	641
Victims of Domestic Violence	10	10	62
Stress Management	298	176	1,245
Parenting	117	168	1,162

Suicide:

There were 107 suicidal threats, gestures or low/moderate risk attempts during November. There were no serious attempts.

Outpatient:

There were 2,297 inmates on the mental health medical log at the beginning of November. Mental Health conducted the following contacts during November:

Case management contacts	2,308
Requests for interviews	856
Testing	2
Intakes	1,032
Unit requests	1,042
Counseling (with treatment plans)	0
Pre-lock up reviews	1,027
Routine segregation reviews	296
Segregation rounds	17,554
PREA evaluations	93
Routine follow-up	201
834 requests	35

Monetary Sanctions:

Sanction reimbursements for October were \$37,850.00.

County Mental Health Requests:

During November, there were 99 requests of a mental health nature received and 4 inmates were fast tracked to ADC.

County Medical Health Requests:

During November, there were 342 requests of a medical nature received and 14 inmates were fast tracked to ADC.

Deaths:

There were 3 inmate deaths during the month of November; all 3 were claimed.

CCS:

See attachment for CCS's report regarding outside beds and emergency room visits.

Medical Grievances:

In November, there were a total of 200 appeals of medical grievances received and 247 appeals were answered; 20 of those were found to be with merit and 7 with merit but resolved.

SEX OFFENDER ASSESSMENTS**Assessments Completed:**

Risk Level	November	Sept. 1999 thru November 30, 2016
Level 1	2	1,154
Level 2	33	6,437
Level 3	22	6,167
Level 4	1	576
Default 3	6	*
Total	64	14,334
*Default Level 3's are included in the total number of Level 3's to date.		

ACIC Numbers:

The total number of sex offenders registered from Sept. 1, 1999 to November 30, 2016:

In Compliance	7,484
Delinquent (Did not return address on time)	932
Confined	2,985
Out of State	3,033
Address Unknown (absconded)	179
Deceased	1,062
Deported	173
Incapacitated	71
Out of USA	6
Total	15,922

PAWS IN PRISON**Currently Enrolled in Training:**

Max Unit	8
Tucker Unit	8
Hawkins Unit	5
Randall Williams Unit	3
Ouachita River Unit	8
North Central Unit	8
Total	40

Completed Training:

November 2016	12
YTD 2016	191
Since Inception Dec. 2011	855
Dogs Currently in foster: (Graduated but not adopted)	5

CONSTRUCTION**PROJECT UPDATES****Barbara Ester Unit:**

Barracks are still being renovated in the old hospital/medical areas. HVAC units being installed. Skylight bars are being received and will be installed. We are continuing to purchase material. Work is still in progress on plumbing, air conditioning, electrical and the installation of new metal ceilings. We are still working on Phase 3. Specifications and plans for the new generator have been received. The Fire Marshall has approved the Infirmary Plans.

Cummins Unit:

We are still working on interior and exterior repairs to two Free-line residences and the Guest House. Roadwork to the wastewater plant continues.

Cummins Poultry:

The generator is tested weekly.

Delta Unit:

Work is still being executed on storm damage. Lockeby Architect completed gym repair plans and have been sent to DBA for approval.

East Arkansas Regional Unit:

Work is still in progress on building a new firing range. Completed porches and under pinning on State trailers. Material has been received for farm building to be moved.

The new Free-line gate is working.

We received purchase for plumbing to install stainless steel in barracks and installation has started.

Additional personnel was sent to help get ready for ACA.

Ouachita River Correctional Unit:

Gravel operations are still in progress.

Chapel metal building exterior is complete and work has started on inside and outside trim.

Pine Bluff:

Material is being purchased for new barracks in the former Central Records building. The new school metal building has been erected. We are

working on interior and HVAC units. Electrical service for the new school has been installed.

Maximum Security Unit:

The boiler is being repaired.

The metal ceilings on the walkways in the barracks are being worked on. Work is being rendered on floor repairs to Officer BOQ trailers.

Tucker Unit:

We are still working on additional cross fencing.

Wrightsville:

The Hobbycraft roof has been replaced. We are looking at how to repair the Gym roof. Multiple water line leaks have been repaired. We are still finalizing plans for the Isolation Recreation Yard.

CONSTRUCTION/MAINTENANCE PERSONNEL VACANCIES:

2 Project Supervisors

3 Maintenance Technicians

2 Administrative Specialists

1 Corporal position

1 Procurement Coordinator

[illegible][illegible]

**Inmate Institutional Grievance Appeal Report
November 2016**

	Received	Rejected	Processed W/O Merit	Processed W/ Merit
Benton Unit	0	0	0	0
Benton Work Release	0	0	0	0
Bowie County Texas Correctional Facility	25	7	18	0
Cummins Unit	17	11	24	0
Cummins Modular Unit	1	1	1	0
Delta Regional Unit	7	2	12	0
East Arkansas Regional Unit	7	4	9	0
East Arkansas Regional Maximum Unit	59	6	113	2
Ester Unit	4	1	1	0
Grimes Unit	11	4	8	1
Maximum Security Unit	49	12	37	0
McPherson Unit	29	18	39	0
McPherson Mental Health Residential Program Unit	9	2	7	0
Mississippi County Work Release Center	0	0	0	0
Northwest Arkansas Work Release Center	0	0	0	0
North Central Unit	15	2	13	0
Ouachita River Correctional Unit	20	14	27	0
ORCU Hospital	0	0	0	0
ORCU New Commitment	3	0	1	0
ORCU Mental Health Residential Program Unit	0	0	2	0
Pine Bluff Unit	0	0	3	0
Pine Bluff Re-Entry	0	0	0	0
Randall L. Williams Correctional Facility	7	2	1	0
Texarkana Regional Correctional Center	0	0	0	0
Tucker Unit	5	3	9	0
Varner Super Max	155	22	114	1
Varner Unit	19	9	12	1
Wrightsville Unit	8	1	2	0
Wrightsville Satellite Unit	0	0	0	0
Hawkins Center	6	2	3	0
Hawkins for Males	1	0	0	0
Hawkins SPU	0	0	0	0
Total	457	123	456	5

Admissions and Releases			
November 2016			
<u>Admissions</u>	<u>Male</u>	<u>Female</u>	<u>Total</u>
Asian	2	-	2
Black	344	15	359
Hispanic	28	-	28
Nat. Amer.	3	2	5
Hawaiian/Pacific Isl	3	1	4
White	525	140	665
Other	1	1	2
Unknown	-	-	-
Total	906	159	1,065
<u>Releases</u>	<u>Male</u>	<u>Female</u>	<u>Total</u>
Asian	5	-	5
Black	420	32	452
Hispanic	30	1	31
Nat. Amer.	2	-	2
Hawaiian/Pacific Isl	2	-	2
White	626	143	769
Other	1	-	1
Unknown	-	-	-
Total	1,086	176	1,262

**ARKANSAS DEPARTMENT OF CORRECTION
INMATE POPULATION GROWTH 2000-2023**

Mo.	2000	2001	2002	2003	2004	2005	2006	2007	2008	2009	2010	2011	2012	2013	2014	2015	2016
Jan.	11,984	11,908	12,402	13,015	13,105	13,595	13,481	13,839	14,518	14,796	15,334	16,312	15,134	14,815	17,481	18,142	17,785
Feb.	12,169	12,022	12,529	13,054	13,166	13,783	13,633	14,012	14,603	14,883	15,374	16,209	14,990	15,008	17,438	18,082	17,625
March	12,006	12,033	12,299	13,108	13,088	13,418	13,534	13,772	14,580	14,843	15,290	16,095	14,964	14,665	17,395	18,233	17,573
April	12,069	12,167	12,465	13,213	13,323	13,469	13,554	13,851	14,769	14,937	15,570	16,172	15,124	14,850	17,604	18,703	17,815
May	12,109	12,384	12,558	13,463	13,556	13,528	13,711	14,146	14,880	15,146	15,694	16,062	15,132	15,074	17,593	18,693	17,769
June	12,005	12,108	12,439	13,418	13,389	13,251	13,430	13,915	14,700	15,025	15,564	15,554	14,832	14,825	17,340	18,813	17,973
July	12,030	12,190	12,622	13,509	13,528	13,286	13,560	14,082	14,868	15,195	15,807	15,519	14,879	15,379	17,522	18,870	18,130
August	12,087	12,371	12,815	13,565	13,632	13,419	13,646	14,224	15,100	15,385	15,829	15,240	14,675	16,103	17,549	18,806	17,919
September	11,983	12,289	12,774	13,341	13,516	13,237	13,652	14,217	14,850	15,285	16,025	15,172	14,724	16,412	17,605	18,549	18,026
October	12,119	12,348	12,942	13,341	13,584	13,363	13,775	14,349	14,836	15,381	16,311	15,271	14,856	16,993	17,880	18,430	18,127
November	12,094	12,408	13,162	13,408	13,706	13,587	13,913	14,437	15,025	15,340	16,460	15,205	14,625	17,168	17,848	17,981	17,573
December	11,856	12,333	12,845	13,106	13,470	13,338	13,728	14,315	14,716	15,199	16,204	15,062	14,654	17,235	17,874	17,707	
Net Ann. Inc.	29	477	512	261	364	-132	390	587	401	483	1,005	-1,142	-408	2,581	639	-167	-134
Avg. Mo. Inc.	2	40	43	22	30	-11	33	49	33	40	84	-95	-34	215	53	-14	-12

Population is total jurisdictional count at end of each month. Population at end of month December 1999 was 11,827.

Average monthly population increase for past fifteen years 2001 - 2015 is 33

Average monthly population increase for past ten years Jan.2006 - Dec 2015 is 36

Average monthly population increase for past five years 2011 - 2015 is 25

Projected at Growth of 33 per Month

Mo.	2008	2009	2010	2011	2012	2013	2014	2015	2016	2017	2018	2019	2020	2021	2022	2023
January	14,518	14,796	15,334	16,312	15,134	14,815	17,481	18,142	17,785	17,639	18,035	18,431	18,827	19,223	19,619	20,015
February	14,603	14,883	15,374	16,209	14,990	15,008	17,438	18,082	17,625	17,672	18,068	18,464	18,860	19,256	19,652	20,048
March	14,580	14,843	15,290	16,095	14,964	14,665	17,395	18,233	17,573	17,705	18,101	18,497	18,893	19,289	19,685	20,081
April	14,769	14,937	15,570	16,172	15,124	14,850	17,604	18,703	17,815	17,738	18,134	18,530	18,926	19,322	19,718	20,114
May	14,880	15,146	15,694	16,062	15,132	15,074	17,593	18,693	17,769	17,771	18,167	18,563	18,959	19,355	19,751	20,147
June	14,700	15,025	15,564	15,554	14,832	14,825	17,340	18,813	17,973	17,804	18,200	18,596	18,992	19,388	19,784	20,180
July	14,868	15,195	15,807	15,519	14,879	15,379	17,522	18,870	18,130	17,837	18,233	18,629	19,025	19,421	19,817	20,213
August	15,100	15,385	15,829	15,240	14,675	16,103	17,549	18,806	17,919	17,870	18,266	18,662	19,058	19,454	19,850	20,246
September	14,850	15,285	16,025	15,172	14,724	16,412	17,605	18,549	18,026	17,903	18,299	18,695	19,091	19,487	19,883	20,279
October	14,836	15,381	16,311	15,271	14,856	16,993	17,880	18,430	18,127	17,936	18,332	18,728	19,124	19,520	19,916	20,312
November	15,025	15,340	16,460	15,205	14,625	17,168	17,848	17,981	17,573	17,969	18,365	18,761	19,157	19,553	19,949	20,345
December	14,716	15,199	16,204	15,062	14,654	17,235	17,874	17,707	17,606	18,002	18,398	18,794	19,190	19,586	19,982	20,378
Net Ann. Inc.	401	483	1,005	-1,142	-408	2,581	639	-167	-101	396	396	396	396	396	396	396
Ave. Mo. Inc.	33	40	84	-95	-34	215	53	-14	-8	33	33	33	33	33	33	33

		Monthly Population - November 2016																									
Unit/Center	11/1	11/2	11/3	11/4	11/7	11/8	11/9	11/10	11/11	11/14	11/15	11/16	11/17	11/18	11/21	11/22	11/23	11/24	11/25	11/28	11/29	11/30	AVG				
Benton	330	329	329	328	327	319	328	326	326	326	329	328	328	337	337	340	333	329	329	329	329	330	330	329			
Cummins	1,931	1,923	1,923	1,923	1,933	1,922	1,923	1,921	1,926	1,926	1,926	1,924	1,922	1,921	1,921	1,924	1,898	1,899	1,899	1,899	1,904	1,901	1,918				
Delta	626	625	615	625	623	621	619	617	629	629	628	621	628	624	624	619	609	625	625	625	624	623	623				
E AR Reg	1,686	1,689	1,688	1,689	1,687	1,684	1,684	1,683	1,690	1,690	1,692	1,687	1,685	1,685	1,691	1,694	1,684	1,659	1,659	1,659	1,682	1,677	1,683				
Ester	361	369	365	368	363	363	364	364	366	366	370	362	354	357	369	368	369	366	366	365	365	352	364				
Grimes	1,079	1,078	1,078	1,078	1,080	1,080	1,075	1,081	1,070	1,070	1,080	1,080	1,079	1,079	1,079	1,079	1,077	1,073	1,073	1,073	1,080	1,070	1,077				
Max Sec	666	666	666	664	664	664	666	665	665	666	665	667	664	664	661	654	641	636	636	636	646	645	657				
McPherson	1,024	1,022	1,020	1,020	1,023	1,023	1,017	1,023	1,020	1,020	1,019	1,019	1,005	1,000	1,007	1,012	1,010	999	999	999	999	999	1,012				
MCWRC	144	144	144	144	144	143	144	144	144	143	143	143	143	143	143	141	144	144	144	144	144	144					
N Central	840	836	837	813	827	839	839	839	829	829	837	841	840	833	833	832	823	828	828	828	835	830	833				
NWAWRC	99	100	100	100	99	100	99	100	100	100	100	99	99	98	99	100	94	92	92	92	93	99	98				
Ouachita River	1,870	1,840	1,867	1,879	1,887	1,888	1,909	1,895	1,889	1,890	1,885	1,887	1,869	1,866	1,867	1,883	1,752	1,693	1,692	1,692	1,681	1,733	1,832				
Randall L Williams	561	567	564	563	562	567	564	561	555	555	553	554	537	552	550	550	542	546	546	546	558	555	555				
Pine Bluff	382	425	429	429	428	427	428	427	429	429	425	424	430	430	432	428	426	430	430	431	431	432	426				
PB Reentry	54	54	54	54	54	54	54	54	54	54	54	54	54	54	54	54	54	54	54	54	54	54					
TRCC	125	125	128	128	126	126	126	128	128	128	127	125	125	128	128	127	123	126	126	126	126	126					
Tucker	1,016	1,013	1,022	1,016	1,013	1,018	1,017	1,011	1,016	1,016	1,019	1,019	1,015	1,008	1,001	1,003	992	983	983	980	978	1,006					
Varner	1,741	1,738	1,738	1,745	1,744	1,738	1,744	1,740	1,737	1,737	1,739	1,737	1,741	1,731	1,739	1,740	1,732	1,711	1,711	1,711	1,726	1,723	1,734				
Wrightsville	1,470	1,479	1,468	1,452	1,467	1,465	1,481	1,479	1,481	1,482	1,479	1,480	1,474	1,471	1,481	1,479	1,470	1,473	1,473	1,471	1,477	1,474					
Total ADC	16,005	16,022	16,035	16,018	16,051	16,041	16,081	16,058	16,054	16,056	16,070	16,051	15,992	15,981	16,006	16,027	15,773	15,666	15,665	15,665	15,708	15,751	15,944				
ALETA	19	18	18	18	18	18	18	18	18	18	18	18	18	18	18	18	18	18	18	18	18	18					
Ar State Police	64	64	64	64	64	64	64	64	64	64	64	64	64	63	65	65	64	64	64	64	64	64					
Co Jail / M	1,368	1,354	1,333	1,327	1,297	1,287	1,314	1,335	1,328	1,327	1,292	1,305	1,295	1,284	1,271	1,243	1,226	1,183	1,183	1,183	1,129	1,274					
Co Jail / F	79	74	75	78	73	77	72	66	59	59	63	62	56	65	61	58	29	25	25	25	32	12					
Total Co Jail BK	1,447	1,428	1,408	1,405	1,370	1,364	1,386	1,401	1,387	1,386	1,355	1,367	1,351	1,349	1,332	1,301	1,255	1,208	1,208	1,208	1,185	1,141					
Bowie Co., TX	333	333	333	333	333	333	325	325	325	325	329	328	331	330	330	334	334	333	333	333	333	331					
309/M	214	214	214	213	213	213	212	212	213	213	213	212	212	211	211	211	210	210	210	210	212	212					
309/F	34	34	34	34	34	33	33	34	34	34	33	33	33	33	33	33	33	33	33	34	34	33					
Total Act 309	248	248	248	247	247	246	245	246	247	247	246	245	245	244	244	244	243	243	243	243	246	245					
Total Non ADC	2,111	2,091	2,071	2,067	2,032	2,025	2,038	2,054	2,041	2,040	2,012	2,022	2,009	2,004	1,989	1,962	1,914	1,866	1,866	1,866	1,844	1,800					
Total	18,116	18,113	18,106	18,085	18,083	18,066	18,119	18,112	18,095	18,096	18,082	18,073	18,001	17,985	17,995	17,989	17,687	17,532	17,531	17,531	17,552	17,551					

Fiscal Year 2017 County Jail Back-up

DAY		Jul-16		Aug-16		Sep-16		Oct-16		Nov-16
1		1,238		1,361		1,335	*	1,335		1,447
2	*	1,238		1,357		1,302	*	1,335		1,428
3	*	1,238		1,385	*	1,302		1,336		1,408
4		1,252		1,391	*	1,302		1,360		1,405
5		1,252		1,428		1,260		1,381	*	1,405
6		1,282	*	1,428		1,260		1,409	*	1,405
7		1,324	*	1,428		1,222		1,415		1,370
8		1,324		1,424		1,195	*	1,415		1,364
9	*	1,324		1,429		1,185	*	1,415		1,386
10	*	1,324		1,437	*	1,185		1,408		1,401
11		1,274		1,469	*	1,185		1,418		1,387
12		1,280		1,478		1,194		1,421	*	1,387
13		1,323	*	1,478		1,206		1,414	*	1,387
14		1,331	*	1,478		1,178		1,431		1,386
15		1,353		1,494		1,182	*	1,431		1,355
16	*	1,353		1,508		1,172	*	1,431		1,367
17	*	1,353		1,515	*	1,172		1,440		1,351
18		1,343		1,523	*	1,172		1,478		1,349
19		1,368		1,531		1,165		1,490	*	1,349
20		1,384	*	1,531		1,172		1,492	*	1,349
21		1,382	*	1,531		1,206		1,480		1,332
22		1,353		1,525		1,228	*	1,480		1,301
23	*	1,353		1,522		1,253	*	1,480		1,255
24	*	1,353		1,553	*	1,253		1,480		1,208
25		1,336		1,542	*	1,253		1,470		1,208
26		1,350		1,512		1,260		1,471	*	1,208
27		1,379	*	1,512		1,284		1,479	*	1,208
28		1,364	*	1,512		1,285		1,471		1,208
29		1,380		1,466		1,318	*	1,471		1,185
30	*	1,380		1,424		1,335	*	1,471		1,141
31	*	1,380		1,377				1,482		
Average		1,328		1,469		1,234		1,435		1,331

Fiscal Year Average: 1,360

Notes: Totals do not include 309 Contracts in County Jails (maximum of 336)



November STTG Unit Counts

Unit	Beginning Total	Confirmed	Suspected	In	Out	Paroled	Removed	Ending Total
Benton	70	6	0	0	7	0	0	69
Cummins	436	1	0	28	11	23	0	431
Delta	118	0	0	26	13	15	0	116
EARU	514	0	0	80	67	18	0	509
Grimes	301	1	0	29	35	2	0	294
Hawkins	48	0	0	4	5	3	0	44
Mcpherson	57	0	0	0	0	2	0	55
Max	248	0	0	1	0	0	0	249
MCWR	37	0	0	4	1	3	0	37
NCU	182	3	0	33	15	7	0	196
NWAWR	18	0	0	3	0	0	0	21
ORCU	333	0	0	46	26	18	0	333
ORCU Intake	49	148	0	0	158	0	0	39
PB/Ester	170	0	0	70	48	24	0	168
RLW	127	1	1	24	17	7	0	129
TWR	29	0	0	4	4	4	0	25
Tucker	266	0	0	48	43	0	0	271
Varnier	614	0	0	106	28	28	0	664
Wrightsville	234	0	0	44	27	25	0	226
Total	3851	160	1	550	505	179	0	3876

ORCU Intake brought in 148 new STTG members into ADC last Month.



November STTG Counts by STTG Set

STTG Set	Benton	Cummins	Delta	EARU	Grimes	Hawkins	Mcpherson	Max	MCWR	NCU	NNAWR	ORCU	Intake	PB	RLW	TWR	Tucker	Varner	Wrightsville	Total
Asian	2	0	0	1	1	0	0	0	0	2	1	0	0	1	0	0	1	2	0	11
Bloods	9	85	22	87	55	6	10	62	2	23	3	57	8	28	21	8	59	128	32	705
Crips	4	65	16	56	33	5	7	32	4	17	4	36	6	20	14	5	34	100	42	500
Folk	18	139	34	176	33	16	10	82	8	37	7	95	13	57	31	8	85	213	72	1134
GD	0	0	0	0	60	0	0	0	0	0	0	0	0	0	0	0	0	0	0	60
Mexican	2	12	11	18	10	2	3	4	1	10	1	11	2	5	3	0	4	19	8	126
Motorcycle	1	2	0	6	0	1	1	0	0	2	0	0	0	0	1	0	0	2	1	17
Other	3	9	3	10	7	0	0	2	5	7	1	3	0	2	4	0	6	9	7	78
People	3	21	5	19	12	0	2	9	0	9	0	14	0	11	2	0	13	27	9	156
Unknown	0	2	0	8	0	0	4	1	0	9	0	9	5	4	5	3	1	5	6	62
W/s	14	32	9	128	30	14	13	18	3	40	2	46	3	12	23	1	27	25	24	464
NAE	1	18	5	0	16	0	2	9	3	8	1	20	0	6	10	0	7	28	5	139
WAR	8	41	5	0	25	0	1	15	10	16	1	29	1	13	8	0	25	47	6	251
AC	1	8	2	0	10	0	2	12	1	7	0	8	0	3	3	0	5	48	0	110
AB	3	7	4	0	2	0	0	3	0	9	0	5	1	6	4	0	4	11	4	63
Total	69	431	116	509	294	44	55	249	37	196	21	333	39	168	129	25	271	664	226	3876

Key:

GD = Gangster Disciples

W/S = White Supremacist

NAE = New Aryan Empire

WAR = White Aryan Resistance

AC = Aryan Circle

AB = Aryan Brotherhood



November STTG Disciplinary Report

Unit	STTG Incidents	STTG Suspected Incidents	Total Unit Disciplinary	Disciplinary Involving STTG	Percentage
Benton	0	0	15	1	6.67%
Cummins	0	0	394	105	26.65%
Delta	0	2	125	33	26.40%
EARU	0	0	194	81	41.75%
Grimes	7	0	139	54	38.85%
Hawkins	0	0	27	1	3.70%
Mcperson	0	0	86	5	5.81%
Max	0	0	85	40	47.06%
MCWR	0	0	9	4	44.44%
NCU	0	0	68	16	23.53%
NWAWR	0	0	3	0	0.00%
ORCU	3	0	309	105	33.98%
ORCU Intake	0	0	11	4	36.36%
PB/Ester	0	0	35	12	34.29%
RLW	2	1	53	19	35.85%
TWR	0	0	6	2	33.33%
Tucker	0	0	70	38	54.29%
Varner	0	0	355	198	55.77%
Wrightsville	0	0	57	25	43.86%
Total	12	3	2041	743	36.40%

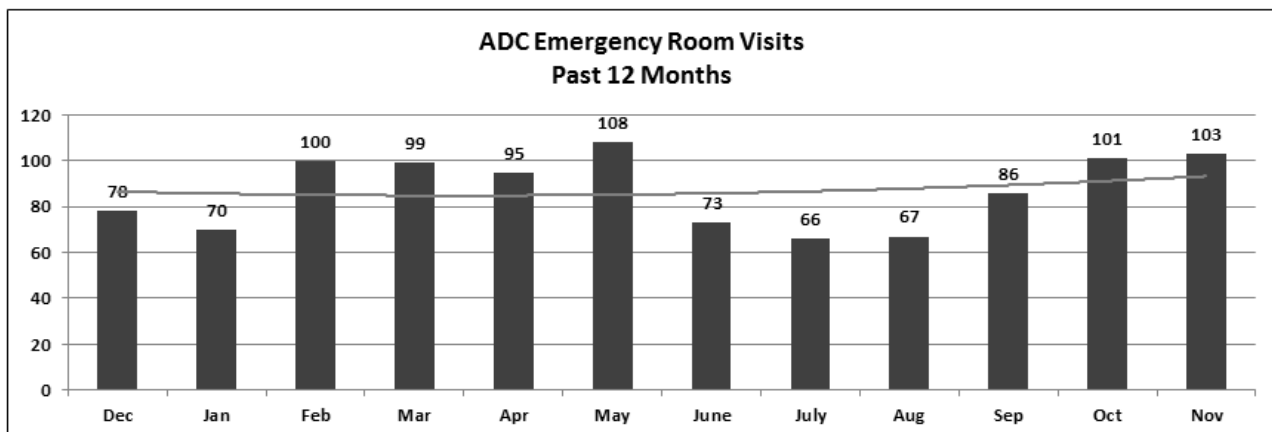
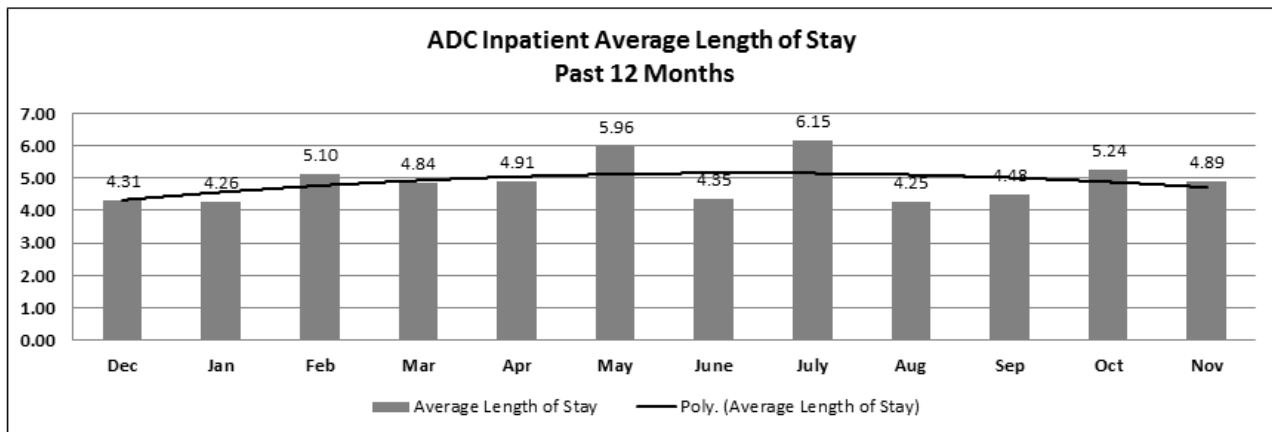
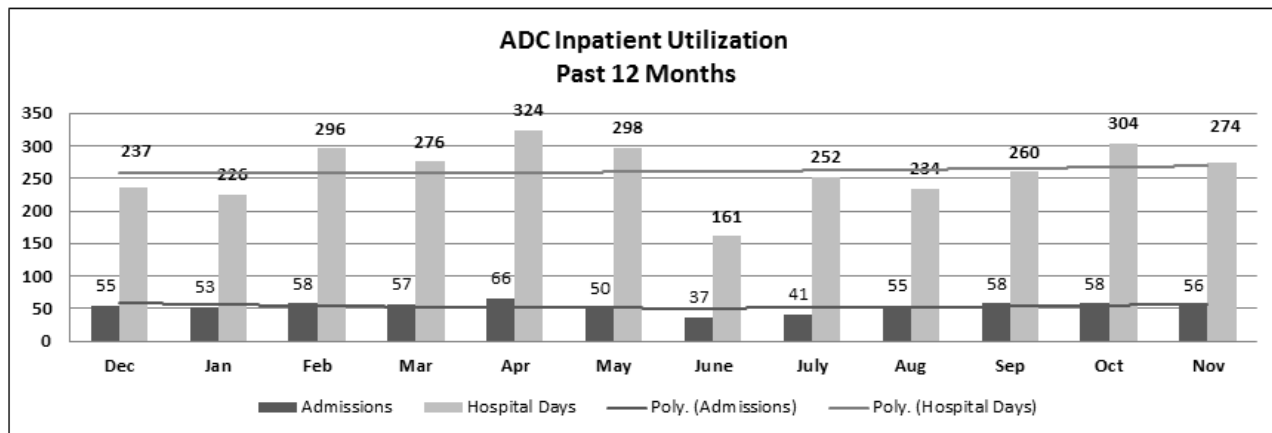
ARKANSAS DEPARTMENT OF CORRECTION INPATIENT AND EMERGENCY ROOM UTILIZATION

ADC Inpatient Statistics Past 12 Months

	2015	2016											
	Dec	Jan	Feb	Mar	Apr	May	June	July	Aug	Sep	Oct	Nov	Average
Admissions	55	53	58	57	66	50	37	41	55	58	58	56	53.7
Hospital Days	237	226	296	276	324	298	161	252	234	260	304	274	261.8
Average Length of Stay	4.31	4.26	5.10	4.84	4.91	5.96	4.35	6.15	4.25	4.48	5.24	4.89	4.88

ADC ER Visits Past 12 Months

	2015	2016											
	Dec	Jan	Feb	Mar	Apr	May	June	July	Aug	Sep	Oct	Nov	Average
Emergency Room Visits	78	70	100	99	95	108	73	66	67	86	101	103	87.2



November 2016 Medical Grievance Report							
Unit	<i>Acknowledged/ Received</i>	<i>Rejected</i>	<i>Reviewed & Signed by Dep Director</i>	<i>With Merit</i>	<i>With Merit, but Resolved</i>	<i>% With Merit</i>	<i>Without Merit</i>
Benton	0	0	0	0	0	0%	0
Boot Camp	0	0	0	0	0	0%	0
Bowie Co.	0	0	7	0	0	0%	7
CMU	0	1	2	0	0	0%	2
Cummins	11	3	20	2	0	10%	18
Delta	0	0	8	0	0	0%	8
EARU	14	2	18	2	0	11%	16
EARU Max	19	2	42	3	3	14%	36
Ester	0	0	3	0	0	0%	3
Grimes	19	1	8	0	0	0%	8
Hawkins	0	0	0	0	0	0%	0
McPherson	13	1	19	1	1	11%	17
MCWRC	0	0	0	0	0	0%	0
MSU	25	5	26	3	2	19%	21
North Central	15	0	6	0	0	0%	6
NWAWRC	0	0	0	0	0	0%	0
Ouachita	16	8	36	4	0	11%	32
Pine Bluff	1	1	0	0	0	0%	0
Randall Williams	1	0	2	0	0	0%	2
SNN	0	0	0	0	0	0%	0
TRCC	0	0	0	0	0	0%	0
Tucker	7	1	7	0	0	0%	7
Varner	22	2	10	2	1	30%	7
Varner S Max	35	1	31	3	0	10%	28
WRU	2	0	1	0	0	0%	1
WHM	0	0	1	0	0	0%	1
WWR	0	0	0	0	0	0%	0
TOTAL	200	28	247	20	7	11%	220

CHAPLAINCY

Monthly Report for: November 2016

	BENTON	CUMMINS	DELTA REGIONAL	EAST ARKANSAS	EAST ARKANSAS MAX	ESTER	GRIMES	HAWKINS	MAXIMUM SECURITY	MCPHERSON	NORTH CENTRAL	OUACHITA RIVER	PINE BLUFF	RANDALL L. WILLIAMS	TUCKER	VARNER	VARNER MAX	WRIGHTSVILLE	PTF	TOTAL
Services Chaplains Oversaw																				
Christian																				
Population	4	10	6	10	0	10	25	3	17	10	5	20	2	14	6	3	0	12	0	157
Segregation	0	0	0	0	0	0	0	0	0	0	0	0	0	0	0	0	0	0	0	0
Muslim																				
Population	0	4	2	5	0	4	5	0	0	6	0	4	0	5	0	4	0	0	0	39
Segregation	0	0	0	0	0	0	0	0	0	0	0	0	0	0	0	0	0	0	0	0
Total Services																				196
Volunteers in Charge																				
Protestant	14	16	0	21	0	10	23	16	24	40	17	80	11	1	22	26	2	26	0	349
Catholic	0	1	0	0	0	0	2	3	0	3	2	1	0	2	0	1	3	4	0	22
Muslim	0	1	0	5	0	2	0	2	4	0	0	6	0	0	2	0	0	1	0	23
Other	3	0	0	4	0	0	0	0	1	4	0	0	0	0	0	0	0	0	0	12
Baptism	0	0	0	6	0	3	0	0	3	0	3	0	0	0	1	25	0	11	0	52
Marriages																				
	1	0	0	1	0	0	0	0	1	0	1	0	0	0	0	0	0	1	0	5
Distributed by Chaplains																				
Greeting Cards	50	50	250	0	0	10	132	0	2000	624	1842	0	160	16	211	422	185	0	0	5952
Bibles, Quran, Torah, Etc.	50	115	25	5	0	36	32	11	8	78	10	425	9	11	6	32	15	10	0	878
Study Course	15	0	0	7	4	0	14	0	80	0	0	44	16	8	0	69	1	0	0	258
Writing Supplies	20	94	0	0	0	450	0	544	1000	0	0	19	0	14	0	0	0	2	0	2143
Literature	200	1123	455	846	14	267	58	0	1125	298	265	841	302	12	323	1772	554	350	250	9055
Chaplain's Visits																				
Barracks	65	64	60	19	0	24	719	15	98	218	50	65	75	72	176	11	16	55	10	1812
Approximate Hours Spent in Barracks	38	39	8	12	0	98	180	30	112	52	25	45	38	31	44	10	15	27	5	809
Inmate Office visits	156	84	32	92	0	75	392	65	0	70	61	723	64	131	136	29	0	41	4	2155
Other Office visits	53	32	6	54	0	36	24	1	45	7	25	0	9	10	30	15	0	30	0	377
Hospital	0	1	1	0	0	0	4	0	0	0	4	28	0	8	0	5	1	0	0	52
Infirmary/Sick Call	0	8	0	4	0	0	20	0	2	3	8	9	4	10	6	4	0	5	0	83
Restrictive Housing	0	3	4	0	34	0	180	0	28	20	0	61	8	20	0	0	8	9	0	375
Punitive Isolation	0	6	4	0	7	0	0	0	14	20	2	19	4	10	5	0	4	10	0	105
PC - DRU	0	0	4	0	0	0	0	0	0	0	0	0	0	0	0	0	0	0	0	4
Visitation Days	1	0	1	0	0	1	0	0	0	3	1	4	0	0	0	0	0	0	0	11
Volunteer Visits																				
RCV	5	0	0	0	0	0	5	4	21	25	12	68	0	16	13	0	0	0	0	169
OCV	14	0	0	0	0	7	0	0	69	43	13	0	13	74	39	7	0	42	50	371
Spiritual Advisor	0	1	0	0	0	0	0	0	1	0	0	0	0	2	0	0	0	1	1	6
CRA	23	40	9	103	2	10	33	58	97	65	67	151	7	30	62	40	5	15	0	817
Religious Volunteer Hours																				
Volunteer Hours	106	133	9	288	10	92	237	169	566	418	238	580	48	618	361	191	14	60	70	4208
DENOMINATIONAL/VOLUNTEER CHAPLAIN HOURS	109	157	0	68	0	96	59	107	83	147	118	127	30	78	87	19	0	200	15	1500
Total Volunteer Hours																				5708
Other Activities of Chaplain																				
Counseled Employees	0	2	1	7	0	15	2	0	3	4	25	95	8	9	4	12	7	5	4	203
Orientation Sessions	0	4	0	1	0	5	0	1	0	1	0	2	0	0	0	0	0	0	0	14
Free World Devotions	0	4	0	9	0	8	6	0	5	3	0	7	12	12	0	0	0	0	0	66
Spoke in Churches	0	14	0	18	0	8	18	0	5	2	0	7	12	12	4	2	0	12	0	114
Crisis Intervention Sessions	0	22	0	0	0	10	2	0	2	12	7	7	11	7	11	6	3	20	0	120
Marriage Counseling	0	0	1	1	0	1	0	1	1	0	1	1	0	0	2	0	0	0	0	9
Denominational Meeting	0	2	0	4	0	4	0	0	0	1	0	0	1	1	0	0	0	1	0	14
Chaplain's Meeting	0	2	1	1	0	1	0	0	0	1	1	3	1	1	1	19	0	2	0	34
Volunteer Training Session	0	0	0	0	0	5	0	0	0	0	0	1	0	0	0	0	0	0	1	7
Choir Trip	0	0	0	0	0	0	0	0	0	0	0	0	0	0	0	0	0	0	0	0
Chaplain Transfers																				
	0	0	0	0	0	0	0	0	0	0	0	0	0	0	0	1	0	0	0	1
Chaplain Promotions																				
	0	0	0	0	0	0	0	0	0	0	0	0	0	0	0	0	0	0	0	0
PAL PROGRAM																				
Enrolled at start of month	0	44	11	47	0	46	47	41	22	38	34	44	0	30	62	47	0	29	0	542
Enrolled during the month	0	11	2	4	0	12	4	7	2	10	2	8	0	3	8	6	0	4	0	83
Removed From PAL Program																				
# Paroled	0	1	1	0	0	0	1	4	0	6	3	2	0	2	6	2	0	3	0	31
# Completed	0	0	0	0	0	9	2	2	1	3	3	4	0	0	0	1	0	1	0	26
# Withdrew	0	0	0	1	0	0	0	0	1	1	1	4	0	1	0	0	0	1	0	10
# Removed	0	3	0	1	0	0	2	0	0	2	1	5	0	0	0	3	0	0	0	17
# Transferred	0	4	1	0	0	2	0	4	0	2	0	4	0	0	2	0	0	1	0	20
Total Removed from PAL Program	0	8	2	2	0	11	5	10	2	14	8	19	0	3	8	6	0	6	0	104
Total Enrolled at the End of the Month	0	47	11	49	0	47	46	38	22	34	28	33	0	30	62	47	0	27	0	521
Volunteers In PAL																				
	0	16	2	10	0	5	10	15	15	18	5	7	0	7	11	4	0	4	0	129
Special Events:																				
	2	0	2	1	0	0	0	1	1	3	1	2	0	1	1	1	0	2	0	18

PURCHASE ORDERS OVER \$10,000.00 - November 2016

VENDOR	DESCRIPTION	LOCATION	PO#	PURCHASE AMOUNT	FUND
Arkansas Correctional Industries	Linen Supplies	Tucker Unit	4501670697	\$ 25,174.76	Operational Budget
Galls LLC	Clothing Items	Training Academy	4501670375	\$ 18,005.21	Operational Budget
American Business Solutions INC	Computer Supplies	Information Services	4501670290	\$ 10,683.63	Operational Budget
Green Point AG LLC	Seeds	Wrightsville/Farm	4501669172	\$ 15,375.00	Operational Farm Budget
Green Point AG LLC	Seeds	Cummins/Farm	4501669323	\$ 15,375.00	Operational Farm Budget
Riceland Foods INC	Feed	Cummins/Farm	4501670904	\$ 84,564.00	Operational Farm Budget
Arkansas Correctional Industries	Clothing Items	Benton Unit	4501672343	\$ 11,833.91	Operational Budget
Diamond International	Vehicle Maintenance	Benton Unit	4501652655	\$ 25,034.96	Operational Budget
Central Laundry Equipment INC	Commercial Dishwasher	Texarkana	4501671632	\$ 12,517.34	Operational Budget
SHI International Corp	Computer Supplies	Information Services	4501671845	\$ 29,673.11	Operational Budget
Turner Holdings LLC	Skim Milk	Central Warehouse	4501671160	\$ 19,173.04	Operational Budget
Turner Holdings LLC	Skim Milk	Central Warehouse	4501671246	\$ 11,181.32	Operational Budget
Turner Holdings LLC	Skim Milk	Central Warehouse	4501671250	\$ 21,476.64	Operational Budget
Turner Holdings LLC	Skim Milk	Central Warehouse	4501671253	\$ 19,173.04	Operational Budget
Miller-Bowie Supply Co	Feed	Cummins/Farm	4501672371	\$ 40,760.40	Operational Farm Budget
Fastenal	Bean Machine	Varner/Farm	4501671879	\$ 38,176.78	Operational Farm Budget
Barnes Paper Co	Egg Cartons	Cummins/Farm	4501671301	\$ 13,443.99	Operational Farm Budget
Fastenal Co	Industrial Supplies	Construction/Construction Dept	4501673544	\$ 58,478.09	Operational Budget
CDW Government INC	Network Service Equipment	Information Services	4501673782	\$ 11,685.79	Operational Budget
RA-CAM	Hauling Service	Tucker/Farm	4501674174	\$ 14,036.25	Operational Farm Budget
Mid South Sales INC	Fuel	EARU/Farm	4501669422	\$ 12,220.24	Operational Farm Budget
Crop Production Services INC	Fertilizer	Cummins/Chemical Shed	4501672639	\$ 94,281.00	Operational Farm Budget
Cedar Creek LLC	Red Oak	Wrightsville/ACI Warehouse	4501673793	\$ 18,900.00	Operational Industry Budget
Youngs Custom Service LLC	Irrigation Supplies	EARU/Farm	4501674320	\$ 15,814.33	Operational Farm Budget
Boue Johnson	Fertilizer	Grimes Unit	4501674327	\$ 13,000.00	Operational Farm Budget
Miller-Bowie Supply Co	Feed	Cummins/Farm	4501674333	\$ 179,040.00	Operational Farm Budget
Greenway Equipment INC	Tractors	Cummins/Farm	4501674724	\$ 296,012.76	Operational Farm Budget
Mid-State Services INC	Toilet Paper	Hawkins/Industry	4501674574	\$ 24,268.80	Operational Industry Budget
Premier Biotech INC	Drug Testing	Drug Testing/Glover	4501674747	\$ 16,243.00	Operational Budget
Redwood Biotech INC	Drug Testing	Drug Testing/Glover	4501674762	\$ 13,005.38	Operational Budget
Sysco Food Services of Arkansas	Food Purchases	Central Warehouse	4501675545	\$ 384,180.40	Operational Budget
Robbins Sales Company INC	Food Purchases	Central Warehouse	4501675515	\$ 98,151.20	Operational Budget
Printing Papers INC	Paper	Central Warehouse	4501675517	\$ 27,122.30	Operational Budget
National Food Group	Food Purchases	Central Warehouse	4501675522	\$ 102,723.80	Operational Budget
Arkansas Correctional Industries	Coffee & Tea	Central Warehouse	4501675529	\$ 11,080.00	Operational Budget
Arkansas Correctional Industries	Cleaning Supplies	Central Warehouse	4501675530	\$ 91,485.54	Operational Budget
Atlantic Beverage Company	Food Purchases	Central Warehouse	4501675536	\$ 14,912.90	Operational Budget
American Paper & Twine	Paper Towels	Central Warehouse	4501675539	\$ 11,368.34	Operational Budget
A C Sales CO	Food Purchases	Central Warehouse	4501675540	\$ 12,396.00	Operational Budget
William R Hill & Co Inc	Food Purchases	Central Warehouse	4501675643	\$ 403,128.98	Operational Budget
US Food Service	Food Purchases	Central Warehouse	4501675646	\$ 66,903.90	Operational Budget
Mid-State Services INC	Toilet Paper	Wrightsville/Industry	4501675281	\$ 20,275.20	Operational Industry Budget
Razor Chemical INC	Janitorial Supplies	Delta/Janitorial Factory	4501675294	\$ 25,620.40	Operational Industry Budget
Ensco Rail INC	Computer	Emergency Preparedness	4501675399	\$ 25,445.25	Operational Budget
Green & Chapman LLC	Fuel	Cummins/Farm	4501673233	\$ 11,733.54	Operational Farm Budget
Turner Holdings LLC	Skim Milk	Central Warehouse	4501676472	\$ 12,876.00	Operational Budget
Turner Holdings LLC	Skim Milk	Central Warehouse	4501676491	\$ 18,844.20	Operational Budget
Turner Holdings LLC	Skim Milk	Central Warehouse	4501676487	\$ 18,809.40	Operational Budget
Turner Holdings LLC	Skim Milk	Central Warehouse	4501676484	\$ 12,876.00	Operational Budget
Turner Holdings LLC	Skim Milk	Central Warehouse	4501676482	\$ 18,844.20	Operational Budget
Turner Holdings LLC	Skim Milk	Central Warehouse	4501676475	\$ 17,591.40	Operational Budget
Arkansas Correctional Industries	Toilet Paper	Central Warehouse	4501676525	\$ 277,455.00	Operational Budget
MJ Kellner CO INC	Food Purchases	Central Warehouse	4501676522	\$ 134,368.00	Operational Budget
William R Hill & Co Inc	Food Purchases	Central Warehouse	4501676515	\$ 26,748.30	Operational Budget
MJ Kellner CO INC	Food Purchases	Central Warehouse	4501676512	\$ 19,482.00	Operational Budget
Amercare Products INC	Deodorant Soap	Central Warehouse	4501676497	\$ 17,384.40	Operational Budget
Barnes Paper Co	Egg Cartons	Cummins/Farm	4501676660	\$ 10,844.39	Operational Farm Budget
Green & Chapman LLC	Fuel	Tucker/Farm	4501674892	\$ 11,931.29	Operational Farm Budget
Miller-Bowie Supply Co	Feed	Cummins/Farm	4501676653	\$ 27,600.00	Operational Farm Budget
		Total for Purchases over \$10,000		\$ 3,110,790.10	

FIRM CONTRACTS OVER \$25,000.00

VENDOR	DESCRIPTION	UNIT	Contract # P.O.#	PURCHASE AMOUNT	FUND
		Total for Contracts		\$ -	

EMERGENCY PURCHASE ORDERS OVER \$25,000.00

		Total EM Purchases		\$ -	
		Total Purchases		\$ 3,110,790.10	

**Arkansas Department of Correction
Vacancies, Hires and Terminations
November 2016**

UNIT	VACANCIES	HIRES	TERMINATIONS
BENTON (CR05)	6	5	3
CENTRAL OFFICE (CR01, CR02, CR08 & CR22)	19	2	1
CHAPLAINCY	0	0	0
CONSTRUCTION (CR04)	10	3	2
CUMMINS (CR09)	99	6	3
DELTA (CR10)	8	12	2
EAST ARKANSAS (CR12)	71	29	14
ESTER (CR11)	11	2	2
FARM (CR29)	11	1	0
GRIMES (CR27)	7	6	3
INDUSTRY (CR07)	13	1	1
MAXIMUM SECURITY (CR14)	48	8	4
MCPHERSON (CR28)	38	7	3
MENTAL HEALTH	19	3	2
MISS COUNTY (CR15)	4	0	0
NORTH CENTRAL (CR16)	0	2	0
NORTHWEST ARK (CR17)	0	0	0
OUACHITA RIVER (CR30)	52	15	5
PINE BLUFF (CR20)	2	1	1
RANDAL L. WILLIAMS (CR13)	3	4	0
TEXARKANA (CR21)	1	2	2
TRANSPORTATION (CR32)	9	0	0
TUCKER (CR23)	30	1	1
TUCKER RENTRY (CR33)	3	0	0
VARNER (CR24)	58	9	5
VARNER SUPER MAX (CR31)	40	2	2
WRIGHTSVILLE (CR25)/HAWKINS(CR06)	39	7	4
TOTAL	601	128	60

ARKANSAS DEPARTMENT OF CORRECTION Construction Budget / Status Report

Report Date - December 5, 2016

Data as of 12/01/16

Fund	Project Desc	Total Projected Spend	Budget	Available Funds	\$ % Complete	Construction % Complete	Notes
7004810	Cummins Poultry Houses	\$5,481,607	\$6,100,000	\$618,393	90%	90%	Cooler-design at DBA for approval
7004819	ESTER - Phase 1	\$3,886,593	\$4,000,000	\$113,407	97%	97%	184 beds opened 7/1/15. Kitchen complete. 190 beds opened January 2016. Phase 3 roof and interior underway.
700481A	ESTER - Phase 2 1A	\$1,618,222	\$5,100,000	\$3,481,778	32%	84%	
7004820	ESTER - Phase 2 - Kitchen	\$373,623	\$1,700,000	\$0	22%	100%	
KBR4Q95	ESTER - Phase 3 - General Improvement Fu	\$2,503,693	\$7,400,000	\$4,896,307	34%	65%	
NDC0100	Wrightsville Generator	\$193,267	\$200,000	\$6,733	97%	100%	1st phase complete, 2nd phase prioritized and in design.
70004820	Tucker 2016 New Well	\$365,696	\$550,000	\$184,304	66%	99%	Contractor repaired leak. ADC to sterilize/test pipeline.
	Pine Bluff Unit Barracks Renovation	\$0	\$784,000	\$784,000	0%	98%	DBA approval rec'd 11/2/16, purchasing materials
7004815	ORCU- Chapel	\$117,073	\$200,000	\$82,927	59%	60%	Slab Complete - Building being erected, exterior wells & roof complete.

Telephone Projects

Maintenance & Operations	Camera Equipment - All Units	\$100,013	\$250,000	\$149,987	40%	25%	on going
	Fire Alarm Upgrades (All Units)	\$46,143	\$53,000	\$6,857	87%	87%	All identified are complete.
	Locks/Riot Gates - All Units	\$51,668	\$75,000	\$23,332	69%	69%	EARU underway.
	Gates and Fences all units	\$49,235	\$50,000	\$765	98%	99%	Multiple Underway
	Gas Stations - Canopy (C/O)	\$0	\$5,000	\$5,000	0%	85%	Canopy built in shop, to do foundation
	Stainless Steel - Kitchen/Shower/Restrooms - A	\$62,772	\$70,000	\$7,228	90%	90%	On Going, sinks, showers, ceiling.
	ACA Maintenance	\$35,883	\$175,000	\$139,117	21%	21%	Working on EARU, Delta, & NCU
	ADA Projects - All Units	\$3,330	\$5,000	\$1,670	67%	100%	Estimating project at Varner
	Fast Top Floor Systems - (kitchen/laundry/show	\$5,657	\$50,000	\$44,343	11%	100%	100% of identified projects
	AC Units - All Units	\$140,795	\$150,000	\$9,205	94%	100%	All identified are complete.
	Lawn Equipment - All Units	\$0	\$0	\$0	0%	0%	Moved 1/20/16
	Parking Lot - Gravel and Paving - EARU	\$0					Plans in to DBA
	Parking Lot - Gravel and Paving - Tucker	\$0	\$250,000	\$250,000	0%		Tucker Completed 2015
	Parking Lot - Gravel and Paving - Other Units	\$0					
FY16 Carryforward	ORCU Gravel Pit Operations	\$17,695	\$45,000	\$27,305	39%	39%	continual
	PB Kitchen HVAC	\$0	\$12,000	\$12,000	0%	0%	make up air unit - on hold, scheduling shutdown to install
	Dog Kennel/Horse Stable Malvern	\$0	\$48,000	\$48,000	0%	0%	Plans Underway
	Tucker Pole Barn (Reg. Maint.) Firing Range	\$0	\$12,200	\$12,200	0%	100%	
	Metal Ceilings	\$39,217	\$75,000	\$35,783	52%	88%	Max Barracks #1 complete, #3 underway
FY17 New Projects	Emergency Generator - All Units	\$439	\$220,000	\$219,561	0%	0%	Plans in Design by on-call Engr.
	Tucker Wastewater Containers	\$0	\$31,000	\$31,000	0%	0%	2 dumpsters and all materials on hand
	EARU Firing Range	\$4,919	\$7,200	\$2,281	68%	95%	
	Boiler Repairs	\$80,928	\$90,000	\$9,072	90%	100%	100% of identified projects
	Roof Repairs-Tucker	\$0				30%	Underway
	Roof Repairs-Varner	\$51,689				50%	Underway
	Roof Repairs-East Arkansas	\$0	\$250,000	\$184,002	21%	20%	Underway
	Roof Repairs-East Arkansas	\$14,309					
	Roof Repairs-Cummins Laundry	\$0				25%	Underway

Notes

- * Report has not been reconciled against Accountings Reconciled Reports.
- * Tolerance/Derivation is with in 1% of Projected Spending.