

Wendy Kelley
Director

Board Report
December 2017



PUBLIC RELATIONS

RESEARCH/PLANNING

November 2017 Admissions and Releases – Admissions for November totaled **680** (591-males & 89-females) while Releases totaled **935** (786-males & 149 females) for a net decrease in-house of 255 Inmates.

Inmate Population Growth/Projection – At the end of November 2017, the Arkansas Department of Correction Population totaled **17,973** representing an increase of **436** Inmates since the beginning of 2017. Calendar year 2017 average growth is **40** Inmates per month, up from an average decrease of **14** Inmates per month during calendar year 2016 .

Average County Jail Back-up – The backup in the County Jails averaged **1,735** Inmates per day during the month of November 2017 – up from an average decrease of **1,667** inmates per day during the month of October 2017. Average County Jail Back-up for first five months of **FY18** is **1,571** Inmates per day.

LEGAL SERVICES

PREA

PREA data:

Number of Calls Received	320
Total PREA Issue Calls	19
Total Non-PREA Calls	118
Total Calls Referred to Internal Affairs Division	14
Total Repeat Calls	104
Total Calls with no message	0
Total Technical Failure Calls	1

INMATE INSTITUTIONAL GRIEVANCE

Inmate Formal/Informal Grievances: In November, there were a total of 1,917 formal grievances filed and 2,844 informal grievances filed at various units.

Institutional Grievances: There were a total of 490 appeals of institutional grievances received in November. Four hundred and seven (407) were acknowledged and 83 were rejected for various reasons. A total of 492 appeals were answered, 480 had no merit and 12 were found with merit.

INSTITUTIONS

STTG

The STTG Coordinator along with K-9 Officers, started an eight (8) week online Specialized Gang Academy on November 2nd. The STTG Coordinator also had a meeting on November 8th with the Arkansas Coordinator for Regional Organized Crime Information Center to discuss ongoing gang issues in our region. An STTG sweep of the Pine Bluff Complex was completed on November 21st.

FARM

Harvesting of the row crops were finished at all units during November. The lack of rain allowed fertilizer to be applied for next year's crops. We sold two (2) loads of cattle from the Wrightsville Unit for very good prices. The remaining calves will be sold in January, through Superior Livestock. We are closely monitoring somatic cell count and the milk production continues to rise. The poultry facility continues to meet the needs of the ADC and cover the contract of furnishing eggs with the Oklahoma Department of Correction. The installation of the new egg cooler is close to being finished. The cooler will double our storage capacity, which will allow more options to market excess eggs. The early frosts caused a lot of damage to the gardens. However, we still have crops to be harvested such as greens, turnips, broccoli and carrots.

Regional Maintenance Hours

Regional Maintenance Hours	November
Benton Unit	4,526
Delta Regional Unit	2,208
East Arkansas Unit	3,608
Grimes Unit	1,368
McPherson Unit	1,008
Mississippi Co Work Release	552
North Central Unit	8,458
Ouachita River Unit	2,904
Randall Williams Unit	3976
Texarkana Regional Unit	70
Tucker Unit	1,312
Varner Unit	2,232
Wrightsville Unit	1,896
Total Hours	34,118

Work Release Rent Report

Unit	November
Benton Unit	\$100,300.00
Mississippi County Work Release	\$55,335.00
Northwest AR Work Release Center	\$39,168.00
Pine Bluff Unit	\$31,042.00
Texarkana Regional Unit	\$50,269.00
Tucker Re-Entry Center	\$22,863.00
Total	\$298,977.00

Preparing for Success

Unit	Slots	Completed	Discharged	End Count
Ester Barracks 9-12	125	10	14	126
Tucker Re-Entry	20	2	5	13
Total	145	12	19	139

There are 577 males and 126 females on the waiting list within 42 months of their release date, and of those, 4 males are mandated by the Parole Board. The average time on the waiting list is approximately 3 months. The total number of inmates on the waiting list, including those not currently within the identified time frame, is 653 males and 159 females.

WAGE**(Workforce Alliance for Growth in the Economy)**

Unit	Slots	Completed	Discharged	End Count
Delta	24	5	5	4
Ester	30	0	0	30
Hawkins	36	8	8	32
Ouachita River	10	2	0	10
Tucker	10	3	0	10
Tucker Re-Entry	8	1	0	6
Wrightsville	36	4	7	24
Total	154	23	20	116

Randall L. Williams Juvenile Education Program

	Slots	Enrolled	Discharged	End Count
Juveniles	20	19	4	19

ADMINISTRATIVE SERVICES**BUDGET SECTION UPDATE****Procurement Section Update:****Current Bids:**

- Personal Care Items

Contracts Recently Awarded/Renewed:

- Waste Management-NCU
- Metal/Isolation Recreation Yard-EARU

Procurement/Contracts Report (required by policy) –

For November 2017, Purchase Orders and Contracts in excess of \$10,000 amounted to \$2,585,131.26. Of this amount, \$1,076,533.77 was for Inmate Care and Custody related items (food, shoes, clothing, etc.). Bulk fuel costs for the month of November were \$80,999.42 – average cost of E-10 was \$2.02/gallon; average cost for bulk diesel was \$2.06/gallon.

HUMAN RESOURCES UPDATE

Workplace Safety – During the month of November, the modified version of the Health and Safety Plan was presented to one (1) Basic Training class to a total of 65 cadets.

Sixty-five (65) incidents were reported to the company nurse in November, bringing our total to 773 in 2017.

Benefits – There were 92 FMLA requests processed, with 89 approved and 3 denied. A total of 14 CAT leave requests were received, 5 were approved and 9 are pending.

Physical Assessments – A total of 141 applicants and incumbent personnel were assessed in the month of November. Sixty eight (68) incumbent personnel successfully passed their physical assessment and 2 did not (neither has rescheduled). Seventy (70) applicants passed their physical assessments and 1 did not (and has not rescheduled).

Employment – ADC Human Resources personnel attended 6 Job Fairs in the month of November:

Date	Unit	Location
11/8	Cummins and Varner	McGehee High School
11/8	Tucker	Admin East
11/9	Tucker	Stuttgart
11/14	Grimes and McPherson	Newport Economic Development Center
11/15	EARU	AR Workforce Center/Forrest City
11/17	Cummins and Varner	Wynn Job Center-Greenville, MS

A total of 1,449 applications were received in November. Fifty-four (54) Non-Security applications and fifty-seven (57) CO I applications were processed. Fifty-six (56) Correctional Officers were hired, and twelve (12) Correctional Officers were rehired.

Vacancies, Hires, and Terminations - In November 2017, a total of 612 vacancies, 74 new hires, and 118 terminations were at the various ADC locations.

Administrative Services Division Fund Reports:

The **Inmate Welfare Fund** balance on November 30, 2017 was \$6,070,316.11.

The **PAWS in Prison Fund** balance on November 30, 2017 was \$181,916.23: ADC account (7004822/Donations) \$19,159.55 and ADC account (NDC0500/Recycling) \$102,515.81 and ADC Paws in Prison Non-Profit account balance was \$60,240.87.

INFORMATION TECHNOLOGY

We implemented and tested a new Disaster Recovery (DR) site backup Virtual Private Network (DR-VPN) appliance. During the test, the user was able to connect, access the internet and remote into his computer. Before deployment, we plan to complete a multi-user test. To ensure that users who require VPN to access state resources have minimal or no interruption in service, the DR VPN appliance will be used as backup in the event the primary VPN server goes down or is not available due to network issues.

We are in the process of installing the second wave of Jail Arraignment Kiosk equipment provided by Association of Arkansas Counties (AAC) for incarcerated inmates. The project will reduce the need to transport inmates to local county jails for arraignments. The facilities scheduled to receive the equipment in this installation project include Grimes, Pine Bluff Unit, Ester, Randall L. Williams, Wrightsville, Hawkins, Tucker, and Delta. IT will coordinate with AAC to complete the installation.

IT staff conferenced to discuss changes needed for recent revisions to the Step-Down Program, and the Restricted Housing Policy. The policy was revised to include restrictive recreation for inmates assigned to restrictive housing. We discussed required new forms, revised forms, and new alerts for notifying staff immediately upon an inmate's assignment to restrictive recreation.

IT staff continued work with the Administrative Office of the Courts (AOC) . Marquis to implement the AOC's Contexte project.

SECURUS Video Visitation Project:

- The Tucker Unit Dog Kennel installation is pending the receipt of the hardware.
- SECURUS is to complete a walk-through of the Cummins Unit in December for the Dog Kennel installation. They are also communicating with the contractor for the project. The Entergy contract for their pole usage for aerial fiber is still pending.
- Wrightsville – Fiber installation was set to be completed by November 29th. "Go Live" date has not been determined.

3,771 video visits took place this month. Visits remain at the \$5.00/30 minutes promotional price to encourage remote visitation until December 31, 2017.

SECURUS Tablet Project:

The Edovo application has been removed from the tablets until issues with video playback are resolved. SECURUS reported that they are trying to synchronize the Edovo videos to work with the player. Phase II "Go Live" date is January 25, 2018.

Install Priority Phase 2	ADC Facility	Installation % Complete
5	DELTA	76%
5	WRIGHTSVILLE	55%
5	CUMMINS	37%
5	VARNER	33%
5	NORTH CENTRAL	61%
5	NWAWRC	79%
5	TEXARKANA	62%
5	OUACHITA	71%
5	BENTON	34%
5	STATE POLICE	51%

Training Academy – November 2017

Basic Training Division

Lt. Bryant Dallas' BCOT Class 2017-O graduated on November 17, 2017, with 65 cadets. Tabitha Crater from the Transportation Division won the Willis H. Sargent Award. Deputy Warden Todd Ball from the Maximum Security Unit served as the Graduation Speaker.

In-Service Division

During the first week of the month, we offered ServSafe training and certification.

Security for Non-Security for full time staff was held on November 2-3. Management Level 1 was taught November 6th – 9th. Guest instructors from OPM's training division presented two classes, Arkansas Government Basics and HRkansas.

Management Level II class was held on November 12-14.

LEAP: Learning Life with EAP was held on November 15th. LEAP is designed for all employees, regardless of their job title, rank, or supervisory status.

Sexual Assault Investigator Training (SAIT) was held on November 13th – 15th. This class is specifically for supervisory staff at the units to become more efficient in PREA investigations.

Pressure Point Control Tactics (PPCT) re-certification was offered the 13th – 17th. This is a week long class of intense training for selected security and non-security staff. Once trained, these staff members will come back to the Academy approximately three times a year to teach cadets.

Field Training Officer (FTO) class was offered on November 14th to encourage staff to become not only great trainers but also great mentors.

The Annual Training Day was held on November 15th which offered all mandatory classes in one day.

Defensive Driving was held on November 16th and was open to Arkansas Community Correction (ACC) and Arkansas Insurance Department (AID) staff; The class was taught by Risk Consultant Brad Murry from AID.

Other elective classes that were scattered throughout the month include: Where's my Coffee, Ruling by Fear, Image Matters, Personal Boundaries, and Back to Basics: Complacency.

eCADEMY

During the month of November 2017, 490 ADC employees completed a total of 4,762.25 hours of eCADEMY training. Approximately 11% of ADC employees completed at least one course during that time frame, averaging 1.03 hours per staff member.

HEALTH/CORRECTIONAL PROGRAMS

CHAPLAINCY SERVICES

Benton Work Release

A volunteer meeting was held on November 4th with 14 volunteers. On November 11th, Greater Macedonia Baptist Church of Little Rock held a special worship service with 56 inmates.

East Arkansas Regional Unit

Eighteen (18) inmates participated in a KAIROS Walk on November 2—5. On November 15th, the Chapel hosted a Veteran's Day Event, co-sponsored by the Inmate Council with a total of 61 inmate veterans. Thanksgiving services were held in the chapel on November 25th and 26th.

Ester Unit

A Phase II graduation ceremony for APAL was held on November 16th. A total of forty (40) inmates completed Phase II. Bob Holyfield was the guest speaker.

Maximum Security Unit

On November 28th, 32 inmates graduated from the Life Principles Class #2.

McPherson Unit

On November 2nd, Chaplain Lang held a special worship service in Barracks 3. Forty five (45) inmates were baptized.

North Central Unit

On November 3rd, 1,650 holiday greeting cards were distributed to the inmate population which were donated by American Rehabilitation Ministries.

Pine Bluff Unit

Literacy Tutor training took place on November 8th and 9th. Nine (9) inmates completed the training.

Varner Unit

CRA Volunteer training was held on November 4th. Volunteers facilitated a Holy Day of Atonement observance for Nation of Islam, with 53 inmates on the 16th.

Accreditation

ACA Internal Audits Completed:

November 1-3	Training Academy/ORCU File Review
November 6-10	ORCU File Review
November 14-17	ORCU File Review
November 20-22	Maximum Security Unit File Review
November 27-30	Maximum Security Unit File Review

Fire/Safety and Sanitation independent audits conducted by the Fire and Sanitation Coordinator:

November 1-3	McPherson Unit Independent Audit
November 6	ORCU Fire Safety Audit
November 8-9	Maximum Security Fire Safety Audit
November 13-22	Cummins Unit Independent Audit
November 27	Varner Unit/trained new Fire Safety Officer
November 27-30	Maximum Security Unit Audit Prep

VOLUNTEER SERVICES

The total number of volunteer hours for the month.

Unit/Program	Hours
Cummins	2
East Arkansas Regional	65
Maximum Security	4
North Central	4
Ouachita River	18
Ester	10
Pine Bluff	3
Randall Williams	35
Varner	136
Wrightsville Complex	6
PAWS	18
Think Legacy	216
Religious Services/Chaplaincy	4410
Total	4,927

PROGRAM SERVICES**Sex Offender Treatment Program**

	SLOTS	COMPLETED	REMOVED	CLIENTS
RSVP	238	0	4	240
SOFT	30	0	1	19
Total	268	0	5	259

There are 885 males on the waiting list for RSVP and 3 females on the waiting list for SOFT within 5 years of their TE date. Of those, 88 inmates are mandated by the Parole Board. The average time on the waiting list from request is between 3 and 6 months for those stipulated. The total on the waiting list, including those not currently within the identified time frame, is 1,566 males and 4 females. We have one PREA inmate in the program at this time.

*The waiting list numbers include inmates that are ineligible due to class or housing status.

Therapeutic Community

Unit	Slots	Completed	Removed	Clients
Tucker	129*	19	11	122
Wrightsville	45*	3	2	48
McPherson	50*	6	7	46
Total	224	28	20	216

There are 215 males and 12 females on the waiting list within 18 months of their release date. Of those, 10 are stipulated by the Parole Board. The average time on the waiting list from request is 22 days. The total on the waiting list, including those not currently within the identified time frame, is 595 males and 50 females.

*Denotes transitional beds available at this treatment program. The Tucker Therapeutic Community also has 129 client slots and seven (7) peer counselor slots.

Substance Abuse Treatment Program

Unit	Slots	Completed	Removed	Clients
Grimes	50*	9	2	52
McPherson	100*	14	8	96
MSU	3	1	0	2
RLW/CF	188*	25	16	190
Tucker	43*	9	0	40
Varner	44	6	1	46
Wrightsville	135*	21	30	143
Total	563	85	57	569

There are 2,006 males and 306 females on the waiting list within 18 months of their release date. And of those, 53 are stipulated by the Parole Board. The average time on the waiting list from request is 16 days. The total on the waiting list including those not currently within the identified time frame is 2,834 males and 430 females.

*Denotes transitional beds available at this treatment program

Outpatient:

There were 2,217 inmates on the mental health medication log at the beginning of November. Mental Health staff conducted the following contacts during November.

Case management contacts	2,325
Requests for interviews	1,096
Testing	1
Intakes	675
Unit requests	1,271
Pre-lock up reviews	67
Routine segregation reviews	530
Segregation rounds	19,891
PREA evaluations	57
Routine follow-up	151
834 requests	23

ORCU Residential Program Unit:

The RPU at Ouachita had 4 admissions and 5 discharges in November for an end-of-month count of 122.

McPherson Mental Health Residential Program:

There were 5 admissions and 3 discharges in November. The end-of-month count was 40.

Habilitation Program:

The Habilitation Program at the Ouachita River Unit provided treatment services to 46 inmates during November. There were 2 admissions and 1 discharge for an end-of-month count of 45.

Restrictive Housing (RH) Anger Management Treatment:

The RH Anger Management Treatment Program at the Cummins Unit provided treatment services to 24 inmates during November. There were no admissions or discharges for an end-of-month count of 24.

Staffing:

The following Mental Health Services and SATP positions were vacant in October and November.

Positions	October	November
Psychologists	10	10
Social Workers	15	17
Advisors	8	6
Rehab Program Manager	2	0
Psychological Examiner	1	2

ADDITIONAL PROGRAM INFORMATION

Self-Study Classes	# of Participants	# Completed	Waiting List
Anger Management	343	263	960
Thinking Errors	315	251	1,241
Substance Abuse Education	147	72	250
Communication Skills	132	37	1,043
Domestic Violence	44	37	362
Victims of Domestic Violence	0	0	40
Stress Management	173	126	1,160
Parenting	114	64	730

Suicide:

There were 77 suicidal threats, gestures or low/moderate risk attempts during November. There were 21 serious attempts, none resulted in death.

County Mental Health Requests:

During November, there were 81 requests of a mental health nature received. Thirty-three (33) inmates were fast tracked to ADC.

County Medical Health Requests:

During November, there were 418 requests of a medical nature received. Seven (7) inmates were fast tracked to ADC.

Monetary Sanctions:

Sanction reimbursements for November were \$13,650.

Deaths:

There were nine (9) inmate deaths during the month of November; five (5) were claimed and four (4) were cremated.

CCS:

See attachment for CCS's report regarding outside beds and emergency room visits.

Medical Grievances:

In November, there were 178 appeals of medical grievances received, 136 appeals were answered; 16 of those were found to be with merit and 2 with merit but resolved.

SEX OFFENDER ASSESSMENTS**Assessments Completed:**

Risk Level	November	Sept. 1999 thru November 30, 2017
Level 1	1	1,165
Level 2	42	7,010
Level 3	15	6,488
Level 4	3	617
Default 3	6	*
Total	67	15,280
*Default Level 3's are included in the total number of Level 3's to date.		

ACIC Numbers:

The total number of sex offenders registered from Sept. 1999 thru November 2017:

In Compliance	7,812
Delinquent (Did not return address on time)	1,013
Confined	3,076
Out of State	3,249
Address Unknown (absconded)	185
Deported	173
Incapacitated	79
Out of USA	7
Total	15,594

Think Legacy

Unit	Slots	Graduates	Removed	Signed-out	Assigned
Cummins	55	2	2	3	46
Delta	24	4	0	0	20
EARU	50	0	6	0	46
Ester	48	3	0	0	36
Grimes	56	9	0	0	45
Hawkins	40	2	0	0	41
McPherson	68	14	2	2	65
North Central	59	15	2	1	48
Ouachita River	46	2	2	1	51
Tucker Re-Entry	20	2	0	0	20
Tucker	55	1	8	3	53
Varner	49	16	0	0	49
Wrightsville	49	12	8	0	50
Total	619	82	30	10	570

There are 109 males and 35 females on the waiting list. All Think Legacy applicants are within 18 months of their TE, or discharge date. The average time on the waiting list is approximately 45 days. Dr. John Dunsmoor, from Red Rocks Community College in Denver, Colorado taught OSHA Field Leadership Management Training at the North Central Unit November 26th—29th and at the McPherson Unit November 29th-December 1st (32 inmates completed the course at NCU and 64 from McPherson). The North Central Unit hosted a Think Legacy graduation on November 28th; Chairman Benny Magness and Dr. Dubs Byers from the Board of Corrections, State Rep. Michelle Gray along with a representative from Arkansas Attorney General Leslie Rutledge's office attended.

PAWS IN PRISON

Currently Enrolled in Training:

Maximum Security Unit	7
Tucker Unit	7
Hawkins Unit	1
Randall Williams Unit	4
Ouachita River Unit	5
North Central Unit	9
Total	33

Completed Training:

November 2017	20
Year to date- 2017	148
Since Inception Dec. 2011	1009
Dogs Currently in foster: (Graduated but not adopted)	6

Construction/Maintenance**Project Updates****Cummins Unit:**

The architect submitted plans and specs to DBA for new generator. The architect is also working on plans for the new School to be located where the existing Hobbycraft building is. Plans were submitted to the School District for their review. We are continuing to replace windows throughout the unit. Asbestos testing was performed at old Hobby Craft Maintenance shop; the report came back that no asbestos was found.

Cummins Poultry:

The new egg cooler has been completed and turned over to Farm for use. The generator is tested weekly.

Delta Unit:

Work continues on storm damages. The contractor finished tearing off and replacing the roof covering, and is now working on penetrations and parapet. Work is expected to be finished by the end of the year. The Horse Barn repairs are complete. The gym repairs are lacking only the HVAC repairs. Integrity is continuing to work on the design of the energy saving project. Plans have been sent to DBA for Phases I and 2 and 30 comments were received back from DBA. We are continuing to replace barracks windows.

East Arkansas Regional Unit:

Integrity is continuing to work on the designs for energy savings projects. Plans have been sent to DBA for Phases I and 2 and 30 comments were received. Plans for the emergency generators and for the perimeter lighting were sent to DBA for review and approval.

Grimes:

Roof repairs on the gym are complete. We are working inside to repair water damage. We do have mold inside the gym, but no asbestos was found. Remediation is ongoing. Once all work is complete, the gym will be opened back up for use. We have repaired the barn roof and wall. Work on the Dog Kennel is ongoing.

Hawkins:

Architects completed plans for an additional generator for kitchen and lighting, and submitted the plan to DBA for approval.

Maximum Security Unit:

Repairs to the Boiler & Barrack 4 utility chase are ongoing. Work was completed on repairs to East and West Isolation. Recreation Yard upgrades have been completed.

McPherson:

Met with on-call architect to discuss shakedown area and enclosing the outdoor area for Visitation and new Administration areas.

Ouachita River Correctional Unit:

Gravel Operations continue. More than half of skylights have been installed. The additional skylights are being installed. Chapel: Working on interior of building and ordering remainder material as funds become available. Continuing sheet rock and painting.

Pine Bluff:

Architect submitted plans and specs to DBA for review to change former Industry area in 9 barracks to inmate housing. Asbestos report came back negative for asbestos.

Tucker Unit:

Continue to monitor waste water plant & make repairs & adjustments to keep the system in compliance. Working on changing out the water filter media and adding more filters. Two sets of bacteriologic samples must pass Arkansas Department of Health testing before filters are put back in service.

Wrightsville:

Architects submitted plans and specs to DBA for approval on new generator. Working on the construction of the new Isolation recreation yard.

CONSTRUCTION/MAINTENANCE PERSONNEL UPDATE:

- 1 Project Supervisor
- 3 Maintenance Technicians
- 1 Administrative Spec
- 1 Assistant Maintenance Supervisor
- 1 Corporal

2017 INFORMAL GRIEVANCE REPORT

Month	BENTON	HAWK/M	HAWK/F	WRTS SPU	WRTS	WRTS/SAT	EARU & MX	GRIMES	RLW	MCWR	MCPH	MSU	NCU	PBU Re-entry	PBU	NWA	TU	TRCC	VSMX	VU	CU	ORCU	Ester	DRU	Bowie Cty	TOTAL
JAN	2	15	34	0	75	13	416	301	59	0	309	225	138	1	25	0	109	1	235	85	297	388	22	150	106	3006
FEB	2	15	34	0	83	6	313	280	40	0	247	211	181	0	18	0	68	2	533	100	301	229	23	193	91	2970
MAR	1	7	21	0	63	0	480	283	36	2	381	214	205	0	30	1	162	3	694	88	470	298	48	218	115	3820
APR	4	28	23	0	83	0	341	234	52	0	366	173	198	0	25	0	125	6	657	97	287	214	46	123	96	3178
MAY	4	28	35	0	110	0	821	315	53	0	326	181	217	0	19	0	159	1	611	90	312	306	49	146	98	3881
JUN	2	17	30	0	78	0	1218	278	78	0	367	148	181	0	41	0	169	2	757	85	314	314	44	162	87	4372
JUL	1	37	28	0	82	0	370	283	61	0	411	155	197	0	46	0	155	0	564	94	228	310	53	172	82	3329
AUG	1	37	60	0	71	0	425	296	59	0	283	137	226	0	68	2	160	1	616	84	275	408	71	235	90	3605
SEPT	1	22	49	0	121	0	460	246	44	0	313	122	199	0	63	0	162	0	612	92	198	272	39	185	72	3272
OCT	0	23	20	0	90	0	528	266	41	0	353	129	99	0	70	1	167	0	558	98	205	257	33	188	68	3194
NOV	5	37	19	0	88	0	355	163	38	0	258	175	209	0	38	0	108	0	543	90	237	249	43	117	72	2844
DEC																										0
TOTAL	23	266	353	0	944	19	5727	2945	561	2	3614	1870	2050	1	443	4	1544	16	6380	1003	3124	3245	471	1889	977	37471

2017 FORMAL GRIEVANCE REPORT

Month	BENTON	HAWK/M	HAWK/F	WRTS SPU	WRTS	WRTS/SAT	EARU & MX	GRIMES	RLW	MCWR	MCPH	MSU	NCU	PBU Re-entry	PBU	NWA	TU	TRCC	VSMX	VU	CU	ORCU	Ester	DRU	Bowie Cty	TOTAL
JAN	1	5	16	0	27	6	350	113	31	1	148	239	59	1	6	0	87	2	314	67	151	165	12	67	24	1892
FEB	2	7	12	0	45	1	388	117	17	0	112	208	87	0	6	0	68	0	360	91	165	169	8	81	16	1960
MAR	0	15	20	0	24	0	389	98	17	0	125	222	95	0	3	1	110	0	421	76	173	166	13	97	30	2095
APR	2	39	46	0	34	0	322	113	22	1	148	201	79	0	6	0	65	2	423	86	141	182	16	56	14	1998
MAY	2	28	35	0	47	0	445	142	27	0	186	227	93	0	3	0	93	0	361	77	145	271	28	78	25	2313
JUN	0	9	8	0	34	0	408	114	31	0	167	170	69	0	7	0	99	3	425	83	160	240	21	79	22	2149
JUL	0	10	7	0	45	0	438	136	37	0	129	178	94	0	20	0	98	0	345	77	132	218	24	77	15	2080
AUG	0	9	15	0	25	0	429	128	23	0	139	162	11	0	19	2	122	0	358	74	154	216	35	131	29	2081
SEPT	0	10	29	0	48	0	352	123	30	1	152	115	89	0	32	0	113	0	322	73	126	157	20	92	17	1901
OCT	0	9	10	0	30	0	569	120	18	0	184	179	51	0	21	1	101	0	339	83	147	157	16	108	16	2159
NOV	1	6	10	0	46	0	366	104	17	0	162	191	99	0	19	0	76	0	291	74	132	206	21	78	18	1917
DEC																										0
TOTAL	8	147	208	0	405	7	4456	1308	270	3	1652	2092	826	1	142	4	1032	7	3959	861	1626	2147	214	944	226	22545

Inmate Institutional Grievance Appeal Report
November 2017

	Acknowledged	Rejected	Processed W/O Merit	Processed W/ Merit
Benton Unit	0	0	0	0
Benton Work Release	0	0	0	0
Bowie County Texas Correctional Facility	2	1	4	0
Cummins Unit	26	7	36	2
Cummins Modular Unit	1	1	0	0
Delta Regional Unit	19	0	24	1
East Arkansas Regional Unit	22	3	40	1
East Arkansas Regional Max Unit	74	4	77	2
Ester Unit	0	2	0	0
Grimes Unit	24	5	23	0
Maximum Security Unit	36	4	40	1
Tucker Re-Entry	0	0	0	0
McPherson Unit	30	7	26	0
McPherson Mental Health Residential Program Unit	2	1	3	0
Mississippi County Work Release Center	0	0	0	0
Northwest Arkansas Work Release Center	0	0	0	0
North Central Unit	11	6	27	0
Ouachita River Correctional Unit	28	16	25	1
ORCU Hospital	0	0	0	0
ORCU New Commitment	0	0	1	1
ORCU Mental Health Residential Program Unit	0	0	0	0
Pine Bluff Unit	4	3	7	0
Pine Bluff Re-Entry	0	0	0	0
Randall L. Williams Correctional Facility	1	2	3	0
Texarkana Regional Correctional Center	0	0	0	0
Tucker Unit	26	3	17	1
Varner Super Max	65	16	98	2
Varner Unit	28	0	24	0
Wrightsville Unit	6	1	3	0
Hawkins Center	1	1	0	0
Hawkins for Males	1	0	2	0
Hawkins SPU	0	0	0	0
Total	407	83	480	12

Admissions and Releases

November, 2017

<u>Admissions</u>	<u>Male</u>	<u>Female</u>	<u>Total</u>
Black	171	16	187
Hispanic	20	0	20
Native American Indian	1	0	1
White	398	73	471
Other	1	0	1
Total	591	89	680

<u>Releases</u>	<u>Male</u>	<u>Female</u>	<u>Total</u>
Asian	3	1	4
Black	276	21	297
Hispanic	27	2	29
Native American Indian	1	0	1
White	479	125	604
Total	786	149	935

ARKANSAS DEPARTMENT OF CORRECTION
INMATE POPULATION GROWTH 2000-2024

Updated 11/30/2017

Mo.	2000	2001	2002	2003	2004	2005	2006	2007	2008	2009	2010	2011	2012	2013	2014	2015	2016	2017
Jan.	11,984	11,908	12,402	13,015	13,105	13,595	13,481	13,839	14,518	14,796	15,334	16,312	15,134	14,815	17,481	18,142	17,785	17,824
Feb.	12,169	12,022	12,529	13,054	13,166	13,783	13,633	14,012	14,603	14,883	15,374	16,209	14,990	15,008	17,438	18,082	17,625	17,608
March	12,006	12,033	12,299	13,108	13,088	13,418	13,534	13,772	14,580	14,843	15,290	16,095	14,964	14,665	17,395	18,233	17,573	17,666
April	12,069	12,167	12,465	13,213	13,323	13,469	13,554	13,851	14,769	14,937	15,570	16,172	15,124	14,850	17,604	18,703	17,815	17,798
May	12,109	12,384	12,558	13,463	13,556	13,528	13,711	14,146	14,880	15,146	15,694	16,062	15,132	15,074	17,593	18,693	17,769	17,652
June	12,005	12,108	12,439	13,418	13,389	13,251	13,430	13,915	14,700	15,025	15,564	15,554	14,832	14,825	17,340	18,813	17,973	17,963
July	12,030	12,190	12,622	13,509	13,528	13,286	13,560	14,082	14,868	15,195	15,807	15,519	14,879	15,379	17,522	18,870	18,130	18,180
August	12,087	12,371	12,815	13,565	13,632	13,419	13,646	14,224	15,100	15,385	15,829	15,240	14,675	16,103	17,549	18,806	17,919	18,051
September	11,983	12,289	12,774	13,341	13,516	13,237	13,652	14,217	14,850	15,285	16,025	15,172	14,724	16,412	17,605	18,549	18,026	18,179
October	12,119	12,348	12,942	13,341	13,584	13,363	13,775	14,349	14,836	15,381	16,311	15,271	14,856	16,993	17,880	18,430	18,127	18,348
November	12,094	12,408	13,162	13,408	13,706	13,587	13,913	14,437	15,025	15,340	16,460	15,205	14,625	17,168	17,848	17,981	17,573	17,973
December	11,856	12,333	12,845	13,106	13,470	13,338	13,728	14,315	14,716	15,199	16,204	15,062	14,654	17,235	17,874	17,707	17,537	
Net Ann. Inc	29	477	512	261	364	-132	390	587	401	483	1,005	-1,142	-408	2,581	639	-167	-170	436
Avg. Mo. Inc	2	40	43	22	30	-11	33	49	33	40	84	-95	-34	215	53	-14	-14	40

Population is total jurisdictional count at end of each month. Population at end of month December 1999 was 11,827.

Average monthly population increase for past fifteen years 2002 - 2016 is 29

Average monthly population increase for past ten years Jan.2007 - Dec 2016 is 32

Average monthly population increase for past five years 2012 - 2016 is 41

Projected at Growth of 29 per Month

	2008	2009	2010	2011	2012	2013	2014	2015	2016	2017	2018	2019	2020	2021	2022	2023	2024
Month	Actual	Actual	Actual	Actual	Actual	Actual	Actual	Actual	Actual	Actual/ Proj.	Proj.	Proj.	Proj.	Proj.	Proj.	Proj.	Proj.
January	14,518	14,796	15,334	16,312	15,134	14,815	17,481	18,142	17,785	17,824	18,031	18,379	18,727	19,075	19,423	19,771	20,119
February	14,603	14,883	15,374	16,209	14,990	15,008	17,438	18,082	17,625	17,608	18,060	18,408	18,756	19,104	19,452	19,800	20,148
March	14,580	14,843	15,290	16,095	14,964	14,665	17,395	18,233	17,573	17,666	18,089	18,437	18,785	19,133	19,481	19,829	20,177
April	14,769	14,937	15,570	16,172	15,124	14,850	17,604	18,703	17,815	17,798	18,118	18,466	18,814	19,162	19,510	19,858	20,206
May	14,880	15,146	15,694	16,062	15,132	15,074	17,593	18,693	17,769	17,652	18,147	18,495	18,843	19,191	19,539	19,887	20,235
June	14,700	15,025	15,564	15,554	14,832	14,825	17,340	18,813	17,973	17,963	18,176	18,524	18,872	19,220	19,568	19,916	20,264
July	14,868	15,195	15,807	15,519	14,879	15,379	17,522	18,870	18,130	18,180	18,205	18,553	18,901	19,249	19,597	19,945	20,293
August	15,100	15,385	15,829	15,240	14,675	16,103	17,549	18,806	17,919	18,051	18,234	18,582	18,930	19,278	19,626	19,974	20,322
September	14,850	15,285	16,025	15,172	14,724	16,412	17,605	18,549	18,026	18,179	18,263	18,611	18,959	19,307	19,655	20,003	20,351
October	14,836	15,381	16,311	15,271	14,856	16,993	17,880	18,430	18,127	18,348	18,292	18,640	18,988	19,336	19,684	20,032	20,380
November	15,025	15,340	16,460	15,205	14,625	17,168	17,848	17,981	17,573	17,973	18,321	18,669	19,017	19,365	19,713	20,061	20,409
December	14,716	15,199	16,204	15,062	14,654	17,235	17,874	17,707	17,537	18,002	18,350	18,698	19,046	19,394	19,742	20,090	20,438
Net Ann. Inc.	401	483	1,005	-1,142	-408	2,581	639	-167	-170	465	348	348	348	348	348	348	348
Ave. Mo. Inc.	33	40	84	-95	-34	215	53	-14	-14	39	29	29	29	29	29	29	29

Monthly Population Averages

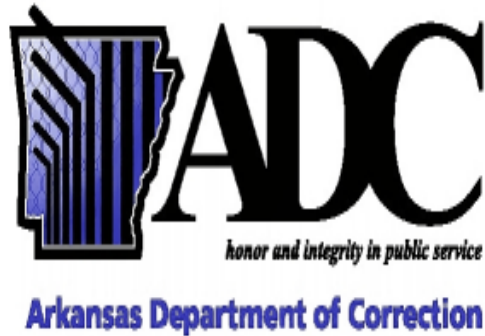
	11/1	11/2	11/3	11/6	11/7	11/8	11/9	11/10	11/13	11/14	11/15	11/16	11/17	11/20	11/21	11/22	11/23	11/24	11/27	11/28	11/29	11/30	
Unit/Center																							Average
Benton	330	328	330	334	333	332	331	329	329	327	326	325	323	335	305	314	313	313	313	313	317	320	324
Cummins	1,926	1,928	1,927	1,927	1,924	1,920	1,921	1,943	1,943	1,948	1,946	1,940	1,950	1,949	1,931	1,933	1,926	1,926	1,926	1,924	1,922	1,909	1,931
Delta	622	619	621	610	609	598	594	612	612	611	607	607	622	619	590	605	596	596	596	621	620	602	609
EARU Reg	1,674	1,671	1,666	1,665	1,660	1,653	1,653	1,652	1,652	1,642	1,633	1,620	1,631	1,627	1,599	1,602	1,610	1,610	1,610	1,630	1,624	1,620	1,637
Ester	576	572	571	573	569	579	580	574	571	568	569	571	563	559	556	566	565	565	564	574	575	585	570
Grimes	1,077	1,076	1,069	1,079	1,074	1,074	1,074	1,063	1,063	1,075	1,073	1,072	1,072	1,064	1,051	1,054	1,051	1,051	1,051	1,060	1,055	1,075	1,066
Max Sec	635	635	635	633	634	635	628	629	629	626	625	625	625	623	632	620	619	619	617	618	617	621	626
McPherson	995	994	998	998	995	989	992	990	990	998	992	997	990	995	979	941	948	948	948	950	944	940	978
MCWRC	137	137	137	138	138	138	138	138	138	137	137	136	134	134	130	131	133	133	133	133	133	133	135
N Central	839	838	835	825	825	825	829	828	828	828	827	835	827	822	807	798	802	802	802	800	811	802	820
NWAWRC	99	100	99	100	100	100	100	100	100	99	99	100	100	100	92	94	97	97	97	97	100	99	99
Ouachita River	1,773	1,803	1,825	1,805	1,821	1,838	1,841	1,823	1,823	1,826	1,840	1,832	1,827	1,830	1,809	1,763	1,728	1,728	1,728	1,690	1,704	1,696	1,789
Randall L Williams	560	563	562	559	561	555	556	554	556	553	560	562	559	556	539	531	538	538	537	541	540	538	551
Pine Bluff	491	495	492	491	492	497	497	502	503	502	502	499	491	497	487	487	484	482	484	491	485	487	493
PB Reentry	54	54	53	53	54	54	54	54	54	54	54	48	54	54	52	52	51	53	53	53	54	54	53
TRCC	128	128	128	128	128	127	126	126	126	126	126	126	126	126	118	125	125	125	125	126	126	126	126
Tucker	994	990	1,000	1,000	1,002	1,003	1,001	996	996	999	998	1,004	1,000	998	992	987	992	992	992	992	991	993	996
Varner	1,721	1,721	1,724	1,722	1,721	1,720	1,713	1,707	1,707	1,701	1,705	1,706	1,711	1,708	1,705	1,701	1,712	1,712	1,714	1,718	1,724	1,733	1,714
Wrightsville	1,303	1,294	1,283	1,289	1,299	1,301	1,300	1,302	1,302	1,303	1,312	1,315	1,308	1,301	1,271	1,295	1,286	1,286	1,286	1,283	1,295	1,300	1,296
Total ADC	15,934	15,946	15,955	15,929	15,939	15,938	15,928	15,922	15,922	15,923	15,931	15,920	15,913	15,897	15,645	15,599	15,576	15,576	15,576	15,614	15,637	15,633	15,812
ALETA	19	19	19	19	19	19	19	19	19	20	20	20	20	20	19	19	19	19	19	19	19	19	19
Ar State Police	60	62	62	63	63	63	63	62	62	63	62	62	61	61	61	61	60	60	60	60	60	60	61
Co Jail / M	1,659	1,648	1,645	1,654	1,645	1,652	1,676	1,657	1,657	1,683	1,677	1,693	1,697	1,717	1,715	1,684	1,662	1,662	1,662	1,631	1,616	1,591	1,663
Co Jail / F	78	81	80	82	85	81	81	77	77	69	72	73	76	75	72	65	58	58	58	55	60	63	72
Total Co Jail BK	1,737	1,729	1,725	1,736	1,730	1,733	1,757	1,734	1,734	1,752	1,749	1,766	1,773	1,792	1,787	1,749	1,720	1,720	1,720	1,686	1,676	1,654	1,735
Bowie Co., TX	334	334	335	334	334	334	334	333	333	333	333	333	333	332	332	332	332	332	332	332	332	332	333
309/M	201	202	203	203	204	202	202	202	202	202	202	204	208	210	209	203	204	204	204	204	204	203	204
309/F	44	44	44	44	44	44	44	44	44	44	44	44	47	47	46	46	45	45	45	47	47	47	45
Total Act 309	245	246	247	247	248	246	246	246	246	246	246	248	255	257	255	249	249	249	249	251	251	250	249
Total Non ADC	2,395	2,390	2,388	2,399	2,394	2,395	2,419	2,394	2,394	2,414	2,410	2,429	2,442	2,462	2,454	2,410	2,380	2,380	2,380	2,348	2,338	2,315	2,397
Total	18,329	18,336	18,343	18,328	18,333	18,333	18,347	18,316	18,316	18,337	18,341	18,349	18,355	18,359	18,099	18,009	17,956	17,956	17,956	17,962	17,975	17,948	18,208

Fiscal Year 2017 County Jail Backup

DAY		Jul-17		Aug-17		Sep-17		Oct-17		Nov-17
1	*	1,384		1,490		1,460	*	1,577		1,737
2	*	1,384		1,478	*	1,460		1,590		1,729
3		1,392		1,471	*	1,460		1,617		1,725
4		1,419		1,467		1,462		1,631	*	1,725
5		1,419	*	1,467		1,462		1,645	*	1,725
6		1,424	*	1,467		1,437		1,631		1,736
7		1,428		1,475		1,426	*	1,631		1,730
8	*	1,428		1,493		1,456	*	1,631		1,733
9	*	1,428		1,472	*	1,456		1,627		1,757
10		1,437		1,485	*	1,456		1,653		1,734
11		1,473		1,505		1,439		1,639	*	1,734
12		1,442	*	1,505		1,445		1,639	*	1,734
13		1,474	*	1,505		1,450		1,659		1,734
14		1,468		1,525		1,479	*	1,659		1,752
15	*	1,468		1,524		1,489	*	1,659		1,749
16	*	1,468		1,529	*	1,489		1,662		1,766
17		1,491		1,518	*	1,489		1,649		1,773
18		1,482		1,546		1,490		1,660	*	1,773
19		1,441	*	1,546		1,471		1,661	*	1,773
20		1,435	*	1,546		1,472		1,664		1,792
21		1,464		1,592		1,491	*	1,664		1,787
22	*	1,464		1,592		1,537	*	1,664		1,749
23	*	1,464		1,577	*	1,537		1,656		1,720
24		1,453		1,543	*	1,537		1,669		1,720
25		1,455		1,516		1,552		1,717	*	1,720
26		1,452	*	1,516		1,578		1,742	*	1,720
27		1,481	*	1,516		1,607		1,763		1,720
28		1,483		1,490		1,596	*	1,763		1,686
29	*	1,483		1,490		1,577	*	1,763		1,676
30	*	1,483		1,480	*	1,577		1,754		1,654
31		1,484		1,476				1,745		
Avg Daily Backup		1,450		1,510		1,495		1,667		1,735

Note: Totals do not include 309 Contracts in County Jails (maximum of 336)

Fiscal Year Average 1,571



November STTG Unit Counts

Unit	Beginning Total	Confirmed	Suspected	In	Out	Paroled	Removed	Ending Total	Total Unit Population	Unit % of STTG's
Benton	61	3	3	4	3	4		64	321	19.94%
Cummins	507			26	14	17		502	1903	26.38%
Delta	166			28	34	6		154	613	25.12%
EARU	576	3	3	31	38	14		561	1624	34.54%
Grimes	325	4		41	22	20		328	1069	30.68%
Hawkins	39			1		2		38	447	8.50%
Max	236	10	4	25	17			258	640	40.31%
Mcperson	59			2	1	1	14	45	927	4.85%
MCWR	38			1	4			35	133	26.32%
NCU	201			30	5	13		213	801	26.59%
NWAWR	15			2	2			15	100	15.00%
ORCU	366			30	19	15		362	1604	22.57%
ORCU Intake	74	140			164			50	106	47.17%
PB/Ester	291	13		64	39	21		308	1120	27.50%
RLW	146			30	22	9		145	540	26.85%
TWR	25			7	2	3		27	123	21.95%
Tucker	278			36	19	16		279	987	28.27%
Varner	629		1	84	40	15		659	1730	38.09%
Wrightsville	161			24	9	6		170	851	19.98%
Total	4193	173	11	466	454	162	14	4213	15639	26.94%

ORCU Intake brought in 140 new STTG members into ADC last Month.



November STTG Disciplinary Report

Unit	STTG Incidents	STTG Suspected Incidents	Total Unit Disciplinary	Disciplinary Involving STTG	Percentage
Benton			6	2	33.33%
Cummins	3		283	96	33.92%
Delta			190	91	47.89%
EARU		1	235	100	42.55%
Grimes	4	1	155	64	41.29%
Hawkins			22	1	4.55%
Max			63	37	58.73%
Mcperson			123	7	5.69%
MCWR			9	4	44.44%
NCU			127	43	33.86%
NWAWR			7	1	14.29%
ORCU			207	78	37.68%
ORCU Intake			4	0	0.00%
PB/Ester			66	23	34.85%
RLW	1		66	5	7.58%
TWR			0	0	0.00%
Tucker	1		151	70	46.36%
Varner			356	194	54.49%
Wrightsville	1		60	18	30.00%
Total	10	2	2130	834	39.15%



November STTG Counts by STTG Set

STTG Set	Benton	Cummins	Delta	EARU	Grimes	Hawkins	Max	Mcpherson	MCWR	NCU	NWAWR	ORCU	Intake	PB	RLW	TWR	Tucker	Varnar	Wrightsville	Total
Asian	1	1	1	1	2					1	1	2	1	3			1	2		17
Bloods	9	103	30	91	57	8	68	5	4	23	1	64	4	50	14	6	62	122	28	749
Crips	4	74	19	49	34	3	29	6	4	22	3	53	1	36	17	1	34	109	28	526
Folk	1	23	8	56	26	5	30	5		45	4	23	7	22		7	31	74	7	374
GD	14	133	34	123	77	7	49	3	4			89	10	58	46		58	127	33	865
Mexican	6	16	2	19	12	3	2	3		8	3	11		10	9		5	26	7	142
Motorcycle		1		3	3		2	1		1		1		2	1			4		19
Other	3	8	5	9	11		2	2		5		9	1	16	2		6	9	5	93
People	2	16	3	18	11		13	2	2	11	1	13		18	2	1	8	25	8	154
Unknown		3		12	7		1	1	1	4		5	2		4	1	2	0	4	47
W/S	13	34	23	52	35	6	16	12	8	39	2	39	12	43	16	11	31	82	22	496
NAE	2	30	11	34	13	3	12	2	3	11		23	5	11	11		12	16	6	205
WAR	6	46	10	64	24	2	25	2	5	28		18	4	24	13		22	29	14	336
AC	2	11	7	12	15	1	6	1	2	7		5	1	6	6		6	23	5	116
AB	1	3	1	18	1		3		2	8		7	2	9	4		1	11	3	74
Total	64	502	154	561	328	38	258	45	35	213	15	362	50	308	145	27	279	659	170	4213

Key:

GD = Gangster Disciples

W/S = White Supremacist

NAE = New Aryan Empire

WAR = White Aryan Resistance

AC = Aryan Circle

AB = Aryan Brotherhood

ARKANSAS DEPARTMENT OF CORRECTION INPATIENT AND EMERGENCY ROOM UTILIZATION

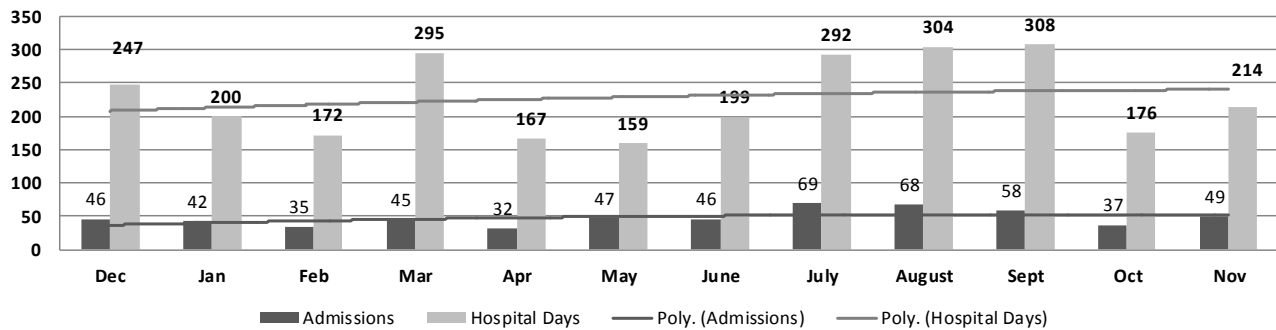
ADC Inpatient Statistics Past 12 Months

	2016	2017											
	Dec	Jan	Feb	Mar	Apr	May	June	July	August	Sept	Oct	Nov	Average
Admissions	46	42	35	45	32	47	46	69	68	58	37	49	47.8
Hospital Days	247	200	172	295	167	159	199	292	304	308	176	214	227.8
Average Length of Stay	5.37	4.76	4.91	6.56	5.22	5.48	5.10	6.21	7.07	6.70	7.65	4.37	4.76

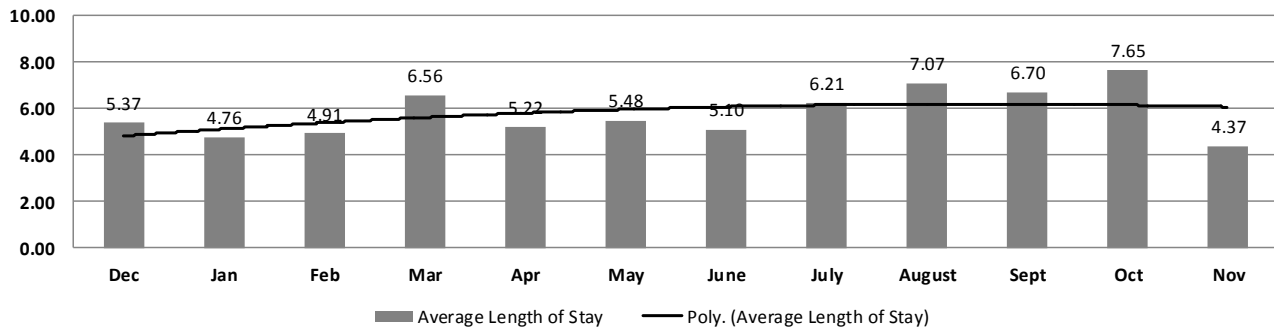
ADC ER Visits Past 12 Months

	2016	2017											
	Dec	Jan	Feb	Mar	Apr	May	June	July	August	Sept	Oct	Nov	Average
Emergency Room Visits	102	92	85	129	114	92	85	92	133	138	87	100	104.1

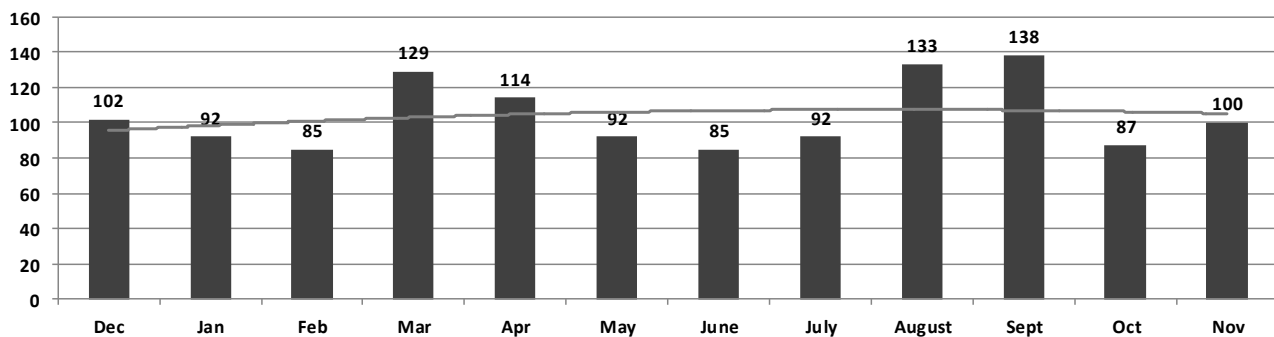
ADC Inpatient Utilization Past 12 Months



ADC Inpatient Average Length of Stay Past 12 Months



ADC Emergency Room Visits Past 12 Months



**November 2017
Medical Grievance
Board Report**

Unit	Acknowledged/ Received	Rejected	Reviewed & Signed by Dep Director	With Merit	With Merit, but Resolved	% With Merit	Without Merit
Benton	0	0	0	0	0	0%	0
Bowie Co.	0	0	4	1	0	25%	3
CMU	1	0	0	0	0	0%	0
Cummins	18	1	8	0	1	13%	7
Delta	8	0	3	0	0	0%	3
EARU	19	5	19	4	0	21%	15
EARU Max	34	1	30	3	0	10%	27
Ester	3	0	5	0	0	0%	5
Grimes	9	3	6	0	0	0%	6
Hawkins	0	1	0	0	0	0%	0
McPherson	9	4	5	2	0	40%	3
MCWRC	0	0	0	0	0	0%	0
MSU	6	0	7	1	0	14%	6
North Central	4	2	6	0	0	0%	6
NWAWRC	0	0	0	0	0	0%	0
Ouachita	16	6	25	5	1	24%	19
Pine Bluff	1	0	0	0	0	0%	0
Randall Williams	2	2	1	0	0	0%	1
SNN	0	0	0	0	0	0%	0
TRCC	0	0	0	0	0	0%	0
Tucker	1	0	0	0	0	0%	0
Varner	9	0	2	0	0	0%	2
Varner Super Max	35	3	14	0	0	0%	14
WRU	3	3	1	0	0	0%	1
WHM	0	0	0	0	0	0%	0
WWR	0	0	0	0	0	0%	0
TOTAL	178	31	136	16	2	13%	118

November 2017

PURCHASE ORDERS OVER \$10,000.00					
VENDOR	DESCRIPTION	LOCATION	PO#	PURCHASE AMOUNT	FUND
Mid South Sales Inc	Fuel	Wrightsville	4501755596	\$14,222.13	Operational Budget
Green Point AG LLC	Fuel	Cummins/Farm	4501756497	\$43,924.53	Operational Farm Budget
American Paper & Twine Co	Paper Towels	Central Warehouse	4501758191	\$11,887.65	Operational Budget
HMU Limited Liability Company	Modular Panel System	Wrightsville/Industry Furniture	4501758825	\$14,297.85	Operational Industry Budget
Liberty Trailer Co Inc	Utility Trailers	Central Warehouse	4501758991	\$21,200.00	Work Release
WW Grainger Inc	Magento Static Detector	ADC Radio Shop	4501758948	\$21,165.54	Work Release
Sysco Food Services of Arkansas Inc	Margarine	Central Warehouse	4501759328	\$29,406.30	Operational Budget
Galls LLC	Uniform Shirts	Training Academy	4501759582	\$11,264.35	Operational Budget
Arkansas Correctional Industries	Clothing and Mattress Covers	Pine Bluff	4501759339	\$14,545.22	Operational Budget
William R Hill & Co Inc Doug Waldman	Food Purchases	Central Warehouse	4501759324	\$21,299.04	Operational Budget
Arkansas Correctional Industries	Janitorial Supplies	Central Warehouse	4501759335	\$11,651.19	Operational Budget
Arkansas Correctional Industries	Tea and Coffee	Central Warehouse	4501759341	\$11,080.00	Operational Budget
Greenway Equipment Inc	Overages & Damages on JD Equipment	Cummins/Farm	4501759548	\$38,609.20	Operational Farm Budget
Bracey Insurance Agency Inc	Crop Hail Insurance	Cummins/Farm	4501759534	\$15,303.00	Operational Farm Budget
Razor Chemical	Janitorial Supplies	Delta/Janitorial Factory	4501759792	\$28,962.72	Operational Industry Budget
Woodbury Beach Co	Tube Bundle for Boiler Project	Max/Construction	4501759910	\$14,932.07	Telephone Funds
Miller Bowie Supply.Com	Swine Feed	Cummins/Farm	4501760251	\$20,957.20	Operational Farm Budget
Arkansas Correctional Industries	Clothing	Ouachita	4501760166	\$55,108.22	ORU Operating Funds
The Presidio Corporation	Network Service Equipment	Information Service	4501760661	\$77,074.69	Telephone Funds
Charm Tex	Mattress	Ouachita	4501760671	\$10,224.20	ORU Operating Funds
McClelland Consulting Engineers Inc	Civil Engineering Services	Construction	4501760810	\$21,799.06	Telephone Funds
Cruse Uniforms and Equipment Inc	Chemical Weapons	Departmental Armor	4501760892	\$10,894.01	Telephone Funds
Littlefield Oil Co	Fuel	Grimes	4501759075	\$12,397.51	Operational Budget
Central Restaurant Products LLC	Convection Ovens	North Central	4501760965	\$13,494.20	Operational Budget
Bob Barker Company Inc	Clothing	EARU	4501761300	\$10,272.52	Operational Budget
Terco Investment Co Inc	Welder/Generator	Construction	4501761373	\$10,673.26	Operational Budget
WW Grainger Inc	Baggage Scanner	EARU/Emergency Preparedness	4501761702	\$22,822.25	Work Release
William R Hill & Co Inc Doug Waldman	Food Purchases	Central Warehouse	4501761948	\$479,287.99	Operational Budget
Mid States Services Inc	Toilet Paper	Hawkins/ACI/Imaging	4501762105	\$24,268.80	Operational Industry Budget
Tabb Textiles Co Inc	Shirt Fabric	Wrightsville/ACI Warehouse	4501762103	\$54,000.00	Operational Industry Budget
Gary R Powell, AG H2O	Reinke Pivot Irrigation Supplies	EARU/Farm	4501762151	\$10,248.70	Operational Farm Budget
Mid South Sales Inc	Fuel	Central Warehouse	4501760970	\$10,455.25	Operational Budget
Plunkett Distributing	Planed Oak	Wrightsville/ACI Warehouse	4501762055	\$21,000.00	Operational Industry Budget
National Food Group	Food Purchases	Central Warehouse	4501762565	\$70,451.00	Operational Budget
Sysco Food Services of Arkansas Inc	Food Purchases	Central Warehouse	4501762501	\$93,203.80	Operational Budget
Green Point AG LLC	Fertilizer	Cummins/Chemical Shed	4501762479	\$49,500.00	Operational Farm Budget
Arkansas Correctional Industries	Tea and Coffee	Central Warehouse	4501762453	\$12,861.00	Operational Budget
Phoenix Trading Inc Amercare Products	Deodorant Soap	Central Warehouse	4501762485	\$17,483.40	Operational Budget
Arkansas Correctional Industries	Janitorial and Household Supplies	Central Warehouse	4501762446	\$41,137.62	Operational Budget
US Foods Inc	Food Purchases	Central Warehouse	4501762480	\$30,650.46	Operational Budget
Robbins Sales Company Inc	Food Purchases	Central Warehouse	4501762558	\$101,978.24	Operational Budget
Boone & Boone Sales Co Inc	Boiler Room Repair Supplies	Construction	4501762898	\$12,183.20	Telephone Funds
Steve Groves	Bulls	Wrightsville/Farm	4501759093	\$33,600.00	Operational Farm Budget
Accrurent LLC	TMS Software Upgrad & Training	Information Service	4501760523	\$42,491.09	Operational Budget
Arkansas Correctional Industries	Clothing and Linens	Vamer	4501763929	\$54,005.92	Operational Budget
		Total for Purchases over \$10,000		\$1,748,274.38	
FIRM CONTRACTS OVER \$25,000.00					
VENDOR	DESCRIPTION	UNIT	Contract # P.O#	PURCHASE AMOUNT	FUND
		Total for Contracts		\$0.00	
EMERGENCY PURCHASE ORDERS OVER \$25,000.00					
Adani Systems Inc	Body Scanners Warranty & Services	Cummins, Varner, Max, EARU	4501758273	\$88,000.00	Work Release
Adani Systems Inc	Body Scanner Security System	Cummins, Varner, Max, EARU	4501758061	\$748,856.88	Work Release
		Total EM Purchases		\$836,856.88	
		Total Purchases		\$2,585,131.26	

NOVEMBER 2017 PERSONNEL REPORT

UNIT	AUTHORIZED	FILLED	VACANT	HIRED	VOLUNTARY TERMINATION	INVOLUNTARY TERMINATION	RETIREMENT
BENTON (CR05)	75	72	3	1	1	1	0
CENTRAL OFFICE (CR01, CR02, CR08 & CR22)	268	237	31	1	1	0	1
CHAPLAINCY	27	27	0	0	0	0	0
CONSTRUCTION (CR04)	132	126	6	2	0	0	0
CUMMINS (CR09)	445	380	65	0	1	4	0
DELTA (CR10)	178	166	12	7	1	1	0
EAST ARKANSAS (CR12)	357	306	51	7	12	2	0
ESTER (CR11)	157	139	18	6	6	1	0
FARM (CR29)	66	58	8	0	0	0	0
GRIMES (CR27)	241	219	22	2	2	1	0
INDUSTRY (CR07)	57	42	15	0	0	0	0
MAXIMUM SECURITY (CR14)	225	173	52	3	2	5	1
MCPHERSON (CR28)	225	185	40	6	5	1	0
MENTAL HEALTH	186	152	34	1	3	0	1
MISS COUNTY (CR15)	36	33	3	0	2	0	0
NORTH CENTRAL (CR16)	191	184	7	3	3	0	0
NORTHWEST ARK (CR17)	29	29	0	0	1	0	0
OUACHITA RIVER (CR30)	460	421	39	15	23	6	0
PINE BLUFF (CR20)	166	165	1	1	0	0	0
RANDAL L. WILLIAMS (CR13)	142	125	17	0	2	2	0
TEXARKANA (CR21)	31	27	4	3	0	0	0
TRANSPORTATION (CR32)	102	92	10	0	0	0	0
TUCKER (CR23)	186	144	42	2	4	7	0
TUCKER RENTRY (CR33)	31	28	3	1	1	0	0
VARNER (CR24)	354	252	102	11	5	5	0
WRIGHTSVILLE (CR25)/HAWKINS(CR06)	275	248	27	2	3	1	0
TOTAL	4642	4030	612	74	78	37	3

Chaplaincy

Monthly Report for: November 2017	BENTON	CUMMINS	DELTA REGIONAL	EAST ARKANSAS	EAST ARKANSAS MAX	ESTER	GRIMES	HAWKINS	MAXIMUM SECURITY	MCPHERSON	NORTH CENTRAL	OUACHITA RIVER	PINE BLUFF	RANDALL L. WILLIAMS	TUCKER	VARNER	VARNER MAX	WRIGHTSVILLE	PTF	TOTAL
Services Chaplains Oversaw																				
Christian																				
Population	3	7	4	5	0	3	6	3	8	3	7	4	3	9	5	2	0	4	2	78
Segregation	0	0	1	0	0	0	0	0	0	0	0	2	0	0	0	0	0	0	0	3
Muslim																				
Population	0	4	2	2	0	1	4	0	1	4	0	2	1	5	0	5	0	0	0	31
Segregation	0	0	0	0	0	0	0	0	0	0	0	0	0	0	0	0	0	0	0	0
Total Services																				112
Volunteers in Charge																				
Protestant	22	24	5	30	0	11	17	18	47	21	5	11	12	12	19	26	9	29	2	320
Catholic	0	0	0	3	0	0	2	4	1	2	1	4	0	1	1	2	2	4	4	31
Muslim	0	0	0	4	0	4	4	0	0	4	0	5	0	0	2	0	0	0	0	23
Other	4	2	0	4	0	0	0	2	0	1	0	19	0	0	0	0	0	2	0	34
Baptism	0	1	0	1	0	0	8	0	0	45	4	0	0	0	0	15	3	2	0	79
Marriages																				
	0	0	1	0	0	0	0	0	0	0	1	0	0	0	2	0	0	1	0	5
Distributed by Chaplains																				
Greeting Cards	20	76	0	0	0	60	52	0	68	814	1762	0	150	16	97	136	167	0	600	4018
Bibles, Quran, Torah, Etc.	20	30	30	50	17	150	18	2	9	40	23	650	6	4	10	83	10	25	3	1180
Study Course	325	0	0	8	4	0	2	1	47	20	0	29	0	0	0	329	56	0	0	821
Writing Supplies	15	0	0	0	0	0	62	0	170	0	0	29	0	5	0	0	0	0	800	1081
Literature	275	1343	615	684	261	450	78	4	770	262	485	620	150	8	5	3073	569	375	225	10252
Chaplain's Visits																				
Barracks	58	34	39	6	0	20	312	55	44	60	62	120	89	6	127	113	39	40	6	1230
Approximate Hours Spent in Barracks	31	26	5	4	0	88	58	28	25	40	31	51	9	1	32	12	13	20	2	476
Inmate Office visits	78	48	110	56	0	75	88	74	20	66	82	173	58	108	311	74	0	29	15	1465
Other Office visits	67	18	8	24	0	26	16	14	30	40	20	110	12	6	30	30	0	35	12	498
Hospital	0	1	0	0	0	0	7	0	0	0	0	27	0	6	1	0	0	0	0	42
Infirmary/Sick Call	0	2	2	1	0	5	37	9	4	3	4	34	4	10	3	5	0	6	0	129
Restrictive Housing	0	2	3	0	18	0	262	12	38	7	3	41	4	10	2	0	26	4	0	432
Punitive Isolation	0	3	3	0	2	0	0	12	16	7	0	29	4	10	0	0	13	4	0	103
PC - DRU	0	0	3	0	0	0	0	0	0	0	0	0	0	0	0	0	0	0	0	3
Visitation Days	0	1	1	0	0	0	0	2	0	0	0	3	0	0	0	0	0	1	1	9
Volunteer Visits																				
RCV	4	0	0	0	0	11	15	3	38	24	9	57	0	6	14	0	0	0	0	181
OCV	12	0	0	0	0	3	0	70	33	22	22	0	29	0	34	8	0	48	20	301
Spiritual Advisor	0	2	0	0	0	2	1	0	0	0	11	2	0	3	0	0	2	0	0	23
CRA	31	26	12	92	14	25	231	10	84	31	47	106	22	11	99	73	15	46	0	975
Religious Volunteer Hours																				
Volunteer Hours	94	98	35	251	19	52	246	81	27	175	347	434	92	48	461	337	30	118	20	2965
DENOMINATIONAL/VOLUNTEER CHAPLAIN HOURS	73	22	4	29	0	192	115	71	111	48	138	112	19	64	129	39	9	270	0	1445
Total Volunteer Hours																				4410
Other Activities of Chaplain																				
Counseled Employees	27	4	4	7	0	8	10	15	2	22	10	46	10	8	4	19	9	8	4	217
Orientation Sessions	0	4	0	0	0	0	0	0	2	1	0	4	0	0	0	0	0	0	0	11
Free World Devotions	0	0	0	10	0	9	15	0	0	2	0	4	12	9	2	1	0	0	1	65
Spoke in Churches	4	10	0	17	0	10	13	0	0	2	0	5	12	8	3	1	0	0	1	86
Crisis Intervention Sessions	9	17	0	0	0	10	1	11	3	15	5	120	11	6	5	17	5	15	10	260
Marriage Counseling	1	1	0	4	0	0	2	0	2	3	1	5	0	2	0	0	0	0	3	24
Denominational Meeting	0	1	0	0	0	0	1	0	1	0	0	2	1	7	0	1	0	0	0	14
Chaplain's Meeting	0	2	1	1	0	1	2	1	0	1	0	2	1	1	1	1	0	1	1	17
Volunteer Training Session	1	1	0	0	0	0	16	2	1	1	0	0	0	0	0	1	0	0	0	23
Choir Trip	0	0	0	0	0	0	0	0	0	0	0	0	0	0	0	0	0	0	0	0
Chaplain Transfers																				
	0	0	0	0	0	0	0	0	0	0	0	0	0	0	0	0	0	0	0	0
Chaplain Promotions																				
	0	0	0	0	0	0	0	0	0	0	0	0	0	0	0	0	0	0	0	0
PAL PROGRAM																				
Enrolled at start of month	0	47	23	48	0	45	49	49	19	56	23	35	0	33	59	45	0	28	0	559
Enrolled during the month	0	7	3	4	0	0	4	11	2	14	4	19	0	0	6	12	0	1	0	87
Removed From PAL Program																				
# Paroled	0	1	0	1	0	2	1	8	0	6	1	0	0	2	4	3	0	0	0	29
# Completed	0	0	4	1	0	0	0	1	0	1	0	4	0	0	0	4	0	1	0	16
# Withdrew	0	1	1	0	0	0	1	0	0	2	1	3	0	0	2	3	0	0	0	14
# Removed	0	5	2	1	0	0	1	0	0	2	0	1	0	1	0	1	0	0	0	14
# Transferred	0	0	1	0	0	2	1	0	2	3	0	2	0	0	1	1	0	0	0	13
Total Removed from PAL Program	0	7	8	3	0	4	4	9	2	14	2	10	0	3	7	12	0	1	0	86
Total Enrolled at the End of the Month	0	47	18	49	0	41	49	51	19	56	25	44	0	30	58	45	0	28	0	560
Volunteers In PAL																				
	0	15	4	10	0	8	20	40	20	20	5	10	0	4	10	7	0	32	0	205
Special Events:																				
	2	0	0	3	0	1	0	0	1	1	1	0	1	0	0	2	0	0	0	12

AR-Department of Correction Securus Video Visitation Activity Tracker

Total ADP: 15,586

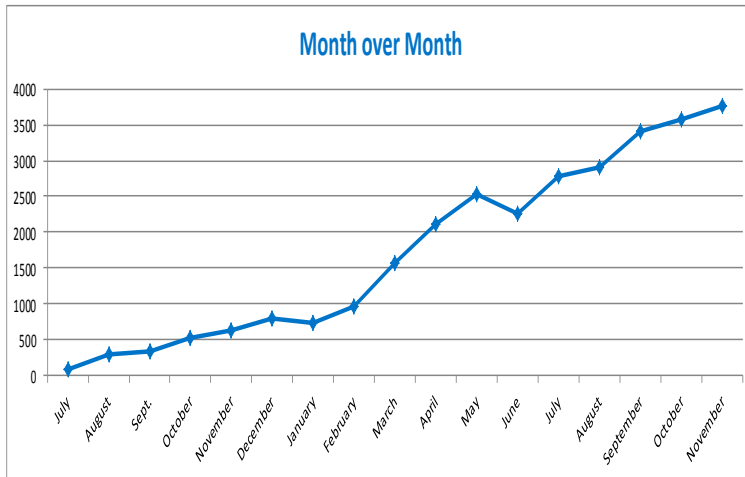
July 6, 2016 Go Live: Cummins & Pine Bluff Re-Entry
August 17, 2016 Go Live: Benton, State Police Barracks & Wrightsville Satellite Unit
Sept. 14, 2016 Go Live: NW Arkansas Work Release
Sept. 28, 2016 Go Live: Varner Unit & Texarkana Regional Correction Center
Nov. 2, 2016 Go Live: Mississippi County Work Release Center
Jan. 18, 2017 Go Live: Randall L Williams Facility & Pine Bluff Complex
Feb. 22, 2017 Go Live: Mcpherson Unit, J Aaron Hawkins Sr. Center Facility & Ester Unit
March 29, 2017 Go Live: East Arkansas Regional Unit & Tucker Re-entry
April 11, 2017 Go Live: North Central Unit
April 12, 2017 Go Live: Grimes Unit
June 3, 2017 Go Live: Tucker Unit
July 19, 2017 Go Live: Delta Regional Unit

Promotional Pricing

Until 12/31/17: \$5/30 minutes - Promotional price point to encourage remote visitation

Total Visits by Month	July	August	Sept.	October	November	December	January	February	March	April	May	June	July	August	September	October	November
Total (Includes SuperMax)	97	288	348	528	631	806	736	958	1,578	2,117	2,524	2,252	2,780	2,898	3,398	3,572	3,771
Target Objective	2,002	2,552	4,468	4,468	4,590	4,590	5,589	7,097	8,876	10,722	10,722	11,710	11,710	14,659	14,659	14,659	14,659

Anywhere Visitation Performance:



Completed Visits

Site	November	October
Cummins	322	330
Pine Bluff Re-Entry	1	0
Benton	89	89
State Police Barracks	41	29
NW Arkansas WRC	27	11
Varner Unit	167	177
Texarkana Regional	24	17
Mississippi County WRC	29	38
Randall L Williams	285	316
Pine Bluff Complex	186	155
Mcpherson	141	144
J Aaron Hawkins Sr.	170	211
Ester	258	319
East Arkansas Regional	321	319
Tucker Re-entry	26	9
North Central	252	260
Grimes	255	345
Tucker Unit	245	274
Delta Regional	247	187
Tucker Max	129	141
Ouachita River	556	201
Total:	3771	3572

Missed by Inmate

Site	November	October
Cummins	12	20
Pine Bluff Re-Entry	0	0
Benton	5	5
State Police Barracks	2	1
NW Arkansas WRC	0	0
Varner Unit	6	18
Texarkana Regional	5	2
Mississippi County WRC	2	2
Randall L Williams	8	12
Pine Bluff Complex	11	3
Mcpherson	12	5
J Aaron Hawkins Sr.	1	3
Ester	11	7
East Arkansas Regional	15	4
Tucker Re-entry	1	0
North Central	3	9
Grimes	3	9
Tucker Unit	23	39
Delta Regional	5	11
Tucker Max	6	3
Ouachita River	25	20
Total:	156	173