

Wendy Kelley
Director

September
2015



OPERATIONS/INSTITUTIONS

RESEARCH/PLANNING

August, 2015 Admissions and Releases – Admissions for August, 2015 totaled **1,137**, while releases totaled 943, for a net increase in-house of **194**.

Inmate Population Growth/Projection – The ADC's jurisdictional count rose to a **record high of 19,063** inmates on August 25. At the end of August, 2015, the Arkansas Department of Correction Population/Jurisdiction totaled **18,806** representing a growth of 932 inmates since the first of January, 2015. For calendar year 2015, the average growth is **117** inmates per month, up from an average monthly growth during calendar year 2014 of **53** inmates per month.

Average County Jail Backup – The backup in the county jails averaged **2,572** inmates per day during the month of August, 2015 – down from an average of **2,598** for the month of July, 2015.

ACCREDITATION

Several employees attended ACA Summer Conference and received re-accreditation certificates for the following:

Cummins Unit - 100% and 99.07%
Ouachita Regional Correctional Unit - 100% and 100%
Newport Complex – 100% and 100%
Maximum Security – 100% and 100%
Training Academy – 100% and 100%

ACA Internal Audits Completed:

August 4 Varner Unit, first pre-audit
August 24-28 Varner re-accreditation preparation
August 31 Varner re-accreditation preparation

Fire/Safety and Sanitation independent audits completed:

August 3-7 Varner re-accreditation prep
August 10-14 Varner re-accreditation prep
August 17-21 Pine Bluff Complex Independent Audit

PREA/STTG

PREA Hotline Data:

There were no reported issues with the PREA Hotline. The transition from GTL to Securus has gone smoothly for the PREA

hotline. Internal Affairs is handling all PREA investigations.

Number of calls received	87
Total calls referred for reported PREA issue	8
Total calls referred for non-PREA issue	20
Calls referred due to technical failure	0
Calls referred to IAD	1

The PREA coordinator has coordinated gender specific training for staff at the McPherson Unit.

STTG:

Two STTG unit coordinators completed the most recent Homeland Security Liaison Officer training program in the month of August through the Arkansas State Fusion Center in Rogers. DW Aiken, the Agency STTG Coordinator, was a guest speaker at this event and gave a presentation on ADC prison gangs and their impact on public safety.

FARM

August proved to be another hot and dry month for most of the farms in the ADC AG Division. Cummins Farm received the least amount of rain which means irrigation was the top priority for the month. There were insect/worm problems at each farm in the soybeans so a lot of spraying was done. Cummins started harvesting rice and corn. Tucker started harvesting corn. Cummins put up 7,500 tons of silage for dairy and beef feed. The beef herd will use silage to supplement the shortage of hay. The poultry division had a major setback August 1. Power was lost due to poles being hit by tractors. The power was out for over seven hours. The generator did not operate correctly so there was no ventilation in the houses. We lost over 41,000 birds. We are moving forward to replace the birds and to put a backup generator in place. The fall/winter gardens at Cummins are mostly planted. The beef herd shipped 500 head of calves to Oklahoma City during the month. They brought a very good price. Comparing the price there and the Arkansas sale barns that same week, there was a 20 cents higher price in Oklahoma City that week than Arkansas sales. In the next few weeks many cows are expected to deliver calves. Their production continued to be down due to the heat.

INMATE GRIEVANCE

Inmate Formal / Informal Grievances: In August, there were a total of 2,832 formal grievances filed and 4,526 informal grievances filed at various units.

Institutional Grievances: There were a total of 524 appeals of institutional grievances received and 342 were answered in August. There were two found with merit.

RE-ENTRY**CHAPLAINCY SERVICES****ALL UNITS**

Each unit participated in the volunteer recruitment and training event, the Gathering, on August 29 at the Summit Church in North Little Rock. Nearly 300 were in attendance. Every unit in the state had a chaplaincy representative available to answer questions for potential future volunteers.

NCU

The NCU Chapel hosted the Kansas Youth Choir August 1. We had 129 inmates and 45 volunteers attend this service.

EARU and EARU Max

CABBI Theology Class was held on August 13 with 20 inmates in attendance.

Tucker Unit

Compassionate Communication Class was provided as well as Jumuah Prayer.

McPherson Unit

On July 31 and August 1, 160 inmates participated in the PAL retreat. On August 22, 223 inmates attended the Gospel Explosion.

Hawkins Unit

On August 21, First Lady Hutchinson came and participated in the community Bible Study. She then providing words of encouragement to inmates. Chaplains Baxley and D'Arezzo attended the Governor's Summit on August 25.

ORCU

The Gideons visited 1,640 inmates and passed out Bibles. 'It's Almost Midnite' held a workshop with 42 inmates attending. Kairos had 84 inmates in three reunions with an average of 28 per reunion.

Varner Unit/VSM

'Christmas Behind Bars' came and passed out packages to all the inmates. Nineteen volunteers spent six hours in the Max preaching, singing, and giving out gift bags. These same volunteers held six services in the chapel for the population and gave them gift bags also. This took place August 21-22. All three chaplains and one CRA were present to assist.

Pre-Release: August 2015

	Slots	Completed	Dis-charged	End Count
McPherson	15	3	1	11
PBU 9B	50	6	2	49
PBU 9C	50	8	11	47
Total	115	15	14	107

There are 500 males and 65 females on the waiting list within 18 months of their release date and of those, nine males and one female are mandated by the Board of Parole. The average time on the waiting list is about three months. The total on the waiting list, including those not currently within the identified time frame, is 691 males and 106 females.

Volunteer Services:

The total number of volunteer hours for the month of August 2015:

Unit	Hours
Cummins	0
Hawkins	12
RLW	30
North Central	2
Ouachita River	0
Pine Bluff	6
PAWS	23
WSU	210
Wrightsville Satellite –Reentry	10
Pine Bluff Unit – Pre-Release	3.5
Religious Volunteer-all Units	6257
TOTAL	7147.5

ADMINISTRATIVE SERVICES

Procurement Section Update:

Contracts/Bids Status:

Contract Renewals

Deodorant soaps

Waste disposal - EARU & Delta

Pest control

Contracts (in process by OSP)

Canvas shoes

Contract (in process with OSP)

Boiler – Ester Unit

Procurement/Contracts Report (required by policy) –

For August 2015, purchase orders and contracts in excess of \$10,000 amounted to \$3,643,385.46. Of this amount, \$1,961,913.01 was for inmate care and custody related items (food, shoes, clothing, etc.). Bulk fuel costs for the month of August were \$128,406.51 - average cost of bulk diesel was \$1.74/gallon; average cost of E-10 was \$2.01/gallon.

HUMAN RESOURCES

Workplace Safety – During the month of August the modified version of the Health and Safety Plan was presented to two Basic Training classes with a total of 105 cadets in attendance. There were three CPR classes presented in the Admin East training room during the month with 57 officers in attendance. Additionally, a new “Active Shooters” class was presented four times during the month to Admin East and Central Office staff with 202 employees attending.

There were 46 incidents reported to Company Nurse in August, which brings our Workman’s Compensation incidents reported to 422 in 2015. Pine Bluff Unit had a follow-up audit from Workers Comp and was released from the Rule 32 Program.

Benefits - There were 37 MIPS promotions and 169 MIPS payments. Eighty-three FMLA requests were processed with two denied. A total of five CAT leave requests were processed with four approved and one denied. The CAT leave bank had 1,300 hours donated. There were four applications received for shared leave with three approved for 640 hours of donated time and one was denied.

Physical Assessments – There were a total of 172 applicants and incumbent personnel that were assessed in the month of August. Ninety-one incumbent personnel successfully completed their physical assessments and two incumbent personnel did not. Of those two, one rescheduled and passed; and one has not been released by a physician. Seventy-seven applicants passed their physical assessments and one did not. That applicant was rescheduled twice and did not show; therefore, he was coded out.

Employment – Facebook results for the month showed a total of 10,300 likes of our page. Through Discover Corrections, there were 276 people from across the U.S. who viewed

ADC’s page. This site does not allow you to review comments made unless the viewer applies for a position through their site and is hired. During the month of August there were no applications submitted for ADC through the Discover Corrections website. There were no job fairs during the month of August.

There were a total of 3,004 applications received during August through ARStateJobs website. A total of 56 non-correctional applications were processed in August. One hundred nine CO I applications were processed: 102 correctional officers were hired and 19 correctional officers were re-hired.

Vacancies, Hires, and Terminations - On August 31 there were a total of 471 vacancies, 118 new hires, and 135 terminations at the various ADC locations.

Donated to ADC:

Gifts, Grants and Donations:

Donations for the month of August were \$35,756.10.

Inmate Welfare Fund balance on August 31 was \$3,976,946.12.

PAWS in Prison Fund balances total on August 31, were \$101,554.85 in ADC Account (7004822/Donations) \$16,762.55 and ADC account (NDC0500/Recycling) \$84,792.30. This does not include the Foundation account managed by PIP Foundation Board.

INFORMATION TECHNOLOGY

During the month, a major issue with network performance has continued at the North Central Unit. Daily, the data circuit has failed at irregular times and for unspecified time frames causing interruption to major applications and email. We have continued to work with DIS and Centurylink in an attempt to identify, isolate, and correct the issue.

There are numerous fiber projects currently in process, including: McPherson RPU, PBU, Construction, Warehouse and EARU Horse barn. Network hardware is being upgraded at RLW and a survey for fiber will soon follow.

The integration of AOC’s Contexte application and eOMIS continues with a conference call discussing the interface. AOC staff prepared a proposed schema for demographics which was well received and stated to be very beneficial for development by Marquis. Marquis staff to begin mapping eOMIS data to the provided schema examples.

Development for processing gate funds was discussed this month. ADC gate fund disbursement has increased from \$100 to \$125. Disbursements do not include transfer to ACC Re-Entry. The funds will be disbursed as follows:

\$50 provided on initial release from ADC

\$75 will be distributed after offender has met the following requirements.

Deduction of any outstanding applicable driver’s

- license issuance funds;
- Documented first physical visit to their parole officer;
- Sex offender (parole or discharge) first physical visit to LLE within 30 days of release;
- Non-sex offender discharges must not have contact with LLE within 30 days of release.

A conference meeting was held between CSG Justice Data Center, Tiffanye Compton, eOMIS Staff, and Marquis Staff to discuss development of a new statistical data report for CSG's use. It was determined that the files developed for JFA would be sent to CSG for review to determine if they will need a new report to meet their research requirements. Information was provided after receiving an agreement between ADC and CSG.

ACT 895 – Progress continues on the development with driver services. Project requirement updates were received which included vision exams and vision referral forms. Also included was the definition of "Vision Specialist." Any ADC staff using the DFA vision equipment is authorized to sign the vision referral form and considered a Vision Specialist.

A multi-agency conference call was held to discuss and review Chapter 1 of the criminal statutes which included all homicide statute codes for uniformity of the agencies.

ACT 1265 – A meeting was held to discuss the estimates from INA and Marquis for the requirements of Transparency, ACT 1265. Funding of the project was also discussed and a determination was made that Assistant Director Mike Carraway will prepare a letter requesting the funding from the General Improvement Fund and have all three agency directors sign the letter prior to the submission.

Inmate outbound emails using their MP3/MP4 player was approved. The vendor was notified and upon review, this project requires no development for inmate commissary transactions. Funds required for the outbound emails are provided by the friends and families using the vendor website. Inmates will only be able to reply to a message they have received from an approved sender.

The SECURUS "SCP" Secure Call Platform has progressed with the completion of all inmate phone systems and equipment. All GTL debit balances have been reviewed and applied to the SECURUS inmate custody accounts. Issues and questions related to the cutover are dwindling with the majority of the concerns resolved. We are now working with the vendor for the rollout of the "SVV" Secure Video Visitation. Site surveys are being completed to conclude with a recommended installation location of the 400-inmate SVV KIOSK.

TRAINING ACADEMY

Basic Training Division

The basic training class 2015-J graduated on August 21 with 69 cadets. The Willis H. Sargent Award winner was Twona Frazier of the Ester Unit.

In-Service Division

During this month, two of the four security for non-security classes were held.

The focus for August was the Management Level 1 class held the 10-13th. This four-day session is for new supervisors and includes training as mandated through the office of the Governor. Guest instructors from the Office of Personnel Management Training Division presented two of those classes, Arkansas Government Basics and HRkansas. Other topics taught by ADC staff include Performance Evaluation, Grievance Prevention and Handling, and the Fair Labor Standards Act. Over 30 students completed this course.

Nineteen students attended the *Southern Folger Locksmith* class. Various locks were studied and then taken apart and put back together. A special day was set aside in the week-long class to go to the Max Unit and work on locks so the students could get firsthand experience under supervision of the instructor.

CPR Instructor Certification class was held on August 11-12. With the new students, this brings our new total of instructors to 73. The Department is saving money by certifying our own instructors. CPR is taught at the unit level to all security staff at the rank of sergeant and above.

A United States Postal Service Inspector instructed the class 'Mail Handling,' which is not only for mail staff, but administrative staff who handle mail and other documents and even security staff who help pass out mail. Several tools of the trade were brought and used during the class. For instance, the HazMatID 360 takes any substance that is tested and provides its chemical make-up.

eCADEMY

During the month of August, 431 ADC employees completed a total of 5047.25 hours of eCADEMY training. Nine percent of ADC employees completed at least one course during that time frame for an average of 0.93 hours per staff member.

HEALTH/CORRECTIONAL PROGRAMS

Sex Offender Treatment Programs:

	Slots	Completed	Removed	Clients
Rsvp	238	0	16	238
Soft	30	0	0	11
Total	268	0	16	249

There are 701 males on the waiting list for RSVP and 23 females on the waiting list for SOFT within five years of their release date and of those, 45 are mandated by the Board of Parole. The average time on the waiting list from request is three to six months for stipulated. The total on the waiting list, including those not currently within the identified time frame, is 1,535 males and 30 females. There are no PREA inmates in either

program at this time.

Therapeutic Community:

	Slots	Completed	Removed	Clients
Tucker	129	3	2	132
Wrts	45	3	3	46
McP	50	3	1	50
Total	224	9	6	228

There are 135 males and 17 females on the waiting list within 18 months of their release date and of those, 24 are mandated by the Board of Parole. The average time on the waiting list from request is 24 days. The total on the waiting list, including those not currently within the identified time frame, is 547 males and 54 females.

S.A.T.P.:

	Slots	Completed	Removed	Clients
Grimes	100	10	35	54
McPh	50	11	1	47
MSU	3	1	0	2
RLW/CF	188	21	9	188
Tucker	43	3	6	42
Varner	44	7	6	46
Wrts	135	17	6	141
Total	563	70	63	520

There are 1,999 males and 415 females on the waiting list within 18 months of their release date and of those, 29 are mandated by the Board of Parole. The average time on the waiting list from request is 20 days. The total on the waiting list, including those not currently within the identified time frame, is 2,986 males and 559 females. The Grimes program is being reduced to 50 slots, and the McPherson program is being increased to 100 slots.

R.P.U.:

The Residential Program Unit at Ouachita had five admissions and four discharges in August for an end of the month count of 69.

McPherson SPU Program:

There was one admission and no discharges in August for an end-of-month count of seven.

Hawkins Center SPU Program:

No admissions and no discharges in August for an end-of-month count of 10.

Habilitation Program:

The Habilitation Program at the Ouachita River Correctional Unit provided treatment services to 39 inmates during Au-

gust. There was one admissions and no discharges for an end-of-month count of 39.

Staffing:

The following Mental Health Services and treatment positions were vacant in July and August:

	July	August
Psychologists	5	6
Psychological Examiners	1	0
Social Workers	5	5
LPC	0	0
Advisors	5	5
Substance Abuse Prog Leaders	6	6
Admin. Specialist/Analyst	3	5
Rehab Adm/Facility Supv	1	1
Nurse II	1	1

ADDITIONAL PROGRAM INFORMATION

Substance Abuse Education:

Substance Abuse Education Groups were held at four units and 40 inmates completed the program during August. The current waiting list is 618.

Anger Management:

Anger Management self-study materials were used at 13 units and 554 inmates completed the material during August. The current waiting list is 1,040.

Thinking Errors:

Thinking Errors self-study materials were used at 13 units and 1,326 inmates completed the material during August. The current waiting list is 2,671.

Suicide:

There were 47 suicidal threats, gestures or low/moderate risk attempts during August. There was one serious attempt resulting in death.

Outpatient:

There were 2,013 inmates on the mental health med log at the end of August. Mental Health conducted the following contacts:

Case Management contacts	1,989
Request for interviews	2,644
Testing	6
Intakes	905
Unit requests	1,105
Counseling (with treatment plan)	169
Pre-lock up reviews	492
Routine seg reviews	1,137
Seg rounds	5,053
PREA evaluations	13
Routine follow-up	223
834 requests	31

Monetary Sanctions:

Sanction reimbursements for July were \$230,200.

County Mental Health Requests:

During August, there were 47 requests of a mental health nature received and 23 inmates were fast tracked to ADC.

County Medical Health Requests:

During August, there were 472 requests of a medical nature received and six were fast tracked.

Deaths:

There were three inmate deaths during the month of August; two bodies were claimed and one body was cremated.

CCS:

See attachment for CCS's report regarding outside beds and emergency room visits.

Medical Grievances:

In August, there were a total of 368 appeals of medical grievances received and 299 appeals were answered. Twenty-nine of those were found to be with merit and 11 with merit but resolved.

Medical Grievances (Bowie County):

In August, there were a total of four appeals of medical grievances received and three appeals were answered. One of those were found to be with merit.

SEX OFFENDER ASSESSMENT**Assessments Completed:**

Risk Level	August	Sept. 1999 thru Aug. 31, 2015
Level 1	0	1,138
Level 2	48	5,840
Level 3	23	5,818
Level 4	1	541
Default 3	1	**
Total	73	13,337

ACIC Numbers:

The total number of sex offenders registered from Sept. 1, 1999 to August 31, 2015:

In Compliance	7,175
Delinquent (Did not return address on time)	853
Confined	2,700
Out of State	2,797
Address Unknown (absconded)	192
Deceased	921
Deported	157
Incapacitated	58
Out of USA	3
Total	14,856

PAWS IN PRISON

We currently have 40 enrolled in training.

Max	7
Tucker	7
Hawkins	4
RLW	4
ORCU	10
NCU	8
Graduates for August	12
Graduates for 2015	139
Graduates since inception	612
Dogs currently in foster	4

CONSTRUCTION/ MAINTENANCE**REGIONAL MAINTENANCE HOURS (August):**

Benton Unit	5,268
Delta Regional Unit	3,124
EARU	3,770
Grimes	2,672
McPherson	3,356
Randall L. Williams Corr. Facility	3,448
MSCOWRC	1,304
North Central Unit	9,480
Ouachita River	5,704
TRCC	2,956
Tucker Unit	3,587
Varner Unit	3,280
Wrightsville Unit	2,504
Total Hours	50,453

Regional Maintenance Hours:

*Note: Regional maintenance hours are reported to the Department of Human Services along with volunteer hours

Regional Maintenance Hours

		<u>Jul'15</u>	<u>Aug'15</u>	<u>Sep'15</u>
Benton Unit		5,639	5,268	
Delta Regional Unit		3,704	3,124	
EARU		4,176	3,770	
Grimes		3,676	2,672	
McPherson		3,928	3,356	
Randall L. Williams Corr. Facility		3,696	3,448	
MSCOWRC		1,874	1,304	
North Central Unit		6,848	9,480	
Ouachita River		6,392	5,704	
TRCC		2,598	2,956	
Tucker Unit		2,902	3,587	
Varner Unit		4,132	3,280	
Wrightsville Unit		3,096	2,504	
Total Hours		52,661	50,453	

Rent Report

		<u>Jul ' 15</u>	<u>Aug. '15</u>	<u>Sep ' 15</u>
Benton Unit		\$94,911	\$96,679.00	
NWARWRC		\$37,349	\$46,172.00	
MSCOWRC		\$43,605	\$49,946.00	
Pine Bluff Reentry		\$27,812	\$28,339.00	
Pine Bluff Unit		\$36,380	\$46,053.00	
TRCC		\$39,321	\$30,209.00	
Total Rent Paid		\$279,378.00	\$297,398.00	\$0.00

[illegible][illegible]

Institutional Inmate Grievance Appeal Report August 2015				
	Received	Rejected	Processed W/O Merit	Processed W/ Merit
Benton Unit	0	0	0	0
Benton Work Release	0	0	0	0
Bowie County Texas Correctional	10	3	3	0
Cummins Unit	44	14	11	0
Cummins Modular Unit	0	0	1	0
Delta Regional Unit	13	2	1	0
Ester Unit	0	0	0	0
East Arkansas Regional Unit	24	6	14	0
East Arkansas Regional Maximum Unit	96	16	44	0
Grimes Unit	22	9	12	0
Maximum Security Unit	78	14	54	2
McPherson Unit	8	4	10	0
Mississippi County Work Release	0	0	0	0
Northwest Arkansas Work Release	0	0	0	0
North Central Unit	13	3	19	0
Ouachita River Correctional Unit	22	12	15	0
ORCU New Commitment	0	0	0	0
ORCU Mental Health Residential Program Unit	0	0	0	0
Pine Bluff Unit	1	4	0	0
Randall L. Williams Correctional	5	2	2	0
Texarkana Regional Correctional	0	0	0	0
Tucker Unit	21	13	11	0
Varner Super Max	127	25	121	0
Varner Unit	28	12	19	0
Wrightsville Unit	4	3	0	0
Wrightsville Satellite Unit	1	0	0	0
Hawkins Center	4	1	1	0
Hawkins for Males	3	1	1	0
Hawkins SPU	0	0	1	0
Total	524	144	340	2

Medical Grievances

Unit	Acknowledged/ Received	Rejected	Reviewed & Signed by Dep Director	With Merit	With Merit, but Resolved	% With Merit	Without Merit
Benton	0	0	0	0	0	0%	0
Boot Camp	0	0	0	0	0	0%	0
CMU	0	1	0	0	0	0%	0
Cummins	42	7	12	0	0	0%	12
Delta	5	0	3	0	0	0%	3
EARU	50	6	44	4	3	16%	37
EARU Max	63	5	60	4	4	13%	52
Grimes	14	0	4	0	0	0%	4
Hawkins	2	2	0	0	0	0%	0
McPherson	9	4	0	0	0	0%	0
MCWRC	0	0	0	0	0	0%	0
MSU	55	4	15	2	0	13%	13
North Central	14	8	11	1	0	9%	10
NWAWRC	0	0	0	0	0	0%	0
Ouachita	24	2	7	0	0	0%	7
Pine Bluff	0	0	0	0	0	0%	0
Randall Williams	5	0	3	1	0	33%	2
SNN	0	0	0	0	0	0%	0
TRCC	0	0	0	0	0	0%	0
Tucker	11	1	14	1	0	7%	13
Varner	22	5	48	6	0	13%	42
Varner S Max	39	13	77	10	4	18%	63
WRU	9	1	1	0	0	0%	1
WHM	4	1	0	0	0	0%	0
WWR	0	0	0	0	0	0%	0
TOTAL	368	60	299	29	11	13%	259

ADMISSIONS AND RELEASES AUGUST 2015

<u>Admissions</u>	<u>Male</u>	<u>Female</u>	<u>Total</u>
Asian	2	1	3
Black	352	40	392
Hispanic	21	5	26
Nat. Amer.	0	2	2
Hawaiian/Pacific Isl	0	0	0
White	520	192	712
Other	2	0	2
Total	897	240	1137
<u>Releases</u>	<u>Male</u>	<u>Female</u>	<u>Total</u>
Asian	3	0	3
Black	294	26	320
Hispanic	25	3	28
Nat. Amer.	2	1	3
Hawaiian/Pacific Isl	0	0	0
White	488	101	589
Other	0	0	0
Total	812	131	943

ARKANSAS DEPARTMENT OF CORRECTION
INMATE POPULATION GROWTH/PROJECTION 2000-2022

Updated 08/31/2015

Mo.	2000	2001	2002	2003	2004	2005	2006	2007	2008	2009	2010	2011	2012	2013	2014	2015
Jan.	11,984	11,908	12,402	13,015	13,105	13,595	13,481	13,839	14,518	14,796	15,334	16,312	15,134	14,815	17,481	18,142
Feb.	12,169	12,022	12,529	13,054	13,166	13,783	13,633	14,012	14,603	14,883	15,374	16,209	14,990	15,008	17,438	18,082
March	12,006	12,033	12,299	13,108	13,088	13,418	13,534	13,772	14,580	14,843	15,290	16,095	14,964	14,665	17,395	18,233
April	12,069	12,167	12,465	13,213	13,323	13,469	13,554	13,851	14,769	14,937	15,570	16,172	15,124	14,850	17,604	18,703
May	12,109	12,384	12,558	13,463	13,556	13,528	13,711	14,146	14,880	15,146	15,694	16,062	15,132	15,074	17,593	18,693
June	12,005	12,108	12,439	13,418	13,389	13,251	13,430	13,915	14,700	15,025	15,564	15,554	14,832	14,825	17,340	18,813
July	12,030	12,190	12,622	13,509	13,528	13,286	13,560	14,082	14,868	15,195	15,807	15,519	14,879	15,379	17,522	18,870
August	12,087	12,371	12,815	13,565	13,632	13,419	13,646	14,224	15,100	15,385	15,829	15,240	14,675	16,103	17,549	18,806
September	11,983	12,289	12,774	13,341	13,516	13,237	13,652	14,217	14,850	15,285	16,025	15,172	14,724	16,412	17,605	
October	12,119	12,348	12,942	13,341	13,584	13,363	13,775	14,349	14,836	15,381	16,311	15,271	14,856	16,993	17,880	
November	12,094	12,408	13,162	13,408	13,706	13,587	13,913	14,437	15,025	15,340	16,460	15,205	14,625	17,168	17,848	
December	11,856	12,333	12,845	13,106	13,470	13,338	13,728	14,315	14,716	15,199	16,204	15,062	14,654	17,235	17,874	
Net Ann. Inc.	29	477	512	261	364	-132	390	587	401	483	1,005	-1,142	-408	2,581	639	932
Avg. Mo. Inc.	2	40	43	22	30	-11	33	49	33	40	84	-95	-34	215	53	117

Population is total jurisdictional count at end of each month. Population at end of month December 1999 was 11,827.

Average monthly population increase for past fifteen years 2000 - 2014 is 34

Average monthly population increase for past ten years Jan.2005 - Dec 2014 is 37

Average monthly population increase for past five years 2010 - 2014 is 45

Projected at Growth of 34 per Month

Mo.	2008	2009	2010	2011	2012	2013	2014	2015	2016	2017	2018	2019	2020	2021	2022	2022
	Actual	Actual	Actual	Actual	Actual	Actual	Actual	Proj.	Proj.	Proj.	Proj.	Proj.	Proj.	Proj.	Proj.	Proj.
January	14,518	14,796	15,334	16,312	15,134	14,815	17,481	18,142	18,976	19,384	19,792	20,200	20,608	21,016	21,424	21,832
February	14,603	14,883	15,374	16,209	14,990	15,008	17,438	18,082	19,010	19,418	19,826	20,234	20,642	21,050	21,458	21,866
March	14,580	14,843	15,290	16,095	14,964	14,665	17,395	18,233	19,044	19,452	19,860	20,268	20,676	21,084	21,492	21,900
April	14,769	14,937	15,570	16,172	15,124	14,850	17,604	18,703	19,078	19,486	19,894	20,302	20,710	21,118	21,526	21,934
May	14,880	15,146	15,694	16,062	15,132	15,074	17,593	18,693	19,112	19,520	19,928	20,336	20,744	21,152	21,560	21,968
June	14,700	15,025	15,564	15,554	14,832	14,825	17,340	18,813	19,146	19,554	19,962	20,370	20,778	21,186	21,594	22,002
July	14,868	15,195	15,807	15,519	14,879	15,379	17,522	18,870	19,180	19,588	19,996	20,404	20,812	21,220	21,628	22,036
August	15,100	15,385	15,829	15,240	14,675	16,103	17,549	18,806	19,214	19,622	20,030	20,438	20,846	21,254	21,662	22,070
September	14,850	15,285	16,025	15,172	14,724	16,412	17,605	18,840	19,248	19,656	20,064	20,472	20,880	21,288	21,696	22,104
October	14,836	15,381	16,311	15,271	14,856	16,993	17,880	18,874	19,282	19,690	20,098	20,506	20,914	21,322	21,730	22,138
November	15,025	15,340	16,460	15,205	14,625	17,168	17,848	18,908	19,316	19,724	20,132	20,540	20,948	21,356	21,764	22,172
December	14,716	15,199	16,204	15,062	14,654	17,235	17,874	18,942	19,350	19,758	20,166	20,574	20,982	21,390	21,798	22,206
Net Ann. Inc.	401	483	1,005	-1,142	-408	2,581	639	1,068	408	408	408	408	408	408	408	408
Ave. Mo. Inc.	33	40	84	-95	-34	215	53	89	34	34	34	34	34	34	34	34

ADC County Jail Backup FY2016

DAY		Jul-15		Aug-15
1		2,674	*	2,556
2		2,615	*	2,556
3		2,618		2,558
4	*	2,618		2,572
5	*	2,618		2,592
6		2,618		2,598
7		2,638		2,615
8		2,669	*	2,615
9		2,686	*	2,615
10		2,677		2,621
11	*	2,677		2,625
12	*	2,677		2,597
13		2,660		2,606
14		2,635		2,607
15		2,614	*	2,607
16		2,587	*	2,607
17		2,576		2,614
18	*	2,576		2,651
19	*	2,576		2,666
20		2,541		2,705
21		2,550		2,687
22		2,546	*	2,687
23		2,542	*	2,687
24		2,550		2,685
25	*	2,550		2,605
26	*	2,550		2,553
27		2,533		2,453
28		2,535		2,309
29		2,525	*	2,309
30		2,549	*	2,309
31		2,556		2,272
Average		2,598		2,572

Notes: Totals do not include 309 Contracts in County Jails (maximum of 336)

ARKANSAS DEPARTMENT OF CORRECTION															
FY15 BED CAPACITY; MONTHLY POP. AVG; AVERAGE NO. VACANT BEDS PER UNIT															
	TOTAL	Avg. Mo.	Avg. Mo.	Avg. Mo.	Avg. Mo.	Avg. Mo.	Avg. Mo.	Avg. Mo.	Avg. Mo.	Avg. Mo.	Avg. Mo.	Avg. Mo.	Avg. Mo.	Avg. Mo.	Total Vac
	CAP	Pop	Pop	Pop	Pop	Pop	Pop	Pop	Pop	Pop	Pop	Pop	Pop	Pop	Beds
<u>Units</u>		Jul-15	Aug-15	Sep-15	Oct-15	Nov-15	Dec-15	Jan-16	Feb-16	Mar-16	Apr-16	May-16	Jun-16		
Cummins	1876	1927	1924											1926	-50
Maximum Security	532	566	569											568	-36
North Central	800	822	819											821	-21
Texarkana Regional	128	126	126											126	2
Varner	1654	1722	1728											1725	-71
Wrightsville	1437	1436	1447											1442	-5
Benton	325	328	325											327	-2
Delta	603	595	595											595	8
East Arkansas Regional	1659	1665	1660											1663	-4
Randall L Williams/Corr. Fac.	562	566	567											563	-1
Mississippi Co. WR	121	127	128											128	-7
Northwest AR WR	100	97	98											98	2
Ouachita River	1782	1792	1806											1799	-17
Pine Bluff	430	435	433											434	-4
PB Female Work Release	54	54	54											54	0
Tucker	1088	1096	1101											1099	-11
Grimes	1000	1044	1046											1045	-45
Ester	184	140	183											140	44
McPherson	971	1007	1019											1013	-42
Totals Bed Capacity	15306	15,545	15,628	0	0	0	0	0	0	0	0	0	0	15587	-260
		1	1	0	0	0	0	0	0	0	0	0	0	2	
															101.8%

Total Capacity Includes 796 temporary beds & 39 Regional Jail Operations (CU, NC, VR, DR, EARU, RLW, TU & ORCU).

Population Capacity does not include Jail Contracts 309 (336), Bowie County, Texas (336), ALETA beds (65) & AR State Police (20)

CY15 Jurisdictional Count

DAY	Jan-15	Feb-15	Mar-15	Apr-15	May-15	Jun-15	Jul-15	Aug-15	
1	17,854 *	18,142 *	18,082	18,233	18,720	18,685	18,773 *	18,870	
2	17,854	18,164	18,049	18,261 *	18,720	18,668	18,778 *	18,870	
3	* 17,854	18,173	18,012	18,286 *	18,720	18,681	18,782	18,892	
4	* 17,854	18,201	18,023 *	18,286	18,739	18,693	18,783	18,912	
5	17,853	18,259	18,039 *	18,286	18,754	18,681	18,783	18,917	
6	17,863	18,268	18,051	18,290	18,793 *	18,681	18,783	18,919	
7	17,868 *	18,268 *	18,051	18,304	18,822 *	18,681	18,801	18,947	
8	17,880 *	18,268 *	18,051	18,325	18,822	18,639	18,811 *	18,947	
9	17,902	18,266	18,031	18,370 *	18,822	18,638	18,821 *	18,947	
10	* 17,902	18,272	18,025	18,387 *	18,822	18,678	18,843	18,949	
11	* 17,902	18,291	18,034 *	18,387	18,845	18,701 *	18,805	18,971	
12	17,888	18,306	18,053 *	18,387	18,853	18,733 *	18,805	18,967	
13	17,894	18,323	18,041	18,403	18,869 *	18,733	18,805	18,963	
14	17,901 *	18,323 *	18,041	18,402	18,875 *	18,733	18,811	18,969	
15	17,928 *	18,323 *	18,041	18,416	18,891	18,719	18,820 *	18,969	
16	17,966	18,354	18,054	18,454 *	18,891	18,746	18,843 *	18,969	
17	* 17,966	18,354	18,054	18,488 *	18,891	18,747	18,843	19,004	
18	* 17,966	18,382	18,074 *	18,488	18,900	18,748 *	18,838	19,026	
19	17,950	18,414	18,102 *	18,488	18,905	18,753 *	18,836	19,036	
20	17,950	18,425	18,116	18,491	18,931	18,728	18,838	19,055	
21	17,986 *	18,425 *	18,116	18,517	18,944	18,727	18,851	19,035	
22	17,992 *	18,425 *	18,116	18,537	18,966	18,727	18,834 *	19,035	
23	18,015	18,446	18,139	18,580 *	18,966	18,754	18,838 *	19,035	
24	* 18,015	18,310	18,155	18,613 *	18,966	18,779	18,842	19,048	
25	* 18,015	18,219	18,177 *	18,613	18,902	18,783 *	18,842	19,063	
26	18,022	18,114	18,195 *	18,613	18,902	18,788 *	18,842	18,890	
27	18,049	18,082	18,190	18,641	18,839	18,810	18,838	18,832	
28	18,058 *	18,082 *	18,190	18,663	18,737	18,810	18,844	18,781	
29	18,100		18,190	18,658	18,693	18,809	18,850 *	18,781	
30	18,142		18,198	18,703 *	18,693	18,813	18,863 *	18,781	
31	* 18,142		18,233		18,693		18,870	18,806	
Avg Daily Jurisdiction	17,953	18,281	18,094	18,452	18,835	18,729	18,823	18,941	18513.64

Notes:

*Red- denotes highest count in ADC History

*Yellow denotes previous high

August 2015 Monthly Population Averages

	8/3	8/4	8/5	8/6	8/7	8/10	8/11	8/12	8/13	8/14	8/17	8/18	8/19	8/20	8/21	8/24	8/25	8/26	8/27	8/28	8/31	AVG	
Unit/Center																							
Benton	324	327	336	335	334	333	336	335	334	333	332	330	330	330	326	325	325	320	318	280	282	325	
Cummins	1,928	1,931	1,925	1,924	1,941	1,937	1,933	1,929	1,924	1,923	1,921	1,926	1,918	1,917	1,930	1,931	1,929	1,896	1,908	1,916	1,921	1,924	
Delta	601	597	594	589	591	589	599	595	593	590	602	601	595	597	599	602	596	583	592	591	606	595	
E AR Reg	1,676	1,663	1,660	1,666	1,668	1,658	1,652	1,649	1,656	1,666	1,665	1,663	1,662	1,652	1,658	1,662	1,660	1,643	1,661	1,661	1,663	1,660	
Ester	180	184	184	184	183	181	184	184	184	184	184	184	183	184	184	181	184	183	184	184	184	183	
Grimes	1,043	1,044	1,038	1,037	1,027	1,024	1,037	1,057	1,057	1,054	1,052	1,040	1,051	1,051	1,038	1,050	1,053	1,050	1,051	1,055	1,055	1,046	
Max Sec	567	567	568	567	567	567	571	569	566	566	569	569	569	569	569	569	571	571	571	570	569	569	
McPherson	1,008	1,007	1,007	1,007	1,008	1,008	1,008	1,007	1,007	1,007	1,007	1,007	1,007	1,006	1,005	1,007	1,056	1,059	1,056	1,056	1,057	1,019	
MCWRC	129	129	129	127	127	126	126	129	129	129	128	128	128	128	129	129	128	122	123	128	128	128	
N Central	817	827	818	818	811	815	812	817	817	816	828	828	826	823	820	816	812	808	813	815	841	819	
NWAWRC	95	95	95	94	94	96	100	100	100	100	100	100	100	100	100	100	100	97	97	99	99	98	
Quachita River	1,795	1,795	1,782	1,797	1,789	1,796	1,794	1,808	1,806	1,800	1,799	1,792	1,793	1,788	1,797	1,800	1,847	1,837	1,809	1,854	1,856	1,806	
andall L Willian	570	568	566	571	573	572	569	566	562	565	564	565	566	565	565	567	567	565	562	568	568	567	
Pine Bluff	432	431	432	431	434	432	430	436	434	428	431	440	442	438	433	434	430	418	434	433	436	433	
PB Reentry	54	54	54	54	54	54	54	54	54	54	54	54	54	54	54	54	54	54	54	54	52	54	
TRCC	125	125	127	127	126	126	126	126	128	128	128	128	127	123	123	123	123	125	125	125	127	126	
Tucker	1,096	1,101	1,107	1,099	1,099	1,098	1,102	1,102	1,099	1,102	1,103	1,097	1,095	1,105	1,102	1,105	1,104	1,098	1,092	1,103	1,113	1,101	
Vamer	1,723	1,719	1,724	1,723	1,728	1,727	1,727	1,730	1,731	1,730	1,732	1,729	1,727	1,725	1,728	1,722	1,726	1,715	1,742	1,740	1,739	1,728	
Wrightsville	1,433	1,438	1,441	1,434	1,438	1,446	1,444	1,442	1,439	1,445	1,442	1,445	1,447	1,447	1,443	1,441	1,444	1,445	1,439	1,500	1,501	1,447	
Total ADC	15,596	15,602	15,587	15,584	15,592	15,585	15,604	15,635	15,620	15,620	15,641	15,626	15,620	15,602	15,603	15,618	15,709	15,589	15,631	15,732	15,797	15,628	15628
ALETA	19	19	19	19	19	19	19	19	19	19	19	19	19	19	19	19	19	19	19	19	19	19	
Ar State Police	58	58	58	57	59	61	61	61	62	62	62	62	62	62	62	62	62	61	61	61	60	61	
Co Jail / M	2,314	2,322	2,335	2,342	2,359	2,361	2,365	2,339	2,343	2,352	2,350	2,386	2,395	2,428	2,415	2,413	2,382	2,349	2,263	2,182	2,142	2,340	
Co Jail / F	244	250	257	256	256	260	260	258	263	255	264	265	271	277	272	272	223	204	190	127	130	241	
Total Co Jail BK	2,558	2,572	2,592	2,598	2,615	2,621	2,625	2,597	2,606	2,607	2,614	2,651	2,666	2,705	2,687	2,685	2,605	2,553	2,453	2,309	2,272	2,581	
Bowie Co., TX	336	336	336	336	336	336	336	335	334	333	336	336	336	336	335	336	336	336	336	335	336	336	
309/M	256	256	256	256	257	258	256	249	251	257	261	261	262	261	259	258	262	262	262	256	254	258	
309/F	46	46	46	46	46	46	47	48	48	48	48	48	48	47	47	47	47	47	47	46	45	47	
Total Act 309	302	302	302	302	303	304	303	297	299	305	309	309	310	308	306	305	309	309	309	302	299	304	
Total Non ADC	3,273	3,287	3,307	3,312	3,332	3,341	3,344	3,309	3,320	3,326	3,340	3,377	3,393	3,430	3,409	3,407	3,331	3,278	3,178	3,026	2,986	3,300	
Total	18,869	18,889	18,894	18,896	18,924	18,926	18,948	18,944	18,940	18,946	18,981	19,003	19,013	19,032	19,012	19,025	19,040	18,867	18,809	18,758	18,783	18,929	18929
	1	1	1	1	1	1	1	1	1	1	1	1	1	1	1	1	1	1	1	1	1	21	

Monthly Report for: Aug 2015	BENTON	CUMMINS	DELTA REGIONAL	EAST ARKANSAS	EAST ARKANSAS MAX	GRIMES	HAWKINS	MAXIMUM SECURITY	MCPHERSON	NORTH CENTRAL	OUACHITA RIVER	PINE BLUFF	RANDALL L. WILLIAMS	TUCKER	VARNER	VARNER MAX	WRIGHTSVILLE	PTF	TOTAL
Chaplain in Charge	6	5	12	2	0	7	4	9	12	6	12	4	13	10	4	0	16	11	133
Christian																			
Population	6	5	11	2	0	7	4	9	12	6	12	4	13	7	3	0	12	11	124
Segregation	0	0	0	0	0	0	0	0	0	0	0	0	0	0	0	0	0	0	0
Muslim																			
Population	0	0	1	0	0	0	0	0	0	0	0	0	0	3	1	0	4	0	9
Segregation	0	0	0	0	0	0	0	0	0	0	0	0	0	0	0	0	0	0	0
Volunteers in Charge																			
Protestant	30	39	21	30	8	28	6	30	40	48	35	10	8	10	4	1	19	0	367
Catholic	0	37	0	4	0	16	2	1	3	2	1	0	0	1	1	1	4	0	73
Muslim	0	1	0	0	0	0	0	1	0	0	1	0	0	0	1	0	0	0	4
Other	4	0	0	0	0	4	0	1	4	0	0	0	0	0	2	0	0	0	15
Baptism	0	1	1	0	0	0	0	2	0	6	0	0	1	0	0	0	6	0	17
Marriages	2	3	0	0	1	0	0	0	0	1	1	0	0	0	0	0	0	0	8
Distributed by Chaplains																			
Greeting Cards	75	36	0	25	0	125	0	400	749	39	10	256	75	302	209	219	0	0	2520
Bibles, Quran, Torah, Etc.	30	19	25	40	1	18	2	7	46	12	45	8	15	44	23	9	10	8	362
Study Course	12	26	0	0	0	0	0	136	0	0	6	8	30	0	19	1	3	1	242
Writing Supplies	25	35	0	0	0	0	475	600	0	0	35	0	480	0	0	0	0	0	1650
Literature	175	1001	100	801	7	150	0	1100	117	245	380	227	1105	214	2013	57	350	25	8067
Chaplain's Visits																			
Barracks - How Many Visits	71	103	8	40	7	110	28	472	105	57	325	47	62	49	4	23	34	27	1572
Approximate Hours Spent in Barracks	38	39	2	45	6	35	23	118	55	43	33	18	148	105	2	32	44	9	795
Office (How many Inmates)	121	405	320	5	8	50	95	27	95	109	30	69	115	279	169	0	95	155	2147
How Many Visits Chaplain Made																			
Hospital	0	1	0	0	0	0	0	0	1	0	19	0	0	0	1	1	3	0	26
Infirmary	0	3	4	5	0	17	2	9	5	4	1	4	4	2	1	0	30	1	92
Office	0	17	0	5	0	0	0	30	10	109	0	15	6	154	27	0	0	0	373
Admin Seg	0	8	4	8	8	17	0	112	10	0	5	0	0	0	0	12	0	0	184
Segregation	0	0	4	8	8	17	0	10	0	4	4	4	8	0	0	0	0	0	67
Punitive	0	8	4	8	8	17	0	21	10	8	16	4		0	0	6	1	2	113
PC	0	0	0	8	8	0	0	0	10	0	0	0	0	0	0	0	0	0	26
Visitation Days	2	0	0	0	0	0	0	0	10	3	4	0	0	1	0	0	0	1	21
How Many Visits Volunteers Made																			
RCV	5	0	0	50	6	8	3	29	28	0	58	0	1	43	0	0	0	0	231
OCV	4	0	10	2	0	40	51	58	43	55	4	28	36	4	90	19	25	0	469
Spiritual Advisor	0	2	0	0	0	0	0	0	4	0	4	1	1	4	0	2	2	1	21
CRA	29	37	11	80	6	32	18	118	63	95	152	24	17	32	84	0	15	10	823
Total Volunteer Hours	91	39	42	295	15	80	249	637	359	440	789	118	118	107	810	204	75	48	4516
DENOMINATIONAL/VOLUNTEER CHAPLAIN HOURS	107	45	0	0	0	32	162	122	148	149	253	16	180	123	35	0	165	204	1741
Other Activities of Chaplain																			
Counseled Employees	22	7	6	0	0	25	5	5	2	25	10	14	11	12	13	11	2	2	172
Orientation Sessions	0	5	0	0	0	0	0	0	5	0	0	0	0	4	0	0	1	0	15
Free World Devotions	0	8	0	4	0	0	0	0	2	0	7	12	12	0	5	0	5	1	56
Spoke in Churches	4	17	10	5	0	26	4	4	2	0	16	12	12	2	12	0	4	0	130
Crisis Intervention Sessions	11	15	30	0	0	14	0	3	3	5	12	9	4	11	66	20	26	8	237
Marriage Counseling	2	4	0	0	1	7	0	0	3	1	1	0	0	0	0	0	2	0	21
Denominational Meeting	0	12	0	1	1	0	0	0	1	0	5	0	0	1	1	0	0	2	24
Chaplain's Meeting	2	2	1	1	0	1	0	1	1	1	0	1	1	4	8	0	4	1	29
Volunteer Training Session	2	0	0	0	0	0	0	1	1	1	0	0	0	0	0	0	0	1	6
Choir Trip	0	0	0	0	0	0	0	0	0	0	0	0	0	0	0	0	0	0	0
Staff Movement (Chaplain)																			
Promotions (Chaplain)	0	1	0	0	0	0	0	0	0	0	0	0	0	0	0	0	0	0	1
Interns	0	0	0	0	0	0	0	0	0	0	0	0	0	0	0	0	0	0	0
PAL PROGRAM																			
# Enrolled at start of month	0	47	19	48	0	49	45	20	61	33	45	0	28	62	41	0	29	0	527
# Enrolled during the month	0	5	0	11	0	7	6	0	19	1	4	0	5	18	3	0	3	0	82
# Completing the program	0	1	0	2	0	1	0	0	1	3	1	0	0	3	2	0	1	0	15
(# Removed from the program)																			
Paroled	0	1	0	2	0	1	2	0	13	3	4	0	2	1	1	0	0	0	30
Withdrawn	0	0	0	0	0	2	0	0	1	2	1	0	0	2	1	0	2	0	11
Removed	0	3	0	5	0	0	0	0	0	3	0	0	1	14	1	0	2	0	29
Transferred	0	0	0	0	0	0	3	0	3	0	6	0	2	1	0	0	1	0	16
# At the end of the month	0	47	19	50	0	52	46	20	62	23	37	0	28	59	39	0	26	0	508
# Of volunteers	0	26	3	53	0	9	14	11	10	6	10	0	6	7	4	0	6	0	165

ADC INPATIENT AND EMERGENCY ROOM UTILIZATION

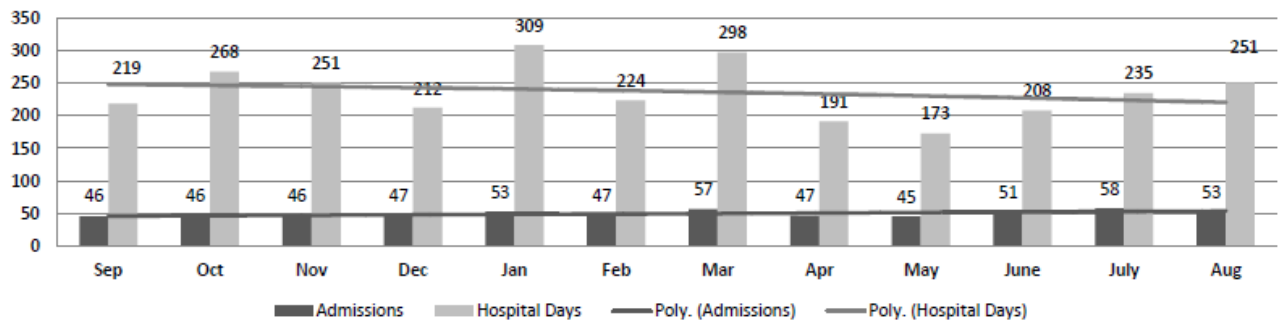
ADC Inpatient Statistics Past 12 Months

	2014				2015								Average
	Sep	Oct	Nov	Dec	Jan	Feb	Mar	Apr	May	June	July	Aug	
Admissions	46	46	46	47	53	47	57	47	45	51	58	53	49.7
Hospital Days	219	268	251	212	309	224	298	191	173	208	235	251	236.6
Average Length of Stay	4.76	5.83	5.46	4.51	5.83	4.77	5.23	4.06	3.84	4.08	4.05	4.74	4.76

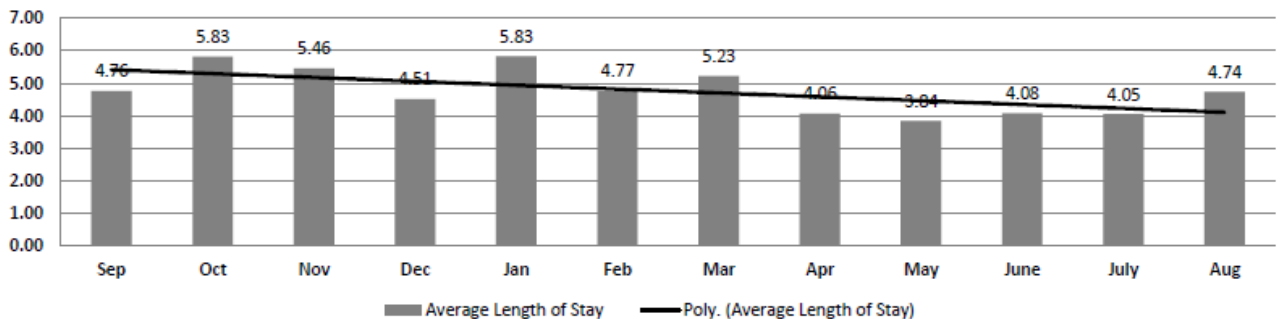
ADC ER Visits Past 12 Months

	2014				2015								Average
	Sep	Oct	Nov	Dec	Jan	Feb	Mar	Apr	May	June	July	Aug	
Emergency Room Visits	65	90	64	65	59	68	78	77	86	76	99	74	75.1

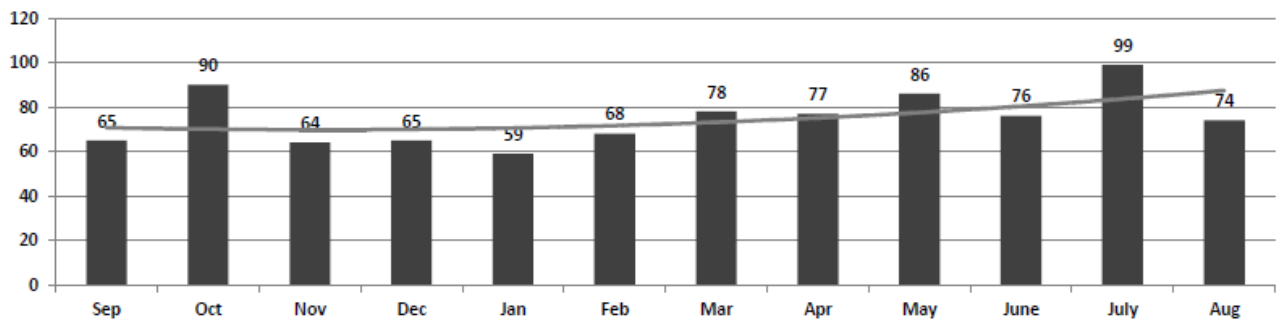
ADC Inpatient Utilization
Past 12 Months



ADC Inpatient Average Length of Stay
Past 12 Months



ADC Emergency Room Visits
Past 12 Months



Monthly Purchasing Report for August 2015

PURCHASE ORDERS OVER \$10,000.00					
VENDOR	DESCRIPTION	LOCATION	PO#	PURCHASE AMOUNT	FUND
AR Dept of Correction Industries	Brogans	East AR Unit	4501556614	\$10,481.25	Operational Budget
AR Dept of Correction Industries	Linens Supplies	Delta Unit	4501557082	\$11,638.05	Operational Budget
Plasmacam Inc	Welding Tool	Tucker Unit/Industry	4501552177	\$17,093.84	Operational Industry Budget
AR Dept of Correction Industries	Brogans	Pine Bluff Unit	4501557738	\$11,718.01	Operational Budget
AR Dept of Correction Industries	Inmate Clothing & Linens	Pine Bluff Unit	4501557713	\$15,185.46	Operational Budget
AR Dept of Correction Industries	Inmate Clothing	Delta Unit	4501557721	\$10,871.89	Operational Budget
Quality Plumbing Parts Inc	Plumbing Supplies	Grimes Unit	4501557652	\$10,390.32	Operational Budget
William R Hill & Co Inc	Food Purchases	Central Warehouse	4501557418	\$181,383.19	Operational Budget
Sysco Food Services of AR Inc	Food Purchases	Central Warehouse	4501557436	\$103,435.50	Operational Budget
Robbins Sales Company Inc	Food Purchases	Central Warehouse	4501557444	\$54,168.80	Operational Budget
Printing Papers Inc	Xerox Paper	Central Warehouse	4501557460	\$26,200.40	Operational Budget
AR Dept of Correction Industries	Janitorial Supplies	Central Warehouse	4501557466	\$46,414.34	Operational Budget
B Sharp Blades LTD	Disposable Razors	Central Warehouse	4501557483	\$16,100.33	Operational Budget
Green Point AG LLC	Chemicals	Cummins Chemical Shed	4501556934	\$25,654.00	Operational Farm Budget
AR Dept of Correction Industries	Bulk Form Order	All Units	4501558345	\$71,532.29	Operational Budget
National Food Group	Food Purchases	Central Warehouse	4501557449	\$30,640.00	Operational Budget
American Paper & Twine Co	Paer Products	Central Warehouse	4501557490	\$11,039.62	Operational Budget
CKEP LLC	Foodservice Equipment	Diagnostic Unit	4501558117	\$12,257.98	Prison Housing
Fastenal Co	Ceiling Material	Max Sec Unit	4501558152	\$20,987.84	Telephone Funds - Metal Ceilings
AR Dept of Correction Industries	Inmate Clothing & Linens	East AR Unit	4501556532	\$71,514.62	Operational Budget
AR Dept of Correction Industries	Linens Supplies	East AR Unit	4501558551	\$11,405.75	Operational Budget
O'Neal Steel Inc	Expanded Metal	Vanner Unit	4501558390	\$15,191.04	Telephone Funds - ACA Maint
Mid South Sales Inc	Unleaded Gas & Low Sulfur Diesel	Central Warehouse	4501557824	\$10,279.73	Operational Budget
Green Point AG LLC	Pesticide	Cummins Chemical Shed	4501557537	\$21,465.00	Operational Farm Budget
VW Grainger Inc	Radio's	Emergency Preparedness	4501558969	\$26,927.16	Telephone Funds - Emerg Prep
Bob Barker Company Inc	Inmate Clothing	Ouachita Unit	4501558904	\$16,576.87	Operational Budget
Westrock Coffee LLC	Coffee, Tea	McPherson Unit/Industry	4501558485	\$12,113.44	Operational Industry Budget
Razor Chemical Inc	Chemicals	Delta Regional Janitorial Factory	4501558458	\$13,765.70	Operational Industry Budget
Razor Chemical Inc	Chemicals	Delta Regional Janitorial Factory	4501558739	\$28,902.60	Operational Industry Budget
Miller Bowlie Supply.Com	Feed	Cummins Unit/Farm	4501558705	\$13,305.60	Operational Farm Budget
Cummins Mid South Inc	Rental Equipment	Cummins Unit/Farm	4501558973	\$11,596.49	Operational Farm Budget
Mel Stevenson & Associates Inc	Roofing Material	Vanner Unit	4501559722	\$15,785.63	Telephone Funds - Roof Project
Cruse Uniforms & Equipment Inc	Ammunition	Wrightsville Unit	4501558993	\$22,123.50	Operational Budget
Green Point AG LLC	Fertilizer	Cummins Chemical Shed	4501558154	\$29,445.00	Operational Farm Budget
AR Dept of Correction Industries	Inmate Clothing & Linens	McPherson Unit	4501560407	\$95,548.74	Operational Budget
Huntley Metal Sales	Building Material	Diagnostic Unit	4501560106	\$11,332.34	ADFA Construction Ester Unit
U S Foods Inc	Food Purchases	Central Warehouse	4501560188	\$14,334.60	Operational Budget
Robbins Sales Company Inc	Food Purchases	Central Warehouse	4501560183	\$17,040.90	Operational Budget
William R Hill & Co Inc	Food Purchases	Central Warehouse	4501560179	\$48,982.16	Operational Budget
Chemtack Coated Fabrics	Mattress Covers	Tucker Unit/Industry	4501559445	\$14,220.00	Operational Industry Budget
Shoe Corp of Birmingham	Brogans	Tucker Unit/Industry	4501559437	\$54,232.10	Operational Industry Budget
Mac Papers Inc	Paper	Wrightsville Unit/Industry	4501559906	\$11,210.34	Operational Industry Budget
Printing Papers Inc	Paper	Wrightsville Unit/Industry	4501559557	\$17,239.60	Operational Industry Budget
Sysco Food Services of AR Inc	Food Purchases	Central Warehouse	4501560606	\$34,969.80	Operational Budget
Atlantic Beverages Company	Food Purchases	Central Warehouse	4501560518	\$18,906.70	Operational Budget
Blastrac NA Inc	Heavy Equipment	Diagnostic Unit	4501560304	\$12,003.93	ADFA Construction Ester Unit
Fastenal Co	Insulation	Diagnostic Unit	4501560989	\$12,346.88	ADFA Construction Ester Unit
Green & Chapman Inc	Low Sulfur Red Diesel	Cummins Unit/Farm	4501555796	\$38,534.11	Operational Farm Budget
Helena Chemical Company	Chemicals	Cummins Chemical Shed	4501560521	\$81,181.00	Operational Farm Budget
D & H Poultry Service Inc	Vet Services	Cummins Unit/Farm	4501560556	\$13,226.00	Operational Farm Budget
Fastenal Co	Security Equipment	Diagnostic Unit	4501561219	\$14,223.60	ADFA Construction Ester Unit
Goxlax Corp	Shoes	Ouachita Unit	4501561347	\$12,863.86	Operational Budget
Fastenal Co	Cameras	Construction Dept	4501561492	\$46,588.70	Telephone Funds - Cameras
William R Hill & Co Inc	Food Purchases	Central Warehouse	4501561560	\$95,159.72	Operational Budget
National Food Group	Food Purchases	Central Warehouse	4501561583	\$81,052.80	Operational Budget
Pine Bluff Sand & Gravel	Gravel	Max Sec Unit	4501561524	\$10,569.22	Operational Budget
Miller Bowlie Supply.Com	Feed	Cummins Unit/Farm	4501559477	\$48,400.00	Operational Farm Budget
Galls LLC	Uniforms	Training Academy	4501562610	\$27,185.10	Operational Budget
Service Wear Apparel	Uniforms	Training Academy	4501562249	\$14,597.64	Operational Budget
Cruse Uniforms & Equipment Inc	Ammunition	Cummins Unit	4501561960	\$10,029.75	Operational Budget
Mitrasens Limited	Detectors	Emergency Preparedness	4501561067	\$32,058.95	Telephone Funds - Emerg Prep
Southern Pipe & Supply Co Inc	Building Supplies	Ester Unit	4501562191	\$10,324.75	ADFA Construction Ester Unit
Green & Chapman Inc	Low Sulfur Red Diesel	Tucker Unit/Farm	4501559182	\$12,537.10	Operational Farm Budget
Crop Production Services Inc	Chemicals	East AR Unit/Farm	4501561598	\$14,357.00	Operational Farm Budget
AR Dept of Correction Industries	Inmate Clothing & Linens	Grimes Unit	4501563306	\$15,630.43	Operational Budget
Green & Chapman Inc	Low Sulfur Red Diesel	Cummins Unit/Farm	4501561153	\$37,359.03	Operational Farm Budget
Riceland Foods Inc	Livestock Feed	Cummins Unit/Farm	4501565894	\$93,192.00	Operational Farm Budget
AG H2O	Equipment Repair	East AR Unit/Farm	4501564896	\$18,379.20	Operational Farm Budget
McKesson Medical Surgical	Medical Supplies	Admin Bldg. Medical Services	4501563088	\$22,187.38	Operational Budget
Green & Chapman Inc	Ethanol Gas & Low Sulfur Diesel	Wrightsville Unit	4501565879	\$17,995.86	Operational Budget
William R Hill & Co Inc	Food Purchases	Central Warehouse	4501563621	\$177,766.17	Operational Budget
U S Foods Inc	Food Purchases	Central Warehouse	4501563634	\$123,294.70	Operational Budget
Sysco Food Services of AR Inc	Food Purchases	Central Warehouse	4501563637	\$38,408.04	Operational Budget
Robbins Sales Company Inc	Food Purchases	Central Warehouse	4501563640	\$465,321.12	Operational Budget
Northern Oil Company Inc	Ethanol Gas & Low Sulfur Diesel	Ouachita Unit	4501561616	\$11,700.68	Operational Budget
Hertz Corp	Equipment Rental	Ester Unit	4501564436	\$25,786.86	ADFA Construction Ester Unit
Fastenal Co	Lighting Equipment	Ester Unit	4501563742	\$116,583.82	ADFA Construction Ester Unit
Datamax Inc	Copier Equipment	Information Services	4501564766	\$12,544.43	Telephone Funds - IT
Meredith Digital Inc	Computer Supplies	Information Services	4501561160	\$12,863.09	Operational Budget
Bob Barker Company Inc	Inmate Clothing	Cummins Unit	4501564687	\$13,931.48	Operational Budget
Bob Barker Company Inc	Inmate Clothing	Cummins Unit	4501564689	\$23,128.41	Operational Budget
Beryl Bitley & Sons Trucking Inc	Hauling Service	Cummins Unit/Farm	4501564820	\$11,610.00	Operational Farm Budget
Krueger International Inc	Kdaks	Tucker Unit/Farm	4501564538	\$10,792.96	Operational Industry Budget
Triple J Flying Service Inc	Aerial Application	Cummins Unit/Farm	4501563550	\$16,497.15	Operational Farm Budget
Abbott Supply Company Inc	Well Repair	Cummins Unit/Farm	4501556727	\$12,216.06	Operational Farm Budget
Beryl Bitley & Sons Trucking Inc	Hauling Service	Cummins Unit/Farm	4501560223	\$16,874.86	Operational Farm Budget
Miller Bowlie Supply.Com	Livestock Feed	Cummins Unit/Farm	4501564578	\$181,440.00	Operational Farm Budget
Mid States Services Inc	Toilet Paper	Hawkins Unit/Imaging	4501563432	\$64,166.40	Operational Industry Budget
Total for Purchases over \$10,000				\$3,535,736.46	
FIRM CONTRACTS OVER \$25,000.00					
VENDOR	DESCRIPTION	UNIT	Contract # P.O.#	PURCHASE AMOUNT	FUND
Peterbilt of Little Rock LLC	Truck Tractor (08/17/15)	Cummins Farm - Poultry	4501541401	\$107,655.00	ADFA Poultry House
Total for Contracts				\$107,655.00	
EMERGENCY PURCHASE ORDERS OVER \$25,000.00					
Total EM Purchases				\$0.00	
Total Purchases				\$3,643,385.46	