



**Wendy Kelley
Director**

**October
2015**



OPERATIONS/INSTITUTIONS

RESEARCH/PLANNING

September Admissions and Releases – Admissions for September totaled **902** (791-males & 111-females), while releases totaled **877** (771-males & 106-females), for a net increase in-house of **25**.

Inmate Population Growth/Projection – At the end of September the Arkansas Department of Correction Population/Jurisdiction totaled **18,549** representing a growth of **675** inmates since the first of January, 2015. Calendar year 2015 average growth is **75** inmates per months, up from an average monthly growth during calendar year 2014 of **53** inmates per month.

Average County Jail Backup – The backup in the County Jails averaged **2,109** inmates per day during the month of September – down from an average of 2,572 for the month of August. The County Jail Backup dropped below 2,000 during the month of September, the first time since October 15, 2013.

ACCREDITATION

The next ACA re-accreditation audit will be Varner/Varner Super Max, October 13-15, 2015.

ACA Internal Audits Completed:

Sept. 10 Varner Unit second pre-audit
Sept.9-11 Varner Unit file review
Sept. 14-18 Varner re-accreditation preparation
Sept. 21-23 Varner re-accreditation preparation

Classes Taught:

Sept. 8 Training Academy
Sept. 29 Training Academy

Fire/Safety and Sanitation independent audits conducted by the Fire and Sanitation Coordinator:

Sept. 1-4 Varner re-accreditation prep
Sept. 14-18 Varner re-accreditation prep
Sept. 21-25 Varner re-accreditation prep
Sept. 28-30 Varner re-accreditation prep

PREA/STTG

PREA Hotline Data:

There were no reported issues with the PREA Hotline. PREA Coordinator Judy Taylor attended the National PREA Auditor

Training held in San Diego during the month of September. Also, Gender Responsive Training for McPherson and Grimes Unit staff working with female inmates was held in September under the supervision of Taylor. Internal Affairs is handling all PREA investigations.

Number of calls received	37
Total calls referred for reported PREA issue	6
Total calls referred for non-PREA issue	10
Calls referred due to technical failure	0
Calls referred to IAD	0

FARM

September continued to be an extremely dry month, but that fit very well with our harvest. The harvest was in full swing during the month at each of the row crop farms. Cummins harvested all of their rice without putting a rut in the fields. That will be a huge time and money savings for us next spring. Tucker finished their rice as well. Both farms had excellent yields this year. Both were in the 180 bushel range. There were a lot of farmers who were well under 150 this year due to the heat. Our supervisors did a great job. East Arkansas had a problem with the sugar cane aphid in their grain sorghum, but still had good yields for the year. Cummins has harvested almost 1,700 acres of their soybeans and are waiting on more to get ready. Tucker has harvested over 400 acres of beans and are about to catch up with what is ready. East Arkansas has started their soybean harvest this week. The yields are varying greatly due to soil type and variety. So far we are ranging from 40 bushels per acre to 78 bushels per acre. The best part of this extended dry spell is the work we are able to do preparing for next year. Cummins has spread chicken litter and fertilizer on almost 3,000 acres and has most of that bedded and ready for next year's crop. Tucker and East Arkansas are working on discing stalks in and applying fertilizer as well. These are all things that we usually have to do in March and April.

The poultry division is back on track. We moved the pullets we had raised into their laying house. Their production is steadily rising. At this time we are able to supply all of the ADC needs. We were able to find a group of birds to replace what we lost in the power failure. They started arriving Sept. 30. We should be up to full production by mid-October. We are waiting on the bid process for the new generator. We have a rental unit on hand

now until the new one arrives. The new generator will be the primary back up and the older existing generator will be the secondary.

Due to the drought conditions, the fall garden crops are struggling. We are trying to water these crops, and that is very risky.

The beef units are still watering grass where they can to make hay. We were hoping to go into winter with some grass stockpiled in the pastures but we are grazing that now. Martin does have a plan to plant a lot of winter grasses to make up for any lack of hay. We are going to be short on oats for horse feed this year. We are exploring different options for feed during the winter.

The dairy had a rough month battling somatic cell count. They finally got that straight and under control. Their production is starting to rise again with the cooler weather. November will be a big calving month for the dairy.

INMATE GRIEVANCE

Inmate Formal / Informal Grievances: In September, there was a total of 2,607 formal grievances filed and 4,411 informal grievances filed at various units.

Institutional Grievances: There was a total of 672 appeals of institutional grievances received and 552 appeals were answered in September. Twelve were found with merit

RE-ENTRY

CHAPLAINCY SERVICES

Wrightsville/PTF

Eid Al-Adha Feast was held on Sept. 23.

Grimes

The Eid Al Ad-ha Feast was held at the Grimes Unit on Sept. 24. The feast was held from 7:30 p.m. to 9:00 p.m. in the inmate dining hall. There were 89 inmates in attendance and two staff members present.

EARU and EARU Max

Eid Feast was held Sept. 25, with over 300 inmates in attendance.

Maximum Security Unit

The annual PAL Program graduation was held on Sept. 3. There were 12 students that graduated and three PAL instructors celebrated their accomplishment.

On Sept. 23, the Islamic community held the EID-UL-ADHA feast. There were 84 inmates who completed the Ramadan fast and were eligible for the feast. There were three volunteers at MSU to facilitate the feast.

Tucker Unit

The Eid Feast had 54 inmates attending.
The Compassionate Communication class had 60 in attendance.

The Jumuah Prayer had 262 in attendance.

Hawkins Unit

The first APAL lead worship service was held. Participants from APAL gave their testimonies and signed songs that went with their testimony. Praise and worship songs were played with scriptures for each song read before playing the song. Chaplain Baxley and Chaplain D'Arezzo opened and closed the event in prayer. There were 137 inmates in attendance.

ORCU

The Islamic Community celebrated their Eid Al-Adha Feast the end of Hajj, with 24 inmates in attendance for the month.

Bikers IV Jesus 1st Annual "Happy Jack" Burbridge Rodeo Revival was held Sept. 18-20. Bike games were held on the yard and barracks visitation with 1,825 inmates in attendance.

Kairos Weekend #17 was conducted by the Kairos Outside Team. There were 145 inmates in attendance.

Varner Unit/VSM

On Sept. 23, the Islamic community held their Eid Feast, in the Visitation Center. There were two freeworld guests in attendance, 73 inmates from general population and 74 inmates from the VSM.

Benton Unit

Five classes of Financial Peace University were held with 106 inmates attending and 14 graduating.

Christian Activity Service showed the movie "Four Blood Moons." There were 78 inmates in attendance with four salvations.

The Christian Motor Cycle Association held two services and Yard Call Rodeo which 125 inmates attended, and there were two salvations.

NCU

The NCU Chapel hosted the Eid-UI-Adha feasts on Sept. 23, with two volunteers and 20 inmates in attendance.

Pre-Release: September 2015

	Slots	Completed	Discharged	End Count
McPherson	15	2	0	11
PBU 9B	50	10	6	51
PBU 9C	50	7	7	47
Total	115	19	13	109

There are 508 males and 57 females on the waiting list within 18 months of their release date and of those, 13 males and one female are mandated by the Board of Parole. The average time on the waiting list is about three months. The total on the waiting list, including those not currently within the identified time frame, is 708 males and 100 females.

Volunteer Services:

The total number of volunteer hours for the month of September 2015:

Unit	Hours
Cummins	0
Hawkins	0
RLW	25
North Central	2
Ouachita River	30
Pine Bluff	6
PAWS	11
WSU	310
Wrightsville Satellite –Reentry	0
Pine Bluff Unit – Pre-Release	0
Religious Volunteer-all Units	7106
TOTAL	7490

ADMINISTRATIVE SERVICES**Contracts/Bids Status:****Contract Renewals**

Uniform Insignia

Waste Disposal - NCU

Contracts (in process by OSP)

Boiler-Ester Unit

HUMAN RESOURCES

Workplace Safety – During the month of September the modified version of the Health and Safety Plan was presented to one Basic Training class with a total of 47 cadets in attendance.

There were 49 incidents reported to the Company Nurse in September, which brings our Workman's Compensation incidents reported to 471 in 2015. The Randall L. Williams Unit, Delta Regional Unit, and Varner Unit had follow-up audits from Worker's Compensation and were released from the Rule32 Program.

Benefits - There were 59 MIPS promotions and 196 MIPS payments. Eighty-five FMLA requests were processed with three denied. A total of six CAT leave requests were processed with four approved and two denied. Four-hundred-twenty-seven hours were donated to the CAT leave bank. There were two applications received for shared leave and both were approved for a total of 452 hours of donated time.

Physical Assessments – There was a total of 256 applicants and incumbent personnel that were assessed in the month of September. One-hundred-twenty-nine incumbent personnel successfully completed their physical assessments and six incumbent per-

sonnel did not. Of those six, four rescheduled and passed; and the other two have not been released by a physician. One hundred twenty applicants passed their physical assessments and three did not. Those three applicants were rescheduled and passed.

Employment – Facebook results for the month showed a total of 15,327 “likes” of our page. Through Discover Corrections, there were 512 people from across the U.S. who viewed ADC's page. This site does not allow you to review comments made unless the viewer applies for a position through their site and is hired. During the month of September there were no applications submitted for ADC through the Discover Corrections website. The Human Resources Recruiter coordinated job fairs at the Pine Bluff Workforce Center, the Monticello Workforce Center, the Greenville Win Job Center; and the Dumas Workforce Center. The recruiter visited with a total of 97 potential applicants during these job fairs.

The reporting features that INS (Information Network Systems) has developed for the ARStateJobs website (all agencies) have been implemented. We have requested agency specific features, but have not received notification that those changes have been made. Because of duplicating information, we are now only tracking CO I applications through the ARStateJobs website. This site does not have the capabilities to give us a breakdown. INS still has not developed any agency specific request for reporting purposes.

The report through AR State Jobs provides the following information:

Advertised positions

Positions hired

Applications received

How many met minimum qualifications

How many did not meet qualifications and a reason they did not meet - (1-experience; 2-license or certifications; 3-other)

How many need further review

How many were not processed

Gender

Race

Veteran status

There were a total of 3,105 applications received during September through ARStateJobs website. There were 58 non-correctional applications and 95 CO I applications processed. Thirty-eight correctional officers were hired and 21 correctional officers were re-hired.

Administrative Services Division Monthly Reports (attached) include:

Gifts, Grants, and Donations/Inmate Welfare Fund Balance (required by policy) – During the month of September are reported as follows:

Donated to ADC:**Gifts, Grants and Donations:**

Donations for the month of September were \$2,325.50.

Inmate Welfare Fund balance on Sept. 30 was \$3,977,961.13

PAWS in Prison Fund balances total on Sept. 30 were \$96,260.56 in ADC. Account (7004822/Donations) \$16,369.32 and ADC account (NDC0500/Recycling) \$79,891.24. This does not include the Foundation account managed by PIP Foundation Board.

Procurement/Contracts Report (required by policy) –

For September, purchase orders and contracts in excess of \$10,000 amounted to \$4,209,651.39. Of this amount, \$2,081,480.96 was for inmate care and custody related items (food, shoes, clothing, etc.). Bulk fuel costs for the month of September were \$79,800.32 - average cost of bulk diesel was \$1.80/gallon; average cost of E-10 was \$1.88/gallon.

Vacancies, Hires, and Terminations - On Sept. 30, there were a total of 608 vacancies, 54 new hires, and 76 terminations at the various ADC locations.

INFORMATION TECHNOLOGY

Unitrends has been selected as the data backup and off-site disaster recovery software solution. We will continue to test and attempt to 'break it' through October to verify our decision before moving forward with a possible purchase. Unitrends has been the only solution capable of backing some of our locations like North Central and Central Office consistently. We are working on the quote for both a one-year and three-year license agreement.

Several legislatively required eOMIS development projects are in process:

- ACT 1201 County Jail Invoice changes to 30-day cycle
- ACT 973 Sex Offender notification to PA 120 days
- ACT 375 addition of two offenses for SOCNA assessment.

eOMIS training was provided for ORCU and McPherson Units intake staff on the new ARORA assessment form they will be required to complete for all intakes.

Weekly conference meetings continue with SECURUS Technologies to discuss progression of the SVV (inmate kiosk for Video Visitation) project.

TRAINING ACADEMY**Basic Training Division**

Basic Training class 2015-K graduated on Sept. 11 with 36 cadets. The Willis H. Sargent Award winner was Joshua Skillen of the Pine Bluff Unit. Deputy Warden Tami Aiken of the Wrightsville Complex served as the special speaker. On Sept. 15, Captains Joi Harris, Latisha Davis, and Martha Lacy attended the "Female Enforcers" class in North Little Rock.

In-Service Division

Train the Trainer: Learning Transfer Impact, the Department's Instructor development class, was held the first full week of September at the Academy. This class is designed for those who teach. Students began by learning the elements of defendable training and the role it plays in the instructional environment. Then, they were able to actually design and develop their own lesson and present it to the facilitators of the class. After the solo presentation, students were able to improve their skills even more by giving a group presentation.

Sept. 8-10 brought another installment of *Management Level 2* training. This mandatory training includes *Rethinking Retention*, *PREA Investigations for Supervisors*, *Solutions for the Correct Care of Inmates* and more. One new course added this year is a section on ACA and its importance for senior staff. Supervisors at the rank of Lieutenant and above take this course.

On Sept. 15, a new class, Hospital Escorts with a Taser, was conducted with Gary Hill instructing. Several area hospitals do not allow a firearm due to the effect it may have on the patients.

The focal point for this month is the new and improved Field Training Officer Class. This course is designed for staff that will work side by side with cadets and train them on how to accomplish their jobs. The FTO program is steered using the FTO Manual which encompassed the Mockingbird Program. This means using our best staff to model for our new staff. Components of the training focus on not only the teaching aspect, but the retention of the employee.

eCADEMY

During the month of September 2015, 283 ADC employees completed a total of 3,358.00 hours of eCADEMY training.

HEALTH/CORRECTIONAL PROGRAMS**Sex Offender Treatment Programs:**

	Slots	Completed	Removed	Clients
Rsvp	238	0	16	238
Soft	30	0	0	11
Total	268	0	16	249

There are 735 males on the waiting list for RSVP and 29 females on the waiting list for SOFT within five years of their release date and of those, 51 are mandated by the Board of Parole. The average time on the waiting list from request is three to six months for stipulated. The total on the waiting list, including those not currently within the identified time frame, is 1,561 males and 36 females. There are no PREA inmates in either program at this time.

Therapeutic Community:

	Slots	Completed	Removed	Clients
Tucker	129	6	5	130
Wrts	45	4	1	47
McP	50	5	0	52
Total	224	15	6	229

There are 125 males and 20 females on the waiting list within 18 months of their release date and of those, 24 are mandated by the Board of Parole. The average time on the waiting list from request is 23 days. The total on the waiting list, including those not currently within the identified time frame, is 544 males and 52 females.

S.A.T.P.:

	Slots	Completed	Removed	Clients
Grimes	50	23	2	46
McPh	100	10	1	101
MSU	3	0	0	2
RLW/CF	188	32	6	188
Tucker	43	2	10	47
Varner	44	4	3	46
Wrts	135	18	8	139
Total	563	89	30	569

There are 2,074 males and 454 females on the waiting list within 18 months of their release date and of those, 30 are mandated by the Board of Parole. The average time on the waiting list from request is 22 days. The total on the waiting list, including those not currently within the identified time frame is 3,071 males and 599 females.

R.P.U.:

The Residential Program Unit at Ouachita had four admissions and two discharges in September for an end of the month count of 71.

McPherson RPU Program:

There were 33 admissions and one discharge in September for an end-of-month count of 39.

Hawkins Center SPU Program:

There were no admissions and ten discharges in September for an end-of-month count of zero. These inmates were transferred to the McPherson Mental Health RPU and the SPU was reassigned by the Hawkins Unit for non-mental health inmates.

Habilitation Program:

The Habilitation Program at the Ouachita River Correctional Unit provided treatment services to 39 inmates during September. There was one admission and no discharge for an end-of-month count of 39.

Staffing:

The following Mental Health Services and SATP positions were vacant in August and September:

	August	September
Psychologists	6	8
Psychological Examiners	0	0
Social Workers	5	5
LPC	0	0
Advisors	5	6
Substance Abuse Prog Leaders	6	7
Admin. Specialist/Analyst	5	4
Rehab Adm/Facility Supv	1	0
Nurse II	1	0

ADDITIONAL PROGRAM INFORMATION**Substance Abuse Education:**

Substance Abuse Education Groups were held at five units and ten inmates completed the program during September. The current waiting list is 596.

Anger Management:

Anger Management Groups were held at 11 units and 276 inmates completed the program during September. The current waiting list is 1,032.

Thinking Errors:

Thinking Errors Groups were held at 11 units and 432 inmates completed the program during September. The current waiting list is 2,553.

Suicide:

There were 57 suicidal threats, gestures or low/moderate risk attempts during September. There were no serious attempts with none resulting in death.

Outpatient:

There were 2,038 inmates on the mental health med log at the end of September. Mental Health conducted the following contacts during September:

Case Management Contacts	1,682
Request for Interviews	3,253
Testing	3
Intakes	1,116
Unit Requests	1,325
Counseling (with treatment plan)	208
Pre-Lock Up Reviews	435
Routine Seg Reviews	1,007
Seg Rounds	3,763
PREA Evaluations	9
Routine Follow-Up	51
834 Requests	23

Monetary Sanctions:

Sanction reimbursements for August were \$153,250.

County Mental Health Requests:

During September, there were 60 requests of a mental health nature received and 31 inmates were fast tracked to ADC.

County Medical Health Requests:

During September, there were 664 requests of a medical nature received and 14 were fast tracked.

Deaths:

There was one inmate deaths during the month of September; the body was not claimed and was cremated.

CCS:

See attachment for CCS's report regarding outside beds and emergency room visits.

Medical Grievances:

In September, there were a total of 304 appeals of medical grievances received and 364 appeals were answered. Twenty-nine of those were found to be with merit and ten with merit but resolved.

Medical Grievances (Bowie County):

In September, there were a total of four appeals of medical grievances received and seven appeals were answered. One of those were found to be with merit and one with merit but resolved.

SEX OFFENDER ASSESSMENT**Assessments Completed:**

Risk Level	September	Sept. 1999 thru Sep. 31, 2015
Level 1	2	1,140
Level 2	38	5,878
Level 3	32	551
Level 4	10	551
Default 3	1	**
Total	83	13,420
*Default Level 3's are included in the total number of Level 3's to date.		

ACIC Numbers:

The total number of sex offenders registered from Sept. 1, 1999 to September 30, 2015:

In Compliance	7,228
Delinquent (did not return address on time)	838
Confined	2,720
Out of State	2,818
Address Unknown (absconded)	190
Deceased	930
Deported	157
Incapacitated	60
Out of USA	3
Total	14,944

PAWS IN PRISON

We currently have 39 enrolled in training.

MAX	7
TUCKER	7
HAWKINS	4
RLW	4
ORCU	9
NCU	8

Graduates for the month of September 2015	11
Graduates year to date (2015)	150
Graduates since inception (Dec 2011)	623
Dogs currently in foster (graduated but not adopted)	3

REGIONAL MAINTENANCE HOURS (September):

Benton Unit	6,556
Delta Regional Unit	4,020
EARU	3,766
Grimes	2,716
McPherson	1,868
R L.W. Corr. Facility	3,696
MSCOWRC	2,016
North Central Unit	9,509
Ouachita River	5,217
TRCC	2,618
Tucker Unit	4,797
Varner Unit	4,120
Wrightsville Unit	3,576
Wrightsville Satellite Unit	2,976
Total Hours	57,451

Regional Maintenance Hours:

*Note: Regional maintenance hours are reported to the Department of Human Services along with volunteer hours.

Rent Report

Sep ' 15
\$88,060.00
\$38,199.00
\$49,674.00
\$26,826.00
\$35,972.00
\$28,951.00
\$267,682.00

[illegible][illegible]

INMATE GRIEVANCE APPEAL REPORT

	Received	Rejected	Processed W/O Merit	Processed W/ Merit
Benton Unit	0	0	0	0
Benton Work Release	0	0	0	0
Bowie County Texas Correctional Facility	10	2	16	1
Cummins Unit	43	18	43	0
Cummins Modular Unit	9	3	0	0
Delta Regional Unit	6	1	15	0
Ester Unit	0	0	1	0
East Arkansas Regional Unit	31	11	18	1
East Arkansas Regional Maximum Unit	104	26	96	0
Grimes Unit	18	19	23	1
Maximum Security Unit	67	22	82	0
McPherson Unit	24	15	21	1
Mississippi County Work Release Center	0	0	0	0
Northwest Arkansas Work Release Center	0	0	0	0
North Central Unit	9	7	10	0
Ouachita River Correctional Unit	14	8	18	0
ORCU New Commitment	0	0	0	0
ORCU Mental Health Residential Program Unit	1	0	2	0
Pine Bluff Unit	1	0	0	0
Randall L. Williams Correctional Facility	4	6	6	0
Texarkana Regional Correctional Center	0	0	0	0
Tucker Unit	18	6	18	4
Varner Super Max	87	22	124	3
Varner Unit	39	12	35	1
Wrightsville Unit	6	2	4	0
Wrightsville Satellite Unit	0	0	1	0
Hawkins Center	0	0	4	0
Hawkins for Males	1	0	3	0
Hawkins SPU	0	0	0	0
Total	492	180	540	12

Medical Grievances

Unit	<i>Acknowledged/ Received</i>	<i>Rejected</i>	<i>Reviewed & Signed by Dep Director</i>	<i>With Merit</i>	<i>With Merit, but Resolved</i>	<i>% With Merit</i>	<i>Without Merit</i>
Benton	0	0	2	0	0	0%	2
Boot Camp	0	0	0	0	0	0%	0
CMU	1	0	0	0	0	0%	0
Cummins	20	4	24	2	0	8%	22
Delta	9	0	3	0	0	0%	3
EARU	26	6	32	4	1	16%	27
EARU Max	54	9	84	5	4	11%	75
ESU	4	0	0	0	0	0%	0
Grimes	19	3	10	0	1	10%	9
Hawkins	0	0	0	0	0	0%	0
McPherson	7	3	6	0	0	0%	6
MCWRC	0	0	0	0	0	0%	0
MSU	42	2	52	4	1	10%	47
North Central	8	3	8	1	0	13%	7
NWAWRC	0	0	0	0	0	0%	0
Ouachita	10	0	24	3	0	13%	21
Pine Bluff	0	0	0	0	0	0%	0
PBR	0	1	0	0	0	0%	0
Randall L. Williams	1	0	4	0	0	0%	4
SNN	0	0	1	1	0	0%	0
TRCC	0	0	0	0	0	0%	0
Tucker	11	5	8	1	2	38%	5
Varner	23	10	27	2	0	7%	25
Varner S Max	62	30	68	6	1	10%	61
WRU	5	0	6	0	0	0%	6
WHM	2	0	5	0	0	0%	5
WWR	0	0	0	0	0	0%	0
TOTAL	304	76	364	29	10	11%	325

ADMISSIONS AND RELEASES

<u>Admissions</u>	<u>Male</u>	<u>Female</u>	<u>Total</u>
Asian	4	0	4
Black	273	22	295
Hispanic	24	0	24
Nat. Amer.	3	0	3
Hawaiian/Pacific Isl	3	0	3
White	483	89	572
Other	1	0	1
Total	791	111	902
<u>Releases</u>	<u>Male</u>	<u>Female</u>	<u>Total</u>
Asian	4	0	4
Black	286	21	307
Hispanic	13	3	16
Nat. Amer.	2	2	4
Hawaiian/Pacific Isl	1	0	1
White	465	80	545
Other	0	0	0
Total	771	106	877

ARKANSAS DEPARTMENT OF CORRECTION

INMATE POPULATION GROWTH 2000-2022

Updated 09/30/2015

Mo.	2000	2001	2002	2003	2004	2005	2006	2007	2008	2009	2010	2011	2012	2013	2014	2015
Jan.	11,984	11,908	12,402	13,015	13,105	13,595	13,481	13,839	14,518	14,796	15,334	16,312	15,134	14,815	17,481	18,142
Feb.	12,169	12,022	12,529	13,054	13,166	13,783	13,633	14,012	14,603	14,883	15,374	16,209	14,990	15,008	17,438	18,082
March	12,006	12,033	12,299	13,108	13,088	13,418	13,534	13,772	14,580	14,843	15,290	16,095	14,964	14,665	17,395	18,233
April	12,069	12,167	12,465	13,213	13,323	13,469	13,554	13,851	14,769	14,937	15,570	16,172	15,124	14,850	17,604	18,703
May	12,109	12,384	12,558	13,463	13,556	13,528	13,711	14,146	14,880	15,146	15,694	16,062	15,132	15,074	17,593	18,693
June	12,005	12,108	12,439	13,418	13,389	13,251	13,430	13,915	14,700	15,025	15,564	15,554	14,832	14,825	17,340	18,813
July	12,030	12,190	12,622	13,509	13,528	13,286	13,560	14,082	14,868	15,195	15,807	15,519	14,879	15,379	17,522	18,870
August	12,087	12,371	12,815	13,565	13,632	13,419	13,646	14,224	15,100	15,385	15,829	15,240	14,675	16,103	17,549	18,806
September	11,983	12,289	12,774	13,341	13,516	13,237	13,652	14,217	14,850	15,285	16,025	15,172	14,724	16,412	17,605	18,549
October	12,119	12,348	12,942	13,341	13,584	13,363	13,775	14,349	14,836	15,381	16,311	15,271	14,856	16,993	17,880	
November	12,094	12,408	13,162	13,408	13,706	13,587	13,913	14,437	15,025	15,340	16,460	15,205	14,625	17,168	17,848	
December	11,856	12,333	12,845	13,106	13,470	13,338	13,728	14,315	14,716	15,199	16,204	15,062	14,654	17,235	17,874	
Net Ann. Inc.	29	477	512	261	364	-132	390	587	401	483	1,005	-1,142	-408	2,581	639	675
Avg. Mo. Inc.	2	40	43	22	30	-11	33	49	33	40	84	-95	-34	215	53	75

Population is total jurisdictional count at end of each month. Population at end of month December 1999 was 11,827.

Average monthly population increase for past fifteen years 2000 - 2014 is 34

Average monthly population increase for past ten years Jan.2005 - Dec 2014 is 37

Average monthly population increase for past five years 2010 - 2014 is 45

Projected at Growth of 34 per Month

	2008	2009	2010	2011	2012	2013	2014	2015 Actual/ Proj.	2016	2017	2018	2019	2020	2021	2022	2023
Mo.	Actual	Actual	Actual	Actual	Actual	Actual	Actual	Proj.	Proj.	Proj.	Proj.	Proj.	Proj.	Proj.	Proj.	Proj.
January	14,518	14,796	15,334	16,312	15,134	14,815	17,481	18,142	18,685	19,093	19,501	19,909	20,317	20,725	21,133	21,541
February	14,603	14,883	15,374	16,209	14,990	15,008	17,438	18,082	18,719	19,127	19,535	19,943	20,351	20,759	21,167	21,575
March	14,580	14,843	15,290	16,095	14,964	14,665	17,395	18,233	18,753	19,161	19,569	19,977	20,385	20,793	21,201	21,609
April	14,769	14,937	15,570	16,172	15,124	14,850	17,604	18,703	18,787	19,195	19,603	20,011	20,419	20,827	21,235	21,643
May	14,880	15,146	15,694	16,062	15,132	15,074	17,593	18,693	18,821	19,229	19,637	20,045	20,453	20,861	21,269	21,677
June	14,700	15,025	15,564	15,554	14,832	14,825	17,340	18,813	18,855	19,263	19,671	20,079	20,487	20,895	21,303	21,711
July	14,868	15,195	15,807	15,519	14,879	15,379	17,522	18,870	18,889	19,297	19,705	20,113	20,521	20,929	21,337	21,745
August	15,100	15,385	15,829	15,240	14,675	16,103	17,549	18,806	18,923	19,331	19,739	20,147	20,555	20,963	21,371	21,779
September	14,850	15,285	16,025	15,172	14,724	16,412	17,605	18,549	18,957	19,365	19,773	20,181	20,589	20,997	21,405	21,813
October	14,836	15,381	16,311	15,271	14,856	16,993	17,880	18,583	18,991	19,399	19,807	20,215	20,623	21,031	21,439	21,847
November	15,025	15,340	16,460	15,205	14,625	17,168	17,848	18,617	19,025	19,433	19,841	20,249	20,657	21,065	21,473	21,881
December	14,716	15,199	16,204	15,062	14,654	17,235	17,874	18,651	19,059	19,467	19,875	20,283	20,691	21,099	21,507	21,915
Net Ann. Inc.	401	483	1,005	-1,142	-408	2,581	639	777	408	408	408	408	408	408	408	408
Ave. Mo. Inc.	33	40	84	-95	-34	215	53	65	34	34	34	34	34	34	34	34

ADC County Jail Backup FY2016

DAY		Jul-15		Aug-15		Sep-15
1		2,674	*	2,556		2,276
2		2,615	*	2,556		2,274
3		2,618		2,558		2,267
4	*	2,618		2,572		2,236
5	*	2,618		2,592	*	2,236
6		2,618		2,598	*	2,236
7		2,638		2,615		2,180
8		2,669	*	2,615		2,180
9		2,686	*	2,615		2,174
10		2,677		2,621		2,181
11	*	2,677		2,625		2,147
12	*	2,677		2,597	*	2,147
13		2,660		2,606	*	2,147
14		2,635		2,607		2,116
15		2,614	*	2,607		2,100
16		2,587	*	2,607		2,074
17		2,576		2,614		2,067
18	*	2,576		2,651		2,034
19	*	2,576		2,666	*	2,034
20		2,541		2,705	*	2,034
21		2,550		2,687		2,031
22		2,546	*	2,687		2,023
23		2,542	*	2,687		2,019
24		2,550		2,685		2,034
25	*	2,550		2,605		2,023
26	*	2,550		2,553	*	2,023
27		2,533		2,453	*	2,023
28		2,535		2,309		2,027
29		2,525	*	2,309		1,975
30		2,549	*	2,309		1,958
31		2,556		2,272		
Average		2,598		2,572		2,109
						2426.454

Notes: Totals do not include 309 Contracts in County Jails (maximum of 336)

ARKANSAS DEPARTMENT OF CORRECTION															
FY15 BED CAPACITY; MONTHLY POP. AVG; AVERAGE NO. VACANT BEDS PER UNIT															
	TOTAL	Avg. Mo.	Avg. Mo.	Avg. Mo.	Avg. Mo.	Avg. Mo.	Avg. Mo.	Avg. Mo.	Avg. Mo.	Avg. Mo.	Avg. Mo.	Avg. Mo.	Avg. Mo.	Avg. Mo.	Total Vac
	CAP	Pop	Pop	Pop	Pop	Pop	Pop	Pop	Pop	Pop	Pop	Pop	Pop	Pop	Beds
<u>Units</u>		Jul-15	Aug-15	Sep-15	Oct-15	Nov-15	Dec-15	Jan-16	Feb-16	Mar-16	Apr-16	May-16	Jun-16		
Cummins	1876	1927	1924	1938										1930	-54
Maximum Security	532	566	569	566										567	-35
North Central	800	822	819	840										827	-27
Texarkana Regional	128	126	126	127										126	2
Varner	1714	1722	1728	1736										1729	-15
Wrightsville	1481	1436	1447	1498										1460	21
Benton	325	328	325	305										319	6
Delta	603	595	595	598										596	7
East Arkansas Regional	1659	1665	1660	1661										1662	-3
Randall L. Williams/Corr. Fac.	562	566	567	570										568	-6
Mississippi Co. WR	133	127	128	133										129	4
Northwest AR WR	100	97	98	100										98	2
Ouachita River	1782	1792	1806	1850										1816	-34
Pine Bluff	430	435	433	437										435	-5
PB Female Work Release	54	54	54	54										54	0
Tucker	1126	1096	1101	1114										1104	22
Grimes	1012	1044	1046	1067										1052	-40
Ester	184	140	183	184										169	15
McPherson	924	1007	1019	1059										1028	-104
Totals Bed Capacity	15425	15,545	15,628	15,837	0	0	0	0	0	0	0	0	0	15670	-244
		1	1	1	0	0	0	0	0	0	0	0	0	3	
															101.6%

Total Capacity Includes 812 temporary beds & 39 Regional Jail Operations (CU, NC, VR, DR, EARU, HW, RLW, TU & ORCU).

Population Capacity does not include Jail Contracts 309 (336), Bowie County, Texas (336), ALETA beds (65) & AR State Police (20)

Monthly Population Averages

	9/1	9/2	9/3	9/4	9/7	9/8	9/9	9/10	9/11	9/14	9/15	9/16	9/17	9/18	9/21	9/22	9/23	9/24	9/25	9/28	9/29	9/30	
Unit/Center																						AVG	
Benton	285	284	280	280	285	285	285	281	296	303	309	314	322	326	325	323	323	323	323	323	323	321	305
Cummins	1,921	1,915	1,913	1,933	1,938	1,938	1,942	1,936	1,953	1,959	1,960	1,955	1,951	1,954	1,953	1,949	1,939	1,933	1,932	1,923	1,922	1,912	1,938
Delta	600	592	603	594	603	603	600	599	593	605	605	604	600	594	597	598	601	591	598	593	602	591	598
E AR Reg	1,667	1,666	1,666	1,667	1,660	1,660	1,668	1,668	1,662	1,655	1,658	1,660	1,655	1,659	1,656	1,649	1,653	1,655	1,660	1,665	1,666	1,665	1,661
Ester	184	184	184	183	183	183	184	183	183	184	184	184	184	184	183	184	184	184	184	184	184	184	184
Grimes	1,055	1,064	1,065	1,057	1,067	1,067	1,070	1,066	1,071	1,061	1,071	1,069	1,069	1,067	1,068	1,067	1,074	1,069	1,069	1,060	1,070	1,077	1,067
Max Sec	569	569	569	569	569	569	566	566	565	568	567	567	565	565	564	564	564	564	564	563	562	562	566
McPherson	1,057	1,057	1,058	1,056	1,057	1,057	1,059	1,057	1,056	1,056	1,057	1,057	1,057	1,059	1,058	1,057	1,065	1,065	1,065	1,064	1,065	1,065	1,059
MCWRC	128	126	126	129	129	129	129	129	129	129	129	130	129	136	136	136	134	141	141	141	141	141	133
N Central	841	841	841	835	840	840	839	838	838	840	839	839	842	844	843	843	839	837	837	837	841	841	840
NWAWRC	100	100	100	100	100	100	100	100	100	100	100	100	99	99	100	100	100	100	100	99	99	99	100
Ouachita River	1,849	1,850	1,848	1,861	1,852	1,852	1,846	1,863	1,841	1,821	1,832	1,848	1,855	1,841	1,845	1,846	1,862	1,858	1,846	1,861	1,853	1,860	1,850
andall L Willian	568	571	570	569	566	566	567	566	571	570	568	566	567	574	574	574	569	569	572	574	572	572	570
Pine Bluff	439	438	434	431	431	431	435	436	440	435	437	443	438	440	439	440	439	439	439	442	442	436	437
PB Reentry	54	54	54	54	54	54	54	54	54	54	54	54	54	54	54	54	54	54	54	54	54	54	54
TRCC	125	125	128	128	128	128	128	127	127	128	128	128	128	127	127	127	127	128	128	125	125	128	127
Tucker	1,112	1,116	1,116	1,111	1,107	1,107	1,104	1,104	1,109	1,107	1,106	1,112	1,113	1,121	1,121	1,123	1,128	1,131	1,125	1,113	1,116	1,116	1,114
Vanner	1,739	1,738	1,738	1,732	1,730	1,730	1,735	1,739	1,736	1,737	1,733	1,737	1,733	1,733	1,730	1,738	1,735	1,738	1,744	1,741	1,738	1,736	1,736
Wrightsville	1,498	1,500	1,497	1,493	1,501	1,501	1,501	1,499	1,497	1,503	1,503	1,498	1,500	1,503	1,496	1,497	1,487	1,496	1,490	1,490	1,499	1,502	1,498
Total ADC	15,791	15,790	15,790	15,782	15,800	15,800	15,812	15,811	15,821	15,815	15,840	15,865	15,861	15,880	15,869	15,869	15,877	15,875	15,871	15,852	15,874	15,862	15,837
ALETA	19	19	19	19	19	19	19	19	19	19	19	19	19	19	19	19	19	19	19	19	19	19	19
Ar State Police	60	59	59	60	60	60	61	61	62	62	61	61	61	61	61	61	61	61	60	60	60	60	61
Co Jail / M	2,149	2,143	2,142	2,118	2,072	2,072	2,071	2,070	2,043	2,010	1,989	1,963	1,952	1,924	1,912	1,905	1,899	1,919	1,909	1,915	1,873	1,854	1,996
Co Jail / F	127	131	125	118	108	108	103	111	104	106	111	111	115	110	119	118	120	115	114	112	102	104	113
Total Co Jail BK	2,276	2,274	2,267	2,236	2,180	2,180	2,174	2,181	2,147	2,116	2,100	2,074	2,067	2,034	2,031	2,023	2,019	2,034	2,023	2,027	1,975	1,958	2,109
Bowie Co., TX	336	332	335	335	335	335	336	336	336	336	336	335	334	335	335	335	336	336	336	336	336	336	335
309/M	253	249	248	248	247	247	246	251	252	252	251	251	250	250	248	248	248	245	245	248	249	248	249
309/F	45	44	44	44	43	43	43	43	43	43	43	43	43	43	43	43	43	43	43	43	43	43	43
Total Act 309	298	293	292	292	290	290	289	294	295	295	294	294	293	293	291	291	291	288	288	291	292	291	292
Total Non ADC	2,989	2,977	2,972	2,942	2,884	2,884	2,879	2,891	2,859	2,828	2,810	2,783	2,774	2,742	2,737	2,729	2,726	2,738	2,726	2,733	2,682	2,664	2,816
Total	18,780	18,767	18,762	18,724	18,684	18,684	18,691	18,702	18,680	18,643	18,650	18,648	18,635	18,622	18,606	18,598	18,603	18,613	18,597	18,585	18,556	18,526	18,653
																							0
	1	1	1	1	1	1	1	1	1	1	1	1	1	1	1	1	1	1	1	1	1	1	22

CHAPLAINCY

Monthly Report for: September 2015	BENTON	CUMMINS	DELTA REGIONAL	EAST ARKANSAS	EAST ARKANSAS MAX	GRIMES	HAWKINS	MAXIMUM SECURITY	MCPHERSON	NORTH CENTRAL	OUACHITA RIVER	PINE BLUFF	RANDALL L. WILLIAMS	TUCKER	VARNER	VARNER MAX	WRIGHTSVILLE	PTF	TOTAL
Chaplain in Charge	2	5	15	4	0	17	5	9	13	6	13	4	13	9	4	0	17	12	148
Christian																			
Population	2	5	11	4	0	17	5	9	12	6	12	4	13	7	3	0	13	11	134
Segregation	0	0	0	0	0	0	0	0	0	0	0	0	0	0	0	0	0	0	0
Muslim																			
Population	0	0	4	0	0	0	0	0	1	0	1	0	0	2	1	0	4	1	14
Segregation	0	0	0	0	0	0	0	0	0	0	0	0	0	0	0	0	0	0	0
Volunteers in Charge																			
Protestant	26	35	22	0	6	32	3	28	40	48	91	9	11	12	4	1	19	4	391
Catholic	0	1	0	4	1	16	2	1	3	0	1	0	0	0	1	1	4	4	39
Muslim	0	0	0	0	0	0	0	1	0	0	3	0	0	0	1	0	0	0	5
Other	3	0	0	0	0	4	1	1	4	0	0	0	0	0	2	0	0	0	15
Baptism	0	0	0	0	0	7	0	2	0	3	0	0	0	1	0	0	0	0	13
Marriages	0	1	0	0	0	0	0	1	0	1	0	0	0	0	0	0	1	0	4
Distributed by Chaplains																			
Greeting Cards	60	4	0	0	0	100	0	455	488	60	55	421	75	240	197	207	0	0	2362
Bibles, Quran, Torah, Etc.	25	40	30	27	0	14	2	10	31	29	165	12	14	36	16	10	11	5	477
Study Course	10	7	0	0	0	0	0	230	0	0	30	7	32	0	39	2	4	3	364
Writing Supplies	15	28	0	0	0	0	420	900	0	0	125	0	480	0	0	0	0	0	1968
Literature	120	1117	75	672	31	215	0	1100	41	350	1472	214	560	200	2116	50	250	28	8611
Chaplain's Visits																			
Barracks - How Many Visits	84	119	8	35	13	122	32	340	90	127	2150	52	59	22	5	25	30	10	3323
Approximate Hours Spent in Barracks	48	81	2	20	10	20	28	85	45	58	215	21	136	44	13	54	25	30	935
Office (How many Inmates)	79	61	330	7	3	96	78	14	80	215	130	61	95	86	145	0	80	49	1609
How Many Visits Chaplain Made																			
Hospital	0	0	0	0	0	1	0	0	1	0	19	0	2	0	0	1	0	0	24
Infirmary	0	5	4	8	2	28	1	20	5	5	1	4	4	2	1	0	2	0	92
Office	0	8	0	6	0	0	0	30	10	0	0	14	8	100	16	5	0	0	197
Admin Seg	0	22	4	9	9	25	0	50	10	0	5	0	0	0	0	17	0	0	151
Segregation	0	0	4	9	9	25	1	0	10	0	4	4	4	7	0	6	0	0	83
Punitive	0	14	4	9	9	25	0	16	10	12	16	4	4	0	0	6	4	0	133
PC	0	0	0	9	9	0	0	0	10	0	0	0	0	0	0	0	0	0	28
Visitation Days	0	0	0	0	0	0	0	0	10	0	0	0	0	1	0	0	0	0	11
How Many Visits Volunteers Made																			
RCV	2	0	0	60	8	8	2	28	42	0	33	0	19	33	0	0	0	0	235
OCV	35	0	14	5	0	32	32	61	7	21	222	24	36	2	40	0	20	0	551
Spiritual Advisor	0	1	2	0	0	1	0	1	0	0	3	2	2	5	0	1	1	0	19
CRA	44	42	8	70	6	35	12	130	69	79	173	28	7	48	49	16	20	0	836
Total Volunteer Hours	214	61	44	307	15	76	174	669	320	238	2242	121	115	137	398	36	60	0	5227
DENOMINATIONAL VOLUNTEER CHAPLAIN HOURS	112	65	0	0	0	32	133	105	135	461	235	41	191	65	21	0	221	62	1879
Other Activities of Chaplain																			
Counseled Employees	12	4	10	15	5	28	1	4	1	15	30	12	8	10	15	6	1	1	178
Orientation Sessions	0	4	0	0	0	0	0	0	5	0	0	0	0	3	0	0	0	2	14
Free World Devotions	0	9	0	2	0	0	0	3	1	0	5	12	12	0	2	0	1	1	48
Spoke in Churches	4	14	7	4	0	17	2	3	1	0	14	12	12	2	11	0	1	0	104
Crisis Intervention Sessions	7	17	100	0	0	14	1	4	5	6	6	12	6	18	55	15	16	5	287
Marriage Counseling	2	4	1	0	0	12	0	1	2	1	0	0	0	0	0	0	0	1	24
Denominational Meeting	0	10	0	0	0	0	0	0	1	0	4	0	0	1	1	0	0	2	19
Chaplain's Meeting	0	2	1	1	0	3	1	0	1	1	0	1	1	3	8	0	2	0	25
Volunteer Training Session	2	0	0	0	0	0	0	0	1	0	0	0	0	0	0	0	0	0	3
Choir Trip	0	0	0	0	0	0	0	0	0	0	0	0	0	0	0	0	0	0	0
Staff Movement (Chaplain)	0	1	0	0	0	0	0	0	0	0	1	0	0	0	0	0	0	0	2
Promotions (Chaplain)	0	0	0	0	0	0	0	0	0	0	0	0	0	0	0	0	0	0	0
Interns	0	0	0	0	0	0	0	0	0	0	0	0	0	0	0	0	0	0	0
PAL PROGRAM																			
# Enrolled at start of month	0	47	19	50	0	52	46	20	62	23	38	0	28	61	38	0	28	0	512
# Enrolled during the month	0	1	1	1	0	13	18	5	16	13	10	0	7	14	6	0	4	0	109
# Completing the program	0	0	2	3	0	0	0	4	3	0	0	0	0	1	2	0	2	0	17
(# Removed from the program)																			
Paroled	0	1	0	1	0	2	4	0	11	2	3	0	2	1	1	0	0	0	28
Withdrew	0	0	2	0	0	1	3	0	2	3	0	0	0	1	1	0	2	0	15
Removed	0	0	0	0	0	2	0	1	1	0	0	0	1	12	1	0	1	0	19
Transferred	0	0	1	1	0	0	3	0	5	0	1	0	4	1	0	0	1	0	17
# At the end of the month	0	47	15	46	0	60	54	20	56	31	44	0	28	59	39	0	26	0	525
# Of volunteers	0	20	3	53	0	8	14	11	10	6	11	0	6	7	1	0	6	0	156
Special Events:																			

ADC INPATIENT AND EMERGENCY ROOM UTILIZATION

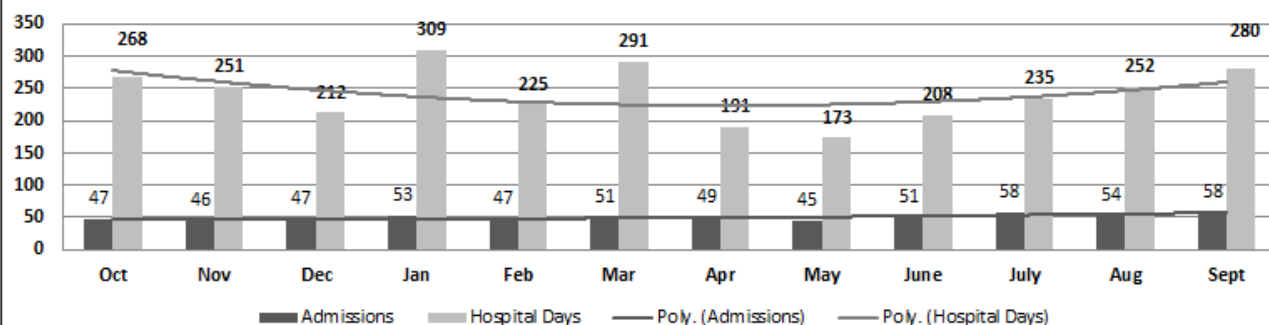
ADC Inpatient Statistics Past 12 Months

	2014			2015									Average
	Oct	Nov	Dec	Jan	Feb	Mar	Apr	May	June	July	Aug	Sept	
Admissions	47	46	47	53	47	51	49	45	51	58	54	58	50.5
Hospital Days	268	251	212	309	225	291	191	173	208	235	252	280	241.3
Average Length of Stay	5.70	5.46	4.51	5.83	4.79	5.71	3.90	3.84	4.08	4.05	4.67	4.83	4.78

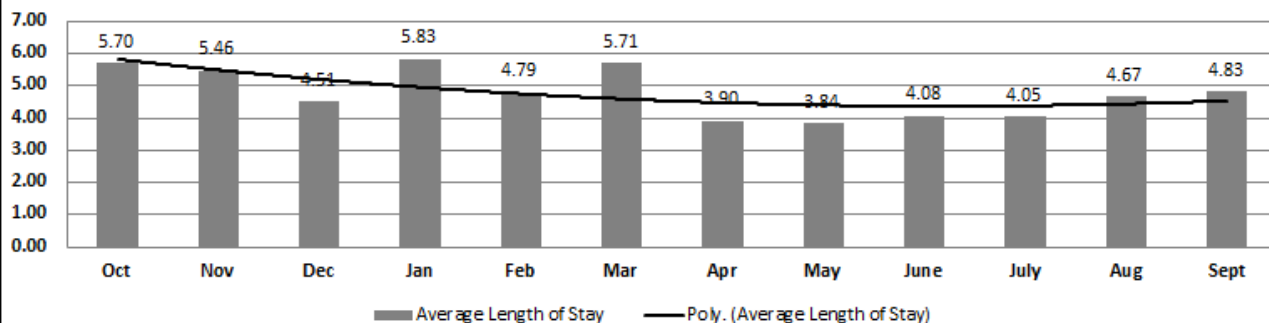
ADC ER Visits Past 12 Months

	2014			2015									Average
	Oct	Nov	Dec	Jan	Feb	Mar	Apr	May	June	July	Aug	Sept	
Emergency Room Visits	90	64	65	59	68	79	83	86	77	99	74	76	76.7

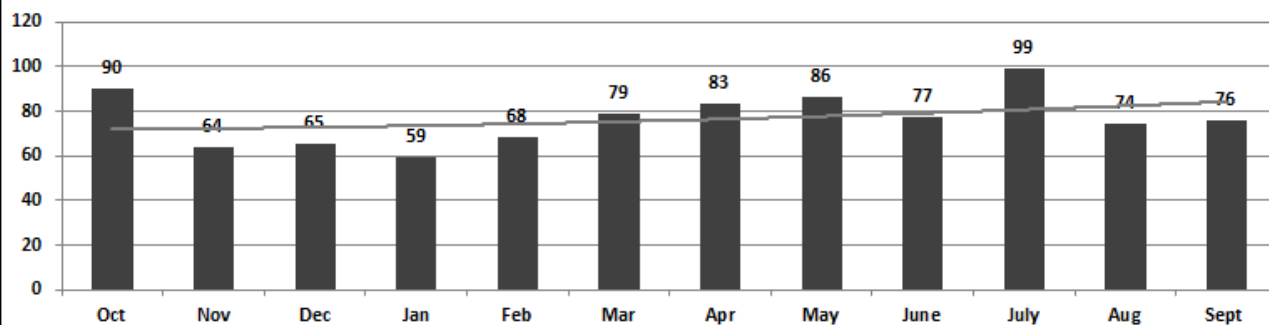
ADC Inpatient Utilization Past 12 Months



ADC Inpatient Average Length of Stay Past 12 Months



ADC Emergency Room Visits Past 12 Months



Monthly Purchasing Report/ Purchase Orders Over \$10,000

VENDOR	DESCRIPTION	LOCATION	PO#	PURCHASE AMOUNT	FUND
Sysco Food Services of AR Inc	Food Purchases	Central Warehouse	4501565318	\$228,049.60	Operational Budget
US Foods Inc	Food Purchases	Central Warehouse	4501565309	\$158,687.22	Operational Budget
Dell Marketing LP	Computers	Information Services	4501564970	\$94,473.90	Operational Budget
Tabb Textiles Co Inc	Fabric	Wrightsville Unit/Industry	4501565394	\$48,110.00	Operational Industry Budget
Razor Chemical Inc	Janitorial Supplies	Delta Regional Janitorial Factory	4501565481	\$15,826.22	Operational Industry Budget
Arkansas Dept of Corr/Industry	Food Purchases	Central Warehouse	4501565779	\$11,436.20	Operational Budget
Robbins Sales Company Inc	Food Purchases	Central Warehouse	4501565386	\$84,033.60	Operational Budget
Arkansas Dept of Corr/Industry	Linen Supplies	Wrightsville Unit	4501565801	\$30,954.32	Operational Budget
Phoenix Trading	Soap	Central Warehouse	4501565793	\$23,179.20	Operational Budget
William R Hill & Co Inc	Food Purchases	Central Warehouse	4501565303	\$319,748.30	Operational Budget
Arkansas Dept of Corr/Industry	Inmate Clothing	Tucker Unit	4501566160	\$10,240.94	Operational Budget
Arkansas Dept of Corr/Industry	Inmate Clothing	Tucker Unit	4501566225	\$35,977.99	Operational Budget
Arkansas Dept of Corr/Industry	Inmate Clothing	Wrightsville Unit	4501566535	\$19,933.90	Operational Budget
Green & Chapman Inc	Low Sulfur Red Diesel	Cummins Unit/Farm	4501565133	\$13,116.92	Operational Farm Budget
R & L Farms (Linford Snyder)	Layer Hens	Cummins Unit/Farm	4501565925	\$367,290.00	Operational Farm Budget
Landers Ford	Truck	Admin East Purchasing	4501567658	\$36,621.00	Work Release
Green & Chapman Inc	Ethanol Gasoline	Cummins Unit	4501559139	\$17,292.69	Operational Budget
Miller Bowie Supply. Com	Livestock Feed	Cummins Unit	4501565993	\$27,867.20	Operational Farm Budget
Mid South Sales Inc	Low Sulfur Red Diesel	Tucker Unit/Farm	4501566219	\$13,547.49	Operational Farm Budget
Barnes Paper Co	Egg Flats	Cummins Unit/Farm	4501567310	\$10,402.56	Operational Farm Budget
Mid South Sales Inc	Unleaded Gas & Low Sulfur Diesel	Central Warehouse	4501565438	\$10,661.32	Operational Budget
Green & Chapman Inc	Unleaded Gasoline	Cummins Unit	4501567294	\$14,406.72	Operational Budget
Hubert Company	Kitchen Supplies	Benton Unit	4501568102	\$10,548.94	Operational Budget
Hiland Dairy	Food Purchases	Central Warehouse	4501568518	\$30,386.28	Operational Budget
Shamrock Meats Inc	Food Purchases	Cummins Cold Storage Facility	4501566240	\$227,960.00	Operational Farm Budget
Green Point AG LLC	Chemical Insecticide	East AR Unit/Farm	4501568478	\$11,121.50	Operational Farm Budget
Frost Flying Service	Aerial Application	East AR Unit/Farm	4501568481	\$10,732.50	Operational Farm Budget
Gammon Equipment Inc	Forklift	Cummins Unit/Farm	4501565966	\$23,436.08	Operational Farm Budget
Barnes Paper Co	Egg Cartons	Cummins Unit/Farm	4501568072	\$10,723.13	Operational Farm Budget
Processors Choice Inc	Soy Protein	Cummins Cold Storage Facility	4501566821	\$26,760.00	Operational Farm Budget
Green Point AG LLC	Grass Seed & Fertilizer	Cummins Unit/Farm	4501568589	\$30,000.00	Operational Farm Budget
Central States Bus Sales Inc	Conversion Vans	Admin East Purchasing	4501569956	\$86,762.00	Medical Risk Assessment
Sysco Food Services of AR Inc	Food Purchases	Central Warehouse	4501569614	\$49,231.00	Operational Budget
Mid States Services Inc	Tissue Paper	Hawkins Unit/ACI Imaging	4501569591	\$97,075.20	Operational Industry Budget
Helena Chemical Company	Fertilizer	Cummins Chemical Shed	4501568074	\$99,004.00	Operational Farm Budget
Farmers Association	Fence Supplies	Cummins Unit/Farm	4501569221	\$21,461.84	Operational Farm Budget
Planter Cotton Oil Mill Inc	Feed	Cummins Unit/Farm	4501568875	\$23,760.00	Operational Farm Budget
M J Kellner Co Inc	Food Purchases	Central Warehouse	4501569963	\$175,712.00	Operational Budget
American Paper & Twine Co	Paper Products	Central Warehouse	4501569951	\$33,742.07	Operational Budget
Arkansas Dept of Corr/Industry	Tissue Paper	Central Warehouse	4501569957	\$208,091.25	Operational Budget
Tabb Textiles Co Inc	Fabric	Wrightsville ACI Warehouse	4501570001	\$84,000.00	Operational Industry Budget
Cedar Creek LLC	Oak	Wrightsville ACI Warehouse	4501570003	\$19,815.00	Operational Industry Budget
Bennie Johnson	Hauling Service	Tucker Unit/Farm	4501570536	\$16,000.00	Operational Farm Budget
Beyrl Bitely & Sons Trucking Inc	Hauling Service	Cummins Unit/Farm	4501570701	\$11,228.64	Operational Farm Budget
Kronos Incorporated	Data Processing Supplies	Information Services	4501571218	\$67,776.93	Operational Budget
Fastenal Co	Video Surveillance Equipment	Ester Unit	4501571344	\$277,411.50	Const ADFA Ester II
Green Point AG LLC	Crop Seed	Cummins Chemical Shed	4501570861	\$12,000.00	Operational Farm Budget
Crop Production Services Inc	Fertilizer	Cummins Chemical Shed	4501571441	\$92,925.00	Operational Farm Budget
Progressive Tractor & Implement	Rental Equipment	Tucker Unit/Farm	4501571374	\$15,948.44	Operational Farm Budget
Cedar Creek LLC	Lumber	Wrightsville ACI Warehouse	4501571446	\$16,515.00	Operational Industry Budget
American Correction Association	Re-Accreditation Contract	Admin Bldg/Accreditation	4501565523	\$12,150.00	Operational Budget
National Food Group	Food Purchases	Central Warehouse	4501571805	\$102,793.60	Operational Budget
Robbins Sales Company Inc	Food Purchases	Central Warehouse	4501571799	\$37,089.92	Operational Budget
Sysco Food Services of AR Inc	Food Purchases	Central Warehouse	4501571791	\$28,318.50	Operational Budget
US Foods Inc	Food Purchases	Central Warehouse	4501571787	\$70,228.80	Operational Budget
William R Hill & Co Inc	Food Purchases	Central Warehouse	4501571830	\$265,131.79	Operational Budget
White River Petroleum Co Inc	Ethanol Gas & Low Sulfur Diesel	Grimes Unit	4501568734	\$10,775.18	Operational Budget
Arkansas Dept of Corr/Industry	Food Purchases	Central Warehouse	4501572086	\$10,189.50	Operational Budget
Arkansas Dept of Corr/Industry	Janitorial Supplies	Central Warehouse	4501572075	\$114,099.90	Operational Budget
William R Hill & Co Inc	Food Purchases	Central Warehouse	4501572092	\$48,098.40	Operational Budget
Printing Papers Inc	Xerox Paper	Central Warehouse	4501572062	\$26,200.40	Operational Budget
Ferguson Enterprises Inc	Plumbing Supplies	Ester Unit	4501569792	\$31,797.22	Const ADFA Ester II
Mississippi AG Company	Farm Equipment	Cummins Unit/Farm	4501564022	\$19,192.59	Operational Farm Budget
John D Wahrmond	Harvesting Service	Cummins Unit/Farm	4501568079	\$51,600.00	Operational Farm Budget
Total for Purchases over \$10,000				\$4,209,651.39	
FIRM CONTRACTS OVER \$25,000.00					
VENDOR	DESCRIPTION	UNIT	Contract # P.O#	PURCHASE AMOUNT	FUND
Total for Contracts				\$0.00	
EMERGENCY PURCHASE ORDERS OVER \$25,000.00					
Total EM Purchases				\$0.00	
Total Purchases				\$4,209,651.39	