



PUBLIC RELATIONS

RESEARCH/PLANNING

September 2018 Admissions and Releases – Admissions for September 2018 totaled **723** (592-males & 131-females) while releases totaled **488** (423-males & 65 females) for a net increase in-house of **235** Inmates.

Inmate Population Growth/Projection – At the end of September 2018, the Arkansas Department of Correction population totaled **17,865** representing a decrease of **213** Inmates since the first of January 2018. Calendar year 2018 has had an average decrease of **24** inmates per month, down from an average growth of **45** inmates per month during calendar year 2017.

Average County Jail Back-up – The backup in the County Jails averaged **1,536** inmates per day during the month of September 2018 – down from an average of **1,666** inmates per day during the month of August 2018. Of the **1,536** average, short-term revocations averaged **684** (605-males & 79-females) during the month.

SOCIAL MEDIA

Facebook results for September showed a total of six thousand five hundred sixty-five (6,565) “likes” of our page, an increase of one hundred seventy-three (173) from the previous month.

LEGAL SERVICES

PREA

PREA Hotline Data:

Number of Calls Received	290
Total PREA Issue Calls	14
Total Non-PREA Calls	129
Total Calls Referred to Internal Affairs Division	23
Total Repeat Calls	86
Total Calls with No Message	61
Total Technical Failure Calls	0

Internal Affairs is handling all PREA investigations. There were no issues with the PREA Hotline.

INMATE INSTITUTIONAL GRIEVANCES

Inmate Formal/Informal Grievances: During September 2018, a total of one thousand six hundred fifty-six (1,656) formal grievances and two thousand seven hundred sixty-three (2,763) informal grievances were filed at various units.

Institutional Grievances Appeals: There were a total of five hundred two (502) appeals of institutional grievances received in September 2018. Four hundred five (405) were acknowledged and ninety-seven (97) were rejected for various reasons. A total of three hundred eighty-seven (387) appeals were answered; three hundred eighty-three (383) had no merit and four (4) were found with merit.

INSTITUTIONS

STTG

During the month of September, the STTG Coordinator, along with K9 officers, provided assistance on five BCOT special assignments on the 4th, 5th, 6th, 24th and 25th. The STTG Coordinator attended security audits at the Wrightsville Unit on September 7th and Texarkana Work Release on the 20th. An STTG sweep of the North Central Unit was conducted on September 13th. The STTG Coordinator also taught the BCOT STTG class on the 19th. The third STTG quarterly meeting of 2018 was held at the Ouachita River Unit on September 26th.

FARM

All farms harvested row crops in September. It appears that crop yields at all farms are below what was produced last year. While wet weather slowed down the process, work to complete the harvest has continued whenever possible. Cummins is continuing to cut corn and rice. Tucker is cutting soybeans and rice. EARU is cutting corn.

Hay production moved forward during September despite the rains. Goals for the amount of hay needed for the winter have almost been achieved.

The planting of fall gardens is being completed. Harvesting is expected to begin next month.

The Somatic Cell Count issues in the dairy remain under control and milk processing continues to meet the needs of the agency.

A high mortality rate developed in one of the layer houses. Samples were submitted to the state veterinarian to determine the problem, and test results indicated a bacterial infection. A treatment plan consisting of additional antibiotics in the water and an increase in vitamins and minerals was implemented. Egg production remained stable in filling the unit needs and the contract with Oklahoma Department of Correction. Plans are underway to begin providing eggs and milk to ACC.

REGIONAL MAINTENANCE HOURS

Regional Maintenance Hours	September 2018
Benton Unit	7,944
Delta Regional Unit	1,548
East Arkansas Regional Unit	3,096
Grimes Unit	2,176
McPherson Unit	1,200
Mississippi County Work Release	872
North Central Unit	8,096
Ouachita River Unit	1,512
Randall L. Williams Unit	3,344
Texarkana Regional Correctional Center	43
Tucker Unit	1,504
Varner Unit	2,256
Wrightsville Unit	2,832
Total Hours	36,423

WORK RELEASE RENT REPORT

Unit	September 2018
Benton Unit	\$84,864.00
Mississippi County Work Release	\$52,870.00
Northwest Arkansas Work Release	\$38,845.00
Pine Bluff Work Release	\$28,696.00
Texarkana Regional Correctional Center	\$50,609.00
Wrightsville/Hawkins Work Release	\$24,072.00
Total	\$279,956.00

WAGE**(Workforce Alliance for Growth in the Economy)**

Unit	Slots	Completed	Discharged	End Count
Delta	24	0	0	24
Ester*	0	0	0	0
Hawkins	36	4	15	30
Ouachita River	10	0	0	10
Tucker	17	0	0	17
Wrightsville	36	4	4	33
Total	123	8	19	114

*WAGE currently inactive pending testing

**RANDALL L. WILLIAMS
JUVENILE EDUCATION PROGRAM**

	Slots	Enrolled	Discharged	End Count
Juveniles*	20	12	2	10

*Juveniles are transferred from the program once they reach the age of eighteen (18). The Juvenile count also changes based on new commitments. During the month, five (5) inmates were on punitive status. There were four (4) new commitments.

ADMINISTRATIVE SERVICES**BUDGET SECTION UPDATE**

No Act 715 cases were filed in September.

PROCUREMENT SECTION UPDATE**Current Bids:**

- Chemical Munitions
- HVAC Cummins Classroom Project

No ABA Contracts**No Contracts Awarded In-House****No Renewed Contracts/OSP****Procurement/Contracts Report (required by policy)–**

For September 2018, Purchase Orders and Contracts in excess of \$10,000 amounted to \$3,497,912.51. Of this amount, \$1,721,681.96 was for Inmate Care and Custody-related items (food, shoes, clothing, etc.). Bulk fuel costs for the month of September were \$61,156.60 – average cost of E-10 was \$2.39/gallon; average cost for bulk diesel was \$2.48/gallon.

HUMAN RESOURCES UPDATE

Workplace Safety – During the month of September, the modified version of the Health and Safety Plan was presented to one (1) Basic Training class with a total of fifty-four (54) cadets in attendance.

Sixty (60) incidents were reported to the Company Nurse in September, bringing the total of reported incidents to six hundred thirty-four (634) in 2018.

Benefits – There were seventy-seven (77) FMLA requests processed during the month; seventy-one (71) were approved and six (6) denied. A total of sixteen (16) catastrophic leave requests were received; nine (9) were approved, two (2) were denied, and five (5) are pending.

HUMAN RESOURCES UPDATE, *continued*

Physical Assessments – A total of one hundred ninety-nine (199) applicants and incumbent personnel were assessed during September. Eighty-six (86) incumbent personnel successfully passed the physical assessment and two (2) did not. One of those rescheduled and passed after a physician's release; the other one has not rescheduled. One hundred eleven (111) applicants successfully passed their physical assessments.

Employment – A total of two thousand fourteen (2,014) applications were received during September. Fifty-seven (57) Non-Security applications and eighty-two (82) CO I applications were processed. Forty-seven (47) Correctional Officers were hired, and fifteen (15) Correctional Officers were rehired.

ADC personnel attended the following Job Fairs in the month of September:

Date	Unit	Location
9/13/18	Grimes	Goodwill/Newport
9/18/18	EARU	Eastern AR Community College Career & Transfer Fair/Forrest City
9/18/18	Grimes	KAIT8 Employment Expo/Jonesboro
9/18/18	McPherson	KAIT8 Employment Expo/Jonesboro
9/26/18	Varner	Varner Unit
9/28/18	MAX	Workforce Center/Lonoke

CO I interviews were conducted in the month of September at various units throughout the department:

Date	Unit	Date	Unit	Date	Unit
9/4/18	MAX McPherson	9/13/18	Grimes MAX McPherson ORCU	9/21/18	Delta McPherson
9/5/18	EARU	9/17/18	EARU MAX	9/25/18	Delta MAX McPherson
9/6/18	EARU Grimes MAX ORCU	9/18/18	Delta MAX	9/26/18	EARU
9/7/18	Delta	9/19/18	NCU	9/27/18	Grimes MAX ORCU
9/10/18	McPherson	9/20/18	Grimes MAX McPherson ORCU	9/28/18	Tucker
9/11/18	MAX				
9/12/18	Cummins EARU MAX				

Vacancies, Hires, and Terminations

During the month there were a total of three hundred ninety-nine (399) security and non-security vacancies, seventy-four (74) new hires, ninety-nine (99) terminations, and twelve (12) retirements throughout the department.

**ADMINISTRATIVE SERVICES DIVISION
MONTHLY REPORTS INCLUDE GIFTS,
GRANTS, DONATIONS / INMATE WELFARE
FUND BALANCE (*required by policy*):****Gifts, Grants and Donations:**

Donations made in the month of September totaled \$3,150.00 (700 watermelons at \$4.50 each).

The **Inmate Welfare Fund** balance on September 30, 2018 was \$7,291,846.78.

The **PAWS in Prison Fund** total on September 30, 2018 was \$227,340.84. ADC Account (7004822/Donations) balance was \$19,159.55, ADC Account (NDC0500/Recycling) balance was \$104,091.12, and the ADC Paws in Prison Non-Profit account (Quickbooks) balance was \$104,090.17.

INFORMATION TECHNOLOGY**SECURUS VIDEO VISITATION (SVV) PROJECT****SVV Dog Kennel Installations:**

- Cummins Unit – Securus internal processes remaining:
 - Installation team information being gathered to submit to ADC for completion of background checks.
 - Entergy to complete vendor form to submit to accounts payable.

Inmate Video Visits:

- Inmates completed two thousand nine hundred thirty-nine (2,939) video visits during September and missed one hundred thirty-six (136).

SECURUS TABLET PROJECT:

- A total of two thousand sixty-eight (2,068) tablets were leased during the month.

IT/eOMIS ACTIVITIES

- Meetings continued with DIS to discuss the Microsoft Office 365 transition for the agency. In preparation for this transition, computer group policies were updated to force the installation of Microsoft updates overnight, insuring compliance on the remainder of computers in production.
- Phone service at the Delta Regional Unit was converted to VOIP. The remaining sites awaiting conversion include the Cummins, Varner, North Central, Wrightsville, and Hawkins units.
- Marquis representatives delivered a presentation to the Management Team and facility staff of the new eOMIS GIS (Geographical Information System) features. Only the Ouachita River Unit has GIS functionality in eOMIS, which was previously provided by Marquis at no cost to the agency. Several suggestions were discussed for additional GIS development.

INFORMATION TECHNOLOGY, *continued*

- A new dashboard, *Out on Gate Pass*, was created by IT and placed in the eOMIS test region where it passed testing. When promoted to production, this dashboard will provide unit staff members with the ability to check offenders who are still on gate for their facilities.
- Marquis presented an overview of the new JIRA application that is used for eOMIS development documentation of issues, defects, enhancements, and product improvements. Marquis plans to embed the application in EOMIS. They will continue to provide access to the old application issue process for historical information; however, all new issues will be documented in JIRA.

TRAINING ACADEMY - SEPTEMBER 2018

BASIC TRAINING DIVISION –

Instructor Kathy Lowery's, **BCOT Class 2018-K** graduated on September 14th with one hundred eleven (111) cadets. Cedric Mayo of the Wrightsville Unit received the Willis H. Sargent Award. Deputy Warden Judy Taylor served as the guest speaker.

IN-SERVICE DIVISION –

EQ 360° was presented September 5th. Emphasizing emotional intelligence and the student's ability to understand, express, and manage his or her own emotions, this class also teaches students how to pay attention to what people around them may be feeling.

LEAP Seminar was presented on September 9th and includes "learning life's lessons" with the Employee Assistance Program (EAP). The six-hour session consists of a variety of classes and utilizes professionals contracted through the EAP.

Character First, which serves as a paradigm for personal growth, was presented on September 7th. One of 49 character qualities is shared with staff members each month in the form of a 15-minute training session. The sessions outline realistic practices/behaviors that are designed to develop each particular character quality, applying it both to work and family life. The character quality for September was meekness.

Lock Technician Training, presented by a certified lock technician from Southern Folger Detention Equipment Company, was held on September 10th. The class enables staff to work on locking mechanisms within our facilities.

Correctional Security for Non-Security was presented September 11th. This is an 8-hour class designed for volunteers who serve in various roles.

Correctional Security for Non-Security was presented on September 12th-13th. The course highlights a variety of issues that full-time non-security ADC staff members new to a correctional setting need to be aware of. Participants are taught correctional history, how to communicate and cooperate with security staff members, and other essential new employee information. 24 hours of eCADEMY course work is the prerequisite for attending the two-day session at the Training Academy.

Armorer Class, held September 17th-18th, instructs students on basic takedowns, maintenance and operation of firearms; in addition to holster maintenance. Instruction is also provided on completing the Security Audit Checklist, ACA Checklist, ADC Weapons Policy, and required inventories.

Management Level II was held on September 17th–19th. The class is intended for Lieutenants and above, and mid-level security supervisory staff. The course includes learning the supervisor's role in Correct Care Solutions, PREA for supervisors, and rethinking retention.

Taser Training was presented on September 18th and 20th. Participants were taught the practical and legal uses of the Taser X-26 electronic device by a department-certified trainer. Once certified, students are required to obtain recertification every two years.

Weapon Retention was presented on September 21st and is based on components of PPCT. The class is intended for those who carry handguns on a regular basis. Included in the training were field security, transportation officers, and hospital security officers.

PPCT/SKD Instructor Certification/Recertification

Course was presented on September 24th–28th. Staff members in attendance were certified as PPCT/SKD instructors. Certification allows for an instructor to teach any of the PPCT/SKD components. Recertification is required every three years.

eCADEMY –

During the month of September 2018, two hundred eighty-six (286) ADC employees completed a total of 3,205.55 hours of eCADEMY training. Approximately 16% of ADC employees completed at least one course during that timeframe, averaging 1.43 hours per staff member. The Computer Lab is open on a daily basis for staff members who wish to complete online training through eCademy.

HEALTH/CORRECTIONAL PROGRAMS

CHAPLAINCY SERVICES

Cummins Unit – Star City Assembly of God Church led revival services on September 7th through 9th with an average inmate attendance of ninety (90) per service. The Christian Motorcycle Association (CMA) visited Cummins for three consecutive days on the 13th through 15th. CMA held worship services each day with an average attendance of ninety-seven (97) and a yard event attended by a total of four hundred twenty-five (425) inmates.

Delta Regional Unit – On September 10th through 12th, staff from the “Institute of Basic Life Principles” in Little Rock presented a three-day course to forty two (42) inmates.

East Arkansas Regional Unit – “Joyce Myer Ministries” distributed books and a bar of soap to all inmates willing to receive them on September 12th. Representatives of “Gideons International” distributed three hundred fifty (350) Bibles to inmates in general population and four hundred (400) more to the Max area on the 22nd.

Ester Unit – On September 2nd, Minister Ron Hale baptized ten (10) inmates during a special Sunday service.

Grimes Unit – During September, representatives of “The Storybook Project” assisted thirty-six (36) inmates in recording themselves reading children’s stories to be sent to their children.

Maximum Security Unit – Thirty-five (35) inmates graduated from the “Life Principles II” course on September 4th. On the 10th, “Joyce Meyer Ministries” distributed a book and bar of soap to all inmates and staff who wished to receive them. They also led a worship gathering in the Chapel. A quarterly volunteer training session was held on the 29th to provide education on PREA to CRAs.

McPherson Unit – Three volunteers from “Love Without End Ministries” led a worship gathering attended by one hundred twenty-one (121) inmates on September 7th. “The Storybook Project” assisted one hundred eleven (111) inmates with recording themselves reading children’s stories to be sent to their children on the 26th.

North Central Unit – Volunteer training took place on September 8th with 18 volunteers in attendance. On the 29th, a graduation ceremony took place for five (5) inmates who completed PAL training.

Ouachita River Correctional Unit – On September 7th, representatives of “Joyce Meyer Ministries” distributed books and soap to the inmate population and led a worship service attended by seventy (70) inmates. “Kairos Walk 23” took place from the 13th through 16th. A total of twenty (20) volunteers facilitated the program which was completed by eighteen (18) inmate participants.

Tucker Unit – Eleven (11) volunteers attended a training session conducted on September 29th.

Wrightsville Complex (*Pathway to Freedom included*) – “Angel Tree” applications were distributed, collected, and submitted during September. One hundred seventy (170) inmates sent in applications for their child to receive a Christmas gift through the program. A “Real Men Talk” seminar was attended by one hundred twenty-four (124) inmates.

ACCREDITATION

ACA Internal Audits Completed:

9/6–9/6 Varner 2nd Pre-Audit

9/10–9/14 Varner File Review

9/17–9/21 Northwest Arkansas Work Release Center
File Review

9/24–9/28 Pine Bluff Complex File Review

Classes Taught:

9/11 Deputy Warden Mentor Training

9/12 Training Academy

Fire/Safety and Sanitation independent audits conducted by the Fire and Sanitation Coordinator:

9/4–9/7 Varner Audit Prep

9/10–9/14 Varner Audit Prep

9/17–9/21 Varner Audit Prep

9/24–9/28 Varner Audit Prep

VOLUNTEER SERVICES

Total Number of Volunteer Hours for September 2018:

Unit/Program	Hours
Cummins Unit	1
Delta Unit	18
East Arkansas Regional Unit	35
Hawkins Unit	23
McPherson Unit	4
Maximum Security Unit	36
Mississippi County Work Release	12
North Central Unit	4
Northwest Arkansas Work Release	16
Ouachita River Unit	24
Pine Bluff Complex	16
Varner Unit	18
PAWS	14
Think Legacy	161
Religious Services/Chaplaincy	5,345
Total Hours	5,727

MENTAL HEALTH SERVICES**Sex Offender Treatment Program:**

	Slots	Completed	Removed	Clients
RSVP	238	47	6	190
SOFT	30	0	0	11
Total	268	47	6	201

There are eight hundred ninety (890) males on the waiting list for RSVP and five (5) females on the waiting list for SOFT within five (5) years of their TE date. Of those, forty-five (45) inmates are mandated by the Parole Board.

The average time on the waiting list from request is between one (1) and two (2) months for those stipulated.

The total on the waiting list, including those not currently within the identified timeframe, is one thousand five hundred thirty-eight (1,538) males and five (5) females.

There is one (1) PREA inmate in the program at this time.

***The waiting list numbers include inmates that are ineligible due to class or housing status.**

Therapeutic Community (TC):

Unit	Slots	Completed	Removed	Clients
Tucker	136**	5	12	134
Wrightsville	50**	1	5	48
McPherson	53*	2	4	48
Total	239	8	21	230

There are four hundred forty-one (441) males and forty-seven (47) females on the waiting list within eighteen (18) months of their release date. Of those, ten (10) are mandated by the Parole Board.

The average time on the waiting list from request is thirty-one (31) days.

The total on the waiting list, including those not currently within the identified timeframe, is eight hundred fifty-seven (857) males and eighty-eight (88) females.

***Denotes transitional beds available at this treatment program. The Tucker Therapeutic Community has one hundred twenty-nine (136) client slots and seven (7) peer counselor slots.**

****Treatment count has increased due to reduction of peer counselors and peer mentors.**

Substance Abuse Treatment Program (SATP):

Unit	Slots	Completed	Removed	Clients
Grimes	56*	7	8	50
McPherson	106*	10	5	98
Maximum Security	3	0	0	3
Randall L. Williams	200**	23	21	186
Benton	36*	25	1	35
Varner	52**	10	8	44
Wrightsville	150**	19	12	148
Total	603	94	55	564

There are one thousand nine hundred ninety-three (1,993) males and one hundred fifty-three (153) females on the waiting list within eighteen (18) months of their release date. Of those, fifty-two (52) are mandated by the Parole Board.

The average time on the waiting list from request is twenty (20) days.

The total on the waiting list, including those not currently within the identified timeframe, is two thousand eight hundred ninety-seven (2,897) males and two hundred ninety-seven (297) females.

***Denotes transitional beds available at this treatment program.**

****Treatment count has increased due to reduction of peer counselors and peer mentors.**

ORCU Residential Program Unit (RPU): The RPU at Ouachita had five (5) admissions and six (6) discharges in September for an end-of-month count of one hundred twenty-three (123).

McPherson Mental Health Residential Program Unit (RPU):

There were two (2) admissions and four (4) discharges in September, for an end-of-month count of thirty-eight (38).

Habilitation Program: The Habilitation Program at the Ouachita River Correctional Unit provided treatment services to forty-nine (49) inmates during September. There were two (2) admissions and three (3) discharges for an end-of-month count of forty-six (46).

Restrictive Housing (RH) Anger Management

Treatment: The RH Anger Management Treatment Program at the Cummins Unit provided treatment services to thirty-three (33) inmates during September. There were eight (8) admissions and zero (0) discharges for an end-of-month count of thirty-three (33).

Staffing: The following Mental Health Services and SATP positions were vacant in August and September:

Positions	August	September
Psychologists	6	6
Social Workers	14	14
Advisors	7	7
Substance Abuse Program Leaders	2	0
Administrative Specialists/Analysts	3	1
Substance Abuse Program Coordinator	0	1
Psychological Examiners	1	1
Rehabilitation Manager	1	0

ADDITIONAL MENTAL HEALTH AND MEDICAL INFORMATION

Self-Study Classes:

Classes	# of Participants	# Completed	Waiting List
Anger Management	197	143	831
Thinking Errors	277	218	1,036
Substance Abuse Education	65	47	161
Communication Skills	224	163	1,010
Domestic Violence	108	98	301
Victims of Domestic Violence	6	6	19
Stress Management	266	244	1,027
Parenting	235	136	536

Suicide:

There were seventy-two (72) suicidal threats during September. There were two (2) attempts resulting in one (1) death.

Outpatient: There were two thousand seventeen (2,017) inmates on the mental health medical log at the beginning of September. Mental Health staff conducted the following contacts during September:

Case Management Contacts	2,031
Requests for Interviews	1,222
Testing	1
Intakes	720
Unit Requests	916
Pre-Lockup Reviews	411
Routine Segregation Reviews	715
Segregation Rounds	17,288
PREA Evaluations	57
Routine Follow-up	186
834 Requests	44

County Mental Health Requests: During September, there were seventy-five (75) requests of a mental health nature received. Fifty-one (51) inmates were fast-tracked to ADC.

County Medical Health Requests: During September, there were two hundred ninety-seven (297) requests of a medical nature received. Three (3) inmates were fast-tracked to ADC.

Monetary Sanctions: Sanction reimbursements for August were \$21,200.00.

Deaths: There were seven (7) inmate deaths during the month of September; three (3) were claimed and four (4) were cremated.

CCS: See attachment for CCS's report regarding outside beds and emergency room visits.

Medical Grievances: In September, there were one hundred ninety-five (195) appeals of medical grievances received and one hundred fifty-nine (159) appeals were answered; twelve (16) of those were found to be with merit and two (2) with merit but resolved.

SEX OFFENDER ASSESSMENT

Assessments Completed:

Risk Level	September	September 1999 through September 30, 2018
Level 1	0	1,179
Level 2	26	7,342
Level 3	19	6,710
Level 4	0	645
Default 3	2	*
Total	47	15,876

*Default Level 3's are included in the total number of Level 3's to date.

ACIC Numbers:

The total number of sex offenders registered from September 1999 through September 2018:

Compliant	7,976
Delinquent (<i>Did not return address on time</i>)	1,036
Confined	3,145
Out-of-State	3,429
Address Unknown (<i>Absconded</i>)	238
Deported	176
Incapacitated	83
Out of USA	7
Total	16,090

Due to a change in Arkansas law, deceased offenders no longer remain on the registry. SOCNA was notified by ACIC of eleven (11) offenders removed due to death since 1/1/2018.

THINK LEGACY

Unit	Slots	Completed	Removed	Assigned
Cummins	55	7	0	44
Delta Regional	24	4	0	23
East Ark. Regional	50	0	4	47
Ester	107	7	0	90
Grimes	56	5	2	54
Hawkins (Female)	40	5	0	40
McPherson	68	13	0	63
North Central	59	4	1	54
Ouachita River	46	6	0	46
Tucker	55	2	3	56
Varner	49	4	0	49
Wrightsville	48	2	1	46
Total	657	59	11	612

There are one hundred thirty-six (136) males and ninety-five (95) females on the Think Legacy waiting list. All Think Legacy applicants are within eighteen 18 months of their TE or discharge date.

The average time on the waiting list is approximately sixty (60) days. There were one hundred sixty-one (161) volunteer hours recorded for the month of September.

Rock City Reentry hosted an event at the Ester Unit on September 5th. Nicole Smart, Reentry Treatment Coordinator, visited Jonesboro, Arkansas on September 12th-13th to present ADC Reentry and Reunification procedures to representatives of the Division of Family Services. The Fair Sentencing of Youth Advocates visited the Ouachita Regional, Randall L. Williams, and Ester Units on September 20th. The Hawkins Unit hosted an Entrepreneur Class on the 21st, and a Think Legacy Graduation was held at the Tucker Unit on the 28th.

PAWS IN PRISON**Currently Enrolled in Training:**

Maximum Security Unit	8
Tucker Unit	6
Hawkins Unit	5
Randall L. Williams Unit	4
Ouachita River Unit	8
North Central Unit	9
Total	40

Completed Training:

September 2018	20
YTD 2018	170
Since Inception (Dec. 2011)	1,192
Dogs Currently in Foster: (<i>Graduated but not adopted</i>)	1
Volunteer Hours	14
YTD Volunteer Hours	164

CONSTRUCTION/MAINTENANCE

PROJECT UPDATES

Cummins Unit:

DBA has approved and issued the plans for a new emergency generator. Work on changing the doors in Barracks 13 to solid doors has been completed. Estimates for changing metal desks to concrete are being prepared. A contract was awarded to the architect, and the design of precast recreation yards has started. The architect is still working on plans to submit to DBA. The sally port building is being remodeled to accommodate a new body scanner.

Cummins Poultry:

Generators are being tested weekly. A meeting was held with the architect to discuss making changes to the loading ramp for coolers at the chicken houses. Changing the forklift remains under consideration.

Cummins School:

Structural steel for the building has been received and erected. Plumbing, electrical underground utilities and exterior walls have been installed. Installation of the roof and insulation is underway.

Delta Unit:

Entegriy has completed all lighting and plumbing upgrades. The compost shed has been completed and compost equipment has been installed. Wood pellets are being ordered. Work on replacing the HVAC mechanical equipment has begun.

East Arkansas Regional Unit:

A generator was ordered and is scheduled to be delivered on October 27th and transfer switches are scheduled to arrive on November 7th. Materials for the generator installation are being received and installation of gas service to the generators has been completed. DBA has issued an approval to proceed with the plans for the precast recreation yards. Entegriy has completed all lighting upgrades and solar installation, 85% of the water upgrades, 95% on the compost, and 98% on the plumbing. Compost equipment has been installed and wood pellets have been ordered. Work with Entegriy on the Entergy contract for providing service to the new solar array is underway. A purchase order was approved for repairs to the sewer lift station. Work on the repair and replacement of the components of a serving line is being completed as needed. Electrical problems are being corrected.

Maximum Security Unit:

DBA has approved the plans for an emergency generator and a bid package is being prepared. A contract was awarded to the architect who is now preparing plans for the precast recreation yards. Repairs of roof leaks and the installation of replacement skylights are both ongoing.

McPherson Unit:

The architect is working on the design of the additions to the visitation and administration areas. The plans were completed and have been submitted to DBA for review and approval.

Ouachita River Correctional Unit:

Gravel operations continue and the rock crusher is operational. Repairs to the lift station have been completed. Two new 20 hp pumps are operational, and interior piping was replaced with six-inch stainless steel. Non-storm related roof repairs have been completed. Design review comments for a new dog kennel were received from DBA and a response is being drafted.

Pine Bluff Unit:

Construction continues on Barracks 9D to reinforce security of exterior walls by adding concrete blocks to the inside of the exterior walls.

Tucker Unit:

Regular monitoring of the waste water plant continues with repairs and adjustments being made as needed. All media for the seven filters has been changed out, passed testing, and the filters are operational. Engineers have prepared plans to add water filters and aeration for the water plant. Both the Arkansas Department of Health and DBA have approved the plans. Funding for one-third of the total plant renovation was received from the Governor's Office.

Varner Unit:

Cell doors in the Super Max are being repaired. Demolition of isolation recreation yards was completed and six have been rebuilt. All panels were built in the Weld Shop. Bull pens for the open barracks are being built and installed. One bull pen will be used as a demonstration for management approval.

Wrightsville Unit:

DBA has approved the plans for new emergency generators and a bid package is being prepared. The contract to replace the Industry Warehouse roof was approved. Crews began working on electrical repairs. Materials for the roofing project were delivered and the replacement is underway.

Wrightsville Hawkins Unit:

DBA approved the plans for an additional generator for the kitchen and lighting and a bid package is being prepared.

2018 INFORMAL GRIEVANCE REPORT

Month	BENTON	HAWK/M	HAWK/F	WRTS	EARU & MX	GRIMES	RLW	MCWR	MCPH	MSU	NCU	PBU	NWA	TU	TRCC	VSMX	VU	CU	ORCU	Ester	DRU	Bowie Cty	TOTAL
JAN	3	13	28	71	434	162	47	0	337	202	105	60	0	128	1	591	82	240	318	45	191	67	3,125
FEB	3	20	34	77	283	160	26	1	237	160	74	43	0	109	1	507	63	256	267	31	211	59	2,622
MAR	1	5	27	74	430	158	44	0	343	192	192	37	1	91	0	555	76	223	253	51	155	61	2,969
APR	2	9	15	114	410	171	60	0	315	202	138	42	0	121	2	359	112	191	318	43	122	69	2,815
MAY	0	19	20	103	569	169	69	0	357	198	140	25	1	150	0	416	59	189	348	26	124	72	3,054
JUN	0	20	28	109	471	189	38	0	289	167	184	35	0	142	1	452	53	166	438	34	150	51	3,017
JUL	0	25	39	86	471	230	33	0	323	162	214	25	1	99	1	469	64	236	405	47	108	4	3,042
AUG	1	25	24	89	491	233	31	0	116	168	213	35	1	76	0	614	86	253	345	42	139	41	3,023
SEPT	1	15	17	90	262	266	37	0	218	154	137	3	0	157	0	544	69	192	388	42	106	65	2,763
OCT																							0
NOV																							0
DEC																							0
TOTAL	11	151	232	813	3,821	1,738	385	1	2,535	1,605	1,397	305	4	1,073	6	4,507	664	1,946	3,080	361	1,306	489	26,430

2018 FORMAL GRIEVANCE REPORT

Month	BENTON	HAWK/M	HAWK/F	WRTS	EARU & MX	GRIMES	RLW	MCWR	MCPH	MSU	NCU	PBU	NWA	TU	TRCC	VSMX	VU	CU	ORCU	Ester	DRU	Bowie Cty	TOTAL
JAN	3	10	13	21	369	102	13	0	148	217	59	20	0	108	0	329	58	122	174	21	80	18	1,885
FEB	3	4	5	25	334	87	17	1	131	195	28	43	0	79	0	290	55	123	160	8	82	18	1,688
MAR	0	4	9	33	394	96	23	0	158	212	87	19	1	50	0	322	66	130	253	16	76	19	1,968
APR	2	5	5	61	402	85	29	0	122	211	59	5	0	94	0	247	89	86	135	12	66	18	1,733
MAY	0	11	8	38	453	82	30	0	159	237	64	13	1	93	0	264	54	102	121	31	62	24	1,847
JUN	0	11	16	42	441	108	16	0	169	208	59	7	0	108	1	270	47	91	121	21	67	10	1,813
JUL	0	8	11	35	440	118	14	0	157	177	86	13	1	84	1	284	55	128	135	28	54	7	1,836
AUG	1	8	1	29	435	142	10	0	229	215	128	15	1	53	1	380	78	171	82	17	86	5	2,087
SEPT	1	5	6	37	397	128	11	0	115	172	65	3	0	100	0	309	65	103	54	17	50	18	1,656
OCT																							0
NOV																							0
DEC																							0
TOTAL	10	66	74	321	3,665	948	163	1	1,388	1,844	635	138	4	769	3	2,695	567	1,056	1,235	171	623	137	16,513

INMATE INSTITUTIONAL GRIEVANCE APPEAL REPORT – SEPTEMBER 2018

	Acknowledged	Rejected	Processed W/O Merit	Processed W/ Merit
Benton Unit	0	0	0	0
Benton Work Release	0	0	0	0
Bowie County Texas Correctional Facility	0	4	0	0
Cummins Unit	13	4	33	0
Delta Regional Unit	8	4	9	0
East Arkansas Regional Unit	16	5	27	1
East Arkansas Regional Max Unit	81	5	86	2
Ester Unit	1	0	2	0
Grimes Unit	33	5	23	0
Maximum Security Unit	44	10	45	0
McPherson Unit	27	5	28	0
McPherson Mental Health Residential Program Unit	0	1	0	0
Mississippi County Work Release Center	0	0	0	0
Northwest Arkansas Work Release Center	0	0	0	0
North Central Unit	6	14	12	0
Ouachita River Correctional Unit	36	7	20	0
ORCU Hospital	0	0	0	0
ORCU New Commitment	11	2	1	0
ORCU Mental Health Residential Program Unit	4	4	4	0
Pine Bluff Unit	2	2	4	0
Pine Bluff Re-Entry	0	0	0	0
Randall L. Williams Correctional Facility	5	0	4	0
Texarkana Regional Correctional Center	0	0	0	0
Tucker Unit	17	1	18	1
Varner Super Max	84	18	53	0
Varner Unit	7	3	8	0
Wrightsville Unit	8	3	5	0
Hawkins Center	2	0	1	0
Hawkins for Males	0	0	0	0
Hawkins SPU	0	0	0	0
Total	405	97	383	4

ADMISSIONS AND RELEASES – SEPTEMBER 2018

<u>Admissions</u>	<u>Male</u>	<u>Female</u>	<u>Total</u>
Asian	2	0	2
Black	214	23	237
Hispanic	12	1	13
Native American Indian	1	1	2
White	360	106	466
Other	3	0	3
Total	592	131	723

<u>Releases</u>	<u>Male</u>	<u>Female</u>	<u>Total</u>
Asian	1	0	1
Black	140	10	150
Hispanic	16	0	16
Native American Indian	1	0	1
White	265	55	320
Other	0	0	0
Total	423	65	488

ADC INMATE POPULATION GROWTH 2000-2026 - SEPTEMBER 2018

Updated 09/30/2018

Mo.	2000	2001	2002	2003	2004	2005	2006	2007	2008	2009	2010	2011	2012	2013	2014	2015	2016	2017	2018
Jan.	11,984	11,908	12,402	13,015	13,105	13,595	13,481	13,839	14,518	14,796	15,334	16,312	15,134	14,815	17,481	18,142	17,785	17,824	18,201
Feb.	12,169	12,022	12,529	13,054	13,166	13,783	13,633	14,012	14,603	14,883	15,374	16,209	14,990	15,008	17,438	18,082	17,625	17,608	17,998
March	12,006	12,033	12,299	13,108	13,088	13,418	13,534	13,772	14,580	14,843	15,290	16,095	14,964	14,665	17,395	18,233	17,573	17,666	18,089
April	12,069	12,167	12,465	13,213	13,323	13,469	13,554	13,851	14,769	14,937	15,570	16,172	15,124	14,850	17,604	18,703	17,815	17,798	18,227
May	12,109	12,384	12,558	13,463	13,556	13,528	13,711	14,146	14,880	15,146	15,694	16,062	15,132	15,074	17,593	18,693	17,769	17,652	17,945
June	12,005	12,108	12,439	13,418	13,389	13,251	13,430	13,915	14,700	15,025	15,564	15,554	14,832	14,825	17,340	18,813	17,973	17,963	17,972
July	12,030	12,190	12,622	13,509	13,528	13,286	13,560	14,082	14,868	15,195	15,807	15,519	14,879	15,379	17,522	18,870	18,130	18,180	18,005
August	12,087	12,371	12,815	13,565	13,632	13,419	13,646	14,224	15,100	15,385	15,829	15,240	14,675	16,103	17,549	18,806	17,919	18,051	17,751
September	11,983	12,289	12,774	13,341	13,516	13,237	13,652	14,217	14,850	15,285	16,025	15,172	14,724	16,412	17,605	18,549	18,026	18,179	17,865
October	12,119	12,348	12,942	13,341	13,584	13,363	13,775	14,349	14,836	15,381	16,311	15,271	14,856	16,993	17,880	18,430	18,127	18,348	
November	12,094	12,408	13,162	13,408	13,706	13,587	13,913	14,437	15,025	15,340	16,460	15,205	14,625	17,168	17,848	17,981	17,573	17,973	
December	11,856	12,333	12,845	13,106	13,470	13,338	13,728	14,315	14,716	15,199	16,204	15,062	14,654	17,235	17,874	17,707	17,537	18,078	
Net Ann. Inc.	29	477	512	261	364	-132	390	587	401	483	1,005	-1,142	-408	2,581	639	-167	-170	541	-213
Avg. Mo. Inc.	2	40	43	22	30	-11	33	49	33	40	84	-95	-34	215	53	-14	-14	45	-24

Population is total jurisdictional count at end of each month. Population at end of month December 1999 was 11,827.

Average monthly population increase for past fifteen years 2003 - 2017 is 29

Average monthly population increase for past ten years Jan. 2008 - Dec 2017 is 31

Average monthly population increase for past five years 2013 - 2017 is 57

Projected at Growth of 29 per Month

	2008	2009	2010	2011	2012	2013	2014	2015	2016	2017	2018	2019	2020	2021	2022	2023	2024	2025	2026
Mo.	Actual	Actual	Actual	Actual	Actual	Actual	Actual	Actual	Actual	Actual	Actual/ Proj.	Proj.	Proj.	Proj.	Proj.	Proj.	Proj.	Proj.	Proj.
January	14,518	14,796	15,334	16,312	15,134	14,815	17,481	18,142	17,785	17,824	18,201	17,981	18,329	18,677	19,025	19,373	19,721	20,069	20,417
February	14,603	14,883	15,374	16,209	14,990	15,008	17,438	18,082	17,625	17,608	17,998	18,010	18,358	18,706	19,054	19,402	19,750	20,098	20,446
March	14,580	14,843	15,290	16,095	14,964	14,665	17,395	18,233	17,573	17,666	18,089	18,039	18,387	18,735	19,083	19,431	19,779	20,127	20,475
April	14,769	14,937	15,570	16,172	15,124	14,850	17,604	18,703	17,815	17,798	18,227	18,068	18,416	18,764	19,112	19,460	19,808	20,156	20,504
May	14,880	15,146	15,694	16,062	15,132	15,074	17,593	18,693	17,769	17,652	17,945	18,097	18,445	18,793	19,141	19,489	19,837	20,185	20,533
June	14,700	15,025	15,564	15,554	14,832	14,825	17,340	18,813	17,973	17,963	17,972	18,126	18,474	18,822	19,170	19,518	19,866	20,214	20,562
July	14,868	15,195	15,807	15,519	14,879	15,379	17,522	18,870	18,130	18,180	18,005	18,155	18,503	18,851	19,199	19,547	19,895	20,243	20,591
August	15,100	15,385	15,829	15,240	14,675	16,103	17,549	18,806	17,919	18,051	17,751	18,184	18,532	18,880	19,228	19,576	19,924	20,272	20,620
September	14,850	15,285	16,025	15,172	14,724	16,412	17,605	18,549	18,026	18,179	17,865	18,213	18,561	18,909	19,257	19,605	19,953	20,301	20,649
October	14,836	15,381	16,311	15,271	14,856	16,993	17,880	18,430	18,127	18,348	17,894	18,242	18,590	18,938	19,286	19,634	19,982	20,330	20,678
November	15,025	15,340	16,460	15,205	14,625	17,168	17,848	17,981	17,573	17,973	17,923	18,271	18,619	18,967	19,315	19,663	20,011	20,359	20,707
December	14,716	15,199	16,204	15,062	14,654	17,235	17,874	17,707	17,537	18,078	17,952	18,300	18,648	18,996	19,344	19,692	20,040	20,388	20,736
Net Ann. Inc.	401	483	1,005	-1,142	-408	2,581	639	-167	-170	541	-126	348	348	348	348	348	348	348	348
Ave. Mo. Inc.	33	40	84	-95	-34	215	53	-14	-14	45	-11	29	29	29	29	29	29	29	29

MONTHLY POPULATION AVERAGES - SEPTEMBER 2018

	9/3	9/4	9/5	9/6	9/7	9/10	9/11	9/12	9/13	9/14	9/17	9/18	9/19	9/20	9/21	9/24	9/25	9/26	9/27	9/28	
Unit/Center																					AVG
Benton	307	307	308	312	310	307	304	305	304	306	308	310	312	320	320	326	336	337	340	338	316
Cummins	1,644	1,644	1,651	1,648	1,654	1,650	1,651	1,651	1,648	1,652	1,654	1,657	1,653	1,649	1,648	1,654	1,650	1,649	1,650	1,648	1,650
Delta	614	614	618	618	622	620	618	619	619	623	620	623	622	627	626	625	624	621	614	609	620
E AR Reg	1,672	1,672	1,671	1,672	1,667	1,669	1,671	1,680	1,677	1,676	1,655	1,656	1,674	1,664	1,665	1,671	1,669	1,671	1,676	1,681	1,670
Ester	586	585	580	586	586	588	586	578	584	582	577	586	585	584	583	578	582	581	583	583	583
Grimes	1,074	1,074	1,073	1,075	1,071	1,072	1,075	1,078	1,077	1,075	1,074	1,078	1,076	1,073	1,070	1,080	1,079	1,080	1,078	1,078	1,076
Max Sec	558	558	558	556	557	557	557	557	557	557	557	556	556	557	557	554	554	554	554	553	556
McPherson	926	926	910	911	919	915	916	921	915	927	928	932	932	933	937	940	945	953	958	971	931
MCWRC	130	130	130	130	130	130	128	127	127	133	135	135	135	135	135	135	134	134	130	130	132
N Central	807	807	807	818	815	811	818	817	824	818	817	816	815	823	823	822	819	819	829	829	818
NWAWRC	99	99	100	100	100	100	99	102	100	100	99	99	100	100	100	100	100	100	99	100	100
Ouachita River	1,789	1,789	1,797	1,807	1,825	1,841	1,852	1,841	1,839	1,840	1,844	1,840	1,830	1,826	1,845	1,847	1,842	1,842	1,852	1,844	1,832
Randall L Williams	557	558	557	558	560	556	556	558	558	555	557	556	561	563	556	555	558	554	559	549	557
Pine Bluff	472	472	483	481	487	486	484	481	481	482	486	480	479	479	482	482	481	479	477	484	481
PB Reentry	54	54	54	54	54	54	54	54	54	54	54	54	54	53	53	53	53	53	53	53	54
TRCC	120	120	122	122	122	122	124	124	123	123	123	123	123	124	124	123	123	122	122	120	122
Tucker	988	988	991	984	973	982	990	991	987	982	985	987	985	986	996	1,001	1,000	999	994	995	989
Varner	1,711	1,711	1,720	1,717	1,713	1,714	1,715	1,707	1,712	1,707	1,711	1,714	1,714	1,713	1,722	1,718	1,714	1,716	1,720	1,719	1,714
Wrightsville	1,285	1,285	1,299	1,297	1,307	1,303	1,301	1,292	1,293	1,289	1,300	1,303	1,303	1,295	1,298	1,305	1,306	1,304	1,300	1,297	1,298
Total ADC	15,393	15,393	15,429	15,446	15,472	15,477	15,499	15,483	15,479	15,481	15,484	15,505	15,509	15,504	15,540	15,569	15,569	15,568	15,588	15,581	15,498
ALETA	17	17	17	20	20	19	19	19	19	19	19	19	19	19	19	19	19	19	19	19	19
Ar State Police	63	63	63	62	61	60	61	61	61	60	60	60	60	62	61	61	61	61	61	62	61
Co Jail / M	1,513	1,513	1,478	1,466	1,453	1,422	1,408	1,400	1,396	1,415	1,396	1,389	1,393	1,413	1,399	1,408	1,429	1,449	1,436	1,457	1,432
Co Jail / F	100	100	105	101	99	95	100	101	107	99	109	107	105	98	95	98	95	93	91	75	99
Total Co Jail BK	1,613	1,613	1,583	1,567	1,552	1,517	1,508	1,501	1,503	1,514	1,505	1,496	1,498	1,511	1,494	1,506	1,524	1,542	1,527	1,532	1,530
Bowie Co., TX	328	328	330	330	330	330	329	329	329	329	331	331	331	331	331	328	330	330	330	330	330
309/M	239	239	239	238	239	241	241	241	242	242	242	243	243	247	247	247	246	245	244	243	242
309/F	73	73	73	75	75	74	73	73	74	74	74	74	74	75	75	75	75	75	75	75	74
Total Act 309	312	312	312	313	314	315	314	314	316	316	316	317	317	322	322	322	321	320	319	318	317
Total Non ADC	2,333	2,333	2,305	2,292	2,277	2,241	2,231	2,224	2,228	2,238	2,231	2,223	2,225	2,245	2,227	2,236	2,255	2,272	2,256	2,261	2,257
Total	17,726	17,726	17,734	17,738	17,749	17,718	17,730	17,707	17,707	17,719	17,715	17,728	17,734	17,749	17,767	17,805	17,824	17,840	17,844	17,842	17,755

FISCAL YEAR 2019 COUNTY JAIL BACKUP - SEPTEMBER 2018

DAY		Jul-18		Aug-18		Sep-18
1	*	1,575		1,618	*	1,646
2		1,578		1,624	*	1,646
3		1,594		1,631		1,613
4		1,577	*	1,631		1,613
5		1,577	*	1,631		1,583
6		1,548		1,649		1,567
7	*	1,548		1,654		1,552
8	*	1,548		1,652	*	1,552
9		1,547		1,642	*	1,552
10		1,532		1,665		1,517
11		1,571	*	1,665		1,508
12		1,584	*	1,665		1,501
13		1,609		1,670		1,503
14	*	1,609		1,671		1,514
15	*	1,609		1,660	*	1,514
16		1,598		1,676	*	1,514
17		1,589		1,681		1,505
18		1,569	*	1,681		1,496
19		1,563	*	1,681		1,498
20		1,559		1,690		1,511
21	*	1,559		1,683		1,494
22	*	1,559		1,677	*	1,494
23		1,553		1,685	*	1,494
24		1,560		1,701		1,506
25		1,552	*	1,701		1,524
26		1,553	*	1,701		1,542
27		1,597		1,700		1,527
28	*	1,597		1,679		1,532
29	*	1,597		1,669	*	1,532
30		1,623		1,657	*	1,532
31		1,629		1,646		
Avg Daily Backup		1,576		1,666		1,536

Note: Totals do not include 309 Contracts in County Jails (maximum of 336)

Fiscal Year Average - 1,593

Short-term Revocation Program Fiscal Year Average
(Included in County Jail Back-Up Total) - 680

STTG UNIT COUNTS – SEPTEMBER 2018



Arkansas Department of Correction

Unit	Beginning Total	Confirmed	Suspected	In	Out	Paroled	Removed	Ending Total	Total Unit Population	Unit % of STTG's
Benton	66	0	1	29	7	3	0	86	339	25.37%
Cummins	499	0	0	26	23	12	0	490	1,646	29.77%
Delta	157	0	0	14	16	10	0	145	602	24.09%
EARU	611	0	0	15	5	13	0	608	1,680	36.19%
Grimes	382	4	0	30	12	22	1	381	1,076	35.41%
Hawkins	47	0	0	2	3	0	0	46	449	10.24%
Max	261	0	0	1	5	0	0	257	553	46.47%
McPherson	30	0	2	0	0	0	0	32	978	3.27%
MCWR	39	0	0	8	2	0	0	45	130	34.62%
NCU	218	0	0	26	9	11	0	224	834	26.86%
NWAWR	12	0	0	1	1	0	0	12	99	12.12%
ORCU	426	0	0	28	23	8	0	423	1,611	26.26%
ORCU Intake	53	160	0	0	163	0	0	50	226	22.12%
PB/Ester	231	0	0	30	23	2	0	235	1,126	20.87%
RLW	157	0	0	46	41	0	0	162	555	29.19%
TWR	21	0	0	12	3	0	0	30	120	25.00%
Tucker	276	0	0	26	17	0	0	285	988	28.85%
Varner	690	0	0	92	63	10	0	709	1,722	41.17%
Wrightsville	227	1	0	24	15	8	0	229	850	26.94%
Total	4,403	165	3	410	431	99	1	4,449	15,584	28.55%

ORCU Intake brought in 160 new STTG members into ADC last Month.

STTG DISCIPLINARY REPORT – SEPTEMBER 2018



Arkansas Department of Correction

Unit	STTG Incidents	STTG Suspected Incidents	Total Unit Disciplinary	Disciplinary Involving STTG	Percentage
Benton	0	0	20	2	10.00%
Cummins	0	6	429	174	40.56%
Delta	0	0	161	59	36.65%
EARU	0	1	521	229	43.95%
Grimes	3	1	181	84	46.41%
Hawkins	0	0	14	1	7.14%
Max	0	0	68	28	41.18%
McPherson	0	0	190	0	0.00%
MCWR	2	0	7	3	42.86%
NCU	2	0	102	43	42.16%
NWAWR	0	0	17	1	5.88%
ORCU	0	0	379	156	41.16%
ORCU Intake	0	0	26	9	34.62%
PB/Ester	0	0	97	43	44.33%
RLW	1	1	34	16	47.06%
TWR	0	0	3	2	66.67%
Tucker	0	0	66	34	51.52%
Varner	0	0	473	253	53.49%
Wrightsville	4	0	86	39	45.35%
Total	12	9	2,874	1,176	40.92%

STTG COUNTS BY STTG SET – SEPTEMBER 2018



Arkansas Department of Correction

STTG Set	Benton	Cummins	Delta	EARU	Grimes	Hawkins	Max	McPherson	MCWR	NCU	NWAWR	ORCU	Intake	PB	RLW	TWR	Tucker	Varner	Wrightsville	Total
Asian	2	1	0	1	2	0	0	0	1	0	0	1	0	2	0	1	1	0	0	12
Bloods	13	107	17	101	66	7	64	5	6	34	4	85	10	38	26	8	64	137	50	842
Crips	9	69	12	63	42	3	31	4	5	15	1	52	4	28	15	4	40	100	23	520
Folk	2	38	7	62	36	4	34	7	0	15	2	15	2	14	14	0	22	80	16	370
GD	11	116	42	133	83	9	43	0	9	39	0	102	10	49	23	6	68	140	51	934
Mexican	3	14	3	16	12	3	5	3	1	10	2	12	1	7	4	1	8	26	4	135
Motorcycle	0	2	0	3	2	0	3	1	0	1	0	2	0	2	1	0	4	1	2	24
Other	4	12	7	10	11	1	1	0	0	8	0	15	2	14	5	0	5	15	6	116
People	6	13	8	20	18	0	12	2	0	14	0	17	1	15	10	0	5	28	6	175
Unknown	0	4	3	7	12	2	2	0	0	5	0	10	4	0	7	0	1	5	6	68
W/S	15	31	23	56	35	1	10	10	7	38	3	42	12	32	17	10	33	56	24	455
NAE	9	27	5	41	16	8	18	0	3	3	0	22	1	12	13	0	13	32	11	234
WAR	12	45	12	73	27	5	18	0	10	26	0	30	2	14	18	0	12	53	22	379
AC	0	5	4	11	14	2	13	0	1	5	0	10	1	4	6	0	3	29	5	113
AB	0	6	2	11	5	1	3	0	2	11	0	8	0	4	3	0	6	7	3	72
Total	86	490	145	608	381	46	257	32	45	224	12	423	50	235	162	30	285	709	229	4,449

Key:

GD = Gangster Disciples

W/S = White Supremacist

NAE = New Aryan Empire

WAR = White Aryan Resistance

AC = Aryan Circle

AB = Aryan Brotherhood

ADC INPATIENT AND EMERGENCY ROOM UTILIZATION

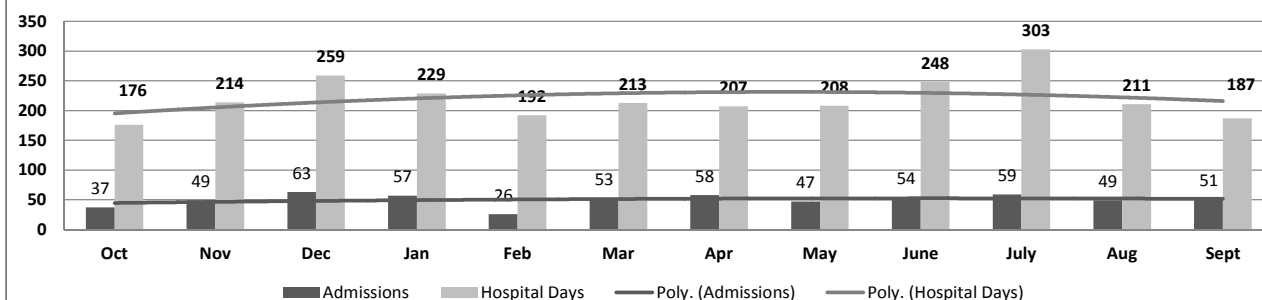
ADC Inpatient Statistics Past 12 Months

	2017			2018									Average
	Oct	Nov	Dec	Jan	Feb	Mar	Apr	May	June	July	Aug	Sept	
Admissions	37	49	63	57	26	53	58	47	54	59	49	51	50.3
Hospital Days	176	214	259	229	192	213	207	208	248	303	211	187	220.6
Average Length of Stay	5.37	4.76	4.91	6.56	5.22	5.48	5.10	6.21	7.07	6.70	7.65	3.67	4.39

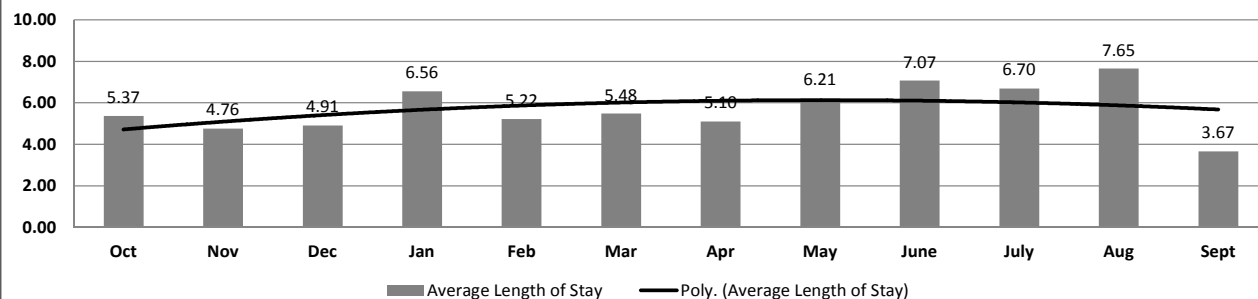
ADC ER Visits Past 12 Months

	2017			2018									Average
	Oct	Nov	Dec	Jan	Feb	Mar	Apr	May	June	July	Aug	Sept	
Emergency Room Visits	87	100	70	105	97	99	94	79	82	117	96	110	94.7

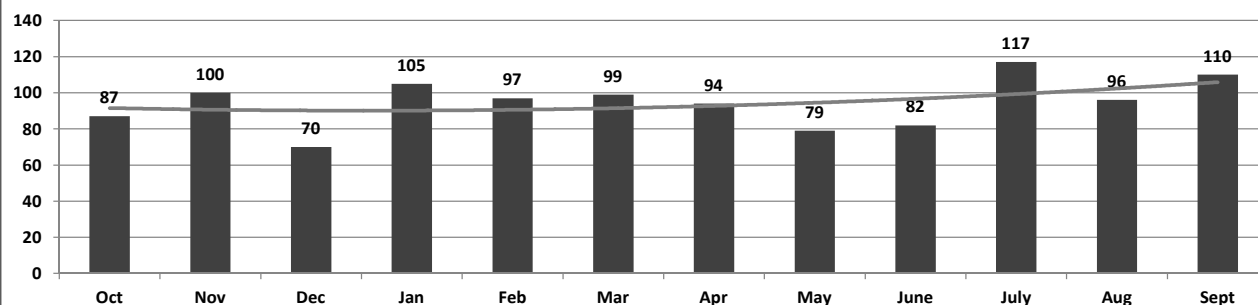
ADC Inpatient Utilization Past 12 Months



ADC Inpatient Average Length of Stay Past 12 Months



ADC Emergency Room Visits Past 12 Months



MEDICAL GRIEVANCE BOARD REPORT – SEPTEMBER 2018

Unit	Acknowledge d/ Received	Rejected	Reviewed & Signed by Dep Director	With Merit	With Merit, but Resolved	% With Merit	Without Merit
Benton	0	0	0	0	0	0%	0
Bowie Co.	1	1	1	0	0	0%	1
CMU	0	0	0	0	0	0%	0
Cummins	14	4	5	0	0	0%	5
Delta	2	0	2	0	0	0%	2
EARU	17	4	9	0	0	0%	9
EARU Max	43	4	27	3	0	11%	24
Ester	2	1	4	1	0	25%	3
Grimes	8	3	7	0	0	0%	7
Hawkins	0	2	1	1	0	100%	0
McPherson	11	3	8	0	0	0%	8
MCWRC	0	0	0	0	0	0%	0
MSU	17	2	29	1	0	3%	28
North Central	7	6	7	0	0	0%	7
NWAWRC	0	0	0	0	0	0%	0
Ouachita	26	0	13	0	1	8%	12
Pine Bluff	0	0	0	0	0	0%	0
Randall Williams	2	0	2	0	0	0%	2
SNN	0	0	0	0	0	0%	0
TRCC	0	0	0	0	0	0%	0
Tucker	4	1	4	1	0	25%	3
Varner	9	0	11	2	0	18%	9
Varner S Max	30	3	24	1	0	4%	23
WRU	1	0	4	2	0	50%	2
WHM	0	0	1	0	0	0%	1
WWR	1	0	0	0	0	0%	0
TOTAL	195	34	159	12	1	8%	146

CHAPLAINCY

Monthly Report for: September 2018	CUMMINS	DELTA REGIONAL	EAST ARKANSAS	EAST ARKANSAS MAX	ESTER	GRIMES	HAWKINS	MAXIMUM	MCPHERSON	NORTH CENTRAL	OUACHITA RIVER	PINE BLUFF	RANDALL L. WILLIAMS	TUCKER	VARNER	VARNER MAX	WRIGHTSVILLE	TOTAL
Services Chaplains Oversaw																		
Christian																		
Population	15	10	2	0	3	6	7	4	4	15	4	3	11	10	11	0	5	110
Segregation	0	0	0	0	0	0	0	0	0	0	2	0	0	0	0	0	0	2
Muslim																		
Population	4	3	1	0	1	5	0	0	4	0	5	4	4	0	4	0	0	35
Segregation	0	0	0	0	0	0	0	0	0	0	0	0	0	0	0	0	0	0
																		147
Volunteers in Charge																		
Protestant	9	12	17	0	17	12	22	23	30	0	9	15	0	22	8	0	34	230
Catholic	2	0	3	0	1	2	4	1	2	4	4	1	1	1	2	0	4	32
Muslim	0	0	3	0	0	4	0	0	0	0	4	0	0	2	1	0	4	18
Other	5	0	8	0	0	0	2	9	2	0	10	0	3	0	3	0	1	43
Baptism	5	4	9	0	1	0	0	0	0	2	0	0	1	8	8	0	0	38
Marriages																		
	0	0	0	0	0	0	0	0	1	0	1	0	0	0	1	0	0	3
Distributed by Chaplains																		
Greeting Cards	100	0	0	0	220	38	250	30	287	24	200	145	18	44	85	0	0	1,441
Bibles, Quran, Torah, Etc.	45	40	367	421	35	27	20	11	49	18	500	12	6	13	12	0	4	1,580
Study Course	10	5	3	4	20	6	0	76	38	0	165	0	14	0	0	0	0	341
Writing Supplies	22	0	0	0	60	5	202	300	6	0	200	0	0	3	0	0	0	798
Literature	900	600	524	368	550	45	240	385	122	650	500	190	17	7	225	0	141	5,464
Chaplain's Visits																		
Barracks	32	52	12	0	26	51	24	53	29	48	285	52	44	203	99	0	33	1,043
Approximate Hours Spent in Barracks	19	21	6	0	112	5	12	30	35	28	65	8	8	51	24	12	20	456
Inmate Office visits	26	136	94	0	62	120	78	18	65	46	360	32	127	305	45	0	40	1,554
Other Office visits	8	14	16	2	22	16	8	4	33	12	165	8	16	30	0	0	8	362
Hospital	0	1	0	0	1	0	0	2	0	0	50	0	0	0	8	0	0	62
Infirmery/Sick Call	10	3	0	2	8	21	5	8	9	4	26	4	4	4	4	0	4	116
Restrictive/Punitive Housing	9	6	0	15	0	10	4	59	32	5	60	8	8	6	4	0	4	230
PC - DRU	0	3	0	0	0	0	0	0	0	0	0	0	0	0	0	0	0	3
Visitation Days	1	2	1	0	2	0	0	0	0	0	3	0	0	0	0	0	2	11
Volunteer Visits																		
RCV	0	3	13	0	0	4	6	35	26	0	10	0	13	4	0	0	0	114
OCV	85	15	22	9	42	145	69	42	21	28	90	14	0	106	20	0	44	752
Spiritual Advisor	2	0	0	0	1	0	2	1	0	0	13	0	0	3	0	0	0	22
CRA	41	17	68	4	38	69	61	36	39	97	89	8	20	134	43	10	23	797
Religious Volunteer Hours																		
Volunteer Hours	522	102	255	8	220	324	133	379	129	390	814	52	68	497	182	25	134	4,234
DENOMINATIONAL/VOLUNTEER CHAPLAIN HOURS	16	0	14	0	162	11	114	147	109	140	132	24	58	148	16	4	16	1,111
																		5,345
Other Activities of Chaplain																		
Counseled Employees	5	10	3	0	10	2	4	4	20	8	80	6	21	5	26	6	6	216
Orientation Sessions	4	0	0	0	1	4	0	1	1	3	4	0	0	0	0	0	0	18
Free World Devotions	0	0	6	0	9	13	0	2	2	0	12	0	0	3	12	0	0	59
Spoke in Churches	9	0	14	0	12	14	2	2	2	0	8	0	0	3	19	0	0	85
Crisis Intervention Sessions	10	3	0	0	11	0	4	0	12	5	150	8	2	11	6	3	9	234
Marriage Counseling	0	0	1	0	1	0	0	0	2	0	6	0	0	1	2	0	2	15
Denominational Meeting	0	0	1	0	2	0	1	5	0	0	1	0	0	0	0	0	0	10
Chaplain's Meeting	2	1	1	0	1	2	1	1	1	1	3	1	1	1	3	0	1	21
Volunteer Training Session	0	1	0	0	0	0	2	1	0	1	4	0	0	1	0	0	0	10
Choir Trip	0	0	0	0	0	0	0	0	0	0	0	0	0	0	0	0	0	0
Chaplain Transfers																		
	0	0	0	0	0	0	0	0	0	0	0	0	0	0	0	0	0	0
Chaplain Promotions																		
	0	0	1	0	0	0	0	0	0	0	0	0	0	0	1	0	0	2
PAL PROGRAM																		
Enrolled at start of month	47	22	47	0	30	50	26	18	56	25	35	0	27	58	52	0	23	516
Enrolled during the month	6	5	0	0	2	0	3	2	23	0	5	0	3	13	6	0	6	74
Removed From PAL Program																		
# Paroled	1	0	0	0	1	1	0	0	6	1	0	0	1	2	0	0	0	13
# Completed	0	1	2	0	0	0	0	5	2	5	2	0	0	3	3	0	1	24
# Withdrew	2	1	0	0	0	0	1	1	8	0	2	0	0	6	1	0	1	23
# Removed	2	1	0	0	0	1	0	2	2	2	1	0	0	0	3	0	2	16
# Transferred	2	0	0	0	0	1	1	0	5	0	0	0	0	4	1	0	0	14
Total Removed from PAL Program	7	3	2	0	1	3	2	8	23	8	5	0	1	15	8	0	4	90
Total Enrolled at the End of the Month	46	24	45	0	31	47	27	12	56	17	35	0	29	56	50	0	25	500
Volunteers In PAL																		
	16	1	11	0	6	23	72	15	29	5	10	0	4	12	7	0	3	214
Special Events:																		
	2	1	2	2	1	1	1	3	2	2	2	0	0	1	0	0	2	22

MONTHLY PURCHASING REPORT – SEPTEMBER 2018

PURCHASE ORDERS OVER \$10,000.00					
VENDOR	DESCRIPTION	LOCATION	PO#	PURCHASE AMOUNT	FUND
Elder Drilling & Supply Co Inc	Well Maintenance & Repair	Tucker/Farm	4501808799	\$27,422.38	Operational Farm Budget
Mid South Sales Inc	Fuel-Unleaded & Diesel	Central Warehouse	4501828549	\$11,999.40	Operational Budget
Fastenal Co	Cameral Installation Equipment	Construction/Construction	4501828479	\$23,278.28	DOC Existing Facilities
South Arkansas Equipment Co	Farm Equipment-Landoll	Tucker/Farm	4501828565	\$60,340.00	Operational Farm Budget
Arkansas Correctional Industries	Coffee & Tea	Central Warehouse	4501828794	\$11,080.00	Operational Budget
Arkansas Correctional Industries	Janitorial Supplies	Central Warehouse	4501828780	\$36,375.98	Operational Budget
National Food Group	Food	Central Warehouse	4501828768	\$98,233.30	Operational Budget
Sysco Food Services of Arkansas Inc	Food	Central Warehouse	4501828763	\$110,855.20	Operational Budget
Cedar Creek LLC	Planned Red Oak	Wrightsville/ACI Warehouse	4501828943	\$21,800.00	Operational Industry Budget
William R Hill & Co Inc Doug Waldmann	Food	Central Warehouse	4501828904	\$257,279.72	Operational Budget
Arkansas Correctional Industries	Toilet Paper	Central Warehouse	4501828793	\$115,869.60	Operational Budget
US Foods Inc	Food	Central Warehouse	4501828761	\$96,496.40	Operational Budget
Bob Barker Company Inc	Clothing	Cummins/Commissary	4501829388	\$32,258.88	Operational Budget
Arkansas Correctional Industries	Clothing, Jackets, Towels	Tucker	4501829504	\$110,606.48	Operational Budget
Terry Simpson	Hauling Corn	EARU/Farm	4501829870	\$23,200.00	Operational Farm Budget
Terry Simpson	Hauling Corn	EARU/Farm	4501829892	\$10,976.00	Operational Farm Budget
Barnes Paper Co	Egg Filler Flats	Cummins/Farm	4501831207	\$14,255.36	Operational Farm Budget
Ryder Exchange LLC	Vehicle-Isuzu Box Truck	Admin East/Purchasing	4501831201	\$23,595.00	Operational Industry Budget
Untangle Inc	Software License Renewals	Admin East/Information Services	4501826955	\$28,571.40	Operational Budget
Bob Barker Company Inc	Clothing	Delta	4501830287	\$24,894.56	Operational Budget
WW Grainger Inc	Toggle Clamps for Cell Doors	Construction/Construction	4501830673	\$14,383.51	Telephone Funds
Bob Barker Company Inc	Clothing	Randall L. Williams	4501829851	\$14,274.12	Operational Budget
Bob Barker Company Inc	Clothing	EARU	4501829844	\$34,673.82	Operational Budget
Miller Bowie Supply.Com	Layer Base Premix for Chicken Feed	Cummins/Farm	4501830139	\$42,240.00	Operational Farm Budget
Phoenix Trading Inc	Deodorant Soap	Central Warehouse	4501829955	\$17,424.00	Operational Budget
US Foods Inc	Liquid Bleach	Central Warehouse	4501829953	\$10,994.98	Operational Budget
Razor Chemical Inc	Janitorial Supplies	Delta/Janitorial Factory	4501830192	\$13,565.00	Operational Industry Budget
Robbins Sales Company Inc	Food	Central Warehouse	4501829951	\$60,052.16	Operational Budget
Tabb Textiles Co Inc	Fabric	Wrightsville/ACI Warehouse	4501830432	\$71,000.00	Operational Industry Budget
Bob Barker Company Inc	Clothing	Tucker	4501830298	\$17,237.75	Operational Budget
Arkansas Correctional Industries	Mattress Covers	Tucker	4501830286	\$13,576.50	Operational Budget
Arkansas Correctional Industries	Boots, Clothing, Linens, Jackets	Delta	4501831290	\$50,012.73	Operational Budget
Green & Chapman LLC	Fuel-Diesel Farm	EARU/Farm	4501827315	\$18,050.76	Operational Farm Budget
Consolidated Electrical Distributor	Light Fixtures	Tucker/Maintenance	4501831317	\$10,575.02	Operational Budget
William R Hill & Co Inc Doug Waldmann	Food	Central Warehouse	4501831361	\$190,789.52	Operational Budget
Mid States Service Inc	Toilet Paper	Wrightsville/ACI Warehouse	4501831335	\$21,964.80	Operational Industry Budget
US Foods Inc	Food	Central Warehouse	4501831369	\$159,982.32	Operational Budget
Sysco Food Services of Arkansas Inc	Food	Central Warehouse	4501831374	\$57,441.20	Operational Budget
National Food Group	Food	Central Warehouse	4501831380	\$55,888.60	Operational Budget
Printing Papers	Paper	Central Warehouse	4501831375	\$28,108.08	Operational Budget
MJ Kellner	Food	Central Warehouse	4501831382	\$75,327.00	Operational Budget
National Food Group	Textured Vegetable Soy Protein	Cummins/Cold Storage Facility	4501831151	\$26,524.08	Operational Farm Budget
Arkansas Correctional Industries	Security Screens	Emergency Preparedness	4501831507	\$12,320.00	Operational Budget
Arkansas Correctional Industries	Food-Coffee & Tea	Central Warehouse	4501831396	\$20,379.00	Operational Budget
Arkansas Correctional Industries	Janitorial Supplies	Central Warehouse	4501831398	\$39,322.69	Operational Budget
Arkansas Correctional Industries	Boots	North Central	4501831980	\$10,355.45	Operational Budget
The Sherwin-Williams Co	Paint & Supplies	Ouachita/Maintenance	4501831446	\$19,246.91	Telephone Funds
Blue Courage LLC	License to Print Courage Manuals	Training Academy	4501831601	\$11,050.00	Operational Budget
Westrock Coffee LLC	Coffee & Tea	Grimes	4501832201	\$20,900.00	Operational Industry Budget
Crop Production Services Inc	Wheat Seed	Cummins/Farm	4501832194	\$14,475.00	Operational Farm Budget
Craftmaster Hardware Co Inc	Locks, Lock Parts, Keys	Varner	4501832216	\$13,562.05	Operational Budget
WW Grainger Inc	Radios	Cummins/Commissary	4501831008	\$18,913.66	Operational Budget
Dell Marketing LP	Computer Equipment	Admin East/Information Services	4501832736	\$92,183.30	Operational Budget
Dell Marketing LP	Computer Equipment	Admin East/Information Services	4501832740	\$66,570.68	Operational Budget
Joseph T Ryerson & Son Inc	Stainless Steel	Construction/Construction	4501832713	\$13,563.00	DOC Existing Facilities
Mid States Service Inc	Toilet Paper	Wrightsville/ACI Warehouse	4501832550	\$21,964.80	Operational Industry Budget
American Quilting Co Inc	Quilted Lining Fabric	Wrightsville/ACI Warehouse	4501832568	\$29,200.00	Operational Industry Budget
Falk Supply Company Inc	Hot Water Heater	Tucker/Maintenance	4501833003	\$13,874.00	Operational Budget
Green & Chapman LLC	Fuel-Unleaded & Diesel	EARU	4501831141	\$11,451.20	Operational Budget
Mid South Sales Inc	Fuel-Unleaded	Cummins/Commissary	4501832534	\$19,655.24	Operational Budget
Enasco Inc	Microsearch & Cable Mgmt Systems	Varner	4501833399	\$28,251.00	Operational Budget
Razor Chemical Inc	Janitorial Supplies	Delta/Janitorial Factory	4501833404	\$14,415.96	Operational Industry Budget
On The Spot Windshield Repair	Replacement Glass Polycarbonate	EARU	4501834799	\$12,201.15	Operational Budget
Wholesale Electric Supply Co Inc	Electrical Supplies	Construction/Construction	4501834322	\$10,026.28	DOC Existing Facilities
CVK Enterprises Inc	Mobile Heated Cabinets	EARU	4501834045	\$19,210.00	Operational Budget
		Total for Purchases over \$10,000		\$2,676,565.26	
FIRM CONTRACTS OVER \$25,000.00					
		Total for Contracts		\$0.00	
EMERGENCY PURCHASE ORDERS OVER \$25,000.00					
Adani Systems Inc	Body Scanners	Cummins/EARU/Max/Varner	4501832181	\$726,692.25	Operational Budget
Adani Systems Inc	Body Scanners-Service Contract	Cummins/EARU/Max/Varner	4501832180	\$94,655.00	Operational Budget
		Total EM Purchases		\$821,347.25	
Total Purchases				\$3,497,912.51	

PERSONNEL REPORT – SEPTEMBER 2018

UNIT	AUTHORIZED	FILLED	VACANT	% VACANT	HIRED	VOLUNTARY TERMINATION	INVOLUNTARY TERMINATION	RETIREMENT
BENTON (CR05)	77	74	3	3.90%	3	0	0	1
CENTRAL OFFICE (CR01, CR02, CR08 & CR22)	269	249	20	7.43%	0	0	0	0
509 CHAPL ADMIN	28	26	2	7.14%	0	0	0	1
CONSTRUCTION (CR04)	59	56	3	5.08%	0	1	0	0
CUMMINS (CR09)	427	393	34	7.96%	10	1	3	0
DELTA (CR10)	183	170	13	7.10%	2	3	2	0
EAST ARKANSAS (CR12)	365	335	30	8.22%	8	7	4	1
ESTER (CR11)	155	145	10	6.45%	2	1	0	0
FARM (CR29)	61	54	7	11.48%	1	0	0	1
GRIMES (CR27)	244	227	17	6.97%	2	5	2	0
HAWKINS (CR06)	76	74	2	2.63%	2	2	0	0
INDUSTRY (CR07)	52	50	2	3.85%	0	0	0	1
MAXIMUM SECURITY (CR14)	229	182	47	20.52%	9	4	2	0
MCPHERSON (CR28)	230	211	19	8.26%	1	8	2	1
MENTAL HEALTH	182	154	28	15.38%	3	2	0	3
MISS COUNTY (CR15)	38	33	5	13.16%	0	1	1	0
NORTH CENTRAL (CR16)	197	193	4	2.03%	1	1	0	1
NORTHWEST ARK (CR17)	30	30	0	0.00%	1	1	0	0
OUACHITA RIVER (CR30)	466	435	31	6.65%	10	8	5	0
PINE BLUFF (CR20)	170	154	16	9.41%	0	4	0	1
RANDAL L. WILLIAMS (CR13)	144	127	17	11.81%	3	4	3	0
TEXARKANA (CR21)	31	31	0	0.00%	2	0	0	0
TRANSPORTATION (CR32)	102	96	6	5.88%	0	0	0	0
TUCKER (CR23)	199	178	21	10.55%	8	6	1	0
VARNER (CR24)	358	299	59	16.48%	4	8	4	1
WRIGHTSVILLE (CR25)	207	204	3	1.45%	2	2	1	0
TOTAL	4,579	4,180	399	8.71%	74	69	30	12

Term/Hire report run 10/1/18 - PSR created 9/28/18

AR-DOC SECURUS VIDEO VISITATION ACTIVITY TRACKER - SEPTEMBER 2018

AR-DOC SVV Activity Tracker

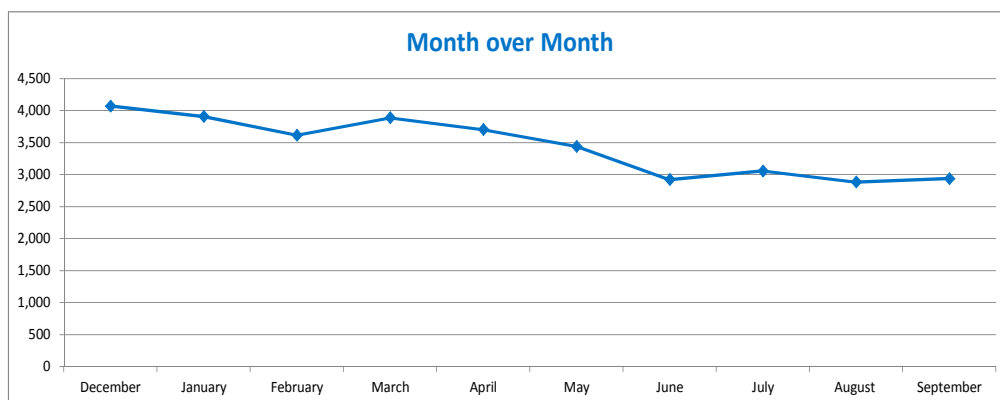
Total ADP: 15,586

All sites have been deployed

Total Visits by Month	December	January	February	March	April	May	June	July	August	September
Total (Includes SuperMax)	4,071	3,909	3,618	3,890	3,705	3,441	2,923	3,057	2,885	2,939
Target Objective	15,586	15,586	15,586	15,586	15,586	15,586	15,586	15,586	15,586	15,586

*Targets determined by vendor.

Anywhere Visitation Performance:



Completed Visits

Site	Current Month	Previous Month
Benton	177	162
Cummins	195	201
Delta Regional	197	214
East Arkansas Regional	270	322
Ester	143	146
Grimes	243	262
J Aaron Hawkins Sr.	120	98
Tucker Max	37	32
McPherson	244	208
Mississippi County WRC	6	11
North Central	185	194
NW Arkansas WRC	8	11
Quachita River	228	210
Pine Bluff Complex	95	109
Randall L. Williams	240	237
State Police Barracks	20	17
Texarkana Regional	44	9
Tucker Unit	133	117
Vanner	163	170
Wrightsville Unit	191	146
Pine Bluff Re-Entry	0	0
Total:	2,939	2,876

Missed by Inmate

Site	Current Month	Previous Month
Benton	11	15
Cummins	14	22
Delta Regional	5	10
East Arkansas Regional	18	27
Ester	5	10
Grimes	7	20
J Aaron Hawkins Sr.	3	3
Tucker Max	6	5
McPherson	6	22
Mississippi County WRC	1	1
North Central	16	23
NW Arkansas WRC	4	1
Quachita River	16	27
Pine Bluff Complex	3	19
Randall L. Williams	5	21
State Police Barracks	1	0
Texarkana Regional	1	4
Tucker Unit	4	6
Vanner	9	17
Wrightsville Unit	1	14
Pine Bluff Re-Entry	0	0
Total:	136	267

CONSTRUCTION BUDGET / STATUS REPORT - OCTOBER 16, 2018 — [Page 1 of 2]

Fund	Project Description	Total Projected	Budget	Available Funds	\$ % Complete	Construction % Complete	Notes
7004810	Cummins Poultry Houses	\$ 5,939,547	\$ 6,100,000	\$ 160,453	97%	98%	Plans to correct ramp problem by JBP, looking at changing forklifts.
7004819	ESTER - Phase 1	3,878,954	4,000,000	121,046	97%	100%	Infirmary construction complete. Repairs to existing electrical for generator completed. Installing cameras. Parking Lot in design. ADFA bonds turned back on Phases 1 & 2 1A
700481A	ESTER - Phase 2 1A	1,699,402	5,100,000	3,400,598	33%	100%	
7004820	ESTER - Phase 2 - Kitchen	677,301	677,301	0	100%	100%	
KBR4Q95	ESTER - Phase 3 - General Improvement Fund	2,943,927	4,383,781	1,439,854	67%	98%	
700483A	EARU ISO Rec Yard	265,735	271,430	5,695	98%	100%	Complete
700483A	Varner ISO Rec Yard	180,277	180,953	676	100%	75%	Rec Pens underway
700483A	EARU Max Rec Precast Rec Yard	59,242	659,553	600,311	9%	0%	Plans approved by DBA for construction.
700483A	Tucker Max Precast Rec Yard	-	1,210,000	1,210,000	0%	0%	Plans being submitted to DBA
700483A	Cummins Precast Rec Yard	-	927,500	927,500	0%	0%	Plans being submitted to DBA
KBR4Q95	Bullpens	175,877	851,999	676,122	21%	50%	22 installed at Varner without doors. One being completed as a demonstration.
KBR4Q95	13 & 15 Barracks Door Revisions	107,983	174,000	66,017	62%	55%	All doors have been installed in 13 Barracks.
7004815	ORCU- Chapel	230,418	233,000	2,582	99%	100%	All HVAC installed, Chapel turned over to the Unit for operations.
KBR4Q95	Camera's (New)	704,091	1,248,000	543,909	56%	45%	Cameras ordered, installation underway. Delta complete.
700485A	Integrity Energy Improvements at EARU & Delta	10,573,860	17,020,204	6,446,344	62%	59%	lights (100%), water (90%), compost (90%), & solar (90%), HVAC started.
700486A	Pine Bluff Unit Barracks 9 Renovation	193,637	437,000	243,363	44%	90%	Construction underway, near completion
KBSCW18	McPherson Administration	-	395,439	395,439	0%	0%	Architects prepared Plans, submitted to DBA.
KBSBW18	McPherson Visitation	-	312,430	312,430	0%	0%	
KBSHW18	Tucker Water Treatment	-	1,093,848	1,093,848	0%	0%	
KBSFW18	Max Armory	-	70,000	70,000	0%	0%	to replace existing inadequate Armory.
KBSFW18	Varner Armory	-	68,399	68,399	0%	0%	Plans sent to DBA, comments received.
Telephone Projects							
Maintenance & Operations	Fire Alarm Upgrades (All Units)	7,459	53,000	45,541	14%	12%	on-going
	Gas Stations - Canopy (C/O)	0	-	0	0%	97%	Steel structure completed.
	Stainless Steel - Kitchen/Shower/Restrooms - All Units	1,547	20,000	18,453	8%	6%	continual need
	Parking Lot - Gravel and Paving - EARU	0	68,000	68,000	0%	0%	Parking lot complete. Working on paving road to State highway, acquiring R.O.W.
	Gates and Fences all units	740	30,000	29,260	2%	0%	to improve security
	ACA Maintenance	93,679	100,000	6,321	94%	90%	seven Units coming up this fiscal year, 2018
	ADA Projects - All Units	0	1,000	1,000	0%	0%	as needed.
	Fast Top Floor Systems (kitchen/laundry/showers all units)	22,362	25,000	2,638	89%	0%	projects as requested as needed. ACA audits initiate some projects. ORCU to complete 10/5.
	Camera Equipment - All Units	92,512	175,000	82,488	53%	40%	cameras as requested/approved.
	Lock/Riot Gates - All Units	85,223	90,500	5,277	94%	50%	on-going.
	AC Units-All Units	50,764	100,000	49,236	51%	42%	repairing & replacing daily.
	Subtotal	\$ 354,287	\$ 662,500	\$ 308,213			
FY19 Carry Forward	Metal Ceilings	0	25,000	25,000	0%	0%	Max Barracks 2 complete.
	ORCU Gravel Pit Operations	4,097	35,000	30,903	12%	100%	on-going. Elect upgrades complete, crusher operating.
	Dog Kennel/Horse Stable Malvern	0	48,000	48,000	0%	0%	Plans are at DBA for Review/Approval.



CONSTRUCTION BUDGET / STATUS REPORT - OCTOBER 16, 2018 — [Page 2 of 2]

Fund	Project Description	Total Projected	Budget	Available Funds	\$ % Complete	Construction % Complete	Notes
FY19 Carry Forward	Emergency Generator - All Units	77,943	100,000	22,057	78%	0%	EARU generators ordered, preparing site. Wrightsville Infirmary is next.
	Roof Repairs-Cummins	0	189,700	163,670	14%	0%	Prepared large order for multiple Units. Worked on the Cummins roof, moved to the Max roof, moved to ORCU, now back at the Max, 122 of 196 skylights installed. Office of State Procurement secured a State contract to purchase roofing materials.
	Roof Repairs-Cummins Laundry	0				0%	
	Roof Repairs-East Arkansas	0				0%	
	Roof Repairs-Max	24,302				10%	
	Roof Repairs-Tucker	0				0%	
	Roof Repairs-Verner	1,728				0%	
	Roof Repairs-Wrightsville	0				0%	
	Boiler Repair	15,766	100,000	84,234	16%	100%	continually needing repair
	Subtotal	\$ 123,836	\$ 497,700	\$ 373,864			
New Projects	EARU Sewer lift station	72,782	75,000	2,218	97%	0%	equipment delivered, sched installation
	Tucker 4 new filters & one aeration tank	10,803	500,000	489,198	2%	0%	Plans approved by Health Dept & DBA, preparing bid documents.
	Change media in 7 water filters at Tucker	4,132	6,000	1,869	69%	100%	Filter media changed out in all 7 filters. Bacteriologic tests on Filter 7 passed, all in operation.
	Tucker Barracks 10 covered walkway	0	-	0	0%	0%	Plans being submitted to DBA
	Max manhole	0	-	0	0%	0%	to provide access to a blockage point in sewer
	RLW Sewer relocation 400' + 2 MH	0	34,000	34,000	0%	0%	weekly stoppages, defect in pipe line.
	Additional Metal Fab shop	0	-	0	0%	0%	room to do more metal work
	PB Warehouse Drive replacement	0	95,000	95,000	0%	0%	asphalt drive pot holed
	Subtotal	\$ 87,716	\$ 710,000	\$ 622,284			
	Architect Fees	187,825	30,000	-157,825	626%		
	Total	\$ 753,664	\$ 1,900,200	\$ 1,146,536			

Notes

Report has not been reconciled against Accountings Reconciled Reports.
Tolerance/Deviation is with in 1% of Projected Spending.