

**Wendy Kelley**  
**Director**

**November**  
**2015**



## **OPERATIONS/INSTITUTIONS**

### **RESEARCH/PLANNING**

**October Admissions and Releases** – Admissions for October totaled **787** (681-males and 106-females), while Releases totaled **741** (637-males and 104-females), for a net increase in-house of **46**.

**Inmate Population Growth/Projection** – At the end of October the Arkansas Department of Correction Population/Jurisdiction totaled **18,430** representing a growth of **556** inmates since the first of January. For calendar year 2015 the average growth is **56** inmates per month, up from an average monthly growth during calendar year 2014 of **53** inmates per month.

**Average County Jail Backup** – The backup in the county jails averaged **1,881** inmates per day during the month of October – down from an average of **2,109** inmates per day for the month of September.

### **ACCREDITATION**

The ACA re-accreditation audit for Varner/Varner Super Max, October 13-15, resulted in scores of 100% mandatory, and 99.07% non-mandatory.

#### **ACA Internal Audits Completed:**

Oct. 1-2 Varner Unit file prep  
Oct. 5-9 Varner Unit file/Welcome Book review  
Oct. 29 EARU Monitoring Visit

#### **Classes Taught:**

Oct. 20 Training Academy

Fire/Safety and Sanitation independent audits conducted by the Fire and Sanitation Coordinator:

Oct. 1-2 Varner re-accreditation prep  
Oct. 5-9 Varner re-accreditation prep

#### **Independent Audits**

Oct. 15 Wrightsville/Hawkins  
Oct. 19-23 Wrightsville/Hawkins  
Oct. 26-30 Wrightsville/Hawkins

## **PREA**

### **PREA Hotline Data:**

There were no reported issues with the PREA Hotline. Internal Affairs is handling all PREA investigations. Gender Responsiveness Training for all McPherson Unit Staff has been completed.

Number of calls received	67
Total calls referred for reported PREA issue	15
Total calls referred for non-PREA issue	11
Calls referred due to technical failure	0
Calls referred to IAD	0

## **FARM**

The ADC AG Division had almost perfect conditions for harvest. The Tucker Farm has completed all of their harvest. The Cummins Farm lacks 200 acres of soybeans. These acres were sprayed with a foliar fertilizer to see if we could boost yield. Apparently, the beans just kept growing and have not matured for harvest yet. East Arkansas lacks 400 acres. These acres are all double cropped, which makes them later being harvested. All of the farms were able to work fields and put out fertilizer for next year's crop. The main farms have put together their crop plans for next year. Due to the lingering drought conditions and market prices, we have opted not to raise wheat this upcoming year. We will raise oats for horse feed. The managers are putting their seed out for bids during November to lock in early pricing and get the varieties they want.

The fall gardens continued to suffer due to the drought conditions. We did have a good sweet potato harvest. The rains late in the month have made the garden crops grow so we will have a delayed harvest. We had a department-wide garden meeting in October to plan the gardens for next year. Our plan is to meet all of ADC's vegetable needs within the next three years. We will be gearing our gardens to meet those needs on a unit level first with fresh produce and processed vegetables to be coming out of the freezers at VP during the year.

The poultry operation is on track and producing an average of 110,000 eggs per day. We are filling 100% of ADC needs and I am currently selling two loads a month to the Oklahoma DOC. At the present production, I have six loads to take bids on per month. We will be starting the next batch of pullets on November 4 with the arrival of day old chicks.

The dairy is producing 1,000 gallons of milk every other day which is enough to meet ADC needs. The plan for the dairy is to slowly increase the dairy herd and milk output. The goals are 1,600 gallons every other day by the end of December and 2,400 gallons every other day by the end of April.

Calving season is in full swing at the Cummins Farm beef herd. Wrightsville is in the process of weaning and vaccinating calves in preparation for sale in December. We will be using Superior Livestock Auctions to sell the next group of calves. We are aiming toward a sale on December 4.

Swine numbers are still improving. We are running 150 head per month through our facility here for processing. We are selling about 50 head a month to the vendor in Louisiana.

### INMATE GRIEVANCE

**Inmate Formal / Informal Grievances:** In October, there were a total of 2,499 formal grievances filed and 4,376 informal grievances filed at various units.

**Institutional Grievances:** There were a total of 710 appeals of institutional grievances received and 567 were answered in October. Eight were found with merit.

### **RE-ENTRY**

### CHAPLAINCY SERVICES

#### Benton Work Release

The class by Financial Peace University was held with six inmates attending. The Christian Activity Service had 28 inmates attending. There were four Stepping Up classes with 60 inmates attending.

#### North Central Unit

There was a Unit revival with Pastor Andy Riley from Pleasant Valley Missionary Baptist Church of Calico Rock. We averaged 98 inmates per service with two volunteers to assist with the services. The Storybook Project returned with eight volunteers who helped 47 inmates read stories that will be sent to their children.

#### Cummins Unit

On Oct. 2 and 3, the CMA Bike Rodeo was held on the yard. There were 470 inmates on the yard Saturday. We held church in the chapel with 90 inmates Friday and 125 inmates on Saturday.

#### Grimes Unit

On Oct. 31, we held the Quarterly CRA Meeting at the Newport Complex. We had 48 volunteers, two chaplains, and one denominational chaplain in attendance. We went over poli-procedures for CRA's, and communicated the needs for both the McPherson and Grimes Units for Christmas.

#### Varner/VSM

On Oct. 7, we held our first volunteer recruitment training at the Varner Unit. We had seven CRA's and 10 OCV's. The topic was

the do's and don't's of volunteering and Chaplain Treas spoke about the PAL program.

#### Maximum Security Unit

On Oct. 24, MSU conducted our quarterly CRA/volunteer training. There were 25 volunteers here for the training. Topics covered were new security procedures for movement provided by Major Stout. PREA and sexual misconduct were also provided.

#### Wrightsville

The employee awards breakfast was held at Hawkins Unit.

#### Tucker Unit

We had a Kairos Walk with 24 participants, Jumuah Prayer and Compassionate Communication.

#### **Pre-Release:**

	Slots	Completed	Dis-charged	End Count
McPherson	15	3	2	11
Ester-2 BKS	50	11	3	51
Ester-3 BKS	50	13	0	51
<b>Total</b>	<b>115</b>	<b>27</b>	<b>5</b>	<b>113</b>

There are 660 males and 72 females on the waiting list within 42 months of their release date and of those, seven males are mandated by the Board of Parole. The average time on the waiting list is about three months. The total on the waiting list, including those not currently within the identified time frame, is 724 males and 98 females.

#### **Volunteer Services:**

The total number of volunteer hours for the month of October 2015:

Unit	Hours
RLW	44
Ouachita River	26
Pine Bluff	8
PAWS	12
WSU	334
Religious Volunteer-all Units	6,359
<b>TOTAL</b>	<b>6,783</b>

### **ADMINISTRATIVE SERVICES**

#### **Contracts/Bids Status:**

##### **Contract Renewals**

Chemical Munitions

##### **Contracts (in process by OSP)**

Boiler-Ester Unit

**Minority Spending 1<sup>ST</sup> Quarter FY16**

July-September \$155,945.66 (1.12%)

**Human Resources**

**Workplace Safety** – During the month of October the modified version of the Health and Safety Plan was presented to two Basic Training classes with a total of 164 cadets in attendance. There were 59 incidents reported to the company nurse in October, which brings our workman's compensation incidents reported to 530 in 2015. The Workplace Safety Coordinator attended two Workers' Comp trainings during the month.

**Benefits** – There were 55 MIPS promotions and 1,039 MIPS payments. There were 86 FMLA requests processed with one denied. A total of six CAT leave requests were processed with three approved and three denied. Four hundred sixty-six hours were donated to the CAT leave bank. There were five applications received for shared leave; two were approved for a total of 124 hours of donated time, and three were denied.

**Physical Assessments** – There was a total of 214 applicants and incumbent personnel that were assessed in the month of October. One hundred seven incumbent personnel successfully completed their physical assessments and two incumbent personnel did not. Of those two, both rescheduled and passed. One hundred two applicants passed their physical assessments and three did not. One of those three applicants rescheduled and passed; the other two are pending release from a physician.

**Employment** – Facebook results for the month showed a total of 11,905 "likes" of our page. Through Discover Corrections, there were 423 from across the U.S. who viewed ADC's page. This site does not allow you to review comments made unless the viewer applies for a position through their site and is hired. During the month of October there were no applications submitted for ADC through the Discover Corrections website. The Human Resources Recruiter coordinated job fairs in the following locations: Forrest City Workforce Center; Pulaski Technical College; West Helena Workforce Center; West Memphis Workforce Center; Hot Springs Workforce Center; the University of Arkansas at Little Rock; Pine Bluff Workforce Center; and Monticello Workforce Center. The recruiter visited with a total of 133 potential applicants during these job fairs.

The reporting features that INS (Information Network Systems) has developed for the ARStateJobs website (all agencies) have been implemented. We have requested agency specific features, but have not received notification that those changes have been made. Because of duplicating information, we are now only tracking CO I applications through the ARStateJobs website. This site does not have the capability to give us a breakdown. INS still has not developed any agency specific request for reporting purposes.

There were a total of 2,538 applications received during October through ARStateJobs website. There were 63 non-correctional applications and 110 CO I applications processed with the following results: 145 correctional officers were hired and nine

correctional officers were re-hired.

**Administrative Services Division Monthly Reports (attached) include:****Gifts, Grants and Donations:**

Donations for the month of October were \$120.

**Inmate Welfare Fund** balance on October 31 was \$4,265,663.34.

**PAWS in Prison Fund** balances total on October 31 were \$92,324.91 in ADC. Account (7004822/Donations) \$16,506.55 and ADC account (NDC0500/Recycling) \$75,818.36. This does not include the Foundation account managed by PIP Foundation Board.

**Procurement/Contracts Report (required by policy) –**

For October 2015, purchase orders and contracts in excess of \$10,000 amounted to \$3,409,287.69. Of this amount, \$1,925,915.84 was for inmate care and custody related items (food, shoes, clothing, etc.). Bulk fuel costs for the month of October were \$67,389.70 - average cost of bulk diesel was \$1.83/gallon; average cost of E-10 was \$1.74/gallon.

**Vacancies, Hires, and Terminations** - On Oct. 31, there was a total of 572 vacancies, 157 new hires, and 83 terminations at the various ADC locations.

**Information Technology**

IT staff is currently working on digitizing paper forms in order to decrease the amount of paper forms used and to decrease the amount of data entry.

Disaster Recovery for eOMIS was tested at DIS SDCW. During the two-day testing, several issues were experienced. These items have been provided to DIS in order to have full functionality on the next Disaster Recovery test.

ADC hosted seven staff from the New Mexico Department of Corrections in October. eOMIS staff escorted them to ORCU and PB Unit-Central Records where they observed eOMIS functions in use for institutional daily operation.

Priority eOMIS development projects include:

Act 895 – Identification and Drivers Licenses for Re-Entry

Act 1265 – Inmate Transparency on the ADC Website  
We continued to test the backup software by Unitrends but, after talking with our sales contact at Acronis, we have decided to work with them on another test install. Acronis appears to be just as user friendly and simple, but may have better licensing options.

SECURUS Technologies continues with deployment of the IPRO Voice Biometrics system. Site surveys are currently in progress for the placement of inmate kiosk for video visita-

tion and inmate kiosk services such as commissary ordering, electronic sick call request, review of bank balances, and PE/TE Dates.

### Training Academy

#### **Basic Training Division**

BCOT 2015-L class graduated on Oct. 2 with 60 cadets. The Willis H. Sargent Award winner was Tammy Cox of the Ouachita River Unit. Major Derwin Metcalf of the Benton Unit served as the special speaker.

On Oct. 23, BCOT 2015-M graduated with 44 cadets. Valarie Ivie from the McPherson Unit won the Willis H. Sargent Award. The special speaker was Supervisor John Herrington from the Mississippi County Work Release.

#### **In-Service Division**

The focus for October was the **Management Level 1** class held Oct. 12-15. This four-day session is for new supervisors and includes training as mandated through the Office of the Governor. Guest instructors from the Office of Personnel Management Training Division presented two of those classes, Arkansas Government Basics and HRkansas. Other topics taught by ADC staff include Performance Evaluation, Grievance Prevention and Handling, Fair Labor Standards Act. Over 30 students completed this course. Some of them will be attending the next session of **Level 2** training.

### eCADEMY

During the month of October 2015, 242 ADC employees completed a total of 4,056.25 hours of eCADEMY training.

## **HEALTH/CORRECTIONAL PROGRAMS**

#### Sex Offender Treatment Programs:

	Slots	Completed	Re-moved	Clients
RSVP	238	0	12	238
Soft	30	0	3	11
Total	268	0	15	249

There are 739 males on the waiting list for RSVP and 28 females on the waiting list for SOFT within five years of their release date and of those, 38 are mandated by the Board of Parole. The average time on the waiting list from request is three to six months for stipulated. The total on the waiting list, including those not currently within the identified time frame, is 1,576 males and 35 females.

#### Therapeutic Community:

	Slots	Completed	Removed	Clients
Tucker	129	10	15	133
Wrts	45*	8	7	43
McP	50*	6	0	48
Total	224	24	22	224

There are 119 males and 14 females on the waiting list within 18 months of their release date and of those, 15 are mandated by the Board of Parole. The average time on the waiting list from request is 14 days. The total on the waiting list, including those not currently within the identified time frame, is 515 males and 51 females.

#### S.A.T.P.:

	Slots	Completed	Removed	Clients
Grimes	50*	7	4	50
McPh	100*	3	5	101
MSU	3	2	0	0
RLW/CF	188*	40	8	187
Tucker	43*	1	3	45
Varner	44	6	9	43
Wrts	135*	27	5	141
Total	563	86	34	567

There are 2,044 males and 458 females on the waiting list within 18 months of their release date, and of those, 25 are mandated by the Board of Parole. The average time on the waiting list from request is 13 days. The total on the waiting list, including those not currently within the identified time frame is 3,048 males and 606 females.

#### R.P.U.:

The Residential Program Unit at Ouachita had six admissions and three discharges in October for an end-of-month count of 74.

#### McPherson Mental Health Residential Program:

There were four admissions and three discharges in October for an end-of-month count of 40.

#### Habilitation Program:

The Habilitation Program at the Ouachita River Correctional Unit provided treatment services to 40 inmates during October. There were two admissions and one discharge for an end-of-month count of 39.



**Staffing:**

The following Mental Health Services and SATP positions were vacant in September and October:

	September	October
Psychologists	8	8
Social Workers	5	6
Advisors	6	9
Substance Abuse Prog Leaders	7	5
Admin. Specialist/Analyst	4	4
Rehab Adm/Facility Supv	0	1

**ADDITIONAL PROGRAM INFORMATION****Substance Abuse Education:**

Substance Abuse Education Groups were held at seven units and 71 inmates completed the program during October. The current waiting list is 596.

**Anger Management:**

Anger Management Self-study Groups were held at 13 units and 812 inmates completed the program during October. The current waiting list is 920.

**Thinking Errors:**

Thinking Errors Groups were held at 10 units and 262 inmates completed the program during October. The current waiting list is 2,555.

**Suicide:**

There were 59 suicidal threats, gestures or low/moderate risk attempts during October. There was one serious attempt, which resulted in death.

**Outpatient:**

There were 2,107 inmates on the mental health medical log at the end of October. Mental Health conducted the following contacts during October:

Case Management Contacts	2,064
Request for Interviews	3,418
Testing	6
Intakes	779
Unit Requests	1,474
Counseling (with treatment plan)	193
Pre-Lock Up Reviews	571
Routine Seg Reviews	592
Seg Rounds	8,086
PREA Evaluations	9
Routine Follow-Up	190
834 Requests	45

**CCS Monetary Sanctions:**

Sanction reimbursements for September were \$61,850.

**County Mental Health Requests:**

During October, there were 76 requests of a mental health nature received and 59 inmates were fast tracked to ADC.

**County Medical Health Requests:**

During October, there were 603 requests of a medical nature received and 21 were fast tracked.

**Deaths:**

There were three inmate deaths during the month of October; all three bodies were claimed.

**CCS:**

See attachment for CCS's report regarding outside beds and emergency room visits.

**Medical Grievances:**

In October, there were a total of 350 appeals of medical grievances received and 357 appeals were answered. Forty-six of those were found to be with merit and nine with merit but resolved.

**SEX OFFENDER ASSESSMENT****Assessments Completed:**

Risk Level	October	Sept. 1999 thru Oct. 31, 2015
Level 1	6	1,146
Level 2	36	5,914
Level 3	25	5,879
Level 4	2	553
Default 3	3	**
<b>Total</b>	<b>72</b>	<b>13,492</b>

\*Default Level 3's are included in the total number of Level 3's to date.

**ACIC Numbers:**

The total number of sex offenders registered from Sept. 1, 1999 to October 31, 2015:

In Compliance	7,213
Delinquent (Did not return address on time)	876
Confined	2,747
Out of State	2,820
Address Unknown (absconded)	194
Deceased	933
Deported	158
Incapacitated	63
Out of USA	3
<b>Total</b>	<b>15,004</b>

**PAWS IN PRISON**

We currently have 39 enrolled in training.

<b>MAX</b>	<b>7</b>
<b>TUCKER</b>	<b>11</b>
<b>HAWKINS</b>	<b>4</b>
<b>RLW</b>	<b>4</b>
<b>ORCU</b>	<b>7</b>
<b>NCU</b>	<b>8</b>

Graduates for the month of October 2015	14
Graduates year to date (2015)	164
Graduates since inception (Dec 2011)	637
Dogs currently in foster (graduated but not adopted)	6

**CONSTRUCTION****PROJECT UPDATES:****Barbara Ester Unit (Diagnostic):**

They are renovating barracks and re-roofing Unit; purchasing material; working with vendor on receiving kitchen equipment. The Contractor is working on HVAC renovation; installing new metal ceilings; working on plumbing & electrical. A requisition has been submitted to DFA for a new boiler. We are working with the Architect on Phase 3 and the School addition. Soil samples were taken for school.

**Cummins Unit:**

They are working on roof repairs and repairs to the free line residences.

**Cummins Poultry:**

The unit submitted the requisition for a new generator. All of the houses are complete and in production.

**East Arkansas Regional Unit:**

The horse barn is complete. They are working on new firing range.

**Ouachita River Correctional Unit:**

We are continuing gravel operations. Telecomm cables are being run to the maintenance building.

**Newport/Grimes:**

Construction on the new sally port building continues.

**Tucker Maximum Security Unit:**

We are working on stainless steel for kitchen walls and putting a metal ceiling on fir down in front of cells in the barracks.

**Varner:**

We are working on roof repairs.

**CONSTRUCTION PERSONNEL UPDATE:****11 vacancies:**

- 1– Engineer
- 2– CO's
- 7– Maintenance Techs
- 1– Construction Project Supervisor

**Regional Maintenance Hours**

<b>Regional Maintenance</b>	<b>Oct'15</b>
Benton Unit	4,905
Delta Regional Unit	4,494
EARU	2,623
Grimes	2,624
McPherson	2,200
Randall L. Williams Corr. Facility	3,464
MSCOWRC	1,705
North Central Unit	11,326
Ouachita River	5,816
TRCC	2,645
Tucker Unit	3,972
Varner Unit	4,520
Wrightsville Satellite Unit	3,144
Wrightsville Unit	3,285
<b>Total Hours</b>	<b>56,723</b>

<b>Rent Report</b>	<b>Oct. '15</b>
Benton Unit	\$95,693.00
Pine Bluff Reentry W/R	\$27,149.00
NWARWRC	\$38,216.00
MSCOWRC	\$53,703.00
Pine Bluff Unit	\$35,496.00
TRCC	\$32,011.00
<b>Total Rent Paid</b>	<b>\$282,268.00</b>

[illegible][illegible]

# INMATE INSTITUTIONAL GRIEVANCE APPEAL REPORT

	Received	Rejected	Processed W/O Merit	Processed W/ Merit
Benton Unit	0	0	0	0
Benton Work Release	0	0	0	0
Bowie County Texas Correctional Facility	14	2	5	0
Cummins Unit	17	13	44	0
Cummins Modular Unit	3	1	7	0
Delta Regional Unit	4	0	8	0
Ester Unit	0	0	0	0
East Arkansas Regional Unit	36	9	40	1
East Arkansas Regional Maximum Unit	81	19	84	2
Grimes Unit	48	14	31	1
Maximum Security Unit	98	18	111	2
McPherson Unit	32	13	25	0
McPherson Mental Health Residential Program Unit	1	0	1	0
Mississippi County Work Release Center	0	0	0	0
Mississippi County Work Release Center	0	0	0	0
Northwest Arkansas Work Release Center	0	0	0	0
North Central Unit	11	4	9	1
Ouachita River Correctional Unit	16	21	17	0
ORCU New Commitment	0	1	1	0
ORCU Mental Health Residential Program Unit	1	0	0	0
Pine Bluff Unit	1	1	1	0
Randall L. Williams Correctional Facility	10	1	6	0
Texarkana Regional Correctional Center	0	0	0	0
Tucker Unit	19	2	15	1
Varner Super Max	108	25	96	0
Varner Unit	41	10	52	0
Wrightsville Unit	2	7	4	0
Wrightsville Satellite Unit	0	0	0	0
Hawkins Center	0	0	1	0
Hawkins for Males	6	0	1	0
Hawkins SPU	0	0	0	0
<b>Total</b>	<b>549</b>	<b>161</b>	<b>559</b>	<b>8</b>



## Medical Grievance Appeals

Unit	<i>Acknowledged/ Received</i>	<i>Rejected</i>	<i>Reviewed &amp; Signed by Dep Director</i>	<i>With Merit</i>	<i>With Merit, but Resolved</i>	<i>% With Merit</i>	<i>Without Merit</i>
Benton	0	0	0	0	0	0%	0
Boot Camp	0	0	0	0	0	0%	0
CMU	1	0	0	0	0	0%	0
Cummins	28	3	32	2	1	9%	29
Delta	1	0	9	0	0	0%	9
EARU	27	10	48	7	2	19%	39
EARU Max	45	2	65	11	2	20%	52
ESU	2	1	0	0	0	0%	0
Grimes	34	7	17	4	1	29%	12
Hawkins	0	1	2	0	0	0%	2
McPherson	16	6	9	0	0	0%	9
MCWRC	0	0	0	0	0	0%	0
MSU	40	1	51	5	0	10%	46
North Central	11	0	9	1	0	11%	8
NWAWRC	0	0	0	0	0	0%	0
Ouachita	14	1	13	2	0	15%	11
Pine Bluff	0	0	0	0	0	0%	0
PBR	0	0	0	0	0	0%	0
Randall L. Williams	8	0	4	0	0	0%	4
SNN	1	0	0	0	0	0%	0
TRCC	0	0	0	0	0	0%	0
Tucker	3	2	11	2	0	18%	9
Varner	49	16	27	4	1	19%	22
Varner S Max	66	19	53	6	2	15%	45
WRU	3	3	7	2	0	29%	5
WHM	1	0	0	0	0	0%	0
WWR	0	0	0	0	0	0%	0
Bowie Co.	8	0	0	0	0	0%	0
<b>TOTAL</b>	<b>358</b>	<b>72</b>	<b>357</b>	<b>46</b>	<b>9</b>	<b>15%</b>	<b>302</b>

## ADMISSIONS AND RELEASES

<u>Admissions</u>	<u>Male</u>	<u>Female</u>	<u>Total</u>
Asian	2	0	2
Black	259	16	275
Hispanic	19	4	23
Nat. Amer.	2	0	2
Hawaiian/Pacific Isl	1	0	1
White	397	86	483
Other	1	0	1
<b>Total</b>	<b>681</b>	<b>106</b>	<b>787</b>
<u>Releases</u>	<u>Male</u>	<u>Female</u>	<u>Total</u>
Asian	4	0	4
Black	231	22	253
Hispanic	16	1	17
Nat. Amer.	0	0	0
Hawaiian/Pacific Isl	2	0	2
White	384	81	465
Other	0	0	0
<b>Total</b>	<b>637</b>	<b>104</b>	<b>741</b>

## ARKANSAS DEPARTMENT OF CORRECTION

### INMATE POPULATION GROWTH 2000-2022

<i>Updated 10/30/2015</i>																
Mo.	2000	2001	2002	2003	2004	2005	2006	2007	2008	2009	2010	2011	2012	2013	2014	2015
Jan.	11,984	11,908	12,402	13,015	13,105	13,595	13,481	13,839	14,518	14,796	15,334	16,312	15,134	14,815	17,481	18,142
Feb.	12,169	12,022	12,529	13,054	13,166	13,783	13,633	14,012	14,603	14,883	15,374	16,209	14,990	15,008	17,438	18,082
March	12,006	12,033	12,299	13,108	13,088	13,418	13,534	13,772	14,580	14,843	15,290	16,095	14,964	14,665	17,395	18,233
April	12,069	12,167	12,465	13,213	13,323	13,469	13,554	13,851	14,769	14,937	15,570	16,172	15,124	14,850	17,604	18,703
May	12,109	12,384	12,558	13,463	13,556	13,528	13,711	14,146	14,880	15,146	15,694	16,062	15,132	15,074	17,593	18,693
June	12,005	12,108	12,439	13,418	13,389	13,251	13,430	13,915	14,700	15,025	15,564	15,554	14,832	14,825	17,340	18,813
July	12,030	12,190	12,622	13,509	13,528	13,286	13,560	14,082	14,868	15,195	15,807	15,519	14,879	15,379	17,522	18,870
August	12,087	12,371	12,815	13,565	13,632	13,419	13,646	14,224	15,100	15,385	15,829	15,240	14,675	16,103	17,549	18,806
September	11,983	12,289	12,774	13,341	13,516	13,237	13,652	14,217	14,850	15,285	16,025	15,172	14,724	16,412	17,605	18,549
October	12,119	12,348	12,942	13,341	13,584	13,363	13,775	14,349	14,836	15,381	16,311	15,271	14,856	16,993	17,880	18,430
November	12,094	12,408	13,162	13,408	13,706	13,587	13,913	14,437	15,025	15,340	16,460	15,205	14,625	17,168	17,848	
December	11,856	12,333	12,845	13,106	13,470	13,338	13,728	14,315	14,716	15,199	16,204	15,062	14,654	17,235	17,874	
Net Ann. Inc	29	477	512	261	364	-132	390	587	401	483	1,005	-1,142	-408	2,581	639	556
Avg. Mo. Inc	2	40	43	22	30	-11	33	49	33	40	84	-95	-34	215	53	56
Population is total jurisdictional count at end of each month. Population at end of month December 1999 was 11,827.																
Average monthly population increase for past fifteen years 2000 - 2014 is 34																
Average monthly population increase for past ten years Jan.2005 - Dec 2014 is 37																
Average monthly population increase for past five years 2010 - 2014 is 45																

<i>Projected at Growth of 34 per Month</i>																
Mo.	2008	2009	2010	2011	2012	2013	2014	2015	2016	2017	2018	2019	2020	2021	2022	2023
	Actual	Actual	Actual	Actual	Actual	Actual	Actual	Actual/Proj.	Proj.	Proj.	Proj.	Proj.	Proj.	Proj.	Proj.	Proj.
January	14,518	14,796	15,334	16,312	15,134	14,815	17,481	18,142	18,532	18,940	19,348	19,756	20,164	20,572	20,980	21,388
February	14,603	14,883	15,374	16,209	14,990	15,008	17,438	18,082	18,566	18,974	19,382	19,790	20,198	20,606	21,014	21,422
March	14,580	14,843	15,290	16,095	14,964	14,665	17,395	18,233	18,600	19,008	19,416	19,824	20,232	20,640	21,048	21,456
April	14,769	14,937	15,570	16,172	15,124	14,850	17,604	18,703	18,634	19,042	19,450	19,858	20,266	20,674	21,082	21,490
May	14,880	15,146	15,694	16,062	15,132	15,074	17,593	18,693	18,668	19,076	19,484	19,892	20,300	20,708	21,116	21,524
June	14,700	15,025	15,564	15,554	14,832	14,825	17,340	18,813	18,702	19,110	19,518	19,926	20,334	20,742	21,150	21,558
July	14,868	15,195	15,807	15,519	14,879	15,379	17,522	18,870	18,736	19,144	19,552	19,960	20,368	20,776	21,184	21,592
August	15,100	15,385	15,829	15,240	14,675	16,103	17,549	18,806	18,770	19,178	19,586	19,994	20,402	20,810	21,218	21,626
September	14,850	15,285	16,025	15,172	14,724	16,412	17,605	18,549	18,804	19,212	19,620	20,028	20,436	20,844	21,252	21,660
October	14,836	15,381	16,311	15,271	14,856	16,993	17,880	18,430	18,838	19,246	19,654	20,062	20,470	20,878	21,286	21,694
November	15,025	15,340	16,460	15,205	14,625	17,168	17,848	18,464	18,872	19,280	19,688	20,096	20,504	20,912	21,320	21,728
December	14,716	15,199	16,204	15,062	14,654	17,235	17,874	18,498	18,906	19,314	19,722	20,130	20,538	20,946	21,354	21,762
Net Ann. Inc	401	483	1,005	-1,142	-408	2,581	639	624	408	408	408	408	408	408	408	408
Ave. Mo. Inc	33	40	84	-95	-34	215	53	52	34	34	34	34	34	34	34	34

## ADC County Jail Backup FY2016

DAY		Jul-15		Aug-15		Sep-15		Oct-15
1		2,674	*	2,556		2,276		1,973
2		2,615	*	2,556		2,274		1,979
3		2,618		2,558		2,267	*	1,979
4	*	2,618		2,572		2,236	*	1,979
5	*	2,618		2,592	*	2,236		1,938
6		2,618		2,598	*	2,236		1,899
7		2,638		2,615		2,180		1,900
8		2,669	*	2,615		2,180		1,895
9		2,686	*	2,615		2,174		1,895
10		2,677		2,621		2,181	*	1,895
11	*	2,677		2,625		2,147	*	1,895
12	*	2,677		2,597	*	2,147		1,895
13		2,660		2,606	*	2,147		1,879
14		2,635		2,607		2,116		1,897
15		2,614	*	2,607		2,100		1,914
16		2,587	*	2,607		2,074		1,886
17		2,576		2,614		2,067	*	1,886
18	*	2,576		2,651		2,034	*	1,886
19	*	2,576		2,666	*	2,034		1,862
20		2,541		2,705	*	2,034		1,872
21		2,550		2,687		2,031		1,856
22		2,546	*	2,687		2,023		1,853
23		2,542	*	2,687		2,019		1,843
24		2,550		2,685		2,034	*	1,843
25	*	2,550		2,605		2,023	*	1,843
26	*	2,550		2,553	*	2,023		1,821
27		2,533		2,453	*	2,023		1,814
28		2,535		2,309		2,027		1,815
29		2,525	*	2,309		1,975		1,815
30		2,549	*	2,309		1,958		1,801
31		2,556		2,272			*	1,801
Average		2,598		2,572		2,109		1,881
								2290.074
Notes: Totals do not include 309 Contracts in County Jails (maximum of 336)								

Notes: Totals do not include 309 Contracts in County Jails (maximum of 336)

ARKANSAS DEPARTMENT OF CORRECTION															
FY16 BED CAPACITY; MONTHLY POP. AVG; AVERAGE NO. VACANT BEDS PER UNIT															
	TOTAL	Avg. Mo.	Avg. Mo.	Avg. Mo.	Avg. Mo.	Avg. Mo.	Avg. Mo.	Avg. Mo.	Avg. Mo.	Avg. Mo.	Avg. Mo.	Avg. Mo.	Avg. Mo.	Avg. Mo.	Total Vac
	CAP	Pop	Pop	Pop	Pop	Pop	Pop	Pop	Pop	Pop	Pop	Pop	Pop	Pop	Beds
<u>Units</u>		Jul-15	Aug-15	Sep-15	Oct-15	Nov-15	Dec-15	Jan-16	Feb-16	Mar-16	Apr-16	May-16	Jun-16		
Cummins	1876	1927	1924	1938	1929									1930	-54
Maximum Security	532	566	569	566	558									565	-33
North Central	800	822	819	840	840									830	-30
Texarkana Regional	128	126	126	127	127									127	1
Vanner	1714	1722	1728	1736	1733									1730	-16
Wrightsville	1481	1436	1447	1498	1499									1470	11
Benton	325	328	325	305	321									320	5
Delta	614	595	595	598	605									598	16
East Arkansas Regional	1659	1665	1660	1661	1659									1661	-2
Randall L Williams/Corr. Fac.	562	566	567	570	569									568	-6
Mississippi Co. WR	133	127	128	133	140									132	1
Northwest AR WR	100	97	98	100	99									99	1
Ouachita River	1782	1792	1806	1850	1851									1825	-43
Pine Bluff	430	435	433	437	440									436	-6
PB Female Work Release	54	54	54	54	54									54	0
Tucker	1126	1096	1101	1114	1125									1109	17
Grimes	1012	1044	1046	1067	1067									1056	-44
Ester	184	140	183	184	184									173	11
McPherson	964	1007	1019	1059	1064									1037	-73
Totals Bed Capacity	15476	15,545	15,628	15,837	15,864	0	0	0	0	0	0	0	0	15719	-244
		1	1	1	1	0	0	0	0	0	0	0	0	4	
															101.6%

Total Capacity Includes 812 temporary beds & 39 Regional Jail Operations (CU, NC, VR, DR, EARU, HW, RLW, TU & ORCU).

Population Capacity does not include Jail Contracts 309 (336), Bowie County, Texas (336), ALETA beds (65) & AR State Police (20)



## Monthly Population Averages

	10/1	10/2	10/5	10/6	10/7	10/8	10/9	10/12	10/13	10/14	10/15	10/16	10/19	10/20	10/21	10/22	10/23	10/26	10/27	10/28	10/29	10/30		
Unit/Center																						AVG		
Benton	320	315	321	321	323	320	320	318	319	319	319	322	321	321	322	323	324	323	323	319	321	320	321	
Cummins	1,905	1,903	1,932	1,934	1,929	1,930	1,930	1,938	1,938	1,936	1,934	1,926	1,930	1,918	1,917	1,923	1,931	1,932	1,932	1,931	1,938	1,941	1,929	
Delta	586	580	595	619	616	606	608	607	608	607	604	604	606	605	603	613	611	606	605	605	602	617	605	
E AR Reg	1,667	1,668	1,662	1,659	1,661	1,663	1,653	1,651	1,655	1,653	1,654	1,653	1,656	1,654	1,655	1,656	1,656	1,660	1,663	1,661	1,665	1,666	1,659	
Ester	184	184	183	184	184	184	184	184	184	184	184	184	184	184	184	184	184	184	184	184	184	184	184	
Grimes	1,071	1,074	1,059	1,051	1,059	1,072	1,071	1,063	1,075	1,072	1,071	1,064	1,063	1,064	1,064	1,070	1,069	1,061	1,072	1,077	1,074	1,065	1,067	
Max Sec	562	559	560	561	559	559	559	560	560	560	557	557	557	555	555	555	555	556	557	557	557	557	558	
McPherson	1,066	1,066	1,066	1,063	1,063	1,064	1,063	1,062	1,063	1,063	1,063	1,060	1,063	1,063	1,063	1,063	1,063	1,064	1,064	1,064	1,066	1,066	1,064	
MCWRC	141	141	141	141	141	141	141	141	141	141	141	140	140	140	139	139	139	139	138	138	137	141	140	
N Central	840	841	841	841	841	842	841	841	841	841	839	837	840	840	839	835	840	840	840	840	838	841	840	
NWAWRC	98	98	99	99	99	99	98	97	99	99	98	98	97	100	100	100	100	100	100	99	98	99	99	
Ouachita River	1,851	1,843	1,814	1,840	1,855	1,868	1,867	1,856	1,859	1,852	1,839	1,849	1,854	1,847	1,852	1,846	1,837	1,856	1,861	1,854	1,863	1,862	1,851	
andall L William	570	569	569	567	570	568	568	565	563	562	571	570	570	570	570	570	569	570	572	571	570	568	569	
Pine Bluff	433	436	443	442	437	442	438	440	438	440	440	443	439	441	439	441	441	442	439	443	443	441	440	
PB Reentry	54	54	54	54	54	54	54	54	54	54	51	54	54	54	54	54	54	54	54	54	54	54	54	
TRCC	128	128	128	128	128	128	128	128	128	128	128	128	128	127	127	127	127	125	125	125	116	121	127	
Tucker	1,119	1,120	1,120	1,118	1,116	1,121	1,121	1,132	1,132	1,130	1,130	1,129	1,130	1,123	1,123	1,125	1,130	1,126	1,122	1,120	1,128	1,128	1,125	
Vanner	1,739	1,742	1,735	1,732	1,729	1,722	1,728	1,727	1,727	1,728	1,730	1,736	1,735	1,743	1,743	1,733	1,730	1,733	1,730	1,739	1,738	1,735	1,733	
Wrightsville	1,498	1,498	1,499	1,497	1,501	1,508	1,505	1,504	1,497	1,497	1,496	1,502	1,506	1,497	1,496	1,499	1,494	1,501	1,499	1,497	1,494	1,496	1,499	
Total ADC	15,832	15,819	15,821	15,851	15,865	15,891	15,877	15,868	15,881	15,866	15,849	15,856	15,873	15,846	15,845	15,856	15,854	15,872	15,880	15,878	15,886	15,902	15,862	15862
ALETA	19	19	19	19	19	19	19	19	19	19	19	19	19	19	19	19	19	19	19	18	18	18	19	
Ar State Police	59	58	58	58	58	54	54	54	56	56	56	56	56	59	59	59	59	59	59	59	59	59	57	
Co Jail / M	1,874	1,884	1,846	1,813	1,817	1,811	1,814	1,820	1,806	1,823	1,837	1,815	1,796	1,802	1,789	1,787	1,784	1,762	1,752	1,751	1,748	1,736	1,803	
Co Jail / F	99	95	92	86	83	84	81	75	73	74	77	71	66	70	67	66	59	59	62	64	67	65	74	
Total Co Jail BK	1,973	1,979	1,938	1,899	1,900	1,895	1,895	1,895	1,879	1,897	1,914	1,886	1,862	1,872	1,856	1,853	1,843	1,821	1,814	1,815	1,815	1,801	1,877	
Bowie Co., TX	336	336	336	336	336	335	335	335	335	334	334	335	336	336	335	336	336	334	334	336	336	335	335	
309/M	248	248	247	247	247	246	245	244	243	243	245	246	248	248	249	249	248	249	249	249	249	249	247	
309/F	43	43	43	43	43	43	43	43	43	43	43	43	43	43	43	43	43	43	43	43	43	43	43	
Total Act 309	291	291	290	290	290	289	288	287	286	286	288	289	291	291	292	292	291	292	292	292	292	292	290	
Total Non ADC	2,678	2,683	2,641	2,602	2,603	2,592	2,591	2,590	2,575	2,592	2,611	2,585	2,564	2,577	2,561	2,559	2,548	2,525	2,518	2,520	2,520	2,505	2,579	
Total	18,510	18,502	18,462	18,453	18,468	18,483	18,468	18,458	18,456	18,458	18,460	18,441	18,437	18,423	18,406	18,415	18,402	18,397	18,398	18,398	18,406	18,407	18,441	18441
																							0	
	1	1	1	1	1	1	1	1	1	1	1	1	1	1	1	1	1	1	1	1	1	1	22	

# CHAPLAINCY

Monthly Report for: Oct 2015	BENTON	CUMMINS	DELTA REGIONAL	EAST ARKANSAS	EAST ARKANSAS MAX	GRIMES	HAWKINS	MAXIMUM SECURITY	MCPHERSON	NORTH CENTRAL	OUACHITA RIVER	PINE BLUFF	RANDALL L. WILLIAMS	TUCKER	VARNER	VARNER MAX	WRIGHTSVILLE	PTF	TOTAL
Chaplain in Charge	2	3	15	4	0	0	0	0	0	0	12	0	0	3	0	0	2	9	50
Christian																			
Population	8	3	9	3	0	14	2	12	10	2	11	4	12	7	3	0	13	0	113
Segregation	0	0	0	0	0	0	0	0	0	0	0	0	0	0	0	0	0	0	0
Muslim																			
Population	0	0	5	2	1	0	0	0	0	0	1	0	0	0	1	0	4	0	14
Segregation	0	0	0	2	1	0	0	0	0	0	0	0	0	0	0	0	0	0	3
Volunteers in Charge																			
Protestant	19	48	21	41	0	32	5	31	40	55	68	9	9	12	4	1	0	0	395
Catholic	0	1	0	4	1	16	2	1	3	2	1	0	0	1	1	1	0	0	34
Muslim	0	0	0	0	0	0	0	1	0	0	5	0	0	0	1	1	0	0	8
Other	5	0	0	0	0	4	1	1	4	0	3	0	1	0	0	0	0	0	19
Baptism	0	0	0	0	0	0	0	0	0	3	0	0	0	0	0	0	1	0	4
Marriages	1	0	0	0	0	0	0	1	0	0	0	0	0	0	1	0	1	0	4
Distributed by Chaplains																			
Greeting Cards	25	12	10	0	0	125	0	400	665	102	52	185	78	84	173	153	0	0	2064
Bibles, Quran, Torah, Etc.	50	23	30	0	6	15	2	10	40	14	59	6	16	260	25	11	4	8	579
Study Course	15	30	0	7	1	8	0	170	0	0	32	12	32	0	17	1	0	10	335
Writing Supplies	15	17	0	0	0	0	613	450	0	0	32	0	480	0	0	0	0	0	1607
Literature	150	1230	75	325	10	225	0	1100	62	600	588	287	560	200	1048	19	250	15	6744
Chaplain's Visits																			
Barracks - How Many Visits	77	107	10	8	6	124	24	431	110	152	165	59	58	84	5	28	16	30	1494
Approximate Hours Spent in Barracks	47	55	2	12	6	23	19	108	50	76	17	19	130	200	12	40	17	11	844
Office (How many Inmates)	95	65	330	4	2	105	68	17	105	97	65	63	92	350	122	0	70	127	1777
How Many Visits Chaplain Made																			
Hospital	0	3	0	0	0	0	0	0	1	1	10	0	0	0	2	0	0	0	17
Infirmary	0	5	4	5	0	28	1	13	5	6	3	4	4	3	2	0	2	0	85
Office	0	17	0	4	0	0	0	35	10	0	0	19	8	18	25	15	0	0	151
Admin Seg	0	19	4	7	7	32	0	72	10	0	5	0	0	0	0	14	0	0	170
Segregation	0	0	4	7	7	32	0	0	10	0	3	4	4	0	0	7	0	0	78
Punitive	0	12	4	7	7	32	0	32	10	9	9	4	4	6	0	7	3	0	146
PC	0	0	0	7	7	0	0	0	10	0	0	0	0	0	0	0	0	0	24
Visitation Days	1	0	0	0	0	0	0	0	10	2	4	0	0	1	0	0	0	0	18
How Many Visits Volunteers Made																			
RCV	6	0	0	42	5	26	1	25	31	0	77	0	24	27	0	0	0	0	264
OCV	16	0	12	5	0	32	61	61	20	29	9	20	28	2	26	0	20	0	341
Spiritual Advisor	0	1	3	0	0	0	1	0	0	0	6	1	1	6	2	0	1	0	22
CRA	20	43	7	62	6	48	11	179	75	96	151	23	12	39	50	16	20	0	858
Total Volunteer Hours	104	61	44	187	12	96	151	745	321	274	671	82	123	183	241	46	80	0	3421
DENOMINATIONAL/VOLUNTEER CHAPLAIN HOURS	110	81	0	0	0	30	102	85	127	185	163	38	176	60	0	0	210	124	1491
Other Activities of Chaplain																			
Counseled Employees	37	7	4	10	7	18	3	1	0	12	21	15	9	12	15	6	2	1	180
Orientation Sessions	0	4	0	0	0	0	0	0	5	1	0	0	0	0	4	0	0	0	15
Free World Devotions	0	7	0	2	0	0	0	1	0	0	5	12	12	0	4	0	1	0	44
Spoke in Churches	4	20	7	2	0	12	1	4	1	0	9	12	12	0	11	0	1	1	97
Crisis Intervention Sessions	8	14	80	0	0	17	0	5	13	4	3	13	6	23	54	0	16	4	260
Marriage Counseling	2	5	1	1	0	9	0	1	1	0	1	0	0	0	0	0	2	0	23
Denominational Meeting	0	6	0	0	0	0	0	0	1	0	3	0	0	1	2	0	0	2	15
Chaplain's Meeting	0	13	1	0	0	2	0	1	1	1	0	1	1	1	8	0	2	1	33
Volunteer Training Session	3	1	0	0	0	0	0	1	1	3	2	0	0	2	1	0	0	0	14
Choir Trip	0	0	0	0	0	0	0	0	0	0	0	0	0	0	0	0	0	0	0
Staff Movement (Chaplain)	0	0	0	0	0	0	0	0	0	0	0	0	0	0	0	0	1	0	1
Promotions (Chaplain)	0	0	0	0	0	0	0	0	0	0	0	0	0	0	0	0	0	0	0
Interns	0	0	0	0	0	0	0	0	0	0	0	0	0	0	0	0	0	0	0
PAL PROGRAM																			
# Enrolled at start of month	0	47	19	50	0	60	53	20	56	31	44	0	28	61	38	0	30	0	537
# Enrolled during the month	0	6	1	5	0	10	4	1	18	7	4	0	6	9	3	0	4	0	78
# Completing the program	0	0	2	0	0	0	0	0	2	1	2	0	0	2	0	0	2	0	11
Total for this month added to Program ( # Removed from the program)	0	53	22	55	0	70	57	21	76	39	50	0	34	72	41	0	36	0	
Paroled	0	1	2	1	0	3	5	0	20	2	0	0	2	2	1	0	1	0	40
Withdrew	0	2	0	1	0	1	5	0	2	0	0	0	0	1	1	0	0	0	13
Removed	0	0	1	1	0	2	1	1	0	0	0	0	0	0	0	0	0	0	6
Transferred	0	0	15	2	0	2	0	0	5	1	0	0	4	2	0	0	0	0	31
Total for this month subtract from program	0	3	18	5	0	8	11	1	27	3	0	0	6	5	2	0	1	0	
# At the end of the month	0	50	4	50	0	62	46	20	49	36	50	0	28	67	39	0	35	0	536
# Of volunteers	0	22	4	49	0	0	14	11	10	6	0	0	6	7	5	0	0	0	134
Special Events:																			

# ADC INPATIENT AND EMERGENCY ROOM UTILIZATION

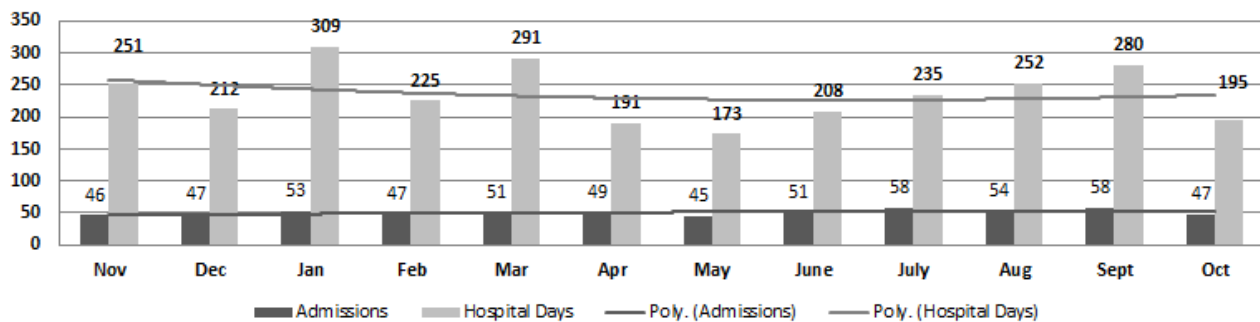
## ADC Inpatient Statistics Past 12 Months

	2014		2015										Average
	Nov	Dec	Jan	Feb	Mar	Apr	May	June	July	Aug	Sept	Oct	
Admissions	46	47	53	47	51	49	45	51	58	54	58	47	50.5
Hospital Days	251	212	309	225	291	191	173	208	235	252	280	195	235.2
Average Length of Stay	5.46	4.51	5.83	4.79	5.71	3.90	3.84	4.08	4.05	4.67	4.83	4.15	4.66

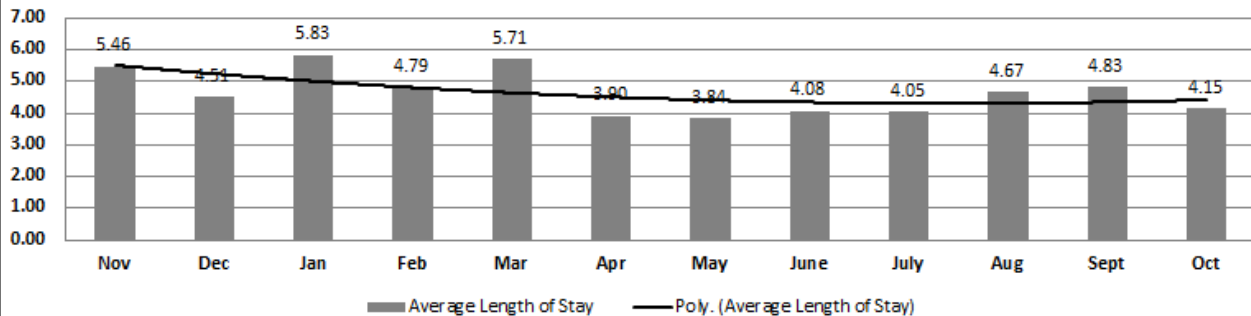
## ADC ER Visits Past 12 Months

	2014		2015										Average
	Nov	Dec	Jan	Feb	Mar	Apr	May	June	July	Aug	Sept	Oct	
Emergency Room Visits	64	65	59	68	79	83	86	77	99	74	76	72	75.2

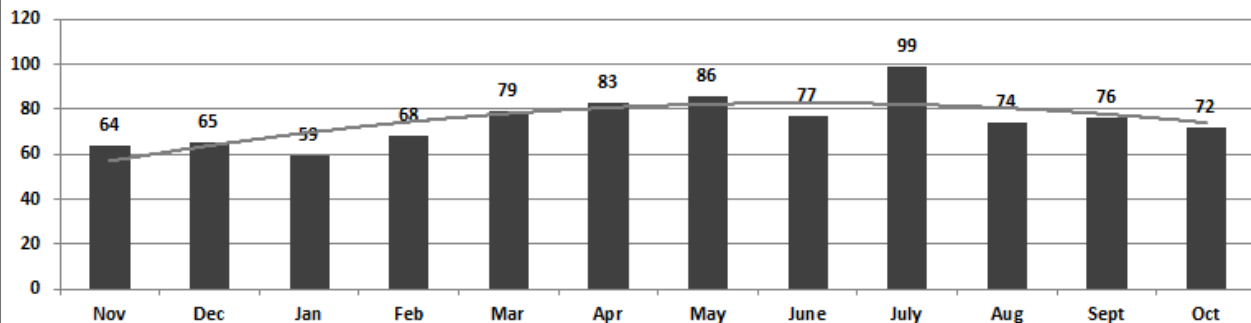
## ADC Inpatient Utilization Past 12 Months



## ADC Inpatient Average Length of Stay Past 12 Months



## ADC Emergency Room Visits Past 12 Months



Report Date - October 30, 2015  
Data as of 10/28/15

Report Date - October 30, 2015						Percentage of Completion is the actual construction completion and does not reflect the cost in
Data as of 10/28/15						
Fund	Project Desc	Total Projected Spend	Budget	Available Funds	* % Complete	Notes
7004810	Cummins Chicken Houses	\$5,159,212	\$6,100,000	\$940,788	99%	Poultry houses complete. Birds into House #6 on 8/19/15. Construction coming back for generator and 2nd cooler.
7004811	ORCU Maintenance Shop	\$312,700	\$383,000	\$70,300	95%	Complete, moving in
7004811	ORCU - VoTech	\$475,324	\$817,000	\$341,676	95%	Estimated Completion Date 9/1
7004812	NCU Phase II	\$3,086,966	\$3,127,000	\$40,034	99%	Complete - Held open for Professional Fees.
7004819	Diagnostic/ESTER	\$3,770,382	\$4,000,000	\$229,618	94%	184 Beds opened 7/1/15. Kitchen well underway. 172 beds to open 1/1/16.
7004820	Diagnostic/ESTER	\$1,328,657	\$1,700,000	\$371,343	78%	
700481A	Diagnostic/ESTER	\$663,558	\$5,100,000	\$4,436,442	13%	
7004820	Tucker Boot Camp	\$655,340	\$764,088	\$108,748	100%	Complete
NDC0100	Wrightsville Generator	\$182,321	\$200,000	\$17,679	44%	First phase complete
NDC0100	Tucker Parking Lot	\$149,718	\$300,000	\$150,282	95%	Parking Lot complete
NDC0300	HDRS Renovation - Phase II	\$172,258	\$175,000	\$2,742	100%	Complete
<b>Telephone Projects</b>						
Maintenance & Operations	Camera Equipment - All Units	\$174,104	\$500,000	\$325,896	35%	
	Fire Alarm Upgrades (All Units)	\$7,524	\$75,000	\$67,476	10%	
	Looks/Riot Gates - All Units	\$8,756	\$75,000	\$66,244	12%	
	Gates and Fences all units	\$2,016	\$50,000	\$47,984	4%	
	Gas Stations - Canopy (C/O)	\$0	\$12,000	\$12,000	0%	
	Stainless Steel - Kitchen/Shower/Restrooms	\$20,428	\$150,000	\$129,572	14%	
	ACA Maintenance	\$70,633	\$200,000	\$129,367	35%	
	ADA Projects - All Units	\$521	\$50,000	\$49,479	1%	
	Fast Top Floor Systems - (kitchen/laundry/s	\$12,053	\$50,000	\$37,947	24%	
	Lawn Equipment - All Units	\$0	\$20,000	\$20,000	0%	
	Parking Lot - Gravel and Paving - EARU	\$0	\$50,000	\$50,000	0%	
	Parking Lot - Gravel and Paving - Tucker	\$0	\$50,000	\$50,000	0%	
	Parking Lot - Gravel and Paving - Other Uni	\$0	\$225,000	\$225,000	0%	
	<b>Subtotal</b>	<b>\$296,036</b>	<b>\$1,507,000</b>	<b>\$1,210,964</b>		
FY15 Carry forward	ORCU Gravel Pit Operations	\$54,669	\$87,762	\$33,093	62%	continual
	Cummins Non-Contact Visitation	\$0	\$30,000	\$30,000	0%	on hold
	Tucker Pole Barn (Reg. Maint.)	\$14,836	\$16,710	\$1,874	89%	
	Metal Ceilings	\$110,382	\$208,955	\$98,573	53%	
	TWWPP Containers 4	\$17,103	\$22,103	\$5,000	77%	
	Tucker New Well	\$0	\$550,000	\$550,000	0%	
	<b>Subtotal</b>	<b>\$196,990</b>	<b>\$915,530</b>	<b>\$718,540</b>		
FY16 New Projects	Dog Kennel/Horse Stable Malvern	\$0	\$48,000	\$48,000	0%	
	Wrightsville Kitchen Roofing Repairs	\$0	\$15,000	\$15,000	0%	
	Wrightsville Emergency Generator continua	\$0	\$300,000	\$300,000	0%	
	ORU Gym Acoustics	\$0	\$230,000	\$230,000	0%	
	Roof Repairs	\$0	\$35,000	\$35,000	0%	
	Roof Repairs-Tucker		\$20,000	\$20,000	0%	underway
	Roof Repairs-Vanner		\$20,000	\$20,000	0%	underway
	Boiler Repairs	\$13,776	\$100,000	\$86,224	14%	
	Grimes Sallyport	\$2,887	\$10,000	\$7,113	0%	underway
	EARU Firing Range	\$15,450	\$20,000	\$4,550	14%	
<b>Subtotal</b>	<b>\$13,776</b>	<b>\$768,000</b>	<b>\$754,224</b>	<b>2%</b>		
<b>Subtotal</b>	<b>\$525,139</b>	<b>\$3,220,530</b>	<b>\$2,695,391</b>	<b>16%</b>		

**Notes**

- 1) Mid month reports have not been reconciled against Accountings Reconciled Reports.
- 2) Tolerance/Deviation is with in 1% of Projected Spending.
- 3) FY2015 Carry forward to FY2016 Project Budget = (FY2015 Actual Spending + FY2016 Approved Budget Am

### Notes

- 1) Mid month reports have not been reconciled against Accountings Reconciled Reports.
- 2) Tolerance/Deviation is with in 1% of Projected Spending.
- 3) FY2015 Carry forward to FY2016 Project Budget = (FY2015 Actual Spending + FY2016 Approved Budget Am



## Monthly Purchasing Report/ Purchase Orders Over \$10,000

VENDOR	DESCRIPTION	LOCATION	PO#	AMOUNT	FUND
Airetech Corporation	Building Supplies	Ester Unit	4501572734	\$19,612.33	Const ADFA Ester II
William R Hill & Co Inc	Food Purchases	Central Warehouse	4501572827	\$163,763.60	Operational Budget
Bob Barker Company Inc	Inmate Clothing	Randall L Williams Unit	4501572807	\$10,271.92	Operational Budget
AR Dept of Cor Industry	Brogans	Randall L Williams Unit	4501572523	\$14,861.04	Operational Budget
Bob Barker Company Inc	Inmate Clothing	Delta Regional Unit	4501572913	\$14,617.40	Operational Budget
Robbins Sales Company Inc	Food Purchases	Central Warehouse	4501572850	\$103,387.20	Operational Budget
Sysco Food Services of AR Inc	Food Purchases	Central Warehouse	4501572848	\$37,351.40	Operational Budget
Untangle Inc	Software	Admin Bldg/Information Services	4501573218	\$24,348.60	Operational Budget
Precision Delta Corp	Ammunition	Ouachita Unit	4501573362	\$15,225.67	Operational Budget
Arkansas Automatic Sprinklers Inc	Fire Alarm Equipment	NW Arkansas Work Release	4501573404	\$10,275.89	Work Release Funds
Fastenal Co	Cameras	Various Units	4501573184	\$31,183.27	Telephone Funds
Tabb Textiles Co Inc	Fabric	Wrightsville ACI Warehouse	4501570036	\$16,000.00	Operational Industry Budget
Westrock Coffee LLC	Food Purchases	McPherson Unit/Industry	4501572732	\$11,933.44	Operational Industry Budget
Tabb Textiles Co Inc	Fabric	Wrightsville ACI Warehouse	4501573007	\$45,000.00	Operational Industry Budget
Ricoh USA Inc	Copier Charges	Wrightsville Unit/Industry	4501564428	\$22,958.99	Operational Industry Budget
JMS Russel Metals Corp	Fabrication Material	Tucker Unit/Industry	4501572912	\$10,152.00	Operational Industry Budget
England Liquid Fertilizer Inc	Fertilizer	Tucker Unit/Farm	4501573122	\$80,028.80	Operational Farm Budget
AR Dept of Cor Industry	Inmate Clothing & Linen	Pine Bluff Unit	4501574168	\$12,708.71	Ester Unit Expenses
AR Dept of Cor Industry	Inmate Clothing & Linen	Pine Bluff Unit	4501574142	\$15,363.59	Operational Budget
AR Dept of Cor Industry	Inmate Beds	Hawkins Unit	4501574802	\$29,384.68	Operational Budget
AR Dept of Cor Industry	Brogans	Cummins Unit	4501574804	\$14,791.14	Operational Budget
Green & Chapman Inc	Low Sulfur Red Diesel	Cummins Unit/Farm	4501571450	\$36,791.12	Operational Farm Budget
Dell Marketing LP	Computer Hardware	Admin Bldg/Information Services	4501575042	\$32,081.01	Operational Budget
Sysco Food Services of AR Inc	Food Purchases	Central Warehouse	4501575158	\$17,354.40	Operational Budget
William R Hill & Co Inc	Food Purchases	Central Warehouse	4501575149	\$60,755.20	Operational Budget
Taylor Group of Companies	Generator Parts	Ouachita Unit	4501575683	\$18,350.15	Operational Budget
Galls Inc	Uniforms	Training Academy	4501575765	\$15,603.28	Operational Budget
Cruse Uniforms and Equipment Inc	Body Armor	Training Academy	4501575749	\$24,724.38	Telephone Funds
Servicewear Apparel	Uniforms	Training Academy	4501575845	\$10,137.25	Operational Budget
Uniform 4 All Inc	Uniforms	Training Academy	4501575877	\$18,665.84	Operational Budget
WW Grainger Inc	Radios	Emergency Preparedness	4501576115	\$27,435.12	Telephone Funds
Cruse Uniforms and Equipment Inc	Ammunition	Grimes Unit	4501575751	\$11,902.59	Operational Budget
Cruse Uniforms and Equipment Inc	Ammunition	North Central	4501575755	\$11,768.03	Operational Budget
AR Dept of Cor Industry	Linen Supplies	Cummins Unit	4501575878	\$14,081.43	Operational Budget
National Food Group	Food Purchases	Central Warehouse	4501576328	\$66,630.00	Operational Budget
Robbins Sales Company Inc	Food Purchases	Central Warehouse	4501576326	\$57,995.84	Operational Budget
Sysco Food Services of AR Inc	Food Purchases	Central Warehouse	4501576322	\$126,925.80	Operational Budget
US Foods Inc	Food Purchases	Central Warehouse	4501576317	\$193,050.06	Operational Budget
William R Hill & Co Inc	Food Purchases	Central Warehouse	4501576277	\$166,945.22	Operational Budget
American Paper & Twine Co	Paper Towels	Central Warehouse	4501576263	\$11,039.62	Operational Budget
AR Dept of Cor Industry	Food Purchases	Central Warehouse	4501576258	\$11,080.00	Operational Budget
Atlantic Beverage Company	Food Purchases	Central Warehouse	4501576332	\$19,811.40	Operational Budget
Bob Barker Company Inc	Inmate Clothing	Wrightsville Unit	4501576653	\$12,404.00	Operational Budget
Progressive Tractor & Implement	Lease on Combine & Header	Cummins Unit/Farm	4501575322	\$110,685.00	Operational Farm Budget
Mid South Sales Inc	Low Sulfur Red Diesel	Tucker Unit/Farm	4501574629	\$15,883.15	Operational Farm Budget
Razor Chemical Inc	Chemicals	Delta Regional Janitorial Factory	4501574153	\$36,393.60	Operational Industry Budget
Acadian Hardwoods & Cypress	Plywood	Wrightsville ACI Warehouse	4501574867	\$10,908.00	Operational Industry Budget
Mid South Sales Inc	Ethanol Gasoline	Cummins Unit	4501575940	\$14,715.43	Operational Budget
Shoe Corp of Birmingham	Brogans	Tucker Unit/Industry	4501576440	\$13,384.80	Operational Industry Budget
Tabb Textiles Co Inc	Fabric	Wrightsville ACI Warehouse	4501576523	\$22,200.00	Operational Industry Budget
Beyrl Bitely & Sons Trucking Inc	Hauling Service	Cummins Unit/Farm	4501574110	\$10,466.28	Operational Farm Budget
GE Government Supply LLC	Powdered Milk	Cummins Unit/Farm	4501576819	\$86,800.00	Operational Farm Budget
Cruse Uniforms and Equipment Inc	Body Armor	Grimes Unit	4501577155	\$18,601.38	Telephone Funds
Miller Bowie Supply	Feed	Cummins Unit/Farm	4501576583	\$17,360.00	Operational Farm Budget
Fastenal Co	Network Camera Installation	Various Units	4501577321	\$16,953.57	Telephone Funds
M J Kellner Co Inc	Food Purchases	Central Warehouse	4501577535	\$19,482.00	Operational Budget
US Foods Inc	Food Purchases	Central Warehouse	4501577532	\$95,768.80	Operational Budget
William R Hill & Co Inc	Food Purchases	Central Warehouse	4501577529	\$133,260.77	Operational Budget
AR Dept of Cor Industry	Inmate Clothing & Linen	Cummins Unit	4501577504	\$27,155.91	Operational Budget
Bob Barker Company Inc	Inmate Clothing	Cummins Unit	4501577500	\$16,563.86	Operational Budget
Dreamline MFG Inc	Mattresses	Tucker Unit/Industry	4501576956	\$31,500.00	Operational Industry Budget
Tencarva Machinery Company	Repair Parts	Wrightsville Unit	4501578075	\$10,158.75	Operational Budget
Green Point AG LLC	Fertilizer	Cummins Unit/Farm	4501577954	\$13,078.00	Operational Farm Budget
B Sharp Blades LTD	Disposable Razors	Central Warehouse	4501578840	\$16,100.33	Operational Budget
Kerr Paper & Supply	Kitchen Supplies	Central Warehouse	4501578834	\$12,524.68	Operational Budget
Hy-Line North America LLC	Chickens, Pullets	Cummins Unit/Farm	4501576581	\$42,750.00	Operational Farm Budget
Xerox Corporation	Maintenance Charges	Wrightsville Unit Graphic Arts	4501578662	\$10,606.84	Operational Industry Budget
Dreamline MFG Inc	Mattresses	Tucker Unit/Industry	4501578673	\$31,500.00	Operational Industry Budget
JMS Russel Metals Corp	Metal	Tucker Unit/Industry	4501578269	\$56,120.80	Operational Industry Budget
Utility Tri-State Inc	Truck Trailer	Cummins Unit/Farm	4501577297	\$49,999.99	Operational Farm Budget
AR Dept of Cor Industry	Inmate Clothing & Linen	Varner Unit	4501579333	\$88,892.84	Operational Budget
Atlantic Beverage Company	Food Purchases	Central Warehouse	4501579037	\$15,612.50	Operational Budget
Sysco Food Services of AR Inc	Food Purchases	Central Warehouse	4501579031	\$76,252.20	Operational Budget
William R Hill & Co Inc	Food Purchases	Central Warehouse	4501579017	\$38,127.60	Operational Budget
AR Dept of Cor Industry	Bunk Beds	Tucker Unit	4501579187	\$35,529.88	Operational Budget
Dell Marketing LP	Computers	Admin Bldg/Information Services	4501579289	\$72,046.72	Telephone Funds
AR Dept of Cor Industry	Janitorial Supplies	Central Warehouse	4501579521	\$88,074.34	Operational Budget
Shamrock Meats Inc	Ground Beef	Cummins Cold Storage Facility	4501579330	\$227,960.00	Operational Farm Budget
Flying H Genetics LLC	Angus Bulls	Cummins Unit/Farm	4501577658	\$43,740.00	Operational Farm Budget
Triple J Flying Service Inc	Aerial Application	Cummins Unit/Farm	4501563752	\$14,791.30	Operational Farm Budget
Beyrl Bitely & Sons Trucking Inc	Hauling Service	Cummins Unit/Farm	4501578676	\$10,590.48	Operational Farm Budget
US Foods Inc	Food Purchases	Central Warehouse	4501579020	\$19,411.20	Operational Budget
Robbins Sales Company Inc	Food Purchases	Central Warehouse	4501579033	\$14,766.08	Operational Budget
National Food Group	Food Purchases	Central Warehouse	4501579036	\$30,640.00	Operational Budget
Phoenix Trading	Soap	Central Warehouse	4501576270	\$23,179.20	Operational Budget
Total for Purchases over \$10,000				\$3,409,287.69	
FIRM CONTRACTS OVER \$25,000.00					
VENDOR	DESCRIPTION	UNIT	Contract # P.O#	PURCHASE AMOUNT	FUND
Total for Contracts				\$0.00	
EMERGENCY PURCHASE ORDERS OVER \$25,000.00					
Total EM Purchases				\$0.00	
Total Purchases				\$3,409,287.69	