



PUBLIC RELATIONS

RESEARCH/PLANNING

October 2018 Admissions and Releases – Admissions for October 2018 totaled **562** (470-males & 92-females) while releases totaled **534** (473-males & 61 females) for a net increase in-house of **28** Inmates.

Inmate Population Growth/Projection – At the end of October 2018, the jurisdictional population totaled **17,943** representing a decrease of **135** inmates since the first of January 2018. Calendar year 2018 has had an average decrease of **14** inmates per month, down from an average growth of **45** inmates per month during calendar year 2017.

Average County Jail Back-up – The backup in the County Jails averaged **1,577** inmates per day during the month of October 2018 – up from an average of **1,536** inmates per day during the month of September 2018. Of the **1,577** average, short-term revocations averaged **635** (566-males & 69-females) during the month.

SOCIAL MEDIA

Facebook results for October showed a total of six thousand five hundred ninety-eight (6,598) “likes” of our page, an increase of thirty-three (33) from the previous month.

LEGAL SERVICES

PREA

PREA Hotline Data:

Number of Calls Received	278
Total PREA Issue Calls	22
Total Non-PREA Calls	122
Total Calls Referred to Internal Affairs Division	16
Total Repeat Calls	85
Total Calls with No Message	49
Total Technical Failure Calls	0

Internal Affairs is handling all PREA investigations. PREA Sexual Assault Investigator Training (SAIT) was presented October 23rd through 25th, with 17 staff in attendance.

INMATE INSTITUTIONAL GRIEVANCES

Inmate Formal/Informal Grievances: During October 2018, a total of two thousand thirty-five (2,035) formal grievances and three thousand two hundred seventeen (3,217) informal grievances were filed at various units.

Institutional Grievances Appeals: There were a total of five hundred ninety-three (593) appeals of institutional grievances received in October 2018. Four hundred eighty (480) were acknowledged and one hundred thirteen (113) were rejected for various reasons. A total of four hundred sixty-five (465) appeals were answered; four hundred fifty-six (456) had no merit and nine (9) were found with merit.

INSTITUTIONS

STTG

During the month of October, the STTG Coordinator, along with K9 officers, taught the BCOT STTG classes on the 10th and 31st. They also provided assistance on a BCOT special assignment on the 15th. Additionally, the STTG Coordinator attended a meeting with Little Rock FBI office and the Joint Terrorism Taskforce.

FARM

Rainy conditions slowed down the harvesting during the month. However, all rice harvesting was completed at both Tucker and Cummins, which yielded about 180 bushels per acre. Soybean crops were impacted the most by the month's rain, with higher-than-normal discounts for damage when the beans were delivered to the elevator. Some rejected loads were taken to the Cummins grain storage. Utilizing the damaged beans as part of feed rations is being discussed with an animal nutritionist. Finally, the fall gardens were also affected by the rainfall; especially the sweet potato harvest.

The Wrightsville beef herd calves have been weaned and are now in the precondition program in preparation to be sold in December or January.

The dairy continues to meet milk needs and keep the somatic cell count under control.

REGIONAL MAINTENANCE HOURS

Regional Maintenance Hours	October 2018
Benton Unit	10,666
Delta Regional Unit	2,384
East Arkansas Regional Unit	3,808
Grimes Unit	1,920
McPherson Unit	1,616
Mississippi County Work Release	448
North Central Unit	10,200
Ouachita River Unit	2,208
Randall L. Williams Unit	3,968
Texarkana Regional Correctional Center	1,447
Tucker Unit	1,072
Varner Unit	2,184
Wrightsville Unit	2,324
Total Hours	44,245

WORK RELEASE RENT REPORT

Unit	October 2018
Benton Unit	\$111,619.00
Mississippi County Work Release	\$53,414.00
Northwest Arkansas Work Release	\$40,069.00
Pine Bluff Work Release	\$27,778.00
Texarkana Regional Correctional Center	\$50,983.00
Wrightsville/Hawkins Work Release	\$24,055.00
Total	\$307,918.00

WAGE**(Workforce Alliance for Growth in the Economy)**

Unit	Slots	Completed	Discharged	End Count
Delta	8	7	0	7
Ester*	0	0	0	0
Hawkins	36	10	14	23
Ouachita River	10	0	0	10
Tucker	20	2	2	18
Wrightsville	36	11	5	24
Total	110	30	21	82

*WAGE currently inactive pending testing

**RANDALL L. WILLIAMS
JUVENILE EDUCATION PROGRAM**

	Slots	Enrolled	Discharged	End Count
Juveniles*	20	13	3	10

*Juveniles are transferred from the program once they reach the age of eighteen (18). The Juvenile count also changes based on new commitments. During the month, one (1) inmate was on punitive status. There were three (3) new commitments.

ADMINISTRATIVE SERVICES**BUDGET SECTION UPDATE**

No Act 715 cases were filed in October.

PROCUREMENT SECTION UPDATE**No Current Bids****New Contracts/OSP:**

- Chemical Munitions
- HVAC Cummins Classroom Project

No ABA Contracts**No Contracts Awarded In-House****No Renewed Contracts/OSP****Procurement/Contracts Report (required by policy)–**

For October 2018, Purchase Orders and Contracts in excess of \$10,000 amounted to \$3,270,566.96. Of this amount, \$2,041,926.41 was for Inmate Care and Custody-related items (food, shoes, clothing, etc.). Bulk fuel costs for the month of October were \$115,752.05 – average cost of E-10 was \$2.35/gallon; average cost for bulk diesel was \$2.56/gallon.

HUMAN RESOURCES UPDATE

Workplace Safety – During the month of October, the modified version of the Health and Safety Plan was presented to one (1) Basic Training class with a total of seventy (70) cadets in attendance.

Ninety-two (92) incidents were reported to the Company Nurse in October, bringing the total of reported incidents to seven hundred twenty-six (726) in 2018.

Benefits – There were ninety-five (95) FMLA requests processed during the month; eighty (80) were approved and fifteen (15) denied. A total of fifteen (15) catastrophic leave requests were received; ten (10) were approved, three (3) were denied, and two (2) were pending at the time of this report.

HUMAN RESOURCES UPDATE, *continued*

Health Fair – The 8th Annual Employee Health Fair, hosted by the ADC Human Resources Department, was held on October 3, 2018, in the Legends Auditorium at the Administrative Annex East building. “Catch the Wellness Wave – Fit and Lit Luau” was the theme for this year’s fair. Approximately one hundred seventy (170) participants visited the fair, and fourteen (14) vendors from Pine Bluff and White Hall were present. The Super 1 Foods Pharmacy provided flu shots. Participating vendors supplied fifty-two (51) individual door prizes and offered fresh fruit and fruit drinks to those attending. Three grand prizes were given away: two \$100 Visa gift cards were provided by The Arkansas State Employee Association (ASEA) and a grill was donated by Arkansas Correctional Industries (ACI).

Physical Assessments – A total of two hundred thirty-three (233) applicants and incumbent personnel were assessed during October. Seventy-four (74) incumbent personnel successfully passed the physical assessment and two (2) did not. Both of those rescheduled and passed after a physician’s release. One hundred fifty-seven (157) applicants successfully passed the physical assessment.

Employment – A total of two thousand one hundred thirty-three (2,133) applications were received during October. Sixty-eight (68) Non-Security applications and one hundred thirty-three (133) CO I applications were processed. One hundred eighteen (118) Correctional Officers were hired, and twenty-seven (27) Correctional Officers were rehired.

ADC personnel attended the following Job Fairs/ Recruitment Events in the month of October:

Date	Unit	Location
10/5/18	Tucker	Airman and Family Readiness Center/Little Rock Air Force Base
10/9/18	MAX	Statehouse Convention Center/Little Rock
10/9/18	McPherson	Batesville
10/10/18	Cummins	Star City High School
10/17/18	Varner	Job Fair/Varner Unit
10/18/18	Grimes	Newport Economic Development Commission Job Fair/Newport
10/18/18	McPherson	Newport Economic Development Commission Job Fair/Newport
10/19/18	Cummins	Star City Job Fair
10/23/18	ORCU	Henderson State University Career and Leadership Development
10/24/18	MAX	Pulaski Tech Job Fair
10/25/18	Tucker	Pulaski Tech Job Fair
10/25/18	Grimes	Goodwill Hiring Event/Newport
10/29/18	ADC	University of Arkansas - Monticello
10/30/18	McPherson	Goodwill Hiring Event/Newport

CO I interviews were conducted in the month of October at various units throughout the department:

Date	Unit	Date	Unit	Date	Unit
10/1/18	EARU	10/11/18	Delta	10/23/18	MAX
10/2/18	Delta		Grimes		McPherson
	MAX		ORCU	10/24/18	Cummins
	Tucker		Tucker	10/25/18	Delta
10/4/18	Grimes	10/12/18	McPherson		Grimes
	McPherson	10/15/18	McPherson		Tucker
	ORCU	10/16/18	Delta		Varner
10/5/18	MAX		Wrightsville	10/26/18	Cummins
	McPherson	10/17/18	Delta		McPherson
10/10/18	Cummins	10/18/18	Grimes	10/29/18	McPherson
	MAX		ORCU		Varner
	Tucker		Varner	10/30/18	Grimes
		10/22/18	MAX	10/31/18	MAX
					NCU
					Varner

Vacancies, Hires, and Terminations –

During the month there were a total of three hundred seventy-two (372) security and non-security vacancies, one hundred sixty-four (164) new hires, ninety (90) terminations, and eleven (11) retirements throughout the department.

**ADMINISTRATIVE SERVICES DIVISION
MONTHLY REPORTS INCLUDE GIFTS,
GRANTS, DONATIONS / INMATE WELFARE
FUND BALANCE (*required by policy*):****Gifts, Grants and Donations:**

No donations were made in the month of October.

The **Inmate Welfare Fund** balance on October 31, 2018 was \$7,461,196.07.

The **PAWS in Prison Fund** total on October 31, 2018 was \$226,356.09. ADC Account (7004822/Donations) balance was \$19,159.55, ADC Account (NDC0500/Recycling) balance was \$102,196.41, and the ADC Paws in Prison Non-Profit account (Quickbooks) balance was \$105,000.13.

INFORMATION TECHNOLOGY**SECURUS VIDEO VISITATION (SVV) PROJECT****SVV Dog Kennel Installation:**

- Cummins Unit – Still pending due to installation delay by Securus contractor

Inmate Video Visits:

- Inmates completed three thousand two hundred seven (3,207) video visits during October and missed one hundred twelve (112).

SECURUS TABLET PROJECT:

- A total of one thousand eight hundred fifty-seven (1,857) tablets were leased during October.

INFORMATION TECHNOLOGY, *continued*

IT/eOMIS ACTIVITIES

- Sony digital cameras with flash were installed in each Records Office for driver and identification card processing. The new cameras provide clearer and more detailed photos, reducing card request denials. Denials require staff to completely reprocess the card request. Also, training and instructional material on the complete process was provided to Records and IT staff.
- Monthly meetings are held with Clay Causey and Josh Smith, DIS Service representatives for ADC. These meetings address DIS services and issues of importance to ADC. Work on the following is currently taking place:
 - Office 365 migration – (plus web training attendance on the 365 implementation process)
 - New documents outlining eOMIS, Caringo, and Pentaho hosting services and agency shares in service
 - VOIP Call Manager view permissions
 - VPN – multi-factor authentication
 - Phone service for the EARU's warden's residence
 - eOMIS hosting invoice
 - Adequate detail in the VOIP telephone invoice including the date and time of calls to be made available in the drill down invoice
- North Central Unit was the first deployment in a series of circuit upgrades as part of a new DIS contract with service vendors. Site bandwidth was increased from 20MB to 1GB with a reduction in broadband cost of \$1,215 per month. The upgrade will assist with performance in network services such as VOIP phones, video hearings, eOMIS, etc. Additionally, NCU was upgraded to Power of Ethernet (PoE) switches, which pass electrical power along with data on Ethernet cabling and eliminate the need for power outlets for PoE-capable network devices.
- A conference call to discuss revisions of the Mental Health Social History Form requested by Dr. Jim Austin for the ARORA Risk Needs Project was conducted. The Parole Board will use the revised MH Social History Form and the ARORA Scoring Tool to aid in their decision for release of inmates to parole supervision and for any stipulations for program completion before or after release.

TRAINING ACADEMY - OCTOBER 2018

BASIC TRAINING DIVISION –

Under the direction of Instructor Bryant Dallas, **BCOT Class 2018-L** graduated on October 5th with eighty (80) cadets. Gerald Smith of the North Central Unit received the Willis H. Sargent Award. Deputy Warden Steven Ricketts of the Grimes Unit served as the guest speaker.

BCOT Class 2018-M, led by Instructor Mark Norris, graduated on October 26th with forty-eight (48) cadets. Jeremy Hambrick of the East Arkansas Regional Unit (EARU) received the Willis H. Sargent Award. Deputy Warden James Dycus of EARU served as the guest speaker.

IN-SERVICE DIVISION –

Oleoresin Capsicum Instructor Certification was offered on October 1st and 2nd. This 16-hour class teaches current “pepper spray” end users how to instruct and certify other students. Instructor candidates receive both a Level 1 and a Level 3 contamination during the class. Recertification, for instructors in which a Level 3 contamination is administered, is required every three years.

Taser Training, a six-hour course, was offered on the following dates – October 2nd, 4th, 29th, and 31st. Participants were taught the practical and legal uses of the Taser X-26 electronic device by a department-certified trainer. Once certified, students are required to obtain recertification every two years.

Defensive Driving was presented on October 19th to multiple agencies, including the ADC, by outside staff to encourage safer driving behavior.

Firearms Instructor Certification Course was presented on October 15th through 19th. Students learn the elements of defendable training related to firearms. They also gain skills on coaching shooters into achieving better scores.

Field Training Officer (FTO) Class was offered on October 16th, but yielded few participants.

Employee Drug Testing was presented October 16th. In this class, students become familiar with the department policy for properly collecting, handling, and testing employee specimens. This is an active class where tests for drugs of abuse are administered to the students.

Inmate Drug Testing was presented October 16th. This course teaches students the information needed to conduct testing for drugs of abuse as related to inmates. Students are able to demonstrate the collection, handling, and testing process for on-site testing and to understand the process of sending specimens for off-site testing.

Management Level 1 is a four-day course for new supervisors that was presented on October 22nd-25th. ADC staff facilitate the training, which is mandated by Executive Order. Topics include: Arkansas Government Basics, HRkansas, Performance Evaluation, Grievance Prevention and Handling, Fair Labor Standards Act, and more.

Mail Handling, held October 25th, utilizes information from the United States Postal Inspection Service to assist in preventing dangerous mail from coming into ADC facilities. Topics such as bombs, bomb-making materials, and poisonous items are discussed. A portion of the training also focuses on policy, procedures, and practices of the department regarding the battle to prevent the entry of contraband.

TRAINING ACADEMY, *continued*

LGBTI 360° was offered on October 30th. The class provides an understanding of the terms Lesbian, Gay, Bisexual, Transgender and Intersex (LGBTI) and Sexual Orientation and Gender Identity and Expression (SOGIE) to correctional staff in order to help them feel more competent working with LGBTI inmates. It also provides the basics for correctional staff to communicate in an effective and respectful manner with LGBTI inmates.

eOMIS Training: Some of the smaller elective classes that rounded out the month were all three levels of eOMIS training.

eCADEMY –

During the month of October 2018, four hundred seventy-three (473) ADC employees completed a total of 4,673.95 hours of eCADEMY training. Approximately 10% of ADC employees completed at least one course during that timeframe, averaging 1.02 hours per staff member. The Computer Lab is open on a daily basis for staff members who wish to complete online training through eCademy.

HEALTH/CORRECTIONAL PROGRAMS

CHAPLAINCY SERVICES

Cummins Unit – Destiny Assembly of God Church of Monroe, Louisiana led revival services on October 19th and 20th. An average of ninety (90) inmates attended each service.

East Arkansas Regional Unit – On October 11th through 15th, First Pentecostal Church held a revival attended by three hundred ten (310) inmates. Fifty (50) inmates graduated from the Think Legacy Reentry Program in a ceremony held in the chapel on the 17th. On the 31st, Wiccan Solitary Worship was scheduled, attended separately by five (5) inmates.

Ester Unit – About twenty (20) inmates performed when the Chapel hosted its first talent show on October 16th. One hundred forty (140) inmates attended.

Hawkins Unit – On October 5th, five (5) members of Central Baptist Church treated the women's unit to a cookout with music and testimonies. Two hundred thirty-seven (237) inmates attended.

Maximum Security Unit – Eight (8) inmates graduated from the PAL program on October 13th. Inmates and staff attended memorial services held by the PAL Ministry team on the 9th and 23rd for two inmates who were long-term residents of the facility. The Chapel hosted a Career Service Awards ceremony on the 12th where several employees were recognized.

North Central Unit – On October 2nd, seven (7) volunteers from "The Storybook Project" assisted nineteen (19) inmates with recording themselves reading children's stories to be sent to their children. Two volunteers attended the graduation of fifty-four (54) inmates on the 6th from "Biblical Approach to Addiction." Revival services, led by William Boone on the 25th, were attended by eighty (80) inmates and two (2) volunteers.

Ouachita River Correctional Unit – On October 12th, "Christmas Behind Bars" donated gift items for the inmate population and held a worship service attended by one hundred twenty-seven (127) inmates.

Tucker Unit – Fourteen (14) inmates and twenty-five (25) volunteers attended a four-day Kairos event October 4th through 7th. The "Alternative to Violence" program was held on the 19th with twelve (12) inmates and two (2) volunteers in attendance.

ACCREDITATION

ACA Internal Audits Completed:

10/1–10/2 Varner Audit Prep
 10/4–10/5 Varner Audit Prep
 10/9–10/11 Varner Reaccreditation Audit:
 100%-Mandatory; 99.5%-Non-mandatory
 10/15–10/19 File Review - Pine Bluff Complex
 10/22–10/23 File Review - TRCC
 10/25–10/26 TRCC Review
 10/29–10/31 TRCC Visit; Train ACA Manager; File Prep

Classes Taught:

10/3 BCOT - Training Academy
 10/24 BCOT - Training Academy

Fire/Safety and Sanitation independent audits conducted by the Fire and Sanitation Coordinator:

10/1–10/2 Varner Audit Prep
 10/4–10/5 Varner Audit Prep
 10/9–10/11 Varner Reaccreditation Audit:
 100%-Mandatory; 99.5%-Non-mandatory

VOLUNTEER SERVICES

Total Number of Volunteer Hours for October 2018:

Unit/Program	Hours
Cummins Unit	8
Delta Unit	19.5
East Arkansas Regional Unit	94.5
Hawkins Unit	14
North Central Unit	4
Northwest Arkansas Work Release	24.25
Ouachita River Correctional Unit	32
Pine Bluff Complex	18.5
Varner Unit	18
PAWS	18
Think Legacy	202.50
Religious Services/Chaplaincy	5,912
Total Hours	6,365.25

MENTAL HEALTH SERVICES**Sex Offender Treatment Program:**

	Slots	Completed	Removed	Clients
RSVP	238	0	4	239
SOFT	30	0	2	9
Total	268	0	6	248

There are eight hundred thirty-eight (838) males on the waiting list for RSVP and eight (8) females on the waiting list for SOFT within five (5) years of their TE date. Of those, thirty-three (33) inmates are mandated by the Parole Board.

The average time on the waiting list from request is between one (1) and two (2) months for those stipulated.

The total on the waiting list, including those not currently within the identified timeframe, is one thousand four hundred eighty-nine (1,489) males and eight (8) females. There is one (1) PREA inmate in the program at this time.

***The waiting list numbers include inmates that are ineligible due to class or housing status.**

Therapeutic Community (TC):

Unit	Slots	Completed	Removed	Clients
Tucker	136*/**	17	10	128
Wrightsville	50*/**	4	6	48
McPherson	53*	1	6	50
Total	239	22	22	226

There are four hundred fifty-seven (457) males and seventeen (17) females on the waiting list within eighteen (18) months of their release date. Of those, ten (10) are mandated by the Parole Board.

The average time on the waiting list from request is twenty-three (23) days.

The total on the waiting list, including those not currently within the identified timeframe, is nine hundred seventeen (917) males and fifty-eight (58) females.

***Denotes transitional beds available at this treatment program. The Tucker Therapeutic Community has one hundred thirty-six (136) client slots and seven (7) peer counselor slots. **Treatment count has increased due to reduction of peer counselors and peer mentors.**

Substance Abuse Treatment Program (SATP):

Unit	Slots	Completed	Removed	Clients
Grimes	56*	15	5	48
McPherson	106*	9	11	102
Maximum Security	3	0	0	3
Randall L. Williams	200*/**	34	18	186
Benton	36*	3	1	36
Varner	52*/**	6	1	48
Wrightsville	150*/**	29	8	144
Total	603	96	44	567

There are one thousand nine hundred twenty-seven (1,927) males and one hundred fifty-three (153) females on the waiting list within eighteen (18) months of their release date. Of those, thirty-four (34) are mandated by the Parole Board.

The average time on the waiting list from request is twenty (20) days.

The total on the waiting list, including those not currently within the identified timeframe, is two thousand eight hundred sixteen (2,816) males and two hundred ninety-seven (297) females.

***Denotes transitional beds available at this treatment program.**

****Treatment count has increased due to reduction of peer counselors and peer mentors.**

ORCU Residential Program Unit (RPU): The RPU at Ouachita had six (6) admissions and six (6) discharges in October for an end-of-month count of one hundred twenty-three (123).

McPherson Mental Health Residential Program Unit (RPU):

There were two (2) admissions and four (4) discharges in October, for an end-of-month count of thirty-six (36).

Habilitation Program: The Habilitation Program at the Ouachita River Correctional Unit provided treatment services to forty-six (46) inmates during October. There were zero (0) admissions and two (2) discharges for an end-of-month count of forty-four (44).

Restrictive Housing (RH) Anger Management

Treatment: The RH Anger Management Treatment Program at the Cummins Unit provided treatment services to thirty-three (33) inmates during October. There were zero (0) admissions and five (5) discharges for an end-of-month count of twenty-eight (28).

MENTAL HEALTH SERVICES, continued

Staffing: The following Mental Health Services and SATP positions were vacant in September and October:

Positions	September	October
Psychologists	6	6
Social Workers	14	12
Advisors	7	9
Substance Abuse Program Leaders	0	1
Administrative Specialists/Analysts	1	1
Substance Abuse Program Coordinator	1	0
Psychological Examiners	1	1
Rehabilitation Manager	0	0

ADDITIONAL MENTAL HEALTH AND MEDICAL INFORMATION**Self-Study Classes:**

Classes	# of Participants	# Completed	Waiting List
Anger Management	332	262	852
Thinking Errors	393	286	869
Substance Abuse Education	73	56	166
Communication Skills	353	314	936
Domestic Violence	70	57	312
Victims of Domestic Violence	13	13	25
Stress Management	336	283	919
Parenting	309	205	458

Suicide: There were sixty-eight (68) suicidal threats during October. There were five (5) attempts resulting in zero (0) deaths.

Outpatient: There were two thousand fifty-four (2,054) inmates on the mental health medical log at the beginning of October. Mental Health staff conducted the following contacts during October:

Case Management Contacts	2,055
Requests for Interviews	1,150
Testing	7
Intakes	604
Unit Requests	1,192
Counseling (with treatment plans)	0
Pre-Lockup Reviews	437
Routine Restrictive Housing Reviews	790
Restrictive Housing Rounds	21,780
PREA Evaluations	90
Routine Follow-up	184
834 Requests	49

County Mental Health Requests: During October, there were one hundred eleven (111) requests of a mental health nature received. Seventy-three (73) inmates were fast-tracked to ADC.

County Medical Health Requests: During October, there were three hundred sixty-eight (368) requests of a medical nature received. Six (6) inmates were fast-tracked to ADC.

Monetary Sanctions: Sanction reimbursements for September were \$17,350.00.

Deaths: There were nine (9) inmate deaths during the month of October; five (5) were claimed and four (4) were cremated.

CCS: See attachment for CCS's report regarding outside beds and emergency room visits.

Medical Grievances: In October, there were two hundred thirty-five (235) appeals of medical grievances received and two hundred forty-nine (249) appeals were answered; fifteen (15) of those were found to be with merit and two (2) with merit but resolved.

SEX OFFENDER ASSESSMENT**Assessments Completed:**

Risk Level	October	September 1999 through October 31, 2018
Level 1	3	1,182
Level 2	38	7,380
Level 3	8	6,721
Level 4	4	649
Default 3	3	*
Total	56	15,932
*Default Level 3's are included in the total number of Level 3's to date.		

ACIC Numbers:

The total number of sex offenders registered from September 1999 through October 2018:

Compliant	7,997
Delinquent (<i>Did not return address on time</i>)	1,038
Confined	3,160
Out-of-State	3,442
Address Unknown (<i>Absconded</i>)	239
Deported	175
Incapacitated	83
Out of USA	7
Total	16,141

Due to a change in Arkansas law, deceased offenders no longer remain on the registry. SOCNA was notified by ACIC of eleven (11) offenders removed due to death since 1/1/2018.

THINK LEGACY

Unit	Slots	Completed	Removed	Assigned
Cummins	55	2	2	46
Delta Regional	24	6	1	24
East Ark. Regional	50	1	5	46
Ester	107	1	0	87
Grimes	56	5	0	56
Hawkins (Female)	40	5	0	41
McPherson	68	5	2	68
North Central	59	0	0	55
Ouachita River	46	5	1	37
Tucker	55	5	3	52
Varner	49	3	0	50
Wrightsville	48	2	2	44
Total	657	40	16	606

There are one hundred sixty-two (162) males and one hundred six (106) females on the Think Legacy waiting list. All Think Legacy applicants are within eighteen (18) months of their TE or discharge date.

The average time on the waiting list is approximately forty-five (45) days. There were two hundred two and one half (202.5) volunteer hours recorded for the month of October.

The Ester, McPherson and Hawkins Units hosted graduation ceremonies in October. Goodwill Industries presented employability skills workshops at the Cummins, Ester, McPherson, Ouachita, Varner, and Wrightsville Units. The Child Support Enforcement Agency visited the Varner, Cummins, Grimes, and McPherson Units. Arkansas Workforce visited the Hawkins, Wrightsville, and Varner Units.

PAWS IN PRISON**Currently Enrolled in Training:**

Maximum Security Unit	7
Tucker Unit	6
Hawkins Unit	6
Randall L. Williams Unit	0
Ouachita River Unit	7
North Central Unit	5
Total	31

Completed Training:

October 2018	15
YTD 2018	185
Since Inception (Dec. 2011)	1,207
Dogs Currently in Foster: (<i>Graduated but not adopted</i>)	6

CONSTRUCTION/MAINTENANCEPROJECT UPDATES**Cummins Unit:**

DBA has approved and issued the plans for a new emergency generator. Project to change the doors in Barracks 13 to solid doors has been completed. Estimates for changing metal desks to concrete are being prepared. A contract was awarded to WD&D to design precast recreation yards. The architect is working on plans to submit to DBA. A significant cost-savings measure was offered and accepted to lower the maximum height of the precast walls to 12 feet. The sally port building is ready to accommodate a new body scanner. A shakedown room is being built to replace the one now housing the scanner equipment.

Cummins Poultry:

Generators are tested weekly. A meeting was held with the architect to discuss making changes to the loading ramp for coolers at the chicken houses. Changing the existing forklift to one with different steering and drive is under consideration by using loaner forklifts on a trial basis.

PROJECT UPDATES, continued**Cummins School:**

Structural steel for the building has been erected, and exterior walls, insulation and roof are in place. Installation of interior stud walls is underway.

Delta Unit:

Entegrity has completed all lighting and plumbing upgrades. The compost shed has been completed and compost equipment has been installed. Wood pellets were delivered and staff trained on the compost operation. Work on the mechanical equipment and HVAC replacement is approximately 50% completed.

East Arkansas Regional Unit:

DBA has issued an approval to proceed with the plans for the precast recreation yards that were submitted by the architect. A significant cost-savings measure was offered and accepted to lower the maximum height of the precast walls to 12 feet. Two emergency generators were received and transfer switches were scheduled to arrive November 7, 2018. Installation is nearing completion. Entegrity has completed all lighting upgrades, solar array installation, and compost equipment installation; as well as wood pellets delivery and staff training. Plumbing upgrades are approximately 98% complete. Work with Entegrity on the Entergy contract for providing electric service to the new solar system has been approved and returned to Entergy. Work on the HVAC upgrades are approximately 30% complete, and boilers are being replaced. Repairs to the sewer lift station have been completed. Work on the repair and/or replacement of the serving line components is being completed as needed. Electrical problems are being corrected. A new scanner location has been completed with the addition of a dedicated electrical power circuit.

Maximum Security Unit:

DBA has approved the plans for an emergency generator and a bid package is being prepared. A contract was awarded to the architect who is now preparing plans for the precast recreation yards. A significant cost-savings measure was offered and accepted to lower the maximum height of the precast walls to 12 feet. Repairs of roof leaks and the installation of replacement skylights are both ongoing.

McPherson Unit:

The architect completed the design of the additions to the visitation and administration areas. The plans have been approved to proceed by DBA.

Ouachita River Correctional Unit:

Gravel operations continue and the rock crusher is operational. Repairs to the lift station have been completed. Two new 20 hp pumps are operational, and interior piping was replaced with six-inch stainless steel. Design review comments for a new dog kennel were received from DBA and a response is being drafted.

Pine Bluff Unit:

Construction on Barracks 9D to reinforce security of exterior walls by adding concrete blocks to the inside of the exterior walls has been completed. A request is being made to obtain funding to add "cinder block" walls, replace lighting and add stainless steel to the shower areas for the remainder of Barracks 9, using excess funds remaining from the 9D project.

Tucker Unit:

Regular monitoring of the waste water plant continues with repairs and adjustments being made as needed to remain in compliance. All media for the seven filters has been changed out, passed testing, and the filters are operational. Engineers have prepared plans to add water filters and aeration for the water plant. Both the Arkansas Department of Health and DBA have approved the plans. A bid package for the new pressure filters is being prepared. Funding for one-third of the total plant renovation was received from the Governor's Office. Documents for selecting a design firm are being prepared.

Varner Unit:

Cell doors in the Supermax are being repaired. Demolition of isolation recreation yards was completed and six pens have been rebuilt. All panels were built and stored in the Weld Shop. Bull pens for the open barracks are being built and installed. One bull pen was initially used for demonstration purposes, which received management approval for operation, and for the remaining bull pens to be completed. A room to accommodate a new body scanner is under construction adjacent to the sally port building.

Wrightsville Unit:

DBA has approved the plans for new emergency generators and a bid package is being prepared. The contract to replace the Industry Warehouse roof was approved. Crews have begun working on electrical repairs. Materials for the roofing project were delivered and the replacement is underway.

Wrightsville Hawkins Unit:

DBA approved the plans for an additional generator for the kitchen and lighting and a bid package is being prepared.

**CONSTRUCTION/MAINTENANCE
PERSONNEL UPDATE**

The following Construction/Maintenance position(s) were vacant at the end of October 2018:

- 2 Project Specialists

2018 INFORMAL GRIEVANCE REPORT

Month	BENTON	HAWK/M	HAWK/F	WRTS	EARU & MX	GRIMES	RLW	MCWR	MCPH	MSU	NCU	PBU	NWA	TU	TRCC	VSMX	VU	CU	ORCU	Ester	DRU	Bowie Cty	TOTAL
JAN	3	13	28	71	434	162	47	0	337	202	105	60	0	128	1	591	82	240	318	45	191	67	3,125
FEB	3	20	34	77	283	160	26	1	237	160	74	43	0	109	1	507	63	256	267	31	211	59	2,622
MAR	1	5	27	74	430	158	44	0	343	192	192	37	1	91	0	555	76	223	253	51	155	61	2,969
APR	2	9	15	114	410	171	60	0	315	202	138	42	0	121	2	359	112	191	318	43	122	69	2,815
MAY	0	19	20	103	569	169	69	0	357	198	140	25	1	150	0	416	59	189	348	26	124	72	3,054
JUN	0	20	28	109	471	189	38	0	289	167	184	35	0	142	1	452	53	166	438	34	150	51	3,017
JUL	0	25	39	86	471	230	33	0	323	162	214	25	1	99	1	469	64	236	405	47	108	4	3,042
AUG	1	25	24	89	491	233	31	0	116	168	213	35	1	76	0	614	86	253	345	42	139	41	3,023
SEPT	1	15	17	90	262	266	37	0	218	154	137	3	0	157	0	544	69	192	388	42	106	65	2,763
OCT	0	24	30	92	522	295	10	0	433	132	138	64	0	100	0	589	106	195	271	33	128	55	3,217
NOV																							0
DEC																							0
TOTAL	11	175	262	905	4,343	2,033	395	1	2,968	1,737	1,535	369	4	1,173	6	5,096	770	2,141	3,351	394	1,434	544	29,647

2018 FORMAL GRIEVANCE REPORT

Month	BENTON	HAWK/M	HAWK/F	WRTS	EARU & MX	GRIMES	RLW	MCWR	MCPH	MSU	NCU	PBU	NWA	TU	TRCC	VSMX	VU	CU	ORCU	Ester	DRU	Bowie Cty	TOTAL
JAN	3	10	13	21	369	102	13	0	148	217	59	20	0	108	0	329	58	122	174	21	80	18	1,885
FEB	3	4	5	25	334	87	17	1	131	195	28	43	0	79	0	290	55	123	160	8	82	18	1,688
MAR	0	4	9	33	394	96	23	0	158	212	87	19	1	50	0	322	66	130	253	16	76	19	1,968
APR	2	5	5	61	402	85	29	0	122	211	59	5	0	94	0	247	89	86	135	12	66	18	1,733
MAY	0	11	8	38	453	82	30	0	159	237	64	13	1	93	0	264	54	102	121	31	62	24	1,847
JUN	0	11	16	42	441	108	16	0	169	208	59	7	0	108	1	270	47	91	121	21	67	10	1,813
JUL	0	8	11	35	440	118	14	0	157	177	86	13	1	84	1	284	55	128	135	28	54	7	1,836
AUG	1	8	1	29	435	142	10	0	229	215	128	15	1	53	1	380	78	171	82	17	86	5	2,087
SEPT	1	5	6	37	397	128	11	0	115	172	65	3	0	100	0	309	65	103	54	17	50	18	1,656
OCT	0	7	8	50	473	154	34	0	205	133	65	15	0	80	0	357	84	92	164	27	71	16	2,035
NOV																							0
DEC																							0
TOTAL	10	73	82	371	4,138	1,102	197	1	1,593	1,977	700	153	4	849	3	3,052	651	1,148	1,399	198	694	153	18,548

INMATE INSTITUTIONAL GRIEVANCE APPEAL REPORT – OCTOBER 2018

	Acknowledged	Rejected	Processed W/O Merit	Processed W/ Merit
Benton Unit	0	1	0	0
Benton Work Release	0	0	0	0
Bowie County Texas Correctional Facility	5	2	3	0
Cummins Unit	32	5	19	0
Delta Regional Unit	11	8	12	0
East Arkansas Regional Unit	16	2	11	0
East Arkansas Regional Max Unit	94	18	112	3
Ester Unit	5	3	2	0
Grimes Unit	29	7	28	0
Maximum Security Unit	46	7	32	0
McPherson Unit	24	7	29	0
McPherson Mental Health Residential Program Unit	0	0	0	0
Mississippi County Work Release Center	0	0	0	0
Northwest Arkansas Work Release Center	0	0	0	0
North Central Unit	13	3	7	0
Ouachita River Correctional Unit	31	8	23	1
ORCU Hospital	0	0	0	0
ORCU New Commitment	9	2	7	0
ORCU Mental Health Residential Program Unit	2	0	4	0
Pine Bluff Unit	4	1	1	0
Pine Bluff Re-Entry	0	0	0	0
Randall L. Williams Correctional Facility	0	0	3	0
Texarkana Regional Correctional Center	0	0	0	0
Tucker Unit	16	3	20	2
Varner Super Max	122	29	129	3
Varner Unit	15	6	7	0
Wrightsville Unit	6	1	6	0
Hawkins Center	0	0	1	0
Hawkins for Males	0	0	0	0
Hawkins SPU	0	0	0	0
Total	480	113	456	9

ADMISSIONS AND RELEASES – OCTOBER 2018

<u>Admissions</u>	<u>Male</u>	<u>Female</u>	<u>Total</u>
Black	144	11	155
Hispanic	6	1	7
Native American Indian	1	0	1
White	319	80	399
Total	470	92	562

<u>Releases</u>	<u>Male</u>	<u>Female</u>	<u>Total</u>
Black	174	10	184
Hispanic	15	0	15
Native American Indian	3	0	3
White	280	51	331
Other	1	0	1
Total	473	61	534

ADC INMATE POPULATION GROWTH 2000-2026 - OCTOBER 2018

Updated 10/31/2018

Mo.	2000	2001	2002	2003	2004	2005	2006	2007	2008	2009	2010	2011	2012	2013	2014	2015	2016	2017	2018
Jan.	11,984	11,908	12,402	13,015	13,105	13,595	13,481	13,839	14,518	14,796	15,334	16,312	15,134	14,815	17,481	18,142	17,785	17,824	18,201
Feb.	12,169	12,022	12,529	13,054	13,166	13,783	13,633	14,012	14,603	14,883	15,374	16,209	14,990	15,008	17,438	18,082	17,625	17,608	17,998
March	12,006	12,033	12,299	13,108	13,088	13,418	13,534	13,772	14,580	14,843	15,290	16,095	14,964	14,665	17,395	18,233	17,573	17,666	18,089
April	12,069	12,167	12,465	13,213	13,323	13,469	13,554	13,851	14,769	14,937	15,570	16,172	15,124	14,850	17,604	18,703	17,815	17,798	18,227
May	12,109	12,384	12,558	13,463	13,556	13,528	13,711	14,146	14,880	15,146	15,694	16,062	15,132	15,074	17,593	18,693	17,769	17,652	17,945
June	12,005	12,108	12,439	13,418	13,389	13,251	13,430	13,915	14,700	15,025	15,564	15,554	14,832	14,825	17,340	18,813	17,973	17,963	17,972
July	12,030	12,190	12,622	13,509	13,528	13,286	13,560	14,082	14,868	15,195	15,807	15,519	14,879	15,379	17,522	18,870	18,130	18,180	18,005
August	12,087	12,371	12,815	13,565	13,632	13,419	13,646	14,224	15,100	15,385	15,829	15,240	14,675	16,103	17,549	18,806	17,919	18,051	17,751
September	11,983	12,289	12,774	13,341	13,516	13,237	13,652	14,217	14,850	15,285	16,025	15,172	14,724	16,412	17,605	18,549	18,026	18,179	17,865
October	12,119	12,348	12,942	13,341	13,584	13,363	13,775	14,349	14,836	15,381	16,311	15,271	14,856	16,993	17,880	18,430	18,127	18,348	17,943
November	12,094	12,408	13,162	13,408	13,706	13,587	13,913	14,437	15,025	15,340	16,460	15,205	14,625	17,168	17,848	17,981	17,573	17,973	
December	11,856	12,333	12,845	13,106	13,470	13,338	13,728	14,315	14,716	15,199	16,204	15,062	14,654	17,235	17,874	17,707	17,537	18,078	
Net Ann. Inc.	29	477	512	261	364	-132	390	587	401	483	1,005	-1,142	-408	2,581	639	-167	-170	541	-135
Avg. Mo. Inc.	2	40	43	22	30	-11	33	49	33	40	84	-95	-34	215	53	-14	-14	45	-14

Population is total jurisdictional count at end of each month. Population at end of month December 1999 was 11,827.

Average monthly population increase for past fifteen years 2003 - 2017 is 29

Average monthly population increase for past ten years Jan. 2008 - Dec 2017 is 31

Average monthly population increase for past five years 2013 - 2017 is 57

Projected at Growth of 29 per Month

	2008	2009	2010	2011	2012	2013	2014	2015	2016	2017	2018	2019	2020	2021	2022	2023	2024	2025	2026
Mo.	Actual	Actual	Actual	Actual	Actual	Actual	Actual	Actual	Actual	Actual	Actual/	Proj.	Proj.	Proj.	Proj.	Proj.	Proj.	Proj.	Proj.
January	14,518	14,796	15,334	16,312	15,134	14,815	17,481	18,142	17,785	17,824	18,201	18,030	18,378	18,726	19,074	19,422	19,770	20,118	20,466
February	14,603	14,883	15,374	16,209	14,990	15,008	17,438	18,082	17,625	17,608	17,998	18,059	18,407	18,755	19,103	19,451	19,799	20,147	20,495
March	14,580	14,843	15,290	16,095	14,964	14,665	17,395	18,233	17,573	17,666	18,089	18,088	18,436	18,784	19,132	19,480	19,828	20,176	20,524
April	14,769	14,937	15,570	16,172	15,124	14,850	17,604	18,703	17,815	17,798	18,227	18,117	18,465	18,813	19,161	19,509	19,857	20,205	20,553
May	14,880	15,146	15,694	16,062	15,132	15,074	17,593	18,693	17,769	17,652	17,945	18,146	18,494	18,842	19,190	19,538	19,886	20,234	20,582
June	14,700	15,025	15,564	15,554	14,832	14,825	17,340	18,813	17,973	17,963	17,972	18,175	18,523	18,871	19,219	19,567	19,915	20,263	20,611
July	14,868	15,195	15,807	15,519	14,879	15,379	17,522	18,870	18,130	18,180	18,005	18,204	18,552	18,900	19,248	19,596	19,944	20,292	20,640
August	15,100	15,385	15,829	15,240	14,675	16,103	17,549	18,806	17,919	18,051	17,751	18,233	18,581	18,929	19,277	19,625	19,973	20,321	20,669
September	14,850	15,285	16,025	15,172	14,724	16,412	17,605	18,549	18,026	18,179	17,865	18,262	18,610	18,958	19,306	19,654	20,002	20,350	20,698
October	14,836	15,381	16,311	15,271	14,856	16,993	17,880	18,430	18,127	18,348	17,943	18,291	18,639	18,987	19,335	19,683	20,031	20,379	20,727
November	15,025	15,340	16,460	15,205	14,625	17,168	17,848	17,981	17,573	17,973	17,972	18,320	18,668	19,016	19,364	19,712	20,060	20,408	20,756
December	14,716	15,199	16,204	15,062	14,654	17,235	17,874	17,707	17,537	18,078	18,001	18,349	18,697	19,045	19,393	19,741	20,089	20,437	20,785
Net Ann. Inc.	401	483	1,005	-1,142	-408	2,581	639	-167	-170	541	-77	348	348	348	348	348	348	348	348
Ave. Mo. Inc.	33	40	84	-95	-34	215	53	-14	-14	45	-6	29	29	29	29	29	29	29	29

MONTHLY POPULATION AVERAGES - OCTOBER 2018

Unit/Center	10/1	10/2	10/3	10/4	10/5	10/8	10/9	10/10	10/11	10/12	10/15	10/16	10/17	10/18	10/19	10/22	10/23	10/24	10/25	10/26	10/29	10/30	10/31	AVG
Benton	339	337	339	338	338	336	335	339	341	340	342	345	342	343	342	343	340	347	347	347	348	346	346	342
Cummins	1,646	1,656	1,652	1,650	1,649	1,655	1,656	1,662	1,658	1,656	1,643	1,642	1,642	1,636	1,632	1,632	1,633	1,629	1,626	1,623	1,624	1,638	1,639	1,643
Delta	602	608	608	610	608	614	614	615	616	617	614	614	610	614	614	621	620	616	626	618	614	624	624	615
E AR Reg	1,680	1,678	1,675	1,677	1,668	1,664	1,661	1,660	1,656	1,657	1,655	1,653	1,650	1,639	1,630	1,619	1,610	1,611	1,611	1,629	1,633	1,639	1,627	1,647
Ester	589	587	589	590	588	587	589	588	585	581	585	583	578	571	579	583	579	579	572	580	575	580	589	583
Grimes	1,076	1,076	1,076	1,078	1,075	1,073	1,071	1,066	1,056	1,065	1,068	1,069	1,070	1,066	1,067	1,073	1,073	1,073	1,071	1,071	1,075	1,073	1,074	1,071
Max Sec	553	553	553	553	552	550	548	547	547	547	547	547	547	546	545	544	546	546	546	544	544	543	543	547
McPherson	978	979	982	979	982	990	991	996	990	993	997	998	998	993	997	997	999	998	997	998	1,001	1,001	1,004	993
MCWRC	130	130	130	134	134	133	133	133	133	130	130	130	130	125	125	125	125	125	126	126	132	136	136	130
N Central	834	834	835	826	826	819	830	831	831	831	823	828	826	826	824	823	828	827	823	821	832	834	831	828
NWAWRC	99	99	100	100	99	99	99	100	100	100	100	100	100	100	100	100	100	100	100	99	100	100	100	100
Ouachita River	1,837	1,842	1,839	1,831	1,855	1,852	1,842	1,851	1,850	1,842	1,826	1,841	1,842	1,842	1,838	1,832	1,845	1,847	1,834	1,822	1,831	1,823	1,822	1,839
Randall L Williams	555	559	550	549	549	554	554	555	555	556	561	566	567	565	555	558	572	567	566	556	560	561	561	559
Pine Bluff	484	482	479	480	478	480	483	479	479	483	479	475	484	483	487	486	485	481	483	483	487	487	486	482
PB Reentry	53	53	53	53	53	53	53	53	53	53	53	53	53	53	53	53	53	53	54	54	54	54	54	53
TRCC	120	120	119	120	121	121	121	121	121	120	120	120	120	120	120	120	119	117	121	121	124	124	124	121
Tucker	988	996	993	991	985	977	986	985	984	984	992	992	991	989	982	990	988	981	986	985	979	975	973	986
Vanner	1,722	1,721	1,729	1,728	1,730	1,731	1,728	1,730	1,730	1,724	1,723	1,727	1,730	1,734	1,735	1,740	1,740	1,733	1,734	1,733	1,734	1,732	1,731	1,730
Wrightsville	1,299	1,296	1,302	1,291	1,296	1,290	1,302	1,296	1,294	1,295	1,301	1,300	1,301	1,305	1,304	1,310	1,309	1,301	1,297	1,308	1,307	1,304	1,301	1,300
Total ADC	15,584	15,606	15,603	15,578	15,586	15,578	15,596	15,607	15,579	15,574	15,559	15,583	15,581	15,550	15,529	15,549	15,564	15,532	15,520	15,518	15,554	15,574	15,565	15,568
Bowie CO., TX	329	329	330	330	330	329	329	329	329	329	331	328	328	328	328	328	326	326	330	330	330	330	330	329
ALETA	19	19	19	19	19	19	19	19	19	19	19	19	19	19	19	19	19	19	19	19	19	19	19	19
Ar State Police	62	62	62	61	60	60	58	57	58	58	58	58	58	59	59	59	59	59	59	59	58	59	63	59
Co Jail / M	1,460	1,452	1,449	1,464	1,457	1,469	1,464	1,456	1,487	1,511	1,511	1,506	1,510	1,518	1,544	1,539	1,531	1,552	1,547	1,566	1,536	1,522	1,546	1,504
Co Jail / F	71	79	71	73	78	66	63	68	70	67	63	65	63	65	62	67	68	67	65	68	66	73	75	68
Total Co Jail BK	1,531	1,531	1,520	1,537	1,535	1,535	1,527	1,524	1,557	1,578	1,574	1,571	1,573	1,583	1,606	1,606	1,599	1,619	1,612	1,634	1,602	1,595	1,621	1,573
309/M	244	246	245	245	248	248	248	247	247	247	247	248	249	248	249	248	249	250	250	249	249	249	249	248
309/F	75	75	75	75	74	74	74	73	73	73	73	73	72	72	72	72	72	72	72	72	72	72	73	73
Total Act 309	319	321	320	320	322	322	322	320	320	320	320	321	321	320	321	320	321	322	322	321	321	321	322	321
Total Non ADC	2,260	2,262	2,251	2,267	2,266	2,265	2,255	2,249	2,283	2,304	2,302	2,297	2,299	2,309	2,333	2,332	2,324	2,345	2,342	2,363	2,330	2,324	2,355	2,301
Total	17,844	17,868	17,854	17,845	17,852	17,843	17,851	17,856	17,862	17,878	17,861	17,880	17,880	17,859	17,862	17,881	17,888	17,877	17,862	17,881	17,884	17,898	17,920	17,869

FISCAL YEAR 2019 COUNTY JAIL BACKUP - OCTOBER 2018

DAY		Jul-18		Aug-18		Sep-18		Oct-18
1	*	1,575		1,618	*	1,646		1,531
2		1,578		1,624	*	1,646		1,531
3		1,594		1,631		1,613		1,520
4		1,577	*	1,631		1,613		1,537
5		1,577	*	1,631		1,583		1,535
6		1,548		1,649		1,567	*	1,535
7	*	1,548		1,654		1,552	*	1,535
8	*	1,548		1,652	*	1,552		1,535
9		1,547		1,642	*	1,552		1,527
10		1,532		1,665		1,517		1,524
11		1,571	*	1,665		1,508		1,557
12		1,584	*	1,665		1,501		1,578
13		1,609		1,670		1,503	*	1,578
14	*	1,609		1,671		1,514	*	1,578
15	*	1,609		1,660	*	1,514		1,574
16		1,598		1,676	*	1,514		1,571
17		1,589		1,681		1,505		1,573
18		1,569	*	1,681		1,496		1,583
19		1,563	*	1,681		1,498		1,606
20		1,559		1,690		1,511	*	1,606
21	*	1,559		1,683		1,494	*	1,606
22	*	1,559		1,677	*	1,494		1,606
23		1,553		1,685	*	1,494		1,599
24		1,560		1,701		1,506		1,619
25		1,552	*	1,701		1,524		1,612
26		1,553	*	1,701		1,542		1,634
27		1,597		1,700		1,527	*	1,634
28	*	1,597		1,679		1,532	*	1,634
29	*	1,597		1,669	*	1,532		1,602
30		1,623		1,657	*	1,532		1,595
31		1,629		1,646				1,621
Avg Daily Backup		1,576		1,666		1,536		1,577

Notes: Totals do not include 309 Contracts in County Jails (maximum of 336)

Fiscal Year Average as of October 31, 2018 - 1,589

Short-Term Revocation Program Fiscal Year Average as of October 31, 2018 - 669

STTG UNIT COUNTS – OCTOBER 2018



Arkansas Department of Correction

Unit	Beginning Total	Confirmed	Suspected	In	Out	Paroled	Removed	Ending Total	Total Unit Population	Unit % of STTG's
Benton	86	2	1	6	8	1	0	86	347	24.78%
Cummins	490	0	0	26	11	11	0	494	1,641	30.10%
Delta	145	0	0	22	12	11	0	144	615	23.41%
EARU	608	0	0	7	18	13	0	584	1,637	35.68%
Grimes	381	3	0	38	36	14	0	372	1,073	34.67%
Hawkins	46	0	0	0	1	0	0	45	441	10.20%
Max	254	0	2	8	9	0	0	255	543	46.96%
Mcperson	32	0	4	0	2	0	0	34	1,005	3.38%
MCWR	45	0	0	5	8	1	0	41	140	29.29%
NCU	224	0	0	24	13	16	0	219	825	26.55%
NWAWR	12	0	0	1	1	1	0	11	100	11.00%
ORCU	423	0	0	24	16	13	0	418	1,589	26.31%
ORCU Intake	50	126	0	0	0	118	0	58	196	29.59%
PB/Ester	236	0	0	40	29	9	0	238	1,131	21.04%
RLW	148	0	0	40	30	0	0	158	562	28.11%
TWR	30	3	1	4	5	1	0	32	123	26.02%
Tucker	278	0	0	30	15	0	0	293	980	29.90%
Varner	709	1	0	88	76	9	0	713	1,732	41.17%
Wrightsville	229	1	1	24	13	11	0	231	850	27.18%
Total	4,426	136	9	387	303	229	0	4,426	15,530	28.50%

ORCU Intake brought in 126 new STTG members into ADC last Month.

STTG DISCIPLINARY REPORT – OCTOBER 2018



Arkansas Department of Correction

Unit	STTG Incidents	STTG Suspected Incidents	Total Unit Disciplinary	Disciplinary Involving STTG	Percentage
Benton	0	0	20	5	25.00%
Cummins	0	0	500	192	38.40%
Delta	0	0	212	66	31.13%
EARU	0	1	605	268	44.30%
Grimes	4	1	234	118	50.43%
Hawkins	0	0	11	0	0.00%
Max	0	1	53	35	66.04%
Mcpherson	0	0	175	6	3.43%
MCWR	0	0	18	9	50.00%
NCU	1	0	123	48	39.02%
NWAWR	0	0	13	1	7.69%
ORCU	0	0	373	171	45.84%
ORCU Intake	0	0	14	10	71.43%
PB/Ester	0	0	84	21	25.00%
RLW	0	0	35	15	42.86%
TWR	0	0	4	2	50.00%
Tucker	0	0	157	75	47.77%
Varner	0	0	326	217	66.56%
Wrightsville	0	0	148	58	39.19%
Total	5	3	3,105	1,317	42.42%

STTG COUNTS BY STTG SET – OCTOBER 2018



Arkansas Department of Correction

STTG Set	Benton	Cummins	Delta	EARU	Grimes	Hawkins	Max	McPherson	MCWR	NCU	NWAWR	ORCU	Intake	PB	RLW	TWR	Tucker	Varner	Wrightsville	Total
Asian	2	1	0	1	2	0	0	0	1	0	0	1	0	2	0	1	1	0	0	12
Bloods	13	110	16	96	68	7	61	5	6	35	5	88	8	42	23	7	66	138	43	837
Crips	9	71	13	62	43	3	31	4	5	12	0	52	10	30	12	6	39	100	22	524
Folk	3	38	7	59	32	4	35	7	0	16	1	9	0	10	6	0	17	80	15	339
GD	11	118	43	125	86	9	42	0	10	33	0	107	15	54	23	7	68	144	56	951
Mexican	3	14	4	18	12	3	4	3	1	8	2	11	2	6	5	1	4	29	4	134
Motorcycle	0	2	0	3	2	0	3	1	0	1	0	1	1	1	1	0	2	1	1	20
Other	4	12	7	10	10	1	5	0	0	8	0	13	2	14	5	0	7	15	8	121
People	5	16	7	18	16	0	13	2	0	15	0	15	3	16	12	0	4	28	6	176
Unknown	0	2	3	8	13	2	2	0	0	5	0	11	3	0	8	0	10	3	5	75
W/S	18	31	24	51	35	2	8	12	6	41	3	47	5	28	23	10	34	49	27	454
NAE	0	24	4	38	14	6	17	0	4	2	0	20	2	12	17	0	15	35	14	224
WAR	0	43	10	73	23	5	19	0	6	28	0	27	7	14	12	0	16	55	22	360
AC	7	7	3	12	12	2	12	0	0	6	0	9	0	4	8	0	4	28	6	120
AB	11	5	3	10	4	1	3	0	2	9	0	7	0	5	3	0	6	8	2	79
Total	86	494	144	584	372	45	255	34	41	219	11	418	58	238	158	32	293	713	231	4,426

Key:

GD = Gangster Disciples

W/S = White Supremacist

NAE = New Aryan Empire

WAR = White Aryan Resistance

AC = Aryan Circle

AB = Aryan Brotherhood

ADC INPATIENT AND EMERGENCY ROOM UTILIZATION

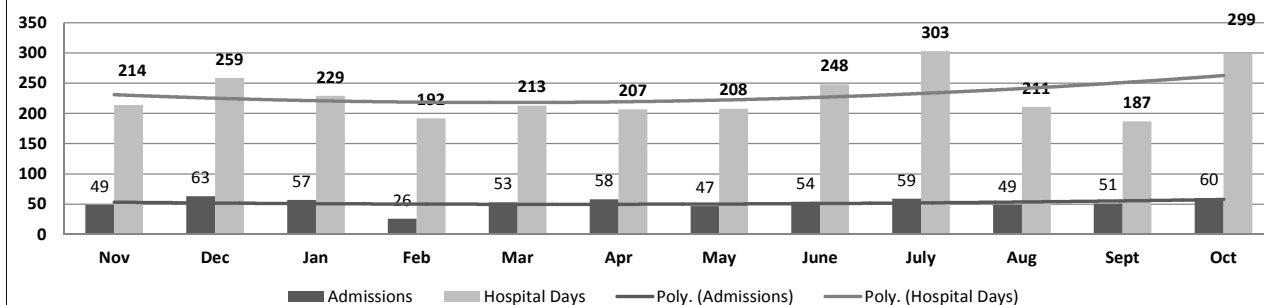
ADC Inpatient Statistics Past 12 Months

	2017		2018										Average
	Nov	Dec	Jan	Feb	Mar	Apr	May	June	July	Aug	Sept	Oct	
Admissions	49	63	57	26	53	58	47	54	59	49	51	60	52.2
Hospital Days	214	259	229	192	213	207	208	248	303	211	187	299	230.8
Average Length of Stay	5.37	4.76	4.91	6.56	5.22	5.48	5.10	6.21	7.07	6.70	7.65	4.98	4.42

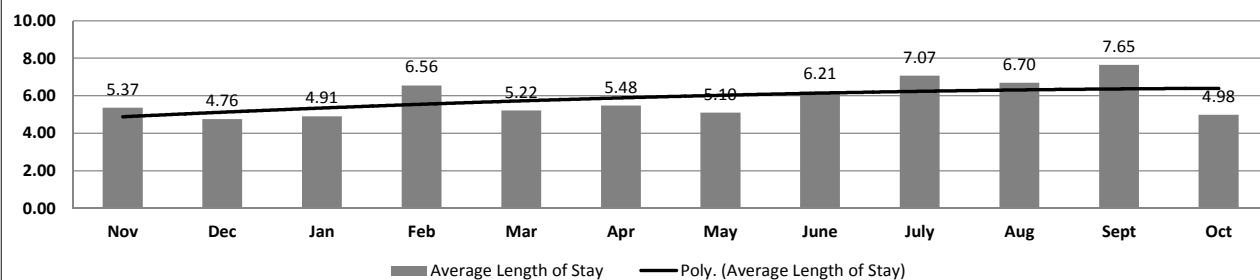
ADC ER Visits Past 12 Months

	2017		2018										Average
	Nov	Dec	Jan	Feb	Mar	Apr	May	June	July	Aug	Sept	Oct	
Emergency Room Visits	100	70	105	97	99	94	79	82	117	96	110	95	95.3

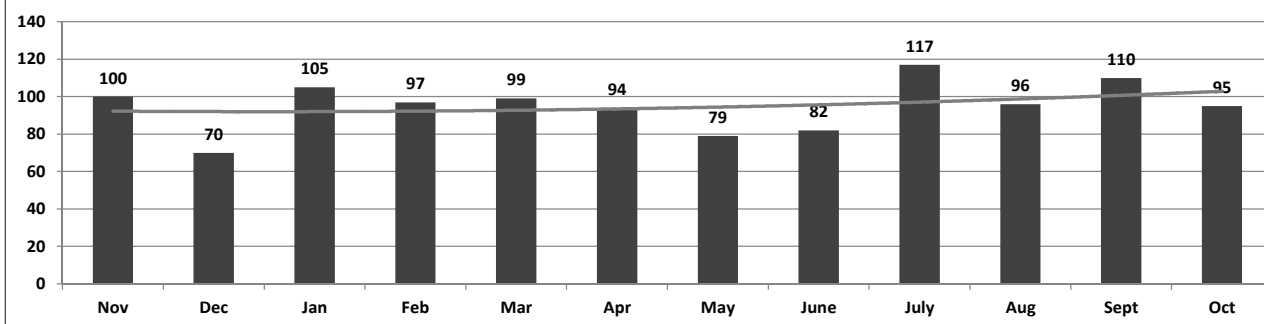
ADC Inpatient Utilization Past 12 Months



ADC Inpatient Average Length of Stay Past 12 Months



ADC Emergency Room Visits Past 12 Months



MEDICAL GRIEVANCE BOARD REPORT – OCTOBER 2018

Unit	<i>Acknowledged/ Received</i>	<i>Rejected</i>	<i>Reviewed & Signed by Dep Director</i>	<i>With Merit</i>	<i>With Merit, but Resolved</i>	<i>% With Merit</i>	<i>Without Merit</i>
Benton	0	0	0	0	0	0%	0
Bowie Co.	1	0	1	0	0	0%	1
CMU	0	0	0	0	0	0%	0
Cummins	18	1	13	1	1	15%	11
Delta	3	2	3	0	0	0%	3
EARU	21	5	27	5	0	19%	22
EARU Max	43	4	51	3	1	8%	47
Ester	2	1	2	0	0	0%	2
Grimes	9	2	7	1	0	14%	6
Hawkins	0	0	1	0	0	0%	1
McPherson	7	3	12	0	0	0%	12
MCWRC	0	0	0	0	0	0%	0
MSU	23	1	22	1	0	5%	21
North Central	9	1	7	0	0	0%	7
NWAWRC	0	0	0	0	0	0%	0
Ouachita	28	11	38	2	0	5%	36
Pine Bluff	3	0	4	1	0	25%	3
Randall Williams	3	0	2	0	0	0%	2
SNN	0	0	0	0	0	0%	0
TRCC	0	0	0	0	0	0%	0
Tucker	3	4	4	0	0	0%	4
Varner	24	4	19	0	0	0%	19
Varner S Max	34	1	33	1	0	3%	32
WRU	3	3	3	0	0	0%	3
WHM	1	3	0	0	0	0%	0
WWR	0	0	0	0	0	0%	0
TOTAL	235	46	249	15	2	7%	232

CHAPLAINCY

Monthly Report for: October 2018	BENTON	CUMMINS	DELTA REGIONAL	EAST ARKANSAS	EAST ARKANSAS MAX	ESTER	GRIMES	HAWKINS	MAXIMUM	MCPHERSON	NORTH CENTRAL	OUACHITA RIVER	PINE BLUFF	RANDALL L. WILLIAMS	TUCKER	VARNER	VARNER MAX	WRIGHTSVILLE	TOTAL
Services Chaplains Oversaw																			
Christian																			
Population	0	13	13	2	0	3	4	2	6	2	9	4	3	11	15	12	0	5	104
Segregation	0	0	0	0	0	0	0	0	0	0	0	2	0	0	0	0	0	0	2
Muslim																			
Population	0	4	3	4	0	1	4	1	1	4	0	4	4	4	0	5	0	1	40
Segregation	0	0	0	0	0	0	0	0	0	0	0	0	0	0	0	0	0	0	0
																			146
Volunteers in Charge																			
Protestant	0	17	11	24	0	16	11	24	24	32	0	9	15	3	26	9	0	34	255
Catholic	0	2	0	2	0	0	2	10	0	2	5	4	1	1	0	3	0	4	36
Muslim	0	0	0	1	0	0	4	1	0	0	0	4	0	0	2	0	0	4	16
Other	0	5	0	6	0	0	0	2	6	4	0	20	0	0	0	3	0	2	48
Baptism	0	7	2	15	0	0	0	0	0	0	5	0	0	0	1	0	0	13	43
Marriages																			
	0	0	0	0	0	0	3	0	0	1	1	0	0	0	1	0	0	1	7
Distributed by Chaplains																			
Greeting Cards	0	21	0	0	0	150	32	250	40	717	63	200	123	15	58	191	104	0	1,964
Bibles, Quran, Torah, Etc.	0	16	35	34	24	50	18	17	18	25	250	500	11	8	6	137	29	6	1,184
Study Course	0	0	21	13	21	35	8	5	12	193	0	165	0	6	0	30	3	0	512
Writing Supplies	0	11	0	0	0	100	6	200	72	6	0	200	0	0	0	0	0	0	595
Literature	0	257	625	683	382	350	114	248	751	293	620	500	250	26	32	994	84	187	6,396
Chaplain's Visits																			
Barracks	0	133	68	16	0	22	38	84	64	29	60	285	68	48	306	116	0	30	1,367
Approximate Hours Spent in Barracks	0	57	20	8	0	98	3	42	0	35	15	65	10	9	77	36	10	18	503
Inmate Office visits	0	64	118	98	0	56	85	74	16	62	60	50	15	156	293	76	0	31	1,254
Other Office visits	0	25	16	26	0	20	10	12	6	25	15	165	11	36	30	10	0	10	417
Hospital	0	7	1	0	0	3	0	0	2	0	0	55	0	9	1	0	0	0	78
Infirmery/Sick Call	0	7	3	3	0	10	18	4	20	8	4	42	4	4	9	8	0	3	147
Restrictive/Punitive Housing	0	9	6	0	13	0	30	0	57	32	5	60	8	8	7	0	0	3	238
PC - DRU	0	0	3	0	0	0	0	0	0	0	0	0	0	0	0	0	0	0	3
Visitation Days	0	1	3	0	0	1	0	0	0	0	0	3	0	0	0	0	0	0	8
Volunteer Visits																			
RCV	0	0	3	15	0	0	5	37	32	26	0	0	0	20	11	0	0	0	149
OCV	0	45	19	11	0	36	0	45	42	24	21	81	19	0	145	11	0	19	518
Spiritual Advisor	0	2	0	0	0	0	0	1	0	0	0	13	0	0	2	2	0	0	20
CRA	0	35	19	97	12	26	56	83	73	36	82	116	12	70	262	32	12	30	1,053
Religious Volunteer Hours																			
Volunteer Hours	0	86	123	337	14	180	300	173	960	163	320	534	73	90	1,154	178	40	98	4,823
DENOMINATIONAL/VOLUNTEER CHAPLAIN HOURS	0	98	3	21	0	154	0	105	10	148	108	60	24	64	229	31	6	28	1,089
																			5,912
Other Activities of Chaplain																			
Counseled Employees	0	10	11	5	0	8	2	7	2	20	4	80	3	11	4	22	8	2	199
Orientation Sessions	0	4	0	0	0	1	3	0	0	1	2	4	0	0	0	0	0	0	15
Free World Devotions	0	1	1	7	0	7	6	0	3	2	0	12	0	0	0	12	0	0	51
Spoke in Churches	0	22	1	17	0	10	5	0	1	2	0	8	0	0	3	16	0	1	86
Crisis Intervention Sessions	0	16	4	0	0	12	0	5	1	15	4	150	7	14	13	9	5	10	265
Marriage Counseling	0	2	1	2	0	0	3	0	0	0	2	6	0	1	1	2	0	0	20
Denominational Meeting	0	7	0	0	0	2	0	1	1	0	0	1	0	0	0	1	0	0	13
Chaplain's Meeting	0	3	1	1	0	1	1	1	1	1	1	3	1	1	1	2	0	1	20
Volunteer Training Session	0	0	0	0	0	0	0	1	0	0	0	4	0	0	0	0	0	1	6
Choir Trip	0	0	0	0	0	0	0	0	0	0	0	0	0	0	0	0	0	0	0
Chaplain Transfers																			
	0	0	0	0	0	0	0	0	0	0	0	0	0	0	0	0	0	0	0
Chaplain Promotions																			
	0	0	0	0	0	0	0	0	0	0	0	0	0	0	0	0	0	0	0
PAL PROGRAM																			
Enrolled at start of month	0	46	24	47	0	31	47	27	15	56	17	37	0	29	56	50	0	25	507
Enrolled during the month	0	9	1	9	0	1	4	4	3	13	7	3	0	1	8	4	0	3	70
Removed From PAL Program																			
# Paroled	0	0	0	0	0	0	2	2	0	0	0	0	0	1	2	1	0	0	8
# Completed	0	3	0	5	0	0	0	2	2	0	0	0	1	0	0	2	0	0	15
# Withdrew	0	5	1	0	0	0	1	0	1	7	1	0	0	0	1	1	0	1	19
# Removed	0	0	1	0	0	1	0	0	2	4	0	3	0	0	0	1	0	1	13
# Transferred	0	1	1	1	0	0	2	0	0	2	0	0	0	0	3	1	0	0	11
Total Removed from PAL Program	0	9	3	6	0	1	5	4	5	13	1	4	0	1	8	4	0	2	66
Total Enrolled at the End of the Month	0	46	22	50	0	31	46	27	13	56	23	36	0	29	56	50	0	26	511
Volunteers in PAL																			
	0	21	1	11	0	6	23	75	15	39	4	10	0	4	12	8	0	3	232
Special Events:																			
	0	1	0	3	0	1	0	1	3	0	3	1	0	0	2	0	0	0	15

MONTHLY PURCHASING REPORT – OCTOBER 2018

PURCHASE ORDERS OVER \$10,000.00					
VENDOR	DESCRIPTION	LOCATION	PO#	PURCHASE AMOUNT	FUND
Green Point AG LLC	Fuel-Diesel	Cummins/Farm	4501833711	\$18,136.24	Operational Farm Budget
Mid South Sales Inc	Fuel-Unleaded & Diesel	Central Warehouse	4501834741	\$10,463.61	Operational Budget
William R Hill & Co Inc Doug Waldmann	Food Purchases	Central Warehouse	4501835545	\$208,123.35	Operational Budget
Mid South Sales Inc	Fuel-Unleaded & Diesel	Central Warehouse	4501835108	\$10,423.19	Operational Budget
Anchortex Corporation	Clothing-Boxer Shorts	Cummins/Industry	4501834436	\$13,850.00	Operational Industry Budget
South Arkansas Equipment Co	Tractor Equipment-Humdingier	EARU/Farm	4501834131	\$74,777.00	Operational Farm Budget
American Correctional Association	Re-Accreditation Audit Service	Admin Bldg/Accreditation	4501835521	\$12,150.00	Operational Budget
Sysco Food Services of Arkansas Inc	Food Purchases	Central Warehouse	4501835633	\$66,939.90	Operational Budget
Robbins Sales Company Inc	Food Purchases	Central Warehouse	4501835640	\$195,550.32	Operational Budget
Arkansas Correctional Industries	Janitorial Supplies	Central Warehouse	4501835705	\$76,998.99	Operational Budget
Ponderosa Packaging	Cardboard Boxes & Lids	Varner/Vegetable Processing	4501835646	\$51,076.38	Operational Farm Budget
Phoenix Trading Inc	Hairnets, Razors, Maxi-pads	Central Warehouse	4501835709	\$21,340.00	Operational Budget
American Paper & Twine Co	Paper Towels	Central Warehouse	4501835820	\$24,875.14	Operational Budget
Terry Simpson	Hauling Corn & Soybeans	EARU/Farm	4501835888	\$74,000.00	Operational Farm Budget
Dell Marketing LP	Computer PowerEdge Server	Admin East/Information Services	4501835963	\$14,334.16	Operational Budget
Razor Chemical Inc	Janitorial Supplies	Delta/Janitorial Factory	4501836077	\$24,408.90	Operational Industry Budget
Littfield Oil Co	Fuel-Unleaded	Grimes	4501835259	\$11,955.85	Operational Budget
Arkansas Correctional Industries	Toilet Paper	Central Warehouse	4501836669	\$208,565.28	Operational Budget
US Foods Inc	Food Purchases	Central Warehouse	4501836598	\$310,982.46	Operational Budget
Livestock Nutrition Center	Feed for Livestock-Soybean Meal	Cummins/Farm	4501836950	\$77,328.00	Operational Farm Budget
William R Hill & Co Inc Doug Waldmann	Food Purchases	Central Warehouse	4501837023	\$273,400.68	Operational Budget
Mid States Services Inc	Toilet Paper	Wrightsville/Industry	4501836858	\$21,964.80	Operational Industry Budget
JMS Russel Metals Corp	Metal, Iron, Tubing	Tucker/Industry	4501837008	\$131,465.17	Operational Industry Budget
Cedar Creek LLC	Plywood	Wrightsville/Industry	4501836853	\$12,921.60	Operational Industry Budget
Jack Tyler Engineering Inc	Lift Station Repairs	Ouachita/Maintenance	4501810654	\$39,674.80	Operational Budget
Cruse Uniforms and Equipment Inc	Ammunition	North Central	4501837190	\$11,189.20	Operational Budget
Mid South Sales Inc	Fuel-Unleaded	Wrightsville	4501833947	\$16,942.87	Operational Budget
Green & Chapman LLC	Fuel-Unleaded & Diesel	EARU	4501837498	\$10,332.62	Operational Budget
Galls LLC	Uniform Shirts	Training Academy	4501838847	\$16,955.15	Operational Budget
Joseph T Ryerson & Son Inc	Stainless Steel Fiber Film	Construction/Construction	4501838491	\$10,051.65	Telephone Funds
Westrock Coffee LLC	Coffee	Grimes	4501838056	\$14,100.00	Operational Industry Budget
Barnes Paper Co	Egg Cases	Cummins/Farm	4501838456	\$13,892.34	Operational Farm Budget
Arkansas Correctional Industries	Janitorial Supplies	Texarkana	4501838363	\$13,651.82	Work Release Funds
National Food Group	Food Purchases	Central Warehouse	4501838354	\$67,593.30	Operational Budget
Mid South Sales Inc	Fuel-Unleaded & Diesel	Central Warehouse	4501836968	\$11,363.53	Operational Budget
Fastenal Co	Skylights & Parts	Max/Maintenance	4501837739	\$48,579.98	Operational Budget
Beyrl Bitley & Sons Trucking Inc	Hauling Soybeans	Cummins/Farm	4501839051	\$30,000.00	Operational Farm Budget
McKesson Medical Surgical MN Supply	TB Screening Supplies	Admin/Medical Services	4501839197	\$29,302.90	Operational Budget
AC Furniture Company	Chairs	Tucker/Industry	4501837436	\$22,200.00	Operational Industry Budget
Bale Chevrolet	Passenger Vans	Admin East/Purchasing	4501838804	\$55,445.40	Work Release Funds
Fastenal Co	Domes & Parts	Construction/Construction	4501839108	\$17,425.65	Telephone Funds
Mid States Services Inc	Toilet Paper	Wrightsville/ACI Warehouse	4501838923	\$21,964.80	Operational Industry Budget
Trane US Inc	HVAC Unit & Parts	McPherson/Maintenance	4501837830	\$11,530.54	Operational Budget
Charm Tex	Mattresses	Ouachita	4501837424	\$16,885.00	Operational Budget
Cedar Creek LLC	Plywood	Wrightsville/Industry	4501837031	\$17,306.40	Operational Industry Budget
Arkansas Correctional Industries	Clothing	Cummins/Commissary	4501837815	\$26,159.80	Operational Budget
Arkansas Correctional Industries	Clothing	EARU	4501838016	\$32,029.48	Operational Budget
Arkansas Correctional Industries	Bulk Forms	Various Units	4501839523	\$41,755.60	Operational Budget
Arkansas Correctional Industries	Clothing, Boots, Linens, Mattresses	McPherson	4501839481	\$31,160.22	Operational Budget
Sysco Food Services of Arkansas Inc	Food Purchases	Central Warehouse	4501839945	\$305,550.00	Operational Budget
Arkansas Correctional Industries	Clothing and Linens	Wrightsville	4501839736	\$21,000.68	Operational Budget
Tabb Textiles Co Inc	Linens	Cummins/Industry	4501839911	\$25,750.00	Operational Industry Budget
Mid States Services Inc	Toilet Paper	Wrightsville/Industry	4501839832	\$21,964.80	Operational Industry Budget
Foam Products of Tyler Inc	Pole Vault Foam & Pads	Tucker/Industry	4501840752	\$15,556.31	Operational Industry Budget
Brown Brothers Produce Company	Vaccines & Service for Pullets	Cummins/Farm	4501840787	\$19,780.50	Operational Farm Budget
Sysco Food Services of Arkansas Inc	Food Purchases	Central Warehouse	4501840479	\$53,555.90	Operational Budget
National Food Group	Food Purchases	Central Warehouse	4501840574	\$55,888.60	Operational Budget
Mid States Services Inc	Toilet Paper	Wrightsville/Industry	4501840290	\$21,964.80	Operational Industry Budget
Westrock Coffee LLC	Coffee & Tea	Grimes	4501840171	\$20,900.00	Operational Industry Budget
The Presidio Corporation	Cisco Phones & Equipment	Admin East/Information Services	4501840032	\$28,261.75	Telephone Funds
McLarty NLRF LLC Mark McLarty Ford	Motor Repair on 1 Ton Dually	Grimes/Maintenance	4501830638	\$16,347.58	Operational Budget
Arkansas Correctional Industries	Clothing & Linens	Ester	4501840894	\$14,720.34	Operational Budget
Consolidated Electrical Distributor	Lighting Supplies	Ouachita/Maintenance	4501841683	\$10,392.12	Operational Budget
Green & Chapman LLC	Fuel-Unleaded	Cummins/Commissary	4501838959	\$15,266.49	Operational Budget
Mid South Sales Inc	Fuel-Unleaded & Diesel	Central Warehouse	4501840758	\$10,867.65	Operational Budget
Barnes Paper Co	Egg Cases	Cummins/Farm	4501841502	\$14,387.97	Operational Farm Budget
Razor Chemical Inc	Janitorial Supplies	Delta/Janitorial Factory	4501841731	\$24,887.40	Operational Industry Budget
		Total for Purchases over \$10,000		\$3,270,566.96	
FIRM CONTRACTS OVER \$25,000.00					
			Contract #	PURCHASE	
VENDOR	DESCRIPTION	UNIT	P.O#	AMOUNT	FUND
		Total for Contracts		\$0.00	
EMERGENCY PURCHASE ORDERS OVER \$25,000.00					
		Total EM Purchases		\$0.00	
Total Purchases				\$3,270,566.96	

PERSONNEL REPORT – OCTOBER 2018

UNIT	AUTHORIZED	FILLED	VACANT	% VACANT	HIRED	VOLUNTARY TERMINATION	INVOLUNTARY TERMINATION	RETIREMENT
BENTON (CR05)	77	76	1	1.30%	2	0	0	0
CENTRAL OFFICE (CR01, CR02, CR08 & CR22)	270	243	27	10.00%	1	2	0	1
509 CHAPL ADMIN	27	26	1	3.70%	0	0	0	0
CONSTRUCTION (CR04)	59	56	3	5.08%	0	0	0	0
CUMMINS (CR09)	427	394	33	7.73%	17	4	7	0
DELTA (CR10)	183	175	8	4.37%	6	6	0	1
EAST ARKANSAS (CR12)	365	337	28	7.67%	12	3	8	0
ESTER (CR11)	155	150	5	3.23%	5	0	1	0
FARM (CR29)	61	53	8	13.11%	0	0	0	1
GRIMES (CR27)	244	227	17	6.97%	8	7	0	1
HAWKINS (CR06)	76	75	1	1.32%	3	0	0	0
INDUSTRY (CR07)	52	41	11	21.15%	1	0	0	1
MAXIMUM SECURITY (CR14)	229	195	34	14.85%	20	2	4	2
MCPHERSON (CR28)	230	215	15	6.52%	11	3	0	2
MENTAL HEALTH	182	152	30	16.48%	2	3	2	0
MISS COUNTY (CR15)	38	34	4	10.53%	4	0	0	0
NORTH CENTRAL (CR16)	197	193	4	2.03%	6	4	0	1
NORTHWEST ARK (CR17)	30	29	1	3.33%	0	1	0	0
OUACHITA RIVER (CR30)	466	434	32	6.87%	15	9	1	0
PINE BLUFF (CR20)	169	163	6	3.55%	11	2	0	0
RANDAL L. WILLIAMS (CR13)	146	140	6	4.11%	9	0	0	0
TEXARKANA (CR21)	31	30	1	3.23%	0	1	0	0
TRANSPORTATION (CR32)	102	99	3	2.94%	1	0	0	0
TUCKER (CR23)	199	182	17	8.54%	15	2	4	1
VARNER (CR24)	358	289	69	19.27%	14	5	5	0
WRIGHTSVILLE (CR25)	207	200	7	3.38%	1	3	1	0
TOTAL	4,580	4,208	372	8.12%	164	57	33	11

Term/Hire report run 11/1/18 - PSR created 10/31/18

AR-DOC SECURUS VIDEO VISITATION ACTIVITY TRACKER - OCTOBER 2018

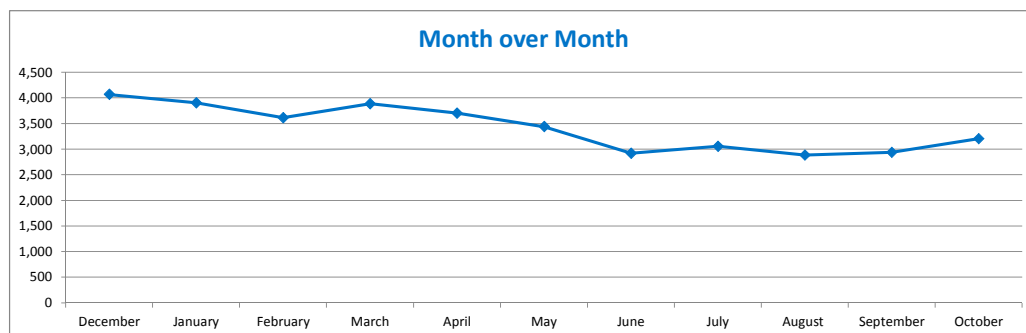
AR-DOC SVV Activity Tracker

Total ADP: 15,586

Total Visits by Month	December	January	February	March	April	May	June	July	August	September	October
Total (Includes SuperMax)	4,071	3,909	3,618	3,890	3,705	3,441	2,923	3,057	2,885	2,939	3,207
Target Objective*	15,586	15,586	15,586	15,586	15,586	15,586	15,586	15,586	15,586	15,586	15,586

*Targets determined by vendor.

Anywhere Visitation Performance:



Completed Visits

Site	Current Month	Previous Month
Benton	204	177
Cummins	205	195
Delta Regional	162	197
East Arkansas Regional	240	270
Ester	232	143
Grimes	262	243
J Aaron Hawkins Sr.	122	120
Tucker Max	37	37
Mcpherson	313	244
Mississippi County WRC	11	6
North Central	211	185
NW Arkansas WRC	5	8
Ouachita River	327	228
Pine Bluff Complex	71	95
Randall L. Williams	307	240
State Police Barracks	24	20
Texarkana Regional	38	44
Tucker Unit	79	133
Varner	164	163
Wrightsville Unit	193	191
Pine Bluff Re-Entry	0	0
Total:	3,207	2,939

Missed by Inmate

Site	Current Month	Previous Month
Benton	4	11
Cummins	11	14
Delta Regional	4	5
East Arkansas Regional	8	18
Ester	3	5
Grimes	3	7
J Aaron Hawkins Sr.	3	3
Tucker Max	2	6
Mcpherson	14	6
Mississippi County WRC	1	1
North Central	3	16
NW Arkansas WRC	0	4
Ouachita River	20	16
Pine Bluff Complex	5	3
Randall L. Williams	7	5
State Police Barracks	0	1
Texarkana Regional	1	1
Tucker Unit	1	4
Varner	19	9
Wrightsville Unit	3	1
Pine Bluff Re-Entry	0	0
Total:	112	136

AR-DOC LEASED SECURUS TABLETS - OCTOBER 2018

FACILITY NAME	LEASED	TOTAL
Benton Unit	54	65
Cummins Unit	215	316
Delta Regional Unit	60	112
East Arkansas Regional Unit	128	232
Ester Unit	46	198
Grimes Unit	115	197
J Aaron Hawkins Sr Center For Women	73	157
McPherson Unit	158	266
Mississippi County Work Release Center	35	46
North Central Unit	87	167
Northwest Arkansas Work Release Center	39	49
Ouachita River Unit	183	307
Pine Bluff Reentry Center	10	12
Pine Bluff Unit	40	53
Randall L Williams Unit	68	108
State Police Barracks	13	17
Texarkana Regional Correctional Center	18	30
Tucker Maximum Security Unit	63	105
Tucker Unit	117	188
Varner Unit	186	291
Wrightsville Unit	149	212
	1,857	3,128

*The difference between LEASED and TOTAL tablets reflects the number of program and officer tablets.

CONSTRUCTION BUDGET / STATUS REPORT - NOVEMBER 9, 2018 — [Page 1 of 2]

Fund	Project Description	Total Projected	Budget	Available Funds	\$ % Complete	Construction % Complete	Notes
7004810	Cummins Poultry Houses	\$ 5,939,547	\$ 6,100,000	\$ 160,453	97%	98%	Plans to correct ramp problem by JBP, looking at changing forklifts.
KBR4Q95	ESTER - Phase 3 - General Improvement Fund	2,943,927	4,383,781	1,439,854	67%	98%	Infirmary construction complete. Repairs to existing electrical for generator completed. Installing cameras. Parking Lot in design. ADFA bonds turned back on Phases 1 & 2 1A
700483A	EARU ISO Rec Yard	265,735	271,430	5,695	98%	100%	Complete
700483A	Varner ISO Rec Yard	180,277	180,953	676	100%	75%	Rec Pens underway
700483A	EARU Max Rec Precast Rec Yard	59,242	659,553	600,311	9%	0%	Plans approved by DBA for construction.
700483A	Tucker Max Precast Rec Yard	-	1,210,000	1,210,000	0%	0%	Plans being submitted to DBA
700483A	Cummins Precast Rec Yard	-	927,500	927,500	0%	0%	Plans being submitted to DBA
KBR4Q95	Bullpens	179,185	851,999	672,814	21%	50%	22 installed at Varner without doors. One completed as a demonstration and approved.
KBR4Q95	13 & 15 Barracks Door Revisions	107,985	174,000	66,015	62%	55%	All doors have been installed in 13 Barracks.
KBR4Q95	Camera's (New)	719,066	1,248,000	528,934	58%	45%	Cameras ordered, installation underway. Delta complete, working at Varner
700485A	Integrity Energy Improvements at EARU & Delta	10,573,860	17,020,204	6,446,344	62%	62%	lights (100%), water (90%), compost (90%), & solar (90%), HVAC started.
700486A	Pine Bluff Unit Barracks 9 Renovation	211,582	437,000	225,418	48%	95%	Construction underway, near completion
KBSCW18	McPherson Administration	-	395,439	395,439	0%	0%	Architects prepared Plans, submitted to DBA, Plans approved 11/2/18
KBSBW18	McPherson Visitation	-	312,430	312,430	0%	0%	
KBSHW18	Tucker Water Treatment	-	1,093,848	1,093,848	0%	0%	submitting for designer approval.
KBSFW18	Max Armory	-	70,000	70,000	0%	0%	to replace existing inadequate Armory.
KBSFW18	Varner Armory	-	68,399	68,399	0%	0%	Plans sent to DBA, comments received.

Telephone Projects

Maintenance & Operations	Fire Alarm Upgrades (All Units)	11,488	53,000	41,512	22%	17%	on-going
	Gas Stations - Canopy (C/O)	0	-	0	0%	97%	Steel structure completed.
	Stainless Steel - Kitchen/Shower/Restrooms - All Units	12,601	20,000	7,399	63%	60%	continual need
	Parking Lot - Gravel and Paving - EARU	0	68,000	68,000	0%	0%	Parking lot complete. Working on paving road to State highway, acquiring R.O.W.
	Gates and Fences all units	740	30,000	29,260	2%	0%	to improve security
	ACA Maintenance	93,578	100,000	6,422	94%	90%	seven Units coming up this fiscal year, 2018
	ADA Projects - All Units	0	1,000	1,000	0%	0%	as needed.
	Fast Top Floor Systems (kitchen/laundry/showers all units)	22,362	25,000	2,638	89%	0%	projects as requested as needed. ACA audits initiate some projects. ORCU to complete 10/5.
	Camera Equipment - All Units	129,263	175,000	45,737	74%	45%	cameras as requested/approved.
	Lock/Riot Gates - All Units	81,325	90,500	9,175	90%	60%	on-going.
	AC Units-All Units	50,764	100,000	49,236	51%	47%	repairing & replacing daily.
	Subtotal	\$ 402,121	\$ 662,500	\$ 260,379			



CONSTRUCTION BUDGET / STATUS REPORT - NOVEMBER 9, 2018 — [Page 2 of 2]

Fund	Project Description	Total Projected	Budget	Available Funds	\$ % Complete	Construction % Complete	Notes
FY19 Carry Forward	Metal Ceilings	0	25,000	25,000	0%	0%	Max Barracks 2 complete.
	ORCU Gravel Pit Operations	5,305	35,000	29,695	15%	100%	on-going. Elect upgrades complete, crusher operating.
	Dog Kennel/Horse Stable Malvern	0	48,000	48,000	0%	0%	Plans are at DBA for Review/Approval, comments received.
	Emergency Generator - All Units	78,393	100,000	21,607	78%	0%	EARU generators received, being installed. Wrightsville Infirmary is next.
	Roof Repairs-Cummins	0	189,700	162,329	14%	0%	Prepared large order for multiple Units. Worked on the Cummins roof, moved to the Max roof, moved to ORCU, now back at the Max, 122 of 196 skylights installed. Office of State Procurement secured a State contract to purchase roofing materials.
	Roof Repairs-Cummins Laundry	0				0%	
	Roof Repairs-East Arkansas	0				0%	
	Roof Repairs-Max	25,643				10%	
	Roof Repairs-Tucker	0				0%	
	Roof Repairs-Varner	1,728				0%	
	Roof Repairs-Wrightsville	0				0%	
	Boiler Repair	17,540	100,000	82,460	18%	100%	continually needing repair
	Subtotal	\$ 128,609	\$ 497,700	\$ 369,091			
New Projects	EARU Sewer lift station	72,782	75,000	2,218	97%	80%	equipment delivered, sched installation
	Tucker 4 new filters & one aeration tank	11,787	500,000	488,213	2%	0%	Plans approved by Health Dept. & DBA, preparing bid documents.
	Change media in 7 water filters at Tucker	4,132	6,000	1,869	69%	100%	Filter media changed out in all 7 filters. Bacteriologic tests on Filter 7 passed, all in operation.
	Tucker Barracks 10 covered walkway	0	-	0	0%	0%	Plans being submitted to DBA
	Max manhole	0	-	0	0%	0%	to provide access to a blockage point in sewer
	RLW Sewer relocation 400' + 2 MH	0	34,000	34,000	0%	0%	weekly stoppages, defect in pipe line.
	Additional Metal Fab shop	0	-	0	0%	0%	room to do more metal work
	PB Warehouse Drive replacement	0	95,000	95,000	0%	0%	asphalt drive pot holed
	Subtotal	\$ 88,701	\$ 710,000	\$ 621,299			
	Architect Fees	155,293	30,000	-125,293	518%		
	Total	\$ 774,722	\$ 1,900,200	\$ 1,125,478			

Notes

Report has not been reconciled against Accountings Reconciled Reports.
Tolerance/Deviation is within 1% of Projected Spending.