



Arkansas Department of Correction



@ARDeptofCorrection



@adcpio

BOARD REPORT

March 2019

Wendy Kelley,
Director



PUBLIC RELATIONS

RESEARCH/PLANNING

February 2019 Admissions and Releases – Admissions for February 2019 totaled **599** (513-males & 86-females) while releases totaled **710** (621-males & 89 females) for a net decrease in-house of **111** inmates.

Inmate Population Growth/Projection – At the end of February 2019, the jurisdictional population totaled **17,846**, representing a growth of **47** inmates since the first of January 2019. Average growth is **24** inmates, up from an average monthly decrease of **23** inmates per month during calendar year 2018.

Average County Jail Back-up – The backup in the County Jails averaged **1,621** inmates per day during the month of February 2019 – up from an average of **1,458** inmates per day during the month of January 2019. Of the **1,621** average, short-term revocations averaged **602** (542-males & 60-females) during the month.

SOCIAL MEDIA

Facebook results for February showed a total of seven thousand seven hundred eighty-two (7,782) “likes” of our page, an increase of two hundred eighteen (218) from the previous month. Our Twitter account currently has 221 followers.

LEGAL SERVICES

PREA

PREA Hotline Data:

Number of Calls Received	256
Total PREA Issue Calls	20
Total Non-PREA Calls	133
Total Calls Referred to Internal Affairs Division	26
Total Repeat Calls	50
Total Calls with No Message	53
Total Technical Failure Calls	0

Internal Affairs continues to handle all PREA investigations. The ADC PREA Hotline had no technical issues during the month of February. Training for the month included “Sexual Assault Investigator Training (SAIT),” a 24-hour class presented to middle and upper-level supervisory staff. A total of 16 staff members attended with 384 training hours given. There were 26 test calls conducted at the units during the month. These calls are included in the “number of calls received” total noted in the table above.

INMATE INSTITUTIONAL GRIEVANCES

Inmate Formal/Informal Grievances: During February 2019, a total of one thousand six hundred fifty-five (1,655) formal grievances and two thousand six hundred seventy-seven (2,677) informal grievances were filed at various units.

Institutional Grievances Appeals: There were a total of three hundred ninety-one (391) appeals of institutional grievances received in February 2019. Two hundred seventy-eight (278) were acknowledged and one hundred thirteen (113) were rejected for various reasons. A total of four hundred twenty-eight (428) appeals were answered; four hundred twenty (420) had no merit and eight (8) were found with merit.

INSTITUTIONS

STTG

During the month of February, the STTG Coordinator, along with K9 officers, assisted in four BCOT special assignments on the 4th, 5th, 25th and 26th.

On February 13th, the STTG Coordinator taught the BCOT class at the Training Academy.

The STTG Coordinator attended the Security Audit of the Grimes Unit on the 21st and spoke at a law enforcement meeting at the Ouachita River Unit on the 28th.

FARM

The month of February continued to be wet and cold.

Transplants were started in the greenhouses in preparation for upcoming garden planting. Row crop staff worked on equipment preparation for the planting season.

Milk production remains good and the somatic cell count levels are still under control.

The first of the calves conceived through artificial insemination were born in the final week of February.

Managers pulled horses to be included in March’s annual horse auction.

REGIONAL MAINTENANCE HOURS

Regional Maintenance Hours	February 2019
Benton Unit	6,688
Delta Regional Unit	2,284
East Arkansas Regional Unit	1,384
Grimes Unit	2,472
McPherson Unit	1,196
Mississippi County Work Release	808
North Central Unit	6,880
Ouachita River Unit	2,728
Randall L. Williams Unit	3,072
Texarkana Regional Correctional Center	875
Tucker Unit	2,972
Varner Unit	1,800
Wrightsville Unit	800
Total Hours	33,959

WORK RELEASE RENT REPORT

Unit	February 2019
Benton Unit	\$103,207.00
Mississippi County Work Release	\$48,705.00
Northwest Arkansas Work Release	\$39,049.00
Pine Bluff Work Release	\$19,176.00
Texarkana Regional Correctional Center	\$39,933.00
Wrightsville/Hawkins Work Release	\$23,885.00
Total	\$273,955.00

WAGE**(Workforce Alliance for Growth in the Economy)**

Unit	Slots	Completed	Discharged	End Count
Delta	8	6	2*	6
Ester	30	0	0	11
Hawkins	36	0	0	23
Ouachita River	10	0	0	10
Tucker	20	9	9	18
Wrightsville	36	0	0	24
Total	140	15	11	92

*One (1) inmate from the Delta Unit transferred and one (1) inmate went home.

**RANDALL L. WILLIAMS
JUVENILE EDUCATION PROGRAM**

	Slots	Enrolled	Discharged	End Count
Juveniles*	20	8	0	8

*Juveniles are transferred from the program once they reach the age of eighteen (18). The Juvenile count also changes based on new commitments. During the month, no inmates were on punitive status. There was one (1) new commitment.

ADMINISTRATIVE SERVICES**BUDGET SECTION UPDATE**

- An Act 71 case was held on February 5, 2019, with the Honorable Judge Jodi Raines Dennis in the Jefferson County 5th Division Circuit Court against Leon Simmons, ADC #076733. The Court found that the per capita cost of the Defendant's care while incarcerated exceeded the balance of the funds held in possession of the Court, and also that the Defendant failed to demonstrate that he has a spouse, dependent children, or any other person having a moral or legal right to support and maintenance out of his estate. The Court found that the Plaintiff (State of Arkansas) was entitled to the \$6,872.55 held by the Court.
- A second Act 715 case was held on February 27, 2019, with the Honorable Judge Jodi Raines Dennis in the Jefferson County 5th Division Circuit Court against James Nichols, ADC #121025. Judge Dennis' ruling in this case has not been received.

PROCUREMENT SECTION UPDATE**Current Bids:**

- Waste Disposal Services (various locations)
- Inmate Holiday Package RFP

No New Contracts/OSP**No ABA Contracts****Contracts Awarded In-House:**

- Video Services (inmate movies)

Renewed Contracts/OSP:

- Personal Care
- Disposable Gloves

Procurement/Contracts Report (required by policy)– For February 2019, Purchase Orders and Contracts in excess of \$10,000 amounted to \$2,393,362.41. Of this amount, \$1,875,633.65 was for Inmate Care and Custody-related items (food, shoes, clothing, etc.). Bulk fuel costs for the month of February were \$31,703.94 – average cost of E-10 was \$1.69/gallon; average cost for bulk diesel was \$2.05/gallon.

HUMAN RESOURCES UPDATE

Workplace Safety – During the month of February, the modified version of the Health and Safety Plan was presented to one (1) Basic Training class with a total of sixty-five (65) cadets in attendance.

Sixty-six (66) incidents were reported to the Company Nurse in February 2019, bringing the total of reported incidents to one hundred twenty-seven (127) for 2019.

Benefits – There were eighty-two (82) FMLA requests processed during the month: seventy-three (73) were approved and nine (9) denied. A total of eleven (11) catastrophic leave requests were received: eight (8) were approved, one (1) was denied, and two (2) were pending at the time of this report.

Physical Assessments – A total of one hundred sixty-five (165) applicants and incumbent personnel were assessed during February. Seventy (70) incumbent personnel successfully passed the physical assessment, and two (2) did not. Both incumbent personnel rescheduled and passed after receiving a physician's release. Eighty-nine (89) applicants successfully passed the physical assessment and four (4) did not. All four (4) applicants rescheduled and passed after receiving a physician's release.

Employment – A total of one thousand five hundred eighteen (1,518) applications were received during February. Fifty-three (53) Non-Security applications and eighty-eight (88) CO I applications were processed. Fifty-four (54) Correctional Officers were hired, and twenty-four (24) Correctional Officers were rehired.

ADC personnel attended the following Job Fairs/ Recruitment Events in the month of February:

Date	Unit	Location
2/6/19	Varner	Admin Annex East/Pine Bluff
2/12/19	EARU	Arkansas Workforce Center/Forrest City
2/13/19	Varner	WIN Job Center/Greenville, Mississippi
2/14/19	Grimes	Goodwill/Batesville
2/20/19	MAX	Arkansas Workforce Center/Pine Bluff
2/21/19	EARU	WIN Job Center/Clarksdale, Mississippi
2/25/19	Tucker	Arkansas Workforce Center/Pine Bluff
2/27/19	Varner	Crossett High School
2/28/19	Grimes	Goodwill/Batesville

Correctional Officer interviews were conducted in the month of February at various units throughout the department:

Date	Unit	Date	Unit	Date	Unit
2/4/19	McPherson TRCC	2/13/19	EARU Grimes McPherson TRCC	2/22/19	Delta McPherson
2/5/19	EARU Grimes			2/25/19	EARU
2/6/19	Delta EARU	2/14/19	EARU	2/26/19	Grimes
2/7/19	Delta EARU McPherson	2/19/19	Delta Grimes	2/27/19	EARU Ester
2/8/19	Grimes	2/20/19	Grimes McPherson Varner	2/28/19	Cummins EARU
2/12/19	Delta MAX McPherson Varner				

Vacancies, Hires, and Terminations –

There was a total of four hundred sixty-seven (467) security and non-security vacancies, ninety-four (94) new hires, ninety-six (96) terminations, and five (5) retirements throughout the department during the month of February.

ADMINISTRATIVE SERVICES DIVISION MONTHLY REPORTS INCLUDE GIFTS, GRANTS, DONATIONS / INMATE WELFARE FUND BALANCE (required by policy):

Gifts, Grants and Donations:

Donations for the month of February totaled \$27,305.00 [Books: \$674; Computer Items: \$580; Horses: \$26,000].

The **Inmate Welfare Fund** balance on February 28, 2019 was \$8,147,723.27.

The **PAWS in Prison Fund** total on February 28, 2019 was \$246,801.08. ADC Account (7004822/Donations) balance was \$19,159.55, ADC Account (NDC0500/Recycling) balance was \$100,830.86, and the ADC Paws in Prison Non-Profit account (Quickbooks) balance was \$126,810.67.

INFORMATION TECHNOLOGY - FEBRUARY 2019

SECURUS VIDEO VISITATION (SVV) PROJECT

SVV Dog Kennel Installation:

- Cummins Unit – Installation scheduled to begin March 6, 2019.

Inmate Video Visits:

- Inmates completed three thousand four hundred eighty-four (3,484) video visits during February and missed ninety-five (95).

INFORMATION TECHNOLOGY, *continued***SECURUS TABLET PROJECT:**

- A total of two thousand six hundred thirteen (2,613) inmate tablets were leased during February.

IT/eOMIS ACTIVITIES

- Central Office and Admin East computers are being upgraded to the Windows 10 operating system.
- CCS Organizational Unit in Active Directory was modified to reflect the “Wellpath” name change.
- The deployment of iPhones (Majors) and iPads (Wardens) is continuing.
- Configuration of the new Nagios Server for the Ouachita River Unit is underway.
- The WAGE server was updated with the new typing program.
- Adair County, Oklahoma was set up for, and provided with instructions on the use of, WebEx for remote hearings.
- Hot Springs and Jefferson Counties were provided with assistance for Video Court Hearings.
- New computers, to replace facility Windows Server Update Services (WSUS) servers, were configured.
- ADC staff toured and observed facility processes with Marquis and ACC staff during the Week of February 19th–21st. Unit visits to observe inmate screenings for Parole Board and simulate commissioner’s decisions via InTouch Parole Board Portal included Grimes, ORCU, and McPherson. Marquis observed the new commitment intake and classification processes for the potential development of offline processing. In addition, the informal grievance process was discussed for eOMIS development. This development will be necessary to provide electronic grievance form processing on barrack kiosks.
- eOMIS discussions also included the following:
 - The Parole Board Pre-Release Investigation Tool (PRI), which included information on program stipulations and related scoring, was discussed.
 - A meeting was held with Rhonda Ratteree (ACIC) and Sgt. Shurrel Freeman (ADC) to review information required for the upcoming ACIC/CJIS IT audit.

TRAINING ACADEMY - FEBRUARY 2019**BASIC TRAINING DIVISION –**

Under the direction of Instructor Bryant Dallas, **BCOT Class 2019-A** graduated on February 15th with seventy-six (76) cadets. Cora Harris of the Tucker Unit received the Willis H. Sargent Award. Warden Jeremy Andrews of the East Arkansas Regional Unit served as the guest speaker.

IN-SERVICE DIVISION –

Management Level 1, a four-day session for new supervisors, was offered February 4th–7th. ADC staff facilitate the training, which is mandated by Executive Order. Topics include: Arkansas Government Basics, HRkansas, Performance Evaluation, Grievance Prevention and Handling, and the Fair Labor Standards Act, among others.

Blue Courage was offered February 7th and 8th. The 16-hour course provides the path of constant vigilance through comprehensive training that includes giving the officer the right inspiration (heart-set), the right reasoning (mind-set), the right skills (skill-set), and the right tools (tool-set). Blue Courage targets physical, mental, and spiritual aspects for officers to pave a clear path forward.

Correctional Security for Non-Security (Full-Time Staff)

was presented February 11th and 12th. The course highlights a variety of issues of which full-time non-security ADC staff members, new to a correctional setting, should be aware of. Participants are taught correctional history, how to communicate and cooperate with security staff members, and other essential new employee information. 26 hours of eCADEMY training is the prerequisite for this class.

Oleoresin Capsicum (OC) Instructor Certification

was offered on February 11th and 12th. This 16-hour class teaches current “pepper spray” users how to instruct and certify others. Instructor candidates receive both a Level 1 and a Level 3 contamination during the class. Recertification, for instructors in which a Level 3 contamination is administered, is required every three years.

Becoming Resilient was held on February 14th. This course is designed to increase the ability of individuals to withstand or recover quickly from difficult conditions.

Security Audit Training was offered on February 15th. This course assists staff in remaining compliant with the ADC mission of providing a safe and humane environment for staff and inmates. By developing staff who can identify and correct security deficiencies, security awareness is heightened and the overall security operation of the unit is strengthened.

Management Level II was held February 19th–21st. The class is intended for Lieutenants and above; in addition to mid-level non-security supervisory staff. The course includes learning the supervisor’s role in inmate medical care, PREA for supervisors, and rethinking retention.

Correctional Security for Non-Security (Volunteers) was presented February 23rd. This is an 8-hour class designed for volunteers who serve in various roles within the prison environment.

Train the Trainer: Learning Transfer Impact was offered February 25th– March 1st. This training course is for people who are called upon to develop and conduct training. The course offers delivery methods which can be used to enhance the learning experience and includes intensive trainee involvement.

eCADEMY –

During the month of February 2019, eight hundred four (804) ADC employees completed a total of 13,929.25 hours of eCADEMY training. Approximately 18% of ADC employees completed at least one course during that timeframe, averaging 2.90 hours per employee. The Computer Lab is open on a daily basis for employees who wish to complete online training through eCademy.

HEALTH/CORRECTIONAL PROGRAMS

CHAPLAINCY SERVICES

East Arkansas Regional Unit – On February 26th, the Nation of Islam's (NOI) Savior's Day was observed at the unit with forty-seven (47) inmates in attendance.

Maximum Security Unit – On February 17th, "COPS Ministry" visited the unit and held a service that was attended by twenty-two (22) inmates. Life Principles #2 held graduation for nineteen (19) inmates on the 26th. Thirty-two (32) inmates attended a NOI commemoration service for Savior's Day on the 26th, with Wayne Muhammad as the speaker.

McPherson Unit – On February 14th, forty-eight (48) inmates at the unit were baptized, with two free-world volunteers in attendance. One hundred fifty-nine (159) inmates and four (4) volunteers attended a "Gospel Echoes" concert held on the 25th.

North Central Unit – On February 28th, a "Gospel Echoes" concert was held with one hundred ten (110) inmates and nine (9) volunteers in attendance.

Ouachita River Correctional Unit – The "COPS Ministry" visited the unit on February 18th and held a service attended by fifty-two (52) inmates. On the 27th, sixteen (16) inmates graduated from the PAL Program.

Pine Bluff Unit – The 49th Kairos Weekend event was held February 21st-24th with twenty-four (24) inmates and fourteen (14) volunteers participating. Forty (40) inmate workers assisted with the event.

Tucker Unit – On February 23rd, the unit facilitated a quarterly volunteer training that was attended by twelve (12) volunteers.

Varner Unit – One hundred eleven (111) inmates attended a "COPS Ministries" service on February 17th. On the 28th, eighty-five (85) inmates attended the NOI Savior's Day service.

Wrightsville - Hawkins Complex (PTF included) – On

February 12th, representatives from "Gideon's International" visited the unit and distributed bibles. Ten (10) volunteers visited seventeen (17) barracks. "COPS Ministries" visited the unit and held a service attended by sixty-seven (67) inmates and four (4) volunteers. One hundred thirty-eight (138) inmates and three (3) volunteers attended a concert by Lyn McCalister and group on the 17th. "Real Men Talk" held an event attended by one hundred three (103) inmates and five (5) volunteers.

ACCREDITATION

ACA Internal Audits Completed:

2/4–2/8	Pine Bluff Complex Audit Prep
2/11–2/13	TRCC File Review
2/19–2/22	NWAWRC File Review
2/25–2/28	Pine Bluff Complex Audit Prep

Classes Taught:

2/14	Management Level II, Training Academy
------	---------------------------------------

VOLUNTEER SERVICES

Total Number of Volunteer Hours for February 2019:

Unit/Program	Hours
Cummins Unit	12
Delta Unit	25
East Arkansas Regional Unit	15
Hawkins Unit	11
Mississippi County Work Release Center	12
North Central Unit	4
Northwest Arkansas Work Release Center	22.5
Ouachita River Correctional Unit	12
Pine Bluff Complex	10
Varner Unit	51
PAWS	16
Think Legacy	173.5
Religious Services/Chaplaincy	4,696
Total Hours	5,060

MENTAL HEALTH SERVICES

Sex Offender Treatment Programs (RSVP/SOFT):

	Slots	Completed	Removed	Clients
RSVP	278	0	0	278
SOFT	30	0	0	9
Total	308	0	0	287

There are eight hundred twenty-seven (827) males on the waiting list for RSVP and six (6) females on the waiting list for SOFT within five (5) years of their TE date. Of those, thirty-eight (38) inmates are mandated by the Parole Board.

The average time on the waiting list from request is between one (1) and two (2) months for those stipulated.

The total on the waiting list, including those not currently within the identified timeframe, is one thousand four hundred ninety-five (1,495) males and seven (7) females. There is one (1) PREA inmate in the program at this time.

***The waiting list numbers include inmates that are ineligible due to class or housing status.**

Therapeutic Community (TC):

Unit	Slots	Completed	Removed	Clients
Tucker	136*	11	14	134
Wrightsville	50*	1	2	50
McPherson	53*	4	2	50
Total	239	16	18	234

There are five hundred forty-four (544) males and nineteen (19) females on the waiting list within eighteen (18) months of their release date. Of those, six (6) are mandated by the Parole Board.

The average time on the waiting list from request is sixteen (16) days.

The total on the waiting list, including those not currently within the identified timeframe, is nine hundred eighty-seven (987) males and one hundred fourteen (114) females.

***Denotes transitional beds available at this treatment program. The Tucker Therapeutic Community has one hundred thirty-six (136) client slots and seven (7) peer counselor slots.**

Substance Abuse Treatment Program (SATP):

Unit	Slots	Completed	Removed	Clients
Grimes	56*	2	2	53
McPherson	106*	13	8	101
Maximum Security	3	1	0	3
Randall L. Williams	200*	36	11	191
Benton	36*	3	3	34
Wrightsville	150*	14	10	143
Total	551	69	34	525

There are one thousand eight hundred thirty-two (1,832) males and two hundred five (205) females on the waiting list within eighteen (18) months of their release date. Of those, thirty-six (36) are mandated by the Parole Board.

The average time on the waiting list from request is thirteen (13) days.

The total on the waiting list, including those not currently within the identified timeframe, is two thousand seven hundred seventeen (2,717) males and three hundred eleven (311) females.

***Denotes transitional beds available at this treatment program.**

Substance Use Intervention Program: The Substance Use Intervention Program had fifty-eight (58) admissions and fourteen (14) discharges for an end-of-month count of forty-four (44). This is a NEW program, housed at the Varner Unit, for inmates found guilty of a disciplinary violation for either drug use or drug possession.

ORCU Residential Program Unit (RPU): The RPU at Ouachita had three (3) admissions and eight (8) discharges in February for an end-of-month count of one hundred nineteen (119).

McPherson Mental Health Residential Program Unit (RPU): There were seven (7) admissions and nine (9) discharges in February, for an end-of-month count of thirty-seven (37).

Habilitation Program: The Habilitation Program at the Ouachita River Correctional Unit provided treatment services to forty-six (46) inmates during February. There was one (1) admission and one (1) discharge for an end-of-month count of forty-five (45).

Anger Management Treatment: The Anger Management Treatment Program at the Cummins Unit provided treatment services to thirty-two (32) inmates during February. There were sixteen (16) admissions and no discharges for an end-of-month count of thirty-two (32).

MENTAL HEALTH SERVICES, *continued*

Staffing: The following Mental Health Services and SATP positions were vacant in January and February 2019:

Positions	FTE's*	Jan.	Feb.
Psychologists	14	6	6
Social Workers	31	12	12
Advisors	64	10	10
Substance Abuse Program Leaders	35	2	3
Administrative Specialists/Analysts	17	3	4
Substance Abuse Program Coordinators	6	0	0
Psychological Examiners	2	1	0

*FTE refers to authorized Full Time Equivalent positions.

ADDITIONAL MENTAL HEALTH AND MEDICAL INFORMATION**Self-Study Classes:**

Classes	# of Participants	# Completed	Waiting List
Anger Management	194	167	931
Thinking Errors	241	229	1,026
Substance Abuse Education	214	207	447
Communication Skills	253	245	1,011
Domestic Violence	60	60	311
Victims of Domestic Violence	11	11	35
Stress Management	165	164	1,040
Parenting	213	191	570

Suicide: There were seventy-three (73) suicidal threats during February. There were two (2) attempts resulting in zero (0) deaths.

Outpatient: There were two thousand one hundred sixteen (2,116) inmates on the mental health medical log at the beginning of February. Mental Health staff conducted the following contacts during February:

Case Management Contacts	2,141
Requests for Interviews	1,020
Testing	1
Intakes	574
Unit Requests	1,235
Counseling (with Treatment Plans)	0
Pre-Lockup Reviews	508
Routine Restrictive Housing Reviews	764
Restrictive Housing Rounds	19,149
PREA Evaluations	139
Routine Follow-up	182
834 Requests	35

County Mental Health Requests: During February, there were one hundred twenty-eight (128) requests of a mental health nature received. Sixty-four (64) inmates were fast-tracked to ADC.

County Medical Health Requests: During February, there were three hundred eighty-four (384) requests of a medical nature received. Fifteen (15) inmates were fast-tracked to ADC.

Monetary Sanctions: Sanction reimbursements for January were \$28,300.00.

Deaths: There were four (4) inmate deaths during the month of February; one (1) was claimed and three (3) were cremated.

CCS: See attachment for CCS's report regarding outside beds and emergency room visits.

Medical Grievances: In February, there were one hundred fifty-three (153) appeals of medical grievances received and one hundred one (101) appeals were answered; eight (8) of those were found to be with merit and one (1) with merit but resolved.

SEX OFFENDER ASSESSMENT**Assessments Completed:**

Risk Level	February	September 1999 through February 2019
Level 1	0	1,187
Level 2	27	7,472
Level 3	10	6,799
Level 4	0	652
Default 3	0	*
Total	37	16,110
*Default Level 3's are included in the total number of Level 3's to date.		

ACIC Numbers:

The total number of sex offenders registered from September 1999 through February 2019:

Compliant	8,151
Delinquent	995
Confined	3,259
Out-of-State	3,487
Address Unknown	194
Deported	189
Incapacitated	84
Out of USA	7
Total	16,366

Due to a change in Arkansas law, deceased offenders no longer remain on the registry. SOCNA has been notified by ACIC of eleven (11) offenders removed due to death since 1/1/2018.

THINK LEGACY

Unit	Slots	Completed	Removed	Assigned
Cummins	55	3	6	50
Delta Regional	24	0	0	22
East Ark. Regional	50	3	1	47
Ester	107	0	0	63
Grimes	56	9	11	53
Hawkins (Female)	40	1	0	42
McPherson	68	11	0	67
North Central	59	8	1	55
Ouachita River	46	1	0	40
Tucker	55	5	4	47
Varner	49	2	0	49
Wrightsville	48	2	0	50
Total	657	45	23	585

There are one hundred sixty-four (164) males and one hundred twenty-one (121) females on the Think Legacy waiting list, for a total of two hundred eighty-five (285). All Think Legacy applicants are within eighteen (18) months of their TE or discharge date.

The average time on the waiting list is approximately sixty (60) days. There were one hundred seventy-three and one half (173.5) volunteer hours recorded for the month of February.

The Grimes, McPherson, North Central, and Tucker Units all held graduations during February. The Arkansas Securities Department visited several units during the month; including the Wrightsville, Ester, and Delta Units. Dr. Dubs Byers, of the Board of Corrections, spoke at the Delta Unit on the February 11th. Wrightsville hosted a "Back to Basics" Workshop and Attorneys Latonya Austin and Fran Kelly also visited the unit. The Office of Child Support Enforcement spoke to Grimes Unit program participants on the 21st. Also during the month the McPherson Unit hosted the following speakers: Rick Bezet (New Life Church), Gerrie Pemberton (Crissie's House of Recovery), Dana Davin-Ward (The Harbor Home for Women), Kim Strauss (Letters to Children), and Leah Sparks and Quentin Stephens (Goodwill Industries).

PAWS IN PRISON

Currently Enrolled in Training:

Maximum Security Unit	7
Tucker Unit	6
Hawkins Unit	6
Randall L. Williams Unit	4
Ouachita River Unit	7
North Central Unit	9
Total	39

Completed Training:

February 2019	24
YTD 2018	254
Since Inception (January 2011)	1,276
Dogs Currently in Foster: (<i>Graduated but not adopted</i>)	4
Volunteer Hours	16

CONSTRUCTION/MAINTENANCE

PROJECT UPDATES

ALL UNITS

Cameras (NEW): Cameras, and components of camera equipment, have been ordered and installation is underway. Interior installation at the Delta and Varner Units have been completed. Camera upgrades at the Tucker Unit have begun.

CENTRAL OFFICE

Roof Replacement: Rainy weather has slowed down completion of the roof replacement project, which began on December 3, 2018 with a demolition crew working at night and an installation crew during the day.

CUMMINS UNIT

13 & 15 Barracks Door Revisions: Projects in Barracks 13 to change the doors to solid doors and the bullpen at the entrance, have been completed. Estimates to change metal desks in Barracks 13 to concrete are being prepared. New locks for the bullpens have been ordered.

Poultry House: The generators are being tested weekly. A meeting was held with the architect to discuss making changes to the loading ramp for coolers at the chicken houses. While rear-wheel forklifts are able to get up the ramp, so far they have proven to be too large to operate

in the cooler. A request has been made to the Agricultural Division to look into purchasing a second forklift that's the same size as the existing one, but is front-wheel drive.

Precast Recreation Yard: A contract was awarded to WD&D Architects to design precast recreation yards. WD&D is working on plans to submit to DBA.

DELTA UNIT

Integrity Energy Improvements: Integrity is 100% complete with lighting and plumbing upgrades. The compost shed was completed, equipment was installed, wood pellets were delivered, and staff was trained. HVAC upgrades are 99% complete, with testing and balancing to be done in the next two weeks. Mechanical system replacement is nearing completion and boilers should be complete this month.

EAST ARKANSAS REGIONAL UNIT (EARU)

Integrity Energy Improvements: Integrity is 100% complete with lighting and plumbing upgrades, compost equipment installation, and the solar array has been installed and is operational. Wood pellets have been delivered and staff were trained on compost operation. A contract for providing electric service to new solar system was approved. Work on the HVAC upgrades is 90% complete. Boilers are being replaced, and two air handlers in Isolation are scheduled to be completed in mid-March.

Isolation Recreation Yards: The isolation recreation yards have been completed.

Max Precast Recreation Yard: The architect submitted plans for the precast recreation yards to DBA, who issued approval to proceed. The plans were revised to include a walkway for officers. Work with a vendor on pricing for the precast walls is underway. An updated budget estimate for the project has been made, which allows the preparation of bid documents to begin.

ESTER UNIT

Phase 3: The parking lot is in the design phase. DBA has concerns with the parking lot being in the floodway. The existing stream banks will need to be modified so that they do not change flow during floods. Exterior lighting and cameras will be installed following completion of the pavement of the parking lot.

MAXIMUM SECURITY UNIT

Armory: See *Varner Unit "Armory"* information in this section. Plans will be duplicated for the Max.

Precast Recreation Yard: The design for pre-cast recreation yards is currently underway by WD&D Architects.

MCPHERSON UNIT

Expansion of Administration and Visitation Areas: Plans to increase the size of the McPherson Unit's administration and visitation areas (similar to those at the Grimes Unit) were prepared by the architect and have been approved by DBA. Bid documents are being prepared. Construction supervisors will be relocated to Newport as soon as Pine Bluff Unit projects have been completed.

PINE BLUFF UNIT

Barracks 9 Renovation: The construction in Barracks 9 continues. Work on Barracks 9A and 9D has been completed and inmates are being housed there. Currently in Barracks 9B, concrete block walls have been added to the inside of exterior walls to increase security of the walls. Lighting is being replaced and stainless steel is being added to the shower areas for the remainder of Barracks 9. Following the completion of 9B, work will move to 9C.

TUCKER UNIT

Water Treatment: Funding in the amount of \$1,093,848 was received from the Governor's Office, which covers 1/3 of the cost of total renovation of the water plant. Documents for the selection of a design firm are being prepared.

VARNER UNIT

Armory: Plans for the armory at Varner were sent to DBA. DBA followed up with comments, which have been answered. Plans were then sent to the Department of Health and the State Fire Marshal for approval.

Bull Pens: All bull pens for the Varner Unit open barracks have been completed and are ready to be use.

Isolation Recreation Yards: All parts of the isolation recreation yards have been built. Construction has resumed and the pens are being built. The project is about 2/3 completed. Rain has hampered the ability to move the panels to the rec yard.

WRIGHTSVILLE

ACI (Industry) Roof Replacement: The contract for a new metal roof was bid out, awarded and roof replacement is now 100% complete. The replacement of interior and exterior lighting has also been completed.

CONSTRUCTION/MAINTENANCE PERSONNEL UPDATE

The following Construction/Maintenance position(s) were vacant at the end of February 2019:

- 4 Construction Project Specialists (Statewide)
- 1 Corporal

AGENCY HIGHLIGHTS**AGENCY-WIDE:*****Think Legacy Presentation at Arkansas Career Education Center***

On February 28, 2019, Nicole Smart visited the Arkansas Career Education Center (ACE) to present the components and successes of the Think Legacy Reentry Program. Ms. Smart was able to share the Think Legacy Reentry documentary with several county instructors and directors, in addition to thanking them for their continued support and facilitation of the WAGE program which is located in nine facilities across the state.

**GRIMES UNIT:*****Farewell to Antonio Garcia***

On February 15, 2019, Grimes Unit staff hosted a Mexican-themed farewell dinner for retiring Program Coordinator Antonio Garcia (left). Mr. Garcia was gifted with a superhero cape and a plaque, presented on behalf of the staff by Deputy Warden Steven Ricketts, in honor of the fantastic job he has done for the Think Legacy Program at the Grimes Unit!



GRIMES UNIT, *continued:****New Vision Newport***

Lt. David McClusky (left) and Deputy Warden Steven Ricketts of the Grimes Unit were selected to participate in the 16th class of the *New Vision Newport* leadership program. The purpose of *New Vision Newport* is to equip new leaders for Newport and Jackson County to be effective in the community. On February 5, 2019, the two traveled to Little Rock, along with their class, and visited the Arkansas State Capitol, the Electric Cooperatives of Arkansas, and the Mosaic Templars Cultural Center. DW Ricketts and Lt. McClusky will graduate from the program in May. Their involvement will no doubt strengthen the Arkansas Department of Correction's relationship with the community of Newport and Jackson County!

**MAXIMUM SECURITY UNIT:*****Valentine's Day Social***

The Maximum Security Unit held a Valentine's Day social on February 14, 2019. Staff were served cookies and treats as a token of love and appreciation for their hard work and dedication. Those who attended the fun event might even describe it as a SWEET SUCCESS!

**OUACHITA RIVER CORRECTIONAL UNIT:*****Quarterly Training for Religious Volunteers Held***

On February 5, 2019, the ORCU Chaplaincy Department hosted quarterly training for all religious volunteers who will

have contact with the inmate population. Superintendent DeAngelo Earl addressed the group about having effective communication with ORCU staff and the volunteer groups, the goal of the volunteers, and how security and the volunteers will work together to ensure that inmates are allowed the opportunity to worship and participate in religious activities. Senior Chaplain Moore went in depth about the expectations of volunteers and how they will work within the facility.

**VARNER UNIT:*****Regional Maintenance Crew***

Sgt. C. Sherrill supervised the Regional Maintenance Crew as the inmates packed and loaded sandbags to go to Mike Morgan with the Chicot County Emergency Services on February 25, 2019.

**WRIGHTSVILLE-HAWKINS UNIT:*****"Cooking Matters" Graduation***

Participants of the Think Legacy Reentry Program at the Wrightsville-Hawkins Women's Unit graduated from the "Cooking Matters" course on February 28, 2019. Eight women completed the most recent six-week course focusing on nutrition, grocery budgeting, and the safe preparation of meals. The valuable skills learned in this course will be beneficial to the women and their families following their release from incarceration.



2019 INFORMAL GRIEVANCE REPORT

Month	BENTON	HAWK/M	HAWK/F	WRTS	EARU & MX	GRIMES	RLW	MCWR	MCPH	MSU	NCU	PBU	NWA	TU	TRCC	VSMX	VU	CU	ORCU	Ester	DRU	Bowie Cty	TOTAL
JAN	1	25	25	85	362	310	28	0	448	175	118	33	0	139	1	470	72	151	228	24	132	57	2,884
FEB	0	15	27	80	341	284	17	0	267	147	148	30	0	107	0	450	54	149	406	20	96	39	2,677
MAR	0	0	0	0	0	0	0	0	0	0	0	0	0	0	0	0	0	0	0	0	0	0	0
APR	0	0	0	0	0	0	0	0	0	0	0	0	0	0	0	0	0	0	0	0	0	0	0
MAY	0	0	0	0	0	0	0	0	0	0	0	0	0	0	0	0	0	0	0	0	0	0	0
JUN	0	0	0	0	0	0	0	0	0	0	0	0	0	0	0	0	0	0	0	0	0	0	0
JUL	0	0	0	0	0	0	0	0	0	0	0	0	0	0	0	0	0	0	0	0	0	0	0
AUG	0	0	0	0	0	0	0	0	0	0	0	0	0	0	0	0	0	0	0	0	0	0	0
SEPT	0	0	0	0	0	0	0	0	0	0	0	0	0	0	0	0	0	0	0	0	0	0	0
OCT	0	0	0	0	0	0	0	0	0	0	0	0	0	0	0	0	0	0	0	0	0	0	0
NOV	0	0	0	0	0	0	0	0	0	0	0	0	0	0	0	0	0	0	0	0	0	0	0
DEC	0	0	0	0	0	0	0	0	0	0	0	0	0	0	0	0	0	0	0	0	0	0	0
TOTAL	1	40	52	165	703	594	45	0	715	322	266	63	0	246	1	920	126	300	634	44	228	96	5,561

2019 FORMAL GRIEVANCE REPORT

Month	BENTON	HAWK/M	HAWK/F	WRTS	EARU & MX	GRIMES	RLW	MCWR	MCPH	MSU	NCU	PBU	NWA	TU	TRCC	VSMX	VU	CU	ORCU	Ester	DRU	Bowie Cty	TOTAL
JAN	0	14	8	37	335	152	16	0	171	128	70	13	0	117	0	289	55	106	155	12	73	21	1,772
FEB	0	4	5	56	334	134	9	0	104	185	78	15	0	81	0	255	46	115	161	8	57	8	1,655
MAR	0	0	0	0	0	0	0	0	0	0	0	0	0	0	0	0	0	0	0	0	0	0	0
APR	0	0	0	0	0	0	0	0	0	0	0	0	0	0	0	0	0	0	0	0	0	0	0
MAY	0	0	0	0	0	0	0	0	0	0	0	0	0	0	0	0	0	0	0	0	0	0	0
JUN	0	0	0	0	0	0	0	0	0	0	0	0	0	0	0	0	0	0	0	0	0	0	0
JUL	0	0	0	0	0	0	0	0	0	0	0	0	0	0	0	0	0	0	0	0	0	0	0
AUG	0	0	0	0	0	0	0	0	0	0	0	0	0	0	0	0	0	0	0	0	0	0	0
SEPT	0	0	0	0	0	0	0	0	0	0	0	0	0	0	0	0	0	0	0	0	0	0	0
OCT	0	0	0	0	0	0	0	0	0	0	0	0	0	0	0	0	0	0	0	0	0	0	0
NOV	0	0	0	0	0	0	0	0	0	0	0	0	0	0	0	0	0	0	0	0	0	0	0
DEC	0	0	0	0	0	0	0	0	0	0	0	0	0	0	0	0	0	0	0	0	0	0	0
TOTAL	0	18	13	93	669	286	25	0	275	313	148	28	0	198	0	544	101	221	316	20	130	29	3,427

INMATE INSTITUTIONAL GRIEVANCE APPEAL REPORT – FEBRUARY 2019

	Acknowledged	Rejected	Processed W/O Merit	Processed W/ Merit
Benton Unit	0	0	0	0
Benton Work Release	0	0	0	0
Bowie County Texas Correctional Facility	5	1	4	0
Cummins Unit	15	6	29	0
Cummins Modular Unit	0	0	0	0
Delta Regional Unit	12	1	7	0
East Arkansas Regional Unit	5	1	9	0
East Arkansas Regional Max Unit	57	20	95	1
Ester Unit	1	0	2	0
Grimes Unit	29	14	32	0
Maximum Security Unit	20	10	30	0
McPherson Unit	10	18	14	1
McPherson Mental Health Residential Program Unit	1	1	2	0
Mississippi County Work Release Center	0	0	0	0
Northwest Arkansas Work Release Center	0	0	0	0
North Central Unit	6	11	9	0
Ouachita River Correctional Unit	26	10	21	0
ORCU Hospital	0	0	0	0
ORCU New Commitment	1	0	1	0
ORCU Mental Health Residential Program Unit	2	1	2	0
Pine Bluff Unit	0	2	1	0
Pine Bluff Re-Entry	0	0	0	0
Randall L. Williams Correctional Facility	3	4	1	0
Texarkana Regional Correctional Center	0	0	0	0
Tucker Unit	16	4	20	1
Varner Super Max	50	4	116	5
Varner Unit	11	4	16	0
Wrightsville Unit	7	1	6	0
Hawkins Center	0	0	0	0
Hawkins for Males	1	0	3	0
Hawkins SPU	0	0	0	0
Total	278	113	420	8

ADMISSIONS AND RELEASES – FEBRUARY 2019

<u>Admissions</u>	<u>Male</u>	<u>Female</u>	<u>Total</u>
Asian	3	0	3
Black	180	16	196
Hispanic	11	0	11
Native American Indian	1	0	1
White	315	70	385
Other	2	0	2
Unknown	1	0	1
Total	513	86	599

<u>Releases</u>	<u>Male</u>	<u>Female</u>	<u>Total</u>
Asian	2	0	2
Black	214	12	226
Hispanic	13	1	14
Native American Indian	1	0	1
White	391	76	467
Total	621	89	710

ADC INMATE POPULATION GROWTH 2000-2026 - FEBRUARY 2019

Updated 02/01/2019

Mo.	2000	2001	2002	2003	2004	2005	2006	2007	2008	2009	2010	2011	2012	2013	2014	2015	2016	2017	2018	2019
Jan.	11,984	11,908	12,402	13,015	13,105	13,595	13,481	13,839	14,518	14,796	15,334	16,312	15,134	14,815	17,481	18,142	17,785	17,824	18,201	17,958
Feb.	12,169	12,022	12,529	13,054	13,166	13,783	13,633	14,012	14,603	14,883	15,374	16,209	14,990	15,008	17,438	18,082	17,625	17,608	17,998	17,846
March	12,006	12,033	12,299	13,108	13,088	13,418	13,534	13,772	14,580	14,843	15,290	16,095	14,964	14,665	17,395	18,233	17,573	17,666	18,089	
April	12,069	12,167	12,465	13,213	13,323	13,469	13,554	13,851	14,769	14,937	15,570	16,172	15,124	14,850	17,604	18,703	17,815	17,798	18,227	
May	12,109	12,384	12,558	13,463	13,556	13,528	13,711	14,146	14,880	15,146	15,694	16,062	15,132	15,074	17,593	18,693	17,769	17,652	17,945	
June	12,005	12,108	12,439	13,418	13,389	13,251	13,430	13,915	14,700	15,025	15,564	15,554	14,832	14,825	17,340	18,813	17,973	17,963	17,972	
July	12,030	12,190	12,622	13,509	13,528	13,286	13,560	14,082	14,868	15,195	15,807	15,519	14,879	15,379	17,522	18,870	18,130	18,180	18,005	
August	12,087	12,371	12,815	13,565	13,632	13,419	13,646	14,224	15,100	15,385	15,829	15,240	14,675	16,103	17,549	18,806	17,919	18,051	17,751	
September	11,983	12,289	12,774	13,341	13,516	13,237	13,652	14,217	14,850	15,285	16,025	15,172	14,724	16,412	17,605	18,549	18,026	18,179	17,865	
October	12,119	12,348	12,942	13,341	13,584	13,363	13,775	14,349	14,836	15,381	16,311	15,271	14,856	16,993	17,880	18,430	18,127	18,348	17,943	
November	12,094	12,408	13,162	13,408	13,706	13,587	13,913	14,437	15,025	15,340	16,460	15,205	14,625	17,168	17,848	17,981	17,573	17,973	17,666	
December	11,856	12,333	12,845	13,106	13,470	13,338	13,728	14,315	14,716	15,199	16,204	15,062	14,654	17,235	17,874	17,707	17,537	18,078	17,799	
Net Ann. Inc.	29	477	512	261	364	-132	390	587	401	483	1,005	-1,142	-408	2,581	639	-167	-170	541	-279	47
Avg. Mo. Inc.	2	40	43	22	30	-11	33	49	33	40	84	-95	-34	215	53	-14	-14	45	-23	24

Population is total jurisdictional count at end of each month. Population at end of month December 1999 was 11,827.

Average monthly population increase for past fifteen years 2004 - 2018 is 26

Average monthly population increase for past ten years Jan. 2009 - Dec 2018 is 26

Average monthly population increase for past five years 2014 - 2018 is 9

Projected at Growth of 26 per Month

	2008	2009	2010	2011	2012	2013	2014	2015	2016	2017	2018	2019	2020	2021	2022	2023	2024	2025	2026
Mo.	Actual	Actual	Actual	Actual	Actual	Actual	Actual	Actual	Actual	Actual	Actual	Actual/ Proj.	Proj.	Proj.	Proj.	Proj.	Proj.	Proj.	Proj.
January	14,518	14,796	15,334	16,312	15,134	14,815	17,481	18,142	17,785	17,824	18,201	17,958	18,132	18,444	18,756	19,068	19,380	19,692	20,004
February	14,603	14,883	15,374	16,209	14,990	15,008	17,438	18,082	17,625	17,608	17,998	17,846	18,158	18,470	18,782	19,094	19,406	19,718	20,030
March	14,580	14,843	15,290	16,095	14,964	14,665	17,395	18,233	17,573	17,666	18,089	17,872	18,184	18,496	18,808	19,120	19,432	19,744	20,056
April	14,769	14,937	15,570	16,172	15,124	14,850	17,604	18,703	17,815	17,798	18,227	17,898	18,210	18,522	18,834	19,146	19,458	19,770	20,082
May	14,880	15,146	15,694	16,062	15,132	15,074	17,593	18,693	17,769	17,652	17,945	17,924	18,236	18,548	18,860	19,172	19,484	19,796	20,108
June	14,700	15,025	15,564	15,554	14,832	14,825	17,340	18,813	17,973	17,963	17,972	17,950	18,262	18,574	18,886	19,198	19,510	19,822	20,134
July	14,868	15,195	15,807	15,519	14,879	15,379	17,522	18,870	18,130	18,180	18,005	17,976	18,288	18,600	18,912	19,224	19,536	19,848	20,160
August	15,100	15,385	15,829	15,240	14,675	16,103	17,549	18,806	17,919	18,051	17,751	18,002	18,314	18,626	18,938	19,250	19,562	19,874	20,186
September	14,850	15,285	16,025	15,172	14,724	16,412	17,605	18,549	18,026	18,179	17,865	18,028	18,340	18,652	18,964	19,276	19,588	19,900	20,212
October	14,836	15,381	16,311	15,271	14,856	16,993	17,880	18,430	18,127	18,348	17,943	18,054	18,366	18,678	18,990	19,302	19,614	19,926	20,238
November	15,025	15,340	16,460	15,205	14,625	17,168	17,848	17,981	17,573	17,973	17,666	18,080	18,392	18,704	19,016	19,328	19,640	19,952	20,264
December	14,716	15,199	16,204	15,062	14,654	17,235	17,874	17,707	17,537	18,078	17,799	18,106	18,418	18,730	19,042	19,354	19,666	19,978	20,290
Net Ann. Inc.	401	483	1,005	-1,142	-408	2,581	639	-167	-170	541	-279	307	312	312	312	312	312	312	312
Ave. Mo. Inc.	33	40	84	-95	-34	215	53	-14	-14	45	-23	26	26	26	26	26	26	26	26

MONTHLY POPULATION AVERAGES - FEBRUARY 2019

	2/1	2/4	2/5	2/6	2/7	2/8	2/11	2/12	2/13	2/14	2/15	2/18	2/19	2/20	2/21	2/22	2/25	2/26	2/27	2/28	
Unit/Center																					AVG
Benton	354	349	342	342	343	341	341	340	344	344	346	344	344	344	342	345	343	352	330	331	343
Cummins	1,656	1,653	1,653	1,650	1,648	1,653	1,651	1,656	1,655	1,651	1,653	1,652	1,652	1,663	1,661	1,660	1,660	1,666	1,666	1,667	1,656
Delta	623	615	623	623	628	624	622	627	624	621	625	616	616	623	618	621	621	620	619	620	621
E AR Reg	1,677	1,674	1,686	1,684	1,683	1,678	1,679	1,680	1,684	1,681	1,679	1,679	1,679	1,683	1,687	1,689	1,687	1,680	1,670	1,661	1,680
Ester	584	584	582	588	588	587	589	588	583	579	584	588	587	585	584	581	572	579	573	568	583
Grimes	1,069	1,075	1,074	1,074	1,073	1,068	1,074	1,074	1,071	1,073	1,067	1,072	1,072	1,062	1,072	1,069	1,065	1,065	1,072	1,063	1,070
Max Sec	557	556	554	557	557	558	557	557	557	556	556	556	556	557	556	556	556	555	555	555	556
McPherson	1,003	1,006	1,004	999	998	1,004	1,008	1,011	1,005	1,003	1,001	1,008	1,008	1,010	1,008	1,011	1,011	1,010	984	986	1,004
MCWRC	133	133	133	133	136	136	136	136	136	136	135	135	135	135	133	131	132	132	125	125	133
N Central	829	827	825	823	835	830	828	836	834	843	842	845	845	841	837	834	833	833	824	816	833
NWAWRC	100	100	100	100	100	100	100	101	101	102	102	100	100	100	100	100	100	100	89	85	99
Ouachita River	1,836	1,841	1,841	1,835	1,836	1,832	1,839	1,834	1,837	1,844	1,843	1,844	1,844	1,832	1,823	1,842	1,843	1,835	1,798	1,786	1,833
Randall L Williams	556	552	550	552	555	555	549	552	548	557	557	565	565	564	560	558	559	559	551	546	556
Pine Bluff	482	491	492	489	490	488	489	490	485	488	487	486	487	488	492	487	481	482	469	466	485
PB Reentry	54	48	48	48	48	50	50	50	54	54	54	53	53	53	51	50	54	54	48	54	51
TRCC	127	125	125	125	125	125	125	125	127	127	125	124	124	124	124	127	128	128	121	121	125
Tucker	998	1,003	1,002	998	997	995	993	1,002	998	998	1,003	1,001	1,001	1,003	1,002	999	996	992	990	990	998
Varner	1,719	1,721	1,728	1,726	1,724	1,726	1,714	1,711	1,721	1,725	1,721	1,721	1,721	1,713	1,711	1,720	1,718	1,714	1,713	1,717	1,719
Wrightsville	1,306	1,305	1,304	1,309	1,304	1,301	1,308	1,298	1,310	1,307	1,309	1,311	1,311	1,310	1,315	1,312	1,312	1,312	1,304	1,299	1,307
Total ADC	15,663	15,658	15,666	15,655	15,668	15,651	15,652	15,668	15,674	15,689	15,689	15,700	15,700	15,690	15,676	15,692	15,671	15,668	15,501	15,456	15,654
ALETA	18	18	18	18	18	18	18	18	18	18	18	18	18	18	18	18	18	18	18	18	18
Ar State Police	60	60	60	60	62	62	62	62	62	64	64	64	64	64	64	64	64	64	64	64	63
Co Jail / M	1,466	1,475	1,475	1,487	1,475	1,513	1,507	1,513	1,526	1,535	1,545	1,547	1,547	1,543	1,552	1,565	1,593	1,611	1,571	1,538	1,529
Co Jail / F	79	80	88	87	89	85	84	82	82	92	96	98	98	104	106	110	113	117	103	87	94
Total Co Jail BK	1,545	1,555	1,563	1,574	1,564	1,598	1,591	1,595	1,608	1,627	1,641	1,645	1,645	1,647	1,658	1,675	1,706	1,728	1,674	1,625	1,623
Bowie Co., TX	335	335	335	336	336	336	336	336	336	336	334	333	333	335	333	333	333	332	332	333	334
309/M	250	250	250	251	251	251	251	251	252	251	252	252	252	252	252	252	252	251	250	251	251
309/F	74	76	76	76	76	76	76	76	75	75	75	76	76	75	75	75	75	76	76	76	76
Total Act 309	324	326	326	327	327	327	327	327	327	326	327	328	328	327	327	327	327	327	326	327	327
Total Non ADC	2,282	2,294	2,302	2,315	2,307	2,341	2,334	2,338	2,351	2,371	2,384	2,388	2,388	2,391	2,400	2,417	2,448	2,469	2,414	2,367	2,365
Total	17,945	17,952	17,968	17,970	17,975	17,992	17,986	18,006	18,025	18,060	18,073	18,088	18,088	18,081	18,076	18,109	18,119	18,137	17,915	17,823	18,019

FISCAL YEAR 2019 COUNTY JAIL BACKUP - FEBRUARY 2019

DAY		Jul-18		Aug-18		Sep-18		Oct-18		Nov-18		Dec-18		Jan-19		Feb-19
1	*	1,575		1,618	*	1,646		1,531		1,634	*	1,578		1,461		1,545
2		1,578		1,624	*	1,646		1,531		1,659	*	1,578		1,461	*	1,545
3		1,594		1,631		1,613		1,520	*	1,659		1,538		1,452	*	1,545
4		1,577	*	1,631		1,613		1,537	*	1,659		1,532		1,430		1,555
5		1,577	*	1,631		1,583		1,535		1,646		1,521	*	1,430		1,563
6		1,548		1,649		1,567	*	1,535		1,654		1,519	*	1,430		1,574
7	*	1,548		1,654		1,552	*	1,535		1,644		1,532		1,431		1,564
8	*	1,548		1,652	*	1,552		1,535		1,633	*	1,532		1,427		1,598
9		1,547		1,642	*	1,552		1,527		1,602	*	1,532		1,419	*	1,598
10		1,532		1,665		1,517		1,524	*	1,602		1,509		1,400	*	1,598
11		1,571	*	1,665		1,508		1,557	*	1,602		1,505		1,401		1,591
12		1,584	*	1,665		1,501		1,578		1,600		1,513	*	1,401		1,595
13		1,609		1,670		1,503	*	1,578		1,600		1,496	*	1,401		1,608
14	*	1,609		1,671		1,514	*	1,578		1,618		1,493		1,402		1,627
15	*	1,609		1,660	*	1,514		1,574		1,626	*	1,493		1,404		1,641
16		1,598		1,676	*	1,514		1,571		1,633	*	1,493		1,425	*	1,641
17		1,589		1,681		1,505		1,573	*	1,633		1,472		1,434	*	1,641
18		1,569	*	1,681		1,496		1,583	*	1,633		1,458		1,459		1,645
19		1,563	*	1,681		1,498		1,606		1,633		1,484	*	1,459		1,645
20		1,559		1,690		1,511	*	1,606		1,620		1,477	*	1,459		1,647
21	*	1,559		1,683		1,494	*	1,606		1,624		1,463		1,476		1,658
22	*	1,559		1,677	*	1,494		1,606		1,657	*	1,463		1,476		1,675
23		1,553		1,685	*	1,494		1,599		1,657	*	1,463		1,479	*	1,675
24		1,560		1,701		1,506		1,619	*	1,657		1,452		1,509	*	1,675
25		1,552	*	1,701		1,524		1,612	*	1,657		1,452		1,513		1,706
26		1,553	*	1,701		1,542		1,634		1,656		1,452	*	1,513		1,728
27		1,597		1,700		1,527	*	1,634		1,650		1,449	*	1,513		1,674
28	*	1,597		1,679		1,532	*	1,634		1,609		1,464		1,528		1,625
29	*	1,597		1,669	*	1,532		1,602		1,591	*	1,464		1,515		
30		1,623		1,657	*	1,532		1,595		1,578	*	1,464		1,535		
31		1,629		1,646				1,621				1,473		1,540		
Avg Daily Backup		1,576		1,666		1,536		1,577		1,631		1,494		1,458		1,621

Notes: Totals do not include 309 Contracts in County Jails (maximum of 336)

Fiscal Year Average as of February 28, 2019 - 1,570

Short-Term Revocation Program Fiscal Year Average of February 28, 2019 - 602

STTG UNIT COUNTS –FEBRUARY 2019

Unit	Beginning Total	Confirmed	Suspected	In	Out	Paroled	Removed	Ending Total	Total Unit Population	Unit % of STTG's
Benton	80	1	0	12	2	5	0	86	334	25.75%
Cummins	502	0	0	29	7	8	0	516	1,666	30.97%
Delta	168	0	0	14	8	8	0	166	617	26.90%
EARU	592	0	0	20	8	13	0	591	1,660	35.60%
Grimes	366	0	0	35	23	23	0	355	1,059	33.52%
Hawkins	51	0	0	3	2	6	0	46	454	10.13%
Max	254	0	0	12	9	2	0	255	554	46.03%
Mcperson	33	0	5	1	0	2	0	35	987	3.55%
MCWR	42	0	0	4	2	5	0	39	125	31.20%
NCU	214	0	0	20	23	0	0	211	826	25.54%
NWAWR	13	0	0	4	1	2	0	14	96	14.58%
ORCU	406	0	0	19	34	16	0	375	1,603	23.39%
ORCU Intake	73	135	0	0	147	0	0	61	205	29.76%
PB/Ester	237	0	0	43	39	18	0	223	1,093	20.40%
RLW	152	0	0	39	19	0	0	172	552	31.16%
TWR	33	0	0	11	8	0	0	36	124	29.03%
Tucker	292	0	0	33	22	0	0	293	986	29.72%
Varner	697	0	0	82	71	25	0	683	1,722	39.66%
Wrightsville	241	1	0	27	15	16	0	238	848	28.07%
Total	4,446	137	5	408	440	149	0	4,395	15,511	28.33%

ORCU Intake brought in 135 new STTG members into ADC last Month.

STTG DISCIPLINARY REPORT – FEBRUARY 2019

Unit	STTG Incidents	STTG Suspected Incidents	Total Unit Disciplinary	Disciplinary Involving STTG	Percentage
Benton	0	0	21	5	23.81%
Cummins	1	2	264	119	45.08%
Delta	0	0	232	40	17.24%
EARU	0	0	321	195	60.75%
Grimes	1	0	117	49	41.88%
Hawkins	0	0	16	0	0.00%
Max	1	5	82	60	73.17%
Mcpherson	0	0	198	0	0.00%
MCWR	0	0	5	2	40.00%
NCU	4	3	137	56	40.88%
NWAWR	0	0	10	2	20.00%
ORCU	0	0	150	17	11.33%
ORCU Intake	0	0	17	9	52.94%
PB/Ester	0	0	70	19	27.14%
RLW	0	0	28	10	35.71%
TWR	0	0	2	0	0.00%
Tucker	1	1	85	38	44.71%
Varner	0	0	399	181	45.36%
Wrightsville	0	1	66	24	36.36%
Total	8	12	2,220	826	37.21%

STTG COUNTS BY STTG SET – FEBRUARY 2019

STTG Set	Benton	Cummins	Delta	EARU	Grimes	Hawkins	Max	Mcperson	MCWR	NCU	NWAWR	ORCU	Intake	PB	RLW	TWR	Tucker	Varner	Wrightsville	Total
Asian	2	0	1	1	2	0	0	0	1	0	0	0	0	3	0	0	1	0	1	12
Bloods	11	121	22	102	64	4	60	4	7	40	4	80	8	33	24	5	61	138	44	832
Crips	11	65	20	64	40	1	34	4	5	19	3	49	9	27	19	5	33	105	18	531
Folk	6	38	9	57	30	15	33	9	2	14	3	19	2	13	6	1	20	75	19	371
GD	11	127	48	132	76	0	44	0	7	27	0	77	12	49	35	10	74	134	56	919
Mexican	5	14	5	20	14	2	3	2	1	6	1	10	2	10	3	0	9	24	4	135
Motorcycle	0	2	1	1	1	1	3	1	0	1	0	1	1	3	1	1	5	1	0	24
Other	3	13	4	9	11	2	6	0	0	6	0	18	4	10	6	0	11	13	8	124
People	4	19	5	18	16	1	14	4	0	11	0	13	3	15	10	0	3	26	6	168
Unknown	0	3	0	8	9	0	2	0	0	5	0	12	2	0	4	0	3	6	7	61
W/S	22	26	29	52	40	20	10	11	5	39	3	39	10	30	21	7	33	44	24	465
AB	0	5	4	12	2	0	1	0	4	5	0	4	0	4	2	1	7	8	5	64
AC	1	9	3	13	9	0	12	0	3	6	0	8	2	6	4	2	4	23	5	110
NAE	4	30	5	40	15	0	16	0	1	5	0	26	4	10	19	2	11	28	17	233
WAR	6	44	10	62	26	0	17	0	3	27	0	19	2	10	18	2	18	58	24	346
Total	86	516	166	591	355	46	255	35	39	211	14	375	61	223	172	36	293	683	238	4,395

Key:

GD = Gangster Disciples

W/S = White Supremacist

NAE = New Aryan Empire

WAR = White Aryan Resistance

AC = Aryan Circle

AB = Aryan Brotherhood

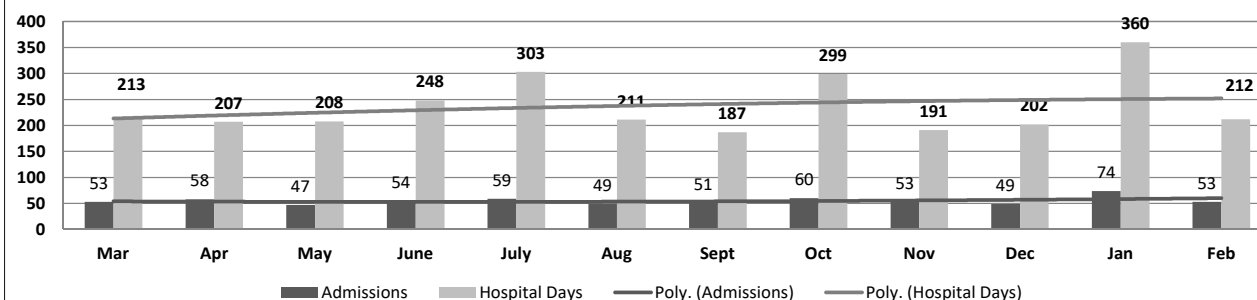
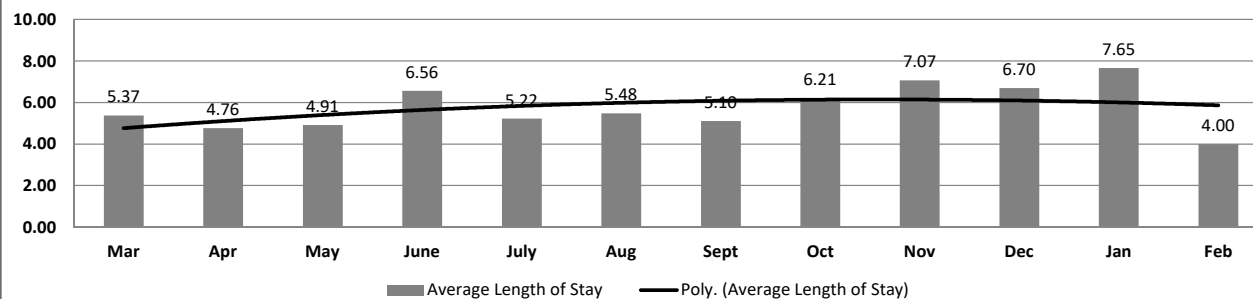
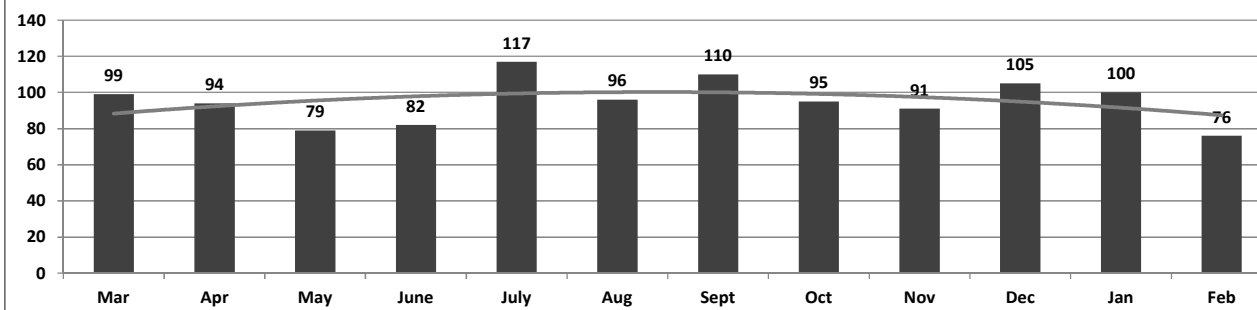
ADC INPATIENT AND EMERGENCY ROOM UTILIZATION

ADC Inpatient Statistics Past 12 Months

	2018												2019		Average
	Mar	Apr	May	June	July	Aug	Sept	Oct	Nov	Dec	Jan	Feb			
Admissions	53	58	47	54	59	49	51	60	53	49	74	53			55.0
Hospital Days	213	207	208	248	303	211	187	299	191	202	360	212			236.8
Average Length of Stay	5.37	4.76	4.91	6.56	5.22	5.48	5.10	6.21	7.07	6.70	7.65	4.00			4.30

ADC ER Visits Past 12 Months

	2018												2019		Average
	Mar	Apr	May	June	July	Aug	Sept	Oct	Nov	Dec	Jan	Feb			
Emergency Room Visits	99	94	79	82	117	96	110	95	91	105	100	76			95.3

ADC Inpatient Utilization
Past 12 MonthsADC Inpatient Average Length of Stay
Past 12 MonthsADC Emergency Room Visits
Past 12 Months

MEDICAL GRIEVANCE BOARD REPORT – FEBRUARY 2019

Unit	Acknowledged/ Received	Rejected	Reviewed & Signed by Dep Director	With Merit	With Merit, but Resolved	% With Merit	Without Merit
Benton	0	0	0	0	0	0%	0
Bowie Co.	1	0	1	0	0	0%	1
CMU	0	0	0	0	0	0%	0
Cummins	19	2	5	0	0	0%	5
Delta	2	0	0	0	0	0%	0
EARU	7	1	4	0	0	0%	4
EARU Max	10	3	6	1	0	17%	5
Ester	0	0	0	0	0	0%	0
Grimes	9	2	5	0	0	0%	5
Hawkins	1	0	0	0	0	0%	0
McPherson	3	1	4	1	0	25%	3
MCWRC	0	0	0	0	0	0%	0
MSU	12	0	13	3	0	23%	10
North Central	12	0	3	0	0	0%	3
NWAWRC	0	0	0	0	0	0%	0
Ouachita	20	2	12	2	0	17%	10
Pine Bluff	3	0	1	0	0	0%	1
Randall L. Williams	1	0	1	1	0	100%	0
SNN	0	0	0	0	0	0%	0
TRCC	0	0	0	0	0	0%	0
Tucker	2	0	6	0	1	17%	5
Varner	18	1	11	0	0	0%	11
Varner Super Max	26	6	20	0	0	0%	20
WRU	3	1	0	0	0	0%	0
WHM	4	0	9	0	0	0%	9
WWR	0	0	0	0	0	0%	0
TOTAL	153	19	101	8	1	9%	92

CHAPLAINCY

Month: February Year: 2019	CUMMINS	DELTA REGIONAL	EAST ARKANSAS	EAST ARKANSAS MAX	ESTER	GRIMES	HAWKINS	MAXIMUM	MCPHERSON	NORTH CENTRAL	OUACHITA RIVER	PINE BLUFF	RANDALL L. WILLIAMS	TUCKER	VARNER	VARNER MAX	WRIGHTSVILLE	TOTAL
Services Chaplains Oversaw																		
Christian																		
Population	5	10	3	0	4	10	1	4	4	12	4	3	5	8	12	0	5	90
Segregation	0	0	0	0	0	0	0	0	0	0	12	0	0	0	0	0	0	12
Muslim																		
Population	4	3	1	0	2	4	0	1	4	0	4	0	0	0	5	0	2	30
Segregation	0	0	0	0	0	0	0	0	0	0	0	0	0	0	0	0	0	0
																		132
Volunteers in Charge																		
Protestant	10	10	31	0	17	1	11	24	28	0	4	6	8	22	12	4	17	205
Catholic	2	0	3	0	1	2	8	1	2	4	3	1	0	1	2	2	4	36
Muslim	0	0	4	0	0	0	0	1	0	0	6	0	0	2	0	0	4	17
Other	1	0	8	0	0	0	2	0	4	0	16	0	0	0	4	0	0	35
Baptism	5	3	21	0	0	0	0	0	48	6	0	0	0	0	4	0	5	92
Marriages																		
	1	0	0	0	0	0	0	0	0	0	0	0	0	1	0	0	1	3
Distributed by Chaplains																		
Greeting Cards	20	6	0	0	126	110	250	47	800	90	30	168	12	50	30	98	0	1,837
Bibles, Quran, Torah, Etc.	22	25	24	14	45	32	8	8	53	40	250	4	6	3	9	16	4	563
Study Course	0	4	3	6	15	0	0	60	32	0	50	0	3	0	5	0	0	178
Writing Supplies	0	0	0	0	27	29	200	22	6	0	320	0	0	0	0	0	0	604
Literature	1,142	625	637	452	0	0	300	350	425	360	200	130	0	3	50	143	495	5,312
Chaplain's Visits																		
Barracks	34	60	8	0	22	48	10	62	60	53	147	105	44	158	133	0	14	958
Approximate Hours Spent in Barracks	21	11	5	0	60	28	5	92	25	13	36	10	7	39	37	5	28	422
Inmate Office visits	21	81	98	0	81	53	90	28	35	34	41	8	149	200	109	0	18	1,046
Other Office visits	11	15	7	0	8	23	12	4	21	10	62	0	17	44	30	15	6	285
Hospital	0	0	0	0	0	0	0	1	3	0	25	0	0	0	0	0	0	29
Infirmary/Sick Call	4	3	5	0	4	26	4	5	8	4	24	4	4	1	7	0	3	106
Restrictive/Punitive Housing	3	3	0	12	0	10	0	35	12	3	2	4	56	4	0	15	3	162
PC - DRU	0	3	0	0	0	0	0	0	0	0	0	0	0	0	0	0	0	3
Visitation Days	0	2	0	0	1	0	0	1	0	0	2	0	0	0	0	0	0	6
Volunteer Visits																		
RCV	0	3	14	0	0	0	17	0	37	0	45	0	11	1	1	0	25	154
OCV	12	21	41	0	30	0	21	49	27	21	3	68	0	45	10	0	25	373
Spiritual Advisor	2	0	0	0	0	0	0	0	1	0	0	0	0	0	0	0	1	4
CRA	24	8	96	8	20	34	106	116	49	82	125	14	13	126	41	9	38	909
Religious Volunteer Hours																		
Volunteer Hours	29	92	348	18	140	106	219	359	201	354	518	480	53	457	176	20	84	3,654
Denominational/Volunteer Chaplain Hours	65	3	6	0	160	6	76	98	100	103	41	23	73	209	19	2	58	1,042
																		4,696
Other Activities of Chaplain																		
Counseled Employees	1	8	15	0	6	0	4	4	31	3	122	0	9	4	17	7	4	235
Orientation Sessions	4	2	5	0	0	0	0	0	1	2	0	0	0	0	0	0	0	14
Free World Devotions	0	1	2	0	2	16	0	0	2	0	2	0	0	0	12	0	0	37
Spoke in Churches	7	0	5	0	5	20	0	0	2	0	5	0	0	4	12	0	0	60
Crisis Intervention Sessions	8	8	5	0	1	0	4	2	33	4	45	7	3	11	7	5	6	149
Marriage Counseling	1	0	0	0	0	0	0	1	3	0	12	0	0	0	1	0	0	18
Denominational Meeting	1	0	0	0	4	1	1	1	0	0	1	0	0	0	0	0	0	9
Chaplain's Meeting	0	1	1	0	1	1	1	0	1	1	1	1	1	1	9	0	1	21
Volunteer Training Session	0	1	0	0	0	0	1	0	0	0	1	0	0	1	0	0	0	4
Chaplain Transfers																		
	0	0	0	0	0	0	0	0	0	0	0	0	0	0	0	0	0	0
Chaplain Promotions																		
	0	0	0	0	0	0	0	0	0	0	0	0	0	0	0	0	0	0
PAL PROGRAM																		
Enrolled at start of month	45	24	50	0	22	49	33	12	56	13	37	0	31	62	50	0	31	515
Enrolled during the month	7	3	4	0	5	7	2	6	17	9	5	0	0	10	10	0	0	85
Removed From PAL Program																		
# Paroled	0	0	0	0	0	2	0	1	6	0	5	0	1	3	2	0	0	20
# Completed	1	0	3	0	0	0	1	0	1	2	4	0	0	5	2	0	0	19
# Withdrew	0	3	0	0	0	0	0	0	5	0	1	0	0	2	3	0	1	15
# Removed	2	3	0	0	0	4	0	0	3	0	1	0	2	4	1	0	5	25
# Transferred	2	0	1	0	0	1	0	0	2	2	1	0	0	0	1	0	0	10
Total Removed from PAL Program	5	6	4	0	0	7	1	1	17	4	12	0	3	14	9	0	6	89
Total Enrolled at the End of the Month	47	21	50	0	27	49	34	17	56	18	30	0	28	58	51	0	25	511
Volunteers in PAL																		
	13	2	11	0	6	32	17	8	33	5	6	0	3	5	3	0	3	147
Special Events:																		
	0	0	1	0	0	0	0	3	2	1	2	1	0	1	2	0	4	17

MONTHLY PURCHASING REPORT – FEBRUARY 2019

<u>PURCHASE ORDERS OVER \$10,000.00</u>					
<u>VENDOR</u>	<u>DESCRIPTION</u>	<u>LOCATION</u>	<u>PO#</u>	<u>PURCHASE AMOUNT</u>	<u>FUND</u>
Cap Fleet Upfitters LLC	Emergency Equipment for Vehicles	Emergency Prep/Radio Shop	4501858497	\$10,322.30	Telephone Funds
Dell Marketing LP	Computers and Monitors	Admin East/Information Services	4501858727	\$99,608.25	Telephone Funds
William R Hill & Co, Inc Doug Waldmann	Food Purchases	Central Warehouse	4501858946	\$451,910.22	Operational Budget
Sysco Food Services of Arkansas Inc	Food Purchases	Central Warehouse	4501858875	\$250,689.80	Operational Budget
Tommy Huntley, Huntley Metal Sales	Covered Walkway for PB Unit	Construction/Maintenance	4501858942	\$12,322.20	Operational Budget
Razor Chemical Inc	Janitorial Supplies	Delta/Janitorial Factory	4501858608	\$10,193.70	Operational Industry Budget
Sentry Security Fasteners Inc	Hardware for Locks & Doors	Randall L. Williams	4501858048	\$16,259.54	Operational Budget
Bayer Corp	Lice Shampoo	Central Warehouse	4501858711	\$15,549.60	Operational Budget
Bob Barker Company Inc	Clothing	Ouachita	4501859311	\$27,189.20	Operational Budget
Mid States Services Inc	Toilet Paper	Wrightsville/Warehouse	4501859522	\$20,966.40	Operational Industry Budget
Chestnut Ridge Foam Inc	Mattress Inserts	Tucker/Industry	4501859004	\$10,876.00	Operational Industry Budget
Cruse Uniforms and Equipment Inc	Ammunition	Wrightsville	4501859015	\$18,506.13	Operational Budget
Mid South Sales Inc	Fuel-Unleaded & Diesel	Wrightsville	4501858701	\$16,220.98	Operational Budget
Brown Brothers Produce Company	Cost of Pullet Vaccinations	Cummins/Farm	4501860538	\$20,593.65	Operational Farm Budget
Galls LLC	Uniform Shirts	Training Academy	4501860284	\$10,728.12	Operational Budget
Lowes Home Ctr Inc	Building Supplies	Tucker/Maintenance	4501860620	\$10,639.10	Operational Budget
West Memphis Paper/Housekeeping Supply	Janitorial Supplies	Central Warehouse	4501861131	\$15,749.06	Operational Budget
Phoenix Trading Inc Americare Products	Disposable Razors	Central Warehouse	4501861137	\$13,196.70	Operational Budget
Printing Papers Inc	Paper	Central Warehouse	4501861141	\$67,359.60	Operational Budget
US Foods Inc	Food Purchases	Central Warehouse	4501861149	\$112,894.08	Operational Budget
Arkansas Correctional Industries	Janitorial Supplies	Central Warehouse	4501861909	\$178,197.03	Operational Budget
Kerr Paper & Supply	Paper Bags & Food Film Wrap	Central Warehouse	4501861084	\$14,148.20	Operational Budget
Thomas Petroleum Inc	Fuel-Diesel	EARU/Farm	4501860497	\$15,482.96	Operational Farm Budget
JWC Environmental	Kitchen-Muffin Monster Part	Varner/Maintenance	4501860019	\$12,091.89	Operational Budget
Dell Marketing LP	Laptops & Adapters	Admin East/Information Services	4501860741	\$30,798.57	Operational Budget
Barnes Paper Co	Egg Cases	Cummins/Farm	4501862050	\$10,790.98	Operational Farm Budget
National Food Group	Food Purchases	Central Warehouse	4501862634	\$30,640.00	Operational Budget
Robbins Sales Company Inc	Food Purchases	Central Warehouse	4501862775	\$71,552.32	Operational Budget
Sysco Food Services of Arkansas Inc	Food Purchases	Central Warehouse	4501862632	\$23,959.80	Operational Budget
Winnelson North Little Rock	Plumbing Repair Parts	Tucker/Maintenance	4501862650	\$15,308.51	Operational Budget
National Food Group	Textured Vegetable Soy Protein	Cummins/Farm Cold Storage Facility	4501857896	\$26,128.08	Operational Farm Budget
Acadian Wood Products Inc	Red Oak Lumber	Wrightsville/Industry-Furniture	4501862509	\$21,400.00	Operational Industry Budget
William R Hill & Co, Inc Doug Waldmann	Food Purchases	Central Warehouse	4501863038	\$191,069.04	Operational Budget
Sysco Food Services of Arkansas Inc	Food Purchases	Central Warehouse	4501863041	\$392,850.00	Operational Budget
Phoenix Trading Inc Americare Products	Deodorant Soap	Central Warehouse	4501863039	\$18,579.00	Operational Budget
Mid States Services Inc	Toilet Paper	Wrightsville/Warehouse	4501863244	\$20,966.40	Operational Industry Budget
Shamrock Meats Inc	Ground Beef	Cummins/Farm Cold Storage Facility	4501863319	\$107,625.00	Operational Farm Budget
		Total for Purchases over \$10,000		\$2,393,362.41	
<u>FIRM CONTRACTS OVER \$25,000.00</u>					
<u>VENDOR</u>	<u>DESCRIPTION</u>	<u>UNIT</u>	<u>Contract # P.O#</u>	<u>PURCHASE AMOUNT</u>	<u>FUND</u>
		Total for Contracts		\$0.00	
<u>EMERGENCY PURCHASE ORDERS OVER \$25,000.00</u>					
		Total EM Purchases		\$0.00	
Total Purchases				\$2,393,362.41	

PERSONNEL REPORT – FEBRUARY 2019

UNIT	AUTHORIZED	FILLED	VACANT	% VACANT	HIRED	VOLUNTARY TERMINATION	INVOLUNTARY TERMINATION	RETIREMENT
BENTON (CR05)	77	71	6	7.79%	0	2	0	0
CENTRAL OFFICE (CR01, CR02, CR08 & CR22)	274	249	25	9.12%	4	0	0	0
509 CHAPL ADMIN	26	26	0	0.00%	0	0	0	0
CONSTRUCTION (CR04)	59	53	6	10.17%	1	0	0	0
CUMMINS (CR09)	427	389	38	8.90%	2	1	2	1
DELTA (CR10)	183	177	6	3.28%	2	3	2	0
EAST ARKANSAS (CR12)	366	319	47	12.84%	7	6	3	0
ESTER (CR11)	156	145	11	7.05%	3	1	2	1
FARM (CR29)	60	51	9	15.00%	1	0	0	0
GRIMES (CR27)	244	229	15	6.15%	6	3	1	1
HAWKINS (CR06)	76	75	1	1.32%	1	1	0	0
INDUSTRY (CR07)	52	40	12	23.08%	0	0	0	0
MAXIMUM SECURITY (CR14)	230	182	48	20.87%	12	4	3	0
MCPHERSON (CR28)	231	212	19	8.23%	5	8	1	1
MENTAL HEALTH	182	147	35	19.23%	3	2	0	0
MISS COUNTY (CR15)	38	32	6	15.79%	0	1	0	0
NORTH CENTRAL (CR16)	197	192	5	2.54%	5	1	0	1
NORTHWEST ARK (CR17)	30	28	2	6.67%	0	1	1	0
OUACHITA RIVER (CR30)	466	436	30	6.44%	20	10	2	0
PINE BLUFF (CR20)	169	160	9	5.33%	3	0	2	0
RANDALL L. WILLIAMS (CR13)	145	140	5	3.45%	5	3	1	0
TEXARKANA (CR21)	31	28	3	9.68%	1	1	0	0
TRANSPORTATION (CR32)	102	100	2	1.96%	0	0	0	0
TUCKER (CR23)	199	166	33	16.58%	1	7	6	0
VARNER (CR24)	358	287	71	19.83%	9	5	5	0
WRIGHTSVILLE (CR25)	207	184	23	11.11%	3	3	2	0
TOTAL	4,585*	4,118*	467	10.19%	94	63	33	5

Term/Hire report run 3/1/19 - PSR created 3/1/19 for 2/28/19

*These numbers reflect both security and non-security employees.

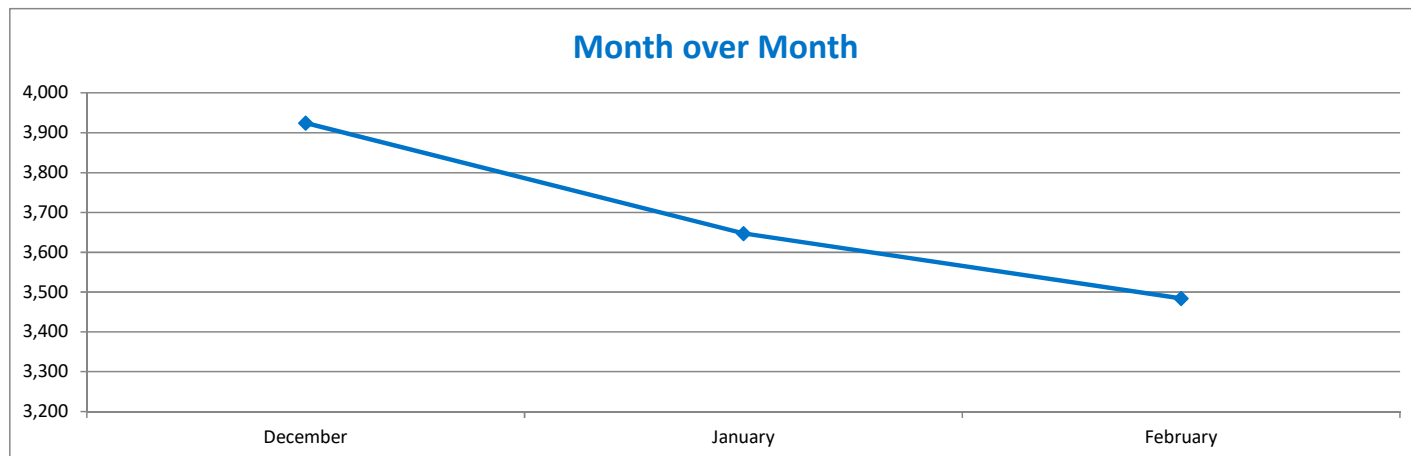
SECURUS VIDEO VISITATION ACTIVITY TRACKER - FEBRUARY 2019

Activity Tracker

Total Average Daily Population: 15,586

Total Visits by Month	December	January	February
Total (Includes SuperMax)	3,924	3,647	3,484
Target Objective	15,587	15,587	15,588

Anywhere Visitation Performance:



Completed Visits

Site	Current Month	Previous Month
Benton	142	187
Cummins	201	248
Delta Regional	177	211
East Arkansas Regional	249	272
Ester	191	187
Grimes	364	380
J Aaron Hawkins Sr.	146	182
Tucker Max	100	87
Mcpherson	261	296
Mississippi County WRC	17	22
North Central	202	219
NW Arkansas WRC	6	3
Ouachita River	356	343
Pine Bluff Complex	134	140
Randall L Williams	202	211
State Police Barracks	26	31
Texarkana Regional	60	53
Tucker Unit	177	136
Varner	202	189
Wrightsville Unit	266	243
Pine Bluff Re-Entry	5	7
Total:	3,484	3,647

Missed by Inmate

Site	Current Month	Previous Month
Benton	4	7
Cummins	11	9
Delta Regional	1	3
East Arkansas Regional	8	16
Ester	0	5
Grimes	6	2
J Aaron Hawkins Sr.	3	3
Tucker Max	4	3
Mcpherson	5	6
Mississippi County WRC	2	3
North Central	4	0
NW Arkansas WRC	0	0
Ouachita River	8	10
Pine Bluff Complex	1	5
Randall L Williams	5	4
State Police Barracks	0	0
Texarkana Regional	4	1
Tucker Unit	1	6
Varner	25	8
Wrightsville Unit	3	5
Pine Bluff Re-Entry	0	0
Total:	95	96

LEASED SECURUS TABLETS - FEBRUARY 2019

FACILITY NAME	JAN. '19 LEASED	FEB. '19 LEASED	JAN. '19 TOTAL	FEB. '19 TOTAL
Benton Unit	93	93	58	104
Cummins Unit	274	278	296	380
Delta Regional Unit	107	109	103	162
East Arkansas Regional Unit	182	201	210	305
Ester Unit	106	104	191	256
Grimes Unit	162	164	169	246
J Aaron Hawkins Sr Center For Women	104	112	150	196
McPherson Unit	210	222	256	337
Mississippi County Work Release Center	38	38	42	49
North Central Unit	137	130	162	212
Northwest Arkansas Work Release Center	46	46	45	56
Ouachita River Unit	215	236	279	360
Pine Bluff Re-Entry Center	9	12	10	14
Pine Bluff Unit	64	71	47	84
Randall L. Williams Facility	106	113	93	153
State Police Barracks	18	18	17	22
Texarkana Regional Correction Center	27	30	26	42
Tucker Maximum Security Unit	77	75	101	117
Tucker Unit	164	167	170	238
Varner Unit	205	212	267	318
Wrightsville Unit	185	182	187	246
	2,529	2,613	2,879	3,897

*The difference between LEASED and TOTAL tablets reflects the number of program and officer tablets.

CONSTRUCTION BUDGET / STATUS REPORT - MARCH 11, 2019 — [Page 1 of 2]

Fund	Project Description	Total Projected	Budget	Available Funds	\$ % Complete	Construction % Complete	Notes
7004810	Cummins Poultry Houses	\$ 5,939,457	\$ 6,100,000	\$ 160,543	97%	98%	To correct ramp problem, looking at changing forklifts.
KBR4Q95	ESTER - Phase 3 - General Improvement Fund	2,951,909	4,383,781	1,431,872	67%	98%	Parking Lot in design. Cameras will be installed around perimeter after paving. ADFA bonds turned back on Phases 1 & 2 1A
700483A	EARU ISO Rec Yard	265,735	271,430	5,695	98%	100%	Complete
700483A	Varner ISO Rec Yard	180,277	180,953	676	100%	75%	Rec Pens underway, all parts built
700483A	EARU Max Rec Precast Rec Yard	67,887	659,553	591,666	10%	0%	Plans approved by DBA. Getting revised quotes. Preparing budget.
700483A	Tucker Max Precast Rec Yard	57,167	1,210,000	1,152,833	5%	0%	Plans being submitted to DBA
700483A	Cummins Precast Rec Yard	47,487	927,500	880,013	5%	0%	Plans being submitted to DBA
KBR4Q95	Bullpens	181,355	851,999	670,644	21%	98%	Bullpens at Varner are complete.
KBR4Q95	13 & 15 Barracks Door Revisions	111,509	174,000	62,491	64%	58%	All doors have been installed in 13 Barracks. Bullpen locks on order.
KBR4Q95	Camera's (New)	745,534	1,248,000	502,466	60%	54%	Cameras ordered, installation underway. Delta complete, working at Varner, and Tucker.
700485A	Integrity Energy Improvements at EARU & Delta	15,512,885	17,010,204	1,497,319	91%	91%	lights (100%), plumbing 99%, water (95%), compost (100%), & solar (100%), HVAC (95%).
700486A	Pine Bluff Unit Barracks 9 Renovation	307,485	437,000	129,515	70%	70%	9A, B & D construction complete, 9C underway.
700482A	Pine Bluff Unit Barracks 10 Renovation	458,618	784,000	325,382	58%		
KBSCW18	McPherson Administration	30,342.81	395,439	365,096	8%	0%	preparing Bid packages
KBSBW18	McPherson Visitation	22,524.78	312,430	289,905	7%	0%	
KBSHW18	Tucker Water Treatment	-	1,093,848	1,093,848	0%	0%	submitting for designer approval.
KBSFW18	Max Armory	-	70,000	70,000	0%	0%	to replace existing inadequate Armory.
KBSFW18	Varner Armory	-	68,399	68,399	0%	0%	Plans sent to DBA, comments received, replied to DBA.
7004820	Central Office Roof Replacement	398,893.77	500,000	101,106	80%	94%	Started 12/3, installing flashing. 94% complete
509	Wrightsville ACI Roof Replacement	251,332.07	255,000	3,668	99%	100%	replaced a very old metal roof.
	Springdale WRC Laundry and Commissary	-		0	0%		reviewing /revising architect's floorplan

Telephone Projects

Maintenance & Operations	Fire Alarm Upgrades (All Units)	21,077	53,000	31,923	40%	35%	on-going
	Gas Stations - Canopy (C/O)	0	-	0	0%	97%	Steel structure completed.
	Stainless Steel - Kitchen/Shower/Restrooms - All Units	12,419	20,000	7,581	62%	60%	continual need
	Parking Lot - Gravel and Paving - EARU	0	68,000	68,000	0%	0%	Parking lot complete. Working on paving road to State highway, acquiring R.O.W.
	Gates and Fences all units	9,920	30,000	20,080	33%	30%	to improve security
	ACA Maintenance	97,047	100,000	2,953	97%	92%	seven Units coming up this fiscal year, 2019. PB Complex complete
	ADA Projects - All Units	371	1,000	629	37%	37%	as needed.
	Fast Top Floor Systems (kitchen/laundry/showers all units)	24,939	25,000	61	100%	100%	projects as requested as needed. ORCU 100% complete, Benton & NWA WRC next.



CONSTRUCTION BUDGET / STATUS REPORT - MARCH 11, 2019 — [Page 2 of 2]

Fund	Project Description	Total Projected	Budget	Available Funds	\$ % Complete	Construction % Complete	Notes
Maintenance & Operations	Camera Equipment - All Units	171,950	175,000	3,050	98%	88%	cameras as requested/approved.
	Lock/Riot Gates - All Units	90,112	90,500	388	100%	90%	on-going.
	AC Units-All Units	64,976	100,000	35,024	65%	57%	repairing & replacing daily.
	Subtotal	\$ 492,810	\$ 662,500	\$ 169,690			
FY19 Carry Forward	Metal Ceilings	0	25,000	25,000	0%	0%	Max Barracks 2 complete.
	ORCU Gravel Pit Operations	8,537	35,000	26,463	24%	100%	on-going. Elect upgrades complete, crusher operating.
	Dog Kennel/Horse Stable Malvern	0	48,000	48,000	0%	0%	DBA comments received, responses underway.
	Emergency Generator - All Units	121,919	145,000	23,081	84%	98%	EARU complete. Wrightsville Infirmary generator purchased.
	Roof Repairs-Cummins	2,091	189,700	128,901	32%	0%	Prepared large order for multiple Units. Currently at the Max & Tucker, last 75 skylights arrived and installed at Max. Office of State Procurement secured a State contract to purchase roofing materials.
	Roof Repairs-Cummins Laundry	0				0%	
	Roof Repairs-East Arkansas	0				0%	
	Roof Repairs-Max	56,980				10%	
	Roof Repairs-Tucker	0				5%	
	Roof Repairs-Varner	1,728				0%	
	Roof Repairs-Wrightsville	0				0%	
	Boiler Repair	60,702	100,000	39,298	61%	100%	continually needing repair
	Subtotal	\$ 251,957	\$ 542,700	\$ 290,743			
New Projects	EARU Sewer lift station	72,782	75,000	2,218	97%	100%	Project complete and operating.
	Tucker 4 new filters & one aeration tank	11,567	500,000	488,434	2%	0%	Plans approved by ADH & DBA, preparing Plans & bid documents.
	Change media in 7 water filters at Tucker	4,132	6,000	1,869	69%	100%	Filter media changed out in all 7 filters. Water quality improving.
	Tucker Barracks 10 covered walkway	0	-	0	0%	0%	Plans being submitted to DBA
	Max manhole	0	-	0	0%	0%	to provide access to a blockage point in sewer
	RLW Sewer relocation 400' + 2 MH	0	34,000	34,000	0%	0%	frequent stoppages, defect in pipe line.
	Additional Metal Fab shop	0	-	0	0%	0%	room to do more metal work
	PB Warehouse Drive replacement	0	50,000	50,000	0%	0%	asphalt drive pot holed
	Subtotal	\$ 88,480	\$ 665,000	\$ 576,520			
	Architect Fees	132,235	30,000	-102,235	441%		
	Total	\$ 965,481	\$ 1,900,200	\$ 934,719			

Notes

Report has not been reconciled against Accountings Reconciled Reports.
Tolerance/Deviation is with in 1% of Projected Spending.