



Arkansas Department of Correction



@ARDeptofCorrection



@adcpio

BOARD REPORT

June 2019

Wendy Kelley,
Director



PUBLIC RELATIONS

RESEARCH/PLANNING

May 2019 Admissions and Releases – Admissions for May 2019 totaled **656** (540-males & 116-females) while releases totaled **788** (686-males & 102 females) for a net decrease in-house of **132** inmates.

Inmate Population Growth/Projection – At the end of May 2019, the jurisdictional population totaled **17,817**, representing a growth of **18** inmates since the first of January 2019. Average growth for calendar year 2019 is **4** inmates, up from an average monthly decrease of **23** inmates per month during calendar year 2018.

Average County Jail Back-up – The backup in the County Jails averaged **1,542** inmates per day during the month of May 2019 – up from an average of **1,530** inmates per day during the month of April 2019. Of the **1,542** average, short-term revocations accounted for **720** (648-males & 72-females) during the month.

SOCIAL MEDIA

Facebook results for May showed a total of eight thousand seven hundred eighty-eight (8,788) “likes” of our page, an increase of two hundred thirty-four (234) from the previous month. Our Twitter account currently has 264 followers.

LEGAL SERVICES

PREA

PREA Hotline Data:

Number of Calls Received	254
Total PREA Issue Calls	23
Total Non-PREA Calls	140
Total Calls Referred to Internal Affairs Division	23
Total Repeat Calls	79
Total Calls with No Message	52
Total Technical Failure Calls	0
Test Calls	16

Internal Affairs continues to handle all PREA investigations. Training for the month included “Sexual Assault Investigator Training (SAIT),” which was presented to 28 participants; “PREA Train the Trainer” was presented to 25 staff members; and “PREA File Management” was presented to 12 participants. The PREA Hotline had no technical issues during the month.

INMATE INSTITUTIONAL GRIEVANCES

Inmate Formal/Informal Grievances: During May 2019, a total of one thousand seven hundred eighty-eight (1,788) formal grievances and three thousand thirty-three (3,033) informal grievances were filed at various units.

Institutional Grievances Appeals: There were a total of five hundred thirty-six (536) appeals of institutional grievances received in May 2019. Four hundred seventeen (417) were acknowledged and one hundred nineteen (119) were rejected for various reasons. A total of four hundred ninety-one (491) appeals were answered; four hundred eighty-six (486) had no merit and five (5) were found with merit.

INSTITUTIONS

STTG

During the month of May, the STTG Coordinator, along with K9 officers, conducted an STTG sweep of the Tucker Unit on the 2nd and assisted in two BCOT special assignments on the 20th and 21st.

On the 8th and 29th, the STTG Coordinator taught the BCOT class at the Training Academy. A STTG class for the Homeland Security Liaison Officer training was also taught on the 14th. Security audits were conducted at the North Central Unit on the 9th and the Benton Work Release Unit on the 23rd.

FARM

The planting of row crops occurred at all farms during the month. All crops at the EARU farm were planted with the corn crop fertilized and watering started. The Cummins farm corn crop was planted and fertilized. Rice and soybeans were planted as well. Due to the wet fields at Tucker, and a subsequent delay in planting, a decision was made to move rice acreage to Cummins. Soybeans were planted at the Tucker farm, and efforts to work ground that was rutted in the fall continued. All of the gardens around the state are looking good and fresh vegetables are expected in mid-June.

The beef herd worked cattle during the month. The Wrightsville crew worked on reinforcing weak places in the levee and moved cattle to higher ground away from the water. The Cummins crews moved their cattle away from high water as well.

The dairy continues to meet unit needs, and preparations are underway for maintaining hot weather production.

Layer production has been meeting the needs of the units and contracts.

River flooding will be an ongoing issue for our agriculture operations. At least one cutting will be missed at major hay production areas as a result.

REGIONAL MAINTENANCE HOURS

Regional Maintenance Hours	May 2019
Benton Unit	7,484
Delta Regional Unit	3,134
East Arkansas Regional Unit	3,164
Grimes Unit	4,084
McPherson Unit	1,456
Mississippi County Work Release	1,816
North Central Unit	8,840
Ouachita River Unit	1,232
Randall L. Williams Unit	5,672
Texarkana Regional Correctional Center	929
Tucker Unit	3,880
Varner Unit	2,496
Wrightsville Unit	3,232
Total Hours	47,419

WORK RELEASE RENT REPORT

Unit	May 2019
Benton Unit	\$97,614.00
Mississippi County Work Release	\$53,890.00
Northwest Arkansas Work Release	\$38,658.00
Pine Bluff Work Release	\$29,886.00
Texarkana Regional Correctional Center	\$54,026.00
Tucker Reentry Work Release	\$25,398.00
Total	\$299,472.00

**RANDALL L. WILLIAMS
JUVENILE EDUCATION PROGRAM**

	Slots	Enrolled	Discharged	End Count
Juveniles*	20	13	2	11

*Juveniles are transferred from the program once they reach the age of eighteen (18). The Juvenile count also changes based on new commitments. During the month, two (2) inmates were on punitive status. There were three (3) new commitments.

REENTRY**WAGE****(Workforce Alliance for Growth in the Economy)**

Unit	Slots	Completed	Discharged	End Count
Delta	6	6	0	6
Ester	20	0	0	20
Hawkins	36	11	15	15
Ouachita River	10	0	2	10
Tucker	20	3	2	20
Wrightsville	36	12	12	25
Total	128	32	31	96

**APAL – ADVANCED PRINCIPLES AND
APPLICATIONS FOR LIFE PROGRAM**

	Slots	Completed*	Enrolled	Removed	End Count
Ester	35	0	33	1	32
Hawkins	50	3	32	2	30
TOTAL	85	3	65	3	62

*Advanced PAL is an 18-month reentry program that combines a pre-release curriculum with the PAL program.

THINK LEGACY

Unit	Slots	Completed	Removed	Assigned
Cummins	55	4	3	43
Delta Regional	24	7	0	24
East Ark. Regional	50	2	2	46
Ester	75	8	1	75
Grimes	56	11	2	51
Hawkins (Female)	40	4	0	41
McPherson	68	2	1	68
North Central	59	3	0	53
Ouachita River	46	6	0	42
Tucker	55	4	1	56
Varner	49	2	0	49
Wrightsville	48	6	2	45
Total	625	59	12	593

THINK LEGACY, *continued*

There are two hundred eight (208) males and one hundred thirty-five (135) females on the Think Legacy waiting list, for a total of three hundred forty-three (343). All Think Legacy applicants are within eighteen (18) months of their TE or discharge date.

The average time on the waiting list is approximately seventy-five (75) days. There were 153.5 volunteer hours recorded for the month of May.

The Fair Housing Commission visited the Delta Unit on May 21st. Think Legacy graduations were held throughout the month at the Ester, Grimes, Hawkins Women's, and Wrightsville Units. The Arkansas Securities Department visited the Wrightsville Unit. A four-day seminar was held at EARU with a prior inmate, Mr. Rodriguez, serving as the keynote speaker. Arkansas State Senator, Greg Leding, and former inmate, Laura Berry, visited the McPherson Unit Think Legacy Program. Workforce Innovation and Opportunity Act (WIOA) and Celebrate Recovery also visited the McPherson Unit. Arkansas Workforce Development visited the North Central Unit. Workforce Alliance for Growth of the Economy (WAGE) classes are being offered through the University of Arkansas Community College at Batesville's facilitator at the McPherson Unit.

WRIGHTSVILLE-HAWKINS PATHWAY TO FREEDOM PROGRAM

May 2019	Slots	Completed	Enrolled	Removed	End Count
PTF	204	3	150	5	197*

*Forty-seven (47) graduates remain in the program.

ADMINISTRATIVE SERVICES

BUDGET SECTION UPDATE

- No Act 715 cases were filed in May.

PROCUREMENT SECTION UPDATE

Current Bids:

- Waste Disposal Services (various locations)
- Inmate Holiday Package RFP
- Farm Equipment Lease
- Tucker Water Treatment Sand Filter Project
- Capital Laundry Equipment

No New Contracts/OSP

ABA Contracts:

- EARU Recreation Yard Precast
- McPherson Administration and Visitation Precast

No Renewed Contracts

Procurement/Contracts Report (required by policy)– For May 2019, Purchase Orders and Contracts in excess of \$10,000 amounted to \$1,757,781.60. Of this amount, \$867,664.02 was for Inmate Care and Custody-related items (food, shoes, clothing, etc.). Bulk fuel costs for the month of May were \$82,757.72 – average cost of E-10 was \$2.19/gallon; average cost for bulk diesel was \$2.24/gallon.

HUMAN RESOURCES UPDATE

Workplace Safety – During the month of May, the modified version of the Health and Safety Plan was presented to one (1) Basic Training classes with a total of fifty-one (51) cadets in attendance.

Sixty (60) incidents were reported to the Company Nurse in May, bringing the total of reported incidents to three hundred twelve (312) for 2019.

Benefits – There were seventy-six (76) FMLA requests processed during the month: sixty-seven (67) were approved and nine (9) denied. A total of fourteen (14) catastrophic leave requests were received: four (4) were approved, two (2) were denied, and eight (8) were pending at the time of this report.

Physical Assessments – A total of two hundred forty-four (244) applicants and incumbent personnel were assessed during May. Ninety-six (96) incumbent personnel successfully passed the physical assessment, and one (1) did not (and has not rescheduled). One hundred forty-four (144) applicants successfully passed the physical assessment and three (3) did not. Those applicants rescheduled and passed their assessment after receiving a physician's release.

Employment – A total of two thousand two hundred fifty (2,250) applications were received during May. Eighty-one (81) Non-Security applications and one hundred thirteen (113) CO I applications were processed. Forty-five (45) Correctional Officers were hired, and eighteen (18) Correctional Officers were rehired.

Vacancies, Hires, and Terminations – There was a total of five hundred sixty-two (562) security and non-security vacancies, seventy-two (72) new hires, ninety-one (91) terminations, and seven (7) retirements throughout the department during the month of May.

ADC personnel attended the following Job Fairs/Recruitment Events in the month of May:

Date	Unit	Location
5/7/19	Grimes	Goodwill/Batesville
5/7/19	MAX & ORCU	Goodwill/Arkansas State Fairgrounds – Little Rock
5/7/19	McPherson	Goodwill/Batesville
5/8/19	Grimes	St. Bernards Auditorium/Jonesboro
5/8/19	McPherson	Goodwill/Jonesboro

**ADC personnel attended the following Job Fairs/
Recruitment Events in the month of May, *continued*:**

5/10/19	MAX	Arkansas Workforce Center/Pulaski Tech – Little Rock
5/15/19	Grimes	Grimes Unit/Newport
5/17/19	Varner	Arkansas Workforce Center/Monticello
5/18/19	ORCU	Garland County Library/Hot Springs
5/21/19	Varner	Regional Job Fair/Greenville, MS
5/22/19	Varner	Arkansas Workforce Center/Dumas
5/23/19	Grimes & McPherson	KAIT Spring Employment Expo/Jonesboro
5/23/19	TRCC	TRCC/Texarkana
5/24/19	TRCC	TRCC/Texarkana
5/24/19	Varner	WIN Job Center/Greenville, MS

Correctional Officer interviews were conducted in the month of May at various units throughout the department:

Date	Unit	Date	Unit	Date	Unit
5/1/19	EARU	5/14/19	Varner	5/22/19	EARU
5/2/19	ORCU	5/15/19	EARU		Grimes
5/3/19	EARU		Grimes	5/23/19	EARU
5/6/19	EARU		McPherson		Tucker
	McPherson		NCU	5/28/19	Grimes
5/7/19	EARU		Varner		McPherson
	Tucker	5/16/19	EARU	5/29/19	McPherson
	Varner		TRCC		Tucker
5/8/19	Grimes	5/17/19	EARU	5/30/19	EARU
	MAX		McPherson		McPherson
	TRCC		Varner		Tucker
5/9/19	Tucker	5/20/19	EARU	5/31/19	EARU
5/13/19	McPherson	5/21/19	TRCC		Grimes
	TRCC		Tucker		

ADMINISTRATIVE SERVICES DIVISION
MONTHLY REPORTS INCLUDE GIFTS,
GRANTS, DONATIONS / INMATE WELFARE
FUND BALANCE (required by policy):

Gifts, Grants and Donations:

Donations for the month of May totaled \$12,090.00
[Books: \$180.00; Buckskin Stallion: \$7,500.00;
Strawberries: \$4,410.00].

The **Inmate Welfare Fund** balance on May 31, 2019 was \$8,626,387.84.

The **PAWS in Prison Program** total on May 31, 2019 was \$259,412.97. ADC Account (7004822/Donations) balance was \$19,159.55, ADC Account (NDC0500/Recycling) balance was \$107,328.39, and the ADC Paws in Prison Non-Profit account (Quickbooks) balance was \$132,925.03.

INFORMATION TECHNOLOGY -
MAY 2019

SECURUS VIDEO VISITATION (SVV) PROJECT

Inmate Video Visits:

- Inmates completed three thousand seven hundred forty-two (3,742) video visits during May and missed two hundred forty-one (241).

SECURUS TABLET PROJECT:

- A total of two thousand six hundred fifty-seven (2,657) inmate tablets were leased during May.

IT/eOMIS ACTIVITIES

- **VSM Video Distribution Server** – IT is working to identify the titles of more than 200 digital programs.
- Network upgrades remain for the Cummins and Varner Units pending completion by AT&T.
- Wrightsville and Hawkins facilities were converted to the VOIP phone service during the month. Follow-up on the VOIP project will include additional inside network cabling for analog lines and outside fiber installation to locations where copper cables need to be replaced.
- The Offline Segregation pilot project is progressing due to a visit to the Maximum Security Unit in which NFC tags were installed outside each door. During a security check round, tablets will be used to scan the tags that will then display the inmate assigned to the associated bed and provide a variety of options for response on the round.

TRAINING ACADEMY - MAY 2019

BASIC TRAINING DIVISION –

Under the direction of Instructor David Farrier, **BCOT Class 2019-E** graduated on May 10th with forty-three (43) cadets. Hannah Brummett of the Benton Work Release Center received the Willis H. Sargent Award. Warden William Straughn of the Cummins Unit served as the guest speaker.

IN-SERVICE DIVISION –

Blue Courage was offered for security supervisors May 2nd and 3rd at the Wrightsville Complex and the 23rd and 24th at the East Arkansas Regional Unit. This 16-hour course provides the path of constant vigilance through comprehensive training: giving the officer the right inspiration (heart-set), the right reasoning (mind-set), the right skills (skill-set), and the right tools (tool-set). Blue Courage targets physical, mental, and spiritual aspects for officers to pave a clear path forward.

TRAINING ACADEMY, continued

American Red Cross CPR/First Aid/AED was presented on May 6th. This class provides staff with knowledge and instruction on performing cardiopulmonary resuscitation (CPR), along with basic first aid and the ability to operate an automated external defibrillator (AED).

Correctional Security for Non-Security (Contract Staff) was presented on May 7th and 8th. The course highlights a variety of issues of which contract staff (such as medical staff) who operate in various roles new to a correctional setting need to be made aware. Participants are taught correctional history, how to communicate and cooperate with security staff members, and other essential new employee information.

Taser Instructor Certification was offered on May 13th and 14th. The class is taught by a Certified Trainer and is designed to certify staff as instructors. Participants were taught the essential elements of certifying employees, as well as important factors that involve using and training others to operate an electronic Taser device.

FISH! Philosophy was presented on May 14th. This class encourages employees to see the positive in all circumstances, re-awakening the self-trusting, creative spirit within us all, to start new conversations about what's possible, to develop new attitudes, and to have fun again at work and at home.

American Red Cross CPR Instructor Certification Course was presented on May 14th and 15th. Staff members who successfully complete this course become certified to instruct CPR, first aid, and AED.

Correctional Police Officer (CPOs) Annual Training was presented on May 20th and 21st. Each year, CPOs are required to obtain a minimum of 16 hours of annual continuing education.

Taser Training was offered on May 21st and 23rd. Participants were taught the practical and legal uses of the Taser X-26 electronic device by a department-certified trainer. Certified staff are required to obtain recertification every two years.

Management Level 1, a session designed for new supervisors, was offered May 21st–24th. ADC staff facilitate the training, which is mandated by Executive Order. Topics include: Arkansas Government Basics, HRkansas, Performance Evaluation, Grievance Prevention and Handling, and the Fair Labor Standards Act, among others.

eCADEMY –

During the month of May 2019, seven hundred thirty-seven (737) ADC employees completed a total of 11,426.50 hours of eCADEMY training. Approximately 16% of ADC employees completed at least one course during that timeframe, averaging 2.48 hours per staff member. The Computer Lab is open on a daily basis for employees who wish to complete online training through eCademy.

CHAPLAINCY SERVICES

All Facilities – The ADC Chaplaincy Division's annual training conference took place at Camp Paron near Paron, Arkansas on May 13th–15th. Dr. Thomas Beckner, author of *Correctional Chaplains: Keepers of the Cloak*, provided instruction to Chaplains from all facilities.

Also of note, Denominational Chaplain Daniel Hiser died after a long battle with cancer on May 7th. Chaplain Hiser was a wonderful man and a role model volunteer during his years at the Maximum Security and Tucker Units. He was a past recipient of the Bill Knight Faithful Service Award.

Cummins Unit – On May 17th–19th, the chapel hosted a two-day service with a total of two hundred thirty-nine (239) inmates at both services. David Markcum led the services.

Delta Regional Unit – On May 30th, a "Bible QUIZlympics" competition was held at the unit. Eighteen (18) inmates and four (4) volunteers participated in the event where the inmates studied biblical questions before holding a competition between two teams. On May 31st and June 1st, Heather Powell, executive director of the Twin Lakes Literacy Council, trained fourteen (14) inmates as tutors to assist other inmates with their reading skills.

East Arkansas Regional Unit – A Kairos Walk #5 event was held at the unit on May 16th–19th. A revival held May 28th–31st drew a total attendance of five hundred forty-seven (547) inmates over four days.

Grimes Unit – On May 10th, four (4) volunteers assisted thirty-two (32) inmates with recording themselves reading children's stories to be sent to their children as part of "The Storybook Project."

Hawkins Unit – With the assistance of the unit's Chaplaincy staff, thirty-seven (37) inmates took part in an event hosted by "The Storybook Project" to make recordings reading books to their children on May 29th and 31st.

McPherson Unit – On May 9th, the chapel provided a meal for Mother's Day to twelve hundred (1,200) inmates and staff. On May 31st, "The Storybook Project" hosted an event in which sixty-five (65) inmates made a recording for their children with the help of four (4) volunteers.

North Central Unit – Fifty-six (56) inmates and four (4) volunteers attended a memorial service on May 12th at the North Central Unit for the late Jerry Butler, who was a CRA.

Ouachita River Correctional Unit – On May 25th, Gideon's Ministry visited inmates throughout the barracks and hosted a worship service in the chapel.

Randall L. Williams Unit – On May 14th–17th, revival services were held at the unit that were attended by an average of one hundred and twenty-five (125) inmates. Two ministers from Texarkana were the speakers and they also visited the PAL barracks and chapel office.

CHAPLAINCY SERVICES, *continued*

Tucker Unit – The Tucker Unit facilitated an Alternative to Violence (AVP) seminar on May 3rd–5th that was attended by twelve (12) inmate participants and one (1) volunteer. Thirteen (13) volunteers attended the unit's second quarterly volunteer training session on May 18th.

Varner Unit – The Christian Motorcycle Association (CMA) hosted an event on May 17th and 18th that was attended by one hundred forty-nine (149) inmates and eleven (11) volunteers.

VOLUNTEER SERVICES

Total Number of Volunteer Hours for May 2019:

Unit/Program	Hours
Delta Unit	16
Hawkins Unit	7
McPherson Unit	15
Mississippi County Work Release Center	15
North Central Unit	2
Northwest Arkansas Work Release Center	28
Pine Bluff Complex	4.57
Varner Unit	48.25
PAWS	18
Think Legacy	153.32
Religious Services/Chaplaincy	5,079
Total Hours	5,386.14

MENTAL HEALTH SERVICES

Sex Offender Treatment Programs (RSVP/SOFT):

	Slots	Completed	Removed	Clients
RSVP	278	57	7	273
SOFT	30	0	0	8
Total	308	57	7	281

There are eight hundred fifteen (815) males on the waiting list for RSVP and twelve (12) females on the waiting list for SOFT within five (5) years of their TE date. Of those, thirty-five (35) inmates are mandated by the Parole Board.

The average time on the waiting list from request is between one (1) and two (2) months for those stipulated.

The total on the waiting list, including those not currently within the identified timeframe, is one thousand four hundred thirty-one (1,431) males – one thousand one hundred twenty-six (1,126) of which are low risk on the ARORA, and fifteen (15) females – seven (7) of which are low risk on the ARORA. There are two (2) PREA inmates in the program at this time.

***The waiting list numbers include inmates that are ineligible due to class or housing status.**

Therapeutic Community (TC):

Unit	Slots	Completed	Removed	Clients
Tucker	136*	18	4	128
Wrightsville	50*	3	1	48
McPherson	53*	5	1	49
Total	239	26	6	225

There are five hundred fifty-six (556) males and forty (40) females on the waiting list within eighteen (18) months of their release date. Of those, nine (9) are mandated by the Parole Board.

The average time on the waiting list from request is twenty-seven (27) days.

The total on the waiting list, including those not currently within the identified timeframe, is one thousand forty-one (1,041) males and one hundred thirty-nine (139) females; of these, two hundred seventy-four (274) are low risk on the ARORA.

***Denotes transitional beds available at this treatment program. The Tucker Therapeutic Community has one hundred twenty-nine (129) client slots and seven (7) peer counselor slots.**

Substance Abuse Treatment Program (SATP):

Unit	Slots	Completed	Removed	Clients
Grimes	56*	14	1	51
McPherson	106*	20	17	96
Maximum Security	3	1	0	3
Randall L. Williams	200*	41	22	176
Benton	36*	11	1	36
Wrightsville	150*	17	13	142
Total	551	104	54	504

There are one thousand seven hundred eighty-two (1,782) males and two hundred thirty-two (232) females on the waiting list within eighteen (18) months of their release date. Of those, sixty-two (62) are mandated by the Parole Board.

The average time on the waiting list from request is eighteen (18) days.

The total on the waiting list, including those not currently within the identified timeframe, or ineligible due to class or housing status, is two thousand seven hundred fifty-nine (2,759) males and three hundred thirty-three (333) females; of these, six hundred seventy (670) are low risk on the ARORA.

***Denotes transitional beds available at this treatment program.**

MENTAL HEALTH SERVICES, *continued*

Substance Use Intervention Program: The Substance Use Intervention Program had thirty-one (31) admissions and thirty-eight (38) discharges for an end-of-month count of thirty-seven (37). This program is housed at the Varner Unit and is for inmates found guilty of a disciplinary violation for either drug use or drug possession.

ORCU Residential Program Unit (RPU): The RPU had seven (7) admissions and five (5) discharges in May for an end-of-month count of one hundred twenty-five (125).

McPherson Mental Health Residential Program Unit (RPU): There were five (5) admissions and five (5) discharges in May, for an end-of-month count of forty (40).

Habilitation Program: The Habilitation Program at the Ouachita River Correctional Unit provided treatment services to forty-seven (47) inmates during May. There were two (2) admissions and three (3) discharges resulting in an end-of-month count of forty-four (44).

Anger Management Treatment: The Anger Management Treatment Program at the Cummins Unit provided treatment services to thirty-five (35) inmates during May. There were three (3) admissions and three (3) discharges for an end-of-month count of thirty-two (32).

Staffing: The following Mental Health Services and SATP positions were vacant in April and May 2019:

Positions	FTE's*	April	May
Psychologists	14	4	4
Social Workers	31	11	12
Advisors	64	8	7
Substance Abuse Program Leaders	35	1	4
Rehab Facility Supervisor	3	0	1
Rehab Program Director	1	1	1

*FTE refers to authorized Full Time Equivalent positions.

ADDITIONAL MENTAL HEALTH AND MEDICAL INFORMATION**Self-Study Classes:**

Classes	# of Participants	# Completed	Waiting List
Anger Management	419	363	1,137
Thinking Errors	372	314	1,078
Substance Abuse Education	238	205	605
Communication Skills	279	253	1,039
Domestic Violence	109	101	322
Victims of Domestic Violence	22	22	82
Stress Management	343	308	1,219
Parenting	264	210	578

Suicide: There were one hundred five (105) suicidal threats during May. There were six (6) attempts resulting in three (3) deaths.

Outpatient: There were two thousand eighty-eight (2,088) inmates on the mental health medical log at the beginning of May. Mental Health staff conducted the following contacts during May:

Case Management Contacts	2,002
Requests for Interviews	1,078
Testing	2
Intakes	668
Unit Requests	1,727
Counseling (with Treatment Plans)	0
Pre-Lockup Reviews	715
Routine Restrictive Housing Reviews	1,077
Restrictive Housing Rounds	23,934
PREA Evaluations	118
Routine Follow-up	236
834 Requests	39

ADDITIONAL MENTAL HEALTH AND MEDICAL INFORMATION, *continued*

County Mental Health Requests: During May, there were one hundred fifty-three (153) requests of a mental health nature received. Fifty-eight (58) inmates were fast-tracked to ADC.

County Medical Health Requests: During May, there were six hundred twenty-one (621) requests of a medical nature received. Seven (7) inmates were fast-tracked to ADC.

Monetary Sanctions: Sanction reimbursements for April were \$10,600.00.

Deaths: There were nine (9) inmate deaths during the month of May; three (3) were claimed and six (6) were cremated.

CCS: See attachment for CCS's report regarding outside beds and emergency room visits.

Medical Grievances: In May, there were one hundred sixty-nine (169) appeals of medical grievances received and one hundred eighty-nine (189) appeals were answered; ten (10) of those were found to be with merit and four (4) with merit but resolved.

SEX OFFENDER ASSESSMENT

Assessments Completed:

Risk Level	May	September 1999 through May 2019
Level 1	0	1,194
Level 2	19	7,525
Level 3	12	6,838
Level 4	3	658
Default 3	2	*
Total	36	16,215
*Default Level 3's are included in the total number of Level 3's to date.		

ACIC Numbers:

The total number of sex offenders registered from September 1999 through May 2019:

Compliant	8,267
Delinquent	1,042
Confined	3,241
Out-of-State	3,525
Address Unknown	150
Deported	202
Incapacitated	79
Out of USA	9
Total	16,515

Consistent with current Arkansas law, deceased offenders no longer remain on the registry.

PAWS IN PRISON

Currently Enrolled in Training:

Maximum Security Unit	9
Tucker Unit	7
Hawkins Unit	7
Randall L. Williams Unit	4
Ouachita River Unit	6
North Central Unit	8
Total	41

Completed Training:

May 2019	15
YTD 2019	304
Since Inception (December 2011)	1,328
Volunteer Hours	18

CONSTRUCTION/MAINTENANCE

PROJECT UPDATES

BULL PENS:

All Varner bullpens have been completed, and are ready for use. We have started buying materials and building components for the EARU bullpens.

CAMERAS:

The Delta Unit and Varner Interior installations have been completed. We have started on the camera upgrades at Tucker and the Max.

CUMMINS UNIT 13 & 15 BARRACKS DOOR REVISIONS:

We have completed changing Barracks 13 doors to solid doors and the bull pen at the entrance to Barracks 13 has been installed. We are preparing estimates to convert the metal desks to concrete. New locks for the Barracks 13 bullpen have been received and are being installed.

CUMMINS POULTRY:

The generators are tested weekly. The Agriculture Division is reviewing quotes for a replacement forklift.

CUMMINS PRECAST RECREATION YARD:

The architects are working on modifications to the plans previously submitted to DBA.

EARU MAX ISOLATION RECREATION YARD:

The final plans are at the Office of State Procurement for bid preparation for the precast concrete panels.

ENTEGRITY ENERGY IMPROVEMENTS AT EARU AND DELTA UNITS:

At **EARU**, Entegrity is 100% complete with the lighting upgrades, 100% on the compost, plumbing is 100% complete and the solar array has been installed and is operating. Compost equipment installed, wood pellets delivered and staff trained. HVAC is at 98% and boilers were replaced.

At the **DELTA UNIT**, Entegrity is 100% complete with the lighting upgrades, 100% on the plumbing upgrades. Compost shed is complete, compost equipment has been installed, wood pellets delivered and staff trained. HVAC is at 100% with testing and balancing near completion. Mechanical systems are complete. Boiler installation is complete.

ESTER UNIT PHASE 3:

The parking lot is being designed. DBA has concerns with the parking lot being in the floodway. This will require some modifications to the existing stream banks to ensure that they do not change the flows during floods.

Exterior lighting and cameras will be installed as soon as the parking lot is paved.

MAX ARMORY:

The Varner Armory plans have been approved and were modified for use as the Max Armory plans.

MAX PRECAST RECREATION YARD:

The architects are working on modifications to the plans previously submitted to DBA.

MCPHERSON ADMINISTRATION AND VISITATION EXPANSION:

The bid documents are being prepared by the Office of State Procurement, who will handle bidding of the precast roof structural. Construction supervisors have relocated to McPherson and are ordering materials.

TUCKER WATER TREATMENT:

The Department received funding in the amount of \$1,093,848 from the Governor's Office, which covers 1/3 of the cost of the total water plant renovation. Documents for the selection of a design firm are being prepared.

The project to add four pressure water filters is underway. The Office of State Procurement is working on sending out the bid for filters. Plans for the filter building are at DBA, the Department of Health, and the State Fire Marshal for their review and approval.

VARNER ARMORY:

The plans were re-submitted to DBA and have been approved and released for construction.

CONSTRUCTION/MAINTENANCE PERSONNEL UPDATE

The following Construction/Maintenance position(s) were vacant at the end of May 2019:

- 3 Construction Project Specialists (Statewide)
- 1 Construction Project Supervisor (Statewide)

AGENCY HIGHLIGHTS

AGENCY WIDE:

Phenomenal Woman Conference

This year's Phenomenal Woman Conference 2019 – a day set aside to celebrate the phenomenal women that are employed with the state – was held at Administrative Annex East on May 2, 2019. The conference featured guest speakers, a 'real talk' panel discussion, and other sessions that were informative, empowering, and fun! Participation for the event was limited to 30 women employed with the ADC, Arkansas Community Corrections and the Arkansas Parole Board. Recipients of the "Remembering Your Spirit Award" were Verna Barnes with Maximum Security Unit and Gail Stith with the Wrightsville Unit.



Correctional Officers Week 2019

Governor Asa Hutchinson officially declared the week of May 5th–11th as Correctional Officers Week in Arkansas. During the week, Correctional Officers, employees, nurses, and teachers were celebrated throughout the agency with special breakfasts, cookouts, luncheons and sweet treats galore!



Sgt. J. Jones and Lt. L. Johnson enjoyed fish, baked beans, coleslaw, fries, and hushpuppies at the Cummins Unit luncheon.



The smoker was fired up at the RLW Unit for a staff luncheon.



Iced sugar cookies are a sweet way of saying thanks!



The Maximum Security Unit held a cookout lunch for staff.

Pop Tab Pandemonium

The Arkansas Department of Correction recently competed in the 11th Annual Pop Tab Pandemonium contest benefiting Ronald McDonald House Charities® of Arkansas (RMHCA).

Proceeds from recycling the tabs goes directly to the RMHCA to help sponsor the costs of giving families who have children in the hospital a safe, comfortable, and free place to stay.

The weigh-in for Pop Tab Pandemonium 2019 was held at the Little Rock Zoo on Friday, May 10, 2019.

Of the more than 6,000 pounds of pop tabs collected this year, the ADC contributed a total of 220 pounds to the cause, with the top three units that participated collecting 123.01 pounds of our total amount collected. Those units were:

- **1st Place** – GRIMES UNIT – 55.2 lbs.
- **2nd Place** – WRIGHTSVILLE UNIT – 42.65 lbs.
- **3rd Place** – CUMMINS UNIT – 25.16 lbs.



AGENCY HIGHLIGHTS, continued

ERT Graduation

Several officers graduated from Emergency Response Team School on May 17, 2019! Pictured here are the graduates along with their trainers and Chief Deputy Dale Reed.



Red Ribbon Run Scholarships Awarded

Recipients of the 2019 Red Ribbon Run Scholarship were awarded certificates by the ADC Management Team on May 17th.

This year's recipients included Maya Rouse, Pine Bluff High School (left); Charles Harris III, Pine Bluff High School; Kaela Hodge, White Hall High School; Samaria Jackson, White Hall High School; Hailee Glasscock, Rison High School; and Julius Pruitt, Newport High School (not pictured).



Special Olympics Law Enforcement Torch Run

Members of the Emergency Response Teams from our Pine Bluff Complex, Delta Regional Unit, Cummins Unit, and Wrightsville Complex took part in the Law Enforcement Torch Run for Special Olympics Arkansas in Pine Bluff on May 22, 2019.



Corporal Lindsey from the Pine Bluff Unit had an extra-special reason for participating – his sister, Rebecca – who is a Special Olympics athlete!

ADMINISTRATIVE ANNEX EAST:

Employees Donate Blood

A mobile unit from the Arkansas Blood Institute, a non-profit blood center, visited ADC's Administrative Annex East office on May 9, 2019. Admin East staff not only achieved their goal for number of appointments for the day, but reached their donation goal as well! The blood donated by volunteers who participated in the drive will support patients in 40 Arkansas hospitals.



Candace Robertson



Debbie Reynolds



ARKANSAS CORRECTIONAL SCHOOL:

Graduation Ceremony Held

Several hundred inmates received their GED and 21 were awarded college degrees at the annual Arkansas Correctional School graduation ceremony that was held on May 15, 2019 at the Ouachita River Correctional Unit. This was the largest GED class in ADC history.



Little Rock Mayor Frank Scott Jr. delivered an inspiring commencement address that challenged the graduates to not let their future be determined by their past actions.



AGENCY HIGHLIGHTS, continued***Additional Photos from ACS Graduation:*****EAST ARKANSAS REGIONAL UNIT:*****Employees Wear Purple for Lupus Awareness***

In observance of May being Lupus Awareness Month, staff at EARU wore PURPLE on May 24, 2019 in a show of support to their fellow co-workers who live with the disease.

**OUACHITA RIVER CORRECTIONAL UNIT:*****Softball Team Participates in Cancer Society Event***

The ORCU Softball Team finished in the number one spot in the Hot Spring County Relay for Life Co-Ed Softball Tournament that was held on May 4, 2019. Tournament proceeds benefited local efforts of the American Cancer Society.



2019 INFORMAL GRIEVANCE REPORT

Month	BENTON	HAWK/M	HAWK/F	WRTS	EARU & MX	GRIMES	RLW	MCWR	MCPH	MSU	NCU	PBU	NWA	TU	TRCC	VSMX	VU	CU	ORCU	Ester	DRU	Bowie Cty	TOTAL
JAN	1	25	25	85	362	310	28	0	448	175	118	33	0	139	1	470	72	151	228	24	132	57	2,884
FEB	0	15	27	80	341	284	17	0	267	147	148	30	0	107	0	450	54	149	406	20	96	39	2,677
MAR	3	15	30	96	305	254	26	0	309	155	171	52	0	125	0	517	72	201	339	27	80	44	2,821
APR	0	34	14	100	305	243	21	0	454	267	141	42	0	97	0	607	145	167	255	29	97	53	3,071
MAY	3	21	12	88	354	299	10	0	278	406	106	40	1	119	1	448	90	180	396	32	114	35	3,033
JUN	0	0	0	0	0	0	0	0	0	0	0	0	0	0	0	0	0	0	0	0	0	0	0
JUL	0	0	0	0	0	0	0	0	0	0	0	0	0	0	0	0	0	0	0	0	0	0	0
AUG	0	0	0	0	0	0	0	0	0	0	0	0	0	0	0	0	0	0	0	0	0	0	0
SEPT	0	0	0	0	0	0	0	0	0	0	0	0	0	0	0	0	0	0	0	0	0	0	0
OCT	0	0	0	0	0	0	0	0	0	0	0	0	0	0	0	0	0	0	0	0	0	0	0
NOV	0	0	0	0	0	0	0	0	0	0	0	0	0	0	0	0	0	0	0	0	0	0	0
DEC	0	0	0	0	0	0	0	0	0	0	0	0	0	0	0	0	0	0	0	0	0	0	0
TOTAL	7	110	108	449	1,667	1,390	102	0	1,756	1,150	684	197	1	587	2	2,492	433	848	1,624	132	519	228	14,486

2019 FORMAL GRIEVANCE REPORT

Month	BENTON	HAWK/M	HAWK/F	WRTS	EARU & MX	GRIMES	RLW	MCWR	MCPH	MSU	NCU	PBU	NWA	TU	TRCC	VSMX	VU	CU	ORCU	Ester	DRU	Bowie Cty	TOTAL
JAN	0	14	8	37	335	152	16	0	171	128	70	13	0	117	0	289	55	106	155	12	73	21	1,772
FEB	0	4	5	56	334	134	9	0	104	185	78	15	0	81	0	255	46	115	161	8	57	8	1,655
MAR	3	9	4	40	332	121	12	0	115	111	102	15	0	125	0	310	5	144	113	25	37	14	1,637
APR	0	14	4	52	274	128	19	0	153	289	81	21	0	67	0	334	130	119	150	14	42	21	1,912
MAY	1	10	4	39	337	137	37	0	109	270	49	20	1	93	0	277	77	126	151	0	45	5	1,788
JUN	0	0	0	0	0	0	0	0	0	0	0	0	0	0	0	0	0	0	0	0	0	0	0
JUL	0	0	0	0	0	0	0	0	0	0	0	0	0	0	0	0	0	0	0	0	0	0	0
AUG	0	0	0	0	0	0	0	0	0	0	0	0	0	0	0	0	0	0	0	0	0	0	0
SEPT	0	0	0	0	0	0	0	0	0	0	0	0	0	0	0	0	0	0	0	0	0	0	0
OCT	0	0	0	0	0	0	0	0	0	0	0	0	0	0	0	0	0	0	0	0	0	0	0
NOV	0	0	0	0	0	0	0	0	0	0	0	0	0	0	0	0	0	0	0	0	0	0	0
DEC	0	0	0	0	0	0	0	0	0	0	0	0	0	0	0	0	0	0	0	0	0	0	0
TOTAL	4	51	25	224	1,612	672	93	0	652	983	380	84	1	483	0	1,465	313	610	730	59	254	69	8,764

INMATE INSTITUTIONAL GRIEVANCE APPEAL REPORT – MAY 2019

	Acknowledged	Rejected	Processed W/O Merit	Processed W/ Merit
Benton Unit	0	0	0	0
Benton Work Release	0	0	0	0
Bowie County Texas Correctional Facility	7	2	7	0
Cummins Unit	28	11	26	0
Cummins Modular Unit	0	0	0	0
Delta Regional Unit	3	2	15	0
East Arkansas Regional Unit	13	0	9	1
East Arkansas Regional Max Unit	79	12	118	0
Ester Unit	0	0	0	0
Grimes Unit	25	3	34	0
Maximum Security Unit	89	24	82	1
Tucker Re-Entry	0	0	0	0
McPherson Unit	27	8	34	0
McPherson Mental Health Residential Program Unit	0	1	1	0
Mississippi County Work Release Center	0	0	0	0
Northwest Arkansas Work Release Center	0	0	0	0
North Central Unit	14	6	10	0
Ouachita River Correctional Unit	19	8	13	1
ORCU Hospital	0	0	0	0
ORCU New Commitment	8	1	4	0
ORCU Mental Health Residential Program Unit	1	1	2	0
Pine Bluff Unit	0	4	1	0
Pine Bluff Re-Entry	0	0	0	0
Randall L. Williams Correctional Facility	1	0	1	0
Texarkana Regional Correctional Center	0	0	0	0
Tucker Unit	11	7	4	0
Varner Super Max	54	24	75	2
Varner Unit	31	4	40	0
Wrightsville Unit	5	1	8	0
Hawkins Center	0	0	0	0
Hawkins for Males	2	0	2	0
Hawkins SPU	0	0	0	0
Total	417	119	486	5

ADMISSIONS AND RELEASES – MAY 2019

<u>Admissions</u>	<u>Male</u>	<u>Female</u>	<u>Total</u>
Asian	1	1	2
Black	209	22	231
Hispanic	11	2	13
Native American Indian	0	2	2
Native Hawaiian or Pacific Isl.	0	0	0
White	318	89	407
Other	0	0	0
Unknown	1	0	1
Total	540	116	656

<u>Releases</u>	<u>Male</u>	<u>Female</u>	<u>Total</u>
Asian	1	0	1
Black	241	23	264
Hispanic	19	3	22
Native American Indian	2	0	2
Native Hawaiian or Pacific Isl.	0	0	0
White	422	76	498
Other	1	0	1
Unknown	0	0	0
Total	686	102	788

ADC INMATE POPULATION GROWTH 2000-2026 - MAY 2019

Updated 05/31/2019

Mo.	2000	2001	2002	2003	2004	2005	2006	2007	2008	2009	2010	2011	2012	2013	2014	2015	2016	2017	2018	2019
Jan.	11,984	11,908	12,402	13,015	13,105	13,595	13,481	13,839	14,518	14,796	15,334	16,312	15,134	14,815	17,481	18,142	17,785	17,824	18,201	17,958
Feb.	12,169	12,022	12,529	13,054	13,166	13,783	13,633	14,012	14,603	14,883	15,374	16,209	14,990	15,008	17,438	18,082	17,625	17,608	17,998	17,846
March	12,006	12,033	12,299	13,108	13,088	13,418	13,534	13,772	14,580	14,843	15,290	16,095	14,964	14,665	17,395	18,233	17,573	17,666	18,089	17,898
April	12,069	12,167	12,465	13,213	13,323	13,469	13,554	13,851	14,769	14,937	15,570	16,172	15,124	14,850	17,604	18,703	17,815	17,798	18,227	17,977
May	12,109	12,384	12,558	13,463	13,556	13,528	13,711	14,146	14,880	15,146	15,694	16,062	15,132	15,074	17,593	18,693	17,769	17,652	17,945	17,817
June	12,005	12,108	12,439	13,418	13,389	13,251	13,430	13,915	14,700	15,025	15,564	15,554	14,832	14,825	17,340	18,813	17,973	17,963	17,972	
July	12,030	12,190	12,622	13,509	13,528	13,286	13,560	14,082	14,868	15,195	15,807	15,519	14,879	15,379	17,522	18,870	18,130	18,180	18,005	
August	12,087	12,371	12,815	13,565	13,632	13,419	13,646	14,224	15,100	15,385	15,829	15,240	14,675	16,103	17,549	18,806	17,919	18,051	17,751	
September	11,983	12,289	12,774	13,341	13,516	13,237	13,652	14,217	14,850	15,285	16,025	15,172	14,724	16,412	17,605	18,549	18,026	18,179	17,865	
October	12,119	12,348	12,942	13,341	13,584	13,363	13,775	14,349	14,836	15,381	16,311	15,271	14,856	16,993	17,880	18,430	18,127	18,348	17,943	
November	12,094	12,408	13,162	13,408	13,706	13,587	13,913	14,437	15,025	15,340	16,460	15,205	14,625	17,168	17,848	17,981	17,573	17,973	17,666	
December	11,856	12,333	12,845	13,106	13,470	13,338	13,728	14,315	14,716	15,199	16,204	15,062	14,654	17,235	17,874	17,707	17,537	18,078	17,799	
Net Ann. Inc.	29	477	512	261	364	-132	390	587	401	483	1,005	-1,142	-408	2,581	639	-167	-170	541	-279	18
Avg. Mo. Inc.	2	40	43	22	30	-11	33	49	33	40	84	-95	-34	215	53	-14	-14	45	-23	4

Population is total jurisdictional count at end of each month. Population at end of month December 1999 was 11,827.

Average monthly population increase for past fifteen years 2004 - 2018 is 26

Average monthly population increase for past ten years Jan. 2009 - Dec 2018 is 26

Average monthly population increase for past five years 2014 - 2018 is 9

Projected at Growth of 26 per Month

	2008	2009	2010	2011	2012	2013	2014	2015	2016	2017	2018	2019	2020	2021	2022	2023	2024	2025	2026
Mo.	Actual	Actual	Actual	Actual	Actual	Actual	Actual	Actual	Actual	Actual	Actual	Actual/ Proj.	Proj.	Proj.	Proj.	Proj.	Proj.	Proj.	Proj.
January	14,518	14,796	15,334	16,312	15,134	14,815	17,481	18,142	17,785	17,824	18,201	17,958	18,025	18,337	18,649	18,961	19,273	19,585	19,897
February	14,603	14,883	15,374	16,209	14,990	15,008	17,438	18,082	17,625	17,608	17,998	17,846	18,051	18,363	18,675	18,987	19,299	19,611	19,923
March	14,580	14,843	15,290	16,095	14,964	14,665	17,395	18,233	17,573	17,666	18,089	17,898	18,077	18,389	18,701	19,013	19,325	19,637	19,949
April	14,769	14,937	15,570	16,172	15,124	14,850	17,604	18,703	17,815	17,798	18,227	17,977	18,103	18,415	18,727	19,039	19,351	19,663	19,975
May	14,880	15,146	15,694	16,062	15,132	15,074	17,593	18,693	17,769	17,652	17,945	17,817	18,129	18,441	18,753	19,065	19,377	19,689	20,001
June	14,700	15,025	15,564	15,554	14,832	14,825	17,340	18,813	17,973	17,963	17,972	17,843	18,155	18,467	18,779	19,091	19,403	19,715	20,027
July	14,868	15,195	15,807	15,519	14,879	15,379	17,522	18,870	18,130	18,180	18,005	17,869	18,181	18,493	18,805	19,117	19,429	19,741	20,053
August	15,100	15,385	15,829	15,240	14,675	16,103	17,549	18,806	17,919	18,051	17,751	17,895	18,207	18,519	18,831	19,143	19,455	19,767	20,079
September	14,850	15,285	16,025	15,172	14,724	16,412	17,605	18,549	18,026	18,179	17,865	17,921	18,233	18,545	18,857	19,169	19,481	19,793	20,105
October	14,836	15,381	16,311	15,271	14,856	16,993	17,880	18,430	18,127	18,348	17,943	17,947	18,259	18,571	18,883	19,195	19,507	19,819	20,131
November	15,025	15,340	16,460	15,205	14,625	17,168	17,848	17,981	17,573	17,973	17,666	17,973	18,285	18,597	18,909	19,221	19,533	19,845	20,157
December	14,716	15,199	16,204	15,062	14,654	17,235	17,874	17,707	17,537	18,078	17,799	17,999	18,311	18,623	18,935	19,247	19,559	19,871	20,183
Net Ann. Inc.	401	483	1,005	-1,142	-408	2,581	639	-167	-170	541	-279	200	312	312	312	312	312	312	312
Ave. Mo. Inc.	33	40	84	-95	-34	215	53	-14	-14	45	-23	17	26	26	26	26	26	26	26

MONTHLY POPULATION AVERAGES - MAY 2019

Unit/Center	5/1	5/2	5/3	5/6	5/7	5/8	5/9	5/10	5/13	5/14	5/15	5/16	5/17	5/20	5/21	5/22	5/23	5/24	5/27	5/28	5/29	5/30	5/31	AVG
Benton	347	350	345	346	347	349	349	349	350	352	346	345	346	348	343	347	349	350	348	348	330	340	344	346
Cummins	1,666	1,666	1,663	1,661	1,659	1,659	1,657	1,655	1,653	1,663	1,665	1,665	1,663	1,664	1,665	1,669	1,668	1,669	1,669	1,669	1,659	1,659	1,655	1,663
Delta	613	622	622	617	617	615	609	620	619	621	625	625	624	623	621	619	616	614	609	609	598	599	613	616
E AR Reg	1,675	1,677	1,671	1,665	1,654	1,655	1,686	1,680	1,678	1,673	1,670	1,668	1,662	1,679	1,682	1,685	1,684	1,677	1,703	1,703	1,689	1,674	1,664	1,676
Ester	587	586	587	588	588	588	586	579	577	589	589	584	581	586	590	587	583	586	583	583	586	585	588	585
Grimes	1,078	1,069	1,075	1,075	1,068	1,073	1,071	1,070	1,072	1,071	1,064	1,063	1,060	1,064	1,064	1,068	1,077	1,071	1,070	1,070	1,063	1,059	1,078	1,069
Max Sec	675	674	674	674	672	672	672	672	670	671	674	674	672	672	673	673	672	672	673	673	671	670	667	672
McPherson	988	981	982	988	989	991	991	997	1,000	1,004	1,000	1,001	1,006	1,009	1,012	1,012	1,009	1,011	1,012	1,012	994	992	1,009	1,000
MCWRC	131	128	128	128	127	127	127	136	134	134	134	134	133	133	133	133	133	133	133	133	130	125	123	131
N Central	823	822	819	815	832	841	836	834	833	833	837	836	835	834	834	833	832	830	832	832	819	805	808	828
NWAWRC	100	100	100	100	100	99	100	100	99	99	99	99	99	100	100	101	102	102	100	100	90	93	98	99
Ouachita River	1,847	1,853	1,856	1,858	1,854	1,849	1,853	1,849	1,846	1,847	1,843	1,843	1,846	1,853	1,846	1,831	1,844	1,850	1,847	1,847	1,822	1,832	1,802	1,844
Randall L Williams	564	564	561	557	562	561	565	563	559	560	559	556	568	564	561	560	556	558	562	558	560	559	556	561
Pine Bluff	534	533	534	533	533	535	536	537	539	540	539	537	525	530	522	522	522	539	540	544	544	531	533	534
PB Reentry	53	53	53	53	54	54	54	54	54	54	54	54	54	54	54	54	54	54	54	54	54	54	54	54
TRCC	127	127	128	128	128	128	128	128	128	128	128	129	127	127	127	128	128	128	127	127	119	122	125	127
Tucker	1,004	1,000	1,001	994	1,000	997	995	992	990	989	994	994	992	991	998	993	991	998	994	994	987	972	982	993
Varner	1,679	1,678	1,673	1,673	1,662	1,660	1,656	1,653	1,652	1,651	1,650	1,649	1,650	1,648	1,656	1,651	1,647	1,645	1,641	1,641	1,635	1,631	1,628	1,653
Wrightsville	1,251	1,250	1,247	1,246	1,243	1,247	1,244	1,246	1,251	1,246	1,245	1,243	1,248	1,251	1,251	1,250	1,248	1,246	1,244	1,244	1,234	1,236	1,241	1,246
Total ADC	15,742	15,733	15,719	15,699	15,689	15,700	15,715	15,714	15,704	15,725	15,715	15,699	15,691	15,730	15,732	15,716	15,715	15,733	15,741	15,741	15,584	15,538	15,568	15,698
Bowie CO., TX	333	329	327	326	326	326	326	326	325	325	325	326	326	326	325	330	330	332	332	332	334	334	334	328
ALETA	18	18	18	18	18	18	18	18	18	18	18	18	18	18	18	18	18	18	18	18	18	18	18	18
Ar State Police	58	58	60	60	60	60	59	58	58	58	58	58	58	56	56	56	58	58	58	58	57	52	53	58
Co Jail / M	1,374	1,375	1,400	1,425	1,432	1,441	1,430	1,442	1,454	1,437	1,438	1,451	1,498	1,465	1,479	1,492	1,494	1,487	1,467	1,467	1,445	1,424	1,399	1,444
Co Jail / F	78	78	83	82	95	91	88	86	89	87	99	93	91	92	97	105	107	108	115	115	118	104	98	96
Total Co Jail BK	1,452	1,453	1,483	1,507	1,527	1,532	1,518	1,528	1,543	1,524	1,537	1,544	1,589	1,557	1,576	1,597	1,601	1,595	1,582	1,582	1,563	1,528	1,497	1,540
309/M	253	253	253	252	254	252	252	252	253	254	254	252	252	252	253	253	253	253	252	252	251	250	249	252
309/F	74	74	72	72	73	73	73	73	74	75	75	77	77	77	77	76	76	76	76	76	78	78	75	75
Total Act 309	327	327	325	324	327	325	325	325	327	329	329	329	329	329	329	330	329	329	329	328	329	328	324	327
Total Non ADC	2,188	2,185	2,213	2,235	2,258	2,261	2,246	2,255	2,271	2,254	2,267	2,275	2,320	2,286	2,305	2,330	2,336	2,332	2,318	2,318	2,301	2,260	2,226	2,271
Total	17,930	17,918	17,932	17,934	17,947	17,961	17,961	17,969	17,975	17,979	17,982	17,974	18,011	18,016	18,037	18,046	18,051	18,065	18,059	18,059	17,885	17,798	17,794	17,969

FISCAL YEAR 2019 COUNTY JAIL BACKUP - MAY 2019

DAY		Jul-18		Aug-18		Sep-18		Oct-18		Nov-18		Dec-18		Jan-19		Feb-19		Mar-19		Apr-19		May-19
1	*	1,575		1,618	*	1,646		1,531		1,634	*	1,578		1,461		1,545		1,568		1,531		1,452
2		1,578		1,624	*	1,646		1,531		1,659	*	1,578		1,461	*	1,545	*	1,568		1,552		1,453
3		1,594		1,631		1,613		1,520	*	1,659		1,538		1,452	*	1,545	*	1,568		1,540		1,483
4		1,577	*	1,631		1,613		1,537	*	1,659		1,532		1,430		1,555		1,472		1,536	*	1,483
5		1,577	*	1,631		1,583		1,535		1,646		1,521	*	1,430		1,563		1,517		1,523	*	1,483
6		1,548		1,649		1,567	*	1,535		1,654		1,519	*	1,430		1,574		1,526	*	1,523		1,507
7	*	1,548		1,654		1,552	*	1,535		1,644		1,532		1,431		1,564		1,518	*	1,523		1,527
8	*	1,548		1,652	*	1,552		1,535		1,633	*	1,532		1,427		1,598		1,548		1,517		1,532
9		1,547		1,642	*	1,552		1,527		1,602	*	1,532		1,419	*	1,598	*	1,548		1,490		1,518
10		1,532		1,665		1,517		1,524	*	1,602		1,509		1,400	*	1,598	*	1,548		1,534		1,528
11		1,571	*	1,665		1,508		1,557	*	1,602		1,505		1,401		1,591		1,557		1,557	*	1,528
12		1,584	*	1,665		1,501		1,578		1,600		1,513	*	1,401		1,595		1,511		1,557	*	1,528
13		1,609		1,670		1,503	*	1,578		1,600		1,496	*	1,401		1,608		1,485	*	1,557		1,543
14	*	1,609		1,671		1,514	*	1,578		1,618		1,493		1,402		1,627		1,511	*	1,557		1,524
15	*	1,609		1,660	*	1,514		1,574		1,626	*	1,493		1,404		1,641		1,516		1,524		1,537
16		1,598		1,676	*	1,514		1,571		1,633	*	1,493		1,425	*	1,641	*	1,516		1,529		1,544
17		1,589		1,681		1,505		1,573	*	1,633		1,472		1,434	*	1,641	*	1,516		1,529		1,589
18		1,569	*	1,681		1,496		1,583	*	1,633		1,458		1,459		1,645		1,525		1,521	*	1,589
19		1,563	*	1,681		1,498		1,606		1,633		1,484	*	1,459		1,645		1,538		1,502	*	1,589
20		1,559		1,690		1,511	*	1,606		1,620		1,477	*	1,459		1,647		1,535	*	1,502		1,557
21	*	1,559		1,683		1,494	*	1,606		1,624		1,463		1,476		1,658		1,527	*	1,502		1,576
22	*	1,559		1,677	*	1,494		1,606		1,657	*	1,463		1,476		1,675		1,528		1,504		1,597
23		1,553		1,685	*	1,494		1,599		1,657	*	1,463		1,479	*	1,675	*	1,528		1,505		1,601
24		1,560		1,701		1,506		1,619	*	1,657		1,452		1,509	*	1,675	*	1,528		1,516		1,595
25		1,552	*	1,701		1,524		1,612	*	1,657		1,452		1,513		1,706		1,525		1,524	*	1,595
26		1,553	*	1,701		1,542		1,634		1,656		1,452	*	1,513		1,728		1,523		1,558	*	1,595
27		1,597		1,700		1,527	*	1,634		1,650		1,449	*	1,513		1,674		1,519	*	1,558		1,582
28	*	1,597		1,679		1,532	*	1,634		1,609		1,464		1,528		1,625		1,501	*	1,558		1,582
29	*	1,597		1,669	*	1,532		1,602		1,591	*	1,464		1,515				1,504		1,552		1,563
30		1,623		1,657	*	1,532		1,595		1,578	*	1,464		1,535			*	1,504		1,523		1,528
31		1,629		1,646				1,621				1,473		1,540			*	1,504				1,497
Avg Daily Backup		1,576		1,666		1,536		1,577		1,631		1,494		1,458		1,621		1,525		1,530		1,542

Notes: Totals do not include 309 Contracts in County Jails (maximum of 336)

Fiscal Year Average as of May 31, 2019 - 1,560

Short-Term Revocation Program Fiscal Year Average for May 31, 2019 - 720

STTG UNIT COUNTS – MAY 2019

Unit	Beginning Total	Confirmed	Suspected	In	Out	Paroled	Removed	Ending Total	Total Unit Population	Unit % of STTG's
Benton	80	0	0	9	3	8	0	78	343	22.74%
Cummins	520	0	0	27	10	13	0	524	1,655	31.66%
Delta	199	25	5	25	12	14	0	228	623	36.60%
EARU	579	0	0	26	4	18	0	583	1,665	35.02%
Grimes	357	0	0	33	17	17	1	355	1,073	33.08%
Hawkins	53	0	0	2	4	0	0	51	396	12.88%
Max	255	0	0	9	4	5	0	255	668	38.17%
Mcperson	43	0	0	0	1	0	0	42	1,005	4.18%
MCWR	37	0	0	4	2	3	0	36	123	29.27%
NCU	202	0	0	20	16	0	0	206	807	25.53%
NWAWR	17	0	0	0	1	1	0	15	98	15.31%
ORCU	364	0	0	33	22	14	0	361	1,580	22.85%
ORCU Intake	61	156	0	0	129	0	0	88	241	36.51%
PB/Ester	245	0	0	72	41	17	0	259	1,171	22.12%
RLW	175	0	0	69	80	14	0	150	553	27.12%
TWR	39	0	0	0	3	2	0	34	124	27.42%
Tucker	276	25	0	17	13	4	0	301	973	30.94%
Varner	679	0	0	66	72	13	0	660	1,630	40.49%
Wrightsville	236	0	1	33	10	16	0	244	861	28.34%
Total	4,417	206	6	445	444	159	1	4,470	15,589	28.67%

ORCU Intake brought in 156 new STTG members into ADC last month.

STTG DISCIPLINARY REPORT – MAY 2019

Unit	STTG Incidents	STTG Suspected Incidents	Total Unit Disciplinary	Disciplinary Involving STTG	Percentage
Benton	0	0	25	3	12.00%
Cummins	1	4	691	302	43.70%
Delta	0	0	220	93	42.27%
EARU	0	0	603	290	48.09%
Grimes	1	0	123	41	33.33%
Hawkins	0	0	9	1	11.11%
Max	0	0	60	26	43.33%
Mcperson	0	0	182	13	7.14%
MCWR	0	0	4	4	100.00%
NCU	2	0	137	59	43.07%
NWAWR	0	0	14	2	14.29%
ORCU	0	0	122	48	39.34%
ORCU Intake	0	0	7	4	57.14%
PB/Ester	2	0	106	42	39.62%
RLW	0	1	61	40	65.57%
TWR	0	0	8	3	37.50%
Tucker	0	0	104	52	50.00%
Varner	0	0	682	349	51.17%
Wrightsville	1	0	97	33	34.02%
Total	7	5	3,255	1,405	43.16%

STTG COUNTS BY STTG SET – MAY 2019

STTG Set	Benton	Cummins	Delta	EARU	Grimes	Hawkins	Max	Mcperson	MCWR	NCU	NWAWR	ORCU	Intake	PB	RLW	TWR	Tucker	Varner	Wrightsville	Total
Asian	1	0	0	1	1	0	0	0	0	0	0	0	0	3	0	0	1	0	1	8
Bloods	9	123	27	95	60	5	58	6	9	35	5	79	13	40	24	4	64	145	37	838
Crips	7	70	18	67	39	4	32	4	4	20	1	48	7	34	18	3	35	95	23	529
Folk	4	44	55	59	29	6	30	8	0	14	5	15	8	15	7	12	20	73	13	417
GD	16	125	37	136	78	10	44	2	7	26	0	74	19	58	27	0	75	124	56	914
Mexican	2	12	5	21	12	2	4	2	1	10	1	9	2	10	4	0	8	26	9	140
Motorcycle	0	1	1	1	2	1	3	1	1	1	0	1	0	3	2	1	5	1	0	25
Other	2	12	7	7	15	2	5	0	0	9	0	17	2	15	6	1	8	10	9	127
People	3	16	4	18	18	1	16	5	0	12	0	16	4	13	5	0	5	24	8	168
Unknown	0	7	4	11	9	0	2	1	1	5	0	13	7	0	6	0	6	8	8	88
W/S	18	27	45	50	38	4	9	7	5	36	3	33	15	32	25	13	34	39	22	455
AB	2	6	2	10	3	1	1	2	2	7	0	3	2	6	0	0	7	8	6	68
AC	1	9	2	11	8	5	11	1	1	5	0	9	2	8	0	0	4	22	5	104
NAE	5	30	8	37	16	4	19	2	3	3	0	22	5	8	12	0	11	29	27	241
WAR	8	42	13	59	27	6	21	1	2	23	0	22	2	14	14	0	18	56	20	348
Total	78	524	228	583	355	51	255	42	36	203	15	361	88	259	150	34	301	660	244	4,470

Key:

GD = Gangster Disciples

W/S = White Supremacist

NAE = New Aryan Empire

WAR = White Aryan Resistance

AC = Aryan Circle

AB = Aryan Brotherhood

INTERNAL AFFAIRS BOARD REPORT - MAY 2019

OPENED INVESTIGATIONS, REVIEWS/ASP - MAY 2019	Open Investigation	Open Review	ASP Referral
Assault on Inmate	0	0	0
Assault on Staff	0	0	2
Attempted Escape from Unit	0	0	0
Banding Together to Interfere with Unit	0	0	0
Battery on Inmate without Serious Injury	0	0	0
Battery on Inmate with Serious Injury	0	0	1
Battery on Inmate with Use of Unknown Substance	0	0	0
Battery on Staff without Serious Injury	0	0	2
Battery on Staff with Serious Injury	0	0	0
Battery on Staff with Bodily Fluids	0	0	3
Battery on Staff with Use of Unknown Substance	0	0	0
Death	0	0	12
Disobey Direct Order	0	0	1
Employee Misconduct	2	3	0
Escape from Work Release	0	0	1
Forcible Rape	0	1	0
Inappropriate Relationship	0	0	0
Inmate on Inmate Abusive Sexual Contact	0	0	0
Inmate on Inmate Sexual Assault	0	0	0
Inmate on Inmate Sexual Harassment	1	22	0
Inmate on Inmate Sexual Misconduct	1	24	0
Inmate on Inmate Nonconsensual Sexual Contact	0	1	1
Introduction of Contraband	1	0	3
Introduction of Drugs	0	0	1
Introduction of Tobacco	0	0	0
Other Incident	3	1	0
Other Rule Violation	1	0	0
Possession of Cell Phone	0	0	0
Possession of Drugs	0	0	2
Retaliation	0	0	0
Sexual Misconduct	0	1	0
Staff on Inmate Sexual Harassment	0	15	0
Staff on Inmate Sexual Misconduct	0	8	0
Staff on Staff Sexual Harassment	0	1	0
Staff on Staff Sexual Misconduct	0	0	0
Suicide Attempt	0	0	0
Suspected Criminal Activity	0	1	1
Trafficking	0	0	0
Use of Force	0	76	0
Verbal/Written Threat on Staff	0	1	1
TOTAL	9	155	31

ADC INPATIENT AND EMERGENCY ROOM UTILIZATION

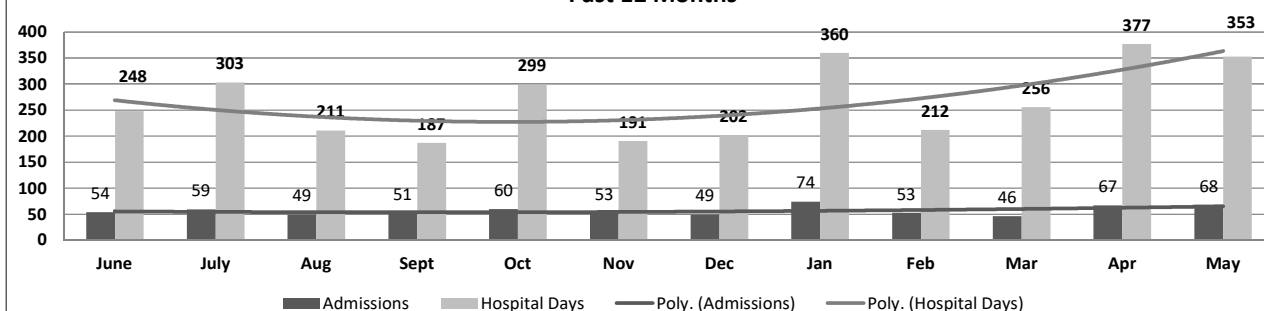
ADC Inpatient Statistics Past 12 Months

	2018							2019					
	June	July	Aug	Sept	Oct	Nov	Dec	Jan	Feb	Mar	Apr	May	Average
Admissions	54	59	49	51	60	53	49	74	53	46	67	68	56.9
Hospital Days	248	303	211	187	299	191	202	360	212	256	377	353	266.6
Average Length of Stay	5.37	4.76	4.91	6.56	5.22	5.48	5.10	6.21	7.07	6.70	7.65	5.19	4.68

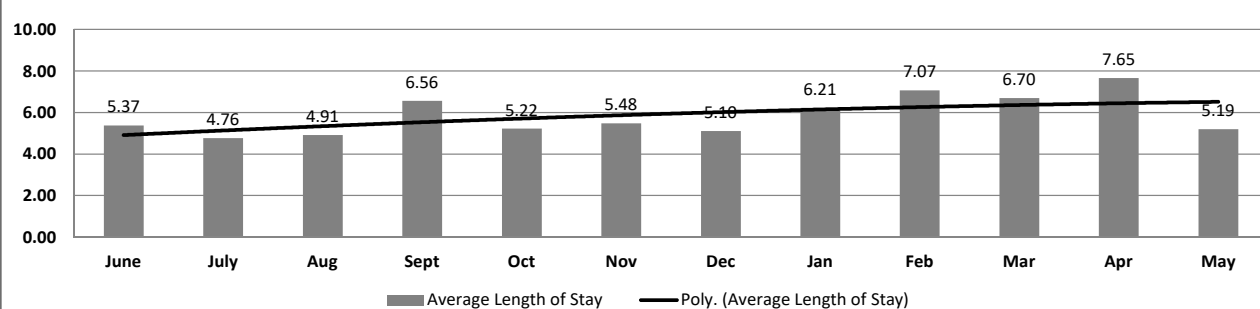
ADC ER Visits Past 12 Months

	2018							2019					
	June	July	Aug	Sept	Oct	Nov	Dec	Jan	Feb	Mar	Apr	May	Average
Emergency Room Visits	82	117	96	110	95	91	105	100	76	88	116	117	99.4

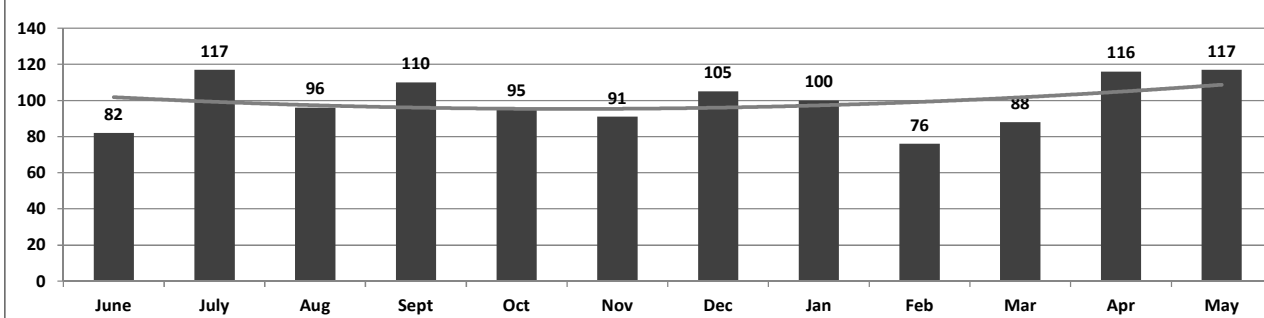
ADC Inpatient Utilization Past 12 Months



ADC Inpatient Average Length of Stay Past 12 Months



ADC Emergency Room Visits Past 12 Months



MEDICAL GRIEVANCE BOARD REPORT – MAY 2019

Unit	Acknowledged/ Received	Rejected	Reviewed & Signed by Dep Director	With Merit	With Merit, but Resolved	% With Merit	Without Merit
Benton	0	0	0	0	0	0%	0
Bowie Co.	0	0	1	0	0	0%	1
CMU	0	0	0	0	0	0%	0
Cummins	13	2	11	0	1	9%	10
Delta	4	0	2	1	0	50%	1
EARU	3	0	24	0	0	0%	24
EARU Max	9	6	19	1	1	11%	17
Ester	2	0	2	0	0	0%	2
Grimes	5	6	14	0	0	0%	14
Hawkins	1	0	1	0	0	0%	1
McPherson	5	3	9	1	0	11%	8
MCWRC	0	0	0	0	0	0%	0
MSU	11	0	8	3	0	38%	5
North Central	10	0	6	0	0	0%	6
NWAWRC	0	0	0	0	0	0%	0
Ouachita	15	8	26	2	0	8%	24
Pine Bluff	4	0	0	0	0	0%	0
Randall Williams	0	0	0	0	0	0%	0
SNN	0	0	0	0	0	0%	0
TRCC	0	0	0	0	0	0%	0
Tucker	7	2	15	0	1	7%	14
Varner	23	2	15	1	1	13%	13
Varner S Max	52	3	30	1	0	3%	29
WRU	3	0	5	0	0	0%	5
WHM	2	0	1	0	0	0%	1
WWR	0	0	0	0	0	0%	0
TOTAL	169	32	189	10	4	7%	175

CHAPLAINCY

Month: May Year: 2019	CUMMINS	DELTA REGIONAL	EAST ARKANSAS	EAST ARKANSAS MAX	ESTER	GRIMES	HAWKINS	MAXIMUM	MCPHERSON	NORTH CENTRAL	OUACHITA RIVER	PINE BLUFF	RANDALL L. WILLIAMS	TUCKER	VARNER	VARNER MAX	WRIGHTSVILLE	TOTAL
Services Chaplains Oversaw																		
Christian																		
Population	10	28	3	0	2	4	1	4	4	13	7	3	13	12	13	0	4	121
Segregation	0	0	0	0	0	0	0	0	0	0	1	0	0	0	0	0	0	1
Muslim																		
Population	4	4	2	0	1	4	0	1	4	0	1	1	4	0	5	0	1	32
Segregation	0	0	0	0	0	0	0	0	0	0	0	0	0	0	0	0	0	0
																		154
Volunteers in Charge																		
Protestant	13	15	26	0	17	3	22	29	36	0	6	14	8	29	16	6	24	264
Catholic	2	0	0	0	1	0	4	1	2	4	5	1	1	1	3	4	4	33
Muslim	1	0	4	0	1	0	0	0	0	0	11	0	0	2	0	0	4	23
Other	1	0	3	0	0	0	2	13	4	0	21	0	4	0	5	0	2	55
Baptism	3	0	37	0	0	0	0	0	0	7	0	0	1	1	0	0	5	54
Marriages																		
	0	0	1	0	0	0	0	0	0	0	0	0	0	1	0	0	0	2
Distributed by Chaplains																		
Greeting Cards	633	356	0	0	250	100	250	228	573	72	10	210	103	213	312	187	0	3,497
Bibles, Quran, Torah, Etc.	19	30	17	14	35	30	17	12	33	18	650	10	33	42	75	25	3	1,063
Study Course	0	4	152	43	12	0	10	300	90	0	40	0	27	2	16	2	0	698
Writing Supplies	0	0	0	0	85	41	200	69	129	0	300	0	5	3	0	0	0	832
Literature	678	525	985	365	550	3	200	20	155	418	500	200	122	0	2717	87	616	8,141
Chaplain's Visits																		
Barracks	43	54	13	0	22	17	14	26	25	22	220	128	36	161	230	0	20	1,031
Approximate Hours Spent in Barracks	21	8	3	0	110	10	6	12	8	6	78	16	10	40	51	7	10	396
Inmate Office visits	28	80	142	0	60	15	58	24	195	21	77	18	127	210	154	0	32	1,241
Other Office visits	13	15	14	0	22	17	12	10	42	18	180	0	16	40	19	3	9	430
Hospital	2	3	1	0	2	5	0	1	3	3	41	0	13	0	0	0	0	74
Infirmary/Sick Call	4	3	2	0	10	8	10	10	14	4	24	4	5	2	3	0	2	105
Restrictive/Punitive Housing	7	3	0	21	0	3	0	6	28	0	35	8	8	6	0	3	2	130
PC - DRU	0	3	0	0	0	0	0	0	0	0	0	0	0	0	0	0	0	3
Visitation Days	0	1	0	0	0	0	0	0	0	0	2	0	4	0	0	0	1	8
Volunteer Visits																		
RCV	0	4	9	0	0	0	5	0	28	0	43	0	9	0	2	0	0	100
OCV	33	21	53	0	24	0	1	52	22	14	12	17	0	48	16	0	39	352
Spiritual Advisor	2	0	1	0	0	0	0	0	0	0	2	0	0	2	0	0	0	7
CRA	32	11	98	12	22	164	75	146	37	84	102	30	14	137	50	13	31	1,058
Religious Volunteer Hours																		
Volunteer Hours	53	75	568	18	186	164	201	432	317	363	449	109	53	447	384	49	140	4,008
Denominational/Volunteer Chaplain Hours	65	3	12	0	160	15	120	128	140	107	33	52	16	160	29	2	29	1,071
																		5,079
Other Activities of Chaplain																		
Counseled Employees	5	4	8	0	12	0	8	4	30	5	220	7	4	6	18	6	5	342
Orientation Sessions	4	0	1	0	1	0	0	0	0	0	0	0	2	0	0	0	3	11
Free World Devotions	0	0	4	0	7	8	0	0	0	0	4	0	4	3	15	0	0	45
Spoke in Churches	19	0	3	0	8	15	0	0	2	0	11	0	4	4	22	0	1	89
Crisis Intervention Sessions	28	6	0	0	18	0	8	2	16	6	51	9	0	13	5	4	13	179
Marriage Counseling	0	0	3	0	0	0	0	0	0	0	21	0	0	11	0	0	0	35
Denominational Meeting	0	0	0	0	1	1	1	0	0	1	1	0	1	1	3	0	0	10
Chaplain's Meeting	1	1	1	0	0	2	1	1	1	1	2	1	1	1	2	0	1	17
Volunteer Training Session	0	1	0	0	0	0	0	0	0	0	0	0	0	1	0	0	0	2
Chaplain Transfers																		
	0	0	0	0	0	0	0	0	0	0	0	0	0	0	0	0	0	0
Chaplain Promotions																		
	0	0	0	0	0	1	0	0	0	0	0	0	0	0	0	0	0	1
PAL PROGRAM																		
Enrolled at start of month	47	23	49	0	33	50	32	14	56	17	31	0	31	62	50	0	30	525
Enrolled during the month	7	2	6	0	0	1	0	2	25	0	8	0	3	9	10	0	0	73
Removed From PAL Program																		
# Paroled	1	0	2	0	1	1	1	0	4	0	1	0	0	2	3	0	0	16
# Completed	0	1	2	0	0	0	0	0	2	0	0	0	0	2	1	0	0	8
# Withdrew	4	0	0	0	0	0	0	0	6	0	0	0	0	0	0	0	0	10
# Removed	1	3	1	0	0	0	0	1	4	0	1	0	3	2	5	0	0	21
# Transferred	2	0	0	0	0	0	1	0	8	0	0	0	1	3	1	0	2	18
Total Removed from PAL Program	8	4	5	0	1	1	2	1	24	0	2	0	4	9	10	0	2	73
Total Enrolled at the End of the Month	46	21	50	0	32	50	30	15	57	17	37	0	30	62	50	0	28	525
Volunteers in PAL																		
	15	1	11	0	6	32	19	8	33	5	6	0	5	8	9	0	3	161
Special Events:																		
	2	3	3	1	1	1	2	1	3	2	2	1	2	3	2	0	3	32

MONTHLY PURCHASING REPORT – MAY 2019

PURCHASE ORDERS OVER \$10,000.00					
VENDOR	DESCRIPTION	LOCATION	PO#	PURCHASE AMOUNT	FUND
Chestnut Ridge Foam Inc	Mattress Inserts	Tucker/Industry	4501876335	\$10,876.00	Operational Industry Budget
Shoe Corporation of Birmingham	Boots	Tucker/Industry	4501876320	\$13,087.20	Operational Industry Budget
Mid State Services Inc	Toilet Paper	Wrightsville/Warehouse	4501876472	\$20,966.40	Operational Industry Budget
Arkansas Correctional Industries	Clothing and Linens	McPherson	4501876858	\$40,331.89	Operational Budget
Charm Tex	Clothing	McPherson	4501876854	\$10,470.25	Operational Budget
Keathley Patterson Electric	Lethal Fence Contactor	Cummins/Maintenance	4501876590	\$13,050.38	Operational Budget
Acme Brick Company	Brick	McPherson/Construction	4501877237	\$16,399.83	McPherson Admin Bldg Const
Home Depot Credit Services	Building Supplies	McPherson/Construction	4501877027	\$18,275.71	McPherson Admin Bldg Const
Cherokee Building Materials Inc	Building Supplies	McPherson/Construction	4501877045	\$19,922.42	McPherson Admin Bldg Const
R & E Supply Co	Cooler Unit & Supplies	Cummins/Farm	4501877545	\$16,189.08	Operational Farm Budget
VWV Grainger Inc	Radios	Emergency Prep/Radio Shop	4501877566	\$12,799.05	Operational Budget
Goaltex Corp	Shoes	Mcpherson	4501877528	\$11,721.80	Operational Budget
Mid State Services Inc	Toilet Paper	Wrightsville/Warehouse	4501877596	\$20,966.40	Operational Industry Budget
Razor Chemical Inc	Janitorial Supplies	Delta/Janitorial Factory	4501877607	\$22,650.00	Operational Industry Budget
Razor Chemical Inc	Janitorial Supplies	Delta/Janitorial Factory	4501877605	\$21,055.10	Operational Industry Budget
Trane US Inc	HVAC Parts	Ouachita/Maintenance	4501877652	\$19,128.76	Operational Budget
Green & Chapman LLC	Fuel-Diesel	Cummins/Farm	4501876846	\$16,640.69	Operational Farm Budget
HMU LLC, Open Plan Systems	Chairs	Tucker/Industry	4501877471	\$16,447.20	Operational Industry Budget
Niche Chem Industries Inc	Janitorial Chemicals	Delta/Janitorial Factory	4501877733	\$10,575.00	Operational Industry Budget
Redwood Toxicology Laboratory Inc	Drug Test Supplies	Chief Deputy Institutions	4501877687	\$13,200.00	Operational Budget
Plunkett Distributing	Laminate & Glue	Wrightsville/Industry/Furniture	4501878451	\$14,552.24	Operational Industry Budget
National Food Group	Food Purchases	Central Warehouse	4501878932	\$145,740.76	Operational Budget
William R Hill & Co Inc Doug Waldmann	Food Purchases	Central Warehouse	4501878942	\$385,550.48	Operational Budget
Farm Brothers Flyers A LLC	Aerial Application Fertilizer to Corn	Cummins/Farm	4501878753	\$20,475.00	Operational Farm Budget
Phoenix Trading Inc Amercare Products	Deodorant Soap	Central Warehouse	4501878927	\$19,041.00	Operational Budget
Thomas Petroleum Inc	Fuel-Diesel	EARU/Farm	4501877820	\$16,634.90	Operational Farm Budget
Mid South Sales Inc	Fuel-Unleaded & Diesel	Central Warehouse	4501878174	\$11,436.81	Operational Budget
Stephenson Oil Co Inc	Fuel-Unleaded	Grimes	4501877844	\$10,826.34	Operational Budget
Bluelinx Corportation	Lumber	Wrightsville/Industry/Furniture	4501879242	\$19,680.80	Operational Industry Budget
Arkansas Rebar Inc	Building Supplies/Steel	McPherson/Construction	4501879603	\$21,500.54	McPherson Admin Bldg Const
Mid State Services Inc	Toilet Paper	Wrightsville/Warehouse	4501879293	\$20,966.40	Operational Industry Budget
Bob Barker Company Inc	Duty Jackets	Training Academy	4501879796	\$10,129.98	Operational Budget
Servicewear Apparel	Uniform Pants	Training Academy	4501879828	\$15,686.58	Operational Budget
American Correctional Association	Re-Accreditation	Accreditation/Pine Bluff Complex	4501878203	\$12,600.00	Operational Budget
American Correctional Association	Re-Accreditation	Accreditation/NWA & Texarkana WR	4501878203	\$16,200.00	Work Release
Simpson Door and Hardware LLC	Supplies to Build Shower Doors	Max Sec/Maintenance	4501880512	\$12,916.53	Operational Budget
Galls LLC	Uniform Shirts	Training Academy	4501879968	\$31,824.00	Operational Budget
McClelland Consulting Engineers Inc	Consulting Svc for Waste Water Permit	North Central/Maintenance	4501879560	\$15,950.00	Operational Budget
Arkansas Correctional Industries	Shirts & Socks	Ouachita	4501880123	\$10,335.05	Operational Budget
American Business Solutions Inc	Scanners	Admin East/Information Services	4501880596	\$10,862.50	Operational Budget
Tabb Textiles Co Inc	Fabric for Clothing	Wrightsville/Warehouse	4501880723	\$38,500.00	Operational Industry Budget
Mid States Services Inc	Toilet Paper	Wrightsville/Warehouse	4501880724	\$20,966.40	Operational Industry Budget
Vincent A Irwin Ark Lighting Solutions	Lights	Ouachita/Maintenance	4501881087	\$12,199.00	Operational Budget
Bob Barker Company Inc	Mattresses	Ouachita	4501881098	\$12,939.30	Operational Budget
Barnes Paper Co	Egg Cartons	Cummins/Farm	4501881107	\$12,395.04	Operational Farm Budget
Green & Chapman LLC	Fuel-Unleaded	Cummins/Commissary	4501878730	\$16,705.57	Operational Budget
Riceland Foods Inc	Soybean Meal	Cummins/Farm	4501880827	\$70,200.00	Operational Farm Budget
Razor Chemical Inc	Janitorial Supplies	Delta/Janitorial Factory	4501881413	\$11,325.00	Operational Industry Budget
Arkansas Correctional Industries	Janitorial Supplies	Central Warehouse	4501881408	\$75,214.92	Operational Budget
Farm Brothers Flyers A LLC	Aerial Application Fertilizer to Corn	Cummins/Farm	4501881537	\$29,250.00	Operational Farm Budget
Trane US Inc	A/C Unit	Grimes/Construction	4501881657	\$10,413.32	Telephone Funds
The Sherwin-Williams Co	Paint & Supplies	Construction/Maintenance	4501881665	\$10,224.65	Operational Budget
Mid South Sales Inc	Fuel-Unleaded & Diesel	Central Warehouse	4501881724	\$10,513.41	Operational Budget
Mid States Services Inc	Toilet Paper	Wrightsville/Warehouse	4501881849	\$20,966.40	Operational Industry Budget
K Hall & Sons Produce Inc	Watermelons	Central Warehouse	4501882038	\$31,370.00	Operational Budget
Sysco Food Services of Arkansas	Food Purchases	Central Warehouse	4501881944	\$19,707.60	Operational Budget
William R Hill & Co Inc Doug Waldmann	Food Purchases	Central Warehouse	4501881931	\$38,971.90	Operational Budget
S&S Septic Systems & Environmental Sv	Septic Tank	EARU/Maintenance	4501845532	\$16,000.00	Operational Budget
MJ Kellner	Food Purchases	Central Warehouse	4501882182	\$53,788.00	Operational Budget
Woodbury Beach Co	Boiler Repair Parts	Construction/Construction	4501882188	\$13,648.45	telephone Funds
Southwest Microwave Inc	Perimeter Microwave System Parts	Constructiono/Maintenance	4501882192	\$18,595.50	Operational Budget
Arkansas Correctional Industries	Clothing & Linens	Varner	4501882263	\$12,481.07	Operational Budget
Farm Brothers Flyers A LLC	Aerial Application for Rice	Cummins/Farm	4501882426	\$12,600.00	Operational Farm Budget
Helena Chemical Company	Herbicides for Rice	Cummins/Chemical Shed	4501882706	\$21,143.00	Operational Farm Budget
		Total for Purchases over \$10,000		\$1,757,781.60	
FIRM CONTRACTS OVER \$25,000.00					
VENDOR	DESCRIPTION	UNIT	Contract #	PURCHASE AMOUNT	FUND
		Total for Contracts		\$0.00	
EMERGENCY PURCHASE ORDERS OVER \$25,000.00					
		Total EM Purchases		\$0.00	
Total Purchases				\$1,757,781.60	

PERSONNEL REPORT – MAY 2019

UNIT	AUTHORIZED	FILLED	VACANT	% VACANT	HIRED	VOLUNTARY TERMINATION	INVOLUNTARY TERMINATION	RETIREMENT
BENTON (CR05)	77	72	5	6.49%	0	2	0	0
CENTRAL OFFICE (CR01, CR02, CR08 & CR22)	275	252	23	8.36%	1	0	0	0
509 CHAPL ADMIN	26	24	2	7.69%	0	1	0	0
CONSTRUCTION (CR04)	59	52	7	11.86%	0	1	0	1
CUMMINS (CR09)	427	387	40	9.37%	14	2	5	1
DELTA (CR10)	183	169	14	7.65%	0	3	0	0
EAST ARKANSAS (CR12)	367	307	60	16.35%	6	8	1	0
ESTER (CR11)	155	147	8	5.16%	0	1	0	0
FARM (CR29)	60	49	11	18.33%	0	0	0	0
GRIMES (CR27)	244	221	23	9.43%	3	1	0	0
HAWKINS (CR06)	75	69	6	8.00%	1	1	0	1
INDUSTRY (CR07)	52	41	11	21.15%	0	0	0	0
MAXIMUM SECURITY (CR14)	225	170	55	24.44%	5	5	6	2
MCPHERSON (CR28)	234	201	33	14.10%	2	7	1	0
MENTAL HEALTH	182	155	27	14.84%	2	2	0	2
MISS COUNTY (CR15)	38	30	8	21.05%	2	2	1	0
NORTH CENTRAL (CR16)	197	190	7	3.55%	3	5	2	0
NORTHWEST ARK (CR17)	30	27	3	10.00%	0	0	0	0
OUACHITA RIVER (CR30)	466	421	45	9.66%	5	8	2	0
PINE BLUFF (CR20)	169	163	6	3.55%	1	0	2	0
RANDAL L. WILLIAMS (CR13)	145	140	5	3.45%	3	3	1	0
TEXARKANA (CR21)	31	25	6	19.35%	0	1	0	0
TRANSPORTATION (CR32)	102	99	3	2.94%	0	1	0	0
TUCKER (CR23)	197	154	43	21.83%	3	2	1	0
TUCKER REENTRY (CR33)	31	23	8	25.81%	6	0	0	0
VARNER (CR24)	358	271	87	24.30%	11	5	6	0
WRIGHTSVILLE (CR25)	207	191	16	7.73%	4	2	0	0
TOTAL	4,612*	4,050*	562	12.19%	72	63	28	7

Term/Hire report run 6/4/19 - PSR created 6/4/19 for 5/31/19

*These numbers reflect both security and non-security employees.

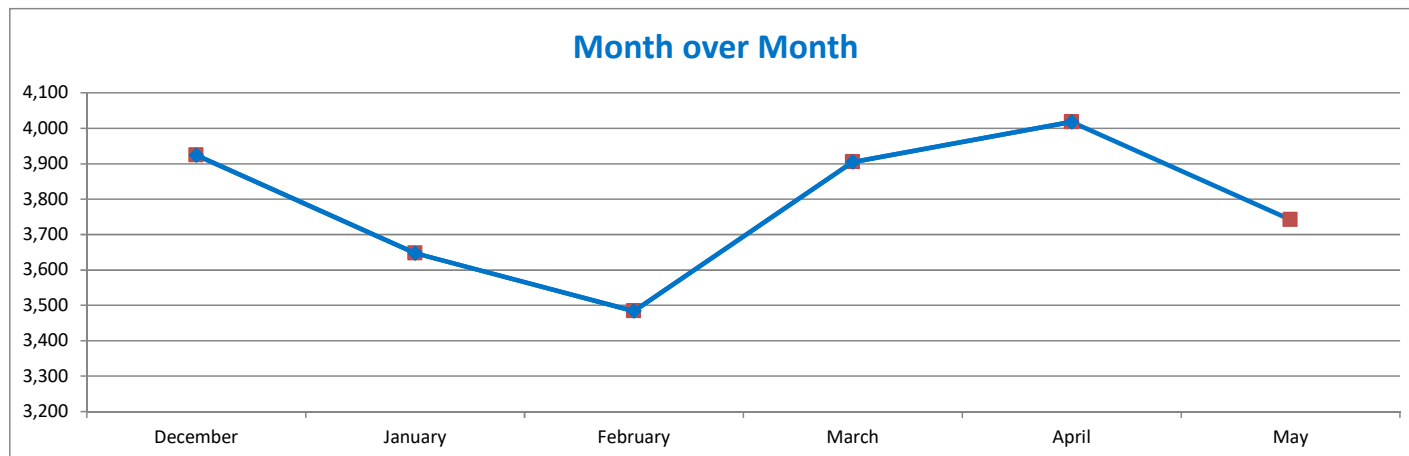
SECURUS VIDEO VISITATION ACTIVITY TRACKER - MAY 2019

AR-DOC SVV Activity Tracker

Total ADP: 15,587

Total Visits by Month	December	January	February	March	April	May
Total (Includes SuperMax)	3,924	3,647	3,484	3,905	4,018	3,742
Target Objective	15,587	15,587	15,587	15,587	15,587	15,587

Anywhere Visitation Performance:



Completed Visits

Site	Current Month	Previous Month
Benton	160	256
Cummins	241	258
Delta Regional	191	199
East Arkansas Regional	194	271
Ester	191	208
Grimes	419	421
J Aaron Hawkins Sr.	181	163
Tucker Max	127	125
Mcperson	274	297
Mississippi County WRC	32	28
North Central	219	205
NW Arkansas WRC	1	4
Ouachita River	397	407
Pine Bluff Complex	170	195
Randall L Williams	205	255
State Police Barracks	40	30
Texarkana Regional	48	51
Tucker Unit	249	243
Varner	117	175
Wrightsville Unit	267	213
Pine Bluff Re-Entry	19	14
Tucker Re-entry	0	0
Total:	3742	4018

Missed by Inmate

Site	Current Month	Previous Month
Benton	21	8
Cummins	12	4
Delta Regional	15	3
East Arkansas Regional	14	10
Ester	9	1
Grimes	25	1
J Aaron Hawkins Sr.	1	1
Tucker Max	25	9
Mcperson	51	10
Mississippi County WRC	1	2
North Central	3	5
NW Arkansas WRC	1	1
Ouachita River	26	7
Pine Bluff Complex	8	4
Randall L Williams	12	0
State Police Barracks	2	0
Texarkana Regional	1	0
Tucker Unit	4	0
Varner	2	9
Wrightsville Unit	7	38
Pine Bluff Re-Entry	1	0
Tucker Re-entry	0	0
Total:	241	113

LEASED SECURUS TABLETS - MAY 2019

FACILITY NAME	APR. '19 LEASED	MAY '19 LEASED	APR. '19 TOTAL	MAY '19 TOTAL
Benton Unit	98	91	109	109
Cummins Unit	281	279	383	383
Delta Regional Unit	114	117	167	167
East Arkansas Regional Unit	193	185	297	297
Ester Unit	84	96	244	244
Grimes Unit	183	184	269	269
J Aaron Hawkins Sr Center For Women	108	92	192	192
McPherson Unit	228	220	343	343
Mississippi County Work Release Center	38	41	49	49
North Central Unit	118	120	199	199
Northwest Arkansas Work Release Center	47	45	57	57
Ouachita River Unit	213	227	337	337
Pine Bluff Re-Entry Center	15	20	17	17
Pine Bluff Unit	69	72	82	82
Randall L. Williams Facility	102	103	142	142
State Police Barracks	20	17	24	24
Texarkana Regional Correction Center	41	37	53	53
Tucker Maximum Security Unit	76	86	118	118
Tucker Re-Entry Center	0	35	0	62
Tucker Unit	179	182	250	250
Varner Unit	206	201	312	312
Wrightsville Unit	208	207	270	270
	2,621	2,657	3,914	3,976

*The difference between LEASED and TOTAL tablets reflects the number of program and officer tablets.

CONSTRUCTION BUDGET / STATUS REPORT - JUNE 6, 2019 — [Page 1 of 2]

Fund	Project Description	Total Projected	Budget	Available Funds	\$ % Complete	Construction % Complete	Notes
7004810	Cummins Poultry Houses	\$ 5,939,457	\$ 6,100,000	\$ 160,543	97%	98%	To correct problem with ramp, Farm is looking at changing forklifts.
KBR4Q95	ESTER - Phase 3 - General Improvement Fund	2,951,933	4,383,781	1,431,849	67%	98%	Parking Lot in design. Cameras will be installed around perimeter after paving. ADFA bonds turned back on Phases 1 & 2 1A
700483A	EARU ISO Rec Yard	265,735	271,430	5,695	98%	100%	Complete
700483A	Varner ISO Rec Yard	180,277	180,953	676	100%	100%	Complete
700483A	EARU Max Rec Precast Rec Yard	67,887	659,553	591,666	10%	0%	OSP preparing bid package
700483A	Tucker Max Precast Rec Yard	57,092	1,210,000	1,152,908	5%	0%	Plans being submitted to DBA
700483A	Cummins Precast Rec Yard	47,449	927,500	880,051	5%	0%	Plans being submitted to DBA
KBR4Q95	Bullpens	351,408	851,999	500,591	41%	98%	Varner complete, EARU underway.
KBR4Q95	13 & 15 Barracks Door Revisions	111,509	174,000	62,491	64%	60%	All doors installed in 13 Barracks. Bullpen locks still on order.
KBR4Q95	Camera's (New)	785,038	1,248,000	462,962	63%	56%	Installations underway. Delta & Varner complete, working at Tucker and Max.
700485A	Entegrity Energy Improvements at EARU & Delta	16,524,885	17,010,204	485,319	97%	97%	lights (100%), plumbing 99%, water (100%), compost (100%), & solar (100%). HVAC (99%).
700486A	Pine Bluff Unit Barracks 9 Renovation	343,585	437,000	93,415	79%	96%	9A, B C & D construction complete, 4/5/19
700482A	Pine Bluff Unit Barracks 10 Renovation	458,798	784,000	325,202	59%	100%	Complete
KBSCW18	McPherson Administration	58,932.91	395,439	336,506	15%	0%	Supervisor onsite, preparing Bid packages, and ordering materials.
KBSBW18	McPherson Visitation	130,328.55	312,430	182,101	42%	0%	
KBSHW18	Tucker Water Treatment	-	1,093,848	1,093,848	0%	0%	submitting for designer approval.
KBSFW18	Max Armory	-	70,000	70,000	0%	0%	to replace existing inadequate Armory. Plans underway
KBSFW18	Varner Armory	-	68,399	68,399	0%	0%	DBA comments received & answered. DBA Approved
7004820	Central Office Roof Replacement	414,995.77	500,000	85,004	83%	100%	Started 12/3, Substantially complete 4/1/19
7004820	Pine Bluff Infirmary Roof Replacement	58,251.20	132,800	74,549	44%	0%	Pre-Const Mtg held 6-3-19, 120 days to complete
509	Wrightsville ACI Roof Replacement	251,332.07	255,000	3,668	99%	100%	replaced roof. Complete
Springdale WRC Laundry and Commissary		-		0	0%		Revised architect's floorplan, preparing plans & geotech report.

Telephone Projects

Maintenance & Operations	Fire Alarm Upgrades (All Units)	52,703	53,000	297	99%	90%	on-going
	Gas Stations - Canopy (C/O)	0	-	0	0%	99%	Steel structure completed.
	Stainless Steel - Kitchen/Shower/Restrooms - All Units	19,171	20,000	829	96%	60%	continual need
	Parking Lot - Gravel and Paving - EARU	0	68,000	68,000	0%	0%	Lee County gave us the road ROW. DBA comments received
	Gates and Fences all units	20,453	30,000	9,547	68%	65%	to improve security
	ACA Maintenance	98,299	100,000	1,701	98%	95%	Wrightsville, Benton, & Tucker coming up.
	ADA Projects - All Units	675	1,000	325	67%	37%	as needed.
	Fast Top Floor Systems (kitchen/laundry/showers all units)	24,939	25,000	61	100%	100%	projects as needed. ORCU, NNAWRC & Texarkana 100% complete, Benton & Tucker next.



CONSTRUCTION BUDGET / STATUS REPORT - JUNE 6, 2019 — [Page 2 of 2]

Fund	Project Description	Total Projected	Budget	Available Funds	\$ % Complete	Construction % Complete	Notes
Maintenance & Operations	Camera Equipment - All Units	174,044	175,000	956	99%	100%	cameras as requested/approved.
	Lock/Riot Gates - All Units	90,112	90,500	388	100%	95%	on-going.
	AC Units-All Units	95,468	100,000	4,532	95%	60%	repairing & replacing daily.
	Subtotal	\$ 575,863	\$ 662,500	\$ 86,637			
FY19 Carry Forward	Metal Ceilings	0	25,000	25,000	0%	0%	installing at Tucker Barracks 5, NCU next
	ORCU Gravel Pit Operations	9,014	35,000	25,986	26%	100%	on-going. Elect upgrades complete, crusher operating.
	Dog Kennel/Horse Stable Malvern	0	48,000	48,000	0%	0%	DBA comments received, responses underway.
	Emergency Generator - All Units	130,446	145,000	14,554	90%	98%	Wrightsville Infirmary generator & mat'l delivered, installation near completion
	Roof Repairs-Cummins	2,091	189,700	129,241	32%	0%	Prepared large order for multiple Units. Currently at the Max. Need repairs at ORCU. Office of State Procurement secured a State contract to purchase roofing materials.
	Roof Repairs-Cummins Laundry	0				0%	
	Roof Repairs-East Arkansas	0				0%	
	Roof Repairs-Max	56,640				60%	
	Roof Repairs-Tucker	0				20%	
	Roof Repairs-Varner	1,728				0%	
	Roof Repairs-Wrightsville	0				0%	
	Boiler Repair	99,056	100,000	944	99%	100%	continually needing repair
	Subtotal	\$ 298,974	\$ 542,700	\$ 243,726			
New Projects	EARU Sewer lift station	72,782	75,000	2,218	97%	100%	Project complete and operating.
	Tucker 4 new filters & one aeration tank	11,567	500,000	488,434	2%	0%	Plans approved by ADH & DBA, Plans & Specs sent to DBA.
	Change media in 7 water filters at Tucker	4,132	6,000	1,869	69%	100%	Filter media changed out in all 7 filters. Water quality improving.
	Tucker Barracks 10 covered walkway	0	-	0	0%	0%	Plans being submitted to DBA
	Max manhole	0	-	0	0%	0%	to provide access to a blockage point in sewer
	RLW Sewer relocation 400' + 2 MH	0	34,000	34,000	0%	0%	frequent stoppages, defect in pipe line.
	Additional Metal Fab shop	0	-	0	0%	0%	room to do more metal work
	PB Warehouse Drive replacement	0	50,000	50,000	0%	0%	asphalt drive pot holed
	Subtotal	\$ 88,480	\$ 665,000	\$ 576,520			
	Architect Fees	28,651	30,000	1,349	96%		
	Total	\$ 991,968	\$ 1,900,200	\$ 908,232			

Notes

Report has not been reconciled against Accountings Reconciled Reports.
Tolerance/Deviation is with in 1% of Projected Spending.