

Wendy Kelley
Director

July
2015



OPERATIONS/INSTITUTIONS

RESEARCH/PLANNING

June, 2015 Admissions and Release – Admissions for June, 2015 totaled **930**, while Releases totaled **784**, for a net increase in-house of **146**.

Inmate Population Growth/Projection – At the end of June, 2015 the Arkansas Department of Correction Population/Jurisdiction totaled **18,813** representing a growth of **939** Inmates since the first of January, 2015. For Calendar Year 2015 the average growth is **157** inmates per month, up from an average monthly growth during calendar year 2014 of 53 inmates per month.

Average County Jail Backup – The backup in the County Jails averaged **2,688** inmates per day during the month of June, 2015 – down from an average of **2,734** for the month of May, 2015. The average County Jail Back-up for FY15 is 2,396 up from FY14 average of 2,164.

Accreditation:

ACA reaccreditation audits were completed May 5-7 at Cummins Unit with 100% mandatory, 99.07% non-mandatory and Ouachita Regional Correctional Unit on May 12-14 with 100% mandatory, 100% non-mandatory.

ACA Internal Audits Completed:

June 3 Tucker Monitoring Visit
June 8 Benton Monitoring Visit
June 9 Wrightsville Complex Monitoring Visit
June 10 TRCC Monitoring Visit
June 11 Pine Bluff Complex Monitoring Visit
June 15, 17, 19 Review Varner Accreditation files
June 16 Teach at Training Academy

Fire/Safety and Sanitation independent audits conducted by the Fire and Sanitation Coordinator:

June 8 – Grimes and McPherson Food Service Inspection
June 10 – Max Food Service Inspection
June 11 – NAWRC Food Service Inspection
June 15 – Benton Food Service Inspection
June 17 – Varner ACA File Review
June 18 – Firearms Training
June 22 – ORCU Food Service Inspection
June 24 – Training Committee Meeting
June 25 – MCWRC Food Service Inspection
June 26 – Fire Safety and Tool Control Officers Quarterly Meeting

June 29 – North Central Food Service Inspection

June 30 – RLW Food Service Inspection

PREA/STTG

PREA Hotline Data:

There were no reported issues with the PREA Hotline. Deputy Warden Aiken, Deputy Warden Taylor and Lt. Lacy presented two PREA training opportunities to staff during the month of June. An eight-hour “PREA Compliance Manager” class was given on June 10th for the Unit PREA Compliance Managers. A 24-hour class, “PREA Train the Trainer,” was also presented on June 15th, 16th and 17th for selected ADC and ACC staff in attendance.

Internal Affairs is handling all PREA investigations.

Number of calls received	141
Total calls referred for reported PREA issue	33
Total calls referred for non-PREA issue	29
Calls referred due to technical failure	2
Calls referred to IAD	4

STTG:

Deputy Warden Aiken presented Prison Gangs in Arkansas at the Benton Police Department for law enforcement officers and prosecutors on June 11th. The course is certified by ALETA, and participants from several area agencies received continuing education credits for their participation. She also presented Prison Gang Dynamics and Management for ACC recruits at the ACC Training Academy in Pine Bluff on June 12th.

The monthly STTG Coordinator’s Intelligence meeting was held on June 2nd via phone.

Farm

The old adage about Arkansas weather changing daily held true recently. The month of May was extremely wet following by hot and dry conditions in June. All of the farms started irrigation of the corn crops during the month. We harvested all of the wheat and oat acres during the month. The yields were off this year due to the extended cold and wet winter. Each farm was off 10-15 bushels from their normal yields. The rice at Tucker and at Cummins looks extremely good at this point in the year. Corn is going to be a little later this year, but looks to be an average crop. All of the double crop soybeans are planted and have received

their first herbicide treatment. To compensate for the flooded pastures and lack of hay production, we have moved 250 acres of soybean production to Sorghum Sudan grass for hay production. Sorghum Sudan makes high quality hay and under irrigated conditions will produce the tons we need to make the winter.

The beef operation weaned calves at the Cummins farm during June. They have started their pre-conditioning program in advance of selling the calves in mid-July.

The poultry operation had a good month increasing our efficiency rate to over 80% productivity. Dr. Dustin Clark with the University of Arkansas Poultry Science division in Fayetteville visited the farm. He told Mr. Stephens that we have a first rate operation. He was very impressed with the bird health and the way the operation is worked. Eggs sales have been slow with the government agencies due to year end closeout.

The gardens moved a lot of fresh produce into the kitchens during the month. What the kitchens could not use was transported to vegetable processing to be stored for use at a later date.

RE-ENTRY

CHAPLAINCY SERVICES

Chaplaincy Division

Benton Work Release

On the 2nd, 9th and 16th, Dave Ramsey Financial Peace was provided.

Twenty-seven inmates graduated the nine-week course.

On the 6th, 13th, 20th and 27th the Stepping Up class was provided and 45 inmates attended.

On the 17th-21st there was an annual review with Victory Baptist Church of Benton with six salvations recorded. From the 18th to the 30th, Ramadan Prayer took place, and on the 27th we had 36 men show up for the Christian activity night movie.

Grimes Unit

On the 12th and 13th, Freedom From Within Ministries came and cooked/served 1,039 inmates and 60 staff while ministering to the inmates in song as they ate. We also had 10 "world champion chicken cluckers" entertain the men. They led in a worship service on Friday and Saturday evenings. The Gideons came to the Unit on the 27th and distributed seven cases of Bibles to the inmates.

Cummins Unit

Senior Chaplain Banks retired after nearly 14 years.

NCU

Quarterly Volunteer Training on the 13th at First Baptist Church in Calico Rock with 28 volunteers in attendance.

Maximum Security Unit

John Singleton, #113352, completed our one year PAL program.

Tucker Unit

One-hundred-six inmates attended chapel movie call. The average daily attendance for the five-day Basic Life Principals Seminar was 72 inmates. Thirty inmates attended the Compassionate

Communication Class, and over 70 inmates attended the beginning of Ramadan.

McPherson Unit

Kairos weekend was June 11-14. Thirty inmates participated. Gideon Bible distribution was completed on June 27th.

RLW

A Christian Rock concert was held on Saturday, June 6th. The band Oktober Melon played.

ORCU

Basic seminar was held June 15-19. There were 30 inmates in attendance. The Christian Motorcycle Group had a Rodeo Revival June 11-13. There were 1,800 staff and inmates in attendance.

Pre-Release: June 2015

	Slots	Completed	Discharged	End Count
McPherson	15	2	0	12
PBU 9B	50	13	3	44
PBU 9C	50	4	5	50
Total	115	19	8	106

There are 461 males and 68 females on the waiting list within 18 months of their release date, and of those five males are mandated by the Board of Parole. The average time on the waiting list is about three months. The total on the waiting list, including those not currently within the identified time frame, is 639 males and 106 females.

Volunteer Services:

The total number of volunteer hours for the month of June:

Unit	Hours
Cummins	0
Hawkins	16
RLW	45
North Central	2
Ouachita River	40
Pine Bluff	0
PAWS	22
WSU	302
Wrightsville Satellite –Reentry	10
Pine Bluff Unit – Pre-Release	2
Religious Volunteer-all Units	5817
TOTAL	6256

***Note:** Volunteer hours are reported to the Department of Human Services along with regional maintenance hours.

ADMINISTRATIVE SERVICES

Procurement Section Update:

Contracts/Bids Status:

Contract Renewals

Inmate holiday packages
Uniform services (excluding Benton)
Waste disposal – Benton
Waste disposal – Tucker Complex
Flour

Contracts/Bids (in process by OSP)

Canvas shoes

Contract Recently Awarded-OSP

Uniform Service W/R inmates (Benton W/R)
Tractor Truck (Cummins Farm)

Human Resource Update:

- **Workplace Safety** – During the month of June the modified version of the Health and Safety Plan was presented to two Basic Training classes with a total of 111 cadets in attendance. There were 44 incidents reported to the company nurse in June, which brings our Workman's Compensation incidents reported to 323 in 2015.
- **Benefits** – There were 30 MIPS promotions and 190 MIPS payments. Seventy-five FMLA requests were processed with three denied. A total of five CAT leave requests were processed with none approved. Two hundred twenty-three hours were donated to the CAT leave bank. There were five applications received for shared leave with one approved for 160 hours of donated time and four were denied.
- **Physical Assessments** – There were a total of 166 applicants and incumbent personnel that were assessed in the month of June. Eighty-eight incumbent personnel successfully completed their physical assessments, and three incumbent personnel did not. Of those three, one rescheduled and passed; one rescheduled and has not passed; and one has not been released by a physician. Seventy-one applicants passed their physical assessments and four did not. Three applicants were later released by a physician and passed their assessments, and one is pending release from a physician.
- **Employment** – Facebook results for the month were: 26 new likes and 10,371 total likes of our page. Through Discover Corrections, there were 237 people from across the United States who viewed ADC's page. This site does not allow you to review comments made unless the viewer applies for a position through their site and is hired. During the month of June, there were no applications submitted for ADC through the Discover Corrections website. The Human Resources recruiter coordinated job fairs in the following locations: June 3rd at the West Helena Workforce Center; June 8th at the Dumas Workforce Center; June 11th at the Pine Bluff Workforce Center; June 16th at the Greenville Win Job Center; June 25th at the Forrest City Workforce Center; and June 29th at the Monticello Workforce Center. The recruiter visited with a total of 90 potential applicants during these job fairs.
- The reporting features that INS (Information Network Systems) has developed for the ARStateJobs website (all agencies) have been implemented. We have requested agency specific features, but have not received notification that those changes have been made. Because of duplicating information, we are now only tracking COI applications through the ARStateJobs website. This site does not have the capabilities to give us a breakdown. INS still has not developed any agency specific request for reporting purposes.
- The report through AR State Jobs provides the following information:
 - Advertised positions
 - Positions hired
 - Applications received
 - How many met minimum qualifications
 - How many did not meet qualifications and a reason they did not meet (1-experience; 2-license or certifications; 3-other)
 - How many need further review
 - How many were not processed
 - Gender
 - Race
 - Veteran status
- There were a total of 2,301 applications received during June through ARStateJobs website. A total of 51 non-correctional applications were processed in June. One hundred thirty-two COI applications were processed with the following results: 88 correctional officers were hired and 25 correctional officers were re-hired.

Administrative Services Division Monthly Reports include:

- **Gifts, Grants, and Donations/Inmate Welfare Fund Balance (required by policy)** – During the month of June 2015, are reported as follows:
Donated to the ADC:
Gifts, Grants and Donations:
Donations for the month of June were \$29,510.
Inmate Welfare Fund balance on June 30, 2015 was \$3,705,740.11.
PAWS in Prison Fund balances total on June 30, were \$88,637.47 in ADC. Account (7004822/Donations) \$16,138.55 and ADC account (NDC0500/Recycling) \$72,498.92. This does not include the Foundation account managed by PIP Foundation Board.
- **Procurement/Contracts Report (required by policy)** – For June 2015, Purchase Orders and Contracts in excess of \$10,000 amounted to \$2,885,707.43. Of this amount, \$1,729,035.32 was for inmate care and custody related items (food, shoes, clothing, etc.). Bulk fuel costs for the month of June were \$205,606.41 - the average cost of bulk

diesel was \$2.10/gallon; the average cost of E-10 was \$2.24/gallon.

- **Vacancies, Hires, and Terminations** - On June 30, 2015 there were a total of 449 vacancies, 111 new hires, and 64 terminations at the various ADC locations.

Information Technology:

In June, training materials were created for the ACA Electronic Filing project and were taught at Admin East to a class of 12. This class covered: scanning procedures; hyper-linking slides and network shares from PowerPoint; and Adobe Basics – high-lighting, OCR and aligning images.

The network team has completed the fiber optic backbone through the Ester Unit using the newly purchased fiber splicer. The new circuit at Ester is now in use throughout the remodeled portion of the building and at Central Transportation. Being able to 'weld' the glass fibers creates a solid connection from one end of the building to the other with stops along the way. This will also be used to reconnect the existing underground fiber leading to Warehouse and Construction to the new infrastructure.

The Desktop Support Team installed computers and equipment required for the initial opening of Ester beds. We have also worked to provide the phone lines needed.

Multiple meetings and conference calls were attended during the month for eOMIS staff. This included subjects of ACT 895 reentry requirements, CONTEXTE data sharing, SECURUS contract for inmate phone system and eOMIS interface requirements and statute code management among multiple state agencies.

ADC/ACC is working together to provide a new reporting solution PENTAHO for eOMIS. PENTAHO was provided by Marquis to enhance reporting for eOMIS. The solution is hosted by DIS.

Much effort has been extended to SECURUS to provide assistance with site surveys and providing information necessary for the inmate telephone system installation. Assistance has been provided for demarcation information, telephone company addressing, communication with maintenance for service requirements, and other issues as they arise.

Training Academy

Basic Training Division

Basic Training class 2015-G graduated on June 19th with 57 cadets. The Willis H. Sargent Award winner was Seth Brochert of the Tucker Unit. Randy Watson, Superintendent of the Varner Unit, served as the Special Speaker.

In-Service Division

June 9th began a two day session for Certified Police Officers of the Arkansas Department of Correction. This mandatory annual training class covered subjects such as defensive tactics, employee misconduct for supervisors, officers flying armed, racial profiling and weapons maintenance.

Self Defense and Staff Survival was held on June 16th. This is a class for non-security staff. Students learn about predetermined survival strategies, identifying warning signs of aggressive behavior and discuss the use of force policy. Finally, students get to put into practice defensive techniques in a very static environment in order to teach the technique.

Spontaneous Knife Defense is a class expanded from the basic Pressure Point Control Tactics class. On June 17th, students learned how to defend themselves in a deadly use of force scenario. Students actually perform techniques with rubber training knives starting in a static environment and move to a fluid level.

eCADEMY

During the month of June 2015, 599 ADC employees completed a total of 7,240 hours of eCADEMY training. 13% of ADC employees completed at least one course during that time frame for an average of 1.60 hours per staff member.

HEALTH/CORRECTIONAL PROGRAMS

Sex Offender Treatment Programs:

	Slots	Completed	Removed	Clients
Rsvp	238	63	72	211
Soft	14	0	0	14
Total	252	63	72	225

There are 665 males on the waiting list for RSVP and 22 females on the waiting list for SOFT within five years of their release date and of those 51 are mandated by the Board of Parole. The average time on the waiting list from request is three to six months for stipulated. The total on the waiting list, including those not currently within the identified time frame, is 1,463 males and 29 females. There were no PREA inmates in the program at this time.

Therapeutic Community:

	Slots	Completed	Removed	Clients
Tucker	129	14	8	120
Wrtsv	45*	2	5	47
McPh	50*	6	1	50
Total	234	22	14	217

There are 127 males and 17 females on the waiting list within 18 months of their release date, and of those, 27 are mandated by the Board of Parole. The average time on the waiting list from request is 22 days. The total on the waiting list, including those not currently within the identified time frame, is 575 males and 63 females.

*Denotes transitional beds available at this treatment program. Tucker TC has 129 client slots and 7 peer counselor slots

S.A.T.P.:

	Slots	Completed	Removed	Clients
Grimes	100*	9	5	101
McPh	50*	9	0	50
MSU	3	0	0	3
RLW/CF	188*	45	11	189
Tucker	43*	6	2	42
Varner	44	7	2	42

There are 1,866 males and 582 females on the waiting list within 18 months of their release date, and of those, 35 are mandated by the Board of Parole. The average time on the waiting list from request is 19 days. The total on the waiting list, including those not currently within the identified time frame, is 2,771 males and 582 females.

*Denotes transitional beds available at this treatment program.

R.P.U.:

The Residential Program Unit at Ouachita had six admissions and three discharges in June for an end-of-month count of 70.

McPherson SPU Program:

There were one admission and two discharges in June for an end-of-month count of six.

Hawkins Center SPU Program:

No admissions and no discharges in June for an end-of-month count of 10.

Habilitation Program:

The Habilitation Program at the Ouachita River Correctional Unit provided treatment services to 39 inmates during June. There were no admissions and three discharges for an end-of-month count of 36.

Staffing:

The following Mental Health Services and SATP positions were vacant in May and June:

	May	June
Psychologists	5	5
Psychological Examiners	1	1
Social Workers	5	5
LPC	0	0
Advisors	4	5
Substance Abuse Prog Leaders	5	6
Admin. Specialist/Analyst	1	2
Rehab Adm/Facility Supv	2	2
Nurse II	1	1

ADDITIONAL PROGRAM INFORMATION**Substance Abuse Education:**

Substance Abuse Education groups were held at 10 units, and 32 inmates completed the program during June. The current waiting list is 591.

Anger Management:

Anger Management groups were held at five units and 789 inmates completed the program during June. The current waiting list is 2,785.

Thinking Errors:

Thinking Errors groups were held at 11 units, and 186 inmates completed the program during June. The current waiting list is 3,813.

Suicide:

There were 69 suicidal threats, gestures or low/moderate risk attempts during June. There were no serious attempts and no attempts resulting in death.

Outpatient:

There were 1,895 inmates on the mental health med log at the end of June. Mental Health conducted the following contacts during June:

Case Management Contacts	2,024
Request for Interviews	2,102
Testing	3
Intakes	1,014
Unit requests	1,075
Counseling (with treatment plan)	244
Pre-Lock Up Reviews	1,005
Routine Seg Reviews	346
Seg Rounds	7,631
PREA Evaluations	10
Routine Follow-Up	198
834 Requests	43

Monetary Sanctions:

Sanction reimbursements for May were \$79,700.

County Mental Health Requests:

During June, there were 47 requests of a mental health nature received and 21 inmates were fast tracked to ADC.

County Medical Health Requests:

During June, there were 642 requests of a medical nature received and 22 were fast tracked.

Deaths:

There were six inmate deaths during the month of June; three bodies were claimed and three bodies were cremated.

CCS:

See attachment for CCS's report regarding outside beds and emergency room visits.

Medical Grievances:

In June, there were a total of 244 appeals of medical grievances

received and 208 appeals were answered. Eleven of those were found to be with merit and five with merit but resolved

Medical Grievances (Bowie County):

In June there were a total of seven appeals of medical grievances received and five appeals were answered. Two of those were found to be with merit and one with merit but resolved.

SEX OFFENDER ASSESSMENT

Assessments Completed:

Risk Level	June	Sept. 1999 thru June 30, 2015
Level 1	2	1,135
Level 2	59	5,756
Level 3	44	5,771
Level 4	10	530
Default 3	4	**
Total	119	13,192
*Default Level 3's are included in the total number of Level 3's to date.		

The total number of sex offenders registered from Sept. 1, 1999 to June 30, 2015:

In Compliance	7,111
Delinquent (Did not return address on time)	870
Confined	2,611
Out of State	2,765
Address Unknown (absconded)	192
Deceased	894
Deported	157
Incapacitated	56

PAWS IN PRISON

We currently have 43 enrolled in training.

Max	7
Tucker	7
Hawkins	6
RLW	4
ORCU	11
NCU	8

Graduates for month of May 2015:	14
Graduates year to date: (2015)	76
Graduates since inception (Dec 2011)	541
Dogs Currently in foster:	5*
*graduated but not adopted	

CONSTRUCTION/ MAINTENANCE

Construction Expenditure Report:

The commitment/expenditure status of various construction projects as of June 1 is provided on the attached Construction Expenditure spreadsheet.

Project Updates (as of June 10)

Barbara Ester Unit (Diagnostic):

We are renovating barracks and re-roofing the Unit; purchasing material; continuing to paint inside and out; contractor working on HVAC renovation; installing new metal ceiling; working on plumbing and electrical.

Cummins:

We are working on the last chicken layer house; electrical and plumbing are 90% finished. We are installing equipment in last house and working on litter storage, compost and gravel for the road. We are installing additional lighting.

East Arkansas Regional Unit:

We are still working on new horse barn. We are receiving new material for firing range.

HDRS Building (13th St):

Project is complete.

HR:

We are working on roof repairs to Annex East building, and we are replacing carpet with floor tile in various areas.

Ouachita River Correctional Unit:

Work continues on building a new maintenance building; and we are working on completion of the new Vo-Tech building. We continue to run the gravel pit operation.

Shorter College, Little Rock:

A crew started tearing it down for salvage.

Tucker Maximum Security Unit:

We are working on stainless steel for kitchen walls and putting metal ceiling on fir down in front of cells in 6 barracks.

Construction personnel update:

3 vacancies – Maintenance Technician
2 vacancies – CO 1's

Regional Maintenance Hours June:

Benton Unit	6,210
Delta Regional Unit	4,432
EARU	4,128
Grimes	4,548
McPherson	4,248
Randall L. Williams Corr. Facility	3,104
MSCOWRC	2,531
North Central Unit	9,712
Ouachita River	2,472
TRCC	3,248
Tucker Unit	3,950
Varner Unit	4,064
Wrightsville Unit	2,224
Total Hours	54,871

Regional Maintenance Hours:

***Note:** Regional maintenance hours are reported to the Department of Human Services along with volunteer hours.

Regional Maintenance Hours Worked			<u>Apr'15</u>	<u>May'15</u>	<u>June'15</u>
Benton Unit			6,157	5,766	6,210
Delta Regional Unit			3,712	6,088	4,432
EARU			2840	3,464	4,128
Grimes			3,828	4,440	4,548
McPherson			3,156	3,588	4,248
Randall L. Williams Corr. Facility			3,208	3,040	3,104
MSCOWRC			2,971	2,053	2,531
North Central Unit			12,824	10,376	9,712
Ouachita River			4,376	5,376	5,944
TRCC			3,432	2,883	3,248
Tucker Unit			4,040	3,750	3,950
Varner Unit			3,680	3,584	4,064
Wrightsville Unit			2,623	2,928	2,224
Total Hours			56,847	57,336	58,343
Rent Report			<u>Apr.'15</u>	<u>May '15</u>	<u>June '15</u>
Benton Unit			\$94,265.00	\$119,867.00	\$87,550.00
PB ReEntry CTR (Hawkins)			\$20,536.00	\$27,438.00	\$27,098.00
NWARWRC			\$39,641.00	\$36,992.00	\$44,864.00
MSCOWRC			\$37,485.00	\$42,415.00	\$39,627.00
Pine Bluff Unit			\$34,918.00	\$44,438.00	\$34,782.00
TRCC			\$33,966.00	\$35,071.00	\$30,906.00
Total Rent Paid			\$260,811.00	\$306,221.00	\$264,827.00

June 2015 Monthly In-Class Training Report

	Unit/Facility	# of Classes Held	Credit Hours Offered	# of Participants	Total Hours
1	Training Academy In-Service	16	120.5	247	2438
2	Training Academy Basic Training	1	240	57	13,680
3	Benton	eCADEMY Only			
4	Construction	12	24.25	30	110
5	Cummins	39	70.5	534	749
6	Farm	eCADEMY Only			
7	Delta	25	35.75	278.25	140.75
8	East Arkansas	14	24	84	153
9	Grimes	24	58.5	187	714.5
10	Human Resources	24	116	72	341
11	Maximum Security	7	19.25	179	653.75
12	McPherson	28	62.5	150	1060.25
13	Mississippi County	2	1.5	9	6
14	North Central	8	19	829	1475.25
15	Northwest Arkansas	3	6	41	84
16	Ouachita River	35	104	524	1479
17	Pine Bluff	27	47	298	571
18	Randall L. Williams	1	2	19	38
19	Texarkana	eCADEMY Only			
20	Tucker	11	35.5	107	541.5
21	Varner/Varner Supermax	25	31	407	415.75
22	Wrightsville	5	6	398	440
23		307	1023.25	4450.25	25090.75

During the month of June 2015, 599 ADC employees completed a total of 7240 hours of eCADEMY training. 13% of ADC employees completed at least one course during that time frame for an average of 1.60 hours per staff member.

June 2015					
Date	Title	Location	Time	Hours	Instructor
June 8-12	CPR/First Aid/AED-Max Unit	Training Academy	8:00-5:00	4	Guest Instructors
June 9	eOMIS Incident Report	Admin East	9:00-11:00	2	eOMIS Staff
June 9	eOMIS Incident Report	Admin East	1:00-3:00	2	eOMIS Staff
June 9-10	Certified Police Officer	Training Academy	8:00-5:00	16	Guest Instructors
June 11	eOMIS Basic	Admin East	8:00-12:00	4	eOMIS Staff
June 11	eOMIS for Security	Admin East	12:30-4:30	4	eOMIS Staff
June 16	Self Defense & Staff Survival**	Training Academy	8:00-12:00	4	Larry Cyr
June 17	Spontaneous Knife Defense	Training Academy	8:00-5:00	8	Mark Norris
June 18	Avoiding Mediocrity	Training Academy	8:00-12:00	4	Amanda Bacus
June 18	eOMIS Visitation	Admin East	8:00-3:00	6	eOMIS Staff
June 23-24	ServSafe*	Training Academy	8:00-5:00	16	Larry Cyr
June 25	Defensive Driving	Training Academy	8:00-5:00	8	Ryan Pierce
June 29-30	Security for Non-Security 40 (Full Time Staff)	Training Academy	8:00-5:00	16	Academy Staff
	* ServSafe is mandatory for food service workers other staff can take ServSafe, such as kitchen security, ACA Managers, Safety/Sanitation officers and Deputy Wardens. Enrollment forms must be sent to the In-Service supervisor at the Academy for approval.				
	** non security staff only				
	Special note: Must Bring Valid Driver's License when attending Defensive Driving class				
	Additional Training				
Your unit trainer has information for classes with Criminal Justice Institute, Inter Agency and E-Learning					
Open Enrollment	National Institute of Corrections- supervisors	National Institute of Corrections		Varied	Self-Paced
	Inter-Agency Training	Little Rock		Varied	
	ADC eCADEMY - e-learning for ALL STAFF	at your computer		Varied	
This monthly training schedule does not reflect all training opportunities available in the Department of Correction.					

[illegible]

2015 INFORMAL GRIEVANCE REPORT

[illegible]

2015 FORMAL GRIEVANCE REPORT

[illegible]

Inmate Institutional Grievance Appeal Report June 2015				
	Received	Rejected	Processed W/O Merit	Processed W/ Merit
Benton Unit	3	1	1	0
Benton Work Release	0	0	0	0
Bowie County Texas Correctional Facility	20	4	19	0
Cummins Unit	27	13	9	0
Cummins Modular Unit	2	0	0	0
Delta Regional Unit	7	2	10	0
East Arkansas Regional Unit	26	6	9	0
East Arkansas Regional Maximum Unit	53	19	35	1
Grimes Unit	23	6	24	0
Maximum Security Unit	99	27	87	0
McPherson Unit	15	13	11	0
Mississippi County Work Release Center	1	0	0	0
Northwest Arkansas Work Release Center	1	0	0	0
North Central Unit	12	3	21	0
Ouachita River Correctional Unit	25	5	5	1
ORCU New Commitment	0	0	0	0
ORCU Mental Health Residential Program Unit	0	0	0	0
Pine Bluff Unit	1	0	0	0
Randall L. Williams Correctional Facility	12	3	10	0
Texarkana Regional Correctional Center	0	0	0	0
Tucker Unit	7	3	12	0
Varner Super Max	175	29	111	0
Varner Unit	21	9	20	0
Wrightsville Unit	9	5	5	0
Wrightsville Satellite Unit	0	1	0	0
Hawkins Center	2	1	0	0
Hawkins for Males	1	0	1	0
Hawkins SPU	1	0	0	0
Total	543	150	390	2

ADMISSIONS AND RELEASES

JUNE, 2015

<u>Admissions</u>	<u>Male</u>	<u>Female</u>	<u>Total</u>
Asian	7	0	7
Black	317	18	335
Hispanic	20	3	23
Nat. Amer.	5	1	6
Hawaiian/Pacific Isl	1	0	1
White	474	84	558
Total	824	106	930
<u>Releases</u>	<u>Male</u>	<u>Female</u>	<u>Total</u>
Asian	2	1	3
Black	266	18	284
Hispanic	18	2	20
Nat. Amer.	3	1	4
Hawaiian/Pacific Isl	1	0	1
White	388	84	472
	678	106	784
Total			

ARKANSAS DEPARTMENT OF CORRECTION
INMATE POPULATION GROWTH/PROJECTION 2000-2022

Updated 06/30/2015

Mo.	2000	2001	2002	2003	2004	2005	2006	2007	2008	2009	2010	2011	2012	2013	2014	2015
Jan.	11,984	11,908	12,402	13,015	13,105	13,595	13,481	13,839	14,518	14,796	15,334	16,312	15,134	14,815	17,481	18,142
Feb.	12,169	12,022	12,529	13,054	13,166	13,783	13,633	14,012	14,603	14,883	15,374	16,209	14,990	15,008	17,438	18,082
March	12,006	12,033	12,299	13,108	13,088	13,418	13,534	13,772	14,580	14,843	15,290	16,095	14,964	14,665	17,395	18,233
April	12,069	12,167	12,465	13,213	13,323	13,469	13,554	13,851	14,769	14,937	15,570	16,172	15,124	14,850	17,604	18,703
May	12,109	12,384	12,558	13,463	13,556	13,528	13,711	14,146	14,880	15,146	15,694	16,062	15,132	15,074	17,593	18,693
June	12,005	12,108	12,439	13,418	13,389	13,251	13,430	13,915	14,700	15,025	15,564	15,554	14,832	14,825	17,340	18,813
July	12,030	12,190	12,622	13,509	13,528	13,286	13,560	14,082	14,868	15,195	15,807	15,519	14,879	15,379	17,522	
August	12,087	12,371	12,815	13,565	13,632	13,419	13,646	14,224	15,100	15,385	15,829	15,240	14,675	16,103	17,549	
September	11,983	12,289	12,774	13,341	13,516	13,237	13,652	14,217	14,850	15,285	16,025	15,172	14,724	16,412	17,605	
October	12,119	12,348	12,942	13,341	13,584	13,363	13,775	14,349	14,836	15,381	16,311	15,271	14,856	16,993	17,880	
November	12,094	12,408	13,162	13,408	13,706	13,587	13,913	14,437	15,025	15,340	16,460	15,205	14,625	17,168	17,848	
December	11,856	12,333	12,845	13,106	13,470	13,338	13,728	14,315	14,716	15,199	16,204	15,062	14,654	17,235	17,874	
Net Ann. Inc.	29	477	512	261	364	-132	390	587	401	483	1,005	-1,142	-408	2,581	639	939
Avg. Mo. Inc.	2	40	43	22	30	-11	33	49	33	40	84	-95	-34	215	53	157

Population is total jurisdictional count at end of each month. Population at end of month December 1999 was 11,827.

Average monthly population increase for past fifteen years 2000 - 2014 is 34

Average monthly population increase for past ten years Jan.2005 - Dec 2014 is 37

Average monthly population increase for past five years 2010 - 2014 is 45

Projected at Growth of 34 per Month

Mo.	2008	2009	2010	2011	2012	2013	2014	2015	2016	2017	2018	2019	2020	2021	2022	2022
	Actual	Actual	Actual	Actual	Actual	Actual	Actual	Proj.	Proj.	Proj.	Proj.	Proj.	Proj.	Proj.	Proj.	Proj.
January	14,518	14,796	15,334	16,312	15,134	14,815	17,481	18,142	19,051	19,459	19,867	20,275	20,683	21,091	21,499	21,907
February	14,603	14,883	15,374	16,209	14,990	15,008	17,438	18,082	19,085	19,493	19,901	20,309	20,717	21,125	21,533	21,941
March	14,580	14,843	15,290	16,095	14,964	14,665	17,395	18,233	19,119	19,527	19,935	20,343	20,751	21,159	21,567	21,975
April	14,769	14,937	15,570	16,172	15,124	14,850	17,604	18,703	19,153	19,561	19,969	20,377	20,785	21,193	21,601	22,009
May	14,880	15,146	15,694	16,062	15,132	15,074	17,593	18,693	19,187	19,595	20,003	20,411	20,819	21,227	21,635	22,043
June	14,700	15,025	15,564	15,554	14,832	14,825	17,340	18,813	19,221	19,629	20,037	20,445	20,853	21,261	21,669	22,077
July	14,868	15,195	15,807	15,519	14,879	15,379	17,522	18,847	19,255	19,663	20,071	20,479	20,887	21,295	21,703	22,111
August	15,100	15,385	15,829	15,240	14,675	16,103	17,549	18,881	19,289	19,697	20,105	20,513	20,921	21,329	21,737	22,145
September	14,850	15,285	16,025	15,172	14,724	16,412	17,605	18,915	19,323	19,731	20,139	20,547	20,955	21,363	21,771	22,179
October	14,836	15,381	16,311	15,271	14,856	16,993	17,880	18,949	19,357	19,765	20,173	20,581	20,989	21,397	21,805	22,213
November	15,025	15,340	16,460	15,205	14,625	17,168	17,848	18,983	19,391	19,799	20,207	20,615	21,023	21,431	21,839	22,247
December	14,716	15,199	16,204	15,062	14,654	17,235	17,874	19,017	19,425	19,833	20,241	20,649	21,057	21,465	21,873	22,281
Net Ann. Inc.	401	483	1,005	-1,142	-408	2,581	639	1,143	408	408	408	408	408	408	408	408
Ave. Mo. Inc.	33	40	84	-95	-34	215	53	95	34	34	34	34	34	34	34	34

Arkansas Department of Correction County Jail Backup
FY2015

DAY	Jul-14	Aug-14	Sep-14	Oct-14	Nov-14	Dec-14	Jan-15	Feb-15	Mar-15	Apr-15	May-15	Jun-15
1	2359	2160	2261	2186	* 2380	2463	2205	* 2422	* 2592	2263	2602	2731
2	2333	* 2160	2261	2203	* 2380	2444	2205	2426	2488	2245	* 2602	2701
3	2318	* 2160	2266	2203	2393	2424	* 2205	2437	2478	2229	* 2602	2689
4	2315	2160	2250	* 2203	2394	2420	* 2205	2451	2469	* 2229	2612	2688
5	* 2315	2171	2227	* 2203	2410	2439	2198	2514	2454	* 2229	2612	2674
6	* 2315	2176	* 2227	2189	2414	* 2439	2196	2527	2468	2228	2649	* 2674
7	2315	2170	* 2227	2188	2408	* 2439	2178	* 2527	* 2468	2246	2690	* 2674
8	2295	2187	2204	2205	* 2408	2432	2204	* 2527	* 2468	2251	2690	2646
9	2294	* 2187	2215	2222	* 2408	2421	2221	2563	2469	2285	* 2690	2594
10	2272	* 2187	2206	2221	2418	2414	* 2221	2570	2442	2290	* 2690	2608
11	2267	2204	2221	* 2221	2393	2383	* 2221	2584	2451	* 2290	2725	2629
12	* 2267	2212	2197	* 2221	2393	2330	2196	2588	2452	* 2290	2722	2656
13	* 2267	2212	* 2197	2248	2411	* 2330	2217	2580	2453	2298	2734	* 2656
14	2301	2222	* 2197	2241	2415	* 2330	2211	* 2580	* 2453	2320	2756	* 2656
15	2309	2213	2203	2235	* 2415	2291	2241	* 2580	* 2453	2334	2736	2652
16	2330	* 2213	2206	2249	* 2415	2251	2249	2591	2456	2368	* 2736	2681
17	2297	* 2213	2180	2266	2397	2220	* 2249	2591	2423	2379	* 2736	2694
18	2326	2197	2194	* 2266	2414	2262	* 2249	2631	2423	* 2379	2748	2691
19	* 2326	2209	2188	* 2266	2429	2277	2257	2653	2422	* 2379	2762	2703
20	* 2326	2226	* 2188	2253	2447	* 2277	2257	2654	2423	2405	2793	* 2703
21	2314	2240	* 2188	2258	2461	* 2277	2288	* 2654	* 2423	2375	2796	* 2703
22	2274	2250	2162	2270	* 2461	2289	2289	* 2654	* 2423	2397	2829	2695
23	2263	* 2250	2164	2262	* 2461	2261	2306	2667	2416	2438	* 2829	2730
24	2254	* 2250	2171	2273	2473	2244	* 2306	2642	2445	2467	* 2829	2738
25	2248	2249	2180	* 2273	2502	2244	* 2306	2629	2450	* 2467	2813	2739
26	* 2248	2248	2170	* 2273	2490	2244	2333	2585	2450	* 2467	2813	2731
27	* 2248	2268	* 2170	2294	2463	* 2244	2328	2592	2416	2503	2847	* 2731
28	2230	2262	* 2170	2320	2463	* 2244	2333	* 2592	* 2416	2532	2815	* 2731
29	2215	2263	2170	2357	* 2463	2244	2362		* 2416	2542	2770	2715
30	2184	* 2263	2147	2370	* 2463	2212	2422		2302	2582	* 2770	2721
31	2183	* 2263		2380		2214	* 2422		2267		* 2770	
Average	2,284	2,214	2,200	2,252	2,428	2,323	2,261	2,572	2,440	2,357	2,734	2,688

2396.079

Notes: Totals do not include 309 Contracts in County Jails (maximum of 336)

Arkansas Department of Correction County Jail Backup
FY2014

DAY	Jul-13	Aug-13	Sep-13	Oct-13	Nov-13	Dec-13	Jan-14	Feb-14	Mar-14	Apr-14	May-14	Jun-14	
1	376	718 *	1297	1716	2283 *	2709	2503 *	2736 *	2884	2563	2529 *	2656	
2	364	772	1376	1746 *	2283	2709	2503 *	2736 *	2884	2544	2550	2642	
3	361 *	772	1376	1766 *	2283	2698	2512	2698	2864	2555 *	2550	2617	
4	396 *	772	1403	1823	2292	2682 *	2512	2710	2857	2528 *	2550	2596	
5	396	779	1419 *	1823	2315	2682 *	2512	2692	2837 *	2528	2526	2615	
6	* 396	805	1451 *	1823	2343	2684	2542	2718	2829 *	2528	2527	2601	
7	* 396	819 *	1451	1827	2384 *	2684	2562	2699	2816	2514	2527 *	2601	
8	406	860 *	1451	1854	2427 *	2684	2598 *	2699 *	2816	2496	2547 *	2601	
9	414	876	1455	1885 *	2427	2648	2599 *	2699 *	2816	2478	2522	2576	
10	454 *	876	1450	1930 *	2427	2685	2612	2691	2789	2484 *	2522	2567	
11	477 *	876	1460	1984	2449	2679 *	2612	2687	2788	2501 *	2522	2539	
12	477	885	1444 *	1984	2449	2669 *	2612	2732	2786 *	2501	2521	2542	
13	* 477	894	1487 *	1984	2456	2657	2628	2781	2774 *	2501	2526	2541	
14	* 477	918 *	1487	1971	2501 *	2657	2631	2798	2783	2461	2559 *	2541	
15	507	950 *	1487	1969	2540 *	2657	2658 *	2798 *	2783	2450	2550 *	2541	
16	505	983	1472	2002 *	2540	2659	2701 *	2798 *	2783	2443	2563	2517	
17	528 *	983	1489	2021 *	2540	2636	2749	2811	2768	2448 *	2563	2503	
18	544 *	983	1537	2021	2578	2619 *	2749	2811	2753	2434 *	2563	2484	
19	554	1003	1541 *	2021	2593	2604 *	2749	2817	2764 *	2434	2566	2476	
20	* 554	1030	1543 *	2021	2624	2618	2721	2833	2786 *	2434	2589	2477	
21	* 554	1091 *	1543	2019	2642 *	2618	2721	2851	2775	2443	2599 *	2477	
22	584	1126 *	1543	2050	2648 *	2618	2716 *	2851 *	2775	2453	2629 *	2477	
23	604	1144	1561	2093 *	2648	2638	2722 *	2851 *	2775	2468	2675	2466	
24	624 *	1144	1631	2123 *	2648	2639	2734	2872	2742	2477 *	2675	2440	
25	672 *	1144	1652	2144	2672	2638 *	2734	2867	2731	2474 *	2675	2425	
26	683	1180	1681 *	2144	2675	2638 *	2734	2879	2703 *	2474	2664	2413	
27	* 683	1209	1663 *	2144	2701	2582	2693	2883	2666 *	2474	2664	2387	
28	* 683	1263 *	1663	2178	2709 *	2582	2671	2884	2627	2481	2664 *	2387	
29	696	1286 *	1663	2216	2709 *	2582	2692		* 2627	2498	2680 *	2387	
30	704	1297	1697	2239 *	2709	2528	2728		* 2627	2529	2656	2369	
31	721 *	1297		2272		2510	2736		2583		* 2656		
Average	525	991	1,512	1,993	2,517	2,642	2,650	2,782	2,767	2,487	2,584	2,515	2163.754

Notes: Totals do not include 309 Contracts in County Jails (maximum of 336)

[illegible]

	6/1	6/2	6/3	6/4	6/5	6/8	6/9	6/10	6/11	6/12	6/15	6/16	6/17	6/18	6/19	6/22	6/23	6/24	6/25	6/26	6/29	6/30			
Unit/Center																							AVG		
Benton	292	301	304	305	308	305	299	299	293	293	297	297	299	296	296	299	303	315	317	321	327	329	304		
Cummins	1,913	1,919	1,908	1,915	1,925	1,922	1,920	1,925	1,931	1,925	1,930	1,929	1,922	1,920	1,932	1,929	1,923	1,916	1,913	1,919	1,919	1,915	1,921		
Delta	588	595	583	597	592	595	605	602	601	601	596	597	605	605	597	597	597	594	593	598	597	595	597		
E AR Reg	1,645	1,649	1,657	1,659	1,658	1,665	1,665	1,670	1,675	1,674	1,661	1,662	1,667	1,673	1,671	1,662	1,660	1,657	1,660	1,663	1,663	1,660	1,663		
Grimes	1,041	1,033	1,041	1,051	1,042	1,041	1,044	1,055	1,054	1,054	1,047	1,047	1,047	1,047	1,046	1,046	1,040	1,032	1,033	1,042	1,043	1,043	1,044		
Max Sec	566	566	564	563	562	563	563	562	562	561	561	560	564	564	564	564	564	565	565	565	564	564	563		
McPherson	1,007	1,007	1,005	1,007	1,007	1,007	1,007	1,007	1,007	1,007	1,007	1,007	1,007	1,007	1,008	1,008	1,007	1,007	1,007	1,007	1,004	1,004	1,007		
MCWRC	122	122	121	121	125	125	125	125	125	125	125	125	125	124	129	129	129	129	128	128	128	128	126		
N Central	801	808	809	808	803	809	821	826	826	825	819	817	810	817	826	826	826	814	814	814	817	819	816		
NWAWRC	91	94	95	96	95	95	93	93	93	92	92	92	91	90	93	93	93	93	100	100	100	100	94		
Ouachita River	1,805	1,780	1,795	1,790	1,795	1,787	1,795	1,797	1,804	1,800	1,788	1,796	1,786	1,795	1,791	1,792	1,773	1,791	1,790	1,777	1,802	1,800	1,792		
andall L William	564	566	569	567	565	564	569	570	564	563	566	564	569	566	562	566	568	568	568	566	560	563	566		
Pine Bluff	424	433	433	430	433	434	430	434	434	432	433	433	436	436	434	426	435	437	435	434	435	440	433		
PB Reentry	53	53	53	54	54	54	54	54	54	54	54	54	54	54	54	54	54	54	54	53	54	54	54		
TRCC	115	115	120	119	125	125	125	126	126	125	125	124	123	123	124	124	124	124	124	123	123	123	123		
Tucker	1,094	1,098	1,105	1,100	1,109	1,109	1,113	1,111	1,111	1,107	1,110	1,103	1,094	1,093	1,088	1,099	1,102	1,103	1,105	1,106	1,107	1,110	1,104		
Vamer	1,714	1,713	1,710	1,703	1,695	1,693	1,701	1,697	1,693	1,713	1,733	1,736	1,735	1,730	1,726	1,722	1,729	1,728	1,721	1,718	1,728	1,726	1,717		
Wrightsville	1,441	1,437	1,441																						

ARKANSAS DEPARTMENT OF CORRECTIONS						
Construction Budget / Status Report						
Report Date - July 10, 2015						* Percentage of Completion is the actual construction completion and does not reflect the cost in
Data as of 6/30/15						
Fund	Project Desc	Total Projected Spend	Budget	Available Funds	* % Complete	Notes
7004810	Cummings Chicken Houses	\$4,878,709	\$6,100,000	\$1,221,291	95%	Waiting on equipment parts building #6.
7004811	ORCU Maintenance Shop	\$286,087	\$383,000	\$96,913	90%	Lacks Fencing & Chemical Storage Estimated Completion Date 7/1
7004811	ORCU - VoTech	\$414,757	\$817,000	\$402,243	90%	Estimated Completion Date 8/1
7004812	NCU Phase II	\$3,110,010	\$3,127,000	\$16,990	99%	
7004819	Diagnostics/ESTER	\$3,440,490	\$4,000,000	\$559,510	86%	188 Beds to open 7/1
7004820	Diagnostics/ESTER	\$665,043	\$1,700,000	\$1,034,957	39%	
700481A	Diagnostics/ESTER		\$5,100,000	\$5,100,000	0%	
7004820	Tucker Max Boot Camp	\$655,340	\$764,088	\$108,748	86%	
	All Telephone Projects	\$1,129,184	\$1,316,347	\$187,163	86%	
NDC0100	EARU Firing Range	\$2,932	\$27,500	\$24,568	11%	
NDC0100	Camera (All Units)	\$406,441	\$400,000	(\$6,441)	102%	
NDC0100	Fire Alarm (All Units)	\$67,894	\$75,000	\$7,106	91%	
NDC0100	Lock & Riot Gate Replacement	\$55,692	\$75,000	\$19,308	74%	
NDC0100	Malvern Gravel Operations	\$37,762	\$50,000	\$12,238	76%	
NDC0100	Fencing & Gates - All Units	\$21,648	\$50,000	\$28,352	43%	
NDC0100	Gas Station Control Cards	\$31,564	\$50,001	\$18,437	63%	
NDC0100	Stainless Steel - Kitchen/Shower	\$100,638	\$100,000	(\$638)	101%	
NDC0100	ACA Maintenance	\$145,437	\$150,000	\$4,563	97%	
NDC0100	ADA Projects	\$44,499	\$50,000	\$5,501	89%	
NDC0100	Cummins Non-Contact Visitation	\$0	\$30,000	\$30,000	0%	
NDC0100	EARU Horse Barn	\$24,879	\$25,000	\$121	100%	
NDC0100	Fast Top Floor Systems- All Units	\$44,453	\$50,000	\$5,547	89%	
NDC0100	Tucker Pole Barn Maintenance	\$1,788	\$15,000	\$13,212	12%	
NDC0100	Max Mail Room Renovation	\$8,099	\$11,500	\$3,401	70%	Complete 7/10/15
NDC0100	HDRS Renovation - Phase I	\$28,460	\$30,000	\$1,540	95%	
NDC0100	Metal Ceilings (All Units)	\$87,967	\$100,000	\$12,033	50%	1/2 installed
NDC0100	TWWTP Container - Special Design	\$17,103	\$25,000	\$7,897	68%	
NDC0100	Food Cart Lifts	\$1,928	\$2,346	\$418	100%	Complete
NDC0100	Wrightsville Generator	\$182,321	\$200,000	\$17,679	91%	
NDC0300	HDRS Renovation - Phase II	\$172,164	\$145,000	(\$27,164)	92%	Remaining decks, drainage, & sidewalks. (Bgt changed to \$145k from \$175K see HDRS Phase 1 \$30k bgt)
NDC0100	Parking Lot - Gravel & Paving- All U	\$65,846	\$300,000	\$234,154	22%	
Notes						
1) Mid month reports have not been reconciled against Accountings Reconciled Reports.						
2) Tolerance/Deviation is with in 1% of Projected Spending.						

Monthly Report for: June 2015	BENTON	CUMMINS	DELTA	EAST AR MAX	EAST AR	GRIMES	HAWKINS	MAXIMUM	MCPHERSON	NCU	OUACHITA	PINE BLUFF	RLW	TUCKER	VARNER	VARMAX	WRIGHTSV	PTF	TOTAL
Chaplain in Charge	0	10	10	0	0	0	0	0	0	0	13	0	0	1	0	0	4	9	47
Christian																			
Population	5	6	430	0	2	13	5	11	12	2	12	4	12	6	3	0	13	0	536
Segregation	0	0	0	0	0	0	3	0	0	0	0	0	0	0	0	0	0	0	3
Muslim																			
Population	0	4	58	0	3	0	0	1	0	0	1	0	0	4	1	0	4	0	76
Segregation	0	0	0	0	0	0	0	0	0	0	0	0	0	0	0	0	0	0	
Volunteers in Charge																			
Protestant	27	8	19	0	18	52	4	25	40	41	38	11	21	42	4	1	19	0	370
Catholic	0	1	0	1	2	16	2	1	3	2	1	0	0	1	1	1	4	0	36
Muslim	0	0	0	0	3	0	0	0	0	0	1	0	4	4	1	0	0	0	13
Other	3	0	0	0	0	4	1	1	4	0	0	0	0	0	2	0	0	0	15
Baptism	0	2	0	0	6	0	0	2	25	9	1	0	7	0	0	0	6	0	58
Marriages	0	1	1	0	1	1	0	1	0	0	0	0	0	1	1	0	1	0	8
Distributed by Chaplains																			
Greeting Cards	200	750	0	0	0	125	0	1000	361	32	80	185	47	307	262	332	0	0	3681
Bibles,Quran,Torrah, Etc	50	15	20	0	4	15	2	100	59	10	155	11	30	68	28	25	11	8	611
Study Course	25	10	0	1	88	0	0	180	0	0	15	17	60	0	83	7	3	1	490
Writing Supplies	50	26	0	0	0	0	349	1150	0	0	120	0	480	0	0	0	0	0	2175
Literature	150	1200	100	14	706	200	2	1100	150	385	2075	285	617	167	3149	90	300	28	10718
Chaplain's Visits																			
Barracks - How Many Visits	82	35	8	8	27	150	31	352	105	38	591	52	50	51	7	37	55	36	1715
Approximate Hours Spent in Barracks	43	16	2	12	35	25	27	88	55	19	89	28	179	116	15	30	26	18	823
Office (How many Inmates)	83	137	200	4	5	75	75	33	95	70	37	48	129	268	108	0	140	167	1674
How Many Visits Chaplain Made																			
Hospital	0	0	0	0	0	0	0	1	1	0	12	0	12	0	2	0	2	0	30
Infirmary	0	4	4	0	5	25	2	7	5	2	0	4	4	7	1	0	30	0	100
Office	0	13	0	4	5	0	0	30	10	70	7	10	4	40	15	0	0	0	208
Admin Seg	0	6	0	0	0	21	0	55	0	0	10	0	0	0	18	0	0	0	110
Segregation	0	0	0	8	9	21	0	0	10	0	59	4	4	10	0	0	0	0	125
Punitive	0	6	4	8	8	21	0	18	0	8	20	4	4	0	12	0	2	3	118
PC	0	0	0	8	8	0	0	0	0	0	10	0	0	0	0	0	0	0	26
Visitation Days	0	0	0	0	2	0	0	0	10	2	4	0	0	3	0	0	0	0	21
How Many Visits Volunteers Made																			
RCV	3	0	0	0	35	8	2	41	26	0	73	0	2	0	0	0	0	0	190
OCV	14	23	10	0	3	26	45	54	36	25	0	16	31	43	28	0	30	0	384
Spiritual Advisor	0	1	0	0	0	0	0	0	0	0	4	1	1	4	2	1	2	1	17
CRA	41	36	8	12	95	41	6	121	80	79	149	18	16	65	45	8	10	10	840
Total Volunteer Hours	127	60	36	23	236	75	117	750	341	249	1013	115	186	208	412	19	75	48	4090
DENOMINATIONAL/VOLUNTEER CHAPLAIN	109	42	0	0	0	32	162	130	151	64	259	0	138	153	23	0	288	176	1727
Other Activities of Chaplain																			
Counseled Employees	7	3	6	0	0	40	2	2	2	3	14	18	9	6	12	0	8	3	135
Orientation Sessions	0	4	0	0	0	0	0	0	5	0	0	0	0	3	0	0	2	0	14
Free World Devotions	0	14	0	0	0	0	0	0	2	2	0	5	12	12	0	1	0	6	54
Spoke in Churches	8	12	8	0	3	21	0	4	1	2	8	12	12	1	17	0	5	1	115
Crisis Intervention Sessions	8	13	60	0	0	12	0	3	3	4	10	7	7	16	35	0	20	4	202
Marriage Counseling	1	1	1	0	0	7	0	0	3	0	1	0	0	1	1	0	2	1	19
Denominational Meeting	0	0	2	0	0	1	0	0	1	2	4	0	0	1	3	0	0	3	17
Chaplain's Meeting	1	2	1	0	1	1	0	1	1	1	1	1	1	2	8	0	4	0	26
Volunteer Training Session	1	0	0	0	0	0	1	0	1	1	0	0	0	2	0	0	0	0	6
Choir Trip	0	0	0	0	0	0	0	0	0	0	0	0	0	0	0	0	0	0	0
Staff Movement (Chaplain)	0	1	0	0	0	0	0	0	0	0	0	0	0	0	0	0	0	0	1
Promotions (Chaplain)	0	0	0	0	0	0	0	0	0	0	0	0	0	0	0	0	0	0	0
Interns	0	0	0	0	0	0	0	0	0	0	0	0	0	0	0	0	0	0	0
PAL PROGRAM																			
# Enrolled at start of month	0	45	11	0	50	44	47	18	61	35	44	0	28	62	37	0	30	0	512
# Enrolled during the month	0	9	6	0	3	8	8	3	29	6	5	0	5	13	10	0	7	0	112
# Completing the program	0	1	0	0	0	0	0	1	5	0	1	0	0	2	3	0	0	0	13
(# Removed from the program)																			
Paroled	0		0	0	0	0	5	0	12	0	0	0	2	1	0	0	0	0	20
Withdrew	0	3	0	0	1	0	0	1	2	2	1	0	0	4	2	0	3	0	19
Removed	0	2	0	0	2	2	0	1	4	6	0	0	1	6	2	0	2	0	28
Transferred	0	0	0	0	0	2	1	0	14	0	3	0	2	1	1	0	1	0	25
# At the end of the month	0	47	17	0	50	48	49	18	59	33	44	0	28	61	41	0	30	0	525
# Of volunteers	0	22	3	0	0	7	14	11	15	6	12	0	7	7	3	0	6	0	113
Special Events:																			

ADC INPATIENT AND EMERGENCY ROOM UTILIZATION

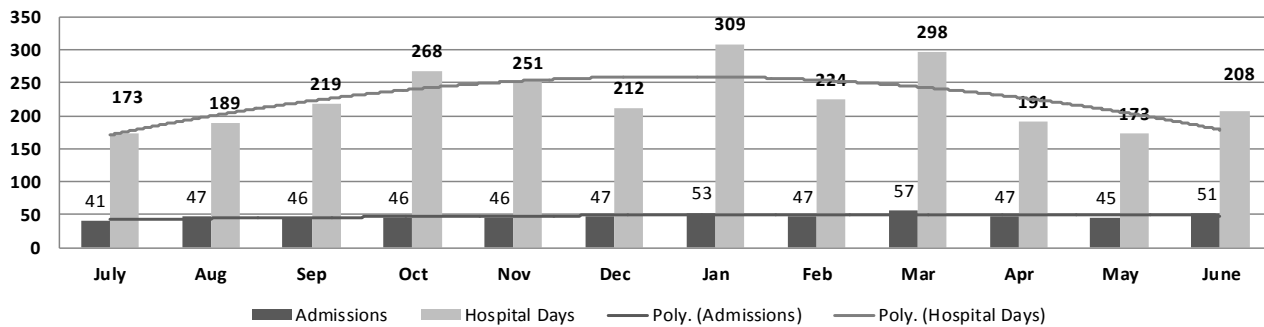
ADC Inpatient Statistics Past 12 Months

	2014						2015						Average
	July	Aug	Sep	Oct	Nov	Dec	Jan	Feb	Mar	Apr	May	June	
Admissions	41	47	46	46	46	47	53	47	57	47	45	51	47.8
Hospital Days	173	189	219	268	251	212	309	224	298	191	173	208	226.3
Average Length of Stay	4.22	4.02	4.76	5.83	5.46	4.51	5.83	4.77	5.23	4.06	3.84	4.08	4.74

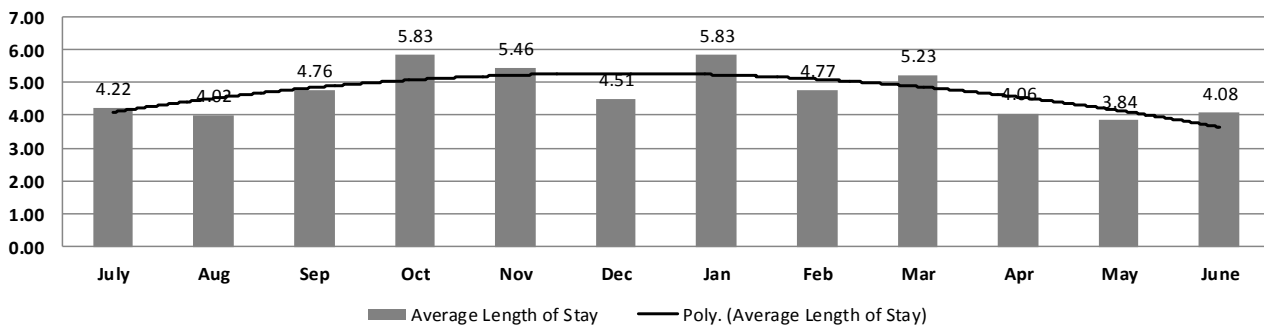
ADC ER Visits Past 12 Months

	2014						2015						Average
	July	Aug	Sep	Oct	Nov	Dec	Jan	Feb	Mar	Apr	May	June	
Emergency Room Visits	58	61	65	90	64	65	59	68	78	77	86	76	70.6

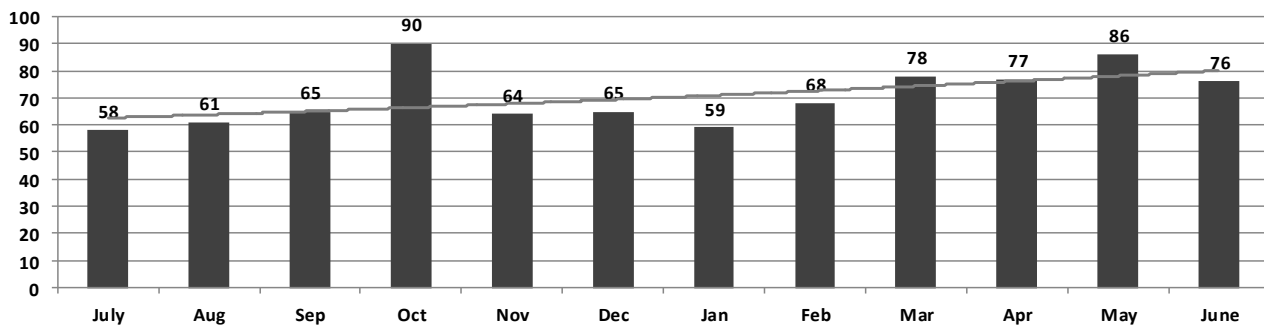
ADC Inpatient Utilization Past 12 Months: 2013-2014



ADC Inpatient Average Length of Stay Past 12 Months: 2013-2014



ADC Emergency Room Visits Past 12 Months



Medical Grievances

CMU	0	0	0	0	0	#DIV/0!
Cummins	31	6	30	0	0	0%
Delta	5	1	1	0	0	0%
EARU	29	2	25	3	1	16%
EARU Max	31	3	32	2	0	6%
Grimes	10	5	6	0	0	0%
Hawkins	0	0	0	0	0	0%
McPherson	7	0	5	0	0	0%
MCWRC	0	0	0	0	0	#DIV/0!
MSU	17	2	21	1	2	14%
North Central	11	3	4	0	0	0%
NWAWRC	0	0	0	0	0	#DIV/0!
Ouachita	7	3	12	1	0	8%
Pine Bluff	0	0	0	0	0	#DIV/0!
Randall Williams	2	1	2	0	0	0%
SNN	0	0	0	0	0	#DIV/0!
TRCC	0	0	0	0	0	#DIV/0!
Tucker	14	1	10	0	1	10%
Varner	28	13	22	4	1	23%
Varner S Max	46	16	33	0	0	0%
WRU	3	0	3	0	0	0%
WHM	3	0	2	0	0	0%
WWR	0	0	0	0	0	#DIV/0!
TOTAL	244	56	208	11	5	8%