



PUBLIC RELATIONS

RESEARCH/PLANNING

June 2019 Admissions and Releases – Admissions for June 2019 totaled **678** (599-males & 79-females) while releases totaled **549** (472-males & 77 females) for a net increase in-house of **129** inmates.

Inmate Population Growth/Projection – At the end of June 2019, the jurisdictional population totaled **17,942**, representing a growth of **143** inmates since the first of January 2019. Average monthly growth for calendar year 2019 is **24** inmates, up from an average monthly decrease of **23** inmates per month during calendar year 2018.

Average County Jail Back-up – The backup in the County Jails averaged **1,469** inmates per day during the month of June 2019 – down from an average of **1,542** inmates per day during the month of May 2019. Of the **1,469** average, short-term revocations accounted for **707** (629-males & 78-females) during the month. The short-term revocation FY19 average was **643** (573-males & 70-females). It can be noted further that the average county jail backup for FY19 was **1,552**, which is down from a FY18 average of **1,604**.

Restrictive Housing – A total of **2,616** (2,486-males & 130-females) inmates were assigned to Restrictive Housing during the 2nd Quarter of the year.

SOCIAL MEDIA

Facebook results for June showed a total of 9,182 “likes” of our page, an increase of 394 from the previous month. Our Twitter account currently has 270 followers.

LEGAL SERVICES

PREA

PREA Hotline Data:

Number of Calls Received	348
Total PREA Issue Calls	22
Total Non-PREA Calls	138
Total Calls Referred to Internal Affairs Division	22
Total Repeat Calls	73
Total Calls with No Message	83
Total Technical Failure Calls	0
Test Calls	32

INMATE INSTITUTIONAL GRIEVANCES

Inmate Formal/Informal Grievances: During June 2019, a total of 1,525 formal grievances and 2,531 informal grievances were filed at various units.

Institutional Grievances Appeals: There was a total of 487 appeals of institutional grievances received in June 2019. Of those, 380 were acknowledged and 107 were rejected for various reasons. A total of 404 appeals were answered; 403 had no merit and one (1) was found with merit.

INSTITUTIONS

STTG

During the month of June, the STTG Coordinator, along with K-9 officers, conducted an STTG sweep of the Varner Unit on the 5th and the Randall L. Williams Unit on the 18th. Security audits were conducted at the Pine Bluff Complex on the 6th, the Tucker Unit on the 20th, and the Ouachita River Correctional Unit on the 27th. The STTG Coordinator taught a BCOT class at the Cummins Unit on the 11th, and another at the Training Academy on the 19th. K-9 officers assisted in a BCOT special assignment on the 10th. The STTG second quarterly meeting of the year was held at the Central Office on the 21st.

FARM

The Agriculture Division experienced a lot of flooding during the month of June. Flood waters covered all grazing and hay land located behind the levee at Cummins, and has been slow to recede. Aftermath of the flooding included a great deal of debris on the pastures, broken fences, and in some cases, fences were completely washed away. A portion of the pasture at Cummins was lost due to bank erosion as well. The Wrightsville farm has dealt with similar conditions. Cattle had to be moved to higher ground to get ahead of the water. As a result, grass is in short supply, which causes a concern for hay in the winter. Options are being explored to increase the production of hay for the winter season by planting grazing and hay crops. Another possibility being considered is renting pasture away from the units in order to move the cattle and get enough hay for the winter.

All farms have finished planting their row crops. The corn crops at EARU and Cummins are looking good. Although the soybeans and rice seem to be struggling, they are growing. All farms have been watering and spraying as needed to stay ahead of the weed pressure.

All units began cooking fresh vegetables produced from their gardens during the month of June.

FARM, continued

The poultry operation experienced an electrical issue when the wiring that controls the fans in House 6 was shorted out by rodents. As a result, birds were lost to heat stress. There were two weeks without eggs supplied to ADC.

The dairy has been maintaining a consistent supply of milk needed to provide for all units.

REGIONAL MAINTENANCE HOURS

Regional Maintenance Hours	June 2019
Benton Unit	9,753
Delta Regional Unit	3,096
East Arkansas Regional Unit	2,772
Grimes Unit	3,968
McPherson Unit	1,992
Mississippi County Work Release	2,152
North Central Unit	9,576
Ouachita River Unit	2,424
Randall L. Williams Unit	5,290
Texarkana Regional Correctional Center	1,189.5
Tucker Unit	3,264
Varner Unit	2,856
Wrightsville Unit	2,712
Total Hours	51,045

WORK RELEASE RENT REPORT

Unit	June 2019
Benton Unit	\$94,146.00
Mississippi County Work Release	\$42,109.00
Northwest Arkansas Work Release	\$36,482.00
Pine Bluff Work Release	\$29,750.00
Texarkana Regional Correctional Center	\$40,544.00
Tucker Reentry Work Release	\$24,429.00
Total	\$267,460.00

**RANDALL L. WILLIAMS
JUVENILE EDUCATION PROGRAM**

	Slots	Enrolled	Discharged	End Count
Juveniles*	20	12	3	10

*Juveniles are transferred from the program once they reach the age of 18. The Juvenile count also changes based on new commitments. During the month, no inmates were on punitive status. There was one (1) new commitment.

REENTRY**WAGE****(Workforce Alliance for Growth in the Economy)**

Unit	Slots	Completed	Discharged	End Count
Delta*	0	0	0	0
Ester	20	0	0	20
Hawkins	36	6	6	20
McPherson	8	6	0	6
Ouachita River	20	0	3	19
Tucker	20	4	3	16
Wrightsville	36	12	14	20
Total	140	28	26	101

*There is no WAGE at the Delta Regional Unit during the month of June.

**APAL – ADVANCED PRINCIPLES AND
APPLICATIONS FOR LIFE PROGRAM**

	Slots	Completed*	Enrolled	Removed	End Count
Ester	35	0	2	0	34
Hawkins	50	3	30	1	29
TOTAL	85	3	32	1	63

*Advanced PAL is an 18-month reentry program that combines a pre-release curriculum with the PAL program.

THINK LEGACY

Unit	Slots	Completed	Removed	Assigned
Cummins	55	0	2	46
Delta Regional	24	3	0	24
East Ark. Regional	50	2	1	47
Ester	75	8	0	74
Grimes	56	1	2	56
Hawkins (Female)	40	2	0	49
McPherson	68	4	0	68
North Central	59	6	0	51
Ouachita River	46	5	0	45
Tucker	55	3	2	57
Varner	49	6	2	49
Wrightsville	48	5	3	48
Total	625	45	12	614

There are 202 males and 139 females on the Think Legacy waiting list, for a total of 341. All Think Legacy applicants are within 18 months of their TE or discharge date.

The average time on the waiting list is approximately 60 days. There were 148.5 volunteer hours recorded for the month of June.

June 2019 Think Legacy Activities included:

CUMMINS UNIT – A “Tie-Your-Tie” Workshop was held on June 13th. **DELTA UNIT** – Ms. McDearmon of Arkansas Workforce Development visited the program on the 11th. S.Hughes, R. Racey, and J. Carlton from Child Support Enforcement visited on the 26th. A graduation was held on the 28th with Quintin Stephens as speaker. **EARU** – A Father’s Day brunch was held on the 13th. **ESTER UNIT** – A graduation, with Quintin Stephens serving as speaker, was held on the 20th. **GRIMES UNIT** – A graduation was held on the 26th. **HAWKINS UNIT** – Participants took part in a Dramatic Arts Workshop on the 17th - 19th. Representatives from Arkansas Workforce Development and Child Support Enforcement visited the program on the 19th. **MCPHERSON UNIT** – Representatives from Goodwill Industries visited on the 5th, the House of Faith on the 7th, Child Support Enforcement on the 14th, Soaring Wings on the 26th, and Serenity Ridge Recovery on the 28th. A graduation was held on the 19th. **WRIGHTSVILLE UNIT** – Representatives from Arkansas Workforce Development, Driver Control, Goodwill Industries, and Child Support visited the program throughout the month. A suicide prevention class, taught by Ms. Davidson and Ms. Crutchfield, was also held.

WRIGHTSVILLE-HAWKINS
PATHWAY TO FREEDOM PROGRAM

June 2019	Slots	Completed	Enrolled	Removed	End Count
PTF	204	0	154	6	197*

*Number of graduates remaining in the program: 43

ADMINISTRATIVE SERVICESPROCUREMENT SECTION UPDATE**Current Bids:**

- Waste Disposal Services (various locations)
- Inmate Holiday Package RFP
- Tucker Water Treatment Sand Filter Project
- Capital Laundry Equipment

No New Contracts/OSP**ABA Contracts:**

- EARU Recreation Yard Precast
- McPherson Administration and Visitation Precast

Renewed Contracts:

- Flour

Procurement/Contracts Report (required by policy)–

For June 2019, Purchase Orders and Contracts in excess of \$10,000 amounted to \$1,409,785.88. Of this amount, \$428,435.90 was for Inmate Care and Custody-related items (food, shoes, clothing, etc.). Bulk fuel costs for the month of June were 96,817.18 – average cost of E-10 was \$2.01/gallon; average cost for bulk diesel was \$2.07/gallon.

HUMAN RESOURCES UPDATE

Workplace Safety – During the month of June, the modified version of the Health and Safety Plan was presented to two Basic Training classes with a total of 170 cadets in attendance.

The number of incidents reported to the Company Nurse in June was 70, which brought the total number of reported incidents for 2019 to 382.

Benefits – There were 74 FMLA requests processed during the month: 57 were approved and 17 denied. A total of nine (9) catastrophic leave requests were received: six (6) were approved, one (1) was denied, and two (2) were pending at the time of this report.

HUMAN RESOURCES UPDATE, *continued*

Physical Assessments – A total of 184 applicants and incumbent personnel were assessed during June. Fifty-nine (59) incumbent personnel successfully passed the physical assessment, and three (3) did not, but rescheduled and passed after receiving a physician's release. A total of 118 applicants successfully passed the physical assessment and four (4) did not. Three (3) of those applicants rescheduled and passed the assessment after receiving a physician's release, and one (1) has not rescheduled.

Employment – A total of 1,813 applications were received during June. Of those, 62 Non-Security applications and 118 CO I applications were processed. One hundred forty-three (143) Correctional Officers were hired, and 35 Correctional Officers were rehired.

Vacancies, Hires, and Terminations – There was a total of 517 security and non-security vacancies, 182 new hires, 116 terminations, and 11 retirements throughout the department during the month of June.

ADC personnel attended the following Job Fairs/ Recruitment Events in the month of June:

Date	Unit	Location
6/5/19	Grimes	Arkansas State University/Jonesboro
6/6/19	Tucker	Pine Bluff Convention Center
6/13/19	ORCU	Goodwill Job Fair/Hot Springs
6/13/19	ORCU	AR Career Training Institute/Hot Springs
6/18/19	Varner	WIN Job Center/Greenville, MS
6/21/19	Grimes	Goodwill/Jonesboro
6/22/19	Tucker	Forward Fest/Pine Bluff
6/24/19	McPherson	Arkansas Workforce Center/Paragould
6/27/19	McPherson	Arkansas Workforce Center/Searcy
6/28/19	ORCU	Brickfest/Malvern
6/29/19	ORCU	Brickfest/Malvern

Correctional Officer interviews were conducted in the month of June at various units throughout the department:

Date	Unit	Date	Unit	Date	Unit
6/3/19	EARU NCU Varner	6/11/19	Grimes MAX Tucker	6/20/19	ORCU Tucker
6/4/19	EARU Tucker	6/12/19	EARU MAX McPherson TRCC	6/21/19	Grimes MAX
6/5/19	McPherson NCU	6/13/19	Tucker	6/24/19	McPherson
6/6/19	MAX McPherson Varner	6/17/19	EARU	6/25/19	MAX McPherson
6/7/19	Grimes McPherson	6/18/19	Tucker	6/26/19	Grimes MAX McPherson
6/10/19	Varner	6/19/19	Grimes MAX Tucker	6/27/19	McPherson ORCU
				6/28/19	MAX

ADMINISTRATIVE SERVICES DIVISION
MONTHLY REPORTS INCLUDE GIFTS,
GRANTS, DONATIONS / INMATE WELFARE
FUND BALANCE (*required by policy*):

Gifts, Grants and Donations:

Donations for the month of June totaled \$1,592.00 [Books: \$136.00; Strawberries: \$1,456.00].

The **Inmate Welfare Fund** balance on June 30, 2019 was \$7,963,599.23.

The **PAWS in Prison Program** total on June 30, 2019 was \$261,509.19. ADC Account (7004822/Donations) balance was \$19,159.55, ADC Account (NDC0500/ Recycling) balance was \$108,899.96, and the ADC Paws in Prison Non-Profit account (Quickbooks) balance was \$133,449.68.

INFORMATION TECHNOLOGY -
JUNE 2019

SECURUS VIDEO VISITATION (SVV) PROJECT
Inmate Video Visits:

- Inmates completed 3,703 video visits during June and missed 158.

SECURUS TABLET PROJECT:

- A total of 2,610 inmate tablets were leased during June.

IT/eOMIS ACTIVITIES

- Joy Taylor, Charles Bass, and Larry Bowman attended the 2019 Corrections Technology Association Summit in Scottsdale, AZ. Joy is a Board Member of the association.
- A meeting was held with the AIRES team in Little Rock to discuss an interface file transmitted from eOMIS to DHS. AIRES is a DHS system. The DHS vendor, Deloitte, requested that additional data elements (organization type code) be added to the interface file. This new type of code will allow them to differentiate between incarcerated inmates and inmates who are in the County Jail Backup. They also requested the suffix of offender names.
- Marquis, ACC, and ADC staff members attended a conference call to discuss time computation for offenders. The discussion included how to hand-calculate all sentence types based on Arkansas Release Laws.
- The IT team has been working with DIS to install Carbon Black Defense and Response agents to all agency end-points. Once installed, the Carbon Black agents will report to Splunk, monitoring for any unwanted and potentially dangerous malware. A virus, Trickbot, has been making its way through the state network.

INFORMATION TECHNOLOGY, *continued*

- There has been no activity from Telco on the network upgrades that remain for the Cummins and Varner Units. Next month will mark one year since the upgrade order was placed with DIS.
- IT staff demonstrated the Offline Segregation software/hardware to the Wardens at the Institutional Staff Meeting. Deployment begins in July.
- Marquis proposed developing detailed information on time calculations and a flow chart for all agencies. This is pending the estimate.
- There was a discussion with Marquis and ADC staff regarding the automation of the current Bank of America (BOA) positive pay file to generate the monthly cleared check report from eOMIS. Currently, staff members retrieve and store the text file from the BOA website. The file is then emailed to eOMIS support staff who then send it to DIS to place on the SFTP site for retrieval by the eOMIS report server. Next, eOMIS staff members order the extract report for the monthly cleared checks, prompting eOMIS to retrieve the text document and update all eOMIS checks associated with the report, generating a final pdf document. A staff member then emails the pdf document to Kristina Johnson in Accounting. Automation would simplify the process and reduce required staff time.
- A discussion with Marquis and ADC staff was held in regards to the final piece of the JFA project – Stock Population Report. The discussion included using a broader definition of admissions and releases to insure that inmates released due to execution or death (who may have been admitted after the begin date of the report) were included in the report.
- A discussion about an interface with Arkansas' SHARE (electronic health record) system was held that included the ability to interface eOMIS with SHARE for a bi-directional web service. The conversation also included the type of information for transmission, interface file format for use, and current processes used by Wellpath to obtain data from SHARE on offenders (manual retrieval). Deputy Director Rory Griffin presented that ADC would pay for Marquis' programming costs of development and completion of the interface.
- Testing of eOMIS Disaster Recovery (DR) was completed at DIS State Data Center West. The results demonstrated that eOMIS testing was successful with the exception of the ACIC Openfox and Caringo application interfaces. While a solution is not currently available to break the Caringo mirror between the production and DR-hosted solution, DIS plans to work with Caringo support to document a DR procedure to test Caringo on the next annual DR testing date.

- Preparation work is in progress for the deployment of Office 365. IT staff members attended the kickoff meeting on July 2nd. The rollout schedule includes a Wave 10 cutover for 09/25/2019.
- Upgrades to all agency computers from Windows 7 to Windows 10 continues.

TRAINING ACADEMY - JUNE 2019**BASIC TRAINING DIVISION –**

Under the direction of Instructor David Farrier, **BCOT Class 2019-G** graduated on June 21st with forty-three (43) cadets. Jeffrey Johnston, of the Ouachita River Correctional Unit, received the Willis H. Sargent Award. Center Supervisor John Craig of the Benton Work Release Unit served as the guest speaker.

IN-SERVICE DIVISION –

Correctional Security for Non-Security (Full-Time Staff) was presented on June 4th and 5th. The course highlights a variety of issues of which full-time non-security ADC staff members, new to a correctional setting, should be made aware. Participants are taught correctional history, how to communicate and cooperate with security staff members, and other essential new employee information. 26 hours of eCADEMY training is the prerequisite for this class.

Taser Training was offered on three occasions during the month of June. The initial certification class was presented on June 4th, and the other two classes, focusing on recertification, were offered on the 4th and 6th. Participants were taught the practical and legal uses of the Taser X-26 electronic device by a department-certified trainer. Certified staff are required to obtain recertification every two years.

American Red Cross CPR/First Aid/AED was presented on June 6th and 7th. This class provides staff with knowledge and instruction on performing cardiopulmonary resuscitation (CPR), along with basic first aid and the ability to operate an automated external defibrillator (AED).

Character First, which serves as a paradigm for personal growth, was presented on June 7th. One of 49 character qualities is shared with staff members each month in the form of a 15-minute training session. The sessions outline realistic practices/behaviors that are designed to develop each particular character quality, applying it both to work and family life. The character quality for June was loyalty.

Other training opportunities on June 6th included the 15-Minute Safety Briefing: **Earthquake Safety** and the PREA Staff Education Briefing: **Rape–Inmate on Inmate**.

TRAINING ACADEMY, *continued*

Blue Courage was offered for security supervisors 13th and 14th at the Administrative Annex East building in Pine Bluff. This 16-hour course provides the path of constant vigilance through comprehensive training; giving the officer the right inspiration (heart-set), the right reasoning (mind-set), the right skills (skill-set), and the right tools (tool-set). Blue Courage targets physical, mental, and spiritual aspects for officers to pave a clear path forward.

The schedule for upcoming Blue Courage sessions is as follows:

- July 16-17 – Cummins Unit
- July 16-17 – Tucker Unit
- August 1-2 – Ouachita River Correctional Unit
- August 12-13 – Delta Regional Unit
- August 19-20 – Cummins Unit
- August 20-21 – North Central Unit
- August 21-22 – Cummins Unit

Correctional Police Officer (CPOs) Annual Training was presented on June 17th. Each year, CPOs are required to obtain a minimum of 16 hours of annual continuing education.

Management Level 1, a session designed for new supervisors, was offered June 17th–20th. ADC staff facilitate the training, which is mandated by Executive Order. Topics include: Arkansas Government Basics, HRkansas, Performance Evaluation, Grievance Prevention and Handling, and the Fair Labor Standards Act, among others.

eCADEMY –

During the month of June 2019, 837 ADC employees completed a total of 13,839 hours of eCADEMY training. Approximately 18% of ADC employees completed at least one course during that timeframe, averaging 3.0 hours per staff member. The Computer Lab is open on a daily basis for employees who wish to complete online training through eCademy.

CHAPLAINCY SERVICES

All Facilities – The month of Ramadan concluded on June 3rd. Islamic inmates throughout the state celebrated its conclusion by participating the Eid al-Fitr feast.

Delta Regional Unit – On June 1st, the unit hosted the second night of revival services with 12 volunteers and 75 inmates in attendance.

East Arkansas Regional Unit – On June 8th, *Gideons International* visited the unit and distributed 212 bibles.

Maximum Security Unit – Representatives from the Madina (Islamic) Institute participated in an Eid al-Fitr feast, along with MSU inmates, on June 6th. The service was led by the visiting (Free world) Iman. On the 11th, 23 inmates graduated from the Overcomer's Class of Principles II. Quarterly training for unit volunteers was held on the 29th with 20 volunteers in attendance.

McPherson Unit – On June 29th, 53 inmates were baptized at the unit. Thirty inmates and 40 volunteers participated in a Kairos Walk that was held on the 6th–10th. The play, “12 Jurors,” was presented at the unit with 36 participants and 240 inmates in attendance.

Ouachita River Correctional Unit – On June 13th-15th, Christian Motorcyclists Association (CMA) hosted an event at the unit called “Rodeo Revival.” An average of 137 inmates attended various parts of the event. The Habilitation Program held a talent show on the 28th.

Wrightsville Unit – On June 16th, the first Hispanic Father's Day concert was held at the unit with 11 volunteers and 82 inmates in attendance. The group “Real Men Talk” hosted an event on the 30th that was attended by 134 inmates and one volunteer.

ACCREDITATION

ACA Internal Audits Completed:

6/3–6/7	Wrightsville File Prep
6/10–6/14	Tucker File Prep
6/17–6/19	Tucker File Prep
6/20	Wrightsville First Pre-Audit
6/23	Tucker First Pre-Audit
6/26–6/28	Benton File Prep

Fire/Safety and Sanitation independent audits conducted by the Fire and Sanitation Coordinator:

6/3–6/7	Tucker Independent Audit
6/10–6/14	Wrightsville Independent Audit
6/17–6/20	Benton Independent Audit
6/24	Benton Fire Safety File Prep
6/25	ORCU Fire Safety
6/26	Tucker Fire Safety File Prep
6/27	Wrightsville Fire Safety File Prep

VOLUNTEER SERVICES

Total Number of Volunteer Hours for June 2019:

Unit/Program	Hours
Cummins Unit	1
Delta Unit	10
East Arkansas Regional Unit	42.75
Hawkins Unit	11
Mississippi County Work Release Center	12
North Central Unit	2
Northwest Arkansas Work Release Center	30
Ouachita River Correctional Unit	22
Pine Bluff Complex	5.5
PAWS	16
Think Legacy	148.5
Religious Services/Chaplaincy	4,657
Total Hours	4,957.75

MENTAL HEALTH SERVICES

Sex Offender Treatment Programs (RSVP/SOFT):

	Slots	Completed	Removed	Clients
RSVP	278	0	10	273
SOFT	30	0	1	8
Total	308	0	11	281

There are 825 males on the waiting list for RSVP and 15 females on the waiting list for SOFT within five years of their TE date. Of those, 29 inmates are mandated by the Parole Board.

The average time on the waiting list from request is between one and two months for those stipulated.

The total on the waiting list, including those not currently within the identified timeframe, is 1,470 males – 1,148 of which are low risk on the ARORA, and 18 females – eight (8) of which are low risk on the ARORA. There is one (1) PREA inmate in the program at this time.

***The waiting list numbers include inmates that are ineligible due to class or housing status.**

Therapeutic Community (TC):

Unit	Slots	Completed	Removed	Clients
Tucker	136*	6	8	130
Wrightsville	50*	2	2	47
McPherson	53*	3	7	48
Total	239	11	17	225

There are 555 males and 99 females on the waiting list within 18 months of their release date. Of those, 16 are mandated by the Parole Board.

The average time on the waiting list from request is 37 days.

The total on the waiting list, including those not currently within the identified timeframe, is 1,075 males and 144 females; of these, 285 are low risk on the ARORA.

***Denotes transitional beds available at this treatment program. The Tucker Therapeutic Community has 129 client slots and seven (7) peer counselor slots.**

Substance Abuse Treatment Program (SATP):

Unit	Slots	Completed	Removed	Clients
Grimes	56*	9	3	50
McPherson	106*	12	15	99
Maximum Security	3	1	1	3
Randall L. Williams	200*	32	16	182
Benton	36*	6	3	33
Wrightsville	150*	20	11	142
Total	551	80	49	509

There are 2,644 males and 245 females on the waiting list within 18 months of their release date. Of those, 36 are mandated by the Parole Board.

The average time on the waiting list from request is 13 days.

The total on the waiting list, including those not currently within the identified timeframe, or ineligible due to class or housing status, is 2,812 males and 348 females; of these, 736 are low risk on the ARORA.

***Denotes transitional beds available at this treatment program.**

Substance Use Intervention Program: The Substance Use Intervention Program had 18 admissions and 17 discharges for an end-of-month count of 38 during June. This program is housed at the Varner Unit and is for inmates found guilty of a disciplinary violation for either drug use or drug possession.

ORCU Residential Program Unit (RPU): The RPU had two (2) admissions and three (3) discharges in June for an end-of-month count of 124.

McPherson Mental Health Residential Program Unit (RPU): There were six (6) admissions and eight (8) discharges in June, for an end-of-month count of 38.

Habilitation Program: The Habilitation Program at the Ouachita River Correctional Unit provided treatment services to 46 inmates during June. There were two (2) admissions and one (1) discharge resulting in an end-of-month count of 45.

Anger Management Treatment: The Anger Management Treatment Program at the Cummins Unit provided treatment services to 39 inmates during June. There were seven (7) admissions and seven (7) discharges for an end-of-month count of 32.

Staffing: The following Mental Health Services and SATP positions were vacant in May and June 2019:

Positions	FTE's*	May	June
Psychologists	14	4	4
Social Workers	31	11	12
Advisors	64	8	8
Substance Abuse Program Leaders	35	1	3
Rehab Program Director	1	1	1

***FTE refers to authorized Full Time Equivalent positions.**

ADDITIONAL MENTAL HEALTH AND MEDICAL INFORMATION

Self-Study Classes:

Classes	# of Participants	# Completed	Waiting List
Anger Management	269	252	1,142
Thinking Errors	322	307	1,114
Substance Abuse Education	281	261	560
Communication Skills	260	255	1,144
Domestic Violence	119	83	308
Victims of Domestic Violence	48	47	114
Stress Management	334	317	1,179
Parenting	191	185	574

Suicide: There were 90 suicidal threats during June. There were four (4) attempts resulting in no deaths.

Outpatient: There were 2,070 inmates on the mental health medical log at the beginning of June. Mental Health staff conducted the following contacts during June:

Case Management Contacts	2,040
Requests for Interviews	1,501
Testing	4
Intakes	750
Unit Requests	1,646
Counseling (with Treatment Plans)	0
Pre-Lockup Reviews	620
Routine Restrictive Housing Reviews	768
Restrictive Housing Rounds	22,594
PREA Evaluations	115
Routine Follow-up	297
834 Requests	60

County Mental Health Requests: During June, there were 153 requests of a mental health nature received. Fifty-four (54) inmates were fast-tracked to ADC.

County Medical Health Requests: During June, there were 485 requests of a medical nature received. Thirteen (13) inmates were fast-tracked to ADC.

Monetary Sanctions: Sanction reimbursements for May were \$10,400.00.

Deaths: There were five (5) inmate deaths during the month of June; four (4) were claimed and one (1) was cremated.

Wellpath: See attachment for Wellpath's report regarding outside beds and emergency room visits.

Medical Grievances: In June, there were 126 appeals of medical grievances received and 117 appeals were answered; seven (7) of those were found to be with merit and two (2) with merit but resolved.

SEX OFFENDER ASSESSMENT

Assessments Completed:

Risk Level	June	September 1999 through June 2019
Level 1	1	1,195
Level 2	24	7,549
Level 3	13	6,853
Level 4	1	659
Default 3	2	*
Total	41	16,256
*Default Level 3's are included in the total number of Level 3's to date.		

ADDITIONAL MENTAL HEALTH AND MEDICAL INFORMATION, *continued*

ACIC Numbers:

The total number of sex offenders registered from September 1999 through June 2019:

Compliant	8,289
Delinquent	1,020
Confined	3,271
Out-of-State	3,528
Address Unknown	145
Deported	202
Incapacitated	80
Out of USA	9
Total	16,554

Consistent with current Arkansas law, deceased offenders no longer remain on the registry.

PAWS IN PRISON

Currently Enrolled in Training:

Maximum Security Unit	9
Tucker Unit	7
Hawkins Unit	6
Randall L. Williams Unit	4
Ouachita River Unit	5
North Central Unit	8
Total	39

Completed Training:

June 2019	15
YTD 2019	319
Since Inception (December 2011)	1,343
Dogs Currently in Foster (Graduated, but Not Adopted)	5
Volunteer Hours	16

CONSTRUCTION/MAINTENANCE

PROJECT UPDATES

BULL PENS:

All Varner bullpens have been completed and are in use. EARU bullpen components have been prefabricated and delivered to the unit and installation is underway.

CAMERAS:

The Delta Unit and Varner Interior installations have been completed. We have started on the camera upgrades at Tucker and the Maximum Security Unit.

CENTRAL OFFICE ROOF REPLACEMENT:

Following completion of the roof replacement, the tracking and repairing of minor leaks was done until no new leaks were detected. We were waiting on final completion documents from the project contractor, but had more leaks.

CUMMINS UNIT 13 & 15 BARRACKS DOOR REVISIONS:

We have completed changing Barracks 13 doors to solid doors and the bull pen at the entrance to Barracks 13 has been installed. We are preparing estimates to convert the metal desks to concrete. New locks for the Barracks 13 bullpen have been received and are being installed. A bullpen is being added to the Barracks 15 entrance.

CUMMINS POULTRY:

The generators are tested weekly. Funding closed and unspent portion was returned to the Arkansas Development Finance Authority (ADFA).

CUMMINS PRECAST RECREATION YARD:

The architects are working on modifications to the plans previously submitted to DBA.

EARU MAX ISOLATION RECREATION YARD:

The final plans are at the Office of State Procurement for bid preparation for the precast concrete panels.

ENTEGRITY ENERGY IMPROVEMENTS AT EARU AND DELTA UNITS:

At EARU, Entegriy is 100% complete with the lighting upgrades, 100% on the compost, plumbing is 100% complete and the solar array has been installed and is operating. Compost equipment installed, wood pellets delivered and staff trained. HVAC is at 98% and boilers were replaced. Two air handlers in Isolation were completed in March.

At the DELTA UNIT, Entegriy is 100% complete with the lighting upgrades, 100% on the plumbing upgrades. Compost shed is complete, compost equipment has been installed, wood pellets delivered and staff trained. HVAC is at 100% with testing and balancing near completion. Mechanical systems are complete. Boiler installation is complete.

PROJECT UPDATES, continued

ESTER UNIT PHASE 3:

The parking lot is being designed. DBA has concerns with the parking lot being in the floodway. This will require some modifications to the existing stream banks to ensure that they do not change the flows during floods.

Exterior lighting and cameras will be installed as soon as the parking lot is paved.

MAX ARMORY:

The Varner Armory plans have been approved and were modified for use as the Max Armory plans and have been sent to DBA for review.

MAX PRECAST RECREATION YARD:

The architects are working on modifications to the plans previously submitted to DBA.

MCPHERSON ADMINISTRATION AND VISITATION EXPANSION:

The bid documents are being prepared by the Office of State Procurement, who will handle bidding of the precast roof structural. Construction supervisors have relocated to McPherson and are ordering materials. Foundations are underway, but have been delayed by rain.

TUCKER WATER TREATMENT:

The Department received funding in the amount of \$1,093,848 from the Governor's Office, which covers 1/3 of the cost of the total water plant renovation. Documents for the selection of a design firm are being prepared.

The project to add four pressure water filters is underway. The Office of State Procurement is working on sending out the bid for filters. Plans for the filter building are at DBA awaiting approval. The Department of Health and State Fire Marshal have approved the plans.

VARNER ARMORY:

The plans were sent to the Department of Health and the State Fire Marshal and approvals have been received. They were also re-submitted to DBA and have been approved and released for construction.

CONSTRUCTION/MAINTENANCE PERSONNEL UPDATE

The following Construction/Maintenance position(s) were vacant at the end of June 2019:

- 3 Construction Project Specialists (Statewide)

AGENCY HIGHLIGHTS

AGENCY WIDE:

ADC Teams Compete in Annual Police Olympics

The annual Arkansas Police Olympics was held June 10-14, 2019 at various venues throughout the central Arkansas area. Teams representing the ADC competed in every category, which included: golf, bowling, softball, basketball, shooting, and cycling! The event successfully brought together different branches of law enforcement in friendly competition and fellowship!



In just one of the many events held throughout the week, the "Max Pack," from the Maximum Security Unit, finished the softball tournament in 2nd place!

HAWKINS UNIT:

Workshop Held for Think Legacy Participants

The Hawkins Unit hosted a workshop for Think Legacy Reentry Program participants entitled, "It's Me I'm Running To," on June 17-19, 2019. The workshop, which was facilitated by artist, author, and motivational storyteller Alice Aida Ayers, focused on mindfulness change and ways to deal with former and present trauma. Ms. Ayers delivered an encouraging message to the program participants about self-awareness, personal accountability, forgiveness, and how happiness is something that comes from within.



OUACHITA RIVER CORRECTIONAL UNIT:

BOC Member Visits Think Legacy Program

Dr. "Dubs" Byers, a member of the Board of Corrections, visited the Think Legacy Reentry Program at the Ouachita River Correctional Unit on June 7, 2019. Dr. Byers delivered a motivational speech to the participants about priming one's life before release, and the importance of not becoming stagnated. He emphasized the importance of growing and evolving as related to the transitional process.



2019 INFORMAL GRIEVANCE REPORT

Month	BENTON	HAWK/M	HAWK/F	WRTS	EARU & MX	GRIMES	RLW	MCWR	MCPH	MSU	NCU	PBU	NWA	TU	TRCC	VSMX	VU	CU	ORCU	Ester	DRU	Bowie Cty	TOTAL
JAN	1	25	25	85	362	310	28	0	448	175	118	33	0	139	1	470	72	151	228	24	132	57	2,884
FEB	0	15	27	80	341	284	17	0	267	147	148	30	0	107	0	450	54	149	406	20	96	39	2,677
MAR	3	15	30	96	305	254	26	0	309	155	171	52	0	125	0	517	72	201	339	27	80	44	2,821
APR	0	34	14	100	305	243	21	0	454	267	141	42	0	97	0	607	145	167	255	29	97	53	3,071
MAY	3	21	12	88	354	299	10	0	278	406	106	40	1	119	1	448	90	180	396	32	114	35	3,033
JUN	1	20	17	81	290	221	21	0	307	192	131	37	1	130	0	478	67	157	203	21	110	46	2,531
JUL	0	0	0	0	0	0	0	0	0	0	0	0	0	0	0	0	0	0	0	0	0	0	0
AUG	0	0	0	0	0	0	0	0	0	0	0	0	0	0	0	0	0	0	0	0	0	0	0
SEPT	0	0	0	0	0	0	0	0	0	0	0	0	0	0	0	0	0	0	0	0	0	0	0
OCT	0	0	0	0	0	0	0	0	0	0	0	0	0	0	0	0	0	0	0	0	0	0	0
NOV	0	0	0	0	0	0	0	0	0	0	0	0	0	0	0	0	0	0	0	0	0	0	0
DEC	0	0	0	0	0	0	0	0	0	0	0	0	0	0	0	0	0	0	0	0	0	0	0
TOTAL	8	130	125	530	1,957	1,611	123	0	2,063	1,342	815	234	2	717	2	2,970	500	1,005	1,827	153	629	274	17,017

2019 FORMAL GRIEVANCE REPORT

Month	BENTON	HAWK/M	HAWK/F	WRTS	EARU & MX	GRIMES	RLW	MCWR	MCPH	MSU	NCU	PBU	NWA	TU	TRCC	VSMX	VU	CU	ORCU	Ester	DRU	Bowie Cty	TOTAL
JAN	0	14	8	37	335	152	16	0	171	128	70	13	0	117	0	289	55	106	155	12	73	21	1,772
FEB	0	4	5	56	334	134	9	0	104	185	78	15	0	81	0	255	46	115	161	8	57	8	1,655
MAR	3	9	4	40	332	121	12	0	115	111	102	15	0	125	0	310	5	144	113	25	37	14	1,637
APR	0	14	4	52	274	128	19	0	153	289	81	21	0	67	0	334	130	119	150	14	42	21	1,912
MAY	1	10	4	39	337	137	37	0	109	270	49	20	1	93	0	277	77	126	151	13	45	5	1,801
JUN	0	7	4	44	265	92	8	0	115	192	77	12	1	89	0	264	56	95	130	0	57	17	1,525
JUL	0	0	0	0	0	0	0	0	0	0	0	0	0	0	0	0	0	0	0	0	0	0	0
AUG	0	0	0	0	0	0	0	0	0	0	0	0	0	0	0	0	0	0	0	0	0	0	0
SEPT	0	0	0	0	0	0	0	0	0	0	0	0	0	0	0	0	0	0	0	0	0	0	0
OCT	0	0	0	0	0	0	0	0	0	0	0	0	0	0	0	0	0	0	0	0	0	0	0
NOV	0	0	0	0	0	0	0	0	0	0	0	0	0	0	0	0	0	0	0	0	0	0	0
DEC	0	0	0	0	0	0	0	0	0	0	0	0	0	0	0	0	0	0	0	0	0	0	0
TOTAL	4	58	29	268	1,877	764	101	0	767	1,175	457	96	2	572	0	1,729	369	705	860	72	311	86	10,302

INMATE INSTITUTIONAL GRIEVANCE APPEAL REPORT – JUNE 2019

	Acknowledged	Rejected	Processed W/O Merit	Processed W/ Merit
Benton Unit	0	0	0	0
Benton Work Release	0	0	0	0
Bowie County Texas Correctional Facility	4	1	5	0
Cummins Unit	18	11	27	1
Cummins Modular Unit	0	0	0	0
Delta Regional Unit	6	1	6	0
East Arkansas Regional Unit	11	3	18	0
East Arkansas Regional Max Unit	110	12	82	0
Ester Unit	3	0	3	0
Grimes Unit	27	6	31	0
Maximum Security Unit	47	17	61	0
Tucker Re-Entry	0	0	0	0
McPherson Unit	16	8	14	0
McPherson Mental Health Residential Program Unit	0	0	0	0
Mississippi County Work Release Center	0	0	0	0
Northwest Arkansas Work Release Center	0	0	0	0
North Central Unit	7	5	13	0
Ouachita River Correctional Unit	16	11	21	0
ORCU Hospital	0	0	0	0
ORCU New Commitment	0	6	0	0
ORCU Mental Health Residential Program Unit	8	2	11	0
Pine Bluff Unit	4	1	5	0
Pine Bluff Re-Entry	0	0	0	0
Randall L. Williams Correctional Facility	3	2	3	0
Texarkana Regional Correctional Center	0	0	0	0
Tucker Unit	13	7	11	0
Varner Super Max	73	10	74	0
Varner Unit	10	2	12	0
Wrightsville Unit	3	1	5	0
Hawkins Center	0	1	0	0
Hawkins for Males	1	0	1	0
Hawkins SPU	0	0	0	0
Total	380	107	403	1

ADMISSIONS AND RELEASES – JUNE 2019

<u>Admissions</u>	<u>Male</u>	<u>Female</u>	<u>Total</u>
Asian	6	0	6
Black	206	11	217
Hispanic	23	0	23
Native American Indian	2	0	2
Native Hawaiian or Pacific Isl.	0	0	0
White	360	68	428
Other	2	0	2
Unknown	0	0	0
Total	599	79	678

<u>Releases</u>	<u>Male</u>	<u>Female</u>	<u>Total</u>
Asian	1	0	1
Black	173	8	181
Hispanic	11	0	11
Native American Indian	1	0	1
Native Hawaiian or Pacific Isl.	0	0	0
White	284	69	353
Other	2	0	2
Unknown	0	0	0
Total	472	77	549

ADC INMATE POPULATION GROWTH 2000-2026 - JUNE 2019

Updated 06/30/2019

Mo.	2000	2001	2002	2003	2004	2005	2006	2007	2008	2009	2010	2011	2012	2013	2014	2015	2016	2017	2018	2019
Jan.	11,984	11,908	12,402	13,015	13,105	13,595	13,481	13,839	14,518	14,796	15,334	16,312	15,134	14,815	17,481	18,142	17,785	17,824	18,201	17,958
Feb.	12,169	12,022	12,529	13,054	13,166	13,783	13,633	14,012	14,603	14,883	15,374	16,209	14,990	15,008	17,438	18,082	17,625	17,608	17,998	17,846
March	12,006	12,033	12,299	13,108	13,088	13,418	13,534	13,772	14,580	14,843	15,290	16,095	14,964	14,665	17,395	18,233	17,573	17,666	18,089	17,898
April	12,069	12,167	12,465	13,213	13,323	13,469	13,554	13,851	14,769	14,937	15,570	16,172	15,124	14,850	17,604	18,703	17,815	17,798	18,227	17,977
May	12,109	12,384	12,558	13,463	13,556	13,528	13,711	14,146	14,880	15,146	15,694	16,062	15,132	15,074	17,593	18,693	17,769	17,652	17,945	17,817
June	12,005	12,108	12,439	13,418	13,389	13,251	13,430	13,915	14,700	15,025	15,564	15,554	14,832	14,825	17,340	18,813	17,973	17,963	17,972	17,942
July	12,030	12,190	12,622	13,509	13,528	13,286	13,560	14,082	14,868	15,195	15,807	15,519	14,879	15,379	17,522	18,870	18,130	18,180	18,005	
August	12,087	12,371	12,815	13,565	13,632	13,419	13,646	14,224	15,100	15,385	15,829	15,240	14,675	16,103	17,549	18,806	17,919	18,051	17,751	
September	11,983	12,289	12,774	13,341	13,516	13,237	13,652	14,217	14,850	15,285	16,025	15,172	14,724	16,412	17,605	18,549	18,026	18,179	17,865	
October	12,119	12,348	12,942	13,341	13,584	13,363	13,775	14,349	14,836	15,381	16,311	15,271	14,856	16,993	17,880	18,430	18,127	18,348	17,943	
November	12,094	12,408	13,162	13,408	13,706	13,587	13,913	14,437	15,025	15,340	16,460	15,205	14,625	17,168	17,848	17,981	17,573	17,973	17,666	
December	11,856	12,333	12,845	13,106	13,470	13,338	13,728	14,315	14,716	15,199	16,204	15,062	14,654	17,235	17,874	17,707	17,537	18,078	17,799	
Net Ann. Inc.	29	477	512	261	364	-132	390	587	401	483	1,005	-1,142	-408	2,581	639	-167	-170	541	-279	143
Avg. Mo. Inc.	2	40	43	22	30	-11	33	49	33	40	84	-95	-34	215	53	-14	-14	45	-23	24

Population is total jurisdictional count at end of each month. Population at end of month December 1999 was 11,827.

Average monthly population increase for past fifteen years 2004 - 2018 is 26

Average monthly population increase for past ten years Jan. 2009 - Dec 2018 is 26

Average monthly population increase for past five years 2014 - 2018 is 9

Projected at Growth of 26 per Month

	2008	2009	2010	2011	2012	2013	2014	2015	2016	2017	2018	2019	2020	2021	2022	2023	2024	2025	2026
Mo.	Actual	Actual	Actual	Actual	Actual	Actual	Actual	Actual	Actual	Actual	Actual	Actual/ Proj.	Proj.	Proj.	Proj.	Proj.	Proj.	Proj.	Proj.
January	14,518	14,796	15,334	16,312	15,134	14,815	17,481	18,142	17,785	17,824	18,201	17,958	18,124	18,436	18,748	19,060	19,372	19,684	19,996
February	14,603	14,883	15,374	16,209	14,990	15,008	17,438	18,082	17,625	17,608	17,998	17,846	18,150	18,462	18,774	19,086	19,398	19,710	20,022
March	14,580	14,843	15,290	16,095	14,964	14,665	17,395	18,233	17,573	17,666	18,089	17,898	18,176	18,488	18,800	19,112	19,424	19,736	20,048
April	14,769	14,937	15,570	16,172	15,124	14,850	17,604	18,703	17,815	17,798	18,227	17,977	18,202	18,514	18,826	19,138	19,450	19,762	20,074
May	14,880	15,146	15,694	16,062	15,132	15,074	17,593	18,693	17,769	17,652	17,945	17,817	18,228	18,540	18,852	19,164	19,476	19,788	20,100
June	14,700	15,025	15,564	15,554	14,832	14,825	17,340	18,813	17,973	17,963	17,972	17,942	18,254	18,566	18,878	19,190	19,502	19,814	20,126
July	14,868	15,195	15,807	15,519	14,879	15,379	17,522	18,870	18,130	18,180	18,005	17,968	18,280	18,592	18,904	19,216	19,528	19,840	20,152
August	15,100	15,385	15,829	15,240	14,675	16,103	17,549	18,806	17,919	18,051	17,751	17,994	18,306	18,618	18,930	19,242	19,554	19,866	20,178
September	14,850	15,285	16,025	15,172	14,724	16,412	17,605	18,549	18,026	18,179	17,865	18,020	18,332	18,644	18,956	19,268	19,580	19,892	20,204
October	14,836	15,381	16,311	15,271	14,856	16,993	17,880	18,430	18,127	18,348	17,943	18,046	18,358	18,670	18,982	19,294	19,606	19,918	20,230
November	15,025	15,340	16,460	15,205	14,625	17,168	17,848	17,981	17,573	17,973	17,666	18,072	18,384	18,696	19,008	19,320	19,632	19,944	20,256
December	14,716	15,199	16,204	15,062	14,654	17,235	17,874	17,707	17,537	18,078	17,799	18,098	18,410	18,722	19,034	19,346	19,658	19,970	20,282
Net Ann. Inc.	401	483	1,005	-1,142	-408	2,581	639	-167	-170	541	-279	299	312	312	312	312	312	312	312
Ave. Mo. Inc.	33	40	84	-95	-34	215	53	-14	-14	45	-23	25	26	26	26	26	26	26	26

MONTHLY POPULATION AVERAGES - JUNE 2019

	6/3	6/4	6/5	6/6	6/7	6/10	6/11	6/12	6/13	6/14	6/17	6/18	6/19	6/20	6/21	6/24	6/25	6/26	6/27	6/28	AVG
Unit/Center																					
Benton	343	339	338	336	335	333	336	337	337	336	335	338	336	336	336	337	334	331	340	342	337
Cummins	1,655	1,663	1,663	1,656	1,662	1,661	1,664	1,666	1,665	1,664	1,661	1,658	1,662	1,662	1,660	1,658	1,656	1,655	1,659	1,658	1,660
Delta	623	621	619	614	613	612	610	610	615	614	612	611	614	611	608	611	610	614	611	609	613
E AR Reg	1,665	1,663	1,675	1,669	1,661	1,658	1,676	1,673	1,672	1,665	1,676	1,672	1,667	1,670	1,674	1,671	1,670	1,665	1,676	1,673	1,670
Ester	585	586	585	585	589	586	579	585	581	586	585	585	586	585	581	572	583	582	583	586	584
Grimes	1,073	1,073	1,076	1,071	1,068	1,073	1,072	1,082	1,082	1,079	1,078	1,078	1,067	1,065	1,065	1,070	1,070	1,069	1,069	1,067	1,072
Max Sec	668	665	667	666	666	662	662	663	663	664	664	665	665	665	664	666	665	665	665	662	665
McPherson	1,005	1,004	1,001	1,000	999	1,002	1,006	1,001	999	1,001	1,003	1,004	1,008	1,004	1,002	1,006	1,005	1,001	997	995	1,002
MCWRC	123	123	132	132	132	131	131	131	131	131	131	130	130	135	135	134	133	135	135	133	131
N Central	807	816	824	816	808	817	815	823	817	816	814	826	840	837	836	835	833	835	835	842	825
NWAWRC	98	97	100	99	99	100	100	100	100	100	100	99	100	100	100	100	100	100	100	100	100
Ouachita River	1,821	1,787	1,790	1,822	1,827	1,828	1,828	1,833	1,833	1,835	1,836	1,832	1,833	1,839	1,837	1,821	1,837	1,839	1,838	1,843	1,828
Randall L Williams	553	552	544	543	546	546	555	551	559	562	561	561	567	558	556	557	558	556	563	557	555
Pine Bluff	532	532	526	535	534	533	535	534	532	535	527	529	526	528	519	517	526	527	532	533	530
PB Reentry	54	54	54	54	54	54	54	54	54	54	54	54	54	54	53	53	54	54	54	53	54
TRCC	124	125	127	127	127	127	127	125	125	123	126	126	126	126	126	126	126	126	126	128	126
Tucker	973	978	971	982	990	987	990	997	995	993	992	991	991	998	996	990	998	997	988	994	990
Varner	1,630	1,641	1,639	1,641	1,639	1,637	1,635	1,639	1,635	1,636	1,634	1,643	1,634	1,629	1,628	1,637	1,647	1,652	1,652	1,650	1,639
Wrightsville	1,257	1,251	1,245	1,239	1,245	1,255	1,251	1,254	1,251	1,254	1,253	1,253	1,252	1,250	1,248	1,243	1,239	1,240	1,248	1,249	1,249
Total ADC	15,589	15,570	15,576	15,587	15,594	15,602	15,626	15,658	15,646	15,648	15,642	15,655	15,658	15,652	15,624	15,604	15,644	15,643	15,671	15,674	15,628
ALETA	18	18	18	18	18	18	18	18	18	18	18	18	18	18	18	18	18	18	18	18	18
Ar State Police	53	53	54	54	55	55	55	55	55	57	57	57	58	58	58	58	62	62	62	63	57
Co Jail / M	1,396	1,411	1,387	1,384	1,371	1,360	1,352	1,360	1,365	1,361	1,371	1,354	1,358	1,359	1,386	1,384	1,350	1,363	1,343	1,360	1,369
Co Jail / F	95	95	94	92	95	99	96	98	99	102	100	94	88	93	96	92	97	101	105	114	97
Total Co Jail BK	1,491	1,506	1,481	1,476	1,466	1,459	1,448	1,458	1,464	1,463	1,471	1,448	1,446	1,452	1,482	1,476	1,447	1,464	1,448	1,474	1,466
Bowie Co., TX	334	333	330	330	330	330	328	328	328	328	328	328	328	328	328	328	328	327	326	324	329
309/M	249	250	250	251	251	253	253	252	250	251	251	252	252	251	251	253	254	252	252	252	252
309/F	75	78	78	78	78	78	79	80	80	81	81	81	81	81	81	80	80	80	79	79	79
Total Act 309	324	328	328	329	329	331	332	332	330	332	332	333	333	332	332	333	334	332	331	331	331
Total Non ADC	2,220	2,238	2,211	2,207	2,198	2,193	2,181	2,191	2,195	2,198	2,206	2,184	2,183	2,188	2,218	2,213	2,189	2,203	2,185	2,210	2,201
Central Admin. Escapee						1	1	1													
Total	17,809	17,808	17,787	17,794	17,792	17,796	17,808	17,850	17,841	17,846	17,848	17,839	17,841	17,840	17,842	17,817	17,833	17,846	17,856	17,884	17,829

RESTRICTIVE HOUSING QUARTERLY REPORT**April 1, 2019 to June 30, 2019****Restrictive Housing Disciplinary Counts**

12-3 : Failure To Obey Order Of Staff	532
12-4 : Refusing A Direct Verbal Order	230
05-3 : Assault - verbal or written threat	218
11-1 : Insolence To A Staff Member	197
04-8 : Battery - Use of Force on an Inmate	185
02-17 : Creating Unnecessary Noise	149
03-5 : Out Of Place Of Assignment	129
02-16 : Refusal To Submit To Testing	112
09-3 : Possession/Introduce Drugs	90
07-1 : Unauthorized Use Of State Prop	89
02-12 : Keep Person/Quarters W Regulat	82
09-15 : Possession/Introduction/Use of Cell Phone	78
10-3 : Indecent Exposure	77
09-1 : Possession/Intro Of Fireworks	72
02-2 : Use Of Drugs,Alcohol,Chemical	68
03-3 : Unexcused Absence From Wk/Schl	68
01-1 : Banding Together/Demonstration	64
05-5 : Provoking Or Agitating A Fight	56
09-5 : Possession/Introduction Of Clothing	52
13-2 : Lying To A Staff Member	51
08-4 : Destruction Of Property	47

Disciplinary Categories

Violence to self	11
Violence to others	263
Possession of drug-related contraband	158
Masturbation/Indecent Exposure	83
Sex with another person	54
Other violations	2,474

Inmates placed in RH due to
Disciplinary Violation

1,502

Population Demographics

<u>RACE</u>	<u>GENDER</u>		
	M	F	Total
Asian	6	0	6
Black	1,361	59	1,420
Caucasian	1,054	63	1,117
Hispanic	55	6	61
Mexican	1	0	1
NA Indian	4	2	6
Other	5	0	5
Total	2,486	130	2,616

Protective Custody	4
Twenty-one or Younger	150
Fifty-five or Older	101
SMI	231

Suicides/Deaths
in Restrictive Housing

Suicides	0
Suicide Attempts	5
Deaths	2

FISCAL YEAR 2019 COUNTY JAIL BACKUP - JUNE 2019

DAY	Jul-18	Aug-18	Sep-18	Oct-18	Nov-18	Dec-18	Jan-19	Feb-19	Mar-19	Apr-19	May-19	Jun-19
1	* 1,575	1,618	* 1,646	1,531	1,634	* 1,578	1,461	1,545	1,568	1,531	1,452	* 1,497
2	1,578	1,624	* 1,646	1,531	1,659	* 1,578	1,461	* 1,545	* 1,568	1,552	1,453	* 1,497
3	1,594	1,631	1,613	1,520	* 1,659	1,538	1,452	* 1,545	* 1,568	1,540	1,483	1,491
4	1,577	* 1,631	1,613	1,537	* 1,659	1,532	1,430	1,555	1,472	1,536	* 1,483	1,506
5	1,577	* 1,631	1,583	1,535	1,646	1,521	* 1,430	1,563	1,517	1,523	* 1,483	1,481
6	1,548	1,649	1,567	* 1,535	1,654	1,519	* 1,430	1,574	1,526	* 1,523	1,507	1,476
7	* 1,548	1,654	1,552	* 1,535	1,644	1,532	1,431	1,564	1,518	* 1,523	1,527	1,466
8	* 1,548	1,652	* 1,552	1,535	1,633	* 1,532	1,427	1,598	1,548	1,517	1,532	* 1,466
9	1,547	1,642	* 1,552	1,527	1,602	* 1,532	1,419	* 1,598	* 1,548	1,490	1,518	* 1,466
10	1,532	1,665	1,517	1,524	* 1,602	1,509	1,400	* 1,598	* 1,548	1,534	1,528	1,459
11	1,571	* 1,665	1,508	1,557	* 1,602	1,505	1,401	1,591	1,557	1,557	* 1,528	1,448
12	1,584	* 1,665	1,501	1,578	1,600	1,513	* 1,401	1,595	1,511	1,557	* 1,528	1,458
13	1,609	1,670	1,503	* 1,578	1,600	1,496	* 1,401	1,608	1,485	* 1,557	1,543	1,464
14	* 1,609	1,671	1,514	* 1,578	1,618	1,493	1,402	1,627	1,511	* 1,557	1,524	1,463
15	* 1,609	1,660	* 1,514	1,574	1,626	* 1,493	1,404	1,641	1,516	1,524	1,537	* 1,463
16	1,598	1,676	* 1,514	1,571	1,633	* 1,493	1,425	* 1,641	* 1,516	1,529	1,544	* 1,463
17	1,589	1,681	1,505	1,573	* 1,633	1,472	1,434	* 1,641	* 1,516	1,529	1,589	1,471
18	1,569	* 1,681	1,496	1,583	* 1,633	1,458	1,459	1,645	1,525	1,521	* 1,589	1,448
19	1,563	* 1,681	1,498	1,606	1,633	1,484	* 1,459	1,645	1,538	1,502	* 1,589	1,446
20	1,559	1,690	1,511	* 1,606	1,620	1,477	* 1,459	1,647	1,535	* 1,502	1,557	1,452
21	* 1,559	1,683	1,494	* 1,606	1,624	1,463	1,476	1,658	1,527	* 1,502	1,576	1,482
22	* 1,559	1,677	* 1,494	1,606	1,657	* 1,463	1,476	1,675	1,528	1,504	1,597	* 1,482
23	1,553	1,685	* 1,494	1,599	1,657	* 1,463	1,479	* 1,675	* 1,528	1,505	1,601	* 1,482
24	1,560	1,701	1,506	1,619	* 1,657	1,452	1,509	* 1,675	* 1,528	1,516	1,595	1,476
25	1,552	* 1,701	1,524	1,612	* 1,657	1,452	1,513	1,706	1,525	1,524	* 1,595	1,447
26	1,553	* 1,701	1,542	1,634	1,656	1,452	* 1,513	1,728	1,523	1,558	* 1,595	1,464
27	1,597	1,700	1,527	* 1,634	1,650	1,449	* 1,513	1,674	1,519	* 1,558	1,582	1,448
28	* 1,597	1,679	1,532	* 1,634	1,609	1,464	1,528	1,625	1,501	* 1,558	1,582	1,474
29	* 1,597	1,669	* 1,532	1,602	1,591	* 1,464	1,515		1,504	1,552	1,563	* 1,474
30	1,623	1,657	* 1,532	1,595	1,578	* 1,464	1,535		* 1,504	1,523	1,528	* 1,474
31	1,629	1,646		1,621		1,473	1,540		* 1,504		1,497	
Avg Daily Backup	1,576	1,666	1,536	1,577	1,631	1,494	1,458	1,621	1,525	1,530	1,542	1,469

Notes: Totals do not include 309 Contracts in County Jails (maximum of 336)

Fiscal Year '19 Average ~ 1,552

Short-Term Revocation Program Fiscal Year '19 Average ~ 643

STTG UNIT COUNTS – JUNE 2019

Unit	Beginning Total	Confirmed	Suspected	In	Out	Paroled	Removed	Ending Total	Total Unit Population	Unit % of STTG's
Benton	78	0	0	2	1	2	0	77	343	22.45%
Cummins	524	2	0	21	16	5	0	526	1,654	31.80%
Delta	228	8	2	8	13	8	0	225	617	36.47%
EARU	583	0	0	146	131	19	4	575	1,666	34.51%
Grimes	355	0	0	40	24	15	0	356	1,064	33.46%
Hawkins	51	0	0	4	3	0	0	52	393	13.23%
Max	259	0	0	12	5	2	1	255	662	38.52%
Mcperson	42	0	0	3	1	0	0	44	1,001	4.40%
MCWR	36	0	0	7	2	0	0	41	133	30.83%
NCU	206	0	0	43	21	0	0	228	843	27.05%
NWAWR	15	0	0	2	0	0	0	17	99	17.17%
ORCU	361	0	0	32	12	15	0	366	1,618	22.62%
ORCU Intake	79	139	0	0	160	0	0	58	241	24.07%
PB/Ester	259	0	0	32	22	15	0	254	1,165	21.80%
RLW	156	0	0	48	41	0	0	163	554	29.42%
TWR	35	0	0	0	1	1	0	33	128	25.78%
Tucker	309	0	0	45	42	0	0	312	994	31.39%
Varner	692	0	0	79	63	16	0	692	1,647	42.02%
Wrightsville	244	0	0	28	15	10	0	247	858	28.79%
Total	4,512	149	2	552	573	108	5	4,521	15,680	28.83%

ORCU Intake brought in 139 new STTG members into ADC last month.

STTG DISCIPLINARY REPORT – JUNE 2019

Unit	STTG Incidents	STTG Suspected Incidents	Total Unit Disciplinary	Disciplinary Involving STTG	Percentage
Benton	0	0	13	3	23.08%
Cummins	2	0	631	249	39.46%
Delta	0	0	82	19	23.17%
EARU	0	0	824	403	48.91%
Grimes	0	1	147	61	41.50%
Hawkins	0	0	10	2	20.00%
Max	0	1	48	21	43.75%
Mcperson	0	0	141	6	4.26%
MCWR	0	0	4	1	25.00%
NCU	2	0	157	56	35.67%
NWAWR	0	0	7	3	42.86%
ORCU	0	0	140	50	35.71%
ORCU Intake	0	0	8	6	75.00%
PB/Ester	0	0	99	40	40.40%
RLW	0	0	45	25	55.56%
TWR	0	0	4	1	25.00%
Tucker	0	0	100	45	45.00%
Varner	0	0	769	424	55.14%
Wrightsville	0	0	144	48	33.33%
Total	4	2	3,373	1,463	43.37%

STTG COUNTS BY STTG SET – JUNE 2019

STTG Set	Benton	Cummins	Delta	EARU	Grimes	Hawkins	Max	Mcperson	MCWR	NCU	NWAWR	ORCU	Intake	PB	RLW	TWR	Tucker	Varner	Wrightsville	Total
Asian	1	0	0	1	1	0	0	0	0	0	0	0	0	2	0	0	1	0	1	7
Bloods	8	122	32	94	55	5	60	6	10	38	6	75	6	47	22	4	65	153	37	845
Crips	7	70	17	65	37	4	36	5	4	21	1	49	6	33	20	3	33	100	25	536
Folk	4	44	53	52	28	6	29	9	0	13	5	17	2	14	10	10	21	80	14	411
GD	16	121	38	149	83	11	44	0	9	32	0	73	13	59	33	0	75	131	59	946
Mexican	2	14	6	21	12	2	5	2	1	9	1	9	1	9	5	0	7	24	11	141
Motorcycle	0	1	1	1	2	1	3	1	1	1	0	2	0	2	1	1	4	1	0	23
Other	2	12	6	8	14	2	1	0	0	12	0	18	4	10	7	6	10	12	9	133
People	3	19	4	16	19	1	15	4	0	13	0	18	1	12	6	0	6	27	8	172
Unknown	0	9	4	13	7	0	3	2	1	5	0	11	4	0	11	0	6	6	11	93
W/S	19	28	41	36	40	5	9	15	6	44	4	38	8	29	22	0	30	38	21	433
AB	2	6	2	12	3	0	1	0	1	7	0	4	1	6	1	2	7	10	6	71
AC	1	8	3	14	12	4	12	0	1	4	0	8	0	9	0	3	6	20	3	108
NAE	4	31	7	35	18	5	17	0	3	5	0	23	10	9	10	1	16	33	24	251
WAR	8	41	11	58	25	6	20	0	4	24	0	21	2	13	15	3	25	57	18	351
Total	77	526	225	575	356	52	255	44	41	228	17	366	58	254	163	33	312	692	247	4,521

Key:

GD = Gangster Disciples

W/S = White Supremacist

NAE = New Aryan Empire

WAR = White Aryan Resistance

AC = Aryan Circle

AB = Aryan Brotherhood

INTERNAL AFFAIRS BOARD REPORT - JUNE 2019

Opened Investigation, Reviews/ASP - June 2019	Open Investigation	Open Review	ASP Referral
Assault on Inmate	0	0	1
Assault on Staff	0	3	0
Attempted Escape from Unit	0	0	0
Banding Together to Interfere with Unit	0	0	0
Battery on Inmate without Serious Injury	0	1	1
Battery on Inmate with Serious Injury	0	0	0
Battery on Inmate with Use of Unknown Substance	0	0	0
Battery on Staff without Serious Injury	0	0	2
Battery on Staff with Serious Injury	0	0	0
Battery on Staff with Bodily Fluids	0	1	5
Battery on Staff with Use of Unknown Substance	0	0	1
Death	0	0	4
Disobey Direct Order	0	1	1
Employee Misconduct	3	2	0
Escape from Work Release	0	0	1
Forcible Rape	0	0	1
Inappropriate Relationship	0	0	0
Inmate on Inmate Abusive Sexual Contact	0	2	0
Inmate on Inmate Sexual Assault	0	0	0
Inmate on Inmate Sexual Harassment	0	33	0
Inmate on Inmate Sexual Misconduct	2	31	0
Inmate on Inmate Nonconsensual Sexual Contact	2	2	0
Introduction of Contraband	0	3	2
Introduction of Drugs	0	0	0
Introduction of Tobacco	0	0	0
Other Incident	4	2	1
Other Rule Violation	0	0	0
Possession of Cell Phone	0	0	1
Possession of Drugs	0	0	1
Retaliation	0	0	0
Sexual Assault	0	1	0
Sexual Misconduct	0	5	0
Staff on Inmate Sexual Harassment	0	25	0
Staff on Inmate Sexual Misconduct	0	7	1
Staff on Staff Sexual Harassment	4	16	0
Staff on Staff Sexual Misconduct	0	0	0
Suicide Attempt	0	0	0
Suspected Criminal Activity	0	0	1
Trafficking	0	0	0
Use of Force	0	61	0
Verbal/Written threat on Staff	1	0	0
Total	16	196	24

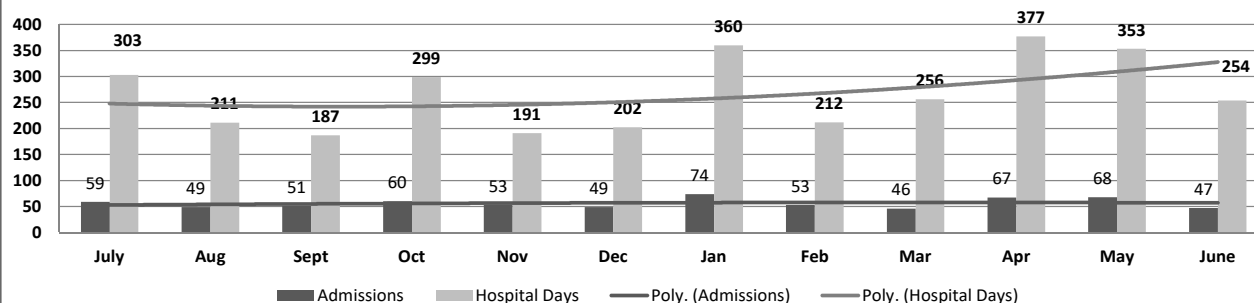
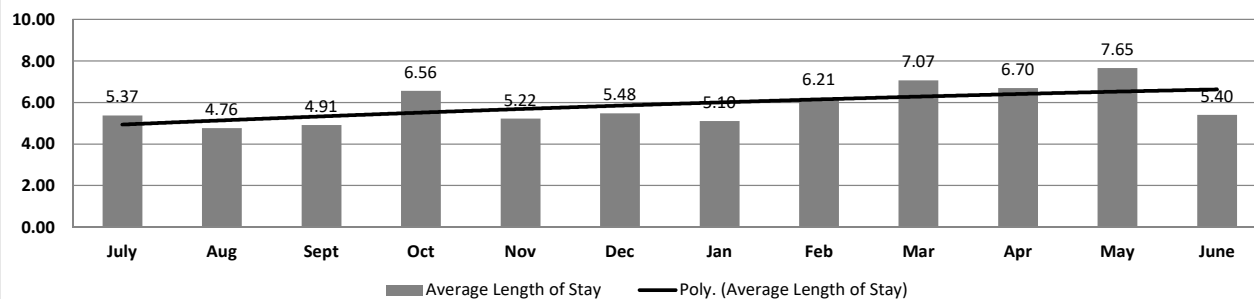
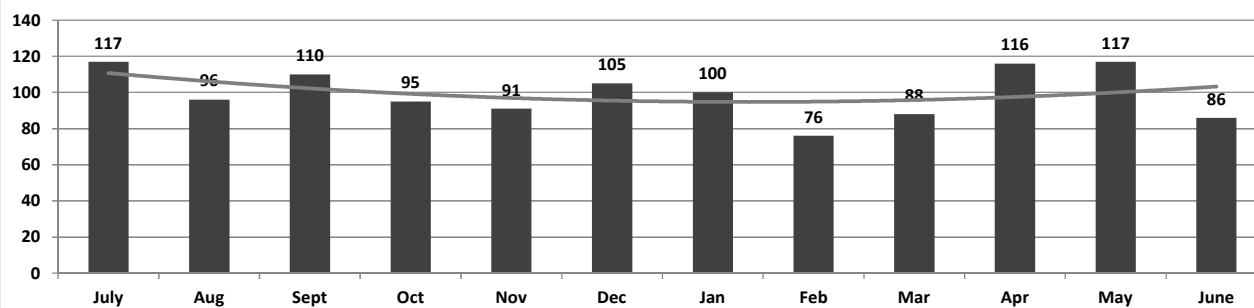
ADC INPATIENT AND EMERGENCY ROOM UTILIZATION

ADC Inpatient Statistics Past 12 Months

	2018						2019						Average
	July	Aug	Sept	Oct	Nov	Dec	Jan	Feb	Mar	Apr	May	June	
Admissions	59	49	51	60	53	49	74	53	46	67	68	47	56.3
Hospital Days	303	211	187	299	191	202	360	212	256	377	353	254	267.1
Average Length of Stay	5.37	4.76	4.91	6.56	5.22	5.48	5.10	6.21	7.07	6.70	7.65	5.40	4.74

ADC ER Visits Past 12 Months

	2018						2019						Average
	July	Aug	Sept	Oct	Nov	Dec	Jan	Feb	Mar	Apr	May	June	
Emergency Room Visits	117	96	110	95	91	105	100	76	88	116	117	86	99.8

ADC Inpatient Utilization
Past 12 MonthsADC Inpatient Average Length of Stay
Past 12 MonthsADC Emergency Room Visits
Past 12 Months

MEDICAL GRIEVANCE BOARD REPORT – JUNE 2019

Unit	Acknowledged/ Received	Rejected	Reviewed & Signed by Dep Director	With Merit	With Merit, but Resolved	% With Merit	Without Merit
Benton	0	0	0	0	0	0%	0
Bowie Co.	0	0	0	0	0	0%	0
CMU	0	0	0	0	0	0%	0
Cummins	9	2	12	1	0	8%	11
Delta	1	3	5	1	0	20%	4
EARU	14	2	1	0	0	0%	1
EARU Max	13	6	5	0	0	0%	5
Ester	1	0	1	0	0	0%	1
Grimes	3	2	9	0	0	0%	9
Hawkins	0	0	1	0	0	0%	1
McPherson	11	4	6	2	0	33%	4
MCWRC	0	0	0	0	0	0%	0
MSU	10	2	10	1	0	10%	9
North Central	8	0	5	0	0	0%	5
NWAWRC	0	0	0	0	0	0%	0
Ouachita	17	6	13	1	0	8%	12
Pine Bluff	0	2	3	0	0	0%	3
Randall Williams	0	0	0	0	0	0%	0
SNN	0	0	0	0	0	0%	0
TRCC	0	0	0	0	0	0%	0
Tucker	6	3	3	0	0	0%	3
Varner	12	4	13	0	1	8%	12
Varner S Max	19	1	26	1	0	4%	25
WRU	1	2	2	0	0	0%	2
WHM	1	0	2	0	1	50%	1
WWR	0	0	0	0	0	0%	0
TOTAL	126	39	117	7	2	8%	108

CHAPLAINCY

Month: June Year: 2019	CUMMINS	DELTA REGIONAL	EAST ARKANSAS	EAST ARKANSAS MAX	ESTER	GRIMES	HAWKINS	MAXIMUM	MCPHERSON	NORTH CENTRAL	OUACHITA RIVER	PINE BLUFF	RANDALL L. WILLIAMS	TUCKER	VARNER	VARNER MAX	WRIGHTSVILLE	TOTAL
Services Chaplains Oversaw																		
Christian																		
Population	9	16	2	0	2	7	0	4	4	13	7	5	12	8	11	0	5	105
Segregation	0	0	0	0	0	0	0	0	0	0	0	0	0	0	0	0	0	0
Muslim																		
Population	5	5	0	0	1	4	0	1	4	0	0	2	5	1	4	0	1	33
Segregation	0	0	0	0	0	0	0	0	0	0	0	0	0	0	0	0	0	0
																		138
Volunteers in Charge																		
Protestant	14	13	32	0	13	24	25	31	36	0	7	12	10	26	17	10	25	295
Catholic	2	0	0	0	1	2	5	0	2	4	2	1	1	0	2	4	4	30
Muslim	1	0	0	0	1	0	0	1	0	0	9	0	0	1	0	0	4	17
Other	0	0	3	0	0	0	2	17	4	0	20	0	2	0	4	0	2	54
Baptism	3	0	13	0	0	0	0	0	53	1	1	0	2	7	3	0	1	84
Marriages																		
	0	0	0	0	0	1	2	0	0	0	1	0	0	0	0	0	0	4
Distributed by Chaplains																		
Greeting Cards	250	89	0	0	200	40	200	425	539	60	120	185	134	185	159	69	0	2,655
Bibles, Quran, Torah, Etc.	23	30	228	14	20	15	12	20	27	15	250	12	6	40	77	21	7	817
Study Course	0	6	62	34	15	0	5	350	81	0	40	0	4	75	8	1	0	681
Writing Supplies	0	0	0	0	90	28	150	80	91	0	300	0	0	40	0	0	0	779
Literature	765	525	787	327	575	5	300	35	312	224	400	217	67	425	1,057	56	348	6,425
Chaplain's Visits																		
Barracks	67	64	15	0	25	20	12	84	30	34	160	31	31	141	159	0	30	903
Approximate Hours Spent in Barracks	45	8	4	0	120	15	8	12	12	17	28	4	4	35	40	7	13	372
Inmate Office visits	18	97	82	0	55	29	60	8	225	40	72	41	85	175	126	0	25	1,138
Other Office visits	11	15	8	0	20	9	12	6	35	15	90	0	6	30	15	1	9	282
Hospital	1	0	0	0	0	6	1	0	8	0	47	15	6	0	0	0	0	84
Infirmary/Sick Call	3	3	0	0	8	20	8	12	30	5	24	4	4	5	4	0	2	132
Restrictive/Punitive Housing	9	3	0	7	0	4	0	12	24	3	12	3	0	6	0	6	3	92
PC - DRU	0	3	0	0	0	0	0	0	0	0	0	0	0	0	0	0	0	3
Visitation Days	0	2	0	0	0	0	0	0	1	0	1	2	0	0	0	0	0	6
Volunteer Visits																		
RCV	0	5	9	0	0	7	7	0	24	0	54	0	0	2	2	0	0	110
OCV	14	29	27	0	25	0	18	54	24	20	0	18	0	54	9	0	30	322
Spiritual Advisor	3	0	0	0	0	0	0	0	0	0	2	0	0	3	0	0	0	8
CRA	37	6	99	9	25	83	68	134	39	89	106	13	12	113	49	9	30	921
Religious Volunteer Hours																		
Volunteer Hours	68	84	338	11	195	185	143	365	308	365	690	89	62	410	215	19	120	3,667
Denominational/Volunteer Chaplain Hours	78	3	15	0	150	15	139	99	104	116	17	32	25	136	26	1	34	990
																		4,657
Other Activities of Chaplain																		
Counseled Employees	8	6	7	0	16	0	12	2	41	4	60	3	4	4	15	8	5	195
Orientation Sessions	4	1	0	0	1	0	0	0	2	0	0	0	0	0	0	0	4	12
Free World Devotions	0	1	1	0	8	10	0	0	2	0	2	0	2	4	20	0	0	50
Spoke in Churches	32	0	1	0	8	12	0	0	2	0	6	2	1	4	20	0	0	88
Crisis Intervention Sessions	15	8	2	0	15	0	11	1	18	4	21	2	0	12	4	2	6	121
Marriage Counseling	0	0	2	0	0	0	2	0	0	3	13	0	0	0	0	0	0	20
Denominational Meeting	1	1	1	0	1	1	1	1	0	1	0	1	1	0	9	0	0	19
Chaplain's Meeting	1	1	1	0	1	3	1	0	1	1	1	0	1	1	1	0	1	15
Volunteer Training Session	0	0	0	0	0	0	0	1	0	0	1	0	0	0	0	0	0	2
Chaplain Transfers																		
	1	0	0	0	0	0	0	0	0	0	0	0	0	0	0	0	0	1
Chaplain Promotions																		
	0	0	0	0	0	1	0	0	1	0	0	0	0	0	0	0	0	2
PAL PROGRAM																		
Enrolled at start of month	46	21	50	0	32	50	30	15	57	17	37	0	30	62	50	0	28	525
Enrolled during the month	6	7	4	0	2	3	3	4	13	10	9	0	2	2	4	0	1	70
Removed From PAL Program																		
# Paroled	1	0	1	0	0	0	0	0	5	0	3	0	0	1	0	0	0	11
# Completed	0	1	3	0	0	2	2	1	1	3	2	0	0	0	1	0	0	16
# Withdrew	0	0	0	0	0	0	1	0	6	1	3	0	0	0	2	0	0	13
# Removed	4	3	0	0	0	0	0	0	4	0	1	0	2	1	1	0	0	16
# Transferred	1	2	0	0	0	0	2	0	0	0	1	0	0	0	0	0	0	6
Total Removed from PAL Program	6	6	4	0	0	5	1	16	4	10	0	2	2	4	0	0	0	62
Total Enrolled at the End of the Month	44	22	50	0	34	51	28	18	54	23	36	0	30	62	50	0	29	533
Volunteers In PAL																		
	15	1	11	0	6	32	21	8	35	6	6	0	3	5	6	0	3	158
Special Events:																		
	1	2	2	1	1	1	1	3	4	1	3	1	1	1	1	1	3	28

MONTHLY PURCHASING REPORT – JUNE 2019

PURCHASE ORDERS OVER \$10,000.00					
VENDOR	DESCRIPTION	LOCATION	PO#	PURCHASE AMOUNT	FUND
Mid States Services+4:29 Inc	Toilet Paper	Wrightsville/Warehouse	4501883139	\$25,804.80	Operational Industry Budget
Winsupply Pine Bluff AR Co	Raypack & Pump for Boiler	Pine Bluff/Maintenance	4501883481	\$10,450.00	Operational Budget
William Harrison Inc	HVAC Unit	North Central/Maintenance	4501883186	\$12,716.00	Operational Budget
Printing Papers Inc	Paper	Central Warehouse	4501882826	\$31,314.36	Operational Budget
PVF Industrial Supply	Boiler Room Building Supplies	Cummins/Construction	4501882272	\$10,485.82	Telephone Funds
Trane US Inc	HVAC Unit	Varner/Construction	4501882877	\$11,009.13	Telephone Funds
Tyco Fire & Security Management Inc	Security Alarm System Supplies	Varner/Construction	4501882847	\$19,107.59	Telephone Funds
Green Point AG LLC	Fertilizer for Corn	Cummins/Chemical Shed	4501882443	\$85,355.00	Operational Farm Budget
Vans Harvesting Inc	Lease Pixall & Heads	Cummins/Farm	4501883185	\$10,080.00	Operational Farm Budget
William R Hill & Co Inc, Doug Waldmann	Food Purchases	Central Warehouse	4501883902	\$372,235.90	Operational Budget
Wholesale Electric Supply Co Inc	Electrical Supplies	McPherson/Construction	4501883777	\$18,298.74	McPherson Vis. Ctr. Const
The Presidio Corporaton	Network Switches & Phones	Admin East/Information Services	4501883772	\$34,313.37	Telephone Funds
Shupe & Associates Inc	Mixer Pump	Tucker WW Treatment/Maintenance	4501884963	\$11,809.40	Operational Budget
Miller Bowie Supply.Com	Whole Cotton Seed for Cow Feed	Cummins/Farm	4501883862	\$11,750.00	Operational Farm Budget
Mid States Services Inc	Toilet Paper	Wrightsville/Warehouse	4501884436	\$25,804.80	Operational Industry Budget
Tabb Textiles Co Inc	Fabric	Wrightsville/Warehouse	4501884494	\$25,500.00	Operational Industry Budget
Mid South Sales Inc	Fuel-Unleaded & Diesel	Central Warehouse	4501883971	\$11,283.66	Operational Budget
Pierce & Company Inc	Concrete	Construction/Maintenance	4501884391	\$10,912.00	Tucker Unit Op Exp
Bob Barker Company Inc	Deodorant Soap	Central Warehouse	4501884359	\$41,250.00	Operational Budget
Green Point AG LLC	Herbicide-Liberty for Corn	Cummins/Chemical Shed	4501884394	\$12,100.00	Operational Farm Budget
Mobley Construction Co Inc	Concrete	McPherson/Construction	4501884966	\$28,001.30	McPherson Vis. Ctr. Const
Green Point AG LLC	Fertilizer for Rice	Cummins/Chemical Shed	4501884638	\$138,810.00	Operational Farm Budget
Helena Chemical Company	Herbicide for Soybeans	Cummins/Chemical Shed	4501884531	\$134,175.00	Operational Farm Budget
Gary R Powell AG H20	Pivot Repair	EARU/Farm	4501881854	\$10,678.94	Operational Farm Budget
Green Point AG LLC	Herbicide for Soybeans	Tucker/Farm	4501885017	\$27,507.20	Operational Farm Budget
Gary R Powell AG H20	Pivot Repair	Cummins/Farm	4501886903	\$34,987.19	Operational Farm Budget
Farm Brothers Flyers A LLC	Fertizer for Rice	Cummins/Farm	4501885166	\$26,000.00	Operational Farm Budget
South Arkansas Equipment	Tractor Fuel System Repair	Cummins/Farm	4501871932	\$16,006.36	Operational Farm Budget
Mid South Sales Inc	Fuel-Unleaded	Wrightsville	4501884810	\$14,193.21	Operational Budget
Mid South Sales Inc	Fuel-Unleaded	Cummins/Commissary	4501884818	\$15,162.56	Operational Budget
Razor Chemical Inc	Janitorial Supplies	Delta/Janitorial Factory	4501885344	\$12,154.20	Operational Industry Budget
Mid South Sales Inc	Fuel-Diesel	Tucker/Farm	4501880265	\$16,350.00	Operational Farm Budget
Green Point AG LLC	Fuel-Diesel	Cummins/Farm	4501884989	\$13,994.42	Operational Farm Budget
Mid South Sales Inc	Fuel-Diesel	Tucker/Farm	4501885508	\$14,823.54	Operational Farm Budget
US Foods Inc	Food Purchases	Central Warehouse	4501885851	\$14,950.00	Operational Budget
Green Point AG LLC	Herbicide for Soybeans	Tucker/Farm	4501885845	\$13,911.50	Operational Farm Budget
Layne Christensen Company	Well Repair	Tucker/Maintenance	4501881847	\$22,080.31	Tucker Unit Op Exp
Mississippi Ag Company	Tractor & Implement Parts	Cummins/Farm Garage	4501883179	\$10,427.95	Operational Farm Budget
Galls LLC	Uniform Shirts	Training Academy	4501886256	\$24,928.80	Operational Budget
Mid South Sales Inc	Fuel-Unleaded & Diesel	Ouachita	4501885798	\$11,009.79	Work Release
Fastenal Co	Network Cameras	Construction/Construction	4501886340	\$18,053.04	DOC Existing Facilities
		Total for Purchases over \$10,000		\$1,409,785.88	
FIRM CONTRACTS OVER \$25,000.00					
VENDOR	DESCRIPTION	UNIT	Contract # P.O#	PURCHASE AMOUNT	FUND
		Total for Contracts		\$0.00	
EMERGENCY PURCHASE ORDERS OVER \$25,000.00					
		Total EM Purchases		\$0.00	
Total Purchases				\$1,409,785.88	

PERSONNEL REPORT – JUNE 2019

UNIT	AUTHORIZED	FILLED	VACANT	% VACANT	HIRED	VOLUNTARY TERMINATION	INVOLUNTARY TERMINATION	RETIREMENT
BENTON (CR05)	77	73	4	5.19%	3	1	0	0
CENTRAL OFFICE (CR01, CR02, CR08 & CR22)	276	250	26	9.42%	0	0	0	3
509 CHAPL ADMIN	27	24	3	11.11%	1	0	0	1
CONSTRUCTION (CR04)	59	53	6	10.17%	0	1	0	0
CUMMINS (CR09)	427	387	40	9.37%	15	6	8	0
DELTA (CR10)	183	176	7	3.83%	7	0	0	1
EAST ARKANSAS (CR12)	366	310	56	15.30%	12	4	5	0
ESTER (CR11)	157	152	5	3.18%	9	3	0	1
FARM (CR29)	60	47	13	21.67%	0	1	0	0
GRIMES (CR27)	244	224	20	8.20%	9	3	1	2
HAWKINS (CR06)	75	70	5	6.67%	2	0	0	0
INDUSTRY (CR07)	53	43	10	18.87%	1	0	0	0
MAXIMUM SECURITY (CR14)	225	170	55	24.44%	13	5	3	0
MCPHERSON (CR28)	234	206	28	11.97%	9	3	0	0
MENTAL HEALTH	184	154	30	16.30%	1	0	1	0
MISS COUNTY (CR15)	38	31	7	18.42%	1	1	0	0
NORTH CENTRAL (CR16)	197	193	4	2.03%	9	4	2	0
NORTHWEST ARK (CR17)	30	28	2	6.67%	2	1	0	0
OUACHITA RIVER (CR30)	466	418	48	10.30%	20	13	5	2
PINE BLUFF (CR20)	169	166	3	1.78%	4	0	2	0
RANDAL L. WILLIAMS (CR13)	145	142	3	2.07%	8	3	0	0
TEXARKANA (CR21)	31	28	3	9.68%	5	1	0	0
TRANSPORTATION (CR32)	103	99	4	3.88%	0	1	0	0
TUCKER (CR23)	197	146	51	25.89%	12	14	6	0
TUCKER REENTRY (CR33)	31	31	0	0.00%	3	0	1	0
VARNER (CR24)	358	285	73	20.39%	27	10	3	0
WRIGHTSVILLE (CR25)	207	196	11	5.31%	9	1	3	1
TOTAL	4,619*	4,102*	517	12.19%	182	76	40	11

Term/Hire report run 7/1/19 - PSR created 7/1/19 for 6/30/19

*These numbers reflect both security and non-security employees.

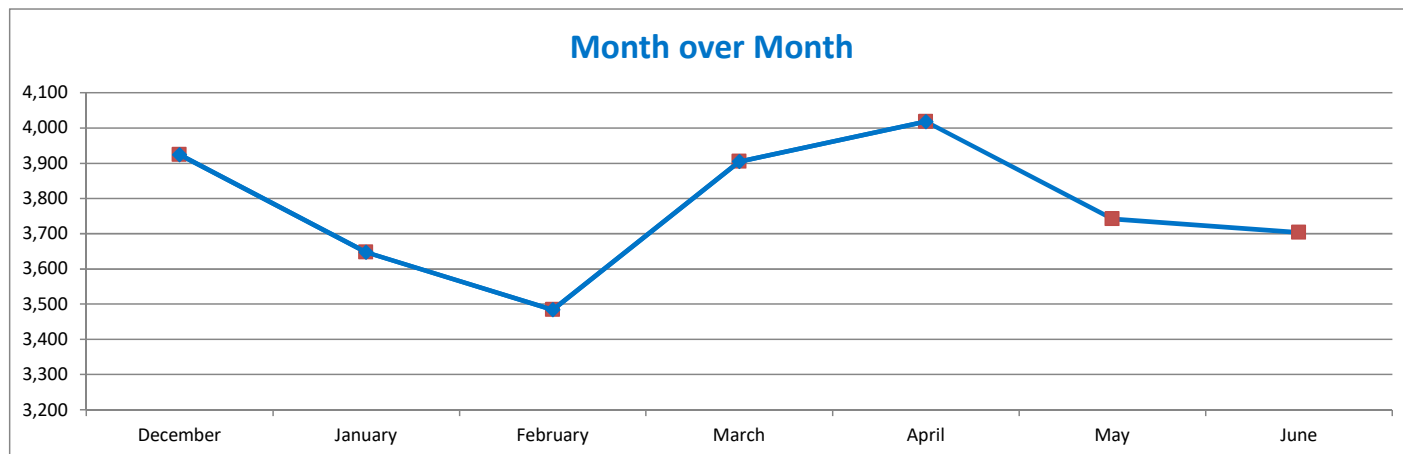
SECURUS VIDEO VISITATION ACTIVITY TRACKER - JUNE 2019

AR-DOC SVV Activity Tracker

Total ADP: 15,587

Total Visits by Month	December	January	February	March	April	May	June
Total (Includes SuperMax)	3,924	3,647	3,484	3,905	4,018	3,742	3,703
Securus Target Objective	15,587	15,587	15,587	15,587	15,587	15,587	15,587

Anywhere Visitation Performance:



Completed Visits

Site	Current Month	Previous Month
Benton	143	160
Cummins	254	241
Delta Regional	198	191
East Arkansas Regional	223	194
Ester	191	191
Grimes	521	419
J Aaron Hawkins Sr.	191	181
Tucker Max	111	127
Mcperson	205	274
Mississippi County WRC	46	32
North Central	195	219
NW Arkansas WRC	5	1
Ouachita River	375	397
Pine Bluff Complex	147	170
Randall L Williams	163	205
State Police Barracks	43	40
Texarkana Regional	16	48
Tucker Unit	211	249
Varner	156	117
Wrightsville Unit	298	267
Pine Bluff Re-Entry	11	19
Tucker Re-entry	0	0
Total:	3,703	3,742

Missed by Inmate

Site	Current Month	Previous Month
Benton	11	21
Cummins	9	12
Delta Regional	6	15
East Arkansas Regional	16	14
Ester	7	9
Grimes	5	25
J Aaron Hawkins Sr.	4	1
Tucker Max	6	25
Mcperson	28	51
Mississippi County WRC	0	1
North Central	13	3
NW Arkansas WRC	1	1
Ouachita River	21	26
Pine Bluff Complex	4	8
Randall L Williams	3	12
State Police Barracks	0	2
Texarkana Regional	0	1
Tucker Unit	7	4
Varner	8	2
Wrightsville Unit	5	7
Pine Bluff Re-Entry	4	1
Tucker Re-entry	0	0
Total:	158	241

LEASED SECURUS TABLETS - JUNE 2019

FACILITY NAME	MAY '19 LEASED	JUNE '19 LEASED	MAY '19 TOTAL	JUNE '19 TOTAL
Benton Unit	91	94	109	105
Cummins Unit	279	264	383	366
Delta Regional Unit	117	108	167	160
East Arkansas Regional Unit	185	183	297	287
Ester Unit	96	94	244	253
Grimes Unit	184	199	269	286
J Aaron Hawkins Sr Center For Women	92	97	192	181
McPherson Unit	220	210	343	325
Mississippi County Work Release Center	41	38	49	49
North Central Unit	120	117	199	191
Northwest Arkansas Work Release Center	45	38	57	48
Ouachita River Unit	227	220	337	344
Pine Bluff Re-Entry Center	20	18	17	20
Pine Bluff Unit	72	74	82	87
Randall L. Williams Facility	103	103	142	143
State Police Barracks	17	18	24	22
Texarkana Regional Correction Center	37	31	53	43
Tucker Maximum Security Unit	86	84	118	126
Tucker Re-Entry Center	35	34	62	96
Tucker Unit	182	182	250	250
Varner Unit	201	199	312	304
Wrightsville Unit	207	205	270	267
	2,657	2,610	3,976	3,953

*The difference between LEASED and TOTAL tablets reflects the number of program and officer tablets.

CONSTRUCTION BUDGET / STATUS REPORT - JULY 10, 2019 — [Page 1 of 2]

Fund	Project Description	Data ending on June 30, 2019			\$ % Complete	Construction % Complete	Notes
		Total Projected	Budget	Available Funds			
7004810	Cummins Poultry Houses	\$ 5,939,457	\$ 6,100,000	\$ 160,543	97%	100%	Funding closed, REQUEST TO REMOVE
KBR4Q95	ESTER - Phase 3 - General Improvement Fund	2,951,933	4,383,781	1,431,849	67%	98%	Parking Lot in design. Cameras will be installed around perimeter after paving. ADFA bonds turned back on Phases 1 & 2 1A
700483A	EARU ISO Rec Yard	265,735	271,430	5,695	98%	100%	Complete
700483A	Varner ISO Rec Yard	179,734	180,953	1,219	99%	100%	Complete
700483A	EARU Max Rec Precast Rec Yard	67,887	659,553	591,666	10%	0%	OSP preparing bid package
700483A	Tucker Max Precast Rec Yard	57,092	1,210,000	1,152,908	5%	0%	Plans being submitted to DBA
700483A	Cummins Precast Rec Yard	47,449	927,500	880,051	5%	0%	Plans being submitted to DBA
KBR4Q95	Bullpens	351,408	851,999	500,591	41%	98%	Varner complete, EARU underway.
KBR4Q95	13 & 15 Barracks Door Revisions	115,646	174,000	58,354	66%	63%	All doors installed in 13 Barracks. Bullpen locks have been received
KBR4Q95	Camera's (New)	820,918	1,248,000	427,082	66%	60%	Installations underway. Delta & Varner complete, working at Tucker and Max.
700485A	Integrity Energy Improvements at EARU & Delta	16,524,885	17,010,204	485,319	97%	97%	lights (100%), plumbing 99%, water (100%), compost (100%), & solar (100%), HVAC (99%).
700486A	Pine Bluff Unit Barracks 9 Renovation	341,706	437,000	95,294	78%	96%	9A, B C & D construction complete, 4/5/19
700482A	Pine Bluff Unit Barracks 10 Renovation	459,565	784,000	324,435	59%	100%	Complete, REQUEST TO REMOVE
KBSCW18	McPherson Administration	58,946.16	395,439	336,493	15%	5%	Preparing Bid packages, and ordering materials. Half the footings poured.
KBSBW18	McPherson Visitation	166,509.85	312,430	145,920	53%	5%	
KBSHW18	Tucker Water Treatment	-	1,093,848	1,093,848	0%	0%	submitting for designer approval.
KBSFW18	Max Armory	-	70,000	70,000	0%	0%	to replace existing inadequate Armory. Plans complete, submitting to DBA
KBSFW18	Varner Armory	-	68,399	68,399	0%	0%	DBA comments received & answered. DBA Approved
7004820	Central Office Roof Replacement	416,625.35	500,000	83,375	83%	100%	Started 12/3, Substantially complete 4/1/19
7004820	Pine Bluff Infirmary Roof Replacement	58,251.20	132,800	74,549	44%	0%	Pre-Const Mtg held 6-3-19, 120 days to complete
509	Wrightsville ACI Roof Replacement	247,158.40	255,000	7,842	97%	100%	replaced roof. Complete
Springdale WRC Laundry and Commissary		-		0	0%	0%	Revised architect's floorplan, preparing plans & geotech report.

Telephone Projects

Maintenance & Operations	Fire Alarm Upgrades (All Units)	50,440	53,000	2,560	95%	100%	on-going
	Gas Stations - Canopy (C/O)	0	-	0	0%	99%	Steel structure completed.
	Stainless Steel - Kitchen/Shower/Restrooms - All Units	19,043	20,000	957	95%	60%	continual need
	Parking Lot - Gravel and Paving - EARU	0	68,000	68,000	0%	0%	Lee County gave us the ROW. DBA approved the Plans for construction
	Gates and Fences all units	20,453	30,000	9,547	68%	65%	to improve security
	ACA Maintenance	98,286	100,000	1,714	98%	95%	Wrightsville, Benton, & Tucker coming up.
	ADA Projects - All Units	680	1,000	320	68%	100%	as needed.
	Fast Top Floor Systems (kitchen/laundry/showers all units)	24,939	25,000	61	100%	100%	Tucker underway, Benton next.



CONSTRUCTION BUDGET / STATUS REPORT - JULY 10, 2019 — [Page 2 of 2]

Fund	Project Description	Total Projected	Budget	Available Funds	\$ % Complete	Construction % Complete	Notes
Maintenance & Operations	Camera Equipment - All Units	174,044	175,000	956	99%	100%	cameras as requested/approved.
	Lock/Riot Gates - All Units	90,112	90,500	388	100%	99%	on-going.
	AC Units-All Units	94,996	100,000	5,004	95%	92%	repairing & replacing daily.
	Subtotal	\$ 572,993	\$ 662,500	\$ 89,507			
FY19 Carry Forward	Metal Ceilings	0	25,000	25,000	0%	0%	installing at Tucker Barracks 5, NCU next.
	ORCU Gravel Pit Operations	8,889	35,000	26,111	25%	100%	on-going. Elect upgrades complete, crusher operating.
	Dog Kennel/Horse Stable Malvern	0	48,000	48,000	0%	0%	DBA comments received, responses underway.
	Emergency Generator - All Units	132,418	145,000	12,582	91%	100%	Wrightsville Infirmary generator & mat'l delivered, installation complete
	Roof Repairs-Cummins	2,091	189,700	129,206	32%	0%	Prepared large order for multiple Units. Currently at the Max. Need repairs at ORCU. Office of State Procurement secured a State contract to purchase roofing materials.
	Roof Repairs-Cummins Laundry	0				0%	
	Roof Repairs-East Arkansas	0				0%	
	Roof Repairs-Max	56,675				60%	
	Roof Repairs-Tucker	0				20%	
	Roof Repairs-Varner	1,728				0%	
	Roof Repairs-Wrightsville	0				0%	
	Boiler Repair	99,265	100,000	735	99%	100%	continually needing repair
	Subtotal	\$ 301,066	\$ 542,700	\$ 241,634			
New Projects	EARU Sewer lift station	72,782	75,000	2,218	97%	100%	Project complete and operating.
	Tucker 4 new filters & one aeration tank	11,567	500,000	488,434	2%	0%	Plans approved by ADH & DBA, Plans & Specs sent to DBA.
	Change media in 7 water filters at Tucker	4,132	6,000	1,869	69%	100%	Filter media changed out in all 7 filters. Water quality improving.
	Tucker Barracks 10 covered walkway	0	-	0	0%	0%	Plans being submitted to DBA
	Max manhole	0	-	0	0%	0%	to provide access to a blockage point in sewer
	RLW Sewer relocation 400' + 2 MH	0	34,000	34,000	0%	0%	frequent stoppages, defect in pipe line.
	Additional Metal Fab shop	0	-	0	0%	0%	room to do more metal work
	PB Warehouse Drive replacement	0	50,000	50,000	0%	0%	asphalt drive pot holed
	Subtotal	\$ 88,480	\$ 665,000	\$ 576,520			
	Architect Fees	30,708	30,000	-708	102%		
	Total	\$ 993,247	\$ 1,900,200	\$ 906,953			

Notes

Report has not been reconciled against Accountings Reconciled Reports.
Tolerance/Deviation is with in 1% of Projected Spending.